



Wisconsin Department of Transportation

March 6, 2019

Division of Transportation Systems Development

Bureau of Project Development
4822 Madison Yards Way, 4th Floor South
Madison, WI 53705

Telephone: (608) 266-1631
Facsimile (FAX): (608) 266-8459

NOTICE TO ALL CONTRACTORS:

Proposal #10: 5989-00-14, WISC 2019 155
City of Beloit, Prairie Avenue
Cranston Road to Huebbe Parkway
CTH G
Rock County

Letting of March 12, 2019

This is Addendum No. 01, which provides for the following:

Schedule of Items:

Deleted Bid Item Quantities					
Bid Item	Item Description	Unit	Old Quantity	Revised Quantity	Proposal Total
416.0620	Drilled Dowel Bars	EACH	176	-176	0

Plan Sheets:

Revised Plan Sheets	
Plan Sheet	Plan Sheet Title (brief description of changes to sheet)
11	Construction Details - Removed Drilled Dowel Bars references.
120	Miscellaneous Quantities - Removed Drilled Dowel Bars Bid Item and quantity.

Schedule of Items

Attached, dated March 6, 2019, are the revised Schedule of Items Pages 1 – 14.

Plan Sheets

The following 8½ x 11-inch sheets are attached and made part of the plans for this proposal:
Revised: 11 and 120

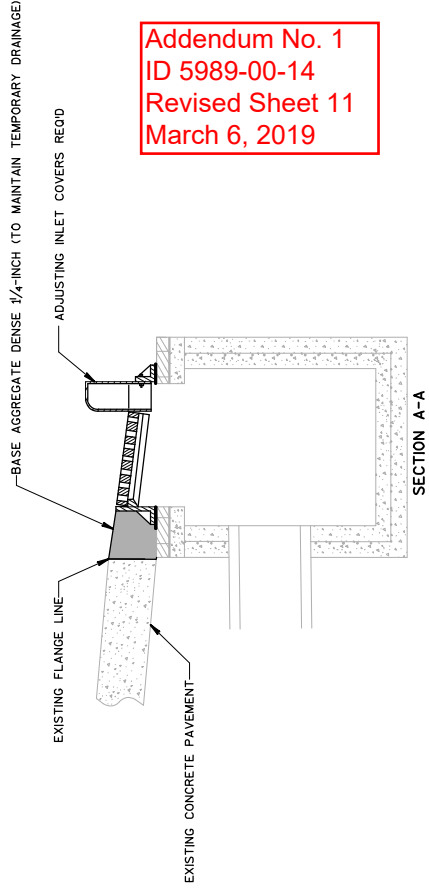
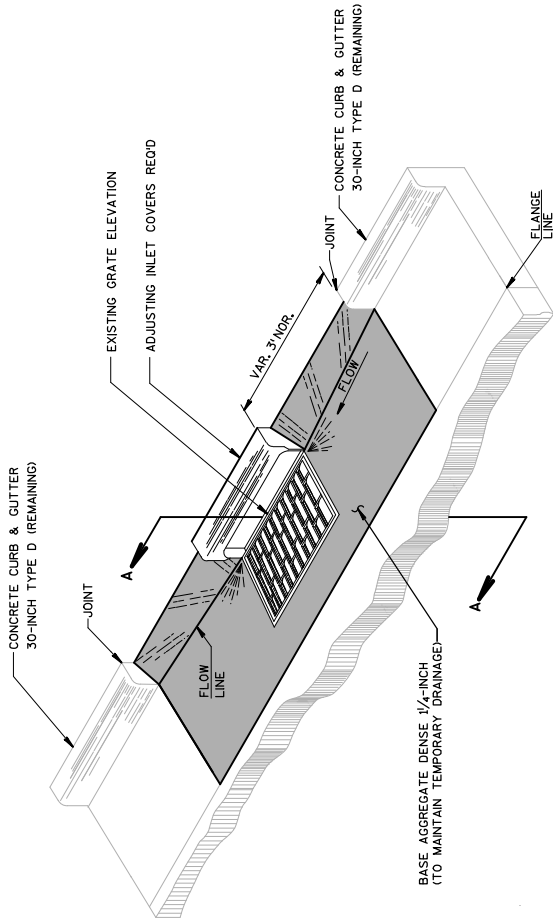
The responsibility for notifying potential subcontractors and suppliers of these changes remains with the prime contractor.

Sincerely,

Mike Coleman

Proposal Development Specialist
Proposal Management Section

END OF ADDENDUM



ADJUSTING INLET LOCATIONS (AT SPOT CURB AND GUTTER REPLACEMENT LOCATIONS) PRIOR TO PLACEMENT OF NEW CURB AND GUTTER

(LOCATIONS AS IDENTIFIED IN THE PLAN OR AS DIRECTED BY THE ENGINEER)

PROJECT NO: 5989-00-14

HWY: CTH G

COUNTY: ROCK

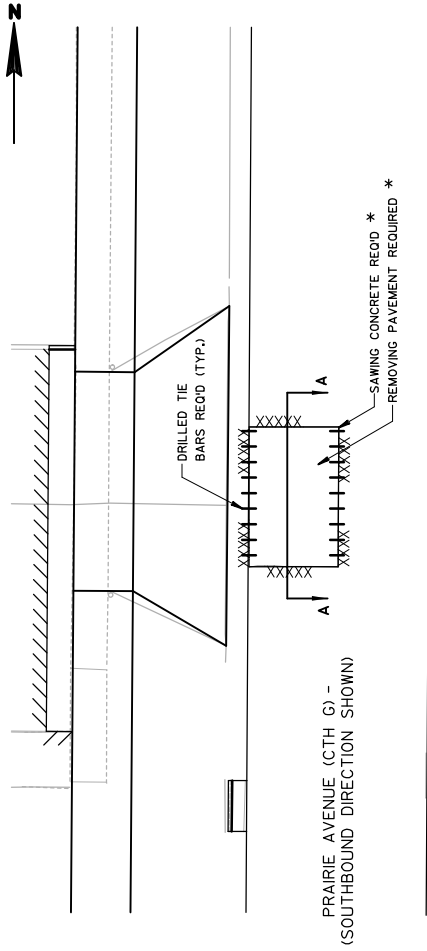
FILE NAME : S:\NMD\1700--1798\1745\G11\Nl.cros\Plan\021002b.cad.dgn

PLOT DATE : 3/4/2019

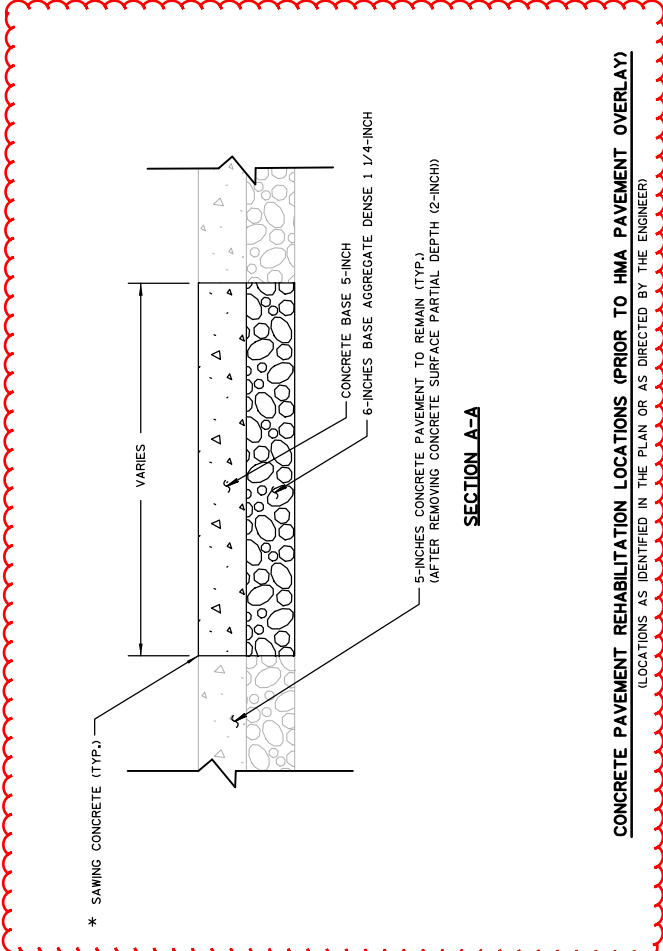
PLOT BY : _user_name_

PLOT NAME :

PLOT SCALE : ##.....plot scale.....** WISDOT/CADD SHEET 42



* SAWING CONCRETE AND REMOVING PAVEMENT REQUIRED AFTER 2-INCH REMOVING CONCRETE SURFACE PARTIAL DEPTH IS COMPLETE.



CONCRETE PAVEMENT REHABILITATION LOCATIONS (PRIOR TO HMA PAVEMENT OVERLAY)

(LOCATIONS AS IDENTIFIED IN THE PLAN OR AS DIRECTED BY THE ENGINEER)

CONSTRUCTION DETAILS

SHEET 11

E

Addendum No. 1
ID 5989-00-14
Revised Sheet 120
March 6, 2019

REMOVING STRUCTURES				REMOVING BOLLARDS				REMOVING BLOCK RETAINING WALL				FINISHING ROADWAY			
204.020	204.020	204.960.S.01	204.965.S.01	204.960.S.01	204.965.S.01	204.960.S.01	204.965.S.01	204.960.S.01	204.965.S.01	204.960.S.01	204.965.S.01	204.960.S.01	204.965.S.01	204.960.S.01	204.965.S.01
REMOVING MANHOLES	REMOVING INLETS	STATION	LOCATION	STATION	LOCATION	STATION	LOCATION	STATION	LOCATION	STATION	LOCATION	STATION	LOCATION	STATION	LOCATION
0000	57+76	40.9 RT	---	1	49+LT	1	53+95 - 58+16	LT	750	0000	5989-00-14	0000	5989-00-14	0000	5989-00-14
0000	59+19	30.6 RT	---	1	49+LT	1									
0000	64+84	37.7 RT	---	1	TOTAL	2									
TOTALS		1	2												

BASE AGGREGATE DENSE			
305.010	305.010	305.010	305.010
3/4-INCH	1 1/4-INCH	CONCRETE PAVEMENT SUMMARY	CONCRETE DRIVEWAY
TON	TON	CONCRETE PAVEMENT SUMMARY	CONCRETE DRIVEWAY
0000	10+55 - 29+26	40	1,550
0000	10+55 - 29+26	20	270
0000	29+26 - 44+57	30	1,250
0000	29+26 - 44+57	30	200
0000	44+57 - 73+78	160	1,600
0000	44+57 - 73+78	160	2,650
TOTALS		440	7,520

CONCRETE PAVEMENT SUMMARY			
320.005	320.005	415.0070	415.0070
CONCRETE 5-INCH	CONCRETE 7-INCH	CONCRETE 5-INCH	CONCRETE 7-INCH
SY	SY	SY	SY
0000	10+55 - 11+51	---	---
0000	10+55 - 11+31	59	---
0000	14+83 - 17+00	---	---
0000	18+61 - 18+85	8	---
0000	23+52 - 23+72	---	---
0000	28+83 - 30+77	---	---
0000	29+58 - 29+76	9	---
0000	34+08 - 34+46	19	---
0000	35+91 - 36+96	365	---
0000	35+91 - 36+96	81	---
0000	38+82 - 39+30	---	---
0000	41+47 - 41+95	23	---
0000	51+73 - 51+88	---	---
0000	54+93 - 55+22	11	---
0000	59+90 - 60+22	12	---
TOTALS		1,856	115

DRILLED TIE BARS SUMMARY			
416.0610	416.0610	416.0610	416.0610
CONCRETE 6-INCH	CONCRETE 6-INCH	CONCRETE 6-INCH	CONCRETE 6-INCH
SY	SY	SY	SY
0000	10+55 - 29+26	LT	435
0000	10+55 - 29+26	RT	435
0000	29+26 - 44+57	LT	483
0000	29+26 - 44+57	RT	281
0000	44+57 - 73+78	LT	772
0000	44+57 - 73+78	RT	464
0000	UNDISTRIBUTED	---	170
TOTAL		3,030	

ASPHALTIC ITEMS SUMMARY			
465.0605	465.0605	465.0605	465.0605
TACK COAT	TACK COAT	TACK COAT	TACK COAT
GAL	GAL	GAL	GAL
0000	10+55 - 29+26	455	---
0000	10+55 - 29+26	460	---
0000	29+26 - 44+57	365	---
0000	29+26 - 44+57	350	---
0000	44+57 - 73+78	675	---
0000	44+57 - 73+78	790	---
TOTALS		3,095	610

ASPHALTIC SURFACE DRIVEWAYS AND FIELD ENTRANCES			
465.020	465.020	465.020	465.020
ASPHALTIC SURFACE DRIVEWAYS AND FIELD ENTRANCES	ASPHALTIC SURFACE DRIVEWAYS AND FIELD ENTRANCES	ASPHALTIC SURFACE DRIVEWAYS AND FIELD ENTRANCES	ASPHALTIC SURFACE DRIVEWAYS AND FIELD ENTRANCES
TON	TON	TON	TON
0000	10+55 - 29+26	215	---
0000	10+55 - 29+26	18	---
0000	29+26 - 44+57	185	---
0000	29+26 - 44+57	5	---
0000	44+57 - 73+78	210	---
0000	44+57 - 73+78	430	---
TOTALS		483	4,645

REHEATING HMA PAVEMENT LONGITUDINAL JOINTS			
460.410.S	460.410.S	460.410.S	460.410.S
LF	LF	LF	LF
0000	10+55 - 29+26	CENTERLINE	1,365
0000	29+26 - 44+57	CENTERLINE	730
0000	44+57 - 73+78	CENTERLINE	2,320
TOTAL			4,415

NOTES: A UNIT WEIGHT OF 110 POUNDS PER SQUARE YARD PER INCH OF THICKNESS WAS USED TO ESTIMATE ASPHALT QUANTITIES.
A TACK COAT APPLICATION RATE OF 0.07 GALLONS PER SQUARE YARD OF PAVEMENT AREA WAS USED TO ESTIMATE TACK COAT QUANTITIES.



Proposal Schedule of Items

Proposal ID: 20190312010 Project(s): 5989-00-14

Federal ID(s): WISC 2019155

SECTION: 0001 Contract Items

Alt Set ID: Alt Mbr ID:

Proposal Line Number	Item ID Description	Approximate Quantity and Units	Unit Price	Bid Amount
0002	201.0120 Clearing	566.000 ID	_____.	_____.
0004	201.0220 Grubbing	666.000 ID	_____.	_____.
0006	204.0100 Removing Pavement	5,385.000 SY	_____.	_____.
0008	204.0105 Removing Pavement Butt Joints	77.000 SY	_____.	_____.
0010	204.0109.S Removing Concrete Surface Partial Depth	281,900.000 SF	_____.	_____.
0012	204.0115 Removing Asphaltic Surface Butt Joints	80.000 SY	_____.	_____.
0014	204.0120 Removing Asphaltic Surface Milling	6,970.000 SY	_____.	_____.
0016	204.0150 Removing Curb & Gutter	6,210.000 LF	_____.	_____.
0018	204.0155 Removing Concrete Sidewalk	2,785.000 SY	_____.	_____.
0020	204.0195 Removing Concrete Bases	16.000 EACH	_____.	_____.
0022	204.0205 Removing Utility Poles	3.000 EACH	_____.	_____.
0024	204.0210 Removing Manholes	1.000 EACH	_____.	_____.
0026	204.0220 Removing Inlets	2.000 EACH	_____.	_____.
0028	204.0245 Removing Storm Sewer (size) 01. 12-Inch	35.000 LF	_____.	_____.
0030	204.0245 Removing Storm Sewer (size) 02. 36-Inch	20.000 LF	_____.	_____.
0032	204.9060.S Removing (item description) 01. Bollards	2.000 EACH	_____.	_____.



Proposal Schedule of Items

Proposal ID: 20190312010 Project(s): 5989-00-14

Federal ID(s): WISC 2019155

SECTION: 0001 Contract Items

Alt Set ID: Alt Mbr ID:

Proposal Line Number	Item ID Description	Approximate Quantity and Units	Unit Price	Bid Amount
0034	204.9165.S Removing (item description) 01. Block Retaining Wall	750.000 SF	_____.	_____.
0036	205.0100 Excavation Common	6,487.000 CY	_____.	_____.
0038	213.0100 Finishing Roadway (project) 01. 5989-00-14	1.000 EACH	_____.	_____.
0040	305.0110 Base Aggregate Dense 3/4-Inch	440.000 TON	_____.	_____.
0042	305.0120 Base Aggregate Dense 1 1/4-Inch	7,520.000 TON	_____.	_____.
0044	312.0110 Select Crushed Material	265.000 TON	_____.	_____.
0046	320.0115 Concrete Base 5-Inch	1,856.000 SY	_____.	_____.
0048	415.0070 Concrete Pavement 7-Inch	115.000 SY	_____.	_____.
0050	415.5110.S Concrete Pavement Joint Layout	1.000 LS	_____.	_____.
0052	416.0160 Concrete Driveway 6-Inch	980.000 SY	_____.	_____.
0054	416.0260 Concrete Driveway HES 6-Inch	90.000 SY	_____.	_____.
0056	416.0610 Drilled Tie Bars	3,030.000 EACH	_____.	_____.
0060	455.0605 Tack Coat	3,095.000 GAL	_____.	_____.
0062	460.2000 Incentive Density HMA Pavement	3,680.000 DOL	1.00000	3,680.00
0064	460.4110.S Reheating HMA Pavement Longitudinal Joints	4,415.000 LF	_____.	_____.
0066	460.5224 HMA Pavement 4 LT 58-28 S	610.000 TON	_____.	_____.



Proposal Schedule of Items

Proposal ID: 20190312010 Project(s): 5989-00-14

Federal ID(s): WISC 2019155

SECTION: 0001 Contract Items

Alt Set ID: Alt Mbr ID:

Proposal Line Number	Item ID Description	Approximate Quantity and Units	Unit Price	Bid Amount
0068	460.6223 HMA Pavement 3 MT 58-28 S	483.000 TON	_____.	_____.
0070	460.6424 HMA Pavement 4 MT 58-28 H	4,645.000 TON	_____.	_____.
0072	465.0110 Asphaltic Surface Patching	10.000 TON	_____.	_____.
0074	465.0120 Asphaltic Surface Driveways and Field Entrances	95.000 TON	_____.	_____.
0076	520.1012 Apron Endwalls for Culvert Pipe 12-Inch	1.000 EACH	_____.	_____.
0078	520.8000 Concrete Collars for Pipe	8.000 EACH	_____.	_____.
0080	601.0405 Concrete Curb & Gutter 18-Inch Type A	2,575.000 LF	_____.	_____.
0082	601.0407 Concrete Curb & Gutter 18-Inch Type D	560.000 LF	_____.	_____.
0084	601.0409 Concrete Curb & Gutter 30-Inch Type A	5,570.000 LF	_____.	_____.
0086	601.0411 Concrete Curb & Gutter 30-Inch Type D	1,099.000 LF	_____.	_____.
0088	602.0405 Concrete Sidewalk 4-Inch	15,150.000 SF	_____.	_____.
0090	602.0515 Curb Ramp Detectable Warning Field Natural Patina	228.000 SF	_____.	_____.
0092	602.0615 Curb Ramp Detectable Warning Field Radial Natural Patina	318.000 SF	_____.	_____.
0094	608.0412 Storm Sewer Pipe Reinforced Concrete Class IV 12-Inch	91.000 LF	_____.	_____.
0096	608.0436 Storm Sewer Pipe Reinforced Concrete Class IV 36-Inch	20.000 LF	_____.	_____.



Proposal Schedule of Items

Proposal ID: 20190312010 Project(s): 5989-00-14

Federal ID(s): WISC 2019155

SECTION: 0001 Contract Items

Alt Set ID: Alt Mbr ID:

Proposal Line Number	Item ID Description	Approximate Quantity and Units	Unit Price	Bid Amount
0098	611.0420 Reconstructing Manholes	1.000 EACH	_____.	_____.
0100	611.0430 Reconstructing Inlets	1.000 EACH	_____.	_____.
0102	611.0530 Manhole Covers Type J	3.000 EACH	_____.	_____.
0104	611.0624 Inlet Covers Type H	2.000 EACH	_____.	_____.
0106	611.0639 Inlet Covers Type H-S	2.000 EACH	_____.	_____.
0108	611.0642 Inlet Covers Type MS	1.000 EACH	_____.	_____.
0110	611.1230 Catch Basins 2x3-FT	3.000 EACH	_____.	_____.
0112	611.2003 Manholes 3-FT Diameter	1.000 EACH	_____.	_____.
0114	611.2005 Manholes 5-FT Diameter	1.000 EACH	_____.	_____.
0116	611.3901 Inlets Median 1 Grate	1.000 EACH	_____.	_____.
0118	611.8110 Adjusting Manhole Covers	8.000 EACH	_____.	_____.
0120	611.8115 Adjusting Inlet Covers	38.000 EACH	_____.	_____.
0122	612.0206 Pipe Underdrain Unperforated 6-Inch	4.000 LF	_____.	_____.
0124	616.0700.S Fence Safety	100.000 LF	_____.	_____.
0126	618.0100 Maintenance And Repair of Haul Roads (project) 01. 5989-00-14	1.000 EACH	_____.	_____.
0128	619.1000 Mobilization	1.000 EACH	_____.	_____.



Proposal Schedule of Items

Proposal ID: 20190312010 Project(s): 5989-00-14

Federal ID(s): WISC 2019155

SECTION: 0001 Contract Items

Alt Set ID: Alt Mbr ID:

Proposal Line Number	Item ID Description	Approximate Quantity and Units	Unit Price	Bid Amount
0130	620.0300 Concrete Median Sloped Nose	360.000 SF	_____.	_____.
0132	624.0100 Water	150.000 MGAL	_____.	_____.
0134	625.0100 Topsoil	9,790.000 SY	_____.	_____.
0136	627.0200 Mulching	12,720.000 SY	_____.	_____.
0138	628.1504 Silt Fence	250.000 LF	_____.	_____.
0140	628.1520 Silt Fence Maintenance	500.000 LF	_____.	_____.
0142	628.1905 Mobilizations Erosion Control	12.000 EACH	_____.	_____.
0144	628.1910 Mobilizations Emergency Erosion Control	3.000 EACH	_____.	_____.
0146	628.2006 Erosion Mat Urban Class I Type A	1,826.000 SY	_____.	_____.
0148	628.7005 Inlet Protection Type A	4.000 EACH	_____.	_____.
0150	628.7010 Inlet Protection Type B	12.000 EACH	_____.	_____.
0152	628.7015 Inlet Protection Type C	38.000 EACH	_____.	_____.
0154	628.7020 Inlet Protection Type D	19.000 EACH	_____.	_____.
0156	628.7504 Temporary Ditch Checks	30.000 LF	_____.	_____.
0158	628.7555 Culvert Pipe Checks	1.000 EACH	_____.	_____.
0160	628.7560 Tracking Pads	7.000 EACH	_____.	_____.
0162	629.0210 Fertilizer Type B	8.600 CWT	_____.	_____.



Proposal Schedule of Items

Proposal ID: 20190312010 Project(s): 5989-00-14

Federal ID(s): WISC 2019155

SECTION: 0001 Contract Items

Alt Set ID: Alt Mbr ID:

Proposal Line Number	Item ID Description	Approximate Quantity and Units	Unit Price	Bid Amount
0164	630.0140 Seeding Mixture No. 40	159.400 LB	_____.	_____.
0166	630.0300 Seeding Borrow Pit	64.800 LB	_____.	_____.
0168	642.5201 Field Office Type C	1.000 EACH	_____.	_____.
0170	643.0300 Traffic Control Drums	64,181.000 DAY	_____.	_____.
0172	643.0420 Traffic Control Barricades Type III	6,723.000 DAY	_____.	_____.
0174	643.0500 Traffic Control Flexible Tubular Marker Posts	1,779.000 EACH	_____.	_____.
0176	643.0600 Traffic Control Flexible Tubular Marker Bases	1,779.000 EACH	_____.	_____.
0178	643.0705 Traffic Control Warning Lights Type A	8,359.000 DAY	_____.	_____.
0180	643.0715 Traffic Control Warning Lights Type C	2,457.000 DAY	_____.	_____.
0182	643.0800 Traffic Control Arrow Boards	95.000 DAY	_____.	_____.
0184	643.0900 Traffic Control Signs	14,306.000 DAY	_____.	_____.
0186	643.1050 Traffic Control Signs PCMS	61.000 DAY	_____.	_____.
0188	643.5000 Traffic Control	1.000 EACH	_____.	_____.
0190	644.1430.S Temporary Pedestrian Surface Plate	125.000 SF	_____.	_____.
0192	646.1020 Marking Line Epoxy 4-Inch	13,635.000 LF	_____.	_____.
0194	646.3020 Marking Line Epoxy 8-Inch	3,143.000 LF	_____.	_____.



Proposal Schedule of Items

Proposal ID: 20190312010 Project(s): 5989-00-14

Federal ID(s): WISC 2019155

SECTION: 0001 Contract Items

Alt Set ID: Alt Mbr ID:

Proposal Line Number	Item ID Description	Approximate Quantity and Units	Unit Price	Bid Amount
0196	646.5020 Marking Arrow Epoxy	47.000 EACH	_____.	_____.
0198	646.5120 Marking Word Epoxy	5.000 EACH	_____.	_____.
0200	646.5220 Marking Symbol Epoxy	4.000 EACH	_____.	_____.
0202	646.6120 Marking Stop Line Epoxy 18-Inch	765.000 LF	_____.	_____.
0204	646.7120 Marking Diagonal Epoxy 12-Inch	346.000 LF	_____.	_____.
0206	646.7420 Marking Crosswalk Epoxy Transverse Line 6-Inch	2,400.000 LF	_____.	_____.
0208	646.8120 Marking Curb Epoxy	80.000 LF	_____.	_____.
0210	646.8220 Marking Island Nose Epoxy	8.000 EACH	_____.	_____.
0212	646.9000 Marking Removal Line 4-Inch	1,453.000 LF	_____.	_____.
0214	646.9010 Marking Removal Line Water Blasting 4-Inch	495.000 LF	_____.	_____.
0216	646.9100 Marking Removal Line 8-Inch	115.000 LF	_____.	_____.
0218	646.9110 Marking Removal Line Water Blasting 8-Inch	98.000 LF	_____.	_____.
0220	646.9210 Marking Removal Line Water Blasting Wide	26.000 LF	_____.	_____.
0222	646.9300 Marking Removal Special Marking	10.000 EACH	_____.	_____.
0224	646.9310 Marking Removal Special Marking Water Blasting	11.000 EACH	_____.	_____.



Proposal Schedule of Items

Proposal ID: 20190312010 Project(s): 5989-00-14

Federal ID(s): WISC 2019155

SECTION: 0001 Contract Items

Alt Set ID: Alt Mbr ID:

Proposal Line Number	Item ID Description	Approximate Quantity and Units	Unit Price	Bid Amount
0226	649.0120 Temporary Marking Line Epoxy 4-Inch	19,370.000 LF	_____.	_____.
0228	649.0150 Temporary Marking Line Removable Tape 4-Inch	25,362.000 LF	_____.	_____.
0230	649.0250 Temporary Marking Line Removable Tape 8-Inch	260.000 LF	_____.	_____.
0232	649.0550 Temporary Marking Arrow Removable Tape	4.000 EACH	_____.	_____.
0234	649.0850 Temporary Marking Stop Line Removable Tape 18-Inch	1,139.000 LF	_____.	_____.
0236	649.0960 Temporary Marking Removable Mask Out Tape 6-Inch	710.000 LF	_____.	_____.
0238	649.0970 Temporary Marking Removable Mask Out Tape 10-Inch	335.000 LF	_____.	_____.
0240	650.4000 Construction Staking Storm Sewer	7.000 EACH	_____.	_____.
0242	650.5000 Construction Staking Base	675.000 LF	_____.	_____.
0244	650.5500 Construction Staking Curb Gutter and Curb & Gutter	1,659.000 LF	_____.	_____.
0246	650.7000 Construction Staking Concrete Pavement	625.000 LF	_____.	_____.
0248	650.8000 Construction Staking Resurfacing Reference	6,320.000 LF	_____.	_____.
0250	650.8500 Construction Staking Electrical Installations (project) 01. 5989-00-14	LS	LUMP SUM	_____.
0252	650.9000 Construction Staking Curb Ramps	35.000 EACH	_____.	_____.



Proposal Schedule of Items

Proposal ID: 20190312010 Project(s): 5989-00-14

Federal ID(s): WISC 2019155

SECTION: 0001 Contract Items

Alt Set ID: Alt Mbr ID:

Proposal Line Number	Item ID Description	Approximate Quantity and Units	Unit Price	Bid Amount
0254	650.9910 Construction Staking Supplemental Control (project) 01. 5989-00-14	LS	LUMP SUM	_____.
0256	650.9920 Construction Staking Slope Stakes	6,320.000 LF	_____.	_____.
0258	652.0225 Conduit Rigid Nonmetallic Schedule 40 2-Inch	392.000 LF	_____.	_____.
0260	652.0235 Conduit Rigid Nonmetallic Schedule 40 3-Inch	338.000 LF	_____.	_____.
0262	652.0615 Conduit Special 3-Inch	853.000 LF	_____.	_____.
0264	652.0700.S Install Conduit into Existing Item	13.000 EACH	_____.	_____.
0266	652.0800 Conduit Loop Detector	158.000 LF	_____.	_____.
0268	652.0900 Loop Detector Slots	34.000 LF	_____.	_____.
0270	653.0140 Pull Boxes Steel 24x42-Inch	13.000 EACH	_____.	_____.
0272	653.0900 Adjusting Pull Boxes	1.000 EACH	_____.	_____.
0274	653.0905 Removing Pull Boxes	6.000 EACH	_____.	_____.
0276	654.0101 Concrete Bases Type 1	16.000 EACH	_____.	_____.
0278	654.0102 Concrete Bases Type 2	6.000 EACH	_____.	_____.
0280	654.0217 Concrete Control Cabinet Bases Type 9 Special	4.000 EACH	_____.	_____.
0282	655.0230 Cable Traffic Signal 5-14 AWG	3,175.000 LF	_____.	_____.
0284	655.0240 Cable Traffic Signal 7-14 AWG	2,386.000 LF	_____.	_____.



Proposal Schedule of Items

Proposal ID: 20190312010 Project(s): 5989-00-14

Federal ID(s): WISC 2019155

SECTION: 0001 Contract Items

Alt Set ID: Alt Mbr ID:

Proposal Line Number	Item ID Description	Approximate Quantity and Units	Unit Price	Bid Amount
0286	655.0250 Cable Traffic Signal 9-14 AWG	1,136.000 LF	_____.	_____.
0288	655.0260 Cable Traffic Signal 12-14 AWG	2,130.000 LF	_____.	_____.
0290	655.0305 Cable Type UF 2-12 AWG Grounded	2,911.000 LF	_____.	_____.
0292	655.0515 Electrical Wire Traffic Signals 10 AWG	9,247.000 LF	_____.	_____.
0294	655.0610 Electrical Wire Lighting 12 AWG	1,750.000 LF	_____.	_____.
0296	655.0700 Loop Detector Lead In Cable	669.000 LF	_____.	_____.
0298	655.0800 Loop Detector Wire	448.000 LF	_____.	_____.
0300	656.0200 Electrical Service Meter Breaker Pedestal (location) 01. Prairie Avenue & Robin Road	LS	LUMP SUM	_____.
0302	656.0200 Electrical Service Meter Breaker Pedestal (location) 02. Prairie Avenue & Elmwood Avenue	LS	LUMP SUM	_____.
0304	656.0200 Electrical Service Meter Breaker Pedestal (location) 03. Prairie Avenue & Hart Road	LS	LUMP SUM	_____.
0306	656.0200 Electrical Service Meter Breaker Pedestal (location) 04. Prairie Avenue & Huebbe Parkway	LS	LUMP SUM	_____.
0308	657.0100 Pedestal Bases	21.000 EACH	_____.	_____.
0310	657.0255 Transformer Bases Breakaway 11 1/2-Inch Bolt Circle	5.000 EACH	_____.	_____.
0312	657.0310 Poles Type 3	5.000 EACH	_____.	_____.



Proposal Schedule of Items

Proposal ID: 20190312010 Project(s): 5989-00-14

Federal ID(s): WISC 2019155

SECTION: 0001 Contract Items

Alt Set ID: Alt Mbr ID:

Proposal Line Number	Item ID Description	Approximate Quantity and Units	Unit Price	Bid Amount
0314	657.0405 Traffic Signal Standards Aluminum 3.5-FT	1.000 EACH	_____.	_____.
0316	657.0410 Traffic Signal Standards Aluminum 9-FT	4.000 EACH	_____.	_____.
0318	657.0420 Traffic Signal Standards Aluminum 13-FT	10.000 EACH	_____.	_____.
0320	657.0425 Traffic Signal Standards Aluminum 15-FT	6.000 EACH	_____.	_____.
0322	657.0590 Trombone Arms 20-FT	5.000 EACH	_____.	_____.
0324	657.0595 Trombone Arms 25-FT	3.000 EACH	_____.	_____.
0326	657.0614 Luminaire Arms Single Member 4-Inch Clamp 8-FT	5.000 EACH	_____.	_____.
0328	658.0173 Traffic Signal Face 3S 12-Inch	34.000 EACH	_____.	_____.
0330	658.0175 Traffic Signal Face 5S 12-Inch	11.000 EACH	_____.	_____.
0332	658.0416 Pedestrian Signal Face 16-Inch	14.000 EACH	_____.	_____.
0334	658.0500 Pedestrian Push Buttons	27.000 EACH	_____.	_____.
0336	658.5069 Signal Mounting Hardware (location) 01. Prairie Avenue & Robin Road	LS	LUMP SUM	_____.
0338	658.5069 Signal Mounting Hardware (location) 02. Prairie Avenue & Elmwood Avenue	LS	LUMP SUM	_____.
0340	658.5069 Signal Mounting Hardware (location) 03. Prairie Avenue & Hart Road	LS	LUMP SUM	_____.
0342	658.5069 Signal Mounting Hardware (location) 04. Prairie Avenue & Huebbe Parkway	LS	LUMP SUM	_____.



Proposal Schedule of Items

Proposal ID: 20190312010 Project(s): 5989-00-14

Federal ID(s): WISC 2019155

SECTION: 0001 Contract Items

Alt Set ID: Alt Mbr ID:

Proposal Line Number	Item ID Description	Approximate Quantity and Units	Unit Price	Bid Amount
0344	659.1125 Luminaires Utility LED C	14.000 EACH	_____.	_____.
0346	674.0300 Remove Cable	1,506.000 LF	_____.	_____.
0348	674.0400 Reinstall Cable	12.000 LF	_____.	_____.
0350	690.0150 Sawing Asphalt	2,295.000 LF	_____.	_____.
0352	690.0250 Sawing Concrete	11,280.000 LF	_____.	_____.
0354	715.0415 Incentive Strength Concrete Pavement	500.000 DOL	1.00000	500.00
0356	740.0440 Incentive IRI Ride	8,802.000 DOL	1.00000	8,802.00
0358	ASP.1T0A On-the-Job Training Apprentice at \$5.00/HR	850.000 HRS	5.00000	4,250.00
0360	ASP.1T0G On-the-Job Training Graduate at \$5.00/HR	1,300.000 HRS	5.00000	6,500.00
0362	SPV.0060 Special 01. Storm Sewer Tap	2.000 EACH	_____.	_____.
0364	SPV.0060 Special 02. Traffic Signal Controller, Fully Actuated, 8 Phase	4.000 EACH	_____.	_____.
0366	SPV.0060 Special 03. Relocate Traffic Signal Pole	2.000 EACH	_____.	_____.
0368	SPV.0060 Special 04. Remove Luminaire	9.000 EACH	_____.	_____.
0370	SPV.0060 Special 05. Remove Trombone Arm	3.000 EACH	_____.	_____.
0372	SPV.0060 Special 06. Remove Traffic Signal Pole	9.000 EACH	_____.	_____.
0374	SPV.0060 Special 07. Remove Pedestrian Push Button	8.000 EACH	_____.	_____.



Proposal Schedule of Items

Proposal ID: 20190312010 Project(s): 5989-00-14

Federal ID(s): WISC 2019155

SECTION: 0001 Contract Items

Alt Set ID: Alt Mbr ID:

Proposal Line Number	Item ID Description	Approximate Quantity and Units	Unit Price	Bid Amount
0376	SPV.0060 Special 08. Remove Traffic Signal Face	10.000 EACH	_____.	_____.
0378	SPV.0060 Special 09. Remove Pedestrian Signal Face	1.000 EACH	_____.	_____.
0380	SPV.0060 Special 10. Relocate Pedestrian Signal Face	9.000 EACH	_____.	_____.
0382	SPV.0060 Special 11. Utility Line Opening (ULO)	1.000 EACH	_____.	_____.
0384	SPV.0090 Special 01. Sawing Curb Head	8.000 LF	_____.	_____.
0386	SPV.0090 Special 02. Concrete Joint and Crack Cleaning and Repair	14,700.000 LF	_____.	_____.
0388	SPV.0090 Special 03. Concrete Curb & Gutter 30-Inch Type A HES	17.000 LF	_____.	_____.
0390	SPV.0105 Special 01. Remove Traffic Signals, Prairie Avenue and Shopko Plaza Int.	LS	LUMP SUM	_____.
0392	SPV.0105 Special 02. Video Detection, Prairie Avenue and Elmwood Avenue Intersection	LS	LUMP SUM	_____.
0394	SPV.0105 Special 03. Video Detection, Prairie Avenue and Hart Road Intersection	LS	LUMP SUM	_____.
0396	SPV.0105 Special 04. Modify Video Detection System, Prairie Avenue and Huebbe Prkwy Int.	LS	LUMP SUM	_____.
0398	SPV.0105 Special 05. Reestablish Manhole Invert, Structure SS-3	LS	LUMP SUM	_____.
0400	SPV.0105 Special 06. Research and Locate Existing Property Monuments	LS	LUMP SUM	_____.



Proposal Schedule of Items

Proposal ID: 20190312010 Project(s): 5989-00-14

Federal ID(s): WISC 2019155

SECTION: 0001 Contract Items

Alt Set ID: Alt Mbr ID:

Proposal Line Number	Item ID Description	Approximate Quantity and Units	Unit Price	Bid Amount
0402	SPV.0105 Special 07. Verify and Replace Existing Property Monuments	LS	LUMP SUM	_____.
0404	SPV.0105 Special 08. Temporary Near Right Signal - Cranston Road	LS	LUMP SUM	_____.
0406	SPV.0120 Special 01. Water for Seeded Areas	200.000 MGAL	_____.	_____.
0408	SPV.0180 Special 01. Salvage and Replace Landscaping Mulch	10.000 SY	_____.	_____.
Section: 0001			Total:	_____.
			Total Bid:	_____.

