



Wisconsin Department of Transportation

March 8, 2019

Division of Transportation Systems Development

Bureau of Project Development
4822 Madison Yards Way, 4th Floor South
Madison, WI 53705

Telephone: (608) 266-1631
Facsimile (FAX): (608) 266-8459

NOTICE TO ALL CONTRACTORS:

Proposal #16: 2060-00-76, WISC 2019 158
S Chase Avenue, City of Milwaukee
Ohio Ave to Lincoln Ave
STH 38
Milwaukee County

2110-00-72, WISC 2019 160
W Lincoln Ave
Intersect with 43rd St & 27th St
Local Street
Milwaukee County

Letting March 12, 2019

This is Addendum No. 02, which provides for the following:

Special Provisions:

Revised Special Provisions	
Article No.	Description
3	Prosecution and Progress

Schedule of Items:

Added Bid Item Quantities					
Bid Item	Item Description	Unit	Old Quantity	Revised Quantity	Proposal Total
614.0700	Sand Barrel Arrays	EA	0	4	4

Plan Sheets:

Revised Plan Sheets	
Plan Sheet	Plan Sheet Title (brief description of changes to sheet)
30	Construction Detail (added Sand Barrel Array detail)
286	Miscellaneous Quantities (added Sand Barrel Arrays)
316	Plan (revised based on addition of Sand Barrel Arrays)

Other

Revise the contract time for completion from 100 working days to a completion date of April 1, 2020.

The responsibility for notifying potential subcontractors and suppliers of these changes remains with the prime contractor.

Sincerely,

Mike Coleman

Proposal Development Specialist

ADDENDUM NO. 02

2060-00-76

March 8, 2019

Special Provisions

3. Prosecution and Progress.

Add the following text after paragraph seven:

Interim Liquidated Damages

Complete all contract work with all streets open to through traffic, except for monotube materials (poles, arms, signals, wiring), furnishing and planting all trees no later than 100 working days from the construction start date. Concrete bases without poles shall be protected by the contractor at their cost.

If the contractor fails to complete all contract work, except for monotube materials (poles, arms, signals, wiring), furnishing and planting all trees and open all streets to through traffic prior to 12:01 AM, November 13, 2019, the department will assess the contractor \$2070.00 in interim liquidated damages, for each calendar day that the roadways remain closed after 12:01 AM, November 13, 2019. An entire calendar day will be charged for any period of time within a calendar day that the roads remain closed beyond 12:01 AM.

Complete all monotube related work (poles, arms, signal and wiring) no later than April 1, 2020. If the contractor fails to complete all monotube related work prior to 12:01 AM, April 2, 2020, the department will assess the contractor \$2070 in interim liquidated damages, for each calendar day that the monotube work is not completed after 12:01 AM, April 2, 2020. An entire calendar day will be charged for any period of time within a calendar day that the roads remain closed beyond 12:01 AM.

If the contract time expires prior to completing all work specified in the contract, additional liquidated damages will be affixed according to standard spec. 108.11.

The City of Milwaukee is committed to maintain temporary signals until final monotubes are up and running which should be no later than 4/1/2020.

Schedule of Items

Attached, dated March 8, 2019, are the revised Schedule of Items Page 17.

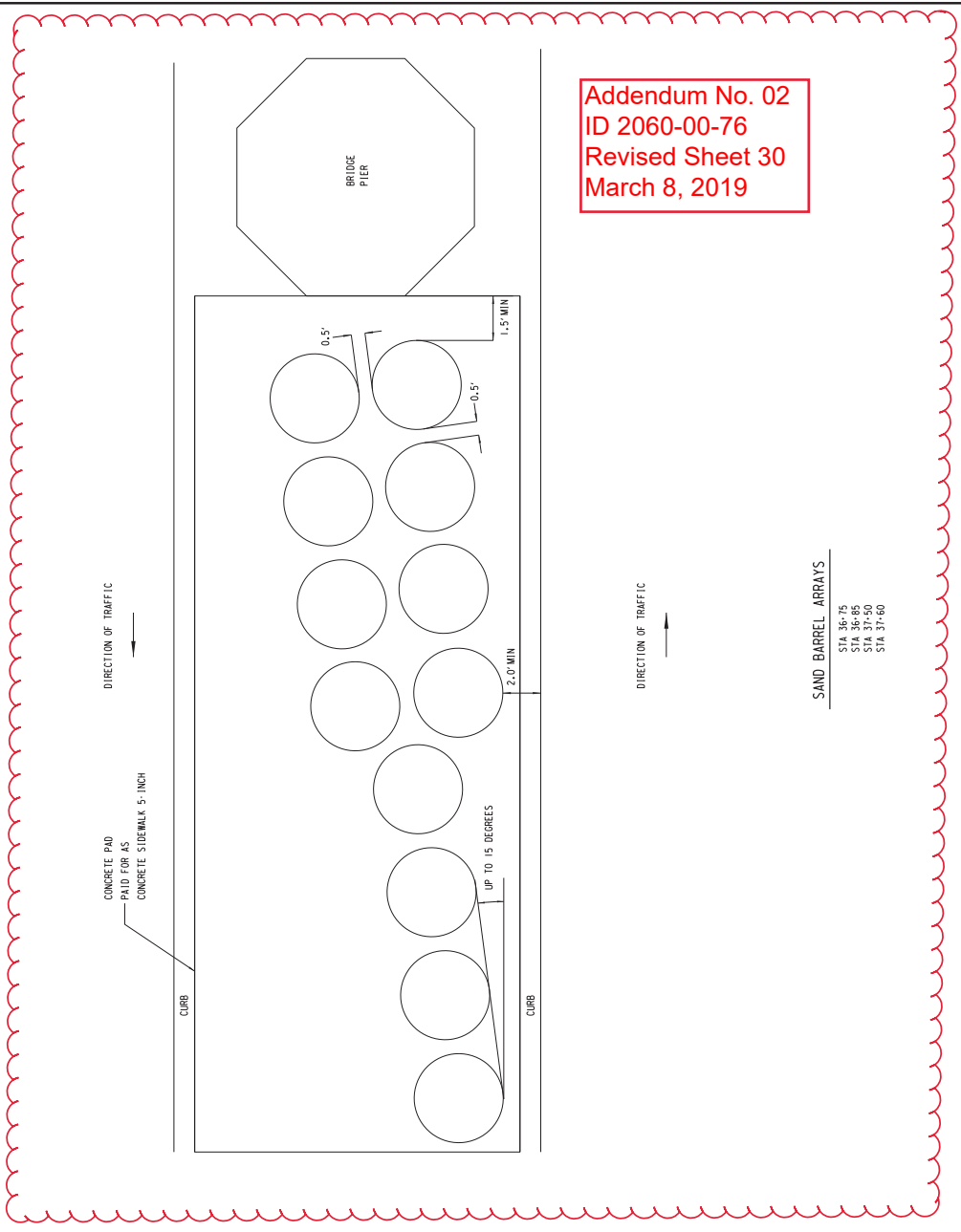
Plan Sheets

The following 8½ x 11-inch sheets are attached and made part of the plans for this proposal:

Revised: 30, 286, and 316.

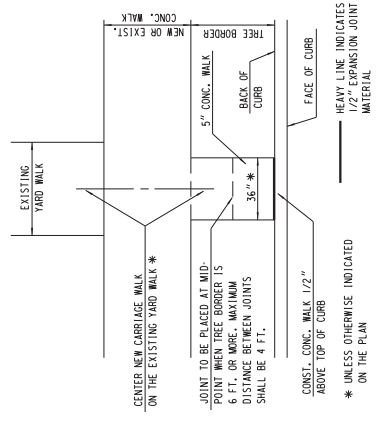
Added:

END OF ADDENDUM



Addendum No. 02
 ID 2060-00-76
 Revised Sheet 30
 March 8, 2019

SAND BARREL ARRAYS
 STA 36+75
 STA 36+85
 STA 36+90
 STA 37+00



CARRIAGE WALK

Ⓢ * LOCATIONS SHOWN ON PLAN SHEETS

JOINT TO BE PLACED AT MID-POINT WHEN TREE BORDER IS 6 FT. OR MORE. MAXIMUM SPACING BETWEEN JOINTS SHALL BE 4 FT.
 CONST. CONC. WALK 1/2" ABOVE TOP OF CURB
 * UNLESS OTHERWISE INDICATED ON THE PLAN

SAND BARREL ARRAYS

CATEGORY 0010	SAND BARREL ARRAYS	EA	FT	WIDTH	BACK MARKING PATTERN	OBJECT	CRASH TEST LEVEL	TRAFFIC DIRECTION	TRAFFIC LOCATION
	STA 36+75	1	4'	OM-3C (W05-58M)	TL-2	BIDIRECTIONAL	L & R		
	STA 36+85	1	4'	OM-3C (W05-58M)	TL-2	BIDIRECTIONAL	L & R		
	STA 37+50	1	4'	OM-3C (W05-58M)	TL-2	BIDIRECTIONAL	L & R		
	STA 37+60	1	4'	OM-3C (W05-58M)	TL-2	BIDIRECTIONAL	L & R		
TOTAL		4							

CONCRETE CURB & GUTTER 22-INCH

LOCATION	CONCRETE CURB & GUTTER 22-INCH	LF
E GAUER CIRCLE	CONCRETE CURB & GUTTER 22-INCH	30
TOTAL		30

Addendum No. 02
ID 2060-00-76
Revised Sheet 216
March 8, 2019

CONCRETE LOADING ZONE

CONCRETE LOADING ZONE	602.1000	SF
LOCATION	OKLAHOMA AVE	135
TOTAL		135

UTILITY LINE OPENING (ULO)

UTILITY LINE OPENING (ULO)	SPV.0060.34	EACH
LOCATION	OKLAHOMA AVE	30
TOTAL		30

LANDSCAPING ITEMS

2060-00-76	CATEGORY 0010	ITEM NO.	UNIT PAY	Category	WATER	TOPSOIL	SOD LAWN	FERTILIZER
					MGAL	SY	SY	TYPE B
					0010	0010	0010	629.0210
								CVMT
								0010
	LOCATION							
	STA 0+77 TO 4+00	LT			6	610	6	
	STA 4+00 TO 10+00	LT			530	530	610	
	STA 10+00 TO 16+00	LT			280	280	530	
	STA 16+00 TO 22+00	LT			360	360	280	
	STA 22+00 TO 27+00	LT			480	480	360	
	STA 27+00 TO 33+00	LT			580	580	480	
	STA 33+00 TO 39+00	LT			350	350	580	
	STA 39+00 TO 45+00	LT			550	550	350	
	STA 45+00 TO 50+00	LT			1240	1240	550	
	STA 50+00 TO 56+00	LT			1400	1400	1240	
	STA 56+00 TO 62+00	LT			180	180	1400	
	STA 62+00 TO 66+00	LT			150	150	180	
	STA 66+00 TO 71+00	LT			0	0	150	
	STA 71+00 TO 75+00	LT			20	20	0	
	STA 101+59 TO 103+00 (OKLAHOMA)	LT						
	SUBTOTALS (LEFT)				6736	6736	6736	
	STA 0+77 TO 4+00	RT			6	6	6	
	STA 4+00 TO 10+00	RT			520	520	6	
	STA 10+00 TO 16+00	RT			690	690	520	
	STA 16+00 TO 22+00	RT			250	250	690	
	STA 22+00 TO 27+00	RT			470	470	250	
	STA 27+00 TO 33+00	RT			540	540	470	
	STA 33+00 TO 39+00	RT			430	430	540	
	STA 39+00 TO 45+00	RT			370	370	430	
	STA 45+00 TO 50+00	RT			420	420	370	
	STA 50+00 TO 56+00	RT			1170	1170	420	
	STA 56+00 TO 62+00	RT			1220	1220	1170	
	STA 62+00 TO 66+00	RT			310	310	1220	
	STA 66+00 TO 71+00	RT			300	300	310	
	STA 71+00 TO 75+00	RT			370	370	300	
	STA 101+59 TO 103+00 (OKLAHOMA)	RT			20	20	370	
	SUBTOTALS (RIGHT)				7086	7086	7086	
	GRAND TOTALS				200	13,822	13,822	5

Addendum No. 02
ID 2060-00-76
Revised Sheet 316
March 8, 2019

AVENUE

CHASE

SOUTH

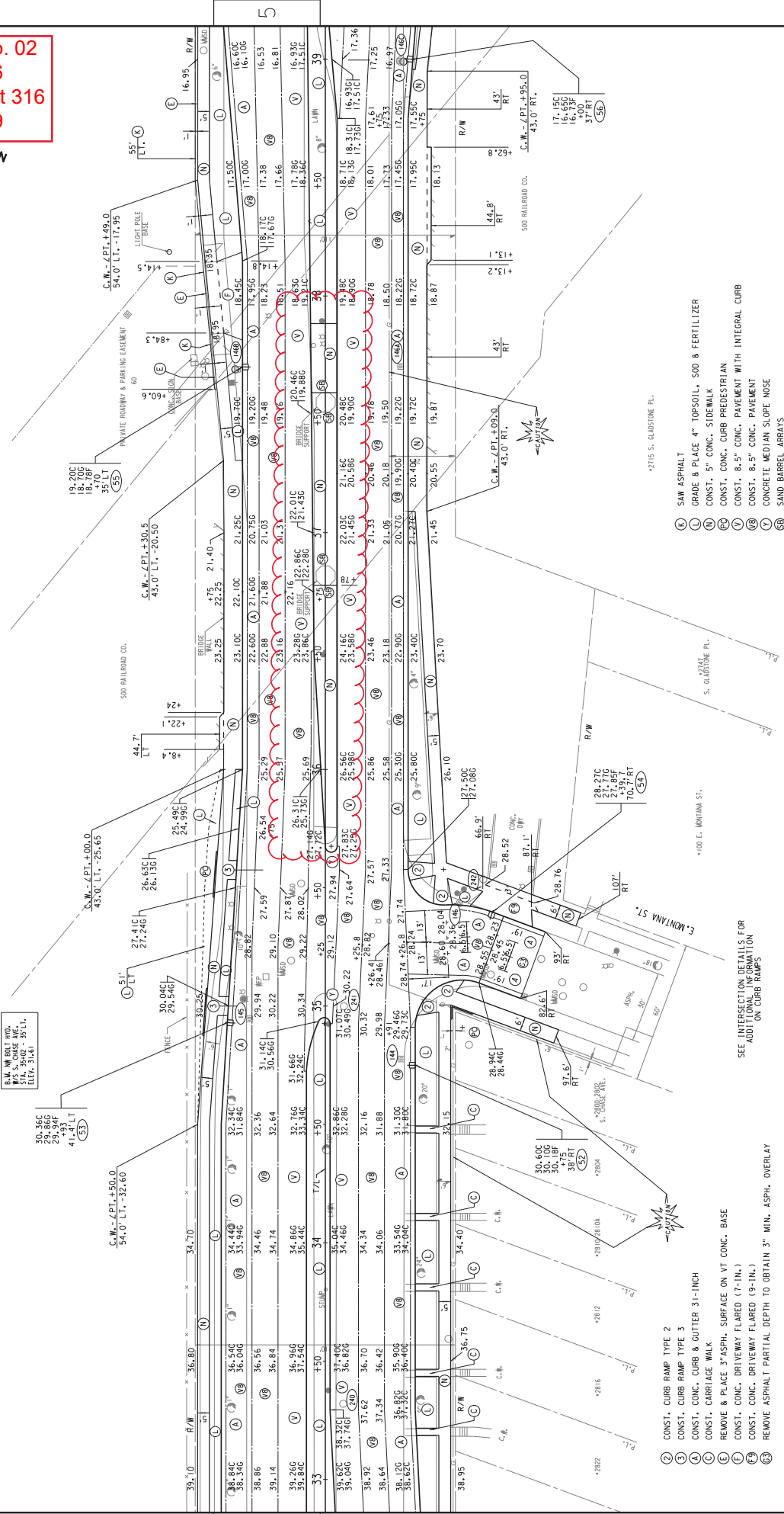
SEE INTERSECTION DETAILS FOR
 ADDITIONAL INFORMATION
 ON CURB RAMP

R.H. W. BROT. INV.
 514.3502 - 35' LT.
 514.3160

C.M. - /PT. +50.0
 54.0' LT. -32.60

C.M. - /PT. +30.5
 43.0' LT. -20.50

C.M. - /PT. +148.0
 54.0' LT. -17.95



- (K) SAW ASPHALT
- (L) GRADE & PLACE 4" TOPSOIL, SOD & FERTILIZER
- (M) CONST. 5" CONC. SIDEWALK
- (N) CONST. CONC. CURB PREDESTRIAN
- (O) CONST. 8.5" CONC. PAVEMENT WITH INTEGRAL CURB
- (P) CONST. 8.5" CONC. PAVEMENT
- (Q) CONCRETE MEDIAN SLOPE NOSE
- (R) SAND BARREL ARRAYS

SEE INTERSECTION DETAILS FOR
 ADDITIONAL INFORMATION
 ON CURB RAMP

- (2) CONST. CURB RAMP TYPE 2
- (3) CONST. CURB RAMP TYPE 3
- (4) CONST. CONC. CURB & GUTTER 31-INCH
- (5) CONST. CARRIAGE WALK
- (6) REMOVE & PLACE 3" ASPH. SURFACE ON VT CONC. BASE
- (7) CONST. CONC. DRIVEWAY FLARED (7'-IN.)
- (8) CONST. CONC. DRIVEWAY FLARED (9'-IN.)
- (9) REMOVE ASPHALT PARTIAL DEPTH TO OBTAIN 3" MIN. ASPH. OVERLAY



Proposal Schedule of Items

Proposal ID: 20190312016 Project(s): 2060-00-76, 2110-00-72

Federal ID(s): WISC 2019158, WISC 2019160

SECTION: 0001 Contract Items

Alt Set ID: Alt Mbr ID:

Proposal Line Number	Item ID Description	Approximate Quantity and Units	Unit Price	Bid Amount
0486	SPV.0180 Special 01. Joint Sealing	62,587.000 SY	_____.	_____.
0488	SPV.0195 Special 01. Management of Solid Waste	3,217.000 TON	_____.	_____.
0490	202.0110 Roadside Clearing	85.000 SY	_____.	_____.
0492	204.0170 Removing Fence	75.000 LF	_____.	_____.
0494	608.0512 Storm Sewer Pipe Reinforced Concrete Class V 12-Inch	3,394.000 LF	_____.	_____.
0496	614.0700 Sand Barrels Arrays	4.000 EACH	_____.	_____.
Section: 0001			Total:	_____.
			Total Bid:	_____.

