



Wisconsin Department of Transportation

Division of Transportation Systems Development

Bureau of Project Development
4822 Madison Yards Way, 4th Floor South
Madison, WI 53705

March 1, 2019

Telephone: (608) 266-1631
Facsimile (FAX): (608) 266-8459

NOTICE TO ALL CONTRACTORS:

Proposal #21: 2704-00-76
Wisconn Valley Way, V MT Pleasant
CTH KR to STH 11
Local Street
Racine County

Letting of March 12, 2019

This is Addendum No. 01, which provides for the following:

Special Provisions:

Revised Special Provisions	
Article No.	Description
5	Prosecution and Progress
11	Utilities

Added Special Provisions	
Article No.	Description
107	Concrete Base Monotube Type 9 & 10 Special Pole, Item SPV.0060.301
108	Installing Poles Type 9S, Item SPV.0060.302
109	Remove Wood Poles, Item SPV.0195.001

Schedule of Items:

Added Bid Item Quantities					
Bid Item	Item Description	Unit	Old Quantity	Revised Quantity	Proposal Total
SPV.0195.001	Remove Wood Poles	TON	0	3	3
SPV.0060.301	Concrete Bases Monotube Type 9 & 10 Special Poles	EACH	0	2	2
SPV.0060.302	Installing Poles Type 9S	EACH	0	2	2

Deleted Bid Item Quantities					
Bid Item	Item Description	Unit	Old Quantity	Revised Quantity	Proposal Total
654.0113	Concrete Bases Type 13	TON	2	-2	0

Plan Sheets:

Revised Plan Sheets	
Plan Sheet	Plan Sheet Title (brief description of changes to sheet)
32	Construction Detail (updated "Haul Routes" to access construction site)
204	Traffic Signal Plan (updated plan view and legend)
229	Alignment Diagram (updated bearing call-out)
292	Miscellaneous Quantities (added 'Utility Removals' table)
293	Miscellaneous Quantities (updated 'Summary of State Furnished Materials' table)
297	Miscellaneous Quantities (updated 'Concrete Bases' table)
301-302	Miscellaneous Quantities (updated 'Cast Bases, Poles, Standards, Monotubes, Push Buttons, and Luminaires' table)
335	Plan and Profile (added "Remove Wood Pole" call-out)

Added Plan Sheets	
Plan Sheet	Plan Sheet Title (brief description of why sheet was added)
208A	Traffic Signal Plan (added 'Type 9 & 10 Traffic Signal Base' detail)

Delete Plan Sheets	
Plan Sheet	Plan Sheet Title (brief description of why sheet was deleted)
371	Standard Detail Drawing-Concrete Base Type 13 (Type 13 base no longer used)
372	Standard Detail Drawing-Concrete Base Type 13 (Type 13 base no longer used)

The responsibility for notifying potential subcontractors and suppliers of these changes remains with the prime contractor.

Sincerely,

Mike Coleman

Proposal Development Specialist
Proposal Management Section

ADDENDUM NO. 01
Project ID 2704-00-76
March 1, 2019

Special Provisions

5. Prosecution and Progress.

Replace paragraph six with the following:

Complete all pavement marking, signage and open all traffic lanes in all directions by November 15. During Winter shutdown all traffic lanes in all directions will be open to traffic. Winter Shutdown will commence with the completion of all the roadway grading and paving except for plantings and restoration in the fall of 2019. Do not resume work until April 15, 2020 unless approved by the engineer. Provide a start date in writing at least 14 days prior to the planned start of construction in 2020. Upon approval the engineer will issue the notice to proceed within 10 days of the approved start date.

*Replace paragraph one under section titled **D Enhanced Coordination** with the following:*

The project limits include numerous utilities that parallel the entire length of the project limits, along both Wisconn Valley Way and Braun Road. There may be multiple utility contractors working within the roadway construction area. Contractor is required to coordinate with all utility contractors to facilitate the roadway construction in a timely manner without delays. Braun Road east of the project will be under construction along with an expansive site development which will add trucks to the haul routes. The contract interim and final completion dates will not be extended due to utility installations or haul route delays due to Braun Road and the site development construction traffic. Ensure these elements are accounted for when determining the construction schedule.

11. Utilities

*Add the following bullet after the 3rd bulleted paragraph under section titled **AT&T Wisconsin**:*

- An existing overhead communication line beginning beyond the westerly project limits and running easterly to a pole at Station 600+32, 33'LT and continues to a pole at Station 600+33, 101'RT where it turns and runs northerly to beyond the project limits. AT&T Wisconsin will remove this line prior to construction. The poles will remain in place. Remove the poles as shown in the plans.

*Replace paragraph one under section titled **Mount Pleasant, Village of – Sanitary** with the following:*

Prior to construction, the Village of Mount Pleasant will construct new sanitary sewer facilities beginning beyond the easterly project limits and running westerly to a manhole at Station 501+20, 130'RT where it turns and runs northerly and terminates at a manhole at Station 503+76, 140'RT. This line will remain in place.

*Replace the 1st bullet under section titled **Racine Water Works Commission (RWWC)** with the following:*

- A new water main beginning at Station 555+24, 94'LT and running northerly crossing Braun Road at Station 68BRW+55, and continuing northerly along a line 16' east of and parallel to the proposed westerly Wisconn Valley Way right of way, to beyond the project limits. Construction of the water main along Wisconn Valley Way is anticipated to begin May 1, 2019 and be completed August 31, 2019.

Replace the 3rd bullet under section titled **We Energies - Electric** with the following:

- An existing overhead line beginning beyond the westerly project limits and running easterly to a pole at Station 600+32, 33'LT and continues to a pole at Station 600+33, 101'RT where it turns and runs northerly to beyond the project limits. We Energies will remove this line prior to construction.

Replace the 1st bullet under section titled **We Energies - Gas** with the following:

- A new low-pressure gas line beginning beyond the southerly project limits and running northerly along a line 8' east of and parallel to the proposed westerly Wisconsin Valley Way right of way, crossing Braun Road at Station 68BRW+47, and continuing northerly along said parallel line to beyond the northerly project limits. Construction of this low-pressure gas line is anticipated to begin June 2019 and be completed August 2019.

107. Concrete Base Monotube Type 9 & 10 Special Pole, Item SPV.0060.301.

A Description

This special provision describes constructing concrete bases for Monotube Type 9 & 10 Special Pole conform to standard spec 654, details shown in the plans.

B Materials

Materials shall be according to standard spec 654.

C Construction

Construction shall be according to standard spec 654.

D Measurement

The department will measure Concrete Bases Monotube Type 9 & 10 Special Pole at the contract unit price acceptably completed.

E Payment

The department will pay for measured quantities at the contract unit price under the following bid item:

ITEM NUMBER	DESCRIPTION	UNIT
SPV.0060.301	Concrete Base Monotube Type 9 & 10 Special Poles	Each

Payment is full compensation for providing concrete bases; for embedded conduit and electrical components; for bar steel reinforcement, if required; for excavating, backfilling, and disposing of surplus materials.

108. Install Poles Type 9S, Item SPV.0060.302.

A Description

This special provision describes installing state furnished materials conforming to standard spec 657, details shown in the plans, and as modified in this special provision.

B Materials

The department will furnish the monotube poles. Provide any other necessary material required to complete the installation in accordance with standard spec 657.2 and as the plans show.

C Construction

Install equipment in accordance to standard spec 657.3.

D Measurement

The department will measure Install [Equipment] at the contract unit price acceptably completed.

E Payment

The department will pay for measured quantities at the contract unit price under the following bid item:

ITEM NUMBER	DESCRIPTION	UNIT
SPV.0060.302	Install Poles Type 9S	Each

Payment for the Install Poles bid items is full compensation for installing department furnished poles and for providing grounding lugs, fittings, shims, hardware, and other required components the department does not furnish.

109. Remove Wood Poles, Item SPV.0195.001.

A Description

A.1 General

This special provision describes removing the entire wood poles from the ground, loading and hauling the removed wood pole to a licensed solid waste disposal facility.

A.2 Environmental Protection – Disposal of Wood Poles

Conduct construction activities in an environmentally sound manner, including the proper disposal of all demolition material that cannot be recycled.

Treated wood is a regulated solid waste per NR 500 of the Wisconsin Administrative Code. Waste wood poles generated by the project must be landfilled at a licensed disposal facility.

Contact Andrew Malsom (WisDOT) at 262-548-6705 or Andrew.Malsom@dot.wi.gov for questions regarding the disposal.

Management of Material Excavated During Highway Construction

<u>Classification</u>	<u>Characterization of Material</u>	<u>Material Management</u>
<u>1. Common Excavation (NR 500.08(2) Unregulated or Exempt Material)</u>	<ul style="list-style-type: none"> - Native soil - Fill soils that have no obvious visual or olfactory contamination and may not have been analyzed for contaminants. - Clean unpainted or untreated wood, brick, concrete, cured asphalt, and trace amounts of glass. 	Contractor-selected sites approved through Erosion Control Implementation Plan (ECIP) review process, or on-site reuse
<u>2. Special Excavation (NR 500.08(4) Solid Waste Low Hazard Exemption)</u>	<ul style="list-style-type: none"> - Soil with low levels of petroleum contamination or contaminant metals within the site fill plan criteria. - Trace amounts (<25% volume of the excavation equipment's bucket load) of foundry sand, cinders, and fly ash. 	WisDOT selected site or on-site reuse with WDNR concurrence. Sites must meet the location criteria of 504.04 (3) (c) and (4) (a) to (f) . Fill plans are also approved through ECIP review process.
<u>3. Contaminated Soil and Fill Material</u>	<ul style="list-style-type: none"> - Lead painted or treated wood - Petroleum contaminated soil - Significant amounts (>25% volume of the excavation equipment's bucket load) of foundry sand, cinders, or fly ash. 	Contaminated material disposed at a WDNR-licensed solid waste disposal facility. Petroleum contaminated material shall be treated at a bioremediation facility (biopile) prior to disposal at the landfill. Direct disposal of contaminated material at landfills without such pre-treatment must be pre-authorized by the WisDOT.
<u>4. Asbestos-containing Waste</u>	Asbestos-containing material	Landfill at a WDNR-licensed solid waste landfill with approval to accept asbestos-containing material.
<u>5. Hazardous Waste</u>	RCRA Subtitle C (NR 600) contaminated media (hazardous waste)	Disposed or treatment under State's hazardous waste disposal contract with Veolia. Significant quantities should be evaluated for potential treatment to render non-hazardous to reduce disposal costs.
<u>6. Potentially contaminated material</u>	Potentially contaminated material with unusual visual, olfactory, or other characteristics	Temporary stockpile with appropriate environmental controls constructed per NR 718.05. Temporary stockpiling at solid waste landfill may be alternative with WDNR & Landfill's approvals.

B (Vacant)

C Construction

Utility wood poles currently erected, downed, or stacked in piles shall be removed in its entirety from the ground. No part of any wood pole shall remain in the ground or buried on-site. The wood shall be hauled to a licensed landfill disposal facility.

D Measurement

The department will measure the Remove Wood Poles bid item acceptably completed by the ton. The contractor shall provide a ticket from a licensed landfill disposal facility with a certified scale that will represent an accurate weight of the wood delivered to the landfill. Should the poles become moisturized during delivery, the engineer may use engineering judgement to determine the actual weight of a dry wood pole.

E Payment

The department will pay for measured quantities at the contract unit price under the following bid item:

ITEM NUMBER	DESCRIPTION	UNIT
SPV.0195.001	Remove Wood Poles	TON

Payment is full compensation for removing and hauling wood poles to a licensed solid waste disposal facility. The contractor shall be compensated for the unit weight of the wood pole waste.

Schedule of Items

Attached, dated March 1, 2019, are the revised Schedule of Items Pages 10 – 16.

Plan Sheets

The following 8½ x 11-inch sheets are attached and made part of the plans for this proposal:

Revised: 32, 204, 229, 292-293, 297, 301-302, & 335

Added: 208A.

Deleted: 371 and 372

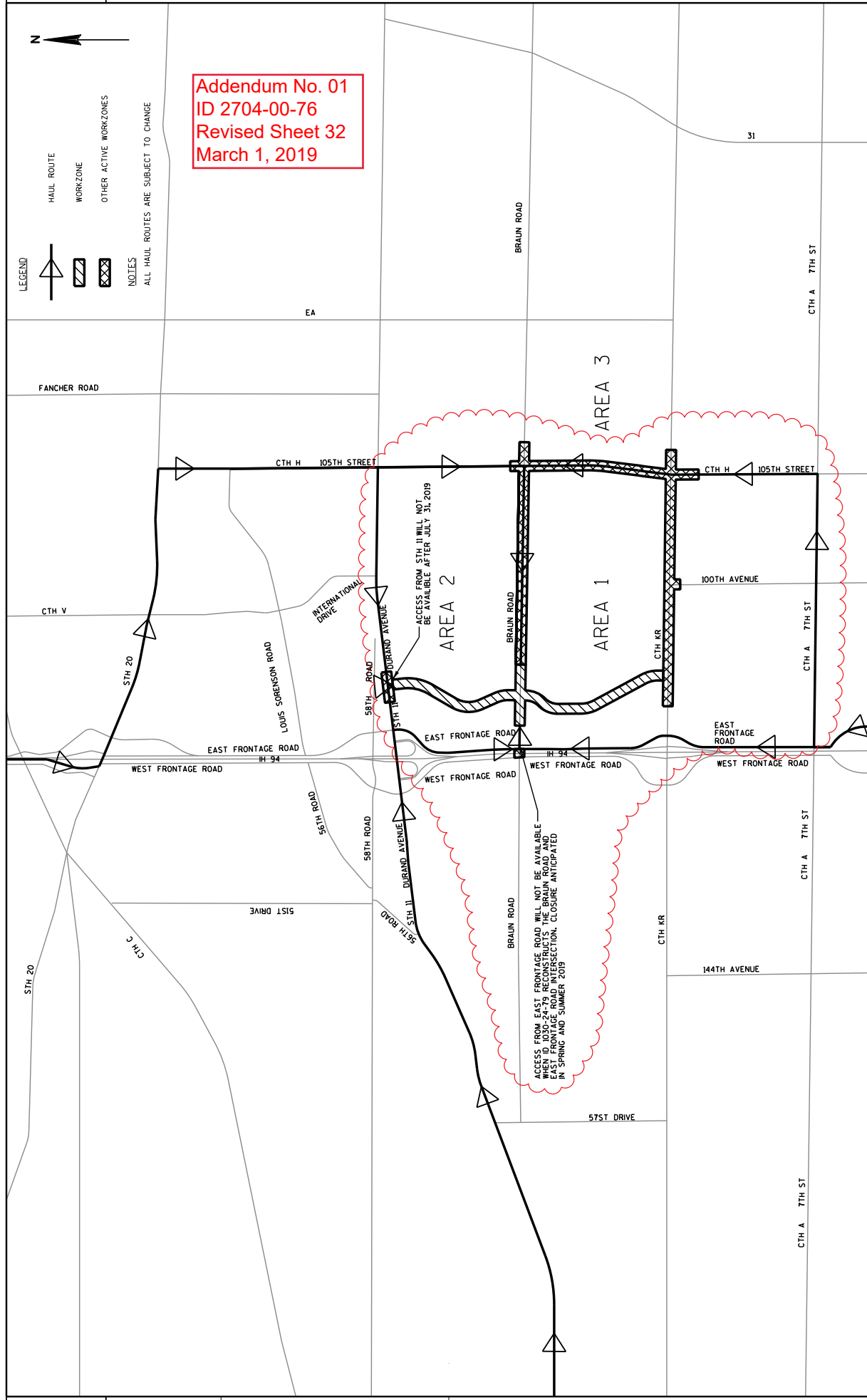
END OF ADDENDUM

2



- LEGEND**
- HAUL ROUTE
 - WORKZONE
 - OTHER ACTIVE WORKZONES
- NOTES**
- ALL HAUL ROUTES ARE SUBJECT TO CHANGE

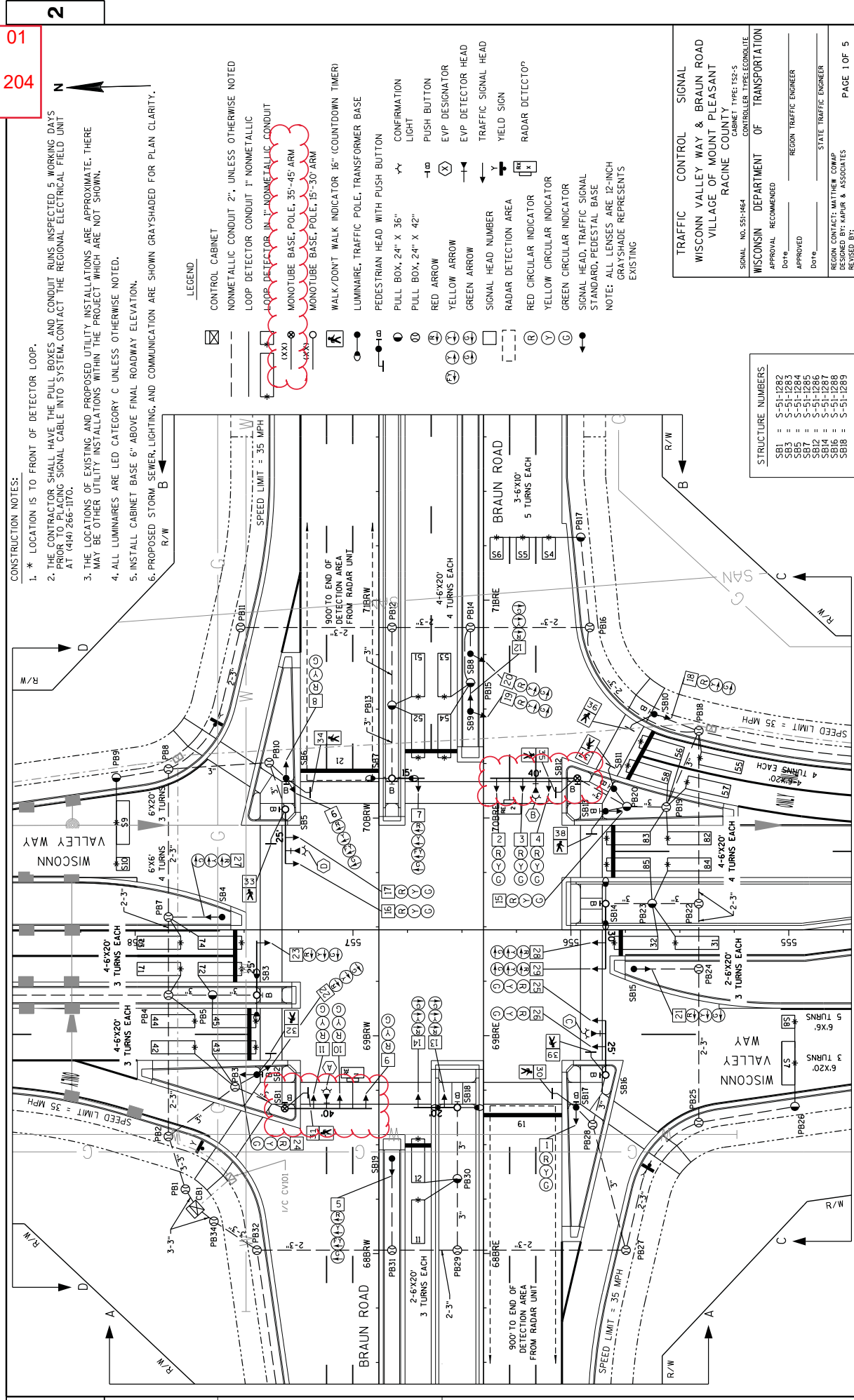
Addendum No. 01
 ID 2704-00-76
 Revised Sheet 32
 March 1, 2019



2

PROJECT NO: 2704-00-76	HWY: WISCONN VALLEY WAY	COUNTY: RACINE	CONSTRUCTION DETAILS: HAUL ROUTES
<small>FILE NAME : S:\DOT\DOT_SE\180045_Foxconn\Local_Roads\DesIgn\UDN_Files\WV\PI\onefees\27040076\021004_CD.DGN</small>			
<small>PROJECT DATE : 2/22/2019</small>		<small>PLOT BY : mwolok</small>	
<small>PLOT SCALE : 1:3200</small>		<small>SHEET 32</small>	
<small>WISDOT/CADD SHEET 42</small>			

Addendum No. 01
 ID 2704-00-76
 Revised Sheet 204
 March 1, 2019



- CONSTRUCTION NOTES:
- * LOCATION IS TO FRONT OF DETECTOR LOOP.
 - THE CONTRACTOR SHALL HAVE THE PULL BOXES AND CONDUIT RUNS INSPECTED 5 WORKING DAYS PRIOR TO TIGHTENING SIGNAL CABLE INTO SYSTEM. CONTACT THE REGIONAL ELECTRICAL FIELD UNIT AT (414) 266-1170.
 - THE LOCATIONS OF EXISTING AND PROPOSED UTILITY INSTALLATIONS ARE APPROXIMATE. THERE MAY BE OTHER UTILITY INSTALLATIONS WITHIN THE PROJECT WHICH ARE NOT SHOWN.
 - ALL LUMINAIRES ARE LED CATEGORY C UNLESS OTHERWISE NOTED.
 - INSTALL CABINET BASE 6" ABOVE FINAL ROADWAY ELEVATION.
 - PROPOSED STORM, SEWER, LIGHTING, AND COMMUNICATION ARE SHOWN GRAYSHADED FOR PLAN CLARITY.

LEGEND

- CONTROL CABINET
- NONMETALLIC CONDUIT 2", UNLESS OTHERWISE NOTED
- LOOP DETECTOR IN 1" NONMETALLIC CONDUIT
- MONOTUBE BASE, POLE, 35'-45' ARM
- MONOTUBE BASE, POLE, 15'-30' ARM
- WALK/DONT WALK INDICATOR 16" (COUNTDOWN TIMER)
- LUMINAIRE, TRAFFIC POLE; TRANSFORMER BASE
- PEDESTRIAN HEAD WITH PUSH BUTTON
- PULL BOX, 24" X 36"
- PULL BOX, 24" X 42"
- RED ARROW
- YELLOW ARROW
- GREEN ARROW
- SIGNAL HEAD NUMBER
- RAVAD DETECTION AREA
- RED CIRCULAR INDICATOR
- YELLOW CIRCULAR INDICATOR
- GREEN CIRCULAR INDICATOR
- SIGNAL HEAD, TRAFFIC SIGNAL STANDARD, PEDESTAL BASE
- NOTE: ALL LENSES ARE 12-INCH GRAYSHADE REPRESENTS EXISTING
- CONFIRMATION LIGHT
- PUSH BUTTON
- EVP DESIGNATOR
- EVP DETECTOR HEAD
- TRAFFIC SIGNAL HEAD
- YIELD SIGN
- RAVAD DETECTOR

STRUCTURE NUMBERS

SBI	=	S-511282
SBI	=	S-511283
SBI	=	S-511284
SBI	=	S-511285
SBI	=	S-511286
SBI	=	S-511287
SBI	=	S-511288
SBI	=	S-511289

TRAFFIC CONTROL SIGNAL
 WISCONN VALLEY WAY & BRAUN ROAD
 VILLAGE OF MOUNT PLEASANT
 RACINE COUNTY
 CONTROLLED INTERCONSOLE
 SIGNAL NO. 551-984
 CABINET TYPE: T23-S
 WISCONSIN DEPARTMENT OF TRANSPORTATION
 APPROVAL RECOMMENDED
 DATE: _____ REGIONAL TRAFFIC ENGINEER
 APPROVED _____ STATE TRAFFIC ENGINEER
 DATE: _____
 REGION CONTACT: MATTHEW COMAP
 DESIGNED BY: KAPUR & ASSOCIATES
 REVISED BY: _____
 PAGE 1 OF 5

CONNECT DRAIN TILE

SPV.0060.013		608.0312*	
CONNECT		STORM SEWER PIPE	
DRAIN TILE		REINFORCED CONCRETE	
CLASS III 12-INCH			
LOCATION	EA	LF	
UNDISTRIBUTED	50	4,375	
PROJECT 2704-00-76 TOTAL		50	4,375

*NOTE: ADDITIONAL QUANTITIES SHOWN ELSEWHERE

PAVEMENT CLEANUP PROJECT

SPV.0075.001		PROJECT 2704-00-76	
PAVEMENT		CLEANUP	
LOCATION	HR		
PROJECT 2704-00-76	30		
PROJECT 2704-00-76 TOTAL		30	

PIPE UNDERDRAIN

SPV.0090.002*		PIPE UNDERDRAIN	
6-INCH SPECIAL			
STA	TO STA	LOCATION	LF
501+54	- 555+10	WISCONN VALLEY WAY	8,230
558+00	- 604+25	WISCONN VALLEY WAY	7,130
		BRAUN ROAD	550
PROJECT 2704-00-76 TOTAL			15,910

*NOTE: ADDITIONAL QUANTITIES SHOWN ELSEWHERE

NOTE: CONNECT PIPE UNDERDRAIN TO CURBLINE INLETS

UTILITY REMOVALS

SPV.0195.001		REMOVE	
WOOD		POLES	
ROADWAY	STATION	OFFSET	TON
Wiscom Valley Way	600+32	33'LT	.5
	600+31	101'RT	.5
	600+92	116'RT	.5
	603+61	136'RT	.5
	605+30	158'RT	.5
	605+85	163'RT	.5
TOTALS			3.0

Addendum No. 01
ID 2704-00-76
Revised Sheet 292
March 1, 2019

REMOVAL AND DISPOSAL OF INVASIVE PLANT SPECIES

SPV.0170.001		REMOVAL AND DISPOSAL	
OF INVASIVE PLANT		SPECIES	
LOCATION	STA		
PROJECT 2704-00-76	5		
PROJECT 2704-00-76 TOTAL			5

SURVEY PROJECT

SPV.0105.007		SURVEY	
PROJECT		2704-00-76	
LOCATION	LS		
PROJECT 2704-00-76	1		
PROJECT 2704-00-76 TOTAL			1

ALL ITEMS CATEGORY 1000 UNLESS OTHERWISE NOTED

PROJECT NO: 2704-00-76

COUNTY: RACINE

MISCELLANEOUS QUANTITIES

SHEET: 292

E

WISCONN VALLEY WAY & BRAUN ROAD
 ALL ITEMS ARE CATEGORY 3000 UNLESS
 OTHERWISE NOTED

3

3

SUMMARY OF STATE FURNISHED MATERIALS - FOR INFORMATION ONLY

QUANTITY	UNIT	DESCRIPTION
1	EACH	TRAFFIC SIGNAL CONTROLLER AND CABINET
4	EACH	EVP DETECTOR HEAD WITH CONFIRMATION BEACON (HEADS A, B, C, D)
2	EACH	RADAR DETECTOR UNIT - ADVANCE (REL. REZ)
1	EACH	CELL MODEM
1	EACH	ETHERNET SWITCH
2	EACH	STATE FURNISHED POLES TYPE 9
4	EACH	STATE FURNISHED POLES TYPE 10
2	EACH	STATE FURNISHED POLES TYPE 9S
1	EACH	STATE FURNISHED MONOTUBE ARMS 15-FT
1	EACH	STATE FURNISHED MONOTUBE ARMS 20-FT
3	EACH	STATE FURNISHED MONOTUBE ARMS 25-FT
1	EACH	STATE FURNISHED MONOTUBE ARMS 30-FT
2	EACH	STATE FURNISHED MONOTUBE ARMS 40-FT
8	EACH	STATE FURNISHED LUMINAIRE ARMS STEEL 15-FT

Addendum No. 01
 ID 2704-00-76
 Revised Sheet 293
 March 1, 2019

WISCONN VALLEY WAY & BRAUN ROAD
 ALL ITEMS ARE CATEGORY 3000 UNLESS
 OTHERWISE NOTED

3

CONCRETE BASES

SPV.0060.301
 CONCRETE BASE
 MONOTUBE TYPE 9 & 10
 SPECIAL POLE
 EACH

BASE NO.	STATION	LOCATION	654.0101 CONCRETE BASES TYPE 1		654.0110 CONCRETE BASES TYPE 10		654.0217 CONCRETE CONTROL CABINET BASES TYPE 9 SPECIAL	
			EACH	EACH	EACH	EACH	EACH	EACH
CB1	68BRW+21.04	83.6' LT	--	--	--	--	1	1
SB1	68BRW+66.61	43.2' LT	--	--	--	--	1	--
SB2	68BRW+82.18	56.1' LT	1	--	--	--	--	--
SB3	557+44.18	30.0' LT	--	1	--	--	--	--
SB4	557+60.12	5.8' RT	1	--	--	--	--	--
SB5	70BRW+04.01	42.9' LT	--	1	--	--	--	--
SB6	70BRW+18.26	42.6' LT	1	--	--	--	--	--
SB7	70BRW+18.23	6.0' RT	--	1	--	--	--	--
SB8	70BRE+75.38	6.0' LT	1	--	--	--	--	--
SB9	70BRE+48.93	6.0' LT	1	--	--	--	--	--
SB10	70BRE+47.64	78.4' RT	1	--	--	--	--	--
SB11	70BRE+13.37	59.9' RT	1	--	--	--	--	--
SB12	70BRE+18.22	43.1' RT	--	--	--	1	--	--
SB13	555+84.08	54.5' RT	1	--	--	--	--	--
SB14	555+84.05	12.0' RT	--	1	--	--	--	--
SB15	555+71.07	18.0' LT	1	--	--	--	--	--
SB16	68BRE+81.98	56.1' RT	--	1	--	--	--	--
SB17	68BRE+67.04	42.5' RT	1	--	--	--	--	--
SB18	68BRE+67.08	12.0' LT	--	1	--	--	--	--
SB19	68BRW+43.68	6.0' RT	1	--	--	--	--	--
PROJECT 2704-00-76 TOTALS			11	6	2	1		

*** FINAL LOCATION TO BE DETERMINED BY THE ENGINEER IN THE FIELD

Addendum No. 01
 ID 2704-00-76
 Revised Sheet 297
 March 1, 2019

3

WISCONN VALLEY WAY & BRAUN ROAD
 ALL ITEMS ARE CATEGORY 3000 UNLESS OTHERWISE NOTED

3

CAST BASES, POLES, STANDARDS, MONOTUBE, PUSH BUTTONS, AND LUMINAIRES

SIGNAL BASE NO.	657.0100 PEDESTAL BASES		657.0420 TRAFFIC SIGNAL STANDARDS ALUMINIUM 13-FT EACH		657.0425 TRAFFIC SIGNAL STANDARDS ALUMINIUM 15-FT EACH		657.0430 TRAFFIC SIGNAL STANDARDS ALUMINIUM 10-FT EACH		STATE FURNISHED POLES TYPE 9**** EACH	STATE FURNISHED POLES TYPE 10**** EACH	STATE FURNISHED POLES TYPE 9S**** EACH						
	1	1	1	1	1	1	1	1									
SB1	--	--	--	--	--	--	--	--	--	--	1						
SB2	1	1	1	1	1	1	1	1	1	1	--						
SB3	--	--	--	--	--	--	--	--	--	1	--						
SB4	1	1	1	1	1	1	1	1	1	--	--						
SB5	--	--	--	--	--	--	--	--	1	--	--						
SB6	1	1	1	1	1	1	1	1	--	--	--						
SB7	--	--	--	--	--	--	--	--	--	1	--						
SB8	1	1	1	1	1	1	1	1	--	--	--						
SB9	1	1	1	1	1	1	1	1	--	--	--						
SB10	1	1	1	1	1	1	1	1	--	--	--						
SB11	1	1	1	1	1	1	1	1	--	--	--						
SB12	--	--	--	--	--	--	--	--	--	--	1						
SB13	1	1	1	1	1	1	1	1	--	--	--						
SB14	--	--	--	--	--	--	--	--	--	1	--						
SB15	1	1	1	1	1	1	1	1	--	--	--						
SB16	--	--	--	--	--	--	--	1	--	--	--						
SB17	1	1	1	1	1	1	1	1	--	--	--						
SB18	--	--	--	--	--	--	--	--	--	1	--						
SB19	1	1	1	1	1	1	1	1	--	--	--						
PROJECT 2704-00-76 TOTALS											11	8	2	1	2	4	2

**** ITEM WILL BE PAID FOR UNDER SPV.0105.309 TRANSPORT AND INSTALL TRAFFIC SIGNAL, MONOTUBE, AND INTERSECTION LIGHTING MATERIALS

Addendum No. 01
 ID 2704-00-76
 Revised Sheet 301
 March 1, 2019

3

WISCONN VALLEY WAY & BRAUN ROAD
 ALL ITEMS ARE CATEGORY 3000 UNLESS
 OTHERWISE NOTED

3

3

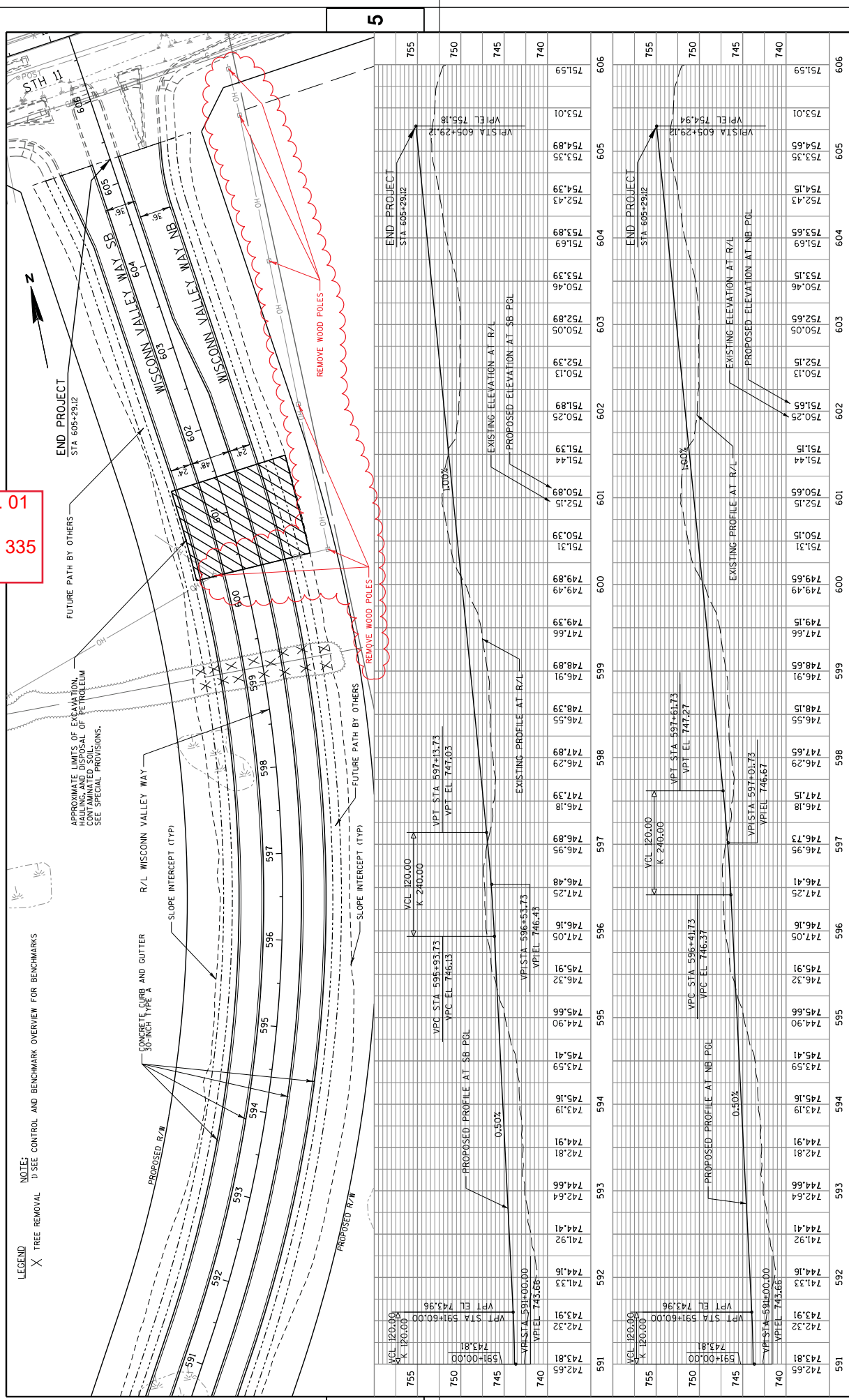
CAST BASES, POLES, STANDARDS, MONOTUBE, PUSH BUTTONS, AND LUMINAIRES (CONTINUED)

SIGNAL BASE NO.	STATE FURNISHED MONOTUBE ARMS 15-FT*** EACH	STATE FURNISHED MONOTUBE ARMS 20-FT*** EACH	STATE FURNISHED MONOTUBE ARMS 25-FT*** EACH	STATE FURNISHED MONOTUBE ARMS 30-FT*** EACH	STATE FURNISHED MONOTUBE ARMS 40-FT*** EACH	STATE FURNISHED LUMINAIRE ARMS STEEL 15-FT*** EACH	658.0500 PEDESTRIAN PUSH BUTTONS EACH	659.1125 LUMINAIRES UTILITY LED C EACH	SPV.0060.302 INSTALL POLES TYPE 95 EACH
SR1	--	--	--	--	1	--	1	--	1
SR2	--	--	--	--	--	--	1	--	--
SR3	--	--	1	--	--	2	1	2	--
SR4	--	--	--	--	--	--	--	--	--
SR5	--	--	1	--	--	--	1	--	--
SR6	--	--	--	--	--	--	1	--	--
SR7	1	--	--	--	--	2	1	2	--
SR8	--	--	--	--	--	--	--	--	--
SR9	--	--	--	--	--	--	--	--	--
SR10	--	--	--	--	--	--	--	--	--
SR11	--	--	--	--	1	--	1	--	1
SR12	--	--	--	--	--	--	--	--	--
SR13	--	--	--	--	--	--	1	--	--
SR14	--	--	1	1	2	2	1	2	--
SR15	--	--	--	--	--	--	--	--	--
SR16	--	--	1	--	--	--	1	--	--
SR17	--	--	--	--	--	--	1	--	--
SR18	--	1	--	--	--	2	1	2	--
SR19	--	--	--	--	--	--	--	--	--
PROJECT 2704-00-76 TOTALS	1	1	3	1	2	8	13	8	2

**** ITEM WILL BE PAID FOR UNDER SPV.0105.309 TRANSPORT AND INSTALL TRAFFIC SIGNAL, MONOTUBE, AND INTERSECTION LIGHTING MATERIALS

Addendum No. 01
 ID 2704-00-76
 Revised Sheet 302
 March 1, 2019

Addendum No. 01
 ID 2704-00-76
 Revised Sheet 335
 March 1, 2019



Station	Elevation	Notes
755	751.59	
755	753.01	
755	754.89	
755	753.35	
755	754.39	
755	752.43	
755	751.69	
755	753.39	
755	750.46	
755	752.89	
755	750.05	
755	752.39	
755	750.13	
755	751.89	
755	750.25	
755	751.65	
755	750.13	
755	752.15	
755	750.05	
755	751.15	
755	751.44	
755	750.89	
755	752.15	
755	750.99	
755	750.39	
755	751.31	
755	749.89	
755	749.49	
755	749.39	
755	747.66	
755	749.15	
755	747.66	
755	748.91	
755	746.91	
755	748.15	
755	746.55	
755	747.89	
755	746.29	
755	747.39	
755	746.18	
755	746.89	
755	746.95	
755	746.99	
755	746.48	
755	747.25	
755	746.16	
755	747.05	
755	745.91	
755	746.32	
755	745.66	
755	744.90	
755	745.41	
755	743.59	
755	745.16	
755	743.19	
755	744.91	
755	742.81	
755	744.66	
755	742.64	
755	744.41	
755	741.92	
755	744.16	
755	741.33	
755	744.16	
755	743.91	
755	742.32	
755	743.81	
755	743.81	
755	742.65	
755	743.81	
755	742.32	
755	743.91	
755	742.32	
755	743.81	
755	742.65	
755	743.81	
755	742.32	
755	743.91	
755	742.32	
755	743.81	
755	742.65	
755	743.81	
755	742.32	
755	743.91	
755	742.32	
755	743.81	
755	742.65	
755	743.81	
755	742.32	
755	743.91	
755	742.32	
755	743.81	
755	742.65	
755	743.81	
755	742.32	
755	743.91	
755	742.32	
755	743.81	
755	742.65	
755	743.81	
755	742.32	
755	743.91	
755	742.32	
755	743.81	
755	742.65	
755	743.81	
755	742.32	
755	743.91	
755	742.32	
755	743.81	
755	742.65	
755	743.81	
755	742.32	
755	743.91	
755	742.32	
755	743.81	
755	742.65	
755	743.81	
755	742.32	
755	743.91	
755	742.32	
755	743.81	
755	742.65	
755	743.81	
755	742.32	
755	743.91	
755	742.32	
755	743.81	
755	742.65	
755	743.81	
755	742.32	
755	743.91	
755	742.32	
755	743.81	
755	742.65	
755	743.81	
755	742.32	
755	743.91	
755	742.32	
755	743.81	
755	742.65	
755	743.81	
755	742.32	
755	743.91	
755	742.32	
755	743.81	
755	742.65	
755	743.81	
755	742.32	
755	743.91	
755	742.32	
755	743.81	
755	742.65	
755	743.81	
755	742.32	
755	743.91	
755	742.32	
755	743.81	
755	742.65	
755	743.81	
755	742.32	
755	743.91	
755	742.32	
755	743.81	
755	742.65	
755	743.81	
755	742.32	
755	743.91	
755	742.32	
755	743.81	
755	742.65	
755	743.81	
755	742.32	
755	743.91	
755	742.32	
755	743.81	
755	742.65	
755	743.81	
755	742.32	
755	743.91	
755	742.32	
755	743.81	
755	742.65	
755	743.81	
755	742.32	
755	743.91	
755	742.32	
755	743.81	
755	742.65	
755	743.81	
755	742.32	
755	743.91	
755	742.32	
755	743.81	
755	742.65	
755	743.81	
755	742.32	
755	743.91	
755	742.32	
755	743.81	
755	742.65	
755	743.81	
755	742.32	
755	743.91	
755	742.32	
755	743.81	
755	742.65	
755	743.81	
755	742.32	
755	743.91	
755	742.32	
755	743.81	
755	742.65	
755	743.81	
755	742.32	
755	743.91	
755	742.32	
755	743.81	
755	742.65	
755	743.81	
755	742.32	
755	743.91	
755	742.32	
755	743.81	
755	742.65	
755	743.81	
755	742.32	
755	743.91	
755	742.32	
755	743.81	
755	742.65	
755	743.81	
755	742.32	
755	743.91	
755	742.32	
755	743.81	
755	742.65	
755	743.81	
755	742.32	
755	743.91	
755	742.32	
755	743.81	
755	742.65	
755	743.81	
755	742.32	
755	743.91	
755	742.32	
755	743.81	
755	742.65	
755	743.81	
755	742.32	
755	743.91	
755	742.32	
755	743.81	
755	742.65	
755	743.81	
755	742.32	
755	743.91	
755	742.32	
755	743.81	
755	742.65	
755	743.81	
755	742.32	
755	743.91	
755	742.32	
755	743.81	
755	742.65	
755	743.81	
755	742.32	
755	743.91	
755	742.32	
755	743.81	
755	742.65	
755	743.81	
755	742.32	
755	743.91	
755	742.32	
755	743.81	
755	742.65	
755	743.81	
755	742.32	
755	743.91	
755	742.32	
755	743.81	
755	742.65	
755	743.81	
755	742.32	
755	743.91	
755	742.32	
755	743.81	
755	742.65	
755	743.81	
755	742.32	
755	743.91	
755	742.32	
755	743.81	
755	742.65	
755	743.81	
755	742.32	
755	743.91	
755	742.32	
755	743.81	
755	742.65	
755	743.81	
755	742.32	
755	743.91	
755	742.32	
755	743.81	
755	742.65	
755	743.81	
755	742.32	
755	743.91	
755	742.32	
755	743.81	
755	742.65	
755	743.81	
755	742.32	
755	743.91	
755	742.32	
755	743.81	
755	742.65	
755	743.81	
755	742.32	
755	743.91	
755	742.32	
755	743.81	
755	742.65	
755	743.81	
755	742.32	
755	743.91	
755	742.32	
755	743.81	
755	742.65	
755	743.81	
755	742.32	
755	743.91	
755	742.32	
755	743.81	
755	742.65	
755	743.81	
755	742.32	
755	743.91	
755	742.32	
755	743.81	
755	742.65	
755	743.81	
755	742.32	
755	743.91	
755	742.32	
755	743.81	
755	742.65	
755	743.81	
755	742.32	
755	743.91	
755	742.32	
755	743.81	
755	742.65	
755	743.81	
755	742.32	
755	743.91	
755	742.32	
755	743.81	
755	742.65	
755	743.81	
755	742.32	
755	743.91	
755	742.32	
755	743.81	
755	742.65	
755	743.81	
755	742.32	
755	743.91	
755	742.32	
755	743.81	
755	742.65	
755	743.81	
755	742.32	
755	743.91	
755	742.32	
755	743.81	
755	742.65	
755	743.81	
755	742.32	
755	743.91	
755	742.32	
755	743.81	
755	742.65	
755	743.81	
755	742.32	
755	743.91	
755	742.32	
755	743.81	
755	742.65	
755	743.81	
755	742.32	
755	743.91	
755	742.32	
755	743.81	
755	742.65	
755	743.81	
755	742.32	
755	743.91	
755	742.32	
755	743.81	
755	742.65	
755	743.81	
755	742.32	
755	743.91	
755	742.32	
755	743.81	
755	742.65	
755	743.81	



Proposal Schedule of Items

Proposal ID: 20190312021 Project(s): 2704-00-76

Federal ID(s): N/A

SECTION: 0001 Contract Items

Alt Set ID: Alt Mbr ID:

Proposal Line Number	Item ID Description	Approximate Quantity and Units	Unit Price	Bid Amount
0274	652.0225 Conduit Rigid Nonmetallic Schedule 40 2-Inch	13,488.000 LF	_____.	_____.
0276	652.0235 Conduit Rigid Nonmetallic Schedule 40 3-Inch	4,108.000 LF	_____.	_____.
0278	652.0800 Conduit Loop Detector	3,182.000 LF	_____.	_____.
0280	653.0135 Pull Boxes Steel 24x36-Inch	26.000 EACH	_____.	_____.
0282	653.0140 Pull Boxes Steel 24x42-Inch	22.000 EACH	_____.	_____.
0284	654.0101 Concrete Bases Type 1	11.000 EACH	_____.	_____.
0286	654.0105 Concrete Bases Type 5	53.000 EACH	_____.	_____.
0288	654.0110 Concrete Bases Type 10	6.000 EACH	_____.	_____.
0292	654.0217 Concrete Control Cabinet Bases Type 9 Special	1.000 EACH	_____.	_____.
0294	654.0230 Concrete Control Cabinet Bases Type L30	3.000 EACH	_____.	_____.
0296	655.0210 Cable Traffic Signal 3-14 AWG	1,666.000 LF	_____.	_____.
0298	655.0230 Cable Traffic Signal 5-14 AWG	996.000 LF	_____.	_____.
0300	655.0240 Cable Traffic Signal 7-14 AWG	4,261.000 LF	_____.	_____.
0302	655.0260 Cable Traffic Signal 12-14 AWG	3,567.000 LF	_____.	_____.
0304	655.0270 Cable Traffic Signal 15-14 AWG	512.000 LF	_____.	_____.
0306	655.0320 Cable Type UF 2-10 AWG Grounded	1,453.000 LF	_____.	_____.



Proposal Schedule of Items

Proposal ID: 20190312021 Project(s): 2704-00-76

Federal ID(s): N/A

SECTION: 0001 Contract Items

Alt Set ID: Alt Mbr ID:

Proposal Line Number	Item ID Description	Approximate Quantity and Units	Unit Price	Bid Amount
0308	655.0510 Electrical Wire Traffic Signals 12 AWG	10,926.000 LF	_____.	_____.
0310	655.0515 Electrical Wire Traffic Signals 10 AWG	5,423.000 LF	_____.	_____.
0312	655.0610 Electrical Wire Lighting 12 AWG	1,152.000 LF	_____.	_____.
0314	655.0700 Loop Detector Lead In Cable	11,696.000 LF	_____.	_____.
0316	655.0800 Loop Detector Wire	12,094.000 LF	_____.	_____.
0318	655.0900 Traffic Signal EVP Detector Cable	1,666.000 LF	_____.	_____.
0320	656.0200 Electrical Service Meter Breaker Pedestal (location) 301. Braun Road & Wisconn Valley Way	LS	LUMP SUM	_____.
0322	657.0100 Pedestal Bases	11.000 EACH	_____.	_____.
0324	657.0255 Transformer Bases Breakaway 11 1/2-Inch Bolt Circle	53.000 EACH	_____.	_____.
0326	657.0420 Traffic Signal Standards Aluminum 13-FT	8.000 EACH	_____.	_____.
0328	657.0425 Traffic Signal Standards Aluminum 15-FT	2.000 EACH	_____.	_____.
0330	657.0430 Traffic Signal Standards Aluminum 10-FT	1.000 EACH	_____.	_____.
0332	658.0173 Traffic Signal Face 3S 12-Inch	26.000 EACH	_____.	_____.
0334	658.0174 Traffic Signal Face 4S 12-Inch	3.000 EACH	_____.	_____.
0336	658.0416 Pedestrian Signal Face 16-Inch	10.000 EACH	_____.	_____.
0338	658.0500 Pedestrian Push Buttons	13.000 EACH	_____.	_____.



Proposal Schedule of Items

Proposal ID: 20190312021 Project(s): 2704-00-76

Federal ID(s): N/A

SECTION: 0001 Contract Items

Alt Set ID: Alt Mbr ID:

Proposal Line Number	Item ID Description	Approximate Quantity and Units	Unit Price	Bid Amount
0340	658.5069 Signal Mounting Hardware (location) 301. Braun Road & Wisconsin Valley Way	LS	LUMP SUM	_____.
0342	659.1125 Luminaires Utility LED C	8.000 EACH	_____.	_____.
0344	670.0100 Field System Integrator 001. FTMS	LS	LUMP SUM	_____.
0346	670.0200 ITS Documentation 001. FTMS	LS	LUMP SUM	_____.
0348	671.0122 Conduit HDPE 2-Duct 2-Inch	10,555.000 LF	_____.	_____.
0350	673.0105 Communication Vault Type 1	12.000 EACH	_____.	_____.
0352	673.0200 Tracer Wire Marker Posts	11.000 EACH	_____.	_____.
0354	677.0200 Install Camera Assembly	1.000 EACH	_____.	_____.
0356	678.0072 Install Fiber Optic Cable Outdoor Plant 72-CT	32,815.000 LF	_____.	_____.
0358	678.0300 Fiber Optic Splice	72.000 EACH	_____.	_____.
0360	678.0500 Communication System Testing	LS	LUMP SUM	_____.
0362	715.0415 Incentive Strength Concrete Pavement	23,358.000 DOL	1.00000	23,358.00
0364	715.0710 Optimized Aggregate Gradation Incentive	73,578.000 DOL	1.00000	73,578.00
0366	740.0440 Incentive IRI Ride	19,625.000 DOL	1.00000	19,625.00
0368	SPV.0005 Special 001. Seed Bed Preparation	1.600 ACRE	_____.	_____.
0370	SPV.0005 Special 002. Seeding Special	1.600 ACRE	_____.	_____.



Proposal Schedule of Items

Proposal ID: 20190312021 Project(s): 2704-00-76

Federal ID(s): N/A

SECTION: 0001 Contract Items

Alt Set ID: Alt Mbr ID:

Proposal Line Number	Item ID Description	Approximate Quantity and Units	Unit Price	Bid Amount
0372	SPV.0035 Special 001. EBS Excavation	31,723.000 CY	_____.	_____.
0374	SPV.0035 Special 002. EBS Backfill	31,723.000 CY	_____.	_____.
0376	SPV.0035 Special 003. Roadway Embankment	246,090.000 CY	_____.	_____.
0378	SPV.0060 Special 002. Temporary Stone Ditch Checks	20.000 EACH	_____.	_____.
0380	SPV.0060 Special 003. Sand Bags	150.000 EACH	_____.	_____.
0382	SPV.0060 Special 004. Temporary Sediment Traps	10.000 EACH	_____.	_____.
0384	SPV.0060 Special 005. Remove and Relocate Existing Apron Endwall 15-Inch	1.000 EACH	_____.	_____.
0386	SPV.0060 Special 006. Remove and Relocate Existing Apron Endwall 24-Inch	1.000 EACH	_____.	_____.
0388	SPV.0060 Special 008. Inlet Covers Beehive	9.000 EACH	_____.	_____.
0390	SPV.0060 Special 011. Manholes 9-FT	1.000 EACH	_____.	_____.
0392	SPV.0060 Special 012. Cover Plates Left In Place	2.000 EACH	_____.	_____.
0394	SPV.0060 Special 013. Connect Drain Tile	50.000 EACH	_____.	_____.
0396	SPV.0060 Special 020. Pond I Outlet Storm Sewer Structure	1.000 EACH	_____.	_____.
0398	SPV.0060 Special 021. Pond J Outlet Storm Sewer Structure	1.000 EACH	_____.	_____.
0400	SPV.0060 Special 022. Pond K Outlet Storm Sewer Structure	1.000 EACH	_____.	_____.



Proposal Schedule of Items

Proposal ID: 20190312021 Project(s): 2704-00-76

Federal ID(s): N/A

SECTION: 0001 Contract Items

Alt Set ID: Alt Mbr ID:

Proposal Line Number	Item ID Description	Approximate Quantity and Units	Unit Price	Bid Amount
0402	SPV.0060 Special 023. Slip-In Check Valve for 12-Inch Inside Diameter Pipe	1.000 EACH	_____.	_____.
0404	SPV.0060 Special 024. Slip-In Check Valve for 24-Inch Inside Diameter Pipe	3.000 EACH	_____.	_____.
0406	SPV.0060 Special 025. Slip-In Check Valve for 30-Inch Inside Diameter Pipe	1.000 EACH	_____.	_____.
0408	SPV.0060 Special 026. Slip-In Check Valve for 15-Inch Inside Diameter Pipe	1.000 EACH	_____.	_____.
0410	SPV.0060 Special 050. Sign Support Special Mounting	3.000 EACH	_____.	_____.
0412	SPV.0060 Special 725. Bioretention Type A	5.000 EACH	_____.	_____.
0414	SPV.0060 Special 726. Bioretention Type B	4.000 EACH	_____.	_____.
0416	SPV.0075 Special 001. Pavement Cleanup Project 2704-00-76	30.000 HRS	_____.	_____.
0418	SPV.0085 Special 001. Seed Mix Special	350.000 LB	_____.	_____.
0420	SPV.0090 Special 001. Heavy Duty Silt Fence	2,885.000 LF	_____.	_____.
0422	SPV.0090 Special 002. Pipe Underdrain 6-Inch Special	16,010.000 LF	_____.	_____.
0424	SPV.0090 Special 003. Culvert Pipe Reinforced Concrete Horizontal Elliptical Class HE-IV 53x83-In	462.000 LF	_____.	_____.
0426	SPV.0090 Special 004. Marking Line Contrast Epoxy 4-Inch	4,738.000 LF	_____.	_____.
0428	SPV.0090 Special 005. Marking Line Contrast Epoxy 8-Inch	2,721.000 LF	_____.	_____.



Proposal Schedule of Items

Proposal ID: 20190312021 Project(s): 2704-00-76

Federal ID(s): N/A

SECTION: 0001 Contract Items

Alt Set ID: Alt Mbr ID:

Proposal Line Number	Item ID Description	Approximate Quantity and Units	Unit Price	Bid Amount
0430	SPV.0090 Special 006. Concrete Curb and Gutter 6-Inch Sloped 48-Inch Type A	234.000 LF	_____.	_____.
0432	SPV.0105 Special 001. Surveillance and Care for Seeding Special	LS	LUMP SUM	_____.
0434	SPV.0105 Special 007. Survey Project 2704-00-76	LS	LUMP SUM	_____.
0436	SPV.0105 Special 306. Trns & Install State Furn Traf Sig Cabinet Braun Rd & WVV	LS	LUMP SUM	_____.
0438	SPV.0105 Special 307. Trns & Install State Furn Radar Det Sys Braun Rd & WVV	LS	LUMP SUM	_____.
0440	SPV.0105 Special 308. Trns & Install State Furn EVP Det Heads w/Conf Beacons Braun Rd & WVV	LS	LUMP SUM	_____.
0442	SPV.0105 Special 309. Trans & Install Traf Sig, Monotube & Inter Lighting Mat Braun Rd & WVV	LS	LUMP SUM	_____.
0444	SPV.0105 Special 310. Trns & Install St Furn FO Cable Pigtail 8-Ct, CTH KR & 100 Ave/Foxconn Drwy	LS	LUMP SUM	_____.
0446	SPV.0105 Special 311. Trns & Install St Furn FO Cable Pigtail 8-Ct, CTH H & CTH KR	LS	LUMP SUM	_____.
0448	SPV.0105 Special 312. Trns & Install St Furn FO Cable Pigtail 8-Ct, Braun Rd & Foxconn Drwy	LS	LUMP SUM	_____.
0450	SPV.0105 Special 313. Trns & Install St Furn FO Cable Pigtail 8-Ct, CTH H & Braun Road	LS	LUMP SUM	_____.
0452	SPV.0170 Special 001. Removal and Disposal of Invasive Plant Species	5.000 STA	_____.	_____.



Proposal Schedule of Items

Proposal ID: 20190312021 Project(s): 2704-00-76

Federal ID(s): N/A

SECTION: 0001 Contract Items

Alt Set ID: Alt Mbr ID:

Proposal Line Number	Item ID Description	Approximate Quantity and Units	Unit Price	Bid Amount
0454	SPV.0180 Special 001. Topsoil Special	199,655.000 SY	_____.	_____.
0456	SPV.0180 Special 002. Mulching Special	7,744.000 SY	_____.	_____.
0458	SPV.0180 Special 003. Topsoil Special for Prairie Seeding	7,744.000 SY	_____.	_____.
0460	SPV.0060 Special 301. Concrete Bases Monotube Type 9 & 10 Special Poles	2.000 EACH	_____.	_____.
0462	SPV.0060 Special 302. Installing Poles Type 9S	2.000 EACH	_____.	_____.
0464	SPV.0195 Special 001. Remove Wood Poles	3.000 TON	_____.	_____.
Section: 0001			Total:	_____.
			Total Bid:	_____.