



Wisconsin Department of Transportation

Division of Transportation Systems Development

Bureau of Project Development
4822 Madison Yards Way, 4th Floor South
Madison, WI 53705

February 19, 2019

Telephone: (608) 266-1631
Facsimile (FAX): (608) 266-8459

NOTICE TO ALL CONTRACTORS:

Proposal #22: 2984-38-71, WISC 2018 376
Various Highways
Various Bridges B-40-378, 579,580
Various Highways
Milwaukee County

Letting of March 12, 2019

This is Addendum No. 01, which provides for the following:

Special Provisions:

Revised Special Provisions	
Article No.	Description
3	Prosecution and Progress
4	Traffic
14	Debris Containment B-40-579, Item 203.0225.S.01; Debris Containment B-40-580, Item 203.0225.S.02; Debris Containment B-40-378, Item 203.0225.S.03

Schedule of Items:

Revised Bid Item Quantities					
Bid Item	Item Description	Unit	Old Quantity	Revised Quantity	Proposal Total
628.1905	Mobilization Erosion Control	Each	6	2	8
628.1910	Mobilization Emergency Erosion Control	Each	5	2	7
643.0300	Traffic Control Drums	Days	22,216	8,400	30,616
643.0300	Traffic Control Barricades Type II	Days	18	12	30
643.0420	Traffic Control Barricades Type III	Days	4,970	304	5,274
643.0705	Traffic Control Warning Lights Type A	Days	8,562	872	9,434
643.0715	Traffic Control Warning Lights Type C	Days	7,440	1,064	8,504
643.0800	Traffic Control Arrow Boards	Days	315	72	387
643.0900	Traffic Control Signs	Days	20,531	3,839	24,370
643.1000	Traffic Control Signs Fixed Message	SF	500.5	-110.5	390
643.1050	Traffic Control Signs PCMS	Days	20	21	41
646.9000	Marking Removal Line 4-Inch	LF	1,580	188	1,768
649.0105	Temporary Marking Line Paint 4-Inch	LF	3,890	2,196	6,086
649.0150	Temporary Marking Line Removable Tape 4-Inch	LF	19,850	9,365	29,215

649.0960	Temporary Marking Removable Mask Out Tape 6-Inch	LF	280	413	693
690.0250	Sawing Concrete	LF	282	147	429

Added Bid Item Quantities					
Bid Item	Item Description	Unit	Old Quantity	Revised Quantity	Proposal Total
603.8000	Concrete Barrier Temporary Precast Delivered	LF	0	1,350	1,350
603.8125	Concrete Barrier Temporary Precast Installed	LF	0	2,650	2,650
614.0905	Crash Cushion Temporary	Each	0	3	3
649.0970	Temporary Marking Removable Mask Out Tape 10-Inch	LF	0	106	106

Deleted Bid Item Quantities					
Bid Item	Item Description	Unit	Old Quantity	Revised Quantity	Proposal Total
203.0225.S.01	Debris Containment B-40-579	LS	1	-1	0
203.0225.S.02	Debris Containment B-40-580	LS	1	-1	0

Plan Sheets:

Revised Plan Sheets	
Plan Sheet	Plan Sheet Title (brief description of changes to sheet)
61	Miscellaneous Quantities (revised quantity for Erosion Control Mobilization items)
62	Miscellaneous Quantities (revised quantity for Traffic Control and Sawing Items, added Temporary Marking and Concrete Barrier quantities)

Added Plan Sheets	
Plan Sheet	Plan Sheet Title (brief description of why sheet was added)
37 A	Construction Staging (Typical Section for Stages 1 & 2 for B-40-579 & B-40-580)
37 B	Traffic Control: Stage 1 (W Silver Spring Drive)
37 C	Traffic Control: Stage 1 (W Silver Spring Drive)
37 D	Traffic Control: Stage 1 (W Silver Spring Drive)
37 E	Traffic Control: Stage 2 (W Silver Spring Drive)
37 F	Traffic Control: Stage 2 (W Silver Spring Drive)
37 G	Traffic Control: Stage 2 (W Silver Spring Drive)
37 H	Traffic Control: Stage 2 (W Silver Spring Drive)
39 A	Detour: NB I-43 Off-Ramp to WB Silver Spring Drive, EB Silver Spring Drive to SB I-43 On-Ramp
39 B	Detour: WB Silver Spring Drive to SB I-43 On-Ramp
39 C	Detour: SB I-43 Off-Ramp to WB Silver Spring Drive
78 A	SDD 14 B 07 – 15 A Concrete Barrier Temporary Precast, 12'-6"
78 B	SDD 14 B 07 – 15 B Concrete Barrier Temporary Precast, 12'-6"
78 C	SDD 14 B 07 – 15 C Concrete Barrier Temporary Precast, 12'-6"
78 D	SDD 14 B 07 – 15 D Concrete Barrier Temporary Precast, 12'-6"
78 E	SDD 14 B 07 – 15 E Concrete Barrier Temporary Precast, 12'-6"
78 F	SDD 14 B 07 – 15 F Concrete Barrier Temporary Precast, 12'-6"
78 G	SDD 14 B 07 – 15 G Concrete Barrier Temporary Precast, 12'-6"
78 H	SDD 14 B 07 – 15 H Concrete Barrier Temporary Precast, 12'-6"
78 I	SDD 14 B 07 – 15 I Concrete Barrier Temporary Precast, 12'-6"

78 J	SDD 14 B 08 – 02 A Crash Cushion / Sand Barrel Array and Other Temporary Barrier Layout Details
78 K	SDD 14 B 08 – 02 B Crash Cushion / Sand Barrel Array and Other Temporary Barrier Layout Details
78 L	SDD 14 B 08 – 02 C Crash Cushion / Sand Barrel Array and Other Temporary Barrier Layout Details
78 M	SDD 14 B 08 – 02 D Crash Cushion / Sand Barrel Array and Other Temporary Barrier Layout Details
78 N	SDD 14 B 08 – 02 E Crash Cushion / Sand Barrel Array and Other Temporary Barrier Layout Details
102 A	SDD 15 D 28 – 03 Traffic Control, Work on Shoulder or Parking Lane, Undivided roadway
107 A	SDD 15 D 40 – 01 Traffic Control, Lane Shift, Multi-Lane Divided or One-Way Road

Deleted Plan Sheets	
Plan Sheet	Plan Sheet Title (brief description of why sheet was deleted)
39	Detour – NB I-43 to Westbound W Silver Spring Drive – Stage 1
40	Detour – Westbound W Silver Spring Drive – Stage 1
41	Detour – Eastbound W Silver Spring Drive to SB I-43 – Stage 2
42	Detour – Eastbound W Silver Spring Drive – Stage 2

The responsibility for notifying potential subcontractors and suppliers of these changes remains with the prime contractor.

Sincerely,

Mike Coleman

Proposal Development Specialist
Proposal Management Section

ADDENDUM NO. 01

2984-38-71

February 19, 2019

Special Provisions

3. Prosecution and Progress.

Insert the following paragraphs after paragraph four:

Peak Hours

- 6:00 AM to 9:00 AM, Monday through Friday
- 3:00 PM to 6:00 PM, Monday through Friday

Contractor Coordination

Attend weekly scheduling meetings to discuss near-term schedule activities, address long-term schedule issues, and discuss any relevant technical issues. Prior to each weekly scheduling meeting develop a rolling three-week schedule.

Include the actual work activities from the previous week and the planned activities for the next two weeks in the schedule. Include sufficient detail for prime/sub-contractor onsite and offsite construction activities, traffic control ramp/lane closures, and issues requiring engineering action or input.

Interim Completion Date

Do not begin B-40-579 and B-40-580 (Silver Spring Drive) construction operations that reduce Silver Spring Drive to a single through lane in either direction (eastbound or westbound) until after June 16, 2019 unless approved by the engineer.

Place traffic control on Silver Spring Drive and associated side roads as shown in the Traffic Control Plans for Stage 1 and Stage 2. Complete all construction operations to a stage necessary to open Silver Spring Drive to two through lanes prior to 5:30 AM August 30, 2019. Complete any remaining work on B-40-579, B-40-580, and Silver Spring Drive using short term lane closures outside of peak hours.

If the contractor fails to complete the construction operations to a condition to allow two through lanes in both directions of Silver Spring Drive prior to 5:30 AM August 30, 2019, the department will assess the contractor \$1,540 in interim liquidated damages for each calendar day that this work remains incomplete after 5:30 AM August 30, 2019. An entire calendar day will be charged for any period of time within a calendar day that the lanes remain closed beyond 5:30 AM.

If contract time expires prior to completing all work specified in the contract, additional liquidated damages will be affixed according to standard spec 108.11.

4. Traffic.

*Replace entire subsection titled Stage 1 under section titled **B-80-579 and B-40-580 (Silver Spring Dr)** with the following:*

Stage 1 involves work on the inside lane and median of Structures B-40-579 and B-40-580.

During Stage 1 construction, close the inside lane of westbound and eastbound Silver Spring Drive as shown in the plans. Prior to closing Silver Spring Drive lanes, post the following detour routes as shown in the plans:

NB I-43 off-ramp to WB Silver Spring Drive
EB Silver Spring Drive to SB I-43 on-ramp
WB Silver Spring Drive to SB I-43 on-ramp

*Replace entire subsection titled Stage 2 under section titled **B-80-579 and B-40-580 (Silver Spring Dr)** with the following:*

Stage 2 involves work on the outside lanes of Structures B-40-579 and B-40-580.

During Stage 2 construction, close the outside lanes of westbound and eastbound Silver Spring Drive as shown in the plans. Prior to closing Silver Spring Drive lanes, post the following detour routes as shown in the plans:

NB I-43 off-ramp to WB Silver Spring Drive
EB Silver Spring Drive to SB I-43 on-ramp
WB Silver Spring Drive to SB I-43 on-ramp
SB I-43 off-ramp to WB Silver Spring Drive

- 14. Debris Containment B-40-579, Item 203.0225.S.01;
Debris Containment B-40-580, Item 203.0225.S.02;
Debris Containment B-40-378, Item 203.0225.S.03.**

Rename and replace entire article with the following:

- 14. Debris Containment B-40-378, Item 203.0225.S.03.**

A Description

This special provision describes providing a containment system to prevent debris from structure removal, reconstruction, or other construction operations from falling onto facilities located under the structure. Using this containment system does not relieve the contractor of requirements under standard spec 107.17 and standard spec 107.19 or requirements under a US Army Corps of Engineers Section 404 Permit.

B (Vacant)

C Construction

Before starting work, submit a debris containment plan to the engineer for review. Incorporate engineer-requested modifications. Do not start work over the Milwaukee River until the engineer approves the debris containment plan.

Maintain adequate protection throughout construction for people and property within the potential fall zone. Ensure that a containment system capable of protecting underlying facilities from falling construction debris is in place before beginning deck repair, parapet removal, or other operations that may generate debris.

At least 15 working days before conducting potential debris generating operations, contact the following owners or lessees:

1. Wisconsin DNR, Kristina Betzold at (414) 507-4946 or Kristina.betzold@wisconsin.gov

D Measurement

The department will measure Debris Containment B-40-378 as a single lump sum unit of work for each structure acceptably completed.

E Payment

The department will pay for measured quantities at the contract unit price under the following bid item:

ITEM NUMBER	DESCRIPTION	UNIT
203.0225.S.03	Debris Containment B-40-378	LS

Payment is full compensation for furnishing, installing, maintaining, and removing a debris containment system.

stp-203-010 (20080902)

Schedule of Items

Attached, dated February 19, 2019, are the revised Schedule of Items Pages 1 – 9.

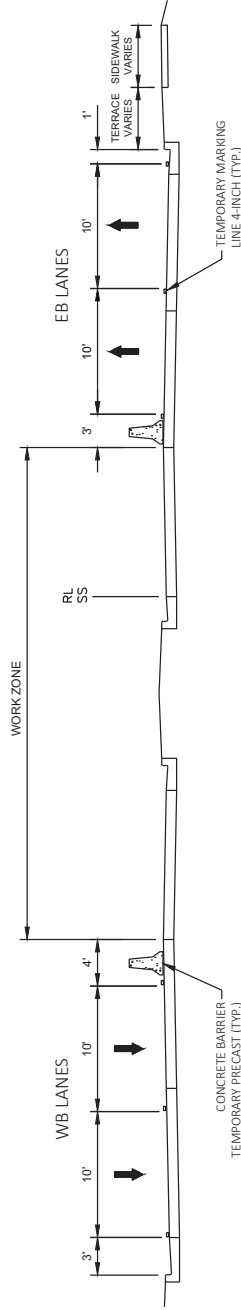
Plan Sheets

The following 8½ x 11-inch sheets are attached and made part of the plans for this proposal:

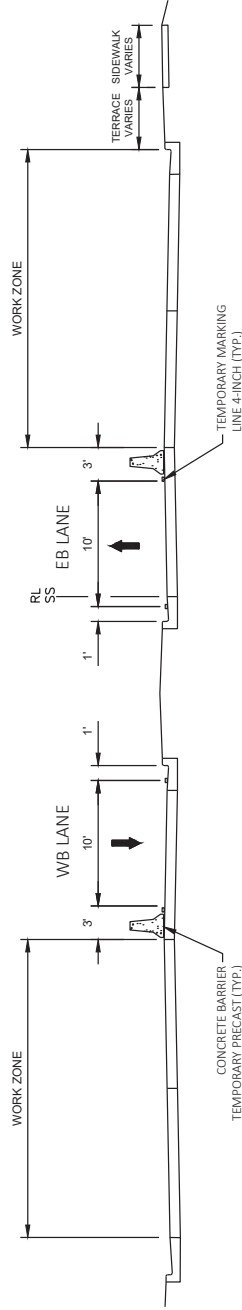
Revised: 61 and 62.

Added: 37A-H, 39A-C, 78A-N, 102A, and 107A.

END OF ADDENDUM

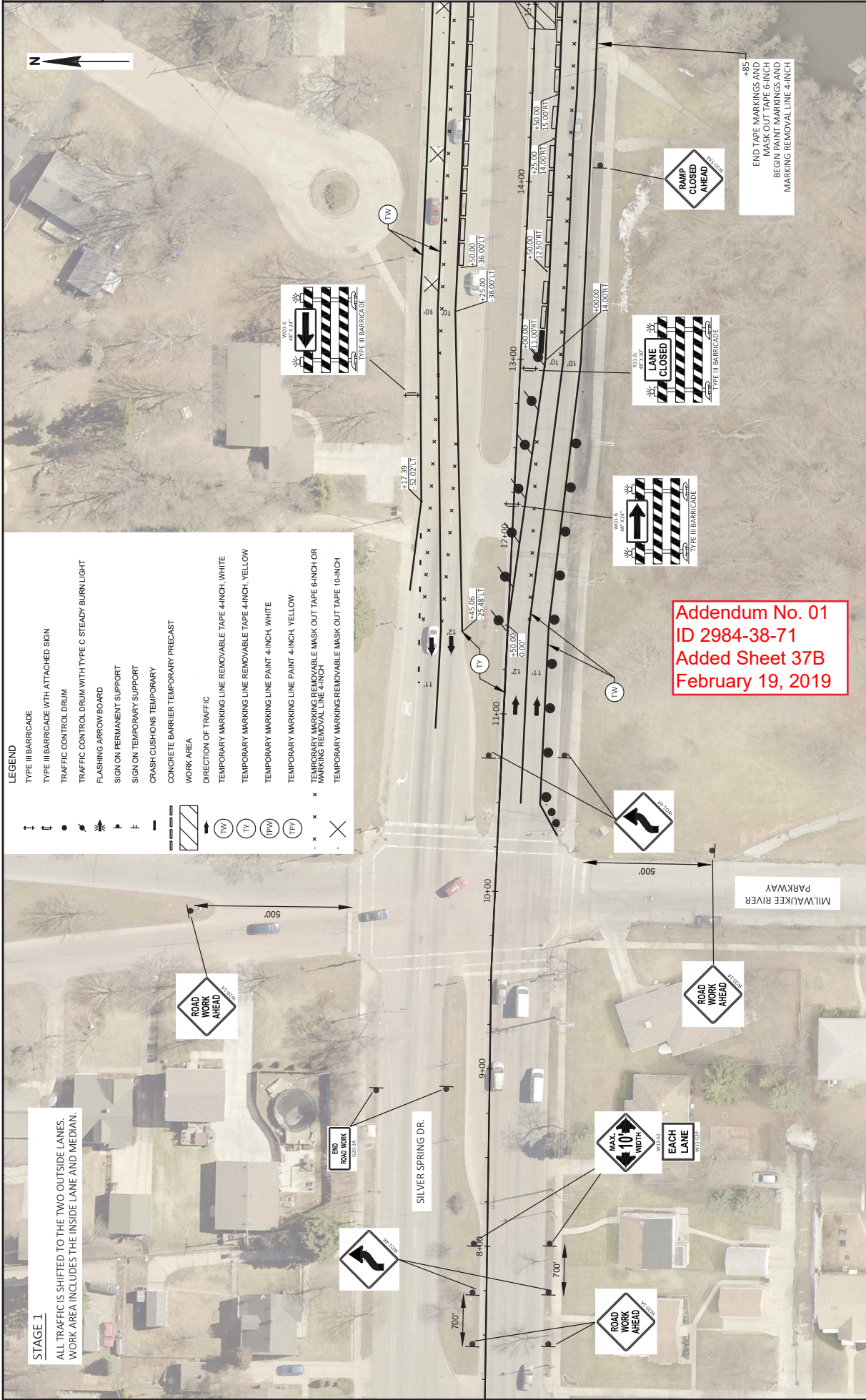


STAGE 1 (LOOKING EAST)



STAGE 2 (LOOKING EAST)

Addendum No. 01
 ID 2984-38-71
 Added Sheet 37A
 February 19, 2019



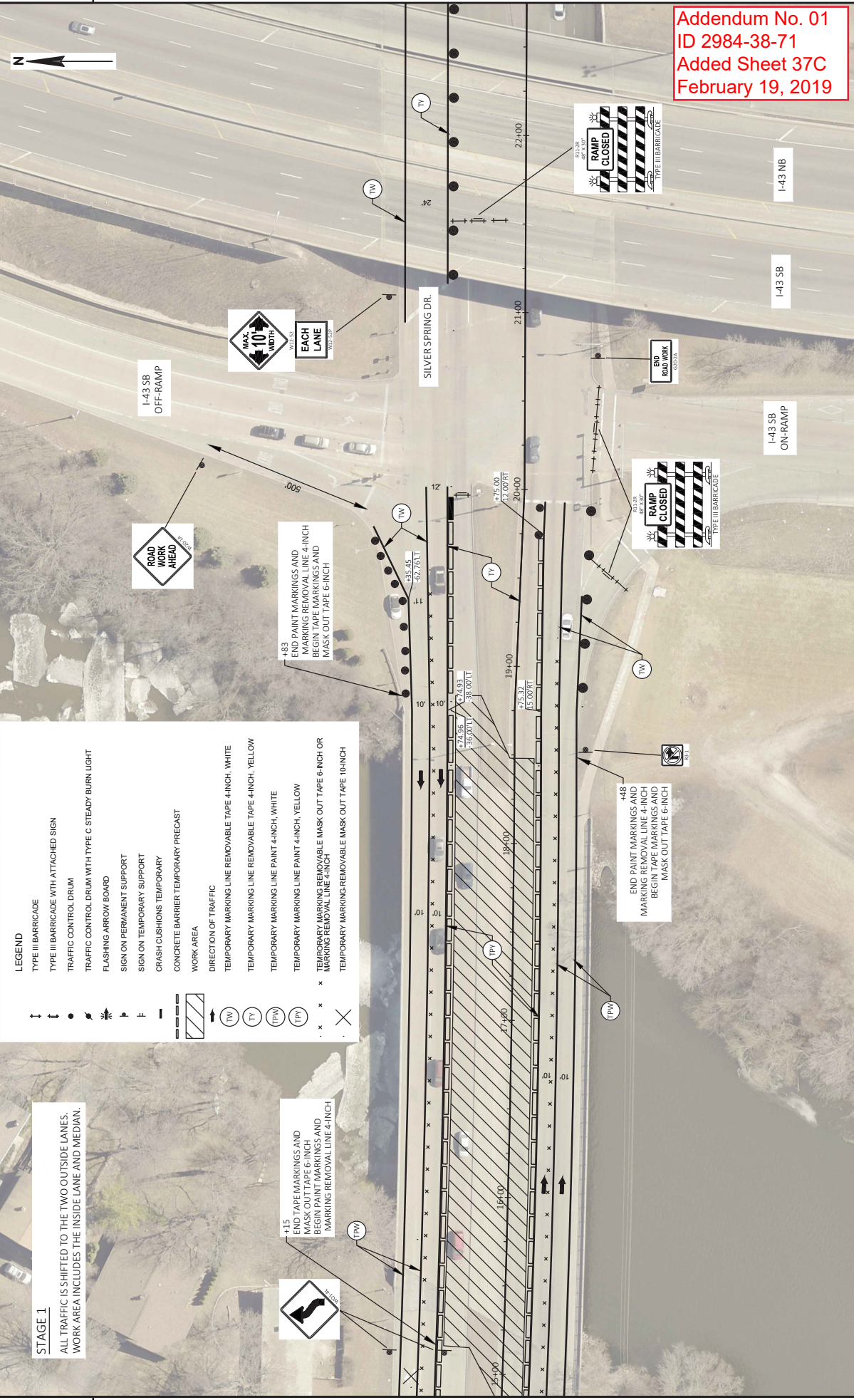
STAGE 1
 ALL TRAFFIC IS SHIFTED TO THE TWO OUTSIDE LANES.
 WORK AREA INCLUDES THE INSIDE LANE AND MEDIAN.

Addendum No. 01
ID 2984-38-71
Added Sheet 37B
February 19, 2019

- LEGEND**
- ↑ TYPE III BARRICADE
 - ↑ TYPE III BARRICADE WITH ATTACHED SIGN
 - ↑ TRAFFIC CONTROL DRUM
 - ↑ TRAFFIC CONTROL DRUM WITH TYPE C STEADY BURST LIGHT
 - ↑ FLASHING ARROW BOARD
 - ↑ SIGN ON PERMANENT SUPPORT
 - ↑ SIGN ON TEMPORARY SUPPORT
 - ↑ CRASH CUSHIONS TEMPORARY
 - ↑ CONCRETE BARRIER TEMPORARY PRECAST
 - ↑ WORK AREA
 - ↑ DIRECTION OF TRAFFIC
 - ↑ TEMPORARY MARKING LINE REMOVABLE TAPE 4-INCH, WHITE
 - ↑ TEMPORARY MARKING LINE REMOVABLE TAPE 4-INCH, YELLOW
 - ↑ TEMPORARY MARKING LINE PAINT 4-INCH, WHITE
 - ↑ TEMPORARY MARKING LINE PAINT 4-INCH, YELLOW
 - ↑ TEMPORARY MARKING REMOVABLE MASK OUT TAPE 6-INCH OR MARKING REMOVAL LINE 4-INCH
 - ↑ TEMPORARY MARKING REMOVABLE MASK OUT TAPE 10-INCH



Addendum No. 01
ID 2984-38-71
Added Sheet 37C
February 19, 2019

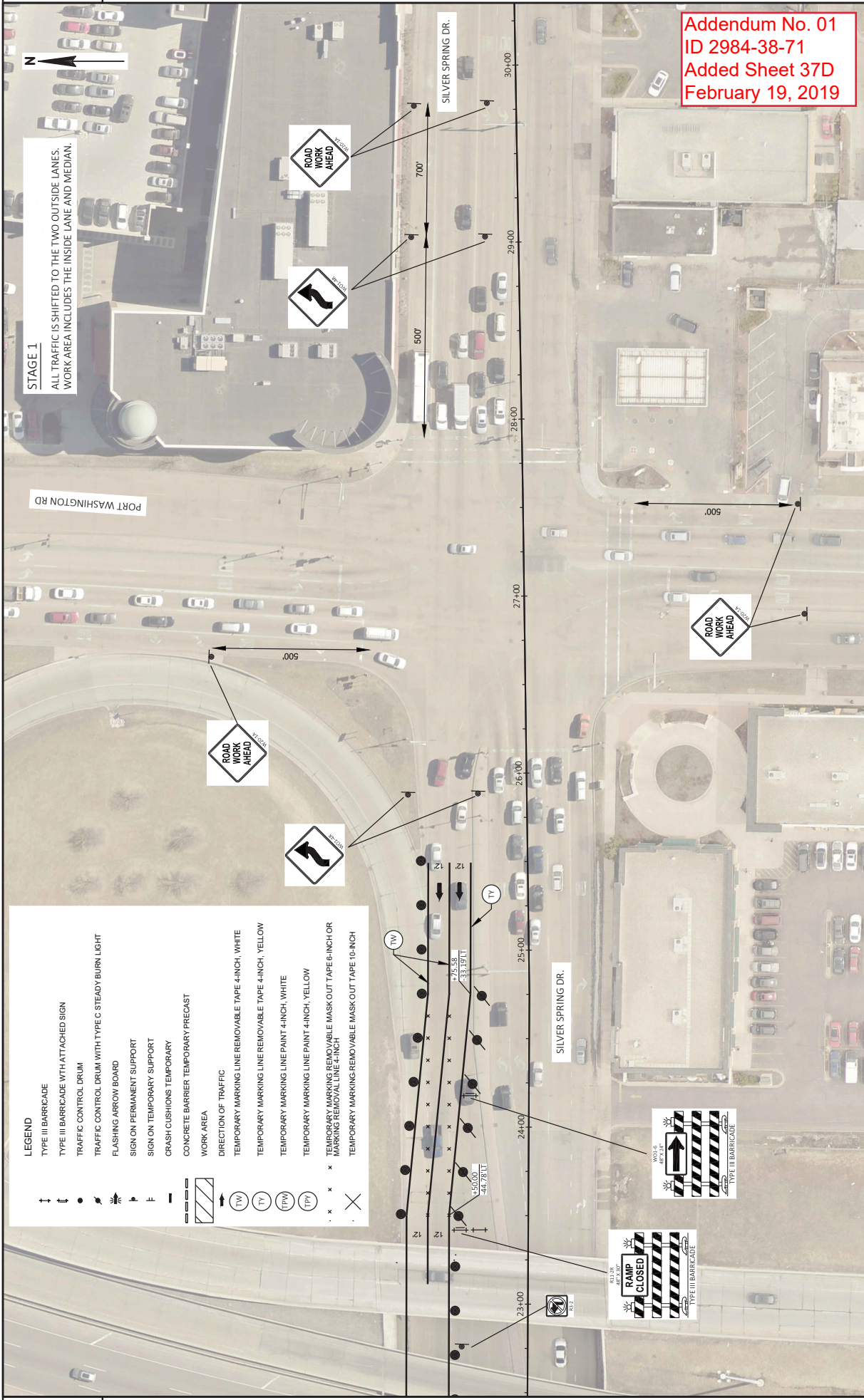


STAGE 1

ALL TRAFFIC IS SHIFTED TO THE TWO OUTSIDE LANES.
WORK AREA INCLUDES THE INSIDE LANE AND MEDIAN.

LEGEND

- TYPE III BARRICADE
- TYPE III BARRICADE WITH ATTACHED SIGN
- TRAFFIC CONTROL DRUM
- TRAFFIC CONTROL DRUM WITH TYPE C STEADY BURN LIGHT
- FLASHING ARROW BOARD
- SIGN ON PERMANENT SUPPORT
- SIGN ON TEMPORARY SUPPORT
- CRASH CUSHIONS - TEMPORARY
- CONCRETE BARRIER TEMPORARY PRECAST
- WORK AREA
- DIRECTION OF TRAFFIC
- TEMPORARY MARKING LINE REMOVABLE TAPE 4-INCH, WHITE
- TEMPORARY MARKING LINE REMOVABLE TAPE 4-INCH, YELLOW
- TEMPORARY MARKING LINE PAINT 4-INCH, WHITE
- TEMPORARY MARKING LINE PAINT 4-INCH, YELLOW
- TEMPORARY MARKING REMOVABLE MASK OUT TAPE 6-INCH OR MARKING REMOVAL LINE 4-INCH
- TEMPORARY MARKING REMOVABLE MASK OUT TAPE 10-INCH



STAGE 1
 ALL TRAFFIC IS SHIFTED TO THE TWO OUTSIDE LANES.
 WORK AREA INCLUDES THE INSIDE LANE AND MEDIAN.

Addendum No. 01
ID 2984-38-71
Added Sheet 37D
February 19, 2019

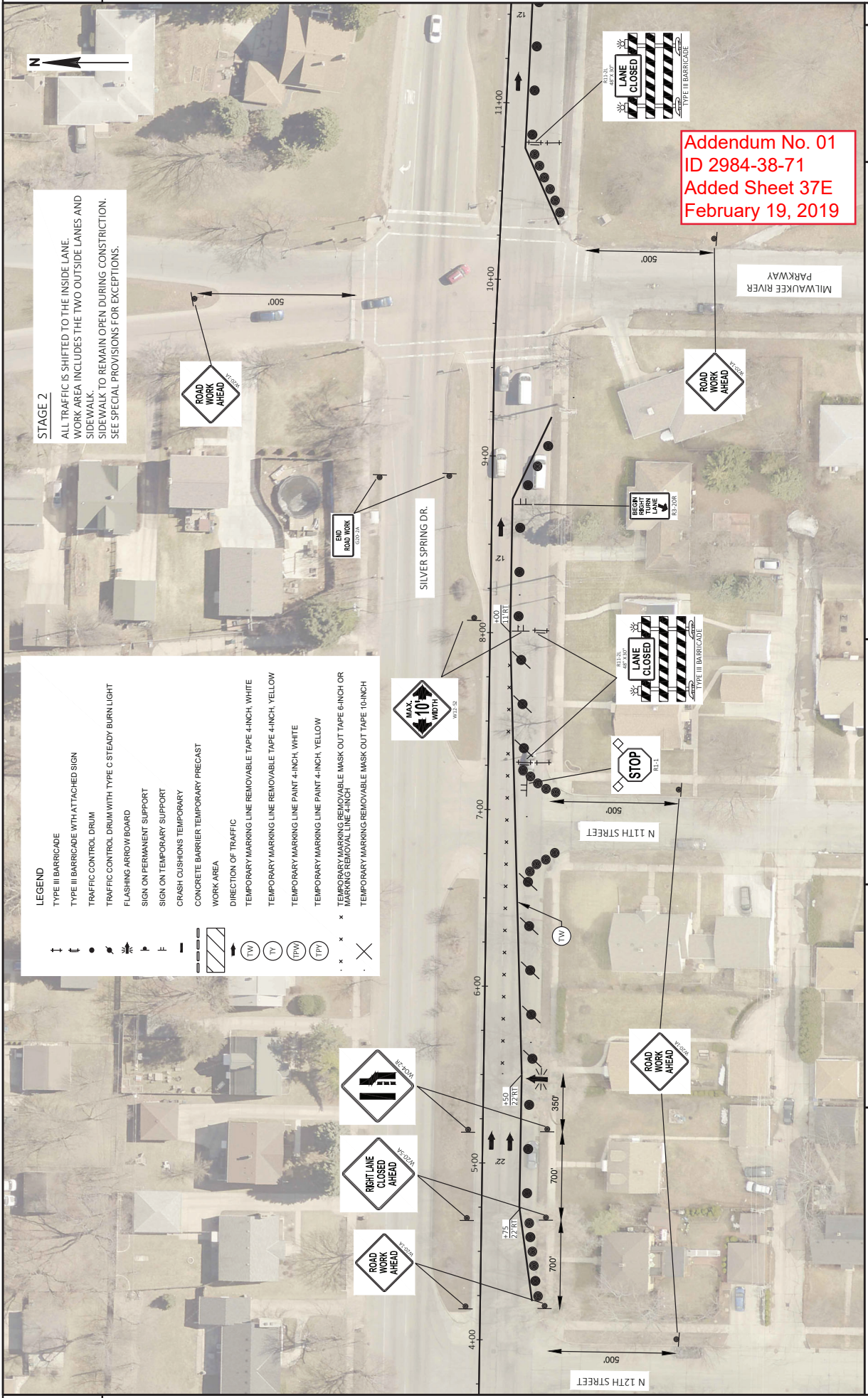
LEGEND

↑ ↓	TYPE III BARRICADE
↑ ↓	TYPE III BARRICADE WITH ATTACHED SIGN
●	TRAFFIC CONTROL DRUM
⚡	FLASHING ARROW BOARD
⬆	SIGN ON TEMPORARY SUPPORT
⬆	CRASH CUSHIONS TEMPORARY
—	CONCRETE BARRIER TEMPORARY PRECAST
▨	WORK AREA
→	DIRECTION OF TRAFFIC
○ TW	TEMPORARY MARKING LINE REMOVABLE TAPE 4-INCH, WHITE
○ TY	TEMPORARY MARKING LINE REMOVABLE TAPE 4-INCH, YELLOW
○ TW	TEMPORARY MARKING LINE PAINT 4-INCH, WHITE
○ TY	TEMPORARY MARKING LINE PAINT 4-INCH, YELLOW
· x · x	TEMPORARY MARKING REMOVABLE MASKOUT TAPE 6-INCH OR MARKING REMOVAL LINE 4-INCH
· x · x	TEMPORARY MARKING REMOVABLE MASKOUT TAPE 10-INCH

STAGE 2

ALL TRAFFIC IS SHIFTED TO THE INSIDE LANE. WORK AREA INCLUDES THE TWO OUTSIDE LANES AND SIDEWALK TO REMAIN OPEN DURING CONSTRUCTION. SEE SPECIAL PROVISIONS FOR EXCEPTIONS.

- LEGEND**
- ↓ TYPE III BARRICADE
 - ↑ TYPE III BARRICADE WITH ATTACHED SIGN
 - TRAFFIC CONTROL DRUM
 - ⚡ FLASHING ARROW BOARD
 - ⊥ SIGN ON PERMANENT SUPPORT
 - SIGN ON TEMPORARY SUPPORT
 - CRASH CUSHIONS TEMPORARY
 - ▬ CONCRETE BARRIER TEMPORARY PRECAST WORK AREA
 - DIRECTION OF TRAFFIC
 - (TW) TEMPORARY MARKING LINE REMOVABLE TAPE 4-INCH, WHITE
 - (PY) TEMPORARY MARKING LINE REMOVABLE TAPE 4-INCH, YELLOW
 - (PW) TEMPORARY MARKING LINE PAINT 4-INCH, WHITE
 - (PY) TEMPORARY MARKING LINE PAINT 4-INCH, YELLOW
 - · · · · TEMPORARY MARKING REMOVABLE MASK OUT TAPE 6-INCH OR MARKING REMOVAL LINE 4-INCH
 - · · · · TEMPORARY MARKING REMOVABLE MASK OUT TAPE 10-INCH



Addendum No. 01
ID 2984-38-71
Added Sheet 37E
February 19, 2019

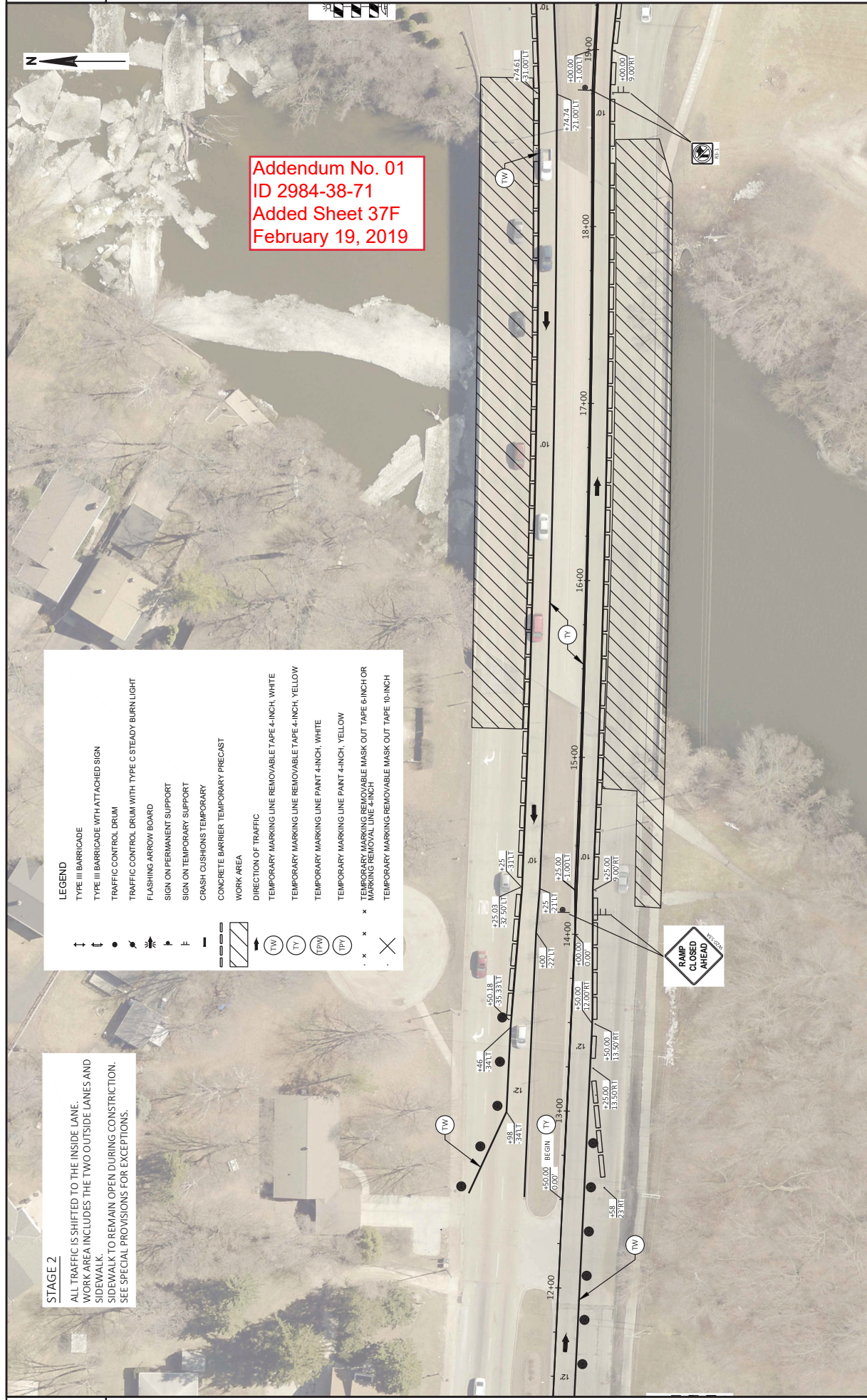
STAGE 2

ALL TRAFFIC IS SHIFTED TO THE INSIDE LANE.
 WORK AREA INCLUDES THE TWO OUTSIDE LANES AND
 SIDEWALK.
 SIDEWALK TO REMAIN OPEN DURING CONSTRUCTION.
 SEE SPECIAL PROVISIONS FOR EXCEPTIONS.

LEGEND

- ↑ TYPE III BARRICADE
- ↓ TYPE III BARRICADE WITH ATTACHED SIGN
- TRAFFIC CONTROL DRUM
- TRAFFIC CONTROL DRUM WITH TYPE C STEADY BURN LIGHT
- ⚡ FLASHING ARROW BOARD
- ⚡ SIGN ON PERMANENT SUPPORT
- ⚡ SIGN ON TEMPORARY SUPPORT
- ⚡ CRASH CUSHIONS TEMPORARY
- ⚡ CONCRETE BARRIER TEMPORARY PRECAST
- ▭ WORK AREA
- DIRECTION OF TRAFFIC
- ▭ TEMPORARY MARKING LINE REMOVABLE TAPE 4-INCH, WHITE
- ▭ TEMPORARY MARKING LINE REMOVABLE TAPE 4-INCH, YELLOW
- ▭ TEMPORARY MARKING LINE PAINT 4-INCH, WHITE
- ▭ TEMPORARY MARKING LINE PAINT 4-INCH, YELLOW
- ▭ TEMPORARY MARKING MASK OUT TAPE 6-INCH OR MARKING REMOVAL LINE 4-INCH
- ▭ TEMPORARY MARKING REMOVABLE MASK OUT TAPE 10-INCH

**Addendum No. 01
 ID 2984-38-71
 Added Sheet 37F
 February 19, 2019**



PROJECT NO: 2984-38-71	COUNTY: MILWAUKEE	TRAFFIC CONTROL: STAGE 2	SHEET: 37 F
<small>FILE NAME: N:\PDS\PROJECTS\29843801\PLAN\00 ADDENDUM #1\CD\INFO\026102-02.DWG LAYOUT NAME: 02</small>	<small>PLOT DATE: 2/19/2019 11:08 AM</small>	<small>PLOT BY: GUENETTE, JEFFREY</small>	<small>PLOT SCALE: #/####</small>
HWY: W SILVER SPRING DR		E	



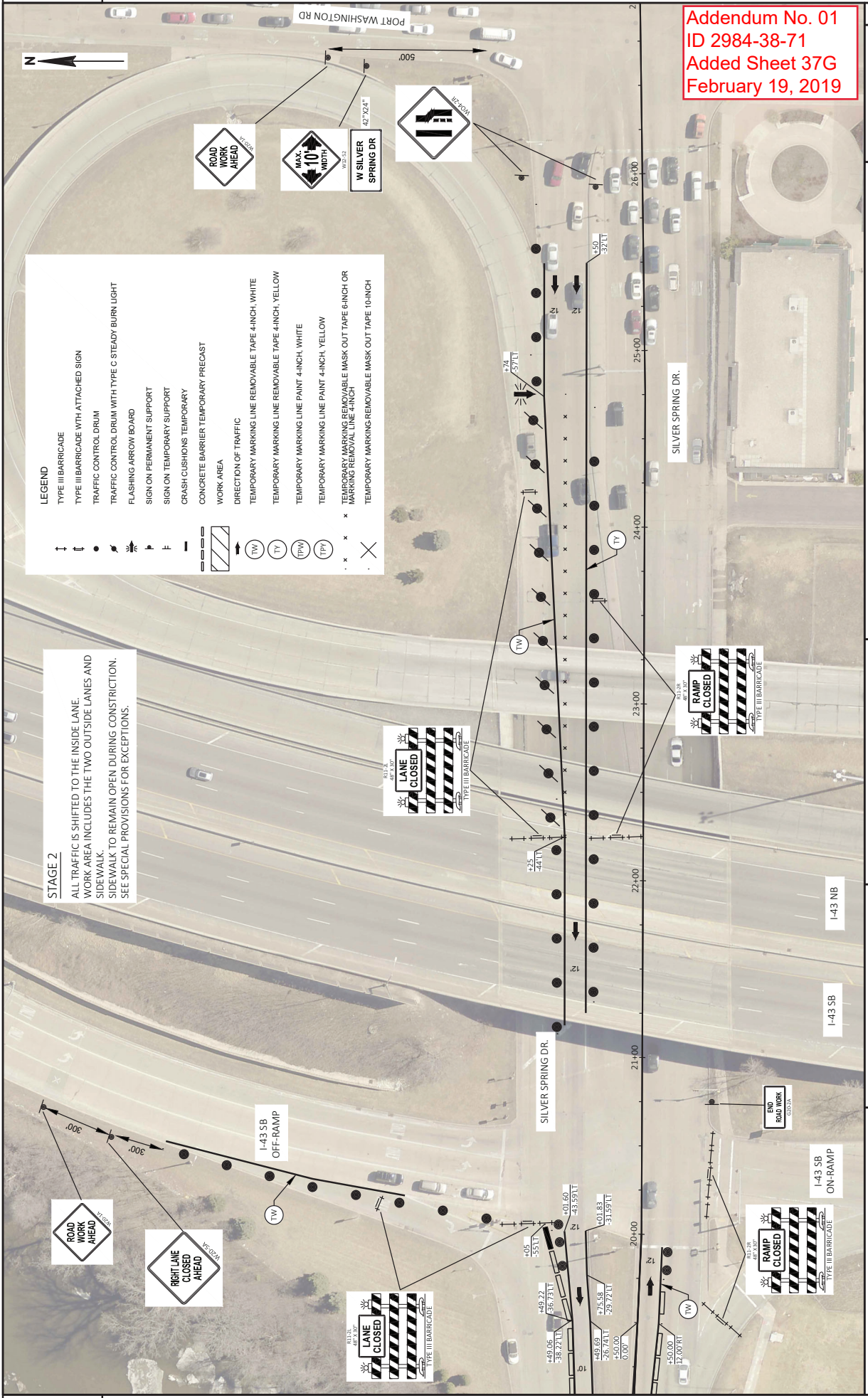
STAGE 2
 ALL TRAFFIC IS SHIFTED TO THE INSIDE LANE.
 WORK AREA INCLUDES THE TWO OUTSIDE LANES AND
 SIDEWALK. TO REMAIN OPEN DURING CONSTRUCTION.
 SEE SPECIAL PROVISIONS FOR EXCEPTIONS.

LEGEND

↑	TYPE III BARRICADE
↓	TYPE III BARRICADE WITH ATTACHED SIGN
●	TRAFFIC CONTROL DRUM
○	TRAFFIC CONTROL DRUM WITH TYPE C STEADY BLURN LIGHT
⚡	FLASHING ARROW BOARD
⌋	SIGN ON PERMANENT SUPPORT
⌋	SIGN ON TEMPORARY SUPPORT
⌋	CRASH CUSHIONS TEMPORARY
⌋	CONCRETE BARRIER TEMPORARY PRECAST
▨	WORK AREA
→	DIRECTION OF TRAFFIC
(TW)	TEMPORARY MARKING LINE REMOVABLE TAPE 4-INCH, WHITE
(TY)	TEMPORARY MARKING LINE REMOVABLE TAPE 4-INCH, YELLOW
(TPW)	TEMPORARY MARKING LINE PAINT 4-INCH, WHITE
(TPY)	TEMPORARY MARKING LINE PAINT 4-INCH, YELLOW
·	TEMPORARY MARKING REMOVABLE MASK OUT TAPE 6-INCH OR MARKING REMOVAL LINE 4-INCH
x	TEMPORARY MARKING REMOVABLE MASK OUT TAPE 10-INCH



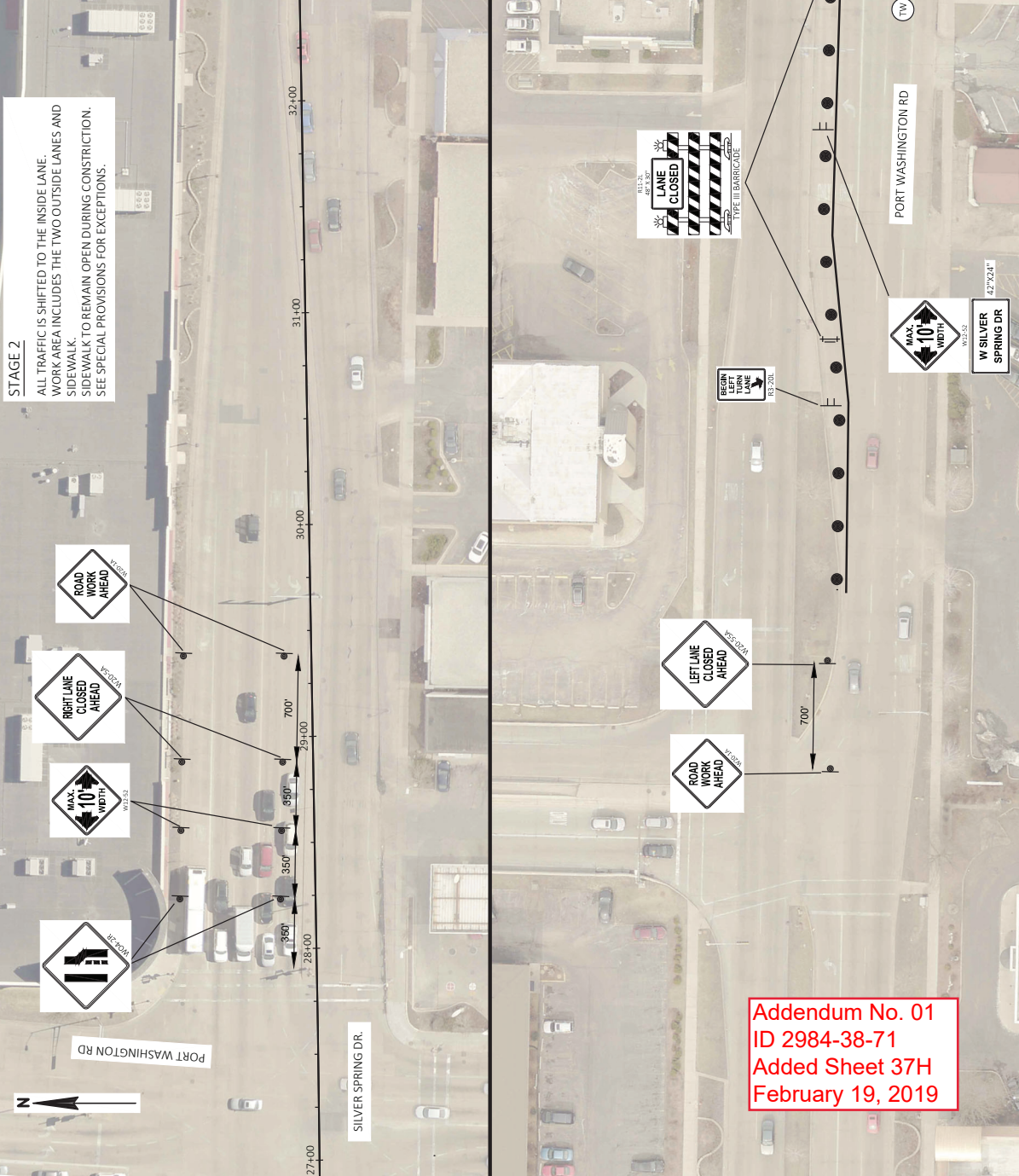
Addendum No. 01
 ID 2984-38-71
 Added Sheet 37G
 February 19, 2019



STAGE 2
 ALL TRAFFIC IS SHIFTED TO THE INSIDE LANE. WORK AREA INCLUDES THE TWO OUTSIDE LANES AND SIDEWALK. SIDEWALK TO REMAIN OPEN DURING CONSTRUCTION. SEE SPECIAL PROVISIONS FOR EXCEPTIONS.

LEGEND

↑	TYPE III BARRICADE
↓	TYPE II BARRICADE WITH ATTACHED SIGN
•	TRAFFIC CONTROL DRUM
⊙	TRAFFIC CONTROL DRUM WITH TYPE C STEADY BURN LIGHT
⚡	FLASHING ARROW BOARD
⊥	SIGN ON PERMANENT SUPPORT
⊥	SIGN ON TEMPORARY SUPPORT
⊥	CRASH CUSHIONS TEMPORARY
⊥	CONCRETE BARRIER TEMPORARY PRECAST
▨	WORK AREA
→	DIRECTION OF TRAFFIC
⊖	TEMPORARY MARKING LINE REMOVABLE TAPE 4-INCH, WHITE
⊖	TEMPORARY MARKING LINE REMOVABLE TAPE 4-INCH, YELLOW
⊖	TEMPORARY MARKING LINE PAINT 4-INCH, WHITE
⊖	TEMPORARY MARKING LINE PAINT 4-INCH, YELLOW
⊖	TEMPORARY MARKING LINE REMOVABLE MASK OUT TAPE 6-INCH OR MARKING REMOVABLE LINE 4-INCH
⊖	TEMPORARY MARKING REMOVABLE MASK OUT TAPE 10-INCH

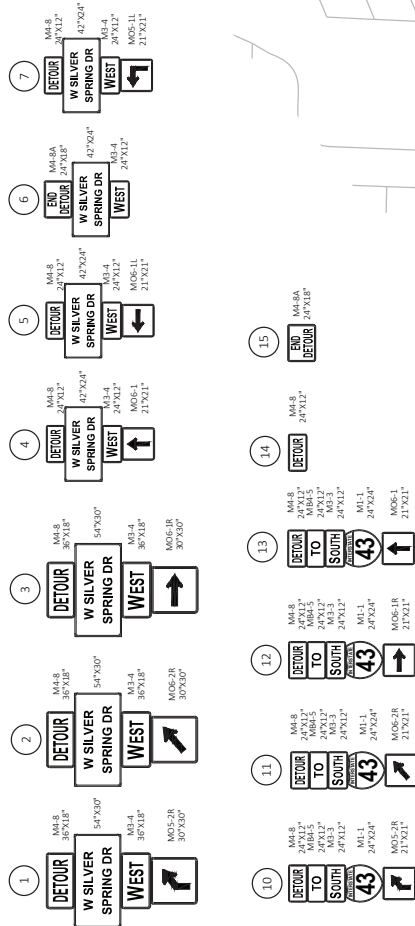


**Addendum No. 01
 ID 2984-38-71
 Added Sheet 37H
 February 19, 2019**

**DETOUR ROUTE:
NB I-43 OFF-RAMP TO WB SILVER SPRING DR
EB SILVER SPRING DR TO SB I-43 ON-RAMP**

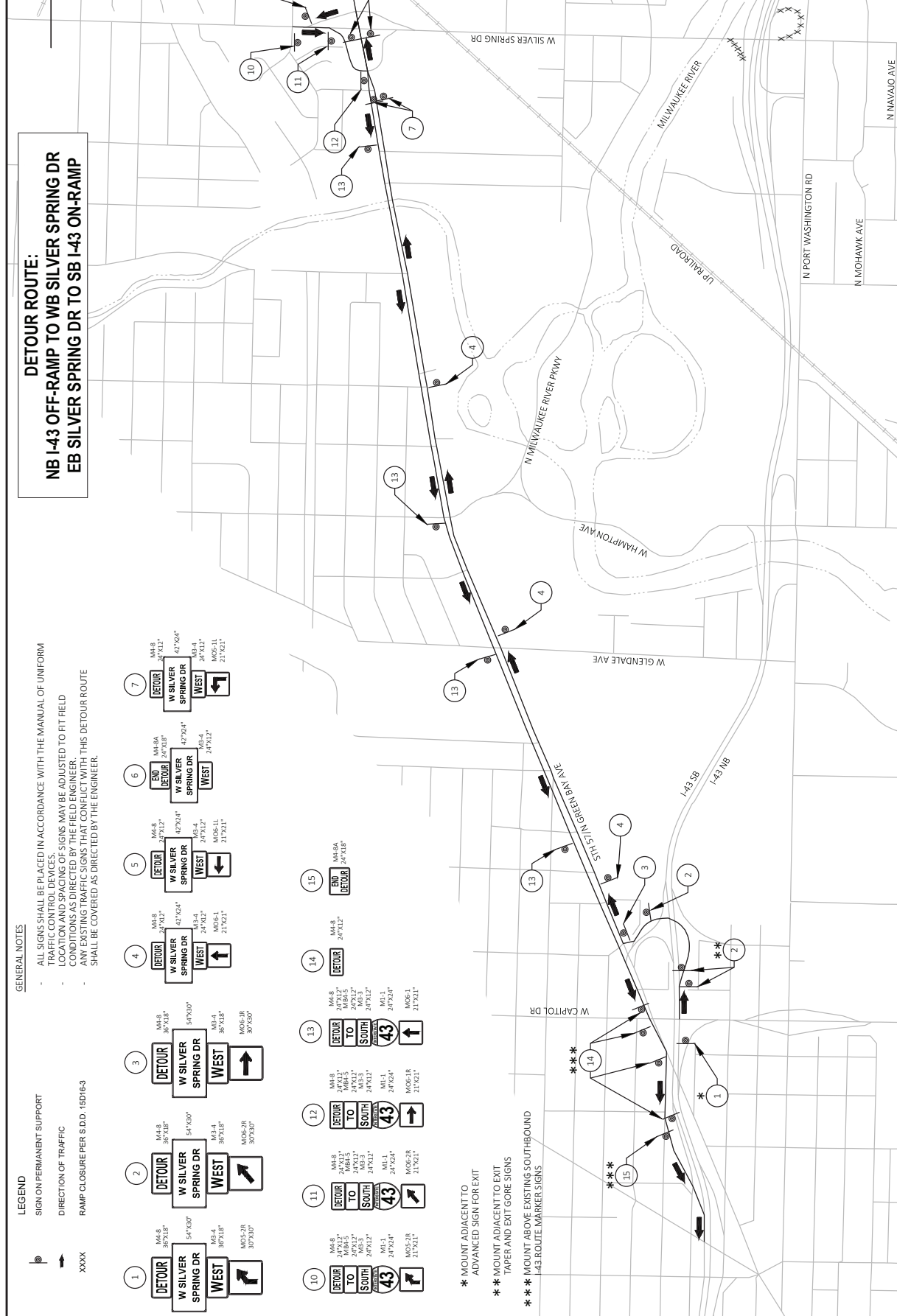
- GENERAL NOTES**
- ALL SIGNS SHALL BE PLACED IN ACCORDANCE WITH THE MANUAL OF UNIFORM TRAFFIC CONTROL DEVICES
 - LOCATION AND SPACING OF SIGNS MAY BE ADJUSTED TO FIT FIELD CONDITIONS AS DIRECTED BY THE FIELD ENGINEER.
 - ANY EXISTING TRAFFIC SIGNS THAT CONFLICT WITH THIS DETOUR ROUTE SHALL BE COVERED AS DIRECTED BY THE ENGINEER.

- LEGEND**
- ⊙ SIGN ON PERMANENT SUPPORT
 - ➔ DIRECTION OF TRAFFIC
 - XXXX RAMP CLOSURE PER S.D.D. 65016-3



- * MOUNT ADJACENT TO ADVANCED SIGN FOR EXIT
- ** MOUNT ADJACENT TO EXIT TAPER AND EXIT GORE SIGNS
- *** MOUNT ABOVE EXISTING SOUTHBOUND I-43 ROUTE MARKER SIGNS

Addendum No. 01
ID 2984-38-71
Added Sheet 39A
February 19, 2019



PROJECT NO: 2984-38-71	COUNTY: MILWAUKEE	SHEET 39 A	E
FILE NAME: N:\PDS\PROJECTS\29843801\PLAN\ADDENDUM\1\3\INFO\02200L_DT.DWG	LAYOUT NAME: 02700L_01	DATE: 2/19/2019 11:06 AM	SCALE: 1 IN=1000 FT
	DESIGNED BY: GUYETTE, JEFFREY	CHECKED BY:	
	DATE: 2/19/2019	PROJECT: DETOUR: NB I-43 TO WB SILVER SPRING DR, EB SILVER SPRING DR TO SB I-43	

Addendum No. 01
ID 2984-38-71
Added Sheet 39B
February 19, 2019

**DETOUR ROUTE:
WB SILVER SPRING DR TO SB I-43**

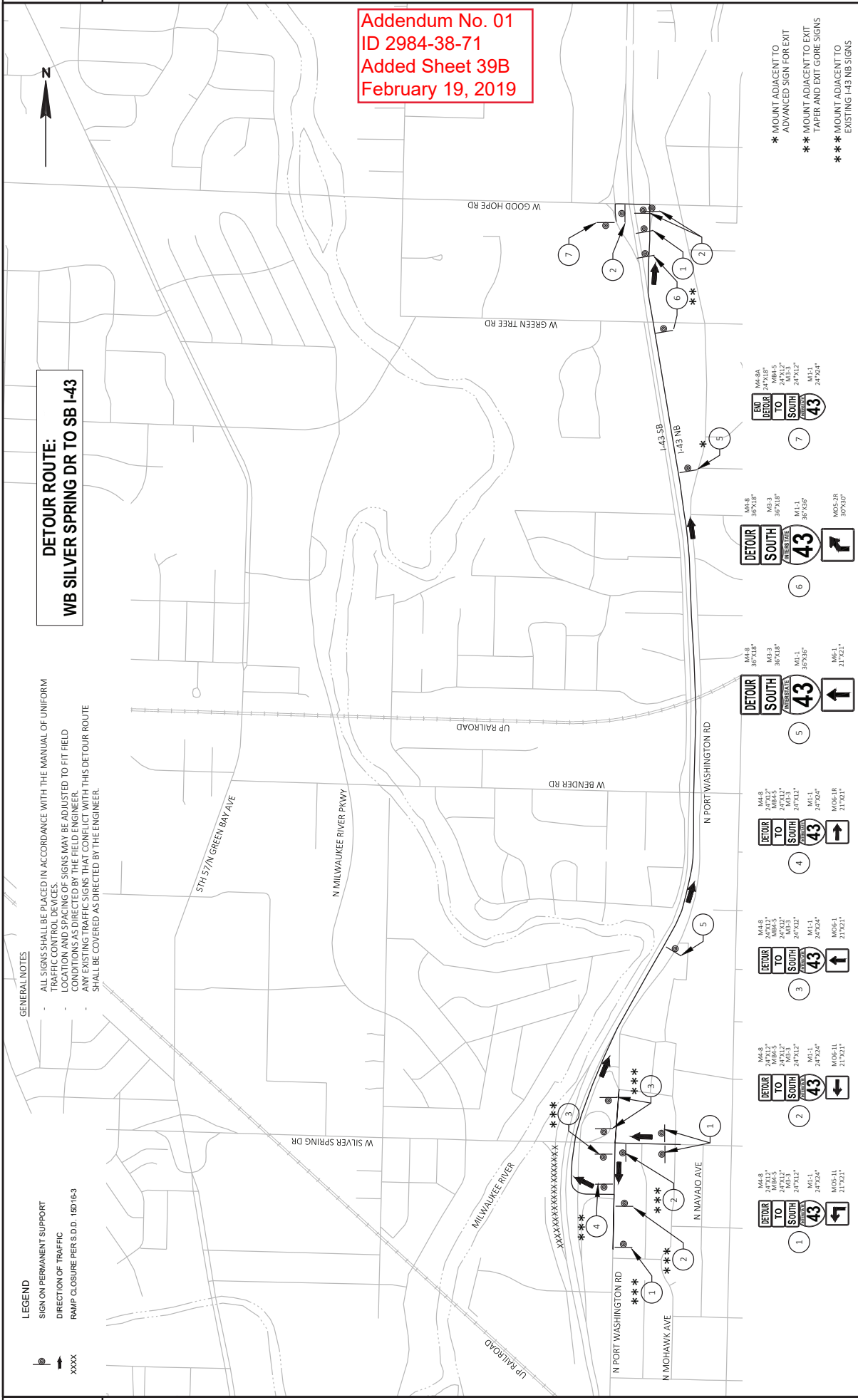
GENERAL NOTES

- ALL SIGNS SHALL BE PLACED IN ACCORDANCE WITH THE MANUAL OF UNIFORM TRAFFIC CONTROL DEVICES.
- LOCATION AND SPACING OF SIGNS MAY BE ADJUSTED TO FIT FIELD CONDITIONS AS DIRECTED BY THE FIELD ENGINEER.
- ANY EXISTING TRAFFIC SIGNS THAT CONFLICT WITH THIS DETOUR ROUTE SHALL BE COVERED AS DIRECTED BY THE ENGINEER.

LEGEND

- SIGN ON PERMANENT SUPPORT
- DIRECTION OF TRAFFIC
- RAMP CLOSURE PER S.D.D. 15D16-3

XXXX



* MOUNT ADJACENT TO
ADVANCED SIGN FOR EXIT
TAPER AND EXIT GORE SIGNS
** MOUNT ADJACENT TO
EXISTING I-43 NB SIGNS

MA-8 35'x18"
MA-3 36'x18"
MA-1 36'x36"
MO-52R 35'x59"

MA-8 35'x18"
MA-3 36'x18"
MA-1 36'x36"
MO-52R 35'x59"

MA-8 35'x18"
MA-3 36'x18"
MA-1 36'x36"
MO-52R 35'x59"

MA-8 35'x18"
MA-3 36'x18"
MA-1 36'x36"
MO-52R 35'x59"

MA-8 35'x18"
MA-3 36'x18"
MA-1 36'x36"
MO-52R 35'x59"

MA-8 35'x18"
MA-3 36'x18"
MA-1 36'x36"
MO-52R 35'x59"

MA-8 35'x18"
MA-3 36'x18"
MA-1 36'x36"
MO-52R 35'x59"

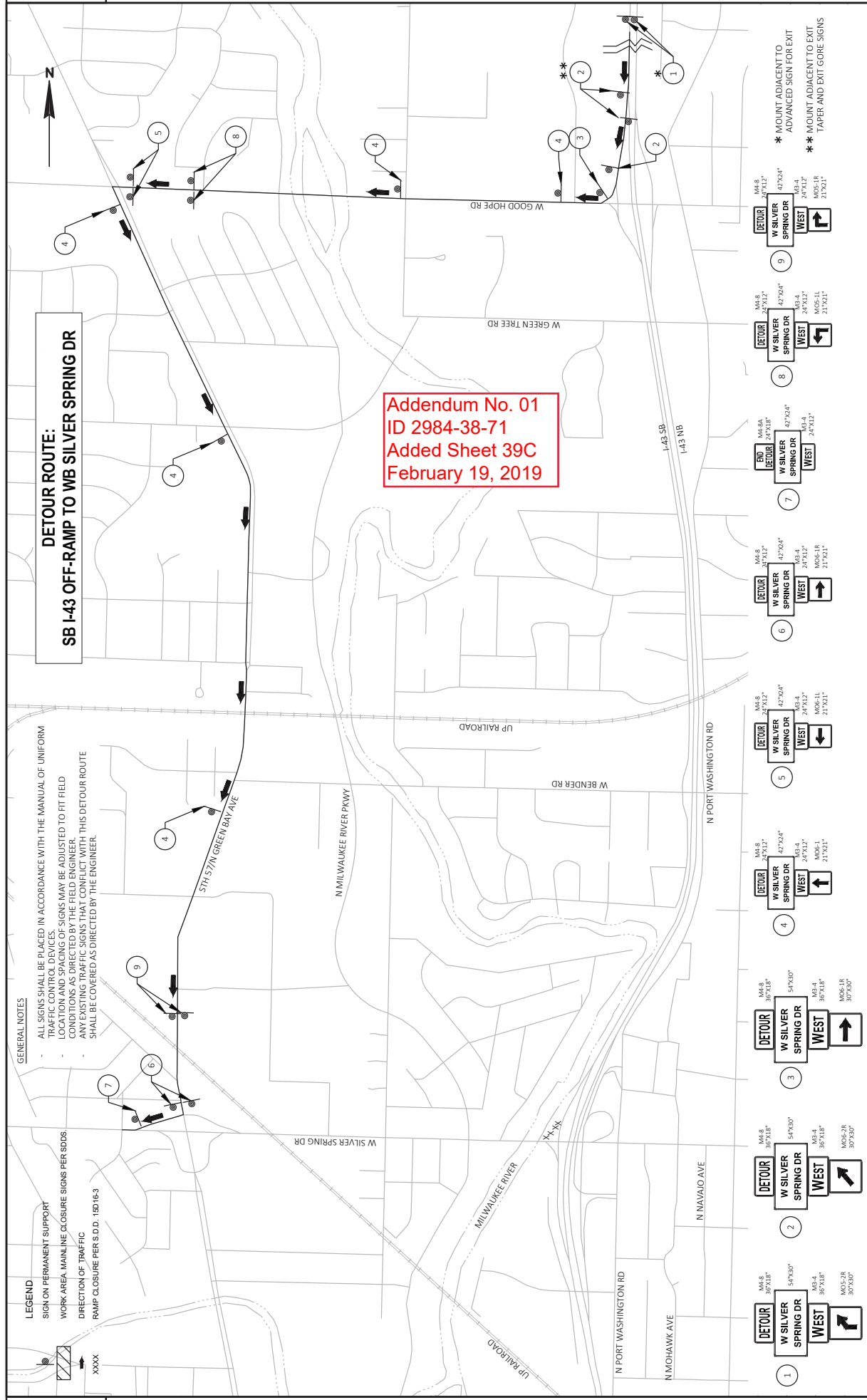
DETOUR ROUTE: SB I-43 OFF-RAMP TO WB SILVER SPRING DR

- GENERAL NOTES**
- ALL SIGNS SHALL BE PLACED IN ACCORDANCE WITH THE MANUAL OF UNIFORM TRAFFIC CONTROL DEVICES. SIGNS MAY BE ADJUSTED TO FIT FIELD CONDITIONS AS DIRECTED BY THE FIELD ENGINEER.
 - ANY EXISTING TRAFFIC SIGNS THAT CONFLICT WITH THIS DETOUR ROUTE SHALL BE COVERED AS DIRECTED BY THE ENGINEER.

LEGEND

- SIGN ON PERMANENT SUPPORT
- WORK AREA MAINLINE CLOSURE SIGNS PER SDDS.
- DIRECTION OF TRAFFIC
- RAMP CLOSURE PER S.D.D. 18D16.3
- XXXX

**Addendum No. 01
ID 2984-38-71
Added Sheet 39C
February 19, 2019**



- 1. **DETOUR** M4-S 30'x30" 54'x50" W SILVER SPRING DR WEST
 - 2. **DETOUR** M4-S 30'x30" 54'x50" W SILVER SPRING DR WEST
 - 3. **DETOUR** M4-S 30'x30" 54'x50" W SILVER SPRING DR WEST
 - 4. **DETOUR** M4-S 24'x12" 47'x54" W SILVER SPRING DR WEST
 - 5. **DETOUR** M4-S 24'x12" 47'x54" W SILVER SPRING DR WEST
 - 6. **DETOUR** M4-S 24'x12" 47'x54" W SILVER SPRING DR WEST
 - 7. **DETOUR** M4-S 24'x12" 47'x54" W SILVER SPRING DR WEST
 - 8. **DETOUR** M4-S 24'x12" 47'x54" W SILVER SPRING DR WEST
 - 9. **DETOUR** M4-S 24'x12" 47'x54" W SILVER SPRING DR WEST
- * MOUNT ADJACENT TO ADVANCED SIGN FOR EXIT
 ** MOUNT ADJACENT TO EXIT TAPER AND EXIT GORE SIGNS

Addendum No. 01
ID 2984-38-71
Revised Sheet 61
February 19, 2019

CURB & GUTTER

CATEGORY	STATION	LOCATION	LF	LF
0010	14+18SS - 15+06SS	EB, RT	90	-
	14+86SS - 15+29SS	EB, LT	43	-
	15+15SS - 15+39SS	WB, RT	24	-
	15+15SS - 15+46SS	WB, LT	-	33
	18+04SS - 18+46SS	EB, RT	44	-
	18+26SS - 18+46SS	EB, LT	22	-
	18+37SS - 18+83SS	WB, RT	46	-
	18+75SS - 18+81SS	WB, LT	8	-
	TOTALS:		277	33

RESTORATION ITEMS

CATEGORY	LOCATION	SY	SY	629.0210 TOPSOIL	629.0210 FERTILIZER	631.1000 LAWN	631.0300 SOD
0010	NW WINGS	15	0	0.01	15	0.3	
	CURB RAMPS	7	-	0.01	7	0.2	
	BEHIND NEW CURB & GUTTER	-	60	0.04	60	1.4	
	UNDISTRIBUTED	5	5	0.05	10	0.1	
TOTALS:	27	65	0.10	92	2		

CONCRETE SIDEWALK

CATEGORY	STATION	LOCATION	SF	SF
0010	14+43SS	BIKE SLIP LANE	45	-
	14+70SS - 15+07SS	BIKE SLIP LANE & SIDEWALK	250	-
TOTAL:			295	

SILT FENCE

CATEGORY	LOCATION	LF	LF
0010	NW WING WALL GRADING	70	70
	BIKE SLIP LANE	15	15
	UNDISTRIBUTED	25	25
TOTALS:		110	110

INLET PROTECTION

CATEGORY	LOCATION	EACH	EACH
0010	UNDISTRIBUTED	4	4
	TOTAL:	4	4

*PROVIDE INLET PROTECTION AT THE FIRST INLET WEST OF THE PROJECT LIMITS ON EACH SECTION OF CURB & GUTTER ON THE WEST APPROACH.

MOBILIZATION EROSION CONTROL

DESCRIPTION	EACH	EACH
PROJECT 2984-38-71	4	4
TOTALS:	4	4

GUARDRAIL

CATEGORY	LOCATION	LF	LF
0010	NE WING	14	25
	TOTALS:	14	25

SIGNING ITEMS

CATEGORY	LOCATION	EACH	EACH
0010	BIKE PATH, SW QUADRANT	1	1
	TOTAL:	1	1

*LOCATION OF POST TO BE COORDINATED WITH THE MILWAUKEE COUNTY DEPARTMENT OF PARKS, RECREATION & CULTURE.

NOTE: ADDITIONAL QUANTITIES ARE INCLUDED ELSEWHERE IN THE PLAN SET

TRAFFIC CONTROL SIGNS													
CATEGORY	STAGE	SIZE	QTY	SF	COMMENTS	LOCATION	DAYS	EACH	DAYS	EACH	DAYS	EACH	LF
0010	STAGE 1 - DETOURS	54"x30"	5	56	"W SILVER SPRING DR"	DETOUR ROUTE	32	-	-	-	-	-	-
	STAGE 1 - DETOURS	42"x24"	6	56	"W SILVER SPRING DR"	SILVER SPRING DRIVE	32	60	1,920	-	-	-	-
	STAGE 2 - DETOURS	54"x30"	11	124	"W SILVER SPRING DR"	DETOUR ROUTE	36	-	-	-	-	-	-
	STAGE 2 - DETOURS	42"x24"	22	154	"W SILVER SPRING DR"	SILVER SPRING DRIVE	36	115	4,140	-	-	-	-
	STAGE 2 - AT PROJECT	42"x24"	2	14	"W SILVER SPRING DR"	I-43 NB OFF-RAMP CLOSURE (1)	68	42	2,868	-	-	-	-
TOTALS:				390		SW QUAD SDWIK REPLACEMENT (2)	5	-	8,916	30	-	2,024	2,954

(1) - PLACE TRAFFIC CONTROL DRUMS TO CLOSE THE RIGHT TURN LANE ON THE I-43 NB EXIT RAMP TO W SILVER SPRING DRIVE WB.
 (2) - CLOSE SIDEWALK AND PROVIDE TEMPORARY PEDESTRIAN ACCOMMODATIONS DURING SIDEWALK REPLACEMENT ON THE WEST APPROACH, APPLICATION OF PROTECTIVE SURFACE TREATMENT ON THE BRIDGE SIDEWALK, AND APPLICATION OF PIGMENTED SURFACE SEALER ON THE

TRAFFIC CONTROL SIGNS FIXED MESSAGE

CATEGORY	STAGE	SIZE	QTY	SF	COMMENTS
0010	STAGE 1 - DETOURS	54"x30"	5	56	"W SILVER SPRING DR"
	STAGE 1 - DETOURS	42"x24"	6	56	"W SILVER SPRING DR"
	STAGE 2 - DETOURS	54"x30"	11	124	"W SILVER SPRING DR"
	STAGE 2 - DETOURS	42"x24"	22	154	"W SILVER SPRING DR"
	STAGE 2 - AT PROJECT	42"x24"	2	14	"W SILVER SPRING DR"
TOTALS:				390	

CONCRETE BARRIER

CATEGORY	STAGE	LOCATION	LF	EACH	LF
0010	STAGE 1	EB	663	663	1
	STAGE 1	WB	637	637	1
	STAGE 2	EB	50	713	-
	STAGE 2	WB	-	637	1
	TOTALS:			1,350	2,660

PCMS

CATEGORY	LOCATION	EACH	DAY	
0010	I-43 SB ON RAMP	1	7	
	I-43 NB OFF RAMP	1	7	
	I-43 SB OFF RAMP	1	7	
	TOTALS:			21

COVERING SIGNS

CATEGORY	STAGE	EACH	CYCLES	SIGNS
0010	STAGE 1 - WB DETOUR	3	-	3
	STAGE 2 - EB DETOUR	-	24	24
	TOTALS:			27

PAVEMENT MARKINGS

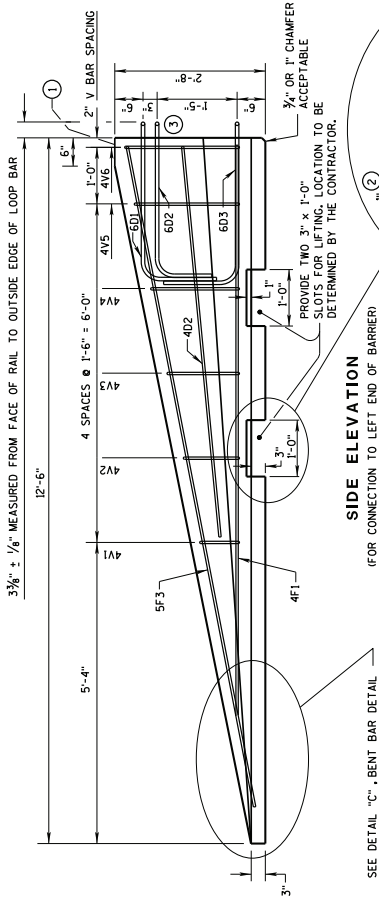
CATEGORY	STATION	LOCATION	NOTES
0010	14+96SS - 18+48SS	EB CENTERLINES - DASHED	187.5
	15+15SS - 18+92SS	WB CENTERLINES - DASHED	187.5
	TOTAL:		375

CATEGORY	STAGE	LOCATION	LINE	REMOVABLE TAPE	REMOVABLE MASK	OUT TAPE	
0010	STAGE 1	EB	WHITE	1,125	480	113	
			YELLOW	364	1,125	480	
	STAGE 1	WB	WHITE	1,710	920	213	
			YELLOW	368	1,710	920	
	STAGE 2	EB	WHITE	1,470	750	63	
			YELLOW	-	1,735	1,175	
	STAGE 2	WB	WHITE	1,464	732	25	
			YELLOW	-	6,040	3,325	
	SUBTOTAL			1,464	732	413	106
	TOTAL			188	2,196	9,365	413

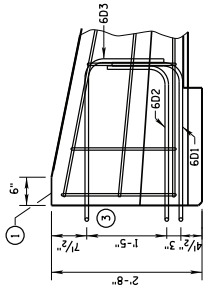
CATEGORY	LOCATION	SAVING
0010	STAGE 1	94
	STAGE 1	99
	STAGE 2	134
	STAGE 2	58
	TOTAL:	385

Addendum No. 01
 ID 2984-38-71
 Revised Sheet 62
 February 19, 2019

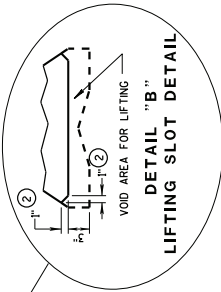
NOTE: ADDITIONAL QUANTITIES ARE INCLUDED ELSEWHERE IN THE PLAN SET



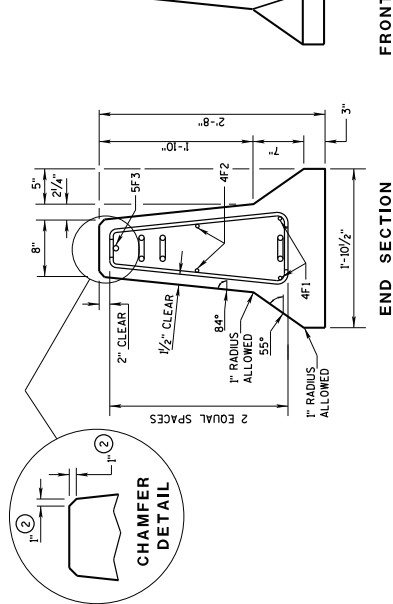
SIDE ELEVATION
(FOR CONNECTION TO LEFT END OF BARRIER)



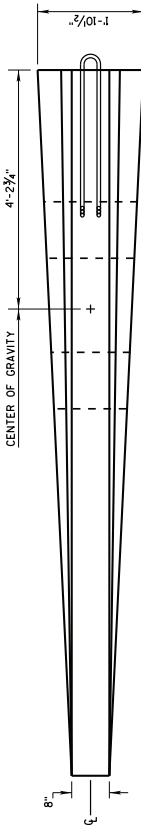
SIDE ELEVATION
LOOP BAR ASSEMBLY INVERTED
FOR OPPOSITE END.
(FOR CONNECTION TO RIGHT END OF BARRIER)



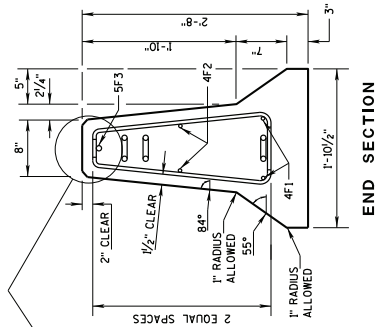
DETAIL "B" - LIFTING SLOT DETAIL



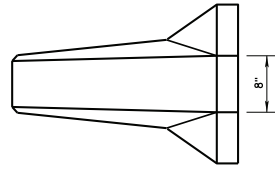
CHAMFER DETAIL



PLAN VIEW



END SECTION



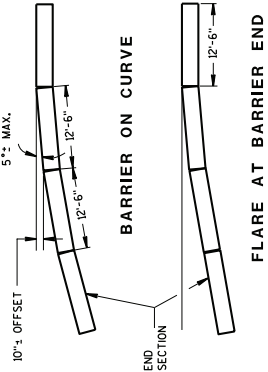
FRONT ELEVATION

GENERAL NOTES

- 1 MARK ONE END OF EACH BARRIER PERMANENTLY BY FORMING INTO THE BARRIER THE FOLLOWING INFORMATION:
 a. TYPE W/CBTP
 b. MANUFACTURER
 c. DATE MANUFACTURED (MONTH AND YEAR)
- 2 1" CHAMFER TO PREVENT SPALLING.
- 3 NEVER USE LOOP BARS (601, 602 OR 603) TO LIFT, MOVE OR REPOSITION THE BARRIER.

Addendum No. 01
ID 2984-38-71
Added Sheet 78B
February 19, 2019

POSTED SPEED, (MPH)	FLARE RATE
40 OR LESS	6:1
45 OR GREATER	8:1



78 B

DETAILS OF BARRIER TAPER SECTION

CONCRETE BARRIER
TEMPORARY PRECAST, 12'-6"

STATE OF WISCONSIN
DEPARTMENT OF TRANSPORTATION

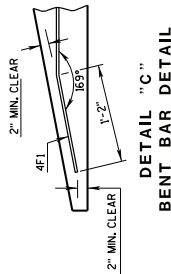
GENERAL NOTES

① NEVER USE LOOP BARS (601, 602 OR 603) TO LIFT, MOVE OR REPOSITION THE BARRIER.

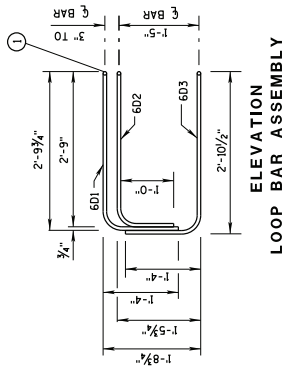
**BARRIER TAPER SECTION
BILL OF MATERIALS**
(PER 12'-6" BARRIER TAPER SECTION)

BAR	BAR SIZE	NO. OF BARS	LENGTH FT.
4V1	4	2	1'-11"
4V2	4	2	2'-2"
4V3	4	2	2'-5"
4V4	4	2	2'-9"
4V5	4	2	3'-2"
4V6	4	2	3'-4"
4F1	4	2	12'-0"
4F2	4	2	7'-6"
5F3	5	1	11'-9"

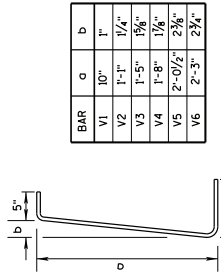
LOOP ASSEMBLY		
601	6	1
602	6	1
603	6	1



TAPER BARRIER SECTION



ELEVATION LOOP BAR ASSEMBLY



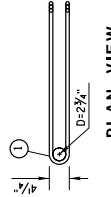
4V BARS
2 AT EACH SIZE REQUIRED FOR STRIPE ASSEMBLY

BAR	a	b
V1	10"	1"
V2	1'-1"	1/4"
V3	1'-5"	1/8"
V4	1'-8"	1/4"
V5	2'-0 1/2"	2 3/4"
V6	2'-3"	2 1/4"

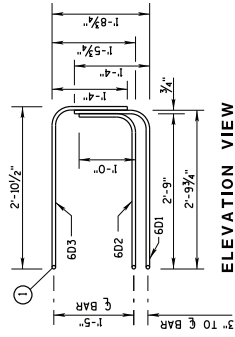
**BARRIER SECTION
BILL OF MATERIALS**
(PER 12'-6" BARRIER SECTION)

BAR	BAR SIZE	NO. OF BARS	LENGTH FT.
4A1	4	12	6'-0"
6A2	6	6	2'-11"
5B1	5	3	12'-2"
4C1	4	2	12'-2"

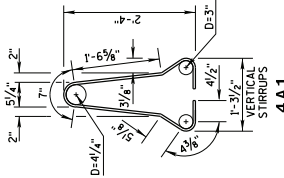
LOOP ASSEMBLY		
601	6	2
602	6	2
603	6	2



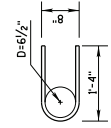
PLAN VIEW LOOP BAR ASSEMBLY
(MARKED END SHOWN, INVERT FOR OTHER END)



ELEVATION VIEW



4A1



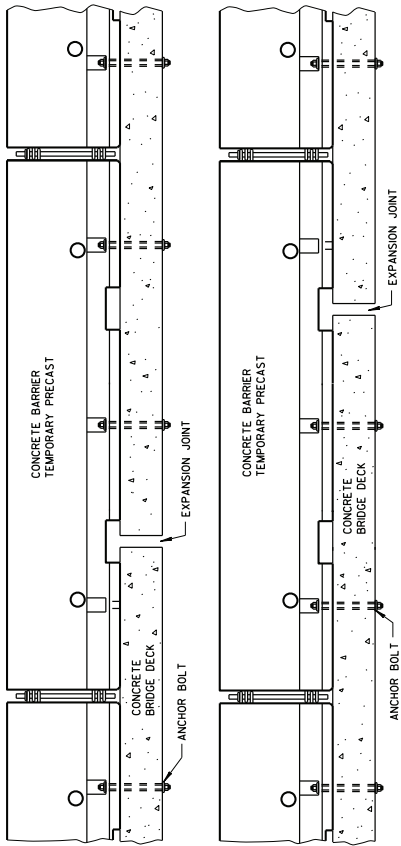
6A2

BARRIER SECTION

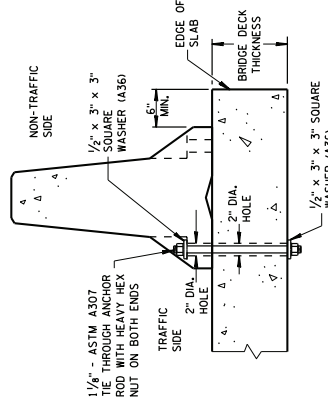
Addendum No. 01
ID 2984-38-71
Added Sheet 78C
February 19, 2019

78C

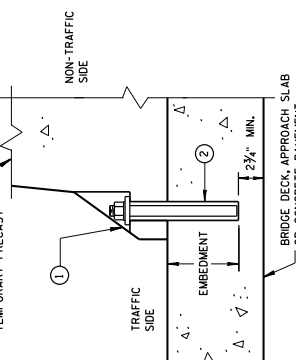
CONCRETE BARRIER
TEMPORARY PRECAST, 12'-6"
STATE OF WISCONSIN
DEPARTMENT OF TRANSPORTATION



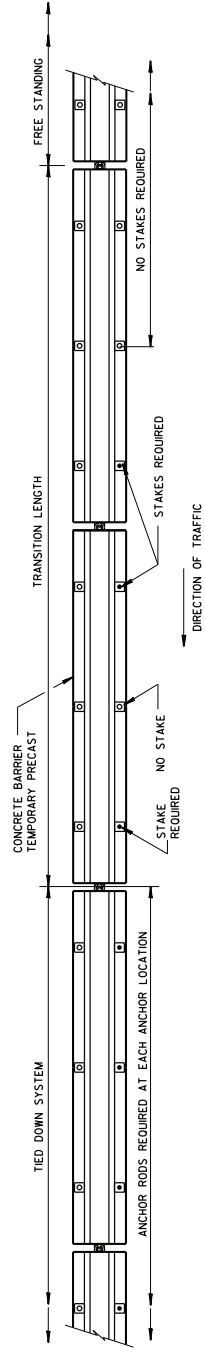
TREATMENT AT BRIDGE DECK EXPANSION JOINTS
 (NO SINGLE CONCRETE BARRIER SECTION SHALL BE ANCHORED TO BOTH THE BRIDGE DECK AND THE APPROACH SLAB. ALL ANCHOR BOLT LOCATIONS SHALL BE ANCHORED TO THE DECK IN ACCORDANCE WITH THE DETAIL. NO MORE THAN ONE ANCHOR BOLT SHALL BE ELIMINATED FROM A BARRIER SECTION WHEN SPANNING AN EXPANSION JOINT.)



THROUGH BOLTED ANCHOR INSTALLATION ON BRIDGE DECK
 (DO NOT USE ON CONCRETE BRIDGE DECK WITH ASPHALT OVERLAY)



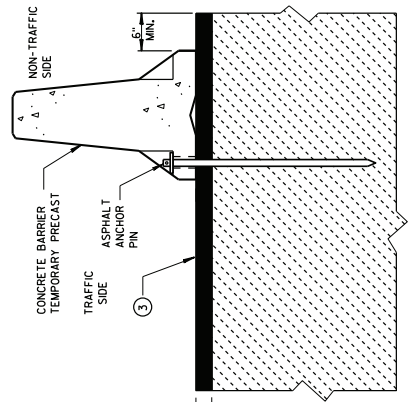
REMOVABLE ADHESIVE ANCHOR INSTALLATION ON CONCRETE BRIDGE DECK, CONCRETE APPROACH SLAB, OR CONCRETE PAVEMENT
 (DO NOT USE ON CONCRETE WITH AN ASPHALTIC OVERLAY)



FREE STANDING TRANSITION TO TIED-DOWN SYSTEM
 (PLACE TRANSITION IN A TANGENT SECTION OF BARRIER PARALLEL TO THE ROADWAY. IF TRANSITION OCCURS ON STRUCTURAL SLAB, ANCHOR AS SHOWN.)

GENERAL NOTES

- SEE SHEET E FOR WHEN TO ANCHOR. OTHER PARTS OF THE PLAN MAY SHOW ADDITIONAL LOCATIONS REQUIRING ANCHORING.
- REMOVE ALL ANCHORS WHEN NO LONGER NEEDED. FILL CONCRETE PAVEMENTS, DECKS AND APPROACH SLABS WITH NON-SHRINK COMMERCIAL GROUT FROM THE APPROVED PRODUCT LIST. FILL ASPHALT PAVEMENTS WITH ASTM D6690 TYPE II RUBBERIZED CRACK FILLER.
- 1 1/8\"/>
- 2 ADHESIVE ANCHORS WITH A MINIMUM BOND STRENGTH OF 1,800 PSI AND 5/16\"/>
- 3 ASPHALT SURFACE SHOWING. CONTRACTOR MAY DRILL THROUGH CONCRETE PAVEMENT AND THAN DRIVE ASPHALT ANCHOR PIN.



STAKE DOWN INSTALLATION FOR ASPHALTIC SURFACE

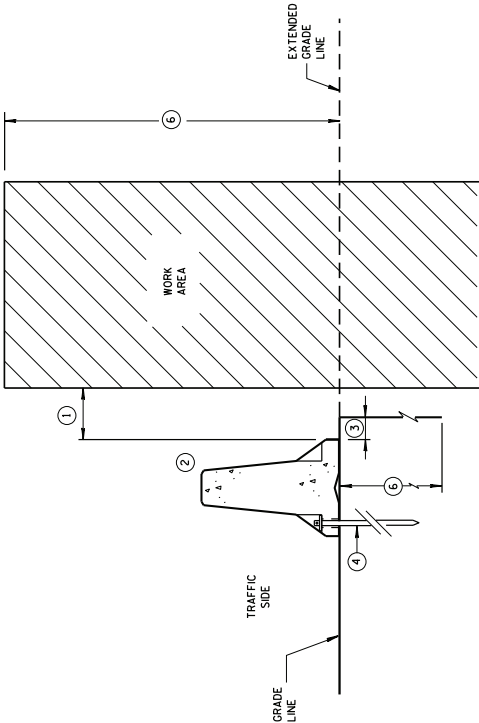
Addendum No. 01
 ID 2984-38-71
 Added Sheet 78D
 February 19, 2019

CONCRETE BARRIER
 TEMPORARY PRECAST. 12'-6"

STATE OF WISCONSIN
 DEPARTMENT OF TRANSPORTATION

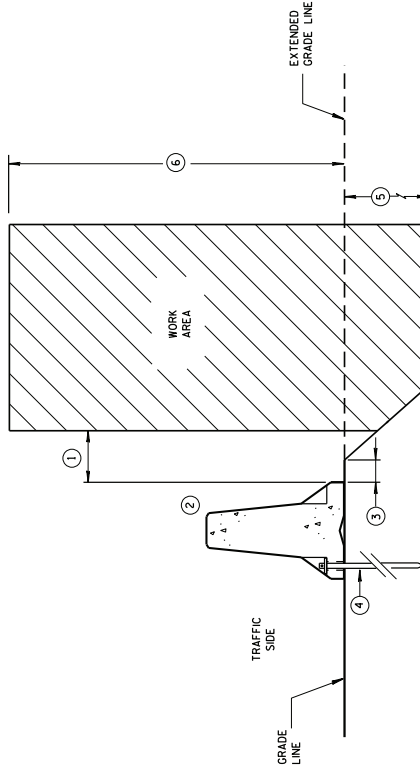
GENERAL NOTES

- 1 WHEN OBJECTS EXTEND ABOVE THE GRADE, A MINIMUM OF 1 FOOT IS REQUIRED FROM BACK OF BARRIER TO OBJECT. SEE OTHER DETAILS FOR OBJECTS WITH AN OFFSET FROM BACK OF BARRIER TO SLOPES OR VERTICAL DROPS.
- 2 OBJECTS ARE NOT TO BE PLACED ON, MOUNTED TO, OR LEANED AGAINST THE BARRIER WITHOUT PERMISSION OF THE PROJECT ENGINEER.
- 3 SEE OTHER DETAIL ON SHEET "D" FOR SPACE REQUIREMENTS.
- 4 SEE BOLT THROUGH DECK, REMOVABLE ADHESIVE ANCHOR, OR A STAKE DOWN FOR ASPHALTIC SURFACE TREATMENT DETAILS. ASPHALTIC ANCHOR SHOWN.
- 5 DEPTH OF 3 FEET OR MORE.
- 6 Y = 6'-6".

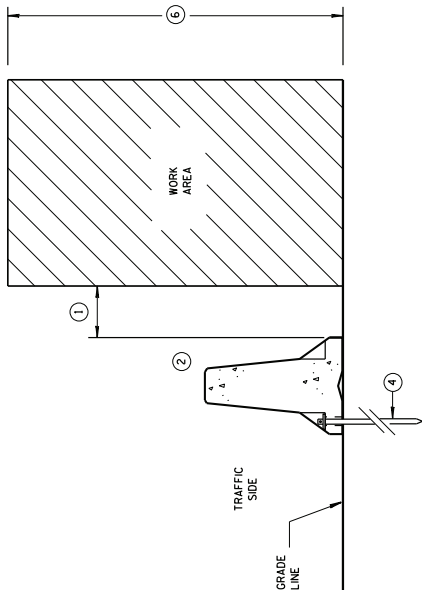


ANCHORED BARRIER SPACE REQUIREMENTS FOR HAZARDS EXTENDED ABOVE THE GRADE LINE

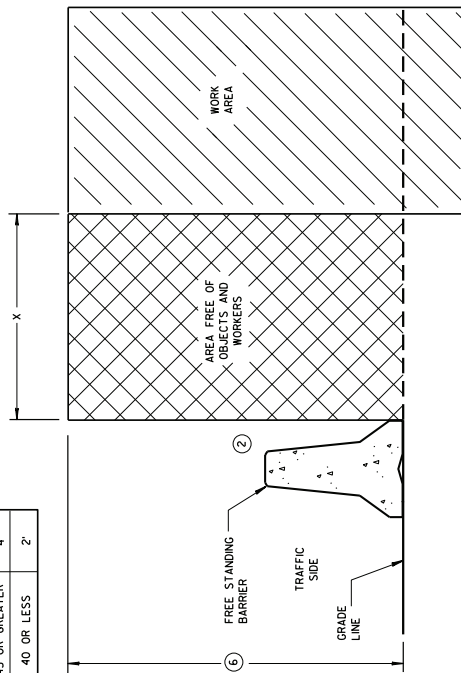
ANCHORED BARRIER SPACE REQUIREMENTS ON VERTICAL DROP OFFS



ANCHORED BARRIER SPACE REQUIREMENTS ON SLOPES



POSTED SPEED MPH.	X
45 OR GREATER	4'
40 OR LESS	2'

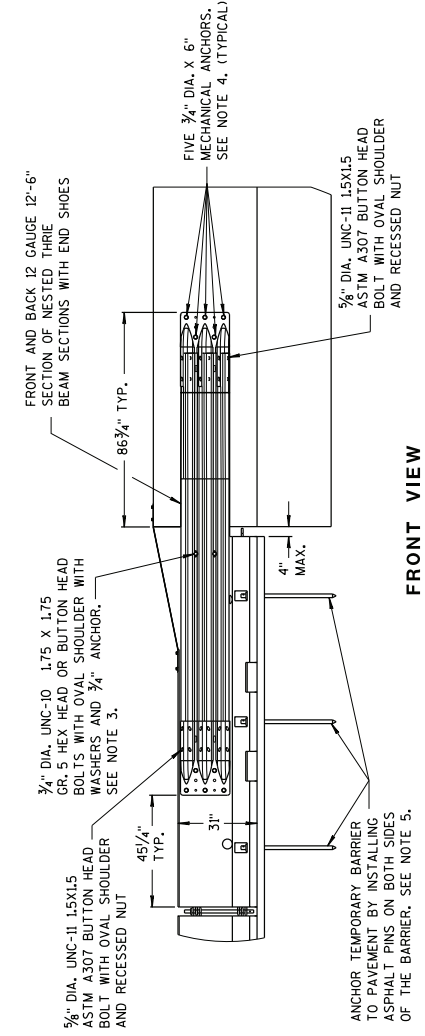


FREE STANDING BARRIER SPACE REQUIREMENTS

Addendum No. 01
ID 2984-38-71
Added Sheet 78E
February 19, 2019

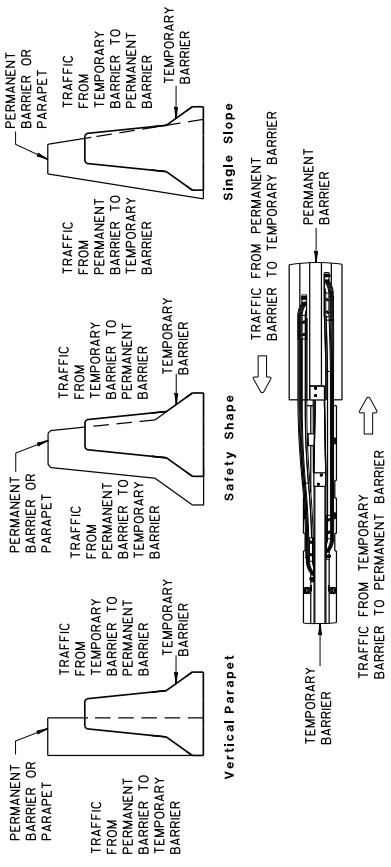
CONCRETE BARRIER
TEMPORARY PRECAST, 12'-6"
STATE OF WISCONSIN
DEPARTMENT OF TRANSPORTATION

78 E

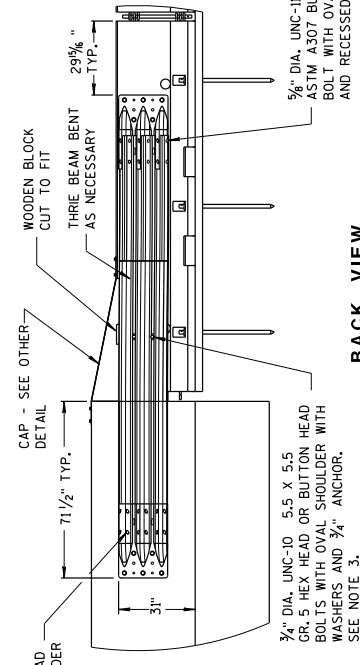


FRONT VIEW

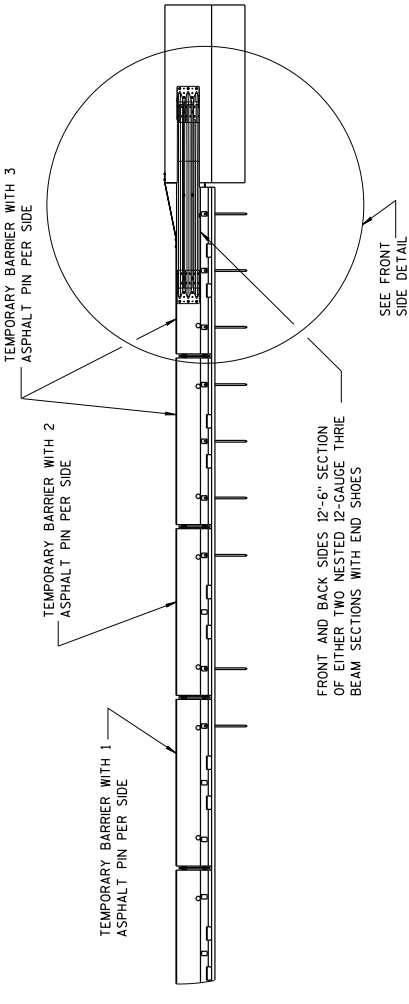
- NOTES**
- NESTED THRE BEAM IS REQUIRED ON BOTH SIDES OF THE TEMPORARY BARRIER FOR ALL INSTALLATIONS REGARDLESS OF TRAFFIC.
1. CAP END PLATE PLACED FLUSH WITH UPSTREAM END OF PERMANENT BARRIER OR PARAPET.
 2. THRE BEAM PIECES ARE OFFSET 15/4" TO PREVENT INTERFERENCE FROM THE ANCHORS ON OPPOSING SIDES.
 3. MINIMUM MECHANICAL OR ADHESIVE ANCHOR STRENGTH REQUIREMENTS: ULTIMATE TENSILE LOAD 9.48 KIPS AND ULTIMATE SHEAR LOAD 10.48 KIPS.
 4. MINIMUM MECHANICAL OR ADHESIVE ANCHOR STRENGTH REQUIREMENTS: ULTIMATE TENSILE LOAD 17.9 KIPS AND ULTIMATE SHEAR LOAD 21.96 KIPS.
 5. MAY BE USED ON CONCRETE OR ASPHALT PAVEMENTS. ASPHALT OPTION SHOWN FOR CONCRETE OPTION SEE OTHER DETAILS.
 6. MINIMUM MECHANICAL OR ADHESIVE ANCHOR STRENGTH REQUIREMENTS: ULTIMATE TENSILE LOAD 12.14 KIPS AND ULTIMATE SHEAR LOAD 17.5 KIPS.



TEMPORARY BARRIER PLACEMENT FOR BI-DIRECTIONAL TRANSITION TO TIED-DOWN SYSTEM



BACK VIEW



FRONT VIEW

Addendum No. 01
ID 2984-38-71
Added Sheet 78F
February 19, 2019

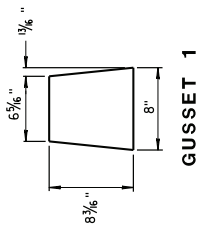
PLAN VIEW

BI-DIRECTIONAL TRANSITION TO TIED-DOWN SYSTEM

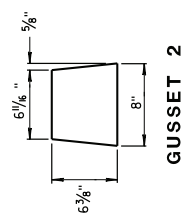
CONCRETE BARRIER
TEMPORARY PRECAST, 12'-6"

78 F

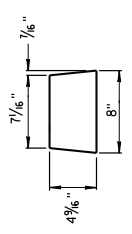
STATE OF WISCONSIN
DEPARTMENT OF TRANSPORTATION



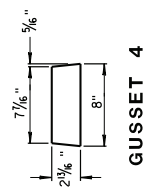
GUSSET 1



GUSSET 2

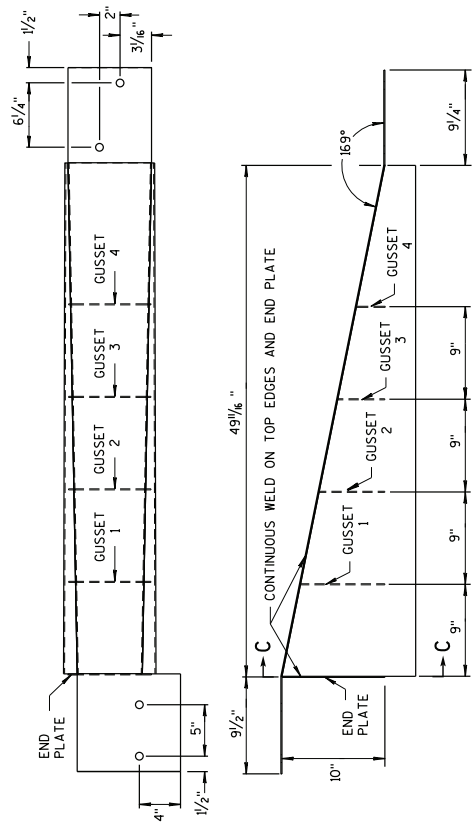


GUSSET 3

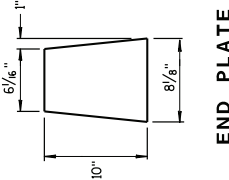


GUSSET 4

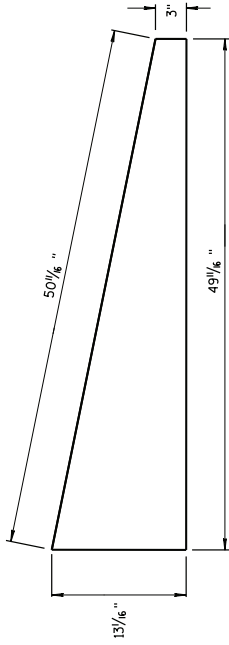
GUSSETS



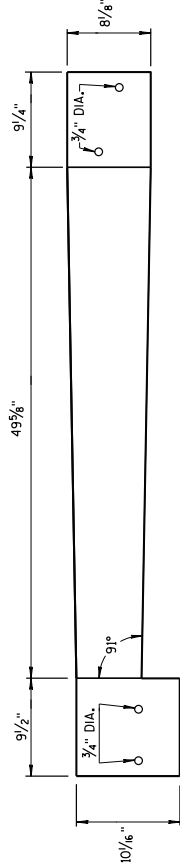
- NOTES
1. FOUR GUSSETS AND END PLATE ARE STITCH WELDED ON THREE SIDES.
 2. TWO TRIANGULAR SIDE PLATES ARE STITCH WELDED TO TOP PLATE, END PLATE, AND GUSSETS.



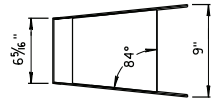
END PLATE



SIDE PLATE



TOP PLATE



SECTION C-C

SIDE, TOP AND END PLATES FOR CAP FROM TEMPORARY CONCRETE BARRIER TO 42" PERMANENT CONCRETE BARRIER

SIDE PLATES, TOP PLATE, END PLATE AND GUSSETS ARE 12 GAUGE ASTM A36 GALVANIZED STEEL.

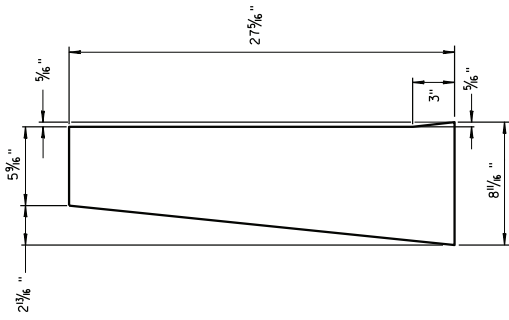
Addendum No. 01
ID 2984-38-71
Added Sheet 78G
February 19, 2019

CAP DETAILS FOR TEMPORARY CONCRETE BARRIER TO 42" PERMANENT CONCRETE BARRIER

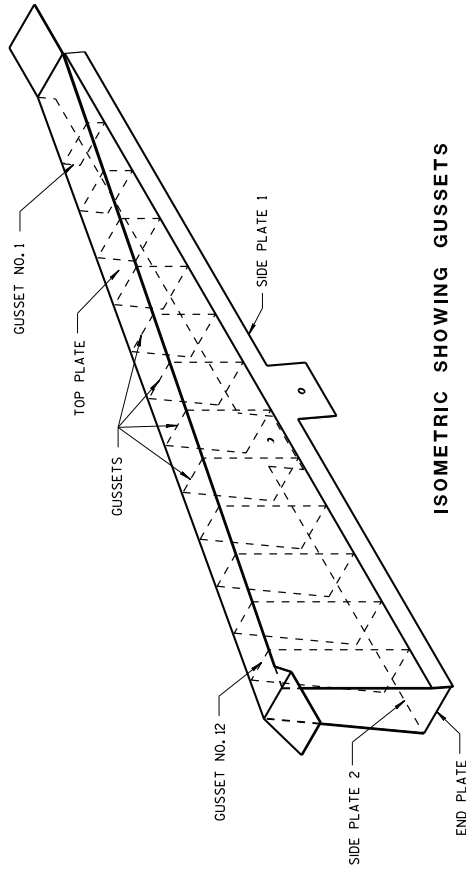
CONCRETE BARRIER
TEMPORARY PRECAST, 12'-6"

78 G

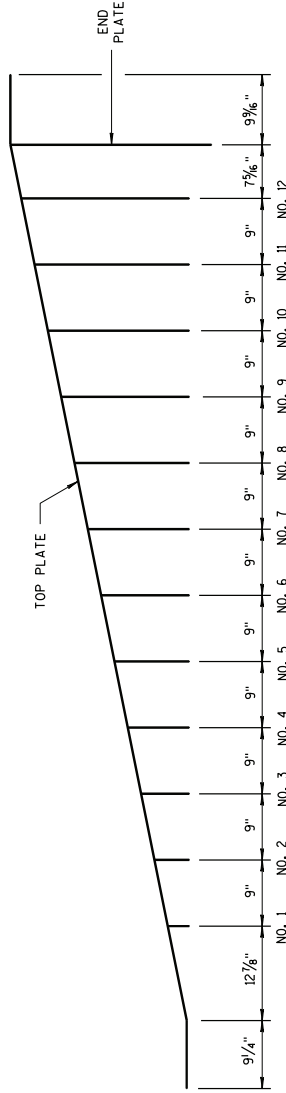
STATE OF WISCONSIN
DEPARTMENT OF TRANSPORTATION



END PLATE
1/8" STEEL PLATE

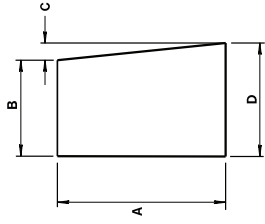


ISOMETRIC SHOWING GUSSETS



GUSSET LOCATION

Addendum No. 01
ID 2984-38-71
Added Sheet 78H
February 19, 2019



GUSSETS 1 - 12
ALL GUSSETS 1/8" STEEL PLATE

GUSSET DIMENSIONS				
GUSSET NO.	A	B	C	D
1	2 7/8"	7 3/4"	1/4"	8
2	4 1/8"	7 3/8"	1/2"	8
3	6 1/2"	7 7/8"	3/4"	8 1/8"
4	8 5/8"	7 3/8"	7/8"	8 1/8"
5	10 7/8"	7"	1 1/8"	8 1/8"
6	11 5/8"	6 1/8"	1 1/4"	8 1/8"
7	13 3/4"	6 5/8"	1 7/8"	8 1/8"
8	15 5/8"	6 7/8"	1 3/4"	8 1/8"
9	17 3/8"	6 1/4"	1 9/16"	8 1/8"
10	19 3/8"	6 1/8"	1 5/8"	8 1/8"
11	21"	5 7/8"	2 3/8"	8 1/8"
12	22 1/8"	5 1/8"	2 5/8"	8 1/8"

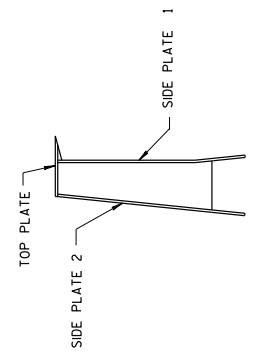
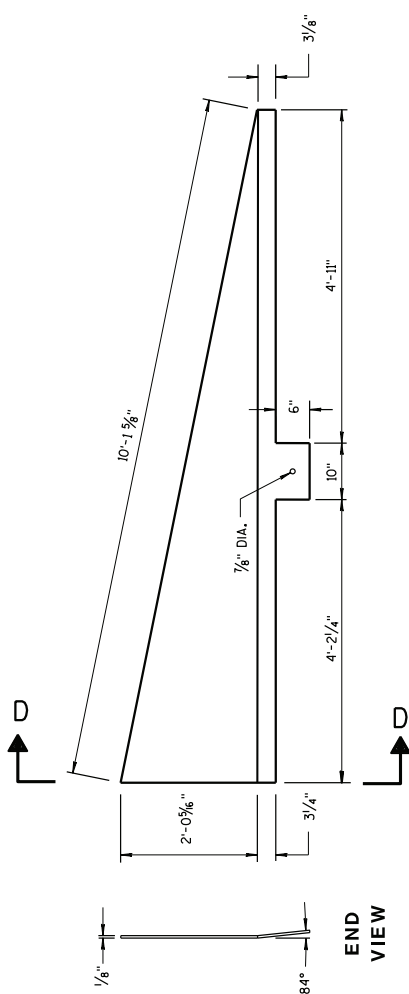
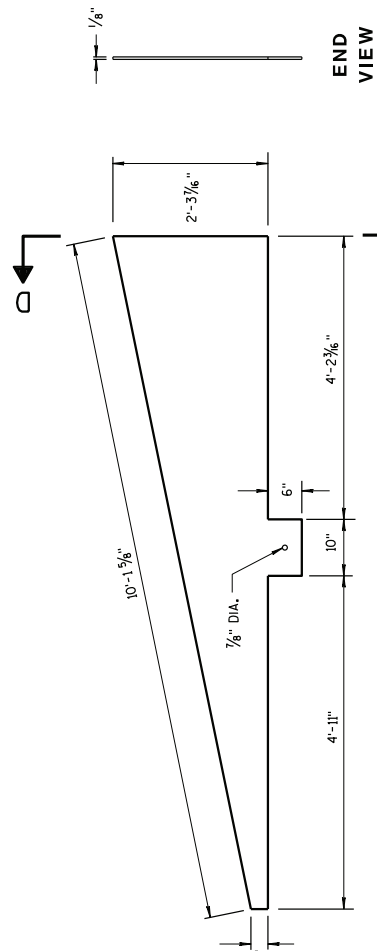
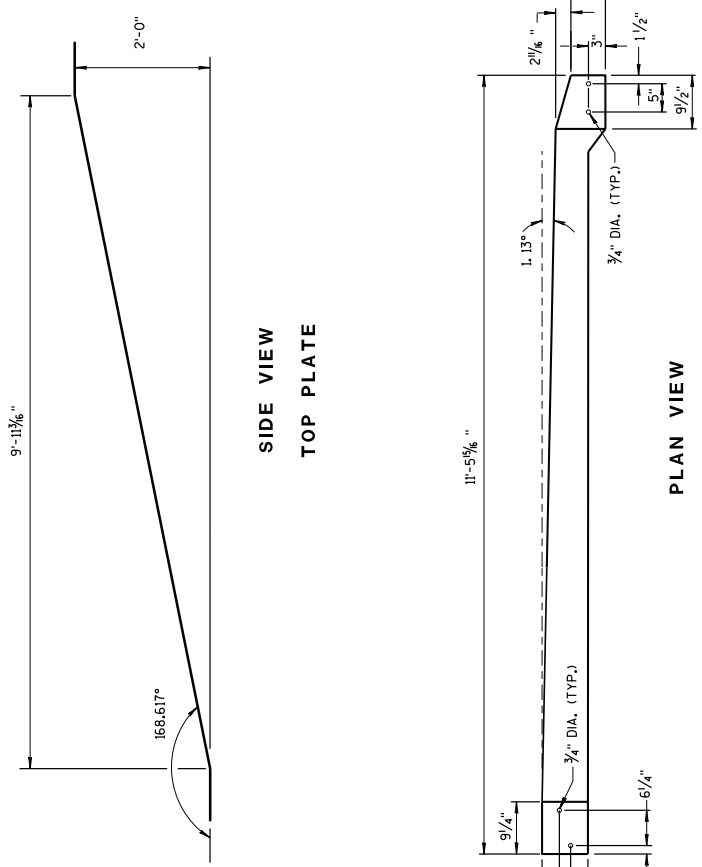
SIDE PLATES, TOP PLATE, END PLATE AND GUSSETS ARE 12 GAUGE ASTM A36 STEEL AND GALVANIZED.
GUSSETS AND END PLATE ARE STITCH WELDED ON 3 SIDES.
TWO TRIANGULAR SIDE PLATES ARE STITCH WELDED TO TOP PLATE, END PLATE AND GUSSETS.

CONCRETE BARRIER
TEMPORARY PRECAST, 12'-6"

STATE OF WISCONSIN
DEPARTMENT OF TRANSPORTATION

78H

CAP DETAILS FOR TEMPORARY CONCRETE BARRIER TO 56" PERMANENT CONCRETE BARRIER

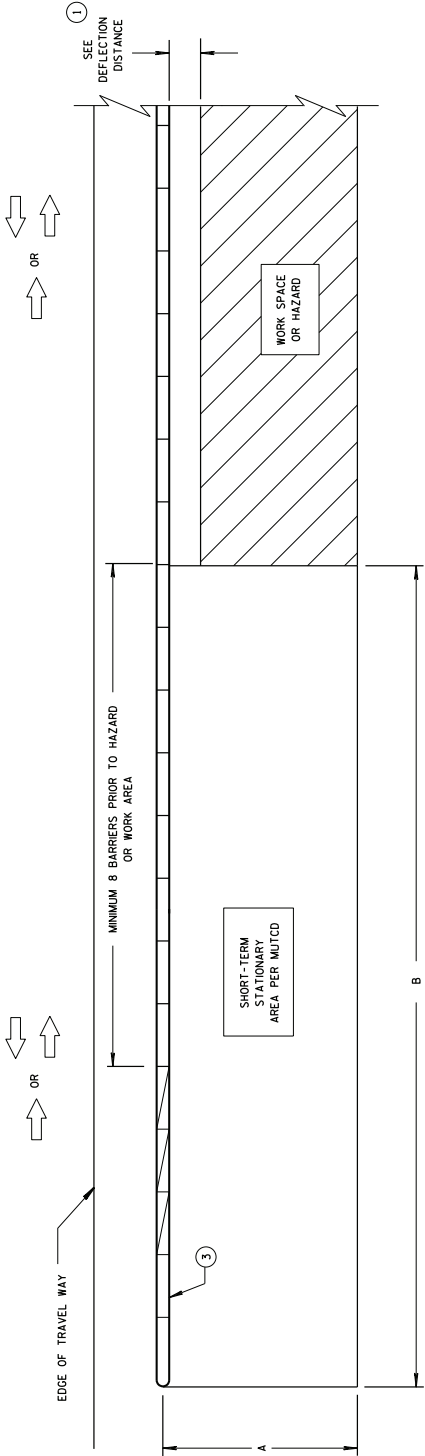


**Addendum No. 01
 ID 2984-38-71
 Added Sheet 781
 February 19, 2019**

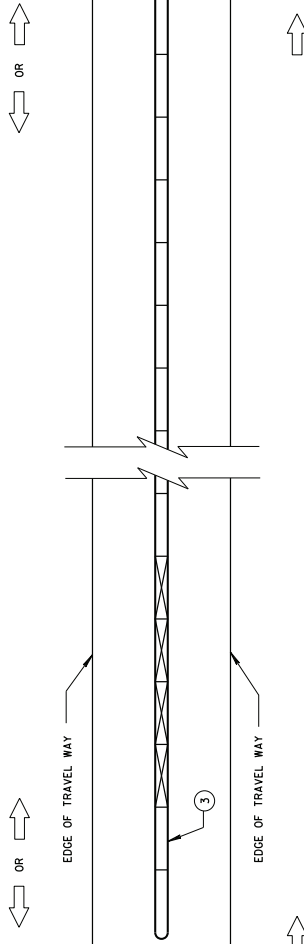
CONCRETE BARRIER TEMPORARY PRECAST, 12'-6"
STATE OF WISCONSIN DEPARTMENT OF TRANSPORTATION
APPROVED _____ DATE: June 2017 ROADWAY STANDARD DEVELOPMENT UNIT SUPERVISOR

**CAP DETAILS FOR TEMPORARY CONCRETE
 BARRIER TO 56" PERMANENT CONCRETE BARRIER**

781



CRASH CUSHION/SAND BARREL ARRAY AND TEMPORARY BARRIER INSTALLATION FOR TRAFFIC ON ONE SIDE OF BARRIER



CRASH CUSHION/SAND BARREL ARRAY AND TEMPORARY BARRIER INSTALLATION FOR TRAFFIC ON BOTH SIDES OF BARRIER

GENERAL NOTES

- SEE STANDARD DETAIL DRAWING 14B7 FOR MORE INFORMATION.
- DETAILS PROVIDE A GENERAL LAYOUT OF TEMPORARY CONCRETE BARRIER, CRASH CUSHIONS, SAND BARREL ARRAYS AND TIE DOWN TRANSITIONS. DETAILS PROVIDED MAY NOT FIT ALL POSSIBLE SITUATIONS OR SITE CONDITIONS. SEE OTHER SECTIONS OF THE CONTRACT OR PROJECT ENGINEER FOR MORE DETAILS.
- ADDITIONAL TEMPORARY BARRIER MAY BE REQUIRED TO PROTECT TRAVELING PUBLIC FROM HAZARDS. CONTRACTOR'S OPERATIONS OR TO CONTROL TRAFFIC.
- TEMPORARY BARRIER MAY BE REQUIRED TO BE ANCHORED TO PAVEMENT OR BRIDGE DECK.

- FOR DETAILS ON CRASH CUSHION OR SAND BARREL ARRAYS SEE OTHER SECTIONS OF THE PLAN AND MANUFACTURE'S DETAILS.
- SLOPES LEADING TO TEMPORARY BARRIER, CRASH CUSHION OR SAND BARREL ARRAY ARE 10:1 OR LESS.
- FOR DEFLECTION INFORMATION SEE STANDARD DETAIL DRAWING 14B7.
- ANCHOR TEMPORARY BARRIER ACCORDING TO CRASH CUSHION OR SAND BARREL MANUFACTURE'S RECOMMENDATIONS. MANUFACTURER'S RECOMMENDATIONS ARE NOT PROVIDED, ANCHOR 3 PINS ON TRAFFIC SIDE.
- VALUES PROVIDED MAY NOT FIT ALL POSSIBLE SITUATIONS OR SITE CONDITIONS. SEE OTHER SECTIONS OF THE CONTRACT OR PROJECT ENGINEER FOR MORE DETAILS.

DIMENSION A TABLE

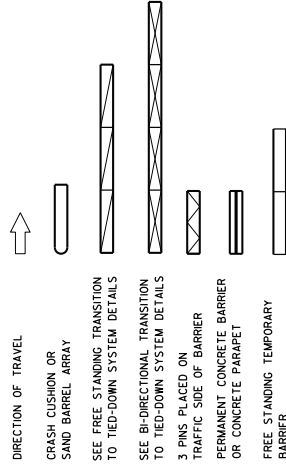
FACILITY	POSTED SPEED MPH	DIMENSION A	
		MIN. FT	MAX. FT
FREEMWAY/EXPRESSWAY	ALL	15	20
NON-FREEMWAY/EXPRESSWAY	GREATER THAN OR EQUAL TO 45	10	15
NON-FREEMWAY/EXPRESSWAY	LESS THAN 45	8	10
AADT LESS THAN 1500	ALL	8	10

DIMENSION B TABLE

POSTED SPEEDS MPH	DIMENSION B FT
20	115
25	155
30	200
35	250
40	305
45	360
50	425
55	495
60	570
65	645

Addendum No. 01
ID 2984-38-71
Added Sheet 78J
February 19, 2019

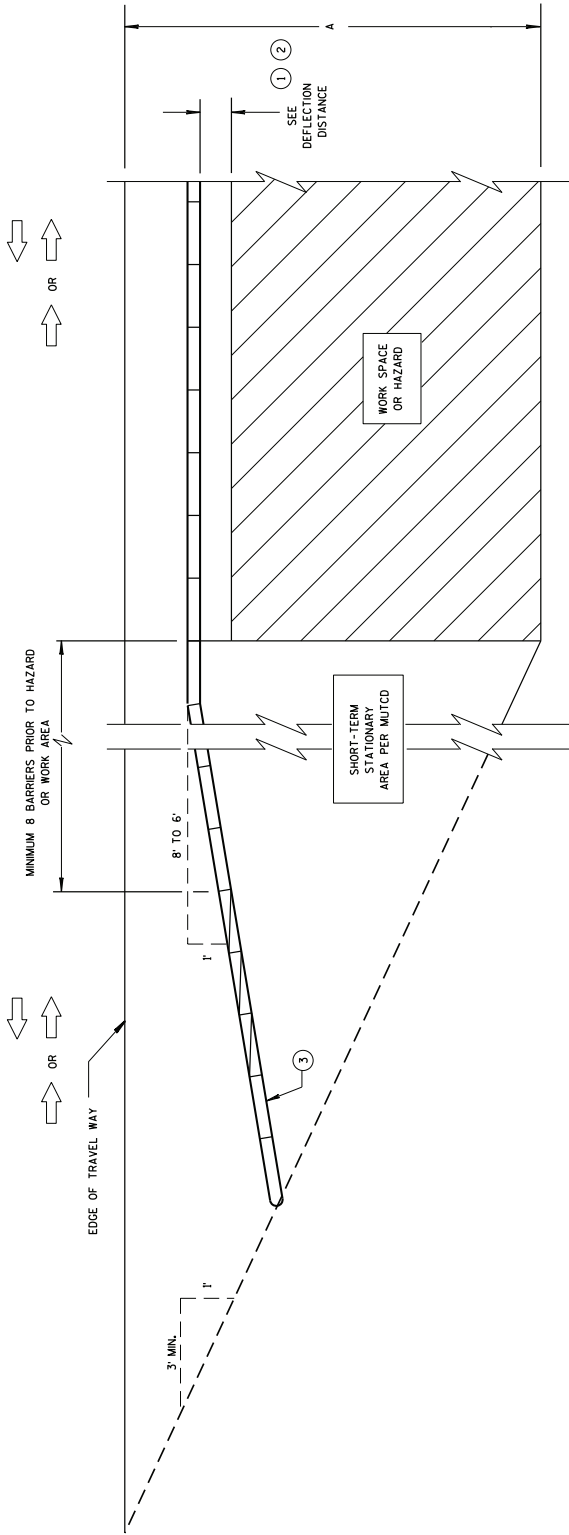
LEGEND



CRASH CUSHION/SAND BARREL ARRAY AND OTHER TEMPORARY BARRIER LAYOUT DETAILS

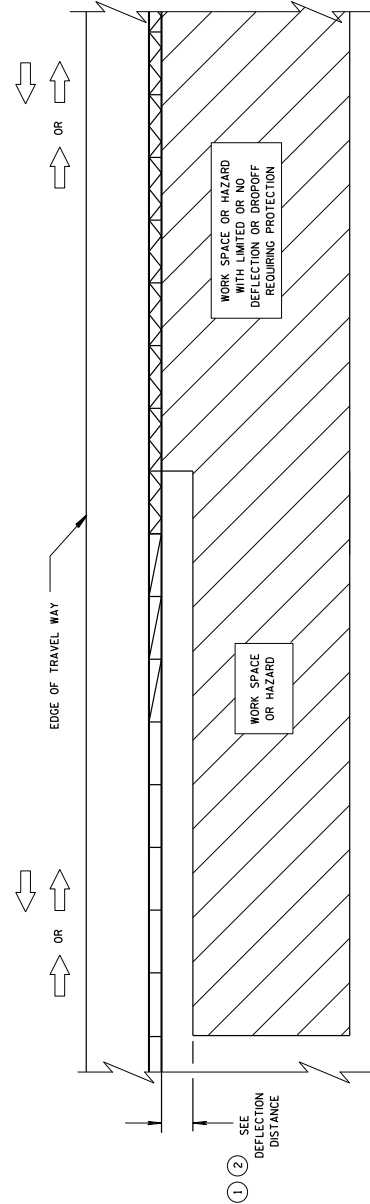
STATE OF WISCONSIN
DEPARTMENT OF TRANSPORTATION

78J



Addendum No. 01
ID 2984-38-71
Added Sheet 78K
February 19, 2019

**CRASH CUSHION/SAND BARREL ARRAY AND TEMPORARY BARRIER
INSTALLATION FOR TRAFFIC ON ONE SIDE - FLARED INSTALLATION**



LEGEND

- DIRECTION OF TRAVEL
- CRASH CUSHION OR SAND BARREL ARRAY
- SEE FREE STANDING TRANSITION TO TIED-DOWN SYSTEM DETAILS
- SEE BI-DIRECTIONAL TRANSITION TO TIED-DOWN SYSTEM DETAILS
- 3 PINS PLACED ON TRAFFIC SIDE OF BARRIER
- PERMANENT CONCRETE BARRIER OR CONCRETE PARAPET
- FREE STANDING TEMPORARY BARRIER

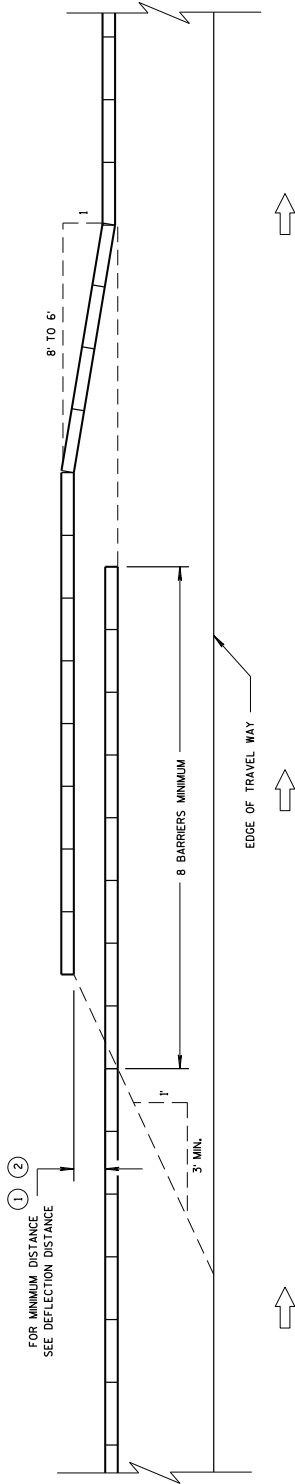
**TRANSITION FROM FREE STANDING TEMPORARY BARRIER
TO ANCHORED BARRIER**

CRASH CUSHION/SAND BARREL
ARRAY AND OTHER TEMPORARY
BARRIER LAYOUT DETAILS

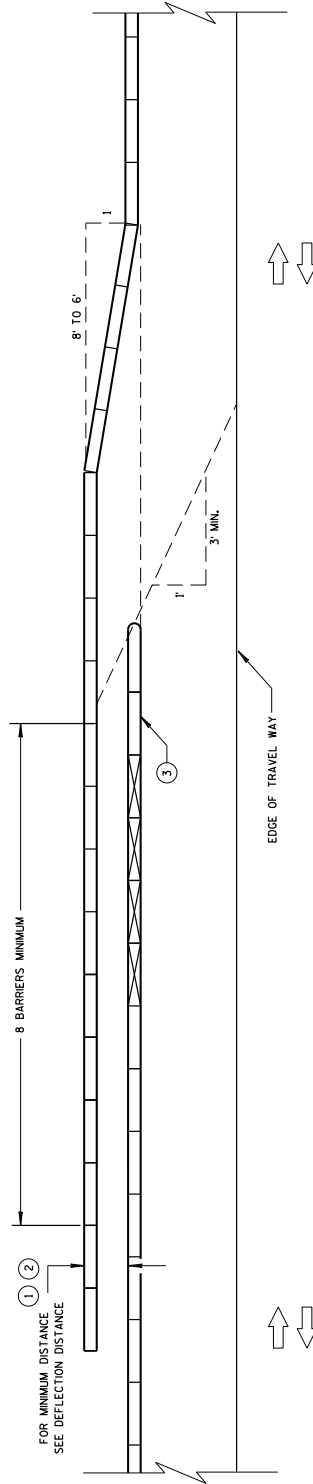
STATE OF WISCONSIN
DEPARTMENT OF TRANSPORTATION

78K

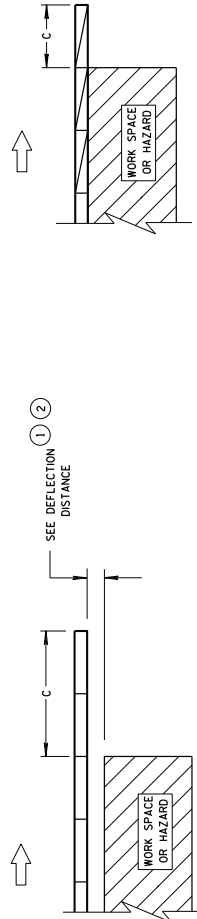
SDD 14b8-c Overlapping of Temporary Barrier and Temporary Barrier Downstream of Hazard



TEMPORARY BARRIER OVERLAP - ONE-WAY TRAFFIC



TEMPORARY BARRIER OVERLAP - TWO-WAY TRAFFIC



ENDING TEMPORARY BARRIER DOWNSTREAM - UNANCHORED

ENDING TEMPORARY BARRIER DOWNSTREAM - ANCHORED

LEGEND

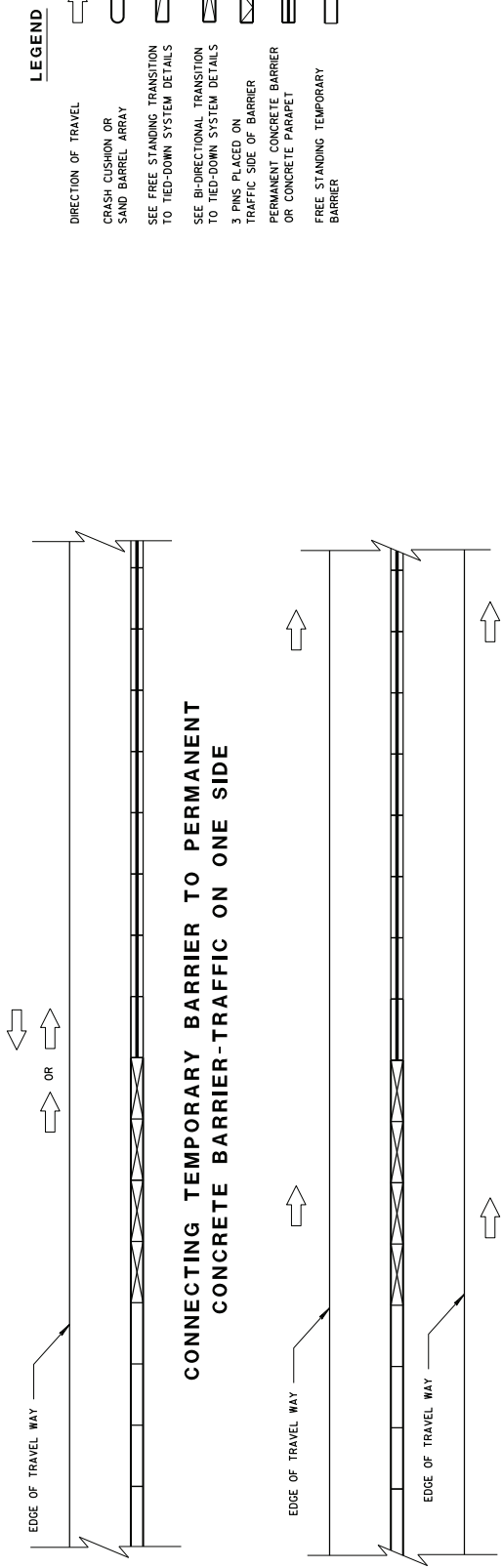
- DIRECTION OF TRAVEL
- CRASH CUSHION OR SAND BARREL ARRAY
- SEE FREE STANDING TRANSITION TO TIED-DOWN SYSTEM DETAILS
- SEE BI-DIRECTIONAL TRANSITION TO TIED-DOWN SYSTEM DETAILS
- 3 PINS PLACED ON TRAFFIC SIDE OF BARRIER
- PERMANENT CONCRETE BARRIER OR CONCRETE PARAPET
- FREE STANDING TEMPORARY BARRIER

CRASH CUSHION/SAND BARREL ARRAY AND OTHER TEMPORARY BARRIER LAYOUT DETAILS

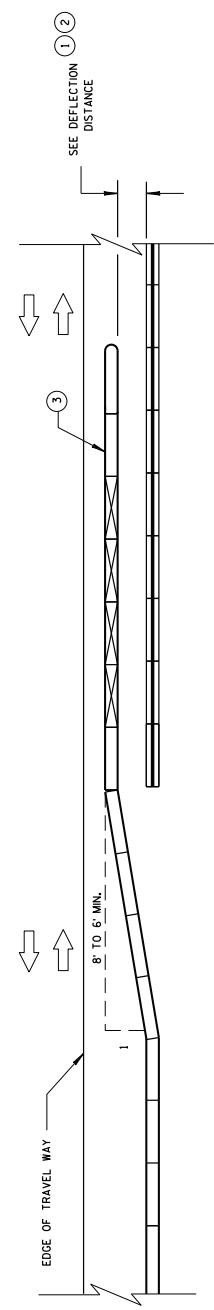
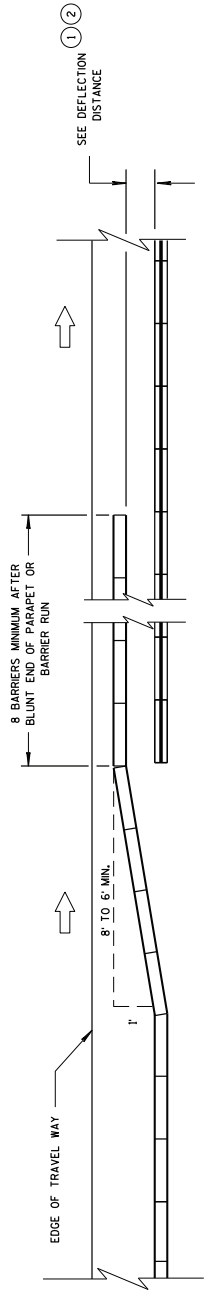
STATE OF WISCONSIN
DEPARTMENT OF TRANSPORTATION

78 L

Addendum No. 01
ID 2984-38-71
Added Sheet 78L
February 19, 2019



- LEGEND**
- DIRECTION OF TRAVEL
 - CRASH CUSHION OR SAND BARREL ARRAY
 - SEE FREE STANDING TRANSITION TO TIED-DOWN SYSTEM DETAILS
 - SEE BI-DIRECTIONAL TRANSITION TO TIED-DOWN SYSTEM DETAILS
 - 3 PINS PLACED ON TRAFFIC SIDE OF BARRIER
 - PERMANENT CONCRETE BARRIER OR CONCRETE PARAPET
 - FREE STANDING TEMPORARY BARRIER








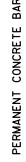

Addendum No. 01
ID 2984-38-71
Added Sheet 78M
February 19, 2019

CRASH CUSHION/SAND BARREL ARRAY AND OTHER TEMPORARY BARRIER LAYOUT DETAILS

STATE OF WISCONSIN
DEPARTMENT OF TRANSPORTATION

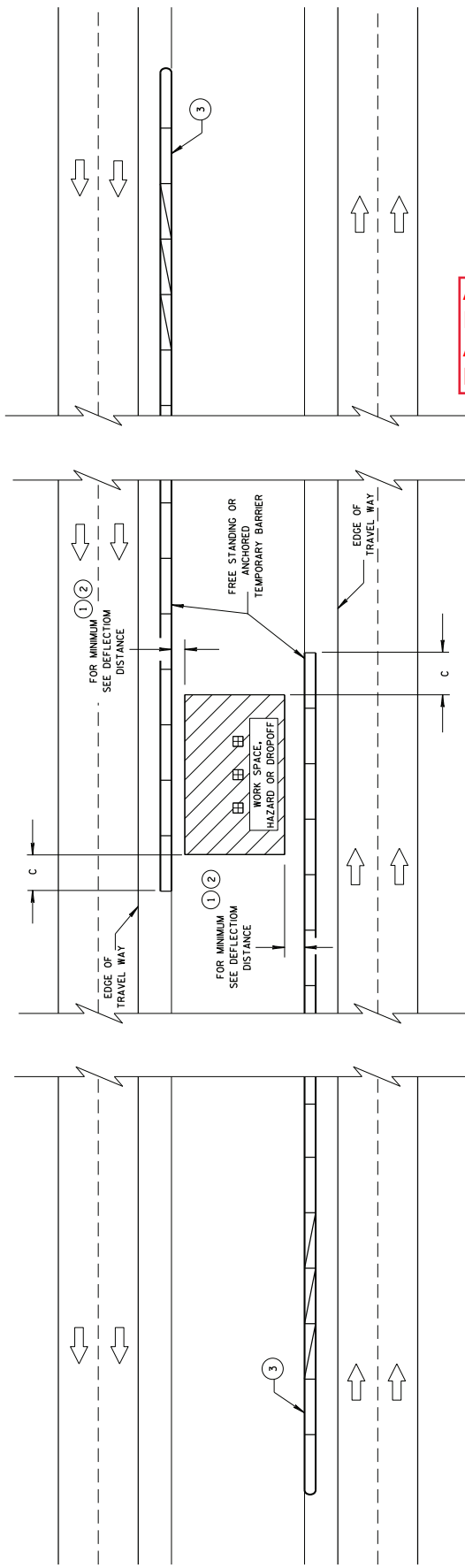
78 M

LEGEND

-  DIRECTION OF TRAVEL
-  CRASH CUSHION OR SAND BARREL ARRAY
-  SEE FREE STANDING TRANSITION TO TIED-DOWN SYSTEM DETAILS
-  SEE BI-DIRECTIONAL TRANSITION TO TIED-DOWN SYSTEM DETAILS
-  3 PINS PLACED ON TRAFFIC SIDE OF BARRIER
-  PERMANENT CONCRETE BARRIER OR CONCRETE PARAPET
-  FREE STANDING TEMPORARY BARRIER

DIMENSION C TABLE (2)

AVAILABLE DEFLECTION DISTANCE	MINIMUM LENGTH OF BARRIER BEYOND HAZARD FT
GREATER THAN 8'	12.5
LESS THAN OR EQUAL TO 8' BUT GREATER THAN 4'	50
LESS THAN OR EQUAL TO 4'	100



Addendum No. 01
ID 2984-38-71
Added Sheet 78N
February 19, 2019

78 N

CRASH CUSHION/SAND BARREL
ARRAY AND OTHER TEMPORARY
BARRIER LAYOUT DETAILS

STATE OF WISCONSIN
DEPARTMENT OF TRANSPORTATION

APPROVED
June, 2015 DATE
/s/ Jerry H. Zogg ROADWAY STANDARDS DEVELOPMENT ENGINEER
FHWA



SDD 15d28 Traffic Control, Work on Shoulder or Parking Lane, Undivided Roadway

GENERAL NOTES

THE EXACT NUMBER, LOCATION, AND SPACING OF ALL SIGNS, AND DEVICES SHALL BE ADJUSTED TO FIT FIELD CONDITIONS AS APPROVED BY THE ENGINEER.

ALL SIGNS ARE 48" X 48" UNLESS OTHERWISE NOTED. IF NECESSARY DUE TO SPACE CONSTRAINTS IN URBAN AREAS, 36" X 36" SIGNS MAY BE USED IF APPROVED BY DISTRICT TRAFFIC UNIT.

"W" SIGNS ARE THE SAME AS "M" SIGNS EXCEPT THE BACKGROUND IS ORANGE.

SIGNS THAT WILL BE IN PLACE LESS THAN 7 CONTINUOUS DAYS AND NIGHTS MAY BE MOUNTED ON PORTABLE SUPPORTS.

ANY SIGNS TEMPORARY OR EXISTING, WHICH CONFLICT WITH TRAFFIC CONTROL "IN USE" SHALL BE REMOVED OR COVERED AS NEEDED AND AS APPROVED BY THE ENGINEER.

W20-1A AND G20-2A SIGNS ARE NOT REQUIRED IF THE WORK AREA IS WITHIN A LARGER WORK ZONE WHERE THESE SIGNS ARE ALREADY PRESENT. G20-2A SIGNS MAY ALSO BE OMITTED IF DURATION OF WORK IS LESS THAN 7 CONTINUOUS DAYS AND NIGHTS.

CHANNELIZING DEVICES PLACED ADJACENT TO THE WORK AREA SHALL BE PULLED BACK FROM THE TRAVEL LANE WHEN WORK IS NOT IN PROGRESS.

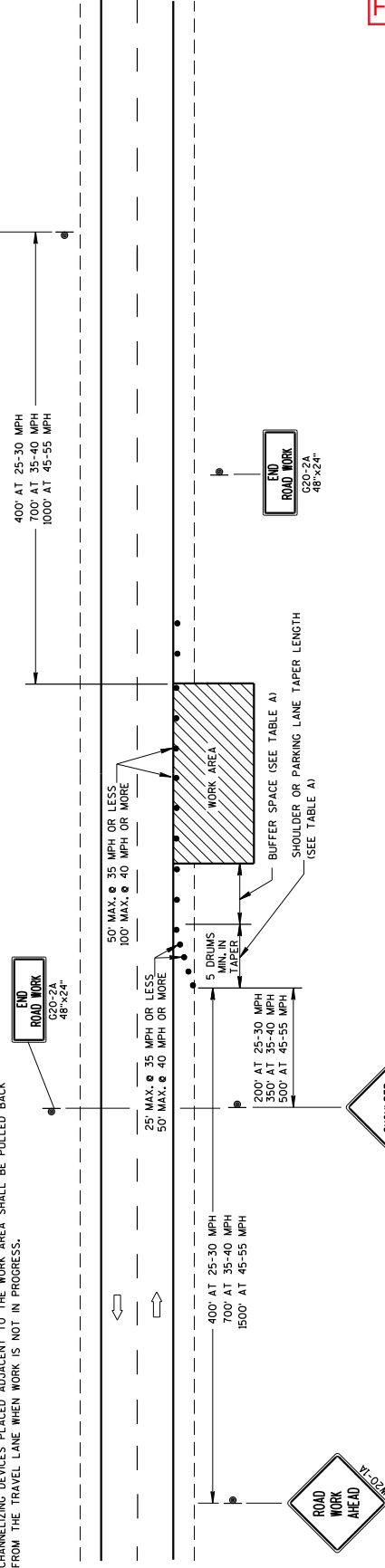
TABLE A

SHOULDER TAPER LENGTH (FEET)	SHOULDER WIDTH (FEET)	BUFFER SPACE (FEET)
30	4	50
40	6	70
50	8	100
60	10	150
70	12	200
80	15	250
90	18	300
100	20	350
120	25	425
150	30	500
185	35	600
495	75	1000

SHOULDER TAPER LENGTH = 1/3L

W = SHOULDER WIDTH (FEET)
 S = NON-CONSTRUCTION SPEED LIMIT (MPH)

TAPER LENGTH
 L = WS AT 45 MPH OR GREATER
 L = WS² AT 40 MPH OR LESS
 L = 60



LEGEND

- TRAFFIC CONTROL DRUM
 - SIGN ON PERMANENT SUPPORT
 - ➔ DIRECTION OF TRAFFIC
 - ▨ WORK AREA
- OR
 IF TRAFFIC CONTROL DEVICES ENCR OACH ONTO TRAVELED WAY, USE

Addendum No. 01
 ID 2984-38-71
 Added Sheet 102A
 February 19, 2019

TRAFFIC CONTROL,
 WORK ON SHOULDER OR
 PARKING LANE,
 UNDIVIDED ROADWAY

STATE OF WISCONSIN
 DEPARTMENT OF TRANSPORTATION

APPROVED
 July 14, 2015
 DATE

/s/ Peter Amakobe Atepe
 STATEWIDE TRAFFIC
 SAFETY ENGINEER
 FHWA

102 A



SDD 15d40 Traffic Control, Lane Shift, Multi-Lane Divided or One-Way Road

GENERAL NOTES

- THE EXACT NUMBER, LOCATION, AND SPACING OF ALL SIGNS AND DEVICES SHALL BE ADJUSTED TO FIT FIELD CONDITIONS AS APPROVED BY THE ENGINEER.
- THE SPACING BETWEEN SIGNS SHOULD BE ADJUSTED TO NOT CONFLICT WITH AND TO PROVIDE A MINIMUM OF 200 FEET, (500 FEET DESIRABLE) DISTANCE TO EXISTING SIGNS.
- THIS LANE CLOSURE IS TYPICAL FOR SHIFTING RIGHT LANE - REVERSE FOR SHIFTING LEFT LANE.
- ALL SIGNS ARE 48"x48" UNLESS OTHERWISE NOTED.
- "W" IS THE SAME AS "W" EXCEPT THE BACKGROUND IS ORANGE.
- ANY SIGNS TEMPORARY OR EXISTING WHICH CONFLICT WITH TRAFFIC CONTROL "IN USE" SHALL BE REMOVED OR COVERED AS NEEDED AND AS APPROVED BY THE ENGINEER. NO WARNING LIGHTS SHALL BE WORKING ON "COVERED" OR "DOWNED" SIGNS.
- CONSIDER GEOMETRICS WHEN LOCATING SIGNS AND ARROW BOARD SO THE DRIVER HAS A CLEAR VIEW OF THE ARROW BOARD AND LANE CLOSURE DRUMS FOR A MINIMUM 1500 FEET IN FRONT OF DRUMS.
- FOR A LANE CLOSURE THAT IS IN PLACE LESS THAN 7 CONTINUOUS DAYS AND NIGHTS, THE ADVANCED WARNING SIGNS MAY BE MOUNTED ON PORTABLE SUPPORTS.

- LEGEND**
- TYPE III BARRICADE WITH ATTACHED SIGN
- SIGN ON PERMANENT SUPPORT
- TRAFFIC CONTROL DRUM
- TRAFFIC CONTROL DRUM WITH TYPE "C" STEADY BURN LIGHT
- TYPE "A" WARNING LIGHT (FLASHING)
- DIRECTION OF TRAFFIC
- WORK AREA
- REMOVING PAVEMENT MARKING (SEE GENERAL NOTES)

REMOVE PAVEMENT MARKINGS IF LANE CLOSURE IS TO BE IN PLACE FOR LONGER THAN 4 OR MORE DAYS AND NIGHTS.

WARNING LIGHTS ARE NOT REQUIRED IF THE LANE CLOSURE IS A DAYTIME ONLY OPERATION.

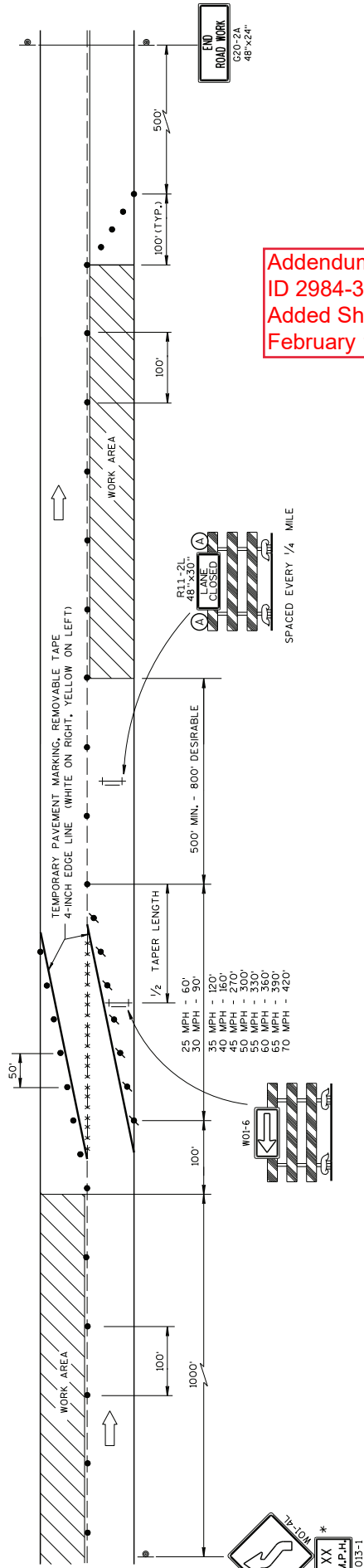
IF THE HORIZONTAL ALIGNMENT IS SUCH THAT A CURVE MAY REQUIRE ADDITIONAL DELINEATION, THE DEVICE SPACING MAY BE DECREASED TO 50 FEET.

ADJUSTMENTS IN BUFFER SPACE NEED TO BE INCORPORATED WHEN THE LANE CLOSURE OCCURS AT THE END OF A RAMP. THE BUFFER SPACE MUST BE PLACED FAR ENOUGH IN ADVANCE OF AN EXIT OR ENTRANCE RAMP TO STILL ALLOW FOR ADEQUATE BUFFER SPACE. THE MINIMUM LENGTH OF THE BUFFER SPACE BEFORE AN EXIT RAMP SHOULD BE 1/2 THE LENGTH OF THE TRANSITION AREA. THE ENTRANCE RAMP SHOULD BE FOLLOWED BY THE ORIGINAL BUFFER SPACE LENGTH OF 800 FEET DESIRABLE PRIOR TO ANOTHER TRAFFIC CONTROL CHANGE SUCH AS A CROSSOVER MANEUVER.

IF THE HORIZONTAL ALIGNMENT IS SUCH THAT A CURVE MAY REQUIRE ADDITIONAL DELINEATION, THE DEVICE SPACING MAY BE DECREASED TO 50 FEET.

ADJUSTMENTS IN BUFFER SPACE NEED TO BE INCORPORATED WHEN THE LANE CLOSURE OCCURS AT THE END OF A RAMP. THE BUFFER SPACE MUST BE PLACED FAR ENOUGH IN ADVANCE OF AN EXIT OR ENTRANCE RAMP TO STILL ALLOW FOR ADEQUATE BUFFER SPACE. THE MINIMUM LENGTH OF THE BUFFER SPACE BEFORE AN EXIT RAMP SHOULD BE 1/2 THE LENGTH OF THE TRANSITION AREA. THE ENTRANCE RAMP SHOULD BE FOLLOWED BY THE ORIGINAL BUFFER SPACE LENGTH OF 800 FEET DESIRABLE PRIOR TO ANOTHER TRAFFIC CONTROL CHANGE SUCH AS A CROSSOVER MANEUVER.

FOR A LANE CLOSURE THAT IS IN PLACE LESS THAN 7 CONTINUOUS DAYS AND NIGHTS, THE ADVANCED WARNING SIGNS MAY BE MOUNTED ON PORTABLE SUPPORTS.



Addendum No. 01
ID 2984-38-71
Added Sheet 107A
February 19, 2019

LANE SHIFT MULTI-LANE DIVIDED OR ONE WAY ROAD

* USE ONLY IF DESIGN SPEED IS 10 MPH BELOW POSTED SPEED

TRAFFIC CONTROL - LANE SHIFT, MULTI-LANE DIVIDED OR ONE WAY ROAD
STATE OF WISCONSIN DEPARTMENT OF TRANSPORTATION
APPROVED Mar-ch 2018 DATE /S/ Andrew Heidtme WORK ZONE ENGINEER

107 A



Proposal Schedule of Items

Proposal ID: 20190312022 Project(s): 2984-38-71

Federal ID(s): WISC 2018376

SECTION: 0001 Contract Items

Alt Set ID: Alt Mbr ID:

Proposal Line Number	Item ID Description	Approximate Quantity and Units	Unit Price	Bid Amount
0002	203.0200 Removing Old Structure (station) 01. 55+42	LS	LUMP SUM	_____.
0008	203.0225.S Debris Containment (structure) 03. B-40-378	LS	LUMP SUM	_____.
0010	204.0100 Removing Pavement	863.000 SY	_____.	_____.
0012	204.0150 Removing Curb & Gutter	1,445.000 LF	_____.	_____.
0014	204.0155 Removing Concrete Sidewalk	229.000 SY	_____.	_____.
0016	204.0165 Removing Guardrail	41.000 LF	_____.	_____.
0018	204.9105.S Removing (item description) 01. (Loop Detector wire & Lead-in Cable) .01 IH 43 & Silver Spring Drive	LS	LUMP SUM	_____.
0020	205.0100 Excavation Common	470.000 CY	_____.	_____.
0022	211.0200 Prepare Foundation for Concrete Pavement (project) 01. 2984-38-71	LS	LUMP SUM	_____.
0024	213.0100 Finishing Roadway (project) 01. 2984-38-71	1.000 EACH	_____.	_____.
0026	305.0120 Base Aggregate Dense 1 1/4-Inch	650.000 TON	_____.	_____.
0028	310.0110 Base Aggregate Open-Graded	11.000 TON	_____.	_____.
0030	415.0100 Concrete Pavement 10-Inch	240.000 SY	_____.	_____.
0032	415.0410 Concrete Pavement Approach Slab	583.000 SY	_____.	_____.
0034	416.0610 Drilled Tie Bars	28.000 EACH	_____.	_____.



Proposal Schedule of Items

Proposal ID: 20190312022 Project(s): 2984-38-71

Federal ID(s): WISC 2018376

SECTION: 0001 Contract Items

Alt Set ID: Alt Mbr ID:

Proposal Line Number	Item ID Description	Approximate Quantity and Units	Unit Price	Bid Amount
0036	416.0620 Drilled Dowel Bars	115.000 EACH	_____.	_____.
0038	455.0605 Tack Coat	50.000 GAL	_____.	_____.
0040	460.2000 Incentive Density HMA Pavement	100.000 DOL	1.00000	100.00
0042	460.6224 HMA Pavement 4 MT 58-28 S	150.000 TON	_____.	_____.
0044	465.0125 Asphaltic Surface Temporary	150.000 TON	_____.	_____.
0046	502.0100 Concrete Masonry Bridges	4.000 CY	_____.	_____.
0048	502.3100 Expansion Device (structure) 01. B-40-378	LS	LUMP SUM	_____.
0050	502.3200 Protective Surface Treatment	6,590.000 SY	_____.	_____.
0052	502.3210 Pigmented Surface Sealer	395.000 SY	_____.	_____.
0054	502.4204 Adhesive Anchors No. 4 Bar	40.000 EACH	_____.	_____.
0056	502.4205 Adhesive Anchors No. 5 Bar	174.000 EACH	_____.	_____.
0058	502.4206 Adhesive Anchors No. 6 Bar	88.000 EACH	_____.	_____.
0060	505.0600 Bar Steel Reinforcement HS Coated Structures	6,640.000 LB	_____.	_____.
0062	505.0904 Bar Couplers No. 4	36.000 EACH	_____.	_____.
0064	505.0905 Bar Couplers No. 5	12.000 EACH	_____.	_____.
0066	505.0906 Bar Couplers No. 6	40.000 EACH	_____.	_____.



Proposal Schedule of Items

Proposal ID: 20190312022 Project(s): 2984-38-71

Federal ID(s): WISC 2018376

SECTION: 0001 Contract Items

Alt Set ID: Alt Mbr ID:

Proposal Line Number	Item ID Description	Approximate Quantity and Units	Unit Price	Bid Amount
0068	509.0310.S Sawing Pavement Deck Preparation Areas	100.000 LF	_____.	_____.
0070	509.0351 Preparation Decks Type 1	38.000 SY	_____.	_____.
0072	509.0352 Preparation Decks Type 2	9.000 SY	_____.	_____.
0074	509.0500 Cleaning Decks	5,287.000 SY	_____.	_____.
0076	509.1050 Joint Repair	77.000 SY	_____.	_____.
0078	509.1250 Curb Repair	2.000 LF	_____.	_____.
0080	509.1500 Concrete Surface Repair	22.000 SF	_____.	_____.
0082	509.2050 Full-Depth Deck Repair	3.000 SY	_____.	_____.
0084	509.2550 Concrete Masonry Overlay Decks	5,287.000 SY	_____.	_____.
0086	517.1800.S Structure Repainting Recycled Abrasive (structure) 01. B-40-378	LS	LUMP SUM	_____.
0088	517.3000.S Structure Overcoating Cleaning and Priming (structure) 01. B-40-378	LS	LUMP SUM	_____.
0090	517.4000.S Containment and Collection of Waste Materials (structure) 01. B-40-378	LS	LUMP SUM	_____.
0092	517.4500.S Negative Pressure Containment and Collection of Waste Materials (structure) 01. B-40-378	LS	LUMP SUM	_____.
0094	517.6001.S Portable Decontamination Facility	1.000 EACH	_____.	_____.
0096	601.0331 Concrete Curb & Gutter 31-Inch	277.000 LF	_____.	_____.



Proposal Schedule of Items

Proposal ID: 20190312022 Project(s): 2984-38-71

Federal ID(s): WISC 2018376

SECTION: 0001 Contract Items

Alt Set ID: Alt Mbr ID:

Proposal Line Number	Item ID Description	Approximate Quantity and Units	Unit Price	Bid Amount
0098	601.0405 Concrete Curb & Gutter 18-Inch Type A	85.000 LF	_____.	_____.
0100	601.0407 Concrete Curb & Gutter 18-Inch Type D	1,090.000 LF	_____.	_____.
0102	601.0409 Concrete Curb & Gutter 30-Inch Type A	50.000 LF	_____.	_____.
0104	601.0411 Concrete Curb & Gutter 30-Inch Type D	70.000 LF	_____.	_____.
0106	602.0410 Concrete Sidewalk 5-Inch	2,130.000 SF	_____.	_____.
0108	606.0200 Riprap Medium	35.000 CY	_____.	_____.
0110	611.0430 Reconstructing Inlets	4.000 EACH	_____.	_____.
0112	611.8110 Adjusting Manhole Covers	1.000 EACH	_____.	_____.
0114	611.8115 Adjusting Inlet Covers	2.000 EACH	_____.	_____.
0116	611.8120.S Cover Plates Temporary	4.000 EACH	_____.	_____.
0118	614.2300 MGS Guardrail 3	14.000 LF	_____.	_____.
0120	614.2310 MGS Guardrail 3 HS	25.000 LF	_____.	_____.
0122	614.2620 MGS Guardrail Terminal Type 2	1.000 EACH	_____.	_____.
0124	619.1000 Mobilization	1.000 EACH	_____.	_____.
0126	624.0100 Water	8.000 MGAL	_____.	_____.
0128	625.0100 Topsoil	237.000 SY	_____.	_____.
0130	625.0500 Salvaged Topsoil	65.000 SY	_____.	_____.



Proposal Schedule of Items

Proposal ID: 20190312022 Project(s): 2984-38-71

Federal ID(s): WISC 2018376

SECTION: 0001 Contract Items

Alt Set ID: Alt Mbr ID:

Proposal Line Number	Item ID Description	Approximate Quantity and Units	Unit Price	Bid Amount
0132	628.1504 Silt Fence	110.000 LF	_____.	_____.
0134	628.1520 Silt Fence Maintenance	110.000 LF	_____.	_____.
0136	628.1905 Mobilizations Erosion Control	8.000 EACH	_____.	_____.
0138	628.1910 Mobilizations Emergency Erosion Control	7.000 EACH	_____.	_____.
0140	628.7015 Inlet Protection Type C	4.000 EACH	_____.	_____.
0142	628.7020 Inlet Protection Type D	23.000 EACH	_____.	_____.
0144	629.0210 Fertilizer Type B	0.400 CWT	_____.	_____.
0146	631.0300 Sod Water	7.500 MGAL	_____.	_____.
0148	631.1000 Sod Lawn	302.000 SY	_____.	_____.
0150	634.0410 Posts Wood 4x4-Inch X 10-FT	1.000 EACH	_____.	_____.
0152	642.5001 Field Office Type B	1.000 EACH	_____.	_____.
0154	643.0300 Traffic Control Drums	30,616.000 DAY	_____.	_____.
0156	643.0410 Traffic Control Barricades Type II	30.000 DAY	_____.	_____.
0158	643.0420 Traffic Control Barricades Type III	5,274.000 DAY	_____.	_____.
0160	643.0500 Traffic Control Flexible Tubular Marker Posts	70.000 EACH	_____.	_____.
0162	643.0600 Traffic Control Flexible Tubular Marker Bases	70.000 EACH	_____.	_____.



Proposal Schedule of Items

Proposal ID: 20190312022 Project(s): 2984-38-71

Federal ID(s): WISC 2018376

SECTION: 0001 Contract Items

Alt Set ID: Alt Mbr ID:

Proposal Line Number	Item ID Description	Approximate Quantity and Units	Unit Price	Bid Amount
0164	643.0705 Traffic Control Warning Lights Type A	9,434.000 DAY	_____.	_____.
0166	643.0715 Traffic Control Warning Lights Type C	8,504.000 DAY	_____.	_____.
0168	643.0800 Traffic Control Arrow Boards	387.000 DAY	_____.	_____.
0170	643.0900 Traffic Control Signs	24,370.000 DAY	_____.	_____.
0172	643.0910 Traffic Control Covering Signs Type I	3.000 EACH	_____.	_____.
0174	643.0920 Traffic Control Covering Signs Type II	24.000 EACH	_____.	_____.
0176	643.1000 Traffic Control Signs Fixed Message	390.000 SF	_____.	_____.
0178	643.1050 Traffic Control Signs PCMS	41.000 DAY	_____.	_____.
0180	643.5000 Traffic Control	1.000 EACH	_____.	_____.
0182	644.1420.S Temporary Pedestrian Surface Plywood	25.000 SF	_____.	_____.
0184	644.1601.S Temporary Curb Ramp	4.000 EACH	_____.	_____.
0186	644.1616.S Temporary Pedestrian Safety Fence	2,255.000 LF	_____.	_____.
0188	646.1020 Marking Line Epoxy 4-Inch	375.000 LF	_____.	_____.
0190	646.1545 Marking Line Grooved Wet Ref Contrast Epoxy 4-Inch	1,580.000 LF	_____.	_____.
0192	646.3545 Marking Line Grooved Wet Ref Contrast Epoxy 8-Inch	85.000 LF	_____.	_____.
0194	646.9000 Marking Removal Line 4-Inch	1,768.000 LF	_____.	_____.



Proposal Schedule of Items

Proposal ID: 20190312022 Project(s): 2984-38-71

Federal ID(s): WISC 2018376

SECTION: 0001 Contract Items

Alt Set ID: Alt Mbr ID:

Proposal Line Number	Item ID Description	Approximate Quantity and Units	Unit Price	Bid Amount
0196	646.9100 Marking Removal Line 8-Inch	85.000 LF	_____.	_____.
0198	649.0105 Temporary Marking Line Paint 4-Inch	6,086.000 LF	_____.	_____.
0200	649.0150 Temporary Marking Line Removable Tape 4-Inch	29,215.000 LF	_____.	_____.
0202	649.0960 Temporary Marking Removable Mask Out Tape 6-Inch	693.000 LF	_____.	_____.
0204	650.8500 Construction Staking Electrical Installations (project) 01. 2984-38-71	LS	LUMP SUM	_____.
0206	652.0220 Conduit Rigid Nonmetallic Schedule 40 1 1/2-Inch	36.000 LF	_____.	_____.
0208	652.0225 Conduit Rigid Nonmetallic Schedule 40 2-Inch	118.000 LF	_____.	_____.
0210	652.0230 Conduit Rigid Nonmetallic Schedule 40 2 1/2-Inch	570.000 LF	_____.	_____.
0212	652.0330 Conduit Rigid Nonmetallic Schedule 80 2 1/2-Inch	115.000 LF	_____.	_____.
0214	652.0800 Conduit Loop Detector	242.000 LF	_____.	_____.
0216	653.0222 Junction Boxes 18x12x6-Inch	2.000 EACH	_____.	_____.
0218	655.0700 Loop Detector Lead In Cable	474.000 LF	_____.	_____.
0220	655.0800 Loop Detector Wire	534.000 LF	_____.	_____.
0222	657.6005 Anchor Assemblies Light Poles on Structures	2.000 EACH	_____.	_____.
0224	690.0150 Sawing Asphalt	1,200.000 LF	_____.	_____.



Proposal Schedule of Items

Proposal ID: 20190312022 Project(s): 2984-38-71

Federal ID(s): WISC 2018376

SECTION: 0001 Contract Items

Alt Set ID: Alt Mbr ID:

Proposal Line Number	Item ID Description	Approximate Quantity and Units	Unit Price	Bid Amount
0226	690.0250 Sawing Concrete	429.000 LF	_____.	_____.
0228	715.0415 Incentive Strength Concrete Pavement	500.000 DOL	1.00000	500.00
0230	715.0502 Incentive Strength Concrete Structures	500.000 DOL	1.00000	500.00
0232	801.0117 Railroad Flagging Reimbursement	32,000.000 DOL	1.00000	32,000.00
0234	ASP.1T0A On-the-Job Training Apprentice at \$5.00/HR	1,000.000 HRS	5.00000	5,000.00
0236	ASP.1T0G On-the-Job Training Graduate at \$5.00/HR	1,250.000 HRS	5.00000	6,250.00
0238	SPV.0060 Special 01. Remove, Salvage, and Reinstall Sign	2.000 EACH	_____.	_____.
0240	SPV.0060 Special 02. Bearing Seat Repair	2.000 EACH	_____.	_____.
0242	SPV.0060 Special 302. Fiberglass/Polymer Concrete Pull Boxes 13" x 24" x 24"	6.000 EACH	_____.	_____.
0244	SPV.0090 Special 01. Remove, Salvage, and Reinstall Beam Guard	92.000 LF	_____.	_____.
0246	SPV.0090 Special 02. Concrete Curb & Gutter 43-Inch	33.000 LF	_____.	_____.
0248	SPV.0105 Special 01. Survey Project 2984-38-71	LS	LUMP SUM	_____.
0250	603.8000 Concrete Barrier Temporary Precast Delivered	1,350.000 LF	_____.	_____.
0252	603.8125 Concrete Barrier Temporary Precast Installed	2,650.000 LF	_____.	_____.
0254	614.0905 Crash Cushions Temporary	3.000 EACH	_____.	_____.



Proposal Schedule of Items

Proposal ID: 20190312022 Project(s): 2984-38-71

Federal ID(s): WISC 2018376

SECTION: 0001 Contract Items

Alt Set ID: Alt Mbr ID:

Proposal Line Number	Item ID Description	Approximate Quantity and Units	Unit Price	Bid Amount
0256	649.0970 Temporary Marking Removable Mask Out Tape 10-Inch	106.000 LF	_____.	_____.
Section: 0001			Total:	_____.
			Total Bid:	_____.