



Wisconsin Department of Transportation

February 19, 2019

Division of Transportation Systems Development

Bureau of Project Development
4822 Madison Yards Way, 4th Floor South
Madison, WI 53705

Telephone: (608) 266-1631
Facsimile (FAX): (608) 266-8459

NOTICE TO ALL CONTRACTORS:

Proposal #55: 1560-04-70, WISC 2019 183
Hayward - Drummond
Larsen Road to CTH M
USH 63
Sawyer/Bayfield Counties

Letting of March 12, 2019

This is Addendum No. 01, which provides for the following:

Special Provisions:

| Revised Special Provisions | |
|----------------------------|----------------|
| Article No. | Description |
| 7 | Work by Others |

Schedule of Items:

| Revised Bid Item Quantities | | | | | |
|-----------------------------|------------------------------|------|--------------|------------------|----------------|
| Bid Item | Item Description | Unit | Old Quantity | Revised Quantity | Proposal Total |
| 305.0110 | Base Aggregate Dense ¾-Inch | Ton | 3,370 | 30 | 3,400 |
| 512.1000 | Piling Steel Sheet Temporary | SF | 1,900 | -830 | 1,070 |
| 633.5200 | Mark Culvert End | Each | 6 | 14 | 20 |

| Added Bid Item Quantities | | | | | |
|---------------------------|-------------------------|------|--------------|------------------|----------------|
| Bid Item | Item Description | Unit | Old Quantity | Revised Quantity | Proposal Total |
| 611.0630 | Inlet Covers Type HM-GJ | Each | 0 | 7 | 7 |

| Deleted Bid Item Quantities | | | | | |
|-----------------------------|---------------------|------|--------------|------------------|----------------|
| Bid Item | Item Description | Unit | Old Quantity | Revised Quantity | Proposal Total |
| 611.0624 | Inlet Covers Type H | Each | 7 | -7 | 0 |

Plan Sheets:

| Revised Plan Sheets | |
|----------------------------|---|
| Plan Sheet | Plan Sheet Title (brief description of changes to sheet) |
| 6 | Removed detail from Curb Adjustment. |
| 8 | Added note about using Base Aggregate for shoulder widening. |
| 9 | Added note about using Base Aggregate for shoulder widening. |
| 13 | Updated inlet covers and elevations. |
| 14 | Updated inlet covers and elevations. |
| 22 | Updated quantity for Base Aggregate Dense ¾-Inch |
| 23 | Updated quantity for Piling Steel Sheet Temporary |
| 24 | Updated bid items and elevations for Inlet Covers Type HM-GJ |
| 25 | Included undistributed quantity for Marker Culvert Ends |

The responsibility for notifying potential subcontractors and suppliers of these changes remains with the prime contractor.

Sincerely,

Mike Coleman

Proposal Development Specialist
Proposal Management Section

ADDENDUM NO. 01

1560-04-70

February 19, 2019

Special Provisions

7. Work By Others

Add the following paragraph at the end:

Project 1560-02-70/75

Project 1560-02-70/75 is a pavement replacement project on USH 63 from STH 27 to Larsen Road and will be ongoing during this project. The contractor shall coordinate with the contractor of ID 1560-02-70/75 to ensure that traffic is maintained at all times on USH 63. The construction on 1560-02-70/75 is anticipated to be completed by July 12, 2019. The 1560-02-70/75 contract includes a truck detour on USH 63. This detour will remain in place during the pipe replacements for the 1560-04-70 project. No additional payment will be made for this coordination.

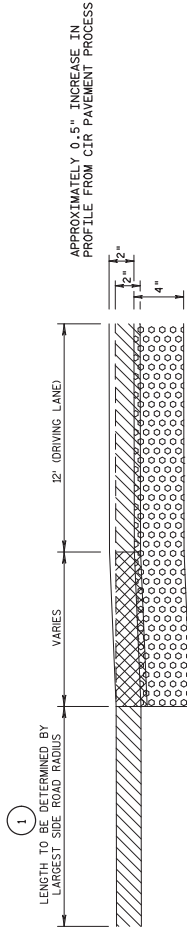
Schedule of Items

Attached, dated February 19, 2019, are the revised Schedule of Items Pages 1 – 7.

Plan Sheets

The following 8½ x 11-inch sheets are attached and made part of the plans for this proposal:
Revised: 6, 8, 9, 13, 14, 22, 23, 24, and 25.

END OF ADDENDUM

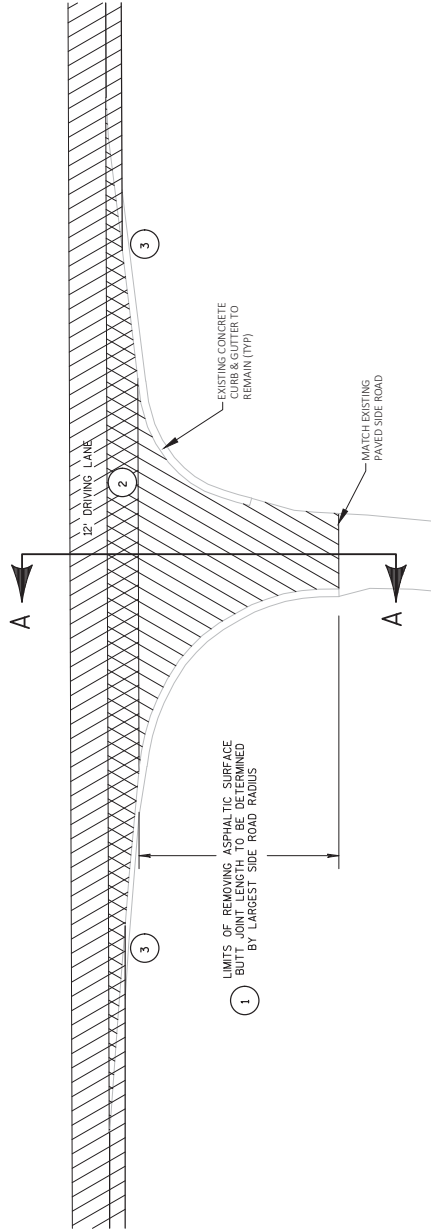


- 1 LIMITS AS DIRECTED BY THE ENGINEER.
- 2 TRANSITION SHOULDER SLOPE AND SIDE ROAD CROSS-SLOPE TO MATCH THE EXISTING CONCRETE CURB AND GUTTER FLANGE LINE.
- 3 MATCH EXISTING TAPER RATES.

- ▨ MILLING ASPHALTIC SURFACE
DEPTH VARIES FROM 2" TO 2.5"
- ▨ MILLING ASPHALTIC SURFACE
DEPTH 2"
- ▨ 4" COLD-IN-PLACE RECYCLE

CONSTRUCTION DETAIL DELETED

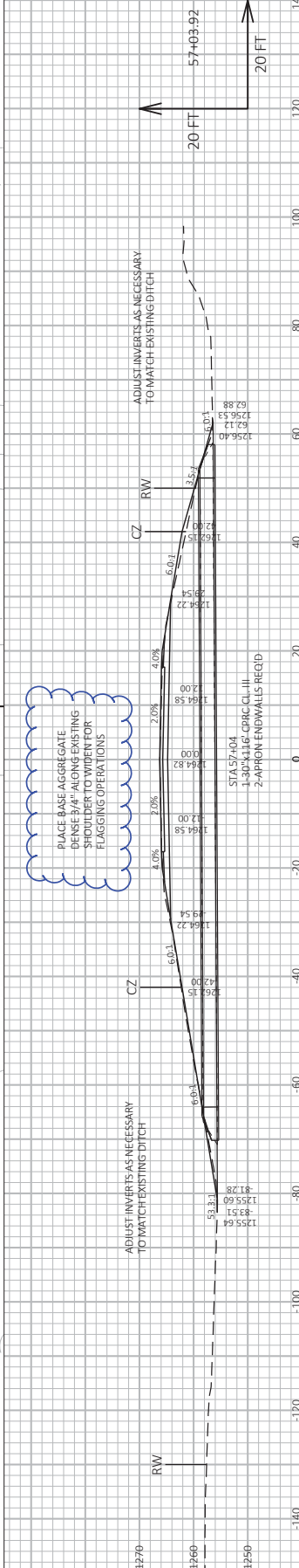
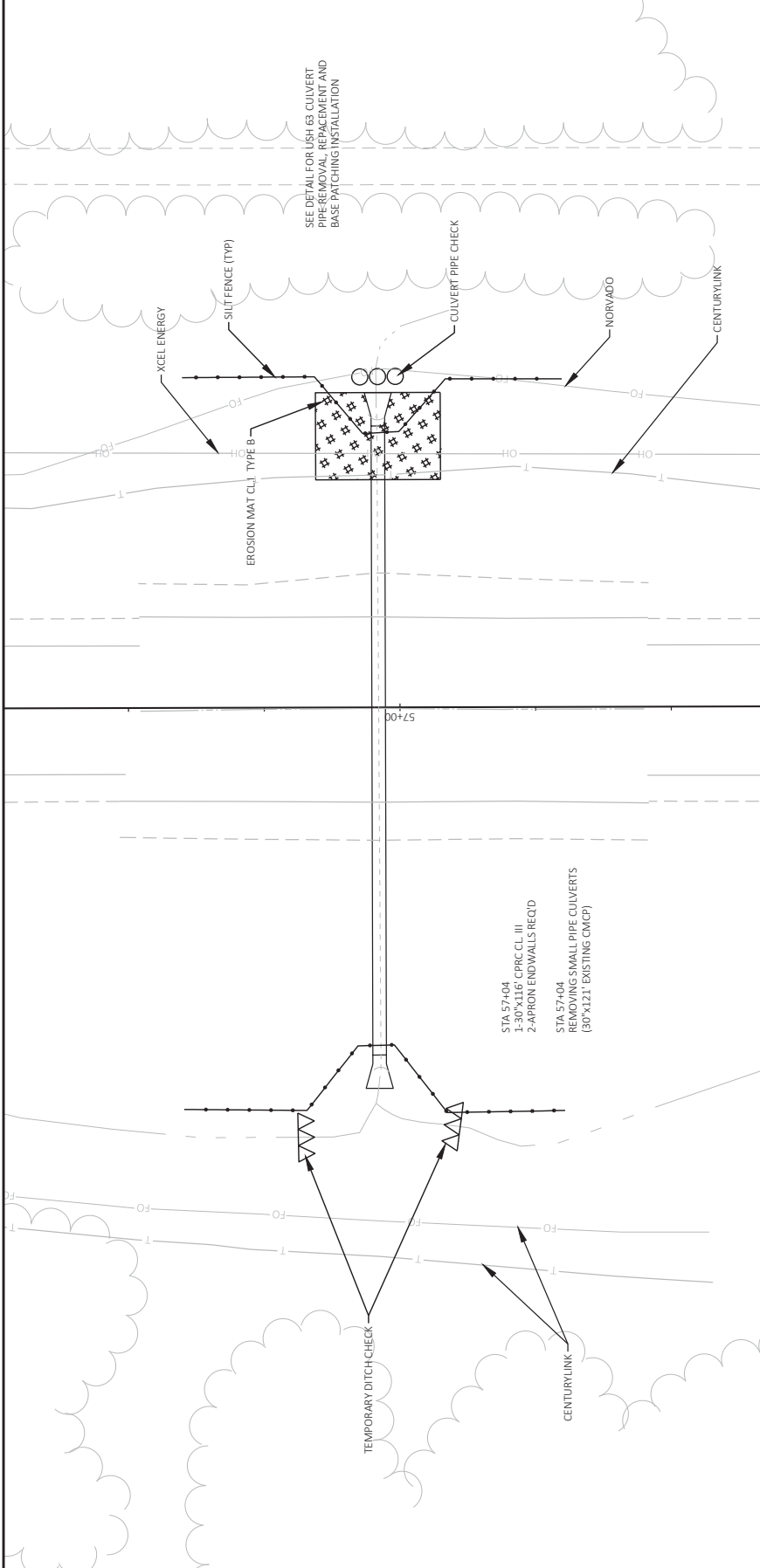
Addendum No. 01
ID 1560-04-70
Revised Sheet 6
February 19, 2019



DETAIL FOR RURAL PAVED SIDE ROAD

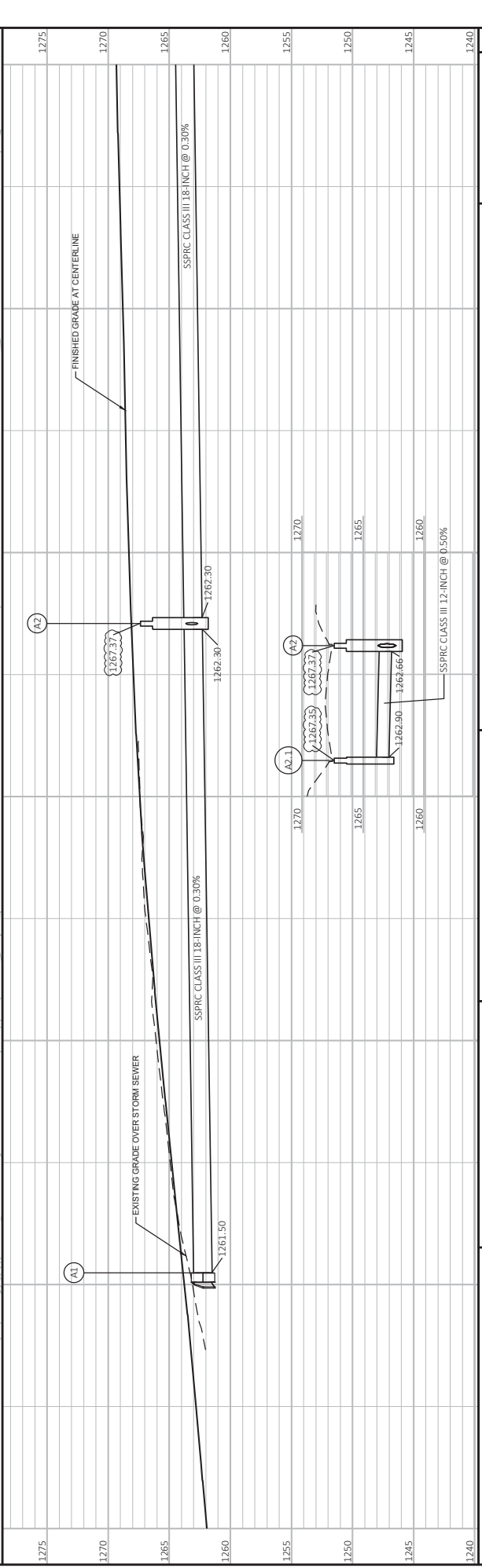
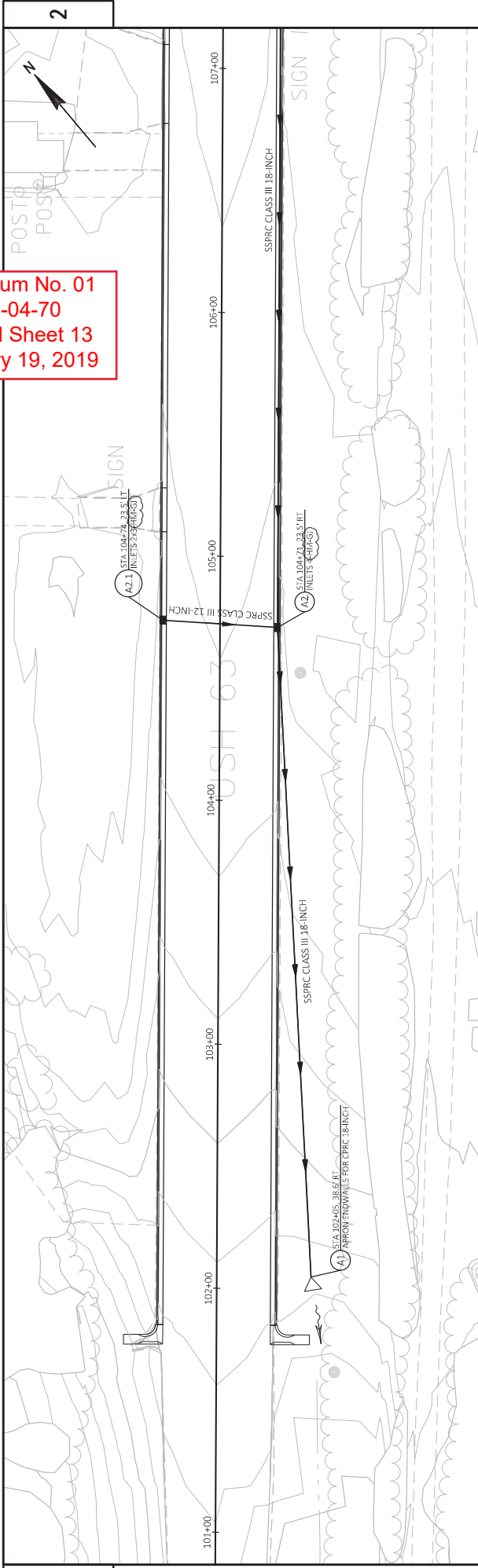


Addendum No. 01
ID 1560-04-70
Revised Sheet 8
February 19, 2019



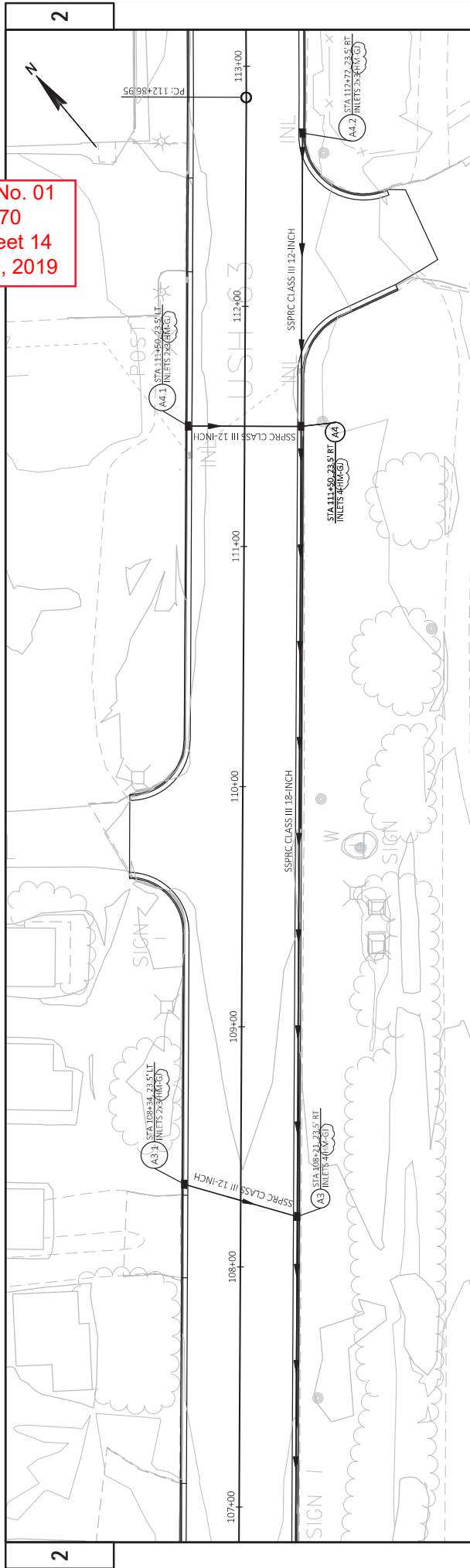
| | | | | |
|--|----------------|-------------|---------|---|
| PROJECT NO: 1560-04-70 | COUNTY: SAWYER | HWY: USH 63 | SHEET 8 | E |
| PLOT NAME: V:\TRANS-EC\10257\USH 63\30\SHEETS\PLAN\021002_CD.DWG | | | | |
| FILE NAME: -021001.dwg | | | | |
| PLOT DATE: 2/6/2019 11:53 AM | | | | |
| PLOT BY: HERRINGTON, MARK | | | | |
| PLOT NAME: CULVERT PIPE DETAIL STA 57+04 | | | | |
| PLOT SCALE: 1 IN=20 FT HORZ. / 1 IN=20 FT VERT. | | | | |

Addendum No. 01
 ID 1560-04-70
 Revised Sheet 13
 February 19, 2019



| | | | | |
|--|-------------------------------|-------------------------|----------------------|---------------------------|
| PROJECT NO: 1560-04-70 | COUNTY: SAWYER/BAYFIELD | STORM SEWER | SHEET 13 | E |
| FILE NAME: V:\TRANS-EC\1057\USH\63\3D\SHEETS\PLAN\022501_SSDWG | LAYOUT NAME: 022501_63 SAWYER | DATE: 2/6/2019 1:35 PM | BY: APRES ASSOCIATES | NAME: W6507CADDS SHEET 41 |
| PROJECT NO: 1560-04-70 | | COUNTY: SAWYER/BAYFIELD | STORM SEWER | SHEET 13 |
| HWY: USH 63 | | DATE: 2/6/2019 1:35 PM | BY: APRES ASSOCIATES | NAME: W6507CADDS SHEET 41 |
| PROJECT NO: 1560-04-70 | | COUNTY: SAWYER/BAYFIELD | STORM SEWER | SHEET 13 |
| HWY: USH 63 | | DATE: 2/6/2019 1:35 PM | BY: APRES ASSOCIATES | NAME: W6507CADDS SHEET 41 |

Addendum No. 01
 ID 1560-04-70
 Revised Sheet 14
 February 19, 2019



| | | | |
|---|-----------------------------|---------------------------------|------------------------|
| PROJECT NO: 1560-04-70 | COUNTY: SAWYER/BAYFIELD | STORM SEWER | SHEET 14 |
| FILE NAME: V:\TRANS-EC\1057\USH 63\3D\SHEETS\PLAN\022501_SS.DWG | LAYOUT NAME: 022501_SS.SWP | PLOT BY: APRES ASSOCIATES | PLOT SCALE: 1 IN=40 FT |
| DATE: 2/6/2019 1:36 PM | PLOT DATE: 2/6/2019 1:36 PM | PLOT NAME: W65007CADDS SHEET 14 | |

REMOVING SMALL PIPE CULVERTS

| STATION | LOCATION | SIZE | MATERIAL | 203.0100 EACH |
|----------------------|----------|----------|----------|------------------|
| 57+04 | USH 63 | 30"x121' | CMCP | 1 |
| 272+92 | USH 63 | 30"x106' | CMCP | 1 |
| 347+70 | USH 63 | 30"x143' | CMCP | 1 |
| PROJECT TOTAL | | | | 3 |

REMOVING ASPHALTIC SURFACE BUTT JOINTS

| STATION TO STATION | LOCATION | SY | 204.0115 |
|----------------------|---------------------|-----|-------------|
| 0+90 - 1+40 | USH 63 | 189 | |
| 476+35 - 496+85 | USH 63 | 244 | |
| 12+00 | LARSEN RD | 278 | |
| 16+80 | THANNUM FIRE LN | 221 | |
| 78+80 | STARK RD | 165 | |
| 109+80 | TOWN HALL RD | 113 | |
| 112+10 | OLD OO RD | 272 | |
| 120+60 | UHRENHOLDT RD | 241 | |
| 139+30 | PETERSON RD | 240 | |
| 146+80 | SOMMERVILLE RD | 126 | |
| 158+90 | PARK RD | 116 | |
| 175+30 | COOK RD | 208 | |
| 220+20 | MOODY'S RD | 36 | |
| 220+20 | NORTHERN LIGHTS RD | 208 | |
| 329+90 | OLD MILL RD | 221 | |
| 335+70 | LEONARD SCHOOL RD | 256 | |
| 335+70 | E LEONARD SCHOOL RD | 170 | |
| 402+40 | NAMAKAGON RIVER RD | 196 | |
| 425+90 | SHORT RD | 206 | |
| 492+70 | CABLE SUNSET RD | 234 | |
| 493+20 | CTH M | 607 | |
| PROJECT TOTAL | | | 4547 |

REMOVING ASPHALTIC SURFACE MILLING

| STATION TO STATION | SY | 204.0120 |
|----------------------|-------|---------------|
| 1+40 - 101+85 | 37947 | |
| 101+85 - 116+39 | 7108 | |
| 116+39 - 207+81 | 34536 | |
| 207+81 - 210+61 | 1369 | |
| 210+61 - 395+88 | 69991 | |
| 395+88 - 402+09 | 2596 | |
| 402+09 - 409+00 | 2610 | |
| 409+00 - 415+00 | 2267 | |
| 415+00 - 478+50 | 23989 | |
| 478+50 - 487+25 | 3305 | |
| 487+25 - 488+90 | 715 | |
| 488+90 - 496+35 | 3642 | |
| INTERSECTIONS | 4750 | |
| PROJECT TOTAL | | 194825 |

REMOVING CURB & GUTTER

| STATION TO STATION | LOCATION | LP | 204.0150 |
|----------------------|----------|------|-------------|
| 101+85 - 108+64 | LT | 795 | |
| 101+85 - 112+08 | RT | 1045 | |
| 109+95 - 116+36 | LT | 650 | |
| 112+45 - 116+36 | RT | 425 | |
| 491+50 - 492+05 | RT | 55 | |
| PROJECT TOTAL | | | 2970 |

REMOVING INLETS

| STATION | LOCATION | EACH | 204.0220 |
|----------------------|----------|------|----------|
| 111+38 | LT | 1 | |
| 111+73 | RT | 1 | |
| 112+71 | RT | 1 | |
| PROJECT TOTAL | | | 3 |

REMOVING STORM SEWER 12-INCH

| STATION TO STATION | LOCATION | LF | 204.0245.01 |
|----------------------|----------|----|-------------|
| 111+38 - 111+73 | USH 63 | 58 | |
| 111+73 - 112+71 | USH 63 | 97 | |
| PROJECT TOTAL | | | 155 |

ABANDONING CULVERT PIPES

| STATION | LOCATION | EACH | 204.0270 |
|----------------------|------------|------|----------|
| 111+55 | USH 63, LT | 1 | |
| 412+64 | USH 63 | 1 | |
| PROJECT TOTAL | | | 2 |

BACKFILL CONTROLLED LOW STRENGTH

| STATION | LOCATION | CY | 209.0200.S |
|----------------------|------------|------|-------------|
| 111+55 | USH 63, LT | 9.1 | |
| 412+64 | USH 63 | 14.4 | |
| PROJECT TOTAL | | | 23.5 |

PREPARING FOUNDATION FOR ASPHALT SHOULDER

| STATION TO STATION | LOCATION | STA | 211.0400 |
|----------------------|----------|-----|-----------|
| 394+35 - 398+00 | RT | 4 | |
| 401+50 - 402+09 | LT | 2 | |
| 408+97 - 415+03 | LT | 9 | |
| 480+49 - 487+72 | RT | 8 | |
| PROJECT TOTAL | | | 23 |

FINISHING ROADWAY

| PROJECT | EACH | 213.0100 |
|----------------------|------|----------|
| 1560-04-70 | 1 | |
| PROJECT TOTAL | | 1 |

BASE AGGREGATE DENSE

| STATION TO STATION | LOCATION | TON | 305.0120 |
|-----------------------|----------|------|-------------|
| 000+90 - 496+75 | USH 63 | 3000 | |
| PIPE REPLACEMENT | USH 63 | 100 | |
| MGS GUARDRAIL AREAS | USH 63 | 200 | |
| DRIVEWAYS | USH 63 | 100 | |
| PROJECT TOTALS | | | 3400 |



SHAPING SHOULDERS

| STATION TO STATION | LOCATION | STA | 305.0500 |
|----------------------|----------|-----|------------|
| 0+90 - 101+85 | USH 63 | 101 | |
| 115+07 - 489+40 | USH 63 | 375 | |
| PROJECT TOTAL | | | 476 |

Addendum No. 01
ID 1560-04-70
Revised Sheet 22
February 19, 2019

HMA PAVEMENT ITEMS

Table with columns: STATION TO STATION, LOCATION, TON, 465.0120 ASPHALTIC SURFACE, 465.0105 ASPHALTIC DRIVEWAYS AND SURFACE FIELD ENTRANCES, 455.0605 TACK COAT GAL. Includes sub-totals for DRIVEWAYS, INTERSECTIONS, and SOFT/YIELDING AREAS.

PROJECT TOTALS 21733 292 30 13810

REPEATING HMA PAVEMENT LONGITUDINAL JOINTS

Table with columns: STATION TO STATION, LOCATION, TON. Includes sub-totals for 0+90 - 496+85 and PROJECT TOTAL 49505.

ASPHALTIC SURFACE PATCHING

Table with columns: STATION TO STATION, LOCATION, TON. Includes sub-totals for UNDISTRIBUTED SOFT/YIELDING AREAS and PROJECT TOTAL 100.

PILING STEEL SHEET TEMPORARY

Table with columns: STATION, LOCATION, SF, 512.1000. Includes sub-totals for 347+70 and PROJECT TOTAL 1070.

CONCRETE CURB AND GUTTER 6-INCH SLOPED 30-INCH TYPE J

Table with columns: STATION TO STATION, LOCATION, LF, 601.0415. Includes sub-totals for 101+85, 101+85-112+08, 109+95, 112+45, 491+50 and PROJECT TOTAL 2841.

CULVERT PIPE REINFORCED CONCRETE CLASS III

Table with columns: STATION, LOCATION, LF, 522.1030, 522.0142, 522.0160, 60-INCH, 42-INCH, 30-INCH, 42-INCH, 60-INCH, 60-INCH. Includes sub-totals for PROJECT TOTALS 116, 86, 120, 2, 2, 2.

BARRIER SYSTEM GRADING SHAPING FINISHING

Table with columns: STATION TO STATION, LOCATION, EXCAVATION COMMON CY, BORROW CY, TOPSOIL SY, FERTILIZER TYPE A CWT, SEEDING LB, MULCHING SY, 614.0010 EACH. Includes sub-totals for PROJECT TOTAL 5.

* FOR INFORMATION ONLY

ASPHALTIC RUMBLE STRIPS 2-LANE RURAL

Table with columns: STATION, LOCATION, SY, 465.0315. Includes sub-totals for PROJECT TOTAL 10.

MGS GUARDRAIL

Table with columns: STATION TO STATION, LOCATION, GUARDRAIL 3K LF, RADIUS LF, SHORT RADIUS LF, THRIE BEAM TRANSITION LF, TERMINAL EAT EACH, 614.2300, 614.2330, 614.2500, 614.2610, 614.2630. Includes sub-totals for PROJECT TOTALS 1189, 350, 76, 78, 6, 2.

Addendum No. 01 ID 1560-04-70 Revised Sheet 23 February 19, 2019

STORM SEWER STRUCTURES

522.1018 APRON ENDWALLS FOR 611.0630 611.3004 611.3230 650.4000
CULVERT PIPE REINFORCED CONCRETE 18-INCH INLET COVERS 4'-FT DIAMETER 2x3-FT STORM SEWER
CONCRETE 18-INCH INLET COVERS TYPE HM-GJ EACH EACH EACH EACH CONSTRUCTION

| STRUCTURE | STATION | OFFSET* | LOCATION | CONCRETE 18-INCH INLET COVERS TYPE HM-GJ EACH | 4'-FT DIAMETER INLETS EACH | 2x3-FT STORM SEWER EACH | STAKING STORM SEWER EACH | RIM*** ELEVATION | INVERT** ELEVATION | DEPTH*** FT | |
|----------------|---------|----------|----------|---|----------------------------|-------------------------|--------------------------|------------------|--------------------|-------------|---|
| A1 | 120+05 | 38.6' RT | USH 63 | 1 | --- | --- | 1 | --- | 1261.50 | --- | |
| A2 | 104+71 | 23.5' RT | USH 63 | --- | 1 | --- | 1 | 1267.37 | 1262.30 | 4.24 | |
| A3 | 108+21 | 23.5' RT | USH 63 | --- | 1 | --- | 1 | 1269.28 | 1263.35 | 5.10 | |
| A4 | 111+50 | 23.5' RT | USH 63 | --- | 1 | --- | 1 | 1269.58 | 1264.34 | 4.41 | |
| A2.1 | 104+74 | 23.5' LT | USH 63 | --- | 1 | --- | 1 | 1267.35 | 1262.90 | 3.62 | |
| A3.1 | 108+34 | 23.5' LT | USH 63 | --- | 1 | --- | 1 | 1269.18 | 1264.58 | 3.77 | |
| A4.1 | 111+50 | 23.5' LT | USH 63 | --- | 1 | --- | 1 | 1269.37 | 1264.90 | 3.64 | |
| A4.2 | 112+72 | 23.5' RT | USH 63 | --- | 1 | --- | 1 | 1270.16 | 1265.65 | 3.68 | |
| PROJECT TOTALS | | | | 1 | 7 | 3 | 4 | | | | 8 |

REMARKS
 * STATIONS AND OFFSETS ARE TO CENTER OF STRUCTURE
 ** THE INVERT ELEVATION IS THE ELEVATION OF THE LOWEST PIPE FLOW LINE
 *** DEPTH = RIM ELEV - INVERT ELEV - INLET COVER HEIGHT - 6-INCH ADJUSTMENT RING HEIGHT
 **** RIM EQUALS FLOWLINE FOR CURB TYPE INLET COVERS

STORM SEWER PIPE REINFORCED CONCRETE CLASS III

| FROM | TO | LOCATION | 12-INCH LF | 18-INCH LF | START INVERT | END INVERT | SLOPE (FT/FT) |
|----------------|----|----------|------------|------------|--------------|------------|---------------|
| A2 | - | A1 | --- | 267 | 1262.30 | 1261.50 | 0.0030 |
| A2.1 | - | A2 | 47 | --- | 1262.90 | 1262.66 | 0.0051 |
| A3 | - | A2 | --- | 350 | 1263.35 | 1262.30 | 0.0030 |
| A3.1 | - | A3 | 49 | --- | 1264.58 | 1263.85 | 0.0150 |
| A4 | - | A3 | --- | 329 | 1264.34 | 1263.35 | 0.0030 |
| A4.1 | - | A4 | 47 | --- | 1264.90 | 1264.66 | 0.0051 |
| A4.2 | - | A4 | 122 | --- | 1265.65 | 1264.84 | 0.0066 |
| PROJECT TOTALS | | | 265 | 946 | | | |

Addendum No. 01
 ID 1560-04-70
 Revised Sheet 24
 February 19, 2019

MAINTENANCE AND REPAIR OF HAUL ROADS

| PROJECT | 618.0100 EACH | MOBILIZATION | 619.1000 EACH | WATER | 624.0100 MGAL |
|----------------------|------------------|----------------------|------------------|---------------------------------|------------------|
| 1560-04-70 | 1 | 1560-04-70 | 1 | BASE COMPACTION DUST CONTROL | 62 10 |
| PROJECT TOTAL | 1 | PROJECT TOTAL | 1 | PROJECT TOTAL | 72 |

TEMPORARY DITCH CHECKS

| STATION | LOCATION | LF |
|----------------------|----------|-----------|
| 57+04 | LT | 24 |
| 272+92 | LT | 12 |
| 347+70 | LT | 12 |
| UNDISTRIBUTED | | 12 |
| PROJECT TOTAL | | 60 |

SALVAGED TOPSOIL, MULCHING, FERTILIZER, & SEEDING

| STATION TO STATION | SY | MULCHING | TYPE A | CWT | SEEDING MIXTURE NO. 20 | SEEDING MIXTURE NO. 40 | TEMPORARY |
|-------------------------------------|-------------|------------|------------|-----------|------------------------|------------------------|-----------|
| PIPE LOCATIONS | 500 | 150 | 0.3 | 14 | --- | 7 | |
| STORM SEWER/CURB & GUTTER LOCATIONS | 1000 | --- | 0.6 | 14 | 14 | 14 | |
| UNDISTRIBUTED | --- | 40 | 0.1 | 4 | 10 | 3 | |
| PROJECT TOTALS | 1500 | 190 | 1.0 | 32 | 24 | 24 | 24 |

SILT FENCE

| STATION TO STATION | LOCATION | LF | LF |
|-----------------------|----------|------------|------------|
| 56+70 - 57+40 | LT & RT | 160 | 160 |
| 272+62 - 273+25 | LT & RT | 144 | 144 |
| 347+36 - 348+03 | LT & RT | 158 | 158 |
| UNDISTRIBUTED | PROJECT | 238 | 238 |
| PROJECT TOTALS | | 700 | 700 |

MOBILIZATIONS EROSION CONTROL AND EMERGENCY EROSION CONTROL

| PROJECT | 628.1504 EACH | 628.1905 EACH | 628.1910 EMERGENCY |
|-----------------------|------------------|------------------|-----------------------|
| 1560-04-70 | 4 | 4 | 4 |
| PROJECT TOTALS | 4 | 4 | 4 |

EROSION MAT

| STATION TO STATION | LOCATION | SY | CL.I TYPE B | CL.II TYPE C |
|-----------------------|-------------------|------------|-------------|--------------|
| 56+93 - 57+15 | RT | 50 | --- | --- |
| 272+80 - 273+05 | RT | 34 | --- | --- |
| 347+57 - 347+82 | LT | 100 | --- | --- |
| 347+57 - 347+82 | RT | 95 | --- | --- |
| BEHIND CURB & GUTTER | LT & RT | 400 | --- | --- |
| UNDISTRIBUTED | NEAR STREAM BANKS | --- | 100 | --- |
| UNDISTRIBUTED | | 171 | --- | --- |
| PROJECT TOTALS | | 850 | 100 | |

INLET PROTECTION

| STATION | LOCATION | TYPE A | TYPE B | TYPE C |
|-----------------------|-----------|----------|----------|----------|
| 104+71 | INLET, RT | 1 | 1 | 1 |
| 104+74 | INLET, LT | 1 | 1 | 1 |
| 108+21 | INLET, RT | 1 | 1 | 1 |
| 108+34 | INLET, LT | 1 | 1 | 1 |
| 111+51 | INLET, LT | 1 | 1 | 1 |
| 111+51 | INLET, RT | 1 | 1 | 1 |
| 112+72 | INLET, RT | 1 | 1 | 1 |
| PROJECT TOTALS | | 7 | 7 | 7 |

FIELD OFFICE TYPE B

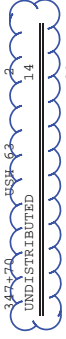
| PROJECT | 642.5001 EACH |
|----------------------|------------------|
| 1560-04-70 | 1 |
| PROJECT TOTAL | 1 |

TEMPORARY PORTABLE RUMBLE STRIP

| PROJECT | 643.0310.S LS |
|----------------------|------------------|
| 1560-04-70 | 1 |
| PROJECT TOTAL | 1 |

MARKER CULVERT END

| STATION | LOCATION | EACH |
|----------------------|----------|-----------|
| 57+04 | USH 63 | 2 |
| 272+92 | USH 63 | 2 |
| 347+36 | USH 63 | 2 |
| UNDISTRIBUTED | | 14 |
| PROJECT TOTAL | | 20 |



Addendum No. 01
ID 1560-04-70
Revised Sheet 25
February 19, 2019



Proposal Schedule of Items

Proposal ID: 20190312055 Project(s): 1560-04-70

Federal ID(s): WISC 2019183

SECTION: 0001

Contract Items

Alt Set ID:

Alt Mbr ID:

| Proposal Line Number | Item ID Description | Approximate Quantity and Units | Unit Price | Bid Amount |
|----------------------|--|--------------------------------|------------|------------|
| 0002 | 203.0100 Removing Small Pipe Culverts | 3.000 EACH | _____ | _____ |
| 0004 | 204.0115 Removing Asphaltic Surface Butt Joints | 4,547.000 SY | _____ | _____ |
| 0006 | 204.0120 Removing Asphaltic Surface Milling | 194,825.000 SY | _____ | _____ |
| 0008 | 204.0150 Removing Curb & Gutter | 2,970.000 LF | _____ | _____ |
| 0010 | 204.0220 Removing Inlets | 3.000 EACH | _____ | _____ |
| 0012 | 204.0245 Removing Storm Sewer (size) 01. 12-Inch | 155.000 LF | _____ | _____ |
| 0014 | 204.0270 Abandoning Culvert Pipes | 2.000 EACH | _____ | _____ |
| 0016 | 209.0200.S Backfill Controlled Low Strength | 23.500 CY | _____ | _____ |
| 0018 | 211.0400 Prepare Foundation for Asphaltic Shoulders | 23.000 STA | _____ | _____ |
| 0020 | 213.0100 Finishing Roadway (project) 01. 1560-04-70 | 1.000 EACH | _____ | _____ |
| 0022 | 305.0110 Base Aggregate Dense 3/4-Inch | 3,400.000 TON | _____ | _____ |
| 0024 | 305.0120 Base Aggregate Dense 1 1/4-Inch | 180.000 TON | _____ | _____ |
| 0026 | 305.0500 Shaping Shoulders | 476.000 STA | _____ | _____ |
| 0028 | 455.0605 Tack Coat | 13,810.000 GAL | _____ | _____ |
| 0030 | 460.2000 Incentive Density HMA Pavement | 13,830.000 DOL | 1.00000 | 13,830.00 |
| 0032 | 460.4110.S Reheating HMA Pavement Longitudinal Joints | 49,505.000 LF | _____ | _____ |



Proposal Schedule of Items

Proposal ID: 20190312055 Project(s): 1560-04-70

Federal ID(s): WISC 2019183

SECTION: 0001

Contract Items

Alt Set ID:

Alt Mbr ID:

| Proposal Line Number | Item ID Description | Approximate Quantity and Units | Unit Price | Bid Amount |
|----------------------|---|--------------------------------|------------|------------|
| 0034 | 460.6444 HMA Pavement 4 MT 58-34 H | 21,733.000 TON | _____. | _____. |
| 0036 | 465.0105 Asphaltic Surface | 292.000 TON | _____. | _____. |
| 0038 | 465.0110 Asphaltic Surface Patching | 100.000 TON | _____. | _____. |
| 0040 | 465.0120 Asphaltic Surface Driveways and Field Entrances | 30.000 TON | _____. | _____. |
| 0042 | 465.0315 Asphaltic Flumes | 10.000 SY | _____. | _____. |
| 0044 | 465.0425 Asphaltic Shoulder Rumble Strips 2-Lane Rural | 93,180.000 LF | _____. | _____. |
| 0046 | 465.0475 Asphalt Centerline Rumble Strips 2-Lane Rural | 29,600.000 LF | _____. | _____. |
| 0048 | 512.1000 Piling Steel Sheet Temporary | 1,070.000 SF | _____. | _____. |
| 0050 | 522.0130 Culvert Pipe Reinforced Concrete Class III 30-Inch | 116.000 LF | _____. | _____. |
| 0052 | 522.0142 Culvert Pipe Reinforced Concrete Class III 42-Inch | 86.000 LF | _____. | _____. |
| 0054 | 522.0160 Culvert Pipe Reinforced Concrete Class III 60-Inch | 120.000 LF | _____. | _____. |
| 0056 | 522.1018 Apron Endwalls for Culvert Pipe Reinforced Concrete 18-Inch | 1.000 EACH | _____. | _____. |
| 0058 | 522.1030 Apron Endwalls for Culvert Pipe Reinforced Concrete 30-Inch | 2.000 EACH | _____. | _____. |
| 0060 | 522.1042 Apron Endwalls for Culvert Pipe Reinforced Concrete 42-Inch | 2.000 EACH | _____. | _____. |



Proposal Schedule of Items

Proposal ID: 20190312055 Project(s): 1560-04-70

Federal ID(s): WISC 2019183

SECTION: 0001

Contract Items

Alt Set ID:

Alt Mbr ID:

| Proposal Line Number | Item ID Description | Approximate Quantity and Units | Unit Price | Bid Amount |
|----------------------|---|--------------------------------|------------|------------|
| 0062 | 522.1060 Apron Endwalls for Culvert Pipe Reinforced Concrete 60-Inch | 2.000 EACH | _____. | _____. |
| 0064 | 601.0415 Concrete Curb & Gutter 6-Inch Sloped 30-Inch Type J | 2,841.000 LF | _____. | _____. |
| 0066 | 608.0312 Storm Sewer Pipe Reinforced Concrete Class III 12-Inch | 265.000 LF | _____. | _____. |
| 0068 | 608.0318 Storm Sewer Pipe Reinforced Concrete Class III 18-Inch | 946.000 LF | _____. | _____. |
| 0072 | 611.3004 Inlets 4-FT Diameter | 3.000 EACH | _____. | _____. |
| 0074 | 611.3230 Inlets 2x3-FT | 4.000 EACH | _____. | _____. |
| 0076 | 614.0010 Barrier System Grading Shaping Finishing | 5.000 EACH | _____. | _____. |
| 0078 | 614.2300 MGS Guardrail 3 | 1,189.000 LF | _____. | _____. |
| 0080 | 614.2330 MGS Guardrail 3 K | 350.000 LF | _____. | _____. |
| 0082 | 614.2350 MGS Guardrail Short Radius | 76.000 LF | _____. | _____. |
| 0084 | 614.2500 MGS Thrie Beam Transition | 78.000 LF | _____. | _____. |
| 0086 | 614.2610 MGS Guardrail Terminal EAT | 6.000 EACH | _____. | _____. |
| 0088 | 614.2630 MGS Guardrail Short Radius Terminal | 2.000 EACH | _____. | _____. |
| 0090 | 618.0100 Maintenance And Repair of Haul Roads (project) 01. 1560-04-70 | 1.000 EACH | _____. | _____. |
| 0092 | 619.1000 Mobilization | 1.000 EACH | _____. | _____. |



Proposal Schedule of Items

Proposal ID: 20190312055 Project(s): 1560-04-70

Federal ID(s): WISC 2019183

SECTION: 0001

Contract Items

Alt Set ID:

Alt Mbr ID:

| Proposal Line Number | Item ID Description | Approximate Quantity and Units | Unit Price | Bid Amount |
|----------------------|---|--------------------------------|------------|------------|
| 0094 | 624.0100 Water | 72.000 MGAL | _____. | _____. |
| 0096 | 625.0500 Salvaged Topsoil | 1,500.000 SY | _____. | _____. |
| 0098 | 627.0200 Mulching | 190.000 SY | _____. | _____. |
| 0100 | 628.1504 Silt Fence | 700.000 LF | _____. | _____. |
| 0102 | 628.1520 Silt Fence Maintenance | 700.000 LF | _____. | _____. |
| 0104 | 628.1905 Mobilizations Erosion Control | 4.000 EACH | _____. | _____. |
| 0106 | 628.1910 Mobilizations Emergency Erosion Control | 4.000 EACH | _____. | _____. |
| 0108 | 628.2004 Erosion Mat Class I Type B | 850.000 SY | _____. | _____. |
| 0110 | 628.2027 Erosion Mat Class II Type C | 100.000 SY | _____. | _____. |
| 0112 | 628.7005 Inlet Protection Type A | 7.000 EACH | _____. | _____. |
| 0114 | 628.7015 Inlet Protection Type C | 7.000 EACH | _____. | _____. |
| 0116 | 628.7504 Temporary Ditch Checks | 60.000 LF | _____. | _____. |
| 0118 | 628.7555 Culvert Pipe Checks | 32.000 EACH | _____. | _____. |
| 0120 | 629.0205 Fertilizer Type A | 1.000 CWT | _____. | _____. |
| 0122 | 630.0120 Seeding Mixture No. 20 | 32.000 LB | _____. | _____. |
| 0124 | 630.0140 Seeding Mixture No. 40 | 24.000 LB | _____. | _____. |
| 0126 | 630.0200 Seeding Temporary | 24.000 LB | _____. | _____. |



Proposal Schedule of Items

Proposal ID: 20190312055 Project(s): 1560-04-70

Federal ID(s): WISC 2019183

SECTION: 0001

Contract Items

Alt Set ID:

Alt Mbr ID:

| Proposal Line Number | Item ID Description | Approximate Quantity and Units | Unit Price | Bid Amount |
|----------------------|---|--------------------------------|------------|------------|
| 0128 | 633.5200 Markers Culvert End | 20.000 EACH | _____. | _____. |
| 0130 | 634.0614 Posts Wood 4x6-Inch X 14-FT | 91.000 EACH | _____. | _____. |
| 0132 | 634.0616 Posts Wood 4x6-Inch X 16-FT | 53.000 EACH | _____. | _____. |
| 0134 | 634.0618 Posts Wood 4x6-Inch X 18-FT | 11.000 EACH | _____. | _____. |
| 0136 | 634.0620 Posts Wood 4x6-Inch X 20-FT | 2.000 EACH | _____. | _____. |
| 0138 | 637.2210 Signs Type II Reflective H | 731.410 SF | _____. | _____. |
| 0140 | 637.2230 Signs Type II Reflective F | 150.720 SF | _____. | _____. |
| 0142 | 638.2102 Moving Signs Type II | 3.000 EACH | _____. | _____. |
| 0144 | 638.2602 Removing Signs Type II | 108.000 EACH | _____. | _____. |
| 0146 | 638.3000 Removing Small Sign Supports | 136.000 EACH | _____. | _____. |
| 0148 | 642.5001 Field Office Type B | 1.000 EACH | _____. | _____. |
| 0150 | 643.0310.S Temporary Portable Rumble Strips | 1.000 LS | _____. | _____. |
| 0152 | 643.0900 Traffic Control Signs | 13,050.000 DAY | _____. | _____. |
| 0154 | 643.5000 Traffic Control | 1.000 EACH | _____. | _____. |
| 0156 | 646.1020 Marking Line Epoxy 4-Inch | 51,420.000 LF | _____. | _____. |
| 0158 | 646.1040 Marking Line Grooved Wet Ref Epoxy 4-Inch | 99,540.000 LF | _____. | _____. |



Proposal Schedule of Items

Proposal ID: 20190312055 Project(s): 1560-04-70

Federal ID(s): WISC 2019183

SECTION: 0001

Contract Items

Alt Set ID:

Alt Mbr ID:

| Proposal Line Number | Item ID Description | Approximate Quantity and Units | Unit Price | Bid Amount |
|----------------------|--|--------------------------------|------------|------------|
| 0160 | 646.5020 Marking Arrow Epoxy | 18.000 EACH | _____ | _____ |
| 0162 | 646.6120 Marking Stop Line Epoxy 18-Inch | 121.000 LF | _____ | _____ |
| 0164 | 646.7120 Marking Diagonal Epoxy 12-Inch | 220.000 LF | _____ | _____ |
| 0166 | 648.0100 Locating No-Passing Zones | 8.830 MI | _____ | _____ |
| 0168 | 649.0105 Temporary Marking Line Paint 4-Inch | 189,448.000 LF | _____ | _____ |
| 0170 | 650.4000 Construction Staking Storm Sewer | 8.000 EACH | _____ | _____ |
| 0172 | 650.5500 Construction Staking Curb Gutter and Curb & Gutter | 2,841.000 LF | _____ | _____ |
| 0174 | 650.6000 Construction Staking Pipe Culverts | 3.000 EACH | _____ | _____ |
| 0176 | 650.8000 Construction Staking Resurfacing Reference | 49,595.000 LF | _____ | _____ |
| 0178 | 650.9910 Construction Staking Supplemental Control (project) 01. 1560-04-70 | LS | LUMP SUM | _____ |
| 0180 | 690.0150 Sawing Asphalt | 204.000 LF | _____ | _____ |
| 0182 | 690.0250 Sawing Concrete | 5.000 LF | _____ | _____ |
| 0184 | 740.0440 Incentive IRI Ride | 37,600.000 DOL | 1.00000 | 37,600.00 |
| 0186 | ASP.1T0A On-the-Job Training Apprentice at \$5.00/HR | 630.000 HRS | 5.00000 | 3,150.00 |
| 0188 | ASP.1T0G On-the-Job Training Graduate at \$5.00/HR | 2,000.000 HRS | 5.00000 | 10,000.00 |



Proposal Schedule of Items

Proposal ID: 20190312055 Project(s): 1560-04-70

Federal ID(s): WISC 2019183

SECTION: 0001

Contract Items

Alt Set ID:

Alt Mbr ID:

| Proposal Line Number | Item ID Description | Approximate Quantity and Units | Unit Price | Bid Amount |
|----------------------|--|--------------------------------|------------|------------|
| 0190 | SPV.0035 Special 01. Base Repair for CIR Pavement | 300.000 CY | _____. | _____. |
| 0192 | SPV.0060 Special 01. Ditch Cleaning | 3.000 EACH | _____. | _____. |
| 0194 | SPV.0105 Special 01. Prepare Foundation for HMA Layer 1560-04-70 | LS | LUMP SUM | _____. |
| 0196 | SPV.0105 Special 02. Prepare Foundation for CIR Asphalt Pavement | LS | LUMP SUM | _____. |
| 0198 | SPV.0165 Special 01. Remove and Salvage Brick Pavers | 315.000 SF | _____. | _____. |
| 0200 | SPV.0180 Special 01. Cold In Place Recycling (CIR) Asphalt Pavement | 143,489.000 SY | _____. | _____. |
| 0202 | SPV.0195 Special 01. Asphalt Stabilizing Agent | 504.000 TON | _____. | _____. |
| 0204 | 611.0630 Inlet Covers Type HM-GJ | 7.000 EACH | _____. | _____. |
| Section: 0001 | | | Total: | _____. |
| | | | Total Bid: | _____. |

