



# Wisconsin Department of Transportation

May 2, 2019

## Division of Transportation Systems Development

Bureau of Project Development  
4822 Madison Yards Way, 4<sup>th</sup> Floor South  
Madison, WI 53705

Telephone: (608) 266-1631  
Facsimile (FAX): (608) 266-8459

### NOTICE TO ALL CONTRACTORS:

**Proposal #18: 2120-16-70, WISC 2019 289**  
**STH 24**  
**Intersection with 92<sup>nd</sup> St**  
**STH 24**  
**Milwaukee County**

### Letting of May 14, 2019

This is Addendum No. 01, which provides for the following:

#### Special Provisions:

Revised Special Provisions	
Article No.	Description
3	Prosecution and Progress

Added Special Provisions	
Article No.	Description
39	Poles Type 9, Item 657.0345; Poles Type 12, Item 657.0355; Poles Type 13, Item 657.0360; Monotube Arms 30-FT, Item 657.0530; Monotube Arms 35-FT, Item 657.0535; Monotube Arms 40-FT, Item 657.0540; Monotube Arms 45-FT, Item 657.0545; Luminaire Arms Steel 15-FT, Item 657.0815.

Deleted Special Provisions	
Article No.	Description
34	Luminaire Arm, Steel, 15' Clamp-on, Item SPV.0060.04.

#### Schedule of Items:

Revised Bid Item Quantities					
Bid Item	Item Description	Unit	Old Quantity	Revised Quantity	Proposal Total
657.0815	Luminaire Arms Steel 15-FT	Each	2	-1	1

<b>Deleted Bid Item Quantities</b>					
Bid Item	Item Description	Unit	Old Quantity	Revised Quantity	Proposal Total
SPV.0060.04	Luminaire Arm, Steel, 15' Clamp-on	Each	1	-1	0

**Plan Sheets:**

<b>Revised Plan Sheets</b>	
Plan Sheet	Plan Sheet Title (brief description of changes to sheet)
31	Traffic Signal Plan – changed callout
35	Revised Video Detection Cable callout
73	Change callout on cameras
77	Miscellaneous Quantities – Added State Furnished items, removed SPV0.0060.04

The responsibility for notifying potential subcontractors and suppliers of these changes remains with the prime contractor.

Sincerely,

*Mike Coleman*

Proposal Development Specialist  
Proposal Management Section

**ADDENDUM NO. 02**

**2120-16-70**

**May 2, 2019**

**Special Provisions**

**3. Prosecution and Progress.**

*Add the following after paragraph three:*

Once all work is complete, except for monotube materials with delayed deliveries (poles, arms, signals, wiring), work will be suspended until the materials are available. At that time, the contractor shall re-mobilize to complete all remaining work under the remaining contract time. Begin work within 10 calendar days after the engineer provides written notice to resume work.

**34. DELETED.**

**39. Poles Type 9, Item 657.0345; Poles Type 12, Item 657.0355; Poles Type 13, Item 657.0360; Monotube Arms 30-FT, Item 657.0530; Monotube Arms 35-FT, Item 657.0535; Monotube Arms 40-FT, Item 657.0540; Monotube Arms 45-FT, Item 657.0545; Luminaire Arms, Steel, 15-FT, Item 657.0815.**

Perform the work conforming to standard spec 657 except the department will furnish the following:

- Type 9, 10, 12, and 13 poles, hand hole covers, and pole caps.
- Monotube arms.
- Luminaire arms steel.

The department furnished poles, arms, and components are located at 935 S. 60th St., West Allis WI 53214-3362 Contact Bree Johns-Konkol at (414) 266-1170 or (414) 750-2814 to coordinate pick-up at a mutually agreed time between Tuesday – Thursday, 7:00 AM – 2:00 PM. 5-day notice required for pick-up.

**Schedule of Items**

Attached, dated May 1, 2019, are the revised Schedule of Items Pages 9 and 10.

**Plan Sheets**

The following 8½ x 11-inch sheets are attached and made part of the plans for this proposal:  
Revised: 77.

END OF ADDENDUM



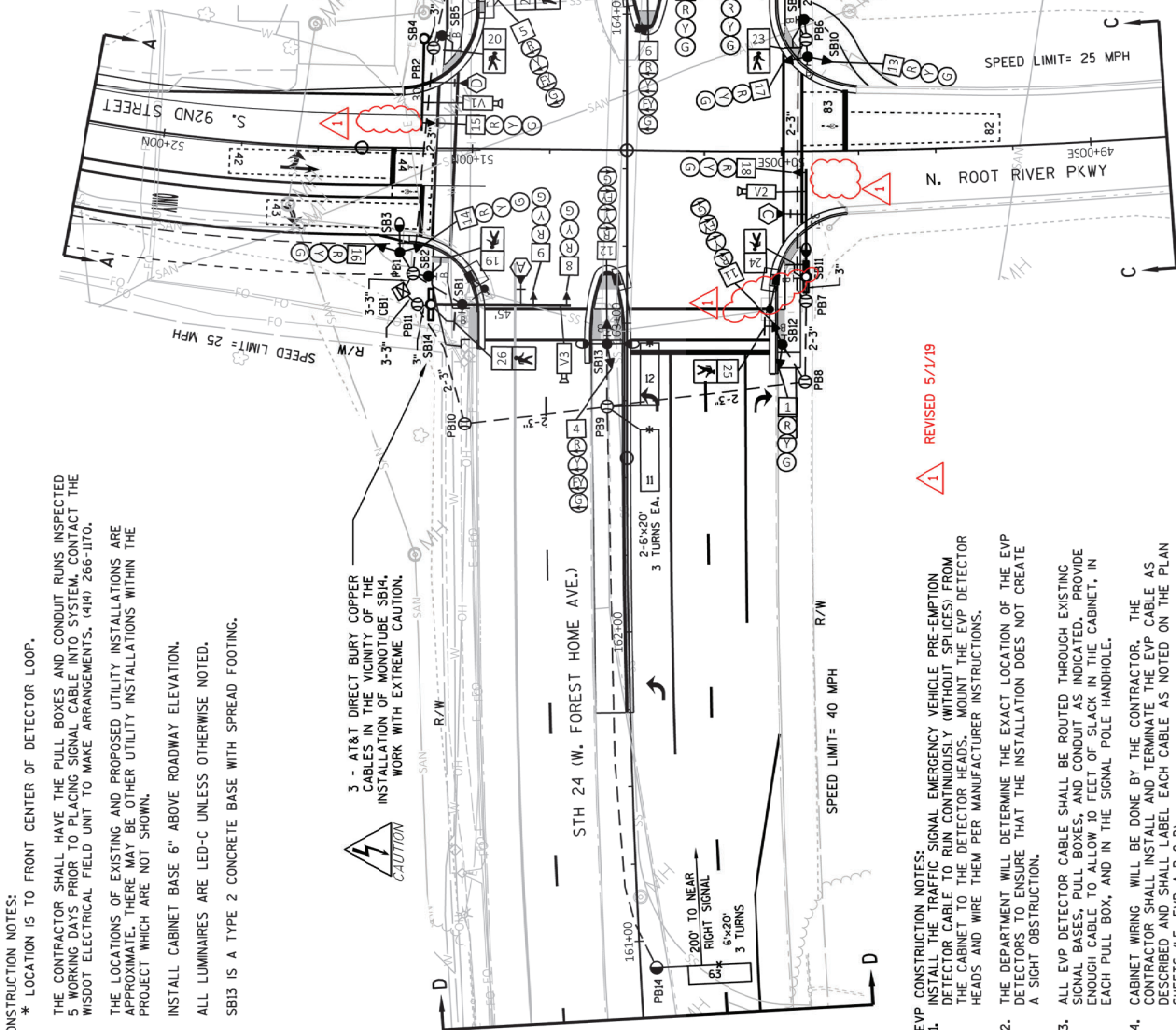
- PULL BOX, 24" x 36"
- ⊙ PULL BOX, 24" x 42"
- ⊗ SIGNAL HEAD NUMBER
- ⊙ RED CIRCULAR INDICATOR
- ⊙ YELLOW CIRCULAR INDICATOR
- ⊙ GREEN CIRCULAR INDICATOR
- ⊙ RED ARROW
- ⊙ YELLOW ARROW
- ⊙ GREEN ARROW
- ⊙ WALK/DON'T WALK INDICATOR 18" (COUNTDOWN TIMER)
- ⊙ EVP DESIGNATOR
- ⊙ EVP DETECTOR HEAD

- ⊗ CONTROL CABINET
- NONMETALLIC CONDUIT 2", UNLESS OTHERWISE NOTED
- LOOP DETECTOR CONDUIT, 1" NONMETALLIC
- ⊙ SIGNAL HEAD, TRAFFIC SIGNAL STANDARD, PEDESTAL BASE
- (XX) MONOTUBE BASE, POLE, 15'-30' ARM
- (XX) MONOTUBE BASE, POLE, 35'-55' ARM
- ⊙ PEDESTRIAN HEAD WITH PUSH BUTTON
- ⊙ PUSH BUTTON
- ⊙ LOOP DETECTOR IN 1" NONMETALLIC CONDUIT
- ⊙ VIDEO DETECTION AREA
- ⊙ VIDEO DETECTION CAMERA

NOTE: ALL LENSES ARE 12 INCH  
GRAY SHADE REPRESENTS EXISTING

- 1. \* LOCATION IS TO FRONT CENTER OF DETECTOR LOOP.
- 2. THE CONTRACTOR SHALL HAVE THE PULL BOXES AND CONDUIT RUNS INSPECTED 5 WORKING DAYS PRIOR TO PLACING SIGNAL CABLE INTO SYSTEM, CONTACT THE WISDOT ELECTRICAL UNIT TO MAKE ARRANGEMENTS. (414) 266-1170.
- 3. THE LOCATIONS OF EXISTING AND PROPOSED UTILITY INSTALLATIONS ARE APPROXIMATE. THERE MAY BE OTHER UTILITY INSTALLATIONS WITHIN THE PROJECT WHICH ARE NOT SHOWN.
- 4. INSTALL CABINET BASE 6" ABOVE ROADWAY ELEVATION.
- 5. ALL LUMINAIRES ARE LED-C UNLESS OTHERWISE NOTED.
- 6. SB13 IS A TYPE 2 CONCRETE BASE WITH SPREAD FOOTING.

3. - AT&T DIRECT BURY COPPER CABLES IN THE VICINITY OF THE INSTALLATION OF MONOTUBE SB14. WORK WITH EXTREME CAUTION.



1. REVISED 5/1/19

- EVP CONSTRUCTION NOTES:
- 1. INSTALL THE TRAFFIC SIGNAL EMERGENCY VEHICLE PRE-EMPTION DETECTOR CABLE TO RUN CONTINUOUSLY (WITHOUT SPLICES) FROM THE CABINET TO THE DETECTOR HEADS. MOUNT THE EVP DETECTOR HEADS AND WIRE THEM PER MANUFACTURER INSTRUCTIONS.
- 2. THE DEPARTMENT WILL DETERMINE THE EXACT LOCATION OF THE EVP DETECTORS TO ENSURE THAT THE INSTALLATION DOES NOT CREATE A SIGHT OBSTRUCTION.
- 3. ALL EVP DETECTOR CABLE SHALL BE ROUTED THROUGH EXISTING SIGNAL BASES, PULL BOXES, AND CONDUIT AS INDICATED. PROVIDE ENOUGH CABLE TO ALLOW 10 FEET OF SLACK IN THE CABINET, IN EACH PULL BOX, AND IN THE SIGNAL POLE HANDHOLE.
- 4. CABINET WIRING WILL BE DONE BY THE CONTRACTOR. THE CONTRACTOR SHALL INSTALL AND LABEL TERMINAL CABLE AS DESCRIBED AND SHALL LABEL EACH CABLE AS NOTED ON THE PLAN SHEETS (I.E. EVP A-B-C-D).

TRAFFIC CONTROL SIGNAL	
STH 24 & 92ND STN. ROOT RIVER PKWY	
CITY OF GREENFIELD/CITY OF GREENDALE	
MILWAUKEE COUNTY	
SIGNAL NO. S40-1436	CABINET TYPE: TS2-S
WISCONSIN DEPARTMENT OF TRANSPORTATION	
APPROVAL: RFT/CM/MP/DFD	CONTROLLER TYPE: ECONOLITE
DATE: _____	APPROVED: _____
REGION CONTACT: M. COWAP	DESIGNED BY: W. MANNEN
REVISIONS BY: M. COWAP	START TRAFFIC ENGINEER: _____
DATE: _____	STATE TRAFFIC ENGINEER: _____
PAGE 1 OF 3	

Addendum No. 01  
ID 2120-16-70  
Revised Sheet 31  
May 2, 2019

MONOTUBE STRUCTURE NUMBERS
SB4 = S-40-1936
SB8 = S-40-1937
SB11 = S-40-1938
SB14 = S-40-1939

Equipment Grounding Conductor 10 AWG Green XLP		
From	To	
CB1	SB1	
SB1	SB2	
SB2	SB3	
SB3	SB4	
SB4	SB5	
SB5	SB6	
SB6	SB7	
SB7	SB8	
SB8	SB9	
SB9	SB10	
SB10	SB11	
SB11	SB12	
SB12	SB13	
SB13	SB14	
SB14	CB1	

Pull Box Bonding Jumper 10 AWG Green XLP		
From	To	
PB1	CB1	
PB2	SB4	
PB3	SB6	
PB4	SB7	
PB5	SB8	
PB6	SB10	
PB7	SB11	
PB8	SB11	
PB9	SB13	
PB10	SB14	
PB11	SB14	

Lighting UF 2-10 AWG Grounded		
From	To	
CB1	SB3	
SB3	SB7	
CB1	SB13	
SB13	SB11	

Emergency Vehicle Preemption		
From	To	
CB1	SB1 (HEAD A)	
CB1	SB8 (HEAD B)	
CB1	SB11 (HEAD C)	
CB1	SB4 (HEAD D)	

Video Detection Cable		
From	To	
CB1	SB4 (V1)	
CB1	SB11 (V2)	
CB1	SB14 (V3)	

Addendum No. 01  
ID 2120-16-70  
Revised Sheet 35  
May 2, 2019

STH 24 & 92<sup>ND</sup> ST/N ROOT RIVER PKWY  
 MILWAUKEE COUNTY  
 CATEGORY 0010  
 S40-1436

STATE FURNISHED MATERIALS SUMMARY

EACH	DESCRIPTION
1	TRAFFIC SIGNAL CONTROLLER, FULLY ACTUATED, 8 PHASE
1	TRAFFIC SIGNAL CABINET
3	VIDEO CAMERA
4	EVP DETECTOR HEADS
1	ETHERNET SWITCH
1	CELLULAR MODEM

STATE FURNISHED  
 FOR INFORMATION ONLY

SIGNAL BASENO.	VIDEO CAMERA EACH	EVP DETECTOR HEADS EACH
SB4	2	1
SB8	1	1
SB11	3	1
SB14	1	1
TOTAL	5	4

STATE FURNISHED COMMUNICATIONS EQUIPMENT  
 FOR INFORMATION ONLY

LOCATION	ETHERNET SWITCHES EACH	CELLULAR MODEMS EACH	CAT-5E-CABLE 5 FEET EACH
CB7 (S40-1436)	1	1	1
TOTAL	1	1	1

CONDUIT

FROM	TO	652.0225 CONDUIT RIGID NONMETALLIC SCHEDULE 40 2-INCH L.F.	652.0235 CONDUIT RIGID NONMETALLIC SCHEDULE 40 3-INCH L.F.	652.0615 CONDUIT SPECIAL 3-INCH L.F.
CB1	PB1		8	
PB1	SB1	9		
PB1	SB2	5		
PB1	SB3	8		
PB1	PB2		4	148
PB2	SB4			
PB2	SB5	5		
PB2	PB3		102	
PB2	SB6	20		
PB3	PB4			116
PB4	SB7	16		
PB4	PB2	24		
PB2	PB3		81	
PB4	PB5			102
PB5	SB8		12	
PB5	PB6		82	
PB6	SB9	7		
PB6	SB10	6		
PB6	PB7			174
PB7	SB11		8	
PB7	PB8		52	
PB8	SB12	14		
PB8	PB9			80
PB9	SB13	20		
PB9	PB14		24	
PB9	PB10			92
PB10	PB11		82	
PB11	SB14	5		
PB11	CB1		21	
TOTAL		610	386	762

Addendum No. 01  
 ID 2120-16-70  
 Revised Sheet 73  
 May 2, 2019

STH 24 & 92<sup>ND</sup> ST/N ROOT RIVER PKWY  
MILWAUKEE COUNTY  
CATEGORY 0010  
S40-1436

SIGNAL BASE NO.	657.0255	657.0300	657.0345	657.0365	657.0360	657.0405	657.0420	657.0425	657.0430	657.0530	657.0535	657.0540	657.0545	657.0609	657.085	658.0500	659.125
	TRANSFORMER BASEBREAKAWAY	POLES TYPE 3	POLES TYPE 9	POLES TYPE 12	POLES TYPE 13	STANDARDS ALUMINUM 35-FT	STANDARDS ALUMINUM 13-FT	STANDARDS ALUMINUM 15-FT	TRAFFIC SIGNAL STANDARDOS	MONOTUBE ARMS 30-FT	MONOTUBE ARMS 35-FT	MONOTUBE ARMS 40-FT	MONOTUBE ARMS 45-FT	LUMINAIRE ARMS SINGLE MEMBER 4-INCH CLAMP 6-FT	LUMINAIRE ARMS STEEL 6-FT	PEDESTRIAN PUSH BUTTONS	LUMINAIRES UTILITY LED C
	EACH	EACH	EACH	EACH	EACH	EACH	EACH	EACH	EACH	EACH	EACH	EACH	EACH	EACH	EACH	EACH	EACH
SB1	1					1										1	1
SB2	1								1							1	1
SB3		1															
SB4			1							1							
SB5	1															1	1
SB6	1							1								1	1
SB7		1												2		1	2
SB8				1												1	1
SB9	1											1				1	1
SB10	1					1										1	1
SB11	1						1				1					1	1
SB12	1															1	1
SB13	1													2		1	2
SB14	1															1	1
TOTAL	7	3	3	2	1	1	1	2	3	1	1	1	1	5	1	11	6

\* State Furnished

Addendum No. 01  
ID 2120-16-70  
Revised Sheet 77  
May 2, 2019



Proposal Schedule of Items

Proposal ID: 20190514018 Project(s): 2120-16-70

Federal ID(s): WISC 2019289

SECTION: 0001

Contract Items

Alt Set ID:

Alt Mbr ID:

Proposal Line Number	Item ID Description	Approximate Quantity and Units	Unit Price	Bid Amount
0254	657.0425 Traffic Signal Standards Aluminum 15-FT	2.000 EACH	_____.	_____.
0256	657.0430 Traffic Signal Standards Aluminum 10-FT	3.000 EACH	_____.	_____.
0258	657.0530 Monotube Arms 30-FT	1.000 EACH	_____.	_____.
0260	657.0535 Monotube Arms 35-FT	1.000 EACH	_____.	_____.
0262	657.0540 Monotube Arms 40-FT	1.000 EACH	_____.	_____.
0264	657.0545 Monotube Arms 45-FT	1.000 EACH	_____.	_____.
0266	657.0609 Luminaire Arms Single Member 4-Inch Clamp 6-FT	5.000 EACH	_____.	_____.
0268	657.0815 Luminaire Arms Steel 15-FT	1.000 EACH	_____.	_____.
0270	658.0173 Traffic Signal Face 3S 12-Inch	12.000 EACH	_____.	_____.
0272	658.0174 Traffic Signal Face 4S 12-Inch	6.000 EACH	_____.	_____.
0274	658.0416 Pedestrian Signal Face 16-Inch	8.000 EACH	_____.	_____.
0276	658.0500 Pedestrian Push Buttons	11.000 EACH	_____.	_____.
0278	658.5069 Signal Mounting Hardware (location) 01. STH 24 & 92ND ST	LS	LUMP SUM	_____.
0280	659.1125 Luminaires Utility LED C	6.000 EACH	_____.	_____.
0282	690.0150 Sawing Asphalt	385.000 LF	_____.	_____.
0284	690.0250 Sawing Concrete	1,216.000 LF	_____.	_____.





Proposal Schedule of Items

Proposal ID: 20190514018 Project(s): 2120-16-70

Federal ID(s): WISC 2019289

SECTION: 0001

Contract Items

Alt Set ID:

Alt Mbr ID:

Proposal Line Number	Item ID Description	Approximate Quantity and Units	Unit Price	Bid Amount
0286	ASP.1T0A On-the-Job Training Apprentice at \$5.00/HR	400.000 HRS	5.00000	2,000.00
0288	ASP.1T0G On-the-Job Training Graduate at \$5.00/HR	450.000 HRS	5.00000	2,250.00
0290	SPV.0060 Special 01. Concrete Bases Type 2 Spread Footing	1.000 EACH	_____.	_____.
0292	SPV.0060 Special 02. Internal/External Sanitary Manhole Seals	1.000 EACH	_____.	_____.
0294	SPV.0060 Special 03. Adjusting Water Boxes	3.000 EACH	_____.	_____.
0298	SPV.0090 Special 01. Concrete Curb & Gutter 31-Inch Modified	149.000 LF	_____.	_____.
0300	SPV.0105 Special 01. Transport and Install State Furnished Traffic Signal Cabinet STH24 & 92nd St	LS	LUMP SUM	_____.
0302	SPV.0105 Special 02. Transport and Install State Furnished Video Detection System STH24 & 92ND St	LS	LUMP SUM	_____.
0304	SPV.0105 Special 03. Transport and Install State Furnished EVP Detector Heads STH 24 & 92nd St	LS	LUMP SUM	_____.
Section: 0001			Total:	_____.
			Total Bid:	_____.

