



Wisconsin Department of Transportation

Division of Transportation Systems Development

Bureau of Project Development
4822 Madison Yards Way, 4th Floor South
Madison, WI 53705

August 8, 2019

Telephone: (608) 266-1631
Facsimile (FAX): (608) 266-8459

NOTICE TO ALL CONTRACTORS:

Proposal #03: 5290-00-72, WISC 2019 576
USH 12 – IH 39
River Road to IH 39
STH 19
Dane County

Letting of August 13, 2019

This is Addendum No. 03, which provides for the following:

Special Provisions:

Revised Special Provisions	
Article No.	Description
54	Fill Existing Rumble Strips, Item SPV.0090.02

Deleted Special Provisions	
Article No.	Description
55	Restore Existing Rumble Strips, Item SPV.0090.03

Schedule of Items:

Revised Bid Item Quantities					
Bid Item	Item Description	Unit	Old Quantity	Revised Quantity	Proposal Total
305.0110	Base Aggregate Dense ¾ Inch	Ton	3,470	10	3,480
305.0120	Base Aggregate Dense 1 ¼ Inch	Ton	50,880	10	50,890
450.4000	HMA Cold Weather Paving	Ton	1,757	182	1,939
455.0605	Tack Coat	Gal	698	66	764
460.5224	HMA Pavement 4 LT 58-28 S	Ton	2,393	76	2,469
460.6224	HMA Pavement 4 MT 58-28 S	Ton	1,249	106	1,355
465.0400	Asphaltic Shoulder Rumble Strips	LF	3,739	70	3,809
690.0150	Sawing Asphalt	LF	3,135	100	3,235

Added Bid Item Quantities					
Bid Item	Item Description	Unit	Old Quantity	Revised Quantity	Proposal Total
204.0115	Removing Asphaltic Surface Butt Joints	SY	0	11	11
204.0120	Removing Asphaltic Surface Milling	SY	0	950	950

Deleted Bid Item Quantities					
Bid Item	Item Description	Unit	Old Quantity	Revised Quantity	Proposal Total
SPV.0090	Special 03. Restore Existing Rumble Strips	LF	355	-355	0

Plan Sheets:

Revised Plan Sheets	
Plan Sheet	Plan Sheet Title (brief description of changes to sheet)
7	Added a typical section to show mill and overlay
45	Revised paving detail to show mill and overlay
223	Added misc quantity for milling items
228	Revised base aggregate quantities in misc quantities
231	Revised rumble strip quantity and removed restoring rumble strip item in misc quantities
232	Revised several asphaltic paving items in misc quantities
265	Revised sawing item in misc quantities
285	Revised plan and profile sheet for eastbound STH 19 to show mill and overlay
290	Revised plan and profile sheet for westbound STH 19 to show mill and overlay
551	Bar B411 removed from east abutment detail

The responsibility for notifying potential subcontractors and suppliers of these changes remains with the prime contractor.

Sincerely,

Mike Coleman

Proposal Development Specialist
Proposal Management Section

ADDENDUM NO. 03

5290-00-72

August 8, 2019

Special Provisions

54. Fill Existing Rumble Strips, Item SPV.0090.02

Replace paragraph B Materials and paragraph C Construction with the following:

B Materials

Furnish asphaltic mixture meeting the requirements specified for Asphaltic Surface Temporary under standard spec 465.2.

B Construction

Clean, fill, and compact the rumble strip indentations using methods that will provide a sound smooth surface which will handle traffic and not leave a detrimental residue on the surface. Special care to limit the splatter of asphaltic material onto existing asphalt is required.

55. DELETED

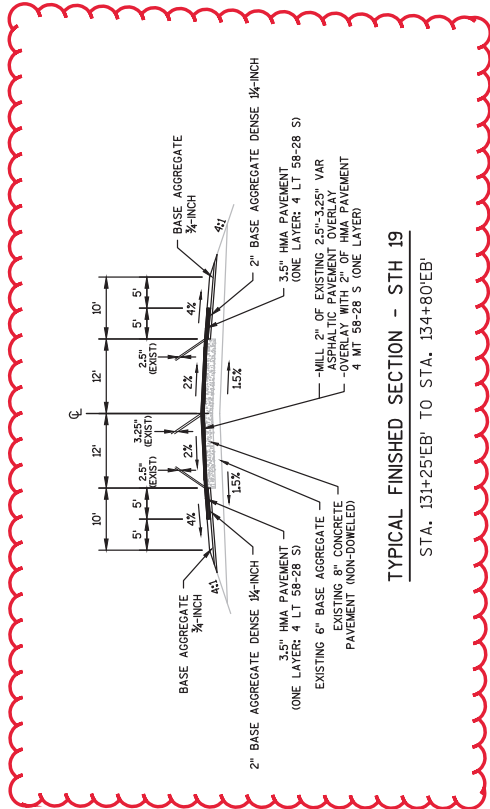
Schedule of Items

Attached, dated August 8, 2019, are the revised Schedule of Items Pages 1 – 22.

Plan Sheets

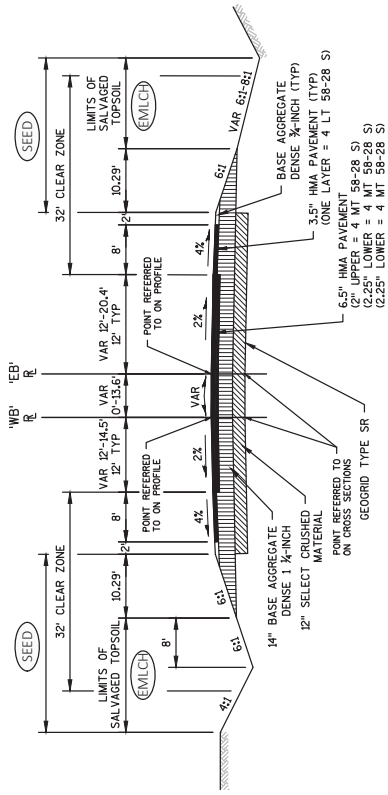
The following 8½ x 11-inch sheets are attached and made part of the plans for this proposal:
Revised: 7, 45, 223, 228, 231, 232, 265, 285, 290, and 551.

END OF ADDENDUM



TYPICAL FINISHED SECTION - STH 19

STA. 131+25'EB' TO STA. 134+80'EB'



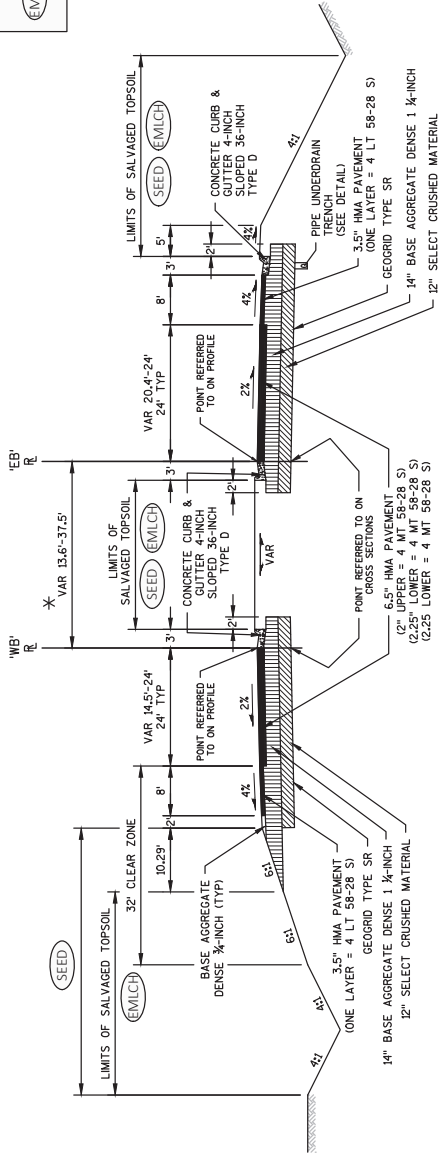
TYPICAL FINISHED SECTION - STH 19

STA. 134+80'EB' TO STA. 139+33.90'EB'

FINISHING NOTES:
 SEE MISCELLANEOUS QUANTITIES FOR SPECIFIC SEEDING, SEEDING TEMPORARY, & FERTILIZER TYPES AND THEIR LOCATIONS.
 SEE CONSTRUCTION DETAILS, MISCELLANEOUS QUANTITIES AND EROSION CONTROL PLAN FOR MULCH AND EROSION MAT LOCATIONS.

* WHEN 20' OR LESS BETWEEN 'WB' 'R' AND 'EB' 'R' OR UNDER A PAVED SURFACE, PROVIDE BASE LAYERS ACROSS ENTIRE MEDIAN.

Addendum No. 01
 ID 5290-00-72
 Revised Sheet 7
 August 8, 2019



TYPICAL FINISHED SECTION - STH 19

STA. 139+33.90'EB' TO STA. 142+47.63'EB'

REMOVING PAVEMENT

CAT	STA	TO	STA	OFFSET	ALIGN	LOCATION	SY
0010	134+80	-	154+73	LT/RT	WB	WEST OF B-13-795	8620
	55+19	-	55+19	LT/RT	RNB	SOUTH RIVER RD	460
	55+35	-	55+35	LT/RT	RSB	NORTH RIVER RD	460
	155+50	-	194+55	LT/RT	WB	EAST OF B-13-795	16500
CATEGORY 0010 SUBTOTAL							26040
PROJECT TOTAL							26040

CAT	STA	TO	STA	OFFSET	ALIGN	LOCATION	SY
0010	7+66	-	9+98	RT	LWS	SIDEWALK	130
	7+66	-	10+39	LT	LWS		310
	7+66	-	10+39	RT	LWS		290
	10+44	-	10+82	LT	CW	SPLITTER ISLAND	95
	10+56	-	11+18	LT	CW		90
	10+56	-	11+18	RT	CW		80
	8+00	-	10+27	RT	LES		160
	8+00	-	10+37	LT	LES		180
CATEGORY 0010 SUBTOTAL							1110
PROJECT TOTAL							1110

REMOVING CURB & GUTTER AND SIDEWALK

CAT	STA	TO	STA	OFFSET	ALIGN	LOCATION	SY
0010	7+66	-	9+98	RT	LWS	SIDEWALK	130
	7+66	-	10+39	LT	LWS		310
	7+66	-	10+39	RT	LWS		290
	10+44	-	10+82	LT	CW	SPLITTER ISLAND	95
	10+56	-	11+18	LT	CW		90
	10+56	-	11+18	RT	CW		80
	8+00	-	10+27	RT	LES		160
	8+00	-	10+37	LT	LES		180
CATEGORY 0010 SUBTOTAL							1110
PROJECT TOTAL							1110

Addendum No. 01
 ID 5290-00-72
 Revised Sheet 223
 August 8, 2019

REMOVING CONCRETE BASE

CAT	STA	TO	STA	OFFSET	ALIGN	LOCATION	SY
0010	152+12	-	152+12	6.8' LT	WB		1
CATEGORY 0010 SUBTOTAL							1
PROJECT TOTAL							1

*ADDITIONAL QUANTITIES LISTED ELSEWHERE

CLEARING & GRUBBING

CAT	STA	TO	STA	OFFSET	ALIGN	STA	SY
0010	152+00	-	153+00	RT	EB	1	1
	154+00	-	156+00	RT	EB	2	2
	155+00	-	157+00	LT	WB	2	2
	163+00	-	164+00	LT	EB	1	1
	7+00	-	10+00	RT	LWS	3	3
	176+00	-	183+00	RT	EB	7	7
	186+00	-	192+00	RT	EB	6	6
	154+50	-	155+50	RT	YA	1	1
	154+50	-	155+50	LT	YA	1	1
CATEGORY 0010 SUBTOTAL							24
PROJECT TOTAL							24

REMOVING ASPHALTIC SURFACE

CAT	STA	TO	STA	OFFSET	ALIGN	COMMENTS	SY
0010	163+67	-	167+59	LT	EB	STAGE 1D-LNW MEDIUM ISLAND	430
	168+78	-	172+75	RT	WB	STAGE 1D-LNW MEDIUM ISLAND	1630
	52+98	-	54+93	LT	RNB	STAGE 2B-RAB - MEDIUM ISLAND	470
CATEGORY 0010 SUBTOTAL							2530
0050	256+71	-	260+97	LT/RT	TEB1	STAGE 1E- MEDIUM CROSSOVER	570
CATEGORY 0050 SUBTOTAL							570
PROJECT TOTAL							3100

REMOVING ASPHALTIC SURFACE MILLING & BUTT JOINTS

CAT	STA	TO	STA	ALIGN	SY
0010	131+25	-	134+80	EB	11
CATEGORY 0010 SUBTOTAL					11
PROJECT TOTAL					11

PROJECT NO: 5290-00-72

HWY: STH 19

COUNTY: DANE

MISCELLANEOUS QUANTITIES

SHEET NO: 223

E

Addendum No. 01
ID 5290-00-72
Revised Sheet 232
August 8, 2019

ASPHALT PAVEMENT ITEMS

CAT	STA	TO	STA	OFFSET	ALIGN	LOCATION	450.4000		455.0605		460.5223		460.5224		460.6223		460.6224			
							TON	GAL	TON	GAL	TON	GAL	TON	GAL	TON	GAL	TON	GAL	TON	GAL
0010	131+25	-	134+80	LT/RT	EB/WB	STH 19 EB & WB LANES	106	66	-	-	-	-	-	-	-	-	-	106	-	
	131+25	-	134+80	LT	WB	STH 19 WB SHLDR	38	-	-	-	38	-	-	-	-	-	-	-	-	
	131+25	-	134+80	RT	EB	STH 19 EB SHLDR	38	-	-	-	38	-	-	-	-	-	-	-	-	
	134+80	-	142+68	LT	WB	STH 19 EB LANES	513	197	-	-	-	-	-	-	-	-	-	513	-	
	134+80	-	142+48	RT	EB	STH 19 WB LANES	-	241	-	-	-	-	-	-	-	-	-	626	-	
	134+80	-	142+68	LT	WB	STH 19 WB SHLDR	168	-	-	-	168	-	-	-	-	-	-	-	-	
	134+80	-	142+48	RT	EB	STH 19 EB SHLDR	170	-	-	-	170	-	-	-	-	-	-	-	-	
	49+90	-	53+98	LT	RSB	RIVER RD SB SHLDR	-	-	-	-	43	-	-	-	-	-	-	-	-	
	49+90	-	52+83	LT/RT	RNB	RIVER RD LANES	-	67	-	-	252	-	-	-	-	-	-	-	-	
	49+90	-	53+92	RT	RNB	RIVER RD NB SHLDR	-	-	-	-	43	-	-	-	-	-	-	-	-	
	58+04	-	63+10	RT	RNB	RIVER RD NB SHLDR	56	-	-	-	56	-	-	-	-	-	-	-	-	
	58+09	-	63+10	LT	RSB	RIVER RD SB SHLDR	57	-	-	-	57	-	-	-	-	-	-	-	-	
	59+64	-	63+10	LT/RT	RNB	RIVER RD LANES	273	73	-	-	273	-	-	-	-	-	-	-	-	
	147+32	-	154+16	RT	EB	SOUTH STH 19 EB SHLDR	-	-	-	-	100	-	-	-	-	-	-	-	-	
	149+53	-	154+16	LT	EB	NORTH STH 19 EB SHLDR	-	-	-	-	51	-	-	-	-	-	-	-	-	
	149+64	-	154+32	LT	WB	NORTH STH 19 WB SHLDR	63	-	-	-	63	-	-	-	-	-	-	-	-	
	149+64	-	154+32	RT	WB	SOUTH STH 19 WB SHLDR	34	-	-	-	34	-	-	-	-	-	-	-	-	
	155+78	-	167+26	RT	EB	SOUTH STH 19 EB SHLDR	116	-	-	-	116	-	-	-	-	-	-	-	-	
	156+06	-	162+28	LT	EB	NORTH STH 19 EB SHLDR	43	-	-	-	43	-	-	-	-	-	-	-	-	
	155+93	-	161+28	RT	WB	SOUTH STH 19 WB SHLDR	61	-	-	-	61	-	-	-	-	-	-	-	-	
	156+26	-	166+78	LT	WB	NORTH STH 19 WB SHLDR	142	-	-	-	142	-	-	-	-	-	-	-	-	
	7+65	-	9+14	LT/RT	LWS	LUNA WAY LANES	61	39	-	-	77	61	-	-	-	-	-	-	-	
	169+99	-	179+34	LT	WB	NORTH STH 19 WB SHLDR	-	-	-	-	91	-	-	-	-	-	-	-	-	
	169+34	-	186+04	RT	EB	SOUTH STH 19 EB SHLDR	-	-	-	-	190	-	-	-	-	-	-	-	-	
	173+71	-	189+86	LT	EB	NORTH STH 19 EB SHLDR	-	-	-	-	104	-	-	-	-	-	-	-	-	
	173+71	-	189+86	RT	WB	SOUTH STH 19 WB SHLDR	-	-	-	-	97	-	-	-	-	-	-	-	-	
	181+27	-	193+81	LT	WB	NORTH STH 19 WB SHLDR	-	-	-	-	122	-	-	-	-	-	-	-	-	
	8+85	-	9+02	LT/RT	LES	LIUNA WAY LANES	-	4	-	-	8	7	-	-	-	-	-	-	-	
	188+81	-	190+82	RT	EB	SOUTH STH 19 EB SHLDR	-	-	-	-	32	-	-	-	-	-	-	-	-	
	CATEGORY 0010 SUBTOTAL						1939	687	85	2452	0	1245	-	-	-	-	-	-	-	-
0050	CATEGORY 0050 SUBTOTAL						0	77	10	17	165	110	-	-	-	-	-	-	-	-
	51+30	-	52+83	RT	RNB	RIVER RD LANES	-	1	-	-	5	-	-	-	-	-	-	-	-	
	8+00	-	9+14	LT	LWS	LIUNA WAY LANE	-	6	10	12	-	-	-	-	-	-	-	-	-	
	303+96	-	304+37	LT	TCS	SB TIERNEY CROSSING LANES	-	35	-	-	83	-	-	-	-	-	-	55	-	
	303+96	-	304+12	RT	TC	NB TIERNEY CROSSING LANES	-	23	-	-	54	-	-	-	-	-	-	36	-	
	10+82	-	11+18	LT/RT	CW	CASHEL WAY LANES	-	12	-	-	28	-	-	-	-	-	-	19	-	
	CATEGORY 0050 SUBTOTAL						0	77	10	17	165	110	-	-	-	-	-	-	-	-
PROJECT TOTAL						1999	764	95	2469	165	1355									

MISCELLANEOUS QUANTITIES

COUNTY: DANE

HWY: STH 19

PROJECT NO: 5290-00-72

SHEET NO: 232

E

Addendum No. 01
ID 5290-00-72
Revised Sheet 265
August 8, 2019

SAWING
690.0150 690.0250
SAWING SAWING
ASPHALT CONCRETE
LF LF

CAT	STA	TO	STA	OFFSET	ALIGN	LF	COMMENTS	
0010	131+25	-	134+80	RT	EB	360	SHOULDER	
	131+25	-	134+80	LT	EB	360	SHOULDER	
	131+25	-	134+80	LT/RT	EB	30	MAINLINE LANES & SHOULDERS	
	134+80	-	134+80	L7/RT	EB	24	MAINLINE LANES	
	49+90	-	49+90	L7/RT	RNB	28	MAINLINE LANES	
	63+10	-	63+10	L7/RT	RSB	22	MAINLINE LANES	
	62+40	-	62+60	LT	RSB	20	DRIVEWAY	
	231+38	-	235+00	L7/RT	TEB2	360	STAGING 1D INSTALLING TEMP. EB WIDENING	
	231+97	-	234+65	L7/RT	TEB1	270	STAGING 1A INSTALLING TEMP. WB WIDENING	
	143+57	-	143+57	RT	EB	40	STAGING 2B-RAB REMOVE TEMP. EB WIDENING	
	244+82	-	245+04	LT	TEB1	94	STAGING 1B SPLITTER ISLAND REMOVAL	
	46+49	-	48+15	L7/RT	TRR	170	STAGING 1A- INSTALLING TEMP. RNB WIDENING	
	55+23	-	56+16	LT	TRR	120	STAGING 1A- INSTALLING TEMP. RNB WIDENING	
	244+32	-	244+95	LT	TEB1	100	STAGING 1A- INSTALLING TEMP. WB WIDENING	
	244+43	-	245+12	RT	TEB1	69	STAGING 1C- INSTALLING TEMP. ASPHALT IN RAB	
	245+47	-	245+90	LT	TEB1	74	STAGING 1A- INSTALLING TEMP. WB WIDENING	
	245+68	-	251+14	L7/RT	TEB1	1110	STAGING 1B- SPLITTER ISLAND REMOVAL	
	160+28	-	160+45	LT	WB	16	DRIVEWAY	
	166+00	-	168+64	LT	WB	270	STAGING 1A-LNWI INSTALLING TEMP. ASPHALT	
	268+35	-	268+84	LT	TEB1	170	STAGING 1A-LNWI INSTALLING PIPE	
	7+66	-	7+66	RT	LWS	10	SEAWALK	
	7+66	-	7+66	L7/RT	LWS	32	MAINLINE LANES AND CURB/GUTTER	
	7+66	-	10+40	LT	LWS	270	STAGING 1A-LNWI LONGITUDINAL CUT ALONG LANE	
	9+04	-	9+34	RT	LWS	48	STAGING 1A-LNWI INSTALLING PIPE	
	10+25	-	10+25	RT	LWS	42	STAGING 1A-LNWI INSTALLING TEMP. ASPHALT	
	8+85	-	8+85	L7/RT	LES	32	MAINLINE LANES AND CURB/GUTTER	
	186+20	-	175+00	LT	WB	38	STAGING 1B- SPLITTER ISLAND REMOVAL	
	188+15	-	188+41	LT	WB	480	STAGING 1D- TEMP. TRANSITION TURN LANE WB	
	194+00	-	194+69	L7/RT	WB	660	STAGING 1D-MED SPLITTER ISLAND REMOVAL	
	194+00	-	194+00	RT	EB	45	MAINLINE LANES	
	194+00	-	194+69	LT	EB	69	LONGITUDINAL CUT ALONG CURB/GUTTER	
	194+05	-	194+05	LT	WB	8	TRANSVERSAL CUT ACROSS SHOULDER	
	194+05	-	194+55	LT	WB	50	LONGITUDINAL CUT ALONG SHOULDER	
	194+55	-	194+55	LT	WB	24	MAINLINE LANES	
	194+55	-	194+70	LT	WB	15	LONGITUDINAL CUT ALONG CURB/GUTTER	
	194+70	-	194+70	RT	WB	7	CURB AND GUTTER	
	194+70	-	194+70	LT	EB	7	CURB AND GUTTER	
	293+29	-	294+62	LT	TEB2	140	STAGING 1E- TEMP. MEDIAN CROSSOVER	
	CATEGORY 0010 SUBTOTAL						2490	
	CATEGORY 0050 SUBTOTAL						3209	
0050	256+49	-	258+61	L7/RT	TEB1	210	STAGING 1A- TEMP. MEDIAN CROSSOVER	
	304+37	-	304+37	LT	TCS	32	MAINLINE LANES AND SIDEWALK	
	304+38	-	304+38	LT	TCS	10	ASPHALT SIDEWALK	
	304+12	-	304+12	RT	TC	21	MAINLINE LANES	
	273+97	-	275+89	LT	TEB2	190	STAGING 1E- TEMP. MEDIAN CROSSOVER	
	275+93	-	278+39	L7/RT	TEB1	250	STAGING 1A- TEMP. MEDIAN CROSSOVER	
	11+18	-	11+18	L7/RT	CW	32	MAINLINE LANES AND CURB/GUTTER	
	CATEGORY 0050 SUBTOTAL						745	
	PROJECT TOTAL						3235	
	PROJECT TOTAL						3224	

OPTIMIZED AGGREGATE GRADATION INCENTIVE

715.0710

OPTIMIZED

AGGREGATE GRADATION
INCENTIVE

DOL

LOCATION

CAT

0010

PROJECT LIMITES

37406

CATEGORY 0010 SUBTOTAL

37406

PROJECT LIMITES

5972

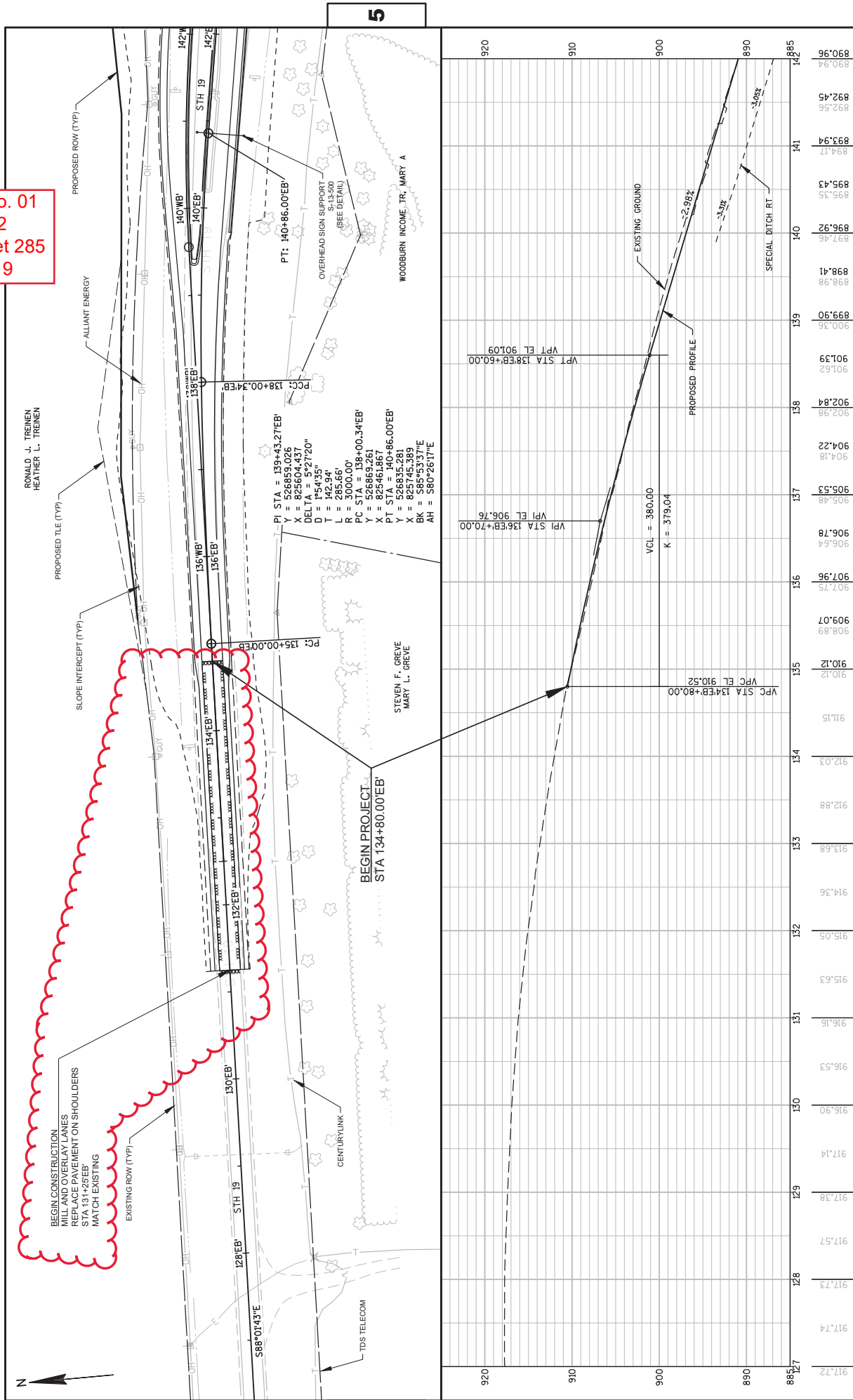
CATEGORY 0050 SUBTOTAL

5972

PROJECT TOTAL

43378

Addendum No. 01
ID 5290-00-72
Revised Sheet 285
August 8, 2019



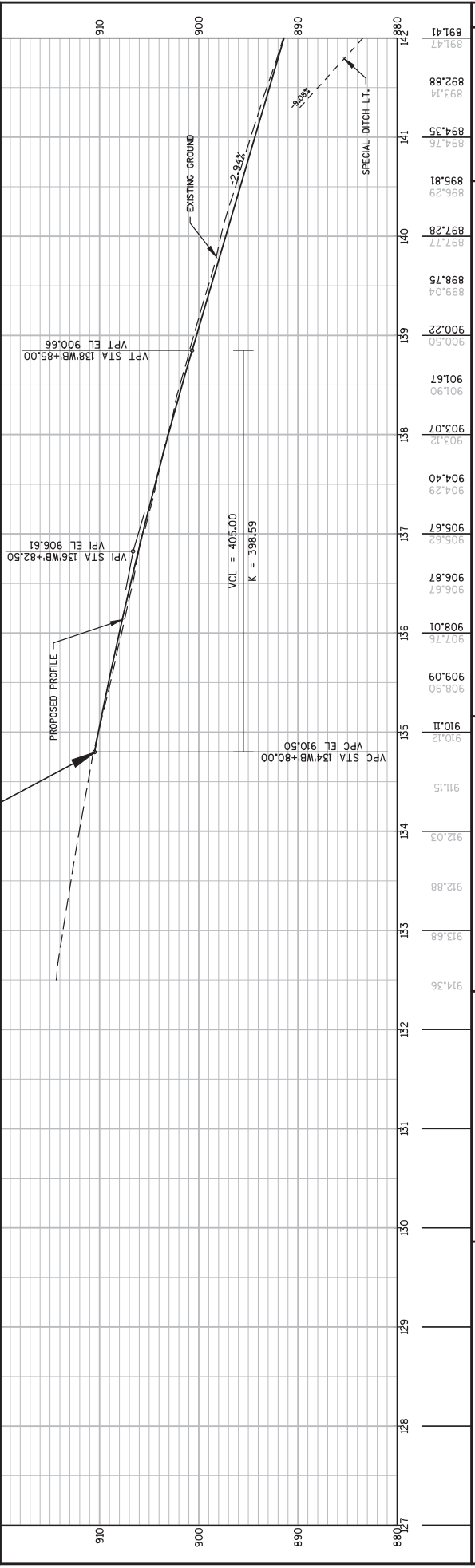
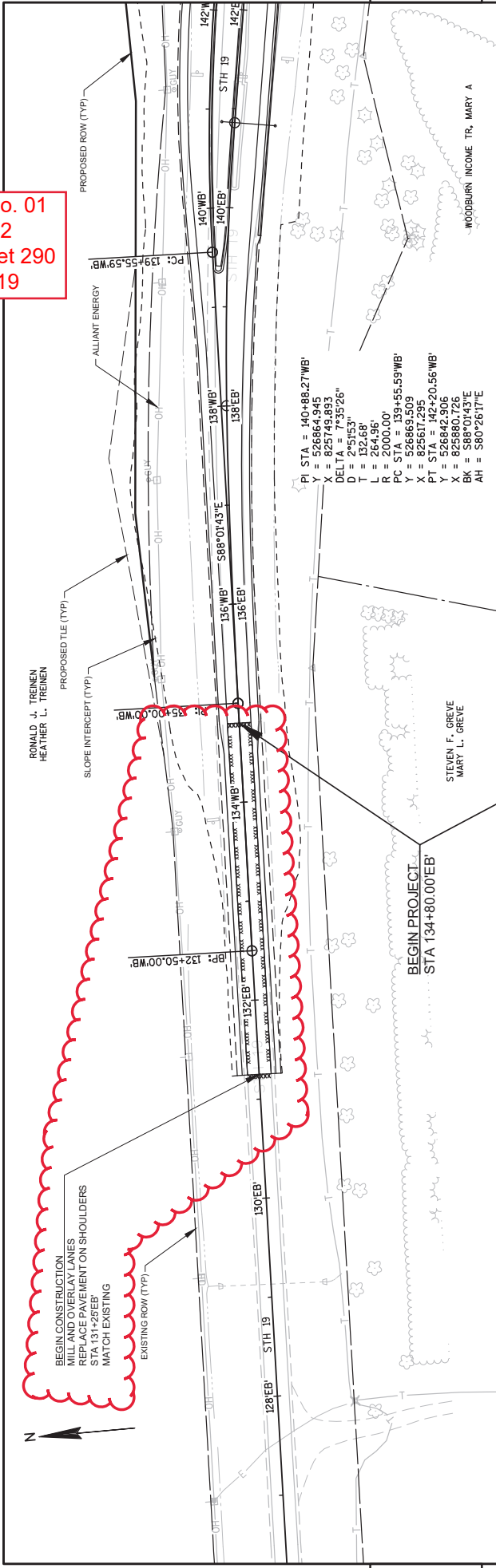
RONALD J. TREIMEN
 HEATHER L. TREIMEN
 ALLIANT ENERGY
 PROPOSED ROW (TYP)
 SLOPE INTERCEPT (TYP)
 BEGIN CONSTRUCTION
 MILL AND OVERLAY LANES
 REPLACE PAVEMENT ON SHOULDERS
 STA 131+25'EB
 MATCH EXISTING
 EXISTING ROW (TYP)
 CENTURILINK
 TDS TELECOM
 STEVEN F. GREVE
 MARY L. GREVE
 BEGIN PROJECT
 STA 134+80.00'EB'
 PI STA = 139+43.27'EB'
 Y = 526855.026
 X = 825604.437
 DELTA = 5°27'20"
 D = 149.33'
 L = 285.66'
 R = 3000.00'
 PC STA = 138+00.34'EB'
 Y = 526865.261
 X = 825461.867
 PT STA = 140+86.00'EB'
 Y = 526835.281
 X = 825745.389
 BK = S85°53'37"E
 AH = S80°26'17"E
 OVERHEAD SIGN SUPPORT
 S-13-300
 (SEE DETAIL)
 WOODBURN INCOME, TR, MARY A
 VPI STA 136+EB+70.00
 VPI EL 906.76
 VPC STA 134+EB+80.00
 VPC EL 910.52
 VPT STA 138+EB+60.00
 VPT EL 901.09
 VCL = 380.00
 K = 379.04
 EXISTING GROUND
 PROPOSED PROFILE
 SPECIAL DITCH RT

STATION	ELEVATION
128	917.74
129	917.38
130	916.90
131	916.16
132	915.05
133	913.68
134	912.03
135	910.12
136	907.96
137	905.53
138	902.84
139	900.36
140	897.46
141	893.94
142	892.45
142.85	890.94

PROJECT NO: 5290-00-72
 HWY: STH 19
 COUNTY: DANE
 PLAN AND PROFILE: 'EB'
 SHEET 285
 WSDOT/CADD SHEET 44

FILE NAME : Y:\NTRANS\MD\410717 STH 19 ROADWAY\CADD\SHEETS\PLANS\5290-00-02_0501A.EB_PP.DWG
 LAYOUT NAME - PP-01
 PLOT DATE : 8/8/2019 10:34 AM
 PLOT BY : MUECH, DOUGLAS
 PLOT NAME :
 PLOT SCALE : 1 IN=100 FT

Addendum No. 01
 ID 5290-00-72
 Revised Sheet 290
 August 8, 2019



STATION	ELEVATION	STATION	ELEVATION
128	894.36	138	903.07
129	894.36	139	900.22
130	894.36	140	897.28
131	894.36	141	895.81
132	894.36	142	894.36
133	893.68		
134	892.88		
135	910.11		
136	908.01		
137	905.67		
138	903.07		
139	900.22		
140	897.28		
141	895.81		
142	894.36		
	893.68		
	892.88		
	891.41		

PROJECT NO: 5290-00-72
 HWY: STH 19
 COUNTY: DANE
 PLAN AND PROFILE: 'WB'
 PLOT DATE: 8/8/2019 10:37 AM
 PLOT BY: MUECH, DOUGLAS
 PLOT NAME:
 PLOT SCALE: 1 IN=100 FT
 SHEET 290
 WSDOT/CADD SHEET 44
 FILE NAME: Y:\NTRANS\MD\410717 STH 19 ROADWAY\CADD\SHEETS\PLANS\5290-00-02_0501B_WB_PP.DWG
 LAYOUT NAME: PP-01

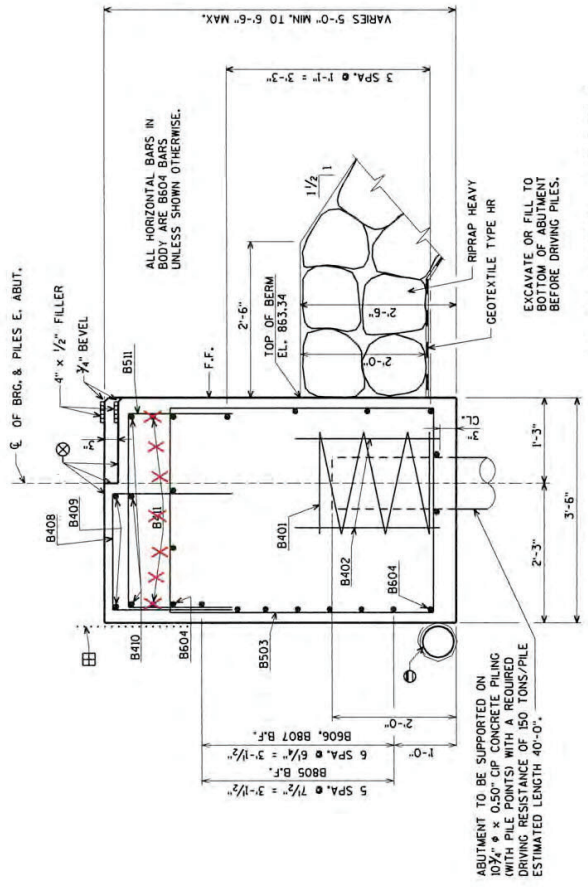
STATE PROJECT NUMBER
5290-00-72

BILL OF BARS

BAR NO.	COATED BAR	NO. REQ'D.	LENGTH	BAR SERIES	LOCATION
B401		11	28'-0"	X	BODY @ PILES
B402		22	2'-3"	X	BODY @ PILES
B503		57	15'-4"	X	BODY VERT.
B604		11	45'-7"	X	BODY HORIZ.
B605		6	14'-0"	X	BODY HORIZ. B.F. @ WING 3
B606		7	21'-5"	X	BODY HORIZ. B.F.
B607		7	16'-0"	X	BODY HORIZ. B.F.
B408		31	5'-1"	X	BODY HORIZ.
B409		2	45'-4"	X	BODY HORIZ.
B410		3	33'-4"	X	BODY HORIZ.
B511		34	8'-1"	X	BODY VERT.
B512		8	15'-5"	X	WING 3 HORIZ.
B513		6	10'-6"	X	WING 3 HORIZ. F.F.
B614		10	10'-6"	X	WING 3 HORIZ. B.F.
B515		10	14'-0"	X	WING 3 HORIZ.
B516		9	10'-10"	X	WING 3 HORIZ.
B417		4	7'-9"	X	WING 3 HORIZ. E.F.
B418		9	13'-8"	X	WING 3 HORIZ. E.F.
B619		2	13'-8"	X	WING 3 HORIZ. TOP E.F.
B520		10	18'-7"	X	WING 4 HORIZ.
B722		7	12'-8"	X	WING 4 HORIZ. F.F.
B521		9	12'-5"	X	WING 4 HORIZ. F.F.
B523		13	14'-0"	X	WING 4 HORIZ.
B524		9	11'-2"	X	WING 4 HORIZ.
B425		4	7'-9"	X	WING 4 HORIZ. E.F.
B426		9	15'-8"	X	WING 4 HORIZ. E.F.
B627		2	15'-8"	X	WING 4 HORIZ. TOP E.F.
B428		4	4'-7"	X	BODY VERT. @ WING 3
B429		4	6'-1"	X	BODY VERT. @ WING 4

BENDING DIMENSIONS ARE OUT TO OUT OF BARS.

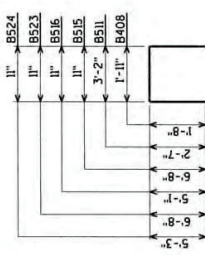
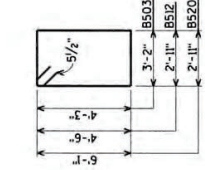
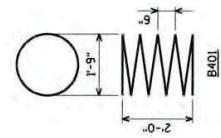
Addendum No. 01
ID 5290-00-72
Revised Sheet 551
August 8, 2019



FOR LOCATION OF SECTION A, SEE SHEET 10

SECTION A

9PFR NAME*



PIPE UNDERDRAIN WRAPPED 6-INCH SLOPE 0.5% MIN. TO SUITABLE DRAINAGE. ATTACH RODENT SHIELD AT ENDS OF PIPE UNDERDRAIN. SEE DETAIL SHEET 9.

STEEL TROWEL TOP SURFACE OF ABUTMENT. PLACE MULTIPLE LAYERS OF POLYETHYLENE SHEETS OVER ENTIRE ABUTMENT TOP BEFORE PLACING BEARING AND/OR SUPERSTRUCTURE. TOTAL THICKNESS OF SHEETS SHALL BE AT LEAST 0.03".

RUBBERIZED MEMBRANE WATERPROOFING SEAL ALL HORIZONTAL AND VERTICAL JOINTS ON BACKFACE OF ABUTMENT.

FOR PILE SPLICE DETAIL SEE SHEET 3

F.F. DENOTES FRONT FACE

B.F. DENOTES BACK FACE

E.F. DENOTES EACH FACE



William C. Decker, TAB
8/8/2019

ORIGINAL PLANS PREPARED BY
3433 Oakwood Hills Parkway
Eau Claire, WI 54601
www.ayresassociates.com

8/7/19

REMOVE NON-REQUIRED AND INCORRECT LABELLED BAR
8/19
NO. DATE
STATE OF WISCONSIN
DEPARTMENT OF TRANSPORTATION

STRUCTURE B-13-795
DRAWN BY
CLS
PLANS
SCALE
CSM

EAST ABUTMENT
DETAILS AND
BILL OF BARS
SHEET 14 OF 26
551



Proposal Schedule of Items

Proposal ID: 20190813003 Project(s): 5290-00-72

Federal ID(s): WISC 2019576

SECTION: 0001

Contract Items

Alt Set ID:

Alt Mbr ID:

Proposal Line Number	Item ID Description	Approximate Quantity and Units	Unit Price	Bid Amount
0002	201.0105 Clearing	24.000 STA	_____.	_____.
0004	201.0205 Grubbing	24.000 STA	_____.	_____.
0006	203.0100 Removing Small Pipe Culverts	13.000 EACH	_____.	_____.
0008	203.0600.S Removing Old Structure Over Waterway With Minimal Debris (station) 01. 155+11 'WB'	LS	LUMP SUM	_____.
0010	204.0100 Removing Pavement	26,040.000 SY	_____.	_____.
0012	204.0110 Removing Asphaltic Surface	3,100.000 SY	_____.	_____.
0014	204.0130 Removing Curb	95.000 LF	_____.	_____.
0016	204.0150 Removing Curb & Gutter	1,110.000 LF	_____.	_____.
0018	204.0155 Removing Concrete Sidewalk	130.000 SY	_____.	_____.
0020	204.0165 Removing Guardrail	610.000 LF	_____.	_____.
0022	204.0170 Removing Fence	1,020.000 LF	_____.	_____.
0024	204.0180 Removing Delineators and Markers	28.000 EACH	_____.	_____.
0026	204.0190 Removing Surface Drains	4.000 EACH	_____.	_____.
0028	204.0195 Removing Concrete Bases	5.000 EACH	_____.	_____.
0030	204.0210 Removing Manholes	3.000 EACH	_____.	_____.
0032	204.0220 Removing Inlets	8.000 EACH	_____.	_____.



Proposal Schedule of Items

Proposal ID: 20190813003 Project(s): 5290-00-72

Federal ID(s): WISC 2019576

SECTION: 0001

Contract Items

Alt Set ID:

Alt Mbr ID:

Proposal Line Number	Item ID Description	Approximate Quantity and Units	Unit Price	Bid Amount
0034	204.0230 Removing Building (station) 01. 58+50	LS	LUMP SUM	_____.
0036	204.0230 Removing Building (station) 02. 183+75	LS	LUMP SUM	_____.
0038	204.0245 Removing Storm Sewer (size) 01. 15-Inch	188.000 LF	_____.	_____.
0040	204.0245 Removing Storm Sewer (size) 02. 24-Inch	137.000 LF	_____.	_____.
0042	204.0245 Removing Storm Sewer (size) 03. 48-Inch	190.000 LF	_____.	_____.
0044	204.9060.S Removing (item description) 01. Lighting Control Cabinets	1.000 EACH	_____.	_____.
0046	204.9060.S Removing (item description) 02. Lighting Units	4.000 EACH	_____.	_____.
0048	204.9060.S Removing (item description) 03. Post-Mounted Barricades	6.000 EACH	_____.	_____.
0050	205.0100 Excavation Common	71,710.000 CY	_____.	_____.
0052	205.0300 Excavation Stone Piles and Stone Fences	224.000 CY	_____.	_____.
0054	205.0400 Excavation Marsh	5,679.000 CY	_____.	_____.
0056	206.1000 Excavation for Structures Bridges (structure) 01. B-13-0794	LS	LUMP SUM	_____.
0058	206.1000 Excavation for Structures Bridges (structure) 02. B-13-0795	LS	LUMP SUM	_____.
0060	208.0100 Borrow	33,566.000 CY	_____.	_____.



Proposal Schedule of Items

Proposal ID: 20190813003 Project(s): 5290-00-72

Federal ID(s): WISC 2019576

SECTION: 0001

Contract Items

Alt Set ID:

Alt Mbr ID:

Proposal Line Number	Item ID Description	Approximate Quantity and Units	Unit Price	Bid Amount
0062	209.2500 Backfill Granular Grade 2	10,600.000 TON	_____.	_____.
0064	210.1500 Backfill Structure Type A	720.000 TON	_____.	_____.
0066	213.0100 Finishing Roadway (project) 01. 5290-00-72	1.000 EACH	_____.	_____.
0068	305.0110 Base Aggregate Dense 3/4-Inch	3,480.000 TON	_____.	_____.
0070	305.0120 Base Aggregate Dense 1 1/4-Inch	50,890.000 TON	_____.	_____.
0072	312.0110 Select Crushed Material	57,027.000 TON	_____.	_____.
0076	405.0100 Coloring Concrete WisDOT Red	152.000 CY	_____.	_____.
0078	415.0085 Concrete Pavement 8 1/2-Inch	40,169.000 SY	_____.	_____.
0080	415.0210 Concrete Pavement Gaps	2.000 EACH	_____.	_____.
0082	415.0410 Concrete Pavement Approach Slab	296.000 SY	_____.	_____.
0084	415.1085 Concrete Pavement HES 8 1/2-Inch	2,406.000 SY	_____.	_____.
0086	416.0160 Concrete Driveway 6-Inch	37.000 SY	_____.	_____.
0088	416.0512 Concrete Truck Apron 12-Inch	457.000 SY	_____.	_____.
0090	416.0610 Drilled Tie Bars	45.000 EACH	_____.	_____.
0092	416.0620 Drilled Dowel Bars	32.000 EACH	_____.	_____.
0094	416.1010 Concrete Surface Drains	7.000 CY	_____.	_____.



Proposal Schedule of Items

Proposal ID: 20190813003 Project(s): 5290-00-72

Federal ID(s): WISC 2019576

SECTION: 0001

Contract Items

Alt Set ID:

Alt Mbr ID:

Proposal Line Number	Item ID Description	Approximate Quantity and Units	Unit Price	Bid Amount
0096	416.1110 Concrete Shoulder Rumble Strips	1,152.000 LF	_____	_____
0098	450.1100.S Asphaltic Mixture For Extreme Conditions	540.000 TON	_____	_____
0100	450.4000 HMA Cold Weather Paving	1,939.000 TON	_____	_____
0102	455.0605 Tack Coat	764.000 GAL	_____	_____
0104	460.2000 Incentive Density HMA Pavement	3,630.000 DOL	1.00000	3,630.00
0106	460.4110.S Reheating HMA Pavement Longitudinal Joints	850.000 LF	_____	_____
0108	460.5223 HMA Pavement 3 LT 58-28 S	95.000 TON	_____	_____
0110	460.5224 HMA Pavement 4 LT 58-28 S	2,469.000 TON	_____	_____
0112	460.6223 HMA Pavement 3 MT 58-28 S	165.000 TON	_____	_____
0114	460.6224 HMA Pavement 4 MT 58-28 S	1,355.000 TON	_____	_____
0116	465.0105 Asphaltic Surface	25.000 TON	_____	_____
0118	465.0110 Asphaltic Surface Patching	25.000 TON	_____	_____
0120	465.0120 Asphaltic Surface Driveways and Field Entrances	23.000 TON	_____	_____
0122	465.0125 Asphaltic Surface Temporary	4,056.000 TON	_____	_____
0124	465.0315 Asphaltic Flumes	217.000 SY	_____	_____
0126	465.0400 Asphaltic Shoulder Rumble Strips	3,809.000 LF	_____	_____



Proposal Schedule of Items

Proposal ID: 20190813003 Project(s): 5290-00-72

Federal ID(s): WISC 2019576

SECTION: 0001

Contract Items

Alt Set ID:

Alt Mbr ID:

Proposal Line Number	Item ID Description	Approximate Quantity and Units	Unit Price	Bid Amount
0128	465.0425 Asphaltic Shoulder Rumble Strips 2-Lane Rural	351.000 LF	_____.	_____.
0130	465.0475 Asphalt Centerline Rumble Strips 2-Lane Rural	351.000 LF	_____.	_____.
0132	502.0100 Concrete Masonry Bridges	820.000 CY	_____.	_____.
0134	502.3200 Protective Surface Treatment	1,200.000 SY	_____.	_____.
0136	502.3210 Pigmented Surface Sealer	260.000 SY	_____.	_____.
0138	503.0146 Prestressed Girder Type I 45W-Inch	860.000 LF	_____.	_____.
0140	505.0400 Bar Steel Reinforcement HS Structures	13,120.000 LB	_____.	_____.
0142	505.0600 Bar Steel Reinforcement HS Coated Structures	106,240.000 LB	_____.	_____.
0144	505.0800.S Bar Steel Reinforcement HS Stainless Structures	2,920.000 LB	_____.	_____.
0146	506.2605 Bearing Pads Elastomeric Non-Laminated	20.000 EACH	_____.	_____.
0148	506.4000 Steel Diaphragms (structure) 01. B-13-0794	8.000 EACH	_____.	_____.
0150	506.4000 Steel Diaphragms (structure) 02. B-13-0795	8.000 EACH	_____.	_____.
0152	511.1300 Temporary Shoring (location) Marsh Excavation	1,450.000 SF	_____.	_____.
0154	516.0500 Rubberized Membrane Waterproofing	48.000 SY	_____.	_____.
0156	520.1015 Apron Endwalls for Culvert Pipe 15-Inch	2.000 EACH	_____.	_____.



Proposal Schedule of Items

Proposal ID: 20190813003 Project(s): 5290-00-72

Federal ID(s): WISC 2019576

SECTION: 0001

Contract Items

Alt Set ID:

Alt Mbr ID:

Proposal Line Number	Item ID Description	Approximate Quantity and Units	Unit Price	Bid Amount
0158	520.1018 Apron Endwalls for Culvert Pipe 18-Inch	8.000 EACH	_____.	_____.
0160	520.2012 Culvert Pipe Temporary 12-Inch	78.000 LF	_____.	_____.
0162	520.2018 Culvert Pipe Temporary 18-Inch	952.000 LF	_____.	_____.
0164	520.2042 Culvert Pipe Temporary 42-Inch	158.000 LF	_____.	_____.
0166	520.3315 Culvert Pipe Class III-A 15-Inch	27.000 LF	_____.	_____.
0168	520.3318 Culvert Pipe Class III-A 18-Inch	168.000 LF	_____.	_____.
0170	520.8000 Concrete Collars for Pipe	5.000 EACH	_____.	_____.
0172	520.8700 Cleaning Culvert Pipes	3.000 EACH	_____.	_____.
0174	521.1518 Apron Endwalls for Culvert Pipe Sloped Side Drains Steel 18-Inch 6 to 1	2.000 EACH	_____.	_____.
0176	521.2005.S Surface Drain Pipe Corrugated Metal Slotted (inch) 18-Inch	406.000 LF	_____.	_____.
0178	522.1012 Apron Endwalls for Culvert Pipe Reinforced Concrete 12-Inch	3.000 EACH	_____.	_____.
0180	522.1018 Apron Endwalls for Culvert Pipe Reinforced Concrete 18-Inch	8.000 EACH	_____.	_____.
0182	522.1024 Apron Endwalls for Culvert Pipe Reinforced Concrete 24-Inch	3.000 EACH	_____.	_____.
0184	522.1030 Apron Endwalls for Culvert Pipe Reinforced Concrete 30-Inch	5.000 EACH	_____.	_____.
0186	522.1042 Apron Endwalls for Culvert Pipe Reinforced Concrete 42-Inch	1.000 EACH	_____.	_____.



Proposal Schedule of Items

Proposal ID: 20190813003 Project(s): 5290-00-72

Federal ID(s): WISC 2019576

SECTION: 0001

Contract Items

Alt Set ID:

Alt Mbr ID:

Proposal Line Number	Item ID Description	Approximate Quantity and Units	Unit Price	Bid Amount
0188	522.2324 Culvert Pipe Reinforced Concrete Horizontal Elliptical Class HE-III 24x38-Inch	122.000 LF	_____.	_____.
0190	522.2624 Apron Endwalls for Culvert Pipe Reinforced Concrete Horizontal Elliptical 24x38-Inch	4.000 EACH	_____.	_____.
0192	550.0500 Pile Points	52.000 EACH	_____.	_____.
0194	550.2108 Piling CIP Concrete 10 3/4 X 0.50-Inch	2,015.000 LF	_____.	_____.
0196	601.0115 Concrete Curb Type G	96.000 LF	_____.	_____.
0198	601.0405 Concrete Curb & Gutter 18-Inch Type A	333.000 LF	_____.	_____.
0200	601.0409 Concrete Curb & Gutter 30-Inch Type A	3,475.000 LF	_____.	_____.
0202	601.0411 Concrete Curb & Gutter 30-Inch Type D	637.000 LF	_____.	_____.
0204	601.0551 Concrete Curb & Gutter 4-Inch Sloped 36-Inch Type A	5,271.000 LF	_____.	_____.
0206	601.0553 Concrete Curb & Gutter 4-Inch Sloped 36-Inch Type D	1,237.000 LF	_____.	_____.
0208	601.0580 Concrete Curb & Gutter 4-Inch Sloped 36-Inch Type R	415.000 LF	_____.	_____.
0210	601.0586 Concrete Curb & Gutter 4-Inch Sloped 30-Inch Type TBTT	91.000 LF	_____.	_____.
0212	601.0600 Concrete Curb Pedestrian	391.000 LF	_____.	_____.
0214	602.0405 Concrete Sidewalk 4-Inch	28,822.000 SF	_____.	_____.



Proposal Schedule of Items

Proposal ID: 20190813003 Project(s): 5290-00-72

Federal ID(s): WISC 2019576

SECTION: 0001

Contract Items

Alt Set ID:

Alt Mbr ID:

Proposal Line Number	Item ID Description	Approximate Quantity and Units	Unit Price	Bid Amount
0216	602.0515 Curb Ramp Detectable Warning Field Natural Patina	320.000 SF	_____.	_____.
0218	602.0615 Curb Ramp Detectable Warning Field Radial Natural Patina	79.000 SF	_____.	_____.
0220	606.0100 Riprap Light	58.000 CY	_____.	_____.
0222	606.0200 Riprap Medium	14.000 CY	_____.	_____.
0224	606.0300 Riprap Heavy	970.000 CY	_____.	_____.
0226	608.0312 Storm Sewer Pipe Reinforced Concrete Class III 12-Inch	630.000 LF	_____.	_____.
0228	608.0318 Storm Sewer Pipe Reinforced Concrete Class III 18-Inch	719.000 LF	_____.	_____.
0230	608.0324 Storm Sewer Pipe Reinforced Concrete Class III 24-Inch	274.000 LF	_____.	_____.
0232	608.0330 Storm Sewer Pipe Reinforced Concrete Class III 30-Inch	482.000 LF	_____.	_____.
0234	608.0342 Storm Sewer Pipe Reinforced Concrete Class III 42-Inch	210.000 LF	_____.	_____.
0236	611.0430 Reconstructing Inlets	2.000 EACH	_____.	_____.
0238	611.0530 Manhole Covers Type J	5.000 EACH	_____.	_____.
0240	611.0624 Inlet Covers Type H	29.000 EACH	_____.	_____.
0242	611.0642 Inlet Covers Type MS	7.000 EACH	_____.	_____.
0244	611.0652 Inlet Covers Type T	2.000 EACH	_____.	_____.



Proposal Schedule of Items

Proposal ID: 20190813003 Project(s): 5290-00-72

Federal ID(s): WISC 2019576

SECTION: 0001

Contract Items

Alt Set ID:

Alt Mbr ID:

Proposal Line Number	Item ID Description	Approximate Quantity and Units	Unit Price	Bid Amount
0246	611.2006 Manholes 6-FT Diameter	4.000 EACH	_____.	_____.
0248	611.2008 Manholes 8-FT Diameter	2.000 EACH	_____.	_____.
0250	611.3225 Inlets 2x2.5-FT	2.000 EACH	_____.	_____.
0252	611.3230 Inlets 2x3-FT	28.000 EACH	_____.	_____.
0254	611.3901 Inlets Median 1 Grate	1.000 EACH	_____.	_____.
0256	611.3902 Inlets Median 2 Grate	3.000 EACH	_____.	_____.
0258	611.8120.S Cover Plates Temporary	16.000 EACH	_____.	_____.
0260	612.0106 Pipe Underdrain 6-Inch	8,299.000 LF	_____.	_____.
0262	612.0206 Pipe Underdrain Unperforated 6-Inch	223.000 LF	_____.	_____.
0264	612.0406 Pipe Underdrain Wrapped 6-Inch	380.000 LF	_____.	_____.
0266	614.0150 Anchor Assemblies for Steel Plate Beam Guard	8.000 EACH	_____.	_____.
0268	614.1200 MGS Guardrail Temporary Terminal EAT	1.000 EACH	_____.	_____.
0270	614.2300 MGS Guardrail 3	804.000 LF	_____.	_____.
0272	614.2500 MGS Thrie Beam Transition	203.000 LF	_____.	_____.
0274	614.2610 MGS Guardrail Terminal EAT	4.000 EACH	_____.	_____.
0276	614.2620 MGS Guardrail Terminal Type 2	2.000 EACH	_____.	_____.



Proposal Schedule of Items

Proposal ID: 20190813003 Project(s): 5290-00-72

Federal ID(s): WISC 2019576

SECTION: 0001

Contract Items

Alt Set ID:

Alt Mbr ID:

Proposal Line Number	Item ID Description	Approximate Quantity and Units	Unit Price	Bid Amount
0278	616.0700.S Fence Safety	80.000 LF	_____.	_____.
0280	618.0100 Maintenance And Repair of Haul Roads (project) 01. 5290-00-72	1.000 EACH	_____.	_____.
0282	619.1000 Mobilization	1.000 EACH	_____.	_____.
0284	620.0200 Concrete Median Blunt Nose	89.000 SF	_____.	_____.
0286	620.0300 Concrete Median Sloped Nose	491.000 SF	_____.	_____.
0288	623.0200 Dust Control Surface Treatment	78,120.000 SY	_____.	_____.
0290	624.0100 Water	435.000 MGAL	_____.	_____.
0292	625.0500 Salvaged Topsoil	138,470.000 SY	_____.	_____.
0294	627.0200 Mulching	142,500.000 SY	_____.	_____.
0296	628.1504 Silt Fence	3,920.000 LF	_____.	_____.
0298	628.1520 Silt Fence Maintenance	3,920.000 LF	_____.	_____.
0300	628.1905 Mobilizations Erosion Control	13.000 EACH	_____.	_____.
0302	628.1910 Mobilizations Emergency Erosion Control	13.000 EACH	_____.	_____.
0304	628.1920 Cleaning Sediment Basins	76.000 CY	_____.	_____.
0306	628.2004 Erosion Mat Class I Type B	29,270.000 SY	_____.	_____.
0308	628.2023 Erosion Mat Class II Type B	300.000 SY	_____.	_____.



Proposal Schedule of Items

Proposal ID: 20190813003 Project(s): 5290-00-72

Federal ID(s): WISC 2019576

SECTION: 0001

Contract Items

Alt Set ID:

Alt Mbr ID:

Proposal Line Number	Item ID Description	Approximate Quantity and Units	Unit Price	Bid Amount
0310	628.6005 Turbidity Barriers	500.000 SY	_____.	_____.
0312	628.6510 Soil Stabilizer Type B	7.000 ACRE	_____.	_____.
0314	628.7005 Inlet Protection Type A	35.000 EACH	_____.	_____.
0316	628.7015 Inlet Protection Type C	35.000 EACH	_____.	_____.
0318	628.7020 Inlet Protection Type D	37.000 EACH	_____.	_____.
0320	628.7504 Temporary Ditch Checks	2,400.000 LF	_____.	_____.
0322	628.7515.S Stone or Rock Ditch Checks	70.000 CY	_____.	_____.
0324	628.7555 Culvert Pipe Checks	60.000 EACH	_____.	_____.
0326	628.7560 Tracking Pads	12.000 EACH	_____.	_____.
0328	628.7570 Rock Bags	50.000 EACH	_____.	_____.
0330	629.0210 Fertilizer Type B	133.000 CWT	_____.	_____.
0332	630.0120 Seeding Mixture No. 20	3,630.000 LB	_____.	_____.
0334	630.0140 Seeding Mixture No. 40	600.000 LB	_____.	_____.
0336	630.0171 Seeding Mixture No. 70A	34.000 LB	_____.	_____.
0338	630.0200 Seeding Temporary	1,879.000 LB	_____.	_____.
0340	630.0300 Seeding Borrow Pit	910.000 LB	_____.	_____.
0342	631.0300 Sod Water	45.000 MGAL	_____.	_____.



Proposal Schedule of Items

Proposal ID: 20190813003 Project(s): 5290-00-72

Federal ID(s): WISC 2019576

SECTION: 0001

Contract Items

Alt Set ID:

Alt Mbr ID:

Proposal Line Number	Item ID Description	Approximate Quantity and Units	Unit Price	Bid Amount
0344	631.1000 Sod Lawn	100.000 SY	_____.	_____.
0346	631.1100 Sod Erosion Control	137.000 SY	_____.	_____.
0348	633.5200 Markers Culvert End	16.000 EACH	_____.	_____.
0350	634.0612 Posts Wood 4x6-Inch X 12-FT	16.000 EACH	_____.	_____.
0352	634.0614 Posts Wood 4x6-Inch X 14-FT	14.000 EACH	_____.	_____.
0354	634.0616 Posts Wood 4x6-Inch X 16-FT	49.000 EACH	_____.	_____.
0356	634.0618 Posts Wood 4x6-Inch X 18-FT	17.000 EACH	_____.	_____.
0358	634.0622 Posts Wood 4x6-Inch X 22-FT	3.000 EACH	_____.	_____.
0360	637.1220 Signs Type I Reflective SH	391.000 SF	_____.	_____.
0362	637.2210 Signs Type II Reflective H	906.000 SF	_____.	_____.
0364	637.2215 Signs Type II Reflective H Folding	67.000 SF	_____.	_____.
0366	637.2230 Signs Type II Reflective F	219.000 SF	_____.	_____.
0368	638.2102 Moving Signs Type II	36.000 EACH	_____.	_____.
0370	638.2602 Removing Signs Type II	114.000 EACH	_____.	_____.
0372	638.3000 Removing Small Sign Supports	63.000 EACH	_____.	_____.
0374	638.4000 Moving Small Sign Supports	28.000 EACH	_____.	_____.



Proposal Schedule of Items

Proposal ID: 20190813003 Project(s): 5290-00-72

Federal ID(s): WISC 2019576

SECTION: 0001

Contract Items

Alt Set ID:

Alt Mbr ID:

Proposal Line Number	Item ID Description	Approximate Quantity and Units	Unit Price	Bid Amount
0376	641.8100 Overhead Sign Support (structure) 01. S-13-500	LS	LUMP SUM	_____.
0378	641.8100 Overhead Sign Support (structure) 02. S-13-498	LS	LUMP SUM	_____.
0380	642.5401 Field Office Type D	1.000 EACH	_____.	_____.
0382	643.0300 Traffic Control Drums	77,390.000 DAY	_____.	_____.
0384	643.0310.S Temporary Portable Rumble Strips	LS	LUMP SUM	_____.
0386	643.0410 Traffic Control Barricades Type II	1,520.000 DAY	_____.	_____.
0388	643.0420 Traffic Control Barricades Type III	6,070.000 DAY	_____.	_____.
0390	643.0500 Traffic Control Flexible Tubular Marker Posts	109.000 EACH	_____.	_____.
0392	643.0600 Traffic Control Flexible Tubular Marker Bases	109.000 EACH	_____.	_____.
0394	643.0705 Traffic Control Warning Lights Type A	12,530.000 DAY	_____.	_____.
0396	643.0715 Traffic Control Warning Lights Type C	16,610.000 DAY	_____.	_____.
0398	643.0800 Traffic Control Arrow Boards	80.000 DAY	_____.	_____.
0400	643.0900 Traffic Control Signs	41,370.000 DAY	_____.	_____.
0402	643.0920 Traffic Control Covering Signs Type II	4.000 EACH	_____.	_____.
0404	643.1050 Traffic Control Signs PCMS	88.000 DAY	_____.	_____.
0406	643.5000 Traffic Control	1.000 EACH	_____.	_____.



Proposal Schedule of Items

Proposal ID: 20190813003 Project(s): 5290-00-72

Federal ID(s): WISC 2019576

SECTION: 0001

Contract Items

Alt Set ID:

Alt Mbr ID:

Proposal Line Number	Item ID Description	Approximate Quantity and Units	Unit Price	Bid Amount
0408	645.0111 Geotextile Type DF Schedule A	160.000 SY	_____	_____
0410	645.0120 Geotextile Type HR	1,799.000 SY	_____	_____
0412	645.0130 Geotextile Type R	301.000 SY	_____	_____
0414	645.0140 Geotextile Type SAS	495.000 SY	_____	_____
0416	645.0220 Geogrid Type SR	80,776.000 SY	_____	_____
0418	646.1020 Marking Line Epoxy 4-Inch	24,688.000 LF	_____	_____
0420	646.1545 Marking Line Grooved Wet Ref Contrast Epoxy 4-Inch	2,893.000 LF	_____	_____
0422	646.3020 Marking Line Epoxy 8-Inch	1,890.000 LF	_____	_____
0424	646.3545 Marking Line Grooved Wet Ref Contrast Epoxy 8-Inch	5,153.000 LF	_____	_____
0426	646.5020 Marking Arrow Epoxy	40.000 EACH	_____	_____
0428	646.5120 Marking Word Epoxy	18.000 EACH	_____	_____
0430	646.6120 Marking Stop Line Epoxy 18-Inch	267.000 LF	_____	_____
0432	646.6320 Marking Dotted Extension Epoxy 18-Inch	120.000 LF	_____	_____
0434	646.6464 Cold Weather Marking Epoxy 4-Inch	7,817.000 LF	_____	_____
0436	646.6468 Cold Weather Marking Epoxy 8-Inch	2,058.000 LF	_____	_____
0438	646.7120 Marking Diagonal Epoxy 12-Inch	905.000 LF	_____	_____



Proposal Schedule of Items

Proposal ID: 20190813003 Project(s): 5290-00-72

Federal ID(s): WISC 2019576

SECTION: 0001

Contract Items

Alt Set ID:

Alt Mbr ID:

Proposal Line Number	Item ID Description	Approximate Quantity and Units	Unit Price	Bid Amount
0440	646.7420 Marking Crosswalk Epoxy Transverse Line 6-Inch	387.000 LF	_____.	_____.
0442	646.8120 Marking Curb Epoxy	326.000 LF	_____.	_____.
0444	646.8220 Marking Island Nose Epoxy	16.000 EACH	_____.	_____.
0446	646.9000 Marking Removal Line 4-Inch	7,346.000 LF	_____.	_____.
0448	646.9010 Marking Removal Line Water Blasting 4-Inch	4,220.000 LF	_____.	_____.
0450	646.9100 Marking Removal Line 8-Inch	347.000 LF	_____.	_____.
0452	646.9110 Marking Removal Line Water Blasting 8-Inch	445.000 LF	_____.	_____.
0454	646.9200 Marking Removal Line Wide	161.000 LF	_____.	_____.
0456	646.9300 Marking Removal Special Marking	2.000 EACH	_____.	_____.
0458	649.0105 Temporary Marking Line Paint 4-Inch	21,133.000 LF	_____.	_____.
0460	649.0150 Temporary Marking Line Removable Tape 4-Inch	67,859.000 LF	_____.	_____.
0462	649.0205 Temporary Marking Line Paint 8-Inch	2,849.000 LF	_____.	_____.
0464	649.0250 Temporary Marking Line Removable Tape 8-Inch	4,282.000 LF	_____.	_____.
0466	649.0505 Temporary Marking Arrow Paint	2.000 EACH	_____.	_____.
0468	649.0605 Temporary Marking Word Paint	2.000 EACH	_____.	_____.



Proposal Schedule of Items

Proposal ID: 20190813003 Project(s): 5290-00-72

Federal ID(s): WISC 2019576

SECTION: 0001

Contract Items

Alt Set ID:

Alt Mbr ID:

Proposal Line Number	Item ID Description	Approximate Quantity and Units	Unit Price	Bid Amount
0470	649.0805 Temporary Marking Stop Line Paint 18-Inch	13.000 LF	_____.	_____.
0472	649.0820 Temporary Marking Stop Line Epoxy 18-Inch	75.000 LF	_____.	_____.
0474	649.0850 Temporary Marking Stop Line Removable Tape 18-Inch	107.000 LF	_____.	_____.
0476	649.0905 Temporary Marking Diagonal Paint 12-Inch	340.000 LF	_____.	_____.
0478	649.0950 Temporary Marking Diagonal Removable Tape 12-Inch	699.000 LF	_____.	_____.
0480	650.4000 Construction Staking Storm Sewer	70.000 EACH	_____.	_____.
0482	650.4500 Construction Staking Subgrade	21,680.000 LF	_____.	_____.
0484	650.5000 Construction Staking Base	21,680.000 LF	_____.	_____.
0486	650.5500 Construction Staking Curb Gutter and Curb & Gutter	11,946.000 LF	_____.	_____.
0488	650.6000 Construction Staking Pipe Culverts	14.000 EACH	_____.	_____.
0490	650.6500 Construction Staking Structure Layout (structure) 01. B-13-0794	LS	LUMP SUM	_____.
0492	650.6500 Construction Staking Structure Layout (structure) 02. B-13-0795	LS	LUMP SUM	_____.
0494	650.6500 Construction Staking Structure Layout (structure) 03. S-13-498	LS	LUMP SUM	_____.
0496	650.6500 Construction Staking Structure Layout (structure) 05. S-13-500	LS	LUMP SUM	_____.



Proposal Schedule of Items

Proposal ID: 20190813003 Project(s): 5290-00-72

Federal ID(s): WISC 2019576

SECTION: 0001

Contract Items

Alt Set ID:

Alt Mbr ID:

Proposal Line Number	Item ID Description	Approximate Quantity and Units	Unit Price	Bid Amount
0498	650.7000 Construction Staking Concrete Pavement	11,360.000 LF	_____.	_____.
0500	650.8500 Construction Staking Electrical Installations (project) 01. 5290-00-02	LS	LUMP SUM	_____.
0502	650.9000 Construction Staking Curb Ramps	19.000 EACH	_____.	_____.
0504	650.9910 Construction Staking Supplemental Control (project) 01. 5290-00-72	LS	LUMP SUM	_____.
0506	650.9920 Construction Staking Slope Stakes	16,223.000 LF	_____.	_____.
0508	652.0225 Conduit Rigid Nonmetallic Schedule 40 2-Inch	6,156.000 LF	_____.	_____.
0510	652.0235 Conduit Rigid Nonmetallic Schedule 40 3-Inch	1,416.000 LF	_____.	_____.
0512	652.0700.S Install Conduit into Existing Item	1.000 EACH	_____.	_____.
0514	652.0800 Conduit Loop Detector	2,022.000 LF	_____.	_____.
0516	653.0154 Pull Boxes Non-Conductive 24x36-Inch	17.000 EACH	_____.	_____.
0518	653.0164 Pull Boxes Non-Conductive 24x42-Inch	20.000 EACH	_____.	_____.
0520	653.0900 Adjusting Pull Boxes	3.000 EACH	_____.	_____.
0522	653.0905 Removing Pull Boxes	10.000 EACH	_____.	_____.
0524	654.0101 Concrete Bases Type 1	4.000 EACH	_____.	_____.
0526	654.0102 Concrete Bases Type 2	3.000 EACH	_____.	_____.



Proposal Schedule of Items

Proposal ID: 20190813003 Project(s): 5290-00-72

Federal ID(s): WISC 2019576

SECTION: 0001

Contract Items

Alt Set ID:

Alt Mbr ID:

Proposal Line Number	Item ID Description	Approximate Quantity and Units	Unit Price	Bid Amount
0528	654.0106 Concrete Bases Type 6	16.000 EACH	_____.	_____.
0530	654.0110 Concrete Bases Type 10	2.000 EACH	_____.	_____.
0532	654.0113 Concrete Bases Type 13	4.000 EACH	_____.	_____.
0534	654.0217 Concrete Control Cabinet Bases Type 9 Special	1.000 EACH	_____.	_____.
0536	654.0224 Concrete Control Cabinet Bases Type L24	1.000 EACH	_____.	_____.
0538	655.0230 Cable Traffic Signal 5-14 AWG	1,599.000 LF	_____.	_____.
0540	655.0240 Cable Traffic Signal 7-14 AWG	875.000 LF	_____.	_____.
0542	655.0250 Cable Traffic Signal 9-14 AWG	629.000 LF	_____.	_____.
0544	655.0270 Cable Traffic Signal 15-14 AWG	229.000 LF	_____.	_____.
0546	655.0320 Cable Type UF 2-10 AWG Grounded	44.000 LF	_____.	_____.
0548	655.0505 Electrical Wire Traffic Signals 14 AWG	2,981.000 LF	_____.	_____.
0550	655.0515 Electrical Wire Traffic Signals 10 AWG	3,356.000 LF	_____.	_____.
0552	655.0610 Electrical Wire Lighting 12 AWG	3,616.000 LF	_____.	_____.
0554	655.0620 Electrical Wire Lighting 8 AWG	8,418.000 LF	_____.	_____.
0556	655.0700 Loop Detector Lead In Cable	5,952.000 LF	_____.	_____.
0558	655.0800 Loop Detector Wire	4,290.000 LF	_____.	_____.



Proposal Schedule of Items

Proposal ID: 20190813003 Project(s): 5290-00-72

Federal ID(s): WISC 2019576

SECTION: 0001

Contract Items

Alt Set ID:

Alt Mbr ID:

Proposal Line Number	Item ID Description	Approximate Quantity and Units	Unit Price	Bid Amount
0560	656.0200 Electrical Service Meter Breaker Pedestal (location) 01. 143+83	LS	LUMP SUM	_____.
0562	657.0100 Pedestal Bases	6.000 EACH	_____.	_____.
0564	657.0255 Transformer Bases Breakaway 11 1/2-Inch Bolt Circle	19.000 EACH	_____.	_____.
0566	657.0315 Poles Type 4	3.000 EACH	_____.	_____.
0568	657.0327 Poles Type 6-Aluminum	16.000 EACH	_____.	_____.
0570	657.0355 Poles Type 12	3.000 EACH	_____.	_____.
0572	657.0360 Poles Type 13	1.000 EACH	_____.	_____.
0574	657.0425 Traffic Signal Standards Aluminum 15-FT	6.000 EACH	_____.	_____.
0576	657.0540 Monotube Arms 40-FT	1.000 EACH	_____.	_____.
0578	657.0545 Monotube Arms 45-FT	3.000 EACH	_____.	_____.
0580	657.0715 Luminaire Arms Truss Type 4 1/2-Inch Clamp 15-FT	26.000 EACH	_____.	_____.
0582	657.0815 Luminaire Arms Steel 15-FT	4.000 EACH	_____.	_____.
0584	658.0173 Traffic Signal Face 3S 12-Inch	18.000 EACH	_____.	_____.
0586	658.0174 Traffic Signal Face 4S 12-Inch	3.000 EACH	_____.	_____.
0588	658.0416 Pedestrian Signal Face 16-Inch	4.000 EACH	_____.	_____.
0590	658.0500 Pedestrian Push Buttons	6.000 EACH	_____.	_____.



Proposal Schedule of Items

Proposal ID: 20190813003 Project(s): 5290-00-72

Federal ID(s): WISC 2019576

SECTION: 0001

Contract Items

Alt Set ID:

Alt Mbr ID:

Proposal Line Number	Item ID Description	Approximate Quantity and Units	Unit Price	Bid Amount
0592	658.5069 Signal Mounting Hardware (location) 01. STH 19 & Liuna Way/Tierney Ct	LS	LUMP SUM	_____.
0594	659.1125 Luminaires Utility LED C	30.000 EACH	_____.	_____.
0596	659.2124 Lighting Control Cabinets 120/240 24- Inch	1.000 EACH	_____.	_____.
0598	670.0100 Field System Integrator	LS	LUMP SUM	_____.
0600	677.0200 Install Camera Assembly	2.000 EACH	_____.	_____.
0602	678.0036 Install Fiber Optic Cable Outdoor Plant 36-CT	2,981.000 LF	_____.	_____.
0604	678.0400 Fiber Optic Termination	6.000 EACH	_____.	_____.
0606	690.0150 Sawing Asphalt	3,235.000 LF	_____.	_____.
0608	690.0250 Sawing Concrete	3,224.000 LF	_____.	_____.
0610	715.0415 Incentive Strength Concrete Pavement	13,009.500 DOL	1.00000	13,009.50
0612	715.0502 Incentive Strength Concrete Structures	4,884.000 DOL	1.00000	4,884.00
0614	715.0710 Optimized Aggregate Gradation Incentive	43,378.000 DOL	1.00000	43,378.00
0616	740.0440 Incentive IRI Ride	8,000.000 DOL	1.00000	8,000.00
0618	ASP.1T0A On-the-Job Training Apprentice at \$5.00/HR	1,500.000 HRS	5.00000	7,500.00
0620	ASP.1T0G On-the-Job Training Graduate at \$5.00/HR	1,000.000 HRS	5.00000	5,000.00



Proposal Schedule of Items

Proposal ID: 20190813003 Project(s): 5290-00-72

Federal ID(s): WISC 2019576

SECTION: 0001

Contract Items

Alt Set ID:

Alt Mbr ID:

Proposal Line Number	Item ID Description	Approximate Quantity and Units	Unit Price	Bid Amount
0622	SPV.0060 Special 01. Inlets Temporary	3.000 EACH	_____.	_____.
0624	SPV.0060 Special 02. Landmark Reference Monuments Special	3.000 EACH	_____.	_____.
0626	SPV.0060 Special 03. Verify Landmark Reference Monuments Special	12.000 EACH	_____.	_____.
0628	SPV.0060 Special 04. Temporary Sediment Basin	8.000 EACH	_____.	_____.
0630	SPV.0090 Special 01. Asphaltic Curb Temporary	660.000 LF	_____.	_____.
0632	SPV.0090 Special 02. Fill Existing Rumble Strips	355.000 LF	_____.	_____.
0636	SPV.0105 Special 01. Walking Path	LS	LUMP SUM	_____.
0638	SPV.0105 Special 02. Canoe and Kayak Launch	LS	LUMP SUM	_____.
0640	SPV.0105 Special 03. Installing Furnished Dane County Park Kiosk	LS	LUMP SUM	_____.
0642	SPV.0105 Special 04. Installing Furnished Dane County Park Sign	LS	LUMP SUM	_____.
0644	SPV.0105 Special 06. Remove & Reinstall Loop Detector Wire & Lead-in Cable	LS	LUMP SUM	_____.
0646	SPV.0105 Special 07. Transport and Install State-Furnished CAT5E Cable, STH 19	LS	LUMP SUM	_____.
0648	204.0115 Removing Asphaltic Surface Butt Joints	11.000 SY	_____.	_____.
0650	204.0120 Removing Asphaltic Surface Milling	950.000 SY	_____.	_____.
Section: 0001			Total:	_____.

Total Bid: _____.

