



# Wisconsin Department of Transportation

November 25, 2019

**Division of Transportation Systems Development**  
 Bureau of Project Development  
 4822 Madison Yards Way, 4<sup>th</sup> Floor South  
 Madison, WI 53705

Telephone: (608) 266-1631  
 Facsimile (FAX): (608) 266-8459

## NOTICE TO ALL CONTRACTORS:

**Proposal #05: 5992-09-26, WISC 2019733**  
**C Madison, Cottage Grove Rd**  
**North Star Dr to Sprecher Road**  
**CTH BB**  
**Dane County**

**5992-09-27**  
**C Madison, Cottage Grove Rd**  
**North Star Dr to Sprecher Road**  
**CTH BB**  
**Dane County**

## Letting of December 10, 2019

This is Addendum No. 01, which provides for the following:

### Special Provisions:

Added Special Provisions	
Article No.	Description
87	No Mow Seed Mix, Item SPV.0085.02

### Schedule of Items:

Revised Bid Item Quantities					
Bid Item	Item Description	Unit	Old Quantity	Revised Quantity	Proposal Total
630.0140	Seeding Mixture No. 40	LB	237	-53	184

Added Bid Item Quantities					
Bid Item	Item Description	Unit	Old Quantity	Revised Quantity	Proposal Total
SPV.0085.02	No Mow Seed Mix	LB	0	132	132

### Plan Sheets:

Revised Plan Sheets	
Plan Sheet	Plan Sheet Title (brief description of changes to sheet)
55	Erosion Control Plan – Revised Restoration of Median Areas to Include a No Mow Seed Mix.

56	Erosion Control Plan – Revised Restoration of Median Areas to Include a No Mow Seed Mix.
57	Erosion Control Plan – Revised Restoration of Median Areas to Include a No Mow Seed Mix.
58	Erosion Control Plan – Revised Restoration of Median Areas to Include a No Mow Seed Mix.
59	Erosion Control Plan – Revised Restoration of Median Areas to Include a No Mow Seed Mix.
60	Erosion Control Plan – Revised Restoration of Median Areas to Include a No Mow Seed Mix.
175	Miscellaneous Quantities – Revised Quantity for Seeding Mixture No. 40 and Added Quantities For No Mow Seed Mix.

The responsibility for notifying potential subcontractors and suppliers of these changes remains with the prime contractor.

Sincerely,

*Mike Coleman*

Proposal Development Specialist  
Proposal Management Section

**ADDENDUM NO. 01**

**5992-09-26/27**

**November 25, 2019**

**Special Provisions**

**87. No Mow Seed Mix, Item SPV.0085.02.**

**A Description**

This special provision describes the provision and placement of No Mow Seed Mix within the median areas of the project.

**B Materials**

The contractor shall supply seed mix that meets the specification detailed below. Availability of specific species may be limited. Substitutions for individual species may be permissible and shall be approved by the engineer prior to seed mix order.

**WILDFLOWERS**

**Botanical Name (Common Name)**

Allium cernuum (Nodding Onion) % by wt. 0.54  
Asclepias tuberosa (Butterfly Weed) % by wt. 1.09  
Astragalus canadensis (Canada Milk Vetch) % by wt. 0.41  
Baptisia alba (White Wild Indigo) % by wt. 1.09  
Chamaecrista fasciculata (Partridge Pea) % by wt. 8.71  
Coreopsis lanceolata (Lance-leaf Coreopsis) % by wt. 4.36  
Dalea candida (White Prairie Clover) % by wt. 3.27  
Dalea purpurea (Purple Prairie Clover) % by wt. 4.36  
Echinacea pallida (Pale Purple Coneflower) % by wt. 2.18  
Echinacea purpurea (Purple Coneflower) % by wt. 1.09  
Helianthus annuus (Early Sunflower) % by wt. 2.18  
Lespedeza capitata (Round-headed Bush Clover) % by wt. 1.09  
Penstemon digitalis (Foxglove Beardtongue) % by wt. 0.82  
Rudbeckia hirta (Black-eyed Susan) % by wt. 4.36  
Senna hebecarpa (Wild Senna) % by wt. 2.18  
Symphyotrichum laeve (Smooth Blue Aster) % by wt. 0.27  
Verbena stricta (Hoary Vervain) % by wt. 1.09

**GRASSES, SEDGES & RUSHES**

**Botanical Name (Common Name)**

Bouteloua curtipendula (Side-oats Grama) % by wt. 26.14  
Bouteloua gracilis (Blue Grama) % by wt. 8.71  
Muhlenbergia mexicana (Leafy Satin Grass) % by wt. 1.36  
Schyzachyrium scoparium (Little Bluestem) % by wt. 20.91

Sporobolus compositus (Rough Dropseed) % by wt. 3.27

**C Construction**

Seed shall be placed according to the supplier's recommendations and per Article 207 of the City of Madison Standard Specifications for Public Works Construction.

**D Measurement**

The department will measure No Mow Seed Mix per pound acceptably supplied and placed.

**E Payment**

The department will pay for measured quantities at the contract unit price under the following bid item:

ITEM NUMBER	DESCRIPTION	UNIT
SPV.0085.02	No Mow Seed Mix	LB

Payment is full compensation for provision and acceptable placement of the seed mix as set forth in this special provision.

**Schedule of Items**

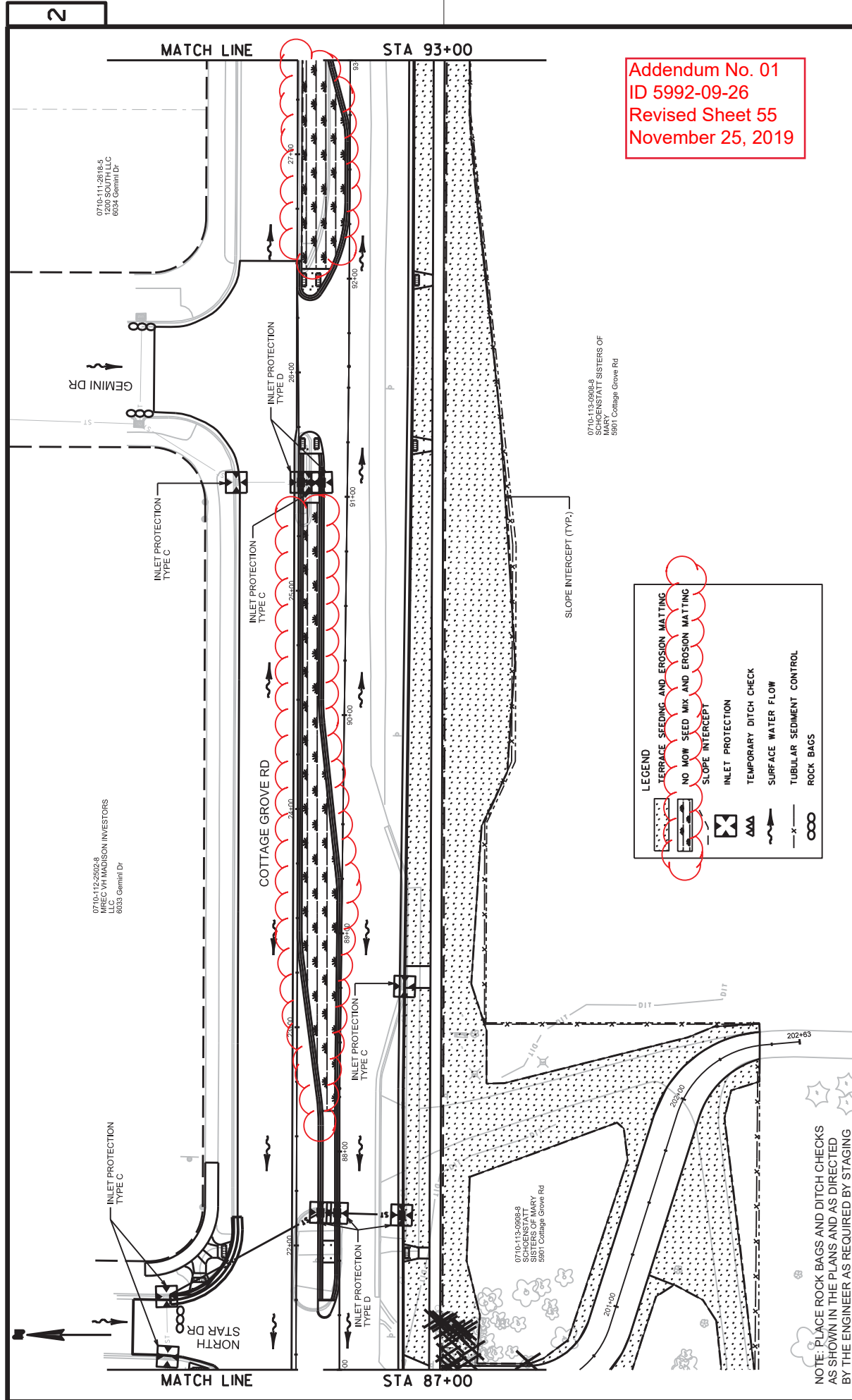
Attached, dated November 25, 2019, are the revised Schedule of Items Pages 6 and 17.

**Plan Sheets**

The following 8½ x 11-inch sheets are attached and made part of the plans for this proposal:

Revised: 55, 56, 57, 58, 59, 60 and 175.

END OF ADDENDUM

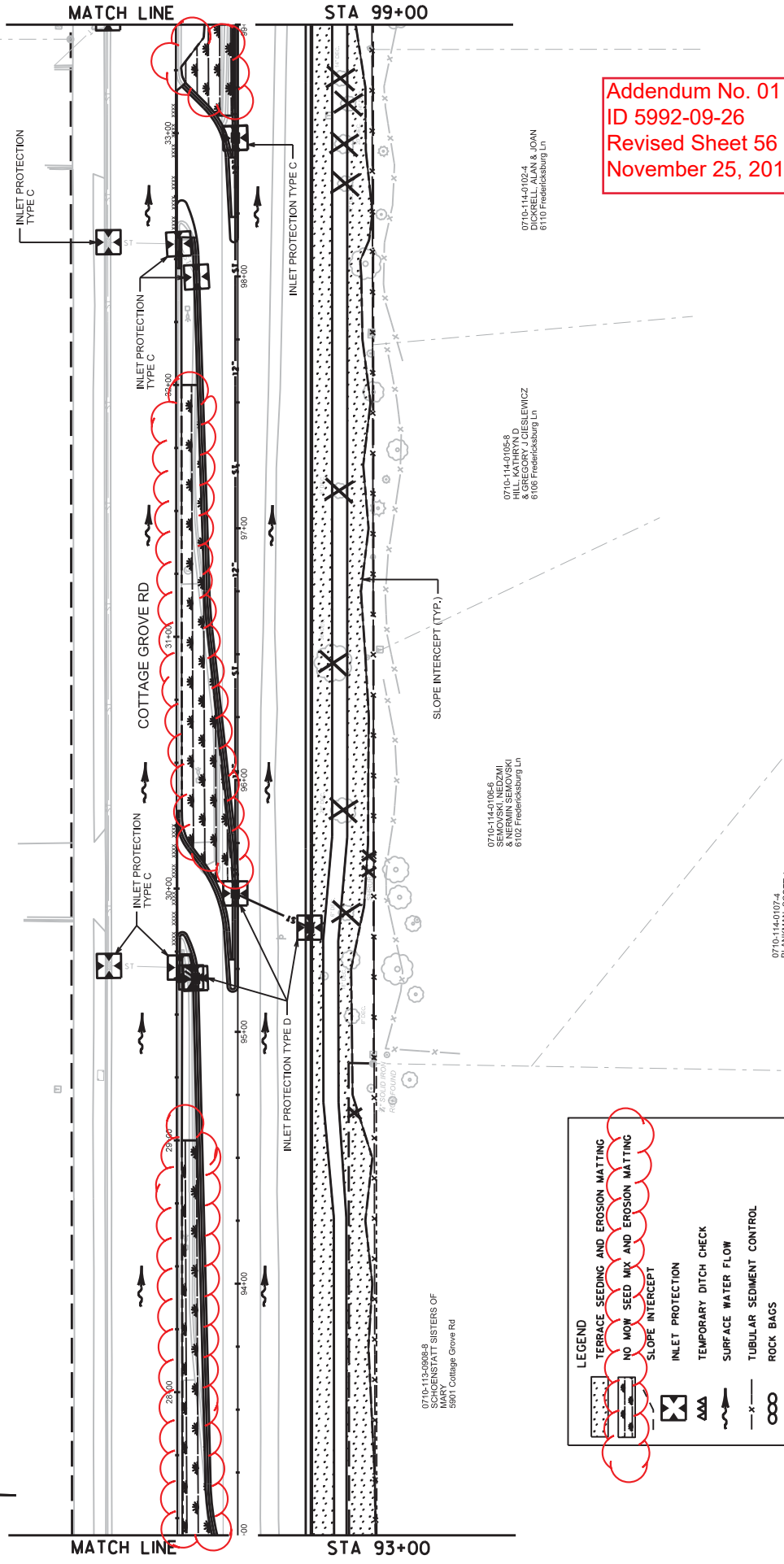


Addendum No. 01  
 ID 5992-09-26  
 Revised Sheet 55  
 November 25, 2019

**LEGEND**

- TERRACE SEEDING AND EROSION MATTING
- NO MOW SEED MIX AND EROSION MATTING
- SLOPE INTERCEPT
- INLET PROTECTION
- TEMPORARY DITCH CHECK
- SURFACE WATER FLOW
- TUBULAR SEDIMENT CONTROL
- ROCK BAGS

NOTE: PLACE ROCK BAGS AND DITCH CHECKS AS SHOWN IN THE PLANS AND AS DIRECTED BY THE ENGINEER AS REQUIRED BY STAGING



Addendum No. 01  
 ID 5992-09-26  
 Revised Sheet 56  
 November 25, 2019

**LEGEND**

- TERRACE SEEDING AND EROSION MATTING
- NO MOW SEED MIX AND EROSION MATTING
- SLOPE INTERCEPT
- INLET PROTECTION
- TEMPORARY DITCH CHECK
- SURFACE WATER FLOW
- TUBULAR SEDIMENT CONTROL
- ROCK BAGS

NOTE: PLACE ROCK BAGS AND DITCH CHECKS AS SHOWN IN THE PLANS AND AS DIRECTED BY THE ENGINEER AS REQUIRED BY STAGING

0710-111-2616-9  
 1208 SOUTH LLC  
 6010 Cottage Grove Rd

0710-113-0906-9  
 SCHOENSTATT SISTERS OF  
 5901 Cottage Grove Rd

0710-114-0106-6  
 SEMOVSKI, NEDZWI  
 & GREGORY J. LESIEWICZ  
 6102 Fredericksburg Ln

0710-114-0105-8  
 HILL, KATHRYN D  
 & GREGORY J. LESIEWICZ  
 6108 Fredericksburg Ln

0710-114-0105-4  
 CROCKETT, JUAN & JOAN  
 6110 Fredericksburg Ln

0710-114-0107-4  
 HANSEN, SCOTTA  
 & DENISE N. SCOTTA  
 6010 Fredericksburg Ln

PROJECT NO: 5992-09-26

HWY: COTTAGE GROVE RD

COUNTY: DANE

EROSION CONTROL PLAN

SHEET 56

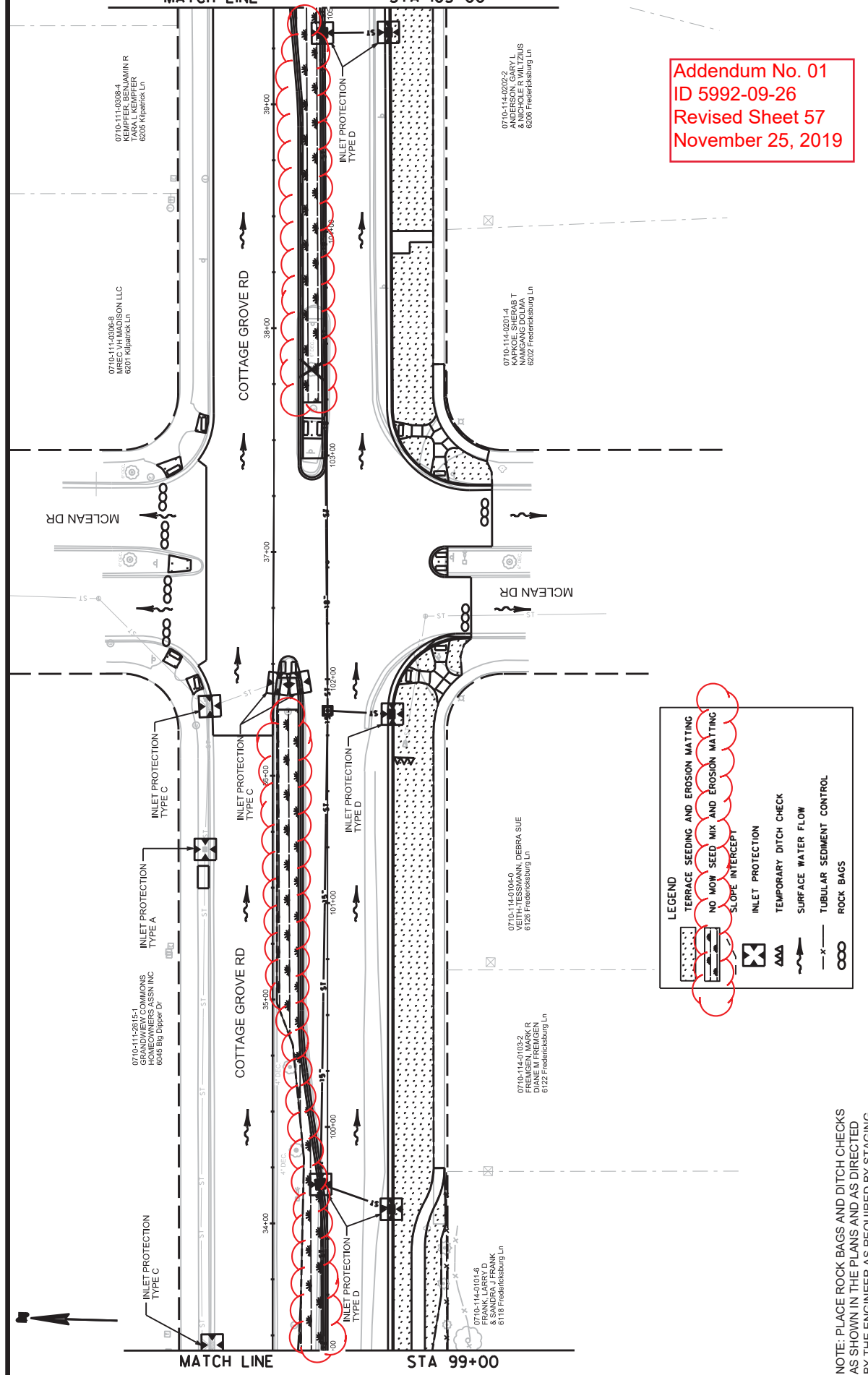
E

MATCH LINE

STA 105+00

MATCH LINE

STA 99+00

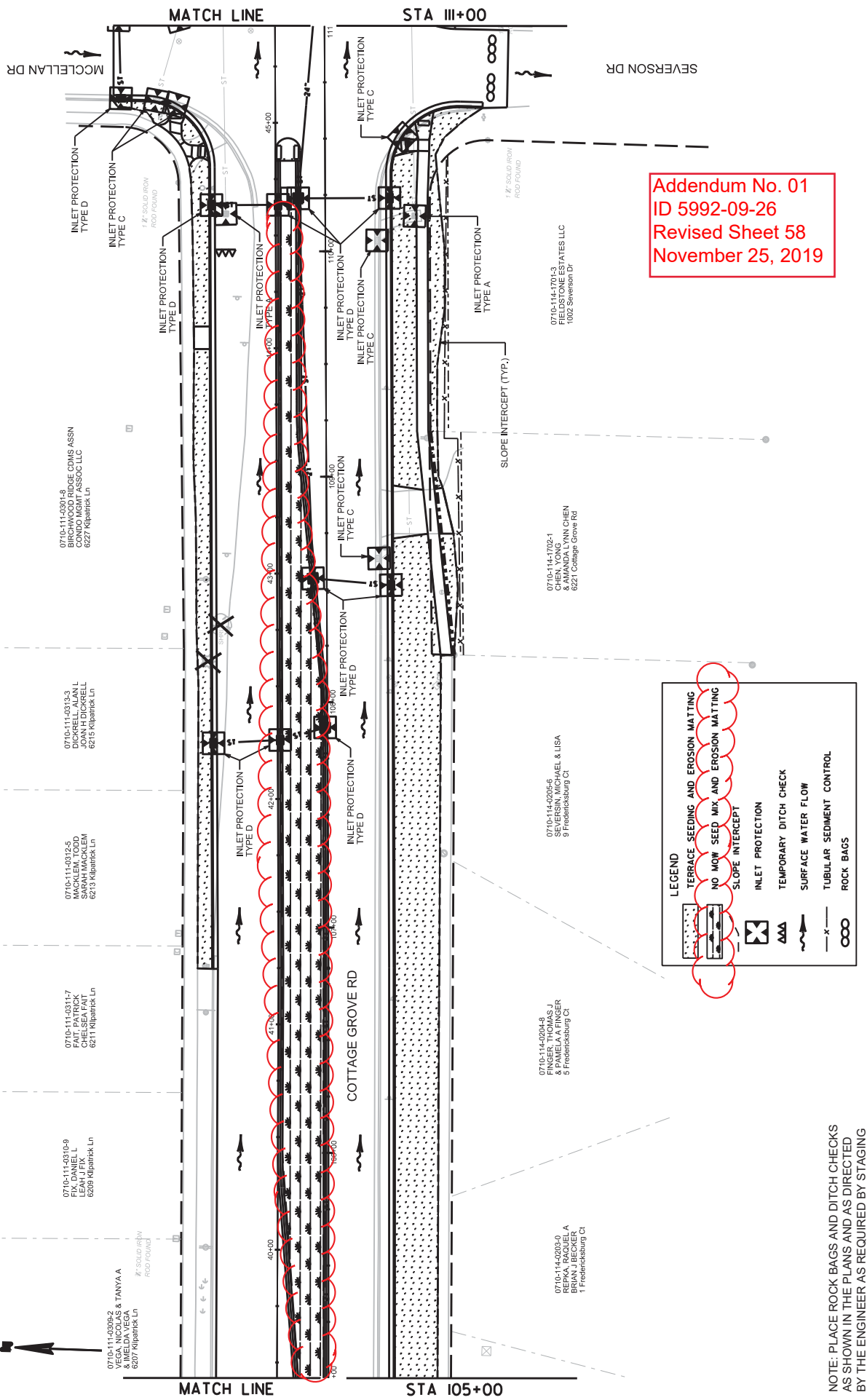


Addendum No. 01  
 ID 5992-09-26  
 Revised Sheet 57  
 November 25, 2019

**LEGEND**

- TERRACE SEEDING AND EROSION MATTING
- NO MOW SEED MIX AND EROSION MATTING
- SLOPE INTERCEPT
- INLET PROTECTION
- TEMPORARY DITCH CHECK
- SURFACE WATER FLOW
- TUBULAR SEDIMENT CONTROL
- ROCK BAGS

NOTE: PLACE ROCK BAGS AND DITCH CHECKS AS SHOWN IN THE PLANS AND AS DIRECTED BY THE ENGINEER AS REQUIRED BY STAGING



Addendum No. 01  
 ID 5992-09-26  
 Revised Sheet 58  
 November 25, 2019

**LEGEND**

- TERRACE SEEDING AND EROSION MATTING
- NO MOW SEED MIX AND EROSION MATTING
- SLOPE INTERCEPT
- INLET PROTECTION
- TEMPORARY DITCH CHECK
- SURFACE WATER FLOW
- TUBULAR SEDIMENT CONTROL
- ROCK BAGS

NOTE: PLACE ROCK BAGS AND DITCH CHECKS AS SHOWN IN THE PLANS AND AS DIRECTED BY THE ENGINEER AS REQUIRED BY STAGING

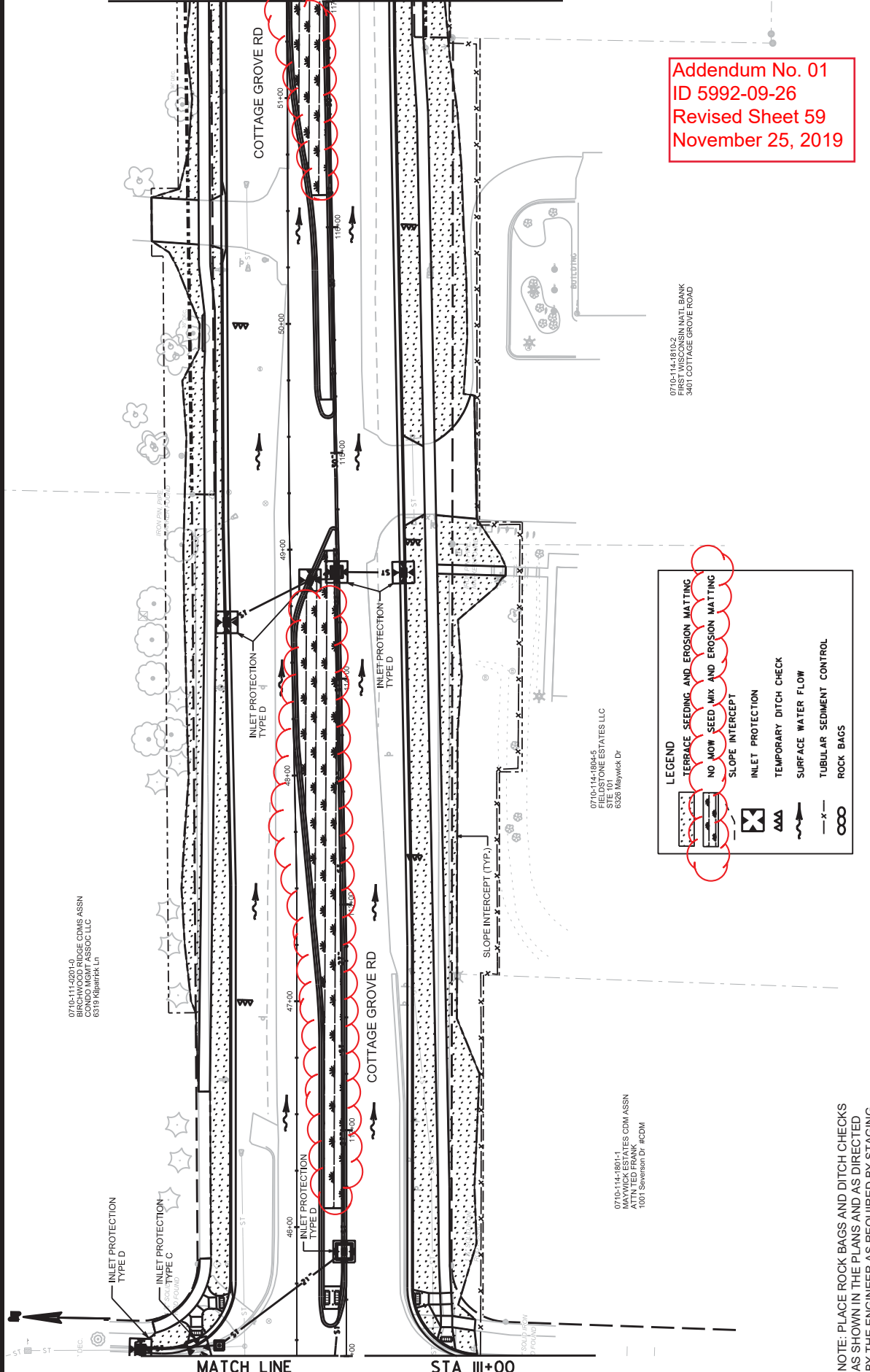


MATCH LINE

STA 117+00

MATCH LINE

STA 113+00



Addendum No. 01  
 ID 5992-09-26  
 Revised Sheet 59  
 November 25, 2019

0710-114-18102  
 FIRST WISCONSIN NATL BANK  
 3401 COTTAGE GROVE ROAD

**LEGEND**

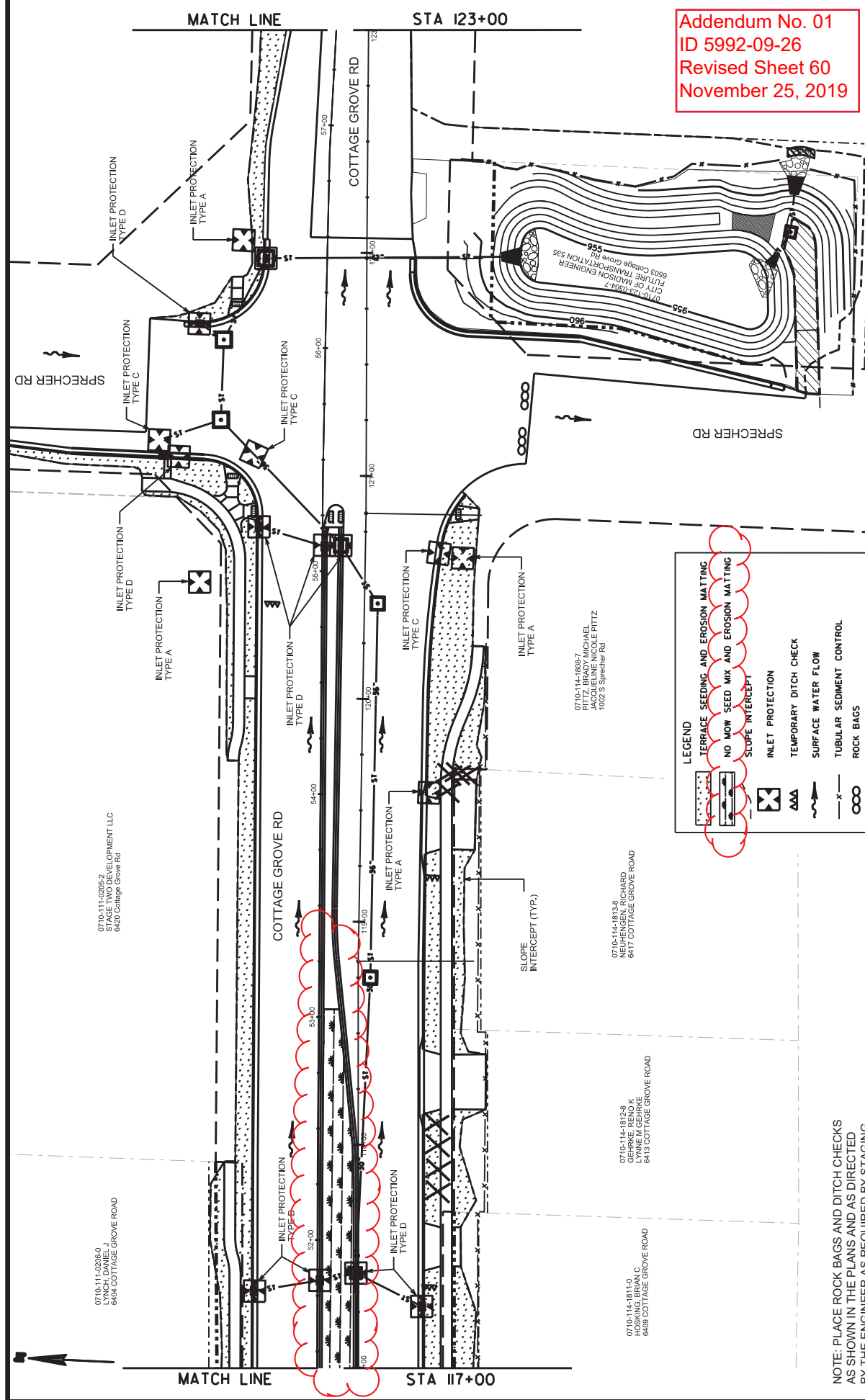
- TERRACE SEEDING AND EROSION MATTING
- NO MOW SEED MIX AND EROSION MATTING
- SLOPE INTERCEPT
- INLET PROTECTION
- TEMPORARY DITCH CHECK
- SURFACE WATER FLOW
- TUBULAR SEDIMENT CONTROL
- ROCK BAGS

0710-114-18045  
 FIELDSTONE ESTATES LLC  
 SITE 101  
 6326 Maywick Dr

0710-114-18041  
 MAYWICK ESTATES CDM ASSN  
 ATTN: TED FRANK  
 1001 Severston Dr. #CDM

0710-114-20015  
 DORCE CDM ASSN  
 CONDO MGMT ASSOC LLC  
 8319 Kilpatrick Ln

NOTE: PLACE ROCK BAGS AND DITCH CHECKS AS SHOWN IN THE PLANS AND AS DIRECTED BY THE ENGINEER AS REQUIRED BY STAGING



Addendum No. 01  
 ID 5992-09-26  
 Revised Sheet 60  
 November 25, 2019

**LEGEND**

- TERRACE SEEDING AND EROSION MATTING
- NO MOW SEED MIX AND EROSION MATTING
- SLOPE INTERCEPT
- INLET PROTECTION
- TEMPORARY DITCH CHECK
- SURFACE WATER FLOW
- TUBULAR SEDIMENT CONTROL
- ROCK BAGS

NOTE: PLACE ROCK BAGS AND DITCH CHECKS AS SHOWN IN THE PLANS AND AS DIRECTED BY THE ENGINEER AS REQUIRED BY STAGING

Addendum No. 01  
ID 5992-09-26  
Revised Sheet 175  
November 25, 2019

FINISHING ITEMS												
CATEGORY	STATION	TO STATION	LOCATION	(628.2006)		(628.2027)		(628.0210)		(630.0140)	(630.0500)	(SPV.0180.02)
				EROSION/MAT	EROSION/MAT	FERTILIZER	SEEDING MIXTURE	NO MOW SEED MIX	SEED WATER			
				URBAN CLASS 1 TYPE A	CLASS II TYPE C	TYPE B	NO. 40	SPECIAL	MGAL	SY	SY	
0020	81+00	87+00	E.B. COTTAGE GROVE ROAD	742	0	0.47	13	0	33	0	742	
	87+00	93+00	E.B. COTTAGE GROVE ROAD	3,377	516	2.13	51	23	152	23	3,377	
	93+00	99+00	E.B. COTTAGE GROVE ROAD	1,467	438	0.92	19	20	66	20	1,467	
	99+00	105+00	E.B. COTTAGE GROVE ROAD	1,419	431	0.89	18	19	64	19	1,419	
	105+00	111+00	E.B. COTTAGE GROVE ROAD	2,234	824	1.41	25	37	100	37	2,234	
	111+00	117+00	E.B. COTTAGE GROVE ROAD	2,484	503	1.56	36	23	111	23	2,484	
	117+00	123+00	E.B. COTTAGE GROVE ROAD	1,323	225	0.83	20	10	59	10	1,323	
	123+00	125+67	E.B. COTTAGE GROVE ROAD	112	0	0.07	2	0	5	0	112	
	-	-	BIORETENTION BASIN	470	1,200	-	-	0	1	0	470	
<b>PROJECT TOTALS</b>				<b>13,628</b>	<b>4,137</b>	<b>8</b>	<b>164</b>	<b>132</b>	<b>592</b>	<b>132</b>	<b>13,628</b>	

EROSION CONTROL														
CATEGORY	STATION	TO STATION	LOCATION	(623.0200)		(628.1504)		(628.7005)		(628.7015)	(628.7020)	(628.7504)	(628.7570)	(SPV.0080.08)
				DUST CONTROL	SURFACE TREATMENT	FENCE	SILT	INLET	PROTECTION					
				SY	LF	LF	LF	TYPE A	TYPE C	TYPE C	TYPE C	CHECKS	BAGS	SEEDING CONTROL
0020	69+00	75+00	E.B. COTTAGE GROVE ROAD	-	-	-	-	-	-	10	-	-	-	366
	75+00	81+00	E.B. COTTAGE GROVE ROAD	-	-	-	-	-	-	2	-	-	-	-
	81+00	87+00	E.B. COTTAGE GROVE ROAD	3023	-	-	-	-	-	8	-	-	-	549
	87+00	93+00	E.B. COTTAGE GROVE ROAD	9656	-	-	-	-	-	5	-	-	3	713
	93+00	99+00	E.B. COTTAGE GROVE ROAD	5043	-	-	-	-	-	4	-	-	-	604
	99+00	105+00	E.B. COTTAGE GROVE ROAD	5721	-	-	-	-	-	7	-	-	-	66
	105+00	111+00	E.B. COTTAGE GROVE ROAD	7590	-	-	-	-	-	5	-	-	6	224
	111+00	117+00	E.B. COTTAGE GROVE ROAD	7709	-	-	-	-	-	11	-	-	2	646
	117+00	123+00	E.B. COTTAGE GROVE ROAD	10159	-	-	-	-	-	5	-	-	2	337
	123+00	126+00	E.B. COTTAGE GROVE ROAD	471	-	-	-	-	-	10	-	-	2	-
	-	-	BIORETENTION BASIN	-	270	-	-	-	-	-	-	-	-	-
	-	-	UNDISTRIBUTED	-	-	270	-	-	-	-	-	-	-	-
<b>PROJECT TOTALS</b>				<b>49172</b>	<b>270</b>	<b>270</b>	<b>270</b>	<b>7</b>	<b>45</b>	<b>40</b>	<b>110</b>	<b>23</b>	<b>3505</b>	

MOBILIZATIONS									
CATEGORY	STATION	TO STATION	LOCATION	(628.1905)		(628.1910)		(SPV.0105.06)	
				EROSION CONTROL	EROSION CONTROL	EMERGENCY	EROSION CONTROL	STORM CONTROL PLAN	AND IMPLEMENTATION
				EACH	EACH	EACH	LS	LS	
0020	10	12	1	1	1	1	1	1	
<b>PROJECT TOTALS</b>				<b>10</b>	<b>12</b>	<b>12</b>	<b>1</b>	<b>1</b>	

TRACKING PADS									
CATEGORY	LOCATION	(628.7560)							
		BEGIN PROJECT	END PROJECT						
0020	UNDISTRIBUTED	11	13						
<b>PROJECT TOTAL</b>		<b>13</b>	<b>13</b>						

UTILITY LINE OPENING (ULO)									
CATEGORY	I.D.	STATION	LOCATION	(SPV.0080.12)					
				UTILITY	EACH				
0020	ULO-1	121+71.50	LT-59.00	ELECTRIC-ATC	1				
	ULO-2	120+99.50	LT-40.72	ELECTRIC/MG&E	1				
	ULO-3	117+34.40	LT-46.00	TEL & TV	1				
	ULO-4	87+40.26	LT-57.59	ELECTRIC & TV	1				
<b>PROJECT TOTAL</b>					<b>18</b>				
<b>PROJECT TOTAL</b>					<b>22</b>				



Proposal Schedule of Items

Proposal ID: 20191210005 Project(s): 5992-09-26, 5992-09-27

Federal ID(s): WISC 2019733, N/A

SECTION: 0001 Contract Items

Alt Set ID: Alt Mbr ID:

Proposal Line Number	Item ID Description	Approximate Quantity and Units	Unit Price	Bid Amount
0154	628.1910 Mobilizations Emergency Erosion Control	12.000 EACH	_____.	_____.
0156	628.2006 Erosion Mat Urban Class I Type A	13,628.000 SY	_____.	_____.
0158	628.2027 Erosion Mat Class II Type C	1,200.000 SY	_____.	_____.
0160	628.7005 Inlet Protection Type A	7.000 EACH	_____.	_____.
0162	628.7015 Inlet Protection Type C	45.000 EACH	_____.	_____.
0164	628.7020 Inlet Protection Type D	40.000 EACH	_____.	_____.
0166	628.7504 Temporary Ditch Checks	110.000 LF	_____.	_____.
0168	628.7560 Tracking Pads	13.000 EACH	_____.	_____.
0170	628.7570 Rock Bags	23.000 EACH	_____.	_____.
0172	629.0210 Fertilizer Type B	8.000 CWT	_____.	_____.
0174	630.0140 Seeding Mixture No. 40	184.000 LB	_____.	_____.
0176	630.0500 Seed Water	592.000 MGAL	_____.	_____.
0178	637.2210 Signs Type II Reflective H	592.690 SF	_____.	_____.
0180	642.5201 Field Office Type C	1.000 EACH	_____.	_____.
0182	643.0300 Traffic Control Drums	108,080.000 DAY	_____.	_____.
0184	643.0420 Traffic Control Barricades Type III	4,368.000 DAY	_____.	_____.



Proposal Schedule of Items

Proposal ID: 20191210005 Project(s): 5992-09-26, 5992-09-27

Federal ID(s): WISC 2019733, N/A

SECTION: 0001 Contract Items

Alt Set ID: Alt Mbr ID:

Proposal Line Number	Item ID Description	Approximate Quantity and Units	Unit Price	Bid Amount
0482	SPV.0105 Special 03. Temporary Traffic Signals Cottage Grove Road - Sprecher Road	LS	LUMP SUM	_____.
0484	SPV.0105 Special 04. Temporary Street Lighting	LS	LUMP SUM	_____.
0486	SPV.0105 Special 05. Construction Staking Water Main	LS	LUMP SUM	_____.
0488	SPV.0105 Special 06. Storm Control Plan and Implementation	LS	LUMP SUM	_____.
0490	SPV.0165 Special 01. Monolithic Concrete Median	100.000 SF	_____.	_____.
0492	SPV.0165 Special 02. Tied Concrete Block Mats	1,351.000 SF	_____.	_____.
0494	SPV.0180 Special 01. Removal of Buried Asphalt Parking Lot	300.000 SY	_____.	_____.
0496	SPV.0180 Special 02. Topsoil Special	13,628.000 SY	_____.	_____.
0498	SPV.0195 Special 01. Disposal of Contaminated Soil	160.000 TON	_____.	_____.
0500	SPV.0195 Special 02. Sand	170.000 TON	_____.	_____.
0502	SPV.0085 Special 02. No Mow Seed Mix	132.000 LB	_____.	_____.
<b>Section: 0001</b>			<b>Total:</b>	_____.
			<b>Total Bid:</b>	_____.

