



Wisconsin Department of Transportation

December 5, 2019

Division of Transportation Systems Development
 Bureau of Project Development
 4822 Madison Yards Way, 4th Floor South
 Madison, WI 53705

Telephone: (608) 266-1631
 Facsimile (FAX): (608) 266-8459

NOTICE TO ALL CONTRACTORS:

Proposal #06: 5992-10-31, WISC 2019 771
City of Madison, Gammon Road
W Twn Mall to Grand Canyon Dr
Local Street
Dane County

5992-10-32, WISC 2019 772
City of Madison, Gammon Road
USH 12 to Mineral Point Road
Local Street
Dane County

5992-10-33
City of Madison, Gammon Road
USH 12 to Mineral Point Road
Local Street
Dane County

Letting of December 10, 2019

This is Addendum No. 02, which provides for the following:

Special Provisions:

Revised Special Provisions	
Article No.	Description
95	Colored Crosswalk Green, SPV.0165.001

Added Special Provisions	
Article No.	Description
27	Removing Asphaltic Longitudinal Notched Wedge Joint Milling, 204.0126.S
73	No Mow Seed Mix, SPV.0085.001
102	Cold Patch, SPV.0195.001

Schedule of Items:

Revised Bid Item Quantities					
Bid Item	Item Description	Unit	Old Quantity	Revised Quantity	Proposal Total
455.0605	Tack Coat	GAL	3321	83	3,404
460.4110.S	Reheating HMA Pavement Longitudinal Joints	LF	4,500	35,535	40,035
628.2006	Erosion Mat Urban Class I Type A	SY	9,700	1,900	11,600

629.0210	Fertilizer Type B	CWT	7.80	1.24	9.04
630.0130	Seeding Mixture No. 30	LB	66	-26	40
630.0140	Seeding Mixture No. 40	LB	158	-28	130
630.0200	Seeding Temporary	LB	66	-26	40
630.0500	Seed Water	MGAL	300	100	400
631.0300	Sod Water	MGAL	160	-50	110
631.1000	Sod Lawn	SY	6,100	-1,900	4,200

Added Bid Item Quantities					
Bid Item	Item Description	Unit	Old Quantity	Revised Quantity	Proposal Total
204.0126.S	Removing Asphaltic Longitudinal Notched Wedge Joint Milling	LF	0	10,800	10,800
460.4110.S	Reheating HMA Pavement Longitudinal Joints	LF	0	135	40,035
641.8100.10	Overhead Sign Support S-13-0516	LS	0	1	1
641.8100.14	Overhead Sign Support S-13-0522	LS	0	1	1
641.8100.15	Overhead Sign Support S-13-0523	LS	0	1	1
641.8100.16	Overhead Sign Support S-13-0525	LS	0	1	1
641.8100.17	Overhead Sign Support S-13-0526	LS	0	1	1
641.8100.18	Overhead Sign Support S-13-0527	LS	0	1	1
641.8100.19	Overhead Sign Support S-13-0528	LS	0	1	1
SPV.0085.001	No Mow Seed Mix	LB	0	218	218
SPV.0195.001	Cold Patch	TON	0	10	10

Deleted Bid Item Quantities					
Bid Item	Item Description	Unit	Old Quantity	Revised Quantity	Proposal Total
641.1200.10	Sign Bridge Cantilevered S-13-0516	LS	1	0	0
641.1200.14	Sign Bridge Cantilevered S-13-0522	LS	1	0	0
641.1200.15	Sign Bridge Cantilevered S-13-0523	LS	1	0	0
641.1200.16	Sign Bridge Cantilevered S-13-0525	LS	1	0	0
641.1200.17	Sign Bridge Cantilevered S-13-0526	LS	1	0	0
641.1200.18	Sign Bridge Cantilevered S-13-0527	LS	1	0	0
641.1200.19	Sign Bridge Cantilevered S-13-0528	LS	1	0	0

Plan Sheets:

Revised Plan Sheets	
Plan Sheet	Plan Sheet Title (brief description of changes to sheet)
2	General Notes – Added note to clarify reference to Topsoil Special bid item
37	Construction Details – Added detail for temporary asphaltic longitudinal wedge
71-79	Erosion Control Detail Sheets – Revised to show addition of new No Mow Seed Mix and changes to other bid items
245	Miscellaneous Quantity Sheet – Revised quantities for tack coat and added Cold Patch item
246	Miscellaneous Quantity Sheet – Added tables for Removing Asphaltic Longitudinal Notched Wedge Joint Milling and Reheating HMA Pavement Longitudinal Joints
263	Miscellaneous Quantity Sheet – Revised for adjusted finishing quantities and addition of No Mow Seed Mix quantity
271	Miscellaneous Quantity Sheet – Revised bid item names for 7 overhead sign support items
297	Miscellaneous Quantity Sheet – Removed Reheating HMA Pavement table

Deleted Plan Sheets	
Plan Sheet	Plan Sheet Title (brief description of why sheet was deleted)
365	Removed SDD 13C19-01 for HMA Longitudinal Joints

The responsibility for notifying potential subcontractors and suppliers of these changes remains with the prime contractor.

Sincerely,

Mike Coleman

Proposal Development Specialist
Proposal Management Section

ADDENDUM NO. 02
5992-10-31 5992-10-32
December 5, 2019

Special Provisions

95. Colored Crosswalk Green, Item SPV.0165.001

A Description

This work consists of furnishing and applying a green colored, high friction surfacing system in accordance with this Section and in conformity with the lines and details shown on the plans. The location of the Colored Crosswalk Green is noted in the plans and consists of a Colored Crosswalk Green, high friction surface installed in the crosswalk areas of the multi-use side path along Gammon Road. The system shall consist of a Methyl Methacrylate resin colorized with pigment to produce the specified color and mixed with anti-skid aggregate that is used for pavement markings.

The color of the Colored Crosswalk Green surface shall be Bike Lane Green.

The manufacturer's technical representative shall come to the construction site to train Department and Contractor personnel prior to surface treatment and shall be available during application as necessary.

B Materials

General: Use Color-Safe Pavement Marking with Anti-Skid Surface by Transpo Industries, or CycleGrip MAXX by Ennis-Flint or an approved equal. Use a Methyl Methacrylate (MMA) based resin system capable of retaining an aggregate topping under vehicular traffic conditions. Install Colored Crosswalk Green in accordance with manufactures specifications and these special provisions.

The MMA based resin system shall comply with chromaticity requirements in accordance with MUTCD Interim Approval for Optional Use of Green Colored Pavement for Bike Lanes.

MMA Based Resin System: The MMA based resin system shall meet the following requirements:

<u>Property</u>	<u>Value</u>	<u>Test Method</u>
Tensile Strength @ 7 days, psi, minimum	400	ASTM D 638
Hardness, Shore D, minimum	50	ASTM D 2240
Gel Time, minutes, minimum	10	ASTM D 2471
Cure Rate, hours, maximum	3	Film@ 75°F
Water Absorption @ 24 hours, max.	0.25%	ASTM D 570

Aggregate: The aggregate shall be high friction crushed Bauxite, Granite, or gravel. The aggregate will be delivered to the construction site in clearly labeled bags or sacks. The aggregate shall be clean, dry and free from foreign matter. The aggregate shall meet the following requirements:

<u>Property</u>	<u>Value</u>	<u>Test Method</u>
Hardness, minimum	7	Mohs Scale

C Construction

General: Apply Colored Crosswalk Green in accordance with manufactures specifications.

Preparation: Prepare surfaces so that they are clean, dry, and free of all dust, oil, debris and any other material that might interfere with the bond between the MMA based resin system and existing

surfaces. The manufacturer's representative will determine if all surfaces have been adequately cleaned.

Protect utilities, drainage structures, curbs and any other structure within or adjacent to the treatment location against the application of the surface treatment materials. Cover and protect all existing pavement markings that are adjacent to the application surfaces as directed by the Engineer. Remove by grinding any pavement markings that conflict with the surface application and thoroughly sweep or vacuum the surface clean prior to the epoxy binder application.

Pre-treat joints and cracks greater than 1/4 inches in width and depth with the MMA resin system specified herein or by using an alternative procedure proposed by the manufacturer and agreed upon by the Engineer. Proceed with the MMA resin system installation once the product, in the pre-treated areas, has gelled or once the alternative procedure has been accomplished.

For applications on new pavements, install the high friction surfacing system topping a minimum of 20 days after the placement of the underlying and adjacent pavement. If temperatures do not allow application of the high friction surfacing system it may be applied in the following spring when adequate temperatures for application occur.

Curing: Allow the MMA based resin system to cure in accordance with manufacturer recommendations. Protect treated surfaces from traffic and environmental effects until the area has cured.

PERFORMANCE REQUIREMENTS

Raveling and Delamination: Remove and replace Colored Crosswalk Green surface treatment that ravels, delaminates, or wears off within 90 days after placement, unless approved to remain in place by the Engineer. The limits of removal and replacement shall be approved by the Engineer. The replaced Colored Crosswalk Green surface treatment shall meet the requirements of this sub-article.

Warranty: The MMA based resin system material shall be installed per plans and specification. The Engineer will notify the Contractor within 48 hours of installation regarding any of the MMA based resin system material that is installed not to specification or to the satisfaction of the Engineer. Non conforming MMA based resin system material shall be removed at no charge to the City and replaced with conforming product.

The warranty period in reference to the following points is to be 1 year from date of installation. Warranty of the following items shall be submitted in writing by the Contractor or his installer prior to the pre-construction meeting.

- The MMA based resin system material will maintain its original color in the surface area throughout the 'warranty period' with the exception of natural weathering, tire and dirt deposits and abnormal markings applied after installation.
- Friction will achieve a minimum BPN of 60 in accordance with ASTM E-303
- The MMA based resin system material will maintain its skid resistance qualities in 100% of its surface area to never fall below a BPN of 60 during the 'warranty period'.
- With the exception of structural cracking or excessive movement of the surface beneath, the MMA based resin system will not be subject to excessive cracking in its surface.

D Measurement

The department will measure Colored Crosswalk Green by the square foot acceptably completed. No deduction will be made for the areas occupied by manholes, inlets, drainage structures, pavement markings or by any public utility appurtenances within the area.

E Payment

The department will pay for measured quantities at the contract unit price under the following bid item:

ITEM NUMBER	DESCRIPTION	UNIT
SPV.0165.001	Colored Crosswalk Green	SF

Payment is full compensation for furnishing and installing all materials including any re-application or repair required under the Performance Requirements and Warranty as provided herein.

100. Removing Asphaltic Longitudinal Notched Wedge Joint Milling, Item 204.0126.S.

A Description

This special provision describes the milling and removing of the upper layer HMA longitudinal notched wedge joint, including sweeping and cleaning of the affected area prior to paving the adjacent lane. Follow drop-off and hazard protection in standard spec 104.6.1.2.3.

B (Vacant)

C Construction

Prior to paving the adjacent upper layer HMA lane, mill longitudinal notched wedge joint to a true line with a face perpendicular to the surface of the existing asphaltic surface pavement as the plans show or the engineer directs. Provide a uniform milled surface that is reasonably plane, free of excessively large scarification marks, and has the grade and transverse slope the plans show, or the engineer directs. Do not damage the remaining pavement.

Use a self-propelled milling machine with depth, grade, and slope controls. Shroud the drum to prevent discharging loosened material onto the adjacent work areas or live traffic lanes. Provide an engineer-approved dust control system.

Thoroughly clean the milled surface and completely remove all millings from the project site. Unless using a continuous removal and pick-up operation, do not windrow or store material on the roadway. Clear the roadway of all material and equipment during non-working hours. The contractor becomes the owner of the removed asphaltic pavement and is responsible for the disposal as specified in standard spec 204.3.1.3.

D Measurement

The department will measure Removing Asphaltic Longitudinal Notched Wedge Joint Milling by the linear foot unit for all wedge joints, acceptably removed.

E Payment

The department will pay for measured quantities at the contract unit price under the following bid item:

ITEM NUMBER	DESCRIPTION	UNIT
204.0126.S	Removing Asphaltic Longitudinal Notched Wedge Joint Milling	LF

Payment is full compensation for milling, removing, sweeping, cleaning, and disposing of materials.
stp-204-045 (20191121)

101. No Mow Seed Mix, Item SPV.0085.001

A Description

This special provision describes the provision and placement of No Mow Seed Mix within the median areas of the project.

B Materials

The contractor shall supply seed mix that meets the specification detailed below. Availability of specific species may be limited. Substitutions for individual species may be permissible and shall be approved by the engineer prior to seed mix order.

WILDFLOWERS

Botanical Name (Common Name)

- Allium cernuum (Nodding Onion) % by wt. 0.54
- Asclepias tuberosa (Butterfly Weed) % by wt. 1.09
- Astragalus canadensis (Canada Milk Vetch) % by wt. 0.41
- Baptisia alba (White Wild Indigo) % by wt. 1.09
- Chamaecrista fasciculata (Partridge Pea) % by wt. 8.71
- Coreopsis 7exicana7e (Lance-leaf Coreopsis) % by wt. 4.36
- Dalea candida (White Prairie Clover) % by wt. 3.27
- Dalea purpurea (Purple Prairie Clover) % by wt. 4.36
- Echinacea pallida (Pale Purple Coneflower) % by wt. 2.18
- Echinacea purpurea (Purple Coneflower) % by wt. 1.09
- Heliopsis helianthoides (Early Sunflower) % by wt. 2.18
- Lespedeza 7exicana (Round-headed Bush Clover) % by wt. 1.09
- Penstemon digitalis (Foxglove Beardtongue) % by wt. 0.82
- Rudbeckia hirta (Black-eyed Susan) % by wt. 4.36
- Senna hebecarpa (Wild Senna) % by wt. 2.18
- Symphotrichum 7exic (Smooth Blue Aster) % by wt. 0.27
- Verbena stricta (Hoary Vervain) % by wt. 1.09

GRASSES, SEDGES & RUSHES

Botanical Name (Common Name)

- Bouteloua curtipendula (Side-oats Grama) % by wt. 26.14
- Bouteloua gracilis (Blue Grama) % by wt. 8.71
- Muhlenbergia 7exicana (Leafy Satin Grass) % by wt. 1.36
- Schyzachyrium scoparium (Little Bluestem) % by wt. 20.91
- Sporobolus compositus (Rough Dropseed) % by wt. 3.27

C Construction

Seed shall be placed according to the supplier's recommendations and per Article 207 of the City of Madison Standard Specifications for Public Works Construction.

D Measurement

The department will measure No Mow Seed Mix per pound supplied and placed.

E Payment

The department will pay for measured quantities at the contract unit price under the following bid item:

ITEM NUMBER	DESCRIPTION	UNIT
SPV.0085.01	No Mow Seed Mix	LB

Payment is full compensation for provision and acceptable placement of the seed mix as set forth in this special provision.

102. Cold Patch, Item SPV.0195.001

A Description

This special provision describes furnishing, stockpiling, placing and maintaining cold patch material. The cold patch material shall be used for short term maintenance purposes to fill potholes/voids in the existing or temporary pavement surfaces as directed by the engineer.

B Materials

B.1 General

Furnish cold patch that is a combination of course aggregate, natural sand and bituminous material MC-250. Furnish a mixture designed to have a workability range of 15 degrees Fahrenheit to 100 degrees Fahrenheit without the addition of heat. Furnish a mixture having good adhesion to wet surfaces and resistant to damage by water, salt and deicing products. Provide a uniform mixture not requiring any mixing or special handling prior to use.

B.2 Gradation

Provide material conforming to the following gradation requirements:

SIEVE SIZE	PERCENT PASSING (by weight)
3/8 Inch (9.5mm)	96-100
No. 4 (4.75 mm)	76-82
No. 8 (2.38 mm)	50-60
No. 50 (.297 mm)	15-20
No. 200 (0.74 mm)	2-5
Bitumen	4.8-5.2

C Construction

Choose a smooth, firm, and well-drained area for an on-site stockpile that is cleared of vegetation and foreign material that may contaminate the cold patch. Locate the stockpile so it is easily accessible

and able to be maintained and replenished at any time during the duration of the project. Maintain a minimum stockpile size of 2 tons or as directed by the engineer.

Application of cold patch must be able to be accomplished by hand labor as necessary. Prior to filling any potholes/voids remove all ponded water and loose debris. Place material into the pothole/void and compact flush with a tamper, roller, or vehicle tire. Traffic must be able to travel over the patch immediately after compacting.

Provide availability of equipment and forces to expeditiously repair areas within 2 hours of a repair request by the engineer.

D Measurement

The department will measure Cold Patch in tons of cold patch, acceptably completed.

E Payment

The department will pay for measured quantities at the contract unit price under the following bid item:

ITEM NUMBER	DESCRIPTION	UNIT
SPV.0195.001	Cold Patch	TON

Schedule of Items

Attached, dated December 5, 2019, are the revised Schedule of Items Pages 1 – 27.

Plan Sheets

The following 8½ x 11-inch sheets are attached and made part of the plans for this proposal:
Revised: 2, 37, 71-79, 245, 246, 263, 271, 297, 365.

END OF ADDENDUM

GENERAL NOTES

ELEVATIONS SHOWN ARE REFERENCED TO THE USGS DATUM NAVD 88 (1988).
 GUTTER SLOPE ON CONCRETE CURB & GUTTER IS 0.25%.
 WHEN THE QUANTITY OF BASE AGGREGATE, HMA PAVEMENT OR ASPHALTIC SURFACE IS MEASURED FOR PAYMENT BY THE TON, THE DEPTH OR THICKNESS OF THE LAYER SHOWN ON THE PLANS IS APPROXIMATE AND THE ACTUAL THICKNESS WILL DEPEND ON THE DISTRIBUTION OF THE MATERIAL AS DIRECTED BY THE ENGINEER.
 THE LOCATION OF THE EXISTING UTILITY INSTALLATIONS AS SHOWN ON THE PLANS IS APPROXIMATE. THERE MAY BE OTHER UTILITY INSTALLATIONS WITHIN THE PROJECT AREA THAT ARE NOT SHOWN.
 NO TREES OR SHRUBS ARE TO BE REMOVED WITHOUT THE APPROVAL OF THE ENGINEER.
 CURVE DATA IS BASED ON ARC DEFINITION.

THE EXACT LOCATION OF EROSION CONTROL DEVICES SHALL BE DETERMINED IN THE FIELD.
 DISTURBED AREAS WITHIN THE RIGHT-OF-WAY ARE TO BE 6-INCH TOPSOIL SPECIAL, FERTILIZED, SEED, MULCHED OR SOD. ALL NOTES IN THE PLANS THAT IDENTIFY "TOPSOIL" REFER TO THE BID ITEM "TOPSOIL SPECIAL".
 BEARINGS SHOWN ON THE PLANS ARE SHOWN TO THE NEAREST SECOND.

ALL CURB AND GUTTER BADI, PAVEMENT DIMENSIONS AND STATIONS ARE SHOWN TO THE EDGE OF PAVEMENT UNLESS OTHERWISE NOTED.

A VERTICAL SAWCUT WILL BE MADE THROUGH PAVEMENTS AT REMOVAL LIMITS.

LOCATION OF STRUCTURES REFER TO CENTER OF STRUCTURE. RIM ELEVATIONS ARE GIVEN AT THE FLOWLINE OF INLET OR AT THE CENTER OF MANHOLE.

ALL STORM SEWER INVERTS, ELEVATIONS, PIPE LENGTHS, AND GRADES ARE COMPUTED CENTER-TO-CENTER OF STRUCTURES.

EXCAVATION BELOW SUBGRADE (EBS) MAY BE REQUIRED IN AREAS WHERE POOR SOILS ARE ENCOUNTERED. EBS MATERIAL MAY BE USED AS FILL IN AREAS OUTSIDE OF ROADWAY SHOULDER POINTS. ESTIMATED EBS AREAS ARE SHOWN ON THE CROSS SECTIONS. ACTUAL LIMITS OF EBS IS TO BE DETERMINED BY THE ENGINEER IN THE FIELD.

HMA PAVEMENT SHALL BE CONSTRUCTED WITH THE FOLLOWING LAYER THICKNESSES:

- UPPER: 2.0" (3MT58-28H)
- MIDDLE: 2.5" (3MT58-28S)
- LOWER: 2.25" (3MT58-28S)

SILT FENCE IS TO BE PLACED AS SHOWN ON THE PLANS OR AS DIRECTED BY THE ENGINEER.

Addendum No. 02
 ID 5992-10-31/32/33
 Revised Sheet 2
 December 5, 2019

DESIGN CONTACT

AVRES ASSOCIATES
 ATTN: DAN SCRUM, P.E.
 5201 E. TERRACE DRIVE, SUITE 200
 MADISON, WI 53718
 PHONE: (608) 261-1177
 EMAIL: SCRUMD@AVRESASSOCIATES.COM

DNR CONTACT

WISCONSIN DNR, SOUTHWEST REGION
 ATTN: ERIC HEGGELUND
 3911 FISH HATCHERY ROAD
 FITCHBURG, WI 53711
 PHONE: (608) 275-3301
 EMAIL: ERIC.HEGGELUND@WISCONSIN.GOV

UTILITY CONTACTS

WATERMAIN:

CITY OF MADISON WATER UTILITY
 ATTN: ADAM WIEDERHOEF
 119 E. OLIN AVENUE
 MADISON, WI 53713
 PHONE: (608) 266-9121 FAX: (608) 266-4426
 E-MAIL: AWIEDERHOEF@MADISONWATER.ORG

STORM SEWER:

CITY OF MADISON ENGINEERING DIVISION
 ATTN: JARET SCHMIDT
 1000 UNIVERSITY AVENUE, JR. BOULEVARD
 CITY-COUNTY BUILDING, ROOM 115
 MADISON, WI 53703
 PHONE: (608) 266-4913
 FAX: (608) 264-9275
 E-MAIL: JSCHMIDT@CITYOFMADISON.COM

SANITARY SEWER:

CITY OF MADISON ENGINEERING DIVISION
 ATTN: MARK MODER
 1000 UNIVERSITY AVENUE, JR. BOULEVARD
 CITY-COUNTY BUILDING, ROOM 115
 MADISON, WI 53703
 PHONE: (608) 261-9250
 FAX: (608) 264-9275
 E-MAIL: MMODER@CITYOFMADISON.COM

SANITARY SEWER

MMISO
 ATTN: TERRY LUILEBAUS
 1510 MCORLANE ROAD
 MADISON, WI 53713

TRAFFIC SIGNALS & STREET LIGHTING:

CITY OF MADISON TRAFFIC ENGINEERING DIVISION
 ATTN: BRIAN SMITH
 P.O. BOX 2986
 MADISON, WI 53701-2986
 PHONE: (608) 261-5925
 FAX: (608) 261-5925
 E-MAIL: BSMITH@CITYOFMADISON.COM

GAS:

MADISON GAS & ELECTRIC
 ATTN: SHAUN ENDRES
 P.O. BOX 1231
 MADISON, WI 53701-1231
 PHONE: (608) 252-7224
 E-MAIL: SENDRES@MGE.COM

CABLE TELEVISION:

CHARTER COMMUNICATIONS
 ATTN: BRANDON STORM
 2701 DANIELS ST.
 MADISON, WI 53718
 PHONE: (608) 274-3822 EX 6642
 E-MAIL: BRANDON.STORM@CHARTERCOM.COM

ELECTRIC

AMERICAN TRANSMISSION COMPANY
 ATTN: LOBI KOLBOW
 10234 N2000 RIDGEVIEW PKWY CT
 TULSA, OK 74103
 PHONE: (262) 506-6886
 E-MAIL: LKOLBOW@ATCLCC.COM

UTILITY CONTACTS (CONT')

ELECTRIC:

ALLIANT ENERGY
 MICHAEL BROJAN
 4802 N. BILTMORE LANE
 MADISON, WI 53718-2148
 PHONE: 608-458-4871

MADISON GAS & ELECTRIC

ATTN: MARK BOHM
 P.O. BOX 1231 133 S BLAIR STREET
 MADISON, WI 53701-1231 PHONE: (608) 252-7379
 E-MAIL: RPARKER@MGE.COM

TELEPHONE:

AT&T WISCONSIN
 ATTN: CAROL AMASON
 316 W. WASHINGTON AVE., 4TH FLOOR
 MADISON, WI 53703
 PHONE: (920) 252-2385
 E-MAIL: CAZ624@ATT.COM

A&E CORPORATION

ATTN: TODD MOORDA
 316 W. WASHINGTON AVE., ROOM 209
 MADISON, WI 53703
 PHONE: (608) 556-7199
 E-MAIL: NN2889@ATT.COM

COMMUNICATIONS:

WISCONSIN INDEPENDENT NETWORK
 ATTN: JEFF MADSON
 800 WISCONSIN ST. E107
 EAU CLAIRE, WI 54703-3613
 PHONE: (715) 832-6041
 E-MAIL: JBRKENHEIR@WINS.NET

WINDSTREAM

FORMERLY: KENTUCKY DATA LINK
 KEVIN PARRIS
 1689 PINEHURST STREET
 MADISON, WI 53704

WISCONSIN DEPARTMENT OF TRANSPORTATION

ATTN: JEFF MADSON
 MILWAUKEE, WI 53203
 433 W ST PAUL, STE 300
 PHONE: (414) 225-3723
 E-MAIL: JEFFREY.MADSON@DOT.WI.GOV

ATTN: GRAHAM HEITZ

2101 WRIGHT ST
 MADISON, WI 53704-2559
 E-MAIL: GRAHAM.HEITZ@DOT.WI.GOV

TDS METROCOM

JERRY MYERS
 525 JUNCTION ROAD
 MADISON, WI 53717
 E-MAIL: JERRY.MYERS@TDSTELECOM.COM

TDS TELECOMMUNICATIONS

JERRY MYERS
 525 JUNCTION ROAD
 MADISON, WI 53717
 E-MAIL: JERRY.MYERS@TDSTELECOM.COM

CENTURYLINK CLEC

ATTN: KENDALL ZETINA
 100 CINCINNATI AVE, SUITE 1200
 TULSA, OK 74103
 EMAIL: KENDALL.ZETINA@CENTURYLINK.COM

MCI (KU ENGINEERING)

STEVE KLICKER
 4585 COLEMAN STREET
 BISMARCK, ND 58503
 PHONE: (701) 696-0163
 EMAIL: STEVE.KLICKE@GSKLENG.COM

PROJECT No: 5992-10-31/32/33

HWY: GAMMON ROAD

COUNTY: DANE

GENERAL NOTES AND UTILITY CONTACTS

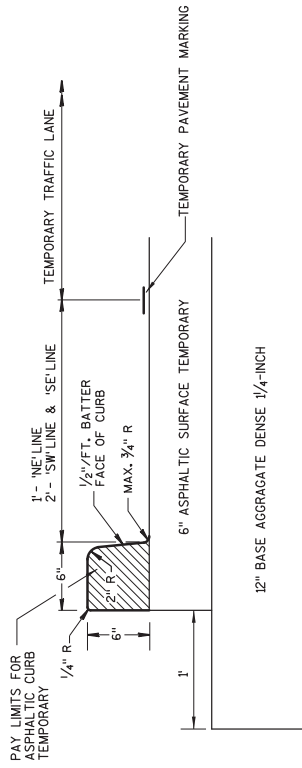
SHEET 2

WISDOT/CADD SHEET 42

PLOT DATE : 12/4/2019

PLOT SCALE : 1:200

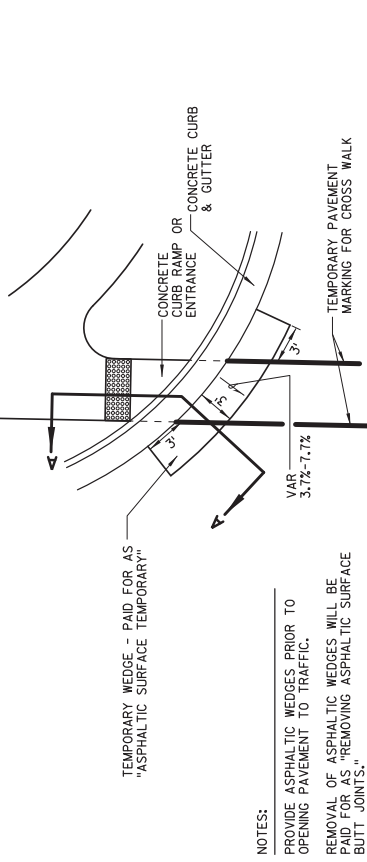
FILE NAME : V:\Trans-MD\410737 - Common Road\Roadway\DN\Sheets\SP\Ln\020101.dgn



DETAIL FOR ASPHALTIC CURB TEMPORARY

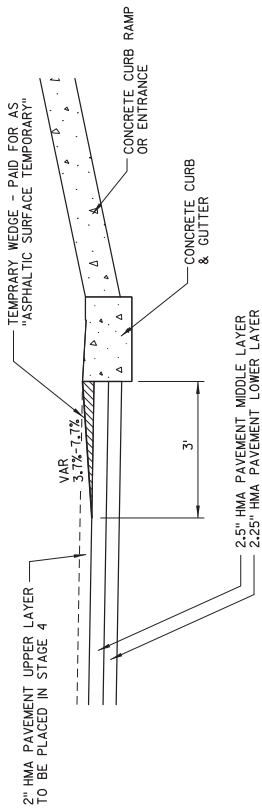
STA. 205+78'W TO STA. 207+34'W RT
STA. 207+02'SE TO STA. 209+47'SE RT
STA. 207+47'NE TO STA. 213+71'NE RT

Addendum No. 02
ID 5992-10-32
Revised Sheet 37
December 5, 2019



NOTES:

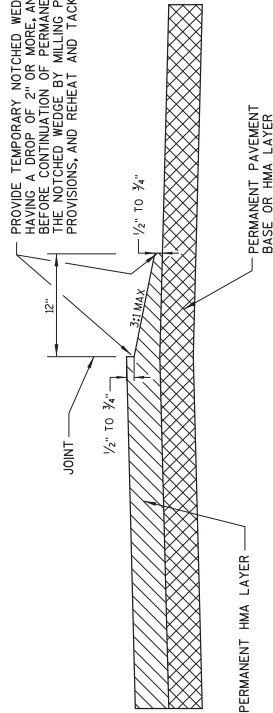
PROVIDE ASPHALTIC WEDGES PRIOR TO OPENING PAVEMENT TO TRAFFIC.
REMOVAL OF ASPHALTIC WEDGES WILL BE PAID FOR AS "REMOVING ASPHALTIC SURFACE BUTT JOINTS."



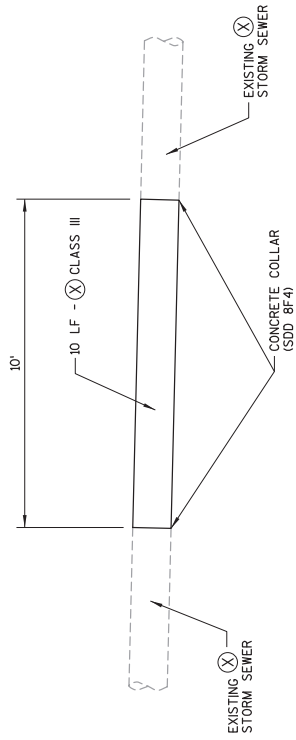
SECTION A-A

DETAIL FOR TEMPORARY WEDGE AT CURB RAMPS OR ENTRANCES

PROVIDE TEMPORARY NOTCHED WEDGE FOR HMA JOINTS HAVING A DROP OF 2" OR MORE, AND UNDER TRAFFIC. BEFORE CONTINUATION OF PERMANENT PAVING, REMOVE THE NOTCHED WEDGE BY MILLING PER THE SPECIAL PROVISIONS, AND REHEAT AND TACK THE JOINT.

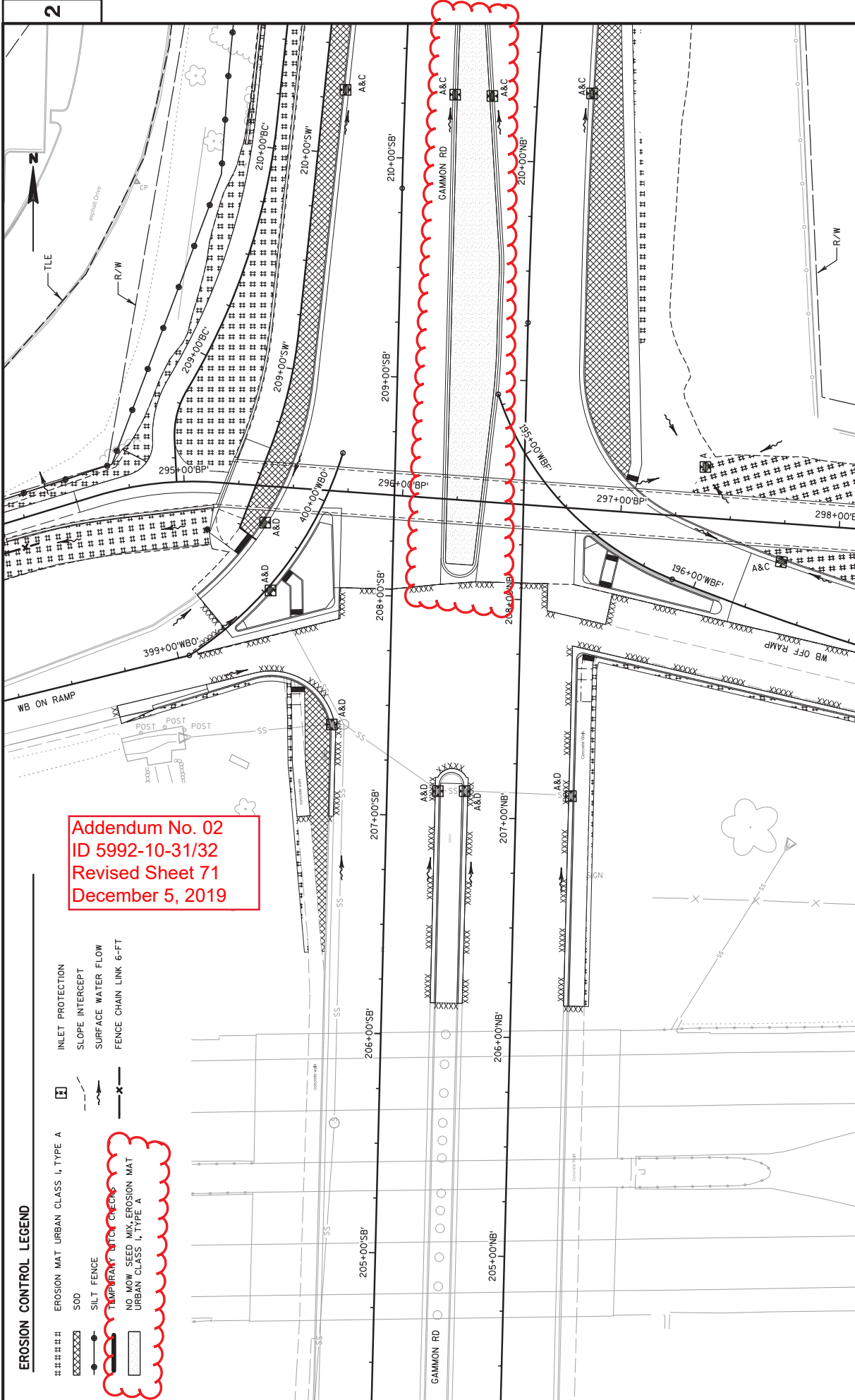


DETAIL FOR TEMPORARY ASPHALTIC LONGITUDINAL NOTCHED WEDGE UNDER TRAFFIC



DETAIL FOR FINAL STORM SEWER RESTORATION

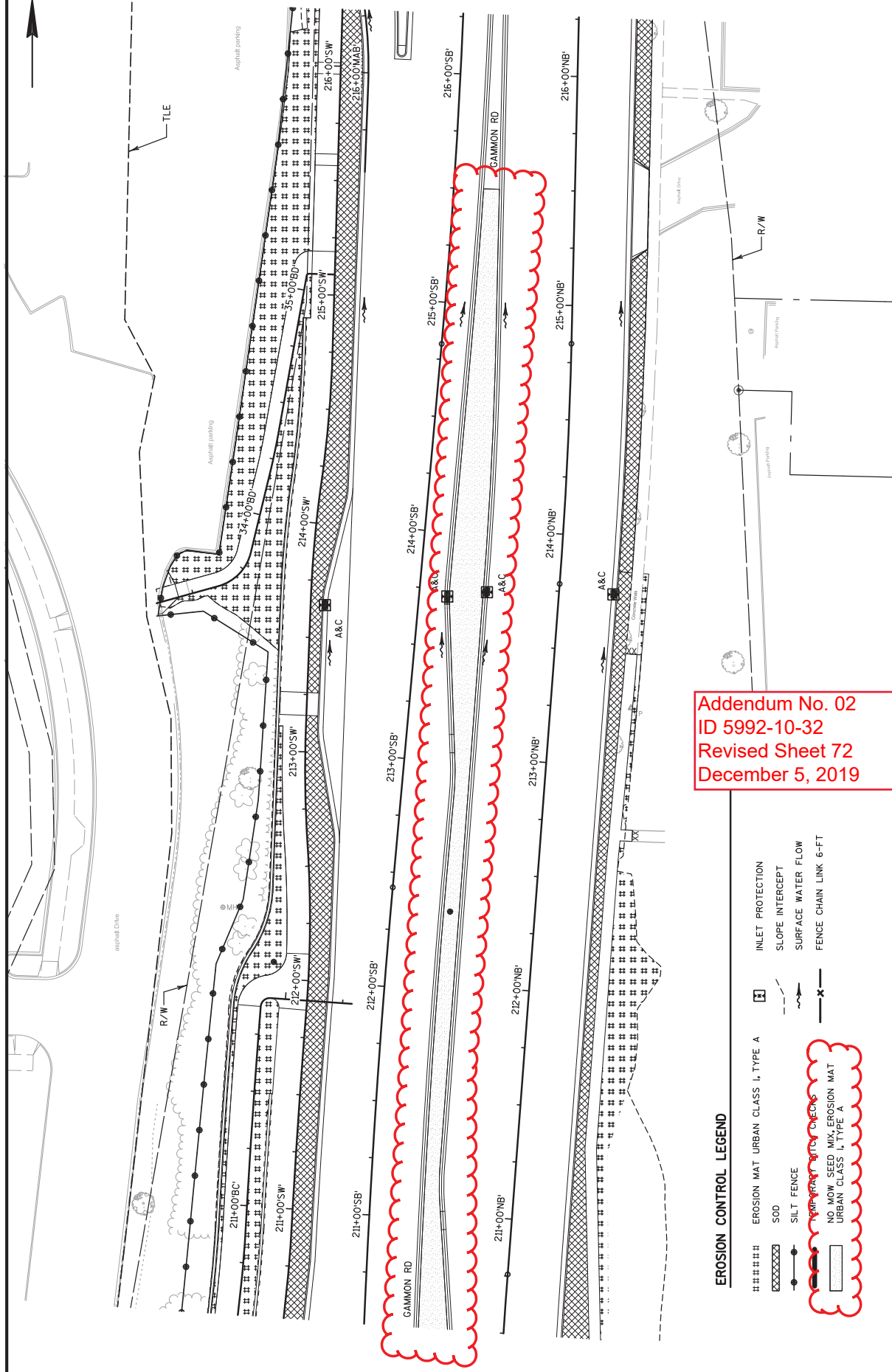
SUBSTAGE 2A: STA. 207+40'NB' - 105' LT (X) = 18"
SUBSTAGE 3B: STA. 224+8'NB' - 17' LT (X) = 15"



Addendum No. 02
 ID 5992-10-31/32
 Revised Sheet 71
 December 5, 2019

EROSION CONTROL LEGEND

- ##### EROSION MAT URBAN CLASS I, TYPE A
- XXXXXX SOD
- SILT FENCE
- X— TEMP. BRACKEN CHECKS
- NO. MOW SEED MIX; EROSION MAT URBAN CLASS I, TYPE A
- INLET PROTECTION
- SLOPE INTERCEPT
- SURFACE WATER FLOW
- FENCE CHAIN LINK 6-FT



Addendum No. 02
 ID 5992-10-32
 Revised Sheet 72
 December 5, 2019

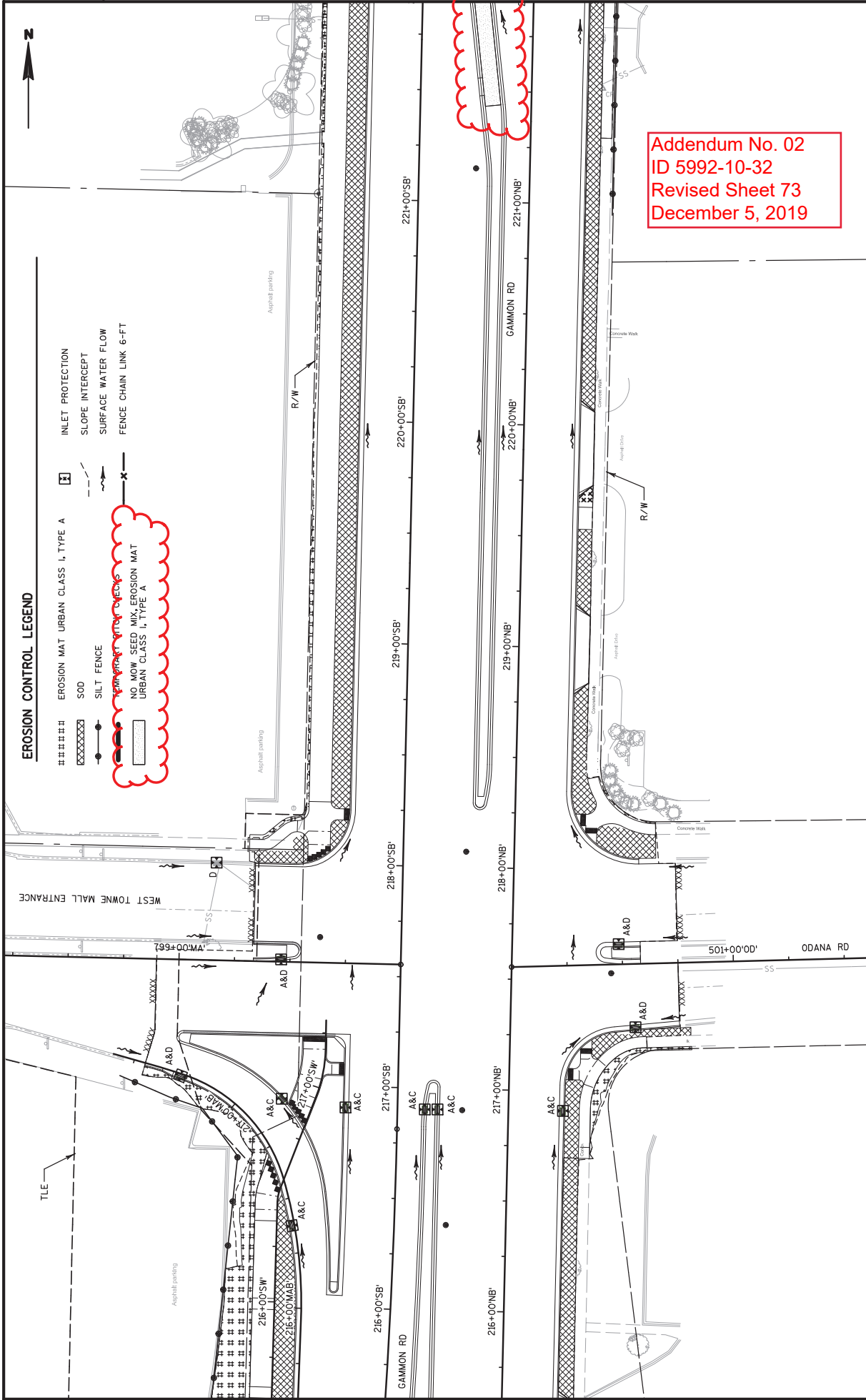
EROSION CONTROL LEGEND

- ##### EROSION MAT URBAN CLASS I, TYPE A
- XXXXXX SOD
- SILT FENCE
- ▣ NO. MOW, SEED MIX. EROSION MAT URBAN CLASS I, TYPE A
- ▣ INLET PROTECTION
- SLOPE INTERCEPT
- SURFACE WATER FLOW
- FENCE CHAIN LINK 6-FT



EROSION CONTROL LEGEND

- ##### EROSION MAT URBAN CLASS I, TYPE A
- XXXXXX SOD
- SILT FENCE
- X— NO MOW SEED MIX, EROSION MAT URBAN CLASS I, TYPE A
- INLET PROTECTION
- X— SLOPE INTERCEPT
- X— SURFACE WATER FLOW
- X— FENCE CHAIN LINK 6-FT



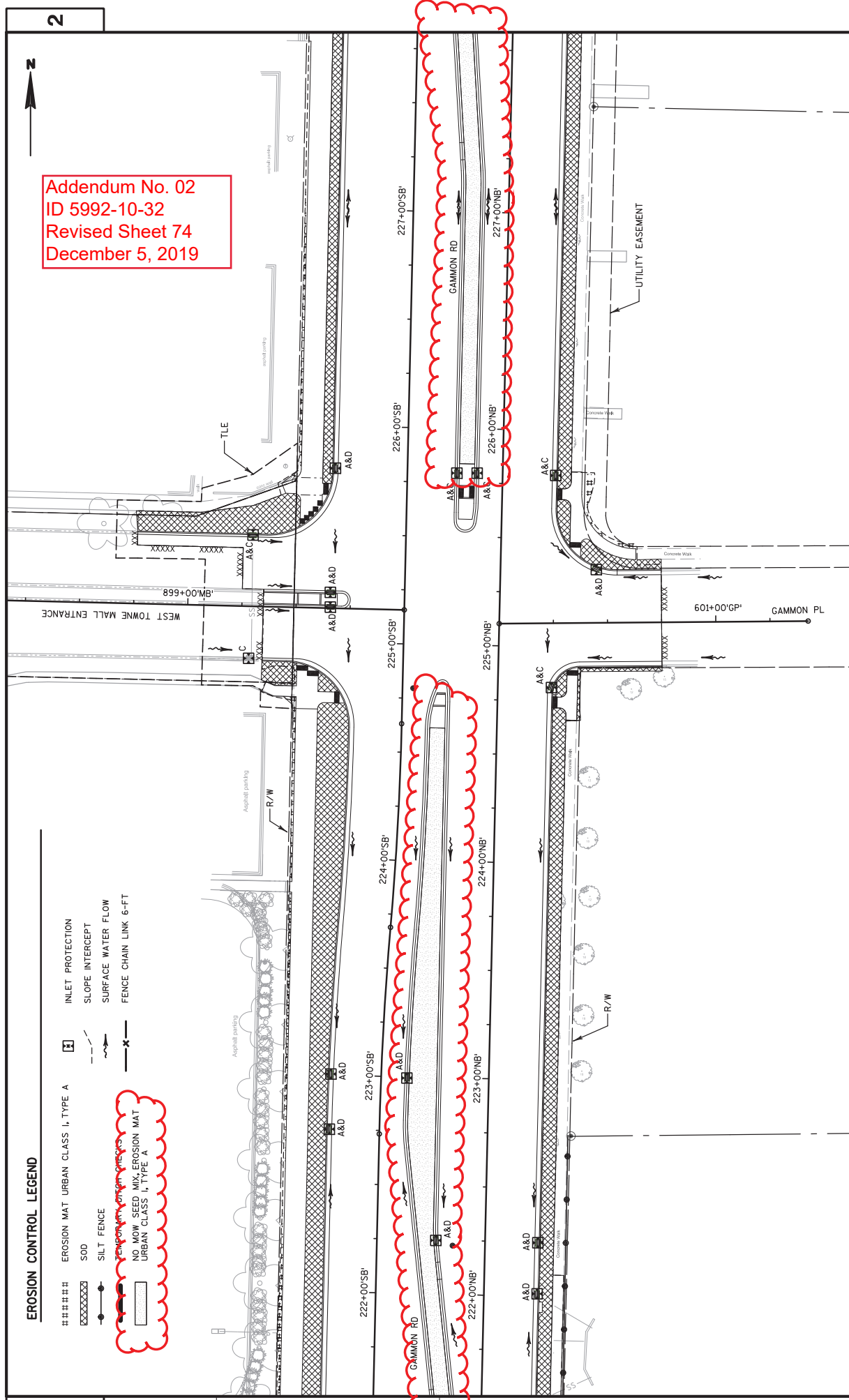
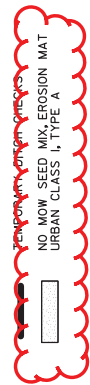
Addendum No. 02
 ID 5992-10-32
 Revised Sheet 73
 December 5, 2019



Addendum No. 02
 ID 5992-10-32
 Revised Sheet 74
 December 5, 2019

EROSION CONTROL LEGEND

- ##### EROSION MAT URBAN CLASS I, TYPE A
- XXXXXX SOD
- SILT FENCE
- NO MOW SEED MIX, EROSION MAT URBAN CLASS I, TYPE A
- ▣ EROSION MAT URBAN CLASS I, TYPE A
- ▣ INLET PROTECTION
- Slope Intercept
- Surface Water Flow
- Fence Chain Link 6-FT



PROJECT NO: 5992-10-32

HWY: GAMMON RD

COUNTY: DANE

EROSION CONTROL AND FENCING

SCALE, FEET 0 20 40

SHEET 74

E

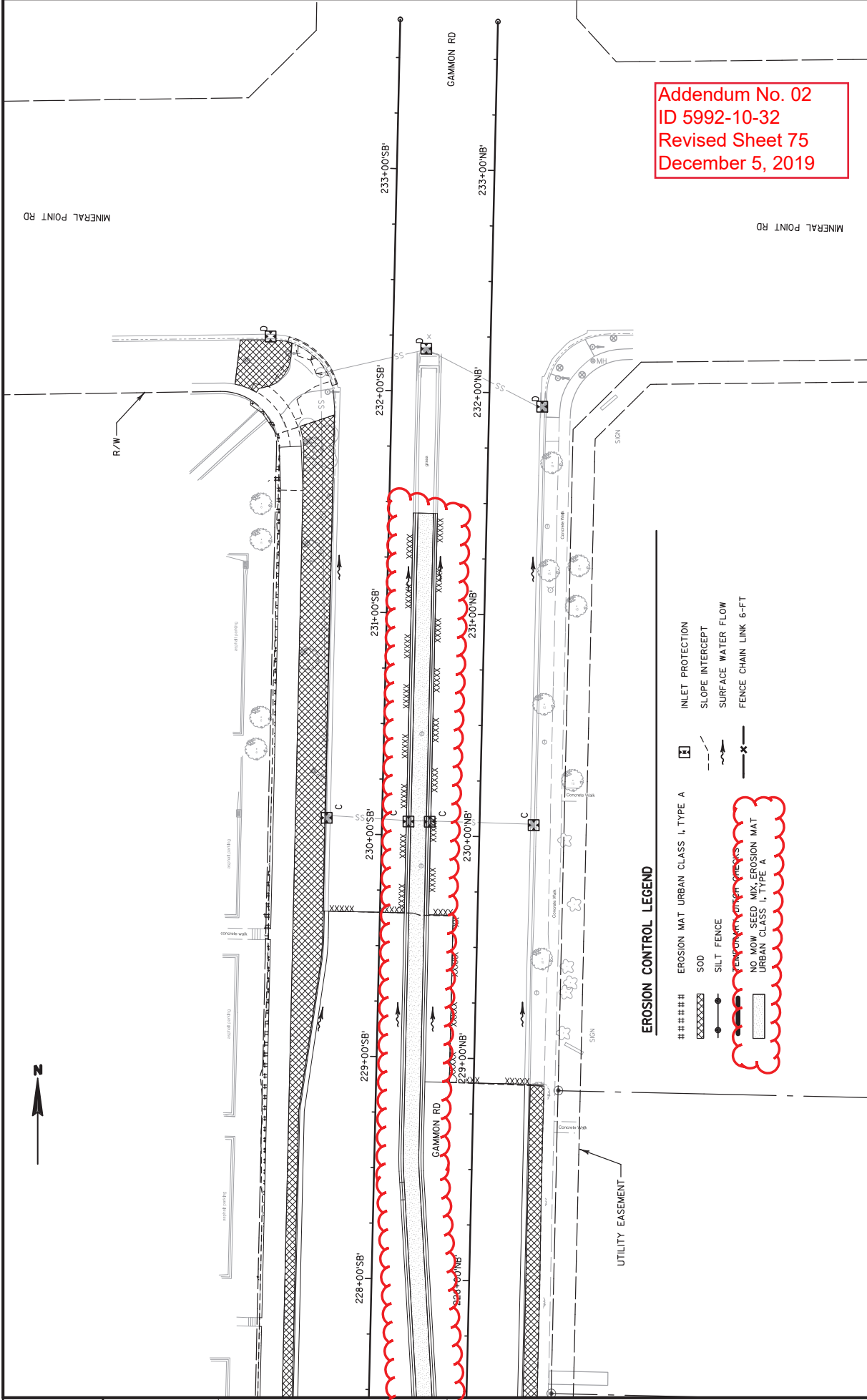
MINERAL POINT RD

GAMMON RD

MINERAL POINT RD



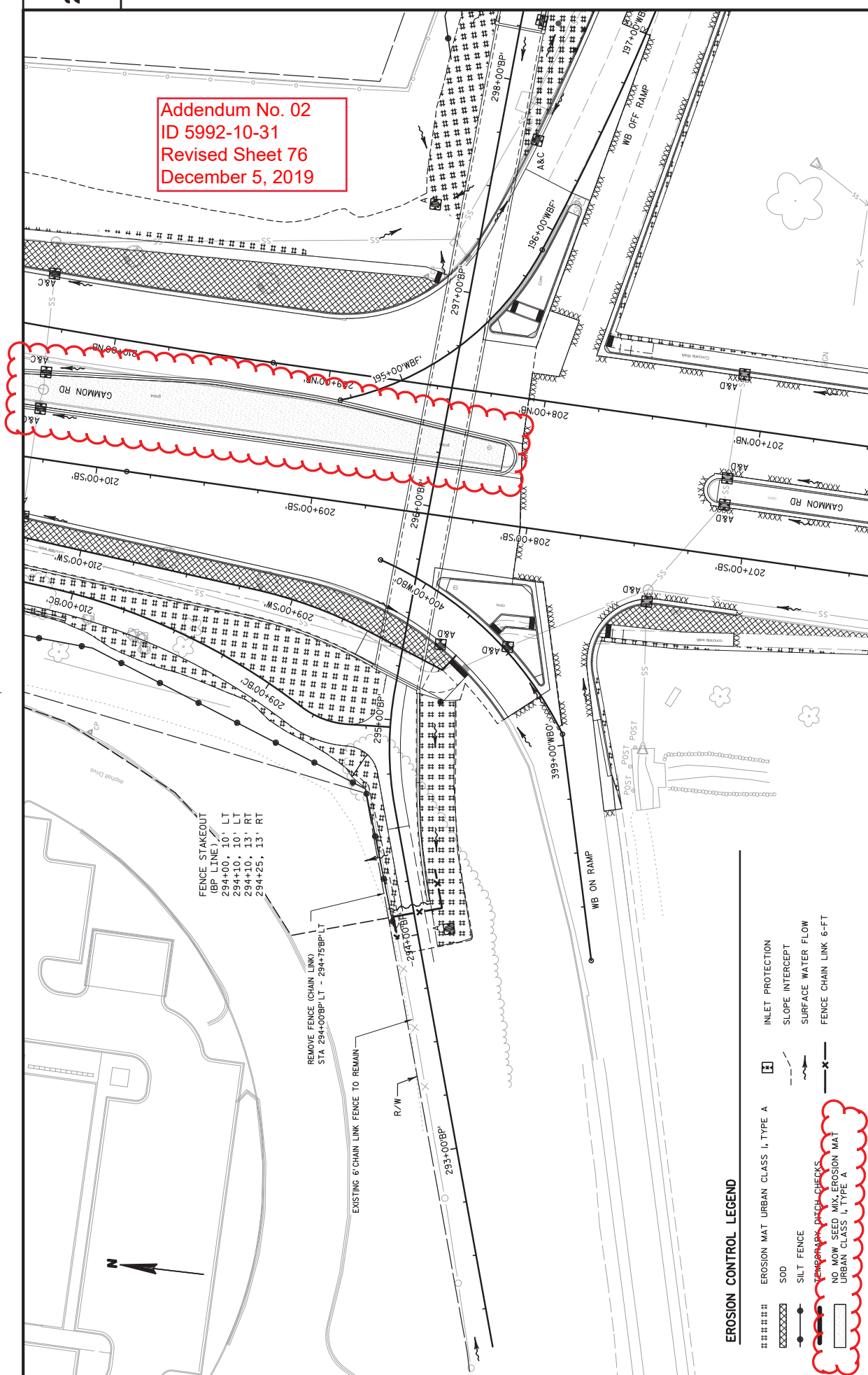
Addendum No. 02
ID 5992-10-32
Revised Sheet 75
December 5, 2019



EROSION CONTROL LEGEND

- ##### EROSION MAT URBAN CLASS I, TYPE A
- XXXXXX SOD
- SILT FENCE
- NO MOW SEED MIX, EROSION MAT URBAN CLASS I, TYPE A
- ☐ INLET PROTECTION
- /— SLOPE INTERCEPT
- ~ SURFACE WATER FLOW
- *— FENCE CHAIN LINK 6-FT

Addendum No. 02
ID 5992-10-31
Revised Sheet 76
December 5, 2019



FENCE STAKEOUT
(BP LINE)
294+00, 10' LT
294+10, 10' LT
294+10, 13' RT
294+25, 13' RT

REMOVE FENCE (CHAIN LINK)
STA. 294+00BP/ LT - 294+75BP/ LT

EXISTING 6' CHAIN LINK FENCE TO REMAIN

R/W

EROSION CONTROL LEGEND

- ##### EROSION MAT URBAN CLASS I, TYPE A
- XXXXXXX SOD
- SILT FENCE
- X— TEMPORARY SLOPE CHECKS
- NO MOW SEED MIX, EROSION MAT URBAN CLASS I, TYPE A
- INLET PROTECTION
- SLOPE INTERCEPT
- SURFACE WATER FLOW
- FENCE CHAIN LINK 6-FT

PROJECT NO: 5992-10-31

HWY: GAMMON RD

COUNTY: DANE

EROSION CONTROL AND FENCING

SHEET 76

E

SCALE, FEET 0 20 40

PLOT SCALE: 1:40

PLOT DATE: 11/22/2019

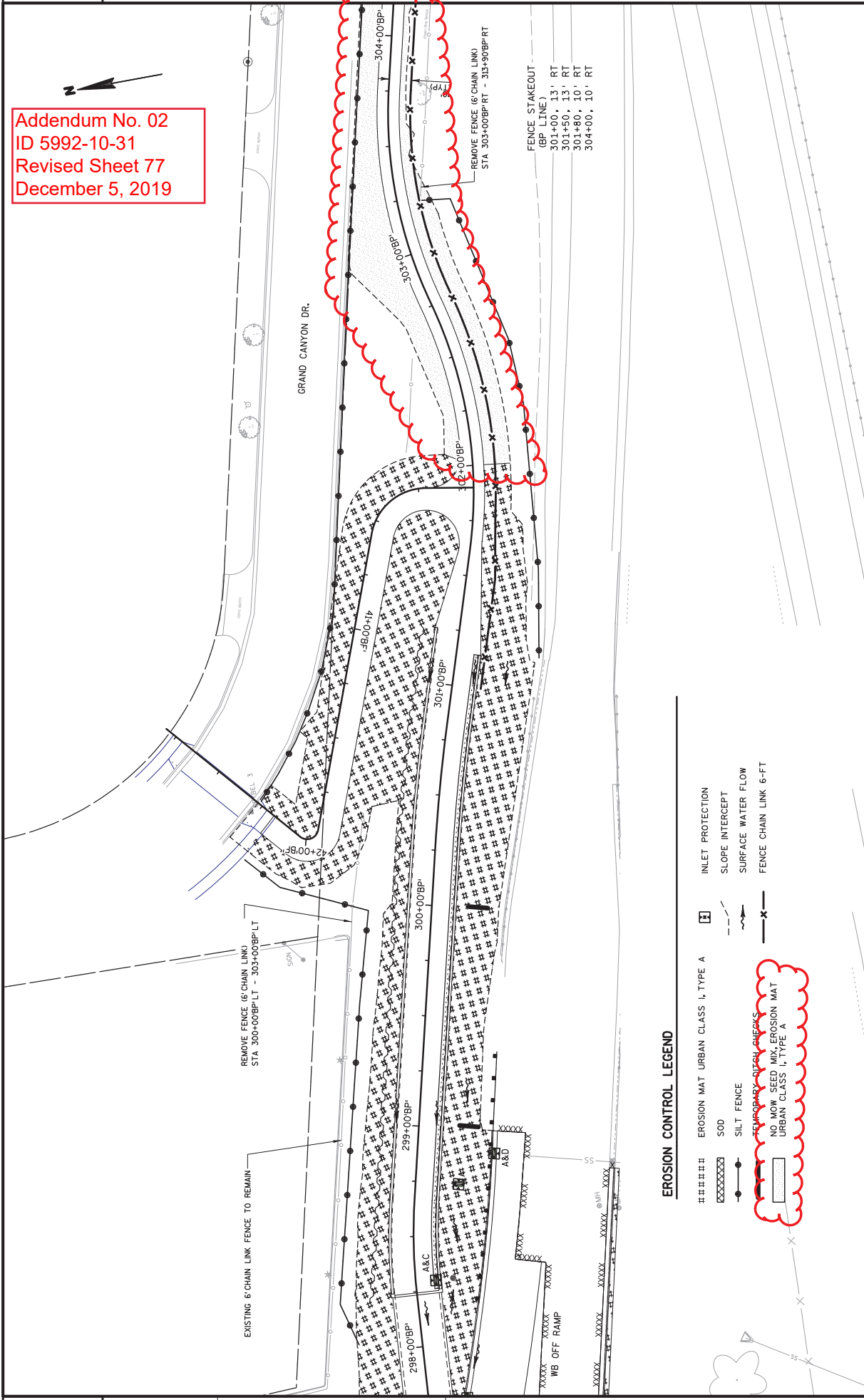
PLOT BY: DM253

WISDOT/CADD SHEET 42

Addendum No. 02
 ID 5992-10-31
 Revised Sheet 77
 December 5, 2019

2

2



EROSION CONTROL LEGEND

- ##### EROSION MAT URBAN CLASS I, TYPE A
- XXXXXXX S00
- SILT FENCE
- X— FENCE CHAIN LINK 6-FT
- INLET PROTECTION
- ▲— SLOPE INTERCEPT
- ~— SURFACE WATER FLOW
- NO MOW SEED MIX, EROSION MAT URBAN CLASS I, TYPE A

PROJECT NO: 5992-10-31

HWY: GAMMON RD

COUNTY: DANE

EROSION CONTROL AND FENCING

SCALE, FEET 0 20 40

SHEET 77

E

Addendum No. 02
 ID 5992-10-31
 Revised Sheet 78
 December 5, 2019

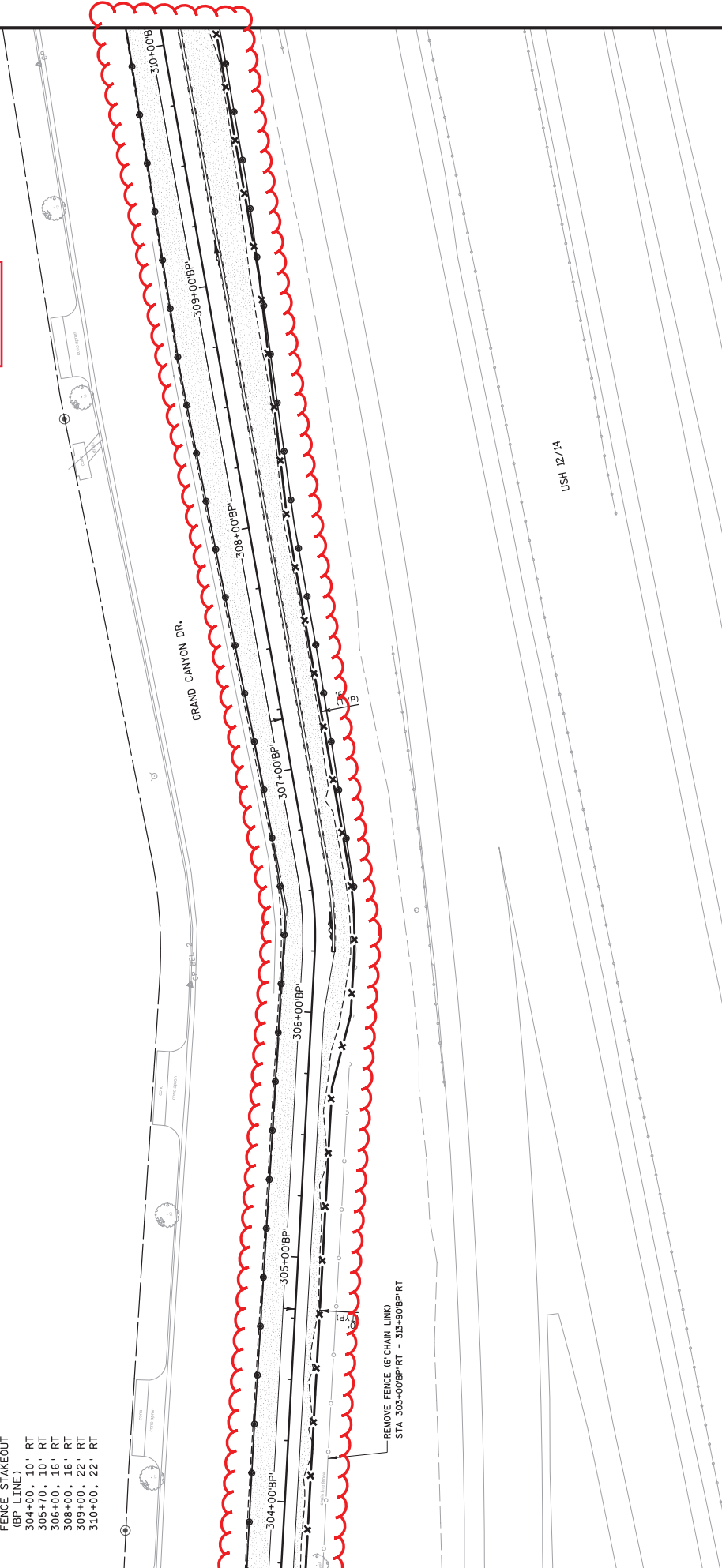
EROSION CONTROL LEGEND

- ##### EROSION MAT URBAN CLASS I, TYPE A
- ||||| SOD
- SILT FENCE
- INLET PROTECTION
- SLOPE INTERCEPT
- SURFACE WATER FLOW
- FENCE CHAIN LINK 6-FT

NO MOW SEED MIX EROSION MAT
 URBAN CLASS I, TYPE A

**FENCE STAKEOUT
(BP LINE)**

- 304+00, 10', RT
- 305+70, 10', RT
- 306+00, 16', RT
- 308+00, 16', RT
- 309+00, 22', RT
- 310+00, 22', RT

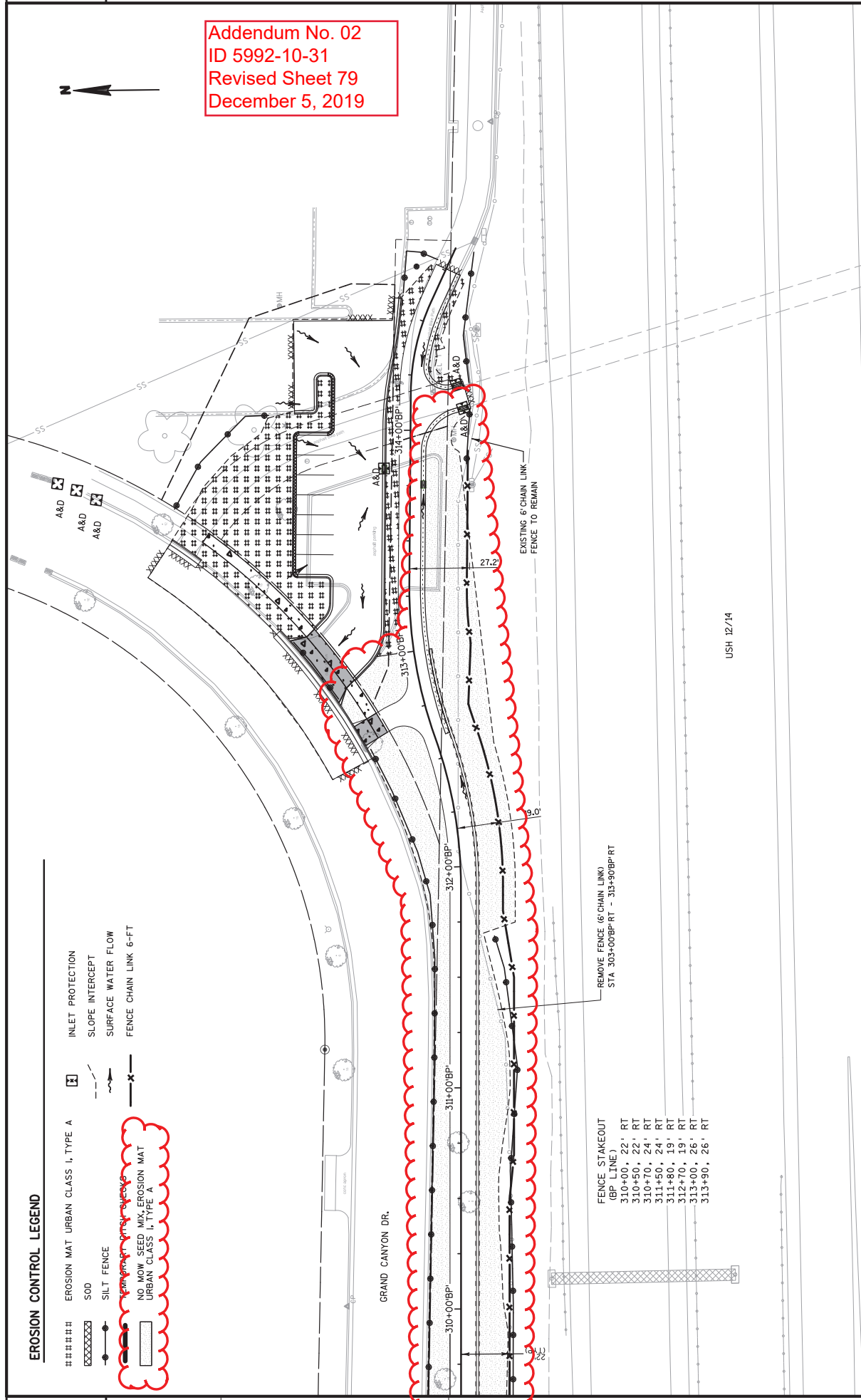




Addendum No. 02
ID 5992-10-31
Revised Sheet 79
December 5, 2019

EROSION CONTROL LEGEND

- ##### EROSION MAT URBAN CLASS I, TYPE A
- XXXXXX SOD
- SILT FENCE
- X— NO MOW SEED MIX EROSION MAT URBAN CLASS I, TYPE A
- X— INLET PROTECTION
- SLOPE INTERCEPT
- SURFACE WATER FLOW
- X— FENCE CHAIN LINK 6-FT



Addendum No. 02
 ID 5992-10-31/32
 Revised Sheet 245
 December 5, 2019

ASPHALT PAVEMENT ITEMS

3

3

PROJECT NO.	CAT	STA	TO	STA	ALI	LOCATION	450.4000 HMA COLD WEATHER PAVING	455.0605 TACK COAT	460.6223 HMA PAVEMENT 3 MT 58-28 S	460.6424 HMA PAVEMENT 4 MT 58-28 H	465.0105* ASPHALTIC SURFACE PATCHING	465.0110 ASPHALTIC SURFACE PATCHING	SPV.0195.0001 COLD PATCH
							TON	GAL	TON	TON	TON	TON	TON
PROJECT 5992-10-31													
0010	60+06	-	60+20	PL		GRAND CANYON DR.	-	1	-	-	4	-	-
	60+17	-	60+85	PL		GRAND CANYON DR.	-	-	-	-	1	-	-
	60+34	-	61+99	PL		PARKING LOT	-	-	-	-	110	-	-
						GRAND CANYON DR.	-	17	-	-	30	-	-
						UNDISTRIBUTED	-	-	-	-	-	-	-
PROJECT 5992-10-31 TOTALS							0	18	0	0	145	0	0
PROJECT 5992-10-32													
0010	195+46	-	195+77	WBF		LANE WB OFF RAMP	6	7	14	6	-	-	-
	207+83	-	216+00	SB		WB ON RAMP/SB LANES	500	629	1,200	500	-	-	-
	208+08	-	216+00	NB		WB OFF RAMP/NB LANES	510	644	1,220	510	-	-	-
	216+00	-	218+25	NB		INTERSECTION	390	486	924	390	-	-	-
	218+25	-	224+50	NB		LANES	300	377	716	300	-	-	-
	218+25	-	224+50	SB		LANES	350	436	828	350	-	-	-
	224+50	-	225+75	NB		INTERSECTION	200	251	477	200	-	-	-
	225+75	-	228+89	NB		LANES	150	184	350	150	-	-	-
	225+75	-	229+64	SB		LANES	338	289	549	230	-	-	-
	225+75	-	229+64	SB		LANES	338	289	549	230	-	-	-
	INTERSECTIONS					STAGE 1 LOWER LAYER JOINTS - WEDGE REMOVAL	-	4	-	-	-	-	-
	INTERSECTIONS					STAGE 1 MIDDLE LAYER JOINTS - WEDGE REMOVAL	-	4	-	-	-	-	-
	INTERSECTIONS					STAGE 2 LOWER LAYER JOINTS - WEDGE REMOVAL	-	4	-	-	-	-	-
	INTERSECTIONS					STAGE 2 MIDDLE LAYER JOINTS - WEDGE REMOVAL	-	4	-	-	-	-	-
	208+08	-	228+89	NB		STAGE 4 UPPER LAYER JOINTS - WEDGE REMOVAL	-	32	-	-	-	-	-
	208+03	-	229+65	SB		STAGE 4 UPPER LAYER JOINTS - WEDGE REMOVAL	-	35	-	-	-	-	-
						UNDISTRIBUTED	-	-	-	-	-	-	-
PROJECT 5992-10-32 TOTALS							2636	3386	6278	2636	0	10	10
OVERALL PROJECT TOTALS							2636	3404	6278	2636	145	10	10

*ADDITIONAL QUANTITIES LISTED ELSEWHERE

Addendum No. 02
ID 5992-10-31/32
Revised Sheet 246
December 5, 2019

ASPHALTIC SURFACE TEMPORARY

PROJECT NO.	CAT	STA	TON	ASPHALTIC SURFACE TEMPORARY	SPV. 0090.006	CONSTRUCTION STAKING SUBGRADE	CONSTRUCTION STAKING BASE	CONSTRUCTION STAKING SLOPE STAKES
PROJECT 5992-10-32	0010		TON	TEMPORARY	TEMPORARY	LF	LF	LF
		STAGE 1A	5407	2433	187	2976	2976	2976
		STAGE 1B	104	46	-	-	-	-
		STAGE 1E	98	44	-	-	-	-
		STAGE 1F	1997	898	828	1520	1520	1520
		STAGE 2B	206	92	-	-	-	-
		STAGE 2C	4	1	-	-	-	-
		STAGE 2D	219	98	-	-	-	-
		STAGE 3A	278	125	-	159	159	159
		CURB RAMP WEDGE-ODANA	-	3	-	-	-	-
		CURB RAMP WEDGE-GAMMON PL	-	4	-	-	-	-
		MANHOLES	-	1	-	-	-	-
		UNDISTRIBUTED	887	63	85	45	45	45
		PROJECT 5992-10-32 TOTALS	9200	3800	1100	4700	4700	4700
		OVERALL PROJECT TOTAL	9200	3800	1100	4700	4700	4700

*ADDITIONAL QUANTITIES LISTED ELSEWHERE

REHEATING HMA JOINTS & REMOVING NOTCHED WEDGE MILLING

**204.0126.S
REMOVING ASPHALTIC LONGITUDINAL NOTCHED WEDGE JOINT MILLING

***460.4110.S
REHEATING HMA PAVEMENT LONGITUDINAL JOINTS

REHEATING HMA JOINTS

PROJECT NO.	CAT	STAGE	HMA LAYER	LOCATION	LF
0010		1	LOWER	SB GAMMON RD, WB ON-RAMP, WT ENTRANCES	550
		1	MIDDLE	SB GAMMON RD, WB ON-RAMP, WT ENTRANCES	550
		2	LOWER	NB GAMMON RD, WB OFF-RAMP, SIDE ROADS	550
		2	MIDDLE	NB GAMMON RD, WB OFF-RAMP, SIDE ROADS	550
		4	UPPER	NB GAMMON RD, WB OFF-RAMP, SIDE ROADS	4100
		4	UPPER	SB GAMMON RD, WB ON-RAMP, WT ENTRANCES	4500
		PROJECT 5992-10-32 TOTALS			10800
		PROJECT 5992-10-31 TOTAL			135
		PROJECT 5992-10-31 TOTAL			135

**PROVIDE TEMPORARY NOTCHED WEDGE PER SDD 15D39 FOR ALL LONGITUDINAL JOINTS, IN ALL LAYERS OF HMA HAVING A DROPOFF OF 2" OR MORE, AND UNDER TRAFFIC, ON ALL ROADWAYS. PRIOR TO CONTINUATION OF PAVING ALONG THE JOINT, REMOVE THE TEMPORARY NOTCHED WEDGE BY MILLING, AND TACK THE JOINT. QUANTITIES FOR TACK COAT ARE LISTED ELSEWHERE.

***ADDITIONAL QUANTITIES LISTED ELSEWHERE. REHEATING IS REQUIRED FOR ALL COLD LONGITUDINAL JOINTS BETWEEN DRIVING LANES, SHOULDERS, AND TURN LANES IN ALL HMA LAYERS. APPLIES TO GAMMON ROAD, RAMPS, WEST TOWNE ENTRANCES, ODANA ROAD, AND GAMMON PLACE.

*ADDITIONAL QUANTITIES LISTED ELSEWHERE

Addendum No. 02
 ID 5992-10-31/32
 Revised Sheet 263
 December 5, 2019

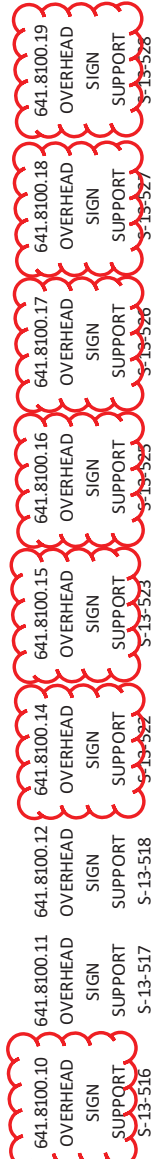
FINISHING ITEMS & EROSION CONTROL

PROJECT NO.	CAT	STA	TO	STA	OFFSET	ALI	TEMPORARY DITCH CHECKS	SILT LF	FENCE LF	SILT LF	FENCE LF	EROSION MAT TYPEA	TRACKING PADS	TOPSOIL SPECIAL	MULCHING SY	FERTILIZER TYPE B	SEEDING MIXTURE	NO. 30 LB	NO. 40 LB	NO MOW SEEDING	MIX LB	SEEDING TEMPORARY	SEED M GAL	WATER M GAL	SOD M GAL	LAWN SY	
PROJECT 5992-10-31																											
0010		292+05	-	295+20	RT	BP	-	-	-	752	-	752	-	0.48	-	0.48	14	-	-	-	-	14	19	-	-	-	-
		292+10	-	294+70	LT	BP	-	265	-	150	-	150	-	0.10	-	0.10	-	-	-	-	-	-	4	-	-	-	
		297+00	-	314+78	LT	BP	16	1490	-	2988	-	2988	-	1.92	-	1.92	22	9	59	22	75	-	-	-	-	-	
		301+15	-	303+25	RT	BP	-	230	-	-	-	-	-	-	-	-	-	-	-	-	-	-	-	-	-	-	
		306+50	-	311+70	RT	BP	-	525	-	-	-	-	-	-	-	-	-	-	-	-	-	-	-	-	-	-	
		297+55	-	314+78	RT	BP	-	-	-	2480	-	2480	-	1.59	-	1.59	-	21	60	-	63	-	-	-	-	-	
		UNDISTRIBUTED					4	290	290	729	4	729	355	0.42	4	0.42	4	3	12	131	4	39	0	0	0	0	
		PROJECT 5992-10-31 TOTALS																									
			20	2800	2800	4	7100	355	4.51	40	36	131	40	200	0	0	0	0	0	0	0	200	0	0	0	0	
PROJECT 5992-10-32																											
0010		206+12	-	207+75	RT	NB	-	-	-	75	-	75	-	0.05	-	0.05	-	-	-	-	-	2	-	-	-	-	
		206+35	-	207+60	LT	SB	-	-	-	45	-	45	-	0.09	-	0.09	-	-	-	-	-	1	-	-	-	-	
		208+05	-	216+53	LT	SB	-	-	-	138	-	138	-	0.30	-	0.30	-	-	-	-	-	12	-	-	-	-	
		208+10	-	215+50	RT	SB	-	-	-	984	-	984	-	0.63	-	0.63	-	-	-	-	-	25	-	-	-	-	
		208+50	-	217+15	LT	SW	-	-	-	731	-	731	-	0.47	-	0.47	-	-	-	-	-	18	-	-	-	-	
		208+53	-	213+83	RT	NB	-	-	-	839	-	839	-	0.54	-	0.54	-	-	-	-	-	21	-	-	-	-	
		208+55	-	216+70	RT	NB	-	-	-	762	-	762	-	-	-	-	-	-	-	-	-	-	-	-	-	-	
		208+40	-	216+90	LT	SB	-	-	-	947	-	947	-	-	-	-	-	-	-	-	-	-	-	-	-	-	
		218+05	-	224+90	LT	SB	-	-	-	804	-	804	-	0.52	-	0.52	-	-	-	-	-	2	-	-	-	-	
		218+05	-	224+90	RT	NB	-	-	-	442	-	442	-	-	-	-	-	-	-	-	-	-	-	-	-	-	
		220+90	-	222+75	RT	NB	-	-	-	171	-	171	-	-	-	-	-	-	-	-	-	-	-	-	-	-	
		221+50	-	224+70	LT	NB	-	-	-	327	-	327	-	0.21	-	0.21	-	-	-	-	-	8	-	-	-	-	
		225+50	-	232+25	LT	SB	-	-	-	93	-	93	-	0.53	-	0.53	-	-	-	-	-	2	-	-	-	-	
		225+30	-	228+89	RT	NB	-	-	-	255	-	255	-	-	-	-	-	-	-	-	-	-	-	-	-	-	
		225+55	-	231+40	LT	NB	-	-	-	437	-	437	-	0.28	-	0.28	-	-	-	-	-	11	-	-	-	-	
		UNDISTRIBUTED					0	182	182	414	6	841	435	0.42	0	0.42	0	9	8	87	0	98	16	427	-		
		PROJECT 5992-10-32 TOTALS																									
			0	1300	1300	6	4500	435	4.53	0	94	87	0	200	110	4200	-	-	-	-	-	-	-	-	-	-	
OVERALL PROJECT TOTAL																											
			20	4100	4100	10	15800	790	9.04	40	130	218	40	400	110	4200	-	-	-	-	-	-	-	-	-	-	

Addendum No. 02
 ID 5992-10-31/32
 Revised Sheet 271
 December 5, 2019

OVERHEAD SIGN SUPPORT

PROJECT NO.	CAT	STA	OFFSET	ALI	LS	LS	LS	LS	LS	LS	LS	LS	LS
PROJECT 5992-10-32													
0030		211+72.34	RT/LT	SB	1	-	-	-	-	-	-	-	-
0040		214+48	LT	NB	-	1	-	-	-	-	-	-	-
0050		216+04.52	RT	NB	-	-	1	-	-	-	-	-	-
0060		219+50	LT	NB	-	-	-	1	-	-	-	-	-
0070		220+25	RT	SB	-	-	-	-	1	-	-	-	-
0090		211+05.58	RT	NB	-	-	-	-	-	1	-	-	-
0100		213+85.32	RT	NB	-	-	-	-	-	-	1	-	-
0110		219+67.1	RT	NB	-	-	-	-	-	-	-	1	-
0120		227+12.81	RT	NB	-	-	-	-	-	-	-	-	1
0130		223+65.15	RT	NB	-	-	-	-	-	-	-	-	1
0140		229+86.25	RT	NB	-	-	-	-	-	-	-	-	1
PROJECT 5992-10-32 TOTALS					1	1	1	1	1	1	1	1	1
OVERALL PROJECT TOTALS					1	1	1	1	1	1	1	1	1



SAW CUTS

PROJECT NO.	CAT	STA	TO	STA	LF
690.0150	SAWING ASPHALT				91
690.0250	SAWING CONCRETE				36
					41
					33
					11
					9
PROJECT 5992-10-31 TOTALS					
					221
					15

PROJECT NO.	CAT	STA	TO	STA	LF
0010					5690
					2560
					200
					120
					270
					1720
					2230
					130
					110
					-
					4910
					610
					750
					0
					0
PROJECT 5992-10-32 TOTALS					
					7830
					13030
OVERALL PROJECT TOTAL					
					8051
					13045

MISCELLANEOUS MAINTENANCE, REPAIRS, FINISHING & FIELD OFFICE

PROJECT NO.	CAT	STA	TO	STA	LF
213.0100.02	FINISHING ROADWAY				1
213.0100.01	FINISHING ROADWAY				-
618.0100	MAINTENANCE AND REPAIR OF HAUL ROADS				1
618.0100	MAINTENANCE AND REPAIR OF HAUL ROADS				-
642.5401	FIELD OFFICE TYPED				0.5
645.5000	TRAFFIC CONTROL				1
PROJECT 5992-10-31 TOTALS					
					1
					0.5
PROJECT 5992-10-32 TOTALS					
					-
					1
					1
OVERALL PROJECT TOTAL					
					1
					1
					0.5
					2

FLUID THERMAL BACKFILL

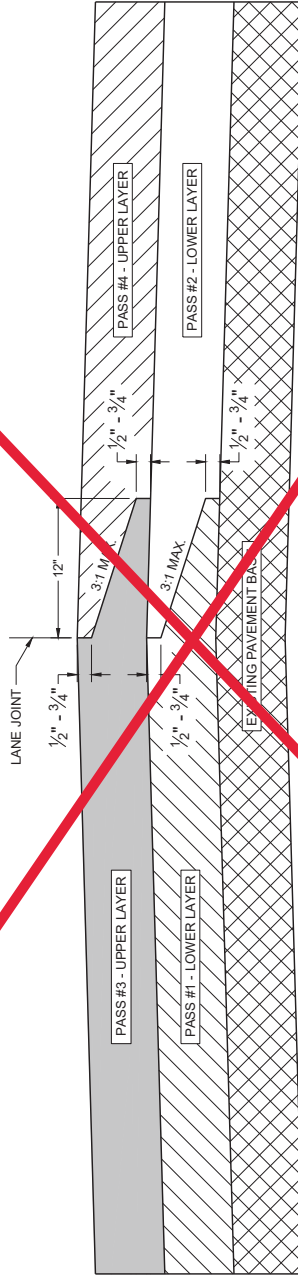
PROJECT NO.	CAT	STA	TO	STA	LF
0010					301+25
					19' LT
					301+84
					20' LT
					305+85
					0.0'
PROJECT 5992-10-31 TOTALS					
					3
OVERALL PROJECT TOTAL					
					3

PROJECT NO.	CAT	STA	TO	STA	LF	COMMENTS
0010						REHEATING HMA PAVEMENT
						460.4110.S
						REHEATING HMA PAVEMENT LONGITUDINAL JOINTS
						REHEATING HMA PAVEMENT WITH CURB AND GUTTER
						REPLACING TEMP. PAVEMENT WITH CURB AND GUTTER
PROJECT 5992-10-32 TOTALS						
						4500
						4500

Addendum No. 02
ID 5992-10-31/32
Revised Sheet 297
December 5, 2019

GENERAL NOTES

CONFORM TO STANDARD SPECIFICATION 450.3.2.8



TYPICAL PAVEMENT CROSS SECTION
OF NOTCHED WEDGE LONGITUDINAL JOINTS

Addendum No. 02
ID 5992-10-31/32/33
Revised Sheet 365
December 5, 2019

HMA LONGITUDINAL JOINTS

STATE OF WISCONSIN
DEPARTMENT OF TRANSPORTATION

APPROVED _____ /S/ Steven Heibel
DATE _____ HMA PAVEMENT ENGINEER 365



Proposal Schedule of Items

Proposal ID: 20191210006 Project(s): 5992-10-31, 5992-10-32, 5992-10-33

Federal ID(s): WISC 2019771, WISC 2019772, N/A

SECTION: 0001

Contract Items

Alt Set ID:

Alt Mbr ID:

Proposal Line Number	Item ID Description	Approximate Quantity and Units	Unit Price	Bid Amount
0002	201.0120 Clearing	659.000 ID	_____.	_____.
0004	201.0220 Grubbing	659.000 ID	_____.	_____.
0006	204.0100 Removing Pavement	22,643.000 SY	_____.	_____.
0008	204.0110 Removing Asphaltic Surface	7,640.000 SY	_____.	_____.
0010	204.0115 Removing Asphaltic Surface Butt Joints	150.000 SY	_____.	_____.
0012	204.0120 Removing Asphaltic Surface Milling	270.000 SY	_____.	_____.
0014	204.0140 Removing Gutter	56.000 LF	_____.	_____.
0016	204.0150 Removing Curb & Gutter	1,971.000 LF	_____.	_____.
0018	204.0155 Removing Concrete Sidewalk	2,536.000 SY	_____.	_____.
0020	204.0165 Removing Guardrail	8.000 LF	_____.	_____.
0022	204.0170 Removing Fence	1,463.000 LF	_____.	_____.
0024	204.0195 Removing Concrete Bases	78.000 EACH	_____.	_____.
0026	204.0210 Removing Manholes	12.000 EACH	_____.	_____.
0028	204.0220 Removing Inlets	39.000 EACH	_____.	_____.
0030	204.0245 Removing Storm Sewer (size) 01. 12-Inch	726.000 LF	_____.	_____.
0032	204.0245 Removing Storm Sewer (size) 02. 15-Inch	244.000 LF	_____.	_____.



Proposal Schedule of Items

Proposal ID: 20191210006 Project(s): 5992-10-31, 5992-10-32, 5992-10-33

Federal ID(s): WISC 2019771, WISC 2019772, N/A

SECTION: 0001

Contract Items

Alt Set ID:

Alt Mbr ID:

Proposal Line Number	Item ID Description	Approximate Quantity and Units	Unit Price	Bid Amount
0034	204.0245 Removing Storm Sewer (size) 03. 18-Inch	389.000 LF	_____.	_____.
0036	204.0245 Removing Storm Sewer (size) 04. 24-Inch	512.000 LF	_____.	_____.
0038	204.0245 Removing Storm Sewer (size) 05. 30-Inch	1,105.000 LF	_____.	_____.
0040	204.0245 Removing Storm Sewer (size) 06. 36-Inch	384.000 LF	_____.	_____.
0042	204.0250 Abandoning Manholes	1.000 EACH	_____.	_____.
0044	204.0260 Abandoning Inlets	1.000 EACH	_____.	_____.
0046	204.0291.S Abandoning Sewer	9.000 CY	_____.	_____.
0048	205.0100 Excavation Common	32,619.000 CY	_____.	_____.
0050	206.2000 Excavation for Structures Culverts (structure) 01. B-13-0870	LS	LUMP SUM	_____.
0052	210.2500 Backfill Structure Type B	7,345.000 TON	_____.	_____.
0054	213.0100 Finishing Roadway (project) 01. 5992-10-32	1.000 EACH	_____.	_____.
0056	213.0100 Finishing Roadway (project) 02. 5992-10-31	1.000 EACH	_____.	_____.
0058	305.0110 Base Aggregate Dense 3/4-Inch	191.000 TON	_____.	_____.
0060	305.0120 Base Aggregate Dense 1 1/4-Inch	29,821.000 TON	_____.	_____.
0062	305.0130 Base Aggregate Dense 3-Inch	19,310.000 TON	_____.	_____.



Proposal Schedule of Items

Proposal ID: 20191210006 Project(s): 5992-10-31, 5992-10-32, 5992-10-33

Federal ID(s): WISC 2019771, WISC 2019772, N/A

SECTION: 0001

Contract Items

Alt Set ID:

Alt Mbr ID:

Proposal Line Number	Item ID Description	Approximate Quantity and Units	Unit Price	Bid Amount
0064	415.0090 Concrete Pavement 9-Inch	120.000 SY	_____.	_____.
0066	415.1090 Concrete Pavement HES 9-Inch	339.000 SY	_____.	_____.
0068	416.0170 Concrete Driveway 7-Inch	135.000 SY	_____.	_____.
0070	416.0610 Drilled Tie Bars	664.000 EACH	_____.	_____.
0072	416.0620 Drilled Dowel Bars	35.000 EACH	_____.	_____.
0074	450.4000 HMA Cold Weather Paving	2,636.000 TON	_____.	_____.
0076	455.0605 Tack Coat	3,404.000 GAL	_____.	_____.
0078	460.2000 Incentive Density HMA Pavement	5,710.000 DOL	1.00000	5,710.00
0080	460.4110.S Reheating HMA Pavement Longitudinal Joints	40,035.000 LF	_____.	_____.
0082	460.6223 HMA Pavement 3 MT 58-28 S	6,278.000 TON	_____.	_____.
0084	460.6424 HMA Pavement 4 MT 58-28 H	2,636.000 TON	_____.	_____.
0086	465.0105 Asphaltic Surface	925.000 TON	_____.	_____.
0088	465.0110 Asphaltic Surface Patching	10.000 TON	_____.	_____.
0090	465.0125 Asphaltic Surface Temporary	3,800.000 TON	_____.	_____.
0092	504.0100 Concrete Masonry Culverts	896.000 CY	_____.	_____.
0094	505.0400 Bar Steel Reinforcement HS Structures	158,390.000 LB	_____.	_____.



Proposal Schedule of Items

Proposal ID: 20191210006 Project(s): 5992-10-31, 5992-10-32, 5992-10-33

Federal ID(s): WISC 2019771, WISC 2019772, N/A

SECTION: 0001

Contract Items

Alt Set ID:

Alt Mbr ID:

Proposal Line Number	Item ID Description	Approximate Quantity and Units	Unit Price	Bid Amount
0096	505.0600 Bar Steel Reinforcement HS Coated Structures	2,290.000 LB	_____.	_____.
0098	511.1200 Temporary Shoring (structure) 600. B-13-0870	3,300.000 SF	_____.	_____.
0100	511.2200 Temporary Shoring Left in Place (structure) 01. R-13-0338	150.000 SF	_____.	_____.
0102	511.2200 Temporary Shoring Left in Place (structure) 02. R-13-0341	4,030.000 SF	_____.	_____.
0104	516.0100 Dampproofing	875.000 SY	_____.	_____.
0106	516.0500 Rubberized Membrane Waterproofing	75.000 SY	_____.	_____.
0108	517.1015.S Concrete Staining Multi-Color (structure) 01. B-13-0870	5,900.000 SF	_____.	_____.
0110	517.1050.S Architectural Surface Treatment (structure) 01. B-13-0870	4,750.000 SF	_____.	_____.
0112	520.8000 Concrete Collars for Pipe	9.000 EACH	_____.	_____.
0114	522.1054 Apron Endwalls for Culvert Pipe Reinforced Concrete 54-Inch	1.000 EACH	_____.	_____.
0116	601.0409 Concrete Curb & Gutter 30-Inch Type A	937.000 LF	_____.	_____.
0118	601.0411 Concrete Curb & Gutter 30-Inch Type D	235.000 LF	_____.	_____.
0120	601.0600 Concrete Curb Pedestrian	193.000 LF	_____.	_____.
0122	602.0410 Concrete Sidewalk 5-Inch	15,790.000 SF	_____.	_____.
0124	602.0420 Concrete Sidewalk 7-Inch	3,790.000 SF	_____.	_____.



Proposal Schedule of Items

Proposal ID: 20191210006 Project(s): 5992-10-31, 5992-10-32, 5992-10-33
Federal ID(s): WISC 2019771, WISC 2019772, N/A

SECTION: 0001 Contract Items

Alt Set ID: Alt Mbr ID:

Proposal Line Number	Item ID Description	Approximate Quantity and Units	Unit Price	Bid Amount
0126	602.0515 Curb Ramp Detectable Warning Field Natural Patina	352.000 SF	_____.	_____.
0128	603.8000 Concrete Barrier Temporary Precast Delivered	1,259.000 LF	_____.	_____.
0130	603.8125 Concrete Barrier Temporary Precast Installed	1,259.000 LF	_____.	_____.
0132	606.0300 Riprap Heavy	23.000 CY	_____.	_____.
0134	608.0312 Storm Sewer Pipe Reinforced Concrete Class III 12-Inch	356.000 LF	_____.	_____.
0136	608.0315 Storm Sewer Pipe Reinforced Concrete Class III 15-Inch	1,003.000 LF	_____.	_____.
0138	608.0318 Storm Sewer Pipe Reinforced Concrete Class III 18-Inch	205.000 LF	_____.	_____.
0140	608.0324 Storm Sewer Pipe Reinforced Concrete Class III 24-Inch	665.000 LF	_____.	_____.
0142	608.0336 Storm Sewer Pipe Reinforced Concrete Class III 36-Inch	40.000 LF	_____.	_____.
0144	608.0348 Storm Sewer Pipe Reinforced Concrete Class III 48-Inch	576.000 LF	_____.	_____.
0146	608.0354 Storm Sewer Pipe Reinforced Concrete Class III 54-Inch	402.000 LF	_____.	_____.
0148	608.0412 Storm Sewer Pipe Reinforced Concrete Class IV 12-Inch	59.000 LF	_____.	_____.
0150	608.0415 Storm Sewer Pipe Reinforced Concrete Class IV 15-Inch	8.000 LF	_____.	_____.



Proposal Schedule of Items

Proposal ID: 20191210006 Project(s): 5992-10-31, 5992-10-32, 5992-10-33

Federal ID(s): WISC 2019771, WISC 2019772, N/A

SECTION: 0001

Contract Items

Alt Set ID:

Alt Mbr ID:

Proposal Line Number	Item ID Description	Approximate Quantity and Units	Unit Price	Bid Amount
0152	608.0430 Storm Sewer Pipe Reinforced Concrete Class IV 30-Inch	318.000 LF	_____.	_____.
0154	608.0448 Storm Sewer Pipe Reinforced Concrete Class IV 48-Inch	465.000 LF	_____.	_____.
0156	611.0420 Reconstructing Manholes	2.000 EACH	_____.	_____.
0158	611.0430 Reconstructing Inlets	3.000 EACH	_____.	_____.
0160	611.0606 Inlet Covers Type B	1.000 EACH	_____.	_____.
0162	611.0609 Inlet Covers Type B-A	3.000 EACH	_____.	_____.
0164	611.0612 Inlet Covers Type C	2.000 EACH	_____.	_____.
0166	611.0642 Inlet Covers Type MS	1.000 EACH	_____.	_____.
0168	611.0666 Inlet Covers Type Z	6.000 EACH	_____.	_____.
0170	611.2004 Manholes 4-FT Diameter	1.000 EACH	_____.	_____.
0172	611.2005 Manholes 5-FT Diameter	4.000 EACH	_____.	_____.
0174	611.2007 Manholes 7-FT Diameter	1.000 EACH	_____.	_____.
0176	611.2066 Manholes 6x6-FT	6.000 EACH	_____.	_____.
0178	611.3003 Inlets 3-FT Diameter	8.000 EACH	_____.	_____.
0180	611.3004 Inlets 4-FT Diameter	11.000 EACH	_____.	_____.
0182	611.3220 Inlets 2x2-FT	1.000 EACH	_____.	_____.



Proposal Schedule of Items

Proposal ID: 20191210006 Project(s): 5992-10-31, 5992-10-32, 5992-10-33
Federal ID(s): WISC 2019771, WISC 2019772, N/A

SECTION: 0001 Contract Items

Alt Set ID: Alt Mbr ID:

Proposal Line Number	Item ID Description	Approximate Quantity and Units	Unit Price	Bid Amount
0184	611.3230 Inlets 2x3-FT	18.000 EACH	_____.	_____.
0186	611.3901 Inlets Median 1 Grate	1.000 EACH	_____.	_____.
0188	611.8120.S Cover Plates Temporary	17.000 EACH	_____.	_____.
0190	611.9710 Salvaged Inlet Covers	6.000 EACH	_____.	_____.
0192	611.9800.S Pipe Grates 01. STA 221+55 NB	1.000 EACH	_____.	_____.
0194	612.0406 Pipe Underdrain Wrapped 6-Inch	2,780.000 LF	_____.	_____.
0196	614.2300 MGS Guardrail 3	107.000 LF	_____.	_____.
0198	614.2620 MGS Guardrail Terminal Type 2	1.000 EACH	_____.	_____.
0200	616.0206 Fence Chain Link 6-FT	1,343.000 LF	_____.	_____.
0202	616.0700.S Fence Safety	3,100.000 LF	_____.	_____.
0204	618.0100 Maintenance And Repair of Haul Roads (project) 01. 5992-10-31	1.000 EACH	_____.	_____.
0206	618.0100 Maintenance And Repair of Haul Roads (project) 02. 5992-10-32	1.000 EACH	_____.	_____.
0208	619.1000 Mobilization	1.000 EACH	_____.	_____.
0210	620.0200 Concrete Median Blunt Nose	79.000 SF	_____.	_____.
0212	620.0300 Concrete Median Sloped Nose	741.000 SF	_____.	_____.
0214	621.0100 Landmark Reference Monuments	2.000 EACH	_____.	_____.



Proposal Schedule of Items

Proposal ID: 20191210006 Project(s): 5992-10-31, 5992-10-32, 5992-10-33

Federal ID(s): WISC 2019771, WISC 2019772, N/A

SECTION: 0001

Contract Items

Alt Set ID:

Alt Mbr ID:

Proposal Line Number	Item ID Description	Approximate Quantity and Units	Unit Price	Bid Amount
0216	623.0200 Dust Control Surface Treatment	35,400.000 SY	_____.	_____.
0218	624.0100 Water	371.000 MGAL	_____.	_____.
0220	627.0200 Mulching	790.000 SY	_____.	_____.
0222	628.1504 Silt Fence	4,100.000 LF	_____.	_____.
0224	628.1520 Silt Fence Maintenance	4,100.000 LF	_____.	_____.
0226	628.1905 Mobilizations Erosion Control	12.000 EACH	_____.	_____.
0228	628.1910 Mobilizations Emergency Erosion Control	12.000 EACH	_____.	_____.
0230	628.2006 Erosion Mat Urban Class I Type A	11,600.000 SY	_____.	_____.
0232	628.7005 Inlet Protection Type A	54.000 EACH	_____.	_____.
0234	628.7015 Inlet Protection Type C	28.000 EACH	_____.	_____.
0236	628.7020 Inlet Protection Type D	33.000 EACH	_____.	_____.
0238	628.7504 Temporary Ditch Checks	20.000 LF	_____.	_____.
0240	628.7560 Tracking Pads	10.000 EACH	_____.	_____.
0242	629.0210 Fertilizer Type B	9.040 CWT	_____.	_____.
0244	630.0130 Seeding Mixture No. 30	40.000 LB	_____.	_____.
0246	630.0140 Seeding Mixture No. 40	130.000 LB	_____.	_____.
0248	630.0200 Seeding Temporary	40.000 LB	_____.	_____.



Proposal Schedule of Items

Proposal ID: 20191210006 Project(s): 5992-10-31, 5992-10-32, 5992-10-33
 Federal ID(s): WISC 2019771, WISC 2019772, N/A

SECTION: 0001 Contract Items

Alt Set ID: Alt Mbr ID:

Proposal Line Number	Item ID Description	Approximate Quantity and Units	Unit Price	Bid Amount
0250	630.0500 Seed Water	400.000 MGAL	_____.	_____.
0252	631.0300 Sod Water	110.000 MGAL	_____.	_____.
0254	631.1000 Sod Lawn	4,200.000 SY	_____.	_____.
0256	634.0612 Posts Wood 4x6-Inch X 12-FT	1.000 EACH	_____.	_____.
0258	634.0620 Posts Wood 4x6-Inch X 20-FT	5.000 EACH	_____.	_____.
0260	637.1220 Signs Type I Reflective SH	371.000 SF	_____.	_____.
0262	637.2210 Signs Type II Reflective H	352.740 SF	_____.	_____.
0264	637.2215 Signs Type II Reflective H Folding	6.250 SF	_____.	_____.
0266	637.2230 Signs Type II Reflective F	54.000 SF	_____.	_____.
0268	638.2102 Moving Signs Type II	15.000 EACH	_____.	_____.
0270	638.2602 Removing Signs Type II	90.000 EACH	_____.	_____.
0272	638.3000 Removing Small Sign Supports	26.000 EACH	_____.	_____.
0274	638.4000 Moving Small Sign Supports	3.000 EACH	_____.	_____.
0290	641.8100 Overhead Sign Support (structure) 08. S-13-0514	LS	LUMP SUM	_____.
0292	641.8100 Overhead Sign Support (structure) 09. S-13-0515	LS	LUMP SUM	_____.
0294	641.8100 Overhead Sign Support (structure) 11. S-13-0517	LS	LUMP SUM	_____.



Proposal Schedule of Items

Proposal ID: 20191210006 Project(s): 5992-10-31, 5992-10-32, 5992-10-33
Federal ID(s): WISC 2019771, WISC 2019772, N/A

SECTION: 0001 Contract Items

Alt Set ID: Alt Mbr ID:

Proposal Line Number	Item ID Description	Approximate Quantity and Units	Unit Price	Bid Amount
0296	641.8100 Overhead Sign Support (structure) 12. S-13-0518	LS	LUMP SUM	_____.
0298	642.5401 Field Office Type D	1.000 EACH	_____.	_____.
0300	643.0300 Traffic Control Drums	58,400.000 DAY	_____.	_____.
0302	643.0410 Traffic Control Barricades Type II	4,000.000 DAY	_____.	_____.
0304	643.0420 Traffic Control Barricades Type III	7,100.000 DAY	_____.	_____.
0306	643.0500 Traffic Control Flexible Tubular Marker Posts	670.000 EACH	_____.	_____.
0308	643.0600 Traffic Control Flexible Tubular Marker Bases	670.000 EACH	_____.	_____.
0310	643.0705 Traffic Control Warning Lights Type A	10,800.000 DAY	_____.	_____.
0312	643.0715 Traffic Control Warning Lights Type C	3,600.000 DAY	_____.	_____.
0314	643.0800 Traffic Control Arrow Boards	1,300.000 DAY	_____.	_____.
0316	643.0900 Traffic Control Signs	50,800.000 DAY	_____.	_____.
0318	643.0920 Traffic Control Covering Signs Type II	9.000 EACH	_____.	_____.
0320	643.1000 Traffic Control Signs Fixed Message	179.000 SF	_____.	_____.
0322	643.1050 Traffic Control Signs PCMS	940.000 DAY	_____.	_____.
0324	643.1070 Traffic Control Cones 42-Inch	340.000 DAY	_____.	_____.
0326	643.5000 Traffic Control	2.000 EACH	_____.	_____.



Proposal Schedule of Items

Proposal ID: 20191210006 Project(s): 5992-10-31, 5992-10-32, 5992-10-33
Federal ID(s): WISC 2019771, WISC 2019772, N/A

SECTION: 0001 Contract Items

Alt Set ID: Alt Mbr ID:

Proposal Line Number	Item ID Description	Approximate Quantity and Units	Unit Price	Bid Amount
0328	644.1810 Temporary Pedestrian Barricade	3,800.000 LF	_____.	_____.
0330	645.0105 Geotextile Type C	990.000 SY	_____.	_____.
0332	645.0120 Geotextile Type HR	58.000 SY	_____.	_____.
0334	646.1020 Marking Line Epoxy 4-Inch	1,206.000 LF	_____.	_____.
0336	646.1545 Marking Line Grooved Wet Ref Contrast Epoxy 4-Inch	900.000 LF	_____.	_____.
0338	646.1555 Marking Line Grooved Contrast Permanent Tape 4-Inch	50.000 LF	_____.	_____.
0340	646.3020 Marking Line Epoxy 8-Inch	4,553.000 LF	_____.	_____.
0342	646.3555 Marking Line Grooved Contrast Permanent Tape 8-Inch	922.000 LF	_____.	_____.
0344	646.5020 Marking Arrow Epoxy	14.000 EACH	_____.	_____.
0346	646.5120 Marking Word Epoxy	11.000 EACH	_____.	_____.
0348	646.6120 Marking Stop Line Epoxy 18-Inch	54.000 LF	_____.	_____.
0350	646.7420 Marking Crosswalk Epoxy Transverse Line 6-Inch	1,703.000 LF	_____.	_____.
0352	646.8120 Marking Curb Epoxy	194.000 LF	_____.	_____.
0354	646.8220 Marking Island Nose Epoxy	10.000 EACH	_____.	_____.
0356	646.9000 Marking Removal Line 4-Inch	11,698.000 LF	_____.	_____.



Proposal Schedule of Items

Proposal ID: 20191210006 Project(s): 5992-10-31, 5992-10-32, 5992-10-33
Federal ID(s): WISC 2019771, WISC 2019772, N/A

SECTION: 0001 Contract Items

Alt Set ID: Alt Mbr ID:

Proposal Line Number	Item ID Description	Approximate Quantity and Units	Unit Price	Bid Amount
0358	646.9010 Marking Removal Line Water Blasting 4-Inch	1,259.000 LF	_____.	_____.
0360	646.9100 Marking Removal Line 8-Inch	2,736.000 LF	_____.	_____.
0362	646.9110 Marking Removal Line Water Blasting 8-Inch	1,033.000 LF	_____.	_____.
0364	646.9200 Marking Removal Line Wide	460.000 LF	_____.	_____.
0366	646.9210 Marking Removal Line Water Blasting Wide	48.000 LF	_____.	_____.
0368	646.9300 Marking Removal Special Marking	4.000 EACH	_____.	_____.
0370	646.9310 Marking Removal Special Marking Water Blasting	13.000 EACH	_____.	_____.
0372	649.0105 Temporary Marking Line Paint 4-Inch	46,358.000 LF	_____.	_____.
0374	649.0150 Temporary Marking Line Removable Tape 4-Inch	1,352.000 LF	_____.	_____.
0376	649.0205 Temporary Marking Line Paint 8-Inch	11,049.000 LF	_____.	_____.
0378	649.0250 Temporary Marking Line Removable Tape 8-Inch	321.000 LF	_____.	_____.
0380	649.0505 Temporary Marking Arrow Paint	11.000 EACH	_____.	_____.
0382	649.0550 Temporary Marking Arrow Removable Tape	3.000 EACH	_____.	_____.
0384	649.0605 Temporary Marking Word Paint	11.000 EACH	_____.	_____.
0386	649.0650 Temporary Marking Word Removable Tape	2.000 EACH	_____.	_____.



Proposal Schedule of Items

Proposal ID: 20191210006 Project(s): 5992-10-31, 5992-10-32, 5992-10-33
Federal ID(s): WISC 2019771, WISC 2019772, N/A

SECTION: 0001 Contract Items

Alt Set ID: Alt Mbr ID:

Proposal Line Number	Item ID Description	Approximate Quantity and Units	Unit Price	Bid Amount
0388	649.0805 Temporary Marking Stop Line Paint 18-Inch	1,414.000 LF	_____.	_____.
0390	649.0850 Temporary Marking Stop Line Removable Tape 18-Inch	82.000 LF	_____.	_____.
0392	650.4000 Construction Staking Storm Sewer	60.000 EACH	_____.	_____.
0394	650.4500 Construction Staking Subgrade	10,700.000 LF	_____.	_____.
0396	650.5000 Construction Staking Base	10,700.000 LF	_____.	_____.
0398	650.5500 Construction Staking Curb Gutter and Curb & Gutter	11,383.000 LF	_____.	_____.
0400	650.6500 Construction Staking Structure Layout (structure) 01. B-13-0870	LS	LUMP SUM	_____.
0402	650.6500 Construction Staking Structure Layout (structure) 02. R-13-0338	LS	LUMP SUM	_____.
0404	650.6500 Construction Staking Structure Layout (structure) 03. R-13-0339	LS	LUMP SUM	_____.
0406	650.6500 Construction Staking Structure Layout (structure) 04. R-13-0340	LS	LUMP SUM	_____.
0408	650.6500 Construction Staking Structure Layout (structure) 05. R-13-0341	LS	LUMP SUM	_____.
0410	650.6500 Construction Staking Structure Layout (structure) 06. R-13-0342	LS	LUMP SUM	_____.
0412	650.6500 Construction Staking Structure Layout (structure) 07. R-13-0343	LS	LUMP SUM	_____.
0414	650.6500 Construction Staking Structure Layout (structure) 08. S-13-0514	LS	LUMP SUM	_____.



Proposal Schedule of Items

Proposal ID: 20191210006 Project(s): 5992-10-31, 5992-10-32, 5992-10-33
Federal ID(s): WISC 2019771, WISC 2019772, N/A

SECTION: 0001 Contract Items

Alt Set ID: Alt Mbr ID:

Proposal Line Number	Item ID Description	Approximate Quantity and Units	Unit Price	Bid Amount
0416	650.6500 Construction Staking Structure Layout (structure) 09. S-13-0515	LS	LUMP SUM	_____.
0418	650.6500 Construction Staking Structure Layout (structure) 10. S-13-0516	LS	LUMP SUM	_____.
0420	650.6500 Construction Staking Structure Layout (structure) 11. S-13-0517	LS	LUMP SUM	_____.
0422	650.6500 Construction Staking Structure Layout (structure) 12. S-13-0518	LS	LUMP SUM	_____.
0424	650.6500 Construction Staking Structure Layout (structure) 14. S-13-0522	LS	LUMP SUM	_____.
0426	650.6500 Construction Staking Structure Layout (structure) 15. S-13-0523	LS	LUMP SUM	_____.
0428	650.6500 Construction Staking Structure Layout (structure) 16. S-13-0525	LS	LUMP SUM	_____.
0430	650.6500 Construction Staking Structure Layout (structure) 17. S-13-0526	LS	LUMP SUM	_____.
0432	650.6500 Construction Staking Structure Layout (structure) 18. S-13-0527	LS	LUMP SUM	_____.
0434	650.6500 Construction Staking Structure Layout (structure) 19. S-13-0528	LS	LUMP SUM	_____.
0436	650.7000 Construction Staking Concrete Pavement	267.000 LF	_____.	_____.
0438	650.8500 Construction Staking Electrical Installations (project) 01. 5992-10-31	LS	LUMP SUM	_____.
0440	650.8500 Construction Staking Electrical Installations (project) 01. 5992-10-32	LS	LUMP SUM	_____.



Proposal Schedule of Items

Proposal ID: 20191210006 Project(s): 5992-10-31, 5992-10-32, 5992-10-33

Federal ID(s): WISC 2019771, WISC 2019772, N/A

SECTION: 0001

Contract Items

Alt Set ID:

Alt Mbr ID:

Proposal Line Number	Item ID Description	Approximate Quantity and Units	Unit Price	Bid Amount
0442	650.9000 Construction Staking Curb Ramps	25.000 EACH	_____.	_____.
0444	650.9910 Construction Staking Supplemental Control (project) 01. 5992-10-31	LS	LUMP SUM	_____.
0446	650.9910 Construction Staking Supplemental Control (project) 02. 5992-10-32	LS	LUMP SUM	_____.
0448	650.9920 Construction Staking Slope Stakes	10,103.000 LF	_____.	_____.
0450	652.0225 Conduit Rigid Nonmetallic Schedule 40 2-Inch	7,940.000 LF	_____.	_____.
0452	652.0235 Conduit Rigid Nonmetallic Schedule 40 3-Inch	6,948.000 LF	_____.	_____.
0454	652.0325 Conduit Rigid Nonmetallic Schedule 80 2-Inch	1,405.000 LF	_____.	_____.
0456	652.0335 Conduit Rigid Nonmetallic Schedule 80 3-Inch	2,945.000 LF	_____.	_____.
0458	652.0605 Conduit Special 2-Inch	100.000 LF	_____.	_____.
0460	652.0615 Conduit Special 3-Inch	200.000 LF	_____.	_____.
0462	652.0800 Conduit Loop Detector	2,880.000 LF	_____.	_____.
0464	653.0164 Pull Boxes Non-Conductive 24x42-Inch	20.000 EACH	_____.	_____.
0466	653.0208 Junction Boxes 8x8x8-Inch	8.000 EACH	_____.	_____.
0468	653.0905 Removing Pull Boxes	24.000 EACH	_____.	_____.
0470	654.0110 Concrete Bases Type 10	3.000 EACH	_____.	_____.



Proposal Schedule of Items

Proposal ID: 20191210006 Project(s): 5992-10-31, 5992-10-32, 5992-10-33

Federal ID(s): WISC 2019771, WISC 2019772, N/A

SECTION: 0001

Contract Items

Alt Set ID:

Alt Mbr ID:

Proposal Line Number	Item ID Description	Approximate Quantity and Units	Unit Price	Bid Amount
0472	654.0113 Concrete Bases Type 13	3.000 EACH	_____.	_____.
0474	655.0230 Cable Traffic Signal 5-14 AWG	5,080.000 LF	_____.	_____.
0476	655.0240 Cable Traffic Signal 7-14 AWG	2,905.000 LF	_____.	_____.
0478	655.0250 Cable Traffic Signal 9-14 AWG	1,070.000 LF	_____.	_____.
0480	655.0260 Cable Traffic Signal 12-14 AWG	2,910.000 LF	_____.	_____.
0482	655.0525 Electrical Wire Traffic Signals 6 AWG	1,510.000 LF	_____.	_____.
0484	655.0615 Electrical Wire Lighting 10 AWG	5,280.000 LF	_____.	_____.
0486	655.0620 Electrical Wire Lighting 8 AWG	10,962.000 LF	_____.	_____.
0488	655.0625 Electrical Wire Lighting 6 AWG	32,886.000 LF	_____.	_____.
0490	655.0700 Loop Detector Lead In Cable	2,900.000 LF	_____.	_____.
0492	655.0800 Loop Detector Wire	7,915.000 LF	_____.	_____.
0494	656.0200 Electrical Service Meter Breaker Pedestal (location) 01. 209+21.85	LS	LUMP SUM	_____.
0496	656.0200 Electrical Service Meter Breaker Pedestal (location) 02. 225+39.46 NB	LS	LUMP SUM	_____.
0498	656.0200 Electrical Service Meter Breaker Pedestal (location) 03. 218+14.39	LS	LUMP SUM	_____.
0500	656.0200 Electrical Service Meter Breaker Pedestal (location) 04. 208+65.57	LS	LUMP SUM	_____.
0502	657.0100 Pedestal Bases	17.000 EACH	_____.	_____.



Proposal Schedule of Items

Proposal ID: 20191210006 Project(s): 5992-10-31, 5992-10-32, 5992-10-33
 Federal ID(s): WISC 2019771, WISC 2019772, N/A

SECTION: 0001 Contract Items

Alt Set ID: Alt Mbr ID:

Proposal Line Number	Item ID Description	Approximate Quantity and Units	Unit Price	Bid Amount
0504	657.0255 Transformer Bases Breakaway 11 1/2-Inch Bolt Circle	51.000 EACH	_____.	_____.
0506	657.0345 Poles Type 9	3.000 EACH	_____.	_____.
0508	657.0355 Poles Type 12	3.000 EACH	_____.	_____.
0510	657.0420 Traffic Signal Standards Aluminum 13-FT	17.000 EACH	_____.	_____.
0512	657.0530 Monotube Arms 30-FT	3.000 EACH	_____.	_____.
0514	657.0535 Monotube Arms 35-FT	3.000 EACH	_____.	_____.
0516	657.0810 Luminaire Arms Steel 10-FT	42.000 EACH	_____.	_____.
0518	658.0173 Traffic Signal Face 3S 12-Inch	57.000 EACH	_____.	_____.
0520	658.0174 Traffic Signal Face 4S 12-Inch	6.000 EACH	_____.	_____.
0522	658.0416 Pedestrian Signal Face 16-Inch	26.000 EACH	_____.	_____.
0524	658.0500 Pedestrian Push Buttons	20.000 EACH	_____.	_____.
0526	658.5069 Signal Mounting Hardware (location) 01. 225+39.64 NB	LS	LUMP SUM	_____.
0528	658.5069 Signal Mounting Hardware (location) 02. 218+14.39 NB	LS	LUMP SUM	_____.
0530	658.5069 Signal Mounting Hardware (location) 03. 208+74.39 NB	LS	LUMP SUM	_____.
0532	659.1115 Luminaires Utility LED A	46.000 EACH	_____.	_____.
0534	659.1120 Luminaires Utility LED B	4.000 EACH	_____.	_____.



Proposal Schedule of Items

Proposal ID: 20191210006 Project(s): 5992-10-31, 5992-10-32, 5992-10-33

Federal ID(s): WISC 2019771, WISC 2019772, N/A

SECTION: 0001

Contract Items

Alt Set ID:

Alt Mbr ID:

Proposal Line Number	Item ID Description	Approximate Quantity and Units	Unit Price	Bid Amount
0536	678.0072 Install Fiber Optic Cable Outdoor Plant 72-CT	5,608.000 LF	_____.	_____.
0538	690.0150 Sawing Asphalt	8,051.000 LF	_____.	_____.
0540	690.0250 Sawing Concrete	13,045.000 LF	_____.	_____.
0542	715.0415 Incentive Strength Concrete Pavement	500.000 DOL	1.00000	500.00
0544	715.0502 Incentive Strength Concrete Structures	5,376.000 DOL	1.00000	5,376.00
0546	740.0440 Incentive IRI Ride	6,570.000 DOL	1.00000	6,570.00
0548	ASP.1T0A On-the-Job Training Apprentice at \$5.00/HR	600.000 HRS	5.00000	3,000.00
0550	ASP.1T0G On-the-Job Training Graduate at \$5.00/HR	600.000 HRS	5.00000	3,000.00
0552	SPV.0035 Special 450. Removal of Excess Amounts of Boulders For Water Main Installation	115.000 CY	_____.	_____.
0554	SPV.0045 Special 001. Temporary Crosswalk Access North & East Legs Odana Road	290.000 DAY	_____.	_____.
0556	SPV.0045 Special 002. Temporary Crosswalk Access North Leg Gammon Place	290.000 DAY	_____.	_____.
0558	SPV.0060 Special 001. Root Pruning Existing Terrace Trees	14.000 EACH	_____.	_____.
0560	SPV.0060 Special 002. Precast Sign Post Base	23.000 EACH	_____.	_____.
0562	SPV.0060 Special 100. Temporary Drainage Cover for Existing Inlet or Manhole	6.000 EACH	_____.	_____.



Proposal Schedule of Items

Proposal ID: 20191210006 Project(s): 5992-10-31, 5992-10-32, 5992-10-33
Federal ID(s): WISC 2019771, WISC 2019772, N/A

SECTION: 0001 Contract Items

Alt Set ID: Alt Mbr ID:

Proposal Line Number	Item ID Description	Approximate Quantity and Units	Unit Price	Bid Amount
0564	SPV.0060 Special 101. Temporary Drainage Cover for Proposed Inlet or Manhole	13.000 EACH	_____.	_____.
0566	SPV.0060 Special 102. Temporarily Drain Between Existing SS Pipe & Proposed SS Pipe	9.000 EACH	_____.	_____.
0568	SPV.0060 Special 103. Temporarily Drain Between Existing SS Pipe & Proposed SS Structure	3.000 EACH	_____.	_____.
0570	SPV.0060 Special 104. Temporary Inlet Connection to Existing Storm Sewer Pipe	2.000 EACH	_____.	_____.
0572	SPV.0060 Special 105. Inlets 5-FT Diameter	5.000 EACH	_____.	_____.
0574	SPV.0060 Special 106. Inlets 6x6-FT	1.000 EACH	_____.	_____.
0576	SPV.0060 Special 107. Private Storm Sewer Reconnect	4.000 EACH	_____.	_____.
0578	SPV.0060 Special 108. Manhole Covers Type J Special	12.000 EACH	_____.	_____.
0580	SPV.0060 Special 109. Inlet Covers Type H Special	32.000 EACH	_____.	_____.
0582	SPV.0060 Special 250. Install City Provided Sign	10.000 EACH	_____.	_____.
0584	SPV.0060 Special 251. Sign Post Base for Concrete Installation	2.000 EACH	_____.	_____.
0586	SPV.0060 Special 300. Special Marking Arrow Epoxy	29.000 EACH	_____.	_____.
0588	SPV.0060 Special 301. Special Marking Word Epoxy	14.000 EACH	_____.	_____.
0590	SPV.0060 Special 350. Electrical Pullbox Type I	15.000 EACH	_____.	_____.



Proposal Schedule of Items

Proposal ID: 20191210006 Project(s): 5992-10-31, 5992-10-32, 5992-10-33
Federal ID(s): WISC 2019771, WISC 2019772, N/A

SECTION: 0001 Contract Items

Alt Set ID: Alt Mbr ID:

Proposal Line Number	Item ID Description	Approximate Quantity and Units	Unit Price	Bid Amount
0592	SPV.0060 Special 351. Electrical Pullbox Type III	12.000 EACH	_____.	_____.
0594	SPV.0060 Special 352. Electrical Pullbox Type V	24.000 EACH	_____.	_____.
0596	SPV.0060 Special 353. Electrical Pullbox Type VII	5.000 EACH	_____.	_____.
0598	SPV.0060 Special 354. Concrete Bases Type G	17.000 EACH	_____.	_____.
0600	SPV.0060 Special 355. Concrete Bases Type LB-2	11.000 EACH	_____.	_____.
0602	SPV.0060 Special 356. Concrete Bases Type LB-3	41.000 EACH	_____.	_____.
0604	SPV.0060 Special 357. Concrete Bases Type LB-8	10.000 EACH	_____.	_____.
0606	SPV.0060 Special 358. Concrete Bases Type M	2.000 EACH	_____.	_____.
0608	SPV.0060 Special 359. Concrete Bases Type P	2.000 EACH	_____.	_____.
0610	SPV.0060 Special 360. Concrete Bases Offset	2.000 EACH	_____.	_____.
0612	SPV.0060 Special 368. Pole 20-Foot, 11 Gauge, Black, Double Fixture	1.000 EACH	_____.	_____.
0614	SPV.0060 Special 369. Pole 20-Foot, 7 Gauge	9.000 EACH	_____.	_____.
0616	SPV.0060 Special 370. Pole 30-Foot, 7 Gauge Single Simplex	1.000 EACH	_____.	_____.
0618	SPV.0060 Special 371. Pole 30-Foot, 11 Gauge Single Simplex	40.000 EACH	_____.	_____.
0620	SPV.0060 Special 372. Pole 20-Foot, 11 Gauge, Black, Single Fixture	10.000 EACH	_____.	_____.



Proposal Schedule of Items

Proposal ID: 20191210006 Project(s): 5992-10-31, 5992-10-32, 5992-10-33
Federal ID(s): WISC 2019771, WISC 2019772, N/A

SECTION: 0001 Contract Items

Alt Set ID: Alt Mbr ID:

Proposal Line Number	Item ID Description	Approximate Quantity and Units	Unit Price	Bid Amount
0622	SPV.0060 Special 373. Pole 30-Foot, 11 Gauge, Black, Twin Simplex	1.000 EACH	_____.	_____.
0624	SPV.0060 Special 374. Luminaires Path and Mounting Bracket	11.000 EACH	_____.	_____.
0626	SPV.0060 Special 375. Traffic Signal Trombone Arms Aluminum 22-Foot	3.000 EACH	_____.	_____.
0628	SPV.0060 Special 376. Traffic Signal Trombone Arms Aluminum 18-Foot	2.000 EACH	_____.	_____.
0630	SPV.0060 Special 377. Trombone Arms 15-FT	5.000 EACH	_____.	_____.
0632	SPV.0060 Special 378. Traffic Signal Control Cabinet	2.000 EACH	_____.	_____.
0634	SPV.0060 Special 380. Lighting Control Cabinet	2.000 EACH	_____.	_____.
0636	SPV.0060 Special 400. Malfunction Management Unit (MMU)	2.000 EACH	_____.	_____.
0638	SPV.0060 Special 401. Traffic Signal Ethernet Switch	2.000 EACH	_____.	_____.
0640	SPV.0060 Special 402. Backplates Signal Face, 3-Section 12-Inch)	57.000 EACH	_____.	_____.
0642	SPV.0060 Special 403. Backplates Signal Face, 4-Section 12-Inch)	6.000 EACH	_____.	_____.
0644	SPV.0060 Special 404. Luminaires Underpass LED 80W	14.000 EACH	_____.	_____.
0646	SPV.0060 Special 405. Luminaires Underpass LED 160W	8.000 EACH	_____.	_____.
0648	SPV.0060 Special 407. Traffic Signal Controller	2.000 EACH	_____.	_____.



Proposal Schedule of Items

Proposal ID: 20191210006 Project(s): 5992-10-31, 5992-10-32, 5992-10-33
Federal ID(s): WISC 2019771, WISC 2019772, N/A

SECTION: 0001 Contract Items

Alt Set ID: Alt Mbr ID:

Proposal Line Number	Item ID Description	Approximate Quantity and Units	Unit Price	Bid Amount
0650	SPV.0060 Special 450. Furnish and Install 16-Inch Water Valve	1.000 EACH	_____.	_____.
0652	SPV.0060 Special 451. Cut-In Or Connect To Existing Water System	2.000 EACH	_____.	_____.
0654	SPV.0060 Special 452. Adjust Water Valve Box Sections	30.000 EACH	_____.	_____.
0656	SPV.0060 Special 500. Adjust MMSD SAS Special	1.000 EACH	_____.	_____.
0658	SPV.0060 Special 550. Utility Line Opening (ULO)	30.000 EACH	_____.	_____.
0660	SPV.0060 Special 650. Fluid Thermal Backfill	3.000 EACH	_____.	_____.
0662	SPV.0090 Special 001. Concrete Curb & Gutter 18-Inch Type D Special	801.000 LF	_____.	_____.
0664	SPV.0090 Special 002. Concrete Curb & Gutter 24-Inch Type A Special	361.000 LF	_____.	_____.
0666	SPV.0090 Special 003. Concrete Curb & Gutter 24-Inch Type D Special	3,870.000 LF	_____.	_____.
0668	SPV.0090 Special 004. Concrete Gutter 24-Inch Type D Special	521.000 LF	_____.	_____.
0670	SPV.0090 Special 005. Concrete Curb & Gutter 30-Inch Type D Special	4,465.000 LF	_____.	_____.
0672	SPV.0090 Special 006. Asphaltic Curb Temporary	1,100.000 LF	_____.	_____.
0674	SPV.0090 Special 007. Construction Staking Bike Path	4,382.000 LF	_____.	_____.
0676	SPV.0090 Special 250. Sign Post	102.000 LF	_____.	_____.



Proposal Schedule of Items

Proposal ID: 20191210006 Project(s): 5992-10-31, 5992-10-32, 5992-10-33
Federal ID(s): WISC 2019771, WISC 2019772, N/A

SECTION: 0001 Contract Items

Alt Set ID: Alt Mbr ID:

Proposal Line Number	Item ID Description	Approximate Quantity and Units	Unit Price	Bid Amount
0678	SPV.0090 Special 251. Reflective Sign Post	171.000 LF	_____.	_____.
0680	SPV.0090 Special 300. Marking Line Epoxy 6-Inch	2,091.000 LF	_____.	_____.
0682	SPV.0090 Special 301. Marking Stop Line Epoxy 24-Inch	471.000 LF	_____.	_____.
0684	SPV.0090 Special 352. Electrical Wire Lighting, 14-3 Grounded	3,264.000 LF	_____.	_____.
0686	SPV.0090 Special 450. Furnish and Install 16-Inch Pipe & Fittings	90.000 LF	_____.	_____.
0688	SPV.0090 Special 451. Furnish and Install 2-Inch Foam Board Insulation	120.000 LF	_____.	_____.
0690	SPV.0090 Special 600. Railing Steel B-13-0870	53.000 LF	_____.	_____.
0692	SPV.0090 Special 650. Railing Steel R-13-0338	96.000 LF	_____.	_____.
0694	SPV.0090 Special 651. Railing Steel R-13-0339	293.000 LF	_____.	_____.
0696	SPV.0090 Special 652. Railing Steel R-13-0340	288.000 LF	_____.	_____.
0698	SPV.0090 Special 653. Railing Steel R-13-0341	303.000 LF	_____.	_____.
0700	SPV.0090 Special 654. Railing Steel R-13-0342	678.000 LF	_____.	_____.
0702	SPV.0090 Special 655. Railing Steel R-13-0343	490.000 LF	_____.	_____.
0704	SPV.0105 Special 002. Temporary Bus Stop Access Substages 1B & 1C	LS	LUMP SUM	_____.
0706	SPV.0105 Special 003. Temporary Bus Stop Access Substages 1D & 1E	LS	LUMP SUM	_____.



Proposal Schedule of Items

Proposal ID: 20191210006 Project(s): 5992-10-31, 5992-10-32, 5992-10-33
Federal ID(s): WISC 2019771, WISC 2019772, N/A

SECTION: 0001 Contract Items

Alt Set ID: Alt Mbr ID:

Proposal Line Number	Item ID Description	Approximate Quantity and Units	Unit Price	Bid Amount
0708	SPV.0105 Special 004. Temporary Bus Stop Access Substages 2A, 2B, & 2C	LS	LUMP SUM	_____.
0710	SPV.0105 Special 005. Temporary Bus Stop Access Substage 2D	LS	LUMP SUM	_____.
0712	SPV.0105 Special 006. Project Dewatering (ID 5992-10-31)	LS	LUMP SUM	_____.
0714	SPV.0105 Special 007. Project Dewatering (ID 5992-10-32)	LS	LUMP SUM	_____.
0716	SPV.0105 Special 008. Project Dewatering (ID 5992-10-33)	LS	LUMP SUM	_____.
0718	SPV.0105 Special 100. Temp Movable SS Trunkline Drainage Conduit Connected & Sealed At Ends	LS	LUMP SUM	_____.
0720	SPV.0105 Special 101. Temp Drain Existing Inlet To Prop Inlet, STA 222+60'NB' to STA 222+25'NB'	LS	LUMP SUM	_____.
0722	SPV.0105 Special 102. Temporary Inlet Connection To Existing Inlet STA 207+11'NB'	LS	LUMP SUM	_____.
0724	SPV.0105 Special 103. Temporary Inlet Connection To Existing and Proposed SS Pipe STA 224+81'NB'	LS	LUMP SUM	_____.
0726	SPV.0105 Special 104. Storm Sewer Tap	LS	LUMP SUM	_____.
0728	SPV.0105 Special 350. Street Light Removal	LS	LUMP SUM	_____.
0730	SPV.0105 Special 351. Temporary Lighting	LS	LUMP SUM	_____.
0732	SPV.0105 Special 400. Temporary Vehicle Detection (Gammon Rd - Gammon Pl)	LS	LUMP SUM	_____.



Proposal Schedule of Items

Proposal ID: 20191210006 Project(s): 5992-10-31, 5992-10-32, 5992-10-33
Federal ID(s): WISC 2019771, WISC 2019772, N/A

SECTION: 0001 Contract Items

Alt Set ID: Alt Mbr ID:

Proposal Line Number	Item ID Description	Approximate Quantity and Units	Unit Price	Bid Amount
0734	SPV.0105 Special 401. Temporary Vehicle Detection (Gammon Road - Odana Road)	LS	LUMP SUM	_____.
0736	SPV.0105 Special 402. Temporary Vehicle Detection (Gammon Rd - WB Beltline Ramp)	LS	LUMP SUM	_____.
0738	SPV.0105 Special 403. Temporary Traffic Signals (Gammon Road - Gammon PI)	LS	LUMP SUM	_____.
0740	SPV.0105 Special 404. Temporary Traffic Signals (Gammon Road - Odana Rd)	LS	LUMP SUM	_____.
0742	SPV.0105 Special 405. Temporary Traffic Signals (Gammon Road - WB Beltline Ramp)	LS	LUMP SUM	_____.
0744	SPV.0105 Special 406. Traffic Signal Removal	LS	LUMP SUM	_____.
0746	SPV.0105 Special 407. Optical Signal Preempt	LS	LUMP SUM	_____.
0748	SPV.0105 Special 450. Construction Staking Water Main	LS	LUMP SUM	_____.
0750	SPV.0105 Special 500. Construction Staking Sanitary Sewer	LS	LUMP SUM	_____.
0752	SPV.0105 Special 700. Overhead Sign Structure Removal (S-13-3063)	LS	LUMP SUM	_____.
0754	SPV.0105 Special 701. Overhead Sign Structure Removal (S-13-3064)	LS	LUMP SUM	_____.
0756	SPV.0105 Special 702. Overhead Sign Structure Removal (S-13-3065)	LS	LUMP SUM	_____.
0758	SPV.0105 Special 703. Overhead Sign Structure Removal (S-13-3066)	LS	LUMP SUM	_____.



Proposal Schedule of Items

Proposal ID: 20191210006 Project(s): 5992-10-31, 5992-10-32, 5992-10-33
Federal ID(s): WISC 2019771, WISC 2019772, N/A

SECTION: 0001 Contract Items

Alt Set ID: Alt Mbr ID:

Proposal Line Number	Item ID Description	Approximate Quantity and Units	Unit Price	Bid Amount
0760	SPV.0105 Special 704. Overhead Sign Structure Removal (S-13-3067)	LS	LUMP SUM	_____.
0762	SPV.0105 Special 705. Overhead Sign Structure Removal (S-13-3068)	LS	LUMP SUM	_____.
0764	SPV.0105 Special 706. Overhead Sign Structure Removal (S-13-3069)	LS	LUMP SUM	_____.
0766	SPV.0165 Special 001. Colored Crosswalk Green	2,520.000 SF	_____.	_____.
0768	SPV.0165 Special 650. Wall Modular Block Gravity R-13-0341	3,545.000 SF	_____.	_____.
0770	SPV.0165 Special 651. Wall Modular Block Gravity R-13-0343	2,290.000 SF	_____.	_____.
0772	SPV.0165 Special 652. Wall Modular Block Mechanically Stabilized Earth R-13-0338	1,075.000 SF	_____.	_____.
0774	SPV.0165 Special 653. Wall Modular Block Mechanically Stabilized Earth R-13-0339	2,410.000 SF	_____.	_____.
0776	SPV.0165 Special 654. Wall Modular Block Mechanically Stabilized Earth R-13-0340	2,330.000 SF	_____.	_____.
0778	SPV.0165 Special 655. Wall Modular Block Mechanically Stabilized Earth R-13-0342	3,675.000 SF	_____.	_____.
0780	SPV.0180 Special 001. Architectural Concrete Pavement 5-Inch	3,870.000 SY	_____.	_____.
0782	SPV.0180 Special 002. Topsoil Special	15,800.000 SY	_____.	_____.
0784	204.0126.S Removing Asphaltic Longitudinal Notched Wedge Joint Milling	10,800.000 LF	_____.	_____.



Proposal Schedule of Items

Proposal ID: 20191210006 Project(s): 5992-10-31, 5992-10-32, 5992-10-33
Federal ID(s): WISC 2019771, WISC 2019772, N/A

SECTION: 0001 Contract Items

Alt Set ID: Alt Mbr ID:

Proposal Line Number	Item ID Description	Approximate Quantity and Units	Unit Price	Bid Amount
0786	641.8100 Overhead Sign Support (structure) 10. S-13-0516	LS	LUMP SUM	_____.
0788	641.8100 Overhead Sign Support (structure) 14. S-13-0522	LS	LUMP SUM	_____.
0790	641.8100 Overhead Sign Support (structure) 15. S-13-0523	LS	LUMP SUM	_____.
0792	641.8100 Overhead Sign Support (structure) 16. S-13-0525	LS	LUMP SUM	_____.
0794	641.8100 Overhead Sign Support (structure) 17. S-13-0526	LS	LUMP SUM	_____.
0796	641.8100 Overhead Sign Support (structure) 18. S-13-0527	LS	LUMP SUM	_____.
0798	641.8100 Overhead Sign Support (structure) 19. S-13-0528	LS	LUMP SUM	_____.
0800	SPV.0085 Special 001. No Mow Seed Mix	218.000 LB	_____.	_____.
0802	SPV.0195 Special 001. Cold Patch	10.000 TON	_____.	_____.
Section: 0001			Total:	_____.
			Total Bid:	_____.

