



Wisconsin Department of Transportation

Division of Transportation Systems Development

Bureau of Project Development
4822 Madison Yards Way, 4th Floor South
Madison, WI 53705

November 27, 2019

Telephone: (608) 266-1631
Facsimile (FAX): (608) 266-8459

NOTICE TO ALL CONTRACTORS:

Proposal #13: 2310-14-70, WISC 2019 739
Jackson – Grafton
CTH Y Intersection
STH 60
Ozaukee County

2310-17-70, WISC 2019 740
STH 60
Eagle Drive to STH 181
STH 60
Washington & Ozaukee Counties

Letting of December 10, 2019

This is Addendum No. 01, which provides for the following:

Special Provisions:

Revised Special Provisions	
Article No.	Description
3	Prosecution and Progress (Added Interim Completion Date for Sports Complex Driveway)
4	Traffic (Added language for Sports Complex Driveway)
5	Holiday Work Restrictions (Added Ryder Cup)

Schedule of Items:

Revised Bid Item Quantities					
Bid Item	Item Description	Unit	Old Quantity	Revised Quantity	Proposal Total
204.0110	Removing Asphaltic Surface	SY	2,972	-113	2,859
204.0120	Removing Asphaltic Surface Milling	SY	108,335	-319	108,016
205.0100	Excavation Common	CY	32,591	1,667	34,258
211.0400	Prepare Foundation for Asphaltic Shoulders	STA	542	7	531
305.0110	Base Aggregate Dense 3/4-Inch	TON	3,274	57	3,331
305.0120	Base Aggregate Dense 1 1/4-Inch	TON	37,036	1,687	38,723
311.0110	Breaker Run	TON	24,902	1,581	26,483
455.0605	Tack Coat	GAL	22,521	137	22,658
460.2010	Incentive Air Voids HMA Pavement	DOL	38,550	480	39,030
460.5223	HMA Pavement 3 LT 58-28 S	TON	26,406	382	26,788
460.5224	HMA Pavement 4 LT 58-28 S	TON	17,105	99	17,204
465.0120	Asphaltic Surface Driveways and Field Entrances	TON	413	-8	405

465.0425	Asphaltic Shoulder Rumble Strips 2-Lane Rural	LF	53,719	-527	53,192
465.0475	Asphaltic Centerline Rumble Strips 2-Lane Rural	LF	28,965	-200	28,765
624.0100	Water	MGAL	586	26	612
625.0500	Salvaged Topsoil	SY	49,753	1,193	50,946
628.1504	Silt Fence	LF	17,974	1,236	19,210
628.1520	Silt Fence Maintenance	LF	17,974	1,236	19,210
628.1905	Mobilizations Erosion Control	EACH	24	2	26
628.2004	Erosion Mat Class I Type B	SY	29,465	589	30,054
628.2008	Erosion Mat Urban Class I Type B	SY	1,584	654	2,238
628.7555	Culvert Pipe Checks	EACH	504	12	516
629.0210	Fertilizer Type B	CWT	29.0	0.8	29.8
630.0130	Seeding Mixture No. 30	LB	1,019	27	1,046
630.0200	Seeding Temporary	LB	921	40	961
630.0500	Seed Water	MGAL	1,270	20	1290
643.0300	Traffic Control Drums	DAY	7,800	3,000	10,800
643.0900	Traffic Control Signs	DAY	61,185	564	61,749
646.1040	Marking Line Grooved Wet Ref Epoxy 4-Inch	LF	64,813	-135	64,678
646.3020	Marking Line Epoxy 8-Inch	LF	3,330	200	3,530
646.5020	Marking Arrow Epoxy	EACH	7	1	8
646.5120	Marking Word Epoxy	EACH	7	1	8
646.6120	Marking Stop Line Epoxy 18-Inch	LF	389	31	420
650.4500	Construction Staking Subgrade	LF	15,868	701	16,569
650.5000	Construction Staking Base	LF	15,868	701	16,569
650.9920	Construction Staking Slope Stakes	LF	16,981	701	17,682
690.0150	Sawing Asphalt	LF	15,716	1,177	16,893

Added Bid Item Quantities					
Bid Item	Item Description	Unit	Old Quantity	Revised Quantity	Proposal Total
465.0105	Asphaltic Surface	TON	0	83	83
628.2027	Erosion Mat Class II Type C	SY	0	249	249

Plan Sheets:

Revised Plan Sheets – ID 2310-14-70	
Plan Sheet	Plan Sheet Title (brief description of changes to sheet)
72	Traffic Control Overview (revised notes and added temp stop signs)
84	Miscellaneous Quantities (increased traffic control drums and signs quantities, updated stage durations)

Revised Plan Sheets – ID 2310-17-70	
Plan Sheet	Plan Sheet Title (brief description of changes to sheet)
5	Project Overview (added sports complex driveway).
6	Project Overview (added sports complex driveway).
11	Proposed Typical Sections (added sports complex bypass and right turn lane).
15	Subgrade Relief Trench (added locations for sports complex driveway).
40	Removal Plan (added removals for sports complex driveway).
78	Plan Details (added sports complex driveway).
103	Erosion Control Plan (added erosion control devices for sports complex driveway).

153	Pavement Marking (added markings for sports complex driveway).
155	Traffic Control Plan (added note for sports complex driveway).
169	Miscellaneous Quantities (revised removing asphalt quantities).
171	Miscellaneous Quantities (revised earthwork quantities).
172	Miscellaneous Quantities (revised aggregate and asphaltic pavement quantities).
173	Miscellaneous Quantities (revised HMA percent within limits (PWL) incentive quantities).
178	Miscellaneous Quantities (revised erosion control and restoration quantities).
183	Miscellaneous Quantities (revised pavement marking quantities).
184	Miscellaneous Quantities (revised construction staking and saw cutting quantities).
345	Earthwork (added sports complex driveway quantities).
419	Cross Sections (added STH 60 cross sections at sports complex driveway).

Added Plan Sheets – ID 2310-17-70	
Plan Sheet	Plan Sheet Title (brief description of why sheet was added)
54A	Intersection & Drainage Details (new sheet for sports complex driveway).
419A	Cross Sections (new STH 60 cross sections at sports complex driveway).
419B	Cross Sections (new STH 60 cross sections at sports complex driveway).
419C	Cross Sections (new STH 60 cross sections at sports complex driveway).
419D	Cross Sections (new STH 60 cross sections at sports complex driveway).
419E	Cross Sections (new STH 60 cross sections at sports complex driveway).
419F	Cross Sections (new STH 60 cross sections at sports complex driveway).

The responsibility for notifying potential subcontractors and suppliers of these changes remains with the prime contractor.

Sincerely,

Mike Coleman

Proposal Development Specialist
Proposal Management Section

ADDENDUM NO. 01
2310-14-70, 2310-17-70
November 27, 2019

Special Provisions

3. Prosecution and Progress

*Insert the following section titled **Interim Completion: Cedarburg Sports Complex Driveway** after the sixth paragraph:*

Interim Completion: Cedarburg Sports Complex Driveway

Complete all excavation, base course, and HMA lower pavement layers necessary to open the sports complex driveway at STA 535+92 RT to traffic.

If the contractor fails to complete the work as described above prior to 12:01 AM, April 20, 2020 the department will assess the contractor \$2,070 in interim liquidated damages, for each calendar day that the driveway remains closed to traffic after 12:01 AM, May 1, 2020. An entire calendar day will be charged for any period of time within a calendar day that the driveway remains closed to traffic beyond 12:01 AM.

4. Traffic

Add the following section after the first paragraph:

Maintain access to the Cedarburg Sports Complex driveway at STA 535+92 RT (8611 Hwy 60, Cedarburg, WI 53012) at all times during construction. Do not close more than half the driveway width at one time. Provide flaggers to maintain one-lane traffic during construction if needed. If a full driveway closure is necessary at any time for construction, notify the owner at least 5 working days in advance and obtain permission prior to closing the driveway to traffic.

5. Holiday Work Restrictions

Add the following to the list of holiday work restrictions:

- From 6:00 AM Friday, September 18, 2020 to 6:00 AM Monday, September 27, 2020 for the Ryder Cup.

Schedule of Items

Attached, dated November 27, 2019, are the revised Schedule of Items Pages 1 – 13.

Plan Sheets

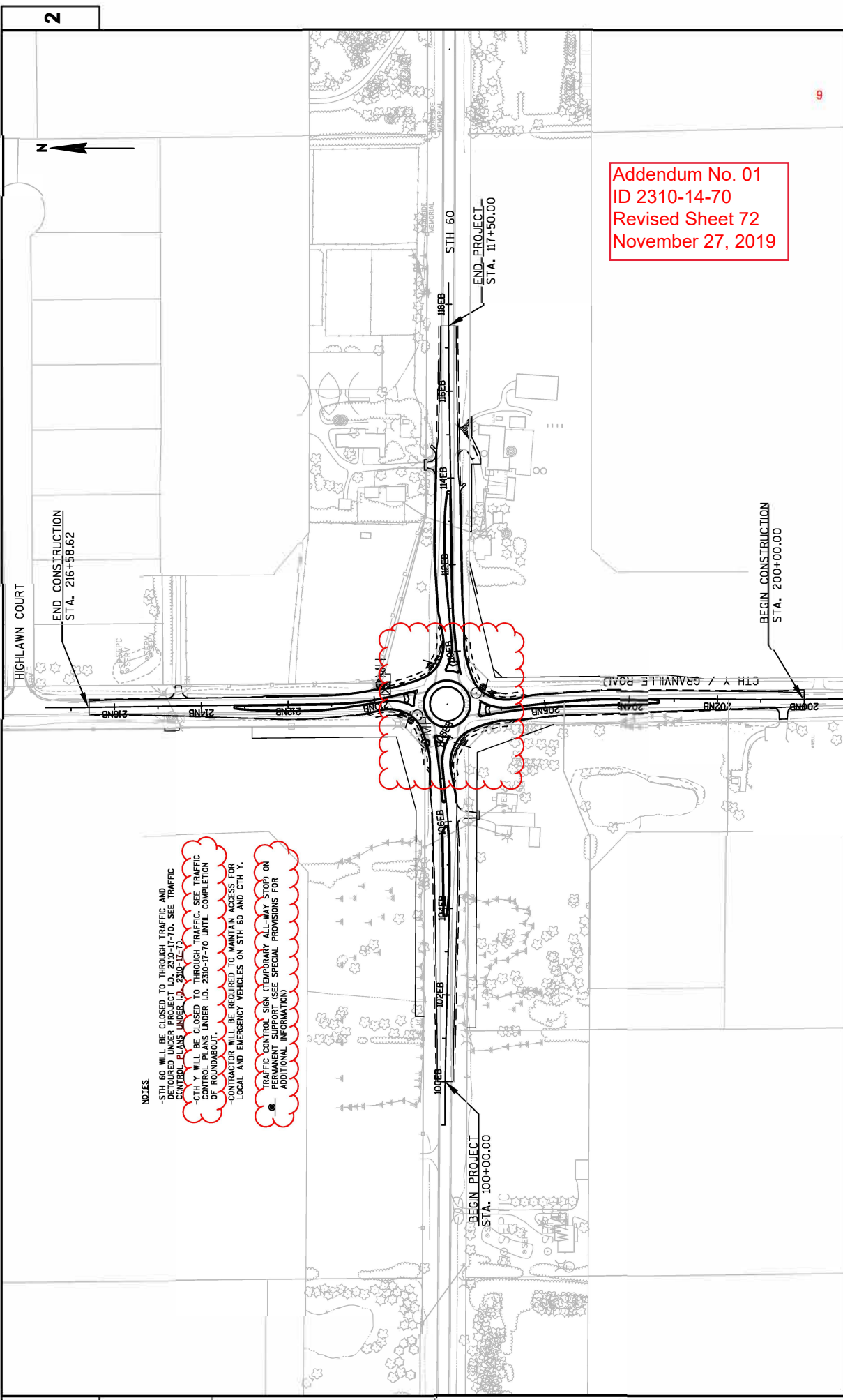
The following 8½ x 11-inch sheets are attached and made part of the plans for this proposal:

Revised (ID 2310-14-70): 72 and 84.

Revised (ID 2310-17-70): 5, 6, 11, 15, 40, 78, 103, 153, 155, 169, 171, 172, 173, 178, 183, 184, 345 and 419.

Added (ID 2310-17-70): 54A and 419A-F.

END OF ADDENDUM



Addendum No. 01
 ID 2310-14-70
 Revised Sheet 72
 November 27, 2019

- NOTES**
- STH 60 WILL BE CLOSED TO THROUGH TRAFFIC AND DETOURED UNDER PROJECT ID. 2310-14-70. SEE TRAFFIC CONTROL PLANS UNDER I.D. 2310-14-70.
 - CTH Y WILL BE CLOSED TO THROUGH TRAFFIC. SEE TRAFFIC CONTROL PLANS UNDER I.D. 2310-14-70 UNTIL COMPLETION OF ROUNDABOUT.
 - CONTRACTOR WILL BE REQUIRED TO MAINTAIN ACCESS FOR LOCAL AND EMERGENCY VEHICLES ON STH 60 AND CTH Y.
 - TRAFFIC CONTROL SIGN (TEMPORARY ALL-WAY STOP) ON PERMANENT SUPPORT (SEE SPECIAL PROVISIONS FOR ADDITIONAL INFORMATION)

2

2

PROJECT NO: 2310-14-70	HWY: STH 60	COUNTY: OZAUKEE	TRAFFIC CONTROL OVERVIEW	SHEET 72	E
FILE NAME: F:\1700X\1786_DP_S1860_CTH\GADDUS\2310.140\NSHEETS\PLAN\26002_S1.DWG					
PLOT DATE: 11/22/2019 10:58 AM					
PLOT BY: KATIE WAKLES					
PLOT NAME: WISDOT/CADD S SHEET 42					
PLOT SCALE: 1" = 200' REF					

INLET PROTECTION

628.7005 628.7010 628.7015 628.7020

CATEGORY	STATION	OFFSET	ALIGNMENT	NUMBER	INLET PROTECTION			
					TYPE A	TYPE B	TYPE C	TYPE D
					EA	EA	EA	EA
0010	103+61	1.5' RT	WB	101	1	1	1	1
	103+61	4.8' LT	WB	102	1	1	1	1
	106+65	23.0' LT	WB	110	1	1	1	1
	106+55	2.9' RT	WB	111	1	1	1	1
	106+86	1.5' LT	EB	112	1	1	1	1
	106+86	2.9' LT	EB	113	1	1	1	1
	111+87	21.5' LT	WB	121	1	1	1	1
	111+77	21.5' LT	WB	121	1	1	1	1
	111+87	1.5' RT	WB	122	1	1	1	1
	111+77	1.5' RT	WB	123	1	1	1	1
	111+42	1.5' LT	EB	124	1	1	1	1
	111+42	1.5' LT	EB	125	1	1	1	1
	111+42	21.5' RT	EB	126	1	1	1	1
	111+22	22.0' RT	EB	127	1	1	1	1
	210+98	19.0' RT	NB	130	1	1	1	1
	210+98	1.5' LT	NB	131	1	1	1	1
	209+78	10.8' RT	NB	142	1	1	1	1
	209+78	20.8' RT	NB	142	1	1	1	1
	209+58	18.4' RT	NB	142	1	1	1	1
	209+81	1.5' LT	NB	143	1	1	1	1
	209+61	1.5' LT	NB	144	1	1	1	1
	209+78	1.5' RT	NB	146	1	1	1	1
	209+81	1.5' RT	NB	147	1	1	1	1
	209+81	17.5' LT	NB	147	1	1	1	1
	209+58	18.6' LT	NB	148	1	1	1	1
	3+36	1.5' LT	C	150	1	1	1	1
	3+63	1.5' LT	C	151	1	1	1	1
	3+78	21.5' RT	NB	152	1	1	1	1
	206+00	21.5' RT	NB	152	1	1	1	1
	206+22	1.5' LT	NB	154	1	1	1	1
	206+24	1.5' RT	NB	155	1	1	1	1
	206+35	21.7' LT	NB	156	1	1	1	1
	203+44	3.1' LT	NB	160	1	1	1	1
	203+44	1.5' RT	NB	161	1	1	1	1
TOTALS					34	2	14	18

TRACKING PADS

628.7560

TRACKING PADS		SY	
CATEGORY	LOCATION	PROJECT	EA
0010	PROJECT	4	
TOTALS		4	

DUST CONTROL SURFACE TREATMENT

DUST CONTROL SURFACE TREATMENT		SY	
CATEGORY	LOCATION	PROJECT	EA
0010	PROJECT	22,300	
TOTAL		22,300	

TRAFFIC CONTROL ITEMS

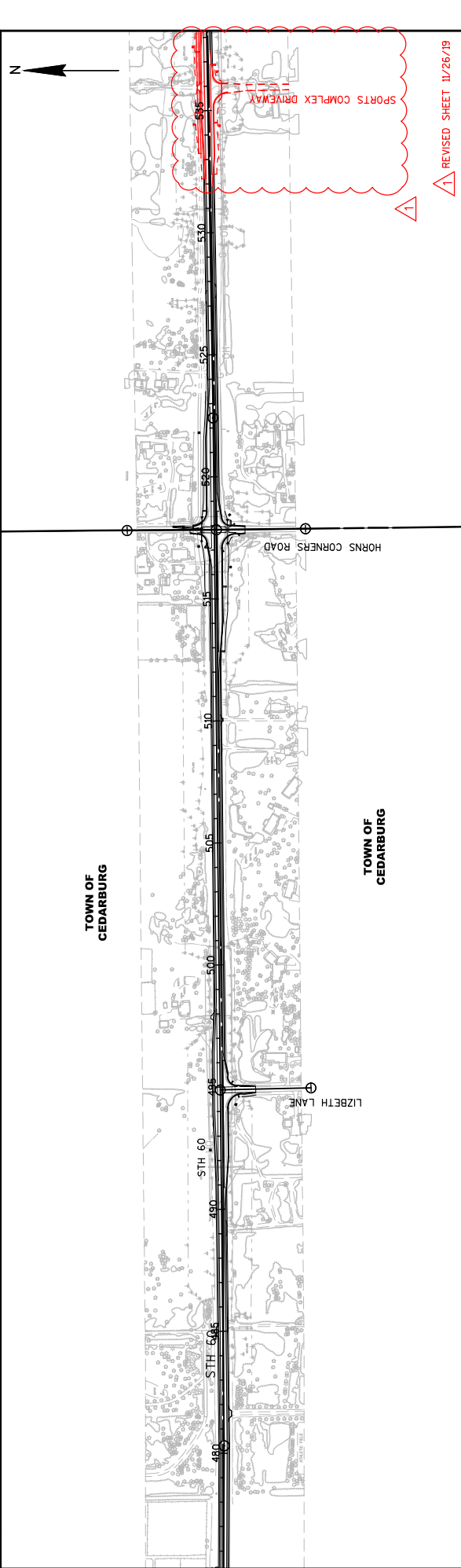
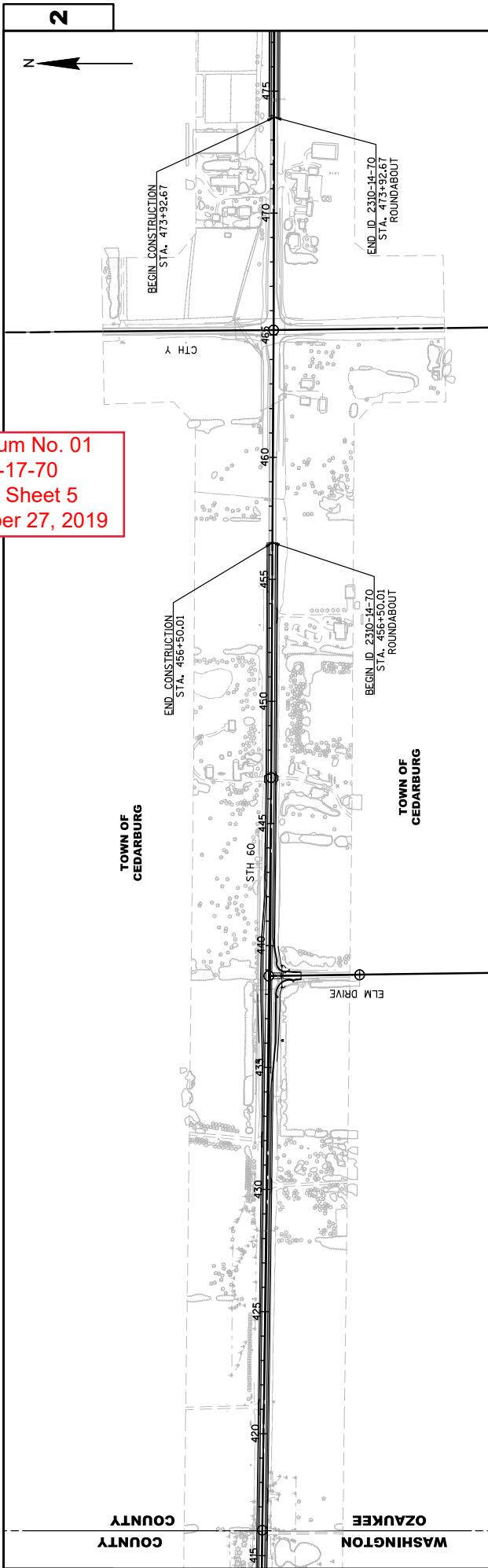
CATEGORY	LOCATION	STAGE DURATION DAYS	TRAFFIC CONTROL DRUMS		TRAFFIC CONTROL SIGNS		TRAFFIC CONTROL EACH	COMMENTS
			NO.	DAY	NO.	DAY		
643.0300	643.0000	68	40	3,600	2	132	TEMP STOP	
643.0300	643.0000	90	40	3,600	4	386	TEMP STOP	
PROJECT TOTAL				3,600	824	0.1		

PAVEMENT MARKING ITEMS

CATEGORY	STATION	TOSTATION/OFFSET ALIGNMENT	MARKING LINE EPOXY 4-INCH		MARKING LINE EPOXY 8-INCH		MARKING LINE EPOXY 12-INCH		MARKING LINE EPOXY 24-INCH		MARKING LINE EPOXY 36-INCH	
			LF	WF	LF	WF	LF	WF	LF	WF	LF	WF
0010	100+00	108+00 LT & RT	40	1,288	68	2,259	68	2,259	115	82	2	2
	108+45	117+50 LT & RT	46	1,287	68	2,239	68	2,239	115	72	1	1
	200+00	207+54 LT & RT	38	1,232	72	2,051	72	2,051	85	53	1	1
	208+98	216+58 LT & RT	34	1,248	72	2,077	72	2,077	85	53	1	1
TOTALS			158	5,056	280	8,626	280	8,626	400	280	5	5

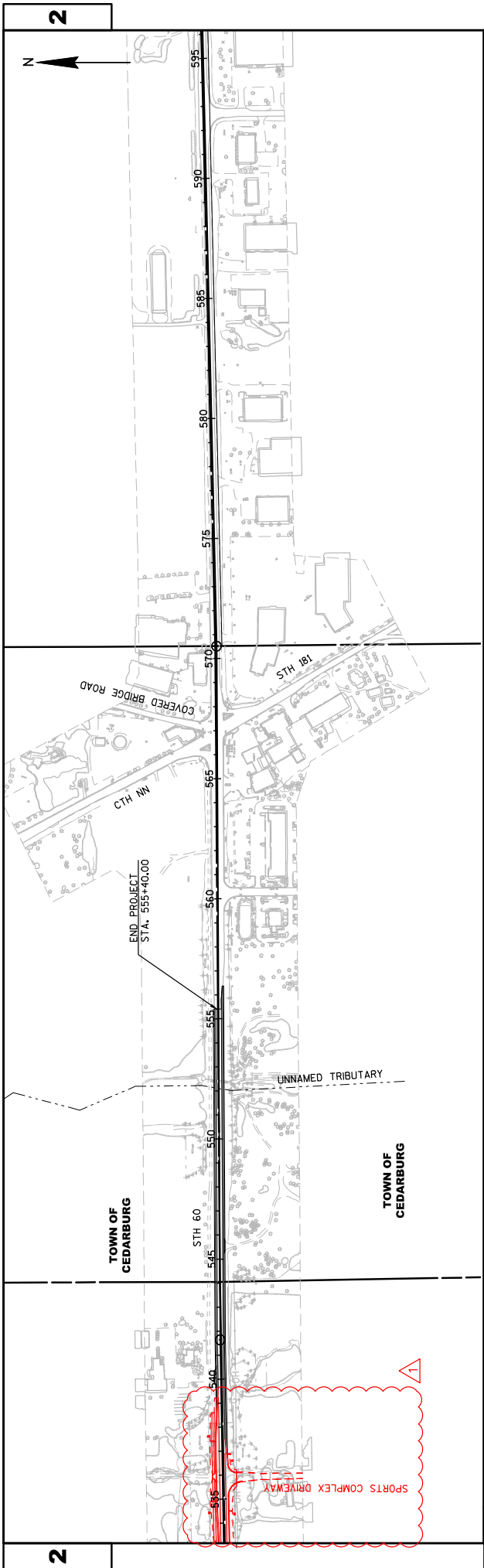
Addendum No. 01
ID 2310-14-70
Revised Sheet 84
November 27, 2019

Addendum No. 01
 ID 2310-17-70
 Revised Sheet 5
 November 27, 2019



REVISOR SHEET 11/26/19

PROJECT NO: 2310-17-70	HWY: STH 60	COUNTY: WASHINGTON & OZAUKEE	PROJECT OVERVIEW	SHEET 5	E
FILE NAME : G:\8906 - STH 60\CAD\23101700\SHEETS\PLAN\020201-PO.DWG					
LAYOUT NAME - 020201-PO - 020203					
PLOT DATE : 11/20/2019 1:20 PM					
PLOT BY : SELENA ALEXANDER					
PLOT NAME :					
PLOT SCALE : 1 IN=400 FT					
WISDOT/CADDS SHEET 44					



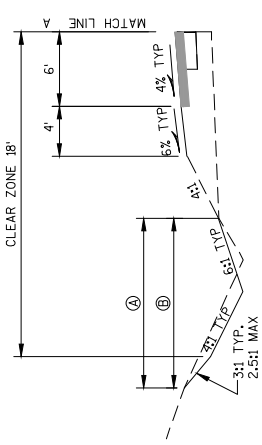
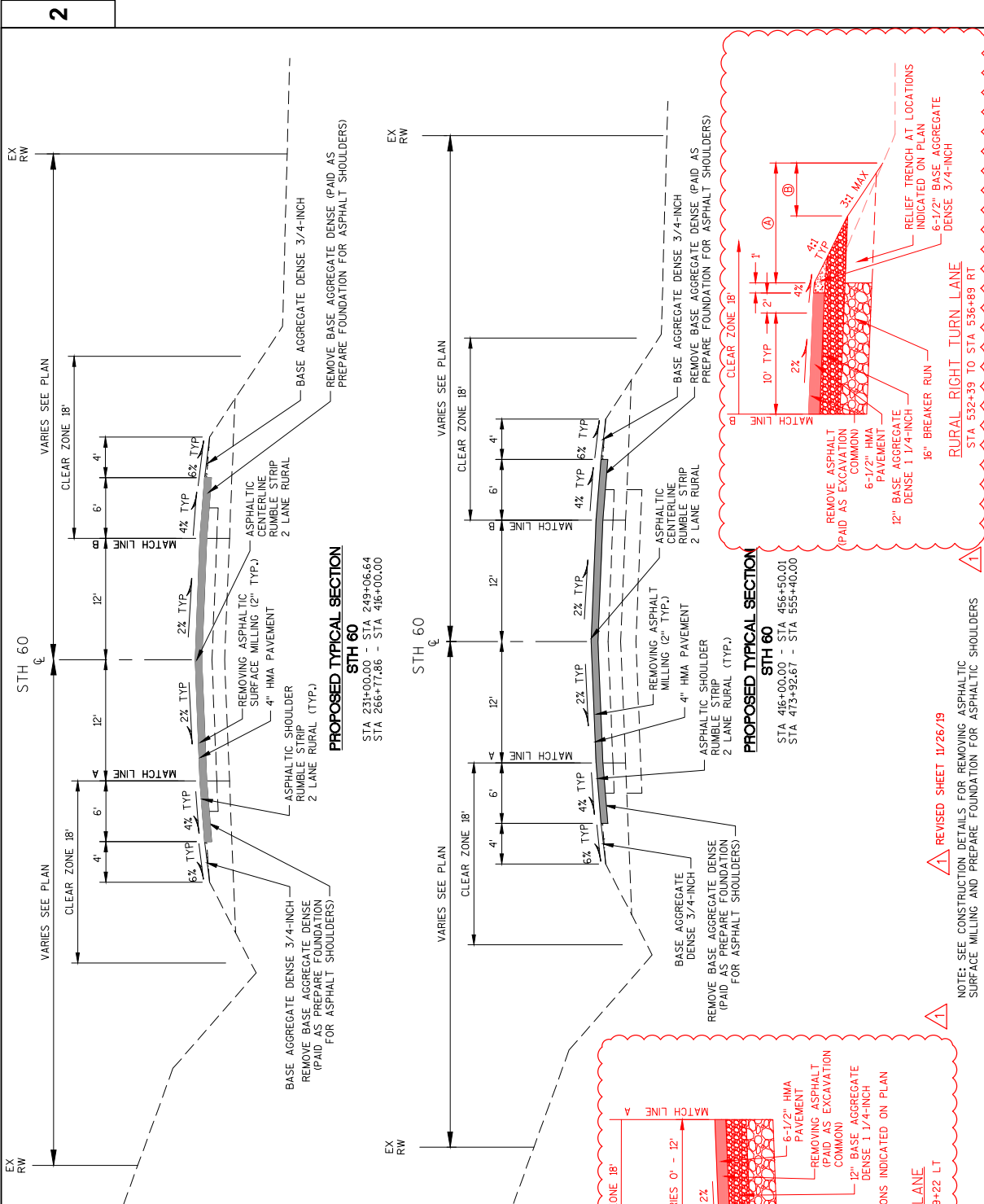
Addendum No. 01
 ID 2310-17-70
 Revised Sheet 6
 November 27, 2019

REVISED SHEET 11/26/19

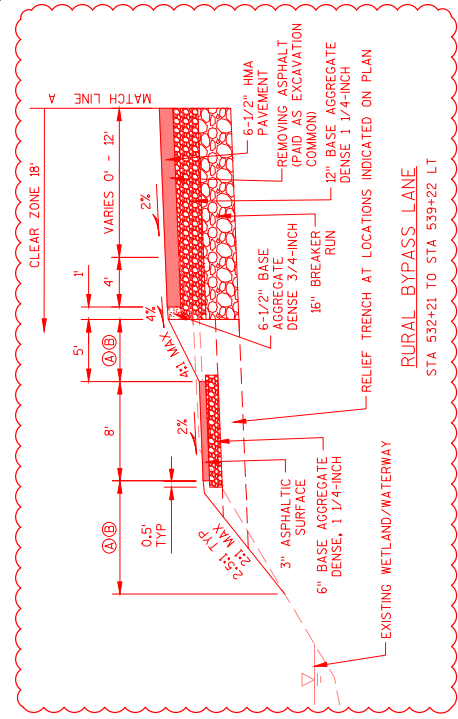
PROJECT NO: 2310-17-70	HWY: STH 60	COUNTY: WASHINGTON & OZAUKEE	PROJECT OVERVIEW	SHEET 6	E
FILE NAME : G:\8906 - STH 60\CAD\23101700\SHEETS\PLAN\020201-PO.DWG					
LAYOUT NAME : 020201-PO - 020204					
PLOT DATE : 11/20/2019 1:17 PM					
PLOT BY : SELENA ALEXANDER					
PLOT NAME :					
PLOT SCALE : 1 IN:400 FT					
WISDOT/CADDSS SHEET 44					

Addendum No. 01
 ID 2310-17-70
 Revised Sheet 11
 November 27, 2019

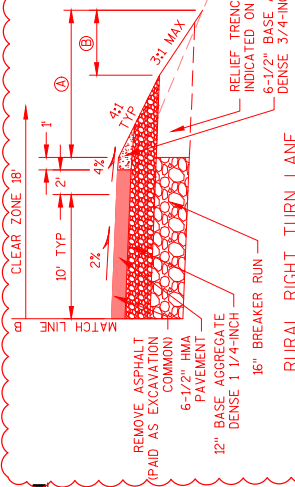
- Ⓐ SEEDING MIXTURE NO. 30 AND FERTILIZER
- Ⓑ 4" TOPSOIL AND MULCHING OR EROSION MAT AS SPECIFIED ON PLAN



DITCH GRADING
 STA 287+86 TO STA 288+87 LT
 STA 404+63 TO STA 406+51 LT
 STA 515+08 TO STA 517+08 LT



PROPOSED TYPICAL SECTION
 STH 60
 STA 416+00.00 - STA 456+50.01
 STA 475+92.67 - STA 555+40.00

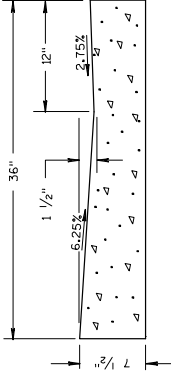


PROPOSED TYPICAL SECTION
 STH 60
 STA 532+21 TO STA 539+22 LT
 STA 532+39 TO STA 536+89 RT

⚠️ REVISED SHEET 11/26/19

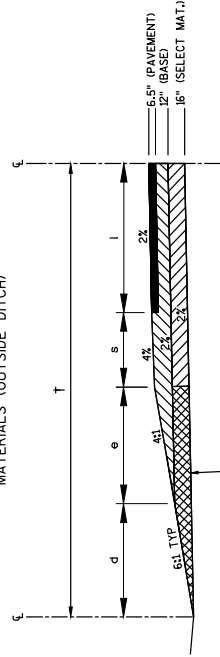
NOTE: SEE CONSTRUCTION DETAILS FOR REMOVING ASPHALTIC SURFACE MILLING AND PREPARE FOUNDATION FOR ASPHALTIC SHOULDERS

Addendum No. 01
ID 2310-17-70
Revised Sheet 15
November 27, 2019

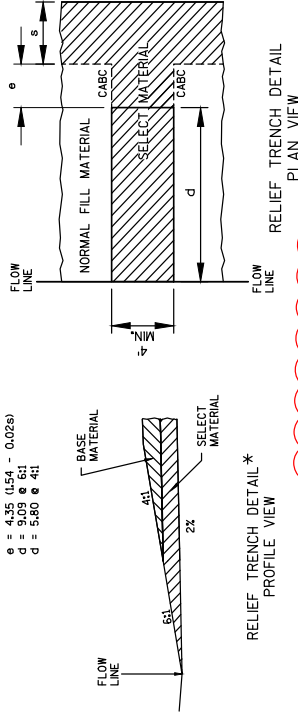


CONCRETE CURB & GUTTER
36 INCH, TYPE "D" MODIFIED
(AT DRIVEWAYS AND LOCATIONS
NOTED ON THE PLAN)

TYPICAL HALF SECTION WITH SELECT
MATERIALS (OUTSIDE DITCH)



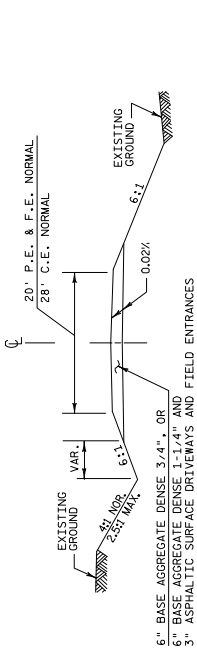
NORMAL FILL MATERIAL
e = 4.35 (1.54 - 0.02s)
s = 0.05 @ 4:1
d = 5.80 @ 4:1



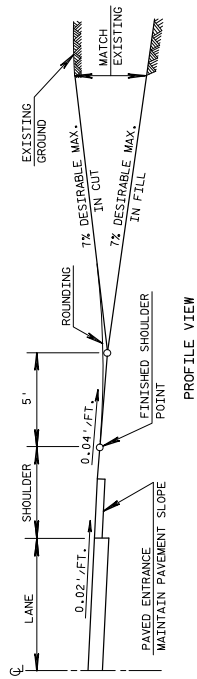
SUBGRADE RELIEF TRENCH

CONSTRUCT RELIEF TRENCH AT:
MAPLE RD
STA 286+38 RT
STA 286+40 RT
STA 283+00 RT
GENTLE RD
STA 285+38 RT
STA 285+50 LT
STA 285+50 RT
STA 360+50 RT
C7H M
STA 371+84 LT
STA 512+85 RT
STA 515+50 RT
STA 518+60 LT
STA 518+60 RT
STA 534+50 RT
STA 534+91 LT
STA 537+42 LT

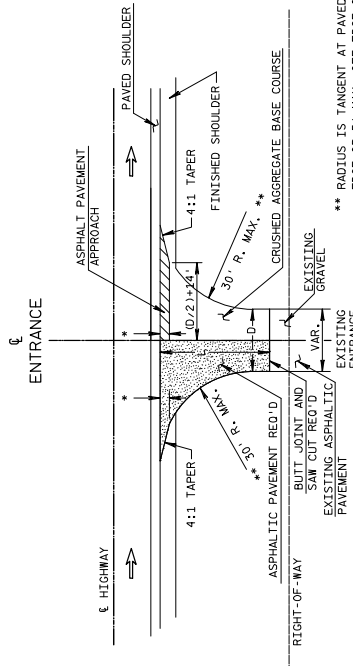
REVISED SHEET 11/26/19



TYPICAL CROSS SECTION



PROFILE VIEW

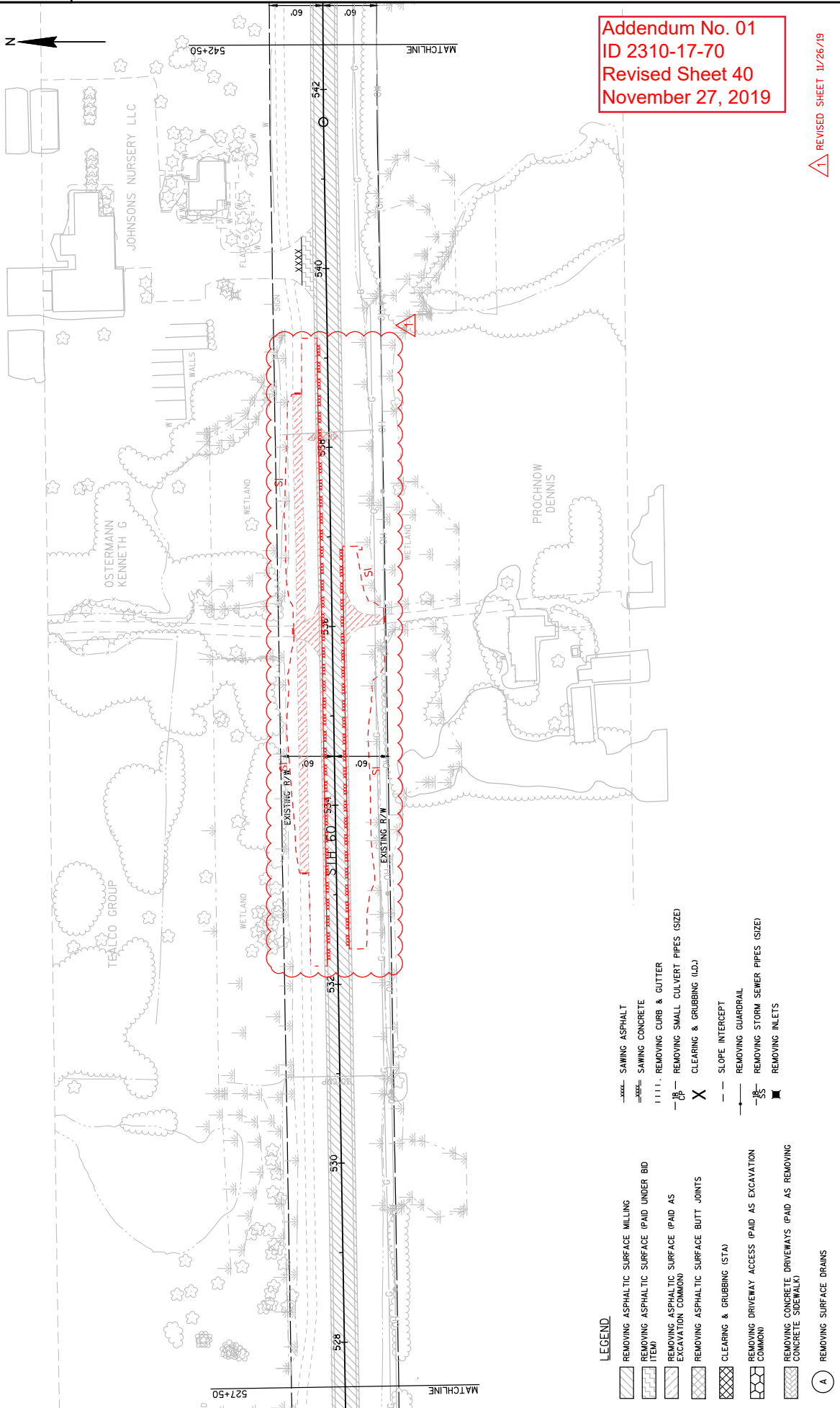


** RADIUS IS TANGENT AT PAVED SHOULDER
EDGE OR 5' MAX. OFF EDGE OF MAIN LINE
PAVEMENT WHICH EVER IS LESS.
* 3' MAX. OR TO FINISHED SHOULDER
WHICH EVER IS LESS.

L= VARIABLE, EXACT LENGTH TO BE DETERMINED
IN THE FIELD BY THE ENGINEER.
BLEND BACK ON THE ENTRANCE FAR
ENOUGH TO GET A SMOOTH PROFILE.
D= DRIVEWAY WIDTH
D= 20' TYP. (PE'S & FE'S) (16'-MIN. - 24' MAX.)
D= 28' TYP. (CE'S & FARM ENT.) (24'-MIN. - 35' MAX.)

PLAN VIEW

RURAL DRIVEWAY INTERSECTION DETAIL
(PE'S, FE'S & CE'S)
(FOR NEW CONSTRUCTION)



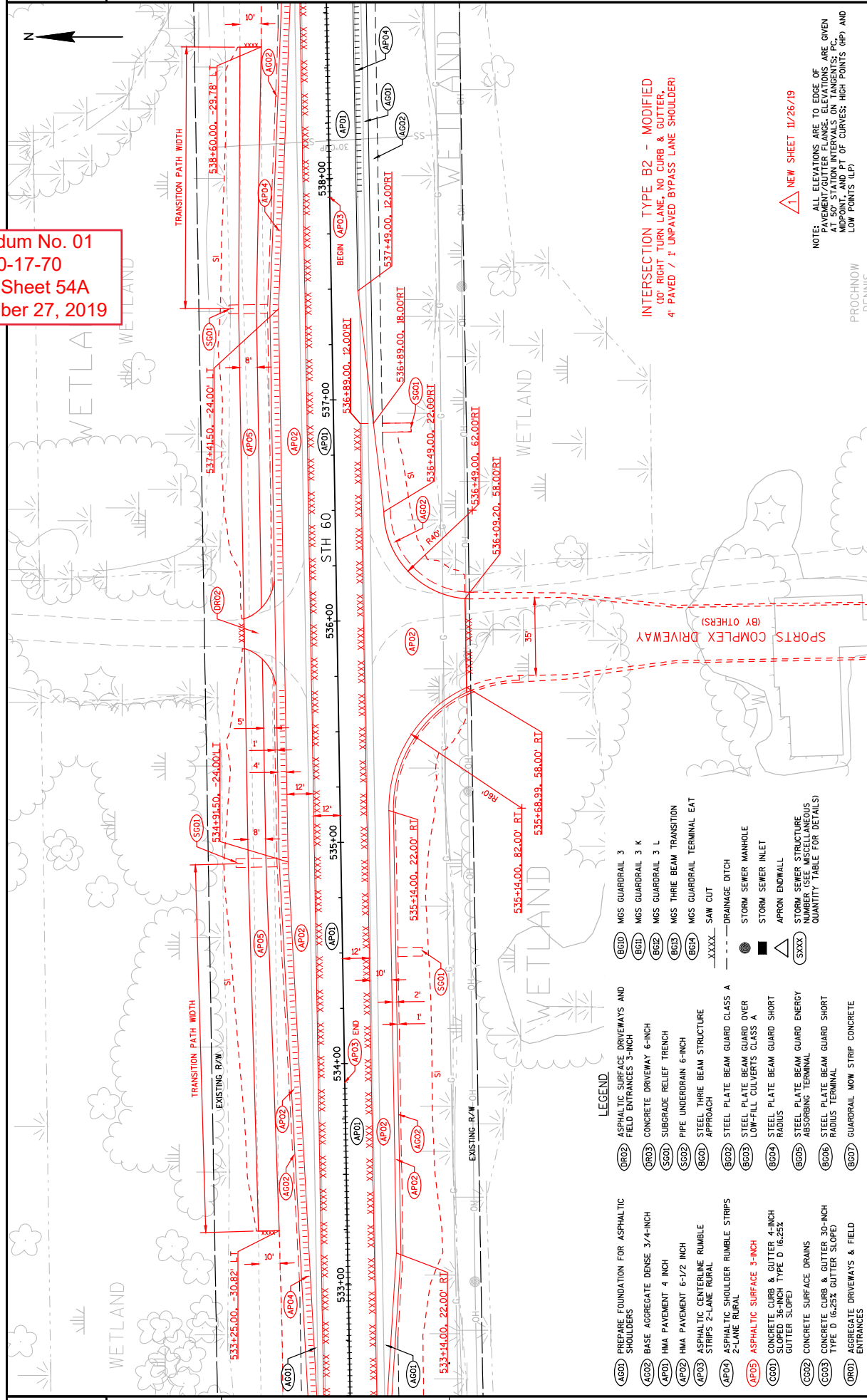
Addendum No. 01
 ID 2310-17-70
 Revised Sheet 40
 November 27, 2019

- LEGEND.**
- | | | | |
|--|--|--|-------------------------------------|
| | REMOVING ASPHALTIC SURFACE MILLING | | SAWING ASPHALT |
| | REMOVING ASPHALTIC SURFACE (PAID UNDER BID ITEM) | | SAWING CONCRETE |
| | REMOVING ASPHALTIC SURFACE (PAID AS EXCAVATION COMMON) | | REMOVING CURB & GUTTER |
| | REMOVING ASPHALTIC SURFACE BUTT JOINTS | | REMOVING SMALL CULVERT PIPES (SIZE) |
| | CLEARING & GRUBBING (STA) | | CLEARING & GRUBBING (LD.) |
| | REMOVING DRIVEWAY ACCESS (PAID AS EXCAVATION COMMON) | | SLOPE INTERCEPT |
| | REMOVING CONCRETE DRIVEWAYS (PAID AS REMOVING CONCRETE SIDEWALK) | | REMOVING GUARDRAIL |
| | REMOVING SURFACE DRAINS | | REMOVING STORM SEWER PIPES (SIZE) |
| | | | REMOVING INLETS |

△ REVISED SHEET 11/26/19



Addendum No. 01
ID 2310-17-70
Added Sheet 54A
November 27, 2019

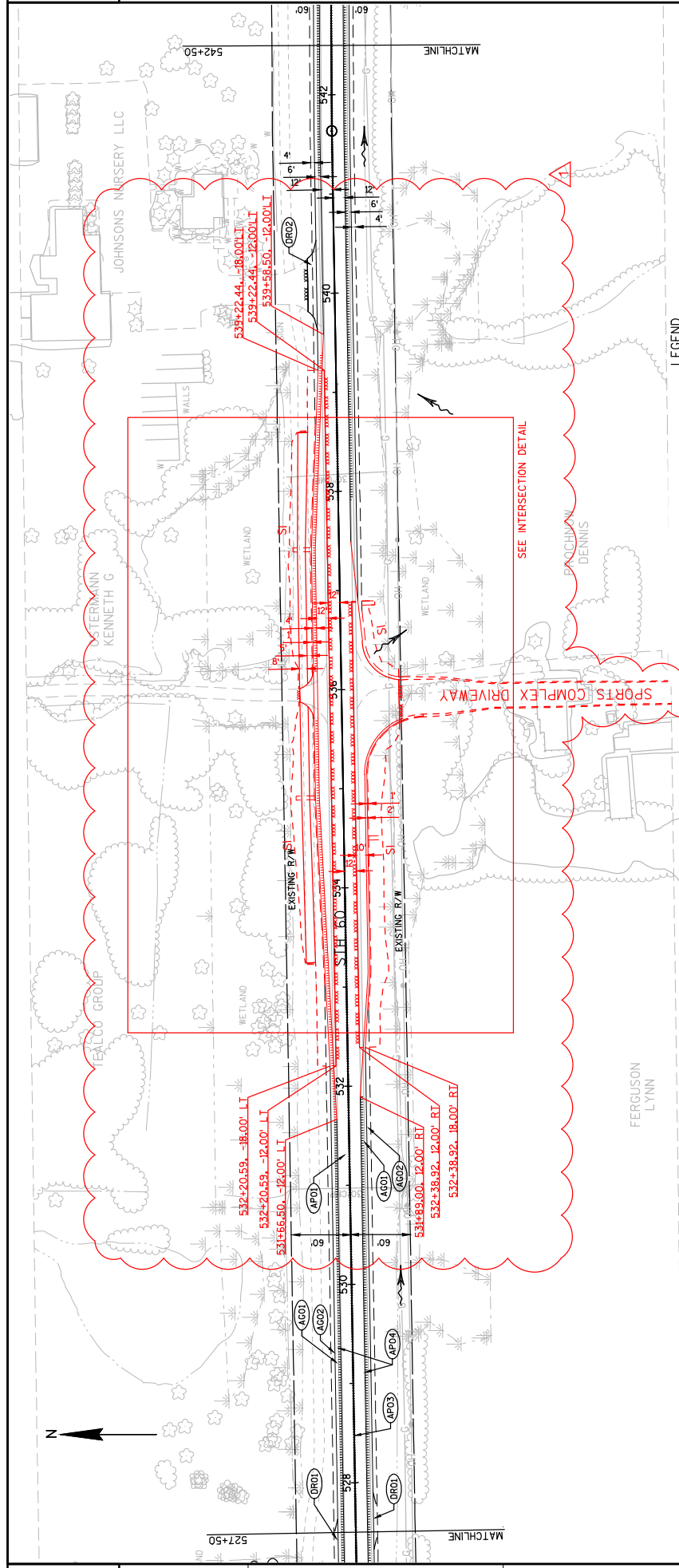


INTERSECTION TYPE B2 - MODIFIED
(0' RIGHT TURN LANE, NO CURB & GUTTER,
4' PAVED / 1' UNPAVED BYPASS LANE SHOULDER)

NEW SHEET 11/26/19

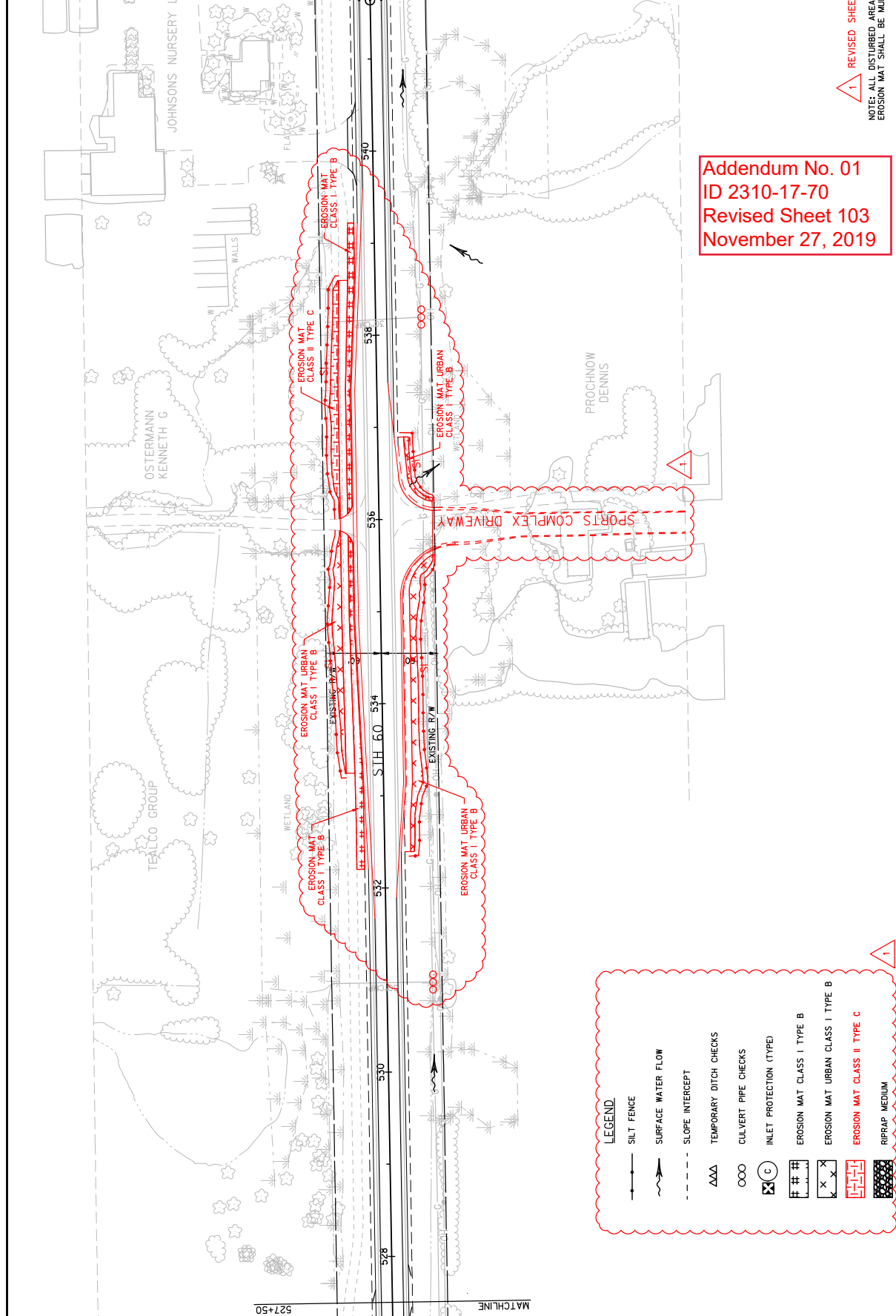
NOTE: ALL ELEVATIONS ARE TO EDGE OF
PAVEMENT UNLESS OTHERWISE NOTED.
AT 50' STATION INTERVALS ON TANGENTS; PC,
MIDPOINT, AND PT OF CURVES; HIGH POINTS (HP) AND
LOW POINTS (LP)

- LEGEND**
- (AG01) PREPARE FOUNDATION FOR ASPHALTIC SHOULDERS
 - (AG02) BASE AGGREGATE DENSE 3/4-INCH
 - (AP01) HMA PAVEMENT 4 INCH
 - (AP02) HMA PAVEMENT 6-1/2 INCH
 - (AP03) ASPHALTIC CENTERLINE RUMBLE STRIPS 2-LANE RURAL
 - (AP04) ASPHALTIC SHOULDER RUMBLE STRIPS 2-LANE RURAL
 - (AP05) ASPHALTIC SURFACE 3-INCH
 - (CC01) CONCRETE CURB & GUTTER 4-INCH GUTTER SLOPE
 - (CC02) CONCRETE SURFACE DRAINS
 - (CC03) CONCRETE CURB & GUTTER 30-INCH TYPE D (6.25% GUTTER SLOPE)
 - (DR01) AGGREGATE DRIVEWAYS & FIELD ENTRANCES
 - (DR02) ASPHALTIC SURFACE DRIVEWAYS AND FIELD ENTRANCES 3-INCH
 - (DR03) CONCRETE DRIVEWAY 6-INCH
 - (SC01) SUBGRADE RELIEF TRENCH
 - (SC02) PIPE UNDERDRAIN 6-INCH
 - (BC01) STEEL THREE BEAM STRUCTURE APPROACH
 - (BC02) STEEL PLATE BEAM GUARD CLASS A
 - (BC03) STEEL PLATE BEAM GUARD OVER LOW-FILL CULVERTS CLASS A
 - (BC04) STEEL PLATE BEAM GUARD SHORT RADIUS
 - (BC05) STEEL PLATE BEAM GUARD ENERGY ABSORBING TERMINAL
 - (BC06) STEEL PLATE BEAM GUARD SHORT RADIUS TERMINAL
 - (BC07) GUARDRAIL MOW STRIP CONCRETE
 - (EG01) MGS GUARDRAIL 3
 - (EG02) MGS GUARDRAIL 3 K
 - (EG03) MGS GUARDRAIL 3 L
 - (EG04) MGS THREE BEAM TRANSITION
 - (EG05) MGS GUARDRAIL TERMINAL EAT
 - XXXX SAW CUT
 - DRAINAGE DITCH
 - STORM SEWER MANHOLE
 - STORM SEWER INLET
 - ▲ APRON ENDWALL
 - STORM SEWER STRUCTURE NUMBER (SEE MISCELLANEOUS QUANTITY TABLE FOR DETAILS)
 - (SXXX)



- LEGEND**
- (AG01) PREPARE FOUNDATION FOR ASPHALTIC SHOULDERS
 - (AG02) BASE AGGREGATE DENSE 3/4-INCH
 - (AP01) HMA PAVEMENT 4 INCH
 - (AP02) HMA PAVEMENT 6-1/2 INCH
 - (AP03) ASPHALTIC CENTERLINE RUMBLE STRIPS 2-LANE RURAL
 - (AP04) ASPHALTIC SHOULDER RUMBLE STRIPS 2-LANE RURAL
 - (CG01) CONCRETE CURB & GUTTER 4-INCH SLOPED 36-INCH TYPE D
 - (CG02) CONCRETE SURFACE DRAINS
 - (CG03) CONCRETE CURB & GUTTER 30-INCH TYPE D
 - (OR01) AGGREGATE DRIVEWAY AND FIELD ENTRANCES
 - (OR02) ASPHALTIC SURFACE DRIVEWAYS AND FIELD ENTRANCES 3-INCH
 - (OR03) CONCRETE DRIVEWAY 6-INCH
 - (SG01) SUBGRADE RELIEF TRENCH
 - (SG02) PIPE UNDERDRAIN 6-INCH
 - (SB01) STEEL THRE BEAM STRUCTURE APPROACH
 - (SB02) STEEL PLATE BEAM GUARD CLASS A
 - (SB03) STEEL PLATE BEAM GUARD OVER LOW-FILL CULVERTS CLASS A
 - (SB04) STEEL PLATE BEAM GUARD SHORT RADIOS
 - (SB05) STEEL PLATE BEAM GUARD ENERGY ABSORBING TERMINAL
 - (SB06) STEEL PLATE BEAM GUARD SHORT RADIOS TERMINAL
 - (BG07) GUARDRAIL MOW STRIP CONCRETE
 - (BG08) ANCHORAGES FOR STEEL PLATE BEAM GUARD TYPE 2
 - (BG09) MGS GUARDRAIL 3
 - (BG10) MGS GUARDRAIL 3 K
 - (BG11) MGS GUARDRAIL 3 L
 - (BG12) MGS THRE BEAM TRANSITION
 - (BG13) MGS GUARDRAIL TERMINAL EAT
 - XXXX SAW CUT
 - DRAINAGE DITCH
 - STORM SEWER MANHOLE
 - STORM SEWER INLET
 - △ APRON ENDWALL

Addendum No. 01
 ID 2310-17-70
 Revised Sheet 78
 November 27, 2019

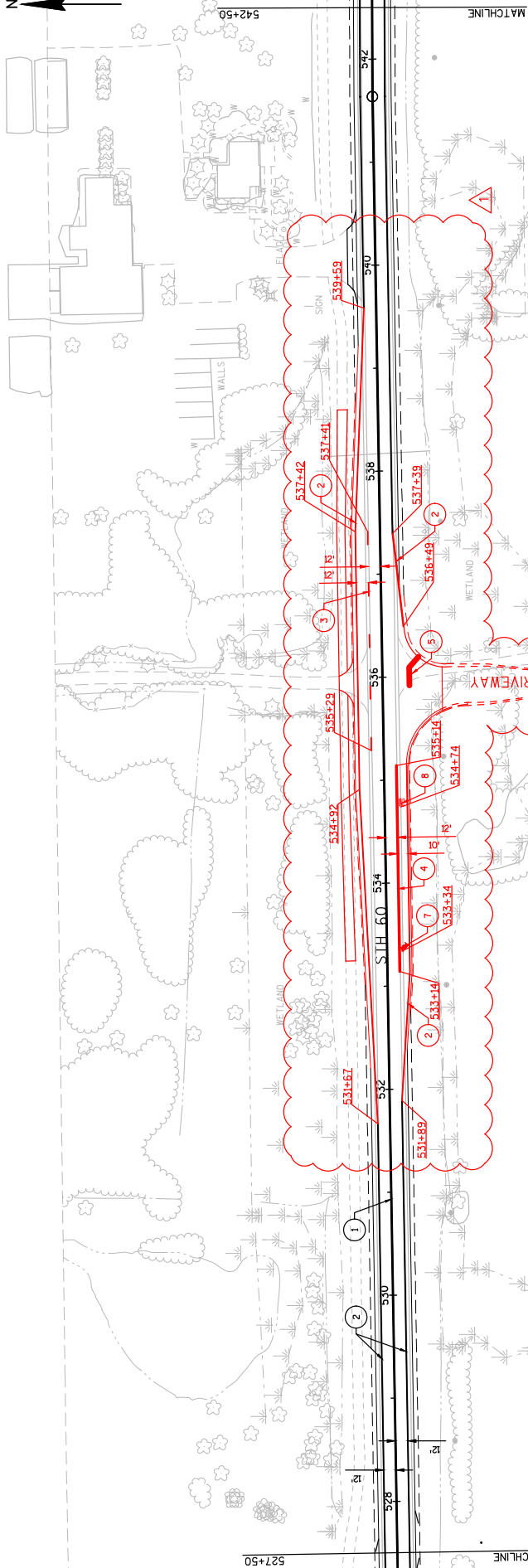
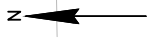


Addendum No. 01
 ID 2310-17-70
 Revised Sheet 103
 November 27, 2019

1 REVISED SHEET 11/26/19
 NOTE: ALL DISTURBED AREAS NOT HATCHED FOR
 EROSION MAT SHALL BE HATCHED.

LEGEND

- SILT FENCE
- SURFACE WATER FLOW
- SLOPE INTERCEPT
- TEMPORARY DITCH CHECKS
- CULVERT PIPE CHECKS
- INLET PROTECTION (TYPE)
- EROSION MAT CLASS I TYPE B
- EROSION MAT CLASS II TYPE C
- RIPRAP MEDIUM



Addendum No. 01
 ID 2310-17-70
 Revised Sheet 153
 November 27, 2019

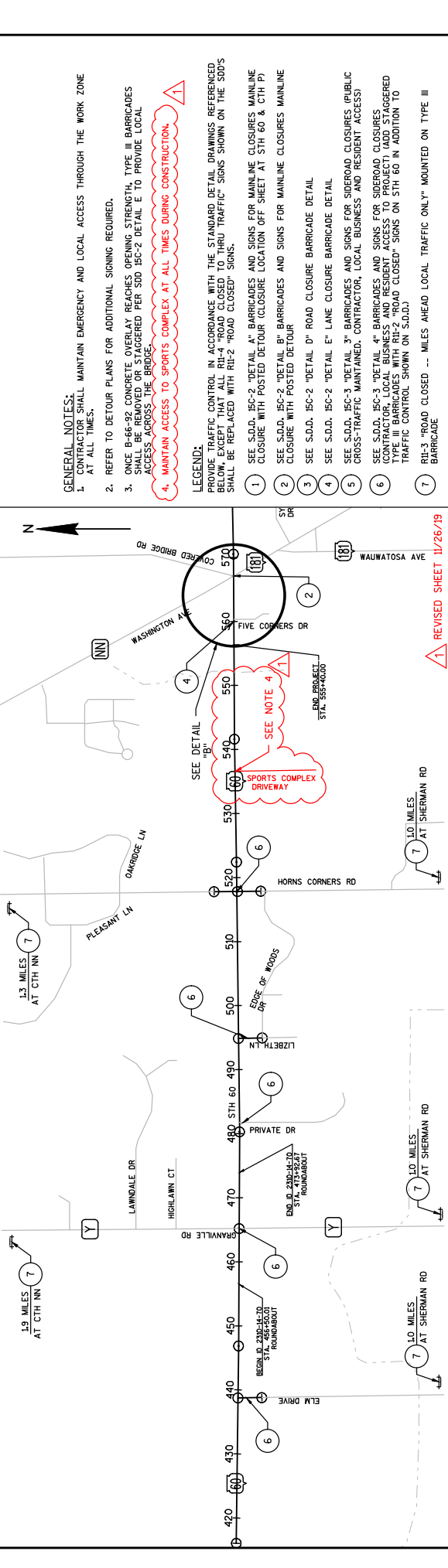
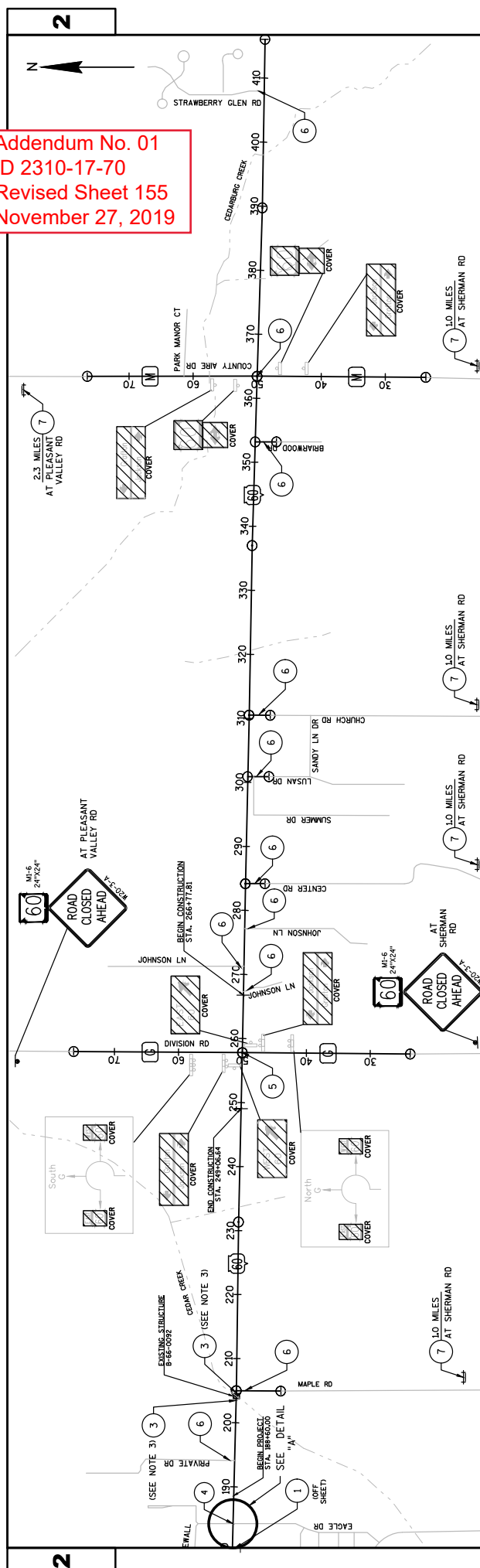
1 REVISED SHEET 11/26/19

LEGEND

- 1 MARKING LINE EPOXY 4-INCH (YELLOW) (SEE NOTE)
- 2 MARKING LINE GROOVED WET REFLECTIVE EPOXY 4-INCH (WHITE)
- 3 MARKING LINE EPOXY 4-INCH (DASHED WHITE) (22.5 FT LINE 37.5 FT SKIP)
- 4 MARKING LINE EPOXY 8-INCH (WHITE)
- 5 MARKING STOP LINE EPOXY 18-INCH (WHITE)
- 6 MARKING LINE EPOXY 4-INCH (WHITE)
- 7 MARKING ARROW EPOXY (WHITE)
- 8 MARKING WORD EPOXY (WHITE)

NOTE: CONTRACTOR SHALL ESTABLISH NO PASSING ZONES IN ACCORDANCE WITH "LOCATING NO PASSING ZONES" BID ITEM.

Addendum No. 01
ID 2310-17-70
Revised Sheet 155
November 27, 2019



- GENERAL NOTES:**
- CONTRACTOR SHALL MAINTAIN EMERGENCY AND LOCAL ACCESS THROUGH THE WORK ZONE AT ALL TIMES.
 - REFER TO DETOUR PLANS FOR ADDITIONAL SIGNING REQUIRED.
 - ONCE B-66-32 CONCRETE OVERLAY REACHES OPENING STRENGTH, TYPE III BARRICADES SHALL BE REMOVED OR STAGGERED PER SDD 15C-2 DETAIL E TO PROVIDE LOCAL ACCESS ACROSS THE BRIDGE.
 - MAINTAIN ACCESS TO SPORTS COMPLEX AT ALL TIMES DURING CONSTRUCTION.**
- LEGEND:**
- PROVIDE TRAFFIC CONTROL IN ACCORDANCE WITH THE STANDARD DETAIL DRAWINGS REFERENCED BELOW, EXCEPT THAT ALL RH-4 "ROAD CLOSED TO THRU TRAFFIC" SIGNS SHOWN ON THE SDD'S SHALL BE REPLACED WITH RH-2 "ROAD CLOSED" SIGNS.
- SEE S.D.D. 15C-2 "DETAIL A" BARRICADES AND SIGNS FOR MAINLINE CLOSURES MAINLINE CLOSURE WITH POSTED DETOUR (CLOSURE LOCATION OFF SHEET AT STH 60 & CTH P)
 - SEE S.D.D. 15C-2 "DETAIL B" BARRICADES AND SIGNS FOR MAINLINE CLOSURES MAINLINE CLOSURE WITH POSTED DETOUR
 - SEE S.D.D. 15C-2 "DETAIL D" ROAD CLOSURE BARRICADE DETAIL
 - SEE S.D.D. 15C-2 "DETAIL E" LANE CLOSURE BARRICADE DETAIL
 - SEE S.D.D. 15C-3 "DETAIL 3" BARRICADES AND SIGNS FOR SIDEROAD CLOSURES (PUBLIC CROSS-TRAFFIC MAINTAINED, CONTRACTOR, LOCAL BUSINESS AND RESIDENT ACCESS)
 - SEE S.D.D. 15C-3 "DETAIL 4" BARRICADES AND SIGNS FOR SIDEROAD CLOSURES (CONTRACTOR, LOCAL BUSINESS AND RESIDENT ACCESS TO PROJECT) (ADD STAGGERED TYPE III BARRICADES WITH RH-2 "ROAD CLOSED" SIGNS ON STH 60 IN ADDITION TO "ROAD CONTROL" SHOWN ON S.D.D.)
 - RH-3 "ROAD CLOSED --- MILES AHEAD LOCAL TRAFFIC ONLY" MOUNTED ON TYPE III BARRICADE

CLEARING AND GRUBBING

STATION FROM TO	OFFSET	201.0105 CLEARING STA	201.0205 GRUBBING STA	201.0120 CLEARING ID	201.0220 GRUBBING ID
201+93	36' LT	--	--	8	8
204+71	68' RT	--	--	8	8
286+00	287+00 LT	1	1	--	--
300+00	302+00 LT	2	2	--	--
304+00	306+00 LT	2	2	--	--
306+18	57' RT	--	--	8	8
306+77	52' LT	--	--	8	8
349+00	351+00 RT	2	2	--	--
352+00	353+00 LT	1	1	--	--
355+00	357+00 LT	2	2	--	--
361+60	49' RT	--	--	8	8
408+62	53' RT	--	--	8	8
408+76	49' RT	--	--	8	8
436+00	439+00 RT	3	3	--	--
494+00	495+00 RT	1	1	--	--
TOTAL		14	14	56	56

STATION FROM TO		204.0110 REMOVING ASPHALTIC SURFACE SY	204.0115 REMOVING ASPHALTIC SURFACE BUTT JOINTS SY	204.0120 REMOVING ASPHALTIC SURFACE MILLING SY
186+60	249+07	338	843	19,631
266+78	416+04	892	1,294	48,561
416+04	456+50	86	153	13,233
473+93	555+40	260	545	26,591
TOTAL		1,576	2,835	108,016

1

Addendum No. 01
 ID 2310-17-70
 Revised Sheet 169
 November 27, 2019

REMOVING SMALL PIPE CULVERTS

STA	OFFSET	DESCRIPTION	LENGTH	203.0100 REMOVING SMALL PIPE CULVERTS EACH
241+15	37' RT	18" CMP	40'	1
273+98	34' RT	18" CMP	40'	1
282+63	39' LT	18" CMP	34'	1
283+93	104' RT	15" CMP	22'	1
285+75	38' LT	18" CMP	30'	1
300+93	39' RT	24" CMP	94'	1
310+52	50' RT	18" CMP	70'	1
328+72	39' LT	18" CMP	30'	1
350+36	34' RT	18" CACP	32'	1
351+57	39' LT	18" CMP	30'	1
353+22	43' RT	18" CACP	100'	1
355+57	37' LT	18" CMP	32'	1
361+68	44' RT	18" CMP	26'	1
409+02	38' RT	18" CMP	34'	1
438+76	43' RT	24" CMP	90'	1
516+49	38' LT	18" CMP	24'	1
517+83	49' RT	18" CMP	94'	1
TOTAL				17

1 REVISED SHEET 11/26/19

NOTE: ALL ITEMS ARE CATEGORY 0010 UNLESS NOTED OTHERWISE.

EARTHWORK SUMMARY

Division	From/To Station	Location	Common Excavation (item # 205.0100)		Salvaged/Unusable Pavement Material	Available Material (4)	Unexpanded Fill	Expanded Fill (5)		Mass Ordinate +/- (6)	Waste (7)	Borrow	Comment
			Cut (2)	EBS Excavation (3)				Factor 1.20					
1	201+85 to 539+22	STH 60	15120	324	2472	12648	2621	3145	9503	9827	(Item 208.0100)		
	5+50 to 6+83	Maple Rd	265	5	32	233	62	74	158	163			
	0+00 to 2+94	Center Rd	584	10	90	494	1	1	493	503			
	2+53 to 3+18	Lusan Dr	264	7	88	176	2	2	174	181			
	2+42 to 3+17	Church Rd	240	7	83	157	2	2	156	162			
	2+46 to 3+20	Brianwood Dr	215	6	81	134	18	22	111	118			
	48+50 to 51+77	CTH M	980	20	213	767	102	122	645	665			
	0+13 to 0+89	Strawberry Glen Rd	342	12	174	168	1	2	167	179			
	2+85 to 3+59	Elim Dr	195	6	67	128	9	10	117	124			
	2+27 to 3+59	Lizbeth Ln	216	6	64	152	24	28	124	131			
	2+85 to 4+62	Horns Corners Rd	951	16	155	796	4	5	791	807			
Division 1 Subtotal			19372	419	3519	15853	2844	3413	12440	12859			
Grand Total			19372	419	3519	15853	2844	3413	12440	12859			

- Common Excavation is the sum of the Cut and EBS Excavation columns. Item number 205.0100
- Salvaged/Unusable Pavement Material is included in Cut - Not shown in Earthwork Detail Sheets
- EBS is estimated at 12" deep over 5% of total area. Assumes all EBS will be wasted. EBS areas are to be backfilled with Breaker Run.
- Available Material = Cut - Salvaged/Unusable Pavement Material
- Expanded Fill. Factor = 1.20
Expanded Fill = Unexpanded Fill * Fill Factor
- The Mass Ordinate + or - Qty calculated for the Division. Plus quantity indicates an excess of material within the Division. Minus indicates a shortage of material within the Division.
Mass Ordinate = Available Material - Expanded Fill
- Waste = Mass Ordinate + EBS Excavation

REVISOR SHEET 11/26/19

NOTE: ALL ITEMS ARE CATEGORY 0010 UNLESS NOTED OTHERWISE.

Addendum No. 01
ID 2310-17-70
Revised Sheet 172
November 27, 2019

3

3

CONCRETE ITEMS

ROADWAY	STATION		SY	CONCRETE CURB & GUTTER 30-INCH TYPE D*		CONCRETE CURB & GUTTER 4-INCH SLOPED 36-INCH TYPE D*
	FROM	TO		LF	LF	
MAPLE RD	201+00	207+00	--	--	--	121
CENTER RD	281+00	287+00	--	--	--	173
LUSAN DR	296+00	302+00	--	--	--	141
CHURCH RD	308+00	314+00	--	--	--	150
BRIARWOOD DR	349+00	355+00	--	--	--	151
CTH M	361+00	373+00	16	--	--	1,177
STRAWBERRY GLEN RD	405+00	411+00	--	--	--	151
ELMRD	436+00	442+00	--	--	--	151
LIZBETH LN	492+00	498+00	--	--	--	150
HORNS CORNERS RD	514+00	519+00	--	46	--	299
TOTAL			16	46		2,664

* 6.25% GUTTER CROSS SLOPE

AGGREGATE ITEMS

STATION	211 0400 PREPARE FOUNDATION FOR ASPHALTIC SHOULDERS	305 0110 BASE DENSE 3/4- INCH	305 0120 BASE AGGREGATE DENSE 1 1/4- INCH	311 0110 BREAKER RUN	624 0100 WATER
FROM TO	STA	TON	TON	TON	MGAL
188+60	249+07	391	579	449	15
266+78	416+04	1,439	14,726	5,402	242
416+04	456+50	293	2,085	58	36
473+93	555+40	580	6,000	3,934	99
TOTAL	531	2,703	23,390	9,843	392

CONCRETE SURFACE DRAIN ITEMS

ROADWAY	STATION	CONCRETE SURFACE DRAINS	CY	RIPRAP MEDIUM	CY	GEOTEXTILE TYPER	SY
ROADWAY	FROM TO	FROM TO	FROM TO	FROM TO	FROM TO	FROM TO	FROM TO
MAPLE RD	201+00	207+00	3	5	5	47	47
CENTER RD	281+00	287+00	2	5	5	46	46
LUSAN DR	296+00	302+00	1	4	4	28	28
CHURCH RD	308+00	314+00	1	4	4	29	29
BRIARWOOD DR	349+00	355+00	2	4	4	31	31
CTH M	361+00	373+00	3	7	7	62	62
ELMRD	436+00	442+00	2	5	5	47	47
LIZBETH LN	492+00	498+00	1	4	4	27	27
HORNS CORNERS RD	514+00	519+00	3	7	7	62	62
TOTAL			18	45	45	379	379

*ADDITIONAL QUANTITIES SHOWN ELSEWHERE - SEE RIPRAP ITEMS

PROJECT NO: 2310-17-70

HWY: STH 60

COUNTY: WASHINGTON & OZAUKEE

SHEET 172

FILE NAME : G:\8906 - STH 60\CAD\2310170A\SHEETS\PLAN\032021-MO.DWG
 LAYOUT NAME - 032021-MO - 032024
 PLOT BY : KEVIN WEIGNER
 PLOT DATE : 11/26/2019 1:16 PM
 PLOT SCALE : *****
 WSDOT/CADD/SHEET 42

ASPHALTIC PAVEMENT ITEMS

ROADWAY	STATION	CONCRETE SURFACE DRAINS	CY	RIPRAP MEDIUM	CY	GEOTEXTILE TYPER	SY
ROADWAY	FROM TO	FROM TO	FROM TO	FROM TO	FROM TO	FROM TO	FROM TO
MAPLE RD	201+00	207+00	3	5	5	47	47
CENTER RD	281+00	287+00	2	5	5	46	46
LUSAN DR	296+00	302+00	1	4	4	28	28
CHURCH RD	308+00	314+00	1	4	4	29	29
BRIARWOOD DR	349+00	355+00	2	4	4	31	31
CTH M	361+00	373+00	3	7	7	62	62
ELMRD	436+00	442+00	2	5	5	47	47
LIZBETH LN	492+00	498+00	1	4	4	27	27
HORNS CORNERS RD	514+00	519+00	3	7	7	62	62
TOTAL			18	45	45	379	379

NOTE: ALL SHOULDER RUMBLE STRIPS SHALL BE TYPE 1.

1 REVISED SHEET 11/26/19

NOTE: ALL ITEMS ARE CATEGORY 0010 UNLESS NOTED OTHERWISE.

FILE NAME : G:\8906 - STH 60\CAD\2310170A\SHEETS\PLAN\032021-MO.DWG
 LAYOUT NAME - 032021-MO - 032024
 PLOT BY : KEVIN WEIGNER
 PLOT DATE : 11/26/2019 1:16 PM
 PLOT SCALE : *****
 WSDOT/CADD/SHEET 42

HMA PERCENT WITHIN LIMITS (PWL) ITEMS

ROADWAY	LOCATION	STATION		MIXTURE USE	UNDERLYING SURFACE	MIXTURE USE	TONS	THICKNESS	QUALITY MANAGEMENT PROGRAM TO BE USED FOR:		460.2005 INCENTIVE DENSITY PWL HMA PAVEMENT DOL	460.2010 INCENTIVE AIR Voids HMA PAVEMENT DOL	SPV/0060.02 HMA PWL TEST STRIP VOLUMETRICS EACH	SPV/0060.03 HMA PWL TEST STRIP DENSITY EACH
		FROM	TO						MIXTURE ACCEPTANCE	DENSITY ACCEPTANCE				
STH 60	12-FT DRIVING LANES	188+60	249+07	UPPER LAYER	3 LT 58-28 S	UPPER LAYER	1,601	1 3/4"	PWL INCENTIVE AIR Voids HMA PAVEMENT 460.2010	INCENTIVE DENSITY PWL HMA PAVEMENT 460.2005	1,601	1,601	1	1
STH 60	12-FT DRIVING LANES	188+60	249+07	LOWER LAYER	EXISTING MILLED HMA	LOWER LAYER	2,058	2 1/4"	PWL INCENTIVE AIR Voids HMA PAVEMENT 460.2010	INCENTIVE DENSITY PWL HMA PAVEMENT 460.2005	2,058	2,058	1	1
STH 60	6-FT SHOULDERS	188+60	249+07	UPPER LAYER	3 LT 58-28 S	UPPER LAYER	881	1 3/4"	PWL INCENTIVE AIR Voids HMA PAVEMENT 460.2010	ACCEPTANCE TESTING BY THE DEPARTMENT; NOT ELIGIBLE FOR INCENTIVE	--	881	--	--
STH 60	6-FT SHOULDERS	188+60	249+07	LOWER LAYER	EXISTING MILLED HMA / BASE AGGREGATE	LOWER LAYER	1,133	2 1/4"	PWL INCENTIVE AIR Voids HMA PAVEMENT 460.2010	ACCEPTANCE TESTING BY THE DEPARTMENT; NOT ELIGIBLE FOR INCENTIVE	--	1,133	--	--
STH 60	TURN LANES / BYPASS LANES / INTERSECTIONS	188+60	249+07	UPPER LAYER	3 LT 58-28 S	UPPER LAYER	35	1 3/4"	PWL INCENTIVE AIR Voids HMA PAVEMENT 460.2010	ACCEPTANCE TESTING BY THE DEPARTMENT; NOT ELIGIBLE FOR INCENTIVE	--	35	--	--
STH 60	TURN LANES / BYPASS LANES / INTERSECTIONS	188+60	249+07	LOWER LAYER	3 LT 58-28 S	LOWER LAYER	45	2 1/4"	PWL INCENTIVE AIR Voids HMA PAVEMENT 460.2010	ACCEPTANCE TESTING BY THE DEPARTMENT; NOT ELIGIBLE FOR INCENTIVE	--	45	--	--
STH 60	TURN LANES / BYPASS LANES / INTERSECTIONS	188+60	249+07	UPPER LAYER	BASE AGGREGATE	UPPER LAYER	50	2 1/2"	PWL INCENTIVE AIR Voids HMA PAVEMENT 460.2010	ACCEPTANCE TESTING BY THE DEPARTMENT; NOT ELIGIBLE FOR INCENTIVE	--	50	--	--
STH 60	12-FT DRIVING LANES	266+78	456+50	UPPER LAYER	3 LT 58-28 S	UPPER LAYER	5,091	1 3/4"	PWL INCENTIVE AIR Voids HMA PAVEMENT 460.2010	INCENTIVE DENSITY PWL HMA PAVEMENT 460.2005	5,091	5,091	--	--
STH 60	12-FT DRIVING LANES	266+78	456+50	LOWER LAYER	EXISTING MILLED HMA	LOWER LAYER	6,546	2 1/4"	PWL INCENTIVE AIR Voids HMA PAVEMENT 460.2010	INCENTIVE DENSITY PWL HMA PAVEMENT 460.2005	6,546	6,546	--	--
STH 60	6-FT SHOULDERS	266+78	456+50	UPPER LAYER	3 LT 58-28 S	UPPER LAYER	1,942	1 3/4"	PWL INCENTIVE AIR Voids HMA PAVEMENT 460.2010	ACCEPTANCE TESTING BY THE DEPARTMENT; NOT ELIGIBLE FOR INCENTIVE	--	1,942	--	--
STH 60	6-FT SHOULDERS	266+78	456+50	LOWER LAYER	EXISTING MILLED HMA / BASE AGGREGATE	LOWER LAYER	2,496	2 1/4"	PWL INCENTIVE AIR Voids HMA PAVEMENT 460.2010	ACCEPTANCE TESTING BY THE DEPARTMENT; NOT ELIGIBLE FOR INCENTIVE	--	2,496	--	--
STH 60	TURN LANES / BYPASS LANES / INTERSECTIONS	266+78	456+50	UPPER LAYER	3 LT 58-28 S	UPPER LAYER	1,821	1 3/4"	PWL INCENTIVE AIR Voids HMA PAVEMENT 460.2010	ACCEPTANCE TESTING BY THE DEPARTMENT; NOT ELIGIBLE FOR INCENTIVE	--	1,821	--	--
STH 60	TURN LANES / BYPASS LANES / INTERSECTIONS	266+78	456+50	LOWER LAYER	3 LT 58-28 S	LOWER LAYER	2,341	2 1/4"	PWL INCENTIVE AIR Voids HMA PAVEMENT 460.2010	ACCEPTANCE TESTING BY THE DEPARTMENT; NOT ELIGIBLE FOR INCENTIVE	--	2,341	--	--
STH 60	TURN LANES / BYPASS LANES / INTERSECTIONS	266+78	456+50	UPPER LAYER	BASE AGGREGATE	UPPER LAYER	2,601	2 1/2"	PWL INCENTIVE AIR Voids HMA PAVEMENT 460.2010	ACCEPTANCE TESTING BY THE DEPARTMENT; NOT ELIGIBLE FOR INCENTIVE	--	2,601	--	--
STH 60	12-FT DRIVING LANES	473+93	555+40	UPPER LAYER	3 LT 58-28 S	UPPER LAYER	2,186	1 3/4"	PWL INCENTIVE AIR Voids HMA PAVEMENT 460.2010	INCENTIVE DENSITY PWL HMA PAVEMENT 460.2005	2,186	2,186	--	--
STH 60	12-FT DRIVING LANES	473+93	555+40	LOWER LAYER	EXISTING MILLED HMA	LOWER LAYER	2,811	2 1/4"	PWL INCENTIVE AIR Voids HMA PAVEMENT 460.2010	INCENTIVE DENSITY PWL HMA PAVEMENT 460.2005	2,811	2,811	--	--
STH 60	6-FT SHOULDERS	473+93	555+40	UPPER LAYER	3 LT 58-28 S	UPPER LAYER	867	1 3/4"	PWL INCENTIVE AIR Voids HMA PAVEMENT 460.2010	ACCEPTANCE TESTING BY THE DEPARTMENT; NOT ELIGIBLE FOR INCENTIVE	--	867	--	--
STH 60	6-FT SHOULDERS	473+93	555+40	LOWER LAYER	EXISTING MILLED HMA / BASE AGGREGATE	LOWER LAYER	1,115	2 1/4"	PWL INCENTIVE AIR Voids HMA PAVEMENT 460.2010	ACCEPTANCE TESTING BY THE DEPARTMENT; NOT ELIGIBLE FOR INCENTIVE	--	1,115	--	--
STH 60	TURN LANES / BYPASS LANES / INTERSECTIONS	473+93	555+40	UPPER LAYER	3 LT 58-28 S	UPPER LAYER	685	1 3/4"	PWL INCENTIVE AIR Voids HMA PAVEMENT 460.2010	ACCEPTANCE TESTING BY THE DEPARTMENT; NOT ELIGIBLE FOR INCENTIVE	--	685	--	--
STH 60	TURN LANES / BYPASS LANES / INTERSECTIONS	473+93	555+40	LOWER LAYER	3 LT 58-28 S	LOWER LAYER	855	2 1/4"	PWL INCENTIVE AIR Voids HMA PAVEMENT 460.2010	ACCEPTANCE TESTING BY THE DEPARTMENT; NOT ELIGIBLE FOR INCENTIVE	--	855	--	--
STH 60	TURN LANES / BYPASS LANES / INTERSECTIONS	473+93	555+40	UPPER LAYER	BASE AGGREGATE	UPPER LAYER	950	2 1/2"	PWL INCENTIVE AIR Voids HMA PAVEMENT 460.2010	ACCEPTANCE TESTING BY THE DEPARTMENT; NOT ELIGIBLE FOR INCENTIVE	--	950	--	--
STH 60	TURN LANES / BYPASS LANES / INTERSECTIONS	473+93	555+40	LOWER LAYER	3 LT 58-28 S	LOWER LAYER	411	1 3/4"	PWL INCENTIVE AIR Voids HMA PAVEMENT 460.2010	ACCEPTANCE TESTING BY THE DEPARTMENT; NOT ELIGIBLE FOR INCENTIVE	--	411	--	--
SIDE ROADS	12-FT DRIVING LANES / SHOULDERS	VARIOUS	VARIOUS	UPPER LAYER	3 LT 58-28 S	UPPER LAYER	528	2 1/4"	PWL INCENTIVE AIR Voids HMA PAVEMENT 460.2010	ACCEPTANCE TESTING BY THE DEPARTMENT; NOT ELIGIBLE FOR INCENTIVE	--	528	--	--
SIDE ROADS	12-FT DRIVING LANES / SHOULDERS	VARIOUS	VARIOUS	LOWER LAYER	EXISTING MILLED HMA / BASE AGGREGATE	LOWER LAYER	528	2 1/4"	PWL INCENTIVE AIR Voids HMA PAVEMENT 460.2010	ACCEPTANCE TESTING BY THE DEPARTMENT; NOT ELIGIBLE FOR INCENTIVE	--	528	--	--
TOTAL											20,300	39,030	2	2

NOTE: ALL ITEMS ARE CATEGORY 0010 UNLESS NOTED OTHERWISE.

REVISER SHEET 11/26/19

COUNTY: WASHINGTON & OZAUKEE MISCELLANEOUS QUANTITIES

HWY: STH 60

PROJECT NO: 2310-17-70

SHEET 173

WSDOT/CADD SHEET 42

Addendum No. 01
ID 2310-17-70
Revised Sheet 173
November 27, 2019

Addendum No. 01
 ID 2310-17-70
 Revised Sheet 178
 November 27, 2019

RESTORATION ITEMS

STATION	TO	FROM	625.0500 SALVAGED TOPSOIL	627.0200 MULCHING	629.0210 FERTILIZER TYPE B	630.0130 SEEDING MIXTURE NO. 30	630.0200 SEEDING TEMPORARY	630.0500 SEED WATER
			SY	SY	CWT	LB	LB	MGAL
188+60	249+07		3,930	2,475	2.5	71	106	66
266+78	416+04		15,150	10,387	10.2	291	436	272
416+04	456+50		2,138	1,156	1.3	38	58	36
473+93	555+40		6,273	3,401	4.0	113	169	106
UNDISTRIBUTED			--	--	--	128	192	--
TOTAL			28,491	17,419	18	641	961	480

1

EROSION CONTROL ITEMS

STATION	TO	FROM	628.1504 SILT FENCE	628.1520 SILT FENCE MAINTENANCE	628.1905 MOBILIZATIONS EROSION CONTROL	628.1910 MOBILIZATIONS EMERGENCY EROSION CONTROL	628.2004 EROSION MAT CLASS I	628.2008 EROSION MAT URBAN CLASS I	628.2027 EROSION MAT CLASS II TYPE C	628.7015 INLET PROTECTION TYPE C	628.7504 TEMPORARY DITCH CHECKS	628.7555 CULVERT CHECKS*	628.7560 TRACKING PADS	628.7570 ROCK BAGS
			LF	LF	EACH	EACH	SY	SY	SY	EACH	LF	EACH	EACH	EACH
188+60	249+07		1,595	1,595	--	--	232	1,223	--	--	200	2	--	--
266+78	416+04		7,673	7,673	--	--	5,719	44	--	4	840	49	--	--
416+04	456+50		1,189	1,189	--	--	982	--	--	2	120	3	--	--
473+93	555+40		3,631	3,631	--	--	2,150	523	199	--	240	23	--	--
UNDISTRIBUTED			3,522	3,522	22	5	2,271	448	50	2	350	19	4	40
TOTAL			17,610	17,610	22	5	11,354	2,238	249	8	1,750	96	4	40

*SEE TABLE FOR ESTIMATED NUMBER OF BAGS PER PIPE.

1

ESTIMATED BAG SIZE = 18" X 12" X 6"	ESTIMATED NUMBER OF BAGS
18"	2
24"	3
30"	5
36"	7
19"X30"	5
24"X38"	7
29"X45"	10

PROJECT NO: 2310-17-70 HWY: STH 60 COUNTY: WASHINGTON & OZAUKEE MISCELLANEOUS QUANTITIES SHEET 178

FILE NAME : G:\8606 - STH 60\CAD\23101700\ASHEETS\PLAN\030201-10.DWG LAYOUT NAME - 030201-10 - 030210 PLOT BY : KEVIN WEIGNER PLOT DATE : 11/26/2019 1:29 PM PLOT SCALE : ***** WSDOT/CADD SHEET 42

NOTE: ALL ITEMS ARE CATEGORY 0010 UNLESS NOTED OTHERWISE.

1 REVISED SHEET 11/26/19

FIXED MESSAGE SIGN

SIGN NUMBER	STAGE	SIGN SIZE WXH (FT) X (FT)	643.1000 TRAFFIC CONTROL SIGNS FIXED MESSAGE SF
200	STAGE 1	7 X 3	21
200	STAGE 1	7 X 3	21
200	STAGE 1	7 X 3	21
201	STAGE 1	7 X 3	21
201	STAGE 1	7 X 3	21
TOTAL			105

TRAFFIC CONTROL

STAGE	DAYS	643.0300 TRAFFIC CONTROL DRUMS	643.0420 TRAFFIC CONTROL BARRICADES TYPE III	643.0705 TRAFFIC CONTROL WARNING LIGHTS TYPE A	643.0715 TRAFFIC CONTROL WARNING LIGHTS TYPE C	643.0800 TRAFFIC CONTROL SIGNS	643.1050 TRAFFIC CONTROL SIGNS PCMS	643.0920 TRAFFIC CONTROL COVERING SIGNS TYPE II
STAGE 1 - STH 60	180	32	149	288	6	272	2	17
UNDISTRIBUTED	--	--	--	--	--	--	--	--
TOTAL		7,200	33,600	64,800	1,350	61,125	60	20

Addendum No. 01
ID 2310-17-70
Revised Sheet 183
November 27, 2019

PAVEMENT MARKING ITEMS

STATION	FROM	TO	646.1020 MARKING LINE EPOXY 4-INCH	646.3020 MARKING LINE EPOXY 8-INCH	646.5020 MARKING ARROW EPOXY	646.5120 MARKING WORD EPOXY	646.6120 MARKING STOP LINE EPOXY 18-INCH	648.0100 LOCATING NO-PASSING ZONES
188+60	249+07		3,260	--	--	--	36	--
266+78	416+04		21,951	2,050	5	5	235	--
416+04	456+50		4,575	200	1	1	30	--
473+93	555+40		4,418	1,000	2	2	119	--
UNDISTRIBUTED			1,584	--	--	--	--	6.43
TOTAL			35,788	3,250	8	8	420	6.43

1 REVISSED SHEET 11/26/19

NOTE: ALL ITEMS ARE CATEGORY 0010 UNLESS NOTED OTHERWISE.

CONSTRUCTION STAKING ITEMS

STATION FROM	STATION TO	650.4000 CONSTRUCTION STORM SEWER EACH	650.4500 CONSTRUCTION STAKING SUBGRADE LF	650.5000 CONSTRUCTION STAKING CURB AND GUTTER LF	650.6000 CONSTRUCTION STAKING PIPE CULVERTS EACH	650.6500 CONSTRUCTION STAKING LAYOUT (STRUCTURE) 01. B-66-0092 LS	650.8000 CONSTRUCTION STAKING RESURFACING LF	650.9920 CONSTRUCTION STAKING SLOPE STAKES LF
188+60	249+07	--	198	121	--	1	6,100	1,012
286+78	416+04	4	6,260	1,943	13	--	15,779	6,742
416+04	456+50	--	803	151	1	--	4,166	746
473+93	555+40	5	2,477	495	1	--	8,582	2,351
UNDISTRIBUTED		--	--	--	--	--	--	--
TOTAL		9	9,738	2,710	15	1	34,627	10,851

1

Addendum No. 01
 ID 2310-17-70
 Revised Sheet 184
 November 27, 2019

SECTION CORNER MONUMENTS

STATION	SECTION CORNER MONUMENTS	EACH
204+99	SPV.0060.01	1
231+34	SECTION CORNER MONUMENTS	1
284+19	SECTION CORNER MONUMENTS	1
310+51	SECTION CORNER MONUMENTS	1
337+00	SECTION CORNER MONUMENTS	1
363+45	SECTION CORNER MONUMENTS	1
389+75	SECTION CORNER MONUMENTS	1
416+04	SECTION CORNER MONUMENTS	1
438+75	SECTION CORNER MONUMENTS	1
491+50	SECTION CORNER MONUMENTS	1
517+83	SECTION CORNER MONUMENTS	1
544+05	SECTION CORNER MONUMENTS	1
TOTAL		12

1

REVISSED SHEET 11/26/19
 NOTE: ALL ITEMS ARE CATEGORY 0010 UNLESS NOTED OTHERWISE.

SAWCUTTING

STATION FROM	STATION TO	690.0150 SAWING ASPHALT LF	690.0250 SAWING CONCRETE LF
188+60	249+07	615	--
286+78	416+04	10,153	14
416+04	456+50	1,486	--
473+93	555+40	4,559	--
TOTAL		16,813	14

1

DIVISION 1: STH 60

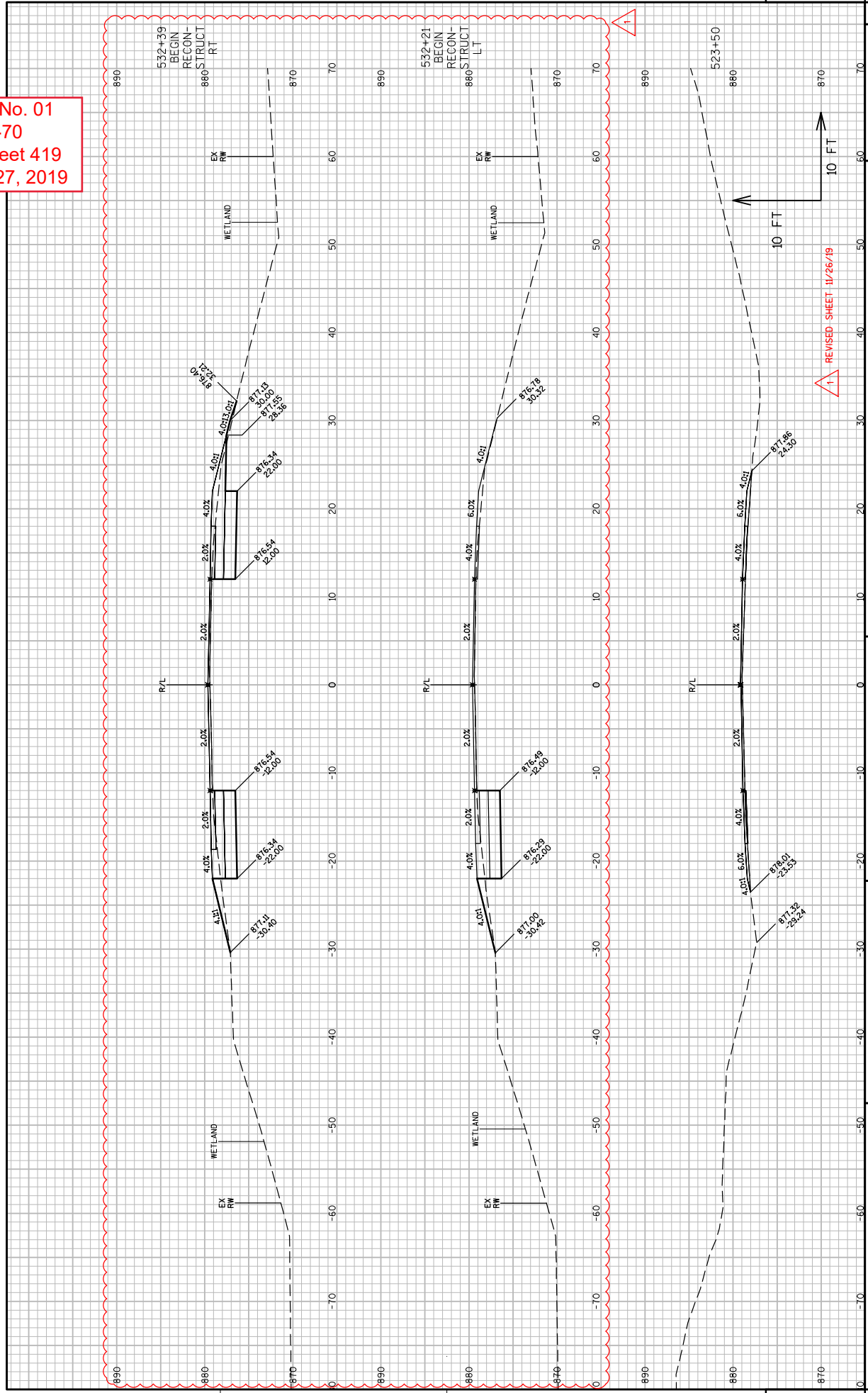
STATION	Real Station	Distance	AREA (SF)			Incremental Vol (CY) (Unadjusted)			Cumulative Vol (CY)				Mass Ordinate		
			Cut	Salvaged/Unusable Pavement Material	Fill	EBS	Cut	Salvaged/Unusable Pavement Material	Fill	EBS	Cut 1.00 Note 1	Expanded Fill 1.20 Note 4		Expanded EBS Backfill 1.30 Note 5	Reduced EBS In Fill 0.80 Note 6
493+00		100	38	0	23	0	0	89	0	2328	0	0	11313	0	8985
494+00		100	44	0	12	0	0	65	0	2406	0	0	11464	0	9058
495+00		100	23	0	9	0	0	38	0	2451	0	0	11588	0	9137
496+00		100	46	0	3	0	0	21	0	2476	0	0	11716	0	9240
496+09		9	46	0	2	0	0	1	0	2477	0	0	11732	0	9254
497+00		91	21	0	7	0	0	17	0	2497	0	0	11845	0	9348
498+00		100	23	0	0	0	0	14	0	2513	0	0	11927	0	9414
498+19	BK	19	18	0	0	0	0	0	0	2513	0	0	11942	0	9428
512+83	AH	0	18	0	0	0	0	0	0	11942	0	0	11953	0	9428
513+00		17	17	0	1	0	0	0	0	11953	0	0	12008	0	9439
514+00		100	13	0	21	0	0	42	0	2564	0	0	12062	0	9444
515+00		100	16	0	16	0	0	69	0	2647	0	0	12138	0	9415
516+00		100	25	0	13	0	0	54	0	2712	0	0	12282	0	9426
517+00		100	53	0	3	0	0	31	0	2750	0	0	12300	0	9533
517+08		8	60	0	3	0	0	1	0	2751	0	0	12455	0	9549
518+00		92	0	0	0	0	0	5	0	2757	0	0	12455	0	9644
518+58		58	49	0	0	0	0	0	0	2757	0	0	12455	0	9698
519+00		42	51	0	4	0	0	3	0	2761	0	0	12531	0	9770
520+00		100	59	0	1	0	0	10	0	2773	0	0	12734	0	9962
521+00		100	74	0	0	0	0	1	0	2774	0	0	12981	0	10207
522+00		100	66	0	0	0	0	0	0	2774	0	0	13240	0	10466
522+86		86	44	0	0	0	0	0	0	2774	0	0	13415	0	10641
523+00		14	12	0	0	0	0	0	0	2774	0	0	13430	0	10655
523+50	BK	50	0	0	0	0	0	0	0	2774	0	0	13440	0	10666
532+21	AH	0	23	0	4	0	0	0	0	2774	0	0	13440	0	10666
532+39		18	50	0	1	0	0	1	0	2776	0	0	13465	0	10689
532+50		11	49	0	5	0	0	1	0	2778	0	0	13486	0	10708
533+00		50	54	0	6	0	0	10	0	2790	0	0	13582	0	10782
533+50		50	65	0	9	0	0	14	0	2807	0	0	13692	0	10865
534+00		50	69	0	11	0	0	18	0	2829	0	0	13816	0	10987
534+50		50	74	0	11	0	0	20	0	2853	0	0	13949	0	11096
535+00		50	77	0	12	0	0	21	0	2879	0	0	14090	0	11211
535+50		50	93	0	52	0	0	60	0	2950	0	0	14248	0	11298
536+00		50	150	0	5	0	0	49	0	3008	0	0	14473	0	11465
536+50		39	82	0	5	0	0	5	0	3014	0	0	14688	0	11674
536+89		39	71	0	9	0	0	9	0	3025	0	0	14798	0	11774
537+00		42	42	0	9	0	0	3	0	3029	0	0	14821	0	11793
537+50		50	34	0	12	0	0	19	0	3052	0	0	14892	0	11840
538+00		50	30	0	10	0	0	20	0	3076	0	0	14951	0	11875
538+50		50	31	0	6	0	0	14	0	3093	0	0	15007	0	11914
539+00		50	24	0	2	0	0	8	0	3102	0	0	15058	0	11955
539+22	BK	22	24	0	2	0	0	2	0	3104	0	0	15078	0	11973
Column totals			15120	0	2621	0	0								

Addendum No. 01
ID 2310-17-70
Revised Sheet 345
November 27, 2019

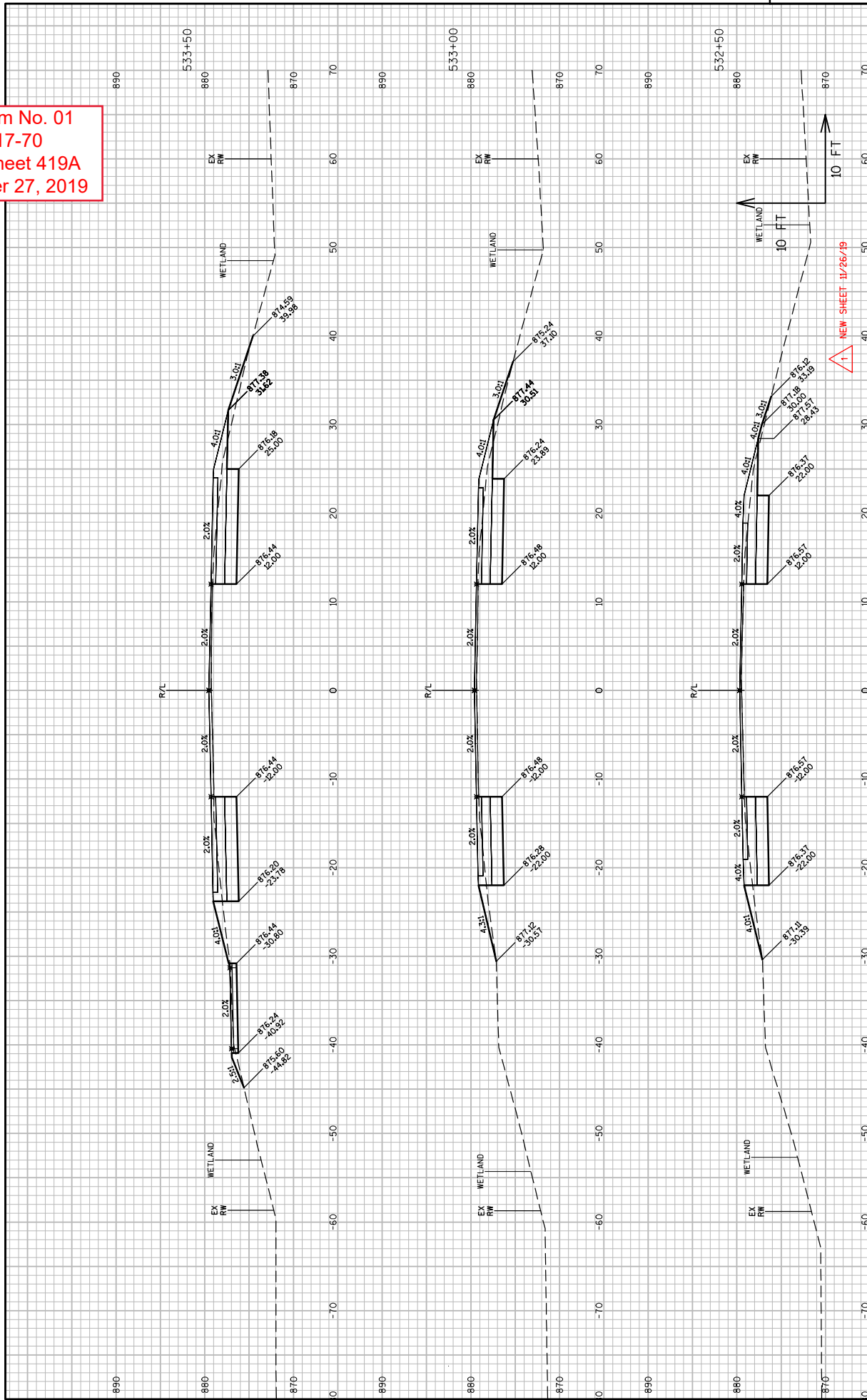
1 REVISED SHEET 11/26/19

Notes:
1 - Cut
2 - Salvaged/Unusable Pavement Material
3 - Fill
4 - Expanded EBS
5 - Reduced EBS in Fill
6 - Mass Ordinate
Cut includes Salvaged/Unusable Pavement material
This does not show up in cross sections
Does not include Unusable Pavement Exc volume
Will be backfilled with Granular Backfill (or Cut, or Borrow)
Reduced EBS Excavation that can be used in Fill
If EBS to be backfilled with Cut or Borrow: $[(Cut + EBS) - ((Fill) - ((Reduced EBS in Fill)) * Fill Factor)]$

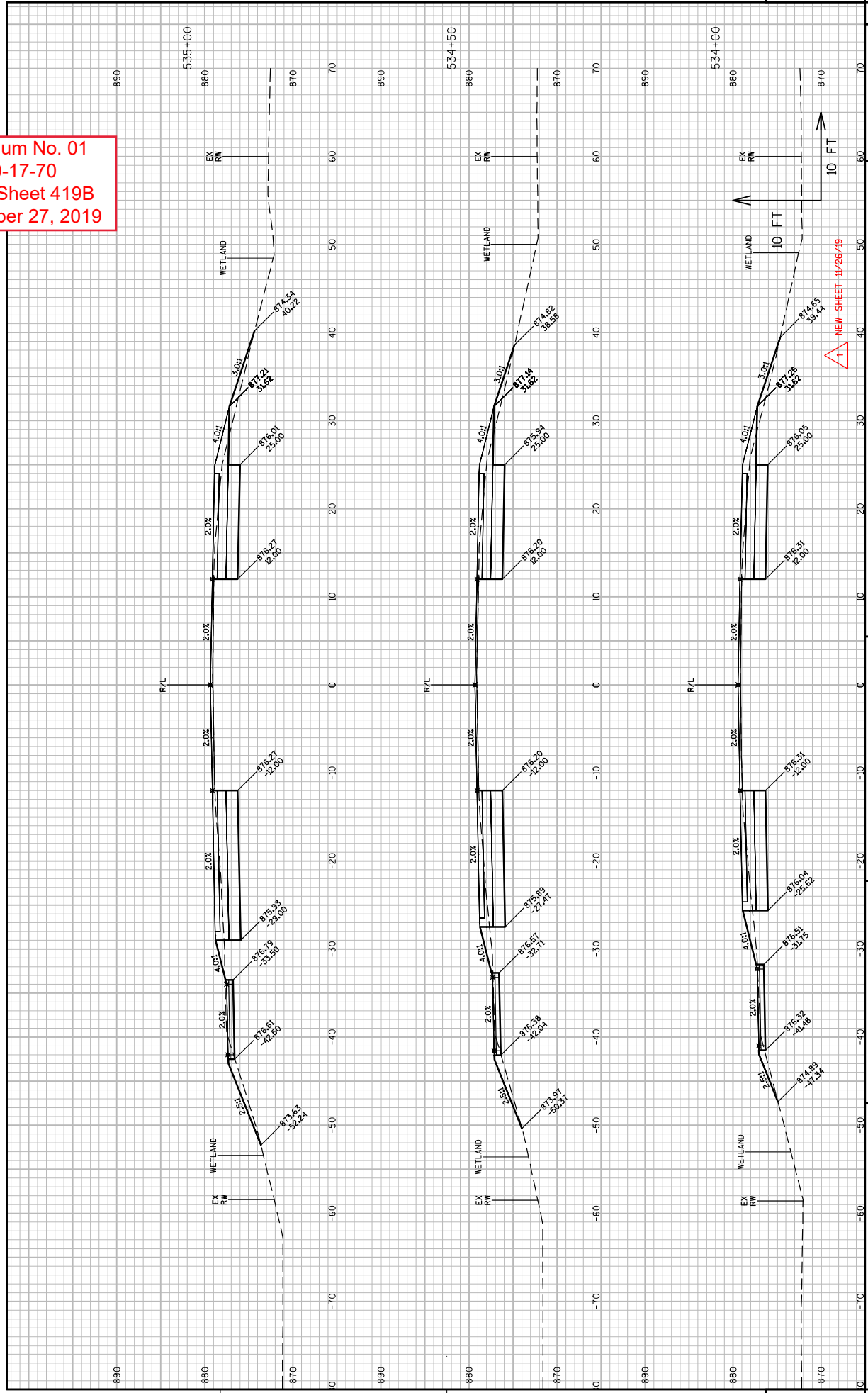
Addendum No. 01
 ID 2310-17-70
 Revised Sheet 419
 November 27, 2019



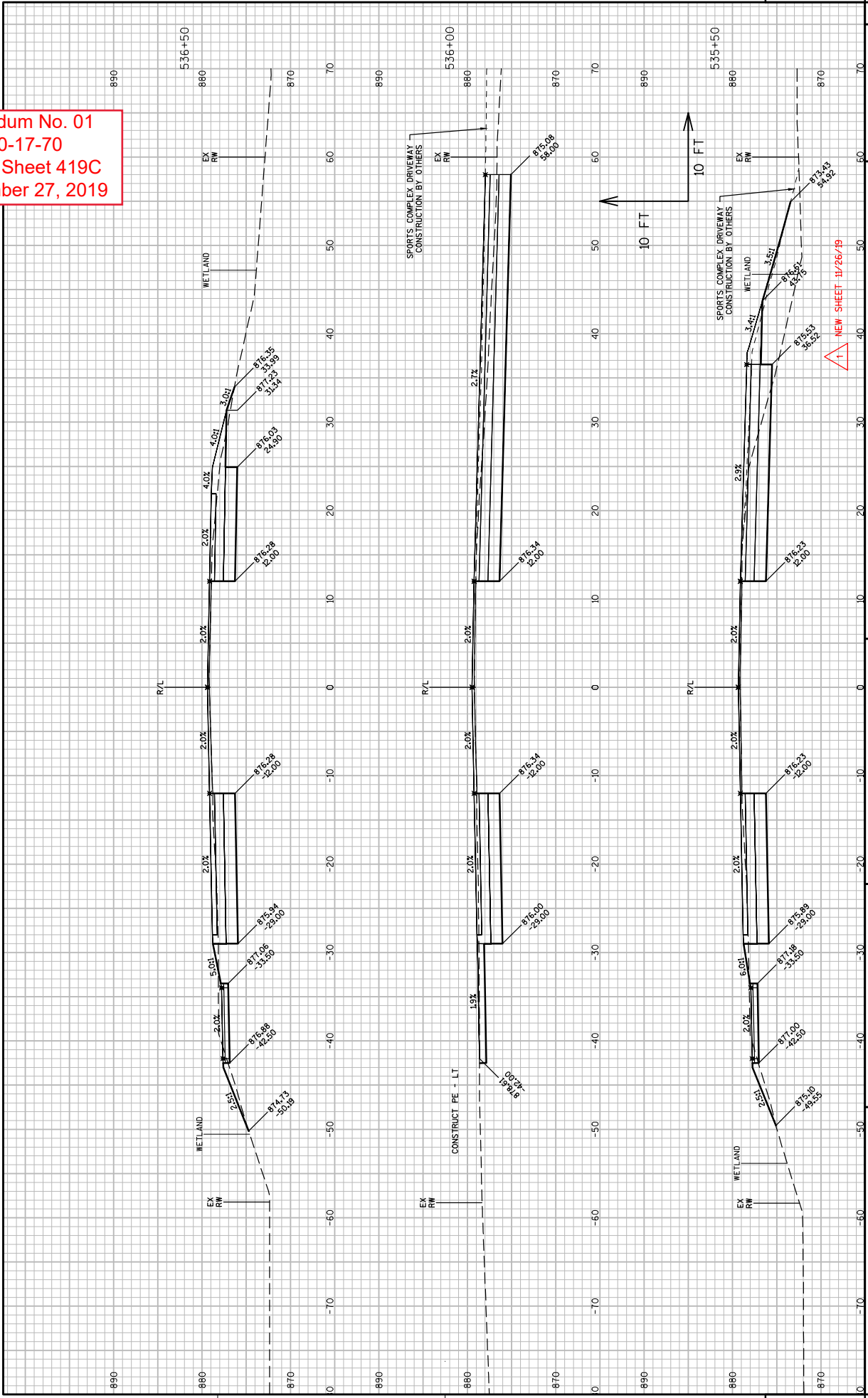
Addendum No. 01
 ID 2310-17-70
 Added Sheet 419A
 November 27, 2019



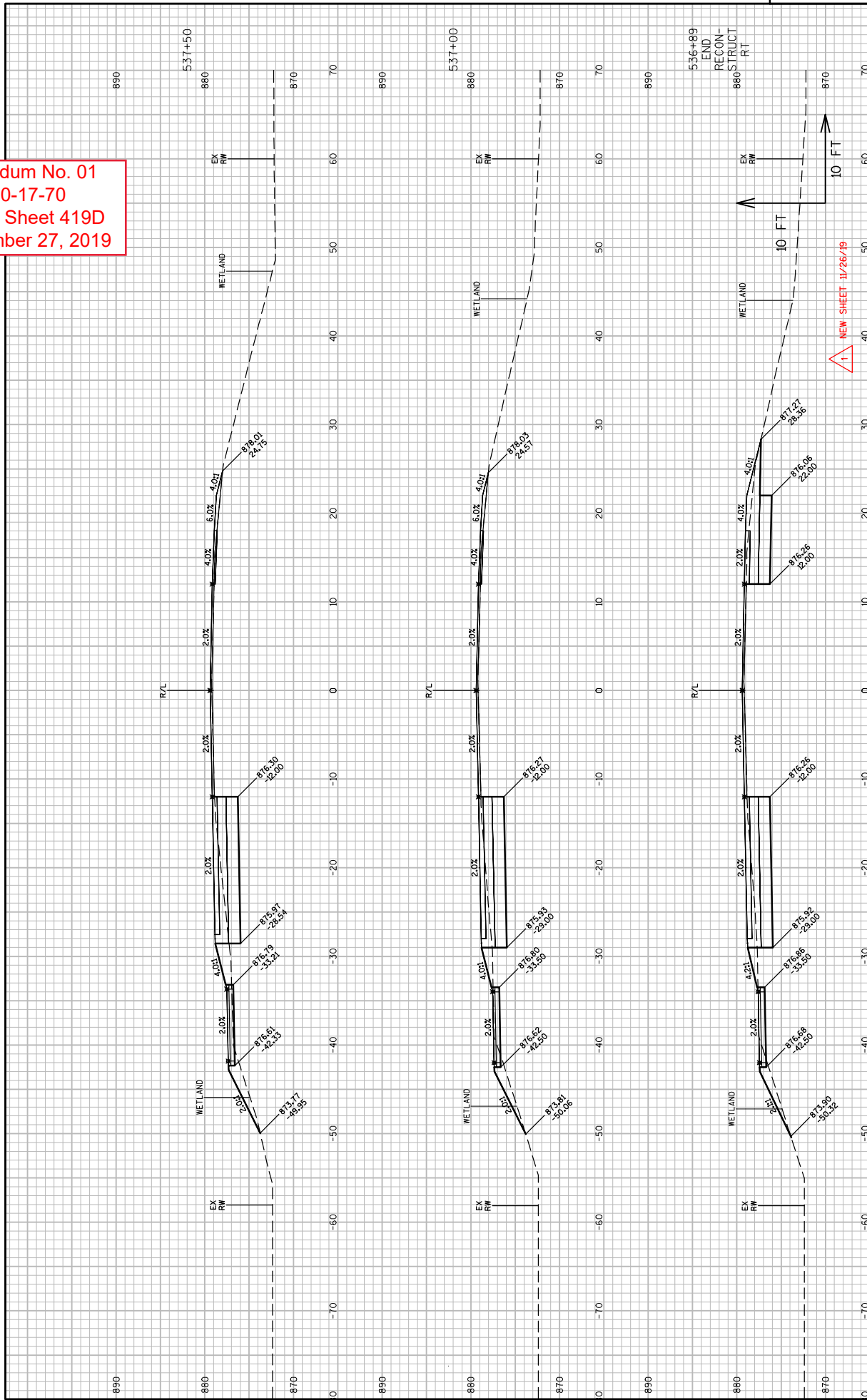
Addendum No. 01
 ID 2310-17-70
 Added Sheet 419B
 November 27, 2019



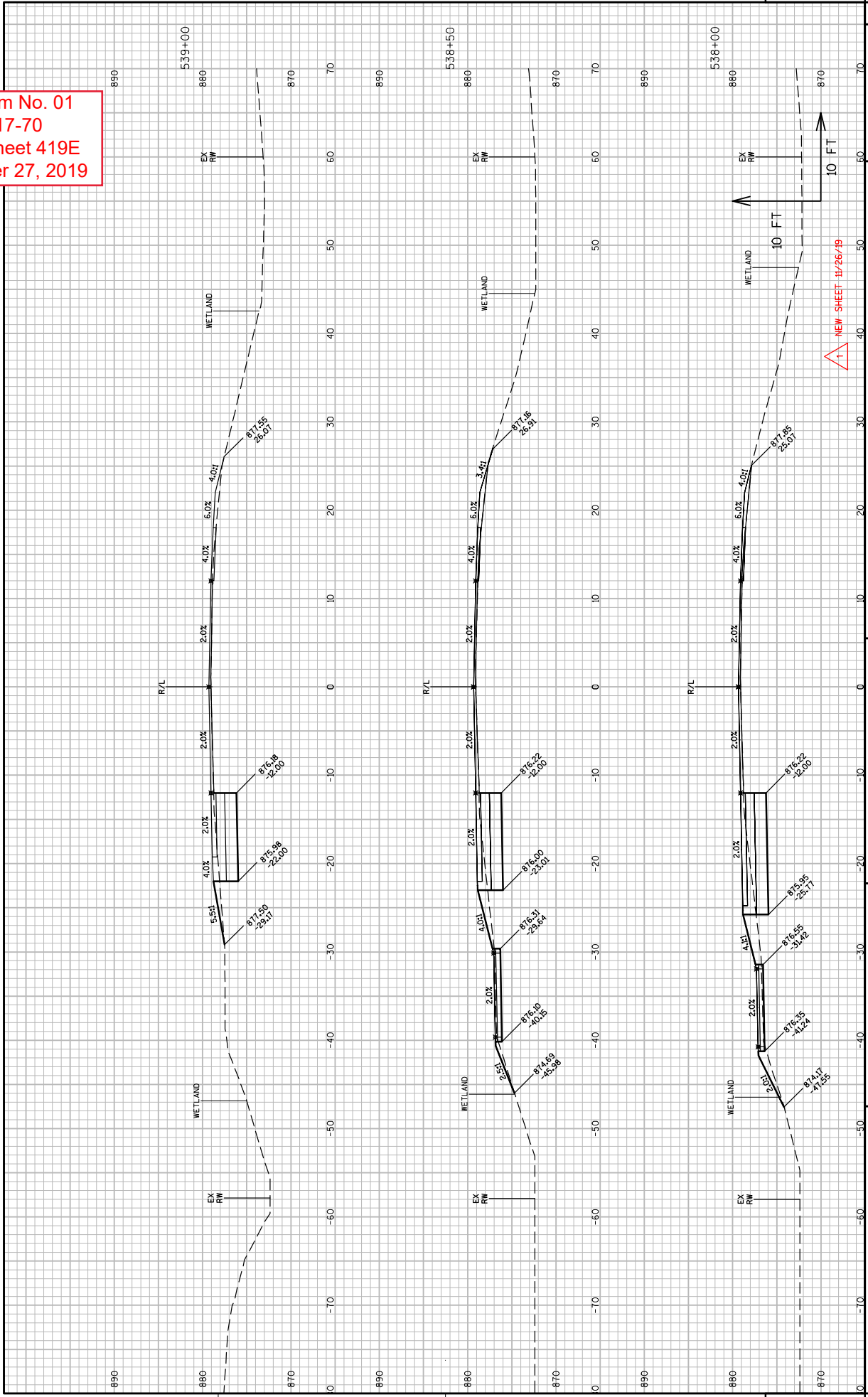
Addendum No. 01
 ID 2310-17-70
 Added Sheet 419C
 November 27, 2019



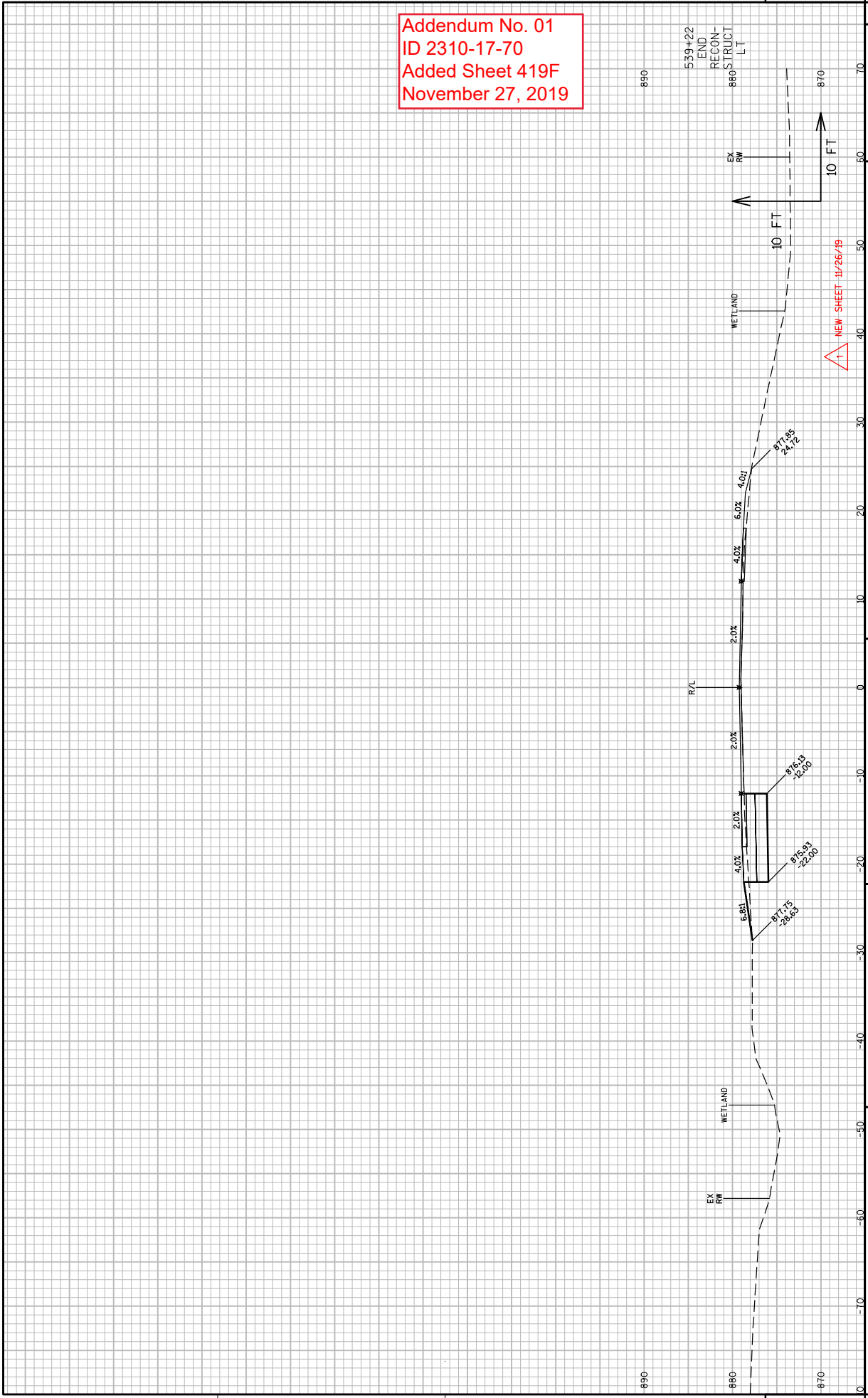
Addendum No. 01
 ID 2310-17-70
 Added Sheet 419D
 November 27, 2019



Addendum No. 01
 ID 2310-17-70
 Added Sheet 419E
 November 27, 2019



Addendum No. 01
ID 2310-17-70
Added Sheet 419F
November 27, 2019



PROJECT NO: 2310-17-70
HWY: STH 60
COUNTY: WASHINGTON/OZAUKEE
CROSS SECTIONS: STH 60
PLOT NAME : KEVIN WEIGNER
PLOT DATE : 11/20/2019 1:21 PM
PLOT SCALE : 1 IN=10 FT.1
SHEET 419F
E
FILE NAME : G:\8906 - STH 60\CD\2310170\ASHEETS\PLAN\090201-AS-STH60-OZKE.DWG
LAYOUT NAME - 050119



Proposal Schedule of Items

Proposal ID: 20191210013 Project(s): 2310-14-70, 2310-17-70

Federal ID(s): WISC 2019739, WISC 2019740

SECTION: 0001 Contract Items

Alt Set ID: Alt Mbr ID:

Proposal Line Number	Item ID Description	Approximate Quantity and Units	Unit Price	Bid Amount
0002	201.0105 Clearing	14.000 STA	_____.	_____.
0004	201.0120 Clearing	111.000 ID	_____.	_____.
0006	201.0205 Grubbing	14.000 STA	_____.	_____.
0008	201.0220 Grubbing	111.000 ID	_____.	_____.
0010	203.0100 Removing Small Pipe Culverts	25.000 EACH	_____.	_____.
0012	203.0600.S Removing Old Structure Over Waterway With Minimal Debris (station) 01. 203+74	LS	LUMP SUM	_____.
0014	204.0110 Removing Asphaltic Surface	2,859.000 SY	_____.	_____.
0016	204.0115 Removing Asphaltic Surface Butt Joints	2,835.000 SY	_____.	_____.
0018	204.0120 Removing Asphaltic Surface Milling	108,016.000 SY	_____.	_____.
0020	204.0150 Removing Curb & Gutter	2,979.000 LF	_____.	_____.
0022	204.0155 Removing Concrete Sidewalk	16.000 SY	_____.	_____.
0024	204.0165 Removing Guardrail	2,078.000 LF	_____.	_____.
0026	204.0190 Removing Surface Drains	10.000 EACH	_____.	_____.
0028	204.0220 Removing Inlets	4.000 EACH	_____.	_____.
0030	204.0245 Removing Storm Sewer (size) 01. 12-Inch	116.000 LF	_____.	_____.
0032	204.0245 Removing Storm Sewer (size) 02. 18-Inch	90.000 LF	_____.	_____.



Proposal Schedule of Items

Proposal ID: 20191210013 Project(s): 2310-14-70, 2310-17-70

Federal ID(s): WISC 2019739, WISC 2019740

SECTION: 0001 Contract Items

Alt Set ID: Alt Mbr ID:

Proposal Line Number	Item ID Description	Approximate Quantity and Units	Unit Price	Bid Amount
0034	204.0245 Removing Storm Sewer (size) 03. 36-Inch	191.000 LF	_____.	_____.
0036	205.0100 Excavation Common	34,258.000 CY	_____.	_____.
0038	206.1000 Excavation for Structures Bridges (structure) 01. B-66-92	LS	LUMP SUM	_____.
0040	210.1500 Backfill Structure Type A	10.000 TON	_____.	_____.
0042	211.0400 Prepare Foundation for Asphaltic Shoulders	531.000 STA	_____.	_____.
0044	213.0100 Finishing Roadway (project) 01. 2310-14-70	1.000 EACH	_____.	_____.
0046	213.0100 Finishing Roadway (project) 02. 2310-17-70	1.000 EACH	_____.	_____.
0048	305.0110 Base Aggregate Dense 3/4-Inch	3,331.000 TON	_____.	_____.
0050	305.0120 Base Aggregate Dense 1 1/4-Inch	38,723.000 TON	_____.	_____.
0052	310.0110 Base Aggregate Open-Graded	14.000 TON	_____.	_____.
0054	311.0110 Breaker Run	26,483.000 TON	_____.	_____.
0056	405.0100 Coloring Concrete WisDOT Red	160.000 CY	_____.	_____.
0058	415.0120 Concrete Pavement 12-Inch	85.000 SY	_____.	_____.
0060	416.0160 Concrete Driveway 6-Inch	16.000 SY	_____.	_____.
0062	416.0512 Concrete Truck Apron 12-Inch	385.000 SY	_____.	_____.



Proposal Schedule of Items

Proposal ID: 20191210013 Project(s): 2310-14-70, 2310-17-70

Federal ID(s): WISC 2019739, WISC 2019740

SECTION: 0001 Contract Items

Alt Set ID: Alt Mbr ID:

Proposal Line Number	Item ID Description	Approximate Quantity and Units	Unit Price	Bid Amount
0064	416.1010 Concrete Surface Drains	18.000 CY	_____.	_____.
0066	455.0605 Tack Coat	22,658.000 GAL	_____.	_____.
0068	460.0105.S HMA Percent Within Limits (PWL) Test Strip Volumetrics	2.000 EACH	_____.	_____.
0070	460.0110.S HMA Percent Within Limits (PWL) Test Strip Density	2.000 EACH	_____.	_____.
0072	460.2000 Incentive Density HMA Pavement	3,130.000 DOL	1.00000	3,130.00
0074	460.2005 Incentive Density PWL HMA Pavement	20,300.000 DOL	1.00000	20,300.00
0076	460.2010 Incentive Air Voids HMA Pavement	39,030.000 DOL	1.00000	39,030.00
0078	460.5223 HMA Pavement 3 LT 58-28 S	26,788.000 TON	_____.	_____.
0080	460.5224 HMA Pavement 4 LT 58-28 S	17,204.000 TON	_____.	_____.
0082	465.0120 Asphaltic Surface Driveways and Field Entrances	405.000 TON	_____.	_____.
0084	465.0315 Asphaltic Flumes	40.000 SY	_____.	_____.
0086	465.0425 Asphaltic Shoulder Rumble Strips 2-Lane Rural	53,192.000 LF	_____.	_____.
0088	465.0475 Asphalt Centerline Rumble Strips 2-Lane Rural	28,765.000 LF	_____.	_____.
0090	502.0100 Concrete Masonry Bridges	83.000 CY	_____.	_____.
0092	502.3200 Protective Surface Treatment	360.000 SY	_____.	_____.



Proposal Schedule of Items

Proposal ID: 20191210013 Project(s): 2310-14-70, 2310-17-70

Federal ID(s): WISC 2019739, WISC 2019740

SECTION: 0001 Contract Items

Alt Set ID: Alt Mbr ID:

Proposal Line Number	Item ID Description	Approximate Quantity and Units	Unit Price	Bid Amount
0094	502.3210 Pigmented Surface Sealer	74.000 SY	_____.	_____.
0096	502.4206 Adhesive Anchors No. 6 Bar	160.000 EACH	_____.	_____.
0098	505.0600 Bar Steel Reinforcement HS Coated Structures	22,700.000 LB	_____.	_____.
0100	509.0301 Preparation Decks Type 1	2.000 SY	_____.	_____.
0102	509.0302 Preparation Decks Type 2	2.000 SY	_____.	_____.
0104	509.0500 Cleaning Decks	354.000 SY	_____.	_____.
0106	509.1500 Concrete Surface Repair Special	5.000 SF	_____.	_____.
0108	509.2000 Full-Depth Deck Repair	1.000 SY	_____.	_____.
0110	509.2500 Concrete Masonry Overlay Decks	31.000 CY	_____.	_____.
0112	509.9010.S Removing Asphaltic Concrete Deck Overlay (structure) 01. B-66-92	354.000 SY	_____.	_____.
0114	516.0500 Rubberized Membrane Waterproofing	6.000 SY	_____.	_____.
0116	520.1012 Apron Endwalls for Culvert Pipe 12-Inch	4.000 EACH	_____.	_____.
0118	520.1015 Apron Endwalls for Culvert Pipe 15-Inch	3.000 EACH	_____.	_____.
0120	520.1018 Apron Endwalls for Culvert Pipe 18-Inch	27.000 EACH	_____.	_____.
0122	520.1024 Apron Endwalls for Culvert Pipe 24-Inch	4.000 EACH	_____.	_____.
0124	520.3312 Culvert Pipe Class III-A 12-Inch	76.000 LF	_____.	_____.



Proposal Schedule of Items

Proposal ID: 20191210013 Project(s): 2310-14-70, 2310-17-70

Federal ID(s): WISC 2019739, WISC 2019740

SECTION: 0001 Contract Items

Alt Set ID: Alt Mbr ID:

Proposal Line Number	Item ID Description	Approximate Quantity and Units	Unit Price	Bid Amount
0126	520.3315 Culvert Pipe Class III-A 15-Inch	76.000 LF	_____.	_____.
0128	520.3318 Culvert Pipe Class III-A 18-Inch	232.000 LF	_____.	_____.
0130	520.3324 Culvert Pipe Class III-A 24-Inch	138.000 LF	_____.	_____.
0132	520.3518 Culvert Pipe Class III-B 18-Inch	270.000 LF	_____.	_____.
0134	522.0118 Culvert Pipe Reinforced Concrete Class III 18-Inch	184.000 LF	_____.	_____.
0136	522.0124 Culvert Pipe Reinforced Concrete Class III 24-Inch	80.000 LF	_____.	_____.
0138	522.0130 Culvert Pipe Reinforced Concrete Class III 30-Inch	94.000 LF	_____.	_____.
0140	522.1012 Apron Endwalls for Culvert Pipe Reinforced Concrete 12-Inch	4.000 EACH	_____.	_____.
0142	522.1018 Apron Endwalls for Culvert Pipe Reinforced Concrete 18-Inch	7.000 EACH	_____.	_____.
0144	522.1024 Apron Endwalls for Culvert Pipe Reinforced Concrete 24-Inch	2.000 EACH	_____.	_____.
0146	522.1030 Apron Endwalls for Culvert Pipe Reinforced Concrete 30-Inch	2.000 EACH	_____.	_____.
0148	522.2319 Culvert Pipe Reinforced Concrete Horizontal Elliptical Class HE-III 19x30-Inch	96.000 LF	_____.	_____.
0150	522.2324 Culvert Pipe Reinforced Concrete Horizontal Elliptical Class HE-III 24x38-Inch	88.000 LF	_____.	_____.



Proposal Schedule of Items

Proposal ID: 20191210013 Project(s): 2310-14-70, 2310-17-70

Federal ID(s): WISC 2019739, WISC 2019740

SECTION: 0001 Contract Items

Alt Set ID: Alt Mbr ID:

Proposal Line Number	Item ID Description	Approximate Quantity and Units	Unit Price	Bid Amount
0152	522.2619 Apron Endwalls for Culvert Pipe Reinforced Concrete Horizontal Elliptical 19x30-Inch	2.000 EACH	_____.	_____.
0154	522.2624 Apron Endwalls for Culvert Pipe Reinforced Concrete Horizontal Elliptical 24x38-Inch	2.000 EACH	_____.	_____.
0156	522.2629 Apron Endwalls for Culvert Pipe Reinforced Concrete Horizontal Elliptical 29x45-Inch	2.000 EACH	_____.	_____.
0158	601.0405 Concrete Curb & Gutter 18-Inch Type A	245.000 LF	_____.	_____.
0160	601.0411 Concrete Curb & Gutter 30-Inch Type D	2,843.000 LF	_____.	_____.
0162	601.0553 Concrete Curb & Gutter 4-Inch Sloped 36-Inch Type D	3,219.000 LF	_____.	_____.
0164	601.0557 Concrete Curb & Gutter 6-Inch Sloped 36-Inch Type D	1,860.000 LF	_____.	_____.
0166	601.0582 Concrete Curb & Gutter 4-Inch Sloped 36-Inch Type T	335.000 LF	_____.	_____.
0168	601.0600 Concrete Curb Pedestrian	160.000 LF	_____.	_____.
0170	602.0405 Concrete Sidewalk 4-Inch	15,450.000 SF	_____.	_____.
0172	602.0505 Curb Ramp Detectable Warning Field Yellow	256.000 SF	_____.	_____.
0174	606.0200 Riprap Medium	179.000 CY	_____.	_____.
0176	606.0300 Riprap Heavy	30.000 CY	_____.	_____.
0178	608.0312 Storm Sewer Pipe Reinforced Concrete Class III 12-Inch	585.000 LF	_____.	_____.



Proposal Schedule of Items

Proposal ID: 20191210013 Project(s): 2310-14-70, 2310-17-70

Federal ID(s): WISC 2019739, WISC 2019740

SECTION: 0001 Contract Items

Alt Set ID: Alt Mbr ID:

Proposal Line Number	Item ID Description	Approximate Quantity and Units	Unit Price	Bid Amount
0180	608.0315 Storm Sewer Pipe Reinforced Concrete Class III 15-Inch	22.000 LF	_____.	_____.
0182	608.0318 Storm Sewer Pipe Reinforced Concrete Class III 18-Inch	120.000 LF	_____.	_____.
0184	608.2329 Storm Sewer Pipe Reinforced Concrete Horizontal Elliptical Class HE-III 29x45-Inch	178.000 LF	_____.	_____.
0186	608.3012 Storm Sewer Pipe Class III-A 12-Inch	240.000 LF	_____.	_____.
0188	608.3015 Storm Sewer Pipe Class III-A 15-Inch	201.000 LF	_____.	_____.
0190	608.3018 Storm Sewer Pipe Class III-A 18-Inch	20.000 LF	_____.	_____.
0192	611.0530 Manhole Covers Type J	2.000 EACH	_____.	_____.
0194	611.0624 Inlet Covers Type H	11.000 EACH	_____.	_____.
0196	611.0627 Inlet Covers Type HM	10.000 EACH	_____.	_____.
0198	611.0636 Inlet Covers Type HM-S	6.000 EACH	_____.	_____.
0200	611.0639 Inlet Covers Type H-S	8.000 EACH	_____.	_____.
0202	611.0652 Inlet Covers Type T	2.000 EACH	_____.	_____.
0204	611.2003 Manholes 3-FT Diameter	1.000 EACH	_____.	_____.
0206	611.2004 Manholes 4-FT Diameter	1.000 EACH	_____.	_____.
0208	611.2007 Manholes 7-FT Diameter	2.000 EACH	_____.	_____.



Proposal Schedule of Items

Proposal ID: 20191210013 Project(s): 2310-14-70, 2310-17-70

Federal ID(s): WISC 2019739, WISC 2019740

SECTION: 0001 Contract Items

Alt Set ID: Alt Mbr ID:

Proposal Line Number	Item ID Description	Approximate Quantity and Units	Unit Price	Bid Amount
0210	611.3004 Inlets 4-FT Diameter	6.000 EACH	_____.	_____.
0212	611.3230 Inlets 2x3-FT	29.000 EACH	_____.	_____.
0214	612.0106 Pipe Underdrain 6-Inch	195.000 LF	_____.	_____.
0216	612.0406 Pipe Underdrain Wrapped 6-Inch	5,716.000 LF	_____.	_____.
0218	612.0806 Apron Endwalls for Underdrain Reinforced Concrete 6-Inch	1.000 EACH	_____.	_____.
0220	614.0115 Anchorages for Steel Plate Beam Guard Type 2	1.000 EACH	_____.	_____.
0222	614.0150 Anchor Assemblies for Steel Plate Beam Guard	4.000 EACH	_____.	_____.
0224	614.0305 Steel Plate Beam Guard Class A	276.000 LF	_____.	_____.
0226	614.0340 Steel Plate Beam Guard Over Low-Fill Culverts Class A	100.000 LF	_____.	_____.
0228	614.0345 Steel Plate Beam Guard Short Radius	126.000 LF	_____.	_____.
0230	614.0370 Steel Plate Beam Guard Energy Absorbing Terminal	3.000 EACH	_____.	_____.
0232	614.0390 Steel Plate Beam Guard Short Radius Terminal	5.000 EACH	_____.	_____.
0234	614.0395 Guardrail Mow Strip Concrete	51.000 SY	_____.	_____.
0236	614.2300 MGS Guardrail 3	714.000 LF	_____.	_____.
0238	614.2330 MGS Guardrail 3 K	363.000 LF	_____.	_____.



Proposal Schedule of Items

Proposal ID: 20191210013 Project(s): 2310-14-70, 2310-17-70

Federal ID(s): WISC 2019739, WISC 2019740

SECTION: 0001 Contract Items

Alt Set ID: Alt Mbr ID:

Proposal Line Number	Item ID Description	Approximate Quantity and Units	Unit Price	Bid Amount
0240	614.2340 MGS Guardrail 3 L	339.000 LF	_____.	_____.
0242	614.2500 MGS Thrie Beam Transition	118.000 LF	_____.	_____.
0244	614.2610 MGS Guardrail Terminal EAT	9.000 EACH	_____.	_____.
0246	618.0100 Maintenance And Repair of Haul Roads (project) 02. 2310-17-70	1.000 EACH	_____.	_____.
0248	619.1000 Mobilization	1.000 EACH	_____.	_____.
0250	620.0300 Concrete Median Sloped Nose	500.000 SF	_____.	_____.
0252	623.0200 Dust Control Surface Treatment	22,300.000 SY	_____.	_____.
0254	624.0100 Water	612.000 MGAL	_____.	_____.
0256	625.0500 Salvaged Topsoil	50,946.000 SY	_____.	_____.
0258	627.0200 Mulching	17,419.000 SY	_____.	_____.
0260	628.1104 Erosion Bales	100.000 EACH	_____.	_____.
0262	628.1504 Silt Fence	19,210.000 LF	_____.	_____.
0264	628.1520 Silt Fence Maintenance	19,210.000 LF	_____.	_____.
0266	628.1905 Mobilizations Erosion Control	26.000 EACH	_____.	_____.
0268	628.1910 Mobilizations Emergency Erosion Control	8.000 EACH	_____.	_____.
0270	628.2004 Erosion Mat Class I Type B	30,054.000 SY	_____.	_____.



Proposal Schedule of Items

Proposal ID: 20191210013 Project(s): 2310-14-70, 2310-17-70

Federal ID(s): WISC 2019739, WISC 2019740

SECTION: 0001 Contract Items

Alt Set ID: Alt Mbr ID:

Proposal Line Number	Item ID Description	Approximate Quantity and Units	Unit Price	Bid Amount
0272	628.2006 Erosion Mat Urban Class I Type A	3,760.000 SY	_____.	_____.
0274	628.2008 Erosion Mat Urban Class I Type B	2,238.000 SY	_____.	_____.
0276	628.7005 Inlet Protection Type A	34.000 EACH	_____.	_____.
0278	628.7010 Inlet Protection Type B	2.000 EACH	_____.	_____.
0280	628.7015 Inlet Protection Type C	22.000 EACH	_____.	_____.
0282	628.7020 Inlet Protection Type D	18.000 EACH	_____.	_____.
0284	628.7504 Temporary Ditch Checks	1,825.000 LF	_____.	_____.
0286	628.7555 Culvert Pipe Checks	516.000 EACH	_____.	_____.
0288	628.7560 Tracking Pads	8.000 EACH	_____.	_____.
0290	628.7570 Rock Bags	140.000 EACH	_____.	_____.
0292	629.0210 Fertilizer Type B	29.800 CWT	_____.	_____.
0294	630.0130 Seeding Mixture No. 30	1,046.000 LB	_____.	_____.
0296	630.0200 Seeding Temporary	961.000 LB	_____.	_____.
0298	630.0500 Seed Water	1,290.000 MGAL	_____.	_____.
0300	633.5200 Markers Culvert End	31.000 EACH	_____.	_____.
0302	634.0618 Posts Wood 4x6-Inch X 18-FT	103.000 EACH	_____.	_____.
0304	634.0814 Posts Tubular Steel 2x2-Inch X 14-FT	85.000 EACH	_____.	_____.



Proposal Schedule of Items

Proposal ID: 20191210013 Project(s): 2310-14-70, 2310-17-70

Federal ID(s): WISC 2019739, WISC 2019740

SECTION: 0001 Contract Items

Alt Set ID: Alt Mbr ID:

Proposal Line Number	Item ID Description	Approximate Quantity and Units	Unit Price	Bid Amount
0306	635.0200 Sign Supports Structural Steel HS	2,400.000 LB	_____.	_____.
0308	636.0100 Sign Supports Concrete Masonry	4.800 CY	_____.	_____.
0310	636.0500 Sign Supports Steel Reinforcement	272.000 LB	_____.	_____.
0312	637.1220 Signs Type I Reflective SH	144.000 SF	_____.	_____.
0314	637.2210 Signs Type II Reflective H	1,120.030 SF	_____.	_____.
0316	637.2230 Signs Type II Reflective F	380.410 SF	_____.	_____.
0318	637.2235 Signs Type II Reflective F Folding	18.750 SF	_____.	_____.
0320	638.2102 Moving Signs Type II	7.000 EACH	_____.	_____.
0322	638.2602 Removing Signs Type II	115.000 EACH	_____.	_____.
0324	638.3000 Removing Small Sign Supports	138.000 EACH	_____.	_____.
0326	642.5401 Field Office Type D	1.000 EACH	_____.	_____.
0328	643.0300 Traffic Control Drums	10,800.000 DAY	_____.	_____.
0330	643.0420 Traffic Control Barricades Type III	33,600.000 DAY	_____.	_____.
0332	643.0705 Traffic Control Warning Lights Type A	64,800.000 DAY	_____.	_____.
0334	643.0715 Traffic Control Warning Lights Type C	1,350.000 DAY	_____.	_____.
0336	643.0900 Traffic Control Signs	61,749.000 DAY	_____.	_____.
0338	643.0920 Traffic Control Covering Signs Type II	20.000 EACH	_____.	_____.



Proposal Schedule of Items

Proposal ID: 20191210013 Project(s): 2310-14-70, 2310-17-70

Federal ID(s): WISC 2019739, WISC 2019740

SECTION: 0001 Contract Items

Alt Set ID: Alt Mbr ID:

Proposal Line Number	Item ID Description	Approximate Quantity and Units	Unit Price	Bid Amount
0340	643.1000 Traffic Control Signs Fixed Message	105.000 SF	_____.	_____.
0342	643.1050 Traffic Control Signs PCMS	60.000 DAY	_____.	_____.
0344	643.5000 Traffic Control	1.000 EACH	_____.	_____.
0346	645.0111 Geotextile Type DF Schedule A	109.000 SY	_____.	_____.
0348	645.0120 Geotextile Type HR	292.000 SY	_____.	_____.
0350	645.0130 Geotextile Type R	379.000 SY	_____.	_____.
0352	646.1020 Marking Line Epoxy 4-Inch	49,628.000 LF	_____.	_____.
0354	646.1040 Marking Line Grooved Wet Ref Epoxy 4-Inch	64,678.000 LF	_____.	_____.
0356	646.3020 Marking Line Epoxy 8-Inch	3,530.000 LF	_____.	_____.
0358	646.5020 Marking Arrow Epoxy	8.000 EACH	_____.	_____.
0360	646.5120 Marking Word Epoxy	8.000 EACH	_____.	_____.
0362	646.6120 Marking Stop Line Epoxy 18-Inch	420.000 LF	_____.	_____.
0364	646.6320 Marking Dotted Extension Epoxy 18-Inch	100.000 LF	_____.	_____.
0366	646.7120 Marking Diagonal Epoxy 12-Inch	400.000 LF	_____.	_____.
0368	646.8120 Marking Curb Epoxy	260.000 LF	_____.	_____.
0370	646.8220 Marking Island Nose Epoxy	5.000 EACH	_____.	_____.



Proposal Schedule of Items

Proposal ID: 20191210013 Project(s): 2310-14-70, 2310-17-70

Federal ID(s): WISC 2019739, WISC 2019740

SECTION: 0001 Contract Items

Alt Set ID: Alt Mbr ID:

Proposal Line Number	Item ID Description	Approximate Quantity and Units	Unit Price	Bid Amount
0372	648.0100 Locating No-Passing Zones	6.430 MI	_____.	_____.
0374	650.4000 Construction Staking Storm Sewer	52.000 EACH	_____.	_____.
0376	650.4500 Construction Staking Subgrade	16,569.000 LF	_____.	_____.
0378	650.5000 Construction Staking Base	16,569.000 LF	_____.	_____.
0380	650.5500 Construction Staking Curb Gutter and Curb & Gutter	9,040.000 LF	_____.	_____.
0382	650.6000 Construction Staking Pipe Culverts	23.000 EACH	_____.	_____.
0384	650.6500 Construction Staking Structure Layout (structure) 01. B-66-0092	LS	LUMP SUM	_____.
0386	650.8000 Construction Staking Resurfacing Reference	34,627.000 LF	_____.	_____.
0388	650.8500 Construction Staking Electrical Installations (project) 01. 2310-14-70	LS	LUMP SUM	_____.
0390	650.9000 Construction Staking Curb Ramps	16.000 EACH	_____.	_____.
0392	650.9910 Construction Staking Supplemental Control (project) 01. 2310-14-70	LS	LUMP SUM	_____.
0394	650.9910 Construction Staking Supplemental Control (project) 02. 2310-17-70	LS	LUMP SUM	_____.
0396	650.9920 Construction Staking Slope Stakes	17,682.000 LF	_____.	_____.
0398	652.0225 Conduit Rigid Nonmetallic Schedule 40 2-Inch	1,885.000 LF	_____.	_____.
0400	652.0235 Conduit Rigid Nonmetallic Schedule 40 3-Inch	285.000 LF	_____.	_____.



Proposal Schedule of Items

Proposal ID: 20191210013 Project(s): 2310-14-70, 2310-17-70

Federal ID(s): WISC 2019739, WISC 2019740

SECTION: 0001 Contract Items

Alt Set ID: Alt Mbr ID:

Proposal Line Number	Item ID Description	Approximate Quantity and Units	Unit Price	Bid Amount
0402	653.0140 Pull Boxes Steel 24x42-Inch	6.000 EACH	_____.	_____.
0404	654.0105 Concrete Bases Type 5	16.000 EACH	_____.	_____.
0406	654.0230 Concrete Control Cabinet Bases Type L30	1.000 EACH	_____.	_____.
0408	655.0610 Electrical Wire Lighting 12 AWG	2,520.000 LF	_____.	_____.
0410	655.0615 Electrical Wire Lighting 10 AWG	140.000 LF	_____.	_____.
0412	655.0620 Electrical Wire Lighting 8 AWG	8,705.000 LF	_____.	_____.
0414	655.0640 Electrical Wire Lighting 1 AWG	18.000 LF	_____.	_____.
0416	656.0200 Electrical Service Meter Breaker Pedestal (location) 01. 2310-14-70	LS	LUMP SUM	_____.
0418	657.0255 Transformer Bases Breakaway 11 1/2-Inch Bolt Circle	16.000 EACH	_____.	_____.
0420	657.0322 Poles Type 5-Aluminum	16.000 EACH	_____.	_____.
0422	657.0610 Luminaire Arms Single Member 4 1/2-Inch Clamp 6-FT	6.000 EACH	_____.	_____.
0424	657.0715 Luminaire Arms Truss Type 4 1/2-Inch Clamp 15-FT	10.000 EACH	_____.	_____.
0426	659.1115 Luminaires Utility LED A	16.000 EACH	_____.	_____.
0428	659.2130 Lighting Control Cabinets 120/240 30-Inch	1.000 EACH	_____.	_____.
0430	690.0150 Sawing Asphalt	16,893.000 LF	_____.	_____.



Proposal Schedule of Items

Proposal ID: 20191210013 Project(s): 2310-14-70, 2310-17-70

Federal ID(s): WISC 2019739, WISC 2019740

SECTION: 0001 Contract Items

Alt Set ID: Alt Mbr ID:

Proposal Line Number	Item ID Description	Approximate Quantity and Units	Unit Price	Bid Amount
0432	690.0250 Sawing Concrete	14.000 LF		
0434	715.0415 Incentive Strength Concrete Pavement	500.000 DOL	1.00000	500.00
0436	715.0502 Incentive Strength Concrete Structures	684.000 DOL	1.00000	684.00
0438	740.0440 Incentive IRI Ride	25,130.000 DOL	1.00000	25,130.00
0440	ASP.1T0A On-the-Job Training Apprentice at \$5.00/HR	2,200.000 HRS	5.00000	11,000.00
0442	ASP.1T0G On-the-Job Training Graduate at \$5.00/HR	3,100.000 HRS	5.00000	15,500.00
0444	SPV.0060 Special 01. Section Corner Monuments	13.000 EACH		
0446	SPV.0090 Special 01. Steel Thrie Beam Structure Approach Curved	21.000 LF		
0448	SPV.0090 Special 02. Concrete Curb & Gutter 4-Inch Sloped 36-Inch Type D Modified	216.000 LF		
0450	SPV.0090 Special 03. Double Staked Silt Fence	1,200.000 LF		
0452	SPV.0105 Special 01. Lighting System Integrator	LS	LUMP SUM	
0454	SPV.0105 Special 02. Lighting System Survey	LS	LUMP SUM	
0456	SPV.0105 Special 03. Removing Traffic Signals CTH Y	LS	LUMP SUM	
0458	465.0105 Asphaltic Surface	83.000 TON		
0460	628.2027 Erosion Mat Class II Type C	249.000 SY		
Section: 0001			Total:	

Total Bid: _____.

