



# Wisconsin Department of Transportation

## Division of Transportation Systems Development

Bureau of Project Development  
4822 Madison Yards Way, 4<sup>th</sup> Floor South  
Madison, WI 53705

December 4, 2019

Telephone: (608) 266-1631  
Facsimile (FAX): (608) 266-8459

### NOTICE TO ALL CONTRACTORS:

**Proposal #17: 1500-37-76, WISC 2019 743**  
**Waldo Blvd, City of Manitowoc**  
**Fleetwood Drive – 14<sup>th</sup> Street**  
**USH 10**  
**Manitowoc County**

**1500-37-77**  
**Waldo Blvd, City of Manitowoc**  
**Fleetwood Drive – 14<sup>th</sup> Street**  
**USH 10**  
**Manitowoc County**

**1500-47-71, WISC 2018 471**  
**Waldo Blvd, City of Manitowoc**  
**CTH R – Fleetwood Drive**  
**USH 10**  
**Manitowoc County**

### Letting of December 10, 2019

This is Addendum No. 01, which provides for the following:

#### Special Provisions:

Revised Special Provisions	
Article No.	Description
4	Traffic (Updated staging info for substage 2A)
6	Utilities (Updated coordination)
73	Optimized Aggregate Gradation Incentive, Item 715.0710 (Updated entire article)
79	Imported Water Main Trench Backfill, Item SPV.0035.40 (Updated materials section and measurement section)
80	Imported Sanitary Sewer Trench Backfill, Item SPV.0035.50 (Updated materials section and measurement section)
102	Connect to Existing Water Main, Item SPV.0060.47 (Updated payment)
107	Reconnect Sanitary Sewer Lateral, Item SPV.0060.53 (Updated materials)
116	Install Water Main 6-Inch, Item SPV.0090.40; Install Water Main 8-Inch, Item SPV.0090.41; Install Water Main 10-Inch, Item SPV.0090.42; Install Water Main 12-Inch, Item SPV.0090.43; Install Water Main 24-Inch, Item SPV.0090.44 (Updated materials)

<b>Added Special Provisions</b>	
Article No.	Description
141	Install Type 13 Pole with 35' Monotube Arm, SPV.0060.30
142	Notice Contractor, Railroad Overhead Lines

**Schedule of Items:**

<b>Revised Bid Item Quantities</b>					
Bid Item	Item Description	Unit	Old Quantity	Revised Quantity	Proposal Total
643.0900	Traffic Control Signs	Each	110,874	6,420	117,294
643.0920	Traffic Control Covering Signs Type II	Each	18	1	19
643.1050	Traffic Control Signs PMCS	Each	168	-7	161
655.0610	Electrical Wire Lighting 12 AWG	LF	8,334	432	8,766
655.0620	Electrical Wire Lighting 8 AWG	LF	2,709	615	3,324
SPV.0060.26	Luminaire LED	Each	40	1	41
SPV.0090.53	Furnishing and Relaying Sanitary Sewer Pipe 12-Inch, Item SPV.0090.53	LF	1,904	-85	1,819

<b>Added Bid Item Quantities</b>					
Bid Item	Item Description	Unit	Old Quantity	Revised Quantity	Proposal Total
SPV.0060.30	Install Type 13 Pole with 35-FT Monotube Arm	Each	0	1	1

<b>Deleted Bid Item Quantities</b>					
Bid Item	Item Description	Unit	Old Quantity	Revised Quantity	Proposal Total
657.0355	Poles Type 12	Each	1	-1	0
657.0535	Monotube Arms 35-FT	Each	1	-1	0

**Plan Sheets:**

<b>Revised Plan Sheets</b>	
Plan Sheet	Plan Sheet Title (brief description of changes to sheet)
125	Traffic Signals (Added Luminaire to SB8 with WisDOT provided pole)
151	Detour Signing (Modified project location and covering signs)
220-221	Miscellaneous Quantities (Updated signs, PCMS, and covering signs)
225	Miscellaneous Quantities (Updated signs, PCMS, and covering signs)
237	Miscellaneous Quantities (Removed Pole Type 12 and 35' monotube arm. Added Install Type 13 Pole with 35' arm for SB8. Added Luminaire for SB8)
239	Miscellaneous Quantities (Updated lighting wire quantities for new luminaire for SB8)
245	Miscellaneous Quantities (Updated Furnish & Relay Sanitary Sewer Pipe 12")
274	Sanitary Sewer and Water Main (Sanitary line work was completed in fall of 2019 that reduced mount to be installed between manholes 22 & 23)
275	Sanitary Sewer and Water Main (Sanitary line work was completed in fall of 2019 that reduced mount to be installed between manholes 22 & 23)

<b>Added Plan Sheets</b>	
Plan Sheet	Plan Sheet Title (brief description of why sheet was added)
225A	Miscellaneous Quantities (Updated signs, PCMS, and covering signs)

The responsibility for notifying potential subcontractors and suppliers of these changes remains with the prime contractor.

Sincerely,

*Mike Coleman*

Proposal Development Specialist  
Proposal Management Section

**ADDENDUM NO. 01**  
**1500-37-76, 1500-37-77, 1500-47-71**  
**December 4, 2019**

**Special Provisions**

**4. Traffic**

*Under section **Construction Staging, Stage 2 – CTH R to Fleetwood Drive, Substage 2A** replace the entire section with the following:*

Complete work within the Waldo Blvd/CTH R intersection under single lane closures using standard detail drawings for traffic control. Maintain through traffic in all directions.

**6. Utilities**

*Under section **Project 1500-37-76, Manitowoc Public Utilities (communication line)** replace the third paragraph with the following:*

Manitowoc Public Utilities has an overhead fiber optic cable mounted below the electric facilities near B-36-232. The fiber optic cable will remain active and in its current location throughout construction.

*Under section **Project 1500-37-76, Manitowoc Public Utilities (electricity)** add the following:*

Manitowoc Public Utilities will remove power pole at 70+35 LT. Temporary poles will be installed at a maximum spacing of 150 feet over structure B-36-232. Coordinate with Manitowoc Public Utilities proposed excavation limits to ensure correct 150 foot spacing is provided. Supply this information at least two months before needing this work completed.

**73. Optimized Aggregate Gradation Incentive, Item 715.0710.**

*Replace the entire article with the following:*

**Description**

This special provision describes optional contractor optimized aggregate gradation, optional optimized mixture designs, and associated additional requirements for class 1 concrete used in concrete pavements. Conform to standard specification part 7 and as follows:

**Optimized Aggregate Gradation**

*Replace standard spec 715.2.2 with the following:*

A Job Mix Formula (JMF) contains all of the following:

- Proportions for each aggregate fraction conforming to table 1.
- Individual gradations for each aggregate fraction.
- Composite gradation of the combined aggregates including working ranges on each sieve in accordance with table 2.

Submit the target JMF and aggregate production gradation test results to the engineer for review 10 business days before initial concrete placement.

**TABLE 1 TARANTULA CURVE GRADATION BAND**

SIEVE SIZES	PERCENT RETAINED
2 in.	0
1 1/2 in.	≤5
1 in.	≤16
3/4 in.	≤20
1/2 in.	4-20
3/8 in.	4-20
No. 4	4-20
No. 8 <sup>[1]</sup>	≤12
No. 16 <sup>[1]</sup>	≤12
No. 30 <sup>[1] [2]</sup>	4-20
No. 50 <sup>[2]</sup>	4-20
No. 100 <sup>[2]</sup>	≤10
No. 200 <sup>[2]</sup>	≤2.3

<sup>[1]</sup> Minimum of 15% retained on the sum of the #8, #16, and #30 sieves.

<sup>[2]</sup> Conform to 24-34% retained of fine sand on the #30-200 sieves.

**TABLE 2 JMF WORKING RANGE**

SIEVE SIZES	WORKING RANGE <sup>[1]</sup> (PERCENT)
2 in.	+/- 5
1 1/2 in.	+/- 5
1 in.	+/- 5
3/4 in.	+/- 5
1/2 in.	+/- 5
3/8 in.	+/- 5
No. 4	+/- 5
No. 8	+/- 4
No. 16	+/- 4
No. 30	+/- 4
No. 50	+/- 3
No. 100	+/- 2
No. 200	≤ 2.3

<sup>[1]</sup> Working range limits of composite gradation based on moving average of 4 tests.

*Replace standard spec 710.5.6 with the following:*

Determine the complete gradation, including P200, using a washed analysis for both fine and coarse aggregates. Test each stockpile for each component aggregate once per 1,500 cubic yards during concrete production.

Take samples by one of the following sampling methods:

1. At the belt leading to the weigh hopper.
2. Working face of the stock piles at the concrete plant if approved by the engineer.

The department will take independent QV samples using the same sampling method the contractor uses for QC sampling. QV samples may be taken by the contractor's QC personnel if witnessed by the department's QV personnel. The department will split each QV sample and retain half for all dispute resolutions. If QV test results conform to the specification, the department will take no further action. If QV test results are nonconforming, add the QV to the QC test results as if it were an additional QC test.

If, during concrete production, the moving average of four for any sieve fall outside the allowable JMF working range do the following:

1. Notify the engineer of the test results within 1 business day from the time of sampling.
2. Make immediate adjustments to the JMF, within the limits specified in Table 3;
3. Review JMF adjustments with the engineer. Both the contractor and engineer will sign the adjusted JMF if the adjustments comply with Table 3.
4. If the moving average of four falls outside the adjusted allowable working range, stop production and provide a new mix design including JMF to the engineer.

**TABLE 3 ALLOWABLE JMF ADJUSTMENTS**

SIEVE SIZES	ALLOWABLE ADJUSTMENT (PERCENT)
>= No. 4	+/- 5
No. 8 – No. 30	+/- 4
No. 50	+/- 3
No. 100	+/- 2

### **Dispute Resolution**

The department will resolve disputes as specified in standard spec 106.3.4.3.5 using QV split samples.

### **Sublot and Lot Size**

A sublot consists of up to 1,500 cubic yards. A lot consists of two sublots.

### **Optimized Concrete Mixtures**

The contractor may use a reduced cementitious content for concrete pavement placed if the contractor does the following:

1. Use an optimized aggregate gradation as defined in this special provision.
2. Conform to the additional testing requirements for flexural strength as specified in the contract special provisions.
3. Submit aggregate gradation result records no more than 2 years old when developing the mix design.
4. Determine the volume of voids in the optimized aggregates using ASTM C29.
5. Download and follow the instructions tab of the Optimized Gradation and Mix Design Spreadsheet located at:  
<https://wisconsin.gov/Pages/doing-bus/eng-consultants/cnslt-rsrcs/qmp/default.aspx>
6. Design an appropriate paste content based upon the Performance-based PCC Mix Design Guide located at:

<https://wisconsindot.gov/Pages/doing-bus/eng-consultants/cnslt-rsrcs/qmp/default.aspx>

7. Provide a minimum  $V_{paste}/V_{voids}$  of 1.25. (Paste/Void ratio equals the volume of paste divided by the volume of voids.)
8. Evaluate workability of trial batches by following section 6.8 of AASHTO Draft Performance Engineered Concrete Pavement Mixtures Specifications located at:  
<https://wisconsindot.gov/Pages/doing-bus/eng-consultants/cnslt-rsrcs/qmp/default.aspx>
9. Submit trial batch workability results when submitting the mix design.
10. Submit the CP Tech center computer spreadsheet concrete mix design to the engineer for review at least 3 business days before producing concrete.
11. Provide a minimum cement content of 520 pounds per cubic yard, except if using type I, II, or III cement in a mix where the geologic composition of the coarse aggregate is primarily igneous or metamorphic materials, provide a minimum cement content of 660 pounds per cubic yard.
12. The contractor may use class C fly ash or grade 100 or 120 slag as a partial replacement for cement. For binary mixes use up to 30% fly ash or slag. For ternary mixes use up to 30% fly ash plus slag in combination. Replacement values are in percent by weight of the total cementitious material in the mix.
13. See CMM 8-70.2.2.3 for additional guidance.

### Measurement

The department will measure Optimized Aggregate Gradation Incentive by the dollar, for each combined averaged lot of QC test results meeting Table 1.

### Payment

The department will pay incentive of 3 percent of the contract unit price for concrete pavement under the following bid item:

ITEM NUMBER	DESCRIPTION	UNIT
715.0710	Optimized Aggregate Gradation Incentive	DOL
stp-715-005 (20191121)		

### 79. Imported Water Main Trench Backfill, Item SPV. 0035.40.

*Under section B Materials replace the entire section with the following:*

Any excavated material from the sewer trenches that are considered unsuitable by the engineer, will be removed from the site by the contractor. The contractor will replace this unsuitable material with either imported granular backfill material conforming to the gradation requirements found in Standard Specifications for Sewer and Water Construction in Wisconsin, Sixth Edition Section 8.43.4 or pit run material conforming to the gradation requirements found in standard spec 313, EXCEPT that the maximum size of individual stone pieces will not exceed 6 inches, or Imported granular backfill material conforming to standard spec 608.2.2.3. If the excavated material from the sewer trenches is suitable material, the contractor can use this at no pay.

*Under section D Measurement replace the entire section with the following:*

The department will measure Imported Water Main Trench Backfill, by the cubic yard, acceptably completed in place. The calculation of the trench width for a given size pipe will be established using the trench dimension guidelines found in the "Standard Specifications for Sewer and Water Construction in Wisconsin" and then converted to volume based on start and end station of material use.

**80. Imported Sanitary Sewer Trench Backfill, Item SPV. 0035.50.**

*Under section B Materials replace the entire section with the following:*

Any excavated material from the sewer trenches that are considered unsuitable by the engineer, will be removed from the site by the contractor. The contractor will replace this unsuitable material with either imported granular backfill material conforming to the gradation requirements found in Standard Specifications for Sewer and Water Construction in Wisconsin, Sixth Edition Section 8.43.4 or pit run material conforming to the gradation requirements found in standard spec 313, EXCEPT that the maximum size of individual stone pieces will not exceed 6 inches, or Imported granular backfill material conforming to standard spec 608.2.2.3. If the excavated material from the sewer trenches is suitable material, the contractor can use this at no pay.

*Under section D Measurement replace the entire section with the following:*

The department will measure Imported Water Main Trench Backfill, by the cubic yard, acceptably completed in place. The calculation of the trench width for a given size pipe will be established using the trench dimension guidelines found in the "Standard Specifications for Sewer and Water Construction in Wisconsin" and then converted to volume based on start and end station of material use.

**102. Connect to Existing Water Main, Item SPV.0060.47.**

*Under section E Payment replace the last paragraph with the following:*

Payment is full compensation for the connection of new water main to existing water main including all fittings required, except ductile iron fittings which will be provided Manitowoc Public Utilities (MPU); all excavating, dewatering, and exposing existing water main; coordination with local water utility; notifications to affected properties; and backfilling excavation.

**107. Reconnect Sanitary Sewer Lateral, Item SPV.0060.53.**

*Under section B Materials replace the entire section with the following:*

Provide flexible connectors, elbows, bends or reducers with stainless steel band seals complying with ASTM C923 for all connecting pipes. Sanitary sewer laterals will be 6-inch diameter, Schedule 40, polyvinyl chloride pipe conforming to the requirements of ASTM D1785.

**116. Install Water Main 6-Inch, Item SPV.0090.40; Install Water Main 8-Inch, Item SPV.0090.41; Install Water Main 10-Inch, Item SPV.0090.42; Install Water Main 12-Inch, Item SPV.0090.43; Install Water Main 24-Inch, Item SPV.0090.44.**

*Under section B Materials replace the entire section with the following:*

Provide bedding conforming to standard spec 209.2.

**141. Install Type 13 Pole with 35-FT Monotube Arm, SPV.0060.30.**

**A Description**

This section describes installing department-furnished components for traffic signals.



## **B Materials**

The department will furnish the following as specified in the contract special provisions:

- Type 13 pole and associated mounting hardware, hand hole cover, and pole cap.
- Monotube arm.

Pole and arm is stored at 2655 S 35th St, in the city of Manitowoc for pickup.

## **C Construction**

### **C.1 Installation**

Install the department-furnished components indicated in the bid item names. Also provide high-strength bolts and DTIs, fittings, either aluminum or galvanized steel shims, hardware, and other components the department does not furnish but that are required to complete the installation as the plans show.

Install a grounding lug either inside the base or pole as required to connect equipment grounding conductors.

### **C.2 Poles**

Clean pole before installation.

Secure type 13 structure to anchor assemblies conforming to the procedures enumerated in department form DT2321. Complete department form DT2321 for structure. Indicate the parties responsible for the installation and submit the form to the engineer for inclusion in the permanent project record.

After completing erection using normal pole shaft raking techniques, ensure that the centerline of the shaft is vertical.

Install identification plaques as the plans show.

### **C.3 Arms**

Install monotube arms to supporting structures at the height and alignment the plans show. Clamp luminaire arms to the pole and rake so the initial level of the luminaire tenon is plus 3 degrees.

Install traffic signal heads within 5 days after monotube arms are erected to control vibration. Contact the bureau of structures if signal heads cannot be installed within those 5 days.

### **C.4 High-Strength Bolts for Monotube Arms**

#### **C.4.1 Handling and Storage**

Store bolts/nut/washer assemblies and DTIs in closed containers in a protected shelter to protect them from dirt and moisture until used. Maintain fastener system components as nearly as possible in the as-manufactured condition until installed. Remove from storage only as needed and promptly return unused components to storage.

#### **C.4.2 Pre-installation Testing**

Notify the engineer before performing the required field pre-installation testing.

Lubricate high-strength bolt threads with a wax-based lubricant before testing. Test bolt/nut/washer assemblies with DTIs in all the configurations used for installation.

Perform pre-installation testing in the field conforming to the procedures enumerated in department form DT2322 for each bolt/nut/washer/DTI size and configuration installed. Provide the engineer with

the test results by submitting 2 copies of department form DT2322.

#### **C.4.3 Bolt Installation**

Do not begin bolt installation without the engineer's approval.

Lubricate high-strength bolt threads with a wax-based lubricant before installation.

Tension high-strength bolts using DTIs. Install the DTI on the bolt with the protrusions facing away from the connected materials. Install bolt/nut/washer assemblies with DTIs in the same configuration used for pre-installation testing.

Tighten conforming to department form DT2322 to provide the correct installation tension. During the operation, ensure no rotation of the part not turned by the wrench. Snug systematically from the most rigid part of the connection to the free edges. Repeat until the full connection is in a snug condition and the faying surfaces are in firm contact. Systematically tighten the connection required number of refusals is achieved. If the gaps on the DTI are completely closed, discontinue tightening.

Perform QC testing as specified in 506.3.12.3.3.3 for tensioning with DTIs. The engineer may verify bolt installation by periodically testing with a feeler gauge.

#### **D Measurement**

The department will measure Install Type 13 Pole with 35- FT Monotube Arm by the each, acceptably completed.

#### **E Payment**

The department will pay for measured quantities at the contract unit price under the following bid item:

ITEM NUMBER	DESCRIPTION	UNIT
SPV.0060.30	Install Type 13 Pole with 35-FT Monotube Arm	Each

Payment is full compensation for picking up from storage; installing department-furnished poles and for providing grounding lugs, fittings, shims, hardware, and other required components the department does not furnish; is full compensation for picking up from storage; installing department-furnished arms; for providing high-strength bolt/nut/washer assemblies and DTIs including those required for testing; and for providing related mounting hardware, leveling shims, and other required components the department does not furnish.

The department will pay separately for concrete foundations under 654.

#### **142. Notice Contractor, Railroad Overhead Lines.**

The existing overhead lines parallel to the railroad tracks and under structure B-36-029 are inactive. Follow standard spec 107.17.2.2.

#### **Schedule of Items**

Attached, dated December 4, 2019, are the revised Schedule of Items Pages 1 - 24.

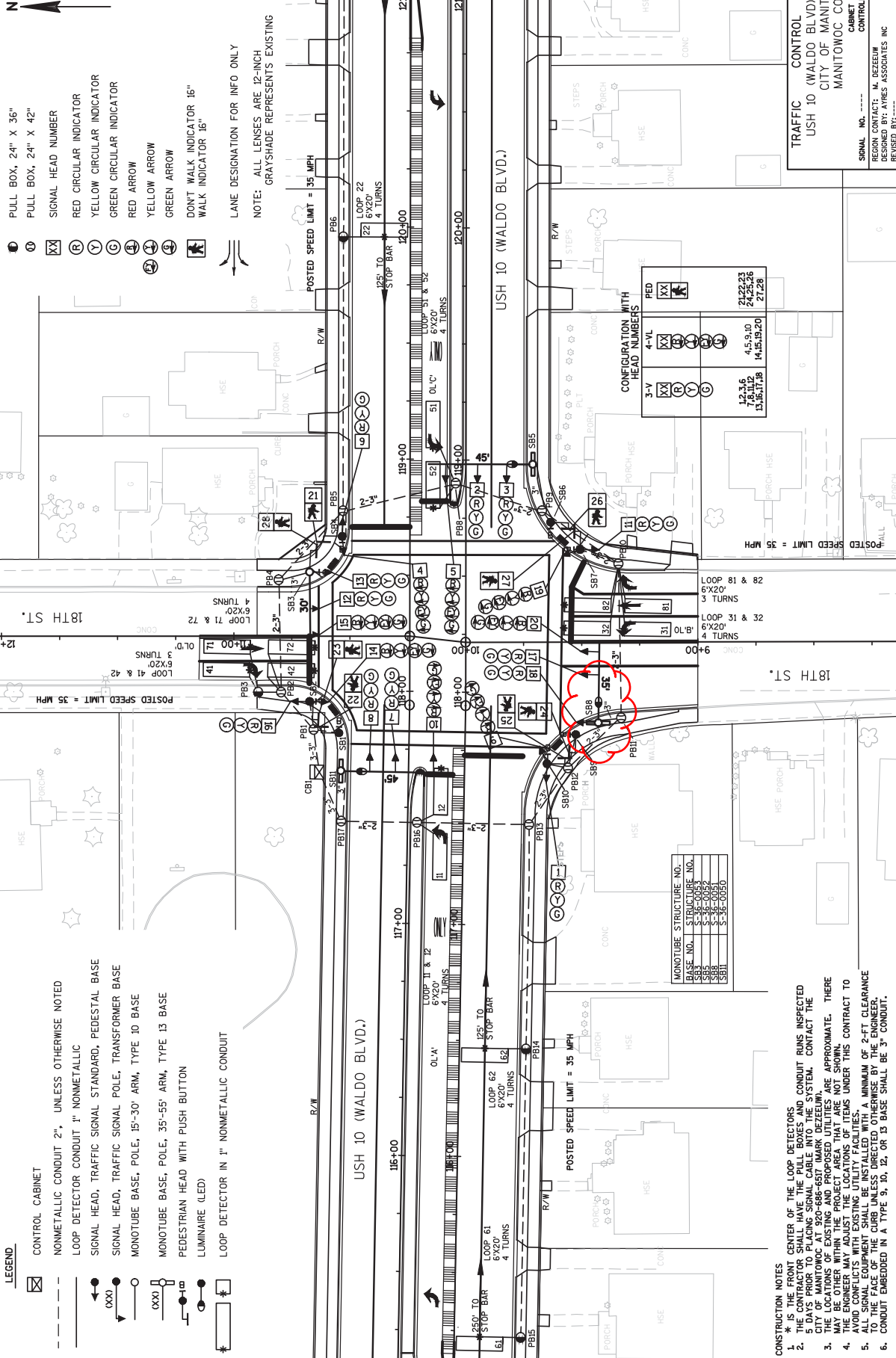
#### **Plan Sheets**

The following 8½ x 11-inch sheets are attached and made part of the plans for this proposal:

Revised: 125, 237, 239, 245, 274, and 275.

Added: 225A

END OF ADDENDUM



- LEGEND**
- ☒ CONTROL CABINET
  - NONMETALLIC CONDUIT 2", UNLESS OTHERWISE NOTED
  - - - LOOP DETECTOR CONDUIT 1" NONMETALLIC
  - ⬆ SIGNAL HEAD, TRAFFIC SIGNAL STANDARD, PEDESTAL BASE
  - ⬆(XX) SIGNAL HEAD, TRAFFIC SIGNAL POLE, TRANSFORMER BASE
  - MONOTUBE BASE, POLE, 15'-30' ARM, TYPE 10 BASE
  - (XX) MONOTUBE BASE, POLE, 35'-55' ARM, TYPE 13 BASE
  - ⬆(XX) PEDESTRIAN HEAD WITH PUSH BUTTON
  - ⬆(XX) LUMINAIRE (LED)
  - ⬆(XX) LOOP DETECTOR IN 1" NONMETALLIC CONDUIT

- ⊙ PULL BOX, 24" X 36"
- ⊙ PULL BOX, 24" X 42"
- ⊙ SIGNAL HEAD NUMBER
- ⊙ RED CIRCULAR INDICATOR
- ⊙ YELLOW CIRCULAR INDICATOR
- ⊙ GREEN CIRCULAR INDICATOR
- ⊙ RED ARROW
- ⊙ YELLOW ARROW
- ⊙ GREEN ARROW
- ⊙ DON'T WALK INDICATOR 16"
- ⊙ WALK INDICATOR 16"

LANE DESIGNATION FOR INFO ONLY  
 NOTE: ALL LENSES ARE 12-INCH GRAYSHADE REPRESENTS EXISTING

POSTED SPEED LIMIT = 35 MPH

CONSTRUCTION NOTES

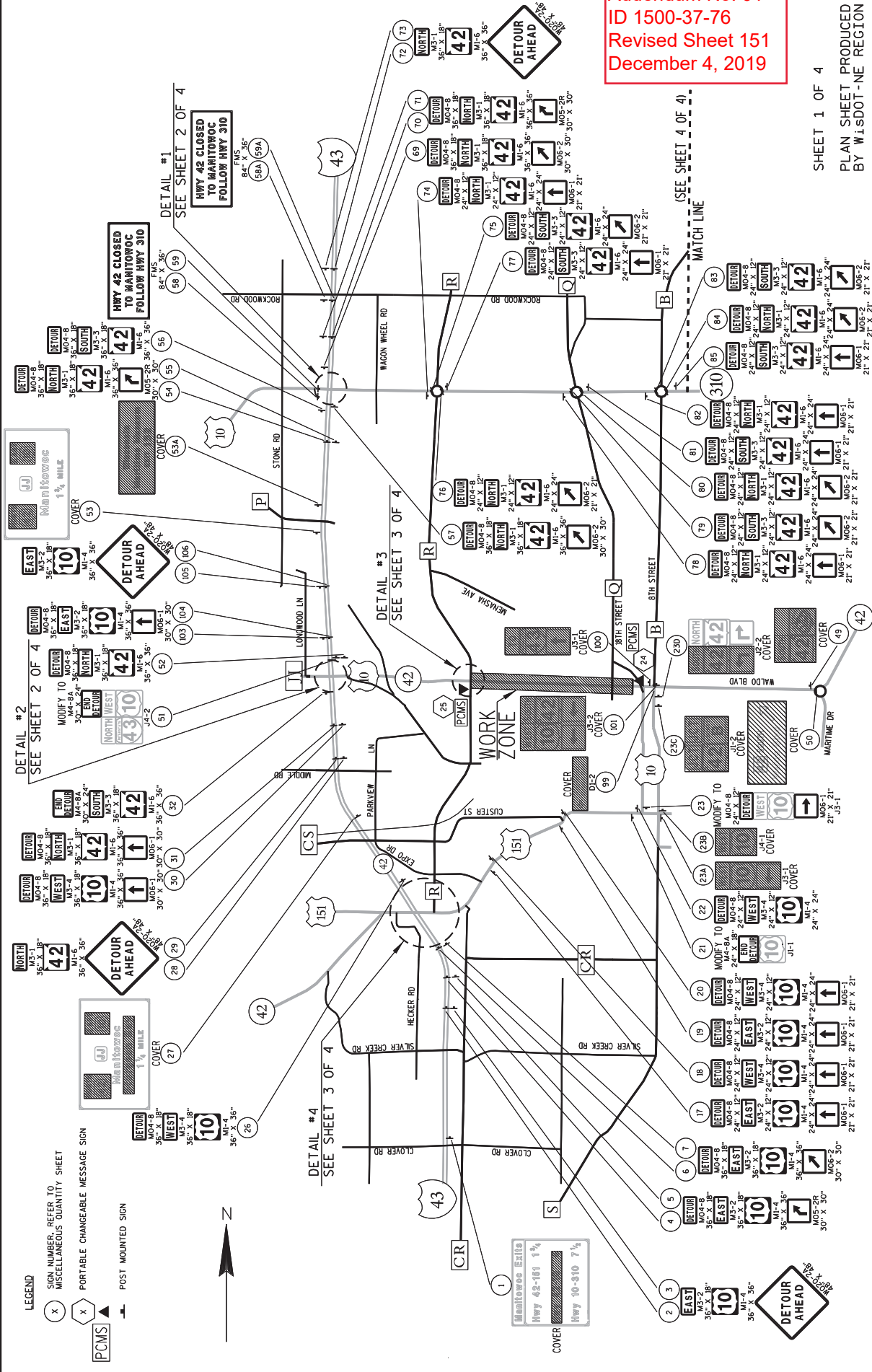
1. \* IS THE FRONT CENTER OF THE LOOP DETECTORS
2. THE CONTRACTOR SHALL HAVE THE PULL BOXES AND CONDUIT RUNS INSPECTED 5 DAYS PRIOR TO PLACING SIGNAL CABLE INTO THE SYSTEM. CONTACT THE CITY OF MANITOWOC AT 920-686-6577 (MARK DEZESIM), BE APPROXIMATE. THERE MAY BE OTHER WITHIN THE PROJECT AREA THAT ARE NOT SHOWN.
3. THE ENGINEER MAY ADJUST THE LOCATIONS OF ITEMS UNDER THIS CONTRACT TO AVOID CONFLICTS WITH EXISTING UTILITY FACILITIES. A MINIMUM OF 2-FT CLEARANCE SHALL BE MAINTAINED BETWEEN THE SIGNAL CABLE AND ANY EXISTING UTILITY.
4. THE FACE OF THE CURB LENSES DIRECTED OTHERWISE BY THE ENGINEER.
5. CONDUIT EMBEDDED IN A TYPE 9, 10, 12, OR 13 BASE SHALL BE 3" CONDUIT.

MONOTUBE STRUCTURE NO.	BASE NO.	STRUCTURE NO.
SBB3	5-36-0050	5-36-0050
SBB4	5-36-0051	5-36-0051
SBB5	5-36-0051	5-36-0051
SBB6	5-36-0051	5-36-0051
SBB7	5-36-0050	5-36-0050

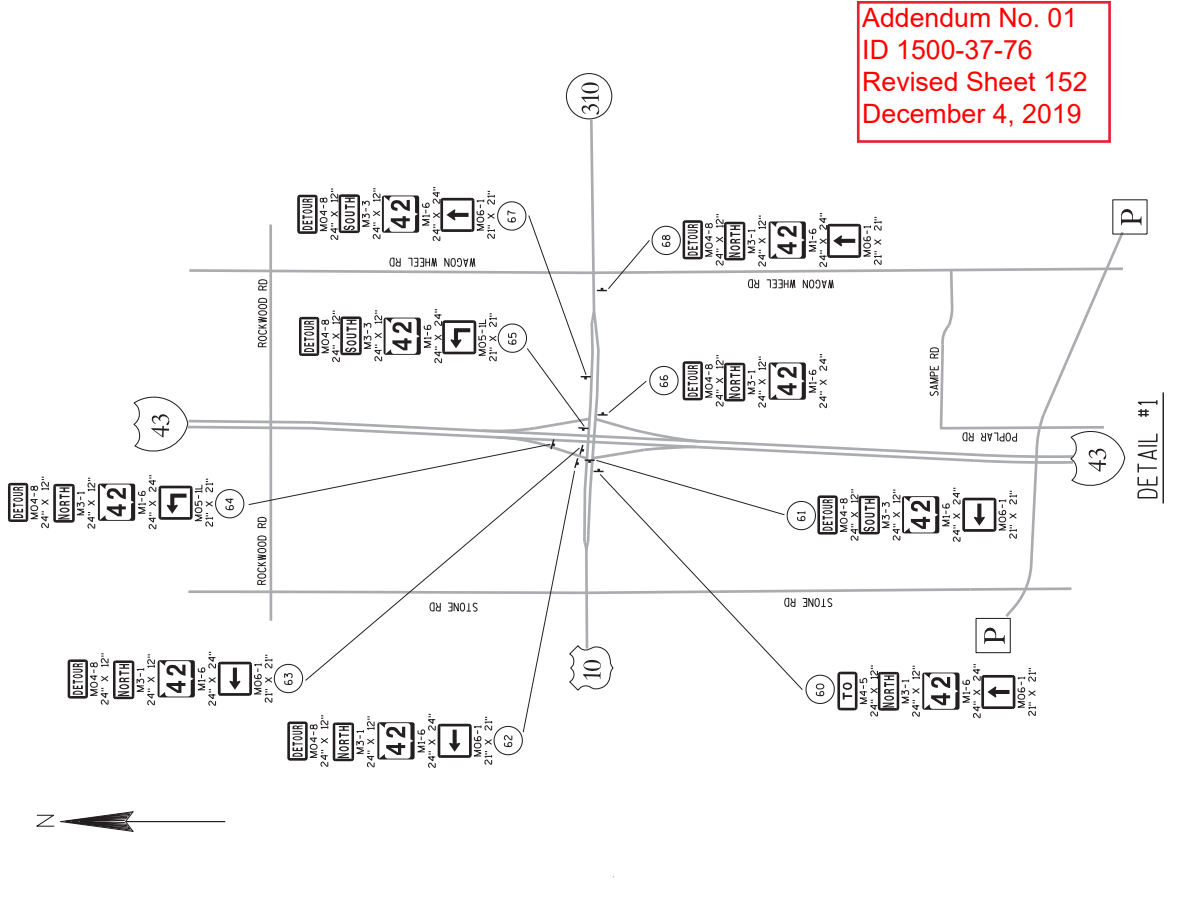
3-Y	4-YL	FED
XX	XX	XX
Y	Y	Y
G	G	G
2122,23	4.5-9.10	2122,23
7.6,11,12	14.15,19,20	24,25,26
13,15,17,18		27,28

TRAFFIC SIGNAL PLAN-18TH ST.  
 COUNTY: MANITOWOC  
 HWY: USH 10  
 PROJECT NO: 1500-37-76  
 SHEET 125  
 E

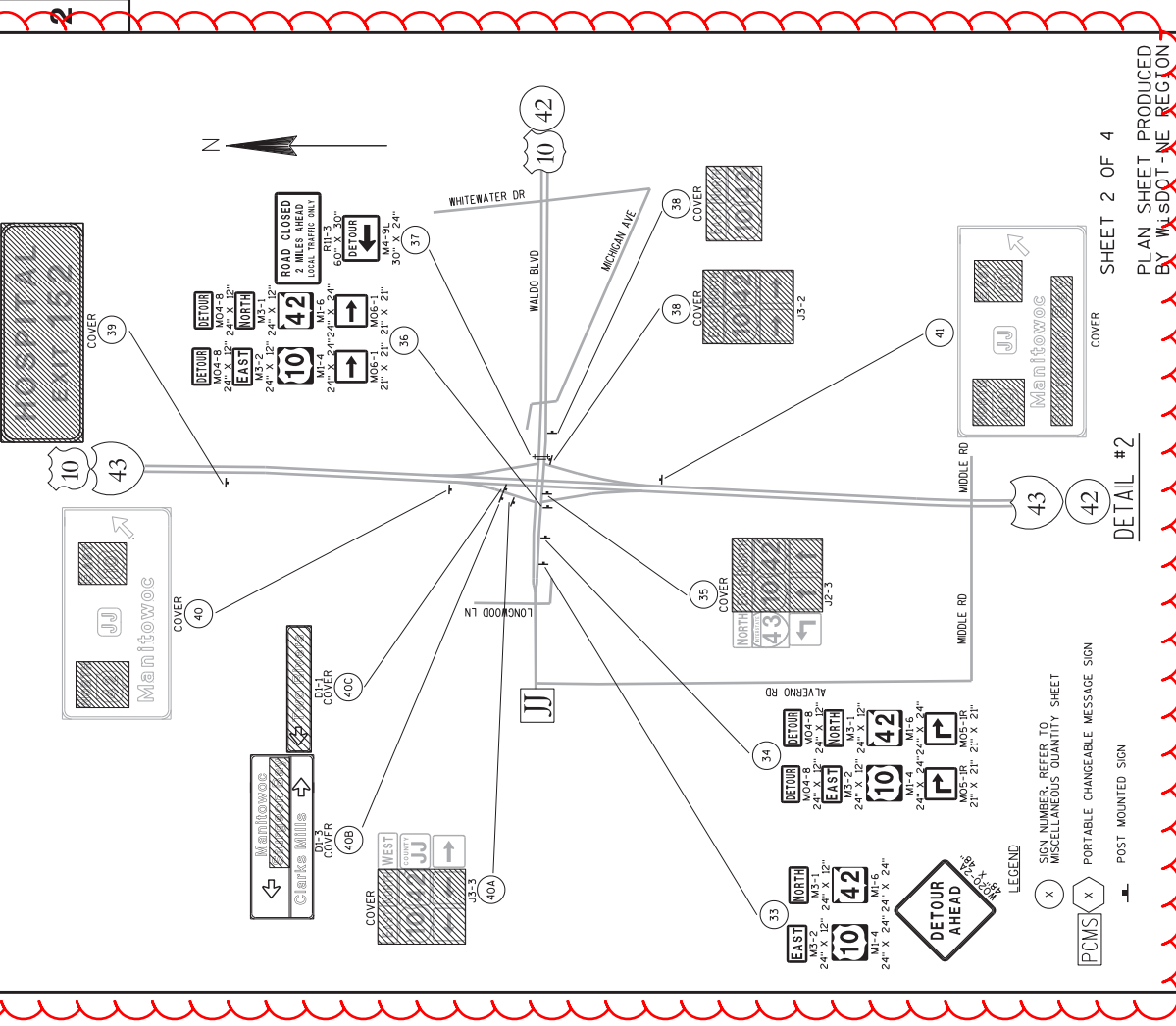
Addendum No. 01  
ID 1500-37-76  
Revised Sheet 151  
December 4, 2019



SHEET 1 OF 4  
PLAN SHEET PRODUCED  
BY WISDOT - NE REGION

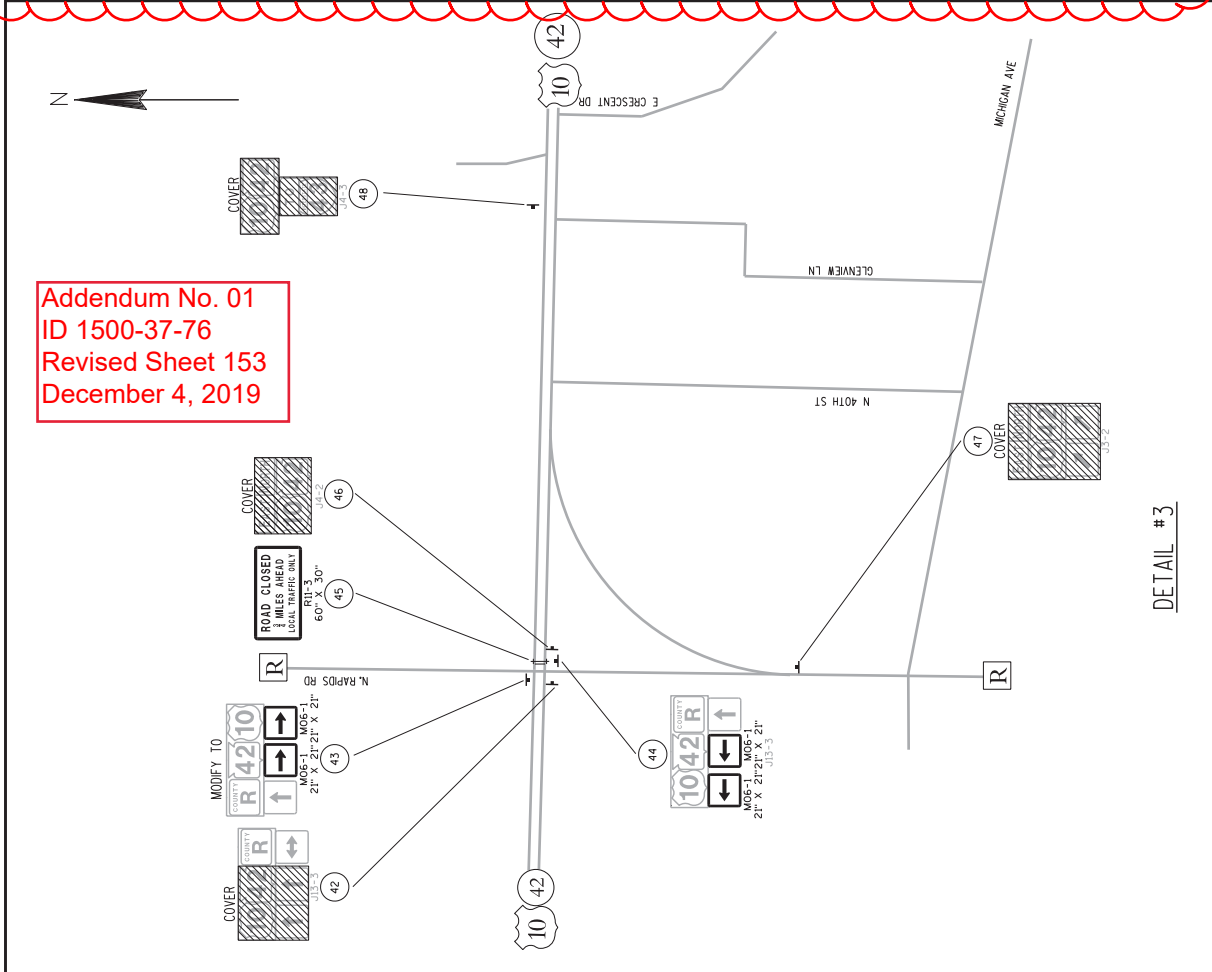
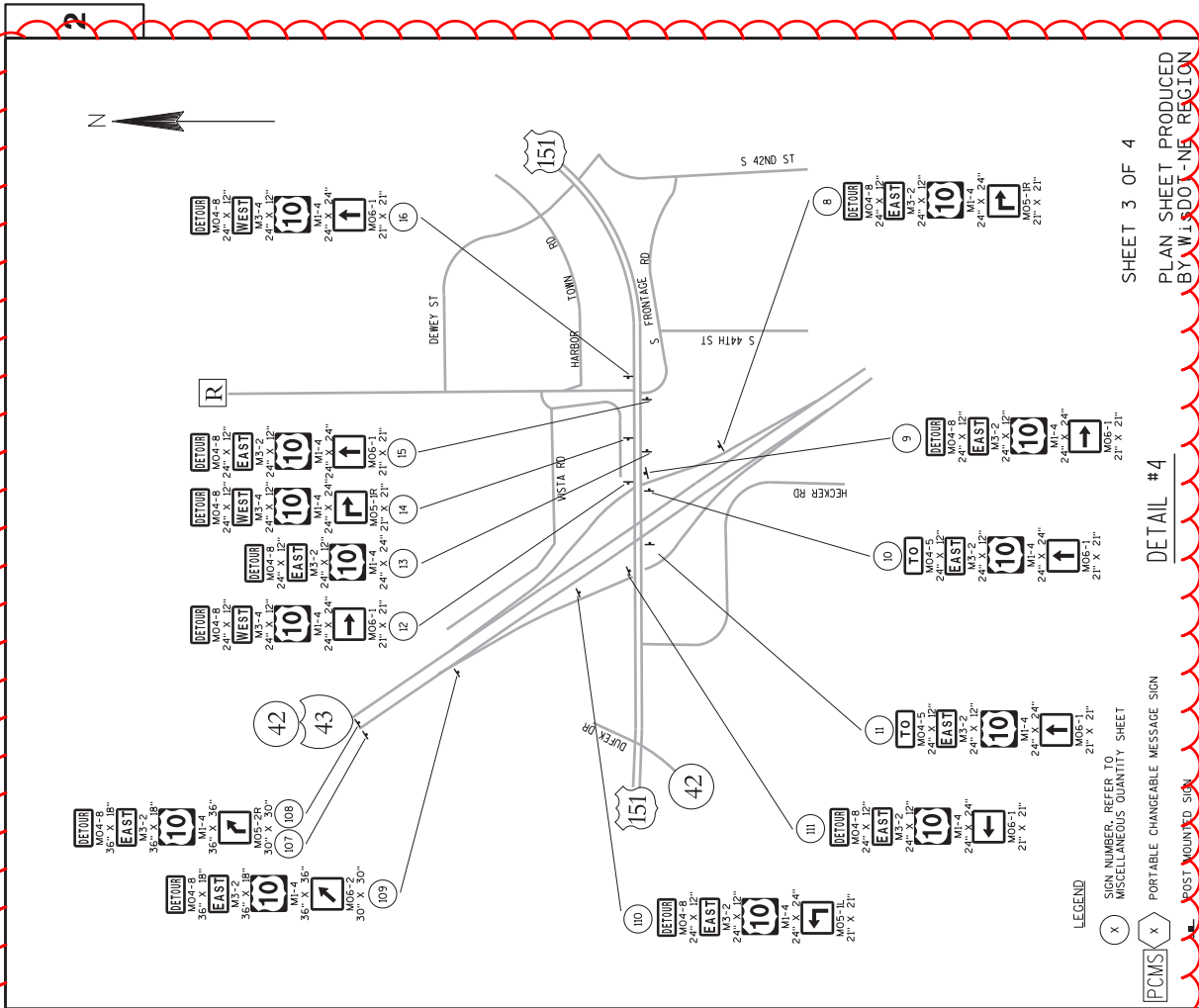


DETAIL #1



DETAIL #2

Addendum No. 01  
 ID 1500-37-76  
 Revised Sheet 153  
 December 4, 2019



SHEET 3 OF 4

PLAN SHEET PRODUCED  
 BY WISDOT-NR REGION

DETAIL #4

DETAIL #3

PROJECT NO: 1500-37-76 COUNTY: MANITOWOC HWY: USH 10/STH 42 SHEET 153

FILE NAME : N:\asoo\traff\ca Work Zone\Detours\Manitowoc County\USH 10\CTH R - CTH BY1500-37-76\027003.dwg PLOT DATE : 03-DEC-2019 13:37 PLOT NAME : DETJLF PLOT SCALE : 200:1 WISDOT/CADD SHEET 42

Addendum No. 01  
 ID 1500-37-76/77 &  
 ID 1500-47-71  
 Revised Sheet 237  
 December 4, 2019

TRAFFIC SIGNAL POLES AND LUMINAIRE ARMS

INTERSECTION: USH 10 & CTHR		657.0100*	657.0425*	657.0430	657.0945	657.0360	657.0530	657.0645	657.0550	657.0815	657.0060.26*	SPV.0060.30
ID	BASE NO.	15-FOOT BASE EACH	10-FOOT STAND. EACH	POLES TYPE 9 EACH	POLES TYPE 13 EACH	MONOTUBE ARMS 30-FT EACH	MONOTUBE ARMS 45-FT EACH	MONOTUBE ARMS 50-FT EACH	MONOTUBE ARMS 55-FT EACH	LUMINAIRE ARMS STEEL 15-FT EACH	LUMINAIRE LED EACH	INSTALL TYPE 13 POLE 35' MONOTUBE ARMS EACH
SB1		1	--	--	--	--	--	--	--	--	--	--
SB2		--	1	--	1	--	--	--	1	1	1	--
SB3		1	--	--	--	--	--	--	--	--	--	--
SB4		--	1	--	1	--	1	--	--	1	1	--
SB5		1	--	--	--	--	--	--	--	--	--	--
SB6		--	--	--	1	--	--	1	--	1	1	--
SB7		1	--	--	--	--	--	--	--	--	--	--
SB8		--	1	--	1	--	1	--	--	1	1	--
PROJECT TOTALS		4	4	0	4	0	2	1	1	4	4	0

TRAFFIC SIGNAL POLES AND LUMINAIRE ARMS (CONTINUED)

INTERSECTION: USH 10 & 18TH AVE		657.0100*	657.0425*	657.0430	657.0345	657.0360	657.0530	657.0645	657.0550	657.0815	657.0060.26*	SPV.0060.30
ID	BASE NO.	15-FOOT BASE EACH	10-FOOT STAND. EACH	POLES TYPE 9 EACH	POLES TYPE 13 EACH	MONOTUBE ARMS 30-FT EACH	MONOTUBE ARMS 45-FT EACH	MONOTUBE ARMS 50-FT EACH	MONOTUBE ARMS 55-FT EACH	LUMINAIRE ARMS STEEL 15-FT EACH	LUMINAIRE LED EACH	INSTALL TYPE 13 POLE 35' MONOTUBE ARMS EACH
SB1		1	--	1	--	--	--	--	--	--	--	--
SB2		1	--	--	--	--	--	--	--	--	--	--
SB3		--	1	--	1	--	--	--	--	--	--	--
SB4		1	--	--	--	--	--	--	--	--	--	--
SB5		--	--	--	1	--	1	--	--	1	1	--
SB6		1	--	1	--	--	--	--	--	--	--	--
SB7		1	--	--	--	--	--	--	--	--	--	--
SB8		--	--	--	--	--	--	--	--	--	--	1
SB9		1	--	--	--	--	--	--	--	--	--	--
SB10		1	--	--	--	--	--	--	--	--	--	--
SB11		--	--	--	1	--	1	--	--	1	1	--
PROJECT TOTALS		7	4	3	1	2	1	2	0	2	3	1
TOTALS		11	8	3	1	6	1	4	1	6	7	1

\* ADDITIONAL QUANTITIES SHOWN ELSEWHERE

ALL ITEMS ARE CATEGORY 0010 UNLESS OTHERWISE STATED

LIGHTING WIRE

INTERSECTION: USH 10 & CTHR		655.0620	655.0610*
ID	FROM TO	ELECTRICAL WIRE LIGHTING 8 AWG	ELECTRICAL WIRE LIGHTING 12 AWG
		LF	LF
<b>PROJECT 1500-47-71</b>			
CAB.	SB2	522	---
SB2	LUM	---	144
SB2	SB4	525	---
SB4	LUM	---	144
CAB.	SB8	96	---
SB8	LUM	---	144
SB6	LUM	624	---
SB6	LUM	---	144
<b>PROJECT TOTAL</b>		1767	576

INTERSECTION: USH 10 & 18TH ST

PROJECT 1500-37-76		1557	432
ID	FROM TO	ELECTRICAL WIRE LIGHTING 8 AWG	ELECTRICAL WIRE LIGHTING 12 AWG
		LF	LF
<b>PROJECT 1500-47-71</b>			
CAB.	SB11	153	---
SB11	LUM	---	144
CAB.	SB5	789	---
SB5	LUM	---	144
CAB.	SB8	615	---
SB8	LUM	---	144
<b>PROJECT TOTAL</b>		1557	432
<b>TOTALS</b>		3324	1008

\* ADDITIONAL QUANTITIES SHOWN ELSEWHERE

REMOVE TRAFFIC SIGNALS

ID	LOCATION	SPV,0105.30	SPV,0105.31
		LS	LS
<b>PROJECT 1500-47-71</b>			
	.30 USH 10 & CTHR	1	---
<b>PROJECT TOTALS</b>		1	0
<b>PROJECT 1500-37-76</b>			
	.31 USH 10 & 18TH ST.	---	1
<b>PROJECT TOTALS</b>		0	1
<b>TOTALS</b>		1	1

SIGNAL MOUNTING HARDWARE

ID	LOCATION	658.5069.01	658.5069.02
		LS	LS
<b>PROJECT 1500-47-71</b>			
	.01 USH 10 & CTHR	1	---
<b>PROJECT TOTALS</b>		1	0
<b>PROJECT 1500-37-76</b>			
	.02 USH 10 & 18TH ST.	---	1
<b>PROJECT TOTALS</b>		0	1
<b>TOTALS</b>		1	1

REMOVE LOOP DETECTOR WIRE AND LEAD-IN CABLE

ID	LOCATION	SPV,0105.32	SPV,0105.33
		LS	LS
<b>PROJECT 1500-47-71</b>			
	.32 USH 10 & CTHR	1	---
<b>PROJECT TOTALS</b>		1	0
<b>PROJECT 1500-37-76</b>			
	.33 USH 10 & 18TH ST.	---	1
<b>PROJECT TOTALS</b>		0	1
<b>TOTALS</b>		1	1

TRAFFIC SIGNAL CABINET & CONTROLLER FULLY ACTUATED 8 PHASE

ID	LOCATION	SPV,0105.34	SPV,0105.35
		LS	LS
<b>PROJECT 1500-47-71</b>			
	.34 USH 10 & CTHR	1	---
<b>PROJECT TOTALS</b>		1	0
<b>PROJECT 1500-37-76</b>			
	.35 USH 10 & 18TH ST.	---	1
<b>PROJECT TOTALS</b>		0	1
<b>TOTALS</b>		1	1

TRAFFIC SIGNAL IDENTIFICATION PLAQUES (INCIDENTAL TO NEW INSTALLATIONS)

LOCATION	BASE NO.	STRUCTURE NO.
<b>PROJECT 1500-47-71</b>		
USH 10 & CTHR	SB8	S-36-0046
	SB6	S-36-0047
	SB4	S-36-0048
	SB2	S-36-0049
<b>PROJECT 1500-37-76</b>		
USH 10 & 18TH ST	SB11	S-36-0050
	SB8	S-36-0051
	SB5	S-36-0052
	SB3	S-36-0053

ELECTRICAL SERVICE METER BREAKER PEDESTAL

ID	LOCATION	656.0200.01	656.0200.02
		LS	LS
<b>PROJECT 1500-47-71</b>			
	.01 USH 10 & CTHR	1	---
<b>PROJECT TOTALS</b>		1	0
<b>PROJECT 1500-37-76</b>			
	.02 USH 10 & 18TH ST.	---	1
<b>PROJECT TOTALS</b>		0	1
<b>TOTALS</b>		1	1

Addendum No. 01  
 ID 1500-37-76/77 &  
 ID 1500-47-71  
 Revised Sheet 239  
 December 4, 2019

ALL ITEMS ARE CATEGORY 0010 UNLESS OTHERWISE STATED



FURNISHING AND RELAYING SANITARY SEWER PIPE

ID	MH	TO	MH	LOCATION	SPV.0090.51 8-INCH LF	SPV.0090.53 12-INCH LF	SPV.0090.54 18-INCH LF	REMARKS
<b>PROJECT 1500-37-77</b>								
65+26	-	30	30	USH 10	140	-	-	68LF WB, 72LF EB CONNECTS TO EXISTING FROM WEST
-	30	-	31	USH 10	28	-	-	
30	-	31	31	USH 10	-	-	41	
29	-	28	28	USH 10	-	-	-	
-	29	-	29	USH 10	29	-	-	
-	28	-	28	N 23RD STREET	34	-	-	CONNECTS TO EXISTING FROM SOUTH
23	-	22	22	USH 10	-	25	-	
22	-	21	21	USH 10	-	302	-	
19	-	18	18	USH 10	-	164	-	
-	18	-	18	N 18TH STREET	103	-	-	40' CONNECTS FROM SOUTH AND 63' CONNECTS FROM NORTH FROM EXISTING
18	-	17	17	USH 10	-	384	-	
17	-	16A	16A	USH 10	-	186	-	
16A	-	16	16	USH 10	-	158	-	
16	-	15	15	USH 10	-	264	-	
15	-	14	14	USH 10	-	280	-	
15	-	14	14	USH 10	-	280	-	
14	-	13	13	USH 10	-	56	-	START AT TEMPORARY CONNECTION FROM PROJECT 1500-37-75
15A	-	15	15	USH 10	48	-	-	
14A	-	14	14	USH 10	48	-	-	
TOTALS					401	29	1,819	41

TELEVISION SEWERS

ID	MH	TO	MH	LOCATION	SPV.0090.04 LF
<b>PROJECT 1500-37-72</b>					
68+43EB	-	40R	72+45EB	40RT	402
68+80EB	-	63L	-	USH 10	361
30	-	31	31	USH 10	41
31	-	31A	31A	USH 10	30
29	-	28	28	USH 10	29
28	-	SOUTH	N 23RD STREET	USH 10	34
28	-	27	27	USH 10	323
27	-	26	26	USH 10	296
26	-	25	25	USH 10/STH 42	101
25	-	24	24	USH 10	246
24	-	23	23	USH 10	351
23	-	22	22	USH 10	110
22	-	21	21	USH 10	302
21	-	20	20	USH 10	299
20	-	19	19	USH 10	301
19	-	18	18	USH 10	164
18	-	NORTH & SOUTH	N 18TH STREET	USH 10	103
18	-	17	17	USH 10	384
17	-	16A	16A	USH 10	186
16A	-	16	16	USH 10	158
16	-	15	15	USH 10	264
15	-	14	14	USH 10	280
14	-	13	13	USH 10	55
15A	-	15	15	USH 10	48
14A	-	14	14	USH 10	48
TOTAL					4,916

\* QUANTITIES SHOWN ELSEWHERE

Addendum No. 01  
ID 1500-37-77  
Revised Sheet 245  
December 4, 2019

TRENCH BACKFILL

ID	STATION	SPV.0035.50 IMPORTED TRENCH CY	SPV.0035.51 TRENCH STABILIZATION CY
<b>PROJECT 1500-37-77</b>			
UNDISTRIBUTED	USH 10	2,000	200
TOTALS		2,000	200

ABANDONING SANITARY SEWER

ID	STATION	TO	STATION	LOCATION	SPV.0090.57 LF
<b>PROJECT 1500-37-77</b>					
93+51	-	99+68	10+42	USH 10	617
9+06	-	10+42	10+42	MENCHL DRIVE	126
TOTAL					743

ALL ITEMS ARE CATEGORY 0010 UNLESS OTHERWISE STATED

Addendum No. 01  
 ID 1500-37-76/77 &  
 ID 1500-47-71  
 Revised Sheet 220  
 December 4, 2019

TRAFFIC CONTROL DETOUR SIGN SUMMARY

1500-37-76	15	16	17	18	19	20	21	22	23	23A	23B	23C	23D	24	24A	25	26	27	28	29	30
SIGN NO.	SIGN CODE	SIGN CODE	SIGN CODE	SIGN CODE	SIGN CODE	SIGN CODE	SIGN CODE	SIGN CODE	SIGN CODE	SIGN CODE	SIGN CODE	SIGN CODE	SIGN CODE	SIGN CODE	SIGN CODE	SIGN CODE	SIGN CODE	SIGN CODE	SIGN CODE	SIGN CODE	SIGN CODE
LOCATION	SIZE	SIZE	SIZE	SIZE	SIZE	SIZE	SIZE	SIZE	SIZE	SIZE	SIZE	SIZE	SIZE	SIZE	SIZE	SIZE	SIZE	SIZE	SIZE	SIZE	SIZE
643.0900	643.0900	643.0900	643.0900	643.0900	643.0900	643.0900	643.0900	643.0900	643.0900	643.0900	643.0900	643.0900	643.0900	643.0900	643.0900	643.0900	643.0900	643.0900	643.0900	643.0900	643.0900
643.0705	643.0705	643.0705	643.0705	643.0705	643.0705	643.0705	643.0705	643.0705	643.0705	643.0705	643.0705	643.0705	643.0705	643.0705	643.0705	643.0705	643.0705	643.0705	643.0705	643.0705	643.0705
643.1000	643.1000	643.1000	643.1000	643.1000	643.1000	643.1000	643.1000	643.1000	643.1000	643.1000	643.1000	643.1000	643.1000	643.1000	643.1000	643.1000	643.1000	643.1000	643.1000	643.1000	643.1000
643.0910	643.0910	643.0910	643.0910	643.0910	643.0910	643.0910	643.0910	643.0910	643.0910	643.0910	643.0910	643.0910	643.0910	643.0910	643.0910	643.0910	643.0910	643.0910	643.0910	643.0910	643.0910
643.1050	643.1050	643.1050	643.1050	643.1050	643.1050	643.1050	643.1050	643.1050	643.1050	643.1050	643.1050	643.1050	643.1050	643.1050	643.1050	643.1050	643.1050	643.1050	643.1050	643.1050	643.1050
NO OF CYCLES	NO OF CYCLES	NO OF CYCLES	NO OF CYCLES	NO OF CYCLES	NO OF CYCLES	NO OF CYCLES	NO OF CYCLES	NO OF CYCLES	NO OF CYCLES	NO OF CYCLES	NO OF CYCLES	NO OF CYCLES	NO OF CYCLES	NO OF CYCLES	NO OF CYCLES	NO OF CYCLES	NO OF CYCLES	NO OF CYCLES	NO OF CYCLES	NO OF CYCLES	NO OF CYCLES
REMARKS	REMARKS	REMARKS	REMARKS	REMARKS	REMARKS	REMARKS	REMARKS	REMARKS	REMARKS	REMARKS	REMARKS	REMARKS	REMARKS	REMARKS	REMARKS	REMARKS	REMARKS	REMARKS	REMARKS	REMARKS	REMARKS
US 151, W. OF CTH R. PLACE 150' W. OF CTH R. INTERSECTION	MO 4-8	MO 4-8	MO 4-8	MO 4-8	MO 4-8	MO 4-8	MO 4-8	MO 4-8	MO 4-8	MO 4-8	MO 4-8	MO 4-8	MO 4-8	MO 4-8	MO 4-8	MO 4-8	MO 4-8	MO 4-8	MO 4-8	MO 4-8	MO 4-8
US 151, E. OF CTH R. PLACE 300' E. OF CTH R. INTERSECTION	MO 4-8	MO 4-8	MO 4-8	MO 4-8	MO 4-8	MO 4-8	MO 4-8	MO 4-8	MO 4-8	MO 4-8	MO 4-8	MO 4-8	MO 4-8	MO 4-8	MO 4-8	MO 4-8	MO 4-8	MO 4-8	MO 4-8	MO 4-8	MO 4-8
US 151, E. OF CTH R. PLACE 100' W. OF DIVISION ST/35TH ST INTERSECTION	MO 4-8	MO 4-8	MO 4-8	MO 4-8	MO 4-8	MO 4-8	MO 4-8	MO 4-8	MO 4-8	MO 4-8	MO 4-8	MO 4-8	MO 4-8	MO 4-8	MO 4-8	MO 4-8	MO 4-8	MO 4-8	MO 4-8	MO 4-8	MO 4-8
US 151, E. OF CTH R. PLACE 100' E. OF DIVISION ST/35TH ST INTERSECTION	MO 4-8	MO 4-8	MO 4-8	MO 4-8	MO 4-8	MO 4-8	MO 4-8	MO 4-8	MO 4-8	MO 4-8	MO 4-8	MO 4-8	MO 4-8	MO 4-8	MO 4-8	MO 4-8	MO 4-8	MO 4-8	MO 4-8	MO 4-8	MO 4-8
US 151, E. OF CTH R. PLACE 100' W. OF CUSTER ST INTERSECTION	MO 4-8	MO 4-8	MO 4-8	MO 4-8	MO 4-8	MO 4-8	MO 4-8	MO 4-8	MO 4-8	MO 4-8	MO 4-8	MO 4-8	MO 4-8	MO 4-8	MO 4-8	MO 4-8	MO 4-8	MO 4-8	MO 4-8	MO 4-8	MO 4-8
US 151, W. OF US 107/10TH ST. MODIFY EXISTING J1-1 SIGN AS SHOWN	MO 4-8	MO 4-8	MO 4-8	MO 4-8	MO 4-8	MO 4-8	MO 4-8	MO 4-8	MO 4-8	MO 4-8	MO 4-8	MO 4-8	MO 4-8	MO 4-8	MO 4-8	MO 4-8	MO 4-8	MO 4-8	MO 4-8	MO 4-8	MO 4-8
US 151, W. OF US 107/10TH ST. PLACE 100' W. OF US 107/10TH ST INTERSECTION	MO 4-8	MO 4-8	MO 4-8	MO 4-8	MO 4-8	MO 4-8	MO 4-8	MO 4-8	MO 4-8	MO 4-8	MO 4-8	MO 4-8	MO 4-8	MO 4-8	MO 4-8	MO 4-8	MO 4-8	MO 4-8	MO 4-8	MO 4-8	MO 4-8
US 107/10TH ST., AT US 151 INTERSECTION, MODIFY EXISTING J3-1 SIGN AS SHOWN	MO 4-8	MO 4-8	MO 4-8	MO 4-8	MO 4-8	MO 4-8	MO 4-8	MO 4-8	MO 4-8	MO 4-8	MO 4-8	MO 4-8	MO 4-8	MO 4-8	MO 4-8	MO 4-8	MO 4-8	MO 4-8	MO 4-8	MO 4-8	MO 4-8
INTERSECTION OF 8TH & WASHINGTON ST. COVER EXISTING J3-1 SIGN AS SHOWN	MO 4-8	MO 4-8	MO 4-8	MO 4-8	MO 4-8	MO 4-8	MO 4-8	MO 4-8	MO 4-8	MO 4-8	MO 4-8	MO 4-8	MO 4-8	MO 4-8	MO 4-8	MO 4-8	MO 4-8	MO 4-8	MO 4-8	MO 4-8	MO 4-8
US TO WB. N. OF WASHINGTON ST. COVER EXISTING J4-1 SIGN AS SHOWN	MO 4-8	MO 4-8	MO 4-8	MO 4-8	MO 4-8	MO 4-8	MO 4-8	MO 4-8	MO 4-8	MO 4-8	MO 4-8	MO 4-8	MO 4-8	MO 4-8	MO 4-8	MO 4-8	MO 4-8	MO 4-8	MO 4-8	MO 4-8	MO 4-8
US TO WB. S. OF PINE ST. COVER EXISTING J1-2 SIGN AS SHOWN	MO 4-8	MO 4-8	MO 4-8	MO 4-8	MO 4-8	MO 4-8	MO 4-8	MO 4-8	MO 4-8	MO 4-8	MO 4-8	MO 4-8	MO 4-8	MO 4-8	MO 4-8	MO 4-8	MO 4-8	MO 4-8	MO 4-8	MO 4-8	MO 4-8
US TO WB. N. OF PINE ST. COVER EXISTING J2-2 SIGN AS SHOWN	MO 4-8	MO 4-8	MO 4-8	MO 4-8	MO 4-8	MO 4-8	MO 4-8	MO 4-8	MO 4-8	MO 4-8	MO 4-8	MO 4-8	MO 4-8	MO 4-8	MO 4-8	MO 4-8	MO 4-8	MO 4-8	MO 4-8	MO 4-8	MO 4-8
US 10/STH 42, W. OF 8TH ST INTERSECTION, PLACE IN TERRACE, FIELD DETERMINED	MO 4-8	MO 4-8	MO 4-8	MO 4-8	MO 4-8	MO 4-8	MO 4-8	MO 4-8	MO 4-8	MO 4-8	MO 4-8	MO 4-8	MO 4-8	MO 4-8	MO 4-8	MO 4-8	MO 4-8	MO 4-8	MO 4-8	MO 4-8	MO 4-8
VACANT	MO 4-8	MO 4-8	MO 4-8	MO 4-8	MO 4-8	MO 4-8	MO 4-8	MO 4-8	MO 4-8	MO 4-8	MO 4-8	MO 4-8	MO 4-8	MO 4-8	MO 4-8	MO 4-8	MO 4-8	MO 4-8	MO 4-8	MO 4-8	MO 4-8
US 10/STH 42, E. OF CTH R. PLACE ON RIGHT SIDE, FIELD DETERMINED	MO 4-8	MO 4-8	MO 4-8	MO 4-8	MO 4-8	MO 4-8	MO 4-8	MO 4-8	MO 4-8	MO 4-8	MO 4-8	MO 4-8	MO 4-8	MO 4-8	MO 4-8	MO 4-8	MO 4-8	MO 4-8	MO 4-8	MO 4-8	MO 4-8
I-43/STH 42, N. OF US 151, PLACE TO RIGHT OF EXISTING J4-2 SIGN	MO 4-8	MO 4-8	MO 4-8	MO 4-8	MO 4-8	MO 4-8	MO 4-8	MO 4-8	MO 4-8	MO 4-8	MO 4-8	MO 4-8	MO 4-8	MO 4-8	MO 4-8	MO 4-8	MO 4-8	MO 4-8	MO 4-8	MO 4-8	MO 4-8
I-43/STH 42, N. OF CTH CS STRUCTURE, COVER EXISTING TYPE 1 AS SHOWN	MO 4-8	MO 4-8	MO 4-8	MO 4-8	MO 4-8	MO 4-8	MO 4-8	MO 4-8	MO 4-8	MO 4-8	MO 4-8	MO 4-8	MO 4-8	MO 4-8	MO 4-8	MO 4-8	MO 4-8	MO 4-8	MO 4-8	MO 4-8	MO 4-8
I-43/STH 42, N. OF MIDDLE RD, PLACE 1/2 MILE S. OF US 10/STH 42 INTERCHANGE ON RIGHT SHOULDER	MO 4-8	MO 4-8	MO 4-8	MO 4-8	MO 4-8	MO 4-8	MO 4-8	MO 4-8	MO 4-8	MO 4-8	MO 4-8	MO 4-8	MO 4-8	MO 4-8	MO 4-8	MO 4-8	MO 4-8	MO 4-8	MO 4-8	MO 4-8	MO 4-8
I-43/STH 42, N. OF MIDDLE RD, PLACE 1/2 MILE S. OF US 10/STH 42 INTERCHANGE IN MEDIAN	MO 4-8	MO 4-8	MO 4-8	MO 4-8	MO 4-8	MO 4-8	MO 4-8	MO 4-8	MO 4-8	MO 4-8	MO 4-8	MO 4-8	MO 4-8	MO 4-8	MO 4-8	MO 4-8	MO 4-8	MO 4-8	MO 4-8	MO 4-8	MO 4-8
I-43/STH 42, N. OF MIDDLE RD, PLACE 1/4 MILE S. OF US 10/STH 42 INTERCHANGE ON RIGHT SHOULDER	MO 4-8	MO 4-8	MO 4-8	MO 4-8	MO 4-8	MO 4-8	MO 4-8	MO 4-8	MO 4-8	MO 4-8	MO 4-8	MO 4-8	MO 4-8	MO 4-8	MO 4-8	MO 4-8	MO 4-8	MO 4-8	MO 4-8	MO 4-8	MO 4-8
PAGE SUBTOTALS	51	51	51	51	51	51	51	51	51	51	51	51	51	51	51	51	51	51	51	51	51
* ADDITIONAL QUANTITIES SHOWN ELSEWHERE																					

PAGE SUBTOTALS

\* ADDITIONAL QUANTITIES SHOWN ELSEWHERE

BY WisDOT - NE REGION

PROJECT NUMBER: 1500-37-76/77, 1500-47-71 HWY: USH 10

COUNTY: MANITOWOC

MISCELLANEOUS QUANTITIES

SHEET 220

E



Addendum No. 01  
 ID 1500-37-76/77 &  
 ID 1500-47-71  
 Revised Sheet 225  
 December 4, 2019

TRAFFIC CONTROL DETOUR SIGN SUMMARY

STATION	DESCRIPTION	LOCATION	SIGN CODE	SIZE W X H	NUMBER IN SERVICE	APPROX. SERVICE PERIOD	643.0900 SIGNS *	643.0420 BARRICADES TYPE III *	643.0705 WARNING LIGHTS TYPE A *	643.1000 FIXED MESSAGE SIGN * S.F.	643.1050 PORTABLE CHANGEABLE MESSAGE DAYS *	NO OF CYCLES	643.0910 COVERING SIGNS TYPE I EACH	643.0920 COVERING SIGNS TYPE II EACH	REMARKS	
1500-37-76																
86		STH 310, W. OF COLUMBUS ST. PLACE 150' W. OF COLUMBUS ST. INTERSECTION	M0 4-8	24"X12"	1	214	214									
		"	M 3-1	24"X12"	1	214	214									
		"	M 1-6	24"X24"	1	214	214									42
		"	M0 6-1	21"X21"	1	214	214									AHEAD
87		STH 310, E. OF COLUMBUS ST. PLACE 150' E. OF COLUMBUS ST. INTERSECTION	M0 4-8	24"X12"	1	214	214									
		"	M 3-3	24"X12"	1	214	214									42
		"	M 1-6	24"X24"	1	214	214									AHEAD
88		STH 310, N. OF 14TH ST. PLACE 175' N. OF 14TH ST. INTERSECTION	M0 4-8	24"X12"	1	214	214									
		"	M 3-1	24"X12"	1	214	214									42
		"	M 1-6	24"X24"	1	214	214									LEFT
89		STH 310, E. OF HAWTHORNE AVE. PLACE 75' E. OF HAWTHORNE AVE. INTERSECTION	M0 4-8	24"X12"	1	214	214									
		"	M 3-3	24"X12"	1	214	214									42
		"	M 1-6	24"X24"	1	214	214									RIGHT
90		STH 310, W. OF MADISON ST. PLACE 125' W. OF MADISON ST. INTERSECTION	M0 4-8	24"X12"	1	214	214									
		"	M 3-1	24"X12"	1	214	214									42
		"	M 1-6	24"X24"	1	214	214									LEFT
91		STH 310, N. OF 14TH ST. PLACE 90' N. OF 14TH ST. INTERSECTION ON SIDEWALK	M0 4-8	24"X12"	1	214	214									
		"	M 3-3	24"X12"	1	214	214									42
		"	M 1-6	24"X24"	1	214	214									RIGHT
92		STH 310, W. OF STH 42. MODIFY EXISTING J1-1 SIGN AS SHOWN	M 4-8A	24"X18"	1	214	214									
93		STH 310, W. OF STH 42. PLACE 125' W. OF STH 42. INTERSECTION	M0 4-8	24"X12"	1	214	214									
		"	M 3-3	24"X12"	1	214	214									42
		"	M 1-6	24"X24"	1	214	214									6 MILES AHEAD
94		STH 42, AT STH 310. INTERSECTION. PLACE IN SW QUADRANT OF STH 310. INTERSECTION OFF ROADWAY	R 11-3	60"X30"	1	214	214		428							
		"	M 4-8R	30"X12"	1	214	214									
95		STH 42, N. OF STH 310. PLACE 75' N. OF STH 310. INTERSECTION	M0 4-8	24"X12"	1	214	214									
		"	M 3-3	24"X12"	1	214	214									42
		"	M 1-6	24"X24"	1	214	214									RIGHT
96		STH 42, S. OF 18TH ST. PLACE JUST S. OF 18TH ST. INTERSECTION IN BUMPOUT	M0 6-1	21"X21"	1	214	214									
		"	M 3-2	24"X12"	1	214	214									42
		"	M 1-6	24"X24"	1	214	214									RIGHT
97		STH 42, S. OF 19TH ST. PLACE JUST S. OF 19TH ST. INTERSECTION IN BUMPOUT	M0 6-1	21"X21"	1	214	214									
		"	M 3-2	24"X12"	1	214	214									42
		"	M 1-6	24"X24"	1	214	214									RIGHT
98		STH 42, S. OF COLUMBUS ST. PLACE IN SW QUADRANT ON PAVED SHOULDER	US 10, S.	COVER EXISTING SIGNS ON SIGN BRIDGE STRUCTURE AS SHOWN												
99		US 10, S. OF STH 42. COVER EXISTING SIGNS ON SIGN BRIDGE STRUCTURE AS SHOWN	US 10, S.	COVER EXISTING SIGNS ON SIGN BRIDGE STRUCTURE AS SHOWN												
100		US 10, S. OF STH 42. COVER EXISTING SIGNS ON SIGN BRIDGE STRUCTURE AS SHOWN	US 10, S.	COVER EXISTING SIGNS ON SIGN BRIDGE STRUCTURE AS SHOWN												
101		US 10, AT 6TH ST. INTERSECTION. COVER EXISTING J3-2 SIGN ON N. SIDE OF INTERSECTION	US 10, AT 6TH ST.	COVER EXISTING J3-2 SIGN ON N. SIDE OF INTERSECTION												
102		VACANT														
							8,988	428	856	0	0	0	3			

\* ADDITIONAL QUANTITIES SHOWN ELSEWHERE

PLAN SHEET PRODUCED  
 BY WisDOT - NE REGION  
 PROJECT NUMBER: 1500-37-76/77, 1500-47-71  
 COUNTY: MANITOWOC  
 HWY: USH 10

Addendum No. 01  
 ID 1500-37-76/77 &  
 ID 1500-47-71  
 Added Sheet 225A  
 December 4, 2019

3

TRAFFIC CONTROL DETOUR SIGN SUMMARY

SIGN NO.	LOCATION	SIGN CODE	SIZE W X H	NUMBER IN SERVICE	APPROX. SERVICE PERIOD DAYS	643.0900 SIGNS * DAYS	643.0420 BARRICADES TYPE I III * DAYS	643.0705 WARNING LIGHTS TYPE A * DAYS	643.1000 FIXED MESSAGE SIGN * S.F.	643.1050 PORTABLE CHANGEABLE MESSAGE * DAYS	NO. OF CYCLES	643.0910 COVERING SIGNS TYPE I	643.0920 COVERING SIGNS TYPE II	REMARKS
103	I-43/US TO. N. OF CTH JJ. PLACE 1000' N. OF CTH JJ INTERCHANGE OFF-RAMP ON RIGHT SHOULDER	MO 4-8	36" X18"	1	214	214								
	"	M 3-2	36" X18"	1	214	214								
	"	M 1-4	36" X36"	1	214	214								10
	"	MO 6-1	30" X30"	1	214	214								AHEAD
104	I-43/US TO. N. OF CTH JJ INTERCHANGE OFF-RAMP IN MEDIUM	MO 4-8	36" X18"	1	214	214								
	"	M 3-2	36" X18"	1	214	214								
	"	M 1-4	36" X36"	1	214	214								10
	"	MO 6-1	30" X30"	1	214	214								AHEAD
105	I-43/US TO. N. OF CTH JJ PLACE 1/2 MILE N. OF CTH JJ INTERCHANGE OFF-RAMP ON RIGHT SHOULDER	M 3-2	36" X18"	1	214	214								
	"	M 1-4	36" X36"	1	214	214								10
106	I-43/US TO. N. OF CTH JJ PLACE 1/2 MILE N. OF CTH JJ INTERCHANGE OFF-RAMP IN MEDIUM	M 3-2	48" X48"	1	214	214								
	"	M 1-4	36" X36"	1	214	214								10
	"	WO 20-2A	48" X48"	1	214	214								
107	I-43/STH 42. N. OF US 151 INTERCHANGE. PLACE 1/4 MILE N. OF US 151 INTERCHANGE OFF-RAMP ON RIGHT SHOULDER	MO 4-8	36" X18"	1	214	214								
	"	M 3-2	36" X18"	1	214	214								
	"	M 1-4	36" X36"	1	214	214								10
108	I-43/STH 42. N. OF US 151 INTERCHANGE. PLACE 1/4 MILE N. OF US 151 INTERCHANGE OFF-RAMP IN MEDIUM	MO 5-1R	30" X30"	1	214	214								
	"	MO 4-8	36" X18"	1	214	214								
	"	M 3-2	36" X18"	1	214	214								
	"	M 1-4	36" X36"	1	214	214								10
109	I-43/STH 42. N. OF US 151 INTERCHANGE. PLACE RIGHT OF EXISTING TYPE I GROUND MOUNT SIGN	MO 5-1R	30" X30"	1	214	214								
	"	MO 4-8	36" X18"	1	214	214								
	"	M 3-2	36" X18"	1	214	214								10
	"	M 1-4	36" X36"	1	214	214								TILT RIGHT
110	I-43/STH 42 OFF-RAMP TO US 151. PLACE 500' PRIOR TO RAMP INTERSECTION	MO 6-2	30" X30"	1	214	214								
	"	MO 4-8	24" X12"	1	214	214								
	"	M 3-2	24" X12"	1	214	214								
	"	M 1-4	24" X24"	1	214	214								10
111	I-43/STH 42 OFF-RAMP TO US 151. PLACE LEFT OF EXISTING PARK/RIE SIGN AT RAMP INTERSECTION	MO 5-1L	21" X21"	1	214	214								
	"	MO 4-8	24" X12"	1	214	214								
	"	M 3-2	24" X12"	1	214	214								10
	"	M 1-4	24" X24"	1	214	214								LEFT
	"	MO 6-1	21" X21"	1	214	214								
				34		7,276	0	0	0	0	0	0	0	
<b>PROJECT TOTALS</b>				<b>336</b>		<b>70,834</b>	<b>866</b>	<b>1,712</b>	<b>84</b>	<b>14</b>		<b>7</b>	<b>19</b>	

\* ADDITIONAL QUANTITIES SHOWN ELSEWHERE

PLAN SHEET PRODUCED  
 BY WisDOT - NE REGION

PROJECT NUMBER: 1500-37-76/77, 1500-47-71 HWY: USH 10

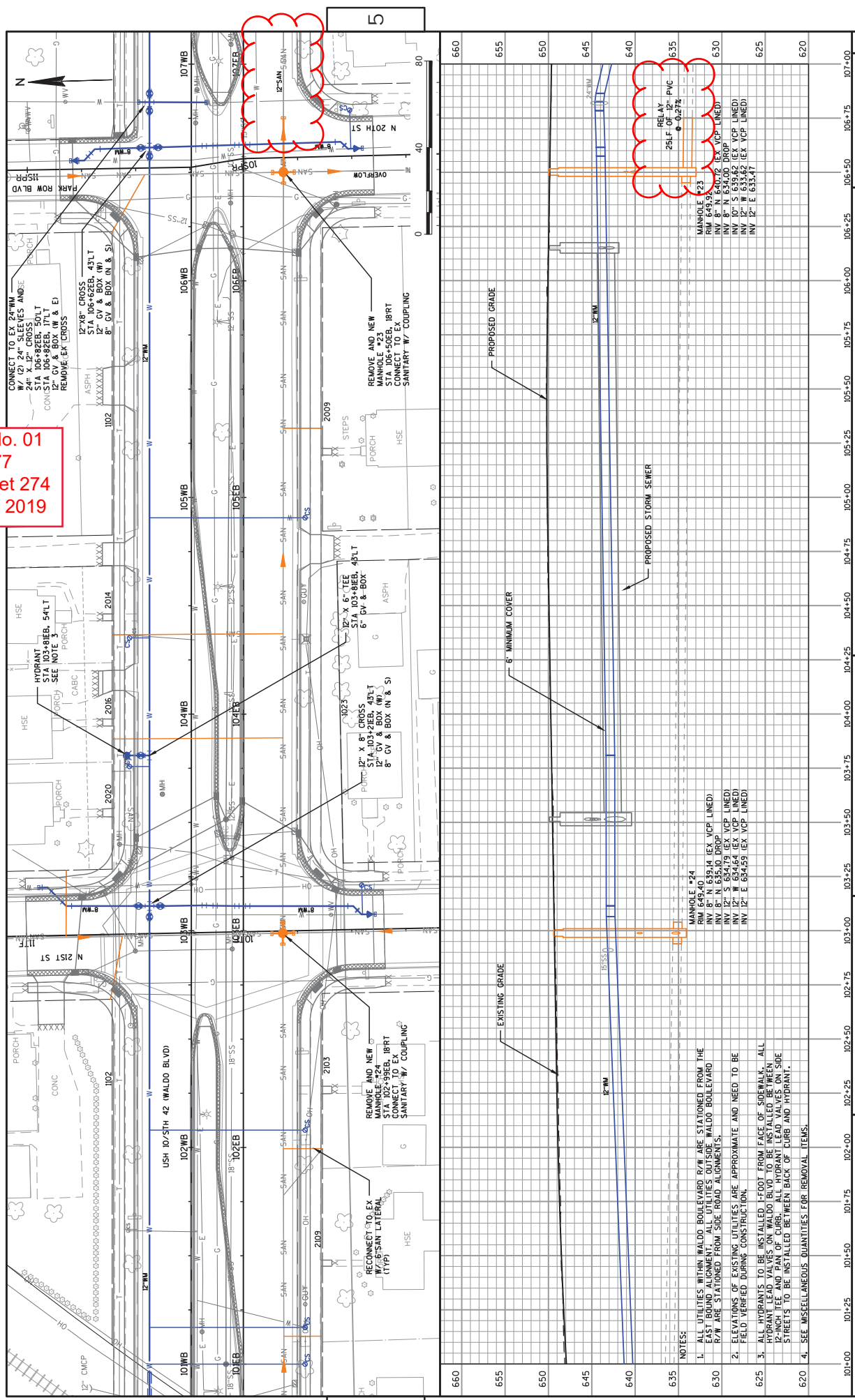
COUNTY: MANITOWOC

MISCELLANEOUS QUANTITIES

SHEET 225A E

3

Addendum No. 01  
 ID 1500-37-77  
 Revised Sheet 274  
 December 4, 2019



101+00	101+25	101+50	101+75	102+00	102+25	102+50	102+75	103+00	103+25	103+50	103+75	104+00	104+25	104+50	104+75	105+00	105+25	105+50	105+75	106+00	106+25	106+50	106+75	107+00
COUNTY: MANITOWOC																								
PLAN AND PROFILE: SANITARY SEWER AND WATER MAIN																								
SHEET 274																								
PROJECT NO: 1500-37-77																								
HWY: USH 10																								
PLOT DATE: 11/21/2019 3:40 PM																								
PLOT BY: SHALLON, JON																								
PLOT SCALE: 1 IN:40 FT																								
WSDOT/CADD SHEET 44																								

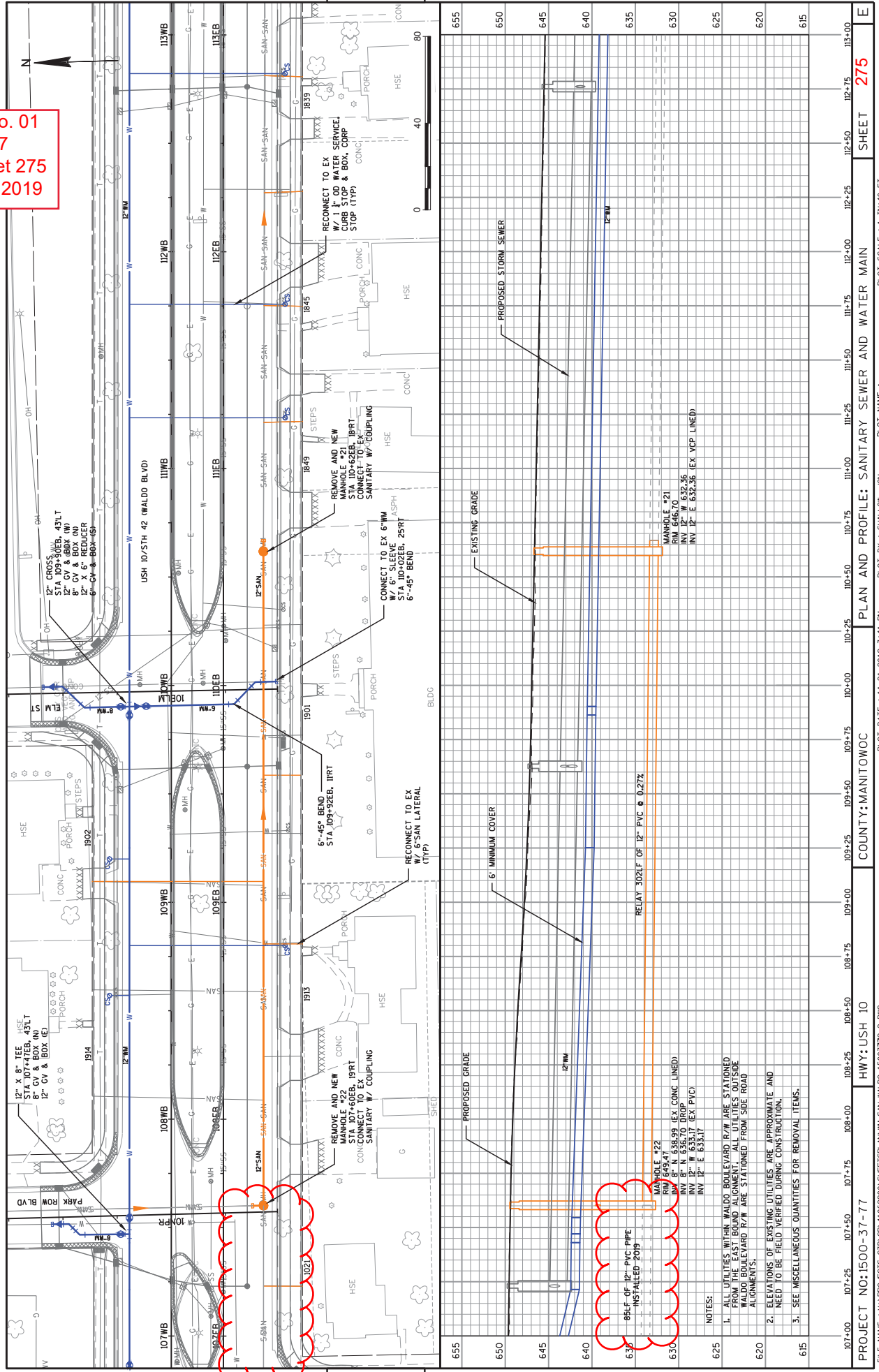
- NOTES:
- ALL UTILITIES WITHIN WALDO BOULEVARD R/W ARE STATIONED FROM THE CENTERLINE OF WALDO BOULEVARD. UTILITIES ALONG WALDO BOULEVARD R/W ARE STATIONED FROM SIDE ROAD ALIGNMENTS.
  - ELEVATIONS OF EXISTING UTILITIES ARE APPROXIMATE AND NEED TO BE FIELD VERIFIED DURING CONSTRUCTION.
  - ALL HYDRANTS TO BE INSTALLED 1-FOOT FROM FACE OF SIDEWALK. ALL HYDRANT LEAD VALVES ON WALDO BLVD TO BE INSTALLED BETWEEN 12-INCH TEE AND PAN OF CURB. ALL HYDRANT LEAD VALVES ON SIDE STREETS TO BE INSTALLED BETWEEN BACK OF CURB AND HYDRANT.
  - SEE MISCELLANEOUS QUANTITIES FOR REMOVAL ITEMS.

MANHOLE #24  
 RIM 649.40  
 INV 8' N 634.10 (EX VCP LINED)  
 INV 12' S 634.79 (EX VCP LINED)  
 INV 12' W 634.64 (EX VCP LINED)  
 INV 12' E 634.59 (EX VCP LINED)

MANHOLE #23  
 RIM 649.40  
 INV 8' N 641.02 (EX VCP LINED)  
 INV 10' S 635.62 (EX VCP LINED)  
 INV 12' W 633.62 (EX VCP LINED)  
 INV 12' E 633.47

RELAY OF 12" PVC  
 25LF @ -0.27%

Addendum No. 01  
 ID 1500-37-77  
 Revised Sheet 275  
 December 4, 2019



107+00	107+25	107+50	107+75	108+00	108+25	108+50	108+75	109+00	109+25	109+50	109+75	110+00	110+25	110+50	110+75	111+00	111+25	111+50	111+75	112+00	112+25	112+50	112+75	113+00
PLAN AND PROFILE: SANITARY SEWER AND WATER MAIN																								
COUNTY: MANITOWOC																								
HWY: USH 10																								
PROJECT NO: 1500-37-77																								
SHEET 275																								
E																								

FILE NAME : V:\PROJECTS\3D\08\1062900\SS\ETS\AN\ML\_SAN\_WALDO\_15003772-2.DWG  
 LAYOUT NAME - 1500-37-72-023008.LIP  
 PLOT DATE : 11/21/2019 3:41 PM  
 PLOT BY : SHALLON, JON  
 PLOT NAME :  
 PLOT SCALE : 1 IN=40 FT  
 WSDOT/CADD SHEET 44

- NOTES:
- ALL UTILITIES WITHIN WALDO BOULEVARD R/W ARE STATIONED FROM THE EAST BOUND ALIGNMENT. ALL UTILITIES OUTSIDE WALDO BOULEVARD R/W ARE STATIONED FROM SIDE ROAD ALIGNMENT.
  - ELEVATIONS OF EXISTING UTILITIES ARE APPROXIMATE AND NEED TO BE FIELD VERIFIED DURING CONSTRUCTION.
  - SEE MISCELLANEOUS QUANTITIES FOR REMOVAL ITEMS.

MANHOLE #22  
 R/W 645.47 E 618.99 EX CONC LINED)  
 INV 12" W 636.70 DROP  
 INV 12" W 633.17 EX PVC  
 INV 12" E 633.17

86LF OF 12" PVC PIPE  
 INSTALLED 2019

RELAY 302LF OF 12" PVC @ 0.27%

MANHOLE #21  
 R/W 645.47 E 632.36  
 INV 12" E 632.36 EX VCP LINED)

CONNECT TO EX 6" WM  
 STA 110+02EB, 25' RT  
 6"-45" BEND

REMOVE AND NEW  
 MANHOLE #21  
 R/W 645.47 E 632.36  
 CONNCT TO EX  
 SANITARY W/ COUPLING

RECONNECT TO EX  
 W/ 1" OD WATER SERVICE  
 CURB STOP & BOX, CORP  
 STOP (TYP)



Proposal Schedule of Items

Proposal ID: 20191210017 Project(s): 1500-37-76, 1500-37-77, 1500-47-71
Federal ID(s): WISC 2018471, N/A, WISC 2019743

SECTION: 0001 Contract Items

Alt Set ID: Alt Mbr ID:

Table with 5 columns: Proposal Line Number, Item ID Description, Approximate Quantity and Units, Unit Price, Bid Amount. Rows include items like Clearing, Grubbing, Removing Old Structure, and Removing Pavement.





Proposal Schedule of Items

Proposal ID: 20191210017 Project(s): 1500-37-76, 1500-37-77, 1500-47-71
Federal ID(s): WISC 2018471, N/A, WISC 2019743

SECTION: 0001 Contract Items

Alt Set ID: Alt Mbr ID:

Table with 5 columns: Proposal Line Number, Item ID Description, Approximate Quantity and Units, Unit Price, Bid Amount. Rows include items like Removing Concrete Bases, Removing Railroad Track, Removing Manholes, Removing Storm Sewer (various sizes), Sealing Pipes, and Abandoning Sewer.



Proposal Schedule of Items

Proposal ID: 20191210017 Project(s): 1500-37-76, 1500-37-77, 1500-47-71
Federal ID(s): WISC 2018471, N/A, WISC 2019743

SECTION: 0001 Contract Items

Alt Set ID: Alt Mbr ID:

Table with 5 columns: Proposal Line Number, Item ID Description, Approximate Quantity and Units, Unit Price, Bid Amount. Rows include items like 'Removing (item description) 02. Railroad Signal Base', 'Excavation Common', 'Backfill Structure Type A', etc.



Proposal Schedule of Items

Proposal ID: 20191210017 Project(s): 1500-37-76, 1500-37-77, 1500-47-71  
 Federal ID(s): WISC 2018471, N/A, WISC 2019743

SECTION: 0001 Contract Items

Alt Set ID: Alt Mbr ID:

Proposal Line Number	Item ID Description	Approximate Quantity and Units	Unit Price	Bid Amount
0092	405.0100 Coloring Concrete WisDOT Red	85.000 CY	_____.	_____.
0094	415.0080 Concrete Pavement 8-Inch	3,835.000 SY	_____.	_____.
0096	415.0085 Concrete Pavement 8 1/2-Inch	37,020.000 SY	_____.	_____.
0098	415.0210 Concrete Pavement Gaps	3.000 EACH	_____.	_____.
0100	415.0410 Concrete Pavement Approach Slab	168.000 SY	_____.	_____.
0102	415.1080 Concrete Pavement HES 8-Inch	515.000 SY	_____.	_____.
0104	415.1085 Concrete Pavement HES 8 1/2-Inch	760.000 SY	_____.	_____.
0106	415.4100 Concrete Pavement Joint Filling	44,100.000 SY	_____.	_____.
0108	415.5110.S Concrete Pavement Joint Layout 01. 1500-37-76	1.000 LS	_____.	_____.
0110	415.5110.S Concrete Pavement Joint Layout 02. 1500-47-71	1.000 LS	_____.	_____.
0112	416.0160 Concrete Driveway 6-Inch	1,950.000 SY	_____.	_____.
0114	416.0610 Drilled Tie Bars	624.000 EACH	_____.	_____.
0116	416.0620 Drilled Dowel Bars	1,521.000 EACH	_____.	_____.
0118	455.0605 Tack Coat	1,155.500 GAL	_____.	_____.
0120	460.2000 Incentive Density HMA Pavement	1,918.000 DOL	1.00000	1,918.00
0122	460.6224 HMA Pavement 4 MT 58-28 S	2,987.000 TON	_____.	_____.



Proposal Schedule of Items

Proposal ID: 20191210017 Project(s): 1500-37-76, 1500-37-77, 1500-47-71
Federal ID(s): WISC 2018471, N/A, WISC 2019743

SECTION: 0001 Contract Items

Alt Set ID: Alt Mbr ID:

Table with 5 columns: Proposal Line Number, Item ID Description, Approximate Quantity and Units, Unit Price, Bid Amount. Rows include items like Asphaltic Surface Driveways, Temporary Surface, Safety Islands, Curb, Concrete Bridges, Protective Surface Treatment, Pigmented Surface Sealer, Adhesive Anchors, Concrete Culverts, Bar Steel Reinforcement, Bearing Pads, Steel Diaphragms, Concrete Surface Repair, and Railing Steel.



Proposal Schedule of Items

Proposal ID: 20191210017 Project(s): 1500-37-76, 1500-37-77, 1500-47-71  
 Federal ID(s): WISC 2018471, N/A, WISC 2019743

SECTION: 0001 Contract Items

Alt Set ID: Alt Mbr ID:

Proposal Line Number	Item ID Description	Approximate Quantity and Units	Unit Price	Bid Amount
0156	516.0500 Rubberized Membrane Waterproofing	78.000 SY	_____.	_____.
0158	520.8000 Concrete Collars for Pipe	13.000 EACH	_____.	_____.
0160	522.1024 Apron Endwalls for Culvert Pipe Reinforced Concrete 24-Inch	1.000 EACH	_____.	_____.
0162	522.1072 Apron Endwalls for Culvert Pipe Reinforced Concrete 72-Inch	1.000 EACH	_____.	_____.
0164	601.0105 Concrete Curb Type A	30.000 LF	_____.	_____.
0166	601.0405 Concrete Curb & Gutter 18-Inch Type A	5,430.000 LF	_____.	_____.
0168	601.0409 Concrete Curb & Gutter 30-Inch Type A	2,800.000 LF	_____.	_____.
0170	602.0405 Concrete Sidewalk 4-Inch	65,400.000 SF	_____.	_____.
0172	602.0415 Concrete Sidewalk 6-Inch	4,430.000 SF	_____.	_____.
0174	602.0505 Curb Ramp Detectable Warning Field Yellow	470.000 SF	_____.	_____.
0176	602.0605 Curb Ramp Detectable Warning Field Radial Yellow	108.000 SF	_____.	_____.
0178	606.0200 Riprap Medium	10.000 CY	_____.	_____.
0180	606.0300 Riprap Heavy	135.000 CY	_____.	_____.
0182	608.0312 Storm Sewer Pipe Reinforced Concrete Class III 12-Inch	3,043.000 LF	_____.	_____.
0184	608.0315 Storm Sewer Pipe Reinforced Concrete Class III 15-Inch	619.000 LF	_____.	_____.



Proposal Schedule of Items

Proposal ID: 20191210017 Project(s): 1500-37-76, 1500-37-77, 1500-47-71
Federal ID(s): WISC 2018471, N/A, WISC 2019743

SECTION: 0001 Contract Items

Alt Set ID: Alt Mbr ID:

Table with 5 columns: Proposal Line Number, Item ID Description, Approximate Quantity and Units, Unit Price, Bid Amount. Rows include items like Storm Sewer Pipe Reinforced Concrete Class III 18-Inch, 24-Inch, 30-Inch, 36-Inch, 72-Inch, and Catch Basins.



Proposal Schedule of Items

Proposal ID: 20191210017 Project(s): 1500-37-76, 1500-37-77, 1500-47-71
Federal ID(s): WISC 2018471, N/A, WISC 2019743

SECTION: 0001 Contract Items

Alt Set ID: Alt Mbr ID:

Table with 5 columns: Proposal Line Number, Item ID Description, Approximate Quantity and Units, Unit Price, Bid Amount. Rows include items like Manholes 5-FT Diameter, Inlets 3-FT Diameter, Pipe Grates, etc.



Proposal Schedule of Items

Proposal ID: 20191210017 Project(s): 1500-37-76, 1500-37-77, 1500-47-71
Federal ID(s): WISC 2018471, N/A, WISC 2019743

SECTION: 0001 Contract Items

Alt Set ID: Alt Mbr ID:

Table with 5 columns: Proposal Line Number, Item ID Description, Approximate Quantity and Units, Unit Price, Bid Amount. Rows include items like Mobilization, Concrete Median Sloped Nose, Dust Control Surface Treatment, Water, Topsoil, Mulching, Silt Fence, Silt Fence Maintenance, Mobilizations Erosion Control, etc.





Proposal Schedule of Items

Proposal ID: 20191210017 Project(s): 1500-37-76, 1500-37-77, 1500-47-71
Federal ID(s): WISC 2018471, N/A, WISC 2019743

SECTION: 0001 Contract Items

Alt Set ID: Alt Mbr ID:

Table with 5 columns: Proposal Line Number, Item ID Description, Approximate Quantity and Units, Unit Price, Bid Amount. Rows include items like Fertilizer Type B, Seeding Mixture No. 30, 40, Temporary, Borrow Pit, Seed Water, Sod Water, Sod Lawn, and various tree species (Ginkgo, Hackberry, Coffeetree, Regal Elm, Linden, Honeylocust).



Proposal Schedule of Items

Proposal ID: 20191210017 Project(s): 1500-37-76, 1500-37-77, 1500-47-71
Federal ID(s): WISC 2018471, N/A, WISC 2019743

SECTION: 0001 Contract Items

Alt Set ID: Alt Mbr ID:

Table with 5 columns: Proposal Line Number, Item ID Description, Approximate Quantity and Units, Unit Price, Bid Amount. Rows include items like Trees (White Oak, Autumn Brilliance Serviceberry, etc.), Shrub (Staghorn Sumac), Landscape Planting, and Signs (Type II Reflective).



Proposal Schedule of Items

Proposal ID: 20191210017 Project(s): 1500-37-76, 1500-37-77, 1500-47-71
Federal ID(s): WISC 2018471, N/A, WISC 2019743

SECTION: 0001 Contract Items

Alt Set ID: Alt Mbr ID:

Table with 5 columns: Proposal Line Number, Item ID Description, Approximate Quantity and Units, Unit Price, Bid Amount. Rows include items like Removing Signs Type II, Traffic Control Drums, and Temporary Pedestrian Surface Asphalt.



Proposal Schedule of Items

Proposal ID: 20191210017 Project(s): 1500-37-76, 1500-37-77, 1500-47-71
Federal ID(s): WISC 2018471, N/A, WISC 2019743

SECTION: 0001 Contract Items

Alt Set ID: Alt Mbr ID:

Table with 5 columns: Proposal Line Number, Item ID Description, Approximate Quantity and Units, Unit Price, Bid Amount. Rows include items like Temporary Pedestrian Surface Plate, Temporary Pedestrian Curb Ramp, Temporary Pedestrian Barricade, Geotextile Type C, Geotextile Type DF Schedule A, Geotextile Type HR, Geogrid Type SR, Marking Line Epoxy 4-Inch, Marking Line Epoxy 8-Inch, Marking Arrow Epoxy, Marking Word Epoxy, Marking Stop Line Epoxy 18-Inch, Marking Diagonal Epoxy 6-Inch, Marking Diagonal Epoxy 12-Inch, Marking Crosswalk Epoxy Transverse Line 6-Inch, Marking Curb Epoxy.



Proposal Schedule of Items

Proposal ID: 20191210017 Project(s): 1500-37-76, 1500-37-77, 1500-47-71  
 Federal ID(s): WISC 2018471, N/A, WISC 2019743

SECTION: 0001 Contract Items

Alt Set ID: Alt Mbr ID:

Proposal Line Number	Item ID Description	Approximate Quantity and Units	Unit Price	Bid Amount
0404	646.8220 Marking Island Nose Epoxy	40.000 EACH	_____.	_____.
0406	646.9010 Marking Removal Line Water Blasting 4-Inch	1,505.000 LF	_____.	_____.
0408	646.9110 Marking Removal Line Water Blasting 8-Inch	120.000 LF	_____.	_____.
0410	646.9310 Marking Removal Special Marking Water Blasting	5.000 EACH	_____.	_____.
0412	649.0150 Temporary Marking Line Removable Tape 4-Inch	1,170.000 LF	_____.	_____.
0414	650.4000 Construction Staking Storm Sewer	188.000 EACH	_____.	_____.
0416	650.4500 Construction Staking Subgrade	13,309.000 LF	_____.	_____.
0418	650.6500 Construction Staking Structure Layout (structure) 01. B-36-29	LS	LUMP SUM	_____.
0420	650.6500 Construction Staking Structure Layout (structure) 02. B-36-232	LS	LUMP SUM	_____.
0422	650.7000 Construction Staking Concrete Pavement	13,309.000 LF	_____.	_____.
0424	650.8000 Construction Staking Resurfacing Reference	3,200.000 LF	_____.	_____.
0426	650.8500 Construction Staking Electrical Installations (project) 01. 1500-37-76	LS	LUMP SUM	_____.
0428	650.8500 Construction Staking Electrical Installations (project) 02. 1500-47-71	LS	LUMP SUM	_____.
0430	650.9910 Construction Staking Supplemental Control (project) 01. 1500-37-76	LS	LUMP SUM	_____.



Proposal Schedule of Items

Proposal ID: 20191210017 Project(s): 1500-37-76, 1500-37-77, 1500-47-71
Federal ID(s): WISC 2018471, N/A, WISC 2019743

SECTION: 0001 Contract Items

Alt Set ID: Alt Mbr ID:

Table with 5 columns: Proposal Line Number, Item ID Description, Approximate Quantity and Units, Unit Price, Bid Amount. Rows include items like Construction Staking Supplemental Control, Construction Staking Slope Stakes, Conduit Rigid Nonmetallic Schedule 40 2-Inch, etc.



Proposal Schedule of Items

Proposal ID: 20191210017 Project(s): 1500-37-76, 1500-37-77, 1500-47-71
Federal ID(s): WISC 2018471, N/A, WISC 2019743

SECTION: 0001 Contract Items

Alt Set ID: Alt Mbr ID:

Table with 5 columns: Proposal Line Number, Item ID Description, Approximate Quantity and Units, Unit Price, Bid Amount. Rows include items like Cable Traffic Signal 12-14 AWG, Cable Traffic Signal 15-14 AWG, Electrical Wire Traffic Signals 10 AWG, etc.



Proposal Schedule of Items

Proposal ID: 20191210017 Project(s): 1500-37-76, 1500-37-77, 1500-47-71  
 Federal ID(s): WISC 2018471, N/A, WISC 2019743

SECTION: 0001 Contract Items

Alt Set ID: Alt Mbr ID:

Proposal Line Number	Item ID Description	Approximate Quantity and Units	Unit Price	Bid Amount
0500	657.0550 Monotube Arms 50-FT	1.000 EACH	_____.	_____.
0502	657.0555 Monotube Arms 55-FT	1.000 EACH	_____.	_____.
0504	657.0815 Luminaire Arms Steel 15-FT	6.000 EACH	_____.	_____.
0506	658.0173 Traffic Signal Face 3S 12-Inch	24.000 EACH	_____.	_____.
0508	658.0174 Traffic Signal Face 4S 12-Inch	16.000 EACH	_____.	_____.
0510	658.0416 Pedestrian Signal Face 16-Inch	8.000 EACH	_____.	_____.
0512	658.0500 Pedestrian Push Buttons	11.000 EACH	_____.	_____.
0514	658.5069 Signal Mounting Hardware (location) 01. USH 10 & CTH R	LS	LUMP SUM	_____.
0516	658.5069 Signal Mounting Hardware (location) 02. USH 10 & 18th Street	LS	LUMP SUM	_____.
0518	690.0150 Sawing Asphalt	305.000 LF	_____.	_____.
0520	690.0250 Sawing Concrete	5,807.000 LF	_____.	_____.
0522	715.0415 Incentive Strength Concrete Pavement	12,478.000 DOL	1.00000	12,478.00
0524	715.0502 Incentive Strength Concrete Structures	8,058.000 DOL	1.00000	8,058.00
0526	715.0710 Optimized Aggregate Gradation Incentive	47,208.000 DOL	1.00000	47,208.00
0528	801.0117 Railroad Flagging Reimbursement	16,250.000 DOL	1.00000	16,250.00
0530	999.1500.S Crack and Damage Survey	LS	LUMP SUM	_____.





Proposal Schedule of Items

Proposal ID: 20191210017 Project(s): 1500-37-76, 1500-37-77, 1500-47-71
Federal ID(s): WISC 2018471, N/A, WISC 2019743

SECTION: 0001 Contract Items

Alt Set ID: Alt Mbr ID:

Table with 5 columns: Proposal Line Number, Item ID Description, Approximate Quantity and Units, Unit Price, Bid Amount. Rows include items like ASP.1T0A, ASP.1T0G, SPV.0035, SPV.0060 with various descriptions and quantities.



Proposal Schedule of Items

Proposal ID: 20191210017 Project(s): 1500-37-76, 1500-37-77, 1500-47-71
Federal ID(s): WISC 2018471, N/A, WISC 2019743

SECTION: 0001 Contract Items

Alt Set ID: Alt Mbr ID:

Table with 5 columns: Proposal Line Number, Item ID Description, Approximate Quantity and Units, Unit Price, Bid Amount. Rows include items 0560 through 0586 with descriptions like 'Concrete Bases Type 7 Special', 'Composite Light Poles 40-FT', 'Luminaire LED', etc.



Proposal Schedule of Items

Proposal ID: 20191210017 Project(s): 1500-37-76, 1500-37-77, 1500-47-71
Federal ID(s): WISC 2018471, N/A, WISC 2019743

SECTION: 0001 Contract Items

Alt Set ID: Alt Mbr ID:

Table with 5 columns: Proposal Line Number, Item ID Description, Approximate Quantity and Units, Unit Price, Bid Amount. Rows include items 0588 through 0614 with descriptions like 'Special 46. Install Corporation Stop & Curb Stop and Box 1 1/4-Inch'.



Proposal Schedule of Items

Proposal ID: 20191210017 Project(s): 1500-37-76, 1500-37-77, 1500-47-71
Federal ID(s): WISC 2018471, N/A, WISC 2019743

SECTION: 0001 Contract Items

Alt Set ID: Alt Mbr ID:

Table with 5 columns: Proposal Line Number, Item ID Description, Approximate Quantity and Units, Unit Price, Bid Amount. Rows include items 0616 through 0644 with descriptions like 'Steel Casing Pipe 42-Inch', 'Pipe Underdrain 6-Inch', 'Install Water Main 6-Inch', etc.



Proposal Schedule of Items

Proposal ID: 20191210017 Project(s): 1500-37-76, 1500-37-77, 1500-47-71
Federal ID(s): WISC 2018471, N/A, WISC 2019743

SECTION: 0001 Contract Items

Alt Set ID: Alt Mbr ID:

Table with 5 columns: Proposal Line Number, Item ID Description, Approximate Quantity and Units, Unit Price, Bid Amount. Rows include items 0646 through 0670 with various descriptions like 'Special 56. Sanitary Lateral Risers 6-Inch' and 'Special 01. Construction Staking Trees and Landscaping Project 1500-37-76'.



Proposal Schedule of Items

Proposal ID: 20191210017 Project(s): 1500-37-76, 1500-37-77, 1500-47-71  
 Federal ID(s): WISC 2018471, N/A, WISC 2019743

SECTION: 0001 Contract Items

Alt Set ID: Alt Mbr ID:

Proposal Line Number	Item ID Description	Approximate Quantity and Units	Unit Price	Bid Amount
0672	SPV.0105 Special 32. Remove Loop Detector Wire and Lead-In Cable USH 10 & CTH R	LS	LUMP SUM	_____.
0674	SPV.0105 Special 33. Remove Loop Detector Wire and Lead-In Cable USH 10 & 18th Street	LS	LUMP SUM	_____.
0676	SPV.0105 Special 34. Traffic Signal Cabinet & Controller Fully Actuated 8 Phase USH 10 & CTH R	LS	LUMP SUM	_____.
0678	SPV.0105 Special 35. Traffic Signal Cabinet & Controller Fully Actuated 8 Phase USH 10 & 18th Str	LS	LUMP SUM	_____.
0680	SPV.0105 Special 41. Abandoning Water Main and Appurtenances Project 1500-37-77	LS	LUMP SUM	_____.
0682	SPV.0105 Special 51. Sanitary Sewer Pipeline Support	LS	LUMP SUM	_____.
0684	SPV.0165 Special 01. Remove and Salvage Brick Pavers	165.000 SF	_____.	_____.
0686	SPV.0165 Special 02. Install Salvaged Brick Pavers	165.000 SF	_____.	_____.
0688	SPV.0165 Special 40. Water Main Trench Insulation 4-Inch	768.000 SF	_____.	_____.
0690	SPV.0180 Special 01. Hydroseeding	15,500.000 SY	_____.	_____.
0692	SPV.0200 Special 50. Sanitary Manhole 4-Foot	259.400 VF	_____.	_____.
0694	SPV.0200 Special 51. Drop Manhole	33.300 VF	_____.	_____.
0696	SPV.0060 Special 30. Install Type 13 Pole with 35-FT Monotube Arm	1.000 EACH	_____.	_____.
<b>Section: 0001</b>			<b>Total:</b>	_____.

**Total Bid:** \_\_\_\_\_.

