



# Wisconsin Department of Transportation

## Division of Transportation Systems Development

Bureau of Project Development  
4822 Madison Yards Way, 4<sup>th</sup> Floor South  
Madison, WI 53705

January 7, 2020

Telephone: (608) 266-1631  
Facsimile (FAX): (608) 266-8459

### NOTICE TO ALL CONTRACTORS:

**Proposal #07: 1090-16-70, WISC 2019 801  
IH 43 Rock Freeway  
Rock County Line to USH 12  
IH 43  
Walworth County**

### Letting of January 14, 2020

This is Addendum No. 01, which provides for the following:

#### Special Provisions:

Revised Special Provisions	
Article No.	Description
3	Prosecution and Progress
77	Resin Binder High Friction Surface Treatment, Item SPV.0180.001

Added Special Provisions	
Article No.	Description
78	Marking Contrast Epoxy 4-inch, Item SPV.0090.03
79	Marking Contrast Epoxy 8-inch, Item SPV.0090.04

#### Schedule of Items:

Revised Bid Item Quantities					
Bid Item	Item Description	Unit	Old Quantity	Revised Quantity	Proposal Total
416.0610	Drilled Tie Bars	Each	374	200	574
416.0620	Drilled Dowel Bars	Each	1,300	975	2,275
416.1710	Concrete Pavement Repair	SY	425	375	800
416.1715	Concrete Pavement Repair SHES	SY	200	200	400
416.1720	Concrete Pavement Replacement	SY	450	250	700
416.1725	Concrete Pavement Replacement SHES	SY	150	150	300
522.1024	Apron Endwalls for Culvert Pipe Reinforced Concrete 24-Inch	Each	6	-4	2

522.1030	Apron Endwalls for Culvert Pipe Reinforced Concrete 30-Inch	Each	9	4	13
614.2300	MGS Guardrail 3	LF	10,387.5	112.5	10,500
614.2320	MGS Guardrail 3 QS	LF	275	-162.5	112.5
614.2620	MGS Guardrail Terminal Type 2	Each	2	1	3
646.1020	Marking Line Epoxy 4-Inch	LF	46,579	4,810	51,389
646.1040	Marking Line Grooved Wet Reflective Epoxy 4-Inch	LF	377,573	-4,810	372,763
646.1555	Marking Line Grooved Contrast Permanent Tape 4-Inch	LF	42,405	-613	41,792
646.3555	Marking Line Grooved Contrast Permanent Tape 8-Inch	LF	23,150	-1,003	22,147
646.7220	Marking Chevron Epoxy 24-Inch	LF	1,165	760	1,925
649.0105	Temporary Marking Line Paint 4-Inch	LF	115,580	461,290	576,870
649.0205	Temporary Marking Line Paint 8-Inch	LF	6,390	25,775	32,165
690.0150	Sawing Asphalt	LF	7,700	600	8,300
690.0250	Sawing Concrete	LF	11,300	400	11,700
SPV.0180.001	Resin Binder High Friction Surface Treatment	SY	34,750	-4,925	29,825

Added Bid Item Quantities					
Bid Item	Item Description	Unit	Old Quantity	Revised Quantity	Proposal Total
614.2310	MGS Guardrail 3 HS	LF	0	50	50
646.6464	Cold Weather Marking Epoxy 4-Inch	LF	0	58,450	58,450
646.6468	Cold Weather Marking Epoxy 8-Inch	LF	0	7,450	7,450
SPV.0090.03	Marking Contrast Epoxy 4-Inch	LF	0	613	613
SPV.0090.04	Marking Contrast Epoxy 8-Inch	LF	0	1,003	1,003

Deleted Bid Item Quantities					
Bid Item	Item Description	Unit	Old Quantity	Revised Quantity	Proposal Total
646.1005	Marking Line Paint 4-Inch	LF	58,450	-58,450	0
646.3005	Marking Line Paint 8-Inch	LF	7,450	-7,450	0
646.7205	Marking Chevron Paint 24-Inch	LF	760	-760	0

### **Plan Sheets:**

Revised Plan Sheets	
Plan Sheet	Plan Sheet Title (brief description of changes to sheet)
17	Revised width of HFST application on shoulders
61	Updated callouts
182, 192, 193 & 200	Added note to see new detail sheets for pavement markings to be applied to bridges with polymer overlays
514	Revised quantities for concrete repair and replacement work
525	Revised quantities for 24-inch & 30-inch apron endwalls
531	Added note indicating joint ties are incidental to salvaged apron endwall work
533 to 537	Revised/added quantities for guardrail
548	Revised quantities for temporary marking line paint 4-inch and 8-inch

549	Revised winter pavement markings from paint to cold weather epoxy and changed chevron paint to epoxy
550	Revised quantities to reflect non grooved paint on bridges with polymer overlays
553	Revised quantity for High Friction Surface Treatment

<b>Added Plan Sheets</b>	
Plan Sheet	Plan Sheet Title (brief description of why sheet was added)
182A, 193A & 200A	New detail sheets for pavement markings to be applied to bridges with polymer overlays

The responsibility for notifying potential subcontractors and suppliers of these changes remains with the prime contractor.

Sincerely,

*Mike Coleman*

Proposal Development Specialist  
Proposal Management Section

**ADDENDUM NO. 01**

**1090-16-70**

**January 7, 2020**

**Special Provisions**

**3. Prosecution and Progress**

*Insert the following after paragraph six:*

Anticipate cold weather paving and concrete. Plan to heat aggregates and water for mixes, and that the heating of the aggregate and water is considered incidental to those items. There will be no adverse weather delay for cold weather construction.

*Insert the following after paragraph four under section titled **General**:*

Temporary pavement markings shall be placed in the exact location and configuration where permanent pavement markings will be placed. Any water blasting required for pavement marking removal should be considered incidental to the temporary pavement marking items.

**77. Resin Binder High Friction Surface Treatment, Item SPV.0180.001**

*Replace paragraph three under section titled **C.3 Application of the HFST** with the following:*

Construct HFST to the full width of the existing pavement surface, or as the plans show or engineer directs. Extend the HFST application 3' onto the shoulders as shown on the plans. Apply as a single layer 1/8 inch to 1/4 inch thick.

**78. Marking Contrast Epoxy 4-inch, Item SPV.0090.03.**

**A Description**

This special provision describes applying contrast epoxy marking conforming to standard spec 646, as the plans show, and as follows.

**B Materials**

Furnish epoxy pavement marking materials conforming of standard spec 646.2.

**C Construction**

Apply two 1 ½-inch wide black epoxy lines with a 4-inch separation between the two black lines for the first pass, followed by a 4-inch wide white epoxy line second pass, for a total width of 7 inches. Apply epoxy pavement marking conforming to standard spec 646.3.

**D Measurement**

The department will measure Marking Contrast Epoxy 4-Inch Special by the linear foot acceptably completed, measured once as the length of the centerline of the completed installation.

**E Payment**

The department will pay for measured quantities at the contract unit price under the following bid items:

ITEM NUMBER	DESCRIPTION	UNIT
SPV.0090.03	Marking Contrast Epoxy 4-Inch	LF

Payment is full compensation for providing replacement marking.

SER-646-001 (20180214)

**79. Marking Contrast Epoxy 8-inch, Item SPV.0090.04.**

**A Description**

This special provision describes applying contrast epoxy marking conforming to standard spec 646, as the plans show, and as follows.

**B Materials**

Furnish epoxy pavement marking materials conforming of standard spec 646.2.

**C Construction**

Apply two 1 ½-inch wide black epoxy lines with a 8-inch separation between the two black lines for the first pass, followed by an 8-inch wide white epoxy line second pass, for a total width of 7 inches. Apply epoxy pavement marking conforming to standard spec 646.3.

**D Measurement**

The department will measure Marking Contrast Epoxy 8-Inch Special by the linear foot acceptably completed, measured once as the length of the centerline of the completed installation.

**E Payment**

The department will pay for measured quantities at the contract unit price under the following bid items:

ITEM NUMBER	DESCRIPTION	UNIT
SPV.0090.04	Marking Contrast Epoxy 8-Inch	LF

Payment is full compensation for providing replacement marking.

SER-646-002 (20180214)

**Schedule of Items**

Attached, dated January 6, 2020, are the revised Schedule of Items Pages 1 – 27.

**Plan Sheets**

The following 8½ x 11-inch sheets are attached and made part of the plans for this proposal:

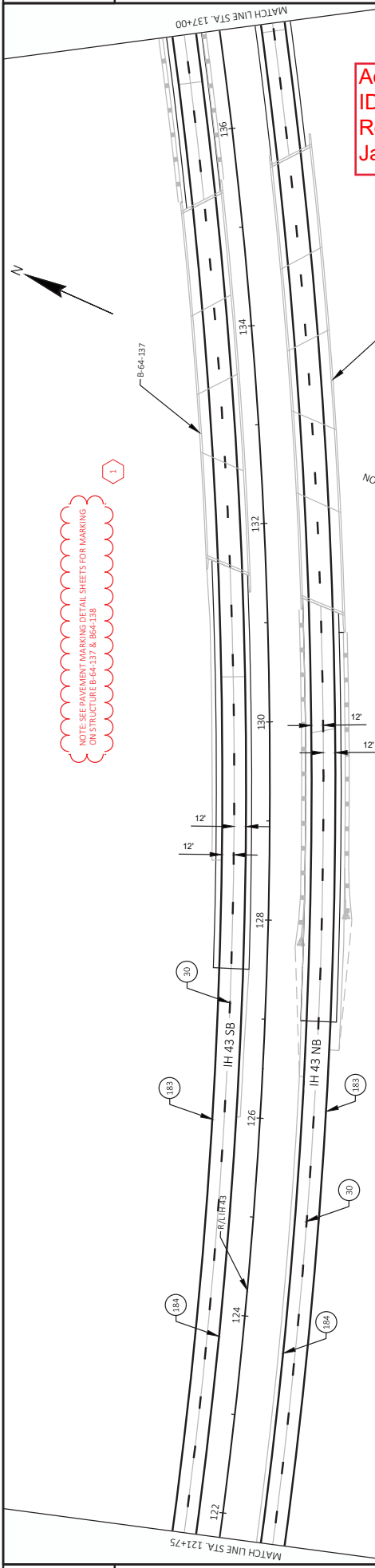
Revised: 17, 61, 182, 192, 193, 200, 514, 525, 531, 533 to 537, 548 to 550, and 553.

Added: 182A, 193A & 200A

END OF ADDENDUM





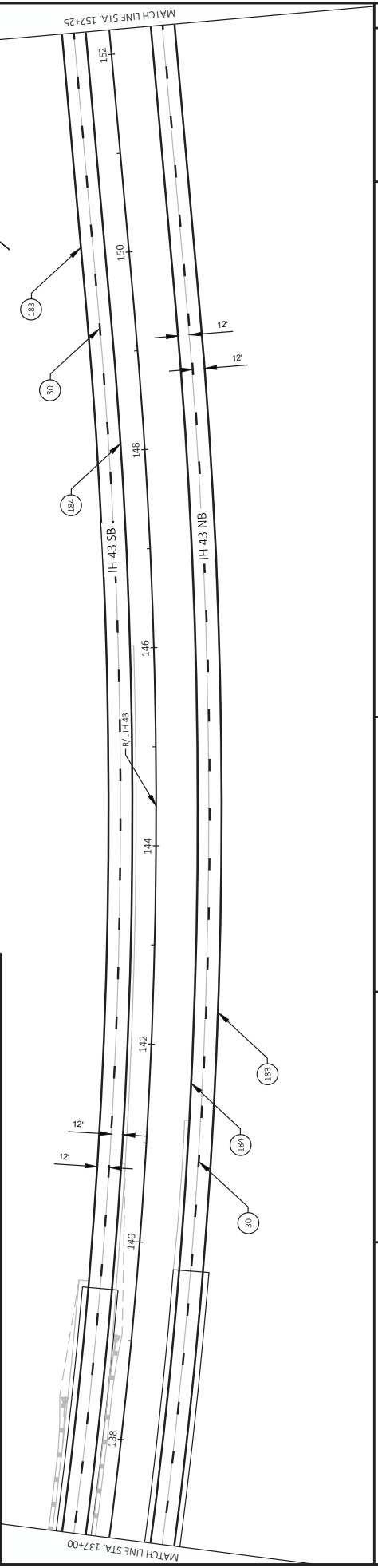
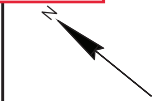


NOTE: SEE PAVEMENT MARKING DETAIL SHEETS FOR MARKING ON STRUCTURE B-64-137 & B-64-138

Addendum No. 01  
ID 1090-16-70  
Revised Sheet 182  
January 7, 2020

NO.	DESCRIPTION
1	MARKING LINE EPOXY 4-INCH (YELLOW)
2	MARKING LINE EPOXY 4-INCH (WHITE)
5	MARKING LINE EPOXY 8-INCH DOT (DOT PATTERN WHITE) 18 FT LINE 9 FT SKIP
6	MARKING LINE EPOXY 8-INCH (WHITE)
7	MARKING STOP LINE EPOXY 18-INCH (WHITE)
16	MARKING ARROWS EPOXY (TYPE 2) (WHITE)
17	MARKING ARROWS EPOXY (TYPE 3) (WHITE)
18	MARKING ARROWS EPOXY (TYPE 4) (WHITE)
29	MARKING LINE GROOVED CONTRAST PERMANENT TAPE 8-INCH (WHITE)
30	MARKING LINE GROOVED CONTRAST PERMANENT TAPE 4-INCH (DASHED WHITE) (12.5 FT LINE 37.5 FT SKIP)
39	MARKING LINE GROOVED CONTRAST PERMANENT TAPE 8-INCH (DOT PATTERN WHITE) (3 FT LINE 9 FT SKIP)
183	MARKING LINE GROOVED WET REFLECTIVE EPOXY 4-INCH (WHITE)
184	MARKING LINE GROOVED WET REFLECTIVE EPOXY 4-INCH (YELLOW)
219	MARKING LINE GROOVED WET REF CONTRAST EPOXY 4-INCH (DOT PATTERN WHITE) (3 FT LINE 9 FT SKIP)
233	MARKING CHEVRON EPOXY 24-INCH (WHITE) SINGLE DELINEATOR (WHITE) ON STEEL POST (400' C-C SPACING UNLESS OTHERWISE NOTED) DOUBLE DELINEATOR (YELLOW) ON STEEL POST

LEGEND

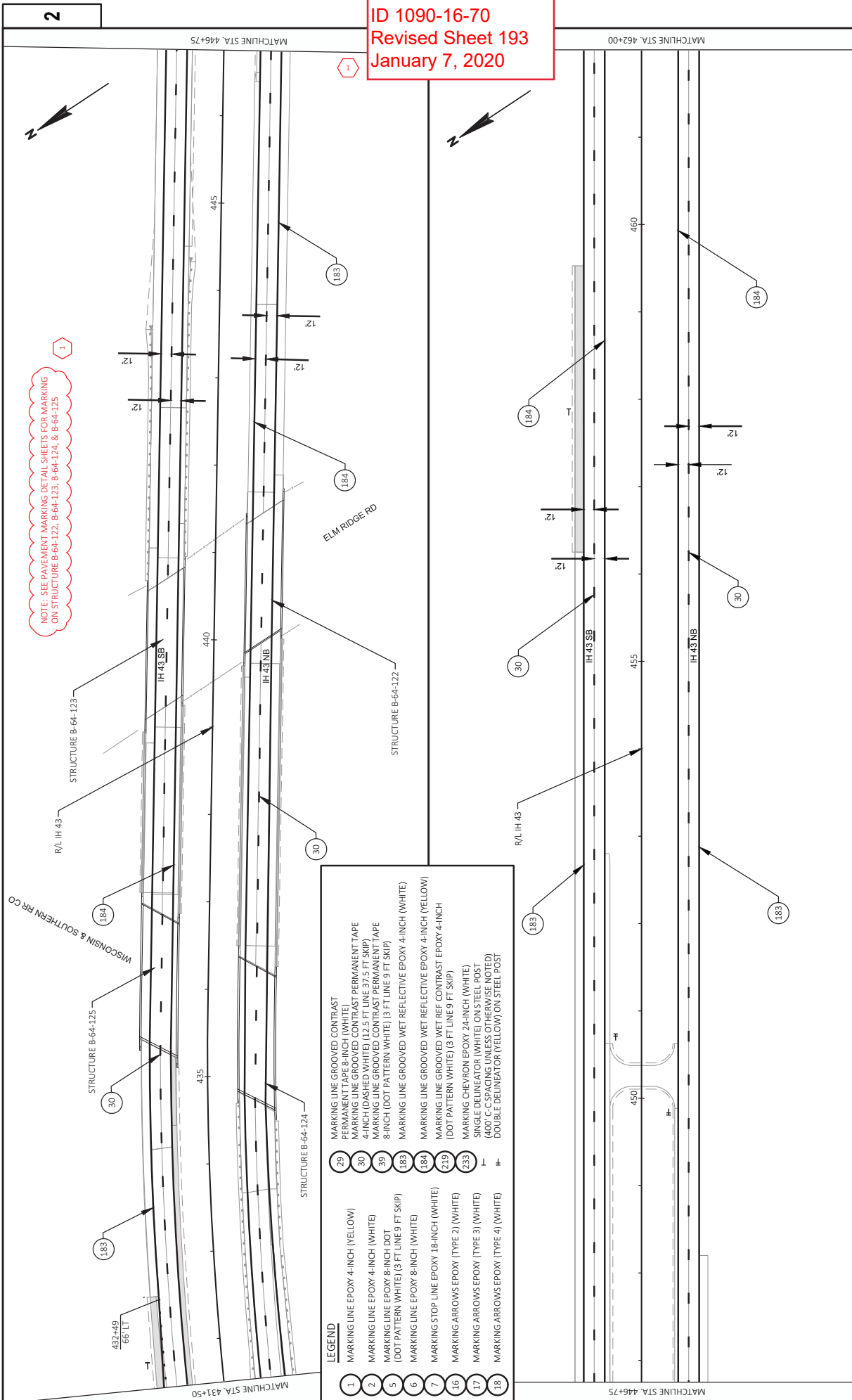








Addendum No. 01  
 ID 1090-16-70  
 Revised Sheet 193  
 January 7, 2020



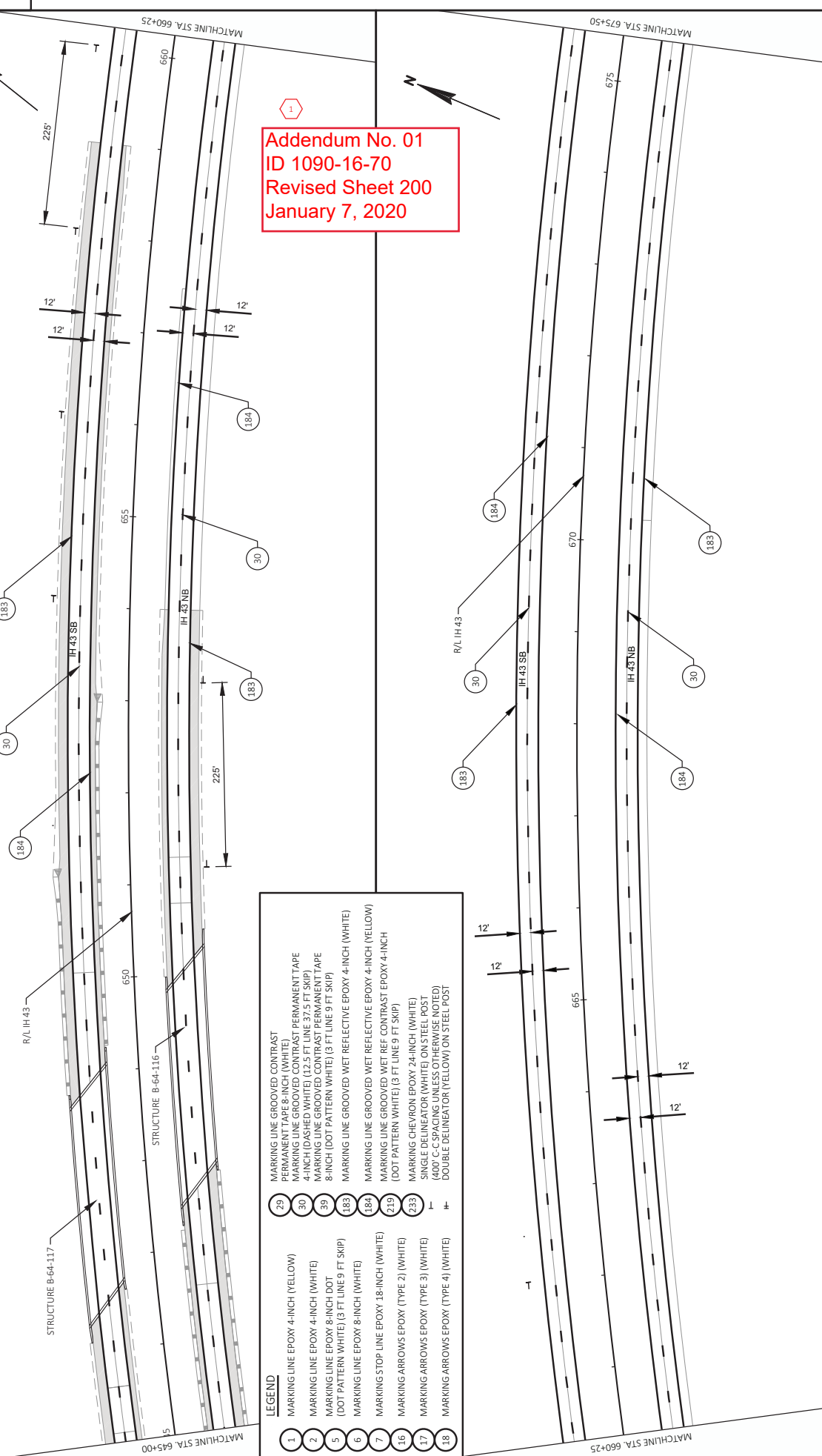
NOTE: SEE PAVEMENT MARKING DETAIL SHEETS FOR MARKING ON STRUCTURE B-64-122, B-64-123, B-64-124, & B-64-125

**LEGEND**

1	MARKING LINE EPOXY 4-INCH (YELLOW)
2	MARKING LINE EPOXY 4-INCH (WHITE)
5	MARKING LINE EPOXY 8-INCH DOT (DOT PATTERN WHITE) 18 FT LINE 9 FT SKIP
6	MARKING LINE EPOXY 8-INCH (WHITE)
7	MARKING STOP LINE EPOXY 18-INCH (WHITE)
16	MARKING ARROWS EPOXY (TYPE 2) (WHITE)
17	MARKING ARROWS EPOXY (TYPE 3) (WHITE)
18	MARKING ARROWS EPOXY (TYPE 4) (WHITE)
29	MARKING LINE GROOVED CONTRAST PERMANENT TAPE 8-INCH (WHITE)
30	MARKING LINE GROOVED CONTRAST PERMANENT TAPE 4-INCH (DASHED WHITE) (12.5 FT LINE 37.5 FT SKIP)
30	MARKING LINE GROOVED CONTRAST PERMANENT TAPE 8-INCH (DOT PATTERN WHITE) (3 FT LINE 9 FT SKIP)
183	MARKING LINE GROOVED WET REFLECTIVE EPOXY 4-INCH (WHITE)
184	MARKING LINE GROOVED WET REFLECTIVE EPOXY 4-INCH (YELLOW)
219	MARKING LINE GROOVED WET REF CONTRAST EPOXY 4-INCH (DOT PATTERN WHITE) (3 FT LINE 9 FT SKIP)
233	MARKING CHEVRON EPOXY 24-INCH (WHITE) SINGLE DELINEATOR (WHITE) ON STEEL POST (600' C-C SPACING UNLESS OTHERWISE NOTED)
+	DOUBLE DELINEATOR (YELLOW) ON STEEL POST



NOTE: SEE PAVEMENT MARKING DETAILS SHEETS FOR MARKING ON STRUCTURE B-64-116 & B-64-117



Addendum No. 01  
 ID 1090-16-70  
 Revised Sheet 200  
 January 7, 2020

**LEGEND**

1	MARKING LINE EPOXY 4-INCH (YELLOW)	29	MARKING LINE GROOVED CONTRAST PERMANENT TAPE 8-INCH (WHITE)
2	MARKING LINE EPOXY 4-INCH (WHITE)	30	MARKING LINE GROOVED CONTRAST PERMANENT TAPE 4-INCH (DASHED WHITE) (12.5 FT LINE 37.5 FT SKIP)
5	MARKING LINE EPOXY 8-INCH DOT (DOT PATTERN WHITE) (3 FT LINE 9 FT SKIP)	39	MARKING LINE GROOVED CONTRAST PERMANENT TAPE 8-INCH (DOT PATTERN WHITE) (3 FT LINE 9 FT SKIP)
6	MARKING LINE EPOXY 8-INCH (WHITE)	183	MARKING LINE GROOVED WET REFLECTIVE EPOXY 4-INCH (WHITE)
7	MARKING STOP LINE EPOXY 18-INCH (WHITE)	184	MARKING LINE GROOVED WET REFLECTIVE EPOXY 4-INCH (YELLOW)
16	MARKING ARROWS EPOXY (TYPE 2) (WHITE)	219	MARKING LINE GROOVED WET REF. CONTRAST EPOXY 4-INCH (DOT PATTERN WHITE) (3 FT LINE 9 FT SKIP)
17	MARKING ARROWS EPOXY (TYPE 3) (WHITE)	233	MARKING CHEVRON EPOXY 24-INCH (WHITE)
18	MARKING ARROWS EPOXY (TYPE 4) (WHITE)	+	SINGLE DELINEATOR (WHITE) ON STEEL POST (DOT PATTERN UNLESS OTHERWISE NOTED)
			DOUBLE DELINEATOR (YELLOW) ON STEEL POST



ALL ITEMS ARE CATEGORY 1000 UNLESS OTHERWISE NOTED

**CONCRETE REPAIR AND REPLACEMENT ITEMS**

PROJECT	STATION	TO STATION	SY	DESCRIPTION	SY	DESCRIPTION	SY	DESCRIPTION	SY	DESCRIPTION	SY	DESCRIPTION	SY	DESCRIPTION	SY	DESCRIPTION
	91+46	- 928+14	70	PATCHING CONCRETE	70	PATCHING CONCRETE	75	BASE	390.0403	416.0610*	416.0620	416.1710	416.1715	416.1720	416.1725	690.0250*
			70	CONCRETE	75	CONCRETE	75	CONCRETE		DRILLED TIE BARS EACH	DRILLED DOWEL BARS EACH	CONCRETE REPAIR	CONCRETE REPAIR	CONCRETE REPAIR	CONCRETE REPLACEMENT	CONCRETE REPLACEMENT
			70	CONCRETE	75	CONCRETE	75	CONCRETE		475	2,275	800	400	700	300	1,800
			70	CONCRETE	75	CONCRETE	75	CONCRETE		475	2,275	800	400	700	300	1,800
<b>TOTALS</b>			<b>70</b>		<b>75</b>		<b>75</b>			<b>475</b>	<b>2,275</b>	<b>800</b>	<b>400</b>	<b>700</b>	<b>300</b>	<b>1,800</b>

\* ADDITIONAL QUANTITIES LISTED ELSEWHERE

1

**FLUMES**

STAGE	ROADWAY	STATION	CY	ASPHALTIC FLUMES	RIPRAP MEDIUM	GEOTEXTILE TYPE HR
	43 NB	917+50	2	-	4	7
	43 SB	587+80	-	8	3	7
		928+10	2	-	4	7
<b>TOTALS</b>			<b>4</b>	<b>8</b>	<b>11</b>	<b>21</b>

\* ADDITIONAL QUANTITIES LISTED ELSEWHERE

Addendum No. 01  
ID 1090-16-70  
Revised Sheet 514  
January 7, 2020

**PARTIAL DEPTH CONCRETE REPAIR**

PROJECT	STATION	TO STATION	LF	DESCRIPTION	LF	DESCRIPTION
	91+46	- 928+14	300	CONCRETE PAVEMENT PARTIAL DEPTH REPAIR	1,500	CONCRETE PAVEMENT PARTIAL DEPTH REPAIR
			300	CONCRETE PAVEMENT PARTIAL DEPTH REPAIR	1,500	CONCRETE PAVEMENT PARTIAL DEPTH REPAIR
<b>TOTALS</b>			<b>300</b>		<b>1,500</b>	

**DIAMOND GRINDING**

ROADWAY	STATION	TO STATION	SY	DESCRIPTION
IH 43	91+46	- 915+25	472,000	CONTINUOUS DIAMOND GRINDING CONCRETE PAVEMENT
<b>TOTALS</b>			<b>472,000</b>	

PROJECT NO: 1090-16-70

HWY: IH 43

COUNTY: WALWORTH

MISCELLANEOUS QUANTITIES

SHEET: 514

E

FILE NAME: T:\Design\01 Projects\WISDOT SE Region\1090-16-00\_L\_03\_Walworth\2.0\_PSB\Misc\_Quantities\03201-mnppt

PLOT DATE: 1/9/2020 1:09:58 PM

PLOT SCALE: 1:1

ALL ITEMS ARE CATEGORY 1000 UNLESS OTHERWISE NOTED

CULVERT PIPE ITEMS

ROADWAY	PIPE NUMBER	STR	STATION	INLET END OFFSET	ELEV	STR	DISCHARGE END STATION	OFFSET	ELEV	SLOPE	REINFORCED CONCRETE CLASS III LF	CULVERT PIPE CLASS IV 12-INCH LF	CONSTRUCTION STAKING PIPE CULVERTS EACH
NORTH CROSSOVER	CP401	401	454+82	22.4' RT	917.03	402	455+66	11.6' LT	915.60	1.57%	--	91	1
NB TO 67 OFF RAMP	CP600	600	824+97	128.9' RT	938.40	601	824+81	181.9' RT	938.00	0.72%	56	--	1
NB TO 67 OFF RAMP	CP602	602	825+04	130.6' RT	938.40	603	824+87	183.8' RT	938.00	0.72%	56	--	1
67 TO SB ON RAMP	CP604	604	830+08	167.0' LT	939.32	605	829+75	239.7' LT	939.05	0.34%	80	--	1
<b>TOTALS</b>											<b>192</b>	<b>91</b>	<b>4</b>

NOTES

- STATIONS, OFFSETS, AND ELEVATIONS SHOWN ARE TO THE END OF THE PIPE, NOT THE APRON END OF ENDWALLS
- JOINT TIES FOR CONCRETE PIPE SHALL BE PROVIDED AT ALL CONCRETE APRON ENDWALLS. APRON ENDWALLS SHALL BE TIED FOR THE LAST THREE JOINTS AT PIPE ENDS. THE COST OF THESE TIES SHALL BE INCIDENTAL TO THE COST OF THE PIPE.
- LENGTH OF APRON ENDWALLS ARE NOT INCLUDED IN CULVERT PIPE LENGTHS.

CULVERT & STORM SEWER ENDWALL SUMMARY

STRUCTURE NUMBER	STATION	OFFSET FT	12-INCH REINFORCED CONCRETE 12-INCH EACH	18-INCH REINFORCED CONCRETE 24-INCH EACH	30-INCH REINFORCED CONCRETE 30-INCH EACH	RIPRAP MEDIUM CY	PIPE GRATES EACH	GEOTEXTILE TYPE HR	MARKERS CULVERT END EACH	CONSTRUCTION STAKING STORMSEWER EACH
NORTH CROSSOVER	401	22.4' RT	1	--	--	--	--	--	--	--
NORTH CROSSOVER	402	11.6' LT	1	--	--	--	--	--	--	--
IH 43	651	108.1' RT	1	1	4	4	--	7	--	1
IH 43	653	96.0' RT	1	1	4	4	--	7	--	1
IH 43	654	96.3' RT	--	--	1	1	1	--	--	1
IH 43	657	95.8' RT	--	--	1	4	--	7	--	1
IH 43	658	104.4' LT	--	--	1	1	1	--	--	1
IH 43	661	103.6' LT	--	--	1	4	--	7	--	1
IH 43	663	97.9' LT	1	1	4	4	--	7	--	1
IH 43	665	95.0' LT	--	--	1	4	--	7	--	1
IH 43	667	97.7' LT	1	1	4	4	--	7	--	1
IH 43	670	98.0' RT	1	1	4	4	--	7	--	1
NB TO 67 OFF RAMP	600	128.9' RT	--	--	1	--	--	--	--	--
NB TO 67 OFF RAMP	601	181.9' RT	--	--	1	5	--	8	--	--
NB TO 67 OFF RAMP	602	130.6' RT	--	--	1	--	--	--	--	--
NB TO 67 OFF RAMP	603	183.8' RT	--	--	1	5	--	8	--	--
67 TO SB ON RAMP	604	167.0' LT	--	--	1	5	--	8	--	--
67 TO SB ON RAMP	605	239.7' LT	--	--	1	5	--	8	--	--
<b>TOTALS</b>						<b>47</b>	<b>2</b>	<b>80</b>	<b>6</b>	<b>10</b>

NOTES

- STATIONS, OFFSETS, AND ELEVATIONS SHOWN ARE TO THE END OF THE PIPE, NOT THE APRON END OF ENDWALLS
  - JOINT TIES FOR CONCRETE PIPE SHALL BE PROVIDED AT ALL CONCRETE APRON ENDWALLS. APRON ENDWALLS SHALL BE TIED FOR THE LAST THREE JOINTS AT PIPE ENDS. THE COST OF THESE TIES SHALL BE INCIDENTAL TO THE COST OF THE PIPE.
- \*ADDITIONAL QUANTITIES LISTED ELSEWHERE

1 Addendum No. 01  
ID 1090-16-70  
Revised Sheet 525  
January 7, 2020





ALL ITEMS ARE CATEGORY 1000 UNLESS OTHERWISE NOTED

Addendum No. 01  
ID 1090-16-70  
Revised Sheet 533  
January 7, 2020

**GUARDRAIL ITEMS**

STAGE	ROADWAY	STATION	TO STATION	SIDE	614.0200 STEEL THRIE BEAM STRUCTURE APPROACH	614.0397 GUARDRAIL MOW STRIP EMULSIFIED ASPHALT	614.2300 MGS GUARDRAIL 3	614.2320 MGS GUARDRAIL 3	614.2500 MGS THRIE BEAM TRANSITION	614.2610 MGS GUARDRAIL TERMINAL EAT	614.2620 MGS GUARDRAIL TERMINAL TYPE 2	614.2310 MGS GUARDRAIL 3	HS LF
1A	IH 43 SB	425+68.8	- 426+07.3	OUT	--	--	--	--	40	--	--	--	--
		426+07.3	- 427+29.5	OUT	--	--	125	--	--	--	--	--	--
		427+29.5	- 427+81.5	OUT	--	--	--	--	--	1	--	--	--
		425+68.8	- 427+81.5	OUT	--	100	--	--	--	--	--	--	--
2	IH 43 NB	418+45.9	- 419+00.3	OUT	--	--	--	--	--	1	--	--	--
		419+00.3	- 421+05.6	OUT	--	--	200	--	--	--	--	--	--
		421+05.6	- 421+46.10	OUT	--	--	--	--	40	--	--	--	--
		418+45.9	- 421+46.10	OUT	--	132	--	--	--	--	--	--	--
3A	IH 43 SB	419+12.0	- 419+65.5	IN	--	--	--	--	--	1	--	--	--
		419+65.5	- 421+54.8	IN	--	--	187.5	--	--	--	--	--	--
		421+54.8	- 421+95.6	IN	--	--	--	--	40	--	--	--	--
		419+12.0	- 421+95.6	IN	--	128	--	--	--	--	--	--	--
YEAR 1 SOUTH SUBTOTAL		425+66.6	- 425+66.6	IN	--	--	--	--	40	--	--	--	--
		425+66.6	- 428+51.4	IN	--	--	287.5	--	--	--	--	--	--
		428+51.4	- 429+04.0	IN	--	--	--	--	--	1	--	--	--
		425+66.6	- 429+04.0	IN	--	171	--	--	--	--	--	--	--
		YEAR 1 SOUTH SUBTOTAL			--	531	--	160	4	--	--	--	

CONTINUED ON NEXT PAGE

PROJECT NO: 1090-16-70

HWY: IH 43

COUNTY: WALWORTH

MISCELLANEOUS QUANTITIES

SHEET: 533

E

FILE NAME: T:\Design\01 Projects\WsdOT SE Region\1090-16-00\_L\_43\_Walworth\2.0\_PSE\Misc. Quantities\030201-mnpp1

PLOT DATE: 12/29/2019 11:23:02 AM

PLOT SCALE: 1:1

ALL ITEMS ARE CATEGORY 1000 UNLESS OTHERWISE NOTED

CONTINUED FROM PREVIOUS PAGE

**GUARDRAIL ITEMS**

STAGE	ROADWAY	STATION	TO STATION	SIDE	614.0200 STEEL THRIE BEAM STRUCTURE APPROACH	614.0397 GUARDRAIL MOW STRIP EMULSIFIED ASPHALT	614.2300 MGS GUARDRAIL	614.2320 MGS GUARDRAIL	614.2500 MGS THRIE BEAM TRANSITION	614.2610 MGS GUARDRAIL TERMINAL EAT	614.2620 MGS GUARDRAIL TERMINAL TYPE 2	614.2310 MGS GUARDRAIL
					LF	SY	LF	OS	LF	EACH	EACH	HS
												LF
1	YEAR 1 NORTH IH 43 NB	897+95.5	- 868+48.6	IN	--	--	--	--	--	1	--	--
		868+48.6	- 871+11.1	IN	--	--	262.5	--	--	--	--	--
		871+11.1	- 871+50.5	IN	--	--	--	--	40	--	--	--
		897+95.5	- 871+50.5	IN	--	160	--	--	--	--	--	--
		898+53.8	- 899+06.9	IN	--	--	--	--	--	1	--	--
		899+06.9	- 901+19.4	IN	--	--	212.5	--	--	--	--	--
		901+19.4	- 901+58.8	IN	--	--	--	--	40	--	--	--
		898+53.8	- 901+58.8	IN	--	138	--	--	--	--	--	--
		904+02.0	- 904+41.4	IN	--	--	--	--	40	--	--	--
		904+41.4	- 906+53.9	IN	--	--	212.5	--	--	--	--	--
2A	IH 43 NB	869+16.1	- 871+16.1	OUT	--	--	--	--	--	1	--	--
		871+16.1	- 871+55.5	OUT	--	--	200	--	--	--	--	
		868+63.0	- 871+55.5	OUT	--	132	--	--	--	--	--	
		873+54.6	- 873+94.0	OUT	--	--	--	--	40	--	--	
		873+94.0	- 875+94.0	OUT	--	--	200	--	--	--	--	
		875+94.0	- 876+47.1	OUT	--	--	--	--	--	1	--	
		873+54.6	- 876+47.1	OUT	--	132	--	--	--	--	--	
		898+26.8	- 899+79.9	OUT	--	--	--	--	--	1	--	
		899+79.9	- 901+54.9	OUT	--	--	275	--	--	--	--	
		901+54.9	- 901+94.3	OUT	--	--	--	--	40	--	--	
IH 43 SB	IH 43 SB	904+78.9	- 904+87.1	OUT	--	--	--	--	--	--	--	
		904+87.1	- 908+24.6	OUT	--	--	337.5	--	--	1	--	
		904+78.9	- 908+24.6	OUT	--	151	--	--	--	--	--	
		903+63.6	- 904+03.0	OUT	--	--	--	--	40	--	--	
		904+03.0	- 906+40.4	OUT	--	--	237.5	--	--	--	--	
		906+40.4	- 906+93.5	OUT	--	--	--	--	--	1	--	
		903+63.6	- 906+93.5	OUT	--	149	--	--	--	--	--	
		916+84.0	- 917+33.2	OUT	--	--	--	--	--	1	--	
		917+33.2	- 920+06.6	OUT	--	--	275	--	--	--	--	
		920+06.6	- 920+46.0	OUT	--	--	--	--	40	--	--	
IH 43 SB	IH 43 SB	916+84.0	- 920+46.0	OUT	--	114	--	--	--	--	--	
		924+19.1	- 924+26.5	OUT	8	--	--	--	--	--	--	
		924+26.5	- 923+76.5	OUT	--	--	--	--	--	--	--	
		923+76.5	- 925+01.3	OUT	--	--	--	50	--	--	25 (1)	
		924+19.1	- 925+01.3	OUT	--	15	--	--	--	--	--	
		919+16.7	- 920+26.2	OUT	--	--	112.5	--	--	--	1	
		920+26.2	- 920+51.2	OUT	--	--	--	--	--	--	--	
		920+51.2	- 920+26.2	OUT	--	--	--	--	--	--	--	
		920+26.2	- 924+21.0	OUT	8	--	--	62.5	--	--	--	
		924+21.0	- 925+33.6	OUT	--	--	--	--	40	--	--	
IH 43 SB	IH 43 SB	925+33.6	- 928+76.5	OUT	--	--	--	--	--	--		
		928+76.5	- 929+21.4	OUT	--	--	--	--	--	1		
		924+94.2	- 929+21.4	OUT	--	157	--	--	--	--		
		924+94.2	- 929+21.4	OUT	--	--	--	--	--	--		

NOTES:  
 (1) 25 FEET OF HALF POST SPACING NOT REQUIRED ON APPROACH END OF QUARTER POST SPACING. USE QUARTER SPACING.

1  
 Addendum No. 01  
 ID 1090-16-70  
 Revised Sheet 534  
 January 7, 2020

ALL ITEMS ARE CATEGORY 1000 UNLESS OTHERWISE NOTED  
 CONTINUED FROM PREVIOUS PAGE

STAGE	ROADWAY	SIDE	TO STATION	FROM STATION	614.0200		614.0397		614.2300		614.2320		614.2500		614.2610		614.2620				
					STEEL	THRIE BEAM	GUARDRAIL	MOW STRIP	MGS	GUARDRAIL	MGS	THRIE	MGS	GUARDRAIL	MGS	GUARDRAIL	THRIE	MGS	GUARDRAIL	THRIE	MGS
					LF	LF	SY	LF	LF	LF	LF	LF	LF	LF	EACH	EACH	EACH	EACH			
2B	IH 43 SB	IN	873+61.5	873+99.0	--	--	--	--	--	--	--	--	--	40	--	--	--	--	--		
			873+99.0	876+49.0	--	--	250	--	--	--	--	--	--	--	--	--	--	--	--	--	--
			876+49.0	877+02.1	--	--	--	--	--	--	--	--	--	--	--	--	1	--	--	--	--
			873+61.5	877+02.1	--	--	157	--	--	--	--	--	--	--	--	--	--	--	--	--	--
			917+77.2	918+30.3	IN	--	--	--	--	--	--	--	--	--	--	--	1	--	--	--	--
			918+30.3	920+30.3	IN	--	--	200	--	--	--	--	--	--	--	--	--	--	--	--	--
			920+30.3	920+69.7	IN	--	--	--	--	--	--	--	--	--	40	--	--	--	--	--	--
			917+77.2	920+69.7	IN	--	--	133	--	--	--	--	--	--	--	--	--	--	--	--	--
			924+70.4	925+09.9	IN	--	--	--	--	--	--	--	--	--	40	--	--	--	--	--	--
			925+09.9	926+97.4	IN	--	--	187.5	--	--	--	--	--	--	--	--	--	--	--	--	--
926+97.4	927+50.4	IN	--	--	--	--	--	--	--	--	--	--	--	1	--	--	--	--			
924+70.4	927+50.4	IN	--	--	128	--	--	--	--	--	--	--	--	--	--	--	--	--			
YEAR 1 NORTH SUBTOTAL					24		1,869			3,312.5		112.5		480	12	3		50			
4A	IH 43 NB	IN	263+66.8	264+20.0	--	--	--	--	--	--	--	--	--	--	1	--	--	--	--		
			264+20.0	266+82.5	IN	--	--	262.5	--	--	--	--	--	--	--	--	--	--	--	--	
			266+82.5	267+22.5	IN	--	--	--	--	--	--	--	--	40	--	--	--	--	--	--	
			263+66.8	267+22.5	IN	--	--	159	--	--	--	--	--	--	--	--	--	--	--	--	
			585+26.0	585+78.9	IN	--	--	--	--	--	--	--	--	--	--	1	--	--	--	--	
			585+78.9	588+53.1	IN	--	--	275	--	--	--	--	--	--	--	--	--	--	--	--	
			588+53.1	588+92.4	IN	--	--	--	--	--	--	--	--	40	--	--	--	--	--	--	
			585+26.0	588+92.4	IN	--	--	165	--	--	--	--	--	--	--	--	--	--	--	--	
			688+85.8	689+39.2	IN	--	--	--	--	--	--	--	--	--	--	--	1	--	--	--	
			689+39.2	691+77.3	IN	--	--	237.5	--	--	--	--	--	--	--	--	--	--	--	--	
691+77.3	692+16.7	IN	--	--	--	--	--	--	--	--	40	--	--	--	--	--	--				
688+85.8	692+16.7	IN	--	--	150	--	--	--	--	--	--	--	--	--	--	--	--				
644+26.2	644+89.6	IN	--	--	--	--	--	--	--	--	--	--	--	1	--	--	--	--			
644+89.6	646+90.9	IN	--	--	200	--	--	--	--	--	--	--	--	--	--	--	--				
646+90.9	947+30.5	IN	--	--	--	--	--	--	--	--	40	--	--	--	--	--	--				
644+26.2	947+30.5	IN	--	--	130	--	--	--	--	--	--	--	--	--	--	--	--				
IH 43 SB	IN	269+30.4	269+70.4	IN	--	--	--	--	--	--	--	--	40	--	--	--	--	--			
		269+70.4	272+32.9	IN	--	--	262.5	--	--	--	--	--	--	--	--	--	--	--			
		272+32.9	272+85.7	IN	--	--	--	--	--	--	--	--	1	--	--	--	--	--			
		269+30.4	272+85.7	IN	--	--	159	--	--	--	--	--	--	--	--	--	--	--	--		
		590+91.9	591+29.6	IN	--	--	--	--	--	--	--	--	--	40	--	--	--	--	--		
		591+29.6	593+17.6	IN	--	--	187.5	--	--	--	--	--	--	--	--	--	--	--	--		
		593+17.6	593+70.8	IN	--	--	--	--	--	--	--	--	1	--	--	--	--	--	--		
		590+91.9	593+70.8	IN	--	--	127	--	--	--	--	--	--	--	--	--	--	--	--		
		649+20.7	649+59.8	IN	--	--	--	--	--	--	--	--	--	40	--	--	--	--	--		
		649+59.8	652+45.5	IN	--	--	287.5	--	--	--	--	--	--	--	--	--	--	--	--		
652+45.5	652+98.3	IN	--	--	--	--	--	--	--	--	--	--	--	1	--	--	--				
649+20.7	652+98.3	IN	--	--	170	--	--	--	--	--	--	--	--	--	--	--	--				
693+84.4	694+23.8	IN	--	--	--	--	--	--	--	--	--	40	--	--	--	--	--				
694+23.8	696+73.8	IN	--	--	250	--	--	--	--	--	--	--	--	--	--	--	--				
696+73.8	697+26.8	IN	--	--	--	--	--	--	--	--	--	--	--	1	--	--	--				
693+84.4	697+26.8	IN	--	--	154	--	--	--	--	--	--	--	--	--	--	--	--				

CONTINUED ON NEXT PAGE

1

Addendum No. 01  
 ID 1090-16-70  
 Revised Sheet 535  
 January 7, 2020

ALL ITEMS ARE CATEGORY 1000 UNLESS OTHERWISE NOTED  
CONTINUED FROM PREVIOUS PAGE

**GUARDRAIL ITEMS**

STAGE	ROADWAY	STATION	TO STATION	SIDE	614.0200		614.0397		614.2300		614.2320		614.2500		614.2610		614.2620				
					STEEL	THRIE BEAM	GUARDRAIL	MOW STRIP	MGS	GUARDRAIL	MGS	GUARDRAIL	THRIE	MGS	GUARDRAIL	THRIE	MGS	GUARDRAIL	THRIE	MGS	GUARDRAIL
					LF	LF	SY	EMULSIFIED ASPHALT	3	LF	LF	QS	LF	LF	EACH	EACH	EACH	EACH	TYPE2		
4B	IH 43 NB	264+42.5	- 264+96.1	OUT	--	--	--	--	--	200	--	--	--	--	1	--	--	--	--	--	
		264+96.1	- 266+96.1	OUT	--	--	--	--	--	--	200	--	--	--	--	--	--	--	--	--	--
		266+96.1	- 267+36.1	OUT	--	--	--	--	--	--	--	40	--	--	--	--	--	--	--	--	--
		264+42.5	- 267+36.1	OUT	--	--	--	136	--	--	--	--	--	--	--	--	--	--	--	--	--
		586+53.9	- 587+06.7	OUT	--	--	--	--	--	--	187.5	--	--	--	--	1	--	--	--	--	--
		587+06.7	- 588+92.9	OUT	--	--	--	--	--	--	--	--	--	--	--	--	--	--	--	--	--
		588+92.9	- 589+32.1	OUT	--	--	--	--	--	--	--	40	--	--	--	--	--	--	--	--	--
		586+53.9	- 589+32.1	OUT	--	--	--	126	--	--	--	--	--	--	--	--	--	--	--	--	--
		644+53.5	- 645+07.3	OUT	--	--	--	--	--	--	--	--	--	--	--	1	--	--	--	--	--
		645+07.3	- 647+48.0	OUT	--	--	--	--	--	--	237.5	--	--	--	--	--	--	--	--	--	--
		647+48.0	- 647+87.9	OUT	--	--	--	--	--	--	--	40	--	--	--	--	--	--	--	--	--
		644+53.5	- 647+87.9	OUT	--	--	--	149	--	--	--	--	--	--	--	--	--	--	--	--	--
		688+97.5	- 689+52.3	OUT	--	--	--	--	--	--	--	--	--	--	--	1	--	--	--	--	--
		689+52.3	- 691+77.3	OUT	--	--	--	--	--	--	225	--	--	--	--	--	--	--	--	--	--
691+77.3	- 692+16.7	OUT	--	--	--	--	--	--	--	40	--	--	--	--	--	--	--	--	--		
688+97.5	- 692+16.7	OUT	--	--	--	143	--	--	--	--	--	--	--	--	--	--	--	--	--		
<b>IH 43 SB</b>					269+21.2	- 269+61.2	OUT	--	--	--	--	--	40	--	--	--	--	--	--		
		269+61.2	- 271+61.2	OUT	--	--	--	--	200	--	--	--	--	--	--	--	--	--	--		
		271+61.2	- 272+13.8	OUT	--	--	--	--	--	--	--	--	--	--	1	--	--	--	--		
		269+21.2	- 272+13.8	OUT	--	--	132	--	--	--	--	--	--	--	--	--	--	--	--		
		590+47.8	- 590+87.5	OUT	--	--	--	--	--	40	--	--	--	--	--	--	--	--	--		
		590+87.5	- 593+14.0	OUT	--	--	--	--	225	--	--	--	--	--	--	--	--	--	--		
		593+14.0	- 593+67.4	OUT	--	--	--	--	--	--	--	--	--	1	--	--	--	--	--		
		590+47.8	- 593+67.4	OUT	--	--	143	--	--	--	--	--	--	--	--	--	--	--	--		
		648+71.3	- 649+10.2	OUT	--	--	--	--	--	40	--	--	--	--	--	--	--	--	--		
		649+10.2	- 650+58.2	OUT	--	--	--	--	150	--	--	--	--	--	--	--	--	--	--		
		650+58.2	- 651+10.6	OUT	--	--	--	--	--	--	--	--	--	1	--	--	--	--	--		
		648+71.3	- 651+10.6	OUT	--	--	110	--	--	--	--	--	--	--	--	--	--	--	--		
		693+84.4	- 694+23.8	OUT	--	--	--	--	--	40	--	--	--	--	--	--	--	--	--		
		694+23.8	- 696+23.8	OUT	--	--	--	--	200	--	--	--	--	--	--	--	--	--	--		
		696+23.8	- 696+76.8	OUT	--	--	--	--	--	--	--	--	--	1	--	--	--	--	--		
		693+84.4	- 696+76.8	OUT	--	--	132	--	--	--	--	--	--	--	--	--	--	--	--		
<b>YEAR 2 STAGE 4 SUBTOTAL</b>					--	--	2,285	--	3,588	--	--	--	640	16	--	--	--	--	--		

1

Addendum No. 01  
ID 1090-16-70  
Revised Sheet 536  
January 7, 2020

1

CONTINUED ON NEXT PAGE



ALL ITEMS ARE CATEGORY 1000 UNLESS OTHERWISE NOTED  
CONTINUED FROM PREVIOUS PAGE

Addendum No. 01  
ID 1090-16-70  
Revised Sheet 548  
January 7, 2020

TEMPORARY PAVEMENT MARKING ITEMS

STAGE	ROADWAY	646.9000*		646.9100*		649.0105		649.0150*		649.0205		649.0250*		649.0760		
		MARKING LINE REMOVAL 4-INCH	LF	MARKING LINE REMOVAL 8-INCH	LF	TEMPORARY MARKING LINE PAINT 4-INCH YELLOW	LF	TEMPORARY MARKING LINE PAINT 4-INCH WHITE	LF	TEMPORARY MARKING LINE REMOVABLE TAPE 4-INCH YELLOW	LF	TEMPORARY MARKING LINE PAINT 8-INCH SOLID	LF	TEMPORARY MARKING LINE REMOVABLE TAPE 8-INCH SOLID	LF	TEMPORARY MARKING RAISED PAVEMENT MARKER TYPE I EACH
4A	IH 43 AT OLD 89 RD	420	--	1,680	--	--	--	--	--	--	--	--	--	--	--	--
	IH 43 AT BORG/MOUND RD	425	500	1,680	--	--	--	--	--	--	--	--	--	--	--	--
	STAGE 4A SUBTOTAL	845	500	3,360	--	--	--	--	--	--	--	--	--	--	--	--
4B	IH 43 AT OLD 89 RD	2,750	--	4,680	800	2,570	800	2,230	800	2,230	147	750	1,445	2,195	--	--
	IH 43 AT BORG/MOUND RD	7,075	850	8,905	--	6,160	--	2,230	--	2,230	147	1,445	--	2,195	--	--
	STAGE 4B SUBTOTAL	9,825	850	13,585	800	8,730	800	2,230	800	2,230	147	1,445	--	2,195	--	--
4C	IH 43 AT OLD 89 RD	2,970	--	4,369	--	2,648	--	3,045	2,648	--	--	--	--	--	--	--
	IH 43 AT BORG/MOUND RD	5,650	500	6,320	--	6,050	--	3,045	6,050	--	--	1,075	--	1,075	--	--
	STAGE 4C SUBTOTAL	8,620	500	10,689	0	3,045	8,698	3,045	8,698	--	--	1,075	--	1,075	--	--
5	IH 43	201,400	--	186,467	232,898	186,467	232,898	186,467	232,898	22,147	1,275	22,147	0	0	0	0
	STAGE 5 SUBTOTAL	201,400	0	186,467	232,898	186,467	232,898	186,467	232,898	22,147	1,275	22,147	0	0	0	0
	YEAR 2 SUBTOTALS	220,690	1,850	200,516	246,483	11,775	9,498	24,377	1,422	3,270	1,422	3,270	--	--	--	--
UNDISTRIBUTED		27,225	695	23,974	28,474	4,899	4,700	2,775	175	800	50	800	50	50	--	--
	TOTALS	299,450	7,600	263,660	313,210	53,889	51,593	30,352	1,813	8,775	365	8,775	365	365	65	65
	* ADDITIONAL QUANTITIES LISTED ELSEWHERE			576,870		105,482		32,165		9,140		9,140				

ALL ITEMS ARE CATEGORY 1000 UNLESS OTHERWISE NOTED

**TRAFFIC CONTROL**

LOCATION PROJECT	643.5000
EACH	1
<b>TOTAL</b>	<b>1</b>

**TRAFFIC CONTROL INTERIM LANE SHIFT**

LOCATION PROJECT	SPV.0060.007
EACH	120
<b>TOTAL</b>	<b>120</b>

**1** Addendum No. 01  
ID 1090-16-70  
Revised Sheet 549  
January 7, 2020

**TRAFFIC CONTROL FULL FREEWAY CLOSURE**

LOCATION PROJECT	SPV.0060.008
EACH	40
<b>TOTAL</b>	<b>40</b>

**TRAFFIC CONTROL CLOSE-OPEN FREEWAY SERVICE RAMP**

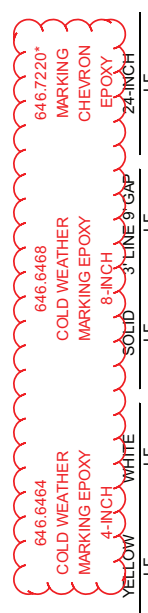
LOCATION PROJECT	SPV.0060.009
EACH	100
<b>TOTAL</b>	<b>100</b>

**FIXED MESSAGE SIGNS**

STAGE	ROADWAY	SIGN NUMBER	EACH	MESSAGE	NO. CYCLES EACH	COMMENTS
YEAR 1	IH 43 NB	100	2	643.1000 TRAFFIC CONTROL SIGNS	162.0	
	IH 43 SB	101	2	638.2102* MOVING SIGNS	165.0	
	USH 14	103	2	643.0920* TRAFFIC CONTROL COVERING SIGNS	44.0	
	CTH X	104	2	643.0920* TRAFFIC CONTROL COVERING SIGNS	44.0	
	STH 50	104	2	643.0920* TRAFFIC CONTROL COVERING SIGNS	44.0	
	STH 67	103	2	643.0920* TRAFFIC CONTROL COVERING SIGNS	44.0	
	USH 12	102	2	643.0920* TRAFFIC CONTROL COVERING SIGNS	132.0	
	STH 11	102A	2	643.0920* TRAFFIC CONTROL COVERING SIGNS	44.0	
	CTH X	---	1	643.0920* TRAFFIC CONTROL COVERING SIGNS	45.0	SEE IH 43 SB EXIT RAMP TO CTH X DETOUR
	USH 12	---	1	643.0920* TRAFFIC CONTROL COVERING SIGNS	45.0	SEE IH 43 NB EXIT RAMP TO USH 12 EB DETOUR
YEAR 2	IH 43 NB	100	1	643.0920* TRAFFIC CONTROL COVERING SIGNS	82.5	
	IH 43 SB	101	1	643.0920* TRAFFIC CONTROL COVERING SIGNS	82.5	
	STH 140	103	2	643.0920* TRAFFIC CONTROL COVERING SIGNS	44.0	
	USH 14	103	2	643.0920* TRAFFIC CONTROL COVERING SIGNS	44.0	
	CTH X	104	2	643.0920* TRAFFIC CONTROL COVERING SIGNS	44.0	
	STH 50	102A	2	643.0920* TRAFFIC CONTROL COVERING SIGNS	44.0	
	STH 67	102A	2	643.0920* TRAFFIC CONTROL COVERING SIGNS	44.0	
	USH 12	102	2	643.0920* TRAFFIC CONTROL COVERING SIGNS	132.0	
	STH 11	102A	2	643.0920* TRAFFIC CONTROL COVERING SIGNS	44.0	
<b>TOTALS</b>					<b>1,333.0</b>	

**TEMPORARY PAVEMENT MARKING ITEMS - WINTER SHUTDOWN**

STAGE	ROADWAY	YEAR 1	YEAR 2	YEAR 3	YEAR 4	YEAR 5
2B	IH 43	20900	20900	4050	1150	610
	STAGE 2B SUBTOTAL	20900	20900	4050	1,150	610
3B	IH 43	8250	8400	2250	--	150
	STAGE 3B SUBTOTAL	8,250	8,400	2,250	--	150
<b>TOTALS</b>		<b>58,450</b>	<b>29,300</b>	<b>6,300</b>	<b>1,150</b>	<b>760</b>



\* ADDITIONAL QUANTITIES LISTED ELSEWHERE



Addendum No. 01  
 ID 1090-16-70  
 Revised Sheet 550  
 January 7, 2020

ALL ITEMS ARE CATEGORY 1000 UNLESS OTHERWISE NOTED

PAVEMENT MARKING ITEMS

LOCATION	646.1020*		646.1040		646.1545		646.3020*		646.3020*		646.5020*		646.5120*		646.5520		646.6120		646.7220*		646.8220*		MARKING CONTRAST EPOXY 4-INCH 12.5' LINE 37.5' GAP
	WHITE	YELLOW	WHITE	YELLOW	WHITE	YELLOW	WHITE	YELLOW	WHITE	YELLOW	WHITE	YELLOW	WHITE	YELLOW	WHITE	YELLOW	WHITE	YELLOW	WHITE	YELLOW	WHITE	YELLOW	
87+30 - 340+00	820	820	54,780	54,515	160	12,217	275	275	4,960	4,960	2	2	2	2	240	240	213	213	240	240	213	213	SPV.0090.03
340+00 - 957+00	1580	1590	97,120	117,160		29,575																	SPV.0090.03
IH 43 NB OFF RAMP TO USH 14			2,115	1,250					235	235	1	1											MARKING CONTRAST EPOXY 4-INCH
IH 43 NB ON RAMP FROM USH 14			2,960	1,405					825	825													MARKING CONTRAST EPOXY 4-INCH
IH 43 SB ON RAMP FROM USH 14			2,765	1,250					950	950													MARKING CONTRAST EPOXY 4-INCH
IH 43 SB OFF RAMP TO USH 14			2,755	1,145					445	445	1	1											MARKING CONTRAST EPOXY 4-INCH
IH 43 NB OFF RAMP TO CTH X	2,125	1,225			175				475	475	2	2											MARKING CONTRAST EPOXY 4-INCH
IH 43 NB ON RAMP FROM CTH X	1,305	1,000	1,954						1,272	1,272													MARKING CONTRAST EPOXY 4-INCH
IH 43 SB ON RAMP FROM CTH X	3,332	2,765	1,028						1,705	1,705													MARKING CONTRAST EPOXY 4-INCH
IH 43 SB OFF RAMP TO CTH X	1,805	1,830	1,025		175				240	240	2	2											MARKING CONTRAST EPOXY 4-INCH
IH 43 NB OFF RAMP TO CTH X	175	170	1,945	995	200				475	475	1	1											MARKING CONTRAST EPOXY 4-INCH
IH 43 NB ON RAMP FROM CTH X	840	850	1,820	302					1,570	1,570													MARKING CONTRAST EPOXY 4-INCH
IH 43 SB ON RAMP FROM CTH X	156	176	2,020	495					1,375	1,375													MARKING CONTRAST EPOXY 4-INCH
IH 43 SB OFF RAMP TO CTH X	390	380	1,417	1,130	150				435	435	2	2											MARKING CONTRAST EPOXY 4-INCH
IH 43 NB OFF RAMP TO CTH X	40	50	1,917	950	200				440	440	2	2											MARKING CONTRAST EPOXY 4-INCH
IH 43 NB ON RAMP FROM CTH X			3,805	1,175					1,325	1,325													MARKING CONTRAST EPOXY 4-INCH
IH 43 SB ON RAMP FROM CTH X			2,690	1,185					1,595	1,595													MARKING CONTRAST EPOXY 4-INCH
IH 43 SB OFF RAMP TO CTH X			2,010	1,035	200				520	520	3	3											MARKING CONTRAST EPOXY 4-INCH
IH 43 NB OFF RAMP TO USH 12 EB	1,260	1,125	760		175				450	450													MARKING CONTRAST EPOXY 4-INCH
IH 43 NB ON RAMP FROM USH 12 EB	1,485	840	440	65				125	350	350													MARKING CONTRAST EPOXY 4-INCH
IH 43 NB OFF RAMP TO USH 12 WB	1,365	1,190	175						355	355													MARKING CONTRAST EPOXY 4-INCH
IH 43 NB ON RAMP FROM USH 12 WB	1,950	1,140							1,000	1,000													MARKING CONTRAST EPOXY 4-INCH
IH 43 SB ON RAMP FROM USH 12 WB	1,475	1,440	1,195						415	415													MARKING CONTRAST EPOXY 4-INCH
IH 43 SB OFF RAMP TO USH 12 WB	1,190	1,120	215					125	150	150													MARKING CONTRAST EPOXY 4-INCH
IH 43 SB ON RAMP FROM USH 12 WB	1,475	955	225						375	375													MARKING CONTRAST EPOXY 4-INCH
IH 43 SB OFF RAMP TO USH 12 WB	1,955	1,125			175				675	675	4	4											MARKING CONTRAST EPOXY 4-INCH
96+00 - 104+00	1,580	1,580	1,570																				MARKING CONTRAST EPOXY 4-INCH
UNDISTRIBUTED																							MARKING CONTRAST EPOXY 4-INCH
SUBTOTAL	26,303	21,371	188,706	184,057	1,610	41,792	1,275	250	22,147	22,147	20	2	800	120	1,165	2	613	1,003	1,165	2	613	1,003	MARKING CONTRAST EPOXY 4-INCH
TOTALS	47,674	372,763	1,610	41,792	1,610	41,792	1,275	585	22,147	22,147	20	2	800	120	1,165	2	613	1,003	1,165	2	613	1,003	MARKING CONTRAST EPOXY 4-INCH

\* ADDITIONAL QUANTITIES LISTED ELSEWHERE

ALL ITEMS ARE CATEGORY 1000 UNLESS OTHERWISE NOTED

**CONSTRUCTION STAKING - STRUCTURES**

LOCATION	650.6500.001	650.6500.002	650.6500.003	650.6500.004	650.6500.005	650.6500.006	650.6500.007	650.6500.008
	CONSTRUCTION STAKING	CONSTRUCTION STAKING	CONSTRUCTION STAKING	CONSTRUCTION STAKING	CONSTRUCTION STAKING	CONSTRUCTION STAKING	CONSTRUCTION STAKING	CONSTRUCTION STAKING
	STRUCTURE LAYOUT	STRUCTURE LAYOUT	STRUCTURE LAYOUT	STRUCTURE LAYOUT	STRUCTURE LAYOUT	STRUCTURE LAYOUT	STRUCTURE LAYOUT	STRUCTURE LAYOUT
	(STRUCTURE)	(STRUCTURE)	(STRUCTURE)	(STRUCTURE)	(STRUCTURE)	(STRUCTURE)	(STRUCTURE)	(STRUCTURE)
	LS	LS	LS	LS	LS	LS	LS	LS
B-64-83	1	--	--	--	--	--	--	--
B-64-84	--	1	--	--	--	--	--	--
B-64-105	--	--	1	--	--	--	--	--
B-64-106	--	--	--	1	--	--	--	--
B-64-107	--	--	--	--	1	--	--	--
B-64-108	--	--	--	--	--	1	--	--
B-64-109	--	--	--	--	--	--	1	--
B-64-126	--	--	--	--	--	--	--	1
<b>TOTALS</b>	<b>1</b>	<b>1</b>	<b>1</b>	<b>1</b>	<b>1</b>	<b>1</b>	<b>1</b>	<b>1</b>

1

Addendum No. 01  
ID 1090-16-70  
Revised Sheet 553  
January 7, 2020

3

3

**SAWING ITEMS**

ROADWAY	PROJECT	STATION	TO	STATION	690.0150* SAWING ASPHALT	690.0250* SAWING CONCRETE
					LF	LF
		91+46	-	938+00	5,900	8,000
					600	1,000
	<b>TOTALS</b>				<b>6,500</b>	<b>9,000</b>

\* ADDITIONAL QUANTITIES LISTED ELSEWHERE

**HIGH FRICTION SURFACE TREATMENT**

ROADWAY	STATION	TO	STATION	SPV.0180.001 RESIN BINDER HIGH FRICTION SURFACE TREATMENT
				SY
IH 43 NB	127+00	-	139+75	2,800
	415+50	-	442+65	9,750
	643+58	-	655+00	3,400
IH 43 SB	127+50	-	139+50	2,800
	416+50	-	443+85	7,650
	642+50	-	656+00	3,425
<b>TOTAL</b>				<b>29,825</b>

1

PROJECT NO: 1090-16-70

HWY: IH 43

COUNTY: WALWORTH

MISCELLANEOUS QUANTITIES

SHEET: 553

E

FILE NAME: T:\Design\01 Projects\WsdOT SE Region\1800-16-00\_L\_03\_Walworth\2.0\_PSE\Misc\_Quantities\030201-mnppt

PLOT DATE: 1/20/20 1:38:01 PM

PLOT SCALE: 1:1



Proposal Schedule of Items

Proposal ID: 20200114007 Project(s): 1090-16-70

Federal ID(s): WISC 2019801

SECTION: 0001 Contract Items

Alt Set ID: Alt Mbr ID:

Proposal Line Number	Item ID Description	Approximate Quantity and Units	Unit Price	Bid Amount
0002	108.4400 CPM Progress Schedule	1.000 EACH	_____.	_____.
0004	203.0200 Removing Old Structure (station) 0005. Sta. 99+94	LS	LUMP SUM	_____.
0006	203.0200 Removing Old Structure (station) 0010. Sta. 423+33.88	LS	LUMP SUM	_____.
0008	203.0200 Removing Old Structure (station) 0020. Sta. 872+46, 42' Lt	LS	LUMP SUM	_____.
0010	203.0200 Removing Old Structure (station) 0030. Sta. 922+47, 40' Rt	LS	LUMP SUM	_____.
0012	203.0200 Removing Old Structure (station) 0040. Sta. 922+84, 40' Lt	LS	LUMP SUM	_____.
0014	203.0210.S Abatement of Asbestos Containing Material (structure) 0010. B-64-63	LS	LUMP SUM	_____.
0016	203.0210.S Abatement of Asbestos Containing Material (structure) 0020. B-64-64	LS	LUMP SUM	_____.
0018	203.0210.S Abatement of Asbestos Containing Material (structure) 0030. B-64-105	LS	LUMP SUM	_____.
0020	203.0210.S Abatement of Asbestos Containing Material (structure) 0040. B-64-106	LS	LUMP SUM	_____.
0022	203.0210.S Abatement of Asbestos Containing Material (structure) 0050. B-64-108	LS	LUMP SUM	_____.
0024	203.0210.S Abatement of Asbestos Containing Material (structure) 0060. B-64-109	LS	LUMP SUM	_____.
0026	203.0210.S Abatement of Asbestos Containing Material (structure) 0070. B-64-114	LS	LUMP SUM	_____.



Proposal Schedule of Items

Proposal ID: 20200114007 Project(s): 1090-16-70

Federal ID(s): WISC 2019801

SECTION: 0001 Contract Items

Alt Set ID: Alt Mbr ID:

Proposal Line Number	Item ID Description	Approximate Quantity and Units	Unit Price	Bid Amount
0028	203.0210.S Abatement of Asbestos Containing Material (structure) 0080. B-64-115	LS	LUMP SUM	_____.
0030	203.0210.S Abatement of Asbestos Containing Material (structure) 0090. B-64-116	LS	LUMP SUM	_____.
0032	203.0210.S Abatement of Asbestos Containing Material (structure) 0100. B-64-117	LS	LUMP SUM	_____.
0034	203.0210.S Abatement of Asbestos Containing Material (structure) 0110. B-64-124	LS	LUMP SUM	_____.
0036	203.0210.S Abatement of Asbestos Containing Material (structure) 0120. B-64-126	LS	LUMP SUM	_____.
0038	203.0210.S Abatement of Asbestos Containing Material (structure) 0130. B-64-127	LS	LUMP SUM	_____.
0040	203.0210.S Abatement of Asbestos Containing Material (structure) 0140. B-64-138	LS	LUMP SUM	_____.
0042	203.0210.S Abatement of Asbestos Containing Material (structure) 0150. B-64-128	LS	LUMP SUM	_____.
0044	203.0225.S Debris Containment (structure) 0010. B-64-107	LS	LUMP SUM	_____.
0046	203.0225.S Debris Containment (structure) 0020. B-64-108	LS	LUMP SUM	_____.
0048	203.0225.S Debris Containment (structure) 0030. B-64-124	LS	LUMP SUM	_____.
0050	203.0225.S Debris Containment (structure) 0040. B-64-125	LS	LUMP SUM	_____.
0052	203.0225.S Debris Containment (structure) 0050. B-64-127	LS	LUMP SUM	_____.



Proposal Schedule of Items

Proposal ID: 20200114007 Project(s): 1090-16-70

Federal ID(s): WISC 2019801

SECTION: 0001 Contract Items

Alt Set ID: Alt Mbr ID:

Proposal Line Number	Item ID Description	Approximate Quantity and Units	Unit Price	Bid Amount
0054	203.0225.S Debris Containment (structure) 0060. B-64-135	LS	LUMP SUM	_____.
0056	203.0225.S Debris Containment (structure) 0070. B-64-136	LS	LUMP SUM	_____.
0058	204.0100 Removing Pavement	1,543.000 SY	_____.	_____.
0060	204.0105 Removing Pavement Butt Joints	3,810.000 SY	_____.	_____.
0062	204.0109.S Removing Concrete Surface Partial Depth	11,880.000 SF	_____.	_____.
0064	204.0110 Removing Asphaltic Surface	21,333.000 SY	_____.	_____.
0066	204.0115 Removing Asphaltic Surface Butt Joints	23,980.000 SY	_____.	_____.
0068	204.0120 Removing Asphaltic Surface Milling	28,943.000 SY	_____.	_____.
0070	204.0150 Removing Curb & Gutter	1,203.000 LF	_____.	_____.
0072	204.0165 Removing Guardrail	14,682.000 LF	_____.	_____.
0074	204.0170 Removing Fence	476.000 LF	_____.	_____.
0076	204.0175 Removing Concrete Slope Paving	95.000 SY	_____.	_____.
0078	204.0180 Removing Delineators and Markers	116.000 EACH	_____.	_____.
0080	204.0220 Removing Inlets	12.000 EACH	_____.	_____.
0082	204.0245 Removing Storm Sewer (size) 001. 12-Inch	135.000 LF	_____.	_____.



Proposal Schedule of Items

Proposal ID: 20200114007 Project(s): 1090-16-70

Federal ID(s): WISC 2019801

SECTION: 0001 Contract Items

Alt Set ID: Alt Mbr ID:

Proposal Line Number	Item ID Description	Approximate Quantity and Units	Unit Price	Bid Amount
0084	204.0245 Removing Storm Sewer (size) 002. 15-Inch	293.000 LF	_____.	_____.
0086	204.0245 Removing Storm Sewer (size) 003. 18-Inch	591.000 LF	_____.	_____.
0088	204.0245 Removing Storm Sewer (size) 004. 24-Inch	149.000 LF	_____.	_____.
0090	204.0270 Abandoning Culvert Pipes	2.000 EACH	_____.	_____.
0092	204.9060.S Removing (item description) 001. Inlet Covers	1.000 EACH	_____.	_____.
0094	204.9060.S Removing (item description) 002. Apron Endwall for Culvert Pipe Steel 12-Inch	5.000 EACH	_____.	_____.
0096	204.9060.S Removing (item description) 003. Apron Endwall for Culvert Pipe Steel 15-Inch	1.000 EACH	_____.	_____.
0098	204.9060.S Removing (item description) 004. Apron Endwall for Culvert Pipe Reinf Conc 18-Inch	7.000 EACH	_____.	_____.
0100	204.9060.S Removing (item description) 005. Apron Endwall for Culvert Pipe Reinf Conc 24-Inch	2.000 EACH	_____.	_____.
0102	204.9060.S Removing (item description) 006. Apron Endwall for Culvert Pipe Reinf Conc 30-Inch	2.000 EACH	_____.	_____.
0104	205.0100 Excavation Common	75,478.000 CY	_____.	_____.
0106	206.1000 Excavation for Structures Bridges (structure) 0010. B-64-63	LS	LUMP SUM	_____.
0108	206.1000 Excavation for Structures Bridges (structure) 0020. B-64-64	LS	LUMP SUM	_____.



Proposal Schedule of Items

Proposal ID: 20200114007 Project(s): 1090-16-70

Federal ID(s): WISC 2019801

SECTION: 0001 Contract Items

Alt Set ID: Alt Mbr ID:

Proposal Line Number	Item ID Description	Approximate Quantity and Units	Unit Price	Bid Amount
0110	206.1000 Excavation for Structures Bridges (structure) 0030. B-64-107	LS	LUMP SUM	_____.
0112	206.1000 Excavation for Structures Bridges (structure) 0040. B-64-126	LS	LUMP SUM	_____.
0114	209.2500 Backfill Granular Grade 2	200.000 TON	_____.	_____.
0116	210.1500 Backfill Structure Type A	288.000 TON	_____.	_____.
0118	213.0100 Finishing Roadway (project) 001. 1090-16-70	1.000 EACH	_____.	_____.
0120	305.0110 Base Aggregate Dense 3/4-Inch	6,590.000 TON	_____.	_____.
0122	305.0120 Base Aggregate Dense 1 1/4-Inch	50,500.000 TON	_____.	_____.
0124	305.0410 Aggregate Detours	25.000 TON	_____.	_____.
0126	310.0110 Base Aggregate Open-Graded	340.000 TON	_____.	_____.
0128	311.0110 Breaker Run	53,100.000 TON	_____.	_____.
0130	320.0145 Concrete Base 8-Inch	334.000 SY	_____.	_____.
0132	390.0303 Base Patching Concrete	70.000 SY	_____.	_____.
0134	390.0403 Base Patching Concrete Shes	75.000 SY	_____.	_____.
0136	415.0120 Concrete Pavement 12-Inch	309.000 SY	_____.	_____.
0138	415.0410 Concrete Pavement Approach Slab	801.000 SY	_____.	_____.
0140	416.0610 Drilled Tie Bars	574.000 EACH	_____.	_____.



Proposal Schedule of Items

Proposal ID: 20200114007 Project(s): 1090-16-70

Federal ID(s): WISC 2019801

SECTION: 0001 Contract Items

Alt Set ID: Alt Mbr ID:

Proposal Line Number	Item ID Description	Approximate Quantity and Units	Unit Price	Bid Amount
0142	416.0620 Drilled Dowel Bars	2,275.000 EACH	_____.	_____.
0144	416.0750.S Concrete Pavement Partial Depth Repair Joint Repair	300.000 LF	_____.	_____.
0146	416.0756.S Concrete Pavement Partial Depth Repair Edge Repair	1,500.000 LF	_____.	_____.
0148	416.1010 Concrete Surface Drains	43.000 CY	_____.	_____.
0150	416.1710 Concrete Pavement Repair	800.000 SY	_____.	_____.
0152	416.1715 Concrete Pavement Repair SHES	400.000 SY	_____.	_____.
0154	416.1720 Concrete Pavement Replacement	700.000 SY	_____.	_____.
0156	416.1725 Concrete Pavement Replacement SHES	300.000 SY	_____.	_____.
0158	420.1000 Continuous Diamond Grinding Concrete Pavement	472,000.000 SY	_____.	_____.
0160	450.4000 HMA Cold Weather Paving	2,245.000 TON	_____.	_____.
0162	455.0605 Tack Coat	5,721.000 GAL	_____.	_____.
0164	460.2000 Incentive Density HMA Pavement	20,920.000 DOL	1.00000	20,920.00
0166	460.6223 HMA Pavement 3 MT 58-28 S	25,259.000 TON	_____.	_____.
0168	460.6224 HMA Pavement 4 MT 58-28 S	7,427.000 TON	_____.	_____.
0170	465.0105 Asphaltic Surface	21.000 TON	_____.	_____.
0172	465.0110 Asphaltic Surface Patching	25.000 TON	_____.	_____.





Proposal Schedule of Items

Proposal ID: 20200114007 Project(s): 1090-16-70

Federal ID(s): WISC 2019801

SECTION: 0001 Contract Items

Alt Set ID: Alt Mbr ID:

Proposal Line Number	Item ID Description	Approximate Quantity and Units	Unit Price	Bid Amount
0174	465.0115 Asphaltic Surface Detours	25.000 TON	_____.	_____.
0176	465.0125 Asphaltic Surface Temporary	1,610.000 TON	_____.	_____.
0178	465.0315 Asphaltic Flumes	8.000 SY	_____.	_____.
0180	465.0400 Asphaltic Shoulder Rumble Strips	81,668.000 LF	_____.	_____.
0182	501.1000.S Ice Hot Weather Concreting	26,635.000 LB	_____.	_____.
0184	502.0100 Concrete Masonry Bridges	2,402.000 CY	_____.	_____.
0186	502.3101 Expansion Device (structure) 0010. B-64-63	116.000 LF	_____.	_____.
0188	502.3101 Expansion Device (structure) 0020. B-64-64	116.000 LF	_____.	_____.
0190	502.3101 Expansion Device (structure) 0030. B-64-105	116.000 LF	_____.	_____.
0192	502.3101 Expansion Device (structure) 0040. B-64-106	118.000 LF	_____.	_____.
0194	502.3101 Expansion Device (structure) 0050. B-64-109	168.000 LF	_____.	_____.
0196	502.3101 Expansion Device (structure) 0060. B-64-126	144.000 LF	_____.	_____.
0198	502.3101 Expansion Device (structure) 0070. B-64-127	155.000 LF	_____.	_____.
0200	502.3101 Expansion Device (structure) 0080. B-64-116	123.000 LF	_____.	_____.



Proposal Schedule of Items

Proposal ID: 20200114007 Project(s): 1090-16-70

Federal ID(s): WISC 2019801

SECTION: 0001 Contract Items

Alt Set ID: Alt Mbr ID:

Proposal Line Number	Item ID Description	Approximate Quantity and Units	Unit Price	Bid Amount
0202	502.3101 Expansion Device (structure) 0090. B-64-117	120.000 LF	_____.	_____.
0204	502.3101 Expansion Device (structure) 0100. B-64-125	47.000 LF	_____.	_____.
0206	502.3200 Protective Surface Treatment	16,479.000 SY	_____.	_____.
0208	502.3210 Pigmented Surface Sealer	1,325.000 SY	_____.	_____.
0210	502.4106 Adhesive Anchors 3/4-inch	140.000 EACH	_____.	_____.
0212	502.4107 Adhesive Anchors 7/8-inch	120.000 EACH	_____.	_____.
0214	502.4204 Adhesive Anchors No. 4 Bar	352.000 EACH	_____.	_____.
0216	502.4205 Adhesive Anchors No. 5 Bar	1,775.000 EACH	_____.	_____.
0218	505.0600 Bar Steel Reinforcement HS Coated Structures	598,180.000 LB	_____.	_____.
0220	505.0904 Bar Couplers No. 4	62.000 EACH	_____.	_____.
0222	505.0905 Bar Couplers No. 5	748.000 EACH	_____.	_____.
0224	505.0906 Bar Couplers No. 6	2,201.000 EACH	_____.	_____.
0226	505.0907 Bar Couplers No. 7	66.000 EACH	_____.	_____.
0228	506.2610 Bearing Pads Elastomeric Laminated	99.000 EACH	_____.	_____.
0230	506.4000 Steel Diaphragms (structure) 0010. B-64-107	12.000 EACH	_____.	_____.



Proposal Schedule of Items

Proposal ID: 20200114007 Project(s): 1090-16-70

Federal ID(s): WISC 2019801

SECTION: 0001 Contract Items

Alt Set ID: Alt Mbr ID:

Proposal Line Number	Item ID Description	Approximate Quantity and Units	Unit Price	Bid Amount
0232	506.6000 Bearing Assemblies Expansion (structure) 0010. B-64-116	10.000 EACH	_____.	_____.
0234	506.6000 Bearing Assemblies Expansion (structure) 0020. B-64-117	10.000 EACH	_____.	_____.
0236	506.6000 Bearing Assemblies Expansion (structure) 0030. B-64-133	10.000 EACH	_____.	_____.
0238	506.6000 Bearing Assemblies Expansion (structure) 0040. B-64-134	10.000 EACH	_____.	_____.
0240	506.7050.S Removing Bearings (structure) 0010. B-64-63	15.000 EACH	_____.	_____.
0242	506.7050.S Removing Bearings (structure) 0020. B-64-64	10.000 EACH	_____.	_____.
0244	506.7050.S Removing Bearings (structure) 0030. B-64-105	10.000 EACH	_____.	_____.
0246	506.7050.S Removing Bearings (structure) 0040. B-64-106	10.000 EACH	_____.	_____.
0248	506.7050.S Removing Bearings (structure) 0050. B-64-109	14.000 EACH	_____.	_____.
0250	506.7050.S Removing Bearings (structure) 0060. B-64-116	10.000 EACH	_____.	_____.
0252	506.7050.S Removing Bearings (structure) 0070. B-64-117	10.000 EACH	_____.	_____.
0254	506.7050.S Removing Bearings (structure) 0080. B-64-126	12.000 EACH	_____.	_____.
0256	506.7050.S Removing Bearings (structure) 0090. B-64-127	12.000 EACH	_____.	_____.



Proposal Schedule of Items

Proposal ID: 20200114007 Project(s): 1090-16-70

Federal ID(s): WISC 2019801

SECTION: 0001 Contract Items

Alt Set ID: Alt Mbr ID:

Proposal Line Number	Item ID Description	Approximate Quantity and Units	Unit Price	Bid Amount
0258	506.7050.S Removing Bearings (structure) 0100. B-64132	8.000 EACH	_____.	_____.
0260	506.7050.S Removing Bearings (structure) 0110. B-64-133	10.000 EACH	_____.	_____.
0262	506.7050.S Removing Bearings (structure) 0120. B-64-134	10.000 EACH	_____.	_____.
0264	506.7050.S Removing Bearings (structure) 0130. B-64-128	8.000 EACH	_____.	_____.
0266	509.0301 Preparation Decks Type 1	3,041.000 SY	_____.	_____.
0268	509.0302 Preparation Decks Type 2	1,735.000 SY	_____.	_____.
0270	509.0310.S Sawing Pavement Deck Preparation Areas	1,780.000 LF	_____.	_____.
0272	509.0500 Cleaning Decks	285.000 SY	_____.	_____.
0274	509.0505.S Cleaning Decks to Reapply Concrete Masonry Overlay	9,462.000 SY	_____.	_____.
0276	509.1000 Joint Repair	354.000 SY	_____.	_____.
0278	509.1500 Concrete Surface Repair	3,999.000 SF	_____.	_____.
0280	509.2000 Full-Depth Deck Repair	20.000 SY	_____.	_____.
0282	509.2100.S Concrete Masonry Deck Repair	13.000 CY	_____.	_____.
0284	509.2500 Concrete Masonry Overlay Decks	1,145.000 CY	_____.	_____.
0286	509.5100.S Polymer Overlay	11,766.000 SY	_____.	_____.



Proposal Schedule of Items

Proposal ID: 20200114007 Project(s): 1090-16-70

Federal ID(s): WISC 2019801

SECTION: 0001 Contract Items

Alt Set ID: Alt Mbr ID:

Proposal Line Number	Item ID Description	Approximate Quantity and Units	Unit Price	Bid Amount
0288	509.9005.S Removing Concrete Masonry Deck Overlay (structure) 0010. B-64-105	1,182.000 SY	_____.	_____.
0290	509.9005.S Removing Concrete Masonry Deck Overlay (structure) 0020. B-64-106	1,181.000 SY	_____.	_____.
0292	509.9005.S Removing Concrete Masonry Deck Overlay (structure) 0030. B-64-108	909.000 SY	_____.	_____.
0294	509.9005.S Removing Concrete Masonry Deck Overlay (structure) 0040. B-64-109	1,781.000 SY	_____.	_____.
0296	509.9005.S Removing Concrete Masonry Deck Overlay (structure) 0050. B-64-127	1,683.000 SY	_____.	_____.
0298	509.9005.S Removing Concrete Masonry Deck Overlay (structure) 0060. B-64-116	1,029.000 SY	_____.	_____.
0300	509.9005.S Removing Concrete Masonry Deck Overlay (structure) 0070. B-64-117	1,031.000 SY	_____.	_____.
0302	509.9005.S Removing Concrete Masonry Deck Overlay (structure) 0080. B-64-125	666.000 SY	_____.	_____.
0304	516.0500 Rubberized Membrane Waterproofing	58.000 SY	_____.	_____.
0306	517.0900.S Preparation and Coating of Top Flanges (structure) 0010. B-64-63	LS	LUMP SUM	_____.
0308	517.0900.S Preparation and Coating of Top Flanges (structure) 0020. B-64-64	LS	LUMP SUM	_____.
0310	517.0900.S Preparation and Coating of Top Flanges (structure) 0030. B-64-126	LS	LUMP SUM	_____.
0312	517.1800.S Structure Repainting Recycled Abrasive (structure) 0010. B-64-63	LS	LUMP SUM	_____.



Proposal Schedule of Items

Proposal ID: 20200114007 Project(s): 1090-16-70

Federal ID(s): WISC 2019801

SECTION: 0001 Contract Items

Alt Set ID: Alt Mbr ID:

Proposal Line Number	Item ID Description	Approximate Quantity and Units	Unit Price	Bid Amount
0314	517.1800.S Structure Repainting Recycled Abrasive (structure) 0020. B-64-64	LS	LUMP SUM	_____.
0316	517.1800.S Structure Repainting Recycled Abrasive (structure) 0030. B-64-105	LS	LUMP SUM	_____.
0318	517.1800.S Structure Repainting Recycled Abrasive (structure) 0040. B-64-106	LS	LUMP SUM	_____.
0320	517.1800.S Structure Repainting Recycled Abrasive (structure) 0050. B-64-109	LS	LUMP SUM	_____.
0322	517.1800.S Structure Repainting Recycled Abrasive (structure) 0060. B-64-120	LS	LUMP SUM	_____.
0324	517.1800.S Structure Repainting Recycled Abrasive (structure) 0070. B-64126	LS	LUMP SUM	_____.
0326	517.1800.S Structure Repainting Recycled Abrasive (structure) 0080. B-64-127	LS	LUMP SUM	_____.
0328	517.1800.S Structure Repainting Recycled Abrasive (structure) 009. B-64-128	LS	LUMP SUM	_____.
0330	517.1800.S Structure Repainting Recycled Abrasive (structure) 0100. B-64-132	LS	LUMP SUM	_____.
0332	517.3000.S Structure Overcoating Cleaning and Priming (structure) 0010. B-64-116	LS	LUMP SUM	_____.
0334	517.3000.S Structure Overcoating Cleaning and Priming (structure) 0020. B-64-117	LS	LUMP SUM	_____.
0336	517.4000.S Containment and Collection of Waste Materials (structure) 0010. B-64116	LS	LUMP SUM	_____.
0338	517.4000.S Containment and Collection of Waste Materials (structure) 0020. B-64-117	LS	LUMP SUM	_____.



Proposal Schedule of Items

Proposal ID: 20200114007 Project(s): 1090-16-70

Federal ID(s): WISC 2019801

SECTION: 0001 Contract Items

Alt Set ID: Alt Mbr ID:

Proposal Line Number	Item ID Description	Approximate Quantity and Units	Unit Price	Bid Amount
0340	517.4500.S Negative Pressure Containment and Collection of Waste Materials (structure) 0010. B-64-63	LS	LUMP SUM	_____.
0342	517.4500.S Negative Pressure Containment and Collection of Waste Materials (structure) 0020. B-64-64	LS	LUMP SUM	_____.
0344	517.4500.S Negative Pressure Containment and Collection of Waste Materials (structure) 0030. B-64-105	LS	LUMP SUM	_____.
0346	517.4500.S Negative Pressure Containment and Collection of Waste Materials (structure) 0040. B-64-106	LS	LUMP SUM	_____.
0348	517.4500.S Negative Pressure Containment and Collection of Waste Materials (structure) 0050. B-64-109	LS	LUMP SUM	_____.
0350	517.4500.S Negative Pressure Containment and Collection of Waste Materials (structure) 0060. B-64-120	LS	LUMP SUM	_____.
0352	517.4500.S Negative Pressure Containment and Collection of Waste Materials (structure) 0070. B-64-126	LS	LUMP SUM	_____.
0354	517.4500.S Negative Pressure Containment and Collection of Waste Materials (structure) 0080. B-64-127	LS	LUMP SUM	_____.
0356	517.4500.S Negative Pressure Containment and Collection of Waste Materials (structure) 0090. B-64-128	LS	LUMP SUM	_____.
0358	517.4500.S Negative Pressure Containment and Collection of Waste Materials (structure) 0100. B-64-132	LS	LUMP SUM	_____.
0360	517.6001.S Portable Decontamination Facility	12.000 EACH	_____.	_____.



Proposal Schedule of Items

Proposal ID: 20200114007 Project(s): 1090-16-70

Federal ID(s): WISC 2019801

SECTION: 0001 Contract Items

Alt Set ID: Alt Mbr ID:

Proposal Line Number	Item ID Description	Approximate Quantity and Units	Unit Price	Bid Amount
0362	520.8000 Concrete Collars for Pipe	1.000 EACH	_____.	_____.
0364	520.8700 Cleaning Culvert Pipes	23.000 EACH	_____.	_____.
0366	521.1012 Apron Endwalls for Culvert Pipe Steel 12-Inch	14.000 EACH	_____.	_____.
0368	521.1015 Apron Endwalls for Culvert Pipe Steel 15-Inch	1.000 EACH	_____.	_____.
0370	522.0118 Culvert Pipe Reinforced Concrete Class III 18-Inch	8.000 LF	_____.	_____.
0372	522.0124 Culvert Pipe Reinforced Concrete Class III 24-Inch	8.000 LF	_____.	_____.
0374	522.0130 Culvert Pipe Reinforced Concrete Class III 30-Inch	192.000 LF	_____.	_____.
0376	522.0412 Culvert Pipe Reinforced Concrete Class IV 12-Inch	91.000 LF	_____.	_____.
0378	522.1012 Apron Endwalls for Culvert Pipe Reinforced Concrete 12-Inch	2.000 EACH	_____.	_____.
0380	522.1018 Apron Endwalls for Culvert Pipe Reinforced Concrete 18-Inch	13.000 EACH	_____.	_____.
0382	522.1024 Apron Endwalls for Culvert Pipe Reinforced Concrete 24-Inch	2.000 EACH	_____.	_____.
0384	522.1030 Apron Endwalls for Culvert Pipe Reinforced Concrete 30-Inch	13.000 EACH	_____.	_____.
0386	524.0618 Apron Endwalls for Culvert Pipe Salvaged 18-Inch	17.000 EACH	_____.	_____.





Proposal Schedule of Items

Proposal ID: 20200114007 Project(s): 1090-16-70

Federal ID(s): WISC 2019801

SECTION: 0001 Contract Items

Alt Set ID: Alt Mbr ID:

Proposal Line Number	Item ID Description	Approximate Quantity and Units	Unit Price	Bid Amount
0388	524.0624 Apron Endwalls for Culvert Pipe Salvaged 24-Inch	5.000 EACH	_____.	_____.
0390	524.0630 Apron Endwalls for Culvert Pipe Salvaged 30-Inch	4.000 EACH	_____.	_____.
0392	524.0636 Apron Endwalls for Culvert Pipe Salvaged 36-Inch	2.000 EACH	_____.	_____.
0394	601.0409 Concrete Curb & Gutter 30-Inch Type A	310.000 LF	_____.	_____.
0396	601.0553 Concrete Curb & Gutter 4-Inch Sloped 36-Inch Type D	1,293.000 LF	_____.	_____.
0398	603.8000 Concrete Barrier Temporary Precast Delivered	20,663.500 LF	_____.	_____.
0400	603.8125 Concrete Barrier Temporary Precast Installed	34,990.000 LF	_____.	_____.
0402	603.8505 Anchoring Concrete Barrier on Bridge Decks	887.000 LF	_____.	_____.
0404	604.0400 Slope Paving Concrete	95.000 SY	_____.	_____.
0406	604.9010.S Slope Paving Repair Crushed Aggregate	134.000 CY	_____.	_____.
0408	604.9015.S Reseal Crushed Aggregate Slope Paving	6,764.000 SY	_____.	_____.
0410	606.0200 Riprap Medium	206.000 CY	_____.	_____.
0412	606.0300 Riprap Heavy	55.000 CY	_____.	_____.
0414	608.0318 Storm Sewer Pipe Reinforced Concrete Class III 18-Inch	250.000 LF	_____.	_____.



Proposal Schedule of Items

Proposal ID: 20200114007 Project(s): 1090-16-70

Federal ID(s): WISC 2019801

SECTION: 0001 Contract Items

Alt Set ID: Alt Mbr ID:

Proposal Line Number	Item ID Description	Approximate Quantity and Units	Unit Price	Bid Amount
0416	608.0330 Storm Sewer Pipe Reinforced Concrete Class III 30-Inch	636.000 LF	_____.	_____.
0418	608.0418 Storm Sewer Pipe Reinforced Concrete Class IV 18-Inch	468.000 LF	_____.	_____.
0420	611.0530 Manhole Covers Type J	5.000 EACH	_____.	_____.
0422	611.0642 Inlet Covers Type MS	25.000 EACH	_____.	_____.
0424	611.0654 Inlet Covers Type V	9.000 EACH	_____.	_____.
0426	611.2005 Manholes 5-FT Diameter	5.000 EACH	_____.	_____.
0428	611.3220 Inlets 2x2-FT	9.000 EACH	_____.	_____.
0430	611.3902 Inlets Median 2 Grate	1.000 EACH	_____.	_____.
0432	611.3904 Inlets Median 4 Grate	6.000 EACH	_____.	_____.
0434	611.8115 Adjusting Inlet Covers	29.000 EACH	_____.	_____.
0436	611.9800.S Pipe Grates	2.000 EACH	_____.	_____.
0438	612.0106 Pipe Underdrain 6-Inch	19,800.000 LF	_____.	_____.
0440	612.0206 Pipe Underdrain Unperforated 6-Inch	3,240.000 LF	_____.	_____.
0442	612.0212 Pipe Underdrain Unperforated 12-Inch	559.000 LF	_____.	_____.
0444	612.0806 Apron Endwalls for Underdrain Reinforced Concrete 6-Inch	95.000 EACH	_____.	_____.
0446	614.0150 Anchor Assemblies for Steel Plate Beam Guard	10.000 EACH	_____.	_____.



Proposal Schedule of Items

Proposal ID: 20200114007 Project(s): 1090-16-70

Federal ID(s): WISC 2019801

SECTION: 0001 Contract Items

Alt Set ID: Alt Mbr ID:

Proposal Line Number	Item ID Description	Approximate Quantity and Units	Unit Price	Bid Amount
0448	614.0200 Steel Thrie Beam Structure Approach	24.000 LF	_____.	_____.
0450	614.0220 Steel Thrie Beam Bullnose Terminal	2.000 EACH	_____.	_____.
0452	614.0230 Steel Thrie Beam	100.000 LF	_____.	_____.
0454	614.0397 Guardrail Mow Strip Emulsified Asphalt	6,447.000 SY	_____.	_____.
0456	614.0905 Crash Cushions Temporary	38.000 EACH	_____.	_____.
0458	614.1000 MGS Guardrail Temporary	375.000 LF	_____.	_____.
0460	614.1100 MGS Guardrail Temporary Thrie Beam Transition	80.000 LF	_____.	_____.
0462	614.1200 MGS Guardrail Temporary Terminal EAT	2.000 EACH	_____.	_____.
0464	614.2300 MGS Guardrail 3	10,500.000 LF	_____.	_____.
0466	614.2320 MGS Guardrail 3 QS	112.500 LF	_____.	_____.
0468	614.2500 MGS Thrie Beam Transition	1,760.000 LF	_____.	_____.
0470	614.2610 MGS Guardrail Terminal EAT	44.000 EACH	_____.	_____.
0472	614.2620 MGS Guardrail Terminal Type 2	3.000 EACH	_____.	_____.
0474	616.0100 Fence Woven Wire (height) 001. 4-FT	264.000 LF	_____.	_____.
0476	616.0206 Fence Chain Link 6-FT	200.000 LF	_____.	_____.
0478	616.0329 Gates Chain Link (width) 001. 4-FT	3.000 EACH	_____.	_____.



Proposal Schedule of Items

Proposal ID: 20200114007 Project(s): 1090-16-70

Federal ID(s): WISC 2019801

SECTION: 0001 Contract Items

Alt Set ID: Alt Mbr ID:

Proposal Line Number	Item ID Description	Approximate Quantity and Units	Unit Price	Bid Amount
0480	616.0800.S Fence Track Clearance	2,160.000 LF	_____.	_____.
0482	618.0100 Maintenance And Repair of Haul Roads (project) 001. 1090-16-70	1.000 EACH	_____.	_____.
0484	619.1000 Mobilization	1.000 EACH	_____.	_____.
0486	624.0100 Water	920.000 MGAL	_____.	_____.
0488	625.0500 Salvaged Topsoil	167,500.000 SY	_____.	_____.
0490	627.0200 Mulching	84,750.000 SY	_____.	_____.
0492	628.1504 Silt Fence	11,500.000 LF	_____.	_____.
0494	628.1520 Silt Fence Maintenance	18,750.000 LF	_____.	_____.
0496	628.1905 Mobilizations Erosion Control	33.000 EACH	_____.	_____.
0498	628.1910 Mobilizations Emergency Erosion Control	21.000 EACH	_____.	_____.
0500	628.2004 Erosion Mat Class I Type B	167,650.000 SY	_____.	_____.
0502	628.7005 Inlet Protection Type A	25.000 EACH	_____.	_____.
0504	628.7010 Inlet Protection Type B	75.000 EACH	_____.	_____.
0506	628.7504 Temporary Ditch Checks	2,700.000 LF	_____.	_____.
0508	628.7555 Culvert Pipe Checks	145.000 EACH	_____.	_____.
0510	628.7570 Rock Bags	300.000 EACH	_____.	_____.



Proposal Schedule of Items

Proposal ID: 20200114007 Project(s): 1090-16-70

Federal ID(s): WISC 2019801

SECTION: 0001 Contract Items

Alt Set ID: Alt Mbr ID:

Proposal Line Number	Item ID Description	Approximate Quantity and Units	Unit Price	Bid Amount
0512	629.0210 Fertilizer Type B	120.000 CWT	_____.	_____.
0514	630.0130 Seeding Mixture No. 30	3,000.000 LB	_____.	_____.
0516	630.0200 Seeding Temporary	2,350.000 LB	_____.	_____.
0518	630.0500 Seed Water	3,000.000 MGAL	_____.	_____.
0520	633.0100 Delineator Posts Steel	116.000 EACH	_____.	_____.
0522	633.0500 Delineator Reflectors	119.000 EACH	_____.	_____.
0524	633.5200 Markers Culvert End	6.000 EACH	_____.	_____.
0526	634.0618 Posts Wood 4x6-Inch X 18-FT	272.000 EACH	_____.	_____.
0528	635.0200 Sign Supports Structural Steel HS	1,000.000 LB	_____.	_____.
0530	636.0100 Sign Supports Concrete Masonry	1.600 CY	_____.	_____.
0532	636.0500 Sign Supports Steel Reinforcement	98.000 LB	_____.	_____.
0534	637.1220 Signs Type I Reflective SH	365.000 SF	_____.	_____.
0536	637.2210 Signs Type II Reflective H	1,370.875 SF	_____.	_____.
0538	637.2215 Signs Type II Reflective H Folding	338.000 SF	_____.	_____.
0540	637.2230 Signs Type II Reflective F	544.750 SF	_____.	_____.
0542	638.2101 Moving Signs Type I	1.000 EACH	_____.	_____.
0544	638.2102 Moving Signs Type II	82.000 EACH	_____.	_____.



Proposal Schedule of Items

Proposal ID: 20200114007 Project(s): 1090-16-70

Federal ID(s): WISC 2019801

SECTION: 0001 Contract Items

Alt Set ID: Alt Mbr ID:

Proposal Line Number	Item ID Description	Approximate Quantity and Units	Unit Price	Bid Amount
0546	638.2601 Removing Signs Type I	2.000 EACH	_____.	_____.
0548	638.2602 Removing Signs Type II	69.000 EACH	_____.	_____.
0550	638.3000 Removing Small Sign Supports	179.000 EACH	_____.	_____.
0552	638.3100 Removing Structural Steel Sign Supports	2.000 EACH	_____.	_____.
0554	643.0300 Traffic Control Drums	323,059.000 DAY	_____.	_____.
0556	643.0420 Traffic Control Barricades Type III	16,723.000 DAY	_____.	_____.
0558	643.0500 Traffic Control Flexible Tubular Marker Posts	20.000 EACH	_____.	_____.
0560	643.0600 Traffic Control Flexible Tubular Marker Bases	20.000 EACH	_____.	_____.
0562	643.0705 Traffic Control Warning Lights Type A	32,257.000 DAY	_____.	_____.
0564	643.0715 Traffic Control Warning Lights Type C	72,795.000 DAY	_____.	_____.
0566	643.0800 Traffic Control Arrow Boards	3,308.000 DAY	_____.	_____.
0568	643.0900 Traffic Control Signs	126,844.000 DAY	_____.	_____.
0570	643.0910 Traffic Control Covering Signs Type I	47.000 EACH	_____.	_____.
0572	643.0920 Traffic Control Covering Signs Type II	717.000 EACH	_____.	_____.
0574	643.1000 Traffic Control Signs Fixed Message	1,333.000 SF	_____.	_____.
0576	643.1050 Traffic Control Signs PCMS	742.000 DAY	_____.	_____.



Proposal Schedule of Items

Proposal ID: 20200114007 Project(s): 1090-16-70

Federal ID(s): WISC 2019801

SECTION: 0001 Contract Items

Alt Set ID: Alt Mbr ID:

Proposal Line Number	Item ID Description	Approximate Quantity and Units	Unit Price	Bid Amount
0578	643.1070 Traffic Control Cones 42-Inch	4,680.000 DAY	_____.	_____.
0580	643.4100.S Traffic Control Interim Lane Closure	125.000 EACH	_____.	_____.
0582	643.5000 Traffic Control	1.000 EACH	_____.	_____.
0584	645.0111 Geotextile Type DF Schedule A	11,076.000 SY	_____.	_____.
0586	645.0120 Geotextile Type HR	483.000 SY	_____.	_____.
0590	646.1020 Marking Line Epoxy 4-Inch	51,389.000 LF	_____.	_____.
0592	646.1040 Marking Line Grooved Wet Ref Epoxy 4-Inch	372,763.000 LF	_____.	_____.
0594	646.1545 Marking Line Grooved Wet Ref Contrast Epoxy 4-Inch	1,610.000 LF	_____.	_____.
0596	646.1555 Marking Line Grooved Contrast Permanent Tape 4-Inch	41,792.000 LF	_____.	_____.
0600	646.3020 Marking Line Epoxy 8-Inch	1,211.000 LF	_____.	_____.
0602	646.3545 Marking Line Grooved Wet Ref Contrast Epoxy 8-Inch	1,275.000 LF	_____.	_____.
0604	646.3555 Marking Line Grooved Contrast Permanent Tape 8-Inch	22,147.000 LF	_____.	_____.
0606	646.5020 Marking Arrow Epoxy	21.000 EACH	_____.	_____.
0608	646.5120 Marking Word Epoxy	2.000 EACH	_____.	_____.
0610	646.5220 Marking Symbol Epoxy	1.000 EACH	_____.	_____.



Proposal Schedule of Items

Proposal ID: 20200114007 Project(s): 1090-16-70

Federal ID(s): WISC 2019801

SECTION: 0001 Contract Items

Alt Set ID: Alt Mbr ID:

Proposal Line Number	Item ID Description	Approximate Quantity and Units	Unit Price	Bid Amount
0612	646.5520 Marking Outfall Epoxy	800.000 EACH	_____.	_____.
0614	646.6120 Marking Stop Line Epoxy 18-Inch	120.000 LF	_____.	_____.
0616	646.7120 Marking Diagonal Epoxy 12-Inch	165.000 LF	_____.	_____.
0620	646.7220 Marking Chevron Epoxy 24-Inch	1,925.000 LF	_____.	_____.
0622	646.8220 Marking Island Nose Epoxy	2.000 EACH	_____.	_____.
0624	646.9000 Marking Removal Line 4-Inch	303,165.000 LF	_____.	_____.
0626	646.9100 Marking Removal Line 8-Inch	8,226.000 LF	_____.	_____.
0628	646.9200 Marking Removal Line Wide	165.000 LF	_____.	_____.
0630	646.9300 Marking Removal Special Marking	2.000 EACH	_____.	_____.
0632	649.0105 Temporary Marking Line Paint 4-Inch	576,870.000 LF	_____.	_____.
0634	649.0150 Temporary Marking Line Removable Tape 4-Inch	117,234.000 LF	_____.	_____.
0636	649.0205 Temporary Marking Line Paint 8-Inch	32,165.000 LF	_____.	_____.
0638	649.0250 Temporary Marking Line Removable Tape 8-Inch	9,391.000 LF	_____.	_____.
0640	649.0760 Temporary Marking Raised Pavement Marker Type I	65.000 EACH	_____.	_____.
0642	650.4000 Construction Staking Storm Sewer	22.000 EACH	_____.	_____.
0644	650.4500 Construction Staking Subgrade	36,417.000 LF	_____.	_____.





Proposal Schedule of Items

Proposal ID: 20200114007 Project(s): 1090-16-70

Federal ID(s): WISC 2019801

SECTION: 0001 Contract Items

Alt Set ID: Alt Mbr ID:

Proposal Line Number	Item ID Description	Approximate Quantity and Units	Unit Price	Bid Amount
0646	650.5000 Construction Staking Base	36,417.000 LF	_____.	_____.
0648	650.5500 Construction Staking Curb Gutter and Curb & Gutter	1,603.000 LF	_____.	_____.
0650	650.6000 Construction Staking Pipe Culverts	4.000 EACH	_____.	_____.
0652	650.6500 Construction Staking Structure Layout (structure) 001. B-64-63	LS	LUMP SUM	_____.
0654	650.6500 Construction Staking Structure Layout (structure) 002. B-64-64	LS	LUMP SUM	_____.
0656	650.6500 Construction Staking Structure Layout (structure) 003. B-64-105	LS	LUMP SUM	_____.
0658	650.6500 Construction Staking Structure Layout (structure) 004. B-64-106	LS	LUMP SUM	_____.
0660	650.6500 Construction Staking Structure Layout (structure) 005. B-64-107	LS	LUMP SUM	_____.
0662	650.6500 Construction Staking Structure Layout (structure) 006. B-64-108	LS	LUMP SUM	_____.
0664	650.6500 Construction Staking Structure Layout (structure) 007. B-64-109	LS	LUMP SUM	_____.
0666	650.6500 Construction Staking Structure Layout (structure) 008. B-64-126	LS	LUMP SUM	_____.
0668	650.8000 Construction Staking Resurfacing Reference	9,159.000 LF	_____.	_____.
0670	650.9910 Construction Staking Supplemental Control (project) 001. 1090-16-70	LS	LUMP SUM	_____.
0672	650.9920 Construction Staking Slope Stakes	42,418.000 LF	_____.	_____.



Proposal Schedule of Items

Proposal ID: 20200114007 Project(s): 1090-16-70

Federal ID(s): WISC 2019801

SECTION: 0001 Contract Items

Alt Set ID: Alt Mbr ID:

Proposal Line Number	Item ID Description	Approximate Quantity and Units	Unit Price	Bid Amount
0674	652.0225 Conduit Rigid Nonmetallic Schedule 40 2-Inch	771.000 LF	_____.	_____.
0676	652.0700.S Install Conduit into Existing Item	3.000 EACH	_____.	_____.
0678	652.0800 Conduit Loop Detector	452.000 LF	_____.	_____.
0680	653.0135 Pull Boxes Steel 24x36-Inch	4.000 EACH	_____.	_____.
0682	654.0105 Concrete Bases Type 5	2.000 EACH	_____.	_____.
0684	655.0210 Cable Traffic Signal 3-14 AWG	1,629.000 LF	_____.	_____.
0686	655.0320 Cable Type UF 2-10 AWG Grounded	779.000 LF	_____.	_____.
0688	655.0610 Electrical Wire Lighting 12 AWG	234.000 LF	_____.	_____.
0690	655.0700 Loop Detector Lead In Cable	930.000 LF	_____.	_____.
0692	655.0800 Loop Detector Wire	1,470.000 LF	_____.	_____.
0694	655.0900 Traffic Signal EVP Detector Cable	1,629.000 LF	_____.	_____.
0696	657.0322 Poles Type 5-Aluminum	2.000 EACH	_____.	_____.
0698	657.0610 Luminaire Arms Single Member 4 1/2- Inch Clamp 6-FT	2.000 EACH	_____.	_____.
0700	659.1125 Luminaires Utility LED C	2.000 EACH	_____.	_____.
0702	690.0150 Sawing Asphalt	8,300.000 LF	_____.	_____.
0704	690.0250 Sawing Concrete	11,700.000 LF	_____.	_____.



Proposal Schedule of Items

Proposal ID: 20200114007 Project(s): 1090-16-70

Federal ID(s): WISC 2019801

SECTION: 0001 Contract Items

Alt Set ID: Alt Mbr ID:

Proposal Line Number	Item ID Description	Approximate Quantity and Units	Unit Price	Bid Amount
0706	715.0415 Incentive Strength Concrete Pavement	500.000 DOL	1.00000	500.00
0708	715.0502 Incentive Strength Concrete Structures	14,684.000 DOL	1.00000	14,684.00
0710	740.0440 Incentive IRI Ride	124,817.000 DOL	1.00000	124,817.00
0712	801.0117 Railroad Flagging Reimbursement	25,000.000 DOL	1.00000	25,000.00
0714	ASP.1T0A On-the-Job Training Apprentice at \$5.00/HR	4,800.000 HRS	5.00000	24,000.00
0716	ASP.1T0G On-the-Job Training Graduate at \$5.00/HR	9,000.000 HRS	5.00000	45,000.00
0718	SPV.0060 Special 005. Locate and Clean Existing Underdrain Outfalls	800.000 EACH	_____.	_____.
0720	SPV.0060 Special 006. Cap Existing Underdrain	30.000 EACH	_____.	_____.
0722	SPV.0060 Special 007. Traffic Control Interim Lane Shift	120.000 EACH	_____.	_____.
0724	SPV.0060 Special 008. Traffic Control Full Freeway Closure	40.000 EACH	_____.	_____.
0726	SPV.0060 Special 009. Traffic Control Close-Open Freeway Service Ramp	100.000 EACH	_____.	_____.
0728	SPV.0060 Special 400. Abandon Existing Hold-Down Device	20.000 EACH	_____.	_____.
0730	SPV.0060 Special 401. Girder Hold-Down Retrofit	20.000 EACH	_____.	_____.
0732	SPV.0090 Special 001. Heavy Duty Silt Fence	1,100.000 LF	_____.	_____.
0734	SPV.0090 Special 002. Double Staked Silt Fence	6,150.000 LF	_____.	_____.



Proposal Schedule of Items

Proposal ID: 20200114007 Project(s): 1090-16-70

Federal ID(s): WISC 2019801

SECTION: 0001 Contract Items

Alt Set ID: Alt Mbr ID:

Proposal Line Number	Item ID Description	Approximate Quantity and Units	Unit Price	Bid Amount
0736	SPV.0105 Special 005. Temporary Pedestrian and Bicyclist Passageway B-64-105	LS	LUMP SUM	_____.
0738	SPV.0105 Special 006. Temporary Pedestrian and Bicyclist Passageway B-64-106	LS	LUMP SUM	_____.
0740	SPV.0105 Special 301. Transport and Install State Furnished EVP IH 43 SB Ramp and STH 67	LS	LUMP SUM	_____.
0742	SPV.0105 Special 302. Transport and Install State Furnished EVP IH 43 NB Ramp and STH 67	LS	LUMP SUM	_____.
0744	SPV.0105 Special 303. Remove Radar Detection System – Partial, IH 43 NB Ramps & STH 67	LS	LUMP SUM	_____.
0746	SPV.0105 Special 304. Remove Radar Detection System – Partial, IH 43 SB Ramps & STH 67	LS	LUMP SUM	_____.
0748	SPV.0105 Special 305. Remove Traffic Signals – Partial, IH 43 SB Ramps & STH 67	LS	LUMP SUM	_____.
0750	SPV.0105 Special 306. Remove Traffic Signals – Partial, IH 43 NB Ramps & STH 67	LS	LUMP SUM	_____.
0752	SPV.0105 Special 400. Removing Lower Lateral Bracing B-64-126	LS	LUMP SUM	_____.
0754	SPV.0105 Special 401. Removing Abandoned Deicing System B-64-127	LS	LUMP SUM	_____.
0756	SPV.0135 Special 001. Field Office Special	22.000 MON	_____.	_____.
0758	SPV.0180 Special 001. Resin Binder High Friction Surface Treatment	29,825.000 SY	_____.	_____.



Proposal Schedule of Items

Proposal ID: 20200114007 Project(s): 1090-16-70

Federal ID(s): WISC 2019801

SECTION: 0001 Contract Items

Alt Set ID: Alt Mbr ID:

Proposal Line Number	Item ID Description	Approximate Quantity and Units	Unit Price	Bid Amount
0760	614.2310 MGS Guardrail 3 HS	50.000 LF	_____.	_____.
0762	646.6464 Cold Weather Marking Epoxy 4-Inch	58,450.000 LF	_____.	_____.
0764	646.6468 Cold Weather Marking Epoxy 8-Inch	7,450.000 LF	_____.	_____.
0766	SPV.0090 Special 03 Marking Contrast Epoxy 4-Inch	613.000 LF	_____.	_____.
0768	SPV.0090 Special 04. Marking Contrast Epoxy 8-Inch	1,003.000 LF	_____.	_____.
<b>Section: 0001</b>			<b>Total:</b>	_____.
			<b>Total Bid:</b>	_____.

