



Wisconsin Department of Transportation

Division of Transportation Systems Development

Bureau of Project Development
4822 Madison Yards Way, 4th Floor South
Madison, WI 53705

January 10, 2020

Telephone: (608) 266-1631
Facsimile (FAX): (608) 266-8459

NOTICE TO ALL CONTRACTORS:

Proposal #08: 2260-00-71, WISC 2019 802
Durand Avenue, City of Racine
STH 31 to Kentucky St
STH 11
Racine County

January 14, 2020

This is Addendum No. 02, which provides for the following:

Special Provisions:

Added Special Provisions	
Article No.	Description
54	Manholes 9-FT Diameter

Schedule of Items:

Revised Bid Item Quantities					
Bid Item	Item Description	Unit	Old Quantity	Revised Quantity	Proposal Total
205.0100	Excavation Common	CY	50,820	-6,237	44,583

Added Bid Item Quantities					
Bid Item	Item Description	Unit	Old Quantity	Revised Quantity	Proposal Total
SPV.0060.25	Manholes 9-FT Diameter	EACH	0	8	8

Deleted Bid Item Quantities					
Bid Item	Item Description	Unit	Old Quantity	Revised Quantity	Proposal Total
208.0100	Borrow	CY	27,620	-27,620	0
611.2008	Manholes 8-FT Diameter	EACH	8	-8	0

Plan Sheets:

Revised Plan Sheets	
Plan Sheet	Plan Sheet Title (brief description of changes to sheet)
87	Replace Manhole 8 FT DIA. with Manholes 9-FT DIA
88	Replace Manhole 8 FT DIA. with Manholes 9-FT DIA
89	Replace Manhole 8 FT DIA. with Manholes 9-FT DIA
90	Replace Manhole 8 FT DIA. with Manholes 9-FT DIA
91	Replace Manhole 8 FT DIA. with Manholes 9-FT DIA
331	Misc. Quantities (Revised Earthwork Items)
332	Misc. Quantities (Revised Earthwork Items)
341	Replace Manholes 8-FT DIA 611.2008 with Manholes 9-FT DIA SPV.0060.25
342	Replace Manholes 8-FT DIA 611.2008 with Manholes 9-FT DIA SPV.0060.25
343	Replace Manholes 8-FT DIA 611.2008 with Manholes 9-FT DIA SPV.0060.25
344	Replace Manholes 8-FT DIA 611.2008 with Manholes 9-FT DIA SPV.0060.25

The responsibility for notifying potential subcontractors and suppliers of these changes remains with the prime contractor.

Sincerely,

Mike Coleman

Proposal Development Specialist
Proposal Management Section

ADDENDUM NO. 02

2260-00-71

January 10, 2020

Special Provisions

54. Manholes 9-FT Diameter, Item SPV.0060.25.

A Description

This special provision describes constructing manholes, made of concrete, brick masonry, or concrete brick or block masonry, with necessary reinforcement, including required excavating and backfilling in accordance to section 611 of the standard specifications.

B Materials

Furnish materials in accordance to section 611 of the standard specifications.

C Construction

Construct manholes in accordance to section 611 of the standard specifications.

D Measurement

The department will measure the bid item under this section as each individual unit acceptably completed.

E Payment

The department will pay for measured quantities at the contract unit price under the following bid item:

ITEM NUMBER	DESCRIPTION	UNIT
SPV.0060.25	Manholes 9-FT Diameter	EACH

Schedule of Items

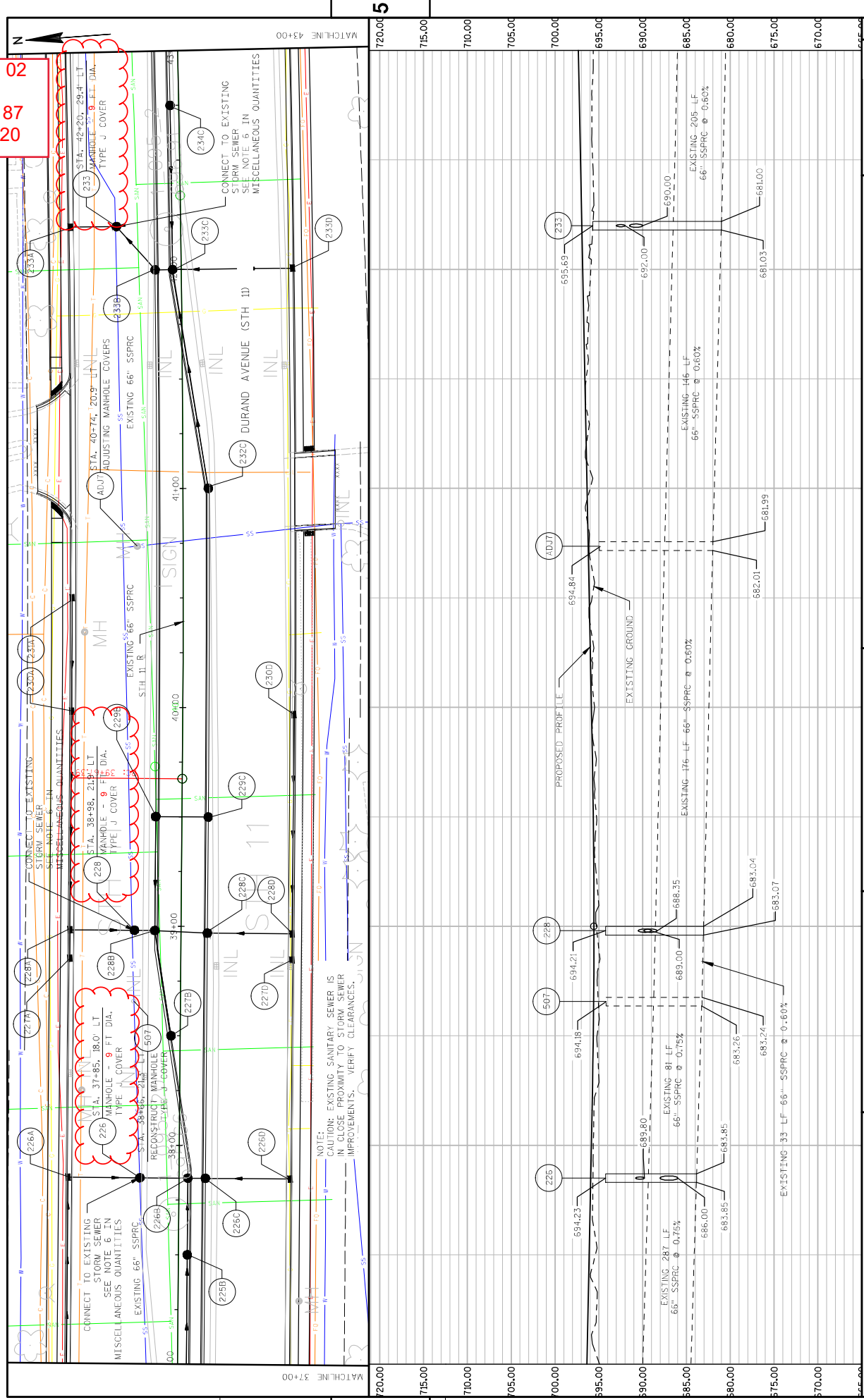
Attached, dated January 10, 2020, are the revised Schedule of Items Pages 1 – 18.

Plan Sheets

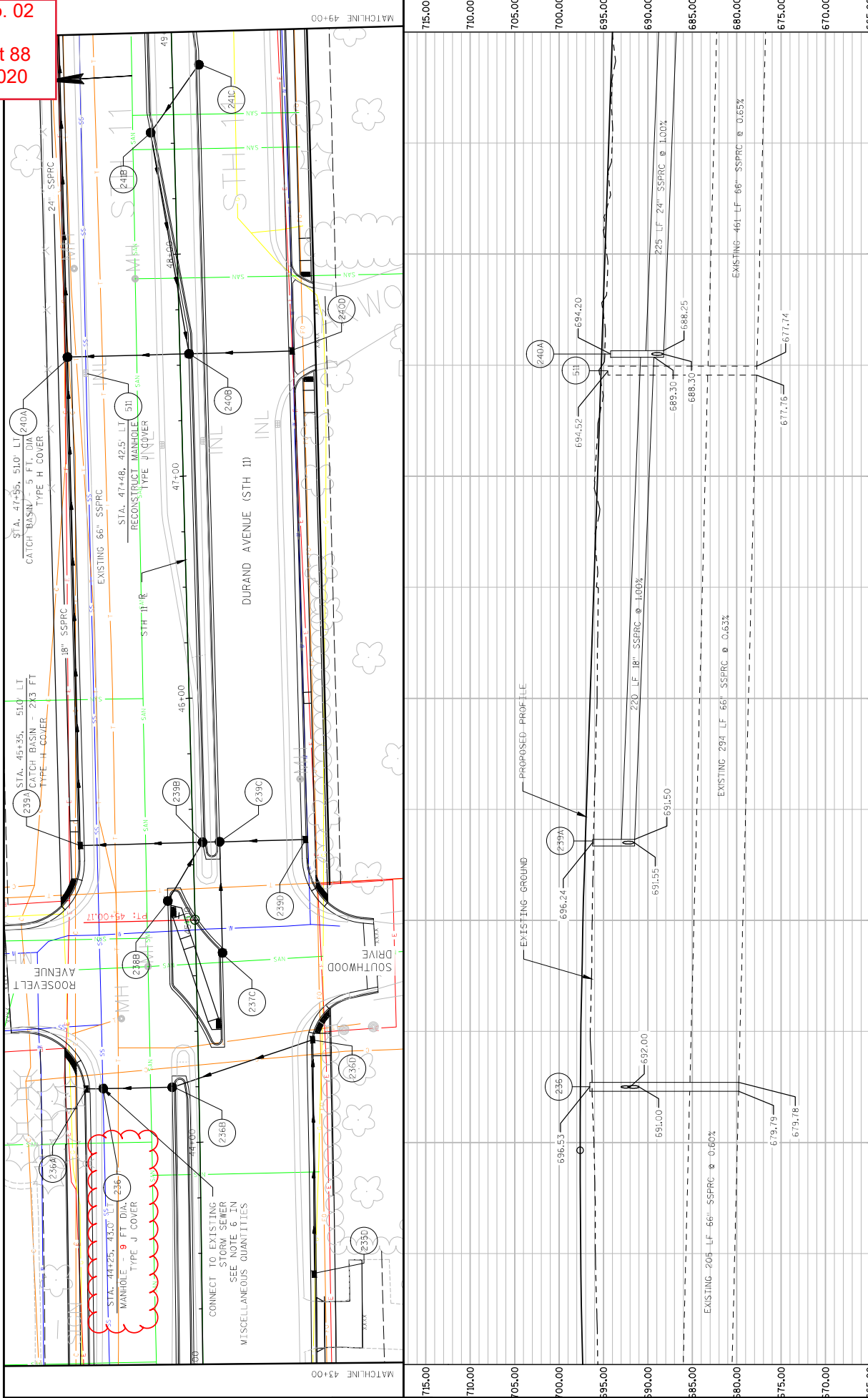
The following 8½ x 11-inch sheets are attached and made part of the plans for this proposal:
Revised: 87 – 91, 330, 331, and 341 – 344.

END OF ADDENDUM

Addendum No. 02
ID 2260-00-71
Revised Sheet 87
January 10, 2020



Addendum No. 02
 ID 2260-00-71
 Revised Sheet 88
 January 10, 2020



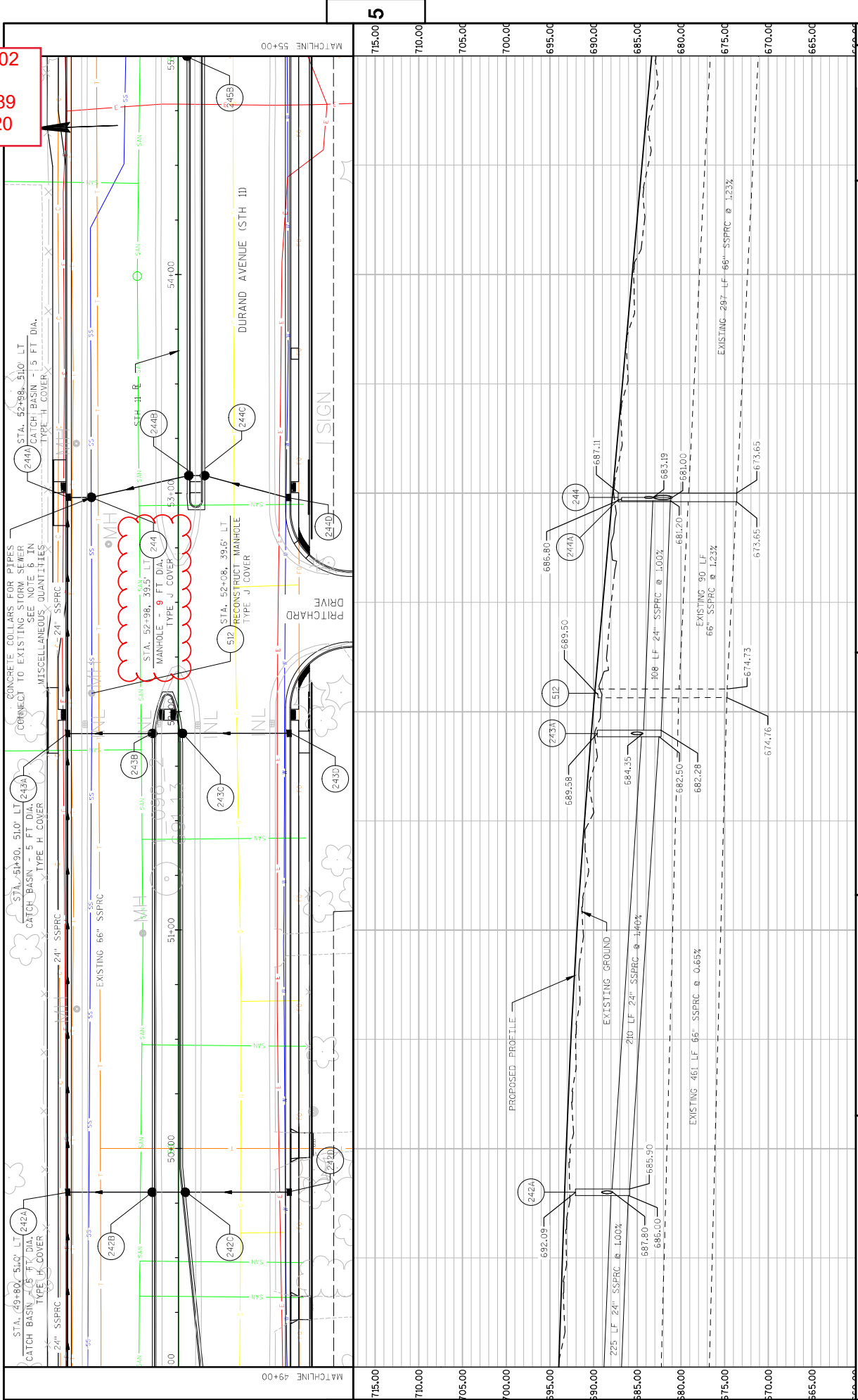
5

5

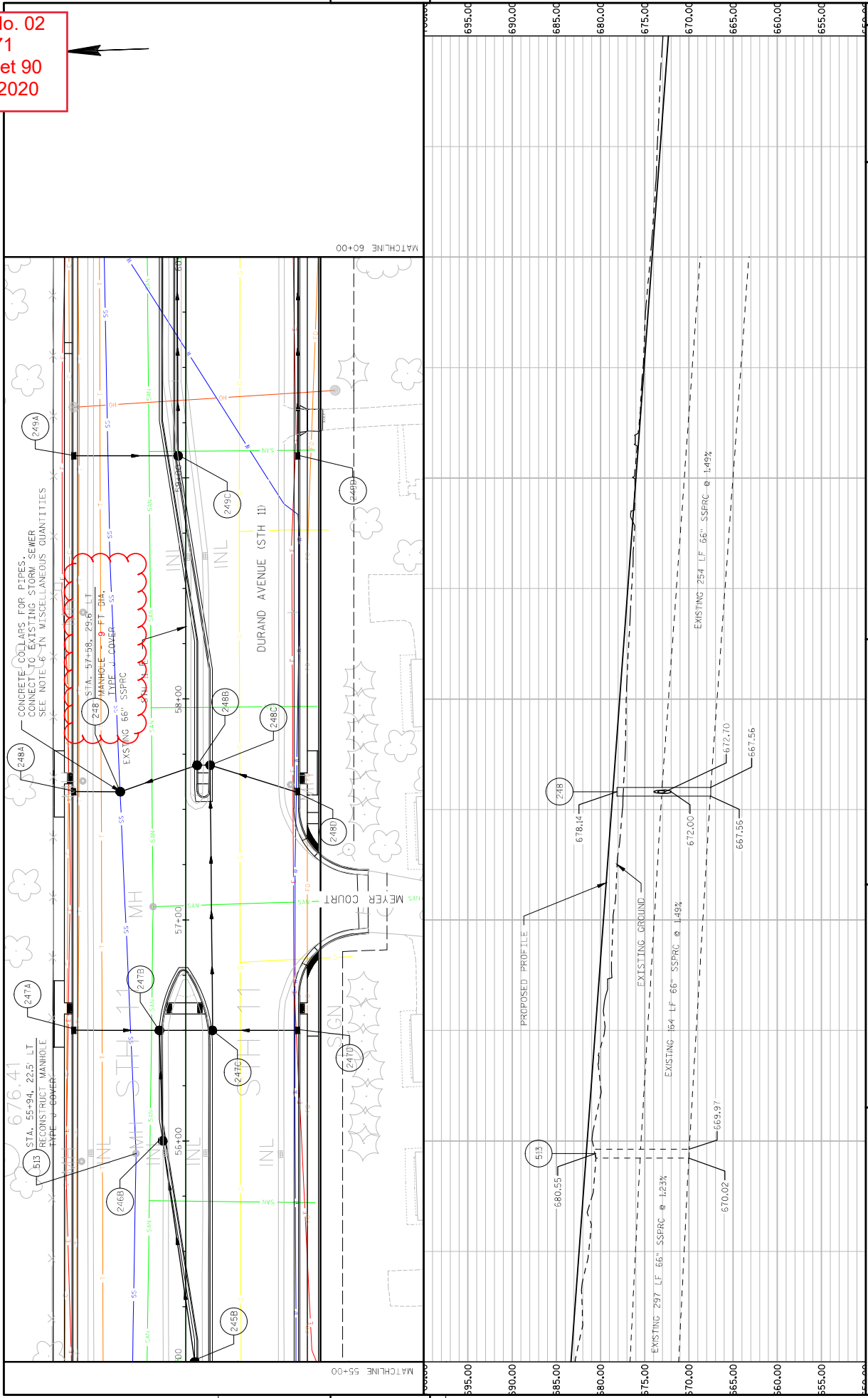
PROJECT NO: 2260-00-71	HWY: STH 11	COUNTY: RACINE	PLAN AND PROFILE: STORM SEWER PLANS	SHEET 88
PLOT DATE: 8/17/2019 14:79		PLOT NAME: 022507-SS		WISDOT/CADDIS SHEET 44
PLOT BY: BRIAN MALACE		PLOT SCALE: 1:140, XHPF		

FILE NAME: F:\DOC, P\F\BUS-0015099-AD, CIVIL\GHPF\SPR.AVI 022507-SS.DWG

Addendum No. 02
 ID 2260-00-71
 Revised Sheet 89
 January 10, 2020



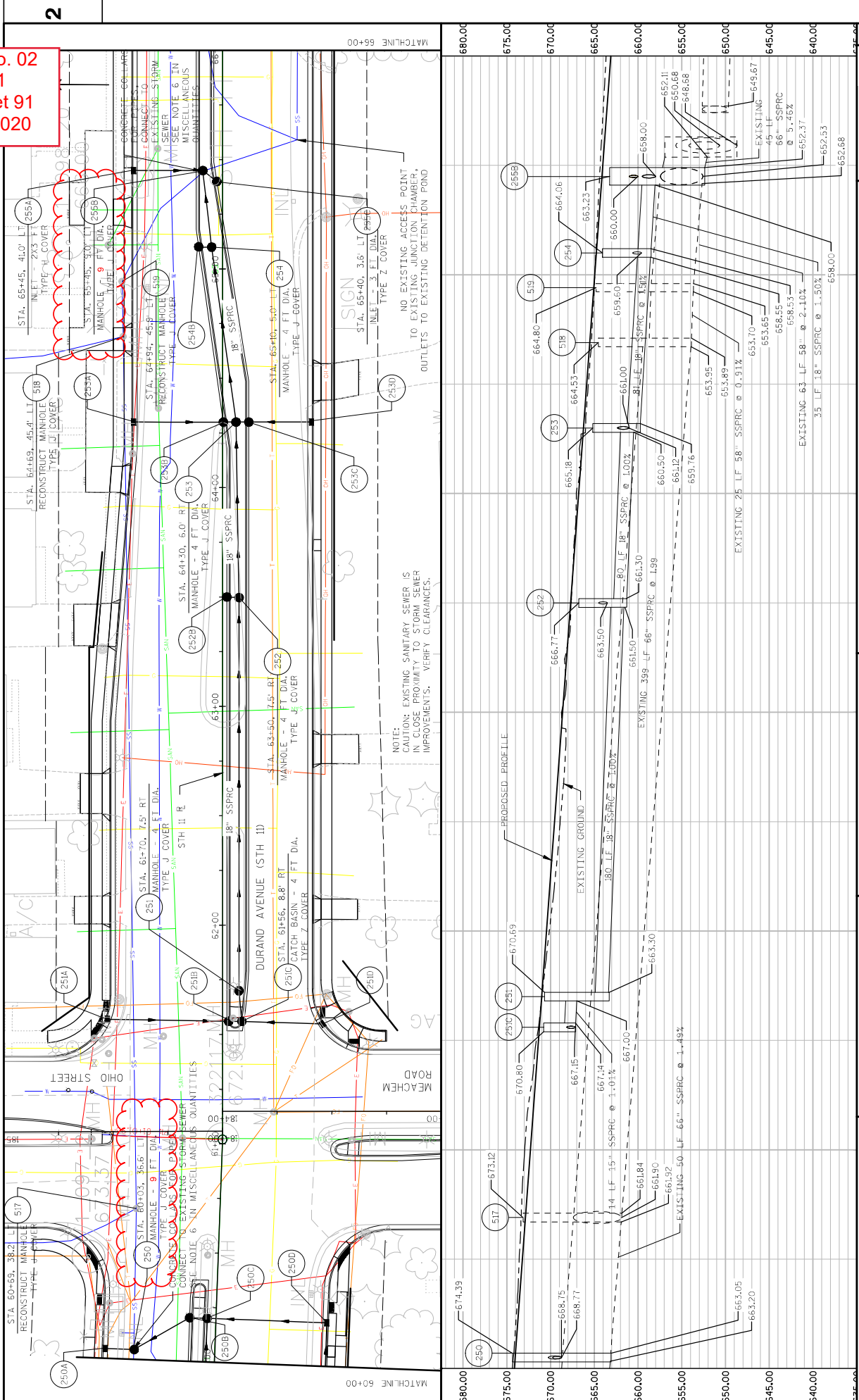
Addendum No. 02
 ID 2260-00-71
 Revised Sheet 90
 January 10, 2020



5

5

Addendum No. 02
ID 2260-00-71
Revised Sheet 91
January 10, 2020



Addendum No. 02
 ID 2260-00-71
 Revised Sheet 330
 January 10, 2020

Division	From/To Station	Location	Excavation Common (1)		Salvaged/Unusable Pavement Material (4)	Available Material (5)	Expanded Fill (13)	Mass Ordinate +/- (14)	Waste	Borrow	Comment:
			Cut (2)	EBS Excavation (3)							
STAGE 1A	6+90.00 - 16+00.00 105+05.00 - 114+25.00	STH 11 STH 31	345 401 746	0 0 0	0 12 12	345 389 734	0 0 0	345 389 734	0		See Note 15 See Note 15
STAGE 1A Subtotal											
STAGE 1B	7+84.00 - 10+82.00 106+74.00 - 111+53.00	STH 11 - SW QUADRANT STH 31 - SE, NE, NW QUADRANTS	259 898 1,157	0 0 0	143 348 491	116 550 666	0 0 0	116 550 666	0		See note 15 See note 15 See note 15
STAGE 1B Subtotal											
STAGE 1C	7+84.00 - 11+21.00	STH 11 - SW INTERIOR	587	0	352	235	0	235	0		See note 15
STAGE 1C Subtotal											
STAGE 1D	11+21.00 - 12+48.00	STH 11 - SE INTERIOR	241	0	132	109	0	109	0		See note 15
STAGE 1D Subtotal											
STAGE 1E	11+21.00 - 12+48.00	STH 11 - NE INTERIOR	211	0	118	93	0	93	0		See note 15
STAGE 1E Subtotal											
STAGE 1F	10+06.00 - 11+21.00	STH 11 - NW INTERIOR	178	0	102	76	0	76	0		See note 15
STAGE 1F Subtotal											
STAGE 2	8+00.00 - 77+09.00 8+00.00 - 77+09.00 105+05.00 - 114+00.00 123+49.00 - 123+84.00 250+49.00 - 250+84.00 133+49.01 - 133+85.00 143+99.00 - 143+85.00 184+49.00 - 185+25.00 190+39.00 - 190+75.00 200+39.00 - 200+70.00 210+39.00 - 210+75.00	STH 11 STH 11 EBS STH 31 MALL ENTRANCE WEST MALL ENTRANCE CENTER MALL ENTRANCE EAST ROOSEVELT AVENUE OHIO STREET ILLINOIS STREET OREGON STREET INDIANA STREET	18,267 0 401 113 114 116 107 278 81 72 76 19,624	0 3,000 0 0 0 0 0 0 0 0 0 0 3,000	8,022 3,000 0 0 0 65 168 54 22 39 11,398	10,245 0 401 113 114 116 42 110 27 22 37 11,226	1,118 0 0 0 0 0 0 0 0 0 0 0 1,118	8,848 0 401 113 114 116 42 110 27 22 37 9,828	0		See note 15 See note 15 See note 15 See note 15 See note 15 See note 15 See note 15 See note 15 See note 15 See note 15 See note 15 See note 15
STAGE 2 Subtotal											
STAGE 3	6+90.00 - 10+40.00 75+50.00 - 77+10.00	STH 11 STH 11	162 44 206	0 0 0	0 27 27	162 17 179	0 1,000 1,000	162 -1,233 -1,071	0		See note 15 See note 15
STAGE 3 Subtotal											

CONTINUED ON NEXT SHEET

Addendum No. 02
 ID 2260-00-71
 Revised Sheet 331
 January 10, 2020

Division	From/To Station	Location	Excavation Common		(Item # 205.0100)	Salvaged/Unusable Pavement Material (4)	Available Material (5)	Unexpanded Fill	Expanded Fill (13)		Mass Ordinate +/- (14)	Waste	Borrow	Comment:
			(1)	(2)					Factor	(13)				
STAGE 4	8+00.00 - 77+09.00	STH 11	14,574	0	0	6,362	8,212	441	551	1.25	7,661			
	8+00.00 - 77+09.00	STH 11 EBS	0	3,000	3,000	3,000	0	0	0		0			See note 15
	122+17.00 - 122+50.96	ELWOOD DRIVE	91	0	0	39	52	0	0		52			See note 15
	132+14.00 - 132+50.96	WOOD DRIVE	108	0	0	53	55	0	0		55			See note 15
	142+19.00 - 142+50.96	SOUTHWOOD DRIVE	76	0	0	38	38	0	0		38			See note 15
	162+14.00 - 162+50.97	PRICHARD DRIVE	85	0	0	39	46	0	0		46			See note 15
	172+17.41 - 172+50.96	MEYER COURT	71	0	0	54	17	0	0		17			See note 15
	180+31.69 - 183+51.00	MEACHEM ROAD	628	0	0	262	366	0	0		366			See note 15
STAGE 4 Subtotal			15,633	3,000	3,000	9,847	8,786	441	551		8,235	8,235	0	
Grand Total		Total Excavation Common	38,583	6,000	6,000	22,479	22,104	2,559	3,199		18,906	18,906	0	

1) Excavation Common is the sum of the Cut and EBS Excavation columns. Item number 205.0100

2) Salvaged/Unusable Pavement Material is included in Cut

3) EBS Excavation to be backfilled with Select Crushed Material

4) Salvaged/Unusable Pavement/EBS Material

5) Available Material = Cut - Salvaged/Unusable Pavement/EBS Material

13) Expanded Fill. Factor = 1.25

14) The Mass Ordinate + or - Qty calculated for the Division. Plus quantity indicates an excess of material within the Division. Minus indicates a shortage of material within the Division.

15) Excavation Common Volume Estimated by Plan View Area and Average Depth

EXCAVATION, HAULING AND DISPOSAL OF CONTAMINATED SOILS

STATION	TO	STATION	LOCATION	OFFSET	TON	CONTAMINATED SOIL	TON	CONTAMINATED SOIL	TON
12+75	13+75	STH 11	RT	---	---	PETROLEUM LEAD	---	---	---
13+75	14+50	STH 11	RT	---	---	CONTAMINATED SOIL	---	---	---
PROJECT ID 2260-00-71 TOTALS (0010)					120	125	120	125	125

FINISHING ROADWAY

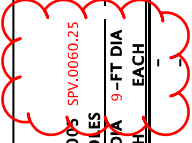
ROADWAY	PROJECT	EACH
STH 11	2260-00-71	1
(0010) PROJECT TOTAL		1

UNLESS OTHERWISE NOTED, ALL ITEMS ARE CATEGORY 0010

PROJECT NO: 2260-00-71	HWY: STH 11	COUNTY: RACINE	MISCELLANEOUS QUANTITIES	SHEET 331	E
------------------------	-------------	----------------	--------------------------	-----------	---

Addendum No. 02
 ID 2260-00-71
 Revised Sheet 341
 January 10, 2020

STORM SEWER STRUCTURES		611.0530	661.0612	611.0624	611.0666	611.1003	611.1004	611.1005	611.1230	611.2004	611.2005	611.3230	611.3003	650.4000	
STRUCTURE NO.	LOCATION	MANHOLE COVERS			INLET COVERS TYPE			CATCH BASINS		MANHOLES		INLETS		STAKING	
		J	C	H	Z	3-FT DIA	4-FT DIA	5-FT DIA	2X3-FT	4-FT DIA	5-FT DIA	9-FT DIA	2X3-FT		3-FT DIA
		EACH	EACH	EACH	EACH	EACH	EACH	EACH	EACH	EACH	EACH	EACH	EACH	EACH	
	STATION	OFFSET													
		FT													
222D	35+25.00	51.2	RT												
223B	36+25.00	5.0	RT												
224A	36+75.00	51.0	LT												
224B	36+75.00	5.0	RT												
224C	36+75.00	11.0	RT												
224D	36+75.00	51.0	RT												
225B	37+50.00	5.0	RT												
226	37+85.00	18.0	LT												
226A	37+85.00	51.0	LT												
226B	37+85.00	5.0	RT												
226C	37+85.00	11.0	RT												
226D	37+85.00	51.0	RT												
227A	38+85.00	51.0	LT												
227B	38+50.00	4.0	LT												
227D	38+85.00	51.0	RT												
228	38+98.00	21.9	LT												
228A	38+98.00	51.0	LT												
228B	38+98.00	11.0	LT												
228C	38+97.00	11.0	RT												
228D	38+97.00	51.0	RT												
229B	39+50.00	11.0	LT												
229C	39+50.00	11.0	RT												
230A	39+98.00	51.0	LT												
230D	39+97.00	51.0	RT												
231A	40+50.00	51.0	LT												
232C	41+00.00	10.6	RT												
233	42+20.00	26.4	LT												
233A	42+20.00	51.0	LT												
233B	42+00.00	11.0	LT												
233C	42+00.00	5.0	LT												
233D	42+00.00	51.0	RT												
234C	42+75.00	5.0	LT												
235D	43+40.00	51.0	RT												
236	44+25.00	43.0	LT												
236A	44+25.00	51.0	LT												
236B	44+25.00	11.0	LT												
236D	44+45.00	52.1	RT												
237C	44+85.00	11.0	RT												
238B	45+09.00	11.0	LT												
239A	45+35.00	51.0	LT												

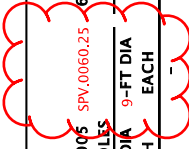


CONTINUED ON NEXT SHEET

Addendum No. 02
 ID 2260-00-71
 Revised Sheet 342
 January 10, 2020

STORM SEWER STRUCTURES

STRUCTURE NO.	STATION	OFFSET FT	MANHOLE/COVERS			INLET COVERS TYPE			CATCH BASINS			MANHOLES			INLETS			STAKING	
			J	C	H	Z	3-FT DIA	4-FT DIA	5-FT DIA	2X3-FT	4-FT DIA	5-FT DIA	9-FT DIA	2X3-FT	3-FT DIA	611.3230	611.3003		650.4000
2398	45+35.00	5.4	RT	-	-	-	1	-	-	-	-	-	-	-	-	-	-	-	-
239C	45+35.00	11.0	RT	-	-	-	1	-	-	-	-	-	-	-	-	-	-	-	-
239D	45+35.00	51.0	RT	-	-	-	1	-	-	-	-	-	-	-	-	-	-	-	-
240A	47+55.00	51.0	LT	-	-	-	1	-	-	-	-	-	-	-	-	-	-	-	-
240B	47+55.00	5.0	RT	-	-	-	1	-	-	-	-	-	-	-	-	-	-	-	-
240D	47+55.00	51.0	RT	-	-	-	1	-	-	-	-	-	-	-	-	-	-	-	-
241B	48+55.00	9.6	LT	-	-	-	1	-	-	-	-	-	-	-	-	-	-	-	-
241C	48+85.00	11.0	RT	-	-	-	1	-	-	-	-	-	-	-	-	-	-	-	-
242A	49+80.00	51.0	LT	-	-	-	1	-	-	-	-	-	-	-	-	-	-	-	-
242B	49+80.00	11.0	LT	-	-	-	1	-	-	-	-	-	-	-	-	-	-	-	-
242C	49+80.00	2.2	RT	-	-	-	1	-	-	-	-	-	-	-	-	-	-	-	-
242D	49+80.00	51.0	RT	-	-	-	1	-	-	-	-	-	-	-	-	-	-	-	-
243A	51+90.00	51.0	LT	-	-	-	1	-	-	-	-	-	-	-	-	-	-	-	-
243B	51+90.00	10.9	LT	-	-	-	1	-	-	-	-	-	-	-	-	-	-	-	-
243C	51+90.00	0.9	RT	-	-	-	1	-	-	-	-	-	-	-	-	-	-	-	-
243D	51+90.00	51.0	RT	-	-	-	1	-	-	-	-	-	-	-	-	-	-	-	-
244	52+98.00	39.5	LT	1	-	-	-	-	-	-	-	-	-	-	-	-	-	-	-
244A	52+98.00	51.0	LT	-	-	-	1	-	-	-	-	-	-	-	-	-	-	-	-
244B	52+98.00	5.0	RT	-	-	-	1	-	-	-	-	-	-	-	-	-	-	-	-
244C	52+98.00	11.0	RT	-	-	-	1	-	-	-	-	-	-	-	-	-	-	-	-
244D	52+98.00	51.0	RT	-	-	-	1	-	-	-	-	-	-	-	-	-	-	-	-
245B	55+00.00	5.0	RT	-	-	-	1	-	-	-	-	-	-	-	-	-	-	-	-
246B	56+00.00	9.5	LT	-	-	-	1	-	-	-	-	-	-	-	-	-	-	-	-
247A	56+50.00	51.0	LT	-	-	-	1	-	-	-	-	-	-	-	-	-	-	-	-
247B	56+50.00	11.0	LT	-	-	-	1	-	-	-	-	-	-	-	-	-	-	-	-
247C	56+50.00	10.7	RT	-	-	-	1	-	-	-	-	-	-	-	-	-	-	-	-
247D	56+50.00	51.0	RT	-	-	-	1	-	-	-	-	-	-	-	-	-	-	-	-
248	57+58.00	29.6	LT	1	-	-	-	-	-	-	-	-	-	-	-	-	-	-	-
248A	57+58.00	51.0	LT	-	-	-	1	-	-	-	-	-	-	-	-	-	-	-	-
248B	57+58.00	5.1	RT	-	-	-	1	-	-	-	-	-	-	-	-	-	-	-	-
248C	57+58.00	11.0	RT	-	-	-	1	-	-	-	-	-	-	-	-	-	-	-	-
248D	57+58.00	51.0	RT	-	-	-	1	-	-	-	-	-	-	-	-	-	-	-	-
249A	59+10.00	51.0	LT	-	-	-	1	-	-	-	-	-	-	-	-	-	-	-	-
249C	59+10.00	4.5	LT	-	-	-	1	-	-	-	-	-	-	-	-	-	-	-	-
249D	59+10.00	51.0	RT	-	-	-	1	-	-	-	-	-	-	-	-	-	-	-	-
250	60+03.00	36.6	LT	1	-	-	-	-	-	-	-	-	-	-	-	-	-	-	-
250A	60+03.00	51.0	LT	-	-	-	1	-	-	-	-	-	-	-	-	-	-	-	-
250B	60+20.00	11.0	LT	-	-	-	1	-	-	-	-	-	-	-	-	-	-	-	-
250C	60+20.00	5.0	LT	-	-	-	1	-	-	-	-	-	-	-	-	-	-	-	-
250D	60+20.00	51.0	RT	-	-	-	1	-	-	-	-	-	-	-	-	-	-	-	-

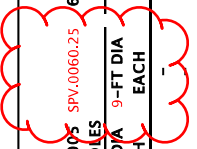


CONTINUED ON NEXT SHEET

Addendum No. 02
 ID 2260-00-71
 Revised Sheet 343
 January 10, 2020

STORM SEWER STRUCTURES

STRUCTURE NO.	LOCATION	OFFSET FT	MANHOLE COVERS		INLET COVERS TYPE		CATCH BASINS		MANHOLES		INLETS		STAKING			
			J	C	H	Z	3-FT DIA	4-FT DIA	5-FT DIA	2X3-FT	4-FT DIA	5-FT DIA	9-FT DIA	2X3-FT	3-FT DIA	650.4000
	STATION		EACH	EACH	EACH	EACH	EACH	EACH	EACH	EACH	EACH	EACH	EACH	EACH		
251	61+70.00	7.5	RT	-	-	-	-	-	-	-	-	-	-	-	-	-
251A	61+57.00	53.2	LT	-	1	-	-	-	-	-	-	-	-	-	-	-
251B	61+56.00	3.0	RT	-	-	1	-	-	-	-	-	-	-	-	-	-
251C	61+56.00	10.0	RT	-	-	-	1	-	-	-	-	-	-	-	-	-
251D	61+55.00	46.0	RT	-	-	-	-	-	-	-	-	-	-	-	-	-
252	63+50.00	7.5	RT	-	-	-	-	-	-	-	-	-	-	-	-	-
252B	63+50.00	3.0	RT	-	-	-	-	-	-	-	-	-	-	-	-	-
253	64+30.00	6.0	RT	-	-	-	-	-	-	-	-	-	-	-	-	-
253A	64+30.00	41.0	LT	-	-	-	-	-	-	-	-	-	-	-	-	-
253B	64+30.00	1.4	RT	-	-	-	-	-	-	-	-	-	-	-	-	-
253C	64+30.00	11.0	RT	-	-	-	-	-	-	-	-	-	-	-	-	-
253D	64+30.00	41.0	RT	-	-	-	-	-	-	-	-	-	-	-	-	-
254	65+10.00	5.0	LT	-	-	-	-	-	-	-	-	-	-	-	-	-
254B	65+10.00	9.9	LT	-	-	-	-	-	-	-	-	-	-	-	-	-
255A	65+45.00	41.0	LT	-	-	-	-	-	-	-	-	-	-	-	-	-
255B	65+45.00	9.0	LT	-	-	-	-	-	-	-	-	-	-	-	-	-
255C	65+40.00	3.6	LT	-	-	-	-	-	-	-	-	-	-	-	-	-
256B	67+00.00	11.0	LT	-	-	-	-	-	-	-	-	-	-	-	-	-
256D	66+88.00	41.0	RT	-	-	-	-	-	-	-	-	-	-	-	-	-
256E	67+17.00	41.0	RT	-	-	-	-	-	-	-	-	-	-	-	-	-
256F	190+54.80	18.5	LT	-	-	-	-	-	-	-	-	-	-	-	-	-
256G	190+55.60	19.0	RT	-	-	-	-	-	-	-	-	-	-	-	-	-
257A	68+08.00	41.0	LT	-	-	-	-	-	-	-	-	-	-	-	-	-
257B	68+08.00	1.4	RT	-	-	-	-	-	-	-	-	-	-	-	-	-
257C	68+08.00	8.3	RT	-	-	-	-	-	-	-	-	-	-	-	-	-
257D	68+06.00	41.0	RT	-	-	-	-	-	-	-	-	-	-	-	-	-
258A	68+44.00	41.0	LT	-	-	-	-	-	-	-	-	-	-	-	-	-
258B	68+35.00	1.0	LT	-	-	-	-	-	-	-	-	-	-	-	-	-
258C	68+35.00	11.0	RT	-	-	-	-	-	-	-	-	-	-	-	-	-
258E	68+53.00	41.0	RT	-	-	-	-	-	-	-	-	-	-	-	-	-
259A	68+54.00	41.0	LT	-	-	-	-	-	-	-	-	-	-	-	-	-
259C	68+55.00	9.9	RT	-	-	-	-	-	-	-	-	-	-	-	-	-
260B	68+90.00	1.0	LT	-	-	-	-	-	-	-	-	-	-	-	-	-
261C	69+75.00	5.0	LT	-	-	-	-	-	-	-	-	-	-	-	-	-
262B	69+75.00	11.0	LT	-	-	-	-	-	-	-	-	-	-	-	-	-
263A	70+55.00	41.0	LT	-	-	-	-	-	-	-	-	-	-	-	-	-
263B	70+55.00	11.0	LT	-	-	-	-	-	-	-	-	-	-	-	-	-
263C	70+55.00	5.0	LT	-	-	-	-	-	-	-	-	-	-	-	-	-
263E	70+55.00	41.0	RT	-	-	-	-	-	-	-	-	-	-	-	-	-
264A	71+48.00	41.0	LT	-	-	-	-	-	-	-	-	-	-	-	-	-



CONTINUED ON NEXT SHEET

Addendum No. 02
 ID 2260-00-71
 Revised Sheet 344
 January 10, 2020

3

STORM SEWER STRUCTURES

STRUCTURE NO.	LOCATION	OFFSET	MANHOLE COVERS			INLET COVERS TYPE			CATCH BASINS			MANHOLES			INLETS			STAKING
			J	C	H	Z	3-FT DIA	4-FT DIA	5-FT DIA	2X3-FT	4-FT DIA	5-FT DIA	9-FT DIA	2X3-FT	3-FT DIA	611.3230	611.3003	
264B	71+50.00	0.9	LT	-	-	-	-	-	-	-	-	-	-	-	-	-	-	-
264C	71+50.00	10.8	RT	-	-	-	-	-	-	-	-	-	-	-	-	-	-	-
264D	71+38.00	8.5	RT	-	-	-	-	-	-	-	-	-	-	-	-	-	-	-
264E	71+48.00	41.0	RT	-	-	-	-	-	-	-	-	-	-	-	-	-	-	-
265C	72+80.00	5.0	LT	-	-	-	-	-	-	-	-	-	-	-	-	-	-	-
266A	73+60.00	41.0	LT	-	-	-	-	-	-	-	-	-	-	-	-	-	-	-
267A	74+75.00	41.0	LT	-	-	-	-	-	-	-	-	-	-	-	-	-	-	-
267B	74+76.00	0.4	LT	-	-	-	-	-	-	-	-	-	-	-	-	-	-	-
267C	74+76.00	10.2	RT	-	-	-	-	-	-	-	-	-	-	-	-	-	-	-
267E	74+77.00	41.0	RT	-	-	-	-	-	-	-	-	-	-	-	-	-	-	-
268B	77+00.00	11.0	LT	-	-	-	-	-	-	-	-	-	-	-	-	-	-	-
268C	77+00.00	5.0	LT	-	-	-	-	-	-	-	-	-	-	-	-	-	-	-
268D	77+00.00	35.4	RT	-	-	-	-	-	-	-	-	-	-	-	-	-	-	-
268E	77+00.00	41.0	RT	-	-	-	-	-	-	-	-	-	-	-	-	-	-	-
269C	76+05.00	4.4	LT	-	-	-	-	-	-	-	-	-	-	-	-	-	-	-
269E	76+22.00	51.5	RT	-	-	-	-	-	-	-	-	-	-	-	-	-	-	-
300	21+61.00	44.0	LT	1	-	-	-	-	-	-	-	-	-	-	-	-	-	-
TOTALS:				23*	1	94	99	28	45	11	17	6	8	9	64	29	217	

*** = ADDITIONAL QUANTITIES LISTED ELSEWHERE

**ADJUSTING MANHOLE AND INLET COVERS
 TEMPORARY INLET COVER**

STATION	LOCATION	OFFSET	611.8110			611.9710			SPV.0060.09		
			ADJUSTING MANHOLE COVERS EACH*	SALVAGED INLET COVER EACH	TEMPORARY INLET COVER EACH	ADJUSTING MANHOLE COVERS EACH	SALVAGED INLET COVER EACH	TEMPORARY INLET COVER EACH			
8+20	STH 11	LT	1	---	---	---	---	---	---	---	
8+55	STH 11	LT	---	---	2	---	---	---	---	---	
10+42	STH 11	LT	1	---	---	---	---	---	---	---	
12+30	STH 11	RT	1	---	---	---	---	---	---	---	
13+50	STH 11	RT	---	---	2	---	---	---	---	---	
14+35	STH 11	RT	---	---	1	---	---	---	---	---	
14+35	STH 11	RT	1	---	---	---	---	---	---	---	
14+70	STH 11	RT	1	---	---	---	---	---	---	---	
105+55	STH 31	LT	1	---	---	---	---	---	---	---	
107+78	STH 31	LT	---	---	1	---	---	---	---	---	
108+25	STH 31	LT	---	---	1	---	---	---	---	---	
109+30	STH 31	LT	---	---	1	---	---	---	---	---	
110+80	STH 31	RT	---	---	1	---	---	---	---	---	
111+10	STH 31	RT	1	---	---	---	---	---	---	---	
111+30	STH 31	RT	---	---	1	---	---	---	---	---	
112+95	STH 31	RT	1	---	---	---	---	---	---	---	
113+35	STH 31	RT	1	---	---	---	---	---	---	---	
PROJECT ID 2260-00-71 TOTALS (0010)			9*	7	11						

*ADDITIONAL QUANTITIES LISTED ELSEWHERE

3



Proposal Schedule of Items

Proposal ID: 20200114008 Project(s): 2260-00-71

Federal ID(s): WISC 2019802

SECTION: 0001 Roadway Items

Alt Set ID: Alt Mbr ID:

Proposal Line Number	Item ID Description	Approximate Quantity and Units	Unit Price	Bid Amount
0002	201.0105 Clearing	16.000 STA	_____.	_____.
0004	201.0120 Clearing	80.000 ID	_____.	_____.
0006	201.0205 Grubbing	16.000 STA	_____.	_____.
0008	201.0220 Grubbing	80.000 ID	_____.	_____.
0010	204.0100 Removing Pavement	65,950.000 SY	_____.	_____.
0012	204.0110 Removing Asphaltic Surface	2,100.000 SY	_____.	_____.
0014	204.0150 Removing Curb & Gutter	3,780.000 LF	_____.	_____.
0016	204.0155 Removing Concrete Sidewalk	1,990.000 SY	_____.	_____.
0018	204.0170 Removing Fence	1,780.000 LF	_____.	_____.
0020	204.0185 Removing Masonry	1.000 CY	_____.	_____.
0022	204.0195 Removing Concrete Bases	44.000 EACH	_____.	_____.
0024	204.0210 Removing Manholes	4.000 EACH	_____.	_____.
0026	204.0220 Removing Inlets	62.000 EACH	_____.	_____.
0028	204.0245 Removing Storm Sewer (size) 01. 12- INCH	1,507.000 LF	_____.	_____.
0030	204.0245 Removing Storm Sewer (size) 02. 15- INCH	367.000 LF	_____.	_____.
0032	204.0245 Removing Storm Sewer (size) 03. 21- INCH	459.000 LF	_____.	_____.



Proposal Schedule of Items

Proposal ID: 20200114008 Project(s): 2260-00-71

Federal ID(s): WISC 2019802

SECTION: 0001 Roadway Items

Alt Set ID: Alt Mbr ID:

Proposal Line Number	Item ID Description	Approximate Quantity and Units	Unit Price	Bid Amount
0034	204.9060.S Removing (item description) 01. Manhole Flat Top	4.000 EACH	_____.	_____.
0036	204.9060.S Removing (item description) 02. Cone Section	4.000 EACH	_____.	_____.
0038	204.9060.S Removing (item description) 03. Barrel Section	10.000 EACH	_____.	_____.
0040	204.9105.S Removing (item description) 01. Overhead Sign Support S-51-213	LS	LUMP SUM	_____.
0042	204.9105.S Removing (item description) 02. Overhead Sign Support S-51-212	LS	LUMP SUM	_____.
0044	204.9105.S Removing (item description) 03 Traffic Signals (STH 11 & STH 31)	LS	LUMP SUM	_____.
0046	204.9105.S Removing (item description) 04. Loop Detector Wire & Lead-In Cable (STH 11 & STH 31)	LS	LUMP SUM	_____.
0048	204.9105.S Removing (item description) 05. Traffic Signals (STH 11 & Wood Road)	LS	LUMP SUM	_____.
0050	204.9105.S Removing (item description) 06. Loop Detector Wire & Lead-In Cable (STH 11 & Wood Road)	LS	LUMP SUM	_____.
0052	204.9105.S Removing (item description) 07. Traffic Signals (STH 11 & Ohio St/Meahem Rd)	LS	LUMP SUM	_____.
0054	205.0100 Excavation Common	44,583.000 CY	_____.	_____.
0056	205.0300 Excavation Stone Piles and Stone Fences	22.000 CY	_____.	_____.
0058	205.0501.S Excavation, Hauling, and Disposal of Petroleum Contaminated Soil	120.000 TON	_____.	_____.



Proposal Schedule of Items

Proposal ID: 20200114008 Project(s): 2260-00-71

Federal ID(s): WISC 2019802

SECTION: 0001 Roadway Items

Alt Set ID: Alt Mbr ID:

Proposal Line Number	Item ID Description	Approximate Quantity and Units	Unit Price	Bid Amount
0062	213.0100 Finishing Roadway (project) 01. 2260-00-71	1.000 EACH	_____.	_____.
0064	305.0110 Base Aggregate Dense 3/4-Inch	60.000 TON	_____.	_____.
0066	305.0120 Base Aggregate Dense 1 1/4-Inch	42,615.000 TON	_____.	_____.
0068	310.0115 Base Aggregate Open-Graded	504.000 CY	_____.	_____.
0070	312.0110 Select Crushed Material	12,000.000 TON	_____.	_____.
0072	390.0203 Base Patching Asphaltic	250.000 SY	_____.	_____.
0074	390.0403 Base Patching Concrete Shes	600.000 SY	_____.	_____.
0076	405.0100 Coloring Concrete WisDOT Red	13.000 CY	_____.	_____.
0078	405.1000 Stamping Colored Concrete	13.000 CY	_____.	_____.
0080	415.0085 Concrete Pavement 8 1/2-Inch	64,410.000 SY	_____.	_____.
0082	415.0210 Concrete Pavement Gaps	40.000 EACH	_____.	_____.
0084	415.1085 Concrete Pavement HES 8 1/2-Inch	4,800.000 SY	_____.	_____.
0086	415.5110.S Concrete Pavement Joint Layout	1.000 LS	_____.	_____.
0088	416.0260 Concrete Driveway HES 6-Inch	690.000 SY	_____.	_____.
0090	416.0280 Concrete Driveway HES 8-Inch	28.000 SY	_____.	_____.
0092	416.0610 Drilled Tie Bars	1,368.000 EACH	_____.	_____.



Proposal Schedule of Items

Proposal ID: 20200114008 Project(s): 2260-00-71

Federal ID(s): WISC 2019802

SECTION: 0001 Roadway Items

Alt Set ID: Alt Mbr ID:

Proposal Line Number	Item ID Description	Approximate Quantity and Units	Unit Price	Bid Amount
0094	416.0620 Drilled Dowel Bars	773.000 EACH	_____.	_____.
0096	455.0605 Tack Coat	90.000 GAL	_____.	_____.
0098	465.0105 Asphaltic Surface	70.000 TON	_____.	_____.
0100	465.0120 Asphaltic Surface Driveways and Field Entrances	265.000 TON	_____.	_____.
0102	465.0125 Asphaltic Surface Temporary	1,960.000 TON	_____.	_____.
0104	465.0315 Asphaltic Flumes	14.000 SY	_____.	_____.
0106	520.8000 Concrete Collars for Pipe	46.000 EACH	_____.	_____.
0108	601.0115 Concrete Curb Type G	170.000 LF	_____.	_____.
0110	601.0405 Concrete Curb & Gutter 18-Inch Type A	11,820.000 LF	_____.	_____.
0112	601.0407 Concrete Curb & Gutter 18-Inch Type D	50.000 LF	_____.	_____.
0114	601.0409 Concrete Curb & Gutter 30-Inch Type A	16,370.000 LF	_____.	_____.
0116	601.0411 Concrete Curb & Gutter 30-Inch Type D	220.000 LF	_____.	_____.
0118	601.0600 Concrete Curb Pedestrian	1,200.000 LF	_____.	_____.
0120	602.0410 Concrete Sidewalk 5-Inch	111,620.000 SF	_____.	_____.
0122	602.0505 Curb Ramp Detectable Warning Field Yellow	608.000 SF	_____.	_____.
0124	602.0605 Curb Ramp Detectable Warning Field Radial Yellow	508.000 SF	_____.	_____.



Proposal Schedule of Items

Proposal ID: 20200114008 Project(s): 2260-00-71

Federal ID(s): WISC 2019802

SECTION: 0001 Roadway Items

Alt Set ID: Alt Mbr ID:

Proposal Line Number	Item ID Description	Approximate Quantity and Units	Unit Price	Bid Amount
0126	608.0312 Storm Sewer Pipe Reinforced Concrete Class III 12-Inch	4,188.000 LF	_____.	_____.
0128	608.0315 Storm Sewer Pipe Reinforced Concrete Class III 15-Inch	2,094.000 LF	_____.	_____.
0130	608.0318 Storm Sewer Pipe Reinforced Concrete Class III 18-Inch	1,505.000 LF	_____.	_____.
0132	608.0324 Storm Sewer Pipe Reinforced Concrete Class III 24-Inch	1,621.000 LF	_____.	_____.
0134	611.0420 Reconstructing Manholes	15.000 EACH	_____.	_____.
0136	611.0530 Manhole Covers Type J	36.000 EACH	_____.	_____.
0138	611.0612 Inlet Covers Type C	1.000 EACH	_____.	_____.
0140	611.0624 Inlet Covers Type H	94.000 EACH	_____.	_____.
0142	611.0666 Inlet Covers Type Z	101.000 EACH	_____.	_____.
0144	611.1003 Catch Basins 3-FT Diameter	28.000 EACH	_____.	_____.
0146	611.1004 Catch Basins 4-FT Diameter	45.000 EACH	_____.	_____.
0148	611.1005 Catch Basins 5-FT Diameter	11.000 EACH	_____.	_____.
0150	611.1230 Catch Basins 2x3-FT	17.000 EACH	_____.	_____.
0152	611.2004 Manholes 4-FT Diameter	6.000 EACH	_____.	_____.
0154	611.2005 Manholes 5-FT Diameter	9.000 EACH	_____.	_____.
0158	611.3003 Inlets 3-FT Diameter	29.000 EACH	_____.	_____.



Proposal Schedule of Items

Proposal ID: 20200114008 Project(s): 2260-00-71

Federal ID(s): WISC 2019802

SECTION: 0001 Roadway Items

Alt Set ID: Alt Mbr ID:

Proposal Line Number	Item ID Description	Approximate Quantity and Units	Unit Price	Bid Amount
0160	611.3230 Inlets 2x3-FT	64.000 EACH	_____.	_____.
0162	611.8110 Adjusting Manhole Covers	15.000 EACH	_____.	_____.
0164	611.8115 Adjusting Inlet Covers	2.000 EACH	_____.	_____.
0166	611.9710 Salvaged Inlet Covers	7.000 EACH	_____.	_____.
0168	612.0106 Pipe Underdrain 6-Inch	6,600.000 LF	_____.	_____.
0170	612.0206 Pipe Underdrain Unperforated 6-Inch	400.000 LF	_____.	_____.
0172	612.0406 Pipe Underdrain Wrapped 6-Inch	260.000 LF	_____.	_____.
0174	619.1000 Mobilization	1.000 EACH	_____.	_____.
0176	620.0300 Concrete Median Sloped Nose	2,130.000 SF	_____.	_____.
0178	621.0100 Landmark Reference Monuments	3.000 EACH	_____.	_____.
0180	624.0100 Water	28.000 MGAL	_____.	_____.
0182	625.0100 Topsoil	16,000.000 SY	_____.	_____.
0184	627.0200 Mulching	16,000.000 SY	_____.	_____.
0186	628.1504 Silt Fence	6,550.000 LF	_____.	_____.
0188	628.1520 Silt Fence Maintenance	6,550.000 LF	_____.	_____.
0190	628.1905 Mobilizations Erosion Control	6.000 EACH	_____.	_____.
0192	628.1910 Mobilizations Emergency Erosion Control	8.000 EACH	_____.	_____.



Proposal Schedule of Items

Proposal ID: 20200114008 Project(s): 2260-00-71

Federal ID(s): WISC 2019802

SECTION: 0001 Roadway Items

Alt Set ID: Alt Mbr ID:

Proposal Line Number	Item ID Description	Approximate Quantity and Units	Unit Price	Bid Amount
0194	628.7005 Inlet Protection Type A	255.000 EACH	_____.	_____.
0196	628.7010 Inlet Protection Type B	20.000 EACH	_____.	_____.
0198	628.7015 Inlet Protection Type C	330.000 EACH	_____.	_____.
0200	628.7504 Temporary Ditch Checks	90.000 LF	_____.	_____.
0202	628.7570 Rock Bags	50.000 EACH	_____.	_____.
0204	629.0210 Fertilizer Type B	10.000 CWT	_____.	_____.
0206	630.0200 Seeding Temporary	490.000 LB	_____.	_____.
0208	631.0300 Sod Water	270.000 MGAL	_____.	_____.
0210	631.1000 Sod Lawn	16,000.000 SY	_____.	_____.
0212	634.0618 Posts Wood 4x6-Inch X 18-FT	217.000 EACH	_____.	_____.
0214	634.0622 Posts Wood 4x6-Inch X 22-FT	4.000 EACH	_____.	_____.
0216	634.0814 Posts Tubular Steel 2x2-Inch X 14-FT	5.000 EACH	_____.	_____.
0218	637.2210 Signs Type II Reflective H	2,123.565 SF	_____.	_____.
0220	637.2215 Signs Type II Reflective H Folding	164.120 SF	_____.	_____.
0222	637.2230 Signs Type II Reflective F	246.000 SF	_____.	_____.
0224	638.2102 Moving Signs Type II	3.000 EACH	_____.	_____.
0226	638.2602 Removing Signs Type II	169.000 EACH	_____.	_____.



Proposal Schedule of Items

Proposal ID: 20200114008 Project(s): 2260-00-71

Federal ID(s): WISC 2019802

SECTION: 0001 Roadway Items

Alt Set ID: Alt Mbr ID:

Proposal Line Number	Item ID Description	Approximate Quantity and Units	Unit Price	Bid Amount
0228	638.3000 Removing Small Sign Supports	119.000 EACH	_____.	_____.
0230	643.0300 Traffic Control Drums	250,000.000 DAY	_____.	_____.
0232	643.0410 Traffic Control Barricades Type II	400.000 DAY	_____.	_____.
0234	643.0420 Traffic Control Barricades Type III	50,000.000 DAY	_____.	_____.
0236	643.0500 Traffic Control Flexible Tubular Marker Posts	1,500.000 EACH	_____.	_____.
0238	643.0600 Traffic Control Flexible Tubular Marker Bases	750.000 EACH	_____.	_____.
0240	643.0705 Traffic Control Warning Lights Type A	60,000.000 DAY	_____.	_____.
0242	643.0715 Traffic Control Warning Lights Type C	30,000.000 DAY	_____.	_____.
0244	643.0800 Traffic Control Arrow Boards	1,500.000 DAY	_____.	_____.
0246	643.0900 Traffic Control Signs	80,000.000 DAY	_____.	_____.
0248	643.0920 Traffic Control Covering Signs Type II	150.000 EACH	_____.	_____.
0250	643.1000 Traffic Control Signs Fixed Message	690.000 SF	_____.	_____.
0252	643.1050 Traffic Control Signs PCMS	150.000 DAY	_____.	_____.
0254	643.5000 Traffic Control	1.000 EACH	_____.	_____.
0256	644.1420 Temporary Pedestrian Surface Plywood	3,300.000 SF	_____.	_____.
0258	644.1601 Temporary Pedestrian Curb Ramp	18.000 DAY	_____.	_____.



Proposal Schedule of Items

Proposal ID: 20200114008 Project(s): 2260-00-71

Federal ID(s): WISC 2019802

SECTION: 0001 Roadway Items

Alt Set ID: Alt Mbr ID:

Proposal Line Number	Item ID Description	Approximate Quantity and Units	Unit Price	Bid Amount
0260	644.1810 Temporary Pedestrian Barricade	2,700.000 LF	_____.	_____.
0262	645.0111 Geotextile Type DF Schedule A	3,680.000 SY	_____.	_____.
0264	646.1020 Marking Line Epoxy 4-Inch	30,067.000 LF	_____.	_____.
0266	646.3020 Marking Line Epoxy 8-Inch	833.000 LF	_____.	_____.
0268	646.5020 Marking Arrow Epoxy	84.000 EACH	_____.	_____.
0270	646.5120 Marking Word Epoxy	25.000 EACH	_____.	_____.
0272	646.6120 Marking Stop Line Epoxy 18-Inch	745.000 LF	_____.	_____.
0274	646.7120 Marking Diagonal Epoxy 12-Inch	3,215.000 LF	_____.	_____.
0276	646.7420 Marking Crosswalk Epoxy Transverse Line 6-Inch	2,275.000 LF	_____.	_____.
0278	646.8120 Marking Curb Epoxy	567.000 LF	_____.	_____.
0280	646.8220 Marking Island Nose Epoxy	31.000 EACH	_____.	_____.
0282	646.9000 Marking Removal Line 4-Inch	100.000 LF	_____.	_____.
0284	646.9100 Marking Removal Line 8-Inch	1,035.000 LF	_____.	_____.
0286	646.9200 Marking Removal Line Wide	265.000 LF	_____.	_____.
0288	646.9300 Marking Removal Special Marking	16.000 EACH	_____.	_____.
0290	649.0105 Temporary Marking Line Paint 4-Inch	49,000.000 LF	_____.	_____.



Proposal Schedule of Items

Proposal ID: 20200114008 Project(s): 2260-00-71

Federal ID(s): WISC 2019802

SECTION: 0001 Roadway Items

Alt Set ID: Alt Mbr ID:

Proposal Line Number	Item ID Description	Approximate Quantity and Units	Unit Price	Bid Amount
0292	649.0150 Temporary Marking Line Removable Tape 4-Inch	83,000.000 LF	_____.	_____.
0294	649.0205 Temporary Marking Line Paint 8-Inch	8,900.000 LF	_____.	_____.
0296	649.0250 Temporary Marking Line Removable Tape 8-Inch	9,570.000 LF	_____.	_____.
0298	649.0505 Temporary Marking Arrow Paint	59.000 EACH	_____.	_____.
0300	649.0605 Temporary Marking Word Paint	20.000 EACH	_____.	_____.
0302	649.0805 Temporary Marking Stop Line Paint 18-Inch	650.000 LF	_____.	_____.
0304	649.0850 Temporary Marking Stop Line Removable Tape 18-Inch	525.000 LF	_____.	_____.
0306	649.0960 Temporary Marking Removable Mask Out Tape 6-Inch	2,785.000 LF	_____.	_____.
0308	649.0970 Temporary Marking Removable Mask Out Tape 10-Inch	1,130.000 LF	_____.	_____.
0310	650.4000 Construction Staking Storm Sewer	217.000 EACH	_____.	_____.
0312	650.4500 Construction Staking Subgrade	14,427.000 LF	_____.	_____.
0314	650.5500 Construction Staking Curb Gutter and Curb & Gutter	1,130.000 LF	_____.	_____.
0316	650.6500 Construction Staking Structure Layout (structure) 01. R-51-77	LS	LUMP SUM	_____.
0318	650.7000 Construction Staking Concrete Pavement	14,427.000 LF	_____.	_____.



Proposal Schedule of Items

Proposal ID: 20200114008 Project(s): 2260-00-71

Federal ID(s): WISC 2019802

SECTION: 0001 Roadway Items

Alt Set ID: Alt Mbr ID:

Proposal Line Number	Item ID Description	Approximate Quantity and Units	Unit Price	Bid Amount
0320	650.8500 Construction Staking Electrical Installations (project) 01. 2260-00-71	LS	LUMP SUM	_____.
0322	650.9000 Construction Staking Curb Ramps	110.000 EACH	_____.	_____.
0324	650.9910 Construction Staking Supplemental Control (project) 01.2260-00-71	LS	LUMP SUM	_____.
0326	650.9920 Construction Staking Slope Stakes	7,724.000 LF	_____.	_____.
0328	652.0225 Conduit Rigid Nonmetallic Schedule 40 2-Inch	4,405.000 LF	_____.	_____.
0330	652.0235 Conduit Rigid Nonmetallic Schedule 40 3-Inch	3,825.000 LF	_____.	_____.
0332	652.0615 Conduit Special 3-Inch	2,805.000 LF	_____.	_____.
0334	652.0800 Conduit Loop Detector	7,350.000 LF	_____.	_____.
0336	653.0135 Pull Boxes Steel 24x36-Inch	43.000 EACH	_____.	_____.
0338	653.0140 Pull Boxes Steel 24x42-Inch	49.000 EACH	_____.	_____.
0340	653.0905 Removing Pull Boxes	45.000 EACH	_____.	_____.
0342	654.0101 Concrete Bases Type 1	22.000 EACH	_____.	_____.
0344	654.0102 Concrete Bases Type 2	4.000 EACH	_____.	_____.
0346	654.0105 Concrete Bases Type 5	16.000 EACH	_____.	_____.
0348	654.0110 Concrete Bases Type 10	3.000 EACH	_____.	_____.
0350	654.0113 Concrete Bases Type 13	4.000 EACH	_____.	_____.



Proposal Schedule of Items

Proposal ID: 20200114008 Project(s): 2260-00-71

Federal ID(s): WISC 2019802

SECTION: 0001 Roadway Items

Alt Set ID: Alt Mbr ID:

Proposal Line Number	Item ID Description	Approximate Quantity and Units	Unit Price	Bid Amount
0352	654.0217 Concrete Control Cabinet Bases Type 9 Special	3.000 EACH	_____.	_____.
0354	655.0210 Cable Traffic Signal 3-14 AWG	3,370.000 LF	_____.	_____.
0356	655.0230 Cable Traffic Signal 5-14 AWG	2,430.000 LF	_____.	_____.
0358	655.0240 Cable Traffic Signal 7-14 AWG	5,275.000 LF	_____.	_____.
0360	655.0260 Cable Traffic Signal 12-14 AWG	6,770.000 LF	_____.	_____.
0362	655.0270 Cable Traffic Signal 15-14 AWG	510.000 LF	_____.	_____.
0364	655.0320 Cable Type UF 2-10 AWG Grounded	5,545.000 LF	_____.	_____.
0366	655.0515 Electrical Wire Traffic Signals 10 AWG	9,570.000 LF	_____.	_____.
0368	655.0615 Electrical Wire Lighting 10 AWG	4,045.000 LF	_____.	_____.
0370	655.0700 Loop Detector Lead In Cable	29,677.000 LF	_____.	_____.
0372	655.0800 Loop Detector Wire	30,471.000 LF	_____.	_____.
0374	655.0900 Traffic Signal EVP Detector Cable	3,370.000 LF	_____.	_____.
0376	656.0200 Electrical Service Meter Breaker Pedestal (location) 01. STH 11 & STH 31	LS	LUMP SUM	_____.
0378	656.0200 Electrical Service Meter Breaker Pedestal (location) 02. STH 11 & Wood Road	LS	LUMP SUM	_____.
0380	656.0200 Electrical Service Meter Breaker Pedestal (location) 03. STH 11 & Ohio St/Meachem Rd	LS	LUMP SUM	_____.



Proposal Schedule of Items

Proposal ID: 20200114008 Project(s): 2260-00-71
Federal ID(s): WISC 2019802

SECTION: 0001 Roadway Items

Alt Set ID: Alt Mbr ID:

Table with 5 columns: Proposal Line Number, Item ID Description, Approximate Quantity and Units, Unit Price, Bid Amount. Rows include items like Pedestal Bases, Transformer Bases Breakaway, Poles Type 3, Poles Type 5-Aluminum, Traffic Signal Standards Aluminum, Luminaire Arms Single Member, and Signal Mounting Hardware.



Proposal Schedule of Items

Proposal ID: 20200114008 Project(s): 2260-00-71

Federal ID(s): WISC 2019802

SECTION: 0001 Roadway Items

Alt Set ID: Alt Mbr ID:

Proposal Line Number	Item ID Description	Approximate Quantity and Units	Unit Price	Bid Amount
0412	658.5069 Signal Mounting Hardware (location) 02. STH 11 & Wood Road	LS	LUMP SUM	_____.
0414	658.5069 Signal Mounting Hardware (location) 03. STH 11 & Ohio St/Meachem Rd	LS	LUMP SUM	_____.
0416	659.1125 Luminaires Utility LED C	33.000 EACH	_____.	_____.
0418	661.0200 Temporary Traffic Signals for Intersections (location) 01. STH 11 & STH 31	LS	LUMP SUM	_____.
0420	661.0200 Temporary Traffic Signals for Intersections (location) 02. STH 11 & Wood Road	LS	LUMP SUM	_____.
0422	661.0200 Temporary Traffic Signals for Intersections (location) 03. STH 11 & Ohio St/Meachem Rd	LS	LUMP SUM	_____.
0424	670.0100 Field System Integrator	LS	LUMP SUM	_____.
0426	670.0200 ITS Documentation	LS	LUMP SUM	_____.
0428	671.0132 Conduit HDPE 3-Duct 2-Inch	4,930.000 LF	_____.	_____.
0430	671.0300 Fiber Optic Cable Marker	4.000 EACH	_____.	_____.
0432	673.0105 Communication Vault Type 1	8.000 EACH	_____.	_____.
0434	678.0036 Install Fiber Optic Cable Outdoor Plant 36-CT	6,270.000 LF	_____.	_____.
0436	678.0200 Fiber Optic Splice Enclosure	3.000 EACH	_____.	_____.
0438	678.0300 Fiber Optic Splice	12.000 EACH	_____.	_____.



Proposal Schedule of Items

Proposal ID: 20200114008 Project(s): 2260-00-71

Federal ID(s): WISC 2019802

SECTION: 0001 Roadway Items

Alt Set ID: Alt Mbr ID:

Proposal Line Number	Item ID Description	Approximate Quantity and Units	Unit Price	Bid Amount
0440	678.0500 Communication System Testing	LS	LUMP SUM	_____.
0442	690.0150 Sawing Asphalt	825.000 LF	_____.	_____.
0444	690.0250 Sawing Concrete	10,285.000 LF	_____.	_____.
0446	715.0415 Incentive Strength Concrete Pavement	19,323.000 DOL	1.00000	19,323.00
0448	715.0710 Optimized Aggregate Gradation Incentive	69,600.000 DOL	1.00000	69,600.00
0450	740.0440 Incentive IRI Ride	10,400.000 DOL	1.00000	10,400.00
0452	ASP.1T0A On-the-Job Training Apprentice at \$5.00/HR	6,000.000 HRS	5.00000	30,000.00
0454	ASP.1T0G On-the-Job Training Graduate at \$5.00/HR	9,000.000 HRS	5.00000	45,000.00
0456	SPV.0060 Special 01. External Chimney Seal	23.000 EACH	_____.	_____.
0458	SPV.0060 Special 02. Replace Manhole Cover and Frame	22.000 EACH	_____.	_____.
0460	SPV.0060 Special 03. Rebuild Chimney	23.000 EACH	_____.	_____.
0462	SPV.0060 Special 04. Install Barrel Section	16.000 EACH	_____.	_____.
0464	SPV.0060 Special 05. Install Cone Section	9.000 EACH	_____.	_____.
0466	SPV.0060 Special 06. Reset Existing Cone Section	7.000 EACH	_____.	_____.
0468	SPV.0060 Special 07. Install Concrete Pipe Plug	2.000 EACH	_____.	_____.
0470	SPV.0060 Special 08. Salvage Bus Shelter	2.000 EACH	_____.	_____.



Proposal Schedule of Items

Proposal ID: 20200114008 Project(s): 2260-00-71

Federal ID(s): WISC 2019802

SECTION: 0001 Roadway Items

Alt Set ID: Alt Mbr ID:

Proposal Line Number	Item ID Description	Approximate Quantity and Units	Unit Price	Bid Amount
0472	SPV.0060 Special 09. Temporary Inlet Cover	11.000 EACH	_____.	_____.
0474	SPV.0060 Special 10. Type 9 & 10 Special Traffic Signal Base	5.000 EACH	_____.	_____.
0476	SPV.0060 Special 11. Install Poles Type 9	2.000 EACH	_____.	_____.
0478	SPV.0060 Special 12. Install Poles Type 9 Special	2.000 EACH	_____.	_____.
0480	SPV.0060 Special 13. Install Poles Type 10	1.000 EACH	_____.	_____.
0482	SPV.0060 Special 14. Install Poles Type 10 Special	3.000 EACH	_____.	_____.
0484	SPV.0060 Special 15. Install Poles Type 12	4.000 EACH	_____.	_____.
0486	SPV.0060 Special 16. Install Monotube Arms 25-FT	1.000 EACH	_____.	_____.
0488	SPV.0060 Special 17. Install Monotube Arms 30-FT	2.000 EACH	_____.	_____.
0490	SPV.0060 Special 18. Install Monotube Arms 35-FT	2.000 EACH	_____.	_____.
0492	SPV.0060 Special 19. Install Monotube Arms 40-FT	1.000 EACH	_____.	_____.
0494	SPV.0060 Special 20. Install Monotube Arms 45-FT	2.000 EACH	_____.	_____.
0496	SPV.0060 Special 21. Install Monotube Arms 50-FT	1.000 EACH	_____.	_____.
0498	SPV.0060 Special 22. Install Monotube Arms 55-FT	3.000 EACH	_____.	_____.
0500	SPV.0060 Special 23. Install Luninaire Arms Steel 15-FT	5.000 EACH	_____.	_____.
0502	SPV.0060 Special 24. Field Facilities Office Space	1.000 EACH	_____.	_____.



Proposal Schedule of Items

Proposal ID: 20200114008 Project(s): 2260-00-71

Federal ID(s): WISC 2019802

SECTION: 0001 Roadway Items

Alt Set ID: Alt Mbr ID:

Proposal Line Number	Item ID Description	Approximate Quantity and Units	Unit Price	Bid Amount
0504	SPV.0090 Special 01. Marking Contrast Epoxy 4-Inch	7,100.000 LF	_____.	_____.
0506	SPV.0090 Special 02. Marking Contrast Epoxy 8-Inch	12,503.000 LF	_____.	_____.
0508	SPV.0105 Special 01. Inst Fiber Optic Comm In Cabinet (STH 11 and STH 31)	LS	LUMP SUM	_____.
0510	SPV.0105 Special 02. Inst Fiber Optic Comm In Cabinet (STH 11 and Wood Road)	LS	LUMP SUM	_____.
0512	SPV.0105 Special 03. Inst Fiber Optic Comm In Cabinet (STH 11 and Ohio St/Meachem Rd)	LS	LUMP SUM	_____.
0514	SPV.0105 Special 04. Trans & Inst St Furn EVP Det Heads with Confirm Beacons STH 11 & STH 31	LS	LUMP SUM	_____.
0516	SPV.0105 Special 05. Trans & Inst St Furn EVP Det Heads with Confirm Beacons STH 11 & Wood Rd	LS	LUMP SUM	_____.
0518	SPV.0105 Special 06. Trans & Inst St Furn EVP Det Heads with Confirm Beacons STH 11 & Ohio St	LS	LUMP SUM	_____.
0520	SPV.0105 Special 07. Transporting Traf Sig & Ltg Mat STH 11 & STH 31	LS	LUMP SUM	_____.
0522	SPV.0105 Special 08. Transporting Traf Sig & Ltg Mat STH 11 & Wood Rd	LS	LUMP SUM	_____.
0524	SPV.0105 Special 09. Transporting Traf Sig & Ltg Mat STH 11 & Ohio St/Meachem Rd	LS	LUMP SUM	_____.
0526	SPV.0105 Special 10. Trans & Inst St Furn Traf Sig Cabinet STH 11 & STH 31	LS	LUMP SUM	_____.



Proposal Schedule of Items

Proposal ID: 20200114008 Project(s): 2260-00-71
Federal ID(s): WISC 2019802

SECTION: 0001 Roadway Items

Alt Set ID: Alt Mbr ID:

Table with 5 columns: Proposal Line Number, Item ID Description, Approximate Quantity and Units, Unit Price, Bid Amount. Rows include items 0528, 0530, 0532, 0534, 0536, 0538 and a Section Total for 0001.