



Wisconsin Department of Transportation

Division of Transportation Systems Development

Bureau of Project Development
4822 Madison Yards Way, 4th Floor South
Madison, WI 53705

January 10, 2020

Telephone: (608) 266-1631
Facsimile (FAX): (608) 266-8459

NOTICE TO ALL CONTRACTORS:

Proposal #11: 1440-13-72
Fond Du Lac - Plymouth
WCL – CTH P
STH 23
Sheboygan County

Letting of January 14, 2020

This is Addendum No. 03, which provides for the following:

Special Provisions:

Revised Special Provisions	
Article No.	Description
4	Traffic

Schedule of Items:

Revised Bid Item Quantities					
Bid Item	Item Description	Unit	Old Quantity	Revised Quantity	Proposal Total
205.0100	Common Excavation	CY	83,992	-4,537	79,455
208.0100	Borrow	CY	14,840	10,536	25,376
313.0110	Pit Run	TON	125,266	-3,585	121,681
645.0140	Geotextile Type SAS	SY	116,842	-4,551	112,291
645.0220	Geogrid Type SR	SY	116,842	-4,551	112,291

Plan Sheets:

Revised Plan Sheets	
Plan Sheet	Plan Sheet Title (brief description of changes to sheet)
5	Typical Section – Revised typical section for west crossover tie-in from STA 746'WB'+78 to STA 755'WB'+90
61	Paving Details – Added point elevations at west crossover tie-in from STA 746'WB'+78 to STA 755'WB'+90
62	Paving Details – Added point elevations at west crossover tie-in from STA 746'WB'+78 to STA 755'WB'+90

280	Miscellaneous Quantities - Revised common excavation and borrow quantities
281	Miscellaneous Quantities - Revised pit run quantity
285	Miscellaneous Quantities - Revised pit run summary quantity
320	Miscellaneous Quantities - Revised geotextile type SAS and geogrid type SR quantities
529	Earthwork Data – Revised quantity from STA 745'EB'+00 to STA 776'EB'+00
530	Earthwork Data – Revised quantity from STA 745'EB'+00 to STA 776'EB'+00
531	Earthwork Data – Revised quantity from STA 745'EB'+00 to STA 776'EB'+00
532	Earthwork Data – Revised quantity from STA 745'EB'+00 to STA 776'EB'+00
533	Earthwork Data – Revised quantity from STA 745'EB'+00 to STA 776'EB'+00
534	Earthwork Data – Revised quantity from STA 745'EB'+00 to STA 776'EB'+00
535	Earthwork Data – Revised quantity from STA 745'EB'+00 to STA 776'EB'+00
536	Earthwork Data – Revised quantity from STA 745'EB'+00 to STA 776'EB'+00
540	Earthwork Data – Revised quantity from STA 745'WB'+00 to STA 776'WB'+00
541	Earthwork Data – Revised quantity from STA 745'WB'+00 to STA 776'WB'+00
542	Earthwork Data – Revised quantity from STA 745'WB'+00 to STA 776'WB'+00
543	Earthwork Data – Revised quantity from STA 745'WB'+00 to STA 776'WB'+00
544	Earthwork Data – Revised quantity from STA 745'WB'+00 to STA 776'WB'+00
545	Earthwork Data – Revised quantity from STA 745'WB'+00 to STA 776'WB'+00
546	Earthwork Data – Revised quantity from STA 745'WB'+00 to STA 776'WB'+00
547	Earthwork Data – Revised quantity from STA 745'WB'+00 to STA 776'WB'+00
573	Cross Sections – Revised crossover tie-in from STA 745'WB'+00 to STA 747'WB'+00
574	Cross Sections – Revised crossover tie-in from STA 748'WB'+00 to STA 751'WB'+00
575	Cross Sections – Revised crossover tie-in from STA 752'WB'+00 to STA 754'WB'+84
576	Cross Sections – Revised crossover tie-in from STA 755'WB'+00 to STA 758'WB'+00
577	Cross Sections – Revised crossover tie-in from STA 759'WB'+00 to STA 762'WB'+00
578	Cross Sections – Revised crossover tie-in from STA 762'WB'+73 to STA 764'WB'+00
579	Cross Sections – Revised crossover tie-in from STA 765'WB'+00 to STA 766'WB'+60
580	Cross Sections – Revised crossover tie-in from STA 766'WB'+81 to STA 767'WB'+30
581	Cross Sections – Revised crossover tie-in from STA 767'WB'+54 to STA 768'WB'+26
582	Cross Sections – Revised crossover tie-in from STA 769'WB'+00 to STA 771'WB'+03
583	Cross Sections – Revised crossover tie-in from STA 772'WB'+00 to STA 772'WB'+84
584	Cross Sections – Revised crossover tie-in from STA 773'WB'+00 to STA 774'WB'+00
585	Cross Sections – Revised crossover tie-in from STA 774'WB'+35 to STA 776'WB'+00

The responsibility for notifying potential subcontractors and suppliers of these changes remains with the prime contractor.

Sincerely,

Mike Coleman

Proposal Development Specialist
Proposal Management Section

ADDENDUM NO. 03

1440-13-72

January 10, 2020

Special Provisions

4. Traffic.

Replace both subsections titled HMA paving Station 746'WB'+90 to Station 755'WB'+90 with one occurrence of the following:

HMA paving Station 746'WB'+90 to Station 755'WB'+90

During placement of HMA pavement from Station 746'WB'+90 to Station 755'WB'+90, traffic in this section may be reduced to a single counter-directional lane via flagging operations during daytime hours only with minimum available width of 16 feet.

Schedule of Items

Attached, dated January 10, 2020, are the revised Schedule of Items Pages 1, 2, and 10.

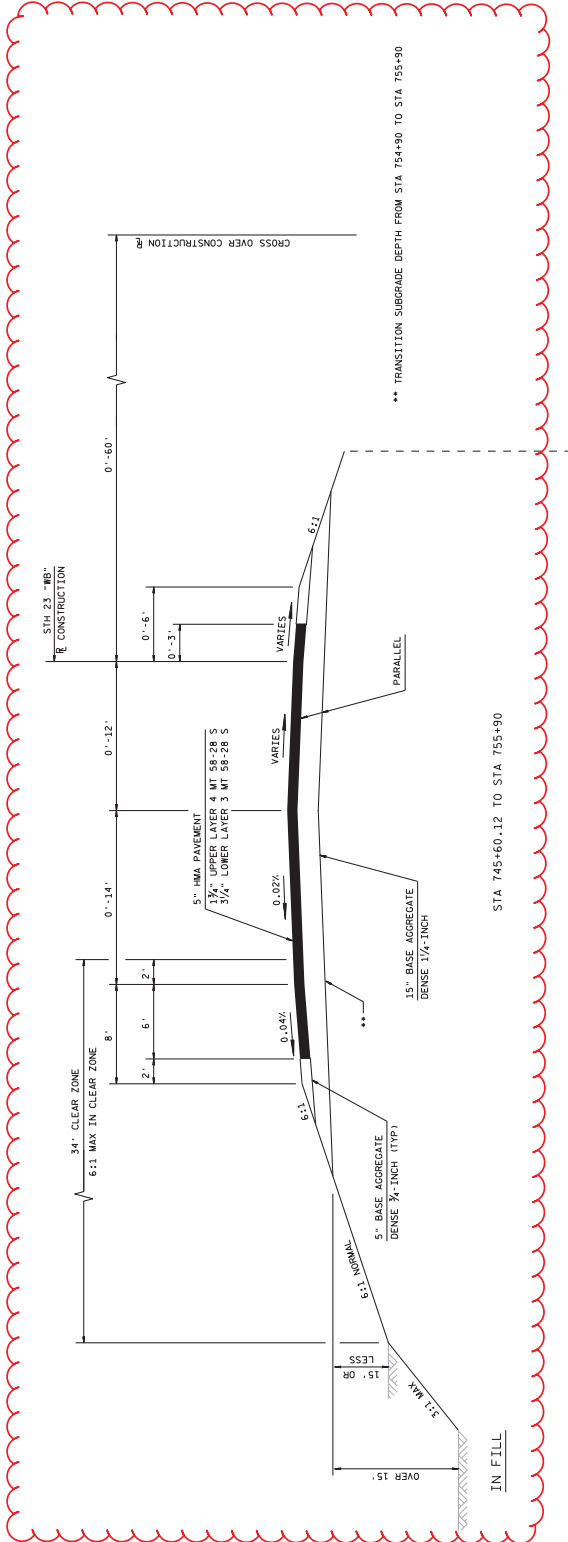
Plan Sheets

The following 8½ x 11-inch sheets are attached and made part of the plans for this proposal:

Revised: 5, 61, 62, 280, 281, 285, 320, 529, 530, 531, 532, 533, 534, 535, 536, 540, 541, 542, 543, 544, 545, 546, 547, 573, 574, 575, 576, 577, 578, 579, 580, 581, 582, 583, 584, 585

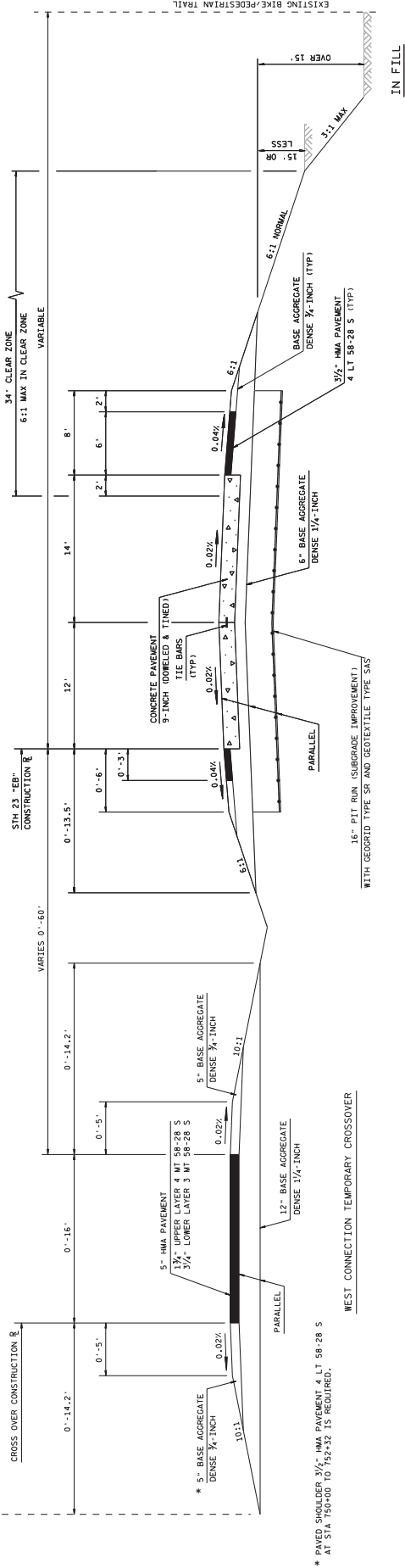
END OF ADDENDUM

Addendum No. 03
ID 1440-13-72
Revised Sheet 5
January 10, 2020



** TRANSITION SUBGRADE DEPTH FROM STA 754+90 TO STA 755+90

STA 745+60.12 TO STA 755+90



* PAVED SHOULDER 3/4\"/>

AT STA 750+00 TO 752+50 IS REQUIRED.

WEST CONNECTION TEMPORARY CROSSOVER

16\"/>

WITH GEOTEXTILE TYPE SR AND GEOTEXTILE TYPE SAS

TYPICAL FINISHED CROSS SECTION FOR STA 23 WEST CROSS OVER CONNECTION

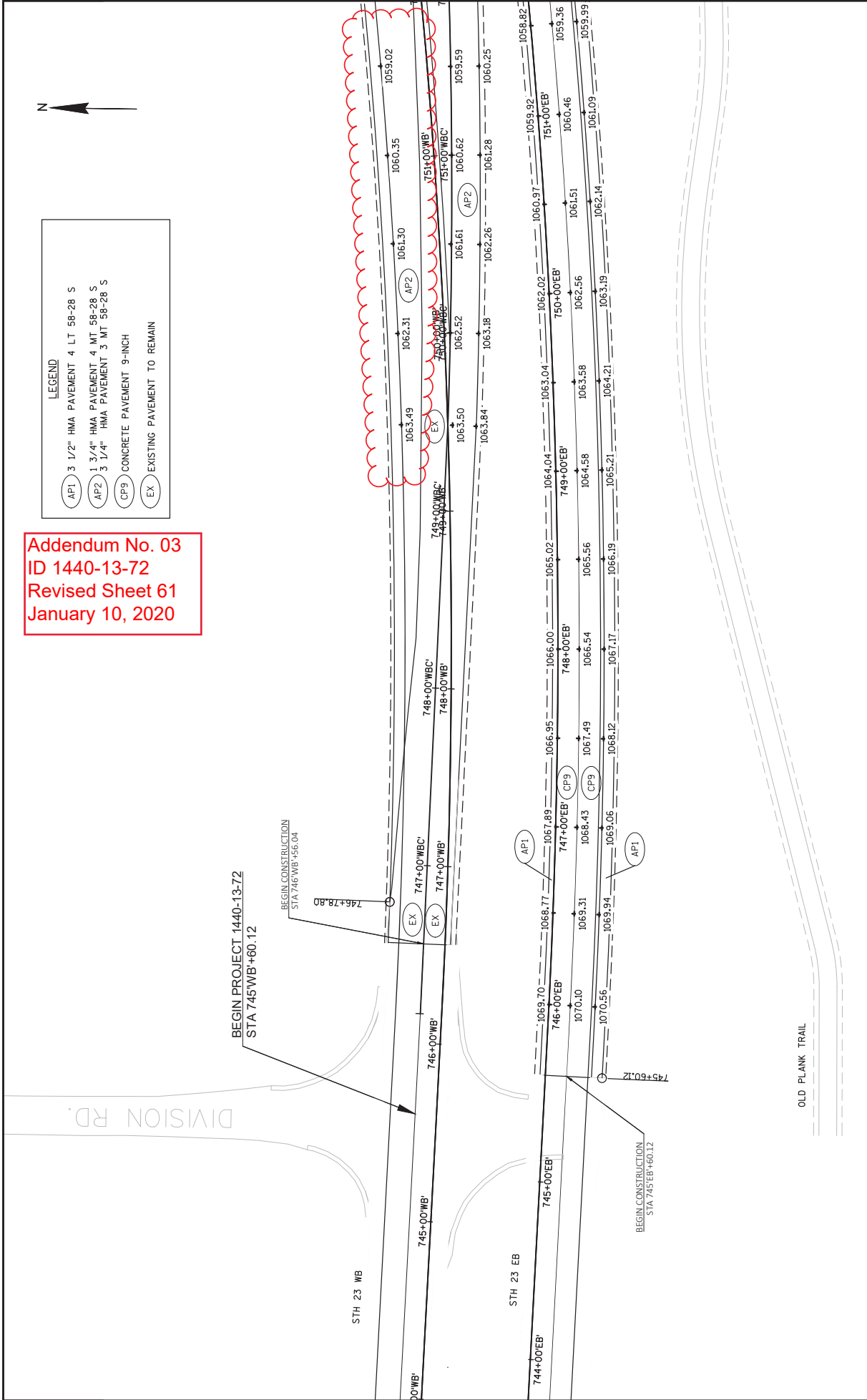
STA 745+60.12 TO STA 755+90
(SEE STA 23 WEST END CONNECTION CROSSOVER DETAIL)



LEGEND

- AP1 3 1/2" HMA PAVEMENT 4 LT 58-28 S
- AP2 1 3/4" HMA PAVEMENT 4 MT 58-28 S
- CP9 3 1/4" HMA PAVEMENT 3 MT 58-28 S
- CP9 CONCRETE PAVEMENT 9-INCH
- EX EXISTING PAVEMENT TO REMAIN

Addendum No. 03
 ID 1440-13-72
 Revised Sheet 61
 January 10, 2020



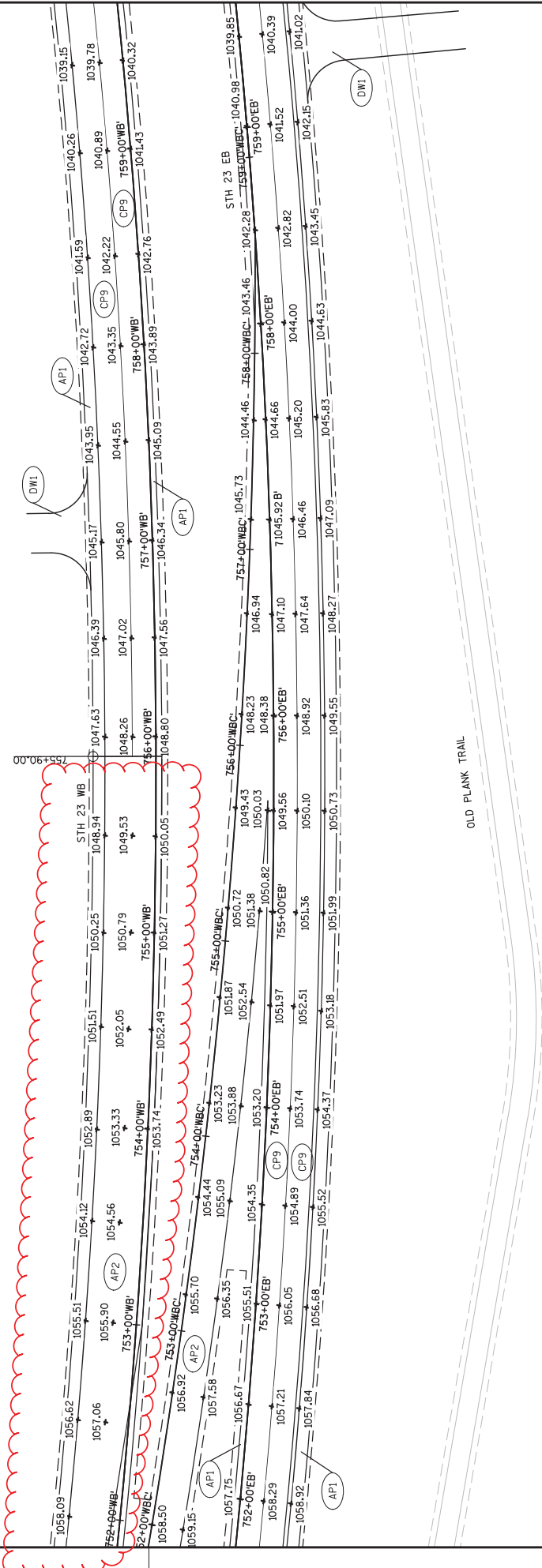
PROJECT NO: 1440-13-72	HWY: STH 23	COUNTY: SHEBOYGAN	PAVING DETAILS	SHEET 61	E
FILE NAME : N:\VPOS\C3D\14401376\SHEETSPR\AN\14401372\PAVING DETAILS\PAVINGDETAILS.DWG					PLOT SCALE : 1:1 IN=50 FT
LAYOUT NAME - PAVINGDETAILS - PAVEMENT GRADES 1					
PLOT DATE : 1.10.2020 11:39 AM			PLOT BY : VOBEL, KURT MICHAEL		WISDOT/CADD SHEET 42

Addendum No. 03
ID 1440-13-72
Revised Sheet 62
January 10, 2020



LEGEND

- (API) 3 1/2" HMA PAVEMENT 4 LT 58-28 S
- (AP2) 1 3/4" HMA PAVEMENT 4 MT 58-28 S
- (CP9) 3 1/4" HMA PAVEMENT 3 MT 58-28 S
- (CP9) CONCRETE PAVEMENT 9-INCH
- (DWI) BASE AGGREGATE DENSE 3/4-INCH



OLD PLANK TRAIL

Addendum No. 03
ID 1440-13-72
Revised Sheet 280
January 10, 2020

DIVISION & LOCATION	FROM/TO STATION	205.0100		UNEXPANDED FILL	EXPANDED FILL	MASS ORDNATE +/- (14)	BORROW (15)	WASTE
		COMMON EXCAVATION (1)						
		CUT (2)	SUBGRADE IMPROVEMENT EXCAVATION (3)					
Division 1								
**S TH 23 WB Mainline 1	745+00-1037+00	7,656	24,773	43,952	58,457	-26,027		
**S TH 23 WB Mainline 2	1038+00-1127+81.64	1,640	0	279	372	-1,328		
Chickadee Rd	45+89 - 49+20.83	234	3	600	512	-275		
Scenic View North	51+37.32 - 54+92.09	582	18	0	70	530		
CH T North	51+53.92 - 52+71.54	117	119	0	0	247		
Scenic View North	51+43.96 - 53+00	128	0	0	0	117		
CH T North	51+52.62 - 52+43.5	74	0	7	9	65		
CH A North	51+44.03 - 59+12.5	439	0	439	82	357		
Castle Rock Ct	50+75.33 - 51+39	0	0	5	7	-7		
*East Cross Over Construction Adj.	1116+09.45-1130+00	10	0	1,307	1,738	-1,728		
CH S North	51+32.41 - 53+19.64	56	0	29	38	17		
Division 1 Subtotal		10,995	24,913	46,078	61,284	-25,376	25,376	0
Division 2								
**S TH 23 EB Mainline 1	745+31.33 - 1037+04.22	20,173	6,152	9,374	12,468	13,857		
*West Cross Over Construction Adj.	749+50-758+50	247	0	950	1,284	1,044		
CH U	47+00 - 48+37.33	186	0	1	1	185		
Spring Valley Rd	46+45.41 - 48+54.49	172	0	2	2	170		
Scenic View South	47+13.61 - 48+91.65	192	0	2	3	190		
CH T South (Plank Rd)	48+41.6 - 49+17.28	153	0	4	6	148		
Subgrubush Rd South	47+98.34-49+17.86	280	0	28	26	246		
CH A South	47+45.46 - 48+79.80	436	0	15	20	416		
Plank Rd	48+00 + 49+15.74	335	0	335	2	333		
Julie Ct	00+74.33 - 01+06.36	42	0	3	4	38		
Culvert Replacement		1,224	0	0	0	1,224		
Division 2 Subtotal		23,411	6,152	10,378	13,802	15,761	0	15,761
Division 3								
**S TH 23 EB Mainline 2	1038+04.74 - 1127+81.64	6,459	0	790	1,050	5,409		
Existing East Cross Over Removal	1127+81.64-1137+50	3,217	0	0	0	3,217		
Ridge Rd	47+25.46 - 48+54.60	838	0	0	0	838		
CH S South	48+42.21 - 49+34.06	575	0	59	78	497		
Division 3 Subtotal		11,090	0	849	1,129	9,961	0	9,961
Division 4								
East Cross Over Removal	1116+09.45 - 1130+00	2,894	0	0	0	2,894		
Division 4 Subtotal		2,894	0	0	0	2,894	0	2,894
Grand Total		48,390	31,064	57,305	76,215	3,240	25,376	28,616
	Total Common Exc		79,455					

1) Common Excavation is the sum of the Cut and Subgrade Improvement Excavation columns. Item number 205.0100
2) Existing Pavement Material is included in Cut.
3) Subgrade Improvement Excavation to be backfilled with Pit Run. Quantity shown elsewhere in plan.
4) Available Material = Cut+Subgrade Improvement Excavation
5) Expanded Fill. Factor = 1.33
6) Mass Ordinate = Available Material - Expanded Fill. The Mass Ordinate + or - Qty calculated for the Location/Division. Minus indicates a shortage of material within the Division.
7) Borrow = Negative Mass Ordinate. Mass Ordinate = Available Material - Expanded Fill
8) Earthwork adjustments made to STA 749+50 - STA 758+50 and STA 1116+09 - STA 1130+00 to include construction of cross overs
9) Median earthwork is included in divisions 1.
10) Quantities shown for STA 745+00 to STA 1137+50 TH 23 WB Mainline are based on the design surface of the previous grading project. The department will survey the finished surface constructed under the previous STA 23 contract (1440-13-76) prior to the start of excavation under this contract. That surface will become the original ground surface under this contract, which will be used to compute earthwork quantities.

Addendum No. 03
ID 1440-13-72
Revised Sheet 281
January 10, 2020

3

MAINLINE BASE AGGREGATE SUMMARY

1440-13-72
*305.0110 *305.0120 *313.0110 *624.0100
BASE BASE
AGGREGATE AGGREGATE

DENSE DENSE
3/4-INCH 1 1/4-INCH
TON TON

PIT
RUN

WATER
MGAL

REMARKS

STATION	TO	STATION	LOCATION	TON	TON	PIT	WATER	REMARKS
755'WB'+90	-	763'WB'+00	STH 23 WB - MAINLINE	---	---	2,580	---	
746'WB'+79	-	778'WB'+30	STH 23 WB - MAINLINE	486	6,513	---	69.99	WEST LIMITS - CHICKADEE DR
755'EB'+90	-	777'EB'+67	STH 23 EB - MAINLINE	---	---	7,762	---	
768'WB'+00	-	837'WB'+00	STH 23 WB - MAINLINE	---	---	27,450	---	
778'WB'+30	-	803'WB'+66	STH 23 WB - MAINLINE	298	5,537	---	58.35	CHICKADEE DR - CTH U
803'WB'+66	-	819'WB'+77	STH 23 WB - MAINLINE	189	3,544	---	37.32	CTH U - SUNRISE RD
819'WB'+77	-	859'WB'+51	STH 23 WB - MAINLINE	522	8,811	---	93.33	SUNRISE RD - SPRING VALLEY DR
841'WB'+00	-	868'WB'+00	STH 23 WB - MAINLINE	---	---	10,536	---	
859'WB'+51	-	887'WB'+03	STH 23 WB - MAINLINE	491	6,272	---	67.62	SPRING VALLEY DR - SCENIC VIEW DR
870'WB'+25	-	877'WB'+75	STH 23 WB - MAINLINE	---	---	2,667	---	
882'WB'+25	-	885'WB'+75	STH 23 WB - MAINLINE	---	---	1,244	---	
887'WB'+03	-	913'WB'+09	STH 23 WB - MAINLINE	265	5,616	---	58.81	SCENIC VIEW DR - CTH T NORTH
893'WB'+50	-	905'WB'+25	STH 23 WB - MAINLINE	---	---	4,878	---	
907'WB'+75	-	909'WB'+25	STH 23 WB - MAINLINE	---	---	533	---	
912'WB'+25	-	941'WB'+25	STH 23 WB - MAINLINE	---	---	9,953	---	
913'WB'+09	-	951'WB'+14	STH 23 WB - MAINLINE	478	8,407	---	88.85	CTH T NORTH - CTH T SOUTH
943'WB'+75	-	950'WB'+00	STH 23 WB - MAINLINE	---	---	2,852	---	
950'WB'+00	-	967'WB'+00	STH 23 WB - MAINLINE	---	---	6,068	---	
951'WB'+14	-	968'WB'+14	STH 23 WB - MAINLINE	311	3,963	---	42.74	CTH T SOUTH - SUGARBUSH RD
968'WB'+14	-	985'WB'+13	STH 23 WB - MAINLINE	116	3,489	---	36.04	SUGARBUSH RD - CTH A
970'WB'+24	-	988'WB'+75	STH 23 WB - MAINLINE	---	---	8,721	---	
985'WB'+13	-	1015'WB'+10	STH 23 WB - MAINLINE	378	6,591	---	69.68	CTH A - PLANK RD
991'WB'+25	-	992'WB'+75	STH 23 WB - MAINLINE	---	---	640	---	
999'WB'+75	-	1005'WB'+00	STH 23 WB - MAINLINE	---	---	622	---	
1009'WB'+00	-	1015'WB'+00	STH 23 WB - MAINLINE	---	---	2,133	---	
1015'WB'+10	-	1017'WB'+94	STH 23 WB - MAINLINE	29	1,667	---	16.96	PLANK RD - RIDGE RD
1017'WB'+94	-	1037'WB'+33	STH 23 WB - MAINLINE	46	3,784	---	38.30	RIDGE RD - W BRIDGE APPROACH
1037'WB'+81	-	1056'WB'+41	STH 23 WB - MAINLINE	336	12,016	---	123.51	E BRIDGE APPROACH - RIDGE RD
1056'WB'+41	-	1084'WB'+14	STH 23 WB - MAINLINE	362	6,193	---	65.55	RIDGE RD - CTH P
1084'WB'+14	-	1115'WB'+07	STH 23 WB - MAINLINE	259	6,475	---	67.33	CTH P - TEMP CROSSOVER
1115'WB'+07	-	1128'WB'+00	STH 23 WB - MAINLINE	236	3,014	---	32.50	TEMP CROSSOVER - EAST LIMITS
SUBTOTAL				4,800	91,890	88,642	966.89	

* ADDITIONAL QUANTITIES SHOWN ELSEWHERE

PREPARE FOUNDATION FOR BASE AGGREGATE

1440-13-72

211.0500

PREPARE
FOUNDATION FOR
BASE AGGREGATE

LOCATION	STA	PROJECT TOTAL
STH 23 EB	32	
STH 23 WB 763+00 - 768+00	5	
STH 23 WB 387+00 - 841+00	4	
STH 23 WB 857+00 - 860+00	3	
STH 23 WB 868+00 - 870+00	2	
STH 23 WB 878+00 - 882+00	4	
STH 23 WB 886+00 - 893+00	7	
STH 23 WB 905+50 - 912+00	2	
STH 23 WB 941+50 - 943+50	7	
STH 23 WB 967+00 - 970+00	3	
STH 23 WB 972+00 - 977+75	6	
STH 23 WB 989+00 - 999+50	11	
STH 23 WB 999+50 - 1005+50	7	
STH 23 WB 1005+50 - 1008+50	4	
STH 23 WB 1008+50 - 1137+51	130	
CHICKADEE DR	5	
CTH U	2	
SUNRISE RD	4	
SPRING VALLEY DR	2	
SCENIC VIEW DR	6	
CTH T NORTH	2	
CTH T SOUTH (PLANK RD)	2	
SUGARBUSH RD	5	
CTH A	12	
PLANK RD	2	
CASTLE ROCK CT	2	
JULIE CT	2	
RIDGE RD	2	
CTH S	5	
PROJECT TOTAL	280	

PROJECT NUMBER: 1440-13-72

HWY: STH 23

COUNTY: SHEBOYGAN

MISCELLANEOUS QUANTITIES

SHEET 281

E

ALL ITEMS ON THIS SHEET ARE CATEGORY 0010

3

BASE AGGREGATE CULVERT REPLACEMENT SUMMARY

1440-13-72

*205.0100 SPV.0035.01 305.0110 305.0120 624.0100

STATION	LOCATION	CY	FOUNDATION	BASE AGGREGATE		WATER	REMARKS
				TON	DENSE		
772' EB'+56	- STH 23 EB	74	---	---	---	---	CULVERT PIPE REPLACEMENT
784' EB'+60	- STH 23 EB	214	109	325	6.08	---	CULVERT PIPE REPLACEMENT
809' EB'+50	- STH 23 EB	---	18	112	1.82	---	CULVERT PIPE REPLACEMENT
819' EB'+00	- STH 23 EB	364	214	89	1.50	---	CULVERT PIPE REPLACEMENT
848' EB'+78	- STH 23 EB	---	18	112	1.82	---	CULVERT PIPE REPLACEMENT
862' EB'+49	- STH 23 EB	---	140	716	11.98	---	CULVERT PIPE REPLACEMENT
888' EB'+16	- STH 23 EB	252	123	557	10.40	---	CULVERT PIPE REPLACEMENT
904' EB'+83	- STH 23 EB	---	81	520	8.41	---	CULVERT PIPE REPLACEMENT
913' EB'+52	- STH 23 EB	---	18	89	1.50	---	CULVERT PIPE REPLACEMENT
919' EB'+03	- STH 23 EB	---	18	112	1.82	---	CULVERT PIPE REPLACEMENT
928' EB'+72	- STH 23 EB	---	27	170	2.76	---	CULVERT PIPE REPLACEMENT
936' EB'+37	- STH 23 EB	---	18	112	1.82	---	CULVERT PIPE REPLACEMENT
1001' EB'+84	- STH 23 EB	---	31	195	3.16	---	CULVERT PIPE REPLACEMENT
1034' EB'+53	- STH 23 EB	---	125	800	12.95	---	CULVERT PIPE REPLACEMENT
1056' EB'+00	- STH 23 EB	---	27	138	2.31	---	CULVERT PIPE REPLACEMENT
SUBTOTALS		1,224	625	834	4,047	68.33	

* ADDITIONAL QUANTITIES SHOWN ELSEWHERE

Addendum No. 03
ID 1440-13-72
Revised Sheet 285
January 10, 2020

BASE AGGREGATE SUMMARY

1440-13-72

*305.0110 *305.0120 *313.0110 *624.0100

	BASE AGGREGATE		PIT	WATER
	TON	DENSE		
MAINLINE BASE AGGREGATE SUMMARY	4,800	91,890	88,642	966.89
MEDIAN BASE AGGREGATE SUMMARY	3,104	37,868	23,691	409.72
WESTBOUND SIDEROADS/RIGHT TURN LANE BASE AGGREGATE SUMMARY	3,542	13,252	0	167.94
EASTBOUND SIDEROADS/RIGHT TURN LANE BASE AGGREGATE SUMMARY	3,435	28,653	9,348	320.88
DRIVEWAY BASE AGGREGATE SUMMARY	1,534	---	---	15.34
BASE AGGREGATE CULVERT REPLACEMENT SUMMARY	834	4,047	---	68.33
CULVERT PIPE TEMPORARY	3,075	---	---	---
PROJECT TOTAL	20,324	175,710	121,681	1,949

*DETAILS SHOWN ELSEWHERE

ALL ITEMS ON THIS SHEET ARE CATEGORY 0010

COVERING SIGNS

1440-13-72

643.0920
 TRAFFIC CONTROL COVERING SIGNS TYPE II

LOCATION	EACH	
UNDISTRIBUTED	28	
PROJECT TOTAL	28	

PERMANENT TRAFFIC CONTROL

1440-13-72

SPV.0060.01 SPV.0060.02
 VERTICAL IMPACT RECOVERY PANEL EACH

LOCATION	EACH	
746' EB'+83 - 791' EB'+87	30	30
PROJECT TOTAL	30	30

TRAFFIC CONTROL ITEMS LEFT IN PLACE FROM 1440-13-76

1440-13-72

SPV.0060.03 SPV.0060.04
 MAINTAIN MAINTAIN
 PERMANENT TRAFFIC CONTROL
 BARRICADES WARNING LIGHTS

LOCATION	EACH	
745'WB'+60 - 1137'WB'+51	236	472
PROJECT TOTAL	236	472

GEOTEXTILE SUMMARY

STATION TO	STATION	LOCATION	SV	SV	645.0140	645.0220
			GEOTEXTILE TYPE SAS	GEOTEXTILE TYPE SR		
755'WB'+90	- 763'WB'+00	STH 23 WB	3,156	3,156		
755'EB'+90	- 777'EB'+67	STH 23 EB	9,703	9,703		
768'WB'+00	- 837'WB'+00	STH 23 WB	34,313	34,313		
841'WB'+00	- 868'WB'+00	STH 23 WB	13,171	13,171		
870'WB'+25	- 877'WB'+75	STH 23 WB	3,333	3,333		
882'WB'+25	- 885'WB'+75	STH 23 WB	1,556	1,556		
893'WB'+50	- 905'WB'+25	STH 23 WB	6,098	6,098		
907'WB'+75	- 909'WB'+25	STH 23 WB	667	667		
912'WB'+25	- 941'WB'+25	STH 23 WB	12,441	12,441		
943'WB'+75	- 950'WB'+00	STH 23 WB	3,565	3,565		
950'WB'+00	- 967'WB'+00	STH 23 WB	7,585	7,585		
970'WB'+24	- 988'WB'+75	STH 23 WB	10,902	10,902		
991'WB'+25	- 992'WB'+75	STH 23 WB	801	801		
999'WB'+75	- 1005'WB'+00	STH 23 WB	2,333	2,333		
1009'WB'+00	- 1015'WB'+00	STH 23 WB	2,667	2,667		
TOTALS			112,291	112,291		

Addendum No. 03
 ID 1440-13-72
 Revised Sheet 320
 January 10, 2020

ALL ITEMS ON THIS SHEET ARE CATEGORY 0010

Addendum No. 03
 ID 1440-13-72
 Revised Sheet 529
 January 10, 2020

STH 23 EB Mainline 1

STATION	Real Station	Distance	AREA (SF)		Incremental Vol (CY) (Unadjusted)			Cumulative Vol (CY)			Mass Ordinate	Note 8
			Cut	Fill	Subgrade Improvement	Excavation	Fill	Excavation	Cut	Expanded Fill		
			Note 1	Note 1	Note 1	Note 1	Note 1	Note 1	Note 1	Note 1	Note 1	Note 1
745+31.33(2)	74549.05	0.00	0.00	0.00	0.00	0	0	0	0	0	0	0.00
745+61.07(2)	74578.79	29.74	8.85	110.50	0.00	5	61	0	0	5	81	-76.06
745+91.07(2)	74608.79	30.00	30.18	111.96	0.00	22	124	0	0	27	245	-218.77
746+00(2)	74617.72	8.93	25.94	112.33	0.00	9	37	0	0	36	295	-258.82
746+21.07(2)	74638.79	21.07	13.58	113.17	0.00	15	88	0	0	51	412	-360.40
746+36.07(2)	74653.79	15.00	11.36	113.88	0.00	7	63	0	0	58	496	-437.36
747+00(2)	74717.72	63.93	15.93	109.80	0.00	32	265	0	0	91	848	-757.28
748+00(2)	74817.72	100.00	33.66	102.82	0.00	92	394	0	0	182	1,371	-1,189.12
749+00(2)	74917.72	100.00	54.41	94.96	0.00	163	366	0	0	345	1,859	-1,513.16
750+00(2)	75017.72	100.00	69.04	89.41	0.00	229	341	0	0	574	2,313	-1,738.65
751+00(2)	75117.72	100.00	81.01	95.57	0.00	278	343	0	0	852	2,768	-1,916.38
752+00(2)	75217.72	100.00	59.76	106.26	0.00	261	374	0	0	1,113	3,265	-2,152.79
753+00(2)	75317.72	100.00	60.38	125.59	0.00	222	429	0	0	1,335	3,836	-2,501.34
754+00(2)	75417.72	100.00	52.87	142.35	0.00	210	496	0	0	1,545	4,496	-2,951.55
755+00(2)	75517.72	100.00	77.42	150.26	0.00	241	542	0	0	1,786	5,217	-3,430.96
756+00(2)	75617.72	100.00	70.10	151.08	0.00	273	558	0	0	2,059	5,959	-3,899.95
757+00(2)	75717.72	100.00	69.49	143.05	0.00	258	545	0	0	2,318	6,684	-4,365.88
758+00(2)	75817.72	100.00	44.08	126.45	0.00	210	499	0	0	2,528	7,347	-4,819.33
759+00(2)	75917.72	100.00	49.72	110.11	0.01	174	438	0	0	2,702	7,930	-5,228.24
760+00(2)	76017.72	100.00	132.32	0.38	53.50	337	205	99	99	3,039	8,202	-5,064.16
761+00(2)	76117.72	100.00	129.91	0.40	53.50	486	1	198	198	3,524	8,204	-4,382.31
762+00(2)	76217.72	100.00	128.46	0.40	54.52	478	1	200	200	4,003	8,206	-3,705.78
763+00(2)	76317.72	100.00	121.88	0.42	54.52	464	2	202	202	4,466	8,208	-3,042.29
764+00(2)	76417.72	100.00	109.36	0.00	0.00	428	1	101	101	4,895	8,209	-2,514.14
765+00(2)	76517.72	100.00	101.88	0.05	0.00	391	0	0	0	5,286	8,209	-2,123.07
766+00(2)	76617.72	100.00	87.97	0.05	0.00	352	0	0	0	5,637	8,209	-1,771.76
767+00(2)	76717.72	100.00	72.87	0.00	0.00	298	0	0	0	5,935	8,210	-1,474.04
768+00(2)	76817.72	100.00	62.52	0.00	0.00	251	0	0	0	6,186	8,210	-1,223.31
769+00(2)	76917.72	100.00	48.74	0.37	53.50	206	1	99	99	6,392	8,210	-919.10
770+00(2)	77017.72	100.00	30.94	0.35	53.50	148	1	198	198	6,540	8,212	-575.17
771+00(2)	77117.72	100.00	30.01	0.37	53.50	113	1	198	198	6,653	8,214	-265.93
772+00(2)	77217.72	100.00	16.69	0.18	65.48	86	1	220	220	6,739	8,215	39.56
773+00(2)	77317.72	100.00	7.76	0.40	65.90	45	1	243	243	6,784	8,217	326.72
774+00(2)	77417.72	100.00	17.61	0.04	66.12	47	1	244	244	6,831	8,218	617.09
775+00(2)	77517.72	100.00	16.21	0.00	65.61	63	0	244	244	6,894	8,218	923.56
776+00(2)	77617.72	100.00	10.88	0.00	72.18	50	0	255	255	6,944	8,218	1,228.88
777+00(2)	77717.72	100.00	12.01	0.01	72.48	42	0	268	268	6,986	8,218	1,539.12
778+00(2)	77817.72	100.00	0.00	0.00	0.00	22	0	134	134	7,009	8,218	1,695.56
779+00(2)	77917.72	100.00	0.00	0.00	0.00	0	0	0	0	7,009	8,218	1,695.55
780+00(2)	78017.72	100.00	0.00	0.00	0.00	0	0	0	0	7,009	8,218	1,695.55
780+75.65(2)	78093.37	75.65	0.00	0.00	0.00	0	0	0	0	7,009	8,218	1,695.55
781+00(2)	78117.72	24.35	0.00	0.01	0.00	0	0	0	0	7,009	8,218	1,695.54
781+49.27(2)	78166.99	49.27	6.77	0.00	8.09	6	0	7	7	7,015	8,218	1,709.08

Subtotal 7,015 6,179 2,912

COUNTY: SHEBOYGAN EARTHWORK

HWY: STH 23

PROJECT NUMBER: 1440-13-72

STH 23 EB Mainline 1

STATION	Real Station	Distance	AREA (SF)		Incremental Vol (CY) (Unadjusted)			Cumulative Vol (CY)		Mass Ordinate
			Cut	Fill	Subgrade Improvement Excavation	Fill	Subgrade Improvement Excavation	Cut	Expanded Fill	
782+00(2)	78217.72	50.73	9.20	0.00	12.72	0	24	17	0	1,750.26
783+00(2)	78317.72	100.00	9.01	0.13	18.20	0	57	51	0	1,840.92
784+00(2)	78417.72	100.00	8.02	0.35	17.98	1	67	83	1	1,938.31
785+00(2)	78517.72	100.00	9.63	0.09	18.24	33	67	115	3	2,036.99
786+00(2)	78617.72	100.00	13.88	0.00	18.33	44	68	159	3	2,148.01
787+00(2)	78717.72	100.00	16.71	0.00	18.33	57	68	215	3	2,272.55
788+00(2)	78817.72	100.00	14.45	0.00	8.09	58	49	273	3	2,379.16
789+00(2)	78917.72	100.00	0.00	0.00	0.00	27	15	300	3	2,420.89
790+00(2)	79017.72	100.00	0.00	0.00	0.00	0	0	300	3	2,420.89
791+00(2)	79117.72	100.00	0.00	0.00	0.00	0	0	300	3	2,420.90
792+00(2)	79217.72	100.00	0.00	0.00	0.00	0	0	300	3	2,420.90
793+00(2)	79317.72	100.00	0.00	0.00	0.00	0	0	300	3	2,420.90
794+00(2)	79417.72	100.00	0.00	0.00	0.00	0	0	300	3	2,420.90
795+00(2)	79517.72	100.00	0.00	0.00	0.00	0	0	300	3	2,420.90
796+00(2)	79617.72	100.00	0.00	0.00	0.00	0	0	300	3	2,420.90
797+00(2)	79717.72	100.00	0.00	0.00	0.00	0	0	300	3	2,420.90
798+00(2)	79817.72	100.00	26.90	0.00	0.00	50	0	350	3	2,470.71
799+00(3)	79905.45	87.73	24.79	0.00	0.00	84	0	434	3	2,554.66
799+59.35(3)	79964.80	59.35	22.52	0.31	0.00	52	0	486	3	2,606.21
800+00(3)	80005.45	40.65	19.42	0.51	0.00	32	1	517	4	2,636.96
801+00(3)	80105.45	100.00	19.11	0.68	0.00	71	2	589	7	2,705.39
802+00(3)	80205.45	100.00	22.17	0.00	0.00	76	1	665	9	2,780.17
803+00(3)	80305.45	100.00	21.32	0.91	0.00	81	2	746	11	2,858.45
803+10.54(3)	80315.99	10.54	21.88	7.02	0.00	8	2	754	13	2,864.82
803+58.75(3)	80364.20	48.21	53.42	0.36	0.00	67	7	821	22	2,923.29
803+70.16(3)	80375.61	11.41	84.56	8.00	14.99	29	3	850	24	2,953.26
804+00(3)	80405.45	29.84	109.29	0.00	18.33	107	4	957	30	3,072.91
804+15.79(3)	80421.24	15.79	115.83	0.00	18.33	66	0	1,023	30	3,149.47
804+57.26(3)	80462.70	41.47	63.09	5.25	11.99	137	4	1,161	35	3,304.78
805+00(3)	80505.45	42.74	37.57	7.98	13.78	80	20	1,240	49	3,390.92
805+65.48(3)	80570.93	65.48	27.94	0.00	0.00	79	10	1,320	62	3,474.19
806+00(3)	80605.45	34.52	18.66	0.00	0.00	30	0	1,350	62	3,503.98
807+00(3)	80705.45	100.00	0.00	0.00	0.00	35	0	1,384	62	3,538.52
808+00(3)	80805.45	100.00	0.00	0.00	0.00	0	0	1,384	62	3,538.52
809+00(3)	80905.45	100.00	0.00	0.00	0.00	0	0	1,384	62	3,538.52
810+00(3)	81005.45	100.00	1.73	0.12	0.00	3	0	1,387	62	3,541.42
811+00(3)	81105.45	100.00	11.69	0.00	9.33	25	0	1,412	63	3,583.25
812+00(3)	81205.45	100.00	11.69	0.00	18.33	43	0	1,456	63	3,677.77
813+00(3)	81305.45	100.00	9.86	0.00	18.33	40	0	1,495	63	3,785.56
814+00(3)	81405.45	100.00	12.34	0.00	18.33	41	0	1,537	63	3,894.55
815+00(3)	81505.45	100.00	12.42	0.00	18.33	46	0	1,582	63	4,008.29
816+00(3)	81605.45	100.00	11.03	0.00	18.33	43	0	1,626	63	4,119.59
817+00(3)	81705.45	100.00	8.96	0.00	18.33	37	0	1,663	63	4,224.49
818+00(3)	81805.45	100.00	8.15	0.01	16.03	32	0	1,694	63	4,319.80
819+00(3)	81905.45	100.00	14.12	0.00	18.85	41	0	1,736	63	4,425.60
Subtotal										1,044

Addendum No. 03
ID 1440-13-72
Revised Sheet 530
January 10, 2020

STH 23 EB Mainline 1

STATION	Real Station	Distance	AREA (SF)		Incremental Vol (CY) (Unadjusted)			Cumulative Vol (CY)			Mass Ordinate
			Cut	Fill	Subgrade Improvement Excavation	Fill	Subgrade Improvement Excavation	Cut	Expanded Fill	Mass Ordinate	
819+50.13(3)	81955.57	50.13	14.80	0.00	18.85	0	35	1,763	63	4,487.43	
820+00(3)	82005.45	49.87	17.50	0.00	18.33	0	34	1,792	63	4,551.60	
821+00(3)	82105.45	100.00	18.36	0.00	18.33	0	68	1,859	63	4,685.89	
822+00(3)	82205.45	100.00	17.88	0.00	18.33	0	68	1,926	63	4,820.88	
823+00(3)	82305.45	100.00	7.86	0.00	8.19	0	49	1,974	63	4,917.65	
824+00(3)	82405.45	100.00	0.01	0.00	0.00	0	15	1,988	63	4,947.36	
825+00(3)	82505.45	100.00	0.00	0.02	0.00	0	0	1,988	63	4,947.32	
826+00(3)	82605.45	100.00	0.00	0.25	0.00	1	0	1,988	64	4,946.64	
827+00(3)	82705.45	100.00	0.00	0.03	0.00	1	0	1,988	64	4,945.94	
828+00(3)	82805.45	100.00	0.00	0.02	0.00	0	0	1,988	64	4,945.82	
829+00(3)	82905.45	100.00	0.00	0.12	0.00	0	0	1,988	65	4,945.48	
830+00(3)	83005.45	100.00	0.00	0.00	0.00	0	0	1,988	65	4,945.18	
831+00(3)	83105.45	100.00	0.00	0.00	0.00	0	0	1,988	65	4,945.17	
832+00(3)	83205.45	100.00	0.01	0.00	0.00	0	0	1,988	65	4,945.19	
833+00(3)	83305.45	100.00	0.09	0.00	0.00	0	0	1,988	65	4,945.37	
834+00(3)	83405.45	100.00	0.01	0.00	0.00	0	0	1,989	65	4,945.55	
835+00(3)	83505.45	100.00	9.85	0.00	8.09	0	15	2,007	65	4,978.79	
836+00(3)	83605.45	100.00	15.67	0.00	15.50	0	44	2,054	65	5,069.72	
836+46.59(3)	83652.04	46.59	16.05	0.03	18.88	27	30	2,081	65	5,126.72	
837+00(3)	83705.45	53.41	16.42	0.00	0.00	0	19	2,114	65	5,177.48	
838+00(3)	83805.45	100.00	15.42	0.01	0.00	59	0	2,173	65	5,236.41	
839+00(3)	83905.45	100.00	15.22	0.00	0.00	57	0	2,229	65	5,293.12	
841+00(4)	84095.56	190.11	14.98	0.00	0.00	106	0	2,336	65	5,399.44	
841+73.26(4)	84168.81	73.26	13.61	0.00	9.42	39	0	2,374	65	5,451.00	
842+00(4)	84195.56	26.74	12.60	0.00	8.09	13	0	2,387	65	5,472.65	
843+00(4)	84295.56	100.00	0.00	0.00	0.00	23	0	2,411	65	5,510.96	
844+00(4)	84395.56	100.00	0.00	0.00	0.00	0	0	2,411	65	5,510.96	
845+00(4)	84495.56	100.00	0.00	0.00	0.00	0	0	2,411	65	5,510.96	
846+00(4)	84595.56	100.00	0.00	0.00	0.00	0	0	2,411	65	5,510.96	
847+00(4)	84695.56	100.00	0.00	0.00	0.00	0	0	2,411	65	5,510.96	
848+00(4)	84795.56	100.00	0.00	0.00	0.00	0	0	2,411	65	5,510.96	
849+00(4)	84895.56	100.00	0.00	0.00	0.00	0	0	2,411	65	5,510.96	
850+00(4)	84995.56	100.00	0.00	0.00	0.00	0	0	2,411	65	5,510.96	
851+00(4)	85095.56	100.00	0.00	0.00	0.00	0	0	2,411	65	5,510.96	
852+00(4)	85195.56	100.00	0.00	0.00	0.00	0	0	2,411	65	5,510.96	
853+00(4)	85295.56	100.00	0.00	0.00	0.00	0	0	2,411	65	5,510.96	
854+00(4)	85395.56	100.00	0.00	0.00	0.00	0	0	2,411	65	5,510.96	
855+00(4)	85495.56	100.00	0.00	0.48	0.00	0	0	2,411	66	5,509.78	
856+00(4)	85595.56	100.00	22.26	0.00	0.00	41	0	2,452	67	5,549.81	
857+00(4)	85695.56	100.00	22.15	0.41	0.00	82	1	2,534	68	5,631.04	
858+00(4)	85795.56	100.00	20.64	0.00	0.00	79	1	2,613	70	5,709.28	
859+00(4)	85895.56	100.00	21.52	0.00	0.00	78	0	2,691	70	5,787.35	
860+00(4)	85995.56	100.00	18.95	3.93	0.00	75	0	2,766	79	5,852.62	
860+35.5(4)	86031.05	35.50	19.74	9.63	18.22	25	9	2,792	91	5,878.18	
860+77.19(4)	86072.74	41.69	40.61	10.24	17.69	47	15	2,838	111	5,932.09	
				Subtotal		1,103	37		452		

Addendum No. 03
ID 1440-13-72
Revised Sheet 531
January 10, 2020

STH 23 EB Mainline 1

STATION	Real Station	Distance	AREA (SF)		Incremental Vol (CY) (Unadjusted)			Cumulative Vol (CY)			Mass Ordinate
			Cut	Fill	Subgrade Improvement Excavation	Fill	Subgrade Improvement Excavation	Cut	Expanded Fill	Mass Ordinate	
860+86.98(4)	86082.53	9.79	58.17	0.27	17.52	18	2	6	2,856	114	5,953.85
861+00(4)	86095.56	13.02	71.67	0.00	17.55	31	0	8	2,888	114	5,993.53
861+31.1(4)	86126.66	31.10	76.28	0.00	17.54	85	0	20	3,019	116	6,098.95
861+53.02(4)	86148.57	21.92	38.51	3.24	17.60	47	1	14	3,054	121	6,158.05
861+84.76(4)	86180.32	31.74	21.00	3.09	18.33	35	4	21	3,066	122	6,209.21
862+00(4)	86195.56	15.24	20.99	0.00	18.33	12	1	10	3,119	123	6,230.25
862+84.45(4)	86280.01	84.45	12.48	0.45	1.66	52	1	31	3,122	123	6,312.91
863+00(4)	86295.56	15.55	0.84	0.00	0.00	4	0	0	3,124	123	6,317.05
864+00(4)	86395.56	100.00	0.00	0.00	0.00	2	0	0	3,124	123	6,318.61
865+00(4)	86495.56	100.00	0.00	0.00	0.00	0	0	0	3,124	123	6,318.61
866+00(4)	86595.56	100.00	0.00	0.00	0.00	0	0	0	3,124	123	6,318.61
867+00(4)	86695.56	100.00	0.00	0.00	0.00	0	0	0	3,124	123	6,318.61
868+00(4)	86795.56	100.00	0.00	0.00	0.00	0	0	0	3,124	123	6,318.61
869+00(4)	86895.56	100.00	0.00	0.00	0.00	0	0	0	3,124	123	6,318.61
870+00(4)	86995.56	100.00	0.00	0.00	0.00	0	0	0	3,124	123	6,318.61
871+00(4)	87095.56	100.00	0.00	0.00	0.00	0	0	0	3,124	123	6,318.61
872+00(4)	87195.56	100.00	0.00	0.00	0.00	0	0	0	3,124	123	6,318.61
873+00(4)	87295.56	100.00	0.00	0.00	0.00	0	0	0	3,124	123	6,318.61
874+00(4)	87395.56	100.00	0.00	0.00	0.00	0	0	0	3,124	123	6,318.61
875+00(4)	87495.56	100.00	0.00	0.00	0.00	0	0	0	3,124	123	6,318.61
876+00(4)	87595.56	100.00	0.00	0.00	0.00	0	0	0	3,124	123	6,318.61
877+00(4)	87695.56	100.00	0.00	0.00	0.00	0	0	0	3,124	123	6,318.61
878+00(4)	87795.56	100.00	0.00	0.00	0.00	0	0	0	3,124	123	6,318.61
879+00(4)	87895.56	100.00	0.01	0.00	0.00	0	0	0	3,124	123	6,318.63
880+00(4)	87995.56	100.00	0.00	0.00	0.00	0	0	0	3,124	123	6,318.65
881+00(4)	88095.56	100.00	0.02	0.00	0.00	136	1	34	3,463	124	6,318.69
882+00(4)	88195.56	100.00	6.45	0.00	0.00	12	0	0	3,606	123	6,330.66
883+00(4)	88295.56	100.00	30.27	0.00	18.33	68	0	34	3,204	123	6,432.61
883+50.97(4)	88346.53	50.97	33.24	0.00	18.33	60	0	35	3,264	123	6,527.18
884+00(4)	88395.56	49.03	36.57	0.00	18.33	63	0	33	3,327	123	6,623.85
885+00(4)	88495.56	100.00	36.84	0.31	0.00	136	1	34	3,463	124	6,792.98
886+00(4)	88595.56	100.00	40.21	0.00	0.00	143	1	0	3,606	125	6,934.91
887+00(4)	88695.56	100.00	39.51	0.00	0.00	148	0	0	3,754	125	7,082.54
887+85.31(4)	88780.87	85.31	48.02	3.00	0.00	138	5	0	3,892	131	7,214.54
888+00(4)	88795.56	14.69	59.92	0.00	0.00	29	1	0	3,921	132	7,340.23
888+30.3(4)	88825.86	30.30	113.71	0.00	0.00	97	0	0	4,019	132	7,340.23
888+44.72(4)	88840.27	14.42	188.66	0.00	0.00	81	0	0	4,100	132	7,420.95
888+80.91(4)	88876.46	36.19	161.13	0.00	0.00	234	0	0	4,334	132	7,655.39
889+00(4)	88895.56	19.09	81.83	1.00	0.00	86	0	0	4,420	132	7,740.82
889+04.49(4)	88900.05	4.49	74.09	2.86	0.00	13	0	0	4,433	133	7,753.37
889+63.79(4)	88959.34	59.29	45.94	4.04	0.00	132	8	0	4,565	143	7,875.08
890+00(4)	88995.56	36.21	40.38	0.00	0.00	58	3	0	4,623	147	7,929.37
890+45.61(4)	89041.17	45.61	24.64	0.00	0.00	55	0	0	4,677	147	7,984.29
891+00(4)	89095.56	54.39	0.03	0.00	0.00	25	0	0	4,702	147	8,009.14
892+00(4)	89195.56	100.00	0.16	0.00	0.00	0	0	0	4,703	147	8,009.50
			Subtotal			1,864	26	248			

Addendum No. 03
ID 1440-13-72
Revised Sheet 532
January 10, 2020

STH 23 EB Mainline 1

STATION	Real Station	Distance	AREA (SF)		Incremental Vol (CY) (Unadjusted)			Cumulative Vol (CY)			Mass Ordinate
			Cut	Fill	Subgrade Improvement Excavation	Fill	Subgrade Improvement Excavation	Cut	Expanded Fill	Mass Ordinate	
893+00(4)	89295.56	100.00	0.07	0.00	0.00	0	0	0	4,703	147	8,009.93
894+00(4)	89395.56	100.00	0.03	0.00	0.00	0	0	0	4,703	147	8,010.12
895+00(4)	89495.56	100.00	0.33	0.00	0.00	1	0	0	4,704	147	8,010.78
896+00(4)	89595.56	100.00	0.00	0.00	0.00	1	0	0	4,705	147	8,011.38
897+00(4)	89695.56	100.00	0.18	0.00	0.00	0	0	0	4,705	147	8,011.71
898+00(4)	89795.56	100.00	0.31	0.00	0.00	1	0	0	4,706	147	8,012.61
899+00(4)	89895.56	100.00	0.07	0.00	0.00	1	0	0	4,706	147	8,013.31
900+00(5)	89961.72	66.17	0.00	0.00	0.00	0	0	0	4,707	147	8,013.39
901+00(5)	90061.72	100.00	0.00	0.00	0.00	0	0	0	4,707	147	8,013.39
901+49.72(5)	90111.45	49.72	0.00	0.00	0.00	0	0	0	4,707	147	8,013.39
902+00(5)	90161.72	50.28	35.23	144.53	19.90	33	135	19	4,739	325	7,885.75
903+00(5)	90261.72	100.00	35.19	4.28	8.09	130	276	52	4,870	692	7,701.47
903+54.24(5)	90315.96	54.24	17.12	0.00	0.00	53	4	8	4,922	698	7,756.41
904+00(5)	90361.72	45.76	0.13	0.00	0.00	15	0	0	4,937	698	7,771.02
905+00(5)	90461.72	100.00	0.00	0.03	0.00	0	0	0	4,937	698	7,771.19
906+00(5)	90561.72	100.00	0.00	0.01	0.00	0	0	0	4,937	698	7,771.09
907+00(5)	90661.72	100.00	0.00	0.00	0.00	0	0	0	4,937	698	7,771.06
908+00(5)	90761.72	100.00	0.03	0.00	0.00	0	0	0	4,937	698	7,771.12
909+00(5)	90861.72	100.00	12.11	0.00	8.00	22	0	15	4,960	698	7,808.42
910+00(5)	90961.72	100.00	10.96	0.00	0.00	43	0	15	5,002	698	7,865.96
911+00(5)	91061.72	100.00	12.61	0.00	0.00	44	0	0	5,046	698	7,909.62
912+00(5)	91161.72	100.00	9.69	0.00	0.00	41	0	0	5,087	698	7,950.92
913+00(5)	91261.72	100.00	9.28	0.00	18.33	35	0	34	5,122	698	8,019.98
914+00(5)	91361.72	100.00	12.56	0.00	18.33	40	0	68	5,163	698	8,128.30
915+00(5)	91461.72	100.00	9.99	2.74	12.27	42	5	57	5,205	705	8,219.96
916+00(5)	91561.72	100.00	0.27	0.00	0.00	19	5	23	5,224	711	8,254.93
917+00(5)	91661.72	100.00	0.00	0.00	0.00	0	0	0	5,224	711	8,255.43
918+00(5)	91761.72	100.00	0.00	0.00	0.00	0	0	0	5,224	711	8,255.43
919+00(5)	91861.72	100.00	0.00	0.00	0.00	0	0	0	5,224	711	8,255.43
920+00(5)	91961.72	100.00	0.00	0.00	0.00	0	0	0	5,224	711	8,255.44
921+00(5)	92061.72	100.00	0.00	0.00	0.00	0	0	0	5,224	711	8,255.44
922+00(5)	92161.72	100.00	0.00	0.00	0.00	0	0	0	5,224	711	8,255.44
923+00(5)	92261.72	100.00	0.00	0.00	0.00	0	0	0	5,224	711	8,255.44
924+00(5)	92361.72	100.00	0.00	0.00	0.00	0	0	0	5,224	711	8,255.44
925+00(5)	92461.72	100.00	0.00	0.00	0.00	0	0	0	5,224	711	8,255.44
926+00(5)	92561.72	100.00	0.00	0.00	0.00	0	0	0	5,224	711	8,255.44
927+00(5)	92661.72	100.00	0.00	0.00	0.00	0	0	0	5,224	711	8,255.44
928+00(5)	92761.72	100.00	11.10	0.00	16.61	21	0	31	5,245	711	8,306.75
929+00(5)	92861.72	100.00	11.74	0.00	18.33	42	0	65	5,287	711	8,413.74
930+00(5)	92961.72	100.00	10.53	0.00	18.33	41	0	68	5,328	711	8,522.86
931+00(5)	93061.72	100.00	9.42	0.00	18.33	37	0	68	5,365	711	8,627.69
932+00(5)	93161.72	100.00	7.86	0.02	18.31	32	0	68	5,397	711	8,727.50
933+00(5)	93261.72	100.00	9.84	0.00	18.33	33	0	68	5,430	712	8,828.10
934+00(5)	93361.72	100.00	6.07	0.20	17.58	29	0	66	5,459	712	8,923.55
935+00(5)	93461.72	100.00	0.00	0.00	0.00	11	0	33	5,471	713	8,966.84
					Subtotal	768	426	755			

Addendum No. 03
ID 1440-13-72
Revised Sheet 533
January 10, 2020

STH 23 EB Mainline 1

STATION	Real Station	Distance	AREA (SF)		Incremental Vol (CY) (Unadjusted)			Cumulative Vol (CY)		Mass Ordinate
			Cut	Fill	Subgrade Improvement Excavation	Fill	Subgrade Improvement Excavation	Cut	Expanded Fill	
			Note 1		Note 1			Note 1		Note 6
936+00(5)	93561.72	100.00	0.00	0.00	0.00	0	0	5,471	713	8,966.84
937+00(5)	93661.72	100.00	0.00	0.00	0.00	0	0	5,471	713	8,966.84
938+00(5)	93761.72	100.00	0.00	0.00	0.00	0	0	5,471	713	8,966.85
939+00(5)	93861.72	100.00	0.00	0.00	0.00	0	0	5,471	713	8,966.86
940+00(5)	93961.72	100.00	0.01	0.00	0.00	0	0	5,471	713	8,966.88
941+00(5)	94061.72	100.00	0.01	0.00	0.00	0	0	5,471	713	8,966.89
942+00(5)	94161.72	100.00	0.01	0.00	0.00	0	0	5,471	713	8,966.92
943+00(5)	94261.72	100.00	0.02	0.00	0.00	0	0	5,471	713	8,966.97
944+00(5)	94361.72	100.00	0.00	0.00	0.00	0	0	5,471	713	8,967.01
944+71.02(5)	94432.74	71.02	18.31	0.00	0.00	24	0	5,495	713	8,991.09
945+00(5)	94461.72	28.98	19.74	6.40	0.00	20	3	5,515	717	9,006.95
946+00(5)	94561.72	100.00	19.89	2.48	0.00	73	16	5,589	739	9,058.48
947+00(5)	94661.72	100.00	7.57	0.00	0.00	51	5	5,640	745	9,103.22
948+00(5)	94761.72	100.00	0.00	0.02	0.00	14	0	5,654	745	9,117.18
949+00(5)	94861.72	100.00	28.04	0.00	0.00	52	0	5,706	745	9,169.05
949+65.31(5)	94927.04	65.31	27.41	0.00	0.00	67	0	5,773	745	9,236.11
950+00(5)	94961.72	34.69	28.00	0.00	0.00	36	0	5,808	745	9,271.70
951+00(5)	95061.72	100.00	26.74	5.14	0.00	101	10	5,910	758	9,360.41
952+00(5)	95161.72	100.00	14.98	0.76	0.00	77	11	5,987	772	9,423.12
953+00(5)	95261.72	100.00	9.47	0.00	0.00	45	1	6,032	774	9,466.50
954+00(5)	95361.72	100.00	38.99	0.16	0.00	90	0	6,122	775	9,555.84
954+31.14(6)	95387.33	25.61	68.74	3.10	0.00	51	2	6,173	777	9,604.87
954+48.75(6)	95404.94	17.61	101.23	0.00	0.00	55	1	6,228	778	9,658.95
954+84.07(6)	95440.26	35.33	86.00	0.00	0.00	122	0	6,351	778	9,781.43
955+00(6)	95456.19	15.93	35.27	10.19	0.00	36	3	6,387	782	9,813.20
956+00(6)	95556.19	100.00	12.82	4.55	0.00	89	27	6,476	818	9,865.94
957+00(6)	95656.19	100.00	0.00	0.00	0.00	24	8	6,499	830	9,878.46
958+00(6)	95756.19	100.00	0.00	0.00	0.00	0	0	6,499	830	9,878.46
959+00(6)	95856.19	100.00	0.00	0.00	0.00	0	0	6,499	830	9,878.46
960+00(6)	95956.19	100.00	0.00	0.00	0.00	0	0	6,499	830	9,878.46
961+00(6)	96056.19	100.00	0.00	0.00	0.00	0	0	6,499	830	9,878.46
962+00(6)	96156.19	100.00	0.00	0.00	0.00	0	0	6,499	830	9,878.46
963+00(6)	96256.19	100.00	0.00	0.00	0.00	0	0	6,499	830	9,878.46
964+00(6)	96356.19	100.00	6.39	0.28	8.50	12	1	6,511	830	9,905.36
965+00(6)	96456.19	100.00	23.85	16.06	17.89	56	45	6,567	838	9,999.28
966+00(6)	96556.19	100.00	36.01	4.32	17.89	111	13	6,678	855	10,155.48
967+00(6)	96656.19	100.00	26.03	6.07	0.00	115	19	6,793	861	10,277.93
968+00(6)	96756.19	100.00	33.14	5.85	0.00	110	22	6,903	910	10,358.15
969+00(6)	96856.19	100.00	38.45	9.51	0.00	133	28	7,035	948	10,452.91
969+46.04(6)	96902.24	46.04	59.20	17.92	0.00	83	23	7,118	979	10,505.08
969+84.96(6)	96941.16	38.92	72.87	39.92	0.00	95	42	7,214	1,035	10,544.83
970+00(6)	96956.19	15.04	86.34	29.81	0.00	44	19	7,258	1,061	10,563.34
970+75.68(6)	97031.88	75.68	123.88	0.17	11.97	295	42	7,553	1,116	10,818.88
971+00(6)	97056.19	24.32	59.96	100.61	11.98	83	45	7,635	1,177	10,852.09
971+28.29(6)	97084.48	28.29	48.46	52.38	10.04	57	80	7,692	1,283	10,813.82
			Subtotal			2,222	429			

Addendum No. 03
ID 1440-13-72
Revised Sheet 534
January 10, 2020

STH 23 EB Mainline 1

STATION	Real Station	Distance	AREA (SF)		Incremental Vol (CY) (Unadjusted)			Cumulative Vol (CY)			Mass Ordinate
			Cut	Fill	Subgrade Improvement Excavation	Fill	Subgrade Improvement Excavation	Cut 1.00	Expanded Fill	Notes	
977+00(6)	97156.19	71.71	27.63	7.32	0.00	0.00	101	79	7,793	1,389	10,822.75
973+00(6)	97256.19	100.00	0.03	0.00	0.00	0.00	51	14	7,844	1,407	10,855.94
974+00(6)	97356.19	100.00	0.01	0.00	0.00	0.00	25	90	7,870	1,527	10,761.42
975+00(6)	97456.19	100.00	13.54	48.60	0.00	0.00	54	98	7,923	1,656	10,685.27
976+00(6)	97556.19	100.00	15.43	4.10	0.00	0.00	60	8	7,983	1,666	10,735.24
977+00(6)	97656.19	100.00	17.01	0.00	0.00	0.00	58	1	8,041	1,668	10,791.62
978+00(6)	97756.19	100.00	14.06	0.46	0.00	0.00	54	7	8,095	1,677	10,836.89
979+00(6)	97856.19	100.00	15.19	3.14	0.00	0.00	52	8	8,147	1,688	10,877.86
980+00(6)	97956.19	100.00	12.95	1.38	0.00	0.00	85	100	8,232	1,821	10,845.04
981+00(6)	98056.19	100.00	33.06	52.61	8.09	0.00	164	206	8,397	2,095	10,784.12
982+00(6)	98156.19	100.00	55.77	58.77	18.33	0.00	230	222	8,627	2,390	10,787.56
983+00(6)	98256.19	100.00	68.59	60.90	18.33	0.00	261	180	8,888	2,630	10,876.52
984+00(6)	98356.19	100.00	72.33	36.47	18.29	0.00	298	112	9,186	2,778	11,094.53
985+00(6)	98456.19	100.00	88.61	23.81	18.67	0.00	403	105	9,589	2,918	11,430.41
986+00(6)	98556.19	100.00	129.11	33.14	20.73	0.00	158	60	9,748	2,998	11,536.77
986+35.79(6)	98591.98	35.79	109.60	57.36	21.43	0.00	51	46	9,798	3,059	11,540.18
986+53.11(6)	98609.30	17.32	48.00	85.74	21.94	0.00	182	74	9,860	3,158	11,657.70
987+00(6)	98656.19	46.89	161.10	0.00	18.33	0.00	247	0	10,227	3,158	11,925.21
987+36.63(6)	98692.82	36.63	202.96	0.00	12.01	0.00	230	1	10,457	3,160	12,170.54
987+73.39(6)	98729.58	36.76	135.55	1.61	12.00	0.00	116	7	10,573	3,169	12,289.45
988+00(6)	98756.19	26.61	99.91	12.06	12.00	0.00	260	22	10,833	3,198	12,539.54
988+87.16(6)	98843.36	87.16	61.32	1.70	0.00	0.00	19	0	10,852	3,199	12,558.04
989+00(6)	98856.19	12.84	18.75	0.00	0.00	0.00	35	0	10,887	3,199	12,592.81
990+00(6)	98956.19	100.00	0.03	0.00	0.00	0.00	0	0	10,887	3,199	12,592.87
991+00(6)	99056.19	100.00	0.00	0.00	0.00	0.00	0	0	10,887	3,199	12,592.87
992+00(6)	99156.19	100.00	0.00	0.00	0.00	0.00	0	0	10,887	3,199	12,592.87
993+00(6)	99256.19	100.00	0.00	0.00	0.00	0.00	0	0	10,887	3,199	12,592.87
994+00(6)	99356.19	100.00	14.44	0.00	0.00	0.00	27	0	10,914	3,199	12,619.61
995+00(6)	99456.19	100.00	15.26	0.00	0.00	0.00	55	0	10,969	3,199	12,674.61
996+00(6)	99556.19	100.00	15.22	0.00	0.00	0.00	56	0	11,025	3,199	12,731.06
997+00(6)	99656.19	100.00	16.45	0.00	0.00	0.00	59	0	11,084	3,199	12,789.71
998+00(6)	99756.19	100.00	17.13	0.00	0.00	0.00	62	0	11,146	3,199	12,851.90
999+00(6)	99856.19	100.00	15.37	0.00	0.00	0.00	60	0	11,206	3,199	12,912.09
1000+00(6)	99956.19	100.00	2.95	0.00	1.49	0.00	34	0	11,240	3,199	12,948.78
1001+00(6)	100056.19	100.00	0.00	0.00	0.00	0.00	5	0	11,246	3,199	12,957.01
1002+00(6)	100156.19	100.00	0.00	0.00	0.00	0.00	0	0	11,246	3,199	12,957.01
1003+00(6)	100256.19	100.00	0.00	0.00	0.00	0.00	0	0	11,246	3,199	12,957.01
1004+00(6)	100356.19	100.00	0.00	0.00	0.00	0.00	0	0	11,246	3,199	12,957.01
1005+00(6)	100456.19	100.00	0.00	0.00	0.00	0.00	0	0	11,246	3,199	12,957.01
1006+00(6)	100556.19	100.00	0.00	0.00	0.00	0.00	0	0	11,246	3,199	12,957.01
1007+00(7)	100637.75	81.56	0.00	0.00	0.00	0.00	0	0	11,246	3,199	12,957.01
1008+00(7)	100737.75	100.00	0.00	0.00	0.00	0.00	0	0	11,246	3,199	12,957.01
1009+00(7)	100837.75	100.00	13.20	14.17	0.00	0.00	24	26	11,270	3,234	12,946.55
1010+00(7)	100937.75	100.00	20.62	15.82	0.00	0.00	63	56	11,333	3,307	12,935.30
1011+00(7)	101037.75	100.00	15.60	13.74	0.00	0.00	67	55	11,400	3,380	12,929.56
			Subtotal				3,708	1,577		505	

Addendum No. 03
ID 1440-13-72
Revised Sheet 535
January 10, 2020

STH 23 EB Mainline 1

STATION	Real Station	Distance	AREA (SF)		Incremental Vol (CY) (Unadjusted)			Cumulative Vol (CY)			Mass Ordinate
			Cut	Fill	Subgrade Improvement Excavation	Fill	Subgrade Improvement Excavation	Cut	Expanded Fill		
1012+00(7)	101137.75	100.00	15.62	28.15	0.00	78	0	11,458	3,483	12,884.20	
1013+00(7)	101237.75	100.00	34.51	12.74	0.00	93	0	11,551	3,584	12,876.33	
1013+41.72(7)	101279.47	41.72	46.88	10.11	0.00	63	0	11,613	3,608	12,915.72	
1013+67.74(7)	101305.49	26.02	41.57	9.62	0.00	43	0	11,656	3,620	12,945.70	
1013+83.78(7)	101321.53	16.04	66.88	0.00	0.00	32	0	11,688	3,624	12,974.11	
1014+00(7)	101337.75	16.22	97.61	0.00	8.09	49	2	11,738	3,624	13,025.95	
1014+25.27(7)	101363.02	25.27	136.13	0.00	8.09	109	8	11,847	3,624	13,142.91	
1014+52.13(7)	101389.88	26.85	79.99	4.44	10.35	107	9	11,955	3,627	13,256.62	
1014+88.76(7)	101426.51	36.63	78.41	24.30	14.25	107	17	12,062	3,653	13,354.83	
1015+00(7)	101437.75	11.24	66.33	13.52	0.00	30	3	12,092	3,663	13,377.47	
1015+87.25(7)	101525.00	87.25	31.50	5.36	0.00	158	0	12,250	3,704	13,494.97	
1016+00(7)	101537.75	12.75	11.41	0.00	0.00	10	0	12,260	3,706	13,503.41	
1017+00(7)	101637.75	100.00	6.93	0.00	0.00	34	0	12,294	3,706	13,537.37	
1018+00(7)	101737.75	100.00	7.58	0.00	0.00	27	0	12,321	3,706	13,564.23	
1019+00(7)	101837.75	100.00	4.82	0.19	0.00	23	0	12,344	3,706	13,586.72	
1020+00(7)	101937.75	100.00	5.88	0.00	0.00	20	0	12,364	3,707	13,606.06	
1021+00(7)	102037.75	100.00	0.00	0.00	0.00	11	0	12,375	3,707	13,616.94	
1022+00(7)	102137.75	100.00	0.00	0.00	0.00	0	0	12,375	3,707	13,616.94	
1023+00(7)	102237.75	100.00	0.00	0.00	0.00	0	0	12,375	3,707	13,616.94	
1024+00(7)	102337.75	100.00	0.00	0.00	0.00	0	0	12,375	3,707	13,616.94	
1025+00(7)	102437.75	100.00	0.00	0.00	0.00	0	0	12,375	3,707	13,616.94	
1026+00(7)	102537.75	100.00	7.47	7.33	0.00	14	14	12,389	3,725	13,612.72	
1027+00(7)	102637.75	100.00	13.65	12.08	0.00	39	36	12,428	3,772	13,604.03	
1028+00(7)	102737.75	100.00	22.91	7.80	0.00	68	37	12,495	3,821	13,622.78	
1029+00(7)	102837.75	100.00	17.99	5.01	0.00	76	24	12,571	3,853	13,666.98	
1030+00(7)	102937.75	100.00	27.15	7.38	0.00	84	23	12,655	3,883	13,720.06	
1030+52.06(7)	102989.81	52.06	16.26	20.57	0.00	42	27	12,697	3,919	13,726.07	
1030+82.58(7)	103020.34	30.52	16.77	39.90	0.00	19	34	12,715	3,965	13,699.28	
1031+00(7)	103037.75	17.42	35.15	7.75	0.00	17	15	12,732	3,985	13,695.59	
1031+27.37(7)	103065.12	27.37	50.19	6.59	0.00	43	7	12,775	3,995	13,729.18	
1031+42.32(7)	103080.07	14.95	23.75	48.62	0.00	20	15	12,796	4,015	13,729.32	
1031+69.44(7)	103107.19	27.12	12.39	31.69	0.00	18	40	12,814	4,069	13,693.82	
1032+00(7)	103137.75	30.56	19.13	9.05	0.00	18	23	12,832	4,099	13,680.99	
1033+00(7)	103237.75	100.00	56.21	0.20	0.00	140	0	12,971	4,122	13,797.72	
1034+00(7)	103337.75	100.00	10.80	1.09	0.00	124	2	13,095	4,125	13,918.63	
1035+00(7)	103437.75	100.00	5.89	20.14	0.00	31	39	13,126	4,178	13,897.25	
1036+00(7)	103537.75	100.00	4.46	2.69	0.00	19	42	13,146	4,234	13,860.20	
1037+00(7)	103637.75	100.00	2.32	3.42	0.00	13	11	13,158	4,249	13,857.71	
1037+04.22(7)	103641.97	4.22	2.20	3.44	0.00	0	1	13,158	4,250	13,857.35	
				Subtotal		1,758	654				
						20,173	9,374				
							6,152				

TOTAL
 20,173 9,374 6,152

Addendum No. 03
 ID 1440-13-72
 Revised Sheet 536
 January 10, 2020

Addendum No. 03
 ID 1440-13-72
 Revised Sheet 540
 January 10, 2020

STH 23 WB Mainline 1

STATION	Real Station	Distance	AREA (SF)		Incremental Vol (CY) (Unadjusted)							Cumulative Vol (CY)			
			Cut	Fill	Salvaged/Unusable Pavement Material	Marsh Exc	Rock Exc	Subgrade Improvement Excavation	Subgrade Improvement Excavation	Cut	Fill	Subgrade Improvement Excavation	Cut	Expanded Fill	Mass Ordinate
745+00(1)	74500.00	0.00	0.00	0.00	0.00	0.00	0.00	0.00	0.00	0.00	0.00	0.00	0.00	0.00	0.00
746+00(1)	74600.00	100.00	0.00	0.00	0.00	0.00	0.00	0.00	0.00	0.00	0.00	0.00	0.00	0.00	0.00
747+00(1)	74700.00	100.00	5.51	14.33	0.00	0.00	0.00	0.00	0.00	0.00	0.00	0.00	0.00	0.00	-25.10
748+00(1)	74800.00	100.00	15.49	17.36	0.00	0.00	0.00	0.00	0.00	0.00	0.00	0.00	0.00	0.00	-64.29
749+00(1)	74900.00	100.00	21.52	16.74	0.00	0.00	0.00	0.00	0.00	0.00	0.00	0.00	0.00	0.00	-79.76
750+00(1)	75000.00	100.00	18.46	23.62	0.00	0.00	0.00	0.00	0.00	0.00	0.00	0.00	0.00	0.00	-105.15
751+00(1)	75100.00	100.00	16.15	52.91	0.00	0.00	0.00	0.00	0.00	0.00	0.00	0.00	0.00	0.00	-229.57
752+00(1)	75200.00	100.00	17.49	70.28	0.00	0.00	0.00	0.00	0.00	0.00	0.00	0.00	0.00	0.00	-470.69
753+00(1)	75300.00	100.00	18.49	67.43	0.00	0.00	0.00	0.00	0.00	0.00	0.00	0.00	0.00	0.00	-743.23
754+00(1)	75400.00	100.00	14.34	47.68	0.00	0.00	0.00	0.00	0.00	0.00	0.00	0.00	0.00	0.00	-965.94
755+00(1)	75500.00	100.00	17.11	29.49	0.00	0.00	0.00	0.00	0.00	0.00	0.00	0.00	0.00	0.00	-1,097.76
756+00(1)	75600.00	100.00	6.97	0.16	0.00	0.00	0.00	0.00	0.00	0.00	0.00	0.00	0.00	0.00	-1,027.37
757+00(1)	75700.00	100.00	4.30	0.32	0.00	0.00	0.00	0.00	0.00	0.00	0.00	0.00	0.00	0.00	-810.30
758+00(1)	75800.00	100.00	0.21	0.61	0.00	0.00	0.00	0.00	0.00	0.00	0.00	0.00	0.00	0.00	-607.56
759+00(1)	75900.00	100.00	0.02	0.83	0.00	0.00	0.00	0.00	0.00	0.00	0.00	0.00	0.00	0.00	-414.52
760+00(1)	76000.00	100.00	0.02	0.87	0.00	0.00	0.00	0.00	0.00	0.00	0.00	0.00	0.00	0.00	-232.59
761+00(1)	76100.00	100.00	0.12	0.82	0.00	0.00	0.00	0.00	0.00	0.00	0.00	0.00	0.00	0.00	-30.42
762+00(1)	76200.00	100.00	53.21	0.91	0.00	0.00	0.00	0.00	0.00	0.00	0.00	0.00	0.00	0.00	269.30
763+00(1)	76300.00	100.00	44.81	0.98	0.00	0.00	0.00	0.00	0.00	0.00	0.00	0.00	0.00	0.00	653.38
764+00(1)	76400.00	100.00	38.25	0.00	0.00	0.00	0.00	0.00	0.00	0.00	0.00	0.00	0.00	0.00	904.85
765+00(1)	76500.00	100.00	37.97	0.00	0.00	0.00	0.00	0.00	0.00	0.00	0.00	0.00	0.00	0.00	1,046.01
766+00(1)	76600.00	100.00	36.87	0.00	0.00	0.00	0.00	0.00	0.00	0.00	0.00	0.00	0.00	0.00	1,184.61
767+00(1)	76700.00	100.00	32.12	0.00	0.00	0.00	0.00	0.00	0.00	0.00	0.00	0.00	0.00	0.00	1,312.38
768+00(1)	76800.00	100.00	41.23	0.00	0.00	0.00	0.00	0.00	0.00	0.00	0.00	0.00	0.00	0.00	1,448.22
769+00(1)	76900.00	100.00	30.47	0.84	0.00	0.00	0.00	0.00	0.00	0.00	0.00	0.00	0.00	0.00	1,676.96
770+00(1)	77000.00	100.00	30.09	0.84	0.00	0.00	0.00	0.00	0.00	0.00	0.00	0.00	0.00	0.00	1,981.06
771+00(1)	77100.00	100.00	32.81	0.90	0.00	0.00	0.00	0.00	0.00	0.00	0.00	0.00	0.00	0.00	2,289.26
772+00(1)	77200.00	100.00	4.34	0.05	0.00	0.00	0.00	0.00	0.00	0.00	0.00	0.00	0.00	0.00	2,552.69
773+00(1)	77300.00	100.00	0.08	2.22	0.00	0.00	0.00	0.00	0.00	0.00	0.00	0.00	0.00	0.00	2,750.67
774+00(2)	77384.26	84.26	0.85	21.42	0.00	0.00	0.00	0.00	0.00	0.00	0.00	0.00	0.00	0.00	2,854.01
775+00(2)	77484.26	100.00	0.24	26.15	0.00	0.00	0.00	0.00	0.00	0.00	0.00	0.00	0.00	0.00	2,900.54
776+00(2)	77584.26	100.00	0.00	24.75	0.00	0.00	0.00	0.00	0.00	0.00	0.00	0.00	0.00	0.00	2,945.18
777+00(2)	77684.26	100.00	0.00	25.86	0.00	0.00	0.00	0.00	0.00	0.00	0.00	0.00	0.00	0.00	3,010.75
778+00(2)	77784.26	100.00	0.00	24.43	0.00	0.00	0.00	0.00	0.00	0.00	0.00	0.00	0.00	0.00	3,089.26
779+00(2)	77884.26	100.00	0.00	17.11	0.00	0.00	0.00	0.00	0.00	0.00	0.00	0.00	0.00	0.00	3,123.88
779+09.53(2)	77893.78	9.53	0.00	34.31	0.00	0.00	0.00	0.00	0.00	0.00	0.00	0.00	0.00	0.00	3,115.06
779+37.32(2)	77921.58	27.79	0.00	17.74	0.00	0.00	0.00	0.00	0.00	0.00	0.00	0.00	0.00	0.00	3,079.42
779+44.83(2)	77929.09	7.51	0.00	18.01	0.00	0.00	0.00	0.00	0.00	0.00	0.00	0.00	0.00	0.00	3,072.81
779+82.4(2)	77966.66	37.57	0.00	17.96	0.00	0.00	0.00	0.00	0.00	0.00	0.00	0.00	0.00	0.00	3,039.63
780+00(2)	77984.26	17.60	0.00	17.41	0.00	0.00	0.00	0.00	0.00	0.00	0.00	0.00	0.00	0.00	3,024.34
780+07.9(2)	77992.16	7.90	0.00	17.39	0.00	0.00	0.00	0.00	0.00	0.00	0.00	0.00	0.00	0.00	3,017.57
780+45.47(2)	78029.72	37.57	32.79	63.40	0.00	0.00	0.00	0.00	0.00	0.00	0.00	0.00	0.00	0.00	2,965.63
781+00(2)	78084.26	54.53	0.00	84.11	0.00	0.00	0.00	0.00	0.00	0.00	0.00	0.00	0.00	0.00	2,800.62
782+00(2)	78184.26	100.00	1.43	88.69	0.00	0.00	0.00	0.00	0.00	0.00	0.00	0.00	0.00	0.00	2,377.67
783+00(2)	78284.26	100.00	0.00	89.21	0.00	0.00	0.00	0.00	0.00	0.00	0.00	0.00	0.00	0.00	1,946.02
				Subtotal											
				2,059											
				2,713											
				3,495											

STH 23 WB Mainline 1

Addendum No. 03
ID 1440-13-72
Revised Sheet 541
January 10, 2020

STATION	Real Station	Distance	AREA (SF)		Incremental Vol (CY) (Unadjusted)							Cumulative Vol (CY)		
			Cut	Salvaged/Unusable Pavement Material	Fill	Marsh Exc	Rock Exc	Subgrade Improvement Excavation	Subgrade Improvement Excavation	Fill	Cut	Expanded Fill	Mass Ordinate	
784+00(2)	78384.26	100.00	0.00	0.00	95.58	0.00	0.00	0.00	1.60	342	0	2,059	4,063	1,497.72
785+00(2)	78484.26	100.00	0.00	0.00	90.54	0.00	0.00	0.00	2.15	345	0	2,059	4,522	1,046.24
786+00(2)	78584.26	100.00	0.35	0.00	78.04	0.00	0.00	0.00	2.73	312	1	2,060	4,937	640.73
786+42.66(2)	78626.92	42.66	6.45	0.00	53.80	0.00	0.00	0.00	21.39	104	5	2,065	5,076	526.64
786+93.46(2)	78677.71	50.80	0.62	0.00	49.80	0.00	0.00	0.00	13.62	97	7	2,072	5,205	436.59
787+00(2)	78684.26	6.54	0.53	0.00	68.69	0.00	0.00	0.00	9.44	14	0	2,072	5,224	420.43
788+00(2)	78784.26	100.00	0.19	0.00	70.01	0.00	0.00	0.00	0.00	257	17	2,073	5,566	97.65
789+00(2)	78884.26	100.00	0.00	0.00	65.94	0.00	0.00	0.00	0.00	252	0	2,074	5,901	-236.84
790+00(2)	78984.26	100.00	0.01	0.00	67.73	0.00	0.00	0.00	0.00	248	0	2,074	6,230	-566.08
791+00(2)	79084.26	100.00	0.00	0.00	70.26	0.00	0.00	0.00	0.00	256	0	2,074	6,570	-905.93
792+00(2)	79184.26	100.00	0.00	0.00	73.92	0.00	0.00	0.00	0.00	267	0	2,074	6,925	-1,261.02
793+00(2)	79284.26	100.00	0.00	0.00	75.26	0.00	0.00	0.00	0.00	276	0	2,074	7,292	-1,628.45
794+00(2)	79384.26	100.00	0.00	0.00	74.05	0.00	0.00	0.00	0.00	276	0	2,074	7,660	-1,996.19
795+00(2)	79484.26	100.00	0.00	0.00	73.39	0.00	0.00	0.00	0.00	273	0	2,074	8,023	-2,359.32
796+00(2)	79584.26	100.00	0.00	0.00	74.58	0.00	0.00	0.00	0.00	274	0	2,074	8,388	-2,723.77
797+00(2)	79684.26	100.00	0.00	0.00	78.81	0.00	0.00	0.00	0.00	284	0	2,074	8,766	-3,101.57
798+00(2)	79784.26	100.00	0.00	0.00	82.32	0.00	0.00	0.00	0.00	298	0	2,074	9,162	-3,498.44
799+00(2)	79884.26	100.00	12.55	0.00	86.01	0.00	0.00	0.00	0.00	312	23	2,097	9,577	-3,889.78
800+00(2)	79984.26	100.00	5.46	0.00	75.23	0.00	0.00	0.00	0.00	299	33	2,130	9,974	-4,253.54
801+00(2)	80084.26	100.00	12.66	0.00	76.41	0.00	0.00	0.00	0.00	279	0	2,164	10,346	-4,591.61
802+00(2)	80184.26	100.00	0.00	0.00	76.41	0.00	0.00	0.00	0.00	282	0	2,187	10,720	-4,942.71
803+00(2)	80284.26	100.00	5.97	0.00	77.68	0.00	0.00	0.00	0.00	285	11	2,198	11,100	-5,311.18
803+66.26(2)	80350.51	66.26	14.96	0.00	83.37	0.00	0.00	0.00	0.00	198	26	2,224	11,363	-5,548.31
804+00(2)	80384.26	33.74	1.03	0.00	108.92	0.00	0.00	0.00	20.87	120	13	2,234	11,522	-5,685.09
804+73.55(2)	80457.81	73.55	0.00	0.00	94.94	0.00	0.00	0.00	2.96	278	1	2,235	11,892	-6,020.50
805+00(2)	80484.26	26.45	0.00	0.00	91.21	0.00	0.00	0.00	0.68	91	2	2,235	12,013	-6,139.99
806+00(2)	80584.26	100.00	1.73	0.00	78.26	0.00	0.00	0.00	0.00	314	3	2,239	12,430	-6,552.93
807+00(2)	80684.26	100.00	2.01	0.00	81.33	0.00	0.00	0.00	0.00	296	7	2,246	12,823	-6,939.06
808+00(2)	80784.26	100.00	2.33	0.00	86.08	0.00	0.00	0.00	0.00	310	8	2,254	13,236	-7,343.34
809+00(2)	80884.26	100.00	4.92	0.00	90.29	0.00	0.00	0.00	0.00	327	13	2,267	13,670	-7,764.31
809+31.29(2)	80915.55	31.29	1.37	0.00	95.99	0.00	0.00	0.00	0.00	108	4	2,271	13,814	-7,904.21
809+82.15(2)	80966.41	50.86	0.05	0.00	54.81	0.00	0.00	0.00	47.20	142	1	2,272	14,003	-8,047.30
810+00(2)	80984.26	17.85	0.28	0.00	33.93	0.00	0.00	0.00	44.94	29	0	2,272	14,042	-8,055.75
811+00(2)	81084.26	100.00	0.63	0.00	35.25	0.00	0.00	0.00	39.50	156	2	2,274	14,212	-8,068.09
812+00(2)	81184.26	100.00	0.39	0.00	29.92	0.00	0.00	0.00	44.37	121	155	2,276	14,372	-8,071.41
813+00(2)	81284.26	100.00	0.38	0.00	20.98	0.00	0.00	0.00	47.69	94	170	2,277	14,498	-8,024.88
814+00(2)	81384.26	100.00	0.63	0.00	12.26	0.00	0.00	0.00	50.80	62	182	2,279	14,580	-7,922.50
815+00(2)	81484.26	100.00	6.18	0.00	2.32	0.00	0.00	0.00	55.77	27	197	2,292	14,616	-7,748.46
816+00(2)	81584.26	100.00	1.92	0.00	33.67	0.00	0.00	0.00	48.95	67	156	2,307	14,704	-7,628.17
817+00(2)	81684.26	100.00	0.20	0.00	71.76	0.00	0.00	0.00	92.50	195	262	2,311	14,964	-7,621.96
818+00(2)	81784.26	100.00	0.02	0.00	26.12	0.00	0.00	0.00	43.68	181	252	2,313	15,205	-7,610.44
819+00(2)	81884.26	100.00	1.16	0.00	45.03	0.00	0.00	0.00	44.68	132	164	2,313	15,380	-7,619.88
820+00(2)	81984.26	100.00	541.96	0.00	17.27	0.00	0.00	0.00	41.33	115	1,006	2,319	15,534	-6,608.27
820+91.18(2)	82075.44	91.18	34.88	0.00	32.90	0.00	0.00	0.00	78.64	85	974	4,303	15,646	-5,544.31
821+00(2)	82084.26	8.82	24.25	0.00	26.86	0.00	0.00	0.00	90.91	10	28	4,303	15,659	-5,519.95
					Subtotal					9,061	2,243			

Addendum No. 03
 ID 1440-13-72
 Revised Sheet 542
 January 10, 2020

STH 23 WB Mainline 1

STATION	Real Station	Distance	AREA (SF)		Incremental Vol (CY) (Unadjusted)										Cumulative Vol (CY)	
			Cut	Salvaged/Unusable Pavement Material	Fill	Marsh Exc	Rock Exc	Subgrade Improvement		Fill	Cut	Expanded Fill	Mass Ordinate			
								Excavation	Excavation							
821+21.89(2)	82106.14	21.89	3.21	0.00	9.27	0.00	0.00	0.00	0.00	11	15	15	15,679	4,314	-5,438.73	
821+35.28(2)	82119.54	13.39	3.80	0.00	8.36	0.00	0.00	0.00	0.00	2	15	15	15,685	4,316	-5,370.77	
821+81.29(2)	82165.54	46.01	2.54	0.00	7.22	0.00	0.00	0.00	0.00	5	13	13	15,702	4,321	-5,111.28	
821+93.43(2)	82177.69	12.14	2.34	0.00	8.32	0.00	0.00	0.00	0.00	1	3	3	15,707	4,322	-5,051.09	
822+00(2)	82184.26	6.57	5.83	0.00	2.73	0.00	0.00	0.00	0.00	1	1	1	15,709	4,323	-5,023.78	
822+23.6(2)	82207.86	23.60	20.32	0.00	7.89	0.00	0.00	0.00	0.00	11	5	5	15,715	4,334	-4,937.01	
823+00(2)	82284.26	76.40	18.60	0.00	0.54	0.00	0.00	0.00	0.00	55	12	12	15,731	4,390	-4,678.27	
824+00(2)	82384.26	100.00	16.18	0.00	0.42	0.00	0.00	0.00	0.00	64	2	2	15,733	4,454	-4,339.46	
825+00(2)	82484.26	100.00	0.00	0.00	0.02	0.00	0.00	0.00	0.00	30	1	1	15,734	4,484	-4,027.04	
826+00(2)	82584.26	100.00	0.00	0.00	0.05	0.00	0.00	0.00	0.00	0	2	2	15,734	4,484	-3,747.65	
827+00(2)	82684.26	100.00	0.02	0.00	2.29	0.00	0.00	0.00	0.00	0	4	4	15,740	4,484	-3,515.20	
828+00(2)	82784.26	100.00	0.00	0.00	0.87	0.00	0.00	0.00	0.00	0	6	6	15,748	4,484	-3,320.98	
829+00(2)	82884.26	100.00	0.00	0.00	0.64	0.00	0.00	0.00	0.00	0	3	3	15,752	4,484	-3,128.09	
830+00(2)	82984.26	100.00	0.00	0.00	0.62	0.00	0.00	0.00	0.00	0	2	2	15,755	4,484	-2,934.39	
831+00(2)	83084.26	100.00	0.00	0.00	0.60	0.00	0.00	0.00	0.00	0	2	2	15,758	4,484	-2,740.57	
832+00(2)	83184.26	100.00	0.00	0.00	0.58	0.00	0.00	0.00	0.00	0	2	2	15,761	4,484	-2,546.59	
833+00(2)	83284.26	100.00	0.00	0.00	0.54	0.00	0.00	0.00	0.00	0	2	2	15,763	4,484	-2,352.38	
834+00(2)	83384.26	100.00	0.00	0.00	0.48	0.00	0.00	0.00	0.00	0	2	2	15,766	4,484	-2,157.84	
835+00(2)	83484.26	100.00	0.00	0.00	0.45	0.00	0.00	0.00	0.00	0	2	2	15,768	4,484	-1,962.96	
836+00(2)	83584.26	100.00	0.97	0.00	0.41	0.00	0.00	0.00	0.00	2	2	2	15,770	4,486	-1,766.04	
837+00(2)	83684.26	100.00	2.64	0.00	0.37	0.00	0.00	0.00	0.00	7	1	1	15,772	4,493	-1,662.62	
838+00(2)	83784.26	100.00	2.58	0.00	0.00	0.00	0.00	0.00	0.00	10	1	1	15,773	4,502	-1,653.85	
839+00(2)	83884.26	100.00	3.55	0.00	0.00	0.00	0.00	0.00	0.00	11	0	0	15,773	4,514	-1,642.50	
840+00(2)	83984.26	100.00	4.94	0.00	0.00	0.00	0.00	0.00	0.00	16	0	0	15,773	4,529	-1,626.77	
841+00(2)	84084.26	100.00	2.32	0.00	1.15	0.00	0.00	0.00	0.00	13	2	2	15,776	4,543	-1,616.14	
842+00(2)	84184.26	100.00	0.06	0.00	59.09	0.00	0.00	0.00	0.00	4	112	112	15,924	4,547	-1,760.07	
843+00(2)	84284.26	100.00	0.00	0.00	99.38	0.00	0.00	0.00	0.00	0	293	293	16,315	4,547	-2,150.26	
844+00(2)	84384.26	100.00	0.02	0.00	132.45	0.00	0.00	0.00	0.00	0	429	429	16,886	4,547	-2,721.22	
845+00(2)	84484.26	100.00	0.00	0.00	143.33	0.00	0.00	0.00	0.00	0	511	511	17,565	4,547	-3,400.40	
846+00(2)	84584.26	100.00	0.00	0.00	155.47	0.00	0.00	0.00	0.00	0	553	553	18,301	4,547	-4,136.32	
847+00(2)	84684.26	100.00	0.03	0.00	162.14	0.00	0.00	0.00	0.00	0	588	588	19,083	4,547	-4,918.51	
848+00(2)	84784.26	100.00	0.14	0.00	170.32	0.00	0.00	0.00	0.00	0	616	616	19,902	4,548	-5,737.05	
849+00(2)	84884.26	100.00	0.14	0.00	171.33	0.00	0.00	0.00	0.00	1	633	633	20,743	4,548	-6,578.01	
850+00(2)	84984.26	100.00	0.00	0.00	169.19	0.00	0.00	0.00	0.00	0	631	631	21,582	4,548	-7,416.43	
851+00(2)	85084.26	100.00	0.00	0.00	169.70	0.00	0.00	0.00	0.00	0	628	628	22,417	4,548	-8,251.10	
852+00(2)	85184.26	100.00	0.00	0.00	172.71	0.00	0.00	0.00	0.00	0	634	634	23,260	4,548	-9,094.45	
853+00(2)	85284.26	100.00	0.00	0.00	177.34	0.00	0.00	0.00	0.00	0	648	648	24,122	4,548	-9,956.58	
854+00(2)	85384.26	100.00	0.00	0.00	182.40	0.00	0.00	0.00	0.00	0	666	666	25,008	4,548	-10,842.59	
855+00(2)	85484.26	100.00	0.00	0.00	189.79	0.00	0.00	0.00	0.00	0	689	689	25,925	4,548	-11,759.29	
856+00(2)	85584.26	100.00	0.19	0.00	198.52	0.00	0.00	0.00	0.00	0	719	719	26,881	4,549	-12,715.33	
857+00(2)	85684.26	100.00	0.09	0.00	51.05	0.00	0.00	0.00	0.02	1	462	462	27,496	4,549	-13,329.44	
858+00(2)	85784.26	100.00	0.07	0.00	33.07	0.00	0.00	0.00	0.00	0	156	156	27,703	4,550	-13,536.27	
859+00(2)	85884.26	100.00	0.66	0.00	39.40	0.00	0.00	0.00	0.00	1	134	134	27,882	4,551	-13,713.40	
860+00(2)	85984.26	100.00	0.07	0.00	109.22	0.00	0.00	0.00	0.00	1	109	109	28,248	4,552	-14,078.09	
860+51.79(2)	86036.04	51.79	0.00	0.00	201.12	0.00	0.00	0.00	2.41	0	298	298	28,644	4,552	-14,471.55	
					Subtotal					250	9,763	9,763	3,783			

Addendum No. 03
 ID 1440-13-72
 Revised Sheet 543
 January 10, 2020

STH 23 WB Mainline 1

STATION	Real Station	Distance	AREA (SF)		Incremental Vol (CY) (Unadjusted)										Cumulative Vol (CY)	
			Cut	Salvaged/Unusable Pavement Material	Fill	Marsh Exc	Rock Exc	Subgrade Improvement		Fill	Subgrade Improvement	Cut	Expanded Fill	Mass Ordinate		
								Excavation	Excavation						Excavation	
860+84.11(2)	86068.37	32.33	0.09	0.00	175.15	0.00	0.00	0.00	0.00	20.62	0	225	14	4,552	28,943	-14,757.28
861+00(2)	86084.26	15.89	1.16	0.00	175.39	0.00	0.00	0.00	0.00	26.10	0	103	14	4,553	29,080	-14,880.33
861+59.47(2)	86143.72	59.47	0.05	0.00	177.08	0.00	0.00	0.00	0.00	18.01	1	388	49	4,554	29,596	-15,346.64
862+00(2)	86184.26	40.53	0.25	0.00	215.17	0.00	0.00	0.00	0.00	1.21	0	294	14	4,554	29,988	-15,723.58
863+00(2)	86284.26	100.00	0.35	0.00	197.24	0.00	0.00	0.00	0.00	0.00	1	764	2	4,556	31,004	-16,735.96
864+00(2)	86384.26	100.00	0.00	0.00	185.02	0.00	0.00	0.00	0.00	0.00	1	708	0	4,556	31,945	-17,676.80
865+00(2)	86484.26	100.00	0.00	0.00	173.75	0.00	0.00	0.00	0.00	0.00	0	664	0	4,556	32,829	-18,560.43
866+00(2)	86584.26	100.00	0.00	0.00	167.11	0.00	0.00	0.00	0.00	0.00	0	631	0	4,556	33,668	-19,399.96
867+00(2)	86684.26	100.00	0.00	0.00	150.58	0.00	0.00	0.00	0.00	0.00	0	588	0	4,556	34,451	-20,182.42
868+00(2)	86784.26	100.00	8.25	0.00	25.67	0.00	0.00	0.00	0.00	0.00	15	326	0	4,571	34,885	-20,601.24
869+00(2)	86884.26	100.00	0.00	0.00	0.00	0.00	0.00	0.00	0.00	0.00	15	48	0	4,587	34,948	-20,649.18
870+00(2)	86984.26	100.00	57.89	0.00	0.66	0.00	0.00	0.00	0.00	0.00	107	1	0	4,694	34,950	-20,543.61
871+00(2)	87084.26	100.00	81.55	0.00	9.62	0.00	0.00	0.00	0.00	49.63	258	19	92	4,952	34,975	-20,218.81
872+00(2)	87184.26	100.00	85.53	0.00	7.95	0.00	0.00	0.00	0.00	50.32	309	33	185	5,262	35,018	-19,767.60
873+00(2)	87284.26	100.00	71.54	0.00	7.46	0.00	0.00	0.00	0.00	50.59	291	29	187	5,552	35,056	-19,327.83
874+00(2)	87384.26	100.00	0.21	0.00	7.93	0.00	0.00	0.00	0.00	50.37	133	29	187	5,685	35,094	-19,045.90
875+00(2)	87484.26	100.00	0.00	0.00	8.15	0.00	0.00	0.00	0.00	50.34	0	30	186	5,686	35,134	-18,898.62
876+00(2)	87584.26	100.00	0.02	0.00	14.93	0.00	0.00	0.00	0.00	47.77	0	43	182	5,686	35,191	-18,773.76
877+00(2)	87684.26	100.00	0.00	0.00	37.54	0.00	0.00	0.00	0.00	38.23	0	97	159	5,686	35,320	-18,743.72
878+00(2)	87784.26	100.00	0.13	0.00	12.46	0.00	0.00	0.00	0.00	0.00	0	93	71	5,686	35,443	-18,795.87
879+00(2)	87884.26	100.00	0.00	0.00	0.00	0.00	0.00	0.00	0.00	0.00	0	23	0	5,686	35,474	-18,826.33
880+00(2)	87984.26	100.00	0.00	0.00	0.00	0.00	0.00	0.00	0.00	0.00	0	0	0	5,686	35,474	-18,826.33
881+00(2)	88084.26	100.00	0.00	0.00	0.00	0.00	0.00	0.00	0.00	0.00	0	0	0	5,686	35,474	-18,826.33
882+00(2)	88184.26	100.00	0.00	0.00	0.00	0.00	0.00	0.00	0.00	0.00	0	0	0	5,686	35,474	-18,826.33
883+00(2)	88284.26	100.00	2.09	0.00	10.46	0.00	0.00	0.00	0.00	50.17	4	19	93	5,690	35,500	-18,755.34
884+00(2)	88384.26	100.00	13.95	0.00	0.44	0.00	0.00	0.00	0.00	64.20	30	20	212	5,720	35,527	-18,540.72
885+00(2)	88484.26	100.00	20.06	0.00	0.38	0.00	0.00	0.00	0.00	20.48	63	2	157	5,783	35,529	-18,322.94
886+00(2)	88584.26	100.00	18.37	0.00	0.32	0.00	0.00	0.00	0.00	0.00	71	1	38	5,854	35,530	-18,215.58
887+00(2)	88684.26	100.00	2.12	0.00	0.39	0.00	0.00	0.00	0.00	0.00	38	1	0	5,892	35,532	-18,179.39
887+69.89(2)	88754.14	69.89	5.78	0.00	0.00	0.00	0.00	0.00	0.00	0.00	10	1	0	5,902	35,533	-18,169.83
888+00(2)	88784.26	30.11	7.05	0.00	0.00	0.00	0.00	0.00	0.00	0.00	7	0	0	5,909	35,533	-18,162.68
888+39.94(2)	88824.20	39.94	38.91	0.00	0.00	0.00	0.00	0.00	0.00	0.00	34	0	0	5,943	35,533	-18,128.68
888+60.24(2)	88844.50	20.30	106.98	0.00	0.00	0.00	0.00	0.00	0.00	0.00	55	0	0	5,998	35,533	-18,073.85
889+00(2)	88884.26	39.76	150.67	0.00	0.00	0.00	0.00	0.00	0.00	0.00	190	0	0	6,188	35,533	-17,884.13
889+09.75(2)	88894.01	9.75	77.87	0.00	0.00	0.00	0.00	0.00	0.00	0.00	41	0	0	6,229	35,533	-17,842.87
889+27.14(2)	88911.40	17.40	22.38	0.00	0.00	0.00	0.00	0.00	0.00	0.00	32	0	0	6,261	35,533	-17,810.57
889+77.37(2)	88961.63	50.23	7.84	0.00	0.00	0.00	0.00	0.00	0.00	0.00	28	0	0	6,289	35,533	-17,782.46
890+00(2)	88984.26	22.63	3.43	0.00	0.00	0.00	0.00	0.00	0.00	0.00	5	0	0	6,294	35,533	-17,777.74
891+00(2)	89084.26	100.00	0.02	0.00	0.00	0.00	0.00	0.00	0.00	0.00	6	0	0	6,301	35,533	-17,771.35
892+00(2)	89184.26	100.00	20.52	0.00	0.00	0.00	0.00	0.00	0.00	0.00	38	0	0	6,339	35,533	-17,733.32
893+00(2)	89284.26	100.00	11.33	0.00	7.34	0.00	0.00	0.00	0.00	0.00	59	14	0	6,398	35,551	-17,692.40
894+00(2)	89384.26	100.00	5.94	0.00	2.80	0.00	0.00	0.00	0.00	74.96	32	19	139	6,430	35,576	-17,546.57
895+00(2)	89484.26	100.00	9.38	0.00	52.86	0.00	0.00	0.00	0.00	40.74	28	103	214	6,458	35,713	-17,441.02
896+00(2)	89584.26	100.00	10.74	0.00	48.58	0.00	0.00	0.00	0.00	35.37	37	188	141	6,495	35,963	-17,512.64
897+00(2)	89684.26	100.00	10.90	0.00	55.90	0.00	0.00	0.00	0.00	33.17	40	193	127	6,535	36,220	-17,602.96
					Subtotal						1,983	5,697	2,462			

STH 23 WB Mainline 1

STATION	Real Station	Distance	AREA (SF)		Incremental Vol (CY) (Unadjusted)										Cumulative Vol (CY)					
			Cut	Salvaged/Unusable Pavement Material	Fill	Marsh Exc	Rock Exc	Subgrade Improvement		Fill	Cut	Expanded Fill	Cut	Expanded Fill						
								Excavation	Excavation											
898+00(2)	89784.26	100.00	9.69	0.00	68.51	0.00	0.00	0.00	0.00	0.00	230	38	31.52	120	6,573	36,526	1.00	1.33	Note 1	Note 8
899+00(2)	89884.26	100.00	10.39	0.00	30.87	0.00	0.00	0.00	0.00	0.00	184	37	47.60	147	6,611	36,771	6,611	184	17,751.46	-17,812.53
900+00(2)	89984.26	100.00	16.26	0.00	5.96	0.00	0.00	0.00	0.00	0.00	68	49	50.52	182	6,660	36,862	6,660	182	-17,672.17	-17,672.17
901+00(2)	90084.26	100.00	14.74	0.00	36.47	0.00	0.00	0.00	0.00	0.00	79	57	39.17	166	6,717	36,966	6,717	166	-17,553.15	-17,553.15
901+59.13(2)	90143.38	59.13	3.30	0.00	26.85	0.00	0.00	0.00	0.00	0.00	69	20	42.09	89	6,737	37,059	6,737	89	-17,536.63	-17,536.63
902+00(2)	90184.26	100.00	1.57	0.00	25.95	0.00	0.00	0.00	0.00	0.00	40	4	97.60	106	6,741	37,112	6,741	106	-17,480.36	-17,480.36
902+73.93(2)	90258.18	73.93	1.16	0.00	24.28	0.00	0.00	0.00	0.00	0.00	69	4	62.38	219	6,745	37,203	6,745	219	-17,349.06	-17,349.06
903+00(2)	90284.26	26.07	1.24	0.00	23.67	0.00	0.00	0.00	0.00	0.00	23	23	58.78	58	6,746	37,234	6,746	58	-17,320.19	-17,320.19
904+00(2)	90384.26	100.00	0.55	0.00	21.62	0.00	0.00	0.00	0.00	0.00	84	3	56.40	213	6,749	37,346	6,749	213	-17,215.15	-17,215.15
905+00(2)	90484.26	100.00	0.52	0.00	19.54	0.00	0.00	0.00	0.00	0.00	76	2	19.95	141	6,751	37,447	6,751	141	-17,173.16	-17,173.16
906+00(2)	90584.26	100.00	0.48	0.00	17.84	0.00	0.00	0.00	0.00	0.00	69	2	0.00	37	6,753	37,539	6,753	37	-17,226.43	-17,226.43
907+00(2)	90684.26	100.00	0.32	0.00	14.54	0.00	0.00	0.00	0.00	0.00	52	1	0.00	0	6,754	37,619	6,754	52	-17,304.70	-17,304.70
908+00(2)	90784.26	100.00	0.11	0.00	76.77	0.00	0.00	0.00	0.00	0.00	169	1	0.00	0	6,755	37,844	6,755	169	-17,528.79	-17,528.79
909+00(2)	90884.26	100.00	0.12	0.00	52.64	0.00	0.00	0.00	0.00	0.00	240	0	0.03	0	6,756	38,162	6,756	240	-17,847.06	-17,847.06
910+00(2)	90984.26	100.00	0.99	0.00	1.58	0.00	0.00	0.00	0.00	0.00	100	2	0.00	0	6,758	38,296	6,758	100	-17,978.51	-17,978.51
911+00(2)	91084.26	100.00	10.21	0.00	0.00	0.00	0.00	0.00	0.00	0.00	3	21	0.00	0	6,778	38,300	6,778	21	-17,961.67	-17,961.67
912+00(2)	91184.26	100.00	1.11	0.00	27.88	0.00	0.00	0.00	0.00	0.00	52	21	0.00	0	6,799	38,369	6,799	52	-18,009.40	-18,009.40
913+00(2)	91284.26	100.00	0.21	0.00	31.34	0.00	0.00	0.00	0.00	0.00	110	2	50.13	93	6,802	38,514	6,802	110	-18,059.97	-18,059.97
913+88.52(2)	91372.78	88.52	0.23	0.00	13.76	0.00	0.00	0.00	0.00	0.00	74	1	79.09	212	6,802	38,613	6,802	74	-17,945.72	-17,945.72
914+00(2)	91384.26	11.48	0.94	0.00	16.00	0.00	0.00	0.00	0.00	0.00	22	0	84.32	35	6,814	38,621	6,814	22	-17,919.24	-17,919.24
914+47.25(2)	91431.50	47.25	11.92	0.00	8.95	0.00	0.00	0.00	0.00	0.00	6	11	142.81	199	6,819	38,650	6,819	6	-17,738.65	-17,738.65
914+58.9(2)	91443.15	11.65	12.71	0.00	2.32	0.00	0.00	0.00	0.00	0.00	2	5	172.90	68	6,819	38,653	6,819	2	-17,668.46	-17,668.46
915+00(2)	91484.26	41.10	1.57	0.00	32.47	0.00	0.00	0.00	0.00	0.00	26	11	132.45	232	6,830	38,689	6,830	26	-17,460.38	-17,460.38
915+25.49(2)	91509.75	25.49	31.38	0.00	0.91	0.00	0.00	0.00	0.00	0.00	16	16	122.82	121	6,845	38,710	6,845	16	-17,345.28	-17,345.28
915+47.14(2)	91531.40	21.65	7.27	0.00	0.16	0.00	0.00	0.00	0.00	0.00	15	15	84.74	83	6,861	38,710	6,861	15	-17,247.15	-17,247.15
915+97.53(2)	91581.78	50.39	1.09	0.00	8.24	0.00	0.00	0.00	0.00	0.00	8	8	65.55	140	6,869	38,721	6,869	8	-17,109.52	-17,109.52
916+00(2)	91584.26	2.47	0.92	0.00	6.38	0.00	0.00	0.00	0.00	0.00	1	0	65.27	6	6,869	38,721	6,869	1	-17,104.33	-17,104.33
917+00(2)	91684.26	100.00	0.12	0.00	16.56	0.00	0.00	0.00	0.00	0.00	42	2	61.51	235	6,871	38,778	6,871	42	-16,924.15	-16,924.15
918+00(3)	91779.14	94.88	0.00	0.00	26.08	0.00	0.00	0.00	0.00	0.00	75	0	53.47	202	6,871	38,878	6,871	75	-16,821.53	-16,821.53
919+00(3)	91879.14	100.00	0.00	0.00	22.83	0.00	0.00	0.00	0.00	0.00	91	0	54.58	200	6,871	38,998	6,871	91	-16,741.88	-16,741.88
920+00(3)	91979.14	100.00	0.47	0.00	27.53	0.00	0.00	0.00	0.00	0.00	93	1	46.74	188	6,872	39,122	6,872	93	-16,677.43	-16,677.43
921+00(3)	92079.14	100.00	0.00	0.00	32.40	0.00	0.00	0.00	0.00	0.00	111	0	40.86	162	6,873	39,270	6,873	111	-16,661.95	-16,661.95
922+00(3)	92179.14	100.00	0.00	0.00	31.64	0.00	0.00	0.00	0.00	0.00	119	0	41.08	152	6,873	39,427	6,873	119	-16,667.93	-16,667.93
923+00(3)	92279.14	100.00	0.01	0.00	30.04	0.00	0.00	0.00	0.00	0.00	114	0	41.62	153	6,873	39,579	6,873	114	-16,666.65	-16,666.65
924+00(3)	92379.14	100.00	0.01	0.00	29.46	0.00	0.00	0.00	0.00	0.00	110	0	41.77	154	6,873	39,726	6,873	110	-16,658.70	-16,658.70
925+00(3)	92479.14	100.00	0.08	0.00	29.48	0.00	0.00	0.00	0.00	0.00	109	0	41.70	155	6,873	39,871	6,873	109	-16,649.11	-16,649.11
926+00(3)	92579.14	100.00	0.02	0.00	29.22	0.00	0.00	0.00	0.00	0.00	109	0	41.78	155	6,873	40,016	6,873	109	-16,638.92	-16,638.92
927+00(3)	92679.14	100.00	0.04	0.00	29.67	0.00	0.00	0.00	0.00	0.00	109	0	41.56	154	6,873	40,161	6,873	109	-16,629.54	-16,629.54
928+00(3)	92779.14	100.00	0.30	0.00	31.62	0.00	0.00	0.00	0.00	0.00	114	1	40.80	153	6,874	40,312	6,874	114	-16,627.36	-16,627.36
929+00(3)	92879.14	100.00	0.68	0.00	36.00	0.00	0.00	0.00	0.00	0.00	125	2	47.45	163	6,876	40,478	6,876	125	-16,628.66	-16,628.66
930+00(3)	92979.14	100.00	0.29	0.00	34.54	0.00	0.00	0.00	0.00	0.00	131	2	47.87	177	6,877	40,652	6,877	131	-16,624.09	-16,624.09
931+00(3)	93079.14	100.00	0.13	0.00	33.15	0.00	0.00	0.00	0.00	0.00	125	1	48.50	178	6,878	40,819	6,878	125	-16,611.58	-16,611.58
932+00(3)	93179.14	100.00	0.52	0.00	27.86	0.00	0.00	0.00	0.00	0.00	113	1	59.23	200	6,879	40,969	6,879	113	-16,561.15	-16,561.15
932+70.05(3)	93249.19	70.05	0.03	0.00	25.02	0.00	0.00	0.00	0.00	0.00	201	1	96.09	201	6,880	41,060	6,880	201	-16,450.19	-16,450.19
933+00(3)	93279.14	29.95	2.88	0.00	23.36	0.00	0.00	0.00	0.00	0.00	27	2	98.75	108	6,882	41,096	6,882	27	-16,376.19	-16,376.19
					Subtotal						346		3,666	5,756						

Addendum No. 03
ID 1440-13-72
Revised Sheet 544
January 10, 2020

STH 23 WB Mainline 1

Addendum No. 03
ID 1440-13-72
Revised Sheet 545
January 10, 2020

STATION	Real Station	Distance	AREA (SF)		Incremental Vol (CY) (Unadjusted)							Cumulative Vol (CY)			
			Cut	Fill	Salvaged/Unusable Pavement Material	Fill	Marsh Exc	Rock Exc	Subgrade Improvement Excavation	Cut	Fill	Subgrade Improvement Excavation	Cut	Expanded Fill	Mass Ordinate
933+20.04(3)	93299.18	20.04	0.20	0.00	0.00	25.85	0.00	0.00	0.00	0.00	18	72	6,883	41,120	-16,327.34
934+00(3)	93379.14	79.96	0.00	0.00	0.00	24.01	0.00	0.00	0.00	0.00	74	230	6,883	41,218	-16,195.17
935+00(3)	93479.14	100.00	0.00	0.00	0.00	23.54	0.00	0.00	0.00	0.00	88	222	6,883	41,335	-16,090.25
936+00(3)	93579.14	100.00	0.00	0.00	0.00	23.59	0.00	0.00	0.00	0.00	87	221	6,883	41,451	-15,985.04
937+00(3)	93679.14	100.00	0.00	0.00	0.00	23.65	0.00	0.00	0.00	0.00	93	220	6,883	41,568	-15,881.13
938+00(3)	93779.14	100.00	0.45	0.00	0.00	26.46	0.00	0.00	0.00	1	96	196	6,884	41,691	-15,807.83
939+00(3)	93879.14	100.00	0.00	0.00	0.00	26.27	0.00	0.00	0.00	1	98	165	6,885	41,821	-15,771.77
940+00(3)	93979.14	100.00	0.00	0.00	0.00	25.17	0.00	0.00	0.00	95	95	159	6,885	41,948	-15,739.83
941+00(3)	94079.14	100.00	0.01	0.00	0.00	24.42	0.00	0.00	0.00	92	92	159	6,885	42,070	-15,767.31
942+00(3)	94179.14	100.00	0.01	0.00	0.00	0.00	0.00	0.00	0.00	45	15	15	6,885	42,130	-15,812.57
943+00(3)	94279.14	100.00	0.02	0.00	0.00	0.00	0.00	0.00	0.00	0	0	0	6,885	42,130	-15,812.51
944+00(3)	94379.14	100.00	0.00	0.00	0.00	0.24	0.00	0.00	0.00	0	0	99	6,885	42,131	-15,714.26
944+79.57(3)	94458.71	79.57	0.00	0.00	0.00	0.23	0.00	0.00	0.00	1	150	150	6,885	42,132	-15,564.73
945+00(3)	94479.14	20.43	0.17	0.00	0.00	0.24	0.00	0.00	0.00	0	50	50	6,885	42,132	-15,514.82
946+00(3)	94579.14	100.00	0.00	0.00	0.00	0.24	0.00	0.00	0.00	1	297	297	6,885	42,133	-15,218.64
947+00(3)	94679.14	100.00	0.00	0.00	0.00	0.24	0.00	0.00	0.00	1	271	271	6,885	42,134	-14,949.29
948+00(3)	94779.14	100.00	0.00	0.00	0.00	0.25	0.00	0.00	0.00	1	257	257	6,885	42,135	-14,693.65
949+00(3)	94879.14	100.00	0.00	0.00	0.00	0.24	0.00	0.00	0.00	0	257	257	6,885	42,137	-14,438.03
950+00(3)	94979.14	100.00	0.00	0.00	0.00	0.24	0.00	0.00	0.00	1	250	250	6,885	42,138	-14,189.39
951+00(3)	95079.14	100.00	0.01	0.00	0.00	0.65	0.00	0.00	0.00	2	220	220	6,885	42,140	-13,971.69
952+00(3)	95179.14	100.00	0.01	0.00	0.00	0.94	0.00	0.00	0.00	0	197	197	6,885	42,144	-13,778.92
953+00(3)	95279.14	100.00	0.01	0.00	0.00	0.90	0.00	0.00	0.00	3	196	196	6,885	42,148	-13,587.03
954+00(3)	95379.14	100.00	0.00	0.00	0.00	0.99	0.00	0.00	0.00	3	197	197	6,885	42,153	-13,395.09
955+00(3)	95479.14	100.00	0.00	0.00	0.00	11.86	0.00	0.00	0.00	24	188	188	6,885	42,185	-13,238.25
956+00(3)	95579.14	100.00	0.00	0.00	0.00	17.26	0.00	0.00	0.00	54	175	175	6,885	42,256	-13,135.20
957+00(3)	95679.14	100.00	0.00	0.00	0.00	21.67	0.00	0.00	0.00	72	167	167	6,885	42,352	-13,064.44
958+00(3)	95779.14	100.00	0.00	0.00	0.00	23.63	0.00	0.00	0.00	84	162	162	6,885	42,464	-13,013.60
959+00(3)	95879.14	100.00	0.00	0.00	0.00	25.99	0.00	0.00	0.00	92	160	160	6,885	42,586	-12,976.21
960+00(3)	95979.14	100.00	0.00	0.00	0.00	28.13	0.00	0.00	0.00	100	157	157	6,885	42,719	-12,952.11
961+00(3)	96079.14	100.00	0.00	0.00	0.00	26.61	0.00	0.00	0.00	101	157	157	6,885	42,854	-12,929.68
962+00(3)	96179.14	100.00	0.00	0.00	0.00	25.85	0.00	0.00	0.00	97	158	158	6,885	42,983	-12,900.44
963+00(3)	96279.14	100.00	0.01	0.00	0.00	26.37	0.00	0.00	0.00	97	158	158	6,885	43,112	-12,870.73
964+00(3)	96379.14	100.00	0.00	0.00	0.00	27.29	0.00	0.00	0.00	99	157	157	6,885	43,244	-12,845.56
965+00(3)	96479.14	100.00	0.00	0.00	0.00	32.43	0.00	0.00	0.00	111	156	156	6,885	43,391	-12,836.98
966+00(3)	96579.14	100.00	0.00	0.00	0.00	43.88	0.00	0.00	0.00	141	158	158	6,885	43,579	-12,866.83
967+00(3)	96679.14	100.00	0.00	0.00	0.00	7.01	0.00	0.00	0.00	94	81	81	6,885	43,705	-12,911.35
968+00(3)	96779.14	100.00	1.61	0.00	0.00	0.00	0.00	0.00	0.00	3	13	0	6,888	43,722	-12,925.63
969+00(3)	96879.14	100.00	1.41	0.00	0.00	0.00	0.00	0.00	0.00	6	0	0	6,894	43,722	-12,920.03
969+45.01(3)	96924.15	45.01	1.62	0.00	0.00	0.85	0.00	0.00	0.00	3	1	0	6,897	43,723	-12,918.45
969+58.78(3)	96937.92	13.77	3.01	0.00	0.00	1.19	0.00	0.00	0.00	1	0	0	6,898	43,723	-12,917.96
970+00(3)	96979.14	41.22	10.02	0.00	0.00	36.52	0.00	0.00	0.00	20	29	0	6,908	43,762	-12,946.30
970+26.82(3)	97005.96	26.82	30.81	0.00	0.00	42.63	0.00	0.00	0.00	39	39	0	6,928	43,814	-12,978.31
970+50.77(3)	97029.91	23.95	23.73	0.00	0.00	125.50	0.00	0.00	0.00	24	75	1	6,952	43,913	-13,051.96
970+86.7(3)	97065.84	35.92	0.57	0.00	0.00	102.42	0.00	0.00	0.00	16	152	14	6,968	44,115	-13,223.01
971+00(3)	97079.14	13.30	0.00	0.00	0.00	102.87	0.00	0.00	0.00	0	51	9	6,968	44,182	-13,281.56
						Subtotal				87	2,321	6,094			

Addendum No. 03
 ID 1440-13-72
 Revised Sheet 546
 January 10, 2020

STH 23 WB Mainline 1

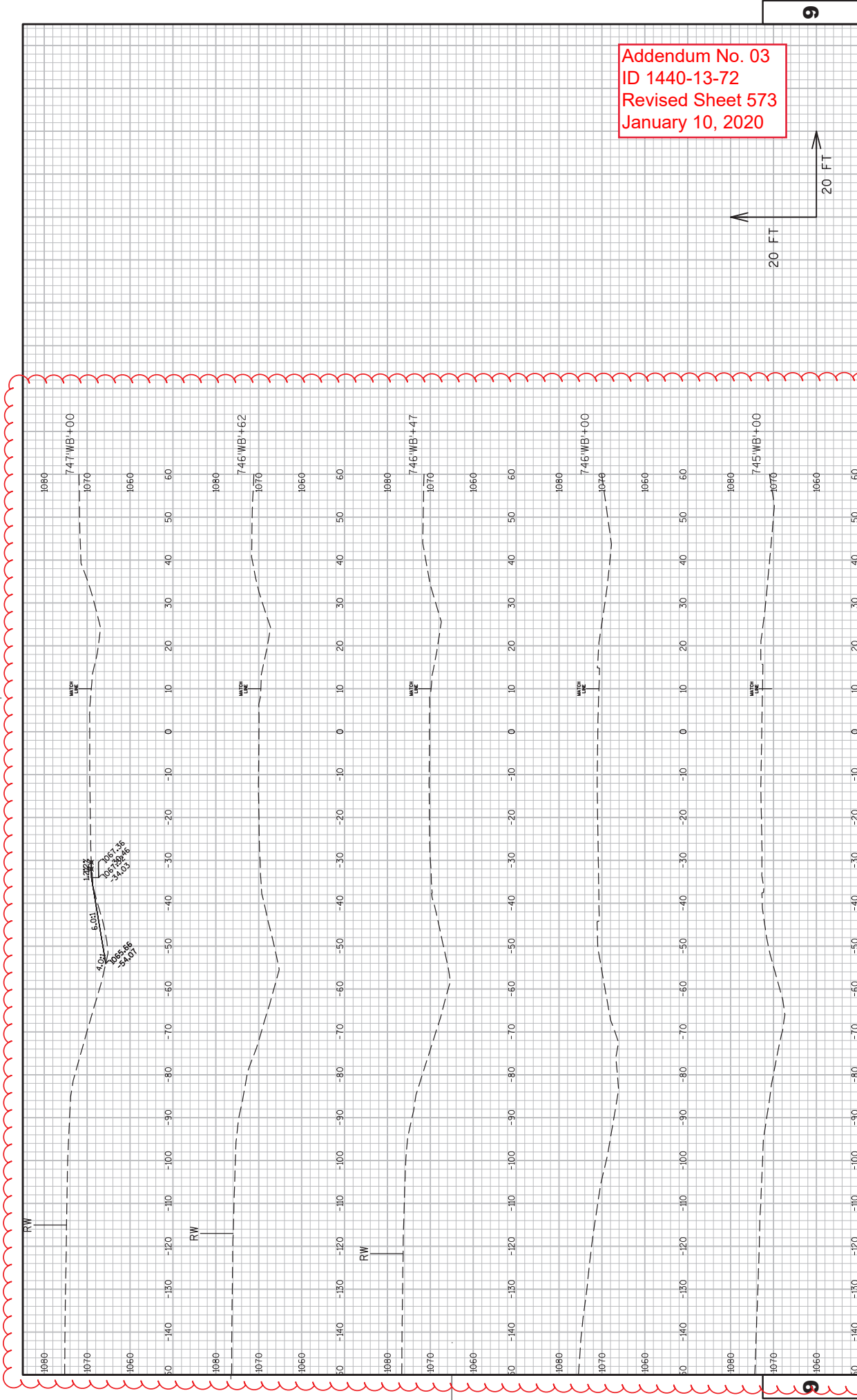
STATION	Real Station	Distance	AREA (SF)		Incremental Vol (CY) (Unadjusted)										Cumulative Vol (CY)	
			Cut	Salvaged/Unusable Pavement Material	Fill	Marsh Exc	Rock Exc	Subgrade Improvement Excavation	Cut	Fill	Subgrade Improvement Excavation	Cut	Expanded Fill	Mass Ordinate		
															Note 1	Note 2
972+00(3)	97179.14	100.00	12.50	0.00	254.37	0.00	0.00	0.00	0.00	0.00	0.00	23	662	6,992	45,062	-14,108.36
973+00(3)	97279.14	100.00	13.35	0.00	32.96	0.00	0.00	0.00	0.00	0.00	0.00	48	532	7,039	45,770	-14,768.16
974+00(3)	97379.14	100.00	13.99	0.00	33.95	0.00	0.00	0.00	0.00	0.00	0.00	51	124	7,090	45,934	-14,882.33
975+00(3)	97479.14	100.00	0.78	0.00	24.53	0.00	0.00	0.00	0.00	0.00	0.00	27	108	7,117	46,079	-14,999.00
976+00(3)	97579.14	100.00	0.47	0.00	24.20	0.00	0.00	0.00	0.00	0.00	0.00	2	90	7,120	46,199	-15,116.71
977+00(3)	97679.14	100.00	0.22	0.00	23.31	0.00	0.00	0.00	0.00	0.00	0.00	1	88	7,121	46,316	-15,232.45
978+00(3)	97779.14	100.00	0.00	0.00	33.26	0.00	0.00	0.00	0.00	0.00	0.00	0	105	7,121	46,455	-15,371.36
979+00(3)	97879.14	100.00	0.03	0.00	197.78	0.00	0.00	0.00	0.00	0.00	0.00	0	428	7,122	47,024	-15,940.33
980+00(3)	97979.14	100.00	0.15	0.00	192.19	0.00	0.00	0.00	0.00	0.00	0.00	0	722	7,122	47,984	-16,900.49
981+00(3)	98079.14	100.00	2.70	0.00	183.46	0.00	0.00	0.00	0.00	0.00	0.00	5	696	7,127	48,910	-17,820.42
982+00(3)	98179.14	100.00	0.83	0.00	184.49	0.00	0.00	0.00	0.00	0.00	0.00	7	681	7,134	49,816	-18,716.35
983+00(3)	98279.14	100.00	1.99	0.00	125.96	0.00	0.00	0.00	0.00	0.00	0.00	5	575	7,139	50,580	-19,455.24
984+00(3)	98379.14	100.00	0.01	0.00	84.44	0.00	0.00	0.00	0.00	0.00	0.00	4	390	7,143	51,099	-19,933.50
985+00(3)	98479.14	100.00	0.06	0.00	79.07	0.00	0.00	0.00	0.00	0.00	0.00	0	303	7,143	51,501	-20,281.99
986+00(3)	98579.14	100.00	8.12	0.00	90.09	0.00	0.00	0.00	0.00	0.00	0.00	15	313	7,158	51,918	-20,589.54
986+44.26(3)	98623.40	44.26	0.79	0.00	60.84	0.00	0.00	0.00	0.00	0.00	0.00	7	124	7,165	52,083	-20,689.40
986+75.46(3)	98654.60	31.20	2.16	0.00	16.93	0.00	0.00	0.00	0.00	0.00	0.00	2	45	7,167	52,142	-20,669.45
987+00(3)	98679.14	24.54	4.60	0.00	10.47	0.00	0.00	0.00	0.00	0.00	0.00	3	12	7,170	52,159	-20,596.37
987+22.96(3)	98702.10	22.96	24.65	0.00	5.40	0.00	0.00	0.00	0.00	0.00	0.00	12	7	7,182	52,168	-20,512.60
987+43.97(3)	98723.11	21.02	12.51	0.00	3.45	0.00	0.00	0.00	0.00	0.00	0.00	14	3	7,197	52,172	-20,455.13
987+82.88(3)	98762.02	38.91	11.30	0.00	37.47	0.00	0.00	0.00	0.00	0.00	0.00	17	29	7,214	52,212	-20,454.09
988+00(3)	98779.14	17.12	140.16	0.00	12.88	0.00	0.00	0.00	0.00	0.00	0.00	48	16	7,262	52,233	-20,421.89
989+00(3)	98879.14	100.00	2.42	0.00	0.00	0.00	0.00	0.00	0.00	0.00	0.00	264	24	7,526	52,265	-20,167.74
990+00(3)	98979.14	100.00	1.09	0.00	0.00	0.00	0.00	0.00	0.00	0.00	0.00	7	0	7,533	52,265	-20,161.23
991+00(3)	99079.14	100.00	0.79	0.00	5.71	0.00	0.00	0.00	0.00	0.00	0.00	3	11	7,536	52,279	-20,171.80
992+00(3)	99179.14	100.00	0.06	0.00	13.54	0.00	0.00	0.00	0.00	0.00	0.00	2	36	7,538	52,326	-20,217.63
993+00(3)	99279.14	100.00	0.00	0.00	0.00	0.00	0.00	0.00	0.00	0.00	0.00	0	25	7,538	52,359	-20,250.86
994+00(3)	99379.14	100.00	0.00	0.00	0.00	0.00	0.00	0.00	0.00	0.00	0.00	0	0	7,538	52,359	-20,250.86
995+00(3)	99479.14	100.00	2.03	0.00	0.02	0.00	0.00	0.00	0.00	0.00	0.00	4	0	7,542	52,359	-20,247.13
996+00(3)	99579.14	100.00	1.66	0.00	1.63	0.00	0.00	0.00	0.00	0.00	0.00	7	3	7,548	52,363	-20,244.35
997+00(3)	99679.14	100.00	2.16	0.00	0.43	0.00	0.00	0.00	0.00	0.00	0.00	7	4	7,555	52,369	-20,242.36
998+00(3)	99779.14	100.00	2.33	0.00	0.14	0.00	0.00	0.00	0.00	0.00	0.00	8	1	7,564	52,370	-20,235.45
998+56.88(3)	99836.02	56.88	2.11	0.00	0.23	0.00	0.00	0.00	0.00	0.00	0.00	5	0	7,568	52,370	-20,231.30
999+00(3)	99879.14	43.12	1.53	0.00	3.33	0.00	0.00	0.00	0.00	0.00	0.00	3	3	7,571	52,374	-20,232.17
999+70.42(3)	99949.56	70.42	9.45	0.00	18.59	0.00	0.00	0.00	0.00	0.00	0.00	14	29	7,586	52,412	-20,255.85
1000+00(3)	99979.14	29.58	1.32	0.00	56.72	0.00	0.00	0.00	0.00	0.00	0.00	6	41	7,592	52,467	-20,285.45
1001+00(3)	100079.14	100.00	1.02	0.00	181.56	0.00	0.00	0.00	0.00	0.00	0.00	4	441	7,596	53,054	-20,802.51
1002+00(3)	100179.14	100.00	0.08	0.00	83.09	0.00	0.00	0.00	0.00	0.00	0.00	2	490	7,598	53,706	-21,452.30
1003+00(3)	100279.14	100.00	0.05	0.00	80.47	0.00	0.00	0.00	0.00	0.00	0.00	0	303	7,598	54,109	-21,854.90
1004+00(3)	100379.14	100.00	5.21	0.00	74.93	0.00	0.00	0.00	0.00	0.00	0.00	10	288	7,608	54,491	-22,227.88
1005+00(3)	100479.14	100.00	0.05	0.00	11.85	0.00	0.00	0.00	0.00	0.00	0.00	10	161	7,618	54,705	-22,431.87
1006+00(3)	100579.14	100.00	0.08	0.00	8.52	0.00	0.00	0.00	0.00	0.00	0.00	0	38	7,618	54,755	-22,481.81
1007+00(3)	100679.14	100.00	1.18	0.00	8.32	0.00	0.00	0.00	0.00	0.00	0.00	2	31	7,620	54,797	-22,520.96
1008+00(3)	100779.14	100.00	0.04	0.00	12.86	0.00	0.00	0.00	0.00	0.00	0.00	2	39	7,623	54,849	-22,570.88
1009+00(3)	100879.14	100.00	0.00	0.00	124.08	0.00	0.00	0.00	0.00	0.00	0.00	0	254	7,623	55,186	-22,908.09
				Subtotal								654	8,274			

Addendum No. 03
 ID 1440-13-72
 Revised Sheet 547
 January 10, 2020

STH 23 WB Mainline 1

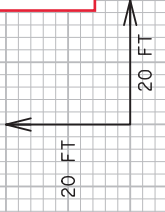
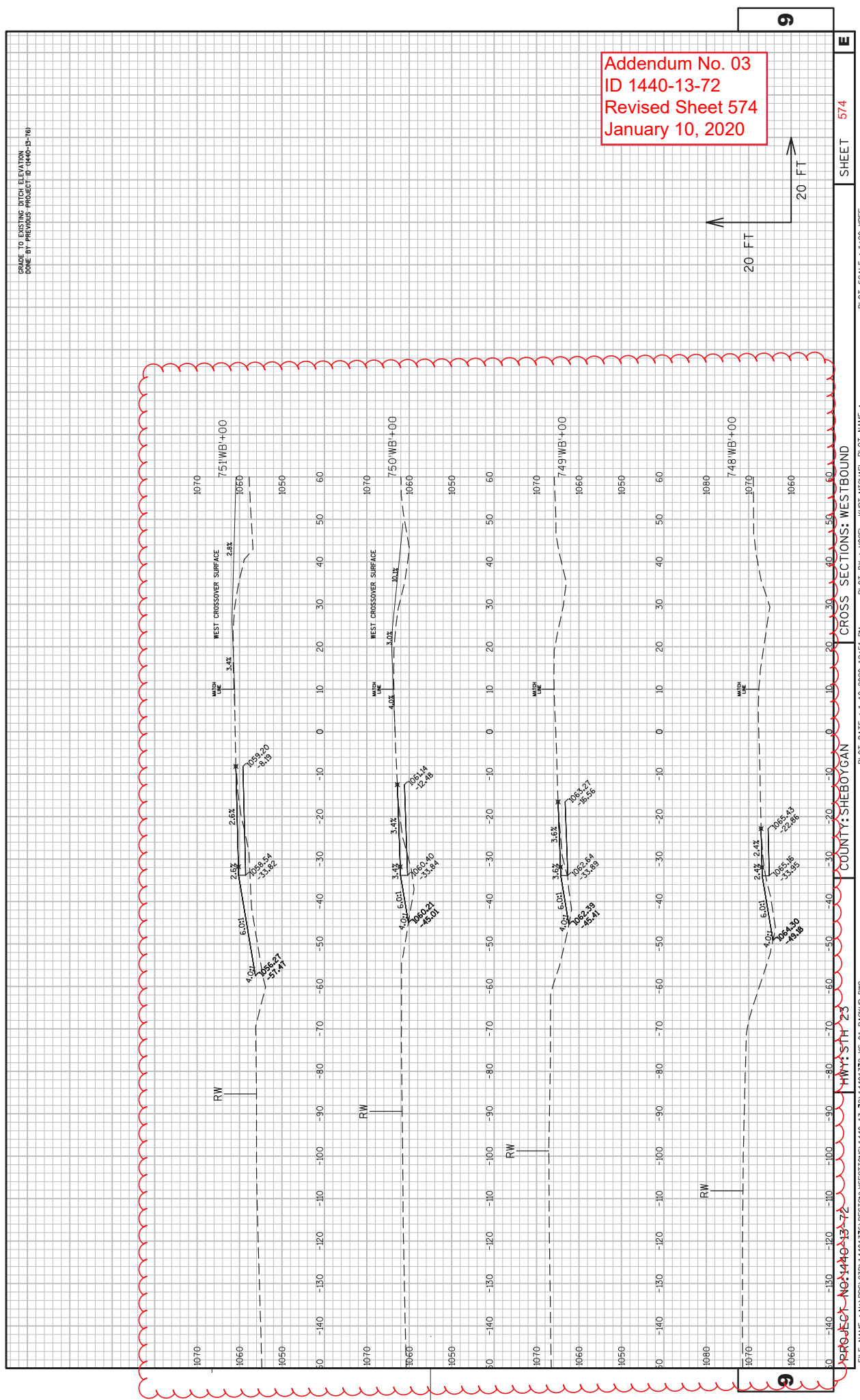
STATION	Real Station	Distance	AREA (SF)		Incremental Vol (CY) (Unadjusted)							Cumulative Vol (CY)						
			Cut	Subgrade Improvement Excavation	Salvaged/Unusable Pavement Material	Fill	Marsh Exc	Rock Exc	Subgrade Improvement Excavation	Cut	Fill	Subgrade Improvement Excavation	Cut	Expanded Fill	Mass Ordinate			
1010+00(3)	100979.14	100.00	0.00	0.00	0.00	109.74	0.00	0.00	0.00	0.00	0.00	0.00	433	0	7,623	55,762	-23,484.00	
1011+00(3)	101079.14	100.00	0.00	0.00	0.00	94.80	0.00	0.00	0.00	0.00	0.00	0.00	379	0	7,623	56,266	-23,987.78	
1012+00(3)	101179.14	100.00	0.00	0.00	0.00	89.60	0.00	0.00	0.00	0.00	0.00	0.00	341	0	7,623	56,720	-24,441.95	
1013+00(3)	101279.14	100.00	1.43	0.00	0.00	86.46	0.00	0.00	0.00	0.00	0.00	0.00	326	3	7,625	57,154	-24,872.92	
1014+00(3)	101379.14	100.00	1.20	0.00	0.00	74.97	0.00	0.00	0.00	0.00	0.00	0.00	299	5	7,630	57,551	-25,265.66	
1015+00(3)	101479.14	100.00	1.68	0.00	0.00	27.67	0.00	0.00	31.79	0.00	0.00	0.00	190	5	7,635	57,804	-25,454.26	
1016+00(3)	101579.14	100.00	1.10	0.00	0.00	3.12	0.00	0.00	0.00	0.00	0.00	0.00	57	5	7,641	57,880	-25,466.08	
1017+00(3)	101679.14	100.00	0.45	0.00	0.00	3.59	0.00	0.00	0.00	0.00	0.00	0.00	12	3	7,643	57,897	-25,479.74	
1018+00(3)	101779.14	100.00	0.29	0.00	0.00	5.24	0.00	0.00	0.00	0.00	0.00	0.00	16	1	7,645	57,918	-25,500.13	
1019+00(3)	101879.14	100.00	0.00	0.00	0.00	3.14	0.00	0.00	0.00	0.00	0.00	0.00	16	1	7,645	57,939	-25,520.23	
1019+18.42(3)	101897.56	18.42	0.36	0.00	0.00	1.37	0.00	0.00	0.00	0.00	0.00	0.00	2	0	7,645	57,941	-25,522.16	
1019+67.98(3)	101947.12	49.57	0.51	0.00	0.00	2.37	0.00	0.00	0.00	0.00	0.00	0.00	3	0	7,646	57,946	-25,525.92	
1020+00(3)	101979.14	32.02	1.35	0.00	0.00	0.84	0.00	0.00	0.00	0.00	0.00	0.00	2	0	7,647	57,948	-25,527.35	
1021+00(3)	102079.14	100.00	0.00	0.00	0.00	0.00	0.00	0.00	0.00	0.00	0.00	0.00	2	2	7,650	57,950	-25,526.93	
1022+00(3)	102179.14	100.00	0.00	0.00	0.00	0.00	0.00	0.00	0.00	0.00	0.00	0.00	0	0	7,650	57,950	-25,526.93	
1023+00(3)	102279.14	100.00	0.00	0.00	0.00	0.00	0.00	0.00	0.00	0.00	0.00	0.00	0	0	7,650	57,950	-25,526.93	
1024+00(3)	102379.14	100.00	0.00	0.00	0.00	0.00	0.00	0.00	0.00	0.00	0.00	0.00	0	0	7,650	57,950	-25,526.93	
1025+00(3)	102479.14	100.00	0.00	0.00	0.00	0.00	0.00	0.00	0.00	0.00	0.00	0.00	0	0	7,650	57,950	-25,526.93	
1026+00(3)	102579.14	100.00	0.00	0.00	0.00	1.24	0.00	0.00	0.00	0.00	0.00	0.00	2	0	7,650	57,953	-25,529.99	
1027+00(3)	102679.14	100.00	0.00	0.00	0.00	7.94	0.00	0.00	0.00	0.00	0.00	0.00	17	0	7,650	57,976	-25,552.60	
1028+00(3)	102779.14	100.00	0.00	0.00	0.00	13.32	0.00	0.00	0.00	0.00	0.00	0.00	39	0	7,650	58,028	-25,604.96	
1029+00(3)	102879.14	100.00	0.00	0.00	0.00	14.25	0.00	0.00	0.00	0.00	0.00	0.00	51	0	7,650	58,096	-25,672.85	
1030+00(3)	102979.14	100.00	0.00	0.00	0.00	16.55	0.00	0.00	0.00	0.00	0.00	0.00	57	0	7,650	58,172	-25,748.72	
1030+39.34(3)	103018.48	39.34	0.00	0.00	0.00	21.12	0.00	0.00	0.00	0.00	0.00	0.00	27	0	7,650	58,208	-25,785.21	
1030+75.63(3)	103054.77	36.29	0.00	0.00	0.00	10.76	0.00	0.00	0.00	0.00	0.00	0.00	21	0	7,650	58,237	-25,813.71	
1031+00(3)	103079.14	24.37	0.00	0.00	0.00	125.46	0.00	0.00	0.00	0.00	0.00	0.00	61	0	7,650	58,319	-25,895.47	
1031+33.05(3)	103112.19	33.05	0.00	0.00	0.00	10.77	0.00	0.00	0.00	0.00	0.00	0.00	83	0	7,650	58,430	-26,006.37	
1031+61.81(3)	103140.95	28.76	0.00	0.00	0.00	6.88	0.00	0.00	0.00	0.00	0.00	0.00	9	0	7,650	58,442	-26,018.88	
1032+00(3)	103179.14	38.19	2.37	0.00	0.00	0.32	0.00	0.00	0.00	0.00	0.00	0.00	5	0	7,652	58,449	-26,023.97	
1033+00(3)	103279.14	100.00	0.02	0.00	0.00	0.00	0.00	0.00	0.00	0.00	0.00	0.00	1	0	7,656	58,450	-26,020.33	
1034+00(3)	103379.14	100.00	0.00	0.00	0.00	0.48	0.00	0.00	0.00	0.00	0.00	0.00	1	0	7,656	58,451	-26,021.46	
1035+00(3)	103479.14	100.00	0.00	0.00	0.00	0.57	0.00	0.00	0.00	0.00	0.00	0.00	2	0	7,656	58,453	-26,024.05	
1036+00(3)	103579.14	100.00	0.00	0.00	0.00	0.18	0.00	0.00	0.00	0.00	0.00	0.00	1	0	7,656	58,455	-26,025.89	
1037+00(3)	103679.14	100.00	0.00	0.00	0.00	0.36	0.00	0.00	0.00	0.00	0.00	0.00	1	0	7,656	58,457	-26,027.20	
						Subtotal							33	2,459	118			
						TOTAL							7,656	43,952	24,773			

Addendum No. 03
ID 1440-13-72
Revised Sheet 573
January 10, 2020



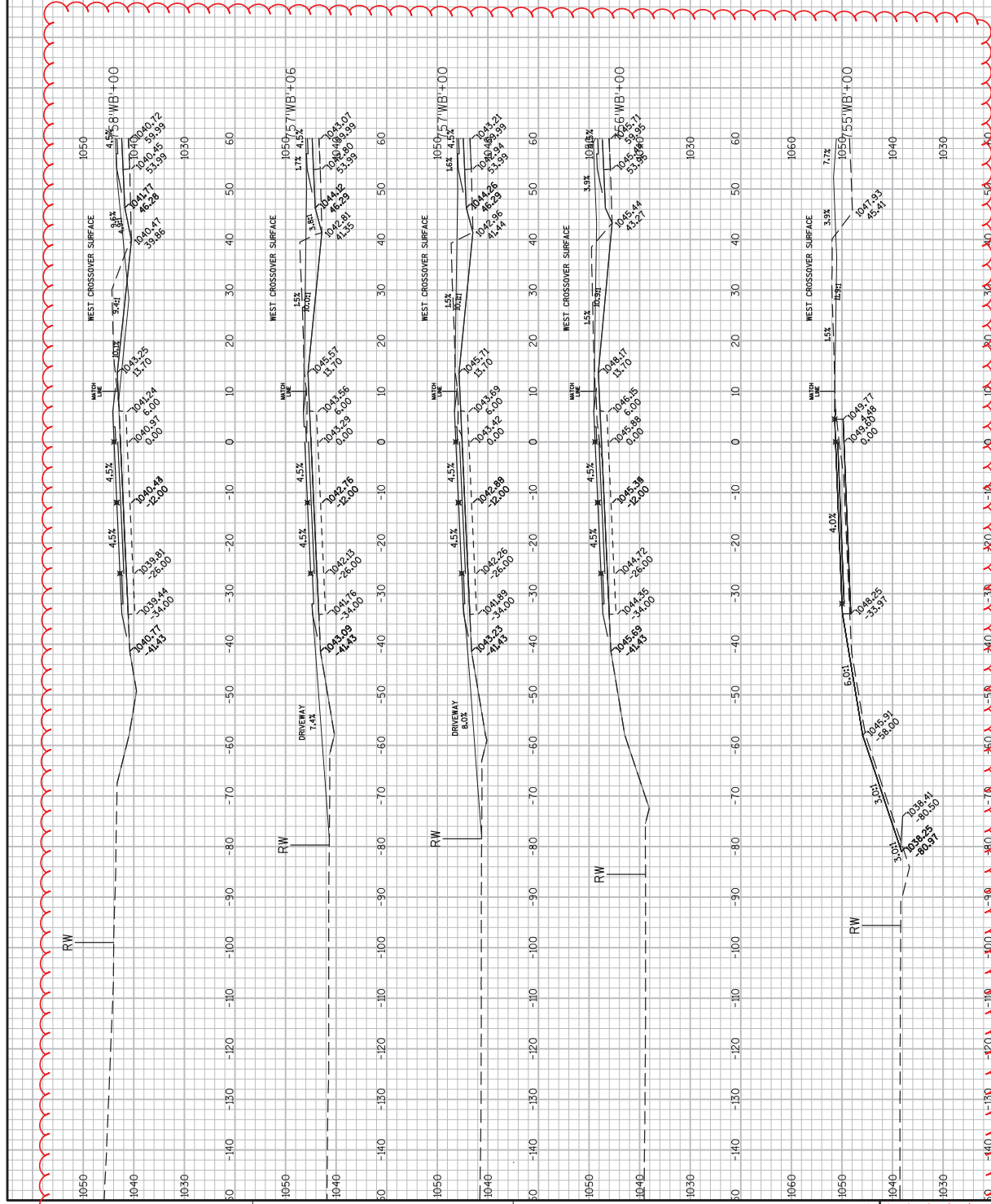
GRADE TO EXISTING DITCH ELEVATION
DONE BY PREVIOUS PROJECT ID 1440-13-16

Addendum No. 03
ID 1440-13-72
Revised Sheet 574
January 10, 2020

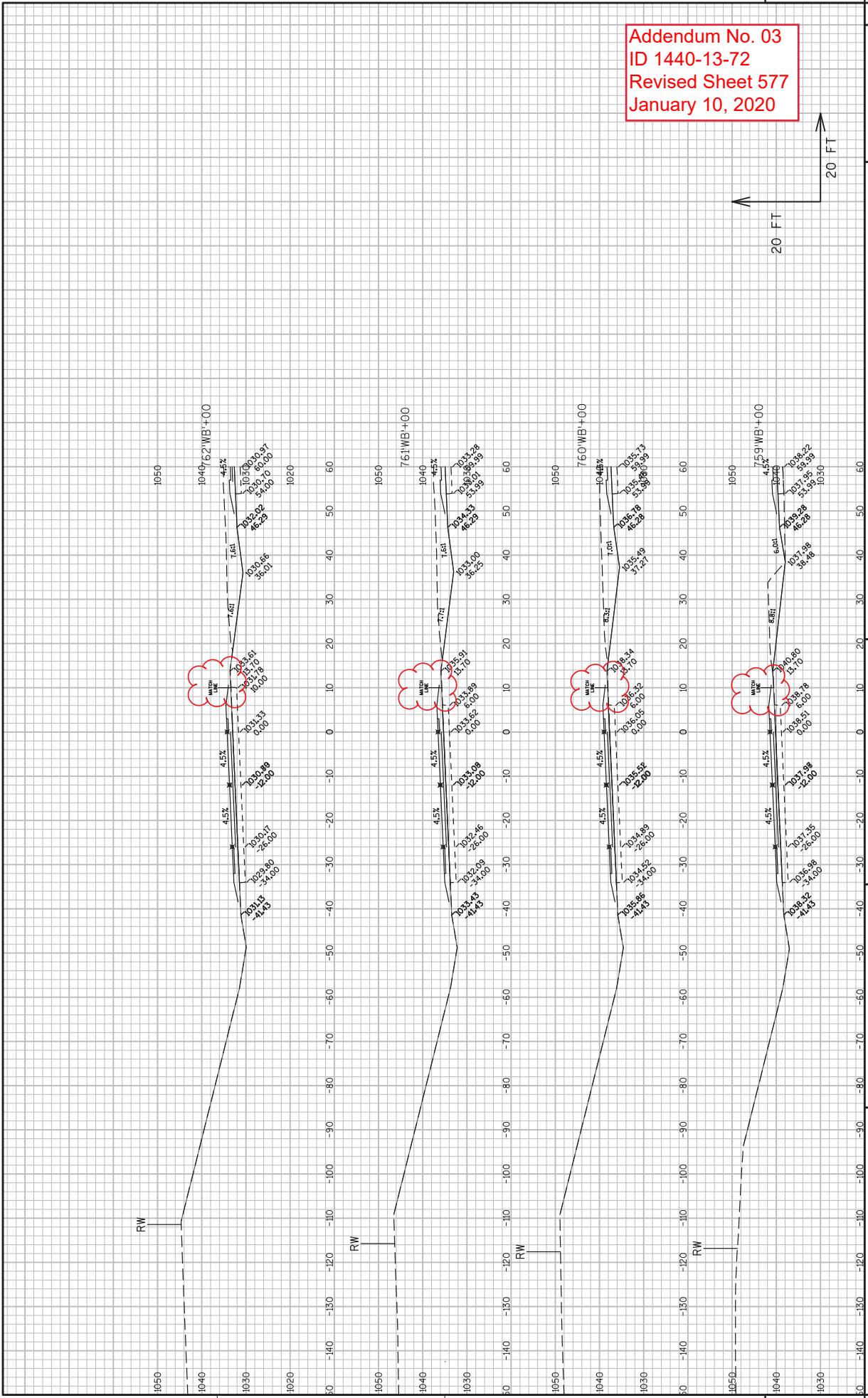


GRADE TO EXISTING DITCH ELEVATION
DONE BY PREVIOUS PROJECT ID 1440-5-16

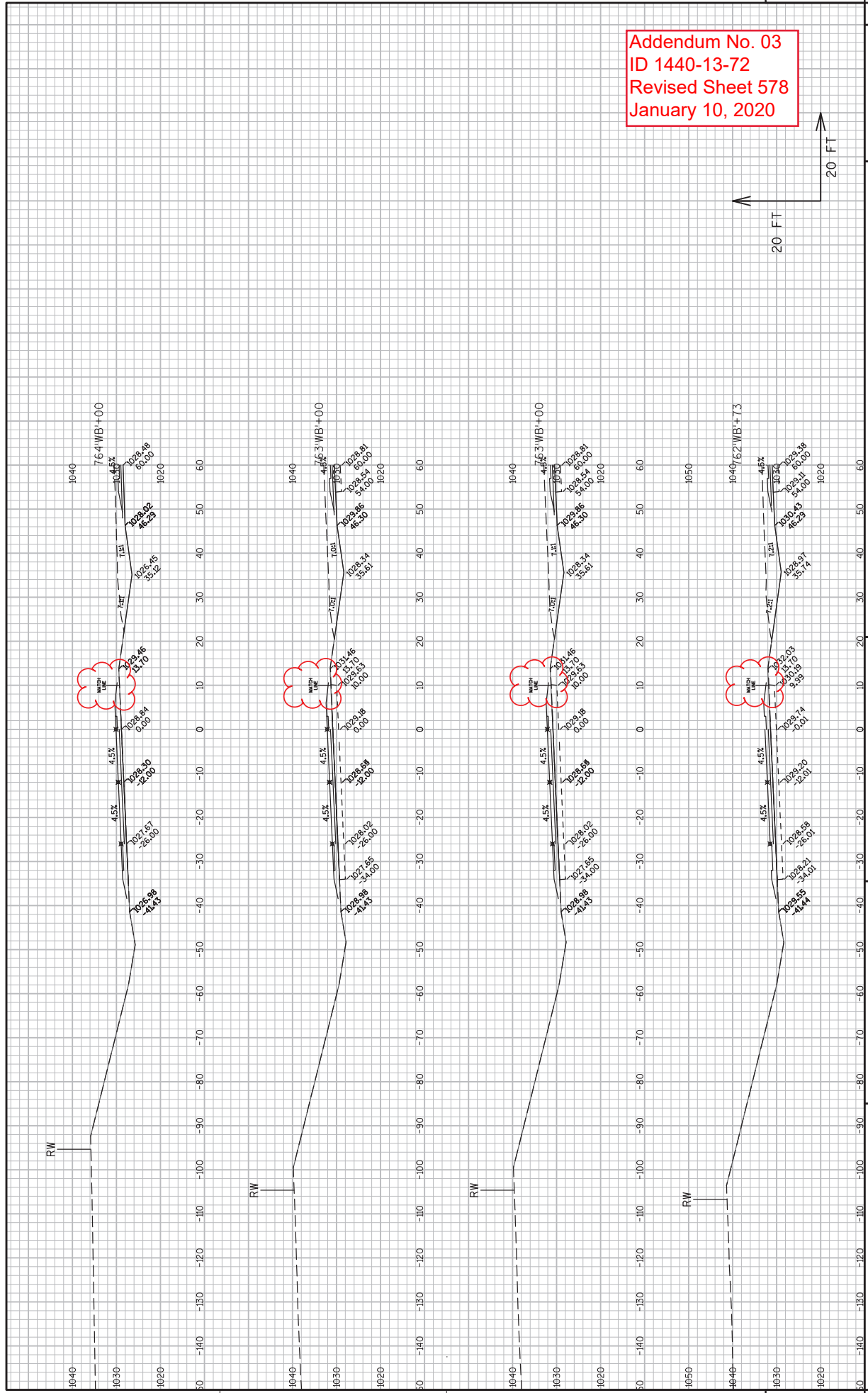
Addendum No. 03
ID 1440-13-72
Revised Sheet 576
January 10, 2020



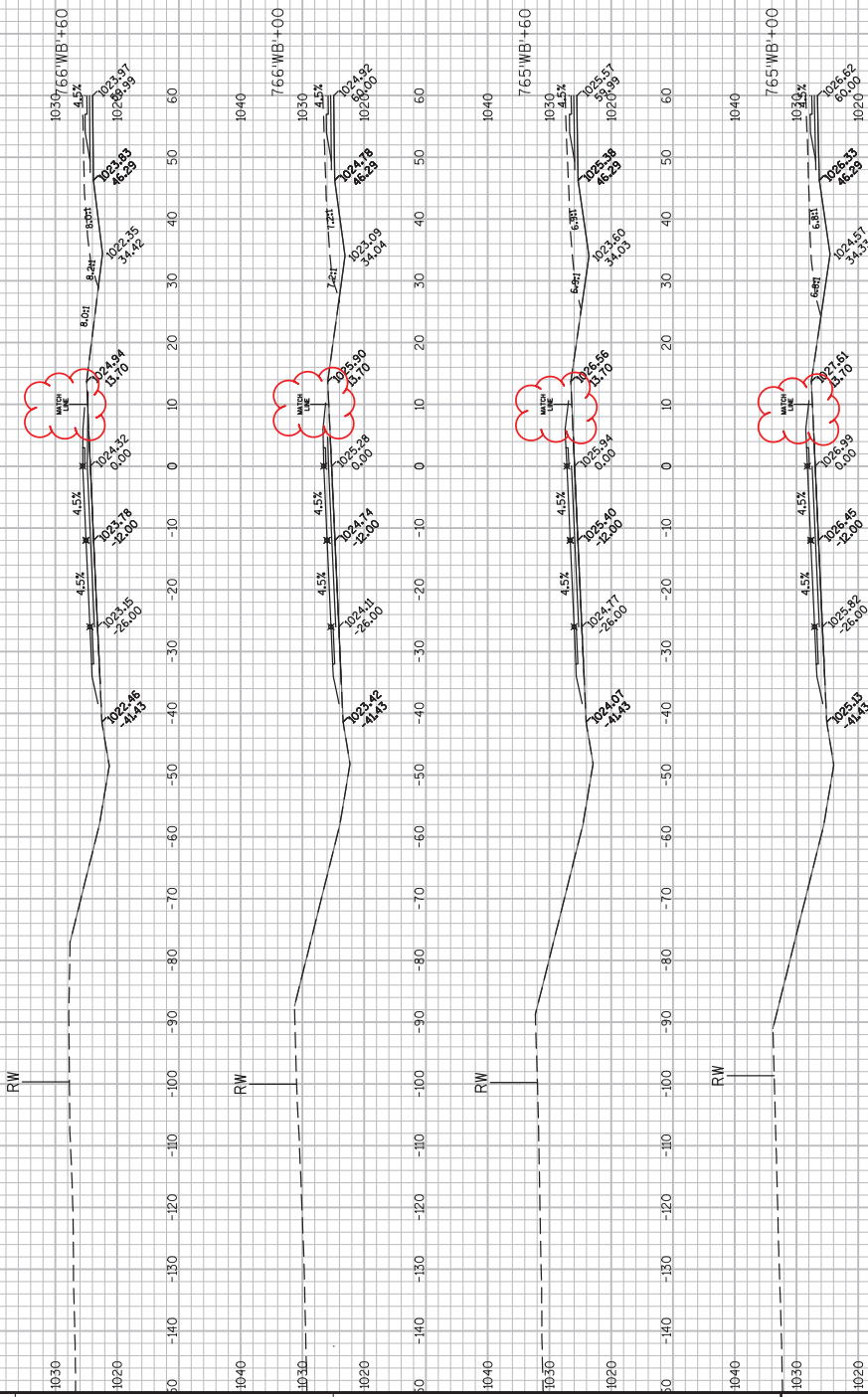
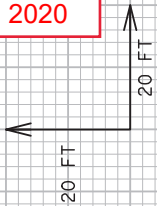
Addendum No. 03
 ID 1440-13-72
 Revised Sheet 577
 January 10, 2020



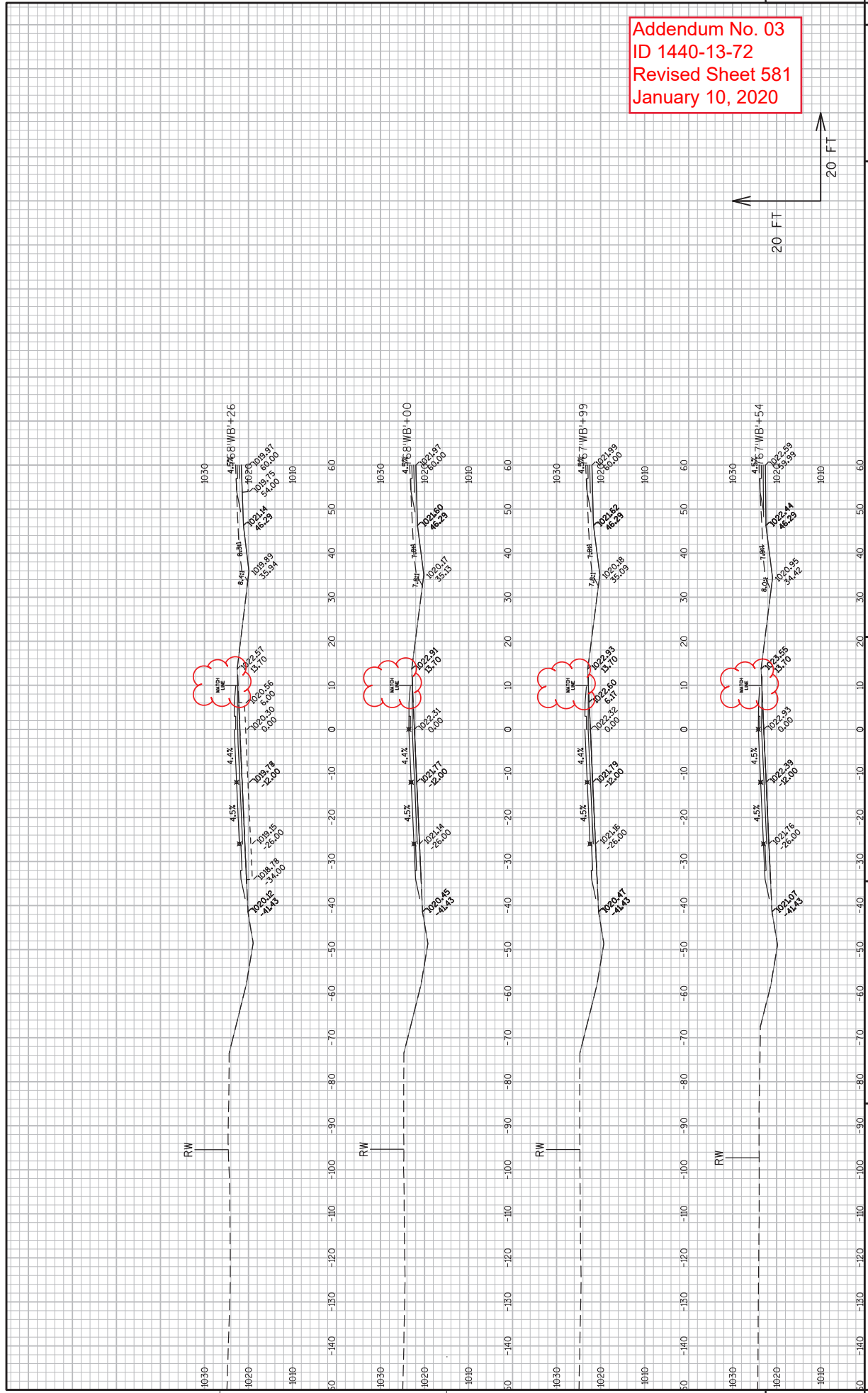
Addendum No. 03
 ID 1440-13-72
 Revised Sheet 578
 January 10, 2020



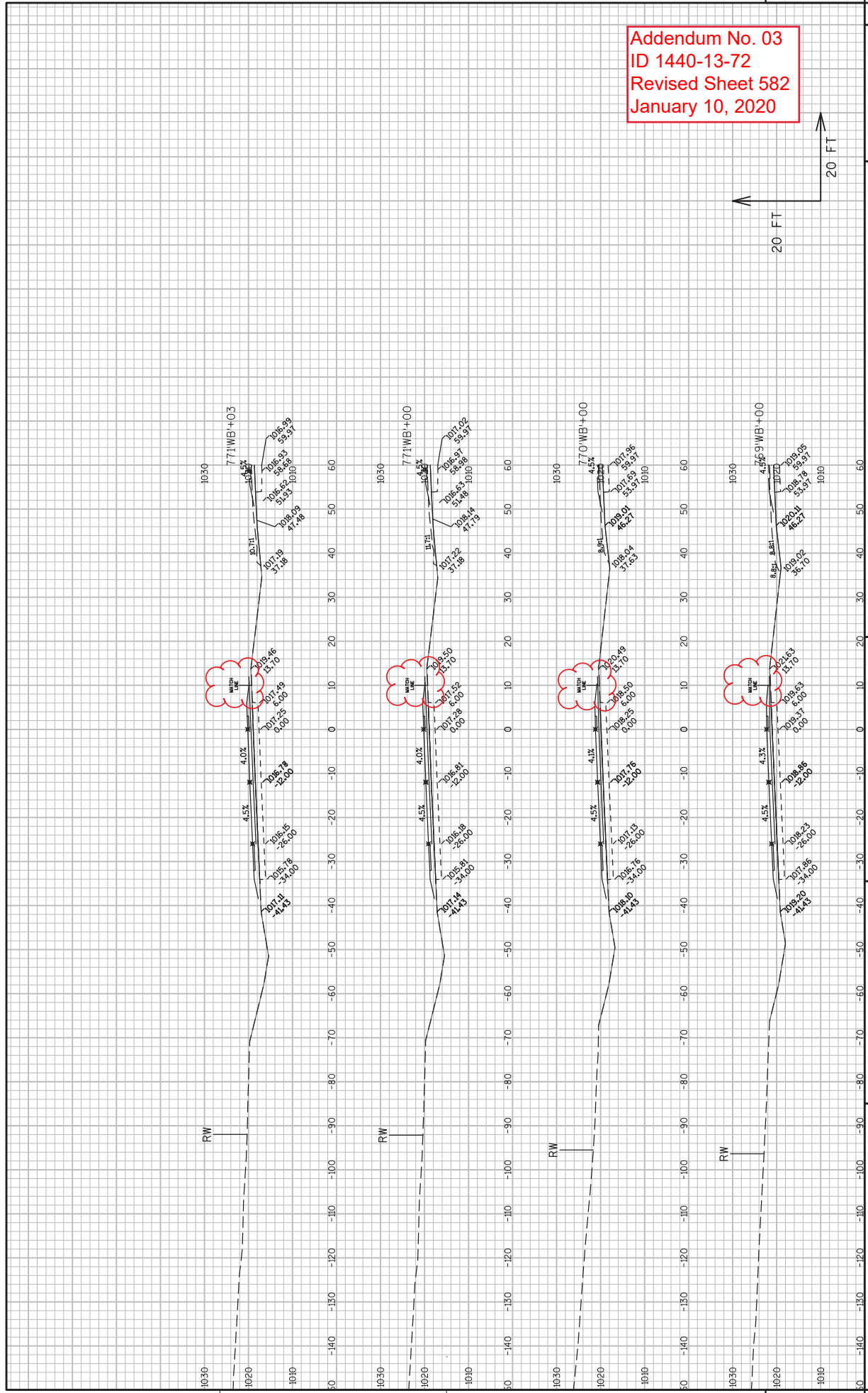
Addendum No. 03
ID 1440-13-72
Revised Sheet 579
January 10, 2020



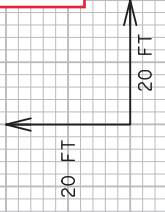
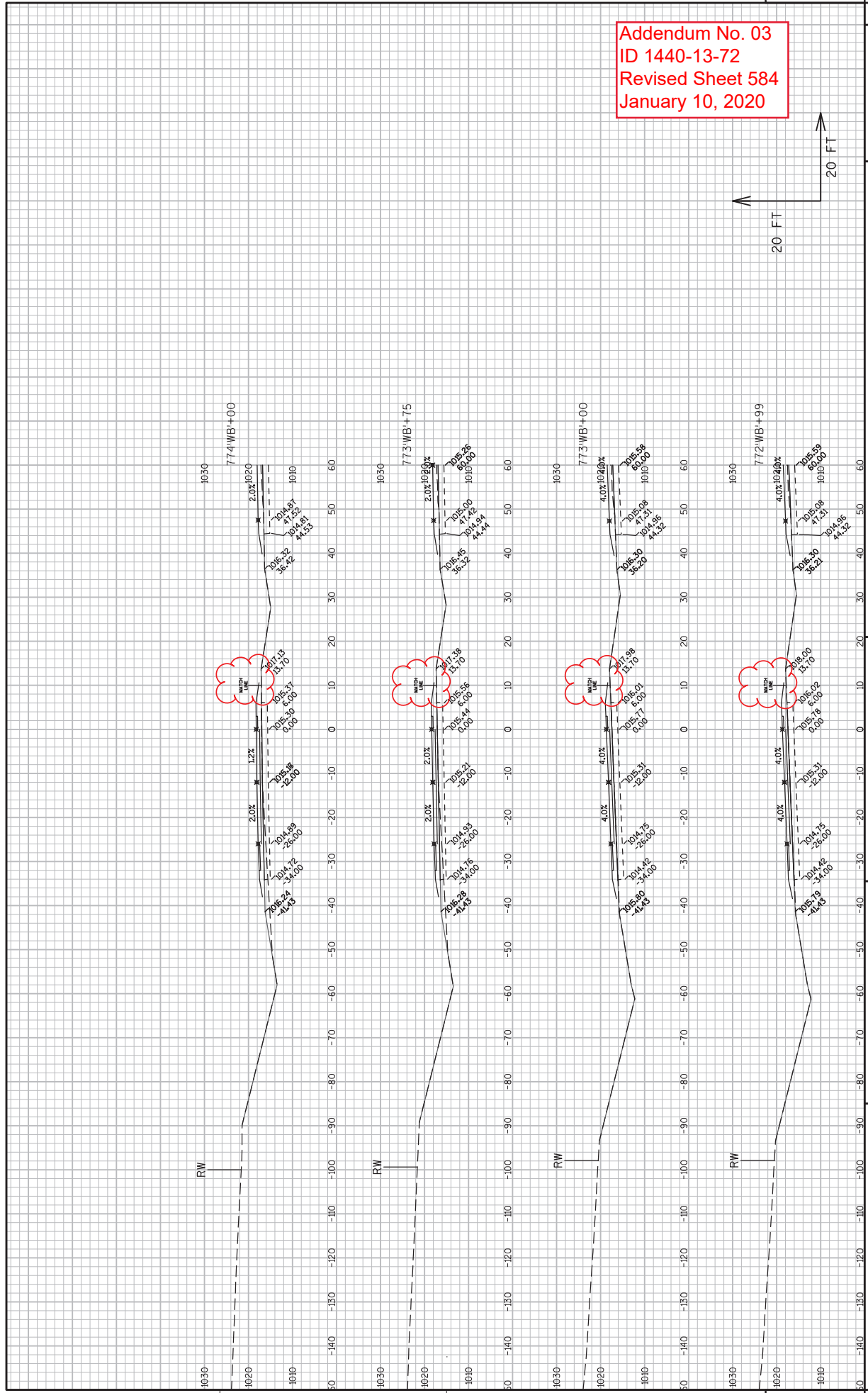
Addendum No. 03
ID 1440-13-72
Revised Sheet 581
January 10, 2020



Addendum No. 03
 ID 1440-13-72
 Revised Sheet 582
 January 10, 2020

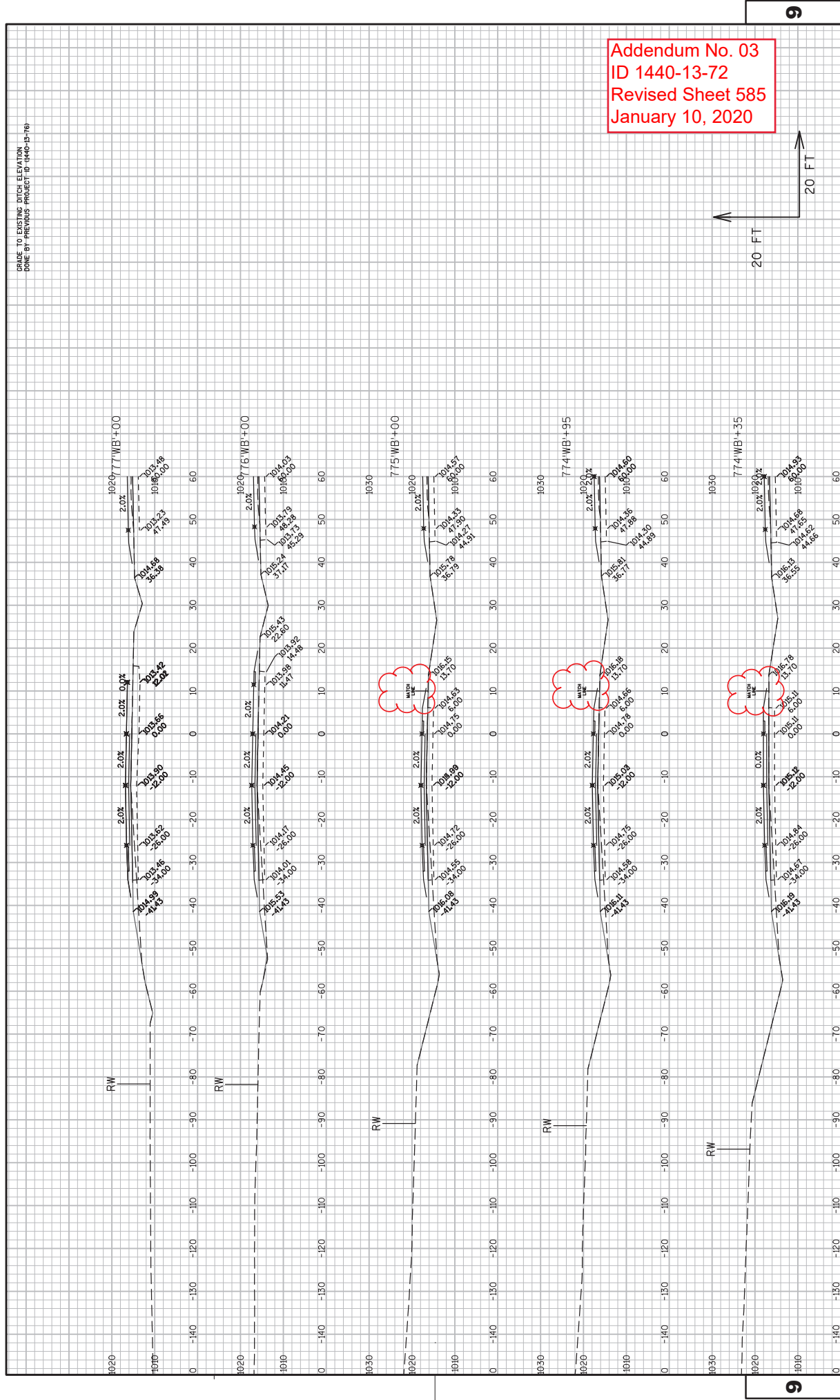


Addendum No. 03
 ID 1440-13-72
 Revised Sheet 584
 January 10, 2020



GRADE TO EXISTING DITCH ELEVATION
DONE BY PREVIOUS PROJECT ID 1440-P-16)

Addendum No. 03
ID 1440-13-72
Revised Sheet 585
January 10, 2020





Proposal Schedule of Items

Proposal ID: 20200114011 Project(s): 1440-13-72

Federal ID(s): N/A

SECTION: 0001 Contract Items

Alt Set ID: Alt Mbr ID:

Proposal Line Number	Item ID Description	Approximate Quantity and Units	Unit Price	Bid Amount
0002	108.4300 RBC Progress Schedule	1.000 EACH	_____.	_____.
0004	201.0105 Clearing	21.000 STA	_____.	_____.
0006	201.0205 Grubbing	21.000 STA	_____.	_____.
0008	203.0100 Removing Small Pipe Culverts	50.000 EACH	_____.	_____.
0010	203.0200 Removing Old Structure (station) 01. STA 848+78 60" CMCP	LS	LUMP SUM	_____.
0012	204.0110 Removing Asphaltic Surface	7,526.000 SY	_____.	_____.
0014	204.0115 Removing Asphaltic Surface Butt Joints	3,945.000 SY	_____.	_____.
0016	204.0120 Removing Asphaltic Surface Milling	21,121.000 SY	_____.	_____.
0018	204.0150 Removing Curb & Gutter	2,400.000 LF	_____.	_____.
0020	204.0157 Removing Concrete Barrier	930.000 LF	_____.	_____.
0022	204.0165 Removing Guardrail	1,173.000 LF	_____.	_____.
0024	204.0190 Removing Surface Drains	25.000 EACH	_____.	_____.
0026	204.0220 Removing Inlets	1.000 EACH	_____.	_____.
0028	204.0270 Abandoning Culvert Pipes	2.000 EACH	_____.	_____.
0030	204.9060.S Removing (item description) 01. Concrete Collars	22.000 EACH	_____.	_____.
0032	205.0100 Excavation Common	79,455.000 CY	_____.	_____.



Proposal Schedule of Items

Proposal ID: 20200114011 Project(s): 1440-13-72

Federal ID(s): N/A

SECTION: 0001 Contract Items

Alt Set ID: Alt Mbr ID:

Proposal Line Number	Item ID Description	Approximate Quantity and Units	Unit Price	Bid Amount
0034	206.1000 Excavation for Structures Bridges (structure) 01. B-59-315	LS	LUMP SUM	_____.
0036	208.0100 Borrow	25,376.000 CY	_____.	_____.
0038	210.1500 Backfill Structure Type A	720.000 TON	_____.	_____.
0040	211.0500 Prepare Foundation for Base Aggregate	280.000 STA	_____.	_____.
0042	213.0100 Finishing Roadway (project) 01. 1440-13-72	1.000 EACH	_____.	_____.
0044	214.0100 Obliterating Old Road	4.000 STA	_____.	_____.
0046	305.0110 Base Aggregate Dense 3/4-Inch	20,324.000 TON	_____.	_____.
0048	305.0120 Base Aggregate Dense 1 1/4-Inch	175,970.000 TON	_____.	_____.
0050	313.0110 Pit Run	121,681.000 TON	_____.	_____.
0052	415.0090 Concrete Pavement 9-Inch	134,162.000 SY	_____.	_____.
0054	415.0210 Concrete Pavement Gaps	20.000 EACH	_____.	_____.
0056	415.0410 Concrete Pavement Approach Slab	160.000 SY	_____.	_____.
0058	415.5110.S Concrete Pavement Joint Layout	1.000 LS	_____.	_____.
0060	416.0620 Drilled Dowel Bars	24.000 EACH	_____.	_____.
0062	416.1010 Concrete Surface Drains	10.000 CY	_____.	_____.
0064	416.1110 Concrete Shoulder Rumble Strips	33,651.000 LF	_____.	_____.



Proposal Schedule of Items

Proposal ID: 20200114011 Project(s): 1440-13-72

Federal ID(s): N/A

SECTION: 0001 Contract Items

Alt Set ID: Alt Mbr ID:

Proposal Line Number	Item ID Description	Approximate Quantity and Units	Unit Price	Bid Amount
0284	643.1050 Traffic Control Signs PCMS	175.000 DAY	_____.	_____.
0286	643.5000 Traffic Control	1.000 EACH	_____.	_____.
0288	645.0105 Geotextile Type C	290.000 SY	_____.	_____.
0290	645.0111 Geotextile Type DF Schedule A	130.000 SY	_____.	_____.
0292	645.0140 Geotextile Type SAS	112,291.000 SY	_____.	_____.
0294	645.0220 Geogrid Type SR	112,291.000 SY	_____.	_____.
0296	646.1020 Marking Line Epoxy 4-Inch	94,136.000 LF	_____.	_____.
0298	646.1040 Marking Line Grooved Wet Ref Epoxy 4-Inch	71,664.000 LF	_____.	_____.
0300	646.1555 Marking Line Grooved Contrast Permanent Tape 4-Inch	9,827.000 LF	_____.	_____.
0302	646.3020 Marking Line Epoxy 8-Inch	11,502.000 LF	_____.	_____.
0304	646.3555 Marking Line Grooved Contrast Permanent Tape 8-Inch	10,177.000 LF	_____.	_____.
0306	646.6220 Marking Yield Line Epoxy 18-Inch	42.000 EACH	_____.	_____.
0308	646.7120 Marking Diagonal Epoxy 12-Inch	664.000 LF	_____.	_____.
0310	646.7220 Marking Chevron Epoxy 24-Inch	1,750.000 LF	_____.	_____.
0312	646.8120 Marking Curb Epoxy	80.000 LF	_____.	_____.
0314	646.8220 Marking Island Nose Epoxy	8.000 EACH	_____.	_____.