



Wisconsin Department of Transportation

January 29, 2020

Division of Transportation Systems Development

Bureau of Project Development
4822 Madison Yards Way, 4th Floor South
Madison, WI 53705

Telephone: (608) 266-1631
Facsimile (FAX): (608) 266-8459

NOTICE TO ALL CONTRACTORS:

Proposal #22: 1130-59-71, WISC 2020 048
STH 15 – STH 47
Gillett St & RR Bridges
IH 41
Outagamie County

Letting of February 11, 2002

This is Addendum No. 01, which provides for the following:

Plan Sheets:

Revised Plan Sheets	
Plan Sheet	Plan Sheet Title (brief description of changes to sheet)
14, 15	Traffic Control - Stage 2 (added Temporary Portable Rumble Strips locations, revised sign location)

Plan Sheets

The following 8½ x 11-inch sheets are attached and made part of the plans for this proposal:
Revised: 14 and 15.

The responsibility for notifying potential subcontractors and suppliers of these changes remains with the prime contractor.

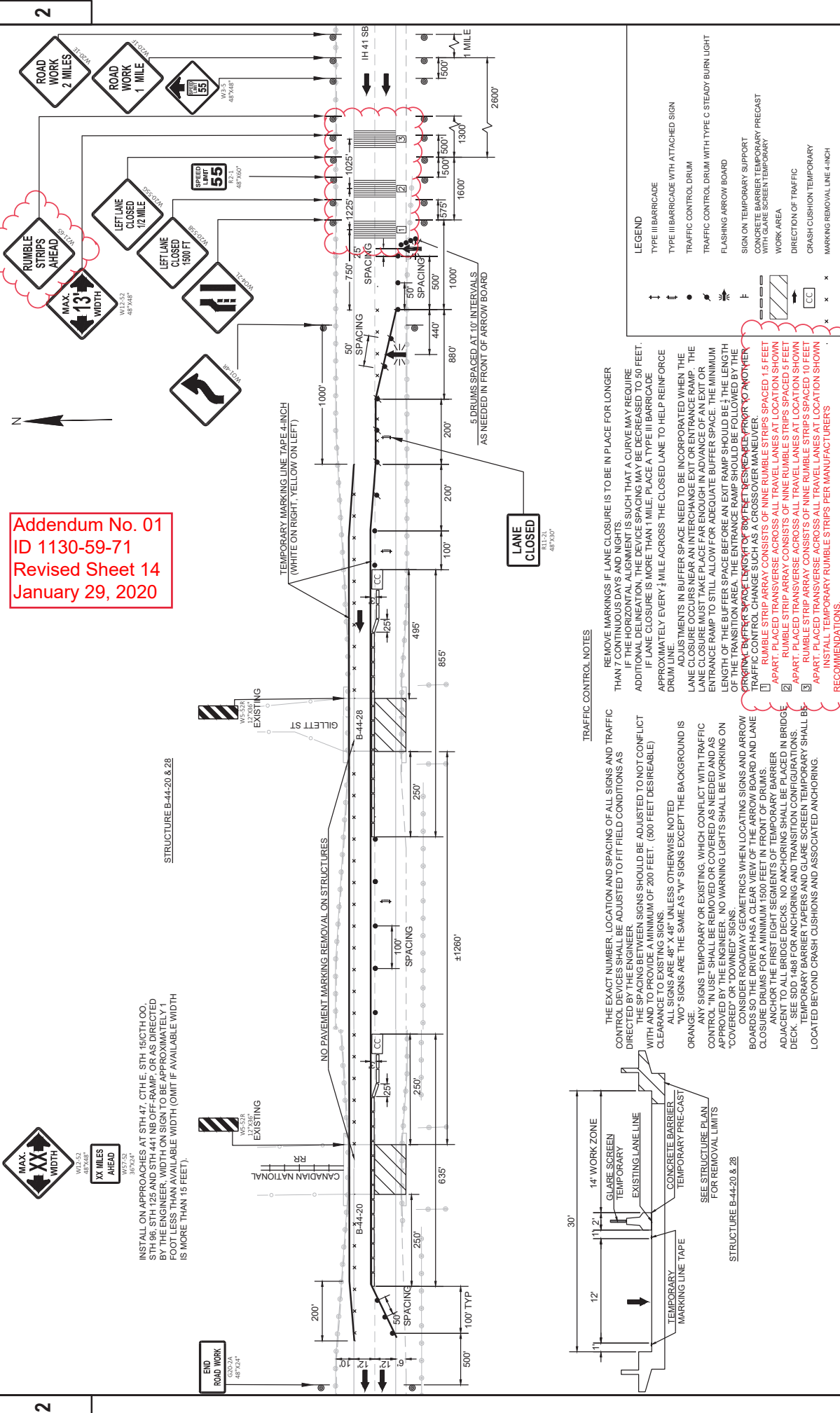
Sincerely,

Mike Coleman

Proposal Development Specialist
Proposal Management Section

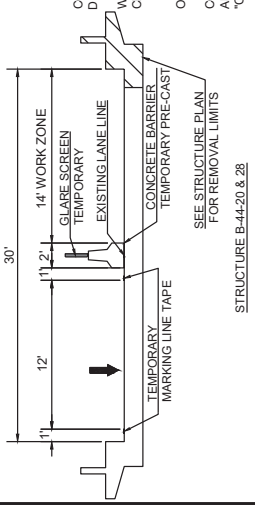
END OF ADDENDUM

Addendum No. 01
ID 1130-59-71
Revised Sheet 14
January 29, 2020



INSTALL ON APPROACHES AT STH 47, CTH E, STH 15/C1TH OO, STH 96, STH 125 AND STH 441 NB OFF-RAMP, OR AS DIRECTED BY THE ENGINEER. WIDTH ON SIGN TO BE APPROXIMATELY 1 FOOT LESS THAN AVAILABLE WIDTH (OMIT IF AVAILABLE WIDTH IS MORE THAN 15 FEET).

STRUCTURE B-44-20 & 28



STRUCTURE B-44-20 & 28

TRAFFIC CONTROL NOTES

- THE EXACT NUMBER, LOCATION AND SPACING OF ALL SIGNS AND TRAFFIC CONTROL DEVICES SHALL BE ADJUSTED TO FIT FIELD CONDITIONS AS DIRECTED BY THE ENGINEER.
- THE SPACING BETWEEN SIGNS SHOULD BE ADJUSTED TO NOT CONFLICT WITH AND TO PROVIDE A MINIMUM OF 200 FEET. (500 FEET DESIRABLE) CLEARANCE TO EXISTING SIGNS.
- ALL SIGNS ARE 48" X 48" UNLESS OTHERWISE NOTED.
- "W" SIGNS ARE THE SAME AS "W" SIGNS EXCEPT THE BACKGROUND IS ORANGE.
- ANY SIGNS TEMPORARY OR EXISTING, WHICH CONFLICT WITH TRAFFIC CONTROL "IN USE" SHALL BE REMOVED OR COVERED AS NEEDED AND AS APPROVED BY THE ENGINEER. NO WARNING LIGHTS SHALL BE WORKING ON "COVERED" SIGNS.
- CONSIDER THE FOLLOWING METRICS WHEN LOCATING SIGNS AND ARROW BOARDS SO THE DRIVER HAS A CLEAR VIEW OF THE ARROW BOARD AND LANE CLOSURE DRUMS FOR A MINIMUM 1500 FEET IN FRONT OF DRUMS.
- ANCHOR THE FIRST EIGHT SEGMENTS OF TEMPORARY BARRIER ADJACENT TO ALL BRIDGE DECKS. NO ANCHORING SHALL BE PLACED IN BRIDGE DECK. SEE SDD 1468 FOR ANCHORING AND TRANSITION CONFIGURATIONS.
- TEMPORARY BARRIER TAPERS AND GLARE SCREEN TEMPORARY SHALL BE LOCATED BEYOND CRASH CUSHIONS AND ASSOCIATED ANCHORING.

- REMOVE MARKINGS IF LANE CLOSURE IS TO BE IN PLACE FOR LONGER THAN 7 CONTINUOUS DAYS AND NIGHTS.
- IF THE HORIZONTAL ALIGNMENT IS SUCH THAT A CURVE MAY REQUIRE ADDITIONAL DELINEATION, THE DEVICE SPACING MAY BE DECREASED TO 50 FEET.
- IF LANE CLOSURE IS MORE THAN 1 MILE, PLACE A TYPE III BARRICADE APPROXIMATELY EVERY 1/4 MILE ACROSS THE CLOSED LANE TO HELP REINFORCE DRUM LINE.
- ADJUSTMENTS IN BUFFER SPACE NEED TO BE INCORPORATED WHEN THE LANE CLOSURE OCCURS NEAR AN INTERCHANGE EXIT OR ENTRANCE RAMP. THE LANE CLOSURE MUST TAKE PLACE FAR ENOUGH IN ADVANCE OF AN EXIT OR ENTRANCE RAMP TO STILL ALLOW FOR ADEQUATE BUFFER SPACE. THE MINIMUM LENGTH OF THE BUFFER SPACE BEFORE AN EXIT RAMP SHOULD BE 1/2 THE LENGTH OF THE TRANSITION AREA. THE ENTRANCE RAMP SHOULD BE FOLLOWED BY THE ORIGINAL BUFFER SPACE LENGTH OF 300 FEET DESIRABLE PRIOR TO ANOTHER TRAFFIC CONTROL CHANGE SUCH AS A CROSSOVER MANEUVER.
- 1. TRAFFIC CONTROL CHANGE SUCH AS A CROSSOVER MANEUVER, SPACED 1.5 FEET APART, PLACED TRANSVERSE ACROSS ALL TRAVEL LANES AT LOCATION SHOWN.
- 2. RUMBLE STRIP ARRAY CONSISTS OF NINE RUMBLE STRIPS SPACED 5 FEET APART, PLACED TRANSVERSE ACROSS ALL TRAVEL LANES AT LOCATION SHOWN.
- 3. RUMBLE STRIP ARRAY CONSISTS OF NINE RUMBLE STRIPS SPACED 10 FEET APART, PLACED TRANSVERSE ACROSS ALL TRAVEL LANES AT LOCATION SHOWN.
- INSTALL TEMPORARY RUMBLE STRIPS PER MANUFACTURER'S RECOMMENDATIONS.

LEGEND

↑	TYPE III BARRICADE
↑	TYPE III BARRICADE WITH ATTACHED SIGN
●	TRAFFIC CONTROL DRUM
●	TRAFFIC CONTROL DRUM WITH TYPE C STEADY BURN LIGHT
→	FLASHING ARROW BOARD
F	SIGN ON TEMPORARY SUPPORT
▬	CONCRETE BARRIER TEMPORARY PRECAST WITH GLARE SCREEN TEMPORARY
▬	WORK AREA
▬	DIRECTION OF TRAFFIC
▬	CRASH CUSHION TEMPORARY
x	MARKING REMOVAL LINE 4-INCH

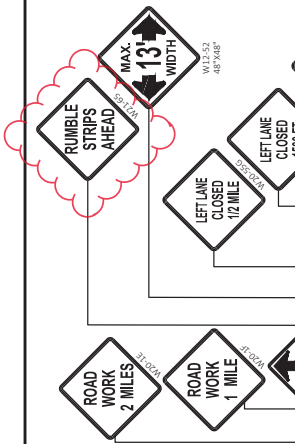


MAX. WIDTH
48'x58'

INSTALL ON APPROACHES AT STH 47, CTH E, STH 16/CTH 00, STH 96, STH 125 AND STH 441 NB OFF-RAMP, OR AS DIRECTED BY THE ENGINEER. WIDTH ON SIGN TO BE APPROXIMATELY 1 FOOT LESS THAN AVAILABLE WIDTH (OMIT IF AVAILABLE WIDTH IS MORE THAN 15 FEET).

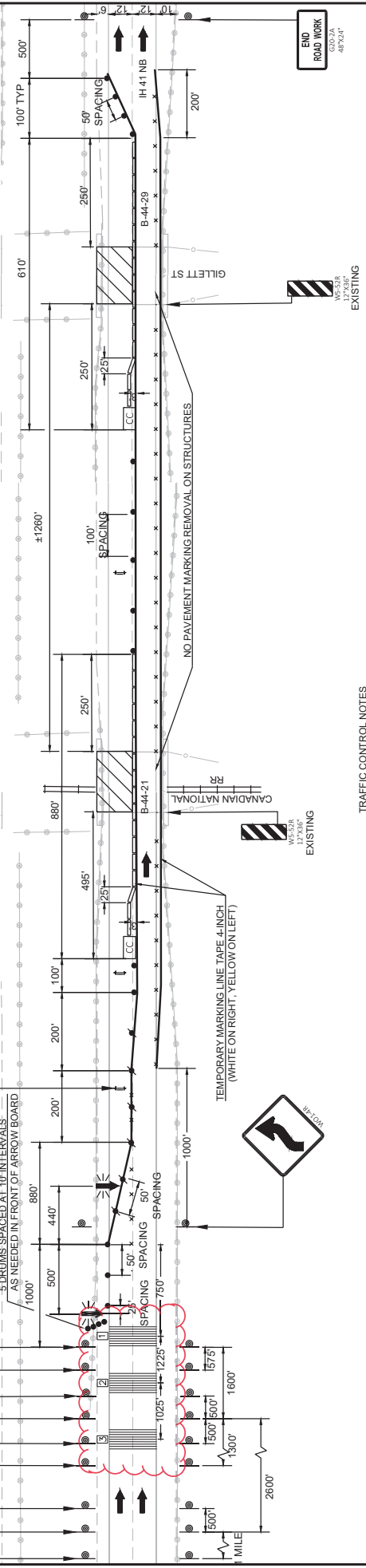
Addendum No. 01
ID 1130-59-71
Revised Sheet 15
January 29, 2020

STRUCTURE B-44-21 & 29



LANE CLOSED
813.23L
48'x50'

5 DRUMS SPACED AT 10' INTERVALS.
AS NEEDED IN FRONT OF ARROW BOARD



TEMPORARY MARKING LINE TAPE 4-INCH
(WHITE ON RIGHT, YELLOW ON LEFT)

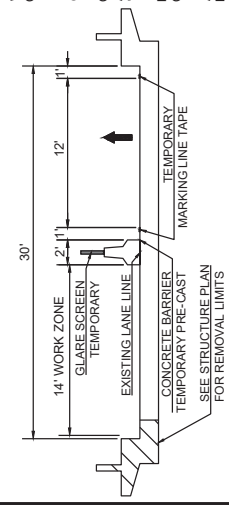
EXISTING
W-5.5A
48'x58'

EXISTING
W-5.5A
48'x58'

EXISTING
W-5.5A
48'x58'

TRAFFIC CONTROL NOTES

- THE EXACT NUMBER, LOCATION AND SPACING OF ALL SIGNS AND TRAFFIC CONTROL DEVICES SHALL BE ADJUSTED TO FIT FIELD CONDITIONS AS DIRECTED BY THE ENGINEER.
- THE SPACING BETWEEN SIGNS SHOULD BE ADJUSTED TO NOT CONFLICT WITH AND TO PROVIDE A MINIMUM OF 200 FEET. (500 FEET DESIRABLE) CLEARANCE TO EXISTING SIGNS.
- ALL SIGNS ARE 48" X 48" UNLESS OTHERWISE NOTED
- "W" SIGNS ARE THE SAME AS "V" SIGNS EXCEPT THE BACKGROUND IS ORANGE.
- ANY SIGNS TEMPORARY OR EXISTING, WHICH CONFLICT WITH TRAFFIC CONTROL "IN USE" SHALL BE REMOVED OR COVERED AS NEEDED AND AS APPROVED BY THE ENGINEER. NO WARNING LIGHTS SHALL BE WORKING ON COVERED OR DOWNED SIGNS.
- TRAFFIC CONTROL DEVICES SHALL BE PLACED IN FRONT OF ARROW BOARDS SO THE DRIVER HAS A CLEAR VIEW OF THE ARROW BOARD AND LANE CLOSURE DRUMS FOR A MINIMUM 1500 FEET IN FRONT OF DRUMS.
- ANCHOR THE FIRST EIGHT SEGMENTS OF TEMPORARY BARRIER ADJACENT TO ALL BRIDGE DECKS. NO ANCHORING SHALL BE PLACED IN BRIDGE DECK. SEE SDD 1468 FOR ANCHORING AND TRANSITION CONFIGURATIONS.
- TEMPORARY BARRIER TAPERS AND GLARE SCREEN TEMPORARY SHALL BE LOCATED BEYOND CRASH CUSHIONS AND ASSOCIATED ANCHORING.
- REMOVE MARKINGS IF LANE CLOSURE IS TO BE IN PLACE FOR LONGER THAN 7 CONTINUOUS DAYS AND NIGHTS.
- IF THE HORIZONTAL ALIGNMENT IS SUCH THAT A CURVE MAY REQUIRE ADDITIONAL DELINEATION, THE DEVICE SPACING MAY BE DECREASED TO 50 FEET.
- IF LANE CLOSURE IS MORE THAN 1 MILE, PLACE A TYPE III BARRICADE APPROXIMATELY EVERY 1/4 MILE ACROSS THE CLOSED LANE TO HELP REINFORCE DRUM LINE.
- ADJUSTMENTS IN BUFFER SPACE NEED TO BE INCORPORATED WHEN THE LANE CLOSURE OCCURS NEAR AN INTERCHANGE EXIT OR ENTRANCE RAMP. THE LANE CLOSURE MUST TAKE PLACE FAR ENOUGH IN ADVANCE OF AN EXIT OR ENTRANCE RAMP TO STILL ALLOW FOR ADEQUATE BUFFER SPACE. THE MINIMUM LENGTH OF THE BUFFER SPACE BEFORE AN EXIT RAMP SHOULD BE 1/2 THE LENGTH OF THE TRANSITION AREA. THE ENTRANCE RAMP SHOULD BE FOLLOWED BY THE WORKING BUFFER SPACE BEHIND OF ADEQUATE BUFFER SPACE.
- APART, PLACE STRIP ARRAY CONSISTS OF NINE RUMBLE STRIPS SPACED 15 FEET APART. PLACE STRIP TRANSVERSE ACROSS ALL TRAVEL LANES AT LOCATION SHOWN.
- APART, PLACE STRIP TRANSVERSE ACROSS ALL TRAVEL LANES AT LOCATION SHOWN.
- APART, PLACE STRIP TRANSVERSE ACROSS ALL TRAVEL LANES AT LOCATION SHOWN.
- INSTALL TEMPORARY RUMBLE STRIPS PER MANUFACTURERS RECOMMENDATIONS.



STRUCTURE B-44-21 & 29

LEGEND

- TYPE III BARRICADE
- TYPE III BARRICADE WITH ATTACHED SIGN
- TRAFFIC CONTROL DRUM
- TRAFFIC CONTROL DRUM WITH TYPE C STEADY BURN LIGHT
- FLASHING ARROW BOARD
- SIGN ON TEMPORARY SUPPORT
- CONCRETE BARRIER TEMPORARY PRECAST WITH GLARE SCREEN TEMPORARY WORK AREA
- DIRECTION OF TRAFFIC
- CRASH CUSHION TEMPORARY
- MARKING REMOVAL LINE 4-INCH

