



# Wisconsin Department of Transportation

## Division of Transportation Systems Development

Bureau of Project Development  
4822 Madison Yards Way, 4<sup>th</sup> Floor South  
Madison, WI 53705

March 5, 2020

Telephone: (608) 266-1631  
Facsimile (FAX): (608) 266-8459

### NOTICE TO ALL CONTRACTORS:

**Proposal #18: 1440-15-72**  
**Fond Du Lac – Plymouth**  
**Seven Hills Road – East County**  
**Line**  
**STH 23**  
**Fond Du Lac**

**1440-15-73, WISC 2020 109**  
**Fond Du Lac – Plymouth**  
**Seven Hills Road – East County**  
**Line**  
**STH 23**  
**Fond Du Lac**

### Letting of March 10, 2020

This is Addendum No. 02, which provides for the following:

#### Special Provisions:

Revised Special Provisions	
Article No.	Description
29	QMP Subgrade

#### Schedule of Items:

Revised Bid Item Quantities					
Bid Item	Item Description	Unit	Old Quantity	Revised Quantity	Proposal Total
614.0305	Steel Plate Beam Guard Class A	LF	780	-184	596
SPV.0060.02	Temporary Stone Ditch Checks	EACH	120	-115	15

Added Bid Item Quantities					
Bid Item	Item Description	Unit	Old Quantity	Revised Quantity	Proposal Total
210.1500	Backfill Structure Type A	TON	0	1,512	1,512
614.0230	Steel Thrie Beam	LF	0	184	184

Deleted Bid Item Quantities					
Bid Item	Item Description	Unit	Old Quantity	Revised Quantity	Proposal Total
210.1100	Backfill Structure Type A	CY	1,512	-1,512	0

**Plan Sheets:**

<b>Revised Plan Sheets</b>	
Plan Sheet	Plan Sheet Title (brief description of changes to sheet)
168	Erosion Control – Temporary - Added Temporary Stone Ditch Check symbol to legend
169	Erosion Control – Temporary - Added Temporary Stone Ditch Check symbol to legend and added Temporary Stone Ditch Check symbols to temporary erosion control layout
170	Erosion Control – Temporary – Added Temporary Stone Ditch Check symbol to legend
171	Erosion Control – Temporary – Added Temporary Stone Ditch Check symbol to legend and added Temporary Stone Ditch Check symbols to temporary erosion control layout
172	Erosion Control – Temporary – Added Temporary Stone Ditch Check symbol to legend
173	Erosion Control – Temporary – Added Temporary Stone Ditch Check symbol to legend and added Temporary Stone Ditch Check symbols to temporary erosion control layout
174	Erosion Control – Temporary – Replaced incorrect sheet in plan with correct Erosion Control – Temporary sheet
459	Miscellaneous Quantities – Revised quantities at the bullnose terminal
463	Miscellaneous Quantities – Revised quantities for Temporary Stone Ditch Checks
464	Miscellaneous Quantities – Revised quantities for Temporary Stone Ditch Checks
479	Miscellaneous Quantities – Revised note on sheet
865	Structure B-20-218 – Revised unit for item Backfill Structure Type A

<b>Added Plan Sheets</b>	
Plan Sheet	Plan Sheet Title (brief description of why sheet was added)
773A & 774A	Sign Plate A3-1.20
775A	Sign Plate A3-2.5
775B	Sign Plate A3-3.5
776A	Sign Plate A4-1.12

<b>Deleted Plan Sheets</b>	
Plan Sheet	Plan Sheet Title (brief description of why sheet was deleted)
773	Sign Plate A3-1.18 Page 1
774	Sign Plate A3-1.18 Page 2
776	Sign Plate A4-1.10

The responsibility for notifying potential subcontractors and suppliers of these changes remains with the prime contractor.

Sincerely,

*Mike Coleman*

Proposal Development Specialist  
Proposal Management Section

**ADDENDUM NO. 02**

**1440-15-72**

**March 5, 2020**

**Special Provisions**

**29. QMP Subgrade.**

*Replace paragraph one under section titled **A Description** with the following:*

- (1) This special provision describes requirements for subgrade materials within the roadway foundation as defined in standard spec 101.3. These requirements apply to all roadway foundations constructed under this contract including STH 23, ramps, county roads, and local roads. Conform to standard spec 207 as modified in this special provision for all work within roadway foundations at the locations the plans show.

**Schedule of Items**

Attached, dated March 5, 2020, are the revised Schedule of Items Pages 1 - 21.

**Plan Sheets**

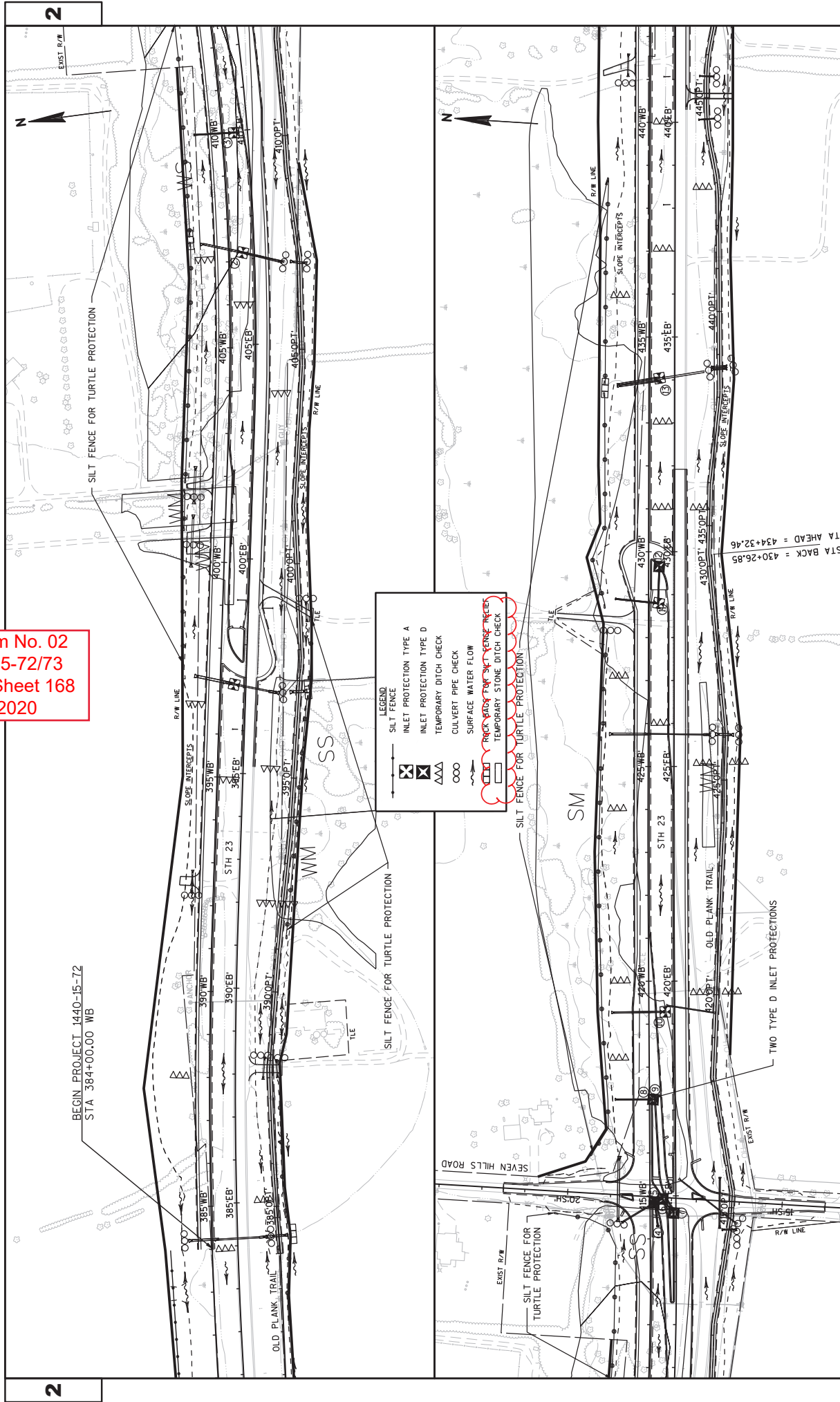
The following 8½ x 11-inch sheets are attached and made part of the plans for this proposal:

Revised: 168, 169, 170, 171, 172, 173, 174, 459, 463, 464, 479, 865.

Added: 773A, 774A, 775A, 775B, and 776A

END OF ADDENDUM

Addendum No. 02  
 ID 1440-15-72/73  
 Revised Sheet 168  
 March 5, 2020

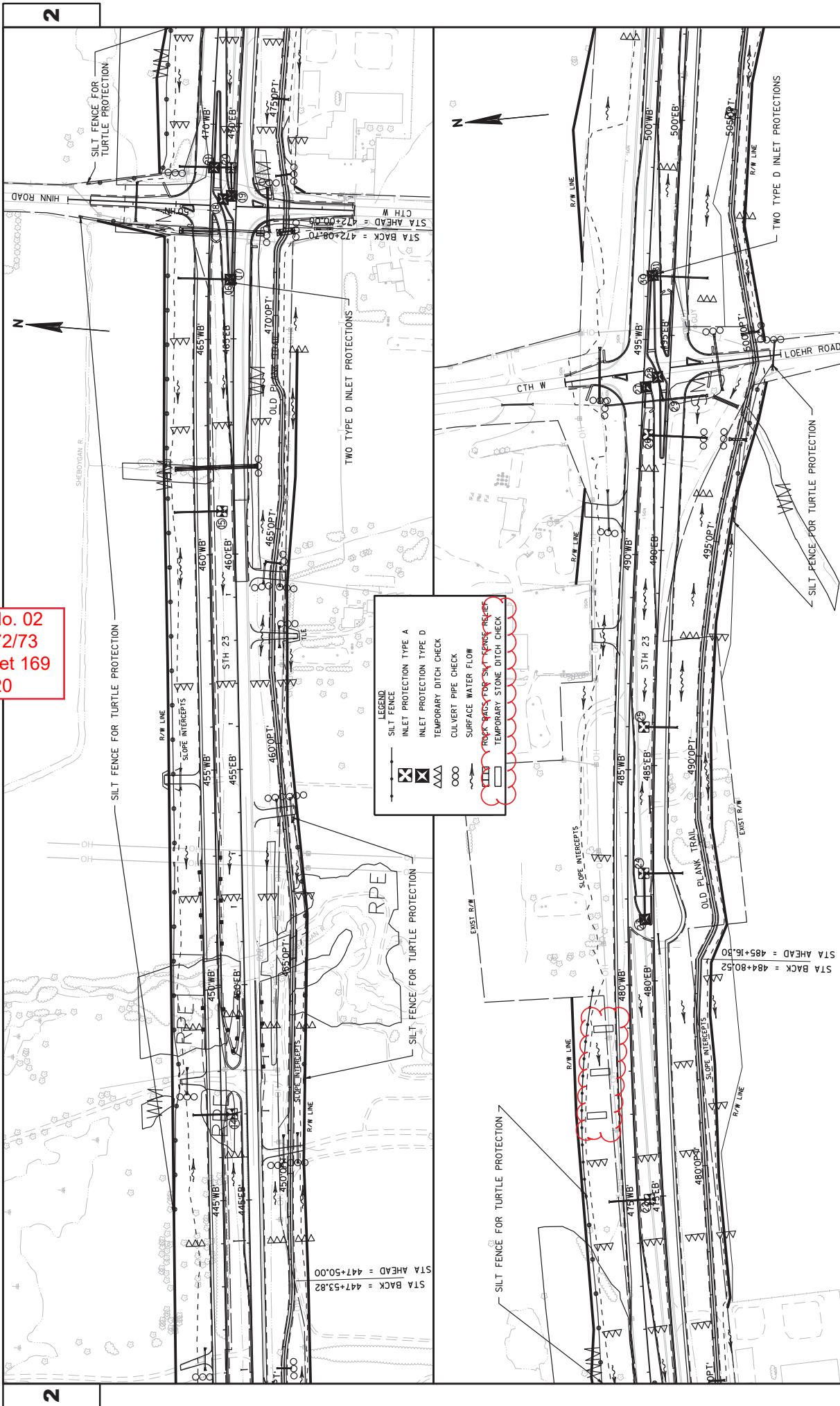


BEGIN PROJECT 1440-15-72  
 STA 384+00.00 WB

STA AHEAD = 434+32.46  
 STA BACK = 430+26.85

PROJECT NO: 1440-15-72/73	COUNTY: FOND DU LAC	EROSION CONTROL - TEMPORARY	SHEET 168
HWY: STH 23			
FILE NAME : N:\PDS\C3D\14401501\SHEET\PLAN\EROSION CONTROL\EC-TEMP.DWG LAYOUT NAME - EC-TEMP - 02011 PLOT DATE : 3/2/2020 3:56 PM PLOT BY : BERG, MATTHEW T PLOT NAME : PLOT SCALE : 1 IN=200 FT WSDOT/CADD SHEET 44			

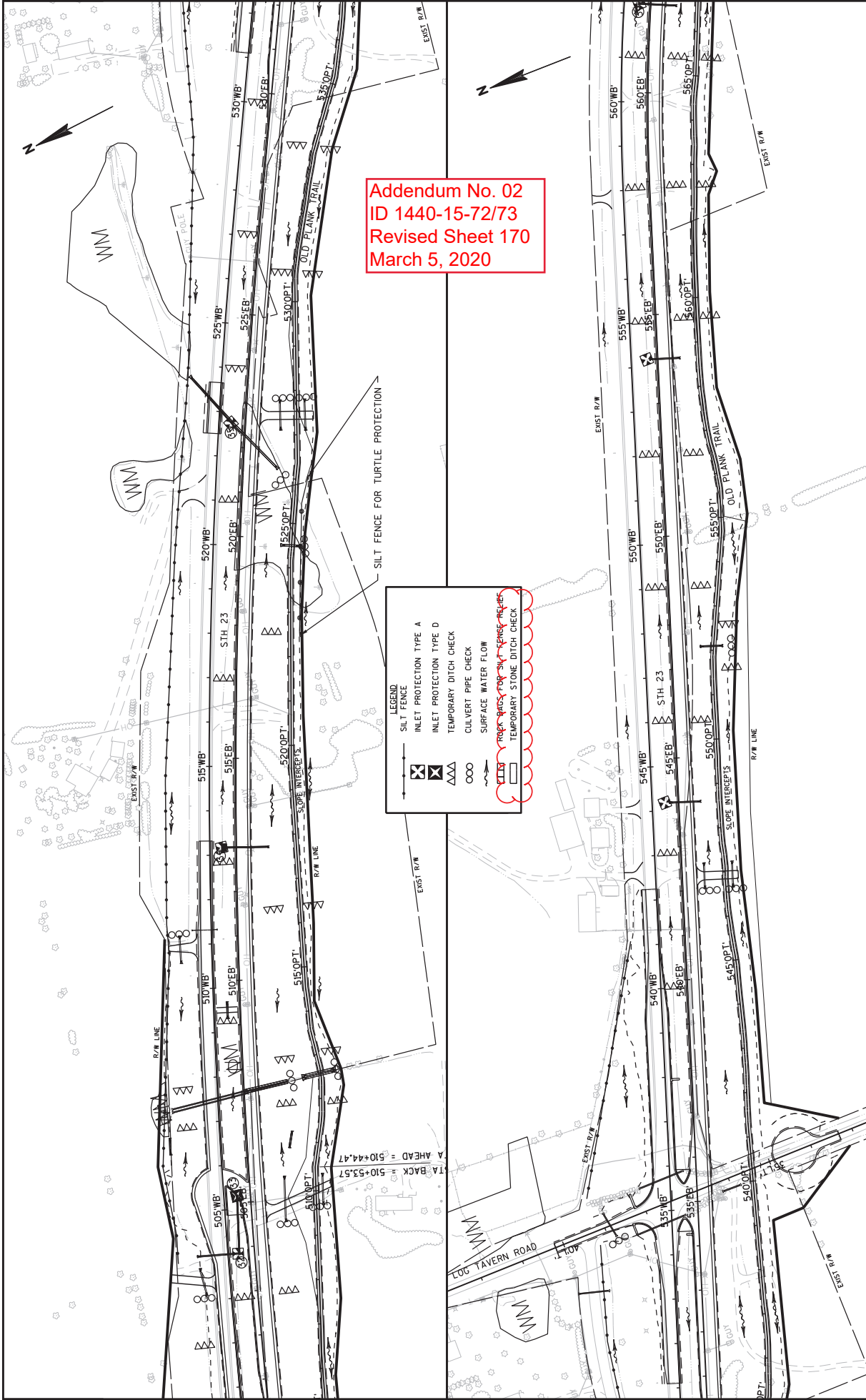
Addendum No. 02  
 ID 1440-15-72/73  
 Revised Sheet 169  
 March 5, 2020



**LEGEND**

- ☒ SILT FENCE
- ☒ INLET PROTECTION TYPE A
- ☒ INLET PROTECTION TYPE D
- ☒ TEMPORARY DITCH CHECK
- ☒ CULVERT PIPE CHECK
- ☒ SURFACE WATER FLOW
- ☒ ROCK BACKS FOR SILT FENCES-RE-EROSION
- ☒ TEMPORARY STONE DITCH CHECK

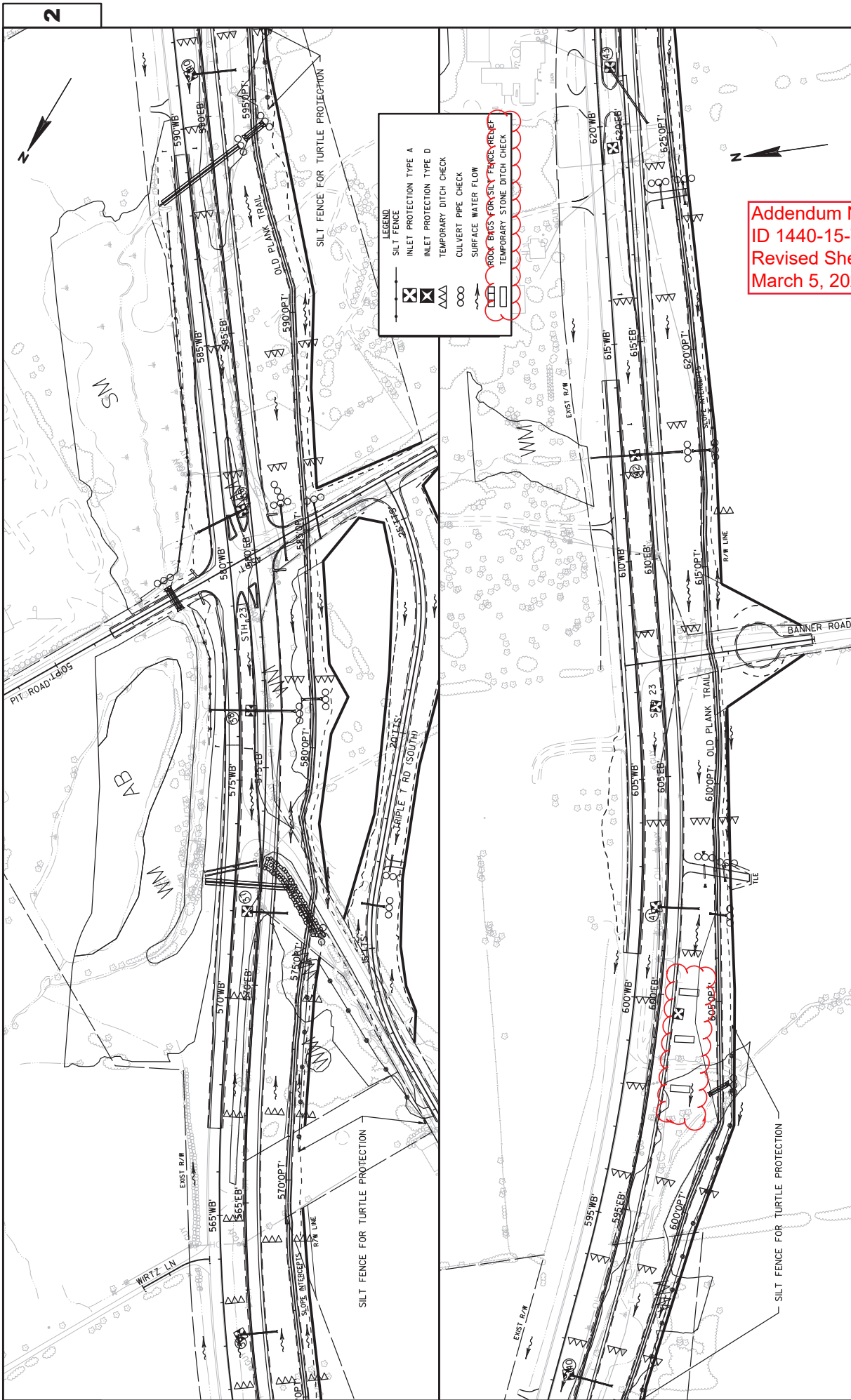
2



Addendum No. 02  
 ID 1440-15-72/73  
 Revised Sheet 170  
 March 5, 2020

**LEGEND**

- SILT FENCE
- ⊠ INLET PROTECTION TYPE A
- ⊠ INLET PROTECTION TYPE D
- △△△ TEMPORARY DITCH CHECK
- ○ ○ CULVERT PIPE CHECK
- ~ SURFACE WATER FLOW
- ⊠ ROCK BACKS FOR SILT FENCE REPAIR
- ⊠ TEMPORARY STONE DITCH CHECK

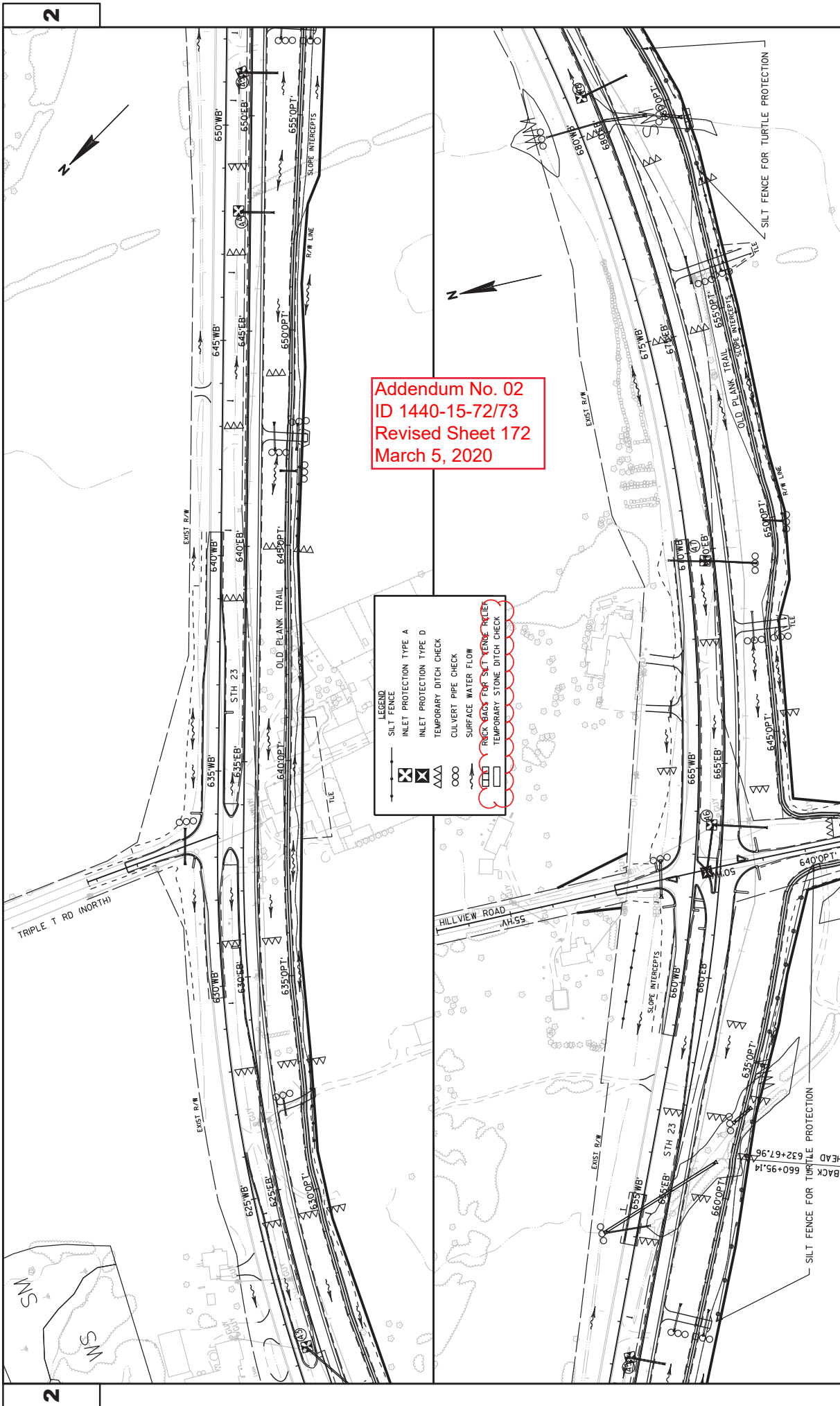


Addendum No. 02  
 ID 1440-15-72/73  
 Revised Sheet 171  
 March 5, 2020

2

2

PROJECT NO: 1440-15-72/73 FILE NAME : N:\NPOS\330\14401501\SHEETSET\PLAN\EROSION CONTROL\EC-TEMP.DWG LAYOUT NAME - EC-TEMP - 02014	HWY: STH 23 COUNTY: FOND DU LAC EROSION CONTROL - TEMPORARY PLOT BY : BERG, MATTHEW T PLOT NAME :	SHEET 171 WISDOT/CADD SHEET 44
--	---	-----------------------------------



Addendum No. 02  
 ID 1440-15-72/73  
 Revised Sheet 172  
 March 5, 2020

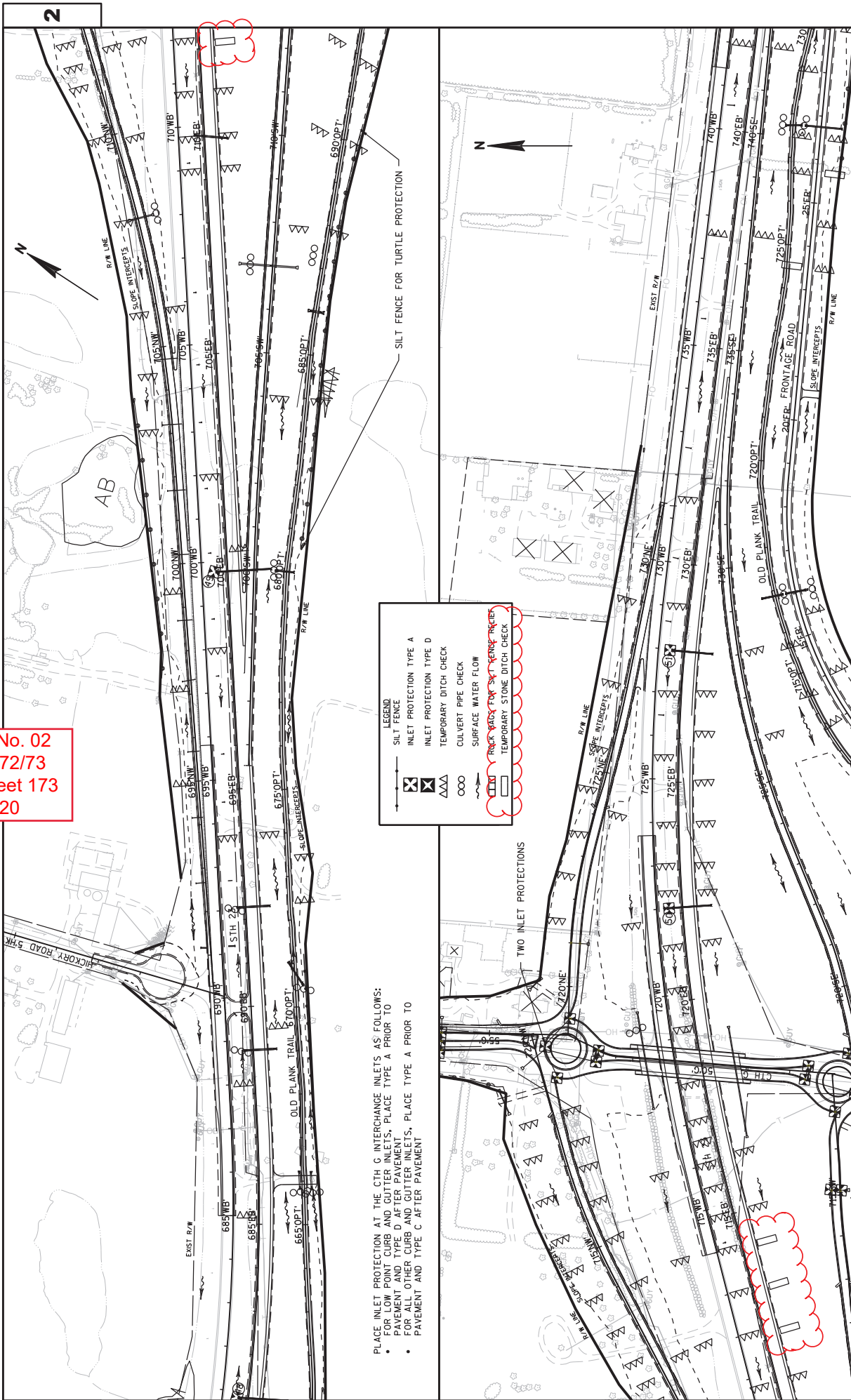
LEGEND	
	SILT FENCE
	INLET PROTECTION TYPE A
	INLET PROTECTION TYPE D
	TEMPORARY DITCH CHECK
	CULVERT PIPE CHECK
	SURFACE WATER FLOW
	ROCK BAGS FOR SILT FENCE RELIEF
	TEMPORARY STONE DITCH CHECK

2

2



Addendum No. 02  
 ID 1440-15-72/73  
 Revised Sheet 173  
 March 5, 2020

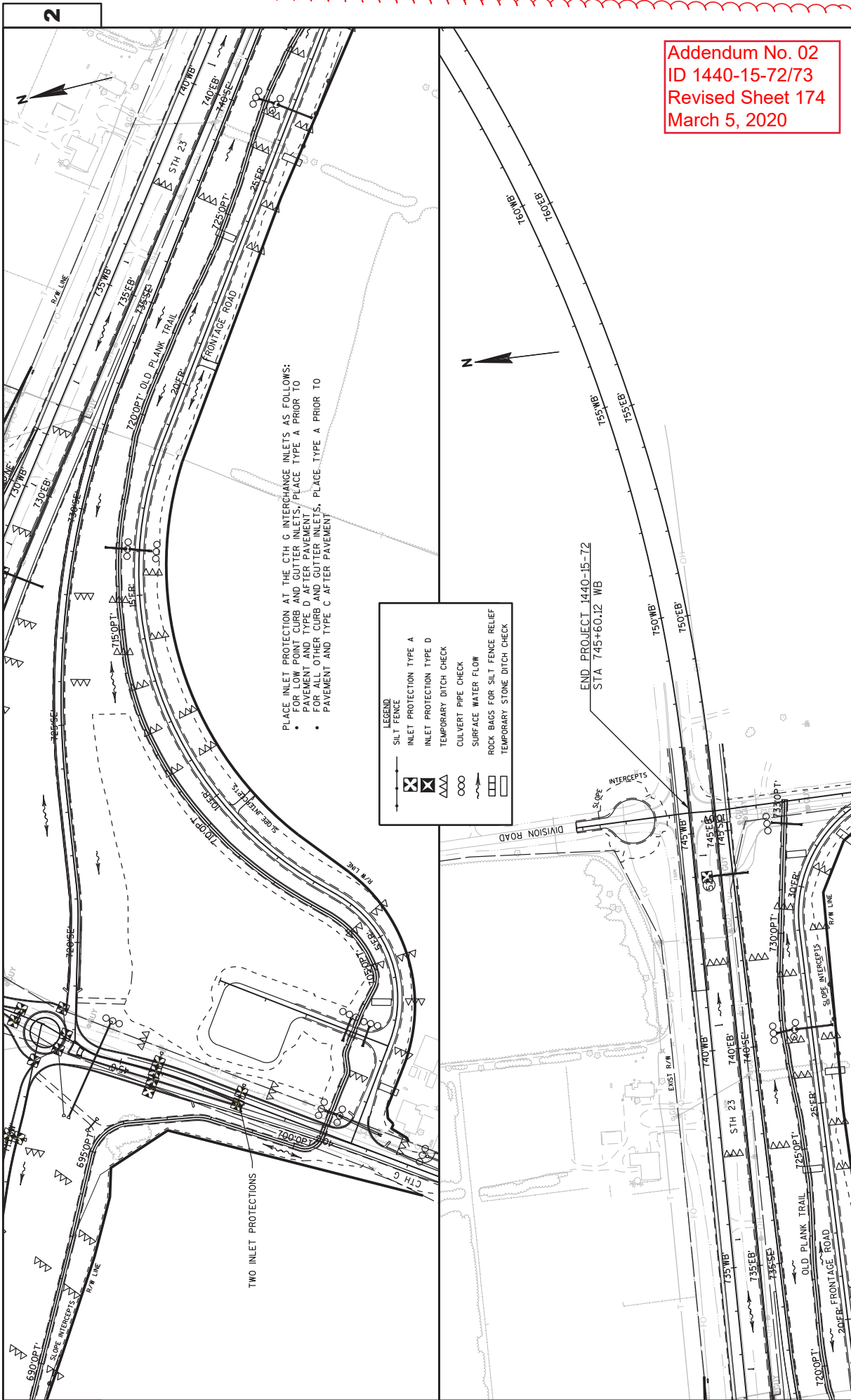


PLACE INLET PROTECTION AT THE CTH G INTERCHANGE INLETS AS FOLLOWS:

- FOR LOW POINT CURB AND GUTTER INLETS, PLACE TYPE A PRIOR TO PAVEMENT AND TYPE D AFTER PAVEMENT
- FOR ALL OTHER CURB AND GUTTER INLETS, PLACE TYPE A PRIOR TO PAVEMENT AND TYPE C AFTER PAVEMENT

LEGEND

- SILT FENCE
- INLET PROTECTION TYPE A
- INLET PROTECTION TYPE D
- TEMPORARY DITCH CHECK
- CULVERT PIPE CHECK
- SURFACE WATER FLOW
- ROCK BACKS FOR SILT FENCE INLETS
- TEMPORARY STONE DITCH CHECK



Addendum No. 02  
 ID 1440-15-72/73  
 Revised Sheet 174  
 March 5, 2020

PLACE INLET PROTECTION AT THE CTH G INTERCHANGE INLETS AS FOLLOWS:

- FOR LOW POINT CURB AND GUTTER INLETS, PLACE TYPE A PRIOR TO PAVEMENT AND TYPE D AFTER PAVEMENT
- FOR ALL OTHER CURB AND GUTTER INLETS, PLACE TYPE A PRIOR TO PAVEMENT AND TYPE C AFTER PAVEMENT

**LEGEND**

- SILT FENCE
- ⊠ INLET PROTECTION TYPE A
- ⊠ INLET PROTECTION TYPE D
- △△△ TEMPORARY DITCH CHECK
- ○ ○ CULVERT PIPE CHECK
- ~ SURFACE WATER FLOW
- ⊠ ROCK BAGS FOR SILT FENCE RELIEF
- ⊠ TEMPORARY STONE DITCH CHECK

**SURFACE DRAIN SUMMARY**

1440-15-72

\*521.2005.S  
SURFACE DRAIN  
PIPE CORRUGATED  
METAL SLOTTED  
18-INCH

STATION	TO	STATION	REMARKS	LF
386'WB'+24,	25' RT	- 390'WB'+06,	39' RT CROSSOVER A	380
473'WB'+85,	24' RT	- 476'WB'+00,	0' RT CROSSOVER B	216
684'WB'+07,	0' RT	- 686'WB'+45,	16' RT CROSSOVER C	239
<b>PROJECT TOTAL</b>				<b>835</b>

\* 6" special grate depth required

**TEMPORARY SLOPE DRAIN SUMMARY**

1440-15-72

STATION	LOCATION	EACH	LF
449'WB'+93	B-20-205	2	
455'OPT'+00	B-20-215	2	
49'G'+13	B-20-218	2	
51'G'+16	B-20-218	2	
<b>PROJECT TOTAL</b>			<b>8</b>

Addendum No. 02  
ID 1440-15-72/73  
Revised Sheet 459  
March 5, 2020

**RUMBLE STRIP SUMMARY**

1440-15-73

416.1110 CONCRETE SHOULDER RUMBLE STRIPS  
465.0400 ASPHALTIC SHOULDER RUMBLE STRIPS

STATION	TO	STATION	LOCATION	LF
384'WB'+00	-	413'WB'+71	STH 23 WB	1,782
384'EB'+00	-	397'EB'+16	STH 23 EB	---
400'EB'+20	-	408'EB'+70	STH 23 EB	852
416'EB'+07	-	429'EB'+92	STH 23 EB	1,306
420'WB'+64	-	466'WB'+86	STH 23 WB	4,000
429'EB'+92	-	461'EB'+70	STH 23 EB	34
469'EB'+26	-	488'EB'+45	STH 23 EB	1,552
473'WB'+12	-	493'WB'+08	STH 23 WB	1,404
496'EB'+02	-	535'EB'+06	STH 23 EB	3,651
499'WB'+76	-	533'WB'+51	STH 23 WB	3,029
535'EB'+06	-	574'EB'+34	STH 23 EB	3,921
540'WB'+82	-	578'WB'+77	STH 23 WB	934
581'EB'+11	-	633'EB'+23	STH 23 EB	5,094
585'WB'+39	-	632'WB'+06	STH 23 WB	2,577
633'EB'+23	-	656'EB'+69	STH 23 EB	2,347
638'WB'+54	-	661'WB'+36	STH 23 WB	358
663'EB'+12	-	745'EB'+60	STH 23 EB	7,321
663'WB'+74	-	745'WB'+60	STH 23 WB	1,405
<b>PROJECT TOTAL</b>				<b>41,567</b>

**BEAM GUARD SUMMARY**

1440-15-73

STATION	TO	STATION	LOCATION	LF	EACH	LF	REMARKS
447'EB'+80	-	450'EB'+05	STH 23 EB RT	---	---	---	
448'EB'+39	-	453'EB'+36	STH 23 MEDIAN	46	1	46	
448'WB'+52	-	452'WB'+92	STH 23 WB LT	46	---	---	
35'LT'+00	-	LOG TAVERN RD		---	---	---	
1'BN'+95	-	BANNER RD		---	---	---	CUL-DE-SAC
0'HK'+80	-	HECKORY RD		---	---	---	CUL-DE-SAC
11'DIV'+28	-	DIVISION RD		---	---	---	CUL-DE-SAC
<b>PROJECT TOTAL</b>				<b>92</b>	<b>1</b>	<b>184</b>	
614.0200	STEEL THRIE BEAM STRUCTURE APPROACH	614.0220	STEEL THRIE BEAM BULLNOSE TERMINAL	---	---	---	
614.0300	GUARDRAIL TYPE 2	614.0370	STEEL PLATE BEAM GUARD ENERGY ABSORBING TERMINAL	---	---	---	
614.2300	GUARDRAIL TYPE 3	614.0305	STEEL PLATE BEAM GUARD CLASS A	---	---	---	
614.2620	MARKER POST FLEXIBLE FOR GUARD RAIL TERMINAL	614.0230	STEEL THRIE BEAM PLATE BEAM GUARD	---	---	---	
SPV.0090.03	RELAPPING STEEL PLATE BEAM GUARD	614.0370	STEEL PLATE BEAM GUARD ENERGY ABSORBING TERMINAL	---	---	---	
<b>PROJECT TOTAL</b>				<b>100</b>	<b>8</b>	<b>484</b>	

\* INCIDENTAL TO BID ITEM 614.0370

Addendum No. 02  
 ID 1440-15-72/73  
 Revised Sheet 463  
 March 5, 2020

**EROSION CONTROL SUMMARY**

1440-15-72

STATION TO	STATION	LOCATION	LF	LF	EACH	EACH	EACH	EACH	LF	LF	EACH	EACH
384' EB'+00	- 745' EB'+60	STH 23	---	---	44	18	596	---	---	---	---	---
380' WB'+00	- 384' WB'+00	WB	395	198	---	---	---	---	---	---	---	---
382' EB'+18	- 388' EB'+02	RT	536	268	---	---	---	---	---	---	---	---
391' EB'+19	- 396' EB'+86	RT	590	295	---	---	---	---	---	---	---	---
397' EB'+12	- 398' EB'+64	RT	179	90	---	---	---	---	---	---	---	---
397' EB'+50	- 400' EB'+35	LT	312	156	---	---	---	---	---	---	---	---
400' EB'+62	- 401' EB'+56	LT	120	60	---	---	---	---	---	---	---	---
401' EB'+73	- 407' EB'+42	LT	584	292	---	---	---	---	---	---	---	---
407' EB'+57	- 414' EB'+62	LT	815	408	---	---	---	---	---	---	---	---
415' EB'+96	- 425' EB'+67	LT	1,012	506	---	---	---	---	---	---	---	---
425' EB'+84	- 428' EB'+16	LT	259	130	---	---	---	---	---	---	---	---
428' EB'+69	- 433' EB'+69	LT	536	268	---	---	---	---	---	---	---	---
433' EB'+90	- 438' EB'+70	LT	506	253	---	---	---	---	---	---	---	---
444' EB'+72	- 447' EB'+69	LT	324	162	---	---	---	---	---	---	---	---
447' EB'+73	- 450' EB'+65	RT	316	158	---	---	---	---	---	---	---	---
447' EB'+91	- 452' EB'+86	LT	524	262	---	---	---	---	---	---	---	---
451' EB'+31	- 453' EB'+88	RT	287	144	---	---	---	---	---	---	---	---
453' EB'+15	- 461' EB'+88	LT	901	451	---	---	---	---	---	---	---	---
462' EB'+04	- 467' EB'+26	LT	555	278	---	---	---	---	---	---	---	---
467' WB'+50	- 483' WB'+00	LT	---	---	---	---	---	---	---	---	---	---
468' EB'+48	- 475' EB'+15	LT	846	423	---	---	---	---	---	---	---	---
475' WB'+00	- 480' WB'+00	LT	520	260	---	---	---	---	---	---	---	---
490' EB'+76	- 492' EB'+59	RT	210	105	---	---	---	---	---	---	---	---
492' EB'+79	- 494' EB'+45	RT	204	102	---	---	---	---	---	---	---	---
495' EB'+00	- 498' EB'+00	RT	314	157	---	---	---	---	---	---	---	---
504' WB'+00	- 541' WB'+00	LT	3,602	1,801	---	---	---	---	---	---	---	---
517' EB'+80	- 521' EB'+43	RT	388	194	---	---	---	---	---	---	---	---
566' EB'+21	- 570' EB'+68	RT	933	467	---	---	---	---	---	---	---	---
576' WB'+00	- 588' WB'+00	LT	1,130	565	---	---	---	---	---	---	---	---
585' EB'+00	- 601' EB'+00	RT	---	---	---	---	---	---	---	---	---	---
<b>SUBTOTAL</b>			<b>16,898</b>	<b>8,449</b>	<b>44</b>	<b>18</b>	<b>596</b>	<b>3,840</b>	<b>3,840</b>	<b>6</b>	<b>3</b>	<b>6</b>

ALL ITEMS ON THIS SHEET ARE CATEGORY 0010

SHEET: 463

PLOT NAME: PLOT SCALE: 1:11

MISCELLANEOUS QUANTITIES

COUNTY: FOND DU LAC

HWY: STH 23

PROJECT NO: 1440-15-72/73

FILE NAME: N:\PDS\...030200\_mq.ppk

EROSION CONTROL SUMMARY CONTINUED

1440-15-72

STATION	TO	STATION	LOCATION	LF	LF	EACH	EACH	LF	LF	EACH	EACH
590'	EB'+04	-	599'	EB'+47	RT	1,000	---	---	---	---	---
602'	EB'+00	-	606'	EB'+00	RT	473	---	---	---	---	---
612'	EB'+00	-	614'	EB'+00	RT	211	---	---	---	---	---
626'	EB'+00	-	628'	EB'+00	RT	219	---	---	---	---	---
640'	EB'+00	-	642'	EB'+00	RT	228	---	---	---	---	---
652'	EB'+21	-	654'	EB'+53	RT	258	---	---	---	---	---
655'	EB'+04	-	662'	EB'+77	RT	826	---	---	---	---	---
659'	WB'+00	-	661'	WB'+50	LT	268	---	---	---	---	---
670'	EB'+00	-	679'	EB'+00	RT	896	---	---	---	---	---
678'	EB'+49	-	679'	EB'+91	RT	173	---	---	---	---	---
680'	EB'+20	-	681'	EB'+44	RT	156	---	---	---	---	---
687'	EB'+00	-	691'	EB'+00	RT	420	---	---	---	---	---
697'	EB'+43	-	704'	EB'+08	LT	670	---	---	---	---	---
700'	EB'+42	-	709'	EB'+81	RT	995	---	---	---	---	---
708'	EB'+00	-	726'	EB'+00	RT	---	---	---	---	---	---
739'	EB'+22	-	742'	EB'+15	RT	293	---	---	---	---	---
50'	HIN'+25	-	52'	HIN'+23	LT	226	---	---	---	---	---
0'	FR'+00	-	33'	FR'+57	---	---	---	---	---	---	---
				UNDISTRIBUTED		6,053	---	---	---	---	---
				<b>SUBTOTAL</b>		<b>13,365</b>	<b>6,682</b>	<b>0</b>	<b>79</b>	<b>149</b>	<b>1,541</b>
				<b>PROJECT TOTAL</b>		<b>34,558</b>	<b>16,961</b>	<b>23</b>	<b>786</b>	<b>5,611</b>	<b>15</b>

\*ADDITIONAL QUANTITIES SHOWN ELSEWHERE

3

6

9

Addendum No. 02  
 ID 1440-15-72/73  
 Revised Sheet 464  
 March 5, 2020

EROSION CONTROL MOBILIZATION - GRADING

1440-15-72

STATION	TO	STATION	EACH	EACH
384'	EB'+00	-	745'	EB'+60
				<b>15</b>
				<b>15</b>
				<b>8</b>
				<b>8</b>

\*ADDITIONAL QUANTITIES SHOWN ELSEWHERE

EROSION CONTROL MOBILIZATION - PAVING

1440-15-73

STATION	TO	STATION	EACH	EACH
384'	EB'+00	-	745'	EB'+60
				<b>13</b>
				<b>13</b>
				<b>6</b>
				<b>6</b>

\*ADDITIONAL QUANTITIES SHOWN ELSEWHERE

ALL ITEMS ON THIS SHEET ARE CATEGORY 0010

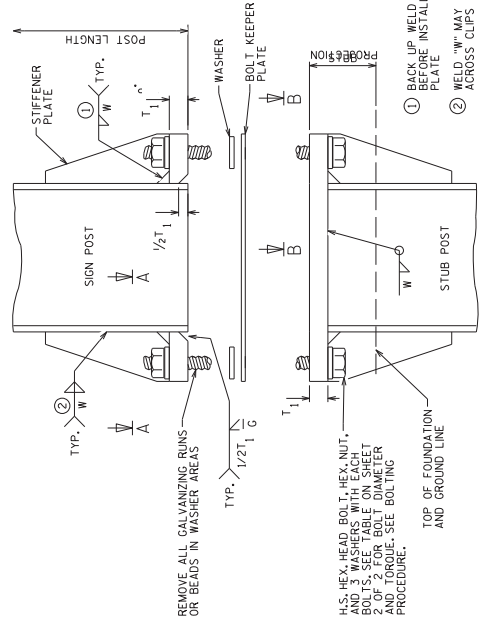
**ERECTION OF PERMANENT SIGNING, TYPE I  
ERECTING STRUCTURAL STEEL SIGN SUPPORTS**

SIGN NO.	LOCATION	SIGN CODE	W X H	637.1220 SIGNS TYPE I REFLECTIVE SH S.F.	635.0200 SIGN SUPPORTS STRUCT. STEEL HIGH-STRENGTH LB*	636.0100 SIGN SUPPORTS CONCRETE MASONRY CY*	636.0500 SIGN SUPPORTS STEEL REINFORCEMENT LB*	TYPE/ SIZE OF STEEL*	REMARKS
700	STH 23 EB, E. OF TRIPLE T RD	E1-51A	168" X 120"	140.00	1365	2.2	322	W12X26	GROUND MOUNT AT STA. 642+75
701	STH 23 EB, AT OFF-RAMP TAPER FOR CTH G	E4-1A	216" X 90"	135.00	1261	2.2	322	W12X26	GROUND MOUNT AT STA. 694+75
702	STH 23 WB, AT OFF-RAMP TAPER FOR CTH G	E4-1A	216" X 90"	135.00	1261	2.2	322	W12X26	GROUND MOUNT AT STA. 732+00
703	STH 23 WB, E. OF CHICKADEE RD	E1-51A	168" X 120"	140.00	1365	2.2	322	W12X26	GROUND MOUNT AT STA. 787+00
				PROJECT TOTALS	550.00	8.8	1288		

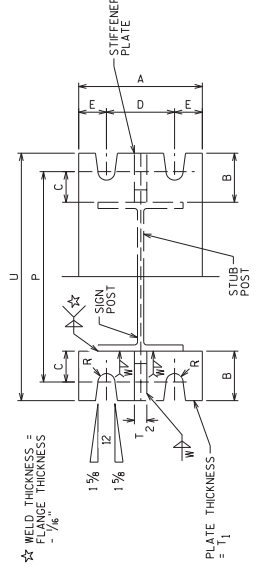
\*THESE QUANTITIES ARE ESTIMATES.  
ACTUAL SIZE/NUMBER/LENGTH/WEIGHT OF STEEL SUPPORTS/REINFORCEMENT/CONCRETE BASES  
ARE TO BE DETERMINED BY CONTRACTOR, BASED ON SURVEY OF FIELD CONDITIONS, FINAL GRADE AND SIGN LOCATION.  
SURVEY REQUIRED FOR DETERMINATION IS THE RESPONSIBILITY OF THE CONTRACTOR, INCIDENTAL TO THE CONTRACT.  
FOLLOW SIGN DETAIL A-PLATES - A3-1, A3-2, A3-3, A4-1

Addendum No. 02  
ID 1440-15-72/73  
Revised Sheet 479  
March 5, 2020

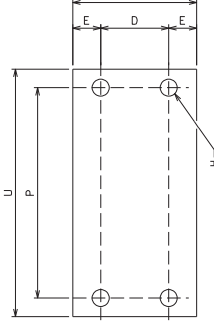
Addendum No. 02  
 ID 1440-15-72/73  
 Added Sheet 773A  
 March 5, 2020



SIGN POST & STUB POST ELEVATION

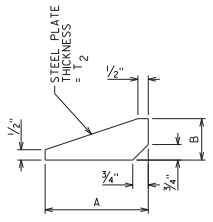


SECTION A-A

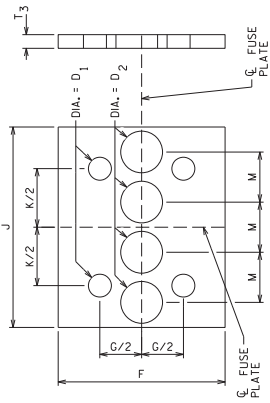


BOLT KEEPER PLATE DETAIL

30 GA GALVANIZED SHEET STEEL



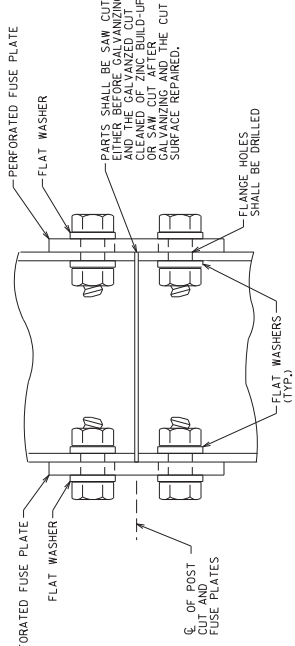
STIFFENER PLATE DETAIL  
 (REFER TO TABLE ON SHEET 2 OF 2 FOR DIMENSIONS)



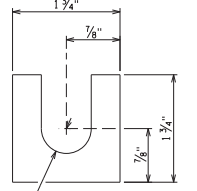
PERFORATED FUSE PLATE DETAIL

USE H.S. HEX HEAD BOLTS, HEX HEAD NUT AND FLAT WASHER UNDER NUT. INSTALL ALL BOLTS PER THE WISCONSIN DEPARTMENT OF TRANSPORTATION STANDARD SPECIFICATION SECTION 506.322.3.

ALL HOLES SHALL BE DRILLED, SUB-PUNCHED AND REAMED. ALL PLATE CUTS SHALL PREFERABLY BE SAW CUTS. HOWEVER, FLAME CUTTING WILL BE PERMITTED PROVIDED THE CUTS ARE CLEANED OF ALL BURRS AND THE CUT SURFACES SHALL CONFORM TO THE REQUIREMENTS OF ASTM A36, ASTM A572 GRADE 50 OR ASTM A588. THE CUT SURFACES SHALL BE CLEANED OF ALL BURRS AND THE CUT SURFACES SHALL BE SUBSTITUTED OR ASB AT THE OPTION OF THE FABRICATOR. MILL TEST REPORTS SHALL BE PROVIDED FOR ALL STEEL USED. STEEL USED SHALL HAVE AN ULTIMATE TENSILE STRENGTH NOT TO EXCEED 80 KSI.

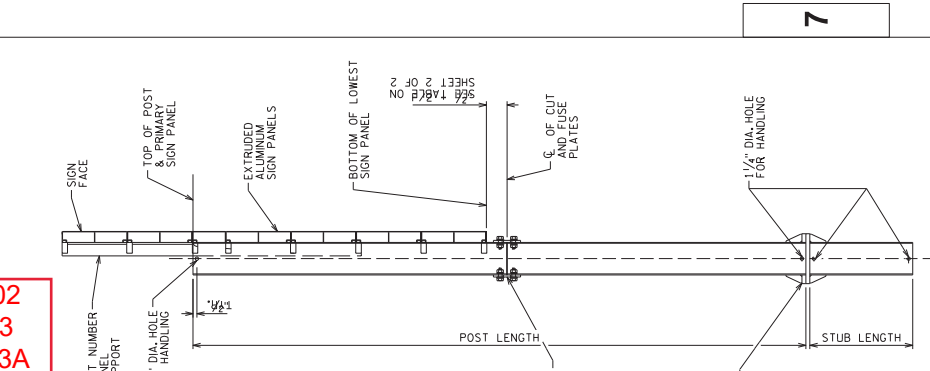


FUSE PLATE CONNECTION DETAIL



SHIM DETAIL

FURNISH TWO (2) 3/8\"/>



POST DETAIL

BOLTING PROCEDURE FOR BASE CONNECTION

1. ASSEMBLE SIGN POST, BOLT KEEPER PLATE, AND STUB POST WITH BOLTS AND THREE FLAT WASHERS PER BOLT AS SHOWN.
2. SHIM AS REQUIRED TO PLUMB POST.
3. PRIOR TO BOLT TIGHTENING, LUBRICATE BASE CONNECTION BOLTS WITH BEESWAX OR OTHER HIGH-WAX LUBRICANT.
4. TIGHTEN ALL BOLTS THE MAXIMUM POSSIBLE WITH A 12\"/>

NO.	DATE	REVISION	BY
STATE OF WISCONSIN DEPARTMENT OF TRANSPORTATION STRUCTURES DESIGN SECTION			
STRUCTURE BTO TYPE SIGNS		DRAWN BY	PLANS TABLE
CONNECTION & FOUNDATION DETAILS 1 OF 2			SHEET A3-120
773A			

**GENERAL NOTES**

- DRAWINGS SHALL NOT BE SCALED
- MATERIALS SHALL CONFORM TO THE WISCONSIN DEPARTMENT OF TRANSPORTATION STANDARD SPECIFICATIONS SECTION 506, UNLESS NOTED OTHERWISE.
- FABRICATION SHALL CONFORM TO THE WISCONSIN DEPARTMENT OF TRANSPORTATION STANDARD SPECIFICATIONS SECTION 506.
- ALL POST, POST STUDS & ATTACHMENTS SHALL BE ASTM A709 GRADE 50, GALVANIZED IN ACCORDANCE WITH ASTM A123.
- THE POST, BASE PLATES, UPPER SIX INCHES OF STUB POST, FLANGE PLATE AND FUSE PLATE SHALL BE GALVANIZED AFTER FABRICATION.
- H.S. BOLTS, WASHERS, & NUTS SHALL BE A325 GALVANIZED.

**FOUNDATION MATERIAL PROPERTIES**

CONCRETE MASONRY  $f_c = 3500$  P.S.I.  
 BAR STEEL REINFORCEMENT (UNCOATED), GRADE 60  $f_y = 60000$  P.S.I.

**DESIGN DATA**

DESIGN CONFORMS TO AASHTO LRFD SPECIFICATIONS FOR STRUCTURAL SUPPORTS FOR HIGHWAY SIGNS, LUMINAIRES, AND TRAFFIC SIGNALS 1ST EDITION 2015 WITH 2017 & 2018 INTERIM REVISIONS.

- DEAD LOADS (DL):
- STEEL POST SELF WEIGHT
- SIGN PANEL WEIGHT = 3 PSF
- WIND LOADS (WL):

WIND LOADS WERE APPLIED TO THE PROJECTED AREAS OF THE SIGN PANELS AND THE STEEL SIGN POSTS.

- BASIC WIND SPEED = 76 MPH
- MEAN RECURRENCE INTERVAL = 10 YEARS
- DIRECTIONALITY FACTOR = 1.00
- GUST EFFECT FACTOR = 1.4

**WIND LOAD CASES:**

- WL CASE 1: 1.0 X NORMAL WIND
- WL CASE 2: 1.0 X TRANSVERSE WIND
- WL CASE 3: 0.75 X NORMAL WIND + 0.75 X TRANSVERSE WIND

**LOAD COMBINATIONS:**

LOAD COMBINATION	TYPE	DL FACTOR	WL FACTOR
STRENGTH I	GRAVITY	1.25	-
EXTREME I	WIND	1.00	1.0
SERVICE I	DEFLECTION	1.0	1.0

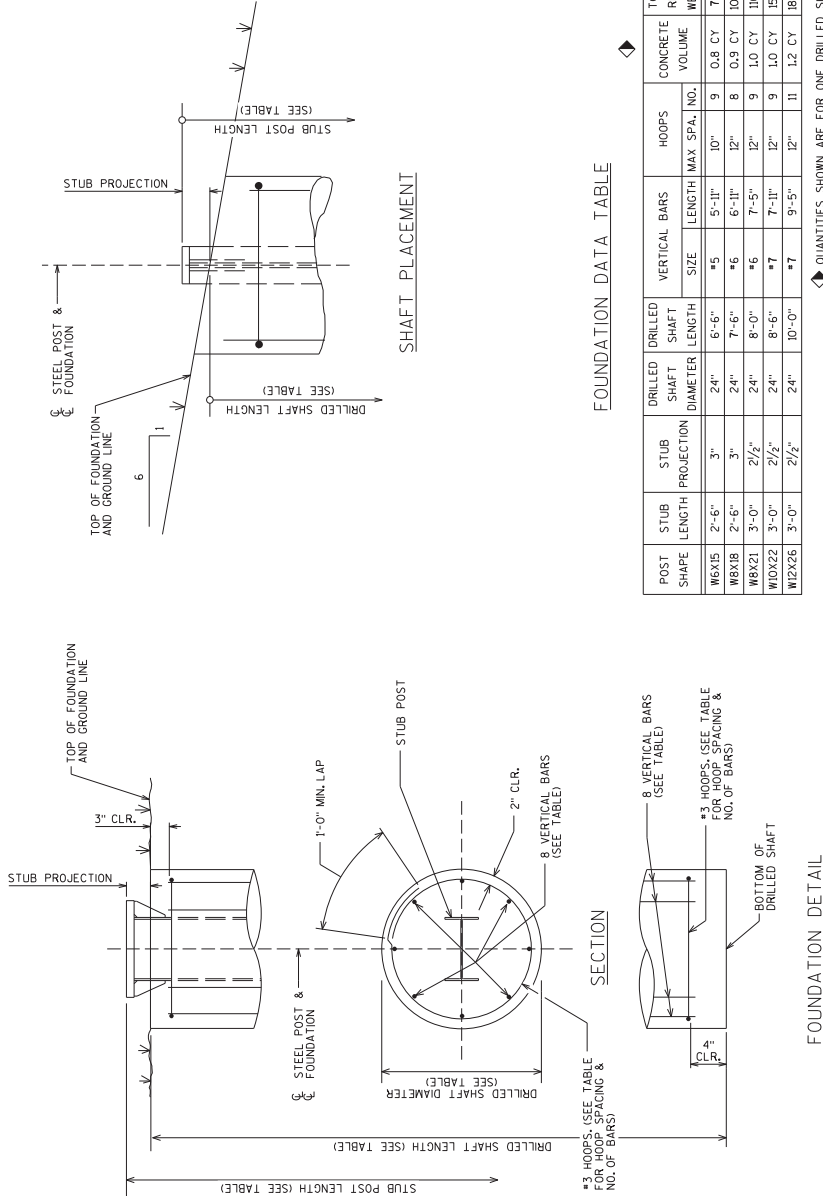
**FOUNDATION DESIGN DATA**

THE FOUNDATION DESIGN ASSUMED COHESIONLESS SOILS (LOOSE SAND) ABOVE THE WATER TABLE WITH THE FOLLOWING PROPERTIES:

- SOIL UNIT WEIGHT = 115 PCF
- ANGLE OF INTERNAL FRICTION = 24 DEGREES
- SOIL MODULUS PARAMETER = 25 LB/IN<sup>3</sup>

NO.	DATE	REVISION	BY
STATE OF WISCONSIN DEPARTMENT OF TRANSPORTATION STRUCTURES BTO TYPE I SIGNS			
CONNECTION & FOUNDATION DETAILS 2 OF 2		DRAWN BY PLANS C.R.D.	SHEET A3-120 <b>774A</b>

Addendum No. 02  
ID 1440-15-72/73  
Added Sheet 774A  
March 5, 2020



**FOUNDATION DATA TABLE**

POST SHAPE	STUB LENGTH	STUB PROJECTION	DRILLED SHAFT DIAMETER	DRILLED SHAFT LENGTH	VERTICAL BARS SIZE	LENGTH	HOOPS MAX SPA.	CONCRETE VOLUME	TOTAL REINF. WEIGHT
W6X15	2'-6"	3"	24"	6'-6"	#5	5'-11"	10"	9	0.8 CY 71 LB
W8X18	2'-6"	3"	24"	7'-6"	#6	6'-11"	10"	8	0.9 CY 102 LB
W8X21	3'-0"	2'-2"	24"	8'-0"	#6	7'-5"	12"	9	1.0 CY 110 LB
W10X22	3'-0"	2'-2"	24"	8'-6"	#7	7'-11"	12"	9	1.0 CY 151 LB
W12X26	3'-0"	2'-2"	24"	10'-0"	#7	9'-5"	12"	11	1.2 CY 180 LB

◆ QUANTITIES SHOWN ARE FOR ONE DRILLED SHAFT

**BASE CONNECTION & FUSE PLATE DATA TABLE**

POST SHAPE	WEIGHT PER FOOT	BASE CONNECTION DATA												PERFORATED FUSE PLATE DATA					BOLT WGT. EA.	BOLT LENGTH	V					
		A	B	C	D	E	T1	T2	W	R	P	U	F	G	J	K	M	D1				D2	T3	BOLT DIA.		
W6X15	15 LB	5"	1/4"	2 3/4"	1/8"	1/4"	1/2"	1/4"	1/2"	1/2"	1/2"	1/2"	1/2"	1/2"	1/2"	1/2"	1/2"	1/2"	1/2"	1/2"	1/2"	1/2"	1/2"	2.4	2	73.0 LB
W8X18	18 LB	6"	1/4"	3"	1/8"	1/4"	1/2"	1/4"	1/2"	1/2"	1/2"	1/2"	1/2"	1/2"	1/2"	1/2"	1/2"	1/2"	1/2"	1/2"	1/2"	1/2"	3.1	2 1/2"	2	83.0 LB
W8X21	21 LB	7 1/4"	3/8"	3 1/2"	1/8"	1/4"	1/2"	1/4"	1/2"	1/2"	1/2"	1/2"	1/2"	1/2"	1/2"	1/2"	1/2"	1/2"	1/2"	1/2"	1/2"	1/2"	3.9	2 1/4"	3	124.0 LB
W10X22	22 LB	6"	1/4"	3 1/2"	1/8"	1/4"	1/2"	1/4"	1/2"	1/2"	1/2"	1/2"	1/2"	1/2"	1/2"	1/2"	1/2"	1/2"	1/2"	1/2"	1/2"	1/2"	4.5	2 1/4"	3	134.0 LB
W12X26	26 LB	6"	1/4"	4 1/2"	1/8"	1/4"	1/2"	1/4"	1/2"	1/2"	1/2"	1/2"	1/2"	1/2"	1/2"	1/2"	1/2"	1/2"	1/2"	1/2"	1/2"	1/2"	4.5	2 1/4"	3	152.0 LB

◆ TOTAL STRUCTURAL CARBON STEEL WEIGHT FOR ONE POST = V \* (POST LENGTH X POST WEIGHT PER FOOT)

"V" INCLUDES STUB POST, BASE PLATES, STIFFENER PLATES, PERFORATED FUSE PLATES, BOLTS, NUTS, AND WASHERS.



2-POST STEEL POST SELECTION TABLE

SIGN PANEL HEIGHT	MAXIMUM GROUND LINE TO BOTTOM OF PRINCIPAL SIGN PANEL												SIGN PANEL WIDTH											
	16'	15'	14'	13'	12'	11'	10'	9'	8'	7'	6'	5'	4'	3'	12'-0"	13'-0"	14'-0"	15'-0"	16'-0"	17'-0"	18'-0"	19'-0"	20'-0"	21'-0"
14'	15'	16'	-	-	-	-	-	-	-	-	-	-	-	-	-	-	-	-	-	-	-	-	-	-
13'	14'	15'	16'	-	-	-	-	-	-	-	-	-	-	-	-	-	-	-	-	-	-	-	-	-
12'	13'	14'	15'	16'	-	-	-	-	-	-	-	-	-	-	-	-	-	-	-	-	-	-	-	-
11'	12'	13'	14'	15'	16'	-	-	-	-	-	-	-	-	-	-	-	-	-	-	-	-	-	-	-
9'	10'	11'	12'	13'	14'	15'	16'	-	-	-	-	-	-	-	-	-	-	-	-	-	-	-	-	-
8'	9'	10'	11'	12'	13'	14'	15'	16'	-	-	-	-	-	-	-	-	-	-	-	-	-	-	-	-
7'	8'	9'	10'	11'	12'	13'	14'	15'	16'	-	-	-	-	-	-	-	-	-	-	-	-	-	-	-
6'	7'	8'	9'	10'	11'	12'	13'	14'	15'	16'	-	-	-	-	-	-	-	-	-	-	-	-	-	-
5'	6'	7'	8'	9'	10'	11'	12'	13'	14'	15'	16'	-	-	-	-	-	-	-	-	-	-	-	-	-
4'	5'	6'	7'	8'	9'	10'	11'	12'	13'	14'	15'	16'	-	-	-	-	-	-	-	-	-	-	-	-
-	4'	5'	6'	7'	8'	9'	10'	11'	12'	13'	14'	15'	16'	-	-	-	-	-	-	-	-	-	-	-
-	-	4'	5'	6'	7'	8'	9'	10'	11'	12'	13'	14'	15'	16'	-	-	-	-	-	-	-	-	-	-
-	-	-	4'	5'	6'	7'	8'	9'	10'	11'	12'	13'	14'	15'	16'	-	-	-	-	-	-	-	-	-
-	-	-	-	4'	5'	6'	7'	8'	9'	10'	11'	12'	13'	14'	15'	16'	-	-	-	-	-	-	-	-
-	-	-	-	-	4'	5'	6'	7'	8'	9'	10'	11'	12'	13'	14'	15'	16'	-	-	-	-	-	-	-
-	-	-	-	-	-	4'	5'	6'	7'	8'	9'	10'	11'	12'	13'	14'	15'	16'	-	-	-	-	-	-
-	-	-	-	-	-	-	4'	5'	6'	7'	8'	9'	10'	11'	12'	13'	14'	15'	16'	-	-	-	-	-
-	-	-	-	-	-	-	-	4'	5'	6'	7'	8'	9'	10'	11'	12'	13'	14'	15'	16'	-	-	-	-
-	-	-	-	-	-	-	-	-	4'	5'	6'	7'	8'	9'	10'	11'	12'	13'	14'	15'	16'	-	-	-
-	-	-	-	-	-	-	-	-	-	4'	5'	6'	7'	8'	9'	10'	11'	12'	13'	14'	15'	16'	-	-
-	-	-	-	-	-	-	-	-	-	-	4'	5'	6'	7'	8'	9'	10'	11'	12'	13'	14'	15'	16'	-
-	-	-	-	-	-	-	-	-	-	-	-	4'	5'	6'	7'	8'	9'	10'	11'	12'	13'	14'	15'	16'

STEEL POST SELECTION NOTES:

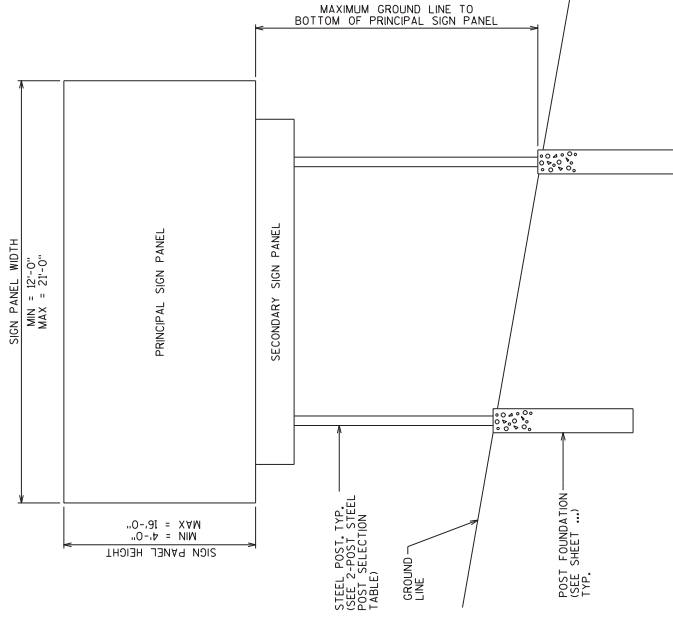
USE PROPOSED SIGN PANEL DIMENSIONS AND THE MAXIMUM HEIGHT FROM THE GROUND LINE TO THE BOTTOM OF THE PRINCIPAL SIGN PANEL TO DETERMINE THE MINIMUM REQUIRED STEEL POST SIZE.

\*\*\* INDICATES THAT THERE IS NO AVAILABLE STEEL POST DESIGN FOR THE PROPOSED SIGN CONFIGURATION. CONTACT THE WISDOT BUREAU OF STRUCTURES TO REQUEST AN ANALYSIS AND DESIGN FOR THE PROPOSED SIGN CONFIGURATION.

IF THE MAXIMUM PROPOSED HEIGHT FROM THE GROUND LINE TO THE BOTTOM OF THE PRINCIPAL SIGN PANEL IS GREATER THAN THE MINIMUM REQUIRED STEEL POST SIZE BASED ON THE NEXT LARGEST 1-FOOT INCREMENT, (FOR EXAMPLE, IF THE PROPOSED GROUND LINE TO BOTTOM OF PRINCIPAL SIGN PANEL IS 12'-6"), SELECT THE STEEL POST SIZE BASED ON A GROUND LINE TO BOTTOM OF SIGN PANEL HEIGHT OF 15'-0".

IF A PROPOSED SIGN PANEL HEIGHT DIMENSION IS IN A 6" INCREMENT, SELECT THE MINIMUM REQUIRED STEEL POST SIZE THAT FALLS WITHIN THE NEXT LARGEST 1-FOOT INCREMENT FROM THE GROUND LINE TO THE BOTTOM OF THE PRINCIPAL SIGN PANEL IS 12'-6". SELECT THE POST SIZE BASED ON A SIGN PANEL HEIGHT OF 13'-0".

FOR PROPOSED SIGN CONFIGURATIONS WHERE THE POST HEIGHTS VARY, SELECT THE STEEL POST SIZE BASED ON THE MAXIMUM DIMENSION FROM THE GROUND LINE TO THE BOTTOM OF THE PRINCIPAL SIGN PANEL TO THE BOTTOM OF THE SECOND POST. IF THE DIMENSION FROM THE GROUND LINE TO THE BOTTOM OF THE SECOND POST IS 8'-FEET FOR ONE POST AND 10'-FEET FOR THE SECOND POST, SELECT THE POST SIZE BASED ON THE 10'-FOOT DIMENSION.



2-POST SIGN CONFIGURATION

Addendum No. 02  
ID 1440-15-72/73  
Added Sheet 775A  
March 5, 2020

NO.	DATE	REVISION	BY
STATE OF WISCONSIN DEPARTMENT OF TRANSPORTATION STRUCTURES DESIGN SECTION			
STRUCTURE BTO TYPE 1 SIGNS			
DESIGNED BY	DRWN	CHKD	
2-POST SIGN CONFIGURATION			SHEET AS-2.5
			775A

3-POST STEEL POST SELECTION TABLE

SIGN PANEL HEIGHT	SIGN PANEL WIDTH															
	16'-0"	15'-0"	14'-0"	13'-0"	12'-0"	11'-0"	10'-0"	9'-0"	8'-0"	7'-0"	6'-0"	5'-0"	4'-0"	3'-0"	2'-0"	1'-0"
16'	W12X26	W12X26	W12X26	W12X26	W12X26	W12X26	W12X26	W12X26	W12X26	W12X26	W12X26	W12X26	W12X26	W12X26	W12X26	W12X26
15'	W12X26	W12X26	W12X26	W12X26	W12X26	W12X26	W12X26	W12X26	W12X26	W12X26	W12X26	W12X26	W12X26	W12X26	W12X26	W12X26
14'	W12X26	W12X26	W12X26	W12X26	W12X26	W12X26	W12X26	W12X26	W12X26	W12X26	W12X26	W12X26	W12X26	W12X26	W12X26	W12X26
13'	W12X26	W12X26	W12X26	W12X26	W12X26	W12X26	W12X26	W12X26	W12X26	W12X26	W12X26	W12X26	W12X26	W12X26	W12X26	W12X26
12'	W12X26	W12X26	W12X26	W12X26	W12X26	W12X26	W12X26	W12X26	W12X26	W12X26	W12X26	W12X26	W12X26	W12X26	W12X26	W12X26
11'	W12X26	W12X26	W12X26	W12X26	W12X26	W12X26	W12X26	W12X26	W12X26	W12X26	W12X26	W12X26	W12X26	W12X26	W12X26	W12X26
10'	W12X26	W12X26	W12X26	W12X26	W12X26	W12X26	W12X26	W12X26	W12X26	W12X26	W12X26	W12X26	W12X26	W12X26	W12X26	W12X26
9'	W12X26	W12X26	W12X26	W12X26	W12X26	W12X26	W12X26	W12X26	W12X26	W12X26	W12X26	W12X26	W12X26	W12X26	W12X26	W12X26
8'	W12X26	W12X26	W12X26	W12X26	W12X26	W12X26	W12X26	W12X26	W12X26	W12X26	W12X26	W12X26	W12X26	W12X26	W12X26	W12X26
7'	W12X26	W12X26	W12X26	W12X26	W12X26	W12X26	W12X26	W12X26	W12X26	W12X26	W12X26	W12X26	W12X26	W12X26	W12X26	W12X26
6'	W12X26	W12X26	W12X26	W12X26	W12X26	W12X26	W12X26	W12X26	W12X26	W12X26	W12X26	W12X26	W12X26	W12X26	W12X26	W12X26
5'	W12X26	W12X26	W12X26	W12X26	W12X26	W12X26	W12X26	W12X26	W12X26	W12X26	W12X26	W12X26	W12X26	W12X26	W12X26	W12X26
4'	W12X26	W12X26	W12X26	W12X26	W12X26	W12X26	W12X26	W12X26	W12X26	W12X26	W12X26	W12X26	W12X26	W12X26	W12X26	W12X26
3'	W12X26	W12X26	W12X26	W12X26	W12X26	W12X26	W12X26	W12X26	W12X26	W12X26	W12X26	W12X26	W12X26	W12X26	W12X26	W12X26
2'	W12X26	W12X26	W12X26	W12X26	W12X26	W12X26	W12X26	W12X26	W12X26	W12X26	W12X26	W12X26	W12X26	W12X26	W12X26	W12X26
1'	W12X26	W12X26	W12X26	W12X26	W12X26	W12X26	W12X26	W12X26	W12X26	W12X26	W12X26	W12X26	W12X26	W12X26	W12X26	W12X26

SEE "2-POST SIGN CONFIGURATION" SHEET

Addendum No. 02  
ID 1440-15-72/73  
Added Sheet 775B  
March 5, 2020

STEEL POST SELECTION NOTES:

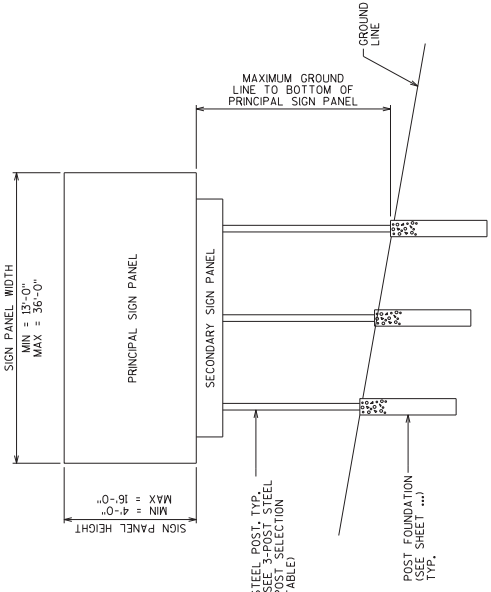
USE PROPOSED SIGN PANEL DIMENSIONS AND THE MAXIMUM HEIGHT OF THE PRINCIPAL SIGN PANEL TO DETERMINE THE MINIMUM REQUIRED STEEL POST SIZE.

"-" INDICATES THAT THERE IS NO STANDARD STEEL POST DESIGN FOR THE PROPOSED SIGN CONFIGURATION. CONTACT THE WISDOT BUREAU OF STRUCTURES TO REQUEST AN ALTERNATE DESIGN FOR THE PROPOSED SIGN CONFIGURATION.

IF THE MAXIMUM PROPOSED HEIGHT FROM THE GROUND LINE TO THE TOP OF THE PRINCIPAL SIGN PANEL IS GREATER THAN THE MAXIMUM HEIGHT OF THE STEEL POST, SELECT THE MINIMUM REQUIRED STEEL POST SIZE BASED ON THE NEXT LARGEST 1-FOOT INCREMENT. IF THE MAXIMUM PROPOSED HEIGHT FROM THE GROUND LINE TO THE TOP OF THE PRINCIPAL SIGN PANEL IS 14'-0" OR GREATER, SELECT THE POST SIZE BASED ON A GROUND LINE TO BOTTOM OF SIGN PANEL HEIGHT OF 15'-0".

IF A PROPOSED SIGN PANEL HEIGHT DIMENSION IS IN A 6" INCREMENT, SELECT THE MINIMUM REQUIRED STEEL POST SIZE BASED ON THE NEXT LARGEST 1-FOOT INCREMENT. IF THE MAXIMUM PROPOSED HEIGHT FROM THE GROUND LINE TO THE TOP OF THE PRINCIPAL SIGN PANEL IS 12'-6", SELECT THE POST SIZE BASED ON A SIGN PANEL HEIGHT OF 13'-0".

FOR PROPOSED SIGN CONFIGURATIONS WHERE THE POST HEIGHTS VARY, SELECT THE STEEL POST SIZE BASED ON THE MAXIMUM DIMENSION FROM THE GROUND LINE TO THE TOP OF THE PRINCIPAL SIGN PANEL. THE DIMENSION FROM THE GROUND LINE TO THE BOTTOM OF THE PRINCIPAL SIGN PANEL IS 8'-FEET FOR ONE POST AND 10'-FEET FOR TWO POSTS. SELECT THE POST SIZE BASED ON THE 16'-FOOT DIMENSION(S).



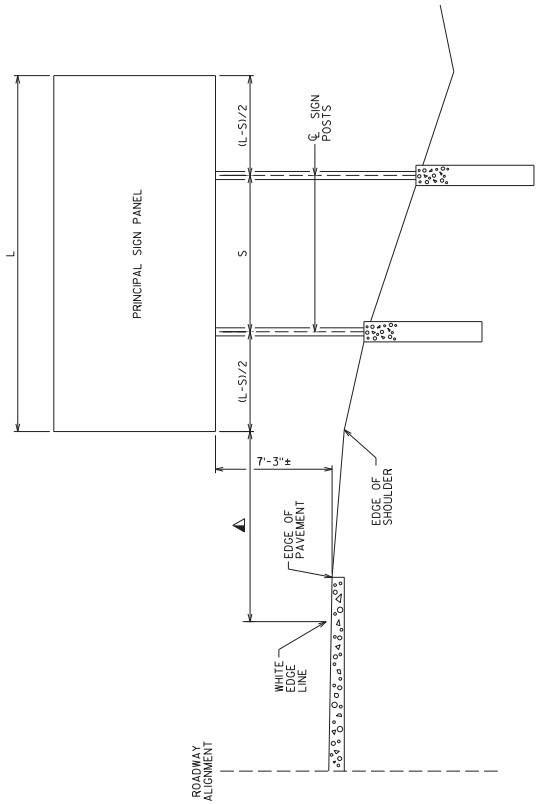
3-POST SIGN CONFIGURATION

NO.	DATE	REVISION	BY
		STATE OF WISCONSIN DEPARTMENT OF TRANSPORTATION STRUCTURES DESIGN SECTION	
STRUCTURE BTO TYPE I SIGNS			
DRAWN BY: [Blank]			775B
CHECKED BY: [Blank]			SHEET A3-3.5
3-POST SIGN CONFIGURATION			

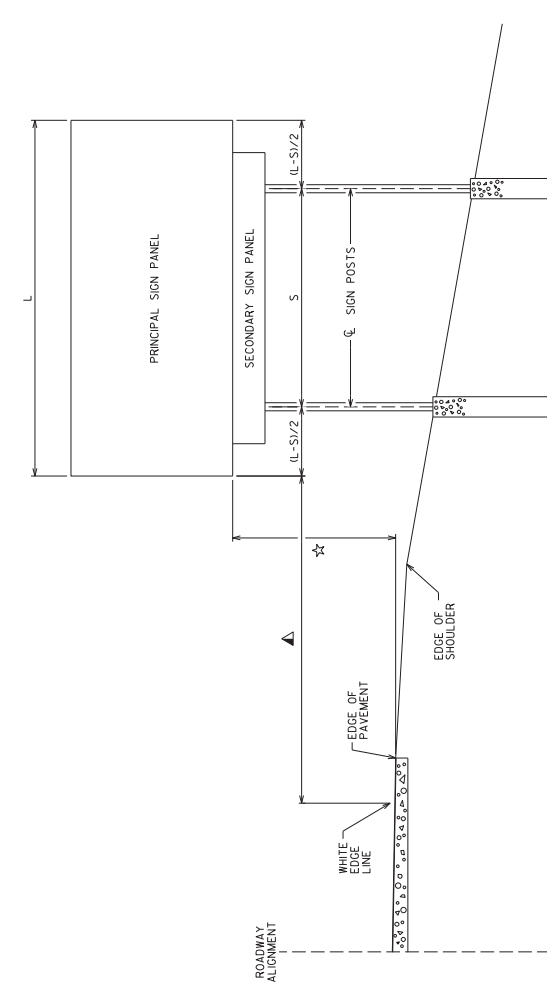
PLOT BY : 00164C

PLOT DATE : 9-SEPT-2019

FILE NAME: C:\CAEF\libs\p\object\TYT-ST01\010A\A32.DGN



INSTALLATION WITHOUT SECONDARY SIGN



INSTALLATION WITH SECONDARY SIGN

**TYPE 1 SIGN INSTALLATION NOTES:**

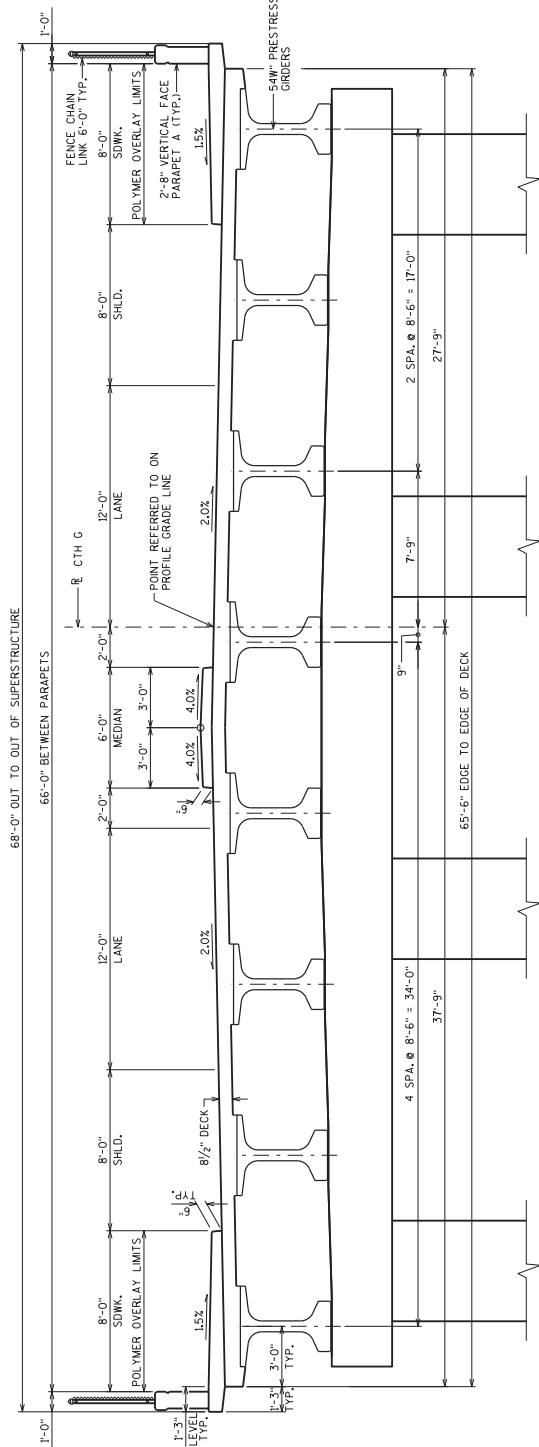
- ▲ FOR A 2-POST INSTALLATION, "S" EQUALS 3L/5, BUT SHALL NOT BE LESS THAN 6'-0".
- ▲ FOR A 3-POST INSTALLATION, "S" EQUALS 5L/7, BUT SHALL NOT BE LESS THAN 12'-0". THE SPACING BETWEEN ANY TWO POSTS SHALL NOT BE LESS THAN 6'-0".
- ▲ UNLESS NOTED IN THE PLANS, THE SIGN OFFSET DISTANCE SHALL BE MINIMUM OF 17'-6" FROM THE WHITE EDGE LINE, DESIRABLE 30'-0".
- ▲ THE ± TOLERANCE SHOWN ON THIS SHEETS IS 3".
- ▲ THE VERTICAL SIGN HEIGHT CLEARANCES SHOWN ON THIS SHEET ARE MEASURED FROM THE BOTTOM OF THE SIGN PANEL TO THE NEAR EDGE OF PAVEMENT.
- ☆ THE VERTICAL CLEARANCE SHALL BE 8'-3"± WHEN THE SECONDARY SIGN HEIGHT IS 3'-0" OR LESS. FOR VERTICAL CLEARANCES GREATER THAN 8'-3", THE SECONDARY SIGN PANEL SHALL BE 5'-3"±.
- ▲ POST LENGTHS SHOWN IN THE MISCELLANEOUS QUANTITIES ARE ESTIMATED LENGTHS. THE CONTRACTOR SHALL VERIFY POST LENGTHS AT THE TIME OF FINAL GRADING.
- ▲ REFER TO THE TRAFFIC ENGINEERING OPERATIONS AND SAFETY MANUAL FOR FURTHER GUIDANCE ON MINIMUM VERTICAL CLEARANCE REQUIREMENTS.

Addendum No. 02  
 ID 1440-15-72/73  
 Added Sheet 776A  
 March 5, 2020

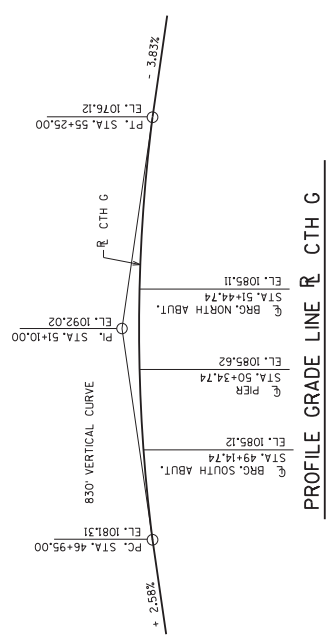
NO.	DATE	REVISION	BY
STATE OF WISCONSIN DEPARTMENT OF TRANSPORTATION STRUCTURES DESIGN SECTION			
DRAWN BY			CHK.
STRUCTURE BTO TYPE 1 SIGNS			
TYPICAL TYPE I SIGN INSTALLATION			776A
SHEET A4-L12			

STATE PROJECT NUMBER  
1440-15-72

Addendum No. 02  
ID 1440-15-72/73  
Revised Sheet 865  
March 5, 2020



CROSS SECTION THRU ROADWAY LOOKING NORTH



PROFILE GRADE LINE R CTH G

3/3/20

NO.	DATE	REVISION	BY
3/2/20		REVISE BACKFILL PAY UNIT	DLW

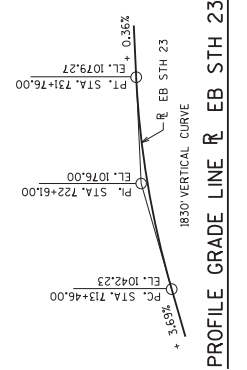
STATE OF WISCONSIN  
DEPARTMENT OF TRANSPORTATION  
STRUCTURES DESIGN SECTION

STRUCTURE B-20-218

PLANS BY: WWR/CKD  
CHECKED BY: DFD

SHEET 2

865



PROFILE GRADE LINE R EB STH 23

TOTAL ESTIMATED QUANTITIES

BID ITEM NUMBER	BID ITEMS	UNIT	SUPER.	SOUTH ABUT.	NORTH ABUT.	PIER	TOTALS
206.1000	EXCAVATION FOR STRUCTURES BRIDGES B-20-218	LS					1
210.1500	BACKFILL STRUCTURE TYPE A	CU		528	528		1,056
502.0100	CONCRETE MASONRY BRIDGES	CY	735	68	68	184	1,055
502.3200	PROTECTIVE SURFACE TREATMENT	SY	1,783				1,783
502.3210	PORIMENTED SURFACE SEALER	SY	189	13	13		215
503.0185	PRESTRESSED GIRDER TYPE I 54W-INCH	LF	1,846				1,846
505.0400	BAR STEEL REINFORCEMENT HS STRUCTURES	LB		4730	4700	10,840	20,270
505.0600	BAR STEEL REINFORCEMENT HS COATED STRUCTURES	LB	193,010	2,980	2,970	18,280	163,240
506.2605	BEARING PADS ELASTOMERIC NON-LAMINATED	EACH		8	8	16	32
506.4000	STEEL DIAPHRAGMS B-20-218	EACH	28				28
509.5100S	POLYMER OVERLAY	SY	414				414
516.0500	RUBBERIZED MEMBRANE WATERPROOFING	SY		18	18		36
550.1100	PILING STEEL HP 10-INCH X 42 LB	LF		510	480		990
604.0500	SLOPE PAVING CRUSHED AGGREGATE	SY		470	385		855
612.0406	PIPE UNDERDRAIN WRAPPED 6-INCH	LF		120	120		240
614.0150	ANCHOR ASSEMBLIES FOR STEEL PLATE BEAM GUARD	EA	4				4
645.0111	GEOTEXTILE TYPE DF SCHEDULE A	SY		67	67		134
SPV.0090	FENCE CHAIN LINK POLYMER-COATED 6-FT.	LF	468	31	31		530
	NON-BID ITEMS						
	FILLER	SIZE					1/2" & 3/4"



Proposal Schedule of Items

Proposal ID: 20200310018 Project(s): 1440-15-72, 1440-15-73

Federal ID(s): N/A, WISC 2020109

SECTION: 0001

Contract Items

Alt Set ID:

Alt Mbr ID:

Proposal Line Number	Item ID Description	Approximate Quantity and Units	Unit Price	Bid Amount
0002	108.4300 RBC Progress Schedule	1.000 EACH	_____.	_____.
0004	201.0105 Clearing	240.000 STA	_____.	_____.
0008	201.0205 Grubbing	240.000 STA	_____.	_____.
0012	203.0100 Removing Small Pipe Culverts	108.000 EACH	_____.	_____.
0014	203.0200 Removing Old Structure (station) 01. Station 573+00	LS	LUMP SUM	_____.
0016	203.0200 Removing Old Structure (station) 02. Station 467+70	LS	LUMP SUM	_____.
0018	203.0200 Removing Old Structure (station) 03. Station 588+40	LS	LUMP SUM	_____.
0020	204.0100 Removing Pavement	3,164.000 SY	_____.	_____.
0022	204.0110 Removing Asphaltic Surface	482.000 SY	_____.	_____.
0024	204.0115 Removing Asphaltic Surface Butt Joints	2,167.000 SY	_____.	_____.
0026	204.0120 Removing Asphaltic Surface Milling	16,252.000 SY	_____.	_____.
0028	204.0150 Removing Curb & Gutter	1,791.000 LF	_____.	_____.
0030	204.0165 Removing Guardrail	742.000 LF	_____.	_____.
0032	204.0170 Removing Fence	1,990.000 LF	_____.	_____.
0034	204.0180 Removing Delineators and Markers	66.000 EACH	_____.	_____.
0036	204.0190 Removing Surface Drains	2.000 EACH	_____.	_____.



Proposal Schedule of Items

Proposal ID: 20200310018 Project(s): 1440-15-72, 1440-15-73

Federal ID(s): N/A, WISC 2020109

SECTION: 0001

Contract Items

Alt Set ID:

Alt Mbr ID:

Proposal Line Number	Item ID Description	Approximate Quantity and Units	Unit Price	Bid Amount
0038	204.0225 Removing Septic Tanks	1.000 EACH	_____.	_____.
0040	204.0230 Removing Building (station) 01. Station 731+25	LS	LUMP SUM	_____.
0042	204.0230 Removing Building (station) 02. Station 389+25	LS	LUMP SUM	_____.
0044	204.0235 Removing Buildings (parcel) 01. Parcel 152	LS	LUMP SUM	_____.
0046	204.0240 Site Clearance (parcel) 01. Parcel 152	LS	LUMP SUM	_____.
0048	204.0240 Site Clearance (parcel) 02. Parcel 114	LS	LUMP SUM	_____.
0050	204.9060.S Removing (item description) 01. Height Modernization Geodetic Survey Monument	1.000 EACH	_____.	_____.
0052	205.0100 Excavation Common	720,212.000 CY	_____.	_____.
0054	205.0300 Excavation Stone Piles and Stone Fences	25.000 CY	_____.	_____.
0056	205.0400 Excavation Marsh	30,346.000 CY	_____.	_____.
0058	205.0501.S Excavation, Hauling, and Disposal of Petroleum Contaminated Soil	150.000 TON	_____.	_____.
0060	206.1000 Excavation for Structures Bridges (structure) 01. B-20-0205	LS	LUMP SUM	_____.
0062	206.1000 Excavation for Structures Bridges (structure) 02. B-20-0215	LS	LUMP SUM	_____.
0064	206.1000 Excavation for Structures Bridges (structure) 03. B-20-0218	LS	LUMP SUM	_____.



## Proposal Schedule of Items

Proposal ID: 20200310018 Project(s): 1440-15-72, 1440-15-73

Federal ID(s): N/A, WISC 2020109

SECTION: 0001

Contract Items

Alt Set ID:

Alt Mbr ID:

Proposal Line Number	Item ID Description	Approximate Quantity and Units	Unit Price	Bid Amount
0066	208.1100 Select Borrow	86,650.000 CY	_____.	_____.
0070	213.0100 Finishing Roadway (project) 01. 1440-15-72	1.000 EACH	_____.	_____.
0072	213.0100 Finishing Roadway (project) 02. 1440-15-73	1.000 EACH	_____.	_____.
0074	214.0100 Obliterating Old Road	8.000 STA	_____.	_____.
0076	305.0110 Base Aggregate Dense 3/4-Inch	26,217.000 TON	_____.	_____.
0078	305.0120 Base Aggregate Dense 1 1/4-Inch	281,606.000 TON	_____.	_____.
0080	312.0110 Select Crushed Material	266,848.000 TON	_____.	_____.
0082	405.0100 Coloring Concrete WisDOT Red	240.000 CY	_____.	_____.
0084	415.0090 Concrete Pavement 9-Inch	141,097.000 SY	_____.	_____.
0086	415.0210 Concrete Pavement Gaps	25.000 EACH	_____.	_____.
0088	415.5110.S Concrete Pavement Joint Layout	1.000 LS	_____.	_____.
0090	416.0512 Concrete Truck Apron 12-Inch	700.000 SY	_____.	_____.
0092	416.1110 Concrete Shoulder Rumble Strips	41,567.000 LF	_____.	_____.
0094	455.0605 Tack Coat	9,896.000 GAL	_____.	_____.
0096	460.2000 Incentive Density HMA Pavement	24,310.000 DOL	1.00000	24,310.00
0098	460.5223 HMA Pavement 3 LT 58-28 S	11,806.000 TON	_____.	_____.



## Proposal Schedule of Items

Proposal ID: 20200310018 Project(s): 1440-15-72, 1440-15-73

Federal ID(s): N/A, WISC 2020109

SECTION: 0001

Contract Items

Alt Set ID:

Alt Mbr ID:

Proposal Line Number	Item ID Description	Approximate Quantity and Units	Unit Price	Bid Amount
0100	460.5224 HMA Pavement 4 LT 58-28 S	10,946.000 TON	_____.	_____.
0102	460.5424 HMA Pavement 4 LT 58-28 H	5,582.000 TON	_____.	_____.
0104	460.6223 HMA Pavement 3 MT 58-28 S	9,593.000 TON	_____.	_____.
0106	460.6224 HMA Pavement 4 MT 58-28 S	5,402.000 TON	_____.	_____.
0108	465.0105 Asphaltic Surface	7,203.000 TON	_____.	_____.
0110	465.0120 Asphaltic Surface Driveways and Field Entrances	297.000 TON	_____.	_____.
0112	465.0125 Asphaltic Surface Temporary	2,217.000 TON	_____.	_____.
0114	465.0315 Asphaltic Flumes	593.000 SY	_____.	_____.
0116	465.0400 Asphaltic Shoulder Rumble Strips	70,800.000 LF	_____.	_____.
0118	502.0100 Concrete Masonry Bridges	1,553.000 CY	_____.	_____.
0120	502.3200 Protective Surface Treatment	2,333.000 SY	_____.	_____.
0122	502.3210 Pigmented Surface Sealer	325.000 SY	_____.	_____.
0124	503.0137 Prestressed Girder Type I 36W-Inch	325.000 LF	_____.	_____.
0126	503.0155 Prestressed Girder Type I 54W-Inch	1,846.000 LF	_____.	_____.
0128	504.0900 Concrete Masonry Endwalls	53.000 CY	_____.	_____.
0130	505.0400 Bar Steel Reinforcement HS Structures	28,570.000 LB	_____.	_____.





Proposal Schedule of Items

Proposal ID: 20200310018 Project(s): 1440-15-72, 1440-15-73

Federal ID(s): N/A, WISC 2020109

SECTION: 0001

Contract Items

Alt Set ID:

Alt Mbr ID:

Proposal Line Number	Item ID Description	Approximate Quantity and Units	Unit Price	Bid Amount
0132	505.0600 Bar Steel Reinforcement HS Coated Structures	224,280.000 LB	_____.	_____.
0134	505.0800.S Bar Steel Reinforcement HS Stainless Structures	1,600.000 LB	_____.	_____.
0136	506.2605 Bearing Pads Elastomeric Non-Laminated	42.000 EACH	_____.	_____.
0138	506.4000 Steel Diaphragms (structure) 01. B-20-0205	4.000 EACH	_____.	_____.
0140	506.4000 Steel Diaphragms (structure) 02. B-20-0218	28.000 EACH	_____.	_____.
0142	509.5100.S Polymer Overlay	505.000 SY	_____.	_____.
0144	511.1100 Temporary Shoring	3,200.000 SF	_____.	_____.
0146	513.7016 Railing Steel Type C3 01. B-20-0215	142.000 LF	_____.	_____.
0148	516.0500 Rubberized Membrane Waterproofing	80.000 SY	_____.	_____.
0150	520.1012 Apron Endwalls for Culvert Pipe 12-Inch	6.000 EACH	_____.	_____.
0152	520.1018 Apron Endwalls for Culvert Pipe 18-Inch	9.000 EACH	_____.	_____.
0154	520.1024 Apron Endwalls for Culvert Pipe 24-Inch	126.000 EACH	_____.	_____.
0156	520.1030 Apron Endwalls for Culvert Pipe 30-Inch	14.000 EACH	_____.	_____.
0158	520.1036 Apron Endwalls for Culvert Pipe 36-Inch	16.000 EACH	_____.	_____.
0160	520.1042 Apron Endwalls for Culvert Pipe 42-Inch	10.000 EACH	_____.	_____.



## Proposal Schedule of Items

Proposal ID: 20200310018 Project(s): 1440-15-72, 1440-15-73

Federal ID(s): N/A, WISC 2020109

SECTION: 0001

Contract Items

Alt Set ID:

Alt Mbr ID:

Proposal Line Number	Item ID Description	Approximate Quantity and Units	Unit Price	Bid Amount
0162	520.1054 Apron Endwalls for Culvert Pipe 54-Inch	14.000 EACH	_____.	_____.
0164	520.2024 Culvert Pipe Temporary 24-Inch	1,604.000 LF	_____.	_____.
0166	520.3142 Culvert Pipe Class III 42-Inch	71.000 LF	_____.	_____.
0168	520.3154 Culvert Pipe Class III 54-Inch	173.000 LF	_____.	_____.
0170	520.3318 Culvert Pipe Class III-A 18-Inch	576.000 LF	_____.	_____.
0172	520.3324 Culvert Pipe Class III-A 24-Inch	3,218.000 LF	_____.	_____.
0174	520.3330 Culvert Pipe Class III-A 30-Inch	433.000 LF	_____.	_____.
0176	520.3336 Culvert Pipe Class III-A 36-Inch	398.000 LF	_____.	_____.
0178	520.4142 Culvert Pipe Class IV 42-Inch	208.000 LF	_____.	_____.
0180	520.4154 Culvert Pipe Class IV 54-Inch	87.000 LF	_____.	_____.
0182	520.4160 Culvert Pipe Class IV 60-Inch	142.000 LF	_____.	_____.
0184	520.8000 Concrete Collars for Pipe	19.000 EACH	_____.	_____.
0186	521.1735 Apron Endwalls for Pipe Arch Sloped Side Drains Steel 35x24-Inch 6 to 1	2.000 EACH	_____.	_____.
0188	521.2005.S Surface Drain Pipe Corrugated Metal Slotted (inch) 01. 18-Inch	835.000 LF	_____.	_____.
0190	521.3735 Pipe Arch Corrugated Steel 35x24-Inch	38.000 LF	_____.	_____.
0192	522.0112 Culvert Pipe Reinforced Concrete Class III 12-Inch	99.000 LF	_____.	_____.



Proposal Schedule of Items

Proposal ID: 20200310018 Project(s): 1440-15-72, 1440-15-73

Federal ID(s): N/A, WISC 2020109

SECTION: 0001

Contract Items

Alt Set ID:

Alt Mbr ID:

Proposal Line Number	Item ID Description	Approximate Quantity and Units	Unit Price	Bid Amount
0194	522.0118 Culvert Pipe Reinforced Concrete Class III 18-Inch	142.000 LF	_____.	_____.
0196	522.0124 Culvert Pipe Reinforced Concrete Class III 24-Inch	2,898.000 LF	_____.	_____.
0198	522.0130 Culvert Pipe Reinforced Concrete Class III 30-Inch	943.000 LF	_____.	_____.
0200	522.0136 Culvert Pipe Reinforced Concrete Class III 36-Inch	628.000 LF	_____.	_____.
0202	522.0142 Culvert Pipe Reinforced Concrete Class III 42-Inch	149.000 LF	_____.	_____.
0204	522.0148 Culvert Pipe Reinforced Concrete Class III 48-Inch	200.000 LF	_____.	_____.
0206	522.0154 Culvert Pipe Reinforced Concrete Class III 54-Inch	906.000 LF	_____.	_____.
0208	522.0424 Culvert Pipe Reinforced Concrete Class IV 24-Inch	650.000 LF	_____.	_____.
0210	522.0430 Culvert Pipe Reinforced Concrete Class IV 30-Inch	282.000 LF	_____.	_____.
0212	522.0436 Culvert Pipe Reinforced Concrete Class IV 36-Inch	203.000 LF	_____.	_____.
0214	522.0460 Culvert Pipe Reinforced Concrete Class IV 60-Inch	382.000 LF	_____.	_____.
0216	522.1012 Apron Endwalls for Culvert Pipe Reinforced Concrete 12-Inch	8.000 EACH	_____.	_____.
0218	522.1024 Apron Endwalls for Culvert Pipe Reinforced Concrete 24-Inch	36.000 EACH	_____.	_____.



Proposal Schedule of Items

Proposal ID: 20200310018 Project(s): 1440-15-72, 1440-15-73

Federal ID(s): N/A, WISC 2020109

SECTION: 0001

Contract Items

Alt Set ID:

Alt Mbr ID:

Proposal Line Number	Item ID Description	Approximate Quantity and Units	Unit Price	Bid Amount
0220	522.1030 Apron Endwalls for Culvert Pipe Reinforced Concrete 30-Inch	10.000 EACH	_____.	_____.
0222	522.1036 Apron Endwalls for Culvert Pipe Reinforced Concrete 36-Inch	6.000 EACH	_____.	_____.
0224	522.1042 Apron Endwalls for Culvert Pipe Reinforced Concrete 42-Inch	1.000 EACH	_____.	_____.
0226	522.1048 Apron Endwalls for Culvert Pipe Reinforced Concrete 48-Inch	2.000 EACH	_____.	_____.
0228	522.1054 Apron Endwalls for Culvert Pipe Reinforced Concrete 54-Inch	3.000 EACH	_____.	_____.
0230	522.2319 Culvert Pipe Reinforced Concrete Horizontal Elliptical Class HE-III 19x30-Inch	521.000 LF	_____.	_____.
0232	522.2324 Culvert Pipe Reinforced Concrete Horizontal Elliptical Class HE-III 24x38-Inch	190.000 LF	_____.	_____.
0234	522.2338 Culvert Pipe Reinforced Concrete Horizontal Elliptical Class HE-III 38x60-Inch	104.000 LF	_____.	_____.
0236	522.2419 Culvert Pipe Reinforced Concrete Horizontal Elliptical Class HE-IV 19x30-Inch	63.000 LF	_____.	_____.
0238	522.2424 Culvert Pipe Reinforced Concrete Horizontal Elliptical Class HE-IV 24x38-Inch	62.000 LF	_____.	_____.
0240	522.2619 Apron Endwalls for Culvert Pipe Reinforced Concrete Horizontal Elliptical 19x30-Inch	17.000 EACH	_____.	_____.



Proposal Schedule of Items

Proposal ID: 20200310018 Project(s): 1440-15-72, 1440-15-73

Federal ID(s): N/A, WISC 2020109

SECTION: 0001

Contract Items

Alt Set ID:

Alt Mbr ID:

Proposal Line Number	Item ID Description	Approximate Quantity and Units	Unit Price	Bid Amount
0242	522.2624 Apron Endwalls for Culvert Pipe Reinforced Concrete Horizontal Elliptical 24x38-Inch	10.000 EACH	_____.	_____.
0244	522.2638 Apron Endwalls for Culvert Pipe Reinforced Concrete Horizontal Elliptical 38x60-Inch	8.000 EACH	_____.	_____.
0246	524.0142 Culvert Pipe Salvaged 42-Inch	40.000 LF	_____.	_____.
0248	524.0154 Culvert Pipe Salvaged 54-Inch	24.000 LF	_____.	_____.
0250	524.0642 Apron Endwalls for Culvert Pipe Salvaged 42-Inch	2.000 EACH	_____.	_____.
0252	524.0654 Apron Endwalls for Culvert Pipe Salvaged 54-Inch	1.000 EACH	_____.	_____.
0254	550.1100 Piling Steel HP 10-Inch X 42 Lb	1,910.000 LF	_____.	_____.
0256	601.0405 Concrete Curb & Gutter 18-Inch Type A	430.000 LF	_____.	_____.
0258	601.0411 Concrete Curb & Gutter 30-Inch Type D	3,790.000 LF	_____.	_____.
0260	601.0413 Concrete Curb & Gutter 6-Inch Sloped 30-Inch Type G	368.000 LF	_____.	_____.
0262	601.0553 Concrete Curb & Gutter 4-Inch Sloped 36-Inch Type D	2,860.000 LF	_____.	_____.
0264	601.0555 Concrete Curb & Gutter 6-Inch Sloped 36-Inch Type A	2,172.000 LF	_____.	_____.
0266	601.0557 Concrete Curb & Gutter 6-Inch Sloped 36-Inch Type D	5,944.000 LF	_____.	_____.
0268	601.0580 Concrete Curb & Gutter 4-Inch Sloped 36-Inch Type R	600.000 LF	_____.	_____.



Proposal Schedule of Items

Proposal ID: 20200310018 Project(s): 1440-15-72, 1440-15-73

Federal ID(s): N/A, WISC 2020109

SECTION: 0001

Contract Items

Alt Set ID:

Alt Mbr ID:

Proposal Line Number	Item ID Description	Approximate Quantity and Units	Unit Price	Bid Amount
0270	601.0600 Concrete Curb Pedestrian	85.000 LF	_____.	_____.
0272	602.0405 Concrete Sidewalk 4-Inch	14,515.000 SF	_____.	_____.
0274	602.0505 Curb Ramp Detectable Warning Field Yellow	364.000 SF	_____.	_____.
0276	603.8000 Concrete Barrier Temporary Precast Delivered	700.000 LF	_____.	_____.
0278	603.8125 Concrete Barrier Temporary Precast Installed	700.000 LF	_____.	_____.
0280	604.0500 Slope Paving Crushed Aggregate	855.000 SY	_____.	_____.
0282	606.0100 Riprap Light	1,134.000 CY	_____.	_____.
0284	606.0200 Riprap Medium	2,046.000 CY	_____.	_____.
0286	606.0300 Riprap Heavy	327.000 CY	_____.	_____.
0288	608.0412 Storm Sewer Pipe Reinforced Concrete Class IV 12-Inch	1,142.000 LF	_____.	_____.
0290	611.0535 Manhole Covers Type J-Special	1.000 EACH	_____.	_____.
0294	611.0615 Inlet Covers Type F	18.000 EACH	_____.	_____.
0296	611.0624 Inlet Covers Type H	12.000 EACH	_____.	_____.
0298	611.0627 Inlet Covers Type HM	8.000 EACH	_____.	_____.
0300	611.0636 Inlet Covers Type HM-S	4.000 EACH	_____.	_____.
0302	611.0642 Inlet Covers Type MS	70.000 EACH	_____.	_____.



## Proposal Schedule of Items

Proposal ID: 20200310018 Project(s): 1440-15-72, 1440-15-73

Federal ID(s): N/A, WISC 2020109

SECTION: 0001

Contract Items

Alt Set ID:

Alt Mbr ID:

Proposal Line Number	Item ID Description	Approximate Quantity and Units	Unit Price	Bid Amount
0304	611.0652 Inlet Covers Type T	4.000 EACH	_____.	_____.
0306	611.2005 Manholes 5-FT Diameter	1.000 EACH	_____.	_____.
0308	611.2006 Manholes 6-FT Diameter	2.000 EACH	_____.	_____.
0310	611.3004 Inlets 4-FT Diameter	15.000 EACH	_____.	_____.
0312	611.3230 Inlets 2x3-FT	16.000 EACH	_____.	_____.
0314	611.3253 Inlets 2.5x3-FT	11.000 EACH	_____.	_____.
0316	611.3902 Inlets Median 2 Grate	33.000 EACH	_____.	_____.
0318	611.3904 Inlets Median 4 Grate	1.000 EACH	_____.	_____.
0320	612.0204 Pipe Underdrain Unperforated 4-Inch	1,473.000 LF	_____.	_____.
0322	612.0406 Pipe Underdrain Wrapped 6-Inch	536.000 LF	_____.	_____.
0324	612.0700 Drain Tile Exploration	100.000 LF	_____.	_____.
0326	612.0804 Apron Endwalls for Underdrain Reinforced Concrete 4-Inch	77.000 EACH	_____.	_____.
0328	614.0150 Anchor Assemblies for Steel Plate Beam Guard	8.000 EACH	_____.	_____.
0330	614.0200 Steel Thrie Beam Structure Approach	92.000 LF	_____.	_____.
0332	614.0220 Steel Thrie Beam Bullnose Terminal	1.000 EACH	_____.	_____.
0334	614.0305 Steel Plate Beam Guard Class A	596.000 LF	_____.	_____.



Proposal Schedule of Items

Proposal ID: 20200310018 Project(s): 1440-15-72, 1440-15-73

Federal ID(s): N/A, WISC 2020109

SECTION: 0001

Contract Items

Alt Set ID:

Alt Mbr ID:

Proposal Line Number	Item ID Description	Approximate Quantity and Units	Unit Price	Bid Amount
0336	614.0370 Steel Plate Beam Guard Energy Absorbing Terminal	4.000 EACH	_____.	_____.
0338	614.0905 Crash Cushions Temporary	4.000 EACH	_____.	_____.
0340	614.2300 MGS Guardrail 3	100.000 LF	_____.	_____.
0342	614.2620 MGS Guardrail Terminal Type 2	8.000 EACH	_____.	_____.
0344	616.0100 Fence Woven Wire (height) 01. 4-Ft	70,665.000 LF	_____.	_____.
0346	618.0100 Maintenance And Repair of Haul Roads (project) 01. 1440-15-72	1.000 EACH	_____.	_____.
0348	618.0100 Maintenance And Repair of Haul Roads (project) 02. 1440-15-73	1.000 EACH	_____.	_____.
0350	619.1000 Mobilization	1.000 EACH	_____.	_____.
0352	620.0300 Concrete Median Sloped Nose	319.000 SF	_____.	_____.
0354	623.0200 Dust Control Surface Treatment	45,420.000 SY	_____.	_____.
0356	624.0100 Water	4,938.000 MGAL	_____.	_____.
0358	625.0500 Salvaged Topsoil	998,676.000 SY	_____.	_____.
0360	627.0200 Mulching	852,790.000 SY	_____.	_____.
0362	628.1104 Erosion Bales	500.000 EACH	_____.	_____.
0364	628.1504 Silt Fence	34,558.000 LF	_____.	_____.
0366	628.1520 Silt Fence Maintenance	16,961.000 LF	_____.	_____.





Proposal Schedule of Items

Proposal ID: 20200310018 Project(s): 1440-15-72, 1440-15-73

Federal ID(s): N/A, WISC 2020109

SECTION: 0001

Contract Items

Alt Set ID:

Alt Mbr ID:

Proposal Line Number	Item ID Description	Approximate Quantity and Units	Unit Price	Bid Amount
0368	628.1905 Mobilizations Erosion Control	33.000 EACH	_____.	_____.
0370	628.1910 Mobilizations Emergency Erosion Control	19.000 EACH	_____.	_____.
0372	628.2004 Erosion Mat Class I Type B	209,427.000 SY	_____.	_____.
0374	628.2006 Erosion Mat Urban Class I Type A	67,600.000 SY	_____.	_____.
0376	628.2008 Erosion Mat Urban Class I Type B	4,290.000 SY	_____.	_____.
0378	628.2027 Erosion Mat Class II Type C	24,500.000 SY	_____.	_____.
0380	628.6510 Soil Stabilizer Type B	7.000 ACRE	_____.	_____.
0382	628.7005 Inlet Protection Type A	79.000 EACH	_____.	_____.
0384	628.7015 Inlet Protection Type C	30.000 EACH	_____.	_____.
0386	628.7020 Inlet Protection Type D	23.000 EACH	_____.	_____.
0388	628.7504 Temporary Ditch Checks	5,911.000 LF	_____.	_____.
0390	628.7515.S Stone or Rock Ditch Checks	19.000 CY	_____.	_____.
0392	628.7555 Culvert Pipe Checks	786.000 EACH	_____.	_____.
0394	628.7560 Tracking Pads	15.000 EACH	_____.	_____.
0396	628.7570 Rock Bags	235.000 EACH	_____.	_____.
0398	629.0210 Fertilizer Type B	696.000 CWT	_____.	_____.
0400	630.0120 Seeding Mixture No. 20	16,298.000 LB	_____.	_____.



Proposal Schedule of Items

Proposal ID: 20200310018 Project(s): 1440-15-72, 1440-15-73

Federal ID(s): N/A, WISC 2020109

SECTION: 0001

Contract Items

Alt Set ID:

Alt Mbr ID:

Proposal Line Number	Item ID Description	Approximate Quantity and Units	Unit Price	Bid Amount
0402	630.0130 Seeding Mixture No. 30	7,105.000 LB	_____.	_____.
0404	630.0140 Seeding Mixture No. 40	82.000 LB	_____.	_____.
0406	630.0200 Seeding Temporary	25,333.000 LB	_____.	_____.
0408	630.0300 Seeding Borrow Pit	1,200.000 LB	_____.	_____.
0410	630.0500 Seed Water	2,672.000 MGAL	_____.	_____.
0412	633.0100 Delineator Posts Steel	182.000 EACH	_____.	_____.
0414	633.0500 Delineator Reflectors	182.000 EACH	_____.	_____.
0416	633.1100 Delineators Temporary	134.000 EACH	_____.	_____.
0418	633.5200 Markers Culvert End	189.000 EACH	_____.	_____.
0420	634.0614 Posts Wood 4x6-Inch X 14-FT	217.000 EACH	_____.	_____.
0422	634.0616 Posts Wood 4x6-Inch X 16-FT	157.000 EACH	_____.	_____.
0424	634.0618 Posts Wood 4x6-Inch X 18-FT	16.000 EACH	_____.	_____.
0426	634.0620 Posts Wood 4x6-Inch X 20-FT	6.000 EACH	_____.	_____.
0428	635.0200 Sign Supports Structural Steel HS	5,252.000 LB	_____.	_____.
0430	636.0100 Sign Supports Concrete Masonry	8.800 CY	_____.	_____.
0432	636.0500 Sign Supports Steel Reinforcement	1,288.000 LB	_____.	_____.
0434	637.1220 Signs Type I Reflective SH	550.000 SF	_____.	_____.



Proposal Schedule of Items

Proposal ID: 20200310018 Project(s): 1440-15-72, 1440-15-73

Federal ID(s): N/A, WISC 2020109

SECTION: 0001

Contract Items

Alt Set ID:

Alt Mbr ID:

Proposal Line Number	Item ID Description	Approximate Quantity and Units	Unit Price	Bid Amount
0436	637.2210 Signs Type II Reflective H	3,961.870 SF	_____.	_____.
0438	637.2220 Signs Type II Reflective SH	20.250 SF	_____.	_____.
0440	637.2230 Signs Type II Reflective F	273.750 SF	_____.	_____.
0442	638.2602 Removing Signs Type II	107.000 EACH	_____.	_____.
0444	638.3000 Removing Small Sign Supports	113.000 EACH	_____.	_____.
0446	642.5201 Field Office Type C	1.000 EACH	_____.	_____.
0448	643.0300 Traffic Control Drums	504,026.000 DAY	_____.	_____.
0450	643.0420 Traffic Control Barricades Type III	119,382.000 DAY	_____.	_____.
0452	643.0705 Traffic Control Warning Lights Type A	234,664.000 DAY	_____.	_____.
0454	643.0715 Traffic Control Warning Lights Type C	10,235.000 DAY	_____.	_____.
0456	643.0800 Traffic Control Arrow Boards	94.000 DAY	_____.	_____.
0458	643.0900 Traffic Control Signs	187,905.000 DAY	_____.	_____.
0460	643.0920 Traffic Control Covering Signs Type II	8.000 EACH	_____.	_____.
0462	643.1050 Traffic Control Signs PCMS	259.000 DAY	_____.	_____.
0464	643.5000 Traffic Control	1.000 EACH	_____.	_____.
0466	645.0111 Geotextile Type DF Schedule A	258.000 SY	_____.	_____.
0468	645.0120 Geotextile Type HR	5,512.000 SY	_____.	_____.



Proposal Schedule of Items

Proposal ID: 20200310018 Project(s): 1440-15-72, 1440-15-73

Federal ID(s): N/A, WISC 2020109

SECTION: 0001

Contract Items

Alt Set ID:

Alt Mbr ID:

Proposal Line Number	Item ID Description	Approximate Quantity and Units	Unit Price	Bid Amount
0470	645.0130 Geotextile Type R	6,918.000 SY	_____.	_____.
0472	645.0140 Geotextile Type SAS	90.000 SY	_____.	_____.
0474	646.1020 Marking Line Epoxy 4-Inch	72,698.000 LF	_____.	_____.
0476	646.1040 Marking Line Grooved Wet Ref Epoxy 4-Inch	103,504.000 LF	_____.	_____.
0478	646.1555 Marking Line Grooved Contrast Permanent Tape 4-Inch	12,787.000 LF	_____.	_____.
0480	646.3555 Marking Line Grooved Contrast Permanent Tape 8-Inch	16,590.000 LF	_____.	_____.
0482	646.6220 Marking Yield Line Epoxy 18-Inch	4.000 EACH	_____.	_____.
0484	646.6320 Marking Dotted Extension Epoxy 18-Inch	115.000 LF	_____.	_____.
0486	646.7120 Marking Diagonal Epoxy 12-Inch	1,213.000 LF	_____.	_____.
0488	646.7220 Marking Chevron Epoxy 24-Inch	1,496.000 LF	_____.	_____.
0490	646.7420 Marking Crosswalk Epoxy Transverse Line 6-Inch	305.000 LF	_____.	_____.
0492	646.8120 Marking Curb Epoxy	480.000 LF	_____.	_____.
0494	646.8220 Marking Island Nose Epoxy	10.000 EACH	_____.	_____.
0496	646.8320 Marking Parking Stall Epoxy	1,512.000 LF	_____.	_____.
0498	649.0105 Temporary Marking Line Paint 4-Inch	92,195.000 LF	_____.	_____.



## Proposal Schedule of Items

Proposal ID: 20200310018 Project(s): 1440-15-72, 1440-15-73

Federal ID(s): N/A, WISC 2020109

SECTION: 0001

Contract Items

Alt Set ID:

Alt Mbr ID:

Proposal Line Number	Item ID Description	Approximate Quantity and Units	Unit Price	Bid Amount
0500	649.0150 Temporary Marking Line Removable Tape 4-Inch	11,674.000 LF	_____.	_____.
0502	649.0760 Temporary Marking Raised Pavement Marker Type I	357.000 EACH	_____.	_____.
0504	650.4000 Construction Staking Storm Sewer	36.000 EACH	_____.	_____.
0506	650.4500 Construction Staking Subgrade	85,947.000 LF	_____.	_____.
0508	650.5000 Construction Staking Base	85,947.000 LF	_____.	_____.
0510	650.5500 Construction Staking Curb Gutter and Curb & Gutter	16,231.000 LF	_____.	_____.
0512	650.6000 Construction Staking Pipe Culverts	113.000 EACH	_____.	_____.
0514	650.6500 Construction Staking Structure Layout (structure) 01. B-20-0205	LS	LUMP SUM	_____.
0516	650.6500 Construction Staking Structure Layout (structure) 02. B-20-0215	LS	LUMP SUM	_____.
0518	650.6500 Construction Staking Structure Layout (structure) 03. B-20-0218	LS	LUMP SUM	_____.
0520	650.7000 Construction Staking Concrete Pavement	43,772.000 LF	_____.	_____.
0522	650.8000 Construction Staking Resurfacing Reference	8,264.000 LF	_____.	_____.
0524	650.9910 Construction Staking Supplemental Control (project) 01. 1440-15-72	LS	LUMP SUM	_____.
0526	650.9910 Construction Staking Supplemental Control (project) 02. 1440-15-73	LS	LUMP SUM	_____.



## Proposal Schedule of Items

Proposal ID: 20200310018 Project(s): 1440-15-72, 1440-15-73

Federal ID(s): N/A, WISC 2020109

SECTION: 0001

Contract Items

Alt Set ID:

Alt Mbr ID:

Proposal Line Number	Item ID Description	Approximate Quantity and Units	Unit Price	Bid Amount
0528	650.9920 Construction Staking Slope Stakes	85,947.000 LF	_____.	_____.
0530	652.0225 Conduit Rigid Nonmetallic Schedule 40 2-Inch	6,840.000 LF	_____.	_____.
0532	652.0235 Conduit Rigid Nonmetallic Schedule 40 3-Inch	590.000 LF	_____.	_____.
0534	652.0615 Conduit Special 3-Inch	1,180.000 LF	_____.	_____.
0536	653.0164 Pull Boxes Non-Conductive 24x42-Inch	53.000 EACH	_____.	_____.
0538	654.0105 Concrete Bases Type 5	31.000 EACH	_____.	_____.
0540	654.0220 Concrete Control Cabinet Bases Type 10	5.000 EACH	_____.	_____.
0542	655.0610 Electrical Wire Lighting 12 AWG	5,250.000 LF	_____.	_____.
0544	655.0615 Electrical Wire Lighting 10 AWG	33,310.000 LF	_____.	_____.
0546	656.0200 Electrical Service Meter Breaker Pedestal (location) 01. Loehr Rd & STH 23	LS	LUMP SUM	_____.
0548	656.0200 Electrical Service Meter Breaker Pedestal (location) 02. Seven Hills Road & STH 23	LS	LUMP SUM	_____.
0550	656.0200 Electrical Service Meter Breaker Pedestal (location) 03. Park & Ride	LS	LUMP SUM	_____.
0552	656.0200 Electrical Service Meter Breaker Pedestal (location) 04. CTH G & EB STH 23	LS	LUMP SUM	_____.
0554	656.0200 Electrical Service Meter Breaker Pedestal (location) 05. CTH G & WB STH 23	LS	LUMP SUM	_____.



## Proposal Schedule of Items

Proposal ID: 20200310018 Project(s): 1440-15-72, 1440-15-73

Federal ID(s): N/A, WISC 2020109

SECTION: 0001

Contract Items

Alt Set ID:

Alt Mbr ID:

Proposal Line Number	Item ID Description	Approximate Quantity and Units	Unit Price	Bid Amount
0556	657.0255 Transformer Bases Breakaway 11 1/2-Inch Bolt Circle	31.000 EACH	_____.	_____.
0558	657.0322 Poles Type 5-Aluminum	31.000 EACH	_____.	_____.
0560	657.0710 Luminaire Arms Truss Type 4 1/2-Inch Clamp 12-FT	35.000 EACH	_____.	_____.
0562	659.1115 Luminaires Utility LED A	35.000 EACH	_____.	_____.
0564	690.0150 Sawing Asphalt	10,000.000 LF	_____.	_____.
0566	715.0415 Incentive Strength Concrete Pavement	42,300.000 DOL	1.00000	42,300.00
0568	715.0502 Incentive Strength Concrete Structures	9,318.000 DOL	1.00000	9,318.00
0570	715.0710 Optimized Aggregate Gradation Incentive	130,160.000 DOL	1.00000	130,160.00
0572	740.0440 Incentive IRI Ride	33,160.000 DOL	1.00000	33,160.00
0574	ASP.1T0A On-the-Job Training Apprentice at \$5.00/HR	2,100.000 HRS	5.00000	10,500.00
0576	ASP.1T0G On-the-Job Training Graduate at \$5.00/HR	5,760.000 HRS	5.00000	28,800.00
0578	SPV.0005 Special 01. Select Clearing And Grubbing	0.500 ACRE	_____.	_____.
0580	SPV.0005 Special 02. Preparation Of Upland Topsoil	8.200 ACRE	_____.	_____.
0582	SPV.0035 Special 01. Roadway Embankment	841,568.000 CY	_____.	_____.
0584	SPV.0035 Special 02. Foundation Backfill	697.000 CY	_____.	_____.



Proposal Schedule of Items

Proposal ID: 20200310018 Project(s): 1440-15-72, 1440-15-73

Federal ID(s): N/A, WISC 2020109

SECTION: 0001

Contract Items

Alt Set ID:

Alt Mbr ID:

Proposal Line Number	Item ID Description	Approximate Quantity and Units	Unit Price	Bid Amount
0586	SPV.0035 Special 03. Excavation Common Mitigation Site	301,702.000 CY	_____.	_____.
0588	SPV.0060 Special 01. Temporary Slope Drain	8.000 EACH	_____.	_____.
0590	SPV.0060 Special 02. Temporary Stone Ditch Checks	15.000 EACH	_____.	_____.
0592	SPV.0060 Special 03. Temporary Sand Bag Dike	5.000 EACH	_____.	_____.
0594	SPV.0060 Special 07. Vertical Impact Recovery Panels	40.000 EACH	_____.	_____.
0596	SPV.0060 Special 08. Vertical Impact Recovery Panel Bases	40.000 EACH	_____.	_____.
0598	SPV.0060 Special 09. Gates Wood Double Leaf 20-Foot	2.000 EACH	_____.	_____.
0600	SPV.0085 Special 01. Seeding Upland Buffer	350.000 LB	_____.	_____.
0602	SPV.0085 Special 02. Seeding Wet Meadow And Shallow Marsh Mix	250.000 LB	_____.	_____.
0604	SPV.0085 Special 03. Low Maintenance Seed Mix	18.000 LB	_____.	_____.
0606	SPV.0090 Special 01. Fence Chain Link Polymer-Coated 6-Ft	530.000 LF	_____.	_____.
0608	SPV.0090 Special 02. Removing Centerline Rumble Strips	30,900.000 LF	_____.	_____.
0610	SPV.0090 Special 03. Relapping Steel Plate Beam Guard	484.000 LF	_____.	_____.
0612	SPV.0090 Special 04. Concrete Barrier Temporary Precast Anchoring	400.000 LF	_____.	_____.





Proposal Schedule of Items

Proposal ID: 20200310018 Project(s): 1440-15-72, 1440-15-73

Federal ID(s): N/A, WISC 2020109

SECTION: 0001

Contract Items

Alt Set ID:

Alt Mbr ID:

Proposal Line Number	Item ID Description	Approximate Quantity and Units	Unit Price	Bid Amount
0614	SPV.0090 Special 05. Concrete Curb & Gutter 30-Inch Type D Reinforced	140.000 LF	_____.	_____.
0616	SPV.0105 Special 01. Construction Staking Wetland Site	LS	LUMP SUM	_____.
0618	SPV.0105 Special 02. Temporary Bypass Channel, STA 572+65	LS	LUMP SUM	_____.
0620	SPV.0105 Special 03. Temporary Bypass Channel, STA 588+75 - STA 603+07	LS	LUMP SUM	_____.
0622	SPV.0165 Special 01. Concrete Sidewalk 6-Inch Reinforced	690.000 SF	_____.	_____.
0624	SPV.0180 Special 02. Salvaged Topsoil 12-Inch	240,500.000 SY	_____.	_____.
0626	SPV.0180 Special 03. Salvaged Topsoil Over Riprap	2,465.000 SY	_____.	_____.
0628	201.0115 Clearing	0.600 ACRE	_____.	_____.
0630	201.0215 Grubbing	0.600 ACRE	_____.	_____.
0632	210.1500 Backfill Structure Type A	1,512.000 TON	_____.	_____.
0634	614.0230 Steel Thrie Beam	184.000 LF	_____.	_____.
Section: 0001			Total:	_____.
			Total Bid:	_____.

