



# Wisconsin Department of Transportation

March 20, 2020

## Division of Transportation Systems Development

Bureau of Project Development  
4822 Madison Yards Way, 4<sup>th</sup> Floor South  
Madison, WI 53705

Telephone: (608) 266-1631  
Facsimile (FAX): (608) 266-8459

### NOTICE TO ALL CONTRACTORS:

<p><b>Proposal #21: 4090-05-71, WISC 2020 145</b>  <b>ECPL Campbellsport – USH 45</b>  <b>Triple S Road – USH 45</b>  <b>STH 67</b>  <b>Fond Du Lac County</b></p>	<p><b>4530-06-71, WISC 2020 146</b>  <b>USH 45 - ECL</b>  <b>USH 45 to Division Road</b>  <b>STH 67</b>  <b>Fond Du Lac County</b></p>
------------------------------------------------------------------------------------------------------------------------------------------------------------------------------------	--------------------------------------------------------------------------------------------------------------------------------------------------------

### Letting of April 14, 2020

This is Addendum No. 1, which provides for the following:

#### Plan Sheets:

<b>Added Plan Sheets</b>	
Plan Sheet	Plan Sheet Title (brief description of why sheet was added)
174A	Add SDD 32", 36", & 42" Concrete Barrier Single Slope Class B. Needed for item 603.1332 "Concrete Barrier Type S32B"
174B	Add SDD Concrete Barrier Single Lope Class B. Needed for item 603.1332 "Concrete Barrier Type S32B"

#### **Plan Sheets**

The following 8½ x 11-inch sheets are attached and made part of the plans for this proposal:  
Added: 174A and 174B

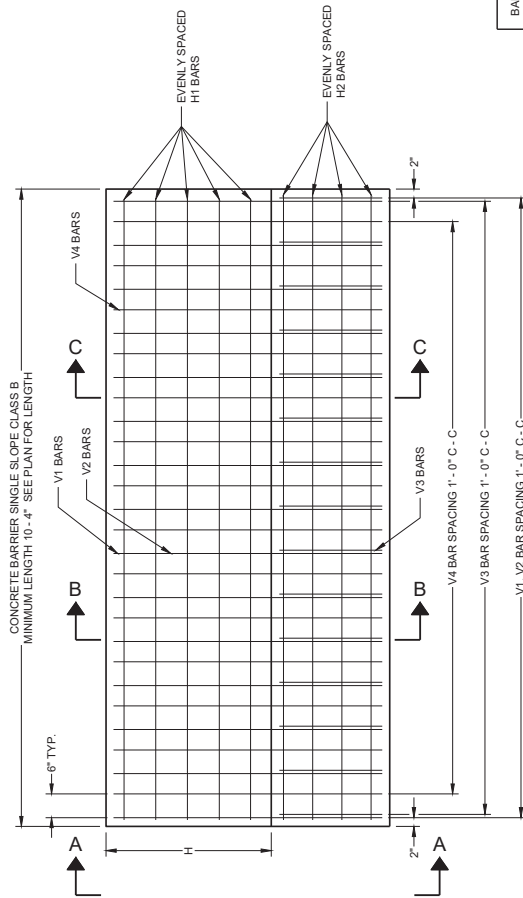
The responsibility for notifying potential subcontractors and suppliers of these changes remains with the prime contractor.

Sincerely,

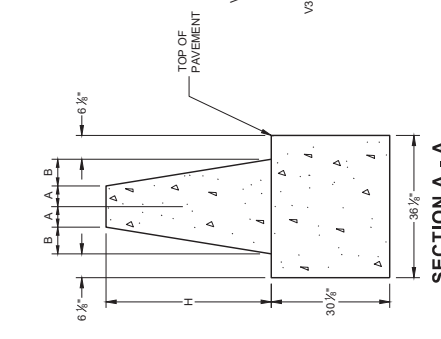
*Mike Coleman*

Proposal Development Specialist  
Proposal Management Section

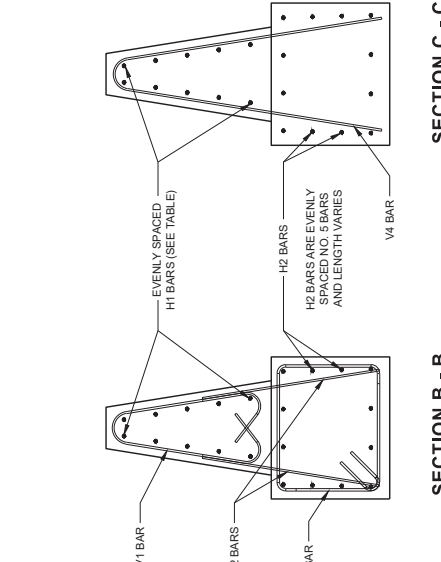
END OF ADDENDUM



**ELEVATION VIEW**



**SECTION A - A**

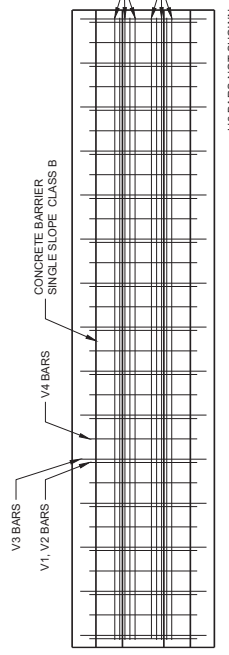


**SECTION B - B**

**SECTION C - C**

BARRIER HEIGHT H INCHES	V1 BAR			V4 BAR		
	C RAD. INCHES	D INCHES	F INCHES	E RAD. INCHES	F INCHES	
32	5 3/4	18 3/4	5 1/2	5 1/2	53 3/4	
36	4 3/4	23 3/4	4 1/4	4 1/4	58 3/4	
42	3 3/4	30 3/4	3 3/4	3 3/4	65 3/4	

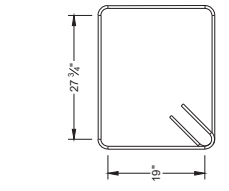
BARRIER HEIGHT H INCHES	A INCHES	B INCHES	NUMBER OF H1 BARS EACH	
			B	8
32	7	5	8	
36	6 1/4	5 3/4	8	
42	5 1/4	6 3/4	10	



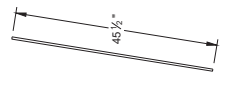
**PLAN VIEW**

**GENERAL NOTES**

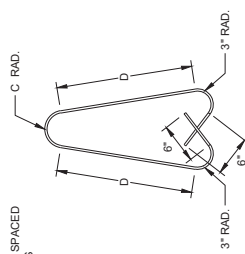
- CONSTRUCT PER STANDARD SPECIFICATION 603.
- SPICES OF LONGITUDINAL BARS TO BE 2' LONG AND FIRMLY TIED AND FASTENED TOGETHER UNLESS NOTED OTHERWISE.
- 4000 PSI CONCRETE AIR ENTRAINMENT PER STANDARD SPECIFICATIONS 501.
- USE 3/4" BEVEL OR 1" RADIUS ON ALL EXPOSED SHARP EDGES UNLESS NOTED OTHERWISE.
- THE NUMBER IN BAR DESIGNATION REPRESENTS THE BARS LOCATION.
- 2" CLEAR COVER TYPICAL.
- WHERE THE CONCRETE BARRIER IS ADDED TO THE FACE OF EXISTING CONCRETE STRUCTURE, MATCH EXISTING WEEP HOLES, PAVEMENT AND PRINCIPAL WALL JOINTS. EXPANSION JOINT FILLER MATERIAL.
- PLACE BARRIER PERPENDICULAR TO SHOULDER GRADE. UNLESS INDICATED IN PLAN.
- WHEN SWITCHING BETWEEN SLIP FORM AND CAST-IN-PLACE OPERATIONS, EXTEND LONGITUDINAL STEEL 3 FEET BEYOND SLIP-FORMING CUT OFF POINT. EXPOSED STEEL INTO NEXT POURS REINFORCEMENT. LAPS TO BE FIRMLY TIED.
- IF REQUIRED USE THREE BEAM ANCHOR. NO OTHER ANCHOR REQUIRED.



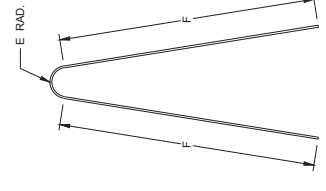
**V3 BAR BENDING DETAIL**  
V3 BARS ARE NO. 6 BARS



**V2 BAR BENDING DETAIL**  
V2 BARS ARE NO. 5 BARS



**V1 BAR BENDING DETAIL**  
V1 BARS ARE NO. 4 BARS



**V4 BAR BENDING DETAIL**  
V4 BARS ARE NO. 6 BARS

Addendum No. 01  
ID 4530-06-71  
Added Sheet 174A  
March 20, 2020

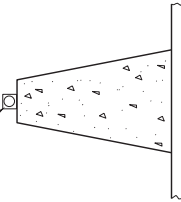
**32", 36", & 42"  
CONCRETE BARRIER  
SINGLE SLOPE CLASS B**

STATE OF WISCONSIN  
DEPARTMENT OF TRANSPORTATION

**DELINEATOR SPACING ON HORIZONTAL CURVES**

RADIUS OF CURVE	APPROXIMATE SPACING ON CURVE
50 FEET	20 FEET
115 FEET	25 FEET
180 FEET	35 FEET
250 FEET	40 FEET
300 FEET	50 FEET
400 FEET	55 FEET
500 FEET	65 FEET
600 FEET	70 FEET
700 FEET	75 FEET
800 FEET	80 FEET
900 FEET	85 FEET
1000 FEET	90 FEET

SEE STANDARD  
DETAIL DRAWING 15A2  
FOR DELINEATOR  
DETAILS



**DELINEATOR**

**DELINEATOR SPACING ON RADIUS GREATER THAN 1000 FEET OR TANGENT SECTIONS**

LENGTH OF BARRIER	REFLECTOR SPACING	NO. SURFACES REFLECTORIZED	MIN. NO. REFLECTORS
ONE WAY TRAFFIC	< 200'	50' C-C	1
	> 200'	100' C-C	1
TWO WAY TRAFFIC	< 200'	25' C-C	1
	> 200'	50' C-C	1
TWO WAY TRAFFIC	< 200'	50' C-C	2
	> 200'	100' C-C	2

Addendum No. 01  
ID 4530-06-71  
Added Sheet 174B  
March 20, 2020

**CONCRETE BARRIER  
SINGLE SLOPE CLASS B**

STATE OF WISCONSIN  
DEPARTMENT OF TRANSPORTATION

APPROVED \_\_\_\_\_  
DATE 07/20/18  
BY \_\_\_\_\_  
UNIT SUPERVISOR  
ROADWAY DEVELOPMENT  
UNIT SUPERVISOR

