



Wisconsin Department of Transportation

April 9, 2020

Division of Transportation Systems Development

Bureau of Project Development
4822 Madison Yards Way, 4th Floor South
Madison, WI 53705

Telephone: (608) 266-1631
Facsimile (FAX): (608) 266-8459

NOTICE TO ALL CONTRACTORS:

Proposal #27: 9050-03-70, WISC 2020 153
Rhineland - Woodruff
USH 8 to Kildeer Rd
STH 47
Oneida County

Letting of January 14, 2020

This is Addendum No. 01, which provides for the following:

Schedule of Items:

Revised Bid Item Quantities					
Bid Item	Item Description	Unit	Old Quantity	Revised Quantity	Proposal Total
646.1020	Marking Line Epoxy 4-Inch	LF	45,220	-110	45,110
646.1040	Marking Line Grooved Wet Ref Epoxy 4-Inch	LF	61,840	61,840	123,680
646.3020	Marking Line Epoxy 8-Inch	LF	910	110	1,020

Added Bid Item Quantities					
Bid Item	Item Description	Unit	Old Quantity	Revised Quantity	Proposal Total
649.0120	Temporary Marking Line Epoxy 4-Inch	LF	0	35,525	35,525

Deleted Bid Item Quantities					
Bid Item	Item Description	Unit	Old Quantity	Revised Quantity	Proposal Total
649.0150	Temporary Marking Line Removable Tape 4-Inch	LF	5,209	-5,209	0

Plan Sheets:

Revised Plan Sheets	
Plan Sheet	Plan Sheet Title (brief description of changes to sheet)
27-30	Pavement Marking (Revised Legend)
43	Miscellaneous Quantities (Revised quantities for Marking Line Epoxy 4-Inch, Marking Line Grooved Wet Ref 4-Inch and Marking Line Epoxy 8-Inch; Removed item Temporary Marking Line Removable Tape 4-Inch; and added item Temporary Marking Line Epoxy 4-inch)

Schedule of Items

Attached, dated April 9, 2020, are the revised Schedule of Items Pages 5 – 7.

Plan Sheets

The following 8½ x 11-inch sheets are attached and made part of the plans for this proposal:
Revised: 27-30 and 43

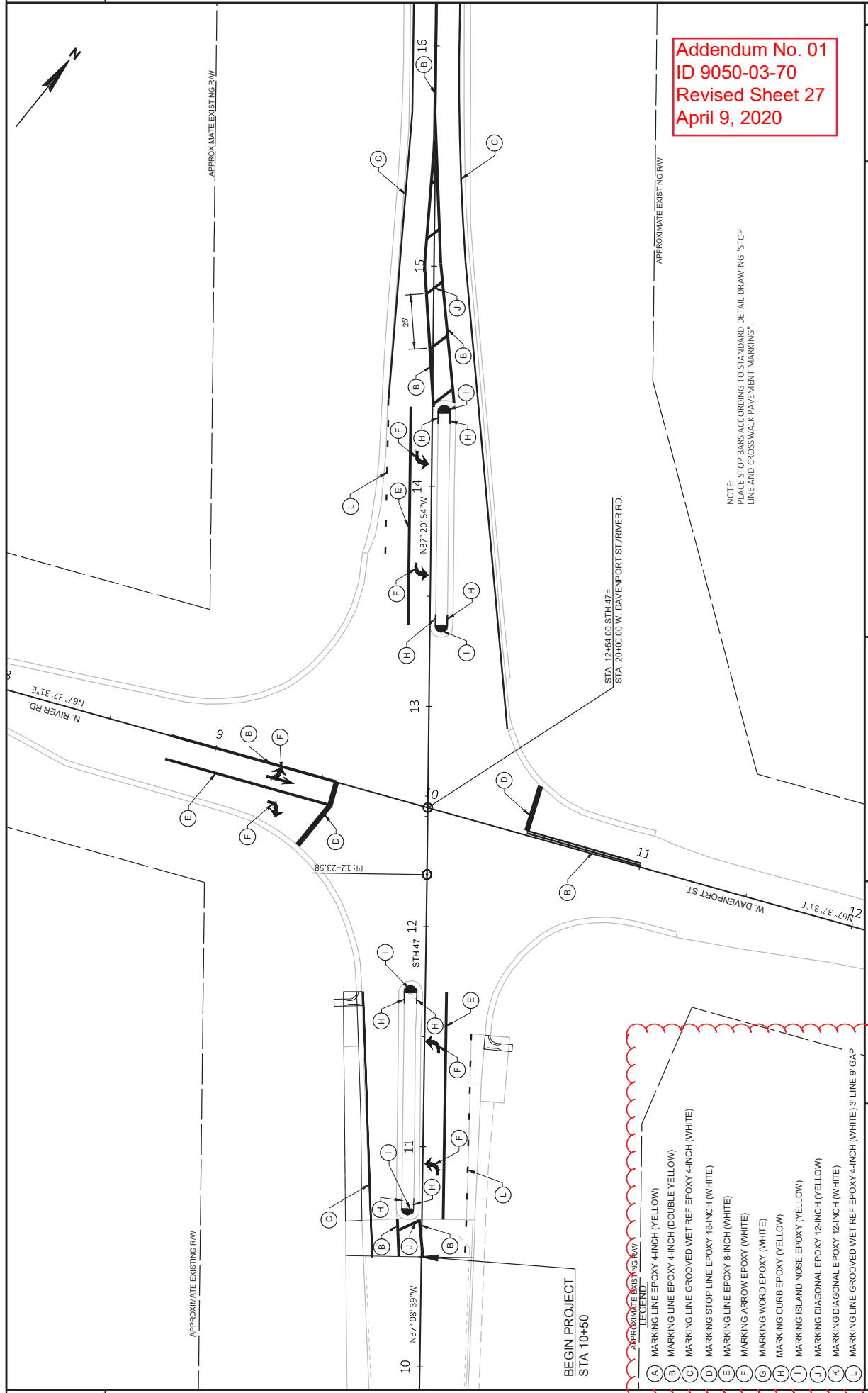
The responsibility for notifying potential subcontractors and suppliers of these changes remains with the prime contractor.

Sincerely,

Mike Coleman

Proposal Development Specialist
Proposal Management Section

END OF ADDENDUM



Addendum No. 01
ID 9050-03-70
Revised Sheet 27
April 9, 2020

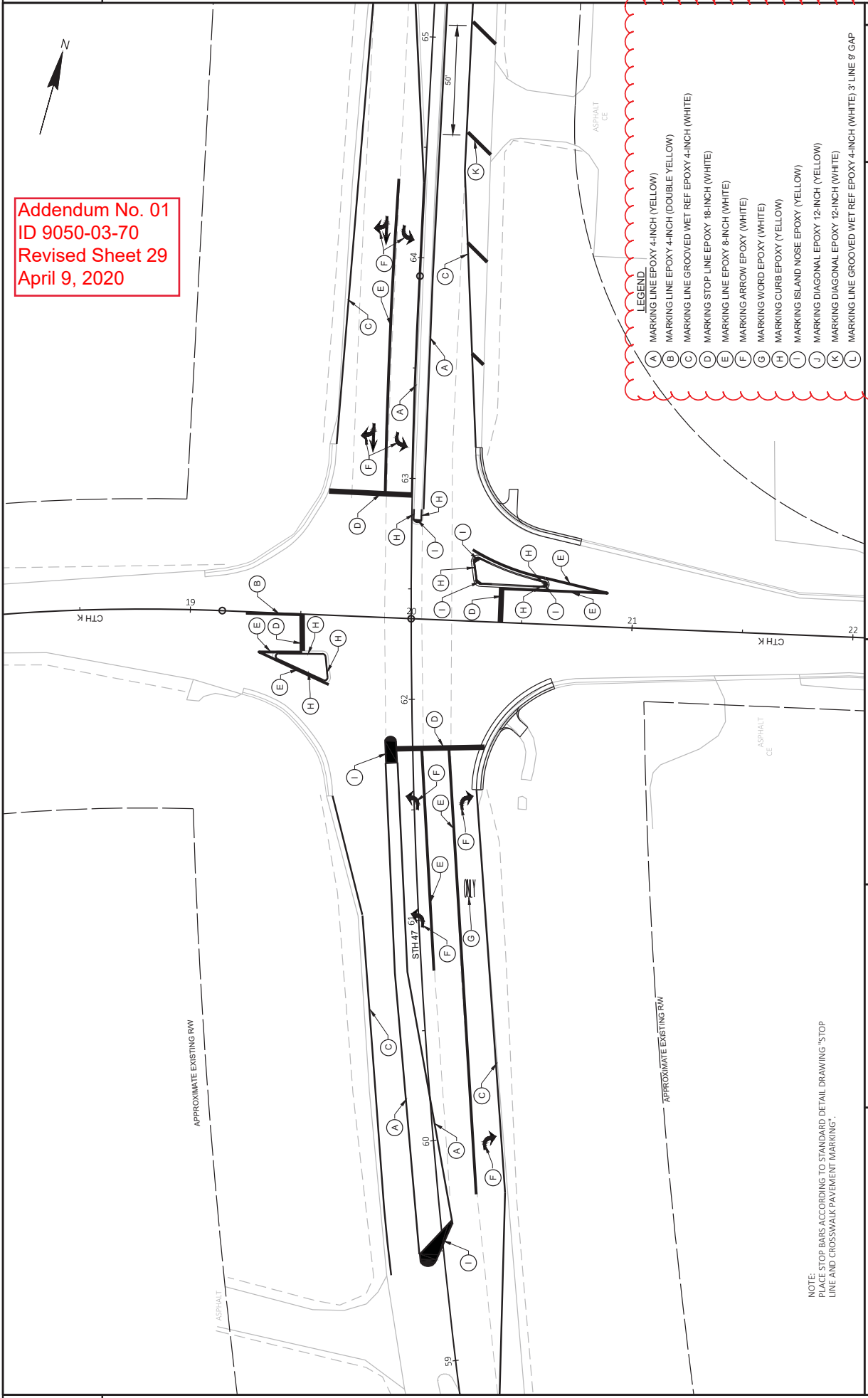
NOTE:
 PLACE STOP BARS ACCORDING TO STANDARD DETAIL DRAWING "STOP
 LINE AND CROSSWALK PAVEMENT MARKING".

LEGEND

- (A) MARKING LINE EPOXY 4-INCH (YELLOW)
- (B) MARKING LINE EPOXY 4-INCH (DOUBLE YELLOW)
- (C) MARKING LINE GROOVED WET REF EPOXY 4-INCH (WHITE)
- (D) MARKING STOP LINE EPOXY 18-INCH (WHITE)
- (E) MARKING LINE EPOXY 8-INCH (WHITE)
- (F) MARKING ARROW EPOXY (WHITE)
- (G) MARKING WORD EPOXY (WHITE)
- (H) MARKING CURB EPOXY (YELLOW)
- (I) MARKING ISLAND NOSE EPOXY (YELLOW)
- (J) MARKING DIAGONAL EPOXY 12-INCH (YELLOW)
- (K) MARKING DIAGONAL EPOXY 12-INCH (WHITE)
- (L) MARKING LINE GROOVED WET REF EPOXY 4-INCH (WHITE) 3' LINE 9' GAP

PROJECT NO. 9050-03-70 HWY: STH 47

Addendum No. 01
ID 9050-03-70
Revised Sheet 29
April 9, 2020

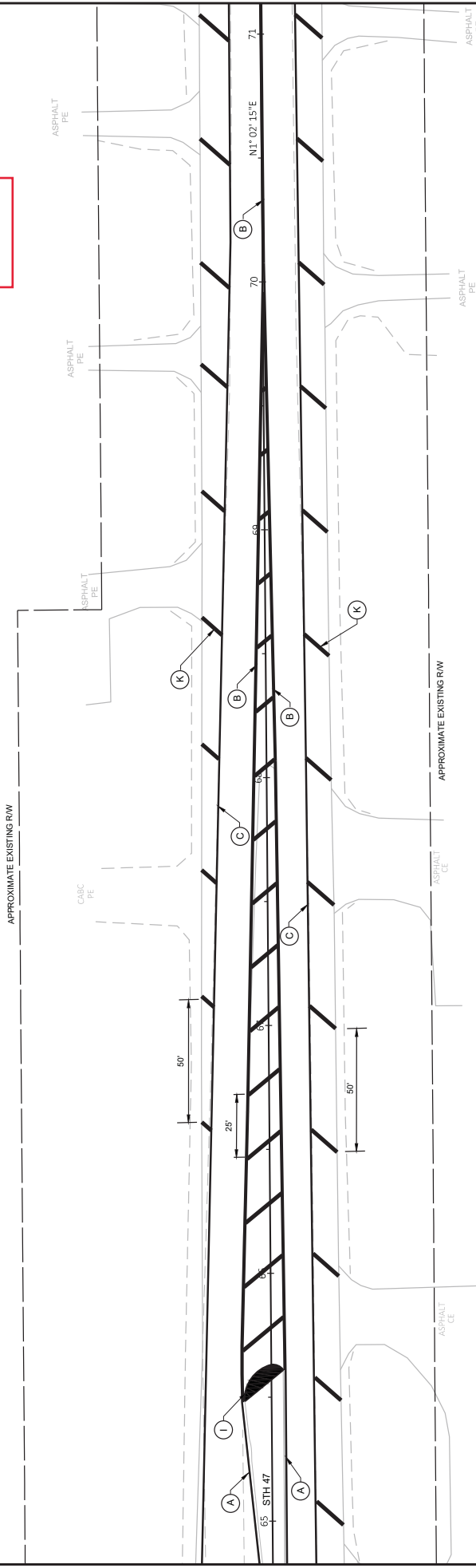


- LEGEND.**
- (A) MARKING LINE EPOXY 4-INCH (YELLOW)
 - (B) MARKING LINE EPOXY 4-INCH (DOUBLE YELLOW)
 - (C) MARKING LINE GROOVED WET REF EPOXY 4-INCH (WHITE)
 - (D) MARKING STOP LINE EPOXY 18-INCH (WHITE)
 - (E) MARKING LINE EPOXY 8-INCH (WHITE)
 - (F) MARKING ARROW EPOXY (WHITE)
 - (G) MARKING WORD EPOXY (WHITE)
 - (H) MARKING CURB EPOXY (YELLOW)
 - (I) MARKING ISLAND NOSE EPOXY (YELLOW)
 - (J) MARKING DIAGONAL EPOXY 12-INCH (WHITE)
 - (K) MARKING DIAGONAL EPOXY 12-INCH (YELLOW)
 - (L) MARKING LINE GROOVED WET REF EPOXY 4-INCH (WHITE) 3' LINE 9' GAP

NOTE:
PLACE STOP BARS ACCORDING TO STANDARD DETAIL DRAWING "STOP
LINE AND CROSSWALK PAVEMENT MARKING".

PROJECT NO: 9050-03-70	HWY: STH 47	COUNTY: ONEIDA	PAVEMENT MARKING	FLYBY: SOUFAL, KEVIN	PLLOT NAME: ######	SHEET: 29
FILE NAME: V:\TRANS-68\950462 STH 47\3D\SHEETS\PLAN\024508.PM.DWG	LAYOUT NAME: 041525.plt	DATE: 4/9/2020 1:29 PM	DATE: 4/9/2020 1:29 PM	DATE: 4/9/2020 1:29 PM	DATE: 4/9/2020 1:29 PM	DATE: 4/9/2020 1:29 PM

Addendum No. 01
ID 9050-03-70
Revised Sheet 30
April 9, 2020



LEGEND:

- (A) MARKING LINE EPOXY 4-INCH (YELLOW)
- (B) MARKING LINE EPOXY 4-INCH (DOUBLE YELLOW)
- (C) MARKING LINE GROOVED WET REF EPOXY 4-INCH (WHITE)
- (D) MARKING STOP LINE EPOXY 18-INCH (WHITE)
- (E) MARKING LINE EPOXY 8-INCH (WHITE)
- (F) MARKING ARROW EPOXY (WHITE)
- (G) MARKING WORD EPOXY (WHITE)
- (H) MARKING CURB EPOXY (YELLOW)
- (I) MARKING ISLAND NOSE EPOXY (YELLOW)
- (J) MARKING DIAGONAL EPOXY 12-INCH (YELLOW)
- (K) MARKING DIAGONAL EPOXY 12-INCH (WHITE)
- (L) MARKING LINE GROOVED WET REF EPOXY 4-INCH (WHITE) 3' LINE 9' GAP

REESTABLISH SECTION CORNER MONUMENTS

STATION	LOCATION	SPV.0060.01 EACH
62+37	STH47, RT	1
89+09	STH47, RT	1
TOTAL		2

LOCATING NO-PASSING ZONES

STATION	TO STATION	LOCATION	648.0100 MI
10+50	-	664+75	STH47
TOTAL			12.4

MARKING LINE

STATION TO STATION	LOCATION	646.1040 EPOXY 4-INCH REFLECTIVE EPOXY 4-INCH WHITE	646.3020 EPOXY 8-INCH WHITE	646.5120 WORD EPOXY	646.6120 STOP-LINE EPOXY 18-INCH	646.7120 DIAGONAL EPOXY 12-INCH	646.8120 CURB EPOXY	646.8220 ISLAND NOSE EPOXY	649.0105 TEMPORARY PAINT 4-INCH	649.0120 TEMPORARY EPOXY 4-INCH
10+50 - 15+75	STH47	310	200	4	-	40	-	4	310	310
15+75 - 55+40	STH47	2,940	7,540	10	80	320	-	4	2,360	2,360
55+40 - 70+00	STH47	1,800	420	6	80	320	-	4	1,800	1,800
70+00 - 664+75	STH47	89,700	230	1	-	130	-	-	31,030	31,030
	RIVER RD	120	60	2	35	-	-	-	-	-
	DAVENPORT ST	60	60	-	20	-	-	-	-	-
	CTHK (EAST)	80	-	-	15	-	70	3	80	-
	CTHK (WEST)	100	50	-	15	-	70	-	100	25
TOTALS		45,110	123,680	17	165	490	140	11	35,680	35,525

NOTE
 SKIPS FOR TEMPORARY MARKING LINE ARE 4 FEET
 PLACE TEMPORARY MARKING LINE PAINT ON MILLED SURFACE
 PLACE TEMPORARY MARKING LINE EPOXY ON PAVEMENT SURFACE PRIOR TO CENTERLINE RUMBLE INSTALLATION

CONSTRUCTION STAKING

STATION TO STATION	LOCATION	650.4500 SUBGRADE	650.5000 BASE	650.5500 CURB GUTTER AND CULVERTS	650.6000 PPE	650.6000 RESURFACING	650.6000 SUPPLEMENTAL CONTROL
10+50 - 135+76	STH47	-	-	-	-	12,526	1
135+76 - 144+08	STH47	-	-	-	-	832	-
144+08 - 157+94	STH47	-	-	-	-	1,386	-
157+94 - 169+28	STH47	-	-	-	-	1,134	-
169+28 - 664+75	STH47	-	-	-	-	48,547	-
20+18 - 20+75	CTHK, LT WILDWOOD DR	57	57	206	1	-	-
TOTALS		57	57	206	1	65,425	1

SAWING

STATION TO STATION	LOCATION	690.0150 ASPHALT	650.0250 CONCRETE	REMARKS
10+59 - 14+50	STH47, LT & RT	1600	-	UNDERDRAIN AREAS
59+45 - 61+80	STH47	110	100	CENTER MEDIA CURB PATCHES
62+80 - 65+60	CTHK	100	90	CENTER MEDIA PATCHING
	WILDWOOD DR	220	6	CURB REMOVALS
		60	-	PRE INSTALLATION
TOTALS		2,090	196	

GRADING AND SHARING DITCH

STATION TO STATION	LOCATION	SPV.0090.01 LF
63+05 - 64+50	STH47, RT	145
TOTALS		145

ADJUSTING PULL BOXES

STATION	LOCATION	663.0900 EACH
20+38	CTHK	1
20+48	CTHK	1
TOTAL		2

Addendum No. 01
 ID 9050-03-70
 Revised Sheet 43
 April 9, 2020



Proposal Schedule of Items

Proposal ID: 20200414027 Project(s): 9050-03-70

Federal ID(s): WISC 2020153

SECTION: 0001

Contract Items

Alt Set ID:

Alt Mbr ID:

Proposal Line Number	Item ID Description	Approximate Quantity and Units	Unit Price	Bid Amount
0128	643.0715 Traffic Control Warning Lights Type C	105.000 DAY	_____.	_____.
0130	643.0900 Traffic Control Signs	5,242.000 DAY	_____.	_____.
0132	643.5000 Traffic Control	1.000 EACH	_____.	_____.
0134	645.0120 Geotextile Type HR	65.000 SY	_____.	_____.
0136	646.1020 Marking Line Epoxy 4-Inch	45,110.000 LF	_____.	_____.
0138	646.1040 Marking Line Grooved Wet Ref Epoxy 4-Inch	123,680.000 LF	_____.	_____.
0140	646.3020 Marking Line Epoxy 8-Inch	1,020.000 LF	_____.	_____.
0142	646.5020 Marking Arrow Epoxy	17.000 EACH	_____.	_____.
0144	646.5120 Marking Word Epoxy	9.000 EACH	_____.	_____.
0146	646.6120 Marking Stop Line Epoxy 18-Inch	165.000 LF	_____.	_____.
0148	646.7120 Marking Diagonal Epoxy 12-Inch	490.000 LF	_____.	_____.
0150	646.8120 Marking Curb Epoxy	140.000 LF	_____.	_____.
0152	646.8220 Marking Island Nose Epoxy	11.000 EACH	_____.	_____.
0154	648.0100 Locating No-Passing Zones	12.400 MI	_____.	_____.
0156	649.0105 Temporary Marking Line Paint 4-Inch	35,680.000 LF	_____.	_____.
0160	650.4500 Construction Staking Subgrade	57.000 LF	_____.	_____.



Proposal Schedule of Items

Proposal ID: 20200414027 Project(s): 9050-03-70

Federal ID(s): WISC 2020153

SECTION: 0001

Contract Items

Alt Set ID:

Alt Mbr ID:

Proposal Line Number	Item ID Description	Approximate Quantity and Units	Unit Price	Bid Amount
0162	650.5000 Construction Staking Base	57.000 LF	_____.	_____.
0164	650.5500 Construction Staking Curb Gutter and Curb & Gutter	206.000 LF	_____.	_____.
0166	650.6000 Construction Staking Pipe Culverts	1.000 EACH	_____.	_____.
0168	650.8000 Construction Staking Resurfacing Reference	65,425.000 LF	_____.	_____.
0170	650.9910 Construction Staking Supplemental Control (project) 01. 9050-03-70	LS	LUMP SUM	_____.
0172	653.0900 Adjusting Pull Boxes	2.000 EACH	_____.	_____.
0174	690.0150 Sawing Asphalt	2,090.000 LF	_____.	_____.
0176	690.0250 Sawing Concrete	196.000 LF	_____.	_____.
0178	740.0440 Incentive IRI Ride	49,570.000 DOL	1.00000	49,570.00
0180	ASP.1T0A On-the-Job Training Apprentice at \$5.00/HR	2,000.000 HRS	5.00000	10,000.00
0182	ASP.1T0G On-the-Job Training Graduate at \$5.00/HR	1,260.000 HRS	5.00000	6,300.00
0184	SPV.0060 Special 01. Reestablish Section Corner Monuments	2.000 EACH	_____.	_____.
0186	SPV.0090 Special 01. Grading and Shaping Ditch	145.000 LF	_____.	_____.
0188	SPV.0090 Special 02. Pipe Underdrain SICPP 12-Inch	780.000 LF	_____.	_____.
0190	SPV.0090 Special 03. Infiltration Trench	40.000 LF	_____.	_____.



Proposal Schedule of Items

Proposal ID: 20200414027 Project(s): 9050-03-70

Federal ID(s): WISC 2020153

SECTION: 0001

Contract Items

Alt Set ID:

Alt Mbr ID:

Proposal Line Number	Item ID Description	Approximate Quantity and Units	Unit Price	Bid Amount
0192	SPV.0090 Special 04. Concrete Curb & Gutter 12-Inch Special	65.000 LF	_____.	_____.
0194	SPV.0090 Special 05. Concrete Curb & Gutter 18-Inch Special	65.000 LF	_____.	_____.
0196	SPV.0180 Special 01. Protective Thermalplastic Coating at Snowmobile Crossing	665.000 SY	_____.	_____.
0198	649.0120 Temporary Marking Line Epoxy 4-Inch	35,525.000 LF	_____.	_____.
Section: 0001			Total:	_____.
			Total Bid:	_____.