



# Wisconsin Department of Transportation

April 30, 2020

## Division of Transportation Systems Development

Bureau of Project Development  
4822 Madison Yards Way, 4<sup>th</sup> Floor South  
Madison, WI 53705

Telephone: (608) 266-1631  
Facsimile (FAX): (608) 266-8459

### NOTICE TO ALL CONTRACTORS:

**Proposal #07: 6075-00-74, WISC 2020 242**  
**IH 39 - Arlington**  
**Bullen Road to US 51**  
**STH 60**  
**Columbia County**

### Letting of May 12, 2020

This is Addendum No. 03, which provides for the following:

#### Schedule of Items:

Revised Bid Item Quantities					
Bid Item	Item Description	Unit	Old Quantity	Revised Quantity	Proposal Total
203.0100	Removing Small Pipe Culverts	EA	3	1	4
305.0110	Base Aggregate Dense ¾-Inch	TON	80	2	82
305.0120	Base Aggregate Dense 1 ¼-Inch	TON	12,395	10	12,405
305.0130	Base Aggregate Dense 3-Inch	TON	10,210	15	10,225
416.0160	Concrete Driveway 6-Inch	SY	551	336	887
455.0605	Tack Coat	GAL	1,880	1	1,881
465.0105	Asphaltic Surface	TON	51.8	5.1	56.9
522.2419	Culvert Pipe Reinforced Concrete Horizontal Elliptical Class HE-IV 19X30-Inch	LF	112	38	150
522.2619	Apron Endwalls for Culvert Pipe Reinforced Concrete Horizontal Elliptical Class HE-IV 19X30-Inch	EA	5	1	6
628.7555	Culvert Pipe Checks	EA	2	1	3
633.5200	Culvert Markers End	EA	6	2	8
650.6000	Construction Staking Pipe Culverts	EA	2	1	3
690.0150	Sawing Asphalt	LF	830	60	890

**Plan Sheets:**

<b>Revised Plan Sheets</b>	
Plan Sheet	Plan Sheet Title (brief description of changes to sheet)
32	Erosion Control (Added missing culvert pipe)
63	Miscellaneous Quantities (Updated Removing Small Pipe Culverts)
66	Miscellaneous Quantities (Updated Base Aggregate and HMA Items)
67	Miscellaneous Quantities (Updated Concrete Driveway 6-Inch)
71	Miscellaneous Quantities (Updated Culvert Pipe Checks)
73	Miscellaneous Quantities (Updated Construction Staking Pipe Culverts)
74	Miscellaneous Quantities (Updated Sawing Asphalt)
79	Plan & Profile (Added Culvert Pipe Replacement)

<b>Added Plan Sheets</b>	
Plan Sheet	Plan Sheet Title (brief description of why sheet was added)
13A	Construction Details (Added Temporary Trench Backfill STA 459+46 Detail)
33A	Erosion Control (Added Erosion Control and Landscaping for Culvert Replacement)

**Schedule of Items**

Attached, dated April 30, 2020, are the revised Schedule of Items Pages 1 – 8.

**Plan Sheets**

The following 8½ x 11-inch sheets are attached and made part of the plans for this proposal:

Revised: 32, 63, 66, 67, 71, 73, 74 and 79.

Added: 13A and 33A.

The responsibility for notifying potential subcontractors and suppliers of these changes remains with the prime contractor.

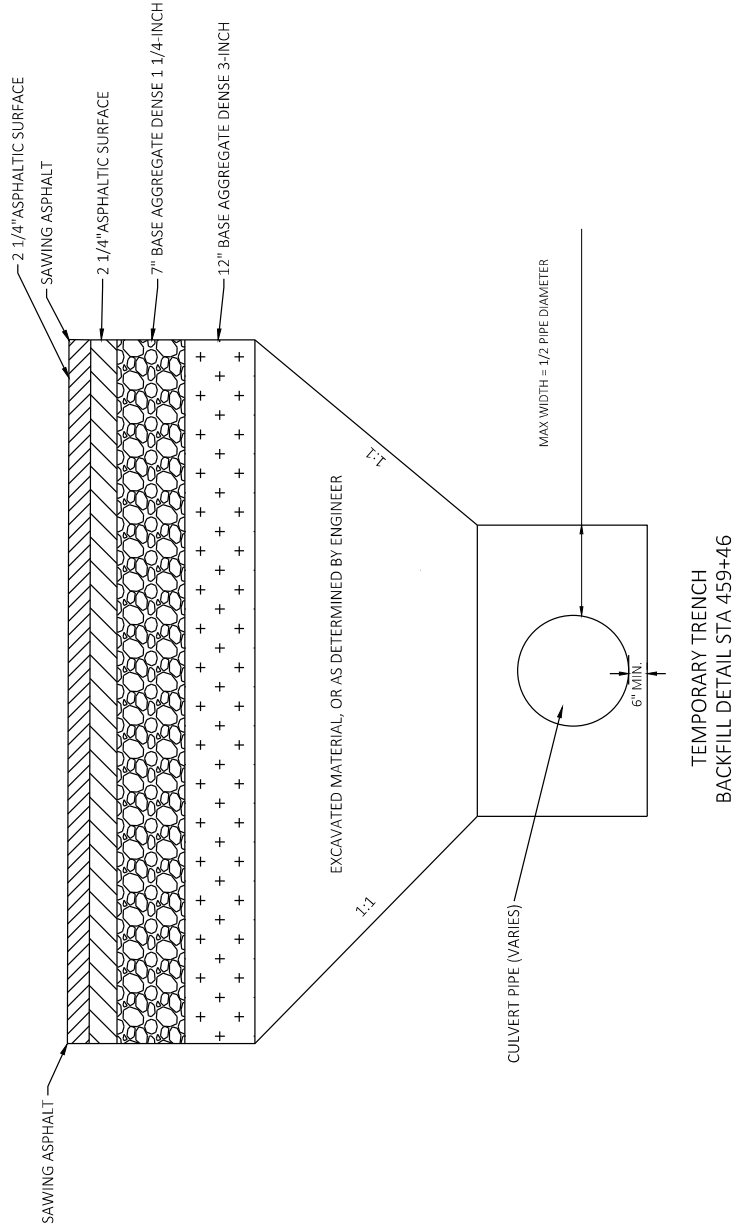
Sincerely,

*Mike Coleman*

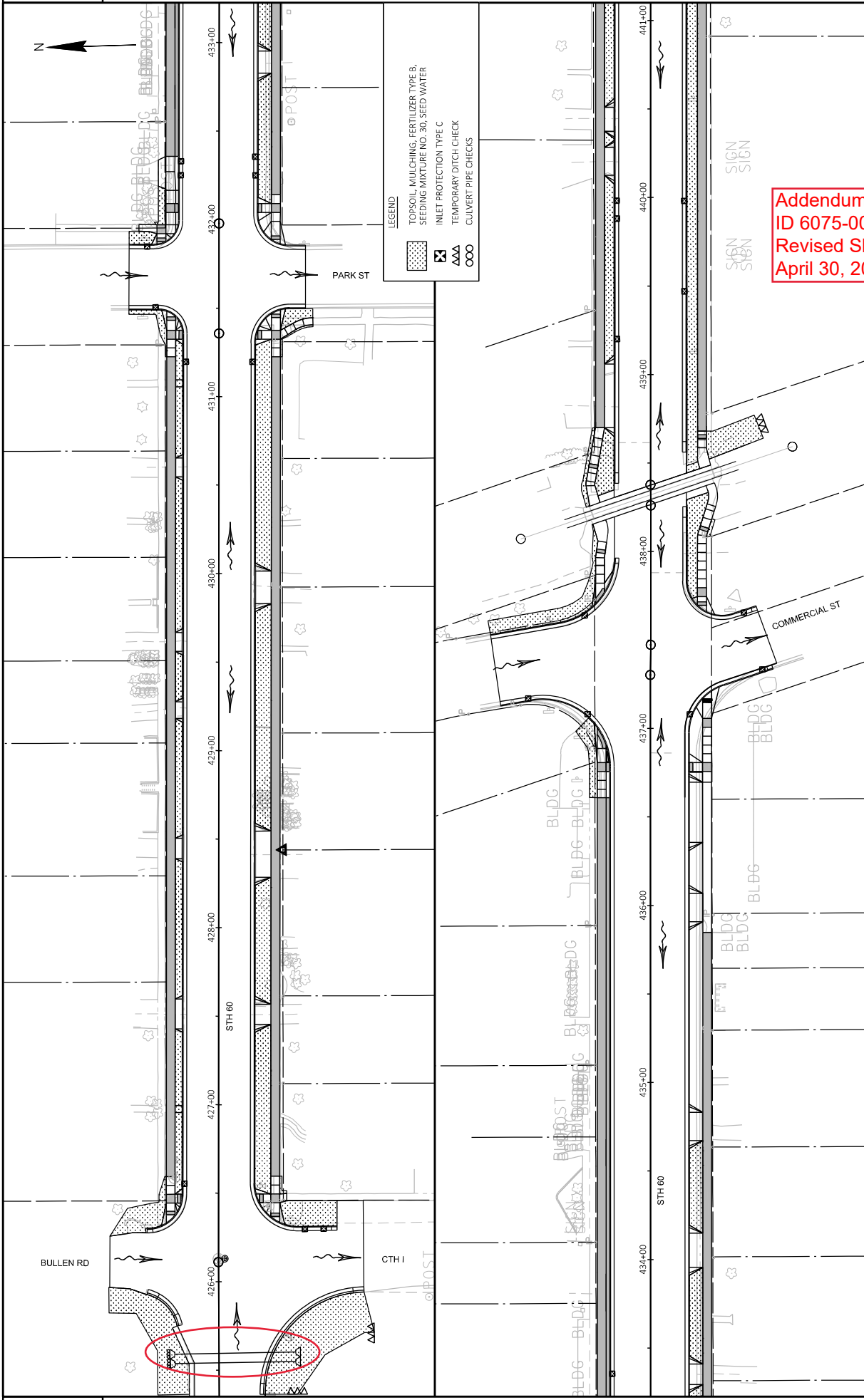
Proposal Development Specialist  
Proposal Management Section

END OF ADDENDUM

Addendum No. 03  
 ID 6075-00-74  
 Added Sheet 13A  
 April 30, 2020



PROJECT NO: 6075-00-74	COUNTY: COLUMBIA	CONSTRUCTION DETAILS	SHEET 13A	E
FILE NAME: C:\WISDOT\DESIGN\CD\60750004\SHEETS\PLAN\SD1001_CD.DWG	HWY: STH 60	PLOT BY: BETZEL, LORRAINE L	PLOT SCALE: 1 IN = 2 FT	WISDOT/CAD05 SHEET 42
LAYOUT NAME: 021008_d	PLOT DATE: 4/29/2020 1:59 PM			



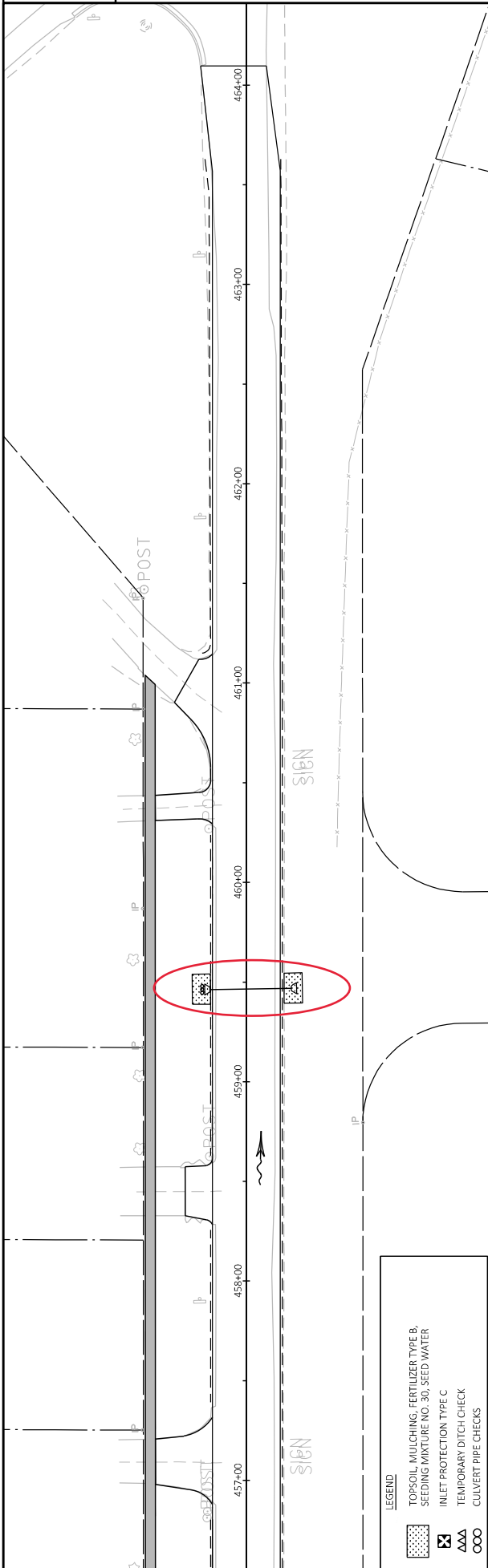
LEGEND

- TOPSOIL MULCHING, FERTILIZER TYPE B, SEEDING MIXTURE NO. 30, SEED WATER
- INLET PROTECTION TYPE C
- TEMPORARY DITCH CHECK
- CULVERT PIPE CHECKS



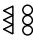

Addendum No. 03  
 ID 6075-00-74  
 Revised Sheet 32  
 April 30, 2020

PROJECT NO: 6075-00-74	COUNTY: COLUMBIA	EROSION CONTROL	SHEET 32	E
FILE NAME: C:\WISDOT\DESIGN\CD\60750004\SHEET\SP\AND22001_EC.DWG	HWY: STH 60	PLOT BY: BETZEL, LORRAINE L		
LAYOUT NAME: 022001_EC-1	PLOT DATE: 4/29/2020 9:28 AM			
				WISDOT/CADDS SHEET 44

2



**LEGEND**

-  TOPSOIL MULCHING, FERTILIZER TYPE B, SEEDING MIXTURE NO. 30, SEED WATER
-  INLET PROTECTION TYPE C
-  TEMPORARY DITCH CHECK
-  CULVERT PIPE CHECKS

Addendum No. 03  
 ID 6075-00-74  
 Added Sheet 33A  
 April 30, 2020

2

<b>PROJECT NO:</b> 6075-00-74	<b>COUNTY:</b> COLUMBIA	<b>EROSION CONTROL</b>	<b>SHEET</b> 33A
<small>FILE NAME: C:\MSD07\DESIGN\CD\6075000A\SHEETS\PLAN\022001_EC.DWG</small>	<small>HWY:</small> STH 60	<small>BY:</small> BETZEL, LORRAINE L	<small>DATE:</small> 4/30/2020 9:24 AM
<small>LAYOUT NAME: 022001_EC-1S</small>	<small>PLOT DATE:</small> 4/28/2020 9:24 AM	<small>PLOT NAME:</small>	<small>PLOT SCALE:</small> 1 IN=50 FT

E

Addendum No. 03  
ID 6075-00-74  
Revised Sheet 63  
April 30, 2020

204.0100  
REMOVING  
PAVEMENT

CATEGORY	STATION	LOCATION	REMARKS
0010	427+51	LT	20
0010	427+51	RT	15
0010	429+22	LT	10
0010	429+62	LT	15
0010	430+60	LT	15
0010	432+69	LT	3
0010	432+88	RT	2
0010	433+14	LT	3
0010	433+35	RT	1
0010	433+81	LT	5
0010	434+05	RT	2
0010	434+60	LT	4
0010	434+75	RT	2
0010	438+80	LT	45
0010	440+20	LT	20
0010	440+44	LT	15
0010	441+57	RT	15
0010	441+88	LT	15
0010	444+21	RT	20
0010	444+62	LT	20
0010	445+38	RT	15
0010	446+57	LT	3
0010	447+61	LT	10
0010	448+37	LT	15
0010	449+65	LT	15
0010	450+80	LT	15
TOTAL 0010			320

CATEGORY	STATION	LOCATION	REMARKS
0010	425+56	STH 60	2 REMOVE 2 EXISTING 44'-18"X30" CPCS
0010	10+48	BULLEN RD	1 REMOVE EXISTING 40'-18"X30" CPCS
0010	459+46	STH 60	1 REMOVE EXISTING 42'-18"X30" CPCS
TOTAL 0010			4

204.-REMOVING STORM SEWER

CATEGORY	STATION	TO	STATION	LOCATION	LF	REMARKS
0010	425+74	-	426+51	15' RT	-	204.0245.01 REMOVE STORM SEWER (SIZE) 01, 12- (INCH)
0010	426+51	-	431+20	15' RT	95	204.0245.03 REMOVE STORM SEWER (SIZE) 03, 24- (INCH)
0010	431+20	-	432+07	20' RT	470	204.0245.04 REMOVE STORM SEWER (SIZE) 04, 30- (INCH)
0010	431+51	-	431+84	40' LT	95	
0010	431+84	-	431+99	40' LT	35	
0010	431+84	-	431+99	40' LT	30	
0010	431+99	-	432+24	26' LT	20	
0010	431+99	-	432+07	LT & RT	55	
0010	437+10	-	437+68	LT & RT	10	
0010	438+44	-	438+56	LT & RT	45	
0010	438+56	-	438+67	40' RT	20	
0010	439+47	-	439+47	LT & RT	45	
TOTAL 0010					85	
					345	
					725	
					65	

PROJECT NO: 6075-00-74

HWY: STH 60

COUNTY: COLUMBIA

MISCELLANEOUS QUANTITIES

SHEET: 63

E

FILE NAME: N\FPDS\...030200\_mq.pptx

PLOT DATE: February 25, 2020

PLOT NAME:

PLOT SCALE: 1:1



Addendum No. 03  
ID 6075-00-74  
Revised Sheet 67  
April 30, 2020

416.0160  
CONCRETE  
DRIVEWAY 6-  
INCH

CATEGORY	STATION	LOCATION	SY	REMARKS
0010	427+51	LT	14	
0010	427+51	RT	28	
0010	428+41	RT	40	
0010	428+45	LT	14	
0010	429+22	LT	14	
0010	429+62	LT	14	
0010	429+92	RT	31	
0010	430+60	LT	14	
0010	432+69	LT	8	
0010	432+88	RT	24	
0010	433+14	LT	8	
0010	433+55	RT	24	
0010	433+81	LT	11	
0010	434+05	RT	28	
0010	434+60	LT	8	
0010	434+75	RT	24	
0010	435+99	RT	24	
0010	436+52	RT	44	
0010	438+80	LT	38	
0010	440+20	LT	20	
0010	440+44	LT	20	
0010	441+57	RT	22	
0010	441+98	LT	27	
0010	442+72	LT	19	
0010	443+05	RT	26	
0010	443+58	LT	19	
0010	443+96	LT	27	
0010	444+21	RT	26	
0010	444+32	LT	23	
0010	445+38	RT	21	
0010	445+97	LT	21	
0010	446+57	LT	24	
0010	447+61	LT	24	
0010	448+37	LT	26	
0010	449+09	LT	24	
0010	449+65	LT	27	
0010	449+65	RT	54	
0010	450+80	LT	25	
	TOTAL 0010		887	

CATEGORY	STATION	LOCATION	REMARKS
0010	452+58	LT	
	TOTAL 0010		0.2
			0.2

CATEGORY	STATION	LOCATION	REMARKS
0010	438+43	RT & LT	
		520	
		TOTAL 0010	520

CULVERT ITEMS

CATEGORY	STATION	LOCATION	INLET ELEVATION	DISCHARGE ELEVATION	SLOPE	LF	REMARKS
0010	425+54	LT & RT	1042.23	1041.62	0.90%	56	2
0010	425+59	LT & RT	1042.18	1041.62	0.82%	56	2
0010	459+46	LT & RT	1043.29	1043.20	0.22%	38	2
0010		UNDISTRIBUTED				-	2
		TOTAL 0010				150	6
							8

\* 522.2419 522.2619 633.5200

APRON  
ENDWALLS FOR  
CULVERT PIPE  
REINFORCED  
CONCRETE  
HORIZONTAL  
ELLIPTICAL  
CLASS HE-IV  
19X30-INCH

MARKERS  
ELLIPTICAL  
CULVERT END  
EACH



Addendum No. 03  
ID 6075-00-74  
Revised Sheet 71  
April 30, 2020

628.1905  
MOBILIZATIONS  
EROSION  
CONTROL  
EACH

CATEGORY	STATION	TO	STATION	LOCATION	REMARKS
0010	425+35	-	464+10	LT & RT	4
				TOTAL 0010	4

628.7504  
TEMPORARY  
DITCH CHECKS

CATEGORY	STATION	TO	STATION	LOCATION	REMARKS
0010	425+35	-	425+95	RT	20
0010	438+37	-	438+80	RT	10
0010				UNDISTRIBUTED	30
				TOTAL 0010	60

624.0100  
WATER  
MGAL

CATEGORY	STATION	TO	STATION	LOCATION	REMARKS
0010	425+35	-	464+10	LT & RT	230
				TOTAL 0010	230

628.1910  
MOBILIZATIONS  
EMERGENCY  
EROSION  
CONTROL  
EACH

CATEGORY	STATION	TO	STATION	LOCATION	REMARKS
0010	425+35	-	464+10	LT & RT	4
				TOTAL 0010	4

628.7015  
INLET  
PROTECTION  
TYPE C  
EACH

CATEGORY	STATION	LOCATION	REMARKS
0010	426+30	59'RT	1
0010	426+30	49'RT	1
0010	426+55	19'LT	1
0010	431+20	19'RT	1
0010	431+20	19'LT	1
0010	431+50	36'LT	1
0010	431+85	40'LT	1
0010	432+25	20.5'RT	1
0010	432+25	21.5'LT	1
0010	432+33	20.5'RT	1
0010	432+33	21.5'LT	1
0010	433+35	21.5'LT	1
0010	437+08	22.4'RT	1
0010	437+08	35.1'LT	1
0010	437+17	69'LT	1
0010	437+34	63'RT	1
0010	437+64	37'LT	1
0010	437+66	52'RT	1
0010	439+20	19'LT	1
0010	439+47	19'RT	1
0010	439+88	19'LT	1
0010	439+98	19'RT	1
0010	439+98	19'LT	1
0010	441+80	19'RT	1
0010	452+58	21'LT	1
		TOTAL 0010	25

628.7555  
CULVERT PIPE  
CHECKS  
EACH

CATEGORY	STATION	TO	STATION	LOCATION	REMARKS
0010	425+52	-	425+62	LT	2
0010	459+46			LT	1
				TOTAL 0010	3

Addendum No. 03  
 ID 6075-00-74  
 Revised Sheet 73  
 April 30, 2020

646-PAVEMENT MARKING

CATEGORY	STATION	TO	STATION	LOCATION	REMARKS
0010	425+00	-	464+10	STH 60	646.7420 MARKING CROSSWALK EPOXY TRANSVERSE LINE 6-INCH
				TOTAL 0010	380
					646.6120 MARKING STOP LINE EPOXY 18-INCH
					13
					646.5320 MARKING RAILROAD CROSSINGS EPOXY EACH
					2
					646.3020 MARKING LINE EPOXY 8-INCH
					140
					(WHITE)
					140
					646.1020 MARKING LINE EPOXY 4-INCH
					(YELLOW)
					7,770
					(WHITE)
					6,550
					14,320

650-CONSTRUCTION STAKING

CATEGORY	STATION	TO	STATION	LOCATION	REMARKS
0010	425+35	-	464+10	STH 60	650.4000 CONSTRUCTION STAKING SUBGRADE
				TOTAL 0010	32
					650.4500 CONSTRUCTION STAKING SUBGRADE
					2,841
					650.5000 CONSTRUCTION STAKING BASE
					2,841
					650.5500 CONSTRUCTION STAKING CURB AND GUTTER
					5,866
					650.6000 CONSTRUCTION STAKING PIPE CULVERTS
					3
					650.8000 CONSTRUCTION STAKING RESURFACING REFERENCE
					1,034
					650.9000 CONSTRUCTION STAKING CURB RAMPS
					26
					650.9920 CONSTRUCTION STAKING SLOPE STAKES
					110

Addendum No. 03  
ID 6075-00-74  
Revised Sheet 74  
April 30, 2020

CATEGORY	STATION	LOCATION	REMARKS
690.0150			
			SAWING ASPHALT LF
0010	425+35	STH 60	40
0010	9+19	CTH 1	49
0010	10+63	BULLEN RD	29
0010	9+55	PARK ST	31
0010	10+50	PARK ST	32
0010	432+00	STH 60 RT	33
0010	436+60	STH 60 RT	185
0010	437+05	STH 60 LT	58
0010	9+35	COMMERCIAL ST	32
0010	10+92	COMMERCIAL ST	36
0010	437+93	STH 60 RT	71
0010	10+50	BUENA VISTADR	32
0010	9+05	DELMONTERO	36
0010	10+79	DELMONTERO	36
0010	457+10	STH 60 LT	31
0010	458+45	STH 60 LT	28
0010	459+46	STH 60	60
0010	460+38	STH 60 LT	13
0010	461+00	STH 60 LT	25
0010	464+10	STH 60	33
		TOTAL 0010	890

CATEGORY	STATION	LOCATION	REMARKS
690.0250			
			SAWING CONCRETE LF
0010	426+48	STH 60 RT	4
0010	431+42	STH 60 RT	4
0010	431+95	STH 60 LT	4
0010	9+55	PARK ST LT	3
0010	9+55	PARK ST RT	3
0010	10+50	PARK ST LT	3
0010	10+50	PARK ST RT	3
0010	9+35	COMMERCIAL ST LT	3
0010	10+92	COMMERCIAL ST LT	3
0010	10+92	COMMERCIAL ST RT	3
0010	10+50	BUENA VISTADR LT	3
0010	10+50	BUENA VISTADR RT	3
0010	9+05	DELMONTERO LT	3
0010	9+05	DELMONTERO RT	3
0010	10+79	DELMONTERO LT	3
0010	10+79	DELMONTERO RT	3
0010	452+58	STH 60 LT	10
		TOTAL 0010	61

PROJECT NO: 6075-00-74

HWY: STH 60

COUNTY: COLUMBIA

MISCELLANEOUS QUANTITIES

SHEET: 74

E

FILE NAME : N\FPDS\...030200\_mq.pptx

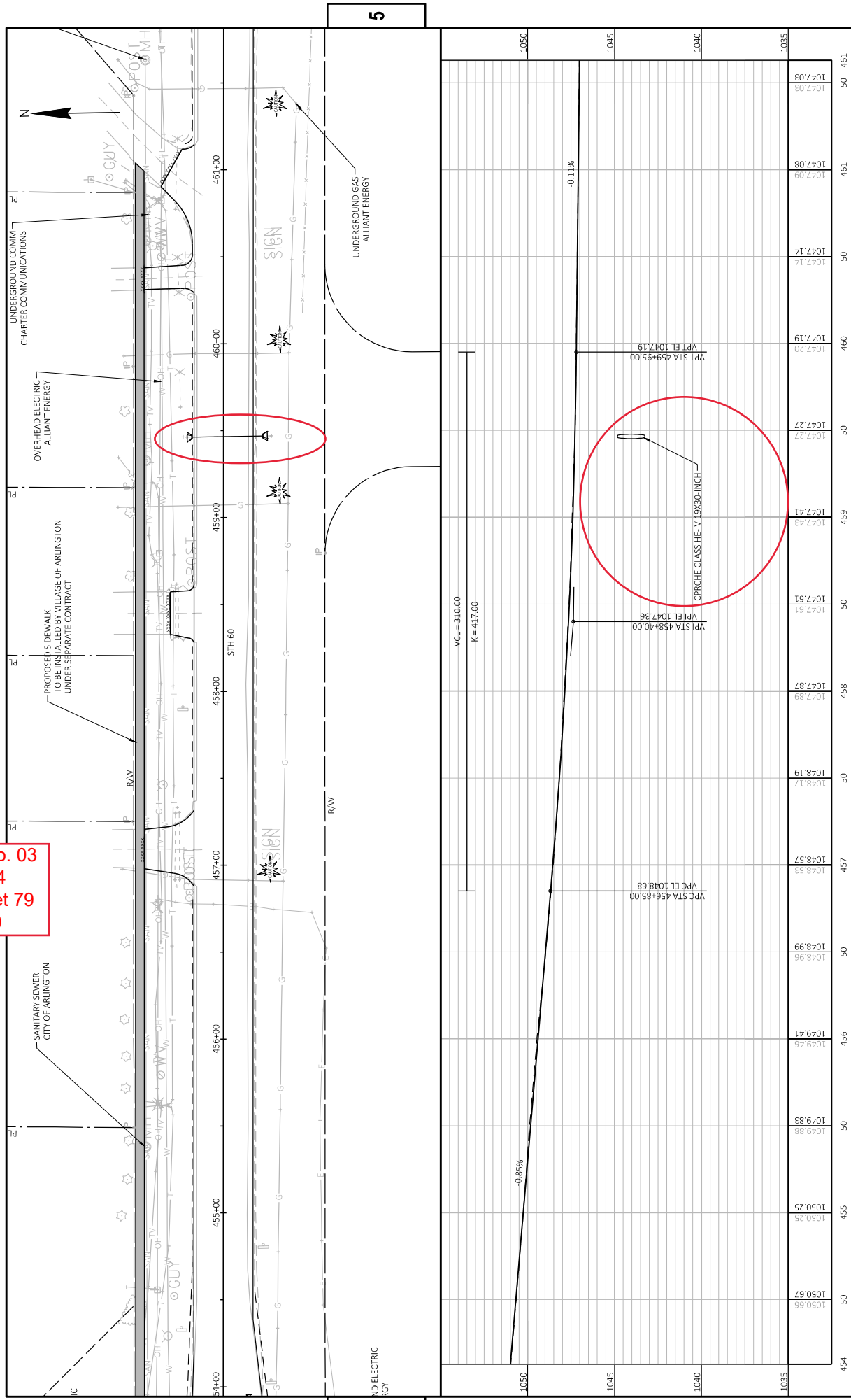
PLOT DATE : February 25, 2020

PLOT BY : LLB

PLOT NAME :

PLOT SCALE : 1:1

Addendum No. 03  
 ID 6075-00-74  
 Revised Sheet 79  
 April 30, 2020



PROJECT NO: 6075-00-74	COUNTY: COLUMBIA	PLAN AND PROFILE: STH 60 (MAIN ST)	SHEET 79
FILE NAME: C:\WISDOT\DESIGN\CD\60750004\SHEET\PLAN\SD101_PP.DWG	LAYOUT NAME: 05101_PP_5	PLOT BY: BETZEL, LORRAINE L	PLOT NAME:
		PLOT DATE: 4/28/2020 9:06 AM	PLOT SCALE: 1 IN=50 FT
			WISDOT/CADDS SHEET 44



Proposal Schedule of Items

Proposal ID: 20200512007 Project(s): 6075-00-74

Federal ID(s): WISC 2020242

SECTION: 0001

Contract Items

Alt Set ID:

Alt Mbr ID:

Proposal Line Number	Item ID Description	Approximate Quantity and Units	Unit Price	Bid Amount
0002	203.0100 Removing Small Pipe Culverts	4.000 EACH	_____.	_____.
0004	204.0100 Removing Pavement	320.000 SY	_____.	_____.
0006	204.0110 Removing Asphaltic Surface	941.000 SY	_____.	_____.
0008	204.0120 Removing Asphaltic Surface Milling	3,450.000 SY	_____.	_____.
0010	204.0150 Removing Curb & Gutter	5,188.000 LF	_____.	_____.
0012	204.0155 Removing Concrete Sidewalk	185.000 SY	_____.	_____.
0014	204.0210 Removing Manholes	3.000 EACH	_____.	_____.
0016	204.0220 Removing Inlets	13.000 EACH	_____.	_____.
0018	204.0245 Removing Storm Sewer (size) 01. 12-Inch	345.000 LF	_____.	_____.
0020	204.0245 Removing Storm Sewer (size) 02. 18-Inch	85.000 LF	_____.	_____.
0022	204.0245 Removing Storm Sewer (size) 03. 24-Inch	725.000 LF	_____.	_____.
0024	204.0245 Removing Storm Sewer (size) 04. 30-Inch	65.000 LF	_____.	_____.
0026	205.0100 Excavation Common	13,937.000 CY	_____.	_____.
0028	211.0400 Prepare Foundation for Asphaltic Shoulders	19.000 STA	_____.	_____.
0030	213.0100 Finishing Roadway (project) 01. 6075-00-74	1.000 EACH	_____.	_____.



Proposal Schedule of Items

Proposal ID: 20200512007 Project(s): 6075-00-74

Federal ID(s): WISC 2020242

SECTION: 0001

Contract Items

Alt Set ID:

Alt Mbr ID:

Proposal Line Number	Item ID Description	Approximate Quantity and Units	Unit Price	Bid Amount
0032	305.0110 Base Aggregate Dense 3/4-Inch	82.000 TON	_____.	_____.
0034	305.0120 Base Aggregate Dense 1 1/4-Inch	12,405.000 TON	_____.	_____.
0036	305.0130 Base Aggregate Dense 3-Inch	10,225.000 TON	_____.	_____.
0038	416.0160 Concrete Driveway 6-Inch	887.000 SY	_____.	_____.
0040	455.0605 Tack Coat	1,881.000 GAL	_____.	_____.
0042	460.2000 Incentive Density HMA Pavement	3,260.000 DOL	1.00000	3,260.00
0044	460.6224 HMA Pavement 4 MT 58-28 S	5,081.000 TON	_____.	_____.
0046	465.0105 Asphaltic Surface	56.900 TON	_____.	_____.
0048	465.0120 Asphaltic Surface Driveways and Field Entrances	38.600 TON	_____.	_____.
0050	504.0100 Concrete Masonry Culverts	0.200 CY	_____.	_____.
0052	511.1100 Temporary Shoring	520.000 SF	_____.	_____.
0054	520.1012 Apron Endwalls for Culvert Pipe 12-Inch	1.000 EACH	_____.	_____.
0056	520.1024 Apron Endwalls for Culvert Pipe 24-Inch	1.000 EACH	_____.	_____.
0058	520.8000 Concrete Collars for Pipe	3.000 EACH	_____.	_____.
0060	522.2419 Culvert Pipe Reinforced Concrete Horizontal Elliptical Class HE-IV 19x30-Inch	150.000 LF	_____.	_____.



## Proposal Schedule of Items

Proposal ID: 20200512007 Project(s): 6075-00-74

Federal ID(s): WISC 2020242

SECTION: 0001

Contract Items

Alt Set ID:

Alt Mbr ID:

Proposal Line Number	Item ID Description	Approximate Quantity and Units	Unit Price	Bid Amount
0062	522.2619 Apron Endwalls for Culvert Pipe Reinforced Concrete Horizontal Elliptical 19x30-Inch	6.000 EACH	_____.	_____.
0064	601.0205 Concrete Gutter 24-Inch	75.000 LF	_____.	_____.
0066	601.0411 Concrete Curb & Gutter 30-Inch Type D	5,791.000 LF	_____.	_____.
0068	601.0600 Concrete Curb Pedestrian	36.000 LF	_____.	_____.
0070	602.0405 Concrete Sidewalk 4-Inch	6,265.000 SF	_____.	_____.
0072	602.0505 Curb Ramp Detectable Warning Field Yellow	280.000 SF	_____.	_____.
0074	602.0605 Curb Ramp Detectable Warning Field Radial Yellow	37.000 SF	_____.	_____.
0076	608.0312 Storm Sewer Pipe Reinforced Concrete Class III 12-Inch	5.000 LF	_____.	_____.
0078	608.0324 Storm Sewer Pipe Reinforced Concrete Class III 24-Inch	8.000 LF	_____.	_____.
0080	608.0412 Storm Sewer Pipe Reinforced Concrete Class IV 12-Inch	546.000 LF	_____.	_____.
0082	608.0424 Storm Sewer Pipe Reinforced Concrete Class IV 24-Inch	8.000 LF	_____.	_____.
0084	608.0524 Storm Sewer Pipe Reinforced Concrete Class V 24-Inch	72.000 LF	_____.	_____.
0086	608.2414 Storm Sewer Pipe Reinforced Concrete Horizontal Elliptical Class HE-IV 14x23-Inch	581.000 LF	_____.	_____.



Proposal Schedule of Items

Proposal ID: 20200512007 Project(s): 6075-00-74

Federal ID(s): WISC 2020242

SECTION: 0001

Contract Items

Alt Set ID:

Alt Mbr ID:

Proposal Line Number	Item ID Description	Approximate Quantity and Units	Unit Price	Bid Amount
0088	608.2419 Storm Sewer Pipe Reinforced Concrete Horizontal Elliptical Class HE-IV 19x30-Inch	562.000 LF	_____.	_____.
0090	611.0530 Manhole Covers Type J	4.000 EACH	_____.	_____.
0092	611.0545 Manhole Covers Type L	1.000 EACH	_____.	_____.
0094	611.0624 Inlet Covers Type H	11.000 EACH	_____.	_____.
0096	611.0639 Inlet Covers Type H-S	14.000 EACH	_____.	_____.
0098	611.2005 Manholes 5-FT Diameter	3.000 EACH	_____.	_____.
0100	611.2006 Manholes 6-FT Diameter	3.000 EACH	_____.	_____.
0102	611.3004 Inlets 4-FT Diameter	7.000 EACH	_____.	_____.
0104	611.3230 Inlets 2x3-FT	17.000 EACH	_____.	_____.
0106	611.8110 Adjusting Manhole Covers	14.000 EACH	_____.	_____.
0108	618.0100 Maintenance And Repair of Haul Roads (project) 01. 6075-00-74	1.000 EACH	_____.	_____.
0110	619.1000 Mobilization	1.000 EACH	_____.	_____.
0112	624.0100 Water	230.000 MGAL	_____.	_____.
0114	625.0100 Topsoil	3,350.000 SY	_____.	_____.
0116	627.0200 Mulching	3,350.000 SY	_____.	_____.
0118	628.1905 Mobilizations Erosion Control	4.000 EACH	_____.	_____.





## Proposal Schedule of Items

Proposal ID: 20200512007 Project(s): 6075-00-74

Federal ID(s): WISC 2020242

SECTION: 0001

Contract Items

Alt Set ID:

Alt Mbr ID:

Proposal Line Number	Item ID Description	Approximate Quantity and Units	Unit Price	Bid Amount
0120	628.1910 Mobilizations Emergency Erosion Control	4.000 EACH	_____.	_____.
0122	628.7015 Inlet Protection Type C	25.000 EACH	_____.	_____.
0124	628.7504 Temporary Ditch Checks	60.000 LF	_____.	_____.
0126	628.7555 Culvert Pipe Checks	3.000 EACH	_____.	_____.
0128	629.0210 Fertilizer Type B	2.000 CWT	_____.	_____.
0130	630.0130 Seeding Mixture No. 30	63.000 LB	_____.	_____.
0132	630.0200 Seeding Temporary	57.000 LB	_____.	_____.
0134	630.0500 Seed Water	75.000 MGAL	_____.	_____.
0136	633.5200 Markers Culvert End	8.000 EACH	_____.	_____.
0138	642.5001 Field Office Type B	1.000 EACH	_____.	_____.
0140	643.0300 Traffic Control Drums	70.000 DAY	_____.	_____.
0142	643.0410 Traffic Control Barricades Type II	1,257.000 DAY	_____.	_____.
0144	643.0420 Traffic Control Barricades Type III	5,153.000 DAY	_____.	_____.
0146	643.0705 Traffic Control Warning Lights Type A	10,037.000 DAY	_____.	_____.
0148	643.0900 Traffic Control Signs	31,734.000 DAY	_____.	_____.
0150	643.0910 Traffic Control Covering Signs Type I	4.000 EACH	_____.	_____.
0152	643.0920 Traffic Control Covering Signs Type II	23.000 EACH	_____.	_____.



Proposal Schedule of Items

Proposal ID: 20200512007 Project(s): 6075-00-74

Federal ID(s): WISC 2020242

SECTION: 0001

Contract Items

Alt Set ID:

Alt Mbr ID:

Proposal Line Number	Item ID Description	Approximate Quantity and Units	Unit Price	Bid Amount
0154	643.1050 Traffic Control Signs PCMS	14.000 DAY	_____.	_____.
0156	643.5000 Traffic Control	1.000 EACH	_____.	_____.
0158	644.1420 Temporary Pedestrian Surface Plywood	4,020.000 SF	_____.	_____.
0160	644.1601 Temporary Pedestrian Curb Ramp	622.000 DAY	_____.	_____.
0162	644.1810 Temporary Pedestrian Barricade	120.000 LF	_____.	_____.
0164	645.0220 Geogrid Type SR	16,950.000 SY	_____.	_____.
0166	646.1020 Marking Line Epoxy 4-Inch	14,320.000 LF	_____.	_____.
0168	646.3020 Marking Line Epoxy 8-Inch	140.000 LF	_____.	_____.
0170	646.5320 Marking Railroad Crossings Epoxy	2.000 EACH	_____.	_____.
0172	646.6120 Marking Stop Line Epoxy 18-Inch	13.000 LF	_____.	_____.
0174	646.7420 Marking Crosswalk Epoxy Transverse Line 6-Inch	380.000 LF	_____.	_____.
0176	649.0150 Temporary Marking Line Removable Tape 4-Inch	64.000 LF	_____.	_____.
0178	650.4000 Construction Staking Storm Sewer	32.000 EACH	_____.	_____.
0180	650.4500 Construction Staking Subgrade	2,841.000 LF	_____.	_____.
0182	650.5000 Construction Staking Base	2,841.000 LF	_____.	_____.
0184	650.5500 Construction Staking Curb Gutter and Curb & Gutter	5,866.000 LF	_____.	_____.



## Proposal Schedule of Items

Proposal ID: 20200512007 Project(s): 6075-00-74

Federal ID(s): WISC 2020242

SECTION: 0001

Contract Items

Alt Set ID:

Alt Mbr ID:

Proposal Line Number	Item ID Description	Approximate Quantity and Units	Unit Price	Bid Amount
0186	650.6000 Construction Staking Pipe Culverts	3.000 EACH	_____	_____
0188	650.8000 Construction Staking Resurfacing Reference	1,034.000 LF	_____	_____
0190	650.9000 Construction Staking Curb Ramps	26.000 EACH	_____	_____
0192	650.9910 Construction Staking Supplemental Control (project) 01. 6075-00-74	LS	LUMP SUM	_____
0194	650.9920 Construction Staking Slope Stakes	110.000 LF	_____	_____
0196	690.0150 Sawing Asphalt	890.000 LF	_____	_____
0198	690.0250 Sawing Concrete	61.000 LF	_____	_____
0200	740.0440 Incentive IRI Ride	2,935.606 DOL	1.00000	2,935.61
0202	SPV.0060 Special 01. Adjusting Water Valve Boxes	26.000 EACH	_____	_____
0204	634.0614 Posts Wood 4x6-Inch X 14-FT	18.000 EACH	_____	_____
0206	634.0616 Posts Wood 4x6-Inch X 16-FT	16.000 EACH	_____	_____
0208	634.0618 Posts Wood 4x6-Inch X 18-FT	2.000 EACH	_____	_____
0210	634.0620 Posts Wood 4x6-Inch X 20-FT	2.000 EACH	_____	_____
0212	637.2210 Signs Type II Reflective H	232.800 SF	_____	_____
0214	637.2230 Signs Type II Reflective F	23.200 SF	_____	_____
0216	638.2102 Moving Signs Type II	3.000 EACH	_____	_____



Proposal Schedule of Items

Proposal ID: 20200512007 Project(s): 6075-00-74

Federal ID(s): WISC 2020242

SECTION: 0001

Contract Items

Alt Set ID:

Alt Mbr ID:

Proposal Line Number	Item ID Description	Approximate Quantity and Units	Unit Price	Bid Amount
0218	638.2602 Removing Signs Type II	32.000 EACH	_____.	_____.
0220	638.3000 Removing Small Sign Supports	35.000 EACH	_____.	_____.
Section: 0001			Total:	_____.
			Total Bid:	_____.