



# Wisconsin Department of Transportation

## Division of Transportation Systems Development

Bureau of Project Development  
4822 Madison Yards Way, 4<sup>th</sup> Floor South  
Madison, WI 53705

Telephone: (608) 266-1631  
Facsimile (FAX): (608) 266-8459

June 3, 2020

### NOTICE TO ALL CONTRACTORS:

**Proposal #08: 2030-13-70, WISC 2020 321**  
**108<sup>th</sup> St**  
**I43 to Hank Aaron State Trail**  
**STH 100**  
**Milwaukee County**

### Letting of June 9, 2020

This is Addendum No. 02, which provides for the following:

#### Schedule of Items:

Revised Bid Item Quantities					
Bid Item	Item Description	Unit	Old Quantity	Revised Quantity	Proposal Total
416.0610	Drilled Tie Bars	EA	29,873	-15,316	14,557

Deleted Bid Item Quantities					
Bid Item	Item Description	Unit	Old Quantity	Revised Quantity	Proposal Total
520.8000	Concrete Collars for Pipe	EA	49	0	0

#### Plan Sheets:

Revised Plan Sheets	
Plan Sheet	Plan Sheet Title (brief description of changes to sheet)
398	Revised "Drilled Tie Bars" quantity.
406	Removed "Concrete Collars for Pipe" column.
407	Removed "Concrete Collars for Pipe" column.
666 (2 of 5)	Structure B-40-318: Removed notes requiring tubular railing removal
668 (4 of 5)	Structure B-40-318: Removed notes requiring tubular railing removal
671 (2 of 5)	Structure B-40-319: Removed notes requiring tubular railing removal
673 (4 of 5)	Structure B-40-319: Removed notes requiring tubular railing removal

**Schedule of Items**

Attached, dated June 3, 2020, are the revised Schedule of Items Pages 1 – 20.

**Plan Sheets**

The following 8½ x 11-inch sheets are attached and made part of the plans for this proposal:

Revised: 398, 406, 407, 666, 668, 671 & 673

The responsibility for notifying potential subcontractors and suppliers of these changes remains with the prime contractor.

Sincerely,

*Mike Coleman*

Proposal Development Specialist  
Proposal Management Section

END OF ADDENDUM

TIE BARS AND DOWEL BARS

CATEGORY	STAGE	ROADWAY	STATION	TO	STATION	LOCATION	DRILLED TIE BARS		COMMENTS
							EA	EA	
1000	1A	STH 100 & LAYTON AVE	74+81	-	82+84	L/T/RT	47	30	CURB & GUTTER
		STH 100 & ARMOUR AVE	74+81	-	82+84	L/T/RT	24	48	BASE PATCHING FOR SIGNAL WORK
		STH 100 & 110TH ST	87+47	-	88+11	LT	14	8	CURB & GUTTER
		STH 100 & OAK LEAF TRAIL	91+14	-	92+21	L/T/RT	3	6	CURB & GUTTER
		STH 100 & HOWARD AVE	131+09	-	131+35	RT	14	4	CURB & GUTTER
		STH 100 & MORGAN AVE	157+55	-	157+78	L/T/RT	26	12	CURB & GUTTER
		STH 100 & WOLLUMER RD	161+55	-	162+40	LT	11	6	CURB & GUTTER
		STH 100 & OKLAHOMA AVE	180+34	-	188+41	L/T/RT	-	24	BASE PATCHING FOR SIGNAL WORK
		STH 100 (DAKOTA - HAYES)	185+10	-	229+87	L/T/RT	-	16	CURB & GUTTER
		STH 100 & LINCOLN AVE	233+20	-	241+20	L/T/RT	-	40	CURB & GUTTER
		STH 100 & FLANDERS ST	233+55	-	234+24	LT	2	4	CURB & GUTTER
		STH 100 & GRANT ST	243+50	-	244+31	L/T/RT	6	12	CURB & GUTTER
		STH 100 & BECHER ST	250+08	-	250+87	L/T/RT	6	12	CURB & GUTTER
		STH 100 (ROGERS - MITCHELL)	257+49	-	272+37	L/T/RT	9	18	CURB & GUTTER
		STH 100 & ORCHARD ST	281+70	-	282+39	RT	4	8	CURB & GUTTER
		STH 100 & MADISON ST	294+00	-	294+80	L/T/RT	4	8	CURB & GUTTER
		STH 100 & WASHINGTON ST	300+66	-	301+41	RT	4	8	CURB & GUTTER
		STH 100 & WALKER ST	307+89	-	308+03	L/T/RT	2	4	CURB & GUTTER
		STH 100					870	696	SEWER ADJUSTMENTS/RECONSTRUCTIONS
		UNDISTRIBUTED					288	320	INLET REPLACEMENTS
		UNDISTRIBUTED					1,892	8,514	BARS REQUIRED FOR UNDISTRIBUTED BASE PATCHING
		STAGE 1A TOTAL					3,230	9,804	
1B		STH 100 & LAYTON AVE	74+81	-	82+84	L/T/RT	24	68	BASE PATCHING FOR SIGNAL WORK
		STH 100 & OKLAHOMA AVE	160+34	-	168+41	L/T/RT	82	34	BASE PATCHING FOR SIGNAL WORK
		STH 100 & NATIONAL AVE	201+02	-	208+47	L/T/RT	129	-	BASE PATCHING FOR SIGNAL WORK
		STH 100 & CLEVELAND AVE	206+92	-	214+59	L/T/RT	82	-	BASE PATCHING FOR SIGNAL WORK
		STH 100 & LINCOLN AVE	233+20	-	241+20	L/T/RT	82	-	BASE PATCHING FOR SIGNAL WORK
		UNDISTRIBUTED					2,324	10,458	BARS REQUIRED FOR UNDISTRIBUTED BASE PATCHING
		STAGE 1B TOTAL					2,723	10,560	
2A		STH 100 & LAYTON AVE	74+81	-	82+84	L/T/RT	14	2	CURB & GUTTER
		STH 100 & OKLAHOMA AVE	160+34	-	168+41	L/T/RT	128	55	BASE PATCHING FOR SIGNAL WORK
		STH 100 & NATIONAL AVE	201+02	-	208+47	L/T/RT	186	14	BASE PATCHING FOR SIGNAL WORK
		STH 100 & CLEVELAND AVE	206+92	-	214+59	L/T/RT	291	16	BASE PATCHING FOR SIGNAL WORK
		ARTHUR AVE	223+18	-	224+75	L/T/RT	170	17	MEDIAN REPLACEMENT
		STH 100 & LINCOLN AVE	233+20	-	241+20	L/T/RT	128	12	BASE PATCHING FOR SIGNAL WORK
		STAGE 2A TOTAL					789	104	
2B		UNDISTRIBUTED					6,368	14,328	BARS REQUIRED FOR UNDISTRIBUTED BASE PATCHING
1/2/3		LAYTON AVE	78+43	-	79+45	L/T/RT	303	209	BASE PATCHING FOR SIGNAL WORK
		OKLAHOMA AVE	183+82	-	184+87	L/T/RT	336	218	BASE PATCHING FOR SIGNAL WORK
		NATIONAL AVE	202+28	-	207+36	L/T/RT	227	184	BASE PATCHING FOR SIGNAL WORK
		CLEVELAND AVE	210+28	-	211+06	L/T/RT	332	222	BASE PATCHING FOR SIGNAL WORK
		LINCOLN AVE	236+68	-	237+51	L/T/RT	249	210	BASE PATCHING FOR SIGNAL WORK
		STAGE 1/2/3 TOTAL					1,447	1,043	
		TOTAL					14,557	35,839	

Addendum No. 02  
 ID 2030-13-70  
 Revised Sheet 398  
 June 3, 2020

STORM SEWER TABLE

CATEGORY	INLET ID	INLET STATION	OFFSET	ELEV	FT	DEPTH OF INLET	SALVAGED INLET COVERS	CATCH BASIN	CATCH BASIN	CATCH BASIN	MANHOLE	611.2504	611.3003	611.3004	611.3253	**611.0654	SPV.0035.003	SPV.0060.009	*PIPE INVENTORY			
																			DIRECTION	SIZE	MATERIAL	
							EACH	4-FT DIAMETER	4-FT DIAMETER	3-FT DIAMETER	TEE 4-FT	INLET	INLET	INLET	2.5X-FT	INLETS	COVERS	BACKFILL	RECONNECT	DIRECTION	SIZE	MATERIAL
								EACH	EACH	EACH	VARIABLE	4-FT DIAMETER	4-FT DIAMETER	4-FT DIAMETER	EACH	TYPE V	SLURRY	STORM SEWER	LATERALS		INCHES	
1000	S116	78+11	LT	767.97	4.7		1						1				9	1	1	E	15	RCP
	N8	102+00	RT	734.36	4.8		1							1			8	3	3	N	24	RCP
	N10	107+96	RT	728.89	4.7		1										9	2	2	W	15	RCP
	N11	109+84	RT	727.99	4.7		1			1							9	4	4	W	18	RCP
	N12	111+65	RT	727.55	5.2		1							1			9	4	4	N	30	RCP
	S94	124+68	LT	726.83	4.3		1							1			7	1	1	E	15	RCP
	N22	127+25	RT	727.95	8.0		1			1							13	3	3	N	60	RCP
	S93	127+67	LT	728.22	4.2		1							1			7	1	1	SE	15	RCP
	S92	129+54	LT	729.21	4		1			1							8	1	1	E	15	RCP
	N23	129+55	RT	729.22	8.1		1				1						14	2	2	N	60	RCP
	S70A	183+56	LT	768.37	4.2		1										8	1	1	NE	15	RCP
	S67	189+47	LT	765.67	5.2		1										10	1	1	E	15	RCP
	N52A	201+22	RT	755.57	5.8		1										10	1	1	N	18	RCP
	N52B	201+24	RT	755.59	8.1		1		1								14	3	3	NW	36	RCP
	N54	210+12	RT	750.27	4.6		1							1			8	1	1	SE	15	RCP
							15	1	1	2	6	5	5	5			142	29	29	W	15	RCP
SUBTOTAL																						

\*FOR INFORMATION ONLY  
 \*\*QUANTITIES LISTED ELSEWHERE

Addendum No. 02  
 ID 2030-13-70  
 Revised Sheet 406  
 June 3, 2020

STORM SEWER TABLE CONTINUED

CATEGORY	INLET ID	STATION	OFFSET	RIM ELEV	DEPTH OF INLET FT	SALVAGED INLET	611.1003		611.1004		611.2504		611.3003		611.3004		611.3253		**611.0654		SPV.0060.009		*PIPE INVENTORY			
							CATCH BASIN	3-FT DIAMETER	CATCH BASIN	4-FT DIAMETER	MANHOLE	TEE 4-FT	INLETS	3-FT DIAMETER	4-FT DIAMETER	INLET	4-FT DIAMETER	2.5X8-FT	INLETS	2.5X8-FT	INLETS	COVERS	BACKFILL	SLURRY	STORM SEWER	RECONNECT
						EACH	EACH	EACH	EACH	EACH	EACH	EACH	EACH	EACH	EACH	EACH	EACH	EACH	EACH	EACH	EACH	EACH	INCHES			
N65		235+05	RT	737.80	4.6	-	-	-	-	-	-	-	-	-	-	-	-	-	-	-	-	-	-	-	-	
N66		236+31	RT	737.79	4.2	1	-	-	-	-	-	-	-	-	-	-	-	-	-	-	-	-	-	-	-	
N67		240+27	RT	736.98	5	-	-	-	-	-	-	-	-	-	-	-	-	-	-	-	-	-	-	-	-	
N71		246+11	RT	736.16	3.8	1	-	-	-	-	-	-	-	-	-	-	-	-	-	-	-	-	-	-	-	
N72		247+39	RT	736.09	3.4	1	-	-	-	-	-	-	-	-	-	-	-	-	-	-	-	-	-	-	-	
N75		250+98	RT	736.12	4.1	1	-	-	-	-	-	-	-	-	-	-	-	-	-	-	-	-	-	-	-	
N76A		252+17	RT	736.10	3.9	1	-	-	-	-	-	-	-	-	-	-	-	-	-	-	-	-	-	-	-	
N78B		252+23	RT	736.47	4.1	-	-	-	-	-	-	-	-	-	-	-	-	-	-	-	-	-	-	-	-	
N77		253+39	RT	736.09	3.6	1	-	-	-	-	-	-	-	-	-	-	-	-	-	-	-	-	-	-	-	
M1		272+80	RT	735.71	6	-	-	-	-	-	-	-	-	-	-	-	-	-	-	-	-	-	-	-	-	
N94		283+90	RT	738.40	3.8	1	-	-	-	-	-	-	-	-	-	-	-	-	-	-	-	-	-	-	-	
N95		286+33	RT	738.40	5.2	1	-	-	-	-	-	-	-	-	-	-	-	-	-	-	-	-	-	-	-	
N97		289+76	RT	739.30	4.3	1	-	-	-	-	-	-	-	-	-	-	-	-	-	-	-	-	-	-	-	
N100		298+16	RT	739.20	4.4	1	-	-	-	-	-	-	-	-	-	-	-	-	-	-	-	-	-	-	-	
N103		304+38	RT	741.49	4.6	1	-	-	-	-	-	-	-	-	-	-	-	-	-	-	-	-	-	-	-	
S5		316+45	LT	741.29	4.6	1	-	-	-	-	-	-	-	-	-	-	-	-	-	-	-	-	-	-	-	
S3		317+47	LT	741.21	4	1	-	-	-	-	-	-	-	-	-	-	-	-	-	-	-	-	-	-	-	
TOTALS						28	1	2	2	14	11	2	3	276	49											

Addendum No. 02  
ID 2030-13-70  
Revised Sheet 407  
June 3, 2020

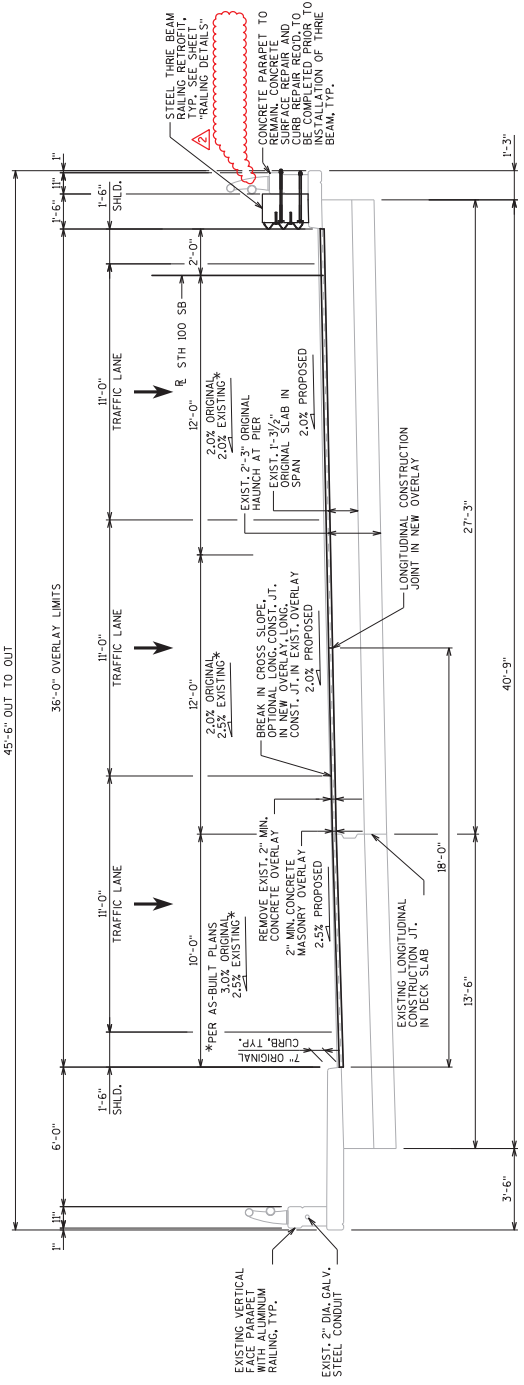
\*FOR INFORMATION ONLY  
\*\*QUANTITIES LISTED ELSEWHERE

**GENERAL NOTES**

DRAWINGS SHALL NOT BE SCALED.  
DIMENSIONS SHOWN ARE BASED ON THE EXISTING STRUCTURE PLANS.  
ALL DIMENSIONS ARE IN FEET AND INCHES UNLESS OTHERWISE NOTED. ALL STATIONS AND VERTICAL DATUM OF 888 BRAND.

- LOCATIONS OF THE FOLLOWING BID ITEMS SHALL BE DETERMINED IN THE FIELD BY THE PROJECT ENGINEER. QUANTITIES FOR THESE ITEMS ARE APPROXIMATE.
  - PREPARATION DECKS
  - CLEANING PARAPETS
  - CONCRETE SURFACE REPAIR
  - FULL-DEPTH DECK REPAIR
  - REMOVING LOOSE CONCRETE
  - EMBEDDED GALVANIC ANODES
- REMOVING LOOSE CONCRETE IS INTENDED FOR THE UNDERSIDE OF THE DECK IN AREAS WHERE REPAIR IS REQUIRED. COMPRESSIVE ZONES IN THE UNDER-DECK, SUCH AS THICKENED HAUNCHES, AND TENSION ZONES SHOULD RECEIVE CONCRETE SURFACE REPAIR.
- EMBEDDED GALVANIC ANODES ARE PAID FOR SEPARATELY AND PROPOSED FOR CONCRETE SURFACE REPAIR OF SUBSTRUCTURE SURFACES AND THE UNDERSIDE OF THE SIDEWALK OR PARAPETS.
- THE AVERAGE OVERLAY THICKNESS IS BASED ON THE MINIMUM OVERLAY THICKNESS PLUS 1/2" INGA TO ACCOUNT FOR VARIATIONS IN DECK SURFACE.
- AT "CURB REPAIR" EXPOSE EXISTING REINFORCEMENT A MINIMUM OF 1/2" CLEAR. NO MORE THAN 3/4" OF THE TOP BAR STEEL SHALL BE EXPOSED LONGITUDINALLY AT THE SAME TIME.
- "PREPARATION DECKS TYPE 1" - PREPARATION DECKS TYPE 2" AND "FULL-DEPTH DECK REPAIR" AREAS ARE BASED ON THE PLANS AND AS DETERMINED BY THE ENGINEER. DECK PREPARATION AND FULL-DEPTH REPAIRS SHALL BE FILLED WITH "CONCRETE MASONRY OVERLAY DECKS".
- "POINTED SURFACE SEALER" SHALL BE APPLIED TO THE TOP AND INSIDE FACES OF EXISTING PARAPETS. PERFORM "CLEANING PARAPETS" PRIOR TO THIS APPLICATION.
- CLEAN AND APPLY PROTECTIVE SURFACE TREATMENT TO THE TOP AND VERTICAL FACES OF THE FLOOR SLABS, BRUSH BLOCKS, AND CURBS. PAID FOR UNDER "PROTECTIVE SURFACE TREATMENT RESEAL".
- PERFORM ALL PARAPET AND CURB REPAIRS AND SURFACE TREATMENT APPLICATIONS PRIOR TO INSTALLATION OF STEEL THREE BEAM RAILING RETROFIT.
- PROFILE GRADE LINE SHALL BE DETERMINED IN THE FIELD BASED UPON A MINIMUM OF THREE (3) CONCRETE SURFACE TESTS. THE EXPECTED AVERAGE OVERLAY THICKNESS IS 2 1/2". IF EXPECTED AVERAGE OVERLAY THICKNESS IS EXCEEDED BY MORE THAN 1/2", CONTACT THE STRUCTURES DESIGN SECTION.
- BEVEL EDGES OF EXPOSED CONCRETE TO MATCH EXISTING BEVELS UNLESS NOTED OTHERWISE.
- CONCRETE MASONRY OVERLAY PLACEMENT AND OTHER PROPOSED WORK ITEMS MUST CONFORM TO TRAFFIC CONTROL RESTRICTIONS NOTED ELSEWHERE IN THE CONTRACT DOCUMENTS. CONSULT RELATED CONSTRUCTION JOINTS IN THE OVERLAY TO BE APPROVED BY THE ENGINEER.
- ANY EVALUATION REQUIRED TO COMPLETE THE CONCRETE MASONRY OVERLAY AT THE ABUTMENTS IS TO BE CONSIDERED INCIDENTAL TO THE BID ITEM "CONCRETE MASONRY OVERLAY DECKS".
- EXISTING FLOOR DRAINS TO REMAIN IN PLACE. FLOOR DRAIN EXTENSIONS TO BE CLEANED AND PAINTED. PAID FOR AS "CLEANING AND PAINTING DRAIN EXTENSIONS".
- VERIFY FLOOR DRAINS AND DOWNSPOUTS ARE NOT CLOGGED ONCE CONSTRUCTION COMPLETED. CLOGGED DOWNSPOUTS TO BE CLEANED OUT AND CONSIDERED INCIDENTAL TO "CONCRETE MASONRY OVERLAY DECKS".
- "REMOVING OLD STRUCTURE" BID ITEM COVERS PARTIAL REMOVAL WORK REQUIRED FOR DEBRIS GENERATED FROM CONCRETE REMOVALS AND REPAIRS OVER AND IN VICINITY OF THE RIVER AND ADJACENT WETLANDS.

2 1/2" AVERAGE OVERLAY THICKNESS



**TYPICAL SECTION**  
(LOOKING NORTH)

Addendum No. 02  
ID 2030-13-70  
Revised Sheet 666  
June 3, 2020

**TOTAL ESTIMATED QUANTITIES**

ITEM NO.	BID ITEM	UNIT	SOUTH ABUT.	PIER 1	PIER 2	NORTH ABUT.	SUPER	TOTAL
203.0200.S.0001	ABATEMENT OF ASBESTOS CONTAINING MATERIAL B-40-318	LS						1
203.0600.S.0001	REMOVING OLD STRUCTURE OVER WATERWAY WITH MINIMAL DEBRIS STA. 126+45	LS						445
502.3200	PROTECTIVE SURFACE TREATMENT	SY					76	76
502.3210	POINTED SURFACE SEALER	SY					127	127
502.3215	PROTECTIVE SURFACE TREATMENT RESEAL	SY					31	31
509.0301	PREPARATION DECKS TYPE 1	SY					25	25
509.0302	PREPARATION DECKS TYPE 2	SY					450	450
509.0505	CLEANING DECKS TO REAPPLY CONCRETE MASONRY OVERLAY	SY					15	15
509.0506	CURB PREPARATION REPAIR	SF					15	15
509.2000	FULL-DEPTH DECK REPAIR	SY					5	5
509.2500	CONCRETE MASONRY OVERLAY DECKS	CY					57	57
509.3005.S.0001	REMOVING CONCRETE MASONRY OVERLAY B-40-318	SY					445	445
509.3050.S	CLEANING PARAPETS	LF					265	265
SPV.0060.4001	EMBEDDED GALVANIC ANODES	EACH					10	10
SPV.0060.4002	CLEANING AND PAINTING DRAIN EXTENSIONS	EACH					3	3
SPV.0090.4001	STEEL THREE BEAM RAILING RETROFIT	LF					140	140
SPV.0165.4001	REMOVING LOOSE CONCRETE	SF					140	140
	NON-BID ITEMS							

ALL ITEMS ARE CATEGORY 2000

THE EMBEDDED GALVANIC ANODES FOR THE SUPERSTRUCTURE REPAIR ARE TO BE USED IN CONJUNCTION WITH APPROXIMATELY 20 SF OF CONCRETE SURFACE REPAIR ESTIMATED FOR UNSOUND UNDER-DECK CONCRETE WHERE PREVIOUS SURFACE REPAIRS FAILED.



06/03/20  
SPR

6/3/20

STRUCTURE B-40-318  
TYPICAL SECTION,  
GENERAL NOTES  
AND QUANTITIES

666

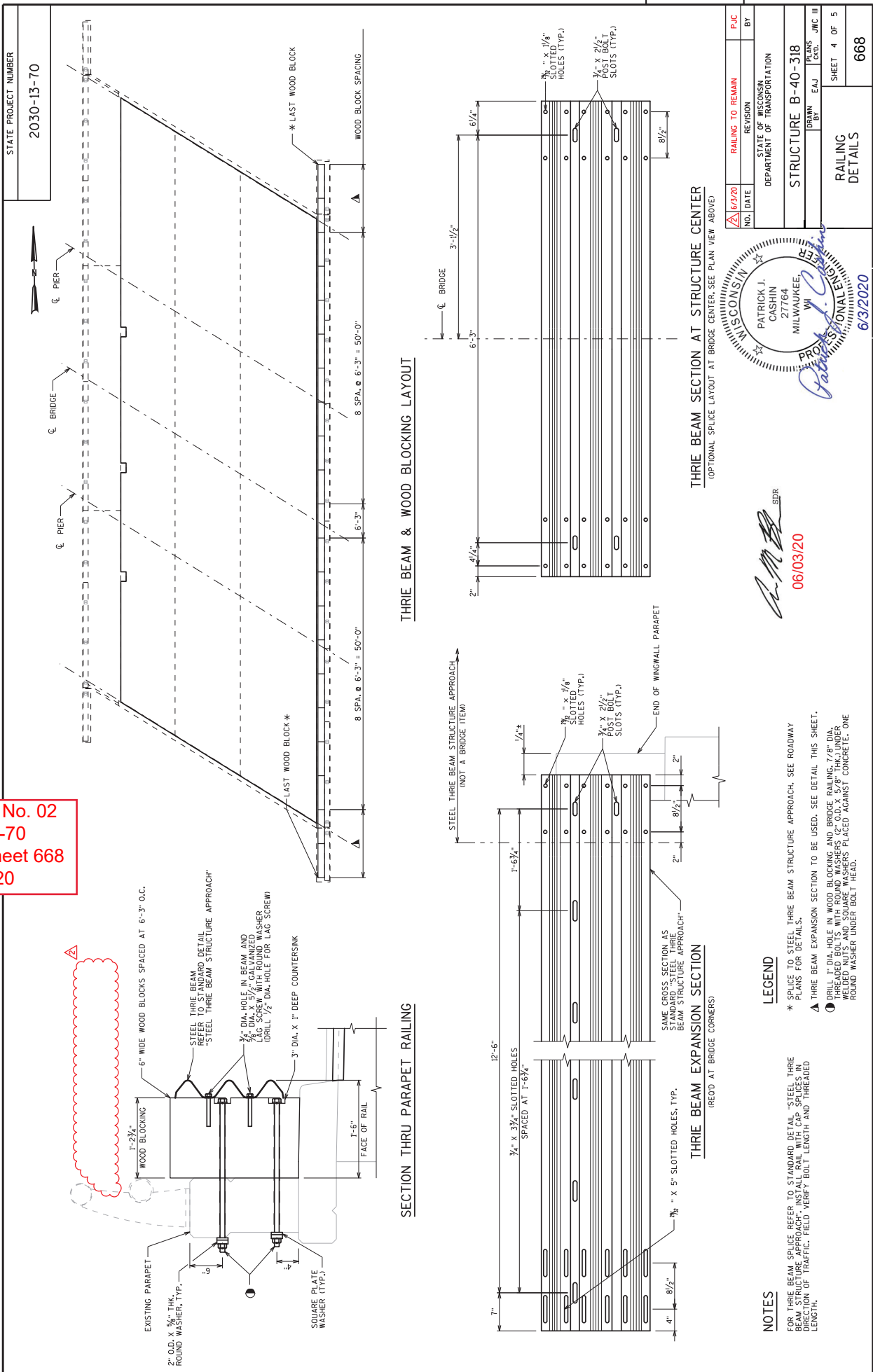
PLOT SCALE: 1" = 3333.33'

PLOT NAME: #FILE\$

PLOT BY: eaj@linck

PLOT DATE: 6/2/2020 6:11:44 PM

Addendum No. 02  
 ID 2030-13-70  
 Revised Sheet 668  
 June 3, 2020



STATE PROJECT NUMBER  
 2030-13-70

8

8

NO.	DATE	REVISION	BY
6/3/20		RAILING TO REMAIN	PJC

STATE OF WISCONSIN  
 DEPARTMENT OF TRANSPORTATION

STRUCTURE B-40-318

DESIGNED BY: JBN  
 DRAWN BY: EAJ  
 CHECKED BY: JMC III

SHEET 4 OF 5

668

THRIE BEAM SECTION AT STRUCTURE CENTER  
 (OPTIONAL SPLICE LAYOUT AT BRIDGE CENTER, SEE PLAN VIEW ABOVE)

PROFESSIONAL ENGINEER  
 PATRICK J. CASHIN  
 2776A  
 MILWAUKEE, WI

06/03/20

SPR  
 06/03/20

LEGEND

- \* SPLICE TO STEEL THRIE BEAM STRUCTURE APPROACH. SEE ROADWAY PLANS FOR DETAILS.
- ▲ THRIE BEAM EXPANSION SECTION TO BE USED. SEE DETAIL THIS SHEET.
- DRILL 1" DIA. HOLE IN WOOD BLOCKING AND BRIDGE RAILING. 7/8" DIA. THREADED BOLTS WITH ROUND WASHERS (2" O.D. X 5/8" THK.) UNDER WELDED NUTS AND SQUARE WASHERS PLACED AGAINST CONCRETE. ONE ROUND WASHER UNDER BOLT HEAD.

NOTES

FOR THRIE BEAM SPLICE REFER TO STANDARD DETAIL "STEEL THRIE BEAM SPLICE" UNDER "STEEL RAIL PARAPET" IN THE "STEEL RAIL PARAPET" SECTION OF "TRAFFIC FIELD" VOLUME LENGTH AND THREADED

**GENERAL NOTES**

- DRAWINGS SHALL NOT BE SCALED.
- DIMENSIONS SHOWN ARE BASED ON THE EXISTING STRUCTURE PLANS.
- ALL DIMENSIONS ARE IN FEET AND INCHES UNLESS OTHERWISE NOTED, ALL STATIONS AND ELEVATIONS ARE IN FEET, ELEVATIONS ARE REFERENCED TO THE NORTH AMERICAN VERTICAL DATUM OF 1988 NAVD83.
- LOCATIONS OF THE FOLLOWING BID ITEMS SHALL BE DETERMINED IN THE FIELD BY THE PROJECT ENGINEER. QUANTITIES FOR THESE ITEMS ARE APPROXIMATE.
  - CONCRETE SURFACE REPAIR
  - CURB REPAIR
  - EMBEDDED GALVANIC ANODES
  - REMOVING LOOSE CONCRETE
  - REMOVING GALVANIC ANODES
- \*"REMOVING LOOSE CONCRETE" IS INTENDED FOR THE UNDERSIDE OF THE DECK IN AREAS NOT VISIBLE TO THE PUBLIC AND WHERE STRUCTURAL CONCRETE REPAIR IS NOT REQUIRED. COMPRESSION ZONES IN THE UNDER-DECK, SUCH AS THICKENED HAUNCHES, AND TENSION ZONES SHOULD RECEIVE "CONCRETE SURFACE REPAIR".
- \*"EMBEDDED GALVANIC ANODES" ARE PAID FOR SEPARATELY AND PROPOSED FOR CONCRETE SURFACE REPAIRS ON SUBSTRUCTURE SURFACES AND THE UNDERSIDE OF THE DECK SLAB; THEY ARE NOT PROPOSED FOR THE TOP SURFACES OF THE DECK SLAB, SIDEWALK OR PARAPETS. ①
- PROTECTIVE SURFACE TREATMENT SHALL BE APPLIED TO THE ENTIRE TOP SURFACE OF THE NEW CONCRETE OVERLAY, PAID FOR UNDER "PROTECTIVE SURFACE TREATMENT".
- THE AVERAGE OVERLAY THICKNESS IS BASED ON THE MINIMUM OVERLAY THICKNESS PLUS 1/2" INCH TO ACCOUNT FOR VARIATIONS IN DECK SURFACE.
- AT "CURB REPAIR" EXPOSE EXISTING REINFORCEMENT A MINIMUM OF 1/2" CLEAR.
- NO MORE THAN 1/3 OF THE TOP BAR STEEL SHALL BE EXPOSED LONGITUDINALLY AT THE SAME TIME.
- \*"PREPARATION DECKS TYPE 1", "PREPARATION DECKS TYPE 2", AND "FULL-DEPTH DECK REPAIR" SHALL BE PERFORMED IN THE FIELD. PREPARATION AND FULL-DEPTH REPAIRS SHALL BE FILLED WITH "CONCRETE MASONRY OVERLAY DECKS".
- \*"PIGMENTED SURFACE SEALER" SHALL BE APPLIED TO THE TOP AND INSIDE FACES OF EXISTING PARAPETS. PERFORM "CLEANING PARAPETS" PRIOR TO THIS APPLICATION.
- CLEAN AND APPLY PROTECTIVE SURFACE TREATMENT TO THE TOP AND VERTICAL FACES OF THE SIDEWALKS, BRUSH BLOCKS, AND CURBS; PAID FOR UNDER "PROTECTIVE SURFACE TREATMENT RESEAL".
- PERFORM ALL PARAPET AND CURB REPAIRS AND SURFACE TREATMENT APPLICATIONS PRIOR TO INSTALLATION OF STEEL THRIE BEAM RAILING RETROFIT.
- PROFILE GRADE LINE SHALL BE DETERMINED IN THE FIELD BASED UPON A MINIMUM OVERLAY THICKNESS OF 2". PLACED ABOVE THE DECK SURFACE AFTER REMOVAL OF EXISTING OVERLAY. THE EXPECTED AVERAGE OVERLAY THICKNESS IS 2 1/2". IF EXPECTED OVERLAY THICKNESS IS EXCEEDED BY MORE THAN 1/2", CONTACT THE STRUCTURES DESIGN SECTION.
- BEVEL EDGES OF EXPOSED CONCRETE TO MATCH EXISTING BEVELS UNLESS NOTED OTHERWISE.
- CONCRETE MASONRY OVERLAY PLACEMENT AND OTHER PROPOSED WORK ITEMS MUST CONFORM TO TRAFFIC CONTROL RESTRICTIONS. NOTICES ELSEWHERE IN THE CONTRACT DOCUMENTS, CONTRACTOR-LOCATED CONSTRUCTION JOINTS IN THE OVERLAY TO BE APPROVED BY THE ENGINEER.
- ANY EXCAVATION REQUIRED TO COMPLETE THE CONCRETE MASONRY OVERLAY AT THE ABUTMENTS IS TO BE CONSIDERED INCIDENTAL TO THE BID ITEM "CONCRETE MASONRY OVERLAY DECKS".
- EXISTING FLOOR DRAINS TO REMAIN IN PLACE. FLOOR DRAIN EXTENSIONS TO BE CLEANED AND PAINTED. PAID FOR AS "CLEANING AND PAINTING DRAIN EXTENSIONS".
- VERIFY FLOOR DRAINS AND DOWNSPOUTS ARE NOT CLOGGED ONCE CONSTRUCTION COMPLETED. CLOGGED DOWNSPOUTS TO BE CLEANED OUT AND CONSIDERED INCIDENTAL TO "CONCRETE MASONRY OVERLAY DECKS".
- \*"REMOVING OLD STRUCTURE" BID ITEM COVERS PARTIAL REMOVAL WORK REQUIRED FOR REPAIRS TO THE STRUCTURE. THIS INCLUDES REMOVAL OF CONCRETE, BRUSH BLOCKS, AND RIVER AND ADJACEMENT WETLANDS.

EXISTING VERTICAL FACE PARAPET WITH ALUMINUM RAILING, TYP.

EXIST. 2" DIA. GALV. STEEL CONDUIT, TYP.

REMOVE EXIST. 2" MIN. ASPHALT OVERLAY & SHEET MEMBRANE

2" MIN. CONCRETE MASONRY OVERLAY

2.5%

EXISTING LONGITUDINAL CONSTRUCTION JOINT IN DECK SLAB

LONGITUDINAL CONSTRUCTION JOINT NEW

LONGITUDINAL CONSTRUCTION JOINT NEW

BREAK IN CROSS SLOPE, OPTION TO ONE CONST. JT. IN NEW OVERLAY

EXIST. 1-3/4" DIA. ORIGINAL HAUNCH AT PIER

EXIST. 1-3/4" DIA. ORIGINAL CURB, TYP.

CONCRETE PARAPET TO REMAIN. CONCRETE SURFACE REPAIR AND CURE REPAIR REQD. TO BE COMPLETED PRIOR TO INSTALLATION OF THRIE BEAM, TYP.

CONCRETE MASONRY OVERLAY DECKS

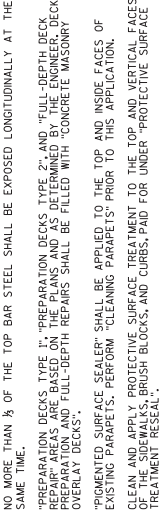
CLEANING PARAPETS

EMBEDDED GALVANIC ANODES

SPV.0060.4001 CLEANING AND PAINTING DRAIN EXTENSIONS

SPV.0090.4001 STEEL THRIE BEAM RAILING RETROFIT

SPV.0105.4001 REMOVING LOOSE CONCRETE



**TYPICAL SECTION**  
(LOOKING NORTH)

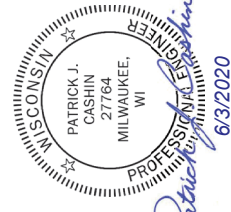
Addendum No. 02  
ID 2030-13-70  
Revised Sheet 671  
June 3, 2020

**TOTAL ESTIMATED QUANTITIES**

ITEM NO.	BID ITEM	UNIT	SOUTH ABUT.	PIER 1	PIER 2	NORTH ABUT.	SUPER	TOTAL
203.0230.S.0002	ABATEMENT OF ASBESTOS CONTAINING MATERIAL B-40-319	LS						1
203.0600.S.0002	REMOVING OLD STRUCTURE OVER WATERWAY WITH MINIMAL DEBRIS STA. 126+30	LS						1
502.3200	PROTECTIVE SURFACE TREATMENT	SY					445	445
502.3210	PIGMENTED SURFACE SEALER	SY					76	76
502.3215	PROTECTIVE SURFACE TREATMENT RESEAL	SY					127	127
509.0301	PREPARATION DECKS TYPE 1	SY					289	289
509.0302	PREPARATION DECKS TYPE 2	SY					116	116
509.0505.S	CLEANING DECKS TO REAPPLY CONCRETE MASONRY OVERLAY	SY					450	450
509.2000	CURB REPAIR	SF					800	800
509.2500	FULL-DEPTH DECK REPAIR	SF	10				35	135
509.2500	CONCRETE MASONRY OVERLAY DECKS	CY					5	5
509.3010.S.0001	REMOVING ASPHALTIC CONCRETE DECK OVERLAY B-40-319	SY					55	55
509.9050.S	CLEANING PARAPETS	LF					265	265
SPV.0060.4001	EMBEDDED GALVANIC ANODES	EACH	8				17	45
SPV.0060.4002	CLEANING AND PAINTING DRAIN EXTENSIONS	EACH	3				3	3
SPV.0090.4001	STEEL THRIE BEAM RAILING RETROFIT	LF					133	133
SPV.0105.4001	REMOVING LOOSE CONCRETE	SF					140	140
	NON-BID ITEMS							

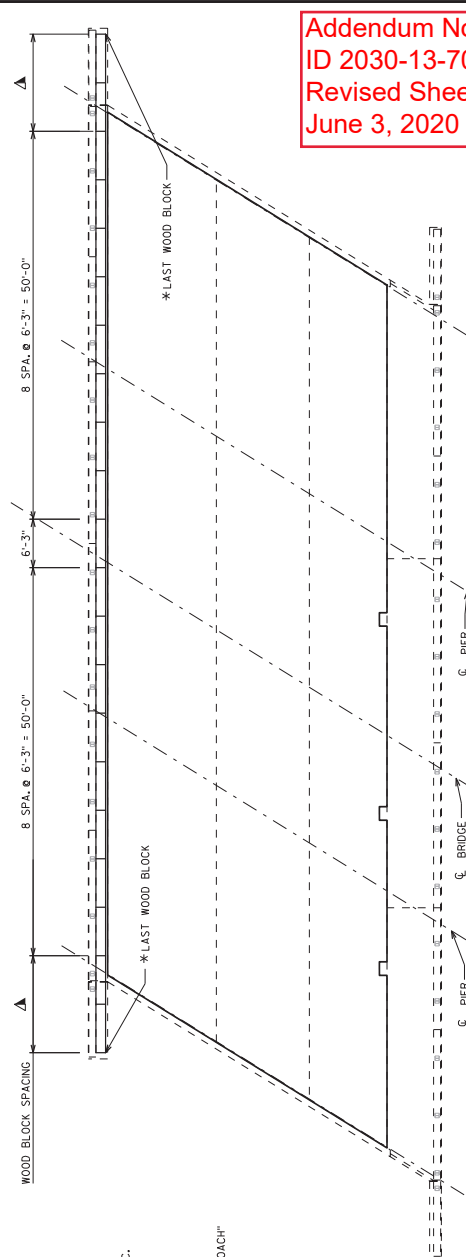
ALL ITEMS ARE CATEGORY 200

① THE EMBEDDED GALVANIC ANODES FOR THE SUPERSTRUCTURE REPAIR ARE TO BE USED IN CONJUNCTION WITH APPROXIMATELY 30 SF OF CONCRETE SURFACE REPAIR ESTIMATED FOR UNSOUND UNDER-DECK CONCRETE WHERE PREVIOUS SURFACE REPAIRS FAILED.



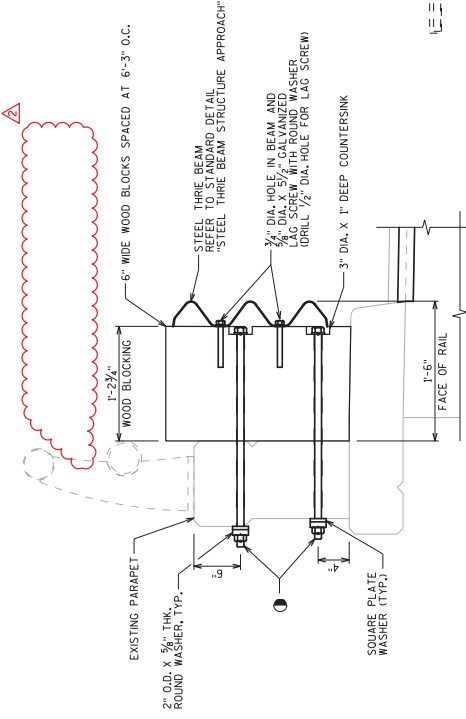
06/03/20



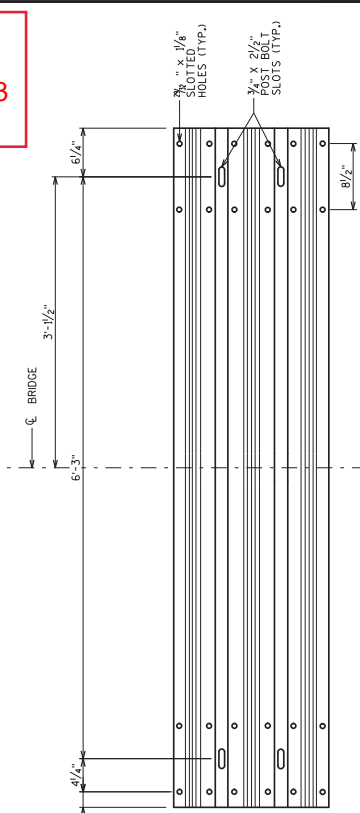


Addendum No. 02  
ID 2030-13-70  
Revised Sheet 673  
June 3, 2020

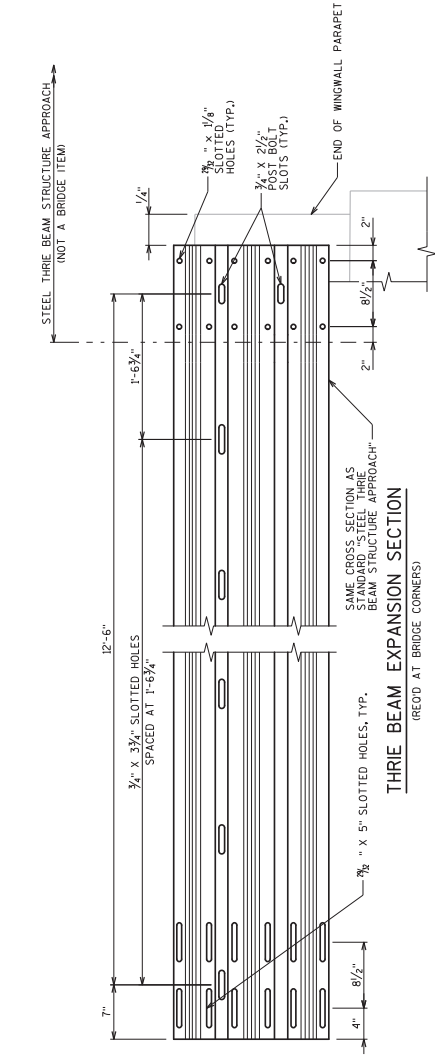
THREE BEAM & WOOD BLOCKING LAYOUT



SECTION THRU PARAPET RAILING



THREE BEAM SECTION AT STRUCTURE CENTER  
(OPTIONAL SPLICE LAYOUT AT BRIDGE CENTER, SEE PLAN VIEW ABOVE)



THREE BEAM EXPANSION SECTION  
(REOD AT BRIDGE CORNERS)

**NOTES**  
FOR THREE BEAM SPLICE REFER TO STANDARD DETAIL "STEEL THREE BEAM SPLICE" FOR ALL DIMENSIONS AND MATERIALS. VERIFY DIRECTION OF TRAFFIC, FIELD BOLT LENGTH AND THREADED LENGTH.

**LEGEND**  
\* SPLICE TO STEEL THREE BEAM STRUCTURE APPROACH. SEE ROADWAY PLANS FOR DETAILS.  
▲ THREE BEAM EXPANSION SECTION TO BE USED. SEE DETAIL THIS SHEET.  
● DRILL 1\"/>

NO.	DATE	REVISION	BY
6/3/20		RAILING TO REMAIN	PJC

STATE OF WISCONSIN  
DEPARTMENT OF TRANSPORTATION

STRUCTURE B-40-319

DESIGNED BY: EAJ  
CHECKED BY: JMC III

SHEET 4 OF 5

673

WISCONSIN PROFESSIONAL ENGINEER

PATRICK J. CASHIN  
27764  
MILWAUKEE, WI

*Patrick J. Cashin*

6/3/2020

*[Signature]* SDR  
06/03/20



Proposal Schedule of Items

Proposal ID: 20200609008 Project(s): 2030-13-70

Federal ID(s): WISC 2020321

SECTION: 0001

Contract Items

Alt Set ID:

Alt Mbr ID:

Proposal Line Number	Item ID Description	Approximate Quantity and Units	Unit Price	Bid Amount
0002	203.0210.S Abatement of Asbestos Containing Material (structure) 0001. B-40-318	LS	LUMP SUM	_____.
0004	203.0210.S Abatement of Asbestos Containing Material (structure) 0002. B-40-319	LS	LUMP SUM	_____.
0006	203.0600.S Removing Old Structure Over Waterway With Minimal Debris (station) 0001. 126+45	LS	LUMP SUM	_____.
0008	203.0600.S Removing Old Structure Over Waterway With Minimal Debris (station) 0002. 126+30	LS	LUMP SUM	_____.
0010	204.0100 Removing Concrete Pavement	3,197.000 SY	_____.	_____.
0012	204.0150 Removing Curb & Gutter	3,553.000 LF	_____.	_____.
0014	204.0155 Removing Concrete Sidewalk	1,878.000 SY	_____.	_____.
0016	204.0165 Removing Guardrail	362.000 LF	_____.	_____.
0018	204.0195 Removing Concrete Bases	82.000 EACH	_____.	_____.
0020	204.0220 Removing Inlets	30.000 EACH	_____.	_____.
0022	204.9105.S Removing (item description) 3001. Removing Traffic Signals STH 100 & Layton Avenue	LS	LUMP SUM	_____.
0024	204.9105.S Removing (item description) 3002. Removing Traffic Signals STH 100 & Oklahoma Avenue	LS	LUMP SUM	_____.
0026	204.9105.S Removing (item description) 3003. Removing Traffic Signals STH 100 & National Avenue	LS	LUMP SUM	_____.



Proposal Schedule of Items

Proposal ID: 20200609008 Project(s): 2030-13-70

Federal ID(s): WISC 2020321

SECTION: 0001

Contract Items

Alt Set ID:

Alt Mbr ID:

Proposal Line Number	Item ID Description	Approximate Quantity and Units	Unit Price	Bid Amount
0028	204.9105.S Removing (item description) 3004. Removing Traffic Signals STH 100 & Cleveland Avenue	LS	LUMP SUM	_____.
0030	204.9105.S Removing (item description) 3005. Removing Traffic Signals STH 100 & Lincoln Avenue	LS	LUMP SUM	_____.
0032	204.9105.S Removing (item description) 3006. Removing Loop Detector Wire and Lead-in Cable STH 100 & Layton Avenue	LS	LUMP SUM	_____.
0034	204.9105.S Removing (item description) 3007. Removing Loop Detector Wire and Lead-in Cable STH 100 & Oklahoma Avenue	LS	LUMP SUM	_____.
0036	204.9105.S Removing (item description) 3008. Removing Loop Detector Wire and Lead-in Cable STH 100 & National Avenue	LS	LUMP SUM	_____.
0038	204.9105.S Removing (item description) 3009. Removing Loop Detector Wire and Lead-in Cable STH 100 & Cleveland Avenue	LS	LUMP SUM	_____.
0040	204.9105.S Removing (item description) 3010. Removing Loop Detector Wire and Lead-in Cable STH 100 & Lincoln Avenue	LS	LUMP SUM	_____.
0042	205.0100 Excavation Common	1,256.000 CY	_____.	_____.
0044	205.0501.S Excavation, Hauling, and Disposal of Petroleum Contaminated Soil	101.000 TON	_____.	_____.
0046	213.0100 Finishing Roadway (project) 0001. 2030-13-70	1.000 EACH	_____.	_____.
0048	305.0120 Base Aggregate Dense 1 1/4-Inch	1,439.000 TON	_____.	_____.
0050	390.0303 Base Patching Concrete	6,896.000 SY	_____.	_____.



Proposal Schedule of Items

Proposal ID: 20200609008 Project(s): 2030-13-70

Federal ID(s): WISC 2020321

SECTION: 0001

Contract Items

Alt Set ID:

Alt Mbr ID:

Proposal Line Number	Item ID Description	Approximate Quantity and Units	Unit Price	Bid Amount
0052	390.0403 Base Patching Concrete Shes	19,801.000 SY	_____.	_____.
0054	416.0170 Concrete Driveway 7-Inch	4.000 SY	_____.	_____.
0056	416.0610 Drilled Tie Bars	14,557.000 EACH	_____.	_____.
0058	416.0620 Drilled Dowel Bars	35,839.000 EACH	_____.	_____.
0060	416.1715 Concrete Pavement Repair SHES	496.000 SY	_____.	_____.
0062	416.1725 Concrete Pavement Replacement SHES	1,078.000 SY	_____.	_____.
0064	455.0605 Tack Coat	29,613.000 GAL	_____.	_____.
0066	460.0105.S HMA Percent Within Limits (PWL) Test Strip Volumetrics	2.000 EACH	_____.	_____.
0068	460.0110.S HMA Percent Within Limits (PWL) Test Strip Density	3.000 EACH	_____.	_____.
0070	460.2000 Incentive Density HMA Pavement	6,450.000 DOL	1.00000	6,450.00
0072	460.2005 Incentive Density PWL HMA Pavement	45,160.000 DOL	1.00000	45,160.00
0074	460.2010 Incentive Air Voids HMA Pavement	45,160.000 DOL	1.00000	45,160.00
0076	460.5223 HMA Pavement 3 LT 58-28 S	31,207.000 TON	_____.	_____.
0078	460.5224 HMA Pavement 4 LT 58-28 S	24,249.000 TON	_____.	_____.
0080	465.0105 Asphaltic Surface	238.000 TON	_____.	_____.
0082	465.0125 Asphaltic Surface Temporary	266.000 TON	_____.	_____.



Proposal Schedule of Items

Proposal ID: 20200609008 Project(s): 2030-13-70

Federal ID(s): WISC 2020321

SECTION: 0001

Contract Items

Alt Set ID:

Alt Mbr ID:

Proposal Line Number	Item ID Description	Approximate Quantity and Units	Unit Price	Bid Amount
0084	502.3200 Protective Surface Treatment	890.000 SY	_____.	_____.
0086	502.3210 Pigmented Surface Sealer	152.000 SY	_____.	_____.
0088	502.3215.S Protective Surface Treatment Reseal	254.000 SY	_____.	_____.
0090	509.0301 Preparation Decks Type 1	600.000 SY	_____.	_____.
0092	509.0302 Preparation Decks Type 2	241.000 SY	_____.	_____.
0094	509.0505.S Cleaning Decks to Reapply Concrete Masonry Overlay	900.000 SY	_____.	_____.
0096	509.1200 Curb Repair	165.000 LF	_____.	_____.
0098	509.1500 Concrete Surface Repair	380.000 SF	_____.	_____.
0100	509.2000 Full-Depth Deck Repair	10.000 SY	_____.	_____.
0102	509.2500 Concrete Masonry Overlay Decks	112.000 CY	_____.	_____.
0104	509.9005.S Removing Concrete Masonry Deck Overlay (structure) 0001. B-40-318	445.000 SY	_____.	_____.
0106	509.9010.S Removing Asphaltic Concrete Deck Overlay (structure) 0001. B-40-319	445.000 SY	_____.	_____.
0108	509.9050.S Cleaning Parapets	530.000 LF	_____.	_____.
0112	601.0331 Concrete Curb & Gutter 31-Inch	1,016.000 LF	_____.	_____.
0114	601.0557 Concrete Curb & Gutter 6-Inch Sloped 36-Inch Type D	70.000 LF	_____.	_____.
0116	601.0600 Concrete Curb Pedestrian	496.000 LF	_____.	_____.



Proposal Schedule of Items

Proposal ID: 20200609008 Project(s): 2030-13-70

Federal ID(s): WISC 2020321

SECTION: 0001

Contract Items

Alt Set ID:

Alt Mbr ID:

Proposal Line Number	Item ID Description	Approximate Quantity and Units	Unit Price	Bid Amount
0118	602.0410 Concrete Sidewalk 5-Inch	17,957.000 SF	_____.	_____.
0120	602.0420 Concrete Sidewalk 7-Inch	629.000 SF	_____.	_____.
0122	602.0505 Curb Ramp Detectable Warning Field Yellow	1,070.000 SF	_____.	_____.
0124	602.2400 Concrete Safety Islands	66.000 SF	_____.	_____.
0126	603.8000 Concrete Barrier Temporary Precast Delivered	1,060.000 LF	_____.	_____.
0128	603.8125 Concrete Barrier Temporary Precast Installed	1,060.000 LF	_____.	_____.
0130	611.0420 Reconstructing Manholes	10.000 EACH	_____.	_____.
0132	611.0430 Reconstructing Inlets	169.000 EACH	_____.	_____.
0134	611.0654 Inlet Covers Type V	9.000 EACH	_____.	_____.
0136	611.1003 Catch Basins 3-FT Diameter	1.000 EACH	_____.	_____.
0138	611.1004 Catch Basins 4-FT Diameter	2.000 EACH	_____.	_____.
0140	611.2504 Manholes Variable Tee 4-FT Diameter	2.000 EACH	_____.	_____.
0142	611.3003 Inlets 3-FT Diameter	14.000 EACH	_____.	_____.
0144	611.3004 Inlets 4-FT Diameter	11.000 EACH	_____.	_____.
0146	611.3253 Inlets 2.5x3-FT	2.000 EACH	_____.	_____.
0148	611.8110 Adjusting Manhole Covers	80.000 EACH	_____.	_____.



Proposal Schedule of Items

Proposal ID: 20200609008 Project(s): 2030-13-70

Federal ID(s): WISC 2020321

SECTION: 0001

Contract Items

Alt Set ID:

Alt Mbr ID:

Proposal Line Number	Item ID Description	Approximate Quantity and Units	Unit Price	Bid Amount
0150	611.8115 Adjusting Inlet Covers	6.000 EACH	_____.	_____.
0152	611.8120.S Cover Plates Temporary	221.000 EACH	_____.	_____.
0154	611.9710 Salvaged Inlet Covers	28.000 EACH	_____.	_____.
0156	614.0200 Steel Thrie Beam Structure Approach	82.000 LF	_____.	_____.
0158	614.0220 Steel Thrie Beam Bullnose Terminal	2.000 EACH	_____.	_____.
0160	614.0905 Crash Cushions Temporary	4.000 EACH	_____.	_____.
0162	614.2300 MGS Guardrail 3	70.000 LF	_____.	_____.
0164	614.2610 MGS Guardrail Terminal EAT	2.000 EACH	_____.	_____.
0166	614.2620 MGS Guardrail Terminal Type 2	2.000 EACH	_____.	_____.
0168	618.0100 Maintenance And Repair of Haul Roads (project) 01. 2030-13-70	1.000 EACH	_____.	_____.
0170	619.1000 Mobilization	1.000 EACH	_____.	_____.
0172	620.0100 Concrete Corrugated Median	132.000 SF	_____.	_____.
0174	620.0300 Concrete Median Sloped Nose	668.000 SF	_____.	_____.
0176	624.0100 Water	22.000 MGAL	_____.	_____.
0178	625.0500 Salvaged Topsoil	5,502.000 SY	_____.	_____.
0180	628.1905 Mobilizations Erosion Control	10.000 EACH	_____.	_____.



Proposal Schedule of Items

Proposal ID: 20200609008 Project(s): 2030-13-70

Federal ID(s): WISC 2020321

SECTION: 0001

Contract Items

Alt Set ID:

Alt Mbr ID:

Proposal Line Number	Item ID Description	Approximate Quantity and Units	Unit Price	Bid Amount
0182	628.1910 Mobilizations Emergency Erosion Control	5.000 EACH	_____.	_____.
0184	628.7005 Inlet Protection Type A	39.000 EACH	_____.	_____.
0186	628.7010 Inlet Protection Type B	338.000 EACH	_____.	_____.
0188	628.7015 Inlet Protection Type C	75.000 EACH	_____.	_____.
0190	628.7020 Inlet Protection Type D	39.000 EACH	_____.	_____.
0192	629.0210 Fertilizer Type B	0.200 CWT	_____.	_____.
0194	630.0171 Seeding Mixture No. 70A	1.000 LB	_____.	_____.
0196	630.0500 Seed Water	6.000 MGAL	_____.	_____.
0198	631.0300 Sod Water	122.000 MGAL	_____.	_____.
0200	631.1000 Sod Lawn	5,502.000 SY	_____.	_____.
0202	634.0618 Posts Wood 4x6-Inch X 18-FT	217.000 EACH	_____.	_____.
0204	634.0814 Posts Tubular Steel 2x2-Inch X 14-FT	26.000 EACH	_____.	_____.
0206	637.2210 Signs Type II Reflective H	1,613.170 SF	_____.	_____.
0208	637.2215 Signs Type II Reflective H Folding	313.320 SF	_____.	_____.
0210	637.2230 Signs Type II Reflective F	240.000 SF	_____.	_____.
0212	638.2102 Moving Signs Type II	142.000 EACH	_____.	_____.
0214	638.2602 Removing Signs Type II	90.000 EACH	_____.	_____.





Proposal Schedule of Items

Proposal ID: 20200609008 Project(s): 2030-13-70

Federal ID(s): WISC 2020321

SECTION: 0001

Contract Items

Alt Set ID:

Alt Mbr ID:

Proposal Line Number	Item ID Description	Approximate Quantity and Units	Unit Price	Bid Amount
0216	638.3000 Removing Small Sign Supports	161.000 EACH	_____.	_____.
0218	641.8100 Overhead Sign Support (structure) 01. S-40-3016	LS	LUMP SUM	_____.
0220	641.8100 Overhead Sign Support (structure) 02. S-40-3017	LS	LUMP SUM	_____.
0222	643.0300 Traffic Control Drums	314,055.000 DAY	_____.	_____.
0224	643.0410 Traffic Control Barricades Type II	480.000 DAY	_____.	_____.
0226	643.0420 Traffic Control Barricades Type III	91,858.000 DAY	_____.	_____.
0228	643.0705 Traffic Control Warning Lights Type A	183,716.000 DAY	_____.	_____.
0230	643.0715 Traffic Control Warning Lights Type C	13,939.000 DAY	_____.	_____.
0232	643.0800 Traffic Control Arrow Boards	1,554.000 DAY	_____.	_____.
0234	643.0900 Traffic Control Signs	109,388.000 DAY	_____.	_____.
0236	643.0920 Traffic Control Covering Signs Type II	365.000 EACH	_____.	_____.
0238	643.1050 Traffic Control Signs PCMS	63.000 DAY	_____.	_____.
0240	643.1070 Traffic Control Cones 42-Inch	179,975.000 DAY	_____.	_____.
0242	643.4100.S Traffic Control Interim Lane Closure	150.000 EACH	_____.	_____.
0244	643.5000 Traffic Control	1.000 EACH	_____.	_____.
0246	644.1601 Temporary Pedestrian Curb Ramp	776.000 DAY	_____.	_____.



Proposal Schedule of Items

Proposal ID: 20200609008 Project(s): 2030-13-70

Federal ID(s): WISC 2020321

SECTION: 0001

Contract Items

Alt Set ID:

Alt Mbr ID:

Proposal Line Number	Item ID Description	Approximate Quantity and Units	Unit Price	Bid Amount
0248	644.1810 Temporary Pedestrian Barricade	4,269.000 LF	_____.	_____.
0250	646.1020 Marking Line Epoxy 4-Inch	2,368.000 LF	_____.	_____.
0252	646.5020 Marking Arrow Epoxy	114.000 EACH	_____.	_____.
0254	646.5120 Marking Word Epoxy	45.000 EACH	_____.	_____.
0256	646.6120 Marking Stop Line Epoxy 18-Inch	2,294.000 LF	_____.	_____.
0258	646.6220 Marking Yield Line Epoxy 18-Inch	52.000 EACH	_____.	_____.
0260	646.7120 Marking Diagonal Epoxy 12-Inch	255.000 LF	_____.	_____.
0262	646.7420 Marking Crosswalk Epoxy Transverse Line 6-Inch	10,378.000 LF	_____.	_____.
0264	646.8120 Marking Curb Epoxy	4,241.000 LF	_____.	_____.
0266	646.8220 Marking Island Nose Epoxy	94.000 EACH	_____.	_____.
0268	646.9000 Marking Removal Line 4-Inch	1,412.000 LF	_____.	_____.
0270	646.9100 Marking Removal Line 8-Inch	292.000 LF	_____.	_____.
0272	646.9200 Marking Removal Line Wide	24.000 LF	_____.	_____.
0274	646.9300 Marking Removal Special Marking	5.000 EACH	_____.	_____.
0276	649.0105 Temporary Marking Line Paint 4-Inch	70,066.000 LF	_____.	_____.
0278	649.0150 Temporary Marking Line Removable Tape 4-Inch	75,253.000 LF	_____.	_____.



Proposal Schedule of Items

Proposal ID: 20200609008 Project(s): 2030-13-70

Federal ID(s): WISC 2020321

SECTION: 0001

Contract Items

Alt Set ID:

Alt Mbr ID:

Proposal Line Number	Item ID Description	Approximate Quantity and Units	Unit Price	Bid Amount
0280	649.0205 Temporary Marking Line Paint 8-Inch	32,568.000 LF	_____.	_____.
0282	649.0250 Temporary Marking Line Removable Tape 8-Inch	9,688.000 LF	_____.	_____.
0284	649.0505 Temporary Marking Arrow Paint	152.000 EACH	_____.	_____.
0286	649.0550 Temporary Marking Arrow Removable Tape	27.000 EACH	_____.	_____.
0288	649.0805 Temporary Marking Stop Line Paint 18-Inch	3,161.000 LF	_____.	_____.
0290	649.0850 Temporary Marking Stop Line Removable Tape 18-Inch	11.000 LF	_____.	_____.
0292	650.9000 Construction Staking Curb Ramps	103.000 EACH	_____.	_____.
0294	652.0225 Conduit Rigid Nonmetallic Schedule 40 2-Inch	5,408.000 LF	_____.	_____.
0296	652.0235 Conduit Rigid Nonmetallic Schedule 40 3-Inch	2,646.000 LF	_____.	_____.
0298	652.0605 Conduit Special 2-Inch	1,833.000 LF	_____.	_____.
0300	652.0615 Conduit Special 3-Inch	4,946.000 LF	_____.	_____.
0302	652.0700.S Install Conduit into Existing Item	3.000 EACH	_____.	_____.
0304	652.0800 Conduit Loop Detector	15,706.000 LF	_____.	_____.
0306	653.0135 Pull Boxes Steel 24x36-Inch	52.000 EACH	_____.	_____.
0308	653.0140 Pull Boxes Steel 24x42-Inch	81.000 EACH	_____.	_____.



Proposal Schedule of Items

Proposal ID: 20200609008 Project(s): 2030-13-70

Federal ID(s): WISC 2020321

SECTION: 0001

Contract Items

Alt Set ID:

Alt Mbr ID:

Proposal Line Number	Item ID Description	Approximate Quantity and Units	Unit Price	Bid Amount
0310	653.0905 Removing Pull Boxes	110.000 EACH	_____.	_____.
0312	654.0101 Concrete Bases Type 1	41.000 EACH	_____.	_____.
0314	654.0102 Concrete Bases Type 2	6.000 EACH	_____.	_____.
0316	654.0105 Concrete Bases Type 5	1.000 EACH	_____.	_____.
0318	654.0110 Concrete Bases Type 10	5.000 EACH	_____.	_____.
0320	654.0217 Concrete Control Cabinet Bases Type 9 Special	5.000 EACH	_____.	_____.
0322	655.0230 Cable Traffic Signal 5-14 AWG	3,509.000 LF	_____.	_____.
0324	655.0240 Cable Traffic Signal 7-14 AWG	7,654.000 LF	_____.	_____.
0326	655.0260 Cable Traffic Signal 12-14 AWG	6,158.000 LF	_____.	_____.
0328	655.0270 Cable Traffic Signal 15-14 AWG	5,293.000 LF	_____.	_____.
0330	655.0320 Cable Type UF 2-10 AWG Grounded	4,442.000 LF	_____.	_____.
0332	655.0515 Electrical Wire Traffic Signals 10 AWG	12,512.000 LF	_____.	_____.
0334	655.0615 Electrical Wire Lighting 10 AWG	5,490.000 LF	_____.	_____.
0336	655.0625 Electrical Wire Lighting 6 AWG	1,140.000 LF	_____.	_____.
0338	655.0630 Electrical Wire Lighting 4 AWG	2,280.000 LF	_____.	_____.
0340	655.0700 Loop Detector Lead In Cable	52,247.000 LF	_____.	_____.



Proposal Schedule of Items

Proposal ID: 20200609008 Project(s): 2030-13-70  
Federal ID(s): WISC 2020321

SECTION: 0001 Contract Items

Alt Set ID: Alt Mbr ID:

Proposal Line Number	Item ID Description	Approximate Quantity and Units	Unit Price	Bid Amount
0342	655.0800 Loop Detector Wire	52,916.000 LF	_____.	_____.
0344	655.0900 Traffic Signal EVP Detector Cable	6,472.000 LF	_____.	_____.
0346	656.0200 Electrical Service Meter Breaker Pedestal (location) 3001. STH 100 & Layton Avenue	LS	LUMP SUM	_____.
0348	656.0200 Electrical Service Meter Breaker Pedestal (location) 3002. STH 100 & Oklahoma Avenue	LS	LUMP SUM	_____.
0350	656.0200 Electrical Service Meter Breaker Pedestal (location) 3003. STH 100 & National Avenue	LS	LUMP SUM	_____.
0352	656.0200 Electrical Service Meter Breaker Pedestal (location) 3004. STH 100 & Cleveland Avenue	LS	LUMP SUM	_____.
0354	656.0200 Electrical Service Meter Breaker Pedestal (location) 3005. STH 100 & Lincoln Avenue	LS	LUMP SUM	_____.
0356	657.0100 Pedestal Bases	41.000 EACH	_____.	_____.
0358	657.0255 Transformer Bases Breakaway 11 1/2-Inch Bolt Circle	7.000 EACH	_____.	_____.
0360	657.0310 Poles Type 3	6.000 EACH	_____.	_____.
0362	657.0321 Poles Type 5-Steel	1.000 EACH	_____.	_____.
0364	657.0405 Traffic Signal Standards Aluminum 3.5-FT	2.000 EACH	_____.	_____.
0366	657.0420 Traffic Signal Standards Aluminum 13-FT	2.000 EACH	_____.	_____.



Proposal Schedule of Items

Proposal ID: 20200609008 Project(s): 2030-13-70

Federal ID(s): WISC 2020321

SECTION: 0001

Contract Items

Alt Set ID:

Alt Mbr ID:

Proposal Line Number	Item ID Description	Approximate Quantity and Units	Unit Price	Bid Amount
0368	657.0425 Traffic Signal Standards Aluminum 15-FT	18.000 EACH	_____.	_____.
0370	657.0430 Traffic Signal Standards Aluminum 10-FT	19.000 EACH	_____.	_____.
0372	657.0605 Luminaire Arms Single Member 4 1/2-Inch Clamp 4-FT	2.000 EACH	_____.	_____.
0374	657.0609 Luminaire Arms Single Member 4-Inch Clamp 6-FT	8.000 EACH	_____.	_____.
0376	657.0714 Luminaire Arms Truss Type 4-Inch Clamp 15-FT	2.000 EACH	_____.	_____.
0378	658.0173 Traffic Signal Face 3S 12-Inch	76.000 EACH	_____.	_____.
0380	658.0174 Traffic Signal Face 4S 12-Inch	51.000 EACH	_____.	_____.
0382	658.0175 Traffic Signal Face 5S 12-Inch	2.000 EACH	_____.	_____.
0384	658.0416 Pedestrian Signal Face 16-Inch	40.000 EACH	_____.	_____.
0386	658.0500 Pedestrian Push Buttons	32.000 EACH	_____.	_____.
0388	658.5069 Signal Mounting Hardware (location) 3001. STH 100 & Layton Avenue	LS	LUMP SUM	_____.
0390	658.5069 Signal Mounting Hardware (location) 3002. STH 100 & Oklahoma Avenue	LS	LUMP SUM	_____.
0392	658.5069 Signal Mounting Hardware (location) 3003. STH 100 & National Avenue	LS	LUMP SUM	_____.
0394	658.5069 Signal Mounting Hardware (location) 3004. STH 100 & Cleveland Avenue	LS	LUMP SUM	_____.
0396	658.5069 Signal Mounting Hardware (location) 3005. STH 100 & Lincoln Avenue	LS	LUMP SUM	_____.



Proposal Schedule of Items

Proposal ID: 20200609008 Project(s): 2030-13-70

Federal ID(s): WISC 2020321

SECTION: 0001

Contract Items

Alt Set ID:

Alt Mbr ID:

Proposal Line Number	Item ID Description	Approximate Quantity and Units	Unit Price	Bid Amount
0398	659.1125 Luminaires Utility LED C	40.000 EACH	_____.	_____.
0400	661.0200 Temporary Traffic Signals for Intersections (location) 3001. STH 100 & Layton Avenue	LS	LUMP SUM	_____.
0402	661.0200 Temporary Traffic Signals for Intersections (location) 3002. STH 100 & Oklahoma Avenue	LS	LUMP SUM	_____.
0404	661.0200 Temporary Traffic Signals for Intersections (location) 3003. STH 100 & National Avenue	LS	LUMP SUM	_____.
0406	661.0200 Temporary Traffic Signals for Intersections (location) 3004. STH 100 & Cleveland Avenue	LS	LUMP SUM	_____.
0408	661.0200 Temporary Traffic Signals for Intersections (location) 3005. STH 100 & Lincoln Avenue	LS	LUMP SUM	_____.
0410	661.0300 Generators	10.000 DAY	_____.	_____.
0412	670.0100 Field System Integrator 3001. Field System Integrator	LS	LUMP SUM	_____.
0414	670.0200 ITS Documentation 3001. ITS Documentation	LS	LUMP SUM	_____.
0416	677.0200 Install Camera Assembly	5.000 EACH	_____.	_____.
0418	678.0500 Communication System Testing 3001. Communication System Testing	LS	LUMP SUM	_____.
0420	690.0250 Sawing Concrete	21,828.000 LF	_____.	_____.
0422	740.0440 Incentive IRI Ride	59,400.000 DOL	1.00000	59,400.00



Proposal Schedule of Items

Proposal ID: 20200609008 Project(s): 2030-13-70

Federal ID(s): WISC 2020321

SECTION: 0001 Contract Items

Alt Set ID: Alt Mbr ID:

Proposal Line Number	Item ID Description	Approximate Quantity and Units	Unit Price	Bid Amount
0424	SPV.0035 Special 001. Monolithic Shim Concrete	58.000 CY	_____.	_____.
0426	SPV.0035 Special 002. Monolithic Shim Concrete SHES	142.000 CY	_____.	_____.
0428	SPV.0035 Special 003. Backfill Slurry	276.000 CY	_____.	_____.
0430	SPV.0060 Special 001. Curb Ramp Grading, Shaping, and Finishing	103.000 EACH	_____.	_____.
0432	SPV.0060 Special 002. Section Corner Monuments	10.000 EACH	_____.	_____.
0434	SPV.0060 Special 003. Adjusting Sanitary Manhole Covers	124.000 EACH	_____.	_____.
0436	SPV.0060 Special 004. Reconstructing Sanitary Manholes	5.000 EACH	_____.	_____.
0438	SPV.0060 Special 005. Sanitary Manhole Seals, West Allis	123.000 EACH	_____.	_____.
0440	SPV.0060 Special 006. Sanitary Manhole Seals, Greenfield	8.000 EACH	_____.	_____.
0442	SPV.0060 Special 007. Adjusting Milwaukee Water Works Water Boxes	10.000 EACH	_____.	_____.
0444	SPV.0060 Special 008. Adjusting City of West Allis Water Boxes	191.000 EACH	_____.	_____.
0446	SPV.0060 Special 009. Reconnect Storm Sewer Laterals	49.000 EACH	_____.	_____.
0448	SPV.0060 Special 010. Adjusting Water Manhole	4.000 EACH	_____.	_____.
0450	SPV.0060 Special 011. Field Facilities Office Space	1.000 EACH	_____.	_____.





Proposal Schedule of Items

Proposal ID: 20200609008 Project(s): 2030-13-70

Federal ID(s): WISC 2020321

SECTION: 0001

Contract Items

Alt Set ID:

Alt Mbr ID:

Proposal Line Number	Item ID Description	Approximate Quantity and Units	Unit Price	Bid Amount
0452	SPV.0060 Special 012. Utility Line Opening (ULO)	22.000 EACH	_____.	_____.
0454	SPV.0060 Special 1001. Pull Boxes Polymer Concrete 13x24-Inch	5.000 EACH	_____.	_____.
0456	SPV.0060 Special 3001. Type 9 & 10 Special Traffic Signal Base	15.000 EACH	_____.	_____.
0458	SPV.0060 Special 3002. Install Poles Type 10	5.000 EACH	_____.	_____.
0460	SPV.0060 Special 3003. Install Poles Type 9 Special	5.000 EACH	_____.	_____.
0462	SPV.0060 Special 3004. Install Poles Type 10 Special	10.000 EACH	_____.	_____.
0464	SPV.0060 Special 3005. Install Monotube Arms 25-FT	2.000 EACH	_____.	_____.
0466	SPV.0060 Special 3006. Install Monotube Arms 30-FT	3.000 EACH	_____.	_____.
0468	SPV.0060 Special 3007. Install Type 9 & 10 Special Pole Arm, 35-FT	5.000 EACH	_____.	_____.
0470	SPV.0060 Special 3008. Install Type 9 & 10 Special Pole Arm, 40-FT	6.000 EACH	_____.	_____.
0472	SPV.0060 Special 3009. Install Type 9 & 10 Special Pole Arm, 45-FT	4.000 EACH	_____.	_____.
0474	SPV.0060 Special 3010. Install Luminaire Arms Steel 15-FT	28.000 EACH	_____.	_____.
0476	SPV.0060 Special 3011. Transport and Install State Furnished APS	8.000 EACH	_____.	_____.



Proposal Schedule of Items

Proposal ID: 20200609008 Project(s): 2030-13-70

Federal ID(s): WISC 2020321

SECTION: 0001

Contract Items

Alt Set ID:

Alt Mbr ID:

Proposal Line Number	Item ID Description	Approximate Quantity and Units	Unit Price	Bid Amount
0478	SPV.0060 Special 4001. Embedded Galvanic Anodes	84.000 EACH	_____.	_____.
0480	SPV.0060 Special 4002. Cleaning and Painting Drain Extensions	6.000 EACH	_____.	_____.
0482	SPV.0090 Special 001. Concrete Curb & Gutter 31-Inch, Modified	2,516.000 LF	_____.	_____.
0484	SPV.0090 Special 002. Concrete Curb & Gutter 31-Inch, Island	66.000 LF	_____.	_____.
0486	SPV.0090 Special 003. Concrete Curb & Gutter 31-Inch, Inlet	1,840.000 LF	_____.	_____.
0488	SPV.0090 Special 004. Concrete Curb & Gutter 19-Inch, Modified	586.000 LF	_____.	_____.
0490	SPV.0090 Special 005. Marking Line Contrast Epoxy 4-Inch	26,707.000 LF	_____.	_____.
0492	SPV.0090 Special 006. Marking Line Contrast Epoxy 8-Inch	19,259.000 LF	_____.	_____.
0494	SPV.0090 Special 007. Sawing Concrete Curb Head	225.000 LF	_____.	_____.
0496	SPV.0090 Special 4001. Steel Thrie Beam Railing Retrofit	266.000 LF	_____.	_____.
0498	SPV.0105 Special 001. Survey Project 2030-13-70	LS	LUMP SUM	_____.
0500	SPV.0105 Special 3001. Transport & Install State Furnished Traffic Signal Cabinet (Layton)	LS	LUMP SUM	_____.
0502	SPV.0105 Special 3002. Transport & Install State Furnished Traffic Signal Cabinet (Oklahoma)	LS	LUMP SUM	_____.



Proposal Schedule of Items

Proposal ID: 20200609008 Project(s): 2030-13-70  
Federal ID(s): WISC 2020321

SECTION: 0001 Contract Items

Alt Set ID: Alt Mbr ID:

Proposal Line Number	Item ID Description	Approximate Quantity and Units	Unit Price	Bid Amount
0504	SPV.0105 Special 3003. Transport & Install State Furnished Traffic Signal Cabinet (National)	LS	LUMP SUM	_____.
0506	SPV.0105 Special 3004. Transport & Install State Furnished Traffic Signal Cabinet (Cleveland)	LS	LUMP SUM	_____.
0508	SPV.0105 Special 3005. Transport & Install State Furnished Traffic Signal Cabinet (Lincoln)	LS	LUMP SUM	_____.
0510	SPV.0105 Special 3006. Transport & Install State Furnished EVP Detector Heads (Layton)	LS	LUMP SUM	_____.
0512	SPV.0105 Special 3007. Transport & Install State Furnished EVP Detector Heads (Oklahoma)	LS	LUMP SUM	_____.
0514	SPV.0105 Special 3008. Transport & Install State Furnished EVP Detector Heads (National)	LS	LUMP SUM	_____.
0516	SPV.0105 Special 3009. Transport & Install State Furnished EVP Detector Heads (Cleveland)	LS	LUMP SUM	_____.
0518	SPV.0105 Special 3010. Transport & Install State Furnished EVP Detector Heads (Lincoln)	LS	LUMP SUM	_____.
0520	SPV.0105 Special 3011. Transport Traffic Signal & Intersection Lighting Materials (Layton)	LS	LUMP SUM	_____.
0522	SPV.0105 Special 3012. Transport Traffic Signal & Intersection Lighting Materials (Oklahoma)	LS	LUMP SUM	_____.
0524	SPV.0105 Special 3013. Transport Traffic Signal & Intersection Lighting Materials (National)	LS	LUMP SUM	_____.



Proposal Schedule of Items

Proposal ID: 20200609008 Project(s): 2030-13-70

Federal ID(s): WISC 2020321

SECTION: 0001

Contract Items

Alt Set ID:

Alt Mbr ID:

Proposal Line Number	Item ID Description	Approximate Quantity and Units	Unit Price	Bid Amount
0526	SPV.0105 Special 3014. Transport Traffic Signal & Intersection Lighting Materials (Cleveland)	LS	LUMP SUM	_____.
0528	SPV.0105 Special 3015. Transport Traffic Signal & Intersection Lighting Materials (Lincoln)	LS	LUMP SUM	_____.
0530	SPV.0105 Special 3016. Temporary Infrared EPV System STH 100 & Layton Avenue	LS	LUMP SUM	_____.
0532	SPV.0105 Special 3017. Temporary Infrared EPV System STH 100 & Oklahoma Avenue	LS	LUMP SUM	_____.
0534	SPV.0105 Special 3018. Temporary Infrared EPV System STH 100 & National Avenue	LS	LUMP SUM	_____.
0536	SPV.0105 Special 3019. Temporary Infrared EPV System STH 100 & Cleveland Avenue	LS	LUMP SUM	_____.
0538	SPV.0105 Special 3020. Temporary Infrared EPV System STH 100 & Lincoln Avenue	LS	LUMP SUM	_____.
0540	SPV.0105 Special 3021. Temporary Accessible Pedestrian Signal Push Button Sta STH 100 & Oklahoma	LS	LUMP SUM	_____.
0542	SPV.0105 Special 3022. Install Fiber Optic Communications in Cabinet STH 100 & Layton Ave	LS	LUMP SUM	_____.
0544	SPV.0105 Special 3023. Install Fiber Optic Communications in Cabinet STH 100 & Oklahoma Ave	LS	LUMP SUM	_____.
0546	SPV.0105 Special 3024. Install Fiber Optic Communications in Cabinet STH 100 & National Ave	LS	LUMP SUM	_____.
0548	SPV.0105 Special 3025. Install Fiber Optic Communications in Cabinet STH 100 & Cleveland Ave	LS	LUMP SUM	_____.



Proposal Schedule of Items

Proposal ID: 20200609008 Project(s): 2030-13-70

Federal ID(s): WISC 2020321

SECTION: 0001

Contract Items

Alt Set ID:

Alt Mbr ID:

Proposal Line Number	Item ID Description	Approximate Quantity and Units	Unit Price	Bid Amount
0550	SPV.0105 Special 3026. Install Fiber Optic Communications in Cabinet STH 100 & Lincoln Ave	LS	LUMP SUM	_____.
0552	SPV.0165 Special 4001. Removing Loose Concrete	280.000 SF	_____.	_____.
0554	SPV.0180 Special 001. Removing Asphaltic Surface Milling Special	246,506.000 SY	_____.	_____.
0556	SPV.0195 Special 001. Management of Solid Waste	63.000 TON	_____.	_____.
0558	SPV.0195 Special 002. Joint and Crack Repair	27.000 TON	_____.	_____.
0560	602.0605 Curb Ramp Detectable Warning Field Radial Yellow	26.000 SF	_____.	_____.
Section: 0001			Total:	_____.
			Total Bid:	_____.

