



Wisconsin Department of Transportation

August 5, 2020

Division of Transportation Systems Development

Bureau of Project Development
4822 Madison Yards Way, 4th Floor South
Madison, WI 53705

Telephone: (608) 266-1631
Facsimile (FAX): (608) 266-8459

NOTICE TO ALL CONTRACTORS:

Proposal #11: 6999-10-60
Rothschild - Schofield
Everest Drive to Schofield Ave
BUS 51
Marathon County

6999-10-61
Rothschild - Schofield
E Grand Ave to Eau Claire Rvr Bridge
BUS 51
Marathon County

Letting of August 11, 2020

This is Addendum No. 02, which provides for the following:

Schedule of Items:

Revised Bid Item Quantities					
Bid Item	Item Description	Unit	Old Quantity	Revised Quantity	Proposal Total
646.3020	Marking Line Epoxy 8-Inch	LF	3,020	436	3,456

Added Bid Item Quantities					
Bid Item	Item Description	Unit	Old Quantity	Revised Quantity	Proposal Total
649.0105	Temporary Marking Line Paint 4-Inch	LF	--	2,270	2,270
649.0205	Temporary Marking Line Paint 8-Inch	LF	--	1,842	1,842

Plan Sheets:

Revised Plan Sheets	
Plan Sheet	Plan Sheet Title (brief description of changes to sheet)
32	Stage 1 Traffic Control Typical Section – Added typical sections for two SB lanes open to traffic
33	Stage 2 Traffic Control Typical Section – Added typical sections for two SB lanes open to traffic
58	Miscellaneous Quantity – Added missing quantity for Marking Line Epoxy 8-Inch

Added Plan Sheets	
Plan Sheet	Plan Sheet Title (brief description of why sheet was added)
58B	Miscellaneous Quantity – Temporary Marking Line Paint 4-Inch and 8-Inch

Attached, dated August 5, 2020, are the revised Schedule of Items Pages 3 and 4.

Plan Sheets

The following 8½ x 11-inch sheets are attached and made part of the plans for this proposal:

Revised: 32, 33 and 58.

Added: 58B.

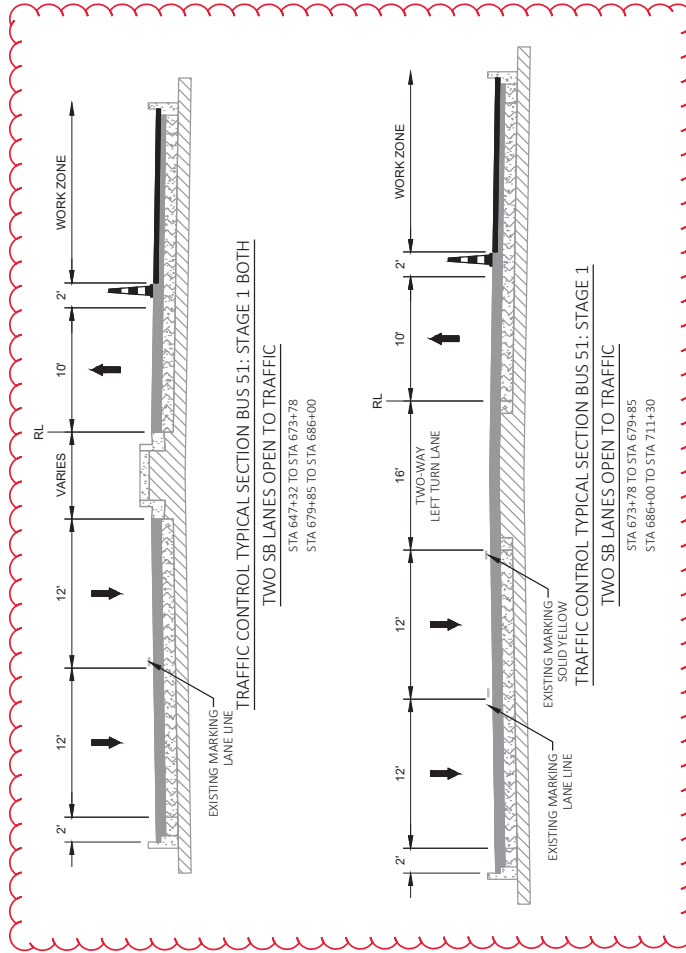
The responsibility for notifying potential subcontractors and suppliers of these changes remains with the prime contractor.

Sincerely,

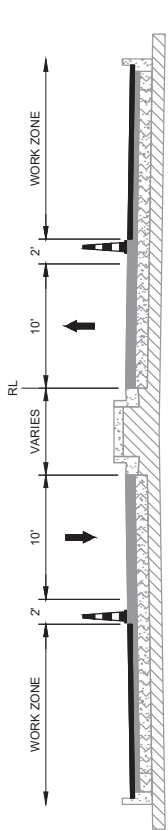
Mike Coleman

Proposal Development Specialist
Proposal Management Section

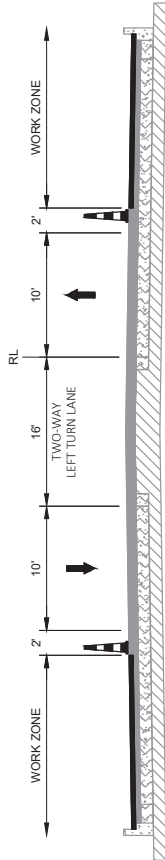
END OF ADDENDUM



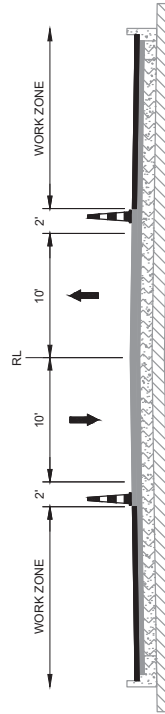
Addendum No. 02
 ID 6999-10-60/61
 Revised Sheet 32
 August 5, 2020



TRAFFIC CONTROL TYPICAL SECTION BUS 51: STAGE 1
 STA 647+32 TO STA 673+78
 STA 679+85 TO STA 686+00



TRAFFIC CONTROL TYPICAL SECTION BUS 51: STAGE 1
 STA 673+78 TO STA 679+85
 STA 686+00 TO STA 711+30



PROJECT NO: 6999-10-60/61	COUNTY: MARATHON	SHEET 32	E
FILE NAME: N:\PDS\3D\6999\B3\5\SHETS\PLAN\02\5000-TC.DWG	PLOT DATE: 8/4/2020 1:44 PM	PLOT SCALE: 1 IN=10 FT	WSS007\CADDS SHEET 42
LAYOUT NAME: -01	PLOT NAME: GRILING_ZACHARY P		
HWY: BUS 51			

Addendum No. 02
 ID 6999-10-60
 Revised Sheet 58
 August 5, 2020

3

3

MARKING LINE EPOXY

STATION	LOCATION	4-INCH WHITE LF	4-INCH YELLOW LF	8-INCH WHITE LF
647+39	NB & SB	268	124	207
652+74	EB RAMPS MINIDASHES	31	28	---
654+08	NB & SB	496	---	866
663+70	WB RAMPS MINIDASHES	---	238	---
665+20	NB & SB	323	---	436
672+60	NB & SB	327	1577	442
679+90	NB & SB	248	---	335
684+25	NB & SB	640	3526	263
698+03	NB & SB	426	2730	200
699+00	NB & SB	264	1443	392
708+60	NB & SB	75	67	---
713+87	INTERSECTION MINIDASHES	114	274	439
715+43	NB & SB	---	---	---
717+71	NB & SB	---	---	---
	SUBTOTAL	3180	1007	---
	TOTAL	14187	---	3280

MARKING DIAGONAL EPOXY 12-INCH

STATION	LOCATION	6-INCH LF	REMARKS
649+00 - 650+70	MEDIAN	75	YELLOW
	TOTAL	75	---

MARKING ARROW & WORD EPOXY

STATION	LOCATION	646.5020 ARROW EACH	646.5120 WORD EACH	REMARKS
654+40	SB	1	---	TYPE 2
654+80	SB	---	1	TYPE 2
655+56	SB	1	---	TYPE 2
660+91	NB	1	---	TYPE 2
662+95	NB	---	1	TYPE 2
663+33	NB	1	---	TYPE 2
665+52	SB	1	---	TYPE 2
665+92	SB	---	1	TYPE 2
669+35	SB	1	---	TYPE 2
670+84	NB	1	---	TYPE 2
673+04	SB	1	---	TYPE 2
673+93	SB	1	---	TYPE 2
677+00	MEDIAN	2	---	TYPE 2
680+23	SB	1	---	TYPE 2
680+63	SB	---	1	TYPE 2
681+45	SB	1	---	TYPE 2
682+85	NB	1	---	TYPE 2
683+85	NB	1	---	TYPE 2
685+55	SB	1	---	TYPE 2
686+10	SB	1	---	TYPE 2
689+84	MEDIAN	2	---	TYPE 2
694+54	MEDIAN	2	---	TYPE 2
697+25	NB	1	---	TYPE 2
697+69	NB	1	---	TYPE 2
699+51	SB	1	---	TYPE 2
700+00	SB	1	---	TYPE 2
703+30	MEDIAN	2	---	TYPE 2
706+70	NB	1	---	TYPE 2
707+18	NB	1	---	TYPE 2
708+92	SB	1	---	TYPE 2
709+40	SB	1	---	TYPE 2
711+93	MEDIAN	2	---	TYPE 1 & TYPE 2
712+64	NB	4	---	TYPE 2
713+00	NB	1	---	TYPE 2
713+12	NB	---	3	TYPE 1 & TYPE 2
713+60	NB	3	---	TYPE 2
715+78	SB	2	---	TYPE 2
716+29	SB	---	2	TYPE 2
717+49	SB	1	---	TYPE 2
	TOTAL	44	9	---

MARKING CROSSWALK EPOXY TRANSVERSE LINE

STATION	LOCATION	6-INCH LF	REMARKS
653+13	RT	97	STH 29 EB ON RAMP
653+71	RT	65	STH 29 EB OFF RAMP
654+00	LT & RT	136	BUS 51
654+36	RT	86	STH 29 EB OFF RAMP
663+87	LT	46	W GRAND AVE RIGHT TURN LANE
664+07	LT & RT	189	BUS 51
664+45	RT	133	STH 29 ON & OFF RAMP
664+50	LT	144	W GRAND AVE
665+32	RT	63	STH 29 OFF RAMP
671+76	LT & RT	165	BUS 51
684+37	LT & RT	142	BUS 51
684+53	LT	91	KORT ST
698+75	RT	90	NEUPERT AVE
713+69	RT	40	BUS 51 RIGHT TURN LANE
	TOTAL	1487	---

MARKING STOP LINE EPOXY 18-INCH

STATION	LOCATION	646.6120 LF	REMARKS
652+76	NB	38	---
654+08	SB	36	---
663+67	NB	12	LEFT TURN LANE
663+98	NB	44	---
665+20	SB	36	---
671+46	NB	34	---
672+72	SB	34	---
679+68	RT	24	VOLKMAN ST
684+18	NB	11	LEFT TURN LANE
684+25	NB	24	---
685+24	SB	34	---
713+88	NB	36	RETRACE
714+64	RT	36	SCHOFIELD AVE RETRACE
714+96	RT	24	METRO DR RETRACE
715+07	LT	24	RETRACE
715+25	SB	19	RIGHT TURN LANE RETRACE
715+46	LT	11	LEFT TURN LANE RETRACE
	TOTAL	477	---

PROJECT NO: 6999-10-60

HWY: BUS 51

COUNTY: MARATHON

MISCELLANEOUS QUANTITIES

SHEET: 58

E

Addendum No. 02
ID 6999-10-60
Added Sheet 58B
August 5, 2020

TEMPORARY MARKING LINE PAINT

STATION - STATION	LOCATION	APPROXIMATE SERVICE PERIOD	649.0105		649.0105		649.0205		REMARKS
			4-INCH WHITE LF	4-INCH YELLOW LF	4-INCH WHITE LF	8-INCH WHITE LF			
647+39 - 652+74	SB	2 WEEKS	43	337	---	---	---	MILLED SURFACE	
647+39 - 652+74	SB	2 WEEKS	43	337	---	---	---	UPPER SURFACE	
654+08 - 664+00	SB	2 WEEKS	80	---	168	---	---	MILLED SURFACE	
654+08 - 664+00	SB	2 WEEKS	80	---	168	---	---	UPPER SURFACE	
665+20 - 671+65	SB	2 WEEKS	52	---	436	---	---	MILLED SURFACE	
665+20 - 671+65	SB	2 WEEKS	52	---	436	---	---	UPPER SURFACE	
672+60 - 679+14	SB	2 WEEKS	53	535	142	---	---	MILLED SURFACE	
672+60 - 679+14	SB	2 WEEKS	53	535	142	---	---	UPPER SURFACE	
679+90 - 684+25	SB	2 WEEKS	35	---	175	---	---	MILLED SURFACE	
679+90 - 684+25	SB	2 WEEKS	35	---	175	---	---	UPPER SURFACE	
SUBTOTAL			526	1744					
TOTAL			2270			1842			



Proposal Schedule of Items

Proposal ID: 20200811011 Project(s): 6999-10-60, 6999-10-61

Federal ID(s): N/A, N/A

SECTION: 0001

Contract Items

Alt Set ID:

Alt Mbr ID:

Proposal Line Number	Item ID Description	Approximate Quantity and Units	Unit Price	Bid Amount
0064	643.0705 Traffic Control Warning Lights Type A	4,212.000 DAY	_____.	_____.
0066	643.0715 Traffic Control Warning Lights Type C	1,452.000 DAY	_____.	_____.
0068	643.0900 Traffic Control Signs	5,380.000 DAY	_____.	_____.
0070	643.0920 Traffic Control Covering Signs Type II	7.000 EACH	_____.	_____.
0072	643.1051 Traffic Control Signs PCMS with Cellular Communications	16.000 DAY	_____.	_____.
0074	643.1070 Traffic Control Cones 42-Inch	45,468.000 DAY	_____.	_____.
0076	643.5000 Traffic Control	1.000 EACH	_____.	_____.
0078	646.1020 Marking Line Epoxy 4-Inch	19,735.000 LF	_____.	_____.
0080	646.3020 Marking Line Epoxy 8-Inch	3,456.000 LF	_____.	_____.
0082	646.5020 Marking Arrow Epoxy	46.000 EACH	_____.	_____.
0084	646.5120 Marking Word Epoxy	9.000 EACH	_____.	_____.
0086	646.6120 Marking Stop Line Epoxy 18-Inch	558.000 LF	_____.	_____.
0088	646.6464 Cold Weather Marking Epoxy 4-Inch	5,000.000 LF	_____.	_____.
0090	646.6468 Cold Weather Marking Epoxy 8-Inch	100.000 LF	_____.	_____.
0092	646.7120 Marking Diagonal Epoxy 12-Inch	116.000 LF	_____.	_____.
0094	646.7420 Marking Crosswalk Epoxy Transverse Line 6-Inch	1,665.000 LF	_____.	_____.



Proposal Schedule of Items

Proposal ID: 20200811011 Project(s): 6999-10-60, 6999-10-61

Federal ID(s): N/A, N/A

SECTION: 0001

Contract Items

Alt Set ID:

Alt Mbr ID:

Proposal Line Number	Item ID Description	Approximate Quantity and Units	Unit Price	Bid Amount
0096	649.0150 Temporary Marking Line Removable Tape 4-Inch	1,155.000 LF	_____.	_____.
0098	649.0250 Temporary Marking Line Removable Tape 8-Inch	589.000 LF	_____.	_____.
0100	649.0960 Temporary Marking Removable Mask Out Tape 6-Inch	184.000 LF	_____.	_____.
0102	649.0970 Temporary Marking Removable Mask Out Tape 10-Inch	249.000 LF	_____.	_____.
0104	650.8000 Construction Staking Resurfacing Reference	9,694.000 LF	_____.	_____.
0106	690.0250 Sawing Concrete	254.000 LF	_____.	_____.
0108	740.0440 Incentive IRI Ride	13,600.000 DOL	1.00000	13,600.00
0110	SPV.0060 Special 01. Adjusting Inlet Covers Modified	19.000 EACH	_____.	_____.
0112	SPV.0090 Special 01. Grading, Shaping and Finishing for Curb & Gutter Replacement	119.000 LF	_____.	_____.
0114	637.2210 Signs Type II Reflective H	14.000 SF	_____.	_____.
0116	649.0105 Temporary Marking Line Paint 4-Inch	2,270.000 LF	_____.	_____.
0118	649.0205 Temporary Marking Line Paint 8-Inch	1,842.000 LF	_____.	_____.
Section: 0001			Total:	_____.
			Total Bid:	_____.