



Wisconsin Department of Transportation

October 26, 2020

Division of Transportation Systems Development

Bureau of Project Development
4822 Madison Yards Way, 4th Floor South
Madison, WI 53705

Telephone: (608) 266-1631
Facsimile (FAX): (608) 266-8459

NOTICE TO ALL CONTRACTORS:

Proposal #01: 1016-05-80, WISC 2020 525
Tomah - Mauston
Sth 82 Interch Prep/X-Overs/Temp Rd
IH 90
Juneau County

Letting of November 10, 2020

This is Addendum No. 01, which provides for the following:

Schedule of Items:

Revised Bid Item Quantities					
Bid Item	Item Description	Unit	Old Quantity	Revised Quantity	Proposal Total
628.2004	Erosion Mat Class I Type B	SY	6,895	-1,040	5,855
643.0920	Traffic Control Covering Signs Type II	EACH	752	-750	2

Added Bid Item Quantities					
Bid Item	Item Description	Unit	Old Quantity	Revised Quantity	Proposal Total
603.8500	Anchoring Concrete Barrier Temporary Precast	LF	0	6,569	6,569
628.2008	Erosion Mat Urban Class I Type B	SY	0	1,040	1,040

Plan Sheets:

Revised Plan Sheets	
Plan Sheet	Plan Sheet Title (brief description of changes to sheet)
17-20	Erosion Control (Updated areas for erosion mat urban)
39	Project Overview: Stage 1A (Temporary pavement hatching added at IH 90/94 EB ramp gores)
49	Traffic Control: Stage 1A (Temporary pavement hatching added at IH 90/94 EB 'X1' off-ramp gore)
51	Traffic Control: Stage 1A (Temporary pavement hatching added at IH 90/94 EB 'X2' on-ramp gore)
66	Project Overview: Stage 1B (Temporary pavement hatching removals/additions on IH 90/94 median)

68	Traffic Control: Stage 1B (Temporary median pavement addition, squaring off at STA 931+42 EXWB)
69	Traffic Control: Stage 1B (Temporary median pavement removal from STA 937+00'EXEB' to 939+50'EXEB', temporary median pavement addition from STA 938+75'EXWB' to 940+00'EXWB')
70	Traffic Control: Stage 1B (Temporary median gore pavement additions at 942+83'T' LT and at 946+50'T' RT)
71	Traffic Control: Stage 1B (Temporary median pavement removal from STA 954+10'T' to 954+77'T' RT)
72	Traffic Control: Stage 1B (Temporary median pavement removal from STA 954+77'T' to 962+01'T' RT)
73	Traffic Control: Stage 1B (Temporary median pavement removals from STA 962+01'T' to 969+40'T' RT and from STA 962+24'T' to 965+35'T' LT. Temporary median pavement additions from STA 968+52'T' to 969+25'T' RT, STA 965+35'T' to 968+50'T' LT, and STA 968+65'T' to 969+25'T' LT)
74	Traffic Control: Stage 1B (Temporary median pavement additions from STA 28+63'X1' to 31+40'X1' LT, TO 30+05'X4' RT. Temporary median pavement removal from STA 969+25'T' to 970+21'T' RT and STA 969+25'T' to 971+92'T' LT Existing temporary pavement from stage 1A added at IH 90/94 EB off-ramp gore)
76	Traffic Control: Stage 1B (Existing temporary pavement from stage 1A added at IH 90/94 EB on-ramp gore)
77	Traffic Control: Stage 1B (Temporary median pavement additions from STA 26+19'X2' to 32+39'X2' and STA 32+01'X6' to 34+49'X6'. Temporary median pavement removal from 34+49'X6' to 35+57'X6')
78	Traffic Control: Stage 1B (Temporary median pavement additions from STA 32+39'X2' to 36+18'X2'. Temporary median pavement removals from STA 1000+56'T' to 1005+50'T' RT and STA 998+25'T' to 1004+13'T' LT)
79	Traffic Control: Stage 1B (Temporary median pavement removal from STA 1005+50'T' to 1011+38'T' RT)
82	Traffic Control: Stage 1B (Temporary median pavement additional at gore locations at STA 1030+10'T' RT, 1031+74'T' LT, and 1030+50'T1' LT)
83	Traffic Control: Stage 1B (Temporary median pavement addition at STA 1036+89'T1' RT and from STA 1037+52'T' to 1039+50'T' LT)
98	Miscellaneous Quantity (Added Anchoring Concrete Barrier Temporary Precast)
102	Miscellaneous Quantity (Updated erosion control items)
104	Traffic Control Item Miscellaneous Quantity Table has been updated to reflect the correct Traffic Control Covering Signs Type II quantity.

Schedule of Items

Attached, dated October 26, 2020, are the revised Schedule of Items Pages 4, 6, and 8..

Plan Sheets

The following 8½ x 11-inch sheets are attached and made part of the plans for this proposal:

Revised: 17, 18, 19, 20, 39, 49, 51, 66, 68, 69, 70, 71, 72, 73, 74, 76, 77, 78, 79, 82, 83, 98, 102, and 104.

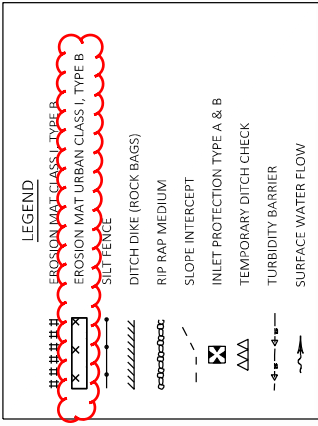
The responsibility for notifying potential subcontractors and suppliers of these changes remains with the prime contractor.

Sincerely,

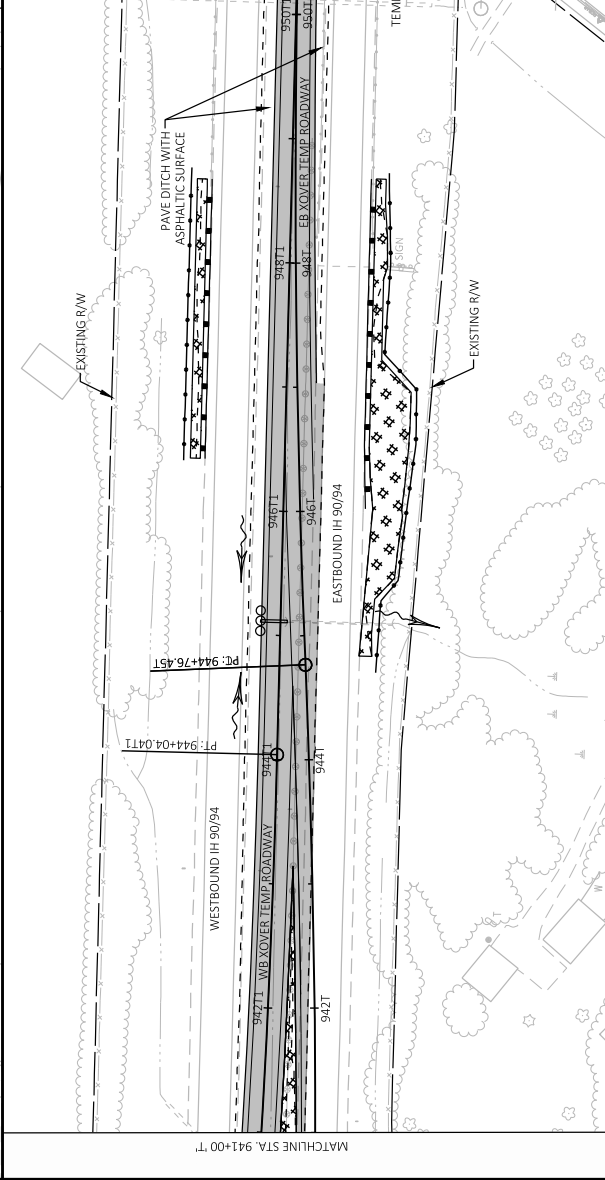
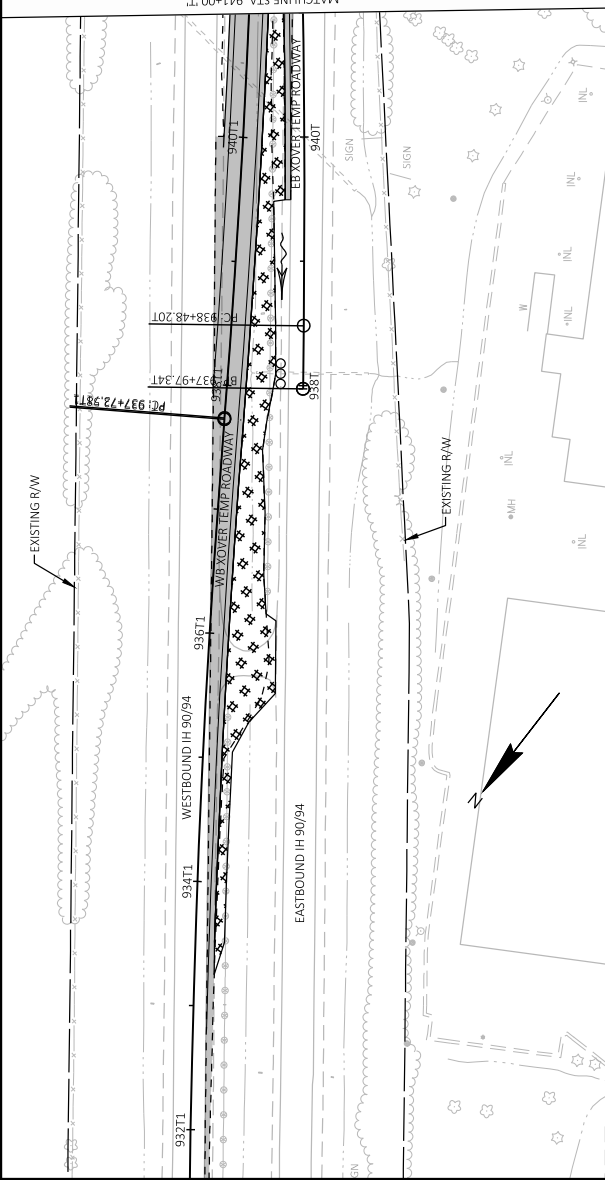
Mike Coleman

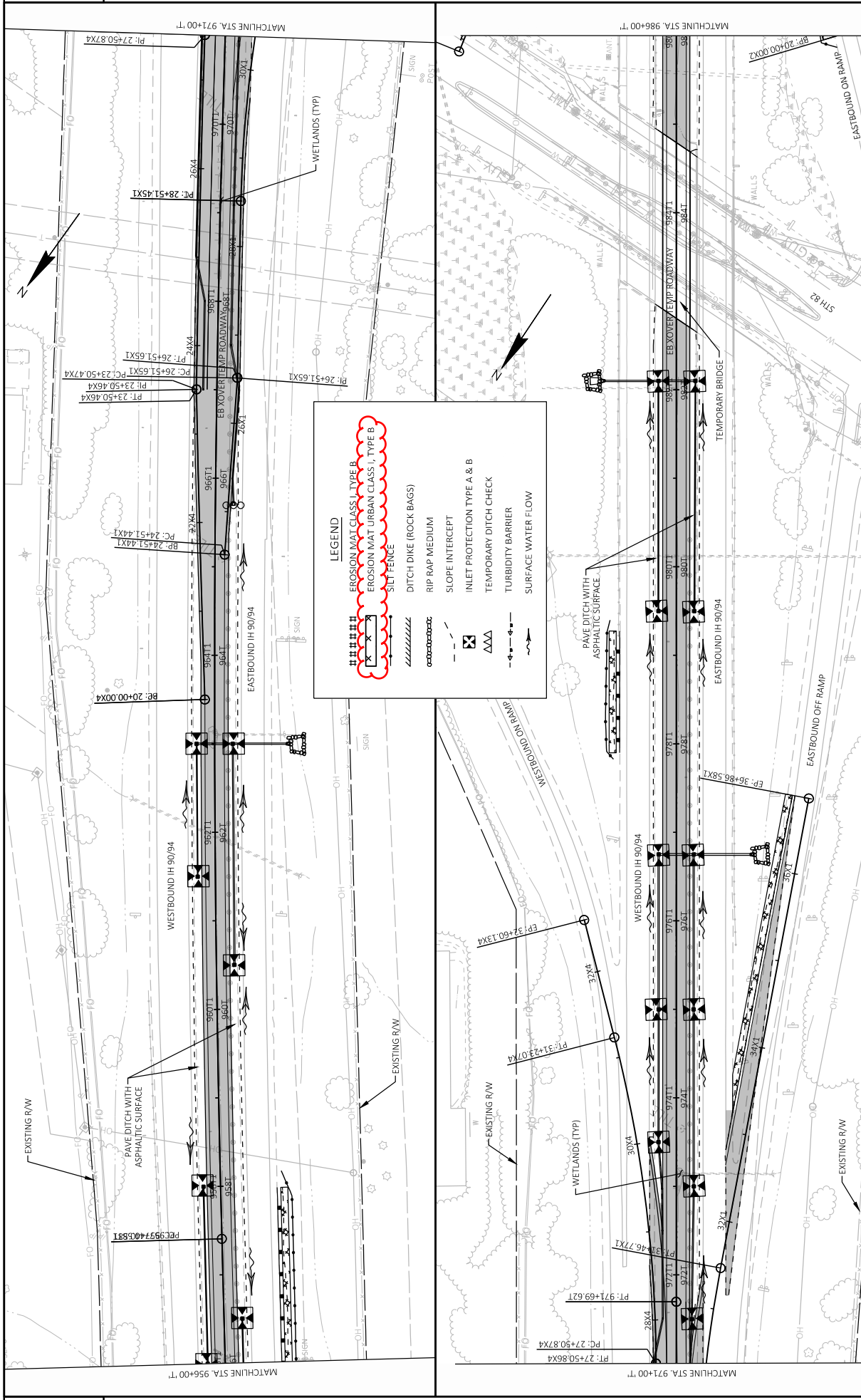
Proposal Development Specialist
Proposal Management Section

END OF ADDENDUM



Addendum No. 01
 ID 1016-05-80
 Revised Sheet 17
 October 26, 2020

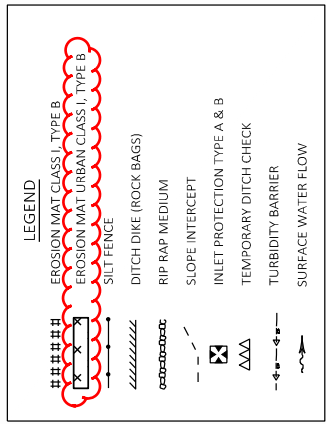
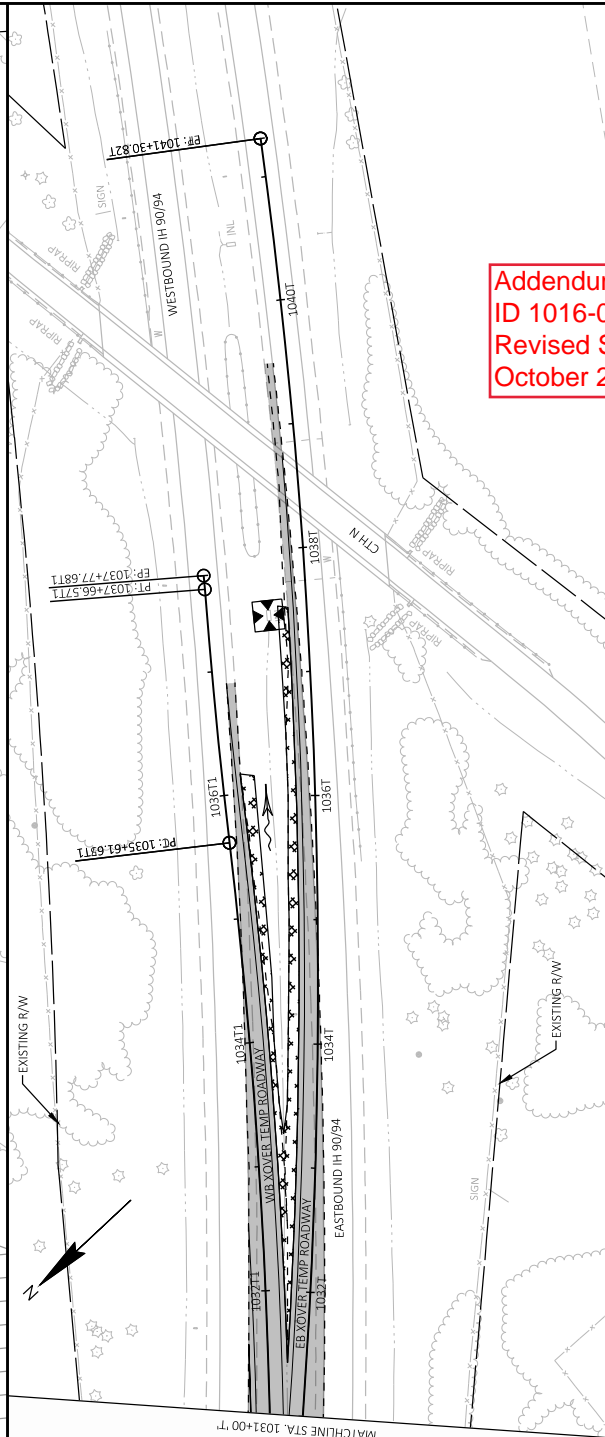
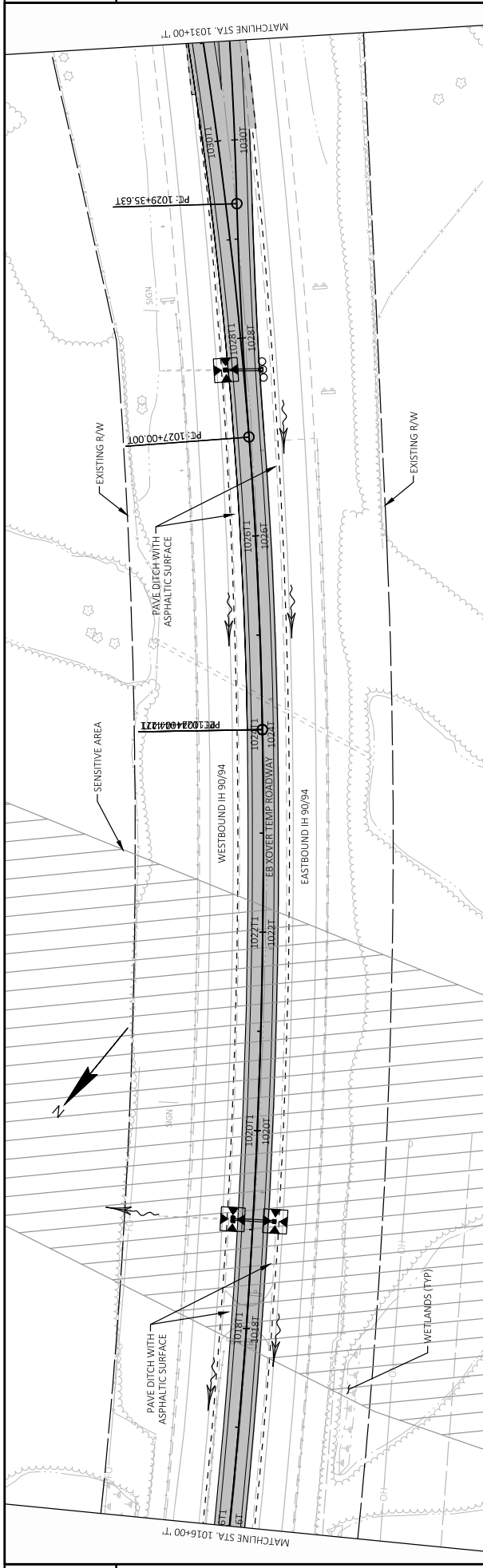




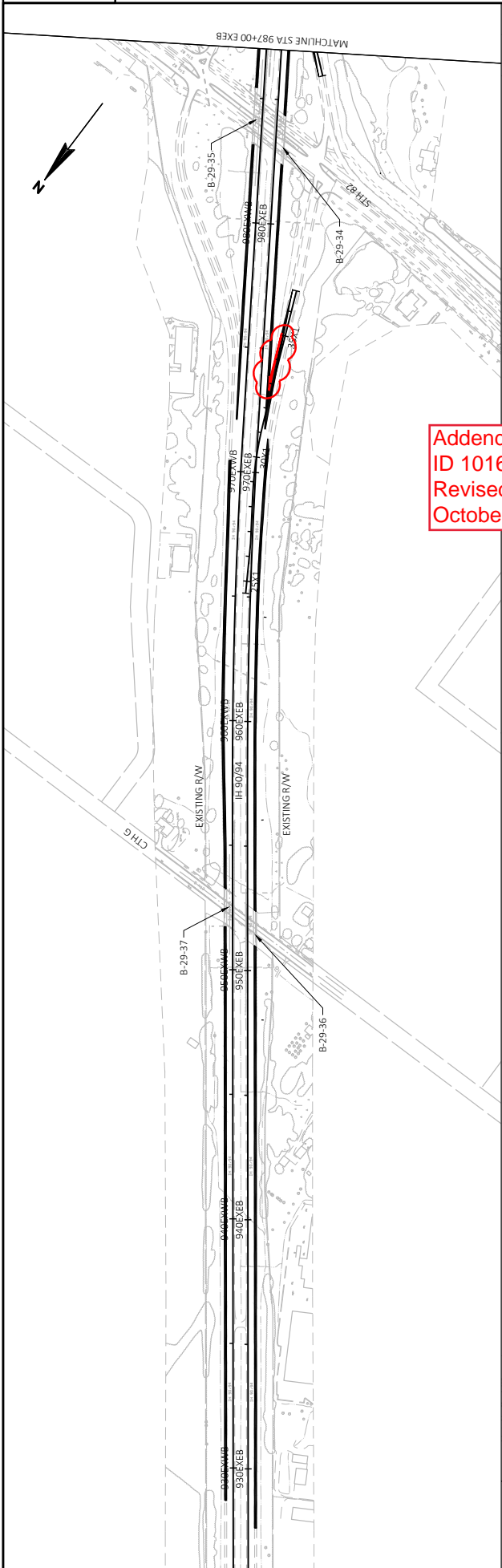
LEGEND

- EROSION MAT CLASS I, TYPE B
- EROSION MAT URBAN CLASS I, TYPE B
- SURFACE
- DITCH DIAPHRAGM
- DITCH DIAPHRAGM WITH RIP RAP
- RIP RAP MEDIUM
- SLOPE INTERCEPT
- INLET PROTECTION TYPE A & B
- TEMPORARY DITCH CHECK
- TURBIDITY BARRIER
- SURFACE WATER FLOW

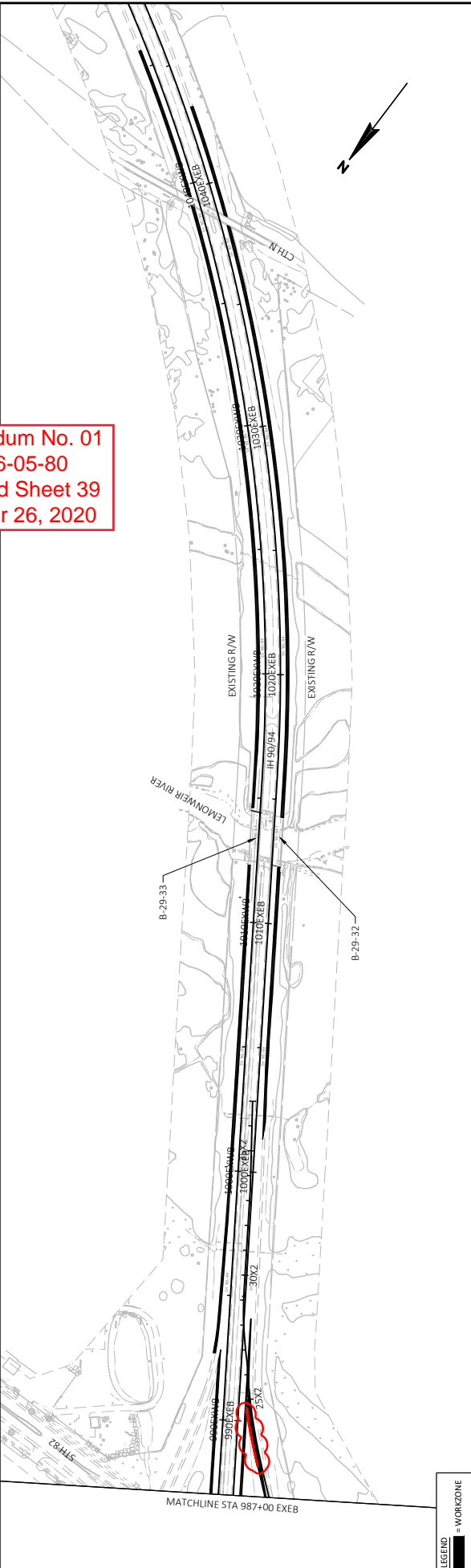
Addendum No. 01
 ID 1016-05-80
 Revised Sheet 18
 October 26, 2020



Addendum No. 01
 ID 1016-05-80
 Revised Sheet 20
 October 26, 2020



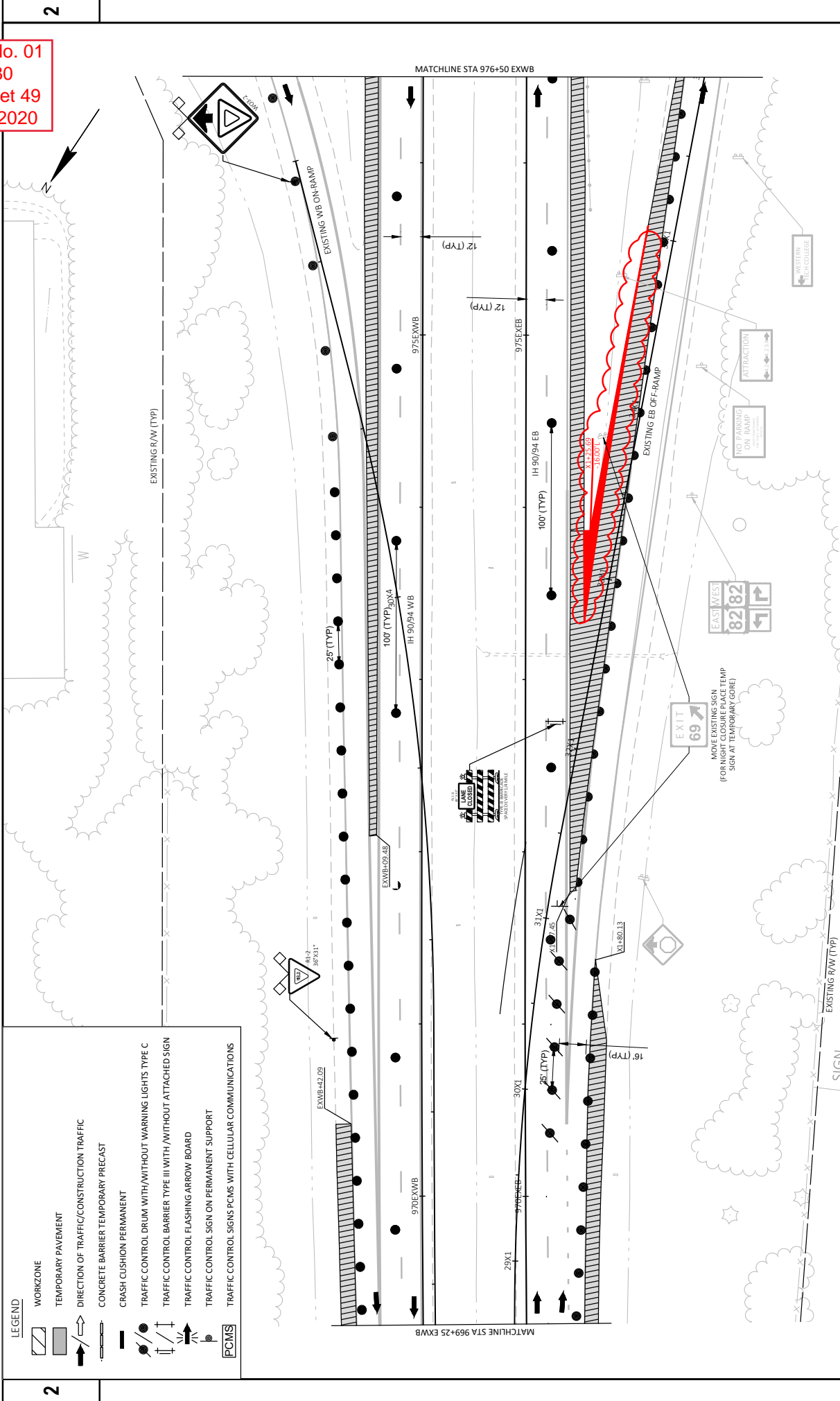
Addendum No. 01
 ID 1016-05-80
 Revised Sheet 39
 October 26, 2020



LEGEND
 = WORKZONE

PROJECT NO: 1016-05-80	COUNTY: JUNEAU	PROJECT OVERVIEW: STAGE 1A	SHEET 39	E
FILE NAME: N:\PDS\3D\10160580\5SHEETS\PLAN\1016-05-80\05102_TC_OVERVIEW_STADWG	HWY: IH 90/94	FLYBY: MICHAEL W. BUCCELLI	1 IN=400 FT	WISDOT/CAD/SHEET 42
LAYOUT NAME: 025_102_TC_overview_s1a	PILOT DATE: 10/22/2020 3:33 PM	PILOT NAME:		

Addendum No. 01
 ID 1016-05-80
 Revised Sheet 49
 October 26, 2020



LEGEND

	WORKZONE
	TEMPORARY PAVEMENT
	DIRECTION OF TRAFFIC/CONSTRUCTION TRAFFIC
	CONCRETE BARRIER TEMPORARY PRECAST
	CRASH CUSHION PERMANENT
	TRAFFIC CONTROL DRUM WITH/WITHOUT WARNING LIGHTS TYPE C
	TRAFFIC CONTROL BARRIER TYPE III WITH/WITHOUT ATTACHED SIGN
	TRAFFIC CONTROL FLASHING ARROW BOARD
	TRAFFIC CONTROL SIGN ON PERMANENT SUPPORT
	TRAFFIC CONTROL SIGNS PCMS WITH CELLULAR COMMUNICATIONS

PROJECT NO: 1016-05-80
 FILE NAME: N:\PDS\3201\080500\5SHEETSPAN\1016-05-80\05109_1C_S1A.DWG
 LAYOUT NAME: 025109_1C

COUNTY: JUNEAU
 HWY: IH 90/94

TRAFFIC CONTROL: STAGE 1A
 PLOT BY: MICHAEL W. BUCCELLI

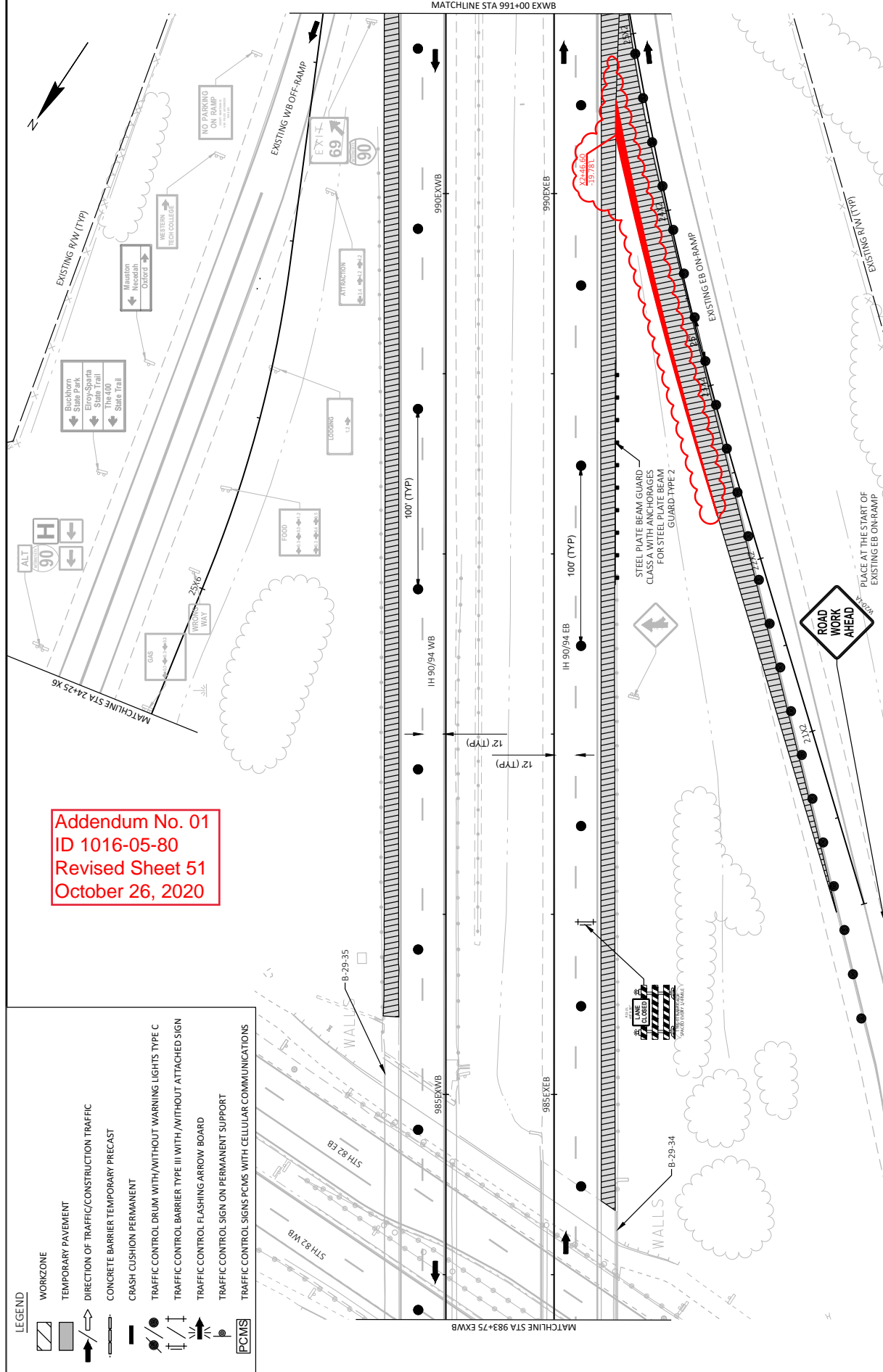
PLOT DATE: 10/22/2020 3:59 PM
 PLOT SCALE: 1"=50 FT

SHEET 49
 WISDOT/CAD/SHEET 42

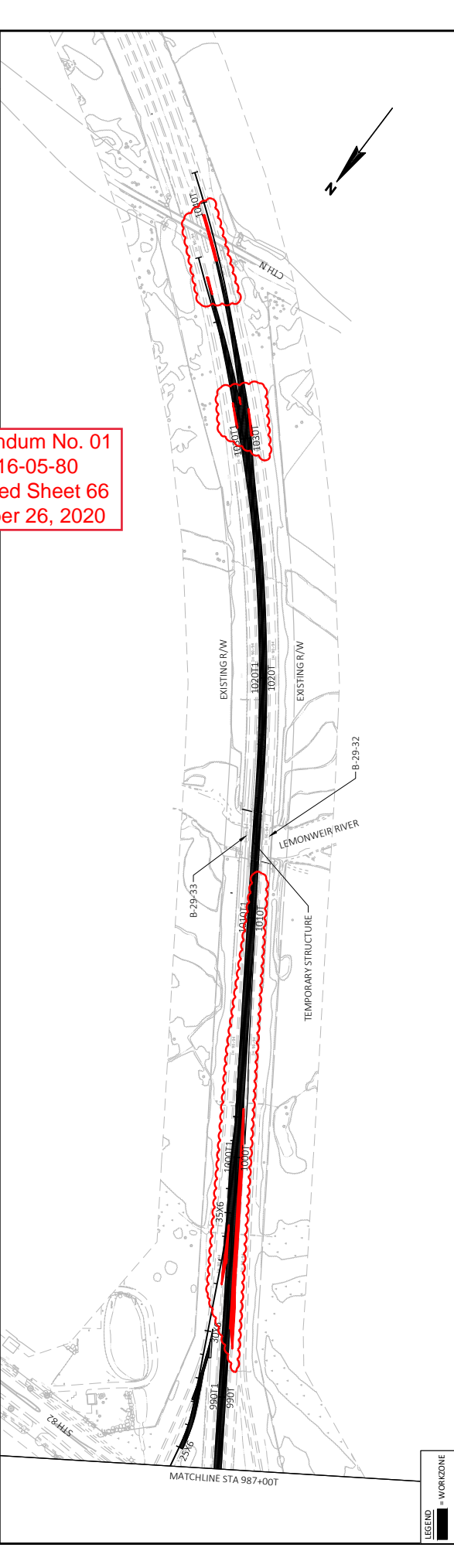
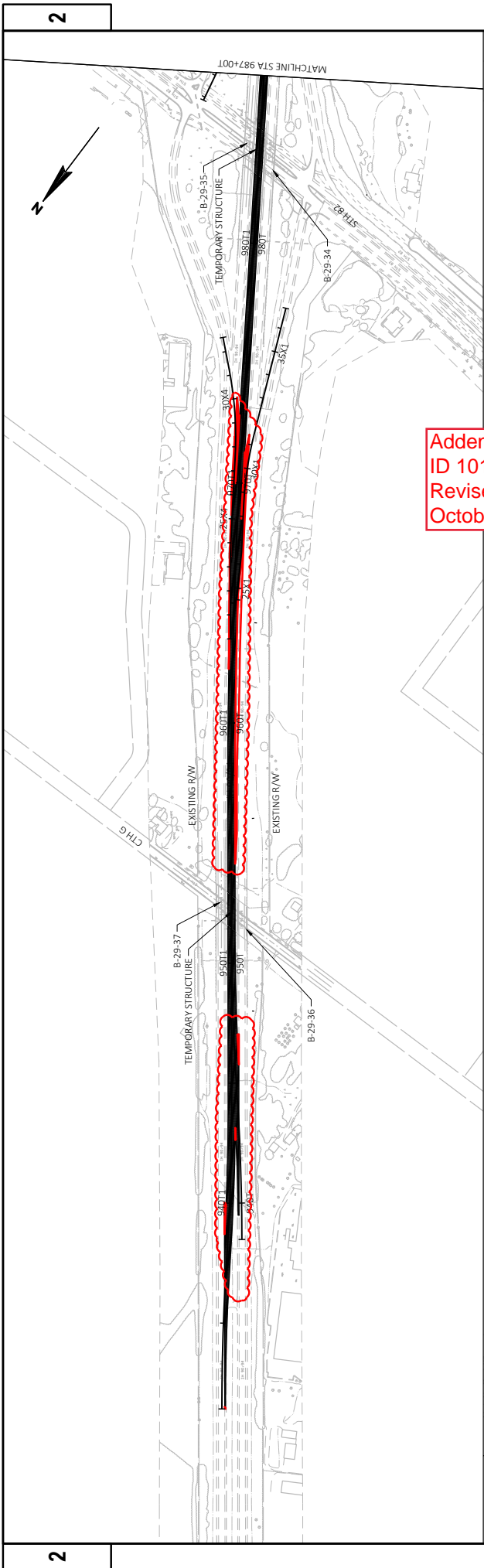
Addendum No. 01
 ID 1016-05-80
 Revised Sheet 51
 October 26, 2020

LEGEND

	WORKZONE
	TEMPORARY PAVEMENT
	DIRECTION OF TRAFFIC/CONSTRUCTION TRAFFIC
	CONCRETE BARRIER TEMPORARY PRECAST
	CRASH CUSHION PERMANENT
	TRAFFIC CONTROL DRUM WITH/WITHOUT WARNING LIGHTS TYPE C
	TRAFFIC CONTROL BARRIER TYPE III WITH/WITHOUT ATTACHED SIGN
	TRAFFIC CONTROL FLASHING ARROW BOARD
	TRAFFIC CONTROL SIGN ON PERMANENT SUPPORT
	TRAFFIC CONTROL SIGNS PCMS WITH CELLULAR COMMUNICATIONS



PROJECT NO: 1016-05-80	COUNTY: JUNEAU	TRAFFIC CONTROL: STAGE 1A	SHEET 51	E
FILE NAME: N:\PDS\3201\080500\5HEETS\PLAN\016-05-80\05103_TC_S1A.DWG	LAYOUT NAME: 005111_1C	DATE: 10/22/2020 4:00 PM	PLOT SCALE: 1 IN=50 FT	WISDOT/CAD/SHEET 42
HWY: IH 90/94	FLYBY: MICHAEL W. BUCCILLI	PLOT NAME:		



Addendum No. 01
 ID 1016-05-80
 Revised Sheet 66
 October 26, 2020

LEGEND
 = WORKZONE

PROJECT NO: 1016-05-80

HWY: IH 90/94

COUNTY: JUNEAU

PLOT DATE: 10/22/2020 3:56 PM

PROJECT OVERVIEW; STAGE 1B

PLOT BY: MICHAEL W. BUCCELLI

SHEET 66

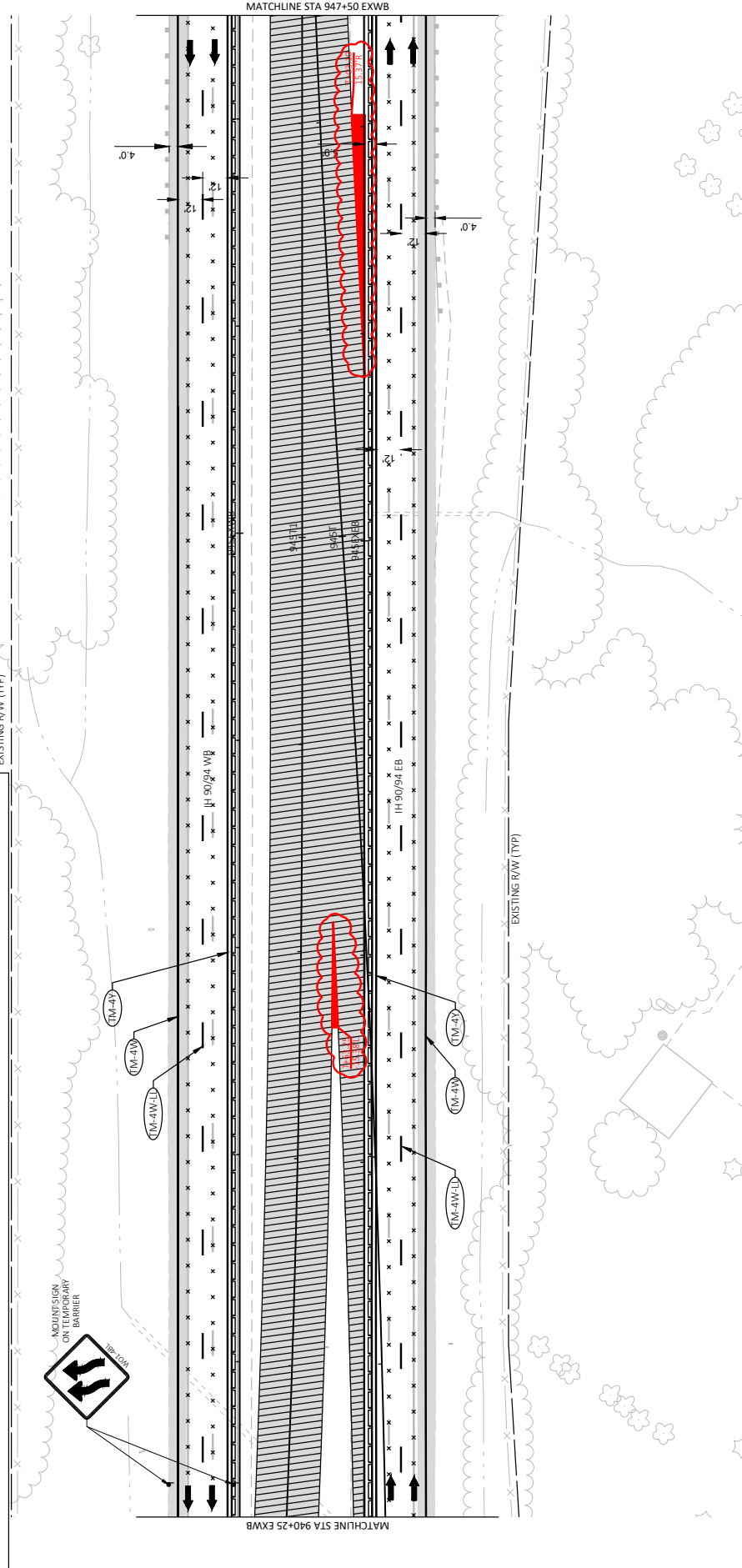
E

FILE NAME: N:\PDS\3201060500\SHEETS\PLAN\1016-05-80\05105_TC_OVERVIEW_S1B.DWG
 LAYOUT NAME: 025105_TC_OVERVIEW_S1B
 PLOT SCALE: 1 IN=400 FT
 PLOT NAME: WISDOT\CAD\05\SHEET 42



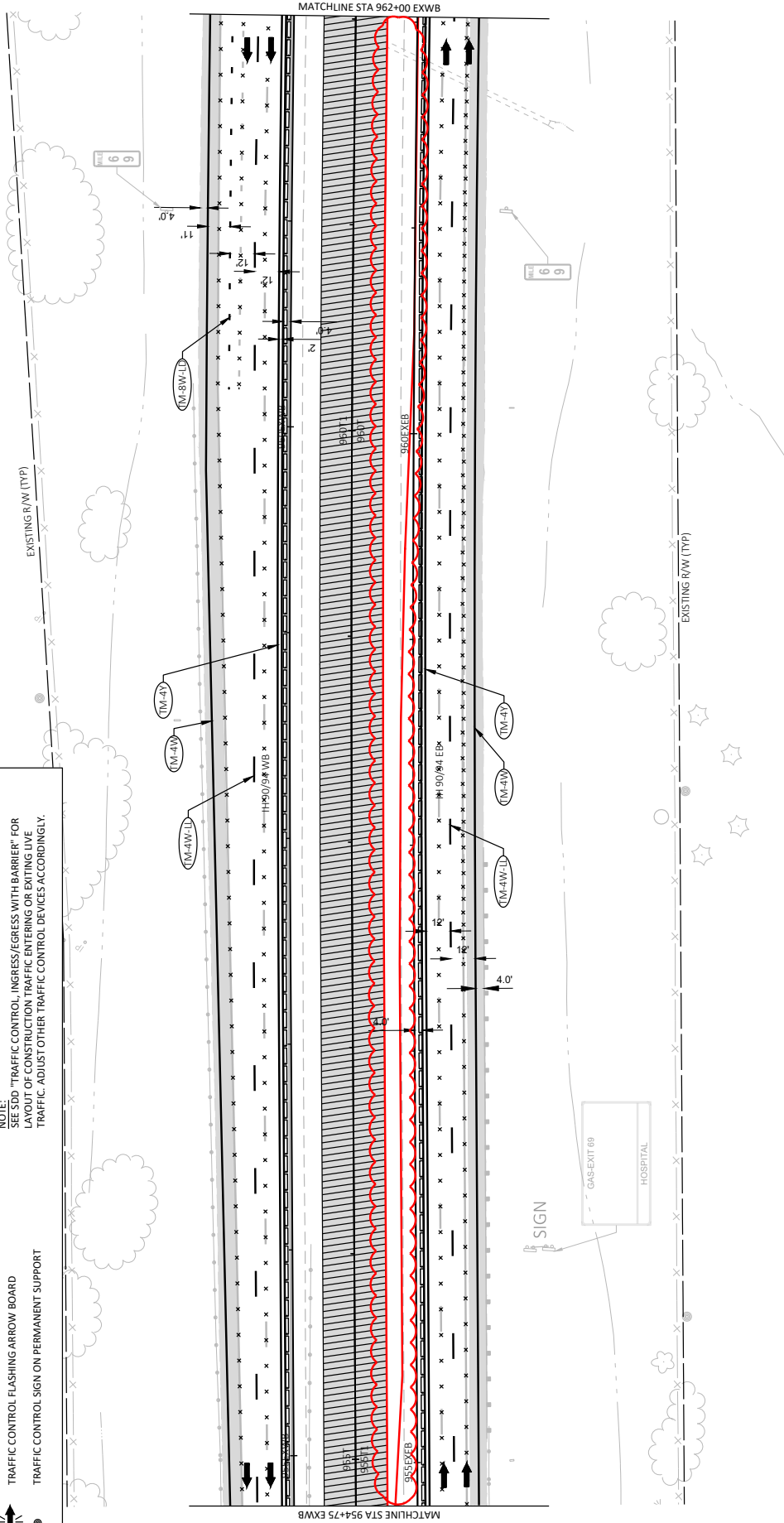
Addendum No. 01
ID 1016-05-80
Revised Sheet 70
October 26, 2020

- LEGEND**
- WORKZONE
 - TEMPORARY PAVEMENT
 - DIRECTION OF TRAFFIC/CONSTRUCTION TRAFFIC
 - CONCRETE BARRIER TEMPORARY PRECAST
 - CRASH CUSHION PERMANENT
 - TRAFFIC CONTROL DRUM WITH/WITHOUT WARNING LIGHTS TYPE C
 - TRAFFIC CONTROL BARRIER TYPE III WITH/WITHOUT ATTACHED SIGN
 - TRAFFIC CONTROL FLASHING ARROW BOARD
 - TRAFFIC CONTROL SIGN ON PERMANENT SUPPORT
- PCMS** TRAFFIC CONTROL SIGNS PCMS WITH CELLULAR COMMUNICATIONS
- X-X-X MARKING REMOVAL LINE
 - (M-1W) TEMPORARY MARKING LINE EPOXY 4-INCH (WHITE)
 - (M-1Y) TEMPORARY MARKING LINE EPOXY 4-INCH (YELLOW)
 - (M-4W-12) TEMPORARY MARKING LINE EPOXY 4-INCH (WHITE) LANE LINE, 12.5' DASH, 37.5' SKIP
 - (M-8W-12) TEMPORARY PAVEMENT MARKING EPOXY 8-INCH (WHITE) LANE LINE, DROP, 3' DASH, 9' SKIP
- NOTE:**
"TRAFFIC CONTROL, INGRESS/EGRESS WITH BARRIER" FOR LAYOUT OF CONSTRUCTION TRAFFIC ENTERING OR EXITING LIVE TRAFFIC. ADJUST OTHER TRAFFIC CONTROL DEVICES ACCORDINGLY.



Addendum No. 01
ID 1016-05-80
Revised Sheet 72
October 26, 2020

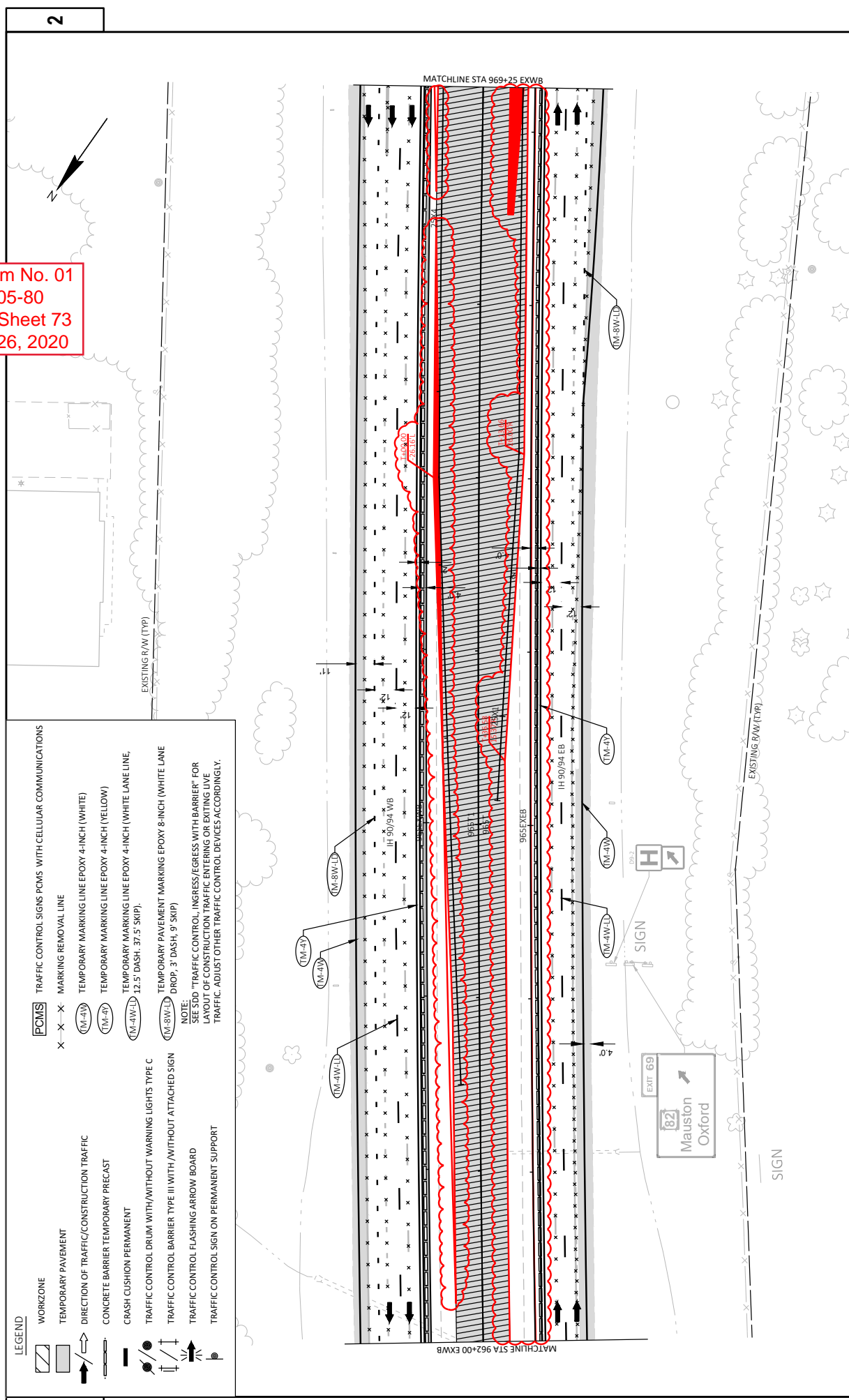
- LEGEND**
- WORKZONE
 - TEMPORARY PAVEMENT
 - DIRECTION OF TRAFFIC/CONSTRUCTION TRAFFIC
 - CONCRETE BARRIER TEMPORARY PRECAST
 - CRASH CUSHION PERMANENT
 - TRAFFIC CONTROL DRUM WITH/WITHOUT WARNING LIGHTS TYPE C
 - TRAFFIC CONTROL BARRIER TYPE III WITH/WITHOUT ATTACHED SIGN
 - TRAFFIC CONTROL FLASHING ARROW BOARD
 - TRAFFIC CONTROL SIGN ON PERMANENT SUPPORT
 - PCMS TRAFFIC CONTROL SIGNS PCMS WITH CELLULAR COMMUNICATIONS
 - X-X-X MARKING REMOVAL LINE
 - (M-1W) TEMPORARY MARKING LINE EPOXY 4-INCH (WHITE)
 - (M-1Y) TEMPORARY MARKING LINE EPOXY 4-INCH (YELLOW)
 - (M-4W-12) 12.5' DASH, 37.5' SKIP
 - (M-8W-12) TEMPORARY PAVEMENT MARKING EPOXY 8-INCH (WHITE) LANE DROP, 3' DASH, 9' SKIP
 - NOTE: "TRAFFIC CONTROL, INGRESS/EGRESS WITH BARRIER" FOR LAYOUT OF CONSTRUCTION TRAFFIC ENTERING OR EXITING LIVE TRAFFIC. ADJUST OTHER TRAFFIC CONTROL DEVICES ACCORDINGLY.



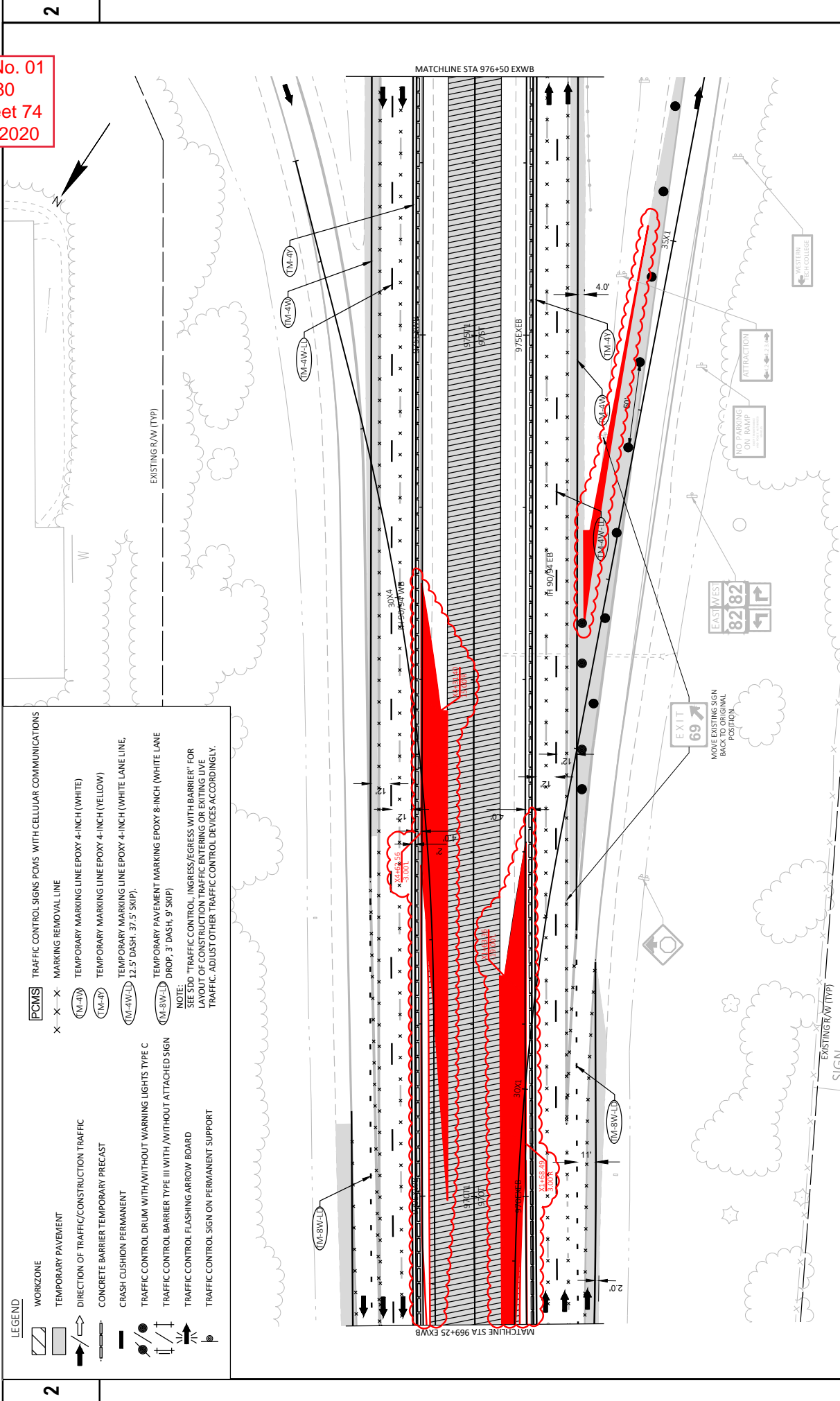
Addendum No. 01
 ID 1016-05-80
 Revised Sheet 73
 October 26, 2020

LEGEND

	WORKZONE		TRAFFIC CONTROL SIGNS PCMS WITH CELLULAR COMMUNICATIONS
	TEMPORARY PAVEMENT	X - X - X	MARKING REMOVAL LINE
	DIRECTION OF TRAFFIC/CONSTRUCTION TRAFFIC	(TM-4V)	TEMPORARY MARKING LINE EPOXY 4-INCH (WHITE)
	CONCRETE BARRIER TEMPORARY PRECAST	(TM-4H)	TEMPORARY MARKING LINE EPOXY 4-INCH (YELLOW)
	CRASH CUSHION PERMANENT	(TM-4W-1)	TEMPORARY MARKING LINE EPOXY 4-INCH (WHITE) LANE LINE, 12.5' DASH, 37.5' SKIP
	TRAFFIC CONTROL DRUM WITH/WITHOUT WARNING LIGHTS TYPE C	(TM-8W-1)	TEMPORARY PAVEMENT MARKING EPOXY 8-INCH (WHITE) LANE DROP, 3' DASH, 9' SKIP
	TRAFFIC CONTROL BARRIER TYPE III WITH/WITHOUT ATTACHED SIGN	NOTE:	"TRAFFIC CONTROL, INGRESS/EGRESS WITH BARRIER" FOR SEE SDD LAYOUT OF CONSTRUCTION TRAFFIC ENTERING OR EXITING LIVE TRAFFIC. ADJUST OTHER TRAFFIC CONTROL DEVICES ACCORDINGLY.
	TRAFFIC CONTROL FLASHING ARROW BOARD		
	TRAFFIC CONTROL SIGN ON PERMANENT SUPPORT		



Addendum No. 01
 ID 1016-05-80
 Revised Sheet 74
 October 26, 2020



2

PROJECT NO: 1016-05-80
 COUNTY: JUNEAU
 HWY: IH 90/94
 TRAFFIC CONTROL: STAGE 1B
 SHEET 74
 E

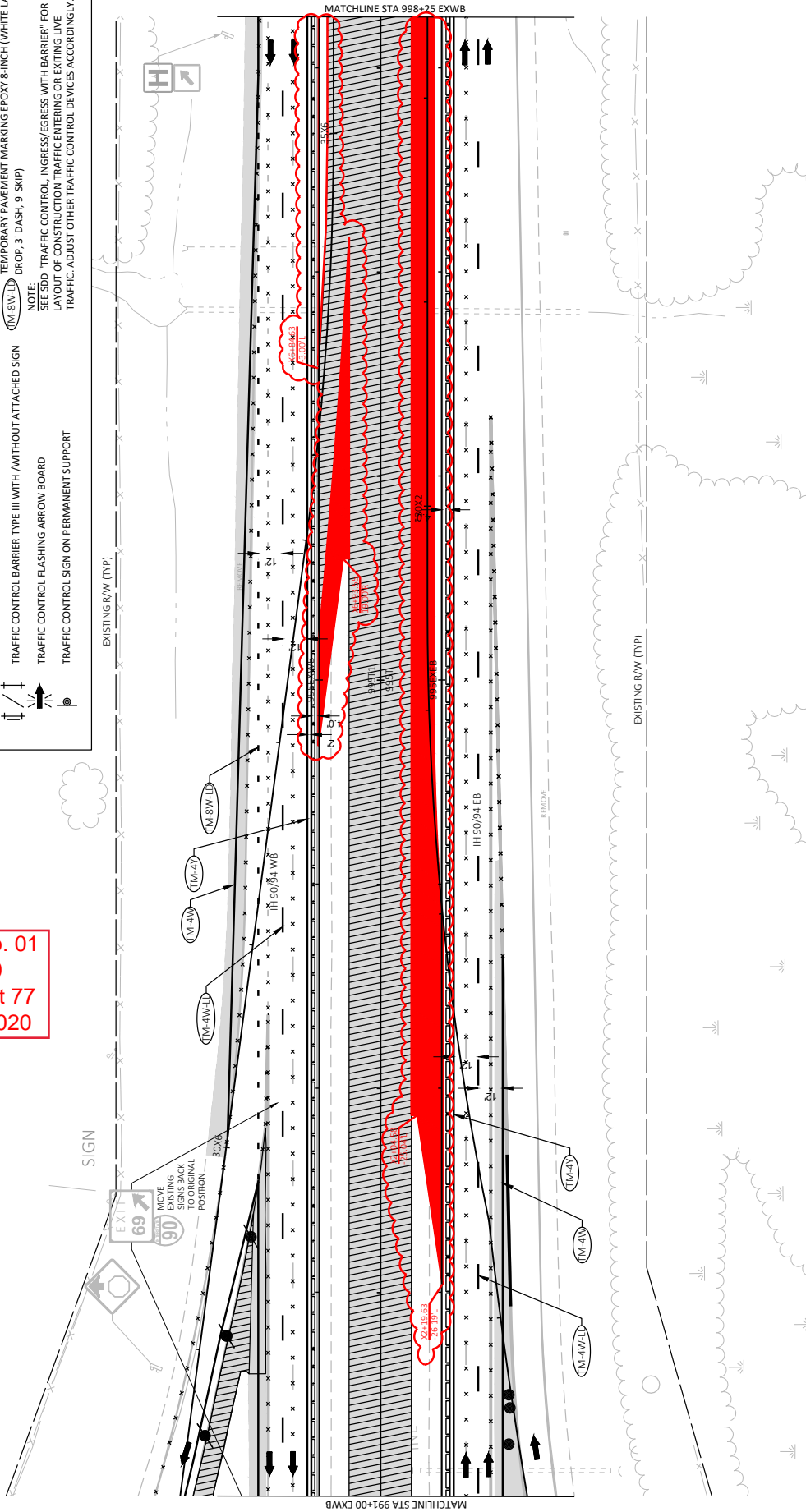
FILE NAME: N:\PDS\3201\080500\5SHEETSPAN\1016-05-80\05106_TC_518.DWG
 LAYOUT NAME: 025.06_1C
 PLOT DATE: 10/22/2020 3:28 PM
 PLOT NAME: MICHAEL W. BUCCELLI
 PLOT SCALE: 1 IN=50 FT
 WISDOT/CARDS SHEET 42

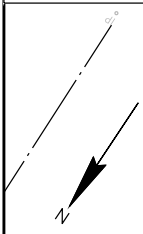
Addendum No. 01
ID 1016-05-80
Revised Sheet 77
October 26, 2020

LEGEND

- WORKZONE
- TEMPORARY PAVEMENT
- DIRECTION OF TRAFFIC/CONSTRUCTION TRAFFIC
- CONCRETE BARRIER TEMPORARY PRECAST
- CRASH CUSHION PERMANENT
- TRAFFIC CONTROL DRUM WITH/WITHOUT WARNING LIGHTS TYPE C
- TRAFFIC CONTROL BARRIER TYPE III WITH /WITHOUT ATTACHED SIGN
- TRAFFIC CONTROL FLASHING ARROW BOARD
- TRAFFIC CONTROL SIGN ON PERMANENT SUPPORT

- PCMS TRAFFIC CONTROL SIGNS PCMS WITH CELLULAR COMMUNICATIONS
 - MARKING REMOVAL LINE
 - TEMPORARY MARKING LINE EPOXY 4-INCH (WHITE)
 - TEMPORARY MARKING LINE EPOXY 4-INCH (YELLOW)
 - TEMPORARY MARKING LINE EPOXY 4-INCH (WHITE) LANE LINE, 12.5' DASH, 37.5' SKIP.
 - TEMPORARY PAVEMENT MARKING EPOXY 8-INCH (WHITE) LANE LINE, DROP, 3' DASH, 9' SKIP
- NOTE:
SEE 300 "TRAFFIC CONTROL, INGRESS/EGRESS WITH BARRIER" FOR LAYOUT OF CONSTRUCTION TRAFFIC ENTERING OR EXITING LIVE LANE
TRAFFIC ADJUST OTHER TRAFFIC CONTROL DEVICES ACCORDINGLY.



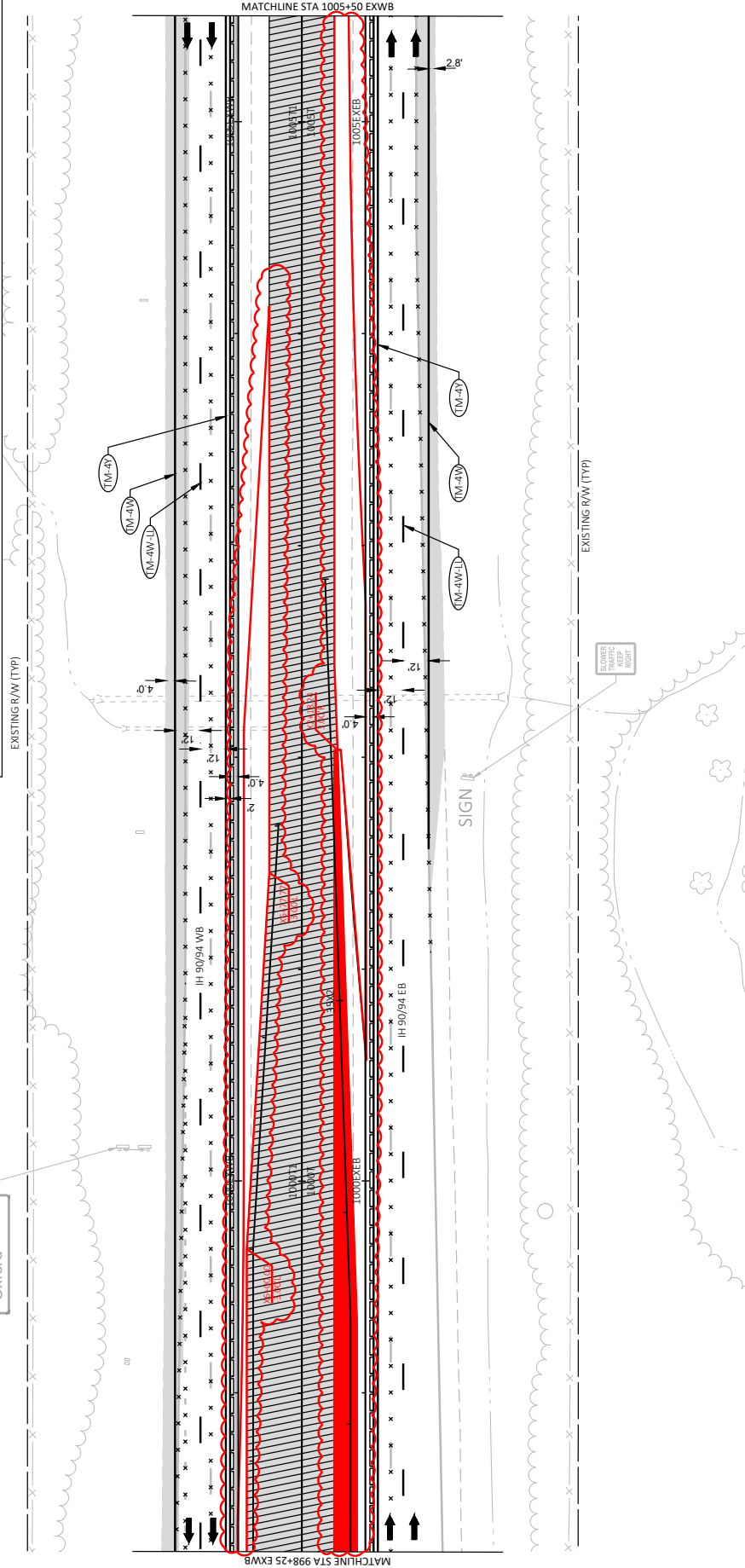


Addendum No. 01
 ID 1016-05-80
 Revised Sheet 78
 October 26, 2020



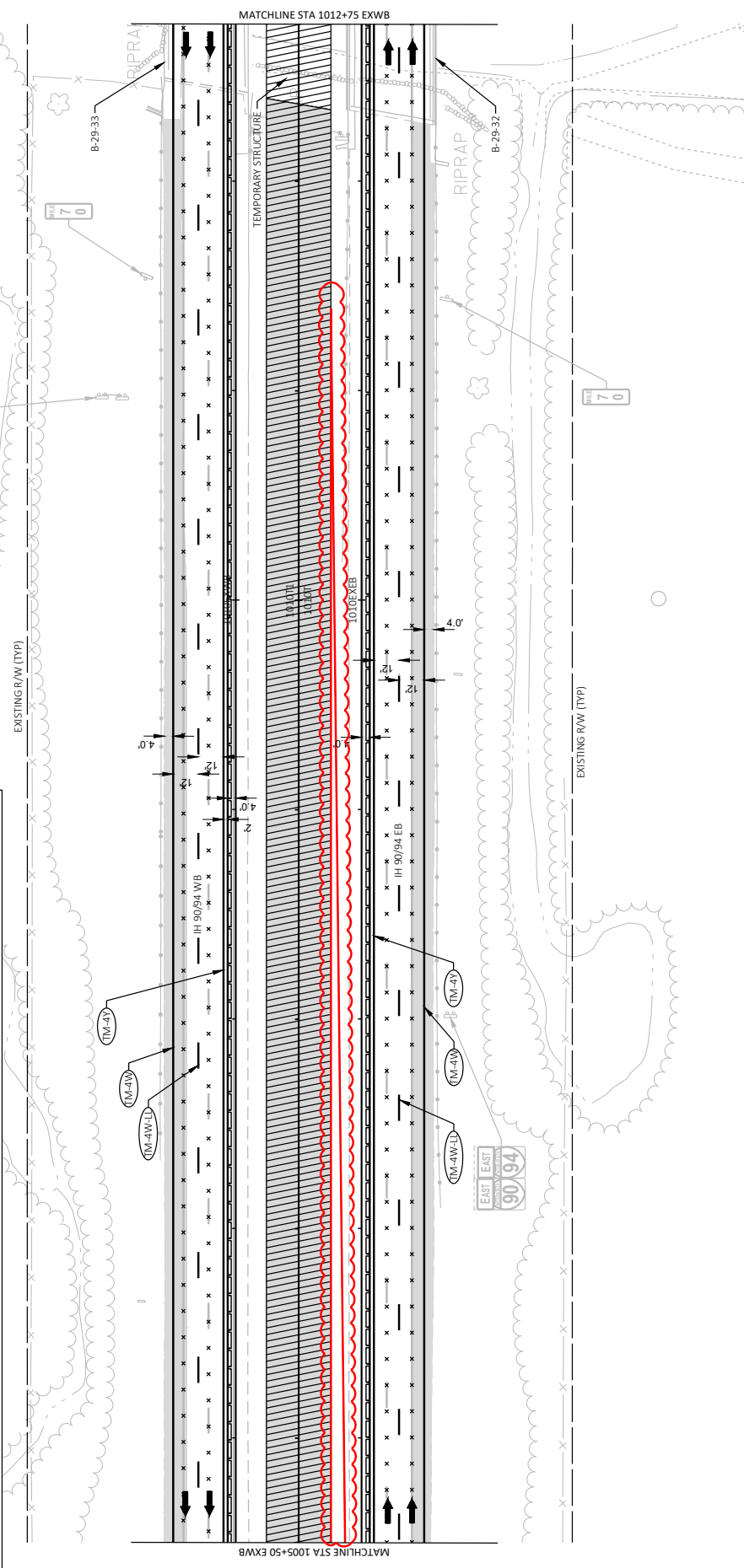
- LEGEND**
- WORKZONE
 - TEMPORARY PAVEMENT
 - DIRECTION OF TRAFFIC/CONSTRUCTION TRAFFIC
 - CONCRETE BARRIER TEMPORARY PRECAST
 - CRASH CUSHION PERMANENT
 - TRAFFIC CONTROL DRUM WITH/WITHOUT WARNING LIGHTS TYPE C
 - TRAFFIC CONTROL BARRIER TYPE III WITH /WITHOUT ATTACHED SIGN
 - TRAFFIC CONTROL FLASHING ARROW BOARD
 - TRAFFIC CONTROL SIGN ON PERMANENT SUPPORT

- PCMS** TRAFFIC CONTROL SIGNS PCMS WITH CELLULAR COMMUNICATIONS
- X - X - X MARKING REMOVAL LINE
 - (TM-4W) TEMPORARY MARKING LINE EPOXY 4-INCH (WHITE)
 - (TM-4Y) TEMPORARY MARKING LINE EPOXY 4-INCH (YELLOW)
 - (TM-4W-L) TEMPORARY MARKING LINE EPOXY 4-INCH (WHITE) LANE LINE, 12.5' DASH, 37.5' SKIP.
 - (TM-8W-L) TEMPORARY PAVEMENT MARKING EPOXY 8-INCH (WHITE) LANE LINE, DROP, 3' DASH, 9' SKIP
- NOTE:**
 SEE 303 "TRAFFIC CONTROL, INGRESS/EGRESS WITH BARRIER" FOR LAYOUT OF CONSTRUCTION TRAFFIC ENTERING OR EXITING LIVE TRAFFIC. ADJUST OTHER TRAFFIC CONTROL DEVICES ACCORDINGLY.



Addendum No. 01
ID 1016-05-80
Revised Sheet 79
October 26, 2020

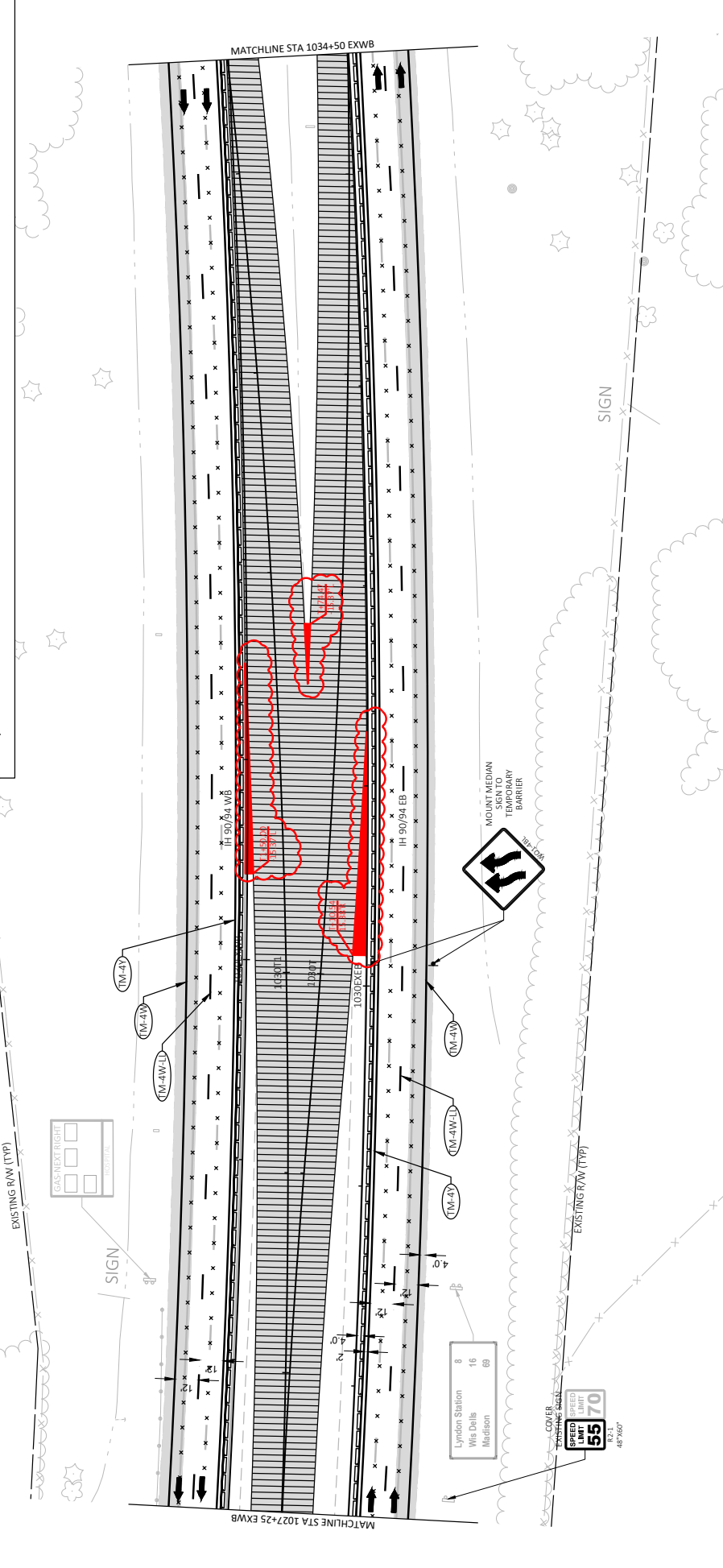
- LEGEND**
- WORKZONE
 - TEMPORARY PAVEMENT
 - DIRECTION OF TRAFFIC/CONSTRUCTION TRAFFIC
 - CONCRETE BARRIER TEMPORARY PRECAST
 - CRASH CUSHION PERMANENT
 - TRAFFIC CONTROL DRUM WITH/WITHOUT WARNING LIGHTS TYPE C
 - TRAFFIC CONTROL BARRIER TYPE III WITH/WITHOUT ATTACHED SIGN
 - TRAFFIC CONTROL FLASHING ARROW BOARD
 - TRAFFIC CONTROL SIGN ON PERMANENT SUPPORT
 - PCMS TRAFFIC CONTROL SIGNS PCMS WITH CELLULAR COMMUNICATIONS
 - X-X-X MARKING REMOVAL LINE
 - (TM-4V) TEMPORARY MARKING LINE EPOXY 4-INCH (WHITE)
 - (TM-4Y) TEMPORARY MARKING LINE EPOXY 4-INCH (YELLOW)
 - (TM-4W-12) TEMPORARY MARKING LINE EPOXY 4-INCH (WHITE) LINE, 12.5' DASH, 37.5' SKIP
 - (TM-8W-12) TEMPORARY PAVEMENT MARKING EPOXY 8-INCH (WHITE) LINE, DROP, 3' DASH, 9' SKIP
- NOTE:
SEE SDD "TRAFFIC CONTROL, INGRESS/EGRESS WITH BARRIER" FOR LAYOUT OF CONSTRUCTION TRAFFIC ENTERING OR EXITING LIVE TRAFFIC. ADJUST OTHER TRAFFIC CONTROL DEVICES ACCORDINGLY.



- PCMS** TRAFFIC CONTROL SIGNS PCMS WITH CELLULAR COMMUNICATIONS
- X X X MARKING REMOVAL LINE
 - (TM-43N) TEMPORARY MARKING LINE EPOXY 4-INCH (WHITE)
 - (TM-43Y) TEMPORARY MARKING LINE EPOXY 4-INCH (YELLOW)
 - (TM-4W-L) TEMPORARY MARKING LINE EPOXY 4-INCH (WHITE) LANE LINE, 12.5' DASH, 37.5' SKIP
 - (TM-8W-L) TEMPORARY PAVEMENT MARKING EPOXY 8-INCH (WHITE) LANE DROP, 3' DASH, 9' SKIP
- LEGEND**
- WORKZONE
 - TEMPORARY PAVEMENT
 - DIRECTION OF TRAFFIC/CONSTRUCTION TRAFFIC
 - CONCRETE BARRIER TEMPORARY PRECAST
 - CRASH CUSHION PERMANENT
 - TRAFFIC CONTROL DRUM WITH/WITHOUT WARNING LIGHTS TYPE C
 - TRAFFIC CONTROL BARRIER TYPE III WITH /WITHOUT ATTACHED SIGN
 - TRAFFIC CONTROL FLASHING ARROW BOARD
 - TRAFFIC CONTROL SIGN ON PERMANENT SUPPORT

- NOTE**
- SEE 303 "TRAFFIC CONTROL - INGRESS/EGRESS WITH BARRIER" FOR LAYOUT OF CONSTRUCTION TRAFFIC ENTERING OR EXITING LIVE TRAFFIC. ADJUST OTHER TRAFFIC CONTROL DEVICES ACCORDINGLY.

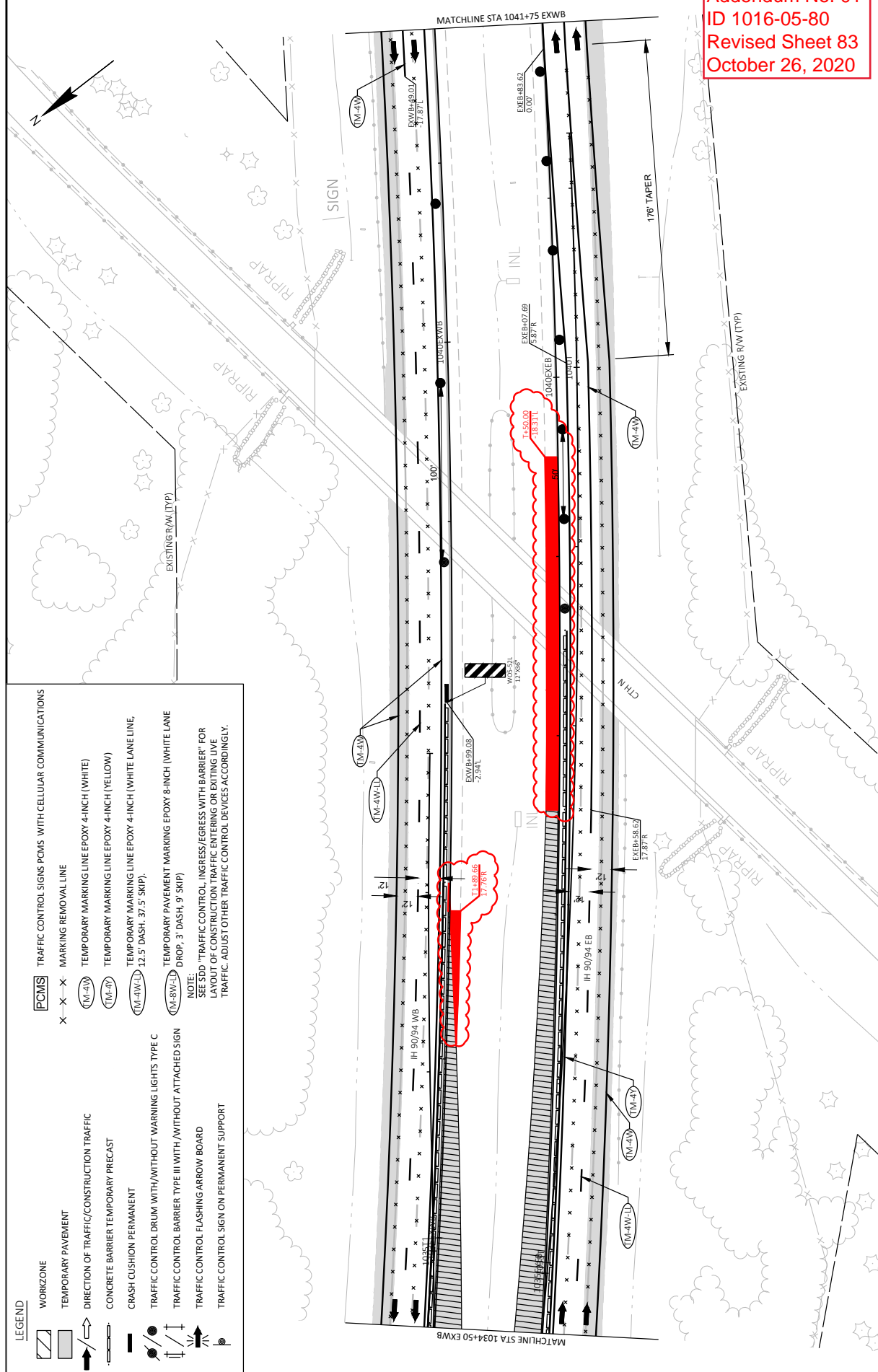
Addendum No. 01
 ID 1016-05-80
 Revised Sheet 82
 October 26, 2020



LEGEND

	WORKZONE		TRAFFIC CONTROL SIGNS PCMS WITH CELLULAR COMMUNICATIONS
	TEMPORARY PAVEMENT	X - X - X	MARKING REMOVAL LINE
	DIRECTION OF TRAFFIC/CONSTRUCTION TRAFFIC	(M-4W)	TEMPORARY MARKING LINE EPOXY 4-INCH (WHITE)
	CONCRETE BARRIER TEMPORARY PRECAST	(M-4W)	TEMPORARY MARKING LINE EPOXY 4-INCH (YELLOW)
	CRASH CUSHION PERMANENT	(M-4W-12)	TEMPORARY MARKING LINE EPOXY 4-INCH (WHITE LANE LINE, 12.5' DASH, 37.5' SKIP)
	TRAFFIC CONTROL DRUM WITH/WITHOUT WARNING LIGHTS TYPE C	(M-8W-13)	TEMPORARY PAVEMENT MARKING EPOXY 8-INCH (WHITE LANE DROP, 3' DASH, 9' SKIP)
	TRAFFIC CONTROL BARRIER TYPE III WITH/WITHOUT ATTACHED SIGN		NOTE: "TRAFFIC CONTROL, INGRESS/EGRESS WITH BARRIER" FOR LAYOUT OF CONSTRUCTION TRAFFIC ENTERING OR EXITING LANE TRAFFIC. ADJUST OTHER TRAFFIC CONTROL DEVICES ACCORDINGLY.
	TRAFFIC CONTROL FLASHING ARROW BOARD		
	TRAFFIC CONTROL SIGN ON PERMANENT SUPPORT		

Addendum No. 01
 ID 1016-05-80
 Revised Sheet 83
 October 26, 2020



TEMPORARY BRIDGES

CATEGORY	STATION	LOCATION	LS	LS	(1)	(1)	526.0100.01	526.0100.02	526.0100.03	TEMPORARY STRUCTURE	REMARKS
0010	952+00.01	CTH G	---	---	---	---	---	---	---	---	---
0010	983+00.01	STH 82	---	---	---	---	---	---	---	---	---
0010	1013+00.01	LEMONWEIR RIVER	---	---	---	---	---	---	---	---	---
TOTAL 0010											

(1) TO BE LEFT IN PLACE

RIPRAP

CATEGORY	STATION	STRUCTURE	LOCATION	CT	SY	645.0120	GEOTECHILE TYPE
0010	963+00.01	---	RT	3	11	---	---
0010	976+75.01	3.8	RT	4	14	---	---
0010	982+10.01	4.4	LT	3	11	---	---
TOTAL 0010							---

CONCRETE BARRIER

CATEGORY	STATION	TO	STATION	LOCATION	LF	603.8000	CONCRETE BARRIER DELIVERED	603.8125	CONCRETE BARRIER PRECAST INSTALLED	603.8500	ANCHORING CONCRETE BARRIER PRECAST	SPV.0090.01 SPECIAL (01) CONCRETE BARRIER PRECAST LEFT-IN-PLACE	REMARKS
0010	IH 90/94	IH 90/94	IH 90/94	STAGE 1A IH 90/94 (FOR STAGE 1B INGRESS WEST OF CTH G)	780	---	---	---	---	---	---	---	FROM SDD "TRAFFIC CONTROL, INGRESS/EGRESS WITH BARRIER
0010	IH 90/94	IH 90/94	IH 90/94	STAGE 1A IH 90/94 (FOR STAGE 1B INGRESS WEST OF CTH G)	1,980	---	---	---	---	---	---	---	FROM SDD "TRAFFIC CONTROL, INGRESS/EGRESS WITH BARRIER
0010	IH 90/94	IH 90/94	IH 90/94	STAGE 1A IH 90/94 (FOR STAGE 1B INGRESS BETWEEN CTH G & STH 82)	780	---	---	---	---	---	---	---	FROM SDD "TRAFFIC CONTROL, INGRESS/EGRESS WITH BARRIER
0010	IH 90/94	IH 90/94	IH 90/94	STAGE 1A IH 90/94 (FOR STAGE 1B INGRESS BETWEEN CTH G & STH 82)	1,980	---	---	---	---	---	---	---	FROM SDD "TRAFFIC CONTROL, INGRESS/EGRESS WITH BARRIER
0010	IH 90/94	IH 90/94	IH 90/94	STAGE 1A IH 90/94 (FOR STAGE 1B INGRESS BETWEEN STH 82 & LEMONWEIR RIVER)	780	---	---	---	---	---	---	---	FROM SDD "TRAFFIC CONTROL, INGRESS/EGRESS WITH BARRIER
0010	IH 90/94	IH 90/94	IH 90/94	STAGE 1A IH 90/94 (FOR STAGE 1B INGRESS BETWEEN STH 82 & LEMONWEIR RIVER)	1,980	---	---	---	---	---	---	---	FROM SDD "TRAFFIC CONTROL, INGRESS/EGRESS WITH BARRIER
0010	IH 90/94	IH 90/94	IH 90/94	STAGE 1A IH 90/94 (FOR STAGE 1B INGRESS EAST OF LEMONWEIR RIVER)	780	---	---	---	---	---	---	---	FROM SDD "TRAFFIC CONTROL, INGRESS/EGRESS WITH BARRIER
0010	IH 90/94	IH 90/94	IH 90/94	STAGE 1A IH 90/94 (FOR STAGE 1B INGRESS EAST OF LEMONWEIR RIVER)	1,980	---	---	---	---	---	---	---	FROM SDD "TRAFFIC CONTROL, INGRESS/EGRESS WITH BARRIER
0010	906+00'EXEB'	1044+10'EXEB'	IH 90/94	PRE-STAGE 1B IH 90/94 IB	7,077	---	---	---	---	---	---	---	FROM SDD "TRAFFIC CONTROL, INGRESS/EGRESS WITH BARRIER
0010	928+10'EXWB'	1066+68'EXWB'	IH 90/94	PRE-STAGE 1B IH 90/94 WB	2,737	---	---	---	---	---	---	---	FROM SDD "TRAFFIC CONTROL, INGRESS/EGRESS WITH BARRIER
0010	IH 90/94	IH 90/94	IH 90/94	STAGE 1B IH 90/94 (FOR STAGE 1C COVER WINTER BETWEEN CTH G & STH 82)	780	---	---	---	---	---	---	---	FROM SDD "TRAFFIC CONTROL, INGRESS/EGRESS WITH BARRIER
0010	IH 90/94	IH 90/94	IH 90/94	STAGE 1B IH 90/94 (FOR STAGE 1C COVER WINTER BETWEEN CTH G & STH 82)	1,980	---	---	---	---	---	---	---	FROM SDD "TRAFFIC CONTROL, INGRESS/EGRESS WITH BARRIER
0010	IH 90/94	IH 90/94	IH 90/94	STAGE 1B IH 90/94 (FOR STAGE 1C COVER WINTER BETWEEN STH 82 & LEMONWEIR RIVER)	780	---	---	---	---	---	---	---	FROM SDD "TRAFFIC CONTROL, INGRESS/EGRESS WITH BARRIER
0010	IH 90/94	IH 90/94	IH 90/94	STAGE 1B IH 90/94 (FOR STAGE 1C COVER WINTER BETWEEN STH 82 & LEMONWEIR RIVER)	1,980	---	---	---	---	---	---	---	FROM SDD "TRAFFIC CONTROL, INGRESS/EGRESS WITH BARRIER
TOTAL 0010					20,854	---	---	26,374	---	6,559	---	15,334	---

CRASH CUSHIONS

CATEGORY	LOCATION	PERMANENT EACH	614.0800 CRASH CUSHIONS	TEMPORARY EACH	614.0905 CRASH CUSHIONS	BACK WIDTH FT	OBJECT MARKING PATTERN	CRASH TEST LEVEL	TRAFFIC DIRECTION	TRAFFIC LOCATION	REMARKS
0010	935+62'EXEB', 2,78'R	1	---	---	---	4	OM-3L (W05-58L)	TL-3	UNIDIRECTIONAL	R	TEMPORARY CONCRETE BARRIER IN MEDIAN SHOULDER
0010	STAGE 1B IH 90/94 EB INGRESS WEST OF CTH G	---	---	1	---	4	OM-3C (W05-58D)	TL-3	UNIDIRECTIONAL	L&R	INGRESS OPENING TEMPORARY CONCRETE BARRIER IN MEDIAN SHOULDER
0010	STAGE 1B IH 90/94 EB INGRESS BETWEEN CTH G & STH 82	---	---	1	---	4	OM-3C (W05-58D)	TL-3	UNIDIRECTIONAL	L&R	INGRESS OPENING TEMPORARY CONCRETE BARRIER IN MEDIAN SHOULDER
0010	STAGE 1B IH 90/94 EB INGRESS BETWEEN STH 82 & LEMONWEIR RIVER	---	---	1	---	4	OM-3C (W05-58D)	TL-3	UNIDIRECTIONAL	L&R	INGRESS OPENING TEMPORARY CONCRETE BARRIER IN MEDIAN SHOULDER
0010	STAGE 1B IH 90/94 EB INGRESS EAST OF LEMONWEIR RIVER	---	---	1	---	4	OM-3C (W05-58D)	TL-3	UNIDIRECTIONAL	L&R	INGRESS OPENING TEMPORARY CONCRETE BARRIER IN MEDIAN SHOULDER
0010	1037+99'EXWB', 2,94'L	1	---	---	---	4	OM-3C (W05-58D)	TL-3	UNIDIRECTIONAL	R	TEMPORARY CONCRETE BARRIER IN MEDIAN SHOULDER
TOTAL 0010											

Addendum No. 01
 ID 1016-05-80
 Revised Sheet 98
 October 26, 2020

Addendum No. 01
ID 1016-05-80
Revised Sheet 102
October 26, 2020

RESTORATION ITEMS

CATEGORY	STATION	TO	STATION	LOCATION	625.0500 SALVAGED TOPSOIL SY	627.0200 MULCHING SY	629.0210 FERTILIZER TYPE B	630.0120 SEEDING MIXTURE NO. 2D LB	630.0200 SEEDING TEMPORARY LB	630.0300 SEEDING BORROW PIT LB	630.0500 SEED WATER MGAL
0010	944+82T	-	948+69T	RT	730	---	0.46	19.7	6.6	---	17
0010	955+09T	-	957+97T	RT	256	---	0.17	6.9	2.3	---	6
0010	987+84T	-	989+08T	RT	112	---	0.07	3.0	1	---	3
0010	946+41T1	-	948+66T1	LT	200	---	0.13	5.4	1.8	---	5
0010	977+90T1	-	979+27T1	LT	123	---	0.08	3.3	1.1	---	3
0010	33+25X1	-	36+87X1	LT	306	---	0.20	8.3	2.8	---	7
0010	20+00X2	-	23+80X2	LT	453	---	12.3	4.1	11	---	11
0010	933+24T1	-	943+14T1	RT-MEDIAN	1,717	---	46.4	15.5	39	---	39
0010	963+00T	-	---	STR 2.4	11	---	0.01	0.3	0.1	---	1.0
0010	976+75T	-	---	STR 3.8	11	---	0.01	0.3	0.1	---	1.0
0010	983+10T	-	---	STR 4.4	15	---	0.01	0.4	0.2	---	1.0
0010	1031+43T	-	1037+54T	LT-MEDIAN	776	---	0.49	21.0	7	---	18
0010	24+50X6	-	28+75X6	RT	611	---	0.39	16.5	5.5	---	14
0010	24+50X6	-	27+06X6	LT	221	---	0.14	6.0	2	---	5
0010	PROJECT 1016-05-8	-	---	---	---	6,950	4.38	---	62.6	94.0	156
0010	UNDISTRIBUTED	-	---	---	1,386	1,738	2	38.0	29	24.0	72
TOTAL 0010					6928	8688	9.9	187.8	141.7	118	359

EROSION CONTROL ITEMS

CATEGORY	STATION	TO	STATION	LOCATION	638.2004 EROSION MAT CLASS I TYPE B SY	638.2008 EROSION MAT URBAN CLASS I TYPE B SY	638.7504 TEMPORARY DITCH CHECKS LF	638.7555 CULVERT PIPE CHECKS EACH	628.7570 ROCK BAGS EACH	645.0140 GEOTEXTILE TYPE SAS SY
0010	944+82T	-	948+69T	RT	730	---	---	---	---	---
0011	955+09T	-	957+97T	RT	256	---	---	---	---	---
0012	987+84T	-	989+08T	RT	112	---	---	---	---	---
0013	946+41T1	-	948+66T1	LT	200	---	---	---	---	---
0014	977+90T1	-	979+27T1	LT	123	---	---	---	---	---
0010	33+25 X1	-	36+87X1	LT	306	---	---	---	---	---
0010	20+00X2	-	23+80X2	LT	453	---	---	---	---	---
0010	933+24T1	-	943+14T1	RT	1,717	---	---	---	---	---
0010	963+10T	-	---	LT	---	---	---	2	---	---
0010	976+75T	-	---	LT	---	---	---	2	---	---
0010	983+10T	-	---	STR 2.4	11	---	---	---	---	---
0010	1027+67T	-	1037+54T	STR 3.7	---	---	---	---	---	---
0010	1031+43T	-	---	STR 9.1	---	---	---	2	---	---
0010	24+50X6	-	28+75X6	LT-MEDIAN	776	---	---	---	---	---
0010	24+50X6	-	27+06X6	RT	---	611	---	---	---	---
0010	953+10T	-	---	LT	---	221	---	---	---	---
0010	956+00T	-	---	STR 1.0	---	---	---	25	---	8
0010	991+13T	-	---	STR 1.2	---	---	---	25	---	8
0010	UNDISTRIBUTED	-	---	STR 5.0	---	---	---	25	---	8
0010	UNDISTRIBUTED	-	---	---	1,171	208	100	---	---	---
TOTAL 0010					5,855	1,040	100	8	75	24

TURBIDITY BARRIERS

CATEGORY	STATION	LOCATION	REMARKS	
628.6005	216	NORTH BANK	LEMONWEIR RIVER TEMP BRIDGE	
628.6005	234	PIER	LEMONWEIR RIVER TEMP BRIDGE	
628.6005	255	PIER & SOUTH BANK	LEMONWEIR RIVER TEMP BRIDGE	
TOTAL 0010				705

Addendum No. 01
ID 1016-05-80
Revised Sheet 104
October 26, 2020

TRAFFIC CONTROL LINES

CATEGORY	STATION	TO	STATION	LOCATION	643.0300	643.0420	643.0500	643.0600	643.0705	643.0715	643.0800	643.0900	643.0920	643.1051	643.1205.5	643.4100.5	REMARKS
0010	906+00EVB	-	1044+10EVB	STAGE 1A IH 90/94 EB	5,104	232	---	---	464	754	58	609	1	1	29	29	TRAFFIC CONTROL SIGNS FORKS WITH CELLULAR COMMUNICATIONS
0010	3+147 X1'	-	36+88 X1'	STAGE 1A IH 90/94 EB OFF RAMP	870	---	---	---	---	174	---	29	---	---	---	---	TRAFFIC CONTROL INTERIM LANE CLOSURE
0010	928+10EVB	-	1066+58EVB	STAGE 1B IH 90/94 WB	6,670	261	---	---	522	812	58	638	1	1	29	29	BASIC TRAFFIC QUEUE WARNING SYSTEM
0010	928+10EVB	-	1066+58EVB	STAGE 1A IH 90/94 WB EXISTING ON RAMP	6,670	261	---	---	522	812	58	638	1	1	29	29	BASIC TRAFFIC QUEUE WARNING SYSTEM
0010	30+47 X1'	-	32+60 X1'	STAGE 1A IH 90/94 WB EXISTING ON RAMP	317	---	---	---	---	---	---	87	---	---	---	---	TRAFFIC CONTROL SIGNS FORKS WITH CELLULAR COMMUNICATIONS
0010	28+5+XV'	-	31+27 XV'	STAGE 1A IH 90/94 WB EXISTING OFF RAMP	319	---	---	---	319	---	---	29	---	---	---	---	TRAFFIC CONTROL SIGNS FORKS WITH CELLULAR COMMUNICATIONS
0010	---	---	---	STH 82 EB	---	---	---	---	---	---	---	58	---	---	---	---	TRAFFIC CONTROL INTERIM LANE CLOSURE
0010	906+00EVB	-	1044+10EVB	PRE-STAGE 1B IH 90/94 EB	1,143	72	---	---	144	104	16	168	---	---	8	8	NIGHT-TIME INSIDE LANE CLOSURE
0010	928+10EVB	-	1066+58EVB	PRE-STAGE 1B IH 90/94 WB	1,279	72	---	---	144	104	16	168	---	---	8	8	NIGHT-TIME INSIDE LANE CLOSURE
0010	906+00EVB	-	1044+10EVB	STAGE 1B IH 90/94 EB INGRESS WEST OF CHG	2,324	166	7	---	---	332	---	266	---	---	166	166	FROM SDD TRAFFIC CONTROL INGRESS/EGRESS WITH BARRIER
0010	928+10EVB	-	1066+58EVB	STAGE 1B IH 90/94 EB INGRESS WEST OF CHG	2,324	166	7	---	---	332	---	266	---	---	166	166	FROM SDD TRAFFIC CONTROL INGRESS/EGRESS WITH BARRIER
0010	928+10EVB	-	1066+58EVB	STAGE 1B IH 90/94 EB INGRESS BETWEEN CHG & STH 82	6,640	332	7	---	---	664	---	664	---	---	---	---	FROM SDD TRAFFIC CONTROL INGRESS/EGRESS WITH BARRIER
0010	928+10EVB	-	1066+58EVB	STAGE 1B IH 90/94 EB INGRESS BETWEEN CHG & STH 82	2,324	166	7	---	---	332	---	664	---	---	---	---	FROM SDD TRAFFIC CONTROL INGRESS/EGRESS WITH BARRIER
0010	928+10EVB	-	1066+58EVB	STAGE 1B IH 90/94 EB INGRESS BETWEEN STH 82 & LEMONWEE R	2,324	166	7	---	---	332	---	664	---	---	---	---	FROM SDD TRAFFIC CONTROL INGRESS/EGRESS WITH BARRIER
0010	928+10EVB	-	1066+58EVB	STAGE 1B IH 90/94 EB INGRESS BETWEEN STH 82 & LEMONWEE R	6,640	332	7	---	---	664	---	664	---	---	---	---	FROM SDD TRAFFIC CONTROL INGRESS/EGRESS WITH BARRIER
0010	31+17 X1'	-	36+88 X1'	STAGE 1B IH 90/94 EB INGRESS EAST OF LEMONWEE R	6,640	332	7	---	---	664	---	664	---	---	---	---	FROM SDD TRAFFIC CONTROL INGRESS/EGRESS WITH BARRIER
0010	20+40 X2'	-	29+48 X2'	STAGE 1B IH 90/94 EB ON RAMP	2,480	---	---	---	---	---	---	---	---	---	---	---	FROM SDD TRAFFIC CONTROL INGRESS/EGRESS WITH BARRIER
0010	928+10EVB	-	1066+58EVB	STAGE 1B IH 90/94 WB	3,320	166	---	---	---	1,328	---	2,490	---	---	166	166	FROM SDD TRAFFIC CONTROL INGRESS/EGRESS WITH BARRIER
0010	28+5+XV'	-	31+27 XV'	STAGE 1B IH 90/94 WB EXISTING OFF RAMP	996	---	---	---	332	996	---	166	---	---	---	---	FROM SDD TRAFFIC CONTROL INGRESS/EGRESS WITH BARRIER
0010	---	---	---	STH 82 EB	---	---	---	---	---	---	---	348	---	---	---	---	FROM SDD TRAFFIC CONTROL INGRESS/EGRESS WITH BARRIER
0010	906+00EVB	-	1044+10EVB	STAGE 1C IH 90/94 EB WINTER SHUTDOWN	4,163	---	---	---	---	1,267	---	2,896	---	---	181	181	FROM SDD TRAFFIC CONTROL INGRESS/EGRESS WITH BARRIER
0010	3+147 X1'	-	36+88 X1'	STAGE 1C IH 90/94 EB INGRESS WEST OF CHG	2,534	181	7	---	---	362	---	724	---	---	---	---	FROM SDD TRAFFIC CONTROL INGRESS/EGRESS WITH BARRIER
0010	928+10EVB	-	1066+58EVB	STAGE 1C IH 90/94 EB INGRESS WEST OF CHG	2,534	181	7	---	---	362	---	724	---	---	---	---	FROM SDD TRAFFIC CONTROL INGRESS/EGRESS WITH BARRIER
0010	928+10EVB	-	1066+58EVB	STAGE 1C IH 90/94 EB INGRESS BETWEEN CHG & STH 82	2,534	181	7	---	---	362	---	724	---	---	---	---	FROM SDD TRAFFIC CONTROL INGRESS/EGRESS WITH BARRIER
0010	928+10EVB	-	1066+58EVB	STAGE 1C IH 90/94 EB INGRESS BETWEEN CHG & STH 82	7,240	362	7	---	---	724	---	905	---	---	---	---	FROM SDD TRAFFIC CONTROL INGRESS/EGRESS WITH BARRIER
0010	31+17 X1'	-	36+88 X1'	STAGE 1C IH 90/94 EB INGRESS BETWEEN STH 82 & LEMONWEE R	2,534	181	7	---	---	362	---	724	---	---	---	---	FROM SDD TRAFFIC CONTROL INGRESS/EGRESS WITH BARRIER
0010	928+10EVB	-	1066+58EVB	STAGE 1C IH 90/94 EB INGRESS BETWEEN STH 82 & LEMONWEE R	7,240	362	7	---	---	724	---	905	---	---	---	---	FROM SDD TRAFFIC CONTROL INGRESS/EGRESS WITH BARRIER
0010	928+10EVB	-	1066+58EVB	STAGE 1C IH 90/94 EB INGRESS EAST OF LEMONWEE R	7,240	362	7	---	---	724	---	905	---	---	---	---	FROM SDD TRAFFIC CONTROL INGRESS/EGRESS WITH BARRIER
0010	928+10EVB	-	1066+58EVB	STAGE 1C IH 90/94 EB INGRESS EAST OF LEMONWEE R	7,240	362	7	---	---	724	---	905	---	---	---	---	FROM SDD TRAFFIC CONTROL INGRESS/EGRESS WITH BARRIER
0010	31+17 X1'	-	36+88 X1'	STAGE 1C IH 90/94 EB OFF RAMP WINTER SHUTDOWN	2,534	---	---	---	---	---	---	---	---	---	---	---	FROM SDD TRAFFIC CONTROL INGRESS/EGRESS WITH BARRIER
0010	928+10EVB	-	1066+58EVB	STAGE 1C IH 90/94 EB ON RAMP WINTER SHUTDOWN	2,715	---	---	---	---	1,448	---	2,715	---	---	181	181	FROM SDD TRAFFIC CONTROL INGRESS/EGRESS WITH BARRIER
0010	928+10EVB	-	1066+58EVB	STAGE 1C IH 90/94 EB ON RAMP WINTER SHUTDOWN	1,086	---	---	---	---	1,086	---	362	---	---	---	---	FROM SDD TRAFFIC CONTROL INGRESS/EGRESS WITH BARRIER
0010	28+5+XV'	-	31+27 XV'	STAGE 1C IH 90/94 WB EXISTING OFF RAMP	---	---	---	---	---	---	---	362	---	---	---	---	FROM SDD TRAFFIC CONTROL INGRESS/EGRESS WITH BARRIER
0010	---	---	---	STH 82 WB	---	---	---	---	---	---	---	362	---	---	---	---	FROM SDD TRAFFIC CONTROL INGRESS/EGRESS WITH BARRIER
0010	---	---	---	TOTAL 0010	118,385	5,148	56	56	1,968	17,882	148	27,636	2	1,416	768	74	



Proposal Schedule of Items

Proposal ID: 20201110001 Project(s): 1016-05-80

Federal ID(s): WISC 2020525

SECTION: 0001

Contract Items

Alt Set ID:

Alt Mbr ID:

Proposal Line Number	Item ID Description	Approximate Quantity and Units	Unit Price	Bid Amount
0094	614.2300 MGS Guardrail 3	262.500 LF	_____.	_____.
0096	614.2610 MGS Guardrail Terminal EAT	1.000 EACH	_____.	_____.
0098	618.0100 Maintenance And Repair of Haul Roads (project) 01. 1016-05-80	1.000 EACH	_____.	_____.
0100	619.1000 Mobilization	1.000 EACH	_____.	_____.
0102	624.0100 Water	636.000 MGAL	_____.	_____.
0104	625.0500 Salvaged Topsoil	6,928.000 SY	_____.	_____.
0106	627.0200 Mulching	8,688.000 SY	_____.	_____.
0108	628.1504 Silt Fence	1,855.000 LF	_____.	_____.
0110	628.1520 Silt Fence Maintenance	1,855.000 LF	_____.	_____.
0112	628.1905 Mobilizations Erosion Control	3.000 EACH	_____.	_____.
0114	628.1910 Mobilizations Emergency Erosion Control	2.000 EACH	_____.	_____.
0116	628.2004 Erosion Mat Class I Type B	5,855.000 SY	_____.	_____.
0118	628.6005 Turbidity Barriers	705.000 SY	_____.	_____.
0120	628.7005 Inlet Protection Type A	45.000 EACH	_____.	_____.
0122	628.7010 Inlet Protection Type B	45.000 EACH	_____.	_____.
0124	628.7504 Temporary Ditch Checks	100.000 LF	_____.	_____.



Proposal Schedule of Items

Proposal ID: 20201110001 Project(s): 1016-05-80

Federal ID(s): WISC 2020525

SECTION: 0001

Contract Items

Alt Set ID:

Alt Mbr ID:

Proposal Line Number	Item ID Description	Approximate Quantity and Units	Unit Price	Bid Amount
0158	643.0600 Traffic Control Flexible Tubular Marker Bases	56.000 EACH	_____.	_____.
0160	643.0705 Traffic Control Warning Lights Type A	1,968.000 DAY	_____.	_____.
0162	643.0715 Traffic Control Warning Lights Type C	17,882.000 DAY	_____.	_____.
0164	643.0800 Traffic Control Arrow Boards	148.000 DAY	_____.	_____.
0166	643.0900 Traffic Control Signs	27,656.000 DAY	_____.	_____.
0168	643.0920 Traffic Control Covering Signs Type II	2.000 EACH	_____.	_____.
0170	643.1051 Traffic Control Signs PCMS with Cellular Communications	1,416.000 DAY	_____.	_____.
0172	643.1205.S Basic Traffic Queue Warning System	768.000 DAY	_____.	_____.
0174	643.4100.S Traffic Control Interim Lane Closure	74.000 EACH	_____.	_____.
0176	643.5000 Traffic Control	1.000 EACH	_____.	_____.
0178	645.0120 Geotextile Type HR	36.000 SY	_____.	_____.
0180	645.0140 Geotextile Type SAS	24.000 SY	_____.	_____.
0182	646.1020 Marking Line Epoxy 4-Inch	20,765.000 LF	_____.	_____.
0184	646.9000 Marking Removal Line 4-Inch	13,970.000 LF	_____.	_____.
0186	646.9100 Marking Removal Line 8-Inch	1,588.000 LF	_____.	_____.
0188	649.0120 Temporary Marking Line Epoxy 4-Inch	55,568.000 LF	_____.	_____.



Proposal Schedule of Items

Proposal ID: 20201110001 Project(s): 1016-05-80

Federal ID(s): WISC 2020525

SECTION: 0001

Contract Items

Alt Set ID:

Alt Mbr ID:

Proposal Line Number	Item ID Description	Approximate Quantity and Units	Unit Price	Bid Amount
0218	SPV.0060 Special 06. Grading, Shaping, and Removing Ingress/Egress Locations	8.000 EACH	_____.	_____.
0220	SPV.0090 Special 01. Concrete Barrier Temporary Precast Left In Place	15,334.000 LF	_____.	_____.
0222	SPV.0090 Special 02. Bore and Jack Steel Casing Pipe 18-Inch	120.000 LF	_____.	_____.
0224	SPV.0090 Special 03. Bore and Jack Steel Casing Pipe 24-Inch	64.000 LF	_____.	_____.
0226	SPV.0090 Special 04. Traffic Control Gawk Screen Furnished	21,794.000 LF	_____.	_____.
0228	SPV.0090 Special 05. Traffic Control Gawk Screen Installed	21,794.000 LF	_____.	_____.
0230	SPV.0090 Special 06. Drain Slotted Vane Longitudinal	1,718.000 LF	_____.	_____.
0232	SPV.0105 Special 01. Temporary Ditch and Storm Sewer Maintenance	LS	LUMP SUM	_____.
0234	603.8500 Anchoring Concrete Barrier Temporary Precast	6,569.000 LF	_____.	_____.
0236	628.2008 Erosion Mat Urban Class I Type B	1,040.000 SY	_____.	_____.
Section: 0001			Total:	_____.
			Total Bid:	_____.

