



Wisconsin Department of Transportation

October 29, 2020

Division of Transportation Systems Development

Bureau of Project Development
4822 Madison Yards Way, 4th Floor South
Madison, WI 53705

Telephone: (608) 266-1631
Facsimile (FAX): (608) 266-8459

NOTICE TO ALL CONTRACTORS:

<p>Proposal #09: 5245-02-72, WISC 2020 533 STH 11 – Mineral Point County Shop Road – Minerva Street STH 23 Lafayette County</p>	<p>5245-02-75 STH 11 – Mineral Point County Shop Road – Minerva Street STH 23 Lafayette County</p>
--	---

Letting of November 10, 2020

This is Addendum No. 01, which provides for the following:

Special Provisions:

Revised Special Provisions	
Article No.	Description
9	Other Contracts/Work By Others
67	Water Service Replace 1-Inch, Item SPV.0060.33; Type 1 Lead Water Service Replace 1-Inch, Item SPV.0060.34 Type 2 Lead Water Service Replace 1-Inch, Item SPV.0060.35 Water Service Replace 1 ½-Inch, Item SPV.0060.36 Water Service Replace 4-Inch, Item SPV.0060.37 Water Service Replace 6-Inch, Item SPV.0060.38 Water Service New 1-Inch, Item SPV.0060.39 Water Service New 4-Inch, Item 0060.40

Schedule of Items:

Revised Bid Item Quantities					
Bid Item	Item Description	Unit	Old Quantity	Revised Quantity	Proposal Total
205.0100	Excavation Common	CY	26,959	1,620	28,579
312.0010	Select Crushed Material	TON	35,102	3,192	38,294
612.0406	Pipe Underdrain Wrapped 6-Inch	LF	1,524	-39	1,485
625.0100	Topsoil	SY	9,557	8,994	18,551
629.0210	Fertilizer Type B	CWT	16	4.50	11.5
630.0120	Seeding Mixture No. 20	LB	25	203	228
630.0140	Seeding Mixture No. 40	LB	5	39	44
630.0500	Seed Water	MGAL	210	30	240
631.0300	Sod Water	MGAL	10	40	50
631.1000	Sod Lawn	SY	288	8,128	8,416
SPV.0035.05	Excavation Waste	CY	23,712	1,679	25,391

Plan Sheets:

Revised Plan Sheets	
Plan Sheet	Plan Sheet Title (brief description of changes to sheet)
41	Revised underdrain construction detail to show limits around sag inlets
379-380	Revised earthwork quantity sheets to incorporate potential EBS excavation
382	Revised aggregate summary sheet to account for additional EBS excavation backfill
405-406	Revised underdrain quantity sheets to correct quantities and to show inlet numbers
407	Revised restoration and water quantity tables to show corrected calculations

The responsibility for notifying potential subcontractors and suppliers of these changes remains with the prime contractor.

Sincerely,

Mike Coleman

Proposal Development Specialist
Proposal Management Section

ADDENDUM NO. 01
5245-02-72 & 5245-02-75
October 29, 2020

Special Provisions

9. Other Contracts/Work by Others

Replace the 4th paragraph under this section with the following:

Lead and galvanized water services must be replaced to inside buildings, houses, and structures within the Project area. The contractor is responsible to replace existing water service from end of new curb stop to inside their building, house, or structure to the existing water meter. Contractor must coordinate water service replacement with property owner. The following property addresses have, or potentially have, existing lead or galvanized water services:

- 67. Water Service Replace 1-Inch, Item SPV.0060.33;**
 - Type 1 Lead Water Service Replace 1-Inch, Item SPV.0060.34**
 - Type 2 Lead Water Service Replace 1-Inch, Item SPV.0060.35**
 - Water Service Replace 1 ½-Inch, Item SPV.0060.36**
 - Water Service Replace 4-Inch, Item SPV.0060.37**
 - Water Service Replace 6-Inch, Item SPV.0060.38**
 - Water Service New 1-Inch, Item SPV.0060.39**
 - Water Service New 4-Inch, Item 0060.40**

*Replace the 2nd paragraph under section titled **E Payment** with the following:*

Payment for Type 1 and Type 2 Lead Water Service Replacement 1-Inch is full compensation for excavating; trenching; bedding; backfilling; maintaining existing water system service; locating and verifying activity of the existing water service; coring into existing foundation wall; sealing of foundation wall with embeco non-shrink grout; removing and replacing concrete building slab; abandoning inactive existing water services; connection to the proposed water main; furnishing and installing the corporation stop, curb stop, curb box and cover, piping, fittings, concrete blocks, PVC sleeve around curb box in concrete or asphalt area, and accessories; testing; coordinating water service replacement with property owner and City; and for furnishing all tools, labor, materials, equipment, and incidentals necessary to complete the Type 1 and Type 2 Lead Water Service Replacement.

Schedule of Items

Attached, dated October 29, 2020, are the revised Schedule of Items Pages 2, 3, 9 – 11, and 17.

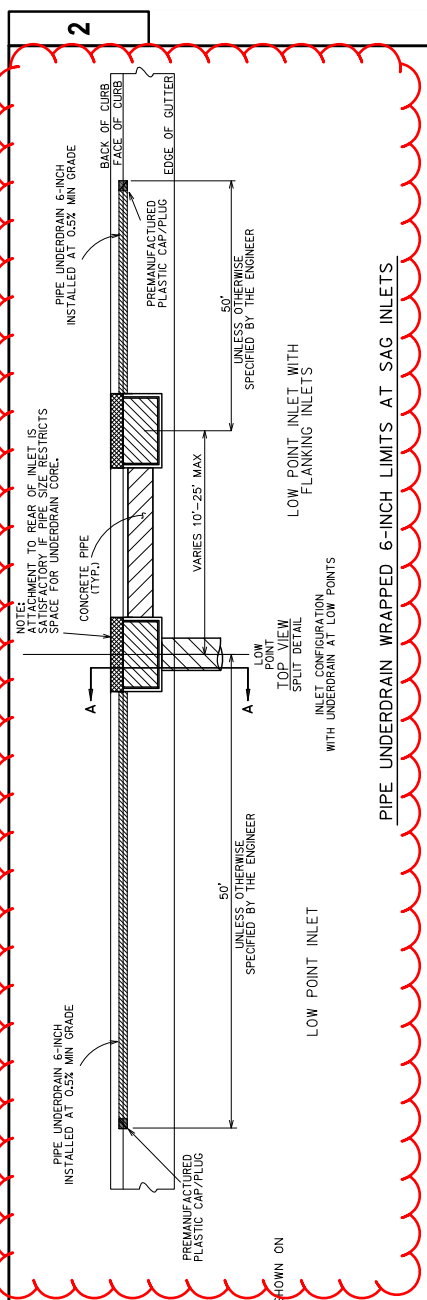
Plan Sheets

The following 8½ x 11-inch sheets are attached and made part of the plans for this proposal:

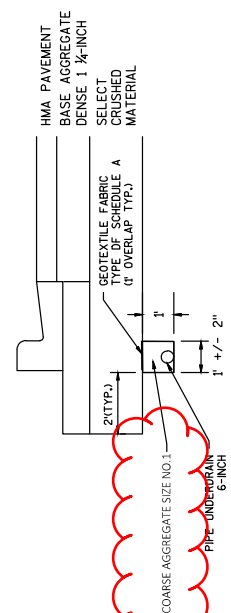
Revised: 41, 379, 380, 382, 405, 406, and 407

Added: None

END OF ADDENDUM



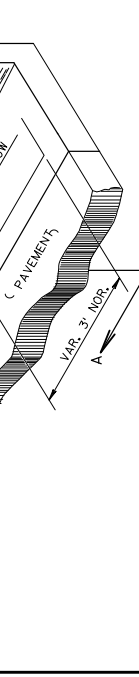
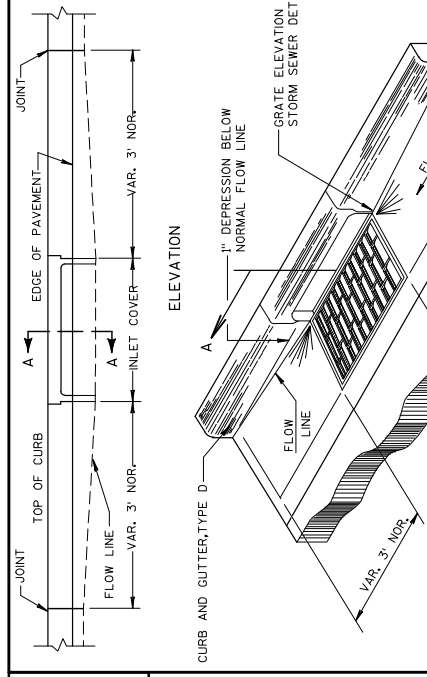
PIPE UNDERDRAIN WRAPPED 6-INCH LIMITS AT SAG INLETS



PIPE UNDERDRAIN WRAPPED 6-INCH DETAIL

Addendum No. 01
 ID 5245-02-72
 Revised Sheet 41
 October 29, 2020

1 PIPE UNDERDRAIN 6-INCH WITH GEOTEXTILE FABRIC TYPE OF SCHEDULE A AND BACKFILL COARSE AGGREGATE SIZE NO. 1. SEE "PIPE UNDERDRAIN 6-INCH DETAIL" AND MISCELLANEOUS QUANTITIES FOR LOCATIONS AND ADDITIONAL INFORMATION.



SECTION A-A
 (INLET TYPE 2X3-H SHOWN)

DIVISION	FROM/TO STATION	CATEGORY	EBS EXCAVATION (3)		UNUSABLE PAVEMENT	205.0100 COMMON EXCAVATION AVAILABLE MATERIAL (5)	205.0200 ROCK EXCAVATION (7)	EXPANDED ROCK (12)		UNEXPANDED FILL	EXPANDED FILL (13)		MASS ORDINATE +/- (14)	SPV.0035.05 EXCAVATION WASTE
			CUT (2)	EBS EXCAVATION (3)				EXPANDED ROCK (12)	FACTOR 1.10		EXPANDED FILL (13)	FACTOR 1.67		
Division 25 w Harriet St	10+96.51/11+43.47	0010	210 210	0 0	23 23	187 187	0 0	0 0	0 0	0 0	0 0	0 0	187 187	187 187
Division 26 Washington St	10+00/10+86.92	0010	141 141	0 0	10 10	131 131	0 0	0 0	0 0	0 0	0 0	0 0	131 131	131 131
Division 27 Wisconsin St	9+53.44/09+70.96	0010	84 84	0 0	11 11	73 73	0 0	0 0	0 0	0 0	0 0	0 0	73 73	73 73
Division 28 NB Downtown	51+25/71+65.03	0010	5,138 5,138	260 260	1,993 1,993	3,405 3,405	0 0	0 0	5 5	9 9	3,396 3,396	0 0	3,396 3,396	3,396 3,396
Division 30 SB Downtown	51+25/71+65.03	0010	5,848 5,848	290 290	3,200 3,200	2,939 2,939	0 0	0 0	31 31	52 52	2,887 2,887	0 0	2,887 2,887	2,887 2,887
Division 32 South Mainline	06+55.97/49+65.97	0010	15,654 15,654	780 780	3,623 3,623	12,811 12,811	19 19	21 21	1,394 1,394	2,293 2,293	10,518 10,518	0 0	10,518 10,518	10,518 10,518
Division 34 North Mainline 1	71+00/74+33.41	0010	1,467 1,467	70 70	156 156	1,381 1,381	0 0	0 0	0 0	0 0	1,381 1,381	0 0	1,381 1,381	1,381 1,381
Division 35 North Mainline 2	74+59.95/84+05	0010	2,180 2,180	110 110	343 343	1,947 1,947	0 0	0 0	350 350	585 585	1,363 1,363	0 0	1,363 1,363	1,363 1,363
CATEGORY SUBTOTAL			30,723	1,510	9,358	22,875	19	21	1,780	2,938	19,937	0	19,937	19,937
CATEGORY TOTAL			35,318	1,510	10,169	26,659	19	21	1,930	3,188	23,471	0	23,471	23,471

Addendum No. 01
ID 5245-02-72
Revised Sheet 379
October 29, 2020

DIVISION	FROM/TO STATION	CATEGORY	EBS EXCAVATION		UNUSABLE PAVEMENT	205.0100 COMMON EXCAVATION		205.0200 ROCK EXCAVATION (7)	EXPANDED ROCK (12)		EXPANDED FILL (13)	MASS ORDINATE +/- (14)	SPV.0035.05 EXCAVATION WASTE
			CUT (2)	(3)		AVAILABLE MATERIAL (5)	EXPANDED ROCK		EXPANDED FILL	FACTOR 1.10			
Division 29	51+25/71+65.03	0020	991	50	783	257	0	0	0	0	0	257	257
NB Parking Lanes			991	50	783	257	0	0	0	0	0	257	257
Division 29 Subtotal													
Division 31	51+25/71+65.03	0020	1,040	50	740	350	0	0	0	0	0	350	350
SB Parking Lanes			1,040	50	740	350	0	0	0	0	0	350	350
Division 31 Subtotal													
Division 33	06+55.97/49+65.97	0020	1,450	70	626	893	0	0	0	0	0	893	893
South Parking Lanes			1,450	70	626	893	0	0	0	0	0	893	893
Division 33 Subtotal													
CATEGORY TOTAL			3,481	170	2,150	1,500	0	0	0	0	0	1,500	1,500
PROJECT TOTAL						28,160							24,972

NOTES:

- (1) COMMON EXCAVATION IS THE SUM OF THE CUT AND EBS EXCAVATION COLUMNS. ITEM NUMBER 205.0100
- (2) SALVAGED/UNUSABLE PAVEMENT MATERIAL IS INCLUDED IN CUT.
- (3) EBS EXCAVATION TO BE BACKFILLED WITH SELECT CRUSHED MATERIAL.
- (4) SALVAGED/UNUSABLE PAVEMENT MATERIAL
- (5) AVAILABLE MATERIAL = CUT - SALVAGED/UNUSABLE PAVEMENT MATERIAL
- (6) MARSH EXCAVATION - TO BE BACKFILLED WITH SELECT BORROW MATERIAL. NOTE: THIS IS DESIGNERS CHOICE, CAN BE BACKFILLED WITH BORROW, OR CUT AS WELL. ITEM NUMBER 205.0500
- (7) ROCK EXCAVATION ITEM NUMBER 205.0200
- (8) REDUCED MARSH IN FILL - EXCAVATED MARSH MATERIAL IS USABLE IN FILLS OUTSIDE THE 1:1 SLOPE.
- (9) REDUCED EBS IN FILL - EXCAVATED EBS MATERIAL IS USABLE IN FILLS OUTSIDE THE 1:1 SLOPE.
- (10) EXPANDED MARSH BACKFILL - THIS IS TO BE FILLED WITH CUT MATERIAL OR OTHER SUITABLE MATERIAL AS DIRECTED BY THE ENGINEER.
- (11) EXPANDED EBS BACKFILL - THIS IS TO BE FILLED WITH CUT MATERIAL OR OTHER SUITABLE MATERIAL AS DIRECTED BY THE ENGINEER.
- (12) EXPANDED ROCK FACTOR = 1.10.
- (13) EXPANDED FILL FACTOR = 1.67.
- (14) THE MASS ORDINATE + OR - QTY CALCULATED FOR THE DIVISION. PLUS QUANTITY INDICATES AN EXCESS OF MATERIAL WITHIN THE DIVISION. MINUS INDICATES A SHORTAGE OF MATERIAL WITHIN THE DIVISION.
- (15) ADDITIONAL COMMON EXCAVATION QUANTITIES ARE ALSO SHOWN ELSEWHERE IN THE PLAN

Addendum No. 01
 ID 5245-02-72
 Revised Sheet 380
 October 29, 2020

AGGREGATES SUMMARY

CATEGORY	ALIGNMENT	STATION	STATION	LOCATION	305.0110		305.0120		312.0110		REMARKS
					BASE AGGREGATE DENSE 3/4- INCH	TON	BASE AGGREGATE DENSE 1 1/4- INCH	TON	SELECT CRUSHED MATERIAL	TON	
0010	NB	6+56	8+00	STH 23	12	--	--	--	--	--	
0010	NB	8+00	16+05	STH 23	75	1602	1602	--	--	--	
0010	NB	16+05	20+78	STH 23	--	1438	1438	2185	--	2185	
0010	NB	20+78	37+00	STH 23	--	4981	4981	7431	--	7431	
0010	NB	37+00	49+67	STH 23	--	3964	3964	5280	--	5280	
0010	NB	BUENA VISTA DR			--	--	--	--	--	--	
0010	NB	UNION GROVE LANE			--	246	246	90	--	90	
0010	NB	CENTER HILL RD			--	331	331	217	--	217	
0010	NB	KENNEDY DR			--	153	153	233	--	233	
0010	NB	HUNTINGTON CT S			--	120	120	94	--	94	
0010	NB	HUNTINGTON CT N			--	134	134	95	--	95	
0010	NB	HILL ST			--	109	109	126	--	126	
0010	NB	RAVINE ST			--	87	87	101	--	101	
0010	NB	WISCONSIN ST			--	48	48	72	--	72	
0010	NB	CTH F			8	253	253	139	--	139	
0010	NB	RIVER ST			--	79	79	120	--	120	
0010	NB	51+14	58+00	STH 23	--	1570	1570	1923	--	1923	
0010	NB	58+00	64+45	STH 23	--	1519	1519	1813	--	1813	
0010	NB	64+45	70+79	STH 23	--	1152	1152	1664	--	1664	
0010	NB	ALICE ST		EAST LEG	--	79	79	69	--	69	
0010	NB	ANN ST		EAST LEG	--	61	61	52	--	52	
0010	NB	STH 81		EAST LEG	--	137	137	133	--	133	
0010	NB	CORNELIA ST		EAST LEG	--	60	60	37	--	37	
0010	NB	CATHERINE ST		EAST LEG	--	55	55	52	--	52	
0010	NB	HARRIET ST		EAST LEG	--	71	71	42	--	42	
0010	NB	51+14	58+00	STH 23	--	1475	1475	1783	--	1783	
0010	NB	58+00	64+45	STH 23	--	1537	1537	1840	--	1840	
0010	NB	64+45	70+79	STH 23	--	1363	1363	1966	--	1966	
0010	NB	ALICE ST		WEST LEG	--	91	91	47	--	47	
0010	NB	ANN ST		WEST LEG	--	281	281	50	--	50	
0010	NB	LOUISA ST		WEST LEG	--	71	71	47	--	47	
0010	NB	CORNELIA ST		WEST LEG	--	66	66	54	--	54	
0010	NB	CATHERINE ST		WEST LEG	--	46	46	52	--	52	
0010	NB	70+79	75+05	STH 23	--	1146	1146	1659	--	1659	
0010	NB	75+05	78+69	STH 23	--	1185	1185	1740	--	1740	
0010	NB	78+69	85+28	STH 23	84	267	267	--	--	--	
0010	NB	WASHINGTON ST CDS		STH 23	--	251	251	--	--	--	
0010	NB	DRIVEWAYS		STH 23	8	650	650	--	--	--	
0010	NB	BACKFILL FOR EBS		STH 23	--	--	--	2869	--	2869	
CATEGORY TOTAL					197	26,677	26,677	34,077			

0020 NB 78+69 - 81+28 STH 23 38
 0020 NB 75+05 - 78+69 STH 23 38
 0020 NB 70+79 - 75+05 STH 23 14
 0020 SB 64+45 - 70+79 STH 23 231
 0020 SB 58+00 - 64+45 STH 23 434
 0020 SB 51+14 - 58+00 STH 23 229
 0020 SB 49+67 - 51+14 STH 23 425
 0020 SB 37+00 - 49+67 STH 23 455
 0020 NB 58+00 - 51+14 STH 23 450
 0020 NB 51+14 - 37+00 STH 23 539
 0020 NB 20+78 - 37+00 STH 23 590
 0020 NB 16+05 - 20+78 STH 23 939
 0020 NB 8+00 - 16+05 STH 23 9
 0020 NB 6+56 - 8+00 STH 23 --
CATEGORY TOTAL 0 3,382 4,217
PROJECT TOTAL 197 30,059 38,294

BACKFILL FOR EBS

Addendum No. 01
 ID 5245-02-72
 Revised Sheet 382
 October 29, 2020

PIPE UNDERDRAIN SUMMARY

612.0206 PIPE UNDERDRAIN UNPERFORATED 6-INCH				612.0206 PIPE UNDERDRAIN UNPERFORATED 6-INCH				SPV.0090.01 PIPE UNDERDRAIN UNPERFORATED 6-INCH				SPV.0090.01 PIPE UNDERDRAIN UNPERFORATED 6-INCH					
CAT	ALI	STA	LOCATION	LF	REMARKS	CAT	ALI	STA	LOCATION	LF	REMARKS	CAT	ALI	STA	LOCATION	LF	REMARKS
0010	NB	19+15	LT	50	INLET 301	0010	NB	39+25	RT	50	INLET 333	0010	NB	39+25	RT	50	INLET 333
0010	NB	19+68	LT	28	INLET 301	0010	NB	39+78	RT	50	INLET 333	0010	NB	40+42	LT	6	---
0010	NB	19+15	RT	50	INLET 300	0010	NB	40+33	LT	50	INLET 334	0010	NB	41+97	LT	50	INLET 335
0010	NB	20+33	LT	39	INLET 303	0010	NB	42+50	LT	38	INLET 335	0010	NB	42+29	RT	50	INLET 336
0010	NB	21+26	LT	50	INLET 408	0010	NB	42+92	RT	50	INLET 337	0010	NB	9+39	LT	7	INLET 338
0010	NB	23+60	LT	6	---	0010	RAV	9+39	LT	31	INLET 340	0010	NB	43+26	LT	50	INLET 340
0010	NB	22+30	LT	273	INLET 308	0010	RAV/NB	9+56	LT/LT	50	INLET 340	0010	NB	43+26	LT	50	INLET 343
0010	NB	23+40	RT	50	INLET 306	0010	NB	44+98	RT	50	INLET 344	0010	NB	45+60	RT	50	INLET 344
0010	NB	25+37	RT	50	INLET 309	0010	NB	45+09	LT	50	INLET 345	0010	NB	45+09	LT	50	INLET 345
0010	NB	25+99	RT	50	INLET 310	0010	NB	46+24	RT	50	INLET 346	0010	NB	46+24	RT	50	INLET 346
0010	NB	26+85	RT	50	INLET 312	0010	WS/NB	9+58	LT/LT	37	INLET 347	0010	NB	46+20	LT/LT	50	INLET 347
0010	NB	26+37	LT	7	---	0010	NB	46+24	LT	50	INLET 347	0010	NB	47+83	LT	50	INLET 349
0010	NB	26+92	LT	7	---	0010	NB	47+83	LT	50	INLET 350	0010	NB	48+37	RT	50	INLET 350
0010	NB	27+49	LT	6	---	0010	NB	48+37	RT	50	INLET 352	0010	NB	48+37	RT	50	INLET 352
0010	NB	26+37	LT	212	INLET 315	0010	NB	48+86	RT	50	INLET 355	0010	NB/RVR	48+87	RT/RT	50	INLET 355
0010	NB	28+56	LT	44	INLET 315	0010	NB	51+84	RT	50	INLET 357	0010	NB	52+46	RT	50	INLET 357
0010	NB	28+03	RT	35	INLET 314	0010	NB	52+46	RT	50	INLET 358	0010	NB	51+20	LT	50	INLET 360
0010	NB	29+45	LT	28	INLET 316	0010	NB	52+35	LT	50	INLET 361	0010	NB	52+85	LT	50	INLET 361
0010	NB	29+22	RT	50	INLET 318	0010	NB	53+65	RT/RT	31	INLET 362	0010	NB	54+51	RT	50	INLET 362
0010	NB	29+77	RT	50	INLET 318	0010	NB	54+77	RT	50	INLET 364	0010	NB	54+77	RT	50	INLET 364
0010	NB	31+95	LT	50	INLET 321	0010	NB	54+77	RT	50	INLET 365	0010	NB	55+22	LT	50	INLET 365
0010	NB	32+57	LT	30	INLET 323	0010	NB	55+22	LT	50	INLET 366	0010	NB	10+17	LT	45	INLET 366
0010	NB	32+04	RT	50	INLET 322	0010	NB	10+08	RT	50	INLET 367	0010	NB	10+53	RT	50	INLET 367
0010	NB	9+46	LT	23	INLET 324	0010	NB	10+56	RT	50	INLET 369	0010	NB	11+06	RT	50	INLET 369
0010	NB	33+96	LT	6	---	0010	NB	12+10	LT/LT	45	INLET 369	0010	NB	12+10	LT/LT	50	INLET 369
0010	NB	34+34	RT	50	INLET 326	0010	NB	58+08	LT	50	INLET 368	0010	NB	58+08	LT	50	INLET 368
0010	NB	34+62	LT	90	INLET 327	0010	NB	58+10	RT	50	INLET 369	0010	NB	58+10	RT	50	INLET 369
0010	NB	35+45	RT	50	INLET 329	0010	NB	58+10	RT	50	INLET 369	0010	NB	58+10	RT	50	INLET 369
0010	NB	35+98	RT/RT	43	INLET 328	0010	NB	58+10	RT	50	INLET 369	0010	NB	58+10	RT	50	INLET 369
0010	NB	10+44	LT	19	INLET 330	0010	NB	58+10	RT	50	INLET 369	0010	NB	58+10	RT	50	INLET 369
0010	NB	10+40	LT/RT	50	INLET 330	0010	NB	58+10	RT	50	INLET 369	0010	NB	58+10	RT	50	INLET 369
0010	NB	35+31	LT	99	INLET 331	0010	NB	58+10	RT	50	INLET 369	0010	NB	58+10	RT	50	INLET 369
0010	NB	37+77	LT	8	INLET 332	0010	NB	58+10	RT	50	INLET 369	0010	NB	58+10	RT	50	INLET 369
0010	NB	37+28	LT	50	INLET 332	0010	NB	58+10	RT	50	INLET 369	0010	NB	58+10	RT	50	INLET 369
SUBTOTAL				52		SUBTOTAL				6		SUBTOTAL				1,684	

PIPE UNDERDRAIN SUMMARY CONTINUED

612.0206

SPV. 0090.01

612.0406

PIPE UNDERDRAIN UNPERFORATED 6-INCH	PIPE UNDERDRAIN (6-INCH) UNPERFORATED WITH GEOTEXTILE FABRIC AND AGGREGATE	PIPE UNDERDRAIN WRAPPED 6-INCH
-------------------------------------	--	--------------------------------

CAT	ALI	STA	STA	LOCATION	LF	REMARKS	CAT	ALI	STA	STA	LOCATION	LF	REMARKS	
0010	NB/LSA	60+46	- 10+92	LT/RT	45	INLET 374	0060	NB	21+26	- 22+30	LT	111		
0010	NB	61+35	- 61+85	RT	50	INLET 370	0060	NB	22+56	- 23+16	LT	66		
0010	NB-SB	61+35	- 61+85	LT	50	INLET 375	0060	NB	23+36	- 23+60	LT	24		
0010	CR/NB	12+11	- 64+52	LT/RT	36	INLET 378	0060	NB	23+60		LT	5		
0010	NB	64+56	- 65+06	RT	50	INLET 378	0060	NB	23+68	- 25+02	LT	143		
0010	NB-SB	65+62	- 66+12	LT	50	INLET 380	0060	NB	25+25	- 26+37	LT	112		
0010	NB-SB	64+58	- 64+80	RT	50	INLET 379	0060	NB	23+60		LT	5		
0010	NB-SB	64+62	- 65+12	RT	50	INLET 379	0060	NB	26+45	- 26+92	LT	52		
0010	CR/NB	10+90	- 67+81	LT/RT	36	INLET 386	0060	NB	26+92		LT	5		
0010	NB	67+85	- 68+35	RT	50	INLET 384	0060	NB	27+00	- 27+49	LT	55		
0010	CR/NB	12+03	- 67+82	LT/LT	32	INLET 384	0060	NB	27+49		LT	5		
0010	NB-SB	67+83	- 68+33	LT	50	INLET 386	0060	NB	27+64	- 28+76	LT	117		
0010	NB-SB	67+90	- 68+10	RT	50	INLET 385	0060	NB	33+19	- 33+96	LT	77		
0010	NB-SB	67+94	- 68+44	RT	50	INLET 387	0060	NB	33+96		LT	5		
0010	NB-SB	69+60	- 70+08	RT	50	INLET 388	0060	NB	34+02	- 34+62	LT	65		
0010	NB-SB	69+74	- 70+24	LT	50	INLET 389	0060	NB	34+62		LT	5		
0010	NB	70+28	- 71+61	LT/LT	50	INLET 389	0060	NB	34+70	- 35+31	LT	66		
0010	NB	70+07	- 70+57	RT	50	INLET 390	0060	NB	35+31		LT	5		
0010	HE	10+31	- 10+55	RT	25	INLET 390	0060	NB	35+39	- 37+77	LT	224		
0010	NB	72+33	- 72+79	RT	50	INLET 393	0060	NB	37+77		LT	5		
0010	NB	72+83	- 73+85	RT	131	INLET 394	0060	NB	37+86	- 38+75	LT	92		
0010	NB	75+54	- 76+04	LT	50	INLET 396	0060	NB	38+75		LT	5		
0010	NB	76+79	- 77+29	LT	50	INLET 397	0060	NB	38+75	- 38+82	LT	8		
0010	NB	76+79	- 77+29	RT	50	INLET 398	0060	NB	38+82		LT	5		
0010	MRY	77+32	- 12+10	RT/RT	50	INLET 398	0060	NB	38+82	- 40+42	LT	160		
0010	MRY	11+91	- 12+41	LT	50	INLET 399.3	0060	NB	40+42		LT	5		
0010	NB	77+98	- 78+48	LT	50	INLET 399.4	0060	NB	40+51	- 40+85	LT	58		
SUBTOTAL					0	1,355						TOTAL	1,485	
TOTAL					58	4,802								

Addendum No. 01
 ID 5245-02-72
 Revised Sheet 406
 October 29, 2020

TEMPORARY STORM SEWER SUMMARY

CATEGORY	STATION	STATION	OFFSET	OFFSET	LF	ABANDONING STORM PIPE	CY	COVERING STORM SEWER	EACH	REMARKS
0010	60+55.35		3.5' LT		--		--	1	1	STAGE 2
0010	64+03.64		7.4' LT		--		--	1	1	STAGE 2
0010	64+58.31 - 64+44.92		1.8' LT - 9.7' LT		16		--	--	--	STAGE 2
0010	67+32.41		10.0' LT		--		--	1	1	STAGE 2
0010	67+90.32 - 67+80.85		0.9' LT - 18.5' LT		17		--	--	--	STAGE 2
0010	70+45.00		10.0' LT		--		--	2	2	STAGE 2
0010	61+01.13		23.5' RT		--	5.3	--	--	--	STAGE 3
TOTAL						33	5.3	5	5	

WATER SUMMARY

CATEGORY	LOCATION	WATER MGAL	SEED WATER MGAL	SOD WATER MGAL	REMARKS
0010	EARTHWORK	150	--	--	
	BASE COURSE	110	--	--	
	SOD	--	--	50	
	SEED	--	240	--	
CATEGORY TOTAL		260	240	50	
0020	EARTHWORK	20	--	--	
	BASE COURSE	20	--	--	
CATEGORY TOTAL		40	0	0	
TOTAL		300	240	50	

RESTORATION SUMMARY

ALIGNMENT	STATION	STATION	STATION	OFFSET	TOPSOIL SY	MULCHING SY	EROSTON MAT URBAN CLASS I TYPE A SY	FERTILIZER TYPE B CWT	SEEDING MIXTURE NO. 20 LB	SEEDING MIXTURE NO. 40 LB	SEEDING MIXTURE NO. 75 LB	SOD LAWN SY	REMARKS
NB	6+56	-	16+05		963	--	--	0.6	26	--	--	--	
NB	16+05	-	20+50		1097	--	1097	0.7	30	--	--	--	
NB	20+50	-	26+85		856	--	--	0.5	--	--	--	856	
NB	26+85	-	36+27		769	--	--	0.5	--	--	--	769	
NB	36+27	-	49+35		1128	--	--	0.7	--	--	--	1128	
NB	49+35	-	64+15		70	--	25	0.0	--	1	--	45	
NB	64+15	-	67+45		868	--	--	0.5	--	--	--	868	
NB	67+45	-	70+75		640	--	--	0.4	--	--	--	640	
NB	70+75	-	77+65		583	--	--	0.4	--	--	--	583	
NB	77+65	-	80+50		598	--	--	0.4	--	--	--	598	
NB	80+50	-	83+95		1128	--	927	0.7	25	--	--	201	
NB	12+25	-	16+05		571	--	--	0.4	15	--	--	--	
NB	16+05	-	20+00		530	--	530	0.3	14	--	--	--	
NB	20+00	-	28+90		1665	--	1665	1.0	45	--	--	--	
NB	28+90	-	32+92		295	--	--	0.2	--	--	--	295	
NB	32+92	-	42+94		1443	--	1317	0.9	36	--	--	126	
NB	42+94	-	45+85		131	--	--	0.1	--	--	--	131	
NB	45+85	-	49+08		203	--	--	0.1	--	--	--	203	
NB	49+08	-	64+15		665	--	590	0.4	16	11	1	75	USE NO. 75 BY RIVER
NB	64+15	-	67+45		269	--	--	0.2	--	--	--	269	
NB	67+45	-	70+75		196	--	--	0.1	--	--	--	196	
NB	70+75	-	77+65		536	--	--	0.3	--	--	--	536	
NB	77+65	-	84+50		1657	--	1530	1.0	28	28	--	127	
			UNDISTRIBUTED		1690	280	833	1.1	21	4	--	770	
TOTAL					18,551	1,814	8,514	11.5	228	44	1	8,416	

Addendum No. 01
 ID 5245-02-72
 Revised Sheet 407
 October 29, 2020



Proposal Schedule of Items

Proposal ID: 20201110009 Project(s): 5245-02-72, 5245-02-75

Federal ID(s): WISC 2020533, N/A

SECTION: 0001 Contract Items

Alt Set ID: Alt Mbr ID:

Proposal Line Number	Item ID Description	Approximate Quantity and Units	Unit Price	Bid Amount
0034	204.0220 Removing Inlets	66.000 EACH	_____.	_____.
0036	204.0245 Removing Storm Sewer (size) 01. 8-IN	33.000 LF	_____.	_____.
0038	204.0245 Removing Storm Sewer (size) 02. 12-IN	2,114.000 LF	_____.	_____.
0040	204.0245 Removing Storm Sewer (size) 03. 15-IN	328.000 LF	_____.	_____.
0042	204.0245 Removing Storm Sewer (size) 04. 18-IN	1,218.000 LF	_____.	_____.
0044	204.0245 Removing Storm Sewer (size) 05. 19x30-Inch HE	65.000 LF	_____.	_____.
0046	204.0245 Removing Storm Sewer (size) 06. 21-IN	14.000 LF	_____.	_____.
0048	204.0245 Removing Storm Sewer (size) 07. 24x38-Inch HE	29.000 LF	_____.	_____.
0050	204.0245 Removing Storm Sewer (size) 08. 24-IN	688.000 LF	_____.	_____.
0052	204.0245 Removing Storm Sewer (size) 09. 30-IN	1,057.000 LF	_____.	_____.
0054	204.0245 Removing Storm Sewer (size) 10. 36-IN	1,509.000 LF	_____.	_____.
0056	204.0245 Removing Storm Sewer (size) 11. 42-IN	254.000 LF	_____.	_____.
0058	204.0245 Removing Storm Sewer (size) 12. 48-IN	407.000 LF	_____.	_____.
0060	204.0291.S Abandoning Sewer	180.000 CY	_____.	_____.
0062	204.9090.S Removing (item description) 01. Removing or Abandoning Conduit	1,700.000 LF	_____.	_____.
0064	205.0100 Excavation Common	28,579.000 CY	_____.	_____.



Proposal Schedule of Items

Proposal ID: 20201110009 Project(s): 5245-02-72, 5245-02-75

Federal ID(s): WISC 2020533, N/A

SECTION: 0001 Contract Items

Alt Set ID: Alt Mbr ID:

Proposal Line Number	Item ID Description	Approximate Quantity and Units	Unit Price	Bid Amount
0066	205.0200 Excavation Rock	19.000 CY	_____.	_____.
0068	206.1000 Excavation for Structures Bridges (structure) 01. B-33-7	LS	LUMP SUM	_____.
0070	206.2000 Excavation for Structures Culverts (structure) 01. C-33-1	LS	LUMP SUM	_____.
0072	210.1500 Backfill Structure Type A	252.000 TON	_____.	_____.
0074	210.2500 Backfill Structure Type B	171.000 TON	_____.	_____.
0076	213.0100 Finishing Roadway (project) 01. 5245-02-72	1.000 EACH	_____.	_____.
0078	214.0100 Obliterating Old Road	5.000 STA	_____.	_____.
0080	305.0110 Base Aggregate Dense 3/4-Inch	197.000 TON	_____.	_____.
0082	305.0120 Base Aggregate Dense 1 1/4-Inch	30,059.000 TON	_____.	_____.
0084	311.0110 Breaker Run	34.000 TON	_____.	_____.
0086	312.0110 Select Crushed Material	38,294.000 TON	_____.	_____.
0088	405.1000 Stamping Colored Concrete	85.000 CY	_____.	_____.
0090	415.0410 Concrete Pavement Approach Slab	223.000 SY	_____.	_____.
0092	416.0160 Concrete Driveway 6-Inch	164.000 SY	_____.	_____.
0094	416.0170 Concrete Driveway 7-Inch	466.000 SY	_____.	_____.
0096	416.0260 Concrete Driveway HES 6-Inch	786.000 SY	_____.	_____.



Proposal Schedule of Items

Proposal ID: 20201110009 Project(s): 5245-02-72, 5245-02-75

Federal ID(s): WISC 2020533, N/A

SECTION: 0001 Contract Items

Alt Set ID: Alt Mbr ID:

Proposal Line Number	Item ID Description	Approximate Quantity and Units	Unit Price	Bid Amount
0248	611.8110 Adjusting Manhole Covers	42.000 EACH	_____.	_____.
0250	611.9800.S Pipe Grates	1.000 EACH	_____.	_____.
0252	612.0206 Pipe Underdrain Unperforated 6-Inch	58.000 LF	_____.	_____.
0254	612.0406 Pipe Underdrain Wrapped 6-Inch	1,485.000 LF	_____.	_____.
0256	612.0902.S Insulation Board Polystyrene (inch) 01.2-Inch	25.000 SY	_____.	_____.
0258	614.2300 MGS Guardrail 3	150.000 LF	_____.	_____.
0260	614.2330 MGS Guardrail 3 K	662.500 LF	_____.	_____.
0262	614.2350 MGS Guardrail Short Radius	69.500 LF	_____.	_____.
0264	614.2500 MGS Thrie Beam Transition	39.000 LF	_____.	_____.
0266	614.2610 MGS Guardrail Terminal EAT	8.000 EACH	_____.	_____.
0268	614.2630 MGS Guardrail Short Radius Terminal	1.000 EACH	_____.	_____.
0270	616.0700.S Fence Safety	1,506.000 LF	_____.	_____.
0272	619.1000 Mobilization	1.000 EACH	_____.	_____.
0274	620.0100 Concrete Corrugated Median	250.000 SF	_____.	_____.
0276	620.0300 Concrete Median Sloped Nose	57.000 SF	_____.	_____.
0278	624.0100 Water	300.000 MGAL	_____.	_____.



Proposal Schedule of Items

Proposal ID: 20201110009 Project(s): 5245-02-72, 5245-02-75

Federal ID(s): WISC 2020533, N/A

SECTION: 0001 Contract Items

Alt Set ID: Alt Mbr ID:

Proposal Line Number	Item ID Description	Approximate Quantity and Units	Unit Price	Bid Amount
0280	625.0100 Topsoil	18,551.000 SY	_____.	_____.
0282	625.0105 Topsoil	65.000 CY	_____.	_____.
0284	627.0200 Mulching	1,814.000 SY	_____.	_____.
0286	628.1104 Erosion Bales	40.000 EACH	_____.	_____.
0288	628.1504 Silt Fence	2,967.000 LF	_____.	_____.
0290	628.1520 Silt Fence Maintenance	2,967.000 LF	_____.	_____.
0292	628.1905 Mobilizations Erosion Control	5.000 EACH	_____.	_____.
0294	628.1910 Mobilizations Emergency Erosion Control	5.000 EACH	_____.	_____.
0296	628.2006 Erosion Mat Urban Class I Type A	8,514.000 SY	_____.	_____.
0298	628.7015 Inlet Protection Type C	131.000 EACH	_____.	_____.
0300	628.7020 Inlet Protection Type D	3.000 EACH	_____.	_____.
0302	628.7504 Temporary Ditch Checks	10.000 LF	_____.	_____.
0304	628.7555 Culvert Pipe Checks	5.000 EACH	_____.	_____.
0306	628.7570 Rock Bags	88.000 EACH	_____.	_____.
0308	629.0210 Fertilizer Type B	11.500 CWT	_____.	_____.
0310	630.0120 Seeding Mixture No. 20	228.000 LB	_____.	_____.
0312	630.0140 Seeding Mixture No. 40	44.000 LB	_____.	_____.



Proposal Schedule of Items

Proposal ID: 20201110009 Project(s): 5245-02-72, 5245-02-75

Federal ID(s): WISC 2020533, N/A

SECTION: 0001 Contract Items

Alt Set ID: Alt Mbr ID:

Proposal Line Number	Item ID Description	Approximate Quantity and Units	Unit Price	Bid Amount
0314	630.0175 Seeding Mixture No. 75	1.000 LB	_____.	_____.
0316	630.0500 Seed Water	240.000 MGAL	_____.	_____.
0318	631.0300 Sod Water	50.000 MGAL	_____.	_____.
0320	631.1000 Sod Lawn	8,416.000 SY	_____.	_____.
0322	632.0101 Trees (species) (size) (root) 01. Quercus Robur, B&B, 2-Inch	5.000 EACH	_____.	_____.
0324	632.0101 Trees (species) (size) (root) 02. Malus X, B&B, 2-Inch	3.000 EACH	_____.	_____.
0326	632.0101 Trees (species) (size) (root) 03. Gleditsia Triacanthos, B&B, 2-Inch	4.000 EACH	_____.	_____.
0328	632.0101 Trees (species) (size) (root) 04. Gkinkgo Biloba, B&B, 2-Inch	3.000 EACH	_____.	_____.
0330	632.0101 Trees (species) (size) (root) 05. Celtis Occidentalis, B&B, 2-Inch	2.000 EACH	_____.	_____.
0332	632.0101 Trees (species) (size) (root) 06. Syringa Reticulata, B&B, 2-Inch	1.000 EACH	_____.	_____.
0334	632.0201 Shrubs (species) (size) (root) 01. Juniperus Horizontalis, Container, 3 Gal	40.000 EACH	_____.	_____.
0336	632.9101 Landscape Planting Surveillance and Care Cycles	16.000 EACH	_____.	_____.
0338	634.0612 Posts Wood 4x6-Inch X 12-FT	7.000 EACH	_____.	_____.
0340	634.0614 Posts Wood 4x6-Inch X 14-FT	10.000 EACH	_____.	_____.
0342	634.0616 Posts Wood 4x6-Inch X 16-FT	12.000 EACH	_____.	_____.



Proposal Schedule of Items

Proposal ID: 20201110009 Project(s): 5245-02-72, 5245-02-75

Federal ID(s): WISC 2020533, N/A

SECTION: 0001 Contract Items

Alt Set ID: Alt Mbr ID:

Proposal Line Number	Item ID Description	Approximate Quantity and Units	Unit Price	Bid Amount
0502	ASP.1T0G On-the-Job Training Graduate at \$5.00/HR	3,200.000 HRS	5.00000	16,000.00
0504	SPV.0035 Special 01. Shredded Bark Mulch	12.000 CY	_____.	_____.
0506	SPV.0035 Special 02. Exc, Seg, Hauling, and Disp of Cont Soil and the Mgmt of Cont Groundwater	822.000 CY	_____.	_____.
0508	SPV.0035 Special 03. Abandoning Storm Pipe Special	5.300 CY	_____.	_____.
0510	SPV.0035 Special 04. Utility Rock Excavation	126.000 CY	_____.	_____.
0512	SPV.0035 Special 05. Excavation Waste	25,391.000 CY	_____.	_____.
0514	SPV.0060 Special 01. Covering Storm Sewer	5.000 EACH	_____.	_____.
0516	SPV.0060 Special 02. Perennials (Achillea X, Container, 1 Gal)	20.000 EACH	_____.	_____.
0518	SPV.0060 Special 03. Perennials (Allium X, Container, 1 Gal)	142.000 EACH	_____.	_____.
0520	SPV.0060 Special 04. Perennials (Stella de Oro, Container, 1 Gal)	84.000 EACH	_____.	_____.
0522	SPV.0060 Special 05. Perennials (Panicum Virgatum, Container, 1 Gal)	24.000 EACH	_____.	_____.
0524	SPV.0060 Special 06. Bench	5.000 EACH	_____.	_____.
0526	SPV.0060 Special 07. Abandon Window Well-307 Main Street	1.000 EACH	_____.	_____.
0528	SPV.0060 Special 08. Abandon Window Well-324 Main Street	1.000 EACH	_____.	_____.