



Wisconsin Department of Transportation

October 29, 2020

Division of Transportation Systems Development

Bureau of Project Development
4822 Madison Yards Way, 4th Floor South
Madison, WI 53705

Telephone: (608) 266-1631
Facsimile (FAX): (608) 266-8459

NOTICE TO ALL CONTRACTORS:

Proposal #22: 4550-03-71, WISC 2020 543
Elkhart Lake - Kiel
South County Line – STH 32/57
STH 67
Manitowoc County

4550-04-71, WISC 2020 544
Plymouth - Kiel
Suhrke Road – North County Line
STH 67
Sheboygan County

Letting of November 10, 2020

This is Addendum No. 01, which provides for the following:

Special Provisions:

Revised Special Provisions	
Article No.	Description
15	Archaeological Coordination
28	Pavement Marking and Centerline Rumble Strips, Type 2 Rumble Strip
38	Cured in Place Point Repair, Item SPV.0090.04

Schedule of Items:

Revised Bid Item Quantities					
Bid Item	Item Description	Unit	Old Quantity	Revised Quantity	Proposal Total
201.0105	Clearing	STA	63	29	92
201.0120	Clearing	ID	137	16	153
201.0205	Grubbing	STA	63	29	92
201.0220	Grubbing	ID	113	8	121

Added Bid Item Quantities					
Bid Item	Item Description	Unit	Old Quantity	Revised Quantity	Proposal Total
520.3318	Culvert Pipe Class III-A 18-Inch	LF	0	95	95
520.3324	Culvert Pipe Class III-A 24-Inch	LF	0	144	144
520.3336	Culvert Pipe Class III-A 36-Inch	LF	0	105	105

Deleted Bid Item Quantities					
Bid Item	Item Description	Unit	Old Quantity	Revised Quantity	Proposal Total
522.0118	Culvert Pipe Reinforced Concrete Class III 18-Inch	LF	95	-95	0
522.0124	Culvert Pipe Reinforced Concrete Class III 24-Inch	LF	144	-144	0
522.0136	Culvert Pipe Reinforced Concrete Class III 36-Inch	LF	105	-105	0

Plan Sheets:

Revised Plan Sheets	
Plan Sheet	Plan Sheet Title (brief description of changes to sheet)
39	Construction Detail – Line style for the cofferdam and the pattern for the temporary diversion channel were not showing up correctly. The drawing was refreshed so those items are depicted correctly.
143	Miscellaneous Quantities – Updates to Clearing and Grubbing items under the 4550-04-71 project including removing rows, adding rows, and updating row data with a change in totals for all four bid items.
153	Miscellaneous Quantities – Bid item number 465.0425 Asphaltic Shoulder Rumble Strips 2-Lane Rural gets a # symbol added after its name with a definition at the bottom of the table to define the shoulder rumble strips as TYPE 1.
155	Miscellaneous Quantities – Bid item number 522.0118 Culvert Pipe Reinforced Concrete Class III 18-Inch was changed to bid item number 520.3318 Culvert Pipe Class III-A 18-Inch. Bid item number 522.0124 Culvert Pipe Reinforced Concrete Class III 24-Inch was changed to bid item number 520.3324 Culvert Pipe Class III-A 24-Inch. Bid item number 522.0136 Culvert Pipe Reinforced Concrete Class III 36-Inch was changed to bid item number 520.3336 Culvert Pipe Class III-A 36-Inch.
211	Plan: STH 67 – Revised description for pipe replacement at STA 152+92 from 1 – CPRC CLASS III 36-INCH REQ'D to 1 – CP CLASS III-A 36-INCH REQ'D
212	Plan: STH 67 – Removed “X” for clearing and grubbing just prior to STA 238+00 LT
213	Plan: STH 67 – Added “X” for clearing and grubbing near STA 252+50 LT, 282+73 LT. Removed “X” for clearing and grubbing near STA 253+60 LT, 258+00 to 258+50 LT, 262+50 to 265+25 LT
215	Plan: STH 67 - Added “X” for clearing and grubbing near STA 417+76 RT, 418+27 RT, 418+28 RT, and 418+88 LT. Removed “X” for clearing and grubbing near STA 414+80 to 416+20 RT, 419+50 to 421+00 RT
216	Plan: STH 67 - Added “X” for clearing and grubbing near STA 422+11 LT, 423+00 LT. Removed “X” for clearing and grubbing near STA 421+00 to 422+00 RT, 430+40 LT, 446+75 LT, 448+25 to 448+75 LT, and 453+50 to 454+00 RT.
217	Plan: STH 67 – Revised description for pipe replacement at STA 482+77 from 1 – CPRC CLASS III 18-INCH REQ'D to 1 – CP CLASS III-A 18-INCH REQ'D Revised description for pipe replacement at STA 527+31 from 1 – CPRC CLASS III 24-INCH REQ'D to 1 – CP CLASS III-A 24-INCH REQ'D Revised description for pipe replacement at STA 528+75 from 1 – CPRC CLASS III 24-INCH REQ'D to 1 – CP CLASS III-A 24-INCH REQ'D
218	Plan: STH 67 – Revised description for pipe replacement at STA 552+43 from 2 – CPRC CLASS III 18-INCH EXTENSIONS REQ'D to 2 – CP CLASS III-A 18-INCH EXTENSIONS REQ'D

The responsibility for notifying potential subcontractors and suppliers of these changes remains with the prime contractor.

Sincerely,

Mike Coleman

Proposal Development Specialist
Proposal Management Section

ADDENDUM NO. 01
4550-03-71/4550-04-71
October 29, 2020

Special Provisions

15. Archaeological Coordination.

Replace the entire article language with the following:

Archaeologically significant sites exist in the project area as follows:

<u>Site</u>	<u>Description</u>	<u>Location</u>
BMN-0092	St. Peter and St. Paul Cemetery	Station 617+00 – 621+00 (LT)
SB-0016 (BSB-0169)	Bugitsquian Village/Becker Village	Station 526+00 – 539+00 (LT and RT)
SB-0131 (47SB131)	Bugitsquian South	Station 505+00 - 516+00 (LT and RT)
SB-0199 (47SB199)	Pink Flamingo	Station 427+00 – 434+00 (LT)
SB-0201 (47SB201)	Collins	Station 163+00 – 170+00 (RT)
BSB-0046	St. John Cemetery	Station 23+00 - 29+00 (RT)

Sites BMN-0092, SB-0016 (BSB-0169), SB-0131, and BSB-0046: WisDOT has received permission from the State Historic Preservation Office (SHPO) to work within the boundaries of these burial sites. This permission only applies to the boundaries of the burial site that lie within the roadway right-of way. A minimum of two weeks prior to beginning any work within the station ranges for these sites, contact Lynn Cloud of the department's Bureau of Technical Services at (608) 266-0099 to determine if the department must appoint an archaeologist to monitor work performed at these locations. Do not use the remainder of these sites outside the roadway right-of-way for borrow, waste disposal, or for the staging of personnel, equipment and/or supplies.

Sites SB-0199 and SB-0201: Do not use these sites for borrow, waste disposal, or for the staging of personnel, equipment and/or supplies.

If a potentially significant archaeological feature or material is discovered during construction operations, halt construction activities in that location and contact the engineer immediately.

28. Pavement Marking and Centerline Rumble Strips.

Replace the entire article language with the following:

Before installing Centerline Rumble Strips place centerline Temporary Marking Line (Epoxy) 4-Inch. Except where removed with the rumble application, do not remove the centerline Temporary Marking Line (Epoxy) 4-Inch. After the Centerline Rumble Strips have been installed, place permanent centerline Marking Line (Epoxy) 4-Inch.

38. Cured in Place Point Repair, Item SPV.0090.04.

Replace paragraph four under section titled B Materials with the following:

The cured repair material shall conform to the following structural standards, test method ASTM D790:

Flexural stress	4,500 psi
Flexural Modulus of Elasticity	250,000 psi

Add the following to the end of section titled E Payment:

Measured length shall be the distance end to end of the repair including the overlap measured lengthwise along the pipe.

Schedule of Items

Attached, dated October 28, 2020, are the revised Schedule of Items Pages 1 – 14.

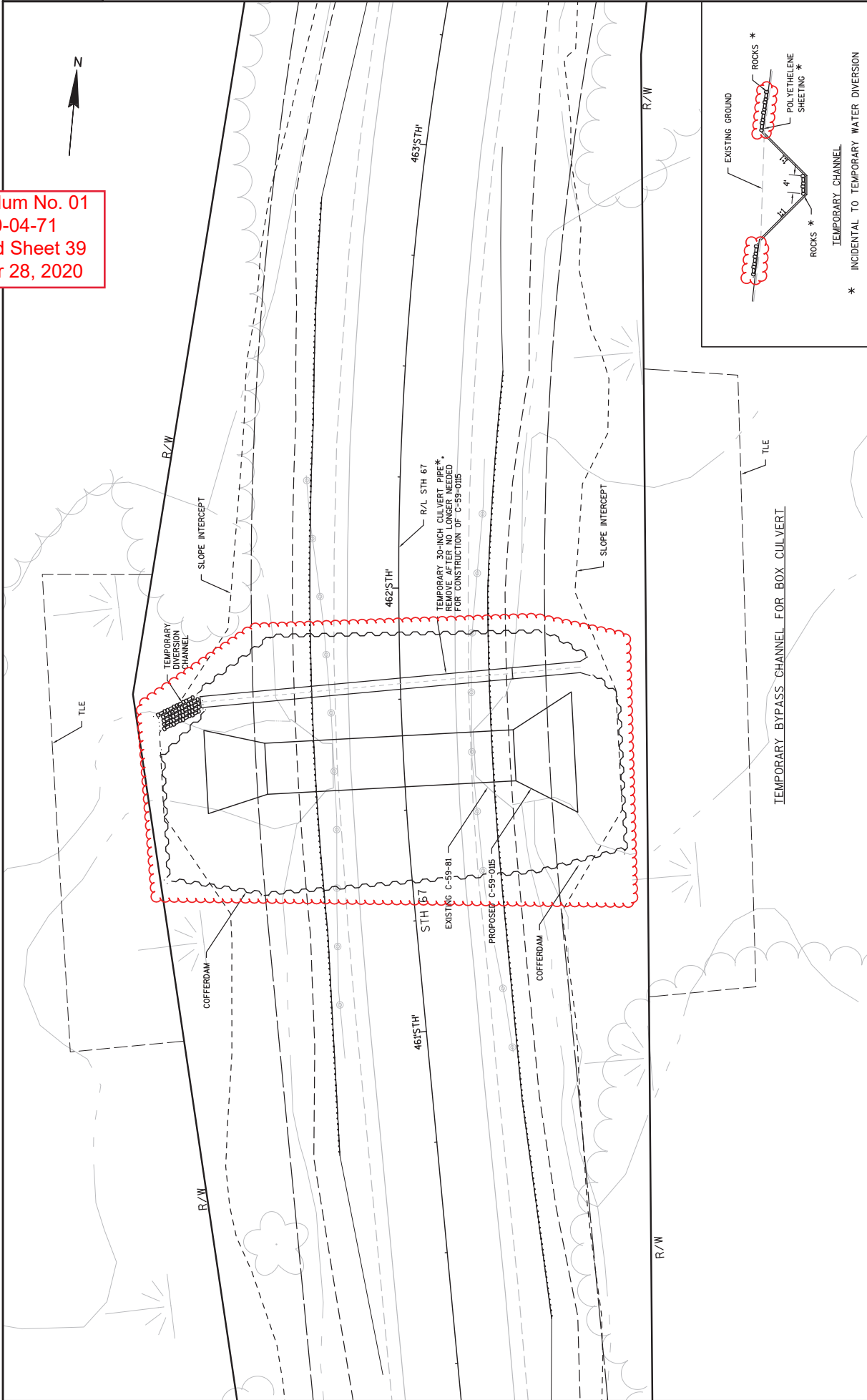
Plan Sheets

The following 8½ x 11-inch sheets are attached and made part of the plans for this proposal:
Revised: 39, 143, 153, 155, 211, 212, 213, 215, 216, 217 and 218.

END OF ADDENDUM



Addendum No. 01
ID 4550-04-71
Revised Sheet 39
October 28, 2020



PROJECT NO: 4550-04-71	COUNTY: SHEBOYGAN	CONSTRUCTION DETAILS	SHEET 39	E
FILE NAME : C:\USERS\MM09386-A\DESKTOP\WISDOT PROJECTS\67TH\DOWNLOADS\45500304_021003-CD.DWG LAYOUT NAME - 021007-CD PLOT DATE : 10/26/2020 11:55 AM PLOT BY : MORGAN, MARC/ME PLOT NAME : PLOT SCALE : *****				

Addendum No. 01
 ID 4550-04-71
 Revised Sheet 143
 October 28, 2020

3

CLEARING AND GRUBBING ITEMS

STATION	LOCATION	STA	D	201.0105 CLEARING	201.0120 GRUBBING	201.0205 GRUBBING	201.0220 GRUBBING	REMARKS
CAT 0010								
PROJECT NO: 4550-03-71								
STAGE 1	596+00 - 600+00	20 L	4	--	4	--	4	--
STAGE 1 SUBTOTAL			4	--	4	--	4	--
4550-03-71 TOTAL			4	--	4	--	4	--
PROJECT NO: 4550-04-71								
STAGE 1	42+28	50 R	--	12	--	18	--	DO NOT GRUB
	46+24	47 R	--	13	--	18	--	
	245-15	31 L	1	1	1	1	1	
	252+00 - 253+00	L	1	--	1	--	1	
	254+00 - 255+00	L	1	--	1	--	1	
	256+00 - 259+00	L	2	--	2	--	2	
	259+00 - 263+00	L	2	--	2	--	2	
	272+00 - 274+00	L	2	--	2	--	2	
	252+73	35 L	1	1	1	1	1	
	237+20	37 L	1	1	1	1	1	
	289+00 - 293+00	35 R	4	4	4	4	4	DO NOT GRUB
	300+14	70 R	1	1	1	1	1	DO NOT GRUB
	314+00 - 315+00	R	1	--	1	--	1	
	316+00 - 321+00	R	5	--	5	--	5	
	416+00 - 424+00	L & R	8	--	8	--	8	
	428+45	30 L	--	11	--	10	--	
	430+37	43 L	--	8	--	8	--	
	444+00 - 449+00	L & R	5	--	5	--	5	
	456+00 - 459+00	R	3	--	3	--	3	
	460+00 - 461+00	R	1	--	1	--	1	
	462+00 - 463+00	L	1	--	1	--	1	
	474+39	28 R	2	2	2	2	2	
	478+00 - 489+00	L & R	11	11	11	11	11	
	490+00 - 496+00	L & R	6	6	6	6	6	
	497+00 - 508+00	L & R	11	--	11	--	11	
	509+00 - 512+00	L & R	3	--	3	--	3	
	515+00 - 519+00	L & R	4	4	4	4	4	
	520+00 - 523+00	L & R	3	3	3	3	3	
	525+00 - 528+00	L & R	3	3	3	3	3	
	531+00 - 535+00	L & R	4	4	4	4	4	
	536+04	44 R	--	8	--	8	--	
	536+20	42 R	--	8	--	8	--	
	537+00 - 538+00	R	1	--	1	--	1	
	538+46	20 R	2	2	2	2	2	
	553+54	L	2	2	2	2	2	
	554+27	31 L	1	1	1	1	1	
	565+00 - 567+00	L	2	2	2	2	2	
STAGE 1 SUBTOTAL			88	113	88	121	121	
4550-04-71 TOTAL			88	113	88	121	121	
CONSTRUCTION TOTAL			92	113	92	121	121	

PIPE REMOVAL ITEMS

STATION	LOCATION	EACH	203.0100 REMOVING SMALL PIPE CULVERTS	203.0200 REMOVING OLD STRUCTURE	204.0185 REMOVING MASONRY	204.0245 REMOVING STORM SEWER	REMARKS
CAT 0010			LS	CY	LF		
PROJECT NO: 4550-03-71							
STAGE 1	627+86 - 627+94	LT	--	--	--	8	
	578+65	LT	1	1	1	--	
	606+50	R/T/L	2	2	2	--	
SUBTOTAL			3	3	3	8	
4550-03-71 TOTAL			3	3	3	8	
PROJECT NO: 4550-04-71							
STAGE 2	32+45	RT	--	--	--	16	ENDWALL ONLY
	32+67	RT	1	1	1	--	
	48+51	RT	--	--	--	16	ENDWALL ONLY
STAGE 2 SUBTOTAL			1	1	1	32	
STAGE 4	48+59 - 48+75	LT	--	--	--	16	
STAGE 4 SUBTOTAL			--	--	--	16	
MILL & OVERLAY SECTION							
	81+75	RT	1	1	1	--	ENDWALLS ONLY
	133+52	RT	1	1	1	--	ENDWALLS ONLY
	152+92	R/T/L	1	1	1	--	ENDWALLS ONLY
	168+62	RT	1	1	1	--	ENDWALLS ONLY
	257+58	RT	1	1	1	--	ENDWALLS ONLY
	310+38 - 311+03	RT	1	1	1	--	ENDWALLS ONLY
	313+18 - 313+96	RT	1	1	1	--	ENDWALLS ONLY
	315+12 - 315+90	RT	1	1	1	--	ENDWALLS ONLY
	447+25 - 447+75	RT	1	1	1	--	ENDWALLS ONLY
	482+77	R/T/L	1	1	1	--	ENDWALLS ONLY
	501+33 - 501+75	LT	1	1	1	--	ENDWALLS ONLY
	508+31 - 508+75	LT	1	1	1	--	ENDWALLS ONLY
	527+31	R/T/L	1	1	1	--	ENDWALLS ONLY
	527+35 - 528+74	LT	--	1	--	--	ENDWALLS ONLY
	540+25	LT	1	1	1	--	ENDWALLS ONLY
	542+18	LT	1	1	1	--	ENDWALLS ONLY
	552+43	RT	2	2	2	--	ENDWALLS ONLY
MILL & OVERLAY SECTION SUBTOTAL			17	17	17	48	
4550-04-71 TOTAL			18	18	18	48	
CONSTRUCTION TOTAL			21	21	21	56	

PROJECT NO: 4550-04-71 HWY: STH 67 COUNTY: SHEBOYGAN

MISCELLANEOUS QUANTITIES

SHEET 143

WISDOT/CADD SHEET 42

PLOT DATE : 10/26/2020 12:47 PM PLOT BY : MORGAN, MARC/KE PLOT NAME :

PLOT SCALE : #####

FILE NAME : C:\PW_WORK\DIR\DEN001\MM093804\00119510\45500304_030201-MQ.DWG LAYOUT NAME - MQ-01

3

Addendum No. 01
ID 4550-04-71
Revised Sheet 153
October 28, 2020

RUMBLE STRIPS

STATION	LOCATION	465.0425 ASPHALTIC SHOULDER RUMBLE STRIPS 2-LANE/RURAL	465.0475 ASPHALTIC CENTERLINE RUMBLE STRIPS 2-LANE/RURAL
56976	571+35	157	--
57005	585+24	1,619	--
57037	617+13	--	4,676
57517	579+89	482	--
58117	594+00	1,283	--
58907	619+66	3,079	--
59526	635+09	219	--
60168	617+36	1,976	--
MILL & OVERLAY SUBTOTAL		6,675	4,676
4550-03-71 TOTAL		6,675	4,676

RUMBLE STRIPS (CONT.)

STATION	LOCATION	465.0425 ASPHALTIC SHOULDER RUMBLE STRIPS 2-LANE/RURAL	465.0475 ASPHALTIC CENTERLINE RUMBLE STRIPS 2-LANE/RURAL
216+13	233+65	C.L.	--
220+72	235+00	LT	1,452
221+72	235+00	RT	--
237+65	272+23	C.L.	4,751
239+62	272+23	C.L.	3,458
275+66	269+00	LT	3,334
276+15	288+86	RT	2,244
278+23	289+20	RT	1,271
291+29	294+05	C.L.	--
291+37	293+54	RT	1,306
291+37	293+54	RT	276
296+03	297+27	RT	134
296+05	299+74	C.L.	369
374+21	392+82	C.L.	--
374+21	399+86	RT	1,565
377+37	392+80	LT	1,543
396+82	424+50	C.L.	--
396+88	402+86	RT	2,768
398+79	424+72	LT	598
403+80	421+80	RT	2,593
428+35	431+13	LT	1,810
428+30	431+65	RT	278
428+50	479+49	C.L.	335
432+41	439+47	RT	--
432+54	434+78	LT	706
435+60	501+00	LT	224
440+31	446+94	RT	6,540
448+02	453+82	RT	663
454+65	479+63	RT	590
483+09	493+54	RT	2,528
483+49	510+19	C.L.	1,045
484+80	510+52	RT	--
502+05	504+27	LT	1,572
505+27	508+27	LT	222
509+05	524+98	LT	300
513+85	520+97	C.L.	1,593
514+19	524+85	C.L.	712
521+88	522+82	RT	--
523+72	529+08	RT	94
528+65	566+37	C.L.	536
528+86	535+41	LT	--
529+84	535+55	RT	645
535+39	540+04	RT	561
535+43	539+86	LT	365
540+62	541+75	LT	343
540+92	566+92	RT	113
542+59	544+88	LT	2,800
545+70	546+19	LT	239
547+03	550+41	LT	49
551+26	558+88	LT	338
559+78	566+61	LT	762
559+78	566+61	LT	683
MILL & OVERLAY SECTION SUBTOTAL		66,629	35,227
4550-04-71 TOTAL		66,629	35,227

MISCELLANEOUS QUANTITIES

STATION	LOCATION	465.0425 ASPHALTIC SHOULDER RUMBLE STRIPS 2-LANE/RURAL	465.0475 ASPHALTIC CENTERLINE RUMBLE STRIPS 2-LANE/RURAL
74+22	81+42	RT	720
80+06	86+24	LT	618
80+54	91+90	CL	1,136
82+35	85+15	RT	380
86+82	95+63	RT	981
87+01	89+05	LT	204
90+02	91+85	LT	183
95+90	144+51	CL	4,861
97+89	99+66	RT	177
99+03	108+68	LT	965
100+79	102+14	RT	135
103+61	105+70	RT	209
106+48	113+68	RT	720
110+60	128+14	LT	1,754
114+88	122+55	LT	767
123+67	126+32	RT	265
127+34	133+04	RT	570
129+17	130+48	LT	131
131+47	144+18	LT	1,271
134+02	138+82	RT	480
139+91	140+77	RT	86
148+51	161+69	CL	1,318
148+65	160+75	RT	1,210
152+25	169+38	LT	1,713
163+69	176+83	CL	1,314
164+39	171+37	RT	698
170+39	202+40	LT	3,201
172+44	174+93	RT	249
178+83	189+34	CL	1,051
179+57	186+54	RT	697
183+34	189+65	CL	531
193+34	196+71	RT	337
202+62	211+83	RT	921
205+47	213+40	LT	793
205+61	215+00	CL	959
CONSTRUCTION TOTAL		75,304	39,903

CULVERT PIPES

STATION	LOCATION	EACH	12-INCH	15-INCH	18-INCH	24-INCH	30-INCH	36-INCH	48-INCH	18-INCH	24-INCH	36-INCH	48-INCH	THICKNESS (INCHES)	INLET ELEVATION	DISCHARGE TIES	JOINT	REMARKS
			STEEL	STEEL	STEEL	STEEL	STEEL	STEEL	STEEL	STEEL	STEEL	STEEL	STEEL	(INCHES)			LF	
520.8000*	521.3112	CONCRETE COLLARS FOR PIPE	12-INCH	15-INCH	18-INCH	24-INCH	30-INCH	36-INCH	48-INCH	18-INCH	24-INCH	36-INCH	48-INCH	0.064	908.38	--	--	
	521.3115	CORRUGATED STEEL	12-INCH	15-INCH	18-INCH	24-INCH	30-INCH	36-INCH	48-INCH	18-INCH	24-INCH	36-INCH	48-INCH	0.109	898.21	--	--	
	521.3118	CORRUGATED STEEL	12-INCH	15-INCH	18-INCH	24-INCH	30-INCH	36-INCH	48-INCH	18-INCH	24-INCH	36-INCH	48-INCH	0.064	924.76	--	--	
	521.3124	CORRUGATED STEEL	12-INCH	15-INCH	18-INCH	24-INCH	30-INCH	36-INCH	48-INCH	18-INCH	24-INCH	36-INCH	48-INCH	0.064	924.56	--	--	
	521.3130	CORRUGATED STEEL	12-INCH	15-INCH	18-INCH	24-INCH	30-INCH	36-INCH	48-INCH	18-INCH	24-INCH	36-INCH	48-INCH	0.064	924.56	--	--	
	521.3136	CORRUGATED STEEL	12-INCH	15-INCH	18-INCH	24-INCH	30-INCH	36-INCH	48-INCH	18-INCH	24-INCH	36-INCH	48-INCH	0.064	924.56	--	--	
	521.3148	CORRUGATED STEEL	12-INCH	15-INCH	18-INCH	24-INCH	30-INCH	36-INCH	48-INCH	18-INCH	24-INCH	36-INCH	48-INCH	0.064	924.56	--	--	
	520.3318	CULVERT PIPE CLASS III-A	18-INCH	24-INCH	36-INCH	48-INCH	18-INCH	24-INCH	36-INCH	48-INCH	18-INCH	24-INCH	36-INCH	0.064	917.97	12	12	
	520.3324	CULVERT PIPE CLASS III-A	18-INCH	24-INCH	36-INCH	48-INCH	18-INCH	24-INCH	36-INCH	48-INCH	18-INCH	24-INCH	36-INCH	0.064	917.97	12	12	
	520.3336	CULVERT PIPE CLASS III-A	18-INCH	24-INCH	36-INCH	48-INCH	18-INCH	24-INCH	36-INCH	48-INCH	18-INCH	24-INCH	36-INCH	0.064	917.97	12	12	
MILL & OVERLAY SECTION			1	11	12	12	12	12	105									
MILL & OVERLAY SUBTOTAL			4	46	12	12	12	12	183	95	144	144	105					
4550-03-71 TOTAL			4	46	12	12	12	12	183	95	144	144	105					

PROJECT NO: 4550-03-71

PROJECT NO: 4550-04-71

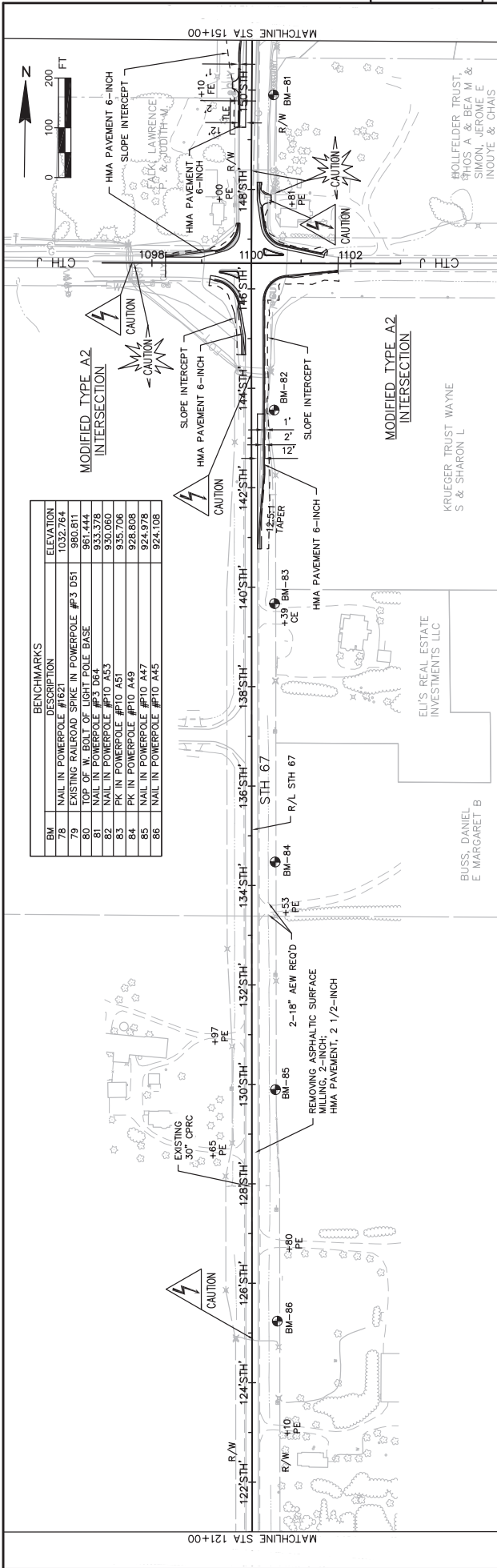
MILL & OVERLAY SECTION

152+92	RT/TLT	2	16	40	84	168	183	95	144	144	105	
168+62	RT	2	16	40	84	168	183	95	144	144	105	
310+38	RT	2	16	40	84	168	183	95	144	144	105	
313+18	RT	2	16	40	84	168	183	95	144	144	105	
315+12	RT	2	16	40	84	168	183	95	144	144	105	
425+71	RT	1	8	16	32	64	128	128	64	64	32	
447+00	RT/TLT	2	16	40	84	168	183	95	144	144	105	
447+25	RT	2	16	40	84	168	183	95	144	144	105	
452+76	RT/TLT	1	8	16	32	64	128	128	64	64	32	
474+82	RT	1	8	16	32	64	128	128	64	64	32	
482+77	RT/TLT	2	16	40	84	168	183	95	144	144	105	
501+33	LT	2	16	40	84	168	183	95	144	144	105	
508+31	LT	2	16	40	84	168	183	95	144	144	105	
527+31	RT/TLT	2	16	40	84	168	183	95	144	144	105	
528+75	RT/TLT	2	16	40	84	168	183	95	144	144	105	
552+43	RT	2	16	40	84	168	183	95	144	144	105	
MILL & OVERLAY SECTION SUBTOTAL			9	16	40	84	168	183	95	144	144	105
4550-04-71 TOTAL			9	16	40	84	168	183	95	144	144	105

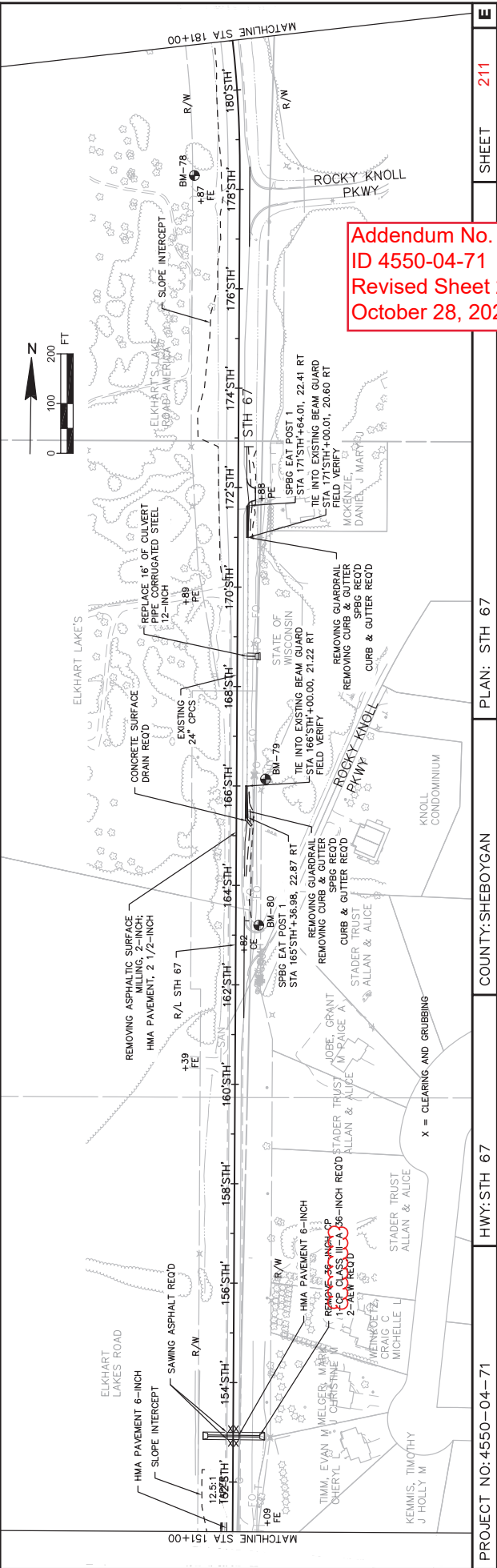
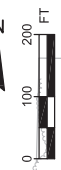
CONSTRUCTION TOTAL

*ADDITIONAL QUANTITIES SHOWN ELSEWHERE IN PLANS

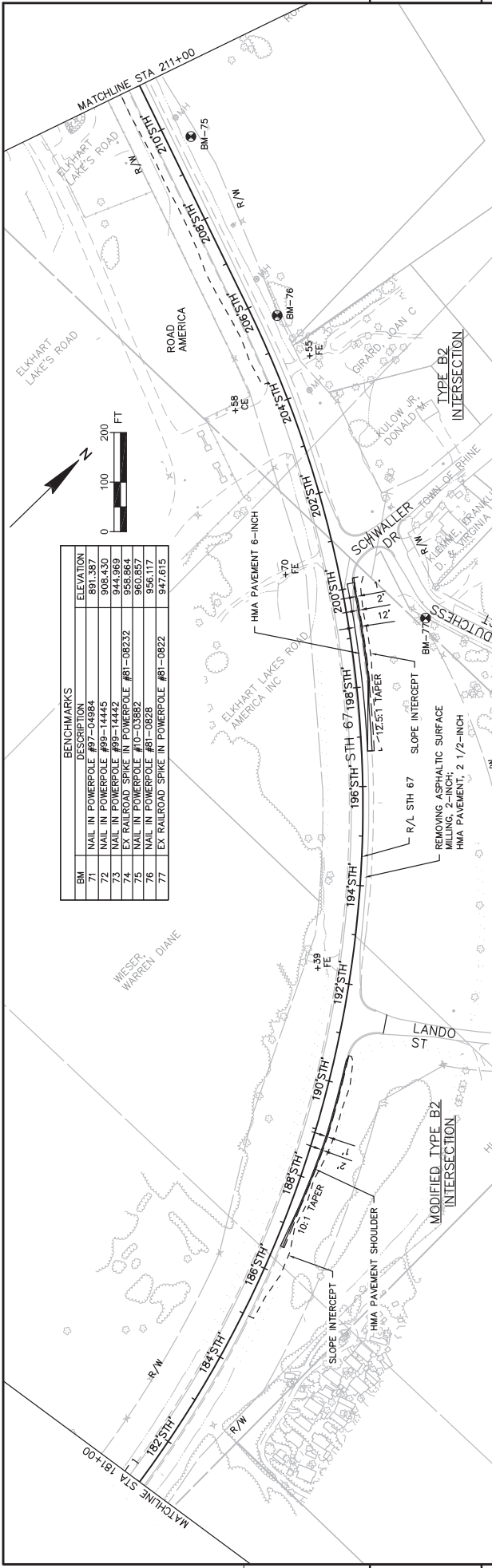
Addendum No. 01
 ID 4550-04-71
 Revised Sheet 155
 October 28, 2020



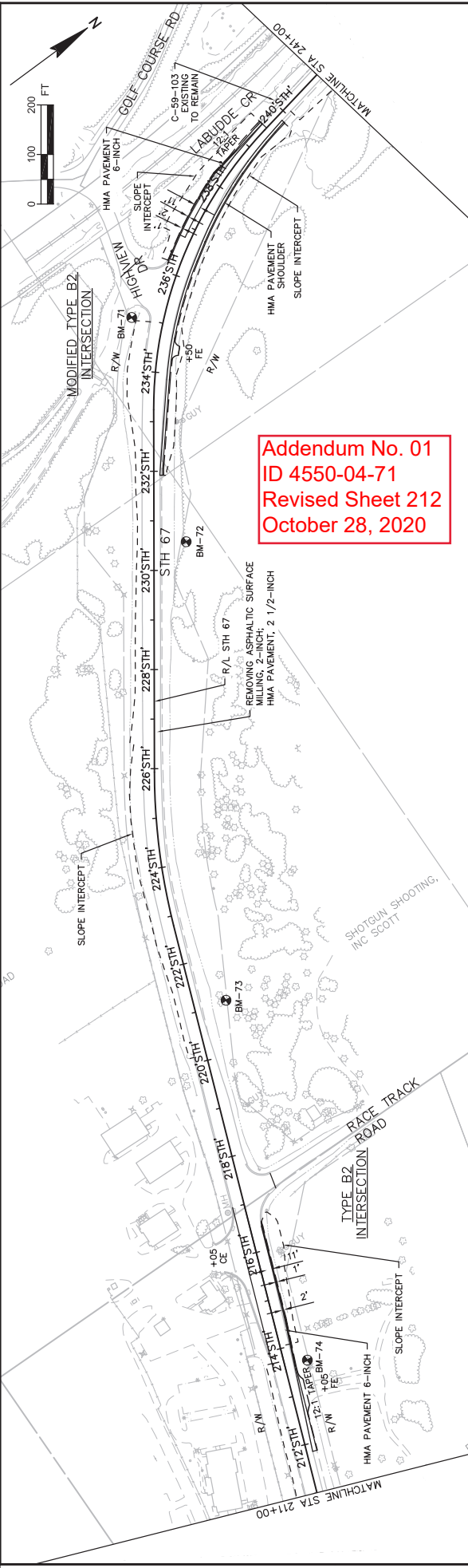
BM	DESCRIPTION	ELEVATION
78	NAIL IN POWERPOLE #1621	1032.764
79	EXISTING RAILROAD SPIKE IN POWERPOLE #3 D51	980.811
80	TOP OF W. BOLT OF LIGHT POLE BASE	961.444
81	NAIL IN POWERPOLE #3 D64	933.378
82	NAIL IN POWERPOLE #10 A53	930.060
83	PK IN POWERPOLE #10 A51	935.706
84	PK IN POWERPOLE #10 A49	928.608
85	NAIL IN POWERPOLE #10 A47	924.978
86	NAIL IN POWERPOLE #10 A45	924.108



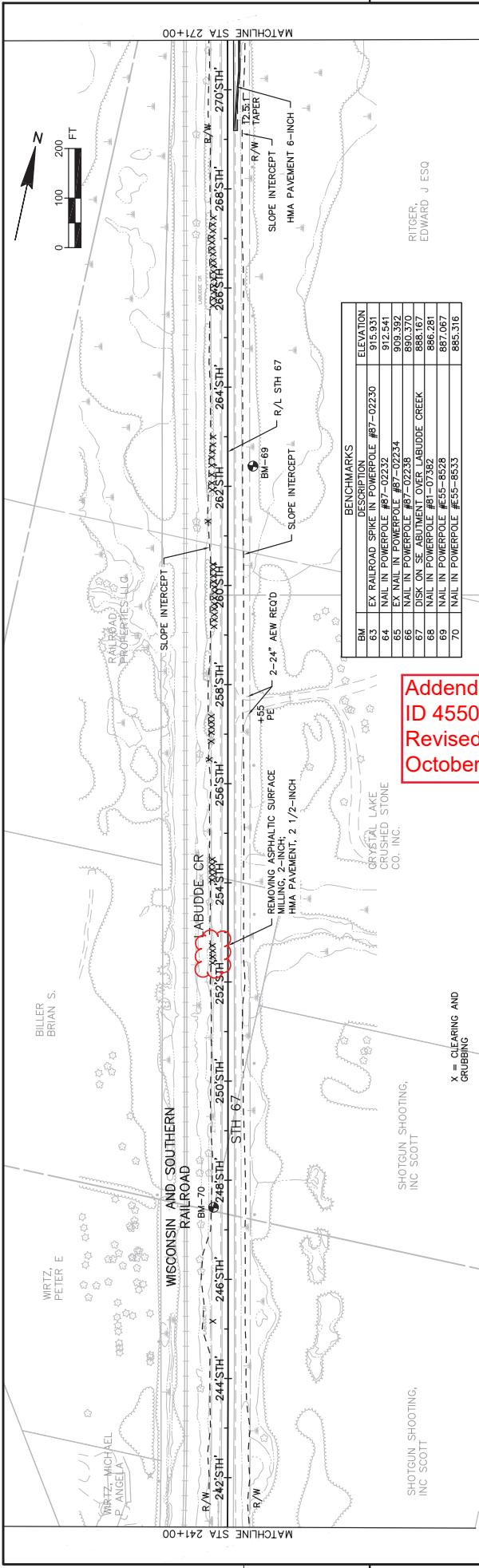
Addendum No. 01
 ID 4550-04-71
 Revised Sheet 211
 October 28, 2020



BM	DESCRIPTION	ELEVATION
71	NAIL IN POWERPOLE #97-04984	891.387
72	NAIL IN POWERPOLE #99-12442	905.430
73	EX RAILROAD SPIKE IN POWERPOLE #91-08232	955.864
74	NAIL IN POWERPOLE #10-03882	960.857
75	NAIL IN POWERPOLE #81-0828	956.117
76	EX RAILROAD SPIKE IN POWERPOLE #91-0822	947.615

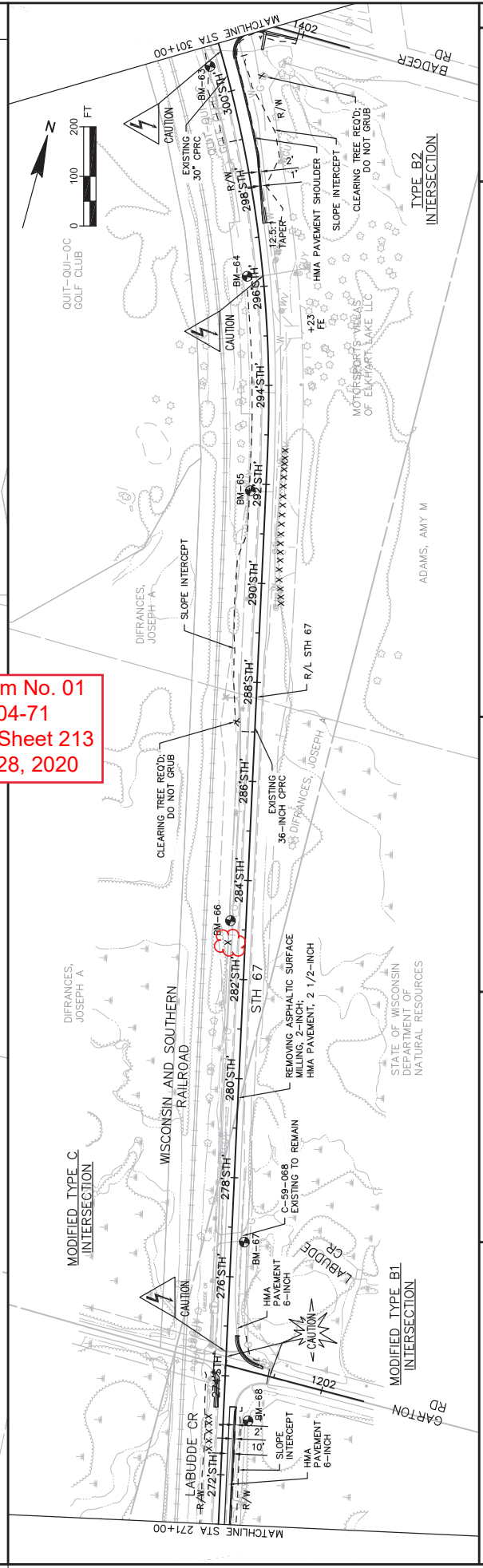


Addendum No. 01
 ID 4550-04-71
 Revised Sheet 212
 October 28, 2020

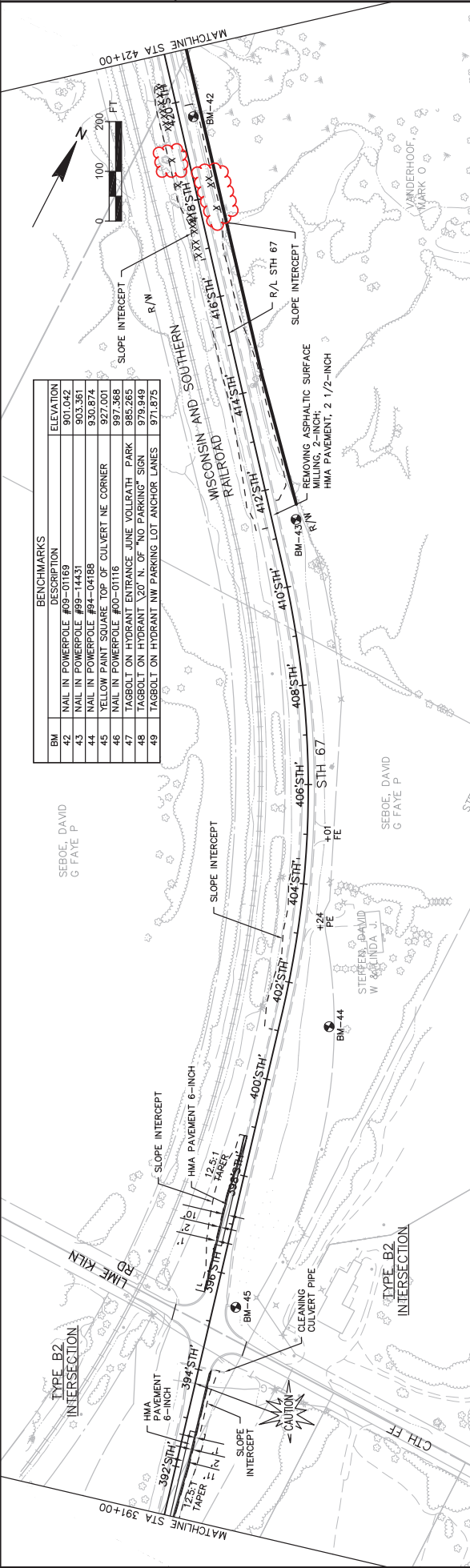
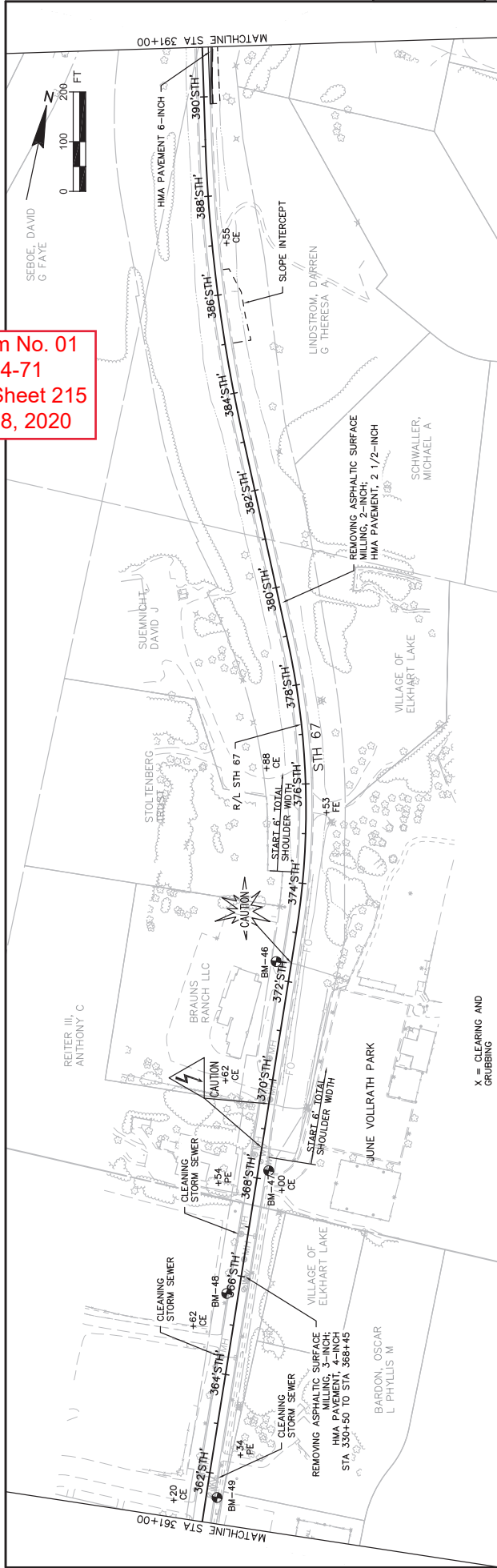


BM	DESCRIPTION	ELEVATION
63	EX RAILROAD SPIKE IN POWERPOLE #87-02230	915.931
64	NAIL IN POWERPOLE #87-02230	912.541
65	EX NAIL IN POWERPOLE #87-02234	890.370
66	NAIL IN POWERPOLE #87-02238	888.167
67	DISK ON SE ABUTMENT OVER LABUDE CREEK	886.281
69	NAIL IN POWERPOLE #81-07382	887.067
70	NAIL IN POWERPOLE #E55-8533	885.316

Addendum No. 01
ID 4550-04-71
Revised Sheet 213
October 28, 2020



Addendum No. 01
ID 4550-04-71
Revised Sheet 215
October 28, 2020



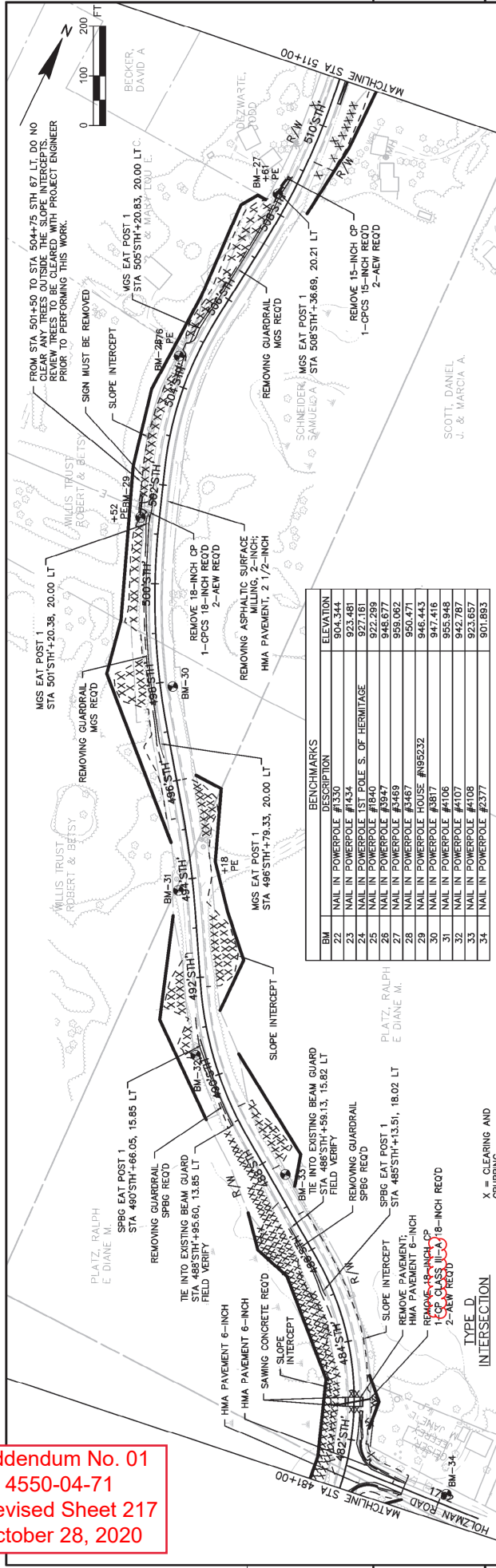
BM	DESCRIPTION	ELEVATION
42	NAIL IN POWERPOLE #09-01169	901.042
43	NAIL IN POWERPOLE #09-11453	903.361
44	NAIL IN POWERPOLE #94-04188	930.874
45	YELLOW PAINT SQUARE TOP OF CULVERT NE CORNER	927.001
46	NAIL IN POWERPOLE #09-01116	997.368
47	TAGBOLT ON HYDRANT ENTRANCE JUNE VOLLRATH PARK	985.263
48	TAGBOLT ON HYDRANT ENTRANCE "MID POWER" SIGN	979.849
49	TAGBOLT ON HYDRANT NW PARKING LOT ANCHOR LINES	971.373

PROJECT NO: 4550-04-71
 COUNTY: SHEBOYGAN
 PLAN: STH 67
 SHEET 215

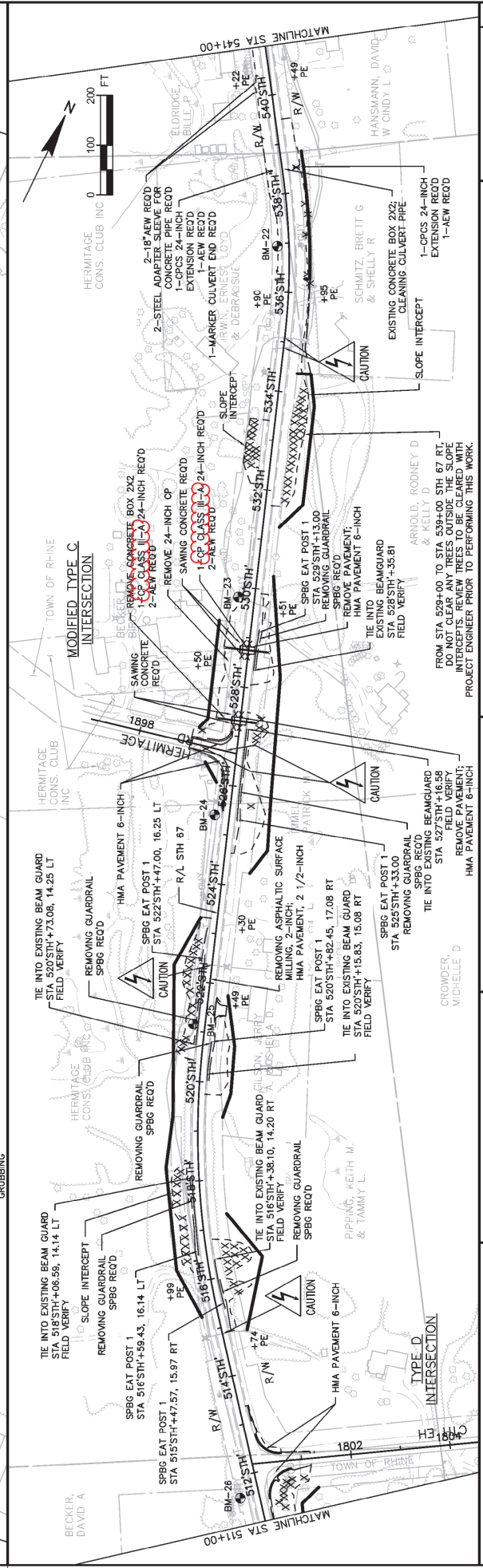
HWY: STH 67
 COUNTY: SHEBOYGAN
 PLAN: STH 67
 SHEET 215

FILE NAME : C:\PW_WORKDIR\DEN001\MM093804\00119510\45500304_050201-PN.DWG
 LAYOUT NAME - MAINLINE-07
 PLOT DATE : 10/26/2020 9:38 AM
 PLOT BY : MORGAN, MARC/ME
 PLOT NAME :
 PLOT SCALE : 1 IN:200 FT
 WISDOT/CADD SHEET 44

Addendum No. 01
 ID 4550-04-71
 Revised Sheet 217
 October 28, 2020

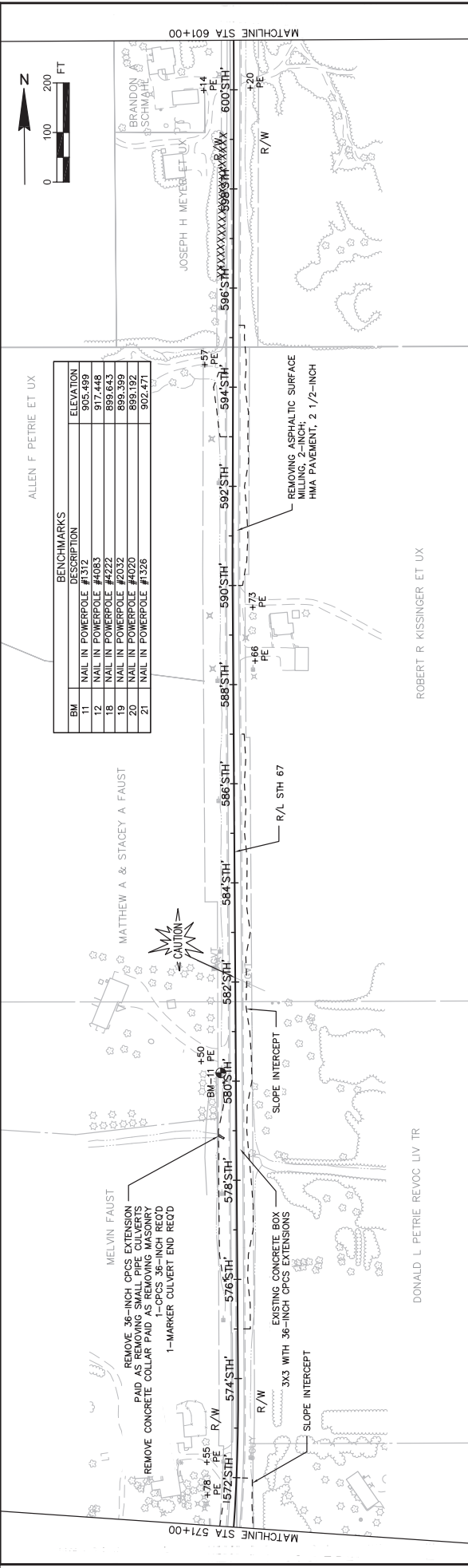
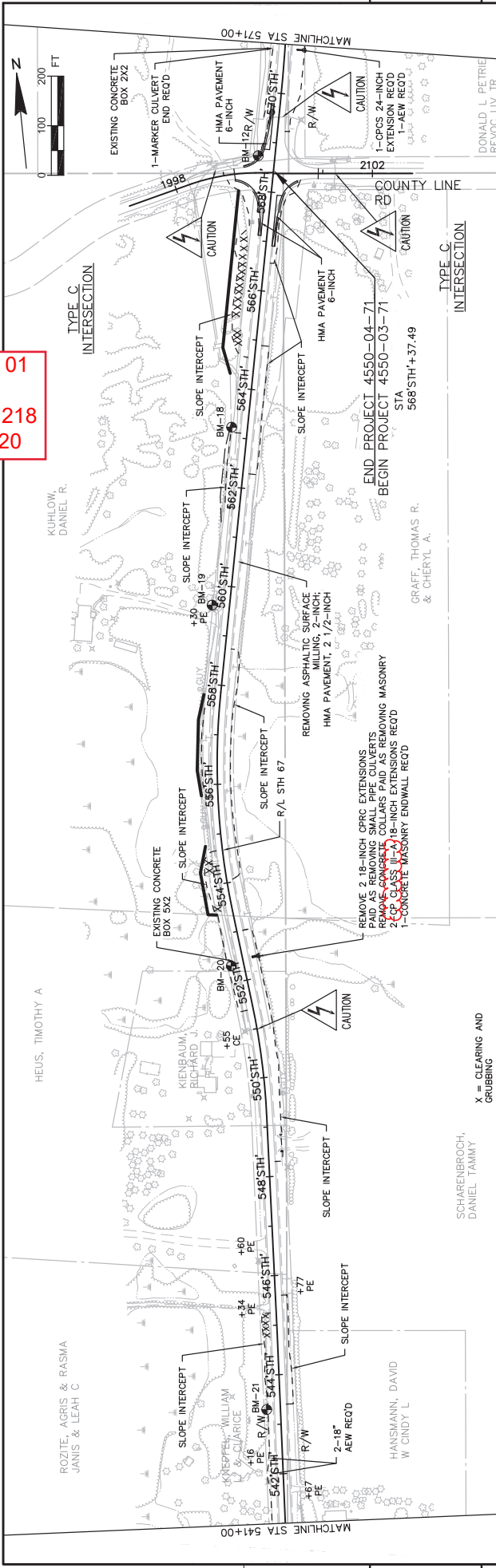


BM	DESCRIPTION	ELEVATION
22	NAIL IN POWERPOLE #330	924.24
22	NAIL IN POWERPOLE #434	924.24
22	NAIL IN POWERPOLE EST. POLE S. OF HERMITAGE	927.18
25	NAIL IN POWERPOLE #184	922.289
26	NAIL IN POWERPOLE #3947	948.877
27	NAIL IN POWERPOLE #3469	959.062
28	NAIL IN POWERPOLE #3467	950.471
29	NAIL IN POWERPOLE HOUSE #N95232	946.443
30	NAIL IN POWERPOLE #3817	947.416
31	NAIL IN POWERPOLE #106	955.948
32	NAIL IN POWERPOLE #107	942.787
33	NAIL IN POWERPOLE #108	923.657
34	NAIL IN POWERPOLE #2377	901.893



PROJECT NO: 4550-04-71
 COUNTY: SHEBOYGAN
 HWY: STH 67
 PLAN: STH 67
 SHEET 217
 E

FILE NAME: C:\P\WORK\DIR\DEV001\W069380A\00119510\45500304-050201-FN.DWG
 LAYOUT NAME - MAINLINE-09
 PLOT DATE: 10/26/2020 1:01 PM
 PLOT BY: MORGAN, MARC/AKE
 PLOT NAME: WISDOT/CADD SHEET 44



BENCHMARK	DESCRIPTION	ELEVATION
11	NAIL IN POWERPOLE #1312	905.499
12	NAIL IN POWERPOLE #4083	917.448
18	NAIL IN POWERPOLE #4222	899.643
19	NAIL IN POWERPOLE #2032	899.399
20	NAIL IN POWERPOLE #4020	899.192
21	NAIL IN POWERPOLE #1326	902.471

Addendum No. 01
 ID 4550-04-71
 Revised Sheet 218
 October 28, 2020



Proposal Schedule of Items

Proposal ID: 20201110022 Project(s): 4550-03-71, 4550-04-71

Federal ID(s): WISC 2020543, WISC 2020544

SECTION: 0001 Contract Items

Alt Set ID: Alt Mbr ID:

Proposal Line Number	Item ID Description	Approximate Quantity and Units	Unit Price	Bid Amount
0002	201.0105 Clearing	92.000 STA	_____.	_____.
0004	201.0120 Clearing	153.000 ID	_____.	_____.
0006	201.0205 Grubbing	92.000 STA	_____.	_____.
0008	201.0220 Grubbing	121.000 ID	_____.	_____.
0010	203.0100 Removing Small Pipe Culverts	21.000 EACH	_____.	_____.
0012	203.0200 Removing Old Structure (station) 01. 527+35	LS	LUMP SUM	_____.
0014	203.0200 Removing Old Structure (station) 02. 461+61	LS	LUMP SUM	_____.
0016	204.0100 Removing Concrete Pavement	11,610.000 SY	_____.	_____.
0018	204.0110 Removing Asphaltic Surface	3,563.000 SY	_____.	_____.
0020	204.0115 Removing Asphaltic Surface Butt Joints	529.000 SY	_____.	_____.
0022	204.0120 Removing Asphaltic Surface Milling	223,156.000 SY	_____.	_____.
0024	204.0130 Removing Curb	189.000 LF	_____.	_____.
0026	204.0150 Removing Curb & Gutter	3,451.000 LF	_____.	_____.
0028	204.0155 Removing Concrete Sidewalk	856.000 SY	_____.	_____.
0030	204.0165 Removing Guardrail	1,680.000 LF	_____.	_____.
0032	204.0170 Removing Fence	20.000 LF	_____.	_____.



Proposal Schedule of Items

Proposal ID: 20201110022 Project(s): 4550-03-71, 4550-04-71

Federal ID(s): WISC 2020543, WISC 2020544

SECTION: 0001 Contract Items

Alt Set ID: Alt Mbr ID:

Proposal Line Number	Item ID Description	Approximate Quantity and Units	Unit Price	Bid Amount
0034	204.0185 Removing Masonry	5.000 CY	_____.	_____.
0036	204.0190 Removing Surface Drains	4.000 EACH	_____.	_____.
0038	204.0245 Removing Storm Sewer (size) 01. 12-Inch	56.000 LF	_____.	_____.
0040	205.0100 Excavation Common	14,090.000 CY	_____.	_____.
0042	206.2000 Excavation for Structures Culverts (structure) 01. C-59-115	LS	LUMP SUM	_____.
0044	206.5000 Cofferdams (structure) 01. C-59-115	LS	LUMP SUM	_____.
0046	208.0100 Borrow	21,766.000 CY	_____.	_____.
0048	210.2500 Backfill Structure Type B	651.000 TON	_____.	_____.
0050	211.0100 Prepare Foundation for Asphaltic Paving (project) 01. 4550-03-71	LS	LUMP SUM	_____.
0052	211.0100 Prepare Foundation for Asphaltic Paving (project) 02. 4550-04-71	LS	LUMP SUM	_____.
0054	211.0200 Prepare Foundation for Concrete Pavement (project) 01. 4550-04-71	LS	LUMP SUM	_____.
0056	211.0400 Prepare Foundation for Asphaltic Shoulders	1,083.000 STA	_____.	_____.
0058	213.0100 Finishing Roadway (project) 01. 4550-03-71	1.000 EACH	_____.	_____.
0060	213.0100 Finishing Roadway (project) 02. 4550-04-71	1.000 EACH	_____.	_____.
0062	305.0110 Base Aggregate Dense 3/4-Inch	6,862.000 TON	_____.	_____.



Proposal Schedule of Items

Proposal ID: 20201110022 Project(s): 4550-03-71, 4550-04-71

Federal ID(s): WISC 2020543, WISC 2020544

SECTION: 0001 Contract Items

Alt Set ID: Alt Mbr ID:

Proposal Line Number	Item ID Description	Approximate Quantity and Units	Unit Price	Bid Amount
0064	305.0120 Base Aggregate Dense 1 1/4-Inch	17,015.000 TON	_____.	_____.
0066	311.0115 Breaker Run	56.000 CY	_____.	_____.
0068	415.0080 Concrete Pavement 8-Inch	11,472.000 SY	_____.	_____.
0070	415.0210 Concrete Pavement Gaps	4.000 EACH	_____.	_____.
0072	415.1080 Concrete Pavement HES 8-Inch	641.000 SY	_____.	_____.
0074	415.5110.S Concrete Pavement Joint Layout	1.000 LS	_____.	_____.
0076	416.0160 Concrete Driveway 6-Inch	16.000 SY	_____.	_____.
0078	416.0610 Drilled Tie Bars	291.000 EACH	_____.	_____.
0080	416.0620 Drilled Dowel Bars	24.000 EACH	_____.	_____.
0082	416.1010 Concrete Surface Drains	15.000 CY	_____.	_____.
0084	450.4000 HMA Cold Weather Paving	23.000 TON	_____.	_____.
0086	455.0605 Tack Coat	20,049.000 GAL	_____.	_____.
0088	460.0105.S HMA Percent Within Limits (PWL) Test Strip Volumetrics	1.000 EACH	_____.	_____.
0090	460.0110.S HMA Percent Within Limits (PWL) Test Strip Density	1.000 EACH	_____.	_____.
0092	460.2000 Incentive Density HMA Pavement	2,070.000 DOL	1.00000	2,070.00
0094	460.2005 Incentive Density PWL HMA Pavement	22,345.000 DOL	1.00000	22,345.00



Proposal Schedule of Items

Proposal ID: 20201110022 Project(s): 4550-03-71, 4550-04-71

Federal ID(s): WISC 2020543, WISC 2020544

SECTION: 0001 Contract Items

Alt Set ID: Alt Mbr ID:

Proposal Line Number	Item ID Description	Approximate Quantity and Units	Unit Price	Bid Amount
0096	460.2007 Incentive Density HMA Pavement Longitudinal Joints	24,725.000 DOL	1.00000	24,725.00
0098	460.2010 Incentive Air Voids HMA Pavement	40,013.000 DOL	1.00000	40,013.00
0100	460.5223 HMA Pavement 3 LT 58-28 S	3,215.000 TON	_____.	_____.
0102	460.5224 HMA Pavement 4 LT 58-28 S	40,013.000 TON	_____.	_____.
0104	465.0110 Asphaltic Surface Patching	20.000 TON	_____.	_____.
0106	465.0120 Asphaltic Surface Driveways and Field Entrances	277.000 TON	_____.	_____.
0108	465.0125 Asphaltic Surface Temporary	660.000 TON	_____.	_____.
0110	465.0425 Asphaltic Shoulder Rumble Strips 2-Lane Rural	75,304.000 LF	_____.	_____.
0112	465.0475 Asphalt Centerline Rumble Strips 2-Lane Rural	39,903.000 LF	_____.	_____.
0114	502.3200 Protective Surface Treatment	360.000 SY	_____.	_____.
0116	502.3210 Pigmented Surface Sealer	91.000 SY	_____.	_____.
0118	504.0100 Concrete Masonry Culverts	89.000 CY	_____.	_____.
0120	504.0900 Concrete Masonry Endwalls	0.600 CY	_____.	_____.
0122	505.0400 Bar Steel Reinforcement HS Structures	8,850.000 LB	_____.	_____.
0124	505.0600 Bar Steel Reinforcement HS Coated Structures	1,490.000 LB	_____.	_____.



Proposal Schedule of Items

Proposal ID: 20201110022 Project(s): 4550-03-71, 4550-04-71

Federal ID(s): WISC 2020543, WISC 2020544

SECTION: 0001 Contract Items

Alt Set ID: Alt Mbr ID:

Proposal Line Number	Item ID Description	Approximate Quantity and Units	Unit Price	Bid Amount
0126	509.0301 Preparation Decks Type 1	33.000 SY	_____.	_____.
0128	509.0302 Preparation Decks Type 2	18.000 SY	_____.	_____.
0130	509.0500 Cleaning Decks	360.000 SY	_____.	_____.
0132	509.2000 Full-Depth Deck Repair	1.000 SY	_____.	_____.
0134	509.2500 Concrete Masonry Overlay Decks	23.000 CY	_____.	_____.
0136	516.0500 Rubberized Membrane Waterproofing	17.000 SY	_____.	_____.
0138	520.8000 Concrete Collars for Pipe	21.000 EACH	_____.	_____.
0140	520.8700 Cleaning Culvert Pipes	4.000 EACH	_____.	_____.
0142	521.1015 Apron Endwalls for Culvert Pipe Steel 15-Inch	2.000 EACH	_____.	_____.
0144	521.1018 Apron Endwalls for Culvert Pipe Steel 18-Inch	4.000 EACH	_____.	_____.
0146	521.1021 Apron Endwalls for Culvert Pipe Steel 21-Inch	2.000 EACH	_____.	_____.
0148	521.1024 Apron Endwalls for Culvert Pipe Steel 24-Inch	7.000 EACH	_____.	_____.
0150	521.1030 Apron Endwalls for Culvert Pipe Steel 30-Inch	2.000 EACH	_____.	_____.
0152	521.1048 Apron Endwalls for Culvert Pipe Steel 48-Inch	2.000 EACH	_____.	_____.
0154	521.1518 Apron Endwalls for Culvert Pipe Sloped Side Drains Steel 18-Inch 6 to 1	9.000 EACH	_____.	_____.



Proposal Schedule of Items

Proposal ID: 20201110022 Project(s): 4550-03-71, 4550-04-71

Federal ID(s): WISC 2020543, WISC 2020544

SECTION: 0001 Contract Items

Alt Set ID: Alt Mbr ID:

Proposal Line Number	Item ID Description	Approximate Quantity and Units	Unit Price	Bid Amount
0156	521.1524 Apron Endwalls for Culvert Pipe Sloped Side Drains Steel 24-Inch 6 to 1	2.000 EACH	_____.	_____.
0158	521.1548 Apron Endwalls for Culvert Pipe Sloped Side Drains Steel 48-Inch 6 to 1	4.000 EACH	_____.	_____.
0160	521.3112 Culvert Pipe Corrugated Steel 12-Inch	16.000 LF	_____.	_____.
0162	521.3115 Culvert Pipe Corrugated Steel 15-Inch	40.000 LF	_____.	_____.
0164	521.3118 Culvert Pipe Corrugated Steel 18-Inch	84.000 LF	_____.	_____.
0166	521.3124 Culvert Pipe Corrugated Steel 24-Inch	61.000 LF	_____.	_____.
0168	521.3130 Culvert Pipe Corrugated Steel 30-Inch	2.000 LF	_____.	_____.
0170	521.3136 Culvert Pipe Corrugated Steel 36-Inch	12.000 LF	_____.	_____.
0172	521.3148 Culvert Pipe Corrugated Steel 48-Inch	183.000 LF	_____.	_____.
0180	522.1012 Apron Endwalls for Culvert Pipe Reinforced Concrete 12-Inch	4.000 EACH	_____.	_____.
0182	522.1018 Apron Endwalls for Culvert Pipe Reinforced Concrete 18-Inch	2.000 EACH	_____.	_____.
0184	522.1024 Apron Endwalls for Culvert Pipe Reinforced Concrete 24-Inch	4.000 EACH	_____.	_____.
0186	522.1027 Apron Endwalls for Culvert Pipe Reinforced Concrete 27-Inch	3.000 EACH	_____.	_____.
0188	522.1036 Apron Endwalls for Culvert Pipe Reinforced Concrete 36-Inch	2.000 EACH	_____.	_____.
0190	601.0120 Concrete Curb Type J	181.000 LF	_____.	_____.



Proposal Schedule of Items

Proposal ID: 20201110022 Project(s): 4550-03-71, 4550-04-71

Federal ID(s): WISC 2020543, WISC 2020544

SECTION: 0001 Contract Items

Alt Set ID: Alt Mbr ID:

Proposal Line Number	Item ID Description	Approximate Quantity and Units	Unit Price	Bid Amount
0192	601.0409 Concrete Curb & Gutter 30-Inch Type A	1,332.000 LF	_____.	_____.
0194	601.0411 Concrete Curb & Gutter 30-Inch Type D	1,409.000 LF	_____.	_____.
0196	601.0557 Concrete Curb & Gutter 6-Inch Sloped 36-Inch Type D	1,127.000 LF	_____.	_____.
0198	601.0600 Concrete Curb Pedestrian	242.000 LF	_____.	_____.
0200	602.0405 Concrete Sidewalk 4-Inch	4,724.000 SF	_____.	_____.
0202	602.0410 Concrete Sidewalk 5-Inch	4,767.000 SF	_____.	_____.
0204	602.0505 Curb Ramp Detectable Warning Field Yellow	280.000 SF	_____.	_____.
0206	606.0100 Riprap Light	99.000 CY	_____.	_____.
0208	606.0300 Riprap Heavy	30.000 CY	_____.	_____.
0210	608.0312 Storm Sewer Pipe Reinforced Concrete Class III 12-Inch	56.000 LF	_____.	_____.
0212	611.8115 Adjusting Inlet Covers	18.000 EACH	_____.	_____.
0214	611.8120.S Cover Plates Temporary	3.000 EACH	_____.	_____.
0216	614.0305 Steel Plate Beam Guard Class A	787.000 LF	_____.	_____.
0218	614.0370 Steel Plate Beam Guard Energy Absorbing Terminal	14.000 EACH	_____.	_____.
0220	614.0397 Guardrail Mow Strip Emulsified Asphalt	330.000 SY	_____.	_____.
0222	614.0400 Adjusting Steel Plate Beam Guard	4,037.000 LF	_____.	_____.



Proposal Schedule of Items

Proposal ID: 20201110022 Project(s): 4550-03-71, 4550-04-71

Federal ID(s): WISC 2020543, WISC 2020544

SECTION: 0001 Contract Items

Alt Set ID: Alt Mbr ID:

Proposal Line Number	Item ID Description	Approximate Quantity and Units	Unit Price	Bid Amount
0224	614.0950 Replacing Guardrail Posts and Blocks	50.000 EACH	_____.	_____.
0226	614.0951 Replacing Guardrail Rail and Hardware	225.000 LF	_____.	_____.
0228	614.2300 MGS Guardrail 3	689.750 LF	_____.	_____.
0230	614.2340 MGS Guardrail 3 L	106.250 LF	_____.	_____.
0232	614.2610 MGS Guardrail Terminal EAT	8.000 EACH	_____.	_____.
0234	618.0100 Maintenance And Repair of Haul Roads (project) 01. 4550-03-71	1.000 EACH	_____.	_____.
0236	618.0100 Maintenance And Repair of Haul Roads (project) 02. 4550-04-71	1.000 EACH	_____.	_____.
0238	619.1000 Mobilization	1.000 EACH	_____.	_____.
0240	620.0200 Concrete Median Blunt Nose	52.000 SF	_____.	_____.
0242	620.0300 Concrete Median Sloped Nose	242.000 SF	_____.	_____.
0244	624.0100 Water	334.000 MGAL	_____.	_____.
0246	625.0500 Salvaged Topsoil	109,065.000 SY	_____.	_____.
0248	627.0200 Mulching	84,506.000 SY	_____.	_____.
0250	628.1504 Silt Fence	25,150.000 LF	_____.	_____.
0252	628.1520 Silt Fence Maintenance	25,150.000 LF	_____.	_____.
0254	628.1905 Mobilizations Erosion Control	18.000 EACH	_____.	_____.



Proposal Schedule of Items

Proposal ID: 20201110022 Project(s): 4550-03-71, 4550-04-71

Federal ID(s): WISC 2020543, WISC 2020544

SECTION: 0001 Contract Items

Alt Set ID: Alt Mbr ID:

Proposal Line Number	Item ID Description	Approximate Quantity and Units	Unit Price	Bid Amount
0256	628.1910 Mobilizations Emergency Erosion Control	12.000 EACH	_____.	_____.
0258	628.2002 Erosion Mat Class I Type A	17,587.000 SY	_____.	_____.
0260	628.2004 Erosion Mat Class I Type B	4,409.000 SY	_____.	_____.
0262	628.2006 Erosion Mat Urban Class I Type A	1,246.000 SY	_____.	_____.
0264	628.2037 Erosion Mat Class III Type C	1,600.000 SY	_____.	_____.
0266	628.7005 Inlet Protection Type A	52.000 EACH	_____.	_____.
0268	628.7015 Inlet Protection Type C	49.000 EACH	_____.	_____.
0270	628.7504 Temporary Ditch Checks	664.000 LF	_____.	_____.
0272	628.7555 Culvert Pipe Checks	20.000 EACH	_____.	_____.
0274	629.0210 Fertilizer Type B	69.700 CWT	_____.	_____.
0276	630.0120 Seeding Mixture No. 20	433.000 LB	_____.	_____.
0278	630.0130 Seeding Mixture No. 30	1,396.000 LB	_____.	_____.
0280	630.0200 Seeding Temporary	1,485.000 LB	_____.	_____.
0282	630.0500 Seed Water	2,670.000 MGAL	_____.	_____.
0284	633.5200 Markers Culvert End	10.000 EACH	_____.	_____.
0286	634.0614 Posts Wood 4x6-Inch X 14-FT	87.000 EACH	_____.	_____.
0288	634.0616 Posts Wood 4x6-Inch X 16-FT	180.000 EACH	_____.	_____.



Proposal Schedule of Items

Proposal ID: 20201110022 Project(s): 4550-03-71, 4550-04-71

Federal ID(s): WISC 2020543, WISC 2020544

SECTION: 0001 Contract Items

Alt Set ID: Alt Mbr ID:

Proposal Line Number	Item ID Description	Approximate Quantity and Units	Unit Price	Bid Amount
0290	634.0618 Posts Wood 4x6-Inch X 18-FT	29.000 EACH	_____.	_____.
0292	637.2210 Signs Type II Reflective H	1,725.260 SF	_____.	_____.
0294	637.2230 Signs Type II Reflective F	616.090 SF	_____.	_____.
0296	638.2602 Removing Signs Type II	263.000 EACH	_____.	_____.
0298	638.3000 Removing Small Sign Supports	291.000 EACH	_____.	_____.
0300	642.5201 Field Office Type C	1.000 EACH	_____.	_____.
0302	643.0300 Traffic Control Drums	7,620.000 DAY	_____.	_____.
0304	643.0420 Traffic Control Barricades Type III	3,326.000 DAY	_____.	_____.
0306	643.0500 Traffic Control Flexible Tubular Marker Posts	141.000 EACH	_____.	_____.
0308	643.0600 Traffic Control Flexible Tubular Marker Bases	141.000 EACH	_____.	_____.
0310	643.0705 Traffic Control Warning Lights Type A	5,359.000 DAY	_____.	_____.
0312	643.0715 Traffic Control Warning Lights Type C	865.000 DAY	_____.	_____.
0314	643.0900 Traffic Control Signs	19,870.000 DAY	_____.	_____.
0316	643.0910 Traffic Control Covering Signs Type I	2.000 EACH	_____.	_____.
0318	643.0920 Traffic Control Covering Signs Type II	12.000 EACH	_____.	_____.
0320	643.1000 Traffic Control Signs Fixed Message	42.000 SF	_____.	_____.



Proposal Schedule of Items

Proposal ID: 20201110022 Project(s): 4550-03-71, 4550-04-71

Federal ID(s): WISC 2020543, WISC 2020544

SECTION: 0001 Contract Items

Alt Set ID: Alt Mbr ID:

Proposal Line Number	Item ID Description	Approximate Quantity and Units	Unit Price	Bid Amount
0322	643.1050 Traffic Control Signs PCMS	140.000 DAY	_____.	_____.
0324	643.5000 Traffic Control	1.000 EACH	_____.	_____.
0326	644.1410 Temporary Pedestrian Surface Asphalt	417.000 SF	_____.	_____.
0328	644.1601 Temporary Pedestrian Curb Ramp	15.000 DAY	_____.	_____.
0330	644.1810 Temporary Pedestrian Barricade	526.000 LF	_____.	_____.
0332	645.0105 Geotextile Type C	185.000 SY	_____.	_____.
0334	645.0120 Geotextile Type HR	75.000 SY	_____.	_____.
0336	645.0130 Geotextile Type R	412.000 SY	_____.	_____.
0338	646.1020 Marking Line Epoxy 4-Inch	92,067.000 LF	_____.	_____.
0340	646.1040 Marking Line Grooved Wet Ref Epoxy 4-Inch	103,260.000 LF	_____.	_____.
0342	646.3020 Marking Line Epoxy 8-Inch	652.000 LF	_____.	_____.
0344	646.3040 Marking Line Grooved Wet Ref Epoxy 8-Inch	2,267.000 LF	_____.	_____.
0346	646.5520 Marking Outfall Epoxy	1.000 EACH	_____.	_____.
0348	646.6020 Marking Stop Line Epoxy 12-Inch	235.000 LF	_____.	_____.
0350	646.6464 Cold Weather Marking Epoxy 4-Inch	240.000 LF	_____.	_____.
0352	646.7420 Marking Crosswalk Epoxy Transverse Line 6-Inch	1,665.000 LF	_____.	_____.



Proposal Schedule of Items

Proposal ID: 20201110022 Project(s): 4550-03-71, 4550-04-71

Federal ID(s): WISC 2020543, WISC 2020544

SECTION: 0001 Contract Items

Alt Set ID: Alt Mbr ID:

Proposal Line Number	Item ID Description	Approximate Quantity and Units	Unit Price	Bid Amount
0354	646.7520 Marking Crosswalk Epoxy Block Style 24-Inch	1,182.000 LF	_____.	_____.
0356	646.8120 Marking Curb Epoxy	914.000 LF	_____.	_____.
0358	646.8220 Marking Island Nose Epoxy	6.000 EACH	_____.	_____.
0360	648.0100 Locating No-Passing Zones	11.018 MI	_____.	_____.
0362	649.0105 Temporary Marking Line Paint 4-Inch	186,093.000 LF	_____.	_____.
0364	649.0120 Temporary Marking Line Epoxy 4-Inch	39,903.000 LF	_____.	_____.
0366	649.0205 Temporary Marking Line Paint 8-Inch	542.000 LF	_____.	_____.
0368	650.4000 Construction Staking Storm Sewer	4.000 EACH	_____.	_____.
0370	650.4500 Construction Staking Subgrade	46,800.000 LF	_____.	_____.
0372	650.5000 Construction Staking Base	46,600.000 LF	_____.	_____.
0374	650.6000 Construction Staking Pipe Culverts	14.000 EACH	_____.	_____.
0376	650.6500 Construction Staking Structure Layout (structure) 01. C-59-115	LS	LUMP SUM	_____.
0378	650.7000 Construction Staking Concrete Pavement	5,440.000 LF	_____.	_____.
0380	650.8000 Construction Staking Resurfacing Reference	57,460.000 LF	_____.	_____.
0382	650.9000 Construction Staking Curb Ramps	24.000 EACH	_____.	_____.



Proposal Schedule of Items

Proposal ID: 20201110022 Project(s): 4550-03-71, 4550-04-71

Federal ID(s): WISC 2020543, WISC 2020544

SECTION: 0001 Contract Items

Alt Set ID: Alt Mbr ID:

Proposal Line Number	Item ID Description	Approximate Quantity and Units	Unit Price	Bid Amount
0384	650.9910 Construction Staking Supplemental Control (project) 01. 4550-03-71	LS	LUMP SUM	_____.
0386	650.9910 Construction Staking Supplemental Control (project) 02. 4550-04-71	LS	LUMP SUM	_____.
0388	650.9920 Construction Staking Slope Stakes	46,800.000 LF	_____.	_____.
0390	690.0150 Sawing Asphalt	10,483.000 LF	_____.	_____.
0392	690.0250 Sawing Concrete	2,360.000 LF	_____.	_____.
0394	715.0415 Incentive Strength Concrete Pavement	3,634.000 DOL	1.00000	3,634.00
0396	715.0502 Incentive Strength Concrete Structures	534.000 DOL	1.00000	534.00
0398	715.0710 Optimized Aggregate Gradation Incentive	13,219.000 DOL	1.00000	13,219.00
0400	740.0440 Incentive IRI Ride	69,058.000 DOL	1.00000	69,058.00
0402	ASP.1T0A On-the-Job Training Apprentice at \$5.00/HR	2,400.000 HRS	5.00000	12,000.00
0404	ASP.1T0G On-the-Job Training Graduate at \$5.00/HR	3,040.000 HRS	5.00000	15,200.00
0406	SPV.0060 Special 01. Cleaning Storm Sewer	24.000 EACH	_____.	_____.
0408	SPV.0060 Special 03. Adjusting Water Valve Boxes	34.000 EACH	_____.	_____.
0410	SPV.0060 Special 04. Adjusting Manhole Covers with Pro-Ring	41.000 EACH	_____.	_____.
0412	SPV.0090 Special 01. Concrete Curb & Gutter 2-Inch Sloped 18-Inch	845.000 LF	_____.	_____.



Proposal Schedule of Items

Proposal ID: 20201110022 Project(s): 4550-03-71, 4550-04-71

Federal ID(s): WISC 2020543, WISC 2020544

SECTION: 0001 Contract Items

Alt Set ID: Alt Mbr ID:

Proposal Line Number	Item ID Description	Approximate Quantity and Units	Unit Price	Bid Amount
0414	SPV.0090 Special 02. Concrete Curb & Gutter 6-Inch Sloped 18-Inch	3,379.000 LF	_____.	_____.
0416	SPV.0090 Special 03. Base Aggregate Shoulder Repair	740.000 LF	_____.	_____.
0418	SPV.0090 Special 04. Cured In Place Point Repair	9.000 LF	_____.	_____.
0420	SPV.0105 Special 01. Temporary Water Diversion C-59-115	LS	LUMP SUM	_____.
0422	SPV.0105 Special 02. Removing and Restoring Rocks and Downspout Extension	LS	LUMP SUM	_____.
0424	SPV.0165 Special 01. Removing and Restoring Brick and Paver Walk	20.000 SF	_____.	_____.
0426	520.3318 Culvert Pipe Class III-A 18-Inch	95.000 LF	_____.	_____.
0428	520.3324 Culvert Pipe Class III-A 24-Inch	144.000 LF	_____.	_____.
0430	520.3336 Culvert Pipe Class III-A 36-Inch	105.000 LF	_____.	_____.
Section: 0001			Total:	_____.
			Total Bid:	_____.