



Wisconsin Department of Transportation

Division of Transportation Systems Development

Bureau of Project Development
4822 Madison Yards Way, 4th Floor South
Madison, WI 53705

November 5, 2020

Telephone: (608) 266-1631
Facsimile (FAX): (608) 266-8459

NOTICE TO ALL CONTRACTORS:

Proposal #22: 4550-03-71, WISC 2020 543
Elkhart Lake - Kiel
South County Line – STH 32/57
STH 67
Manitowoc County

4550-04-71, WISC 2020 544
Plymouth - Kiel
Suhrke Road – North County Line
STH 67
Sheboygan County

Letting of November 10, 2020

This is Addendum No. 02, which provides for the following:

Schedule of Items:

Revised Bid Item Quantities – 4550-04-71					
Bid Item	Item Description	Unit	Old Quantity	Revised Quantity	Proposal Total
520.8700	Cleaning Culvert Pipes	EACH	4	-1	3
690.0150	Sawing Asphalt	LF	10,483	97	10,580

Plan Sheets:

Revised Plan Sheets	
Plan Sheet	Plan Sheet Title (brief description of changes to sheet)
2	General Notes – Add a note for HMA Pavement 4-INCH Shoulder, Upper Layer Thickness 4-INCHES of HMA Pavement Type 4 LT 58-28 S. Change lower layer on 4 ¼-INCH HMA Pavement from Type 3 LT to Type 4 LT.
57	Intersection Detail – Remove term 'SINGLE LAYER' from the note defining the 4 ¼-INCH HMA material on the shoulder
154	Miscellaneous Quantities – Updates to Cleaning Culvert Pipes to add DIAMETER and LENGTH columns for information only also to remove one location for cleaning that was in error. Updates to Cleaning Storm Sewer to add DIAMETER and LENGTH columns for information only.
188	Miscellaneous Quantities – Update to Sawing Asphalt to add sawcut on either side of B-59-108.
208	Plan: STH 67 – Add note to indicate sawing asphalt is required as well as HMA pavement per Engineer's direction on approach to the bridge structure to accommodate work on the structure itself.

382 - 408	EW Data Sheets – Update the note #1 to remove the word NOT so each note states that CUT DOES INCLUDE SALVAGED/UNUSABLE PAVEMENT MATERIAL. SALVAGED/UNUSABLE PAVEMENT MATERIAL IS CALCULATED ON THE SUMMARY SHEET.
--------------	--

Schedule of Items

Attached, dated November 5, 2020, are the revised Schedule of Items Pages 5 and 13.

Plan Sheets

The following 8½ x 11-inch sheets are attached and made part of the plans for this proposal:

Revised: 2, 57, 154, 188, 208, and 382 - 408.

The responsibility for notifying potential subcontractors and suppliers of these changes remains with the prime contractor.

Sincerely,

Mike Coleman

Proposal Development Specialist
Proposal Management Section

END OF ADDENDUM

GENERAL NOTES

NO TREES OR SHRUBS ARE TO BE REMOVED WITHOUT APPROVAL OF THE ENGINEER. NO UNNECESSARY CUTTING OR GRUBBING IS TO BE PERFORMED. ALL CUTTING AND GRUBBING TO IMPROVE VISION IN CERTAIN AREAS, REVIEW THE PROJECT TO VERIFY EFFORTS TO PERFORM CLEARING AND GRUBBING WORK.

FIELD VERIFY BEAM GUARD TIE-IN LOCATIONS.

DISTURBED AREAS WITHIN THE RIGHT-OF-WAY, EXCEPT THE AREAS WITHIN THE FINISHED SHOULDER POINTS, SHALL BE FERTILIZED, SEEDED AND MULCHED.

THE LOCATIONS OF EXISTING AND PROPOSED UTILITY INSTALLATIONS AS SHOWN ON THE PLANS ARE APPROXIMATE. THERE MAY BE OTHER UTILITY INSTALLATIONS WITHIN THE PROJECT AREA THAT ARE NOT SHOWN.

THE CONTRACTOR SHALL NOTIFY DIGGERS HOTLINE AND AFFECTED UTILITIES PRIOR TO THE START OF WORK. ANY UTILITY WHICH IS NOT A MEMBER OF DIGGERS HOTLINE MUST BE CONTACTED SEPARATELY.

A SAVED JOINT IS REQUIRED WHERE NEW HMA PAVEMENT SURFACE MEETS EXISTING HMA PAVEMENT SURFACE.

PLACE HMA PAVEMENT LAYERS WITH THE FOLLOWING THICKNESSES:

- HMA PAVEMENT 2 1/2-INCH UPPER LAYER THICKNESS 2 1/2-INCHES OF HMA PAVEMENT TYPE 4 LT 58-28 S
- HMA PAVEMENT 3 1/2-INCH UPPER LAYER THICKNESS 3 1/2-INCHES OF HMA PAVEMENT TYPE 4 LT 58-28 S
- HMA PAVEMENT 4-INCH UPPER LAYER THICKNESS 1 3/4-INCHES OF HMA PAVEMENT TYPE 4 LT 58-28 S
- HMA PAVEMENT 4-INCH SHOULDER UPPER LAYER THICKNESS 4-INCHES OF HMA PAVEMENT TYPE 4 LT 58-28 S
- HMA PAVEMENT 4 1/4-INCH UPPER LAYER THICKNESS 2 1/2-INCHES OF HMA PAVEMENT TYPE 4 LT 58-28 S
- HMA PAVEMENT 5-INCH UPPER LAYER THICKNESS 1 3/4-INCHES OF HMA PAVEMENT TYPE 4 LT 58-28 S
- HMA PAVEMENT 6-INCH LOWER LAYER THICKNESS 2 1/2-INCHES OF HMA PAVEMENT TYPE 3 LT 58-28 S
- HMA PAVEMENT 7 1/4-INCH (AT TRENCH FOR BOX CULVERT C-59-0115) LOWER LAYER THICKNESS 2 1/2-INCHES OF HMA PAVEMENT TYPE 4 LT 58-28 S
- HMA PAVEMENT 7 1/4-INCH LOWER LAYER THICKNESS 2 1/2-INCHES OF HMA PAVEMENT TYPE 3 LT 58-28 S

REFERENCE LINE CALLOUTS

- '5B' 5TH 67 SOUTHBOUND
- '5TH' 5TH

ORDER OF SECTION 2 SHEETS

- GENERAL NOTES
- WETLAND OVERLAY
- TYPICAL SECTIONS
- CONSTRUCTION DETAILS
- PURB PROP DETAILS
- INTERSECTION DETAILS
- PAVING DETAILS
- EROSION CONTROL
- PAVEMENT MARKING
- STAGING PLANS
- DETOUR PLANS
- ALIGNMENT PLANS

Addendum No. 2
 ID 4550-03-71
 Revised Sheet 2
 November 5, 2020

STANDARD ABBREVIATIONS

- AEW APRON END WALL
- AH ASPHALT
- ASP ASPHALTIC
- BACK BACK
- BAU BACK AGGREGATE DENSE
- BT BEIGN MARK
- CC CENTER OF CURVATURE
- CCD CENTER OF CURVATURE DETAIL
- C/G OR C/L CENTER CONSTRUCTION LINE
- CONC CONCRETE
- CP CULVERT PIPE
- CPM CULVERT PIPE CORRUGATED METAL
- CPRC CULVERT PIPE CORRUGATED STEEL
- CEPRCHE CULVERT PIPE REINFORCED CONCRETE
- CSD CONCRETE SURFACE DRAIN
- CT CURVE TANGENT
- DEGREE OF CURVE
- DELTA
- DISCHARGE
- ET END TRANSVERSE TERMINAL
- FE FIELD ENTRANCE
- FS FULL SUPERELEVATION
- HMA HOT MIX ASPHALT
- HT HEIGHT
- INV INVERT
- L AND FORWARD
- LF LENGTH
- LH LOW POINT
- LT LEFT
- MAX MAXIMUM
- MGS MIDWEST GUARDRAIL SYSTEM
- MIN MINIMUM
- NB NORTHBOUND
- NC NORMAL
- OCRM OFF-CURVE
- PAVT PAVEMENT
- PC POINT OF CURVE
- PCC POINT OF COMPOUND CURVE
- PEL PROFILE GRADE LINE
- PLE POINT OF INTERSECTION
- PERMANENT LIMITED EASEMENT
- POB POINT OF BEGINNING
- PLU PIPE UNDERDRAIN UNPERFORATED
- PVC POLYVINYL CHLORIDE
- R RADIUS OF CURVE
- R/L REFERENCE LINE
- RAB ROUNDABOUT
- RC REVERSE CROWN
- RCREW APRON ENDWALL FOR CULVERT PIPE REINFORCED CONCRETE
- REF REFERENCE
- RF RIGHT HAND FORWARD
- RO RUN OFF LENGTH
- RT RIGHT
- RTY RIGHT TURN
- SALV SALVAGED
- SD STANDARD
- SDO STANDARD DETAIL DRAWING
- SE SUPER ELEVATION
- SF SQUARE FOOT
- STELLON LATE BEAM GUARD
- SY SQUARE YARD
- SVD SLOTTED VANE DRAIN
- TANGENT LENGTH
- TYPICAL
- TYPE TYPICAL LIMITED EASEMENT
- VE VERTICAL CURVE LENGTH
- VOL POINT OF VERTICAL CURVE
- VPC POINT OF VERTICAL INTERSECTION
- VPRC POINT OF VERTICAL TANGENT

UTILITY CONTACTS

- 4550-03-71 AND 4550-04-71
- FRONTIER COMMUNICATIONS OF WI LLC
- KLAD COMMUNICATION LINE
- 521 4th STREET
- WAUSAU, WI 54401
- PHONE: (715) 847-1525
- central@frontier.com
- nick.wilbert@frontier.com
- NICK WILBERT
- GAS/PETROLEUM
- 933 S. WILDWOOD AVENUE
- SHEBOYGAN, WI 53081
- PHONE: (920) 451-3733
- manitowoc.wirenet@wisconsinpublicservice.com

- 4550-04-71
- PLYMOUTH UTILITIES CO
- WILLIAM IMWICH
- 900 CTH PP
- P.O. BOX 277
- PLYMOUTH, WI 53073
- PHONE: (920) 893-3855
- jpeterson@plymouthutilities.com

- SHEBOYGAN COUNTY HIGHWAY
- BRYAN OLSON
- WATER/SEWER
- PLYMOUTH, WI 53073
- PHONE: (920) 459-3822
- MOBILE: (920) 980-3995
- bryan.olson@sheboygancounty.com

OTHER CONTACTS

- TOWN OF RHINE
- RONALD PLATZ
- CHAIR TOWN BOARD
- 1468 STH 32
- ELKHART LAKE, WI 53020
- PHONE: (920) 876-2650

- VILLAGE OF ELKHART LAKE
- RICHARD SOLEK
- PUBLIC WORKS SUPERVISOR
- 51 EAST MAPLE STREET
- P.O. BOX 143
- ELKHART LAKE, WI 53020
- PHONE: (920) 876-2231

- MANITOWOC COUNTY
- MARC A. HOLSEN
- HIGHWAY COMMISSIONER
- DEPARTMENT OF TRANSPORTATION
- 3500 STATE HIGHWAY 310
- MANITOWOC, WI 54220
- PHONE: (920) 683-4353

- WISCONSIN SOUTHERN RAILROAD
- GREG SORRELL
- DIRECTOR OF MAINTENANCE
- DEPARTMENT OF TRANSPORTATION
- 1211 NORTH 23rd STREET
- SHEBOYGAN, WI 53081
- PHONE: (920) 459-3822

- WISCONSIN SOUTHERN RAILROAD
- MARC A. HOLSEN
- HIGHWAY COMMISSIONER
- DEPARTMENT OF TRANSPORTATION
- 3500 STATE HIGHWAY 310
- MANITOWOC, WI 54220
- PHONE: (920) 683-4353

- WISCONSIN SOUTHERN RAILROAD
- MARC A. HOLSEN
- HIGHWAY COMMISSIONER
- DEPARTMENT OF TRANSPORTATION
- 3500 STATE HIGHWAY 310
- MANITOWOC, WI 54220
- PHONE: (920) 683-4353

- WISCONSIN SOUTHERN RAILROAD
- MARC A. HOLSEN
- HIGHWAY COMMISSIONER
- DEPARTMENT OF TRANSPORTATION
- 3500 STATE HIGHWAY 310
- MANITOWOC, WI 54220
- PHONE: (920) 683-4353

- WISCONSIN SOUTHERN RAILROAD
- MARC A. HOLSEN
- HIGHWAY COMMISSIONER
- DEPARTMENT OF TRANSPORTATION
- 3500 STATE HIGHWAY 310
- MANITOWOC, WI 54220
- PHONE: (920) 683-4353

- WISCONSIN SOUTHERN RAILROAD
- MARC A. HOLSEN
- HIGHWAY COMMISSIONER
- DEPARTMENT OF TRANSPORTATION
- 3500 STATE HIGHWAY 310
- MANITOWOC, WI 54220
- PHONE: (920) 683-4353

- WISCONSIN SOUTHERN RAILROAD
- MARC A. HOLSEN
- HIGHWAY COMMISSIONER
- DEPARTMENT OF TRANSPORTATION
- 3500 STATE HIGHWAY 310
- MANITOWOC, WI 54220
- PHONE: (920) 683-4353

- WISCONSIN SOUTHERN RAILROAD
- MARC A. HOLSEN
- HIGHWAY COMMISSIONER
- DEPARTMENT OF TRANSPORTATION
- 3500 STATE HIGHWAY 310
- MANITOWOC, WI 54220
- PHONE: (920) 683-4353

- WISCONSIN SOUTHERN RAILROAD
- MARC A. HOLSEN
- HIGHWAY COMMISSIONER
- DEPARTMENT OF TRANSPORTATION
- 3500 STATE HIGHWAY 310
- MANITOWOC, WI 54220
- PHONE: (920) 683-4353

- WISCONSIN SOUTHERN RAILROAD
- MARC A. HOLSEN
- HIGHWAY COMMISSIONER
- DEPARTMENT OF TRANSPORTATION
- 3500 STATE HIGHWAY 310
- MANITOWOC, WI 54220
- PHONE: (920) 683-4353

- WISCONSIN SOUTHERN RAILROAD
- MARC A. HOLSEN
- HIGHWAY COMMISSIONER
- DEPARTMENT OF TRANSPORTATION
- 3500 STATE HIGHWAY 310
- MANITOWOC, WI 54220
- PHONE: (920) 683-4353

- WISCONSIN SOUTHERN RAILROAD
- MARC A. HOLSEN
- HIGHWAY COMMISSIONER
- DEPARTMENT OF TRANSPORTATION
- 3500 STATE HIGHWAY 310
- MANITOWOC, WI 54220
- PHONE: (920) 683-4353

- WISCONSIN SOUTHERN RAILROAD
- MARC A. HOLSEN
- HIGHWAY COMMISSIONER
- DEPARTMENT OF TRANSPORTATION
- 3500 STATE HIGHWAY 310
- MANITOWOC, WI 54220
- PHONE: (920) 683-4353

- WISCONSIN SOUTHERN RAILROAD
- MARC A. HOLSEN
- HIGHWAY COMMISSIONER
- DEPARTMENT OF TRANSPORTATION
- 3500 STATE HIGHWAY 310
- MANITOWOC, WI 54220
- PHONE: (920) 683-4353

- WISCONSIN SOUTHERN RAILROAD
- MARC A. HOLSEN
- HIGHWAY COMMISSIONER
- DEPARTMENT OF TRANSPORTATION
- 3500 STATE HIGHWAY 310
- MANITOWOC, WI 54220
- PHONE: (920) 683-4353

- WISCONSIN SOUTHERN RAILROAD
- MARC A. HOLSEN
- HIGHWAY COMMISSIONER
- DEPARTMENT OF TRANSPORTATION
- 3500 STATE HIGHWAY 310
- MANITOWOC, WI 54220
- PHONE: (920) 683-4353

- WISCONSIN SOUTHERN RAILROAD
- MARC A. HOLSEN
- HIGHWAY COMMISSIONER
- DEPARTMENT OF TRANSPORTATION
- 3500 STATE HIGHWAY 310
- MANITOWOC, WI 54220
- PHONE: (920) 683-4353

- WISCONSIN SOUTHERN RAILROAD
- MARC A. HOLSEN
- HIGHWAY COMMISSIONER
- DEPARTMENT OF TRANSPORTATION
- 3500 STATE HIGHWAY 310
- MANITOWOC, WI 54220
- PHONE: (920) 683-4353

- WISCONSIN SOUTHERN RAILROAD
- MARC A. HOLSEN
- HIGHWAY COMMISSIONER
- DEPARTMENT OF TRANSPORTATION
- 3500 STATE HIGHWAY 310
- MANITOWOC, WI 54220
- PHONE: (920) 683-4353

- WISCONSIN SOUTHERN RAILROAD
- MARC A. HOLSEN
- HIGHWAY COMMISSIONER
- DEPARTMENT OF TRANSPORTATION
- 3500 STATE HIGHWAY 310
- MANITOWOC, WI 54220
- PHONE: (920) 683-4353

- WISCONSIN SOUTHERN RAILROAD
- MARC A. HOLSEN
- HIGHWAY COMMISSIONER
- DEPARTMENT OF TRANSPORTATION
- 3500 STATE HIGHWAY 310
- MANITOWOC, WI 54220
- PHONE: (920) 683-4353

- WISCONSIN SOUTHERN RAILROAD
- MARC A. HOLSEN
- HIGHWAY COMMISSIONER
- DEPARTMENT OF TRANSPORTATION
- 3500 STATE HIGHWAY 310
- MANITOWOC, WI 54220
- PHONE: (920) 683-4353

- WISCONSIN SOUTHERN RAILROAD
- MARC A. HOLSEN
- HIGHWAY COMMISSIONER
- DEPARTMENT OF TRANSPORTATION
- 3500 STATE HIGHWAY 310
- MANITOWOC, WI 54220
- PHONE: (920) 683-4353

- WISCONSIN SOUTHERN RAILROAD
- MARC A. HOLSEN
- HIGHWAY COMMISSIONER
- DEPARTMENT OF TRANSPORTATION
- 3500 STATE HIGHWAY 310
- MANITOWOC, WI 54220
- PHONE: (920) 683-4353

- WISCONSIN SOUTHERN RAILROAD
- MARC A. HOLSEN
- HIGHWAY COMMISSIONER
- DEPARTMENT OF TRANSPORTATION
- 3500 STATE HIGHWAY 310
- MANITOWOC, WI 54220
- PHONE: (920) 683-4353

- WISCONSIN SOUTHERN RAILROAD
- MARC A. HOLSEN
- HIGHWAY COMMISSIONER
- DEPARTMENT OF TRANSPORTATION
- 3500 STATE HIGHWAY 310
- MANITOWOC, WI 54220
- PHONE: (920) 683-4353

- WISCONSIN SOUTHERN RAILROAD
- MARC A. HOLSEN
- HIGHWAY COMMISSIONER
- DEPARTMENT OF TRANSPORTATION
- 3500 STATE HIGHWAY 310
- MANITOWOC, WI 54220
- PHONE: (920) 683-4353

- WISCONSIN SOUTHERN RAILROAD
- MARC A. HOLSEN
- HIGHWAY COMMISSIONER
- DEPARTMENT OF TRANSPORTATION
- 3500 STATE HIGHWAY 310
- MANITOWOC, WI 54220
- PHONE: (920) 683-4353

- WISCONSIN SOUTHERN RAILROAD
- MARC A. HOLSEN
- HIGHWAY COMMISSIONER
- DEPARTMENT OF TRANSPORTATION
- 3500 STATE HIGHWAY 310
- MANITOWOC, WI 54220
- PHONE: (920) 683-4353

- WISCONSIN SOUTHERN RAILROAD
- MARC A. HOLSEN
- HIGHWAY COMMISSIONER
- DEPARTMENT OF TRANSPORTATION
- 3500 STATE HIGHWAY 310
- MANITOWOC, WI 54220
- PHONE: (920) 683-4353

- WISCONSIN SOUTHERN RAILROAD
- MARC A. HOLSEN
- HIGHWAY COMMISSIONER
- DEPARTMENT OF TRANSPORTATION
- 3500 STATE HIGHWAY 310
- MANITOWOC, WI 54220
- PHONE: (920) 683-4353

- WISCONSIN SOUTHERN RAILROAD
- MARC A. HOLSEN
- HIGHWAY COMMISSIONER
- DEPARTMENT OF TRANSPORTATION
- 3500 STATE HIGHWAY 310
- MANITOWOC, WI 54220
- PHONE: (920) 683-4353

- WISCONSIN SOUTHERN RAILROAD
- MARC A. HOLSEN
- HIGHWAY COMMISSIONER
- DEPARTMENT OF TRANSPORTATION
- 3500 STATE HIGHWAY 310
- MANITOWOC, WI 54220
- PHONE: (920) 683-4353

- WISCONSIN SOUTHERN RAILROAD
- MARC A. HOLSEN
- HIGHWAY COMMISSIONER
- DEPARTMENT OF TRANSPORTATION
- 3500 STATE HIGHWAY 310
- MANITOWOC, WI 54220
- PHONE: (920) 683-4353

- WISCONSIN SOUTHERN RAILROAD
- MARC A. HOLSEN
- HIGHWAY COMMISSIONER
- DEPARTMENT OF TRANSPORTATION
- 3500 STATE HIGHWAY 310
- MANITOWOC, WI 54220
- PHONE: (920) 683-4353

- WISCONSIN SOUTHERN RAILROAD
- MARC A. HOLSEN
- HIGHWAY COMMISSIONER
- DEPARTMENT OF TRANSPORTATION
- 3500 STATE HIGHWAY 310
- MANITOWOC, WI 54220
- PHONE: (920) 683-4353

- WISCONSIN SOUTHERN RAILROAD
- MARC A. HOLSEN
- HIGHWAY COMMISSIONER
- DEPARTMENT OF TRANSPORTATION
- 3500 STATE HIGHWAY 310
- MANITOWOC, WI 54220
- PHONE: (920) 683-4353

- WISCONSIN SOUTHERN RAILROAD
- MARC A. HOLSEN
- HIGHWAY COMMISSIONER
- DEPARTMENT OF TRANSPORTATION
- 3500 STATE HIGHWAY 310
- MANITOWOC, WI 54220
- PHONE: (920) 683-4353

- WISCONSIN SOUTHERN RAILROAD
- MARC A. HOLSEN
- HIGHWAY COMMISSIONER
- DEPARTMENT OF TRANSPORTATION
- 3500 STATE HIGHWAY 310
- MANITOWOC, WI 54220
- PHONE: (920) 683-4353

- WISCONSIN SOUTHERN RAILROAD
- MARC A. HOLSEN
- HIGHWAY COMMISSIONER
- DEPARTMENT OF TRANSPORTATION
- 3500 STATE HIGHWAY 310
- MANITOWOC, WI 54220
- PHONE: (920) 683-4353

- WISCONSIN SOUTHERN RAILROAD
- MARC A. HOLSEN
- HIGHWAY COMMISSIONER
- DEPARTMENT OF TRANSPORTATION
- 3500 STATE HIGHWAY 310
- MANITOWOC, WI 54220
- PHONE: (920) 683-4353

- WISCONSIN SOUTHERN RAILROAD
- MARC A. HOLSEN
- HIGHWAY COMMISSIONER
- DEPARTMENT OF TRANSPORTATION
- 3500 STATE HIGHWAY 310
- MANITOWOC, WI 54220
- PHONE: (920) 683-4353

- WISCONSIN SOUTHERN RAILROAD
- MARC A. HOLSEN
- HIGHWAY COMMISSIONER
- DEPARTMENT OF TRANSPORTATION
- 3500 STATE HIGHWAY 310
- MANITOWOC, WI 54220
- PHONE: (920) 683-4353

- WISCONSIN SOUTHERN RAILROAD
- MARC A. HOLSEN
- HIGHWAY COMMISSIONER
- DEPARTMENT OF TRANSPORTATION
- 3500 STATE HIGHWAY 310
- MANITOWOC, WI 54220
- PHONE: (920) 683-4353

- WISCONSIN SOUTHERN RAILROAD
- MARC A. HOLSEN
- HIGHWAY COMMISSIONER
- DEPARTMENT OF TRANSPORTATION
- 3500 STATE HIGHWAY 310
- MANITOWOC, WI 54220
- PHONE: (920) 683-4353

- WISCONSIN SOUTHERN RAILROAD
- MARC A. HOLSEN
- HIGHWAY COMMISSIONER
- DEPARTMENT OF TRANSPORTATION
- 3500 STATE HIGHWAY 310
- MANITOWOC, WI 54220
- PHONE: (920) 683-4353

- WISCONSIN SOUTHERN RAILROAD
- MARC A. HOLSEN
- HIGHWAY COMMISSIONER
- DEPARTMENT OF TRANSPORTATION
- 3500 STATE HIGHWAY 310
- MANITOWOC, WI 54220
- PHONE: (920) 683-4353

- WISCONSIN SOUTHERN RAILROAD
- MARC A. HOLSEN
- HIGHWAY COMMISSIONER
- DEPARTMENT OF TRANSPORTATION
- 3500 STATE HIGHWAY 310
- MANITOWOC, WI 54220
- PHONE: (920) 683-4353

- WISCONSIN SOUTHERN RAILROAD
- MARC A. HOLSEN
- HIGHWAY COMMISSIONER
- DEPARTMENT OF TRANSPORTATION
- 3500 STATE HIGHWAY 310
- MANITOWOC, WI 54220
- PHONE: (920) 683-4353

- WISCONSIN SOUTHERN RAILROAD
- MARC A. HOLSEN
- HIGHWAY COMMISSIONER
- DEPARTMENT OF TRANSPORTATION
- 3500 STATE HIGHWAY 310
- MANITOWOC, WI 54220
- PHONE: (920) 683-4353

- WISCONSIN SOUTHERN RAILROAD
- MARC A. HOLSEN
- HIGHWAY COMMISSIONER
- DEPARTMENT OF TRANSPORTATION
- 3500 STATE HIGHWAY 310
- MANITOWOC, WI 54220
- PHONE: (920) 683-4353

- WISCONSIN SOUTHERN RAILROAD
- MARC A. HOLSEN
- HIGHWAY COMMISSIONER
- DEPARTMENT OF TRANSPORTATION
- 3500 STATE HIGHWAY 310
- MANITOWOC, WI 54220
- PHONE: (920) 683-4353

- WISCONSIN SOUTHERN RAILROAD
- MARC A. HOLSEN
- HIGHWAY COMMISSIONER
- DEPARTMENT OF TRANSPORTATION
- 3500 STATE HIGHWAY 310
- MANITOWOC, WI 54220
- PHONE: (920) 683-4353

- WISCONSIN SOUTHERN RAILROAD
- MARC A. HOLSEN
- HIGHWAY COMMISSIONER
- DEPARTMENT OF TRANSPORTATION
- 3500 STATE HIGHWAY 310
- MANITOWOC, WI 54220
- PHONE: (920) 683-4353

- WISCONSIN SOUTHERN RAILROAD
- MARC A. HOLSEN
- HIGHWAY COMMISSIONER
- DEPARTMENT OF TRANSPORTATION
- 3500 STATE HIGHWAY 310
- MANITOWOC, WI 54220
- PHONE: (920) 683-4353

- WISCONSIN SOUTHERN RAILROAD
- MARC A. HOLSEN
- HIGHWAY COMMISSIONER
- DEPARTMENT OF TRANSPORTATION
- 3500 STATE HIGHWAY 310
- MANITOWOC, WI 54220
- PHONE: (920) 683-4353

- WISCONSIN SOUTHERN RAILROAD
- MARC A. HOLSEN
- HIGHWAY COMMISSIONER
- DEPARTMENT OF TRANSPORTATION
- 3500 STATE HIGHWAY 310
- MANITOWOC, WI 54220
- PHONE: (920) 683-4353

- WISCONSIN SOUTHERN RAILROAD
- MARC A. HOLSEN
- HIGHWAY COMMISSIONER
- DEPARTMENT OF TRANSPORTATION
- 3500 STATE HIGHWAY 310
- MANITOWOC, WI 54220
- PHONE: (920) 683-4353

- WISCONSIN SOUTHERN RAILROAD
- MARC A. HOLSEN
- HIGHWAY COMMISSIONER
- DEPARTMENT OF TRANSPORTATION
- 3500 STATE HIGHWAY 310
- MANITOWOC, WI 54220
- PHONE: (920) 683-4353

- WISCONSIN SOUTHERN RAILROAD
- MARC A. HOLSEN
- HIGHWAY COMMISSIONER
- DEPARTMENT OF TRANSPORTATION
- 3500 STATE HIGHWAY 310
- MANITOWOC, WI 54220
- PHONE: (920) 683-4353

- WISCONSIN SOUTHERN RAILROAD
- MARC A. HOLSEN
- HIGHWAY COMMISSIONER
- DEPARTMENT OF TRANSPORTATION
- 3500 STATE HIGHWAY 310
- MANITOWOC, WI 54220
- PHONE: (920) 683-4353

- WISCONSIN SOUTHERN RAILROAD
- MARC A. HOLSEN
- HIGHWAY COMMISSIONER
-

CLEANING CULVERT PIPES

520.8700
CLEANING
CULVERT
PIPES
EACH

CAT 0010	STATION	LOCATION	EACH	DIAMETER #	LENGTH#	FT	REMARKS
PROJECT NO: 4550-04-71							
MILL & OVERLAY SECTION							
	394+00	L/RT	1	24 IN	84		
	474+82	L/RT	1	2 FT X 2 FT BOX	48		
	538+50	L/RT	1	2 FT X 2 FT BOX	44		
MILL & OVERLAY SECTION SUBTOTAL					3		
4550-04-71 TOTAL					3		
CONSTRUCTION TOTAL					3		

PROVIDED FOR INFORMATION ONLY. EXISTING LENGTHS ARE APPROXIMATE.

CLEANING STORM SEWER PIPES

SPV.0060.01
CLEANING
STORM
SEWER
EACH

CAT 0010	STATION	LOCATION	EACH	DIAMETER #	LENGTH#	FT	REMARKS
PROJECT NO: 4550-04-71							
STAGE 2							
	42+26	RT	1	27 IN	49		
STAGE 2 SUBTOTAL					1		
STAGE 4							
	28+60	LT	1	12 IN	20		
	32+27	LT	1	12 IN	24		
	32+45	LT	1	12 IN	25		
	32+46	LT	1	12 IN	8		
	42+26	LT	1	27 IN	58		
	48+53	LT	2	12 IN	23		
	48+99	LT	1	18 IN	15		
	49+14	LT	1	18 IN	36		
	50+01	LT	1	30 IN	19		
STAGE 4 SUBTOTAL					10		
MILL & OVERLAY SECTION							
	327+37	LT	1	450 mm	17		
	338+09	RT	1	300 mm	28		
	338+31	L/RT	1	300 mm	34		
	341+58	L/RT	1	300 mm	35		
	344+05	L/RT	1	450 mm	59		
	344+05	RT	1	300 mm	28		
	344+62	LT	1	450 mm	238		
	349+98	LT	1	900 mm	195		
	356+98	L/RT	1	300 mm	30		
	359+45	L/RT	1	300 mm	30		
	361+91	L/RT	1	300 mm	30		
	364+34	L/RT	1	300 mm	31		
	366+84	L/RT	1	300 mm	30		
MILL & OVERLAY SECTION SUBTOTAL					13		
4550-04-71 TOTAL					24		
CONSTRUCTION TOTAL					24		

PROVIDED FOR INFORMATION ONLY. EXISTING LENGTHS ARE APPROXIMATE.

CURED IN PLACE POINT REPAIR

SPV.0090.04
CURED
IN PLACE
POINT
REPAIR
LF

CAT 0010	STATION	LOCATION	LF	REMARKS
PROJECT NO: 4550-04-71				
STAGE 2				
	27+31	LT	3	12" Storm Sewer
	28+61	RT	3	12" Storm Sewer
STAGE 2 SUBTOTAL			6	
MILL & OVERLAY SECTION				
	359+25	LT	3	27" Storm Sewer
MILL & OVERLAY SECTION SUBTOTAL			3	
4550-04-71 TOTAL			9	
CONSTRUCTION TOTAL			9	

Addendum No. 2
ID 4550-03-71
Revised Sheet 154
November 5, 2020

SAWING

CAT 0010	STATION	LOCATION	LF	69C0250
	568+34 - 631+15	L/T/RT	550	SAWING ASPHALT SAWING CONCRETE
			550	

PROJECT NO: 4550-03-71

MILL & OVERLAY SECTION

568+34 - 631+15	L/T/RT	550	--
-----------------	--------	-----	----

MILL & OVERLAY SUBTOTAL

4550-03-71 TOTAL

		550	--
--	--	-----	----

PROJECT NO: 4550-04-71

STAGE 1

	FOR TEMPORARY PAVING	L/T/RT	--	1,300
			--	1,300

STAGE 1 SUBTOTAL

STAGE 2

	23+44 - 56+52	RT	120	20
			120	20

STAGE 2 SUBTOTAL

STAGE 4

	23+44 - 56+52	LT	230	830
			230	830

STAGE 4 SUBTOTAL

MILL & OVERLAY SECTION

56+52 - 140+00	L/T/RT	2,222	--
140+00 - 232+00	L/T/RT	2,655	--
232+00 - 329+50	L/T/RT	1,615	10
329+50 - 374+25	L/T/RT	320	--
374+25 - 479+00	L/T/RT	1,475	--
479+00 - 568+34	L/T/RT	1,665	--
		7,952	10

MILL & OVERLAY SECTION SUBTOTAL

UNDISTRIBUTED

		800	300
--	--	-----	-----

4550-04-71 TOTAL

		9,102	2,360
--	--	-------	-------

CONSTRUCTION TOTAL

		9,652	2,360
--	--	-------	-------

*ADDITIONAL QUANTITIES SHOWN ELSEWHERE IN PLANS

CONSTRUCTION STAKING

STATION	STORM SEWER EACH	SUBGRADE LF	BASE LF	PPE CULVERTS EACH	STRUCTURE LAYOUT LS	CONCRETE PAVEMENT LF	RESURFACING REFERENCE LF	CURB RAmps EACH	SUPPLEMENTAL CONTROL 4550-03-71 LS	SUPPLEMENTAL CONTROL 4550-04-71 LS	SLOPE STAKES LF
650.4000 - 650.4500	1	4,000	4,000	3	--	--	6,280	3	--	--	4,000
650.4500 - 650.5000	1	4,000	4,000	3	--	--	6,280	3	--	--	4,000
650.5000 - 650.6000	1	4,000	4,000	3	--	--	6,280	3	1	--	4,000
650.6000 - 650.7000	1	4,000	4,000	3	--	--	6,280	3	1	--	4,000
650.7000 - 650.8000	1	4,000	4,000	3	--	--	6,280	3	1	--	4,000
650.8000 - 650.9000	1	4,000	4,000	3	--	--	6,280	3	1	--	4,000
650.9000 - 650.9910	1	4,000	4,000	3	--	--	6,280	3	1	--	4,000
650.9910 - 650.9920	1	4,000	4,000	3	--	--	6,280	3	1	--	4,000

PROJECT NO: 4550-03-71

MILL & OVERLAY SECTION

568+34 - 631+15			
-----------------	--	--	--

MILL & OVERLAY SECTION SUBTOTAL

4550-03-71 TOTAL

PROJECT NO: 4550-04-71

CONCRETE SECTION

23+44 - 56+52			
---------------	--	--	--

CONCRETE SECTION SUBTOTAL

MILL & OVERLAY SECTION

56+52 - 568+34			
----------------	--	--	--

MILL & OVERLAY SECTION SUBTOTAL

4550-04-71 TOTAL

CONSTRUCTION TOTAL

Addendum No. 2
ID 4550-03-71
Revised Sheet 188
November 5, 2020

PROJECT NO: 4550-04-71

HWY: STH 67

COUNTY: SHEBOYGAN

MISCELLANEOUS QUANTITIES

SHEET

188

E

FILE NAME : C:\PW_MWORKDIR\DEN001\MM093804\0019510\45500304_030201-MQ.DWG

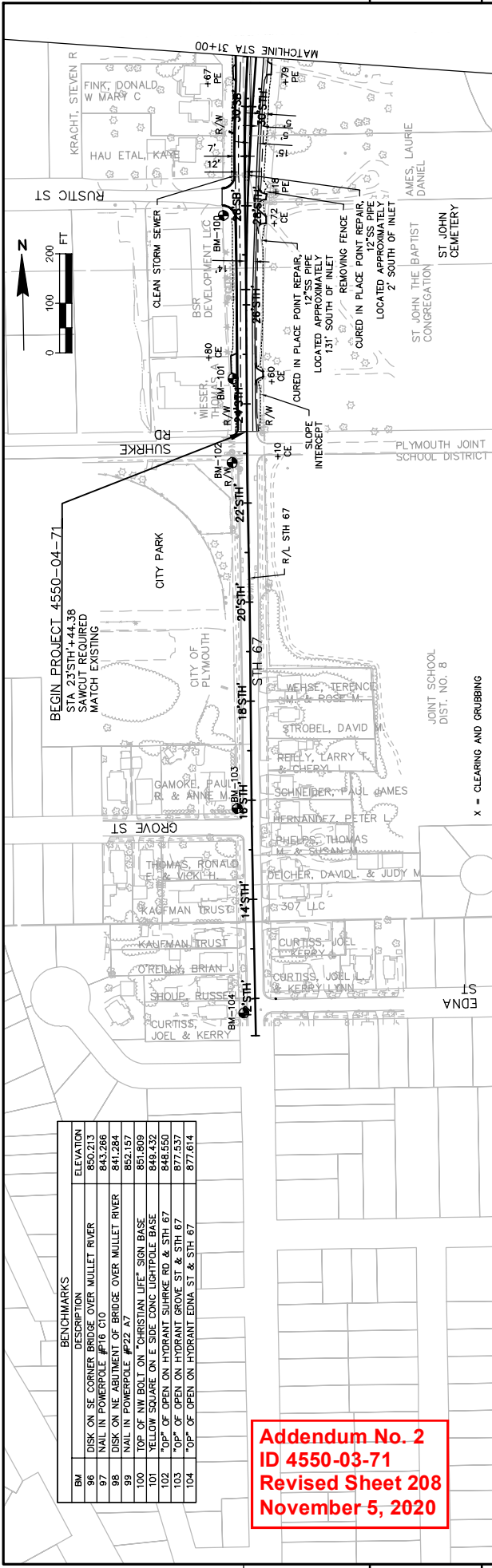
LAYOUT NAME - MQ-25

PLOT DATE : 11/5/2020 8:45 AM

PLOT BY : MORGAN, MARC/AKE

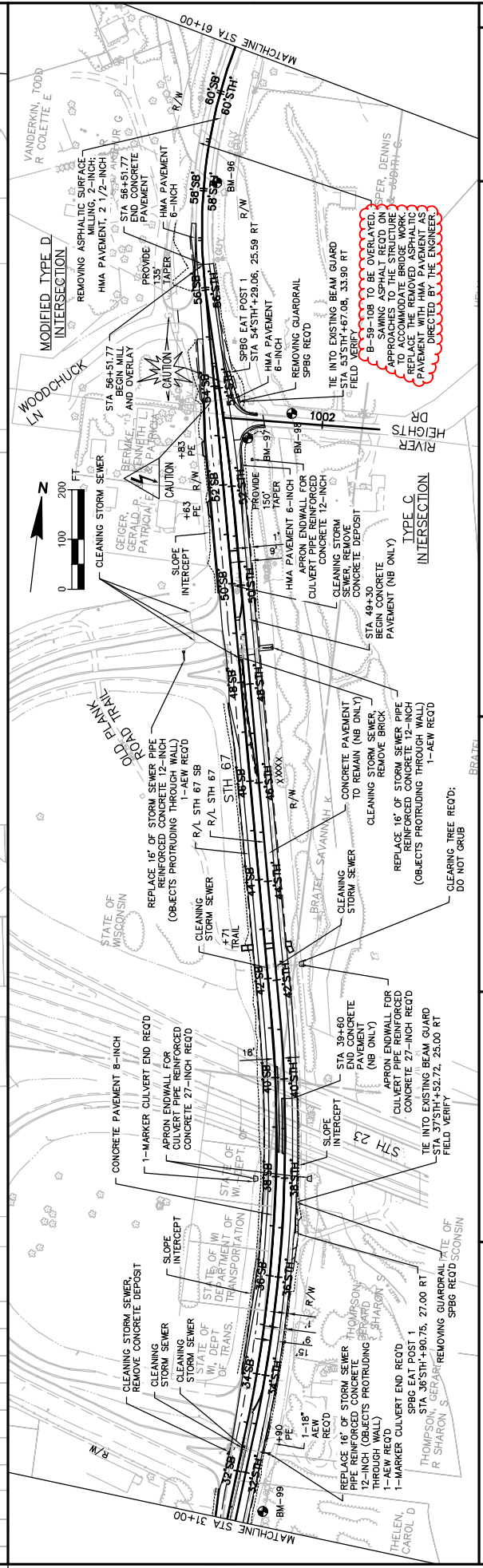
PLOT SCALE : #####

WISDOT/CADD SHEET 42



BM	DESCRIPTION	ELEVATION
89	DISK ON SE CORNER BRIDGE OVER MULLET RIVER	850.213
90	NAIL IN POWERPOLE #116 C/O	843.213
98	DISK ON NE ABUTMENT OF BRIDGE OVER MULLET RIVER	841.284
99	NAIL IN POWERPOLE #122 A7	852.157
100	TOP OF NW BOLT ON "CHRISTIAN LIFE" SIGN BASE	851.809
101	YELLOW SQUARE ON E SIDE CONC LIGHTPOLE BASE	849.432
102	"OP" OF OPEN ON HYDRANT SUHRKE RD & STH 67	848.550
103	"OP" OF OPEN ON HYDRANT GROVE ST & STH 67	872.537
104	"OP" OF OPEN ON HYDRANT EDNA ST & STH 67	877.614

Addendum No. 2
 ID 4550-03-71
 Revised Sheet 208
 November 5, 2020



PROJECT NO: 4550-04-71
 COUNTY: SHEBOYGAN
 PLAN: STH 67
 SHEET 208
 HWY: STH 67
 FILE NAME: C:\PW\WORKDIR\EN001\4550\93804\00119510\45500304_050201-PN.DWG
 LAYOUT NAME - MAINLINE-01
 PLOT DATE: 11/5/2020 8:57 AM
 PLOT BY: MORGAN, MARC/AKE
 PLOT NAME: WISDOT/CADD SHEET 44
 PLOT SCALE: 1 IN:200 FT

Addendum No. 2
ID 4550-03-71
Revised Sheet 382
November 5, 2020

STATION	AREA (SF)		INCREMENTAL VOL. (CY) (UNADJUSTED)		CUMULATIVE VOL. (CY)		MASS ORDINATE NOTE 3
	CUT	FILL	CUT NOTE 1	FILL NOTE 2	CUT 1.00 NOTE 1	EXPANDED FILL 1.25	
23+44.383	14.48	0.00	0	0	0	0	0
23+50.000	13.50	0.75	3	0	3	0	3
24+00.000	11.67	3.90	23	4	26	5	21
24+50.000	13.65	0.00	23	4	50	10	40
25+00.000	11.07	7.03	23	7	73	18	54
25+50.000	15.09	4.70	24	11	97	32	65
26+00.000	19.65	2.63	32	7	129	40	89
26+50.000	20.14	0.58	37	3	166	44	122
27+00.000	19.81	0.02	37	1	203	45	158
27+50.000	22.50	0.00	39	0	242	45	197
30+50.000	23.29	0.00	0	0	242	45	197
31+00.000	20.60	0.00	41	0	283	45	238
35+00.000	14.34	0.00	27	0	309	45	265
51+50.000	13.45	3.27	0	0	309	45	265
52+00.000	13.72	1.16	25	4	334	50	285
52+50.000	10.63	0.55	23	2	357	52	305
54+00.000	20.89	15.30	19	14	376	69	307
COLUMN TOTALS			376	56			

NOTES:
 1 - CUT
 MATERIAL - SALVAGED/UNUSABLE PAVEMENT MATERIAL IS CALCULATED ON THE SUMMARY SHEET.
 DOES NOT INCLUDE PAVEMENT EXC VOLUME.
 2 - FILL
 SALVAGED/UNUSABLE PAVEMENT MATERIAL IS CALCULATED ON THE SUMMARY SHEET.
 3 - MASS ORDINATE
 $[(CUT) - ((FILL) * FILL FACTOR)]$

Addendum No. 2
ID 4550-03-71
Revised Sheet 383
November 5, 2020

STATION	AREA (SF)		INCREMENTAL VOL. (CY) (UNADJUSTED)		CUMULATIVE VOL. (CY)		MASS ORDINATE
	CUT	FILL	CUT	FILL	CUT	FILL	
1000+40.000	36.06	0.59	0	0	0	0	NOTE 3
1000+50.000	22.68	0.91	11	0	11	0	
1000+67.502	13.40	0.64	12	1	23	1	
1000+84.358	7.58	11.73	7	4	29	6	
COLUMN TOTALS			29	5			

NOTES:
 1 - CUT
 CUT DOES INCLUDE SALVAGED/UNUSABLE PAVEMENT MATERIAL. SALVAGED/UNUSABLE PAVEMENT MATERIAL IS CALCULATED ON THE SUMMARY SHEET.
 2 - FILL
 DOES NOT INCLUDE PAVEMENT EXC. VOLUME. SALVAGED/UNUSABLE PAVEMENT MATERIAL IS CALCULATED ON THE SUMMARY SHEET.
 3 - MASS ORDINATE
 ((CUT) - ((FILL) * FILL FACTOR))

Addendum No. 2
ID 4550-03-71
Revised Sheet 384
November 5, 2020

STATION	AREA (SF)		INCREMENTAL VOL. (CY) (UNADJUSTED)		CUMULATIVE VOL. (CY)		MASS ORDINATE
	CUT	FILL	CUT	FILL	CUT 1.00 NOTE 1	EXPANDED FILL 1.25	
23+44.383	15.21	1.49	0	0	0	0	NOTE 3 0
23+50.000	22.58	1.97	4	0	4	0	3
24+00.000	18.73	1.84	38	4	42	5	37
24+50.000	12.97	2.64	29	4	72	10	62
25+00.000	7.95	9.47	19	11	91	24	67
25+50.000	20.04	0.24	26	9	117	35	82
26+00.000	22.87	0.02	40	0	157	36	121
26+50.000	23.93	0.01	43	0	200	36	164
27+00.000	27.41	0.00	48	0	247	36	212
27+50.000	28.42	0.00	52	0	299	36	263
30+50.000	32.54	0.24	0	0	299	36	263
31+00.000	32.37	0.37	60	1	359	36	323
36+00.000	19.10	0.08	35	0	395	37	358
51+50.000	42.41	0.03	0	0	395	37	358
52+00.000	41.72	0.02	78	0	473	37	436
52+50.000	35.95	0.05	72	0	544	37	508
54+00.000	33.93	0.03	31	0	576	37	539
COLUMN TOTALS			576	29			

NOTES:
 1 - CUT MATERIAL - SALVAGED/UNUSABLE PAVEMENT MATERIAL IS CALCULATED ON THE SUMMARY SHEET.
 2 - FILL DOES NOT INCLUDE PAVEMENT EXC. VOLUME. SALVAGED/UNUSABLE PAVEMENT MATERIAL IS CALCULATED ON THE SUMMARY SHEET.
 3 - MASS ORDINATE [(CUT) - ((FILL) * FILL FACTOR)]

Addendum No. 2
ID 4550-03-71
Revised Sheet 385
November 5, 2020

STATION	AREA (SF)		INCREMENTAL VOL (CY) (UNADJUSTED)		CUMULATIVE VOL (CY)		EXPANDED FILL 1.25	MASS ORDINATE NOTE 3
	CUT	FILL	CUT NOTE 1	FILL NOTE 2	CUT 1.00 NOTE 1	FILL		
54+50.000	45.93	9.00	85	17	85	21		64
		COLUMN TOTALS	85	17				

NOTES:

- CUT DOES INCLUDE SALVAGED/UNUSABLE PAVEMENT MATERIAL. SALVAGED/UNUSABLE PAVEMENT MATERIAL IS CALCULATED ON THE SUMMARY SHEET.
- FILL DOES NOT INCLUDE PAVEMENT EXC VOLUME. SALVAGED/UNUSABLE PAVEMENT MATERIAL IS CALCULATED ON THE SUMMARY SHEET.
- MASS ORDINATE ((CUT) - ((FILL) * FILL_FACTOR))

DIVISION 6 - STH 67

STATION	AREA (SF)		INCREMENTAL VOL (CY) (UNADJUSTED)		CUMULATIVE VOL (CY)		EXPANDED FILL 1.25	MASS ORDINATE NOTE 3
	CUT	FILL	CUT NOTE 1	FILL NOTE 2	CUT 1.00 NOTE 1	FILL		
56+51.770	17.98	0.00	0	0	0	0	0	0
57+00.000	16.30	32.56	31	30	31	38	38	-7
57+34.507	18.48	31.17	23	42	54	91	91	-37
57+50.000	0.00	0.00	3	9	59	102	102	-43
64+50.000	2.92	8.89	3	8	62	112	112	-50
65+00.000	1.98	9.12	3	17	66	133	133	-67
65+50.000	0.82	8.37	3	16	69	153	153	-84
66+00.000	0.53	8.38	1	16	70	173	173	-103
66+50.000	11.43	3.07	11	10	81	186	186	-105
66+60.000	11.42	2.94	4	1	85	187	187	-102
67+00.000	0.00	0.00	8	2	93	190	190	-96
67+125.000	0.85	2.40	0	1	94	191	191	-97
67+50.000	0.22	2.83	0	2	194	194	194	-100
68+00.000	0.40	4.83	1	7	195	203	203	-108
68+50.000	0.11	5.94	0	10	195	215	215	-119
69+00.000	1.73	2.71	2	8	197	224	224	-127
69+50.000	2.05	1.50	3	4	200	229	229	-129
70+00.000	1.33	1.29	3	3	203	232	232	-130
70+50.000	0.55	1.63	2	3	205	235	235	-130
71+00.000	0.00	0.00	1	0	206	237	237	-132
74+21.764	7.66	0.00	3	0	209	237	237	-129
74+50.000	1.77	0.00	5	0	214	237	237	-124
75+00.000	0.11	3.06	2	3	216	241	241	-125
75+50.000	0.00	8.28	0	11	216	254	254	-138
76+00.000	0.25	12.78	0	20	216	278	278	-163
76+50.000	0.31	13.40	1	24	217	309	309	-192
77+00.000	1.02	13.21	1	25	218	339	339	-222
77+50.000	0.51	12.35	1	24	219	369	369	-250
78+00.000	1.86	8.73	2	20	221	393	393	-272
78+50.000	0.39	11.52	2	19	223	417	417	-294
79+00.000	1.12	2.20	2	13	225	433	433	-308
79+50.000	0.24	11.24	1	12	226	448	448	-322
79+90.000	4.20	8.00	3	14	229	466	466	-337
80+00.000	4.82	6.44	2	3	231	469	469	-339
80+10.000	4.29	5.55	2	2	233	472	472	-340
80+50.000	1.46	1.26	4	5	237	479	479	-342
81+00.000	10.08	0.17	11	1	248	480	480	-333
81+50.000	0.62	0.93	10	1	258	482	482	-324
82+00.000	3.28	0.14	4	1	262	483	483	-322
82+09.977	1.56	0.00	1	0	263	483	483	-321
82+50.000	0.00	0.00	1	0	263	483	483	-320
83+00.000	0.53	24.69	0	23	263	511	511	-348
83+40.000	0.53	22.99	1	35	264	556	556	-391
83+50.000	0.00	0.00	0	4	264	561	561	-397

Addendum No. 2
ID 4550-03-71
Revised Sheet 386
November 5, 2020

NOTES:
1 - CUT
2 - FILL
3 - MASS ORDINATE [(CUT) - ((FILL) * FILL FACTOR)]
CUT DOES INCLUDE SALVAGED/UNUSABLE PAVEMENT MATERIAL. SALVAGED/UNUSABLE PAVEMENT MATERIAL IS CALCULATED ON THE SUMMARY SHEET.
DOES NOT INCLUDE PAVEMENT EXC VOLUME.
SALVAGED/UNUSABLE PAVEMENT MATERIAL IS CALCULATED ON THE SUMMARY SHEET.

CONTINUED FROM PREVIOUS SHEET
DIVISION 6 - STH 67

STATION	AREA (SF)		INCREMENTAL VOL. (CY) (UNADJUSTED)		CUMULATIVE VOL. (CY)		MASS ORDINATE
	CUT	FILL	CUT	FILL	CUT 1.00 NOTE 1	EXPANDED FILL 1.25	
89+62.089	0.96	0.92	0	0	165	561	-397
90+00.000	0.13	1.02	1	1	166	563	-398
90+50.000	0.61	0.89	1	2	166	565	-399
91+00.000	1.51	0.87	2	2	168	567	-399
91+50.000	0.04	2.86	1	3	169	571	-402
92+00.000	0.69	0.77	1	3	170	576	-406
92+50.000	0.16	1.61	1	2	171	578	-408
93+00.000	0.37	0.33	0	2	171	581	-409
93+50.000	0.81	0.14	1	0	172	581	-409
94+00.000	1.02	0.70	2	1	174	582	-408
94+50.000	1.04	2.36	2	3	176	586	-410
94+65.127	2.59	4.94	1	2	177	588	-411
95+00.000	0.72	13.05	2	12	179	603	-424
95+50.000	12.21	4.51	12	16	191	623	-432
96+00.000	19.32	21.84	29	24	220	654	-433
96+50.000	17.70	24.25	34	43	255	707	-452
97+00.000	28.92	25.78	43	46	298	765	-467
97+50.000	14.70	27.88	40	50	338	827	-489
98+00.000	15.01	10.42	27	35	366	871	-506
98+50.000	22.55	0.00	35	10	400	883	-483
98+69.601	20.62	0.00	16	0	416	883	-467
99+00.000	15.31	0.00	20	0	436	883	-447
99+02.627	15.44	0.00	2	0	438	883	-446
COLUMN TOTALS			438	707			

NOTES:
 1 - CUT MATERIAL - SALVAGED/UNUSABLE PAVEMENT MATERIAL IS CALCULATED ON THE SUMMARY SHEET.
 DOES NOT INCLUDE PAVEMENT EXC VOLUME.
 2 - FILL SALVAGED/UNUSABLE PAVEMENT MATERIAL IS CALCULATED ON THE SUMMARY SHEET.
 3 - MASS ORDINATE $[(CUT) - ((FILL) * FILL\ FACTOR)]$

Addendum No. 2
 ID 4550-03-71
 Revised Sheet 387
 November 5, 2020

Addendum No. 2
ID 4550-03-71
Revised Sheet 388
November 5, 2020

DIVISION 6 - STH 67		AREA (SF)		INCREMENTAL VOL. (CY) (UNADJUSTED)		CUMULATIVE VOL. (CY)		MASS ORIGINATE	
STATION	CUT	FILL	CUT	FILL	FILL	CUT	EXPANDED FILL	NOTE 1	NOTE 3
	NOTE 1	NOTE 2	NOTE 1	NOTE 2	NOTE 1	NOTE 2	NOTE 1	NOTE 1	NOTE 3
140+77.160	14.54	0.45	0	0	0	0	0	0	0
141+00.000	13.79	0.83	12	1	1	1	1	1	11
141+50.000	15.84	1.23	27	2	2	2	3	3	16
142+00.000	17.84	1.72	31	3	3	3	6	6	64
142+50.000	20.05	0.98	35	3	3	3	10	10	96
143+00.000	20.08	0.99	37	2	2	2	12	12	130
143+50.000	9.73	0.06	28	1	1	1	13	13	157
144+00.000	0.27	0.38	9	0	0	0	14	14	166
144+50.000	2.37	0.00	2	0	0	0	14	14	168
144+67.705	16.40	0.30	6	0	0	0	18	18	174
145+00.000	16.34	0.00	20	0	0	0	14	14	193
145+50.000	22.65	2.36	36	2	2	2	17	17	226
145+69.650	23.72	0.17	17	1	1	1	18	18	212
145+77.160	1.79	0.04	4	0	0	0	18	18	246
146+00.000	0.00	0.00	1	0	0	0	18	18	246
146+50.000	0.00	0.00	0	0	0	0	18	18	246
147+00.000	0.00	0.00	0	0	0	0	18	18	246
147+50.000	5.66	0.06	2	0	0	0	18	18	246
147+66.061	2.41	0.95	5	1	1	1	19	19	252
148+00.000	0.00	0.00	1	0	0	0	19	19	253
148+14.461	30.58	0.00	14	0	0	0	19	19	257
149+24.937	27.57	0.00	27	0	0	0	19	19	294
149+50.000	27.58	0.00	51	0	0	0	19	19	345
150+00.000	18.28	15.42	42	14	14	14	37	37	389
151+00.000	16.35	15.05	22	28	28	28	49	49	366
151+50.000	14.36	14.66	27	28	28	28	485	107	388
152+00.000	14.08	13.11	24	28	28	28	490	141	388
152+24.576	15.26	11.84	13	12	12	12	593	137	396
152+50.000	0.00	0.00	7	6	6	6	510	164	397
163+28.714	1.71	0.82	1	0	0	0	511	164	397
163+50.000	1.95	0.86	1	1	1	1	513	165	398
164+00.000	3.68	0.63	5	1	1	1	518	167	351
164+50.000	3.96	0.44	7	1	1	1	515	168	357
165+00.000	2.47	2.01	6	2	2	2	511	171	350
165+50.000	1.28	1.47	3	3	3	3	514	175	350
166+00.000	2.13	0.00	3	1	1	1	518	177	351
166+50.000	0.00	0.00	2	0	0	0	540	177	353
170+14.179	0.01	3.17	0	1	1	1	510	178	352
170+50.000	0.00	13.08	0	11	11	11	540	191	348
171+00.000	4.22	3.73	4	16	16	16	544	211	333
171+50.000	1.71	7.32	6	10	10	10	549	223	326
172+00.000	11.48	2.19	12	9	9	9	511	234	327
172+50.000	7.29	3.09	17	5	5	5	519	241	388
172+82.418	11.00	3.39	11	4	4	4	590	245	344
173+00.000	35.03	4.09	15	2	2	2	615	248	356
173+50.000	45.43	7.22	75	10	10	10	619	262	418
174+00.000	25.34	8.38	66	14	14	14	715	280	455
174+50.000	19.88	10.55	42	18	18	18	765	301	485
175+00.000	9.38	10.87	27	20	20	20	814	326	487
175+50.000	7.18	11.75	15	21	21	21	819	332	476
176+00.000	0.48	3.07	7	14	14	14	816	370	458
176+50.000	0.52	4.36	1	7	7	7	877	378	458

NOTES:
 1 - CUT MATERIAL - SALVAGED/UNUSABLE PAVEMENT MATERIAL IS CALCULATED ON THE SUMMARY SHEET.
 2 - FILL DOES NOT INCLUDE PAVEMENT EXC VOLUME. SALVAGED/UNUSABLE PAVEMENT MATERIAL IS CALCULATED ON THE SUMMARY SHEET.
 3 - MASS ORIGINATE ((CUT) - ((FILL) * FILL FACTOR))

CONTINUED FROM PREVIOUS SHEET
DIVISION 6 - STH 67

STATION	AREA (SF)		INCREMENTAL VOL (CY) (UNADJUSTED)		CUMULATIVE VOL (CY)		EXPANDED FILL 1.25	MASS ORDINATE NOTE 3
	CUT	FILL	CUT NOTE 1	FILL NOTE 2	CUT 1.00 NOTE 1	FILL 1.25		
177+00.00	0.43	0.69	1	5	388	385	453	
177+50.00	0.21	2.60	1	3	838	388	450	
178+00.00	0.04	3.16	0	5	839	395	444	
178+50.00	0.65	0.46	0	3	839	399	440	
179+00.00	0.24	3.39	1	4	840	404	437	
179+50.00	0.04	5.42	0	8	840	414	427	
180+00.00	0.74	1.25	1	6	841	421	420	
180+50.00	1.70	0.05	2	1	843	423	421	
181+00.00	0.79	0.00	2	0	846	423	423	
181+29.265	1.43	0.20	1	0	847	423	424	
181+50.00	0.00	0.00	1	0	847	424	424	
185+00.00	0.05	1.57	0	1	847	425	423	
185+50.00	0.56	0.59	1	2	848	421	421	
186+00.00	0.69	4.63	1	5	849	433	416	
186+50.00	0.38	5.94	1	10	850	446	404	
187+00.00	1.45	0.00	2	6	852	453	399	
187+50.00	1.03	0.04	2	0	854	453	401	
188+00.00	0.50	0.00	1	0	856	453	403	
188+50.00	0.08	1.69	1	2	856	455	401	
189+00.00	0.00	8.22	0	9	856	467	390	
189+50.00	0.00	6.09	0	13	856	482	373	
190+00.00	0.00	5.10	0	11	856	496	360	
190+50.00	0.00	3.51	0	6	856	507	350	
190+58.264	0.00	0.49	0	1	856	507	349	
196+71.029	24.62	0.00	10	0	866	508	358	
197+00.00	22.99	0.00	26	0	881	508	383	
197+50.00	25.53	0.06	45	0	907	508	429	
198+00.00	25.15	0.05	47	0	984	508	476	
198+50.00	22.18	2.22	44	2	1028	511	517	
199+00.00	23.20	1.11	42	3	1071	515	556	
199+50.00	22.96	0.11	43	1	1114	516	598	
200+00.00	31.70	0.00	51	0	1155	516	649	
200+18.760	26.31	6.49	20	2	1185	519	666	
200+50.00	0.00	0.00	15	4	1200	524	679	
204+45.772	2.85	0.07	0	0	1202	524	679	
204+50.00	1.98	0.35	0	0	1203	524	679	
205+00.00	1.50	2.38	3	2	1206	527	679	
205+50.00	2.45	0.11	4	2	1210	530	680	
206+00.00	1.46	0.87	4	1	1213	531	682	
206+50.00	0.49	6.04	2	16	1215	539	676	
207+00.00	0.96	8.01	1	13	1216	555	661	
207+50.00	1.21	2.14	2	9	1218	567	652	
208+00.00	0.76	1.70	2	4	1200	571	649	
208+50.00	2.55	0.63	3	2	1223	574	649	
209+00.00	2.21	1.81	4	2	1228	577	651	
209+50.00	1.29	1.30	3	3	1231	580	648	
210+00.00	1.67	3.45	3	4	1234	586	641	
210+50.00	1.94	4.88	3	8	1237	596	636	
211+00.00	2.73	3.88	4	8	1241	606	635	
211+50.00	3.44	1.96	6	5	1247	612	633	
212+00.00	0.07	2.46	3	4	1250	618	625	
212+50.00	0.47	4.43	1	6	1251	626	621	
213+00.00	1.48	0.62	2	5	1253	631	621	
213+50.00	1.91	0.00	3	1	1256	632	624	
213+75.005	0.36	0.61	1	0	1257	632	624	

NOTES:
 1 - CUT MATERIAL, SALVAGED/UNUSABLE PAVEMENT MATERIAL IS CALCULATED ON THE SUMMARY SHEET.
 2 - FILL DOES NOT INCLUDE PAVEMENT EXC VOLUME. SALVAGED/UNUSABLE PAVEMENT MATERIAL IS CALCULATED ON THE SUMMARY SHEET.
 3 - MASS ORDINATE [(CUT) - ((FILL) * FILL FACTOR)]

Addendum No. 2
ID 4550-03-71
Revised Sheet 389
November 5, 2020

CONTINUED FROM PREVIOUS SHEET

DIVISION 6 - 5TH 67

STATION	AREA (SF)		INCREMENTAL VOL (CY) (UNADJUSTED)		CUMULATIVE VOL (CY)		EXPANDED FILL 1.25	MASS ORDINATE NOTE 3
	CUT	FILL	CUT NOTE 1	FILL NOTE 2	CUT 1.00 NOTE 1	FILL 1.25		
214+00.000	0.00	0.00	0	0	1257	633	624	
214+04.392	22.23	0.00	2	0	1259	633	626	
214+50.000	23.84	0.00	39	0	1298	633	665	
215+00.000	37.70	0.00	57	0	1355	633	722	
215+50.000	54.24	0.00	85	0	1440	633	807	
216+00.000	68.17	0.00	113	0	1553	633	920	
216+50.000	26.44	0.00	88	0	1641	633	1008	
216+58.070	14.43	0.00	6	0	1647	633	1014	
217+00.000	0.00	0.00	11	0	1658	633	1025	
220+12.195	0.44	0.84	0	0	1658	633	1025	
220+50.000	1.42	0.00	1	1	1659	634	1026	
221+00.000	1.99	0.00	3	0	1663	634	1029	
221+50.000	3.46	0.00	4	0	1668	634	1034	
222+00.000	1.39	1.21	5	1	1672	635	1037	
222+50.000	1.59	1.52	3	3	1675	638	1037	
223+00.000	0.96	7.10	2	8	1677	648	1029	
223+50.000	0.33	13.56	1	20	1678	673	1006	
224+00.000	0.49	23.99	1	36	1679	718	962	
224+50.000	0.64	16.57	1	39	1680	766	914	
225+00.000	0.05	20.05	1	35	1681	810	871	
225+50.000	0.07	16.83	0	35	1681	854	827	
226+00.000	0.01	10.04	0	26	1681	886	795	
226+50.000	0.00	6.89	0	16	1681	905	776	
227+00.000	0.00	5.93	0	11	1681	919	762	
227+50.000	0.20	1.88	0	6	1681	927	755	
228+00.000	0.16	1.22	0	3	1682	930	751	
228+50.000	0.46	0.99	1	2	1682	933	750	
229+00.000	0.43	0.59	1	1	1683	934	749	
229+50.000	0.15	1.80	1	2	1684	937	746	
230+00.000	0.92	0.73	1	2	1685	940	745	
230+50.000	1.46	0.09	1	1	1687	941	746	
231+00.000	0.18	1.99	2	1	1688	942	746	
231+50.000	3.77	1.29	4	2	1692	945	747	
232+00.000	1.97	1.47	5	3	1697	948	749	
232+50.000	2.33	2.57	4	4	1701	953	748	
233+00.000	2.08	5.08	4	7	1705	962	743	
233+50.000	0.27	12.93	2	17	1708	983	724	
234+00.000	0.00	21.97	0	34	1708	1026	682	
234+50.000	0.00	23.02	0	44	1708	1080	628	
234+94.000	0.00	26.67	0	42	1708	1133	575	
COLUMN TOTALS			1708	907				

NOTES:
 1 - CUT MATERIAL, SALVAGED/UNUSABLE PAVEMENT CALCULATED ON THE SUMMARY SHEET.
 2 - FILL DOES NOT INCLUDE PAVEMENT EXC VOLUME. SALVAGED/UNUSABLE PAVEMENT MATERIAL IS CALCULATED ON THE SUMMARY SHEET.
 3 - MASS ORDINATE $[(CUT) - ((FILL) * FILL FACTOR)]$

**Addendum No. 2
 ID 4550-03-71
 Revised Sheet 390
 November 5, 2020**

Addendum No. 2
ID 4550-03-71
Revised Sheet 391
November 5, 2020

STATION	AREA (SF)		INCREMENTAL VOL (CY) (UNADJUSTED)		CUMULATIVE VOL (CY)		MASS ORDNATE
	CUT	FILL	CUT	FILL	CUT 1.00 NOTE 1	EXPANDED FILL 1.25	
231+92.00	3.89	0.00	0	0	0	0	3
232+00.00	2.79	0.00	1	0	1	0	1
232+50.00	0.55	4.45	3	4	4	5	-1
233+00.00	0.00	12.85	1	16	5	25	-21
233+50.00	0.00	8.95	0	20	5	50	45
234+00.00	0.09	7.38	0	14	5	68	-63
234+50.00	2.38	1.58	2	8	7	78	-71
235+00.00	0.05	1.81	2	3	9	82	-73
235+50.00	0.06	2.83	0	4	9	87	-78
236+00.00	0.02	5.19	0	7	9	96	-86
236+23.00	2.26	2.43	1	5	10	102	-91
236+50.00	0.02	12.01	1	9	11	113	-101
237+00.00	13.07	30.95	12	41	24	164	-140
237+50.00	14.39	24.85	53	53	50	230	-180
238+00.00	12.11	37.61	25	60	75	305	-230
238+50.00	11.07	25.88	22	61	97	382	-285
239+00.00	11.37	36.97	21	62	118	460	-342
239+50.00	7.82	41.31	18	77	135	556	-420
239+51.958	7.64	41.09	3	3	136	559	-423
239+84.00	2.13	8.08	6	29	142	596	-454
240+00.00	0.00	0.00	1	2	143	599	-456
240+10.00	2.06	6.69	6	1	149	600	-458
240+50.00	5.75	30.30	6	27	155	635	-486
241+00.00	3.53	25.66	9	52	164	699	-542
241+50.00	0.75	25.72	4	48	168	759	-598
241+73.00	4.15	41.60	2	29	170	795	-632
242+00.00	3.98	45.87	4	44	174	850	-682
242+50.00	1.35	51.92	5	91	179	963	-790
243+00.00	5.90	51.39	7	96	186	1082	-903
243+50.00	1.47	43.73	7	88	193	1192	-1007
244+00.00	1.78	40.49	3	78	196	1290	-1101
244+50.00	4.85	45.28	6	70	202	1389	-1194
245+00.00	4.35	46.17	9	85	211	1495	-1291
245+50.00	2.30	40.99	6	81	217	1596	-1386
246+00.00	9.59	48.04	11	82	228	1699	-1478
246+50.00	5.74	49.93	14	91	242	1812	-1562
247+00.00	1.12	29.00	6	73	248	1904	-1728
247+50.00	1.14	29.23	2	54	250	1971	-1790
248+00.00	1.19	26.85	2	52	252	2036	-1849
248+50.00	1.18	25.44	2	48	254	2096	-1910
249+00.00	1.75	30.00	3	51	257	2161	-1965
249+50.00	2.36	20.42	4	47	261	2219	-2016
250+00.00	0.85	26.31	3	43	264	2273	-2062
250+50.00	1.42	15.23	2	38	266	2321	-2092
251+00.00	1.73	13.05	3	26	269	2354	-2120
251+50.00	2.16	14.81	4	26	273	2386	-2164
252+00.00	2.13	26.11	4	38	277	2433	-2211
252+50.00	1.65	17.85	4	41	281	2484	-2259
253+00.00	2.58	26.87	4	41	285	2536	-2310
253+50.00	1.53	20.87	4	44	289	2591	-2352
254+00.00	2.96	19.09	4	44	293	2638	-2404
254+50.00	1.57	29.26	4	45	297	2694	-2477
255+00.00	1.99	36.83	3	61	300	2770	-2477

NOTES:
 1 - CUT MATERIAL. SALVAGED/UNUSABLE PAVEMENT MATERIAL IS CALCULATED ON THE SUMMARY SHEET.
 2 - FILL DOES NOT INCLUDE PAVEMENT EXC. VOLUME. SALVAGED/UNUSABLE PAVEMENT MATERIAL IS CALCULATED ON THE SUMMARY SHEET.
 3 - MASS ORDNATE $[(CUT) - ((FILL) * FILL\ FACTOR)]$

CONTINUED FROM PREVIOUS SHEET
DIVISION 6 - STH 67

STATION	AREA (SF)		INCREMENTAL VOL (CY) (UNADJUSTED)		CUMULATIVE VOL (CY)		MASS ORDNATE
	CUT	FILL	CUT	FILL	CUT 1.00 NOTE 1	EXPANDED FILL 1.25	
255+50.000	3.02	28.53	5	61	297	2846	NOTE 3 -2548
256+00.000	1.70	25.11	4	50	302	2908	-2606
256+50.000	2.23	27.45	4	49	305	2969	-2663
257+00.000	3.23	20.43	5	44	310	3024	-2714
257+50.000	2.40	23.07	5	40	315	3074	-2759
258+00.000	3.50	30.31	5	49	321	3136	-2815
258+50.000	3.55	20.41	7	47	327	3195	-2867
259+00.000	2.98	15.56	6	33	334	3236	-2903
259+50.000	2.64	18.74	5	32	339	3276	-2937
260+00.000	2.21	14.74	4	31	343	3315	-2972
260+50.000	3.04	13.87	5	26	348	3348	-3000
261+00.000	2.38	20.78	5	32	353	3388	-3035
261+50.000	2.22	22.67	5	40	358	3438	-3081
262+00.000	1.59	26.16	4	45	362	3485	-3133
262+50.000	1.28	24.99	2	47	364	3554	-3190
263+00.000	1.99	13.25	3	35	367	3598	-3231
263+50.000	2.02	15.21	4	26	371	3631	-3261
264+00.000	1.53	17.82	3	31	374	3670	-3295
264+50.000	0.64	26.69	2	41	376	3721	-3345
265+00.000	0.87	21.45	1	45	378	3777	-3399
265+50.000	1.35	19.73	2	38	380	3824	-3445
266+00.000	1.56	17.83	3	35	382	3868	-3486
266+50.000	2.31	18.93	4	34	386	3910	-3525
267+00.000	2.82	22.32	5	38	391	3958	-3568
267+50.000	2.28	14.70	5	34	395	4001	-3606
268+00.000	2.11	18.94	4	31	399	4040	-3641
268+50.000	2.26	18.03	4	34	403	4083	-3679
269+00.000	1.68	19.24	4	35	407	4126	-3719
269+50.000	11.01	21.50	12	38	419	4173	-3754
270+00.000	10.69	24.98	20	43	439	4227	-3788
270+50.000	12.35	23.68	21	45	460	4283	-3823
271+00.000	12.15	23.80	23	44	483	4338	-3855
271+50.000	12.96	25.31	23	45	506	4385	-3889
272+00.000	13.94	25.25	25	47	531	4413	-3922
272+50.000	17.60	17.14	29	39	560	4513	-3942
273+00.000	13.03	13.41	33	28	593	4538	-3945
273+37.885	21.05	23.61	27	26	621	4570	-3950
274+00.000	3.79	25.17	6	11	626	4584	-3958
274+00.000	5.39	10.44	12	33	639	4625	-3987
274+06.343	13.57	8.58	3	2	641	4628	-3987
274+50.000	0.00	0.00	11	7	652	4637	-3985

Addendum No. 2
ID 4550-03-71
Revised Sheet 392
November 5, 2020

NOTES:
1 - CUT
2 - FILL
3 - MASS ORDNATE
CUT DOES INCLUDE SALVAGED/UNUSABLE PAVEMENT MATERIAL - SALVAGED/UNUSABLE PAVEMENT MATERIAL IS CALCULATED ON THE SUMMARY SHEET.
DOES NOT INCLUDE PAVEMENT EXC VOLUME.
SALVAGED/UNUSABLE PAVEMENT MATERIAL IS CALCULATED ON THE SUMMARY SHEET.
[(CUT) - ((FILL) * FILL FACTOR)]

CONTINUED FROM PREVIOUS SHEET
DIVISION 6 - 5TH 67

STATION	AREA (SF)		INCREMENTAL VOL. (CY) (UNADJUSTED)		CUMULATIVE VOL. (CY)		EXPANDED FILL 1.25	MASS ORDINATE NOTE 3
	CUT	FILL	CUT NOTE 1	FILL NOTE 2	CUT 1.00 NOTE 1	FILL 1.25		
287+00.000	0.56	0.21	1	0	653	4637	-3984	
287+50.000	1.07	5.83	2	6	654	4644	-3990	
288+00.000	1.84	11.66	3	16	657	4664	-4007	
288+50.000	0.97	10.33	3	20	659	4690	-4030	
289+00.000	0.03	27.52	1	35	660	4733	-4073	
289+50.000	0.30	40.11	0	63	661	4812	-4151	
290+00.000	1.05	38.44	1	73	662	4903	-4241	
290+50.000	0.23	15.37	1	50	663	4965	-4302	
291+00.000	0.23	3.72	0	18	664	4987	-4323	
291+50.000	0.73	4.83	1	8	664	4997	-4332	
292+00.000	0.07	10.94	1	15	665	5015	-4350	
292+50.000	0.03	10.12	0	20	665	5040	-4374	
293+00.000	0.73	5.64	1	15	666	5058	-4392	
293+50.000	1.83	4.00	2	9	668	5069	-4400	
294+00.000	1.17	4.55	3	8	671	5079	-4407	
294+50.000	1.24	3.50	2	7	673	5088	-4414	
295+00.000	1.24	4.94	2	8	676	5097	-4422	
295+50.000	0.51	4.56	2	9	677	5108	-4431	
296+00.000	0.91	3.65	1	8	679	5118	-4439	
296+50.000	0.00	0.00	1	8	679	5122	-4443	
297+26.578	1.63	15.94	1	8	680	5132	-4452	
297+50.000	1.41	25.73	1	18	681	5154	-4473	
298+00.000	1.69	0.00	3	24	684	5185	-4500	
298+50.000	0.28	51.80	2	49	686	5246	-4560	
299+00.000	1.01	42.35	1	89	687	5356	-4669	
299+50.000	2.07	12.90	3	52	690	5421	-4731	
300+00.000	2.82	14.45	5	25	695	5452	-4758	
300+50.000	1.98	9.09	4	22	699	5479	-4780	
300+62.274	14.98	1.43	4	22	703	5482	-4779	
301+00.000	1.65	1.76	4	2	715	5484	-4769	
301+40.000	1.08	15.28	12	1	717	5485	-4768	
302+81.943	0.03	29.59	2	9	717	5497	-4799	
303+00.000	0.16	17.88	0	15	717	5516	-4852	
303+50.000	0.77	15.50	1	43	718	5570	-4889	
304+00.000	0.44	13.00	1	30	719	5608	-4921	
304+50.000	0.52	13.69	1	26	720	5640	-4950	
305+00.000	0.31	9.49	1	24	721	5671	-4975	
305+50.000	1.43	5.18	2	21	722	5697	-4975	
306+00.000	1.51	0.00	3	13	725	5714	-4989	
306+50.000	0.00	4.52	1	5	726	5719	-4993	
308+00.000	1.23	20.19	1	4	727	5725	-4997	
308+50.000	0.18	3.22	1	23	729	5753	-5024	
309+00.000	0.93	5.25	1	21	730	5780	-5050	
309+50.000	1.03		2	8	732	5789	-5058	

NOTES:
 1 - CUT CUT DOES INCLUDE SALVAGED/UNUSABLE PAVEMENT MATERIAL. SALVAGED/UNUSABLE PAVEMENT MATERIAL IS CALCULATED ON THE SUMMARY SHEET.
 2 - FILL DOES NOT INCLUDE PAVEMENT EXC VOLUME. SALVAGED/UNUSABLE PAVEMENT MATERIAL IS CALCULATED ON THE SUMMARY SHEET.
 3 - MASS ORDINATE $[(CUT) - ((FILL) * FILL FACTOR)]$

Addendum No. 2
 ID 4550-03-71
 Revised Sheet 393
 November 5, 2020

CONTINUED FROM PREVIOUS SHEET

DIVISION 6 - STH 57

STATION	AREA (SF)		INCREMENTAL VOL (CY) (UNADJUSTED)		CUMULATIVE VOL (CY)		MASS ORDNATE NOTE 3
	CUT	FILL	CUT NOTE 1	FILL NOTE 2	CUT 1.00 NOTE 1	EXPANDED FILL 1.25	
310+00.000	2.11	7.47	3	12	735	5804	-5070
310+50.000	47.35	3.56	46	10	781	5817	-5036
311+00.000	18.23	10.92	62	14	843	5834	-4991
311+50.000	46.93	10.42	60	20	903	5859	-4956
312+00.000	47.09	6.29	87	15	990	5878	-4888
312+50.000	46.30	2.04	86	8	1077	5888	-4811
313+00.000	44.64	0.96	84	3	1161	5891	-4731
313+50.000	130.58	0.00	162	1	1323	5892	-4569
314+00.000	37.85	0.00	156	0	1479	5893	-4413
314+50.000	43.12	0.80	75	1	1554	5893	-4339
315+00.000	63.46	2.22	99	3	1653	5897	-4244
315+20.000	76.15	9.59	52	4	1704	5902	-4198
315+50.000	147.78	9.66	124	11	1829	5916	-4087
316+00.000	22.36	26.09	158	33	1986	5957	-3971
316+50.000	65.30	17.44	81	40	2068	6008	-3940
317+00.000	69.04	5.96	124	22	2192	6035	-3843
317+50.000	37.12	15.87	98	20	2290	6060	-3770
318+00.000	70.66	37.37	100	49	2390	6121	-3731
318+50.000	82.12	30.26	141	63	2531	6200	-3668
319+00.000	81.96	11.63	152	39	2683	6248	-3565
319+30.000	98.49	7.33	100	11	2784	6261	-3478
319+50.000	100.77	0.65	74	3	2857	6265	-3408
320+00.000	97.47	0.33	184	1	3041	6266	-3225
320+50.000	62.16	2.14	148	2	3189	6269	-3060
321+00.000	16.27	0.18	73	2	3261	6272	-3010
321+50.000	4.67	3.32	19	3	3281	6276	-2995
321+78.143	15.58	0.82	11	2	3291	6279	-2987
COLUMN TOTALS			3291	5023			

NOTES:
 1 - CUT MATERIAL. SALVAGED/UNUSABLE PAVEMENT MATERIAL IS CALCULATED ON THE SUMMARY SHEET.
 2 - FILL DOES NOT INCLUDE PAVEMENT EXC. VOLUME. SALVAGED/UNUSABLE PAVEMENT MATERIAL IS CALCULATED ON THE SUMMARY SHEET.
 3 - MASS ORDNATE $[(CUT) - ((FILL) * FILL FACTOR)]$

**Addendum No. 2
 ID 4550-03-71
 Revised Sheet 394
 November 5, 2020**

DIVISION 6 - STH 67

STATION	AREA (SF)		INCREMENTAL VOL. (CY) (UNADJUSTED)		CUMULATIVE VOL. (CY)		MASS ORDINATE NOTE 3
	CUT	FILL	CUT NOTE 1	FILL NOTE 2	CUT 1.00 NOTE 1	EXPANDED FILL 1.25	
385+00.000	2.50	16.04	0	0	0	0	0
385+50.000	0.55	9.58	3	24	3	30	-27
386+00.000	12.31	12.31	2	20	5	55	-50
386+50.000	1.30	0.00	2	11	7	69	-62
387+00.000	0.00	0.00	1	0	8	69	-61
389+85.830	15.34	0.00	8	0	16	69	-61
390+00.000	15.70	0.00	8	0	24	69	-53
390+50.000	17.88	0.00	31	0	47	70	-22
391+00.000	14.98	0.26	30	0	78	70	8
391+50.000	14.03	1.26	27	1	105	71	33
392+00.000	20.86	0.34	32	1	137	73	64
392+50.000	22.33	0.00	40	0	177	74	103
393+00.000	11.13	0.00	31	0	208	74	134
393+50.000	6.00	0.04	10	0	218	74	145
394+00.000	0.86	0.00	1	0	219	74	145
394+06.500	0.12	0.00	0	0	219	74	146
395+55.100	0.00	0.85	0	0	219	74	146
396+00.000	0.00	0.50	0	1	219	75	144
396+50.000	8.49	3.28	8	4	227	79	148
397+00.000	10.99	10.99	22	13	249	96	153
397+50.000	9.91	22.56	23	31	272	135	137
398+00.000	11.44	10.40	20	31	291	173	119
398+50.000	11.52	0.00	21	0	313	185	128
398+79.340	11.19	0.00	12	0	325	185	140
399+00.000	6.00	0.00	4	0	329	185	144
401+00.000	0.02	2.28	0	0	329	185	144
401+50.000	0.00	6.44	0	0	329	195	134
402+00.000	0.15	4.00	0	10	329	207	132
402+50.000	1.01	0.18	1	4	331	212	119
403+00.000	0.97	1.55	2	2	332	214	119
403+50.000	1.25	1.48	2	3	334	217	117
404+00.000	0.90	3.38	2	4	336	223	114
404+50.000	0.57	0.35	1	3	338	227	111
405+00.000	6.00	0.00	1	0	338	227	111
411+25.000	1.10	6.40	2	5	340	233	106
411+50.000	2.14	37.34	2	19	342	257	84
411+75.000	1.77	39.48	2	36	344	302	42
412+00.000	3.16	96.78	3	126	347	460	-112
412+50.000	0.48	72.44	2	157	349	656	-307
413+00.000	1.26						

Addendum No. 2
ID 4550-03-71
Revised Sheet 395
November 5, 2020

NOTES:
1 - CUT
CUT DOES INCLUDE SALVAGED/UNUSABLE PAVEMENT MATERIAL. SALVAGED/UNUSABLE PAVEMENT MATERIAL IS CALCULATED ON THE SUMMARY SHEET.
2 - FILL
DOES NOT INCLUDE PAVEMENT EXC VOLUME. SALVAGED/UNUSABLE PAVEMENT MATERIAL IS CALCULATED ON THE SUMMARY SHEET.
3 - MASS ORDINATE
[(CUT) - ((FILL) * FILL FACTOR)]

PROJECT NO: 4550-04-71

HWY: STH 67

COUNTY: SHEBOYGAN

EARTHWORK

SHEET

395

WISDOT/CADD SHEET 49

FILE NAME : C:\PW\WORKDIR\DEN001\MM099380A\0011910\45500304_090100-ED.DWG

PLOT DATE : 11/9/2020 10:01 AM

PLOT BY : MORGAN, MARC/ME

PLOT NAME : Quantities

PLOT SCALE : Quantities

CONTINUED FROM PREVIOUS SHEET
DIVISION 6 - STH 67

STATION	AREA (SF)		INCREMENTAL VOL. (CY) (UNADJUSTED)		CUMULATIVE VOL. (CY)		EXPANDED FILL 1.25	MASS ORDINATE NOTE 3
	CUT	FILL	CUT NOTE 1	FILL NOTE 2	CUT 1.00 NOTE 1	FILL NOTE 2		
413+50.000	1.08	56.13	2	119	351	804	-453	
414+00.000	1.84	54.90	3	103	354	933	-579	
414+50.000	1.25	60.81	3	107	357	1067	-710	
415+00.000	2.52	29.70	3	84	360	1172	-811	
415+40.000	2.89	11.59	4	31	364	1210	-846	
415+50.000	0.90	5.45	1	3	365	1214	-849	
416+00.000	0.90	1.58	2	7	366	1222	-855	
416+50.000	0.53	4.69	1	6	368	1229	-861	
416+80.000	3.38	11.64	2	9	370	1240	-870	
417+00.000	2.66	13.47	2	9	372	1252	-880	
417+50.000	2.12	36.10	4	46	377	1309	-933	
418+00.000	1.14	75.54	3	103	380	1439	-1059	
418+50.000	2.01	67.86	3	133	383	1605	-1222	
419+00.000	1.34	74.45	3	132	386	1769	-1384	
419+50.000	2.09	69.59	3	133	389	1936	-1547	
419+90.000	3.15	40.36	4	81	393	2038	-1645	
420+00.000	3.18	25.71	1	12	394	2053	-1659	
420+40.000	4.27	2.28	6	21	399	2079	-1690	
420+50.000	0.00	0.00	1	0	400	2080	-1679	
421+70.000	0.71	35.62	0	0	400	2080	-1679	
421+89.951	10.80	88.77	4	46	404	2137	-1733	
422+00.000	11.10	89.74	4	33	409	2179	-1770	
422+50.000	13.87	83.33	23	162	432	2381	-1949	
423+00.000	19.15	64.36	31	139	462	2554	-2092	
423+50.000	12.55	36.81	29	96	492	2674	-2182	
424+00.000	14.29	26.78	25	60	516	2748	-2232	
424+50.000	16.16	32.20	28	55	545	2818	-2273	
425+00.000	20.83	28.14	34	57	579	2899	-2310	
425+30.000	26.65	17.89	26	26	605	2921	-2316	
425+43.152	28.44	0.00	13	4	619	2927	-2308	
425+50.000	0.00	0.00	4	0	622	2927	-2304	
427+33.510	0.00	56.09	0	0	622	2927	-2304	
427+50.000	0.18	84.95	0	43	622	2981	-2358	
428+00.000	1.92	71.35	2	149	624	3167	-2542	
428+34.881	2.42	85.58	3	104	627	3296	-2669	

NOTES:
 1 - CUT
 CUT DOES INCLUDE SALVAGED/UNUSABLE PAVEMENT MATERIAL. SALVAGED/UNUSABLE PAVEMENT MATERIAL IS CALCULATED ON THE SUMMARY SHEET.
 2 - FILL
 DOES NOT INCLUDE PAVEMENT EXC VOLUME. SALVAGED/UNUSABLE PAVEMENT MATERIAL IS CALCULATED ON THE SUMMARY SHEET.
 3 - MASS ORDINATE
 [(CUT) - ((FILL) * FILL FACTOR)]

Addendum No. 2
 ID 4550-03-71
 Revised Sheet 396
 November 5, 2020

CONTINUED FROM PREVIOUS SHEET
DIVISION 6 - STH 67

STATION	AREA (SF)		INCREMENTAL VOL. (CY) (UNADJUSTED)		CUMULATIVE VOL. (CY)		EXPANDED FILL 1.25	MASS ORDNATE
	CUT	FILL	CUT NOTE 1	FILL NOTE 2	CUT 1.00 NOTE 1	FILL NOTE 3		
428+50.000	0.04	8.38	1	26	628	3329	-2701	
429+00.000	0.01	16.08	0	22	628	3356	-2729	
429+50.000	0.40	0.40	1	15	628	3375	-2747	
430+00.000	0.60	1.56	1	2	630	3377	-2748	
430+14.408	5.29	82.42	2	22	631	3405	-2774	
430+50.000	2.85	5.16	5	59	637	3480	-2843	
431+00.000	1.27	5.98	4	10	640	3493	-2852	
431+50.000	7.29	2.48	8	8	648	3503	-2854	
431+75.000	3.57	3.56	5	3	653	3506	-2853	
432+00.000	0.47	1.48	2	2	655	3509	-2854	
432+50.000	1.80	1.52	2	3	657	3513	-2855	
433+00.000	1.05	3.17	3	4	660	3518	-2858	
433+50.000	1.30	4.39	2	8	662	3528	-2866	
434+00.000	0.23	3.73	1	8	664	3538	-2874	
434+50.000	0.27	3.28	0	7	664	3546	-2882	
435+00.000	0.88	0.33	1	4	665	3551	-2886	
435+50.000	0.49	4.58	1	5	666	3557	-2891	
436+00.000	0.38	5.44	1	9	667	3569	-2902	
436+50.000	0.01	0.00	0	5	668	3576	-2908	
444+50.000	2.51	59.63	0	0	668	3576	-2908	
445+00.000	1.06	147.18	3	184	671	3805	-3135	
445+50.000	12.55	185.59	13	300	683	4181	-3497	
446+00.000	25.45	206.52	353	353	719	4622	-3903	
446+50.000	5.37	166.48	29	337	747	5043	-4296	
447+00.000	2.44	124.39	7	269	754	5380	-4625	
447+50.000	4.91	51.35	7	162	761	5582	-4821	
448+00.000	1.27	61.16	6	104	767	5712	-4945	
448+40.000	1.77	42.23	2	77	769	5808	-5039	
448+50.000	0.00	33.61	0	14	770	5825	-5056	
449+00.000	0.41	20.33	0	50	770	5888	-5118	
449+50.000	0.00	0.00	0	19	770	5911	-5141	
451+70.000	0.51	5.57	0	0	770	5911	-5141	
451+90.000	2.86	31.44	1	14	772	5928	-5172	
452+00.000	1.90	38.35	1	13	772	5945	-5172	
452+50.000	2.23	30.96	4	49	776	6025	-5249	
453+00.000	1.06	21.87	3	41	779	6086	-5307	
453+50.000	2.08	22.80	3	41	782	6138	-5355	
454+00.000	0.07	10.78	2	31	784	6178	-5392	
454+50.000	0.72	10.63	1	19	785	6201	-5416	
455+00.000	0.39	10.77	1	19	786	6225	-5439	
455+50.000	9.78	0.00	9	10	795	6237	-5442	
456+00.000	0.00	0.00	9	0	804	6237	-5433	
456+50.000	1.52	3.32	1	3	806	6241	-5435	
457+00.000	3.16	6.52	4	9	810	6253	-5443	
457+50.000	5.68	12.00	8	17	818	6274	-5456	

NOTES:
1 - CUT MATERIAL - SALVAGED/UNUSABLE PAVEMENT MATERIAL IS CALCULATED ON THE SUMMARY SHEET.
2 - FILL DOES NOT INCLUDE PAVEMENT EXC VOLUME. SALVAGED/UNUSABLE PAVEMENT MATERIAL IS CALCULATED ON THE SUMMARY SHEET.
3 - MASS ORDNATE $[(CUT) - ((FILL) * FILL FACTOR)]$

Addendum No. 2
ID 4550-03-71
Revised Sheet 397
November 5, 2020

CONTINUED FROM PREVIOUS SHEET
DIVISION 6 - STH 67

STATION	AREA (SF)		INCREMENTAL VOL.(CY) (UNADJUSTED)		CUMULATIVE VOL.(CY)		MASS ORDNATE NOTE 3
	CUT	FILL	CUT NOTE 1	FILL NOTE 2	CUT NOTE 1	EXPANDED FILL 1.25	
457+75.000	5.67	13.66	5	12	824	6289	-5465
458+00.000	4.96	9.97	5	11	829	6303	-5474
458+50.000	15.18	2.93	19	12	847	6318	-5470
459+00.000	1.50	5.73	15	8	863	6328	-5465
459+50.000	1.00	13.96	2	18	865	6350	-5486
460+00.000	0.80	20.09	2	32	867	6390	-5523
460+50.000	1.52	55.27	2	70	869	6477	-5608
461+00.000	0.98	68.09	2	114	871	6620	-5749
461+50.000	1.23	108.01	2	164	873	6825	-5952
462+00.000	1.42	83.26	2	177	876	7045	-6170
462+50.000	1.38	74.12	3	143	878	7224	-6346
463+00.000	1.22	22.64	2	88	881	7334	-6453
463+50.000	1.33	7.11	2	28	883	7368	-6485
464+00.000	0.98	4.12	2	11	885	7381	-6496
464+50.000	8.02	10.75	8	14	893	7399	-6506
465+00.000	5.10	16.86	12	26	906	7431	-6526
465+50.000	0.48	23.34	5	37	911	7478	-6567
466+00.000	0.10	25.38	1	45	911	7534	-6623
466+50.000	0.00	36.74	0	58	911	7606	-6695
466+60.000	0.14	45.22	0	15	911	7624	-6713
467+00.000	0.00	3.45	0	35	911	7668	-6756
467+50.000	0.00	2.94	0	6	911	7575	-6764
468+00.000	0.00	3.23	0	6	911	7682	-6771
468+50.000	0.00	3.73	0	6	911	7690	-6779
469+00.000	0.00	6.87	0	10	911	7702	-6791
469+50.000	0.00	8.23	0	14	911	7720	-6808
470+00.000	0.00	9.82	0	17	911	7741	-6829
470+50.000	0.00	10.96	0	19	911	7765	-6853
471+00.000	0.00	9.94	0	19	911	7789	-6878
471+50.000	0.00	10.66	0	19	911	7813	-6901
472+00.000	0.00	8.43	0	18	911	7835	-6924
472+50.000	0.00	4.40	0	12	911	7850	-6938
473+00.000	0.00	2.03	0	6	911	7857	-6946
473+50.000	0.00	0.00	0	2	911	7860	-6948
474+00.000	2.98	0.76	3	1	914	7861	-6946
474+50.000	0.64	8.46	3	9	918	7871	-6954
474+60.002	1.63	8.83	3	3	918	7875	-6957
475+00.000	2.35	14.38	3	17	921	7897	-6976
475+50.000	1.25	14.55	3	27	924	7930	-7006
476+00.000	1.83	14.65	3	27	927	7964	-7037
476+50.000	3.20	5.57	5	19	932	7987	-7056
477+00.000	3.02	10.17	6	15	938	8006	-7068
477+50.000	1.40	16.29	4	24	942	8036	-7095
478+00.000	0.47	20.30	2	34	943	8079	-7135
478+20.000	0.88	14.73	1	13	944	8095	-7151
478+50.000	1.08	0.00	1	8	945	8105	-7160
479+00.000	6.65	0.00	7	0	952	8105	-7153
COLUMN TOTALS			952	6484			

NOTES:
 1 - CUT
 2 - FILL
 3 - MASS ORDNATE
 CUT DOES INCLUDE SALVAGED/UNUSABLE PAVEMENT MATERIAL. SALVAGED/UNUSABLE PAVEMENT MATERIAL IS CALCULATED ON THE SUMMARY SHEET.
 DOES NOT INCLUDE PAVEMENT EXC VOLUME
 SALVAGED/UNUSABLE PAVEMENT MATERIAL IS CALCULATED ON THE SUMMARY SHEET.
 3 - MASS ORDNATE $[(CUT) - ((FILL) * FILL FACTOR)]$

Addendum No. 2
 ID 4550-03-71
 Revised Sheet 398
 November 5, 2020

Addendum No. 2
ID 4550-03-71
Revised Sheet 399
November 5, 2020

STATION	AREA (SF)		INCREMENTAL VOL (CY) (UNADJUSTED)		CUMULATIVE VOL (CY)		EXPANDED FILL 1.25	MASS ORDINATE NOTE 3
	CUT	FILL	CUT NOTE 1	FILL NOTE 2	CUT NOTE 1	FILL		
479+00.000	6.50	4.94	0	0	0	0	0	0
479+50.000	22.96	0.86	27	5	27	5	7	21
480+00.000	21.48	0.00	41	1	68	6	8	61
480+50.000	17.33	0.00	36	0	104	6	8	97
480+80.600	0.00	0.00	10	0	114	6	8	106
481+25.000	0.31	0.00	0	0	114	6	8	107
481+50.000	0.89	2.14	1	1	115	7	9	106
481+94.228	7.51	7.38	7	8	122	15	19	103
482+00.000	6.74	11.14	2	2	123	17	21	102
482+50.000	3.71	50.33	10	57	133	92	41	41
483+00.000	1.63	64.81	5	107	138	226	-88	-88
483+50.000	1.83	57.75	3	113	141	367	-226	-226
484+00.000	2.76	25.47	4	77	145	464	-318	-318
484+50.000	4.28	7.11	7	30	152	501	-350	-350
485+00.000	19.98	7.59	22	14	174	518	-344	-344
485+50.000	32.23	8.56	48	15	223	537	-314	-314
486+00.000	0.33	11.45	30	19	253	560	-307	-307
486+50.000	0.64	258.67	1	250	254	873	-619	-619
486+59.127	0.59	301.55	0	95	254	991	-737	-737
486+75.000	2.49	3.10	1	90	255	1103	-848	-848
487+00.000	0.00	0.00	1	0	256	1105	-849	-849
487+80.000	4.34	0.00	2	0	258	1105	-847	-847
488+00.000	0.93	176.09	2	65	260	1187	-926	-926
488+50.000	0.20	124.03	1	278	261	1534	-1272	-1272
488+95.601	0.15	34.25	0	134	262	1701	-1439	-1439
489+00.000	0.30	23.42	0	5	262	1707	-1445	-1445
489+25.000	26.18	2.87	12	12	274	1722	-1448	-1448
489+50.000	0.32	0.32	1	1	286	1724	-1438	-1438
490+00.000	0.34	42.88	1	40	287	1774	-1487	-1487
490+50.000	109.78	6.54	102	46	389	1831	-1442	-1442
491+00.000	117.94	30.48	211	34	600	1874	-1274	-1274
491+50.000	0.00	614.34	109	597	709	2620	-1911	-1911
491+80.000	1.14	512.47	1	626	710	3463	-2683	-2683
492+00.000	0.58	542.81	1	391	711	3891	-3181	-3181
492+50.000	0.85	219.88	1	706	712	4774	-4063	-4063
493+00.000	0.03	123.22	1	115	713	5171	-4459	-4459
493+50.000	0.34	1.42	4	1	717	5315	-4603	-4603
494+00.000	4.28	0.31	6	2	717	5317	-4601	-4601
494+50.000	2.21	1.15	1	17	723	5319	-4596	-4596
495+00.000	0.01	16.71	2	17	725	5340	-4615	-4615
495+25.000	11.83	110.62	5	59	730	5414	-4683	-4683
495+50.000	7.26	170.89	0	130	730	5576	-4897	-4897
496+00.000	6.48	5.46	13	163	743	5779	-5027	-5027
496+50.000	42.63	6.00	45	11	788	5792	-4925	-4925
497+00.000	2.15	1.42	4	16	839	5812	-4973	-4973
497+50.000	0.77	20.17	2	16	841	5849	-5098	-5098
498+00.000	0.13	489.87	0	29	841	6416	-5375	-5375
498+50.000	0.12	486.42	0	883	841	7323	-6681	-6681
499+00.000	0.06	340.31	0	763	842	8460	-7636	-7636
499+50.000	0.05	163.16	0	466	842	9062	-8221	-8221
500+00.000	0.02	146.35	0	287	842	9421	-8379	-8379

NOTES:
 1 - CUT MATERIAL. SALVAGED/UNUSABLE PAVEMENT MATERIAL IS CALCULATED ON THE SUMMARY SHEET.
 2 - FILL SALVAGED/UNUSABLE PAVEMENT MATERIAL IS CALCULATED ON THE SUMMARY SHEET.
 3 - MASS ORDINATE [(CUT) - ((FILL) * FILL FACTOR)]

CONTINUED FROM PREVIOUS SHEET
DIVISION 6 - STH 67

STATION	AREA (SF)		INCREMENTAL VOL (CY) (UNADJUSTED)		CUMULATIVE VOL (CY)		MASS ORDNATE
	CUT	FILL	CUT	FILL	CUT 1.00 NOTE 1	EXPANDED FILL 1.25	
500+50.000	0.00	162.32	0	286	842	9779	-89377
501+00.000	0.10	110.16	0	253	842	10095	-92553
501+50.000	0.13	0.31	0	102	842	10122	-9380
502+00.000	17.00	13.77	16	13	858	10139	-9381
502+50.000	34.97	8.62	48	21	906	10165	-9159
503+00.000	22.84	10.25	54	17	960	10186	-9127
503+50.000	18.52	14.50	38	23	998	10115	-9317
504+00.000	12.10	6.89	28	20	1026	10140	-9214
504+50.000	0.21	5.21	11	11	1038	10154	-9316
505+00.000	0.31	52.04	0	53	1038	10420	-9382
505+50.000	0.20	63.34	0	107	1039	10554	-9515
506+00.000	0.48	29.61	1	86	1039	10661	-9622
506+50.000	0.04	116.70	0	135	1040	10831	-9791
507+00.000	0.02	209.08	0	302	1040	11008	-10168
507+50.000	0.00	245.38	0	421	1040	11734	-10694
508+00.000	0.00	123.56	0	342	1040	12161	-11121
508+50.000	1.88	0.83	2	115	1042	12305	-11263
508+72.150	4.30	0.04	3	0	1044	12305	-11261
509+00.000	0.00	0.00	2	0	1046	12305	-11259
509+25.000	39.17	1.35	18	1	1064	12306	-11242
509+50.000	99.59	1.67	64	1	1129	12308	-11179
510+00.000	194.44	1.01	272	2	1401	12311	-10910
510+50.000	347.04	0.40	501	1	1902	12312	-10410
511+00.000	258.75	0.00	561	0	2463	12313	-9850
511+41.736	237.63	0.00	384	0	2847	12313	-9466
511+50.000	0.00	0.00	36	0	2883	12313	-9430
514+89.380	1.06	4.09	1	3	2884	12317	-9433
515+00.000	0.17	4.47	0	2	2884	12319	-9435
515+50.000	0.83	0.00	1	4	2885	12324	-9439
516+00.000	0.20	3.93	1	4	2886	12328	-9442
516+10.000	1.09	67.82	0	13	2886	12345	-9459
516+38.101	4.90	360.39	3	223	2889	12624	-9734
516+50.000	7.88	30.79	3	86	2892	12731	-9839
517+00.000	37.19	9.31	42	37	2934	12731	-9843
517+50.000	35.47	14.91	67	22	3001	12805	-9804
518+00.000	47.72	48.16	77	58	3078	12878	-9800
518+06.585	44.55	51.55	11	12	3090	12893	-9804
518+50.000	0.00	0.00	36	41	3125	12845	-9820
519+75.000	0.26	8.94	0	4	3125	12850	-9825
520+00.000	2.23	87.08	1	44	3127	13006	-9879
520+50.000	5.90	60.34	6	137	3154	13176	-10042
520+73.094	18.39	126.88	10	80	3145	13376	-10132
521+00.000	28.13	30.38	23	78	3168	13419	-10207
521+50.000	3.34	8.10	29	26	3197	13423	-10222
521+57.121	-0.07	16.25	0	3	3197	13403	-10225
522+00.000	-0.10	64.43	0	64	3197	13603	-10306
523+50.000	0.69	44.74	1	101	3198	13609	-10432
523+50.000	1.43	17.64	2	54	3199	13607	-10468
523+50.000	1.65	4.20	2	10	3201	13710	-10509

NOTES:
 1 - CUT
 2 - FILL
 3 - MASS ORDNATE
 [(CUT) - ((FILL) * FILL FACTOR)]

CUT DOES INCLUDE SALVAGED/UNUSABLE PAVEMENT MATERIAL - SALVAGED/UNUSABLE PAVEMENT MATERIAL IS CALCULATED ON THE SUMMARY SHEET.
 DOES NOT INCLUDE PAVEMENT EXC VOLUME.
 SALVAGED/UNUSABLE PAVEMENT MATERIAL IS CALCULATED ON THE SUMMARY SHEET.
 [(CUT) - ((FILL) * FILL FACTOR)]

Addendum No. 2
 ID 4550-03-71
 Revised Sheet 400
 November 5, 2020

CONTINUED FROM PREVIOUS SHEET
DIVISION 6 - STH 67

STATION	AREA (SF)		INCREMENTAL VOL (CY) (UNADJUSTED)		CUMULATIVE VOL (CY)		MASS ORDINATE NOTE 3
	CUT	FILL	CUT NOTE 1	FILL NOTE 2	CUT NOTE 1	EXPANDED FILL 1.25	
523+50.00	0.00	0.00	1	2	3205	13712	-1451.0
524+00.00	0.00	0.00	0	0	3205	13712	-1451.0
524+30.00	0.00	0.00	0	0	3205	13712	-1451.0
524+64.786	2.96	1.37	1	0	3206	13713	-1451.0
525+00.00	76.01	0.00	52	1	3254	13713	-1445.9
525+30.00	215.44	0.00	270	0	3524	13713	-1418.9
525+51.767	219.81	0.14	14	0	3538	13713	-1417.5
526+00.00	111.59	0.09	296	0	3834	13713	-879
526+11.770	73.15	0.00	40	0	3874	13714	-839
526+50.00	1.66	0.04	53	0	3927	13714	-824
527+00.00	34.30	0.75	2	32	3930	13753	-860
527+12.220	1.05	94.16	0	29	3930	13790	-860
527+16.576	1.85	162.40	4	133	3934	13815	-885
528+00.00	52.67	36.33	24	82	3958	13982	-1004.8
528+35.815	111.45	111.45	17	98	3975	14207	-1012.7
529+00.00	7.60	95.83	3	55	3978	14276	-1029.8
529+00.00	97.01	0.77	12	179	3990	14499	-1050.9
529+90.794	17.14	0.77	21	89	4010	14611	-1060.1
530+00.00	1.17	0.71	14	3	4024	14614	-1059.1
530+50.00	0.00	0.00	0	1	4024	14615	-1059.1
531+00.00	0.00	0.00	0	1	4025	14616	-1059.1
531+50.00	0.00	0.00	0	0	4025	14616	-1059.1
531+70.00	0.48	25.18	0	9	4026	14628	-1060.2
532+00.00	0.29	87.24	0	62	4026	14706	-1068.0
532+10.00	1.47	105.48	0	35	4026	14750	-1072.4
532+50.00	0.92	223.66	2	244	4028	15055	-1.027
533+00.00	22.60	168.91	22	363	4050	15509	-1.460
533+40.00	42.35	157.83	48	242	4098	15812	-1.714
533+50.00	0.34	150.61	8	57	4106	15883	-1.778
534+00.00	0.62	129.03	1	259	4107	16207	-1210.0
534+50.00	1.52	28.31	2	146	4109	16389	-1228.0
535+00.00	0.84	9.16	2	35	4111	16433	-1232.2
535+50.00	0.02	21.54	1	28	4112	16468	-1235.6
536+00.00	0.01	26.37	0	44	4112	16524	-1241.2
536+25.00	3.42	27.27	2	25	4113	16555	-1244.1
536+50.00	0.95	21.44	2	23	4115	16583	-1246.7
537+00.00	0.13	15.06	1	34	4116	16625	-1250.9
537+50.00	0.12	39.27	0	50	4117	16688	-1257.1
538+00.00	0.36	47.95	0	81	4117	16789	-1267.2
538+50.00	0.00	47.87	0	89	4117	16900	-1278.2
539+00.00	0.04	29.63	0	72	4117	16989	-1287.2
539+50.00	0.06	24.08	0	50	4118	17052	-1293.4
540+00.00	0.43	5.75	0	28	4118	17086	-1296.8
540+50.00	0.61	2.27	1	7	4119	17095	-1297.6
541+00.00	0.76	2.04	1	4	4120	17100	-1298.0
541+50.00	0.77	0.59	1	2	4122	17103	-1298.2
542+00.00	6.18	1.56	6	2	4128	17106	-1297.8
542+50.00	0.08	1.75	6	3	4134	17110	-1297.6
543+00.00	0.20	2.13	0	4	4134	17114	-1298.0
543+40.00	2.01	1.38	2	3	4136	17118	-1298.2
543+50.00	2.35	1.33	1	1	4137	17118	-1298.2
544+00.00	3.41	1.24	5	2	4142	17121	-1297.9

NOTES:
 1 - CUT MATERIAL. SALVAGED/UNUSABLE PAVEMENT CALCULATED ON THE SUMMARY SHEET.
 2 - FILL DOES NOT INCLUDE PAVEMENT EXC VOLUME. SALVAGED/UNUSABLE PAVEMENT MATERIAL IS CALCULATED ON THE SUMMARY SHEET.
 3 - MASS ORDINATE [(CUT) - ((FILL) * FILL FACTOR)]

Addendum No. 2
 ID 4550-03-71
 Revised Sheet 401
 November 5, 2020

CONTINUED FROM PREVIOUS SHEET

STATION	AREA (SF)		INCREMENTAL VOL (CY) (UNADJUSTED)		CUMULATIVE VOL (CY)		EXPANDED FILL 1.25	MASS ORDINATE NOTE 3
	CUT	FILL	CUT NOTE 1	FILL NOTE 2	CUT NOTE 1	FILL NOTE 2		
544+50.000	3.48	0.37	6	1	4148	17123	-113975	
545+00.000	4.29	1.51	7	2	4155	17125	-113970	
545+25.000	4.39	0.40	4	1	4159	17126	-113967	
545+50.000	2.40	0.00	3	0	4163	17127	-113964	
545+60.000	2.49	0.00	2	0	4164	17127	-113963	
546+00.000	0.00	0.00	2	0	4165	17127	-113961	
546+30.000	2.71	0.38	2	0	4167	17127	-113960	
546+50.000	2.29	0.32	2	0	4169	17127	-113958	
548+00.000	1.28	1.40	3	2	4172	17129	-113957	
549+50.000	0.97	2.47	2	4	4174	17134	-113960	
550+00.000	1.21	4.42	4	6	4176	17142	-113966	
551+00.000	0.68	5.13	3	15	4176	17155	-113975	
551+40.000	0.84	10.64	1	15	4180	17171	-113991	
551+60.000	0.80	13.03	1	15	4182	17193	-114011	
551+80.000	0.89	14.05	0	15	4182	17200	-114018	
552+00.000	0.17	11.05	1	27	4183	17229	-114082	
552+30.000	0.13	11.24	1	34	4184	17216	-114120	
553+00.000	0.00	12.04	0	31	4185	17242	-114115	
553+30.000	0.00	12.00	0	22	4185	17342	-114219	
554+00.000	3.77	44.78	0	50	4186	17447	-114266	
554+30.000	1.04	50.78	1	34	4188	17504	-114314	
555+00.000	0.74	50.93	2	45	4189	17547	-114355	
555+50.000	0.86	61.77	2	34	4192	17589	-114366	
555+75.000	0.86	4.50	1	10	4193	17589	-114371	
556+00.000	0.84	7.26	1	4	4195	17572	-114377	
556+50.000	0.14	11.90	1	5	4195	17594	-114399	
557+00.000	1.75	13.14	2	18	4197	17623	-114426	
557+50.000	1.26	5.41	3	23	4200	17644	-114444	
557+70.000	0.59	10.27	6	17	4200	17652	-114451	
558+00.000	0.00	17.18	0	15	4201	17671	-114470	
558+50.000	0.00	11.68	0	27	4201	17704	-115013	
559+00.000	0.00	0.00	0	7	4201	17715	-115102	
561+50.000	1.63	0.00	0	2	4201	17715	-115115	
562+00.000	1.02	1.50	0	0	4201	17716	-115115	
562+30.000	4.70	2.83	2	3	4203	17720	-115117	
562+50.000	1.81	7.34	2	6	4206	17727	-115121	
563+00.000	3.14	13.95	8	8	4209	17737	-115128	
563+10.000	3.00	11.19	5	24	4213	17767	-115154	
563+50.000	0.40	5.75	1	4	4214	17772	-115158	
564+00.000	1.44	5.24	3	13	4217	17788	-115171	
564+50.000	3.21	3.26	4	8	4219	17801	-115182	
564+90.030	1.56	30.11	0	25	4226	17841	-115689	
565+00.000	0.44	27.55	0	0	4226	17841	-115689	
565+50.000	0.44	64.08	0	17	4226	17863	-116346	
566+00.000	1.17	119.23	1	170	4228	18075	-118447	
566+50.000	2.12	123.60	1	225	4229	18356	-14127	
566+57.433	3.84	44.18	3	155	4232	18550	-14318	
567+00.000	28.72	44.46	26	12	4233	18565	-14332	
567+50.000	27.13	27.97	52	57	4259	18637	-14378	
567+95.182	68.41	0.00	80	26	4310	18669	-14359	
568+00.000	0.00	1.67	6	1	4390	18671	-14280	
568+25.555	0.00	0.00	1	0	4397	18671	-14274	
COLUMN TOTALS							4397	14937

NOTES:
 1 - CUT
 2 - FILL
 3 - MASS ORDINATE
 ((CUT) - (FILL) * FILL FACTOR)

Addendum No. 2
 ID 4550-03-71
 Revised Sheet 402
 November 5, 2020

Addendum No. 2
ID 4550-03-71
Revised Sheet 403
November 5, 2020

STATION	AREA (SF)		INCREMENTAL VOL. (CY) (UNADJUSTED)		CUMULATIVE VOL. (CY)		EXPANDED FILL 1.25	MASS ORDINATE NOTE 3
	CUT	FILL	CUT NOTE 1	FILL NOTE 2	CUT 1.00 NOTE 1	FILL		
568+47.340	2.88	0.00	0	0	0	0	0	0
568+50.000	2.24	0.00	0	0	0	0	0	0
569+00.000	15.53	0.00	16	0	16	0	17	17
569+25.000	11.67	0.00	13	0	29	0	29	29
569+50.000	10.42	0.17	10	0	40	0	39	39
570+00.000	3.01	13.00	12	12	52	15	57	57
570+50.000	0.08	20.67	3	31	55	55	0	0
571+00.000	0.52	23.15	1	41	56	106	-50	-50
571+50.000	2.39	5.72	3	27	59	139	-81	-81
572+00.000	0.17	2.80	2	8	61	149	-88	-88
572+50.000	0.00	0.00	0	0	61	152	-91	-91
575+00.000	2.78	0.00	3	0	64	152	-89	-89
575+50.000	2.54	0.03	5	0	69	152	-84	-84
576+00.000	2.69	0.05	5	0	74	152	-79	-79
576+50.000	0.53	8.55	3	8	77	162	-86	-86
577+00.000	0.01	18.88	1	25	78	194	-117	-117
577+50.000	0.01	19.78	0	36	78	239	-162	-162
578+00.000	0.00	18.61	0	36	78	283	-207	-207
578+50.000	0.86	19.61	1	35	79	327	-250	-250
579+00.000	0.17	12.99	1	30	80	365	-287	-287
579+50.000	0.16	2.00	0	14	80	382	-304	-304
580+00.000	0.00	4.03	0	6	80	389	-311	-311
580+50.000	0.05	2.83	0	6	80	397	-319	-319
581+00.000	1.41	0.00	0	4	80	402	-323	-323
581+50.000	0.00	0.43	0	2	80	404	-325	-325
582+00.000	0.07	0.29	0	1	80	405	-326	-326
582+50.000	0.05	0.20	0	0	80	406	-327	-327
583+00.000	0.03	2.17	0	2	80	408	-329	-329
583+50.000	0.00	0.70	0	3	80	412	-333	-333
584+00.000	0.00	0.92	0	1	80	414	-335	-335
584+50.000	0.00	0.75	0	2	80	416	-336	-336
585+00.000	0.32	0.00	0	0	80	416	-337	-337
585+50.000	0.00	1.76	0	2	80	418	-339	-339
586+00.000	0.66	2.28	1	4	81	423	-343	-343
586+50.000	0.30	0.16	1	2	81	426	-345	-345
587+00.000	0.82	0.00	1	0	82	426	-344	-344
587+50.000	0.00	0.00	1	0	83	426	-343	-343
590+00.000	5.00	0.00	5	0	88	426	-338	-338
590+50.000	2.47	1.94	7	2	95	428	-334	-334
591+00.000	2.04	3.63	4	5	99	435	-336	-336
591+50.000	2.74	1.14	4	4	103	440	-337	-337
592+00.000	4.18	0.00	6	1	110	442	-332	-332
592+50.000	2.05	1.22	6	1	115	443	-328	-328
593+00.000	2.20	2.83	4	4	119	448	-329	-329
593+50.000	2.27	9.53	4	11	123	462	-339	-339

NOTES:
 1 - CUT
 2 - FILL
 3 - MASS ORDINATE
 [(CUT) - ((FILL) * FILL FACTOR)]

(CUT DOES INCLUDE SALVAGED/UNUSABLE PAVEMENT MATERIAL. SALVAGED/UNUSABLE PAVEMENT MATERIAL IS CALCULATED ON THE SUMMARY SHEET.
 DOES NOT INCLUDE PAVEMENT EXC VOLUME.
 SALVAGED/UNUSABLE PAVEMENT MATERIAL IS CALCULATED ON THE SUMMARY SHEET.
 [(CUT) - ((FILL) * FILL FACTOR)]

CONTINUED FROM PREVIOUS SHEET

DIVISION 6 - STH 67

STATION	AREA (SF)		INCREMENTAL VOL (CY) (UNADJUSTED)		CUMULATIVE VOL (CY)		EXPANDED FILL 1.25	MASS ORDNATE NOTE 3
	CUT	FILL	CUT NOTE 1	FILL NOTE 2	CUT 1.00 NOTE 1	FILL		
594+00.000	1.84	21.62	4	29	127	498	-371	
594+30.000	2.76	2.21	3	13	130	515	-385	
594+50.000	1.55	0.00	2	1	131	516	-384	
595+00.000	0.33	0.38	2	0	133	516	-383	
595+25.000	1.14	0.00	1	0	134	516	-382	
595+50.000	0.00	0.00	1	0	134	516	-381	
603+75.000	1.71	0.00	1	0	135	516	-381	
604+00.000	0.09	0.46	1	0	136	517	-381	
604+50.000	0.00	5.61	0	6	136	524	-388	
605+00.000	0.00	18.53	0	22	136	552	-416	
605+50.000	0.23	14.71	0	31	136	590	-454	
605+75.000	2.88	15.39	1	14	138	608	-470	
606+00.000	1.96	14.03	2	14	140	623	-465	
606+50.000	5.81	0.46	7	13	147	641	-494	
606+75.000	6.58	0.03	6	0	153	642	-489	
607+00.000	2.86	0.00	4	0	157	642	-484	
607+50.000	3.97	0.00	6	0	164	642	-478	
608+00.000	2.31	0.12	6	0	169	642	-472	
608+50.000	2.53	0.11	4	0	174	642	-468	
609+00.000	1.58	0.93	4	1	178	643	-466	
609+50.000	1.09	3.87	2	4	180	649	-469	
610+00.000	0.16	1.99	1	5	181	656	-474	
610+50.000	0.15	3.73	0	5	182	662	-481	
611+00.000	1.19	0.57	1	4	183	667	-484	
611+50.000	0.00	0.00	1	1	184	668	-484	
619+80.170	12.64	1.04	7	1	191	669	-478	
620+00.000	13.09	0.99	9	1	200	669	-469	
620+50.000	13.74	2.43	25	3	225	673	-448	
620+78.270	0.00	0.00	7	1	232	675	-443	
621+78.850	13.66	0.00	7	0	240	675	-435	
622+00.000	12.34	0.39	10	0	250	675	-425	
622+39.100	13.57	0.00	19	0	269	676	-406	
COLUMN TOTALS			269	540				

NOTES:
 1 - CUT MATERIAL. SALVAGED/UNUSABLE PAVEMENT MATERIAL IS CALCULATED ON THE SUMMARY SHEET.
 2 - FILL DOES NOT INCLUDE PAVEMENT EXC VOLUME. SALVAGED/UNUSABLE PAVEMENT MATERIAL IS CALCULATED ON THE SUMMARY SHEET.
 3 - MASS ORDNATE [(CUT) - ((FILL) * FILL FACTOR)]

Addendum No. 2
ID 4550-03-71
Revised Sheet 404
November 5, 2020

DIVISION 6 - CTH J

STATION	AREA (SF)		INCREMENTAL VOL. (CY) (UNADJUSTED)		CUMULATIVE VOL. (CY)		MASS ORDNATE NOTE 3
	CUT	FILL	CUT NOTE 1	FILL NOTE 2	CUT 1.00 NOTE 1	EXPANDED FILL 1.25	
1098+27.326	4.95	0.34	3	0	3	0	2
1098+50.000	7.03	0.25	5	0	8	1	7
1099+00.000	15.46	0.45	21	1	28	1	27
1099+50.000	23.14	12.09	36	12	64	16	48
1099+60.000	52.96	23.47	14	7	78	24	54
1100+00.000	40.07	25.33	138	72	216	114	102
1100+50.000	55.84	15.61	18	8	234	8	110
1101+00.000	25.99	0.97	76	15	310	143	166
1101+39.325	22.03	3.56	35	3	344	147	197
1101+50.000	13.54	0.01	7	1	352	148	203
1101+74.245	13.32	0.00	12	0	364	148	215
COLUMN TOTALS			364	119			

DIVISION 6 - GARTON ROAD

STATION	AREA (SF)		INCREMENTAL VOL. (CY) (UNADJUSTED)		CUMULATIVE VOL. (CY)		MASS ORDNATE NOTE 3
	CUT	FILL	CUT NOTE 1	FILL NOTE 2	CUT 1.00 NOTE 1	EXPANDED FILL 1.25	
1200+30.000	2.88	19.04	0	0	0	0	0
1200+50.000	3.21	2.58	2	8	2	10	-8
1200+63.082	6.07	2.90	2	1	5	12	-7
COLUMN TOTALS			5	9			

NOTES:
 1 - CUT MATERIAL - SALVAGED/UNUSABLE PAVEMENT MATERIAL IS CALCULATED ON THE SUMMARY SHEET.
 2 - FILL DOES NOT INCLUDE PAVEMENT EXC VOLUME. SALVAGED/UNUSABLE PAVEMENT MATERIAL IS CALCULATED ON THE SUMMARY SHEET.
 3 - MASS ORDNATE [(CUT) - ((FILL) * FILL FACTOR)]

Addendum No. 2
 ID 4550-03-71
 Revised Sheet 405
 November 5, 2020

Addendum No. 2
ID 4550-03-71
Revised Sheet 406
November 5, 2020

DIVISION 6 - BADGER ROAD WEST		INCREMENTAL VOL. (CY) (UNADJUSTED)		CUMULATIVE VOL. (CY)		MASS ORDNATE
STATION	AREA (SF)	CUT NOTE 1	FILL NOTE 2	CUT 1.00 NOTE 1	EXPANDED FILL 1.25	NOTE 3
1304+93.914	0.91	0	0	0	0	0
1305+00.000	0.41	2	0	2	0	2
1305+20.000	26.59	9	10	11	13	-2
COLUMN TOTALS		11	10			

DIVISION 6 - BADGER ROAD EAST		INCREMENTAL VOL. (CY) (UNADJUSTED)		CUMULATIVE VOL. (CY)		MASS ORDNATE
STATION	AREA (SF)	CUT NOTE 1	FILL NOTE 2	CUT 1.00 NOTE 1	EXPANDED FILL 1.25	NOTE 3
1400+80.000	2.59	0	0	0	0	0
1401+00.000	1.35	9	1	9	2	7
1401+50.000	0.24	14	1	23	4	19
1401+90.491	0.00	16	0	39	4	35
COLUMN TOTALS		39	3			

NOTES:

1 - CUT
CUT DOES INCLUDE SALVAGED/UNUSABLE PAVEMENT MATERIAL. SALVAGED/UNUSABLE PAVEMENT MATERIAL IS CALCULATED ON THE SUMMARY SHEET.

2 - FILL
DOES NOT INCLUDE PAVEMENT EXC VOLUME. SALVAGED/UNUSABLE PAVEMENT MATERIAL IS CALCULATED ON THE SUMMARY SHEET.

3 - MASS ORDNATE
[(CUT) - ((FILL) * FILL FACTOR)]

Addendum No. 2
ID 4550-03-71
Revised Sheet 407
November 5, 2020

DIVISION 6 - CTH MM WEST						
STATION	AREA (SF)		INCREMENTAL VOL (CY) (UNADJUSTED)		CUMULATIVE VOL (CY)	
	CUT	FILL	CUT NOTE 1	FILL NOTE 2	CUT 1.00 NOTE 1	EXPANDED FILL 1.25
1499+10.666	8.09	40.53	0	0	0	0
1499+30.000	13.29	96.18	8	49	8	61
COLUMN TOTALS			8	49		
						MASS ORDINATE NOTE 3
						0
						-54

DIVISION 6 - CTH MM EAST						
STATION	AREA (SF)		INCREMENTAL VOL (CY) (UNADJUSTED)		CUMULATIVE VOL (CY)	
	CUT	FILL	CUT NOTE 1	FILL NOTE 2	CUT 1.00 NOTE 1	EXPANDED FILL 1.25
1600+80.000	6.14	29.53	0	0	0	0
1601+00.000	7.15	6.32	5	13	5	17
1601+50.000	8.41	0.03	14	6	19	24
1601+90.000	7.48	0.06	12	0	31	24
COLUMN TOTALS			31	19		
						MASS ORDINATE NOTE 3
						0
						-12
						-5
						7

NOTES:

- CUT DOES INCLUDE SALVAGED/UNUSABLE PAVEMENT MATERIAL. SALVAGED/UNUSABLE PAVEMENT MATERIAL IS CALCULATED ON THE SUMMARY SHEET.
- DOES NOT INCLUDE PAVEMENT EXC VOLUME. SALVAGED/UNUSABLE PAVEMENT MATERIAL IS CALCULATED ON THE SUMMARY SHEET.
- MASS ORDINATE $[(CUT) - ((FILL) * FILL FACTOR)]$

Addendum No. 2
ID 4550-03-71
Revised Sheet 408
November 5, 2020

STATION	AREA (SF)		INCREMENTAL VOL (CY) (UNADJUSTED)		CUMULATIVE VOL (CY)		EXPANDED FILL 1.25	MASS ORDNATE NOTE 3
	CUT	FILL	CUT NOTE 1	FILL NOTE 2	CUT 1.00 NOTE 1	FILL		
1800+30.000	110.26	2.40	0	0	0	0	0	0
1800+50.000	484.57	4.02	224	2	224	3	3	221
1801+00.000	108.72	0.04	559	4	783	8	775	813
1801+17.890	6.13	0.29	38	0	821	8	8	813
COLUMN TOTALS			821	6				

STATION	AREA (SF)		INCREMENTAL VOL (CY) (UNADJUSTED)		CUMULATIVE VOL (CY)		EXPANDED FILL 1.25	MASS ORDNATE NOTE 3
	CUT	FILL	CUT NOTE 1	FILL NOTE 2	CUT 1.00 NOTE 1	FILL		
1700+30.000	18.78	17.86	0	0	0	0	0	0
1700+50.000	20.29	21.90	14	15	14	18	18	-4
1701+00.000	19.50	0.00	37	20	51	44	44	8
1701+24.065	15.70	0.00	16	0	67	44	44	2.3
COLUMN TOTALS			67	35				

STATION	AREA (SF)		INCREMENTAL VOL (CY) (UNADJUSTED)		CUMULATIVE VOL (CY)		EXPANDED FILL 1.25	MASS ORDNATE NOTE 3
	CUT	FILL	CUT NOTE 1	FILL NOTE 2	CUT 1.00 NOTE 1	FILL		
2200+30.000	16.57	15.05	0	0	0	0	0	0
2200+50.000	15.04	9.90	12	9	12	12	12	0
2200+83.135	13.33	10.59	17	13	29	27	27	2
2200+90.002	4.99	6.37	2	2	31	30	30	1
COLUMN TOTALS			31	24				

NOTES:

1 - CUT
CUT DOES INCLUDE SALVAGED/UNUSABLE PAVEMENT MATERIAL. SALVAGED/UNUSABLE PAVEMENT MATERIAL IS CALCULATED ON THE SUMMARY SHEET.

2 - FILL
DOES NOT INCLUDE PAVEMENT EXC VOLUME SALVAGED/UNUSABLE PAVEMENT MATERIAL IS CALCULATED ON THE SUMMARY SHEET.

3 - MASS ORDNATE
[(CUT) - ((FILL) * FILL FACTOR)]



Proposal Schedule of Items

Proposal ID: 20201110022 Project(s): 4550-03-71, 4550-04-71

Federal ID(s): WISC 2020543, WISC 2020544

SECTION: 0001 Contract Items

Alt Set ID: Alt Mbr ID:

Proposal Line Number	Item ID Description	Approximate Quantity and Units	Unit Price	Bid Amount
0126	509.0301 Preparation Decks Type 1	33.000 SY	_____.	_____.
0128	509.0302 Preparation Decks Type 2	18.000 SY	_____.	_____.
0130	509.0500 Cleaning Decks	360.000 SY	_____.	_____.
0132	509.2000 Full-Depth Deck Repair	1.000 SY	_____.	_____.
0134	509.2500 Concrete Masonry Overlay Decks	23.000 CY	_____.	_____.
0136	516.0500 Rubberized Membrane Waterproofing	17.000 SY	_____.	_____.
0138	520.8000 Concrete Collars for Pipe	21.000 EACH	_____.	_____.
0140	520.8700 Cleaning Culvert Pipes	3.000 EACH	_____.	_____.
0142	521.1015 Apron Endwalls for Culvert Pipe Steel 15-Inch	2.000 EACH	_____.	_____.
0144	521.1018 Apron Endwalls for Culvert Pipe Steel 18-Inch	4.000 EACH	_____.	_____.
0146	521.1021 Apron Endwalls for Culvert Pipe Steel 21-Inch	2.000 EACH	_____.	_____.
0148	521.1024 Apron Endwalls for Culvert Pipe Steel 24-Inch	7.000 EACH	_____.	_____.
0150	521.1030 Apron Endwalls for Culvert Pipe Steel 30-Inch	2.000 EACH	_____.	_____.
0152	521.1048 Apron Endwalls for Culvert Pipe Steel 48-Inch	2.000 EACH	_____.	_____.
0154	521.1518 Apron Endwalls for Culvert Pipe Sloped Side Drains Steel 18-Inch 6 to 1	9.000 EACH	_____.	_____.



Proposal Schedule of Items

Proposal ID: 20201110022 Project(s): 4550-03-71, 4550-04-71

Federal ID(s): WISC 2020543, WISC 2020544

SECTION: 0001 Contract Items

Alt Set ID: Alt Mbr ID:

Proposal Line Number	Item ID Description	Approximate Quantity and Units	Unit Price	Bid Amount
0384	650.9910 Construction Staking Supplemental Control (project) 01. 4550-03-71	LS	LUMP SUM	_____.
0386	650.9910 Construction Staking Supplemental Control (project) 02. 4550-04-71	LS	LUMP SUM	_____.
0388	650.9920 Construction Staking Slope Stakes	46,800.000 LF	_____.	_____.
0390	690.0150 Sawing Asphalt	10,580.000 LF	_____.	_____.
0392	690.0250 Sawing Concrete	2,360.000 LF	_____.	_____.
0394	715.0415 Incentive Strength Concrete Pavement	3,634.000 DOL	1.00000	3,634.00
0396	715.0502 Incentive Strength Concrete Structures	534.000 DOL	1.00000	534.00
0398	715.0710 Optimized Aggregate Gradation Incentive	13,219.000 DOL	1.00000	13,219.00
0400	740.0440 Incentive IRI Ride	69,058.000 DOL	1.00000	69,058.00
0402	ASP.1T0A On-the-Job Training Apprentice at \$5.00/HR	2,400.000 HRS	5.00000	12,000.00
0404	ASP.1T0G On-the-Job Training Graduate at \$5.00/HR	3,040.000 HRS	5.00000	15,200.00
0406	SPV.0060 Special 01. Cleaning Storm Sewer	24.000 EACH	_____.	_____.
0408	SPV.0060 Special 03. Adjusting Water Valve Boxes	34.000 EACH	_____.	_____.
0410	SPV.0060 Special 04. Adjusting Manhole Covers with Pro-Ring	41.000 EACH	_____.	_____.
0412	SPV.0090 Special 01. Concrete Curb & Gutter 2-Inch Sloped 18-Inch	845.000 LF	_____.	_____.