



# Wisconsin Department of Transportation

## Division of Transportation Systems Development

Bureau of Project Development  
4822 Madison Yards Way, 4<sup>th</sup> Floor South  
Madison, WI 53705

November 2, 2020

Telephone: (608) 266-1631  
Facsimile (FAX): (608) 266-8459

### NOTICE TO ALL CONTRACTORS:

**Proposal #24: 6090-08-71, WISC 2020 546**  
**Village of Brandon**  
**CTH TC - WCPL**  
**STH 49**  
**Fond du Lac County**

### Letting of November 10, 2020

This is Addendum No. 01, which provides for the following:

#### Schedule of Items:

Revised Bid Item Quantities					
Bid Item	Item Description	Unit	Old Quantity	Revised Quantity	Proposal Total
204.0150	Removing Curb and Gutter	LF	335	121	456
204.0155	Removing Concrete Sidewalk	SY	164	31	195
416.1710	Concrete Pavement Repair	SY	12	83	95
601.0409	Concrete Curb & Gutter 30-Inch Type A	LF	337	119	456
602.0140	Sidewalk 5-Inch	SF	1498	-46	1452
690.0150	Sawing Asphalt	LF	168	28	196
690.0250	Sawing Concrete	LF	479	700	1179

Added Bid Item Quantities					
Bid Item	Item Description	Unit	Old Quantity	Revised Quantity	Proposal Total
204.0110	Removing Asphaltic Surface	SY	0	8	8
465.0110	Asphaltic Surface Patching	Ton	0	3	3

#### Plan Sheets:

Revised Plan Sheets	
Plan Sheet	Plan Sheet Title (brief description of changes to sheet)
18	Revised to correct location of detectable warning field and indicate location and depth of asphalt removal and patching
29	Miscellaneous quantities revised for items 204.0110, 204.0150, 204.0155, 690.0250, and 465.0110
30	Miscellaneous quantities revised for items 416.1710, 601.0409, and 602.0410
32	Miscellaneous quantities revised for item 690.0150

**Schedule of Items**

Attached, dated November 2, 2020, are the revised Schedule of Items Pages 1 – 4..

**Plan Sheets**

The following 8½ x 11-inch sheets are attached and made part of the plans for this proposal:

Revised: 18, 29, 30 and 32.

The responsibility for notifying potential subcontractors and suppliers of these changes remains with the prime contractor.

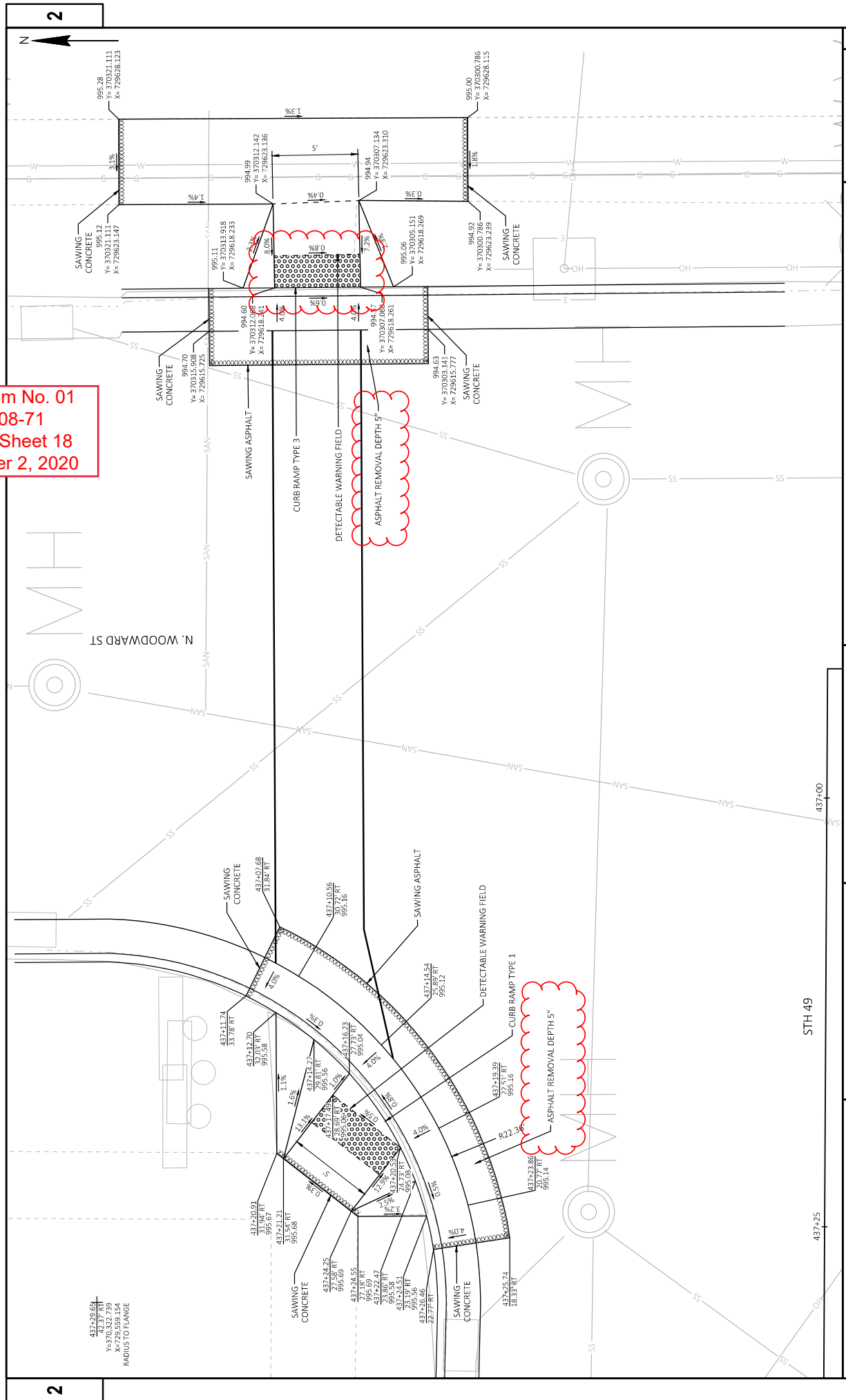
Sincerely,

*Mike Coleman*

Proposal Development Specialist  
Proposal Management Section

END OF ADDENDUM

Addendum No. 01  
 ID 6090-08-71  
 Revised Sheet 18  
 November 2, 2020



2

437+20.69  
 42.37 RT  
 Y=370.327739  
 X=729.559154  
 RADIUS TO FLANGE

Addendum No. 01  
 ID 6090-08-71  
 Revised Sheet 29  
 November 2, 2020

3

REMOVALS

CATEGORY	STATION	TO	STATION	LOCATION	SY	204.0110 REMOVING ASPHALTIC SURFACE	204.0120 REMOVING ASPHALTIC SURFACE MILLING	204.0150 REMOVING CURB AND GUTTER	204.0155 REMOVING CONCRETE SIDEWALK	LF	SY
0010	421+75	-	444+60	LT & RT	-	-	7136	-	-	-	-
0010	444+71	-	473+44	LT & RT	-	-	7719	-	-	-	-
0010	424+97	-	425+03	LT	-	-	-	6	-	-	-
0010	433+83	-	433+97	LT & RT	-	-	-	17	5	-	-
0010	436+92	-	437+25	RT	8	-	-	34	21	-	-
0010	439+94	-	440+56	LT & RT	-	-	-	65	21	-	-
0010	443+23	-	443+84	LT & RT	-	-	-	84	24	-	-
0010	446+48	-	447+21	LT & RT	-	-	-	47	21	-	-
0010	449+87	-	450+56	LT & RT	-	-	-	35	7	-	-
0010	453+15	-	453+81	LT & RT	-	-	-	55	24	-	-
0010	456+49	-	457+12	LT & RT	-	-	-	-	12	-	-
0010	459+79	-	460+47	LT & RT	-	-	-	64	34	-	-
0010	463+16	-	463+68	LT & RT	-	-	-	-	4	-	-
0010	466+41	-	467+08	LT & RT	-	-	-	49	22	-	-
TOTAL 0010					8		14855	456	195		

SAWING CONCRETE

CATEGORY	STATION	TO	STATION	LOCATION	LF
0010	424+97	-	425+03	LT	5
0010	433+83	-	433+97	RT & LT	46
0010	436+92	-	437+25	RT	26
0010	439+94	-	440+56	RT & LT	132
0010	443+23	-	443+84	RT & LT	156
0010	446+48	-	447+21	RT & LT	124
0010	449+77	-	450+56	RT & LT	120
0010	453+15	-	453+81	RT & LT	169
0010	456+49	-	457+12	RT & LT	106
0010	459+79	-	460+47	RT & LT	128
0010	463+16	-	463+68	RT & LT	43
0010	466+41	-	467+08	RT & LT	124
TOTAL 0010					1179

3

REMOVING ASPHALTIC SURFACE BUILT JOINTS

CATEGORY	STATION	LOCATION	SY
0010	421+75	LT & RT	5
0010	436+92	RT	8
0010	444+60	LT & RT	10
0010	444+71	LT & RT	10
0010	473+44	LT & RT	5
TOTAL 0010			38

HMA PAVING

CATEGORY	STATION	TO	STATION	LOCATION	TON
0010	421+75	-	444+60	LT & RT	856
0010	436+92	-	437+25	RT	-
0010	444+71	-	473+44	LT & RT	926
TOTAL 0010					1782

455.0605 TACK COAT  
 460.5224 HMA PAVEMENT  
 4 LT 58-28 S

465.0110 ASPHALTIC SURFACE PATCHING

PROJECT NO: 6090-08-71

HWY: STH 49

COUNTY: FOND DU LAC

MISCELLANEOUS QUANTITIES

SHEET: 29

FILE NAME: N:\PDS\1030200\_074.pbx

PLOT DATE: June 14, 1911

PLOT BY: A.R.H.

PLOT SCALE: 1:11

CATEGORY	STATION	TO	STATION	LOCATION	EACH	CONCRETE 416.0610 DRILLED TIE BARS	CONCRETE PAVEMENT REPAIR	CONCRETE CURB & GUTTER 30-INCH TYPE A	CONCRETE CURB & GUTTER 30-INCH TYPE A	CONCRETE CURB RAMP DETECTABLE WARNING FIELD RADIAL YELLOW	CONCRETE CURB RAMP DETECTABLE WARNING FIELD YELLOW	CONCRETE CURB RAMP DETECTABLE WARNING FIELD RADIAL YELLOW
						416.1710	601.0409	602.0410	602.0505	602.0605		
						SY	LF	SF	SF	SF		
0010	424+97	-	425+03	LT	9	2	6	-	-	-		
0010	433+83	-	433+97	RT & LT	5	4	17	36	19	-		
0010	436+92	-	437+25	RT	10	-	34	196	20	-		
0010	439+94	-	440+56	RT & LT	15	15	65	176	40	-		
0010	443+23	-	443+84	RT & LT	20	18	84	212	40	-		
0010	446+48	-	447+21	RT & LT	10	10	47	150	24	48		
0010	449+77	-	450+56	RT & LT	32	9	35	46	33	-		
0010	453+15	-	453+81	RT & LT	28	12	55	141	20	28		
0010	456+49	-	457+12	RT & LT	-	-	-	16	-	89		
0010	459+79	-	460+47	RT & LT	24	15	64	317	30	-		
0010	463+16	-	463+68	RT & LT	-	-	-	3	-	32		
0010	466+41	-	467+08	RT & LT	11	10	49	159	20	29		
TOTAL 0010					164	95	456	1452	246	226		

Addendum No. 01  
 ID 6090-08-71  
 Revised Sheet 30  
 November 2, 2020

DRAINAGE		611.0603	611.0606
CATEGORY	STATION	INLET COVERS TYPE A-S EACH	INLET COVERS TYPE B EACH
0010	425+01	1	-
0010	449+80	1	-
0010	450+02	1	-
0010	450+36	-	1
0010	453+34	1	-
0010	453+63	1	-
0010	460+25	1	-
TOTAL 0010		6	1

Addendum No. 01  
ID 6090-08-71  
Revised Sheet 32  
November 2, 2020

CATEGORY	STATION	TO	STATION	LOCATION	646.1020 MARKING		646.5320 MARKING		646.7420 MARKING		646.9100 MARKING		649.0105 MARKING		REMARKS
					LINE	EPOXY	RAILROAD CROSSINGS EPOXY	EACH	LINE	EPOXY	CROSSWALK EPOXY	LINE	PAINT	LINE	
0010	421+75	-	436+13	LT & RT	1776	-	-	-	-	-	-	-	-	-	
0010	437+47	-	444+61	LT & RT	1380	-	-	-	-	-	-	-	-	-	
0010	444+71	-	473+44	LT & RT	3785	-	-	-	-	-	-	-	-	-	
0010	421+75	-	444+61	RT	-	1	-	-	-	-	-	-	-	-	
0010	444+71	-	473+44	LT	-	1	-	-	-	-	-	-	-	-	
0010	433+43	-	433+97	LT & RT	-	-	41	-	32	-	-	-	-	80	BOWEN
0010	436+92	-	437+25	LT & RT	-	-	39	-	-	-	-	-	-	160	WOODWARD
0010	439+94	-	440+56	LT & RT	-	-	94	-	-	-	-	-	-	240	PRAIRIE
0010	443+23	-	443+84	LT & RT	-	-	94	-	-	-	-	-	-	320	LOCKIN
0010	446+48	-	447+21	LT & RT	-	-	112	-	-	-	-	-	-	160	COMMERCIAL
0010	449+87	-	450+56	LT & RT	-	-	109	-	-	-	-	-	-	160	CENTER
0010	453+15	-	453+81	LT & RT	-	-	92	-	-	-	-	-	-	160	STATE
0010	456+49	-	457+12	LT & RT	-	-	92	-	-	-	-	-	-	160	WEST
0010	459+79	-	460+47	LT & RT	-	-	41	-	-	-	-	-	-	160	FIRST
0010	466+41	-	467+08	LT & RT	-	-	93	-	-	-	-	-	-	160	THIRD
TOTAL 0010					6941	2	807	32	500	1600					

SAWING ASPHALT

CATEGORY	STATION	LOCATION	LF
0010	421+75	LT & RT	24
0010	436+92	RT	62
0010	444+60	LT & RT	43
0010	444+71	LT & RT	43
0010	473+44	LT & RT	24
TOTAL 0010			196

STAKING

CATEGORY	STATION	TO	STATION	LOCATION	650.8000 CONSTRUCTION STAKING		650.9000 CONSTRUCTION STAKING		650.9910 CONSTRUCTION STAKING	
					REFERENCE	LF	RAMPS	CURB	SUPPLEMENTAL CONTROL	LS
0010	421+75	-	444+60	LT & RT	2285	-	12	-	-	-
0010	444+71	-	473+44	LT & RT	2873	-	25	-	-	-
0010	421+75	-	473+44	LT & RT	-	-	-	1	1	-
TOTAL 0010					5158	37	1			

PROJECT NO: 6090-08-71

HWY: STH 49

COUNTY: FOND DU LAC

MISCELLANEOUS QUANTITIES

SHEET: 32

FILE NAME: N:\PDS\...030200\_mq.pptx

PLOT DATE: June 14, 1911

PLOT BY: A.R.H.

PLOT SCALE: 1:1



## Proposal Schedule of Items

Proposal ID: 20201110024 Project(s): 6090-08-71

Federal ID(s): WISC 2020546

SECTION: 0001

Contract Items

Alt Set ID:

Alt Mbr ID:

Proposal Line Number	Item ID Description	Approximate Quantity and Units	Unit Price	Bid Amount
0002	204.0115 Removing Asphaltic Surface Butt Joints	38.000 SY	_____.	_____.
0004	204.0120 Removing Asphaltic Surface Milling	14,855.000 SY	_____.	_____.
0006	204.0150 Removing Curb & Gutter	456.000 LF	_____.	_____.
0008	204.0155 Removing Concrete Sidewalk	195.000 SY	_____.	_____.
0010	213.0100 Finishing Roadway (project) 01. 6090-08-71	1.000 EACH	_____.	_____.
0012	416.0610 Drilled Tie Bars	164.000 EACH	_____.	_____.
0014	416.1710 Concrete Pavement Repair	95.000 SY	_____.	_____.
0016	455.0605 Tack Coat	1,040.000 GAL	_____.	_____.
0018	460.2000 Incentive Density HMA Pavement	1,160.000 DOL	1.00000	1,160.00
0020	460.5224 HMA Pavement 4 LT 58-28 S	1,782.000 TON	_____.	_____.
0022	601.0409 Concrete Curb & Gutter 30-Inch Type A	456.000 LF	_____.	_____.
0024	602.0410 Concrete Sidewalk 5-Inch	1,452.000 SF	_____.	_____.
0026	602.0505 Curb Ramp Detectable Warning Field Yellow	246.000 SF	_____.	_____.
0028	602.0605 Curb Ramp Detectable Warning Field Radial Yellow	226.000 SF	_____.	_____.
0030	611.0603 Inlet Covers Type A-S	6.000 EACH	_____.	_____.
0032	611.0606 Inlet Covers Type B	1.000 EACH	_____.	_____.



Proposal Schedule of Items

Proposal ID: 20201110024 Project(s): 6090-08-71

Federal ID(s): WISC 2020546

SECTION: 0001

Contract Items

Alt Set ID:

Alt Mbr ID:

Proposal Line Number	Item ID Description	Approximate Quantity and Units	Unit Price	Bid Amount
0034	618.0100 Maintenance And Repair of Haul Roads (project) 01. 6090-08-71	1.000 EACH	_____.	_____.
0036	619.1000 Mobilization	1.000 EACH	_____.	_____.
0038	628.1905 Mobilizations Erosion Control	1.000 EACH	_____.	_____.
0040	628.1910 Mobilizations Emergency Erosion Control	1.000 EACH	_____.	_____.
0042	628.2006 Erosion Mat Urban Class I Type A	60.000 SY	_____.	_____.
0044	628.7005 Inlet Protection Type A	38.000 EACH	_____.	_____.
0046	629.0205 Fertilizer Type A	1.000 CWT	_____.	_____.
0048	630.0130 Seeding Mixture No. 30	2.000 LB	_____.	_____.
0050	630.0500 Seed Water	1.400 MGAL	_____.	_____.
0052	642.5001 Field Office Type B	1.000 EACH	_____.	_____.
0054	643.0300 Traffic Control Drums	2,975.000 DAY	_____.	_____.
0056	643.0410 Traffic Control Barricades Type II	1,260.000 DAY	_____.	_____.
0058	643.0420 Traffic Control Barricades Type III	560.000 DAY	_____.	_____.
0060	643.0705 Traffic Control Warning Lights Type A	1,820.000 DAY	_____.	_____.
0062	643.0900 Traffic Control Signs	2,372.000 DAY	_____.	_____.
0064	643.1050 Traffic Control Signs PCMS	14.000 DAY	_____.	_____.





Proposal Schedule of Items

Proposal ID: 20201110024 Project(s): 6090-08-71

Federal ID(s): WISC 2020546

SECTION: 0001

Contract Items

Alt Set ID:

Alt Mbr ID:

Proposal Line Number	Item ID Description	Approximate Quantity and Units	Unit Price	Bid Amount
0066	643.5000 Traffic Control	1.000 EACH	_____.	_____.
0068	644.1601 Temporary Pedestrian Curb Ramp	280.000 DAY	_____.	_____.
0070	646.1020 Marking Line Epoxy 4-Inch	6,941.000 LF	_____.	_____.
0072	646.5320 Marking Railroad Crossings Epoxy	2.000 EACH	_____.	_____.
0074	646.7420 Marking Crosswalk Epoxy Transverse Line 6-Inch	807.000 LF	_____.	_____.
0076	646.9100 Marking Removal Line 8-Inch	32.000 LF	_____.	_____.
0078	649.0105 Temporary Marking Line Paint 4-Inch	500.000 LF	_____.	_____.
0080	649.0205 Temporary Marking Line Paint 8-Inch	1,600.000 LF	_____.	_____.
0082	650.8000 Construction Staking Resurfacing Reference	5,158.000 LF	_____.	_____.
0084	650.9000 Construction Staking Curb Ramps	37.000 EACH	_____.	_____.
0086	650.9910 Construction Staking Supplemental Control (project) 01. 6090-08-71	LS	LUMP SUM	_____.
0088	690.0150 Sawing Asphalt	196.000 LF	_____.	_____.
0090	690.0250 Sawing Concrete	1,179.000 LF	_____.	_____.
0092	740.0440 Incentive IRI Ride	7,680.000 DOL	1.00000	7,680.00
0094	204.0110 Removing Asphaltic Surface	8.000 SY	_____.	_____.
0096	465.0110 Asphaltic Surface Patching	3.000 TON	_____.	_____.



Proposal Schedule of Items

---

Proposal ID: 20201110024 Project(s): 6090-08-71

Federal ID(s): WISC 2020546

Section: 0001

Total: \_\_\_\_\_.

Total Bid: \_\_\_\_\_.