



Wisconsin Department of Transportation

Division of Transportation Systems Development

Bureau of Project Development
4822 Madison Yards Way, 4th Floor South
Madison, WI 53705

November 25, 2020

Telephone: (608) 266-1631
Facsimile (FAX): (608) 266-8459

NOTICE TO ALL CONTRACTORS:

Proposal #14: 6918-01-72, WISC 2021 030
C Portage, Wisconsin & Dewitt Sts
Ontario Street To E Pleasant Street
USH 051
Columbia County

Letting of December 8, 2020

This is Addendum No. 01, which provides for the following:

Schedule of Items:

Revised Bid Item Quantities					
Bid Item	Item Description	Unit	Old Quantity	Revised Quantity	Proposal Total
608.3012	Storm Sewer Pipe Class III-A 12-Inch	LF	8	635	643

Added Bid Item Quantities					
Bid Item	Item Description	Unit	Old Quantity	Revised Quantity	Proposal Total
608.3015	Storm Sewer Pipe Class III-A 15-Inch	LF	0	145	145
608.3018	Storm Sewer Pipe Class III-A 18-Inch	LF	0	39	39
608.3024	Storm Sewer Pipe Class III-A 24-Inch	LF	0	618	618
608.3030	Storm Sewer Pipe Class III-A 30-Inch	LF	0	57	57
520.1030	Apron Endwalls for Culvert Pipe 30-Inch	EA	0	1	1

Deleted Bid Item Quantities					
Bid Item	Item Description	Unit	Old Quantity	Revised Quantity	Proposal Total
608.0315	Storm Sewer Pipe Class III 12-Inch	LF	635	-635	0
608.0315	Storm Sewer Pipe Class III 15-Inch	LF	145	-145	0
608.0318	Storm Sewer Pipe Class III 18-Inch	LF	39	-39	0
608.0324	Storm Sewer Pipe Class III 24-Inch	LF	618	-618	0
608.0330	Storm Sewer Pipe Class III 30-Inch	LF	57	-57	0
522.1030	Apron Endwalls for Culvert Pipe Reinforced Concrete	EA	1	-1	0

Plan Sheets:

Revised Plan Sheets	
Plan Sheet	Plan Sheet Title (brief description of changes to sheet)
97-102 & 105	Storm Sewer (Changed bid item in pipe material call outs)
249-252	Miscellaneous Quantities (Updated bid items and quantity)

Schedule of Items

Attached, dated November 25, 2020, are the revised Schedule of Items Pages 1 – 19.

Plan Sheets

The following 8½ x 11-inch sheets are attached and made part of the plans for this proposal:
Revised: 97-102, 105 and 249-252

The responsibility for notifying potential subcontractors and suppliers of these changes remains with the prime contractor.

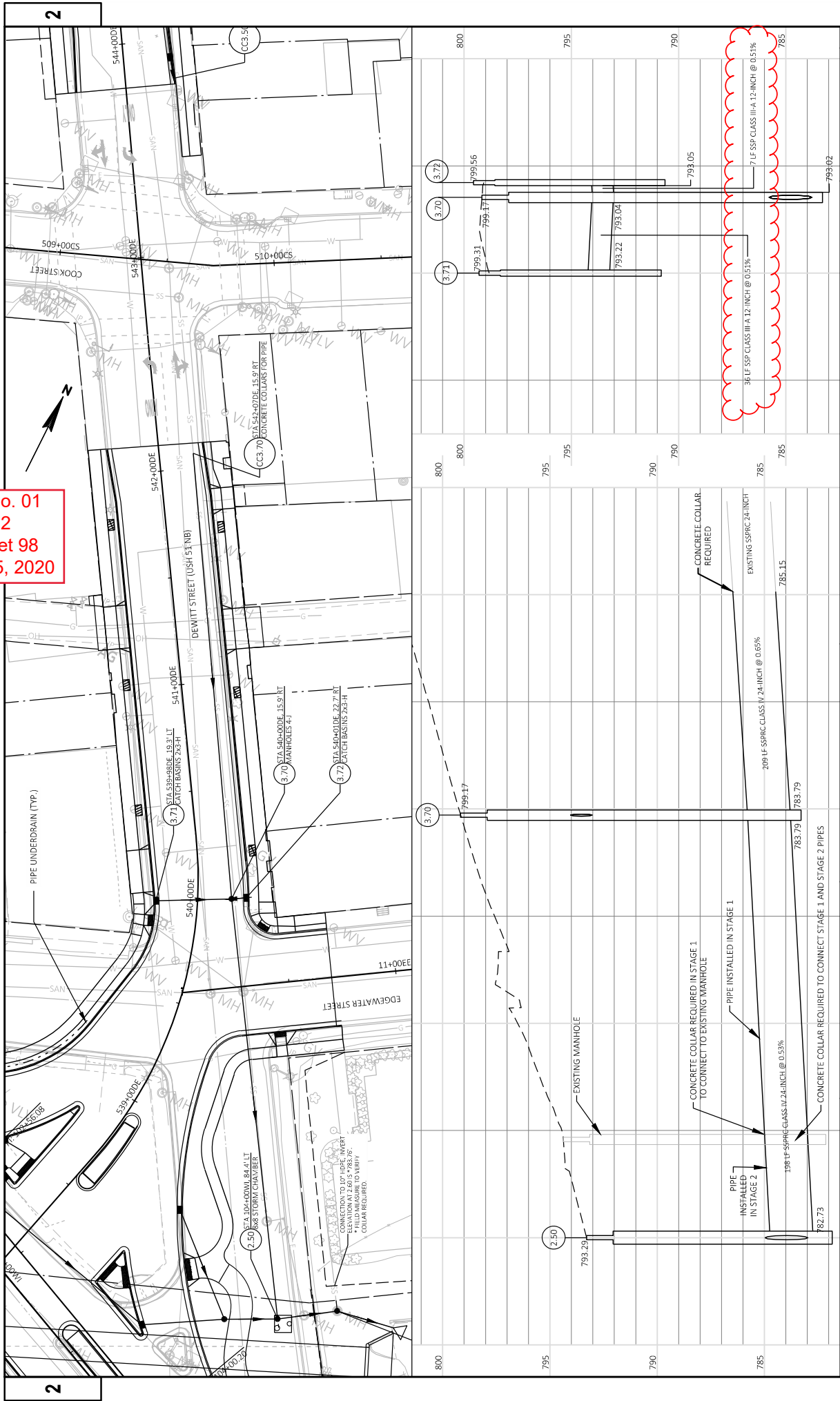
Sincerely,

Mike Coleman

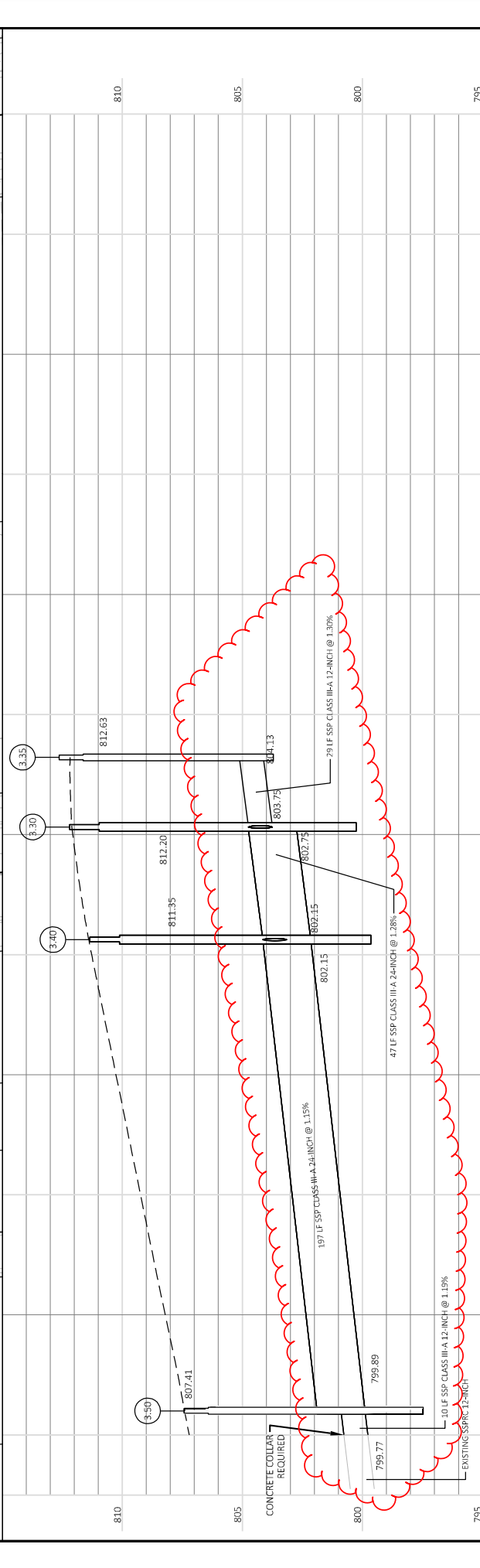
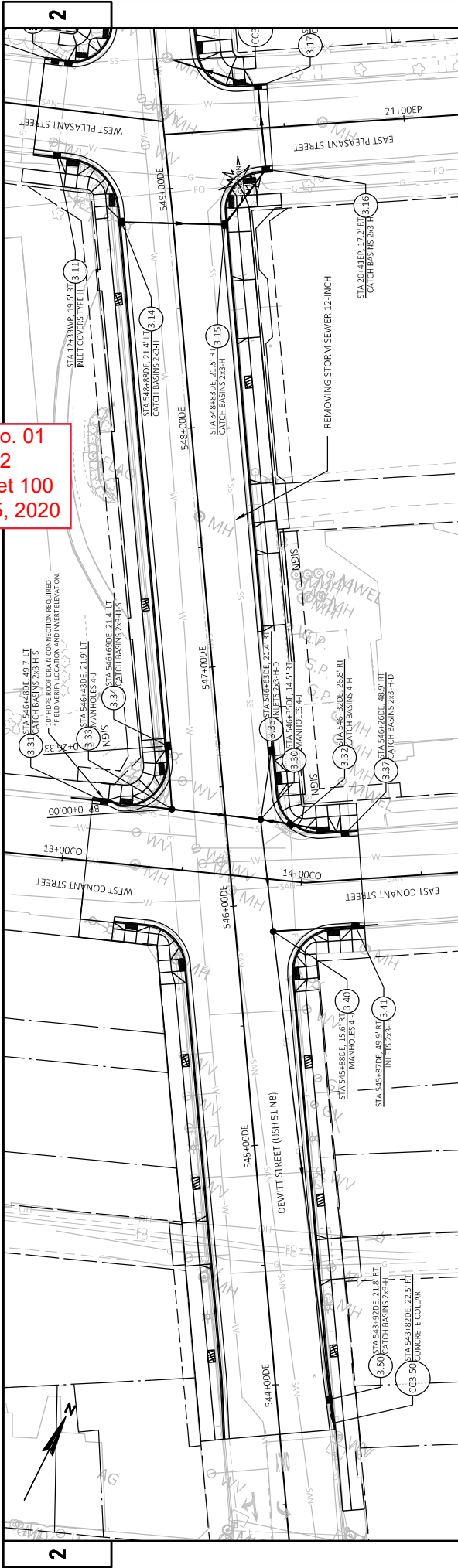
Proposal Development Specialist
Proposal Management Section

END OF ADDENDUM

Addendum No. 01
 ID 6918-01-72
 Revised Sheet 98
 November 25, 2020

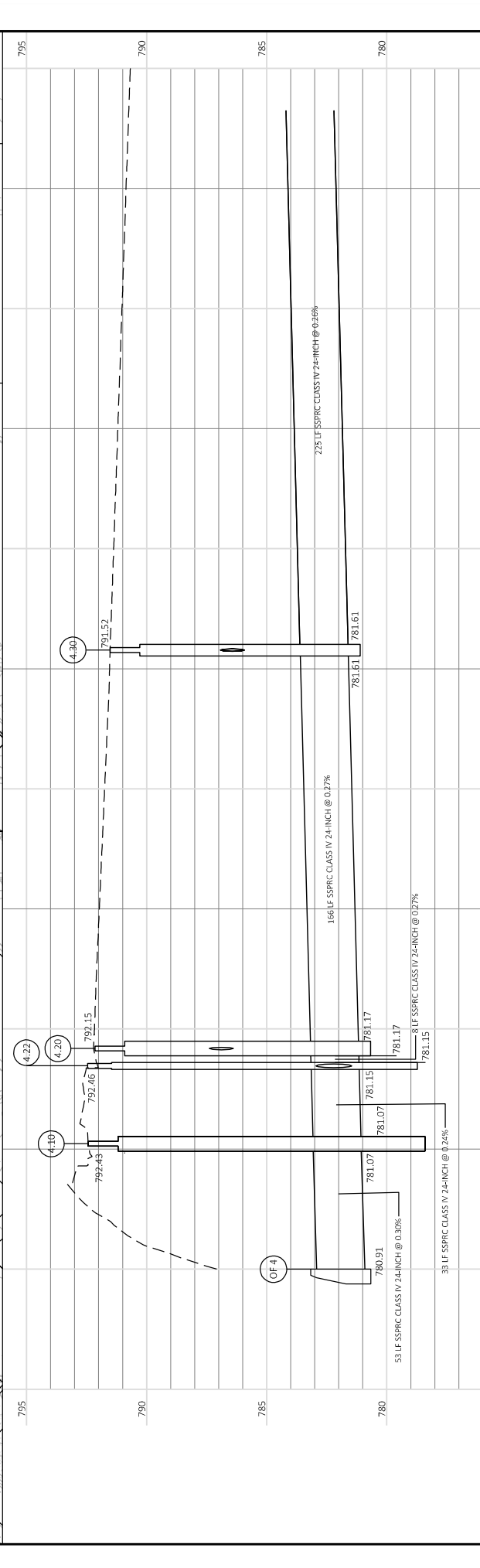
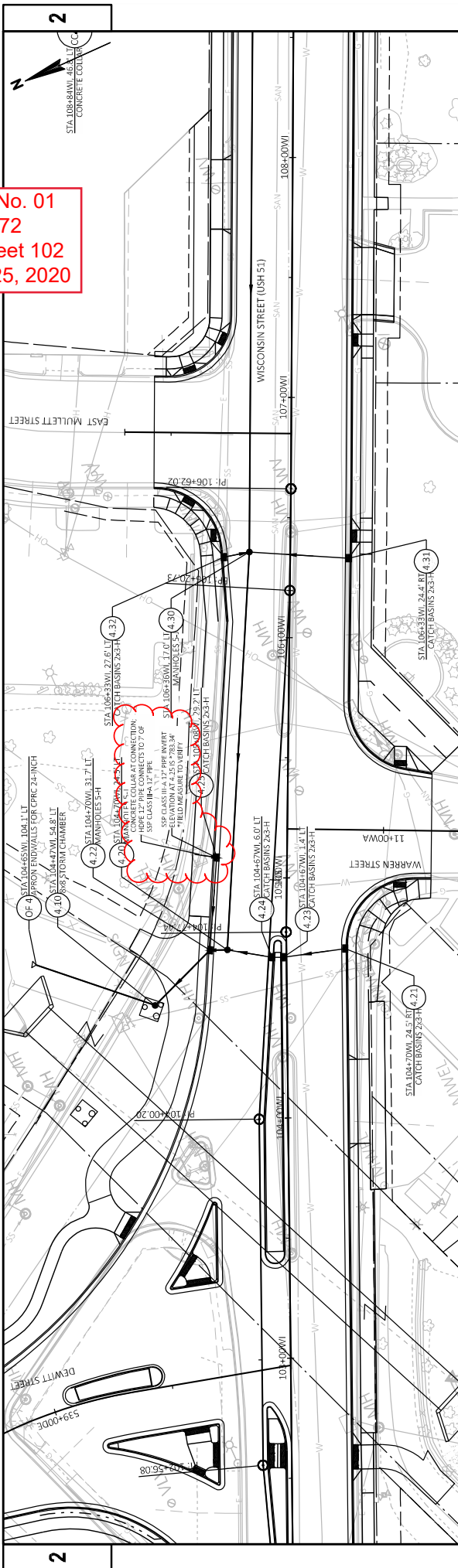


Addendum No. 01
 ID 6918-01-72
 Revised Sheet 100
 November 25, 2020



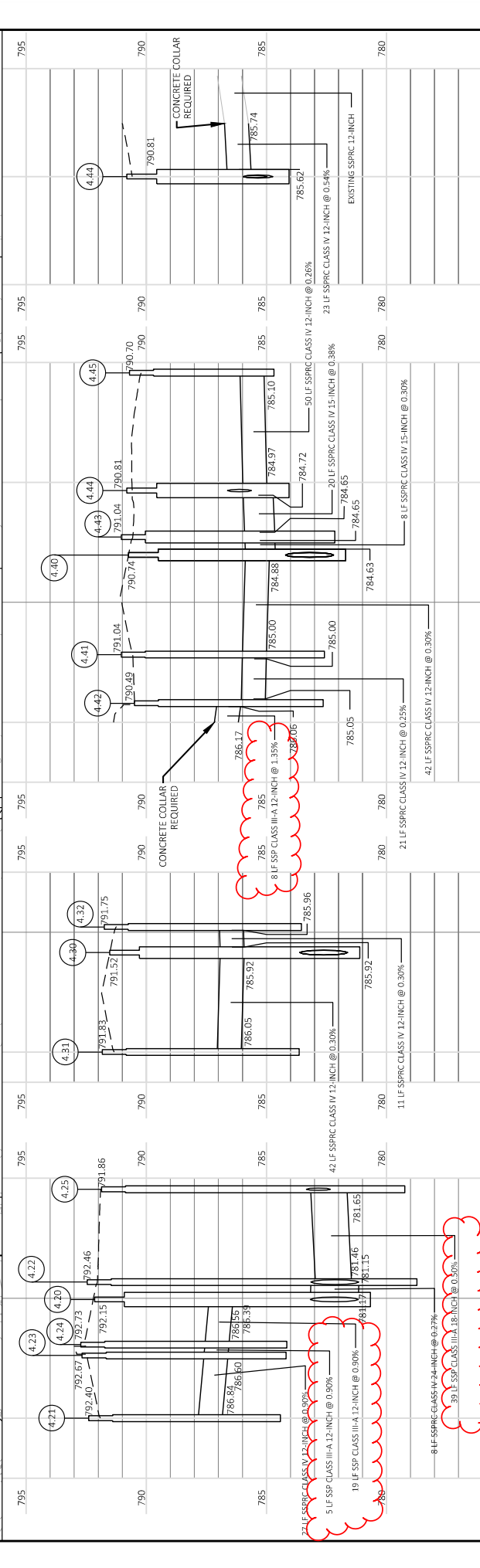
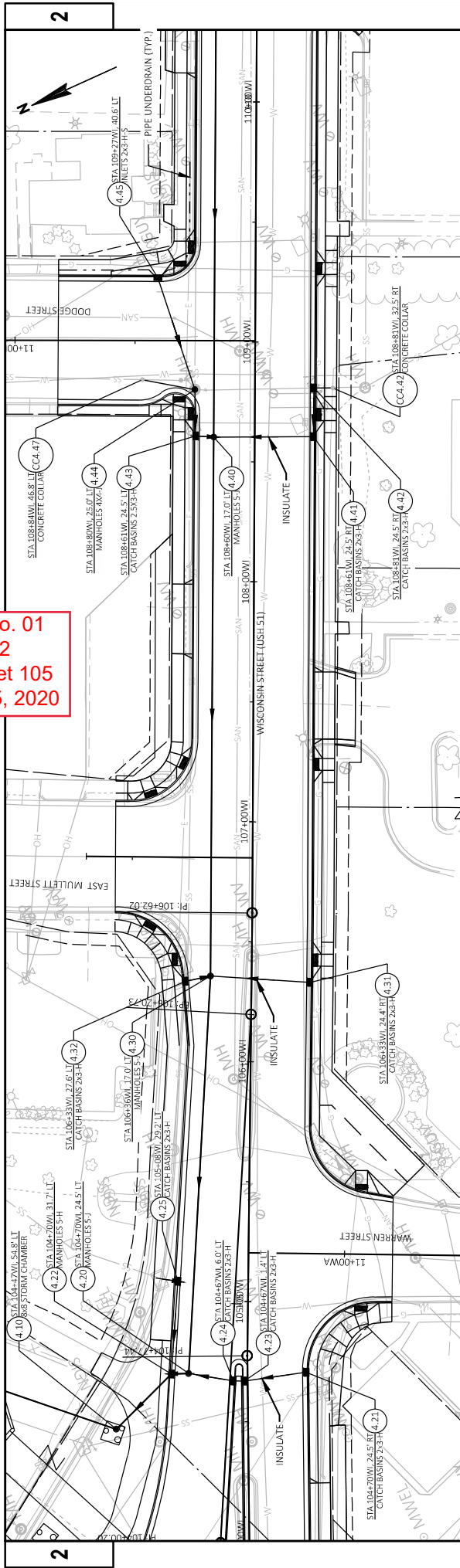
PROJECT NO: 6918-01-72	HWY: USH 51	COUNTY: COLUMBIA	STORM SEWER - DEWITT STREET	SHEET 100	E
FILE NAME: X:\PROJECTS\COLUMBIA\6918-01-72\DESIGN\CD\SHETS\PA\022501_SS_DWRM.DWG	LAYOUT NAME: DE WITT TL - 3	PLOT DATE: 11/17/2020 11:49 AM	PLOT BY: JERIBH MUNROE	PLOT SCALE: 1 IN=30 FT	WISDOT/CADDS SHEET 41

Addendum No. 01
 ID 6918-01-72
 Revised Sheet 102
 November 25, 2020



PROJECT NO:	6918-01-72	HWY:	USH 51	COUNTY:	COLUMBIA	STORM SEWER - WISCONSIN STREET	SHEET	102	E
FILE NAME:	X:\PROJECTS\COLUMBIA\6918-01-72\USH 51\DESIGN\CD\SSHEET\PLAN\022501_SS_ER_W_2_INO_BKE_LANES12.DWG								
LAYOUT NAME:	WESTTL								
PLOT DATE:	11/17/2020 11:46:AM								
PLOT BY:	REDBURN MUNROE								
PLOT NAME:	1 IN=30 FT								
PLOT SCALE:	1 IN=30 FT								

Addendum No. 01
 ID 6918-01-72
 Revised Sheet 105
 November 25, 2020



PROJECT NO: 6918-01-72	COUNTY: COLUMBIA	STORM SEWER - WISCONSIN STREET	SHEET 105	E
FILE NAME: X:\PROJECTS\COLUMBIA\6918-01-72\151515DISIGN\CSHETS\PLAN02300_SS_1&W_2\NO BKE LINES\22.DWG	DATE: 11/17/2020 8:32 AM	PLOT BY: JEDDIDI MADRIDE	PLOT NAME: #####	PLOT SCALE: 1"=10'

Addendum No. 01
 ID 6918-01-72
 Revised Sheet 250
 November 25, 2020

CATEGORY	FROM	TO	STORM SEWER PIPE												SUBTOTAL	REMARKS																																																																																																																																																																																																																																																																																																																																																																																																																																																																																												
			608.3012	608.3015	608.3018	608.3024	608.3030	608.0412	608.0415	608.0418	608.0424	608.2414	608.2419	SPV.0090.03																																																																																																																																																																																																																																																																																																																																																																																																																																																																																														
			CLASS IIIA 12-INCH (LF)	CLASS IIIA 15-INCH (LF)	CLASS IIIA 18-INCH (LF)	CLASS IIIA 24-INCH (LF)	CLASS IIIA 30-INCH (LF)	CLASS IIIA 36-INCH (LF)	CLASS IV 12-INCH (LF)	CLASS IV 15-INCH (LF)	CLASS IV 18-INCH (LF)	CLASS IV 24-INCH (LF)	CLASS IV 30-INCH (LF)	CLASS IIIA 10-INCH (LF)	CLASS IIIA 12-INCH (LF)	CLASS IIIA 15-INCH (LF)	CLASS IIIA 18-INCH (LF)	CLASS IIIA 24-INCH (LF)	CLASS IIIA 30-INCH (LF)	CLASS IIIA 36-INCH (LF)	CLASS IIIA 42-INCH (LF)	CLASS IIIA 48-INCH (LF)	CLASS IIIA 60-INCH (LF)	CLASS IIIA 72-INCH (LF)	CLASS IIIA 90-INCH (LF)	CLASS IIIA 108-INCH (LF)	CLASS IIIA 120-INCH (LF)	CLASS IIIA 144-INCH (LF)	CLASS IIIA 180-INCH (LF)	CLASS IIIA 216-INCH (LF)	CLASS IIIA 270-INCH (LF)	CLASS IIIA 324-INCH (LF)	CLASS IIIA 396-INCH (LF)	CLASS IIIA 474-INCH (LF)	CLASS IIIA 564-INCH (LF)	CLASS IIIA 675-INCH (LF)	CLASS IIIA 810-INCH (LF)	CLASS IIIA 972-INCH (LF)	CLASS IIIA 1170-INCH (LF)	CLASS IIIA 1404-INCH (LF)	CLASS IIIA 1686-INCH (LF)	CLASS IIIA 2022-INCH (LF)	CLASS IIIA 2424-INCH (LF)	CLASS IIIA 2898-INCH (LF)	CLASS IIIA 3498-INCH (LF)	CLASS IIIA 4236-INCH (LF)	CLASS IIIA 5082-INCH (LF)	CLASS IIIA 6066-INCH (LF)	CLASS IIIA 7218-INCH (LF)	CLASS IIIA 8544-INCH (LF)	CLASS IIIA 10062-INCH (LF)	CLASS IIIA 11814-INCH (LF)	CLASS IIIA 13830-INCH (LF)	CLASS IIIA 16116-INCH (LF)	CLASS IIIA 18780-INCH (LF)	CLASS IIIA 21840-INCH (LF)	CLASS IIIA 25308-INCH (LF)	CLASS IIIA 29196-INCH (LF)	CLASS IIIA 34434-INCH (LF)	CLASS IIIA 40122-INCH (LF)	CLASS IIIA 47250-INCH (LF)	CLASS IIIA 55926-INCH (LF)	CLASS IIIA 66150-INCH (LF)	CLASS IIIA 78030-INCH (LF)	CLASS IIIA 91662-INCH (LF)	CLASS IIIA 107150-INCH (LF)	CLASS IIIA 124596-INCH (LF)	CLASS IIIA 144000-INCH (LF)	CLASS IIIA 165480-INCH (LF)	CLASS IIIA 189042-INCH (LF)	CLASS IIIA 214782-INCH (LF)	CLASS IIIA 242700-INCH (LF)	CLASS IIIA 272910-INCH (LF)	CLASS IIIA 305420-INCH (LF)	CLASS IIIA 340332-INCH (LF)	CLASS IIIA 377652-INCH (LF)	CLASS IIIA 417480-INCH (LF)	CLASS IIIA 459918-INCH (LF)	CLASS IIIA 504964-INCH (LF)	CLASS IIIA 552618-INCH (LF)	CLASS IIIA 602880-INCH (LF)	CLASS IIIA 655752-INCH (LF)	CLASS IIIA 711234-INCH (LF)	CLASS IIIA 769326-INCH (LF)	CLASS IIIA 829926-INCH (LF)	CLASS IIIA 893034-INCH (LF)	CLASS IIIA 958650-INCH (LF)	CLASS IIIA 1026774-INCH (LF)	CLASS IIIA 1097394-INCH (LF)	CLASS IIIA 1170510-INCH (LF)	CLASS IIIA 1246224-INCH (LF)	CLASS IIIA 1324536-INCH (LF)	CLASS IIIA 1405446-INCH (LF)	CLASS IIIA 1488954-INCH (LF)	CLASS IIIA 1575060-INCH (LF)	CLASS IIIA 1663762-INCH (LF)	CLASS IIIA 1755060-INCH (LF)	CLASS IIIA 1848954-INCH (LF)	CLASS IIIA 1945446-INCH (LF)	CLASS IIIA 2044536-INCH (LF)	CLASS IIIA 2146224-INCH (LF)	CLASS IIIA 2250510-INCH (LF)	CLASS IIIA 2357394-INCH (LF)	CLASS IIIA 2466876-INCH (LF)	CLASS IIIA 2579058-INCH (LF)	CLASS IIIA 2693940-INCH (LF)	CLASS IIIA 2811582-INCH (LF)	CLASS IIIA 2931974-INCH (LF)	CLASS IIIA 3055116-INCH (LF)	CLASS IIIA 3180918-INCH (LF)	CLASS IIIA 3309370-INCH (LF)	CLASS IIIA 3440482-INCH (LF)	CLASS IIIA 3574246-INCH (LF)	CLASS IIIA 3711660-INCH (LF)	CLASS IIIA 3852724-INCH (LF)	CLASS IIIA 3998438-INCH (LF)	CLASS IIIA 4147702-INCH (LF)	CLASS IIIA 4299666-INCH (LF)	CLASS IIIA 4453330-INCH (LF)	CLASS IIIA 4609704-INCH (LF)	CLASS IIIA 4768788-INCH (LF)	CLASS IIIA 4930582-INCH (LF)	CLASS IIIA 5095086-INCH (LF)	CLASS IIIA 5262290-INCH (LF)	CLASS IIIA 5432194-INCH (LF)	CLASS IIIA 5604808-INCH (LF)	CLASS IIIA 5779132-INCH (LF)	CLASS IIIA 5955176-INCH (LF)	CLASS IIIA 6133130-INCH (LF)	CLASS IIIA 6313894-INCH (LF)	CLASS IIIA 6497368-INCH (LF)	CLASS IIIA 6683552-INCH (LF)	CLASS IIIA 6872456-INCH (LF)	CLASS IIIA 7064070-INCH (LF)	CLASS IIIA 7258394-INCH (LF)	CLASS IIIA 7455428-INCH (LF)	CLASS IIIA 7655172-INCH (LF)	CLASS IIIA 7857626-INCH (LF)	CLASS IIIA 8062790-INCH (LF)	CLASS IIIA 8270664-INCH (LF)	CLASS IIIA 8481258-INCH (LF)	CLASS IIIA 8694572-INCH (LF)	CLASS IIIA 8910606-INCH (LF)	CLASS IIIA 9129360-INCH (LF)	CLASS IIIA 9350834-INCH (LF)	CLASS IIIA 9575028-INCH (LF)	CLASS IIIA 9801942-INCH (LF)	CLASS IIIA 10039576-INCH (LF)	CLASS IIIA 10280810-INCH (LF)	CLASS IIIA 10524154-INCH (LF)	CLASS IIIA 10769608-INCH (LF)	CLASS IIIA 11017172-INCH (LF)	CLASS IIIA 11266846-INCH (LF)	CLASS IIIA 11518680-INCH (LF)	CLASS IIIA 11772684-INCH (LF)	CLASS IIIA 12028958-INCH (LF)	CLASS IIIA 12287392-INCH (LF)	CLASS IIIA 12547986-INCH (LF)	CLASS IIIA 12810740-INCH (LF)	CLASS IIIA 13075654-INCH (LF)	CLASS IIIA 13342728-INCH (LF)	CLASS IIIA 13611972-INCH (LF)	CLASS IIIA 13883386-INCH (LF)	CLASS IIIA 14156960-INCH (LF)	CLASS IIIA 14432694-INCH (LF)	CLASS IIIA 14710588-INCH (LF)	CLASS IIIA 14990642-INCH (LF)	CLASS IIIA 15272856-INCH (LF)	CLASS IIIA 15557230-INCH (LF)	CLASS IIIA 15843774-INCH (LF)	CLASS IIIA 16132478-INCH (LF)	CLASS IIIA 16423342-INCH (LF)	CLASS IIIA 16716366-INCH (LF)	CLASS IIIA 17011550-INCH (LF)	CLASS IIIA 17308914-INCH (LF)	CLASS IIIA 17608448-INCH (LF)	CLASS IIIA 17910162-INCH (LF)	CLASS IIIA 18214056-INCH (LF)	CLASS IIIA 18520130-INCH (LF)	CLASS IIIA 18828394-INCH (LF)	CLASS IIIA 19138838-INCH (LF)	CLASS IIIA 19451472-INCH (LF)	CLASS IIIA 19766296-INCH (LF)	CLASS IIIA 20083400-INCH (LF)	CLASS IIIA 20402794-INCH (LF)	CLASS IIIA 20724478-INCH (LF)	CLASS IIIA 21048452-INCH (LF)	CLASS IIIA 21374726-INCH (LF)	CLASS IIIA 21703290-INCH (LF)	CLASS IIIA 22034154-INCH (LF)	CLASS IIIA 22367318-INCH (LF)	CLASS IIIA 22702782-INCH (LF)	CLASS IIIA 23040546-INCH (LF)	CLASS IIIA 23380610-INCH (LF)	CLASS IIIA 23722974-INCH (LF)	CLASS IIIA 24067638-INCH (LF)	CLASS IIIA 24414602-INCH (LF)	CLASS IIIA 24763866-INCH (LF)	CLASS IIIA 25115430-INCH (LF)	CLASS IIIA 25469304-INCH (LF)	CLASS IIIA 25825488-INCH (LF)	CLASS IIIA 26183982-INCH (LF)	CLASS IIIA 26544896-INCH (LF)	CLASS IIIA 26908230-INCH (LF)	CLASS IIIA 27273994-INCH (LF)	CLASS IIIA 27642178-INCH (LF)	CLASS IIIA 28012782-INCH (LF)	CLASS IIIA 28385816-INCH (LF)	CLASS IIIA 28761280-INCH (LF)	CLASS IIIA 29139154-INCH (LF)	CLASS IIIA 29519418-INCH (LF)	CLASS IIIA 29902072-INCH (LF)	CLASS IIIA 30287126-INCH (LF)	CLASS IIIA 30674580-INCH (LF)	CLASS IIIA 31064434-INCH (LF)	CLASS IIIA 31456688-INCH (LF)	CLASS IIIA 31851342-INCH (LF)	CLASS IIIA 32248406-INCH (LF)	CLASS IIIA 32647790-INCH (LF)	CLASS IIIA 33049554-INCH (LF)	CLASS IIIA 33453798-INCH (LF)	CLASS IIIA 33860532-INCH (LF)	CLASS IIIA 34269756-INCH (LF)	CLASS IIIA 34681470-INCH (LF)	CLASS IIIA 35095684-INCH (LF)	CLASS IIIA 35512398-INCH (LF)	CLASS IIIA 35931612-INCH (LF)	CLASS IIIA 36353326-INCH (LF)	CLASS IIIA 36777540-INCH (LF)	CLASS IIIA 37204254-INCH (LF)	CLASS IIIA 37633468-INCH (LF)	CLASS IIIA 38065182-INCH (LF)	CLASS IIIA 38499396-INCH (LF)	CLASS IIIA 38936110-INCH (LF)	CLASS IIIA 39375424-INCH (LF)	CLASS IIIA 39817338-INCH (LF)	CLASS IIIA 40261852-INCH (LF)	CLASS IIIA 40708966-INCH (LF)	CLASS IIIA 41158680-INCH (LF)	CLASS IIIA 41610994-INCH (LF)	CLASS IIIA 42064908-INCH (LF)	CLASS IIIA 42521532-INCH (LF)	CLASS IIIA 42980766-INCH (LF)	CLASS IIIA 43442610-INCH (LF)	CLASS IIIA 43907174-INCH (LF)	CLASS IIIA 44374348-INCH (LF)	CLASS IIIA 44854142-INCH (LF)	CLASS IIIA 45336556-INCH (LF)	CLASS IIIA 45821580-INCH (LF)	CLASS IIIA 46309224-INCH (LF)	CLASS IIIA 46799438-INCH (LF)	CLASS IIIA 47292202-INCH (LF)	CLASS IIIA 47787526-INCH (LF)	CLASS IIIA 48285410-INCH (LF)	CLASS IIIA 48785864-INCH (LF)	CLASS IIIA 49288888-INCH (LF)	CLASS IIIA 49794492-INCH (LF)	CLASS IIIA 50302676-INCH (LF)	CLASS IIIA 50813430-INCH (LF)	CLASS IIIA 51326764-INCH (LF)	CLASS IIIA 51842678-INCH (LF)	CLASS IIIA 52361172-INCH (LF)	CLASS IIIA 52882256-INCH (LF)	CLASS IIIA 53405930-INCH (LF)	CLASS IIIA 53932204-INCH (LF)	CLASS IIIA 54461078-INCH (LF)	CLASS IIIA 54992052-INCH (LF)	CLASS IIIA 55525826-INCH (LF)	CLASS IIIA 56062400-INCH (LF)	CLASS IIIA 56601774-INCH (LF)	CLASS IIIA 57143948-INCH (LF)	CLASS IIIA 57688922-INCH (LF)	CLASS IIIA 58236696-INCH (LF)	CLASS IIIA 58787270-INCH (LF)	CLASS IIIA 59340644-INCH (LF)	CLASS IIIA 59896818-INCH (LF)	CLASS IIIA 60455892-INCH (LF)	CLASS IIIA 61017866-INCH (LF)	CLASS IIIA 61582740-INCH (LF)	CLASS IIIA 62150514-INCH (LF)	CLASS IIIA 62721188-INCH (LF)	CLASS IIIA 63294762-INCH (LF)	CLASS IIIA 63871236-INCH (LF)	CLASS IIIA 64450610-INCH (LF)	CLASS IIIA 65032884-INCH (LF)	CLASS IIIA 65618058-INCH (LF)	CLASS IIIA 66206132-INCH (LF)	CLASS IIIA 66797106-INCH (LF)	CLASS IIIA 67390980-INCH (LF)	CLASS IIIA 67987754-INCH (LF)	CLASS IIIA 68587428-INCH (LF)	CLASS IIIA 69189902-INCH (LF)	CLASS IIIA 69795276-INCH (LF)	CLASS IIIA 70403550-INCH (LF)	CLASS IIIA 71014724-INCH (LF)	CLASS IIIA 71628808-INCH (LF)	CLASS IIIA 72245792-INCH (LF)	CLASS IIIA 72865676-INCH (LF)	CLASS IIIA 73488460-INCH (LF)	CLASS IIIA 74114144-INCH (LF)	CLASS IIIA 74742728-INCH (LF)	CLASS IIIA 75374212-INCH (LF)	CLASS IIIA 76008606-INCH (LF)	CLASS IIIA 76645900-INCH (LF)	CLASS IIIA 77286094-INCH (LF)	CLASS IIIA 77929188-INCH (LF)	CLASS IIIA 78575182-INCH (LF)	CLASS IIIA 79224076-INCH (LF)	CLASS IIIA 79875870-INCH (LF)	CLASS IIIA 80530564-INCH (LF)	CLASS IIIA 81188158-INCH (LF)	CLASS IIIA 81848652-INCH (LF)	CLASS IIIA 82512046-INCH (LF)	CLASS IIIA 83178340-INCH (LF)	CLASS IIIA 83847534-INCH (LF)	CLASS IIIA 84519628-INCH (LF)	CLASS IIIA 85194622-INCH (LF)	CLASS IIIA 85872516-INCH (LF)	CLASS IIIA 86553310-INCH (LF)	CLASS IIIA 87237004-INCH (LF)	CLASS IIIA 87923598-INCH (LF)	CLASS IIIA 88613092-INCH (LF)	CLASS IIIA 89305486-INCH (LF)	CLASS IIIA 90000780-INCH (LF)	CLASS IIIA 90708974-INCH (LF)	CLASS IIIA 91420068-INCH (LF)	CLASS IIIA 92134062-INCH (LF)	CLASS IIIA 92850956-INCH (LF)	CLASS IIIA 93570750-INCH (LF)	CLASS IIIA 94293444-INCH (LF)	CLASS IIIA 95019038-INCH (LF)	CLASS IIIA 95747532-INCH (LF)	CLASS IIIA 96478926-INCH (LF)	CLASS IIIA 97213220-INCH (LF)	CLASS IIIA 97950414-INCH (LF)	CLASS IIIA 98690508-INCH (LF)	CLASS IIIA 99433502-INCH (LF)	CLASS IIIA 100079396-INCH (LF)	CLASS IIIA 100842190-INCH (LF)	CLASS IIIA 101614484-INCH (LF)	CLASS IIIA 102405278-INCH (LF)	CLASS IIIA 103214572-INCH (LF)	CLASS IIIA 104042366-INCH (LF)	CLASS IIIA 104888660-INCH (LF)	CLASS IIIA 105753454-INCH (LF)	CLASS IIIA 106636748-INCH (LF)	CLASS IIIA 107538542-INCH (LF)	CLASS IIIA 108458836-INCH (LF)	CLASS IIIA 109397630-INCH (LF)	CLASS IIIA 110354924-INCH (LF)	CLASS IIIA 111330618-INCH (LF)	CLASS IIIA 112324812-INCH (LF)	CLASS IIIA 113337506-INCH (LF)	CLASS IIIA 114368690-INCH (LF)	CLASS IIIA 115418374-INCH (LF)	CLASS IIIA 116486558-INCH (LF)	CLASS IIIA 117573242-INCH (LF)	CLASS IIIA 118678426-INCH (LF)	CLASS IIIA 119792090-INCH (LF)	CLASS IIIA 120924234-INCH (LF)	CLASS IIIA 122074858-INCH (LF)	CLASS IIIA 123243972-INCH (LF)	CLASS IIIA 124431576-INCH (LF)	CLASS IIIA 125637660-INCH (LF)	CLASS IIIA 126862224-INCH (LF)	CLASS IIIA 128105268-INCH (LF)	CLASS IIIA 129366792-INCH (LF)	CLASS IIIA 130646796-INCH (LF)	CLASS IIIA 131945270-INCH (LF)	CLASS IIIA 133262214-INCH (LF)	CLASS IIIA 134597618-INCH (LF)	CLASS IIIA 135951482-INCH (LF)	CLASS IIIA 137323806-INCH (LF)	CLASS IIIA 138714690-INCH (LF)	CLASS IIIA 140124054-INCH (LF)	CLASS IIIA 141551988-INCH (LF)	CLASS IIIA 143008492-INCH (LF)	CLASS IIIA 144484566-INCH (LF)	CLASS IIIA 145979210-INCH (LF)	CLASS IIIA 147492424-INCH (LF)	CLASS IIIA 149024198-INCH (LF)	CLASS IIIA 150574532-INCH (LF)	CLASS IIIA 152143426-INCH (LF)	CLASS IIIA 153730870-INCH (LF)	CLASS IIIA 155336864-INCH (LF)	CLASS IIIA 156961408-INCH (LF)	CLASS IIIA 158604502-INCH (LF)	CLASS IIIA 160266146-INCH (LF)	CLASS IIIA 161946340-INCH (LF)	CLASS IIIA 163645084-INCH (LF)	CLASS IIIA 165362378-INCH (LF)	CLASS IIIA 167098222-INCH (LF)	CLASS IIIA 168852616-INCH (LF)	CLASS IIIA 170625560-INCH (LF)	CLASS IIIA 172417054-INCH (LF)	CLASS IIIA 174227098-INCH (LF)	CLASS IIIA 176055692-INCH (LF)	CLASS IIIA 177892836-INCH (LF)	CLASS IIIA 179748530-INCH (LF)	CLASS IIIA 181622774-INCH (LF)	CLASS IIIA 183515568-INCH (LF)	CLASS IIIA 185426912-INCH (LF)	CLASS IIIA 187356806-INCH (LF)	CLASS IIIA 189305250-INCH (LF)	CLASS IIIA 191272244-INCH (LF)	CLASS IIIA 193256888-INCH (LF)	CLASS IIIA 195259082-INCH (LF)	CLASS IIIA 197278826-INCH (LF)	CLASS IIIA 199316120-INCH (LF)	CLASS IIIA 201371964-INCH (LF)	CLASS IIIA 203445358-INCH (LF)	CLASS IIIA 205536302-INCH (LF)	CLASS IIIA 207644806-INCH (LF)	CLASS IIIA 209770850-INCH (LF)	CLASS IIIA 211914444-INCH (LF)	CLASS IIIA 214075588-INCH (LF)	CLASS IIIA 216254282-INCH (LF)	CLASS IIIA 218450526-INCH (LF)	CLASS IIIA 220664320-INCH (LF)	CLASS IIIA 222895664-INCH (LF)	CLASS IIIA 225144508-INCH (LF)	CLASS IIIA 227410852-INCH (LF)	CLASS IIIA 229694696-INCH (LF)	CLASS IIIA 232006040-INCH (LF)	CLASS IIIA 234334884-INCH (LF)	CLASS IIIA 236681228-INCH (LF)	CLASS IIIA 239045072-INCH (LF)	CLASS IIIA 241426416-INCH (LF)	CLASS IIIA 243825260-INCH (LF)	CLASS IIIA 246242604-INCH (LF)	CLASS IIIA 248677548-INCH (LF)	CLASS IIIA 251130992-INCH (LF)	CLASS IIIA 253602036-INCH (LF)	CLASS IIIA 256090680-INCH (LF)	CLASS IIIA 258596924-INCH (LF)	CLASS IIIA 261120768-INCH (LF)	CLASS IIIA 263662812-INCH (LF)	CLASS IIIA 266222856-INCH (LF)	CLASS IIIA 268800800-INCH (LF)	CLASS IIIA 271396744-INCH (LF)	CLASS IIIA 274010688-INCH (LF)	CLASS IIIA 276642632-INCH (LF)	CLASS IIIA 279292576-INCH (LF)	CLASS IIIA 281960520-INCH (LF)	CLASS IIIA 284646464-INCH (LF)	CLASS IIIA 287350408-INCH (LF)	CLASS IIIA 290072352-INCH (LF)	CLASS IIIA 292812296-INCH (LF)	CLASS IIIA 295570240-INCH (LF)	CLASS IIIA 298346184-INCH (LF)	CLASS IIIA 301139128-INCH (LF)	CLASS IIIA 303949072-INCH (LF)	CLASS IIIA 306775916-INCH (LF)	CLASS IIIA 309619760-INCH (LF)	CLASS IIIA 312481504-INCH (LF)	CLASS IIIA 315359248-INCH (LF)	CLASS IIIA 318252992-INCH (LF)	CLASS IIIA 321173136-INCH (LF)	CLASS IIIA 324109880-INCH (LF)	CLASS IIIA 327073124-INCH (LF)	CLASS IIIA 330062868-INCH (LF)	CLASS IIIA 333079012-INCH (LF)	CLASS IIIA 336121656-INCH (LF)	CLASS IIIA 339190700-INCH (LF)	CLASS IIIA 342286244-INCH (LF)	CLASS IIIA 345408288-INCH (LF)	CLASS IIIA 348556882-INCH (LF)	CLASS IIIA 351732026-INCH (LF)	CLASS IIIA 354933720-INCH (LF)	CLASS IIIA 358161964-INCH (LF)	CLASS IIIA 361416758-INCH (LF)	CLASS IIIA 364698102-INCH (LF)	CLASS IIIA 368006046-INCH (LF)	CLASS IIIA 371340490-INCH (LF)	CLASS IIIA 374701534-INCH (LF)	CLASS IIIA 378089078-INCH (LF)	CLASS IIIA 381503122-INCH (LF)	CLASS IIIA 384943666-INCH (LF)	CLASS IIIA 388410710-INCH (LF)	CLASS IIIA 391904354-INCH (LF)	CLASS IIIA 395424598-INCH (LF)	CLASS IIIA 398971442-INCH (LF)	CLASS IIIA 402544886-INCH (LF)	CLASS IIIA 406144830-INCH (LF)	CLASS IIIA 409771374-INCH (LF)	CLASS IIIA 413424418-INCH (LF)	CLASS IIIA 417095062-INCH (LF)	CLASS IIIA 420792306-INCH (LF)	CLASS IIIA 424516150-INCH (LF)	CLASS IIIA 428266594-INCH (LF)	CLASS IIIA 432043638-INCH (LF)	CLASS IIIA 435847282-INCH

Addendum No. 01
ID 6918-01-72
Revised Sheet 251
November 25, 2020

CATEGORY	FROM	TO	STORM SEWER PIPE										REMARKS						
			608.3012	608.3015	608.3018	608.3024	608.3030	608.0412	608.0415	608.0418	608.0424	608.2414		608.2419	SPV.0090.003				
			CLASS III-A 12-INCH (LF)	CLASS III-A 15-INCH (LF)	CLASS III-A 18-INCH (LF)	CLASS III-A 24-INCH (LF)	CLASS III-A 30-INCH (LF)	CLASS IV 12-INCH (LF)	CLASS IV 15-INCH (LF)	CLASS IV 18-INCH (LF)	CLASS IV 24-INCH (LF)	HORIZONTAL ELLIPTICAL CLASS HE-IV 14X23-INCH (LF)	HORIZONTAL ELLIPTICAL CLASS HE-IV 19X30-INCH (LF)	CLASS III-A 10-INCH (LF)	JOINT TIES* EACH	INLET ELEVATION	DISCHARGE ELEVATION	SLOPE FT/FT	
0010			638	145	39	618	57	825	120	16	1319	156	230	62		783.55	783.37	0.0010	
																783.80	783.55	0.0010	
	5.20	5.10											179			785.20	784.97	0.0026	
	5.20	5.20						39					250			784.07	783.80	0.0010	
	5.23	5.22						73					271			785.55	784.49	0.0119	
	5.24	5.22														785.65	784.49	0.0276	
	5.40	5.30														784.15	784.07	0.0010	
	5.41	5.40														785.74	784.57	0.0279	
	5.40	5.40														784.35	784.15	0.0010	
	5.40	5.40														785.83	785.81	0.0027	
	5.50	5.50														785.93	785.91	0.0025	
	5.51	5.50														786.00	784.93	0.1431	
	5.53	5.50														785.94	784.77	0.0279	
	5.60	5.60														784.55	784.35	0.0210	
	5.60	5.60														784.75	784.55	0.0010	
	5.81	5.80														786.24	785.17	0.1433	
	5.82	5.80														786.26	785.17	0.0260	
	5.90	5.80														784.95	784.75	0.0010	
	5.83	5.82						111								786.75	786.42	0.0030	
	5.91	5.90														785.90	785.28	0.0759	
	5.94	5.90							42							786.06	785.28	0.0186	
	5.92	5.91						9								786.17	786.15	0.0029	
	5.93	5.91						8								786.17	786.15	0.0030	
	5.85	5.84						13								786.35	786.31	0.0031	
	5.96	5.94						11								786.34	786.31	0.0027	
	5.100	5.90						144								785.09	784.95	0.0010	
	6.01	6.00						11								786.19	786.16	0.0029	
	6.02	6.00						42								786.28	786.16	0.0029	
	6.10	6.10														785.99	785.64	0.0028	
	6.12	6.10														785.66	785.64	0.0031	
	6.10	6.20														785.77	785.65	0.0027	
	6.21	6.20														785.22	784.94	0.0025	
	6.23	6.23														785.55	785.53	0.0029	
	6.31	6.30														785.65	785.53	0.0025	
	6.32	6.30						42								785.65	785.53	0.0029	
	6.40	6.30														784.94	784.94	0.0000	
	6.41	6.40														785.55	785.55	0.0033	
	6.42	6.40														785.68	785.65	0.0033	
	6.50	6.40														785.65	785.53	0.0025	
	6.51	6.50														785.07	785.03	0.0050	
	6.53	6.50														785.65	785.53	0.0027	
	6.60	6.50														784.94	784.94	0.0000	
	6.52	6.51														785.69	785.56	0.0023	
	6.60	OF 6														784.94	784.94	0.0000	
PROJECT 6918-01-72 - CATEGORY 0010 SUBTOTAL			643	145	39	618	57	1560	171	24	1319	524	2039	62					
PROJECT 6918-01-72 TOTALS			643	145	39	618	57	1560	171	24	1319	524	2039	62					

* NON-BID ITEM FOR INFORMATION ONLY

PROJECT NO: 6918-01-72

HWY: USH 51

COUNTY: COLUMBIA

MISCELLANEOUS QUANTITIES

PROJECT DATE: 11/19/2020 8:04 AM

PLOT BY: KLEIN ENGINEERING

PLOT NAME:

PLOT SCALE: 1"=11.95'

SHEET 251

FILE NAME: G:\ADDENDUM\6918-01-72\6918-01-72\6918-01-72_SHEETS\PLAN\6918-01-72_251.DWG

LAYOUT NAME: 20

WSP07/CADD/SHEET.42

Addendum No. 01
 ID 6918-01-72
 Revised Sheet 252
 November 25, 2020

CATEGORY	STRUCTURE	STATION	OFFSET*	ALI	WI	CONCRETE COLLARS FOR PIPE (EACH)	APRON ENDWALLS REINFORCED CONCRETE 24-INCH (EACH)	520.1030	520.1030	522.1024	522.2619	STORM SEWER STRUCTURE		CONSTRUCTION	STAKING	DEPTH ***	REMARKS	
												REINFORCED CONCRETE HORIZONTAL ELLIPTICAL 19X30-INCH (EACH)	CULVERT PIPE					
												CONNECTION TO	EXISTING	CONNECTION TO	EXISTING	DEPTH **		
												MANHOLE	MANHOLE	STORM SEWER	STORM SEWER	N		
												(EACH)	(EACH)	(EACH)	(EACH)	N		
0010	CC2.00	104+40	16.5' LT	WI	1	1	1	1	1	1	1	1	1	1	1	791.23		
	CC3.18	20+05	31.0' LT	EP	-	-	-	-	-	-	-	-	-	-	-	806.00		
	CC3.50	54+62	22.5' RT	DE	1	1	1	1	1	1	1	1	1	1	1	796.77		
	CC4.42	108+81	32.5' RT	WI	1	1	1	1	1	1	1	1	1	1	1	786.17		
	CC4.47	108+84	46.8' LT	WI	1	1	1	1	1	1	1	1	1	1	1	785.74		
	CC5.00	117+07	54.5' LT	WI	1	1	1	1	1	1	1	1	1	1	1	783.06		
	OF 2	104+37	123.3' LT	WI	-	-	-	-	-	-	-	-	-	-	-	781.58		
	OF 4	104+65	104.1' LT	WI	-	-	-	-	-	-	-	-	-	-	-	780.91		
	OF 6	150+41	60.0' RT	WI	-	-	-	-	-	-	-	-	-	-	-	784.94		
	CC3.70	54+07	15.9' RT	DE	1	1	1	1	1	1	1	1	1	1	1	785.15		
	CC4.70	113+09	28.1' LT	WI	1	1	1	1	1	1	1	1	1	1	1	785.85		
PROJECT 0918-01-72 - CATEGORY 0010 SUBTOTAL																		
					7	1	1	1	1	1	1	1	1	1	1	0	0	3
0060	2.50	104+00	84.4' LT	WI												793.29	10.82	
	4.10	104+47	54.8' LT	WI												792.43	8.96	
PROJECT 0918-01-72 - CATEGORY 0060 SUBTOTAL																		
					0	0	0	0	0	0	0	0	0	0	0	1	1	2
PROJECT 0918-01-72 TOTALS																		
					7	1	1	1	1	1	1	1	1	1	1	1	1	5

* STATIONS AND OFFSETS ARE TO CENTER OF STRUCTURE
 ** FOR STRUCTURES WITH SUMPS, THE INVERT ELEVATION IS THE ELEVATION OF THE SUMP. FOR STRUCTURES WITHOUT SUMPS, THE INVERT ELEVATION IS THE ELEVATION OF THE LOWEST PIPE FLOW LINE
 *** DEPTH = RIM ELEV. - TOP OF STRUCTURE BASE ELEV. - COVER HEIGHT - 6-INCH ADJUSTMENT RING HEIGHT
 **** QUANTITY FOUND ELSEWHERE



Proposal Schedule of Items

Proposal ID: 20201208014 Project(s): 6918-01-72

Federal ID(s): WISC 2021030

SECTION: 0001 Contract Items

Alt Set ID: Alt Mbr ID:

Proposal Line Number	Item ID Description	Approximate Quantity and Units	Unit Price	Bid Amount
0002	201.0120 Clearing	263.000 ID	_____.	_____.
0004	201.0220 Grubbing	263.000 ID	_____.	_____.
0006	203.0200 Removing Old Structure (station) 01. 103+50 'WI'	LS	LUMP SUM	_____.
0008	203.0200 Removing Old Structure (station) 01. 16+50 'C'	LS	LUMP SUM	_____.
0010	204.0100 Removing Concrete Pavement	32,300.000 SY	_____.	_____.
0012	204.0115 Removing Asphaltic Surface Butt Joints	365.000 SY	_____.	_____.
0014	204.0130 Removing Curb	190.000 LF	_____.	_____.
0016	204.0150 Removing Curb & Gutter	2,330.000 LF	_____.	_____.
0018	204.0155 Removing Concrete Sidewalk	5,070.000 SY	_____.	_____.
0020	204.0185 Removing Masonry	3.000 CY	_____.	_____.
0022	204.0195 Removing Concrete Bases	51.000 EACH	_____.	_____.
0024	204.0210 Removing Manholes	15.000 EACH	_____.	_____.
0026	204.0215 Removing Catch Basins	29.000 EACH	_____.	_____.
0028	204.0245 Removing Storm Sewer (size) 01. (10-Inch)	329.000 LF	_____.	_____.
0030	204.0245 Removing Storm Sewer (size) 02. (12-Inch)	3,096.000 LF	_____.	_____.



Proposal Schedule of Items

Proposal ID: 20201208014 Project(s): 6918-01-72

Federal ID(s): WISC 2021030

SECTION: 0001 Contract Items

Alt Set ID: Alt Mbr ID:

Proposal Line Number	Item ID Description	Approximate Quantity and Units	Unit Price	Bid Amount
0032	204.0245 Removing Storm Sewer (size) 03. (15-Inch)	420.000 LF	_____.	_____.
0034	204.0245 Removing Storm Sewer (size) 04. (18-Inch)	1,396.000 LF	_____.	_____.
0036	204.0245 Removing Storm Sewer (size) 05. (24-Inch)	360.000 LF	_____.	_____.
0038	204.0245 Removing Storm Sewer (size) 06. (36-Inch)	140.000 LF	_____.	_____.
0040	204.0291.S Abandoning Sewer	107.000 CY	_____.	_____.
0042	204.9060.S Removing (item description) 01. Tree Grates	3.000 EACH	_____.	_____.
0044	204.9060.S Removing (item description) 02. Removing Handholes	6.000 EACH	_____.	_____.
0046	204.9090.S Removing (item description) 01. Removing Electrical Conductors from Existing Conduit	7,205.000 LF	_____.	_____.
0048	204.9105.S Removing (item description) 01. Removing Concrete Steps, Supports, and Railings	LS	LUMP SUM	_____.
0050	205.0100 Excavation Common	44,430.000 CY	_____.	_____.
0052	206.2000 Excavation for Structures Culverts (structure) 01. C-11-2052	LS	LUMP SUM	_____.
0054	206.4000 Excavation for Structures Structural Plate Pipe or Pipe Arches (station) 01. 103+50 'WI'	LS	LUMP SUM	_____.
0056	206.5000 Cofferdams (structure) 01. C-11-2052	LS	LUMP SUM	_____.



Proposal Schedule of Items

Proposal ID: 20201208014 Project(s): 6918-01-72

Federal ID(s): WISC 2021030

SECTION: 0001 Contract Items

Alt Set ID: Alt Mbr ID:

Proposal Line Number	Item ID Description	Approximate Quantity and Units	Unit Price	Bid Amount
0058	208.1100 Select Borrow	1,530.000 CY	_____.	_____.
0060	209.2100 Backfill Granular Grade 2	15.000 CY	_____.	_____.
0062	210.2500 Backfill Structure Type B	3,464.000 TON	_____.	_____.
0064	211.0100 Prepare Foundation for Asphaltic Paving (project) 01. 6918-01-72	LS	LUMP SUM	_____.
0066	213.0100 Finishing Roadway (project) 01. 6918-01-72	1.000 EACH	_____.	_____.
0068	305.0110 Base Aggregate Dense 3/4-Inch	2,170.000 TON	_____.	_____.
0070	305.0120 Base Aggregate Dense 1 1/4-Inch	36,200.000 TON	_____.	_____.
0072	310.0110 Base Aggregate Open-Graded	115.000 TON	_____.	_____.
0074	311.0110 Breaker Run	61.000 TON	_____.	_____.
0076	312.0110 Select Crushed Material	28,260.000 TON	_____.	_____.
0078	371.2000.S QMP Base Aggregate Dense 1 1/4-Inch Compaction	24.000 EACH	_____.	_____.
0080	416.0160 Concrete Driveway 6-Inch	1,485.000 SY	_____.	_____.
0082	416.0260 Concrete Driveway HES 6-Inch	150.000 SY	_____.	_____.
0084	450.4000 HMA Cold Weather Paving	1,250.000 TON	_____.	_____.
0086	455.0605 Tack Coat	2,560.000 GAL	_____.	_____.
0088	460.2000 Incentive Density HMA Pavement	1.000 DOL	7,550.00000	7,550.00



Proposal Schedule of Items

Proposal ID: 20201208014 Project(s): 6918-01-72

Federal ID(s): WISC 2021030

SECTION: 0001 Contract Items

Alt Set ID: Alt Mbr ID:

Proposal Line Number	Item ID Description	Approximate Quantity and Units	Unit Price	Bid Amount
0090	460.6224 HMA Pavement 4 MT 58-28 S	8,200.000 TON	_____.	_____.
0092	460.6424 HMA Pavement 4 MT 58-28 H	3,590.000 TON	_____.	_____.
0094	465.0105 Asphaltic Surface	40.000 TON	_____.	_____.
0096	465.0120 Asphaltic Surface Driveways and Field Entrances	300.000 TON	_____.	_____.
0098	504.0100 Concrete Masonry Culverts	74.000 CY	_____.	_____.
0100	505.0400 Bar Steel Reinforcement HS Structures	1,100.000 LB	_____.	_____.
0102	505.0600 Bar Steel Reinforcement HS Coated Structures	2,600.000 LB	_____.	_____.
0104	511.1200 Temporary Shoring (structure) 01. C-11-2052	520.000 SF	_____.	_____.
0106	511.1300 Temporary Shoring (location) 01. Levee Connection 2	700.000 SF	_____.	_____.
0108	511.1300 Temporary Shoring (location) 02. Levee Connection 1	800.000 SF	_____.	_____.
0110	513.2001 Railing Pipe 01. Steps	24.000 LF	_____.	_____.
0112	513.2001 Railing Pipe 02. Levee Retaining Walls	300.000 LF	_____.	_____.
0114	513.8006 Railing Steel Pedestrian Type C1	88.000 LF	_____.	_____.
0116	516.0500 Rubberized Membrane Waterproofing	15.000 SY	_____.	_____.
0118	517.1010.S Concrete Staining (structure) 01. C-11-2052	309.000 SF	_____.	_____.



Proposal Schedule of Items

Proposal ID: 20201208014 Project(s): 6918-01-72

Federal ID(s): WISC 2021030

SECTION: 0001 Contract Items

Alt Set ID: Alt Mbr ID:

Proposal Line Number	Item ID Description	Approximate Quantity and Units	Unit Price	Bid Amount
0120	517.1015.S Concrete Staining Multi-Color (structure) 01. C-11-2052	416.000 SF	_____.	_____.
0122	517.1050.S Architectural Surface Treatment (structure) 01. C-11-2052	416.000 SF	_____.	_____.
0124	520.8000 Concrete Collars for Pipe	9.000 EACH	_____.	_____.
0126	522.1024 Apron Endwalls for Culvert Pipe Reinforced Concrete 24-Inch	1.000 EACH	_____.	_____.
0130	522.2619 Apron Endwalls for Culvert Pipe Reinforced Concrete Horizontal Elliptical 19x30-Inch	1.000 EACH	_____.	_____.
0132	527.0345 Pipe Arch Structural Plate 14-FT Span	249.000 LF	_____.	_____.
0134	531.2048 Drilling Shaft 48-Inch	23.000 LF	_____.	_____.
0136	531.5330 Foundation Single-Shaft Type TC-III (structure) 01. S-11-31	1.000 EACH	_____.	_____.
0138	532.5330 Truss Cantilever 2-Chord Type III (structure) 01. S-11-31	1.000 EACH	_____.	_____.
0140	601.0407 Concrete Curb & Gutter 18-Inch Type D	475.000 LF	_____.	_____.
0142	601.0411 Concrete Curb & Gutter 30-Inch Type D	12,900.000 LF	_____.	_____.
0144	601.0415 Concrete Curb & Gutter 6-Inch Sloped 30-Inch Type J	30.000 LF	_____.	_____.
0146	601.0600 Concrete Curb Pedestrian	115.000 LF	_____.	_____.
0148	602.0410 Concrete Sidewalk 5-Inch	71,410.000 SF	_____.	_____.



Proposal Schedule of Items

Proposal ID: 20201208014 Project(s): 6918-01-72

Federal ID(s): WISC 2021030

SECTION: 0001 Contract Items

Alt Set ID: Alt Mbr ID:

Proposal Line Number	Item ID Description	Approximate Quantity and Units	Unit Price	Bid Amount
0150	602.0505 Curb Ramp Detectable Warning Field Yellow	900.000 SF	_____.	_____.
0152	602.0605 Curb Ramp Detectable Warning Field Radial Yellow	118.000 SF	_____.	_____.
0154	602.1500 Concrete Steps	205.000 SF	_____.	_____.
0156	602.2400 Concrete Safety Islands	785.000 SF	_____.	_____.
0158	606.0200 Riprap Medium	3.000 CY	_____.	_____.
0160	606.0300 Riprap Heavy	84.000 CY	_____.	_____.
0172	608.0412 Storm Sewer Pipe Reinforced Concrete Class IV 12-Inch	1,569.000 LF	_____.	_____.
0174	608.0415 Storm Sewer Pipe Reinforced Concrete Class IV 15-Inch	171.000 LF	_____.	_____.
0176	608.0418 Storm Sewer Pipe Reinforced Concrete Class IV 18-Inch	24.000 LF	_____.	_____.
0178	608.0424 Storm Sewer Pipe Reinforced Concrete Class IV 24-Inch	1,319.000 LF	_____.	_____.
0180	608.2414 Storm Sewer Pipe Reinforced Concrete Horizontal Elliptical Class HE-IV 14x23-Inch	524.000 LF	_____.	_____.
0182	608.2419 Storm Sewer Pipe Reinforced Concrete Horizontal Elliptical Class HE-IV 19x30-Inch	2,839.000 LF	_____.	_____.
0184	608.3012 Storm Sewer Pipe Class III-A 12-Inch	643.000 LF	_____.	_____.
0186	611.0530 Manhole Covers Type J	37.000 EACH	_____.	_____.



Proposal Schedule of Items

Proposal ID: 20201208014 Project(s): 6918-01-72

Federal ID(s): WISC 2021030

SECTION: 0001 Contract Items

Alt Set ID: Alt Mbr ID:

Proposal Line Number	Item ID Description	Approximate Quantity and Units	Unit Price	Bid Amount
0188	611.0624 Inlet Covers Type H	59.000 EACH	_____.	_____.
0190	611.0639 Inlet Covers Type H-S	34.000 EACH	_____.	_____.
0192	611.0645 Inlet Covers Type MS-A	2.000 EACH	_____.	_____.
0194	611.0666 Inlet Covers Type Z	2.000 EACH	_____.	_____.
0196	611.1004 Catch Basins 4-FT Diameter	10.000 EACH	_____.	_____.
0198	611.1006 Catch Basins 6-FT Diameter	2.000 EACH	_____.	_____.
0200	611.1230 Catch Basins 2x3-FT	77.000 EACH	_____.	_____.
0202	611.2004 Manholes 4-FT Diameter	6.000 EACH	_____.	_____.
0204	611.2005 Manholes 5-FT Diameter	27.000 EACH	_____.	_____.
0206	611.2006 Manholes 6-FT Diameter	2.000 EACH	_____.	_____.
0208	611.2008 Manholes 8-FT Diameter	1.000 EACH	_____.	_____.
0210	611.2044 Manholes 4x4-FT	2.000 EACH	_____.	_____.
0212	611.2066 Manholes 6x6-FT	2.000 EACH	_____.	_____.
0214	611.3230 Inlets 2x3-FT	3.000 EACH	_____.	_____.
0216	611.3901 Inlets Median 1 Grate	2.000 EACH	_____.	_____.
0218	612.0206 Pipe Underdrain Unperforated 6-Inch	45.000 LF	_____.	_____.
0220	612.0406 Pipe Underdrain Wrapped 6-Inch	2,400.000 LF	_____.	_____.



Proposal Schedule of Items

Proposal ID: 20201208014 Project(s): 6918-01-72

Federal ID(s): WISC 2021030

SECTION: 0001 Contract Items

Alt Set ID: Alt Mbr ID:

Proposal Line Number	Item ID Description	Approximate Quantity and Units	Unit Price	Bid Amount
0222	612.0902.S Insulation Board Polystyrene (inch) 01.2-Inch	19.500 SY	_____.	_____.
0224	616.0700.S Fence Safety	49.000 LF	_____.	_____.
0226	619.1000 Mobilization	1.000 EACH	_____.	_____.
0228	620.0200 Concrete Median Blunt Nose	55.000 SF	_____.	_____.
0230	620.0300 Concrete Median Sloped Nose	420.000 SF	_____.	_____.
0232	623.0200 Dust Control Surface Treatment	11,400.000 SY	_____.	_____.
0234	624.0100 Water	1,300.000 MGAL	_____.	_____.
0236	625.0100 Topsoil	10,200.000 SY	_____.	_____.
0238	628.1504 Silt Fence	1,260.000 LF	_____.	_____.
0240	628.1520 Silt Fence Maintenance	3,780.000 LF	_____.	_____.
0242	628.1905 Mobilizations Erosion Control	6.000 EACH	_____.	_____.
0244	628.1910 Mobilizations Emergency Erosion Control	8.000 EACH	_____.	_____.
0246	628.2008 Erosion Mat Urban Class I Type B	10,700.000 SY	_____.	_____.
0248	628.7005 Inlet Protection Type A	96.000 EACH	_____.	_____.
0250	628.7010 Inlet Protection Type B	2.000 EACH	_____.	_____.
0252	628.7015 Inlet Protection Type C	88.000 EACH	_____.	_____.



Proposal Schedule of Items

Proposal ID: 20201208014 Project(s): 6918-01-72

Federal ID(s): WISC 2021030

SECTION: 0001 Contract Items

Alt Set ID: Alt Mbr ID:

Proposal Line Number	Item ID Description	Approximate Quantity and Units	Unit Price	Bid Amount
0254	628.7020 Inlet Protection Type D	10.000 EACH	_____.	_____.
0256	628.7560 Tracking Pads	6.000 EACH	_____.	_____.
0258	629.0210 Fertilizer Type B	60.000 CWT	_____.	_____.
0260	630.0140 Seeding Mixture No. 40	210.000 LB	_____.	_____.
0262	630.0200 Seeding Temporary	275.000 LB	_____.	_____.
0264	630.0500 Seed Water	235.000 MGAL	_____.	_____.
0266	633.5200 Markers Culvert End	3.000 EACH	_____.	_____.
0268	634.0614 Posts Wood 4x6-Inch X 14-FT	1.000 EACH	_____.	_____.
0270	634.0616 Posts Wood 4x6-Inch X 16-FT	5.000 EACH	_____.	_____.
0272	634.0618 Posts Wood 4x6-Inch X 18-FT	1.000 EACH	_____.	_____.
0274	634.0620 Posts Wood 4x6-Inch X 20-FT	2.000 EACH	_____.	_____.
0276	634.0808 Posts Tubular Steel 2x2-Inch X 8-FT	2.000 EACH	_____.	_____.
0278	634.0809 Posts Tubular Steel 2x2-Inch X 9.5-FT	8.000 EACH	_____.	_____.
0280	634.0810 Posts Tubular Steel 2x2-Inch X 10-FT	12.000 EACH	_____.	_____.
0282	634.0811 Posts Tubular Steel 2x2-Inch X 11-FT	27.000 EACH	_____.	_____.
0284	634.0812 Posts Tubular Steel 2x2-Inch X 12-FT	16.000 EACH	_____.	_____.
0286	634.0814 Posts Tubular Steel 2x2-Inch X 14-FT	4.000 EACH	_____.	_____.



Proposal Schedule of Items

Proposal ID: 20201208014 Project(s): 6918-01-72

Federal ID(s): WISC 2021030

SECTION: 0001 Contract Items

Alt Set ID: Alt Mbr ID:

Proposal Line Number	Item ID Description	Approximate Quantity and Units	Unit Price	Bid Amount
0288	637.2210 Signs Type II Reflective H	234.940 SF	_____.	_____.
0290	637.2230 Signs Type II Reflective F	90.500 SF	_____.	_____.
0292	638.2102 Moving Signs Type II	124.000 EACH	_____.	_____.
0294	638.2602 Removing Signs Type II	31.000 EACH	_____.	_____.
0296	638.3000 Removing Small Sign Supports	39.000 EACH	_____.	_____.
0298	638.3150 Removing Overhead Sign Supports Cantilever (structure) 01. S-11-22	3.000 EACH	_____.	_____.
0300	638.4000 Moving Small Sign Supports	4.000 EACH	_____.	_____.
0302	642.5201 Field Office Type C	1.000 EACH	_____.	_____.
0304	643.0300 Traffic Control Drums	3,130.000 DAY	_____.	_____.
0306	643.0410 Traffic Control Barricades Type II	4,855.000 DAY	_____.	_____.
0308	643.0420 Traffic Control Barricades Type III	15,260.000 DAY	_____.	_____.
0310	643.0705 Traffic Control Warning Lights Type A	10,645.000 DAY	_____.	_____.
0312	643.0715 Traffic Control Warning Lights Type C	350.000 DAY	_____.	_____.
0314	643.0900 Traffic Control Signs	101,675.000 DAY	_____.	_____.
0316	643.0920 Traffic Control Covering Signs Type II	5.000 EACH	_____.	_____.
0318	643.1050 Traffic Control Signs PCMS	14.000 DAY	_____.	_____.



Proposal Schedule of Items

Proposal ID: 20201208014 Project(s): 6918-01-72

Federal ID(s): WISC 2021030

SECTION: 0001 Contract Items

Alt Set ID: Alt Mbr ID:

Proposal Line Number	Item ID Description	Approximate Quantity and Units	Unit Price	Bid Amount
0320	643.5000 Traffic Control	1.000 EACH	_____.	_____.
0322	644.1410 Temporary Pedestrian Surface Asphalt	3,500.000 SF	_____.	_____.
0324	644.1420 Temporary Pedestrian Surface Plywood	1,800.000 SF	_____.	_____.
0326	644.1430 Temporary Pedestrian Surface Plate	1,800.000 SF	_____.	_____.
0328	644.1601 Temporary Pedestrian Curb Ramp	1,700.000 DAY	_____.	_____.
0330	644.1810 Temporary Pedestrian Barricade	7,000.000 LF	_____.	_____.
0332	645.0105 Geotextile Type C	487.000 SY	_____.	_____.
0334	645.0111 Geotextile Type DF Schedule A	825.000 SY	_____.	_____.
0336	645.0120 Geotextile Type HR	204.000 SY	_____.	_____.
0338	645.0140 Geotextile Type SAS	15,200.000 SY	_____.	_____.
0340	646.1020 Marking Line Epoxy 4-Inch	13,545.000 LF	_____.	_____.
0342	646.3020 Marking Line Epoxy 8-Inch	750.000 LF	_____.	_____.
0344	646.5020 Marking Arrow Epoxy	12.000 EACH	_____.	_____.
0346	646.5120 Marking Word Epoxy	4.000 EACH	_____.	_____.
0348	646.5220 Marking Symbol Epoxy	1.000 EACH	_____.	_____.
0350	646.6120 Marking Stop Line Epoxy 18-Inch	385.000 LF	_____.	_____.
0352	646.6464 Cold Weather Marking Epoxy 4-Inch	3,040.000 LF	_____.	_____.



Proposal Schedule of Items

Proposal ID: 20201208014 Project(s): 6918-01-72

Federal ID(s): WISC 2021030

SECTION: 0001 Contract Items

Alt Set ID: Alt Mbr ID:

Proposal Line Number	Item ID Description	Approximate Quantity and Units	Unit Price	Bid Amount
0354	646.6468 Cold Weather Marking Epoxy 8-Inch	150.000 LF	_____.	_____.
0356	646.7120 Marking Diagonal Epoxy 12-Inch	125.000 LF	_____.	_____.
0358	646.7420 Marking Crosswalk Epoxy Transverse Line 6-Inch	2,330.000 LF	_____.	_____.
0360	646.8120 Marking Curb Epoxy	9,775.000 LF	_____.	_____.
0362	646.8220 Marking Island Nose Epoxy	8.000 EACH	_____.	_____.
0364	646.8320 Marking Parking Stall Epoxy	555.000 LF	_____.	_____.
0366	646.9000 Marking Removal Line 4-Inch	935.000 LF	_____.	_____.
0368	646.9100 Marking Removal Line 8-Inch	250.000 LF	_____.	_____.
0370	646.9200 Marking Removal Line Wide	60.000 LF	_____.	_____.
0372	649.0105 Temporary Marking Line Paint 4-Inch	940.000 LF	_____.	_____.
0374	650.4000 Construction Staking Storm Sewer	143.000 EACH	_____.	_____.
0376	650.4500 Construction Staking Subgrade	6,320.000 LF	_____.	_____.
0378	650.5000 Construction Staking Base	6,320.000 LF	_____.	_____.
0380	650.5500 Construction Staking Curb Gutter and Curb & Gutter	13,705.000 LF	_____.	_____.
0382	650.8500 Construction Staking Electrical Installations (project) 01. 6918-01-72	LS	LUMP SUM	_____.
0384	650.9000 Construction Staking Curb Ramps	82.000 EACH	_____.	_____.



Proposal Schedule of Items

Proposal ID: 20201208014 Project(s): 6918-01-72

Federal ID(s): WISC 2021030

SECTION: 0001 Contract Items

Alt Set ID: Alt Mbr ID:

Proposal Line Number	Item ID Description	Approximate Quantity and Units	Unit Price	Bid Amount
0386	650.9910 Construction Staking Supplemental Control (project) 01. 6918-01-72	LS	LUMP SUM	_____.
0388	650.9920 Construction Staking Slope Stakes	6,650.000 LF	_____.	_____.
0390	652.0225 Conduit Rigid Nonmetallic Schedule 40 2-Inch	8,560.000 LF	_____.	_____.
0392	652.0235 Conduit Rigid Nonmetallic Schedule 40 3-Inch	2,945.000 LF	_____.	_____.
0394	653.0164 Pull Boxes Non-Conductive 24x42-Inch	40.000 EACH	_____.	_____.
0396	653.0905 Removing Pull Boxes	15.000 EACH	_____.	_____.
0398	654.0101 Concrete Bases Type 1	8.000 EACH	_____.	_____.
0400	654.0102 Concrete Bases Type 2	5.000 EACH	_____.	_____.
0402	654.0105 Concrete Bases Type 5	77.000 EACH	_____.	_____.
0404	654.0217 Concrete Control Cabinet Bases Type 9 Special	1.000 EACH	_____.	_____.
0406	654.0230 Concrete Control Cabinet Bases Type L30	1.000 EACH	_____.	_____.
0408	655.0230 Cable Traffic Signal 5-14 AWG	1,518.000 LF	_____.	_____.
0410	655.0250 Cable Traffic Signal 9-14 AWG	1,627.000 LF	_____.	_____.
0412	655.0305 Cable Type UF 2-12 AWG Grounded	746.000 LF	_____.	_____.
0414	655.0515 Electrical Wire Traffic Signals 10 AWG	1,723.000 LF	_____.	_____.



Proposal Schedule of Items

Proposal ID: 20201208014 Project(s): 6918-01-72

Federal ID(s): WISC 2021030

SECTION: 0001 Contract Items

Alt Set ID: Alt Mbr ID:

Proposal Line Number	Item ID Description	Approximate Quantity and Units	Unit Price	Bid Amount
0416	655.0610 Electrical Wire Lighting 12 AWG	12,187.000 LF	_____.	_____.
0418	655.0625 Electrical Wire Lighting 6 AWG	54,166.000 LF	_____.	_____.
0420	655.0700 Loop Detector Lead In Cable	42.000 LF	_____.	_____.
0422	656.0200 Electrical Service Meter Breaker Pedestal (location) 01. WI ST & Dewitt ST	LS	LUMP SUM	_____.
0424	656.0200 Electrical Service Meter Breaker Pedestal (location) 02. (CB100)	LS	LUMP SUM	_____.
0426	657.0100 Pedestal Bases	8.000 EACH	_____.	_____.
0428	657.0255 Transformer Bases Breakaway 11 1/2-Inch Bolt Circle	5.000 EACH	_____.	_____.
0430	657.0305 Poles Type 2	1.000 EACH	_____.	_____.
0432	657.0310 Poles Type 3	1.000 EACH	_____.	_____.
0434	657.0315 Poles Type 4	3.000 EACH	_____.	_____.
0436	657.0420 Traffic Signal Standards Aluminum 13-FT	5.000 EACH	_____.	_____.
0438	657.0425 Traffic Signal Standards Aluminum 15-FT	2.000 EACH	_____.	_____.
0440	657.0430 Traffic Signal Standards Aluminum 10-FT	1.000 EACH	_____.	_____.
0442	657.0585 Trombone Arms 15-FT	2.000 EACH	_____.	_____.
0444	657.0609 Luminaire Arms Single Member 4-Inch Clamp 6-FT	1.000 EACH	_____.	_____.



Proposal Schedule of Items

Proposal ID: 20201208014 Project(s): 6918-01-72

Federal ID(s): WISC 2021030

SECTION: 0001 Contract Items

Alt Set ID: Alt Mbr ID:

Proposal Line Number	Item ID Description	Approximate Quantity and Units	Unit Price	Bid Amount
0446	657.0610 Luminaire Arms Single Member 4 1/2-Inch Clamp 6-FT	3.000 EACH	_____.	_____.
0448	658.0173 Traffic Signal Face 3S 12-Inch	9.000 EACH	_____.	_____.
0450	658.0174 Traffic Signal Face 4S 12-Inch	3.000 EACH	_____.	_____.
0452	658.0416 Pedestrian Signal Face 16-Inch	6.000 EACH	_____.	_____.
0454	658.0500 Pedestrian Push Buttons	7.000 EACH	_____.	_____.
0456	658.5069 Signal Mounting Hardware (location) 01. Wisconsin Street & Dewitt Street	LS	LUMP SUM	_____.
0458	659.1120 Luminaires Utility LED B	4.000 EACH	_____.	_____.
0460	659.2130 Lighting Control Cabinets 120/240 30-Inch	1.000 EACH	_____.	_____.
0462	690.0150 Sawing Asphalt	3,770.000 LF	_____.	_____.
0464	690.0250 Sawing Concrete	4,130.000 LF	_____.	_____.
0466	740.0440 Incentive IRI Ride	1.000 DOL	4,596.05000	4,596.05
0468	ASP.1T0A On-the-Job Training Apprentice at \$5.00/HR	2,500.000 HRS	5.00000	12,500.00
0470	ASP.1T0G On-the-Job Training Graduate at \$5.00/HR	3,200.000 HRS	5.00000	16,000.00
0472	SPV.0060 Special 01. Tree Grates	15.000 EACH	_____.	_____.
0474	SPV.0060 Special 02. Abandon Existing Vault	1.000 EACH	_____.	_____.



Proposal Schedule of Items

Proposal ID: 20201208014 Project(s): 6918-01-72

Federal ID(s): WISC 2021030

SECTION: 0001 Contract Items

Alt Set ID: Alt Mbr ID:

Proposal Line Number	Item ID Description	Approximate Quantity and Units	Unit Price	Bid Amount
0476	SPV.0060 Special 03. Adjusting Sanitary Manhole Cover	10.000 EACH	_____.	_____.
0478	SPV.0060 Special 04. Adjusting Water Valve Boxes	37.000 EACH	_____.	_____.
0480	SPV.0060 Special 05. Connection to Existing Manhole	1.000 EACH	_____.	_____.
0482	SPV.0060 Special 06. Inlet Covers Type H-D	5.000 EACH	_____.	_____.
0484	SPV.0060 Special 07. Storm Chamber 8 by 8-FT, MH 2.50	1.000 EACH	_____.	_____.
0486	SPV.0060 Special 08. Storm Chamber 8 by 8-FT, MH 4.10	1.000 EACH	_____.	_____.
0488	SPV.0060 Special 10. Remove Existing Electrical Service	5.000 EACH	_____.	_____.
0490	SPV.0060 Special 11. Remove Street Light Assembly	43.000 EACH	_____.	_____.
0492	SPV.0060 Special 12. Reinstall Salvaged Decorative Street Light Assembly	12.000 EACH	_____.	_____.
0494	SPV.0060 Special 13. Retrofit Luminaire Type A	4.000 EACH	_____.	_____.
0496	SPV.0060 Special 14. Retrofit Luminaire Type B	13.000 EACH	_____.	_____.
0498	SPV.0060 Special 15. Decorative Street Light Type A1	50.000 EACH	_____.	_____.
0500	SPV.0060 Special 16. Decorative Street Light Type A2	1.000 EACH	_____.	_____.
0502	SPV.0060 Special 17. Decorative Street Light Type B	8.000 EACH	_____.	_____.



Proposal Schedule of Items

Proposal ID: 20201208014 Project(s): 6918-01-72

Federal ID(s): WISC 2021030

SECTION: 0001 Contract Items

Alt Set ID: Alt Mbr ID:

Proposal Line Number	Item ID Description	Approximate Quantity and Units	Unit Price	Bid Amount
0504	SPV.0060 Special 18. Decorative Street Light Type C	6.000 EACH	_____.	_____.
0506	SPV.0060 Special 20. Utility Line Opening (ULO)	2.000 EACH	_____.	_____.
0508	SPV.0060 Special 21. Roof Drain Tap	5.000 EACH	_____.	_____.
0510	SPV.0060 Special 22. Tree Root Cutting and Removal	1.000 EACH	_____.	_____.
0512	SPV.0060 Special 23. Wisconsin River Levee Emergency Action Plan	1.000 EACH	_____.	_____.
0514	SPV.0060 Special 24. Wisconsin River Levee Emergency Response	1.000 EACH	_____.	_____.
0516	SPV.0090 Special 01. Reveal Curb	25.000 LF	_____.	_____.
0518	SPV.0090 Special 02. Remove, Paint, and Reinstall Historic Railing	180.000 LF	_____.	_____.
0520	SPV.0090 Special 03. Storm Sewer Pipe Class III-A 10-Inch	62.000 LF	_____.	_____.
0522	SPV.0105 Special 01. Cap Blocks Salvage and Reinstall	LS	LUMP SUM	_____.
0524	SPV.0105 Special 02. Temporary Bypass Pumping	LS	LUMP SUM	_____.
0526	SPV.0105 Special 03. Remove Traffic Signals (Wisconsin Street & Dewitt Street)	LS	LUMP SUM	_____.
0528	SPV.0105 Special 04. Electrical System Integrator	LS	LUMP SUM	_____.
0530	SPV.0105 Special 05. Salvage and Reinstall Communication Equipment (WI ST & Dewitt ST)	LS	LUMP SUM	_____.



Proposal Schedule of Items

Proposal ID: 20201208014 Project(s): 6918-01-72

Federal ID(s): WISC 2021030

SECTION: 0001 Contract Items

Alt Set ID: Alt Mbr ID:

Proposal Line Number	Item ID Description	Approximate Quantity and Units	Unit Price	Bid Amount
0532	SPV.0105 Special 06. Furnish and Install Video Vehicle Detection System (WI ST & Dewitt ST)	LS	LUMP SUM	_____.
0534	SPV.0105 Special 07. Furnish & Install Traffic Signal Cabinet & Controller (WI ST & Dewitt ST)	LS	LUMP SUM	_____.
0536	SPV.0105 Special 08. Traffic Signal Modifications for Intersections (Dewitt St & STH 33/Cook St)	LS	LUMP SUM	_____.
0538	SPV.0105 Special 09. Locate and Replace Existing Property Monuments	LS	LUMP SUM	_____.
0540	SPV.0105 Special 10. Electrical Service Meter Breaker Pedestal Special (Wisconsin & Huron)	LS	LUMP SUM	_____.
0542	SPV.0105 Special 11. Electrical Service Meter Breaker Pedestal Special (Dewitt & Conant)	LS	LUMP SUM	_____.
0544	SPV.0165 Special 01. Wall Modular Block Mechanically Stabilized Earth (Levee Connection #1)	825.000 SF	_____.	_____.
0546	SPV.0165 Special 02. Wall Modular Block Mechanically Stabilized Earth (Levee Connection #2)	675.000 SF	_____.	_____.
0548	SPV.0165 Special 03. Concrete Sidewalk Thickened Edge	600.000 SF	_____.	_____.
0550	SPV.0165 Special 04. Sidewalk Vault Closure	100.000 SF	_____.	_____.
0552	SPV.0195 Special 01. Excavation, Hauling, and Disposal of Contaminated Soil (Bioremediation)	2,450.000 TON	_____.	_____.



Proposal Schedule of Items

Proposal ID: 20201208014 Project(s): 6918-01-72

Federal ID(s): WISC 2021030

SECTION: 0001 Contract Items

Alt Set ID: Alt Mbr ID:

Proposal Line Number	Item ID Description	Approximate Quantity and Units	Unit Price	Bid Amount
0554	SPV.0195 Special 02. Excavating, Hauling, and Disposal of Contaminated Soil (Direct Landfill)	2,800.000 TON	_____.	_____.
0556	520.1030 Apron Endwalls for Culvert Pipe 30-Inch	1.000 EACH	_____.	_____.
0558	608.3015 Storm Sewer Pipe Class III-A 15-Inch	145.000 LF	_____.	_____.
0560	608.3018 Storm Sewer Pipe Class III-A 18-Inch	39.000 LF	_____.	_____.
0562	608.3024 Storm Sewer Pipe Class III-A 24-Inch	618.000 LF	_____.	_____.
0564	608.3030 Storm Sewer Pipe Class III-A 30-Inch	57.000 LF	_____.	_____.
Section: 0001			Total:	_____.
			Total Bid:	_____.