



# Wisconsin Department of Transportation

## Division of Transportation Systems Development

Bureau of Project Development  
4822 Madison Yards Way, 4<sup>th</sup> Floor South  
Madison, WI 53705

Telephone: (608) 266-1631  
Facsimile (FAX): (608) 266-8459

January 5, 2021

### NOTICE TO ALL CONTRACTORS:

**Proposal #03: 1400-00-84, WISC 2021 076  
Columbus - Watertown  
Beaver Dam River Struct B-14-0060  
STH 16  
Dodge County**

### Letting of January 12, 2021

This is Addendum No. 01, which provides for the following:

#### Plan Sheets:

Revised Plan Sheets	
Plan Sheet	Plan Sheet Title (brief description of changes to sheet)
10	Construction Details (revised callout 1 note to replace "tie bars" with "surface drain anchors" the term used in structure plans)
28	Miscellaneous Quantities (delete drilled tie bars item from "Concrete Pavement Item" quantity table, these bars/anchors are included in structure plan quantities)

The responsibility for notifying potential subcontractors and suppliers of these changes remains with the prime contractor.

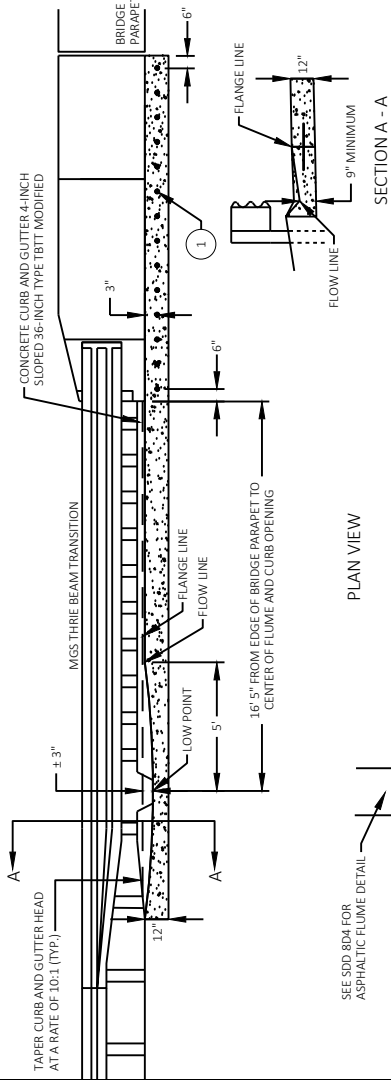
Sincerely,

*Mike Coleman*

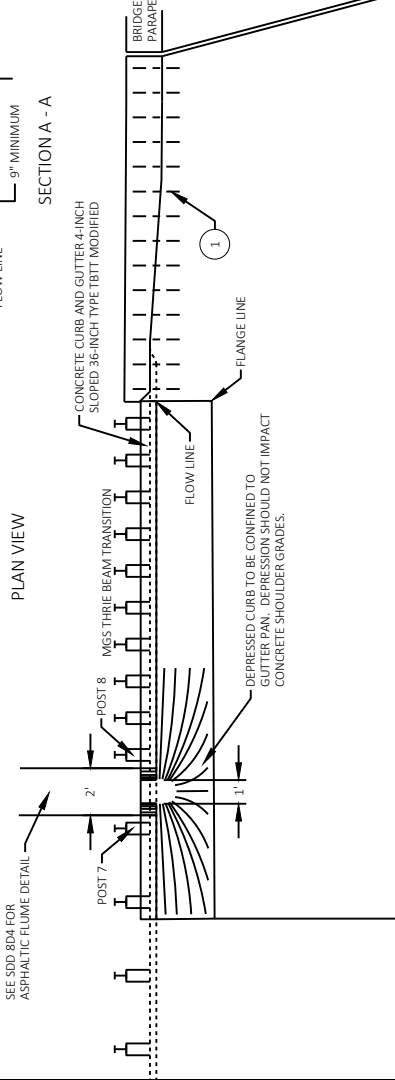
Proposal Development Specialist  
Proposal Management Section

END OF ADDENDUM

PROFILE VIEW



PLAN VIEW

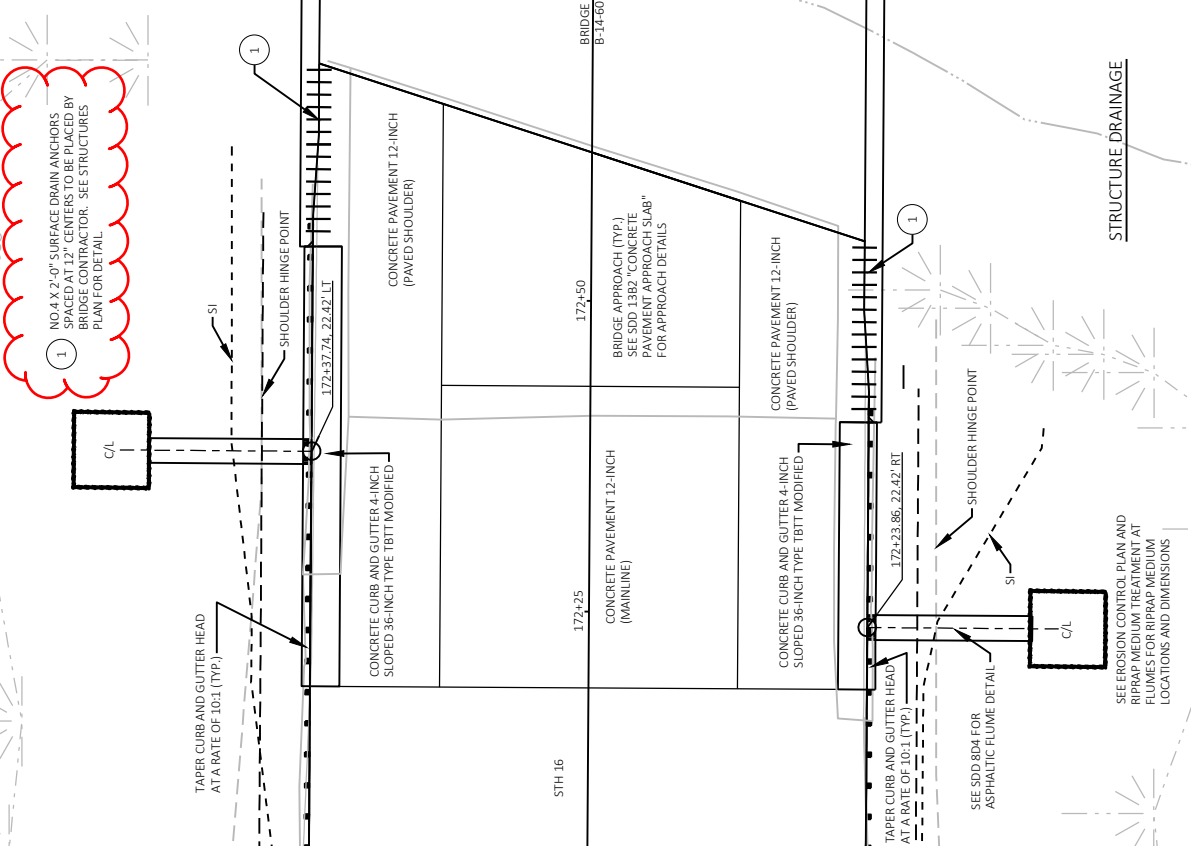


Addendum No. 01  
 ID 1400-00-84  
 Revised Sheet 10  
 January 5, 2021

1 NO.4 X 2'-0" SURFACE DRAIN ANCHORS SPACED AT 12" CENTERS TO BE PLACED BY BRIDGE CONTRACTOR. SEE STRUCTURES PLAN FOR DETAIL.

CONCRETE CURB AND GUTTER 4-INCH SLOPED 36-INCH TYPE TBTT MODIFIED

STA 172+35 LT TO STA 172+58 LT  
 STA 172+21 RT TO STA 172+44 RT



1 NO.4 X 2'-0" SURFACE DRAIN ANCHORS SPACED AT 12" CENTERS TO BE PLACED BY BRIDGE CONTRACTOR. SEE STRUCTURES PLAN FOR DETAIL.



