



# Wisconsin Department of Transportation

January 7, 2020

**Division of Transportation Systems Development**  
Bureau of Project Development  
4822 Madison Yards Way, 4<sup>th</sup> Floor South  
Madison, WI 53705

Telephone: (608) 266-1631  
Facsimile (FAX): (608) 266-8459

## NOTICE TO ALL CONTRACTORS:

**Proposal #33: 1021-00-78, WISC 2021 100**  
**Baldwin - Menomonie**  
**CTH NN Bridge EB B-55-0271**  
**IH 94**  
**St. Croix County**

**1021-00-79, WISC 2021 101**  
**Baldwin - Menomonie**  
**CTH NN Bridge WB B-55-0270**  
**IH 94**  
**St. Croix County**

**1021-04-77, WISC 2021 102**  
**Baldwin - Menomonie**  
**Carr Creek EB Br B-55-0281 & 0285**  
**IH 94**  
**St. Croix County**

**1021-04-78, WISC 2021 103**  
**Baldwin - Menomonie**  
**Carr Creek WB Br B-55-0282 & 0286**  
**IH 94**  
**St. Croix County**

## Letting of January 12, 2021

This is Addendum No. 04, which provides for the following:

### Special Provisions:

Revised Special Provisions	
Article No.	Description
26	Cable Barrier Type 1, Item 613.1100.S; Cable Barrier End Terminal Type 1, Item 613.1200.S

### Schedule of Items:

Revised Bid Item Quantities					
Bid Item	Item Description	Unit	Old Quantity	Revised Quantity	Proposal Total
460.6224	HMA Pavement 4 MT 58-28 S	TON	4745	-880	3865
613.1100.S	Cable Barrier Type 1	LF	7250	-2875	4375
613.1200.S	Cable Barrier End Terminal Type 1	EACH	14	-8	6
614.0220	Steel Thrie Beam Bullnose Terminal	EACH	1	2	3

Added Bid Item Quantities					
Bid Item	Item Description	Unit	Old Quantity	Revised Quantity	Proposal Total
203.0200.05	Removing Old Structure 158+25.29 EB	LS	0	1	1
312.0110	Select Crushed Material	TON	0	12848	12848

460.6244	HMA Pavement 4 MT 58-34 S	TON	0	880	880
614.0230	Steel Thrie Beam	LF	0	253	253

Deleted Bid Item Quantities					
Bid Item	Item Description	Unit	Old Quantity	Revised Quantity	Proposal Total
203.0200.01	Removing Old Structure 158+25.29 WB	LS	1	-1	0
312.0115	Select Crushed Material	CY	6118	-6118	0

**Plan Sheets:**

Revised Plan Sheets	
Plan Sheet	Plan Sheet Title (brief description of changes to sheet)
11	Finished Typical Sections (Revised agg shld note)
12	Finished Typical Sections (Revised pavement layer note)
114	Miscellaneous Quantities (Revised select crush material bid item)
129	Miscellaneous Quantities (Revised HMA quantities, add HMA bid item)
135	Miscellaneous Quantities (Revised select crush material bid item)
137	Miscellaneous Quantities (Revised HMA quantities, add HMA bid item)

Added Plan Sheets	
Plan Sheet	Plan Sheet Title (brief description of why sheet was added)
106A-C	Cable Barrier Borings
213A-H	Steel Thrie Beam Bullnose Terminal (SDD 14B26)

The responsibility for notifying potential subcontractors and suppliers of these changes remains with the prime contractor.

Sincerely,

*Mike Coleman*

Proposal Development Specialist  
Proposal Management Section

ADDENDUM NO. 04

1021-00-78, 1021-00-79, 1021-04-77 and 1021-04-78

January 7, 2021

**Special Provisions**

**26. Cable Barrier Type 1, Item 613.1100.S; Cable Barrier End Terminal Type 1 Item 613.1200.S.**

*Replace paragraph one under section titled **A Description** with the following:*

This special provision describes providing socketed high-tension TL-4 cable guard meeting the National Cooperative Highway Research Program (NCHRP) Report 350, Test Level 4.

**Schedule of Items**

Attached, dated January 7, 2021, are the revised Schedule of Items Pages 1 – 16.

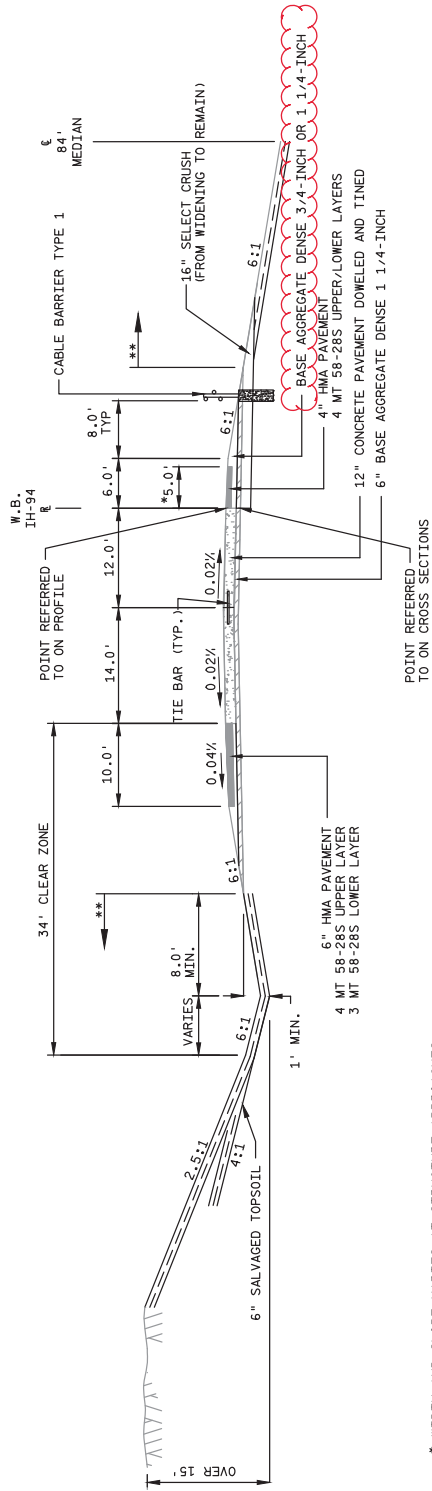
**Plan Sheets**

The following 8½ x 11-inch sheets are attached and made part of the plans for this proposal:

Revised: 11, 12, 114, 129, 135, and 137

Added: 106A – 106C and 213A – 213H

END OF ADDENDUM



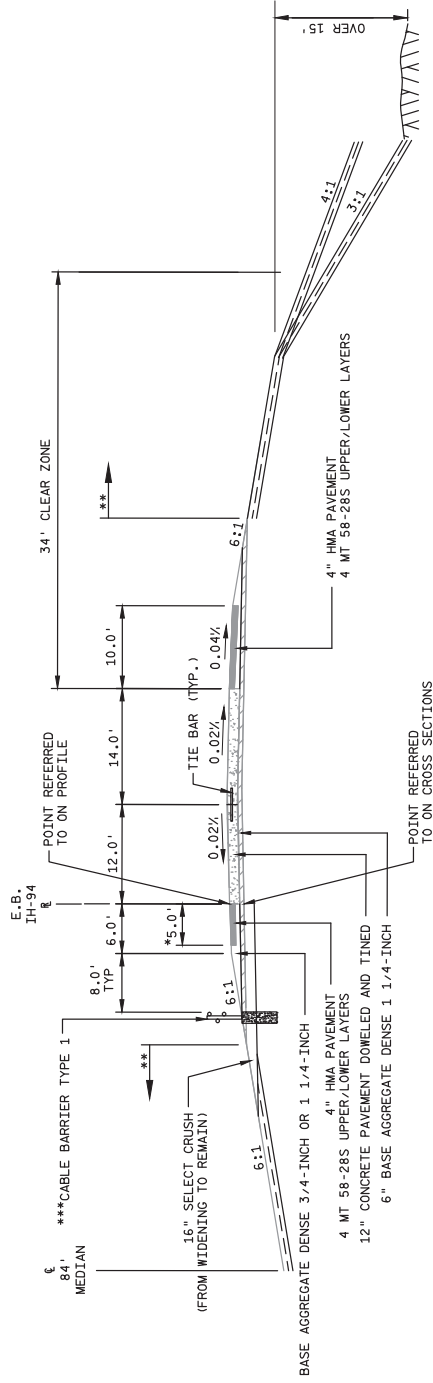
STA. 8+23.67 'WB' - STA. 57+10.35 'WB'

POINT REFERRED TO ON CROSS SECTIONS

\* WIDTH AND SLOPE VARIES AT STRUCTURE APPROACHES, SEE CROSS SECTIONS.

\*\* SEE EROSION CONTROL PLAN FOR SEEDING, FERTILIZING, MULCHING AND EROSION MAT.

\*\*\* SEE PLAN SHEETS FOR LOCATIONS. SEE SDD CABLE BARRIER TYPE 1 LAYOUT FOR DETAILS.

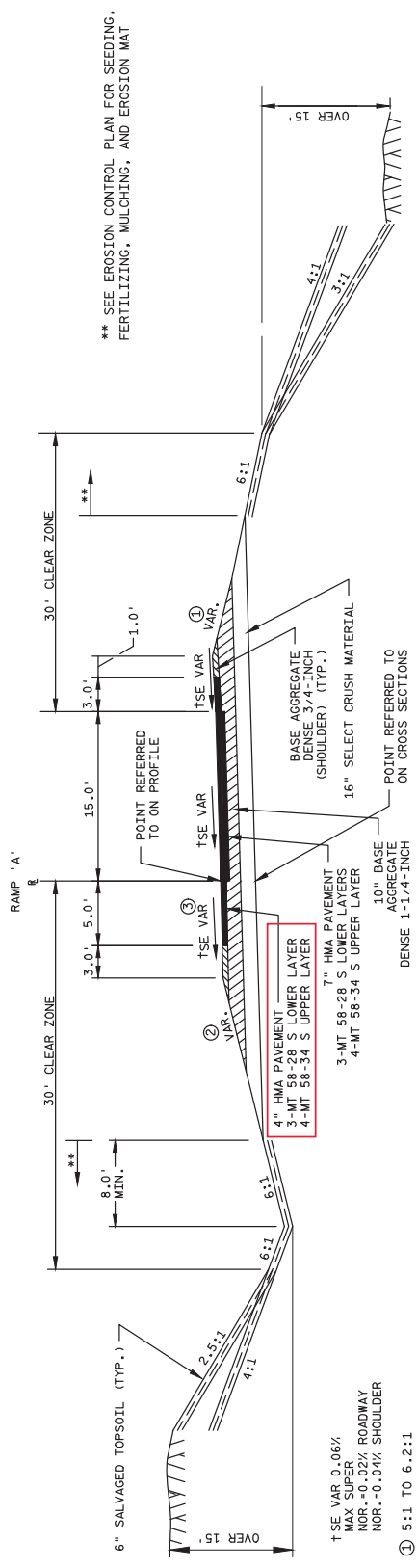


STA. 2+4+50 'EB' - STA. 62+97.29 'EB'

POINT REFERRED TO ON CROSS SECTIONS

FINISHED TYPICAL SECTION  
IH 94

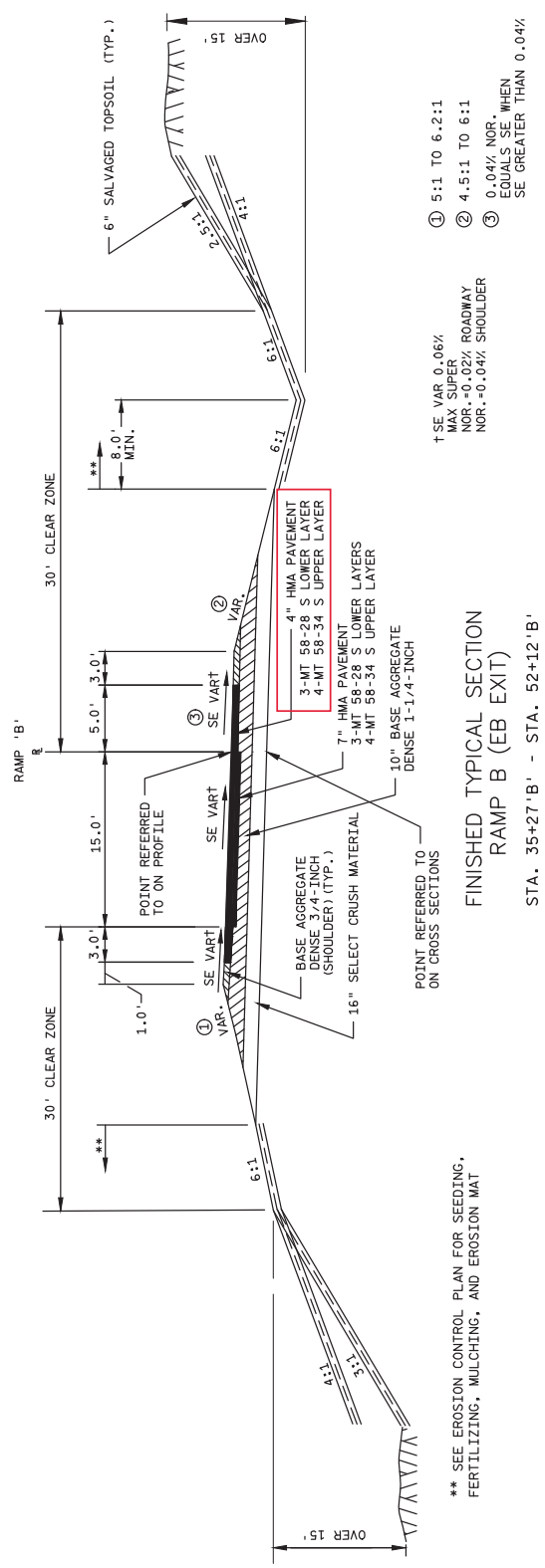
Addendum No. 04  
ID 1021-04-77/78  
Revised Sheet 11  
January 7, 2021



**FINISHED TYPICAL SECTION  
RAMP A (WB ENTRANCE)**

STA. 25+21' A' - STA. 52+18' A'

Addendum No. 04  
ID 1021-04-77/78  
Revised Sheet 12  
January 7, 2021



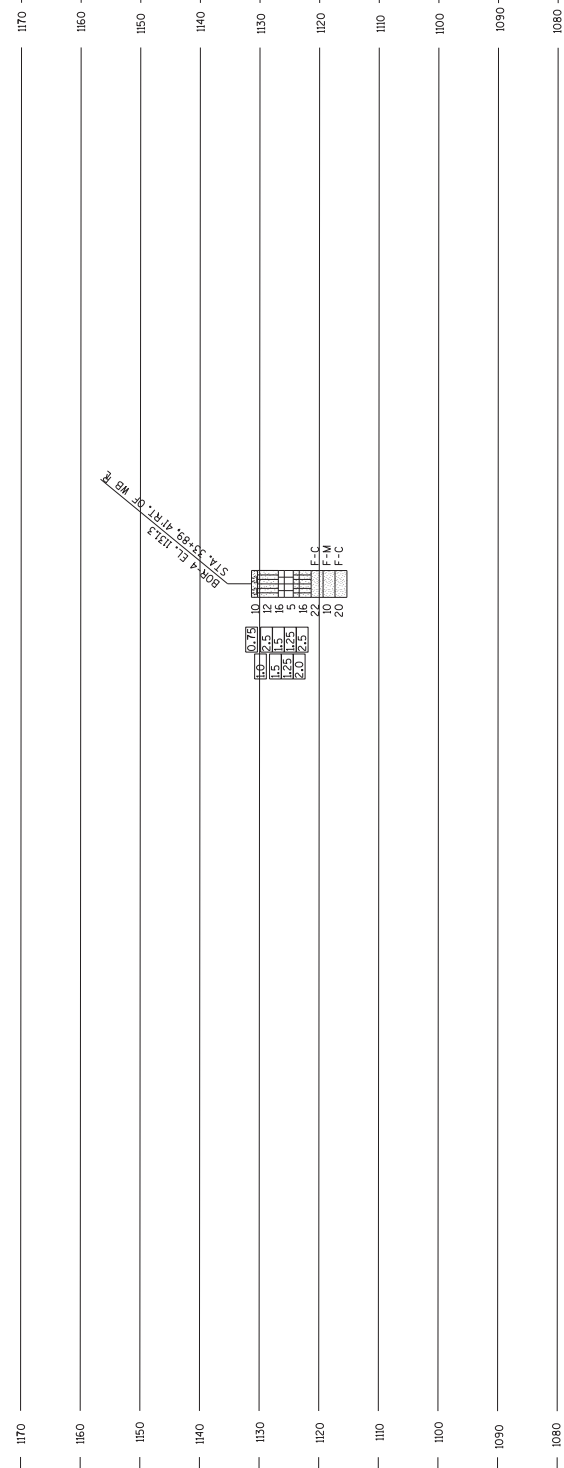
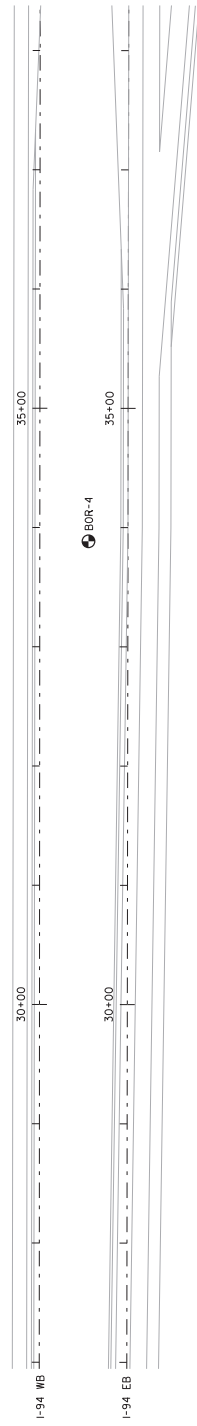
**FINISHED TYPICAL SECTION  
RAMP B (EB EXIT)**

STA. 35+27' B' - STA. 52+12' B'

Addendum No. 04  
 ID 1021-04-77  
 Added Sheet 106A  
 January 7, 2021

BORING #	DATE COMPLETED	NORTHING (Y)	EASTING (X)
1	8/06/2019	327900	636596
2	8/06/2019	327823	636578
3	8/06/2019	327823	631712
4	8/06/2019	327844	633985

BORINGS COMPLETED BY: WISDOT  
 REPORT COMPLETED BY: WISDOT  
 ALL COORDINATES REFERENCED TO WCCS MAD 83(9) ST. CROIX COUNTY  
 COORDINATES COLLECTED USING NON-SURVEY GRADE EQUIPMENT



**MATERIAL SYMBOLS**

ASPHALT	TOPSOIL	PEAT
CONCRETE	FILL	GRAVEL
SAND	CLAY	SILT
BOULDERS	LIMESTONE	BEADROCK (UNKNOWN)
COBBLES	SANDSTONE	IGNEOUS/META
SHALE		

**LEGEND OF BORING**

BRING 4 ft  
 ST  
 0.25  
 17  
 F-C  
 COBBLE OR BOULDER  
 WEATHERED LIMESTONE

(1) UNCONFINED STRENGTH, AS DETERMINED BY A POCKET PENETROMETER (1/3")

(2) UNLESS OTHERWISE SPECIFIED, THE SPT "N" VALUE IS THE NUMBER OF BLOWN PER PENETRATION TEST. THE SPT "N" VALUE PRESENTED HAS NOT BEEN CORRECTED FOR OVERBURDEN PRESSURE OR HAMMER EFFICIENCY.

GROUND WATER ELEVATION  
 ∇ AT TIME OF DRILLING  
 ∇ END OF DRILLING  
 ∇ AFTER DRILLING

ABBREVIATIONS  
 F-FINE M-MEDIUM C-COARSE ST-SHELBY TUBE

SUBSURFACE EXPLORATION FOR FOUNDATION DESIGN AND BIDDERS INFORMATION

BORINGS WERE COMPLETED AT POINTS APPROXIMATELY AS INDICATED ON THIS DRAWING TO OBTAIN INFORMATION CONCERNING THE CHARACTER OF SUBSURFACE MATERIALS. DEPTHS ARE LIMITED AND THE AREA OF THE BORINGS IS VERY SMALL IN RELATION TO THE ENTIRE SITE. THESE BORINGS ARE NOT WARRANTY SIMILAR SUBSURFACE CONDITIONS BELOW BETWEEN OR BEYOND THESE BORINGS. VARIATIONS IN SOIL CONDITIONS SHOULD BE EXPECTED AND FLUCTUATIONS IN GROUNDWATER LEVELS MAY OCCUR.

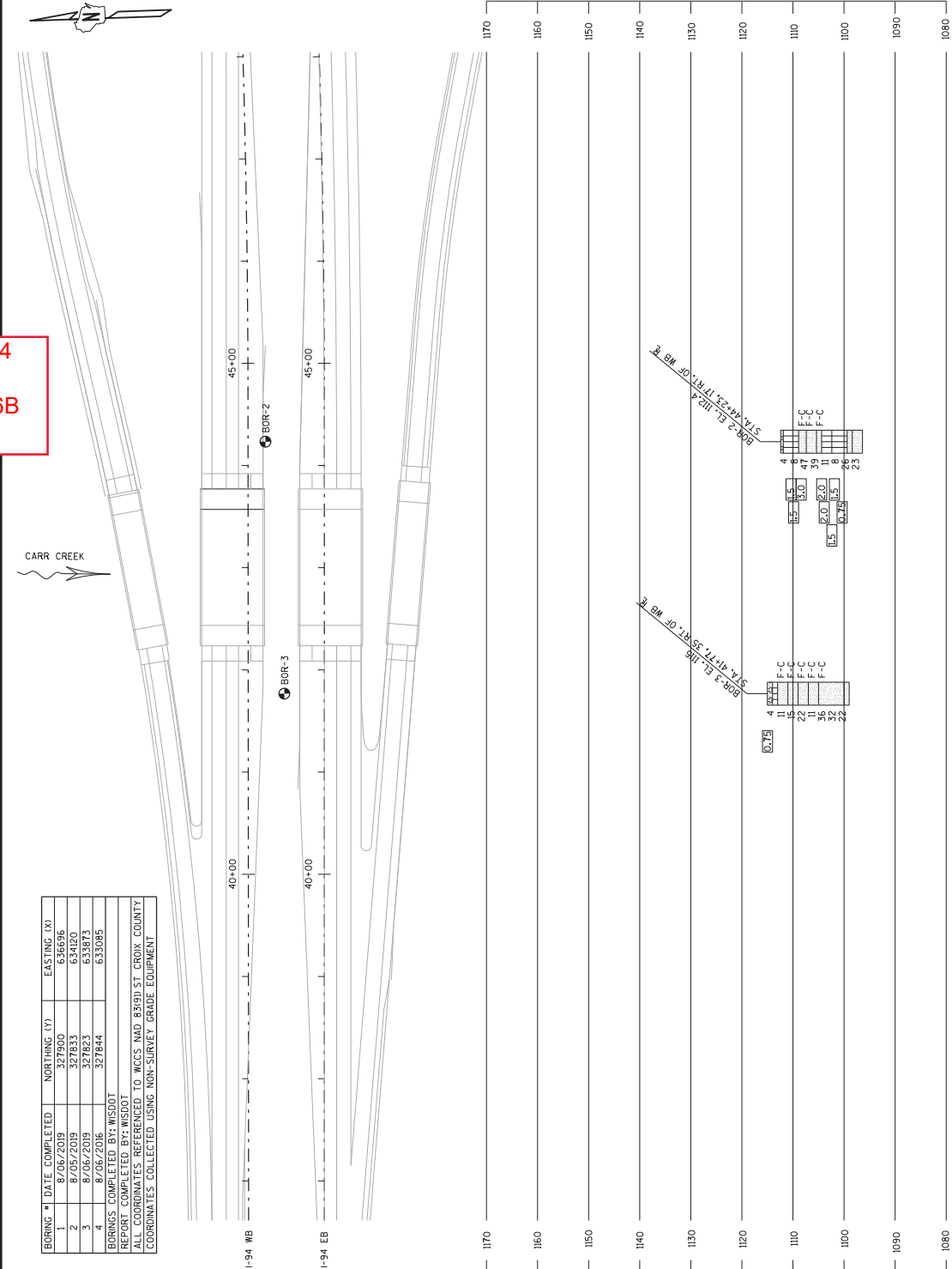
Addendum No. 04  
 ID 1021-04-77  
 Added Sheet 106B  
 January 7, 2021

BORING #	DATE COMPLETED	NORTHING (N)	EASTING (E)
1	8/05/2019	327900	636596
2	8/05/2019	327835	634120
3	8/05/2019	327823	632693
4	8/05/2019	327844	632693

BORINGS COMPLETED BY: WISDOT  
 REPORT COMPLETED BY: WISDOT  
 ALL COORDINATES REFERENCED TO WCCS MAD 83(9) ST. CROIX COUNTY  
 COORDINATES COLLECTED USING NON-SURVEY GRADE EQUIPMENT

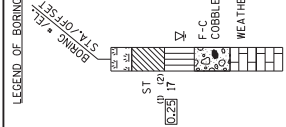


CARR CREEK



MATERIAL SYMBOLS

ASPHALT	TOPSOIL	PEAT
CONCRETE	FILL	GRAVEL
SAND	CLAY	SILT
BOULDERS OR COBBLES	LIMESTONE	BEADROCK (UNIFORM)
SHALE	SANDSTONE	IGNEOUS/METAL



(1) UNCONFINED STRENGTH, AS DETERMINED BY A POCKET PENETROMETER (YSP)  
 (2) UNLESS OTHERWISE SPECIFIED THE SPT 'N' VALUE IS THE NUMBER OF BLOWN PER PENETRATION TEST. THE SPT 'N' VALUE PRESENTED HAS NOT BEEN CORRECTED FOR OVERBURDEN PRESSURE OR HAMMER EFFICIENCY.

GROUND WATER ELEVATION  
 ▽ AT TIME OF DRILLING  
 ▽ AFTER DRILLING

ABBREVIATIONS  
 F-FINE M-MEDIUM C-COARSE ST-SHELBY TUBE

SUBSURFACE EXPLORATION FOR FOUNDATION DESIGN AND BIDDERS INFORMATION  
 BORINGS WERE COMPLETED AT POINTS APPROXIMATELY AS INDICATED ON THIS DRAWING TO OBTAIN INFORMATION CONCERNING THE CHARACTER OF SUBSURFACE MATERIALS. DEPTHS ARE LIMITED AND THE AREA OF THE BORINGS IS VERY SMALL IN RELATION TO THE ENTIRE SITE. THESE BORINGS ARE NOT INTENDED TO REPRESENT A CROSS SECTION OF THE ENTIRE SITE. THEREFORE, THEY DO NOT WARRANT SIMILAR SUBSURFACE CONDITIONS BELOW BETWEEN OR BEYOND THESE BORINGS. VARIATIONS IN SUBSURFACE MATERIALS AND GROUNDWATER LEVELS MAY OCCUR.

Addendum No. 04  
 ID 1021-04-77  
 Added Sheet 106C  
 January 7, 2021

BORING #	DATE COMPLETED	NORTHING (N)	EASTING (E)
1	8/06/2019	327900	636596
2	8/09/2019	327833	634120
3	8/06/2019	327823	633583
4	8/06/2019	327844	633683

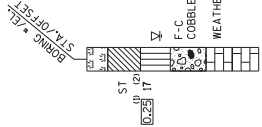
BORINGS COMPLETED BY: WISDOT  
 REPORT COMPLETED BY: WISDOT  
 ALL COORDINATES REFERENCED TO WCCS MAD 83(9) ST. CROIX COUNTY  
 COORDINATES COLLECTED USING NON-SURVEY GRADE EQUIPMENT



**MATERIAL SYMBOLS**

ASPHALT	TOPSOIL	PEAT
CONCRETE	FILL	GRAVEL
SAND	CLAY	SILT
BOULDERS	LIMESTONE	BEDROCK (UNIFORM)
COBBLES	SANDSTONE	IGNEOUS/META
SHALE		

LEGEND OF BORING



(1) UNCONFINED STRENGTH, AS DETERMINED BY A POCKET PENETROMETER (15%)  
 (2) UNLESS OTHERWISE SPECIFIED THE SPT 'N' VALUE IS THE SPT 'N' VALUE PRESENTED HAS NOT BEEN TESTED. THE SPT 'N' VALUE PRESENTED HAS NOT BEEN CORRECTED FOR OVERBURDEN PRESSURE OR HAMMER EFFICIENCY.

GROUND WATER ELEVATION  
 ▽ AT TIME OF DRILLING  
 ▽ AFTER DRILLING

ABBREVIATIONS  
 F-FINE M-MEDIUM C-COARSE ST-SHELBY TUBE

SUBSURFACE EXPLORATION FOR FOUNDATION DESIGN AND BIDDERS INFORMATION  
 BORINGS WERE COMPLETED AT POINTS APPROXIMATELY AS INDICATED ON THIS DRAWING TO OBTAIN INFORMATION CONCERNING THE CHARACTER OF SUBSURFACE MATERIALS. DEPTHS ARE LIMITED AND THE AREA OF THE BORINGS IS VERY SMALL IN RELATION TO THE ENTIRE SITE. THESE BORINGS WERE NOT DESIGNED TO DETECT OR NOT WARRANT SIMILAR SUBSURFACE CONDITIONS BELOW BETWEEN OR BEYOND THESE BORINGS. VARIATIONS IN FLUCTUATIONS IN GROUNDWATER LEVELS MAY OCCUR.





REMOVING FENCE

CATEGORY	STATION	LOCATION	REMARKS	204.0170	REMARKS
				LF	
0010	149+96'EB'	IH 94 MEDIUM	30-INCH, METAL PIPE, L=116 FT	95	BETWEEN STRUCTURES
0010	163+94'EB'	IH 94 MEDIUM	15-INCH, METAL PIPE, L=148 FT	95	BETWEEN STRUCTURES
	TOTAL 0010			140	OUTSIDE SLOPE
				150	OUTSIDE SLOPE
				480	

REMOVING DELINEATORS AND MARKERS

CATEGORY	STATION	TO	STATION	LOCATION	REMARKS
0010	145+50'EB'	-	169+50'EB'	IH 94 EB, RT	5 OUTSIDE SHLD & ENDWALLS/INLETS
	TOTAL 0010				5

REMOVING INLETS

CATEGORY	STATION	LOCATION	REMARKS	204.0220	REMARKS
				EACH	
0010	149+96'EB'	IH 94 MEDIUM		1	
0010	163+94'EB'	IH 94 MEDIUM		1	
	TOTAL 0010			2	

REMOVING SMALL PIPE CULVERTS

CATEGORY	STATION	LOCATION	EACH	REMARKS	203.0100	REMARKS
0010	149+96'EB'	IH 94 MEDIUM	1	30-INCH, METAL PIPE, L=116 FT		
0010	163+94'EB'	IH 94 MEDIUM	1	15-INCH, METAL PIPE, L=148 FT		
	TOTAL 0010		2			

REMOVING CONCRETE PAVEMENT

CATEGORY	STATION	TO	STATION	LOCATION	REMARKS	204.0100	REMARKS
						SY	
0010	145+50'EB'	-	157+73'EB'	IH 94 EB		3260	
0010	158+77'EB'	-	169+50'EB'	IH 94 EB		2860	
	TOTAL 0010					6120	

REMOVING GUARDRAIL

CATEGORY	STATION	TO	STATION	LOCATION	REMARKS	204.0165	REMARKS
						LF	
0010	154+41'EB'	-	157+73'EB'	IH 94 EB		330	
0010	155+54'EB'	-	157+73'EB'	IH 94 EB		220	
0010	157+73'EB'	-	157+73'EB'	IH 94 MEDIUM		80	
0010	158+78'EB'	-	158+78'EB'	IH 94 MEDIUM		80	
0010	158+78'EB'	-	162+28'EB'	IH 94 EB		350	
	TOTAL 0010					1060	

EARTHWORK SUMMARY TABLE

GROUP CODE	STATION	TO	STATION	LOCATION	CUT VOLUME	ASPHALT PAVEMENT	CONCRETE PAVEMENT	USABLE MATERIAL	EXPANDED FILL	BORROW	BORROW	CRUSH MATERIAL	EXCAVATION COMMON	SUITABLE WASTE	UNUSABLE WASTE	EXCAVATION BELOW SUBGRADE	REMARKS
010	145+50'EB'	-	169+50'EB'	94 EB	2519	640	2961	-1082	16671	17753	0	0	2519	0	0	0	(5)
010	133+13	-	190+00	94 EB CROSSOVER	7098	475	3051	3572	6165	0	2593	2054	8076	0	978	978	
				STAGE 2 SUBTOTAL	9617	1115	6012	2490	22836	17753	2593	2054	10595	0	978	978	
				Total	9617	1115	6012	2490	22836	17753	2593	2054	10595	0	978	978	

FILL FACTOR = 1.30

- (1) PAVEMENT (INCLUDES ASPHALT AND CONCRETE) IS INCLUDED IN THE QUANTITY OF EXCAVATION COMMON. PAVEMENT IS CONSIDERED SALVAGEABLE FOR OTHER PURPOSES AND IS NOT INCLUDED IN THE QUANTITY OF USABLE MATERIAL.
- (2) USABLE MATERIAL = EXCAVATION COMMON - EBS - PAVEMENT
- (3) SUITABLE WASTE IS SURPLUS MATERIAL SUITABLE FOR USE AS FILL THAT IS BEYOND THE VOLUME NEEDED FOR THE PROJECT.
- (4) UNSUITABLE WASTE = EBS
- (5) EXCAVATION BELOW SUBGRADE IS NOT USED TO BALANCE EARTHWORK. QUANTITY IS INCLUDED AND PAID FOR IN THE ITEM OF EXCAVATION COMMON.

Addendum No. 04  
 ID 1021-00-78  
 Revised Sheet 114  
 January 7, 2021

Addendum No. 04  
 ID 1021-04-77  
 Revised Sheet 129  
 January 7, 2021

3

HMA PAVEMENT

CATEGORY	STATION	TO	STATION	LOCATION	HMA WEATHER PAVING 450.4000	TACK COAT 455.0605	HMA PAVEMENT 3 MT 58-285	TON	HMA PAVEMENT 4 MT 58-285	TON	HMA PAVEMENT 4 MT 58-345	TON	ASPHALTIC SURFACE PAVING 465.0110	TON	ASPHALTIC SURFACE TEMPORARY 465.0125	TON	REMARKS
0010	24+50'EB'	-	41+54'EB'	IH 94 EB, LT	95	185	3 MT 58-285	185	4 MT 58-285	185	4 MT 58-345	185	465.0110	-	465.0125	-	2" LOWER LAYER/2" UPPER LAYER
0010	24+50'EB'	-	41+54'EB'	IH 94 EB, RT	105	205	3 MT 58-285	205	4 MT 58-285	205	4 MT 58-345	205	465.0110	-	465.0125	-	2" LOWER LAYER/2" UPPER LAYER
0010	43+44'EB'	-	62+97'EB'	IH 94 EB, LT	90	175	3 MT 58-285	175	4 MT 58-285	175	4 MT 58-345	175	465.0110	-	465.0125	-	2" LOWER LAYER/2" UPPER LAYER
0010	43+44'EB'	-	62+97'EB'	IH 94 EB, RT	135	260	3 MT 58-285	260	4 MT 58-285	260	4 MT 58-345	260	465.0110	-	465.0125	-	2" LOWER LAYER/2" UPPER LAYER
0010	35+39'EB'	-	41+57'EB'	RAMP B, RT	25	50	3 MT 58-285	50	4 MT 58-285	50	4 MT 58-345	50	465.0110	-	465.0125	-	2" LOWER LAYER/2" UPPER LAYER
0010	37+89'EB'	-	41+57'EB'	RAMP B, LT	15	30	3 MT 58-285	30	4 MT 58-285	30	4 MT 58-345	30	465.0110	-	465.0125	-	2" LOWER LAYER/2" UPPER LAYER
0010	43+46'EB'	-	54+61'EB'	RAMP B, RT	35	65	3 MT 58-285	65	4 MT 58-285	65	4 MT 58-345	65	465.0110	-	465.0125	-	2" LOWER LAYER/2" UPPER LAYER
0010	43+46'EB'	-	54+61'EB'	RAMP B, LT	20	35	3 MT 58-285	35	4 MT 58-285	35	4 MT 58-345	35	465.0110	-	465.0125	-	2" LOWER LAYER/2" UPPER LAYER
0010	34+76'EB'	-	41+57'EB'	RAMP B	120	280	3 MT 58-285	280	4 MT 58-285	280	4 MT 58-345	280	465.0110	-	465.0125	-	5" LOWER LAYER/2" UPPER LAYER
0010	43+46'EB'	-	54+61'EB'	RAMP B	165	390	3 MT 58-285	390	4 MT 58-285	390	4 MT 58-345	390	465.0110	-	465.0125	-	5" LOWER LAYER/2" UPPER LAYER
0010	-2+22	-	8+23	IH94 WB	140	35	3 MT 58-285	35	4 MT 58-285	35	4 MT 58-345	35	465.0110	-	465.0125	-	2" LOWER LAYER/2" UPPER LAYER
0010	5+00	-	15+75	IH94 EB	140	35	3 MT 58-285	35	4 MT 58-285	35	4 MT 58-345	35	465.0110	-	465.0125	-	2" LOWER LAYER/2" UPPER LAYER
0010	15+75	-	25+00	IH94 EB	120	60	3 MT 58-285	60	4 MT 58-285	60	4 MT 58-345	60	465.0110	-	465.0125	-	2" LOWER LAYER/2" UPPER LAYER
0010	57+10	-	59+65	IH94 WB	20	35	3 MT 58-285	35	4 MT 58-285	35	4 MT 58-345	35	465.0110	-	465.0125	-	2" LOWER LAYER/2" UPPER LAYER
0010	57+10	-	68+78	IH94 WB	150	40	3 MT 58-285	40	4 MT 58-285	40	4 MT 58-345	40	465.0110	-	465.0125	-	2" LOWER LAYER/2" UPPER LAYER
0010	63+42	-	70+84	IH94 EB	100	25	3 MT 58-285	25	4 MT 58-285	25	4 MT 58-345	25	465.0110	-	465.0125	-	2" LOWER LAYER/2" UPPER LAYER
0010	32+63'EB'	-	33+37'EB'	MAINTENANCE CROSSOVER	60	15	3 MT 58-285	15	4 MT 58-285	15	4 MT 58-345	15	465.0110	-	465.0125	-	2" LOWER LAYER/2" UPPER LAYER
0010	15+75	-	36+95	IH 94 EB CROSSOVER	390	390	3 MT 58-285	390	4 MT 58-285	390	4 MT 58-345	390	465.0110	-	465.0125	-	STAGE 4
0010	57+10	-	70+85	IH 94 EB CROSSOVER	230	230	3 MT 58-285	230	4 MT 58-285	230	4 MT 58-345	230	465.0110	-	465.0125	-	STAGE 4
0010	57+10	-	52+00'B'	RAMP B	-	-	3 MT 58-285	-	4 MT 58-285	-	4 MT 58-345	-	465.0110	-	465.0125	-	RAMP B MEDIAN ISLAND
0010	PROJECT	-	PROJECT	IH 94	-	-	3 MT 58-285	-	4 MT 58-285	-	4 MT 58-345	-	465.0110	-	465.0125	-	UNDISTRIBUTED
TOTAL 0010					780	1625	2065	1210	455	180	3550	-	-	-	-	-	UNDISTRIBUTED

CULVERT PIPE

CATEGORY	INLET		OUTLET		SLOPE %	APRON ENDWALLS FOR PIPE 24-INCH	APRON ENDWALLS FOR PIPE 36-INCH	APRON ENDWALLS FOR PIPE 48-INCH	CULVERT PIPE CLASS III-A NON-METAL	CULVERT PIPE CLASS III-B CONCRETE	CULVERT PIPE REINFORCED CONCRETE	CULVERT PIPE CLASS III	REMARKS	
	STATION	ELEVATION	STATION	ELEVATION										
0010	32+50.3'EB', 50.9'RT	1129.12	32+49.1'EB', 36.5'LT	1125.99	3.6	1	-	-	-	-	-	-	88	
0010	39+49.6'EB', 35.6'LT	1111.93	41+87.6'EB', 34.3'LT	1109.55	1.0	1	238	-	-	-	-	-	92	
0010	48+50'EB', 31.6'LT	1104.16	48+50'EB', 60.3'RT	1103.70	0.5	-	-	-	-	-	-	-	86	
0010	56+50'EB', 27.8'LT	1108.55	56+50'EB', 58.2'RT	1108.12	0.5	-	-	-	-	-	-	-	-	
0010	48+40'EB', 84.9'LT	1103.70	48+40'EB', 62.3'RT	1101.93	1.2	-	-	-	-	-	-	-	-	
TOTAL 0010						1	2	238	-	-	-	-	266	3

CONCRETE SIDEWALK 4 INCH

CATEGORY	STATION	TO	STATION	LOCATION	LF	REMARKS
0010	52+40'B'	-	RAMP B	IH 94 EB	160	RAMP B MEDIAN ISLAND
TOTAL 0010					160	

RIPRAP LIGHT

CATEGORY	STATION	TO	STATION	LOCATION	CY	REMARKS
0010	43+29'EB'	-	43+69'EB'	IH 94 EB	40	
0010	43+29'EB'	-	43+69'EB'	IH 94 EB	40	
0010	43+31'B'	-	43+71'B'	RAMP B	40	
0010	43+31'B'	-	43+71'B'	RAMP B	40	
TOTAL 0010					160	

TEMPORARY SHORING

CATEGORY	STATION	TO	STATION	LOCATION	SF	REMARKS
0010	32+50'EB'	-	IH 94 EB	IH 94 EB	250	STAGES 5 - CULVERT PIPE INSTALL
TOTAL 0010					250	

CONCRETE CURB & GUTTER 4 INCH SLOPED 30 INCH TYPE I

CATEGORY	STATION	TO	STATION	LOCATION	LF	REMARKS
0010	52+40'B'	-	RAMP B	IH 94 EB	50	RAMP B MEDIAN ISLAND
TOTAL 0010					50	

CONCRETE CURB & GUTTER 4 INCH SLOPED 36 INCH TYPE I BIT

CATEGORY	STATION	TO	STATION	LOCATION	LF	REMARKS
0010	43+29'EB'	-	43+69'EB'	IH 94 EB	40	
0010	43+29'EB'	-	43+69'EB'	IH 94 EB	40	
0010	43+31'B'	-	43+71'B'	RAMP B	40	
0010	43+31'B'	-	43+71'B'	RAMP B	40	
TOTAL 0010					160	

PROJECT NO: 1021-04-77

HWY: IH 94

COUNTY: ST. CROIX

MISCELLANEOUS QUANTITIES

SHEET 129

E

FILE NAME: C:\CROSS\10210477\10210477\10210477.MXD 10/19/2021 11:11 AM

PROJECT NAME: THAO, 000

PLANT NAME:

PLANT SCALE: 1"=1'

WISDOT/CADDS SHEET 42

3

Addendum No. 04  
ID 1021-04-78  
Revised Sheet 135  
January 7, 2021

REMOVING INLETS

CATEGORY	STATION	TO	STATION	LOCATION	REMARKS	204.0220	EACH	REMARKS
0010	10+00'WB'	-	40+00'WB'	IH 94 WB	12-INCH, METAL PIPE, L = 76 FT	1	1	MEDIAN
0010	17+00'WB'	-	51+50'WB'	IH 94 WB	24-INCH, METAL PIPE, L = 76 FT	1	1	MEDIAN
0010	25+00'WB'	-	50+00'A	IH 94 WB	36-INCH, CONCRETE PIPE, L = 90 FT	1	1	MEDIAN
0010	33+00'WB'	-	50+00'A	IH 94 WB	36-INCH, CONCRETE PIPE, L = 90 FT	1	1	MEDIAN
0010	47+75'A	-	50+00'A	RAMP A	36x30-INCH, HORIZONTAL METAL PIPE, L = 105 FT	1	1	MEDIAN
	TOTAL 0010						4	

REMOVING FENCE

CATEGORY	STATION	TO	STATION	LOCATION	REMARKS	204.0170	LF	REMARKS
0010	8+23'WB'	-	51+90'WB'	IH 94 WB, RAMP A	R/W FENCE	4450	4450	R/W FENCE
	TOTAL 0010					4450	4450	

REMOVING SMALL PIPE CULVERTS

CATEGORY	STATION	TO	STATION	LOCATION	REMARKS	203.0100	EACH	REMARKS
0010	11+00'WB'	-	17+00'WB'	IH 94 WB	12-INCH, METAL PIPE, L = 76 FT	1	1	
0010	17+00'WB'	-	25+00'WB'	IH 94 WB	24-INCH, METAL PIPE, L = 76 FT	1	1	
0010	25+00'WB'	-	33+00'WB'	IH 94 WB	36-INCH, CONCRETE PIPE, L = 90 FT	1	1	
0010	33+00'WB'	-	47+75'A	RAMP A	36x30-INCH, HORIZONTAL METAL PIPE, L = 105 FT	1	1	
	TOTAL 0010					5	5	

REMOVING ASPHALTIC SURFACE MILLING

CATEGORY	STATION	TO	STATION	LOCATION	REMARKS	204.0120	SY	REMARKS
0010	5+00	-	60+50	IH 94 EB OUTSIDE SHLD	STAGE 1, FILL RUMBLES	2230	2230	STAGE 1, FILL RUMBLES
0010		-	PROJECT	IH 94	STAGE 2, FILL RUMBLES	2270	2270	STAGE 2, FILL RUMBLES
	TOTAL 0010					4500	4500	

EARTHWORK SUMMARY TABLE

CATEGORY	STATION	TO	STATION	LOCATION	REMARKS	CUT VOLUME		ASPHALT PAVEMENT		CONCRETE PAVEMENT		USEABLE MATERIAL		EXPANDED FILL		BORROW MATERIAL		CRUSH MATERIAL		205.0100 EXCAVATION COMMON		(3) SUITABLE WASTE		(4) UNSUITABLE WASTE		(5) EXCAVATION BELOW SUBGRADE		
						CY	CY	CY	CY	CY	CY	CY	CY	CY	CY	CY	CY	CY	CY	CY	CY	CY	CY	CY	CY	CY	CY	CY
010	0+00	-	71+08	IH 94 WB CROSSOVER		11857	576	0	10231	1820	-1050	2205	12907	8411	1050	1050	1050	1050	1050	1050	1050	1050	1050	1050	1050	1050	1050	1050
010	48+60	-	61+50	IH 94 EB WIDENING		1750	231	0	-2031	89	-1430	7455	5300	0	3550	3550	3550	3550	3550	3550	3550	3550	3550	3550	3550	3550	3550	3550
010	16+15	-	17+96	RAMP A, TEMP WIDENING		98	25	0	73	6	0	0	98	67	0	0	0	0	0	0	0	0	0	0	0	0	0	0
				STAGE 1 SUBTOTALS		13705	832	0	8273	1915	-2480	9660	18305	8478	4600	4600	4600	4600	4600	4600	4600	4600	4600	4600	4600	4600	4600	4600
010	8+23	-	36+94	IH 94 WB		7854	596	1754	4964	15683	10179	1134	8394	0	540	540	540	540	540	540	540	540	540	540	540	540	540	540
010	36+94	-	51+91	RAMP A		778	131	0	647	43794	43147	0	778	0	0	0	0	0	0	0	0	0	0	0	0	0	0	0
				STAGE 2 SUBTOTALS		8632	727	1754	5611	59477	53326	1134	9172	0	540	540	540	540	540	540	540	540	540	540	540	540	540	540
010	36+94	-	57+10	IH 94 WB		22633	927	2221	19485	142	0	0	22633	19343	0	0	0	0	0	0	0	0	0	0	0	0	0	0
010	57+10	-	60+25	IH 94 WB, NEGORE		175	54	0	121	121	0	0	175	0	0	0	0	0	0	0	0	0	0	0	0	0	0	0
				STAGE 3 SUBTOTALS		22808	981	2221	19606	263	0	0	22808	19343	0	0	0	0	0	0	0	0	0	0	0	0	0	0
				Total		45145	2540	3975	33490	61655	50846	10794	50285	27821	5140	5140	5140	5140	5140	5140	5140	5140	5140	5140	5140	5140	5140	5140

- (1) PAVEMENT (INCLUDES ASPHALT AND CONCRETE) IS INCLUDED IN THE QUANTITY OF EXCAVATION COMMON. PAVEMENT IS CONSIDERED SALVAGEABLE FOR OTHER PURPOSES AND IS NOT INCLUDED IN THE QUANTITY OF USEABLE MATERIAL.
- (2) USEABLE MATERIAL = EXCAVATION COMMON - EBS - PAVEMENT
- (3) SUITABLE WASTE IS SURPLUS MATERIAL SUITABLE FOR USE AS FILL THAT IS BEYOND THE VOLUME NEEDED FOR THE PROJECT.
- (4) UNSUITABLE WASTE = EBS
- (5) EXCAVATION BELOW SUBGRADE IS NOT USED TO BALANCE EARTHWORK. QUANTITY IS INCLUDED AND PAID FOR IN THE ITEM OF EXCAVATION COMMON.

ASPHALTIC SHOULDER RUMBLE STRIPS

CATEGORY	STATION	TO	STATION	LOCATION	LF	REMARKS
0010	8+23'WB'	-	36+60'WB'	IH 94 WB	2840	
0010	43+94'WB'	-	57+10'WB'	IH 94 WB	1320	
0010	4+72'WB EX'	-	8+23'WB EX'	IH 94 WB	1440	
0010	66+20'WB EX'	-	71+28'WB EX'	IH 94 WB	565	
	TOTAL 0010				6165	

HMA PAVEMENT

CATEGORY	STATION	TO	STATION	LOCATION	TACK COAT GAL	HMA PAVEMENT 3 MT 58-285 TON	HMA PAVEMENT 4 MT 58-345 TON	ASPHALTIC PATCHING TON	ASPHALTIC SURFACE TEMPORARY TON	REMARKS
0010	8+23'WB'	-	36+60'WB'	IH 94 WB, LT	120	540	-	-	-	4" LOWER LAYER/2" UPPER LAYER
0010	36+60'WB'	-	42+04'WB'	IH 94 WB, LT	25	100	50	-	-	4" LOWER LAYER/2" UPPER LAYER
0010	8+23'WB'	-	42+04'WB'	IH 94 WB, RT	120	275	275	-	-	2" LOWER LAYER/2" UPPER LAYER
0010	43+94'WB'	-	57+10'WB'	IH 94 WB, LT	75	335	170	-	-	4" LOWER LAYER/2" UPPER LAYER
0010	43+94'WB'	-	57+10'WB'	IH 94 WB, RT	65	150	150	-	-	2" LOWER LAYER/2" UPPER LAYER
0011	36+60'A'	-	42+08'A'	RAMP A	45	105	105	-	-	5" LOWER LAYER/2" UPPER LAYER
0010	43+99'A'	-	51+89'A'	RAMP A	70	380	150	-	-	5" LOWER LAYER/2" UPPER LAYER
0010	36+60'A'	-	42+08'A'	RAMP A, LT	15	35	35	-	-	2" LOWER LAYER/2" UPPER LAYER
0010	39+00'A'	-	42+08'A'	RAMP A, RT	10	20	20	-	-	2" LOWER LAYER/2" UPPER LAYER
0010	43+99'A'	-	51+89'A'	RAMP A, LT	35	75	75	-	-	2" LOWER LAYER/2" UPPER LAYER
0010	43+99'A'	-	51+89'A'	RAMP A, RT	15	40	40	-	-	2" LOWER LAYER/2" UPPER LAYER
0010	0+00'	-	71+07'	IH 94 WB CROSSOVER	1140	-	-	-	-	STAGE 1
0010	48+59'	-	61+48'	IH 94 EB WIDENING	130	-	-	-	-	STAGE 1
0010	5+00'	-	60+50'	IH 94 EB OUTSIDE SHLD	110	-	-	-	-	STAGE 1, FILL RUMBLES
0010	16+15'	-	17+96'	RAMP A	10	-	-	-	-	STAGE 1
0010	PROJECT	-	PROJECT	IH 94	115	-	-	-	-	STAGE 2, FILL RUMBLES
0010	36+93'WB'	-	57+10'WB'	IH 94 WB SHLDS	435	-	-	-	-	STAGE 3
0010	57+10'	-	60+25'	IH 94 WB SHLD	35	-	-	-	-	STAGE 3
0010	PROJECT	-	PROJECT	IH 94	-	-	-	575	-	UNDISTRIBUTED
	TOTAL 0010				2570	2215	915	575	12580	

Addendum No. 04  
ID 1021-04-78  
Revised Sheet 137  
January 7, 2021

CULVERT PIPE

CATEGORY	INLET STATION	INLET ELEVATION	OUTLET STATION	OUTLET ELEVATION	SLOPE %	APRON ENDWALLS FOR CULVERT PIPE	CULVERT PIPE REINFORCED CONCRETE CLASS III	CULVERT PIPE REINFORCED CONCRETE CLASS III	CULVERT PIPE NON-METAL	APRON ENDWALLS FOR CULVERT PIPE REINFORCED CONCRETE CLASS III	REMARKS
0010	7+25, 7.8 RT	1196.30	10+46, 33.3 LT	1194.70	0.5	-	1	1	-	-	CONCRETE CURB & GUTTER 4-INCH SLOPED 36-INCH TYPE TRIT
0010	11+75, 34.3 LT	1193.26	12+08.6, 22.7 LT	1189.67	10	-	1	1	-	-	601.0590
0010	12+12.6, 22.7 LT	1189.67	12+21.3, 22.6 LT	1189.07	6.3	-	-	-	-	-	
0010	18+75, 35.6 LT	1181.16	19+08, 24.9 LT	1177.00	11.6	-	1	1	-	-	
0010	19+42, 24.9 LT	1177.00	19+21.6, 25.4 LT	1176.50	6.3	-	-	-	-	-	
0010	51+25.9, 27.3 LT	1105.00	51+34.6, 27.5 LT	1106.00	6.3	-	-	-	-	-	
0010	51+38.6, 27.5 LT	1106.00	51+75, 32.8 LT	1108.50	6.9	-	-	-	-	-	
0010	59+27.7, 25 LT	1111.00	59+36.4, 24.1 LT	1111.00	6.3	-	-	-	-	-	
0010	59+40.4, 24.1 LT	1111.00	59+98, 6.6 RT	1112.92	1.2	-	-	-	-	-	
0010	10+00'WB'; 25.3 RT	1189.66	10+00'WB'; 55.2 LT	1189.26	0.5	-	-	-	-	80	1
0010	17+00'WB'; 31.5 RT	1175.50	17+00'WB'; 63.4 LT	1175.03	0.5	-	-	-	-	95	1
0010	25+00'WB'; 29.8 RT	1152.50	25+00'WB'; 72.8 LT	1150.44	2.0	-	-	-	-	103	1
0010	33+00'WB'; 36.5 RT	1125.98	33+00'WB'; 81.5 LT	1124.71	1.0	-	-	-	-	127	1
0010	45+90.4'A'; 66.8 RT	1106.50	45+64.3'A'; 48.4 LT	1105.50	0.8	-	-	-	-	118	-
	TOTAL 0010					2	626	118	405	4	

CATEGORY	STATION	TO	STATION	LOCATION	APRON ENDWALLS FOR CULVERT PIPE REINFORCED CONCRETE CLASS III LF	CULVERT PIPE REINFORCED CONCRETE CLASS III LF	CULVERT PIPE NON-METAL LF	APRON ENDWALLS FOR CULVERT PIPE REINFORCED CONCRETE CLASS III LF	REMARKS
0010	33+00'WB'	-	IH 94 WB	250	511.1100	-	-	-	TEMPORARY SHORING
	TOTAL 0010			250	511.1100	-	-	-	
	TOTAL 0010			250	511.1100	-	-	-	

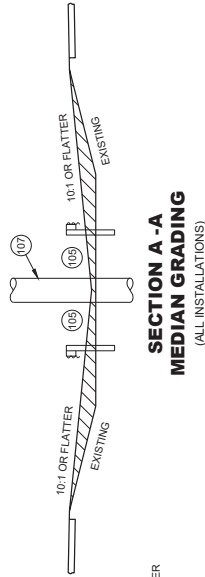


**GENERAL NOTES**

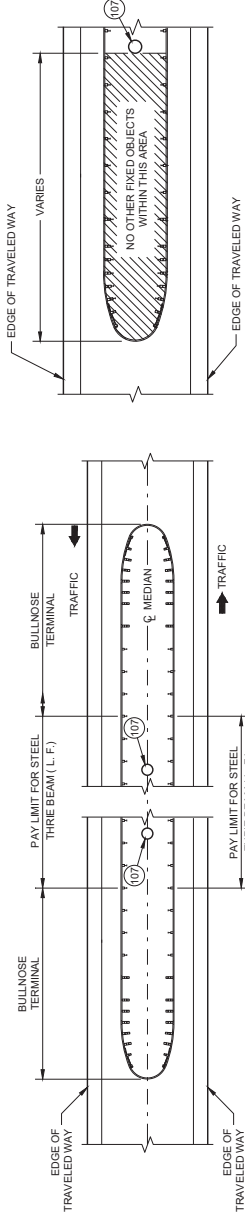
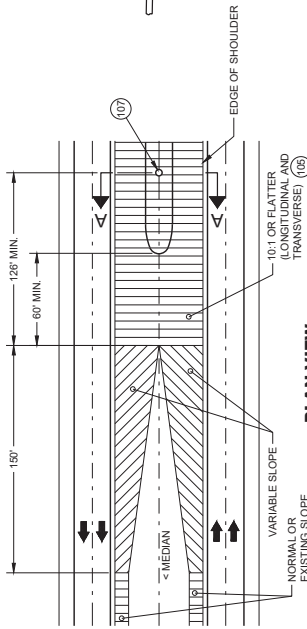
THREE BEAM RAILS MAY NEED TO BE FIELD BENT TO FIT THE LOCATION. SEE STANDARD DETAIL DRAWINGS 14B26 SHEETS 8-11.

IF ROCK IS ENCOUNTERED, REMOVE ROCK TO FULL DEPTH OF POST PLUS 2 1/2". MINIMUM DIAMETER OF THE ROCK REMOVAL IS 12" DIAMETER.

- E1 UNBENT STANDARD THREE BEAM RAIL B1 (POST 8 TO POST 10 AND POST 10 TO POST 12)
- E2 SLOTTED THREE BEAM RAIL E1 (POST 1 TO POST 1)
- E3 SLOTTED THREE BEAM RAIL B9 (POST 5 TO POST 8)
- E4 SLOTTED THREE BEAM RAIL E4 (POST 1 TO POST 5)
- 5 BEYOND POST 12. CONSTRUCT STEEL THREE BEAM. USE UNBENT STANDARD THREE BEAM RAIL NO. 5.
- 109 DIMENSIONS ARE FROM BACK OF RAIL TO BACK OF RAIL WHERE RAIL IS BOLTED TO POST OR BLOCK.
- 107 U-BOLT CABLE CLIPS (9 PER CABLE) SPACED OUT ON NOSE. TO HOLD CABLE TO BACKSIDE OF THE RAIL.
- 102 NOSE CABLE WITH SWAGGED END BUTTONS.
- 103 NOSE CABLE ANCHOR PLATE (BACKSIDE OF SPLICE).
- 104 THE SLACK IN THE NOSE CABLES SHALL BE EVENLY DISTRIBUTED BETWEEN THE CABLE CLIP FASTENERS AND POST NO. 1 ON EITHER SIDE OF THE NOSE.
- 105 MINIMUM WORKING WIDTH 4' - 2".
- 106 MAX. WIDTH OF SYSTEM IS 14' - 2 1/2". MEASURED FROM THE BACK OF RAIL TO BACK OF RAIL WHERE RAIL IS BOLTED TO A POST OR BLOCK.
- 107 FIXED OBJECT OR OTHER HAZARD.
- 108 PLAN IS TO PROVIDE STATION OFFSET TO CENTER OF POST 5 IN PLANS.

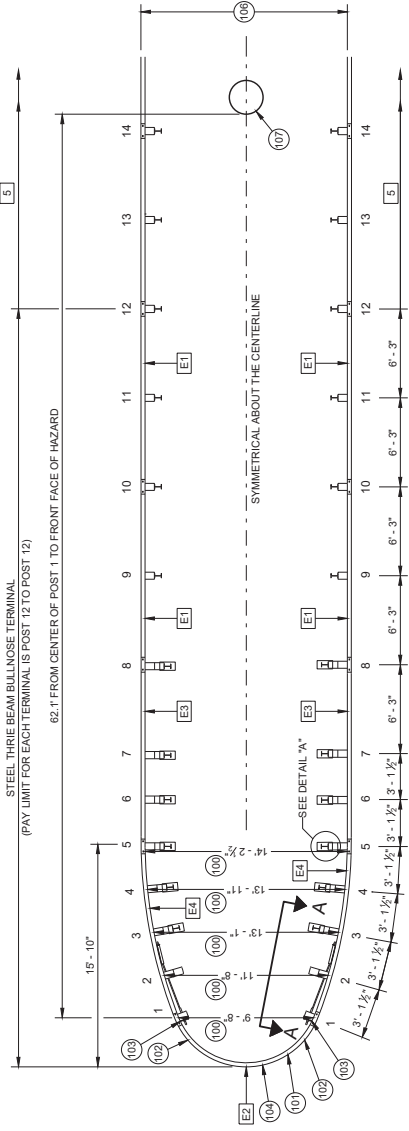


**PLAN VIEW GRADING AT BULLNOSE**  
(ALL INSTALLATIONS)



**MEDIAN HAZARD PROTECTION PAY LIMITS**

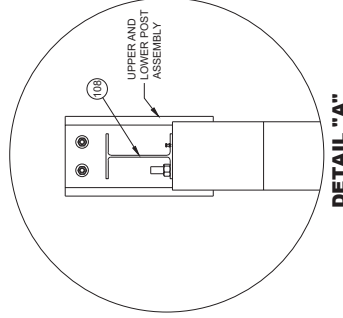
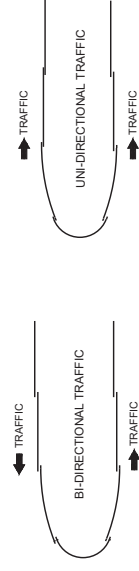
**HAZARD FREE AREA INSIDE BULLNOSE**



**PLAN VIEW TYPICAL BULLNOSE LAYOUT**

Addendum No. 04  
ID 1021-04-77/78  
Added Sheet 213A  
January 7, 2021

**LAPPING DETAIL**

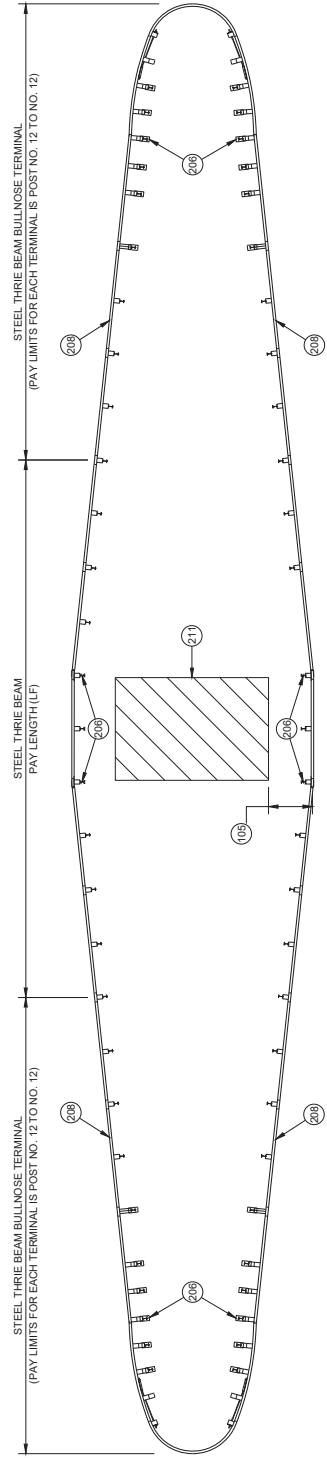


**STEEL THREE BEAM BULLNOSE TERMINAL**

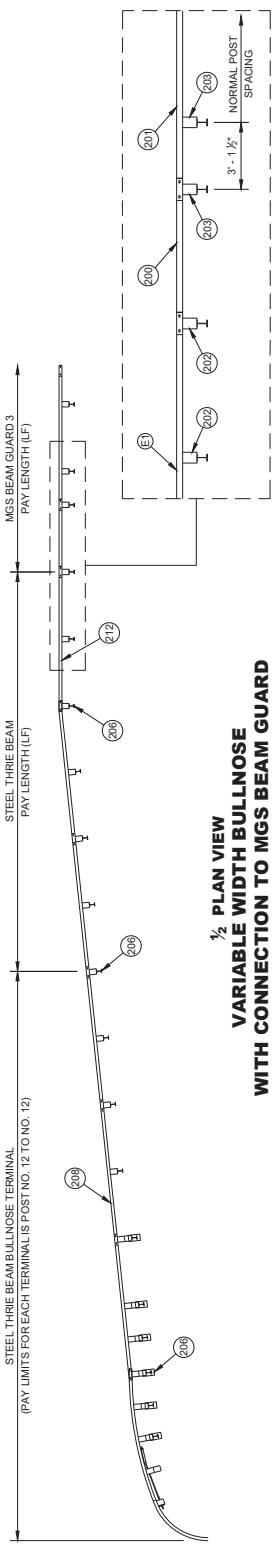
STATE OF WISCONSIN  
DEPARTMENT OF TRANSPORTATION

**GENERAL NOTES**

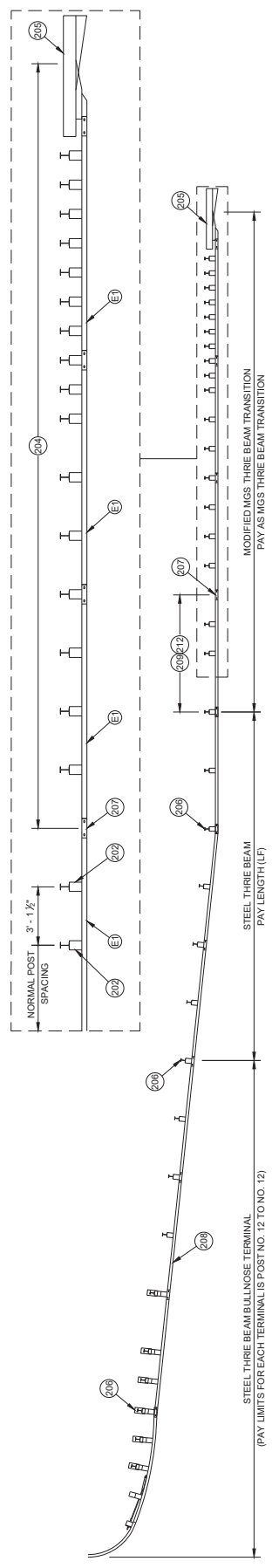
- 200 6'-3" ASYMMETRICAL 10-GAUGE W-BEAM TO THRIE BEAM GUARD TRANSITION. SEE SDD 14B45 FOR MORE INFORMATION.
- 201 W-BEAM RAIL. SEE SDD 14B42 FOR MORE INFORMATION.
- 202 SEE POST NO. 9 AND ALL STEEL THRIE BEAM POST BEYOND DETAIL.
- 203 SEE SDD 14B42 FOR INSTALLATION INFORMATION.
- 204 SEE SDD 14B45 FOR INSTALLATION DETAILS. REPLACE ASYMMETRICAL W-BEAM TO THRIE BEAM TRANSITION AND W-BEAM RAIL WITH E1 PAY FOR MODIFIED THRIE BEAM TRANSITION.
- 205 CONCRETE BARRIER OR BRIDGE RAIL.
- 206 SEE PLAN FOR STATION AND OFFSET TO CENTER OF POST.
- 207 SEE PLAN FOR STATION AND OFFSET TO CENTER OF SPLICE.
- 208 SEE PLAN FOR FLARE RATE.
- 209 A MINIMUM OF 25 FT. OF THRIE BEAM TANGENT BEFORE TRANSITIONING TO BEAM GUARD OR THRIE BEAM TRANSITION.
- 210 NOT ALL BULLNOSE HARDWARE SHOWN. SEE OTHER SHEETS IN 14B26.
- 211 WIDER HAZARD TO BE SHIELDED.
- 212 TRANSITION RAIL HEIGHT TO 31" OVER THE LENGTH OF A 12'-6" BEAM SECTION.



**VARIABLE WIDTH BULLNOSE**



**1/2 PLAN VIEW  
VARIABLE WIDTH BULLNOSE  
WITH CONNECTION TO MGS BEAM GUARD**



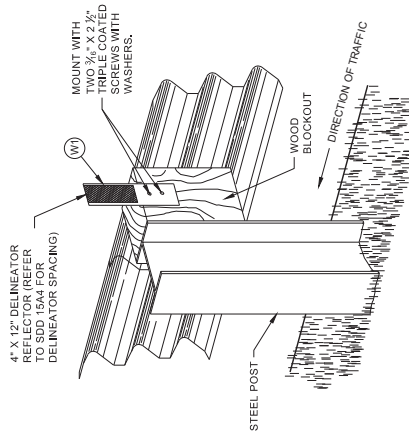
**1/2 PLAN VIEW  
VARIABLE WIDTH BULLNOSE  
WITH CONNECTION TO RIGID BARRIER**

Addendum No. 04  
ID 1021-04-77/78  
Added Sheet 213B  
January 7, 2021

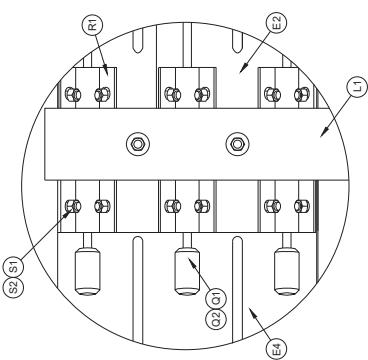
**STEEL THRIE BEAM  
BULLNOSE TERMINAL**

STATE OF WISCONSIN  
DEPARTMENT OF TRANSPORTATION

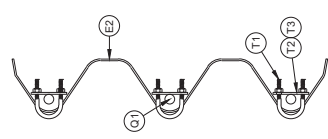
213B



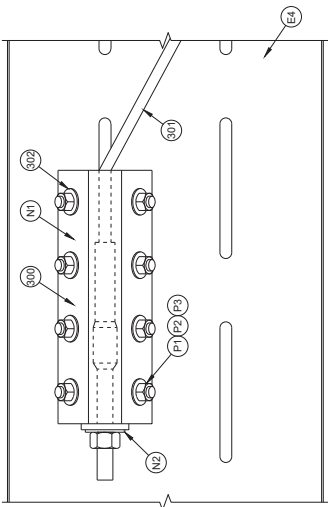
**ONE SIDED REFLECTOR DETAIL AND TYPICAL INSTALLATION**



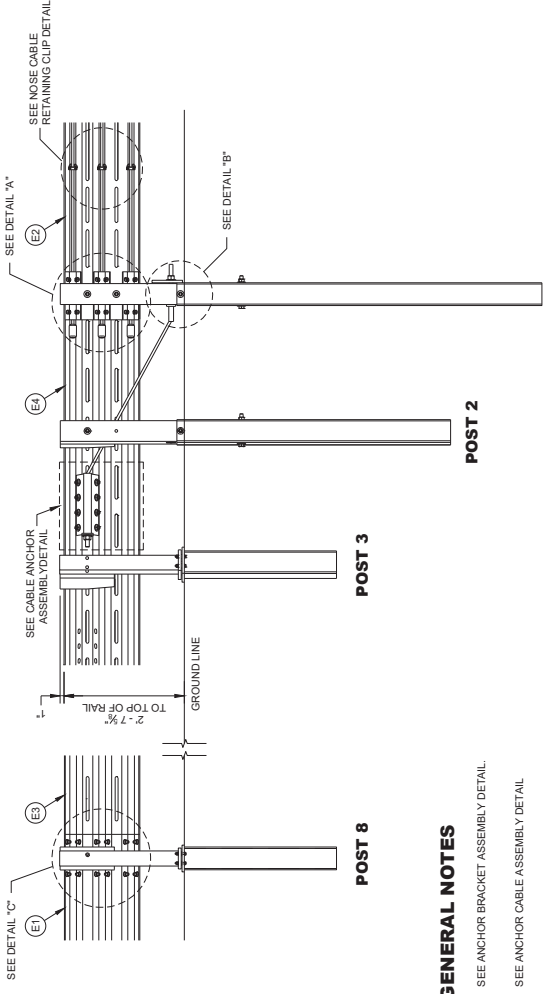
**DETAIL "A"**



**NOSE CABLE RETAINING CLIP**



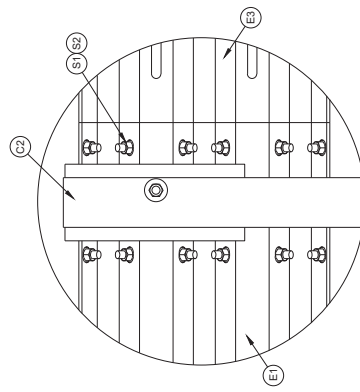
**PROFILE VIEW CABLE ANCHOR ASSEMBLY CONNECTION**



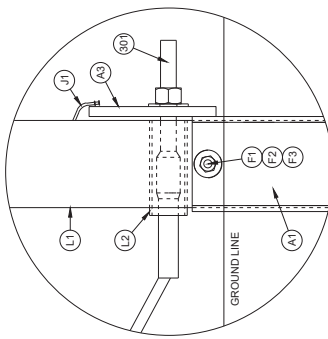
**CROSS SECTION A - A**

**GENERAL NOTES**

- 300 SEE ANCHOR BRACKET ASSEMBLY DETAIL.
- 301 SEE ANCHOR CABLE ASSEMBLY DETAIL
- 302 ONE WASHER BETWEEN BOLT HEAD AND RAIL AND BETWEEN NUT AND ANCHOR BRACKET ASSEMBLY.
- 303 ONE WASHER BETWEEN BOLT HEAD AND FOUNDATION TUBE AND BETWEEN NUT AND FOUNDATION TUBE.



**DETAIL "C" THRIE BEAM SPLICE**



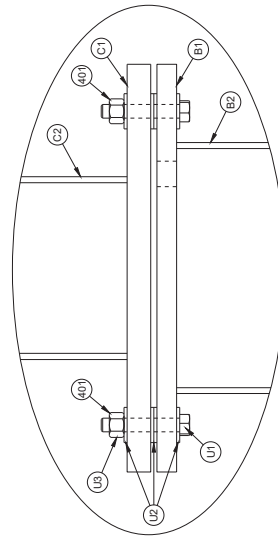
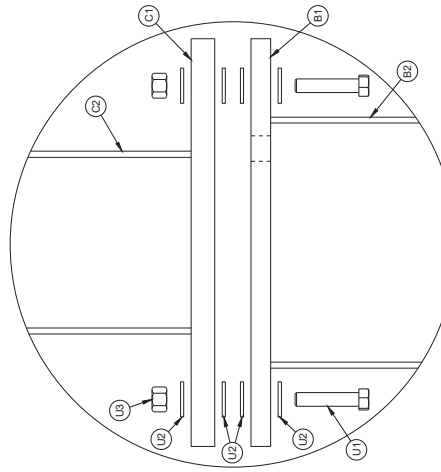
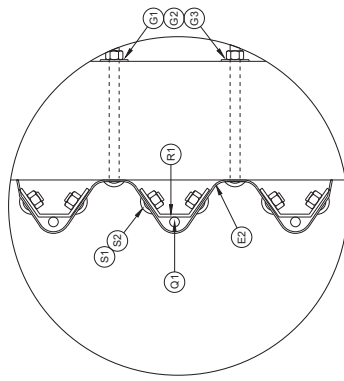
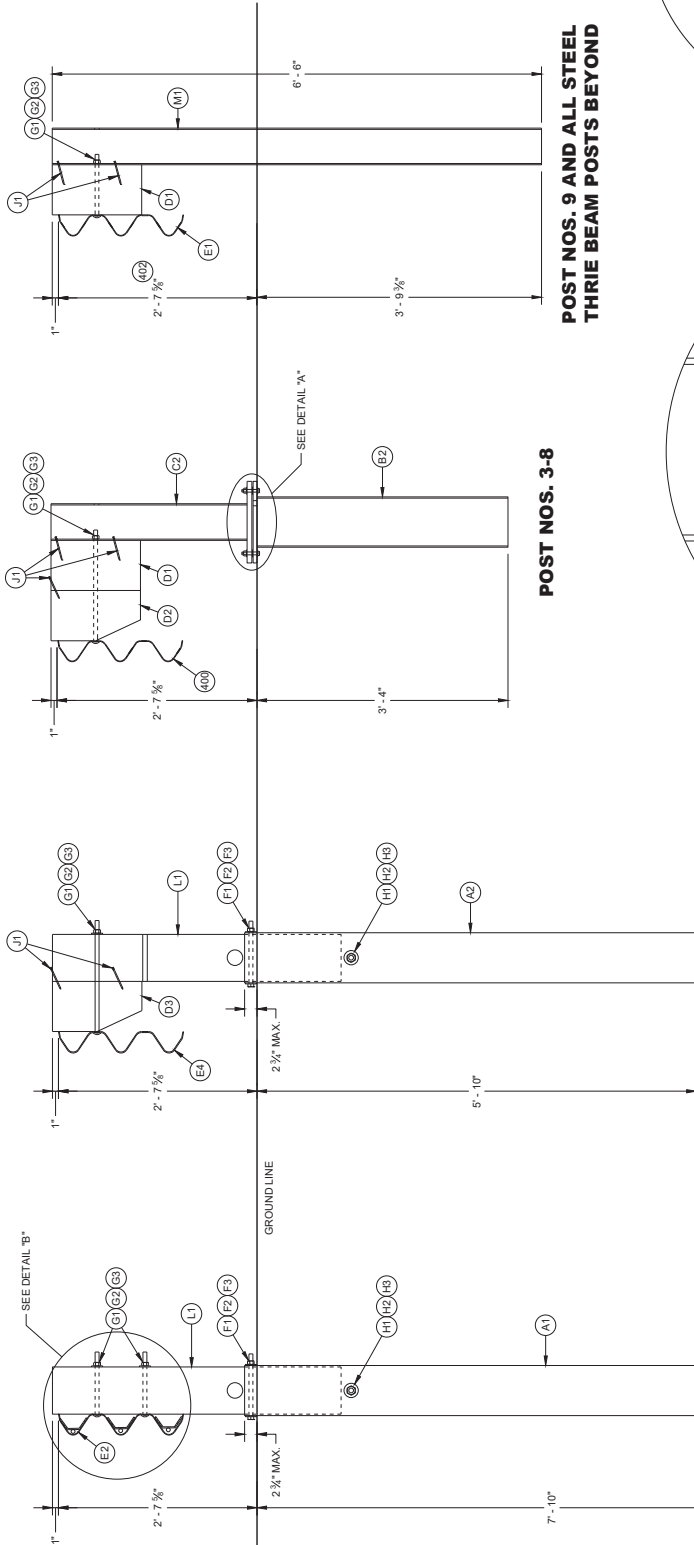
**DETAIL "B"**

<b>STEEL THRIE BEAM BULLNOSE TERMINAL</b>
STATE OF WISCONSIN DEPARTMENT OF TRANSPORTATION

Addendum No. 04  
ID 1021-04-77/78  
Added Sheet 213D  
January 7, 2021

**GENERAL NOTES**

- (40) RAIL CAN BE SLOPED DEPENDING ON POST LOCATION.
- (40) TORQUE BOLD BETWEEN 60-75 FT-LB
- (40) HEIGHT WILL VARY WITH RAIL HEIGHT TRANSITION TO OTHER HARDWARE. SEE NOTE 213, SHEET "b".



**STEEL THRIE BEAM  
BULLNOSE TERMINAL**

STATE OF WISCONSIN  
DEPARTMENT OF TRANSPORTATION

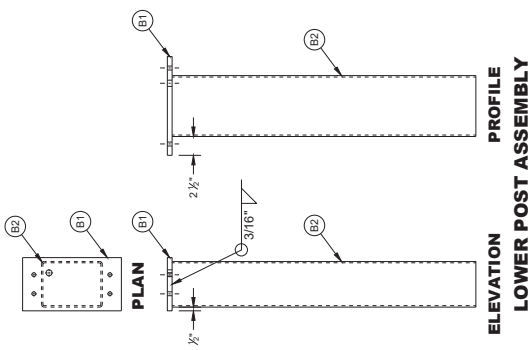


Addendum No. 04  
 ID 1021-04-77/78  
 Added Sheet 213E  
 January 7, 2021

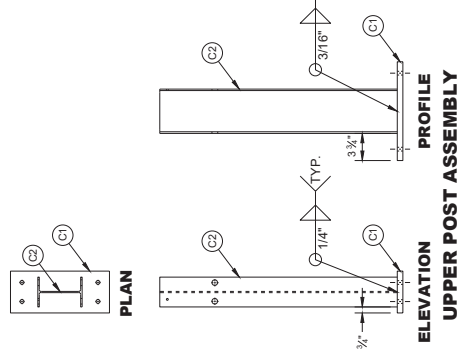
STEEL THRIE BEAM  
 BULLNOSE TERMINAL

STATE OF WISCONSIN  
 DEPARTMENT OF TRANSPORTATION

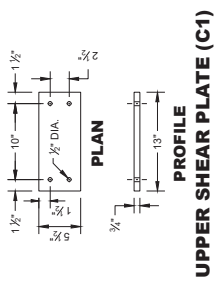
213E



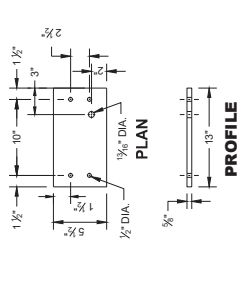
ELEVATION LOWER POST ASSEMBLY  
 PROFILE LOWER POST ASSEMBLY



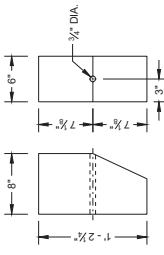
ELEVATION UPPER POST ASSEMBLY  
 PROFILE UPPER POST ASSEMBLY



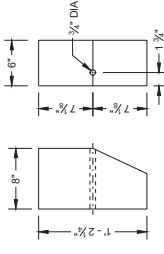
UPPER SHEAR PLATE (C1)



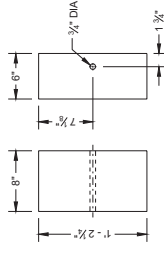
LOWER SHEAR PLATE (B1)



ELEVATION PROFILE BLOCKOUT (D3)

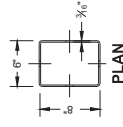


ELEVATION PROFILE BLOCKOUT (D2)

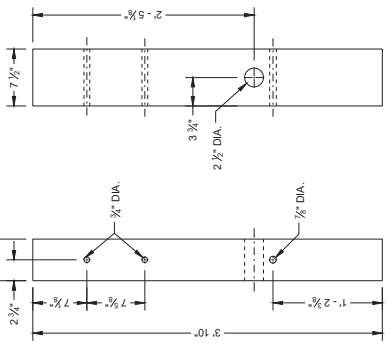


ELEVATION PROFILE BLOCKOUT (D1)

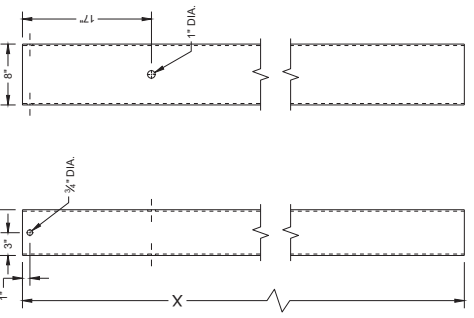
PART	LENGTH "X"
A1	8'-0"
A2	6'-0"
B2	3'-6"



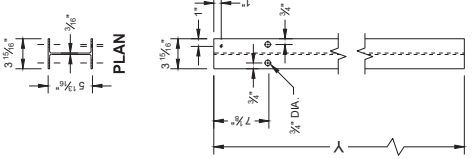
PLAN



ELEVATION PROFILE BCT POST (L1)



ELEVATION PROFILE FOUNDATION TUBE

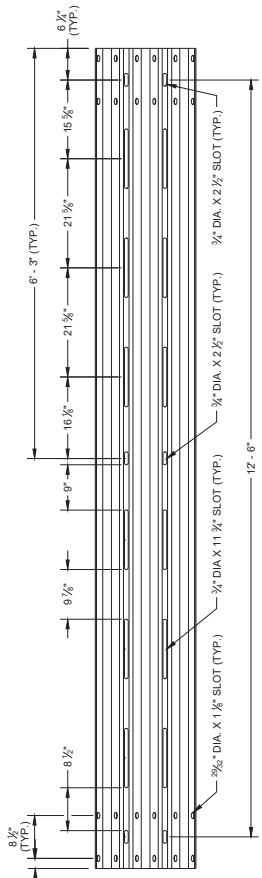


ELEVATION POST  
 PROFILE POST

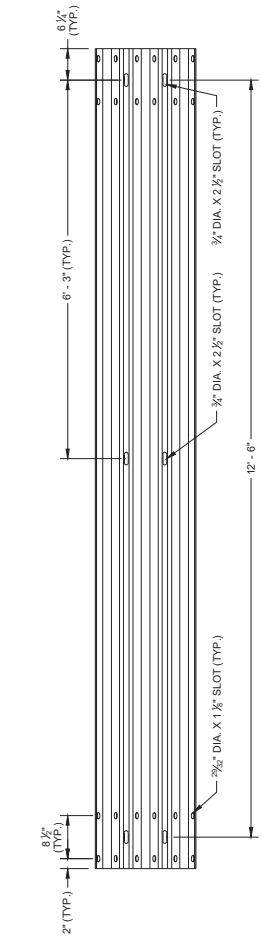
PART	LENGTH "Y"
M1	6'-6"
M2	5'-8 5/8"
C2	2'-8 5/8"

STEEL THRIE BEAM  
BULLNOSE TERMINAL

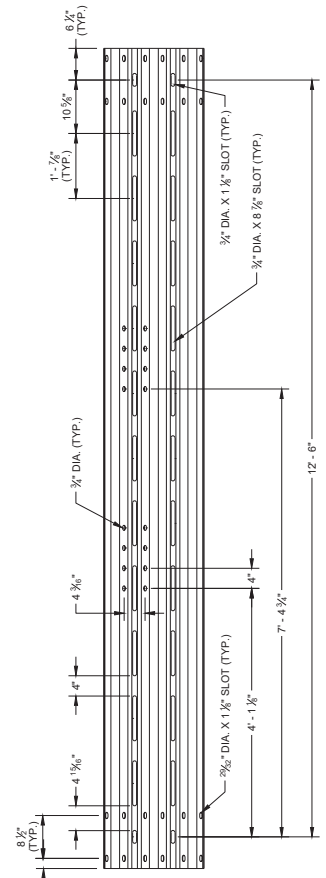
STATE OF WISCONSIN  
DEPARTMENT OF TRANSPORTATION



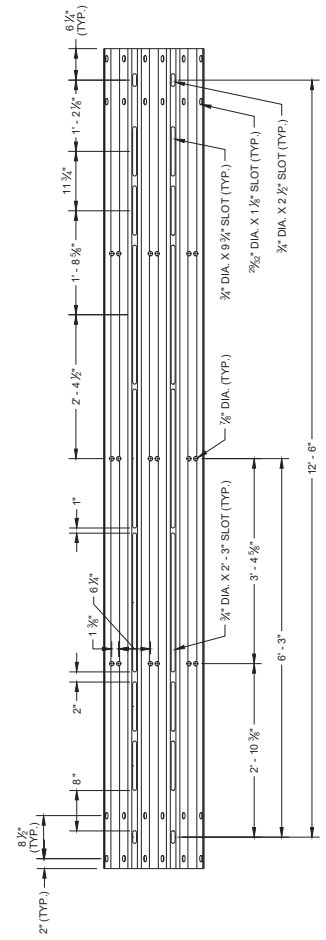
**SLOTTED THRIE BEAM RAIL E3**



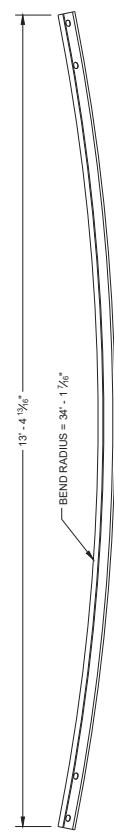
**SLOTTED THRIE BEAM RAIL E1**



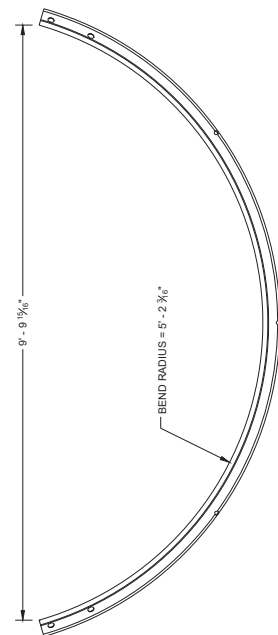
**ELEVATION VIEW NON - RADIUSED  
SLOTTED THRIE BEAM RAIL E4**



**ELEVATION VIEW NON - RADIUSED  
SLOTTED THRIE BEAM RAIL E2**



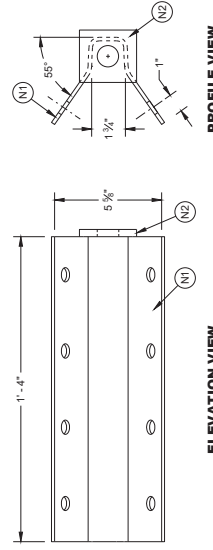
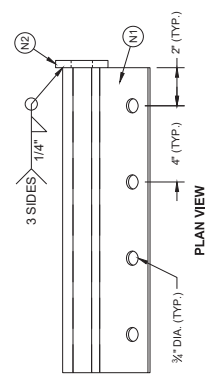
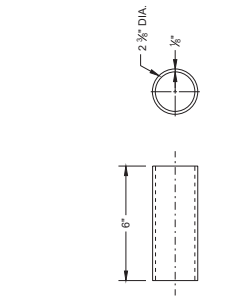
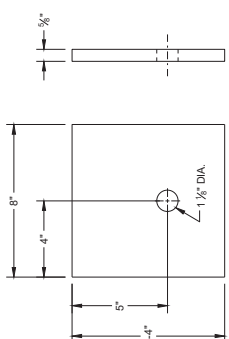
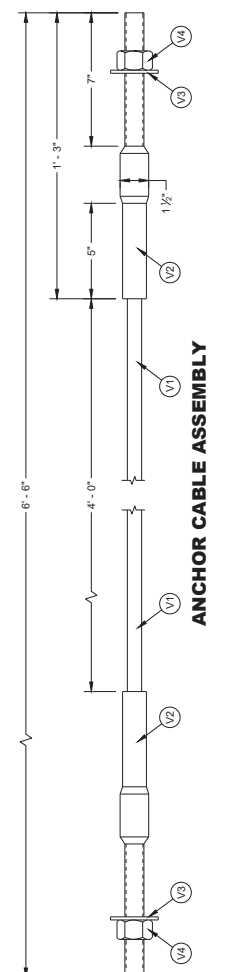
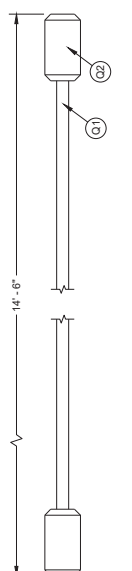
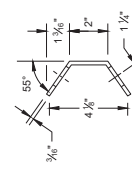
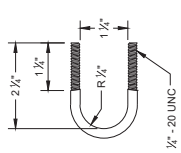
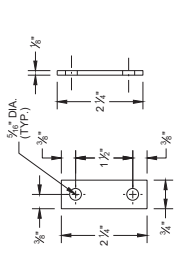
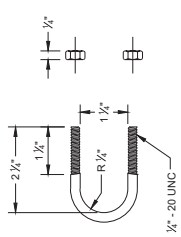
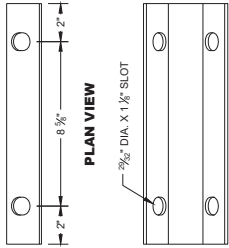
**PLAN VIEW  
SLOTTED THRIE BEAM RAIL E4**



**PLAN VIEW  
SLOTTED THRIE BEAM RAIL E2**

Addendum No. 04  
ID 1021-04-77/78  
Added Sheet 213F  
January 7, 2021

Addendum No. 04  
ID 1021-04-77/78  
Added Sheet 213G  
January 7, 2021



**BILL OF MATERIALS LIST**

PART NUMBER	DESCRIPTION	MATERIAL SPECIFICATION
A1	LONG FOUNDATION TUBE	AASHTO M111/ASTM A123 ASTM A500 GRADE B OR ASTM A-501
A2	FOUNDATION TUBE	AASHTO M111/ASTM A123 ASTM A500 GRADE B OR ASTM A-501
A3	BEARING PLATE AT POST	AASHTO M111/ASTM A123 ASTM A36 MIN. STRENGTH 36 KSI, OR ASTM A572 MAX. STRENGTH 50 KSI, OR ASTM A242 MAX. STRENGTH 50 KSI, OR ASTM A992 MAX. STRENGTH 50 KSI
B1	LOWER SLIP POST ASSEMBLY - PLATE	AASHTO M111/ASTM A123 ASTM A36 MIN. STRENGTH 36 KSI, OR ASTM A572 MAX. STRENGTH 50 KSI, OR ASTM A242 MAX. STRENGTH 50 KSI, OR ASTM A992 MAX. STRENGTH 50 KSI
B2	LOWER SLIP POST ASSEMBLY - TUBE	AASHTO M111/ASTM A123 ASTM A500 GRADE B OR ASTM A-501
C1	UPPER SLIP POST ASSEMBLY - PLATE	AASHTO M111/ASTM A123 ASTM A36 MIN. STRENGTH 36 KSI, OR ASTM A572 MAX. STRENGTH 50 KSI, OR ASTM A242 MAX. STRENGTH 50 KSI, OR ASTM A992 MAX. STRENGTH 50 KSI
C2	UPPER SLIP POST ASSEMBLY - POST	AASHTO M111/ASTM A123 ASTM A500 GRADE B OR ASTM A-501
D1	BLOCK FOR STEEL POST - WOOD	WISDOT SPEC. 614
D2	TAPERED BLOCK FOR STEEL POST - WOOD	WISDOT SPEC. 614
D3	TAPERED BLOCK FOR BCT POST - WOOD	WISDOT SPEC. 614
E1	THREE BEAM RAIL	AASHTO M180 CLASS A TYPE 2 APPROVED PRODUCER. INDICATE RADIUS BEAM GUARD IS BENT TO ON THE BACKSIDE OF RAIL FOLLOW AASHTO M180. MARK RADIUS.
E2	THREE BEAM RAIL - SHOP BENT AND PUNCHED	AASHTO M180 CLASS A TYPE 2 APPROVED PRODUCER. INDICATE RADIUS BEAM GUARD IS BENT TO ON THE BACKSIDE OF RAIL FOLLOW AASHTO M180. MARK RADIUS.
E3	THREE BEAM RAIL - PUNCHED	AASHTO M180 CLASS A TYPE 2 APPROVED PRODUCER.
E4	THREE BEAM RAIL - SHOP BENT AND PUNCHED	AASHTO M180 CLASS A TYPE 2 APPROVED PRODUCER. INDICATE RADIUS BEAM GUARD IS BENT TO ON THE BACKSIDE OF RAIL FOLLOW AASHTO M180. MARK RADIUS.
F1	5/8" DIA. HEX HEAD GROUND STRUT AND YOKE BOLT	HOT DIP AASHTO M232 CLASS / ASTM A153 CLASS C / ASTM F2329 C OR MECHANICAL GAL. TO AASHTO M238 CLASS 50 TYPE 1/ B695 CLASS 50 TYPE 1. UNC. HEAVY HEX HEAD. ASTM A307 GRADE B OR SAE J429 GRADE 2 OR ASTM F1554 GRADE 36
F2	5/8" DIA. GROUND STRUT AND YOKE BOLT - WASHER	HOT DIP AASHTO M232 CLASS / ASTM A153 CLASS C / ASTM F2329 C OR MECHANICAL GAL. TO AASHTO M238 CLASS 50 TYPE 1/ B695 CLASS 50 TYPE 1. F436 TYPE 1 (HARDEN WASHED ONLY)
F3	GROUND STRUT AND YOKE BOLT - NUT	HOT DIP AASHTO M232 CLASS / ASTM A153 CLASS C / ASTM F2329 C OR MECHANICAL GAL. TO AASHTO M238 CLASS 50 TYPE 1/ B695 CLASS 50 TYPE 1. F436 TYPE 1 (HARDEN WASHED ONLY)
G1	5/8" DIA. POST BOLT	HOT DIP AASHTO M232 CLASS / ASTM A153 CLASS C / ASTM F2329 C OR MECHANICAL GAL. TO AASHTO M238 CLASS 50 TYPE 1/ B695 CLASS 50 TYPE 1. F436 TYPE 1 (HARDEN WASHED ONLY)
G2	POST BOLT - WASHER	HOT DIP AASHTO M232 CLASS / ASTM A153 CLASS C / ASTM F2329 C OR MECHANICAL GAL. TO AASHTO M238 CLASS 50 TYPE 1/ B695 CLASS 50 TYPE 1. F436 TYPE 1 (HARDEN WASHED ONLY)
G3	POST BOLT - NUT	HOT DIP AASHTO M232 CLASS / ASTM A153 CLASS C / ASTM F2329 C OR MECHANICAL GAL. TO AASHTO M238 CLASS 50 TYPE 1/ B695 CLASS 50 TYPE 1. F436 TYPE 1 (HARDEN WASHED ONLY)
H1	7/8" DIA. SOIL TUBE BOLT	HOT DIP AASHTO M232 CLASS / ASTM A153 CLASS C / ASTM F2329 C OR MECHANICAL GAL. TO AASHTO M238 CLASS 50 TYPE 1/ B695 CLASS 50 TYPE 1. UNC. OVER TAP NUTS AS SPECIFIED IN AASHTO 291/ASTM A 563 HEAVY HEX HEAD 7/8" ASTM A563DH OR SAE J995 GRADE 5
H2	SOIL TUBE BOLT - WASHER	HOT DIP AASHTO M232 CLASS / ASTM A153 CLASS C / ASTM F2329 C OR MECHANICAL GAL. TO AASHTO M238 CLASS 50 TYPE 1/ B695 CLASS 50 TYPE 1. UNC. OVER TAP NUTS AS SPECIFIED IN AASHTO 291/ASTM A 563 HEAVY HEX HEAD 7/8" ASTM A563DH OR SAE J995 GRADE 5
H3	SOIL TUBE BOLT - NUT	HOT DIP AASHTO M232 CLASS / ASTM A153 CLASS C / ASTM F2329 C OR MECHANICAL GAL. TO AASHTO M238 CLASS 50 TYPE 1/ B695 CLASS 50 TYPE 1. UNC. OVER TAP NUTS AS SPECIFIED IN AASHTO 291/ASTM A 563 HEAVY HEX HEAD 7/8" ASTM A563DH OR SAE J995 GRADE 5
J1	160 DOUBLE HEAD NAIL	ASTM A153 HOT DIPPED CLASS D DOUBLE HEAD ASTM F1667 TYPE 1 STYLE 12 (16 DOUBLE HEADED)
L1	BCT TIMBER POST	WISDOT SPEC. 614 S45 FINISH ON 4 SIDE
L2	BCT POST SLEEVE	AASHTO M111/ASTM A123 2 3/8" OD ASTM 53 GRADE B
M1	W6X8.5 OR W6X9 STEEL POST	AASHTO M111/ASTM A123 ASTM A36 MIN. STRENGTH 36 KSI, OR ASTM A572 MAX. STRENGTH 50 KSI, OR ASTM A242 MAX. STRENGTH 50 KSI, OR ASTM A992 MAX. STRENGTH 50 KSI
M2	W6X8.5 OR W6X9 STEEL POST	AASHTO M111/ASTM A123 ASTM A36 MIN. STRENGTH 36 KSI, OR ASTM A572 MAX. STRENGTH 50 KSI, OR ASTM A242 MAX. STRENGTH 50 KSI, OR ASTM A992 MAX. STRENGTH 50 KSI
N1	ANCHOR BRACKET	AASHTO M111/ASTM A123 ASTM A36 MIN. STRENGTH 36 KSI, OR ASTM A572 MAX. STRENGTH 50 KSI, OR ASTM A242 MAX. STRENGTH 50 KSI, OR ASTM A992 MAX. STRENGTH 50 KSI
N2	ANCHOR BRACKET - BEARING PLATE	AASHTO M111/ASTM A123 ASTM A36 MIN. STRENGTH 36 KSI, OR ASTM A572 MAX. STRENGTH 50 KSI, OR ASTM A242 MAX. STRENGTH 50 KSI, OR ASTM A992 MAX. STRENGTH 50 KSI

PART NUMBER	DESCRIPTION	MATERIAL SPECIFICATION
P1	5/8" DIA. ANCHOR BRACKET BOLT	HOT DIP AASHTO M232 CLASS / ASTM A153 CLASS C / ASTM F2329 C OR MECHANICAL GAL. TO AASHTO M238 CLASS 50 TYPE 1/ B695 CLASS 50 TYPE 1. UNC. HEAVY HEX HEAD 5/8" ASTM A307 GRADE B OR SAE J429 GRADE 2 OR ASTM F1554 GRADE 36
P2	ANCHOR BRACKET BOLT - WASHER	HOT DIP AASHTO M232 CLASS / ASTM A153 CLASS C / ASTM F2329 C OR MECHANICAL GAL. TO AASHTO M238 CLASS 50 TYPE 1/ B695 CLASS 50 TYPE 1. F436 TYPE 1 (HARDEN WASHED ONLY)
P3	SOIL TUBE BOLT - NUT	HOT DIP AASHTO M232 CLASS / ASTM A153 CLASS C / ASTM F2329 C OR MECHANICAL GAL. TO AASHTO M238 CLASS 50 TYPE 1/ B695 CLASS 50 TYPE 1. UNC. OVER TAP NUTS AS SPECIFIED IN AASHTO 291/ASTM A 563 HEAVY HEX HEAD ASTM A563DH OR SAE J995 GRADE 5
Q1	5/8" DIA. NOSE CABLE	6X19 AASHTO M30 / ASTM A741 XPS INDEPENDENT WIRE CORE (IWRC) PR 6X25 XPS, IWRC NOMINAL BREAKING STRENGTH 6X19 41.2 KIPS.
Q2	NOSE CABLE SWAGE BUTTON	COLD TUFFE BUTTON, 5-409 SIZE NO. 12. STOCK NUMBER 1040395 OR ANY OTHER SIMILAR SIZED WAGED GRIP-BUTTON FERRULES. ASTM A576 GRADE 1035 SWAGE FITTING ARE TO BE FIELD SWAGED PER MANUFACTURERS RECOMMENDATION. NOMINAL BREAKING STRENGTH OF 41.2 KIPS.
R1	NOSE CABLE ANCHOR BRACKET	AASHTO M111/ASTM A123 ASTM A36 MIN. STRENGTH 36 KSI, OR ASTM A572 MAX. STRENGTH 50 KSI, OR ASTM A242 MAX. STRENGTH 50 KSI, OR ASTM A992 MAX. STRENGTH 50 KSI
S1	5/8" DIA. SPLICE BOLT - BOLT	HOT DIP AASHTO M232 CLASS / ASTM A153 CLASS C / ASTM F2329 C OR MECHANICAL GAL. TO AASHTO M238 CLASS 50 TYPE 1/ B695 CLASS 50 TYPE 1. UNC. HEAVY HEX HEAD. ASTM A307 GRADE B OR SAE J429 GRADE 2 OR ASTM F1554 GRADE 36
S2	SPLICE - BOLT NUT	HOT DIP AASHTO M232 CLASS / ASTM A153 CLASS C / ASTM F2329 C OR MECHANICAL GAL. TO AASHTO M238 CLASS 50 TYPE 1/ B695 CLASS 50 TYPE 1. UNC. HEAVY HEX HEAD. ASTM A307 GRADE B OR SAE J429 GRADE 2 OR ASTM F1554 GRADE 36
T1	1/4" DIA. NOSE CABLE - U BOLT	HOT DIP AASHTO M232 CLASS / ASTM A153 CLASS C / ASTM F2329 C OR MECHANICAL GAL. TO AASHTO M238 CLASS 50 TYPE 1/ B695 CLASS 50 TYPE 1. UNC. HEAVY HEX HEAD. ASTM A307 GRADE B OR SAE J429 GRADE 2 OR ASTM F1554 GRADE 36
T2	U-BOLT - PLATE WASHER	HOT DIP AASHTO M232 CLASS / ASTM A153 CLASS C / ASTM F2329 C OR MECHANICAL GAL. TO AASHTO M238 CLASS 50 TYPE 1/ B695 CLASS 50 TYPE 1. F436 TYPE 1 (HARDEN WASHED ONLY)
T3	U-BOLT NUT	HOT DIP AASHTO M232 CLASS / ASTM A153 CLASS C / ASTM F2329 C OR MECHANICAL GAL. TO AASHTO M238 CLASS 50 TYPE 1/ B695 CLASS 50 TYPE 1. F436 TYPE 1 (HARDEN WASHED ONLY)
U1	7/16" DIA. SLIP POST ASSEMBLY - BREAKAWAY BOLT	ASTM A153 OR B695 CLASS 55 OR F2329 UNC FULLY THREADED HEX HEAD TAP BOLT ASTM A448 OR SAE J429 GRADE 5
U2	7/16" DIA. SLIP POST ASSEMBLY - BREAKAWAY BOLT - WASHER	ASTM F336 TYPE I (HARDEN TYPICALLY USED WITH STEEL GALV. AASHTO M111/ASTM A123 OR GALV. HOT DIP. TO POST BOLT CLASS C / ASTM F2329 OR GALV. MECHANICALLY TO AASHTO M232 CLASS C / ASTM A153 CLASS C / ASTM A563DH OR SAE J995 GRADE 5
U3	SLIP POST ASSEMBLY - BREAKAWAY BOLT - NUT	HOT DIP AASHTO M232 CLASS / ASTM A153 CLASS C / ASTM F2329 C OR MECHANICAL GAL. TO AASHTO M238 CLASS 50 TYPE 1/ B695 CLASS 50 TYPE 1. UNC. OVER TAP NUTS AS SPECIFIED IN AASHTO 291/ASTM A 563 HEAVY HEX HEAD ASTM A563DH OR SAE J995 GRADE 5
V1	U-BOLT - PLATE WASHER	HOT DIP AASHTO M232 CLASS / ASTM A153 CLASS C / ASTM F2329 C OR MECHANICAL GAL. TO AASHTO M238 CLASS 50 TYPE 1/ B695 CLASS 50 TYPE 1. F436 TYPE 1 (HARDEN WASHED ONLY)
V2	ANCHOR CABLE SWAGE FITTING	UNC. ASTM A576 GRADE 1035 SWAGE FITTING ARE TO BE FACTORY SWAGED. MIN. BREAKING STRENGTH OF 42.7 KIPS. ASME B30.26 CONNECTIONS MANUFACTURER, SIZE OR TAPED (LOAD) GRADE FOR ALLOY FITTINGS.
V3	1" DIA. ANCHOR CABLE - WASHER	HOT DIP AASHTO M232 CLASS / ASTM A153 CLASS C / ASTM F2329 C OR MECHANICAL GAL. TO AASHTO M238 CLASS 50 TYPE 1/ B695 CLASS 50 TYPE 1. F436 TYPE 1 (HARDEN WASHED ONLY)
V4	1" DIA. ANCHOR CABLE - NUT	HOT DIP AASHTO M232 CLASS / ASTM A153 CLASS C / ASTM F2329 C OR MECHANICAL GAL. TO AASHTO M238 CLASS 50 TYPE 1/ B695 CLASS 50 TYPE 1. UNC. OVER TAP NUTS AS SPECIFIED IN AASHTO 291/ASTM A 563 HEAVY HEX HEAD ASTM A563DH OR SAE J995 GRADE 5
W1	REFLECTOR	SEE SDD 1504

Addendum No. 04  
ID 1021-04-77/78  
Added Sheet 213H  
January 7, 2021

**STEEL THRIE BEAM  
BULLNOSE TERMINAL**

STATE OF WISCONSIN  
DEPARTMENT OF TRANSPORTATION

APPROVED  
DATE  
AUGUST 2020  
ROADWAY STRUCTURES DEVELOPMENT  
ENGINEER

213H



Proposal Schedule of Items

Proposal ID: 20210112033 Project(s): 1021-00-78, 1021-00-79, 1021-04-77, 1021-04-78

Federal ID(s): WISC 2021100, WISC 2021101, WISC 2021102, WISC 2021103

SECTION: 0001

Contract Items

Alt Set ID:

Alt Mbr ID:

Proposal Line Number	Item ID Description	Approximate Quantity and Units	Unit Price	Bid Amount
0002	201.0105 Clearing	74.000 STA	_____.	_____.
0004	201.0205 Grubbing	74.000 STA	_____.	_____.
0006	203.0100 Removing Small Pipe Culverts	14.000 EACH	_____.	_____.
0010	203.0200 Removing Old Structure (station) 02. 158+31.35 WB	LS	LUMP SUM	_____.
0012	203.0200 Removing Old Structure (station) 03. 160+50.91	LS	LUMP SUM	_____.
0014	203.0200 Removing Old Structure (station) 04. STA 42+48	LS	LUMP SUM	_____.
0016	203.0600.S Removing Old Structure Over Waterway With Minimal Debris (station) 01. 42+50	LS	LUMP SUM	_____.
0018	203.0600.S Removing Old Structure Over Waterway With Minimal Debris (station) 02. STA 43+00	LS	LUMP SUM	_____.
0020	204.0100 Removing Concrete Pavement	39,922.000 SY	_____.	_____.
0022	204.0120 Removing Asphaltic Surface Milling	5,430.000 SY	_____.	_____.
0024	204.0155 Removing Concrete Sidewalk	18.000 SY	_____.	_____.
0026	204.0165 Removing Guardrail	1,835.000 LF	_____.	_____.
0028	204.0170 Removing Fence	11,890.000 LF	_____.	_____.
0030	204.0180 Removing Delineators and Markers	14.000 EACH	_____.	_____.
0032	204.0195 Removing Concrete Bases	3.000 EACH	_____.	_____.



Proposal Schedule of Items

Proposal ID: 20210112033 Project(s): 1021-00-78, 1021-00-79, 1021-04-77, 1021-04-78

Federal ID(s): WISC 2021100, WISC 2021101, WISC 2021102, WISC 2021103

SECTION: 0001

Contract Items

Alt Set ID:

Alt Mbr ID:

Proposal Line Number	Item ID Description	Approximate Quantity and Units	Unit Price	Bid Amount
0034	204.0220 Removing Inlets	11.000 EACH	_____.	_____.
0036	204.9090.S Removing (item description) 01. Cable Barrier	3,475.000 LF	_____.	_____.
0038	205.0100 Excavation Common	150,234.000 CY	_____.	_____.
0040	206.1000 Excavation for Structures Bridges (structure) 01. B-55-0271	LS	LUMP SUM	_____.
0042	206.1000 Excavation for Structures Bridges (structure) 02. B-55-0270	LS	LUMP SUM	_____.
0044	206.1000 Excavation for Structures Bridges (structure) 03. B-55-0281	LS	LUMP SUM	_____.
0046	206.1000 Excavation for Structures Bridges (structure) 04. B-55-0285	LS	LUMP SUM	_____.
0048	206.1000 Excavation for Structures Bridges (structure) 05. B-55-0282	LS	LUMP SUM	_____.
0050	206.1000 Excavation for Structures Bridges (structure) 06. B-55-0286	LS	LUMP SUM	_____.
0052	206.2000 Excavation for Structures Culverts (structure) 01. C-55-19	LS	LUMP SUM	_____.
0054	208.0100 Borrow	116,051.000 CY	_____.	_____.
0056	208.1100 Select Borrow	2,593.000 CY	_____.	_____.
0058	210.1500 Backfill Structure Type A	1,832.000 TON	_____.	_____.
0060	210.2500 Backfill Structure Type B	685.000 TON	_____.	_____.



Proposal Schedule of Items

Proposal ID: 20210112033 Project(s): 1021-00-78, 1021-00-79, 1021-04-77, 1021-04-78

Federal ID(s): WISC 2021100, WISC 2021101, WISC 2021102, WISC 2021103

SECTION: 0001

Contract Items

Alt Set ID:

Alt Mbr ID:

Proposal Line Number	Item ID Description	Approximate Quantity and Units	Unit Price	Bid Amount
0062	213.0100 Finishing Roadway (project) 01. 1021-00-78	1.000 EACH	_____.	_____.
0064	213.0100 Finishing Roadway (project) 02. 1021-00-79	1.000 EACH	_____.	_____.
0066	213.0100 Finishing Roadway (project) 03. 1021-04-77	1.000 EACH	_____.	_____.
0068	213.0100 Finishing Roadway (project) 04. 1021-04-78	1.000 EACH	_____.	_____.
0070	305.0110 Base Aggregate Dense 3/4-Inch	27,635.000 TON	_____.	_____.
0072	305.0120 Base Aggregate Dense 1 1/4-Inch	91,532.000 TON	_____.	_____.
0074	311.0115 Breaker Run	57.000 CY	_____.	_____.
0078	415.0120 Concrete Pavement 12-Inch	43,635.000 SY	_____.	_____.
0080	415.0410 Concrete Pavement Approach Slab	900.000 SY	_____.	_____.
0082	416.0620 Drilled Dowel Bars	128.000 EACH	_____.	_____.
0084	416.1010 Concrete Surface Drains	24.000 CY	_____.	_____.
0086	416.1110 Concrete Shoulder Rumble Strips	13,555.000 LF	_____.	_____.
0088	450.4000 HMA Cold Weather Paving	1,860.000 TON	_____.	_____.
0090	455.0605 Tack Coat	5,785.000 GAL	_____.	_____.
0092	460.2000 Incentive Density HMA Pavement	7,150.000 DOL	1.00000	7,150.00



Proposal Schedule of Items

Proposal ID: 20210112033 Project(s): 1021-00-78, 1021-00-79, 1021-04-77, 1021-04-78
Federal ID(s): WISC 2021100, WISC 2021101, WISC 2021102, WISC 2021103

SECTION: 0001 Contract Items

Alt Set ID: Alt Mbr ID:

Table with 5 columns: Proposal Line Number, Item ID Description, Approximate Quantity and Units, Unit Price, Bid Amount. Rows include items like HMA Pavement, Asphaltic Surface Patching, Asphaltic Surface Temporary, Asphaltic Shoulder Rumble Strips, Ice Hot Weather Concreting, Concrete Masonry Bridges, Protective Surface Treatment, Pigmented Surface Sealer, Adhesive Anchors, Prestressed Girder, Concrete Masonry Culverts, Bar Steel Reinforcement HS Structures.





Proposal Schedule of Items

Proposal ID: 20210112033 Project(s): 1021-00-78, 1021-00-79, 1021-04-77, 1021-04-78

Federal ID(s): WISC 2021100, WISC 2021101, WISC 2021102, WISC 2021103

SECTION: 0001

Contract Items

Alt Set ID:

Alt Mbr ID:

Proposal Line Number	Item ID Description	Approximate Quantity and Units	Unit Price	Bid Amount
0126	506.2605 Bearing Pads Elastomeric Non-Laminated	216.000 EACH	_____.	_____.
0128	506.4000 Steel Diaphragms (structure) 01. B-55-0271	15.000 EACH	_____.	_____.
0130	506.4000 Steel Diaphragms (structure) 02. B-55-0270	21.000 EACH	_____.	_____.
0132	506.4000 Steel Diaphragms (structure) 03. B-55-0281	18.000 EACH	_____.	_____.
0134	506.4000 Steel Diaphragms (structure) 04. B-55-0285	9.000 EACH	_____.	_____.
0136	506.4000 Steel Diaphragms (structure) 05. B-55-0282	18.000 EACH	_____.	_____.
0138	506.4000 Steel Diaphragms (structure) 06. B-55-0286	9.000 EACH	_____.	_____.
0140	511.1100 Temporary Shoring	1,700.000 SF	_____.	_____.
0142	511.1200 Temporary Shoring (structure) 01. C-55-19	1,660.000 SF	_____.	_____.
0144	511.1200 Temporary Shoring (structure) 02. B-55-0270	650.000 SF	_____.	_____.
0146	511.1200 Temporary Shoring (structure) 03. B-55-0285	1,500.000 SF	_____.	_____.
0148	511.1200 Temporary Shoring (structure) 04. B-55-0282	1,350.000 SF	_____.	_____.
0150	511.1200 Temporary Shoring (structure) 05. B-55-0286	300.000 SF	_____.	_____.



Proposal Schedule of Items

Proposal ID: 20210112033 Project(s): 1021-00-78, 1021-00-79, 1021-04-77, 1021-04-78

Federal ID(s): WISC 2021100, WISC 2021101, WISC 2021102, WISC 2021103

SECTION: 0001

Contract Items

Alt Set ID:

Alt Mbr ID:

Proposal Line Number	Item ID Description	Approximate Quantity and Units	Unit Price	Bid Amount
0152	516.0500 Rubberized Membrane Waterproofing	181.000 SY	_____.	_____.
0154	520.1018 Apron Endwalls for Culvert Pipe 18-Inch	4.000 EACH	_____.	_____.
0156	520.1024 Apron Endwalls for Culvert Pipe 24-Inch	1.000 EACH	_____.	_____.
0158	520.1036 Apron Endwalls for Culvert Pipe 36-Inch	4.000 EACH	_____.	_____.
0160	520.2018 Culvert Pipe Temporary 18-Inch	1,400.000 LF	_____.	_____.
0162	520.3424 Culvert Pipe Class III-A Non-metal 24-Inch	238.000 LF	_____.	_____.
0164	520.3636 Culvert Pipe Class III-B Non-metal 36-Inch	266.000 LF	_____.	_____.
0166	522.0124 Culvert Pipe Reinforced Concrete Class III 24-Inch	937.000 LF	_____.	_____.
0168	522.0130 Culvert Pipe Reinforced Concrete Class III 30-Inch	279.000 LF	_____.	_____.
0170	522.1018 Apron Endwalls for Culvert Pipe Reinforced Concrete 18-Inch	5.000 EACH	_____.	_____.
0172	522.1024 Apron Endwalls for Culvert Pipe Reinforced Concrete 24-Inch	9.000 EACH	_____.	_____.
0174	522.1030 Apron Endwalls for Culvert Pipe Reinforced Concrete 30-Inch	2.000 EACH	_____.	_____.
0176	531.1100 Concrete Masonry Ancillary Structures Type NS	7.000 CY	_____.	_____.
0178	531.1140 Steel Reinforcement HS Ancillary Structures Type NS	870.000 LB	_____.	_____.



Proposal Schedule of Items

Proposal ID: 20210112033 Project(s): 1021-00-78, 1021-00-79, 1021-04-77, 1021-04-78

Federal ID(s): WISC 2021100, WISC 2021101, WISC 2021102, WISC 2021103

SECTION: 0001

Contract Items

Alt Set ID:

Alt Mbr ID:

Proposal Line Number	Item ID Description	Approximate Quantity and Units	Unit Price	Bid Amount
0180	550.0020 Pre-Boring Rock or Consolidated Materials	1,470.000 LF	_____	_____
0182	550.0500 Pile Points	168.000 EACH	_____	_____
0184	550.1120 Piling Steel HP 12-Inch X 53 Lb	3,315.000 LF	_____	_____
0186	550.2106 Piling CIP Concrete 10 3/4 X 0.365-Inch	8,140.000 LF	_____	_____
0188	601.0576 Concrete Curb & Gutter 4-Inch Sloped 30-Inch Type J	50.000 LF	_____	_____
0190	601.0590 Concrete Curb & Gutter 4-Inch Sloped 36-Inch Type TBTT	560.000 LF	_____	_____
0192	602.0405 Concrete Sidewalk 4-Inch	160.000 SF	_____	_____
0194	603.8000 Concrete Barrier Temporary Precast Delivered	38,810.000 LF	_____	_____
0196	603.8125 Concrete Barrier Temporary Precast Installed	55,580.000 LF	_____	_____
0198	603.8500 Anchoring Concrete Barrier Temporary Precast	11,850.000 LF	_____	_____
0200	603.8505 Anchoring Concrete Barrier Temporary Precast on Bridge Decks	205.000 LF	_____	_____
0202	604.0500 Slope Paving Crushed Aggregate	1,380.000 SY	_____	_____
0204	606.0100 Riprap Light	66.000 CY	_____	_____
0206	606.0300 Riprap Heavy	2,068.000 CY	_____	_____



Proposal Schedule of Items

Proposal ID: 20210112033 Project(s): 1021-00-78, 1021-00-79, 1021-04-77, 1021-04-78

Federal ID(s): WISC 2021100, WISC 2021101, WISC 2021102, WISC 2021103

SECTION: 0001

Contract Items

Alt Set ID:

Alt Mbr ID:

Proposal Line Number	Item ID Description	Approximate Quantity and Units	Unit Price	Bid Amount
0208	611.0430 Reconstructing Inlets	5.000 EACH	_____.	_____.
0210	611.0642 Inlet Covers Type MS	12.000 EACH	_____.	_____.
0212	611.3901 Inlets Median 1 Grate	8.000 EACH	_____.	_____.
0214	611.3902 Inlets Median 2 Grate	2.000 EACH	_____.	_____.
0216	611.8120.S Cover Plates Temporary	7.000 EACH	_____.	_____.
0218	612.0206 Pipe Underdrain Unperforated 6-Inch	600.000 LF	_____.	_____.
0220	612.0406 Pipe Underdrain Wrapped 6-Inch	1,220.000 LF	_____.	_____.
0222	613.1100.S Cable Barrier Type 1	4,375.000 LF	_____.	_____.
0224	613.1200.S Cable Barrier End Terminal Type 1	6.000 EACH	_____.	_____.
0226	614.0150 Anchor Assemblies for Steel Plate Beam Guard	24.000 EACH	_____.	_____.
0228	614.0220 Steel Thrie Beam Bullnose Terminal	3.000 EACH	_____.	_____.
0230	614.0360 Steel Plate Beam Guard Temporary	240.000 LF	_____.	_____.
0232	614.0380 Steel Plate Beam Guard Energy Absorbing Terminal Temporary	1.000 EACH	_____.	_____.
0234	614.0905 Crash Cushions Temporary	10.000 EACH	_____.	_____.
0236	614.0920 Salvaged Rail	1,226.000 LF	_____.	_____.
0238	614.2300 MGS Guardrail 3	4,613.000 LF	_____.	_____.



Proposal Schedule of Items

Proposal ID: 20210112033 Project(s): 1021-00-78, 1021-00-79, 1021-04-77, 1021-04-78

Federal ID(s): WISC 2021100, WISC 2021101, WISC 2021102, WISC 2021103

SECTION: 0001

Contract Items

Alt Set ID:

Alt Mbr ID:

Proposal Line Number	Item ID Description	Approximate Quantity and Units	Unit Price	Bid Amount
0240	614.2500 MGS Thrie Beam Transition	576.000 LF	_____.	_____.
0242	614.2610 MGS Guardrail Terminal EAT	10.000 EACH	_____.	_____.
0244	614.2620 MGS Guardrail Terminal Type 2	12.000 EACH	_____.	_____.
0246	616.0100 Fence Woven Wire (height) 01. 4-FT	11,630.000 LF	_____.	_____.
0248	618.0100 Maintenance And Repair of Haul Roads (project) 01. 1021-00-78	1.000 EACH	_____.	_____.
0250	618.0100 Maintenance And Repair of Haul Roads (project) 02. 1021-00-79	1.000 EACH	_____.	_____.
0252	618.0100 Maintenance And Repair of Haul Roads (project) 03. 1021-04-77	1.000 EACH	_____.	_____.
0254	618.0100 Maintenance And Repair of Haul Roads (project) 04. 1021-04-78	1.000 EACH	_____.	_____.
0256	619.1000 Mobilization	1.000 EACH	_____.	_____.
0258	620.0300 Concrete Median Sloped Nose	14.000 SF	_____.	_____.
0260	624.0100 Water	918.000 MGAL	_____.	_____.
0262	625.0500 Salvaged Topsoil	191,795.000 SY	_____.	_____.
0264	627.0200 Mulching	119,215.000 SY	_____.	_____.
0266	628.1504 Silt Fence	15,135.000 LF	_____.	_____.
0268	628.1520 Silt Fence Maintenance	15,135.000 LF	_____.	_____.



Proposal Schedule of Items

Proposal ID: 20210112033 Project(s): 1021-00-78, 1021-00-79, 1021-04-77, 1021-04-78

Federal ID(s): WISC 2021100, WISC 2021101, WISC 2021102, WISC 2021103

SECTION: 0001

Contract Items

Alt Set ID:

Alt Mbr ID:

Proposal Line Number	Item ID Description	Approximate Quantity and Units	Unit Price	Bid Amount
0270	628.1905 Mobilizations Erosion Control	10.000 EACH	_____.	_____.
0272	628.1910 Mobilizations Emergency Erosion Control	8.000 EACH	_____.	_____.
0274	628.2002 Erosion Mat Class I Type A	21,560.000 SY	_____.	_____.
0276	628.2004 Erosion Mat Class I Type B	54,730.000 SY	_____.	_____.
0278	628.7005 Inlet Protection Type A	11.000 EACH	_____.	_____.
0280	628.7504 Temporary Ditch Checks	2,280.000 LF	_____.	_____.
0282	628.7560 Tracking Pads	12.000 EACH	_____.	_____.
0284	628.7570 Rock Bags	50.000 EACH	_____.	_____.
0286	629.0210 Fertilizer Type B	121.000 CWT	_____.	_____.
0288	630.0130 Seeding Mixture No. 30	2,855.000 LB	_____.	_____.
0290	630.0200 Seeding Temporary	5,190.000 LB	_____.	_____.
0292	630.0300 Seeding Borrow Pit	2,360.000 LB	_____.	_____.
0294	630.0500 Seed Water	1,082.000 MGAL	_____.	_____.
0296	633.0100 Delineator Posts Steel	65.000 EACH	_____.	_____.
0298	633.0500 Delineator Reflectors	65.000 EACH	_____.	_____.
0300	633.1100 Delineators Temporary	332.000 EACH	_____.	_____.



Proposal Schedule of Items

Proposal ID: 20210112033 Project(s): 1021-00-78, 1021-00-79, 1021-04-77, 1021-04-78

Federal ID(s): WISC 2021100, WISC 2021101, WISC 2021102, WISC 2021103

SECTION: 0001

Contract Items

Alt Set ID:

Alt Mbr ID:

Proposal Line Number	Item ID Description	Approximate Quantity and Units	Unit Price	Bid Amount
0302	633.5200 Markers Culvert End	12.000 EACH	_____.	_____.
0304	634.0614 Posts Wood 4x6-Inch X 14-FT	28.000 EACH	_____.	_____.
0306	634.0616 Posts Wood 4x6-Inch X 16-FT	6.000 EACH	_____.	_____.
0308	635.0200 Sign Supports Structural Steel HS	3,535.000 LB	_____.	_____.
0310	637.2230 Signs Type II Reflective F	12.000 SF	_____.	_____.
0312	638.2101 Moving Signs Type I	1.000 EACH	_____.	_____.
0314	638.2102 Moving Signs Type II	27.000 EACH	_____.	_____.
0316	638.3000 Removing Small Sign Supports	27.000 EACH	_____.	_____.
0318	638.3100 Removing Structural Steel Sign Supports	5.000 EACH	_____.	_____.
0320	642.5201 Field Office Type C	1.000 EACH	_____.	_____.
0322	643.0300 Traffic Control Drums	58,975.000 DAY	_____.	_____.
0324	643.0420 Traffic Control Barricades Type III	5,230.000 DAY	_____.	_____.
0326	643.0705 Traffic Control Warning Lights Type A	7,190.000 DAY	_____.	_____.
0328	643.0715 Traffic Control Warning Lights Type C	20,280.000 DAY	_____.	_____.
0330	643.0800 Traffic Control Arrow Boards	1,830.000 DAY	_____.	_____.
0332	643.0900 Traffic Control Signs	27,830.000 DAY	_____.	_____.



Proposal Schedule of Items

Proposal ID: 20210112033 Project(s): 1021-00-78, 1021-00-79, 1021-04-77, 1021-04-78
Federal ID(s): WISC 2021100, WISC 2021101, WISC 2021102, WISC 2021103

SECTION: 0001 Contract Items

Alt Set ID: Alt Mbr ID:

Table with 5 columns: Proposal Line Number, Item ID Description, Approximate Quantity and Units, Unit Price, Bid Amount. Rows include items like Traffic Control Covering Signs Type II, Traffic Control Signs PCMS with Cellular Communications, Traffic Control Interim Lane Closure, etc.





Proposal Schedule of Items

Proposal ID: 20210112033 Project(s): 1021-00-78, 1021-00-79, 1021-04-77, 1021-04-78  
 Federal ID(s): WISC 2021100, WISC 2021101, WISC 2021102, WISC 2021103

SECTION: 0001 Contract Items

Alt Set ID: Alt Mbr ID:

Proposal Line Number	Item ID Description	Approximate Quantity and Units	Unit Price	Bid Amount
0364	649.0105 Temporary Marking Line Paint 4-Inch	120,970.000 LF	_____.	_____.
0366	649.0120 Temporary Marking Line Epoxy 4-Inch	41,750.000 LF	_____.	_____.
0368	649.0150 Temporary Marking Line Removable Tape 4-Inch	18,175.000 LF	_____.	_____.
0370	649.0760 Temporary Marking Raised Pavement Marker Type I	350.000 EACH	_____.	_____.
0372	650.4000 Construction Staking Storm Sewer	12.000 EACH	_____.	_____.
0374	650.4500 Construction Staking Subgrade	30,459.000 LF	_____.	_____.
0376	650.5000 Construction Staking Base	38,284.000 LF	_____.	_____.
0378	650.5500 Construction Staking Curb Gutter and Curb & Gutter	610.000 LF	_____.	_____.
0380	650.6500 Construction Staking Structure Layout (structure) 01. B-55-0271	LS	LUMP SUM	_____.
0382	650.6500 Construction Staking Structure Layout (structure) 02. B-55-0270	LS	LUMP SUM	_____.
0384	650.6500 Construction Staking Structure Layout (structure) 03. C-55-19	LS	LUMP SUM	_____.
0386	650.6500 Construction Staking Structure Layout (structure) 04. B-55-0281	LS	LUMP SUM	_____.
0388	650.6500 Construction Staking Structure Layout (structure) 05. B-55-0285	LS	LUMP SUM	_____.
0390	650.6500 Construction Staking Structure Layout (structure) 06. B-55-0282	LS	LUMP SUM	_____.



Proposal Schedule of Items

Proposal ID: 20210112033 Project(s): 1021-00-78, 1021-00-79, 1021-04-77, 1021-04-78  
 Federal ID(s): WISC 2021100, WISC 2021101, WISC 2021102, WISC 2021103

SECTION: 0001 Contract Items

Alt Set ID: Alt Mbr ID:

Proposal Line Number	Item ID Description	Approximate Quantity and Units	Unit Price	Bid Amount
0392	650.6500 Construction Staking Structure Layout (structure) 07. B-55-0286	LS	LUMP SUM	_____.
0394	650.7000 Construction Staking Concrete Pavement	14,755.000 LF	_____.	_____.
0396	650.9910 Construction Staking Supplemental Control (project) 01. 1021-00-78	LS	LUMP SUM	_____.
0398	650.9910 Construction Staking Supplemental Control (project) 02. 1021-00-79	LS	LUMP SUM	_____.
0400	650.9910 Construction Staking Supplemental Control (project) 03. 1021-04-77	LS	LUMP SUM	_____.
0402	650.9910 Construction Staking Supplemental Control (project) 04. 1021-04-78	LS	LUMP SUM	_____.
0404	650.9920 Construction Staking Slope Stakes	37,024.000 LF	_____.	_____.
0406	652.0125 Conduit Rigid Metallic 2-Inch	10.000 LF	_____.	_____.
0408	652.0225 Conduit Rigid Nonmetallic Schedule 40 2-Inch	265.000 LF	_____.	_____.
0410	653.0140 Pull Boxes Steel 24x42-Inch	2.000 EACH	_____.	_____.
0412	653.0905 Removing Pull Boxes	1.000 EACH	_____.	_____.
0414	655.0625 Electrical Wire Lighting 6 AWG	870.000 LF	_____.	_____.
0416	670.0100 Field System Integrator	LS	LUMP SUM	_____.
0418	670.0200 ITS Documentation	LS	LUMP SUM	_____.



Proposal Schedule of Items

Proposal ID: 20210112033 Project(s): 1021-00-78, 1021-00-79, 1021-04-77, 1021-04-78  
 Federal ID(s): WISC 2021100, WISC 2021101, WISC 2021102, WISC 2021103

SECTION: 0001 Contract Items

Alt Set ID: Alt Mbr ID:

Proposal Line Number	Item ID Description	Approximate Quantity and Units	Unit Price	Bid Amount
0420	674.0300 Remove Cable	110.000 LF	_____.	_____.
0422	690.0150 Sawing Asphalt	12,394.000 LF	_____.	_____.
0424	690.0250 Sawing Concrete	369.000 LF	_____.	_____.
0426	715.0415 Incentive Strength Concrete Pavement	13,361.000 DOL	1.00000	13,361.00
0428	715.0502 Incentive Strength Concrete Structures	25,710.000 DOL	1.00000	25,710.00
0430	715.0710 Optimized Aggregate Gradation Incentive	60,130.000 DOL	1.00000	60,130.00
0432	740.0440 Incentive IRI Ride	12,660.000 DOL	1.00000	12,660.00
0434	ASP.1T0A On-the-Job Training Apprentice at \$5.00/HR	2,100.000 HRS	5.00000	10,500.00
0436	ASP.1T0G On-the-Job Training Graduate at \$5.00/HR	2,400.000 HRS	5.00000	12,000.00
0438	SPV.0060 Special 01. Relocate Ground Mount DMS	1.000 EACH	_____.	_____.
0440	SPV.0060 Special 02. Traffic Control Vertical Panels	169.000 EACH	_____.	_____.
0442	SPV.0060 Special 03. Manholes Special 4-FT Diameter Temporary	4.000 EACH	_____.	_____.
0444	SPV.0060 Special 04. Temporary Inlets Median 1 Gate	2.000 EACH	_____.	_____.
0446	SPV.0105 Special 01. Project Concrete Crack Mitigation and Repair, 1021-00-78	LS	LUMP SUM	_____.



Proposal Schedule of Items

Proposal ID: 20210112033 Project(s): 1021-00-78, 1021-00-79, 1021-04-77, 1021-04-78

Federal ID(s): WISC 2021100, WISC 2021101, WISC 2021102, WISC 2021103

SECTION: 0001

Contract Items

Alt Set ID:

Alt Mbr ID:

Proposal Line Number	Item ID Description	Approximate Quantity and Units	Unit Price	Bid Amount
0448	SPV.0105 Special 02. Project Concrete Crack Mitigation and Repair, 1021-00-79	LS	LUMP SUM	_____.
0450	SPV.0105 Special 03. Project Concrete Crack Mitigation and Repair, 1021-04-77	LS	LUMP SUM	_____.
0452	SPV.0105 Special 04. Project Concrete Crack Mitigation and Repair, 1021-04-78	LS	LUMP SUM	_____.
0454	SPV.0105 Special 05. Temporary Bridge Widening B-55-12	LS	LUMP SUM	_____.
0456	203.0200 Removing Old Structure (station) 05. 158+25.29 EB	LS	LUMP SUM	_____.
0458	312.0110 Select Crushed Material	12,848.000 TON	_____.	_____.
0460	460.6244 HMA Pavement 4 MT 58-34 S	880.000 TON	_____.	_____.
0462	614.0230 Steel Thrie Beam	253.000 LF	_____.	_____.
Section: 0001			Total:	_____.
			Total Bid:	_____.