



# Wisconsin Department of Transportation

February 25, 2021

## Division of Transportation Systems Development

Bureau of Project Development  
4822 Madison Yards Way, 4<sup>th</sup> Floor South  
Madison, WI 53705

Telephone: (608) 266-1631  
Facsimile (FAX): (608) 266-8459

### NOTICE TO ALL CONTRACTORS:

**Proposal #04: 5050-02-70, WISC 2021 219  
REEDSBURG – WISCONSIN DELLS  
N JCT STH 33 INTERSECTION  
STH 23  
SAUK COUNTY**

**5050-02-72, WISC 2021 221  
REEDSBURG – BARABOO  
N JCT STH 23 TO USH 12  
STH 33  
SAUK COUNTY**

**5050-02-71, WISC 2021 220  
REEDSBURG – WISCONSIN DELLS  
COPPER SPRINGS RD TO N JCT STH 33  
STH 23  
SAUK COUNTY**

### Letting of March 9, 2021

This is Addendum No. 1, which provides for the following:

#### Special Provisions:

Revised Special Provisions	
Article No.	Description
20	Marking Line In Sinusoidal Rumble Wet Reflective Epoxy 4-Inch

#### Schedule of Items:

Revised Bid Item Quantities					
Bid Item	Item Description	Unit	Old Quantity	Revised Quantity	Proposal Total
305.0110	Base Aggregate Dense ¾-Inch	TON	678	4,211	4,889
460.0110.S	HMA Pavement PWL Test Strip Density	EACH	5	-3	2
460.2005	Incentive Density PWL HMA Pavement	DOL	27,116	-3,214	23,902
460.2007	Incentive HMA Pavement Longitudinal Joint Density	DOL	98,714	-4,540	96,174
460.2010	Incentive Air Voids HMA Pavement	DOL	42,691	-1,554	41,137
460.6224	HMA Pavement 4 MT 58-28 S	TON	42,691	-1,554	41,137
646.1040	Marking Line Grooved Wet Reflective Epoxy 4-Inch	LF	88,503	3,143	91,646
649.0105	Temporary Marking Line Paint 4-Inch	LF	40,160	1,087	41,247

SPV.0090.03	Marking Line In Sinusoidal Rumble Wet Reflective Epoxy 4-Inch	LF	35,602	-3,142	32,460
-------------	---	----	--------	--------	--------

<b>Added Bid Item Quantities</b>					
Bid Item	Item Description	Unit	Old Quantity	Revised Quantity	Proposal Total
460.7424	HMA Pavement 4 HT 58-28 H	TON	0	1,553	1,553
646.4505	Marking Line Same Day Paint 4-Inch	LF	0	15,109	15,109

**Plan Sheets:**

<b>Revised Plan Sheets</b>	
Plan Sheet	Plan Sheet Title (brief description of changes to sheet)
10	Revised typical sections to show change in HMA pavement mix at roundabouts
11	Revised typical sections to show change in HMA pavement mix at roundabouts
14	Revised construction details to clarify pavement marking locations
23-30	Revised pavement marking sheets to show change to pavement marking items at intersections and driveways
50	Revised miscellaneous quantities to account for adjusted shoulder aggregate quantity
51	Revised miscellaneous quantities to account for added HMA pavement mix
52	Revised miscellaneous quantities to account for adjusted HMA limits and testing requirements
57-58	Revised miscellaneous quantities to account for adjusted pavement marking materials
72	Added note to plan sheet to show location of HMA pavement mix change

<b>Added Plan Sheets</b>	
Plan Sheet	Plan Sheet Title (brief description of why sheet was added)
58A	Revised miscellaneous quantities to account for adjusted pavement marking materials

The responsibility for notifying potential subcontractors and suppliers of these changes remains with the prime contractor.

Sincerely,

*Mike Coleman*

Proposal Development Specialist  
Proposal Management Section

**ADDENDUM NO. 01**  
**5050-02-71, 5050-02-72, & 5050-02-70**  
**February 25, 2021**

**Special Provisions**

**20. Marking Line In Sinusoidal Rumble Wet Reflective Epoxy 4-Inch, Item SPV.0090.03.**

*Add the following paragraph after the first paragraph of section C Construction:*

If the roadway is open to traffic, apply marking on the same day the sinusoidal rumble is constructed. If weather or pavement conditions prohibit same-day applications, delineate the travel lanes with flexible delineators or type II temporary raised pavement markers and provide signing as the engineer directs. Apply marking as soon as conditions allow. The engineer may restrict operations until this marking is completed.

**Schedule of Items**

Attached, dated February 25, 2021, are the revised Schedule of Items Pages 1 – 8.

**Plan Sheets**

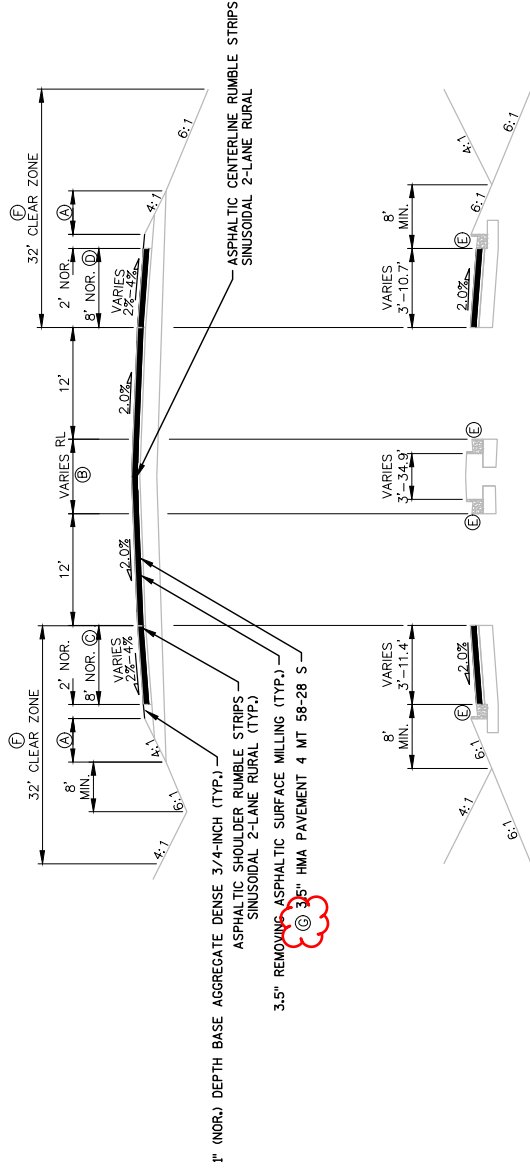
The following 8½ x 11-inch sheets are attached and made part of the plans for this proposal:

Revised: 10, 11, 14, 23-30, 50, 51, 52, 57, 58, and 72.

Added: 58A

END OF ADDENDUM

Addendum No. 01  
 ID 5050-02-70/71/72  
 Revised Sheet 10  
 February 25, 2021



STA. 568+00 - STA. 572+19  
 STA. 573+64 - STA. 574+60  
 STA. 577+20 - STA. 578+18  
 STA. 579+64 - STA. 580+74  
 STA. 592+28

STA. 569+30 - STA. 572+19  
 STA. 573+64 - STA. 574+13  
 STA. 577+69 - STA. 578+18  
 STA. 579+64 - STA. 580+74  
 STA. 590+40 - STA. 592+28

STA. 570+96 - STA. 572+19  
 STA. 573+64 - STA. 574+60  
 STA. 577+20 - STA. 578+18  
 STA. 579+64 - STA. 581+67

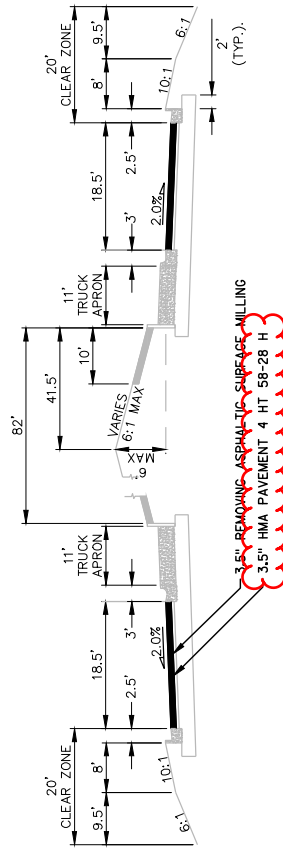
PROPOSED TYPICAL SECTION - STH 33

STA. 559+12 - STA. 572+19  
 STA. 573+64 - STA. 574+60  
 STA. 577+20 - STA. 578+18  
 STA. 579+64 - STA. 592+28

- A VARIES FROM 6.92' TO 7.79'
- B VARIES FROM 0' AT STA. 560+45 TO 10' AT STA. 569+30  
VARIES FROM 0' AT STA. 583+11 TO 16' AT STA. 586+92
- C VARIES FROM 8' AT STA. 561+56 RT TO 13' AT STA. 562+36 RT  
13' FROM STA. 562+36 RT TO STA. 564+89 RT  
VARIES FROM 13' AT STA. 564+89 RT TO 8' AT STA. 565+72 RT
- D VARIES FROM 8' AT STA. 562+67 LT TO 12' AT STA. 563+34  
12' FROM STA. 563+34 TO STA. 566+61  
VARIES FROM 12' AT STA. 566+61 TO 8' AT STA. 567+16
- E EXISTING CONCRETE CURB AND GUTTER 4-INCH SLOPED 36" TYPE D STA. 568+00 TO STA. 569+91  
EXISTING CONCRETE CURB AND GUTTER 30-INCH TYPE D STA. 569+91 TO STA. 581+68
- F PLACE HMA 4 HT 58-28 H FROM STA. 565+00 TO 582+00

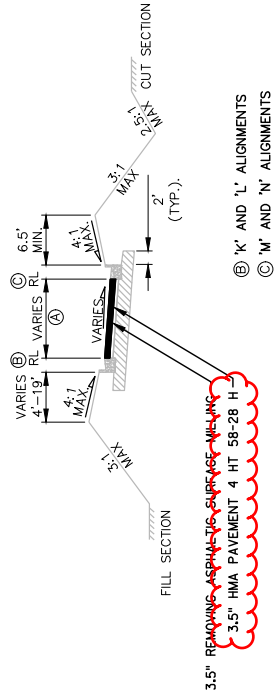
PLACE HMA 4 HT 58-28 H FROM STA. 565+00 TO 582+00

Addendum No. 01  
 ID 5050-02-70/71/72  
 Revised Sheet 11  
 February 25, 2021



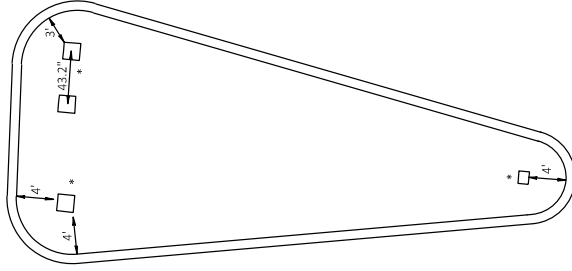
**PROPOSED TYPICAL SECTION — STH 33 (ROUNDABOUT SECTION)**

STA. 572+19 — STA. 573+64  
 STA. 578+18 — STA. 579+64

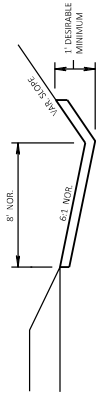


**PROPOSED TYPICAL SECTION — USH 12 RAMPS**

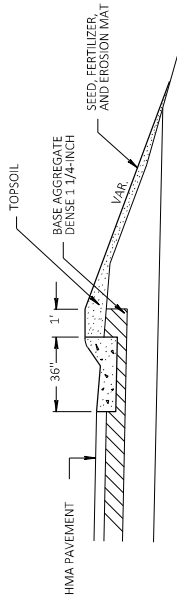
STA. 211'K+30 — STA. 211'K+94; (A) = 15.0' — 16.9'  
 STA. 212'L+81 — STA. 214'L+01; (A) = 18.7' — 23.0'  
 STA. 210'M+70 — STA. 211'M+19; (A) = 15.0' — 15.7'  
 STA. 208'N+62 — STA. 209'N+81; (A) = 18.5' — 23.0'



Addendum No. 01  
 ID 5050-02-70/71/72  
 Revised Sheet 14  
 February 25, 2021



EROSION MAT DETAIL FOR DITCHES



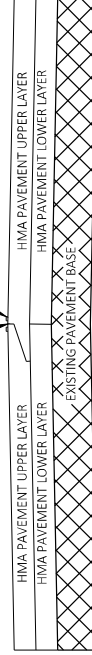
DETAIL OF CURB & GUTTER INSTALLATION

DETAIL OF OPENINGS IN ISLAND FOR SIGN PLACEMENT

\* NOTE: ALL SQUARED OPENINGS IN ISLAND FOR SIGN PLACEMENTS SHALL BE 18" SQUARE UNLESS REVISED BY PROJECT ENGINEER.

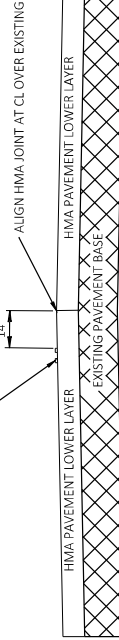
LONGITUDINAL NOTCHED WEDGE JOINT

MARKING LINE SAME DAY PAINT 4-INCH PLACED IN PERMANENT MARKING LOCATION AFTER SURFACE LAYER IS INSTALLED;  
 MARKING LINE IN SINUSOIDAL RUMBLE WET REFLECTIVE EPOXY 4-INCH PLACED AFTER CENTERLINE RUMBLE STRIP IS INSTALLED



PERMANENT PAVEMENT MARKING DETAIL

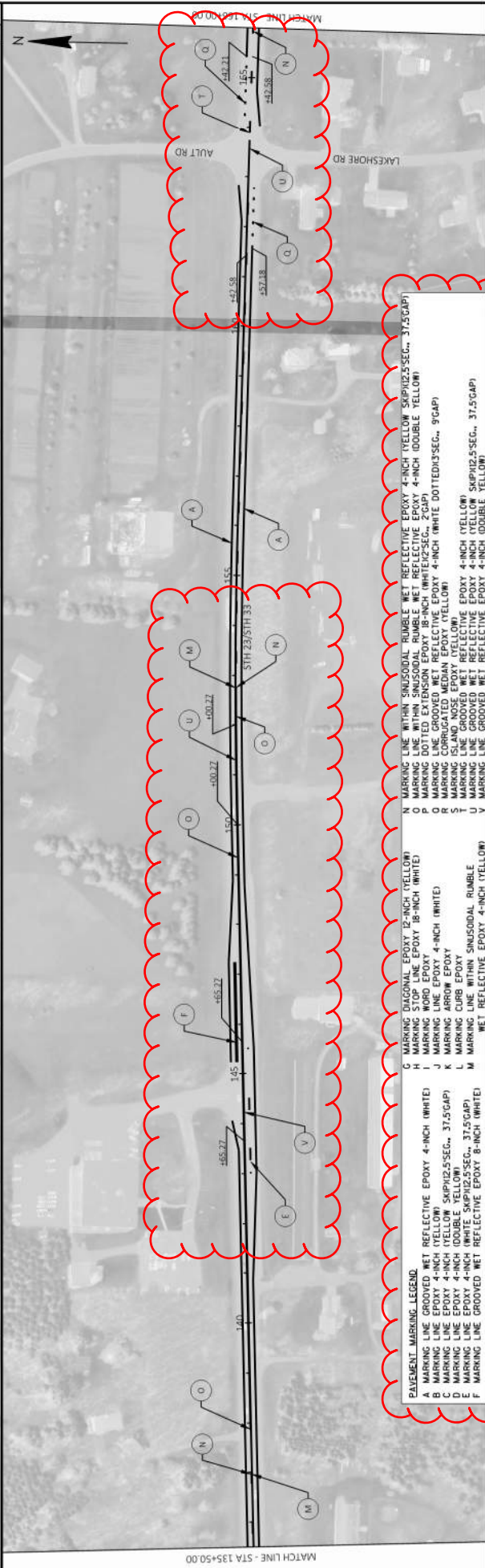
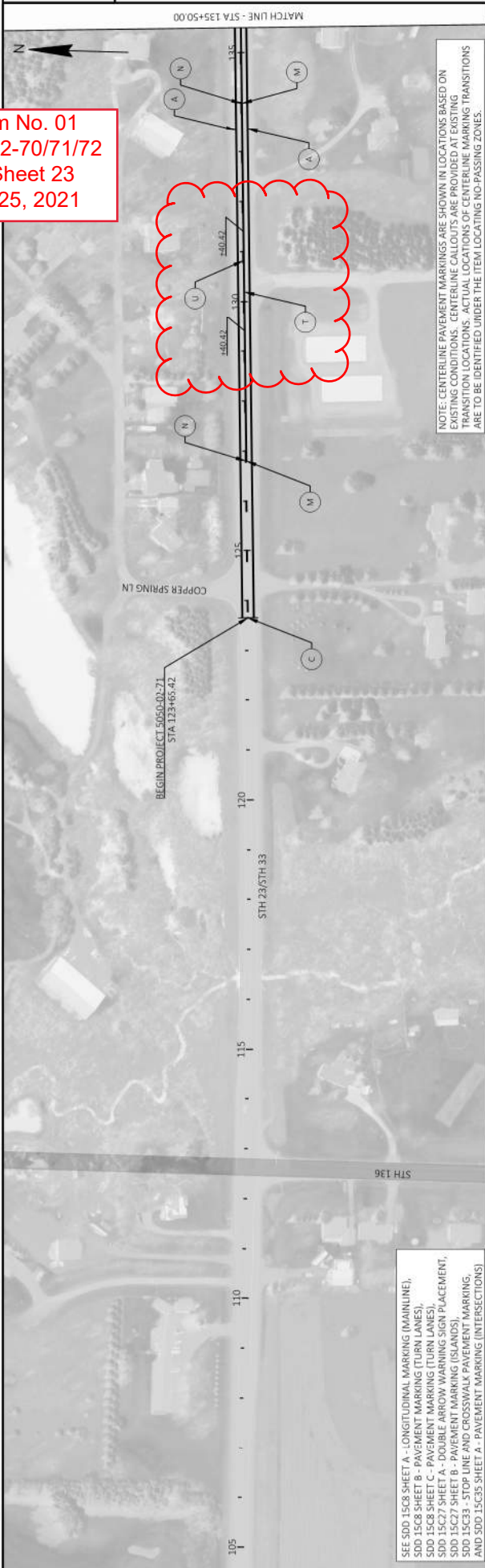
TEMPORARY MARKING LINE PAINT 4-INCH DOUBLE SOLID LINE PLACED AFTER FIRST PASS OF HMA LOWER LAYER\*



TEMPORARY PAVEMENT MARKING DETAIL

\* NOTE: ENSURE TEMPORARY MARKING IS VISIBLE TO TRAFFIC AFTER FIRST PASS OF HMA UPPER LAYER.

Addendum No. 01  
 ID 5050-02-70/71/72  
 Revised Sheet 23  
 February 25, 2021



NOTE: CENTERLINE PAVEMENT MARKINGS ARE SHOWN IN LOCATIONS BASED ON EXISTING CONDITIONS. CENTERLINE CALLOUTS ARE PROVIDED AT EXISTING TRANSITION LOCATIONS. ACTUAL LOCATIONS OF CENTERLINE MARKING TRANSITIONS ARE TO BE IDENTIFIED UNDER THE ITEM LOCATING NO-PASSING ZONES.

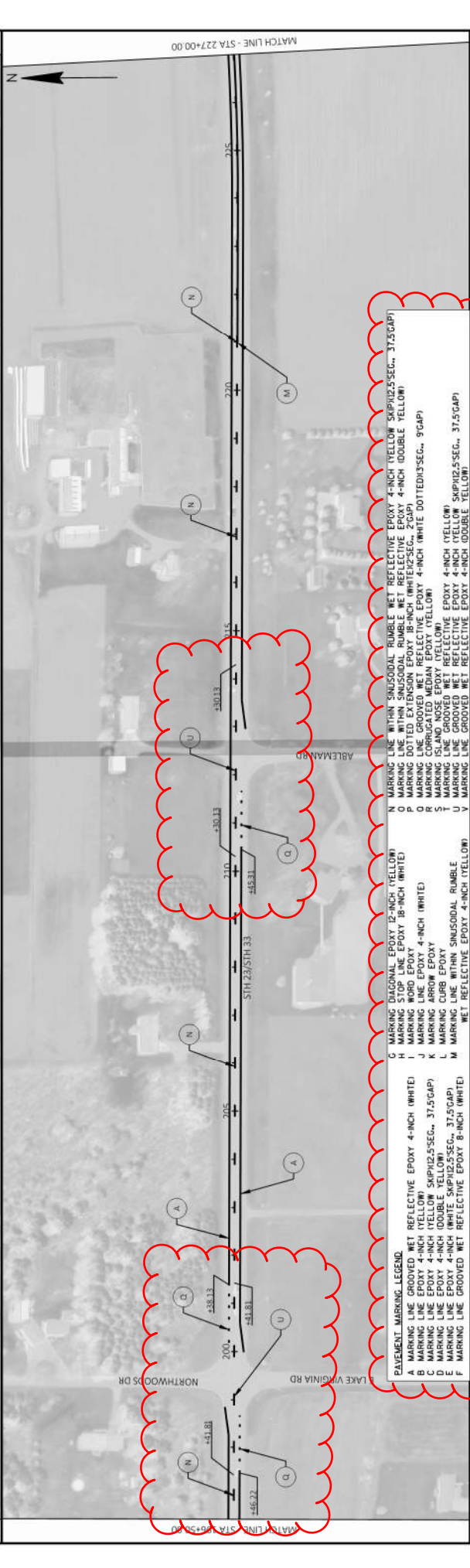
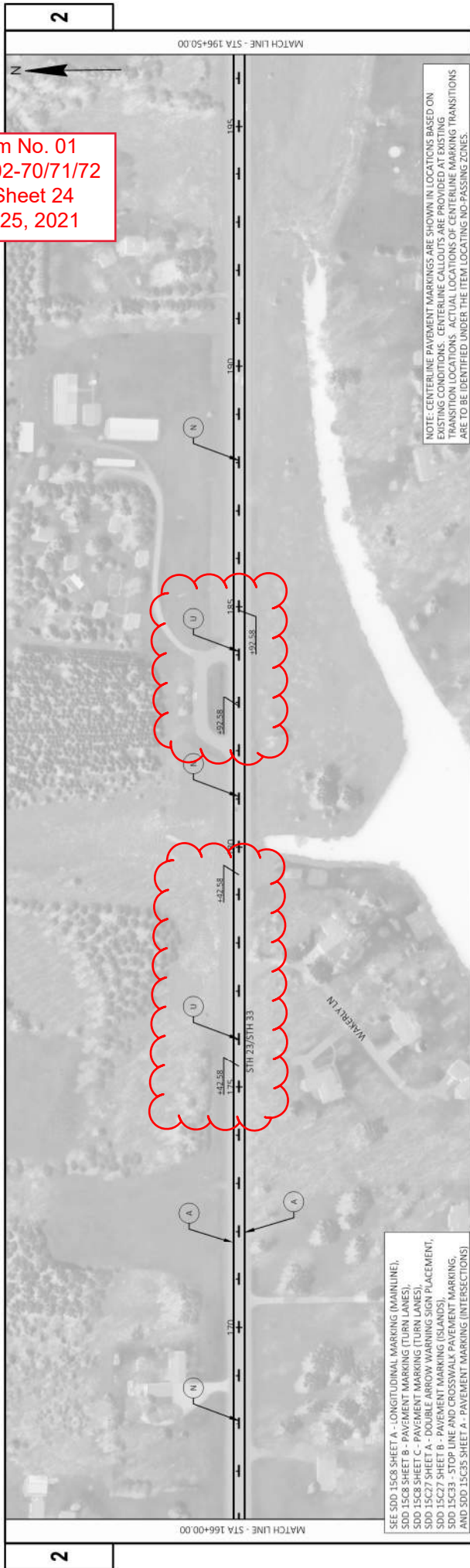
SEE SDD 15C08 SHEET A - LONGITUDINAL MARKING (MAINLINE),  
 SDD 15C08 SHEET B - PAVEMENT MARKING (TURN LANES),  
 SDD 15C08 SHEET C - PAVEMENT MARKING (TURN LANES),  
 SDD 15C27 SHEET A - DOUBLE ARROW WARNING SIGN PLACEMENT,  
 SDD 15C27 SHEET B - PAVEMENT MARKING (ISLANDS),  
 SDD 15C33 - STOP LINE AND CROSSWALK PAVEMENT MARKING,  
 AND SDD 15C35 SHEET A - PAVEMENT MARKING (INTERSECTIONS).

PAVEMENT MARKING LEGEND

N	MARKING LINE WITHIN SIGNISODIAL RUMBLE	WET REFLECTIVE EPOXY 4-INCH (YELLOW SKPH12.5 SEC., 37.5 GAP)
O	MARKING LINE WITHIN SIGNISODIAL RUMBLE	WET REFLECTIVE EPOXY 4-INCH (DOUBLE YELLOW SKPH12.5 SEC., 37.5 GAP)
D	MARKING LINE GROOVED	WET REFLECTIVE EPOXY 4-INCH (WHITE DOTTED/3" SEG., 9" GAP)
R	MARKING CORRUGATED MEDIUM EPOXY	(YELLOW)
S	MARKING ISLAND NOSE EPOXY	(YELLOW)
L	MARKING CURB EPOXY	(YELLOW)
M	MARKING LINE WITHIN SIGNISODIAL RUMBLE	EPOXY 4-INCH (YELLOW SKPH12.5 SEC., 37.5 GAP)
U	MARKING LINE GROOVED	WET REFLECTIVE EPOXY 4-INCH (DOUBLE YELLOW SKPH12.5 SEC., 37.5 GAP)
V	MARKING LINE WITHIN SIGNISODIAL RUMBLE	WET REFLECTIVE EPOXY 4-INCH (YELLOW)
F	MARKING DIAGONAL EPOXY	12-INCH (YELLOW)
H	MARKING STOP LINE EPOXY	18-INCH (WHITE)
J	MARKING LINE EPOXY	4-INCH (WHITE)
K	MARKING ARROW EPOXY	4-INCH (WHITE)
L	MARKING CURB EPOXY	4-INCH (WHITE)
M	MARKING LINE WITHIN SIGNISODIAL RUMBLE	WET REFLECTIVE EPOXY 4-INCH (YELLOW)
N	MARKING LINE WITHIN SIGNISODIAL RUMBLE	WET REFLECTIVE EPOXY 4-INCH (YELLOW SKPH12.5 SEC., 37.5 GAP)
O	MARKING LINE WITHIN SIGNISODIAL RUMBLE	WET REFLECTIVE EPOXY 4-INCH (DOUBLE YELLOW SKPH12.5 SEC., 37.5 GAP)
D	MARKING LINE GROOVED	WET REFLECTIVE EPOXY 4-INCH (WHITE DOTTED/3" SEG., 9" GAP)
R	MARKING CORRUGATED MEDIUM EPOXY	(YELLOW)
S	MARKING ISLAND NOSE EPOXY	(YELLOW)
L	MARKING CURB EPOXY	(YELLOW)
M	MARKING LINE WITHIN SIGNISODIAL RUMBLE	EPOXY 4-INCH (YELLOW SKPH12.5 SEC., 37.5 GAP)
U	MARKING LINE GROOVED	WET REFLECTIVE EPOXY 4-INCH (DOUBLE YELLOW SKPH12.5 SEC., 37.5 GAP)
V	MARKING LINE WITHIN SIGNISODIAL RUMBLE	WET REFLECTIVE EPOXY 4-INCH (YELLOW)



Addendum No. 01  
 ID 5050-02-70/71/72  
 Revised Sheet 24  
 February 25, 2021

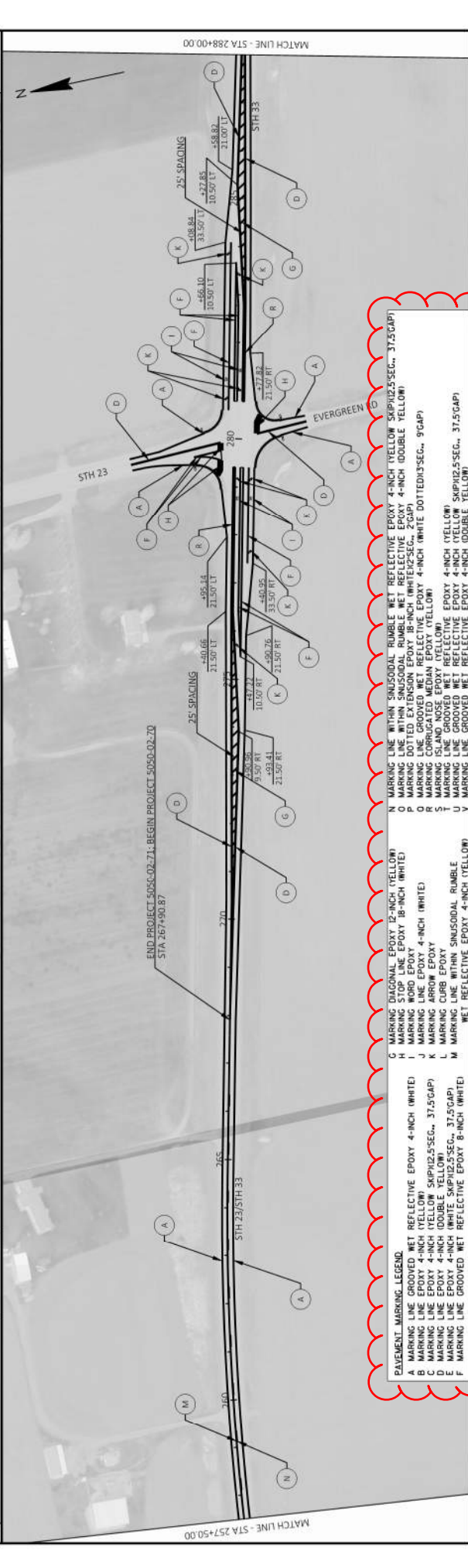
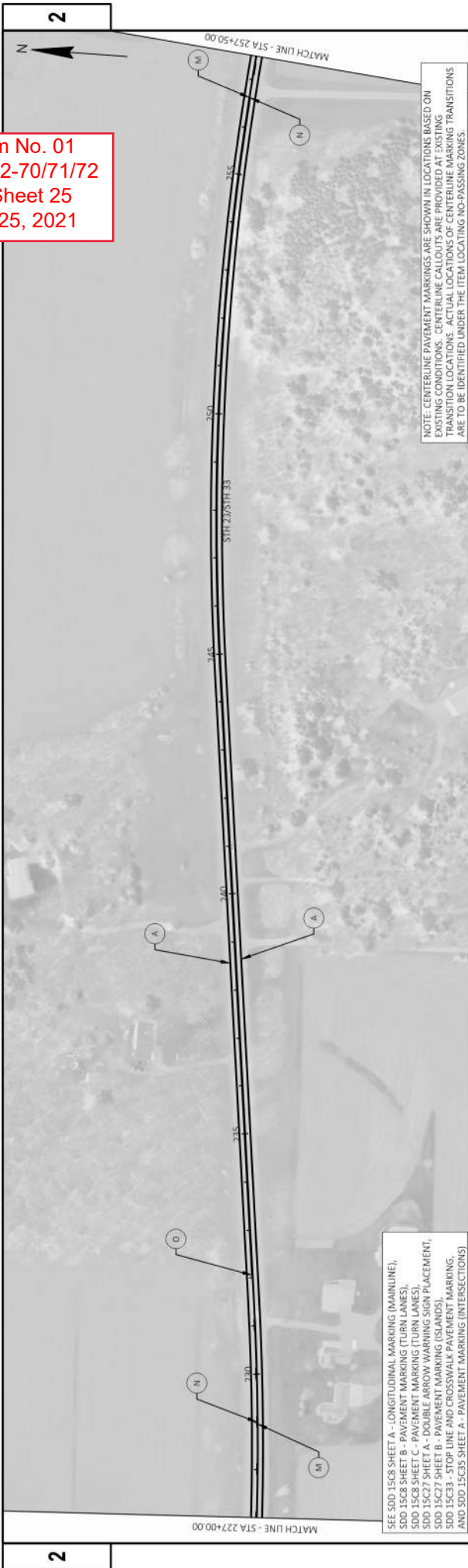


**PAVEMENT MARKING LEGEND**

A	MARKING LINE WITHIN SNUSODIAL RUMBLE	WET REFLECTIVE EPOXY 4-INCH (YELLOW)	SKPH12.5 SEC., 37.5 G/PI
B	MARKING LINE WITHIN SNUSODIAL RUMBLE	WET REFLECTIVE EPOXY 4-INCH (DOUBLE YELLOW)	SKPH12.5 SEC., 37.5 G/PI
C	MARKING LINE WITHIN SNUSODIAL RUMBLE	WET REFLECTIVE EPOXY 4-INCH (WHITE)	SKPH12.5 SEC., 37.5 G/PI
D	MARKING LINE WITHIN SNUSODIAL RUMBLE	WET REFLECTIVE EPOXY 4-INCH (WHITE DOTTED) 3 SEC., 9 G/PI	SKPH12.5 SEC., 37.5 G/PI
E	MARKING LINE WITHIN SNUSODIAL RUMBLE	WET REFLECTIVE EPOXY 4-INCH (WHITE DOTTED) 3 SEC., 9 G/PI	SKPH12.5 SEC., 37.5 G/PI
F	MARKING LINE WITHIN SNUSODIAL RUMBLE	WET REFLECTIVE EPOXY 4-INCH (WHITE)	SKPH12.5 SEC., 37.5 G/PI
G	MARKING LINE WITHIN SNUSODIAL RUMBLE	WET REFLECTIVE EPOXY 4-INCH (YELLOW)	SKPH12.5 SEC., 37.5 G/PI
H	MARKING LINE WITHIN SNUSODIAL RUMBLE	WET REFLECTIVE EPOXY 4-INCH (WHITE)	SKPH12.5 SEC., 37.5 G/PI
I	MARKING LINE WITHIN SNUSODIAL RUMBLE	WET REFLECTIVE EPOXY 4-INCH (WHITE)	SKPH12.5 SEC., 37.5 G/PI
J	MARKING LINE WITHIN SNUSODIAL RUMBLE	WET REFLECTIVE EPOXY 4-INCH (WHITE)	SKPH12.5 SEC., 37.5 G/PI
K	MARKING LINE WITHIN SNUSODIAL RUMBLE	WET REFLECTIVE EPOXY 4-INCH (WHITE)	SKPH12.5 SEC., 37.5 G/PI
L	MARKING LINE WITHIN SNUSODIAL RUMBLE	WET REFLECTIVE EPOXY 4-INCH (YELLOW)	SKPH12.5 SEC., 37.5 G/PI
M	MARKING LINE WITHIN SNUSODIAL RUMBLE	WET REFLECTIVE EPOXY 4-INCH (YELLOW)	SKPH12.5 SEC., 37.5 G/PI
N	MARKING LINE WITHIN SNUSODIAL RUMBLE	WET REFLECTIVE EPOXY 4-INCH (YELLOW)	SKPH12.5 SEC., 37.5 G/PI
O	MARKING LINE WITHIN SNUSODIAL RUMBLE	WET REFLECTIVE EPOXY 4-INCH (DOUBLE YELLOW)	SKPH12.5 SEC., 37.5 G/PI
P	MARKING LINE WITHIN SNUSODIAL RUMBLE	WET REFLECTIVE EPOXY 4-INCH (WHITE)	SKPH12.5 SEC., 37.5 G/PI
Q	MARKING LINE WITHIN SNUSODIAL RUMBLE	WET REFLECTIVE EPOXY 4-INCH (WHITE)	SKPH12.5 SEC., 37.5 G/PI
R	MARKING LINE WITHIN SNUSODIAL RUMBLE	WET REFLECTIVE EPOXY 4-INCH (WHITE)	SKPH12.5 SEC., 37.5 G/PI
S	MARKING LINE WITHIN SNUSODIAL RUMBLE	WET REFLECTIVE EPOXY 4-INCH (YELLOW)	SKPH12.5 SEC., 37.5 G/PI
T	MARKING LINE WITHIN SNUSODIAL RUMBLE	WET REFLECTIVE EPOXY 4-INCH (YELLOW)	SKPH12.5 SEC., 37.5 G/PI
U	MARKING LINE WITHIN SNUSODIAL RUMBLE	WET REFLECTIVE EPOXY 4-INCH (YELLOW)	SKPH12.5 SEC., 37.5 G/PI
V	MARKING LINE WITHIN SNUSODIAL RUMBLE	WET REFLECTIVE EPOXY 4-INCH (YELLOW)	SKPH12.5 SEC., 37.5 G/PI



Addendum No. 01  
 ID 5050-02-70/71/72  
 Revised Sheet 25  
 February 25, 2021



SEE SDD 15C8 SHEET A - LONGITUDINAL MARKING (MAINLINE),  
 SDD 15C8 SHEET B - PAVEMENT MARKING (TURN LANES),  
 SDD 15C8 SHEET C - PAVEMENT MARKING (TURN LANES),  
 SDD 15C27 SHEET A - DOUBLE ARROW WARNING SIGN PLACEMENT,  
 SDD 15C27 SHEET B - PAVEMENT MARKING (ISLANDS),  
 SDD 15C33 - STOP LINE AND CROSSWALK PAVEMENT MARKING,  
 AND SDD 15C35 SHEET A - PAVEMENT MARKING (INTERSECTIONS).

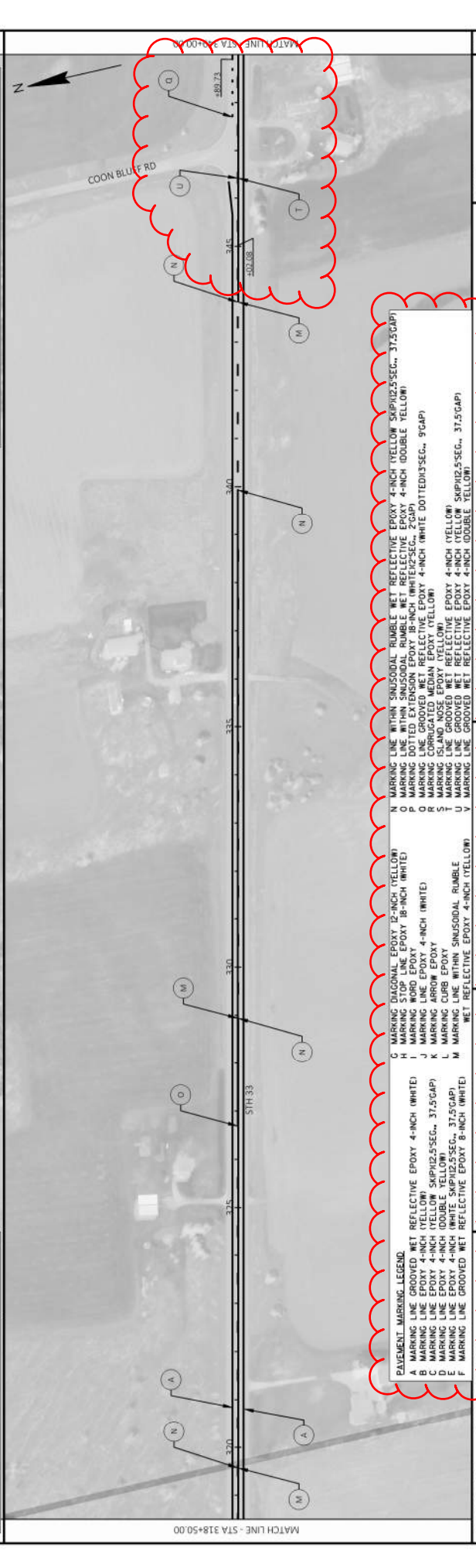
- PAVEMENT MARKING LEGEND**
- G MARKING DIAGONAL EPOXY 12-INCH (YELLOW)
  - H MARKING STOP LINE EPOXY 18-INCH (WHITE)
  - I MARKING STOP LINE EPOXY 4-INCH (WHITE)
  - J MARKING STOP LINE EPOXY 4-INCH (WHITE)
  - K MARKING CORRUATED MEDIAN EPOXY (YELLOW)
  - L MARKING CURB EPOXY
  - M MARKING LINE WITHIN SNUSODIAL RUMBLE
  - N MARKING LINE WITHIN SNUSODIAL RUMBLE WET REFLECTIVE EPOXY 4-INCH (YELLOW)
  - O MARKING LINE WITHIN SNUSODIAL RUMBLE WET REFLECTIVE EPOXY 4-INCH (DOUBLE YELLOW)
  - P MARKING LINE GROOVED WET REFLECTIVE EPOXY 4-INCH (WHITE DOTTED) 3-SEG., 9(GAP)
  - Q MARKING CORRUGATED MEDIAN EPOXY (YELLOW)
  - R MARKING ISLAND NOSE EPOXY (YELLOW)
  - S MARKING ISLAND NOSE EPOXY (YELLOW)
  - T MARKING LINE GROOVED WET REFLECTIVE EPOXY 4-INCH (YELLOW)
  - U MARKING LINE GROOVED WET REFLECTIVE EPOXY 4-INCH (DOUBLE YELLOW)
  - V MARKING LINE GROOVED WET REFLECTIVE EPOXY 4-INCH (DOUBLE YELLOW)

Addendum No. 01  
 ID 5050-02-70/71/72  
 Revised Sheet 26  
 February 25, 2021



NOTE: CENTERLINE PAVEMENT MARKINGS ARE SHOWN IN LOCATIONS BASED ON EXISTING CONDITIONS. CENTERLINE CALLOUTS ARE PROVIDED AT EXISTING TRANSITION LOCATIONS. ACTUAL LOCATIONS OF CENTERLINE MARKING TRANSITIONS ARE TO BE IDENTIFIED UNDER THE ITEM LOCATING NO-PASSING ZONES.

SEE SDD 15C8 SHEET A - LONGITUDINAL MARKING (MAINLINE),  
 SDD 15C8 SHEET B - PAVEMENT MARKING (TURN LANES),  
 SDD 15C8 SHEET C - PAVEMENT MARKING (TURN LANES),  
 SDD 15C27 SHEET A - DOUBLE ARROW WARNING SIGN PLACEMENT,  
 SDD 15C27 SHEET B - PAVEMENT MARKING (ISLANDS),  
 SDD 15C33 - STOP LINE AND CROSSWALK PAVEMENT MARKING,  
 AND SDD 15C35 SHEET A - PAVEMENT MARKING (INTERSECTIONS).



PAVEMENT MARKING LEGEND

N	MARKING LINE WITHIN SINUSOIDAL RUMBLE WET REFLECTIVE EPOXY 4-INCH (YELLOW SKPH12.5 SEC., 37.5 GAP)
O	MARKING LINE WITHIN SINUSOIDAL RUMBLE WET REFLECTIVE EPOXY 4-INCH (DOUBLE YELLOW)
P	MARKING LINE WITHIN SINUSOIDAL RUMBLE WET REFLECTIVE EPOXY 4-INCH (WHITE DOTTED) (3 SEC., 9 GAP)
R	MARKING CORRUGATED MEDIAN EPOXY (YELLOW)
S	MARKING ISLAND NOSE EPOXY (YELLOW)
T	MARKING ISLAND NOSE EPOXY (YELLOW) EPOXY 4-INCH (YELLOW)
U	MARKING LINE GROOVED WET REFLECTIVE EPOXY 4-INCH (DOUBLE SKPH12.5 SEC., 37.5 GAP)
V	MARKING LINE GROOVED WET REFLECTIVE EPOXY 4-INCH (DOUBLE YELLOW)
G	MARKING DIAGONAL EPOXY 12-INCH (YELLOW)
H	MARKING STOP LINE EPOXY 18-INCH (WHITE)
I	MARKING STOP LINE EPOXY 4-INCH (WHITE)
J	MARKING LINE EPOXY 4-INCH (WHITE)
K	MARKING CURB EPOXY
L	MARKING LINE WITHIN SINUSOIDAL RUMBLE WET REFLECTIVE EPOXY 4-INCH (YELLOW)
M	MARKING LINE WITHIN SINUSOIDAL RUMBLE WET REFLECTIVE EPOXY 4-INCH (WHITE)

PROJECT NO: 5050-02-70/71/72  
 COUNTY: SAUVILLE  
 SHEET 26

FILE NAME: X:\PROJECTS\SAUVILLE\5050-02-01\5TH-25\REVISED\CD\5050-SHEETS\PAV\024501-PAV.DWG  
 LAYOUT NAME: PAV 04

PLOT DATE: 2/24/2021 8:38 AM  
 PLOT BY: JAY HILLE

PLOT SCALE: 1 IN=200 FT  
 WSS07CADD SHEET 04

Addendum No. 01  
 ID 5050-02-70/71/72  
 Revised Sheet 27  
 February 25, 2021



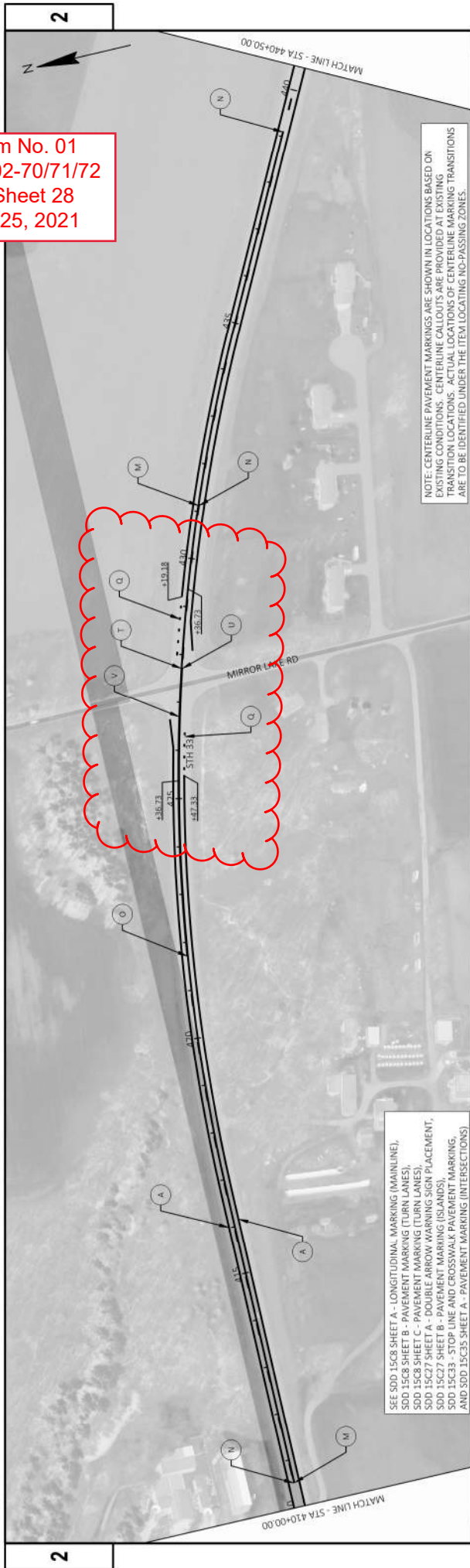
NOTE: CENTERLINE PAVEMENT MARKINGS ARE SHOWN IN LOCATIONS BASED ON EXISTING CONDITIONS. CENTERLINE CALLOUTS ARE PROVIDED AT EXISTING TRANSITION LOCATIONS. ACTUAL LOCATIONS OF CENTERLINE MARKING TRANSMISSIONS ARE TO BE IDENTIFIED UNDER THE ITEM LOCATING NO-PASSING ZONES.

SEE SDD 15C8 SHEET A - LONGITUDINAL MARKING (MAINLINE),  
 SDD 15C8 SHEET B - PAVEMENT MARKING (TURN LANES),  
 SDD 15C8 SHEET C - PAVEMENT MARKING (TURN LANES),  
 SDD 15C27 SHEET A - DOUBLE ARROW WARNING SIGN PLACEMENT,  
 SDD 15C27 SHEET B - PAVEMENT MARKING (ISLANDS),  
 SDD 15C33 - STOP LINE AND CROSSWALK PAVEMENT MARKING,  
 AND SDD 15C35 SHEET A - PAVEMENT MARKING (INTERSECTIONS).

PAVEMENT MARKING LEGEND	
A	MARKING LINE WITHIN SINUSOIDAL RUMBLE WET REFLECTIVE EPOXY 4-INCH (WHITE)
B	MARKING LINE WITHIN SINUSOIDAL RUMBLE WET REFLECTIVE EPOXY 4-INCH (YELLOW)
C	MARKING LINE WITHIN SINUSOIDAL RUMBLE WET REFLECTIVE EPOXY 4-INCH (DOUBLE YELLOW)
D	MARKING LINE WITHIN SINUSOIDAL RUMBLE WET REFLECTIVE EPOXY 4-INCH (DOUBLE YELLOW) SKPH12.5 SEC., 37.5 GAP
E	MARKING LINE WITHIN SINUSOIDAL RUMBLE WET REFLECTIVE EPOXY 4-INCH (WHITE SKPH12.5 SEC., 37.5 GAP)
F	MARKING LINE GROOVED WET REFLECTIVE EPOXY 4-INCH (WHITE)
G	MARKING DIAGONAL EPOXY 12-INCH (YELLOW)
H	MARKING STOP LINE EPOXY 18-INCH (WHITE)
I	MARKING STOP LINE EPOXY 18-INCH (WHITE) SKPH12.5 SEC., 37.5 GAP
J	MARKING LINE EPOXY 4-INCH (WHITE)
K	MARKING CURB EPOXY
L	MARKING CURB EPOXY
M	MARKING LINE WITHIN SINUSOIDAL RUMBLE WET REFLECTIVE EPOXY 4-INCH (YELLOW)
N	MARKING LINE WITHIN SINUSOIDAL RUMBLE WET REFLECTIVE EPOXY 4-INCH (YELLOW SKPH12.5 SEC., 37.5 GAP)
O	MARKING LINE WITHIN SINUSOIDAL RUMBLE WET REFLECTIVE EPOXY 4-INCH (DOUBLE YELLOW)
P	MARKING LINE GROOVED WET REFLECTIVE EPOXY 4-INCH (WHITE DOTTED) 3 SEC., 9 GAP
Q	MARKING LINE GROOVED WET REFLECTIVE EPOXY 4-INCH (WHITE DOTTED) 3 SEC., 9 GAP
R	MARKING CORRUGATED MEDIUM EPOXY (YELLOW)
S	MARKING ISLAND NOSE EPOXY (YELLOW)
T	MARKING ISLAND NOSE EPOXY (YELLOW) SKPH12.5 SEC., 37.5 GAP
U	MARKING LINE GROOVED WET REFLECTIVE EPOXY 4-INCH (DOUBLE YELLOW)
V	MARKING LINE GROOVED WET REFLECTIVE EPOXY 4-INCH (DOUBLE YELLOW) SKPH12.5 SEC., 37.5 GAP

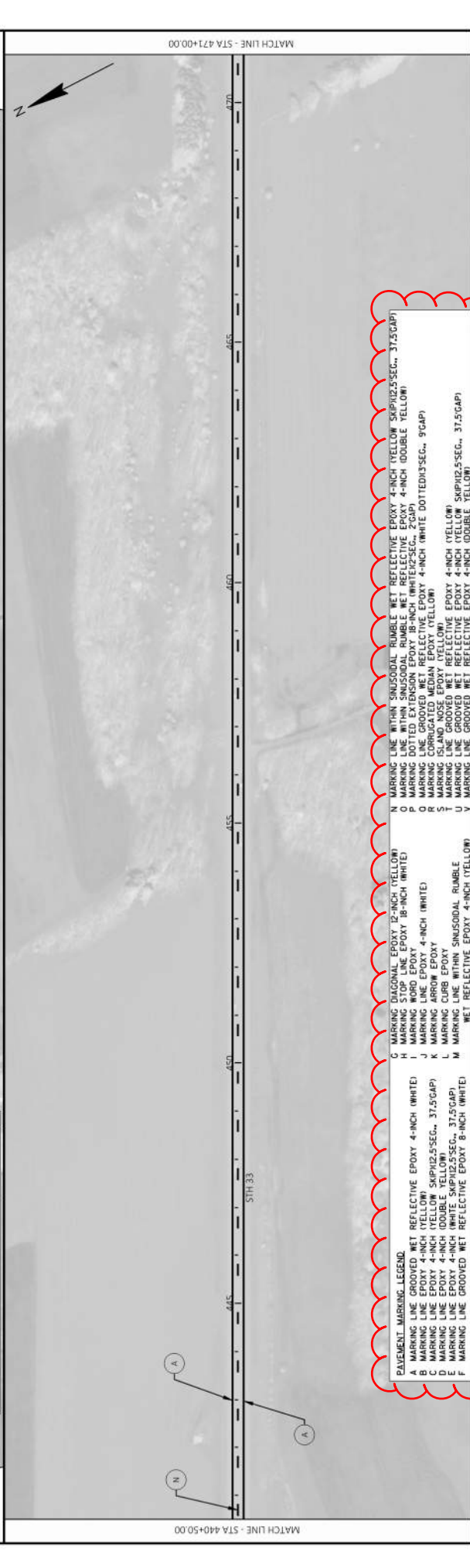


Addendum No. 01  
 ID 5050-02-70/71/72  
 Revised Sheet 28  
 February 25, 2021



NOTE: CENTERLINE PAVEMENT MARKINGS ARE SHOWN IN LOCATIONS BASED ON EXISTING CONDITIONS. CENTERLINE CALLOUTS ARE PROVIDED AT EXISTING TRANSITION LOCATIONS. ACTUAL LOCATIONS OF CENTERLINE MARKING TRANSITIONS ARE TO BE IDENTIFIED UNDER THE ITEM LOCATING NO-PASSING ZONES.

SEE SDD 15C8 SHEET A - LONGITUDINAL MARKING (MAINLINE),  
 SDD 15C8 SHEET B - PAVEMENT MARKING (TURN LANES),  
 SDD 15C8 SHEET C - PAVEMENT MARKING (TURN LANES),  
 SDD 15C27 SHEET A - DOUBLE ARROW WARNING SIGN PLACEMENT,  
 SDD 15C27 SHEET B - PAVEMENT MARKING (ISLANDS),  
 SDD 15C33 - STOP LINE AND CROSSWALK PAVEMENT MARKING,  
 AND SDD 15C35 SHEET A - PAVEMENT MARKING (INTERSECTIONS).



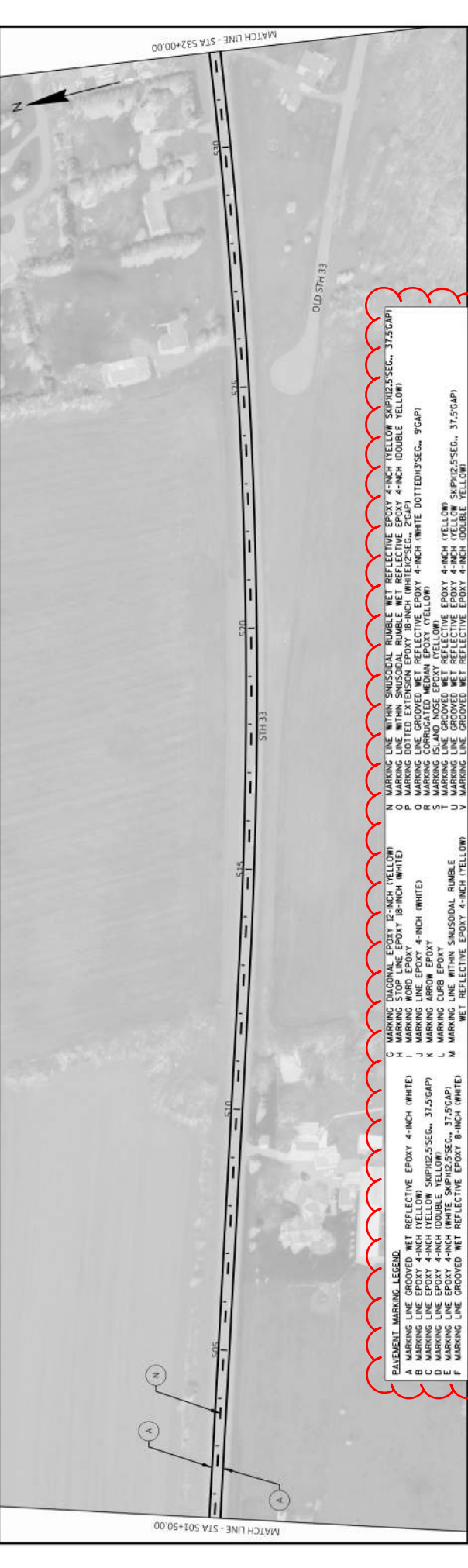
PAVEMENT MARKING LEGEND	
A	MARKING LINE WITHIN SINUSOIDAL RUMBLE WET REFLECTIVE EPOXY 4-INCH (WHITE)
B	MARKING LINE WITHIN SINUSOIDAL RUMBLE WET REFLECTIVE EPOXY 4-INCH (YELLOW)
C	MARKING LINE WITHIN SINUSOIDAL RUMBLE WET REFLECTIVE EPOXY 4-INCH (DOUBLE YELLOW)
D	MARKING LINE WITHIN SINUSOIDAL RUMBLE WET REFLECTIVE EPOXY 4-INCH (DOUBLE YELLOW)
E	MARKING LINE WITHIN SINUSOIDAL RUMBLE WET REFLECTIVE EPOXY 4-INCH (WHITE)
F	MARKING LINE WITHIN SINUSOIDAL RUMBLE WET REFLECTIVE EPOXY 4-INCH (YELLOW)
G	MARKING LINE WITHIN SINUSOIDAL RUMBLE WET REFLECTIVE EPOXY 4-INCH (YELLOW)
H	MARKING LINE WITHIN SINUSOIDAL RUMBLE WET REFLECTIVE EPOXY 4-INCH (WHITE)
I	MARKING LINE WITHIN SINUSOIDAL RUMBLE WET REFLECTIVE EPOXY 4-INCH (WHITE)
J	MARKING LINE WITHIN SINUSOIDAL RUMBLE WET REFLECTIVE EPOXY 4-INCH (WHITE)
K	MARKING LINE WITHIN SINUSOIDAL RUMBLE WET REFLECTIVE EPOXY 4-INCH (WHITE)
L	MARKING CURB EPOXY
M	MARKING LINE WITHIN SINUSOIDAL RUMBLE WET REFLECTIVE EPOXY 4-INCH (YELLOW)
N	MARKING LINE WITHIN SINUSOIDAL RUMBLE WET REFLECTIVE EPOXY 4-INCH (YELLOW)
O	MARKING LINE WITHIN SINUSOIDAL RUMBLE WET REFLECTIVE EPOXY 4-INCH (DOUBLE YELLOW)
P	MARKING LINE WITHIN SINUSOIDAL RUMBLE WET REFLECTIVE EPOXY 4-INCH (DOUBLE YELLOW)
Q	MARKING LINE WITHIN SINUSOIDAL RUMBLE WET REFLECTIVE EPOXY 4-INCH (WHITE DOTTED) 3" SEC., 9" GAP
R	MARKING CORRUGATED MEDIUM EPOXY (YELLOW)
S	MARKING ISLAND NOSE EPOXY (YELLOW)
T	MARKING ISLAND NOSE EPOXY (YELLOW)
U	MARKING LINE WITHIN SINUSOIDAL RUMBLE WET REFLECTIVE EPOXY 4-INCH (DOUBLE YELLOW)
V	MARKING LINE WITHIN SINUSOIDAL RUMBLE WET REFLECTIVE EPOXY 4-INCH (DOUBLE YELLOW)

Addendum No. 01  
 ID 5050-02-70/71/72  
 Revised Sheet 29  
 February 25, 2021



NOTE: CENTERLINE PAVEMENT MARKINGS ARE SHOWN IN LOCATIONS BASED ON EXISTING CONDITIONS. CENTERLINE CALLOUTS ARE PROVIDED AT EXISTING TRANSITION LOCATIONS. ACTUAL LOCATIONS OF CENTERLINE MARKING TRANSITIONS ARE TO BE IDENTIFIED UNDER THE ITEM LOCATING NO-PASSING ZONES.

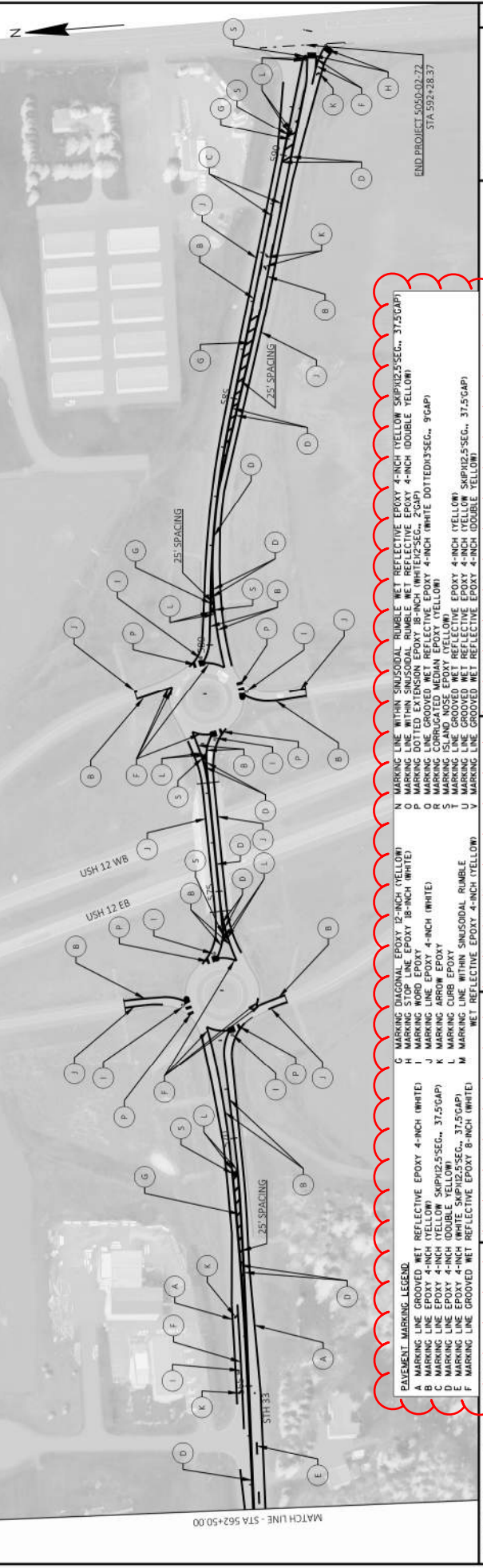
SEE SDD 15C08 SHEET A - LONGITUDINAL MARKING (MAINLINE),  
 SDD 15C08 SHEET B - PAVEMENT MARKING (TURN LANES),  
 SDD 15C08 SHEET C - PAVEMENT MARKING (TURN LANES),  
 SDD 15C27 SHEET A - DOUBLE ARROW WARNING SIGN PLACEMENT,  
 SDD 15C27 SHEET B - PAVEMENT MARKING (ISLANDS),  
 SDD 15C33 - STOP LINE AND CROSSWALK PAVEMENT MARKING,  
 AND SDD 15C35 SHEET A - PAVEMENT MARKING (INTERSECTIONS).



MARKING	DESCRIPTION
A	PAVEMENT MARKING LEGEND
B	MARKING LINE EPOXY 4-INCH (YELLOW)
C	MARKING LINE EPOXY 4-INCH (YELLOW) SKPH12.5 SEC., 37.5 GAP
D	MARKING LINE EPOXY 4-INCH (DOUBLE YELLOW)
E	MARKING LINE EPOXY 4-INCH (WHITE SKPH12.5 SEC., 37.5 GAP)
F	MARKING LINE GROOVED WET REFLECTIVE EPOXY 8-INCH (WHITE)
G	MARKING DIAGONAL EPOXY 12-INCH (YELLOW)
H	MARKING STOP LINE EPOXY 18-INCH (WHITE)
I	MARKING LINE EPOXY 4-INCH (WHITE)
J	MARKING LINE EPOXY 4-INCH (WHITE)
K	MARKING CURB EPOXY
L	MARKING CURB EPOXY
M	MARKING LINE WITHIN SINUSOIDAL RUMBLE WET REFLECTIVE EPOXY 4-INCH (YELLOW)
N	MARKING LINE WITHIN SINUSOIDAL RUMBLE WET REFLECTIVE EPOXY 4-INCH (YELLOW) SKPH12.5 SEC., 37.5 GAP
O	MARKING LINE WITHIN SINUSOIDAL RUMBLE WET REFLECTIVE EPOXY 4-INCH (DOUBLE YELLOW)
P	MARKING LINE GROOVED WET REFLECTIVE EPOXY 4-INCH (WHITE DOTTED) 3 SEC., 9 GAP
R	MARKING CORRUGATED MEDIUM EPOXY (YELLOW)
S	MARKING ISLAND NOSE EPOXY (YELLOW)
T	MARKING ISLAND NOSE EPOXY (YELLOW) EPOXY 4-INCH (YELLOW)
U	MARKING LINE GROOVED WET REFLECTIVE EPOXY 4-INCH (YELLOW) SKPH12.5 SEC., 37.5 GAP
V	MARKING LINE GROOVED WET REFLECTIVE EPOXY 4-INCH (DOUBLE YELLOW)



Addendum No. 01  
 ID 5050-02-70/71/72  
 Revised Sheet 30  
 February 25, 2021



SEE SDD 15C8 SHEET A - LONGITUDINAL MARKING (MAINLINE),  
 SDD 15C8 SHEET B - PAVEMENT MARKING (TURN LANES),  
 SDD 15C8 SHEET C - PAVEMENT MARKING (TURN LANES),  
 SDD 15C27 SHEET A - DOUBLE ARROW WARNING SIGN PLACEMENT,  
 SDD 15C27 SHEET B - PAVEMENT MARKING (ISLANDS),  
 SDD 15C33 - STOP LINE AND CROSSWALK PAVEMENT MARKING,  
 AND SDD 15C35 SHEET A - PAVEMENT MARKING (INTERSECTIONS).

NOTE: CENTERLINE PAVEMENT MARKINGS ARE SHOWN IN LOCATIONS BASED ON EXISTING CONDITIONS. CENTERLINE CALLOUTS ARE PROVIDED AT EXISTING TRANSITION LOCATIONS. ACTUAL LOCATIONS OF CENTERLINE MARKING TRANSITIONS ARE TO BE IDENTIFIED UNDER THE ITEM LOCATING NO-PASSING ZONES.

- PAVEMENT MARKING LEGEND**
- N MARKING LINE WITHIN SIGNISODAL RUMBLE WET REFLECTIVE EPOXY 4-INCH (YELLOW) SKIPH2.5 SEC., 37.5 GAP)
  - O MARKING LINE WITHIN SIGNISODAL RUMBLE WET REFLECTIVE EPOXY 4-INCH (DOUBLE YELLOW)
  - P MARKING LINE GROOVED WET REFLECTIVE EPOXY 4-INCH (WHITE DOTTED) 3 SEC., 9 GAP)
  - R MARKING CORRUGATED MEDIUM EPOXY (YELLOW)
  - S MARKING ISLAND NOSE EPOXY (YELLOW)
  - T MARKING ISLAND NOSE EPOXY (YELLOW)
  - U MARKING LINE WITHIN SIGNISODAL RUMBLE WET REFLECTIVE EPOXY 4-INCH (DOUBLE YELLOW)
  - V MARKING LINE GROOVED WET REFLECTIVE EPOXY 4-INCH (DOUBLE YELLOW)
  - G MARKING DIAGONAL EPOXY 12-INCH (YELLOW)
  - H MARKING STOP LINE EPOXY 18-INCH (WHITE)
  - I MARKING STOP LINE EPOXY 4-INCH (WHITE)
  - J MARKING LINE EPOXY 4-INCH (WHITE)
  - K MARKING CURB EPOXY
  - L MARKING CURB EPOXY
  - M MARKING LINE WITHIN SIGNISODAL RUMBLE WET REFLECTIVE EPOXY 4-INCH (WHITE)
  - N MARKING LINE WITHIN SIGNISODAL RUMBLE WET REFLECTIVE EPOXY 4-INCH (YELLOW) SKIPH2.5 SEC., 37.5 GAP)
  - O MARKING LINE WITHIN SIGNISODAL RUMBLE WET REFLECTIVE EPOXY 4-INCH (DOUBLE YELLOW)
  - P MARKING LINE GROOVED WET REFLECTIVE EPOXY 4-INCH (WHITE DOTTED) 3 SEC., 9 GAP)
  - R MARKING CORRUGATED MEDIUM EPOXY (YELLOW)
  - S MARKING ISLAND NOSE EPOXY (YELLOW)
  - T MARKING ISLAND NOSE EPOXY (YELLOW)
  - U MARKING LINE WITHIN SIGNISODAL RUMBLE WET REFLECTIVE EPOXY 4-INCH (DOUBLE YELLOW)
  - V MARKING LINE GROOVED WET REFLECTIVE EPOXY 4-INCH (DOUBLE YELLOW)



Addendum No. 01  
ID 5050-02-70/71/72  
Revised Sheet 50  
February 25, 2021

**BASE AGGREGATE SUMMARY**

STATION	STATION	LOCATION	305-.0110		305-.0120		REMARKS
			BASE AGGREGATE DENSE 3/4-INCH	TON	BASE AGGREGATE DENSE 1 1/4-INCH	TON	
<b>5050-02-71</b>							
123+65	- 162+98	STH 23 WEST PROJECT LIMIT TO AULT RD	453	--	--	--	
162+98	- 177+22	STH 23 AULT RD TO WAKERLY LN	164	--	--	--	
177+22	- 198+39	STH 23 WAKERLY LN TO E LAKE VIRGINIA RD	244	--	--	--	
198+39	- 211+56	STH 23 E LAKE VIRGINIA RD TO ABLEMAN RD	152	--	--	--	
211+56	- 268+50	STH 23 ABLEMAN RD TO EAST PROJECT LIMIT UNDISTRIBUTED	655	--	--	--	
<b>5050-02-71 SUBTOTAL</b>			<b>1,668</b>	--	--	--	
<b>5050-02-70</b>							
268+50	- 279+41	STH 33 EVERGREEN RD INTERSECTION	28	2,259	3,073	1,067	
279+41	- 291+18	STH 33 EVERGREEN RD INTERSECTION UNDISTRIBUTED	31	--	--	--	
<b>5050-02-70 SUBTOTAL</b>			<b>59</b>	<b>6,399</b>	--	--	
<b>5050-02-72</b>							
291+18	- 346+11	STH 33 WEST PROJECT LIMIT TO COON BLUFF RD	632	--	--	--	
346+11	- 426+49	STH 33 COON BLUFF RD TO MIRROR LAKE RD	925	--	--	--	
426+49	- 560+44	STH 33 MIRROR LAKE RD TO WEST ROUNDABOUT	1,529	--	--	--	
560+44	- 574+60	STH 33 WEST ROUNDABOUT TO EAST ROUNDABOUT	35	--	--	--	
574+60	- 592+28	STH 33 EAST ROUNDABOUT TO EAST PROJECT LIMIT UNDISTRIBUTED	41	--	--	--	
<b>5050-02-72 SUBTOTAL</b>			<b>3,162</b>	--	--	--	
<b>TOTAL</b>			<b>4,889</b>	<b>6,399</b>	--	--	

ASPHALT PAVEMENT SUMMARY

STATION	STATION	HWY	LOCATION	AREA	SY	LOWER LAYER DEPTH	MIDDLE LAYER DEPTH	UPPER LAYER DEPTH	TACK COAT	HWA	HWA	PAVEMENT	SAFETY ISLANDS	RUMBLE STRIPS	SINUSOIDAL	RUMBLE STRIPS	SINUSOIDAL	2-LANE RURAL	2-LANE RURAL	SPV.0090.01	SPV.0090.01	465.0315	REMARKS	
						IN	IN	IN	GAL	TON	TON	TON	TON	TON	TON	TON	TON	TON	TON	TON	TON	TON	SY	

STATION	STATION	HWY	LOCATION	AREA	SY	LOWER LAYER DEPTH	MIDDLE LAYER DEPTH	UPPER LAYER DEPTH	TACK COAT	HWA	HWA	PAVEMENT	SAFETY ISLANDS	RUMBLE STRIPS	SINUSOIDAL	RUMBLE STRIPS	SINUSOIDAL	2-LANE RURAL	2-LANE RURAL	SPV.0090.01	SPV.0090.01	465.0315	REMARKS	
12+465 -	162+98	STH 23	WEST PROJECT LIMIT TO AULT RD	18,010	1.75	--	1.75	2,162	3,530	--	--	7,299	--	--	--	--	--	7,299	3,733	--	--	--	--	
162+98 -	177+22	STH 23	AULT RD TO WAKERLY LN	6,329	1.75	--	1.75	760	1,241	--	--	2,477	--	--	--	--	--	2,477	1,024	--	--	--	--	
177+22 -	198+39	STH 23	WAKERLY LN TO E LAKE VIRGINIA RD	9,409	1.75	--	1.75	1,130	1,845	--	--	3,867	--	--	--	--	--	3,867	1,717	--	--	--	--	
198+39 -	211+56	STH 23	E LAKE VIRGINIA RD TO ABLEMAN RD	5,853	1.75	--	1.75	703	1,148	--	--	2,451	--	--	--	--	--	2,451	517	--	--	--	--	
211+56 -	268+50	STH 23	ABLEMAN RD TO EAST PROJECT LIMIT	25,311	1.75	--	1.75	3,038	4,961	--	--	10,819	--	--	--	--	--	10,819	5,694	--	--	--	--	

<b>5050-02-71 SUBTOTAL</b>				64,912	7,793	12,725	--	--	26,913	--	--	12,685	--	--	--	--	--	26,913	12,685	--	--	--	--	
----------------------------	--	--	--	--------	-------	--------	----	----	--------	----	----	--------	----	----	----	----	----	--------	--------	----	----	----	----	--

STATION	STATION	HWY	LOCATION	AREA	SY	LOWER LAYER DEPTH	MIDDLE LAYER DEPTH	UPPER LAYER DEPTH	TACK COAT	HWA	HWA	PAVEMENT	SAFETY ISLANDS	RUMBLE STRIPS	SINUSOIDAL	RUMBLE STRIPS	SINUSOIDAL	2-LANE RURAL	2-LANE RURAL	SPV.0090.01	SPV.0090.01	465.0315	REMARKS	
268+50 -	291+18	STH 33	EVERGREEN RD INTERSECTION	11,657	1.75	--	1.75	1,399	2,285	--	--	1,733	--	--	--	--	--	1,733	--	--	--	--	--	
291+18 -	291+18	STH 33	EVERGREEN RD INTERSECTION	3,432	1.75	1.75	1.75	584	1,010	--	--	1,452	--	--	--	--	--	1,452	--	--	--	--	--	

<b>5050-02-70 SUBTOTAL</b>				15,089	1,983	3,295	--	--	3,185	--	--	3,185	--	--	--	--	--	3,185	--	--	--	--	--	
----------------------------	--	--	--	--------	-------	-------	----	----	-------	----	----	-------	----	----	----	----	----	-------	----	----	----	----	----	--

STATION	STATION	HWY	LOCATION	AREA	SY	LOWER LAYER DEPTH	MIDDLE LAYER DEPTH	UPPER LAYER DEPTH	TACK COAT	HWA	HWA	PAVEMENT	SAFETY ISLANDS	RUMBLE STRIPS	SINUSOIDAL	RUMBLE STRIPS	SINUSOIDAL	2-LANE RURAL	2-LANE RURAL	SPV.0090.01	SPV.0090.01	465.0315	REMARKS	
291+18 -	346+11	STH 33	WEST PROJECT LIMIT TO COON BLUFF RD	24,413	1.75	--	1.75	2,830	4,786	--	--	10,886	--	--	--	--	--	10,886	5,493	--	--	--	--	
346+11 -	426+49	STH 33	COON BLUFF RD TO MIRROR LAKE RD	35,724	1.75	--	1.75	4,287	7,002	--	--	15,821	--	--	--	--	--	15,821	7,638	--	--	--	--	
426+49 -	560+44	STH 33	MIRROR LAKE RD TO WEBSTER LN	59,533	1.75	--	1.75	7,144	11,669	--	--	25,875	--	--	--	--	--	25,875	12,595	--	--	--	--	
560+44 -	565+00	STH 33	WEBSTER LN TO WEST ROUNDABOUT	2,310	1.75	--	1.75	278	453	--	--	--	--	--	--	--	--	--	--	--	--	--	--	
565+00 -	582+00	STH 33	WEST ROUNDABOUT TO EAST ROUNDABOUT	7,925	1.75	--	1.75	952	--	1,533	--	--	--	--	--	--	--	--	--	--	--	--	--	
582+00 -	592+28	STH 33	EAST ROUNDABOUT TO EAST PROJECT LIMIT	6,155	1.75	--	1.75	739	1,207	--	--	1,574	--	--	--	--	--	1,574	--	--	--	--	--	

<b>5050-02-72 SUBTOTAL</b>				136,061	16,330	25,117	1,533	--	--	54,156	--	--	25,726	--	--	--	--	54,156	25,726	--	--	--	--	
----------------------------	--	--	--	---------	--------	--------	-------	----	----	--------	----	----	--------	----	----	----	----	--------	--------	----	----	----	----	--

<b>TOTAL</b>				216,062	26,106	41,137	1,533	9	84,254	38,411	20													
--------------	--	--	--	---------	--------	--------	-------	---	--------	--------	----	--	--	--	--	--	--	--	--	--	--	--	--	--

Addendum No. 01  
 ID 5050-02-70/71/72  
 Revised Sheet 51  
 February 25, 2021

TEMPORARY ASPHALT

STATION	STATION	HWY	LOCATION	TON	REMARKS
279+58	-	276+76	EVERGREEN RD INTERSECTION	5	465.0125 ASPHALTIC SURFACE TEMPORARY
				<b>5050-02-70</b>	
				<b>5</b>	

PWL MIXTURE USE TABLE (CONTINUED)

Table with columns: LOCATION SECOND LIFT, LOCATION, STATION, MIXTURE USE, UNDERLYING SURFACE, BID ITEMS, TONS, THICKNESS, MIXTURE ACCEPTANCE, QUALITY MANAGEMENT PROGRAM TO BE USED FOR: MIXTURE ACCEPTANCE, DENSITY ACCEPTANCE.

PWL MIXTURE USE TABLE

Table with columns: LOCATION FIRST LIFT, LOCATION, STATION, MIXTURE USE, UNDERLYING SURFACE, BID ITEMS, TONS, THICKNESS, MIXTURE ACCEPTANCE, QUALITY MANAGEMENT PROGRAM TO BE USED FOR: MIXTURE ACCEPTANCE, DENSITY ACCEPTANCE.

Addendum No. 01 ID 5050-02-70/71/72 Revised Sheet 52 February 25, 2021

HMA PAVEMENT PWL TEST STRIPE

460.0105.S 460.0110.S

HMA PAVEMENT PWL STRIP VOLUMETRICS TEST STRIP DENSITY

Summary table with columns: LOCATION, STATION, TO, FROM, REMARKS. Includes rows for 'BINDER LIFT ON MILLED SURFACE' and 'SURFACE LIFT ON MILLED SURFACE'.

ITEM TOTALS

1 1 2

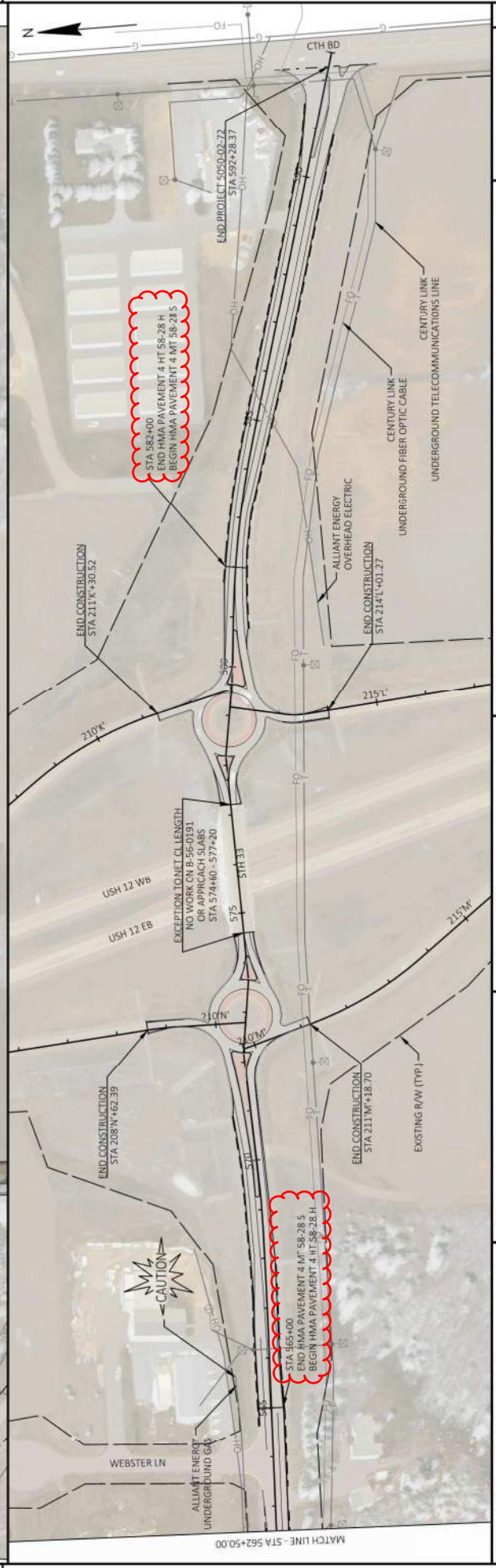
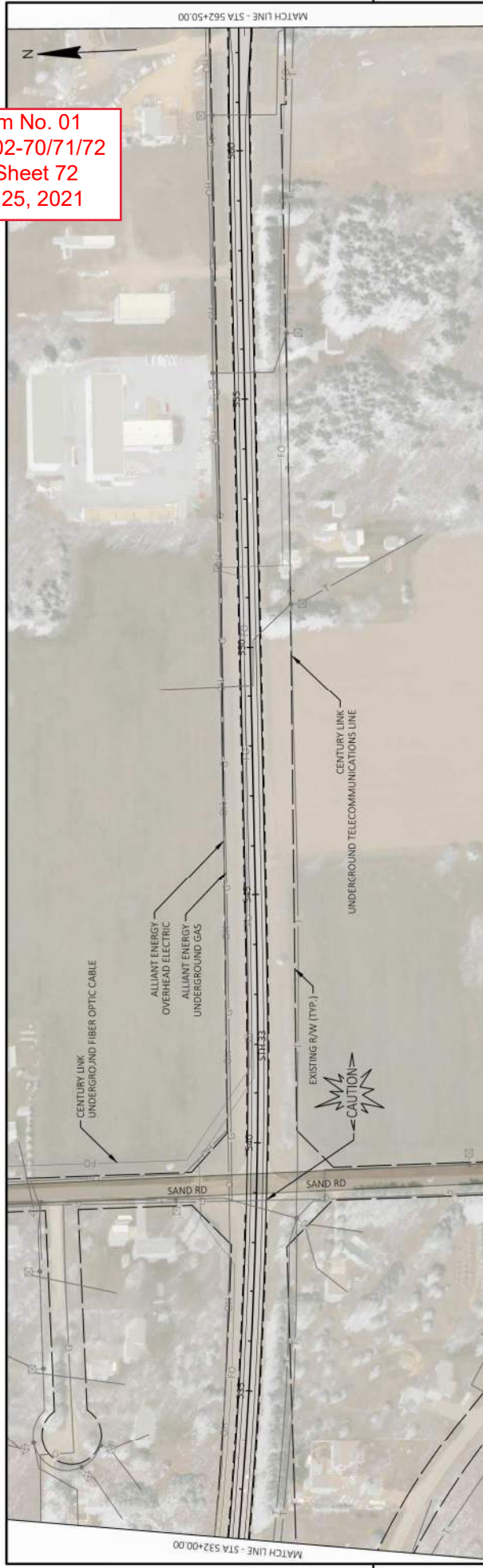








Addendum No. 01  
ID 5050-02-70/71/72  
Revised Sheet 72  
February 25, 2021





Proposal Schedule of Items

Proposal ID: 20210309004 Project(s): 5050-02-70, 5050-02-71, 5050-02-72

Federal ID(s): WISC 2021220, WISC 2021221, WISC 2021219

SECTION: 0001 Contract Items

Alt Set ID: Alt Mbr ID:

Proposal Line Number	Item ID Description	Approximate Quantity and Units	Unit Price	Bid Amount
0002	203.0100 Removing Small Pipe Culverts	4.000 EACH	_____.	_____.
0004	204.0115 Removing Asphaltic Surface Butt Joints	306.000 SY	_____.	_____.
0006	204.0120 Removing Asphaltic Surface Milling	214,925.000 SY	_____.	_____.
0008	204.0150 Removing Curb & Gutter	422.000 LF	_____.	_____.
0010	205.0100 Excavation Common	6,058.000 CY	_____.	_____.
0012	211.0100 Prepare Foundation for Asphaltic Paving (project) 01. 5050-02-70	LS	LUMP SUM	_____.
0014	211.0100 Prepare Foundation for Asphaltic Paving (project) 02. 5050-02-71	LS	LUMP SUM	_____.
0016	211.0100 Prepare Foundation for Asphaltic Paving (project) 03. 5050-02-72	LS	LUMP SUM	_____.
0018	211.0400 Prepare Foundation for Asphaltic Shoulders	939.000 STA	_____.	_____.
0020	213.0100 Finishing Roadway (project) 01. 5050-02-70	1.000 EACH	_____.	_____.
0022	213.0100 Finishing Roadway (project) 02. 5050-02-71	1.000 EACH	_____.	_____.
0024	213.0100 Finishing Roadway (project) 03. 5050-02-72	1.000 EACH	_____.	_____.
0026	305.0110 Base Aggregate Dense 3/4-Inch	4,889.000 TON	_____.	_____.
0028	305.0120 Base Aggregate Dense 1 1/4-Inch	6,399.000 TON	_____.	_____.
0030	455.0605 Tack Coat	26,105.000 GAL	_____.	_____.



Proposal Schedule of Items

Proposal ID: 20210309004 Project(s): 5050-02-70, 5050-02-71, 5050-02-72

Federal ID(s): WISC 2021220, WISC 2021221, WISC 2021219

SECTION: 0001 Contract Items

Alt Set ID: Alt Mbr ID:

Proposal Line Number	Item ID Description	Approximate Quantity and Units	Unit Price	Bid Amount
0032	460.0105.S HMA Percent Within Limits (PWL) Test Strip Volumetrics	1.000 EACH	_____.	_____.
0034	460.0110.S HMA Percent Within Limits (PWL) Test Strip Density	2.000 EACH	_____.	_____.
0036	460.2005 Incentive Density PWL HMA Pavement	23,902.000 DOL	1.00000	23,902.00
0038	460.2007 Incentive Density HMA Pavement Longitudinal Joints	96,174.000 DOL	1.00000	96,174.00
0040	460.2010 Incentive Air Voids HMA Pavement	41,137.000 DOL	1.00000	41,137.00
0042	460.6224 HMA Pavement 4 MT 58-28 S	41,137.000 TON	_____.	_____.
0044	465.0125 Asphaltic Surface Temporary	5.000 TON	_____.	_____.
0046	465.0305 Asphaltic Surface Safety Islands	9.000 TON	_____.	_____.
0048	465.0315 Asphaltic Flumes	20.000 SY	_____.	_____.
0050	520.8000 Concrete Collars for Pipe	4.000 EACH	_____.	_____.
0052	522.0124 Culvert Pipe Reinforced Concrete Class III 24-Inch	36.000 LF	_____.	_____.
0054	522.1024 Apron Endwalls for Culvert Pipe Reinforced Concrete 24-Inch	4.000 EACH	_____.	_____.
0056	601.0120 Concrete Curb Type J	110.000 LF	_____.	_____.
0058	601.0553 Concrete Curb & Gutter 4-Inch Sloped 36-Inch Type D	312.000 LF	_____.	_____.
0060	618.0100 Maintenance And Repair of Haul Roads (project) 01. 5050-02-70	1.000 EACH	_____.	_____.



Proposal Schedule of Items

Proposal ID: 20210309004 Project(s): 5050-02-70, 5050-02-71, 5050-02-72

Federal ID(s): WISC 2021220, WISC 2021221, WISC 2021219

SECTION: 0001 Contract Items

Alt Set ID: Alt Mbr ID:

Proposal Line Number	Item ID Description	Approximate Quantity and Units	Unit Price	Bid Amount
0062	618.0100 Maintenance And Repair of Haul Roads (project) 02. 5050-02-71	1.000 EACH	_____.	_____.
0064	618.0100 Maintenance And Repair of Haul Roads (project) 03. 5050-02-72	1.000 EACH	_____.	_____.
0066	619.1000 Mobilization	1.000 EACH	_____.	_____.
0068	620.0100 Concrete Corrugated Median	4,000.000 SF	_____.	_____.
0070	624.0100 Water	71.000 MGAL	_____.	_____.
0072	625.0100 Topsoil	71,284.000 SY	_____.	_____.
0074	627.0200 Mulching	54,507.000 SY	_____.	_____.
0076	628.1504 Silt Fence	1,700.000 LF	_____.	_____.
0078	628.1520 Silt Fence Maintenance	1,700.000 LF	_____.	_____.
0080	628.1905 Mobilizations Erosion Control	4.000 EACH	_____.	_____.
0082	628.1910 Mobilizations Emergency Erosion Control	4.000 EACH	_____.	_____.
0084	628.2002 Erosion Mat Class I Type A	18,620.000 SY	_____.	_____.
0086	628.7504 Temporary Ditch Checks	130.000 LF	_____.	_____.
0088	628.7555 Culvert Pipe Checks	12.000 EACH	_____.	_____.
0090	629.0210 Fertilizer Type B	25.200 CWT	_____.	_____.
0092	630.0130 Seeding Mixture No. 30	1,081.000 LB	_____.	_____.



Proposal Schedule of Items

Proposal ID: 20210309004 Project(s): 5050-02-70, 5050-02-71, 5050-02-72

Federal ID(s): WISC 2021220, WISC 2021221, WISC 2021219

SECTION: 0001 Contract Items

Alt Set ID: Alt Mbr ID:

Proposal Line Number	Item ID Description	Approximate Quantity and Units	Unit Price	Bid Amount
0094	630.0200 Seeding Temporary	1,081.000 LB	_____.	_____.
0096	630.0500 Seed Water	795.000 MGAL	_____.	_____.
0098	633.5200 Markers Culvert End	4.000 EACH	_____.	_____.
0100	634.0612 Posts Wood 4x6-Inch X 12-FT	1.000 EACH	_____.	_____.
0102	634.0614 Posts Wood 4x6-Inch X 14-FT	5.000 EACH	_____.	_____.
0104	634.0616 Posts Wood 4x6-Inch X 16-FT	15.000 EACH	_____.	_____.
0106	634.0618 Posts Wood 4x6-Inch X 18-FT	6.000 EACH	_____.	_____.
0108	634.0810 Posts Tubular Steel 2x2-Inch X 10-FT	1.000 EACH	_____.	_____.
0110	634.0811 Posts Tubular Steel 2x2-Inch X 11-FT	1.000 EACH	_____.	_____.
0112	637.2210 Signs Type II Reflective H	43.500 SF	_____.	_____.
0114	638.2102 Moving Signs Type II	18.000 EACH	_____.	_____.
0116	638.2602 Removing Signs Type II	1.000 EACH	_____.	_____.
0118	638.3000 Removing Small Sign Supports	26.000 EACH	_____.	_____.
0120	642.5201 Field Office Type C	1.000 EACH	_____.	_____.
0122	643.0300 Traffic Control Drums	11,701.000 DAY	_____.	_____.
0124	643.0420 Traffic Control Barricades Type III	1,846.000 DAY	_____.	_____.
0126	643.0705 Traffic Control Warning Lights Type A	3,692.000 DAY	_____.	_____.



Proposal Schedule of Items

Proposal ID: 20210309004 Project(s): 5050-02-70, 5050-02-71, 5050-02-72

Federal ID(s): WISC 2021220, WISC 2021221, WISC 2021219

SECTION: 0001 Contract Items

Alt Set ID: Alt Mbr ID:

Proposal Line Number	Item ID Description	Approximate Quantity and Units	Unit Price	Bid Amount
0128	643.0715 Traffic Control Warning Lights Type C	286.000 DAY	_____.	_____.
0130	643.0900 Traffic Control Signs	17,393.000 DAY	_____.	_____.
0132	643.0910 Traffic Control Covering Signs Type I	3.000 EACH	_____.	_____.
0134	643.0920 Traffic Control Covering Signs Type II	9.000 EACH	_____.	_____.
0136	643.1000 Traffic Control Signs Fixed Message	208.250 SF	_____.	_____.
0138	643.1050 Traffic Control Signs PCMS	21.000 DAY	_____.	_____.
0140	643.5000 Traffic Control	1.000 EACH	_____.	_____.
0142	646.1020 Marking Line Epoxy 4-Inch	19,687.000 LF	_____.	_____.
0144	646.1040 Marking Line Grooved Wet Ref Epoxy 4-Inch	91,646.000 LF	_____.	_____.
0146	646.3020 Marking Line Epoxy 8-Inch	521.000 LF	_____.	_____.
0148	646.3040 Marking Line Grooved Wet Ref Epoxy 8-Inch	2,366.000 LF	_____.	_____.
0150	646.5020 Marking Arrow Epoxy	13.000 EACH	_____.	_____.
0152	646.5120 Marking Word Epoxy	11.000 EACH	_____.	_____.
0154	646.6120 Marking Stop Line Epoxy 18-Inch	126.000 LF	_____.	_____.
0156	646.6320 Marking Dotted Extension Epoxy 18-Inch	107.000 LF	_____.	_____.
0158	646.7120 Marking Diagonal Epoxy 12-Inch	947.000 LF	_____.	_____.





Proposal Schedule of Items

Proposal ID: 20210309004 Project(s): 5050-02-70, 5050-02-71, 5050-02-72

Federal ID(s): WISC 2021220, WISC 2021221, WISC 2021219

SECTION: 0001 Contract Items

Alt Set ID: Alt Mbr ID:

Proposal Line Number	Item ID Description	Approximate Quantity and Units	Unit Price	Bid Amount
0160	646.8020 Marking Corrugated Median Epoxy	600.000 SF	_____.	_____.
0162	646.8120 Marking Curb Epoxy	60.000 LF	_____.	_____.
0164	646.8220 Marking Island Nose Epoxy	6.000 EACH	_____.	_____.
0166	648.0100 Locating No-Passing Zones	7.960 MI	_____.	_____.
0168	649.0105 Temporary Marking Line Paint 4-Inch	41,247.000 LF	_____.	_____.
0170	649.0805 Temporary Marking Stop Line Paint 18-Inch	58.000 LF	_____.	_____.
0172	650.4500 Construction Staking Subgrade	2,268.000 LF	_____.	_____.
0174	650.5000 Construction Staking Base	2,268.000 LF	_____.	_____.
0176	650.5500 Construction Staking Curb Gutter and Curb & Gutter	2,453.000 LF	_____.	_____.
0178	650.6000 Construction Staking Pipe Culverts	4.000 EACH	_____.	_____.
0180	650.8000 Construction Staking Resurfacing Reference	46,863.000 LF	_____.	_____.
0182	650.9910 Construction Staking Supplemental Control (project) 01. 5050-02-70	LS	LUMP SUM	_____.
0184	650.9910 Construction Staking Supplemental Control (project) 02. 5050-02-71	LS	LUMP SUM	_____.
0186	650.9910 Construction Staking Supplemental Control (project) 03. 5050-02-72	LS	LUMP SUM	_____.
0188	650.9920 Construction Staking Slope Stakes	2,268.000 LF	_____.	_____.



Proposal Schedule of Items

Proposal ID: 20210309004 Project(s): 5050-02-70, 5050-02-71, 5050-02-72

Federal ID(s): WISC 2021220, WISC 2021221, WISC 2021219

SECTION: 0001 Contract Items

Alt Set ID: Alt Mbr ID:

Proposal Line Number	Item ID Description	Approximate Quantity and Units	Unit Price	Bid Amount
0190	652.0225 Conduit Rigid Nonmetallic Schedule 40 2-Inch	715.000 LF	_____.	_____.
0192	652.0235 Conduit Rigid Nonmetallic Schedule 40 3-Inch	940.000 LF	_____.	_____.
0194	653.0164 Pull Boxes Non-Conductive 24x42-Inch	8.000 EACH	_____.	_____.
0196	654.0105 Concrete Bases Type 5	8.000 EACH	_____.	_____.
0198	654.0230 Concrete Control Cabinet Bases Type L30	1.000 EACH	_____.	_____.
0200	655.0610 Electrical Wire Lighting 12 AWG	5,400.000 LF	_____.	_____.
0202	656.0200 Electrical Service Meter Breaker Pedestal (location) 01. STH 23/STH 33 Intersection	LS	LUMP SUM	_____.
0204	657.0322 Poles Type 5-Aluminum	8.000 EACH	_____.	_____.
0206	657.0710 Luminaire Arms Truss Type 4 1/2-Inch Clamp 12-FT	8.000 EACH	_____.	_____.
0208	659.1115 Luminaires Utility LED A	8.000 EACH	_____.	_____.
0210	659.2130 Lighting Control Cabinets 120/240 30- Inch	1.000 EACH	_____.	_____.
0212	690.0150 Sawing Asphalt	2,462.000 LF	_____.	_____.
0214	740.0440 Incentive IRI Ride	34,493.000 DOL	1.00000	34,493.00
0216	ASP.1T0A On-the-Job Training Apprentice at \$5.00/HR	2,400.000 HRS	5.00000	12,000.00



Proposal Schedule of Items

Proposal ID: 20210309004 Project(s): 5050-02-70, 5050-02-71, 5050-02-72

Federal ID(s): WISC 2021220, WISC 2021221, WISC 2021219

SECTION: 0001 Contract Items

Alt Set ID: Alt Mbr ID:

Proposal Line Number	Item ID Description	Approximate Quantity and Units	Unit Price	Bid Amount
0218	ASP.1T0G On-the-Job Training Graduate at \$5.00/HR	2,160.000 HRS	5.00000	10,800.00
0220	SPV.0060 Special 01. Solar Powered Single Blinking Beacon	1.000 EACH	_____.	_____.
0222	SPV.0060 Special 02. Verify Landmark Reference Monuments	3.000 EACH	_____.	_____.
0224	SPV.0090 Special 01. Asphaltic Centerline Rumble Strips Sinusoidal 2-Lane Rural	38,411.000 LF	_____.	_____.
0226	SPV.0090 Special 02. Asphaltic Shoulder Rumble Strips Sinusoidal 2-Lane Rural	84,254.000 LF	_____.	_____.
0228	SPV.0090 Special 03. Marking Line in Sinusoidal Rumble Wet Reflective Epoxy 4-Inch	32,460.000 LF	_____.	_____.
0230	460.7424 HMA Pavement 4 HT 58-28 H	1,553.000 TON	_____.	_____.
0232	646.4505 Marking Line Same Day Paint 4-Inch	15,109.000 LF	_____.	_____.
<b>Section: 0001</b>			<b>Total:</b>	_____.
			<b>Total Bid:</b>	_____.

