



Wisconsin Department of Transportation

February 26, 2021

Division of Transportation Systems Development

Bureau of Project Development
4822 Madison Yards Way, 4th Floor South
Madison, WI 53705

Telephone: (608) 266-1631
Facsimile (FAX): (608) 266-8459

NOTICE TO ALL CONTRACTORS:

**Proposal #11: 1440-15-71, WISC 2021 227
Fond du Lac - Plymouth
USH 151 – Seven Hills Road
STH 23
Fond du Lac County**

Letting of March 9, 2021

This is Addendum No. 01, which provides for the following:

Special Provisions:

Revised Special Provisions	
Article No.	Description
14	Notice to Contractor – Parcel Number 242

Added Special Provisions	
Article No.	Description
64	Notice to Contractor – Parcel Number 238
65	Segregation and Disposal of Demolition Debris, Item SPV.0195.02

Schedule of Items:

Revised Bid Item Quantities					
Bid Item	Item Description	Unit	Old Quantity	Revised Quantity	Proposal Total
204.0110	Removing Asphaltic Surface	SY	7,209	14,837	22,046
416.0160	Concrete Driveway 6-Inch	SY	148	490	638
642.5401	Field Office Type D	Each	1	1	2
658.0500	Pedestrian Push Buttons	Each	6	1	7

Added Bid Item Quantities					
Bid Item	Item Description	Unit	Old Quantity	Revised Quantity	Proposal Total
531.2024	Drilling Shaft 24-Inch	LF	0	64	64
658.0416	Pedestrian Signal Face 16-Inch	Each	0	6	6
SPV.0195.02	Segregation and Disposal of Demolition Debris	Ton	0	75	75

Deleted Bid Item Quantities					
Bid Item	Item Description	Unit	Old Quantity	Revised Quantity	Proposal Total
658.0412	Pedestrian Signal Face 12-Inch	Each	6	-6	0
204.0235.08	Removing Buildings (Parcel 242)	LS	1	-1	0

Plan Sheets:

Revised Plan Sheets	
Plan Sheet	Plan Sheet Title (brief description of changes to sheet)
2	General Notes – Utility Contacts Changed
54	Construction Detail: Station 245+11 WB Entrance – Portion of driveway changed to concrete from gravel.
56-66	Removal Plan – Various Changes Due to contractor questions and Real Estate coordination
75-85	Removal Plan – Various Changes Due to contractor questions and Real Estate coordination
146	Plan Details: STH 23 – Driveway from sheet 54 is shown and the driveway type indicator changed.
147	Plan Details: STH 23 – Driveway from sheet 54 is shown and the driveway type indicator changed.
870	Miscellaneous Quantities – Removing Asphaltic Surface Increased for areas of Fill
874	Miscellaneous Quantities – Property Removals revised to eliminate one building and a line that had no quantity on it
882	Miscellaneous Quantities – Concrete Driveway Quantity Table Updated
992	Miscellaneous Quantities – Drilled Shafts added to Type 1 Signs Table
1000-1003	Miscellaneous Quantities – Corrected Typo of one of the item names
1014	Miscellaneous Quantities – Traffic Signals table updated to change item to 16-Inch pedestrian signal face from 12-Inch
1018	Miscellaneous Quantities – Traffic Signals table updated to change item to 16-Inch pedestrian signal face from 12-Inch

The responsibility for notifying potential subcontractors and suppliers of these changes remains with the prime contractor.

Sincerely,

Mike Coleman

Proposal Development Specialist
Proposal Management Section

ADDENDUM NO. 1

1440-15-71

February 26, 2021

Special Provisions

14. Notice to Contractor – Parcel Number 242

Replace entire article language with the following:

The Dennis Theil property, parcel number 242 as shown in the plat, is not expected to be vacated until October 1, 2021. Do not perform work on this property nor remove its driveway access until the property has been vacated and approval is received from the engineer.

64. Notice to Contractor – Parcel Number 238

Parcel number 238, as shown in the plat, is not expected to be vacated until June 1, 2020. Do not perform work on this property nor remove its driveway access until the property has been vacated and approval is received from the engineer.

65. Segregation and Disposal of Demolition Debris, Item SPV.0195.02

A Description

A.1 General.

This special provision describes the segregation and disposal at a WDNR-licensed landfill facility of demolition debris and other wastes generated at the site referred as Parcel 229 and located at W4085 STH 23 in the Town of Empire, Fond du Lac County, WI. The closest WDNR-licensed facilities are:

Waste Management Valley Trail RDF
N9101 Willard Road
Berlin, WI 54923
(866) 909-4458

Veolia ES Hickory Meadow Landfill
W3105 Schneider Road
Hilbert, Wisconsin 54129
(920) 853-8553

Perform this work in accordance to section 204 of the standard specifications and with pertinent parts of Chapters NR 700-754 of the Wisconsin Administrative Code, as supplemented herein. Per NR 718.07, a solid waste collection and transportation service- operating license is required under NR 502.06 for each vehicle used to transport demolition debris for offsite disposal.

A.2 Notice to the Contractor – Demolition Debris for Segregation

The department and others assessed the interior of buildings for hazardous materials and completed testing of materials on interior and exterior surfaces of buildings where building demolition is required for the project. Known friable asbestos containing materials (ACM) identified during the evaluation and testing have been abated by a licensed asbestos abatement contractor. Other materials inside the building and on interior and exterior surfaces of the building that remain at the site will require segregation for offsite recycling or disposal as a solid waste during demolition. The materials include:

1. Item 1 – Category I Nonfriable ACM: gray roofing membrane below the exterior metal roof and 10 square feet of black tar flashing on the roof vent and roof repair areas contain asbestos.
2. Item 2 – Category II Nonfriable ACM: gray repair caulk on the chimney vent and roof exterior contain

asbestos.

3. Item 3 – Assumed Category II Nonfriable ACM: two fire doors on exterior walls are assumed to contain asbestos.
4. Item 4 – Oil-stained and Painted Concrete Floors: concrete floor with oil staining and/or gray paint/coating inside the building contain polychlorinated biphenyls (PCBs) at concentrations below 50 milligrams per kilogram (mg/kg).
5. Item 5 – Universal/Other Wastes: thermostats, thermometers, electrical switches, fluorescent lights, fluorescent light ballasts, fire extinguishers, electrical boxes, circuit boards, fire extinguishers, and a flow meter that may contain mercury, PCBs, metals, halon, and other hazardous chemicals, elements, and gases.

For further information regarding previous activities conducted by the department at this location, contact:

Contact: Ms. Kathie VanPrice, WisDOT Northeast Region
Address: 944 Vanderperren Way, Green Bay, WI 54304
Phone: (920) 492-7175
Fax: (920)-492-0144
Email: kathie.vanprice@dot.wi.gov

A.3 Coordination

Coordinate work under this contract with the environmental consultant:

Name: GEI Consultants, Inc., Mr. Roger Miller or Mr. Michael DeBraske
Address: 3159 Voyager Drive, Green Bay, WI 54311
Phone: (920) 455-8657 / (920) 455-8655
Fax: (920) 455-8225
E-mail: rmiller@geiconsultants.com, mdebraske@geiconsultants.com

The role of the environmental consultant will be limited to:

1. Determining materials to be segregated from other demolition debris to the extent practicable based on previous assessment and testing and visual observations of material that is generated.
2. Sampling additional suspect asbestos-containing materials (ACM) if encountered during the demolition, because the suspect ACM was previously hidden from view.
3. Documenting that activities associated with management of segregated materials are in conformance with state regulations.
4. Obtaining the necessary approvals for disposal of segregated materials.
5. Providing information on the asbestos inspector and the completed asbestos inspection for the Contractor to use to prepare WDNR Form 4500-113 (Notification for Demolition and/or Renovation and Application for Permit Exemption).

Provide at least a 14-calendar day notice of the preconstruction conference date to the environmental consultant. At the preconstruction conference, provide a schedule for all demolition activities to the environmental consultant. Also notify the environmental consultant at least three calendar days prior to commencement of demolition activities that may result in the generation of debris requiring segregation as part of this special provision.

Coordinate with the environmental consultant to ensure that the environmental consultant is present during demolition activities. Perform demolition activities on a continuous basis until work is completed.

Do not transport demolition debris offsite without prior approval from the environmental consultant.

A.4 Health and Safety Requirements

Supplement subsection 107.1 of the standard specifications with the following:

During demolition activities, expect to encounter materials on the interior of the building and on interior and exterior surfaces of the building that contain asbestos, PCBs, mercury, metals, and halon gas. These materials shall be directly handled by qualified personnel only.

B. (Vacant)

C. Construction

Supplement subsection 204.3 of the standard specification with the following:

Control activities to minimize the quantity of materials requiring offsite disposal as a solid waste.

Non-friable ACM shall be removed and handled in a way that prevents it from becoming friable and releasing asbestos fibers, which precludes the use of methods that shatter, crumble, pulverize, or reduce the material to dust. Sanding, sawing, grinding, and chipping of the material is not allowed.

The environmental consultant will periodically evaluate demolition debris generated. The environmental consultant will evaluate debris based on visual observations and information from previous assessment and testing.

On the basis of the results of such evaluation, the debris will be designated as follows:

- Excavation Common consisting of clean construction and demolition debris (such as concrete, reinforced concrete, bituminous pavement, bricks, and unpainted wood), which under Wisconsin Administrative Code, Chapter NR 500.08 are exempt materials, or
- Demolition debris associated with Items 1, 2, 3 or 4 requiring segregation and offsite disposal as a solid waste by contractor, or
- Demolition debris associated with Item 5 requiring segregation and either offsite re-use or recycling by contractor, or offsite disposal as a universal waste by Veolia North America (Veolia).

If demolition debris associated with Item 5 is designated for offsite disposal, it may require temporary storage on the site until it can be characterized and disposed by Veolia. Provide for temporary onsite storage of up to 2 cubic yards of waste requiring offsite disposal by Veolia. Provide a covered storage container or construct a temporary storage area on an impervious base, such as concrete or synthetic rubber sheeting, and cover the storage area with impervious material to prevent contact with and infiltration of precipitation

D Measurement

The Department will measure Segregation and Disposal of Demolition Debris in tons of debris accepted by the landfill facility as documented by weight tickets generated by the landfill facility.

E Payment

The department will pay for measured quantities at the contract unit price under the following bid item:

ITEM NUMBER	DESCRIPTION	UNIT
SPV.0195.02	Segregation and Disposal of Demolition Debris	Ton

Payment is full compensation for excavating, segregating, loading, hauling, and direct landfilling of debris; obtaining solid waste collection and transportation service operating licenses; and for furnishing all labor, tools, equipment, and incidentals necessary to complete the work.

Schedule of Items

Attached, dated February 26, 2021, are the revised Schedule of Items Pages 1 – 29.

Plan Sheets

The following 8½ x 11-inch sheets are attached and made part of the plans for this proposal:
Revised: 2, 54, 56-66, 77-85, 146, 147, 870, 882, 992, 1014 and 1018.

END OF ADDENDUM

GENERAL NOTES

PIPE ELEVATIONS, LENGTHS, AND LOCATIONS AS SHOWN ON THE PLANS MAY BE ADJUSTED TO FIT EXISTING FIELD CONDITIONS AS APPROVED BY THE ENGINEER.

STANDARD ABBREVIATIONS

Table with 2 columns: Abbreviation and Description. Includes terms like AIR CONDITIONING, AGGREGATE, ANTERNA, etc.

UTILITIES

AT&T WISCONSIN - COMMUNICATION LINE
AT&T COMMUNICATIONS - COMMUNICATION LINE
CHARTER COMMUNICATIONS - COMMUNICATION LINE

LOCAL CONTACTS

THOMAS JAMES, HIGHWAY COMMISSIONER
FOND DU LAC, WI 54935
PHONE: (920) 929-3488
EMAIL: tom.james@fdco.wi.gov

DESIGN CONTACT

DAN HERZBERG
1150 SPRINGHURST DRIVE, SUITE 201
GREEN BAY, WI 54305
PHONE: (920) 482-5638
EMAIL: Dan.Herzberg@GRAF-usa.com

DEPT. OF NATURAL RESOURCES

WISCONSIN DEPT. OF NATURAL RESOURCES
2984 SHAWANO AVENUE
GREEN BAY, WI 54313
PHONE: (920) 662-5119
EMAIL: james.dobersalke@wisconsin.gov

WISCONSIN DEPARTMENT OF TRANSPORTATION - SURVEY

CORMAC A. MCINNIS, PLS
944 VANDERPERREN WAY,
GREEN BAY, WI 54313
PHONE: (920) 482-5638
EMAIL: cormac.mcinnis@dot.wi.gov



Dial 800 or (800) 242-8511
www.DiggersHotline.com

PROJECT NO: 1440-15-71

HWY: 5TH Z3

COUNTY: FOND DU LAC

GENERAL NOTES

PLOT NAME:

1 IN=200 FT

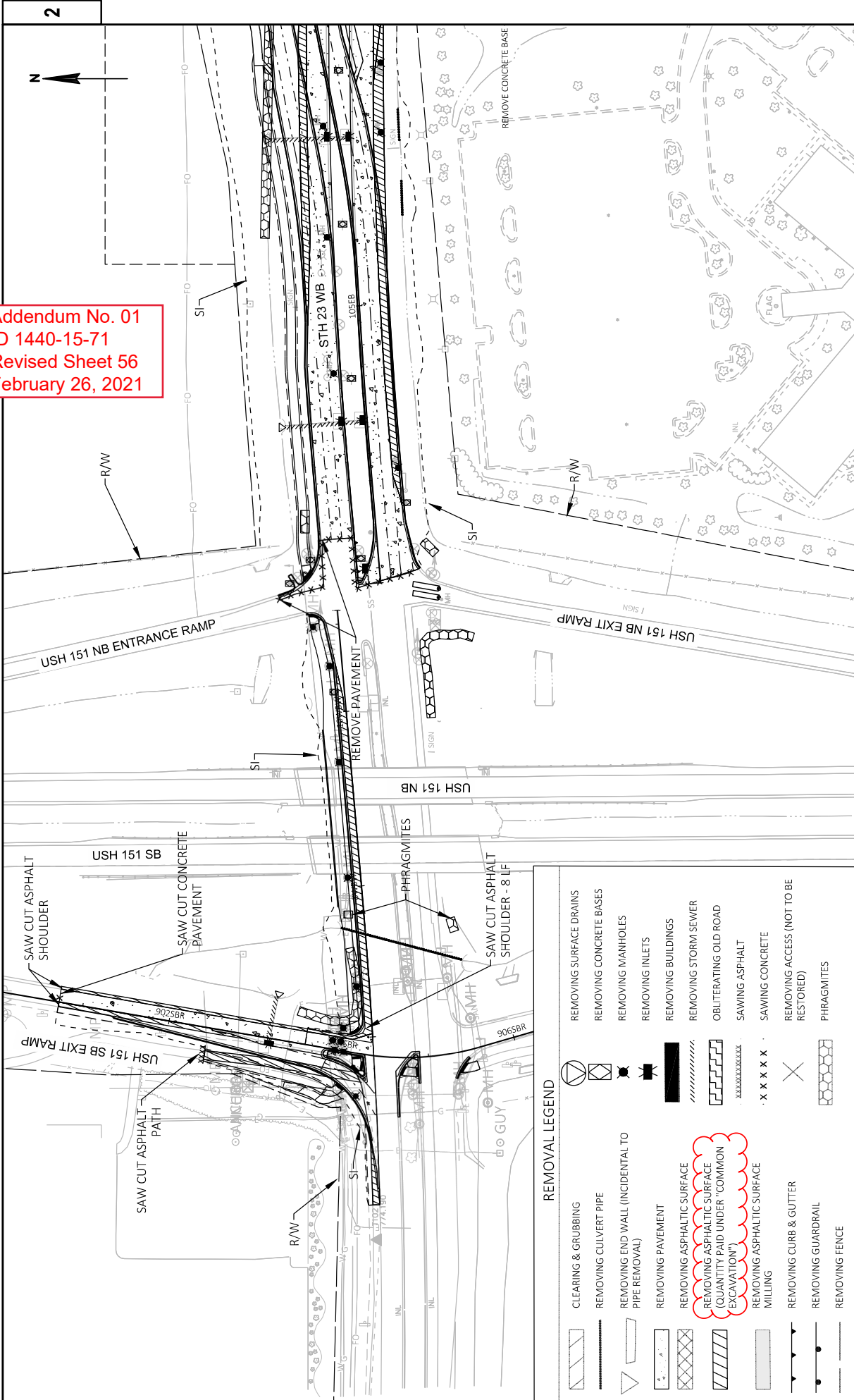
SHEET

2

E

Addendum No. 01
ID 1440-15-71
Revised Sheet 2
February 26, 2021

Addendum No. 01
 ID 1440-15-71
 Revised Sheet 56
 February 26, 2021



REMOVAL LEGEND

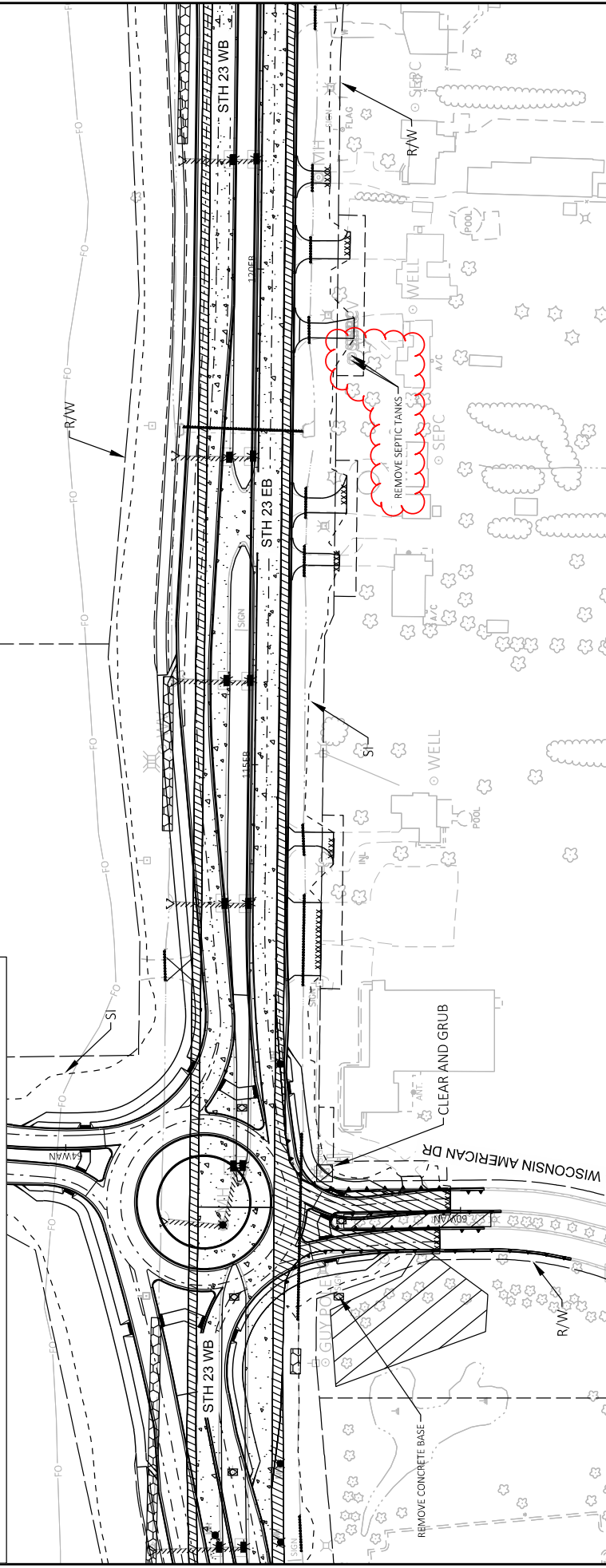
	CLEARING & GRUBBING		REMOVING SURFACE DRAINS
	REMOVING CULVERT PIPE		REMOVING CONCRETE BASES
	REMOVING END WALL (INCIDENTAL TO PIPE REMOVAL)		REMOVING MANHOLES
	REMOVING PAVEMENT		REMOVING INLETS
	REMOVING ASPHALTIC SURFACE (QUANTITY PAID UNDER "COMMON EXCAVATION")		REMOVING BUILDINGS
	REMOVING ASPHALTIC SURFACE MILLING		REMOVING STORM SEWER
	REMOVING CURB & GUTTER		OBLITERATING OLD ROAD
	REMOVING GUARDRAIL		SAWING ASPHALT
	REMOVING FENCE		SAWING CONCRETE
			REMOVING ACCESS (NOT TO BE RESTORED)
			PHRAGMITES

Addendum No. 01
ID 1440-15-71
Revised Sheet 57
February 26, 2021



REMOVAL LEGEND

- CLEARING & GRUBBING
- REMOVING CULVERT PIPE
- REMOVING END WALL (INCIDENTAL TO PIPE REMOVAL)
- REMOVING PAVEMENT
- REMOVING ASPHALTIC SURFACE
- REMOVING ASPHALTIC SURFACE (QUANTITY PAID UNDER "COMMON EXCAVATION")
- REMOVING ASPHALTIC SURFACE
- MILLING
- REMOVING CURB & GUTTER
- REMOVING GUARDRAIL
- REMOVING FENCE
- REMOVING SURFACE DRAINS
- REMOVING CONCRETE BASES
- REMOVING MANHOLES
- REMOVING INLETS
- REMOVING BUILDINGS
- REMOVING STORM SEWER
- OBLITERATING OLD ROAD
- SAWING ASPHALT
- SAWING CONCRETE
- REMOVING ACCESS (NOT TO BE RESTORED)
- PHRAGMITES

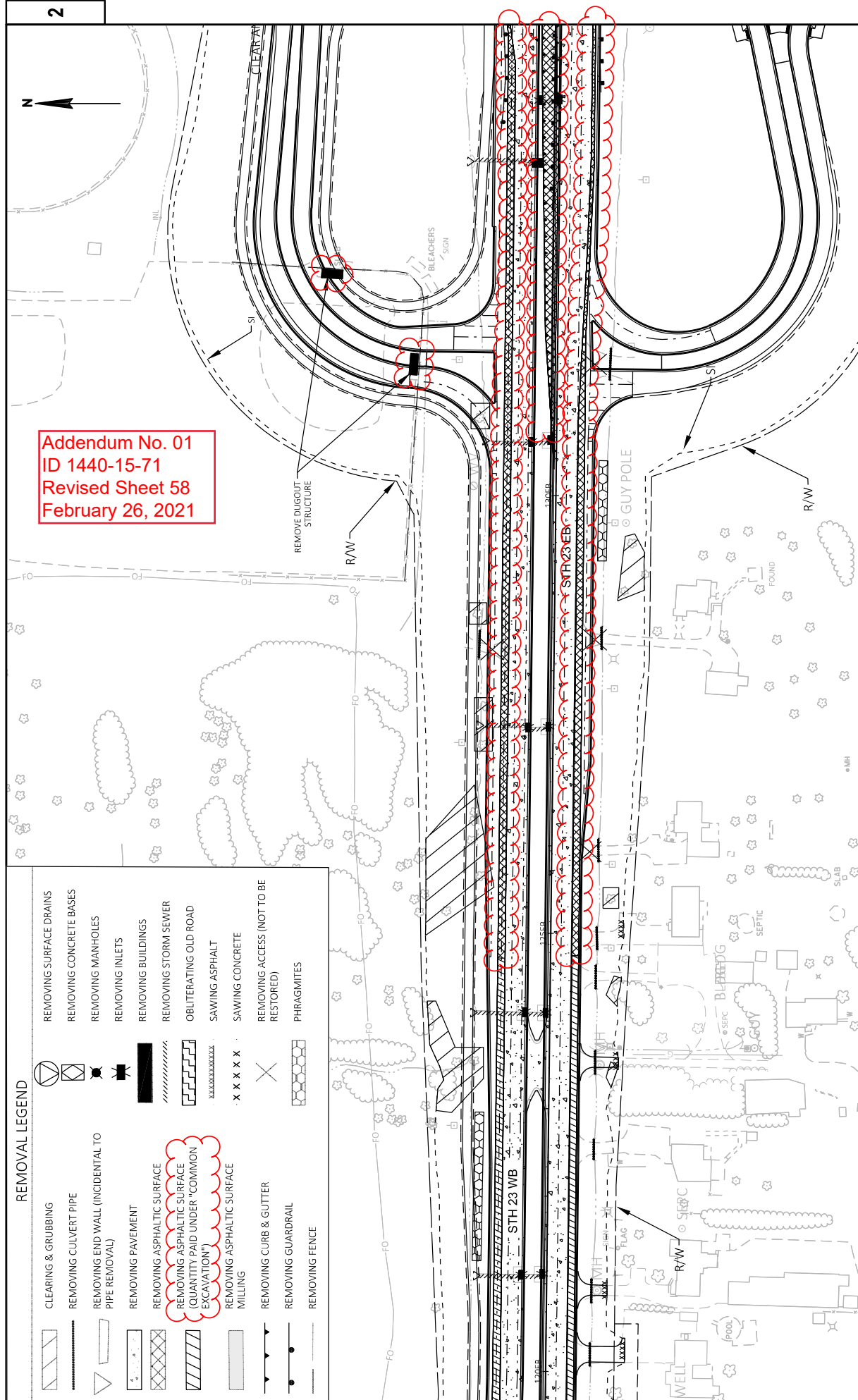


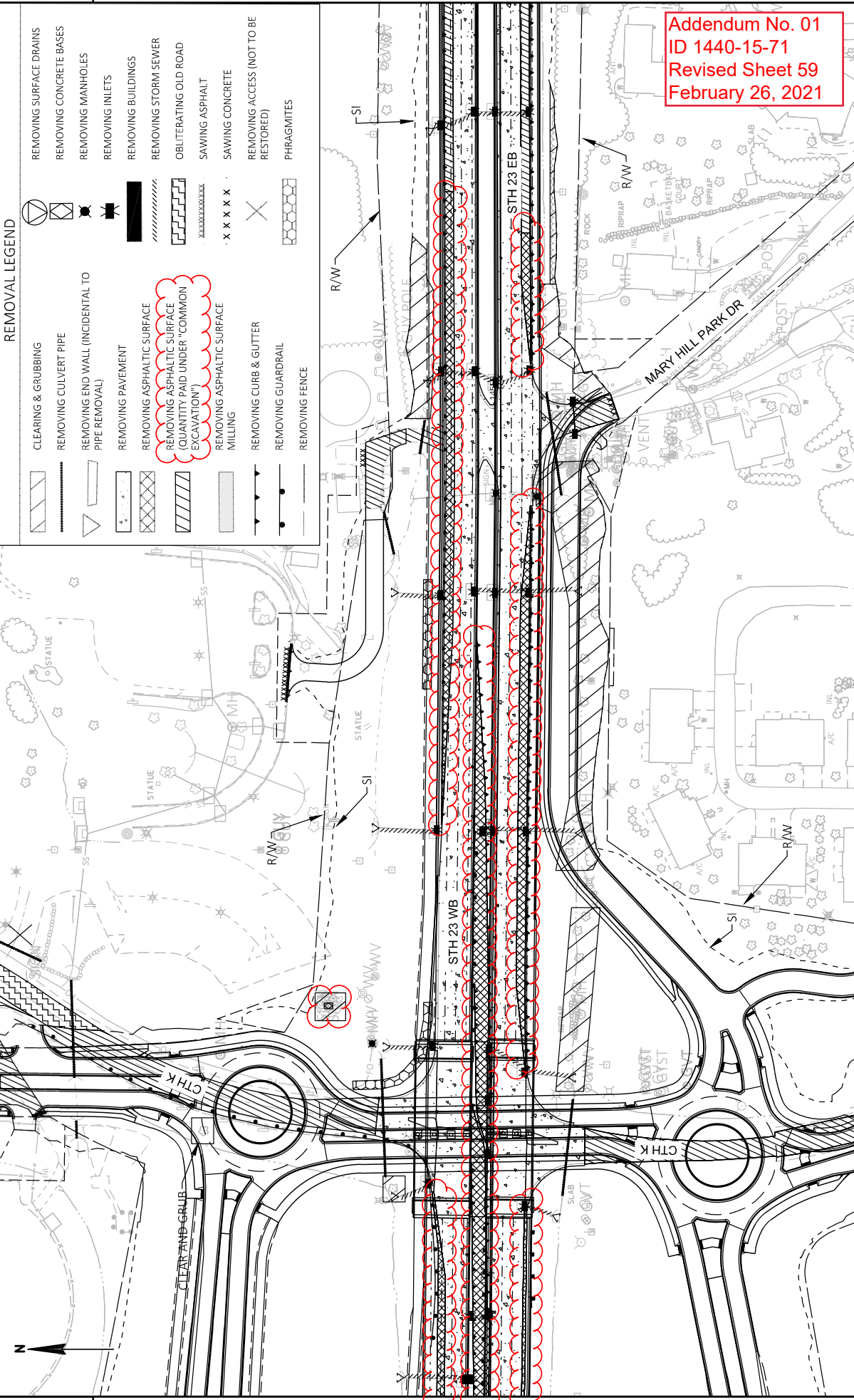
PROJECT NO: 1440-15-17
 FILE NAME: J:\082014\20140203\CAD\TRANSPORTATION\DWG\SHEETS\LAND\21100_RM.DWG
 COUNTY: FOND DU LAC
 PLOT DATE: 2/25/2021 12:45 AM
 REMOVAL PLAN
 PLOT BY: ENGLES, BRIAN
 PLOT NAME:
 PLOT SCALE: 1 IN=100 FT
 SHEET 57 E
 WISDOT/CADSS SHEET 42



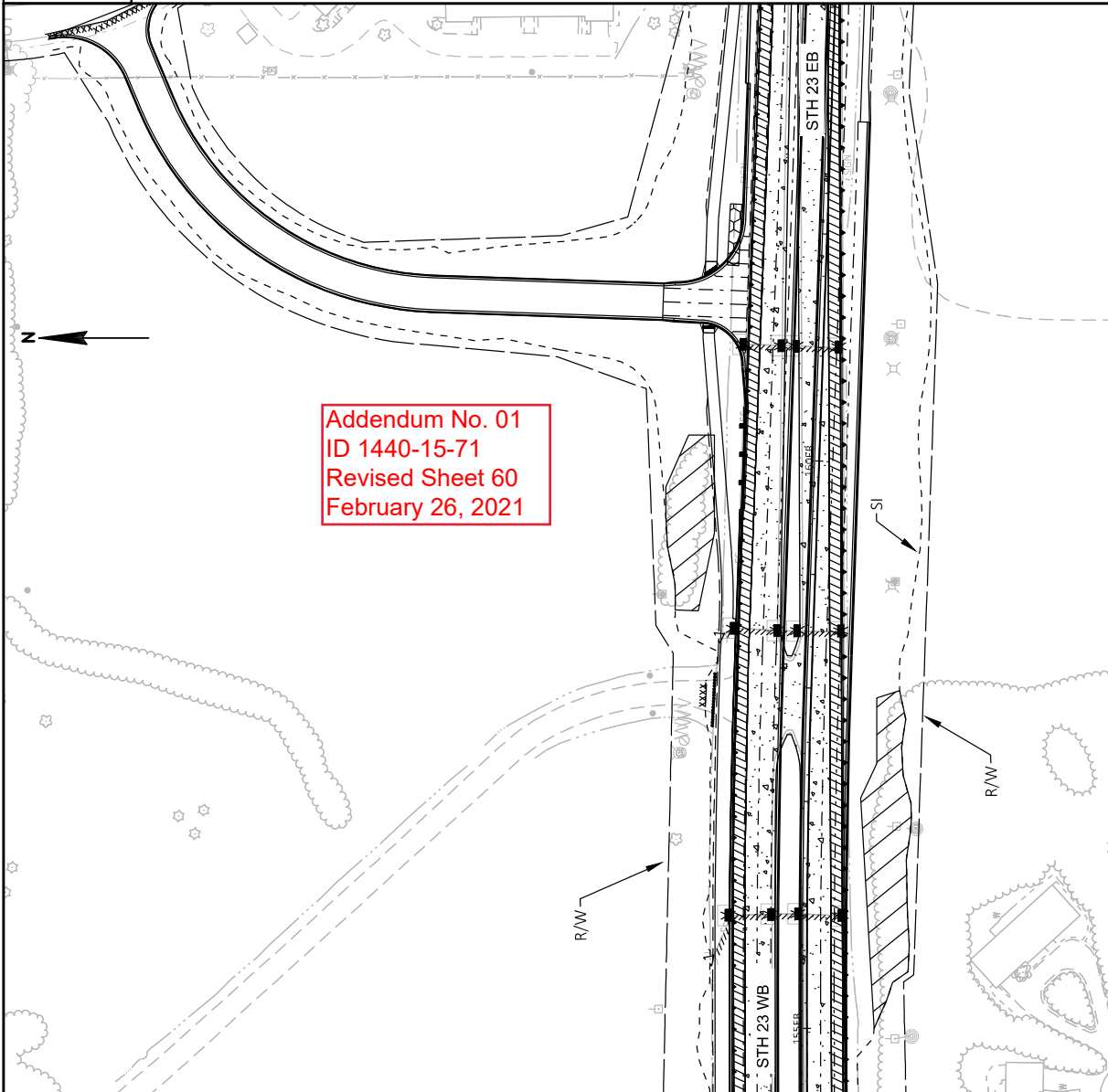
Addendum No. 01
ID 1440-15-71
Revised Sheet 58
February 26, 2021

REMOVAL LEGEND	
	CLEARING & GRUBBING
	REMOVING CULVERT PIPE
	REMOVING END WALL (INCIDENTAL TO PIPE REMOVAL)
	REMOVING PAVEMENT
	REMOVING ASPHALTIC SURFACE
	REMOVING ASPHALTIC SURFACE (QUANTITY PAID UNDER "COMMON EXCAVATION")
	REMOVING ASPHALTIC SURFACE MILLING
	REMOVING CURB & GUTTER
	REMOVING GUARDRAIL
	REMOVING FENCE
	REMOVING SURFACE DRAINS
	REMOVING CONCRETE BASES
	REMOVING MANHOLES
	REMOVING INLETS
	REMOVING BUILDINGS
	REMOVING STORM SEWER
	OBLITERATING OLD ROAD
	SAWING ASPHALT
	SAWING CONCRETE
	REMOVING ACCESS (NOT TO BE RESTORED)
	PHRAGMITES



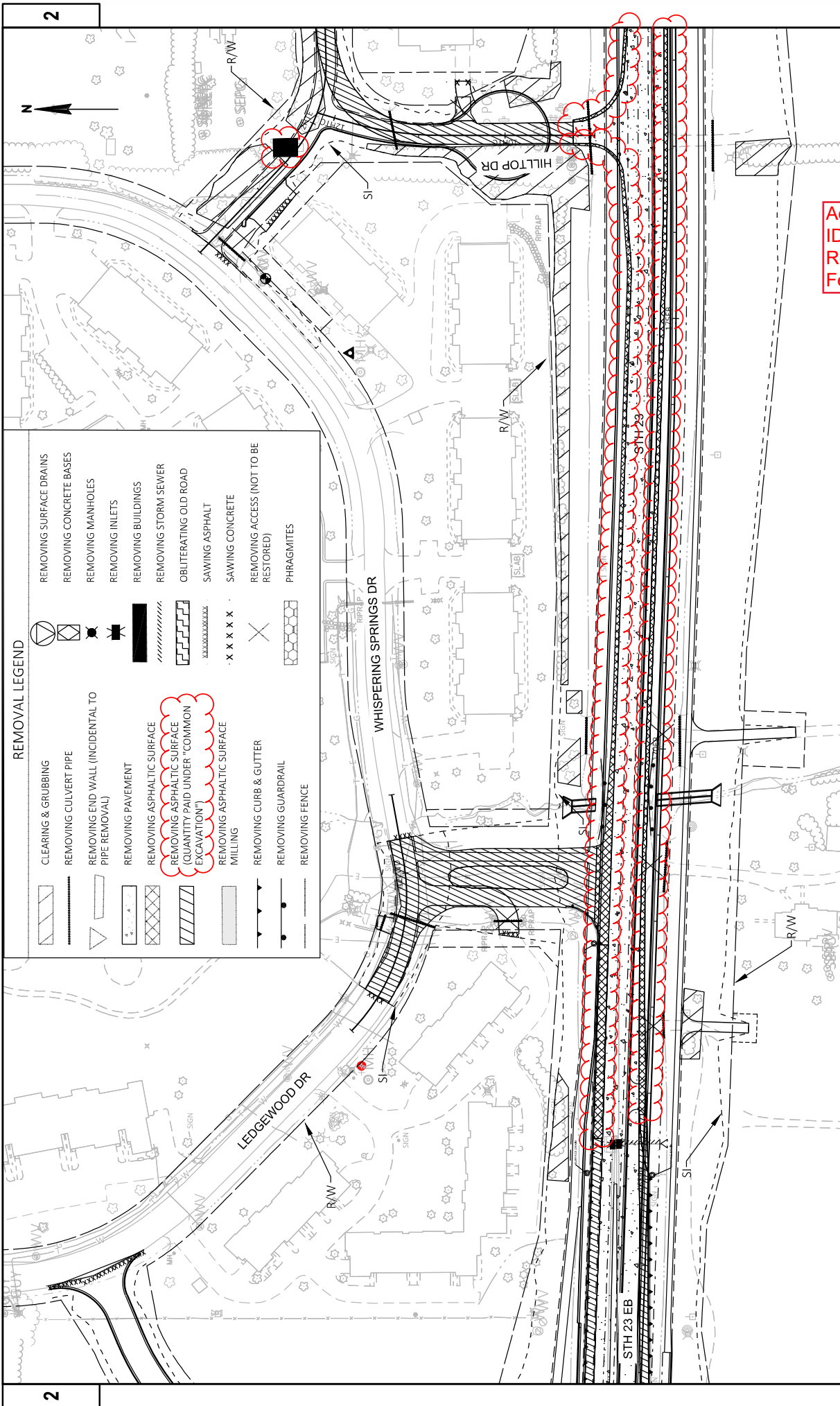


Addendum No. 01
 ID 1440-15-71
 Revised Sheet 59
 February 26, 2021



Addendum No. 01
 ID 1440-15-71
 Revised Sheet 60
 February 26, 2021

REMOVAL LEGEND	
	CLEARING & GRUBBING
	REMOVING CULVERT PIPE
	REMOVING END WALL (INCIDENTAL TO PIPE REMOVAL)
	REMOVING PAVEMENT
	REMOVING ASPHALTIC SURFACE
	REMOVING ASPHALTIC SURFACE (QUANTITY PAID UNDER "COMMON EXCAVATION")
	REMOVING ASPHALTIC SURFACE MILLING
	REMOVING CURB & GUTTER
	REMOVING GUARDRAIL
	REMOVING FENCE
	REMOVING SURFACE DRAINS
	REMOVING CONCRETE BASES
	REMOVING MANHOLES
	REMOVING INLETS
	REMOVING BUILDINGS
	REMOVING STORM SEWER
	OBTLERATING OLD ROAD
	SAWING ASPHALT
	SAWING CONCRETE
	REMOVING ACCESS (NOT TO BE RESTORED)
	PHRAGMITES



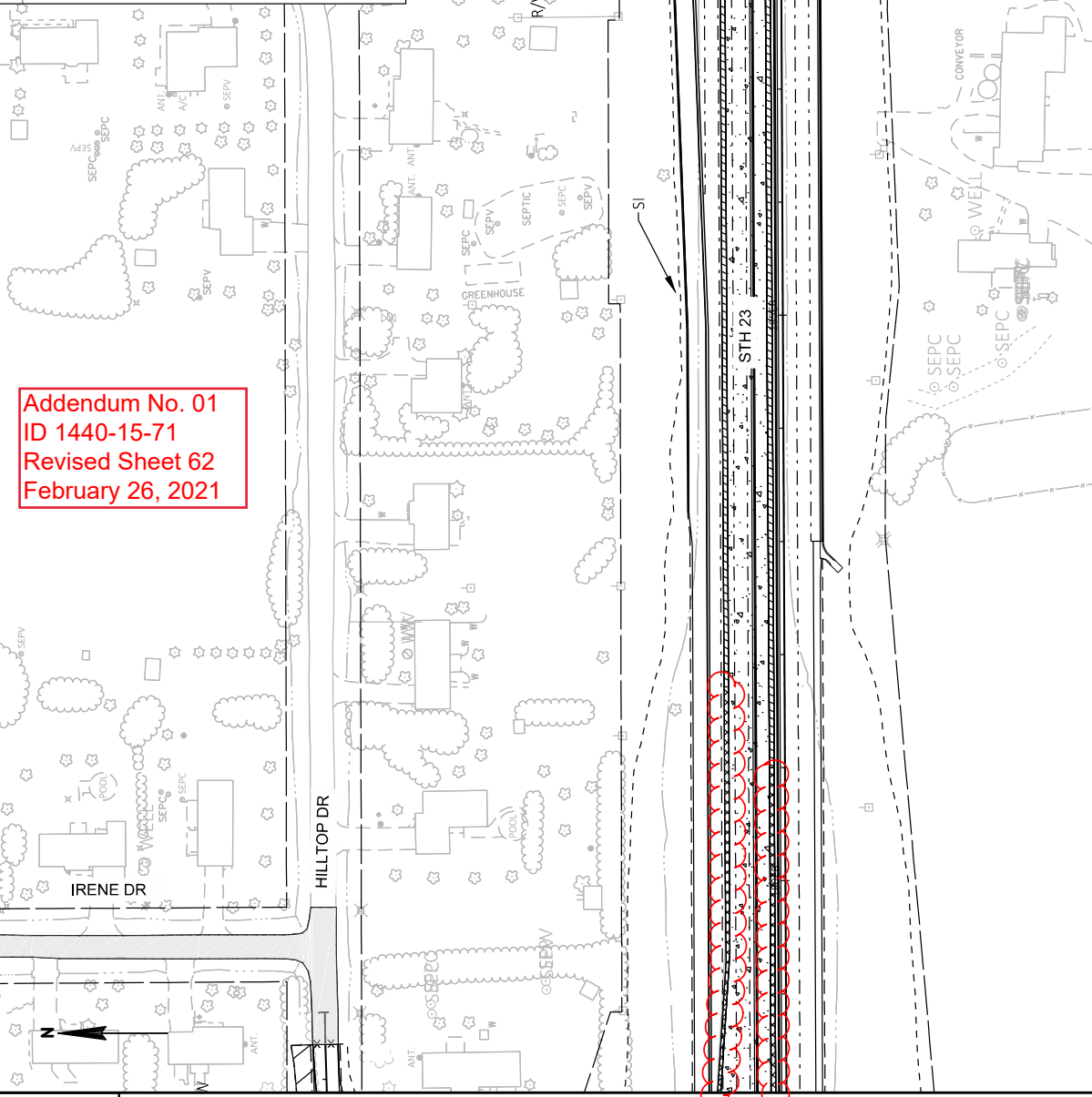
2

2

REMOVAL LEGEND

	CLEARING & GRUBBING		REMOVING SURFACE DRAINS
	REMOVING CULVERT PIPE		REMOVING CONCRETE BASES
	REMOVING END WALL (INCIDENTAL TO PIPE REMOVAL)		REMOVING MANHOLES
	REMOVING PAVEMENT		REMOVING INLETS
	REMOVING ASPHALTIC SURFACE		REMOVING BUILDINGS
	REMOVING ASPHALTIC SURFACE (QUANTITY PAID UNDER "COMMON EXCAVATION")		REMOVING STORM SEWER
	REMOVING ASPHALTIC SURFACE MILLING		OBLITERATING OLD ROAD
	REMOVING CURB & GUTTER		SAWING ASPHALT
	REMOVING GUARDRAIL		SAWING CONCRETE
	REMOVING FENCE		REMOVING ACCESS (NOT TO BE RESTORED)
			PHRAGMITES

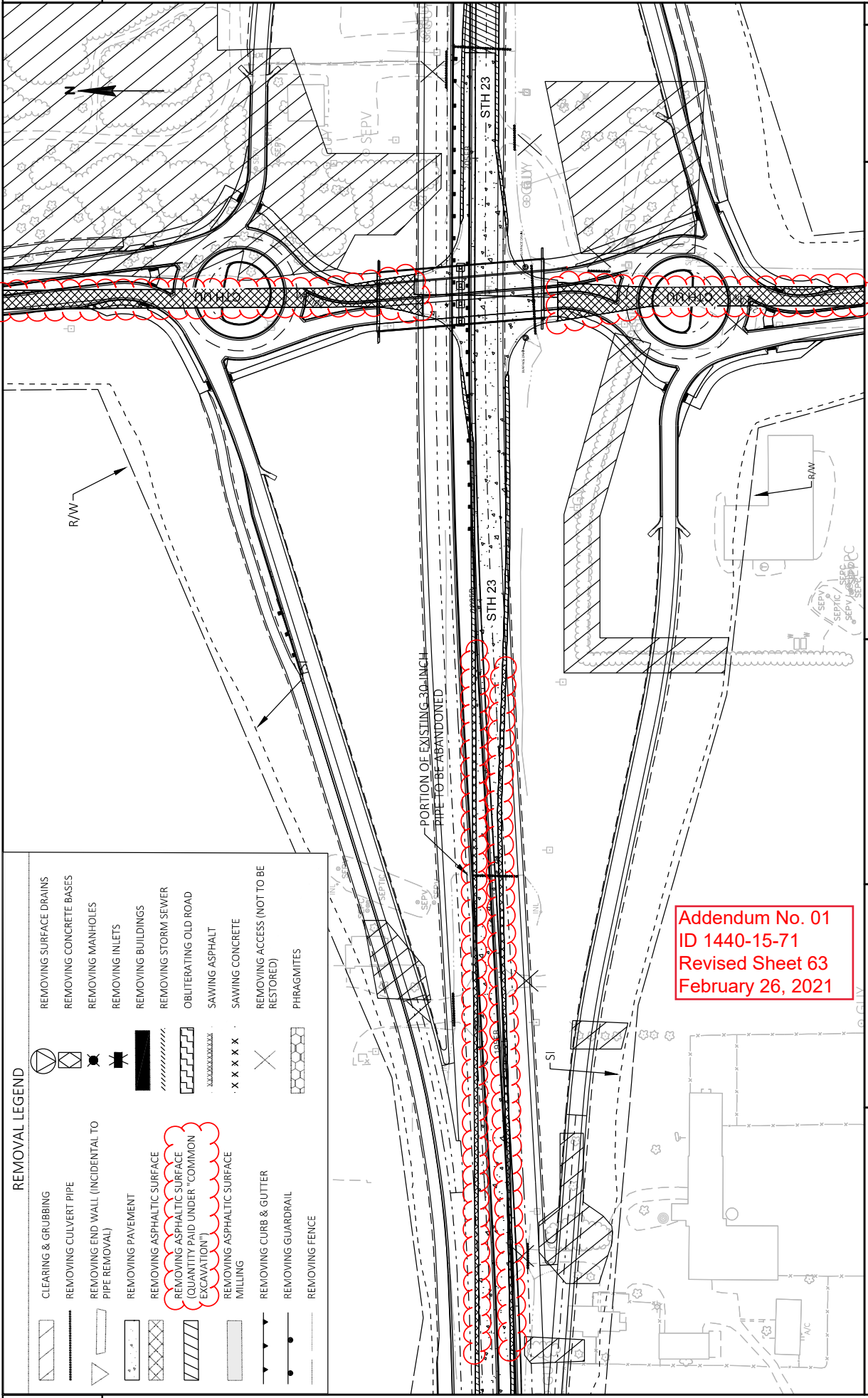
Addendum No. 01
 ID 1440-15-71
 Revised Sheet 61
 February 26, 2021



Addendum No. 01
 ID 1440-15-71
 Revised Sheet 62
 February 26, 2021

REMOVAL LEGEND

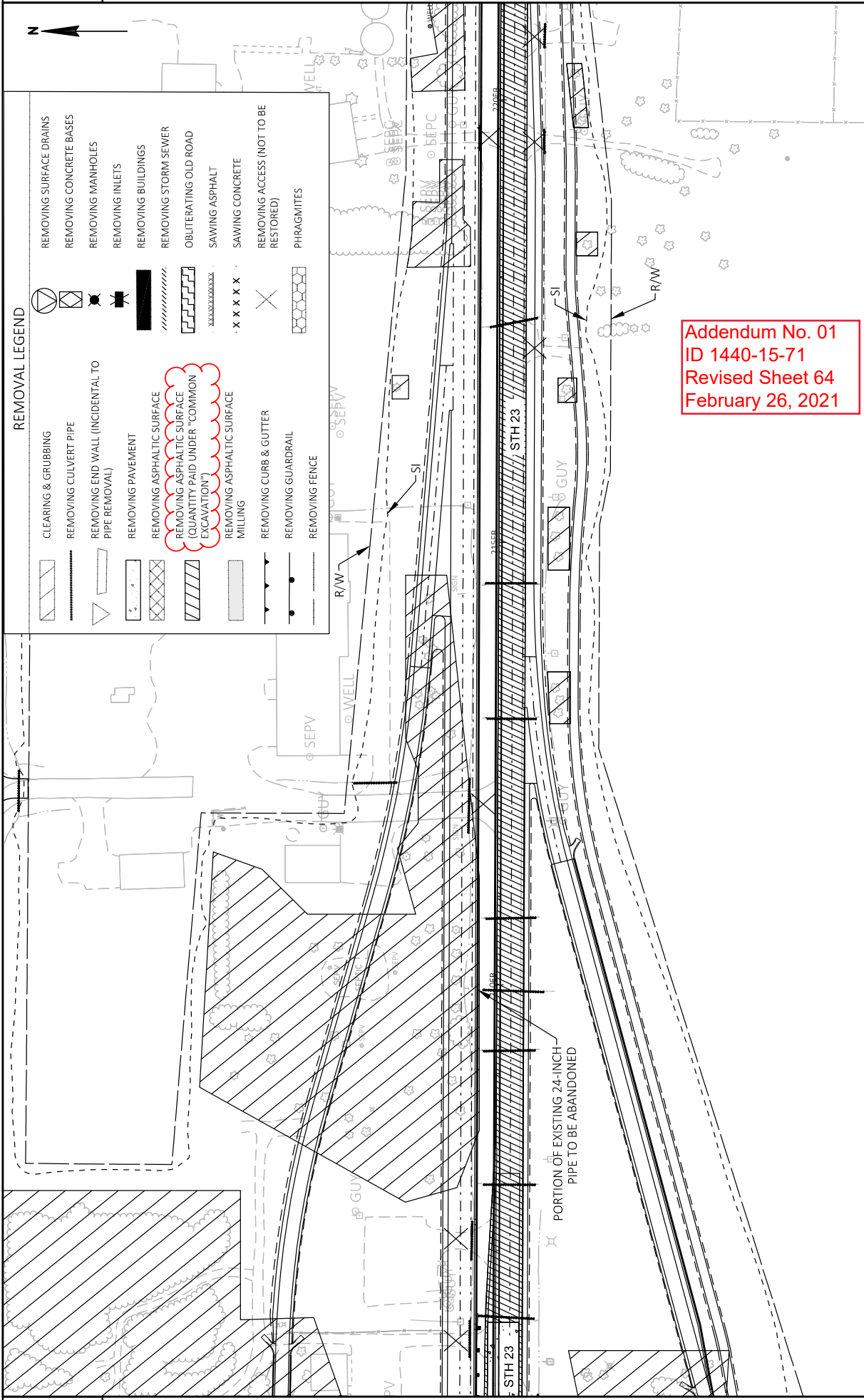
- | | | | |
|--|--|--|--------------------------------------|
| | CLEARING & GRUBBING | | REMOVING SURFACE DRAINS |
| | REMOVING CULVERT PIPE | | REMOVING CONCRETE BASES |
| | REMOVING END WALL (INCIDENTAL TO PIPE REMOVAL) | | REMOVING MANHOLES |
| | REMOVING PAVEMENT | | REMOVING INLETS |
| | REMOVING ASPHALTIC SURFACE | | REMOVING BUILDINGS |
| | REMOVING ASPHALTIC SURFACE (QUANTITY PAID UNDER "COMMON EXCAVATION") | | REMOVING STORM SEWER |
| | REMOVING ASPHALTIC SURFACE MILLING | | OBLETERATING OLD ROAD |
| | REMOVING CURB & GUTTER | | SAWING ASPHALT |
| | REMOVING GUARDRAIL | | SAWING CONCRETE |
| | REMOVING FENCE | | REMOVING ACCESS (NOT TO BE RESTORED) |
| | | | PHRAGMITES |



REMOVAL LEGEND

	CLEARING & GRUBBING		REMOVING SURFACE DRAINS
	REMOVING CULVERT PIPE		REMOVING CONCRETE BASES
	REMOVING END WALL (INCIDENTAL TO PIPE REMOVAL)		REMOVING MANHOLES
	REMOVING PAVEMENT		REMOVING INLETS
	REMOVING ASPHALTIC SURFACE		REMOVING BUILDINGS
	REMOVING ASPHALTIC SURFACE (QUANTITY PAID UNDER "COMMON EXCAVATION")		REMOVING STORM SEWER
	REMOVING ASPHALTIC SURFACE MILLING		OBLITERATING OLD ROAD
	REMOVING CURB & GUTTER		SAWING ASPHALT
	REMOVING GUARDRAIL		SAWING CONCRETE
	REMOVING FENCE		REMOVING ACCESS (NOT TO BE RESTORED)
			PHRAGMITES

Addendum No. 01
 ID 1440-15-71
 Revised Sheet 63
 February 26, 2021



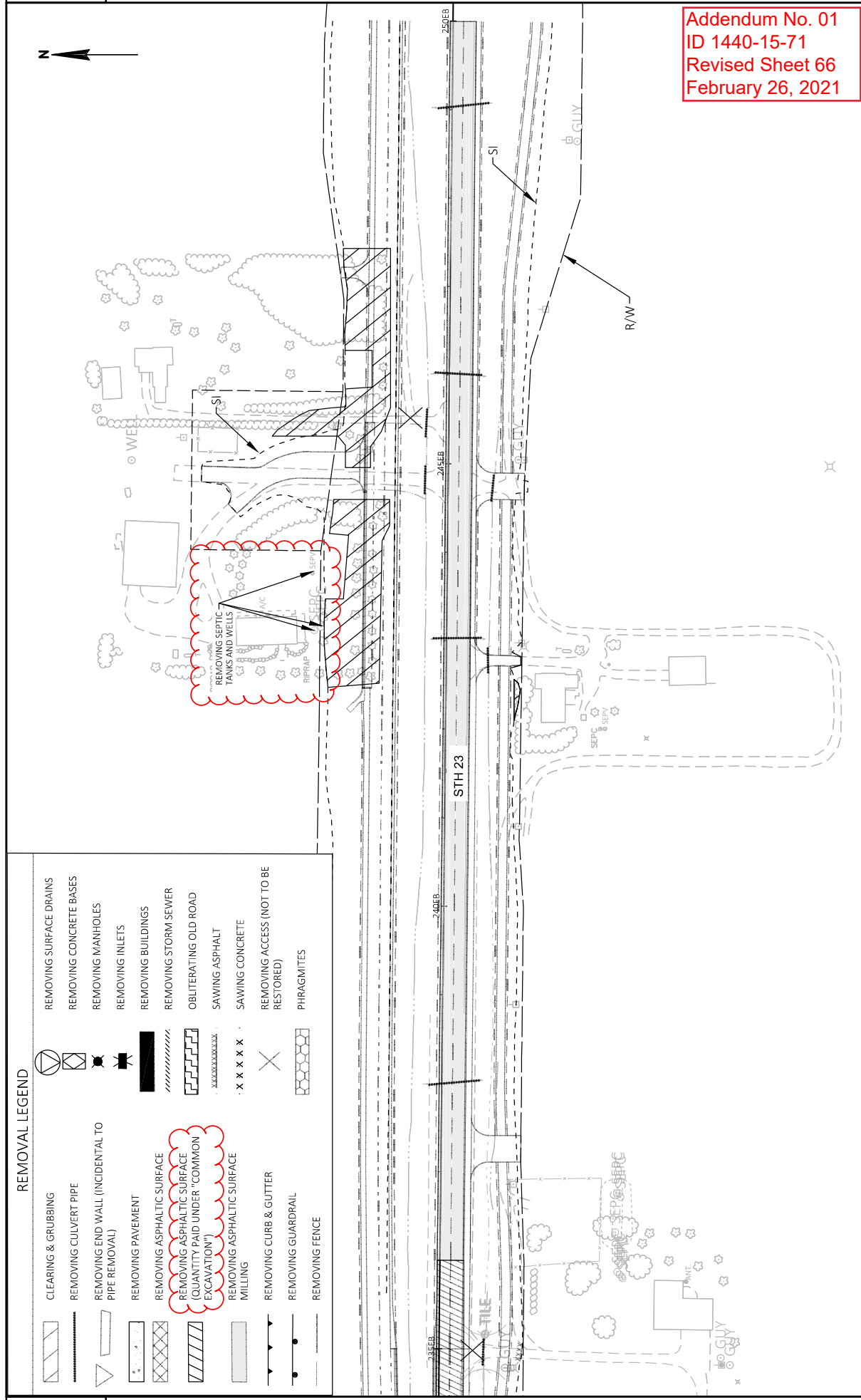
Addendum No. 01
 ID 1440-15-71
 Revised Sheet 64
 February 26, 2021

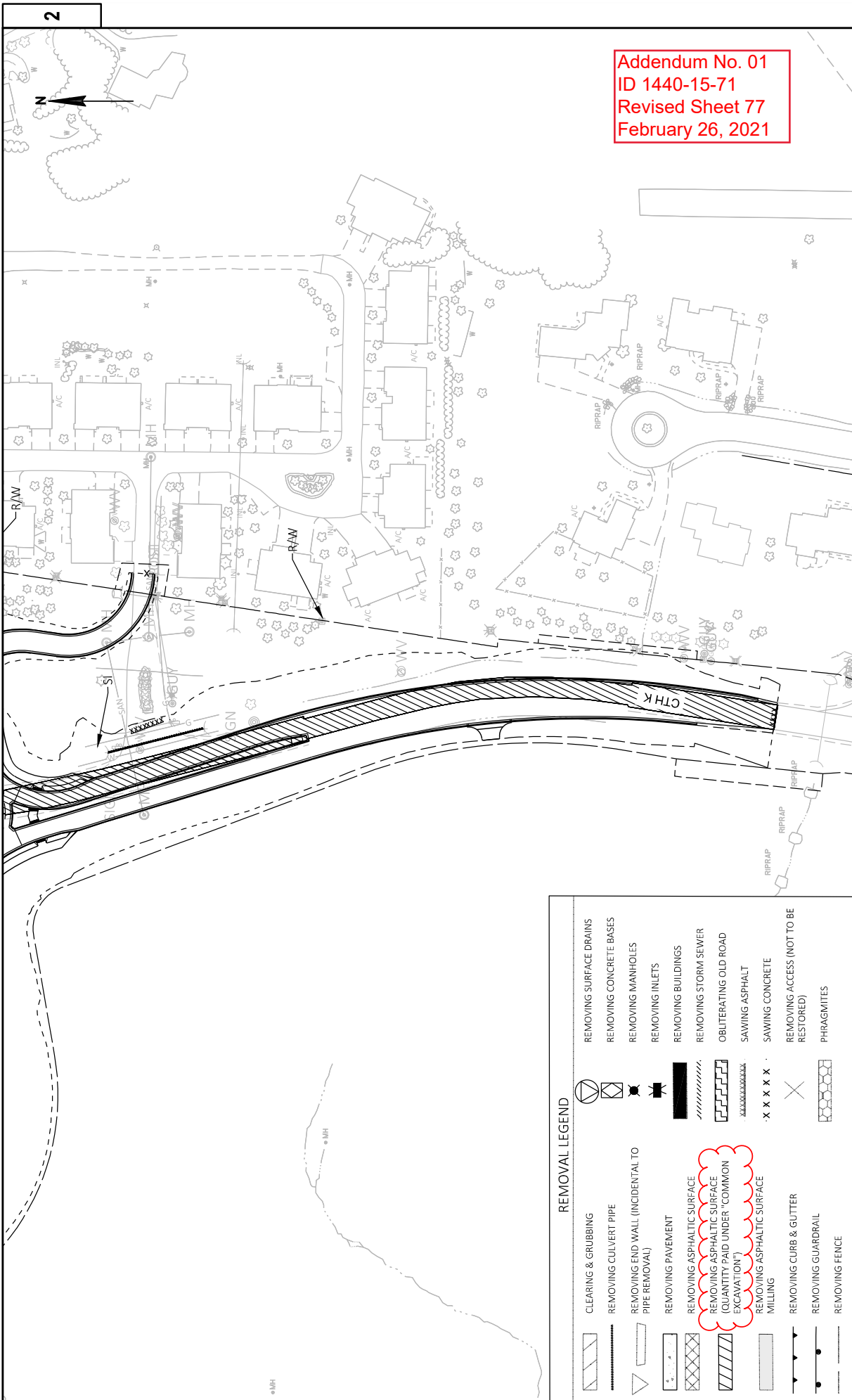


Addendum No. 01
ID 1440-15-71
Revised Sheet 66
February 26, 2021

REMOVAL LEGEND

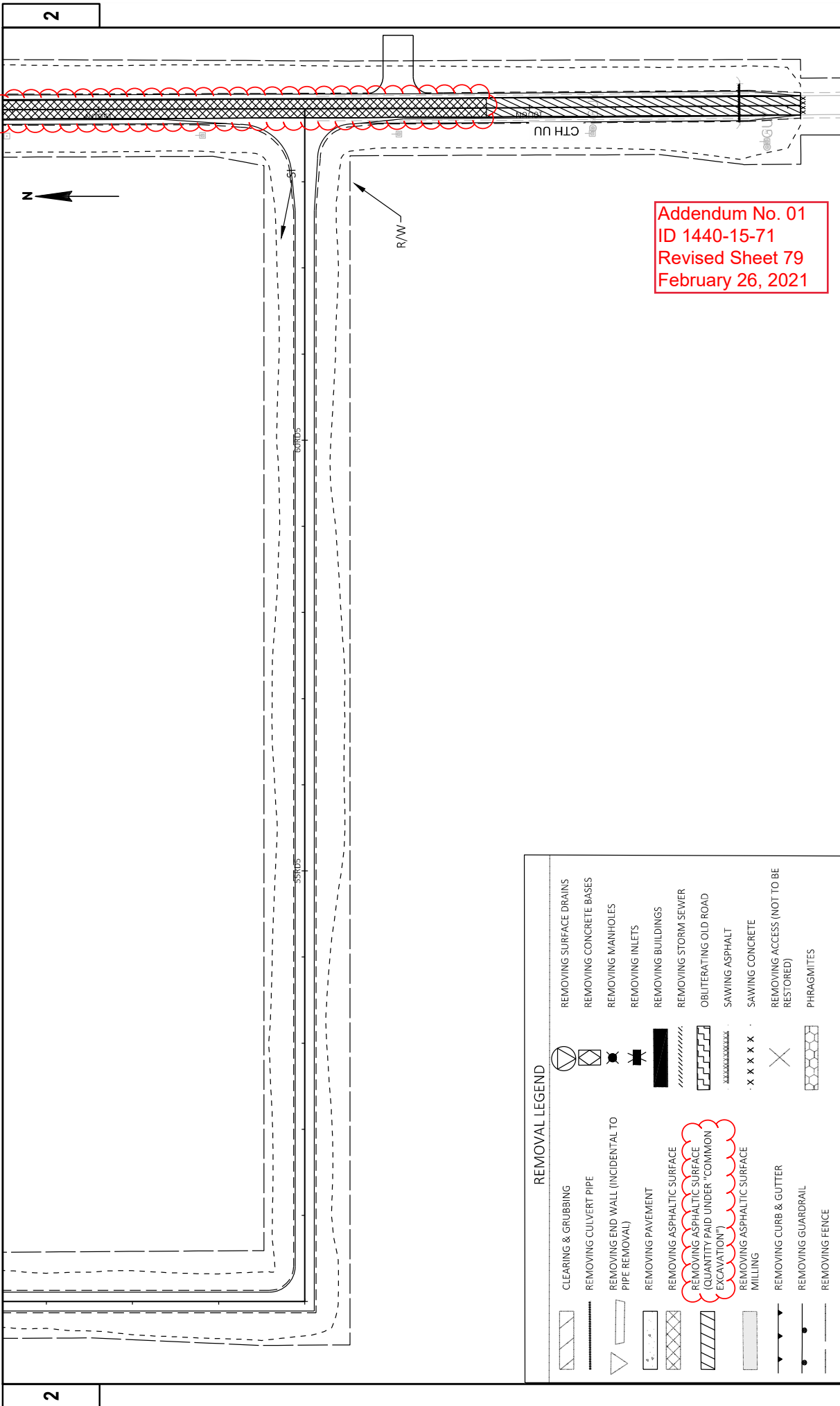
	CLEARING & GRUBBING		REMOVING SURFACE DRAINS
	REMOVING CULVERT PIPE		REMOVING CONCRETE BASES
	REMOVING END WALL (INCIDENTAL TO PIPE REMOVAL)		REMOVING MANHOLES
	REMOVING PAVEMENT		REMOVING INLETS
	REMOVING ASPHALTIC SURFACE		REMOVING BUILDINGS
	REMOVING ASPHALTIC SURFACE (QUANTITY PAID UNDER "COMMON EXCAVATION")		REMOVING STORM SEWER
	REMOVING ASPHALTIC SURFACE (MILLING)		OBLITERATING OLD ROAD
	REMOVING CURB & GUTTER		SAWING ASPHALT
	REMOVING GUARDRAIL		SAWING CONCRETE
	REMOVING FENCE		REMOVING ACCESS (NOT TO BE RESTORED)
			PHRAGMITES





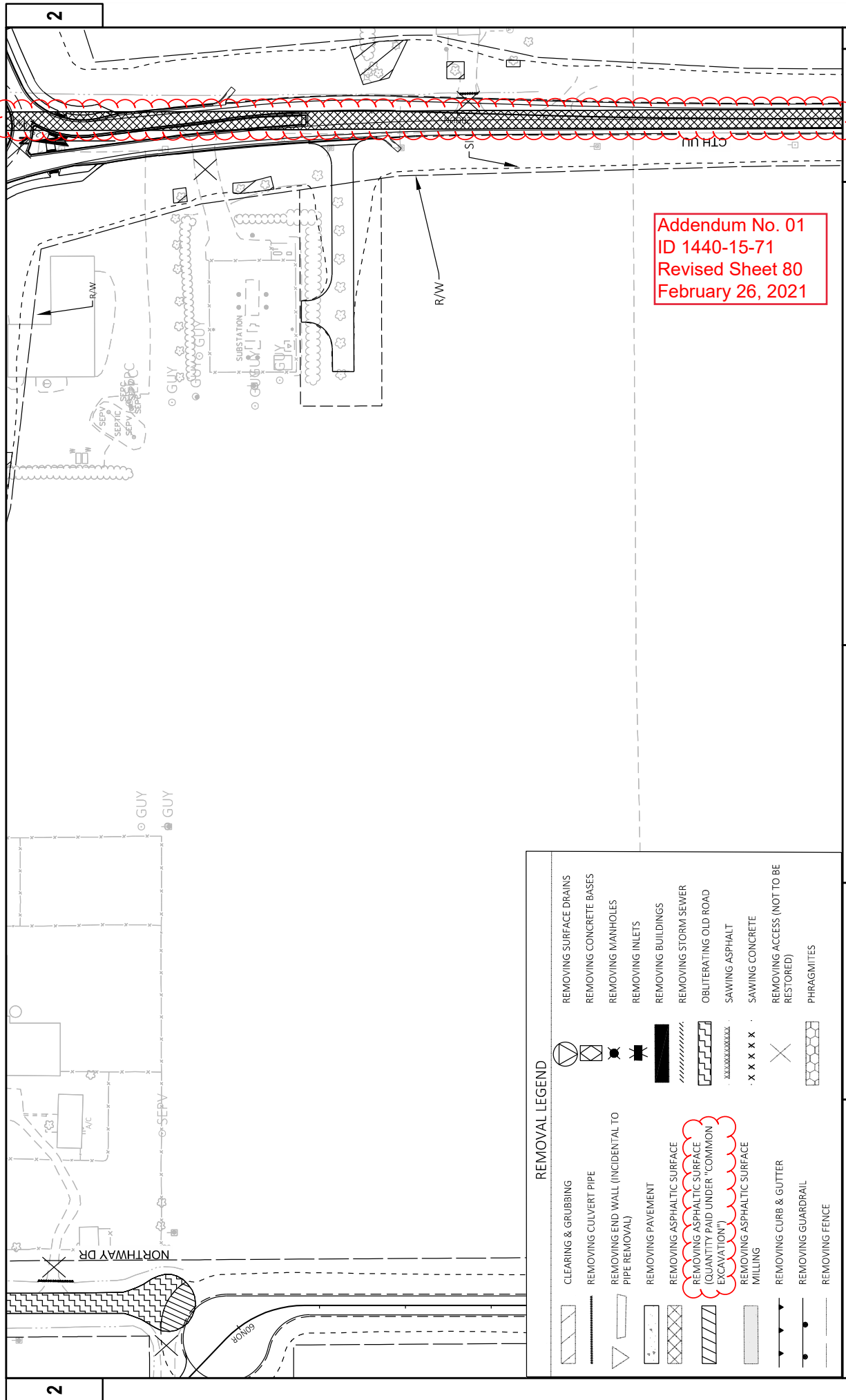
Addendum No. 01
 ID 1440-15-71
 Revised Sheet 77
 February 26, 2021

REMOVAL LEGEND	
	CLEARING & GRUBBING
	REMOVING CULVERT PIPE
	REMOVING END WALL (INCIDENTAL TO PIPE REMOVAL)
	REMOVING PAVEMENT
	REMOVING ASPHALTIC SURFACE
	REMOVING ASPHALTIC SURFACE (QUANTITY PAID UNDER "COMMON EXCAVATION")
	REMOVING ASPHALTIC SURFACE MILLING
	REMOVING CURB & GUTTER
	REMOVING GUARDRAIL
	REMOVING FENCE
	REMOVING SURFACE DRAINS
	REMOVING CONCRETE BASES
	REMOVING MANHOLES
	REMOVING INLETS
	REMOVING BUILDINGS
	REMOVING STORM SEWER
	OBLITERATING OLD ROAD
	SAWING ASPHALT
	SAWING CONCRETE
	REMOVING ACCESS (NOT TO BE RESTORED)
	PHRAGMITES



Addendum No. 01
 ID 1440-15-71
 Revised Sheet 79
 February 26, 2021

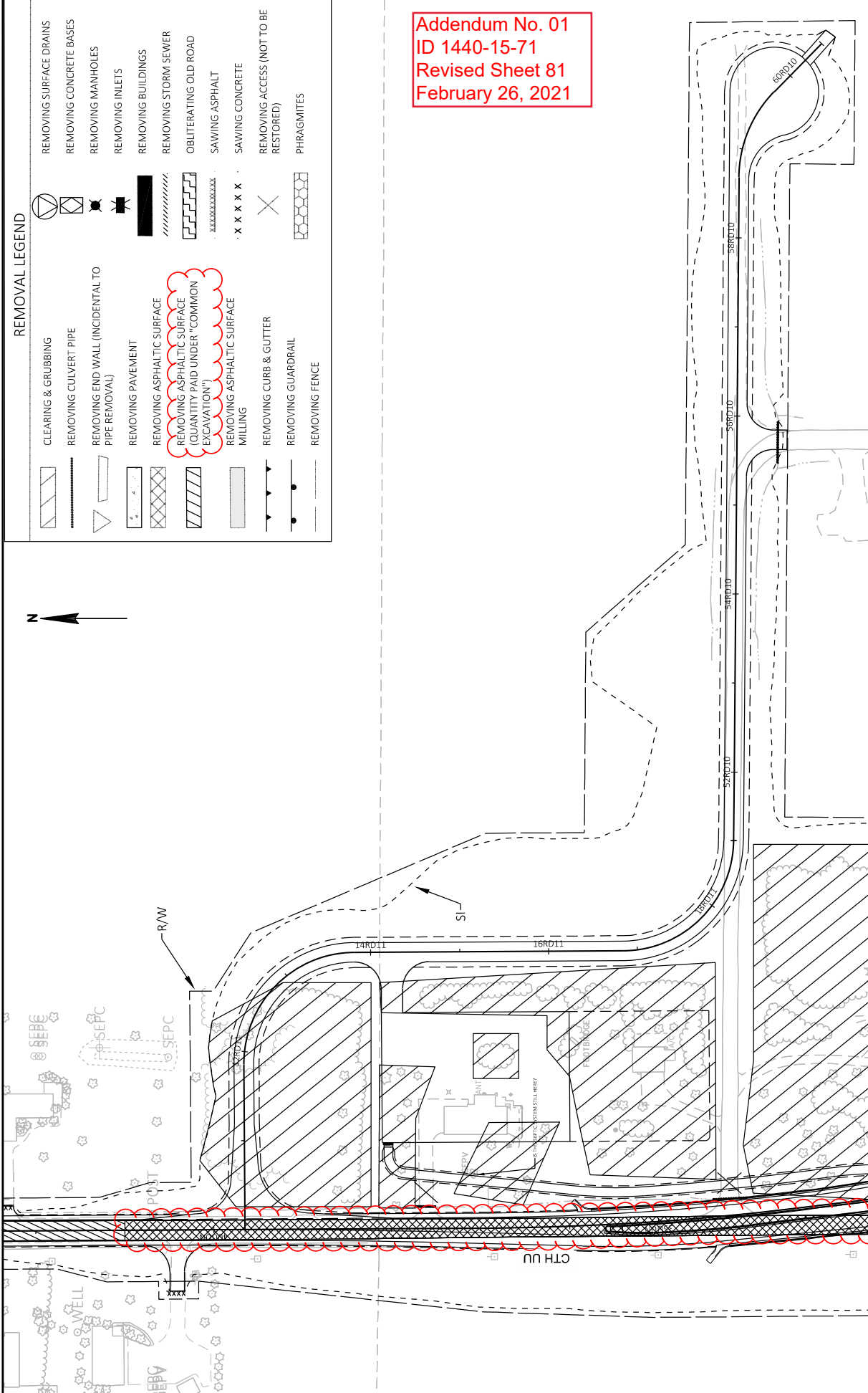
REMOVAL LEGEND			
	CLEARING & GRUBBING		REMOVING SURFACE DRAINS
	REMOVING CULVERT PIPE		REMOVING CONCRETE BASES
	REMOVING END WALL (INCIDENTAL TO PIPE REMOVAL)		REMOVING MANHOLES
	REMOVING PAVEMENT		REMOVING INLETS
	REMOVING ASPHALTIC SURFACE (QUANTITY PAID UNDER "COMMON EXCAVATION")		REMOVING BUILDINGS
	REMOVING ASPHALTIC SURFACE (MILLING)		REMOVING STORM SEWER
	REMOVING CURB & GUTTER		OBLITERATING OLD ROAD
	REMOVING GUARDRAIL		SAWING ASPHALT
	REMOVING FENCE		SAWING CONCRETE
			REMOVING ACCESS (NOT TO BE RESTORED)
			PHRAGMITES



Addendum No. 01
 ID 1440-15-71
 Revised Sheet 80
 February 26, 2021

REMOVAL LEGEND	
	CLEARING & GRUBBING
	REMOVING CULVERT PIPE
	REMOVING END WALL (INCIDENTAL TO PIPE REMOVAL)
	REMOVING PAVEMENT
	REMOVING ASPHALTIC SURFACE
	REMOVING ASPHALTIC SURFACE (QUANTITY PAID UNDER "COMMON EXCAVATION")
	REMOVING ASPHALTIC SURFACE MILLING
	REMOVING CURB & GUTTER
	REMOVING GUARDRAIL
	REMOVING FENCE
	REMOVING SURFACE DRAINS
	REMOVING CONCRETE BASES
	REMOVING MANHOLES
	REMOVING INLETS
	REMOVING BUILDINGS
	REMOVING STORM SEWER
	OBLITERATING OLD ROAD
	SAWING ASPHALT
	SAWING CONCRETE
	REMOVING ACCESS (NOT TO BE RESTORED)
	PHRAGMITES

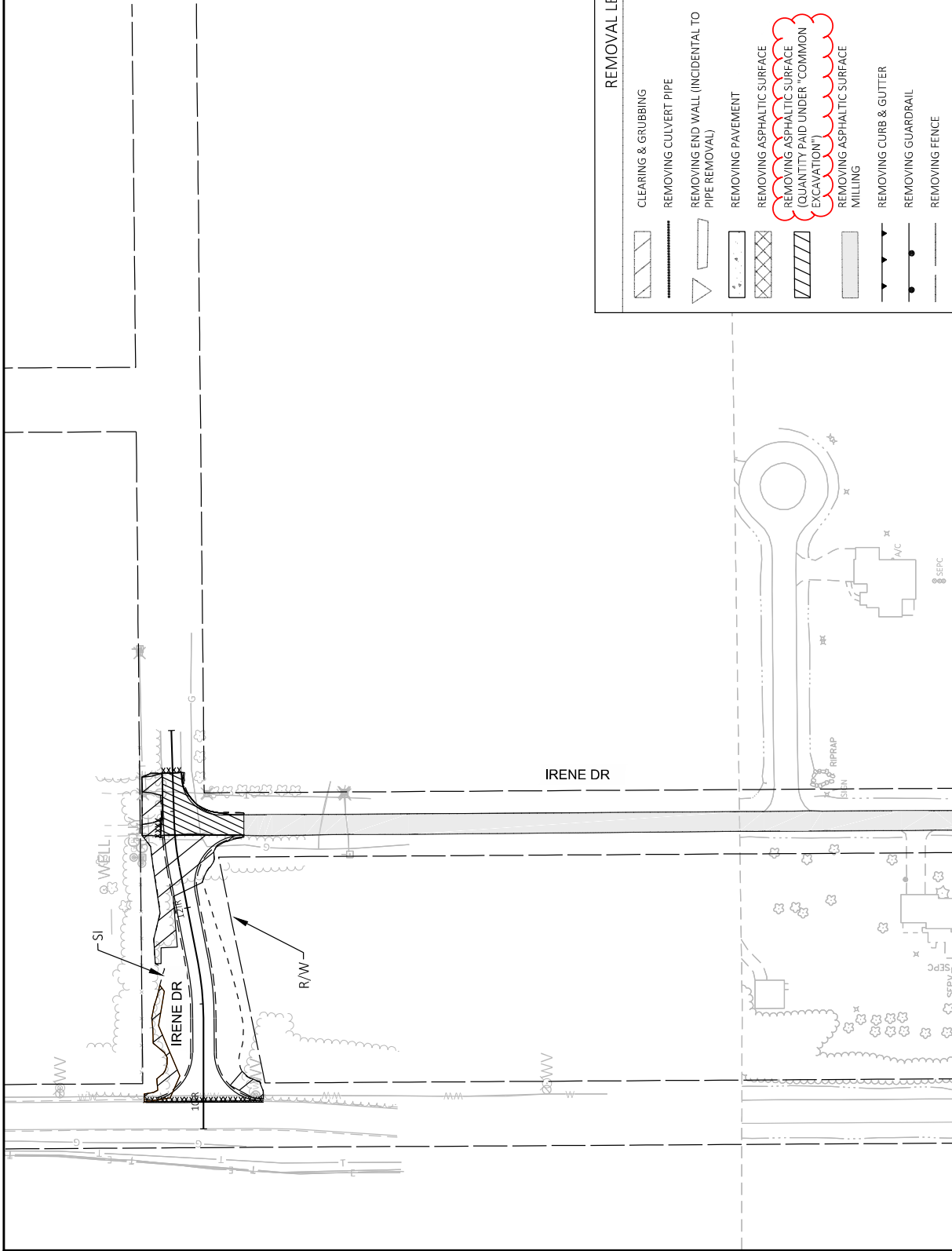
REMOVAL LEGEND	
	CLEARING & GRUBBING
	REMOVING CULVERT PIPE
	REMOVING END WALL (INCIDENTAL TO PIPE REMOVAL)
	REMOVING PAVEMENT
	REMOVING ASPHALTIC SURFACE
	REMOVING ASPHALTIC SURFACE (QUANTITY PAID UNDER "COMMON EXCAVATION")
	REMOVING ASPHALTIC SURFACE MILLING
	REMOVING CURB & GUTTER
	REMOVING GUARDRAIL
	REMOVING FENCE
	REMOVING SURFACE DRAINS
	REMOVING CONCRETE BASES
	REMOVING MANHOLES
	REMOVING INLETS
	REMOVING BUILDINGS
	REMOVING STORM SEWER
	OBLITERATING OLD ROAD
	SAWING ASPHALT
	SAWING CONCRETE
	REMOVING ACCESS (NOT TO BE RESTORED)
	PHRAGMITES



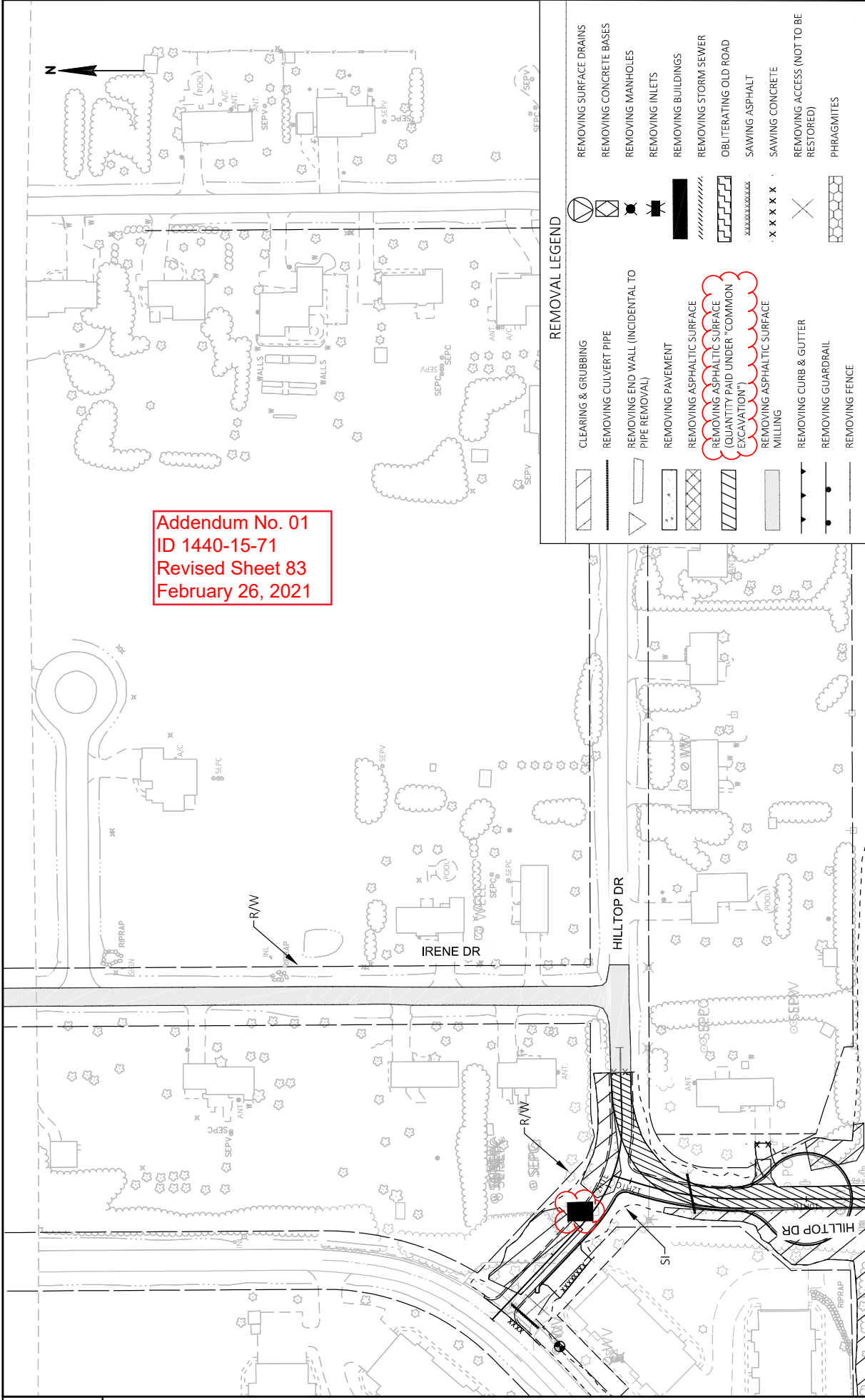
Addendum No. 01
 ID 1440-15-71
 Revised Sheet 81
 February 26, 2021



Addendum No. 01
ID 1440-15-71
Revised Sheet 82
February 26, 2021



REMOVAL LEGEND			
	CLEARING & GRUBBING		REMOVING SURFACE DRAINS
	REMOVING CULVERT PIPE		REMOVING CONCRETE BASES
	REMOVING END WALL (INCIDENTAL TO PIPE REMOVAL)		REMOVING MANHOLES
	REMOVING PAVEMENT		REMOVING INLETS
	REMOVING ASPHALTIC SURFACE (QUANTITY PAID UNDER "COMMON EXCAVATION")		REMOVING BUILDINGS
	REMOVING ASPHALTIC SURFACE MILLING		REMOVING STORM SEWER
	REMOVING CURB & GUTTER		OBLITERATING OLD ROAD
	REMOVING GUARDRAIL		SAWING ASPHALT
	REMOVING FENCE		SAWING CONCRETE
			REMOVING ACCESS (NOT TO BE RESTORED)
			PHRAGMITES



Addendum No. 01
 ID 1440-15-71
 Revised Sheet 83
 February 26, 2021

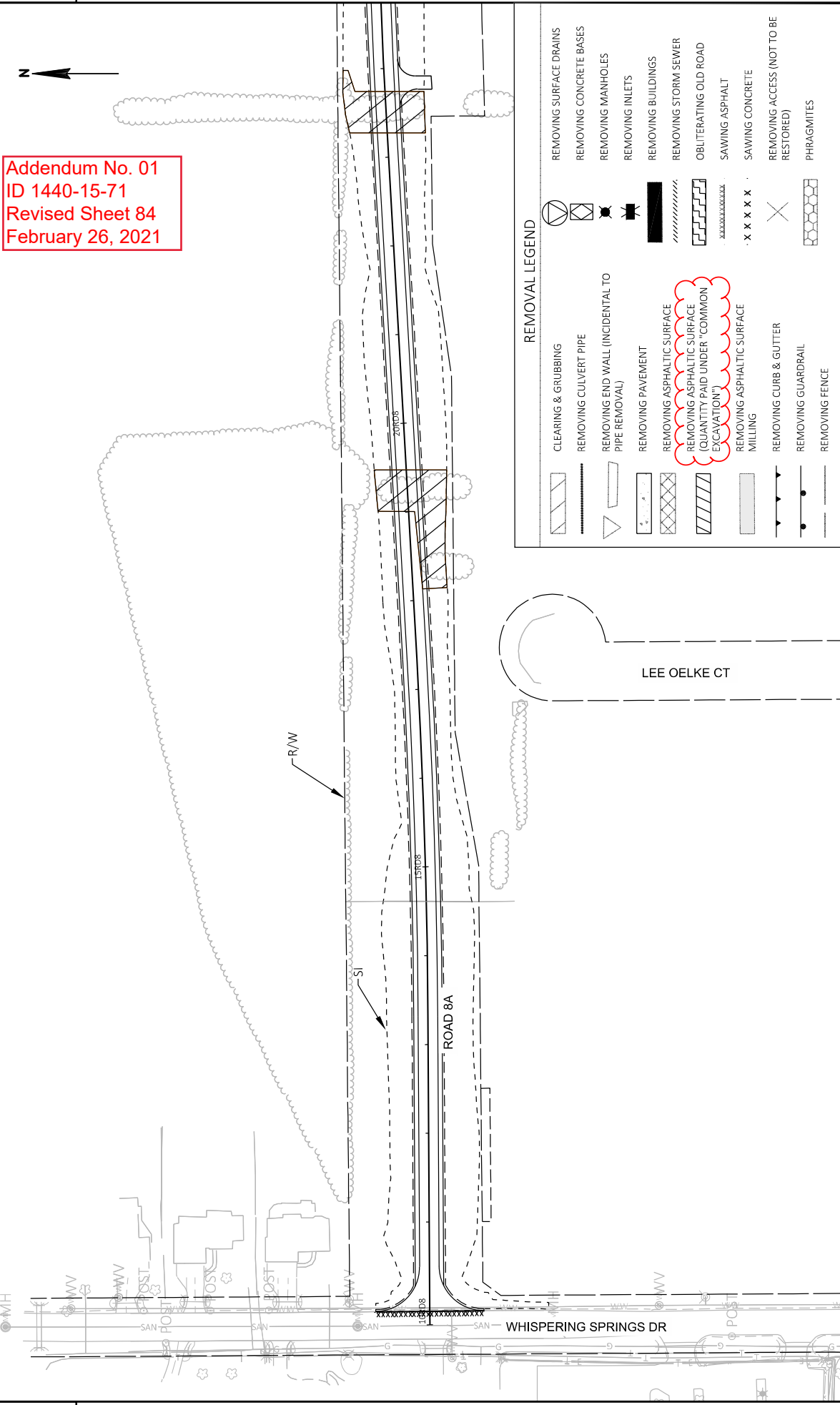
REMOVAL LEGEND

	CLEARING & GRUBBING		REMOVING SURFACE DRAINS
	REMOVING CULVERT PIPE		REMOVING CONCRETE BASES
	REMOVING END WALL (INCIDENTAL TO PIPE REMOVAL)		REMOVING MANHOLES
	REMOVING PAVEMENT		REMOVING INLETS
	REMOVING ASPHALTIC SURFACE (QUANTITY PAID UNDER "COMMON EXCAVATION")		REMOVING BUILDINGS
	REMOVING ASPHALTIC SURFACE		REMOVING STORM SEWER
	MILLING		OBLITERATING OLD ROAD
	REMOVING CURB & GUTTER		SAWING ASPHALT
	REMOVING GUARDRAIL		SAWING CONCRETE
	REMOVING FENCE		REMOVING ACCESS (NOT TO BE RESTORED)
			PHRAGMITES

Addendum No. 01
 ID 1440-15-71
 Revised Sheet 84
 February 26, 2021

2

2



REMOVAL LEGEND

	CLEARING & GRUBBING		REMOVING SURFACE DRAINS
	REMOVING CULVERT PIPE		REMOVING CONCRETE BASES
	REMOVING END WALL (INCIDENTAL TO PIPE REMOVAL)		REMOVING MANHOLES
	REMOVING PAVEMENT		REMOVING INLETS
	REMOVING ASPHALTIC SURFACE (QUANTITY PAID UNDER "COMMON EXCAVATION")		REMOVING BUILDINGS
	REMOVING ASPHALTIC SURFACE MILLING		REMOVING STORM SEWER
	REMOVING CURB & GUTTER		OBLITERATING OLD ROAD
	REMOVING GUARDRAIL		SAWING ASPHALT
	REMOVING FENCE		SAWING CONCRETE
			REMOVING ACCESS (NOT TO BE RESTORED)
			PHRAGMITES

PROJECT NO: 1440-15-17
 HWY: 5TH Z3
 COUNTY: FOND DU LAC
 REMOVAL PLAN
 SHEET 84 E

FILE NAME: J:\082014\20142023\CAD\TRANSPORTATION\DWG\SHEETS\LAND\021100_RM.DWG
 LAYOUT NAME: 1B

DATE: 2/25/2021 1:06 AM
 PLOT DATE: 2/25/2021 1:06 AM

DESIGNER: ENGLES, BRIAN
 PLOT NAME: 1 IN=100 FT

SCALE: 1 IN=100 FT

PROJECT: WIS007CADD05 SHEET 42

REMOVAL LEGEND	
	CLEARING & GRUBBING
	REMOVING CULVERT PIPE
	REMOVING END WALL (INCIDENTAL TO PIPE REMOVAL)
	REMOVING PAVEMENT
	REMOVING ASPHALTIC SURFACE
	REMOVING ASPHALTIC SURFACE (QUANTITY PAID UNDER "COMMON EXCAVATION")
	REMOVING ASPHALTIC SURFACE MILLING
	REMOVING CURB & GUTTER
	REMOVING GUARDRAIL
	REMOVING FENCE
	REMOVING SURFACE DRAINS
	REMOVING CONCRETE BASES
	REMOVING MANHOLES
	REMOVING INLETS
	REMOVING BUILDINGS
	REMOVING STORM SEWER
	OBLITERATING OLD ROAD
	SAWING ASPHALT
	SAWING CONCRETE
	REMOVING ACCESS (NOT TO BE RESTORED)
	PHRAGMITES



R/W

SI

ROAD 8A

ROAD 8A

CTH UU

Addendum No. 01
 ID 1440-15-71
 Revised Sheet 85
 February 26, 2021

PROJECT NO: 1440-15-17

HWY: 5TH Z3

COUNTY: FOND DU LAC

REMOVAL PLAN

SHEET

85

E

FILE NAME: J:\V082014\2014-2023\CD\TRANSPORTATION\DWG\SHEETS\PLAN\021100_RM.DWG

LAYOUT NAME: 19

PLOT DATE: 2/25/2021 1:08 AM

PLOT NAME: ENGLES, BRIAN

PLOT SCALE: 1 IN=100 FT

WIS007CADD85 SHEET 42

NOTE: ALL ITEMS ON THIS SHEET ARE CATEGORY 0010 UNLESS OTHERWISE NOTED.

REMOVING PAVEMENT

STAGE	STATION	TO	STATION	LOCATION	(SY)	NOTES	
STAGE 1B	STH WB OUTSIDE EDGE - OEWB						
	68+02	-	69+33	RT	76	STH 23 CORRUGATED MED	
STAGE 1 TOTAL						76	
STAGE 2A	STH EB - EB						
	101+87	-	115+50	LT/RT	4,130		
STH WB - WB							
	105+65	-	114+53	LT/RT	2,882		
CTH UU - UU							
	27+22	-	27+90	LT/RT	482		
	28+24	-	28+86	LT/RT	440		
STAGE 2B	STH EB - EB						
	115+50	-	130+38	LT/RT	4,607		
	130+38	-	137+44	LT/RT	3,131		
	137+44	-	166+00	LT/RT	9,144		
	172+00	-	192+03	LT	2,825		
STH WB - WB							
	101+71	-	105+65	LT/RT	1,319		
	127+42	-	142+10	LT/RT	2,248		
STAGE 2 TOTAL						31,208	
STAGE 3A	STH WB - WB						
	185+91	-	198+50	LT/RT	3,082	STH 23 EB & WB	
STH WB - WB							
	114+53	-	127+42	LT/RT	3,822		
	127+42	-	142+10	LT/RT	3,218		
	142+10	-	166+85	LT/RT	6,445		
	166+85	-	172+05	LT/RT	2,078	STH 23 EB & WB	
	172+05	-	185+91	LT/RT	4,057	STH 23 EB & WB	
	194+72	-	206+23	RT	3,924	STH 23 EB & WB	
STH EB - EB							
	164+03	-	166+80	LT	478		
STAGE 3 TOTAL						27,105	
STAGE 4	USH 151 SB EXIT RAMP - SBR						
	900+75	-	904+90	LT/RT	940		
STAGE 4 TOTAL						940	
PROJECT TOTAL						59,328	

REMOVING ASPHALTIC SURFACE BUTT JOINTS

STAGE	STATION	TO	STATION	LOCATION	(SY)	NOTES	
STAGE 3	STH EB - EB						
	396+50	-	397+00	LT/RT	167	PROJECT LIMITS	
STAGE 3 TOTAL						167	
PROJECT TOTAL						167	

PROJECT NO: 1440-15-71 HWY: STH 23 COUNTY: FOND DU LAC

FILE NAME : J:\Jobs\2014\2014\2023\Project_Information\Quantities\1440-15-71_MQ.dpt PLOT DATE : 2/25/2021 2:34 AM PLOT BY :

MISCELLANEOUS QUANTITIES

PLOT NAME : 03201.dwg PLOT SCALE : 1:000000:1,000000

SHEET 870 E

WISDOT / CADDS SHEET 42

REMOVING ASPHALTIC SURFACE

STAGE	STATION	TO	STATION	LOCATION	(SY)	NOTES	
STAGE 1	STH WB OUTSIDE EDGE - OEWB						
	70+23	-	71+44	LT	215	STH 23 WB SHLDR WIDENING	
CTH UU							
	10+50	UUN	-	13+36	UUN	700	
STAGE 1 TOTAL						915	
STAGE 2	STH EB						
	124+75	EB	-	135+71	EB	RT	720
	130+30	EB	-	142+21	EB	LT	1,748
	137+21	EB	-	143+67	EB	RT	605
	145+28	EB	-	146+75	EB	RT	114
	165+75	EB	-	181+00	EB	RT	790
	191+50	EB	-	195+75	EB	RT/LT	197
	252+71	EB	-	259+41	EB	LT	435
STAGE 2 TOTAL						4,609	
STAGE 3	STH EB						
	192+03	EB	-	202+57	EB	RT	2,974
STH WB							
	124+75	WB	-	136+37	WB	LT	2,429
	137+19	WB	-	147+25	WB	LT	1,154
	165+50	WB	-	177+07	WB	LT	1,334
	177+32	WB	-	181+75	WB	LT	609
	191+50	WB	-	195+50	WB	LT	1,589
CTH UU							
	13+36	UUN	-	27+22	UUN		3,417
	28+76	UUN	-	41+00	UUN		3,017
STAGE 3 TOTAL						16,522	
PROJECT TOTAL						22,046	

REMOVING ASPHALTIC SURFACE MILLING

STAGE	STATION	TO	STATION	(SY)
STAGE 1	IRENE DRIVE			
STAGE 1 TOTAL				2,935
STAGE 3	STH EB - EB			
	236+00	-	250+00	4,592
	250+00	-	278+78	9,594
	311+90	-	358+78	15,627
	358+78	-	366+36	2,527
	366+36	-	396+50	10,047
STAGE 3 TOTAL				42,387
PROJECT TOTAL				45,322

Addendum No. 01
ID 1440-15-71
Revised Sheet 870
February 26, 2021

NOTE: ALL ITEMS ON THIS SHEET ARE CATEGORY 0010 UNLESS OTHERWISE NOTED.

STORM SEWER REMOVALS (CONTINUED)

STAGE	STATION	TO	STATION	LOCATION	REMOVING STORM SEWER					
					204.0210 MANHOLES	204.0220 INLETS	204.0245 12-INCH	204.0245 15-INCH	204.0245 18-INCH	SPV.0060.04 STORM SEWER PLUG
STAGE 3 (CONTINUED)	STATION	TO	STATION	LOCATION	(EA)	(EA)	(LF)	(LF)	(LF)	(EA)
	161+05	-	161+05	LT	-	1	-	-	34	-
	161+05	-	158+55	LT	-	1	-	-	250	-
	165+44	-		LT	1	-	-	-	-	-
	194+70	-		LT	-	1	-	-	-	-
	196+44	-		RT	-	1	-	-	-	-
STAGE 3 TOTALS					1	28	1,112	95	402	0
STAGE 4										
	USH 151 SB EXIT RAMP - SBR									
	903+17			RT	-	1	-	-	-	-
STAGE 4 TOTALS					0	1	0	0	0	0
PROJECT TOTALS					6	69	2,473	150	553	10

PROPERTY REMOVALS

PARCEL	204.0225 REMOVING SEPTIC TANKS	204.0235 BUILDINGS	204.0265 ABANDONING WELLS	(LS)	(EA)	NOTES
74	1			1	---	HOUSE AND SEPTIC
107	---	1		1	---	BARN AND SILO
202	---	1		1	---	GARAGE
191	---	1		1	---	DUGOUTS AT BALL FIELD
219	1			---	---	
183	2			---	---	TWO SEPTICS ON PROPERTY
227	1			1	1	GARAGE, WELL AND SEPTIC
229	1			1	1	METALL BUILDING, WELL AND SEPTIC
241	1			1	1	HOUSE, WELL AND SEPTIC
242	1			---	1	WELL AND SEPTIC
40	1			1	1	BUILDING, WELL, SEPTIC
PROJECT TOTALS	9	8	6	8	6	

Addendum No. 01
ID 1440-15-71
Revised Sheet 874
February 26, 2021

NOTE: ALL ITEMS ON THIS SHEET ARE CATEGORY 0010 UNLESS OTHERWISE NOTED.

CONCRETE PAVEMENT (CONTINUED)

STAGE	STATION	TO	STATION	CONCRETE PAVEMENT 8-INCH (SY)	CONCRETE PAVEMENT 9-INCH (SY)	CONCRETE PAVEMENT 10-INCH (SY)	CONCRETE PAVEMENT GAPS (EACH)	CONCRETE TRUCK APRON 12-INCH (SY)
STAGE 3 (CONTINUED)								
CTH UU								
	CTH UU SOUTH ROUNDABOUT			---	---	---	---	572
	CTH UU NORTH ROUNDABOUT			---	---	---	---	509
CTH UU RAMP A								
	201+93 RPA - 202+79 RPA			---	---	---	---	67
CTH UU RAMP B								
	202+99 RPB - 203+64 RPB			---	---	---	---	32
CTH UU RAMP C								
	202+41 RPC - 202+50 RPC			---	---	---	---	2
CTH UU RAMP D								
	203+94 RPD - 204+94 RPD			---	---	---	---	79
STAGE 3 TOTALS				0	0	56,872	0	1,681
STAGE 4								
	USH 151 SB OFF RAMP							
	900+72 SBR - 904+38 SBR			---	---	726	---	---
STAGE 4 TOTALS				0	0	726	0	0
PROJECT TOTALS				1,221	38,590	115,966	18	2,880

CONCRETE PAVEMENT APPROACH SLAB

STATION	TO	STATION	(SY)
135+63 EB	-	135+83 EB	111
137+43 EB	-	137+63 EB	111
135+65 WB	-	135+85 WB	106
137+45 WB	-	137+65 WB	105
PROJECT TOTALS			433

Addendum No. 01
ID 1440-15-71
Revised Sheet 882
February 26, 2021

CONCRETE DRIVEWAY

ROAD	STATION	LOCATION	(SY)
STH 23			
	119+39 EB	RT	20
	245+00 WB	LT	490
HILLTOP CUL-DU-SAC			
	10+40 HTC	RT	62
HILLTOP CONNECTOR			
	1+00 HTE	RT	36
CTH UU			
	21+26 UUS	LT	30
PROJECT TOTAL			638

PROJECT NO: 1440-15-71

HWY: STH 23

COUNTY: FOND DU LAC

MISCELLANEOUS QUANTITIES

SHEET 882

ERECTION & REMOVAL OF PERMANENT SIGNING, TYPE II

SIGN NO.	LOCATION	SIGN CODE	W X H	637.2210 SIGNS TYPE II REFLECTIVE TYPE H S.F.	637.2215 SIGNS TYPE II REFLECTIVE TYPE H FOLDING S.F.	637.2230 SIGNS TYPE II REFLECTIVE TYPE F S.F.	634.0614 POSTS WOOD 4x6x14	634.0616 POSTS WOOD 4x6x16	634.0618 POSTS WOOD 4x6x18	REMARKS
550	"	R1-1	36" X 36"	7.07	---	---	EACH	EACH	EACH	
551	"	R6-1R	36" X 12"	3.00	---	---	---	---	1	MOUNT ABOVE SIGN 552
552	"	R1-1	36" X 36"	7.07	---	---	---	---	1	
553	"	R5-1	36" X 36"	9.00	---	---	1	---	---	
554	"	R5-1A	42" X 30"	8.75	---	---	1	---	---	
555	"	D1-1	96" X 21"	14.00	---	---	2	---	---	SEE SIGN DETAILS
556	"	R5-1A	42" X 30"	8.75	---	---	1	---	---	
557	"	R5-1	36" X 36"	9.00	---	---	1	---	---	
558	"	R5-1	36" X 36"	9.00	---	---	1	---	---	
559	"	R5-1A	42" X 30"	8.75	---	---	1	---	---	
PAGE SUBTOTALS				84.39	0.00	0.00	5	3	2	
PROJECT TOTALS				2786.22	42.42	186.25	36	88	59	

Addendum No. 01
ID 1440-15-71
Revised Sheet 892
February 26, 2021

ERECTION & REMOVAL OF PERMANENT SIGNING, TYPE I

SIGN NO.	LOCATION	SIGN CODE	W X H	637.1220 SIGNS TYPE I REFLECTIVE TYPE SH S.F.	531.1100 CONCRETE MASONRY ANC. STR TYPE NS CY*	531.1140 STEEL REIN- HS ANC. STRUCTURES TYPE NS LB*	531.2024 DRILLING SHAFT 24-INCH LF*	635.0200 SIGN SUPPORTS STRUCT. STEEL HIGH-STRENGTH LB*	INFO ONLY - POST LENGTH TO BE VERIFIED BY CONTRACTOR POST NO. 1 POST NO. 2 LENGTH (DITCH) POSTS (S) FT FT		
1007	STH 23, W. OF CTH UU	E1-1A	168" X 84"	98.0	2.0	220	16	1,037	18.0	19.5	6.0
1008	"	E4-1A	120" X 54"	45.0	2.0	220	16	911	15.0	16.5	6.0
1009	STH 23, E. OF CTH UU	E4-1A	120" X 54"	45.0	2.0	220	16	911	15.0	16.5	6.0
1010	"	E1-1A	144" X 84"	84.0	2.0	220	16	1,026	17.8	19.3	6.0
PROJECT TOTALS				272.0	8.0	880	64	3885			

*THESE QUANTITIES ARE ESTIMATES.
ACTUAL SIZE/NUMBER/LENGTH/WEIGHT OF STEEL SUPPORTS/REINFORCEMENT/CONCRETE BASES
ARE TO BE DETERMINED BY CONTRACTOR, BASED ON SURVEY OF FIELD CONDITIONS, FINAL GRADE AND SIGN LOCATION.
SURVEY REQUIRED FOR DETERMINATION IS THE RESPONSIBILITY OF THE CONTRACTOR, INCIDENTAL TO THE CONTRACT.
FOLLOW SIGN DETAIL A-PLATES - A3-1, A3-2, A3-3, A4-1

NOTE: ALL ITEMS ON THIS SHEET ARE CATEGORY 0010 UNLESS OTHERWISE NOTED.

CONSTRUCTION STAKING SUMMARY* (CONTINUED)

STAGE	STATION	TO	STATION	STORM SEWER (EACH)	SUBGRADE (LF)	650.4000	650.4500	650.5000	650.5500	650.6000	650.7000	650.8000	650.9000	650.9920
2 (CONTINUED)						BASE	GUTTER (LF)	PIPE CULVERT (EACH)	CONCRETE PAVEMENT (LF)	RESURFACE REFERENCE (LF)	CURB RAMP (EACH)	SLOPE STAKE (LF)		
WISCONSIN AMERICAN DRIVE														
	60+00	WAN	-	61+40	WAN	---	140	---	---	140	---	---	3	140
	63+60	WAN	-	65+25	WAN	---	165	---	---	165	---	---	3	165
	60+10	WAS	-	61+42	WAS	---	---	---	---	132	---	---	3	132
	63+69	WAS	-	65+30	WAS	---	161	---	---	161	---	---	3	161
	0+00	WAR	-	4+39	WAR	---	439	---	---	439	---	---	---	439
CTH K SB RAMPS														
	10+32	JHA	-	16+43	JHA	---	611	557	692	1	54	---	2	611
	10+64	JHB	-	16+60	JHB	---	596	428	829	---	167	---	2	596
CTH K														
	37+69	KNB	-	46+66	KNB	---	897	897	1,209	---	---	---	3	897
	48+02	KNB	-	49+07	KNB	---	105	105	191	1	---	---	2	105
	54+23	KNB	-	65+38	KNB	---	1,115	1,115	1,809	---	---	---	10	1,115
	38+22	KSB	-	46+69	KSB	---	847	847	1,139	---	---	---	3	847
	48+13	KSB	-	49+13	KSB	---	100	100	176	---	---	---	2	100
	54+27	KSB	-	65+48	KSB	---	1,121	1,121	1,879	---	---	---	10	1,121
	30+00	KSR	-	33+33	KSR	---	333	333	914	---	---	---	---	333
MARY HILL PARK DRIVE														
	20+00	MHP	-	28+60	MHP	---	860	860	1,818	---	---	---	5	860
HILLSIDE CIRCLE														
	0+00	HSC	-	2+79	HSC	---	279	279	541	---	---	---	---	279
HILLTOP CONNECTOR														
	0+15	THE	-	3+30	THE	---	315	315	196	---	---	---	---	315
HILLTOP CUL-DU-SAC														
	9+50	HTC	-	12+20	HTC	---	270	270	481	---	---	---	---	270
CTH UU														
	38+28	UUN	-	42+65	UUN	---	437	437	---	---	---	---	---	437
ROAD 10														
	51+23	RD10	-	60+50	RD10	---	927	927	---	---	---	---	---	927
ROAD 11														
	10+00	RD11	-	18+78	RD11	---	878	878	---	---	---	---	---	878
STH 23 WB UNDER USH 151														
	6+32	WBW	-	11+14	WBW	---	482	482	507	---	---	---	2	482
STH 23 MEDIAN WIDENING														
	103+23	-	-	106+82	-	---	359	359	---	---	---	---	---	359

* ADDITIONAL QUANTITIES SHOWN ELSEWHERE

Addendum No. 01
ID 1440-15-71
Revised Sheet 1001
February 26, 2021

NOTE: ALL ITEMS ON THIS SHEET ARE CATEGORY 0010 UNLESS OTHERWISE NOTED.

CONSTRUCTION STAKING SUMMARY* (CONTINUED)

STAGE	STATION TO	STATION	SEWER (EACH)	SUBGRADE (LF)	BASE (LF)	GUTTER (LF)	PIPE (EACH)	CONCRETE (LF)	RESURFACE (LF)	CURB (EACH)	RAMP (EACH)	SLOPE (LF)
STAGE 2 (CONTINUED)												
STH 23 WB TEMPORARY CONNECTION												
	113+70	-	114+54	84	84	---	---	---	---	---	---	84
STH 23 EB MEDIAN CROSSOVER												
	112+75	-	116+93	418	418	---	---	---	---	---	---	418
STH 23 WB MEDIAN CROSSOVER												
	112+54	-	115+08	254	254	---	---	---	---	---	---	254
STH 23 TEMPORARY CONNECTION												
	5+00	-	15+53	1,053	1,053	---	---	---	---	---	---	1,053
STAGE 2 TOTALS												
				155	41,402	25,519	15,120	27	29,282	0	62	41,402

* ADDITIONAL QUANTITIES SHOWN ELSEWHERE

CONSTRUCTION STAKING SUMMARY* (CONTINUED)

STAGE	STATION TO	STATION	SEWER (EACH)	SUBGRADE (LF)	BASE (LF)	GUTTER (LF)	PIPE (EACH)	CONCRETE (LF)	RESURFACE (LF)	CURB (EACH)	RAMP (EACH)	SLOPE (LF)
STAGE 3												
STH 23 EB												
	101+83 EB	-	102+52 EB	69	---	---	---	69	---	---	---	69
	192+03 EB	-	236+00 EB	4,397	---	---	---	4,397	---	---	---	4,397
	236+00 EB	-	254+00 EB	---	---	---	---	---	1,800	---	---	1,800
STH 23 WB												
	102+29 WB	-	105+65 WB	336	---	---	---	336	---	---	---	336
	113+70 WB	-	135+71 WB	2,201	---	---	---	2,201	---	1	---	2,201
	137+58 WB	-	204+28 WB	6,670	---	---	2	6,670	---	---	---	6,670
CTH K NB RAMPS												
	21+88 JHC	-	27+37 JHC	549	549	1,120	1	---	---	2	---	549
	21+19 JHD	-	26+78 JHD	559	559	1,078	---	---	---	2	---	559
CTH K												
	49+07 KNB	-	54+23 KNB	516	516	707	1	---	---	3	---	516
	49+13 KSB	-	54+27 KSB	514	514	702	---	---	---	3	---	514
	40+00 KRN	-	43+33 KRN	333	333	949	---	---	---	---	---	333
WHISPERING SPRINGS ACCESS RD												
	31+10 WSA	-	37+14 WSA	604	604	1,246	---	---	---	2	---	604
LEDGEWOOD DRIVE												
	10+50 LWD	-	12+40 LWD	190	190	---	2	---	---	1	---	190

* ADDITIONAL QUANTITIES SHOWN ELSEWHERE

Addendum No. 01
ID 1440-15-71
Revised Sheet 1002
February 26, 2021

NOTE: ALL ITEMS ON THIS SHEET ARE CATEGORY 0010 UNLESS OTHERWISE NOTED.

CONSTRUCTION STAKING SUMMARY*

STAGE	STATION TO	STATION	STORM SEWER (EACH)	650.4000	650.4500	650.5000	650.5500	650.6000	650.7000	650.8000	650.9000	650.9920
				STORM SEWER (EACH)	SUBGRADE (LF)	BASE (LF)	GUTTER (LF)	PIPE CULVERT (EACH)	CONCRETE PAVEMENT (LF)	RESURFACE REFERENCE (LF)	CURB RAMP (EACH)	SLOPE STAKE (LF)
STAGE 3 (CONTINUED)												
CTH UU												
	13+36 UUN	-	5	1,164	1,164	---	---	---	---	---	3	1,164
	26+50 UUN	-	3	362	362	---	---	---	---	---	---	362
	31+52 UUN	-	4	676	676	---	---	---	---	---	4	676
	13+36 UUS	-	4	1,164	1,164	---	---	---	---	---	3	1,164
	26+50 UUS	-	2	368	368	---	---	---	---	---	---	368
	31+58 UUS	-	2	670	670	---	---	---	---	---	3	670
	10+00 URS	-	2	333	333	2,987	---	---	---	---	---	333
	20+00 URN	-	2	333	333	3,007	---	---	---	---	---	333
CTH UU RAMP A												
	190+38 RPA	-	---	1,241	1,008	---	---	1	233	---	2	1,241
CTH UU RAMP B												
	202+99 RPB	-	---	1,036	827	877	---	1	209	---	2	1,036
CTH UU RAMP C												
	192+16 RPC	-	---	1,034	818	489	---	---	216	---	2	1,034
CTH UU RAMP D												
	203+94 RPD	-	---	1,305	984	---	---	1	321	---	2	1,305
OLD PLANK TRAIL												
	93+28 OPT	-	---	5,042	5,042	---	---	3	---	---	---	5,042
	289+71 OPT	-	---	13,404	13,404	---	---	8	---	---	---	13,404
PARK AND RIDE												
	0+00 PNR	-	---	368	368	282	---	---	---	---	---	368
STAGE 3 TOTAL			123	45,438	30,786	13,444	20	14,652	1,800	---	35	47,238
STAGE 4												
USH 151 SB OFF RAMP												
	900+72 SBR	-	2	366	---	---	---	---	366	---	1	366
STAGE 4 TOTAL			2	366	0	0	0	366	0	---	1	366
PROJECT TOTALS			283	107,001	76,100	28,715	54	44,300	1,800	---	98	108,801

* ADDITIONAL QUANTITIES SHOWN ELSEWHERE

CONSTRUCTION STAKING*

LOCATION	650.8500	650.9910
ID 1440-15-71	ELECTRICAL INSTALLATIONS (LS)	SUPPLEMENTAL CONTROL (LS)
PROJECT TOTAL	1	1

* ADDITIONAL QUANTITIES SHOWN ELSEWHERE

Addendum No. 01
ID 1440-15-71
Revised Sheet 1003
February 26, 2021

NOTE: ALL ITEMS ON THIS SHEET ARE CATEGORY 0010 UNLESS OTHERWISE NOTED.

TRAFFIC SIGNALS			
656.0200	657.0255	657.0315	657.0420
Electric Service Meter Breaker Pedestal S20-1257 (151 SB & 23)	Transformer Bases Breakaway 11 1/2 Bolt Circle	Poles Type 4	Traffic Signal Standard Aluminum 13-FT EACH
1	1	1	1
TOTALS			
1	1	1	1

TRAFFIC SIGNALS			
657.0430	658.0173	658.0174	658.0416
Traffic Signal Standard Aluminum 10-FT EACH	Traffic Signal Face 3S 12-Inch	Traffic Signal Face 4S 12-Inch	Pedestrian Signal Face 12-Inch 16-Inch
1	2	1	5
TOTALS			
1	2	1	5

TRAFFIC SIGNALS			
658.5069			
Signal Mounting Hardware			
S20-1257 (151 SB & 23)			
LS			
1			
TOTALS			
1			

Addendum No. 01
ID 1440-15-71
Revised Sheet 1014
February 26, 2021



Proposal Schedule of Items

Proposal ID: 20210309011 Project(s): 1440-15-71

Federal ID(s): WISC 2021227

SECTION: 0001 Contract Items

Alt Set ID: Alt Mbr ID:

Proposal Line Number	Item ID Description	Approximate Quantity and Units	Unit Price	Bid Amount
0002	108.4400 CPM Progress Schedule	1.000 EACH	_____.	_____.
0004	201.0105 Clearing	225.000 STA	_____.	_____.
0006	201.0205 Grubbing	225.000 STA	_____.	_____.
0008	203.0100 Removing Small Pipe Culverts	101.000 EACH	_____.	_____.
0010	203.0200 Removing Old Structure (station) 01. 169+42 WB	LS	LUMP SUM	_____.
0012	204.0100 Removing Concrete Pavement	59,328.000 SY	_____.	_____.
0014	204.0110 Removing Asphaltic Surface	22,046.000 SY	_____.	_____.
0016	204.0115 Removing Asphaltic Surface Butt Joints	167.000 SY	_____.	_____.
0018	204.0120 Removing Asphaltic Surface Milling	45,322.000 SY	_____.	_____.
0020	204.0150 Removing Curb & Gutter	8,314.000 LF	_____.	_____.
0022	204.0165 Removing Guardrail	904.000 LF	_____.	_____.
0024	204.0170 Removing Fence	2,255.000 LF	_____.	_____.
0026	204.0175 Removing Concrete Slope Paving	140.000 SY	_____.	_____.
0028	204.0180 Removing Delineators and Markers	140.000 EACH	_____.	_____.
0030	204.0185 Removing Masonry	6.000 CY	_____.	_____.
0032	204.0190 Removing Surface Drains	3.000 EACH	_____.	_____.



Proposal Schedule of Items

Proposal ID: 20210309011 Project(s): 1440-15-71
Federal ID(s): WISC 2021227

SECTION: 0001 Contract Items

Alt Set ID: Alt Mbr ID:

Table with 5 columns: Proposal Line Number, Item ID Description, Approximate Quantity and Units, Unit Price, Bid Amount. Rows include items like Removing Concrete Bases, Removing Manholes, Removing Inlets, Removing Septic Tanks, and Removing Buildings (various parcels).



Proposal Schedule of Items

Proposal ID: 20210309011 Project(s): 1440-15-71

Federal ID(s): WISC 2021227

SECTION: 0001 Contract Items

Alt Set ID: Alt Mbr ID:

Proposal Line Number	Item ID Description	Approximate Quantity and Units	Unit Price	Bid Amount
0064	204.0245 Removing Storm Sewer (size) 03. 18-Inch	553.000 LF	_____.	_____.
0066	204.0265 Abandoning Wells	6.000 EACH	_____.	_____.
0068	204.0270 Abandoning Culvert Pipes	2.000 EACH	_____.	_____.
0070	205.0100 Excavation Common	521,361.000 CY	_____.	_____.
0072	205.0400 Excavation Marsh	46,378.000 CY	_____.	_____.
0074	206.1000 Excavation for Structures Bridges (structure) 01. B-20-202	LS	LUMP SUM	_____.
0076	206.1000 Excavation for Structures Bridges (structure) 02. B-20-203	LS	LUMP SUM	_____.
0078	206.1000 Excavation for Structures Bridges (structure) 03. B-20-204	LS	LUMP SUM	_____.
0080	206.2000 Excavation for Structures Culverts (structure) 01. C-20-0061	LS	LUMP SUM	_____.
0082	208.1100 Select Borrow	114,088.000 CY	_____.	_____.
0084	209.1500 Backfill Granular Grade 1	102.000 TON	_____.	_____.
0086	209.2500 Backfill Granular Grade 2	356.000 TON	_____.	_____.
0088	210.1500 Backfill Structure Type A	1,777.000 TON	_____.	_____.
0090	210.2500 Backfill Structure Type B	836.000 TON	_____.	_____.
0092	213.0100 Finishing Roadway (project) 01. 1440-15-71	1.000 EACH	_____.	_____.



Proposal Schedule of Items

Proposal ID: 20210309011 Project(s): 1440-15-71

Federal ID(s): WISC 2021227

SECTION: 0001 Contract Items

Alt Set ID: Alt Mbr ID:

Proposal Line Number	Item ID Description	Approximate Quantity and Units	Unit Price	Bid Amount
0094	214.0100 Obliterating Old Road	14.000 STA	_____.	_____.
0096	305.0110 Base Aggregate Dense 3/4-Inch	22,701.000 TON	_____.	_____.
0098	305.0120 Base Aggregate Dense 1 1/4-Inch	223,916.000 TON	_____.	_____.
0100	310.0110 Base Aggregate Open-Graded	158.000 TON	_____.	_____.
0102	310.0115 Base Aggregate Open-Graded	12.000 CY	_____.	_____.
0104	311.0110 Breaker Run	4,357.000 TON	_____.	_____.
0106	311.0115 Breaker Run	62.000 CY	_____.	_____.
0108	312.0110 Select Crushed Material	72,947.200 TON	_____.	_____.
0110	415.0080 Concrete Pavement 8-Inch	1,221.000 SY	_____.	_____.
0112	415.0090 Concrete Pavement 9-Inch	38,590.000 SY	_____.	_____.
0114	415.0100 Concrete Pavement 10-Inch	115,966.000 SY	_____.	_____.
0116	415.0210 Concrete Pavement Gaps	18.000 EACH	_____.	_____.
0118	415.0410 Concrete Pavement Approach Slab	433.000 SY	_____.	_____.
0120	415.5110.S Concrete Pavement Joint Layout	1.000 LS	_____.	_____.
0122	416.0160 Concrete Driveway 6-Inch	638.000 SY	_____.	_____.
0124	416.0512 Concrete Truck Apron 12-Inch	2,880.000 SY	_____.	_____.
0126	416.0610 Drilled Tie Bars	413.000 EACH	_____.	_____.



Proposal Schedule of Items

Proposal ID: 20210309011 Project(s): 1440-15-71

Federal ID(s): WISC 2021227

SECTION: 0001 Contract Items

Alt Set ID: Alt Mbr ID:

Proposal Line Number	Item ID Description	Approximate Quantity and Units	Unit Price	Bid Amount
0128	416.0620 Drilled Dowel Bars	102.000 EACH	_____.	_____.
0130	416.1010 Concrete Surface Drains	5.000 CY	_____.	_____.
0132	416.1110 Concrete Shoulder Rumble Strips	32,143.000 LF	_____.	_____.
0134	455.0605 Tack Coat	11,440.000 GAL	_____.	_____.
0136	460.2000 Incentive Density HMA Pavement	28,750.000 DOL	1.00000	28,750.00
0138	460.5223 HMA Pavement 3 LT 58-28 S	11,670.000 TON	_____.	_____.
0140	460.5224 HMA Pavement 4 LT 58-28 S	14,968.000 TON	_____.	_____.
0142	460.5424 HMA Pavement 4 LT 58-28 H	512.000 TON	_____.	_____.
0144	460.6223 HMA Pavement 3 MT 58-28 S	12,152.000 TON	_____.	_____.
0146	460.6224 HMA Pavement 4 MT 58-28 S	5,627.000 TON	_____.	_____.
0148	465.0105 Asphaltic Surface	6,591.000 TON	_____.	_____.
0150	465.0120 Asphaltic Surface Driveways and Field Entrances	684.000 TON	_____.	_____.
0152	465.0125 Asphaltic Surface Temporary	8,867.000 TON	_____.	_____.
0154	465.0305 Asphaltic Surface Safety Islands	30.000 TON	_____.	_____.
0156	465.0310 Asphaltic Curb	271.000 LF	_____.	_____.
0158	465.0315 Asphaltic Flumes	381.000 SY	_____.	_____.



Proposal Schedule of Items

Proposal ID: 20210309011 Project(s): 1440-15-71
Federal ID(s): WISC 2021227

SECTION: 0001 Contract Items

Alt Set ID: Alt Mbr ID:

Table with 5 columns: Proposal Line Number, Item ID Description, Approximate Quantity and Units, Unit Price, Bid Amount. Rows include items like Asphaltic Shoulder Rumble Strips, Concrete Masonry Bridges, Protective Surface Treatment, etc.



Proposal Schedule of Items

Proposal ID: 20210309011 Project(s): 1440-15-71
Federal ID(s): WISC 2021227

SECTION: 0001 Contract Items

Alt Set ID: Alt Mbr ID:

Table with 5 columns: Proposal Line Number, Item ID Description, Approximate Quantity and Units, Unit Price, Bid Amount. Rows include items like Temporary Shoring, Rubberized Membrane Waterproofing, and Culvert Pipe Temporary.



Proposal Schedule of Items

Proposal ID: 20210309011 Project(s): 1440-15-71

Federal ID(s): WISC 2021227

SECTION: 0001 Contract Items

Alt Set ID: Alt Mbr ID:

Proposal Line Number	Item ID Description	Approximate Quantity and Units	Unit Price	Bid Amount
0222	520.3324 Culvert Pipe Class III-A 24-Inch	2,275.000 LF	_____.	_____.
0224	520.3330 Culvert Pipe Class III-A 30-Inch	636.000 LF	_____.	_____.
0226	520.3336 Culvert Pipe Class III-A 36-Inch	561.000 LF	_____.	_____.
0228	520.3512 Culvert Pipe Class III-B 12-Inch	384.000 LF	_____.	_____.
0230	520.3524 Culvert Pipe Class III-B 24-Inch	148.000 LF	_____.	_____.
0232	520.8000 Concrete Collars for Pipe	29.000 EACH	_____.	_____.
0234	521.1042 Apron Endwalls for Culvert Pipe Steel 42-Inch	2.000 EACH	_____.	_____.
0236	521.1060 Apron Endwalls for Culvert Pipe Steel 60-Inch	6.000 EACH	_____.	_____.
0238	521.3142 Culvert Pipe Corrugated Steel 42-Inch	24.000 LF	_____.	_____.
0240	521.3160 Culvert Pipe Corrugated Steel 60-Inch	125.000 LF	_____.	_____.
0242	522.0142 Culvert Pipe Reinforced Concrete Class III 42-Inch	256.000 LF	_____.	_____.
0244	522.0148 Culvert Pipe Reinforced Concrete Class III 48-Inch	103.000 LF	_____.	_____.
0246	522.0160 Culvert Pipe Reinforced Concrete Class III 60-Inch	222.000 LF	_____.	_____.
0248	522.0412 Culvert Pipe Reinforced Concrete Class IV 12-Inch	97.000 LF	_____.	_____.
0250	522.0415 Culvert Pipe Reinforced Concrete Class IV 15-Inch	60.000 LF	_____.	_____.



Proposal Schedule of Items

Proposal ID: 20210309011 Project(s): 1440-15-71
Federal ID(s): WISC 2021227

SECTION: 0001 Contract Items

Alt Set ID: Alt Mbr ID:

Table with 5 columns: Proposal Line Number, Item ID Description, Approximate Quantity and Units, Unit Price, Bid Amount. Rows include items 0252 through 0276, detailing culvert pipe reinforced concrete and apron endwalls in various sizes and quantities.



Proposal Schedule of Items

Proposal ID: 20210309011 Project(s): 1440-15-71

Federal ID(s): WISC 2021227

SECTION: 0001 Contract Items

Alt Set ID: Alt Mbr ID:

Proposal Line Number	Item ID Description	Approximate Quantity and Units	Unit Price	Bid Amount
0278	522.2619 Apron Endwalls for Culvert Pipe Reinforced Concrete Horizontal Elliptical 19x30-Inch	3.000 EACH	_____.	_____.
0280	522.2638 Apron Endwalls for Culvert Pipe Reinforced Concrete Horizontal Elliptical 38x60-Inch	2.000 EACH	_____.	_____.
0282	531.1100 Concrete Masonry Ancillary Structures Type NS	8.000 CY	_____.	_____.
0284	531.1140 Steel Reinforcement HS Ancillary Structures Type NS	880.000 LB	_____.	_____.
0286	531.2042 Drilling Shaft 42-Inch	36.000 LF	_____.	_____.
0288	531.5130 Foundation Single-Shaft Type MC-III (structure) 01. S-20-69	1.000 EACH	_____.	_____.
0290	531.5130 Foundation Single-Shaft Type MC-III (structure) 02. S-20-70	1.000 EACH	_____.	_____.
0292	532.5130 Monotube Cantilever Type III (structure) 01. S-20-69	1.000 EACH	_____.	_____.
0294	532.5130 Monotube Cantilever Type III (structure) 02. S-20-70	1.000 EACH	_____.	_____.
0296	550.0500 Pile Points	162.000 EACH	_____.	_____.
0298	550.1100 Piling Steel HP 10-Inch X 42 Lb	6,450.000 LF	_____.	_____.
0300	601.0405 Concrete Curb & Gutter 18-Inch Type A	1,124.000 LF	_____.	_____.
0302	601.0409 Concrete Curb & Gutter 30-Inch Type A	4,714.000 LF	_____.	_____.
0304	601.0411 Concrete Curb & Gutter 30-Inch Type D	17,609.000 LF	_____.	_____.



Proposal Schedule of Items

Proposal ID: 20210309011 Project(s): 1440-15-71

Federal ID(s): WISC 2021227

SECTION: 0001 Contract Items

Alt Set ID: Alt Mbr ID:

Proposal Line Number	Item ID Description	Approximate Quantity and Units	Unit Price	Bid Amount
0306	601.0413 Concrete Curb & Gutter 6-Inch Sloped 30-Inch Type G	133.000 LF	_____.	_____.
0308	601.0415 Concrete Curb & Gutter 6-Inch Sloped 30-Inch Type J	100.000 LF	_____.	_____.
0310	601.0551 Concrete Curb & Gutter 4-Inch Sloped 36-Inch Type A	20,278.000 LF	_____.	_____.
0312	601.0553 Concrete Curb & Gutter 4-Inch Sloped 36-Inch Type D	8,264.000 LF	_____.	_____.
0314	601.0555 Concrete Curb & Gutter 6-Inch Sloped 36-Inch Type A	6,969.000 LF	_____.	_____.
0316	601.0557 Concrete Curb & Gutter 6-Inch Sloped 36-Inch Type D	6,118.000 LF	_____.	_____.
0318	601.0580 Concrete Curb & Gutter 4-Inch Sloped 36-Inch Type R	427.000 LF	_____.	_____.
0320	601.0582 Concrete Curb & Gutter 4-Inch Sloped 36-Inch Type T	1,678.000 LF	_____.	_____.
0322	601.0588 Concrete Curb & Gutter 4-Inch Sloped 36-Inch Type TBT	100.000 LF	_____.	_____.
0324	601.0590 Concrete Curb & Gutter 4-Inch Sloped 36-Inch Type TBTT	91.000 LF	_____.	_____.
0326	601.0600 Concrete Curb Pedestrian	598.000 LF	_____.	_____.
0328	602.0405 Concrete Sidewalk 4-Inch	91,621.000 SF	_____.	_____.
0330	602.0505 Curb Ramp Detectable Warning Field Yellow	1,608.000 SF	_____.	_____.



Proposal Schedule of Items

Proposal ID: 20210309011 Project(s): 1440-15-71
Federal ID(s): WISC 2021227

SECTION: 0001 Contract Items

Alt Set ID: Alt Mbr ID:

Table with 5 columns: Proposal Line Number, Item ID Description, Approximate Quantity and Units, Unit Price, Bid Amount. Rows include items like Curb Ramp Detectable Warning Field, Concrete Barrier Type S42, etc.



Proposal Schedule of Items

Proposal ID: 20210309011 Project(s): 1440-15-71

Federal ID(s): WISC 2021227

SECTION: 0001 Contract Items

Alt Set ID: Alt Mbr ID:

Proposal Line Number	Item ID Description	Approximate Quantity and Units	Unit Price	Bid Amount
0362	608.0424 Storm Sewer Pipe Reinforced Concrete Class IV 24-Inch	823.000 LF	_____.	_____.
0364	608.3012 Storm Sewer Pipe Class III-A 12-Inch	4,098.000 LF	_____.	_____.
0366	608.3018 Storm Sewer Pipe Class III-A 18-Inch	1,640.000 LF	_____.	_____.
0368	608.3024 Storm Sewer Pipe Class III-A 24-Inch	3,725.000 LF	_____.	_____.
0370	608.3030 Storm Sewer Pipe Class III-A 30-Inch	724.000 LF	_____.	_____.
0372	608.3036 Storm Sewer Pipe Class III-A 36-Inch	701.000 LF	_____.	_____.
0374	608.3630 Storm Sewer Pipe Class III-B 30-Inch	285.000 LF	_____.	_____.
0376	611.0420 Reconstructing Manholes	2.000 EACH	_____.	_____.
0378	611.0530 Manhole Covers Type J	18.000 EACH	_____.	_____.
0380	611.0535 Manhole Covers Type J-Special	2.000 EACH	_____.	_____.
0382	611.0609 Inlet Covers Type B-A	9.000 EACH	_____.	_____.
0384	611.0610 Inlet Covers Type BW	24.000 EACH	_____.	_____.
0386	611.0612 Inlet Covers Type C	1.000 EACH	_____.	_____.
0388	611.0615 Inlet Covers Type F	2.000 EACH	_____.	_____.
0390	611.0627 Inlet Covers Type HM	110.000 EACH	_____.	_____.
0392	611.0636 Inlet Covers Type HM-S	29.000 EACH	_____.	_____.



Proposal Schedule of Items

Proposal ID: 20210309011 Project(s): 1440-15-71

Federal ID(s): WISC 2021227

SECTION: 0001 Contract Items

Alt Set ID: Alt Mbr ID:

Proposal Line Number	Item ID Description	Approximate Quantity and Units	Unit Price	Bid Amount
0394	611.0642 Inlet Covers Type MS	50.000 EACH	_____.	_____.
0396	611.0652 Inlet Covers Type T	6.000 EACH	_____.	_____.
0398	611.0654 Inlet Covers Type V	1.000 EACH	_____.	_____.
0400	611.0660 Inlet Covers Type WM	63.000 EACH	_____.	_____.
0402	611.2003 Manholes 3-FT Diameter	1.000 EACH	_____.	_____.
0404	611.2004 Manholes 4-FT Diameter	8.000 EACH	_____.	_____.
0406	611.2005 Manholes 5-FT Diameter	14.000 EACH	_____.	_____.
0408	611.2006 Manholes 6-FT Diameter	3.000 EACH	_____.	_____.
0410	611.2008 Manholes 8-FT Diameter	1.000 EACH	_____.	_____.
0412	611.2044 Manholes 4x4-FT	2.000 EACH	_____.	_____.
0414	611.2066 Manholes 6x6-FT	1.000 EACH	_____.	_____.
0416	611.3004 Inlets 4-FT Diameter	40.000 EACH	_____.	_____.
0418	611.3220 Inlets 2x2-FT	9.000 EACH	_____.	_____.
0420	611.3225 Inlets 2x2.5-FT	74.000 EACH	_____.	_____.
0422	611.3230 Inlets 2x3-FT	112.000 EACH	_____.	_____.
0424	611.3901 Inlets Median 1 Grate	4.000 EACH	_____.	_____.
0426	611.3902 Inlets Median 2 Grate	24.000 EACH	_____.	_____.



Proposal Schedule of Items

Proposal ID: 20210309011 Project(s): 1440-15-71

Federal ID(s): WISC 2021227

SECTION: 0001 Contract Items

Alt Set ID: Alt Mbr ID:

Proposal Line Number	Item ID Description	Approximate Quantity and Units	Unit Price	Bid Amount
0428	611.8120.S Cover Plates Temporary	20.000 EACH	_____.	_____.
0430	611.9800.S Pipe Grates	20.000 EACH	_____.	_____.
0432	611.9900.S Drain Slotted Vane	3.000 EACH	_____.	_____.
0434	612.0204 Pipe Underdrain Unperforated 4-Inch	480.000 LF	_____.	_____.
0436	612.0406 Pipe Underdrain Wrapped 6-Inch	3,207.000 LF	_____.	_____.
0438	612.0700 Drain Tile Exploration	500.000 LF	_____.	_____.
0440	612.0804 Apron Endwalls for Underdrain Reinforced Concrete 4-Inch	12.000 EACH	_____.	_____.
0442	614.0150 Anchor Assemblies for Steel Plate Beam Guard	5.000 EACH	_____.	_____.
0444	614.0905 Crash Cushions Temporary	8.000 EACH	_____.	_____.
0446	614.1000 MGS Guardrail Temporary	138.000 LF	_____.	_____.
0448	614.1200 MGS Guardrail Temporary Terminal EAT	1.000 EACH	_____.	_____.
0450	614.2300 MGS Guardrail 3	889.000 LF	_____.	_____.
0452	614.2500 MGS Thrie Beam Transition	195.000 LF	_____.	_____.
0454	614.2610 MGS Guardrail Terminal EAT	7.000 EACH	_____.	_____.
0456	614.2620 MGS Guardrail Terminal Type 2	2.000 EACH	_____.	_____.
0458	616.0100 Fence Woven Wire (height) 01. 4-Feet	35,343.000 LF	_____.	_____.



Proposal Schedule of Items

Proposal ID: 20210309011 Project(s): 1440-15-71

Federal ID(s): WISC 2021227

SECTION: 0001 Contract Items

Alt Set ID: Alt Mbr ID:

Proposal Line Number	Item ID Description	Approximate Quantity and Units	Unit Price	Bid Amount
0460	616.0206 Fence Chain Link 6-FT	18,169.000 LF	_____.	_____.
0462	618.0100 Maintenance And Repair of Haul Roads (project) 01. 1440-15-71	1.000 EACH	_____.	_____.
0464	619.1000 Mobilization	1.000 EACH	_____.	_____.
0466	620.0300 Concrete Median Sloped Nose	1,728.000 SF	_____.	_____.
0468	624.0100 Water	5,301.000 MGAL	_____.	_____.
0470	625.0500 Salvaged Topsoil	1,004,465.000 SY	_____.	_____.
0472	627.0200 Mulching	785,318.000 SY	_____.	_____.
0474	628.1504 Silt Fence	43,255.000 LF	_____.	_____.
0476	628.1520 Silt Fence Maintenance	96,341.000 LF	_____.	_____.
0478	628.1905 Mobilizations Erosion Control	58.000 EACH	_____.	_____.
0480	628.1910 Mobilizations Emergency Erosion Control	36.000 EACH	_____.	_____.
0482	628.2004 Erosion Mat Class I Type B	172,891.000 SY	_____.	_____.
0484	628.2008 Erosion Mat Urban Class I Type B	63,798.000 SY	_____.	_____.
0486	628.2031 Erosion Mat Class III Type A	601.000 SY	_____.	_____.
0488	628.6510 Soil Stabilizer Type B	4.000 ACRE	_____.	_____.
0490	628.7005 Inlet Protection Type A	28.000 EACH	_____.	_____.



Proposal Schedule of Items

Proposal ID: 20210309011 Project(s): 1440-15-71

Federal ID(s): WISC 2021227

SECTION: 0001 Contract Items

Alt Set ID: Alt Mbr ID:

Proposal Line Number	Item ID Description	Approximate Quantity and Units	Unit Price	Bid Amount
0492	628.7010 Inlet Protection Type B	4.000 EACH	_____.	_____.
0494	628.7015 Inlet Protection Type C	335.000 EACH	_____.	_____.
0496	628.7020 Inlet Protection Type D	3.000 EACH	_____.	_____.
0498	628.7504 Temporary Ditch Checks	5,319.000 LF	_____.	_____.
0500	628.7555 Culvert Pipe Checks	280.000 EACH	_____.	_____.
0502	628.7570 Rock Bags	595.000 EACH	_____.	_____.
0504	629.0210 Fertilizer Type B	637.800 CWT	_____.	_____.
0506	630.0120 Seeding Mixture No. 20	15,110.000 LB	_____.	_____.
0508	630.0130 Seeding Mixture No. 30	14,112.000 LB	_____.	_____.
0510	630.0140 Seeding Mixture No. 40	4,593.000 LB	_____.	_____.
0512	630.0200 Seeding Temporary	1,751.000 LB	_____.	_____.
0514	630.0300 Seeding Borrow Pit	175.000 LB	_____.	_____.
0516	630.0500 Seed Water	22,559.000 MGAL	_____.	_____.
0518	632.0101 Trees (species) (size) (root) 01. (Red Maple)(#25)(CG)	125.000 EACH	_____.	_____.
0520	632.0101 Trees (species) (size) (root) 02. (Silver Maple)(#25)(CG)	125.000 EACH	_____.	_____.
0522	632.0101 Trees (species) (size) (root) 03. (Quaking Aspen)(#25)(CG)	125.000 EACH	_____.	_____.



Proposal Schedule of Items

Proposal ID: 20210309011 Project(s): 1440-15-71

Federal ID(s): WISC 2021227

SECTION: 0001 Contract Items

Alt Set ID: Alt Mbr ID:

Proposal Line Number	Item ID Description	Approximate Quantity and Units	Unit Price	Bid Amount
0524	632.0101 Trees (species) (size) (root) 04. (River Birch)(#20)(CG)	125.000 EACH	_____.	_____.
0526	632.0101 Trees (species) (size) (root) 05. (Yellow Birch)(#15)(CG)	125.000 EACH	_____.	_____.
0528	632.0101 Trees (species) (size) (root) 06. (American Elm)(#25)(CG)	125.000 EACH	_____.	_____.
0530	632.0101 Trees (species) (size) (root) 07. (Swamp White Oak)(#25)(CG)	125.000 EACH	_____.	_____.
0532	632.0101 Trees (species) (size) (root) 08. (Black Willow)(#15)(CG)	125.000 EACH	_____.	_____.
0534	632.0101 Trees (species) (size) (root) 09. (Speckled Adler)(#2)(CG)	125.000 EACH	_____.	_____.
0536	632.0101 Trees (species) (size) (root) 10. (Tamarack)(#15)(CG)	125.000 EACH	_____.	_____.
0538	632.9101 Landscape Planting Surveillance and Care Cycles	24.000 EACH	_____.	_____.
0540	633.0100 Delineator Posts Steel	83.000 EACH	_____.	_____.
0542	633.0500 Delineator Reflectors	83.000 EACH	_____.	_____.
0544	633.1000 Delineators Barrier Wall	83.000 EACH	_____.	_____.
0546	633.1100 Delineators Temporary	35.000 EACH	_____.	_____.
0548	633.5200 Markers Culvert End	250.000 EACH	_____.	_____.
0550	634.0614 Posts Wood 4x6-Inch X 14-FT	36.000 EACH	_____.	_____.
0552	634.0616 Posts Wood 4x6-Inch X 16-FT	88.000 EACH	_____.	_____.



Proposal Schedule of Items

Proposal ID: 20210309011 Project(s): 1440-15-71

Federal ID(s): WISC 2021227

SECTION: 0001 Contract Items

Alt Set ID: Alt Mbr ID:

Proposal Line Number	Item ID Description	Approximate Quantity and Units	Unit Price	Bid Amount
0554	634.0618 Posts Wood 4x6-Inch X 18-FT	59.000 EACH	_____.	_____.
0556	635.0200 Sign Supports Structural Steel HS	3,885.000 LB	_____.	_____.
0558	637.1220 Signs Type I Reflective SH	272.000 SF	_____.	_____.
0560	637.2210 Signs Type II Reflective H	2,786.220 SF	_____.	_____.
0562	637.2215 Signs Type II Reflective H Folding	42.420 SF	_____.	_____.
0564	637.2230 Signs Type II Reflective F	186.250 SF	_____.	_____.
0566	638.2602 Removing Signs Type II	137.000 EACH	_____.	_____.
0568	638.3000 Removing Small Sign Supports	141.000 EACH	_____.	_____.
0570	642.5401 Field Office Type D	2.000 EACH	_____.	_____.
0572	643.0300 Traffic Control Drums	265,931.000 DAY	_____.	_____.
0574	643.0420 Traffic Control Barricades Type III	49,124.000 DAY	_____.	_____.
0576	643.0500 Traffic Control Flexible Tubular Marker Posts	506.000 EACH	_____.	_____.
0578	643.0600 Traffic Control Flexible Tubular Marker Bases	506.000 EACH	_____.	_____.
0580	643.0705 Traffic Control Warning Lights Type A	68,539.000 DAY	_____.	_____.
0582	643.0715 Traffic Control Warning Lights Type C	21,033.000 DAY	_____.	_____.
0584	643.0800 Traffic Control Arrow Boards	540.000 DAY	_____.	_____.



Proposal Schedule of Items

Proposal ID: 20210309011 Project(s): 1440-15-71

Federal ID(s): WISC 2021227

SECTION: 0001 Contract Items

Alt Set ID: Alt Mbr ID:

Proposal Line Number	Item ID Description	Approximate Quantity and Units	Unit Price	Bid Amount
0586	643.0900 Traffic Control Signs	81,149.000 DAY	_____.	_____.
0588	643.0920 Traffic Control Covering Signs Type II	1,093.000 EACH	_____.	_____.
0590	643.1050 Traffic Control Signs PCMS	217.000 DAY	_____.	_____.
0592	643.1070 Traffic Control Cones 42-Inch	1,430.000 DAY	_____.	_____.
0594	643.5000 Traffic Control	1.000 EACH	_____.	_____.
0596	645.0105 Geotextile Type C	186.000 SY	_____.	_____.
0598	645.0111 Geotextile Type DF Schedule A	380.000 SY	_____.	_____.
0600	645.0112 Geotextile Type DF Schedule B	92.000 SY	_____.	_____.
0602	645.0120 Geotextile Type HR	1,222.000 SY	_____.	_____.
0604	645.0130 Geotextile Type R	3,348.000 SY	_____.	_____.
0606	646.1020 Marking Line Epoxy 4-Inch	44,263.000 LF	_____.	_____.
0608	646.1040 Marking Line Grooved Wet Ref Epoxy 4-Inch	134,257.000 LF	_____.	_____.
0610	646.3020 Marking Line Epoxy 8-Inch	200.000 LF	_____.	_____.
0612	646.3040 Marking Line Grooved Wet Ref Epoxy 8-Inch	591.000 LF	_____.	_____.
0614	646.3555 Marking Line Grooved Contrast Permanent Tape 8-Inch	12,748.000 LF	_____.	_____.
0616	646.5020 Marking Arrow Epoxy	26.000 EACH	_____.	_____.



Proposal Schedule of Items

Proposal ID: 20210309011 Project(s): 1440-15-71

Federal ID(s): WISC 2021227

SECTION: 0001 Contract Items

Alt Set ID: Alt Mbr ID:

Proposal Line Number	Item ID Description	Approximate Quantity and Units	Unit Price	Bid Amount
0618	646.5120 Marking Word Epoxy	27.000 EACH	_____.	_____.
0620	646.5220 Marking Symbol Epoxy	4.000 EACH	_____.	_____.
0622	646.6120 Marking Stop Line Epoxy 18-Inch	312.000 LF	_____.	_____.
0624	646.6220 Marking Yield Line Epoxy 18-Inch	18.000 EACH	_____.	_____.
0626	646.6320 Marking Dotted Extension Epoxy 18-Inch	335.000 LF	_____.	_____.
0628	646.7120 Marking Diagonal Epoxy 12-Inch	1,083.000 LF	_____.	_____.
0630	646.7220 Marking Chevron Epoxy 24-Inch	282.000 LF	_____.	_____.
0632	646.7420 Marking Crosswalk Epoxy Transverse Line 6-Inch	1,746.000 LF	_____.	_____.
0634	646.8120 Marking Curb Epoxy	3,806.000 LF	_____.	_____.
0636	646.8220 Marking Island Nose Epoxy	10.000 EACH	_____.	_____.
0638	646.8320 Marking Parking Stall Epoxy	1,690.000 LF	_____.	_____.
0640	646.9000 Marking Removal Line 4-Inch	5,045.000 LF	_____.	_____.
0642	646.9100 Marking Removal Line 8-Inch	534.000 LF	_____.	_____.
0644	649.0105 Temporary Marking Line Paint 4-Inch	125,862.000 LF	_____.	_____.
0646	649.0120 Temporary Marking Line Epoxy 4-Inch	65,335.000 LF	_____.	_____.
0648	649.0150 Temporary Marking Line Removable Tape 4-Inch	1,243.000 LF	_____.	_____.



Proposal Schedule of Items

Proposal ID: 20210309011 Project(s): 1440-15-71
Federal ID(s): WISC 2021227

SECTION: 0001 Contract Items

Alt Set ID: Alt Mbr ID:

Table with 5 columns: Proposal Line Number, Item ID Description, Approximate Quantity and Units, Unit Price, Bid Amount. Rows include items like Temporary Marking Line Paint 8-Inch, Epoxy 8-Inch, Raised Pavement Marker Type I, Diagonal Paint 12-Inch, Construction Staking Storm Sewer, Subgrade, Base, Curb Gutter and Gutter, Pipe Culverts, and Structure Layout (structures 01-05).



Proposal Schedule of Items

Proposal ID: 20210309011 Project(s): 1440-15-71
Federal ID(s): WISC 2021227

SECTION: 0001 Contract Items

Alt Set ID: Alt Mbr ID:

Table with 5 columns: Proposal Line Number, Item ID Description, Approximate Quantity and Units, Unit Price, Bid Amount. Rows include items 0678 through 0704 with various construction staking and conduit descriptions.



Proposal Schedule of Items

Proposal ID: 20210309011 Project(s): 1440-15-71

Federal ID(s): WISC 2021227

SECTION: 0001 Contract Items

Alt Set ID: Alt Mbr ID:

Proposal Line Number	Item ID Description	Approximate Quantity and Units	Unit Price	Bid Amount
0706	653.0164 Pull Boxes Non-Conductive 24x42-Inch	52.000 EACH	_____.	_____.
0708	654.0101 Concrete Bases Type 1	5.000 EACH	_____.	_____.
0710	654.0102 Concrete Bases Type 2	1.000 EACH	_____.	_____.
0712	654.0105 Concrete Bases Type 5	70.000 EACH	_____.	_____.
0714	654.0113 Concrete Bases Type 13	1.000 EACH	_____.	_____.
0716	654.0120 Concrete Bases Type 10-Special	1.000 EACH	_____.	_____.
0718	654.0220 Concrete Control Cabinet Bases Type 10	7.000 EACH	_____.	_____.
0720	655.0230 Cable Traffic Signal 5-14 AWG	3,910.000 LF	_____.	_____.
0722	655.0240 Cable Traffic Signal 7-14 AWG	485.000 LF	_____.	_____.
0724	655.0260 Cable Traffic Signal 12-14 AWG	780.000 LF	_____.	_____.
0726	655.0305 Cable Type UF 2-12 AWG Grounded	470.000 LF	_____.	_____.
0728	655.0515 Electrical Wire Traffic Signals 10 AWG	2,110.000 LF	_____.	_____.
0730	655.0610 Electrical Wire Lighting 12 AWG	13,990.000 LF	_____.	_____.
0732	655.0615 Electrical Wire Lighting 10 AWG	27,570.000 LF	_____.	_____.
0734	655.0625 Electrical Wire Lighting 6 AWG	8,493.000 LF	_____.	_____.
0736	655.0700 Loop Detector Lead In Cable	4,235.000 LF	_____.	_____.
0738	655.0800 Loop Detector Wire	2,440.000 LF	_____.	_____.



Proposal Schedule of Items

Proposal ID: 20210309011 Project(s): 1440-15-71

Federal ID(s): WISC 2021227

SECTION: 0001 Contract Items

Alt Set ID: Alt Mbr ID:

Proposal Line Number	Item ID Description	Approximate Quantity and Units	Unit Price	Bid Amount
0740	656.0200 Electrical Service Meter Breaker Pedestal (location) 01. STH 23 & Wisconsin American Roundabout	LS	LUMP SUM	_____.
0742	656.0200 Electrical Service Meter Breaker Pedestal (location) 02. South Jughandle	LS	LUMP SUM	_____.
0744	656.0200 Electrical Service Meter Breaker Pedestal (location) 03. North Jughandle	LS	LUMP SUM	_____.
0746	656.0200 Electrical Service Meter Breaker Pedestal (location) 04. CTH UU South Roundabout	LS	LUMP SUM	_____.
0748	656.0200 Electrical Service Meter Breaker Pedestal (location) 05. CTH UU North Roundabout	LS	LUMP SUM	_____.
0750	656.0200 Electrical Service Meter Breaker Pedestal (location) 06. Park and Ride	LS	LUMP SUM	_____.
0752	656.0200 Electrical Service Meter Breaker Pedestal (location) 07. 151 SB & 23	LS	LUMP SUM	_____.
0754	656.0200 Electrical Service Meter Breaker Pedestal (location) 08. CTH K	LS	LUMP SUM	_____.
0756	657.0100 Pedestal Bases	5.000 EACH	_____.	_____.
0758	657.0255 Transformer Bases Breakaway 11 1/2-Inch Bolt Circle	66.000 EACH	_____.	_____.
0760	657.0315 Poles Type 4	1.000 EACH	_____.	_____.
0762	657.0322 Poles Type 5-Aluminum	65.000 EACH	_____.	_____.
0764	657.0352 Poles Type 10-Special	1.000 EACH	_____.	_____.



Proposal Schedule of Items

Proposal ID: 20210309011 Project(s): 1440-15-71

Federal ID(s): WISC 2021227

SECTION: 0001 Contract Items

Alt Set ID: Alt Mbr ID:

Proposal Line Number	Item ID Description	Approximate Quantity and Units	Unit Price	Bid Amount
0766	657.0360 Poles Type 13	1.000 EACH	_____.	_____.
0768	657.0420 Traffic Signal Standards Aluminum 13-FT	2.000 EACH	_____.	_____.
0770	657.0425 Traffic Signal Standards Aluminum 15-FT	1.000 EACH	_____.	_____.
0772	657.0430 Traffic Signal Standards Aluminum 10-FT	1.000 EACH	_____.	_____.
0774	657.0546 Monotube Arms 45-FT-Special	1.000 EACH	_____.	_____.
0776	657.0550 Monotube Arms 50-FT	1.000 EACH	_____.	_____.
0778	657.0710 Luminaire Arms Truss Type 4 1/2-Inch Clamp 12-FT	66.000 EACH	_____.	_____.
0780	658.0173 Traffic Signal Face 3S 12-Inch	8.000 EACH	_____.	_____.
0782	658.0174 Traffic Signal Face 4S 12-Inch	3.000 EACH	_____.	_____.
0786	658.0500 Pedestrian Push Buttons	7.000 EACH	_____.	_____.
0788	658.5069 Signal Mounting Hardware (location) 01. USH 151 SB Ramp & STH 23	LS	LUMP SUM	_____.
0790	658.5069 Signal Mounting Hardware (location) 02. USH 151 NB Ramp & STH 23	LS	LUMP SUM	_____.
0792	659.1115 Luminaires Utility LED A	3.000 EACH	_____.	_____.
0794	659.1120 Luminaires Utility LED B	52.000 EACH	_____.	_____.
0796	659.1125 Luminaires Utility LED C	11.000 EACH	_____.	_____.
0798	659.2130 Lighting Control Cabinets 120/240 30- Inch	1.000 EACH	_____.	_____.



Proposal Schedule of Items

Proposal ID: 20210309011 Project(s): 1440-15-71
Federal ID(s): WISC 2021227

SECTION: 0001 Contract Items

Alt Set ID: Alt Mbr ID:

Table with 5 columns: Proposal Line Number, Item ID Description, Approximate Quantity and Units, Unit Price, Bid Amount. Rows include items like Temporary Traffic Signals, Sawing Asphalt, Incentive Strength Concrete Pavement, etc.



Proposal Schedule of Items

Proposal ID: 20210309011 Project(s): 1440-15-71
Federal ID(s): WISC 2021227

SECTION: 0001 Contract Items

Alt Set ID: Alt Mbr ID:

Table with 5 columns: Proposal Line Number, Item ID Description, Approximate Quantity and Units, Unit Price, Bid Amount. Rows include items like SPV.0060 Special 02. Vertical Impact Recovery Panel Base, SPV.0060 Special 03. Temporary Inlet Cover, etc.



Proposal Schedule of Items

Proposal ID: 20210309011 Project(s): 1440-15-71
Federal ID(s): WISC 2021227

SECTION: 0001 Contract Items

Alt Set ID: Alt Mbr ID:

Table with 5 columns: Proposal Line Number, Item ID Description, Approximate Quantity and Units, Unit Price, Bid Amount. Includes rows for items 0856 through 0872 and a total section for 0001.

