



Wisconsin Department of Transportation

March 31, 2021

Division of Transportation Systems Development

Bureau of Project Development
4822 Madison Yards Way, 4th Floor South
Madison, WI 53705

Telephone: (608) 266-1631
Facsimile (FAX): (608) 266-8459

NOTICE TO ALL CONTRACTORS:

Proposal #11: 1146-75-71, WISC 2021 264
STH 76 – New London
WI Central Railroad – CTH JJ
STH 15
Outagamie County

Letting of April 13, 2021

This is Addendum No. 01, which provides for the following:

Schedule of Items:

Revised Bid Item Quantities					
Bid Item	Item Description	Unit	Old Quantity	Revised Quantity	Proposal Total
208.1100	Select Borrow	CY	79,757	21,670	101,427
522.2324	Culvert Pipe Reinforced Concrete Horizontal Elliptical Class HE – III 24x38 - Inch	LF	214	-126	88

Deleted Bid Item Quantities					
Bid Item	Item Description	Unit	Old Quantity	Revised Quantity	Proposal Total
203.0200	Removing old structure (Station) 01.339+40	LS	1	-1	0
522.2319	Culvert Pipe Reinforced Concrete Horizontal Elliptical Class HE – III 19x30 - Inch	LF	120	-120	0

Plan Sheets:

Revised Plan Sheets	
Plan Sheet	Plan Sheet Title (brief description of changes to sheet)
8	Construction Detail, French Drain, Erosion Control. Updating the layout of the Pipe Grates
73	Miscellaneous Quantities. Updated the Select Borrow Quantity from STA 389+61 – 465+00
83	Miscellaneous Quantities. Removed 522.2319 from the CTH MM listing.

Schedule of Items

Attached, dated March 31, 2021, are the revised Schedule of Items. All pages are being replaced.

Plan Sheets

The following 8½ x 11-inch sheets are attached and made part of the plans for this proposal:

Revised: 8, 73, and 83

The responsibility for notifying potential subcontractors and suppliers of these changes remains with the prime contractor.

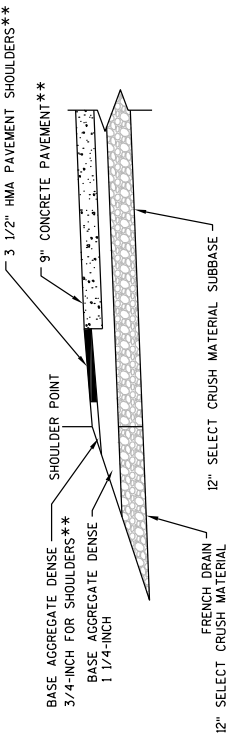
Sincerely,

Mike Coleman

Proposal Development Specialist
Proposal Management Section

END OF ADDENDUM

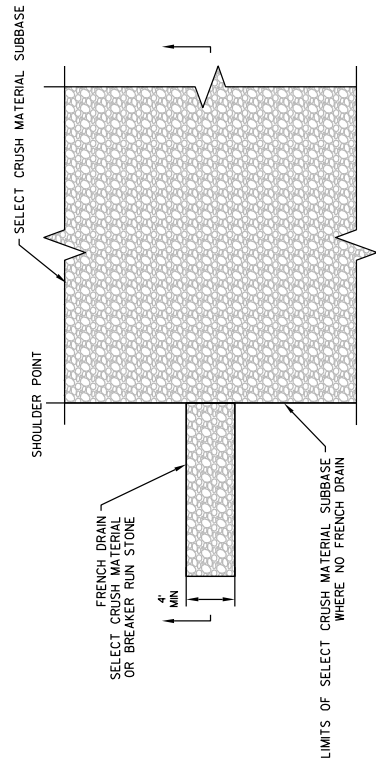
Addendum No. 01
 ID 1146-75-71
 Revised Sheet 8
 March 31, 2021



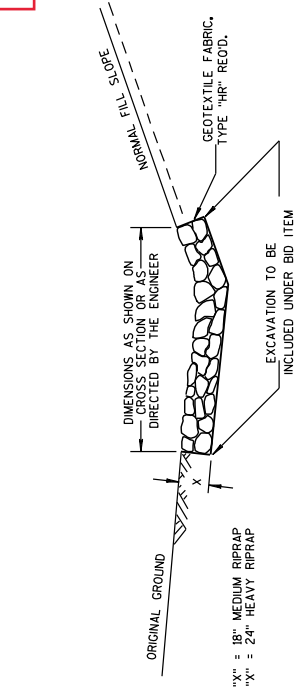
SECTION VIEW

NOTES

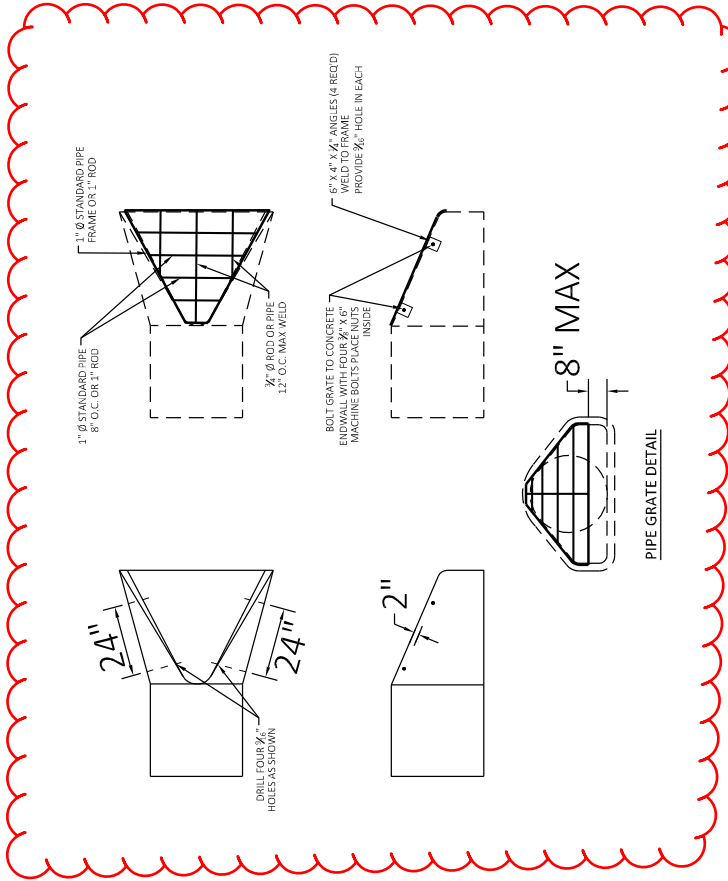
- "X" = POINT REFERENCED TO ON PROFILE (PROFILE GRADE LINE - PCL)
- "Y" = SUBGRADE REFERRED TO ON CROSS SECTIONS
- * CROSS SLOPE VARIES DUE TO SUPERELEVATION (SEE CROSS SECTIONS AND SUPERELEVATION TABLE FOR FURTHER DETAILS)
- ** WORK DONE BY OTHERS, STH 15 PAVEMENT ITEMS SHOWN FOR INFORMATION ONLY
- DRAINS ARE TO BE CONSTRUCTED AT LEAST EVERY 250' AND AT EACH LOW POINT OF A SAG VERTICAL CURVE IN THE PROFILE.
- LOCATIONS TO BE DETERMINED IN THE FIELD BY THE ENGINEER.
- EXCAVATION REQUIRED TO CONSTRUCT FRENCH DRAINS IS INCIDENTAL TO THE ITEM BREAKER RUN STONE.



PLAN VIEW
 FRENCH DRAIN DETAIL



DETAIL FOR RIPRAP IN DITCHES



PIPE GRATE DETAIL

Addendum No. 01
 ID 1146-75-71
 Revised Sheet 73
 March 31, 2021

ALL ITEMS ARE CATEGORY 0010
 UNLESS OTHERWISE NOTED

Station	to Station	Location	208.1100 Select Borrow CY	305.0110 Base Aggregate Dense 3/4-inch Ton	305.0120* Base Aggregate Dense 1 1/4-inch Ton	311.0110* Breaker Run Ton	Base		624.0100 Water Mgal	Dust Control Mgal	SPV.0195.01 2-inch Clear Stone Ton	SPV.0195.02 Shot Rock Ton	Remarks
							312.0110 Select Crush Material Ton	312.0110 Material Ton					
275+00	-- 278+88	STH 15 EB			1,787			2,744	18	7			
275+00	-- 277+07	STH 15 WB			1,423			2,206	14	6			
319+16	-- 321+43	STH 15 EB + WB			284			387	3	1			Median Cross over Driveway Driveway
320+19	--	STH 15 WB	216										
335+00	--	STH 15 WB	20										
281+02	-- 339+40	STH 15 EB			10,818			15,894	108	43			
328+00	-- 362+00	STH 15 EB + WB	47,757			88,148							
279+86	-- 339+05	STH 15 WB			10,968	16,114			271	108		16,230	Marsh Excavation Shot Rock for Paritka Pond 2 driveways Median Crossover
346+60	--	STH 15 EB + WB		185									
345+46	-- 347+74	STH 15 EB + WB			284			387	3	1			
340+80	-- 372+99	STH 15 EB			5,965			8,764	60	24			
340+46	-- 372+95	STH 15 WB			6,022			8,847	60	24			
373+92	-- 388+64	STH 15 EB			2,727			4,007	27	11			
373+87	-- 388+69	STH 15 WB			2,746			4,034	27	11			
408+54	-- 410+82	STH 15 EB + WB			284			387	3	1			Median Crossover
434+00	--	STH 15 WB		72									Driveway
446+86	-- 449+14	STH 15 EB + WB			284			387	3	1			Snowmobile Crossover
429+50	-- 431+50	STH 15 EB + WB	8,000										Marsh Excavation
450+00	-- 458+00	STH 15 EB + WB	24,000										Marsh Excavation 2 driveways
448+00	--	STH 15 EB + WB		140				20,540	140	56			
389+56	-- 465+00	STH 15 EB			13,981			20,527	140	56			
389+61	-- 465+00	STH 15 WB	21,670		13,972								
23+15	-- 26+26	CTH M			1,180				12	5			
11+30	-- 12+62	N. Crest		19									
12+10	--	N. Crest		90									Cul-de-sac 2 driveways
11+00	-- 26+77	CTH MM			3,280				33	13			2 driveways Driveway
15+27	--	CTH MM		78									
25+69	--	CTH MM		19									
20+00	-- 24+93	Samb's Driveway		370				650					
1+50	-- 4+60	Black Otter Creek									151		
Total			101,427	1,209	76,021	104,262	Subtotal	89,761	921	368	151	16,230	
												*SEE STRUCTURES FOR ADDITIONAL QUANTITIES	

CULVERT PIPE REINFORCED CONCRETE - SIDE ROADS

ALL ITEMS CATEGORY 0010

STATION	INLET OFFSET, FT	ELEVATION	STATION	OUTLET OFFSET, FT	ELEVATION	SLOPE	LOCATION	L.F.	REMARKS				
22+60	13.18 RT	787.27	22+71	14.46 LT	787.12	0.50%	SAMBS DWY	30					
10+64	37.3 RT	778.15	10+64	29.2 LT	777.50	0.98%	CTH MM	66	522.0124* CPRC CLASS III 24 - INCH L.F.				
10+72	32.7 RT	778.15	10+72	26.2 LT	777.50	0.98%	CTH MM	60	522.0318* CPRC CLASS IV 18 - INCH L.F.				
15+43	34.1 LT	792.75	15+09	24.0 LT	790.75	5.89%	CTH MM	34	522.2424* CPRCHE CLASS HE-IV 24x38 - INCH L.F.				
15+45	38.8 RT	794.50	15+03	35.7 RT	792.00	5.97%	CTH MM	42	628.7555* CULVERT PIPE CHECKS EACH				
25+00	24.0 RT	828.33	25+00	24.0 LT	825.84	5.22%	CTH MM	40					
25+79	32.0 LT	825.80	25+59	33.6 LT	825.50	1.46%	CTH MM	5	PE				
TOTAL								54	42	30	40	126	30

APRON ENDWALLS FOR CULVERT PIPE REINFORCED CONCRETE - SIDE ROADS

ALL ITEMS CATEGORY 0010

STATION	INLET OFFSET, FT	ELEVATION	STATION	OUTLET OFFSET, FT	ELEVATION	LOCATION	REMARKS						
22+60	13.18 RT	787.27	22+71	14.46 LT	787.12	SAMBS DWY							
10+64	37.3 RT	778.15	10+64	29.2 LT	777.50	CTH MM							
10+72	32.7 RT	778.15	10+72	26.2 LT	777.50	CTH MM							
15+43	34.1 LT	792.75	15+09	24.0 LT	790.75	CTH MM							
15+45	38.8 RT	794.50	15+03	35.7 RT	792.00	CTH MM							
25+00	24.0 RT	828.33	25+00	24.0 LT	825.84	CTH MM							
25+79	32.0 LT	825.80	25+59	33.6 LT	825.50	CTH MM							
TOTAL							6	2	2	4	4	14	6

DRAINAGE ITEM NOTES:

- 1) JOINT TIES FOR CONCRETE PIPE SHALL BE PROVIDED AT ALL CONCRETE APRON ENDWALLS. APRON ENDWALLS SHALL BE TIED FOR THE LAST THREE JOINTS AT PIPE ENDS. THE COST OF THESE TIES SHALL BE INCIDENTAL TO THE COST OF THE PIPE.
- 2) STATIONS AND OFFSETS ARE TO THE CENTER OF STRUCTURE OR TO THE END OF PIPE WHERE THERE IS AN ENDWALL.

Addendum No. 01
 ID 1146-75-71
 Revised Sheet 83
 March 31, 2021



Proposal Schedule of Items

Page 1 of 16

Proposal ID: 20210413011 Project(s): 1146-75-71

Federal ID(s): WISC 2021264

SECTION: 0001

Contract Items

Alt Set ID:

Alt Mbr ID:

Proposal Line Number	Item ID Description	Approximate Quantity and Units	Unit Price	Bid Amount
0002	108.4300 RBC Progress Schedule	1.000 EACH	_____.	_____.
0004	201.0105 Clearing	163.000 STA	_____.	_____.
0006	201.0205 Grubbing	163.000 STA	_____.	_____.
0008	203.0100 Removing Small Pipe Culverts	2.000 EACH	_____.	_____.
0012	203.0600.S Removing Old Structure Over Waterway With Minimal Debris (station) 01. 339+40	LS	LUMP SUM	_____.
0014	204.0110 Removing Asphaltic Surface	579.000 SY	_____.	_____.
0016	204.0120 Removing Asphaltic Surface Milling	3,565.000 SY	_____.	_____.
0018	204.0150 Removing Curb & Gutter	103.000 LF	_____.	_____.
0020	204.0155 Removing Concrete Sidewalk	36.000 SY	_____.	_____.
0022	204.0170 Removing Fence	6,855.000 LF	_____.	_____.
0024	204.0180 Removing Delineators and Markers	2.000 EACH	_____.	_____.
0026	204.0210 Removing Manholes	1.000 EACH	_____.	_____.
0028	204.0220 Removing Inlets	1.000 EACH	_____.	_____.
0030	204.0230 Removing Building (station) 01. STA 447'EB'+00	LS	LUMP SUM	_____.
0032	204.0245 Removing Storm Sewer (size) 01. 30- inch	115.000 LF	_____.	_____.
0034	204.9090.S Removing (item description) 01. Underdrain	525.000 LF	_____.	_____.



Proposal Schedule of Items

Proposal ID: 20210413011 Project(s): 1146-75-71

Federal ID(s): WISC 2021264

SECTION: 0001

Contract Items

Alt Set ID:

Alt Mbr ID:

Proposal Line Number	Item ID Description	Approximate Quantity and Units	Unit Price	Bid Amount
0036	205.0100 Excavation Common	810,462.000 CY	_____.	_____.
0038	205.0200 Excavation Rock	25,553.000 CY	_____.	_____.
0040	205.0400 Excavation Marsh	127,635.000 CY	_____.	_____.
0042	206.1000 Excavation for Structures Bridges (structure) 01. B-44-289	LS	LUMP SUM	_____.
0044	206.1000 Excavation for Structures Bridges (structure) 02. B-44-290	LS	LUMP SUM	_____.
0046	206.1000 Excavation for Structures Bridges (structure) 03. B-44-291	LS	LUMP SUM	_____.
0048	206.1000 Excavation for Structures Bridges (structure) 04. B-44-292	LS	LUMP SUM	_____.
0050	206.1000 Excavation for Structures Bridges (structure) 05. B-44-293	LS	LUMP SUM	_____.
0052	206.1000 Excavation for Structures Bridges (structure) 06. B-44-294	LS	LUMP SUM	_____.
0054	206.1000 Excavation for Structures Bridges (structure) 07. B-44-295	LS	LUMP SUM	_____.
0056	206.1000 Excavation for Structures Bridges (structure) 08. B-44-296	LS	LUMP SUM	_____.
0058	206.5000 Cofferdams (structure) 02. B-44-290	LS	LUMP SUM	_____.
0060	206.5000 Cofferdams (structure) 03. B-44-289	LS	LUMP SUM	_____.
0062	208.1100 Select Borrow	101,427.000 CY	_____.	_____.
0064	210.1500 Backfill Structure Type A	3,283.000 TON	_____.	_____.



Proposal Schedule of Items

Proposal ID: 20210413011 Project(s): 1146-75-71

Federal ID(s): WISC 2021264

SECTION: 0001

Contract Items

Alt Set ID:

Alt Mbr ID:

Proposal Line Number	Item ID Description	Approximate Quantity and Units	Unit Price	Bid Amount
0066	211.0100 Prepare Foundation for Asphaltic Paving (project) 31. 1146-75-71	LS	LUMP SUM	_____.
0068	213.0100 Finishing Roadway (project) 01. 1146-75-71	1.000 EACH	_____.	_____.
0070	214.0100 Obliterating Old Road	9.300 STA	_____.	_____.
0072	305.0110 Base Aggregate Dense 3/4-Inch	1,209.000 TON	_____.	_____.
0074	305.0120 Base Aggregate Dense 1 1/4-Inch	77,600.000 TON	_____.	_____.
0076	305.0500 Shaping Shoulders	11.200 STA	_____.	_____.
0078	311.0110 Breaker Run	104,262.000 TON	_____.	_____.
0080	312.0110 Select Crushed Material	89,761.000 TON	_____.	_____.
0082	415.0410 Concrete Pavement Approach Slab	336.000 SY	_____.	_____.
0084	416.1010 Concrete Surface Drains	5.400 CY	_____.	_____.
0086	455.0605 Tack Coat	656.000 GAL	_____.	_____.
0088	460.2000 Incentive Density HMA Pavement	1,090.000 DOL	1.00000	1,090.00
0090	460.5223 HMA Pavement 3 LT 58-28 S	934.000 TON	_____.	_____.
0092	460.5224 HMA Pavement 4 LT 58-28 S	1,154.000 TON	_____.	_____.
0094	465.0110 Asphaltic Surface Patching	15.000 TON	_____.	_____.
0096	465.0120 Asphaltic Surface Driveways and Field Entrances	13.000 TON	_____.	_____.



Proposal Schedule of Items

Proposal ID: 20210413011 Project(s): 1146-75-71

Federal ID(s): WISC 2021264

SECTION: 0001

Contract Items

Alt Set ID:

Alt Mbr ID:

Proposal Line Number	Item ID Description	Approximate Quantity and Units	Unit Price	Bid Amount
0098	502.0100 Concrete Masonry Bridges	6,061.000 CY	_____.	_____.
0100	502.3101 Expansion Device	348.000 LF	_____.	_____.
0102	502.3200 Protective Surface Treatment	6,743.000 SY	_____.	_____.
0104	502.3210 Pigmented Surface Sealer	1,488.000 SY	_____.	_____.
0106	503.0137 Prestressed Girder Type I 36W-Inch	2,547.000 LF	_____.	_____.
0108	503.0146 Prestressed Girder Type I 45W-Inch	2,694.000 LF	_____.	_____.
0110	505.0400 Bar Steel Reinforcement HS Structures	202,740.000 LB	_____.	_____.
0112	505.0600 Bar Steel Reinforcement HS Coated Structures	688,475.000 LB	_____.	_____.
0114	505.0800.S Bar Steel Reinforcement HS Stainless Structures	11,385.000 LB	_____.	_____.
0116	506.2605 Bearing Pads Elastomeric Non-Laminated	96.000 EACH	_____.	_____.
0118	506.2610 Bearing Pads Elastomeric Laminated	20.000 EACH	_____.	_____.
0120	506.4000 Steel Diaphragms (structure) 01. B-44-289	24.000 EACH	_____.	_____.
0122	506.4000 Steel Diaphragms (structure) 02. B-44-290	24.000 EACH	_____.	_____.
0124	506.4000 Steel Diaphragms (structure) 03. B-44-291	12.000 EACH	_____.	_____.
0126	506.4000 Steel Diaphragms (structure) 04. B-44-292	12.000 EACH	_____.	_____.



Proposal Schedule of Items

Proposal ID: 20210413011 Project(s): 1146-75-71

Federal ID(s): WISC 2021264

SECTION: 0001

Contract Items

Alt Set ID:

Alt Mbr ID:

Proposal Line Number	Item ID Description	Approximate Quantity and Units	Unit Price	Bid Amount
0128	506.4000 Steel Diaphragms (structure) 05. B-44-293	12.000 EACH	_____.	_____.
0130	506.4000 Steel Diaphragms (structure) 06. B-44-294	12.000 EACH	_____.	_____.
0132	511.1200 Temporary Shoring (structure) 03. B-44-295/B-44-296	5,884.000 SF	_____.	_____.
0134	516.0500 Rubberized Membrane Waterproofing	284.000 SY	_____.	_____.
0136	520.8000 Concrete Collars for Pipe	3.000 EACH	_____.	_____.
0138	522.0112 Culvert Pipe Reinforced Concrete Class III 12-Inch	46.000 LF	_____.	_____.
0140	522.0118 Culvert Pipe Reinforced Concrete Class III 18-Inch	1,414.000 LF	_____.	_____.
0142	522.0124 Culvert Pipe Reinforced Concrete Class III 24-Inch	322.000 LF	_____.	_____.
0144	522.0130 Culvert Pipe Reinforced Concrete Class III 30-Inch	654.000 LF	_____.	_____.
0146	522.0136 Culvert Pipe Reinforced Concrete Class III 36-Inch	210.000 LF	_____.	_____.
0148	522.0142 Culvert Pipe Reinforced Concrete Class III 42-Inch	252.000 LF	_____.	_____.
0150	522.0154 Culvert Pipe Reinforced Concrete Class III 54-Inch	214.000 LF	_____.	_____.
0152	522.0418 Culvert Pipe Reinforced Concrete Class IV 18-Inch	816.000 LF	_____.	_____.



Proposal Schedule of Items

Proposal ID: 20210413011 Project(s): 1146-75-71

Federal ID(s): WISC 2021264

SECTION: 0001

Contract Items

Alt Set ID:

Alt Mbr ID:

Proposal Line Number	Item ID Description	Approximate Quantity and Units	Unit Price	Bid Amount
0154	522.0430 Culvert Pipe Reinforced Concrete Class IV 30-Inch	324.000 LF	_____.	_____.
0156	522.0460 Culvert Pipe Reinforced Concrete Class IV 60-Inch	604.000 LF	_____.	_____.
0158	522.0536 Culvert Pipe Reinforced Concrete Class V 36-Inch	738.000 LF	_____.	_____.
0160	522.0542 Culvert Pipe Reinforced Concrete Class V 42-Inch	392.000 LF	_____.	_____.
0162	522.1012 Apron Endwalls for Culvert Pipe Reinforced Concrete 12-Inch	2.000 EACH	_____.	_____.
0164	522.1018 Apron Endwalls for Culvert Pipe Reinforced Concrete 18-Inch	27.000 EACH	_____.	_____.
0166	522.1024 Apron Endwalls for Culvert Pipe Reinforced Concrete 24-Inch	13.000 EACH	_____.	_____.
0168	522.1030 Apron Endwalls for Culvert Pipe Reinforced Concrete 30-Inch	10.000 EACH	_____.	_____.
0170	522.1036 Apron Endwalls for Culvert Pipe Reinforced Concrete 36-Inch	8.000 EACH	_____.	_____.
0172	522.1042 Apron Endwalls for Culvert Pipe Reinforced Concrete 42-Inch	4.000 EACH	_____.	_____.
0174	522.1054 Apron Endwalls for Culvert Pipe Reinforced Concrete 54-Inch	2.000 EACH	_____.	_____.
0176	522.1060 Apron Endwalls for Culvert Pipe Reinforced Concrete 60-Inch	4.000 EACH	_____.	_____.
0180	522.2324 Culvert Pipe Reinforced Concrete Horizontal Elliptical Class HE-III 24x38-Inch	88.000 LF	_____.	_____.



Proposal Schedule of Items

Proposal ID: 20210413011 Project(s): 1146-75-71

Federal ID(s): WISC 2021264

SECTION: 0001

Contract Items

Alt Set ID:

Alt Mbr ID:

Proposal Line Number	Item ID Description	Approximate Quantity and Units	Unit Price	Bid Amount
0182	522.2348 Culvert Pipe Reinforced Concrete Horizontal Elliptical Class HE-III 48x76- Inch	260.000 LF	_____.	_____.
0184	522.2414 Culvert Pipe Reinforced Concrete Horizontal Elliptical Class HE-IV 14x23- Inch	82.000 LF	_____.	_____.
0186	522.2424 Culvert Pipe Reinforced Concrete Horizontal Elliptical Class HE-IV 24x38- Inch	126.000 LF	_____.	_____.
0188	522.2429 Culvert Pipe Reinforced Concrete Horizontal Elliptical Class HE-IV 29x45- Inch	148.000 LF	_____.	_____.
0190	522.2614 Apron Endwalls for Culvert Pipe Reinforced Concrete Horizontal Elliptical 14x23-Inch	1.000 EACH	_____.	_____.
0192	522.2619 Apron Endwalls for Culvert Pipe Reinforced Concrete Horizontal Elliptical 19x30-Inch	4.000 EACH	_____.	_____.
0194	522.2624 Apron Endwalls for Culvert Pipe Reinforced Concrete Horizontal Elliptical 24x38-Inch	8.000 EACH	_____.	_____.
0196	522.2629 Apron Endwalls for Culvert Pipe Reinforced Concrete Horizontal Elliptical 29x45-Inch	3.000 EACH	_____.	_____.
0198	522.2648 Apron Endwalls for Culvert Pipe Reinforced Concrete Horizontal Elliptical 48x76-Inch	2.000 EACH	_____.	_____.
0200	550.0020 Pre-Boring Rock or Consolidated Materials	1,200.000 LF	_____.	_____.
0202	550.0500 Pile Points	80.000 EACH	_____.	_____.



Proposal Schedule of Items

Proposal ID: 20210413011 Project(s): 1146-75-71

Federal ID(s): WISC 2021264

SECTION: 0001

Contract Items

Alt Set ID:

Alt Mbr ID:

Proposal Line Number	Item ID Description	Approximate Quantity and Units	Unit Price	Bid Amount
0204	550.1120 Piling Steel HP 12-Inch X 53 Lb	7,750.000 LF	_____	_____
0206	550.2126 Piling CIP Concrete 12 3/4 X 0.375-Inch	10,440.000 LF	_____	_____
0208	601.0411 Concrete Curb & Gutter 30-Inch Type D	464.000 LF	_____	_____
0210	601.0557 Concrete Curb & Gutter 6-Inch Sloped 36-Inch Type D	157.000 LF	_____	_____
0212	602.0405 Concrete Sidewalk 4-Inch	325.000 SF	_____	_____
0214	604.0400 Slope Paving Concrete	192.000 SY	_____	_____
0216	604.0500 Slope Paving Crushed Aggregate	1,160.000 SY	_____	_____
0218	606.0200 Riprap Medium	762.000 CY	_____	_____
0220	606.0300 Riprap Heavy	1,134.000 CY	_____	_____
0222	608.0312 Storm Sewer Pipe Reinforced Concrete Class III 12-Inch	310.000 LF	_____	_____
0224	608.0315 Storm Sewer Pipe Reinforced Concrete Class III 15-Inch	12.000 LF	_____	_____
0226	608.0412 Storm Sewer Pipe Reinforced Concrete Class IV 12-Inch	4.000 LF	_____	_____
0228	608.0430 Storm Sewer Pipe Reinforced Concrete Class IV 30-Inch	150.000 LF	_____	_____
0230	608.2429 Storm Sewer Pipe Reinforced Concrete Horizontal Elliptical Class HE-IV 29x45- Inch	40.000 LF	_____	_____
0232	611.0530 Manhole Covers Type J	4.000 EACH	_____	_____



Proposal Schedule of Items

Proposal ID: 20210413011 Project(s): 1146-75-71

Federal ID(s): WISC 2021264

SECTION: 0001

Contract Items

Alt Set ID:

Alt Mbr ID:

Proposal Line Number	Item ID Description	Approximate Quantity and Units	Unit Price	Bid Amount
0234	611.0612 Inlet Covers Type C	1.000 EACH	_____.	_____.
0236	611.0624 Inlet Covers Type H	1.000 EACH	_____.	_____.
0238	611.0642 Inlet Covers Type MS	42.000 EACH	_____.	_____.
0240	611.2004 Manholes 4-FT Diameter	1.000 EACH	_____.	_____.
0242	611.2005 Manholes 5-FT Diameter	2.000 EACH	_____.	_____.
0244	611.2006 Manholes 6-FT Diameter	1.000 EACH	_____.	_____.
0246	611.2044 Manholes 4x4-FT	1.000 EACH	_____.	_____.
0248	611.3230 Inlets 2x3-FT	1.000 EACH	_____.	_____.
0250	611.3901 Inlets Median 1 Grate	20.000 EACH	_____.	_____.
0252	611.3902 Inlets Median 2 Grate	7.000 EACH	_____.	_____.
0254	611.3904 Inlets Median 4 Grate	2.000 EACH	_____.	_____.
0256	611.9800.S Pipe Grates	12.000 EACH	_____.	_____.
0258	612.0406 Pipe Underdrain Wrapped 6-Inch	2,780.000 LF	_____.	_____.
0260	614.0150 Anchor Assemblies for Steel Plate Beam Guard	20.000 EACH	_____.	_____.
0262	616.0100 Fence Woven Wire (height) 04. 4-FT	31,400.000 LF	_____.	_____.
0264	616.0120.S Fencing Small Animal	9,837.000 LF	_____.	_____.



Proposal Schedule of Items

Proposal ID: 20210413011 Project(s): 1146-75-71

Federal ID(s): WISC 2021264

SECTION: 0001

Contract Items

Alt Set ID:

Alt Mbr ID:

Proposal Line Number	Item ID Description	Approximate Quantity and Units	Unit Price	Bid Amount
0266	616.0700.S Fence Safety	400.000 LF	_____.	_____.
0268	618.0100 Maintenance And Repair of Haul Roads (project) 06. 1146-75-71	1.000 EACH	_____.	_____.
0270	619.1000 Mobilization	1.000 EACH	_____.	_____.
0272	624.0100 Water	1,290.000 MGAL	_____.	_____.
0274	625.0500 Salvaged Topsoil	342,567.000 SY	_____.	_____.
0276	627.0200 Mulching	211,960.000 SY	_____.	_____.
0278	628.1104 Erosion Bales	10.000 EACH	_____.	_____.
0280	628.1504 Silt Fence	18,521.000 LF	_____.	_____.
0282	628.1520 Silt Fence Maintenance	18,521.000 LF	_____.	_____.
0284	628.1905 Mobilizations Erosion Control	20.000 EACH	_____.	_____.
0286	628.1910 Mobilizations Emergency Erosion Control	15.000 EACH	_____.	_____.
0288	628.2004 Erosion Mat Class I Type B	215,405.000 SY	_____.	_____.
0290	628.2027 Erosion Mat Class II Type C	2,687.000 SY	_____.	_____.
0292	628.6005 Turbidity Barriers	464.000 SY	_____.	_____.
0294	628.7005 Inlet Protection Type A	27.000 EACH	_____.	_____.
0296	628.7015 Inlet Protection Type C	1.000 EACH	_____.	_____.



Proposal Schedule of Items

Proposal ID: 20210413011 Project(s): 1146-75-71

Federal ID(s): WISC 2021264

SECTION: 0001

Contract Items

Alt Set ID:

Alt Mbr ID:

Proposal Line Number	Item ID Description	Approximate Quantity and Units	Unit Price	Bid Amount
0298	628.7504 Temporary Ditch Checks	1,260.000 LF	_____.	_____.
0300	628.7515.S Stone or Rock Ditch Checks	100.000 CY	_____.	_____.
0302	628.7555 Culvert Pipe Checks	275.000 EACH	_____.	_____.
0304	628.7560 Tracking Pads	3.000 EACH	_____.	_____.
0306	628.7570 Rock Bags	100.000 EACH	_____.	_____.
0308	629.0210 Fertilizer Type B	242.000 CWT	_____.	_____.
0310	630.0110 Seeding Mixture No. 10	3,720.000 LB	_____.	_____.
0312	630.0120 Seeding Mixture No. 20	10,972.000 LB	_____.	_____.
0314	630.0140 Seeding Mixture No. 40	16.000 LB	_____.	_____.
0316	630.0500 Seed Water	9,618.000 MGAL	_____.	_____.
0318	632.0101 Trees (species) (size) (root) 28. Paper Birch River 'Fox Valley' (Shrub Form Tree), B&B, 4-Ft Ht	9.000 EACH	_____.	_____.
0320	632.0101 Trees (species) (size) (root) 29. Arborvitae, American, American 'Techny', B&B, 5-FT Ht.	28.000 EACH	_____.	_____.
0322	632.0201 Shrubs (species) (size) (root) 30. Redosier Dogwood, golden Glory Corneliancherry, B&B 4-FT HT	50.000 EACH	_____.	_____.
0324	632.9101 Landscape Planting Surveillance and Care Cycles	30.000 EACH	_____.	_____.
0326	633.5200 Markers Culvert End	70.000 EACH	_____.	_____.



Proposal Schedule of Items

Proposal ID: 20210413011 Project(s): 1146-75-71

Federal ID(s): WISC 2021264

SECTION: 0001

Contract Items

Alt Set ID:

Alt Mbr ID:

Proposal Line Number	Item ID Description	Approximate Quantity and Units	Unit Price	Bid Amount
0328	634.0614 Posts Wood 4x6-Inch X 14-FT	8.000 EACH	_____.	_____.
0330	634.0616 Posts Wood 4x6-Inch X 16-FT	3.000 EACH	_____.	_____.
0332	637.2210 Signs Type II Reflective H	51.180 SF	_____.	_____.
0334	637.2220 Signs Type II Reflective SH	6.750 SF	_____.	_____.
0336	638.2602 Removing Signs Type II	7.000 EACH	_____.	_____.
0338	638.3000 Removing Small Sign Supports	7.000 EACH	_____.	_____.
0340	640.1305.S Clay Cover	1,189.000 CY	_____.	_____.
0342	642.5401 Field Office Type D	1.000 EACH	_____.	_____.
0344	643.0300 Traffic Control Drums	2,250.000 DAY	_____.	_____.
0346	643.0410 Traffic Control Barricades Type II	35.000 DAY	_____.	_____.
0348	643.0420 Traffic Control Barricades Type III	3,753.000 DAY	_____.	_____.
0350	643.0705 Traffic Control Warning Lights Type A	1,850.000 DAY	_____.	_____.
0352	643.0900 Traffic Control Signs	5,730.000 DAY	_____.	_____.
0354	643.1050 Traffic Control Signs PCMS	42.000 DAY	_____.	_____.
0356	643.5000 Traffic Control	1.000 EACH	_____.	_____.
0358	644.1810 Temporary Pedestrian Barricade	400.000 LF	_____.	_____.
0360	645.0111 Geotextile Type DF Schedule A	370.000 SY	_____.	_____.



Proposal Schedule of Items

Proposal ID: 20210413011 Project(s): 1146-75-71

Federal ID(s): WISC 2021264

SECTION: 0001

Contract Items

Alt Set ID:

Alt Mbr ID:

Proposal Line Number	Item ID Description	Approximate Quantity and Units	Unit Price	Bid Amount
0362	645.0120 Geotextile Type HR	4,180.000 SY	_____.	_____.
0364	645.0140 Geotextile Type SAS	300.000 SY	_____.	_____.
0366	646.1020 Marking Line Epoxy 4-Inch	6,676.000 LF	_____.	_____.
0368	646.3020 Marking Line Epoxy 8-Inch	200.000 LF	_____.	_____.
0370	649.0105 Temporary Marking Line Paint 4-Inch	120.000 LF	_____.	_____.
0372	650.4000 Construction Staking Storm Sewer	27.000 EACH	_____.	_____.
0374	650.4500 Construction Staking Subgrade	37,454.000 LF	_____.	_____.
0376	650.5000 Construction Staking Base	40,145.000 LF	_____.	_____.
0378	650.5500 Construction Staking Curb Gutter and Curb & Gutter	621.000 LF	_____.	_____.
0380	650.6000 Construction Staking Pipe Culverts	55.000 EACH	_____.	_____.
0382	650.6500 Construction Staking Structure Layout (structure) 08. B-44-290	LS	LUMP SUM	_____.
0384	650.6500 Construction Staking Structure Layout (structure) 09. B-44-289	LS	LUMP SUM	_____.
0386	650.6500 Construction Staking Structure Layout (structure) 10. B-44-291	LS	LUMP SUM	_____.
0388	650.6500 Construction Staking Structure Layout (structure) 11. B-44-292	LS	LUMP SUM	_____.
0390	650.6500 Construction Staking Structure Layout (structure) 12. B-44-294	LS	LUMP SUM	_____.



Proposal Schedule of Items

Proposal ID: 20210413011 Project(s): 1146-75-71

Federal ID(s): WISC 2021264

SECTION: 0001

Contract Items

Alt Set ID:

Alt Mbr ID:

Proposal Line Number	Item ID Description	Approximate Quantity and Units	Unit Price	Bid Amount
0392	650.6500 Construction Staking Structure Layout (structure) 13. B-44-293	LS	LUMP SUM	_____.
0394	650.6500 Construction Staking Structure Layout (structure) 14. B-44-296	LS	LUMP SUM	_____.
0396	650.6500 Construction Staking Structure Layout (structure) 17. R-44-19	LS	LUMP SUM	_____.
0398	650.6500 Construction Staking Structure Layout (structure) 18. B-44-295	LS	LUMP SUM	_____.
0400	650.6500 Construction Staking Structure Layout (structure) 19. R-44-17	LS	LUMP SUM	_____.
0402	650.6500 Construction Staking Structure Layout (structure) 20. R-44-18	LS	LUMP SUM	_____.
0404	650.6500 Construction Staking Structure Layout (structure) 21. R-44-20	LS	LUMP SUM	_____.
0406	650.6500 Construction Staking Structure Layout (structure) 22. R-44-21	LS	LUMP SUM	_____.
0408	650.9910 Construction Staking Supplemental Control (project) 23. 1146-75-71	LS	LUMP SUM	_____.
0410	650.9920 Construction Staking Slope Stakes	40,145.000 LF	_____.	_____.
0412	690.0150 Sawing Asphalt	1,157.000 LF	_____.	_____.
0414	690.0250 Sawing Concrete	40.000 LF	_____.	_____.
0416	715.0415 Incentive Strength Concrete Pavement	500.000 DOL	1.00000	500.00
0418	715.0502 Incentive Strength Concrete Structures	36,866.000 DOL	1.00000	36,866.00



Proposal Schedule of Items

Proposal ID: 20210413011 Project(s): 1146-75-71

Federal ID(s): WISC 2021264

SECTION: 0001

Contract Items

Alt Set ID:

Alt Mbr ID:

Proposal Line Number	Item ID Description	Approximate Quantity and Units	Unit Price	Bid Amount
0420	740.0440 Incentive IRI Ride	1,240.000 DOL	1.00000	1,240.00
0422	801.0117 Railroad Flagging Reimbursement	117,000.000 DOL	1.00000	117,000.00
0424	ASP.1T0A On-the-Job Training Apprentice at \$5.00/HR	2,100.000 HRS	5.00000	10,500.00
0426	ASP.1T0G On-the-Job Training Graduate at \$5.00/HR	5,760.000 HRS	5.00000	28,800.00
0428	SPV.0035 Special 01. Concrete Masonry Eco-Passage	12.900 CY	_____	_____
0430	SPV.0035 Special 02. Roadway Embankment	1,234,486.000 CY	_____	_____
0432	SPV.0060 Special 01. Temporary Slope Drain	8.000 EACH	_____	_____
0434	SPV.0060 Special 02. Wood Gates Double Leaf 20-Foot	2.000 EACH	_____	_____
0436	SPV.0075 Special 01. Street Sweeping	16.000 HRS	_____	_____
0438	SPV.0090 Special 01. Fence Chain Link 5 - FT Special	6,294.000 LF	_____	_____
0440	SPV.0090 Special 02. Pedestrian Overhead Protection	400.000 LF	_____	_____
0442	SPV.0105 Special 01. Reconnect Pipe Underdrain Parcel 165	LS	LUMP SUM	_____
0444	SPV.0165 Special 01. Steel Grating	144.000 SF	_____	_____
0446	SPV.0165 Special 02. Wall Concrete Panel Mechanically Stabilized Earth LRFD/ QMP R-44-17	10,510.000 SF	_____	_____



Proposal Schedule of Items

Proposal ID: 20210413011 Project(s): 1146-75-71

Federal ID(s): WISC 2021264

SECTION: 0001

Contract Items

Alt Set ID:

Alt Mbr ID:

Proposal Line Number	Item ID Description	Approximate Quantity and Units	Unit Price	Bid Amount
0448	SPV.0165 Special 03. Wall Concrete Panel Mechanically Stabilized Earth LRFD/ QMP R-44-19	4,210.000 SF	_____.	_____.
0450	SPV.0165 Special 04. Wall Concrete Panel Mechanically Stabilized Earth LRFD/ QMP R-44-20	2,775.000 SF	_____.	_____.
0452	SPV.0165 Special 05. Wall Concrete Panel Mechanically Stabilized Earth LRFD/ QMP R-44-21	3,063.000 SF	_____.	_____.
0454	SPV.0165 Special 06. Wall Concrete Panel Mechanically Stabilized Earth LRFD/ QMP R-44-18	3,051.000 SF	_____.	_____.
0456	SPV.0165 Special 07. Temporary Shoring Railroad	3,520.000 SF	_____.	_____.
0458	SPV.0180 Special 01. Salvaged Topsoil Above Riprap	2,687.000 SY	_____.	_____.
0460	SPV.0195 Special 01. 2" Clear Stone	151.000 TON	_____.	_____.
0462	SPV.0195 Special 02. Shot Rock	16,230.000 TON	_____.	_____.
0464	SPV.0195 Special 03. Excavation, Hauling, and Disposal of Contaminated Material	16,958.000 TON	_____.	_____.
Section: 0001			Total:	_____.
			Total Bid:	_____.

