



Wisconsin Department of Transportation

April 2, 2021

Division of Transportation Systems Development

Bureau of Project Development
4822 Madison Yards Way, 4th Floor South
Madison, WI 53705

Telephone: (608) 266-1631
Facsimile (FAX): (608) 266-8459

NOTICE TO ALL CONTRACTORS:

**Proposal #17: 7040-00-71, WISC 2021268
Greenwood – Spencer
Elm Drive to East County Line
STH 98
Clark County**

Letting of April 13, 2021

This is Addendum No. 01, which provides for the following:

Special Provisions:

Revised Special Provisions	
Article No.	Description
16	Prepare Foundation for Asphaltic Paving

Added Special Provisions	
Article No.	Description
28	Removing Distressed Pavement Milling

Schedule of Items:

Added Bid Item Quantities					
Bid Item	Item Description	Unit	Old Quantity	Revised Quantity	Proposal Total
204.0120	Removing Asphaltic Surface Milling	SY	0	187,160	187,160
SPV.0180.01	Removing Distressed Pavement Milling	SY	0	4,500	4,500

Deleted Bid Item Quantities					
Bid Item	Item Description	Unit	Old Quantity	Revised Quantity	Proposal Total
204.0125	Removing Asphaltic Surface Milling	Ton	40,320	-40,320	0

Plan Sheets:

Revised Plan Sheets	
Plan Sheet	Plan Sheet Title (brief description of changes to sheet)
18	Added item Removing Distressed Pavement Milling and changed the units and quantity of Removing Asphaltic Surface Milling from Tons to Square Yard.

Added Plan Sheets	
Plan Sheet	Plan Sheet Title (brief description of why sheet was added)
11A	Added construction detail for Removing Distressed Pavement Milling

The responsibility for notifying potential subcontractors and suppliers of these changes remains with the prime contractor.

Sincerely,

Mike Coleman

Proposal Development Specialist
Proposal Management Section

ADDENDUM NO. 01

7040-00-71

April 2, 2021

Special Provisions

16. Prepare Foundation for Asphaltic Paving.

Replace the entire article with the following:

The limits of the foundation preparation are shown on the typical sections.

Replace standard spec 211.3.5.3 with the following:

After the surface mill, remove all surplus crack sealing, joint sealing, and asphalt patching materials.

Completely remove unstable patches of asphaltic materials used to fill localized areas of pits, potholes, depressions, badly spalled areas, or disintegrated areas of old pavement. Remove any loose material with incipient spalling within or contiguous to such areas.

Remove any failed milled pavement areas that may result from traffic running on the milled surface. These pavement removals will be paid for under the Removing Distressed Pavement Milling item. Prior to refilling, all removal areas shall be cleaned by air blasting or other engineer approved methods. Prior to placement of the HMA pavement lower layer, refill these areas of removal, as described above, to the level of the milled surface. Payment for refilling these areas is paid for under the Asphaltic Surface item.

A quantity of Asphaltic Surface Patching is provided for maintaining traffic on existing asphaltic surfaces (potholes, pop outs, temporary wedges at butt joints, etc.).

28. Removing Distressed Pavement Milling, Item SPV.0180.01

A Description

This special provision describes milling additional asphaltic pavement when the pavement condition warrants. This will be completed in spot locations throughout the project as directed by the engineer.

B (Vacant)

C Construction

Mill a minimum 4-foot by 8-foot area to encompass distressed pavement according to standard spec 204.

D Measurement

The department will measure Removing Distressed Pavement Milling by the square yard, acceptably completed.

E Payment

The department will pay for measured quantities at the contract unit price under the following bid item:

ITEM NUMBER	DESCRIPTION	UNIT
SPV.0180.01	Removing Distressed Pavement Milling	SY

Payment is full compensation for removing the asphaltic surface and properly disposing of all materials.

Schedule of Items

Attached, dated April 2, 2021, are the revised Schedule of Items Pages 1 – 6.

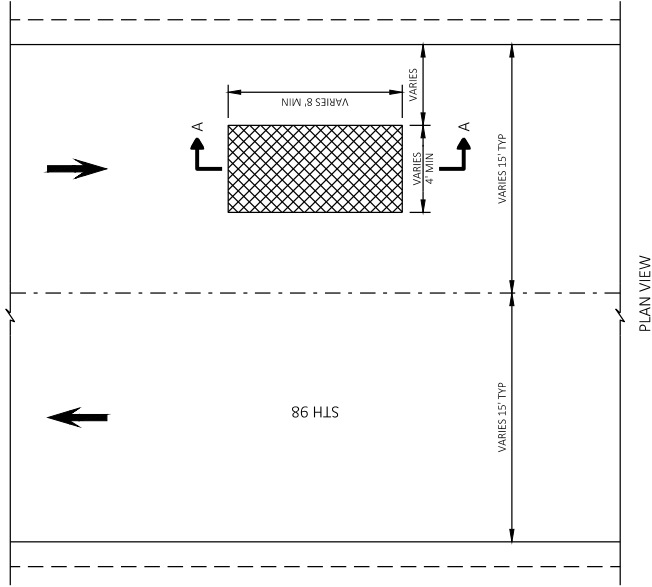
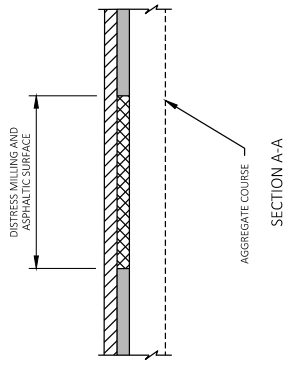
Plan Sheets





The following 8½ x 11-inch sheets are attached and made part of the plans for this proposal:

Revised: 18.

Added: 11A.

END OF ADDENDUM



-  REMOVING ASPHALTIC SURFACE MILLING AND HMA PAVEMENT OVERLAY (SEE TYPICAL SECTIONS FOR HMA PAVEMENT TYPE AND LAYER THICKNESS)
-  2" MAX DEPTH REMOVING DISTRESSED PAVEMENT MILLING AND ASPHALTIC SURFACE
-  EXISTING ASPHALTIC PAVEMENT
-  TRAFFIC FLOW

Addendum No. 01
ID 7040-00-71
Added Sheet 11A
April 2, 2021

NOTE
EXACT LOCATION AND LIMITS OF DISTRESSED MILLING
TO BE DETERMINED BY THE ENGINEER IN THE FIELD.

REMOVING DISTRESSED PAVEMENT MILLING DETAIL

PROJECT NO: 7040-00-71

HWY: STH 98

COUNTY: CLARK

CONSTRUCTION DETAILS

SHEET 11A

E

FILE NAME: P:\3\X\330-DP-19-STH98-CLK\CADD\74000071\SHEETS\PLAN\02-1101-CD.DWG

PLOT DATE: 3/31/2021 10:56 AM

PLOT BY: SCOTT KAISER

PLOT SCALE: 1 IN=30 FT

WISDOT/CADD\SS SHEET 42

Addendum No. 01
ID 7040-00-71
Revised Sheet 18
April 2, 2021

Table 1: EARTHWORK ITEMS. Columns include CATEGORY, LOCATION, 205.0100 EXCAVATION COMMON (NOTE 1), SALVAGED/UNUSABLE PAVEMENT MATERIAL (NOTE 2), AVAILABLE MATERIAL (NOTE 3), UNEXPANDED FILL (NOTE 4), EXPANDED FILL (NOTE 5), MASS ORDNINATE +/- (NOTE 6).

Table 2: REMOVAL ITEMS. Columns include CATEGORY, STATION TO STATION OFFSET, REMOVING ASPHALTIC SURFACE BUTT JOINTS (SY), REMOVING ASPHALTIC SURFACE MILLING (SY), REMOVING DISTRESSED ASPHALTIC PAVEMENT MILLING (SY).

Table 3: MISCELLANEOUS ASPHALTIC ITEMS. Columns include CATEGORY, STATION TO STATION OFFSET, 211.0100.01 FOUNDATION FOR ASPHALTIC SHOULDERS (7040-300-71) (LS), 211.0400 PREPARE FOUNDATION FOR ASPHALTIC (7040-300-71) (LS), 213.0100.01 FINISHING ROADWAY (7040-300-71) (ES&T), SPV.0105.01 MATERIAL TRANSFER VEHICLE (7040-300-71) (LS).

Table 4: BASE AGGREGATE ITEMS. Columns include CATEGORY, STATION TO STATION/OFFSET, 305.0110 BASE AGGREGATE (TON), 305.0120 BASE AGGREGATE (TON).

Table 5: CROSS DRAINS. Columns include CATEGORY, STATION, OFFSET, 204.9060.S.01 REMOVING ENDWALLS (EACH), 520.8700 CLEANING ENDWALLS (EACH), 525.0318 APRON ENDWALLS FOR CULVERT (EACH), 525.0324 APRON ENDWALLS FOR CULVERT (EACH), 525.0330 APRON ENDWALLS FOR CULVERT (EACH), 633.5200 MARKERS CULVERT END (EACH), DITCH CLEANING (LF).

PROJECT NO: 7040-00-71

COUNTY: CLARK

HWY: STH 98

MISCELLANEOUS QUANTITIES

FILE NAME: P:\31\2021\CADD\70400071\31\00\71\00\30201-MQ.DWG

DATE: 3/31/2021 2:26 PM

PLOT NAME: ADMIN

SCALE: 1"=1'

SHEET 18



Proposal Schedule of Items

Proposal ID: 20210413017 Project(s): 7040-00-71

Federal ID(s): WISC 2021268

SECTION: 0001 Roadway Construction

Alt Set ID: Alt Mbr ID:

Proposal Line Number	Item ID Description	Approximate Quantity and Units	Unit Price	Bid Amount
0002	204.0110 Removing Asphaltic Surface	2,465.000 SY	_____.	_____.
0004	204.0115 Removing Asphaltic Surface Butt Joints	190.000 SY	_____.	_____.
0008	204.0150 Removing Curb & Gutter	165.000 LF	_____.	_____.
0010	204.9060.S Removing (item description) 01. Apron Endwalls	12.000 EACH	_____.	_____.
0012	205.0100 Excavation Common	12.000 CY	_____.	_____.
0014	211.0100 Prepare Foundation for Asphaltic Paving (project) 01. 7040-00-71	LS	LUMP SUM	_____.
0016	211.0400 Prepare Foundation for Asphaltic Shoulders	115.000 STA	_____.	_____.
0018	213.0100 Finishing Roadway (project) 01. 7040-00-71	1.000 EACH	_____.	_____.
0020	305.0110 Base Aggregate Dense 3/4-Inch	8,900.000 TON	_____.	_____.
0022	305.0120 Base Aggregate Dense 1 1/4-Inch	110.000 TON	_____.	_____.
0024	455.0605 Tack Coat	22,000.000 GAL	_____.	_____.
0026	460.0105.S HMA Percent Within Limits (PWL) Test Strip Volumetrics	1.000 EACH	_____.	_____.
0028	460.0110.S HMA Percent Within Limits (PWL) Test Strip Density	2.000 EACH	_____.	_____.
0030	460.6644 HMA Pavement 4 MT 58-34 V	41,640.000 TON	_____.	_____.
0032	465.0105 Asphaltic Surface	500.000 TON	_____.	_____.



Proposal Schedule of Items

Proposal ID: 20210413017 Project(s): 7040-00-71

Federal ID(s): WISC 2021268

SECTION: 0001 Roadway Construction

Alt Set ID: Alt Mbr ID:

Proposal Line Number	Item ID Description	Approximate Quantity and Units	Unit Price	Bid Amount
0034	465.0110 Asphaltic Surface Patching	100.000 TON	_____.	_____.
0036	465.0120 Asphaltic Surface Driveways and Field Entrances	410.000 TON	_____.	_____.
0038	465.0475 Asphalt Centerline Rumble Strips 2-Lane Rural	42,850.000 LF	_____.	_____.
0040	520.8700 Cleaning Culvert Pipes	9.000 EACH	_____.	_____.
0042	525.0318 Apron Endwalls for Culvert Pipe Aluminum 18-Inch	3.000 EACH	_____.	_____.
0044	525.0324 Apron Endwalls for Culvert Pipe Aluminum 24-Inch	5.000 EACH	_____.	_____.
0046	525.0330 Apron Endwalls for Culvert Pipe Aluminum 30-Inch	4.000 EACH	_____.	_____.
0048	601.0411 Concrete Curb & Gutter 30-Inch Type D	190.000 LF	_____.	_____.
0050	611.0430 Reconstructing Inlets	1.000 EACH	_____.	_____.
0052	611.8115 Adjusting Inlet Covers	1.000 EACH	_____.	_____.
0054	611.8120.S Cover Plates Temporary	10.000 EACH	_____.	_____.
0056	614.0400 Adjusting Steel Plate Beam Guard	845.000 LF	_____.	_____.
0058	614.0950 Replacing Guardrail Posts and Blocks	14.000 EACH	_____.	_____.
0060	614.0951 Replacing Guardrail Rail and Hardware	100.000 LF	_____.	_____.
0062	614.0952 Replacing Guardrail Reflectors	5.000 EACH	_____.	_____.



Proposal Schedule of Items

Proposal ID: 20210413017 Project(s): 7040-00-71

Federal ID(s): WISC 2021268

SECTION: 0001 Roadway Construction

Alt Set ID: Alt Mbr ID:

Proposal Line Number	Item ID Description	Approximate Quantity and Units	Unit Price	Bid Amount
0064	618.0100 Maintenance And Repair of Haul Roads (project) 01. 7040-00-71	1.000 EACH	_____.	_____.
0066	619.1000 Mobilization	1.000 EACH	_____.	_____.
0068	624.0100 Water	1.000 MGAL	_____.	_____.
0070	625.0100 Topsoil	590.000 SY	_____.	_____.
0072	628.1905 Mobilizations Erosion Control	3.000 EACH	_____.	_____.
0074	628.1910 Mobilizations Emergency Erosion Control	2.000 EACH	_____.	_____.
0076	628.2008 Erosion Mat Urban Class I Type B	590.000 SY	_____.	_____.
0078	628.7015 Inlet Protection Type C	3.000 EACH	_____.	_____.
0080	628.7504 Temporary Ditch Checks	170.000 LF	_____.	_____.
0082	628.7555 Culvert Pipe Checks	150.000 EACH	_____.	_____.
0084	629.0210 Fertilizer Type B	2.000 CWT	_____.	_____.
0086	630.0130 Seeding Mixture No. 30	3.000 LB	_____.	_____.
0088	630.0160 Seeding Mixture No. 60	9.000 LB	_____.	_____.
0090	630.0500 Seed Water	3.000 MGAL	_____.	_____.
0092	633.5200 Markers Culvert End	8.000 EACH	_____.	_____.
0094	634.0616 Posts Wood 4x6-Inch X 16-FT	5.000 EACH	_____.	_____.



Proposal Schedule of Items

Proposal ID: 20210413017 Project(s): 7040-00-71

Federal ID(s): WISC 2021268

SECTION: 0001 Roadway Construction

Alt Set ID: Alt Mbr ID:

Proposal Line Number	Item ID Description	Approximate Quantity and Units	Unit Price	Bid Amount
0096	637.2230 Signs Type II Reflective F	4.500 SF	_____.	_____.
0098	638.2102 Moving Signs Type II	5.000 EACH	_____.	_____.
0100	638.2602 Removing Signs Type II	7.000 EACH	_____.	_____.
0102	638.3000 Removing Small Sign Supports	5.000 EACH	_____.	_____.
0104	638.4000 Moving Small Sign Supports	5.000 EACH	_____.	_____.
0106	642.5001 Field Office Type B	1.000 EACH	_____.	_____.
0108	643.0300 Traffic Control Drums	300.000 DAY	_____.	_____.
0110	643.0420 Traffic Control Barricades Type III	20.000 DAY	_____.	_____.
0112	643.0705 Traffic Control Warning Lights Type A	24.000 DAY	_____.	_____.
0114	643.0900 Traffic Control Signs	3,239.000 DAY	_____.	_____.
0116	643.5000 Traffic Control	1.000 EACH	_____.	_____.
0118	646.1020 Marking Line Epoxy 4-Inch	40,975.000 LF	_____.	_____.
0120	646.1040 Marking Line Grooved Wet Ref Epoxy 4-Inch	92,650.000 LF	_____.	_____.
0122	646.3040 Marking Line Grooved Wet Ref Epoxy 8-Inch	395.000 LF	_____.	_____.
0124	646.4520 Marking Line Same Day Epoxy 4-Inch	2,945.000 LF	_____.	_____.
0126	646.6120 Marking Stop Line Epoxy 18-Inch	65.000 LF	_____.	_____.



Proposal Schedule of Items

Proposal ID: 20210413017 Project(s): 7040-00-71

Federal ID(s): WISC 2021268

SECTION: 0001 Roadway Construction

Alt Set ID: Alt Mbr ID:

Proposal Line Number	Item ID Description	Approximate Quantity and Units	Unit Price	Bid Amount
0128	649.0105 Temporary Marking Line Paint 4-Inch	74,810.000 LF	_____.	_____.
0130	649.0120 Temporary Marking Line Epoxy 4-Inch	34,460.000 LF	_____.	_____.
0132	650.5500 Construction Staking Curb Gutter and Curb & Gutter	190.000 LF	_____.	_____.
0134	650.8000 Construction Staking Resurfacing Reference	50,684.000 LF	_____.	_____.
0136	650.9910 Construction Staking Supplemental Control (project) 01. 7040-00-71	LS	LUMP SUM	_____.
0138	690.0150 Sawing Asphalt	2,016.000 LF	_____.	_____.
0140	690.0250 Sawing Concrete	6.000 LF	_____.	_____.
0142	740.0440 Incentive IRI Ride	38,566.000 DOL	1.00000	38,566.00
0144	ASP.1T0A On-the-Job Training Apprentice at \$5.00/HR	2,400.000 HRS	5.00000	12,000.00
0146	ASP.1T0G On-the-Job Training Graduate at \$5.00/HR	990.000 HRS	5.00000	4,950.00
0148	SPV.0055 Special 01. Incentive Density PWL HMA Pavement	30,276.000 DOL	1.00000	30,276.00
0150	SPV.0055 Special 02. Incentive Air Voids HMA Pavement	41,640.000 DOL	1.00000	41,640.00
0152	SPV.0055 Special 03. Incentive Density HMA Pavement Longitudinal Joints	40,590.000 DOL	1.00000	40,590.00
0154	SPV.0060 Special 01. Adjusting Sanitary Manhole Covers	10.000 EACH	_____.	_____.



Proposal Schedule of Items

Proposal ID: 20210413017 Project(s): 7040-00-71
Federal ID(s): WISC 2021268

SECTION: 0001 Roadway Construction

Alt Set ID: Alt Mbr ID:

Table with 5 columns: Proposal Line Number, Item ID Description, Approximate Quantity and Units, Unit Price, Bid Amount. Rows include items 0156 through 0166, and summary rows for Section 0001 and Total Bid.