



## Wisconsin Department of Transportation

---

April 26, 2021

**Division of Transportation Systems  
Development**

Bureau of Project Development  
4822 Madison Yards Way, 4<sup>th</sup> Floor South  
Madison, WI 53705

Telephone: (608) 266-1631  
Facsimile (FAX): (608) 266-8459

### NOTICE TO ALL CONTRACTORS:

**Proposal #15: 2984-51-70**  
**S Dana Ct,**  
**Bridge Over Land P-40-589**  
**Loc Str**  
**Milwaukee County**

**Letting May 11, 2021**

This is Addendum No. 01, which provides the following:

#### **Plan Sheets:**

<b>Revised Plan Sheets</b>	
<b>Plan Sheet</b>	<b>Plan Sheet Title (brief description of changes to sheet)</b>
93	Addition to note under General Notes
96	Note added

The responsibility for notifying potential subcontractors and suppliers of these changes remains with the prime contractor.

Sincerely,

*Mike Coleman*

Proposal Development Specialist  
Proposal Management Section

END OF ADDENDUM

**BRIDGE REMOVAL AND CONSTRUCTION NOTES**

EXISTING BRIDGE PLANS ARE ON FILE IN CITY OF MILWAUKEE INFRASTRUCTURE SERVICES DIVISION'S STRUCTURAL DESIGN UNIT, ROOM 907, FRANK P. ZEGLER BUILDING, 240 N. BROADWAY, MILWAUKEE, WI 53202. PHONE: (414) 286-0465.

EXISTING BRIDGE DECK WILL BE REMOVED IN TWO STAGES TO KEEP S. DANA COURT OPEN FOR 2-WAY TRAFFIC IN BOTH DIRECTIONS. ALL OVERHEAD UTILITIES TO BE REMOVED FIRST WHILE 2-WAY TRAFFIC IS TO BE CARRIED BY EXISTING NORTHBOUND ROADWAY. AFTER PROPOSED SOUTHBOUND ROADWAY IS COMPLETED THE NORTHBOUND ROADWAY WILL BE REMOVED.

REMOVE EXISTING BRIDGE DECK P-40-589 OVER LAND IN LARGE SECTIONS AND CONFORMING TO CONTRACTOR'S APPROVED STRUCTURE REMOVAL AND CLEAN-UP PLAN.

**PROPOSED IMPROVEMENTS**

PROJECT AS PROPOSED CONSISTS OF: REMOVAL OF EXISTING BRIDGE DECK AND SUPERSTRUCTURE; INSTALLATION OF EXISTING SUPERSTRUCTURE STRUCTURAL STEEL AT THE WEST SIDE OF BRIDGE; CONCRETE SURFACE REPAIR AND DIRECT LAYDOWN CURB, PRECAST AND PAVED SIDEWALKS; SUBSTRUCTURE AND SUPERSTRUCTURE INSTALLATION OF ORDER SHEAR STUD CONNECTORS; PLACEMENT OF NEW CONCRETE BRIDGE DECK AND WALKS; INSTALLATION OF NEW CONCRETE RAILING; REPLACE BEARINGS AT ABUTMENTS.

**DESIGN DATA**

DEAD LOAD  
CONCRETE = 150 PCF  
F.W.S. = 20 PSF  
W. RAILING = 395 PLF  
E. RAILING = 38 PLF

WIND LOAD  
INVENTORY RATING HS-8  
WIND SPEED 100 MPH  
WISCONSIN STANDARD FERRISS VEHICLE (MS-SPV) = 85 MPH

MATERIAL PROPERTIES  
CONCRETE SUBSISTANCE  
CONCRETE STRENGTH  
STEEL STRENGTH  
STEEL PLATES AND ANGLES

TRAFFIC VOLUME  
ADT (2018) = 52  
ADT (2043) = 100  
P.D.S. = 25 MPH

**UTILITIES**

CITY UNDERGROUND COMMUNICATION (CUC) AND TRAFFIC ENGINEERING AND ELECTRICAL SERVICES (TEES) SHALL BE CONTACTED TO IDENTIFY ALL UTILITIES TO BE RELOCATED TO CONSTRUCTION. CUC AND TEES CONDUITS SHALL BE REINSTALLED BY CONTRACTOR DURING CONSTRUCTION. SEE PROJECT SPECIFICATIONS.

**ESTIMATE OF QUANTITIES**

ITEM NUMBER	80 ITEMS	UNIT	SOUTH ABUT.	NORTH ABUT.	SUPER.	CLOSURE WALLS	TOTAL
203.0200	REMOVING OLD STRUCTURE STA. 12+80.34	LS					1
206.1000	EXCAVATION FOR STRUCTURES BRIDGES P-40-589	TON	45				90
210.1500	BACKFILL STRUCTURE TYPE A	CY			16	17	133
502.0100	CONCRETE MASONRY BRIDGES	SY			305		305
502.3200	PROTECTIVE SURFACE TREATMENT	SY			75	40	115
502.3210	PIGMENTED SURFACE SEALER	SY			305		305
502.4205	ADHESIVE ANCHORS NO. 5 BAR	EACH			23,344	1,702	25,046
505.0600	BAR STEEL REINFORCEMENT HS COATED STRUCTURES	LB					520
506.0105	STRUCTURAL STEEL CARBON	LB					30
506.2605	BEARING PAIDS ELASTOMERIC NON-LAMINATED	EACH	15	15			30
506.3015	WELDED STUD SHEAR CONNECTORS 7/8" X 6-INCH	EACH			256		256
506.3025	WELDED STUD SHEAR CONNECTORS 7/8" X 8-INCH	EACH			904		904
506.3030	WELDED STUD SHEAR CONNECTORS 7/8" X 9-INCH	EACH			84		84
506.3035	WELDED STUD SHEAR CONNECTORS 7/8" X 10-INCH	EACH			336		336
506.7050.S	REMOVING BEARINGS P-40-589	EACH	15	15			30
509.1500	CONCRETE SURFACE REPAIR	SF	134	61			195
509.9025.S	EPOXY INJECTION CRACK REPAIR	LF	80	200			280
509.9026.S	CORED HOLES 2-INCH DIAMETER	EACH	2	2			4
511.1200	TEMPORARY SHORING P-40-589	SF	50	30			80
513.4056	RAILING TUBULAR TYPE H	LF			84	19	103
516.0100	DAMP-PROOFING	SY	31	30			61
516.0500	RUBBERIZED MEMBRANE WATERPROOFING	SY	12	12			24
517.1800.S	PREPARATION AND COATING OF TOP FLANGES P-40-589	LS					1
517.4500.S	STRUCTURE REPAINTING RECYCLED ABRASIVE P-40-589	LS					1
517.4500.S	NEGATIVE PRESSURE CONTAINMENT AND COLLECTION OF WASTE MATERIALS P-40-589	LS					1
517.6001.S	PORTABLE DECONTAMINATION FACILITY	EACH					1
517.6006	FENCE CHAIN LINK 6-FT	LF			84	44	128
999.1000.S	SEISMOGRAPH	LS					1
999.1500.S	CRACK AND DAMAGE SURVEY	LS					1
SPV.0060.636	GRIDER REPAIR DETAIL 1	EACH			10		10
SPV.0060.637	GRIDER REPAIR DETAIL 2	EACH			10		10
SPV.0105.400	UNDERDECK UTILITY STRUCTURE P-40-589, CITY OF MILWAUKEE COMMUNICATIONS CONDUIT	LS					1
SPV.0105.401	UNDERDECK UTILITY STRUCTURE P-40-589, CITY OF MILWAUKEE ELECTRICAL CONDUIT	LS					1
SPV.0105.590	GAS MAIN PROTECTION P-40-589	LS					1
SPV.0105.597	CROSS BRACING ADJUSTMENT P-40-589	LS					1
	NON-80 ITEMS						
	PREFORMED JOINT FILLER						
	NON-BITUMINOUS JOINT FILLER						
	NAME PLATE						
	PLASTIC OR ZINC SHEETS 1/4-INCH						
	POLYETHYLENE SHEETS						

**GENERAL NOTES**

ALL STATIONS AND ELEVATIONS ARE IN FEET. DIMENSIONS SHOWN ARE BASED ON ORIGINAL STRUCTURE PLANS. ELEVATIONS ARE REFERRED TO CITY OF MILWAUKEE DATUM, 586.6 NOVO.

DRAWINGS SHALL NOT BE SCALED.

BAR STEEL REINFORCEMENT SHALL BE EMBEDDED 2" CLEAR UNLESS OTHERWISE SHOWN OR NOTED.

REIN. EXPOSED CONCRETE EDGES 3/4" UNLESS OTHERWISE NOTED.

THE FIRST OR FIRST TWO DIGITS OF THE BAR MARK SIGNIFIES THE BAR SIZE.

BENDING DIMENSIONS FOR REINFORCING BARS ARE OUT TO OUT. THE UPPER LIMES OF "INDICATION FOR STRUCTURES BRIDGES P-40-589 SHALL BE THE EXISTING GROUND LINE.

SPACES EXCAVATED AND NOT OCCUPIED BY NEW CONSTRUCTION SHALL BE BACKFILLED WITH BACKFILL STRUCTURE TYPE A.

JOINT FILLER SHALL CONFORM TO AASHTO DESIGNATION M 153 TYPE 1, II, OR III, OR AASHTO DESIGNATION M91.3.

LOCATIONS OF EXISTING AND PROPOSED UTILITY INSTALLATIONS AS SHOWN ON PLANS ARE APPROXIMATE. THERE MAY BE OTHER UTILITY INSTALLATIONS WITHIN PROJECT AREA THAT ARE NOT SHOWN.

SEE ROADWAY PLANS FOR EXISTING AND PROPOSED UTILITY LOCATIONS.

CONCRETE INSERTS FOR UTILITY COMPANY TO BE FURNISHED BY UTILITY COMPANY AND PLACED BY CONTRACTOR. COSTS OF PLACING UTILITY COMPANY INSERTS SHALL BE INCLUDED IN BID PRICE FOR CONCRETE MASONRY BRIDGES.

STEEL PAINTING COLOR TO MATCH ASMA STANDARD NO. 595C. COLOR NO. 25052.

VARIATIONS TO NEW GRADE LINE OVER 1/4" MUST BE SUBMITTED BY FIELD ENGINEER TO STRUCTURES DESIGN SECTION FOR REVIEW.

THE CONTRACTOR SHALL SUPPLY NEW NAME PLATE IN ACCORDANCE WITH SECTION 502.3.1 OR THE STANDARD SPECIFICATIONS AND STANDARD DETAIL DRAWINGS. NAME PLATE TO SHOW ORIGINAL CONSTRUCTION YEAR (1957).

ALL EXISTING STEEL SHALL BE SHARPENED AND PAINTED UNDER BID ITEMS 517.6005, "PREPARATION AND COATING OF TOP FLANGES (STRUCTURE P-40-589)", 517.6005, "STRUCTURE REPAINTING RECYCLED ABRASIVE P-40-589", AND 517.4500.S, "NEGATIVE PRESSURE CONTAINMENT AND COLLECTION OF WASTE MATERIALS P-40-589". PORTIONS OF EXISTING BAR 0636 @ 54" ORDER ENDS EMBEDDED IN ABUTMENT ORDER END DIAPHRAGM TO BE PAINTED PRIOR TO PLACEMENT OF CONCRETE.

ALL WISCONSIN CONDUITS TO BE USED FOR TRANSMISSION LINES AND WEATHERS ELECTRIC LINES ARE LOCATED OVER THE CONSTRUCTION SITE. SEE SPECIAL PROVISIONS REGARDING ALL WORK DONE AT THIS LOCATION.

EXISTING ABUTMENTS AND PIERS ARE TO REMAIN IN PLACE AS SHOWN AND INCORPORATED INTO NEW CONSTRUCTION.

CLEAN, STRAIGHTEN, EPOXY COAT AND INCORPORATE EXISTING BAR STEEL REINFORCEMENT INTO NEW WORK, WHERE APPLICABLE.

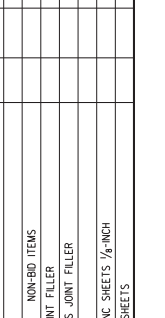
ALL CONCRETE REMOVALS SHALL BE DEFINED BY A 1" DEEP SAW CUT.

IF AN ITEM IS LISTED OR DESCRIBED IN SPECIAL PROVISIONS AND IS NOT SPECIFICALLY SHOWN ON DRAWINGS OR IF AN ITEM IS SHOWN ON THE DRAWINGS AND IS NOT SPECIFICALLY LISTED IN SPECIAL PROVISIONS, THE ITEM SHALL BE CONSIDERED A PART OF THE WORK AND NO ADDITIONAL COMPENSATION WILL BE ALLOWED. IF IT IS NOT OBVIOUS AS TO WHICH PAY ITEM IT BELONGS, THEN ENGINEER SHALL BE CONSULTED FOR INTERPRETATION AND THE ENGINEER'S DECISION SHALL GOVERN.

WELDING NOT SHOWN ON THE PLANS WILL NOT BE PERMITTED. WELDING SHALL BE PERMITTED ONLY WHERE SHOWN AND WITH AN APPROVED WELD PROCEDURE BY THE CONTRACTOR.

UTILIZE EXISTING BAR STEEL REINFORCEMENT WHERE SHOWN AND OTHERWISE.

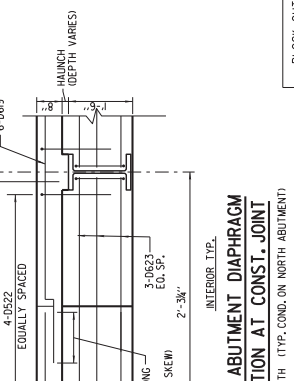
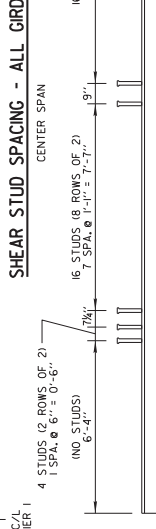
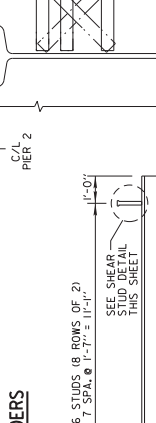
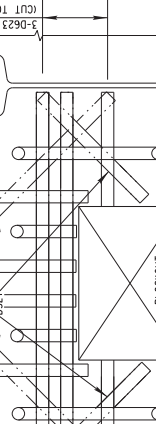
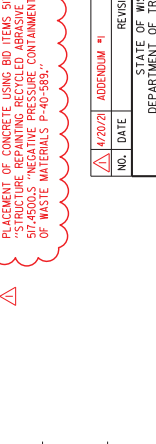
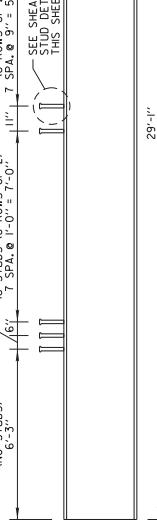
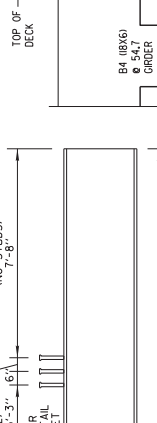
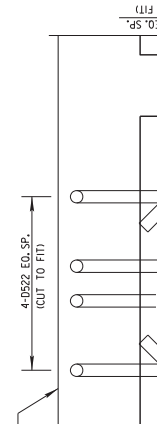
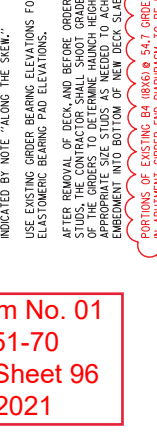
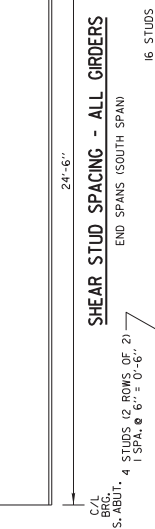
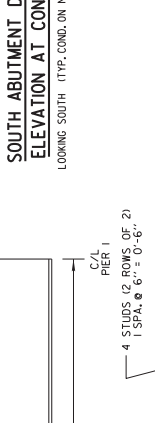
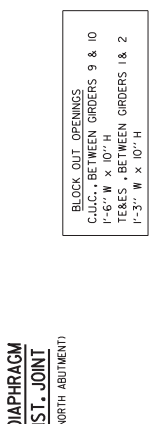
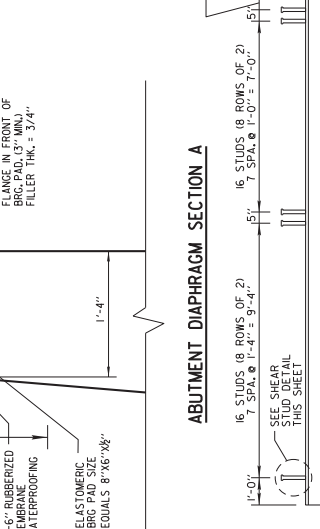
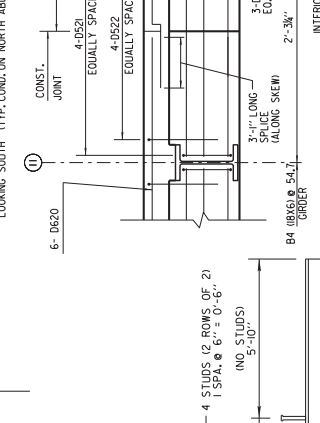
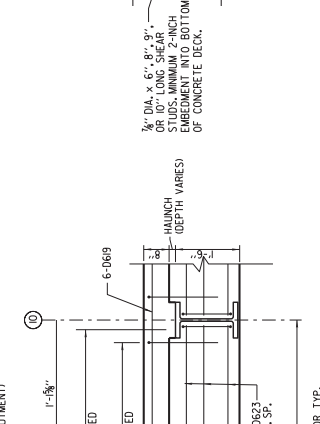
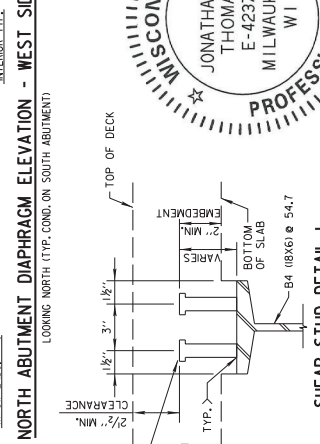
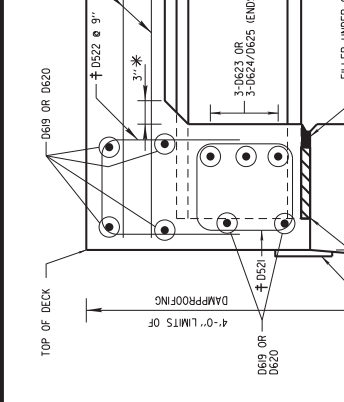
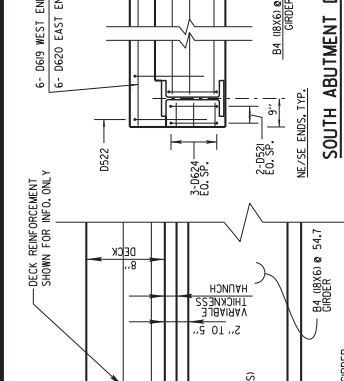
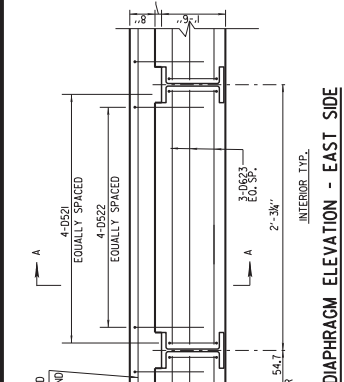
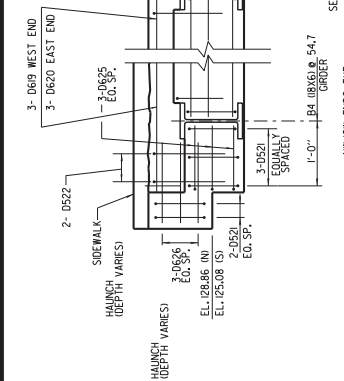
04/22/21



PROFILE GRADE LINE (P.G.L.)  
ALONG T/L OF  
SOUTH DANA COURT BRIDGE

Addendum No. 01  
ID 2984-51-70  
Revised Sheet 93  
April 26, 2021

NO.	DATE	REVISION	BY
4/20/21		ADDENDUM #1	J.P.H.
STATE OF WISCONSIN DEPARTMENT OF TRANSPORTATION			
STRUCTURE P-40-589			
DRAWN BY		M.V. PLANS	
CHECKED BY		J.P.H.	
ESTIMATE OF QUANTITIES			93
			SHEET 3 OF 22



NOTES:  
ALL DIMENSIONS SHOWN ARE NORMAL TO ROADWAY EXCEPT AS INDICATED BY NOTE "ALONG THE SHEAR."  
USE EXISTING GIRDER BEARING ELEVATIONS FOR NEW ELASTOMERIC BEARING PAD ELEVATIONS.  
AFTER REMOVAL OF DECK AND BEFORE ORDERING THE SHEAR STUDS, THE CONTRACTOR SHALL SHOOT GRADES OF THE TOP OF THE GIRDERS TO DETERMINE HAUNCH HEIGHTS. ORDER OF THE GIRDERS TO DETERMINE HAUNCH HEIGHTS. ORDER OF THE GIRDERS TO DETERMINE HAUNCH HEIGHTS. ORDER OF THE GIRDERS TO DETERMINE HAUNCH HEIGHTS. ORDER OF THE GIRDERS TO DETERMINE HAUNCH HEIGHTS.  
PORTIONS OF EXISTING B4 (B8X6) #54.7 GIRDER ENDS EMBEDDED IN ABUTMENT OF CONCRETE USING BID ITEMS 51-0800-5-897 AND 57-4500-5-897. NEGATIVE PRESSURE CURING AND COLLECTION OF WASTE MATERIALS P-40-589.

**Addendum No. 01**  
**ID 2984-51-70**  
**Revised Sheet 96**  
**April 26, 2021**

04/22/21

LEGEND  
DIMENSION IS TAKEN NORMAL TO  
SUBSTRUCTURE UNITS  
BARS PLACED PARALLEL TO GIRDERS, SPACING  
PERPENDICULAR TO C/L GIRDERS.

STRUCTURE P-40-589  
STATE OF WISCONSIN  
DEPARTMENT OF TRANSPORTATION

DATE: \_\_\_\_\_  
REVISION: \_\_\_\_\_  
BY: \_\_\_\_\_

DRAWN: \_\_\_\_\_  
M.P.F. (C/L)

SHEET 6 OF 22

GIRDER END  
DIAPHRAGM AND  
SHEAR STUD SPACING

96

