



Wisconsin Department of Transportation

May 4, 2021

Division of Transportation Systems Development

Bureau of Project Development
4822 Madison Yards Way, 4th Floor South
Madison, WI 53705

Telephone: (608) 266-1631
Facsimile (FAX): (608) 266-8459

NOTICE TO ALL CONTRACTORS:

Proposal #16: 1146-75-72, WISC 2021307
STH 76 – New London
CTH JJ-Lily of the Valley Drive
STH 15
Outagamie County

Letting of May 11, 2021

This is Addendum No. 01, which provides for the following:

Special Provisions:

Revised Special Provisions	
Article No.	Description
21	Select Borrow, Item 208.1100

Added Special Provisions	
Article No.	Description
58	Removing Light Pole
59	Removing Sign

Schedule of Items:

Revised Bid Item Quantities					
Bid Item	Item Description	Unit	Old Quantity	Revised Quantity	Proposal Total
208.1100	Select Borrow	CY	70,980	-10,000	60,980
642.5401	Field Office Type D	EACH	1	1	2
SPV.0035.001	Roadway Embankment	CY	337,800	-18,017	319,783

Added Bid Item Quantities					
60Bid Item	Item Description	Unit	Old Quantity	Revised Quantity	Proposal Total
204.9060.S.01	Removing Light Pole	EACH	0	1	1
204.9060.S.02	Removing Sign	EACH	0	1	1
415.0210	Concrete Paving Gaps	EACH	0	13	13
650.6500	Construction Staking Structure Layout (structure) 03. S-44-115	LS	0	1	1
650.6500	Construction Staking Structure Layout (structure) 04. S-44-116	LS	0	1	1

Plan Sheets:

Revised Plan Sheets	
Plan Sheet	Plan Sheet Title (brief description of changes to sheet)
341	MQ sheet with additional tables showing removing light pole and removing sign
343	MQ sheet with revision to Roadway Embankment item
344	MQ sheet with revision to Select Borrow item
345	MQ sheet with added table for Concrete Paving Gap
461	Added notes for removal of light pole and sign

The responsibility for notifying potential subcontractors and suppliers of these changes remains with the prime contractor.

Sincerely,

Mike Coleman

Proposal Development Specialist
Proposal Management Section

ADDENDUM NO. 01

1146-75-72

May 4, 2021

Special Provisions

21. Select Borrow

Add the following to the end of the article:

Delete Standard Spec 208.4.2 and 208.4.3

The department will measure select borrow in the final position according to standard spec 208.4.4

58. Removing Light Pole, Item 204.9060.S.01.

A Description

This special provision describes removing light pole conforming to standard spec 204.

B (Vacant)

C Construction

Provide Christus Church a two week notice prior to removing light pole. Electricity to light pole will be disconnect by Christus Church.

D Measurement

The department will measure Removing Light Pole in each, acceptably completed.

E Payment

The department will pay for measured quantities at the contract unit price under the following bid item:

ITEM NUMBER	DESCRIPTION	UNIT
204.9060.S.01	Removing Light Pole	EACH

Payment is full compensation for removing light pole, light pole base, any other materials associated with the light pole and disposing of materials off site; and for all necessary excavation, backfilling of the excavation area.

59. Removing Sign, Item 204.9060.S.02.

A Description

This special provision describes removing sign conforming to standard spec 204.

B (Vacant)

C Construction

Provide Christus Church a two week notice prior to removing sign.

D Measurement

The department will measure Removing Sign in each, acceptably completed.

E Payment

The department will pay for measured quantities at the contract unit price under the following bid item:

ITEM NUMBER
204.9060.S.02

DESCRIPTION
Removing Sign

UNIT
EACH

Payment is full compensation for removing sign, sign base, any other materials associated with the sign and disposing of materials off site; and for all necessary excavation, backfilling of the excavation area.

Schedule of Items

Attached, dated May 4, 2021, are the revised Schedule of Items Pages 1 – 22.

Plan Sheets

The following 8½ x 11-inch sheets are attached and made part of the plans for this proposal:
Revised: 341, 343, 344, 345, 461.

END OF ADDENDUM

REMOVING SMALL PIPE CULVERTS

Table with columns: STATION, LOCATION, COMMENTS. Includes sub-totals for STAGE 1A and STAGE 1B.

REMOVING SMALL PIPE CULVERTS (CONTINUED)

Table with columns: STATION, LOCATION, COMMENTS. Includes sub-totals for STAGE 2A and STAGE 2B.

REMOVING LIGHT POLE

Table with columns: STATION, LOCATION, COMMENTS. Includes PROJECT TOTAL.

REMOVING STORM SEWER ITEMS

Table with columns: CATEGORY CODE, STATION, LOCATION, COMMENTS. Includes PROJECT TOTAL.

REMOVING SIGN

Table with columns: STATION, LOCATION, COMMENTS. Includes PROJECT TOTAL.

Addendum No. 01 ID 1146-75-72 Revised Sheet 341 May 4, 2021

Addendum No. 01
ID 1146-75-72
Revised Sheet 343
May 4, 2021

DIVISION	FROM/TO STATION	LOCATION	206.0100 EXCAVATION COMMON (1) CY		206.0100 MARSH (4) CY	FILL CY	SPV.035.001 EXCAVATION EMBANKMENT CY	SPV.035.002 EXCAVATION WASTE CY	MARSH DISPOSAL CY	MASS ORDNATE +/- (6)
			CUT	EBS EXCAVATION (3)						
STAGE 1A	03+00/53+00	TW	4,401	0	0	5,033	5,033	0	0	-632
STAGE 1A SUBTOTAL			4,401	0	0	5,033	5,033	0	0	-632
STAGE 1B	525+00/524+00 525+00/523+00 270+00/268+00 0+00/3+78 20+24/20+98 7+30/15+00 10+50/12+35 35+00/41+50 11+80/14+50 10+60/50+00 25+00/20+00 487+00/501+00	EB WB WB WB WB WB WB WB WB WB WB	75,153 1,888 48,341 543 414 4,055 135 2,884 357 690 57,150 5,134 201,499	3,844	17,868 6,226	182,636 9,046 53,372 214 622 1,776 273 5,352 5 891 7,263 1,478 203,310	180,468 1,888 53,372 214 622 1,776 273 5,352 5 891 7,263 1,478 189,365	17,466 6,562	0	97,183 1,949 30,969 329 -208 2,279 -138 -2,468 351 896 40,927 3,656 -1,811
STAGE 1B SUBTOTAL			201,499	3,844	26,218	203,310	189,365	24,048	0	-1,811
STAGE 1C	514+00/524+00 515+00/525+00 400+00/404+00 501+00/503+00 1519+00/1527+00	EB WB WB WB WB	568 1,868 3,719 1,739 6,911 78	0	1,218 3,543	1,991 4,023 1,019 427 2,112 3,775 13,747	1,585 3,137 1,019 427 2,112 3,775 12,455	974 2,834	0	-1,423 -2,155 2,700 1,312 3,151 -3,699 615
STAGE 1C SUBTOTAL			14,361	0	4,761	13,747	12,455	3,868	0	615
STAGE 1 SUBTOTAL			220,261	3,844	30,977	222,090	206,853	27,856	0	-1,828
STAGE 1 ADJUSTED SUBTOTAL (2) (6)			216,384		250,538			6,965		-34,152
STAGE 2A	465+00/522+00 955+00/953+00 14+00/17+00 301+00/307+00 30+82/33+88 21+00/29+25 30+00/37+00 17+50/25+50 10+00/14+27 43+00/49+00 19+50/16+00	EB WB WB WB WB WB WB WB WB WB	28,416 81,310 1,474 5,371 365 1,998 6,354 3,178 2,918 296 134,420	0	1,311 5,325	19,087 63,362 1,474 5,375 270 718 380 13,526 727 117,590 104,170	18,650 6,019 5,375 270 69 380 13,526 727 101,398	1,049 4,260	0	9,329 17,949 3,029 95 1,281 6,285 2,798 -13,526 2,190 179 29,045
STAGE 2A SUBTOTAL			134,420	0	6,636	104,170	101,398	5,309	0	29,045
STAGE 2B	487+00/489+00 489+00/527+00	EB WB	686 4,373	0	0	399 519	399 519	0	0	467 3,855
STAGE 2B SUBTOTAL			5,239	0	0	918	918	0	0	4,322
STAGE 2C	11+00/14+93 945+33/1001+50	MMW MUT	2,191 37,067	0	0	891 10,016	891 10,016	0	0	1,301 27,961
STAGE 2C SUBTOTAL			39,258	0	0	10,907	10,907	0	0	29,262
STAGE 2 SUBTOTAL			178,937	0	6,636	115,710	112,930	5,309	0	63,229
STAGE 2 ADJUSTED SUBTOTAL (2) (6)			171,183		149,354			1,327		21,829
GRAND TOTAL			387,567	3,844	37,613	399,890	379,183	54,984	8,292	-12,323
TOTAL COMMON EXC			387,567							

NOTES:

- (1) Common Excavation is the sum of the Cut and EBS Excavation columns.
- (2) Salvaged/Reusable Pavement Material is NOT included in Cut.
- (3) EBS Excavation to be backfilled with Select Borrow material.
- (4) See construction detail for limits of excavation and disposal.
- (5) The Mass Ordinate is for informational purposes only as common excavation and roadway embankment are not balanced for quantity purposes and does not guarantee the quality of common excavation, or if it can be reused on site. EBS and Marsh Excavation NOT included in Mass Ordinate determination. Mass Ordinate = Cut - Fill
- (6) Fill has been adjusted to remove reduced EBS and Marsh Excavation and expanded per FDM guidance. FILL EXPANSION 1.25 - MARSH FILL REDUCTION 0.6 - EBS FILL REDUCTION 0.8

CONCRETE PAVEMENT ITEMS

Main table for concrete pavement items, including columns for STAGE, LOCATION, SY, and SUBTOTALS. It is divided into STAGE 1B, STAGE 1C, STAGE 2A, STAGE 2B, and STAGE 2C.

CONCRETE PAVEMENT ITEMS (CONTINUED)

Continuation of the main table for concrete pavement items, including columns for STAGE, LOCATION, SY, and SUBTOTALS. It is divided into STAGE 2A, STAGE 2B, and STAGE 2C.

RUMBLE STRIPS

Table for rumble strips, including columns for STAGE, LOCATION, SY, and SUBTOTALS. It is divided into STAGE 1C and STAGE 2A.

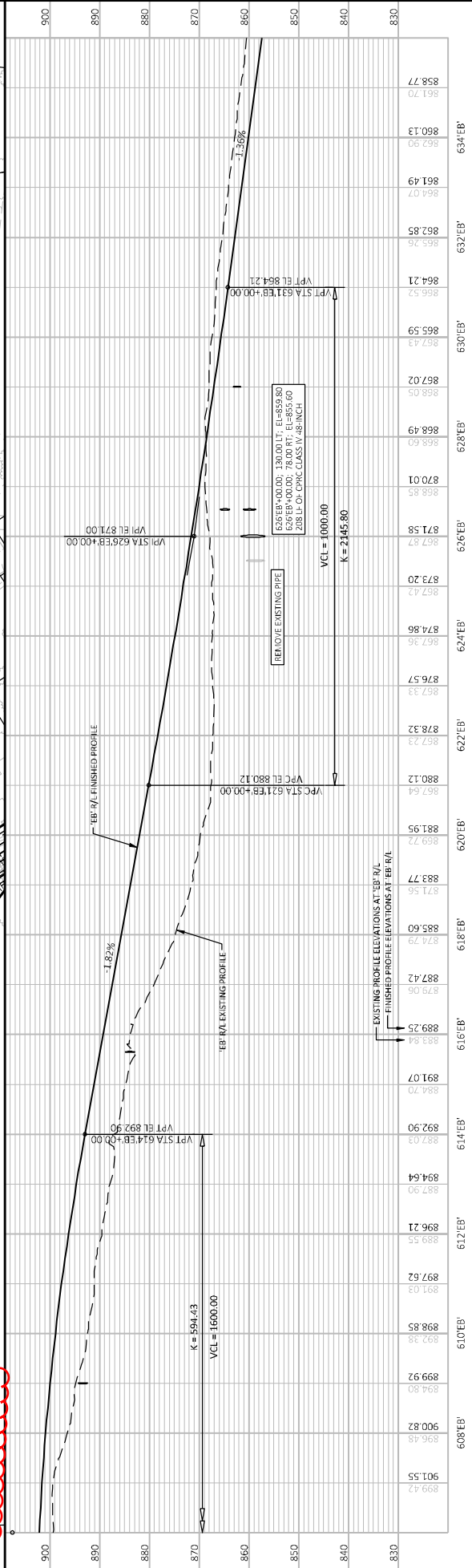
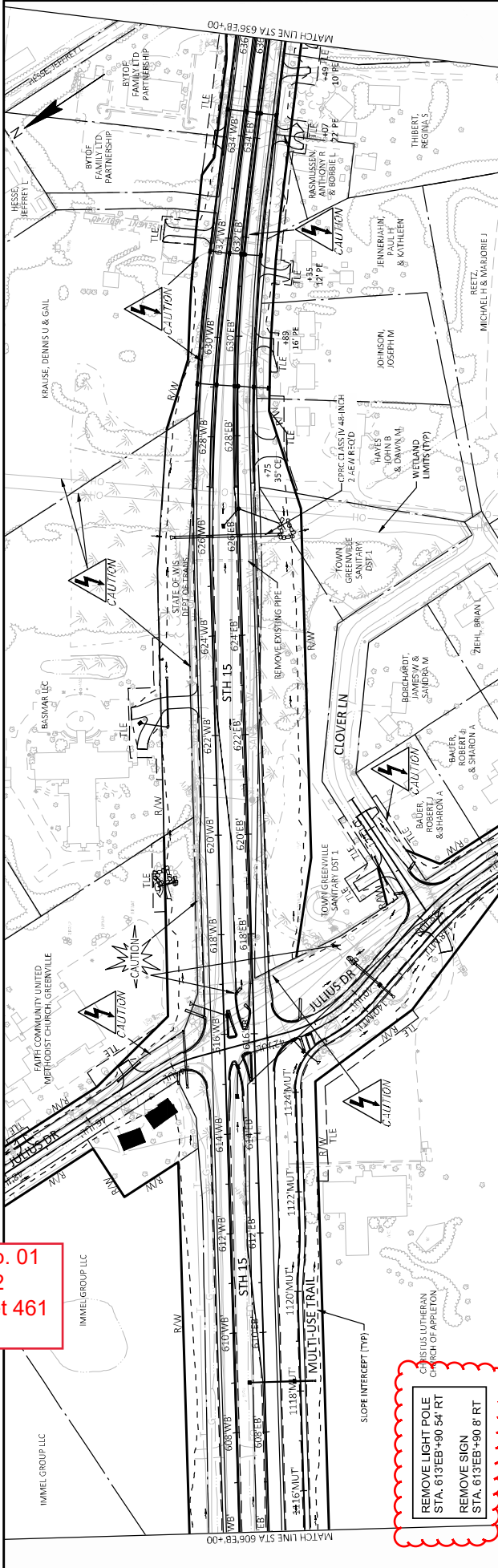
Addendum No. 01 ID 1146-75-72 Revised Sheet 345 May 4, 2021

CONCRETE PAVEMENT GAPS

Table for concrete pavement gaps, including columns for STAGE, LOCATION, EACH, and SUBTOTALS.

Summary table with columns: PROJECT NO., HWY, STATION, PROJECT TOTAL, PROJECT NAME, SHEET, and E.

Addendum No. 01
 ID 1146-75-72
 Revised Sheet 461
 May 4, 2021



STATION	ELEVATION	PROFILE
899.42	901.55	608'EB
898.48	900.87	608'EB
898.85	899.92	610'EB
897.03	897.62	612'EB
896.21	896.21	614'EB
894.64	894.64	614'EB
887.90	892.90	614'EB
884.70	891.07	616'EB
883.84	889.25	616'EB
879.08	887.42	618'EB
874.79	885.60	618'EB
871.56	883.77	620'EB
869.72	881.95	620'EB
867.64	880.12	622'EB
867.23	878.32	622'EB
867.33	876.57	624'EB
867.36	874.86	624'EB
867.42	873.20	626'EB
867.57	871.58	626'EB
868.85	870.01	628'EB
868.60	868.49	628'EB
868.05	867.02	630'EB
865.43	865.59	630'EB
866.52	864.21	632'EB
865.26	862.85	632'EB
864.07	861.49	634'EB
860.13	860.13	634'EB
858.77	858.77	636'EB

PROJECT NO: 1146-75-72
 COUNTY: OUTAGAMIE
 PLAN AND PROFILE: STH 15 EB
 SHEET 461
 TITLE NAME: C:\DWG\WORKDIRS\OUTAG\BUCAR\10384473\1461572\06102\PR.DWG
 LAYOUT NAME: 0610
 PLOT DATE: 7/5/2020 10:37 AM
 PLOT NAME: BUGAIN, JOSSE
 PLOT SCALE: 1"=30.0 FT
 WSDOT/CARDS SHEET 4



Proposal Schedule of Items

Proposal ID: 20210511016 Project(s): 1146-75-72

Federal ID(s): WISC 2021307

SECTION: 0001 Contract Items

Alt Set ID: Alt Mbr ID:

Proposal Line Number	Item ID Description	Approximate Quantity and Units	Unit Price	Bid Amount
0002	108.4300 RBC Progress Schedule	1.000 EACH	_____.	_____.
0004	201.0105 Clearing	189.000 STA	_____.	_____.
0006	201.0120 Clearing	129.000 ID	_____.	_____.
0008	201.0205 Grubbing	189.000 STA	_____.	_____.
0010	201.0220 Grubbing	129.000 ID	_____.	_____.
0012	203.0100 Removing Small Pipe Culverts	116.000 EACH	_____.	_____.
0014	203.0200 Removing Old Structure (station) 01. STA. 528'WB'+63.19	LS	LUMP SUM	_____.
0016	203.0200 Removing Old Structure (station) 02. STA. 259'MNE'+53	LS	LUMP SUM	_____.
0018	204.0100 Removing Concrete Pavement	11,364.000 SY	_____.	_____.
0020	204.0110 Removing Asphaltic Surface	89,309.000 SY	_____.	_____.
0022	204.0150 Removing Curb & Gutter	5,487.000 LF	_____.	_____.
0024	204.0155 Removing Concrete Sidewalk	2,585.000 SY	_____.	_____.
0026	204.0165 Removing Guardrail	312.000 LF	_____.	_____.
0028	204.0170 Removing Fence	4,693.000 LF	_____.	_____.
0030	204.0220 Removing Inlets	8.000 EACH	_____.	_____.
0032	204.0245 Removing Storm Sewer (size) 01. 12- INCH	154.000 LF	_____.	_____.



Proposal Schedule of Items

Proposal ID: 20210511016 Project(s): 1146-75-72

Federal ID(s): WISC 2021307

SECTION: 0001 Contract Items

Alt Set ID: Alt Mbr ID:

Proposal Line Number	Item ID Description	Approximate Quantity and Units	Unit Price	Bid Amount
0034	204.0245 Removing Storm Sewer (size) 02. 18-INCH	48.000 LF	_____.	_____.
0036	204.0280 Sealing Pipes	1.000 EACH	_____.	_____.
0038	205.0100 Excavation Common	387,567.000 CY	_____.	_____.
0040	205.0400 Excavation Marsh	37,613.000 CY	_____.	_____.
0042	206.2000 Excavation for Structures Culverts (structure) 01. C-44-125	LS	LUMP SUM	_____.
0044	206.2000 Excavation for Structures Culverts (structure) 02. C-44-128	LS	LUMP SUM	_____.
0046	208.1100 Select Borrow	60,980.000 CY	_____.	_____.
0048	210.2500 Backfill Structure Type B	6,093.000 TON	_____.	_____.
0050	213.0100 Finishing Roadway (project) 01. 1146-75-72	1.000 EACH	_____.	_____.
0052	305.0110 Base Aggregate Dense 3/4-Inch	19,645.000 TON	_____.	_____.
0054	305.0120 Base Aggregate Dense 1 1/4-Inch	179,095.000 TON	_____.	_____.
0056	311.0115 Breaker Run	435.000 CY	_____.	_____.
0058	312.0110 Select Crushed Material	128,890.000 TON	_____.	_____.
0060	405.0100 Coloring Concrete WisDOT Red	333.000 CY	_____.	_____.
0062	415.0090 Concrete Pavement 9-Inch	120,778.000 SY	_____.	_____.
0064	415.0120 Concrete Pavement 12-Inch	457.000 SY	_____.	_____.



Proposal Schedule of Items

Proposal ID: 20210511016 Project(s): 1146-75-72

Federal ID(s): WISC 2021307

SECTION: 0001 Contract Items

Alt Set ID: Alt Mbr ID:

Proposal Line Number	Item ID Description	Approximate Quantity and Units	Unit Price	Bid Amount
0066	415.5110.S Concrete Pavement Joint Layout	1.000 LS	_____.	_____.
0068	416.0160 Concrete Driveway 6-Inch	344.000 SY	_____.	_____.
0070	416.0512 Concrete Truck Apron 12-Inch	460.000 SY	_____.	_____.
0072	416.1110 Concrete Shoulder Rumble Strips	18,108.000 LF	_____.	_____.
0074	416.1710 Concrete Pavement Repair	130.000 SY	_____.	_____.
0076	455.0605 Tack Coat	3,510.000 GAL	_____.	_____.
0078	460.2000 Incentive Density HMA Pavement	13,141.000 DOL	1.00000	13,141.00
0080	460.5223 HMA Pavement 3 LT 58-28 S	8,865.000 TON	_____.	_____.
0082	460.5224 HMA Pavement 4 LT 58-28 S	11,168.000 TON	_____.	_____.
0084	460.6223 HMA Pavement 3 MT 58-28 S	290.000 TON	_____.	_____.
0086	460.6224 HMA Pavement 4 MT 58-28 S	217.000 TON	_____.	_____.
0088	465.0105 Asphaltic Surface	3,515.000 TON	_____.	_____.
0090	465.0120 Asphaltic Surface Driveways and Field Entrances	1,704.000 TON	_____.	_____.
0092	465.0125 Asphaltic Surface Temporary	7,718.000 TON	_____.	_____.
0094	465.0315 Asphaltic Flumes	283.000 SY	_____.	_____.
0096	465.0400 Asphaltic Shoulder Rumble Strips	15,806.000 LF	_____.	_____.



Proposal Schedule of Items

Proposal ID: 20210511016 Project(s): 1146-75-72

Federal ID(s): WISC 2021307

SECTION: 0001 Contract Items

Alt Set ID: Alt Mbr ID:

Proposal Line Number	Item ID Description	Approximate Quantity and Units	Unit Price	Bid Amount
0098	504.0100 Concrete Masonry Culverts	470.000 CY	_____.	_____.
0100	504.0900 Concrete Masonry Endwalls	37.000 CY	_____.	_____.
0102	505.0400 Bar Steel Reinforcement HS Structures	86,020.000 LB	_____.	_____.
0104	505.0600 Bar Steel Reinforcement HS Coated Structures	3,710.000 LB	_____.	_____.
0106	511.1100 Temporary Shoring	1,000.000 SF	_____.	_____.
0108	511.1200 Temporary Shoring (structure) 01. C-44-125	905.000 SF	_____.	_____.
0110	511.1200 Temporary Shoring (structure) 02. C-44-128	786.000 SF	_____.	_____.
0112	513.4091 Railing Tubular Screening	44.000 LF	_____.	_____.
0114	516.0500 Rubberized Membrane Waterproofing	185.000 SY	_____.	_____.
0116	520.1012 Apron Endwalls for Culvert Pipe 12-Inch	1.000 EACH	_____.	_____.
0118	520.1015 Apron Endwalls for Culvert Pipe 15-Inch	20.000 EACH	_____.	_____.
0120	520.1018 Apron Endwalls for Culvert Pipe 18-Inch	76.000 EACH	_____.	_____.
0122	520.1024 Apron Endwalls for Culvert Pipe 24-Inch	8.000 EACH	_____.	_____.
0124	520.1030 Apron Endwalls for Culvert Pipe 30-Inch	6.000 EACH	_____.	_____.
0126	520.2012 Culvert Pipe Temporary 12-Inch	43.000 LF	_____.	_____.
0128	520.2015 Culvert Pipe Temporary 15-Inch	226.000 LF	_____.	_____.



Proposal Schedule of Items

Proposal ID: 20210511016 Project(s): 1146-75-72

Federal ID(s): WISC 2021307

SECTION: 0001 Contract Items

Alt Set ID: Alt Mbr ID:

Proposal Line Number	Item ID Description	Approximate Quantity and Units	Unit Price	Bid Amount
0130	520.2018 Culvert Pipe Temporary 18-Inch	193.000 LF	_____.	_____.
0132	520.2024 Culvert Pipe Temporary 24-Inch	16.000 LF	_____.	_____.
0134	520.2030 Culvert Pipe Temporary 30-Inch	58.000 LF	_____.	_____.
0136	520.2036 Culvert Pipe Temporary 36-Inch	40.000 LF	_____.	_____.
0138	520.3315 Culvert Pipe Class III-A 15-Inch	340.000 LF	_____.	_____.
0140	520.3318 Culvert Pipe Class III-A 18-Inch	1,944.000 LF	_____.	_____.
0142	520.3324 Culvert Pipe Class III-A 24-Inch	230.000 LF	_____.	_____.
0144	520.3330 Culvert Pipe Class III-A 30-Inch	74.000 LF	_____.	_____.
0146	520.4118 Culvert Pipe Class IV 18-Inch	128.000 LF	_____.	_____.
0148	520.8000 Concrete Collars for Pipe	5.000 EACH	_____.	_____.
0150	521.1012 Apron Endwalls for Culvert Pipe Steel 12-Inch	2.000 EACH	_____.	_____.
0152	521.1018 Apron Endwalls for Culvert Pipe Steel 18-Inch	1.000 EACH	_____.	_____.
0154	521.1242 Apron Endwalls for Pipe Arch Steel 42x29-Inch	2.000 EACH	_____.	_____.
0156	521.1249 Apron Endwalls for Pipe Arch Steel 49x33-Inch	6.000 EACH	_____.	_____.
0158	521.1515 Apron Endwalls for Culvert Pipe Sloped Side Drains Steel 15-Inch 6 to 1	3.000 EACH	_____.	_____.



Proposal Schedule of Items

Proposal ID: 20210511016 Project(s): 1146-75-72

Federal ID(s): WISC 2021307

SECTION: 0001 Contract Items

Alt Set ID: Alt Mbr ID:

Proposal Line Number	Item ID Description	Approximate Quantity and Units	Unit Price	Bid Amount
0160	521.1518 Apron Endwalls for Culvert Pipe Sloped Side Drains Steel 18-Inch 6 to 1	20.000 EACH	_____.	_____.
0162	521.6742 Pipe Arch Corrugated Steel Aluminum Coated 42x29-Inch	60.000 LF	_____.	_____.
0164	521.6749 Pipe Arch Corrugated Steel Aluminum Coated 49x33-Inch	126.000 LF	_____.	_____.
0166	522.0124 Culvert Pipe Reinforced Concrete Class III 24-Inch	168.000 LF	_____.	_____.
0168	522.0418 Culvert Pipe Reinforced Concrete Class IV 18-Inch	1,437.000 LF	_____.	_____.
0170	522.0424 Culvert Pipe Reinforced Concrete Class IV 24-Inch	178.000 LF	_____.	_____.
0172	522.0430 Culvert Pipe Reinforced Concrete Class IV 30-Inch	913.000 LF	_____.	_____.
0174	522.0436 Culvert Pipe Reinforced Concrete Class IV 36-Inch	256.000 LF	_____.	_____.
0176	522.0442 Culvert Pipe Reinforced Concrete Class IV 42-Inch	224.000 LF	_____.	_____.
0178	522.0448 Culvert Pipe Reinforced Concrete Class IV 48-Inch	208.000 LF	_____.	_____.
0180	522.0454 Culvert Pipe Reinforced Concrete Class IV 54-Inch	600.000 LF	_____.	_____.
0182	522.1012 Apron Endwalls for Culvert Pipe Reinforced Concrete 12-Inch	2.000 EACH	_____.	_____.
0184	522.1015 Apron Endwalls for Culvert Pipe Reinforced Concrete 15-Inch	9.000 EACH	_____.	_____.



Proposal Schedule of Items

Proposal ID: 20210511016 Project(s): 1146-75-72

Federal ID(s): WISC 2021307

SECTION: 0001 Contract Items

Alt Set ID: Alt Mbr ID:

Proposal Line Number	Item ID Description	Approximate Quantity and Units	Unit Price	Bid Amount
0186	522.1018 Apron Endwalls for Culvert Pipe Reinforced Concrete 18-Inch	19.000 EACH	_____.	_____.
0188	522.1024 Apron Endwalls for Culvert Pipe Reinforced Concrete 24-Inch	7.000 EACH	_____.	_____.
0190	522.1030 Apron Endwalls for Culvert Pipe Reinforced Concrete 30-Inch	6.000 EACH	_____.	_____.
0192	522.1036 Apron Endwalls for Culvert Pipe Reinforced Concrete 36-Inch	3.000 EACH	_____.	_____.
0194	522.1042 Apron Endwalls for Culvert Pipe Reinforced Concrete 42-Inch	2.000 EACH	_____.	_____.
0196	522.1048 Apron Endwalls for Culvert Pipe Reinforced Concrete 48-Inch	2.000 EACH	_____.	_____.
0198	522.2419 Culvert Pipe Reinforced Concrete Horizontal Elliptical Class HE-IV 19x30-Inch	179.000 LF	_____.	_____.
0200	522.2619 Apron Endwalls for Culvert Pipe Reinforced Concrete Horizontal Elliptical 19x30-Inch	2.000 EACH	_____.	_____.
0202	522.2624 Apron Endwalls for Culvert Pipe Reinforced Concrete Horizontal Elliptical 24x38-Inch	1.000 EACH	_____.	_____.
0204	530.0118 Culvert Pipe Corrugated Polyethylene 18-Inch	4.000 LF	_____.	_____.
0206	531.2036 Drilling Shaft 36-Inch	80.000 LF	_____.	_____.
0208	531.5420 Foundation Single-Shaft Type TF-II (structure) 01. S-44-115	2.000 EACH	_____.	_____.
0210	531.5420 Foundation Single-Shaft Type TF-II (structure) 02. S-44-116	2.000 EACH	_____.	_____.



Proposal Schedule of Items

Proposal ID: 20210511016 Project(s): 1146-75-72

Federal ID(s): WISC 2021307

SECTION: 0001 Contract Items

Alt Set ID: Alt Mbr ID:

Proposal Line Number	Item ID Description	Approximate Quantity and Units	Unit Price	Bid Amount
0212	532.5420 Truss Full Span 2-Chord Type II (structure) 01. S-44-115	1.000 EACH	_____.	_____.
0214	532.5420 Truss Full Span 2-Chord Type II (structure) 02. S-44-116	1.000 EACH	_____.	_____.
0216	601.0405 Concrete Curb & Gutter 18-Inch Type A	333.000 LF	_____.	_____.
0218	601.0409 Concrete Curb & Gutter 30-Inch Type A	4,861.000 LF	_____.	_____.
0220	601.0411 Concrete Curb & Gutter 30-Inch Type D	594.000 LF	_____.	_____.
0222	601.0551 Concrete Curb & Gutter 4-Inch Sloped 36-Inch Type A	6,226.000 LF	_____.	_____.
0224	601.0555 Concrete Curb & Gutter 6-Inch Sloped 36-Inch Type A	965.000 LF	_____.	_____.
0226	601.0557 Concrete Curb & Gutter 6-Inch Sloped 36-Inch Type D	6,445.000 LF	_____.	_____.
0228	601.0574 Concrete Curb & Gutter 4-Inch Sloped 30-Inch Type G	2,326.000 LF	_____.	_____.
0230	601.0580 Concrete Curb & Gutter 4-Inch Sloped 36-Inch Type R	415.000 LF	_____.	_____.
0232	601.0600 Concrete Curb Pedestrian	417.000 LF	_____.	_____.
0234	602.0405 Concrete Sidewalk 4-Inch	11,683.000 SF	_____.	_____.
0236	602.0410 Concrete Sidewalk 5-Inch	27,573.000 SF	_____.	_____.
0238	602.0505 Curb Ramp Detectable Warning Field Yellow	600.000 SF	_____.	_____.



Proposal Schedule of Items

Proposal ID: 20210511016 Project(s): 1146-75-72

Federal ID(s): WISC 2021307

SECTION: 0001 Contract Items

Alt Set ID: Alt Mbr ID:

Proposal Line Number	Item ID Description	Approximate Quantity and Units	Unit Price	Bid Amount
0240	603.8000 Concrete Barrier Temporary Precast Delivered	4,000.000 LF	_____.	_____.
0242	603.8125 Concrete Barrier Temporary Precast Installed	4,000.000 LF	_____.	_____.
0244	603.8500 Anchoring Concrete Barrier Temporary Precast	4,000.000 LF	_____.	_____.
0246	606.0100 Riprap Light	105.000 CY	_____.	_____.
0248	606.0200 Riprap Medium	1,110.000 CY	_____.	_____.
0250	606.0300 Riprap Heavy	78.000 CY	_____.	_____.
0252	608.0412 Storm Sewer Pipe Reinforced Concrete Class IV 12-Inch	80.000 LF	_____.	_____.
0254	608.0415 Storm Sewer Pipe Reinforced Concrete Class IV 15-Inch	1,730.000 LF	_____.	_____.
0256	608.0418 Storm Sewer Pipe Reinforced Concrete Class IV 18-Inch	979.000 LF	_____.	_____.
0258	608.0424 Storm Sewer Pipe Reinforced Concrete Class IV 24-Inch	2,204.000 LF	_____.	_____.
0260	608.2424 Storm Sewer Pipe Reinforced Concrete Horizontal Elliptical Class HE-IV 24x38-Inch	259.000 LF	_____.	_____.
0262	608.3015 Storm Sewer Pipe Class III-A 15-Inch	51.000 LF	_____.	_____.
0264	611.0420 Reconstructing Manholes	1.000 EACH	_____.	_____.
0266	611.0530 Manhole Covers Type J	10.000 EACH	_____.	_____.



Proposal Schedule of Items

Proposal ID: 20210511016 Project(s): 1146-75-72

Federal ID(s): WISC 2021307

SECTION: 0001 Contract Items

Alt Set ID: Alt Mbr ID:

Proposal Line Number	Item ID Description	Approximate Quantity and Units	Unit Price	Bid Amount
0268	611.0612 Inlet Covers Type C	3.000 EACH	_____.	_____.
0270	611.0624 Inlet Covers Type H	11.000 EACH	_____.	_____.
0272	611.0627 Inlet Covers Type HM	41.000 EACH	_____.	_____.
0274	611.0636 Inlet Covers Type HM-S	4.000 EACH	_____.	_____.
0276	611.0639 Inlet Covers Type H-S	4.000 EACH	_____.	_____.
0278	611.0642 Inlet Covers Type MS	56.000 EACH	_____.	_____.
0280	611.0651 Inlet Covers Type S	2.000 EACH	_____.	_____.
0282	611.0652 Inlet Covers Type T	2.000 EACH	_____.	_____.
0284	611.2006 Manholes 6-FT Diameter	11.000 EACH	_____.	_____.
0286	611.3003 Inlets 3-FT Diameter	2.000 EACH	_____.	_____.
0288	611.3220 Inlets 2x2-FT	2.000 EACH	_____.	_____.
0290	611.3230 Inlets 2x3-FT	59.000 EACH	_____.	_____.
0292	611.3901 Inlets Median 1 Grate	16.000 EACH	_____.	_____.
0294	611.3902 Inlets Median 2 Grate	18.000 EACH	_____.	_____.
0296	611.3904 Inlets Median 4 Grate	1.000 EACH	_____.	_____.
0298	611.8120.S Cover Plates Temporary	6.000 EACH	_____.	_____.
0300	611.9705 Salvaged Manhole Covers	2.000 EACH	_____.	_____.



Proposal Schedule of Items

Proposal ID: 20210511016 Project(s): 1146-75-72

Federal ID(s): WISC 2021307

SECTION: 0001 Contract Items

Alt Set ID: Alt Mbr ID:

Proposal Line Number	Item ID Description	Approximate Quantity and Units	Unit Price	Bid Amount
0302	611.9710 Salvaged Inlet Covers	14.000 EACH	_____.	_____.
0304	611.9800.S Pipe Grates	4.000 EACH	_____.	_____.
0306	612.0406 Pipe Underdrain Wrapped 6-Inch	1,120.000 LF	_____.	_____.
0308	614.0700 Sand Barrels Arrays	4.000 EACH	_____.	_____.
0310	616.0100 Fence Woven Wire (height) 01. 4-FEET	1,615.000 LF	_____.	_____.
0312	618.0100 Maintenance And Repair of Haul Roads (project) 01. 1146-75-72	1.000 EACH	_____.	_____.
0314	619.1000 Mobilization	1.000 EACH	_____.	_____.
0316	620.0300 Concrete Median Sloped Nose	350.000 SF	_____.	_____.
0318	624.0100 Water	3,543.000 MGAL	_____.	_____.
0320	625.0500 Salvaged Topsoil	633,500.000 SY	_____.	_____.
0322	627.0200 Mulching	461,800.000 SY	_____.	_____.
0324	628.1504 Silt Fence	29,900.000 LF	_____.	_____.
0326	628.1520 Silt Fence Maintenance	29,900.000 LF	_____.	_____.
0328	628.1905 Mobilizations Erosion Control	30.000 EACH	_____.	_____.
0330	628.1910 Mobilizations Emergency Erosion Control	18.000 EACH	_____.	_____.
0332	628.2004 Erosion Mat Class I Type B	106,650.000 SY	_____.	_____.



Proposal Schedule of Items

Proposal ID: 20210511016 Project(s): 1146-75-72

Federal ID(s): WISC 2021307

SECTION: 0001 Contract Items

Alt Set ID: Alt Mbr ID:

Proposal Line Number	Item ID Description	Approximate Quantity and Units	Unit Price	Bid Amount
0334	628.2008 Erosion Mat Urban Class I Type B	65,050.000 SY	_____.	_____.
0336	628.7005 Inlet Protection Type A	50.000 EACH	_____.	_____.
0338	628.7010 Inlet Protection Type B	135.000 EACH	_____.	_____.
0340	628.7015 Inlet Protection Type C	70.000 EACH	_____.	_____.
0342	628.7504 Temporary Ditch Checks	7,200.000 LF	_____.	_____.
0344	628.7555 Culvert Pipe Checks	470.000 EACH	_____.	_____.
0346	628.7560 Tracking Pads	21.000 EACH	_____.	_____.
0348	628.7570 Rock Bags	600.000 EACH	_____.	_____.
0350	629.0210 Fertilizer Type B	400.000 CWT	_____.	_____.
0352	630.0120 Seeding Mixture No. 20	13,645.000 LB	_____.	_____.
0354	630.0130 Seeding Mixture No. 30	180.000 LB	_____.	_____.
0356	630.0140 Seeding Mixture No. 40	585.000 LB	_____.	_____.
0358	630.0170 Seeding Mixture No. 70	18.000 LB	_____.	_____.
0360	630.0200 Seeding Temporary	2,145.000 LB	_____.	_____.
0362	630.0300 Seeding Borrow Pit	400.000 LB	_____.	_____.
0364	630.0400 Seeding Nurse Crop	35.000 LB	_____.	_____.
0366	630.0500 Seed Water	9,775.000 MGAL	_____.	_____.



Proposal Schedule of Items

Proposal ID: 20210511016 Project(s): 1146-75-72

Federal ID(s): WISC 2021307

SECTION: 0001 Contract Items

Alt Set ID: Alt Mbr ID:

Proposal Line Number	Item ID Description	Approximate Quantity and Units	Unit Price	Bid Amount
0368	632.0101 Trees (species) (size) (root) 01. Crabapple Prairie, 2-Inch, B&B	6.000 EACH	_____.	_____.
0370	632.0101 Trees (species) (size) (root) 02. Juniper, Maney, 2-Inch, B&B	15.000 EACH	_____.	_____.
0372	632.0201 Shrubs (species) (size) (root) 01. Hazelnut American, 12"-18", BR	400.000 EACH	_____.	_____.
0374	632.0201 Shrubs (species) (size) (root) 02. Ninebark Common 12"-18", BR	400.000 EACH	_____.	_____.
0376	632.0201 Shrubs (species) (size) (root) 03. Dogwood, Redosier 12"-18", BR	430.000 EACH	_____.	_____.
0378	632.9101 Landscape Planting Surveillance and Care Cycles	26.000 EACH	_____.	_____.
0380	633.5200 Markers Culvert End	78.000 EACH	_____.	_____.
0382	634.0614 Posts Wood 4x6-Inch X 14-FT	125.000 EACH	_____.	_____.
0384	634.0616 Posts Wood 4x6-Inch X 16-FT	58.000 EACH	_____.	_____.
0386	634.0618 Posts Wood 4x6-Inch X 18-FT	21.000 EACH	_____.	_____.
0388	637.1220 Signs Type I Reflective SH	441.000 SF	_____.	_____.
0390	637.2210 Signs Type II Reflective H	1,499.950 SF	_____.	_____.
0392	637.2215 Signs Type II Reflective H Folding	40.200 SF	_____.	_____.
0394	637.2220 Signs Type II Reflective SH	18.000 SF	_____.	_____.
0396	637.2230 Signs Type II Reflective F	338.780 SF	_____.	_____.



Proposal Schedule of Items

Proposal ID: 20210511016 Project(s): 1146-75-72

Federal ID(s): WISC 2021307

SECTION: 0001 Contract Items

Alt Set ID: Alt Mbr ID:

Proposal Line Number	Item ID Description	Approximate Quantity and Units	Unit Price	Bid Amount
0398	638.2602 Removing Signs Type II	92.000 EACH	_____.	_____.
0400	638.3000 Removing Small Sign Supports	102.000 EACH	_____.	_____.
0402	642.5401 Field Office Type D	2.000 EACH	_____.	_____.
0404	643.0300 Traffic Control Drums	153,610.000 DAY	_____.	_____.
0406	643.0420 Traffic Control Barricades Type III	26,778.000 DAY	_____.	_____.
0408	643.0705 Traffic Control Warning Lights Type A	21,480.000 DAY	_____.	_____.
0410	643.0715 Traffic Control Warning Lights Type C	18,330.000 DAY	_____.	_____.
0412	643.0800 Traffic Control Arrow Boards	622.000 DAY	_____.	_____.
0414	643.0900 Traffic Control Signs	68,806.000 DAY	_____.	_____.
0416	643.1050 Traffic Control Signs PCMS	200.000 DAY	_____.	_____.
0418	643.5000 Traffic Control	1.000 EACH	_____.	_____.
0420	645.0105 Geotextile Type C	1,105.000 SY	_____.	_____.
0422	645.0120 Geotextile Type HR	3,300.000 SY	_____.	_____.
0424	645.0140 Geotextile Type SAS	2,928.000 SY	_____.	_____.
0426	646.1020 Marking Line Epoxy 4-Inch	29,676.000 LF	_____.	_____.
0428	646.1040 Marking Line Grooved Wet Ref Epoxy 4-Inch	68,160.000 LF	_____.	_____.



Proposal Schedule of Items

Proposal ID: 20210511016 Project(s): 1146-75-72

Federal ID(s): WISC 2021307

SECTION: 0001 Contract Items

Alt Set ID: Alt Mbr ID:

Proposal Line Number	Item ID Description	Approximate Quantity and Units	Unit Price	Bid Amount
0430	646.1050 Marking Line Grooved Permanent Tape 4-Inch	9,658.000 LF	_____.	_____.
0432	646.3020 Marking Line Epoxy 8-Inch	330.000 LF	_____.	_____.
0434	646.3545 Marking Line Grooved Wet Ref Contrast Epoxy 8-Inch	14,970.000 LF	_____.	_____.
0436	646.3555 Marking Line Grooved Contrast Permanent Tape 8-Inch	864.000 LF	_____.	_____.
0438	646.5020 Marking Arrow Epoxy	19.000 EACH	_____.	_____.
0440	646.5120 Marking Word Epoxy	8.000 EACH	_____.	_____.
0442	646.5320 Marking Railroad Crossings Epoxy	6.000 EACH	_____.	_____.
0444	646.6120 Marking Stop Line Epoxy 18-Inch	181.000 LF	_____.	_____.
0446	646.6320 Marking Dotted Extension Epoxy 18-Inch	133.000 LF	_____.	_____.
0448	646.7120 Marking Diagonal Epoxy 12-Inch	1,358.000 LF	_____.	_____.
0450	646.7420 Marking Crosswalk Epoxy Transverse Line 6-Inch	568.000 LF	_____.	_____.
0452	646.7520 Marking Crosswalk Epoxy Block Style 24-Inch	610.000 LF	_____.	_____.
0454	646.8120 Marking Curb Epoxy	661.000 LF	_____.	_____.
0456	646.8220 Marking Island Nose Epoxy	10.000 EACH	_____.	_____.
0458	646.9010 Marking Removal Line Water Blasting 4-Inch	52,800.000 LF	_____.	_____.



Proposal Schedule of Items

Proposal ID: 20210511016 Project(s): 1146-75-72

Federal ID(s): WISC 2021307

SECTION: 0001 Contract Items

Alt Set ID: Alt Mbr ID:

Proposal Line Number	Item ID Description	Approximate Quantity and Units	Unit Price	Bid Amount
0460	649.0105 Temporary Marking Line Paint 4-Inch	69,188.000 LF	_____.	_____.
0462	649.0120 Temporary Marking Line Epoxy 4-Inch	58,480.000 LF	_____.	_____.
0464	649.0150 Temporary Marking Line Removable Tape 4-Inch	1,710.000 LF	_____.	_____.
0466	650.4000 Construction Staking Storm Sewer	101.000 EACH	_____.	_____.
0468	650.4500 Construction Staking Subgrade	76,340.000 LF	_____.	_____.
0470	650.5000 Construction Staking Base	38,560.000 LF	_____.	_____.
0472	650.5500 Construction Staking Curb Gutter and Curb & Gutter	4,999.000 LF	_____.	_____.
0474	650.6000 Construction Staking Pipe Culverts	42.000 EACH	_____.	_____.
0476	650.6500 Construction Staking Structure Layout (structure) 01. C-44-125	LS	LUMP SUM	_____.
0478	650.6500 Construction Staking Structure Layout (structure) 02. C-44-128	LS	LUMP SUM	_____.
0480	650.7000 Construction Staking Concrete Pavement	38,391.000 LF	_____.	_____.
0482	650.9000 Construction Staking Curb Ramps	30.000 EACH	_____.	_____.
0484	650.9910 Construction Staking Supplemental Control (project) 01. 1146-75-72	LS	LUMP SUM	_____.
0486	650.9920 Construction Staking Slope Stakes	76,340.000 LF	_____.	_____.
0488	652.0225 Conduit Rigid Nonmetallic Schedule 40 2-Inch	4,935.000 LF	_____.	_____.



Proposal Schedule of Items

Proposal ID: 20210511016 Project(s): 1146-75-72

Federal ID(s): WISC 2021307

SECTION: 0001 Contract Items

Alt Set ID: Alt Mbr ID:

Proposal Line Number	Item ID Description	Approximate Quantity and Units	Unit Price	Bid Amount
0490	652.0235 Conduit Rigid Nonmetallic Schedule 40 3-Inch	500.000 LF	_____.	_____.
0492	652.0615 Conduit Special 3-Inch	860.000 LF	_____.	_____.
0494	652.0800 Conduit Loop Detector	1,065.000 LF	_____.	_____.
0496	653.0164 Pull Boxes Non-Conductive 24x42-Inch	37.000 EACH	_____.	_____.
0498	654.0101 Concrete Bases Type 1	5.000 EACH	_____.	_____.
0500	654.0105 Concrete Bases Type 5	23.000 EACH	_____.	_____.
0502	654.0110 Concrete Bases Type 10	2.000 EACH	_____.	_____.
0504	654.0113 Concrete Bases Type 13	2.000 EACH	_____.	_____.
0506	654.0217 Concrete Control Cabinet Bases Type 9 Special	1.000 EACH	_____.	_____.
0508	654.0220 Concrete Control Cabinet Bases Type 10	2.000 EACH	_____.	_____.
0510	655.0230 Cable Traffic Signal 5-14 AWG	1,340.000 LF	_____.	_____.
0512	655.0240 Cable Traffic Signal 7-14 AWG	200.000 LF	_____.	_____.
0514	655.0260 Cable Traffic Signal 12-14 AWG	1,560.000 LF	_____.	_____.
0516	655.0305 Cable Type UF 2-12 AWG Grounded	990.000 LF	_____.	_____.
0518	655.0515 Electrical Wire Traffic Signals 10 AWG	1,410.000 LF	_____.	_____.
0520	655.0610 Electrical Wire Lighting 12 AWG	4,200.000 LF	_____.	_____.



Proposal Schedule of Items

Proposal ID: 20210511016 Project(s): 1146-75-72

Federal ID(s): WISC 2021307

SECTION: 0001 Contract Items

Alt Set ID: Alt Mbr ID:

Proposal Line Number	Item ID Description	Approximate Quantity and Units	Unit Price	Bid Amount
0522	655.0615 Electrical Wire Lighting 10 AWG	14,125.000 LF	_____.	_____.
0524	655.0700 Loop Detector Lead In Cable	4,390.000 LF	_____.	_____.
0526	655.0800 Loop Detector Wire	3,545.000 LF	_____.	_____.
0528	656.0200 Electrical Service Meter Breaker Pedestal (location) 01. STH 15 & Lily of the Valley Dr	LS	LUMP SUM	_____.
0530	656.0200 Electrical Service Meter Breaker Pedestal (location) 02. STH 15 & Old STH 15 East	LS	LUMP SUM	_____.
0532	656.0200 Electrical Service Meter Breaker Pedestal (location) 03. STH 15 & Old STH 15 West	LS	LUMP SUM	_____.
0534	657.0100 Pedestal Bases	5.000 EACH	_____.	_____.
0536	657.0255 Transformer Bases Breakaway 11 1/2-Inch Bolt Circle	23.000 EACH	_____.	_____.
0538	657.0322 Poles Type 5-Aluminum	23.000 EACH	_____.	_____.
0540	657.0350 Poles Type 10	2.000 EACH	_____.	_____.
0542	657.0360 Poles Type 13	2.000 EACH	_____.	_____.
0544	657.0420 Traffic Signal Standards Aluminum 13-FT	2.000 EACH	_____.	_____.
0546	657.0425 Traffic Signal Standards Aluminum 15-FT	2.000 EACH	_____.	_____.
0548	657.0430 Traffic Signal Standards Aluminum 10-FT	1.000 EACH	_____.	_____.
0550	657.0525 Monotube Arms 25-FT	2.000 EACH	_____.	_____.



Proposal Schedule of Items

Proposal ID: 20210511016 Project(s): 1146-75-72

Federal ID(s): WISC 2021307

SECTION: 0001 Contract Items

Alt Set ID: Alt Mbr ID:

Proposal Line Number	Item ID Description	Approximate Quantity and Units	Unit Price	Bid Amount
0552	657.0555 Monotube Arms 55-FT	2.000 EACH	_____.	_____.
0554	657.0710 Luminaire Arms Truss Type 4 1/2-Inch Clamp 12-FT	24.000 EACH	_____.	_____.
0556	657.0812 Luminaire Arms Steel 12-FT	4.000 EACH	_____.	_____.
0558	658.0173 Traffic Signal Face 3S 12-Inch	12.000 EACH	_____.	_____.
0560	658.0174 Traffic Signal Face 4S 12-Inch	4.000 EACH	_____.	_____.
0562	658.0416 Pedestrian Signal Face 16-Inch	2.000 EACH	_____.	_____.
0564	658.0500 Pedestrian Push Buttons	2.000 EACH	_____.	_____.
0566	658.5069 Signal Mounting Hardware (location) 01. STH 15 & Lily of the Valley Dr	LS	LUMP SUM	_____.
0568	659.1120 Luminaires Utility LED B	28.000 EACH	_____.	_____.
0570	690.0150 Sawing Asphalt	5,906.000 LF	_____.	_____.
0572	690.0250 Sawing Concrete	530.000 LF	_____.	_____.
0574	715.0415 Incentive Strength Concrete Pavement	36,500.000 DOL	1.00000	36,500.00
0576	715.0502 Incentive Strength Concrete Structures	5,820.000 DOL	1.00000	5,820.00
0578	715.0710 Optimized Aggregate Gradation Incentive	40,000.000 DOL	1.00000	40,000.00
0580	740.0440 Incentive IRI Ride	4,000.000 DOL	1.00000	4,000.00
0582	801.0117 Railroad Flagging Reimbursement	30,000.000 DOL	1.00000	30,000.00



Proposal Schedule of Items

Proposal ID: 20210511016 Project(s): 1146-75-72

Federal ID(s): WISC 2021307

SECTION: 0001 Contract Items

Alt Set ID: Alt Mbr ID:

Proposal Line Number	Item ID Description	Approximate Quantity and Units	Unit Price	Bid Amount
0584	999.2000.S Installing and Maintaining Bird Deterrent System	2.000 EACH	_____.	_____.
0586	ASP.1T0A On-the-Job Training Apprentice at \$5.00/HR	2,100.000 HRS	5.00000	10,500.00
0588	ASP.1T0G On-the-Job Training Graduate at \$5.00/HR	5,760.000 HRS	5.00000	28,800.00
0590	SPV.0035 Special 01. Roadway Embankment	319,783.000 CY	_____.	_____.
0592	SPV.0035 Special 02. Excavation Waste	54,994.000 CY	_____.	_____.
0594	SPV.0060 Special 01. Temporary Inlet Covers	10.000 EACH	_____.	_____.
0596	SPV.0060 Special 02. Inlets 2x2.5-FT, Special	2.000 EACH	_____.	_____.
0598	SPV.0060 Special 10. Reconstruct Sanitary Manholes	9.000 EACH	_____.	_____.
0600	SPV.0060 Special 11. Adjusting Sanitary Manhole Covers	9.000 EACH	_____.	_____.
0602	SPV.0060 Special 12. Adjust Fire Hydrants-Provide Extension	6.000 EACH	_____.	_____.
0604	SPV.0060 Special 13. Adjust Fire Hydrants-Remove Extension	5.000 EACH	_____.	_____.
0606	SPV.0060 Special 14. Adjusting Water Valve Boxes	33.000 EACH	_____.	_____.
0608	SPV.0060 Special 15. Salvage and Reinstall Hydrant Extensions	3.000 EACH	_____.	_____.
0610	SPV.0060 Special 16. Adjusting Water Service	1.000 EACH	_____.	_____.
0612	SPV.0075 Special 01. Street Sweeping	40.000 HRS	_____.	_____.



Proposal Schedule of Items

Proposal ID: 20210511016 Project(s): 1146-75-72

Federal ID(s): WISC 2021307

SECTION: 0001 Contract Items

Alt Set ID: Alt Mbr ID:

Proposal Line Number	Item ID Description	Approximate Quantity and Units	Unit Price	Bid Amount
0614	SPV.0085 Special 01. Low Maintenance Seed Mix	54.000 LB	_____.	_____.
0616	SPV.0090 Special 01. Culvert Pipe PVC 12-Inch	27.000 LF	_____.	_____.
0618	SPV.0090 Special 02. Pipe Arch Corrugated Steel Aluminum Coated 87x63-Inch	28.000 LF	_____.	_____.
0620	SPV.0090 Special 04. Pipe Underdrain Railroad 6-Inch	350.000 LF	_____.	_____.
0622	SPV.0105 Special 01. Temporary Water Diversion C-44-125	LS	LUMP SUM	_____.
0624	SPV.0105 Special 02. Temporary Water Diversion C-44-128	LS	LUMP SUM	_____.
0626	SPV.0105 Special 03. Salvage and Reinstall Spillway Blocks	LS	LUMP SUM	_____.
0628	SPV.0180 Special 01. Preparing Topsoil for Lawn Type Turf	32,600.000 SY	_____.	_____.
0630	SPV.0195 Special 01. Coarse Aggregate Size No. 1 for AOP Box Culvert	36.000 TON	_____.	_____.
0632	SPV.0195 Special 02. Shot Rock	2,000.000 TON	_____.	_____.
0634	204.9060.S Removing (item description) 01. Light Pole	1.000 EACH	_____.	_____.
0636	204.9060.S Removing (item description) 02. Sign	1.000 EACH	_____.	_____.
0638	415.0210 Concrete Pavement Gaps	13.000 EACH	_____.	_____.
0640	650.6500 Construction Staking Structure Layout (structure) 03. S-44-115	LS	LUMP SUM	_____.



Proposal Schedule of Items

Proposal ID: 20210511016 Project(s): 1146-75-72

Federal ID(s): WISC 2021307

SECTION: 0001 Contract Items

Alt Set ID: Alt Mbr ID:

Proposal Line Number	Item ID Description	Approximate Quantity and Units	Unit Price	Bid Amount
0642	650.6500 Construction Staking Structure Layout (structure) 04. S-44-116	LS	LUMP SUM	_____.
		Section: 0001	Total:	_____.
			Total Bid:	_____.

