



## Wisconsin Department of Transportation

---

October 26, 2021

**Division of Transportation Systems  
Development**

Bureau of Project Development  
4822 Madison Yards Way, 4<sup>th</sup> Floor South  
Madison, WI 53705

Telephone: (608) 266-1631  
Facsimile (FAX): (608) 266-8459

### NOTICE TO ALL CONTRACTORS:

**Proposal #10: 2365-07-70, WISC 2022008**  
**W Grange Avenue**  
**Bridge Over CP RR B-40-0500**  
**Local Street**  
**Milwaukee County**

### Letting of November 9, 2021

This is Addendum No. 01, which provides for the following:

#### Plan Sheets:

Revised Plan Sheets	
Plan Sheet	Plan Sheet Title (brief description of changes to sheet)
90	Structure B-40-500 Deck Plan

The responsibility for notifying potential subcontractors and suppliers of these changes remains with the prime contractor.

Sincerely,

*Mike Coleman*

Proposal Development Specialist  
Proposal Management Section

END OF ADDENDUM

STATE PROJECT NUMBER  
**2365 - 07 - 70**

**Addendum No. 01**  
**ID 2365-07-70**  
**Revised Sheet 90**  
**October 26 2021**

*[Signature]*  
**10/21/21**



**8**

NO.	DATE	REVISION	BY
1	10/20/21	ADDENDUM #1	J.P.H.

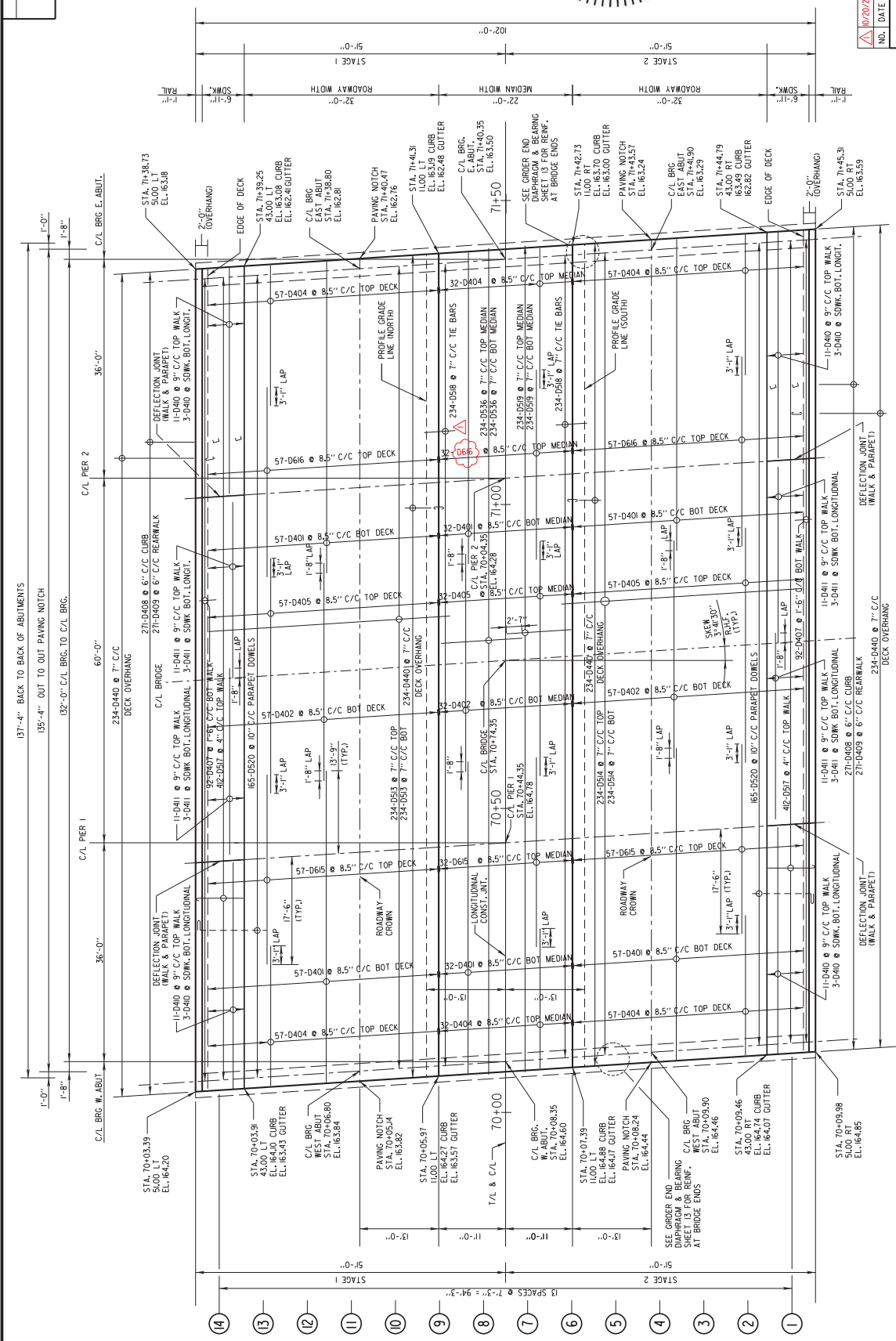
STATE OF WISCONSIN  
DEPARTMENT OF TRANSPORTATION

**STRUCTURE B-40-500**

DRAWN BY: *[Signature]* R.A.M.S.  
CHECKED BY: *[Signature]* H.O.

**DECK PLAN**

SHEET **8** OF 20



**NOTE:**  
UTILITIES NOT SHOWN FOR CLARITY  
OFFSET UPPER AND LOWER STEEL LAYERS BY 1/2 BAR SPACING  
BOTTOM STEEL CLEARANCE = 28"

**DECK PLAN**

**8**