



Wisconsin Department of Transportation

Division of Transportation Systems Development

Bureau of Project Development
4822 Madison Yards Way, 4th Floor South
Madison, WI 53705

December 13, 2021

Telephone: (608) 266-1631
Facsimile (FAX): (608) 266-8459

NOTICE TO ALL CONTRACTORS:

<p>Proposal #21: 6995-0013, WISC 2022 081 C Beaver Dam, East Davis Street S Spring Street – S University Ave Local Street Dodge County</p>	<p>6995-00-14 C Bever Dam, East Davis Street S Spring Street – S University Ave Local Street Dodge County</p>
---	--

Letting of December 14, 2021

This is Addendum No. 01, which provides for the following:

Schedule of Items:

Revised Bid Item Quantities					
Bid Item	Item Description	Unit	Old Quantity	Revised Quantity	Proposal Total
601.0409	Concrete Curb and Gutter 30-Inch Type A	LF	525	4,020	4,545
650.5500	Construction Staking Curb Gutter and Curb & Gutter	LF	885	-525	360

Deleted Bid Item Quantities					
Bid Item	Item Description	Unit	Old Quantity	Revised Quantity	Proposal Total
601.0452	Concrete Curb and Gutter Integral 30-Inch Type D	LF	4,020	-4,020	0

Plan Sheets:

Revised Plan Sheets	
Plan Sheet	Plan Sheet Title (brief description of changes to sheet)
4	Updated Typical Section to change from integral curb and gutter to traditional
12-15	Updated Paving Grades to change from integral curb and gutter to traditional
54	Updated MQs to reflect change from integral curb and gutter to traditional

Schedule of Items

Attached, dated December 13, 2021, are the revised Schedule of Items Pages 1 – 12.

Plan Sheets

The following 8½ x 11-inch sheets are attached and made part of the plans for this proposal:

Revised: 4, 12-15 and 54.

The responsibility for notifying potential subcontractors and suppliers of these changes remains with the prime contractor.

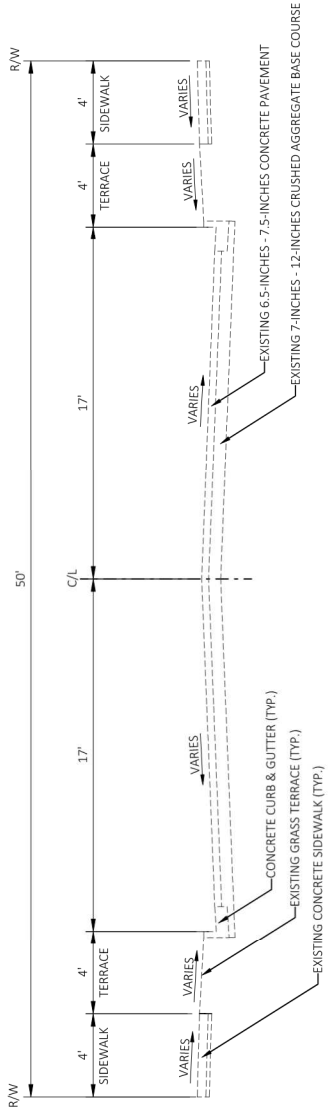
Sincerely,

Mike Coleman

Proposal Development Specialist
Proposal Management Section

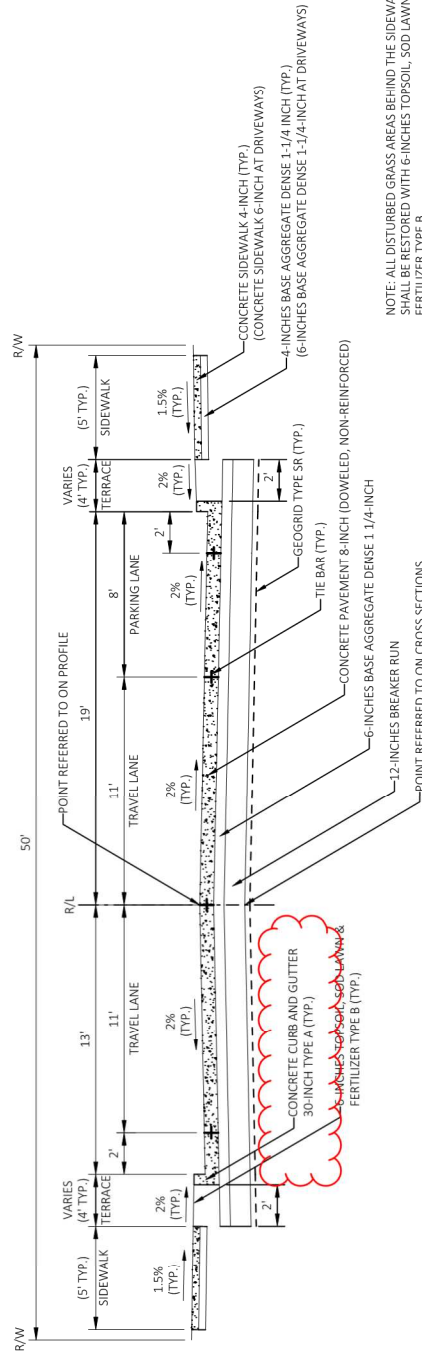
END OF ADDENDUM

Addendum No. 01
 ID 6995-00-13
 Revised Sheet 4
 December 13, 2021



EXISTING TYPICAL SECTION - EAST DAVIS STREET

S. SPRING STREET - S. UNIVERSITY AVENUE
 (STA. 22+73.13 - STA. 44+84.34)

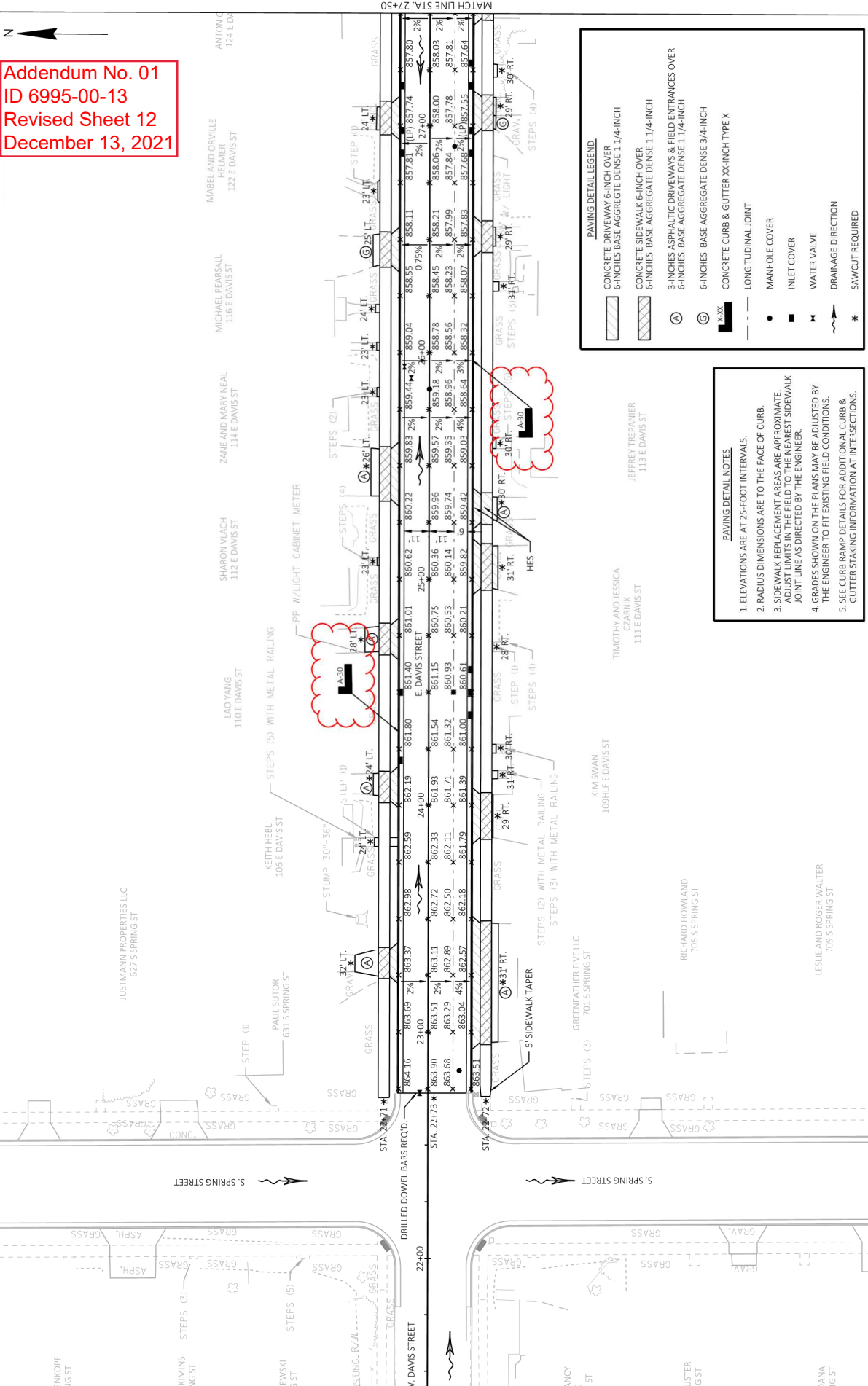


PROPOSED TYPICAL SECTION - EAST DAVIS STREET

S. SPRING STREET - S. UNIVERSITY AVENUE
 (STA. 22+73.13 - STA. 44+84.34)

PROJECT NO: 6995-00-13	COUNTY: DODGE	TYPICAL SECTIONS	SHEET 4
<small>FILE NAME: \\MSKAFS.COM\PROJECTS\00218\00218\45\CADD - GENERAL\CADD - E. DAVIS STREET - STP URBAN\SHETS\PLAN\20301-TS.DWG</small>	<small>LOT DATE: 12/10/2021 8:41 AM</small>	<small>LOT BY: JASON DOLENS</small>	<small>LOT SCALE: 1:6</small>
<small>WISDOT/CADD SHEET 42</small>			

Addendum No. 01
 ID 6995-00-13
 Revised Sheet 12
 December 13, 2021



PAVING DETAIL LEGEND

- CONCRETE DRIVEWAY 6-INCH OVER 6-INCHES BASE AGGREGATE DENSE 1 1/4-INCH
- CONCRETE SIDEWALK 6-INCH OVER 6-INCHES BASE AGGREGATE DENSE 1 1/4-INCH
- 3-INCHES ASPHALTIC DRIVEWAYS & FIELD ENTRANCES OVER 6-INCHES BASE AGGREGATE DENSE 1 1/4-INCH
- 6-INCHES BASE AGGREGATE DENSE 3/4-INCH
- CONCRETE CURB & GUTTER XX-INCH TYPE X
- LONGITUDINAL JOINT
- MANHOLE COVER
- INLET COVER
- WATER VALVE
- DRAINAGE DIRECTION
- SAWCUT REQUIRED

PAVING DETAIL NOTES

- ELEVATIONS ARE AT 25-FOOT INTERVALS.
- RADIUS DIMENSIONS ARE TO THE FACE OF CURB.
- SIDEWALK REPLACEMENT AREAS ARE APPROXIMATE. ADJUST LIMITS IN THE FIELD TO THE NEAREST SIDEWALK JOINT LINE AS DIRECTED BY THE ENGINEER.
- GRADES SHOWN ON THE PLANS MAY BE ADJUSTED BY THE ENGINEER TO FIT EXISTING FIELD CONDITIONS.
- SEE CURB RAMP DETAILS FOR ADDITIONAL CURB & GUTTER STAKING INFORMATION AT INTERSECTIONS.

PAVING DETAIL LEGEND

- CONCRETE DRIVEWAY 6-INCH OVER 6-INCHES BASE AGGREGATE DENSE 1 1/4-INCH
- CONCRETE SIDEWALK 6-INCH OVER 6-INCHES BASE AGGREGATE DENSE 1 1/4-INCH
- 3-INCHES ASPHALTIC DRIVEWAYS & FIELD ENTRANCES OVER 6-INCHES BASE AGGREGATE DENSE 1 1/4-INCH
- 6-INCHES BASE AGGREGATE DENSE 3/4-INCH CONCRETE CURB & GUTTER XX-INCH TYPE X

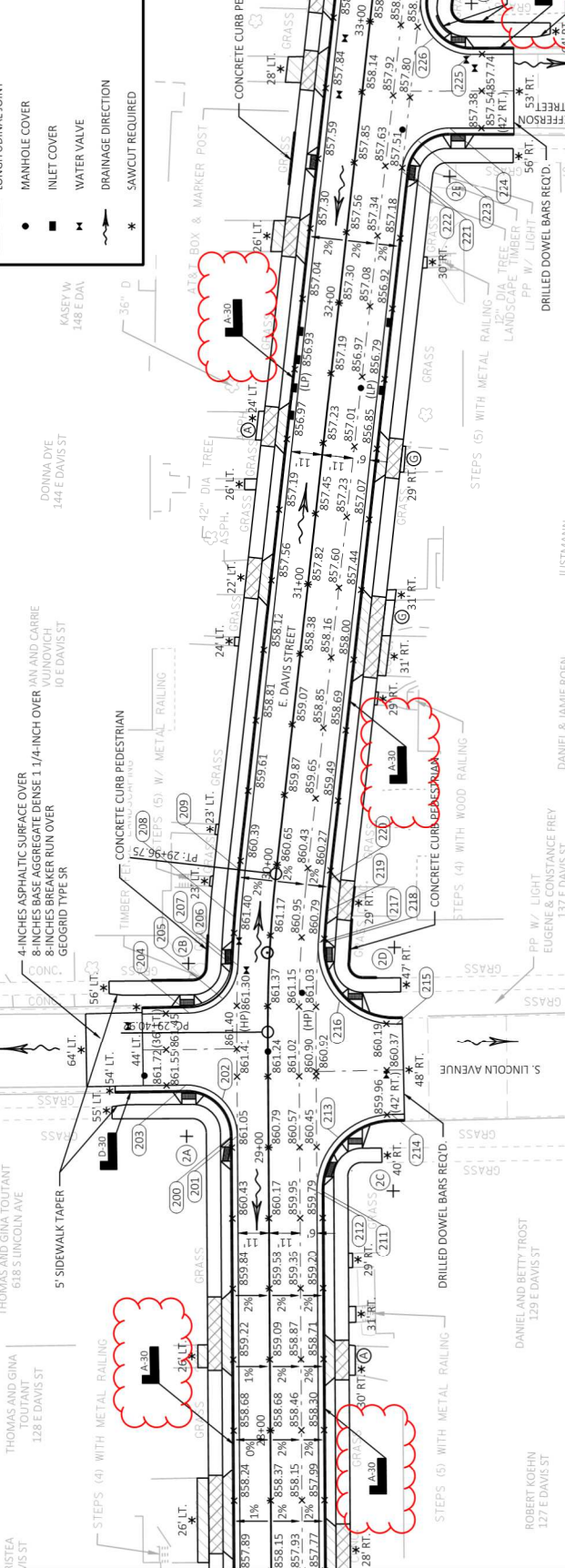
LONGITUDINAL JOINT

- MANHOLE COVER
- INLET COVER
- WATER VALVE
- DRAINAGE DIRECTION
- SAWCUT REQUIRED

- PAVING DETAIL NOTES:**
- ELEVATIONS ARE AT 25-FOOT INTERVALS.
 - RADIUS DIMENSIONS ARE TO THE FACE OF CURB.
 - SIDEWALK REPLACEMENT AREAS ARE APPROXIMATE. ADJUST LIMITS IN THE FIELD TO THE NEAREST SIDEWALK JOINT LINE AS DIRECTED BY THE ENGINEER.
 - GRADES SHOWN ON THE PLANS MAY BE ADJUSTED BY THE ENGINEER TO FIT EXISTING FIELD CONDITIONS.
 - SEE CURB RAMP DETAILS FOR ADDITIONAL CURB & GUTTER STAKING INFORMATION AT INTERSECTIONS.

CURB & GUTTER RADIUS POINT TABLE

POINT NUMBER	RADIUS	STATION	OFFSET	NORTHING	EASTING
2A	16.0'	29+04.10	29.00' LT	720494.73	848264.35
2B	15.5'	29+63.90	28.50' LT	720494.08	848325.51
2C	25.0'	28+84.34	44.00' RT	72021.60	84845.10
2D	25.0'	29+73.44	44.00' RT	72021.20	848331.20
2E	15.0'	32+48.83	34.00' RT	720401.87	848603.97
2F	16.0'	33+10.28	35.00' RT	720394.17	848664.94



CURB & GUTTER POINT TABLE

POINT NUMBER	DESCRIPTION	STATION	OFFSET	ELEVATION	NORTHING	EASTING
200	END INTEGRAL	29+04.10	13.00' LT	858.63	720444.26	848355.03
201	PC/BEGIN GUTTER	29+04.10	11.00' LT	861.10	720476.73	848264.47
202	MID PT.	29+16.85	16.30' LT	861.32	720482.13	848277.19
203	PT	29+22.10	29.08' LT	861.47	720494.94	848282.34
204	PC	29+47.38	27.74' LT	861.37	720493.74	848308.01
205	MID PT.	29+52.29	15.90' LT	861.25	720481.84	848313.01
206	PT/END GUTTER	29+63.90	11.00' LT	861.18	720476.60	848324.79
207	PC	29+63.90	13.00' LT	861.16	720478.60	848324.88
208	MID PT.	29+80.33	13.00' LT	860.83	720477.62	848341.72
209	PT	29+96.75	13.00' LT	860.48	720476.07	848358.52

CURB & GUTTER POINT TABLE

POINT NUMBER	DESCRIPTION	STATION	OFFSET	ELEVATION	NORTHING	EASTING
210	PC	33+46.12	13.00' LT	858.63	720437.98	848705.80
211	END INTEGRAL	28+84.34	19.00' RT	860.02	720446.59	848244.92
212	PC/BEGIN GUTTER	28+84.34	17.00' RT	860.06	720448.59	848244.91
213	MID PT.	29+03.28	24.76' RT	860.38	720440.97	848263.91
214	PT	29+11.33	43.57' RT	859.93	720422.21	848272.09
215	PC	29+43.70	45.51' RT	860.10	720420.40	848304.21
216	MID PT.	29+52.42	25.32' RT	860.67	720440.62	848312.44
217	PT/END GUTTER	29+73.44	17.00' RT	860.85	720448.16	848332.84
218	PC/BEGIN INTEGRAL	29+73.44	19.00' RT	860.81	720446.16	848332.72
219	MID PT.	29+85.09	19.00' RT	860.61	720445.34	848343.89

CURB & GUTTER POINT TABLE

POINT NUMBER	DESCRIPTION	STATION	OFFSET	ELEVATION	NORTHING	EASTING
220	PT	29+96.75	19.00' RT	860.36	720444.26	848355.03
221	END INTEGRAL	32+48.83	19.00' RT	857.46	720416.78	84865.60
222	PC/BEGIN GUTTER	32+48.83	17.00' RT	857.50	720418.76	84865.82
223	MID PT.	32+60.18	21.34' RT	857.53	720413.21	848616.63
224	PT	32+65.73	32.15' RT	857.45	720401.87	848620.97
225	PC	32+92.40	37.04' RT	857.57	720394.10	848652.90
226	MID PT.	32+96.85	23.01' RT	857.90	720407.55	848652.90
227	PT/END GUTTER	33+10.28	17.00' RT	858.21	720412.07	848656.91
228	BEGIN INTEGRAL	33+10.28	19.00' RT	858.17	720410.08	848656.69
229	PC	33+46.12	19.00' RT	858.64	720406.17	848732.31

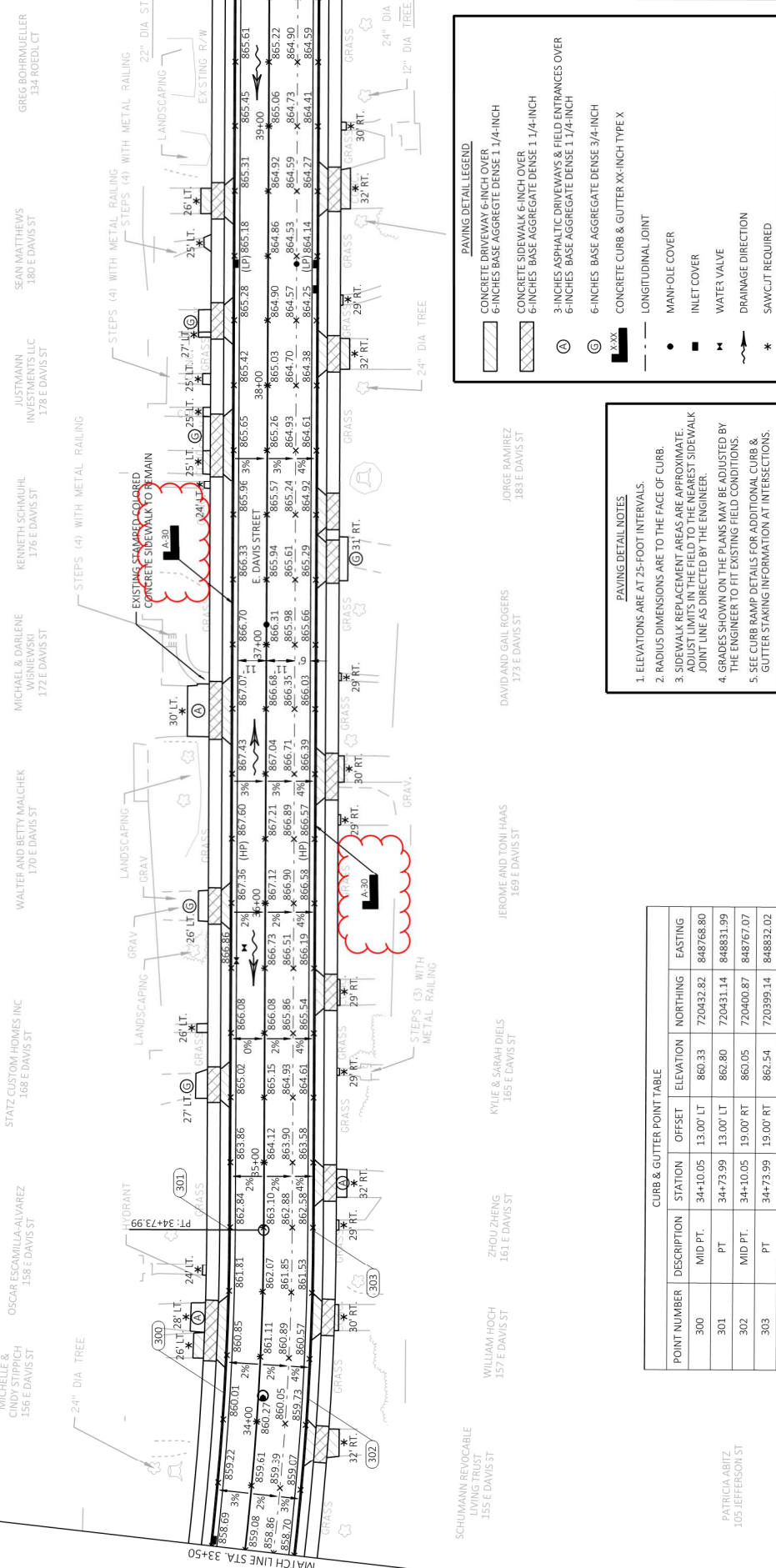
PROJECT NO: 6995-00-13
HWY: E. DAVIS STREET
COUNTY: DODGE
PAVING DETAILS
SHEET 13

FILE NAME: \\MSKPS.COM\PROJECT\000218\00218\CADD - GENERAL\CADD - E. DAVIS STREET - STP URBAN\SHEETS\PLAN\2101-PO.DWG
 LAYOUT NAME: 02101.pd
 PLOT DATE: 12/10/2021 9:53 AM
 PLOT BY: JASON DOLENS
 PLOT NAME: 1 IN=40 FT
 PLOT SCALE: 1 IN=40 FT
 WISDOT/CADD SHEET 42

Addendum No. 01
ID 6995-00-13
Revised Sheet 14
December 13, 2021

2

2



PAVING DETAIL LEGEND

- CONCRETE DRIVEWAY 6-INCH OVER 6-INCHES BASE AGGREGATE DENSE 1 1/4-INCH
- CONCRETE SIDEWALK 6-INCH OVER 6-INCHES BASE AGGREGATE DENSE 1 1/4-INCH
- 3-INCHES ASPHALTIC DRIVEWAYS & FIELD ENTRANCES OVER 6-INCHES BASE AGGREGATE DENSE 1 1/4-INCH
- 6-INCHES BASE AGGREGATE DENSE 3/4-INCH
- CONCRETE CURB & GUTTER XX-INCH TYPE X
- LONGITUDINAL JOINT
- MANHOLE COVER
- INLET COVER
- WATER VALVE
- DRAINAGE DIRECTION
- SAWCUT REQUIRED

PAVING DETAIL NOTES

1. ELEVATIONS ARE AT 25-FOOT INTERVALS.
2. RADIUS DIMENSIONS ARE TO THE FACE OF CURB.
3. SIDEWALK REPLACEMENT AREAS ARE APPROXIMATE. ADJUST LIMITS IN THE FIELD TO THE NEAREST SIDEWALK JOINT LINE AS DIRECTED BY THE ENGINEER.
4. GRADES SHOWN ON THE PLANS MAY BE ADJUSTED BY THE ENGINEER TO FIT EXISTING FIELD CONDITIONS.
5. SEE CURB RAMP DETAILS FOR ADDITIONAL CURB & GUTTER STAKING INFORMATION AT INTERSECTIONS.

CURB & GUTTER POINT TABLE

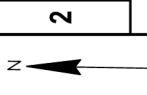
POINT NUMBER	DESCRIPTION	STATION	OFFSET	ELEVATION	NORTHING	EASTING
300	MID PT.	34+10.05	13.00' LT	860.33	720432.82	848768.80
301	PT	34+73.99	13.00' LT	862.80	720431.14	848831.99
302	MID PT.	34+10.05	19.00' RT	860.05	720400.87	848767.07
303	PT	34+73.99	19.00' RT	862.54	720399.14	848832.02

PROJECT NO: 6995-00-13 **COUNTY:** DODGE **PAVING DETAILS** **SHEET 14**

FILE NAME: \\WSKAFS.COM\PROJECT\000218\00218045\CADD - GENERAL\CADD - E. DAVIS STREET - STP URBAN\SHEETS\PLAN\021201-PO.DWG **PLOT DATE:** 12/10/2021 9:53 AM **PLOT NAME:** JASON DOLENS **PLOT SCALE:** 1 IN=40 FT **WISDOT/CADD SHEET 42**

PAVING DETAILS **HWY:** E. DAVIS STREET **PROJECT NO:** 6995-00-13 **COUNTY:** DODGE **SHEET 14**

Addendum No. 01
 ID 6995-00-13
 Revised Sheet 15
 December 13, 2021

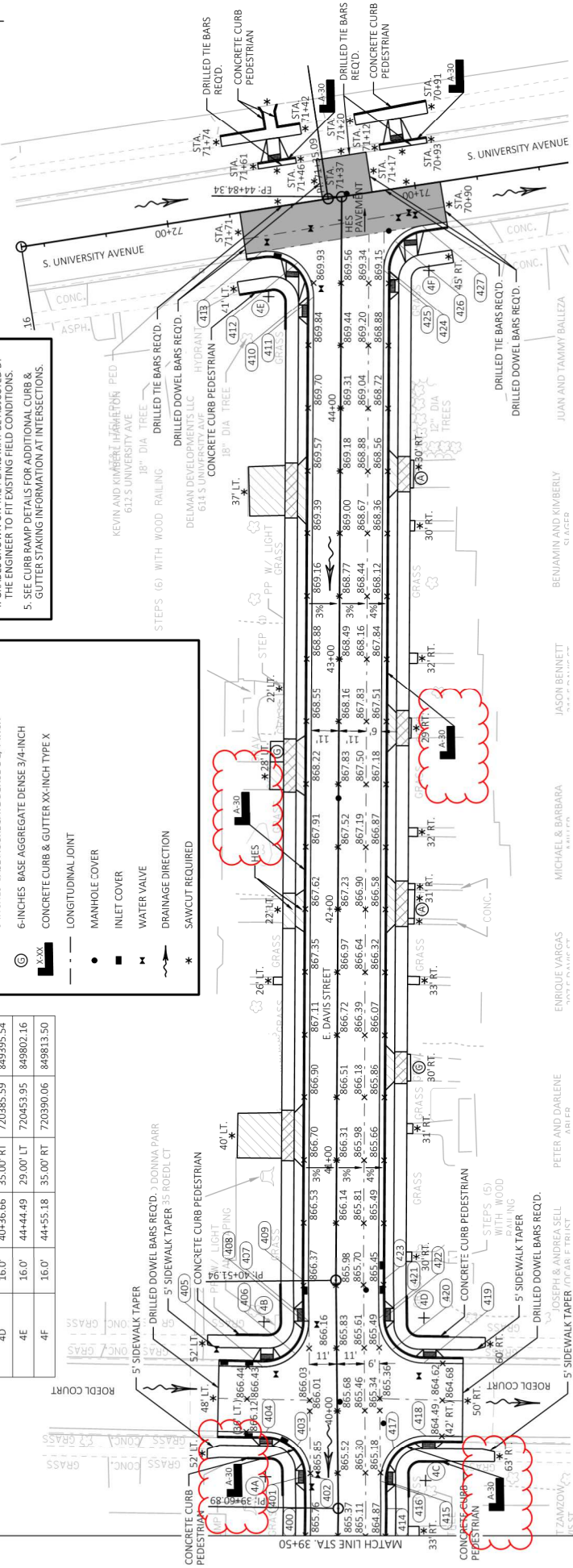


- PAVING DETAIL NOTES**
- ELEVATIONS ARE AT 25-FOOT INTERVALS.
 - RADIUS DIMENSIONS ARE TO THE FACE OF CURB.
 - SIDEWALK REPLACEMENT AREAS ARE APPROXIMATE. ADJUST LIMITS IN THE FIELD TO THE NEAREST SIDEWALK JOINT LINE AS DIRECTED BY THE ENGINEER.
 - GRADES SHOWN ON THE PLANS MAY BE ADJUSTED BY THE ENGINEER TO FIT EXISTING FIELD CONDITIONS.
 - SEE CURB BUMP DETAILS FOR ADDITIONAL CURB & GUTTER STAKING INFORMATION AT INTERSECTIONS.

- PAVING DETAIL LEGEND**
- CONCRETE DRIVEWAY 6-INCH OVER
 - 6-INCHES BASE AGGREGATE DENSE 1 1/4-INCH
 - CONCRETE SIDEWALK 6-INCH OVER
 - 6-INCHES BASE AGGREGATE DENSE 1 1/4-INCH
 - 3-INCHES ASPHALTIC DRIVEWAYS & FIELD ENTRANCES OVER
 - 6-INCHES BASE AGGREGATE DENSE 1 1/4-INCH
 - 6-INCHES BASE AGGREGATE DENSE 3/4-INCH
 - CONCRETE CURB & GUTTER XX-INCH TYPE X
 - LONGITUDINAL JOINT
 - MANHOLE COVER
 - INLET COVER
 - WATER VALVE
 - DRAINAGE DIRECTION
 - SAWCUT REQUIRED

CURB & GUTTER RADIUS POINT TABLE

POINT NUMBER	RADIUS	STATION	OFFSET	NORTHING	EASTING
4A	16.0'	39+73.89	29.00' LT	7204747.95	8493311.15
4B	16.0'	40+35.84	29.00' LT	7204495.55	8493933.08
4C	16.0'	39+71.66	35.00' RT	7203833.92	8493330.57
4D	16.0'	40+36.66	35.00' RT	7203985.59	8493955.54
4E	16.0'	44+44.49	29.00' LT	7204533.95	8498021.16
4F	16.0'	44+55.18	35.00' RT	7203900.06	8498133.50



CURB & GUTTER POINT TABLE

POINT NUMBER	DESCRIPTION	STATION	OFFSET	ELEVATION	NORTHING	EASTING
420	MID PT.	40+24.07	22.13' RT	865.30	7203988.13	849382.63
421	PT/END GUTTER	40+36.66	17.00' RT	865.56	720403.58	849395.08
422	BEGIN INTEGRAL	40+36.66	19.00' RT	865.52	720401.58	849395.13
423	BEND PT.	40+52.08	19.00' RT	865.44	720401.97	849410.26
424	END INTEGRAL	44+55.18	19.00' RT	869.21	720406.06	849813.31
425	PC/BEGIN GUTTER	44+55.18	17.00' RT	869.25	720408.06	849813.31
426	MID PT.	44+66.89	21.33' RT	869.01	720403.85	849825.06
427	PT	44+72.96	32.23' RT	868.52	720393.01	849831.25

CURB & GUTTER POINT TABLE

POINT NUMBER	DESCRIPTION	STATION	OFFSET	ELEVATION	NORTHING	EASTING
410	END INTEGRAL	44+44.49	13.00' LT	870.10	720437.95	849802.32
411	PC/BEGIN GUTTER	44+44.49	11.00' LT	869.89	720435.95	849802.34
412	MID PT.	44+58.16	17.29' LT	870.01	720442.37	849815.94
413	BEND PT.	44+62.28	31.76' LT	870.43	720456.88	849819.92
414	BEND PT.	39+60.89	19.00' RT	865.04	720395.91	849330.16
415	END INTEGRAL	39+71.66	19.00' RT	865.12	720395.91	849330.16
416	PC/BEGIN GUTTER	39+71.66	17.00' RT	865.16	720401.91	849330.11
417	MID PT.	39+84.53	22.41' RT	865.03	720396.83	849343.11
418	MID PT.	39+89.65	35.40' RT	864.65	720383.98	849348.57
419	BEND PT.	40+18.66	34.59' RT	864.86	720385.53	849377.54

CURB & GUTTER POINT TABLE

POINT NUMBER	DESCRIPTION	STATION	OFFSET	ELEVATION	NORTHING	EASTING
400	BEND PT.	39+61.05	13.00' LT	865.82	720431.63	849318.73
401	END INTEGRAL	39+73.89	13.00' LT	865.91	720431.96	849331.56
402	PC/BEGIN GUTTER	39+73.89	11.00' LT	865.85	720429.96	849331.61
403	MID PT.	39+86.45	16.11' LT	865.93	720435.39	849344.04
404	PT	39+91.88	28.54' LT	866.01	720447.95	849344.04
405	PC	40+17.85	29.55' LT	866.38	720449.63	849375.08
406	MID PT.	40+23.92	16.47' LT	866.28	720436.68	849380.49
407	PT/END GUTTER	40+35.84	11.00' LT	866.23	720431.55	849393.55
408	BEGIN INTEGRAL	40+35.84	13.00' LT	866.29	720433.55	849393.49
409	BEND PT.	40+51.94	13.00' LT	866.38	720433.97	849409.69

PROJECT NO: 6995-00-13
HWY: E. DAVIS STREET
COUNTY: DODGE
PAVING DETAILS
SHEET 15

FILE NAME: \\MSKAFS\COMP\PROJECT\000218\00218\BMS\CADD - GENERAL\CADD - STP URBAN\SHETS\PLAN\0210-PO.DWG
 LAYOUT NAME: 021025.plt
 PLOT DATE: 12/10/2021 9:53 AM
 PLOT NAME: JASON DOLENS
 PLOT SCALE: 1 IN=40 FT
 WISDOT/CADD SHEET 42



Proposal Schedule of Items

Proposal ID: 20211214021 Project(s): 6995-00-13, 6995-00-14

Federal ID(s): WISC 2022081, N/A

SECTION: 0001

Roadway Items

Alt Set ID:

Alt Mbr ID:

Proposal Line Number	Item ID Description	Approximate Quantity and Units	Unit Price	Bid Amount
0002	201.0120 Clearing	114.000 ID	_____.	_____.
0004	201.0220 Grubbing	114.000 ID	_____.	_____.
0006	204.0100 Removing Concrete Pavement	9,613.000 SY	_____.	_____.
0008	204.0150 Removing Curb & Gutter	85.000 LF	_____.	_____.
0010	204.0155 Removing Concrete Sidewalk	2,115.000 SY	_____.	_____.
0012	204.0210 Removing Manholes	5.000 EACH	_____.	_____.
0014	204.0220 Removing Inlets	14.000 EACH	_____.	_____.
0016	204.0245 Removing Storm Sewer (size) 01. 12-Inch or Less	295.000 LF	_____.	_____.
0018	204.0245 Removing Storm Sewer (size) 02. 15-Inch	231.000 LF	_____.	_____.
0020	204.0245 Removing Storm Sewer (size) 03. 18-Inch	10.000 LF	_____.	_____.
0022	204.0245 Removing Storm Sewer (size) 04. 21-Inch	414.000 LF	_____.	_____.
0024	204.0245 Removing Storm Sewer (size) 05. 24-Inch	207.000 LF	_____.	_____.
0026	204.0245 Removing Storm Sewer (size) 06. 36-Inch	95.000 LF	_____.	_____.
0028	204.0280 Sealing Pipes	2.000 EACH	_____.	_____.
0030	205.0100 Excavation Common	7,720.000 CY	_____.	_____.



Proposal Schedule of Items

Proposal ID: 20211214021 Project(s): 6995-00-13, 6995-00-14

Federal ID(s): WISC 2022081, N/A

SECTION: 0001 Roadway Items

Alt Set ID: Alt Mbr ID:

Proposal Line Number	Item ID Description	Approximate Quantity and Units	Unit Price	Bid Amount
0032	213.0100 Finishing Roadway (project) 01. 6995-00-13	1.000 EACH	_____.	_____.
0034	305.0110 Base Aggregate Dense 3/4-Inch	16.000 TON	_____.	_____.
0036	305.0120 Base Aggregate Dense 1 1/4-Inch	4,180.000 TON	_____.	_____.
0038	310.0115 Base Aggregate Open-Graded	10.000 CY	_____.	_____.
0040	311.0110 Breaker Run	5,800.000 TON	_____.	_____.
0042	415.0080 Concrete Pavement 8-Inch	7,465.000 SY	_____.	_____.
0044	415.1080 Concrete Pavement HES 8-Inch	185.000 SY	_____.	_____.
0046	416.0160 Concrete Driveway 6-Inch	512.000 SY	_____.	_____.
0048	416.0260 Concrete Driveway HES 6-Inch	27.000 SY	_____.	_____.
0050	416.0610 Drilled Tie Bars	46.000 EACH	_____.	_____.
0052	416.0620 Drilled Dowel Bars	167.000 EACH	_____.	_____.
0054	455.0605 Tack Coat	3.000 GAL	_____.	_____.
0056	465.0105 Asphaltic Surface	13.000 TON	_____.	_____.
0058	465.0120 Asphaltic Surface Driveways and Field Entrances	16.000 TON	_____.	_____.
0060	520.8000 Concrete Collars for Pipe	6.000 EACH	_____.	_____.
0062	601.0409 Concrete Curb & Gutter 30-Inch Type A	4,545.000 LF	_____.	_____.



Proposal Schedule of Items

Proposal ID: 20211214021 Project(s): 6995-00-13, 6995-00-14

Federal ID(s): WISC 2022081, N/A

SECTION: 0001 Roadway Items

Alt Set ID: Alt Mbr ID:

Proposal Line Number	Item ID Description	Approximate Quantity and Units	Unit Price	Bid Amount
0064	601.0411 Concrete Curb & Gutter 30-Inch Type D	10.000 LF	_____.	_____.
0068	601.0600 Concrete Curb Pedestrian	350.000 LF	_____.	_____.
0070	602.0405 Concrete Sidewalk 4-Inch	19,480.000 SF	_____.	_____.
0072	602.0415 Concrete Sidewalk 6-Inch	4,195.000 SF	_____.	_____.
0074	602.0505 Curb Ramp Detectable Warning Field Yellow	260.000 SF	_____.	_____.
0076	608.0412 Storm Sewer Pipe Reinforced Concrete Class IV 12-Inch	163.000 LF	_____.	_____.
0078	608.0415 Storm Sewer Pipe Reinforced Concrete Class IV 15-Inch	20.000 LF	_____.	_____.
0080	608.0418 Storm Sewer Pipe Reinforced Concrete Class IV 18-Inch	57.000 LF	_____.	_____.
0082	608.0424 Storm Sewer Pipe Reinforced Concrete Class IV 24-Inch	233.000 LF	_____.	_____.
0084	608.0430 Storm Sewer Pipe Reinforced Concrete Class IV 30-Inch	261.000 LF	_____.	_____.
0086	608.3012 Storm Sewer Pipe Class III-A 12-Inch	155.000 LF	_____.	_____.
0088	608.3015 Storm Sewer Pipe Class III-A 15-Inch	8.000 LF	_____.	_____.
0090	608.3018 Storm Sewer Pipe Class III-A 18-Inch	292.000 LF	_____.	_____.
0092	608.3030 Storm Sewer Pipe Class III-A 30-Inch	167.000 LF	_____.	_____.
0094	608.3036 Storm Sewer Pipe Class III-A 36-Inch	94.000 LF	_____.	_____.



Proposal Schedule of Items

Proposal ID: 20211214021 Project(s): 6995-00-13, 6995-00-14

Federal ID(s): WISC 2022081, N/A

SECTION: 0001 Roadway Items

Alt Set ID: Alt Mbr ID:

Proposal Line Number	Item ID Description	Approximate Quantity and Units	Unit Price	Bid Amount
0096	608.6010 Storm Sewer Pipe Composite 10-Inch	13.000 LF	_____.	_____.
0098	611.0530 Manhole Covers Type J	10.000 EACH	_____.	_____.
0100	611.0624 Inlet Covers Type H	27.000 EACH	_____.	_____.
0102	611.2004 Manholes 4-FT Diameter	2.000 EACH	_____.	_____.
0104	611.2005 Manholes 5-FT Diameter	6.000 EACH	_____.	_____.
0106	611.2006 Manholes 6-FT Diameter	3.000 EACH	_____.	_____.
0108	611.3004 Inlets 4-FT Diameter	3.000 EACH	_____.	_____.
0110	611.3230 Inlets 2x3-FT	26.000 EACH	_____.	_____.
0112	611.8110 Adjusting Manhole Covers	2.000 EACH	_____.	_____.
0114	611.8115 Adjusting Inlet Covers	1.000 EACH	_____.	_____.
0116	612.0106 Pipe Underdrain 6-Inch	254.000 LF	_____.	_____.
0118	612.0902.S Insulation Board Polystyrene (inch) 01.2-Inch	162.560 SY	_____.	_____.
0120	618.0100 Maintenance And Repair of Haul Roads (project) 01. 6995-00-13	1.000 EACH	_____.	_____.
0122	619.1000 Mobilization	1.000 EACH	_____.	_____.
0124	624.0100 Water	46.000 MGAL	_____.	_____.
0126	625.0100 Topsoil	2,200.000 SY	_____.	_____.



Proposal Schedule of Items

Proposal ID: 20211214021 Project(s): 6995-00-13, 6995-00-14

Federal ID(s): WISC 2022081, N/A

SECTION: 0001 Roadway Items

Alt Set ID: Alt Mbr ID:

Proposal Line Number	Item ID Description	Approximate Quantity and Units	Unit Price	Bid Amount
0128	628.1905 Mobilizations Erosion Control	12.000 EACH	_____.	_____.
0130	628.1910 Mobilizations Emergency Erosion Control	6.000 EACH	_____.	_____.
0132	628.7005 Inlet Protection Type A	1.000 EACH	_____.	_____.
0134	628.7020 Inlet Protection Type D	58.000 EACH	_____.	_____.
0136	628.7560 Tracking Pads	4.000 EACH	_____.	_____.
0138	629.0210 Fertilizer Type B	1.400 CWT	_____.	_____.
0140	631.0300 Sod Water	125.000 MGAL	_____.	_____.
0142	631.1000 Sod Lawn	2,200.000 SY	_____.	_____.
0144	634.0812 Posts Tubular Steel 2x2-Inch X 12-FT	4.000 EACH	_____.	_____.
0146	634.0814 Posts Tubular Steel 2x2-Inch X 14-FT	26.000 EACH	_____.	_____.
0148	634.0816 Posts Tubular Steel 2x2-Inch X 16-FT	2.000 EACH	_____.	_____.
0150	637.2210 Signs Type II Reflective H	79.830 SF	_____.	_____.
0152	637.2220 Signs Type II Reflective SH	13.240 SF	_____.	_____.
0154	637.2230 Signs Type II Reflective F	37.750 SF	_____.	_____.
0156	638.2602 Removing Signs Type II	28.000 EACH	_____.	_____.
0158	638.3000 Removing Small Sign Supports	27.000 EACH	_____.	_____.
0160	642.5001 Field Office Type B	1.000 EACH	_____.	_____.



Proposal Schedule of Items

Proposal ID: 20211214021 Project(s): 6995-00-13, 6995-00-14

Federal ID(s): WISC 2022081, N/A

SECTION: 0001 Roadway Items

Alt Set ID: Alt Mbr ID:

Proposal Line Number	Item ID Description	Approximate Quantity and Units	Unit Price	Bid Amount
0162	643.0300 Traffic Control Drums	4,000.000 DAY	_____.	_____.
0164	643.0410 Traffic Control Barricades Type II	3,024.000 DAY	_____.	_____.
0166	643.0420 Traffic Control Barricades Type III	5,160.000 DAY	_____.	_____.
0168	643.0705 Traffic Control Warning Lights Type A	10,596.000 DAY	_____.	_____.
0170	643.0715 Traffic Control Warning Lights Type C	4,000.000 DAY	_____.	_____.
0172	643.0900 Traffic Control Signs	16,586.000 DAY	_____.	_____.
0174	643.1000 Traffic Control Signs Fixed Message	84.000 SF	_____.	_____.
0176	643.1050 Traffic Control Signs PCMS	7.000 DAY	_____.	_____.
0178	643.5000 Traffic Control	1.000 EACH	_____.	_____.
0180	644.1410 Temporary Pedestrian Surface Asphalt	800.000 SF	_____.	_____.
0182	644.1420 Temporary Pedestrian Surface Plywood	800.000 SF	_____.	_____.
0184	644.1430 Temporary Pedestrian Surface Plate	800.000 SF	_____.	_____.
0186	644.1601 Temporary Pedestrian Curb Ramp	5,000.000 DAY	_____.	_____.
0188	644.1810 Temporary Pedestrian Barricade	1,500.000 LF	_____.	_____.
0190	645.0111 Geotextile Type DF Schedule A	141.000 SY	_____.	_____.
0192	645.0220 Geogrid Type SR	9,965.000 SY	_____.	_____.
0194	646.1020 Marking Line Epoxy 4-Inch	550.000 LF	_____.	_____.



Proposal Schedule of Items

Proposal ID: 20211214021 Project(s): 6995-00-13, 6995-00-14

Federal ID(s): WISC 2022081, N/A

SECTION: 0001

Roadway Items

Alt Set ID:

Alt Mbr ID:

Proposal Line Number	Item ID Description	Approximate Quantity and Units	Unit Price	Bid Amount
0196	646.6120 Marking Stop Line Epoxy 18-Inch	105.000 LF	_____.	_____.
0198	646.7420 Marking Crosswalk Epoxy Transverse Line 6-Inch	820.000 LF	_____.	_____.
0200	646.7520 Marking Crosswalk Epoxy Block Style 24-Inch	96.000 LF	_____.	_____.
0202	649.0150 Temporary Marking Line Removable Tape 4-Inch	500.000 LF	_____.	_____.
0204	650.4000 Construction Staking Storm Sewer	40.000 EACH	_____.	_____.
0206	650.4500 Construction Staking Subgrade	2,211.000 LF	_____.	_____.
0208	650.5500 Construction Staking Curb Gutter and Curb & Gutter	360.000 LF	_____.	_____.
0210	650.7000 Construction Staking Concrete Pavement	2,211.000 LF	_____.	_____.
0212	650.8500 Construction Staking Electrical Installations (project) 01. 6995-00-13	LS	LUMP SUM	_____.
0214	650.9000 Construction Staking Curb Ramps	26.000 EACH	_____.	_____.
0216	650.9910 Construction Staking Supplemental Control (project) 01. 6995-00-13	LS	LUMP SUM	_____.
0218	650.9920 Construction Staking Slope Stakes	2,211.000 LF	_____.	_____.
0220	652.0225 Conduit Rigid Nonmetallic Schedule 40 2-Inch	41.000 LF	_____.	_____.
0222	653.0135 Pull Boxes Steel 24x36-Inch	2.000 EACH	_____.	_____.
0224	690.0150 Sawing Asphalt	246.000 LF	_____.	_____.



Proposal Schedule of Items

Proposal ID: 20211214021 Project(s): 6995-00-13, 6995-00-14

Federal ID(s): WISC 2022081, N/A

SECTION: 0001 Roadway Items

Alt Set ID: Alt Mbr ID:

Proposal Line Number	Item ID Description	Approximate Quantity and Units	Unit Price	Bid Amount
0226	690.0250 Sawing Concrete	988.000 LF		
0228	715.0720 Incentive Compressive Strength Concrete Pavement	2,295.000 DOL	1.00000	2,295.00
0230	740.0440 Incentive IRI Ride	1,675.000 DOL	1.00000	1,675.00
0232	ASP.1T0A On-the-Job Training Apprentice at \$5.00/HR	2,000.000 HRS	5.00000	10,000.00
0234	ASP.1T0G On-the-Job Training Graduate at \$5.00/HR	1,200.000 HRS	5.00000	6,000.00
0236	SPV.0060 Special 01. Reconnect Storm Sewer Laterals	4.000 EACH		
0238	SPV.0060 Special 02. Concrete Pipe Support	2.000 EACH		
0240	SPV.0060 Special 03. Remove Ex. Sanitary Manhole	6.000 EACH		
0242	SPV.0060 Special 04. Remove Ex. Sanitary Vault Structure	1.000 EACH		
0244	SPV.0060 Special 05. Remove Ex. Water Valve Box	14.000 EACH		
0246	SPV.0060 Special 06. Remove Ex. Hydrant	6.000 EACH		
0248	SPV.0060 Special 07. Adjust Ex. Water Valve Box	4.000 EACH		
0250	SPV.0060 Special 08. Adjust Ex. Curb Stop Box	1.000 EACH		
0252	SPV.0060 Special 09. Sanitary Manhole (48 Inch)	3.000 EACH		
0254	SPV.0060 Special 10. Sanitary Manhole (60 Inch)	2.000 EACH		



Proposal Schedule of Items

Proposal ID: 20211214021 Project(s): 6995-00-13, 6995-00-14

Federal ID(s): WISC 2022081, N/A

SECTION: 0001 Roadway Items

Alt Set ID: Alt Mbr ID:

Proposal Line Number	Item ID Description	Approximate Quantity and Units	Unit Price	Bid Amount
0256	SPV.0060 Special 11. Sanitary Drop Manhole (48 Inch)	1.000 EACH	_____.	_____.
0258	SPV.0060 Special 12. Sanitary Drop Manhole (60 Inch)	1.000 EACH	_____.	_____.
0260	SPV.0060 Special 13. Sanitary MH Cover Type J-Special	7.000 EACH	_____.	_____.
0262	SPV.0060 Special 14. Connect to Existing Sanitary Sewer	6.000 EACH	_____.	_____.
0264	SPV.0060 Special 15. Sanitary WYE 30-Inch Main	17.000 EACH	_____.	_____.
0266	SPV.0060 Special 16. Sanitary WYE 24-Inch Main	41.000 EACH	_____.	_____.
0268	SPV.0060 Special 17. Sanitary Lateral Reconnection	58.000 EACH	_____.	_____.
0270	SPV.0060 Special 18. Water Valve & Box 6-Inch	6.000 EACH	_____.	_____.
0272	SPV.0060 Special 19. Water Valve & Box 8-Inch	12.000 EACH	_____.	_____.
0274	SPV.0060 Special 20. Water Valve & Box 10-Inch	2.000 EACH	_____.	_____.
0276	SPV.0060 Special 21. Fire Hydrant	6.000 EACH	_____.	_____.
0278	SPV.0060 Special 22. Cross 8"X8" Special	1.000 EACH	_____.	_____.
0280	SPV.0060 Special 23. Tees 8"x6"x8" Special	6.000 EACH	_____.	_____.
0282	SPV.0060 Special 24. Tees 8"x8"x8" Special	2.000 EACH	_____.	_____.
0284	SPV.0060 Special 25. Tees 10"x6"x10" Special	1.000 EACH	_____.	_____.



Proposal Schedule of Items

Proposal ID: 20211214021 Project(s): 6995-00-13, 6995-00-14

Federal ID(s): WISC 2022081, N/A

SECTION: 0001

Roadway Items

Alt Set ID:

Alt Mbr ID:

Proposal Line Number	Item ID Description	Approximate Quantity and Units	Unit Price	Bid Amount
0286	SPV.0060 Special 26. Tees 10"x10"x10" Special	2.000 EACH	_____.	_____.
0288	SPV.0060 Special 27. Bend 11.25-Degree 8-Inch Special	3.000 EACH	_____.	_____.
0290	SPV.0060 Special 28. Bend 11.25-Degree 10-Inch Special	1.000 EACH	_____.	_____.
0292	SPV.0060 Special 29. Bend 45-Degree 4-Inch Special	4.000 EACH	_____.	_____.
0294	SPV.0060 Special 30. Bend 45-Degree 6-Inch Special	6.000 EACH	_____.	_____.
0296	SPV.0060 Special 31. Bend 45-Degree 8-Inch Special	4.000 EACH	_____.	_____.
0298	SPV.0060 Special 32. Bend 45-Degree 10-Inch Special	4.000 EACH	_____.	_____.
0300	SPV.0060 Special 33. Bend 90-Degree 6-Inch Special	1.000 EACH	_____.	_____.
0302	SPV.0060 Special 34. Reducer 8"x4" Special	2.000 EACH	_____.	_____.
0304	SPV.0060 Special 35. Reducer 8"x6" Special	3.000 EACH	_____.	_____.
0306	SPV.0060 Special 36. Reducer 10"x8" Special	2.000 EACH	_____.	_____.
0308	SPV.0060 Special 37. Connect to Existing Watermain	9.000 EACH	_____.	_____.
0310	SPV.0060 Special 38. Corporation, Curb Stop & Box (Set)	58.000 EACH	_____.	_____.
0312	SPV.0060 Special 39. Water Service Reconnection	58.000 EACH	_____.	_____.



Proposal Schedule of Items

Proposal ID: 20211214021 Project(s): 6995-00-13, 6995-00-14

Federal ID(s): WISC 2022081, N/A

SECTION: 0001 Roadway Items

Alt Set ID: Alt Mbr ID:

Proposal Line Number	Item ID Description	Approximate Quantity and Units	Unit Price	Bid Amount
0314	SPV.0060 Special 40. Utility Line Opening (ULO)	15.000 EACH	_____.	_____.
0316	SPV.0060 Special 41. Inlet Cover Type Driveway Special	3.000 EACH	_____.	_____.
0318	SPV.0060 Special 42. Temporary Water Service Project 6995-00-14	1.000 EACH	_____.	_____.
0320	SPV.0060 Special 43. Abandon/Remove Sanitary Sewer Project 6995-00-14	1.000 EACH	_____.	_____.
0322	SPV.0060 Special 44. Abandon/Remove Water Main Project 6995-00-14	1.000 EACH	_____.	_____.
0324	SPV.0090 Special 01. Sanitary Sewer Pipe 8-Inch Special	50.000 LF	_____.	_____.
0326	SPV.0090 Special 02. Sanitary Sewer Pipe 10-Inch Special	70.000 LF	_____.	_____.
0328	SPV.0090 Special 03. Sanitary Sewer Pipe 24-Inch Special	1,570.000 LF	_____.	_____.
0330	SPV.0090 Special 04. Sanitary Sewer Pipe 30-Inch Special	660.000 LF	_____.	_____.
0332	SPV.0090 Special 05. Sanitary Lateral 6-Inch	1,470.000 LF	_____.	_____.
0334	SPV.0090 Special 06. Sanitary Sewer Televising	2,335.000 LF	_____.	_____.
0336	SPV.0090 Special 07. PVC Water Main 4-Inch Special	20.000 LF	_____.	_____.
0338	SPV.0090 Special 08. PVC Water Main 6-Inch Special	80.000 LF	_____.	_____.
0340	SPV.0090 Special 09. PVC Water Main 8-Inch Special	2,370.000 LF	_____.	_____.



Proposal Schedule of Items

Proposal ID: 20211214021 Project(s): 6995-00-13, 6995-00-14

Federal ID(s): WISC 2022081, N/A

SECTION: 0001 Roadway Items

Alt Set ID: Alt Mbr ID:

Proposal Line Number	Item ID Description	Approximate Quantity and Units	Unit Price	Bid Amount
0342	SPV.0090 Special 10. PVC Water Main 10-Inch Special	140.000 LF	_____.	_____.
0344	SPV.0090 Special 11. Water Service 1 to 2-Inch Special	1,540.000 LF	_____.	_____.
	Section: 0001		Total:	_____.
			Total Bid:	_____.