



Wisconsin Department of Transportation

Division of Transportation Systems Development

Bureau of Project Development
4822 Madison Yards Way, 4th Floor South
Madison, WI 53705

Telephone: (608) 266-1631
Facsimile (FAX): (608) 266-8459

December 9, 2021

NOTICE TO ALL CONTRACTORS:

Proposal #24: 1229-04-74, WISC 2022106
I-43 North South Freeway
W County Line Road Interchange
IH 43
Milwaukee and Ozaukee Counties

Letting of December 14, 2021

This is Addendum No. 03, which provides for the following:

Plan Sheets:

Added Plan Sheets	
Plan Sheet	Plan Sheet Title (brief description of why sheet was added)
966A-966B	SDD Rural Doweled Concrete Pavement
966C	Urban Doweled Concrete Pavement

Deleted Plan Sheets	
Plan Sheet	Plan Sheet Title (brief description of why sheet was added)
36	Construction Details (Removing HPC Pavement Joint Detail)
37	Construction Details (Removing HPC Pavement Joint Detail - Shoulders)

The responsibility for notifying potential subcontractors and suppliers of these changes remains with the prime contractor.

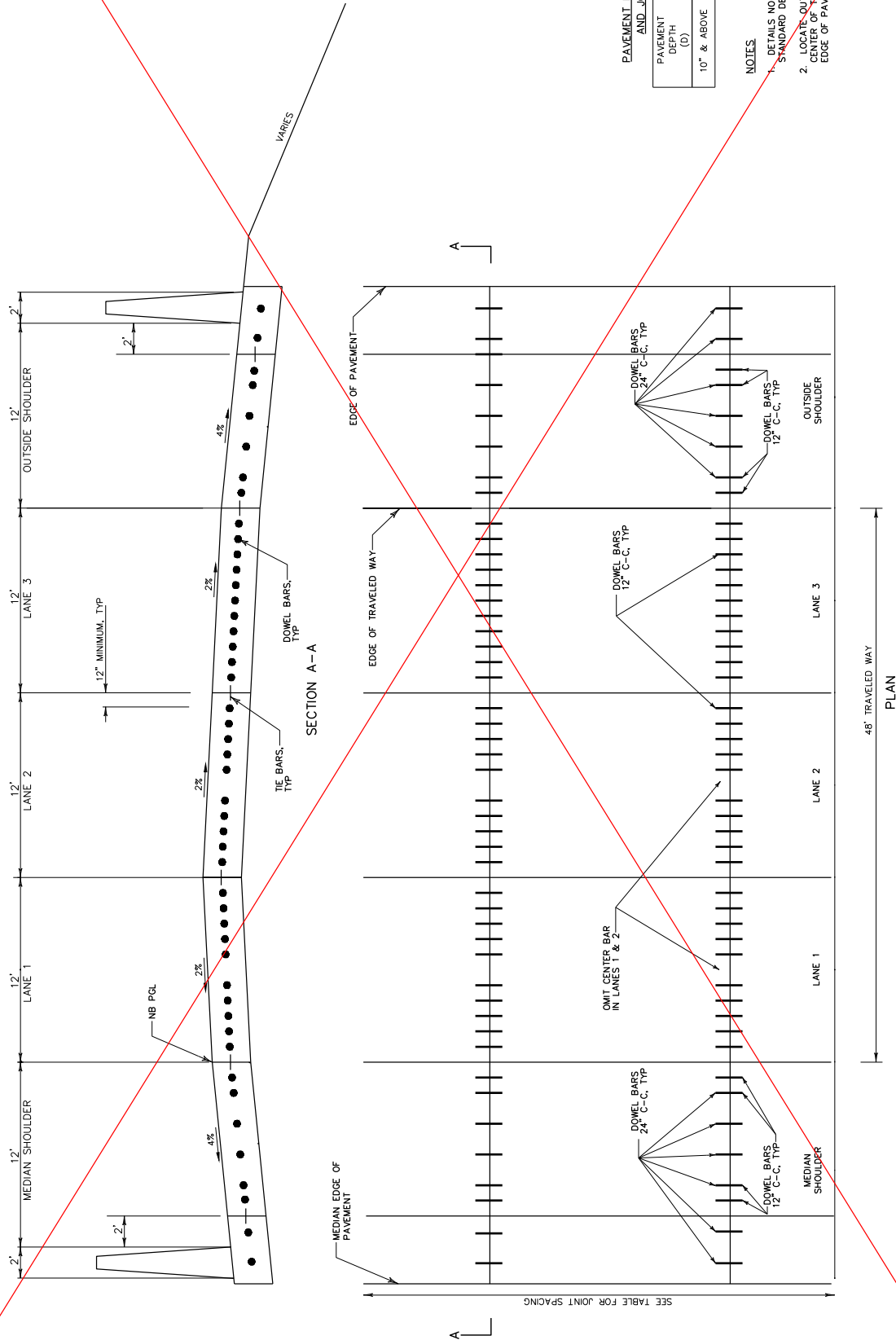
Sincerely,

Mike Coleman

Proposal Development Specialist
Proposal Management Section

END OF ADDENDUM

Addendum No. 03
ID 1229-04-74
Deleted Sheet 36
December 9, 2021



PAVEMENT DEPTH, DOWEL BAR SIZE AND JOINT SPACING TABLE

PAVEMENT DEPTH (D)	DOWEL BAR DIAMETER	CONTRACTION JOINT SPACING
10" & ABOVE	1 1/2"	15'

NOTES

1. DETAILS NOT SHOWN SHALL CONFORM TO STANDARD DETAIL DRAWINGS.
2. LOCATE OUTERMOST DOWEL BAR SO THAT THE CENTER OF THE BAR IS 12 INCHES FROM THE EDGE OF PAVEMENT OR LONGITUDINAL JOINT.

HPC PAVEMENT JOINT DETAIL

COUNTY: MILWAUKEE/OZAUKEE

HWY: IH 43

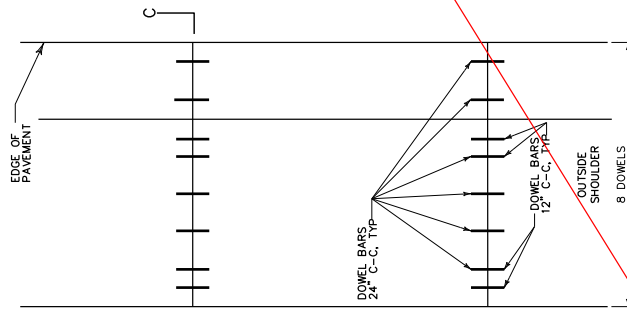
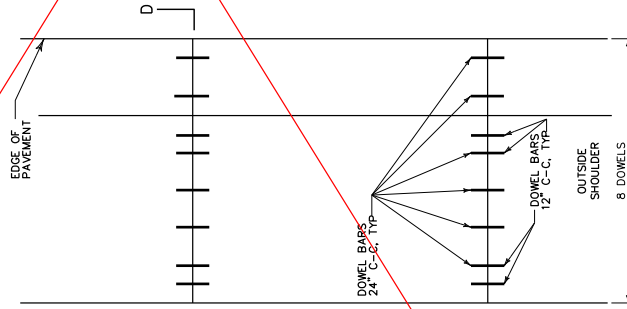
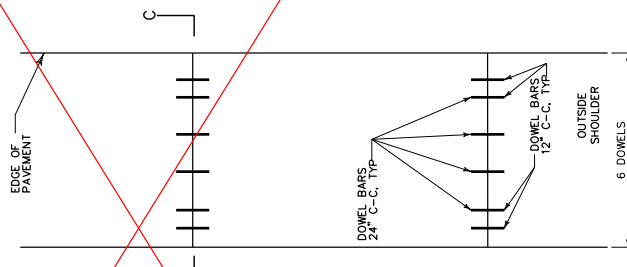
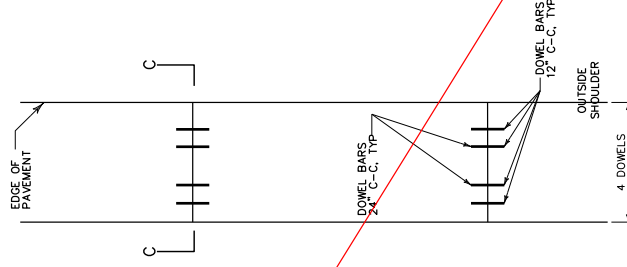
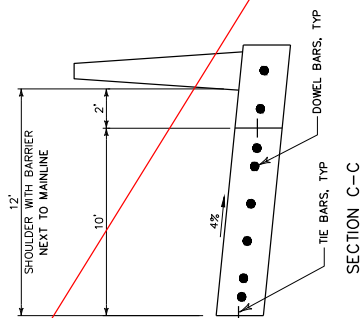
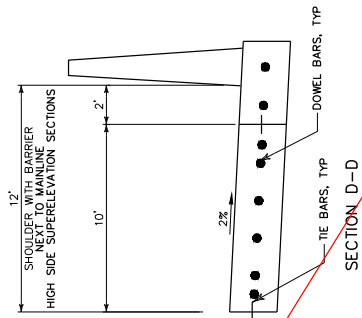
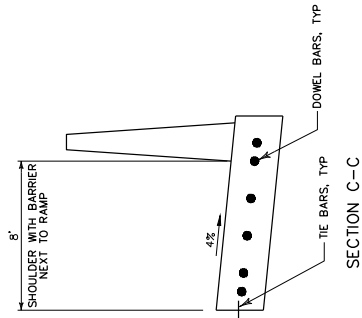
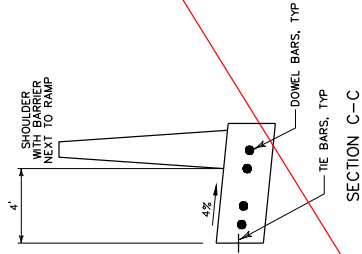
PROJECT NO: 1229-04-74

CONSTRUCTION DETAILS

SHEET 36

E

Addendum No. 03
 ID 1229-04-74
 Deleted Sheet 37
 December 9, 2021



PAVEMENT DEPTH, DOWEL BAR SIZE AND JOINT SPACING TABLE

PAVEMENT DEPTH (D)	DOWEL BAR DIAMETER	JOINT SPACING
7 1/2" < D < 10"	1 1/4"	15'
10" & ABOVE	1 1/2"	15'

- NOTES
- DETAILS NOT SHOWN SHALL CONFORM TO STANDARD DETAIL DRAWINGS.
 - LOCATE OUTERMOST DOWEL BAR SO THAT THE CENTER OF THE BAR IS 12 INCHES FROM THE EDGE OF PAVEMENT OR LONGITUDINAL JOINT.

HPC PAVEMENT JOINT DETAIL - SHOULDERS

COUNTY: MILWAUKEE/OZAUKEE

HWY: IH 43

PROJECT NO: 1229-04-74

SHEET 37

PLOT SCALE : 1:12.386F

PLOT NAME: CECELIA TICHELAR

CONSTRUCTION DETAILS

FLOT BY: MILWAUKEE/OZAUKEE

CONSTRUCTION DETAILS

FLOT DATE: 12/9/2021 10:00 AM

CONSTRUCTION DETAILS

FILE NAME: C:\CAD\DWG\PM\CRK\ASTE\GREATLAKES\02562502\002_CD.DWG

WISDOT/CADDIS SHEET 42

GENERAL NOTES

CONTRACTION JOINTS

CONSTRUCT TRANSVERSE CONTRACTION JOINTS NORMAL TO THE CENTERLINE. SHOW THE LOCATION OF CONTRACTION JOINTS THROUGH INTERSECTIONS ON THE PLANS OR AS DIRECTED BY THE ENGINEER.

INSTALL DOWEL BARS PARALLEL TO THE PAVEMENT CENTERLINE AND PAVEMENT SURFACE.

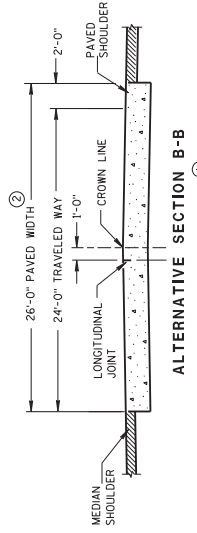
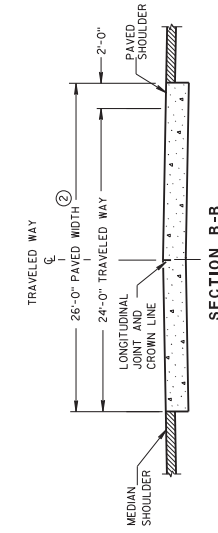
FOR PAVEMENT SLABS OF VARYING WIDTHS, LOCATE THE OUTER MOST DOWEL BAR SO THAT THE CENTER OF THE BAR IS A MINIMUM OF 6 INCHES AND A MAXIMUM OF 18 INCHES FROM THE FREE EDGE OF PAVEMENT.

CONSTRUCTION JOINTS

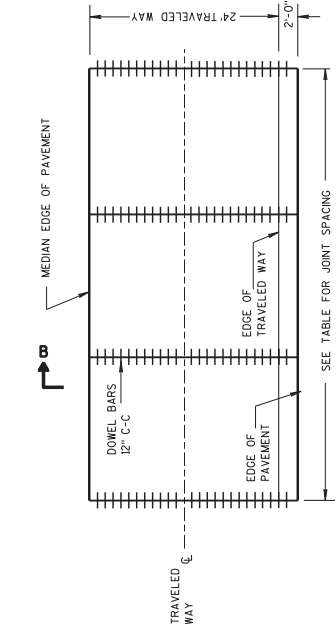
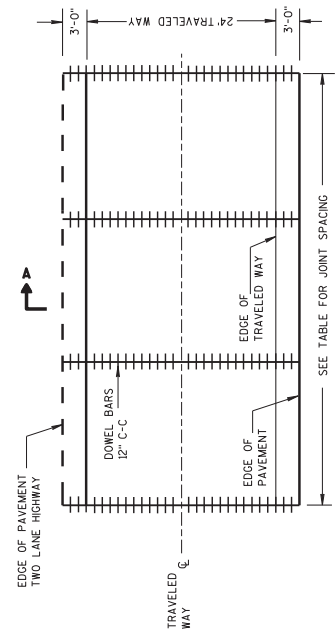
LOCATE CONSTRUCTION JOINTS A MINIMUM OF 6 FEET FROM THE NEAREST CONTRACTION JOINT AND ALIGN PARALLEL TO CONTRACTION JOINTS.

① REFER TO TYPICAL CROSS SECTIONS FOR ADDITIONAL DETAILS.

② MEASURE THE ENTIRE PAVED WIDTH INCLUDING THE PORTIONS LABELED PAVED SHOULDER AS CONCRETE PAVEMENT.



ALTERNATIVE SECTION B-B
DIVIDED HIGHWAY



PAVEMENT DEPTH, DOWEL BAR SIZE
AND JOINT SPACING TABLE

PAVEMENT DEPTH (IN)	DOWEL BAR DIAMETER	CONTRACTION JOINT SPACING
5 1/2" - 6.5 1/2"	NONE	12'
7 - 7 1/2"	1"	14'
8 - 8 1/2"	1 1/4"	15'
9 - 9 1/2"	1 1/4"	15'
10' & ABOVE	1 1/2"	15'

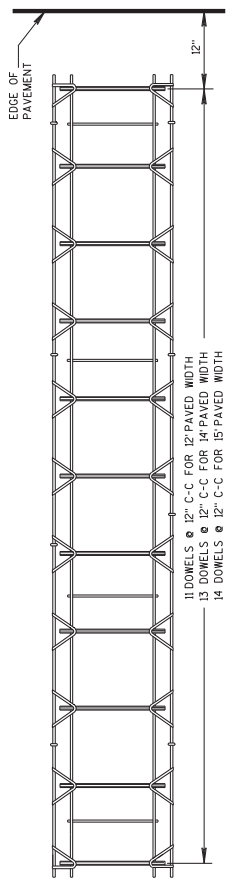
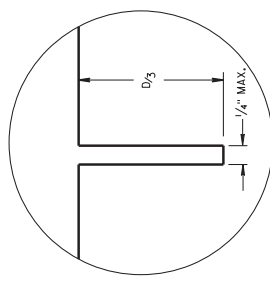
Addendum No. 03
ID 1229-04-74
Added Sheet 966A
December 9, 2021

RURAL DOWELED
CONCRETE PAVEMENT
STATE OF WISCONSIN
DEPARTMENT OF TRANSPORTATION

966A

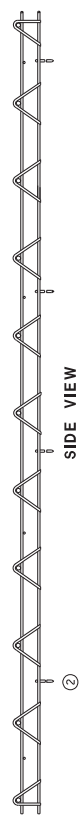
GENERAL NOTES

- ① OBTAIN THE ENGINEER'S APPROVAL FOR THE USE OF ALTERNATIVE DESIGNS OF THE JOINT ASSEMBLY AND THE DOWEL BAR INSERTERS ON DOWEL ASSEMBLIES WHEN CONSTRUCTING CONTRACTION JOINTS.
- ② SECURE BASKETS WITH ANCHORS TO HOLD DOWEL BARS IN THE CORRECT POSITION AND PREVENT THEM FROM MOVING. LOCATION, NUMBER AND LENGTH OF ANCHORS ARE DEPENDENT UPON FIELD CONDITIONS.
- ③ FORM OR SAW CONSTRUCTION JOINTS. PROVIDE A 1/4-INCH RADIUS AT FORMED JOINTS.
- ④ PROVIDE A SMOOTH VERTICAL FACE FOR THE ENTIRE DEPTH OF THE PAVEMENT WHEN FORMING CONSTRUCTION JOINTS.
- ⑤ INSTALL DOWEL BARS AT CONSTRUCTION JOINTS BY FORMING OR DRILLING. DOWEL BARS AT CONSTRUCTION JOINTS SHALL BE 12 INCHES C-C AND 12 INCHES FROM PAVEMENT EDGE. REMOVE EXCESS CONCRETE FROM THE FREE END OF THE DOWEL BAR IF DOWEL BARS ARE FORMED THROUGH A HEADER BOARD. INSTALL DRILLED DOWEL BARS ACCORDING TO *DRILLED DOWEL BAR CONSTRUCTION JOINT* DETAIL.
- ⑥ APPLY A THIN UNIFORM COATING OF SURFACE TREATMENT TO THE FREE END OF DOWEL BARS TO PREVENT BONDING.
- ⑦ ANCHOR DOWEL BARS INTO DRILLED HOLES WITH AN EPOXY. MAXIMUM DRILLED HOLE SIZE IS 1/8-INCH GREATER THAN DOWEL BAR DIAMETER, 9 INCHES IN LENGTH.

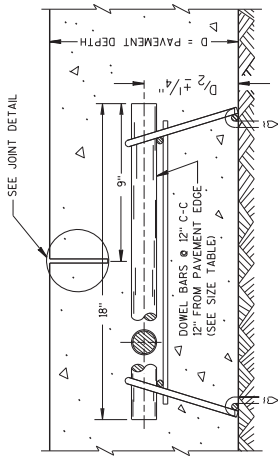


11 DOWELS ϕ 12" C-C FOR 12' PAVED WIDTH
 13 DOWELS ϕ 12" C-C FOR 14' PAVED WIDTH
 14 DOWELS ϕ 12" C-C FOR 15' PAVED WIDTH

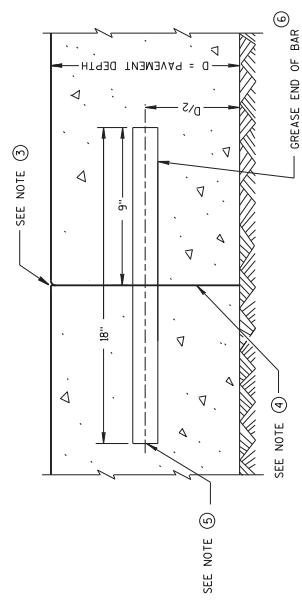
PLAN VIEW



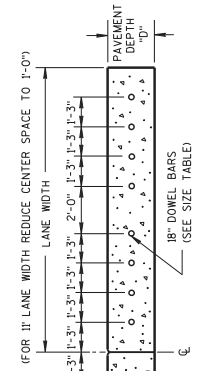
CONTRACTION JOINT DOWEL ASSEMBLY



DOWELED CONTRACTION JOINT



TRANSVERSE CONSTRUCTION JOINT

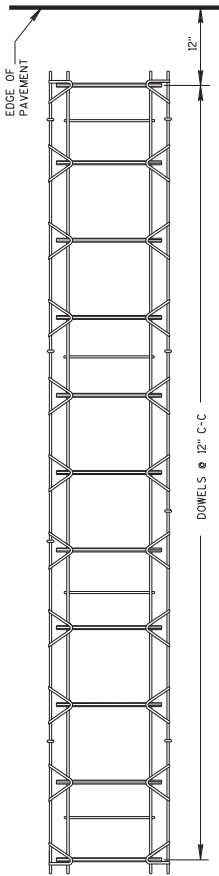


DRILLED DOWEL BAR CONSTRUCTION JOINT

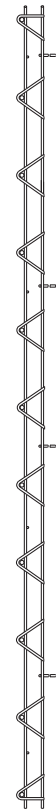
Addendum No. 03
 ID 1229-04-74
 Added Sheet 966B
 December 9, 2021

RURAL DOWELED CONCRETE PAVEMENT
STATE OF WISCONSIN DEPARTMENT OF TRANSPORTATION
APPROVED March 2008 /S/ Peter Kemp, P.E. DATE PAVEMENT SUPERVISOR
FHWA

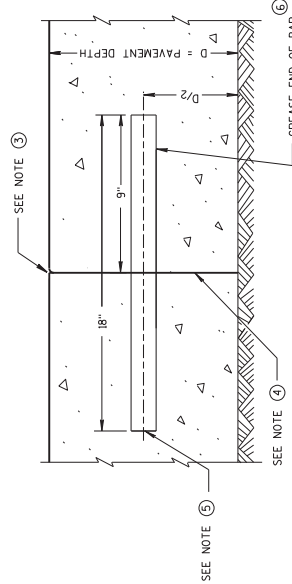
966B



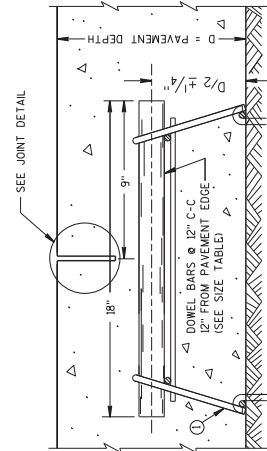
PLAN VIEW



CONTRACTION JOINT DOWEL ASSEMBLY



TRANSVERSE CONSTRUCTION JOINT



DOWELED CONTRACTION JOINT

PAVEMENT DEPTH, DOWEL BAR SIZE AND JOINT SPACING TABLE

PAVEMENT DEPTH (D)	DOWEL BAR DIAMETER	CONTRACTION JOINT SPACING
5 1/2" - 6 1/2"	NONE	12'
7" - 7 1/2"	1"	14'
8" - 8 1/2"	1 1/4"	15'
9" - 9 1/2"	1 1/4"	15'
10" & ABOVE	1 1/2"	15'

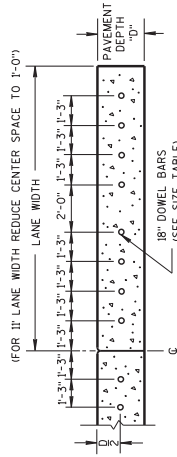
GENERAL NOTES

CONTRACTION JOINTS

CONSTRUCT TRANSVERSE CONTRACTION JOINTS NORMAL TO THE CENTERLINE. SHOW THE LOCATION OF CONTRACTION JOINTS THROUGH INTERSECTIONS ON THE PLANS OR AS DIRECTED BY THE ENGINEER.
 INSTALL DOWEL BARS PARALLEL TO THE PAVEMENT CENTERLINE AND PAVEMENT SURFACE.
 FOR PAVEMENT SLABS OF VARYING WIDTHS, LOCATE THE OUTER MOST DOWEL BAR SO THAT THE CENTER OF THE BAR IS A MINIMUM OF 6 INCHES AND A MAXIMUM OF 18 INCHES FROM THE LONGITUDINAL JOINT AND THE FREE EDGE OF PAVEMENT.

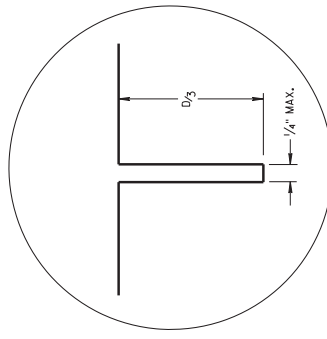
CONSTRUCTION JOINTS

- LOCATE CONSTRUCTION JOINTS A MINIMUM OF 6 FEET FROM THE NEAREST CONTRACTION JOINT AND ALIGN PARALLEL TO CONTRACTION JOINTS.
- OBTAIN THE ENGINEER'S APPROVAL FOR THE USE OF ALTERNATIVE DESIGNS OF THE DOWEL ASSEMBLY. USE MECHANICAL DOWEL BAR INSERTERS OR DOWEL ASSEMBLIES WHEN CONSTRUCTING CONTRACTION JOINTS.
- SECURE BASKETS WITH ANCHORS TO HOLD DOWEL BARS IN THE CORRECT POSITION AND ALIGNMENT. TYPE, LOCATION, NUMBER AND LENGTH OF ANCHORS ARE DEPENDENT UPON FIELD CONDITIONS.
- FORM OR SAW CONSTRUCTION JOINTS. PROVIDE A 1/4-INCH RADIUS AT FORMED JOINTS.
- PROVIDE A SMOOTH VERTICAL FACE FOR THE ENTIRE DEPTH OF THE PAVEMENT WHEN FORMING CONSTRUCTION JOINTS.
- INSTALL DOWEL BARS AT CONSTRUCTION JOINTS BY FORMING OR DRILLING. INSTALL FORMED DOWEL BARS 12 INCHES C-C AND 12 INCHES FROM PAVEMENT SURFACE. DRILLED DOWEL BARS SHALL BE INSTALLED FROM THE FREE END OF THE DOWEL BAR. DOWEL BARS SHALL BE INSTALLED THROUGH BASKETS BEHIND THE DOWEL BARS ACCORDING TO *DRILLED DOWEL BAR CONSTRUCTION JOINT* DETAIL.
- APPLY A THIN UNIFORM COATING OF SURFACE TREATMENT TO THE FREE END OF DOWEL BARS TO PREVENT BONDING.
- ANCHOR DOWEL BARS INTO DRILLED HOLES WITH AN EPOXY. MAXIMUM DRILLED HOLE SIZE IS 1/8-INCH GREATER THAN DOWEL BAR DIAMETER, 9 INCHES IN LENGTH.

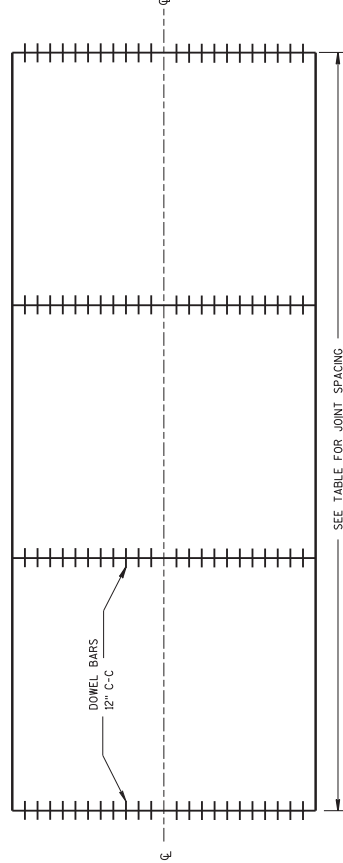


DRILLED DOWEL BAR CONSTRUCTION JOINT

Addendum No. 03
 ID 1229-04-74
 Added Sheet 966C
 December 9, 2021



JOINT DETAIL



SEE TABLE FOR JOINT SPACING

CONTRACTION JOINT LOCATIONS

URBAN DOWELED
 CONCRETE PAVEMENT

STATE OF WISCONSIN
 DEPARTMENT OF TRANSPORTATION

APPROVED
 Mgr-Ch 2018
 DATE
 7/5/ Peter Kemp, P.E.
 PAVEMENT SUPERVISOR
 FHWA

966C