



Wisconsin Department of Transportation

January 31, 2022

Division of Transportation Systems Development
Bureau of Project Development
4822 Madison Yards Way, 4th Floor South
Madison, WI 53705

Telephone: (608) 266-1631
Facsimile (FAX): (608) 266-8459

NOTICE TO ALL CONTRACTORS:

Proposal #02: 1016-05-70
Tomah – Mauston
STH 82 Interchng/B29-36,152-155,157
IH 90
Juneau County

Letting of February 8, 2022

This is Addendum No. 01, which provides for the following:

Special Provisions:

Revised Special Provisions	
Article No.	Description
8	Utilities

Added Special Provisions	
Article No.	Description
86	Install Pole Mounted Cabinet, Item 673.1225.S

Deleted Special Provisions	
Article No.	Description
34	HMA Pavement 4 SMA 58-28 V, HMA Pavement Test Strip Volumetrics, HMA Pavement Test Strip Density
35	Material Transfer Vehicle 1016-05-70
58	Install Pole Mounted Cabinet, Item 673.0225.S

Schedule of Items:

Revised Bid Item Quantities					
Bid Item	Item Description	Unit	Old Quantity	Revised Quantity	Proposal Total
460.5224	HMA Pavement 4 LT 58-28 S	Ton	3,944	104	4,048
460.7424	HMA Pavement 4 HT 58-28 H	Ton	1,089	180	1,269
531.1100	Concrete Masonry Ancillary Structures Type NS	CY	8.8	6.8	15.6
531.1140	Steel Reinforcement HS Ancillary Structures Type NS	LB	1,160	940	2,100
629.0210	Fertilizer Type B	CWT	139.5	2.0	141.5
630.0120	Seeding Mixture No. 20	LB	3,818	45	3,863
635.0200	Sign Supports Steel HS	LB	4,966	214	5,214
638.4100	Moving Structural Steel Sign Supports	Each	5	2	7

Added Bid Item Quantities					
Bid Item	Item Description	Unit	Old Quantity	Revised Quantity	Proposal Total
531.2024	Drilling Shaft 24-Inch	LF	0	128	128
673.1225	Install Pole Mounted Cabinet	Each	0	1	1

Deleted Bid Item Quantities					
Bid Item	Item Description	Unit	Old Quantity	Revised Quantity	Proposal Total
460.0115.S	HMA Pavement Test Strips Volumetrics	Each	1	-1	0
460.0120.S	HMA Pavement Test Strips Density	Each	1	-1	0
460.6223	HMA Pavement 3 MT 58-28 S	Ton	58	-58	0
460.6224	HMA Pavement 4 MT 58-28 S	Ton	45	-45	0
460.8624	HMA Pavement 4 SMA 58-28 V	Ton	180	-180	0
460.9000.S	Material Transfer Vehicle 01. 1016-05-70	Each	1	-1	0
673.0225.S	Install Pole Mounted Cabinet	Each	1	-1	0

Plan Sheets:

Revised Plan Sheets	
Plan Sheet	Plan Sheet Title (brief description of changes to sheet)
2	General Notes (updated Frontier contact)
12	Typical Sections (changed SMA to HMA)
20	Typical Sections (Changed MT to LT)
24	Construction Details (changed SMA to HMA)
453	Miscellaneous Quantities (Removed Material Transfer Vehicle table)
454-457	Miscellaneous Quantities (Removed 3 MT, 4 MT, and SMA)
476-477	Miscellaneous Quantities (Updated Fertilizer Type B and Seeding Mixture No. 20)
483	Miscellaneous Quantities (Updated Type I Signs items)
491	Miscellaneous Quantities (Updated Type I Signs for traffic control items)

Added Plan Sheets	
Plan Sheet	Plan Sheet Title (brief description of why sheet was added)
3A	Project Overview (To show Frontier facilities per system maps. Some areas were not shown correctly on the plans and this overview shows all of Frontier's locations that are known at this time.)
997A-997G	Sign Structures S-29-0011 &0012

The responsibility for notifying potential subcontractors and suppliers of these changes remains with the prime contractor.

Sincerely,

Mike Coleman

Proposal Development Specialist
Proposal Management Section

ADDENDUM NO. 01

1016-05-70

January 31, 2022

Special Provisions

8. Utilities.

*Replace entire section titled **Frontier Communications of Wisconsin (Communication)** with the following:*

Frontier Communications of Wisconsin (Communication)

Frontier Communications has underground communication facilities along the north side of CTH G.

Frontier Communications has underground communication facilities along the south side of CTH G, east of IH 94.

Frontier Communications has underground communication facilities along the northeast right of way of IH 94, from STA 952+50 to STA 968+50 and connects into a line that crosses IH 94 at STA 968+50.

Frontier Communications has underground communication facilities that cross CTH G approximately 100-feet east of IH 94.

Frontier Communications has underground communication facilities along the south side of STH 82, east of the east ramps of IH 94.

Frontier Communications has underground communication facilities along the north and south sides of STH 82, west of the west ramps of IH 94.

Frontier Communications has underground communication facilities that cross STH 82 near Station 153+00 and continue east along the north and south sides of STH 82. On the north side of STH 82, the facilities turn and head north on the east side of Commercial Street. On the south side of STH 82, the facilities run the length of the project.

Frontier Communications has underground communication facilities along the east right of way of IH 94 WB off ramp that crosses under IH 94 and heads north along the west side of the IH 94 EB on ramp.

Frontier Communications has underground communication facilities in the project area that directly conflict with the project improvements. The following work will be performed by Frontier Communications forces prior to construction: Frontier will perform work to discontinue existing facilities along the northeast side of IH 94 westbound from STA 953+00LT to STA 962+00LT.

Work planned prior to construction is anticipated to begin on March 7, 2022 and will take approximately 5 working days to complete.

58. DELETED

86. Install Pole Mounted Cabinet, Item 673.1225.S

A Description

This special provision describes installing department furnished aluminum enclosures on poles for intelligent transportation systems equipment.

B Materials

Use stainless steel bolts, nuts, and washers unless otherwise specified.

All conductors, terminals, and parts that could be hazardous to maintenance personnel shall be protected with suitable insulating material.

The cabinet will be equipped with service panels. Two panels shall be provided and mounted on the cabinet sidewalls. The left side panel shall be designated as "Input/Communications," and the right side panel shall be designated as the "Service Panel."

The service panel will be equipped with a four-outlet handi-box. Wire the handi-box to the series portion of the filtering surge protector.

Use metallic conduit, fittings, and adapters required from the underground conduit transition point to the cabinet as part of this item. A typical installation requires on 2-inch conduit. Use metallic conduit conforming to standard spec 652.

C Construction

Fasten the field cabinet securely onto a pole. Provide bolted stainless steel connections with lock washers, locking nuts, or other engineer-approved means to prevent the connection nuts from backing off. Isolate dissimilar materials from one another using stainless steel fittings. Make all power connections to the cabinet as specified in standard spec 656.

Drill and tap the cabinet, as necessary, to mount the terminal blocks and other attachments to the service panel, to provide an entrance on the back of the cabinet for cable from the pole mounted intelligent transportation systems equipment, and to mount the service panel to the cabinet as shown in the details. Remove all sharp edges or burrs, or both, caused by the cutting or drilling process. Seal all openings to prevent water from entering the cabinet. Mount the surge protector to the service panel.

Install metallic conduit on the exterior of the pole (for entrance to the cabinet from the ground) as the plans show, and according to the applicable requirements of standard spec 652.

D Measurement

The department will measure Install Pole Mounted Cabinet as each individual assembly, acceptably completed.

E Payment

The department will pay for measured quantities at the contract unit price under the following bid item:

ITEM NUMBER	DESCRIPTION	UNIT
673.1225.S	Install Pole Mounted Cabinet	EACH

Payment is full compensation for installing the pole mounted cabinet; for making all connections and conduit/wire entrances; and for all testing.

stp-673-010 (20220107)

Schedule of Items

Attached, dated January 31, 2022, are the revised Schedule of Items Pages 1 – 28.

Plan Sheets

The following 8½ x 11-inch sheets are attached and made part of the plans for this proposal:

Revised: 2, 12, 20, 24, 453-457, 476-477, 483, and 491.

Added: 3A and 997A – 997G.

END OF ADDENDUM

MISCELLANEOUS

THE LOCATIONS OF EXISTING AND PROPOSED UTILITY INSTALLATIONS AS SHOWN ON THE PLANS ARE APPROXIMATE. THERE MAY BE OTHER UTILITY INSTALLATIONS WITHIN THE PROJECT AREA THAT ARE NOT SHOWN. CULVERT PIPE ELEVATIONS, LENGTHS AND LOCATIONS AS SHOWN ON THE PLANS MAY BE ADJUSTED TO FIT EXISTING FIELD CONDITIONS AS APPROVED BY THE ENGINEER.

ALL EXISTING SIGNS SHALL REMAIN IN PLACE UNTIL CONSTRUCTION OPERATIONS REQUIRE THEM TO BE REMOVED/MOVED OR UNLESS THE ENGINEER APPROVES THEM TO BE REMOVED/MOVED.

NO TREES OR SHRUBS ARE TO BE REMOVED WITHOUT APPROVAL OF THE ENGINEER. GRADING AND EROSION CONTROL THE LOCATIONS OF EXISTING WETLAND LOCATIONS AS SHOWN ON THE PLANS ARE APPROXIMATE AND THERE MAY BE OTHER WETLANDS WITHIN THE PROJECT AREA THAT ARE NOT SHOWN.

DO NOT STORE EQUIPMENT OR MATERIALS IN, NOR IMPACT ANY WETLANDS OR WATERWAYS OUTSIDE THE SLOPE INTERCEPTS SHOWN. DISTURBED AREAS WITHIN THE RIGHT-OF-WAY ARE TO BE FERTILIZED, PERMANENTLY SEEDDED, TEMPORARILY SEEDDED AND MULCH ON SOFT TRACKS AS DIRECTED BY THE ENGINEER.

EXCAVATION BELOW SUBGRADE (EBS) WHICH IS NOT INDICATED ON THE CROSS SECTIONS AND WHICH IS REQUIRED BY THE ENGINEER SHALL BE MEASURED AND PAID FOR AS COMMON EXCAVATION. EBS IS NOT USED TO BALANCE YARDAGE. THE EROSION CONTROL ITEMS SHOWN ON THE PLANS ARE AT SUGGESTED LOCATIONS. THE ENGINEER WILL DETERMINE THE EXACT LOCATION OF EROSION CONTROL ITEMS. ALL EROSION CONTROL MEASURES SHALL BE MAINTAINED UNTIL SUCH TIME AS THE ENGINEER DETERMINES THE MEASURE IS NO LONGER NECESSARY. REMOVE ITEMS AT ENGINEER'S DIRECTION.

FILL EXPANSION IS ESTIMATED AT 1.25. PAVING CURVE DATA BASED ON ARC DEFINITION. RADIUS DIMENSIONS FOR THE CURB AND GUTTER ARE TO THE FLAG LINE.

EXPANSION JOINTS SHALL BE CONSTRUCTED AT ALL RADIUS POINTS IN CURB AND GUTTER. HMA WEIGHT CALCULATIONS BASED ON 112 LBS/SY/IN. THE CONTRACTOR'S PAVING OPERATIONS SHALL BE CONSISTENT WITH THE PLAN TYPICAL SECTIONS AND CONSTRUCTED TO PREVENT HMA LONGITUDINAL JOINTS FROM BEING LOCATED WITHIN A DRIVING, TURNING, OR PARKING LANE.

APPLY TACK COAT AT A RATE OF 0.07 GAL/SY TO MILLED SURFACES AND 0.05 GAL/SY BETWEEN LAYERS OF HMA PAVEMENT. UNLESS OTHERWISE SHOWN ON THE PLAN, SAWCUT ALL MATCHING DRIVEWAYS AND STREETS. COST OF CUTTING IS TO BE PAID FOR UNDER "SAWING ASPHALT" FOR ASPHALT PAVEMENT OR "SAWING CONCRETE" FOR CONCRETE PAVEMENT.

5" HMA PAVEMENT 3 FT 58-28 S FOR SHOULDERS SHALL BE PAVED IN ONE LIFT. STORM SEWER INLET OFFSETS GIVEN TO THE CENTER OF THE STRUCTURE. WHERE TYING INTO EXISTING STRUCTURES OR PIPES, VERIFY EXISTING ELEVATIONS AND DIMENSIONS PRIOR TO ORDERING MATERIALS.



PROJECT NO: 1016-05-70 HWY: IH 90/94

FILE NAME: I:\WORK\0508357\CD\05SHEETS\PLAN\016-05-70 PLAN SHEETS\016-05-70_01.dwg

SECTION 2 ORDER OF SHEETS

- 1. GENERAL NOTES
2. PROJECT OVERVIEW
3. EXISTING TYPICAL SECTIONS
4. FINISHED TYPICAL SECTIONS
5. CONSTRUCTION DETAILS
6. PAVING DETAILS
7. CURB RAMP DETAILS
8. EROSION CONTROL
9. STORM SEWER
10. SIGNING
11. LIGHTING
12. TEMPORARY TRAFFIC SIGNALS
13. PAVEMENT MARKING
14. TRAFFIC CONTROL/STAGING
15. FENCING
16. ALIGNMENT DIAGRAMS/SUPERELEVATIONS

UTILITIES

ELECTRIC: ALLIANT ENERGY ATTN: TYLER DONOVAN 338 E STATE STREET MAUJSTON, WI 53948 OFFICE: 608-847-1302 CELL: 608-963-9585 EMAIL: TYLERDONOVAN@ALLIANTENERGY.COM

*WATER/SANITARY: CITY OF MAUJSTON ATTN: BOB NELSON 1260 NORTH ROAD MAUJSTON, WI 53948 OFFICE: 608-847-4070 CELL: 608-547-6676 EMAIL: RNELSON@MAUJSTON.COM

COMMUNICATION: FRONTIER COMMUNICATIONS OF WI LLC ATTN: JEREMY ZEHM 1855 HIGHLAND PL AVE. WISCONSIN, WI 53448 CELL: 715-243-9243 EMAIL: JERMEY.ZEHM@FTR.COM

GAS: ALLIANT ENERGY ATTN: TYLER DONOVAN 338 E STATE STREET MAUJSTON, WI 53948 OFFICE: 608-847-1302 CELL: 608-963-9585 EMAIL: TYLERDONOVAN@ALLIANTENERGY.COM

*NOT A DIGGERS HOTLINE MEMBER

Addendum No. 01 ID 1016-05-70 Revised Sheet 2 January 31, 2022

ABBREVIATIONS

Table with 2 columns: Abbreviation and Full Name. Includes ACRES, ASPHALT CEMENT, ASPHALT ENDWALL, ASPHALT, AVERAGE, AVERAGE DAILY TRAFFIC, BASE AGGREGATE DENSE, BENCHMARK, CENTERLINE, CENTER TO CENTER, CONCRETE, CONCRETE PIPE REINFORCED CONCRETE, CORRUGATED STEEL CULVERT PIPE, CERTIFIED SURVEY MAP, COUNTY TRUNK HIGHWAY, CULVERT PIPE, CURB & GUTTER, DEGREE OF CURVE, DESIGN HOURLY VOLUME, DRAINWAY, DRIVEWAY, DIAMETER, DIA, DRY, E, EAST, ELEVATION, ELEV, ENDWALL, ENT, ENTRANCE, EQUIVALENT SINGLE AXLE LOADS, EXCAVATION, EXC, EXCAVATION BELOW SUBGRADE, EXIST, EXISTING, FACE TO FACE, FF, FERT, FERTILIZER, FILL, FINISH GRADE, FINISHED GRADE, FG, FT, FOOT.

DOT DESIGN CONTACT

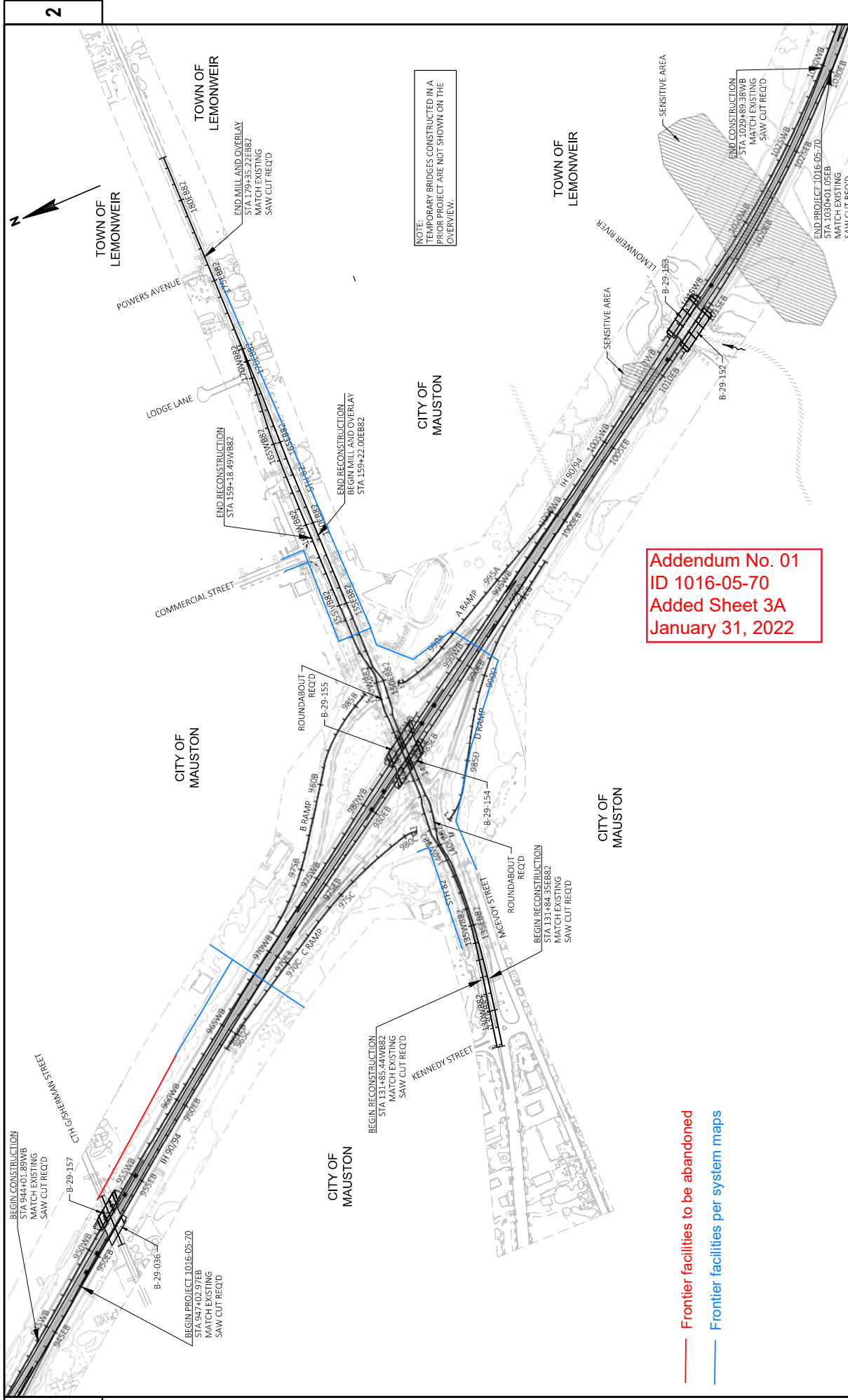
WISDOT SW REGION ATTN: TRAVIS BUIROS, P.E. 3550 MORMON COLLEGE ROAD LA CROSSE, WI 54601 OFFICE: 608-789-5702 EMAIL: TRAVIS.BUIROS@DOT.WI.GOV

MSA DESIGN CONTACT

MSA PROFESSIONAL SERVICES, INC. 1230 SOUTH ROLLINGBARK, P.E. BARABOO, WI 53913 OFFICE: 608-355-8861 EMAIL: BIMAXWELL@MSA.PS.COM

DNR LIAISON

WISCONSIN DEPARTMENT OF NATURAL RESOURCES ATTN: KAREN KALVEJAGE ENVIRONMENTAL ANALYSIS & REVIEW SPECIALIST DNR SERVICE CENTER 3550 MORMON COLLEGE ROAD LA CROSSE, WI 54601 OFFICE: 608-785-9115 EMAIL: KAREN.KALVEJAGE@WISCONSIN.GOV

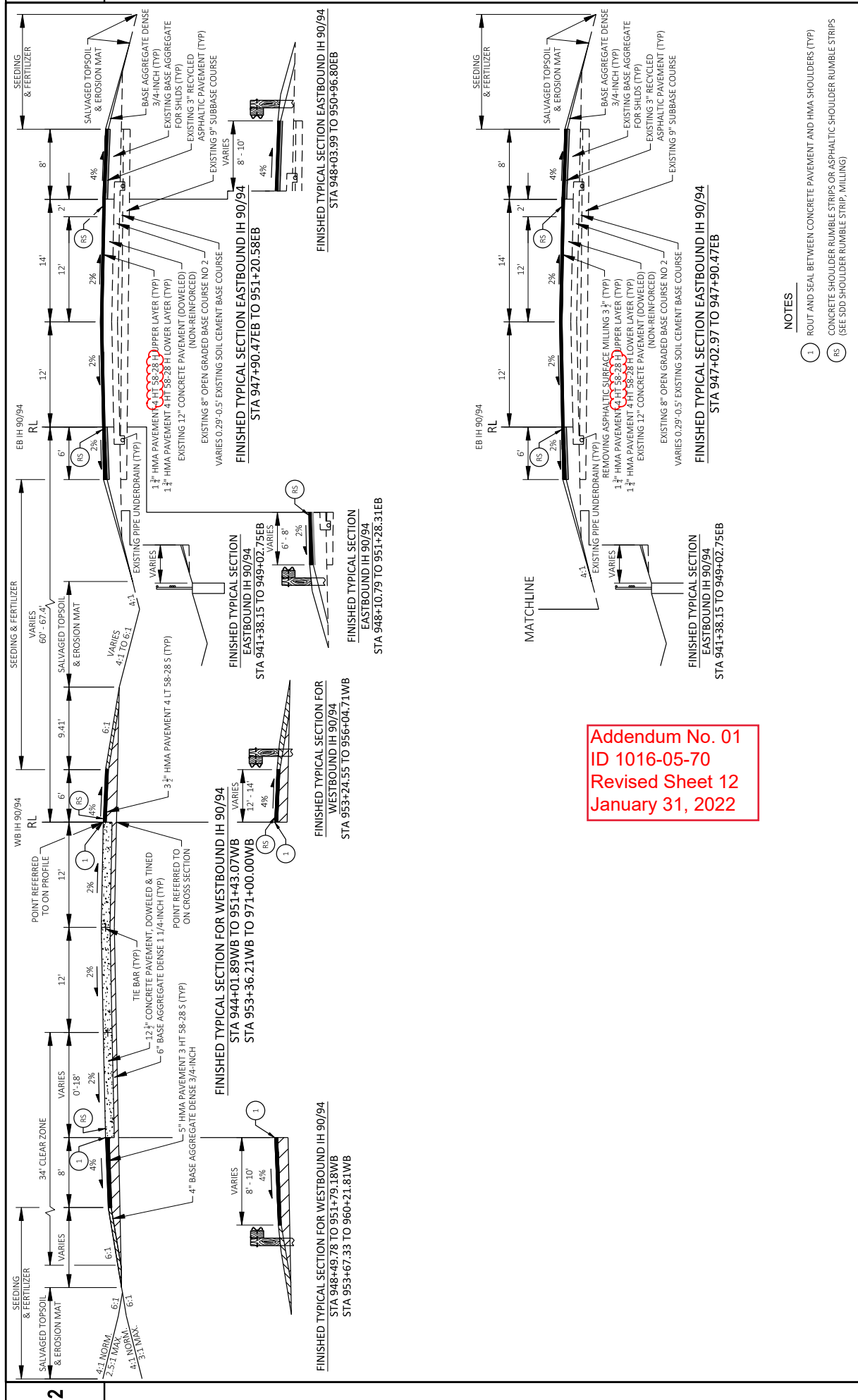


NOTE: TEMPORARY BRIDGES CONSTRUCTED IN A PRIOR PROJECT ARE NOT SHOWN ON THE OVERVIEW.

Addendum No. 01
ID 1016-05-70
Added Sheet 3A
January 31, 2022

— Frontier facilities to be abandoned
— Frontier facilities per system maps

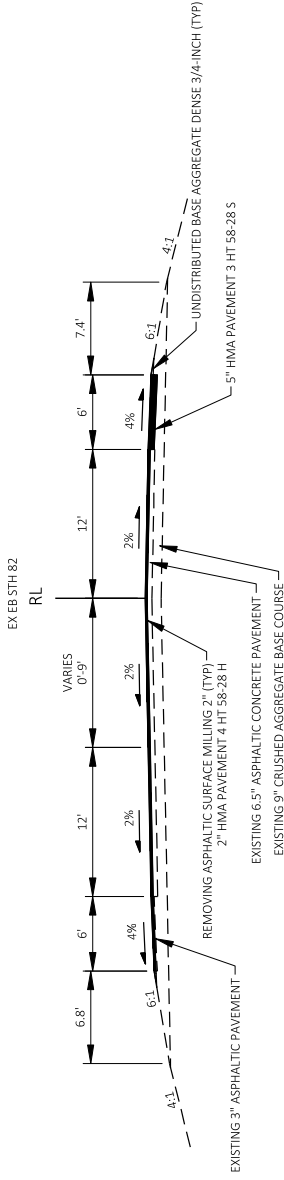
PROJECT NO: 1016-05-70	COUNTY: JUNEAU	PROJECT OVERVIEW	SHEET 3A
FILE NAME: D:\WORK\0908357\CADD\SHEETS\PLAN\1016-05-70\PLAN SHEETS\TALES\10202001_PD.DWG	HWY: IH 90/94	PLOT BY: CONNOR GIBLEN	1 IN=500 FT
LAYOUT NAME: 090801_LP	PLOT DATE: 10/27/2021 6:29 PM	PLOT NAME:	WS007CADD.SHEET 42



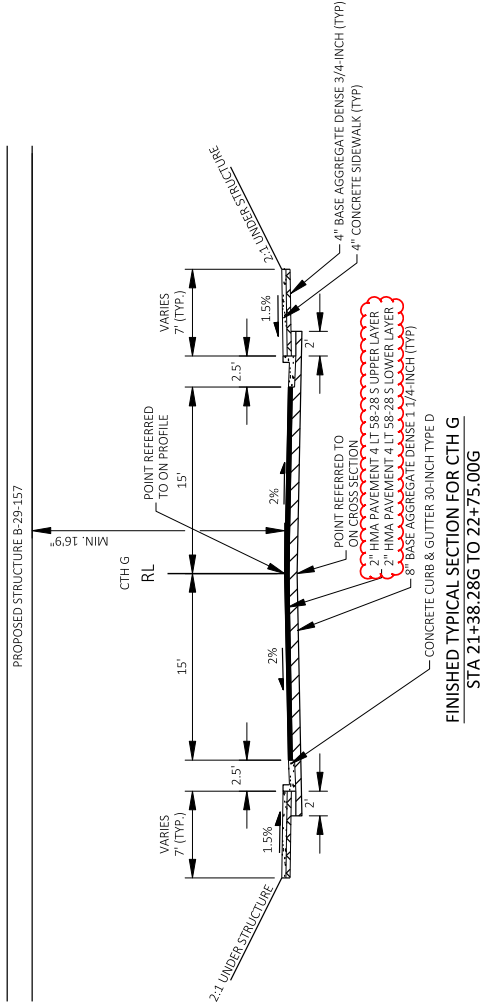
Addendum No. 01
 ID 1016-05-70
 Revised Sheet 12
 January 31, 2022

NOTES

- (1) ROUT AND SEAL BETWEEN CONCRETE PAVEMENT AND HMA SHOULDERS (TYP)
- (RS) CONCRETE SHOULDER RUMBLE STRIPS OR ASPHALTIC SHOULDER RUMBLE STRIPS (SEE SDD SHOULDER RUMBLE STRIP, MILLING)

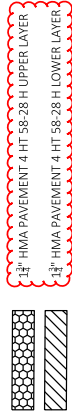
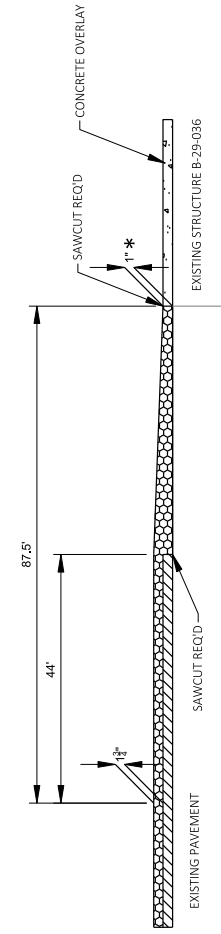


FINISHED TYPICAL SECTION STH.82
 STA. 172+28.89EB82 TO 176+48.18EB82



FINISHED TYPICAL SECTION FOR CTH G
 STA 21+38.28G TO 22+75.00G

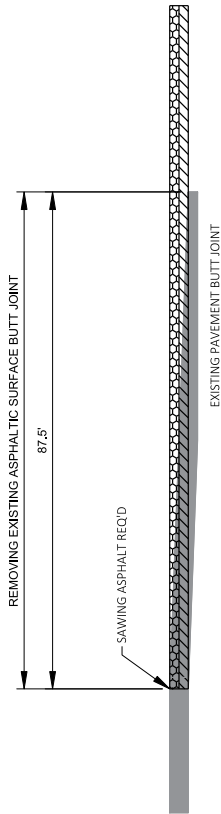
Addendum No. 01
 ID 1016-05-70
 Revised Sheet 20
 January 31, 2022



TRANSITION DETAIL
NOT TO SCALE
B-29-36

NOTE:
* MATCH CONCRETE OVERLAY OF B-29-036

Addendum No. 01
ID 1016-05-70
Revised Sheet 24
January 31, 2022



BUTT JOINT DETAIL
NOT TO SCALE
STA 947+02.97EB - STA 947+90.47EB

RUNOFF COEFFICIENT TABLE

HYDROLOGIC SOIL GROUP	A				B				C				D			
	SLOPE RANGE (PERCENT)		SLOPE RANGE (PERCENT)		SLOPE RANGE (PERCENT)		SLOPE RANGE (PERCENT)		SLOPE RANGE (PERCENT)		SLOPE RANGE (PERCENT)		SLOPE RANGE (PERCENT)		SLOPE RANGE (PERCENT)	
LAND USE:	0-2	2-6	6 & OVER	0-2	2-6	6 & OVER	0-2	2-6	6 & OVER	0-2	2-6	6 & OVER	0-2	2-6	6 & OVER	
ROW CROPS	.08	.16	.22	.12	.20	.27	.15	.24	.33	.19	.28	.36	.19	.28	.36	
MEDIAN STRIP-TURF	.19	.20	.24	.19	.22	.26	.20	.23	.30	.20	.25	.30	.20	.25	.30	
SIDE SLOPE-TURF	.24	.26	.30	.25	.28	.33	.26	.30	.37	.27	.32	.40	.27	.32	.40	
PAVEMENT:																
ASPHALT										.27	.34	.28	.36	.30	.38	
CONCRETE										.70 - .95						
BRICK										.80 - .95						
DRIVES, WALLS										.70 - .80						
ROOFS										.75 - .85						
GRAVEL ROADS, SHOULDERS										.75 - .95						
										.40 - .60						

TOTAL PROJECT AREA = 96.80 ACRES
TOTAL AREA EXPECTED TO BE DISTURBED BY CONSTRUCTION ACTIVITIES = 63.83 ACRES

RUMBLE STRIPS

415.0410 CONCRETE ASPHALTIC SHOULDER RUMBLE STRIPS
 416.1110 CONCRETE SHOULDER RUMBLE STRIPS
 465.0400 ASPHALTIC SHOULDER RUMBLE STRIPS

CATEGORY	STATION	TO	STATION	ALIGNMENT	LOCATION	LF	LF
STAGE 2							
0010	947+02	-	951+02	'EB'	RT	---	399
0010	952+44	-	963+00	'EB'	RT	1,056	---
0010	969+63	-	982+07	'EB'	RT	1,243	---
0010	984+59	-	992+02	'EB'	RT	743	---
0010	991+40	-	1011+98	'EB'	RT	2,058	---
0010	1014+56	-	1030+01	'EB'	RT	1,550	---
STAGE 2 SUBTOTAL						6,650	399
STAGE 3							
0010	944+01	-	951+68	'WB'	LT	767	---
0010	953+64	-	974+00	'WB'	LT	2,040	---
0010	973+05	-	982+99	'WB'	LT	994	---
0010	985+51	-	995+94	'WB'	LT	1,042	---
0010	1001+00	-	1012+22	'WB'	LT	1,122	---
0010	1014+80	-	1029+90	'WB'	LT	1,504	---
STAGE 3 SUBTOTAL						7,469	0
STAGE 4							
0010	944+01	-	951+41	'WB'	RT	---	739
0010	947+02	-	951+21	'EB'	LT	---	419
0010	953+63	-	982+64	'EB'	LT	---	2,861
0010	953+37	-	982+82	'WB'	RT	---	2,944
0010	984+76	-	1012+02	'EB'	LT	---	2,726
0010	985+34	-	1012+17	'WB'	RT	---	2,683
0010	1014+60	-	1030+01	'EB'	LT	---	1,540
0010	1014+75	-	1029+90	'WB'	RT	---	1,514
STAGE 4 SUBTOTAL						0	15,526
TOTAL 0010						14,119	15,925

CONCRETE PAVEMENT APPROACH SLAB

415.0410 CONCRETE PAVEMENT APPROACH SLAB
 416.1110 CONCRETE SHOULDER RUMBLE STRIPS
 465.0400 ASPHALTIC SHOULDER RUMBLE STRIPS

CATEGORY	STATION	TO	STATION	ALIGNMENT	LOCATION	SY	REMARKS
STAGE 2A							
0010	952+37	-	953+78	'EB'	MAINLINE	97	B-29-026
0010	981+89	-	982+39	'EB'	MAINLINE	146	B-29-154
0010	984+56	-	984+89	'EB'	MAINLINE	105	B-29-154
0010	1011+83	-	1012+04	'EB'	MAINLINE	106	B-29-152
0010	1014+54	-	1014+74	'EB'	MAINLINE	102	B-29-152
STAGE 2A SUBTOTAL						556	
STAGE 3A							
0010	951+28	-	951+71	'WB'	MAINLINE	139	B-29-157
0010	953+36	-	953+79	'WB'	MAINLINE	152	B-29-157
0010	982+68	-	983+02	'WB'	MAINLINE	111	B-29-155
0010	985+82	-	985+66	'WB'	MAINLINE	122	B-29-155
0010	1012+04	-	1012+24	'WB'	MAINLINE	95	B-29-153
0010	1014+74	-	1014+94	'WB'	MAINLINE	114	B-29-153
STAGE 3A SUBTOTAL						733	
TOTAL 0010						1,289	

ROUT AND SEAL

CATEGORY	STATION	TO	STATION	ALIGNMENT	LOCATION	LF
STAGE 2						
0010	952+43	-	982+25	'EB'	LT & RT	6,679
0010	969+60	-	978+39	'C'	LT & RT	1,761
0010	976+00	-	985+45	'B'	LT & RT	1,883
0010	981+82	-	994+40	'D'	LT & RT	2,041
0010	984+56	-	1012+04	'EB'	LT & RT	5,950
0010	989+01	-	992+00	'A'	LT & RT	598
0010	1014+54	-	1030+01	'EB'	LT & RT	3,095
STAGE 2 SUBTOTAL						22,007
STAGE 3						
0010	944+01	-	951+71	'WB'	LT & RT	1,511
0010	953+36	-	985+02	'WB'	LT & RT	6,301
0010	973+02	-	976+00	'B'	LT & RT	598
0010	985+32	-	1012+24	'WB'	LT & RT	5,811
0010	992+00	-	995+95	'A'	LT & RT	790
0010	1014+74	-	1029+90	'WB'	LT & RT	3,021
STAGE 3 SUBTOTAL						18,032
TOTAL 0010						40,039

Addendum No. 01
 ID 1016-05-70
 Revised Sheet 453
 January 31, 2022

460.0115.S. 460.0120.S. 460.9000.S REMOVED

Addendum No. 01
ID 1016-05-70
Revised Sheet 454
January 31, 2022

CONCRETE SURFACE DRAINS																					
CATEGORY	STATION	TO	STATION	ALIGNMENT	LOCATION	THICKNESS (IN)	STAGE	STA	TON	TACK COAT	TON	HMA PAVEMENT	HMA PAVEMENT	HMA PAVEMENT	TON	TON	TON	REMARKS	INLET ELEVATION	DISCHARGE ELEVATION	ELBOWS REQD
STAGE 2																					
0010	984+49	-	985+09	'EB'	RT	1.75	2A	---	---	---	---	---	---	---	---	---	---	---	883.32	866.23	2
0010	984+87	-	985+47	'EB'	LT	1.75	2A	---	---	---	---	---	---	---	---	---	---	---	---	---	---
0010	1011+38	-	1011+51	'EB'	RT	5.00	2A	---	---	---	---	---	---	---	---	---	---	---	886.75	858.69	2
0010	1011+48	-	1012+07	'EB'	LT	5.00	2A	---	---	---	---	---	---	---	---	---	---	---	---	---	---
STAGE 2 SUBTOTAL																					
								330	460.5224	460.7223	460.7423	460.7424									
STAGE 3																					
0010	950+75	-	951+34	'WB'	RT	3.50	2A	---	---	---	---	---	---	---	---	---	---	---	---	---	---
0010	951+18	-	951+77	'WB'	LT	3.50	2A	---	---	---	---	---	---	---	---	---	---	---	---	---	---
0010	985+19	-	985+78	'WB'	RT	5.00	2A	---	---	---	---	---	---	---	---	---	---	---	---	---	---
0010	985+57	-	986+03	'WB'	LT	5.00	2A	---	---	---	---	---	---	---	---	---	---	---	---	---	---
0010	1011+56	-	1012+25	'WB'	LT	5.00	2A	---	---	---	---	---	---	---	---	---	---	---	---	---	---
0010	1011+99	-	1012+15	'WB'	RT	5.00	2A	---	---	---	---	---	---	---	---	---	---	---	---	---	---
STAGE 3 SUBTOTAL																					
								330	460.5224	460.7223	460.7423	460.7424									
TOTAL 0010																					
								660	921.0448	921.4446	921.4846	921.4848									

REMOVED
460.6223
460.6224
460.8624

HMA PAVEMENT ITEMS

CATEGORY	STATION	TO	STATION	ALIGNMENT	LOCATION	THICKNESS (IN)	STAGE	STA	TON	TACK COAT	TON	HMA PAVEMENT	HMA PAVEMENT	HMA PAVEMENT	TON	TON	TON	REMARKS
STAGE 2																		
0010	947+02	-	951+25	'EB'	LOWER LAYER	1.75	2A	---	---	---	---	---	---	---	---	---	---	---
0010	947+02	-	951+25	'EB'	UPPER LAYER	1.75	2A	---	---	---	---	---	---	---	---	---	---	---
0010	952+59	-	964+00	'EB'	RT SHLD	5.00	2A	---	---	---	---	---	---	---	---	---	---	---
0010	975+00	-	982+08	'EB'	RT	5.00	2A	---	---	---	---	---	---	---	---	---	---	---
0010	20+00	-	26+50	'X3'	LOWER LAYER	3.50	2A	---	---	---	---	---	---	---	---	---	---	---
0010	20+00	-	26+50	'X3'	UPPER LAYER	2.50	2A	---	---	---	---	---	---	---	---	---	---	---
0010	964+00	-	969+61	'C'	RT	5.00	2A	---	---	---	---	---	---	---	---	---	---	---
0010	969+61	-	978+39	'C'	RT	3.50	2A	---	---	---	---	---	---	---	---	---	---	---
0010	969+61	-	976+75	'C'	LT	3.50	2A	---	---	---	---	---	---	---	---	---	---	---
0010	978+39	-	979+63	'C'	RT	3.50	2A	---	---	---	---	---	---	---	---	---	---	---
0010	20+00	-	23+93	'X3'	LOWER LAYER	3.50	2A	---	---	---	---	---	---	---	---	---	---	---
0010	20+00	-	23+93	'X3'	UPPER LAYER	2.50	2A	---	---	---	---	---	---	---	---	---	---	---
0010	975+00	-	981+89	'EB'	RT	5.00	2A	---	---	---	---	---	---	---	---	---	---	---
0010	985+09	-	989+00	'EB'	RT	5.00	2A	---	---	---	---	---	---	---	---	---	---	---
0010	981+82	-	992+05	'D'	RT	3.50	2A	---	---	---	---	---	---	---	---	---	---	---
0010	992+05	-	994+40	'D'	RT	5.00	2A	---	---	---	---	---	---	---	---	---	---	---
0010	981+82	-	986+66	'D'	LT	3.50	2A	---	---	---	---	---	---	---	---	---	---	---
0010	33+82	-	38+00	'X10'	LOWER LAYER	3.50	2A	---	---	---	---	---	---	---	---	---	---	---
0010	33+82	-	38+00	'X10'	UPPER LAYER	2.50	2A	---	---	---	---	---	---	---	---	---	---	---
0010	988+22	-	993+05	'D'	LT	3.50	2A	---	---	---	---	---	---	---	---	---	---	---
0010	994+40	-	1011+39	'EB'	RT	5.00	2A	---	---	---	---	---	---	---	---	---	---	---
0010	35+71	-	47+25	'X5'	LOWER LAYER	3.50	2A	---	---	---	---	---	---	---	---	---	---	---
CONTINUED ON NEXT PAGE																		

Addendum No. 01
ID 1016-05-70
Revised Sheet 455
January 31, 2022

REMOVED
460.6223
460.6224
460.8624

CONTINUED FROM PREVIOUS PAGE

HMA PAVEMENT ITEMS

211.0400
PREPARE
FOUNDATION
FOR ASPHALTIC
SHOULDERS

450.6000
HMA COLD
WEATHER
PAVING

455.0605
TACK COAT

460.5224
HMA PAVEMENT
4 LT 58-28 S

460.7223
HMA PAVEMENT
3 HT 58-28 H

460.7423
HMA PAVEMENT
4 HT 58-28 H

460.7424
HMA PAVEMENT
4 HT 58-28 H

CATEGORY	STATION	TO	STATION	ALIGNMENT	LOCATION	THICKNESS (IN)	STAGE	STA	SHOULDERS	HMA COLD WEATHER PAVING	TACK COAT GAL	HMA PAVEMENT 4 LT 58-28 S TON	HMA PAVEMENT 3 HT 58-28 H TON	HMA PAVEMENT 3 HT 58-28 H TON	HMA PAVEMENT 4 HT 58-28 H TON	REMARKS	
0010	35+71	-	47+25	'XS'	UPPER LAYER	2.50	2A	---	---	---	61	---	---	---	170	EB ON RAMP XOVER	
0010	1014+74	-	1030+01	'EB'	RT	5.00	2A	---	---	---	---	---	---	478	---	---	
0010	142+40	-	143+13	'EXE882'	LT	5.00	2A	---	---	---	---	---	---	41	---	---	
0010	143+69	-	144+17	'EXE882'	LT	5.00	2A	---	---	---	---	---	---	20	---	---	
0010	138+42	-	141+91	'EXWB882'	LT	5.00	2A	349	---	---	---	---	---	85	---	HMA SHOULDER PAVEMENT REPLACEMENT	
0010	143+00	-	146+82	'EXWB882'	LT	5.00	2A	582	---	---	---	---	---	119	---	HMA SHOULDER PAVEMENT REPLACEMENT	
0010	145+06	-	146+55	'EXWB882'	RT	5.00	2A	---	---	---	---	---	---	115	---	---	
0010	149+05	-	152+67	'EXWB882'	RT	5.00	2A	---	---	---	---	---	---	85	---	---	
0010	81+46	-	81+94	'EXC'	LT & RT	5.00	2A	---	---	---	---	---	---	21	---	---	
0010	85+91	-	86+15	'EXA'	LT & RT	5.00	2A	---	---	---	---	---	---	13	---	---	
0010	11+09	-	12+54	'SWBY'	LT	5.00	2B	---	---	---	---	---	---	116	---	---	
0010	140+45	-	140+76	'EB882'	LT	5.00	2B	---	---	---	---	---	---	6	---	---	
0010	142+50	-	143+57	'EB882'	LT & RT	5.00	2B	---	---	---	---	---	---	144	---	---	
0010	143+57	-	148+29	'EB82'	LT & RT	5.00	2B	---	---	---	---	---	---	325	---	---	
0010	10+09	-	11+91	'W/PAB'	LT & RT	5.00	2B	---	---	---	---	---	---	214	---	---	
0010	12+36	-	13+49	'EBAB'	LT & RT	5.00	2B	---	---	---	---	---	---	230	---	---	
0010	151+43	-	152+70	'EB2'	RT	3.50	2B	---	---	---	---	---	---	18	---	WB OFF RAMP XOVER	
0010	23+61	-	25+00	'X6'	LOWER LAYER	3.50	2B	---	---	---	---	---	---	54	---	WB OFF RAMP XOVER	
0010	23+61	-	25+00	'X6'	UPPER LAYER	2.50	2B	---	---	---	14	---	---	39	---	WB OFF RAMP XOVER	
0010	142+98	-	143+57	'EB82'	RT	5.00	2C	---	---	---	---	---	---	39	---	---	
0010	150+08	-	151+23	'EB82'	LT	5.00	2C	---	---	---	---	---	---	69	---	---	
0010	13+39	-	10+71	'ERAB'	LT & RT	5.00	2C	---	---	---	---	---	---	142	---	---	
0010	987+71	-	989+02	'A'	LT & RT	3.50	2C	---	---	---	---	---	---	23	---	---	
0010	989+01	-	992+00	'A'	LT	3.50	2C	---	---	---	---	---	---	52	---	---	
0010	30+00	-	33+47	'X12'	LOWER LAYER	3.50	2C	---	---	---	---	---	---	70	---	WB OFF RAMP XOVER	
0010	30+00	-	33+47	'X12'	UPPER LAYER	2.50	2C	---	---	---	18	---	---	50	---	WB OFF RAMP XOVER	
0010	976+00	-	985+45	'B'	LT	3.50	2D	---	---	---	---	166	---	---	---	---	
0010	976+00	-	985+75	'B'	RT	3.50	2D	---	---	---	---	67	---	---	---	---	
0010	20+00	-	22+16	'X11'	LOWER LAYER	3.50	2D	---	---	---	---	---	---	70	---	WB ON RAMP XOVER	
0010	20+00	-	22+16	'X11'	UPPER LAYER	2.50	2D	---	---	---	18	---	---	50	---	WB ON RAMP XOVER	
0010	13+83	-	10+04	'W/PAB'	RT	5.00	2D	---	---	---	---	---	---	12	---	---	
0010	10+00	-	10+36	'NEBP'	RT	5.00	2D	---	---	---	---	---	---	24	---	---	
0010	138+42	-	139+05	'WB882'	LT	3.50	2D	---	---	---	---	7	---	---	---	---	
0010	976+75	-	978+39	'C'	LT	5.00	2E	---	---	---	---	---	---	21	---	---	
0010	986+66	-	988+22	'D'	LT	5.00	2E	---	---	---	---	---	---	20	---	---	
0010	UNDISTRIBUTED						2	---	---	---	---	---	---	---	---	---	
STAGE 3 SUBTOTAL								931	0	291	864	4,209	1,322	360	---	---	---
STAGE 3																	
0010	947+73	-	948+93	'WB1'	LOWER LAYER	3.50	3A	---	---	---	---	---	---	111	---	---	
0010	947+73	-	948+93	'WB1'	UPPER LAYER	2.50	3A	---	---	---	29	---	---	79	---	---	
0010	948+93	-	951+18	'WB1'	LT	5.00	3A	---	---	---	---	---	---	57	---	---	
0010	948+93	-	950+75	'WB1'	RT	3.50	3A	---	---	---	---	32	---	---	---	---	
0010	953+79	-	955+90	'WB1'	LT	5.00	3A	---	---	---	---	---	---	53	---	---	
0010	953+51	-	955+90	'WB1'	RT	3.50	3A	---	---	---	---	34	---	---	---	---	
0010	955+90	-	957+10	'WB1'	LOWER LAYER	3.50	3A	---	---	---	---	---	---	129	---	---	
0010	955+90	-	957+10	'WB1'	UPPER LAYER	2.50	3A	---	---	---	33	---	---	92	---	---	
0010	957+10	-	959+44	'WB1'	LOWER LAYER	3.50	3A	---	---	---	---	---	---	67	---	---	
0010	957+10	-	959+44	'WB1'	UPPER LAYER	2.50	3A	---	---	---	---	---	---	48	---	---	
0010	975+50	-	982+25	'WB1'	LOWER LAYER	3.50	3A	---	---	---	---	---	---	564	---	---	
0010	975+50	-	982+25	'WB1'	UPPER LAYER	2.50	3A	---	---	---	144	---	---	403	---	---	

CONTINUED ON NEXT PAGE

Addendum No. 01
ID 1016-05-70
Revised Sheet 456
January 31, 2022

REMOVED
460.6223
460.6224
460.8624

CONTINUED FROM PREVIOUS PAGE

HMA PAVEMENT ITEMS

211.0400
PREPARE
FOUNDATION
FOR ASPHALTIC
SHOULDERS

CATEGORY	STATION	TO	STATION	ALIGNMENT	LOCATION	THICKNESS (IN)	STAGE	STA	TACK COAT		HMA PAVEMENT		HMA PAVEMENT		HMA PAVEMENT		REMARKS		
									TON	GAL	4 LT 58-28 S	3 HT 58-28 H	460.5224	460.7223	460.7423	460.7424			
0010	982+25	-	982+90	'WB'	RT	5.00	3A	---	---	---	20	---	---	---	---	---	---	---	
0010	982+25	-	982+68	'WB'	LT	5.00	3A	---	---	---	---	---	---	---	---	---	---	---	
0010	986+16	-	989+53	'WB'	LT	5.00	3A	---	---	---	106	---	---	---	---	---	---	---	
0010	985+78	-	989+53	'WB'	RT	3.50	3A	---	---	---	54	---	---	---	---	---	---	---	
0010	989+53	-	992+24	'WB'	LOWER LAYER	3.50	3A	---	---	---	---	---	---	---	---	225	---	---	
0010	989+53	-	992+24	'WB'	UPPER LAYER	2.50	3A	---	---	---	---	---	---	---	---	161	---	---	
0010	1006+11	-	1008+82	'WB'	UPPER LAYER	3.50	3A	---	---	---	---	---	---	---	---	232	---	---	
0010	1006+11	-	1008+82	'WB'	UPPER LAYER	2.50	3A	---	---	---	---	---	---	---	---	166	---	---	
0010	1008+82	-	1011+67	'WB'	LT	5.00	3A	---	---	---	---	---	---	---	---	---	---	---	
0010	1008+82	-	1011+57	'WB'	RT	3.50	3A	---	---	---	---	---	---	---	---	---	---	---	
0010	1014+94	-	1017+17	'WB'	LT	5.00	3A	---	---	---	---	---	---	---	---	---	---	---	
0010	1014+94	-	1017+17	'WB'	RT	3.50	3A	---	---	---	---	---	---	---	---	---	---	---	
0010	1017+17	-	1021+53	'WB'	LOWER LAYER	3.50	3A	---	---	---	---	---	---	---	---	---	---	---	
0010	1017+17	-	1021+53	'WB'	UPPER LAYER	2.50	3A	---	---	---	---	---	---	---	---	---	---	---	
0010	21+38	-	22+75	'G'	LOWER LAYER	2.50	3A	---	---	---	---	---	---	---	---	---	---	---	
0010	21+38	-	22+75	'G'	UPPER LAYER	2.50	3A	---	---	---	---	---	---	---	---	---	---	---	
0010	944+01	-	948+93	'WB'	LT	5.00	3B	---	---	---	---	---	---	---	---	---	---	---	
0010	944+01	-	948+93	'WB'	RT	3.50	3B	---	---	---	---	---	---	---	---	---	---	---	
0010	955+90	-	971+00	'WB'	LT	5.00	3B	---	---	---	---	---	---	---	---	---	---	---	
0010	20+34	-	31+89	'X7'	LOWER LAYER	3.50	3B	---	---	---	---	---	---	---	---	---	---	---	
0010	20+34	-	31+89	'X7'	UPPER LAYER	2.50	3B	---	---	---	---	---	---	---	---	---	---	---	
0010	971+00	-	973+02	'B'	LT	5.00	3B	---	---	---	---	---	---	---	---	---	---	---	
0010	973+02	-	976+00	'B'	LT	3.50	3B	---	---	---	---	---	---	---	---	---	---	---	
0010	973+02	-	976+00	'B'	RT	3.50	3B	---	---	---	---	---	---	---	---	---	---	---	
0010	992+00	-	995+80	'A'	LT	3.50	3B	---	---	---	---	---	---	---	---	---	---	---	
0010	992+00	-	995+80	'A'	RT	3.50	3B	---	---	---	---	---	---	---	---	---	---	---	
0010	995+80	-	1000+00	'A'	LT	5.00	3B	---	---	---	---	---	---	---	---	---	---	---	
0010	1000+00	-	1008+82	'WB'	LT	5.00	3B	---	---	---	---	---	---	---	---	---	---	---	
0010	34+00	-	43+56	'XB'	LOWER LAYER	3.50	3B	---	---	---	---	---	---	---	---	---	---	---	
0010	34+00	-	43+56	'XB'	UPPER LAYER	2.50	3B	---	---	---	---	---	---	---	---	---	---	---	
0010	1017+17	-	1029+89	'WB'	LT	5.00	3B	---	---	---	---	---	---	---	---	---	---	---	
0010	973+02	-	982+25	'WB'	LT	5.00	3C	---	---	---	---	---	---	---	---	---	---	---	
0010	989+53	-	995+80	'WB'	LT	5.00	3C	---	---	---	---	---	---	---	---	---	---	---	
0010	983+74	-	985+45	'B'	RT	5.00	3C	---	---	---	---	---	---	---	---	---	---	---	
0010	989+01	-	990+60	'A'	RT	5.00	3C	---	---	---	---	---	---	---	---	---	---	---	
0010	990+60	-	992+00	'A'	RT	3.50	3C	---	---	---	---	---	---	---	---	---	---	---	
0010	UNDISTRIBUTED								140	---	---	---	---	---	---	---	---	---	
STAGE 3 SUBTOTAL								0	140	568	2,167	3,648	0	0	0	0	0	0	0
STAGE 4								0	---	---	---	---	---	---	---	---	---	---	---
0010	935+48	-	936+38	'EB'	MEDIAN	5.00	4	---	---	---	---	---	---	---	---	---	---	---	
0010	952+78	-	982+10	'EB'	LT	3.50	4	---	---	---	---	---	---	---	---	---	---	---	
0010	985+46	-	1011+48	'EB'	LT	3.50	4	---	---	---	---	---	---	---	---	---	---	---	
0010	1014+74	-	1030+01	'EB'	LT	3.50	4	---	---	---	---	---	---	---	---	---	---	---	
0010	944+01	-	948+93	'WB'	RT	3.50	4	---	---	---	---	---	---	---	---	---	---	---	
0010	953+51	-	982+68	'WB'	RT	3.50	4	---	---	---	---	---	---	---	---	---	---	---	
0010	985+78	-	1009+82	'WB'	RT	3.50	4	---	---	---	---	---	---	---	---	---	---	---	
0010	1014+94	-	1029+89	'WB'	RT	3.50	4	---	---	---	---	---	---	---	---	---	---	---	
STAGE 4 SUBTOTAL								0	0	0	45	0	0	0	0	0	0	0	
TOTAL 0010								931	140	859	6,421	4,970	360	0	0	0	0	0	0

CONTINUED ON NEXT PAGE

Addendum No. 01
ID 1016-05-70
Revised Sheet 457
January 31, 2022

REMOVED
460.6223
460.6224
460.8624

CONTINUED FROM PREVIOUS PAGE

HMA PAVEMENT ITEMS

211.0400
PREPARE
FOUNDATION
FOR ASPHALTIC
SHOULDERS

Table with columns: CATEGORY, STATION, TO, STATION, ALIGNMENT, LOCATION, THICKNESS (IN), STAGE, STA, TON, HMA COLD WEATHER PAVING, TACK COAT GAL, HMA PAVEMENT 4 LT 58-28 S, HMA PAVEMENT 3 HT 58-28 S, HMA PAVEMENT 4 HT 58-28 H, HMA PAVEMENT 4 HT 58-28 H, REMARKS. Includes sub-totals for STAGE 2, PROJECT TOTAL, and DRIVEWAY ITEMS.

NOTE: TACK COAT CALCULATED AT 0.07 GALLONS PER SQUARE YARD FOR MILLED SURFACES AND 0.05 GALLONS PER SQUARE YARD BETWEEN LAYERS

ASPHALTIC SURFACE ITEMS

Table with columns: CATEGORY, STATION, TO, STATION, ALIGNMENT, LOCATION, THICKNESS INCH, STAGE, TON, REMARKS. Includes sub-totals for STAGE 2 and STAGE 3.

DRIVEWAY ITEMS

Table with columns: CATEGORY, STATION, TO, STATION, ALIGNMENT, LOCATION, STAGE, TON, REMARKS. Includes sub-totals for STAGE 2.

Table with columns: CATEGORY, STATION, TO, STATION, ALIGNMENT, LOCATION, STAGE, TON, REMARKS. Includes sub-totals for STAGE 2.

*ADDITIONAL QUANTITIES LISTED ELSEWHERE

PROJECT NO: 1016-05-70

HWY: IH 90/94

COUNTY: JUNEAU

MISCELLANEOUS QUANTITIES

PLOT NAME: NSA

PLOT SCALE: 1:1

SHEET: 457

E

Addendum No. 01
ID 1016-05-70
Revised Sheet 476
January 31, 2022

RESTORATION ITEMS

CATEGORY	STATION	TO	STATION	ALIGNMENT	STAGE	LOCATION	SY	MULCHING	SY	EROSION MAT CLASS I TYPE B	SY	EROSION MAT CLASS II TYPE A	SY	TEMPORARY DITCH CHECKS	LF	FERTILIZER TYPE B	CWT	SEEDING MIXTURE NO. 20	LB	SEEDING TEMPORARY	LB	SEED WATER	MGAL	
STAGE 2																								
0010	947409	-	950495	'EB'	2	RT	876	---	876	---	---	---	---	---	---	---	0.6	12	---	---	---	---	19.7	
0010	952437	-	969457	'EB'	2	RT	7,023	---	7,023	---	---	---	---	---	---	---	4.5	95	---	---	---	---	157.8	
0010	969457	-	978439	'C'	2	RT	4,125	---	4,125	---	---	---	---	---	---	---	2.6	56	---	---	---	---	92.7	
0010	969461	-	980451	'C'	2A	LT	834	---	834	---	---	---	---	---	---	---	3.6	141	---	---	---	---	---	
0010	969462	-	978469	'EB'	2	INFIELD RT	10,409	---	8,264	---	2,146	---	---	---	---	---	6.6	77	---	---	---	---	233.8	
0010	976400	-	985445	'B'	2	LT	5,667	---	5,667	---	---	---	---	---	---	---	3.6	141	---	---	---	---	127.3	
0010	976400	-	985489	'B'	2	RT	1,233	---	1,233	---	---	---	---	---	---	---	0.8	17	---	---	---	---	27.7	
0010	981482	-	992405	'D'	2	RT	3,425	---	3,425	---	---	---	---	---	---	---	2.2	47	---	---	---	---	77	
0010	983487	-	992402	'EB'	2	INFIELD RT	13,939	---	13,939	---	---	---	---	---	---	---	8.8	189	---	---	---	---	313.1	
0010	986472	-	990451	'A'	2	RT	1,951	---	1,951	---	---	---	---	---	---	---	1.3	27	---	---	---	---	43.8	
0010	989401	-	992400	'A'	2	LT	2,379	---	2,379	---	---	---	---	---	---	---	1.5	33	---	---	---	---	53.5	
0010	992405	-	1012416	'EB'	2	RT	6,346	---	6,346	---	---	---	---	---	---	---	4.0	86	---	---	---	---	142.6	
0010	1014429	-	1030404	'EB'	2	RT	5,721	---	5,721	---	---	---	---	---	---	---	3.7	78	---	---	---	---	128.5	
0010	138443	-	140491	'WB82'	2	LT	613	---	613	---	---	---	---	---	---	---	0.4	9	---	---	---	---	14	
0010	138443	-	141456	'EB82'	2	RT	1,194	---	1,194	---	---	---	---	---	---	---	0.8	17	---	---	---	---	26.9	
0010	978439	-	980444	'C'	2	RT	731	---	731	---	---	---	---	---	---	---	0.5	10	---	---	---	---	16.5	
0010	141439	-	148436	'WB82'	2	LT	472	---	472	---	---	---	---	---	---	---	0.3	7	---	---	---	---	10.6	
0010	141454	-	148454	'EB82'	2	RT	424	---	424	---	---	---	---	---	---	---	0.3	6	---	---	---	---	9.6	
0010	986496	-	989401	'A'	2	LT	659	---	659	---	---	---	---	---	---	---	0.1	9	---	---	---	---	15	
0010	141437	-	142404	'EB82'	2	CENTER CIRCLE	363	---	363	---	---	---	---	---	---	---	0.3	5	---	---	---	---	8.2	
0010	146452	-	149409	'WB82'	2	LT	1,304	---	1,304	---	---	---	---	---	---	---	0.9	18	---	---	---	---	29.3	
0010	148476	-	149446	'EB82'	2	CENTER CIRCLE	316	---	316	---	---	---	---	---	---	---	0.2	5	---	---	---	---	7.1	
0010	149437	-	152467	'WB82'	2	LT	954	---	954	---	---	---	---	---	---	---	0.6	13	---	---	---	---	21	
0010	149485	-	150480	'EB82'	2	RT	925	---	925	---	---	---	---	---	---	---	0.6	13	---	---	---	---	21	
0010	150436	-	152470	'EB82'	2	RT	344	---	344	---	---	---	---	---	---	---	0.3	5	---	---	---	---	7.8	
0010	---	-	---	---	2	WASTE SITE	---	8,386	---	---	---	---	---	---	---	---	---	---	114	---	227	---	---	
0010	---	-	---	---	2	UNDISTRIBUTED	14,271	---	9,815	---	4,027	---	---	---	---	---	---	---	266	---	---	---	---	
STAGE 2 SUBTOTAL							86,498	8,386	59,763	24,161	2,576	336	---	---	---	---	---	---	365.5	1,342.0	---	227	---	1,973.9
STAGE 3																								
0010	944401	-	948493	'WB'	3	LT	2,041	---	2,041	---	---	---	---	---	---	---	1.3	28	---	---	---	---	45.9	
0010	947478	-	952455	'WB'	3A	LT	2,063	---	2,063	---	---	---	---	---	---	---	1.3	28	---	---	---	---	46.4	
0010	959443	-	973400	'WB'	3	LT	8,609	---	8,609	---	---	---	---	---	---	---	5.5	117	---	---	---	---	193.4	
0010	953411	-	959443	'WB'	3A	LT	2,601	---	2,601	---	---	---	---	---	---	---	1.7	36	---	---	---	---	58.5	
0010	973400	-	976400	'B'	3	LT	912	---	912	---	---	---	---	---	---	---	0.6	13	---	---	---	---	20.5	
0010	973405	-	984482	'WB'	3	INFIELD LT	12,639	---	12,633	---	507	---	---	---	---	---	8.0	171	---	---	---	---	283.9	
0010	975497	-	983472	'WB'	3A	LT	4,105	---	4,105	---	---	---	---	---	---	---	2.6	56	---	---	---	---	92.2	
0010	984498	-	991460	'WB'	3A	LT	2,461	---	2,461	---	---	---	---	---	---	---	1.6	34	---	---	---	---	55.3	
0010	987400	-	995499	'A'	3	INFIELD	3,852	---	3,852	---	---	---	---	---	---	---	2.5	52	---	---	---	---	86.5	
0010	992400	-	996400	'A'	3	LT	1,974	---	1,974	---	---	---	---	---	---	---	1.3	27	---	---	---	---	44.4	
0010	996400	-	1006411	'WB'	3	LT	4,131	---	4,131	---	---	---	---	---	---	---	2.7	56	---	---	---	---	92.8	
0010	1006411	-	1012430	'WB'	3A	LT	1,116	---	1,116	---	---	---	---	---	---	---	0.8	16	---	---	---	---	25.1	
0010	1014475	-	1021452	'WB'	3A	LT	1,756	---	1,756	---	---	---	---	---	---	---	1.2	24	---	---	---	---	39.5	
0010	1017417	-	1029490	'WB'	3	LT	3,740	---	3,740	---	---	---	---	---	---	---	2.4	51	---	---	---	---	84.0	
0010	---	-	---	---	3	WASTE SITE	---	13,860	---	---	---	---	---	---	---	---	---	---	188	---	---	---	---	
0010	---	-	---	---	3	UNDISTRIBUTED	10,400	---	8,330	---	1,969	---	---	---	---	---	---	---	225	---	---	---	---	
STAGE 3 SUBTOTAL							62,400	13,860	49,979	11,814	609	154	---	---	---	---	---	---	41.9	375	---	---	---	1,461.4

CONTINUED ON NEXT PAGE

Addendum No. 01
ID 1016-05-70
Revised Sheet 477
January 31, 2022

CONTINUED FROM PREVIOUS PAGE

RESTORATION ITEMS

CATEGORY	STATION	TO	STATION	ALIGNMENT	STAGE	LOCATION	SALVAGED TOPSOIL SY	MULCHING SY	EROSION MAT CLASS I TYPE B SY	EROSION MAT CLASS II TYPE A SY	TEMPORARY DITCH CHECKS LF	FERTILIZER TYPE B CWT	SEEDING MIXTURE NO. 20 LB	SEEDING TEMPORARY LB	SEED WATER MGAL
STAGE 4															
0010	935+03	-	935+65	'EB'	4	LT	340	---	340	---	8	0.3	5	---	7.7
0010	935+95	-	951+98	'EB'	4	LT	8,529	---	8,529	---	72	5.4	116	---	191.6
0010	932+25	-	983+27	'EB'	4	LT	16,469	---	16,469	---	136	10.4	223	---	369.9
0010	984+48	-	1012+55	'EB'	4	LT	15,429	---	15,429	---	48	9.8	209	---	346.6
0010	1014+30	-	1030+04	'EB'	4	LT	8,874	---	8,874	---	40	5.6	120	---	199.3
0010	---	-	---	---	4	WASTE SITE	20,868	---	---	---	---	---	282	---	564
0010	---	-	---	---	4	UNDISTRIBUTED	9929	---	9929	---	61	7.9	239	---	279.0
STAGE 4 SUBTOTAL							59,570	20,868	59,570	0	365	39.4	1,194	564	1,394.1
TOTAL 0010							208,468	43,114	169,312	35,975	855	1,378	3,658	1,166	4,829.4
STAGE 2															
0080	131+83	-	138+43	'WB82'	2	LT	1,606	---	1,606	---	---	1.1	22	---	36.1
0080	131+84	-	138+43	'EB82'	2	RT	528	---	528	---	---	0.4	8	---	11.9
0080	152+67	-	157+93	'WB82'	2	LT	1,119	---	1,119	---	---	0.8	16	---	25.2
0080	152+70	-	159+22	'EB82'	2	RT	880	---	880	---	---	0.6	12	---	19.8
0080	---	-	---	---	2	WASTE SITE	7,787	---	---	---	---	---	106	---	211
0080	---	-	---	---	2	UNDISTRIBUTED	827	---	827	---	48	0.8	41	---	24.0
STAGE 2 SUBTOTAL							4,960	7,787	4,960	0	48	3.7	205	211	117.0
TOTAL 0080							4,960	7,787	4,960	0	48	3.7	205	211	117.0
PROJECT TOTAL							213,428	50,901	174,272	35,975	903	141.5	3,863	1,377	4,946.4

MOBILIZATIONS & EROSION CONTROL

CATEGORY	STAGE	EACH	QUANTITY
0010	STAGE 2	7	6
0010	STAGE 3	10	8
0010	STAGE 4	6	5
TOTAL 0010			23

CATEGORY	STAGE	EACH	QUANTITY
628.1905	MOBILIZATIONS	EROSION CONTROL	903
628.1910	MOBILIZATIONS	EMERGENCY EROSION CONTROL	19

STATE PROJECT NUMBER
1016-05-70

TRAFFIC VOLUME
A.D.T. (2042) = 19,700
R.D.S. = 50 MPH

STRUCTURE DATA

STANDARD SIGN TYPE II
ACTUAL SIGN DEPTH 10'-0"
158 SF
SIGN STR 5-29-0011

GENERAL NOTES

DRAWINGS SHALL NOT BE SCALED.
ALTERNATE DESIGNS ARE NOT ALLOWED.
COORDINATES ON THIS PLAN ARE REFERENCED TO THE WISCONSIN COUNTY COORDINATE SYSTEM (WCCS), JUNEAU COUNTY ZONE, MAD 83 (2011). ALL STA LETTERS AND DATUMS ARE REFERENCED TO THE NORTH AMERICAN VERTICAL DATUM (NAVD 88 (2011)).
ALL REINFORCING BARS ARE IN ENGLISH UNITS. THE FIRST DIGIT OF A BAR MARK SIGNIFIES THE BAR SIZE.
SIGN BRIDGE PLATES SHALL BE CONSIDERED INCIDENTAL TO THE TRUSS PLAN SET. LOCATE THE ID PLAQUE ON THE FREEMWAY SIDE OF THE SUPPORT COLUMN SO THAT IT CAN BE SEEN FROM THE ROADWAY.
FABRICATE AND INSTALL THE ID PLAQUE IN ACCORDANCE WITH S.D.D. 12 A 4-3.
UNLESS DETAILED OTHERWISE IN THE PLANS, ALL I.L.S. BOLTED CONNECTIONS SHALL BE INSTALLED WITH DT WASHERS.
WELDED CONNECTIONS CAN BE USED IN LIEU OF BOLTED CONNECTIONS, IF A TRUSS UNIT CAN BE GALVANIZED IN ONE PIECE.
WELD TEST AS PER AWS D11.
SEE SIGN PLATE NO. A4-5, A4-7A & A4-7B OF THE SIGN PLATE MANUAL FOR INSTRUCTIONS ON CENTERING SIGNS VERTICALLY ON THE TRUSS.
SIGNS OR BLANKS SHALL BE INSTALLED ON TRUSS AT TIME OF ERECTION. BLANKS SHALL BE 1/4 THE LENGTH OF THE CANTILEVER SPAN, 2'-0" DEEPER THAN THE C/L TO C/L OF CHORDS, AND SHALL BE CENTERED ON THE BRIDGE. SIGNS SHALL BE AS DESIGNATED ON THE PLANS.
THE INFORMATION SHOWN ON THESE DRAWINGS CONCERNING TYPE AND LOCATION OF UNDERGROUND UTILITIES IS NOT GUARANTEED TO BE ACCURATE. THE CONTRACTOR SHALL BE RESPONSIBLE FOR VERIFYING HIS OWN DETERMINATION OF THE TYPE AND LOCATION OF UTILITIES AS MAY BE NECESSARY TO AVOID DAMAGE.
CONTRACTOR SHALL SUBMIT SHOP DRAWINGS PER THE REQUIREMENTS IN THE STANDARD SPECIFICATIONS PRIOR TO FABRICATION OF THE STRUCTURE. CONTRACTOR SHALL SHOW SIGNS ON THE SHOP DRAWINGS.
THE CONTRACTOR SHALL BE RESPONSIBLE FOR DRILLING OR EXCAVATING AND MAINTAINING A STABLE AND OPEN HOLE FOR SUBSEQUENT INSTALLATION OF CONCRETE MASONRY FOR THE DRILLED SHAFTS. A PARTIAL HOLE SHALL BE EXCAVATED TO THE REQUIRED CHAIN FOR THE SIGN SUPPORT PRIOR TO FILLING THE HOLE WITH CONCRETE. PERMANENT CASING MADE FROM STEEL OR CORRUGATED METAL PIPE MAY BE USED IN LIEU OF TEMPORARY CASING. ITEM "DRILLING SHAFT (DAS)"

DESIGN DATA

CONTRACTOR DESIGNED OVERHEAD SIGN STRUCTURES SHALL BE DESIGNED ACCORDING TO THE AASHTO "LRFD SPECIFICATIONS FOR STRUCTURAL SUPPORTS FOR HIGHWAY SIGNS, LUMINAIRES AND TRAFFIC SIGNALS", 1ST EDITION AND INTERIM SPECIFICATIONS, AND THE WISDOT BRIDGE MANUAL.
STANDARD FOUNDATIONS DESIGNED ACCORDING TO THE AASHTO LRFD BRIDGE DESIGN SPECIFICATIONS, 8TH EDITION.
DEAD LOAD: WT. OF SIGN AND SUPPORTING STRUCTURE.
ICE LOAD: 3. PSF TO ONE FACE OF SIGN & SURFACE OF MEMBERS.
WIND PRESSURE: (1700 YEAR MEAN RECURRENCE INTERVAL)
WIND COMPONENTS: NORMAL TRANSVERSE
LOAD CASE 1: 1.00
LOAD CASE 2: 0.75
LOAD CASE 3: 0.75
LOAD COMBINATIONS
STRENGTH I: 1.25 DC + 1.6 LL
EXTREME I (MAX DC): 1.1 DC + 1.0 W + 1.0 ICE
SERVICE I (MIN DC): 0.9 DC + 1.0 W
LOAD CASE 1: 1.0 WIND NATURAL WIND GUST VIBRATION)
LOAD CASE 2: 1.0 TRG (TRUCK INDUCED GUST VIBRATION)
LOAD CASE 3: 1.0 GVW (GALLOPING - CANTILEVER ONLY)

MATERIAL PROPERTIES

CONCRETE MASONRY: fc = 3,500 psi
HIGH STRENGTH STEEL REINFORCEMENT, GRADE 60 fy = 60,000 psi
HIGH STRENGTH BOLTS - A325 fy = 92,000 psi
ANCHOR RODS - ASTM F1554 GRADE 55 fy = 55,000 psi
HEAVY HEX NUTS FOR ANCHOR RODS - ASTM A563A
WASHERS FOR ANCHOR RODS - ASTM F436

FOUNDATION DATA

SIGN STRUCTURE FOUNDATIONS ARE SUPPORTED ON DRILLED SHAFTS THAT HAVE BEEN DESIGNED FOR SITES WHERE SOILS EXHIBIT A PHI-ANGLE GREATER THAN OR EQUAL TO 24° (GRANULAR SOILS) OR A COHESION VALUE GREATER THAN OR EQUAL TO 2.0 KIPS/FT (COHESIVE SOILS).
GROUND WATER TABLE FOR DESIGN IS ASSUMED TO BE AT A DEPTH OF 10'-0" BELOW THE GROUND SURFACE. ACTUAL WATER LEVEL AT SITE MAY VARY. THE REGION GEOTECHNICAL ENGINEER SHALL VISUALLY INSPECT THE SUBSURFACE SOILS DURING CONSTRUCTION TO CONFIRM THESE PROPERTIES PRIOR TO PLACEMENT OF THE DRILLED SHAFT CONCRETE.

LIST OF DRAWINGS

- GENERAL NOTES & DESIGN DATA
- GENERAL LAYOUT 5-29-0011
- GENERAL LAYOUT 5-29-0012

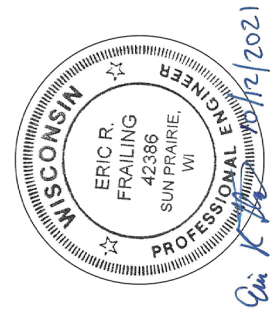
LIST OF OSS STANDARD DESIGN DRAWINGS

- MONOTUBE & 2-CHORD TRUSS DETAILS
- MONOTUBE & 2-CHORD TRUSS ELECTRICAL DETAILS
- MONOTUBE & 2-CHORD TRUSS FOUNDATION DETAILS

TOTAL ESTIMATED QUANTITIES

BID ITEM NO.	BID ITEM	UNIT	5-29-0011	5-29-0012
531.2036	DRILLING SHAFT 06-INCH	LF	40	40
531.5420	FOUNDATION SINGLE-SHAFT TF-II (S-29-0011)	EA	2	----
531.5420	FOUNDATION SINGLE-SHAFT TF-II (S-29-0012)	EA	----	2
532.9420	TRUSS FULL SPAN 2-CHORD TYPE IIS-29-0011	EA	1	----
532.9420	TRUSS FULL SPAN 2-CHORD TYPE IIS-29-0012	EA	----	1

THESE ARE STANDARD DESIGN PLANS DEVELOPED AND MAINTAINED BY THE WISCONSIN DEPARTMENT OF TRANSPORTATION. THE DESIGNER CERTIFIES THAT THE DESIGN AND THE DESIGNER'S NAME ARE CONSISTENT WITH THE GUIDANCE PROVIDED IN THE CURRENT WISCONSIN BRIDGE MANUAL CHAPTER 39.



Addendum No. 01
ID 1016-05-70
Added Sheet 997A
January 31, 2022

STRUCTURE DESIGN CONTACTS:
AARON BONK (608) 261-0261
ERIC FRAILING (608) 216-2054

NO. DATE REVISION BY



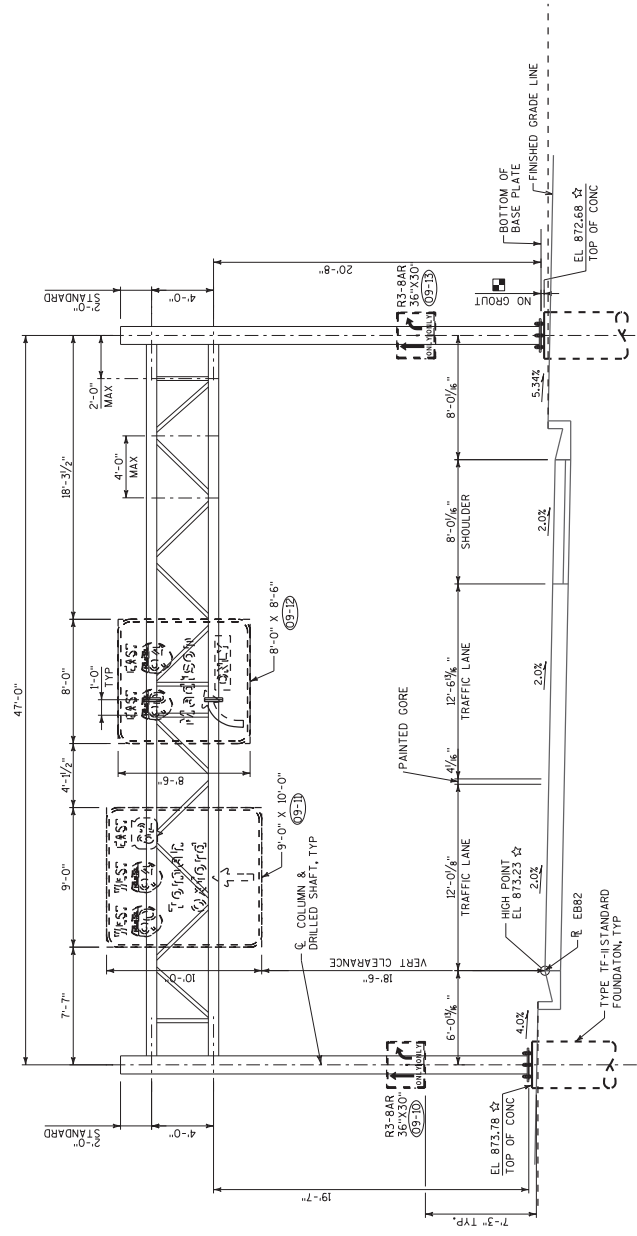
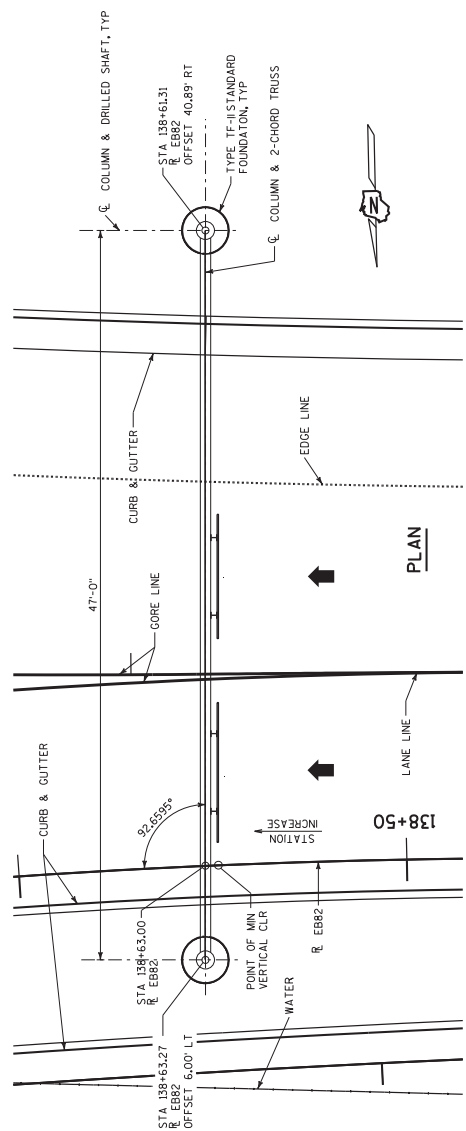
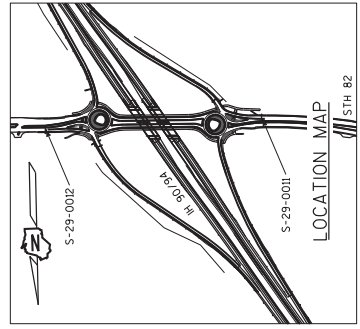
STH 82 OVERHEAD SIGN STRUCTURES
2-CHORD TRUSS PLANS

COUNTY JUNEAU CITY MAULSTON
DESIGN SPEC. AASHTO LRFD, 15-1 W/INTERIMS
DESIGNED BY ERF (EJC&O) JTD BL
CHECKED BY ERF (EJC&O) JTD BL
PLANS ERF (EJC&O) JTD

GENERAL NOTES & DESIGN DATA
SHEET 1 OF 3
997A

I.D. 1016-05-70 DATE: FEB 2021

STATE PROJECT NUMBER
1016-05-70



NOTE
POINT OF MIN. VERTICAL CLEARANCE
STA 138+63.00 EBB2, 0' (LEFT)
EL. 873.23

LEGEND
☆ ELEVATIONS GIVEN ALONG ϕ 2-CHORD TRUSS
⊗ SIGN NUMBERS (PERMANENT SIGNING PLAN)
□ STANDOFF DIMENSION IS ASSUMED TO BE 2'-0" UNLESS OTHERWISE NOTED
DIMENSION SEE FOUNDATION DETAIL SHEET AND SHOP DRAWINGS FOR MORE INFORMATION.

Addendum No. 01
ID 1016-05-70
Added Sheet 997B
January 31, 2022

NO.	DATE	REVISION	BY

STATE OF WISCONSIN
DEPARTMENT OF TRANSPORTATION
STRUCTURES DESIGN SECTION
STRUCTURE S-29-0011

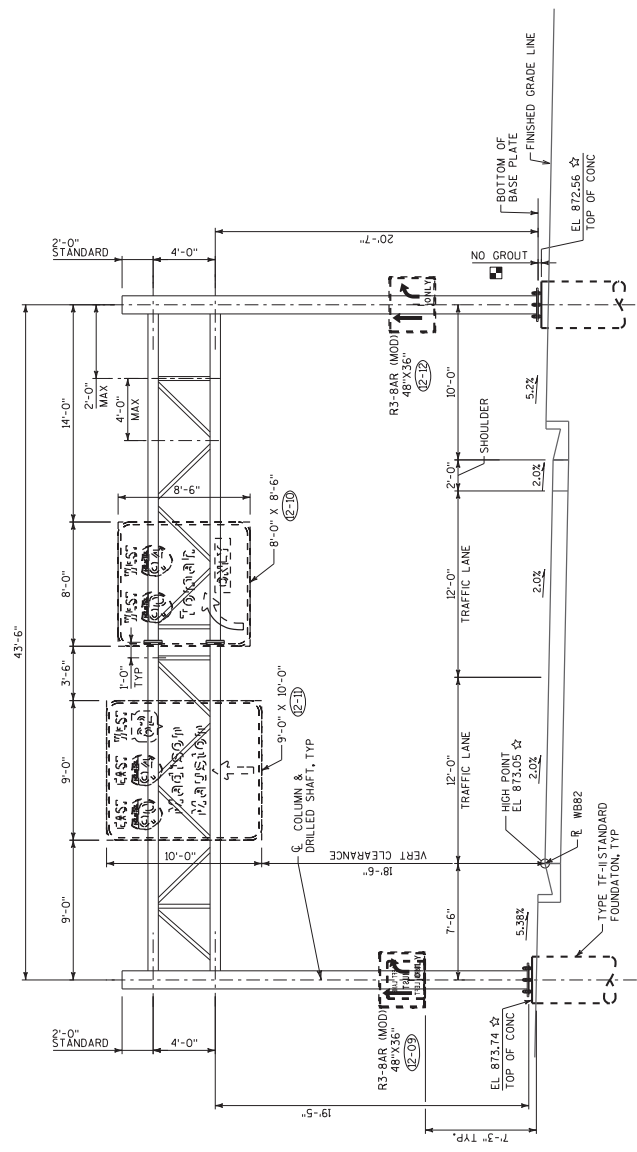
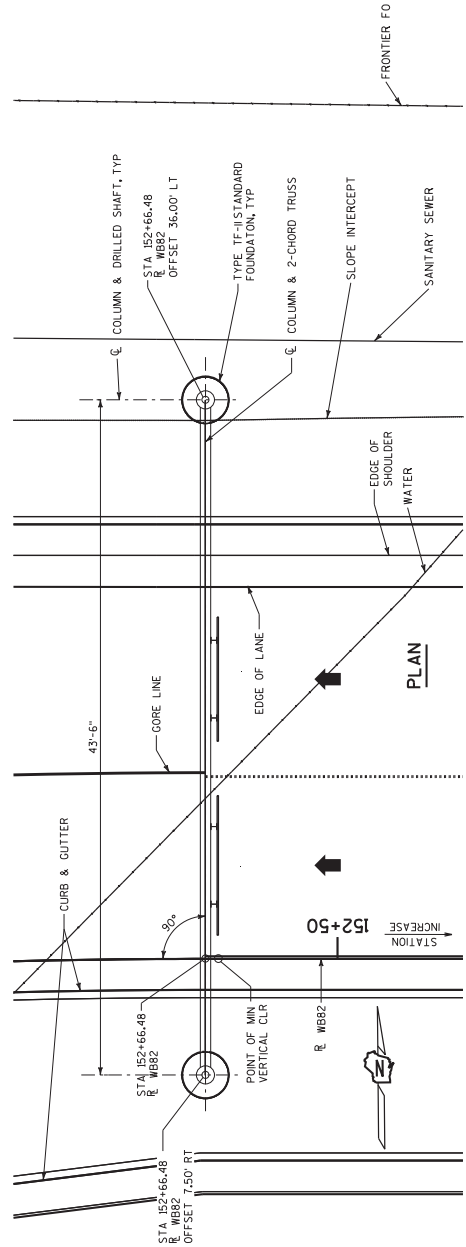
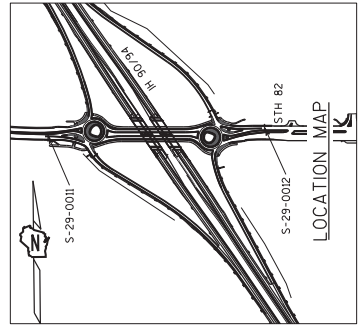
DESIGNED	
CHECKED	
DRAWN	JTD
ENGINEER	

GENERAL LAYOUT
S-29-0011

SHEET 2 OF 3
997B

ELEVATION
STA 138+63.00 EBB2
(LOOKING UPSTATION AT FRONT OF SIGN)

STATE PROJECT NUMBER
1016-05-70



NOTE

POINT OF MIN. VERTICAL CLEARANCE
STA 152+66.48 WBB2, 0' (LEFT)
EL. 873.05

LEGEND

- ☆ ELEVATIONS GIVEN ALONG ϕ 2-CHORD TRUSS
- (XX) SIGN NUMBERS (PERMANENT SIGNING PLAN)
- STANDOFF DIMENSION IS ASSUMED TO BE 2'-0" UNLESS OTHERWISE NOTED
- DIMENSION SEE FOUNDATION DETAIL SHEET AND SHOP DRAWINGS FOR MORE INFORMATION.

Addendum No. 01
 ID 1016-05-70
 Added Sheet 997C
 January 31, 2022

NO.	DATE	REVISION	BY
		STATE OF WISCONSIN DEPARTMENT OF TRANSPORTATION STRUCTURES DESIGN SECTION	
STRUCTURE S-29-0012			
DRAWN		PLANS	JTD
ERF		ICHD.	

GENERAL LAYOUT
S-29-0012

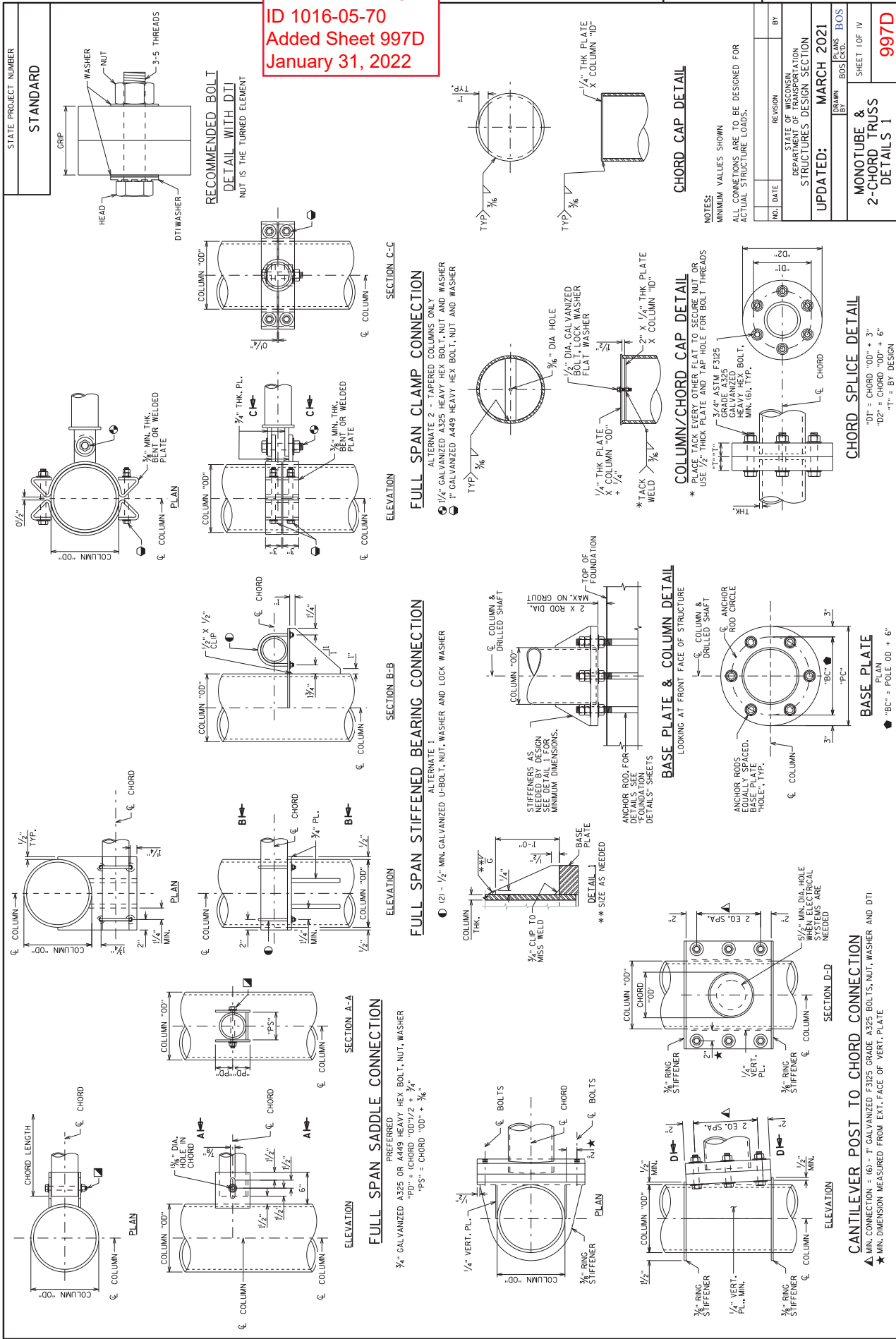
SHEET 3 OF 3

997C

LOOKING DOWNSTATION AT FRONT OF SIGN

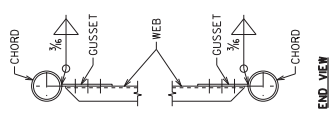
STA 152+66.48 WBB2
 (LOOKING DOWNSTATION AT FRONT OF SIGN)

Addendum No. 01
 ID 1016-05-70
 Added Sheet 997D
 January 31, 2022

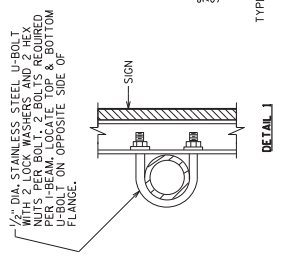


NO.	DATE	REVISION	BY
STATE OF WISCONSIN DEPARTMENT OF TRANSPORTATION STRUCTURES DESIGN SECTION			
UPDATED:		MARCH 2021	
DESIGNED BY	BRUNN	PLANS CHECKED BY	BOS
MONOTUBE & 2-CHORD TRUSS DETAILS 1		SHEET 1 OF 14	997D

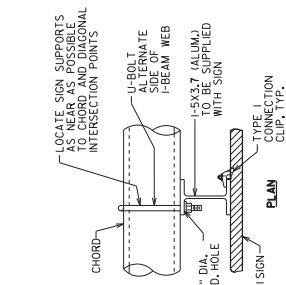
STATE PROJECT NUMBER
STANDARD



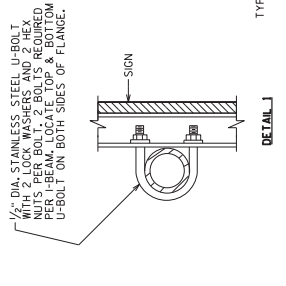
TRUSS CONNECTION DETAILS
BOLTED CONNECTIONS SHOWN NUMBER OF BOLTS BY DESIGN
WELDED CONNECTIONS SIMILAR



2-CHORD TRUSS SIGN CONNECTION
SEE SIGN PLATE MANUAL 44-7A FOR DETAILS
ALUMINUM I-5X3.7 I-BEAMS ARE TO BE SUPPLIED WITH THE SIGN PANEL
HARDWARE TO BE SUPPLIED BY THE CONTRACTOR

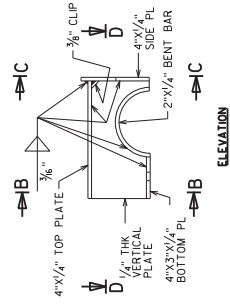


MONOTUBE SIGN CONNECTION
SEE SIGN PLATE MANUAL 44-7B FOR DETAILS
ALUMINUM I-5X3.7 I-BEAMS ARE TO BE SUPPLIED WITH THE SIGN PANEL
HARDWARE TO BE SUPPLIED BY THE CONTRACTOR



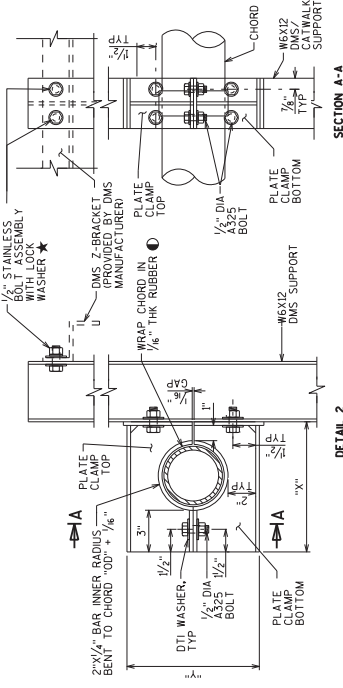
MONOTUBE SIGN CONNECTION
SEE SIGN PLATE MANUAL 44-7B FOR DETAILS
ALUMINUM I-5X3.7 I-BEAMS ARE TO BE SUPPLIED WITH THE SIGN PANEL
HARDWARE TO BE SUPPLIED BY THE CONTRACTOR

Addendum No. 01
ID 1016-05-70
Added Sheet 997E
January 31, 2022

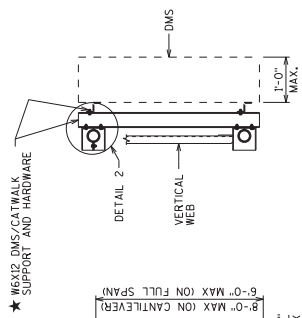


SECTION B-B
SECTION C-C
SECTION D-D

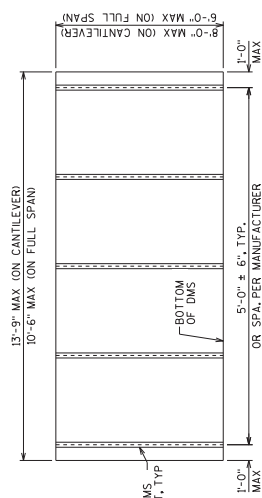
DMS WELDED PLATE CONNECTION DETAILS
TOP PLATE CLAMP SHOWN
BOTTOM PLATE CLAMP SIMILAR



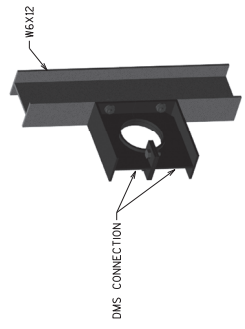
DETAIL 2
TYPICAL DMS CONNECTION
NEOPRENE GRADE 45-45 OTHERWISE MEETING THE REQUIREMENTS OF STD SPEC 506.2.6.1



SECTION THRU TRUSS
FOR DMS/CATWALK CONNECTION
W6X12 SUPPORTS AND HARDWARE ARE TO BE SUPPLIED BY THE CONTRACTOR. 1/2\"/>

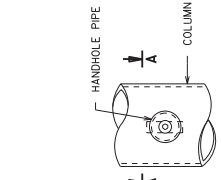


DMS MOUNTING POST SPACING DETAIL
POST SPACING MAY BE ADJUSTED AS REQUIRED IF CONFLICT WITH TRUSS IS ENCOUNTERED.

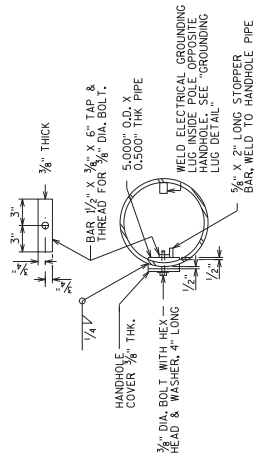


3-D VIEW DMS CONNECTION
CHORD NOT SHOWN FOR CLARITY

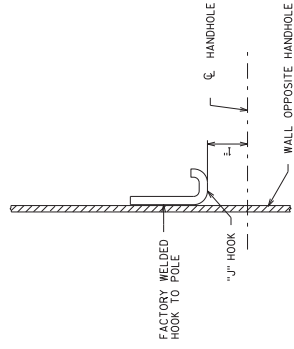
NO.	DATE	REVISION	BY
STATE OF WISCONSIN DEPARTMENT OF TRANSPORTATION STRUCTURES DESIGN SECTION			
UPDATED: APRIL 2021			
DRAWN BY: BOS		CHECKED BY: BOS	
MONOTUBE & 2-CHORD TRUSS DETAILS 2			
SHEET 11 OF 14			
997E			



HANDHOLE DETAILS

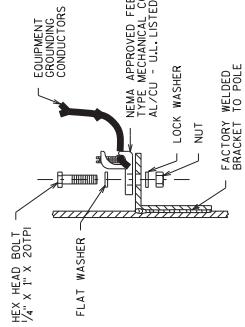


SECTION A-A



TYPICAL "J" HOOK LOCATION

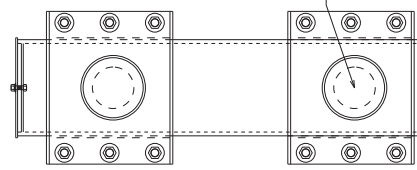
THE "J" HOOK SHALL BE FACTORY WELDED TO THE INSIDE OF ALL COLUMNS CONTAINING ELECTRICAL WIRING. THE "J" HOOK SHALL BE ATTACHED ABOVE THE CENTERLINE OF THE UPPER HANDHOLE AND MOUNTED DIRECTLY OPPOSITE THE HANDHOLE AS SHOWN IN THE DRAWING.



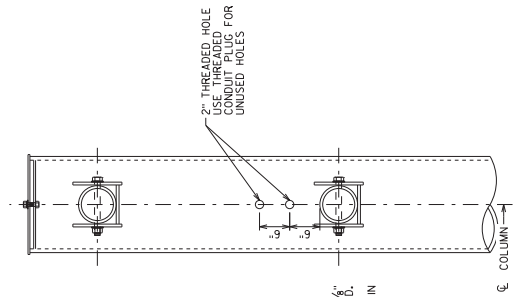
GROUNDING LUG DETAIL

NUT, BOLT, AND WASHERS SHALL BE STAINLESS STEEL

Addendum No. 01
ID 1016-05-70
Added Sheet 997F
January 31, 2022

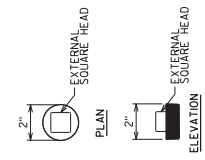


2-CHORD CANTILEVER

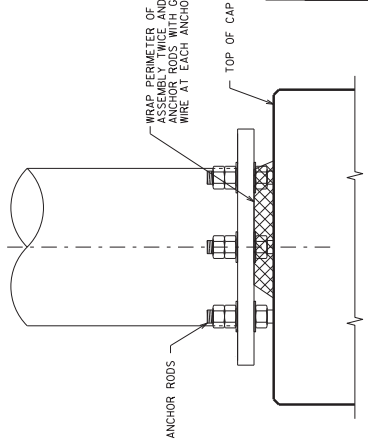


2-CHORD FULL SPAN

SADDLE CONNECTIONS SHOWN, BEARING AND CLAMP CONNECTIONS SIMILAR



CONDUIT PLUG DETAILS



RODENT SCREEN

(ONLY REQD. WHEN ELECTRICAL DEVICES ARE INSTALLED)

CONDUIT HOLE LOCATIONS

NO.	DATE	REVISION	BY
STATE OF WISCONSIN DEPARTMENT OF TRANSPORTATION STRUCTURES DESIGN SECTION			
UPDATED: MARCH 2021			
DESIGNED BY	BY	PLANS BOSS	BOSS
MONOTUBE & 2-CHORD TRUSS ELECTRICAL DETAILS			SHEET III OF IV
			997F

FOUNDATION & REINFORCING DATA

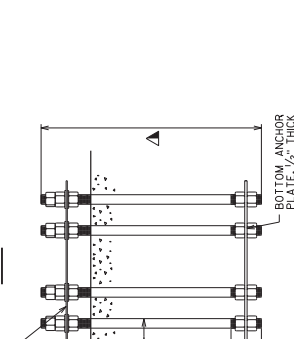
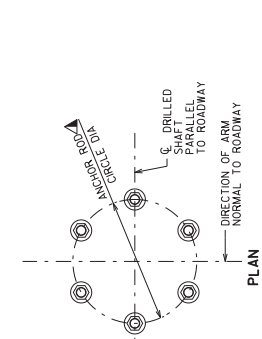
STANDARD FOUNDATION TYPE	SHAFT VARIABLES					
	"D"	"L"	"R"	"S"	"T"	"BC" MAX
MF1	2'-0"	12'-0"	12	A801	6	12"
MFII	2'-6"	13'-0"	13	A801	10	17"
MCI/MCI/TFI	2'-6"	17'-0"	17	A801	10	17"
TCI	3'-0"	18'-0"	18	A801	14	22"
TFII	3'-0"	20'-0"	20	A801	14	22"
MCI/TCI/TFII	3'-6"	18'-0"	18	A801	14	28"
MCI/TFIV	3'-6"	23'-0"	23	A901	14	28"
TCIII	4'-0"	23'-0"	23	A1001	14	34"
TCIV	4'-0"	28'-0"	28	A1001	14	34"

STATE PROJECT NUMBER
STANDARD

NOTE: THE FIRST OR FIRST TWO DIGITS OF THE BAR MARK SIGNIFIES THE BAR SIZE

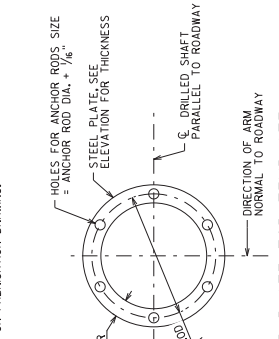
BILL OF BARS - STANDARD FOUNDATIONS

STANDARD FOUNDATION MFI			STANDARD FOUNDATION MCI/TCI/TFI			STANDARD FOUNDATION MCI/TCI/TFII			STANDARD FOUNDATION MCI/TCI/TFIV						
BAR MARK	NO. REOD.	LENGTH	BAR SERIES	NO. REOD.	LENGTH	BAR SERIES	NO. REOD.	LENGTH	BAR SERIES	NO. REOD.	LENGTH	BAR SERIES			
A801	6	11'-7"	BENT	A801	10	12'-7"	BENT	A801	14	17'-7"	BENT	A801	14	17'-7"	BENT
A402	13	5'-10"	X	A402	14	7'-5"	X	A402	19	9'-0"	X	A402	21	9'-0"	X
STANDARD FOUNDATION MFI			STANDARD FOUNDATION MCI/TCI/TFI			STANDARD FOUNDATION MCI/TCI/TFII			STANDARD FOUNDATION MCI/TCI/TFIV						
BAR MARK	NO. REOD.	LENGTH	BENT	BAR MARK	NO. REOD.	LENGTH	BENT	BAR MARK	NO. REOD.	LENGTH	BENT	BAR MARK	NO. REOD.	LENGTH	BENT
A801	10	12'-7"	BENT	A801	10	16'-7"	BENT	A801	14	19'-7"	BENT	A801	14	19'-7"	BENT
A402	14	7'-5"	X	A402	18	7'-5"	X	A402	21	9'-0"	X	A402	21	9'-0"	X
STANDARD FOUNDATION MCI/TCI/TFI			STANDARD FOUNDATION MCI/TCI/TFII			STANDARD FOUNDATION MCI/TCI/TFIV									
BAR MARK	NO. REOD.	LENGTH	BENT	BAR MARK	NO. REOD.	LENGTH	BENT	BAR MARK	NO. REOD.	LENGTH	BENT	BAR MARK	NO. REOD.	LENGTH	BENT
A801	10	12'-7"	BENT	A801	14	17'-7"	BENT	A801	14	19'-7"	BENT	A801	14	19'-7"	BENT
A402	14	7'-5"	X	A402	19	9'-0"	X	A402	21	9'-0"	X	A402	21	9'-0"	X
STANDARD FOUNDATION MCI/TCI/TFII			STANDARD FOUNDATION MCI/TCI/TFIV												
BAR MARK	NO. REOD.	LENGTH	BENT	BAR MARK	NO. REOD.	LENGTH	BENT	BAR MARK	NO. REOD.	LENGTH	BENT	BAR MARK	NO. REOD.	LENGTH	BENT
A801	14	17'-7"	BENT	A801	14	19'-7"	BENT	A801	14	19'-7"	BENT	A801	14	19'-7"	BENT
A402	19	9'-0"	X	A402	21	9'-0"	X	A402	21	9'-0"	X	A402	21	9'-0"	X
STANDARD FOUNDATION MCI/TCI/TFIV															
BAR MARK	NO. REOD.	LENGTH	BENT	BAR MARK	NO. REOD.	LENGTH	BENT	BAR MARK	NO. REOD.	LENGTH	BENT	BAR MARK	NO. REOD.	LENGTH	BENT
A801	14	17'-7"	BENT	A801	14	19'-7"	BENT	A801	14	19'-7"	BENT	A801	14	19'-7"	BENT
A402	19	9'-0"	X	A402	21	9'-0"	X	A402	21	9'-0"	X	A402	21	9'-0"	X



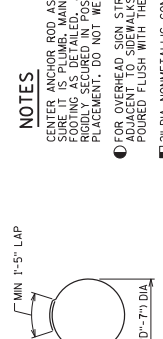
ANCHOR ROD ASSEMBLY DETAILS

ANCHOR ROD NUMBER, LENGTH & ORIENTATION AS SHOWN ON FABRICATION DRAWING.



ANCHOR PLATE/TOP TEMPLATE

MIN 1-5" LAP



A402

NOTES
 CENTER ANCHOR ROD ASSEMBLY ON DRILLED SHAFT AND MAKE SURE IT IS PLUMB. MAINTAIN ANCHOR ROD PROJECTION ABOVE DRILLED SHAFT. ANCHOR RODS TO BE INSTALLED IN POSITION, PLACEMENT, DO NOT WELD THE ANCHOR RODS.
 FOR OVERHEAD SIGN STRUCTURES THAT ARE INSTALLED ADJACENT TO SIDEWALKS, THE TOP OF THE SHAFT SHALL BE Poured FLUSH WITH THE FINISHED GRADE.
 2" DIA. NONMETALLIC CONDUITS, INSTALL ONLY WITH DMS. EXTEND CONDUITS AS SHOWN AND CAP DRILLED SHAFT WITH PLASTIC CONDUIT. REMOVE CONDUIT TO THE DMS. CONDUITS INCIDENTAL TO THE FOUNDATION BID ITEMS.

Addendum No. 01
 ID 1016-05-70
 Added Sheet 997G
 January 31, 2022

ESTIMATED QUANTITIES - FOUNDATIONS

STANDARD FOUNDATION TYPE	CONCRETE MASONRY (CY)	STEEL REINFORCEMENT (LBS)	FOUNDATION DRILLING (LFT)
MF1	2	240	24'
MFII	3	410	30'
MCI/MCI/TFI	4	540	36'
TCI	5	780	42'
TFII	6	860	48'
MCI/TCI/TFII	7	970	54'
MCI/TFIV	9	1,250	63'
TCIII	11	1,500	75'
TCIV	13	1,560	81'
TCV	15	1,600	87'

** * QUANTITIES ARE FOR INFORMATION ONLY AND ARE BASED ON STANDARD STRUCTURE DIMENSIONS



Proposal Schedule of Items

Proposal ID: 20220208002 Project(s): 1016-05-70

Federal ID(s): N/A

SECTION: 0001

Contract Items

Alt Set ID:

Alt Mbr ID:

Proposal Line Number	Item ID Description	Approximate Quantity and Units	Unit Price	Bid Amount
0002	108.3100.S Incentive/Disincentive for Interim Completion of Work 01.	20.000 CD	20,000.00000	400,000.00
0004	108.3100.S Incentive/Disincentive for Interim Completion of Work 02.	1.000 CD	200,000.00000	200,000.00
0006	108.4300 RBC Progress Schedule	1.000 EACH	_____.	_____.
0008	108.4400 CPM Progress Schedule	1.000 EACH	_____.	_____.
0010	201.0105 Clearing	95.000 STA	_____.	_____.
0012	201.0205 Grubbing	95.000 STA	_____.	_____.
0014	203.0100 Removing Small Pipe Culverts	10.000 EACH	_____.	_____.
0016	203.0220 Removing Structure (structure) 01. B-29-34	1.000 EACH	_____.	_____.
0018	203.0220 Removing Structure (structure) 02. B-29-35	1.000 EACH	_____.	_____.
0020	203.0220 Removing Structure (structure) 03. B-29-36	1.000 EACH	_____.	_____.
0022	203.0220 Removing Structure (structure) 04. B-29-37	1.000 EACH	_____.	_____.
0024	203.0260 Removing Structure Over Waterway Minimal Debris (structure) 01. B-29-32	1.000 EACH	_____.	_____.
0026	203.0260 Removing Structure Over Waterway Minimal Debris (structure) 02. Temporary Bridge 1013+00T	1.000 EACH	_____.	_____.
0028	203.0260 Removing Structure Over Waterway Minimal Debris (structure) 03. B-29-33	1.000 EACH	_____.	_____.



Proposal Schedule of Items

Proposal ID: 20220208002 Project(s): 1016-05-70

Federal ID(s): N/A

SECTION: 0001

Contract Items

Alt Set ID:

Alt Mbr ID:

Proposal Line Number	Item ID Description	Approximate Quantity and Units	Unit Price	Bid Amount
0030	204.0100 Removing Concrete Pavement	54,716.000 SY	_____.	_____.
0032	204.0110 Removing Asphaltic Surface	4,573.000 SY	_____.	_____.
0034	204.0115 Removing Asphaltic Surface Butt Joints	246.000 SY	_____.	_____.
0036	204.0120 Removing Asphaltic Surface Milling	11,659.000 SY	_____.	_____.
0038	204.0150 Removing Curb & Gutter	4,657.000 LF	_____.	_____.
0040	204.0155 Removing Concrete Sidewalk	3,939.000 SY	_____.	_____.
0042	204.0165 Removing Guardrail	9,607.000 LF	_____.	_____.
0044	204.0170 Removing Fence	3,943.000 LF	_____.	_____.
0046	204.0180 Removing Delineators and Markers	69.000 EACH	_____.	_____.
0048	204.0210 Removing Manholes	1.000 EACH	_____.	_____.
0050	204.0220 Removing Inlets	69.000 EACH	_____.	_____.
0052	204.0245 Removing Storm Sewer (size) 01. 8-Inch	58.000 LF	_____.	_____.
0054	204.0245 Removing Storm Sewer (size) 02. 12-Inch	3,179.000 LF	_____.	_____.
0056	204.0245 Removing Storm Sewer (size) 03. 15-Inch	2,740.000 LF	_____.	_____.
0058	204.0245 Removing Storm Sewer (size) 04. 18-Inch	1,847.000 LF	_____.	_____.
0060	204.0245 Removing Storm Sewer (size) 05. 24-Inch	8.000 LF	_____.	_____.



Proposal Schedule of Items

Proposal ID: 20220208002 Project(s): 1016-05-70

Federal ID(s): N/A

SECTION: 0001

Contract Items

Alt Set ID:

Alt Mbr ID:

Proposal Line Number	Item ID Description	Approximate Quantity and Units	Unit Price	Bid Amount
0062	204.0270 Abandoning Culvert Pipes	5.000 EACH	_____.	_____.
0064	204.9060.S Removing (item description) 01. Removing Cover Plates Left In Place	1.000 EACH	_____.	_____.
0066	204.9060.S Removing (item description) 02. Removing Endwall	14.000 EACH	_____.	_____.
0068	204.9060.S Removing (item description) 03. Temporary Structure Station 952+00T	1.000 EACH	_____.	_____.
0070	204.9060.S Removing (item description) 04. Temporary Structure Station 983+00T	1.000 EACH	_____.	_____.
0072	204.9090.S Removing (item description) 01. Drain Slotted Vane Longitudinal	4,216.000 LF	_____.	_____.
0074	205.0100 Excavation Common	136,955.000 CY	_____.	_____.
0076	205.0400 Excavation Marsh	220.000 CY	_____.	_____.
0078	206.1000 Excavation for Structures Bridges (structure) 01. B-29-152	LS	LUMP SUM	_____.
0080	206.1000 Excavation for Structures Bridges (structure) 02. B-29-153	LS	LUMP SUM	_____.
0082	206.1000 Excavation for Structures Bridges (structure) 03. B-29-154	LS	LUMP SUM	_____.
0084	206.1000 Excavation for Structures Bridges (structure) 04. B-29-155	LS	LUMP SUM	_____.
0086	206.1000 Excavation for Structures Bridges (structure) 05. B-29-157	LS	LUMP SUM	_____.
0088	206.1000 Excavation for Structures Bridges (structure) 06. B-29-36	LS	LUMP SUM	_____.



Proposal Schedule of Items

Proposal ID: 20220208002 Project(s): 1016-05-70

Federal ID(s): N/A

SECTION: 0001

Contract Items

Alt Set ID:

Alt Mbr ID:

Proposal Line Number	Item ID Description	Approximate Quantity and Units	Unit Price	Bid Amount
0090	206.5000 Cofferdams (structure) 01. B-29-152	LS	LUMP SUM	_____.
0092	206.5000 Cofferdams (structure) 02. B-29-153	LS	LUMP SUM	_____.
0094	208.1100 Select Borrow	46,923.000 CY	_____.	_____.
0096	208.1500.S Temporary Lane Shift During Culvert Work	1.000 EACH	_____.	_____.
0098	210.1500 Backfill Structure Type A	2,584.000 TON	_____.	_____.
0100	211.0100 Prepare Foundation for Asphaltic Paving (project) 01. 1016-05-70	LS	LUMP SUM	_____.
0102	211.0200 Prepare Foundation for Concrete Pavement (project) 01. 1016-05-70	LS	LUMP SUM	_____.
0104	211.0400 Prepare Foundation for Asphaltic Shoulders	3,830.000 STA	_____.	_____.
0106	213.0100 Finishing Roadway (project) 01. 1016-05-70	1.000 EACH	_____.	_____.
0108	305.0110 Base Aggregate Dense 3/4-Inch	11,264.000 TON	_____.	_____.
0110	305.0120 Base Aggregate Dense 1 1/4-Inch	100,187.000 TON	_____.	_____.
0112	312.0110 Select Crushed Material	456.000 TON	_____.	_____.
0114	390.0203 Base Patching Asphaltic	2,656.000 SY	_____.	_____.
0116	405.0100 Coloring Concrete WisDOT Red	647.000 CY	_____.	_____.
0118	415.0115 Concrete Pavement 11 1/2-Inch	24,746.000 SY	_____.	_____.



Proposal Schedule of Items

Proposal ID: 20220208002 Project(s): 1016-05-70

Federal ID(s): N/A

SECTION: 0001

Contract Items

Alt Set ID:

Alt Mbr ID:

Proposal Line Number	Item ID Description	Approximate Quantity and Units	Unit Price	Bid Amount
0120	415.0125 Concrete Pavement 12 1/2-Inch	52,368.000 SY	_____.	_____.
0122	415.0210 Concrete Pavement Gaps	10.000 EACH	_____.	_____.
0124	415.0410 Concrete Pavement Approach Slab	1,289.000 SY	_____.	_____.
0126	415.1115 Concrete Pavement HES 11 1/2-Inch	2,011.000 SY	_____.	_____.
0128	415.1125 Concrete Pavement HES 12 1/2-Inch	5,237.000 SY	_____.	_____.
0130	415.6000.S Rout and Seal	40,039.000 LF	_____.	_____.
0132	416.0512 Concrete Truck Apron 12-Inch	2,096.000 SY	_____.	_____.
0134	416.0610 Drilled Tie Bars	144.000 EACH	_____.	_____.
0136	416.0620 Drilled Dowel Bars	201.000 EACH	_____.	_____.
0138	416.1010 Concrete Surface Drains	12.000 CY	_____.	_____.
0140	416.1110 Concrete Shoulder Rumble Strips	14,119.000 LF	_____.	_____.
0142	450.4000 HMA Cold Weather Paving	341.000 TON	_____.	_____.
0144	455.0605 Tack Coat	1,424.000 GAL	_____.	_____.
0150	460.2000 Incentive Density HMA Pavement	10,670.000 DOL	1.00000	10,670.00
0152	460.5224 HMA Pavement 4 LT 58-28 S	4,048.000 TON	_____.	_____.
0158	460.7223 HMA Pavement 3 HT 58-28 S	7,739.000 TON	_____.	_____.
0160	460.7423 HMA Pavement 3 HT 58-28 H	4,970.000 TON	_____.	_____.



Proposal Schedule of Items

Proposal ID: 20220208002 Project(s): 1016-05-70

Federal ID(s): N/A

SECTION: 0001

Contract Items

Alt Set ID:

Alt Mbr ID:

Proposal Line Number	Item ID Description	Approximate Quantity and Units	Unit Price	Bid Amount
0162	460.7424 HMA Pavement 4 HT 58-28 H	1,269.000 TON	_____.	_____.
0168	465.0105 Asphaltic Surface	431.000 TON	_____.	_____.
0170	465.0120 Asphaltic Surface Driveways and Field Entrances	169.000 TON	_____.	_____.
0172	465.0310 Asphaltic Curb	66.000 LF	_____.	_____.
0174	465.0315 Asphaltic Flumes	81.000 SY	_____.	_____.
0176	465.0400 Asphaltic Shoulder Rumble Strips	15,925.000 LF	_____.	_____.
0178	501.1000.S Ice Hot Weather Concreting 01. 1016-05-70	15,405.000 LB	_____.	_____.
0180	502.0100 Concrete Masonry Bridges	5,197.000 CY	_____.	_____.
0182	502.1100 Concrete Masonry Seal	180.000 CY	_____.	_____.
0184	502.3101 Expansion Device	108.000 LF	_____.	_____.
0186	502.3200 Protective Surface Treatment	8,329.000 SY	_____.	_____.
0188	502.3210 Pigmented Surface Sealer	1,317.000 SY	_____.	_____.
0190	502.4205 Adhesive Anchors No. 5 Bar	104.000 EACH	_____.	_____.
0192	503.0137 Prestressed Girder Type I 36W-Inch	3,465.000 LF	_____.	_____.
0194	503.0146 Prestressed Girder Type I 45W-Inch	2,896.000 LF	_____.	_____.
0196	505.0400 Bar Steel Reinforcement HS Structures	89,960.000 LB	_____.	_____.



Proposal Schedule of Items

Proposal ID: 20220208002 Project(s): 1016-05-70

Federal ID(s): N/A

SECTION: 0001

Contract Items

Alt Set ID:

Alt Mbr ID:

Proposal Line Number	Item ID Description	Approximate Quantity and Units	Unit Price	Bid Amount
0198	505.0600 Bar Steel Reinforcement HS Coated Structures	758,920.000 LB	_____.	_____.
0200	505.0800.S Bar Steel Reinforcement HS Stainless Structures	10,200.000 LB	_____.	_____.
0202	506.2605 Bearing Pads Elastomeric Non-Laminated	164.000 EACH	_____.	_____.
0204	506.4000 Steel Diaphragms (structure) 01. B-29-152	15.000 EACH	_____.	_____.
0206	506.4000 Steel Diaphragms (structure) 02. B-29-153	15.000 EACH	_____.	_____.
0208	506.4000 Steel Diaphragms (structure) 03. B-29-154	24.000 EACH	_____.	_____.
0210	506.4000 Steel Diaphragms (structure) 04. B-29-155	24.000 EACH	_____.	_____.
0212	506.4000 Steel Diaphragms (structure) 05. B-29-157	15.000 EACH	_____.	_____.
0214	506.5000 Bearing Assemblies Fixed (structure) 01. B-29-36	2.000 EACH	_____.	_____.
0216	506.6000 Bearing Assemblies Expansion (structure) 01. B-29-36	5.000 EACH	_____.	_____.
0218	506.7050.S Removing Bearings (structure) 01. B-29-36	7.000 EACH	_____.	_____.
0220	509.0301 Preparation Decks Type 1	8.000 SY	_____.	_____.
0222	509.0302 Preparation Decks Type 2	4.000 SY	_____.	_____.
0224	509.0500 Cleaning Decks	603.000 SY	_____.	_____.



Proposal Schedule of Items

Proposal ID: 20220208002 Project(s): 1016-05-70

Federal ID(s): N/A

SECTION: 0001

Contract Items

Alt Set ID:

Alt Mbr ID:

Proposal Line Number	Item ID Description	Approximate Quantity and Units	Unit Price	Bid Amount
0226	509.1000 Joint Repair	59.000 SY	_____.	_____.
0228	509.1500 Concrete Surface Repair	214.000 SF	_____.	_____.
0230	509.2000 Full-Depth Deck Repair	1.000 SY	_____.	_____.
0232	509.2500 Concrete Masonry Overlay Decks	36.000 CY	_____.	_____.
0234	511.1200 Temporary Shoring (structure) 01. B-29-152	750.000 SF	_____.	_____.
0236	511.1200 Temporary Shoring (structure) 02. B-29-153	750.000 SF	_____.	_____.
0238	511.1200 Temporary Shoring (structure) 03. B-29-154	815.000 SF	_____.	_____.
0240	511.1200 Temporary Shoring (structure) 04. B-29-155	815.000 SF	_____.	_____.
0242	511.1200 Temporary Shoring (structure) 05. B-29-157	480.000 SF	_____.	_____.
0244	516.0500 Rubberized Membrane Waterproofing	174.000 SY	_____.	_____.
0246	517.3001.S Structure Overcoating Cleaning and Priming (structure) 01. B-29-36	1.000 EACH	_____.	_____.
0248	520.2018 Culvert Pipe Temporary 18-Inch	116.000 LF	_____.	_____.
0250	520.8000 Concrete Collars for Pipe	39.000 EACH	_____.	_____.
0252	521.1012 Apron Endwalls for Culvert Pipe Steel 12-Inch	5.000 EACH	_____.	_____.
0254	521.1018 Apron Endwalls for Culvert Pipe Steel 18-Inch	3.000 EACH	_____.	_____.



Proposal Schedule of Items

Proposal ID: 20220208002 Project(s): 1016-05-70

Federal ID(s): N/A

SECTION: 0001

Contract Items

Alt Set ID:

Alt Mbr ID:

Proposal Line Number	Item ID Description	Approximate Quantity and Units	Unit Price	Bid Amount
0256	521.1518 Apron Endwalls for Culvert Pipe Sloped Side Drains Steel 18-Inch 6 to 1	8.000 EACH	_____.	_____.
0258	521.1521 Apron Endwalls for Culvert Pipe Sloped Side Drains Steel 21-Inch 6 to 1	1.000 EACH	_____.	_____.
0260	521.1524 Apron Endwalls for Culvert Pipe Sloped Side Drains Steel 24-Inch 6 to 1	5.000 EACH	_____.	_____.
0262	521.3118 Culvert Pipe Corrugated Steel 18-Inch	16.000 LF	_____.	_____.
0264	522.0130 Culvert Pipe Reinforced Concrete Class III 30-Inch	54.000 LF	_____.	_____.
0266	522.0136 Culvert Pipe Reinforced Concrete Class III 36-Inch	14.000 LF	_____.	_____.
0268	522.0148 Culvert Pipe Reinforced Concrete Class III 48-Inch	10.000 LF	_____.	_____.
0270	522.0412 Culvert Pipe Reinforced Concrete Class IV 12-Inch	96.000 LF	_____.	_____.
0272	522.0418 Culvert Pipe Reinforced Concrete Class IV 18-Inch	10.000 LF	_____.	_____.
0274	522.0424 Culvert Pipe Reinforced Concrete Class IV 24-Inch	484.000 LF	_____.	_____.
0276	522.1012 Apron Endwalls for Culvert Pipe Reinforced Concrete 12-Inch	7.000 EACH	_____.	_____.
0278	522.1018 Apron Endwalls for Culvert Pipe Reinforced Concrete 18-Inch	4.000 EACH	_____.	_____.
0280	522.1024 Apron Endwalls for Culvert Pipe Reinforced Concrete 24-Inch	21.000 EACH	_____.	_____.



Proposal Schedule of Items

Proposal ID: 20220208002 Project(s): 1016-05-70

Federal ID(s): N/A

SECTION: 0001

Contract Items

Alt Set ID:

Alt Mbr ID:

Proposal Line Number	Item ID Description	Approximate Quantity and Units	Unit Price	Bid Amount
0282	522.1030 Apron Endwalls for Culvert Pipe Reinforced Concrete 30-Inch	7.000 EACH	_____.	_____.
0284	522.1036 Apron Endwalls for Culvert Pipe Reinforced Concrete 36-Inch	1.000 EACH	_____.	_____.
0286	522.1048 Apron Endwalls for Culvert Pipe Reinforced Concrete 48-Inch	2.000 EACH	_____.	_____.
0288	522.2624 Apron Endwalls for Culvert Pipe Reinforced Concrete Horizontal Elliptical 24x38-Inch	4.000 EACH	_____.	_____.
0290	530.0112 Culvert Pipe Corrugated Polyethylene 12-Inch	243.000 LF	_____.	_____.
0292	530.0118 Culvert Pipe Corrugated Polyethylene 18-Inch	159.000 LF	_____.	_____.
0294	531.1100 Concrete Masonry Ancillary Structures Type NS	15.600 CY	_____.	_____.
0296	531.1140 Steel Reinforcement HS Ancillary Structures Type NS	2,100.000 LB	_____.	_____.
0298	531.2036 Drilling Shaft 36-Inch	90.000 LF	_____.	_____.
0300	531.4050 Foundation Camera Pole 50-FT	1.000 EACH	_____.	_____.
0302	531.5420 Foundation Single-Shaft Type TF-II (structure) 01. S-29-0011	2.000 EACH	_____.	_____.
0304	531.5420 Foundation Single-Shaft Type TF-II (structure) 02. S-29-0012	2.000 EACH	_____.	_____.
0306	532.5420 Truss Full Span 2-Chord Type II (structure) 01. S-29-0011	1.000 EACH	_____.	_____.



Proposal Schedule of Items

Proposal ID: 20220208002 Project(s): 1016-05-70

Federal ID(s): N/A

SECTION: 0001

Contract Items

Alt Set ID:

Alt Mbr ID:

Proposal Line Number	Item ID Description	Approximate Quantity and Units	Unit Price	Bid Amount
0308	532.5420 Truss Full Span 2-Chord Type II (structure) 02. S-29-0012	1.000 EACH	_____.	_____.
0310	550.0010 Pre-Boring Unconsolidated Materials	960.000 LF	_____.	_____.
0312	550.0500 Pile Points	98.000 EACH	_____.	_____.
0314	550.1100 Piling Steel HP 10-Inch X 42 Lb	600.000 LF	_____.	_____.
0316	550.1120 Piling Steel HP 12-Inch X 53 Lb	13,825.000 LF	_____.	_____.
0318	601.0405 Concrete Curb & Gutter 18-Inch Type A	479.000 LF	_____.	_____.
0320	601.0409 Concrete Curb & Gutter 30-Inch Type A	7,826.000 LF	_____.	_____.
0322	601.0411 Concrete Curb & Gutter 30-Inch Type D	274.000 LF	_____.	_____.
0324	601.0551 Concrete Curb & Gutter 4-Inch Sloped 36-Inch Type A	2,306.000 LF	_____.	_____.
0326	601.0553 Concrete Curb & Gutter 4-Inch Sloped 36-Inch Type D	620.000 LF	_____.	_____.
0328	601.0580 Concrete Curb & Gutter 4-Inch Sloped 36-Inch Type R	767.000 LF	_____.	_____.
0330	601.0588 Concrete Curb & Gutter 4-Inch Sloped 36-Inch Type TBT	550.000 LF	_____.	_____.
0332	601.0600 Concrete Curb Pedestrian	187.000 LF	_____.	_____.
0334	602.0405 Concrete Sidewalk 4-Inch	72,621.000 SF	_____.	_____.
0336	602.0515 Curb Ramp Detectable Warning Field Natural Patina	470.000 SF	_____.	_____.



Proposal Schedule of Items

Proposal ID: 20220208002 Project(s): 1016-05-70

Federal ID(s): N/A

SECTION: 0001

Contract Items

Alt Set ID:

Alt Mbr ID:

Proposal Line Number	Item ID Description	Approximate Quantity and Units	Unit Price	Bid Amount
0338	602.0615 Curb Ramp Detectable Warning Field Radial Natural Patina	10.000 SF	_____.	_____.
0340	603.8000 Concrete Barrier Temporary Precast Delivered	44,177.000 LF	_____.	_____.
0342	603.8125 Concrete Barrier Temporary Precast Installed	70,382.000 LF	_____.	_____.
0344	603.8500 Anchoring Concrete Barrier Temporary Precast	28,509.000 LF	_____.	_____.
0346	604.0400 Slope Paving Concrete	1,776.000 SY	_____.	_____.
0348	606.0200 Riprap Medium	104.000 CY	_____.	_____.
0350	606.0300 Riprap Heavy	1,361.000 CY	_____.	_____.
0352	608.0330 Storm Sewer Pipe Reinforced Concrete Class III 30-Inch	26.000 LF	_____.	_____.
0354	608.0412 Storm Sewer Pipe Reinforced Concrete Class IV 12-Inch	730.000 LF	_____.	_____.
0356	608.0415 Storm Sewer Pipe Reinforced Concrete Class IV 15-Inch	20.000 LF	_____.	_____.
0358	608.0418 Storm Sewer Pipe Reinforced Concrete Class IV 18-Inch	610.000 LF	_____.	_____.
0360	608.0424 Storm Sewer Pipe Reinforced Concrete Class IV 24-Inch	1,970.000 LF	_____.	_____.
0362	608.2319 Storm Sewer Pipe Reinforced Concrete Horizontal Elliptical Class HE-III 19x30-Inch	124.000 LF	_____.	_____.



Proposal Schedule of Items

Proposal ID: 20220208002 Project(s): 1016-05-70

Federal ID(s): N/A

SECTION: 0001

Contract Items

Alt Set ID:

Alt Mbr ID:

Proposal Line Number	Item ID Description	Approximate Quantity and Units	Unit Price	Bid Amount
0364	608.2324 Storm Sewer Pipe Reinforced Concrete Horizontal Elliptical Class HE-III 24x38-Inch	528.000 LF	_____.	_____.
0366	608.3012 Storm Sewer Pipe Class III-A 12-Inch	288.000 LF	_____.	_____.
0368	608.3015 Storm Sewer Pipe Class III-A 15-Inch	536.000 LF	_____.	_____.
0370	608.6015 Storm Sewer Pipe Composite 15-Inch	222.000 LF	_____.	_____.
0372	611.0420 Reconstructing Manholes	2.000 EACH	_____.	_____.
0374	611.0530 Manhole Covers Type J	12.000 EACH	_____.	_____.
0376	611.0612 Inlet Covers Type C	1.000 EACH	_____.	_____.
0378	611.0624 Inlet Covers Type H	9.000 EACH	_____.	_____.
0380	611.0627 Inlet Covers Type HM	4.000 EACH	_____.	_____.
0382	611.0636 Inlet Covers Type HM-S	8.000 EACH	_____.	_____.
0384	611.0639 Inlet Covers Type H-S	14.000 EACH	_____.	_____.
0386	611.0642 Inlet Covers Type MS	27.000 EACH	_____.	_____.
0388	611.0652 Inlet Covers Type T	2.000 EACH	_____.	_____.
0390	611.0654 Inlet Covers Type V	5.000 EACH	_____.	_____.
0392	611.2005 Manholes 5-FT Diameter	9.000 EACH	_____.	_____.
0394	611.2006 Manholes 6-FT Diameter	7.000 EACH	_____.	_____.



Proposal Schedule of Items

Proposal ID: 20220208002 Project(s): 1016-05-70

Federal ID(s): N/A

SECTION: 0001

Contract Items

Alt Set ID:

Alt Mbr ID:

Proposal Line Number	Item ID Description	Approximate Quantity and Units	Unit Price	Bid Amount
0396	611.3004 Inlets 4-FT Diameter	6.000 EACH	_____.	_____.
0398	611.3220 Inlets 2x2-FT	5.000 EACH	_____.	_____.
0400	611.3225 Inlets 2x2.5-FT	1.000 EACH	_____.	_____.
0402	611.3230 Inlets 2x3-FT	28.000 EACH	_____.	_____.
0404	611.3901 Inlets Median 1 Grate	16.000 EACH	_____.	_____.
0406	611.3902 Inlets Median 2 Grate	5.000 EACH	_____.	_____.
0408	611.8110 Adjusting Manhole Covers	11.000 EACH	_____.	_____.
0410	611.8115 Adjusting Inlet Covers	6.000 EACH	_____.	_____.
0412	611.8120.S Cover Plates Temporary	39.000 EACH	_____.	_____.
0414	611.9800.S Pipe Grates	5.000 EACH	_____.	_____.
0416	612.0406 Pipe Underdrain Wrapped 6-Inch	2,065.000 LF	_____.	_____.
0418	612.0902.S Insulation Board Polystyrene (inch) 01.2-Inch	10.800 SY	_____.	_____.
0420	613.1100.S Cable Barrier Type 1	6,132.000 LF	_____.	_____.
0422	613.1200.S Cable Barrier End Terminal Type 1	6.000 EACH	_____.	_____.
0424	614.0150 Anchor Assemblies for Steel Plate Beam Guard	20.000 EACH	_____.	_____.
0426	614.0400 Adjusting Steel Plate Beam Guard	154.000 LF	_____.	_____.



Proposal Schedule of Items

Proposal ID: 20220208002 Project(s): 1016-05-70

Federal ID(s): N/A

SECTION: 0001

Contract Items

Alt Set ID:

Alt Mbr ID:

Proposal Line Number	Item ID Description	Approximate Quantity and Units	Unit Price	Bid Amount
0428	614.0905 Crash Cushions Temporary	22.000 EACH	_____.	_____.
0430	614.1000 MGS Guardrail Temporary	562.500 LF	_____.	_____.
0432	614.1100 MGS Guardrail Temporary Thrie Beam Transition	118.200 LF	_____.	_____.
0434	614.2300 MGS Guardrail 3	7,825.000 LF	_____.	_____.
0436	614.2500 MGS Thrie Beam Transition	709.200 LF	_____.	_____.
0438	614.2610 MGS Guardrail Terminal EAT	17.000 EACH	_____.	_____.
0440	614.2620 MGS Guardrail Terminal Type 2	9.000 EACH	_____.	_____.
0442	616.0100 Fence Woven Wire (height) 01. 4-FT	4,931.000 LF	_____.	_____.
0444	618.0100 Maintenance And Repair of Haul Roads (project) 01. 1016-05-70	1.000 EACH	_____.	_____.
0446	619.1000 Mobilization	1.000 EACH	_____.	_____.
0448	620.0200 Concrete Median Blunt Nose	77.000 SF	_____.	_____.
0450	620.0300 Concrete Median Sloped Nose	985.000 SF	_____.	_____.
0452	624.0100 Water	1,658.900 MGAL	_____.	_____.
0454	625.0500 Salvaged Topsoil	213,428.000 SY	_____.	_____.
0456	627.0200 Mulching	50,901.000 SY	_____.	_____.
0458	628.1504 Silt Fence	15,765.000 LF	_____.	_____.



Proposal Schedule of Items

Proposal ID: 20220208002 Project(s): 1016-05-70

Federal ID(s): N/A

SECTION: 0001

Contract Items

Alt Set ID:

Alt Mbr ID:

Proposal Line Number	Item ID Description	Approximate Quantity and Units	Unit Price	Bid Amount
0460	628.1520 Silt Fence Maintenance	15,765.000 LF	_____.	_____.
0462	628.1905 Mobilizations Erosion Control	23.000 EACH	_____.	_____.
0464	628.1910 Mobilizations Emergency Erosion Control	19.000 EACH	_____.	_____.
0466	628.2004 Erosion Mat Class I Type B	174,272.000 SY	_____.	_____.
0468	628.2008 Erosion Mat Urban Class I Type B	35,975.000 SY	_____.	_____.
0470	628.2031 Erosion Mat Class III Type A	3,185.000 SY	_____.	_____.
0472	628.6005 Turbidity Barriers	2,487.000 SY	_____.	_____.
0474	628.7005 Inlet Protection Type A	60.000 EACH	_____.	_____.
0476	628.7010 Inlet Protection Type B	102.000 EACH	_____.	_____.
0478	628.7015 Inlet Protection Type C	55.000 EACH	_____.	_____.
0480	628.7504 Temporary Ditch Checks	903.000 LF	_____.	_____.
0482	628.7515.S Stone Ditch Checks	449.000 CY	_____.	_____.
0484	628.7555 Culvert Pipe Checks	99.000 EACH	_____.	_____.
0486	628.7560 Tracking Pads	28.000 EACH	_____.	_____.
0488	628.7570 Rock Bags	388.000 EACH	_____.	_____.
0490	629.0210 Fertilizer Type B	141.500 CWT	_____.	_____.
0492	630.0120 Seeding Mixture No. 20	3,863.000 LB	_____.	_____.



Proposal Schedule of Items

Proposal ID: 20220208002 Project(s): 1016-05-70

Federal ID(s): N/A

SECTION: 0001

Contract Items

Alt Set ID:

Alt Mbr ID:

Proposal Line Number	Item ID Description	Approximate Quantity and Units	Unit Price	Bid Amount
0494	630.0200 Seeding Temporary	1,377.000 LB	_____.	_____.
0496	630.0500 Seed Water	4,871.800 MGAL	_____.	_____.
0498	633.0200 Delineators Flexible	116.000 EACH	_____.	_____.
0500	633.5100 Markers ROW	20.000 EACH	_____.	_____.
0502	633.5200 Markers Culvert End	31.000 EACH	_____.	_____.
0504	634.0614 Posts Wood 4x6-Inch X 14-FT	58.000 EACH	_____.	_____.
0506	634.0616 Posts Wood 4x6-Inch X 16-FT	64.000 EACH	_____.	_____.
0508	634.0618 Posts Wood 4x6-Inch X 18-FT	22.000 EACH	_____.	_____.
0510	634.0814 Posts Tubular Steel 2x2-Inch X 14-FT	18.000 EACH	_____.	_____.
0512	634.0816 Posts Tubular Steel 2x2-Inch X 16-FT	5.000 EACH	_____.	_____.
0514	635.0200 Sign Supports Structural Steel HS	5,214.000 LB	_____.	_____.
0516	637.1220 Signs Type I Reflective SH	843.000 SF	_____.	_____.
0518	637.2210 Signs Type II Reflective H	1,244.150 SF	_____.	_____.
0520	637.2215 Signs Type II Reflective H Folding	40.000 SF	_____.	_____.
0522	637.2230 Signs Type II Reflective F	211.000 SF	_____.	_____.
0524	638.2101 Moving Signs Type I	4.000 EACH	_____.	_____.
0526	638.2102 Moving Signs Type II	57.000 EACH	_____.	_____.



Proposal Schedule of Items

Proposal ID: 20220208002 Project(s): 1016-05-70

Federal ID(s): N/A

SECTION: 0001

Contract Items

Alt Set ID:

Alt Mbr ID:

Proposal Line Number	Item ID Description	Approximate Quantity and Units	Unit Price	Bid Amount
0528	638.2601 Removing Signs Type I	6.000 EACH	_____.	_____.
0530	638.2602 Removing Signs Type II	110.000 EACH	_____.	_____.
0532	638.3000 Removing Small Sign Supports	126.000 EACH	_____.	_____.
0534	638.3100 Removing Structural Steel Sign Supports	7.000 EACH	_____.	_____.
0536	638.4000 Moving Small Sign Supports	42.000 EACH	_____.	_____.
0538	638.4100 Moving Structural Steel Sign Supports	7.000 EACH	_____.	_____.
0540	642.5401 Field Office Type D	1.000 EACH	_____.	_____.
0542	643.0300 Traffic Control Drums	107,545.000 DAY	_____.	_____.
0544	643.0410 Traffic Control Barricades Type II	915.000 DAY	_____.	_____.
0546	643.0420 Traffic Control Barricades Type III	15,474.000 DAY	_____.	_____.
0548	643.0705 Traffic Control Warning Lights Type A	30,207.000 DAY	_____.	_____.
0550	643.0715 Traffic Control Warning Lights Type C	31,705.000 DAY	_____.	_____.
0552	643.0800 Traffic Control Arrow Boards	178.000 DAY	_____.	_____.
0554	643.0900 Traffic Control Signs	44,687.000 DAY	_____.	_____.
0556	643.1051 Traffic Control Signs PCMS with Cellular Communications	1,616.000 DAY	_____.	_____.
0558	643.1205.S Basic Traffic Queue Warning System	354.000 DAY	_____.	_____.



Proposal Schedule of Items

Proposal ID: 20220208002 Project(s): 1016-05-70

Federal ID(s): N/A

SECTION: 0001

Contract Items

Alt Set ID:

Alt Mbr ID:

Proposal Line Number	Item ID Description	Approximate Quantity and Units	Unit Price	Bid Amount
0560	643.5000 Traffic Control	1.000 EACH	_____.	_____.
0562	644.1601 Temporary Pedestrian Curb Ramp	272.000 DAY	_____.	_____.
0564	644.1810 Temporary Pedestrian Barricade	1,113.000 LF	_____.	_____.
0566	645.0111 Geotextile Type DF Schedule A	656.000 SY	_____.	_____.
0568	645.0120 Geotextile Type HR	2,104.000 SY	_____.	_____.
0570	645.0130 Geotextile Type R	277.000 SY	_____.	_____.
0572	645.0140 Geotextile Type SAS	918.000 SY	_____.	_____.
0574	646.1005 Marking Line Paint 4-Inch	40,627.000 LF	_____.	_____.
0576	646.1020 Marking Line Epoxy 4-Inch	12,806.000 LF	_____.	_____.
0578	646.1040 Marking Line Grooved Wet Ref Epoxy 4-Inch	42,044.000 LF	_____.	_____.
0580	646.1555 Marking Line Grooved Contrast Permanent Tape 4-Inch	4,222.000 LF	_____.	_____.
0582	646.3005 Marking Line Paint 8-Inch	2,071.000 LF	_____.	_____.
0584	646.3020 Marking Line Epoxy 8-Inch	4,029.000 LF	_____.	_____.
0586	646.3555 Marking Line Grooved Contrast Permanent Tape 8-Inch	4,527.000 LF	_____.	_____.
0588	646.5020 Marking Arrow Epoxy	21.000 EACH	_____.	_____.
0590	646.5120 Marking Word Epoxy	5.000 EACH	_____.	_____.



Proposal Schedule of Items

Proposal ID: 20220208002 Project(s): 1016-05-70

Federal ID(s): N/A

SECTION: 0001

Contract Items

Alt Set ID:

Alt Mbr ID:

Proposal Line Number	Item ID Description	Approximate Quantity and Units	Unit Price	Bid Amount
0592	646.6120 Marking Stop Line Epoxy 18-Inch	18.000 LF	_____.	_____.
0594	646.6320 Marking Dotted Extension Epoxy 18-Inch	132.000 LF	_____.	_____.
0596	646.6464 Cold Weather Marking Epoxy 4-Inch	45,199.000 LF	_____.	_____.
0598	646.6468 Cold Weather Marking Epoxy 8-Inch	4,527.000 LF	_____.	_____.
0600	646.7120 Marking Diagonal Epoxy 12-Inch	367.000 LF	_____.	_____.
0602	646.7220 Marking Chevron Epoxy 24-Inch	569.000 LF	_____.	_____.
0604	646.7405 Marking Crosswalk Paint Transverse Line 6-Inch	957.000 LF	_____.	_____.
0606	646.7420 Marking Crosswalk Epoxy Transverse Line 6-Inch	711.000 LF	_____.	_____.
0608	646.8120 Marking Curb Epoxy	196.000 LF	_____.	_____.
0610	646.8220 Marking Island Nose Epoxy	6.000 EACH	_____.	_____.
0612	646.9000 Marking Removal Line 4-Inch	17,970.000 LF	_____.	_____.
0614	646.9010 Marking Removal Line Water Blasting 4-Inch	22,966.000 LF	_____.	_____.
0616	646.9100 Marking Removal Line 8-Inch	1,214.000 LF	_____.	_____.
0618	646.9110 Marking Removal Line Water Blasting 8-Inch	1,169.000 LF	_____.	_____.
0620	649.0105 Temporary Marking Line Paint 4-Inch	86,963.000 LF	_____.	_____.
0622	649.0120 Temporary Marking Line Epoxy 4-Inch	10,631.000 LF	_____.	_____.



Proposal Schedule of Items

Proposal ID: 20220208002 Project(s): 1016-05-70

Federal ID(s): N/A

SECTION: 0001

Contract Items

Alt Set ID:

Alt Mbr ID:

Proposal Line Number	Item ID Description	Approximate Quantity and Units	Unit Price	Bid Amount
0624	649.0150 Temporary Marking Line Removable Tape 4-Inch	31,673.000 LF	_____.	_____.
0626	649.0205 Temporary Marking Line Paint 8-Inch	5,726.000 LF	_____.	_____.
0628	649.0250 Temporary Marking Line Removable Tape 8-Inch	1,444.000 LF	_____.	_____.
0630	649.0805 Temporary Marking Stop Line Paint 18-Inch	512.000 LF	_____.	_____.
0632	649.0850 Temporary Marking Stop Line Removable Tape 18-Inch	32.000 LF	_____.	_____.
0634	650.4000 Construction Staking Storm Sewer	116.000 EACH	_____.	_____.
0636	650.4500 Construction Staking Subgrade	23,565.000 LF	_____.	_____.
0638	650.5000 Construction Staking Base	46,565.000 LF	_____.	_____.
0640	650.5500 Construction Staking Curb Gutter and Curb & Gutter	894.000 LF	_____.	_____.
0642	650.6000 Construction Staking Pipe Culverts	27.000 EACH	_____.	_____.
0644	650.6500 Construction Staking Structure Layout (structure) 01. S-29-0011	LS	LUMP SUM	_____.
0646	650.6500 Construction Staking Structure Layout (structure) 02. S-29-0012	LS	LUMP SUM	_____.
0648	650.7000 Construction Staking Concrete Pavement	23,045.000 LF	_____.	_____.
0650	650.8000 Construction Staking Resurfacing Reference	3,016.000 LF	_____.	_____.



Proposal Schedule of Items

Proposal ID: 20220208002 Project(s): 1016-05-70

Federal ID(s): N/A

SECTION: 0001

Contract Items

Alt Set ID:

Alt Mbr ID:

Proposal Line Number	Item ID Description	Approximate Quantity and Units	Unit Price	Bid Amount
0652	650.8500 Construction Staking Electrical Installations (project) 01. 1016-05-70	LS	LUMP SUM	_____.
0654	650.9000 Construction Staking Curb Ramps	4.000 EACH	_____.	_____.
0656	650.9910 Construction Staking Supplemental Control (project) 01. 1016-05-70	LS	LUMP SUM	_____.
0658	650.9920 Construction Staking Slope Stakes	31,907.000 LF	_____.	_____.
0660	652.0125 Conduit Rigid Metallic 2-Inch	10.000 LF	_____.	_____.
0662	652.0225 Conduit Rigid Nonmetallic Schedule 40 2-Inch	7,950.000 LF	_____.	_____.
0664	652.0235 Conduit Rigid Nonmetallic Schedule 40 3-Inch	32.000 LF	_____.	_____.
0666	652.0325 Conduit Rigid Nonmetallic Schedule 80 2-Inch	465.000 LF	_____.	_____.
0668	652.0605 Conduit Special 2-Inch	846.000 LF	_____.	_____.
0670	652.0700.S Install Conduit into Existing Item	1.000 EACH	_____.	_____.
0672	653.0140 Pull Boxes Steel 24x42-Inch	4.000 EACH	_____.	_____.
0674	653.0164 Pull Boxes Non-Conductive 24x42-Inch	49.000 EACH	_____.	_____.
0676	654.0105 Concrete Bases Type 5	37.000 EACH	_____.	_____.
0678	654.0230 Concrete Control Cabinet Bases Type L30	1.000 EACH	_____.	_____.
0680	655.0515 Electrical Wire Traffic Signals 10 AWG	1,270.000 LF	_____.	_____.



Proposal Schedule of Items

Proposal ID: 20220208002 Project(s): 1016-05-70

Federal ID(s): N/A

SECTION: 0001

Contract Items

Alt Set ID:

Alt Mbr ID:

Proposal Line Number	Item ID Description	Approximate Quantity and Units	Unit Price	Bid Amount
0682	655.0525 Electrical Wire Traffic Signals 6 AWG	375.000 LF	_____.	_____.
0684	655.0610 Electrical Wire Lighting 12 AWG	34,885.000 LF	_____.	_____.
0686	655.0615 Electrical Wire Lighting 10 AWG	9,702.000 LF	_____.	_____.
0688	655.0620 Electrical Wire Lighting 8 AWG	10,974.000 LF	_____.	_____.
0690	655.0625 Electrical Wire Lighting 6 AWG	7,290.000 LF	_____.	_____.
0692	656.0200 Electrical Service Meter Breaker Pedestal (location) 01. 985+51B	LS	LUMP SUM	_____.
0694	656.0200 Electrical Service Meter Breaker Pedestal (location) 02. CCTV-29-0143	LS	LUMP SUM	_____.
0696	656.0500 Electrical Service Breaker Disconnect Box (location) 01. CCTV-29-0143	LS	LUMP SUM	_____.
0698	657.0255 Transformer Bases Breakaway 11 1/2-Inch Bolt Circle	37.000 EACH	_____.	_____.
0700	657.0322 Poles Type 5-Aluminum	37.000 EACH	_____.	_____.
0702	657.0610 Luminaire Arms Single Member 4 1/2-Inch Clamp 6-FT	6.000 EACH	_____.	_____.
0704	657.0710 Luminaire Arms Truss Type 4 1/2-Inch Clamp 12-FT	44.000 EACH	_____.	_____.
0706	659.0600 Underdeck Lighting (location) 01. 145+09EB82	LS	LUMP SUM	_____.
0708	659.0600 Underdeck Lighting (location) 02. 146+35EB82	LS	LUMP SUM	_____.
0710	659.1115 Luminaires Utility LED A	22.000 EACH	_____.	_____.



Proposal Schedule of Items

Proposal ID: 20220208002 Project(s): 1016-05-70

Federal ID(s): N/A

SECTION: 0001

Contract Items

Alt Set ID:

Alt Mbr ID:

Proposal Line Number	Item ID Description	Approximate Quantity and Units	Unit Price	Bid Amount
0712	659.1125 Luminaires Utility LED C	28.000 EACH	_____.	_____.
0714	659.1210 Luminaires Underdeck LED B	8.000 EACH	_____.	_____.
0716	659.2130 Lighting Control Cabinets 120/240 30-Inch	1.000 EACH	_____.	_____.
0718	661.0100 Temporary Traffic Signals for Bridges (structure) 01. B-29-0037 Underneath on CTH G	LS	LUMP SUM	_____.
0720	661.0200 Temporary Traffic Signals for Intersections (location) 01. Westbound Ramp	LS	LUMP SUM	_____.
0722	661.0200 Temporary Traffic Signals for Intersections (location) 02. Eastbound Ramp	LS	LUMP SUM	_____.
0724	662.1037.S Ramp Closure Gates 37-FT	1.000 EACH	_____.	_____.
0726	662.1040.S Ramp Closure Gates 40-FT	1.000 EACH	_____.	_____.
0728	670.0100 Field System Integrator	LS	LUMP SUM	_____.
0730	670.0200 ITS Documentation	LS	LUMP SUM	_____.
0732	673.0200 Tracer Wire Marker Posts	1.000 EACH	_____.	_____.
0736	677.0150 Install Camera Pole 50-FT	1.000 EACH	_____.	_____.
0738	677.0200 Install Camera Assembly	1.000 EACH	_____.	_____.
0740	678.0006 Install Fiber Optic Cable Outdoor Plant 6-CT	1,470.000 LF	_____.	_____.



Proposal Schedule of Items

Proposal ID: 20220208002 Project(s): 1016-05-70

Federal ID(s): N/A

SECTION: 0001

Contract Items

Alt Set ID:

Alt Mbr ID:

Proposal Line Number	Item ID Description	Approximate Quantity and Units	Unit Price	Bid Amount
0742	678.0200 Fiber Optic Splice Enclosure	1.000 EACH	_____.	_____.
0744	678.0300 Fiber Optic Splice	4.000 EACH	_____.	_____.
0746	678.0400 Fiber Optic Termination	6.000 EACH	_____.	_____.
0748	678.0500 Communication System Testing	LS	LUMP SUM	_____.
0750	678.0600 Install Ethernet Switches	1.000 EACH	_____.	_____.
0752	690.0150 Sawing Asphalt	9,641.000 LF	_____.	_____.
0754	690.0250 Sawing Concrete	735.000 LF	_____.	_____.
0756	715.0502 Incentive Strength Concrete Structures	31,364.000 DOL	1.00000	31,364.00
0758	715.0715 Incentive Flexural Strength Concrete Pavement	23,738.000 DOL	1.00000	23,738.00
0760	740.0440 Incentive IRI Ride	17,996.000 DOL	1.00000	17,996.00
0762	999.2000.S Installing and Maintaining Bird Deterrent System (station) 01. 952+00'T'	1.000 EACH	_____.	_____.
0764	999.2000.S Installing and Maintaining Bird Deterrent System (station) 02. 983+00'T'	1.000 EACH	_____.	_____.
0766	999.2000.S Installing and Maintaining Bird Deterrent System (station) 03. 1013+00'T'	1.000 EACH	_____.	_____.
0768	999.2005.S Maintaining Bird Deterrent System (station) 01. 1013+00'EB'	1.000 EACH	_____.	_____.
0770	999.2005.S Maintaining Bird Deterrent System (station) 02. 1013+00'WB'	1.000 EACH	_____.	_____.



Proposal Schedule of Items

Proposal ID: 20220208002 Project(s): 1016-05-70

Federal ID(s): N/A

SECTION: 0001

Contract Items

Alt Set ID:

Alt Mbr ID:

Proposal Line Number	Item ID Description	Approximate Quantity and Units	Unit Price	Bid Amount
0772	SPV.0045 Special 01. Temporary Detectable Warning Field	580.000 DAY	_____.	_____.
0774	SPV.0045 Special 02. Temporary Crosswalk	285.000 DAY	_____.	_____.
0776	SPV.0045 Special 03. Combination Work Zone Digital Speed Limit-Speed Feedback Sign Trailer (WZDSL)	830.000 DAY	_____.	_____.
0778	SPV.0060 Special 01. Emergency Response to Pavement Repairs	12.000 EACH	_____.	_____.
0780	SPV.0060 Special 02. Emergency Response to Traffic Incident Involving Conc Barrier Temp Precast	9.000 EACH	_____.	_____.
0782	SPV.0060 Special 03. Emergency Response to Traffic Incident Involving Crash Cushion	9.000 EACH	_____.	_____.
0784	SPV.0060 Special 04. Repair Crash Cushion	6.000 EACH	_____.	_____.
0786	SPV.0060 Special 05. Removing Sign and Foundation	1.000 EACH	_____.	_____.
0788	SPV.0060 Special 06. Maintenance for Temporary Bridge	3.000 EACH	_____.	_____.
0790	SPV.0060 Special 07. Concrete Pipe Support	1.000 EACH	_____.	_____.
0792	SPV.0060 Special 08. Maint and Removal of Crash Cushion Barrier Temp Precast L.I.P. By Others	22.000 EACH	_____.	_____.
0794	SPV.0060 Special 11. Cleaning and Painting Bearings	13.000 EACH	_____.	_____.
0796	SPV.0060 Special 12. Utility Line Opening (ULO)	8.000 EACH	_____.	_____.



Proposal Schedule of Items

Proposal ID: 20220208002 Project(s): 1016-05-70

Federal ID(s): N/A

SECTION: 0001

Contract Items

Alt Set ID:

Alt Mbr ID:

Proposal Line Number	Item ID Description	Approximate Quantity and Units	Unit Price	Bid Amount
0798	SPV.0060 Special 13. Landmark Reference Monuments Special	6.000 EACH	_____.	_____.
0800	SPV.0060 Special 14. Verify Landmark Reference Monuments	6.000 EACH	_____.	_____.
0802	SPV.0060 Special 15. Temporary Pipe Connection	2.000 EACH	_____.	_____.
0804	SPV.0060 Special 16. Inlet Covers Flat Temporary	8.000 EACH	_____.	_____.
0806	SPV.0060 Special 17. Ground Rod	1.000 EACH	_____.	_____.
0808	SPV.0060 Special 18. Temporary Ditch and Storm Sewer Maintenance	1.000 EACH	_____.	_____.
0810	SPV.0060 Special 19. Construction Staking Roundabout - IH 90 WB Ramp	1.000 EACH	_____.	_____.
0812	SPV.0060 Special 20. Construction Staking Roundabout - IH 90 EB Ramp	1.000 EACH	_____.	_____.
0814	SPV.0090 Special 01. Maint and Removal of Conc Barrier Temp Precast L.I.P. by Others	24,208.000 LF	_____.	_____.
0816	SPV.0090 Special 03. Drain Slotted Vane Longitudinal	2,302.000 LF	_____.	_____.
0818	SPV.0090 Special 04. Remove and Salvage Modular Block Retaining Wall	555.000 LF	_____.	_____.
0820	SPV.0090 Special 05. Traffic Control Gawk Screen Furnished	21,597.000 LF	_____.	_____.
0822	SPV.0090 Special 06. Traffic Control Gawk Screen Installed	21,597.000 LF	_____.	_____.
0824	SPV.0090 Special 07. Traffic Control Gawk Screen Moved	7,832.000 LF	_____.	_____.



Proposal Schedule of Items

Proposal ID: 20220208002 Project(s): 1016-05-70

Federal ID(s): N/A

SECTION: 0001

Contract Items

Alt Set ID:

Alt Mbr ID:

Proposal Line Number	Item ID Description	Approximate Quantity and Units	Unit Price	Bid Amount
0826	SPV.0180 Special 01. Slope Paving Repair	89.000 SY	_____.	_____.
0828	531.2024 Drilling Shaft 24-Inch	128.000 LF	_____.	_____.
0830	673.1225.S Install Pole Mounted Cabinet	1.000 EACH	_____.	_____.
Section: 0001			Total:	_____.
			Total Bid:	_____.