



Wisconsin Department of Transportation

Division of Transportation Systems Development

Bureau of Project Development
4822 Madison Yards Way, 4th Floor South
Madison, WI 53705

January 28, 2022

Telephone: (608) 266-1631
Facsimile (FAX): (608) 266-8459

NOTICE TO ALL CONTRACTORS:

Proposal #10: 1228-09-73, WISC 2022200
IH 43 North South Freeway
Mitchell I/C to Marquette I/C
IH 43
Milwaukee County

Letting of February 8, 2022

This is Addendum No. 01, which provides for the following:

Special Provisions:

Revised Special Provisions	
Article No.	Description
7	Holiday and Special Event Work Restrictions
59	Pavement Cleanup Project 1228-09-73, Item SPV.0075.0001

Added Special Provisions	
Article No.	Description
67	Roadside Clearing, Item 202.0110
68	Base Patching SHES, Item 390.0403
69	Seeding Mixture No. 30, Item 630.0130
70	Rapid Set Deck Repair, Item SPV.0035.0001
71	Fence Chain Link 6-FT. B-40-286-24B

Schedule of Items:

Revised Bid Item Quantities					
Bid Item	Item Description	Unit	Old Quantity	Revised Quantity	Proposal Total
202.0110	Roadside Clearing	SY	242	3,775	4,017
416.0610	Drilled Tie Bars	Each	1,703	5,316	7,019
416.0620	Drilled Dowel Bars	Each	4,672	18,340	23,012
603.8000	Concrete Barrier Temporary Precast Delivered	LF	360	4,140	4,500
603.8125	Concrete Barrier Temporary Precast Installed	LF	360	4,140	4,500
616.0206	Fence Chain Link 6-FT	LF	375	260	635
690.0250	Sawing Concrete	LF	11,126	43,254	54,380

Added Bid Item Quantities					
Bid Item	Item Description	Unit	Old Quantity	Revised Quantity	Proposal Total
201.0110	Clearing	SY	0	242	242
201.0120	Clearing	ID	0	126	126
201.0210	Grubbing	SY	0	242	242
204.0170	Removing Fence	LF	0	306	306

Deleted Bid Item Quantities					
Bid Item	Item Description	Unit	Old Quantity	Revised Quantity	Proposal Total
630.0500	Seed Water	MGAL	5	-5	0

Plan Sheets:

Revised Plan Sheets	
Plan Sheet	Plan Sheet Title (brief description of changes to sheet)
19	Revision to concrete pavement
362	Miscellaneous Quantities – Update to drilled dowel bars, drilled tie bars and sawing concrete quantities
363	Miscellaneous Quantities – Concrete barrier delivered and installed
373	Miscellaneous Quantities – Addition of roadside clearing, clearing and grubbing quantities
525	Structure plans – B40-174 – The old plan from 2012 was inserted incorrectly.
526	Structure plans – B40-174 – The old plan from 2012 was inserted incorrectly.
527	Structure plans – B40-174 – The old plan from 2012 was inserted incorrectly.
528	Structure plans – B40-175 – Rapid set deck repair replaces concrete masonry deck repair
532	Structure plans – B40-177 – Rapid set deck repair replaces concrete masonry deck repair
534	Structure plans – B40-177 – Rapid set deck repair replaces concrete masonry deck repair
545	Structure plans – B40-182 – Rapid set deck repair replaces concrete masonry deck repair
546	Structure plans – B40-182 – Rapid set deck repair replaces concrete masonry deck repair
548	Structure plans – B40-183 – Rapid set deck repair replaces concrete masonry deck repair
556	Structure plans – B40-261 – Rapid set deck repair replaces concrete masonry deck repair
557	Structure plans – B40-261 – Rapid set deck repair replaces concrete masonry deck repair
604	Structure plans – B40-286-24B – Fence bid item change
606	Structure plans – B40-286-24B – Fence bid item change

Added Plan Sheets	
Plan Sheet	Plan Sheet Title (brief description of why sheet was added)
13A	Construction Detail – Added for clarification
15A	Construction Detail – Added for clarification
19A	Construction Detail – Added clearing and fence removal / replacement at park and ride
374A	Miscellaneous Quantities – Addition of fence removal and replacement at park and ride

The responsibility for notifying potential subcontractors and suppliers of these changes remains with the prime contractor.

Sincerely,

Mike Coleman

Proposal Development Specialist
Proposal Management Section

ADDENDUM NO. 01

1228-09-73

January 28, 2022

Special Provisions

7. Holiday and Special Event Restrictions.

Add the following paragraph under section titled Freeway Special Event Restrictions:

Dates given below were the schedule dates at the time the project was finalized. COVID-19 protocols may change these dates or cancel events. Contractor to track any changes in event dates and work with the Department and the event organizers to avoid scheduling conflicts. Payment for tracking the dates and any additional coordination is incidental to the contract.

55. Pavement Cleanup Project 1228-09-73, Item SPV.0075.0001.

Replace entire section titled C.2 Pavement Cleanup with the following.

C.2 Pavement Cleanup

Keep all pavements, sidewalks, driveways, curb lanes and gutters within the project boundaries, free of dust and debris generated from all activity under the contract. Keep all pavements, sidewalks, driveways, curb lanes, and gutters adjacent to the project free of dust and debris that are caused by land disturbing, dust generating activities, as defined in the contractor's Dust Control Implementation Plan (DCIP). Provide routine sweeping of all pavements, sidewalks, driveways, curb lanes and gutters on local-street active haul routes as defined in the DCIP or as directed by the engineer. Include the following roadways for routine sweeping:

- IH 43 (NB&SB)
- IH 94 (EB&WB)
- IH 794 (EB&WB)
- And all other roadways approved by the department

Conduct sweepings as the engineer directs or approves, to eliminate dust problems that might arise during off-work hours or emergencies. Provide the engineer with a contact person available at all times to respond to requests for emergency sweeping. Coordinate with engineer to determine deadlines for responding to emergency sweeping requests and cleaning up spillage and material tracked to/from the project.

67. Roadside Clearing, Item 202.0110

Add the following to standard spec 202.3 Construction as paragraph seven:

- (7) In areas where fencing is to remain, cut debris at the ground and as needed to remove all plant material intertwined in the fence or wrapped around the posts.

Add the following to standard spec 202.3 Construction as paragraph eight:

- (8) Remove rocks, twigs, foreign material, and clods that cannot be broken down. Back drag the entire surface to present a uniform appearance. The engineer will not require rolling.

Add the following to standard spec 202.5 Payment as paragraph three:

- (3) Payment includes removing all debris from existing fencing within the roadside clearing limits.

Add the following to standard spec 202.5 Payment as paragraph four:

- (4) Payment includes removing rocks, twigs, foreign material, clods that cannot be broken down and for back dragging.

68. Base Patching Concrete SHES, Item 390.0403

Replace standard spec 390.2 Materials with the following:

390.2 Materials

- (1) The contractor may use either concrete or asphaltic mixture.
- (2) Furnish concrete conforming to 501, except use of supplementay cementitious materials of 501.3.2.2.2 are not required for high early strength (HES) and special high early strength (SHES) concrete mixes.
Provide QMP for class II ancillary concrete as specified in 716.
- (3) Furnish concrete conforming to the requirements for high early strength concrete, grade B under 501, except that under the Base Patching Concrete SHES bid item, furnish concrete as specified for SHES concrete repair and replacement in 416.2. Provide QMP for class II ancillary concrete as specified in 716.
- (4) Furnish asphaltic mixture as specified for asphaltic base under 315.2.
- (5) Furnish dowel bars and tie bars as the plans show and conforming to 505.2.6.

69. Seeding Mixture No. 30, Item 630.0130

Replace standard spec 630.5 Payment paragraph three with the following:

- (3) Watering is incidental to the Seeding Mixture bid item.

70. Rapid Set Deck Repair, Item SPV.0035.0001

A Description

This special provision describes furnishing, placing and curing a rapid setting non-shrink patch material on the sawed deck preparation areas of the concrete bridge deck. Perform the work conforming to standard spec 509.

B Materials

B.1 -Patching Materials

Furnish a rapid setting non-shrink material designed for repairing concrete decks from the department's Approved Products List for "Rapid Setting Concrete Patch Material". The material shall be capable of obtaining a minimum compressive strength of 3000 psi within 3 hours. The patch material must be compatible with the existing concrete deck, reinforcing steel, and the polymer or asphalt overlay product (if applicable); and have a proven record of at least five successful applications in climates similar to Wisconsin. The use of chloride accelerators or other corrosion inducing products is prohibited.

A minimum of ten working days prior to construction, submit the manufacturer's product data sheets, material sources, mix designs, and supporting performance documentation to the engineer for approval.

B.2 Materials Quality Control Testing

For projects that allow 3 hours or more of cure time prior to opening to traffic, submit certified test results from an independent lab showing that the patch material can obtain 3000 psi within 3 hours of placement under the same curing conditions as the project.

For projects that require bridge decks to be open to traffic with less than 3 hours of cure time, perform quality control testing. For material extended with aggregates, perform cylinder breaks per ASTM C39. Make a minimum of two compressive strength test cylinders per shift per batch plant and cure under the same conditions as the deck patches. For material not using coarse aggregates, perform cube breaks per ASTM C109. Make a minimum of two compressive strength test cubes per shift per batch plant and cure under the same conditions as the deck patches. Provide test results to the engineer showing 3000 psi strength is obtained prior to opening the bridge deck to traffic.

For projects requiring ASTM C39 or ASTM C109 testing, furnish a department-certified mobile laboratory to perform the testing.

C Construction

Clean and prepare the area to be patched per the manufacturer's recommendations and as follows. After sawed deck preparation work is complete, blast clean the area and any exposed reinforcing steel. Thoroughly clean the surface upon which the new patch material is to be placed by brooming and using air pressure to remove all loose particles and dust. Apply a bonding agent, as necessary and as recommend by the patch material manufacturer, to surfaces to be covered by patch material.

Place patch material to produce plane surfaces that conform to the grade and elevation of the adjoining surfaces. Where a polymer or asphalt overlay will not be placed over the patch, finish the surface by tining or applying exposed angular aggregate as approved by the engineer. Where a polymer or asphalt overlay will be placed over the patch, shotblast the patch in the same fashion as the remainder of the bridge deck.

D Measurement

The department will measure Rapid Set Deck Repair in volume by the cubic yard acceptably completed.

E Payment

The department will pay for the measured quantity at the contract unit price under the following bid item:

ITEM NUMBER	DESCRIPTION	UNIT
SPV.0035.01	Rapid Set Deck Repair	CY

Payment for Rapid Set Deck Repair is full compensation for furnishing, hauling, preparing, placing, finishing, curing, and protecting all materials; and for materials quality control testing.

71. Fence Chain Link 6-FT. B-40-286-24B, Item SPV.0090.0004

A Description

This special provision describes furnishing and installing a fence system on structure B-40-286 Unit 24B in conforming to the pertinent plan details and as directed by the Engineer.

B Materials

All materials for this fence system shall be new stock, free from defects impairing strength, durability, and appearance. Fabric shall be produced by methods recognized as good commercial practice. Wire used in the manufacture of the fabric shall be capable of being woven into fabric. Pipes used in framework shall be straight, true to section and free of defects. All burrs at the ends of pipes shall be removed before galvanizing. Materials shall conform to standard specification section 616.2.3.

All bolts are to be supplied with lock washers and nuts. Use galvanized steel bolts, nuts and washers per plan details.

C Submittals

C.1 Shop Drawings

Submit shop drawings showing the details of fence construction. Show the fence height, post spacing, rail location, and all dimensions necessary for the construction of the chain link fence. Label the end posts, line posts, rails, post sleeves, top rail sleeves, bolts and fittings. State the class of coating used on the fabric, framework, and fittings. For the fabric, state the wire gage, mesh size, and type of selvages used. For the framework, state the size (O.D.) and unit weight for the posts and rails. For the fittings, state the size for top rail sleeves, brace bands, tension bands, tension bars, line rail clamps, size and type of bolts, and the tie wire gage. State the material type used for fabric, framework, and fittings. Also give the breaking strength for the fabric wire and the tensile and yield strength properties for the framework.

C.2 Specification Compliance

Submit certification of compliance with material specifications. Provide material certification and test documentation for fabric, framework, fittings and hardware that shows that all materials meet or exceed the

specifications of this contract . This document shall provide the name, address and phone number of the manufacturer, and the name of a contact person.

D Construction

D.1 Delivery, Storage and Handling

Deliver material to the site in an undamaged condition. Upon receipt at the job site, all materials shall be thoroughly inspected to ensure that no damage occurred during shipping or handling and condition of materials is in conformance with these specifications. If materials are damaged, Contractor shall repair or replace components as necessary to the approval of the Engineer at no additional cost to the Owner. Carefully store material off the ground to ensure proper ventilation and drainage and to provide protection against damage caused by ground moisture. Handle all material with care.

D.2 Touch-up and Repair

For minor damage caused by shipping, handling or installation to material surfaces, touch-up the finish conforming ASTM A780. Provide touch-up coating such that repairs are not visible from a distance of 6-feet. If damage is beyond repair, the fencing component shall be replaced at no additional cost to the Owner. The Contractor shall provide the Engineer with a copy of the repair procedure and materials before repairing damaged coatings.

D.3 General

Install the chain link fence as per the appropriate sections of standard specification section 616.3.3. The Contractor shall provide staff that is thoroughly familiar with the type of construction involved and materials and techniques specified. Chain link fabric shall be installed on the side of the posts indicated on the plans. Fabric shall be attached to the end posts with tension bars and tension bands. It shall be attached to rails, and posts without tension bands, with tie wires. The fabric shall be installed and pulled taut to provide a smooth and uniform appearance free from sag, without permanently distorting the fabric diamond or reducing the fabric height. Heads of bolts shall be on the side of the fence adjacent to traffic.

E Measurement

The department will measure Fence Chain Link 6-Ft. B-40-286-24B by the linear foot acceptably furnished and installed, measured from the center to center of end posts, along the top tension wire.

F Payment

The department will pay for the measured quantity at the contract unit price under the following bid item:

ITEM NUMBER	DESCRIPTION	UNIT
SPV.0090.01	Fence Chain Link 6-Ft. B-40-286-24B	LF

Payment for Fence Chain Link 6-Ft. B-40-286-24B is full compensation for fabricating, galvanizing all fence components, and transporting to jobsite; and for erecting components including brackets, shim plates and adhesive anchors to create a fence system, including any touch-up and repairs.

72. Notice to Contractor – Advanced Notification at Holt Park and Ride

There is evidence of homeless people camping in the vegetated areas adjacent to the Holt Avenue park and ride. The contractor shall post signs notifying people of work a minimum of 4-weeks in advance of doing any work in these areas. Notifications shall be posted on the fence or stakes and positioned so that anyone entering the area may see them. Signs should contain the same message in English and Spanish.

Contractor shall work with WisDOT Maintenance, Milwaukee County Sheriffs and Milwaukee County Housing First to provide proper notice and insure the area is free and clear prior to performing work.

Contact Nick Martin WisDOT Maintenance Engineer for assistance with coordination efforts.

Nick Martin Nicholas.Martin@dot.wi.gov 262 548-5606

Coordination and signing costs are incidental to the contract.

Schedule of Items

Attached, dated January 28, 2022, are the revised Schedule of Items Pages 1 – 11.

Plan Sheets

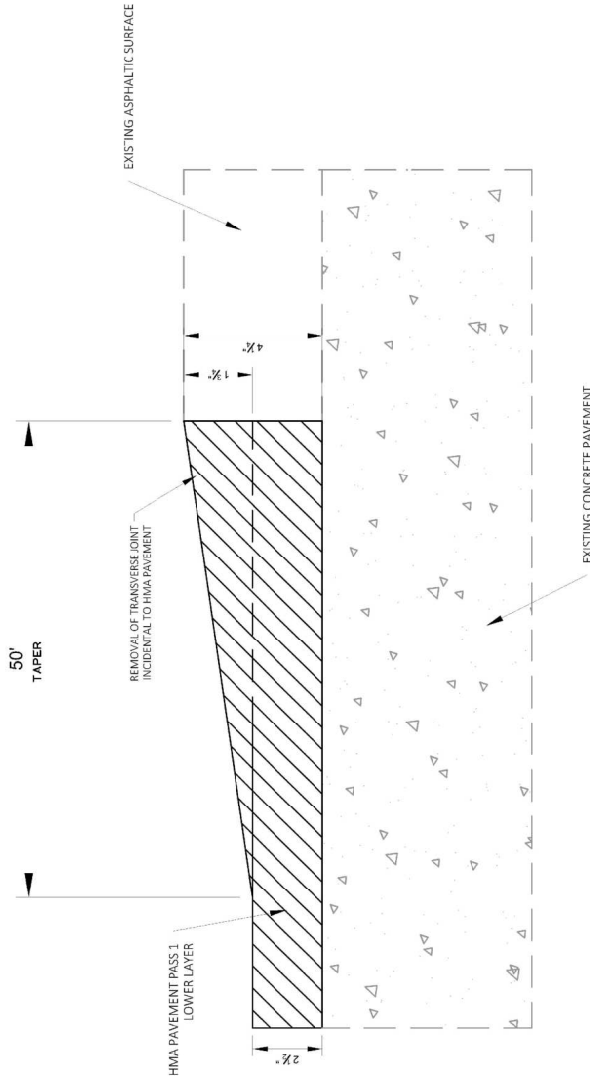
The following 8½ x 11-inch sheets are attached and made part of the plans for this proposal:

Revised: 19, 362, 363, 373, 525-527, 528, 532, 534, 545, 546, 548, 556, 557, 604, and 606.

Added: 13A, 15A, 19A, and 374A.

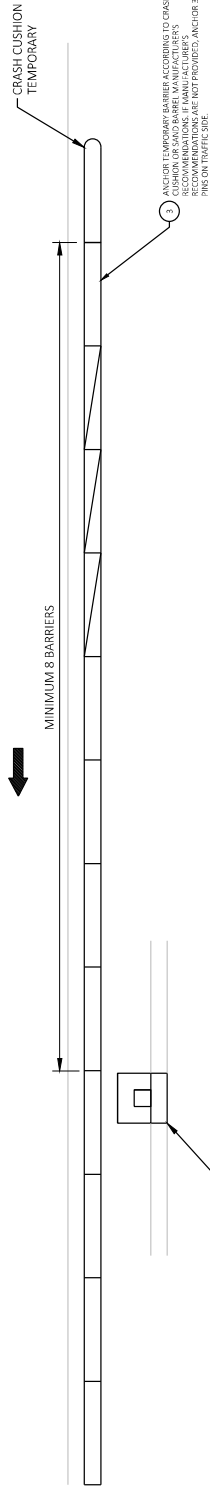
END OF ADDENDUM

Addendum No. 01
 ID 1228-09-73
 Added Sheet 13A
 January 28, 2022



DAY END CONSTRUCTION - TRANSVERSE JOINT DETAIL

PROJECT NO: 1228-09-73	COUNTY: MILWAUKEE	PLAN: CONSTRUCTION DETAILS	SHEET 13A
FILE NAME: C:\BDDP\PROJECTS\1228-09-73\PROJECTS\STATE\DESIGN\12280903P\AN\POST PRE\PAVING TRANSITION.DWG	PLOT DATE: 11/16/2021 1:30PM	PLOT BY: ANDERSON, SCOTT M	PLOT SCALE: 1 IN=10 FT
HWY: IH 43			
LAYOUT NAME - 021005_LO			



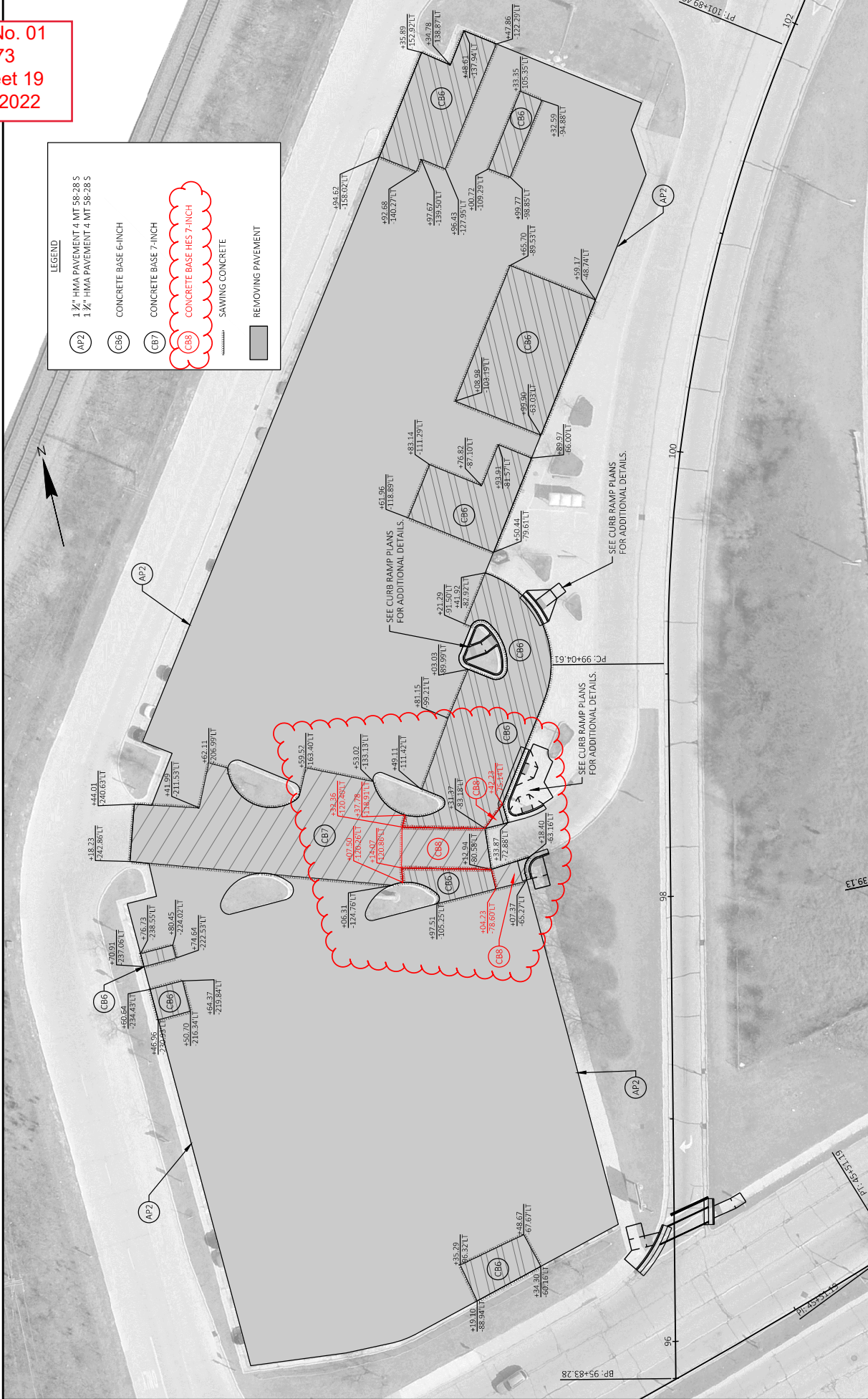
Addendum No. 01
 ID 1228-09-73
 Added Sheet 15A
 January 28, 2022

CONSTRUCTION DETAIL - CONCRETE BARRIER SHIELDING OF INLET RECONSTRUCTIONS

SEE STANDARD DETAIL DRAWING 'CRASH CUSHION/SAND BARREL ARRAY AND OTHER TEMPORARY BARRIER LAYOUT DETAILS' - END TREATMENTS AND GENERAL NOTE FOR ADDITIONAL DETAIL AND INSTALLATION REQUIREMENTS.

PROJECT NO: 1228-09-73	COUNTY: MILWAUKEE	CONSTRUCTION DETAIL - CONCRETE BARRIER SHIELDING	SHEET 15A	E
FILE NAME: N:\PDS\CD\12280903\SHEETS\PLAN\REPLACEMENT PAGES\ADDENDUM\CD_BARRIER.DWG	PLOT DATE: 1/24/2022 1:54 PM	PLOT BY: SPAETH, MICHELE L	PLOT SCALE: 1:15	WISDOT/CADD/SHEET 42
Hwy: IH 43				

Addendum No. 01
 ID 1228-09-73
 Revised Sheet 19
 January 28, 2022



LEGEND

AP2
 1 1/2" HMA PAVEMENT 4 MT 58-28 S
 1 1/2" HMA PAVEMENT 4 MT 58-28 S

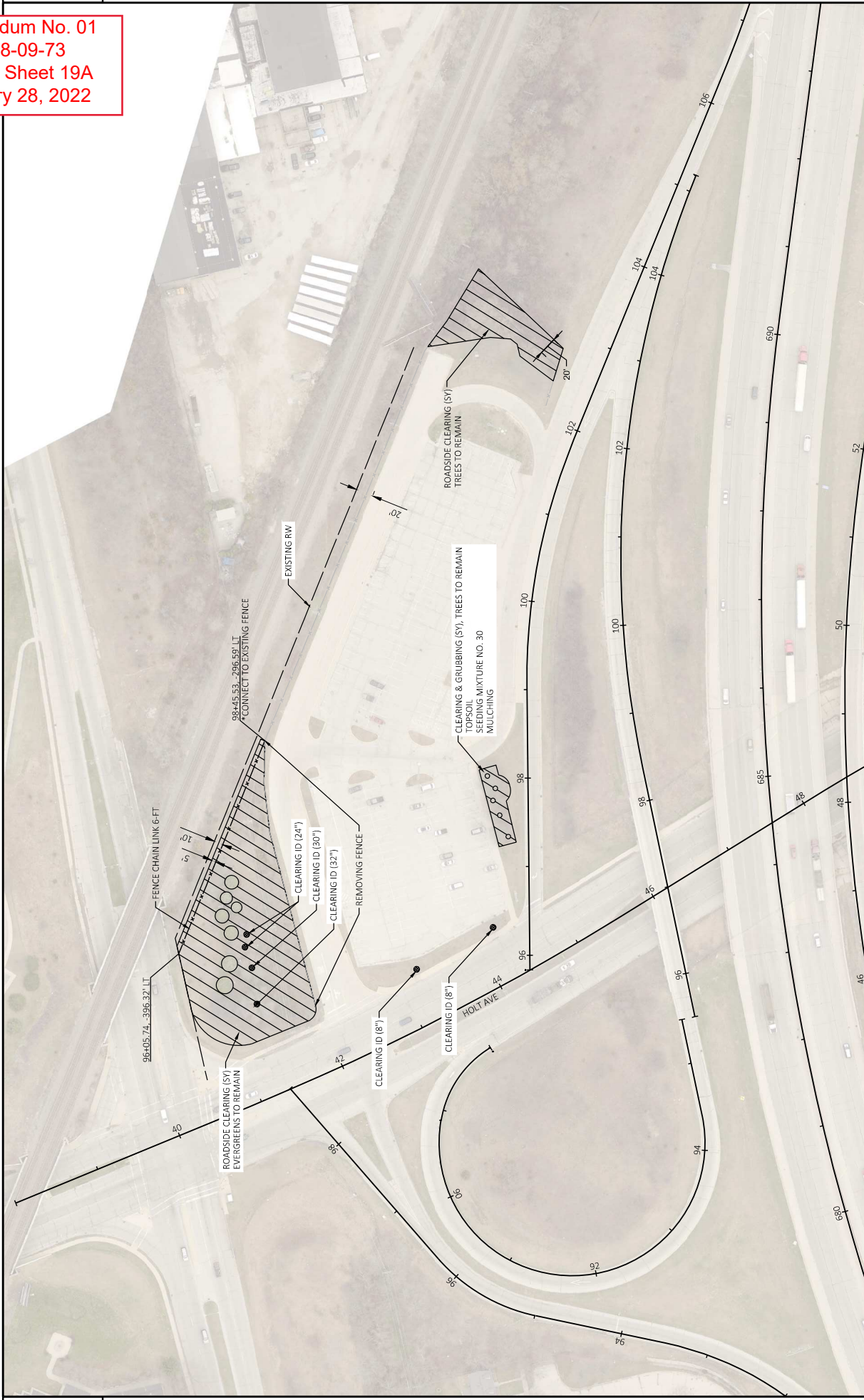
CB6
 CONCRETE BASE 6-INCH

CB7
 CONCRETE BASE 7-INCH

CB8
 CONCRETE BASE HES 7-INCH
 SAWING CONCRETE

REMOVING PAVEMENT

Addendum No. 01
 ID 1228-09-73
 Added Sheet 19A
 January 28, 2022



2

2

PROJECT NO: 1228-09-73	COUNTY: MILWAUKEE	CONSTRUCTION DETAIL - HOLT AVE PARK & RIDE - CLEARING & FENCING	SHEET 19A	E
FILE NAME: N:\PDS\CD\12280903\5SHEETS\PLAN\021004_CD_A.DWG	PLANNING: SPANETH, MICHELLE L	DATE: 1/20/2022 3:22 PM	SCALE: 1 IN=100 FT	NO: W65007CADD5 SHEET 42
LAYOUT NAME: 021004_cd	DATE: 1/20/2022 3:22 PM	DATE: 1/20/2022 3:22 PM	SCALE: 1 IN=100 FT	NO: W65007CADD5 SHEET 42

BASE PATCHING CONCRETE

CATEGORY	LOCATION	SY	DRILLED CONCRETE SHES	DRILLED DOWEL BARS	DRILLED TIE BARS	SAWING CONCRETE	LF
1000	UNDISTRIBUTED - IH 43	15,900	22,760	6,828	51,210		
TOTAL:		15,900	22,760	6,828	51,210		

* ADDITIONAL QUANTITIES SHOWN ELSEWHERE IN PLAN

HOLT AVE PARK & RIDE - CONCRETE BASE

CATEGORY	LOCATION	SY	CONCRETE BASE 6-INCH	CONCRETE BASE 7-INCH	CONCRETE BASE 7-INCH	SY
1010	HOLT AVE PARK & RIDE	1227	1127	557	100	
TOTAL:		1227	1127	557	100	

* ADDITIONAL QUANTITIES SHOWN ELSEWHERE IN PLAN

HIGH FRICTION SURFACE TREATMENT

CATEGORY	STAGE	LOCATION	STATION	TO	STATION	AREA (SF)	SY
1000	NB	677+24.71	690+28.53	54279	6031		
	NB	830+28.42	839+70.90	50712	5635		
	SB	677+24.71	690+28.53	54572	6064		
	SB	810+43.06	825+35.81	69544	7727		
TOTALS:							25,456

SAWING CONCRETE

CATEGORY	LOCATION	STATION	OFFSET	LF
1010	HOLT AVE PARK & RIDE	96+34.30	60.16' LT	98
	HOLT AVE PARK & RIDE	97+50.70	216.34' LT	58
	HOLT AVE PARK & RIDE	97+74.64	222.53' LT	42
	HOLT AVE PARK & RIDE	98+07.37	65.27' LT	116
	HOLT AVE PARK & RIDE	98+12.94	80.58' LT	414
	HOLT AVE PARK & RIDE	98+33.87	72.88' LT	340
	HOLT AVE PARK & RIDE	99+50.44	79.61' LT	174
	HOLT AVE PARK & RIDE	99+99.90	63.03' LT	214
	HOLT AVE PARK & RIDE	100+99.77	98.85' LT	96
	HOLT AVE PARK & RIDE	100+96.43	127.95' LT	193
TOTAL:				1746

* ADDITIONAL QUANTITIES SHOWN ELSEWHERE IN PLAN

MOBILIZATIONS EMERGENCY PAVEMENT REPAIR

CATEGORY	STAGE	LOCATION	LOCATION	EACH
1000	ALL	PROJECT		4
TOTAL:				4

MOBILIZATION

CATEGORY	STAGE	LOCATION	LOCATION	EACH
1000	ALL	PROJECT		1
TOTAL:				1

Addendum No. 01
 ID 1228-09-73
 Revised Sheet 362
 January 28, 2022

Addendum No. 01
ID 1228-09-73
Revised Sheet 373
January 28, 2022

PAVEMENT MARKING ITEMS

CATEGORY	STAGE	LOCATION	STATION	TO	STATION	STRAIGHT										6-INCH		10-INCH	
						TYPE1		TYPE2		LEFT		MERGE		STRAIGHT		EACH	LF	EACH	LF
						EACH	EACH	EACH	EACH	EACH	EACH	EACH	EACH	EACH	EACH				
1000		NB/SB	650+00	TO	670+00	-	-	-	-	-	-	-	-	-	-	-	-	-	
		NB/SB	670+00	TO	690+00	1	1	-	1	2	-	-	-	-	1	5,207	75	-	
		NB/SB	690+00	TO	710+00	-	-	-	-	-	-	-	-	-	-	139	-	-	
		NB/SB	750+00	TO	770+00	-	-	-	2	-	-	-	-	-	-	-	-	-	
		NB/SB	810+00	TO	830+00	-	-	-	-	-	-	-	-	-	-	2,962	511	-	
		NB/SB	830+00	TO	850+00	-	-	-	-	-	-	-	-	-	-	1,141	-	-	
		NB/SB	850+00	TO	870+00	-	-	-	-	3	-	-	-	-	-	-	-	-	
		NB/SB	870+00	TO	224+80	-	-	-	-	3	-	-	-	-	-	-	-	-	
			LINCOLN AVE			2	-	3	-	-	-	-	-	2	-	-	-	-	
			MAPLE ST			1	-	-	-	-	-	-	-	1	-	-	-	-	
		MITCHELL ST			2	-	4	-	-	-	-	-	2	-	-	-	-		
		GREENFIELD AVE			3	-	3	-	-	-	-	-	3	-	-	-	-		
TOTALS:						9	1	10	10	2	2	2	8	3	9,449	586	3		

*ADDITIONAL QUANTITIES SHOWN ELSEWHERE IN THE PLAN

PAVEMENT MARKING - HOLT AVE PARK & RIDE

646.8320	MARKING	646.5220	MARKING
	PARKING		TEMPORARY MARKING
	SYMBOL		REMOVABLE
	STALL		MASKOUT TAPE
	EPOXY		
	LF		
	EACH		
TOTALS:		7	

*ADDITIONAL QUANTITIES SHOWN ELSEWHERE IN THE PLAN

HOLT AVE PARK & RIDE - RESTORATION

CATEGORY	LOCATION	ROADSIDE CLEARING		TOPSOIL		SEEDING MIXTURE		MULCHING		CLEANING		ID
		SY	SY	SY	LB	SY	SY	SY	SY			
1010	HOLT AVE PARK & RIDE	242	242	242	4	242	242	242	242	242	242	201.0110
	HOLT AVE PARK & RIDE - WEST	3235	783									201.0210
	STA. 41+40, 103' LT											201.0120
	STA. 95+85, 128' LT											
	STA. 95+89, 314' LT											
	STA. 96+12, 321' LT											
	STA. 96+27, 320' LT											
	STA. 96+32, 41' LT											
TOTAL:		4017	783	242	4	242	242	242	242	242	242	126

* ADDITIONAL QUANTITIES SHOWN ELSEWHERE IN PLAN.

Addendum No. 01
ID 1228-09-73
Added Sheet 374A
January 28, 2022

HOLT AVE PARK & RIDE - FENCING

204-0170 616.0206

FENCE
REMOVING CHAIN LINK
FENCE 6-FT

CATEGORY	LOCATION	LF	LF
1010	HOLT AVE PARK & RIDE - WEST	306	260
TOTAL:		306	260

STATE PROJECT NUMBER
1228-09-73

GENERAL NOTES:

THE PROPOSED WORK INCLUDES CLEANING AND APPLYING A POLYMER OVERLAY TO THE EXISTING SURFACE. THE POLYMER OVERLAY SHALL BE APPLIED TO THE TOP OF PARAPET.
DRAWINGS SHALL NOT BE SCALED.
DIMENSIONS SHOWN ARE BASED ON PREVIOUS STRUCTURE PLANS. VERTICAL CLEARANCES ARE BASED ON INSPECTION REPORTS.
BRIDGE PLAN ALIGNMENT AND STATIONING MAY NOT CORRESPOND TO ROADWAY ALIGNMENT AND STATIONING.
REFER TO THE PROJECT SPECIFICATIONS FOR DETAILS OF THE REQUIREMENTS FOR CONCRETE REPAIRS, BRASTINGS, DECK SURFACE REPAIRS, AND TRESTLE/PIERS. DETAILS ARE INCLUDED IN THE BID ITEM "POLYMER OVERLAY".

BAR DIAMETERS AND EXTEND EXISTING BAR STEEL REINFORCEMENT 24 INCHES INTO NEW CONSTRUCTION WHERE APPLICABLE.
ENGINEER TO VERIFY CONCRETE SURFACE REPAIR AREAS. CONCRETE SURFACE REPAIRS SHALL BE MADE ONLY AS DIRECTED BY THE ENGINEER. QUANTITIES SHOWN ARE APPROXIMATE.
TAPER POLYMER OVERLAY AT EXPANSION DEVICE OR AS DIRECTED BY ENGINEER.

UPON COMPLETION OF WORK, CLEAN BRIDGE DRAINAGE STRUCTURES AND ENSURE DOWN SPOUTS ARE FREE OF OBSTRUCTIONS AND REMOVE ANY DEBRIS FROM BRIDGE EXPANSION DEVICES.

DESIGN DATA

LIVE LOAD: HS20
WIND: AS BUILT
OPERATING RATING: HS14
WISCONSIN STANDARD PERMIT VEHICLE (WIS-SPV): HS23
= 150 KIPS

TRAFFIC DATA

SB COLLECTOR
A.D.T. (2035) = 13,500

MATERIAL PROPERTIES

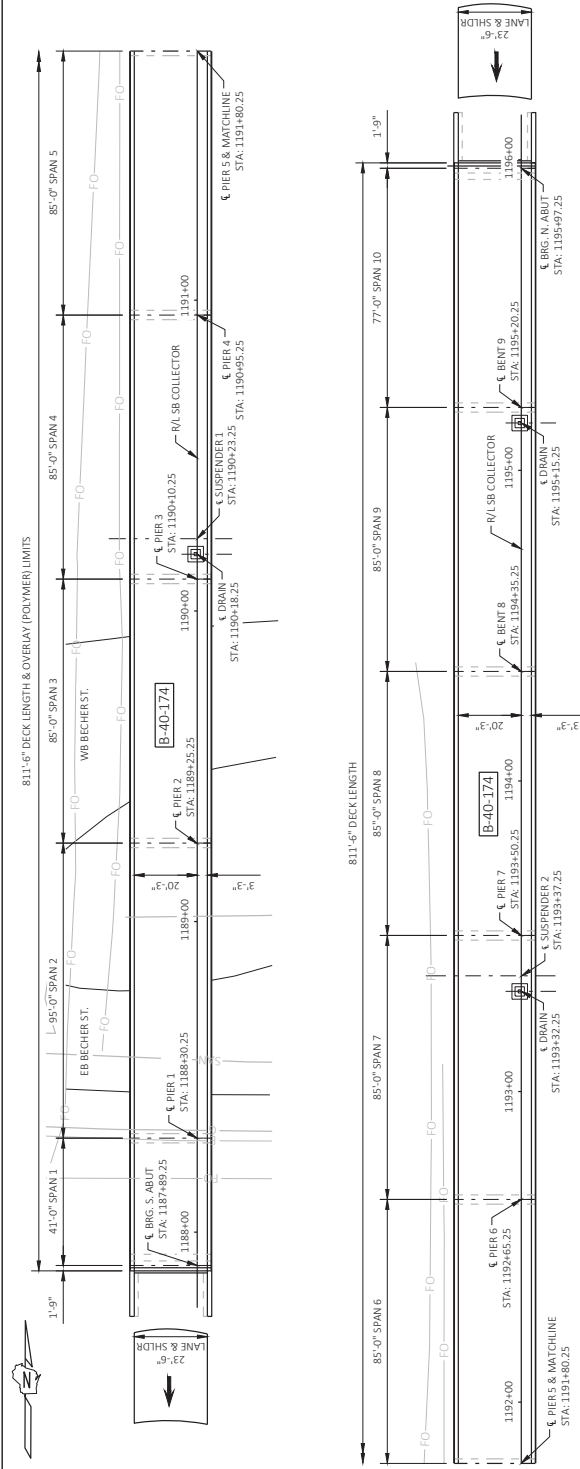
CONCRETE MASONRY - SURFACE REPAIR
F_c = 4000 P.S.I.

LIST OF DRAWINGS

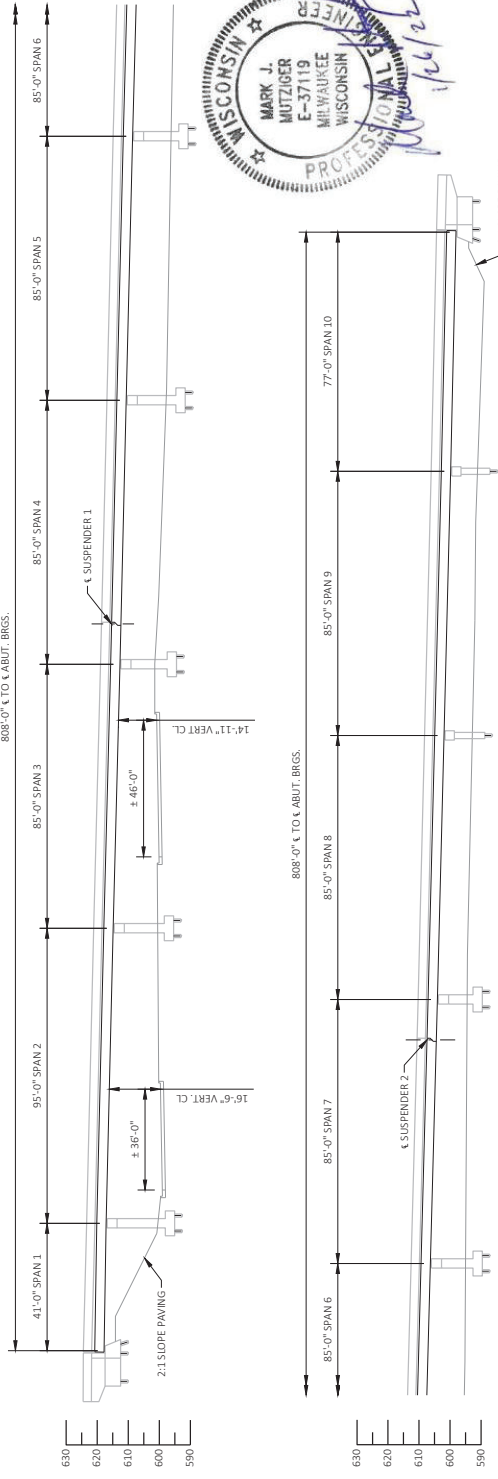
1. PLAN & ELEVATION
2. CROSS SECTION & QUANTITIES
3. CONSTRUCTION DETAILS



STRUCTURE DESIGN CONTACTS:
AARON RONK (608) 281-0261
CONSULTANT CONTACT:
MARK MUTZIGER (614) 282-6905



PLAN B-40-174



Addendum No. 01
ID 1228-09-73
Revised Sheet 525
January 28, 2022

ELEVATION
(LOOKING WEST)

NO.	DATE	REVISION	BY
1	1/26/22	ADDITION OF UPDATED PLANSET	JCG

COLLINS ENGINEERS

STATE OF WISCONSIN
DEPARTMENT OF TRANSPORTATION

ACCEPTED: CHIEF STRUCTURES DESIGN ENGINEER _____ DATE _____

STRUCTURE B-40-174
SB COLLECTOR OVER W. BECHER ST

COUNTY: MILWAUKEE
DESIGN SPEC. FORM/CITY/NUMBER: MILWAUKEE

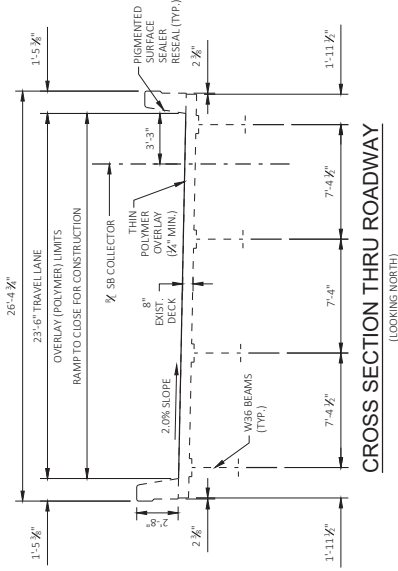
DESIGNED BY: JCG
CHECKED BY: MDM
DRAWN BY: MDM
PLANS BY: MDM

PROJECT NUMBER: 1228-09-73
SHEET 1 OF 3
ELEVATION
525

STATE PROJECT NUMBER

1228-09-73

Addendum No. 01
ID 1228-09-73
Revised Sheet 526
January 28, 2022



CROSS SECTION THRU ROADWAY
(LOOKING NORTH)

BID ITEM	DESCRIPTION	ITEM UNIT	QUANTITY
502.3205	PIGMENTED SURFACE SEALER RESEAL	SY	673
509.1500	CONCRETE SURFACE REPAIR	SF	39
509.5100.5	POLYMER OVERLAY	SY	2119
SPV.0060.4002	EMBEDDED GALVANIC ANODES	EA	10

[Signature]
SRP
01/27/22



NO.	DATE	REVISION	BY
1	1/26/22	ADDITION OF UPDATED PLANSET	JCG

STATE OF WISCONSIN
DEPARTMENT OF TRANSPORTATION
STRUCTURES DESIGN SECTION

STRUCTURE B-40-174

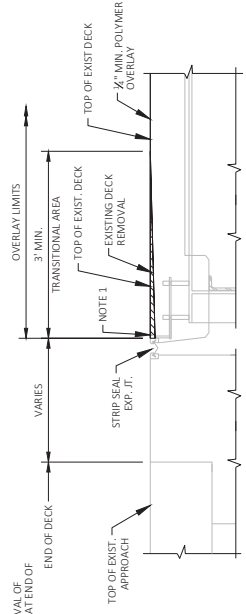
DRAWN BY: JCG
CHECKED BY: JCG

CROSS SECTION
& QUANTITIES

SHEET 2 OF 3

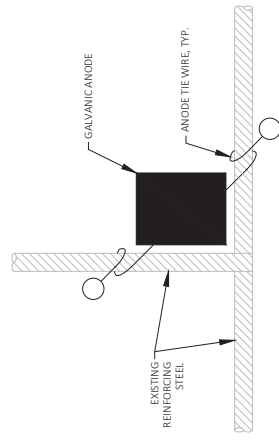
526

NOTES:
1. 1/2" MIN. REMOVAL OF EXISTING DECK AT END OF TRANSITION.

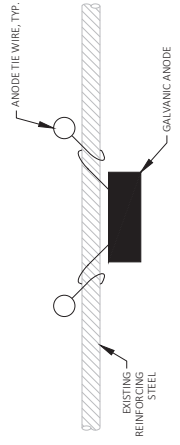


SECTION THRU ABUTMENT TRANSITIONAL AREA ON DECK AT EXPANSION JOINT
(REMOVAL AND OVERLAY THICKNESS NOT TO SCALE)

NOTES:
SEE SPECIAL PROVISION "EMBEDDED GALVANIC ANODES" FOR CONSTRUCTION, MEASUREMENT AND PAYMENT INFORMATION.
EXISTING REINFORCING STEEL TO BE COMPLETELY CLEANED OF CORRODED MATERIAL PRIOR TO INSTALLATION OF GALVANIC ANODES.
LOCATIONS OF GALVANIC ANODES SHOULD BE WITHIN 6" OF THE EDGE OF THE REPAIR AREA.
AFTER PLACEMENT, GALVANIC ANODES SHOULD MAINTAIN A MINIMUM TOP COVER OF 1 1/2" AND A MINIMUM BOTTOM COVER OF 1/2".
PROVIDE GALVANIC ANODES IN CONCRETE SURFACE REPAIR AREAS IN SUBSTRUCTURE ONLY.
THE ESTIMATED ANODE QUANTITY ON PLANS IS BASED ON A MAXIMUM SPACING OF 24" AROUND PERIMETER OF THE CONCRETE SURFACE REPAIR AREA. PLACE ADDITIONAL ANODES AT THE INTERIOR OF REPAIR AREAS AT A MAXIMUM SPACING OF 24" IN ANY DIRECTION.
GREATER THAN 24" IN ANY DIRECTION.



TYPICAL ANODE INSTALLATION AT BAR STEEL INTERSECTION

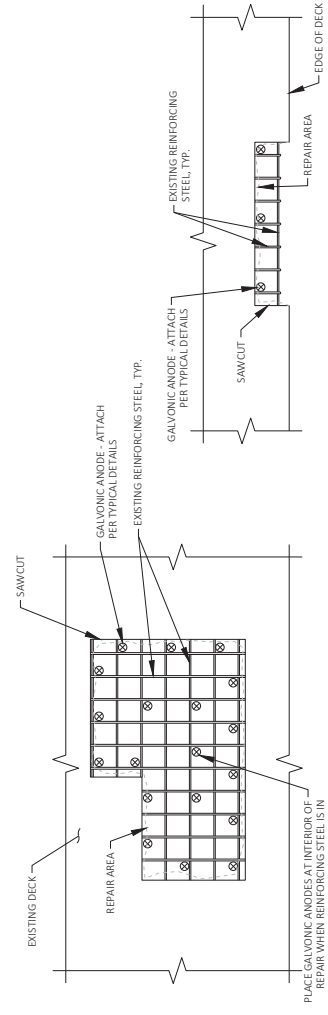


TYPICAL ANODE INSTALLATION FOR BAR STEEL

[Signature]
01/27/22



Addendum No. 01
ID 1228-09-73
Revised Sheet 527
January 28, 2022



PART. PLAN TYPICAL REPAIR DETAIL

508.1500 CONCRETE SURFACE REPAIR
SP/0080 EMBEDDED GALVANIC ANODE

PLACE GALVANIC ANODES AT INTERIOR OF REPAIR WHEN REINFORCING STEEL IS IN CONTACT WITH THE EXISTING CONCRETE AT THE BOTTOM OF THE REPAIR.

NO.	DATE	REVISION	BY
1	1/26/22	ADDITION OF UPDATED PLANSET	JCG

STATE OF WISCONSIN
DEPARTMENT OF TRANSPORTATION
STRUCTURES DESIGN SECTION
STRUCTURE B-40-174

DESIGNED BY	PLANNED BY	DATE
MDS	JCG	1/26/22

CONSTRUCTION DETAILS
SHEET 3 OF 3
527

GENERAL NOTES:

THE PROPOSED WORK INCLUDES CLEANING AND APPLYING A METHACRYLATE FLOOD SEAL TO THE EXISTING BRIDGE DECK SURFACE. THE FLOOD SEAL REPAIR AND A PIGMENTED SURFACE SEALER RESEAL TO THE INSIDE FACE AND TOP OF PARAPET.

DRAWINGS SHALL NOT BE SCALED.

DIMENSIONS SHOWN ARE BASED ON PREVIOUS STRUCTURE PLANS. BRIDGE PLAN ALIGNMENT AND STATIONING MAY NOT CORRESPOND TO ROADWAY ALIGNMENT AND STATIONING.

REFER TO THE PROJECT SPECIFICATIONS FOR DETAILS OF THE REQUIREMENTS FOR DECK PREPARATION. DECK PREPARATIONS ARE INCIDENTAL TO THE PROTECTIVE SURFACE RESEAL ITEM.

CLEAN, STRAIGHTEN AND EXTEND EXISTING BAR STEEL REINFORCEMENT 24 BAR DIAMETERS INTO NEW CONSTRUCTION WHERE APPLICABLE.

ENGINEER TO VERIFY CONCRETE SURFACE REPAIR AREAS. CONCRETE SURFACE REPAIRS SHALL BE MADE ONLY AS DIRECTED BY THE ENGINEER. QUANTITIES SHOWN ARE APPROXIMATE.

REMOVING LOOSE CONCRETE FROM COVERS REMOVAL OF LOOSE CONCRETE OVER THE BOARDER SIDEWALK BELOW METEOROLOGICAL CONTRACTOR SHALL COORDINATE THE FIELD IDENTIFICATION AND DETERMINATION OF ALL REMOVAL LOCATIONS WITH THE ENGINEER.

UPON COMPLETION OF WORK, REMOVE ANY DEBRIS FROM BRIDGE EXPANSION DEVICES.

DESIGN DATA

LIVE LOAD: (TAKEN FROM 01/31/15 HSI RATING) = H-17
INVENTORY RATING = HS-20
OPERATING RATING = HS-20
WISCONSIN STANDARD PERMIT VEHICLE (WIS. SPV) = 130 KIPS

TRAFFIC DATA

LH: 43/94
L: 400
D.H.V. (2040) = 10376
R.D.S. = 60 MPH

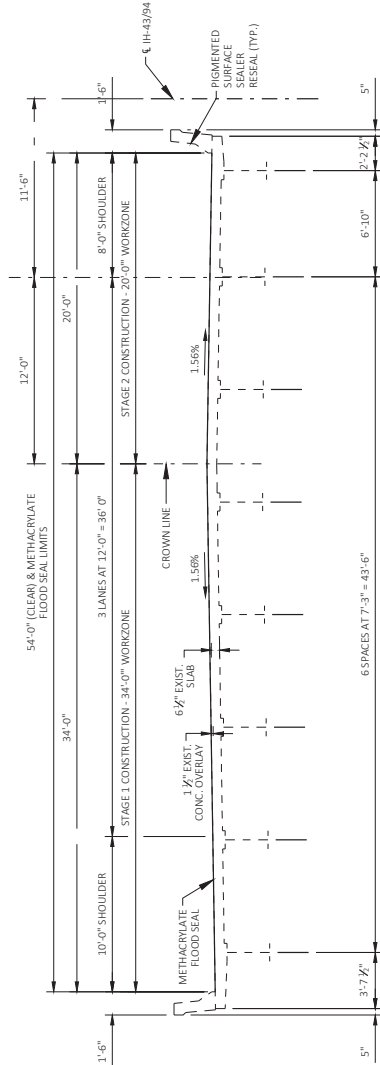
MATERIAL PROPERTIES

RAPID SET DECK REPAIR
CONCRETE MASONRY - SURFACE REPAIR
f_c = 3,000 P.S.I. - 3 HOURS
f_c = 4,000 P.S.I.

LIST OF DRAWINGS

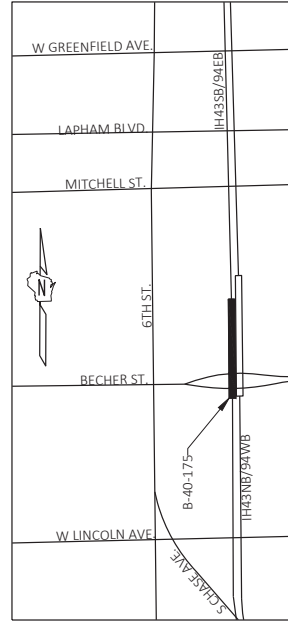
- GENERAL PLAN & QUANTITIES
- CONSTRUCTION DETAILS

Addendum No. 01
ID 1228-09-73
Revised Sheet 528
January 28, 2022



CROSS SECTION THRU ROADWAY
(LOOKING NORTH)

BID ITEM	DESCRIPTION	ITEM UNIT	QUANTITY
502.3205	PIGMENTED SURFACE SEALER RESEAL	SY	691
509.0901	PREPARATION DECKS TYPE 1	SY	1
509.0302.S	SAWING PAVEMENT DECK PREPARATION AREAS	LF	4
509.1500	CONCRETE SURFACE REPAIR	SF	34
SPV.0035.0001	RAPID SET DECK REPAIR	CY	1
SPV.0060.4002	EMBEDDED GALVANIC ANODES	EA	11
SPV.0165.4003	REMOVING LOOSE CONCRETE	SF	22
SPV.0180.4005	CONCRETE BRIDGE DECK METHACRYLATE FLOOD SEAL	SY	5455



LOCATION MAP

NO.	DATE	REVISION	BY
1	1/26/22	ADDITION OF SPV.0035.0001	JCG

COLLINS ENGINEERS
STATE OF WISCONSIN
DEPARTMENT OF TRANSPORTATION

ACCEPTED: CHIEF STRUCTURES DESIGN ENGINEER _____ DATE _____
STRUCTURE B-40-175
IH-43/94 SB/EB OVER W. BECHER ST

COUNTY: MILWAUKEE
DESIGN SPEC: MILWAUKEE
REHABILITATION NO: WISCONSIN
DESIGNED BY: JCG
CHECKED BY: MDM
DRAWN BY: MDM
PLANS BY: MDM
DATE: JCG

GENERAL PLAN
SHEET 1 OF 2
528



STRUCTURE DESIGN CONTACTS:
AARON BORK (608) 281-0261

CONSULTANT CONTACT:
MARK MUTZIGER (614) 282-6905

STATE PROJECT NUMBER
1228-09-73

GENERAL NOTES:

THE PROPOSED WORK INCLUDES CLEANING AND APPLYING A POLYMER CONCRETE SURFACE REPAIR AND HIGHWEAR SURFACE SEALER RESAL TO THE INSIDE FACE AND TOP OF PARAPET.

DRAWINGS SHALL NOT BE SCALED.

DIMENSIONS SHOWN ARE BASED ON PREVIOUS STRUCTURE PLANS. VERTICAL CLEARANCES ARE BASED ON INSPECTION REPORTS.

BRIDGE ALIGNMENT AND STATIONING MAY NOT CORRESPOND TO ROADWAY ALIGNMENT AND STATIONING.

REFER TO THE PROJECT SPECIFICATIONS FOR DETAILS OF THE REQUIREMENTS FOR DECK PREPARATION, SHOT-BLASTING, DECK SURFACE PREPARATIONS, ADDITIONAL AREA ARE INCLUDED IN THE BOTTOM POLYMER OVERLAY.

CLEAN, STRAIGHTEN AND EXTEND EXISTING BAR STEEL REINFORCEMENT 24 BAR DIAMETERS INTO NEW CONSTRUCTION WHERE APPLICABLE.

ENGINEER TO VERIFY CONCRETE SURFACE REPAIR AREAS. CONCRETE SURFACE REPAIRS SHALL BE MADE ONLY AS DIRECTED BY THE ENGINEER. QUANTITIES SHOWN ARE APPROXIMATE.

TAPER POLYMER OVERLAY TREATMENT AT EXPANSION DEVICE OR AS DIRECTED BY ENGINEER.

UPON COMPLETION OF WORK, CLEAN BRIDGE DRAINAGE STRUCTURES AND ENSURE DOWN SPOUTS ARE FREE OF OBSTRUCTIONS AND REMOVE ANY DEBRIS FROM BRIDGE EXPANSION DEVICES.

DESIGN DATA

WIND LOAD:
WIND SPEED: HSL2
OPERATING BATING: HSL20
WISCONSIN STANDARD PERMIT VEHICLE (MIS-SPV): # 130 MIP5

TRAFFIC DATA

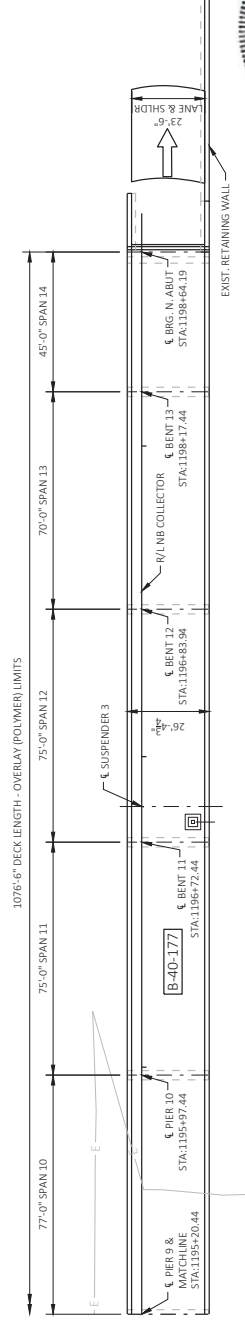
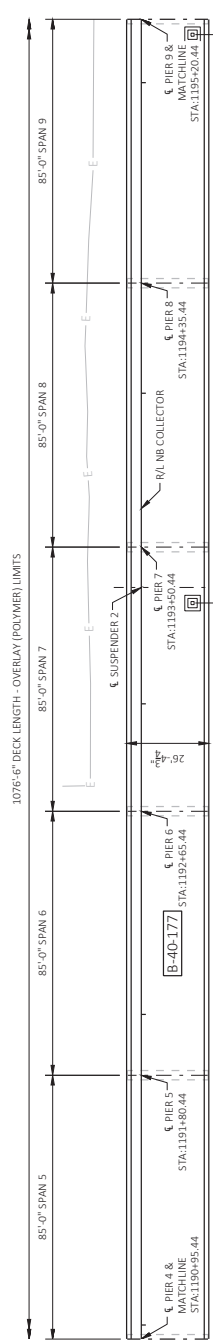
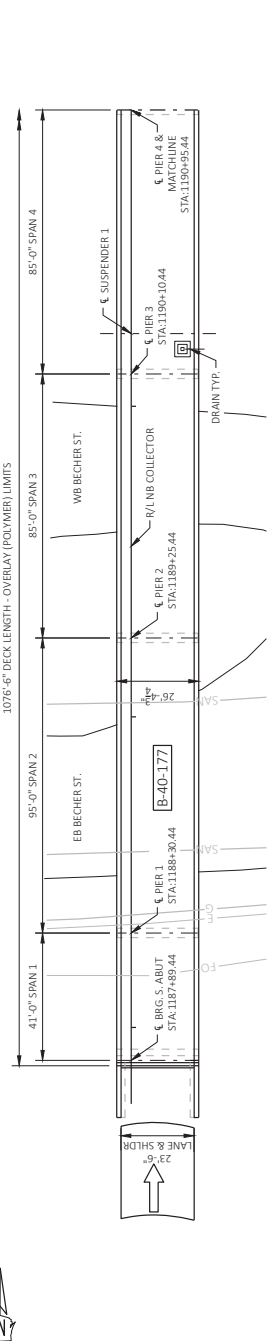
NB COLLECTOR
A.D.T.(2035) = 8,200

MATERIAL PROPERTIES

CONCRETE: DECK REPAIR
CONCRETE: MASS CONCRETE / DECK REPAIR
FC = 3,000 PSI
FC = 4,000 PSI

LIST OF DRAWINGS

- GENERAL PLAN
- ELEVATION
- CROSS SECTION & QUANTITIES
- CONSTRUCTION DETAILS



SR
01127122

Addendum No. 01
ID 1228-09-73
Revised Sheet 532
January 28, 2022

PLAN B-40-177

NO.	DATE	REVISION	BY
1	1/26/22	ADDITION OF SPV.085.0001	JCG

COLLINS ENGINEERS
STATE OF WISCONSIN
DEPARTMENT OF TRANSPORTATION

ACCEPTED: CHIEF STRUCTURES DESIGN ENGINEER DATE

STRUCTURE B-40-177
NB COLLECTOR OVER W. BECHER ST

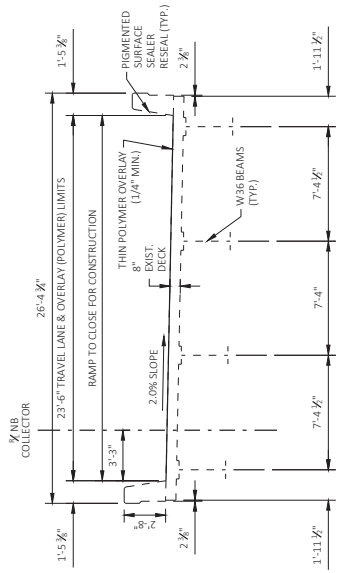
COUNTY: MILWAUKEE
DESIGN SPEC: MILWAUKEE

DESIGNED BY: JCG
CHECKED BY: MDM
DRAWN BY: MDM
PLANS BY: MDM

GENERAL PLAN
SHEET 1 OF 4
532

STRUCTURE DESIGN CONTACTS:
AARON BINK (608) 261-0261
CONSULTANT CONTACT:
MARK MUTZIGER (614) 282-6905

Addendum No. 01
ID 1228-09-73
Revised Sheet 534
January 28, 2022



CROSS SECTION THRU ROADWAY
(LOOKING NORTH)

BID ITEM	DESCRIPTION	ITEM UNIT	QUANTITY
509.2205	PIGMENTED SURFACE SEALER RESEAL	SY	886
509.0301	PREPARATION DECKS TYPE 1	SY	1
509.0310.S	SAVING PAVEMENT DECK PREPARATION AREAS	LF	4
509.1500	CONCRETE SURFACE REPAIR	SF	36
509.5100.S	POLYMER OVERLAY	SY	2811
SPV.0035.0001	RAPID SET DECK REPAIR	CY	1
SPV.0060.4002	EMBEDDED GALVANIC ANODES	EA	13

[Signature]
SDR
01/27/22



NO.	DATE	REVISION	BY
1	1/26/22	ADDITION OF SPV.0035.0001	JCG

STATE OF WISCONSIN
DEPARTMENT OF TRANSPORTATION
STRUCTURES DESIGN SECTION

STRUCTURE B-40-177

DRAWN BY: MDS
CHECKED BY: JCG

CROSS SECTION
& QUANTITIES

SHEET 3 OF 4
534

STATE PROJECT NUMBER
1228-09-73

GENERAL NOTES:

- THE PROPOSED WORK INCLUDES CLEANING AND APPLYING A POLYMER OVERLAY TREATMENT RESAL TO THE TOP SURFACE OF THE BRIDGE DECK AND CURBS. THE POLYMER OVERLAY SHALL BE APPLIED TO SURFACE SEALER RESEAL TO THE INSIDE FACE AND TOP OF PARAPET.
- DRAWINGS SHALL NOT BE SCALED.
- DIMENSIONS SHOWN ARE BASED ON PREVIOUS STRUCTURE PLANS. VERTICAL CLEARANCES ARE BASED ON INSPECTION REPORTS.
- BRIDGE RAN ALIGNMENT AND STATIONINGS MAY NOT CORRESPOND TO ROADWAY ALIGNMENT AND STATIONING.
- REFER TO THE PROJECT SPECIFICATIONS FOR DETAILS OF THE REQUIREMENTS FOR DECK PREPARATION, SHOT BASTING, DECK SURFACE PREPARATIONS, AND TRANSITIONAL AREA ARE INCLUDED IN THE BID ITEM "POLYMER OVERLAY".
- CLEAN, STRAIGHTEN AND EXTEND EXISTING BAR STEEL REINFORCEMENT 24 BAR DIAMETERS INTO NEW CONSTRUCTION WHERE APPLICABLE.
- ENGINEER TO VERIFY CONCRETE SURFACE REPAIR AREAS. CONCRETE SURFACE REPAIRS SHALL BE MADE ONLY AS DIRECTED BY THE ENGINEER. QUANTITIES SHOWN ARE APPROXIMATE.
- TAPER POLYMER OVERLAY AT EXPANSION DEVICE OR AS DIRECTED BY ENGINEER.
- UPON COMPLETION OF WORK, CLEAN BRIDGE DRAINAGE STRUCTURES AND DEBRIS FROM BRIDGE EXPANSION DEVICES.

DESIGN DATA

LIVE LOAD: HS20
OPERATING RATING: HS21
WISCONSIN STANDARD PERMIT VEHICLE (WIS-SPV) = 230 KIPS

TRAFFIC DATA

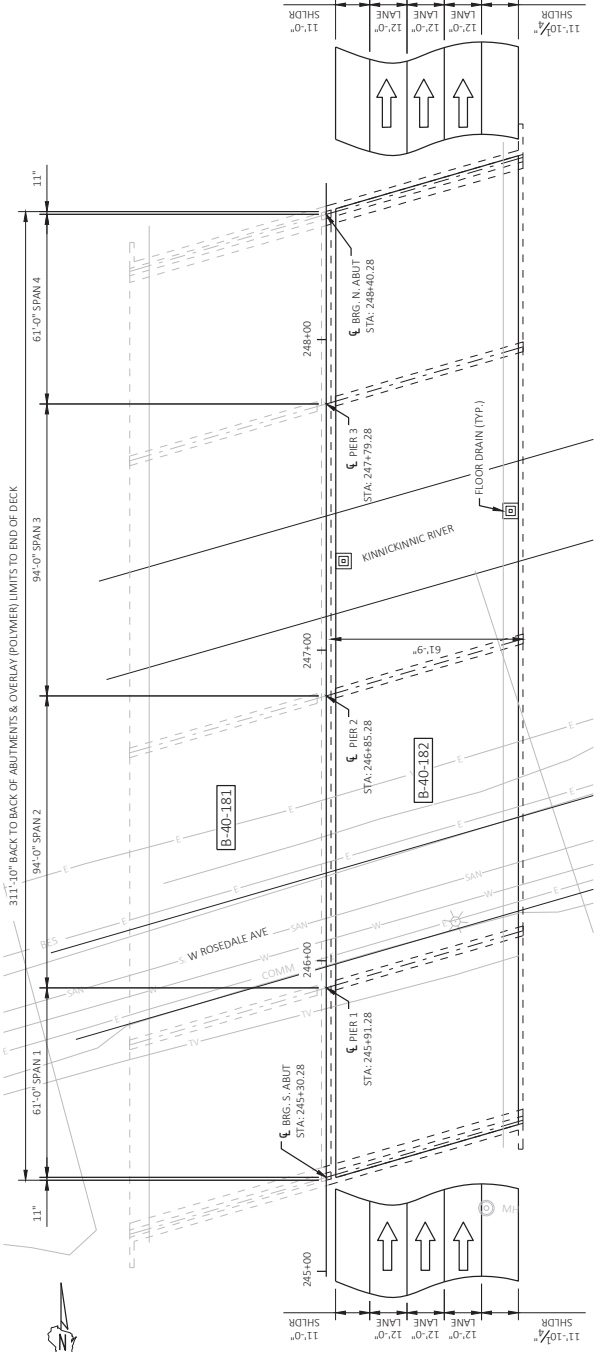
IH-43/7/4
A.D.T. (2040) = 51,800

MATERIAL PROPERTIES

CARDO SET DECK REPAIR
CONCRETE MASONRY: SURFACE REPAIR
f_c = 3,000 P.S.I. (10000)
f_c = 4,000 P.S.I.

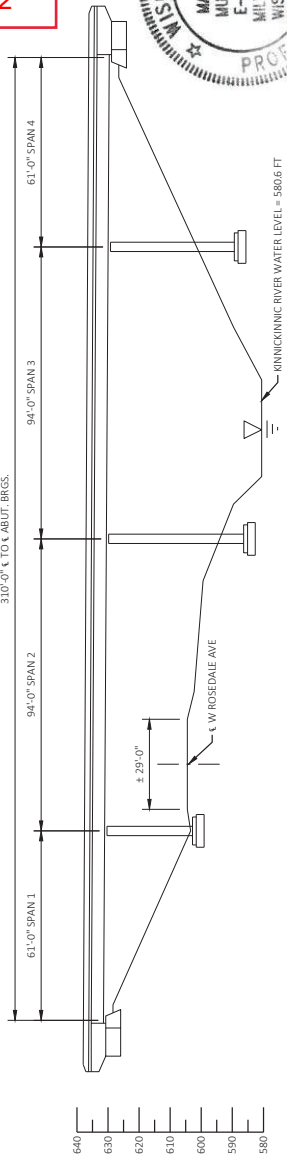
LIST OF DRAWINGS

- PLAN & ELEVATION
- CROSS SECTION & QUANTITIES
- CONSTRUCTION DETAILS



PLAN B-40-182

Addendum No. 01
ID 1228-09-73
Revised Sheet 545
January 28, 2022



ELEVATION
(LOOKING WEST)



STRUCTURE DESIGN CONTACTS:
AARON BINK (608) 261-0261
CONSULTANT CONTACT:
MARK MUTZIGER (614) 282-6905

NO.	DATE	REVISION	BY
1	1/26/22	ADDITION OF SPV.0855.0001	JCG

COLLINS ENGINEERS
STATE OF WISCONSIN
DEPARTMENT OF TRANSPORTATION

ACCEPTED: CHIEF STRUCTURES DESIGN ENGINEER DATE: _____

STRUCTURE B-40-182
IH-43/7/4 HB/WB OVER KINNICKINNIC RIVER

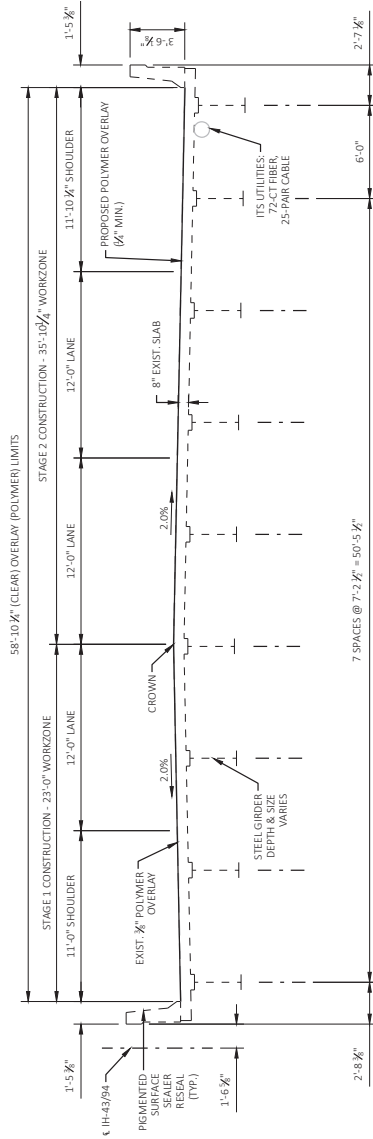
COUNTY: MILWAUKEE
DESIGN SPEC: MILWAUKEE

DESIGNED BY: JCG
CHECKED BY: MDM
DRAWN BY: MDM
PLANS BY: MDM

PROJECT: MILWAUKEE
SHEET 1 OF 3
ELEVATION
545

STATE PROJECT NUMBER
1228-09-73

Addendum No. 01
ID 1228-09-73
Revised Sheet 546
January 28, 2022



CROSS SECTION THRU ROADWAY
(LOOKING NORTH)

BID ITEM	DESCRIPTION	ITEM UNIT	QUANTITY
502.3205	PIGMENTED SURFACE SEALER RESEAL	SY	257
509.0301	PREPARATION DECKS TYPE 1	SY	1
509.0310.S	SAWING PAVEMENT DECK PREPARATION AREAS	LF	4
509.1500	CONCRETE SURFACE REPAIR	SF	45
509.5100.S	POLYMER OVERLAY	SY	2039
509.9015.S	REMOVING POLYMER OVERLAY	SY	2039
SPV.0035.0001	RAPID SET DECK REPAIR	CY	1
SPV.0060.4002	EMBEDDED GALVANIC ANODES	EA	12

[Signature]
SDR
01/27/22



NO.	DATE	REVISION	BY
1	1/26/22	ADDITION OF SPV.0035.0001	JCG

STATE OF WISCONSIN
DEPARTMENT OF TRANSPORTATION
STRUCTURES DESIGN SECTION

STRUCTURE B-40-182

DRAWN BY: MDCG
CHECKED BY: JCG

CROSS SECTION & QUANTITIES

SHEET 2 OF 3

546

STATE PROJECT NUMBER
1228-09-73

GENERAL NOTES:

1. THE PROPOSED WORK INCLUDES CLEANING AND APPLYING METHACRYLATE FLOOD SEAL TO THE EXISTING SURFACE OF THE BRIDGE DECK. REPAIR CONCRETE SURFACE REPAIR, AND PIGMENTED SURFACE SEALER RESEAL TO THE INSIDE FACE AND TOP OF PARAPET.

2. DRAWINGS SHALL NOT BE SCALED.

3. DIMENSIONS SHOWN ARE BASED ON PREVIOUS STRUCTURE PLANS. VERTICAL CLEARANCES ARE BASED ON INSPECTION REPORTS.

4. BRIDGE PLAN ALIGNMENT AND STATIONING MAY NOT CORRESPOND TO ROADWAY ALIGNMENT AND STATIONING.

5. REFER TO THE PROJECT SPECIFICATIONS FOR DETAILS OF THE REQUIREMENTS FOR BRIDGE PREPARATION. DECK PREPARATIONS ARE INCIDENTAL TO THE METHACRYLATE FLOOD SEAL ITEM.

6. ENGINEER TO VERIFY CONCRETE SURFACE REPAIR AREAS. CONCRETE SURFACE REPAIRS SHALL BE MADE ONLY AS DIRECTED BY THE ENGINEER. QUANTITIES SHOWN ARE APPROXIMATE.

7. REMOVING LOOSE CONCRETE ITEM COVERS REMOVAL OF LOOSE CONCRETE OVER THE ROAD OR SIDEWALK BELOW WITHOUT PATCHING. CONTRACTOR SHALL COORDINATE THE FIELD IDENTIFICATION AND DETERMINATION OF ALL REMOVAL LOCATIONS WITH THE ENGINEER.

8. NO CONCRETE REPAIR ADJACENT TO RAILROAD TRACK WITHIN 25 FEET OR CONSIDERED AT RISK OF "FOULING THE TRACK".

9. UPON COMPLETION OF WORK, REMOVE ANY DEBRIS FROM BRIDGE EXPANSION DEVICES.

DESIGN DATA

LIVE LOAD (TAKEN FROM 01/27/15 HS1 RATINGS) = HS17
OPERATING RATING = H529
WISCONSIN STANDARD PERMIT VEHICLE (WIS-SPV) = 180 RIPS

TRAFFIC DATA

IH-43/94 SB
A.D.T. (2009) = 56,900

MATERIAL PROPERTIES

RAPID SET DECK REPAIR
CONCRETE MASONRY SURFACE REPAIR
fc = 3,000 P.S.I., 3 HOURS
fc = 4,000 P.S.I.

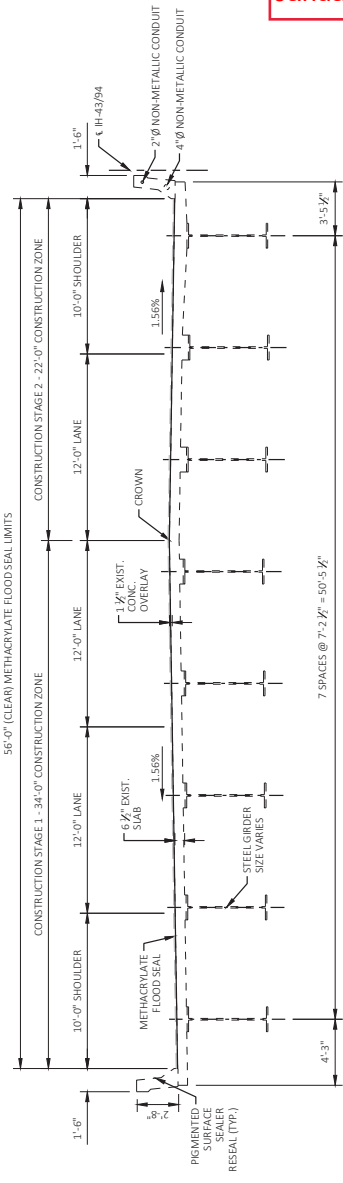
LIST OF DRAWINGS

- CROSS SECTIONS & QUANTITIES
- CONSTRUCTION DETAILS



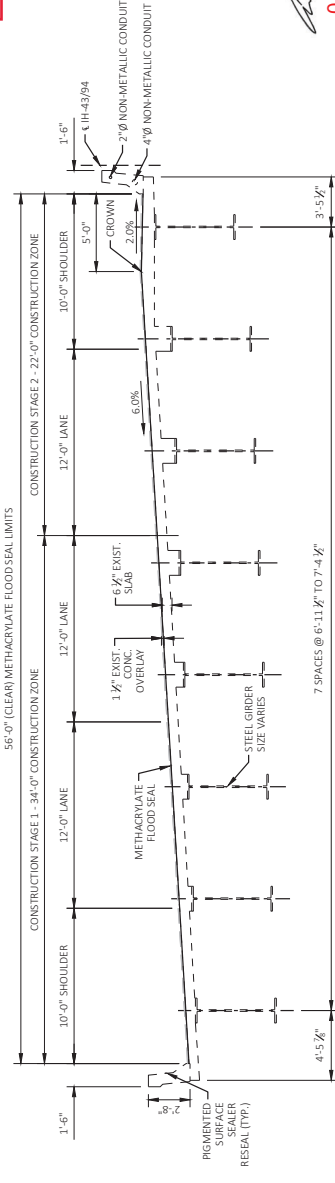
STRUCTURE DESIGN CONTACTS:
AARON BONK (608) 261-0261
CONSULTANT CONTACT:
MARK MUTZIGER (614) 282-6905

Addendum No. 01
ID 1228-09-73
Revised Sheet 548
January 28, 2022



CROSS SECTION THRU ROADWAY
(LOOKING NORTH)
ISO. ABUT. TO STA. 231+40 AND STA. 223+60 TO NO. ABUT.

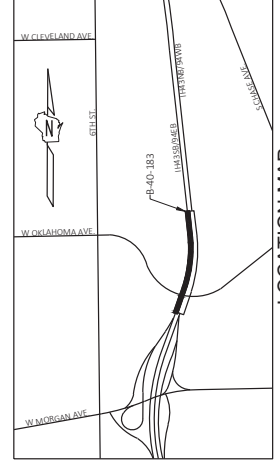
NOTE: 1.56% NORMAL CROWN FROM S. ABUT. TO STA. 211+00.00.
PARABOLIC TRANSITION STA. 211+00.00 TO STA. 213+50.00.
6% CURVE ELEVATION STA. 213+50.00 TO STA. 221+00.00.
PARABOLIC TRANSITION STA. 221+00.00 TO STA. 223+40.00.
1.56% NORMAL CROWN FROM STA. 223+40.00 TO N. ABUT.



CROSS SECTION THRU ROADWAY
(LOOKING NORTH)
STA 213+50 TO STA 221+10

BID ITEM	DESCRIPTION	ITEM UNIT	QUANTITY
502.3205	PIGMENTED SURFACE SEALER RESEAL	SF	1175
509.0301	PREPARATION DECKS TYPE 1	SF	1
509.0310.5	SAWING PAVEMENT DECK PREPARATION AREAS	LF	4
509.1500	CONCRETE SURFACE REPAIR	SF	305
SPV.0835.0001	RAPID SET DECK REPAIR	CY	1
SPV.0860.4002	EMBEDDED GALVANIC ANODES	EA	77
SPV.0165.4003	REMOVING LOOSE CONCRETE	SF	25
SPV.0180.4005	CONCRETE BRIDGE DECK METHACRYLATE FLOOD SEAL	SF	9238

ESTIMATE OF QUANTITIES



LOCATION MAP

8

COLLINS ENGINEERS

STATE OF WISCONSIN
DEPARTMENT OF TRANSPORTATION

ACCEPTED: _____ DATE: _____
CHIEF STRUCTURES DESIGN ENGINEER

STRUCTURE B-40-183

COUNTY: MILWAUKEE PROJECT: MILWAUKEE
DESIGN SFC: _____
REHABILITATION NO: _____
DESIGNED BY: JCG DRAWN BY: MDM CHECKED BY: MDM

SHEET 1 OF 2
548

DESIGNED BY: _____ CHECKED BY: _____
DRAWN BY: _____

STATE PROJECT NUMBER
1228-09-73

GENERAL NOTES:

THE PROPOSED WORK INCLUDES CLEANING AND APPLYING A POLYMER CONCRETE REPAIR TO THE EXISTING SURFACE. THE POLYMER REPAIR, BROAD SET DECK REPAIR, AND PIGMENTED SURFACE SEALER RESALE TO THE INSIDE FACE, AND TOP OF PARAPET.

DRAWINGS SHALL NOT BE SCALED.

DIMENSIONS SHOWN ARE BASED ON PREVIOUS STRUCTURE PLANS. VERTICAL CLEARANCES ARE BASED ON INSPECTION REPORTS.

BRIDGE PLAN ALIGNMENT AND STATIONING MAY NOT CORRESPOND TO ROADWAY ALIGNMENT AND STATIONING.

REFER TO THE PROJECT SPECIFICATIONS FOR DETAILS OF THE REQUIREMENTS FOR DECK REPAIRS. REPAIRS SHALL BE MADE IN ACCORDANCE WITH THE REQUIREMENTS AND TRANSITIONAL AREAS ARE INCLUDED IN THE BID ITEM "POLYMER OVERLAY".

CLEAN, STRAIGHTEN AND EXTEND EXISTING BAR STEEL REINFORCEMENT 24 BAR DIAMETERS INTO NEW CONSTRUCTION WHERE APPLICABLE.

ENGINEER TO VERIFY CONCRETE SURFACE REPAIR AREAS. CONCRETE SURFACE REPAIRS SHALL BE MADE ONLY AS DIRECTED BY THE ENGINEER. QUANTITIES SHOWN ARE APPROXIMATE.

TAPER POLYMER OVERLAY AT EXPANSION DEVICE OR AS DIRECTED BY ENGINEER.

UPON COMPLETION OF WORK, REMOVE ANY DEBRIS FROM BRIDGE EXPANSION DEVICES.

DESIGN DATA

LIVE LOAD:
= HS16
INVENTORY RATING
OPERATING STRESSING
WISCONSIN STANDARD PERMIT VEHICLE (WIS-SPV)
= 160 KIPS

TRAFFIC DATA

IH-43/94
DAD) = 137,000
D.V.V. (D040) = 12,446
R.D.S. = 60 MPH

MATERIAL PROPERTIES

CONCRETE DECK REPAIR
CONCRETE MASONRY - SURFACE REPAIR
f_c = 3,000 P.S.I. (30 MPA)
f_c = 4,000 P.S.I.

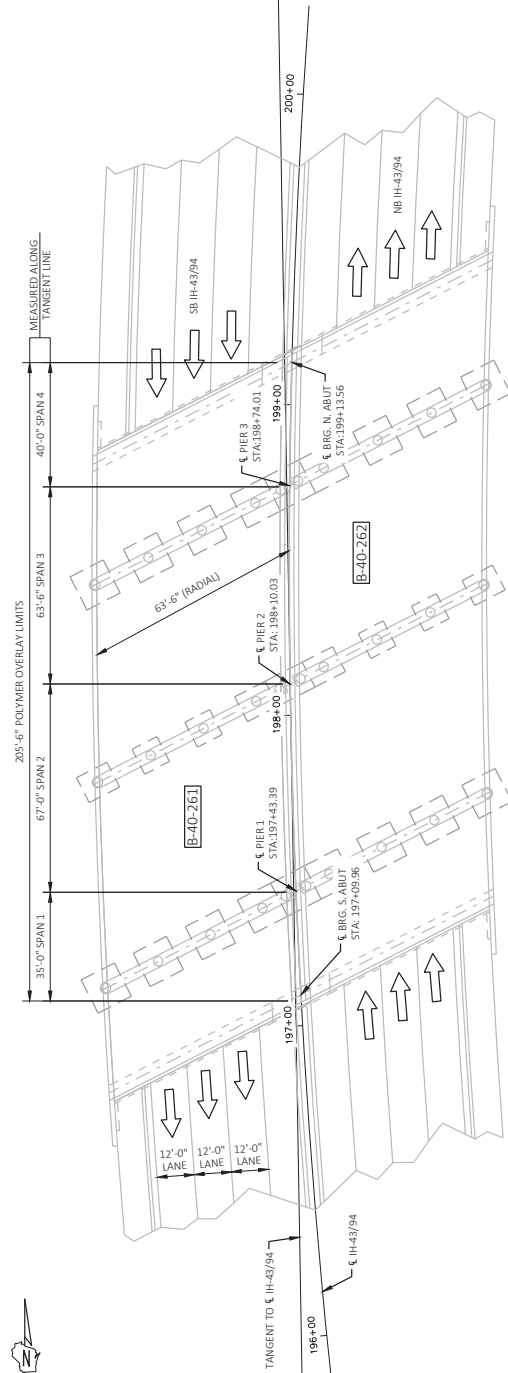
LIST OF DRAWINGS

1. PLAN & ELEVATION
2. STRUCTURE DETAILS
3. CONSTRUCTION DETAILS

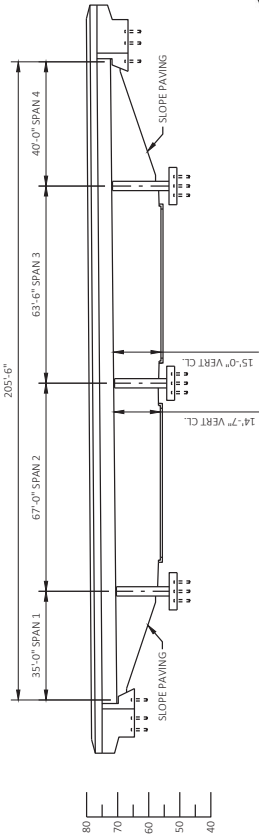


STRUCTURE DESIGN CONTACTS:
AARON BONK (608) 261-0261
CONSULTANT CONTACT:
MARK MUTZIGER (614) 282-6905

Addendum No. 01
ID 1228-09-73
Revised Sheet 556
January 28, 2022



PLAN B-40-261



ELEVATION
(NORMAL TO ϵ HOLT AVE.)
(LOOKING WEST)

01/27/22

NO.	DATE	REVISION	BY
1	1/26/22	ADDITION OF SPV.0355.0001	JCG

COLLINS ENGINEERS
STATE OF WISCONSIN
DEPARTMENT OF TRANSPORTATION

ACCEPTED: CHIEF STRUCTURES DESIGN ENGINEER DATE

STRUCTURE B-40-261
IH-43/94 SB/EB OVER W. HOLT AVENUE

COUNTY: MILWAUKEE
DESIGN SPEC: MILWAUKEE
REVISION: N/A
DESIGNED BY: JCG
CHECKED BY: MDM
DRAWN BY: JAVS
PLANS BY: MDG
DATE: JCG

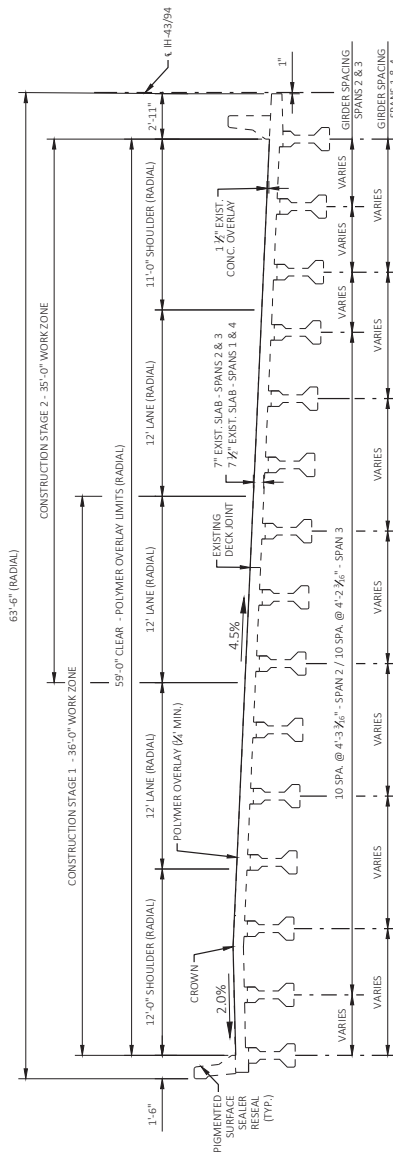
PLAN & ELEVATION
SHEET 1 OF 3
556

Addendum No. 01
ID 1228-09-73
Revised Sheet 557
January 28, 2022

[Signature]
SDR
01/27/22



NO.	DATE	REVISION	BY
1	1/26/22	ADDITION OF SPV.0035.0001	JCG
STATE OF WISCONSIN DEPARTMENT OF TRANSPORTATION STRUCTURES DESIGN SECTION			
STRUCTURE B-40-261			
DRAWN BY MDS		PLATE NO. 1003	JCG
CROSS SECTION & QUANTITIES			SHEET 2 OF 3
			557



CROSS SECTION THRU ROADWAY
(LOOKING NORTH)

BID ITEM	DESCRIPTION	ITEM UNIT	QUANTITY
502.3205	PIGMENTED SURFACE SEALER RESEAL	SY	169
509.0301	PREPARATION DECKS TYPE 1	SF	1
509.0310.5	SAWING PAVEMENT DECK PREPARATION AREAS	LF	4
509.1500	CONCRETE SURFACE REPAIR	SF	13
509.5100.5	POLYMER OVERLAY	SY	1398
SPV.0035.0001	RAPID SET DECK REPAIR	CY	1
SPV.0960.4001	CLEANING AND SEALING CONCRETE GIRDER ENDS	EA	12
SPV.0960.4002	EMBEDDED GALVANIC ANODES	EA	6



THIS DRAWING IS THE PROPERTY OF THE STATE OF WISCONSIN. IT IS TO BE USED ONLY FOR THE PROJECT AND LOCATION SPECIFICALLY IDENTIFIED HEREON. IT IS NOT TO BE REPRODUCED OR TRANSMITTED IN ANY FORM OR BY ANY MEANS, ELECTRONIC OR MECHANICAL, WITHOUT PERMISSION IN WRITING FROM THE STATE OF WISCONSIN DEPARTMENT OF TRANSPORTATION.

STATE PROJECT NUMBER
1228-09-73

Addendum No. 01
ID 1228-09-73
Revised Sheet 604
January 28, 2022

[Signature]
01/27/22



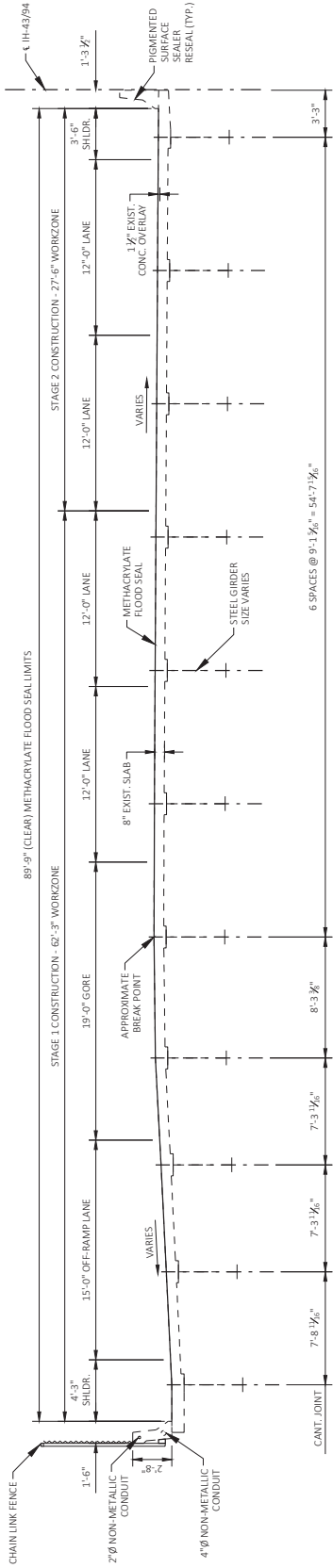
BID ITEM	DESCRIPTION	ITEM UNIT	QUANTITY
502.3205	PIGMENTED SURFACE SEALER RESEAL	SF	305
509.1500	CONCRETE SURFACE REPAIR	SF	36
SPV.0060.4002	EMBEDDED GALVANIC ANODES	EA	10
SPV.0090.0004	FENCE CHAIN LINK 6 - FT. B-40-286-24B	LF	375
SPV.0180.4005	CONCRETE BRIDGE DECK METHACRYLATE FLOOD SEAL	SF	3203

NO.	DATE	REVISION	BY
1	1/26/22	ADDITION OF SPV.0090.0004	JCG

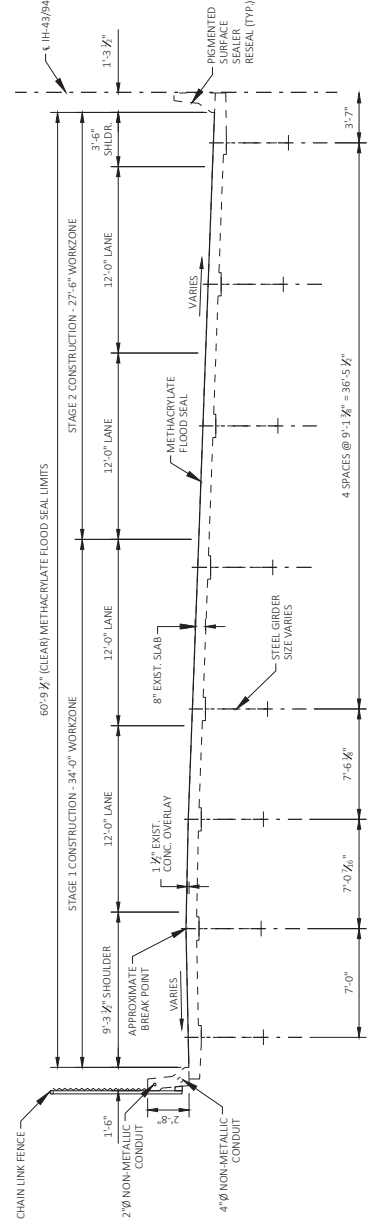
STATE OF WISCONSIN
DEPARTMENT OF TRANSPORTATION
STRUCTURES DESIGN SECTION
STRUCTURE B-40-286-24B

DESIGNED BY: JCG
CHECKED BY: MDCG
DATE: 1/26/22

CROSS SECTIONS & QUANTITIES
SHEET 2 OF 4
604



CROSS SECTION THRU ROADWAY
(LOOKING SOUTH AT CANT JOINT STA. 168+64.0)



CROSS SECTION THRU ROADWAY
(LOOKING SOUTH AT SOUTH ABUT.)

THIS DRAWING IS THE PROPERTY OF WISCONSIN DEPARTMENT OF TRANSPORTATION. IT IS TO BE USED ONLY FOR THE PROJECT AND LOCATION IDENTIFIED HEREON. IT IS NOT TO BE REPRODUCED OR TRANSMITTED IN ANY FORM OR BY ANY MEANS, ELECTRONIC OR MECHANICAL, INCLUDING PHOTOCOPYING, RECORDING, OR BY ANY INFORMATION STORAGE AND RETRIEVAL SYSTEM, WITHOUT THE WRITTEN PERMISSION OF THE WISCONSIN DEPARTMENT OF TRANSPORTATION.

NOTES:

- POSTS ARE TO BE SET VERTICAL.
- METALLIC-COATED FENCE SYSTEM:
- ALL FENCE COMPONENTS SHALL BE GALVANIZED STEEL, EXCEPT THE FENCE FABRIC WHICH MAY BE ALUMINUM-COATED SHEET OR GALVANIZED STEEL.
- FABRIC SHALL CONFORM TO ASTM A491 OR A392, CLASS 2, STEEL RAILS, POSTS AND POST SLEEVES SHALL CONFORM TO ASTM F1083, STANDARD WEIGHT PIPE (SCHEDULE 40). FITTINGS SHALL CONFORM TO ASTM F626, SPV.0090.0004*
- THE BOLT ITEM SHALL BE "FENCE CHAIN LINK & FT. B-40-286-248, ITEM 3PV.0090.0004"
- COMPLETE ANY REQUIRED WELDING OF COMPONENTS BEFORE GALVANIZING.
- POST CLAMPS AND POST CLAMP SPACERS SHALL BE ASTM A709, GRADE 36.
- TENSION WIRE SHALL BE 7-GAGE STEEL WIRE COATED IN ACCORDANCE WITH ASTM A824 AND A817 AS EITHER TYPE 1 (ALUMINUMIZED) OR TYPE II, CLASS 4 (GALVANIZED).
- ALL POST SPACINGS ARE MEASURED HORIZONTALLY ALONG THE CL OF THE POST.
- ANCHOR BOLTS, NUTS AND WASHERS SHALL BE EITHER STAINLESS STEEL OR STAIN 307-IF 307 IS USED, ANCHOR BOLTS, NUTS, AND WASHERS SHALL BE GALVANIZED.
- CONCRETE ADHESIVE ANCHORS 5/8"-INCH EMBED 5" IN CONCRETE. ADHESIVE ANCHORS SHALL CONFORM TO SECTIONS 502.2.12 AND 502.3.14 OF THE STANDARD SPECIFICATIONS.
- ATTACH FABRIC TO RAILS, AND TO POSTS WITHOUT TENSION BANDS, WITH THE WIRES (ROUND, 9-GAGE) SPACED AT 1'-0".
- PROVIDE TENSION POST AND BRACE RAILS TO LIMIT TENSION WIRE RUNS TO LESS THAN 500 FEET.
- PARAPET HAS CONDUIT. INSPECT ALL ANCHORS BEFORE ADHESIVE INSTALLATION. NOTIFY ENGINEER IF CONDUIT IS ENCOUNTERED DURING ADHESIVE ANCHOR INSTALLATION.



Addendum No. 01
ID 1228-09-73
Revised Sheet 606
January 28, 2022

01/27/22

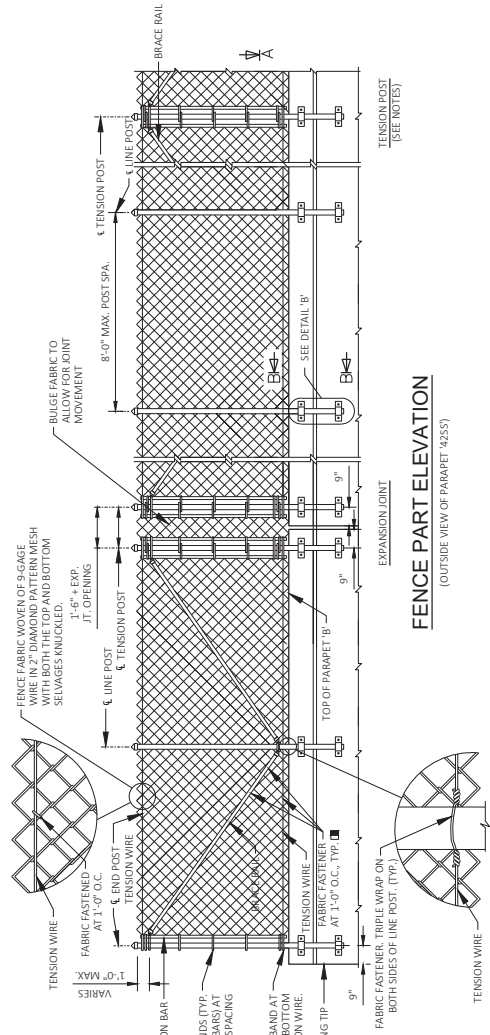
NO.	DATE	REVISION	BY
1	1/26/22	ADDITION OF SPV.0090.0004	JCG

STATE OF WISCONSIN
DEPARTMENT OF TRANSPORTATION
STRUCTURES DESIGN SECTION
STRUCTURE B-40-286-248

DESIGNED BY	DATE	SCALE	JCG
CHECKED BY			
APPROVED BY			

CHAIN LINK
FENCE DETAILS

SHEET 4 OF 4
606

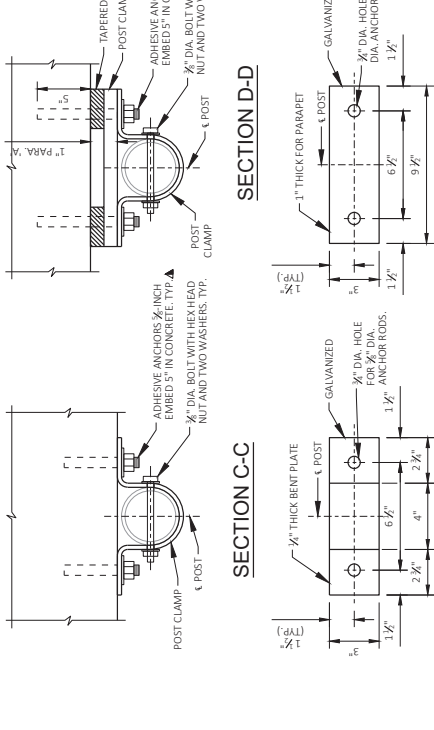
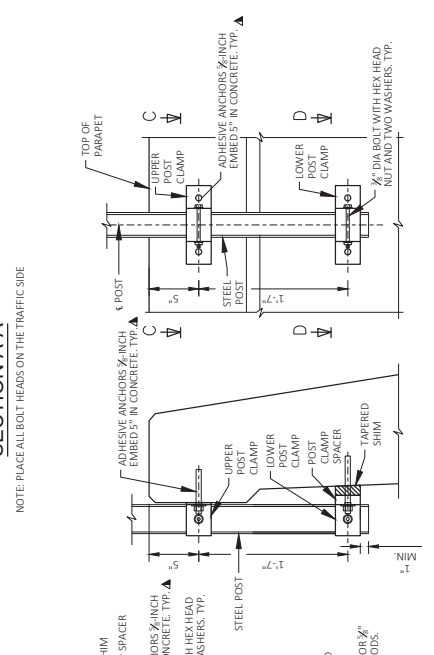
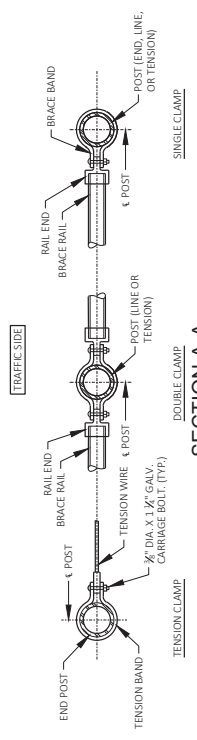
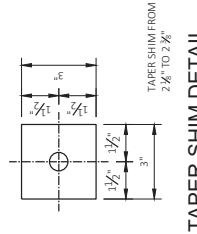


FENCE PART ELEVATION
(OUTSIDE VIEW OF PARAPET *425S*)

SECTION THRU FENCE ON PARAPET *425S*
PROTECTIVE SCREENING SHALL BE STRAIGHT.

FENCE MEMBER SIZE & WEIGHT

STEEL FENCE MEMBER	OUTSIDE DIMENSIONS (INCHES)	WEIGHT (LB/FT)
POST (END, LINE OR TENSION)	3.50	7.576
BRACE RAIL	1.66	2.273



DETAIL 'B'

SECTION B-B

POST CLAMP SPACER DETAIL

POST CLAMP DETAIL



Proposal Schedule of Items

Proposal ID: 20220208010 Project(s): 1228-09-73

Federal ID(s): WISC 2022200

SECTION: 0001

ROADWAY ITEMS

Alt Set ID:

Alt Mbr ID:

Proposal Line Number	Item ID Description	Approximate Quantity and Units	Unit Price	Bid Amount
0002	202.0110 Roadside Clearing	4,017.000 SY	_____.	_____.
0004	204.0100 Removing Concrete Pavement	1,646.000 SY	_____.	_____.
0006	204.0110 Removing Asphaltic Surface	109.000 SY	_____.	_____.
0008	204.0120 Removing Asphaltic Surface Milling	199,646.000 SY	_____.	_____.
0010	204.0125 Removing Asphaltic Surface Milling	1,919.000 TON	_____.	_____.
0012	204.0126.S Removing Asphaltic Longitudinal Notched Wedge Joint Milling	29,341.000 LF	_____.	_____.
0014	204.0150 Removing Curb & Gutter	273.000 LF	_____.	_____.
0016	204.0155 Removing Concrete Sidewalk	160.000 SY	_____.	_____.
0018	204.0157 Removing Concrete Barrier	150.000 LF	_____.	_____.
0020	204.9060.S Removing (item description) 2001. Removing Overhead Freeway DMS	1.000 EACH	_____.	_____.
0022	213.0100 Finishing Roadway (project) 0001. 1228-09-73	1.000 EACH	_____.	_____.
0024	305.0120 Base Aggregate Dense 1 1/4-Inch	187.000 TON	_____.	_____.
0026	320.0125 Concrete Base 6-Inch	1,391.000 SY	_____.	_____.
0028	320.0135 Concrete Base 7-Inch	557.000 SY	_____.	_____.
0030	320.0155 Concrete Base 9-Inch	42.000 SY	_____.	_____.
0032	320.0335 Concrete Base HES 7-Inch	100.000 SY	_____.	_____.



Proposal Schedule of Items

Proposal ID: 20220208010 Project(s): 1228-09-73

Federal ID(s): WISC 2022200

SECTION: 0001

ROADWAY ITEMS

Alt Set ID:

Alt Mbr ID:

Proposal Line Number	Item ID Description	Approximate Quantity and Units	Unit Price	Bid Amount
0034	390.0403 Base Patching Concrete Shes	15,998.000 SY	_____.	_____.
0036	416.0610 Drilled Tie Bars	7,019.000 EACH	_____.	_____.
0038	416.0620 Drilled Dowel Bars	23,012.000 EACH	_____.	_____.
0040	450.4000 HMA Cold Weather Paving	2,750.000 TON	_____.	_____.
0042	455.0605 Tack Coat	30,702.000 GAL	_____.	_____.
0044	460.0105.S HMA Percent Within Limits (PWL) Test Strip Volumetrics	1.000 EACH	_____.	_____.
0046	460.0110.S HMA Percent Within Limits (PWL) Test Strip Density	1.000 EACH	_____.	_____.
0048	460.0115.S HMA Pavement Test Strips Volumetrics	1.000 EACH	_____.	_____.
0050	460.0120.S HMA Pavement Test Strips Density	1.000 EACH	_____.	_____.
0052	460.2000 Incentive Density HMA Pavement	13,330.000 DOL	1.00000	13,330.00
0054	460.2005 Incentive Density PWL HMA Pavement	18,033.000 DOL	1.00000	18,033.00
0056	460.2007 Incentive Density HMA Pavement Longitudinal Joints	28,335.000 DOL	1.00000	28,335.00
0058	460.2010 Incentive Air Voids HMA Pavement	18,033.000 DOL	1.00000	18,033.00
0060	460.6224 HMA Pavement 4 MT 58-28 S	1,855.000 TON	_____.	_____.
0062	460.7423 HMA Pavement 3 HT 58-28 H	28,132.000 TON	_____.	_____.
0064	460.7424 HMA Pavement 4 HT 58-28 H	10.000 TON	_____.	_____.



Proposal Schedule of Items

Proposal ID: 20220208010 Project(s): 1228-09-73
Federal ID(s): WISC 2022200

SECTION: 0001 ROADWAY ITEMS

Alt Set ID: Alt Mbr ID:

Proposal Line Number	Item ID Description	Approximate Quantity and Units	Unit Price	Bid Amount
0066	460.8424 HMA Pavement 4 SMA 58-28 H	19,940.000 TON	_____.	_____.
0068	460.9000.S Material Transfer Vehicle (project) 0001. 1228-09-73	1.000 EACH	_____.	_____.
0070	465.0110 Asphaltic Surface Patching	100.000 TON	_____.	_____.
0072	502.3205 Pigmented Surface Sealer Reseal	16,515.000 SY	_____.	_____.
0074	502.3215 Protective Surface Treatment Reseal	2,174.000 SY	_____.	_____.
0076	509.0301 Preparation Decks Type 1	6.000 SY	_____.	_____.
0078	509.0310.S Sawing Pavement Deck Preparation Areas	24.000 LF	_____.	_____.
0080	509.1200 Curb Repair	4.000 LF	_____.	_____.
0082	509.1500 Concrete Surface Repair	2,322.000 SF	_____.	_____.
0084	509.2100.S Concrete Masonry Deck Repair	7.000 CY	_____.	_____.
0086	509.5100.S Polymer Overlay	27,619.000 SY	_____.	_____.
0088	509.9015.S Removing Polymer Overlay (structure) 0001. B-40-181	2,039.000 SY	_____.	_____.
0090	509.9015.S Removing Polymer Overlay (structure) 0002. B-40-182	2,039.000 SY	_____.	_____.
0092	509.9025.S Epoxy Injection Crack Repair	175.000 LF	_____.	_____.
0094	509.9026.S Cored Holes 2-Inch Diameter	15.000 EACH	_____.	_____.
0096	601.0331 Concrete Curb & Gutter 31-Inch	272.000 LF	_____.	_____.



Proposal Schedule of Items

Proposal ID: 20220208010 Project(s): 1228-09-73

Federal ID(s): WISC 2022200

SECTION: 0001

ROADWAY ITEMS

Alt Set ID:

Alt Mbr ID:

Proposal Line Number	Item ID Description	Approximate Quantity and Units	Unit Price	Bid Amount
0098	601.0600 Concrete Curb Pedestrian	28.000 LF	_____.	_____.
0100	602.0410 Concrete Sidewalk 5-Inch	1,438.000 SF	_____.	_____.
0102	602.0505 Curb Ramp Detectable Warning Field Yellow	122.000 SF	_____.	_____.
0104	603.0105 Concrete Barrier Single-Faced 32-Inch	150.000 LF	_____.	_____.
0106	603.8000 Concrete Barrier Temporary Precast Delivered	4,500.000 LF	_____.	_____.
0108	603.8125 Concrete Barrier Temporary Precast Installed	4,500.000 LF	_____.	_____.
0110	611.0430 Reconstructing Inlets	20.000 EACH	_____.	_____.
0112	611.8115 Adjusting Inlet Covers	25.000 EACH	_____.	_____.
0114	611.9710 Salvaged Inlet Covers	39.000 EACH	_____.	_____.
0116	614.0905 Crash Cushions Temporary	30.000 EACH	_____.	_____.
0118	616.0206 Fence Chain Link 6-FT	635.000 LF	_____.	_____.
0120	619.1000 Mobilization	1.000 EACH	_____.	_____.
0122	625.0100 Topsoil	315.000 SY	_____.	_____.
0124	627.0200 Mulching	242.000 SY	_____.	_____.
0126	628.7020 Inlet Protection Type D	460.000 EACH	_____.	_____.
0128	629.0210 Fertilizer Type B	0.060 CWT	_____.	_____.



Proposal Schedule of Items

Proposal ID: 20220208010 Project(s): 1228-09-73

Federal ID(s): WISC 2022200

SECTION: 0001

ROADWAY ITEMS

Alt Set ID:

Alt Mbr ID:

Proposal Line Number	Item ID Description	Approximate Quantity and Units	Unit Price	Bid Amount
0130	630.0130 Seeding Mixture No. 30	4.000 LB	_____.	_____.
0134	631.0300 Sod Water	1.800 MGAL	_____.	_____.
0136	631.1000 Sod Lawn	73.000 SY	_____.	_____.
0138	634.0618 Posts Wood 4x6-Inch X 18-FT	53.000 EACH	_____.	_____.
0140	634.0814 Posts Tubular Steel 2x2-Inch X 14-FT	8.000 EACH	_____.	_____.
0142	635.9020.S Sign Supports Replacing Base Connection Bolts Legacy System	12.000 EACH	_____.	_____.
0144	637.1220 Signs Type I Reflective SH	6,037.500 SF	_____.	_____.
0146	637.2210 Signs Type II Reflective H	152.750 SF	_____.	_____.
0148	638.2102 Moving Signs Type II	79.000 EACH	_____.	_____.
0150	638.2601 Removing Signs Type I	34.000 EACH	_____.	_____.
0152	638.3000 Removing Small Sign Supports	33.000 EACH	_____.	_____.
0154	638.3210 Revising Signs Type I Demountable	1.000 EACH	_____.	_____.
0156	643.0300 Traffic Control Drums	143,599.000 DAY	_____.	_____.
0158	643.0410 Traffic Control Barricades Type II	49.000 DAY	_____.	_____.
0160	643.0420 Traffic Control Barricades Type III	15,574.000 DAY	_____.	_____.
0162	643.0500 Traffic Control Flexible Tubular Marker Posts	10.000 EACH	_____.	_____.



Proposal Schedule of Items

Proposal ID: 20220208010 Project(s): 1228-09-73

Federal ID(s): WISC 2022200

SECTION: 0001

ROADWAY ITEMS

Alt Set ID:

Alt Mbr ID:

Proposal Line Number	Item ID Description	Approximate Quantity and Units	Unit Price	Bid Amount
0164	643.0600 Traffic Control Flexible Tubular Marker Bases	10.000 EACH	_____.	_____.
0166	643.0705 Traffic Control Warning Lights Type A	31,198.000 DAY	_____.	_____.
0168	643.0715 Traffic Control Warning Lights Type C	22,318.000 DAY	_____.	_____.
0170	643.0800 Traffic Control Arrow Boards	1,839.000 DAY	_____.	_____.
0172	643.0900 Traffic Control Signs	56,215.000 DAY	_____.	_____.
0174	643.0920 Traffic Control Covering Signs Type II	2,135.000 EACH	_____.	_____.
0176	643.1000 Traffic Control Signs Fixed Message	880.000 SF	_____.	_____.
0178	643.1050 Traffic Control Signs PCMS	6,045.000 DAY	_____.	_____.
0180	643.4100.S Traffic Control Interim Lane Closure	931.000 EACH	_____.	_____.
0182	643.5000 Traffic Control	1.000 EACH	_____.	_____.
0184	644.1601 Temporary Pedestrian Curb Ramp	14.000 DAY	_____.	_____.
0186	644.1810 Temporary Pedestrian Barricade	601.000 LF	_____.	_____.
0188	646.1020 Marking Line Epoxy 4-Inch	74,261.000 LF	_____.	_____.
0190	646.1040 Marking Line Grooved Wet Ref Epoxy 4-Inch	83,372.000 LF	_____.	_____.
0192	646.1555 Marking Line Grooved Contrast Permanent Tape 4-Inch	15,514.000 LF	_____.	_____.
0194	646.3020 Marking Line Epoxy 8-Inch	567.000 LF	_____.	_____.



Proposal Schedule of Items

Proposal ID: 20220208010 Project(s): 1228-09-73

Federal ID(s): WISC 2022200

SECTION: 0001

ROADWAY ITEMS

Alt Set ID:

Alt Mbr ID:

Proposal Line Number	Item ID Description	Approximate Quantity and Units	Unit Price	Bid Amount
0196	646.3555 Marking Line Grooved Contrast Permanent Tape 8-Inch	12,968.000 LF	_____.	_____.
0198	646.5020 Marking Arrow Epoxy	32.000 EACH	_____.	_____.
0200	646.5120 Marking Word Epoxy	3.000 EACH	_____.	_____.
0202	646.5220 Marking Symbol Epoxy	15.000 EACH	_____.	_____.
0204	646.6120 Marking Stop Line Epoxy 18-Inch	353.000 LF	_____.	_____.
0206	646.7120 Marking Diagonal Epoxy 12-Inch	5,209.000 LF	_____.	_____.
0208	646.7220 Marking Chevron Epoxy 24-Inch	4,153.000 LF	_____.	_____.
0210	646.8320 Marking Parking Stall Epoxy	5,952.000 LF	_____.	_____.
0212	649.0105 Temporary Marking Line Paint 4-Inch	174,615.000 LF	_____.	_____.
0214	649.0150 Temporary Marking Line Removable Tape 4-Inch	50,377.000 LF	_____.	_____.
0216	649.0205 Temporary Marking Line Paint 8-Inch	25,924.000 LF	_____.	_____.
0218	649.0250 Temporary Marking Line Removable Tape 8-Inch	11,446.000 LF	_____.	_____.
0220	649.0960 Temporary Marking Removable Mask Out Tape 6-Inch	9,449.000 LF	_____.	_____.
0222	649.0970 Temporary Marking Removable Mask Out Tape 10-Inch	586.000 LF	_____.	_____.
0224	670.0100 Field System Integrator	LS	LUMP SUM	_____.



Proposal Schedule of Items

Proposal ID: 20220208010 Project(s): 1228-09-73

Federal ID(s): WISC 2022200

SECTION: 0001

ROADWAY ITEMS

Alt Set ID:

Alt Mbr ID:

Proposal Line Number	Item ID Description	Approximate Quantity and Units	Unit Price	Bid Amount
0226	690.0150 Sawing Asphalt	1,883.000 LF	_____.	_____.
0228	690.0250 Sawing Concrete	54,380.000 LF	_____.	_____.
0230	740.0440 Incentive IRI Ride	40,083.000 DOL	1.00000	40,083.00
0232	999.2000.S Installing and Maintaining Bird Deterrent System (station) 0001. 101+32	1.000 EACH	_____.	_____.
0234	999.2000.S Installing and Maintaining Bird Deterrent System (station) 0002. 301+34	1.000 EACH	_____.	_____.
0236	999.2000.S Installing and Maintaining Bird Deterrent System (station) 0003. 401+52	1.000 EACH	_____.	_____.
0238	999.2000.S Installing and Maintaining Bird Deterrent System (station) 0004. 1191+80	1.000 EACH	_____.	_____.
0240	999.2000.S Installing and Maintaining Bird Deterrent System (station) 0005. 777+00	1.000 EACH	_____.	_____.
0242	999.2000.S Installing and Maintaining Bird Deterrent System (station) 0006. 777+00	1.000 EACH	_____.	_____.
0244	999.2000.S Installing and Maintaining Bird Deterrent System (station) 0007. 1192+65	1.000 EACH	_____.	_____.
0246	999.2000.S Installing and Maintaining Bird Deterrent System (station) 0008. 501+16	1.000 EACH	_____.	_____.
0248	999.2000.S Installing and Maintaining Bird Deterrent System (station) 0009. 601+63	1.000 EACH	_____.	_____.
0250	999.2000.S Installing and Maintaining Bird Deterrent System (station) 0010. 246+85	1.000 EACH	_____.	_____.
0252	999.2000.S Installing and Maintaining Bird Deterrent System (station) 0011. 246+85	1.000 EACH	_____.	_____.



Proposal Schedule of Items

Proposal ID: 20220208010 Project(s): 1228-09-73

Federal ID(s): WISC 2022200

SECTION: 0001

ROADWAY ITEMS

Alt Set ID:

Alt Mbr ID:

Proposal Line Number	Item ID Description	Approximate Quantity and Units	Unit Price	Bid Amount
0254	999.2000.S Installing and Maintaining Bird Deterrent System (station) 0012. 705+00	1.000 EACH	_____.	_____.
0256	999.2000.S Installing and Maintaining Bird Deterrent System (station) 0013. 705+00	1.000 EACH	_____.	_____.
0258	999.2000.S Installing and Maintaining Bird Deterrent System (station) 0014. 97+02	1.000 EACH	_____.	_____.
0260	999.2000.S Installing and Maintaining Bird Deterrent System (station) 0015. 198+10	1.000 EACH	_____.	_____.
0262	999.2000.S Installing and Maintaining Bird Deterrent System (station) 0016. 198+10	1.000 EACH	_____.	_____.
0264	999.2000.S Installing and Maintaining Bird Deterrent System (station) 0017. 48+29	1.000 EACH	_____.	_____.
0266	ASP.1T0A On-the-Job Training Apprentice at \$5.00/HR	1,800.000 HRS	5.00000	9,000.00
0268	ASP.1T0G On-the-Job Training Graduate at \$5.00/HR	14,400.000 HRS	5.00000	72,000.00
0270	SPV.0060 Special 0001. Mobilizations Emergency Pavement Repair	4.000 EACH	_____.	_____.
0272	SPV.0060 Special 0002. Traffic Control Close-Open Freeway Entrance Ramp	563.000 EACH	_____.	_____.
0274	SPV.0060 Special 0003. Traffic Control Close-Open Freeway to Freeway System Ramp	226.000 EACH	_____.	_____.
0276	SPV.0060 Special 0004. Traffic Control Full Freeway Closure	2.000 EACH	_____.	_____.
0278	SPV.0060 Special 0005. Field Facilities Office Space	1.000 EACH	_____.	_____.



Proposal Schedule of Items

Proposal ID: 20220208010 Project(s): 1228-09-73

Federal ID(s): WISC 2022200

SECTION: 0001

ROADWAY ITEMS

Alt Set ID:

Alt Mbr ID:

Proposal Line Number	Item ID Description	Approximate Quantity and Units	Unit Price	Bid Amount
0280	SPV.0060 Special 0006. Traffic Control Local Road Lane Closures	306.000 EACH	_____.	_____.
0282	SPV.0060 Special 0007. Fastening Sewer Access Covers	14.000 EACH	_____.	_____.
0284	SPV.0060 Special 0008. Survey Project 1228-09-73	1.000 EACH	_____.	_____.
0286	SPV.0060 Special 2001. Install Overhead Freeway DMS	1.000 EACH	_____.	_____.
0288	SPV.0060 Special 2002. Refocus Vehicle Detector Assembly	20.000 EACH	_____.	_____.
0290	SPV.0060 Special 4001. Cleaning and Sealing Concrete Girder Ends	24.000 EACH	_____.	_____.
0292	SPV.0060 Special 4002. Embedded Galvanic Anodes	434.000 EACH	_____.	_____.
0294	SPV.0075 Special 0001. Pavement Cleanup Project 1228-09-73	100.000 HRS	_____.	_____.
0296	SPV.0090 Special 0001. Marking Line Contrast Epoxy 4-Inch	9,025.000 LF	_____.	_____.
0298	SPV.0090 Special 0002. Marking Line Contrast Epoxy 8-Inch	11,251.000 LF	_____.	_____.
0300	SPV.0090 Special 0003. Marking Crosswalk Epoxy 12-Inch	58.000 LF	_____.	_____.
0302	SPV.0165 Special 4003. Removing Loose Concrete	240.000 SF	_____.	_____.
0304	SPV.0180 Special 0001. Resin Binder High Friction Surface Treatment	25,456.000 SY	_____.	_____.
0306	SPV.0180 Special 0002. Base Patch For Inlets	123.000 SY	_____.	_____.



Proposal Schedule of Items

Proposal ID: 20220208010 Project(s): 1228-09-73

Federal ID(s): WISC 2022200

SECTION: 0001

ROADWAY ITEMS

Alt Set ID:

Alt Mbr ID:

Proposal Line Number	Item ID Description	Approximate Quantity and Units	Unit Price	Bid Amount
0308	SPV.0180 Special 4005. Concrete Bridge Deck Methacrylate Flood Seal	102,142.000 SY	_____.	_____.
0310	201.0110 Clearing	242.000 SY	_____.	_____.
0312	201.0120 Clearing	126.000 ID	_____.	_____.
0314	201.0210 Grubbing	242.000 SY	_____.	_____.
0316	204.0170 Removing Fence	306.000 LF	_____.	_____.
Section: 0001			Total:	_____.
			Total Bid:	_____.

