



# Wisconsin Department of Transportation

February 4, 2022

## Division of Transportation Systems Development

Bureau of Project Development  
4822 Madison Yards Way, 4<sup>th</sup> Floor South  
Madison, WI 53705

Telephone: (608) 266-1631  
Facsimile (FAX): (608) 266-8459

### NOTICE TO ALL CONTRACTORS:

**Proposal #19: 3834-06-70, WISC 2022202**  
**Burlington Road**  
**Racine Co Line – IH 94 W Frontage RD**  
**STH 142**  
**Kenosha County**

### Letting of February 8, 2022

This is Addendum No. 01, which provides for the following:

#### Special Provisions:

Revised Special Provisions	
Article No.	Description
3	Prosecution and Progress

Added Special Provisions	
Article No.	Description
22	Asphaltic Repair, Item SPV.0195.01

Deleted Special Provisions	
Article No.	Description
16	Geotextile Type SR, Item 645.0135

#### Schedule of Items:

Revised Bid Item Quantities					
Bid Item	Item Description	Unit	Old Quantity	Revised Quantity	Proposal Total
455.0605	Tack Coat	GAL	16,231	649	16,880
646.1040	Marking Line Grooved Wet Ref. Epoxy 4-inch	LF	134,438	-9,763	124,676

Added Bid Item Quantities					
Bid Item	Item Description	Unit	Old Quantity	Revised Quantity	Proposal Total
SPV.0195.01	Asphaltic Repair	TON	0	1,100	1,100

Deleted Bid Item Quantities					
Bid Item	Item Description	Unit	Old Quantity	Revised Quantity	Proposal Total
205.0100	Common Excavation	CY	800	-800	0
305.0120	Base Aggregate Dense 1 ¼-inch	TON	1,510	-1,510	0
311.0110	Breaker Run	TON	1,100	-1,100	0
390.0203	Base Patching Asphaltic	SY	1,440	-1,440	0
390.0403	Base Patching Concrete SHES	SY	1,030	-1,030	0
416.0610	Drilled Tie Bars	EACH	320	-320	0
416.0620	Drilled Dowel Bars	EACH	850	-850	0
645.0135	Geotextile Type SR	SY	1,440	-1,440	0
646.1020	Marking Line Epoxy 4-inch	LF	72,268	-72,268	0

**Plan Sheets:**

Revised Plan Sheets	
Plan Sheet	Plan Sheet Title (brief description of changes to sheet)
57-77	Paving Marking plans. Revised legend to reflect current bid items.
84	Miscellaneous Quantities: Removed concrete patch items.
85	Miscellaneous Quantities: Removed concrete patch items.
95	Miscellaneous Quantities: Added temporary pavement markings, Same day Epoxy, and Asphalt Repair items. Revised Pavement marking groove wet ref. epoxy 4-inch.

Added Plan Sheets	
Plan Sheet	Plan Sheet Title (brief description of why sheet was added)
13A	Asphalt Repair construction detail

The responsibility for notifying potential subcontractors and suppliers of these changes remains with the prime contractor.

Sincerely,

*Mike Coleman*

Proposal Development Specialist  
Proposal Management Section

**ADDENDUM NO. 01**

**3834-06-70**

**February 4, 2022**

**Special Provisions**

**3. Prosecution and Progress.**

In the paragraph "During Non-Work Hours" revise the sentence "Do not leave milled pavement surface exposed for more than 72 hours" with "Do not leave milled pavement surface exposed for more than 96 hours".

**16. DELETED**

**17. Asphaltic Repair, Item SPV.0195.01.**

**A Description**

This special provision describes repairing areas of existing asphalt pavement with asphaltic mixtures for overlaying with new pavement.

**B Material**

Furnish nominal size No. 4 (12.5mm) aggregate blend graded as specified in 460.2.2.3 and conform to the other material and mixture requirements specified for asphaltic surface in 465.

**C Construction**

For areas of partial depth removal, remove areas of existing asphalt pavement, including existing patching or surfacing materials, at locations the plans show or the engineer directs in the field as specified for removing asphaltic surface milling in 204.3.2.2.2. Mill the connecting edges as true and perpendicular as possible, both parallel and perpendicular to the roadway, creating a vertical edge on all sides. Remove the pavement without injury to the remaining pavement. Dispose of removed material as specified in 204.3.1.3.

For areas of full depth removal, remove areas of existing asphalt pavement, including existing patching or surfacing materials, at locations the plans show or the engineer directs in the field as specified for removing asphaltic surface in 204.3.2.2.1. Remove the pavement without injury to the remaining pavement. Dispose of removed material as specified in 204.3.1.3.

Construct as specified for asphaltic surface under 465.3 except as modified here.

*Replace standard spec 465.3.1(2) with the following:*

- (2) Place using self-propelled pavers with cut off plates. Pave at a constant speed, appropriate for the paver and mixture, that ensures uniform spreading and strike-off with a smooth, dense texture and no tearing or segregation.

*Add the following to standard spec 465.3.1 as paragraph six:*

- (6) Place the repair to the thickness of the contiguous pavement conforming to the requirements of 460.3.2(1).

**D Measurement**

The department will measure Asphaltic Repair by the ton acceptably completed as specified for asphaltic pavement in 450.4.

**E Payment**

- (1) The department will pay for measured quantities at the contract unit price under the following bid item:

ITEM NUMBER	DESCRIPTION	UNIT
SPV.0195.01.	Asphaltic Repair	TON

- (2) Payment is full compensation for removing old pavement; for preparing the foundation; and for providing and compacting asphaltic mixture including asphaltic binder.

- (3) The department will pay separately for tack coat under the Tack Coat bid item as specified in 455.5.

SER-390-001 (202201121)

**Schedule of Items**

Attached, dated February 4, 2022, are the revised Schedule of Items Pages 1 – 5.

**Plan Sheets**

The following 8½ x 11-inch sheets are attached and made part of the plans for this proposal:

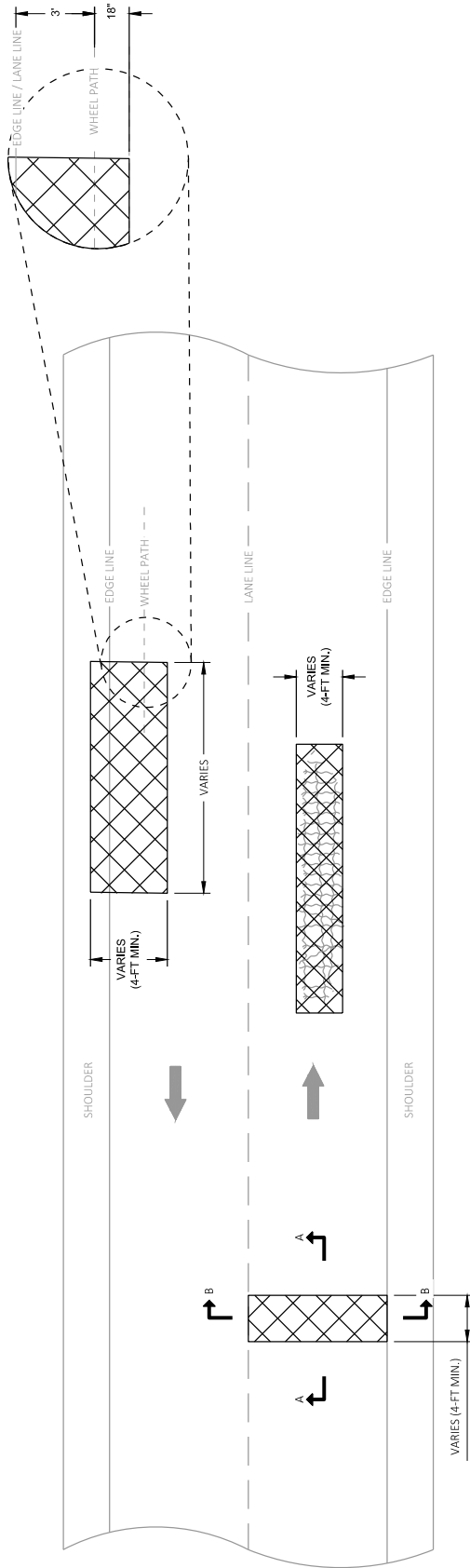
Revised: 57-77, 84,85,95

Added: 13A

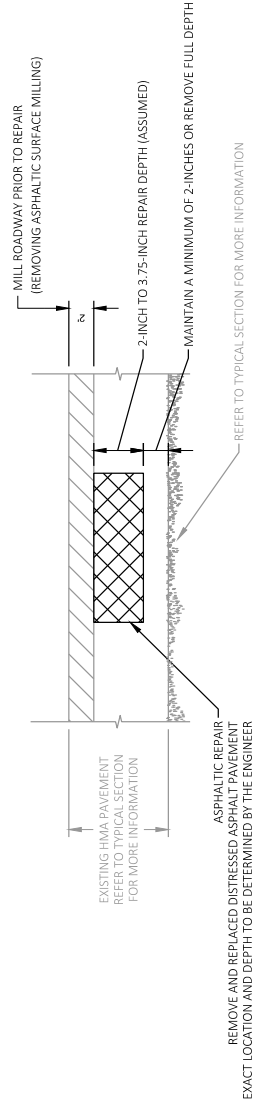
END OF ADDENDUM

GENERAL NOTES

- ① EXACT LOCATION, DEPTH AND SIZE OF REPAIR TO BE DETERMINED BY THE ENGINEER IN THE FIELD.
- ② MILL PAVEMENT PER PLAN PRIOR TO MAKING ASPHALTIC REPAIR.
- ③ ASPHALTIC REPAIR PAVING TO BE DONE ON THE SAME DAY AS REMOVAL.



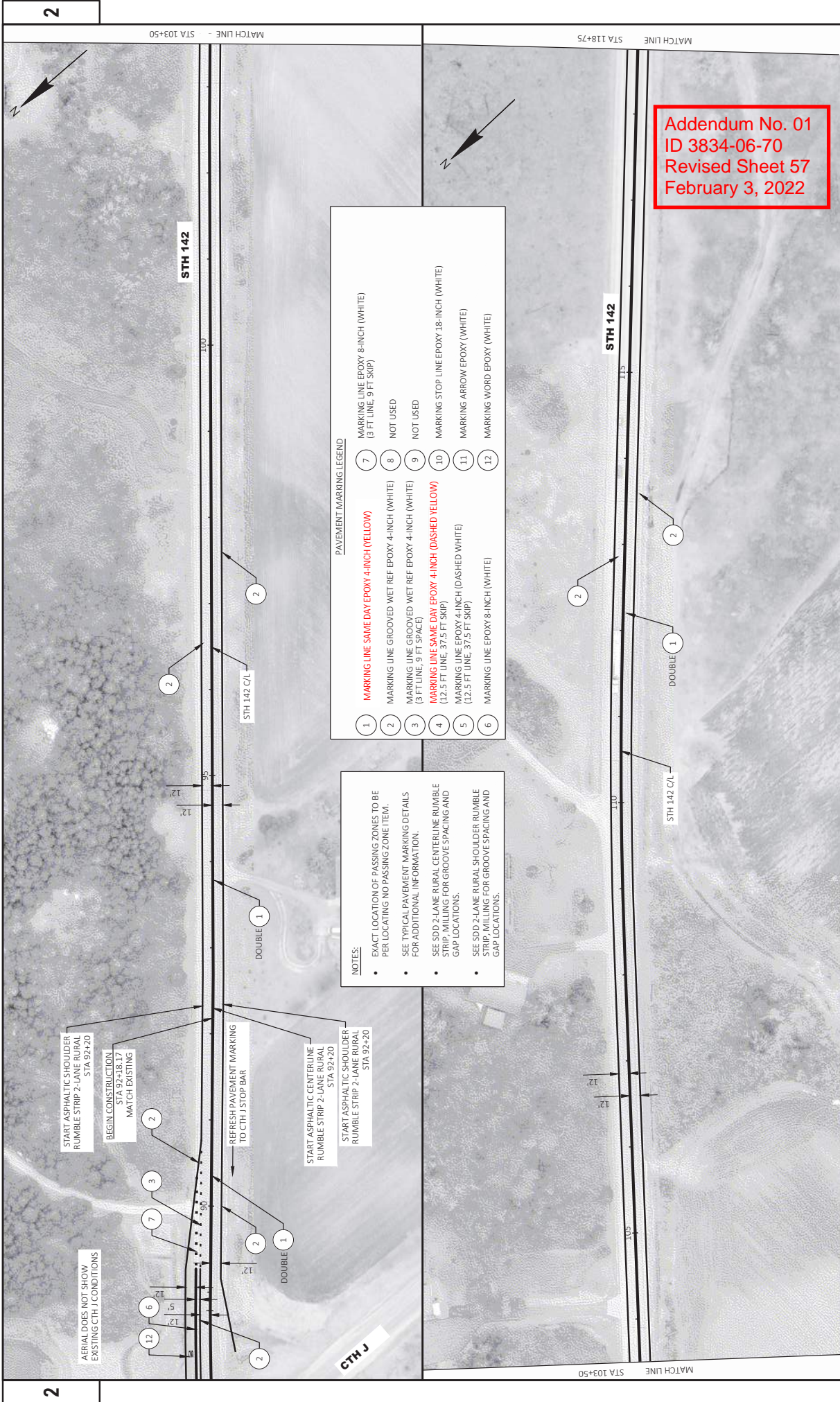
PLAN VIEW



SECTION VIEW A-A

Addendum No. 01  
 ID 3834-06-70  
 Added Sheet 13A  
 February 3, 2022

ASPHALTIC REPAIR



2

2

MATCH LINE - STA 103+50

MATCH LINE STA 118+75

STH 142

STH 142

PAVEMENT MARKING LEGEND

- 1 MARKING LINE SAME DAY EPOXY 4-INCH (YELLOW)
- 2 MARKING LINE GROOVED WET REF EPOXY 4-INCH (WHITE)
- 3 MARKING LINE GROOVED WET REF EPOXY 4-INCH (WHITE) (3 FT LINE, 9 FT SPACE)
- 4 MARKING LINE SAME DAY EPOXY 4-INCH (DASHED YELLOW) (12.5 FT LINE, 37.5 FT SKIP)
- 5 MARKING LINE EPOXY 4-INCH (DASHED WHITE) (12.5 FT LINE, 37.5 FT SKIP)
- 6 MARKING LINE EPOXY 8-INCH (WHITE)
- 7 MARKING LINE EPOXY 8-INCH (WHITE) (3 FT LINE, 9 FT SKIP)
- 8 NOT USED
- 9 NOT USED
- 10 MARKING STOP LINE EPOXY 18-INCH (WHITE)
- 11 MARKING ARROW EPOXY (WHITE)
- 12 MARKING WORD EPOXY (WHITE)

NOTES:

- EXACT LOCATION OF PASSING ZONES TO BE PER LOCATING NO PASSING ZONE ITEM.
- SEE TYPICAL PAVEMENT MARKING DETAILS FOR ADDITIONAL INFORMATION.
- SEE SDD 2-LANE RURAL CENTERLINE RUMBLE STRIP, MILLING FOR GROOVE SPACING AND GAP LOCATIONS.
- SEE SDD 2-LANE RURAL SHOULDER RUMBLE STRIP, MILLING FOR GROOVE SPACING AND GAP LOCATIONS.

START ASPHALTIC SHOULDER RUMBLE STRIP 2-LANE RURAL STA 92+20

BEGIN CONSTRUCTION STA 92+18.17 MATCH EXISTING

REFRESH PAVEMENT MARKING TO CTH J STOP BAR

START ASPHALTIC CENTERLINE RUMBLE STRIP 2-LANE RURAL STA 92+20

START ASPHALTIC SHOULDER RUMBLE STRIP 2-LANE RURAL STA 92+20

AERIAL DOES NOT SHOW EXISTING CTH J CONDITIONS





PAVEMENT MARKING LEGEND

1	MARKING LINE SAME DAY EPOXY 4-INCH (YELLOW)	7	MARKING LINE EPOXY 8-INCH (WHITE) (3 FT LINE, 9 FT SKIP)
2	MARKING LINE GROOVED WET REF EPOXY 4-INCH (WHITE)	8	NOT USED
3	MARKING LINE GROOVED WET REF EPOXY 4-INCH (WHITE) (3 FT LINE, 9 FT SPACE)	9	NOT USED
4	MARKING LINE SAME DAY EPOXY 4-INCH (DASHED-YELLOW) (12.5 FT LINE, 37.5 FT SKIP)	10	MARKING STOP LINE EPOXY 18-INCH (WHITE)
5	MARKING LINE EPOXY 4-INCH (DASHED, WHITE) (12.5 FT LINE, 37.5 FT SKIP)	11	MARKING ARROW EPOXY (WHITE)
6	MARKING LINE EPOXY 8-INCH (WHITE)	12	MARKING WORD EPOXY (WHITE)

NOTES:

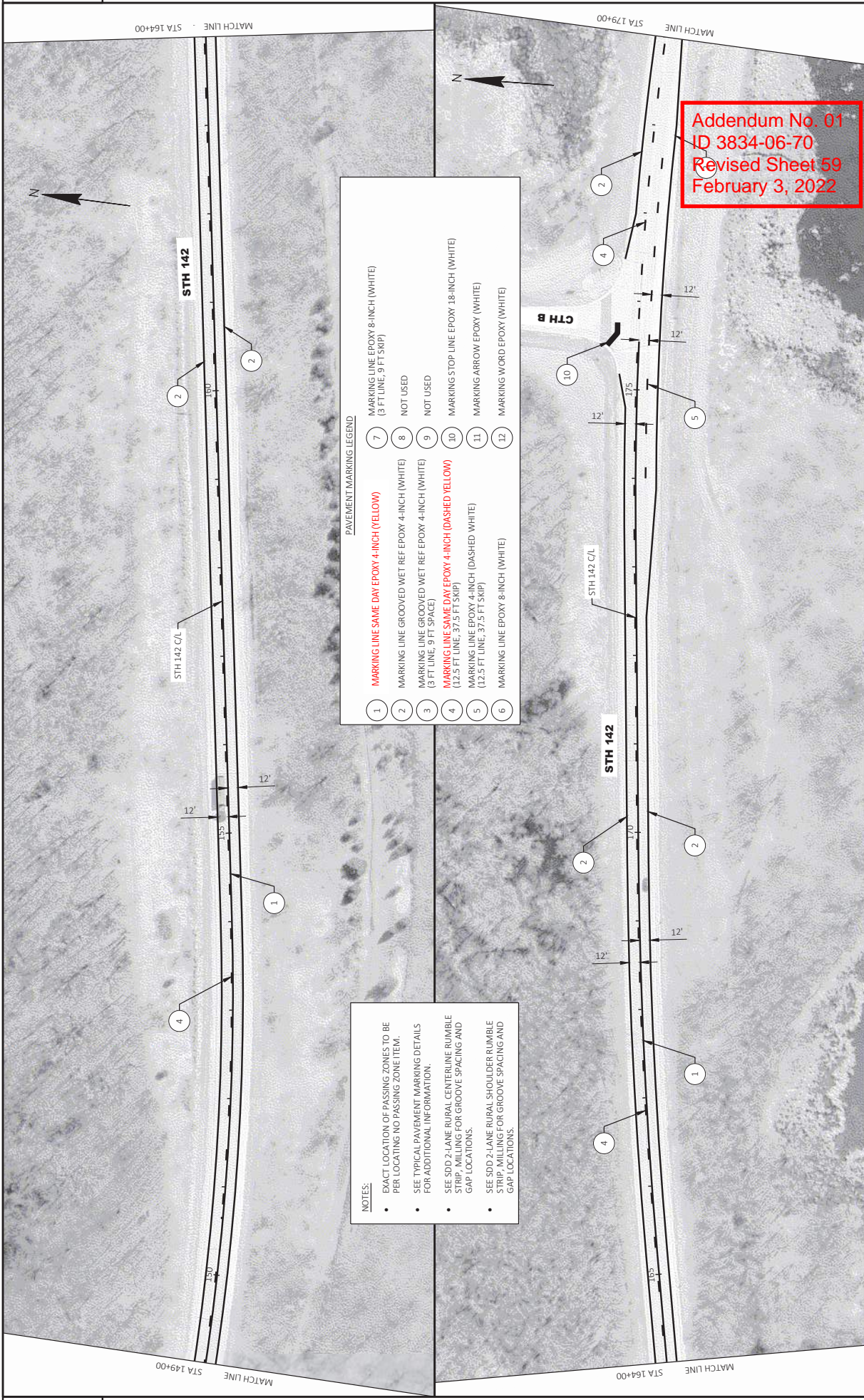
- EXACT LOCATION OF PASSING ZONES TO BE PER LOCATING NO PASSING ZONE ITEM.
- SEE TYPICAL PAVEMENT MARKING DETAILS FOR ADDITIONAL INFORMATION.
- SEE SDD 2-LANE RURAL CENTERLINE RUMBLE STRIP, MILLING FOR GROOVE SPACING AND GAP LOCATIONS.
- SEE SDD 2-LANE RURAL SHOULDER RUMBLE STRIP, MILLING FOR GROOVE SPACING AND GAP LOCATIONS.

Addendum No. 01  
ID 3834-06-70  
Revised Sheet 58  
February 3, 2022

2

2





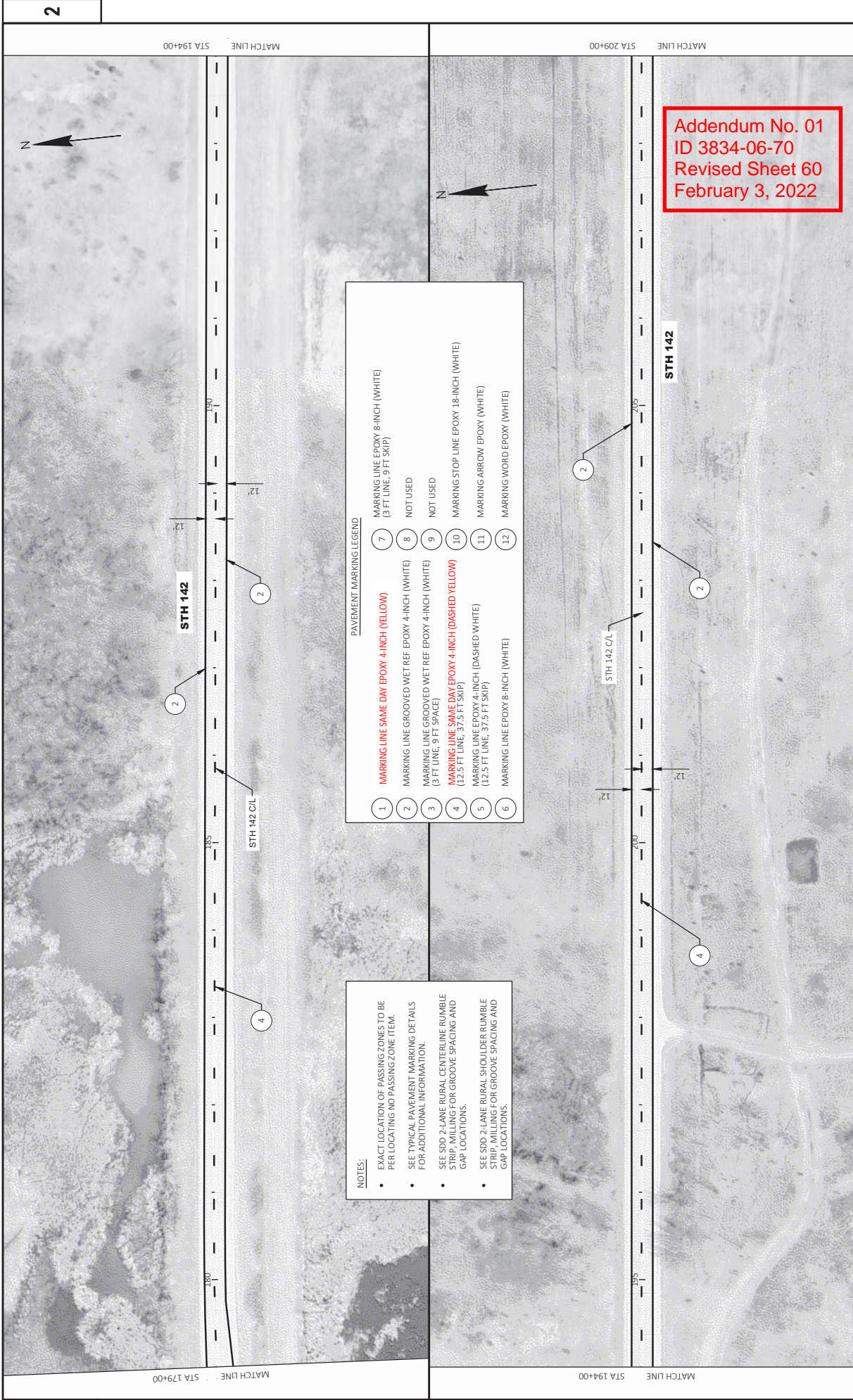
PAVEMENT MARKING LEGEND

1	MARKING LINE SAME DAY EPOXY 4-INCH (YELLOW)	7	MARKING LINE EPOXY 8-INCH (WHITE) (3 FT LINE, 9 FT SKIP)
2	MARKING LINE GROOVED WET REF EPOXY 4-INCH (WHITE) (3 FT LINE, 9 FT SPACE)	8	NOT USED
3	MARKING LINE GROOVED WET REF EPOXY 4-INCH (WHITE) (3 FT LINE, 9 FT SPACE)	9	NOT USED
4	MARKING LINE SAME DAY EPOXY 4-INCH (DASHED YELLOW) (12.5 FT LINE, 37.5 FT SKIP)	10	MARKING STOP LINE EPOXY 18-INCH (WHITE)
5	MARKING LINE EPOXY 4-INCH (DASHED WHITE) (12.5 FT LINE, 37.5 FT SKIP)	11	MARKING ARROW EPOXY (WHITE)
6	MARKING LINE EPOXY 8-INCH (WHITE)	12	MARKING WORD EPOXY (WHITE)

NOTES:

- EXACT LOCATION OF PASSING ZONES TO BE PER LOCATING NO PASSING ZONE ITEM.
- SEE TYPICAL PAVEMENT MARKING DETAILS FOR ADDITIONAL INFORMATION.
- SEE SDD 2-LANE RURAL CENTERLINE RUMBLE STRIP, MILLING FOR GROOVE SPACING AND GAP LOCATIONS.
- SEE SDD 2-LANE RURAL SHOULDER RUMBLE STRIP, MILLING FOR GROOVE SPACING AND GAP LOCATIONS.





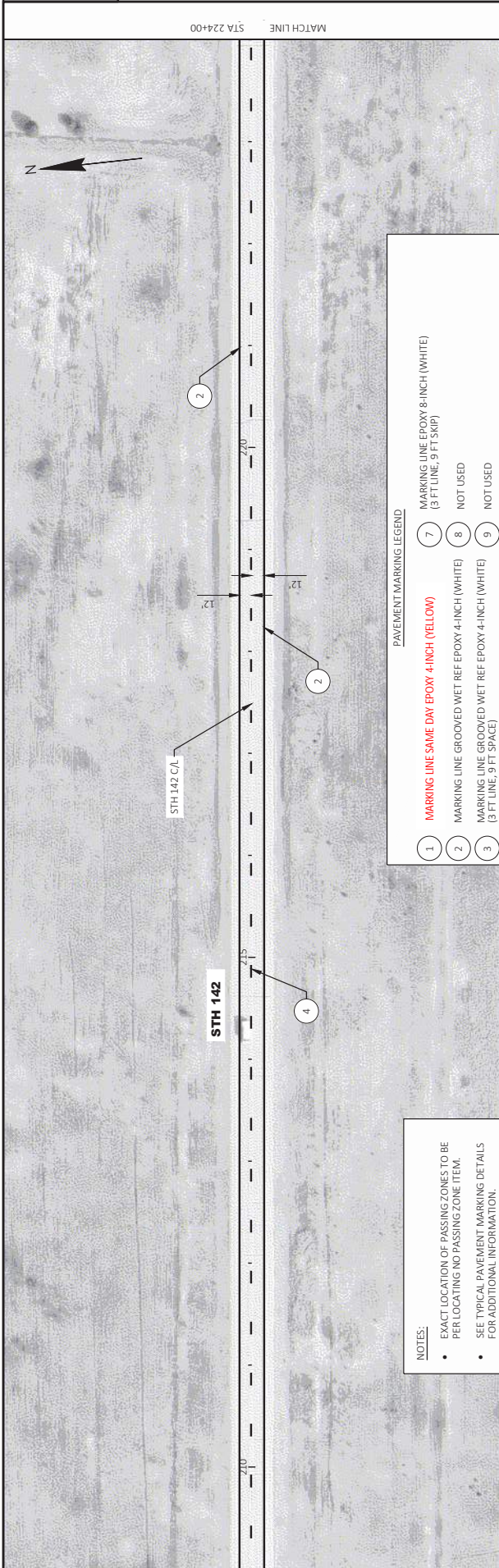
**PAVEMENT MARKING LEGEND**

1	MARKING LINE SAME DAY EPOXY 4-INCH (YELLOW)	7	MARKING LINE EPOXY 8-INCH (WHITE) (3 FT LINE, 9 FT SKIP)
2	MARKING LINE GROOVED WET REF EPOXY 4-INCH (WHITE)	8	NOT USED
3	MARKING LINE GROOVED WET REF EPOXY 4-INCH (WHITE) (3 FT LINE, 9 FT SPACE)	9	NOT USED
4	MARKING LINE SAME DAY EPOXY 4-INCH (DASHED YELLOW) (12.5 FT LINE, 37.5 FT SKIP)	10	MARKING STOP LINE EPOXY 18-INCH (WHITE)
5	MARKING LINE EPOXY 4-INCH (DASHED WHITE) (12.5 FT LINE, 37.5 FT SKIP)	11	MARKING ARROW EPOXY (WHITE)
6	MARKING LINE EPOXY 8-INCH (WHITE)	12	MARKING WORD EPOXY (WHITE)

- NOTES:**
- EXACT LOCATION OF PASSING ZONES TO BE PER LOCATING NO PASSING ZONE ITEM.
  - SEE TYPICAL PAVEMENT MARKING DETAILS FOR ADDITIONAL INFORMATION.
  - SEE SDD 2-LANE RURAL CENTERLINE RUMBLE STRIP, MILLING FOR GROOVE SPACING AND GAP LOCATIONS.
  - SEE SDD 2-LANE RURAL SHOULDER RUMBLE STRIP, MILLING FOR GROOVE SPACING AND GAP LOCATIONS.

Addendum No. 01  
 ID 3834-06-70  
 Revised Sheet 60  
 February 3, 2022





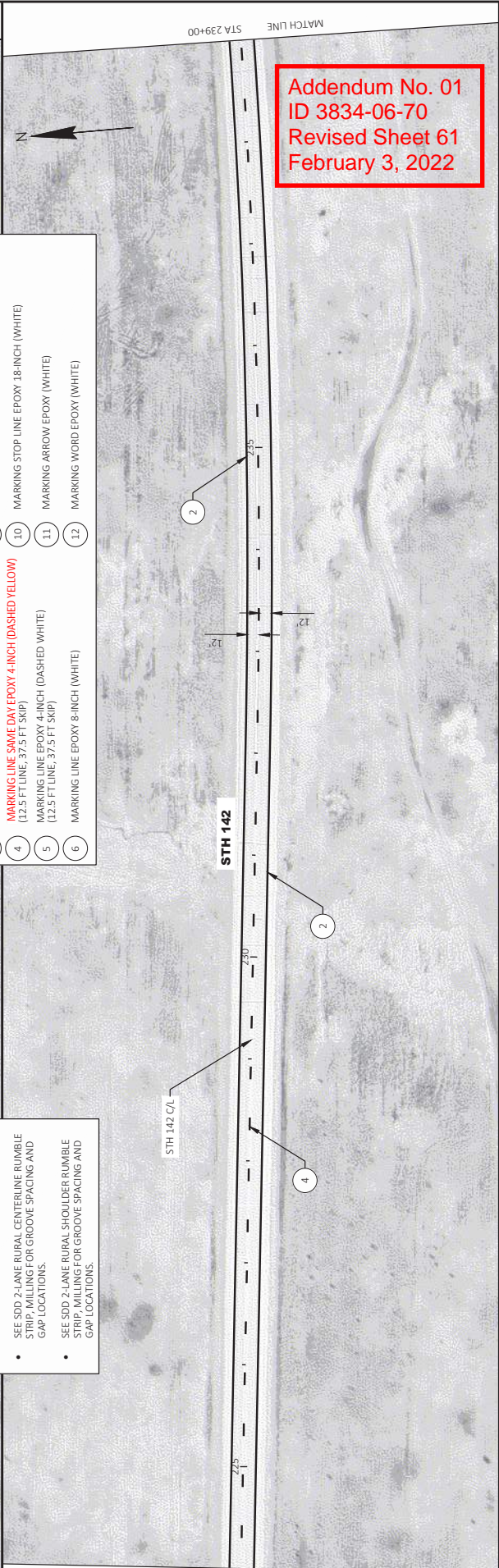
PAVEMENT MARKING LEGEND

1	MARKING LINE SAME DAY EPOXY 4-INCH (YELLOW)	7	MARKING LINE EPOXY 8-INCH (WHITE) (3 FT LINE, 9 FT SKIP)
2	MARKING LINE GROOVED WET REF EPOXY 4-INCH (WHITE)	8	NOT USED
3	MARKING LINE GROOVED WET REF EPOXY 4-INCH (WHITE) (3 FT LINE, 9 FT SPACE)	9	NOT USED
4	MARKING LINE SAME DAY EPOXY 4-INCH (DASHED YELLOW)	10	MARKING STOP LINE EPOXY 18-INCH (WHITE)
5	MARKING LINE EPOXY 4-INCH (DASHED WHITE) (12.5 FT LINE, 37.5 FT SKIP)	11	MARKING ARROW EPOXY (WHITE)
6	MARKING LINE EPOXY 8-INCH (WHITE)	12	MARKING WORD EPOXY (WHITE)

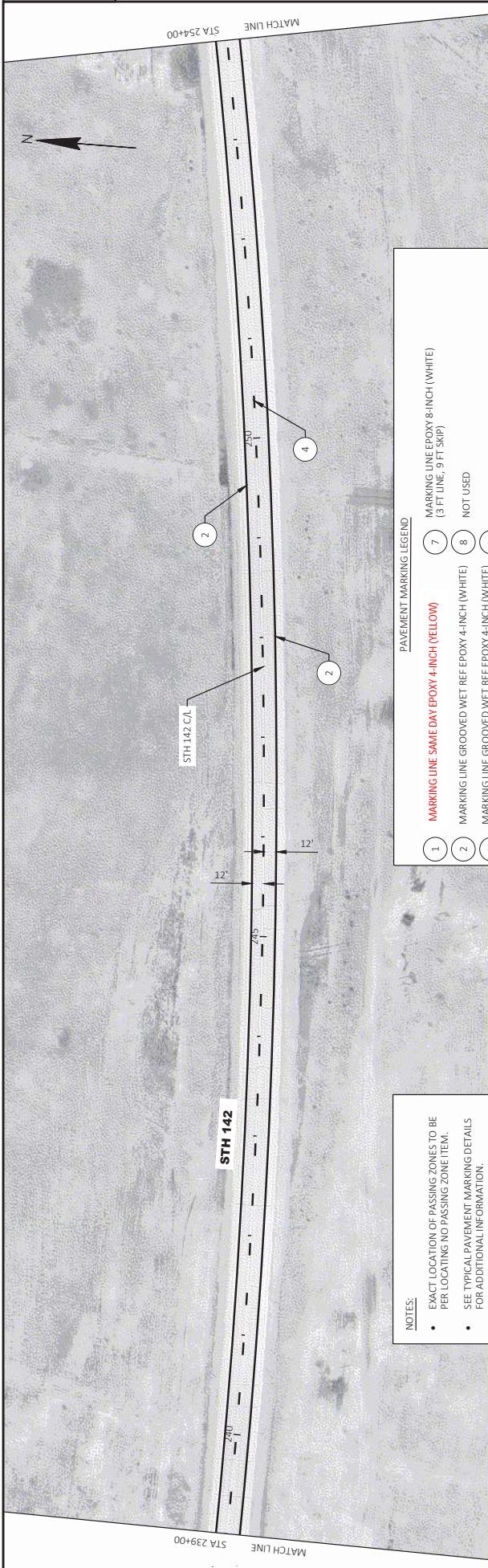
**NOTES:**

- EXACT LOCATION OF PASSING ZONES TO BE PER LOCATING NO PASSING ZONE ITEM.
- SEE TYPICAL PAVEMENT MARKING DETAILS FOR ADDITIONAL INFORMATION.
- SEE SDD 2-LANE RURAL CENTERLINE RUMBLE STRIP, MILLING FOR GROOVE SPACING AND GAP LOCATIONS.
- SEE SDD 2-LANE RURAL SHOULDER RUMBLE STRIP, MILLING FOR GROOVE SPACING AND GAP LOCATIONS.

Addendum No. 01  
ID 3834-06-70  
Revised Sheet 61  
February 3, 2022





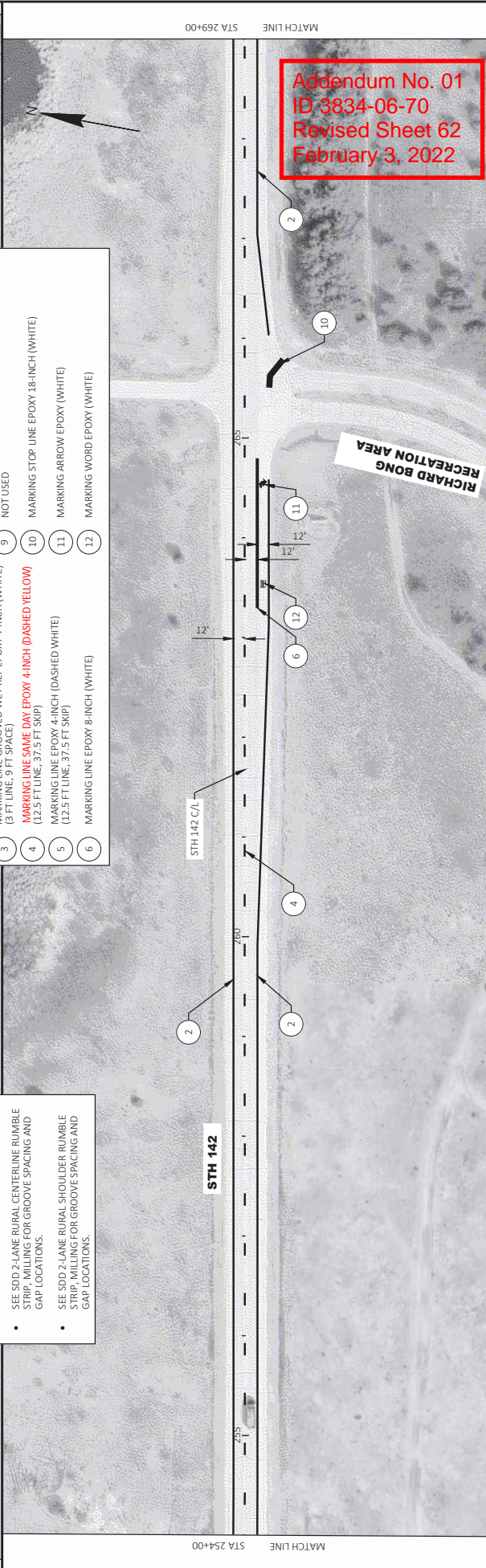


**NOTES:**

- EXACT LOCATION OF PASSING ZONES TO BE PER LOCATING NO PASSING ZONE ITEM.
- SEE TYPICAL PAVEMENT MARKING DETAILS FOR ADDITIONAL INFORMATION.
- SEE GDD 2-LANE RURAL CENTERLINE RUMBLE STRIP LAYOUT FOR GROOVE SPACING AND GAP LOCATIONS.
- SEE SDD 2-LANE RURAL SHOULDER RUMBLE STRIP LAYOUT FOR GROOVE SPACING AND GAP LOCATIONS.

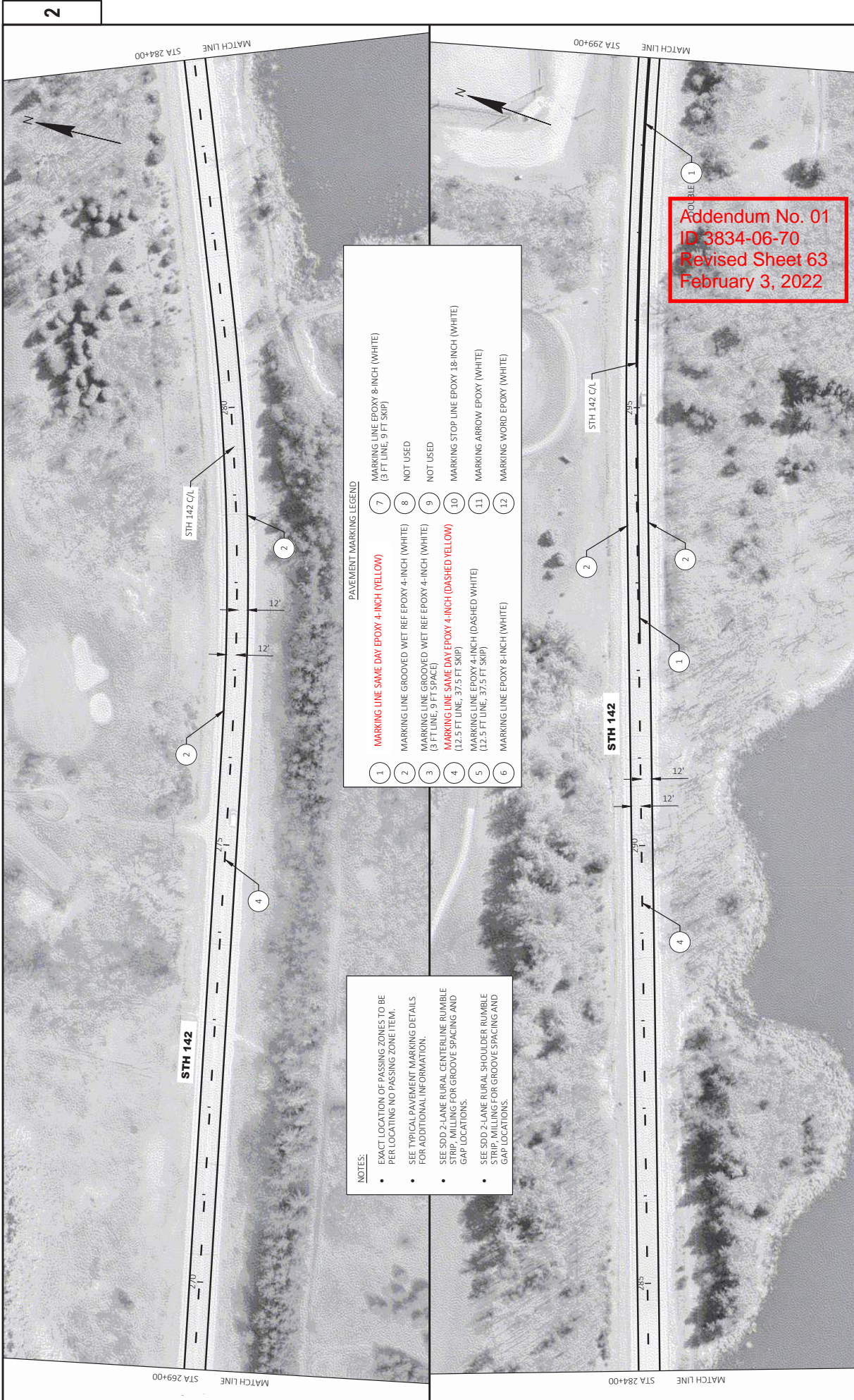
**PAVEMENT MARKING LEGEND**

1	MARKING LINE SAME DAY EPOXY 4-INCH (YELLOW)	7	MARKING LINE EPOXY 8-INCH (WHITE) (3 FT LINE, 9 FT SKIP)
2	MARKING LINE GROOVED WET REF EPOXY 4-INCH (WHITE) (3 FT LINE, 9 FT SPACE)	8	NOT USED
3	MARKING LINE GROOVED WET REF EPOXY 4-INCH (WHITE) (3 FT LINE, 9 FT SPACE)	9	NOT USED
4	MARKING LINE SAME DAY EPOXY 4-INCH (DASHED YELLOW) (12.5 FT LINE, 37.5 FT SKIP)	10	MARKING STOP LINE EPOXY 18-INCH (WHITE)
5	MARKING LINE EPOXY 4-INCH (DASHED WHITE) (12.5 FT LINE, 37.5 FT SKIP)	11	MARKING ARROW EPOXY (WHITE)
6	MARKING LINE EPOXY 8-INCH (WHITE)	12	MARKING WORD EPOXY (WHITE)



Addendum No. 01  
 ID 3834-06-70  
 Revised Sheet 62  
 February 3, 2022





**NOTES:**

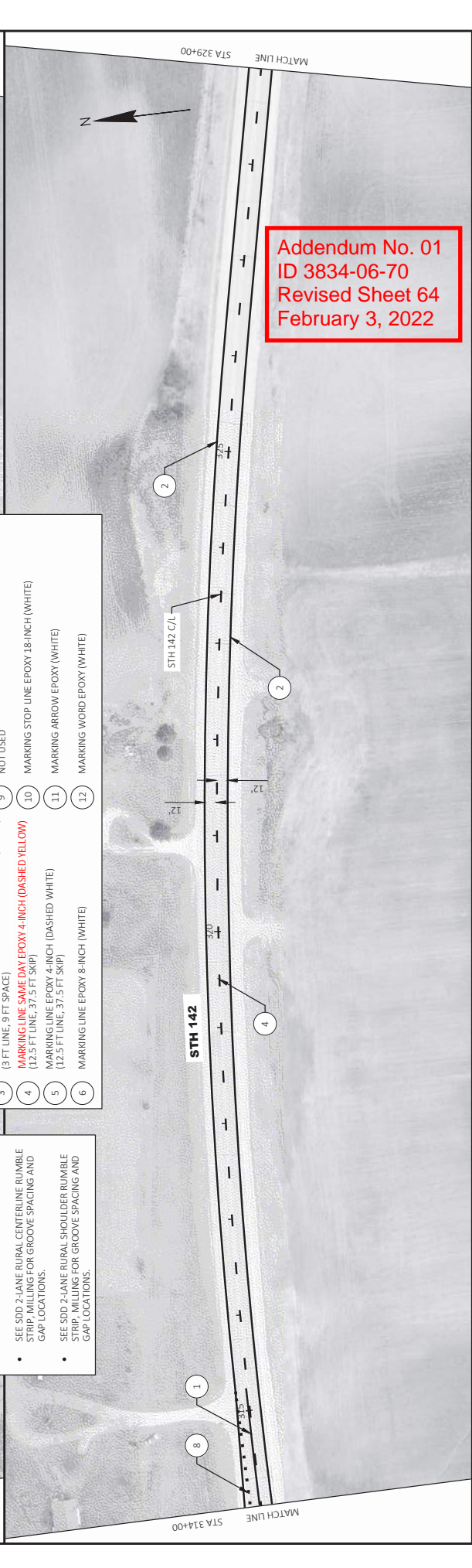
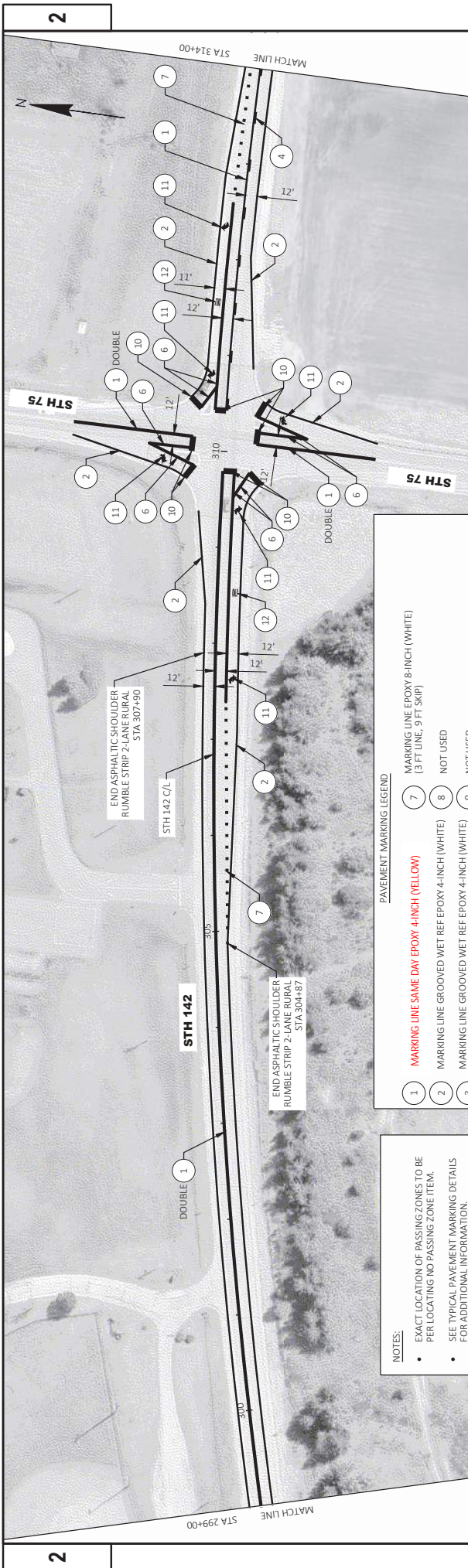
- EXACT LOCATION OF PASSING ZONES TO BE PER LOCATING NO PASSING ZONE ITEM.
- SEE TYPICAL PAVEMENT MARKING DETAILS FOR ADDITIONAL INFORMATION.
- SEE SDD 2-LANE RURAL CENTERLINE RUMBLE STRIP, MILLING FOR GROOVE SPACING AND GAP LOCATIONS.
- SEE SDD 2-LANE RURAL SHOULDER RUMBLE STRIP, MILLING FOR GROOVE SPACING AND GAP LOCATIONS.

**PAVEMENT MARKING LEGEND**

1	MARKING LINE SAME DAY EPOXY 4-INCH (YELLOW)	7	MARKING LINE EPOXY 8-INCH (WHITE) (3 FT LINE, 9 FT SKIP)
2	MARKING LINE GROOVED WET REF EPOXY 4-INCH (WHITE) (3 FT LINE, 9 FT SPACE)	8	NOT USED
3	MARKING LINE GROOVED WET REF EPOXY 4-INCH (WHITE) (3 FT LINE, 9 FT SPACE)	9	NOT USED
4	MARKING LINE SAME DAY EPOXY 4-INCH (DASHED YELLOW) (12.5 FT LINE, 37.5 FT SKIP)	10	MARKING STOP LINE EPOXY 18-INCH (WHITE)
5	MARKING LINE EPOXY 4-INCH (DASHED WHITE) (12.5 FT LINE, 37.5 FT SKIP)	11	MARKING ARROW EPOXY (WHITE)
6	MARKING LINE EPOXY 8-INCH (WHITE)	12	MARKING WORD EPOXY (WHITE)

Addendum No. 01  
 ID 3834-06-70  
 Revised Sheet 63  
 February 3, 2022





Addendum No. 01  
 ID 3834-06-70  
 Revised Sheet 64  
 February 3, 2022

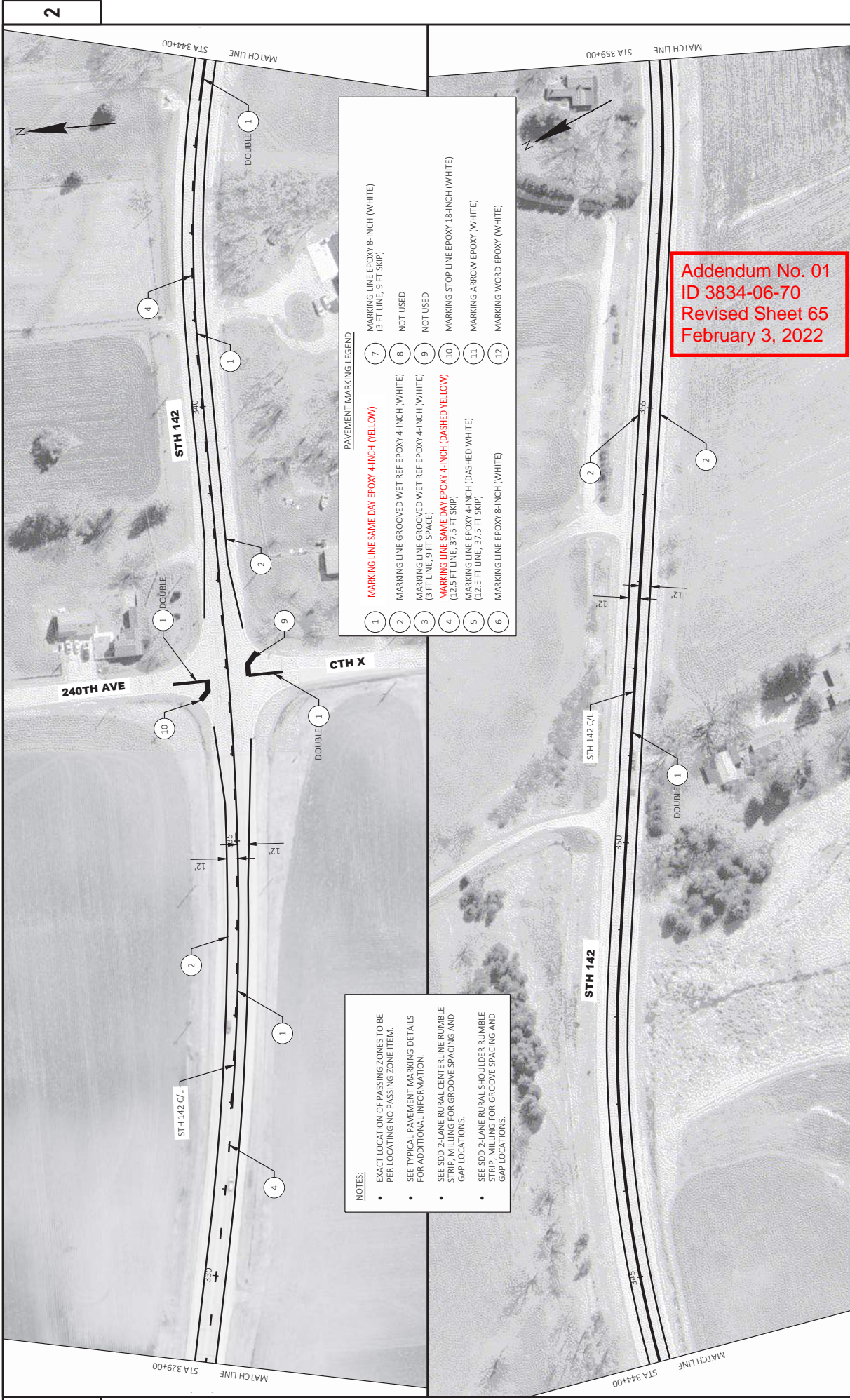
**PAVEMENT MARKING LEGEND**

1	7	MARKING LINE EPOXY 8-INCH (WHITE) (3 FT LINE, 9 FT SKIP)
2	8	NOT USED
3	9	NOT USED
4	10	MARKING STOP LINE EPOXY 18-INCH (WHITE) (12.5 FT LINE, 37.5 FT SKIP)
5	11	MARKING ARROW EPOXY (WHITE) (12.5 FT LINE, 37.5 FT SKIP)
6	12	MARKING WORD EPOXY (WHITE)
<b>MARKING LINE SAME DAY EPOXY 4-INCH (YELLOW)</b>		
1	7	MARKING LINE GROOVED WET REF EPOXY 4-INCH (WHITE) (3 FT LINE, 9 FT SPACE)
<b>MARKING LINE SAME DAY EPOXY 4-INCH (DASHED YELLOW)</b>		
1	7	MARKING LINE GROOVED WET REF EPOXY 4-INCH (WHITE) (3 FT LINE, 9 FT SPACE)
<b>MARKING LINE SAME DAY EPOXY 4-INCH (DASHED WHITE)</b>		
1	7	MARKING LINE EPOXY 8-INCH (WHITE) (3 FT LINE, 9 FT SKIP)

**NOTES:**

- EXACT LOCATION OF PASSING ZONES TO BE PER LOCATING NO PASSING ZONE ITEM.
- SEE TYPICAL PAVEMENT MARKING DETAILS FOR ADDITIONAL INFORMATION.
- SEE SDD 2-LANE RURAL CENTERLINE RUMBLE STRIP, MILLING FOR GROOVE SPACING AND GAP LOCATIONS.
- SEE SDD 2-LANE RURAL SHOULDER RUMBLE STRIP, MILLING FOR GROOVE SPACING AND GAP LOCATIONS.





**NOTES:**

- EXACT LOCATION OF PASSING ZONES TO BE PER LOCATING NO PASSING ZONE ITEM.
- SEE TYPICAL PAVEMENT MARKING DETAILS FOR ADDITIONAL INFORMATION.
- SEE SDD 2-LANE RURAL CENTERLINE RUMBLE STRIP, MILLING FOR GROOVE SPACING AND GAP LOCATIONS.
- SEE SDD 2-LANE RURAL SHOULDER RUMBLE STRIP, MILLING FOR GROOVE SPACING AND GAP LOCATIONS.

**PAVEMENT MARKING LEGEND**

1	MARKING LINE SAME DAY EPOXY 4-INCH (YELLOW)	7	MARKING LINE EPOXY 8-INCH (WHITE) (3 FT LINE, 9 FT SKIP)
2	MARKING LINE GROOVED WET REF EPOXY 4-INCH (WHITE)	8	NOT USED
3	MARKING LINE GROOVED WET REF EPOXY 4-INCH (WHITE) (3 FT LINE, 9 FT SPACE)	9	NOT USED
4	MARKING LINE SAME DAY EPOXY 4-INCH (DASHED YELLOW) (12.5 FT LINE, 37.5 FT SKIP)	10	MARKING STOP LINE EPOXY 18-INCH (WHITE)
5	MARKING LINE EPOXY 4-INCH (DASHED WHITE) (12.5 FT LINE, 37.5 FT SKIP)	11	MARKING ARROW EPOXY (WHITE)
6	MARKING LINE EPOXY 8-INCH (WHITE)	12	MARKING WORD EPOXY (WHITE)

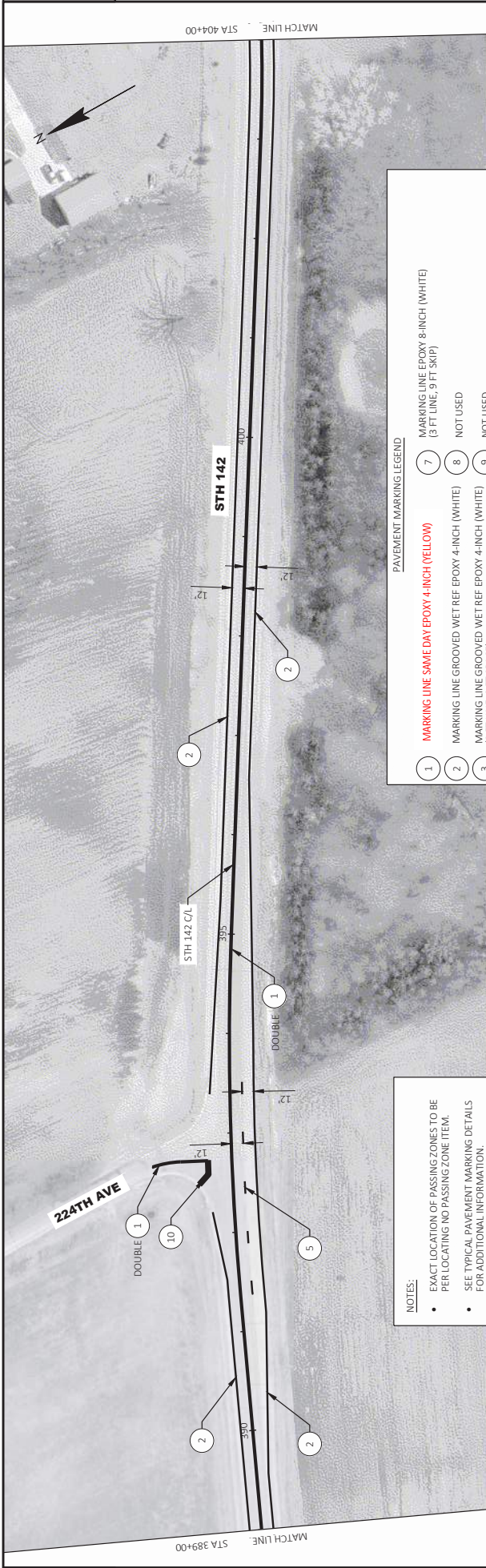
Addendum No. 01  
 ID 3834-06-70  
 Revised Sheet 65  
 February 3, 2022







2



**NOTES:**

- EXACT LOCATION OF PASSING ZONES TO BE PER LOCATING NO PASSING ZONE ITEM.
- SEE TYPICAL PAVEMENT MARKING DETAILS FOR ADDITIONAL INFORMATION.
- SEE SDD 2-LANE RURAL CENTERLINE RUMBLE STRIP, MILLING FOR GROOVE SPACING AND GAP LOCATIONS.
- SEE SDD 2-LANE RURAL SHOULDER RUMBLE STRIP, MILLING FOR GROOVE SPACING AND GAP LOCATIONS.

**PAVEMENT MARKING LEGEND**

1	MARKING LINE SAME DAY EPOXY 4-INCH (YELLOW)	7	MARKING LINE EPOXY 8-INCH (WHITE) (3 FT LINE, 9 FT SKIP)
2	MARKING LINE GROOVED WET REF EPOXY 4-INCH (WHITE)	8	NOT USED
3	MARKING LINE GROOVED WET REF EPOXY 4-INCH (WHITE) (3 FT LINE, 9 FT SPACE)	9	NOT USED
4	MARKING LINE SAME DAY EPOXY 4-INCH (DASHED YELLOW) (12.5 FT LINE, 37.5 FT SKIP)	10	MARKING STOP LINE EPOXY 18-INCH (WHITE)
5	MARKING LINE EPOXY 4-INCH (DASHED WHITE) (12.5 FT LINE, 37.5 FT SKIP)	11	MARKING ARROW EPOXY (WHITE)
6	MARKING LINE EPOXY 8-INCH (WHITE)	12	MARKING WORD EPOXY (WHITE)

Addendum No. 01  
 ID 3834-06-70  
 Revised Sheet 67  
 February 3, 2022

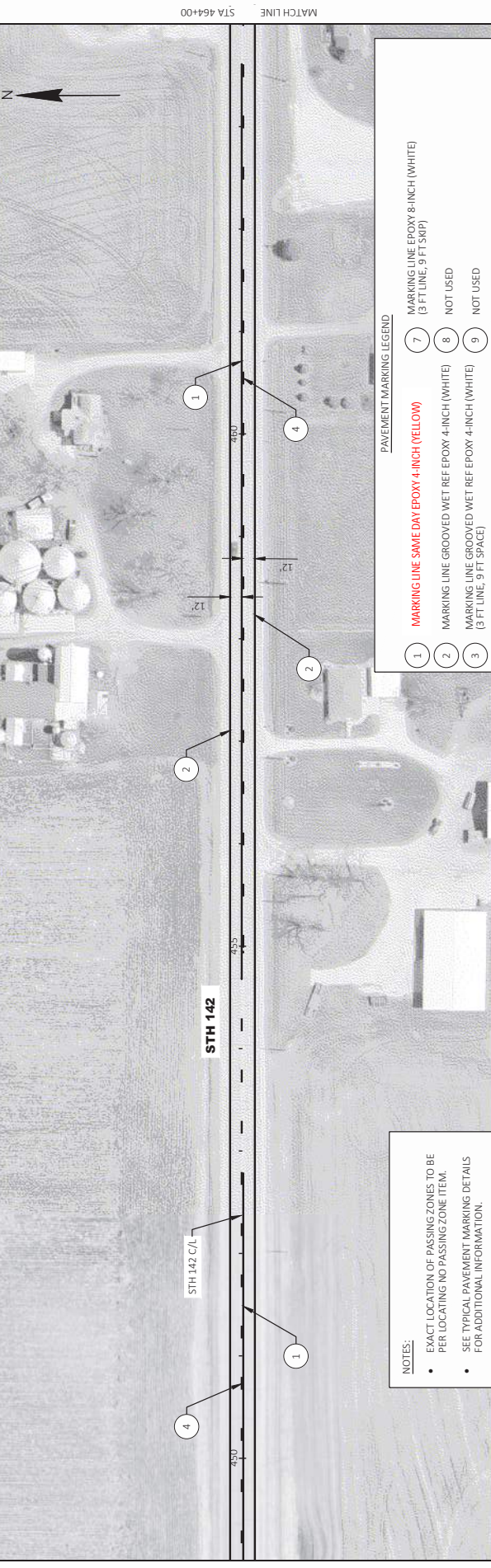
2









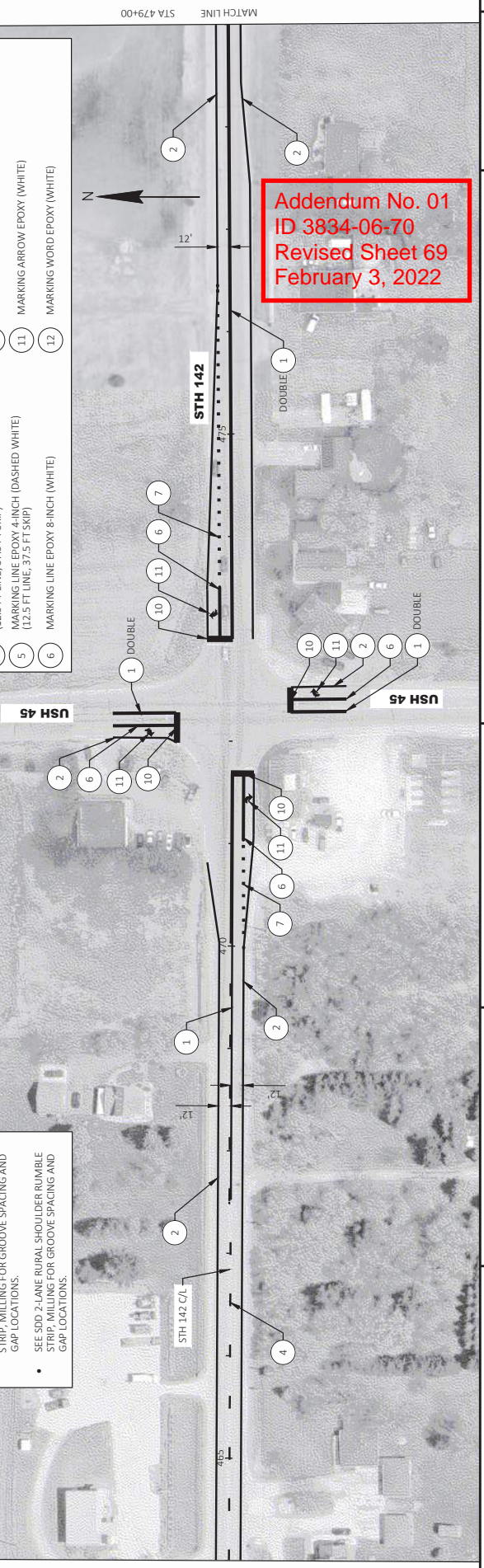


**PAVEMENT MARKING LEGEND**

1	MARKING LINE SAME DAY EPOXY 4-INCH (YELLOW)	7	MARKING LINE EPOXY 8-INCH (WHITE) (3 FT LINE, 9 FT SKIP)
2	MARKING LINE GROOVED WET REF EPOXY 4-INCH (WHITE)	8	NOT USED
3	MARKING LINE GROOVED WET REF EPOXY 4-INCH (WHITE) (3 FT LINE, 9 FT SPACE)	9	NOT USED
4	MARKING LINE SAME DAY EPOXY 4-INCH (DASHED YELLOW) (12.5 FT LINE, 37.5 FT SKIP)	10	MARKING STOP LINE EPOXY 18-INCH (WHITE)
5	MARKING LINE EPOXY 4-INCH (DASHED WHITE) (12.5 FT LINE, 37.5 FT SKIP)	11	MARKING ARROW EPOXY (WHITE)
6	MARKING LINE EPOXY 8-INCH (WHITE)	12	MARKING WORD EPOXY (WHITE)

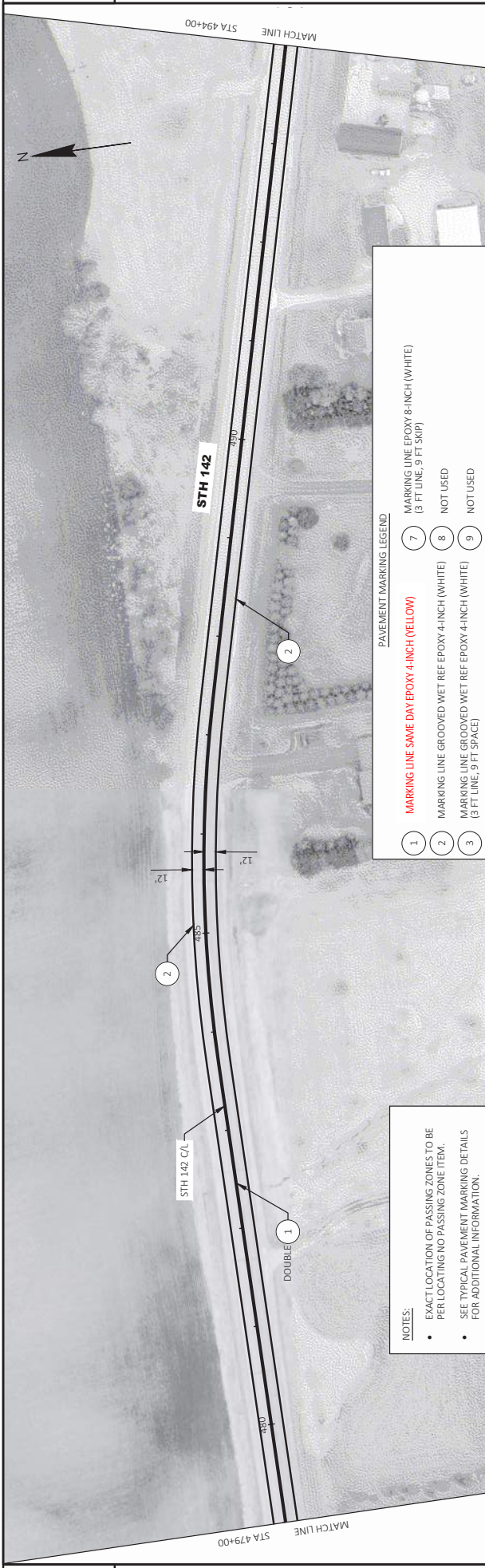
**NOTES:**

- EXACT LOCATION OF PASSING ZONES TO BE PER LOCATING NO PASSING ZONE ITEM.
- SEE TYPICAL PAVEMENT MARKING DETAILS FOR ADDITIONAL INFORMATION.
- SEE SDD 2-LANE RURAL CENTERLINE RUMBLE STRIP, MILLING FOR GROOVE SPACING AND GAP LOCATIONS.
- SEE SDD 2-LANE RURAL SHOULDER RUMBLE STRIP, MILLING FOR GROOVE SPACING AND GAP LOCATIONS.



Addendum No. 01  
 ID 3834-06-70  
 Revised Sheet 69  
 February 3, 2022

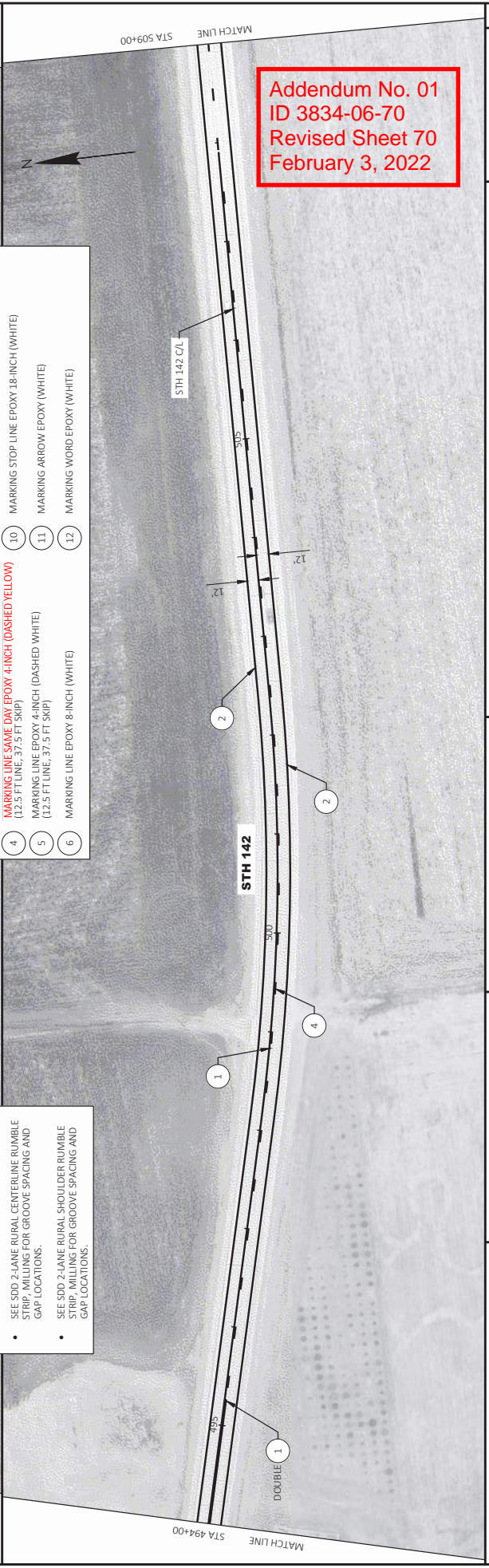




**PAVEMENT MARKING LEGEND**

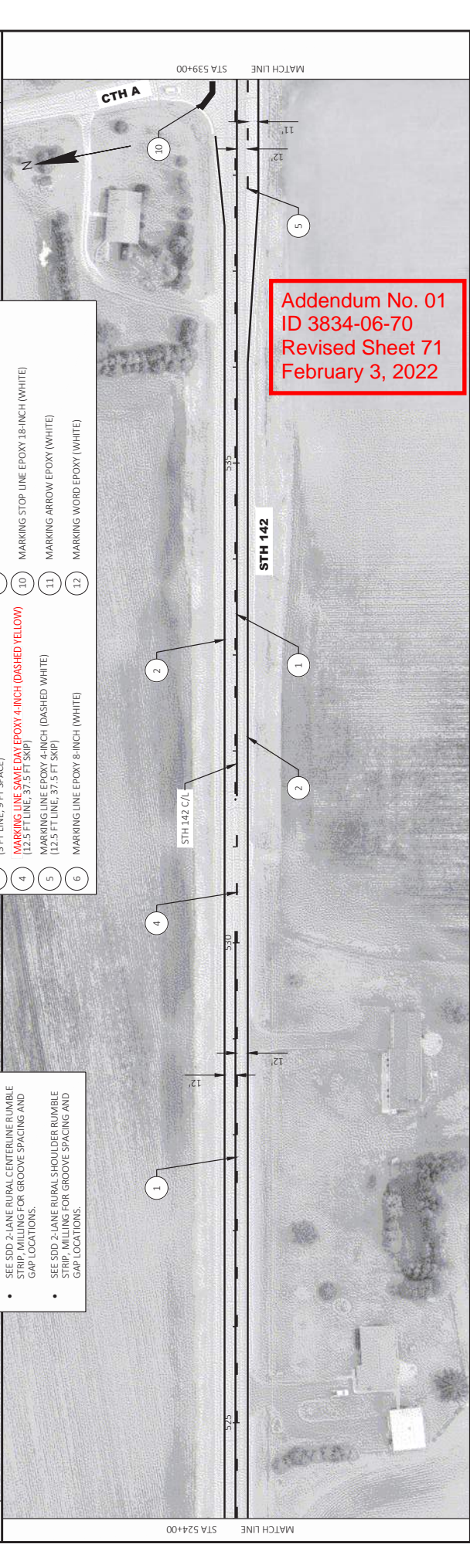
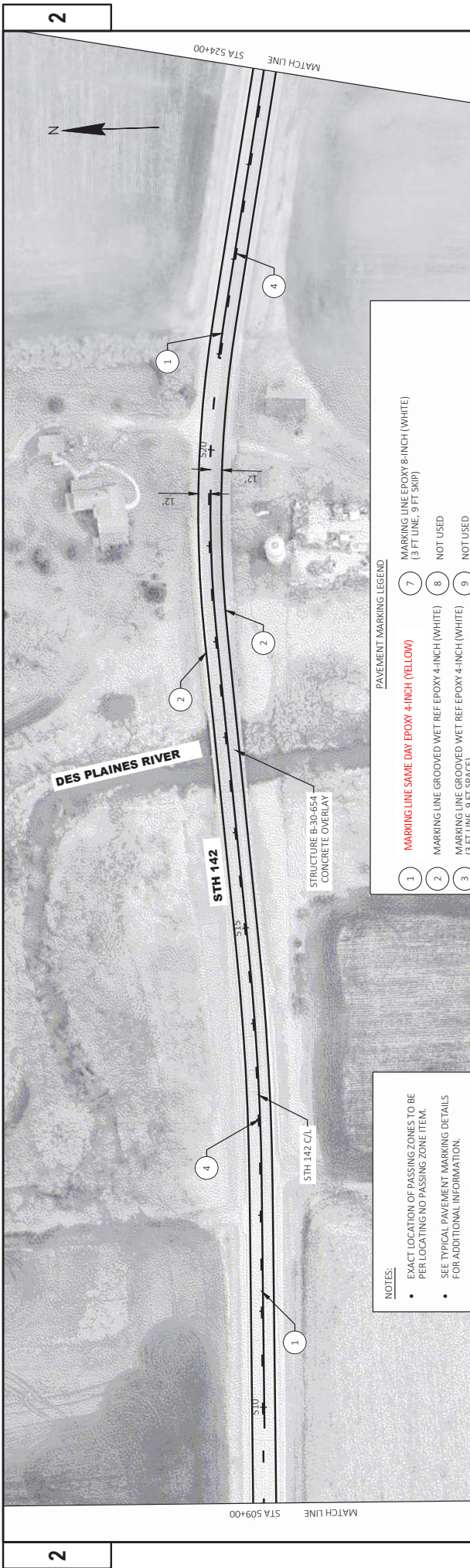
1	MARKING LINE SAME DAY EPOXY 4-INCH (YELLOW)	7	MARKING LINE EPOXY 8-INCH (WHITE) (3 FT LINE, 9 FT SKIP)
2	MARKING LINE GROOVED WET REF EPOXY 4-INCH (WHITE)	8	NOT USED
3	MARKING LINE GROOVED WET REF EPOXY 4-INCH (WHITE) (3 FT LINE, 9 FT SPACE)	9	NOT USED
4	MARKING LINE SAME DAY EPOXY 4-INCH (DASHED YELLOW) (12.5 FT LINE, 37.5 FT SKIP)	10	MARKING STOP LINE EPOXY 18-INCH (WHITE)
5	MARKING LINE EPOXY 4-INCH (DASHED WHITE) (12.5 FT LINE, 37.5 FT SKIP)	11	MARKING ARROW EPOXY (WHITE)
6	MARKING LINE EPOXY 8-INCH (WHITE)	12	MARKING WORD EPOXY (WHITE)

- NOTES:**
- EXACT LOCATION OF PASSING ZONES TO BE PER LOCATING NO PASSING ZONE ITEM.
  - SEE TYPICAL PAVEMENT MARKING DETAILS FOR ADDITIONAL INFORMATION.
  - SEE SDD 2-LANE RURAL CENTERLINE RUMBLE STRIP, MILLING FOR GROOVE SPACING AND GAP LOCATIONS.
  - SEE SDD 2-LANE RURAL SHOULDER RUMBLE STRIP, MILLING FOR GROOVE SPACING AND GAP LOCATIONS.



Addendum No. 01  
ID 3834-06-70  
Revised Sheet 70  
February 3, 2022





**PAVEMENT MARKING LEGEND**

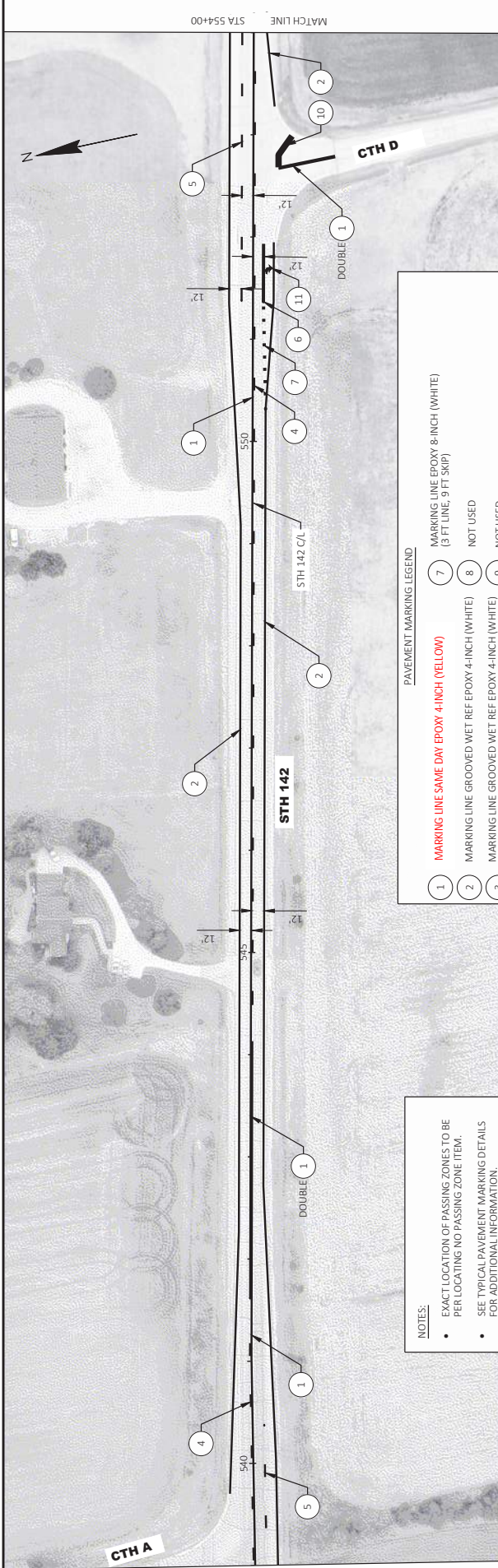
1	MARKING LINE SAME DAY EPOXY 4-INCH (YELLOW)	7	MARKING LINE EPOXY 8-INCH (WHITE) (3 FT LINE, 9 FT SKIP)
2	MARKING LINE GROOVED WET REF EPOXY 4-INCH (WHITE)	8	NOT USED
3	MARKING LINE GROOVED WET REF EPOXY 4-INCH (WHITE) (3 FT LINE, 9 FT SPACE)	9	NOT USED
4	MARKING LINE SAME DAY EPOXY 4-INCH (DASHED YELLOW) (12.5 FT LINE, 37.5 FT SKIP)	10	MARKING STOP LINE EPOXY 18-INCH (WHITE)
5	MARKING LINE EPOXY 4-INCH (DASHED WHITE) (12.5 FT LINE, 37.5 FT SKIP)	11	MARKING ARROW EPOXY (WHITE)
6	MARKING LINE EPOXY 8-INCH (WHITE)	12	MARKING WORD EPOXY (WHITE)

**NOTES:**

- EXACT LOCATION OF PASSING ZONES TO BE PER LOCATING NO PASSING ZONE ITEM.
- SEE TYPICAL PAVEMENT MARKING DETAILS FOR ADDITIONAL INFORMATION.
- SEE SDD 2-LANE RURAL CENTERLINE RUMBLE STRIP, MILLING FOR GROOVE SPACING AND GAP LOCATIONS.
- SEE SDD 2-LANE RURAL SHOULDER RUMBLE STRIP, MILLING FOR GROOVE SPACING AND GAP LOCATIONS.

**Addendum No. 01**  
**ID 3834-06-70**  
**Revised Sheet 71**  
**February 3, 2022**



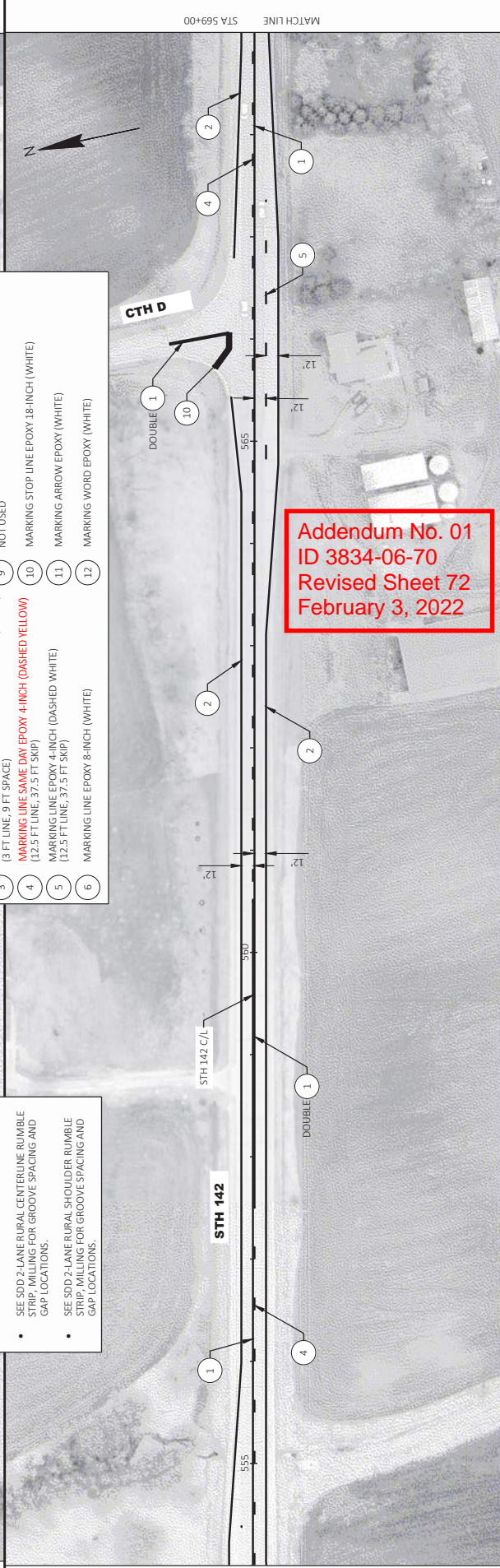


**NOTES:**

- EXACT LOCATION OF PASSING ZONES TO BE PER LOCATING NO PASSING ZONE ITEM.
- SEE TYPICAL PAVEMENT MARKING DETAILS FOR ADDITIONAL INFORMATION.
- SEE SDD 2-LANE RURAL CENTERLINE RUMBLE STRIP, MILLING FOR GROOVE SPACING AND GAP LOCATIONS.
- SEE SDD 2-LANE RURAL SHOULDER RUMBLE STRIP, MILLING FOR GROOVE SPACING AND GAP LOCATIONS.

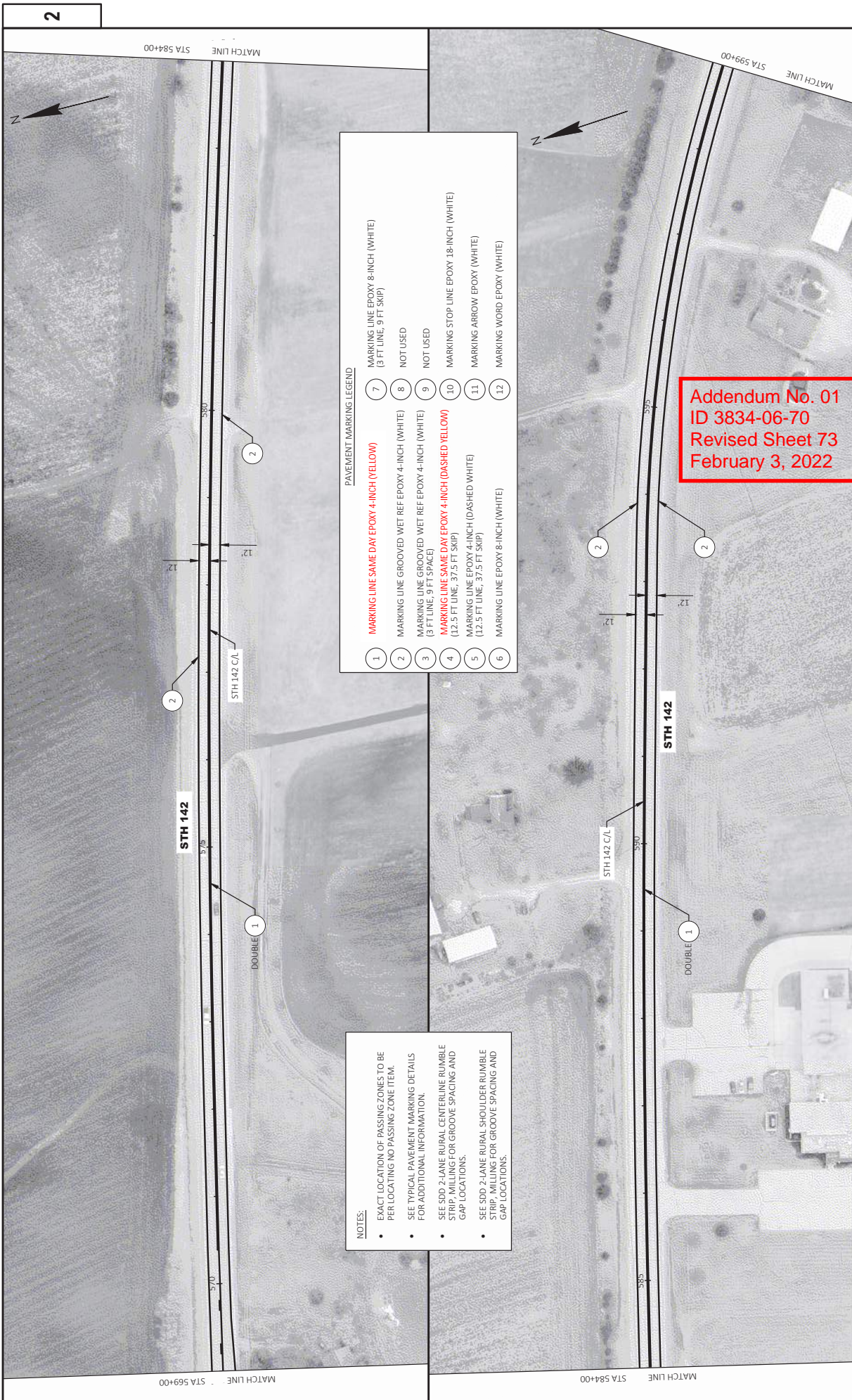
**PAVEMENT MARKING LEGEND:**

1	<b>MARKING LINE SAME DAY EPOXY 4-INCH (YELLOW)</b>	7	MARKING LINE EPOXY 8-INCH (WHITE) (3 FT LINE, 9 FT SKIP)
2	MARKING LINE GROOVED WET REF EPOXY 4-INCH (WHITE)	8	NOT USED
3	MARKING LINE GROOVED WET REF EPOXY 4-INCH (WHITE) (3 FT LINE, 9 FT SPACE)	9	NOT USED
4	<b>MARKING LINE SAME DAY EPOXY 4-INCH (DASHED YELLOW)</b> (12.5 FT LINE, 37.5 FT SKIP)	10	MARKING STOP LINE EPOXY 18-INCH (WHITE)
5	MARKING LINE EPOXY 4-INCH (DASHED WHITE) (12.5 FT LINE, 37.5 FT SKIP)	11	MARKING ARROW EPOXY (WHITE)
6	MARKING LINE EPOXY 8-INCH (WHITE)	12	MARKING WORD EPOXY (WHITE)



**Addendum No. 01**  
**ID 3834-06-70**  
**Revised Sheet 72**  
**February 3, 2022**





**PAVEMENT MARKING LEGEND**

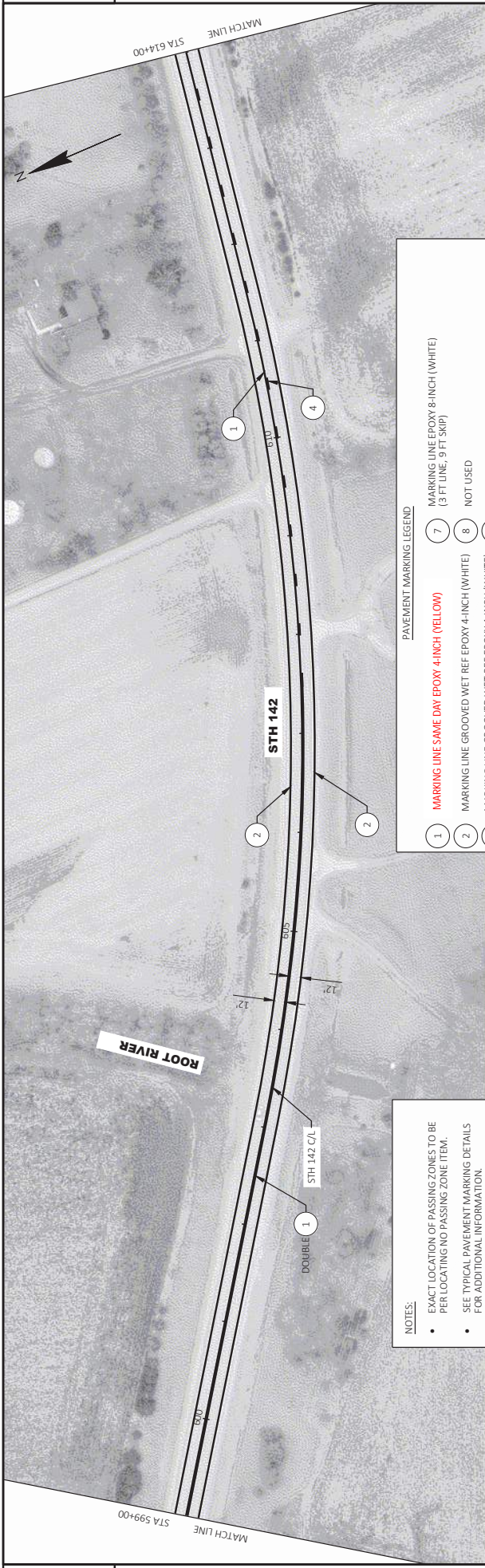
1	MARKING LINE SAME DAY EPOXY 4-INCH (YELLOW)	7	MARKING LINE EPOXY 8-INCH (WHITE) (3 FT LINE, 9 FT SKIP)
2	MARKING LINE GROOVED WET REF EPOXY 4-INCH (WHITE) (3 FT LINE, 9 FT SPACE)	8	NOT USED
3	MARKING LINE GROOVED WET REF EPOXY 4-INCH (WHITE) (3 FT LINE, 9 FT SPACE)	9	NOT USED
4	MARKING LINE SAME DAY EPOXY 4-INCH (DASHED YELLOW) (12.5 FT LINE, 37.5 FT SKIP)	10	MARKING STOP LINE EPOXY 18-INCH (WHITE)
5	MARKING LINE EPOXY 4-INCH (DASHED WHITE) (12.5 FT LINE, 37.5 FT SKIP)	11	MARKING ARROW EPOXY (WHITE)
6	MARKING LINE EPOXY 8-INCH (WHITE)	12	MARKING WORD EPOXY (WHITE)

**Addendum No. 01**  
**ID 3834-06-70**  
**Revised Sheet 73**  
**February 3, 2022**

**NOTES:**

- EXACT LOCATION OF PASSING ZONES TO BE PER LOCATING NO PASSING ZONE ITEM.
- SEE TYPICAL PAVEMENT MARKING DETAILS FOR ADDITIONAL INFORMATION.
- SEE SDD 2-LANE RURAL CENTERLINE RUMBLE STRIP, MILLING FOR GROOVE SPACING AND GAP LOCATIONS.
- SEE SDD 2-LANE RURAL SHOULDER RUMBLE STRIP, MILLING FOR GROOVE SPACING AND GAP LOCATIONS.





**NOTES:**

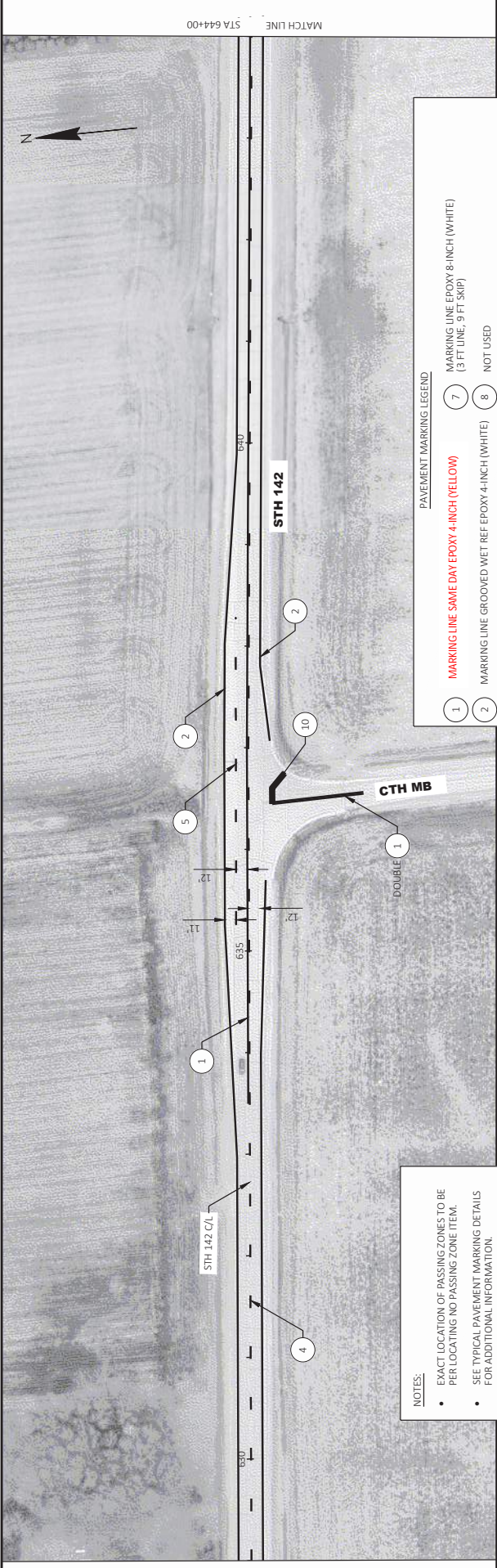
- EXACT LOCATION OF PASSING ZONES TO BE PER LOCATING NO PASSING ZONE ITEM.
- SEE TYPICAL PAVEMENT MARKING DETAILS FOR ADDITIONAL INFORMATION.
- SEE SDD 2-LANE RURAL CENTERLINE RUMBLE STRIP, MILLING FOR GROOVE SPACING AND GAP LOCATIONS.
- SEE SDD 2-LANE RURAL SHOULDER RUMBLE STRIP, MILLING FOR GROOVE SPACING AND GAP LOCATIONS.

**PAVEMENT MARKING LEGEND**

1	MARKING LINE SAME DAY EPOXY 4-INCH (YELLOW)	7	MARKING LINE EPOXY 8-INCH (WHITE) (3 FT LINE, 9 FT SKIP)
2	MARKING LINE GROOVED WET REF EPOXY 4-INCH (WHITE) (3 FT LINE, 3 FT SKIP)	8	NOT USED
3	MARKING LINE GROOVED WET REF EPOXY 4-INCH (WHITE) (3 FT LINE, 3 FT SKIP)	9	NOT USED
4	MARKING LINE SAME DAY EPOXY 4-INCH (DASHED YELLOW) (12.5 FT LINE, 37.5 FT SKIP)	10	MARKING STOP LINE EPOXY 18-INCH (WHITE)
5	MARKING LINE EPOXY 4-INCH (DASHED WHITE) (12.5 FT LINE, 37.5 FT SKIP)	11	MARKING ARROW EPOXY (WHITE)
6	MARKING LINE EPOXY 8-INCH (WHITE)	12	MARKING WORD EPOXY (WHITE)

Addendum No. 01  
 ID 3834-06-70  
 Revised Sheet 74  
 February 3, 2022



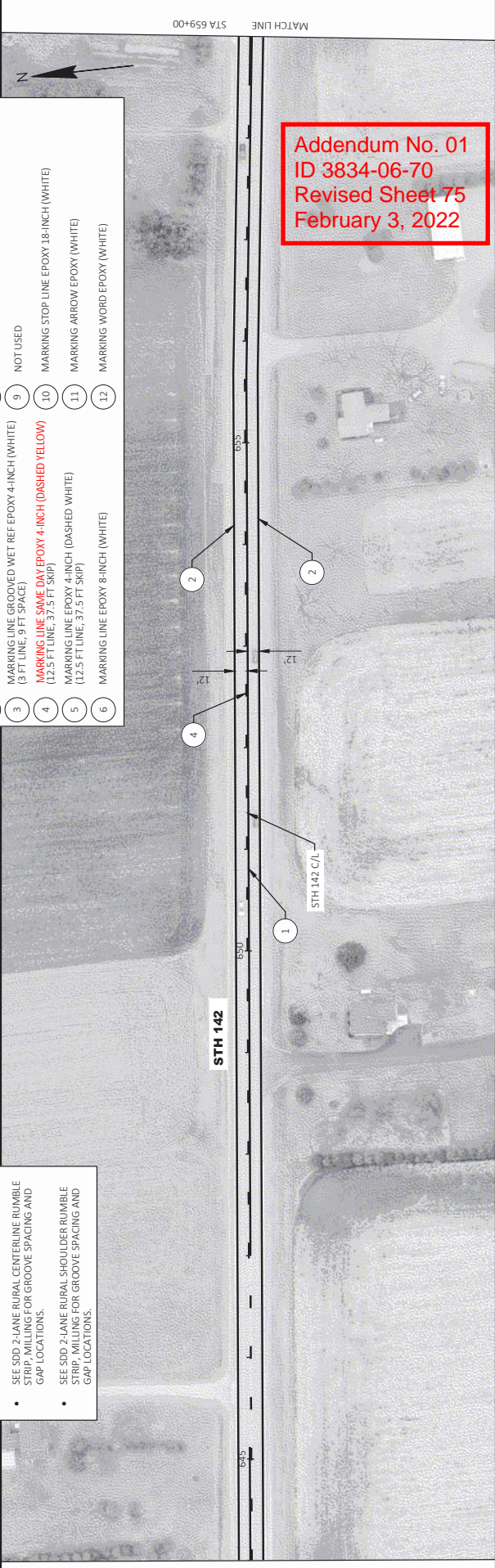
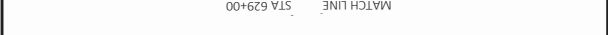


**NOTES:**

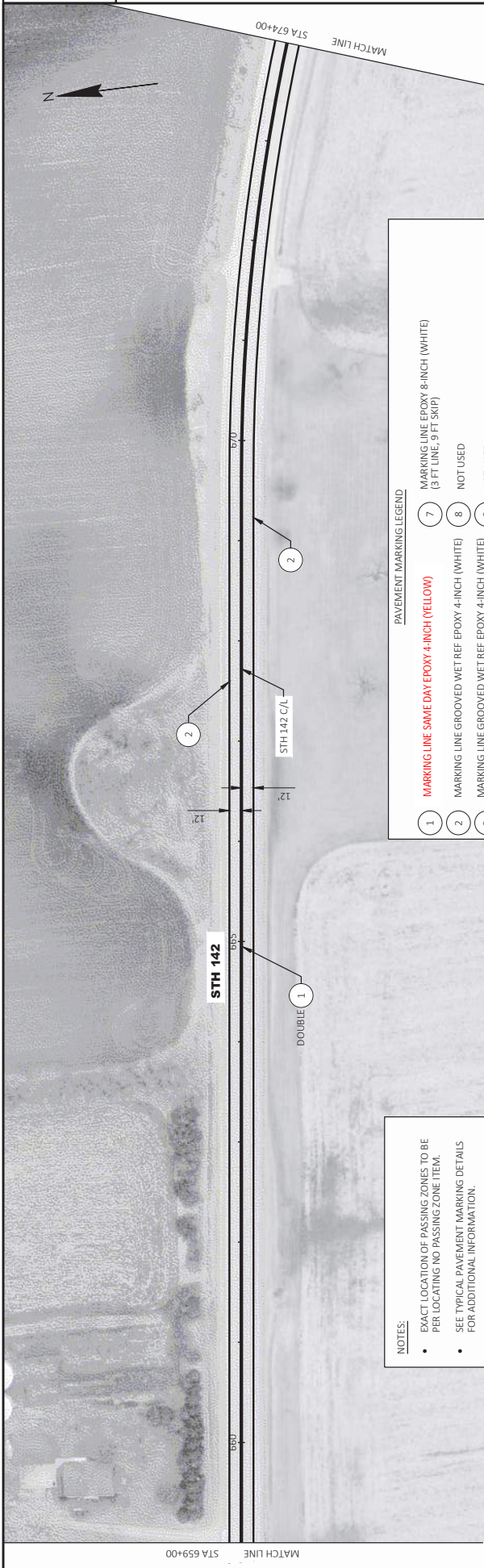
- EXACT LOCATION OF PASSING ZONES TO BE PER LOCATING NO PASSING ZONE ITEM.
- SEE TYPICAL PAVEMENT MARKING DETAILS FOR ADDITIONAL INFORMATION.
- SEE SDD 2-LANE RURAL CENTERLINE RUMBLE STRIP, MILLING FOR GROOVE SPACING AND GAP LOCATIONS.
- SEE SDD 2-LANE RURAL SHOULDER RUMBLE STRIP, MILLING FOR GROOVE SPACING AND GAP LOCATIONS.

PAVEMENT MARKING LEGEND	
(1)	<b>MARKING LINE SAME DAY EPOXY 4-INCH (YELLOW)</b>
(2)	MARKING LINE GROOVED WET REF EPOXY 4-INCH (WHITE)
(3)	MARKING LINE GROOVED WET REF EPOXY 4-INCH (WHITE) (3 FT LINE, 9 FT SPACE)
(4)	<b>MARKING LINE SAME DAY EPOXY 4-INCH (DASHED YELLOW)</b> (12.5 FT LINE, 37.5 FT SKIP)
(5)	MARKING LINE EPOXY 4-INCH (DASHED WHITE) (12.5 FT LINE, 37.5 FT SKIP)
(6)	MARKING LINE EPOXY 8-INCH (WHITE)
(7)	MARKING LINE EPOXY 8-INCH (WHITE) (3 FT LINE, 9 FT SKIP)
(8)	NOT USED
(9)	NOT USED
(10)	MARKING STOP LINE EPOXY 18-INCH (WHITE)
(11)	MARKING ARROW EPOXY (WHITE)
(12)	MARKING WORD EPOXY (WHITE)

**Addendum No. 01**  
**ID 3834-06-70**  
**Revised Sheet 75**  
**February 3, 2022**







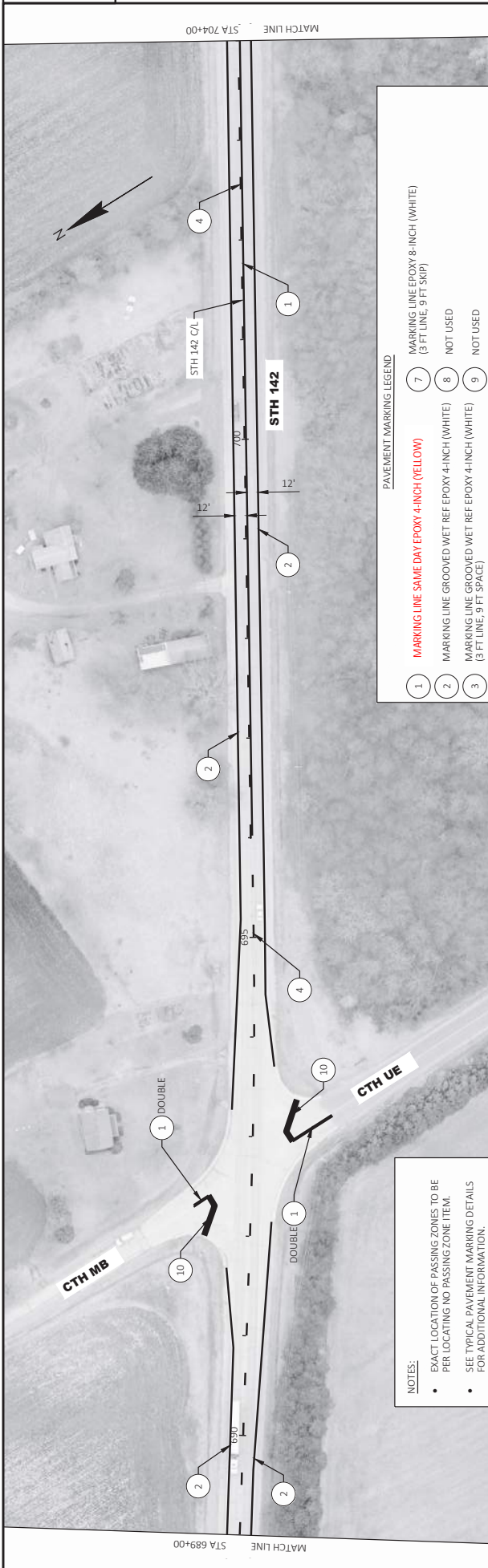
Addendum No. 01  
ID 3834-06-70  
Revised Sheet 76  
February 3, 2022

PAVEMENT MARKING LEGEND

1	<b>MARKING LINE SAME DAY EPOXY 4-INCH (YELLOW)</b>	7	MARKING LINE EPOXY 8-INCH (WHITE) (3 FT LINE, 9 FT SKIP)
2	MARKING LINE GROOVED WET REF EPOXY 4-INCH (WHITE)	8	NOT USED
3	MARKING LINE GROOVED WET REF EPOXY 4-INCH (WHITE) (3 FT LINE, 9 FT SPACE)	9	NOT USED
4	<b>MARKING LINE SAME DAY EPOXY 4-INCH (DASHED YELLOW)</b> (12.5 FT LINE, 37.5 FT SKIP)	10	MARKING STOP LINE EPOXY 18-INCH (WHITE)
5	MARKING LINE EPOXY 4-INCH (DASHED WHITE) (12.5 FT LINE, 37.5 FT SKIP)	11	MARKING ARROW EPOXY (WHITE)
6	MARKING LINE EPOXY 8-INCH (WHITE)	12	MARKING WORD EPOXY (WHITE)

- NOTES:
- EXACT LOCATION OF PASSING ZONES TO BE PER LOCATING NO PASSING ZONE ITEM.
  - SEE TYPICAL PAVEMENT MARKING DETAILS FOR ADDITIONAL INFORMATION.
  - SEE SDD 2-LANE RURAL CENTERLINE RUMBLE STRIP, MILLING FOR GROOVE SPACING AND GAP LOCATIONS.
  - SEE SDD 2-LANE RURAL SHOULDER RUMBLE STRIP, MILLING FOR GROOVE SPACING AND GAP LOCATIONS.





PAVEMENT MARKING LEGEND

1	MARKING LINE SAME DAY EPOXY 4-INCH (YELLOW)	7	MARKING LINE EPOXY 8-INCH (WHITE) (3 FT LINE, 9 FT SKIP)
2	MARKING LINE GROOVED WET REF EPOXY 4-INCH (WHITE) (3 FT LINE, 9 FT SPACE)	8	NOT USED
3	MARKING LINE GROOVED WET REF EPOXY 4-INCH (WHITE) (3 FT LINE, 9 FT SPACE)	9	NOT USED
4	MARKING LINE SAME DAY EPOXY 4-INCH (DASHED YELLOW) (12.5 FT LINE, 37.5 FT SKIP)	10	MARKING STOP LINE EPOXY 18-INCH (WHITE)
5	MARKING LINE EPOXY 4-INCH (DASHED WHITE) (12.5 FT LINE, 37.5 FT SKIP)	11	MARKING ARROW EPOXY (WHITE)
6	MARKING LINE EPOXY 8-INCH (WHITE)	12	MARKING WORD EPOXY (WHITE)

NOTES:

- EXACT LOCATION OF PASSING ZONES TO BE PER LOCATING NO PASSING ZONE ITEM.
- SEE TYPICAL PAVEMENT MARKING DETAILS FOR ADDITIONAL INFORMATION.
- SEE SDD 2-LANE RURAL CENTERLINE RUMBLE STRIP, MILLING FOR GROOVE SPACING AND GAP LOCATIONS.
- SEE SDD 2-LANE RURAL SHOULDER RUMBLE STRIP, MILLING FOR GROOVE SPACING AND GAP LOCATIONS.

Addendum No. 01  
ID 3834-06-70  
Revised Sheet 77  
February 3, 2022









PWL MIXTURE USE TABLE

THE FOLLOWING ACCEPTANCE CRITERIA ARE APPLICABLE FOR THIS PROJECT:

LOCATION	STATION	MIXTURE USE	UNDERLYING SURFACE	BID ITEM	TONS	THICKNESS	QUALITY MANAGEMENT PROGRAM TO BE USE FOR:	
							MIXTURE ACCEPTANCE	DENSITY ACCEPTANCE
12 FOOT EB DRIVING LANE	92+18 - 715+97	UPPER LAYER	MILLED EXISTING HMA PAVEMENT	4 MT 58-28 S	9,815	2"	INCENTIVE AIR VOIDS PWL HMA PAVEMENT 460.2010	INCENTIVE DENSITY PWL HMA PAVEMENT 460.2005
12 FOOT WB DRIVING LANE	92+18 - 715+97	UPPER LAYER	MILLED EXISTING HMA PAVEMENT	4 MT 58-28 S	9,815	2"	INCENTIVE AIR VOIDS PWL HMA PAVEMENT 460.2010	INCENTIVE DENSITY PWL HMA PAVEMENT 460.2005
TURN LANES BYPASS LANES & SHOULDERS	92+18 - 715+97	UPPER LAYER	MILLED EXISTING HMA PAVEMENT	4 MT 58-28 S	7,730	2"	INCENTIVE AIR VOIDS PWL HMA PAVEMENT 460.2010	ACCEPTANCE TESTING BY THE DEPARTMENT; NOT ELIGIBLE FOR INCENTIVE

RUMBLE STRIP		465.0425	465.0475
2-LANE SHOULDER		2-LANE	2-LANE
RUMBLE STRIP		CENTERLINE	RUMBLE STRIP
STATION	TO STATION	LF	LF
92+20	715+87	---	57,735
92+20	304+87, RT	15,836	---
92+20	307+90, LT	17,040	---
TOTALS		32,876	57,735

NOTE: ALL SHOULDER RUMBLE STRIP TO BE TYPE 1.

ELUMES		628.2002	629.0210	630.0130
ASPHALTIC FLUMES		EROSION MAT	FERTILIZER	SEEDING
SY		CLASS I	TYPE B	MIXTURE # 30
STATION	SY	TYPE A	CWT	LB
360+35, LT	5			
362+77, LT	5		0.5	3
477+55, RT	5		0.5	3
700+56, LT	5			
TOTALS	20			

RESTORATION ITEMS		628.2015	TYPE C	EA
TOPSOIL		MULCHING	CLASS I	TYPE B
STATION	SY	TYPE A	CWT	LB
UNDISTRIBUTED	170	150	20	0.5
TOTALS	170	150	20	0.5

TO BE USE AROUND ASPHALTIC FLUME REPLACEMENT AND LOCATIONS DETERMINED BY THE FIELD ENGINEER.

INLET PROTECTION		628.7015	TYPE C	EA
USH 45		LOCATION	STATION	EA
		471+80		1
		472+00		1
TOTALS		518+50		3

TRAFFIC CONTROL ITEMS		643.0705	643.0800	643.1050	643.5000
TRAFFIC CONTROL BARRICADES TYPE III		WARNING LIGHTS	TRAFFIC CONTROL SIGNS	SIGNS PCMS	TRAFFIC CONTROL
STAGE	EACH	DAYS	EACH	DAYS	EACH
1	16	61	32	61	157
2	16	77	32	77	157
TOTALS	32	138	64	138	314

TRAFFIC CONTROL ITEMS		643.0705	643.0800	643.1050	643.5000
TRAFFIC CONTROL BARRICADES TYPE III		WARNING LIGHTS	TRAFFIC CONTROL SIGNS	SIGNS PCMS	TRAFFIC CONTROL
STAGE	EACH	DAYS	EACH	DAYS	EACH
1	16	61	32	61	157
2	16	77	32	77	157
TOTALS	32	138	64	138	314

645.0135 REMOVED

Addendum No. 01  
ID 3834-06-70  
Revised Sheet 85  
February 3, 2022

SAWING		690.0150	SAWING ASPHALT	LF
STATION	TO STATION			
92+18.17	- 118+50			197
118+50	- 148+00			-
148+00	- 178+00			45
178+00	- 208+00			36
208+00	- 237+00			-
237+00	- 267+00			69
267+00	- 297+00			-
297+00	- 327+00			4.18
327+00	- 356+00			369
356+00	- 385+25			182
385+25	- 414+50			249
414+50	- 444+50			383
444+50	- 474+50			691
474+50	- 504+00			242
504+00	- 533+50			185
533+50	- 563+00			288
563+00	- 592+50			223
592+50	- 621+50			388
621+50	- 649+25			246
649+25	- 678+75			205
678+75	- 708+00			236
708+00	- 715+67.28			143
TOTALS				4795









Proposal Schedule of Items

Proposal ID: 20220208019 Project(s): 3834-06-70

Federal ID(s): WISC 2022202

SECTION: 0001 Roadway Items

Alt Set ID: Alt Mbr ID:

Proposal Line Number	Item ID Description	Approximate Quantity and Units	Unit Price	Bid Amount
0002	203.0335 Debris Containment Over Waterway (structure) 01. B-30-654	1.000 EACH	_____.	_____.
0004	204.0115 Removing Asphaltic Surface Butt Joints	796.000 SY	_____.	_____.
0006	204.0120 Removing Asphaltic Surface Milling	230,043.000 SY	_____.	_____.
0008	204.9060.S Removing (item description) 01. Apron Endwalls	2.000 EACH	_____.	_____.
0012	213.0100 Finishing Roadway (project) 01. 3834-06-70	1.000 EACH	_____.	_____.
0014	305.0110 Base Aggregate Dense 3/4-Inch	5,687.000 TON	_____.	_____.
0028	455.0605 Tack Coat	16,880.000 GAL	_____.	_____.
0030	460.0105.S HMA Percent Within Limits (PWL) Test Strip Volumetrics	1.000 EACH	_____.	_____.
0032	460.0110.S HMA Percent Within Limits (PWL) Test Strip Density	1.000 EACH	_____.	_____.
0034	460.2005 Incentive Density PWL HMA Pavement	19,630.000 DOL	1.00000	19,630.00
0036	460.2007 Incentive Density HMA Pavement Longitudinal Joints	31,070.000 DOL	1.00000	31,070.00
0038	460.2010 Incentive Air Voids HMA Pavement	27,360.000 DOL	1.00000	27,360.00
0040	460.6224 HMA Pavement 4 MT 58-28 S	27,360.000 TON	_____.	_____.
0042	465.0315 Asphaltic Flumes	20.000 SY	_____.	_____.
0044	465.0425 Asphaltic Shoulder Rumble Strips 2-Lane Rural	32,876.000 LF	_____.	_____.





Proposal Schedule of Items

Proposal ID: 20220208019 Project(s): 3834-06-70

Federal ID(s): WISC 2022202

SECTION: 0001 Roadway Items

Alt Set ID: Alt Mbr ID:

Proposal Line Number	Item ID Description	Approximate Quantity and Units	Unit Price	Bid Amount
0046	465.0475 Asphalt Centerline Rumble Strips 2-Lane Rural	57,735.000 LF	_____.	_____.
0048	502.3200 Protective Surface Treatment	275.000 SY	_____.	_____.
0050	505.0400 Bar Steel Reinforcement HS Structures	410.000 LB	_____.	_____.
0052	509.0301 Preparation Decks Type 1	50.000 SY	_____.	_____.
0054	509.0302 Preparation Decks Type 2	20.000 SY	_____.	_____.
0056	509.0500 Cleaning Decks	260.000 SY	_____.	_____.
0058	509.1500 Concrete Surface Repair	650.000 SF	_____.	_____.
0060	509.2500 Concrete Masonry Overlay Decks	18.000 CY	_____.	_____.
0062	509.9010.S Removing Asphaltic Concrete Deck Overlay (structure) 01. B-30-654	260.000 SY	_____.	_____.
0064	520.8700 Cleaning Culvert Pipes	1.000 EACH	_____.	_____.
0066	521.1024 Apron Endwalls for Culvert Pipe Steel 24-Inch	2.000 EACH	_____.	_____.
0068	618.0100 Maintenance And Repair of Haul Roads (project) 01. 3834-06-70	1.000 EACH	_____.	_____.
0070	619.1000 Mobilization	1.000 EACH	_____.	_____.
0072	624.0100 Water	69.000 MGAL	_____.	_____.
0074	625.0100 Topsoil	170.000 SY	_____.	_____.
0076	627.0200 Mulching	150.000 SY	_____.	_____.





Proposal Schedule of Items

Proposal ID: 20220208019 Project(s): 3834-06-70

Federal ID(s): WISC 2022202

SECTION: 0001 Roadway Items

Alt Set ID: Alt Mbr ID:

Proposal Line Number	Item ID Description	Approximate Quantity and Units	Unit Price	Bid Amount
0078	628.2002 Erosion Mat Class I Type A	20.000 SY	_____.	_____.
0080	628.7015 Inlet Protection Type C	3.000 EACH	_____.	_____.
0082	629.0210 Fertilizer Type B	0.500 CWT	_____.	_____.
0084	630.0130 Seeding Mixture No. 30	3.000 LB	_____.	_____.
0086	634.0618 Posts Wood 4x6-Inch X 18-FT	270.000 EACH	_____.	_____.
0088	637.2230 Signs Type II Reflective F	170.000 SF	_____.	_____.
0090	638.2102 Moving Signs Type II	256.000 EACH	_____.	_____.
0092	638.2602 Removing Signs Type II	1.000 EACH	_____.	_____.
0094	638.3000 Removing Small Sign Supports	245.000 EACH	_____.	_____.
0096	642.5001 Field Office Type B	1.000 EACH	_____.	_____.
0098	643.0420 Traffic Control Barricades Type III	4,416.000 DAY	_____.	_____.
0100	643.0705 Traffic Control Warning Lights Type A	8,832.000 DAY	_____.	_____.
0102	643.0900 Traffic Control Signs	43,332.000 DAY	_____.	_____.
0104	643.1050 Traffic Control Signs PCMS	28.000 DAY	_____.	_____.
0106	643.5000 Traffic Control	1.000 EACH	_____.	_____.
0112	646.1040 Marking Line Grooved Wet Ref Epoxy 4-Inch	124,676.000 LF	_____.	_____.



Proposal Schedule of Items

Proposal ID: 20220208019 Project(s): 3834-06-70

Federal ID(s): WISC 2022202

SECTION: 0001 Roadway Items

Alt Set ID: Alt Mbr ID:

Proposal Line Number	Item ID Description	Approximate Quantity and Units	Unit Price	Bid Amount
0114	646.3020 Marking Line Epoxy 8-Inch	1,641.000 LF	_____.	_____.
0116	646.5020 Marking Arrow Epoxy	13.000 EACH	_____.	_____.
0118	646.5120 Marking Word Epoxy	4.000 EACH	_____.	_____.
0120	646.6120 Marking Stop Line Epoxy 18-Inch	664.000 LF	_____.	_____.
0122	648.0100 Locating No-Passing Zones	12.000 MI	_____.	_____.
0124	650.8000 Construction Staking Resurfacing Reference	62,130.000 LF	_____.	_____.
0126	650.9910 Construction Staking Supplemental Control (project) 01. 3834-06-70	LS	LUMP SUM	_____.
0128	690.0150 Sawing Asphalt	4,795.000 LF	_____.	_____.
0130	740.0440 Incentive IRI Ride	23,534.000 DOL	1.00000	23,534.00
0132	ASP.1T0A On-the-Job Training Apprentice at \$5.00/HR	3,000.000 HRS	5.00000	15,000.00
0134	ASP.1T0G On-the-Job Training Graduate at \$5.00/HR	4,320.000 HRS	5.00000	21,600.00
0136	SPV.0060 Special 01. Embedded Galvanic Anodes	160.000 EACH	_____.	_____.
0138	SPV.0060 Special 02. Railing Steel Type "W" Repair B-30-654	3.000 EACH	_____.	_____.
0140	SPV.0060 Special 03. Section Corner Monuments	2.000 EACH	_____.	_____.
0142	SPV.0090 Special 01. Flashing Stainless Steel	154.000 LF	_____.	_____.





Proposal Schedule of Items

Proposal ID: 20220208019 Project(s): 3834-06-70

Federal ID(s): WISC 2022202

SECTION: 0001 Roadway Items

Alt Set ID: Alt Mbr ID:

Proposal Line Number	Item ID Description	Approximate Quantity and Units	Unit Price	Bid Amount
0144	646.4520 Marking Line Same Day Epoxy 4-Inch	82,031.000 LF	_____.	_____.
0146	649.0105 Temporary Marking Line Paint 4-Inch	84,687.000 LF	_____.	_____.
0148	649.0120 Temporary Marking Line Epoxy 4-Inch	82,031.000 LF	_____.	_____.
0150	SPV.0195 Special 01. Asphaltic Repair	1,100.000 TON	_____.	_____.
<b>Section: 0001</b>			<b>Total:</b>	_____.
			<b>Total Bid:</b>	_____.