



# Wisconsin Department of Transportation

## Division of Transportation Systems Development

Bureau of Project Development  
4822 Madison Yards Way, 4<sup>th</sup> Floor South  
Madison, WI 53705

February 2, 2022

Telephone: (608) 266-1631  
Facsimile (FAX): (608) 266-8459

### NOTICE TO ALL CONTRACTORS:

**Proposal #29: 4986-00-25, WISC 2022179**  
**C. Fond du Lac, Military Road**  
**Superior Street – Western Avenue**  
**Local Street**  
**Fond du Lac County**

### Letting of February 8, 2022

This is Addendum No. 01, which provides for the following:

#### Special Provisions:

Revised Special Provisions	
Article No.	Description
50	Contaminated Soil Management

Added Special Provisions	
Article No.	Description
51	Temporary 2-Inch Blow Off

Deleted Special Provisions	
Article No.	Description
44	Temporary 2-Inch Blow Off

#### Schedule of Items:

Revised Bid Item Quantities					
Bid Item	Item Description	Unit	Old Quantity	Revised Quantity	Proposal Total
629.0210	Fertilizer Type B	CWT	323.3	-318.9	4.4

<b>Added Bid Item Quantities</b>					
Bid Item	Item Description	Unit	Old Quantity	Revised Quantity	Proposal Total
201.0120	Clearing	ID	0	426	426
201.0220	Grubbing	ID	0	444	444
SPV.0060.66	Temporary 2-Inch Blow Off	Each	0	2	2

<b>Deleted Bid Item Quantities</b>					
Bid Item	Item Description	Unit	Old Quantity	Revised Quantity	Proposal Total
201.0110	Clearing	SY	788	-788	0
201.0210	Grubbing	SY	796	-796	0
SPV.0090.13	Temporary 2-Inch Blow Off	LF	2	-2	0

**Plan Sheets:**

<b>Revised Plan Sheets</b>	
Plan Sheet	Plan Sheet Title (brief description of changes to sheet)
122, 132 & 148	Miscellaneous Quantities (Clearing, Grubbing, Fertilizer Type B updated and SPV.0060.66 added.)
161 & 163	Revised plan and profile to note incidental clearing and grubbing.

The responsibility for notifying potential subcontractors and suppliers of these changes remains with the prime contractor.

Sincerely,

*Mike Coleman*

Proposal Development Specialist  
Proposal Management Section

**ADDENDUM NO. 01**

**4986-00-25**

**February 2, 2022**

**Special Provisions**

**44. DELETED**

**50. Contaminated Soil Management, Item SPV.0195.01.**

*Replace the entire article with the following:*

**A Description**

This special provision describes work conforming with the requirements of standard spec 205, parts of the Wisconsin Administration Code (Department of Natural Resources Environmental Investigation and Remediation of Environmental Contamination, Chapters NR 700-736), as the plans show, and in this special provision.

This work consists of excavating, loading and hauling of contaminated soil to the nearest and most cost-effective department-approved landfill/bio-remediation facility (BioSite). The nearest facilities are the Veolia Hickory Meadows Landfill in Hilbert, Calumet County, Wisconsin and Waste Management Valley Trail Recycling and Disposal facility in Berlin, Green Lake County, Wisconsin. These facilities are located approximately 30 to 35 miles from the project limits.

Manage contaminated soil encountered within the project limits at locations identified in section A.1 as a solid waste and haul directly to the nearest and most cost-effective department-approved landfill/BioSite.

Per NR 718.07, a solid waste collection and transportation service operating license is required under NR 502.06 whenever excavated contaminated soils are transported.

**A.1 Notice to the Contractor**

A Phase 1 Hazardous Materials Assessment and Phase 2.5 Environmental Site Investigation were completed by the department for locations within the project corridor. Information obtained by the department indicates that contaminated soil requiring special management will be encountered at the following location:

<b>Site Name and Location</b>	<b>Description</b>
Big Al's Amoco (former)/Cars-R-Us 206 S. Military Road Fond du Lac  Closed LUST Case with Continuing Obligations (residual petroleum contaminated soil and groundwater) DNR BRRTS No. 03-20-001055	Petroleum Contaminated Soil within Construction Limits: Military Road Station 31+60 to Station 32+60 and Western Avenue Station 101W+60 to Station 103W+10, beginning at an approximate depth of 6 feet below existing grade. Petroleum hydrocarbons were detected in soil, including ethylbenzene (14.3 milligrams per kilogram (mg/kg)), naphthalene (9.8 mg/kg), trimethylbenzenes (163 mg/kg), xylenes (21.6 mg/kg), and total lead (24 mg/kg).

The estimated volume of contaminated soil to be excavated by the contractor at this location is approximately 215 cubic yards (approximately 300 tons using a multiplier of 1.4 tons/cubic yard).

If contaminated soil is encountered at other locations on the project, terminate excavation activities in the area and notify the engineer. The engineer and environmental consultant will determine if contaminated soil encountered elsewhere on the project is to be managed as a solid waste.

For further information regarding investigation activities at these locations, contact Lisa Lumley, Wisconsin Department of Transportation, Environmental Coordinator, 944 Vanderperren Way, Green Bay, Wisconsin, 54304, (920) 492-7175.

## **A.2 Coordination**

Coordinate work under this contract with the environmental consultant retained by the department:

Consultant: AECOM  
Address: 200 Indiana Avenue, Stevens Point, Wisconsin, 54481  
Contact: Kyle Wagoner  
Phone: (715) 342-3038  
Email: kyle.wagoner@aecom.com

The role of the environmental consultant will be limited to obtaining approval from a department-approved landfill/BioSite for treatment/disposal of contaminated soil encountered during the project, determining the location and limits of contaminated soil to be excavated based on soil analytical results from previous field investigations, and collection of post-excavation soil samples.

Manage contaminated soil conforming to the terms and conditions specified herein. Provide a proposed schedule for all excavation activities in the area of contamination during the pre-construction conference. Notify the engineer and environmental consultant at least 3 calendar days before commencement of excavation and activities in the contaminated area. Coordinate with the environmental consultant to ensure that the consultant is present before and during excavation activities in the area of contamination.

Obtain a unique waste profile approval number from the environmental consultant thirty (30) days before construction in the area of contamination, and provide the engineer with the number.

## **A.3 Health and Safety Requirements**

Prepare a site-specific Health and Safety Plan complying with the Occupational Safety and Health Administration (OSHA) standard for Hazardous Waste Operation and Emergency Response (HAZWOPER), 29 CFR 1910.120.

Before the start of remediation work, provide health and safety training meeting OSHA requirements for all site workers taking part in remediation activities or who will have the reasonable probability of exposure to safety or health hazards associated with the contaminated material. Submit a site-specific Health and Safety Plan and written verification that workers have completed up-to-date OSHA training to the project engineer before the start of remediation work.

Develop, delineate and enforce the health and safety exclusion zones for each contaminated site location pursuant to 29 CFR 1910.120.

## **B (Vacant)**

## **C Construction**

*Add the following to standard spec 205.3:*

Manage contaminated soil encountered within the project limits at locations identified in section A.1 as a solid waste, and haul directly to the nearest and most cost-effective department-approved landfill/BioSite.

Provide and place suitable backfill material required to bring the excavation to the elevation of proposed subgrades. Notify the environmental consultant and engineer before placement of backfill in the excavation to ensure that post-excavation samples have been collected by the environmental consultant.

If not directly loaded and hauled to the designated off-site disposal facility during the same day on which it was excavated, temporarily stockpile the petroleum contaminated soil on an impervious surface within the project limits by covering the material with impervious plastic sheeting and anchoring the plastic sheeting in place to prevent the soil from being exposed until such time as the soil is hauled to the off-site disposal facility.

Obtain approval from the engineer and environmental consultant before placing any temporary stockpiles of contaminated soil in the project corridor.

**D Measurement**

The department will measure Contaminated Soil Management by the ton of excavated material accepted at the landfill/bio-remediation facility as shown on the special waste manifest disposal tickets.

**E Payment**

The department will pay for measured quantities at the contract unit price under the following bid item:

ITEM NUMBER	DESCRIPTION	UNIT
SPV.0195.01	Contaminated Soil Management	TON

Payment is full compensation for excavating, segregating, loading, hauling, and treatment via bioremediation and/or disposal of contaminated soil; tipping fees; obtaining solid waste collection and transportation service operating licenses; assisting in the collection soil samples for field evaluation; dewatering of soils prior to transport (if necessary), and for temporary stockpiling at the project site (if necessary).

ner-107-025 (20220120)

**51. Temporary 2-Inch Blow Off, Item SPV.0060.66.**

**A Description**

This special provision describes Temporary 2-Inch Blow Off according to the “Standard Utilities Specifications for WisDOT Let Projects, City of Fond du Lac”.

**B Materials**

Provide the temporary 2-inch blow off conforming to the “Standard Utilities Specifications for WisDOT Let Projects, City of Fond du Lac”.

**C Construction**

Construct 2-inch blow off conforming to the “Standard Utilities Specifications for WisDOT Let Projects, City of Fond du Lac”.

**D Measurement**

The department will measure Temporary 2-Inch Blow Off by each individual unit, acceptably installed and completed.

**E Payment**

The department will pay for measured quantities at the contract unit price under the following bid item:

ITEM NUMBER	DESCRIPTION	UNIT
SPV.0060.66	Temporary 2-Inch Blow Off	EACH

Payment is full compensation for all work herein specified according to the “Standard Utilities Specifications for WisDOT Let Projects, City of Fond du Lac”.

**Schedule of Items**

Attached, dated February 2, 2022, are the revised Schedule of Items Pages 1 – 17.

**Plan Sheets**

The following 8½ x 11-inch sheets are attached and made part of the plans for this proposal:  
Revised: 122, 132, 148, 161, and 163.

END OF ADDENDUM

REMOVING INLETS

204.0210 REMOVING MANHOLES EACH	204.0220 REMOVING INLETS EACH	204.0150 REMOVING CURB & GUTTER LF	204.0155 REMOVING CONCRETE SIDEWALK SY	204.0155 REMOVING CONCRETE SIDEWALK SY
0010	11+23	130	103	103
0010	12+00	222	128	128
0010	2+03W9	76	19	19
0010	2+11W9	150	62	62
0010	12+93	78	97	97
0010	13+06	180	60	60
0010	13+76	90	231	231
0010	14+04	426	182	182
0010	10+06E89	218	52	52
0010	10+39E89	63	34	34
0010	10+44E89	62	24	24
0010	15+98	59	16	16
0010	17+32	627	16	16
0010	17+42	845	12	12
0010	50+10G	773	20	20
0010	50+12G	231	24	24
0010	50+49G	385	24	24
0010	20+50	306	24	24
0010	20+84	76	24	24
0010	20+96	126	24	24
0010	22+14	143	16	16
0010	22+17	117	16	16
0010	22+17	178	16	16
0010	24+88	128	16	16
0010	24+94	46	20	20
0010	24+95	5,726	426	444
0010	70+26W1			
0010	25+44			
0010	70+36W1			
0010	30+55			
0010	30+78			
0010	31+30			
0010	31+49			
0010	31+66			
0010	31+75			
0010	100+65W			
0010	101+50W			
0010	101+51W			
0010	101+57W			
0010	102+72W			
0010	31+30			
0010	31+77			
0010	33+06			
0010	33+17			
TOTAL 0010		20		24

REMOVING CURB AND GUTTER

204.0150 REMOVING CURB & GUTTER LF	204.0155 REMOVING CONCRETE SIDEWALK SY	204.0155 REMOVING CONCRETE SIDEWALK SY
0010	10+47	103
0010	10+47	128
0010	1+00W9	19
0010	1+00W9	62
0010	20+00S	78
0010	21+43S	180
0010	11+85	90
0010	17+24	426
0010	12+84	218
0010	10+00E89	63
0010	10+00E89	62
0010	10+60E89	59
0010	15+07	627
0010	17+40	845
0010	21+05	773
0010	25+40	231
0010	27+49	306
0010	28+65	76
0010	100+84W	126
0010	100+84W	143
0010	102+68W	117
0010	103+30W	178
0010	31+56	128
0010	32+07	46
0010	32+83	5,726
TOTAL 0010		444

CLEARING AND GRUBBING

201.0120 CLEARING ID	201.0220 GRUBBING ID	201.0120 CLEARING ID	201.0220 GRUBBING ID
0010	11+31	18	18
0010	20+35S	10	10
0010	20+56S	6	6
0010	14+48	18	18
0010	15+75	24	24
0010	16+22	16	16
0010	16+48	16	16
0010	16+98	12	12
0010	17+49	16	16
0010	17+87	16	16
0010	18+52	20	20
0010	18+79	12	12
0010	18+87	20	20
0010	19+10	12	12
0010	19+49	16	16
0010	19+88	20	20
0010	19+97	16	16
0010	20+41	24	24
0010	20+83	24	24
0010	21+21	24	24
0010	22+56	24	24
0010	23+93	16	16
0010	24+14	16	16
0010	24+16	12	12
0010	24+66	16	16
0010	25+07	20	20
TOTAL 0010		426	444

REMOVING SIDEWALK

204.0155 REMOVING CONCRETE SIDEWALK SY	204.0155 REMOVING CONCRETE SIDEWALK SY	
0010	10+46	103
0010	10+46	128
0010	1+02W9	19
0010	1+17W9	62
0010	20+00S	97
0010	20+00S	60
0010	12+86	231
0010	12+86	182
0010	15+14	52
0010	10+60E89	34
0010	15+08	313
0010	17+62	579
0010	21+06	417
0010	25+64	104
0010	27+51	334
0010	28+70	188
0010	100+85W	46
0010	100+85W	92
0010	102+38W	126
0010	102+53W	100
0010	31+66	24
0010	32+10	24
0010	10+01NEQ	91
TOTAL 0010		3,362

Addendum No. 01  
ID 4986-00-25  
Revised Sheet 122  
February 2, 2022

Addendum No. 01  
ID 4986-00-25  
Revised Sheet 132  
February 2, 2022

UNDERDRAIN ITEMS

CATEGORY	STATION	TO	STATION	LOCATION	BASE AGGREGATE OPEN-GRADED	TON	PIPE UNDERDRAIN 6-INCH	LF	GEOTEXTILE TYPE/DF SCHEDULEA	SY		
0010	10+46	-	11+24	LT	5	74	37					
0010	10+46	-	11+30	RT	5	83	42					
0010	11+38	-	13+12	LT	10	170	85					
0010	11+38	-	13+14	RT	10	173	87					
0010	1+00W9	-	2+37W9	LT	7	118	59					
0010	1+00W9	-	2+40W9	RT	11	185	93					
0010	20+005	-	20+895	RT	6	105	53					
0010	20+005	-	21+485	LT	8	136	68					
0010	13+13	-	14+71	RT	11	182	91					
0010	13+13	-	16+93	LT	21	356	178					
0010	15+10	-	20+28	RT	33	571	286					
0010	16+93	-	25+00	LT	48	836	418					
0010	20+78	-	27+80	RT	43	748	374					
0010	25+00	-	30+70	LT	35	615	308					
0010	80+288	-	81+268	RT	6	97	49					
0010	27+80	-	30+80	RT	21	361	181					
0010	100+84W	-	101+75W	RT	7	109	55					
0010	100+84W	-	101+75W	LT	6	89	45					
0010	102+19W	-	103+61W	RT	9	155	78					
0010	10+01NEQ	-	11+67NEQ	RT	9	157	79					
0010	31+44	-	33+07	LT	10	168	84					
TOTAL 0010										321	5,488	2,750

EROSION CONTROL MOBILIZATIONS

CATEGORY	LOCATION	PROJECT	628.1905	628.1910
0010	PROJECT	6	MOBILIZATIONS EROSION CONTROL EACH	5
TOTAL 0010		6	6	5

RESTORATION ITEMS

CATEGORY	STATION	TO	STATION	LOCATION	SALVAGED TOPSOIL SY	FERTILIZER TYPE B CWT	SEEDING MIXTURE NO. 40 LB	SEED WATER MGAL	SPV.0085.01 SPECIAL (01. LOW MAINTENANCE SEED MIX)				
0010	10+46	-	12+53	RT	212	0.2	3.9	5	--				
0010	10+46	-	12+40	LT	223	0.2	4.1	5	--				
0010	1+00W9	-	2+45W9	LT	89	0.1	1.6	2	--				
0010	1+00W9	-	2+42W9	RT	261	0.2	4.7	6	--				
0010	20+005	-	20+865	RT	121	0.1	2.2	3	--				
0010	20+005	-	21+375	LT	88	0.1	1.6	2	--				
0010	12+86	-	14+68	RT	224	0.2	4.1	5	--				
0010	14+67	-	14+99	LT & RT	90	0.1	--	2	1.61				
0010	12+98	-	17+20	LT	671	0.5	12.1	15	--				
0010	15+22	-	20+74	RT	450	0.3	8.1	10	--				
0010	17+42	-	25+22	LT	546	0.4	9.9	12	--				
0010	21+15	-	28+26	RT	599	0.4	10.8	13	--				
0010	25+42	-	27+31	LT	103	0.1	1.9	2	--				
0010	27+50	-	30+83	LT	212	0.2	3.8	5	--				
0010	28+67	-	31+29	RT	177	0.2	3.2	4	--				
0010	100+84W	-	101+66W	RT	39	0.1	0.7	1	--				
0010	10+01NEQ	-	11+76NEQ	RT	90	0.1	1.7	2	--				
0010	31+75	-	33+34	LT	72	0.1	1.3	2	--				
0010	UNDISTRIBUTED				854	0.8	16	19	--				
TOTAL 0010										5,121	91.7	115	1.61

PROJECT NO: 4986-00-25

HWY: MILITARY ROAD

COUNTY: FOND DU LAC

MISCELLANEOUS QUANTITIES

SHEET: 132

E

FILE NAME : N:\PDS\...030200\_mq.pptx

PLOT DATE : OCT 2021

PLOT BY : NSA

PLOT SCALE : 1:1

REMOVE EXISTING WATER STRUCTURE

CATEGORY	STREET	STATION	OFFSET DIST.	DIR.	OFFSET	REMOVE EX.	
						WATER	EX. HYDRANT
0020	MILITARY	11+729	45.3	LT	1	-	-
	W. 9TH	1+673	12.1'	LT	1	-	-
	MILITARY	12+068	45.0'	LT	1	-	-
	MILITARY	12+192	30.3'	LT	1	-	-
	MILITARY	12+705	14.7'	RT	1	-	-
	MILITARY	17+104	23.3'	LT	1	-	-
	GROVE	50+36.2	17.6'	LT	1	-	-
	MILITARY	17+563	22.8'	LT	1	-	-
	MILITARY	17+634	15.1'	LT	1	-	-
	GROVE	50+61.4	26.7'	LT	-	1	-
	MILITARY	17+979	5.9'	RT	1	-	-
	MILITARY	21+056	13.4'	LT	1	-	-
	HENNING	60+188	19.1'	LT	1	-	-
	HENNING	60+206	23.2'	LT	-	1	-
	HENNING	60+439	10.1'	LT	1	-	-
	MILITARY	21+143	7.1'	RT	1	-	-
	MILITARY	24+98.0	20.4'	LT	1	-	-
	MILITARY	25+115	25.4'	LT	1	-	-
	MILITARY	25+117	28.9'	LT	-	1	-
	MILITARY	25+547	7.4'	RT	1	-	-
	MILITARY	25+560	16.1'	LT	1	-	-
	MILITARY	25+582	7.2'	RT	1	-	-
	WILKINS	70+699	4.4'	LT	1	-	-
	MILITARY	30+285	7.4'	RT	1	-	-
	MILITARY	31+306	17.4'	RT	1	-	-
	WESTERN	101+69.4	32.4'	RT	-	1	-
	WESTERN	102+10.1	12.9'	LT	1	-	-
	WESTERN	102+57.0	25.5'	LT	1	-	-
TOTAL PROJECT 4986-00-25						24	4

ADJUST EXISTING WATER STRUCTURE

CATEGORY	STREET	STATION	OFFSET DIST.	DIR.	OFFSET	ADJUST EX.	
						VALVE BOX	CURB STOP
0020	W. 9TH	12+18.2	93.0'	LT	-	1	-
	SUPERIOR	12+75.6	94.1'	LT	1	-	-
	W. 9TH	14+51.5	70.3'	RT	1	-	-
	GROVE	50+31.0	24.3'	LT	-	1	-
TOTAL PROJECT 4986-00-25						2	2

WATER MAIN PIPE

CATEGORY	STREET	STATION	OFFSET DIST.	DIR.	OFFSET	STATION	OFFSET DIST.	DIR.	STATION	OFFSET DIST.	DIR.	PVC				COMMENTS	
												4-INCH	6-INCH	8-INCH	10-INCH		12-INCH
0020	MILITARY	10+47.1	18.1'	RT	8.5'	MILITARY	10+72.8	8.5'	LT	-	-	-	-	48	-	SPV0090.10 SPV0090.11 SPV0090.12 SPV0060.66 TEMPORARY BLOW OFF	
	MILITARY	10+47.5	14.7'	LT	8.5'	MILITARY	10+66.8	8.5'	LT	-	22	-	-	-	-	-	
	MILITARY	10+66.8	8.5'	LT	23.8'	MILITARY	10+66.8	23.8'	LT	-	-	-	-	-	-	HYDRANT LEAD	
	MILITARY	10+66.8	8.5'	LT	8.5'	MILITARY	10+69.8	8.5'	LT	-	3	-	-	-	-	-	
	MILITARY	10+69.8	8.5'	LT	8.5'	MILITARY	11+73.8	8.5'	LT	-	-	-	-	101	-	-	
	MILITARY	10+86.0	8.5'	LT	33.0'	MILITARY	10+83.0	33.0'	RT	-	-	-	-	-	-	-	
	MILITARY	11+73.8	8.5'	LT	26.0'	W. 9TH	1+96.1	26.0'	RT	-	50	-	-	-	-	-	
	W. 9TH	1+96.1	26.0'	RT	15.1'	W. 9TH	2+12.1	15.1'	RT	-	23	-	-	-	-	-	
	W. 9TH	1+96.1	26.0'	RT	8.0'	W. 9TH	1+23.7	8.0'	RT	-	86	-	-	-	-	-	
	W. 9TH	1+23.7	8.0'	RT	10.8'	W. 9TH	1+16.0	10.8'	LT	-	27	-	-	-	-	-	
	MILITARY	11+73.8	8.5'	LT	12.0'	MILITARY	12+65.5	12.0'	LT	-	-	-	-	92	-	-	
	MILITARY	12+65.5	12.0'	LT	16.7'	MILITARY	12+73.0	16.7'	RT	-	24	-	-	-	-	-	
	MILITARY	12+73.7	80.0'	LT	56.2'	MILITARY	12+74.9	56.2'	LT	-	-	-	-	-	-	HYDRANT LEAD	
	MILITARY	12+65.5	12.0'	LT	11.0'	MILITARY	17+57.9	11.0'	LT	-	-	-	-	478	-	-	
	MILITARY	17+55.8	11.0'	LT	31.0'	GROVE	17+36.8	31.0'	RT	-	-	-	-	-	-	-	
	MILITARY	17+57.9	10.7'	LT	10.5'	GROVE	50+53.5	10.5'	LT	-	26	-	-	-	-	-	
	GROVE	50+57.1	10.7'	LT	22.2'	GROVE	50+56.5	22.2'	LT	-	12	-	-	-	-	HYDRANT LEAD	
	GROVE	50+53.5	10.5'	LT	9.4'	GROVE	50+33.4	9.4'	LT	-	20	-	-	-	-	-	
	MILITARY	17+57.9	11.0'	LT	11.0'	MILITARY	21+02.5	11.0'	LT	-	-	-	-	345	-	-	
	MILITARY	21+02.5	11.0'	LT	27.5'	MILITARY	21+02.5	27.5'	LT	-	17	-	-	-	-	HYDRANT LEAD	
	MILITARY	21+02.5	11.0'	LT	5.7'	HENNING	60+53.2	5.7'	LT	-	62	-	-	-	-	-	
	HENNING	60+53.2	5.7'	LT	10.1'	HENNING	60+58.1	10.1'	LT	-	9	-	-	-	-	-	
	MILITARY	21+02.5	11.0'	LT	11.0'	MILITARY	25+04.5	11.0'	LT	-	-	-	-	402	-	-	
	MILITARY	25+04.5	11.0'	LT	27.5'	MILITARY	25+04.5	27.5'	LT	-	17	-	-	-	-	-	
	MILITARY	25+04.5	11.0'	LT	11.0'	MILITARY	25+73.4	11.0'	LT	-	-	-	-	69	-	-	
	MILITARY	25+73.4	11.0'	LT	10.5'	WILKINS	70+62.7	10.5'	LT	-	24	-	-	-	-	-	
	MILITARY	25+73.4	11.0'	LT	11.0'	MILITARY	26+71.9	11.0'	LT	-	-	-	-	99	-	-	
	MILITARY	26+71.9	11.0'	LT	6.2'	BROOKE	80+39.3	6.2'	RT	-	-	-	-	84	-	-	
	BROOKE	80+39.3	6.2'	RT	9.8'	BROOKE	80+34.3	9.8'	RT	-	-	-	-	10	-	-	
	MILITARY	26+71.9	11.0'	LT	9.8'	MILITARY	31+09.6	9.8'	LT	-	-	-	-	437	-	-	
	MILITARY	31+09.6	9.8'	LT	18.1'	MILITARY	31+06.2	18.1'	RT	-	29	-	-	-	-	-	
	MILITARY	31+06.2	18.1'	RT	22.4'	MILITARY	31+10.4	22.4'	RT	-	6	-	-	-	-	HYDRANT LEAD	
	MILITARY	31+06.2	18.1'	RT	47.0'	MILITARY	30+87.7	47.0'	RT	-	38	-	-	-	-	-	
	MILITARY	31+09.6	9.8'	LT	12.6'	MILITARY	31+28.2	12.6'	LT	-	-	-	-	20	-	-	
	MILITARY	31+28.2	12.6'	LT	14.3'	MILITARY	31+30.7	14.3'	LT	-	-	-	-	3	-	-	
	MILITARY	31+30.7	14.3'	LT	19.2'	MILITARY	32+06.4	19.2'	LT	-	77	-	-	-	-	-	
	MILITARY	31+28.2	12.6'	LT	20.2'	WESTERN	100+94.9	20.2'	RT	-	-	-	-	121	-	-	
	WESTERN	100+94.9	20.2'	RT	12.6'	WESTERN	100+89.9	12.6'	LT	-	38	-	-	-	-	-	
	MILITARY	31+28.2	12.6'	LT	20.2'	WESTERN	104+01.5	20.2'	RT	-	-	-	-	185	-	-	
	WESTERN	104+01.5	20.2'	RT	13.4'	WESTERN	104+06.7	13.4'	LT	-	-	-	-	39	-	-	
TOTAL PROJECT 4986-00-25											UNDISTRIBUTED	4	14	22	20	32	2
TOTAL PROJECT 4986-00-25											UNDISTRIBUTED	90	385	305	365	2320	2

Addendum No. 01  
 ID 4986-00-25  
 Revised Sheet 148  
 February 2, 2022

PROJECT NO: 4986-00-25 HWY: MILITARY ROAD COUNTY: FOND DU LAC

FILE NAME: G:\V018\878\018\878\018\CONSTRUCTION DOCUMENTS\HWY - ALIGNMENT - MILITARY ROAD - (1) - (1) - RECOVER.DWG  
 LAYOUT NAME: M02

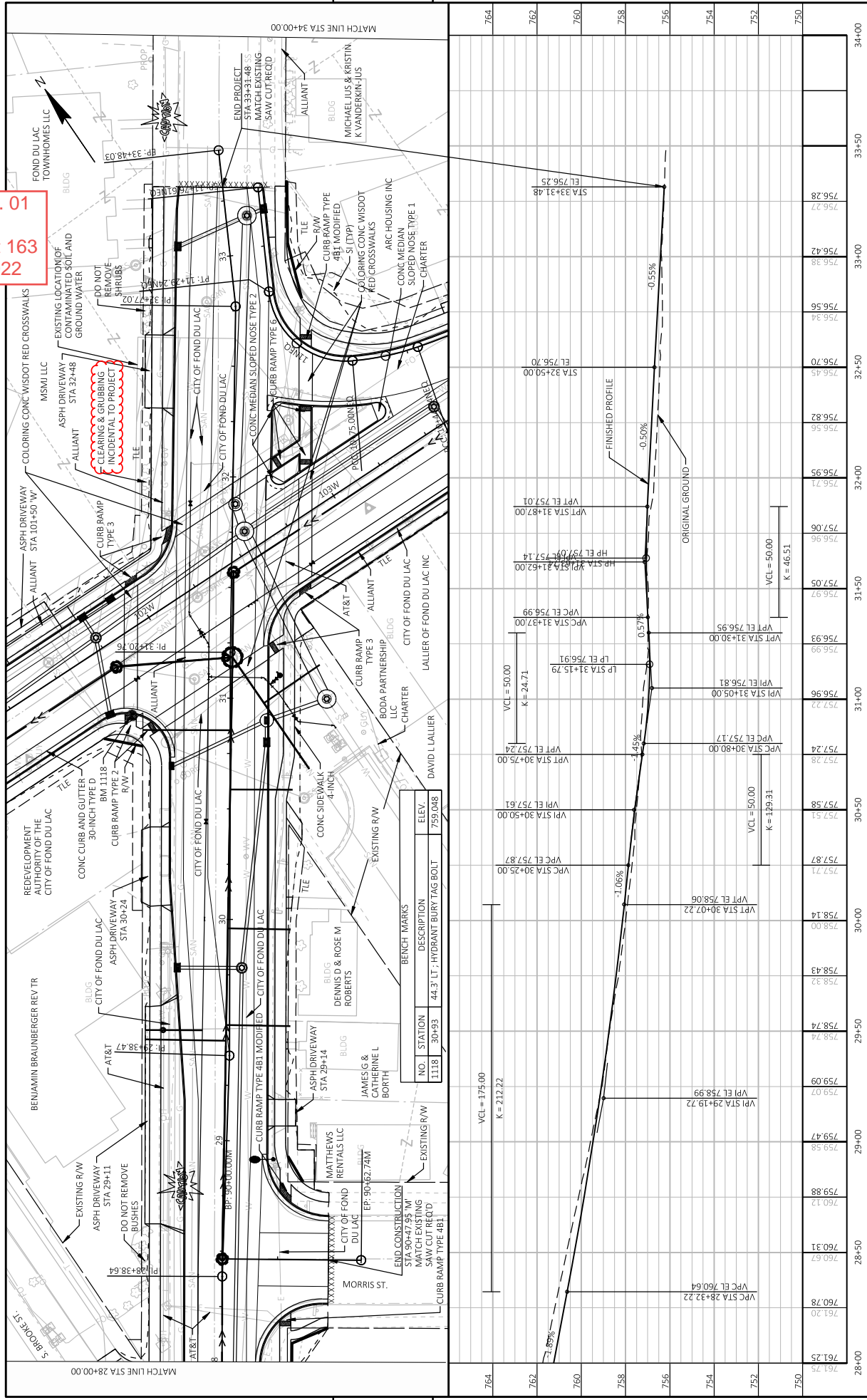
DATE: 1/7/2022 11:27 AM

PLOT NAME: XXX  
 PLOT: XXX  
 SHEET: 148





Addendum No. 01  
 ID 4986-00-25  
 Revised Sheet 163  
 February 2, 2022



STATION	ELEVATION	GRADE	VERTICAL CURVE DATA
28+00	761.25	-1.06%	
28+50	760.31	-1.06%	
29+00	759.47	-1.06%	
29+50	758.74	-1.06%	
30+00	758.00	-1.06%	
30+50	757.51	-1.06%	
31+00	757.22	-1.06%	
31+50	756.97	-1.06%	
32+00	756.71	-1.06%	
32+50	756.45	-1.06%	
33+00	756.18	-1.06%	
33+50	755.91	-1.06%	
34+00	755.64	-1.06%	



## Proposal Schedule of Items

Proposal ID: 20220208029 Project(s): 4986-00-25

Federal ID(s): WISC 2022179

SECTION: 0001 Roadway Items

Alt Set ID: Alt Mbr ID:

Proposal Line Number	Item ID Description	Approximate Quantity and Units	Unit Price	Bid Amount
0006	204.0100 Removing Concrete Pavement	13,496.000 SY	_____.	_____.
0008	204.0150 Removing Curb & Gutter	5,726.000 LF	_____.	_____.
0010	204.0155 Removing Concrete Sidewalk	3,362.000 SY	_____.	_____.
0012	204.0210 Removing Manholes	20.000 EACH	_____.	_____.
0014	204.0220 Removing Inlets	24.000 EACH	_____.	_____.
0016	204.0245 Removing Storm Sewer (size) 01. 8-Inch	346.000 LF	_____.	_____.
0018	204.0245 Removing Storm Sewer (size) 02. 10-Inch	131.000 LF	_____.	_____.
0020	204.0245 Removing Storm Sewer (size) 03. 12-Inch	832.000 LF	_____.	_____.
0022	204.0245 Removing Storm Sewer (size) 04. 15-Inch	422.000 LF	_____.	_____.
0024	204.0245 Removing Storm Sewer (size) 05. 18-Inch	280.000 LF	_____.	_____.
0026	204.0245 Removing Storm Sewer (size) 06. 24-Inch	174.000 LF	_____.	_____.
0028	204.0245 Removing Storm Sewer (size) 07. 36-Inch	24.000 LF	_____.	_____.
0030	204.0291.S Abandoning Sewer	1.000 CY	_____.	_____.
0032	205.0100 Excavation Common	12,348.000 CY	_____.	_____.
0034	213.0100 Finishing Roadway (project) 01. 4986-00-25	1.000 EACH	_____.	_____.



Proposal Schedule of Items

Proposal ID: 20220208029 Project(s): 4986-00-25

Federal ID(s): WISC 2022179

SECTION: 0001 Roadway Items

Alt Set ID: Alt Mbr ID:

Proposal Line Number	Item ID Description	Approximate Quantity and Units	Unit Price	Bid Amount
0036	305.0120 Base Aggregate Dense 1 1/4-Inch	7,939.000 TON	_____.	_____.
0038	305.0130 Base Aggregate Dense 3-Inch	411.000 TON	_____.	_____.
0040	310.0110 Base Aggregate Open-Graded	321.000 TON	_____.	_____.
0042	311.0110 Breaker Run	9,912.000 TON	_____.	_____.
0044	405.0100 Coloring Concrete WisDOT Red	124.000 CY	_____.	_____.
0046	415.0085 Concrete Pavement 8 1/2-Inch	12,368.000 SY	_____.	_____.
0048	415.4100 Concrete Pavement Joint Filling	13,978.000 SY	_____.	_____.
0050	416.0160 Concrete Driveway 6-Inch	960.000 SY	_____.	_____.
0052	416.0260 Concrete Driveway HES 6-Inch	97.000 SY	_____.	_____.
0054	416.0512 Concrete Truck Apron 12-Inch	112.000 SY	_____.	_____.
0056	455.0605 Tack Coat	98.000 GAL	_____.	_____.
0058	460.2000 Incentive Density HMA Pavement	544.000 DOL	1.00000	544.00
0060	460.5223 HMA Pavement 3 LT 58-28 S	193.000 TON	_____.	_____.
0062	460.5224 HMA Pavement 4 LT 58-28 S	154.000 TON	_____.	_____.
0064	465.0120 Asphaltic Surface Driveways and Field Entrances	33.000 TON	_____.	_____.
0066	601.0405 Concrete Curb & Gutter 18-Inch Type A	110.000 LF	_____.	_____.



Proposal Schedule of Items

Proposal ID: 20220208029 Project(s): 4986-00-25

Federal ID(s): WISC 2022179

SECTION: 0001 Roadway Items

Alt Set ID: Alt Mbr ID:

Proposal Line Number	Item ID Description	Approximate Quantity and Units	Unit Price	Bid Amount
0068	601.0409 Concrete Curb & Gutter 30-Inch Type A	1,307.000 LF	_____.	_____.
0070	601.0411 Concrete Curb & Gutter 30-Inch Type D	634.000 LF	_____.	_____.
0072	601.0452 Concrete Curb & Gutter Integral 30-Inch Type D	3,835.000 LF	_____.	_____.
0074	601.0580 Concrete Curb & Gutter 4-Inch Sloped 36-Inch Type R	176.000 LF	_____.	_____.
0076	601.0600 Concrete Curb Pedestrian	18.000 LF	_____.	_____.
0078	602.0405 Concrete Sidewalk 4-Inch	31,707.000 SF	_____.	_____.
0080	602.0515 Curb Ramp Detectable Warning Field Natural Patina	633.000 SF	_____.	_____.
0082	602.0615 Curb Ramp Detectable Warning Field Radial Natural Patina	15.000 SF	_____.	_____.
0084	602.2400 Concrete Safety Islands	30.000 SF	_____.	_____.
0086	608.0312 Storm Sewer Pipe Reinforced Concrete Class III 12-Inch	107.000 LF	_____.	_____.
0088	608.0315 Storm Sewer Pipe Reinforced Concrete Class III 15-Inch	126.000 LF	_____.	_____.
0090	608.0324 Storm Sewer Pipe Reinforced Concrete Class III 24-Inch	202.000 LF	_____.	_____.
0092	608.0336 Storm Sewer Pipe Reinforced Concrete Class III 36-Inch	24.000 LF	_____.	_____.
0094	608.0412 Storm Sewer Pipe Reinforced Concrete Class IV 12-Inch	1,458.000 LF	_____.	_____.



## Proposal Schedule of Items

Proposal ID: 20220208029 Project(s): 4986-00-25

Federal ID(s): WISC 2022179

SECTION: 0001

Roadway Items

Alt Set ID:

Alt Mbr ID:

Proposal Line Number	Item ID Description	Approximate Quantity and Units	Unit Price	Bid Amount
0096	608.0415 Storm Sewer Pipe Reinforced Concrete Class IV 15-Inch	910.000 LF	_____.	_____.
0098	608.0418 Storm Sewer Pipe Reinforced Concrete Class IV 18-Inch	55.000 LF	_____.	_____.
0100	608.0424 Storm Sewer Pipe Reinforced Concrete Class IV 24-Inch	102.000 LF	_____.	_____.
0102	608.0436 Storm Sewer Pipe Reinforced Concrete Class IV 36-Inch	143.000 LF	_____.	_____.
0104	608.2429 Storm Sewer Pipe Reinforced Concrete Horizontal Elliptical Class HE-IV 29x45-Inch	377.000 LF	_____.	_____.
0106	611.0420 Reconstructing Manholes	1.000 EACH	_____.	_____.
0108	611.0530 Manhole Covers Type J	26.000 EACH	_____.	_____.
0110	611.0624 Inlet Covers Type H	24.000 EACH	_____.	_____.
0112	611.0639 Inlet Covers Type H-S	27.000 EACH	_____.	_____.
0114	611.1005 Catch Basins 5-FT Diameter	1.000 EACH	_____.	_____.
0116	611.1006 Catch Basins 6-FT Diameter	1.000 EACH	_____.	_____.
0118	611.2004 Manholes 4-FT Diameter	15.000 EACH	_____.	_____.
0120	611.2005 Manholes 5-FT Diameter	2.000 EACH	_____.	_____.
0122	611.2006 Manholes 6-FT Diameter	3.000 EACH	_____.	_____.
0124	611.2007 Manholes 7-FT Diameter	6.000 EACH	_____.	_____.



Proposal Schedule of Items

Proposal ID: 20220208029 Project(s): 4986-00-25

Federal ID(s): WISC 2022179

SECTION: 0001 Roadway Items

Alt Set ID: Alt Mbr ID:

Proposal Line Number	Item ID Description	Approximate Quantity and Units	Unit Price	Bid Amount
0126	611.2008 Manholes 8-FT Diameter	3.000 EACH	_____.	_____.
0128	611.3004 Inlets 4-FT Diameter	5.000 EACH	_____.	_____.
0130	611.3230 Inlets 2x3-FT	41.000 EACH	_____.	_____.
0132	611.8105 Adjusting Catch Basin Covers	1.000 EACH	_____.	_____.
0134	612.0106 Pipe Underdrain 6-Inch	5,488.000 LF	_____.	_____.
0136	618.0100 Maintenance And Repair of Haul Roads (project) 01. 4986-00-25	1.000 EACH	_____.	_____.
0138	619.1000 Mobilization	1.000 EACH	_____.	_____.
0140	620.0300 Concrete Median Sloped Nose	495.000 SF	_____.	_____.
0142	623.0200 Dust Control Surface Treatment	16,834.000 SY	_____.	_____.
0144	624.0100 Water	272.200 MGAL	_____.	_____.
0146	625.0500 Salvaged Topsoil	5,121.000 SY	_____.	_____.
0148	628.1905 Mobilizations Erosion Control	6.000 EACH	_____.	_____.
0150	628.1910 Mobilizations Emergency Erosion Control	5.000 EACH	_____.	_____.
0152	628.7010 Inlet Protection Type B	1.000 EACH	_____.	_____.
0154	628.7015 Inlet Protection Type C	73.000 EACH	_____.	_____.
0156	629.0210 Fertilizer Type B	4.400 CWT	_____.	_____.



Proposal Schedule of Items

Proposal ID: 20220208029 Project(s): 4986-00-25

Federal ID(s): WISC 2022179

SECTION: 0001 Roadway Items

Alt Set ID: Alt Mbr ID:

Proposal Line Number	Item ID Description	Approximate Quantity and Units	Unit Price	Bid Amount
0158	630.0140 Seeding Mixture No. 40	91.700 LB	_____.	_____.
0160	630.0500 Seed Water	115.000 MGAL	_____.	_____.
0162	634.0809 Posts Tubular Steel 2x2-Inch X 9.5-FT	2.000 EACH	_____.	_____.
0164	634.0810 Posts Tubular Steel 2x2-Inch X 10-FT	6.000 EACH	_____.	_____.
0166	634.0811 Posts Tubular Steel 2x2-Inch X 11-FT	8.000 EACH	_____.	_____.
0168	634.0812 Posts Tubular Steel 2x2-Inch X 12-FT	44.000 EACH	_____.	_____.
0170	634.0814 Posts Tubular Steel 2x2-Inch X 14-FT	18.000 EACH	_____.	_____.
0172	634.0816 Posts Tubular Steel 2x2-Inch X 16-FT	4.000 EACH	_____.	_____.
0174	637.0620 Sign Flags Permanent Type II	8.000 EACH	_____.	_____.
0176	637.2210 Signs Type II Reflective H	344.750 SF	_____.	_____.
0178	637.2220 Signs Type II Reflective SH	6.630 SF	_____.	_____.
0180	637.2230 Signs Type II Reflective F	125.190 SF	_____.	_____.
0182	638.3000 Removing Small Sign Supports	64.000 EACH	_____.	_____.
0184	642.5001 Field Office Type B	1.000 EACH	_____.	_____.
0186	643.0410 Traffic Control Barricades Type II	2,140.000 DAY	_____.	_____.
0188	643.0420 Traffic Control Barricades Type III	4,976.000 DAY	_____.	_____.
0190	643.0705 Traffic Control Warning Lights Type A	6,472.000 DAY	_____.	_____.





Proposal Schedule of Items

Proposal ID: 20220208029 Project(s): 4986-00-25

Federal ID(s): WISC 2022179

SECTION: 0001 Roadway Items

Alt Set ID: Alt Mbr ID:

Proposal Line Number	Item ID Description	Approximate Quantity and Units	Unit Price	Bid Amount
0192	643.0900 Traffic Control Signs	14,710.000 DAY	_____.	_____.
0194	643.1000 Traffic Control Signs Fixed Message	264.000 SF	_____.	_____.
0196	643.1050 Traffic Control Signs PCMS	21.000 DAY	_____.	_____.
0198	643.5000 Traffic Control	1.000 EACH	_____.	_____.
0200	644.1410 Temporary Pedestrian Surface Asphalt	453.000 SF	_____.	_____.
0202	644.1430 Temporary Pedestrian Surface Plate	576.000 SF	_____.	_____.
0204	644.1601 Temporary Pedestrian Curb Ramp	940.000 DAY	_____.	_____.
0206	644.1810 Temporary Pedestrian Barricade	115.000 LF	_____.	_____.
0208	645.0111 Geotextile Type DF Schedule A	2,750.000 SY	_____.	_____.
0210	646.1020 Marking Line Epoxy 4-Inch	7,564.000 LF	_____.	_____.
0212	646.3020 Marking Line Epoxy 8-Inch	319.000 LF	_____.	_____.
0214	646.5020 Marking Arrow Epoxy	26.000 EACH	_____.	_____.
0216	646.5220 Marking Symbol Epoxy	21.000 EACH	_____.	_____.
0218	646.5320 Marking Railroad Crossings Epoxy	1.000 EACH	_____.	_____.
0220	646.6020 Marking Stop Line Epoxy 12-Inch	116.000 LF	_____.	_____.
0222	646.6220 Marking Yield Line Epoxy 18-Inch	10.000 EACH	_____.	_____.
0224	646.6320 Marking Dotted Extension Epoxy 18-Inch	56.000 LF	_____.	_____.



Proposal Schedule of Items

Proposal ID: 20220208029 Project(s): 4986-00-25

Federal ID(s): WISC 2022179

SECTION: 0001 Roadway Items

Alt Set ID: Alt Mbr ID:

Proposal Line Number	Item ID Description	Approximate Quantity and Units	Unit Price	Bid Amount
0226	646.7120 Marking Diagonal Epoxy 12-Inch	34.000 LF	_____.	_____.
0228	646.7420 Marking Crosswalk Epoxy Transverse Line 6-Inch	1,829.000 LF	_____.	_____.
0230	646.7520 Marking Crosswalk Epoxy Block Style 24-Inch	80.000 LF	_____.	_____.
0232	646.8120 Marking Curb Epoxy	39.000 LF	_____.	_____.
0234	646.8220 Marking Island Nose Epoxy	6.000 EACH	_____.	_____.
0236	649.0150 Temporary Marking Line Removable Tape 4-Inch	416.000 LF	_____.	_____.
0238	650.4000 Construction Staking Storm Sewer	79.000 EACH	_____.	_____.
0240	650.4500 Construction Staking Subgrade	2,907.000 LF	_____.	_____.
0242	650.5000 Construction Staking Base	421.000 LF	_____.	_____.
0244	650.5500 Construction Staking Curb Gutter and Curb & Gutter	4,469.000 LF	_____.	_____.
0246	650.7000 Construction Staking Concrete Pavement	2,907.000 LF	_____.	_____.
0248	650.8500 Construction Staking Electrical Installations (project) 01. 4986-00-25	LS	LUMP SUM	_____.
0250	650.9000 Construction Staking Curb Ramps	52.000 EACH	_____.	_____.
0252	650.9910 Construction Staking Supplemental Control (project) 01. 4986-00-25	LS	LUMP SUM	_____.
0254	650.9920 Construction Staking Slope Stakes	3,220.000 LF	_____.	_____.



## Proposal Schedule of Items

Proposal ID: 20220208029 Project(s): 4986-00-25

Federal ID(s): WISC 2022179

SECTION: 0001 Roadway Items

Alt Set ID: Alt Mbr ID:

Proposal Line Number	Item ID Description	Approximate Quantity and Units	Unit Price	Bid Amount
0256	652.0225 Conduit Rigid Nonmetallic Schedule 40 2-Inch	6,458.000 LF	_____.	_____.
0258	652.0235 Conduit Rigid Nonmetallic Schedule 40 3-Inch	127.000 LF	_____.	_____.
0260	652.0325 Conduit Rigid Nonmetallic Schedule 80 2-Inch	1,685.000 LF	_____.	_____.
0262	652.0335 Conduit Rigid Nonmetallic Schedule 80 3-Inch	716.000 LF	_____.	_____.
0264	652.0800 Conduit Loop Detector	1,388.000 LF	_____.	_____.
0266	653.0140 Pull Boxes Steel 24x42-Inch	11.000 EACH	_____.	_____.
0268	653.0164 Pull Boxes Non-Conductive 24x42-Inch	30.000 EACH	_____.	_____.
0270	654.0101 Concrete Bases Type 1	3.000 EACH	_____.	_____.
0272	654.0102 Concrete Bases Type 2	4.000 EACH	_____.	_____.
0274	654.0105 Concrete Bases Type 5	4.000 EACH	_____.	_____.
0276	654.0217 Concrete Control Cabinet Bases Type 9 Special	1.000 EACH	_____.	_____.
0278	654.0230 Concrete Control Cabinet Bases Type L30	1.000 EACH	_____.	_____.
0280	655.0210 Cable Traffic Signal 3-14 AWG	192.000 LF	_____.	_____.
0282	655.0240 Cable Traffic Signal 7-14 AWG	332.000 LF	_____.	_____.
0284	655.0270 Cable Traffic Signal 15-14 AWG	1,791.000 LF	_____.	_____.



Proposal Schedule of Items

Proposal ID: 20220208029 Project(s): 4986-00-25

Federal ID(s): WISC 2022179

SECTION: 0001 Roadway Items

Alt Set ID: Alt Mbr ID:

Proposal Line Number	Item ID Description	Approximate Quantity and Units	Unit Price	Bid Amount
0286	655.0305 Cable Type UF 2-12 AWG Grounded	779.000 LF	_____.	_____.
0288	655.0515 Electrical Wire Traffic Signals 10 AWG	2,267.000 LF	_____.	_____.
0290	655.0610 Electrical Wire Lighting 12 AWG	6,277.000 LF	_____.	_____.
0292	655.0625 Electrical Wire Lighting 6 AWG	16,584.000 LF	_____.	_____.
0294	655.0700 Loop Detector Lead In Cable	2,172.000 LF	_____.	_____.
0296	655.0800 Loop Detector Wire	3,820.000 LF	_____.	_____.
0298	656.0200 Electrical Service Meter Breaker Pedestal (location) 01. Military Rd & Western Ave	LS	LUMP SUM	_____.
0300	656.0200 Electrical Service Meter Breaker Pedestal (location) 02. STA. 1+51'C'	LS	LUMP SUM	_____.
0302	657.0100 Pedestal Bases	3.000 EACH	_____.	_____.
0304	657.0255 Transformer Bases Breakaway 11 1/2-Inch Bolt Circle	8.000 EACH	_____.	_____.
0306	657.0305 Poles Type 2	4.000 EACH	_____.	_____.
0308	657.0322 Poles Type 5-Aluminum	4.000 EACH	_____.	_____.
0310	657.0420 Traffic Signal Standards Aluminum 13-FT	2.000 EACH	_____.	_____.
0312	657.0430 Traffic Signal Standards Aluminum 10-FT	1.000 EACH	_____.	_____.
0314	657.0590 Trombone Arms 20-FT	4.000 EACH	_____.	_____.



## Proposal Schedule of Items

Proposal ID: 20220208029 Project(s): 4986-00-25

Federal ID(s): WISC 2022179

SECTION: 0001 Roadway Items

Alt Set ID: Alt Mbr ID:

Proposal Line Number	Item ID Description	Approximate Quantity and Units	Unit Price	Bid Amount
0316	657.0610 Luminaire Arms Single Member 4 1/2-Inch Clamp 6-FT	4.000 EACH	_____.	_____.
0318	658.0173 Traffic Signal Face 3S 12-Inch	12.000 EACH	_____.	_____.
0320	658.0416 Pedestrian Signal Face 16-Inch	8.000 EACH	_____.	_____.
0322	658.5069 Signal Mounting Hardware (location) 01. Military Rd & Western Ave	LS	LUMP SUM	_____.
0324	659.2130 Lighting Control Cabinets 120/240 30-Inch	1.000 EACH	_____.	_____.
0326	670.0100 Field System Integrator	LS	LUMP SUM	_____.
0328	678.0500 Communication System Testing	LS	LUMP SUM	_____.
0330	690.0150 Sawing Asphalt	919.000 LF	_____.	_____.
0332	690.0250 Sawing Concrete	823.000 LF	_____.	_____.
0334	715.0720 Incentive Compressive Strength Concrete Pavement	3,710.000 DOL	1.00000	3,710.00
0336	740.0440 Incentive IRI Ride	2,202.000 DOL	1.00000	2,202.00
0338	ASP.1T0A On-the-Job Training Apprentice at \$5.00/HR	2,000.000 HRS	5.00000	10,000.00
0340	ASP.1T0G On-the-Job Training Graduate at \$5.00/HR	1,320.000 HRS	5.00000	6,600.00
0342	SPV.0060 Special 01. Remove Ex. Sanitary Manhole	14.000 EACH	_____.	_____.
0344	SPV.0060 Special 02. Remove Ex. Water Valve Box	24.000 EACH	_____.	_____.



Proposal Schedule of Items

Proposal ID: 20220208029 Project(s): 4986-00-25

Federal ID(s): WISC 2022179

SECTION: 0001 Roadway Items

Alt Set ID: Alt Mbr ID:

Proposal Line Number	Item ID Description	Approximate Quantity and Units	Unit Price	Bid Amount
0346	SPV.0060 Special 03. Remove Ex. Hydrant	4.000 EACH	_____.	_____.
0348	SPV.0060 Special 04. Adjust Ex. Valve Box	2.000 EACH	_____.	_____.
0350	SPV.0060 Special 05. Adjust Ex. Curb Stop Box	2.000 EACH	_____.	_____.
0352	SPV.0060 Special 06. Sanitary Manhole 4-FT Diameter	15.000 EACH	_____.	_____.
0354	SPV.0060 Special 07. Sanitary Manhole 5-FT Diameter	1.000 EACH	_____.	_____.
0356	SPV.0060 Special 08. Sanitary Manhole 8-FT Diameter	1.000 EACH	_____.	_____.
0358	SPV.0060 Special 09. Adjust Existing Sanitary Manhole	4.000 EACH	_____.	_____.
0360	SPV.0060 Special 10. Sanitary Sewer Plug 12-Inch	1.000 EACH	_____.	_____.
0362	SPV.0060 Special 11. Connect To Existing Sanitary Sewer (All Sizes Except 27-Inch)	9.000 EACH	_____.	_____.
0364	SPV.0060 Special 12. Connect To Existing 27-Inch Sanitary Sewer	2.000 EACH	_____.	_____.
0366	SPV.0060 Special 13. Water Valve & Box 4-Inch	2.000 EACH	_____.	_____.
0368	SPV.0060 Special 14. Water Valve & Box 6-Inch	10.000 EACH	_____.	_____.
0370	SPV.0060 Special 15. Water Valve & Box 8-Inch	7.000 EACH	_____.	_____.
0372	SPV.0060 Special 16. Water Valve & Box 10-Inch	3.000 EACH	_____.	_____.
0374	SPV.0060 Special 17. Water Valve & Box 12-Inch	8.000 EACH	_____.	_____.



Proposal Schedule of Items

Proposal ID: 20220208029 Project(s): 4986-00-25

Federal ID(s): WISC 2022179

SECTION: 0001 Roadway Items

Alt Set ID: Alt Mbr ID:

Proposal Line Number	Item ID Description	Approximate Quantity and Units	Unit Price	Bid Amount
0376	SPV.0060 Special 18. Fire Hydrant	6.000 EACH	_____.	_____.
0378	SPV.0060 Special 19. Cross 12"X6"	1.000 EACH	_____.	_____.
0380	SPV.0060 Special 20. Cross 12"X10"	1.000 EACH	_____.	_____.
0382	SPV.0060 Special 21. Tees 6"X6"X6"	3.000 EACH	_____.	_____.
0384	SPV.0060 Special 22. Tees 8"X6"X8"	3.000 EACH	_____.	_____.
0386	SPV.0060 Special 23. Tees 10"X8"X10"	1.000 EACH	_____.	_____.
0388	SPV.0060 Special 24. Tees 10"X10"X10"	1.000 EACH	_____.	_____.
0390	SPV.0060 Special 25. Tees 12"X4"X12"	2.000 EACH	_____.	_____.
0392	SPV.0060 Special 26. Tees 12"X6"X12"	3.000 EACH	_____.	_____.
0394	SPV.0060 Special 27. Tees 12"X8"X12"	3.000 EACH	_____.	_____.
0396	SPV.0060 Special 28. Tees 12"X12"X12"	3.000 EACH	_____.	_____.
0398	SPV.0060 Special 29. Bend 45-Degree 4-Inch	2.000 EACH	_____.	_____.
0400	SPV.0060 Special 30. Bend 22.5-Degree 6-Inch	3.000 EACH	_____.	_____.
0402	SPV.0060 Special 31. Bend 45-Degree 6-Inch	5.000 EACH	_____.	_____.
0404	SPV.0060 Special 32. Bend 90-Degree 6-Inch	2.000 EACH	_____.	_____.
0406	SPV.0060 Special 33. Bend 45-Degree 8-Inch	6.000 EACH	_____.	_____.
0408	SPV.0060 Special 34. Bend 90-Degree 8-Inch	1.000 EACH	_____.	_____.



Proposal Schedule of Items

Proposal ID: 20220208029 Project(s): 4986-00-25

Federal ID(s): WISC 2022179

SECTION: 0001 Roadway Items

Alt Set ID: Alt Mbr ID:

Proposal Line Number	Item ID Description	Approximate Quantity and Units	Unit Price	Bid Amount
0410	SPV.0060 Special 35. Bend 45-Degree 10-Inch	4.000 EACH	_____.	_____.
0412	SPV.0060 Special 36. Bend 90-Degree 10-Inch	1.000 EACH	_____.	_____.
0414	SPV.0060 Special 37. Bend 11.25-Degree 12-Inch	1.000 EACH	_____.	_____.
0416	SPV.0060 Special 38. Bend 45-Degree 12-Inch	4.000 EACH	_____.	_____.
0418	SPV.0060 Special 39. Bend 90-Degree 12-Inch	1.000 EACH	_____.	_____.
0420	SPV.0060 Special 40. Reducer 12"X8"	2.000 EACH	_____.	_____.
0422	SPV.0060 Special 41. Plug 6-Inch	2.000 EACH	_____.	_____.
0424	SPV.0060 Special 42. Plug 10-Inch	2.000 EACH	_____.	_____.
0426	SPV.0060 Special 43. Plug 12-Inch	1.000 EACH	_____.	_____.
0428	SPV.0060 Special 44. Connect To Existing 4-Inch Watermain	1.000 EACH	_____.	_____.
0430	SPV.0060 Special 45. Connect to Existing 6-Inch Watermain	5.000 EACH	_____.	_____.
0432	SPV.0060 Special 46. Connect to Existing 8-Inch Watermain	6.000 EACH	_____.	_____.
0434	SPV.0060 Special 47. Connect to Existing 10-Inch Watermain	1.000 EACH	_____.	_____.
0436	SPV.0060 Special 48. Connect to Existing 12-Inch Watermain	2.000 EACH	_____.	_____.
0438	SPV.0060 Special 49. Sacrificial Anode Bag	8.000 EACH	_____.	_____.





Proposal Schedule of Items

Proposal ID: 20220208029 Project(s): 4986-00-25

Federal ID(s): WISC 2022179

SECTION: 0001 Roadway Items

Alt Set ID: Alt Mbr ID:

Proposal Line Number	Item ID Description	Approximate Quantity and Units	Unit Price	Bid Amount
0440	SPV.0060 Special 50. Corporation, Curb Stop, Box, Saddle & Union 1-1/4 Inch	17.000 EACH	_____.	_____.
0442	SPV.0060 Special 51. Corporation, Curb Stop, Box, Saddle & Union 1-1/2 Inch	1.000 EACH	_____.	_____.
0444	SPV.0060 Special 52. Traffic Signal Control Cabinet and Controller	1.000 EACH	_____.	_____.
0446	SPV.0060 Special 53. Audible-Tactile Pedestrian Push Button Unit	8.000 EACH	_____.	_____.
0448	SPV.0060 Special 54. Ornamental Street Light	16.000 EACH	_____.	_____.
0450	SPV.0060 Special 55. Cobra Head Street Light	5.000 EACH	_____.	_____.
0452	SPV.0060 Special 56. Fiber Optic Access Box	10.000 EACH	_____.	_____.
0454	SPV.0060 Special 57. Cobra Head Street Light - Fixture Only	4.000 EACH	_____.	_____.
0456	SPV.0060 Special 58. Management of Petroleum Contaminated Water	1.000 EACH	_____.	_____.
0458	SPV.0060 Special 59. Salvage and Reinstall Flashing Light	2.000 EACH	_____.	_____.
0460	SPV.0060 Special 60. Remove and Salvage Signs	78.000 EACH	_____.	_____.
0462	SPV.0060 Special 61. Remove, Salvage & Reinstall GPS Preemption Detector (Military Road & Western	1.000 EACH	_____.	_____.
0464	SPV.0060 Special 62. Remove & Salvage Traffic Signal Equipment (Military Road & 9th St)	1.000 EACH	_____.	_____.



Proposal Schedule of Items

Proposal ID: 20220208029 Project(s): 4986-00-25

Federal ID(s): WISC 2022179

SECTION: 0001 Roadway Items

Alt Set ID: Alt Mbr ID:

Proposal Line Number	Item ID Description	Approximate Quantity and Units	Unit Price	Bid Amount
0466	SPV.0060 Special 63. Remove & Salvage Traffic Signal Equipment (Military Road & Western Ave)	1.000 EACH	_____.	_____.
0468	SPV.0060 Special 64. Temporary Water Service Project 4986-00-25	1.000 EACH	_____.	_____.
0470	SPV.0060 Special 65. Bypass Pumping 27-Inch Sanitary Interceptor Project 4986-00-25	1.000 EACH	_____.	_____.
0472	SPV.0085 Special 01. Low Maintenance Seed Mix	1.610 LB	_____.	_____.
0474	SPV.0090 Special 01. Sanitary Lateral 6-Inch	1,445.000 LF	_____.	_____.
0476	SPV.0090 Special 02. Polyethylene Water Service 1-1/4 Inch (C.T.S.)	565.000 LF	_____.	_____.
0478	SPV.0090 Special 03. Polyethylene Water Service 1-1/2 Inch (C.T.S.)	35.000 LF	_____.	_____.
0480	SPV.0090 Special 04. Sanitary Sewer Pipe 8-Inch	2,480.000 LF	_____.	_____.
0482	SPV.0090 Special 05. Sanitary Sewer Pipe 10-Inch	30.000 LF	_____.	_____.
0484	SPV.0090 Special 06. Sanitary Sewer Pipe 12-Inch	175.000 LF	_____.	_____.
0486	SPV.0090 Special 07. Sanitary Sewer Pipe 27-Inch	210.000 LF	_____.	_____.
0488	SPV.0090 Special 08. PVC Water Main 4-Inch	90.000 LF	_____.	_____.
0490	SPV.0090 Special 09. PVC Water Main 6-Inch	385.000 LF	_____.	_____.
0492	SPV.0090 Special 10. PVC Water Main 8-Inch	305.000 LF	_____.	_____.
0494	SPV.0090 Special 11. PVC Water Main 10-Inch	365.000 LF	_____.	_____.



Proposal Schedule of Items

Proposal ID: 20220208029 Project(s): 4986-00-25

Federal ID(s): WISC 2022179

SECTION: 0001 Roadway Items

Alt Set ID: Alt Mbr ID:

Proposal Line Number	Item ID Description	Approximate Quantity and Units	Unit Price	Bid Amount
0496	SPV.0090 Special 12. PVC Water Main 12-Inch	2,220.000 LF	_____.	_____.
0500	SPV.0090 Special 14. Concrete Curb and Gutter 4-Inch Sloped 30-Inch Type A Modified	329.000 LF	_____.	_____.
0502	SPV.0090 Special 15. Storm Sewer Laterals	362.000 LF	_____.	_____.
0504	SPV.0090 Special 16. Sawing Curb Head	9.000 LF	_____.	_____.
0506	SPV.0165 Special 01. Insulation Board 2-Inch	1,550.000 SF	_____.	_____.
0508	SPV.0180 Special 01. Hydro Mulch	5,138.000 SY	_____.	_____.
0510	SPV.0195 Special 01. Contaminated Soil Management	300.000 TON	_____.	_____.
0512	201.0120 Clearing	426.000 ID	_____.	_____.
0514	201.0220 Grubbing	444.000 ID	_____.	_____.
0516	SPV.0060 Special 66. Temporary 2-Inch Blow Off	2.000 EACH	_____.	_____.
Section: 0001			Total:	_____.
			Total Bid:	_____.

