



# Wisconsin Department of Transportation

**Division of Transportation Systems Development**

Bureau of Project Development  
4822 Madison Yards Way, 4<sup>th</sup> Floor South  
Madison, WI 53705

Telephone: (608) 266-1631  
Facsimile (FAX): (608) 266-8459

March 4, 2022

**NOTICE TO ALL CONTRACTORS:**

**Proposal #26: 6560-08-71, WISC 20202250**  
**Kaukauna - Seymour**  
**CTH JJ Intersection**  
**STH 55**  
**Outagamie County**

**6570-09-71, WISC 2022251**  
**Kaukauna - Seymour**  
**IH 41 – STH 54**  
**STH 55**  
**Outagamie County**

**Letting of March 8, 2022**

This is Addendum No. 02, which provides for the following:

**Special Provisions:**

Revised Special Provisions	
Article No.	Description
3	Prosecution and Progress
5	Traffic

Added Special Provisions	
Article No.	Description
50	Notice to Contractor, Hazard Protection on Roads open to Traffic

**Schedule of Items:**

Revised Bid Item Quantities					
Bid Item	Item Description	Unit	Old Quantity	Revised Quantity	Proposal Total
521.1024	Apron Endwalls for Culvert Pipe Steel 24-Inch	EA	2	-1	2
521.1030	Apron Endwalls for Culvert Pipe Steel 30-Inch	EA	2	1	3
522.2419	Culvert Pipe Reinforced Concrete Horizontal Elliptical Class HE-IV 19x30-Inch	LF	218	94	312
522.2424	Culvert Pipe Reinforced Concrete Horizontal Elliptical Class HE-IV 24x38-Inch	LF	298	-94	204
522.2619	Apron Endwalls for Culvert Pipe Reinforced Concrete Horizontal Elliptical 19x30-Inch	EA	6	4	10
522.2624	Apron Endwalls for Culvert Pipe Reinforced Concrete Horizontal Elliptical 24x38-Inch	EA	12	-4	8
643.0300	Traffic Control Drums	DAY	1,285	1,665	2,950

**Plan Sheets:**

<b>Revised Plan Sheets (Project ID 6560-08-71)</b>	
Plan Sheet	Plan Sheet Title (brief description of changes to sheet)
42	Storm Sewer Plan – Show missing profile linework.

<b>Revised Plan Sheets (Project ID 6570-09-71)</b>	
Plan Sheet	Plan Sheet Title (brief description of changes to sheet)
5	Existing Typical Section – Updated Matchline A in Guardrail Section.
6	Existing Typical Section – Updated Matchline A in Guardrail Section.
7	Existing Typical Section – Updated Matchline A in Guardrail Section.
9	Proposed Typical Section – Updated Matchline A and B in Guardrail Section.
85	Miscellaneous Quantities – Updated quantities for culvert location STA 200+50.
86	Miscellaneous Quantities – Updated quantities for culvert locations STA 200+50 and 515+85.
91	Miscellaneous Quantities – Updated traffic control drum quantities.
122	Plan Sheet – Updated pipe size at STA 548+50.

The responsibility for notifying potential subcontractors and suppliers of these changes remains with the prime contractor.

Sincerely,

*Mike Coleman*

Proposal Development Specialist  
Proposal Management Section

**ADDENDUM NO. 02**  
**6560-08-71/6570-09-71**  
**March 4, 2022**

**Special Provisions**

**3. Prosecution and Progress.**

*Replace paragraph one under section titled **6570-09-71** with the following:*

A milled surface open to through traffic shall not remain in place for longer than 7 days unless adverse weather prevents placement of the CIR or asphalt layer. Provide an even cross-sectional profile of the roadway at the end of each day's milling operations on roadways open to through traffic.

**5. Traffic.**

*Insert the following after the section titled **6560-08-71**:*

**Opening Roundabout**

Do not open a roundabout to through traffic until the roundabout is completed including lighting (or equivalent temporary lighting), signing, pavement marking and all finishing items.

*Replace paragraph two under section titled **6570-09-71** with the following*

Supplement flaggers with a pilot vehicle, per standard specification 104.6.1.2.2,

*Delete section titled **Guardrail Replacements***

**50. Notice to Contractor, Hazard Protection on Roads open to Traffic.**

*Replace standard specification 104.6.1.2.4 with:*

(1) On roads open to traffic, remove construction hazards, stored materials, and equipment not in use; or if the engineer allows, delineate and shield with concrete barrier for the following:

- Posted speeds 45 mph or less: within 8 feet of the travelled way.
- Posted speeds from 45 mph to 55 mph inclusive: within 10 feet of the travelled way.
- Posted speeds above 55 mph: within 15 feet of the travelled way.

(2) On roads open to traffic, use temporary traffic control drums to delineate bridge abutments, concrete barrier blunt ends, sign bridge foundations, drainage structures, and slopes exposed by removing permanent protective measures. Eliminate the need for delineation within 5 calendar days or before noon on the Friday after removing permanent roadside safety device.

**Schedule of Items**

Attached, dated March 4, 2022, are the revised Schedule of Items Pages 5, 7, and 12.

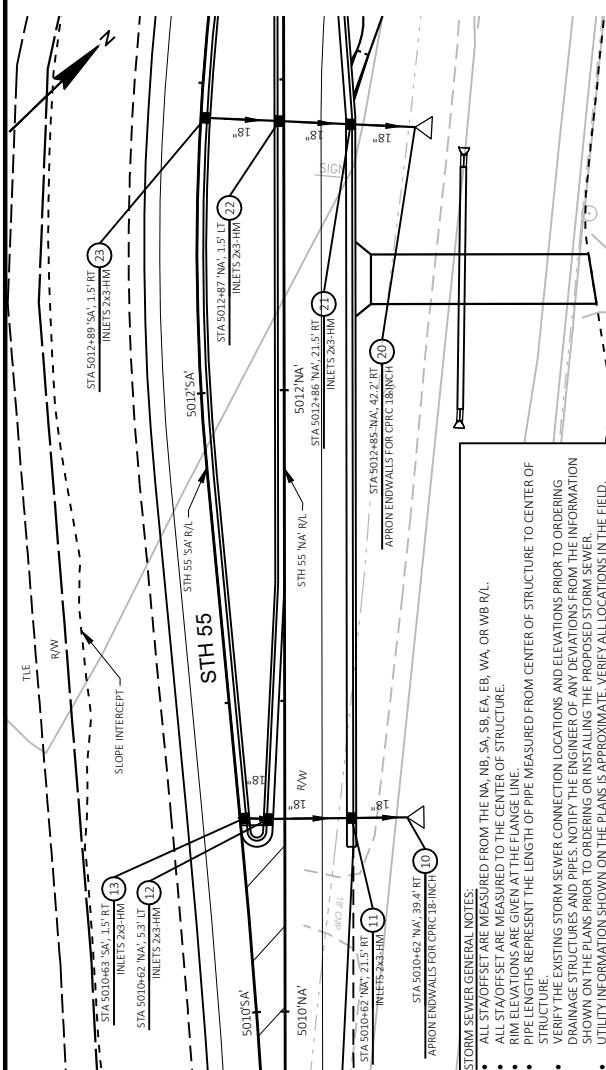
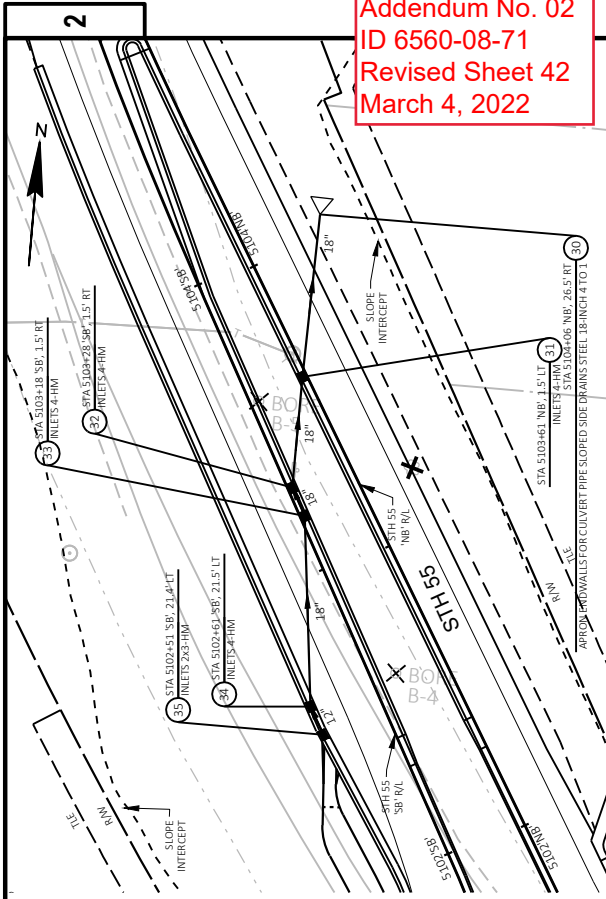
**Plan Sheets**

The following 8½ x 11-inch sheets are attached and made part of the plans for this proposal:

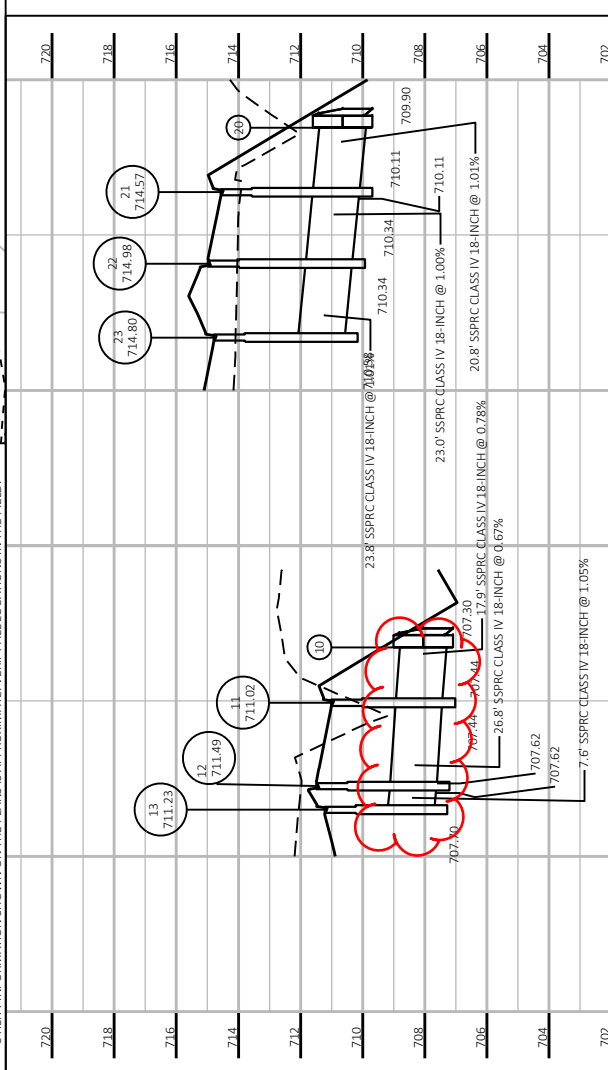
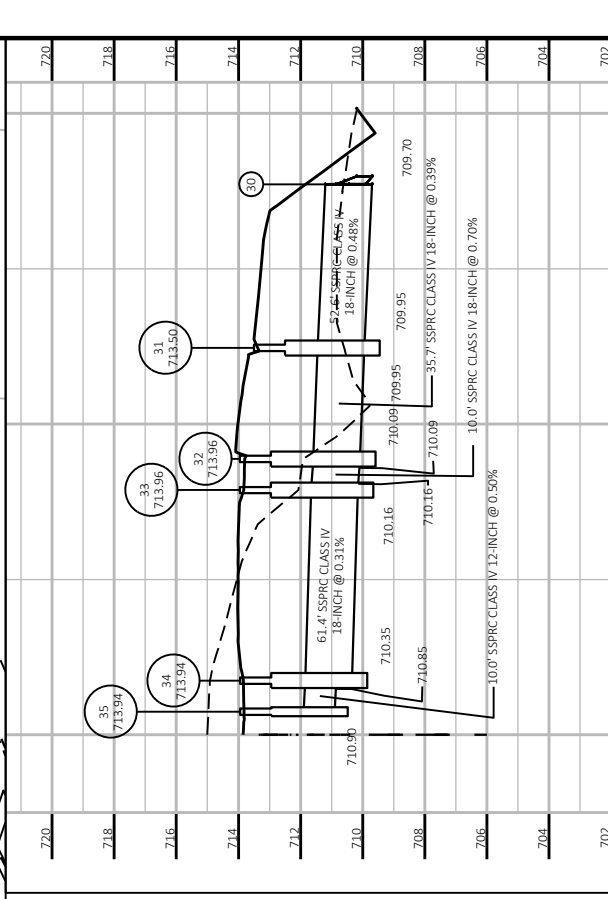
Revised: Project ID 6560-08-71 sheet 42 and Project ID 6570-09-71 sheets 5, 6, 7, 9, 85, 86, 91 and 122.

END OF ADDENDUM

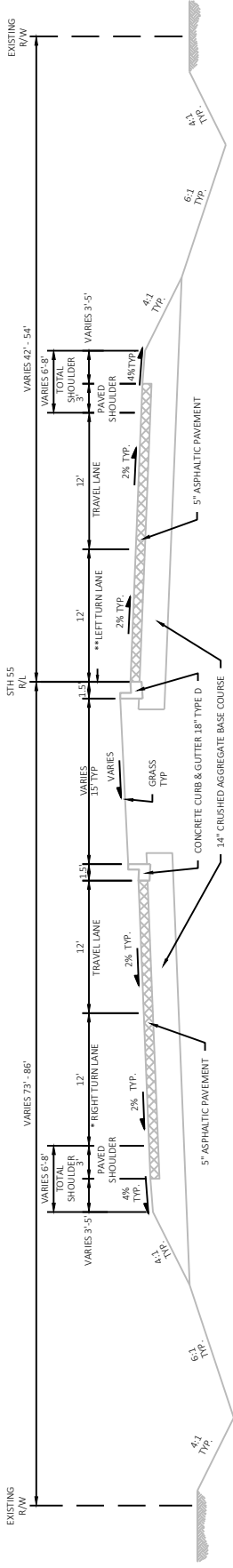
Addendum No. 02  
 ID 6560-08-71  
 Revised Sheet 42  
 March 4, 2022



- STORM SEWER GENERAL NOTES:
- ALL STAVORSET ARE MEASURED FROM THE NA, NB, SA, SB, EA, EB, WA, OR WB R/L.
  - ALL STA OFFSETS ARE MEASURED TO THE CENTER OF STRUCTURE.
  - ALL STA OFFSETS ARE MEASURED TO THE CENTER OF STRUCTURE.
  - PIPE LENGTHS REPRESENT THE LENGTH OF PIPE MEASURED FROM CENTER OF STRUCTURE TO CENTER OF STRUCTURE.
  - VERIFY THE EXISTING STORM SEWER CONNECTION LOCATIONS AND ELEVATIONS PRIOR TO ORDERING DRAINAGE STRUCTURES AND PIPES. NOTIFY THE ENGINEER OF ANY DEVIATIONS FROM THE INFORMATION SHOWN ON THE PLANS PRIOR TO ORDERING OR INSTALLING THE PROPOSED STORM SEWER.
  - UTILITY INFORMATION SHOWN ON THE PLANS IS APPROXIMATE. VERIFY ALL LOCATIONS IN THE FIELD.

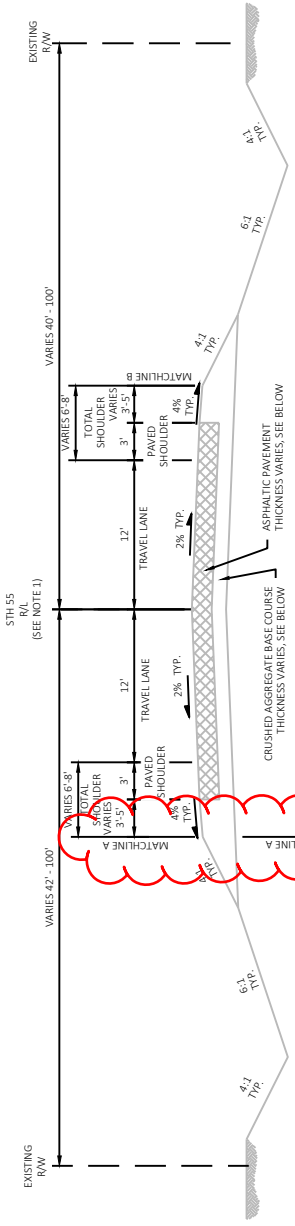


Addendum No. 02  
 ID 6570-09-71  
 Revised Sheet 5  
 March 4, 2022



TYPICAL EXISTING SECTION STH 55

- STA 61+22.68 - STA 79+00.00
- \* STA 64+20.00 - STA 79+00.00
- \*\* STA 67+40.00 - STA 74+50.00



TYPICAL EXISTING SECTION STH 55

- STA 79+00.00 - STA 81+00.00 (5' ASPHALTIC PAVEMENT ON 14\"/>

NOTE: EXCEPTION TO NET CENTERLINE LENGTH STA 116+69.08 - STA 142+42.77

- GUARDRAIL SECTION
- STA 79+79.15 - STA 82+88.83 LT
- STA 79+85.99 - STA 82+54.21 RT
- STA 82+88.83 - STA 82+88.83 LT
- STA 142+82.65 - STA 150+49.71 RT
- STA 300+25.59 - STA 304+30.59 LT
- STA 300+00.00 - STA 308+30.37 RT
- STA 314+09.34 - STA 317+39.13 LT
- STA 314+09.34 - STA 317+26.49 RT
- MATCHLINE B IS A MIRROR IMAGE

PROJECT NO: 6570-09-71

HWY: STH 55

COUNTY: OUTAGAMIE

TYPICAL SECTIONS

SHEET 5

E

FILE NAME: K:\1192\202\CIVIL\65700905\05\SHEETSP\PLAN\020301-1S.DWG

LAYOUT NAME: 020301-5

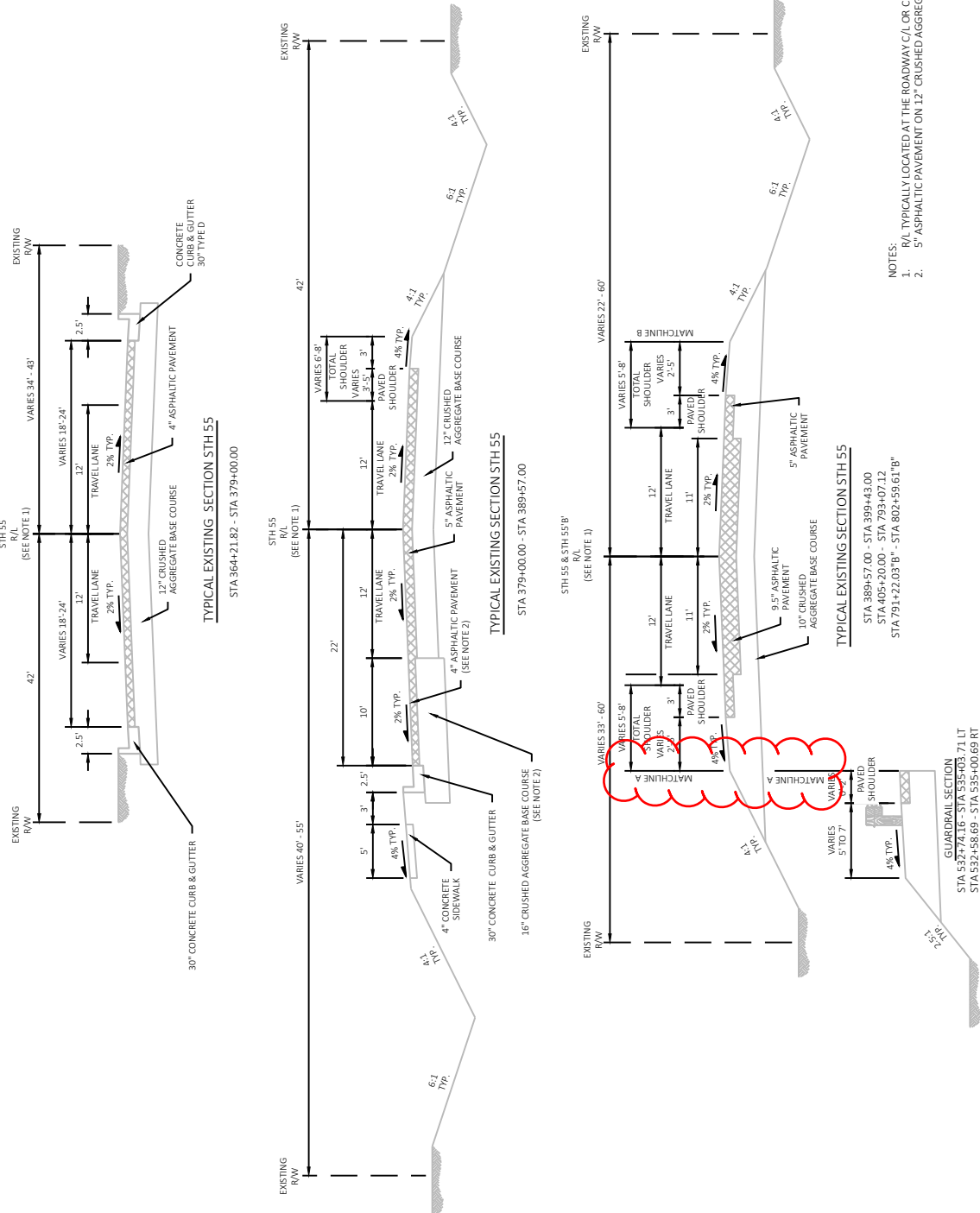
PLOT DATE: 3/27/2022 1:07 PM

PLOT BY: SIEBER, LUKE

PLOT NAME: JIN101T

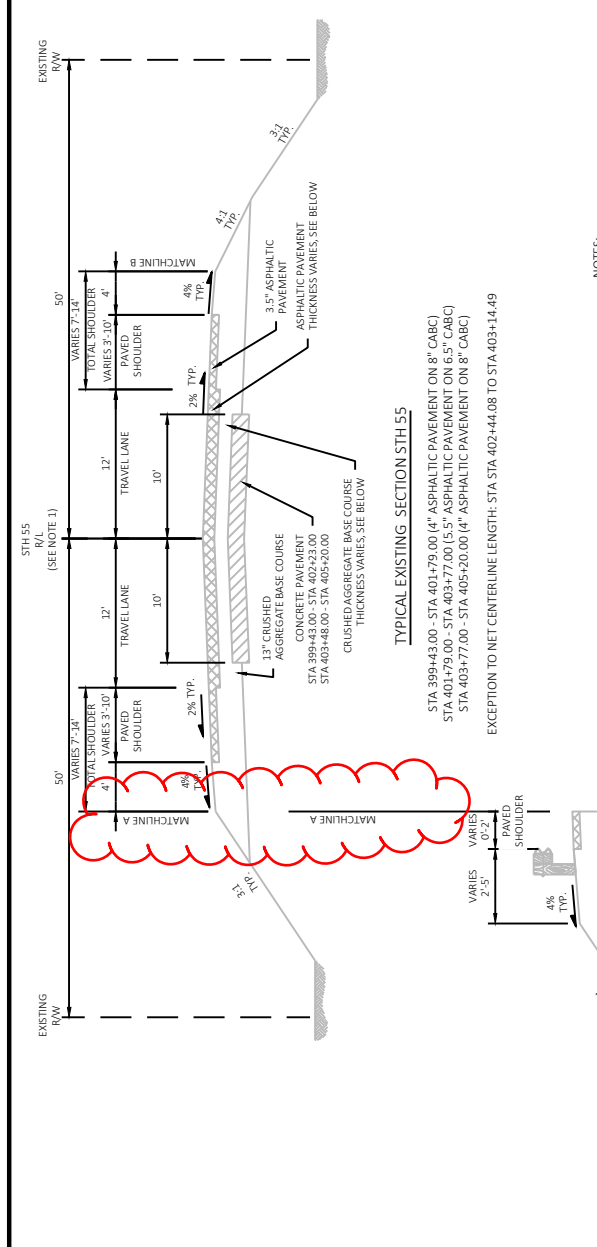
W6507\CADDS SHEET 42

Addendum No. 02  
ID 6570-09-71  
Revised Sheet 6  
March 4, 2022



2

2



TYPICAL EXISTING SECTION STH 55

STA 399+43.00 - STA 401+79.00 (4" ASPHALTIC PAVEMENT ON 8" CABC)  
STA 401+79.00 - STA 403+77.00 (5.5" ASPHALTIC PAVEMENT ON 6.5" CABC)  
STA 403+77.00 - STA 405+20.00 (4" ASPHALTIC PAVEMENT ON 8" CABC)

EXCEPTION TO NET CENTERLINE LENGTH: STA 402+44.08 TO STA 403+14.49

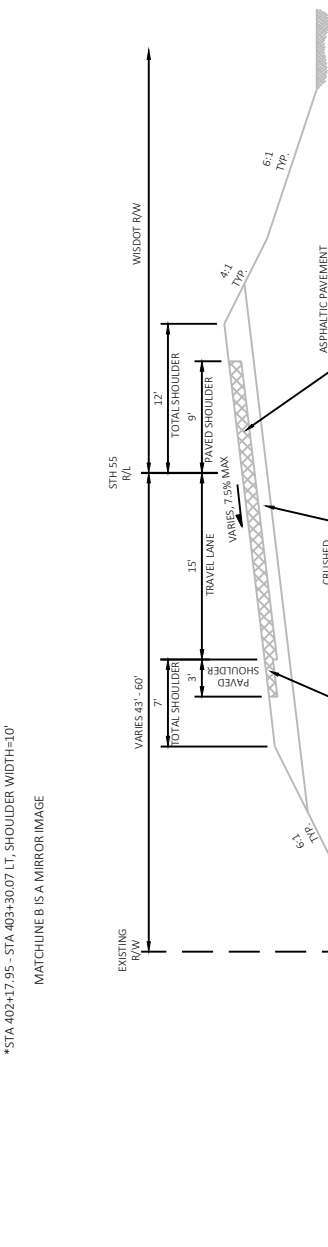
TYPICAL EXISTING SECTION STH 54 EASTBOUND TO STH 55 SOUTHBOUND RAMP

STA 793+07.12 - STA 805+26.62



GUARDRAIL SECTION  
STA 400+71.14 - STA 402+17.95 LT  
STA 400+26.59 - STA 403+52.83 RT  
STA 403+30.07 - STA 404+64.01 LT  
\*STA 402+17.95 - STA 403+30.07 LT, SHOULDER WIDTH=10'  
MATCHLINE B IS A MIRROR IMAGE

- NOTES:  
1.  $\forall$  (L) TYPICALLY LOCATED AT THE ROADWAY  $CL$  OR CROWN POINT BUT VARIES THROUGHOUT THE PROJECT.

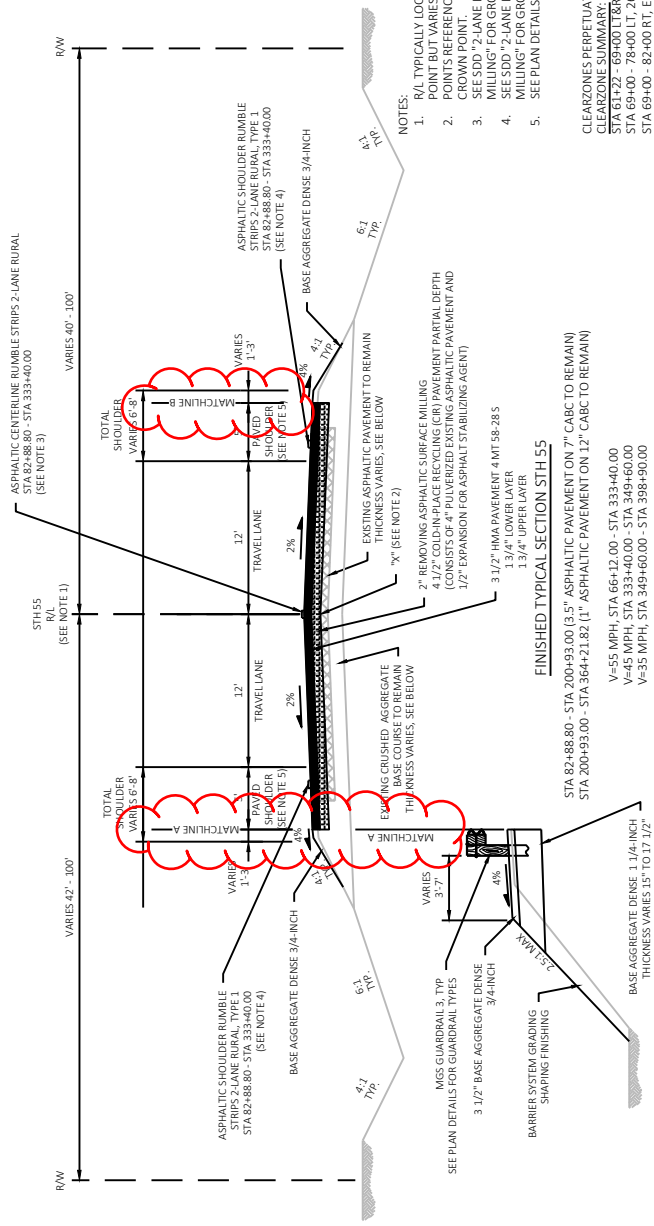


TYPICAL EXISTING SECTION STH 54 EASTBOUND TO STH 55 SOUTHBOUND RAMP

STA 793+07.12 - STA 805+26.62

Addendum No. 02  
ID 6570-09-71  
Revised Sheet 7  
March 4, 2022

**Addendum No. 02**  
**ID 6570-09-71**  
**Revised Sheet 9**  
**March 4, 2022**



- NOTES:
- R/L TYPICALLY LOCATED AT THE ROADWAY C/L OR CROWN POINT BUT VARIES THROUGHOUT THE PROJECT.
  - POINTS REFERENCED ON CROSS SECTIONS AT ROADWAY CROWN POINT.
  - SEE SDD "2-LANE RURAL CENTERLINE RUMBLE STRIP."
  - SEE SDD "2-LANE RURAL SHOULDER RUMBLE STRIP."
  - "MILLING" FOR GROOVE SPACING AND GAP LOCATIONS.
  - SEE PLAN DETAILS FOR PAVING TO FACE OF GUARDRAIL.

CLEARZONES PERPETUATE EXISTING CONDITIONS.  
 CLEARZONE SUMMARY:  
 STA 61+22 - 69+00 LT & RT, 26'  
 STA 69+00 - 78+00 LT, 26'  
 STA 78+00 - 82+00 RT, EXISTING R/W, VARIES 31' - 32'  
 STA 82+00 - 88+00 LT & RT, 26'  
 STA 88+00 - 116+60.09 LT & RT, EXISTING R/W (MIN 26') OR 34'  
 STA 142+47 - 145+50 LT & RT, 26'  
 STA 145+50 - 160+50 LT & RT, VARIES, LESSER OF EXISTING R/W (MIN 29') OR 34'  
 STA 160+50 - 162+50 LT, VARIES, LESSER OF EXISTING R/W (MIN 31') OR 34'  
 STA 162+50 - 167+50 LT & RT, 26'  
 STA 167+50 - 177+50 LT, EXISTING R/W, 31'  
 STA 177+50 - 200+93 LT, EXISTING R/W, VARIES 30' - 31'  
 STA 200+93 - 200+93 RT, VARIES, LESSER OF EXISTING R/W (MIN 29') OR 34'  
 STA 200+93 - 200+93 LT, EXISTING R/W, VARIES 30' - 31'  
 STA 200+93 - 210+50 LT, VARIES, LESSER OF EXISTING R/W (MIN 29') OR 34'  
 STA 210+50 - 210+50 RT, 26'  
 STA 210+50 - 227+50 LT & RT, 26'  
 STA 227+50 - 283+50 LT & RT, VARIES, LESSER OF EXISTING R/W (MIN 28') OR 34'  
 STA 283+50 - 301+50 LT & RT, 26'  
 STA 301+50 - 321+50 LT & RT, VARIES, LESSER OF EXISTING R/W (MIN 29') OR 34'  
 STA 321+50 - 339+50 RT, VARIES, LESSER OF EXISTING R/W (MIN 31') OR 34'  
 STA 339+50 - 365+50 LT & RT, VARIES, LESSER OF EXISTING R/W (MIN 24') OR 26'

**FINISHED TYPICAL SECTION STH 55**

STA 82+88.80 - STA 200+93.00 (1.5" ASPHALTIC PAVEMENT ON 7" CABC TO REMAIN)  
 STA 200+93.00 - STA 364+21.82 (1" ASPHALTIC PAVEMENT ON 12" CABC TO REMAIN)  
 V=55 MPH, STA 66+12.00 - STA 333+40.00  
 V=45 MPH, STA 333+40.00 - STA 349+60.00  
 V=35 MPH, STA 349+60.00 - STA 398+90.00  
 NOTE: EXCEPTION TO NET CENTERLINE LENGTH STA 116+69.08 - STA 142+42.77

GUARDRAIL SECTION  
 STA 146+50.00 - STA 151+25.00 LT  
 STA 145+80.00 - STA 150+55.00 RT  
 STA 300+68.45 - STA 304+30.87 LT  
 STA 299+99.72 - STA 303+37.14 RT  
 STA 314+05.36 - STA 317+42.78 LT  
 STA 314+05.47 - STA 317+30.39 RT  
 MATCHLINE B IS A MIRROR IMAGE



Addendum No. 02  
ID 6570-09-71  
Revised Sheet 85  
March 4, 2022

ROADWAY	INLET	DISCHARGE			ELEV	STATION	OFFSET	ELEV	STATION	OFFSET	ELEV	CULVERT PIPES				CONSTRUCTION	STAKING PIPE	CULVERTS	EACH	
		522.0442	522.2419	522.2424								522.2429	522.0442	522.2419	522.2424					522.2429
		CONCRETE CLASS IV42-INCH	ELLIPTICAL CLASS HE-IV19X30- INCH	CONCRETE HORIZONTAL REINFORCED	CULVERT PIPE REINFORCED	CULVERT PIPE ELLIPITICAL CLASS HE-IV24X38-INCH	CULVERT PIPE REINFORCED CONCRETE HORIZONTAL ELLIPTICAL CLASS HE-IV24X38-INCH	CULVERT PIPE CONCRETE HORIZONTAL ELLIPTICAL CLASS HE-IV 29X45-INCH	CONCRETE HORIZONTAL REINFORCED	CULVERT PIPE ELLIPITICAL CLASS HE-IV24X38-INCH	CULVERT PIPE REINFORCED	CULVERT PIPE ELLIPITICAL CLASS HE-IV24X38-INCH	CULVERT PIPE CONCRETE HORIZONTAL ELLIPTICAL CLASS HE-IV 29X45-INCH	CONSTRUCTION	STAKING PIPE	CULVERTS	EACH			
STH 55																				
100+90.69	25.37' LT	706.36	100+92.32	24.60' RT	706.34															
101+00.46	25.65' LT	706.40	101+02.67	24.30' RT	706.36															
200+25.93	23.50' LT	717.68	200+25.53	23.50' RT	717.65															
200+32.93	23.50' LT	717.68	200+32.53	23.50' RT	717.65															
209+56.74	22.32' LT	715.25	209+57.22	30.03' RT	715.15															
209+68.33	23.38' LT	715.25	209+68.38	29.89' RT	715.15															
216+42.04	29.24' RT	717.25	216+41.55	24.27' LT	716.44															
245+69.25	29.89' LT	715.66	245+69.18	21.90' LT	715.60															
262+31.73	23.74' LT	717.95	262+31.58	24.06' RT	717.50															
262+41.91	23.53' LT	717.95	262+41.22	24.71' RT	717.50															
328+89.88	20.87' RT	721.84	328+88.91	28.49' LT	721.46															
328+95.38	20.76' RT	721.84	328+94.41	28.60' LT	721.46															
348+82.53	23.22' LT	727.23	348+82.43	24.78' RT	727.04															
348+90.87	23.00' LT	727.13	348+90.78	25.00' RT	727.11															
404+57.08	78.66' RT	723.49	403+71.85	64.34' RT	723.19															
443+93.52	26.41' LT	754.41	443+97.01	30.21' RT	754.25															
490+91.22	38.18' LT	762.93	490+91.16	43.82' RT	762.45															
548+51.92	29.24' RT	753.99	548+50.95	2.74' LT	753.80															
568+42.15	33.79' LT	777.90	568+45.27	22.12' RT	777.78															
603+12.54	27.08' LT	776.46	603+11.83	24.93' RT	775.95															
603+20.20	26.99' LT	776.46	603+19.50	25.03' RT	775.95															
611+40.64	30.72' LT	777.96	611+40.83	25.28' RT	777.76															
666+67.71	25.17' LT	785.58	666+68.40	26.83' RT	785.48															
754+28.52	26.80' LT	793.14	754+30.98	31.47' RT	793.05															
754+96.91	25.31' LT	793.60	754+95.91	23.33' RT	793.40															
755+04.57	23.35' LT	793.60	755+03.74	22.84' RT	793.40															
TOTAL 0010																105	312	204	195	26



ALL ITEMS CATEGORY 0010

SHEET: 85

PROJECT: 6570-09-71

HWY: STH 55

COUNTY: OUTAGAMIE

MISCELLANEOUS QUANTITIES

FILE NAME: \\K:\112702\CW\65700900\Design\Quantities\09\_Resurf\030201-rmq.dwg PLOT DATE: 3/2/2022 3:01 PM PLOT BY: PLOT NAME: PLOT SCALE: 1:1

Addendum No. 02  
 ID 6570-09-71  
 Revised Sheet 86  
 March 4, 2022

CULVERT APRON ENDWALLS

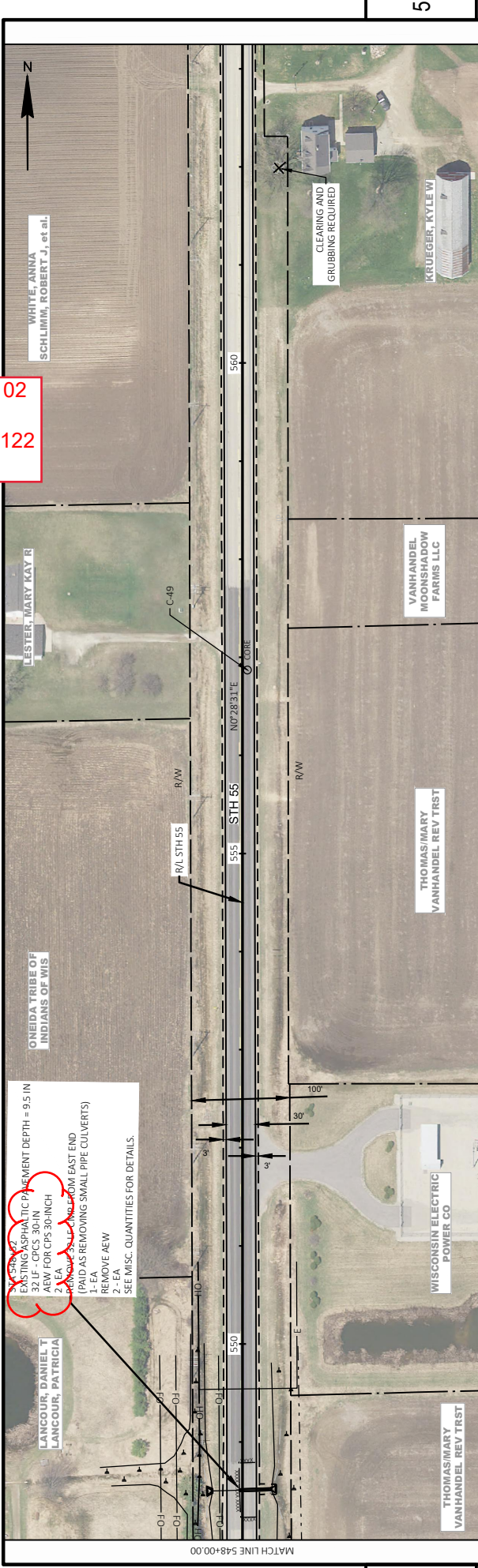
ROADWAY	STATION	OFFSET	520.1024 APRON ENDWALLS FOR CULVERT PIPE 24-INCH EACH	521.1030 APRON ENDWALLS FOR CULVERT PIPE STEEL 30-INCH EACH	521.1048 APRON ENDWALLS FOR CULVERT PIPE STEEL 48-INCH EACH	522.1024 APRON ENDWALLS FOR CULVERT PIPE REINFORCED CONCRETE 24-INCH EACH	522.1030 APRON ENDWALLS FOR CULVERT PIPE REINFORCED CONCRETE 30-INCH EACH	522.1036 APRON ENDWALLS FOR CULVERT PIPE REINFORCED CONCRETE 36-INCH EACH	522.1042 APRON ENDWALLS FOR CULVERT PIPE REINFORCED CONCRETE 42-INCH EACH	522.2619 APRON ENDWALLS FOR CULVERT PIPE REINFORCED CONCRETE HORIZONTAL ELLIPTICAL 19X30-INCH EACH	522.2624 APRON ENDWALLS FOR CULVERT PIPE REINFORCED CONCRETE HORIZONTAL ELLIPTICAL 24X38-INCH EACH	522.2629 APRON ENDWALLS FOR CULVERT PIPE REINFORCED CONCRETE HORIZONTAL ELLIPTICAL 29X45-INCH EACH	633.5200 MARKERS CULVERT END EACH
STH-55	100+90.69	25.37' LT	-	-	-	-	-	-	-	-	-	-	1
	100+92.32	24.60' RT	-	-	-	-	-	-	-	-	-	-	1
	101+00.46	25.65' LT	-	-	-	-	-	-	-	-	-	-	1
	101+02.67	24.30' RT	-	-	-	-	-	-	-	-	-	-	1
	192+81.32	21.48' RT	-	-	-	-	-	-	-	-	-	-	1
	200+25.93	23.50' LT	-	-	-	-	-	-	-	-	-	-	1
	200+25.53	23.50' RT	-	-	-	-	-	-	-	-	-	-	1
	200+32.93	23.50' LT	-	-	-	-	-	-	-	-	-	-	1
	200+32.53	23.50' RT	-	-	-	-	-	-	-	-	-	-	1
	209+56.74	22.32' LT	-	-	-	-	-	-	-	-	-	-	1
	209+57.22	30.03' RT	-	-	-	-	-	-	-	-	-	-	1
	209+68.33	23.38' LT	-	-	-	-	-	-	-	-	-	-	1
	209+68.38	29.89' RT	-	-	-	-	-	-	-	-	-	-	1
	216+42.04	29.24' RT	-	-	-	-	-	-	-	-	-	-	1
	216+41.55	24.27' LT	-	-	-	-	-	-	-	-	-	-	1
	245+69.25	29.89' LT	-	-	-	-	-	-	-	-	-	-	1
	262+31.73	23.74' LT	-	-	-	-	-	-	-	-	-	-	1
	262+31.58	24.06' RT	-	-	-	-	-	-	-	-	-	-	1
	262+44.19	23.53' LT	-	-	-	-	-	-	-	-	-	-	1
	262+44.22	24.71' RT	-	-	-	-	-	-	-	-	-	-	1
	328+89.88	20.87' RT	-	-	-	-	-	-	-	-	-	-	1
	328+88.91	28.49' LT	-	-	-	-	-	-	-	-	-	-	1
	328+95.38	20.76' RT	-	-	-	-	-	-	-	-	-	-	1
	328+94.41	28.60' LT	-	-	-	-	-	-	-	-	-	-	1
	348+82.53	23.22' LT	-	-	-	-	-	-	-	-	-	-	1
	348+82.43	24.78' RT	-	-	-	-	-	-	-	-	-	-	1
	348+90.87	23.00' LT	-	-	-	-	-	-	-	-	-	-	1
	348+90.78	25.00' RT	-	-	-	-	-	-	-	-	-	-	1
	403+71.85	64.34' RT	-	-	-	-	-	-	-	-	-	-	1
	404+57.08	78.66' RT	-	-	-	-	-	-	-	-	-	-	1
	443+37.01	30.21' RT	-	-	-	-	-	-	-	-	-	-	1
	443+93.52	26.41' LT	-	-	-	-	-	-	-	-	-	-	1
	490+91.22	38.18' LT	-	-	-	-	-	-	-	-	-	-	1
	490+91.16	43.82' RT	-	-	-	-	-	-	-	-	-	-	1
	515+84.68	23.84' LT	-	-	-	-	-	-	-	-	-	-	1
	548+50.08	31.15' LT	-	-	-	-	-	-	-	-	-	-	1
	548+51.92	29.24' RT	-	-	-	-	-	-	-	-	-	-	1
	568+42.15	33.79' LT	-	-	-	-	-	-	-	-	-	-	1
	568+45.27	22.12' RT	-	-	-	-	-	-	-	-	-	-	1
	603+12.54	27.08' LT	-	-	-	-	-	-	-	-	-	-	1
	603+11.83	24.93' RT	-	-	-	-	-	-	-	-	-	-	1
	603+20.20	26.99' LT	-	-	-	-	-	-	-	-	-	-	1
	603+19.50	25.03' RT	-	-	-	-	-	-	-	-	-	-	1
	611+40.64	30.72' LT	-	-	-	-	-	-	-	-	-	-	1
	611+40.83	25.28' RT	-	-	-	-	-	-	-	-	-	-	1
	666+67.71	25.17' LT	-	-	-	-	-	-	-	-	-	-	1
	666+68.40	26.83' RT	-	-	-	-	-	-	-	-	-	-	1
	754+28.52	26.80' LT	-	-	-	-	-	-	-	-	-	-	1
	754+30.98	31.47' RT	-	-	-	-	-	-	-	-	-	-	1
	754+96.91	25.31' LT	-	-	-	-	-	-	-	-	-	-	1
	754+95.91	23.33' RT	-	-	-	-	-	-	-	-	-	-	1
	755+04.57	23.35' LT	-	-	-	-	-	-	-	-	-	-	1
	755+03.74	22.84' RT	-	-	-	-	-	-	-	-	-	-	1
	TOTAL 0010		2	1	3	1	6	2	4	10	8	8	36

Addendum No. 02  
 ID 6570-09-71  
 Revised Sheet 91  
 March 4, 2022

OPERATION	643.0300		643.0410		643.0420		643.0705		643.0715		643.0900		643.1050		643.5000	
	* ESTIMATED DURATION (CALENDAR DAYS)	* EACH	* EACH	* EACH	* EACH	* EACH	* EACH	* EACH	* EACH	* EACH	* EACH	* EACH	* EACH	* EACH	* EACH	* EACH
PRECONSTRUCTION/CLOSURES	30	5	150	---	---	---	---	---	---	---	---	---	---	---	---	---
ADVANCED WARNING	155	---	---	---	---	---	---	---	---	---	---	---	---	---	---	---
SIDE ROADS	155	---	---	---	---	---	---	---	---	---	---	---	---	---	---	---
CTH E- NW QUADRANT CLOSURE	15	25	375	6	90	1	15	15	---	---	---	---	---	---	---	---
CTH E- EAST LEG CLOSURE	15	---	---	4	60	8	120	150	---	---	---	---	---	---	---	---
CTH S- QUADRANTS	20	25	500	2	40	1	20	20	---	---	---	---	---	---	---	---
CTH S- STORMSEWER REPAIR	1	73	73	---	---	14	14	14	---	---	---	---	---	---	---	---
STH 54 SUBGRADE IMPROVEMENT	2	25	50	---	---	1	2	2	---	---	---	---	---	---	---	---
STH 54 EB 15 SB 15 IMP	3	60	20	---	---	1	1	1	---	---	---	---	---	---	---	---
GUARDRAIL REPLACEMENT AREAS***	5	300	1500	---	---	4	4	6	---	---	---	---	---	---	---	---
UNDISTRIBUTED			282		19		18	21		15		898		7		0.75
TOTAL 0010			2950		209		193	228		165		9873		70		0.75

\*\*\*FOR INFORMATION ONLY  
 \*\*ADDITIONAL QUANTITIES SHOWN WHEREVER IN THE PLANS.  
 \*\*\*ASSUME 25 DRUMS PER SIDE PER LOCATION.

ALL ITEMS CATEGORY 0010



EXISTING ASPHALTIC PAVEMENT DEPTH = 9.5 IN  
 32 LF - CPCS 30-IN  
 AEW FOR CPCS 30-INCH  
 2 EA - REMOVE FROM EAST END  
 (PAID AS REMOVING SMALL PIPE CULVERTS)  
 REMOVE AEW  
 1 - EA  
 2 - EA  
 SEE MISC. QUANTITIES FOR DETAILS.

STA 568+44  
 EXISTING ASPHALTIC PAVEMENT DEPTH = 9.5 IN  
 1 - CPCH HE CL IV 19X30-IN  
 AEW FOR CPCH HE 19X30-INCH  
 2-EA  
 1-EA  
 1-EA  
 REMOVE SMALL PIPE CULVERTS  
 SEE MISC. QUANTITIES FOR DETAILS.

ADDENDUM NO. 02  
 ID 6570-09-71  
 REVISED SHEET 122  
 MARCH 4, 2022

5

5

MATCH LINE 578+50.00

MATCH LINE 563+25.00



Proposal Schedule of Items

Proposal ID: 20220308026 Project(s): 6560-08-71, 6570-09-71

Federal ID(s): WISC 2022250, WISC 2022251

SECTION: 0001 Contract Items

Alt Set ID: Alt Mbr ID:

Proposal Line Number	Item ID Description	Approximate Quantity and Units	Unit Price	Bid Amount
0124	521.0342 Apron Endwalls for Culvert Pipe Sloped Cross Drains Steel 42-Inch 4 to 1	2.000 EACH	_____.	_____.
0126	521.1018 Apron Endwalls for Culvert Pipe Steel 18-Inch	2.000 EACH	_____.	_____.
0128	521.1024 Apron Endwalls for Culvert Pipe Steel 24-Inch	1.000 EACH	_____.	_____.
0130	521.1030 Apron Endwalls for Culvert Pipe Steel 30-Inch	3.000 EACH	_____.	_____.
0132	521.1036 Apron Endwalls for Culvert Pipe Steel 36-Inch	4.000 EACH	_____.	_____.
0134	521.1048 Apron Endwalls for Culvert Pipe Steel 48-Inch	1.000 EACH	_____.	_____.
0136	521.1503 Apron Endwalls for Culvert Pipe Sloped Side Drains Steel 18-Inch 4 to 1	1.000 EACH	_____.	_____.
0138	521.1518 Apron Endwalls for Culvert Pipe Sloped Side Drains Steel 18-Inch 6 to 1	8.000 EACH	_____.	_____.
0140	521.1524 Apron Endwalls for Culvert Pipe Sloped Side Drains Steel 24-Inch 6 to 1	2.000 EACH	_____.	_____.
0142	521.1542 Apron Endwalls for Culvert Pipe Sloped Side Drains Steel 42-Inch 6 to 1	2.000 EACH	_____.	_____.
0144	521.3118 Culvert Pipe Corrugated Steel 18-Inch	128.000 LF	_____.	_____.
0146	521.3124 Culvert Pipe Corrugated Steel 24-Inch	70.000 LF	_____.	_____.
0148	521.3130 Culvert Pipe Corrugated Steel 30-Inch	32.000 LF	_____.	_____.
0150	521.3136 Culvert Pipe Corrugated Steel 36-Inch	114.000 LF	_____.	_____.



Proposal Schedule of Items

Proposal ID: 20220308026 Project(s): 6560-08-71, 6570-09-71

Federal ID(s): WISC 2022250, WISC 2022251

SECTION: 0001 Contract Items

Alt Set ID: Alt Mbr ID:

Proposal Line Number	Item ID Description	Approximate Quantity and Units	Unit Price	Bid Amount
0178	522.2419 Culvert Pipe Reinforced Concrete Horizontal Elliptical Class HE-IV 19x30-Inch	312.000 LF	_____.	_____.
0180	522.2424 Culvert Pipe Reinforced Concrete Horizontal Elliptical Class HE-IV 24x38-Inch	204.000 LF	_____.	_____.
0182	522.2429 Culvert Pipe Reinforced Concrete Horizontal Elliptical Class HE-IV 29x45-Inch	195.000 LF	_____.	_____.
0184	522.2619 Apron Endwalls for Culvert Pipe Reinforced Concrete Horizontal Elliptical 19x30-Inch	10.000 EACH	_____.	_____.
0186	522.2624 Apron Endwalls for Culvert Pipe Reinforced Concrete Horizontal Elliptical 24x38-Inch	8.000 EACH	_____.	_____.
0188	522.2629 Apron Endwalls for Culvert Pipe Reinforced Concrete Horizontal Elliptical 29x45-Inch	8.000 EACH	_____.	_____.
0190	601.0405 Concrete Curb & Gutter 18-Inch Type A	217.000 LF	_____.	_____.
0192	601.0407 Concrete Curb & Gutter 18-Inch Type D	25.000 LF	_____.	_____.
0194	601.0411 Concrete Curb & Gutter 30-Inch Type D	2,025.000 LF	_____.	_____.
0196	601.0553 Concrete Curb & Gutter 4-Inch Sloped 36-Inch Type D	3,246.000 LF	_____.	_____.
0198	601.0557 Concrete Curb & Gutter 6-Inch Sloped 36-Inch Type D	54.000 LF	_____.	_____.
0200	601.0580 Concrete Curb & Gutter 4-Inch Sloped 36-Inch Type R	302.000 LF	_____.	_____.



Proposal Schedule of Items

Proposal ID: 20220308026 Project(s): 6560-08-71, 6570-09-71

Federal ID(s): WISC 2022250, WISC 2022251

SECTION: 0001 Contract Items

Alt Set ID: Alt Mbr ID:

Proposal Line Number	Item ID Description	Approximate Quantity and Units	Unit Price	Bid Amount
0328	633.5200 Markers Culvert End	46.000 EACH	_____.	_____.
0330	634.0614 Posts Wood 4x6-Inch X 14-FT	13.000 EACH	_____.	_____.
0332	634.0616 Posts Wood 4x6-Inch X 16-FT	17.000 EACH	_____.	_____.
0334	634.0618 Posts Wood 4x6-Inch X 18-FT	31.000 EACH	_____.	_____.
0336	637.2210 Signs Type II Reflective H	398.900 SF	_____.	_____.
0338	637.2230 Signs Type II Reflective F	83.990 SF	_____.	_____.
0340	638.2102 Moving Signs Type II	9.000 EACH	_____.	_____.
0342	638.2602 Removing Signs Type II	30.000 EACH	_____.	_____.
0344	638.3000 Removing Small Sign Supports	30.000 EACH	_____.	_____.
0346	638.4000 Moving Small Sign Supports	9.000 EACH	_____.	_____.
0348	640.1303.S Pond Liner Clay	340.000 CY	_____.	_____.
0350	642.5201 Field Office Type C	1.000 EACH	_____.	_____.
0352	643.0300 Traffic Control Drums	2,950.000 DAY	_____.	_____.
0354	643.0410 Traffic Control Barricades Type II	209.000 DAY	_____.	_____.
0356	643.0420 Traffic Control Barricades Type III	4,823.000 DAY	_____.	_____.
0358	643.0705 Traffic Control Warning Lights Type A	6,738.000 DAY	_____.	_____.
0360	643.0715 Traffic Control Warning Lights Type C	165.000 DAY	_____.	_____.

