



# Wisconsin Department of Transportation

June 13, 2022

**Division of Transportation Systems Development**  
Bureau of Project Development  
4822 Madison Yards Way, 4<sup>th</sup> Floor South  
Madison, WI 53705

Telephone: (608) 266-1631  
Facsimile (FAX): (608) 266-8459

## NOTICE TO ALL CONTRACTORS:

**Proposal #09: 1220-21-60, WISC 2022 463**  
**IH 43, City of Green Bay**  
**Leo Frigo Bridge, B050158**  
**IH 43**  
**Brown County**

## Letting of June 14, 2022

This is Addendum No. 02, which provides for the following:

### Special Provisions:

Revised Special Provisions	
Article No.	Description
33	Installation of Electrical and Lighting Systems, Arch, Item SPV.0060.52

### Plan Sheets:

Revised Plan Sheets	
Plan Sheet	Plan Sheet Title (brief description of changes to sheet)
66	Lighting Plans – Construction Details (clarification on arch length)
77	Lighting Plans – Construction Details (revision to length of continuous LED rope lighting)

The responsibility for notifying potential subcontractors and suppliers of these changes remains with the prime contractor.

Sincerely,

*Mike Coleman*

Proposal Development Specialist  
Proposal Management Section

**ADDENDUM NO. 02**

**1220-21-60**

**June 13, 2022**

**Special Provisions**

**3. Prosecution and Progress.**

*Delete AQLIGHTING, Catalog Number: ENDURA ROPE-RLR-END-MV) under section titled **B.5 LED Rope Light.***

**Plan Sheets**

The following 8½ x 11-inch sheets are attached and made part of the plans for this proposal:

Revised: 66, 77

END OF ADDENDUM

Addendum No. 02  
 ID 1220-21-60  
 Revised Sheet 66  
 June 13, 2022

2

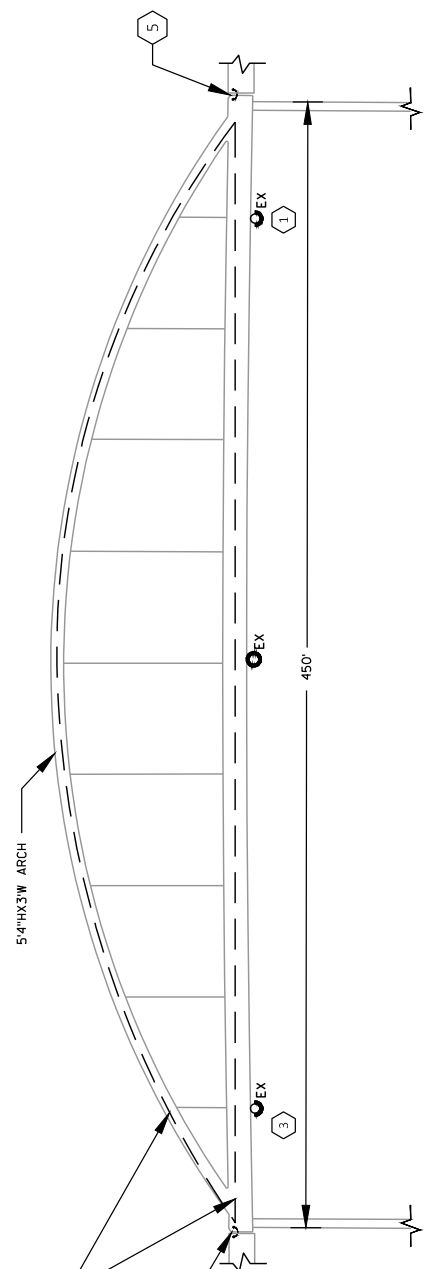
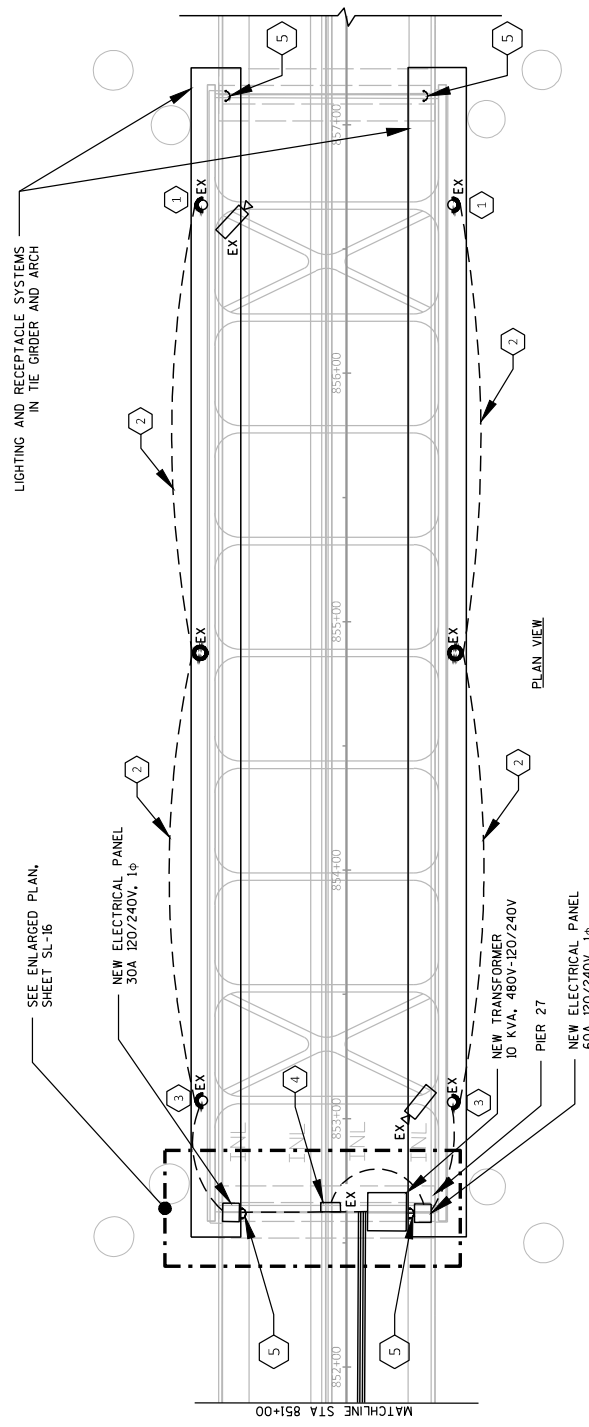
2

KEY NOTES

1. PRIOR TO REFEEDING THE NAVIGATION LIGHTS, DISCONNECT EXISTING 120V CIRCUIT FORM FROM THE WEST END.
2. EXISTING CONDUIT AND WIRING TO REMAIN.
3. PROVIDE NEW SURFACE MOUNTED 1" RTRC CONDUIT WITH 2"x10, 1"x10G TO REFEED THE EXISTING NAVIGATION LIGHTING FROM PIER 27 ON THE NORTH AND SOUTH APPROXIMATELY 15' TO THE FIRST NAVIGATION LIGHT. CONTRACTOR WILL INTERCEPT THE BOX AT THE NAVIGATION LIGHT AND REMOVE THE 1" PVC COATED RIGID STEEL LB FITTING AND INSTALL A 1" PVC COATED RIGID STEEL T-FITTING TO ALLOW THE NEW 1" PVC CONDUIT TO TIE IN.
4. EXISTING ITS CAMERA CABINET TO BE REFEED FROM NEW PANEL. PRIOR TO REFEEDING, DISCONNECT THE EXISTING 120V POWER FROM THE CABINET. PROVIDE NEW SURFACE MOUNTED 1" RTRC CONDUIT WITH 2"x10, 1"x10G.
5. PROVIDE BONDING JUMPER SEE DETAILS ON SHEET SL-19. (TYP. OF 4 LOCATIONS)

GENERAL NOTES

1. CONNECT EXISTING ITS CAMERAS AND LIGHTS TO THE NAVIGATION LIGHTING SYSTEM TO THE NEW MAINTENANCE LIGHTING PANELS INSTALLED ON PIER 27.



INSTALL MAINTENANCE/INSPECTION LIGHTING AND RECEPTACLES INSIDE 911"x31" IE ORDERS AND 54"x3" ARCH. APPROXIMATELY 15' FROM ONE END. CONTINUOUS STRIP LIGHT FROM ONE END TO THE OTHER THROUGH EACH ARCH

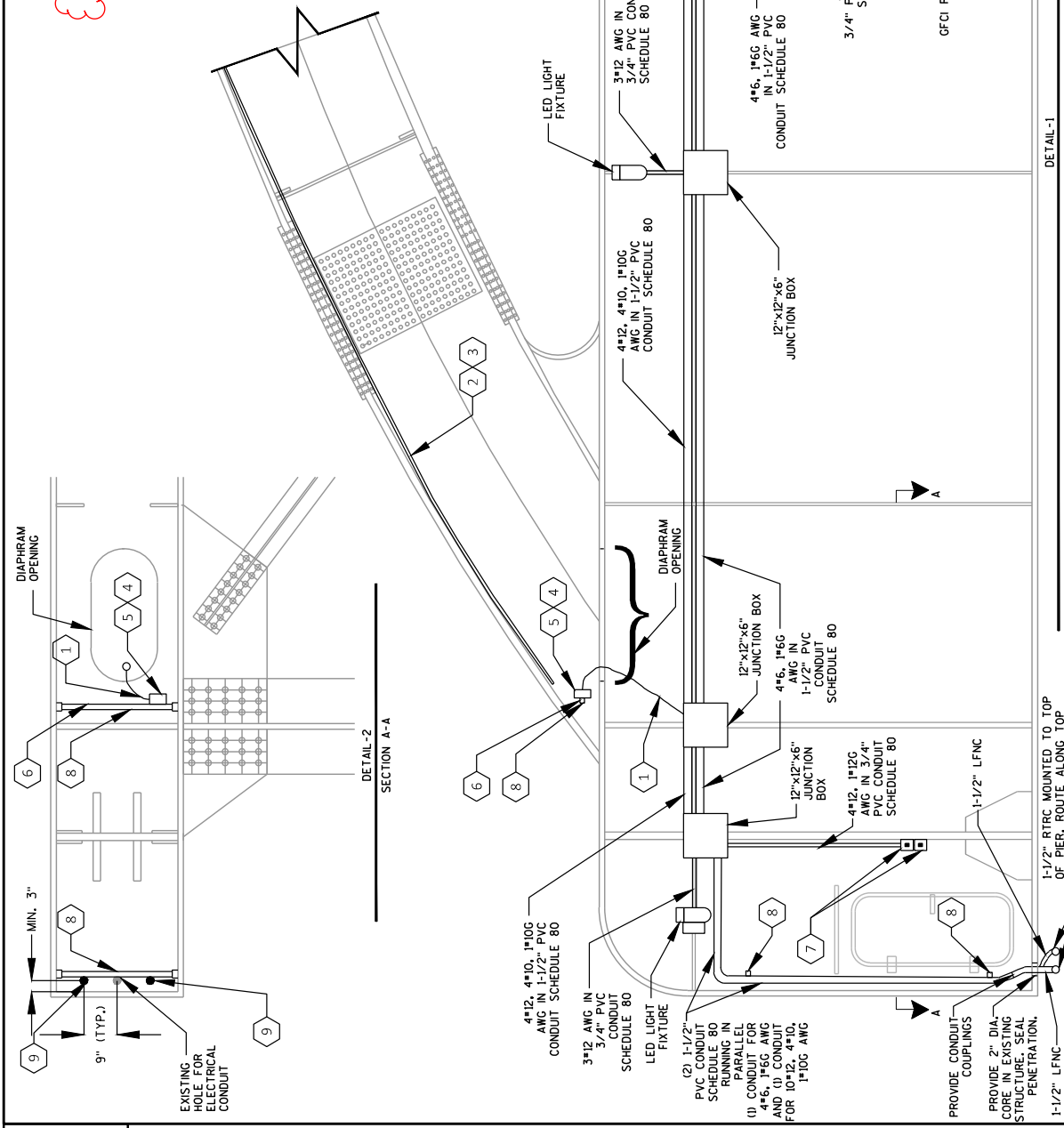
GENERAL NOTES

1. PROVIDE LIQUID TIGHT FLEXIBLE CONDUIT WITH THE TWO CIRCUITS, 6\*12, 1\*12G AWG IN 3/4" LFNC CONDUIT. PROVIDE 482 FT (MIN) OF CONTINUOUS LED ROPE LIGHTING. TO BE PLUGGED IN ON THE EAST END OF THE ARCH.
2. PROVIDE A REDUNDANT LED ROPE LIGHT SYSTEM INSTALLED IN THE OTHER CORNER OF THE ARCH. DESIGN INTENT IS THAT THIS ROPE LIGHT SYSTEM WOULD NOT BE USED FOR NORMAL OPERATION. PROVIDE 500 FT OF CONTINUOUS LED ROPE LIGHTING. PLUG END TO BE LOCATED ON THE EAST END OF THE ARCH. PLUG SHALL NOT BE PLUGGED. COIL AND SAFELY STORE ABOVE IN ARCH.
3. PROVIDE DUPLEX SPLIT WIRED TWIST LOCK RECEPTACLE 15A IZOV NEMA 15-15R. EACH RECEPTACLE TO BE CONTROLLED BY A SEPARATE LIGHT SWITCH. LOCATIONS TO BE WITHIN THE TIE ORDER LOCATED ON EACH END OF THE BRIDGE.
4. 2-GANG BOX TO BE PROVIDED WITH THE 2 WEATHERPROOF GFCI RECEPTACLES. PROVIDE STRUT TO SECURE BOX IN THE ARCH.
5. MOUNT LIGHT DRIVERS TO ROPE LIGHT STRUT SUPPORTS IN ARCH.
6. MOMENTARY LIGHT SWITCHES IN WEATHERPROOF PVC MIN. 3R RATING BOX.
7. PROVIDE COMPRESSION STRUT FOR CONDUIT SUPPORT.
8. LOCATE THE NEW 2" DIA. HOLE FOR ELECTRICAL CONDUIT IN LINE WITH EXISTING CONDUIT HOLE OR AT LEAST MINIMUM 3" FROM C/L HOLE TO END PLATE, AND AT 9" GAGE FROM EXISTING HOLE.

Addendum No. 02  
ID 1220-21-60  
Revised Sheet 77  
June 13, 2022

KEY NOTES (#)

- 1.
- 2.
- 3.
- 4.
- 5.
- 6.
- 7.
- 8.
- 9.



DETAIL -1

TIE-ORDER AND ARCH CROSS SECTION LIGHTING PLANS - CONSTRUCTION DETAILS

DETAIL -2

SECTION A-A