



Wisconsin Department of Transportation

July 18, 2022

Division of Transportation Systems Development

Bureau of Project Development
4822 Madison Yards Way, 4th Floor South
Madison, WI 53705

Telephone: (608) 266-1631
Facsimile (FAX): (608) 266-8459

NOTICE TO ALL CONTRACTORS:

Proposal #09: 2025-15-71
Pewaukee to Milwaukee
Pilgrim Rd/Capitol Dr B-67-0086
CTH YY
Waukesha County

Letting of August 9, 2022

This is Addendum No. 01, which provides for the following:

Schedule of Items:

Revised Bid Item Quantities					
Bid Item	Item Description	Unit	Old Quantity	Revised Quantity	Proposal Total
643.0300	Traffic Control Drums	DAYS	6,189	322	6,511
643.0420	Traffic Control Barricades Type III	DAYS	1,632	9	1,641
643.0705	Traffic Control Warning Lights Type A	DAYS	3,264	18	3,282
643.0900	Traffic Control Signs	DAYS	9,985	121	10,106
643.1050	Traffic Control Signs PCMS	DAYS	175	10	185

Plan Sheets:

Revised Plan Sheets	
Plan Sheet	Plan Sheet Title (brief description of changes to sheet)
5	Traffic Control – Legend removed. Sign code updated to designate orange sign sheeting.
6	Traffic Control – Legend removed.
7	Traffic Control – Legend removed. Sign code updated to designate orange sign sheeting.
8	Traffic Control – Legend removed. Advance warning signs updated.
9	Traffic Control – Legend removed. Drum spacing updated. Lane drop sign added.
10	Traffic Control – Legend removed. Drum spacing updated.
11	Traffic Control – Legend removed.
12	Traffic Control – Legend removed. PCMS added. Advance warning signs updated.
13	Traffic Control – Legend removed. Drum spacing updated. Lane drop sign added.
14	Traffic Control – Legend removed. Drum spacing updated. Signs added.
15	Traffic Control – Legend removed. Sidewalk signing updated.
16	Detour Plan – PCMS abbreviation updated to match bid item.

17	Detour Plan – PCMS abbreviation updated to match bid item.
18	Detour Plan – PCMS abbreviation updated to match bid item. Time frame for pre-warn updated.
21	Miscellaneous Quantities – updated Traffic Control tables to match revisions.

Added Plan Sheets	
Plan Sheet	Plan Sheet Title (brief description of why sheet was added)
4A	Traffic Control – added a Traffic Control General Notes sheet, removed legends from each Stage Construction sheet.
45A	SDD – Traffic Control for Lane Closure with Flagging Operation
47A	SDD – Traffic Control, Two Lane Closure on Freeway or Expressway, Short Term (Less than 24 hours)
47B	Traffic Control, Intersection Within Single Right Lane Closure
47C	Traffic Control, Intersection Within Single Left Lane Closure
48A	Traffic Control Two Lane Full Freeway Closure
62A	Standard Sign M4-9B L&R
69A	Standard Sign R9-9A
72A	Standard Sign W1-2

The responsibility for notifying potential subcontractors and suppliers of these changes remains with the prime contractor.

Sincerely,

Mike Coleman

Proposal Development Specialist
Proposal Management Section

ADDENDUM NO. 01

2025-15-71

July 18, 2022

Schedule of Items

Attached, dated July 18, 2022, are the revised Schedule of Items Pages 1 – 4.

Plan Sheets

The following 8½ x 11-inch sheets are attached and made part of the plans for this proposal:

Revised: 5, 6, 7, 8, 9, 10, 11, 12, 13, 14, 15, 16, 17, 18, and 21.

Added 4A, 45A, 47A-C, 48A, 62A, 69A, and 72A.

END OF ADDENDUM

Addendum No. 01
ID 2025-15-71
Added Sheet 4A
July 18, 2022

LEGEND

- DRUM
- ⦿ DRUM WITH WARNING LIGHT TYPE C
- FLEXIBLE TUBULAR MARKER
- ⊥ SIGN ON PERMANENT SUPPORT
- ⊥ SIGN ON TEMPORARY SUPPORT
- ⊥ BARRICADE TYPE III WITH SIGN & 2 TYPE A LIGHTS
- ⚡ FLASHING ARROW BOARD
- MB SIGN PCMS
- FLOW OF TRAFFIC
- ▨ WORK ZONE
- ▬ CONCRETE BARRIER TEMPORARY PRECAST

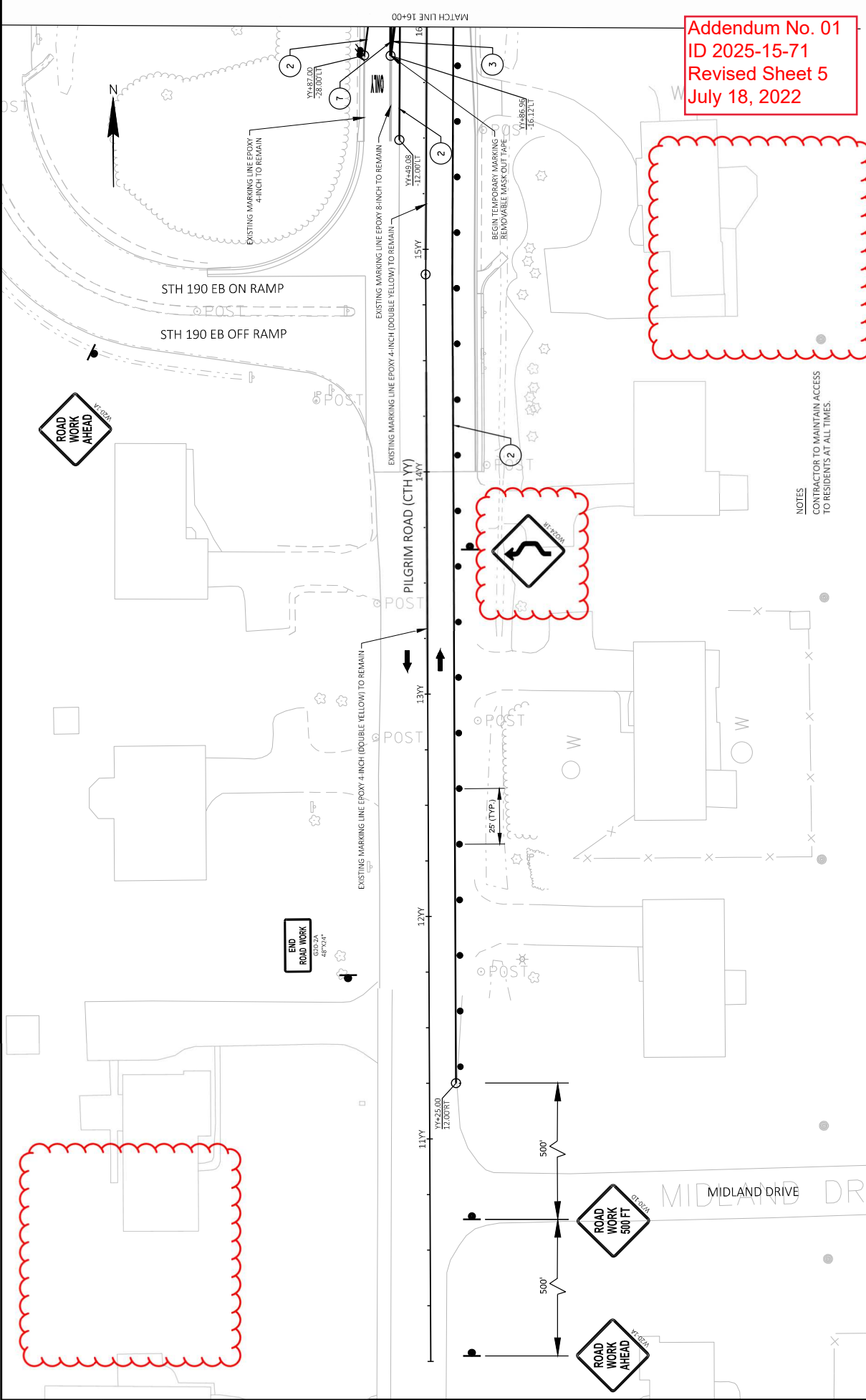
GENERAL NOTES FOR TRAFFIC CONTROL

- 1) THE EXACT NUMBER, LOCATION, AND SPACING OF ALL SIGNS AND DEVICES SHALL BE ADJUSTED TO FIT FIELD CONDITIONS AS DIRECTED BY THE ENGINEER.
- 2) CONFLICTING TRAFFIC SIGNS SHALL BE COVERED USING THE STANDARD BID ITEM, TRAFFIC CONTROL COVERING SIGNS, TYPE VII.
- 3) "WO" SIGNS ARE THE SAME AS "W" SIGNS EXCEPT THE BACKGROUND IS ORANGE.
- 4) FOR NIGHTTIME OPERATIONS, ALL DRUMS IN TAPERS SHALL HAVE A TYPE C STEADY BURN WARNING LIGHT.
- 5) ALL TYPE III BARRICADES SHALL BE 8' WIDE, UNLESS OTHERWISE NOTED, AND EQUIPPED WITH TYPE A (LOW INTENSITY FLASHING) LIGHTS.
- 6) ALL TRAFFIC CONTROL SIGNS SHALL BE 48" X 48" UNLESS OTHERWISE NOTED IN THE PLANS.
- 7) BARRICADE STRIPES ARE TO BE SLOPED DOWNWARD IN THE DIRECTION OF TRAFFIC FLOW.
- 8) TYPICAL DRUM SPACING IS 50' UNLESS OTHERWISE NOTED IN THE PLANS.
- 9) STATION/OFFSET LABELS ON CONCRETE BARRIER TEMPORARY PRECAST ARE TO CENTER OF BARRIER AT HINGE POINTS.

LEGEND (TEMPORARY MARKING)

- ① TEMPORARY MARKING LINE REMOVABLE TAPE 4-INCH (DOUBLE YELLOW)
- ② TEMPORARY MARKING LINE REMOVABLE TAPE 4-INCH (WHITE)
- ③ TEMPORARY MARKING LINE REMOVABLE TAPE 8-INCH (WHITE)
- ④ TEMPORARY MARKING LINE REMOVABLE TAPE 4-INCH (3' LINE/9' GAP) (WHITE)
- ⑤ TEMPORARY MARKING LINE REMOVABLE TAPE 8-INCH (3' LINE/9' GAP) (WHITE)
- ⑥ TEMPORARY MARKING REMOVABLE MASK OUT TAPE 6-INCH
- ⑦ TEMPORARY MARKING REMOVABLE MASK OUT TAPE 10-INCH

PROJECT NO: 2025-15-71	COUNTY: WAUKESHA	TRAFFIC CONTROL - GENERAL NOTES	SHEET 4A
<small>FILE NAME: I:\317\02515\0251501\SHIFTS\PLAN\026000_TCONG LAYOUT\NAME_201</small>	<small>PLOT DATE: 7/13/2022 11:40 AM</small>	<small>PLOT BY: DAN BOUMANN</small>	<small>PLOT SCALE: 1 IN=100 FT</small>

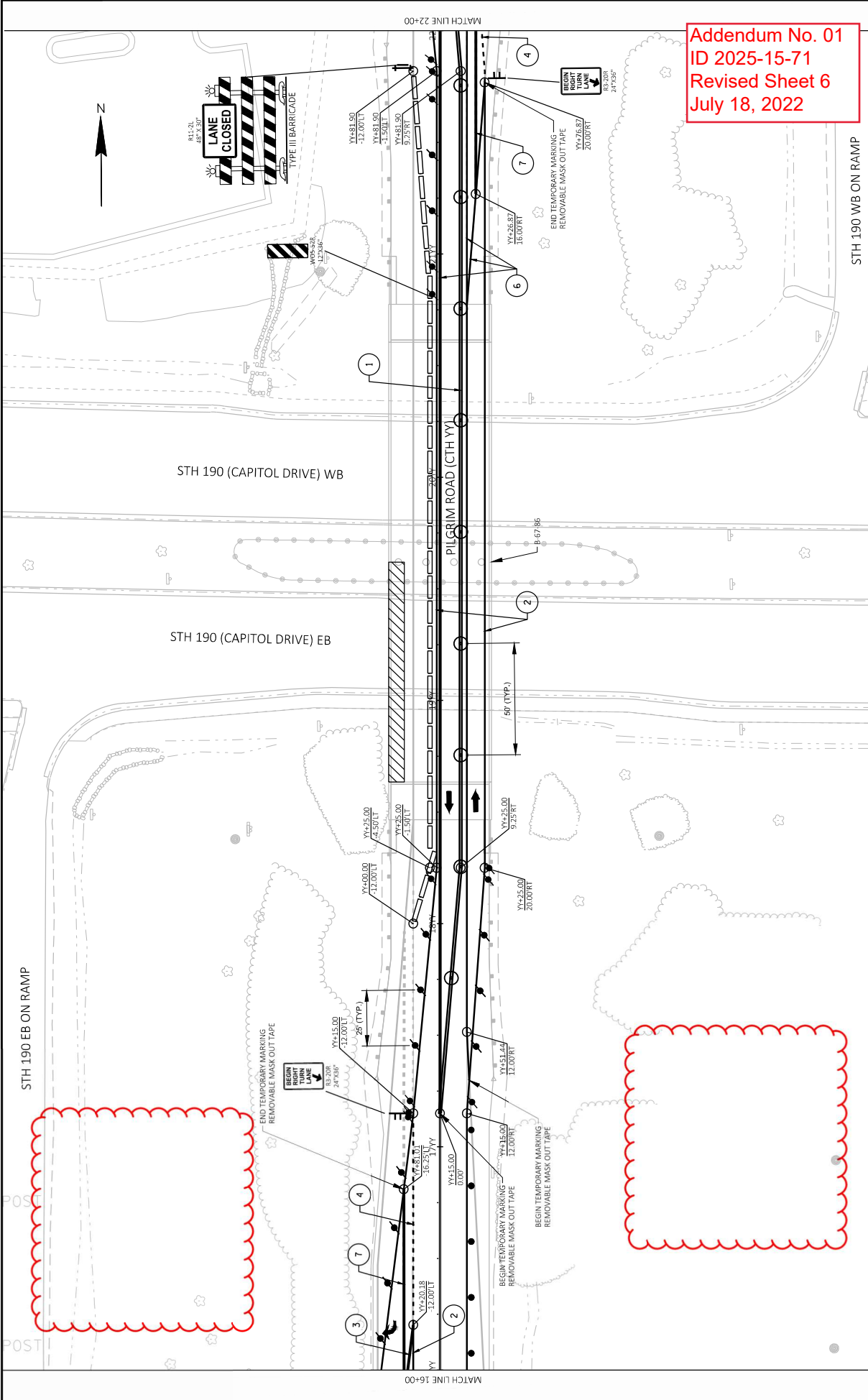


Addendum No. 01
ID 2025-15-71
Revised Sheet 5
July 18, 2022

NOTES
 CONTRACTOR TO MAINTAIN ACCESS
 TO RESIDENTS AT ALL TIMES.

PROJECT NO: 2025-15-71	COUNTY: WAUKESHA	TRAFFIC CONTROL - STAGE 1 - PILGRIM RD	SHEET 5	E
FILE NAME: U:\31\WIS07\CD\31\2025\15\01\SHIFTS\PLAN\026001_31-PILGRIM.DWG	PLOT DATE: 7/17/2022 8:36 AM	PLOT BY: DAN BOURMANN	PLOT SCALE: 1"=40.00 FT	WIS07\CD\31\2025\15\01\SHIFTS\CD\31-SHEET 42
LAYOUT NAME: _001	HWY: CTH YY			

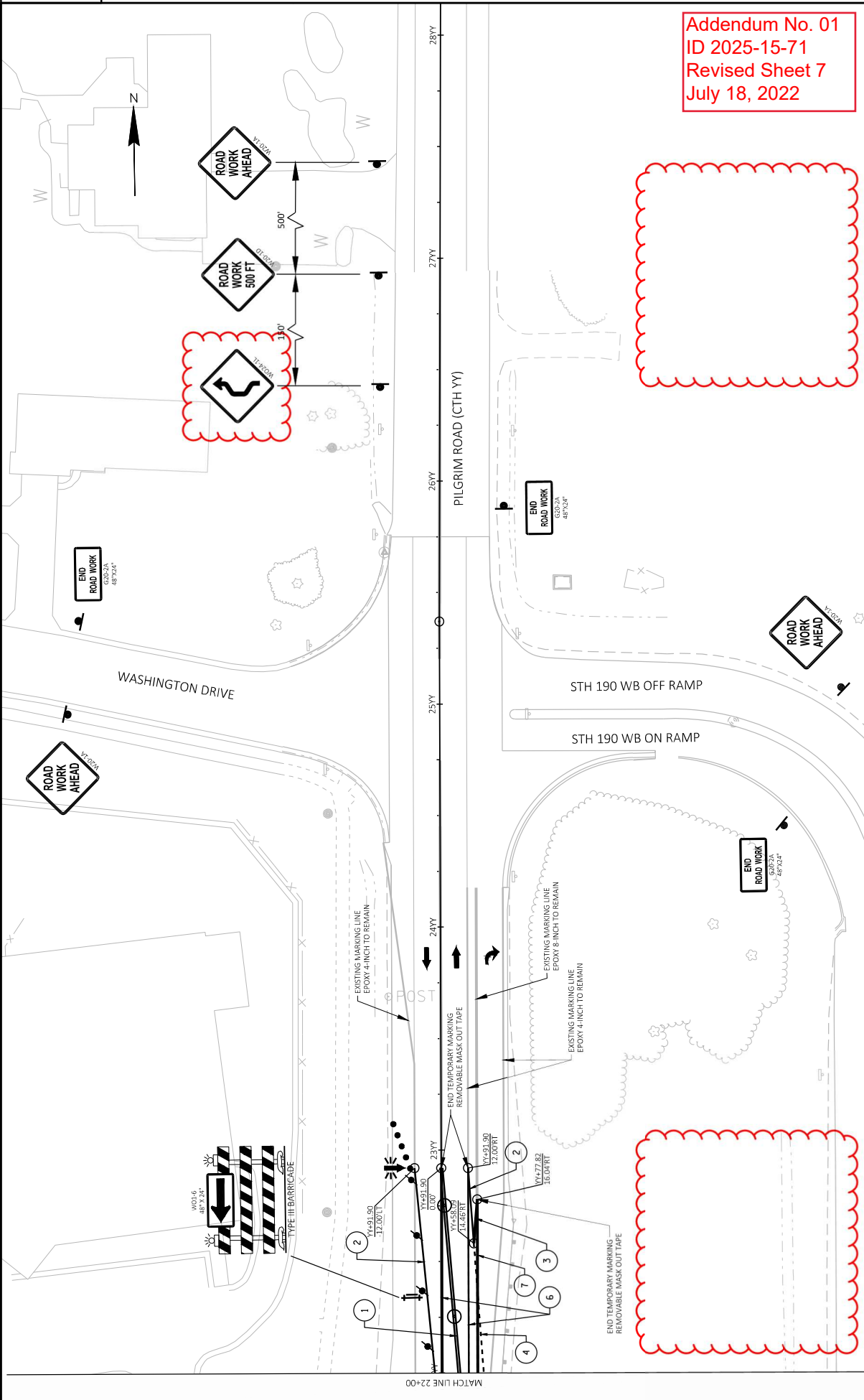
Addendum No. 01
 ID 2025-15-71
 Revised Sheet 6
 July 18, 2022



PROJECT NO:	2025-15-71	COUNTY:	WAUKESHA	TRAFFIC CONTROL - STAGE 1 - PILGRIM RD	SHEET	6	E	
FILE NAME:	I:\S3\WORKS\GIBSON\20251501\SHETS\PLAN\0600_01_PILGRIM.DWG		LAYOUT NAME:	_001	PILOT DATE:	7/17/2022 8:37 AM	PILOT BY:	DAN SAUMANN
PROJECT NO:	2025-15-71	COUNTY:	WAUKESHA	TRAFFIC CONTROL - STAGE 1 - PILGRIM RD	SHEET	6	E	
FILE NAME:	I:\S3\WORKS\GIBSON\20251501\SHETS\PLAN\0600_01_PILGRIM.DWG		LAYOUT NAME:	_001	PILOT DATE:	7/17/2022 8:37 AM	PILOT BY:	DAN SAUMANN

PROJECT NO: 2025-15-71 COUNTY: WAUKESHA TRAFFIC CONTROL - STAGE 1 - PILGRIM RD SHEET 6 E

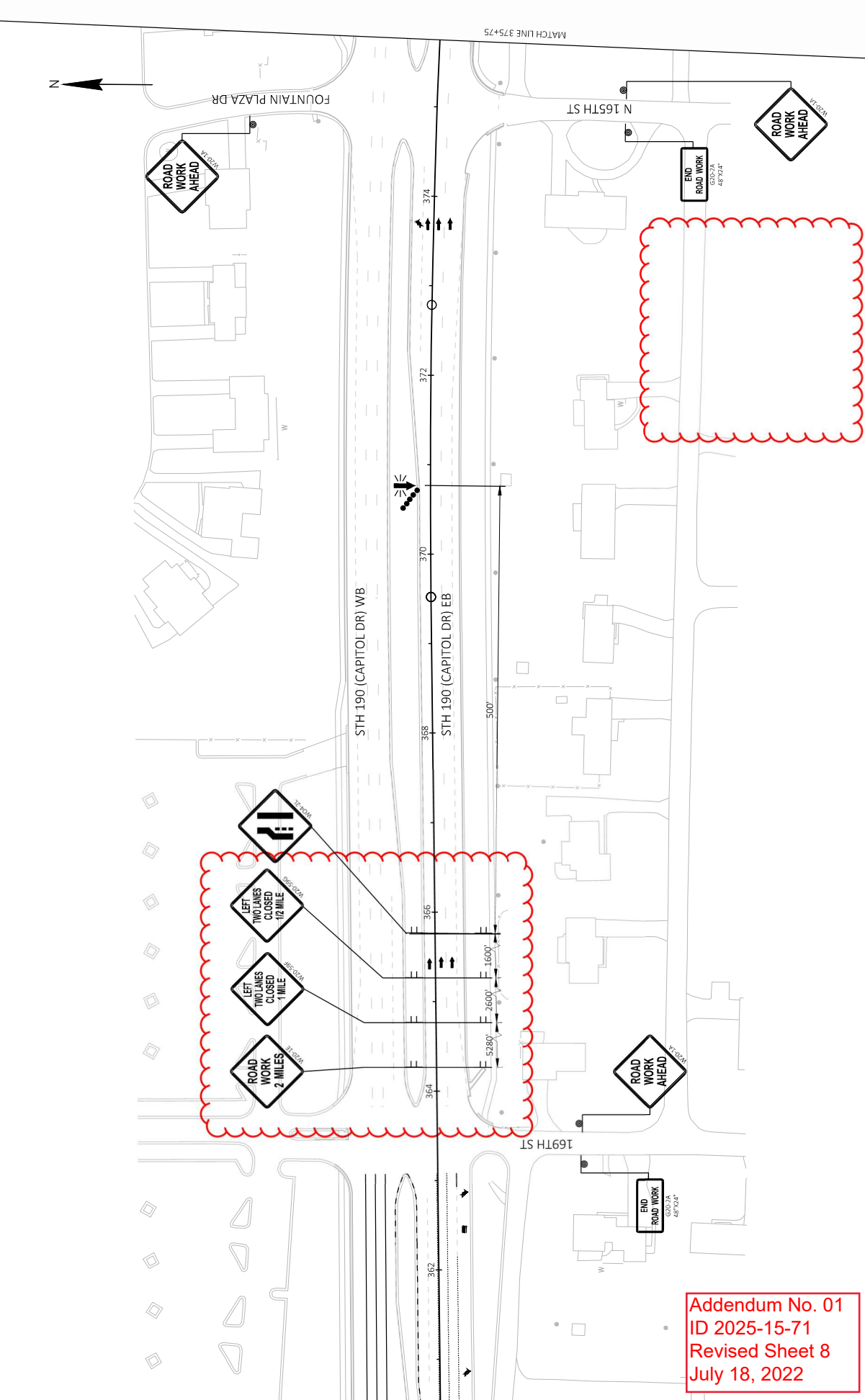
FILE NAME: I:\S3\WORKS\GIBSON\20251501\SHETS\PLAN\0600_01_PILGRIM.DWG LAYOUT NAME: _001 PILOT DATE: 7/17/2022 8:37 AM PILOT BY: DAN SAUMANN



Addendum No. 01
 ID 2025-15-71
 Revised Sheet 7
 July 18, 2022

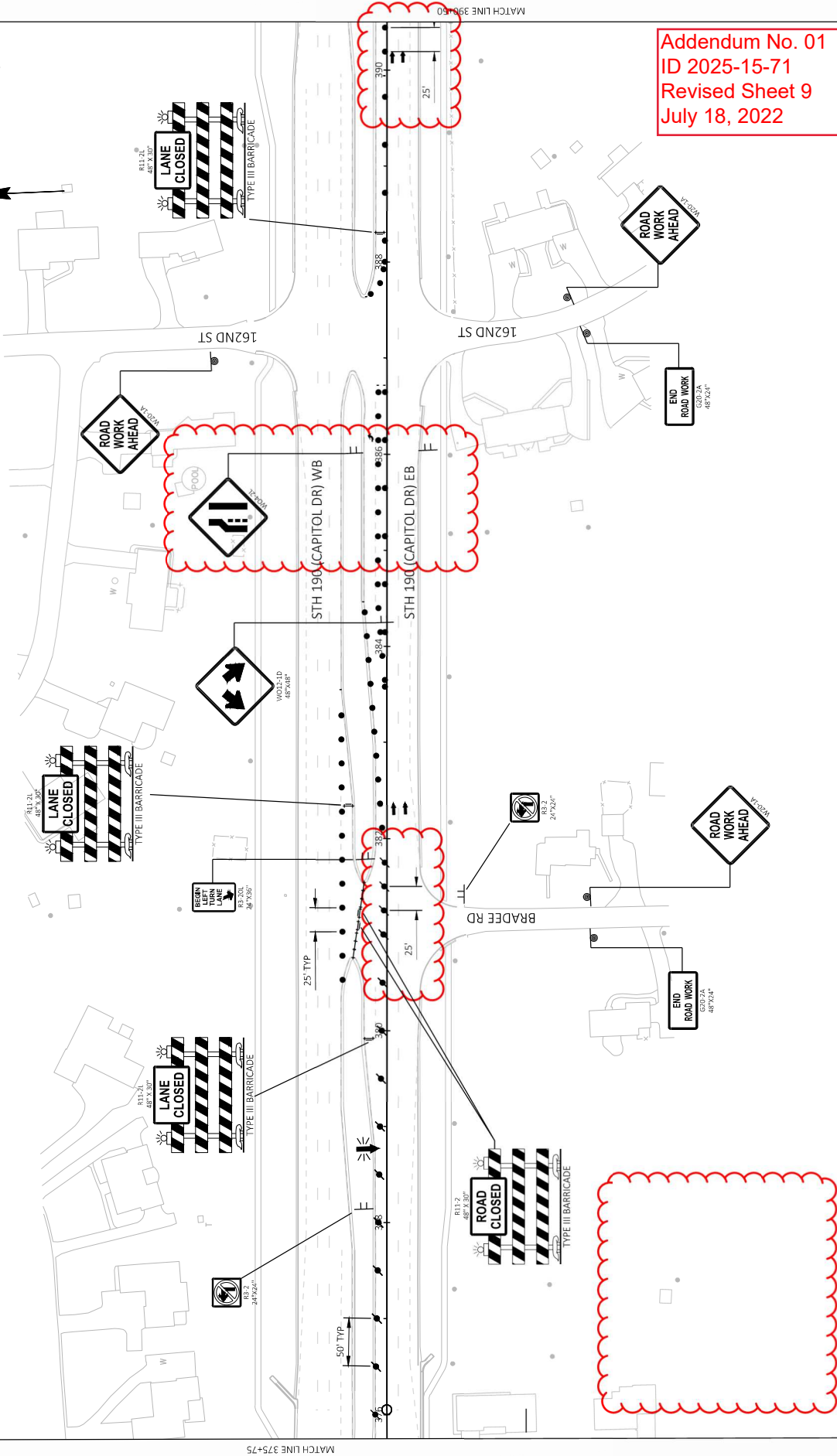
PROJECT NO: 2025-15-71	FILE NAME: \\S:\PROJECTS\20251501\SHEETS\PLAN\0600_31-PILGRIM.DWG	HWY: CTH YY	COUNTY: WAUKESHA	PILOT DATE: 7/17/2022 8:37 AM	PILOT BY: DARL SUJANNAN	TRAFFIC CONTROL - STAGE 1 - PILGRIM RD	SHEET 7	PILOT NAME: WISDOT/CADDS SHEET 42
------------------------	---	-------------	------------------	-------------------------------	-------------------------	--	---------	-----------------------------------

MATCH LINE 22+00

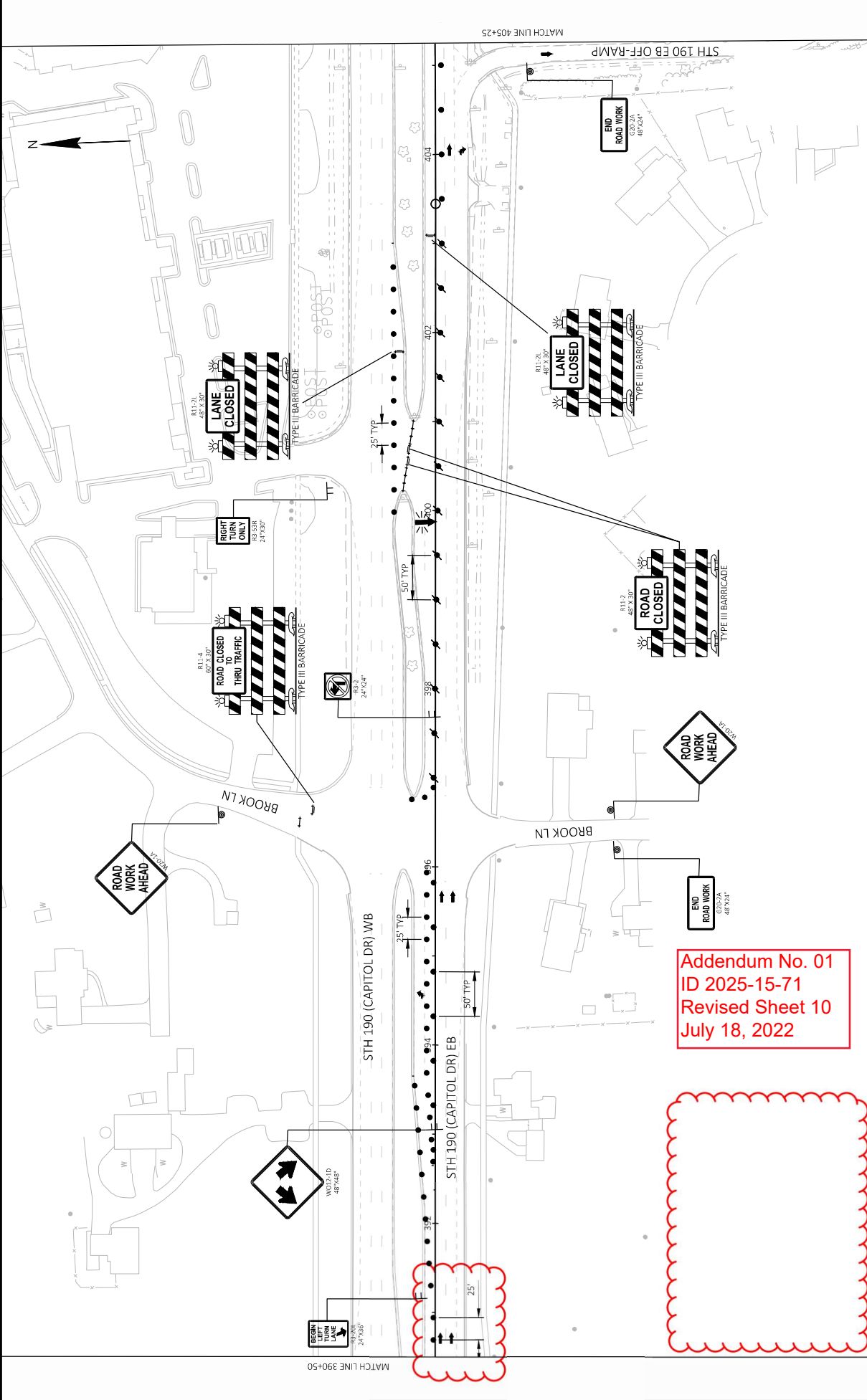


Addendum No. 01
 ID 2025-15-71
 Revised Sheet 8
 July 18, 2022

PROJECT NO: 2025-15-71	COUNTY: WAUKESHA	TRAFFIC CONTROL - CAPITOL DR S1 PARTIAL CLOSURE	SHEET 8
FILE NAME: U:\317\WIS07\CDR\20251501\SHIFTS\PLAN\026001_S1-CAPITOL.DWG	HWY: CTH YY	PLOT BY: DARR SUHMANN	PLOT SCALE: 1"=100' FT
LAYOUT NAME: _201		PLOT DATE: 7/17/2022 9:05 AM	PLOT NAME:



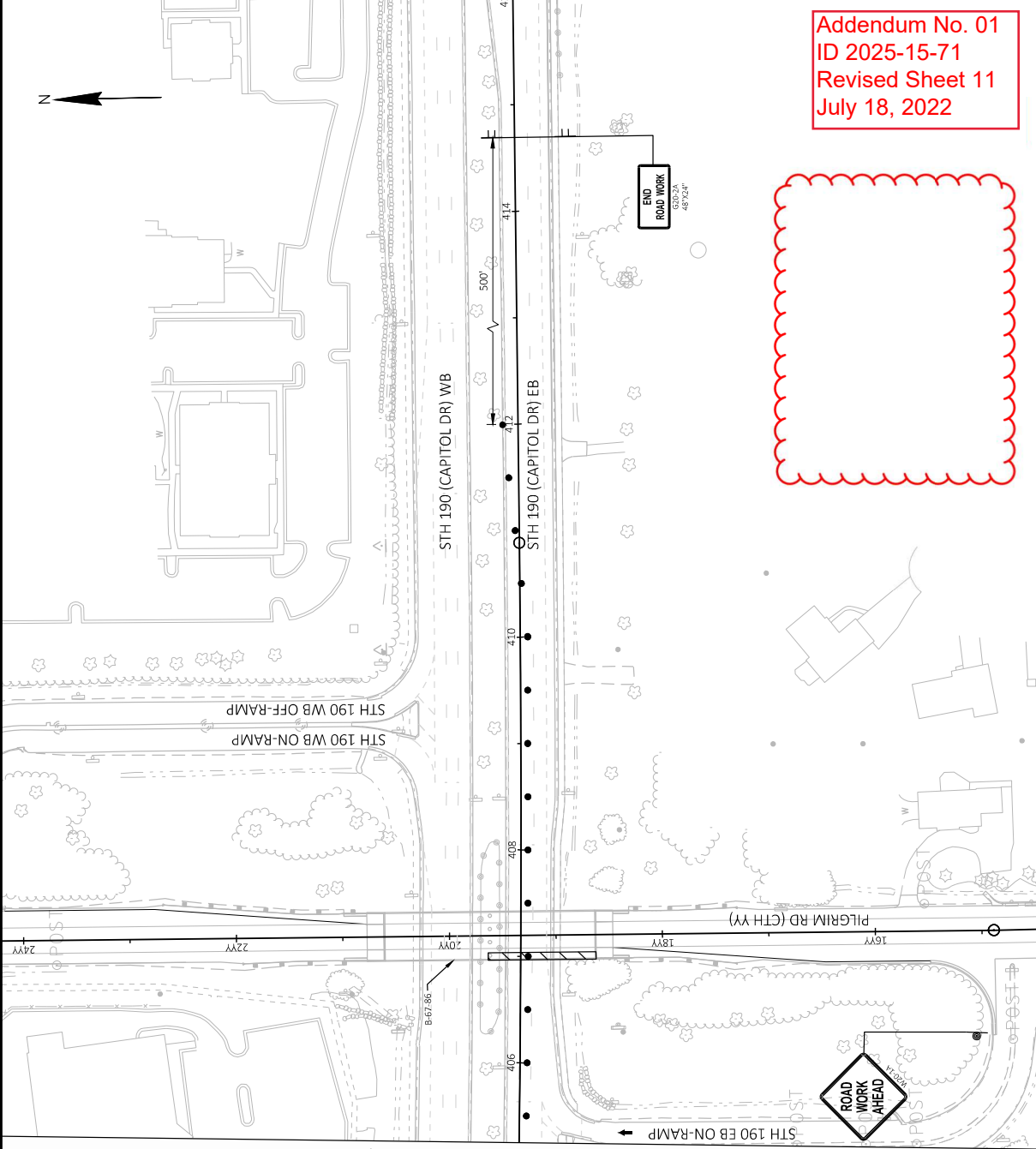
Addendum No. 01
 ID 2025-15-71
 Revised Sheet 9
 July 18, 2022



Addendum No. 01
ID 2025-15-71
Revised Sheet 10
July 18, 2022

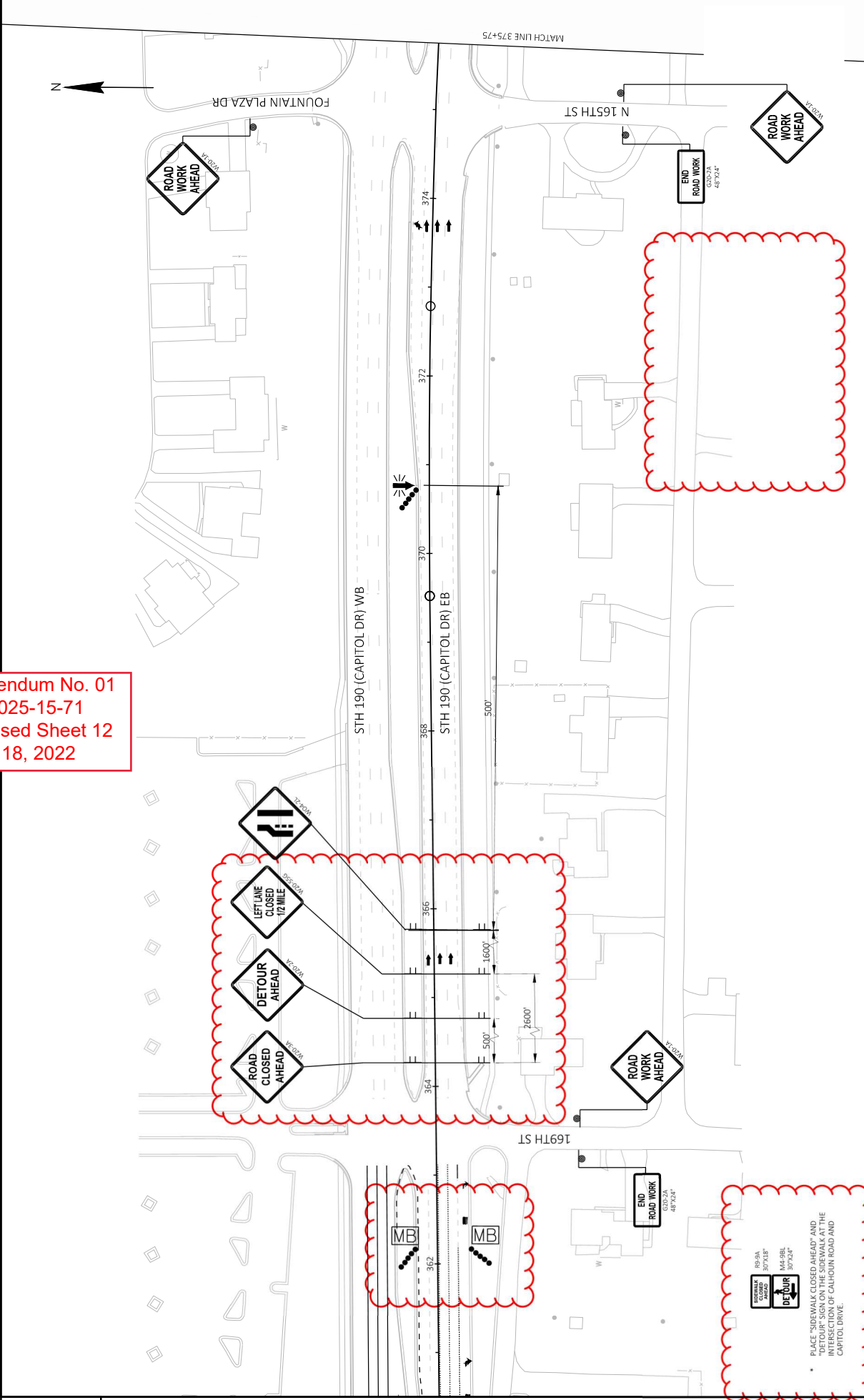


Addendum No. 01
ID 2025-15-71
Revised Sheet 11
July 18, 2022



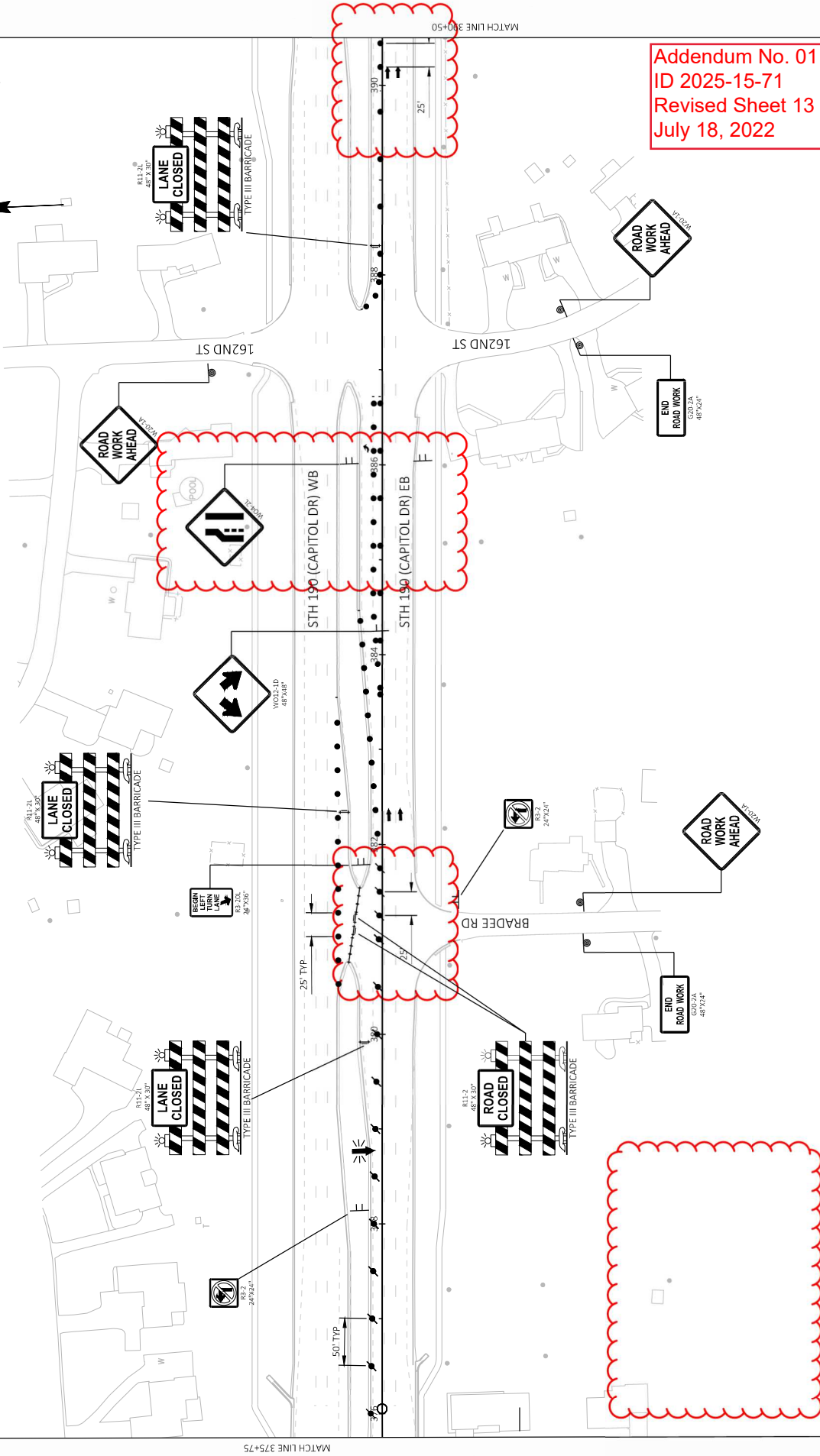
PROJECT NO: 2025-15-71	HWY: CTH YY	COUNTY: WAUKESHA	PILOT DATE: 7/11/2022 9:06 AM	PILOT BY: DAN BAUMANN	TRAFFIC CONTROL - CAPITOL DR S1 PARTIAL CLOSURE	SHEET 11	E
FILE NAME: U:\ST\WORK\CON\2025\15\01\SHETS\PLAN\026001_S1-CAPITOL.DWG	LAYOUT NAME: _004					1 IN=100 FT	WISDOT/CARDS SHEET 42

Addendum No. 01
ID 2025-15-71
Revised Sheet 12
July 18, 2022



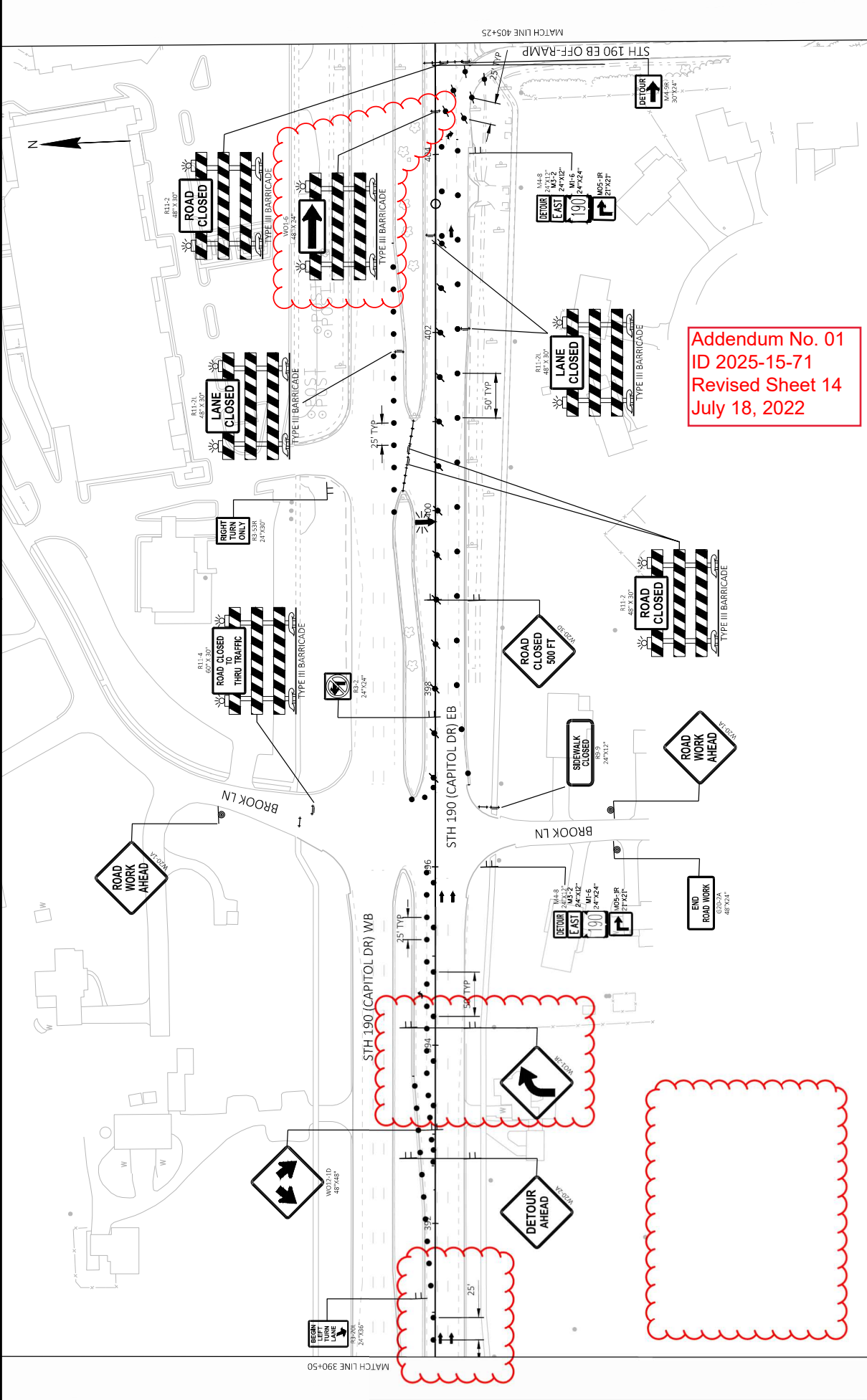
PROJECT NO: 2025-15-71
 FILE NAME: I:\S1\2025\GIS\20251501\SHETS\PLAN\06001_S1-CAPITOL-FULLCLOSURE.DWG
 COUNTY: WAUKESHA
 HWY: CTH YY
 TRAFFIC CONTROL - CAPITOL DR S1 FULL CLOSURE
 PLOT NAME: DARR BOUMANN
 PLOT SCALE: 1"=100 FT
 SHEET 12
 E

PLACE "SIDEWALK CLOSED AHEAD" AND "DETOUR" SIGN ON THE SIDEWALK AT THE INTERSECTION OF CALLOUN ROAD AND CAPITOL DRIVE.

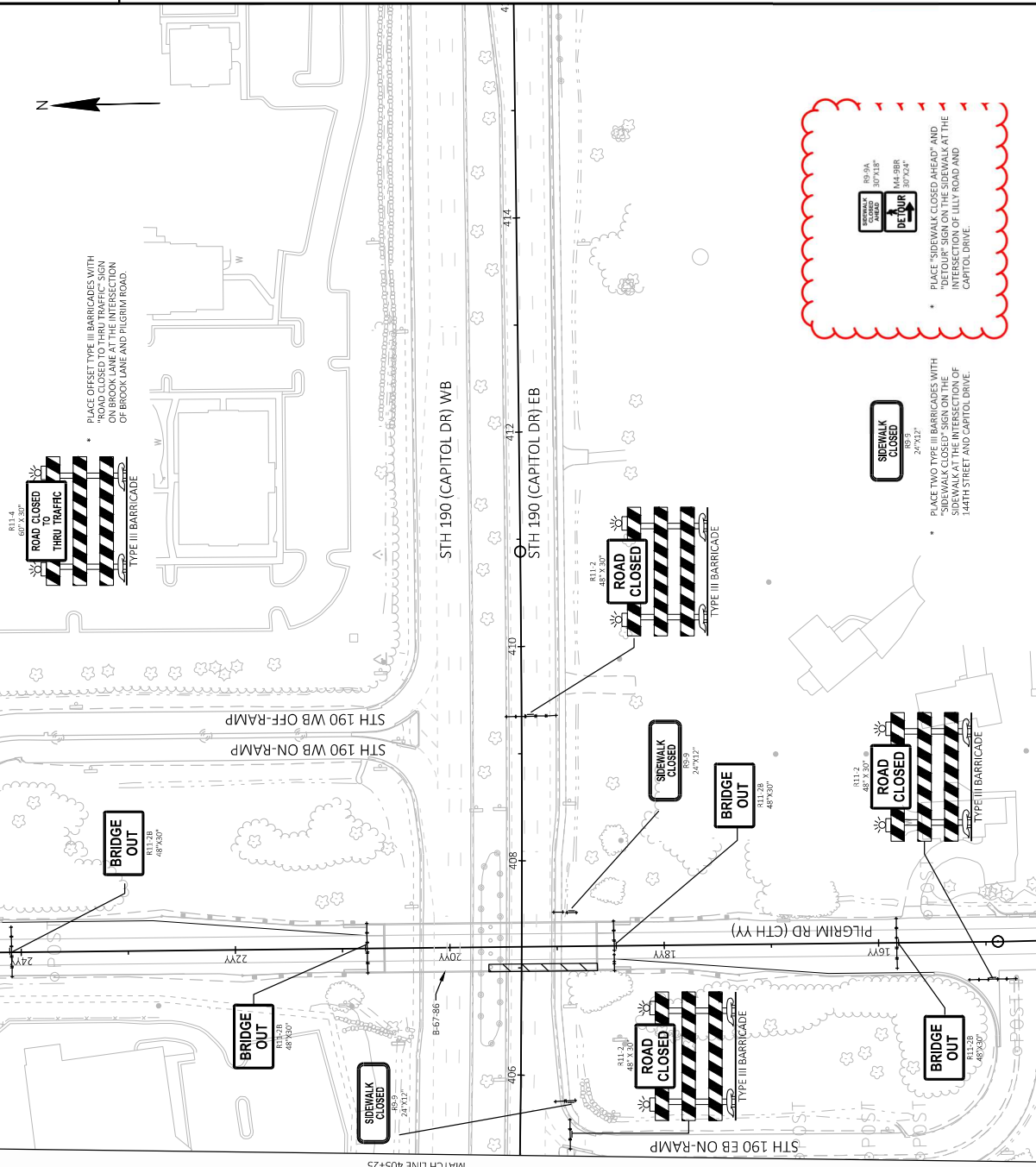


Addendum No. 01
 ID 2025-15-71
 Revised Sheet 13
 July 18, 2022

PROJECT NO: 2025-15-71	COUNTY: WAUKESHA	TRAFFIC CONTROL - CAPITOL DR S1 FULL CLOSURE	SHEET 13
FILE NAME: I:\S17\010576\GIS\20251501\SHETS\PLAN\06001_S1-CAPITOL-FULLCLOSURE.DWG	HWY: CTH YY	PLOT DATE: 7/17/2022 2:14 PM	PLOT NAME: 1 IN 100 FT
LAYOUT NAME: 0E		PLOT BY: DAN SUMMANN	WISDOT/CADDS SHEET 42



PROJECT NO: 2025-15-71	HWY: CTH YY	COUNTY: WAUKESHA	TRAFFIC CONTROL - CAPITOL DR S1 FULL CLOSURE	SHEET 14	E
FILE NAME: I:\S1\2025\630\20251501\SHETS\AN\06801_S1-CAPITOL-FULLCLOSURE.DWG	PROJECT DATE: 7/11/2022 2:14 PM	PLOT BY: DAN BAUMANN	PLOT NAME: 1 IN 100 FT	PLOT SCALE: 1 IN 100 FT	WISDOT/CARDS SHEET 42

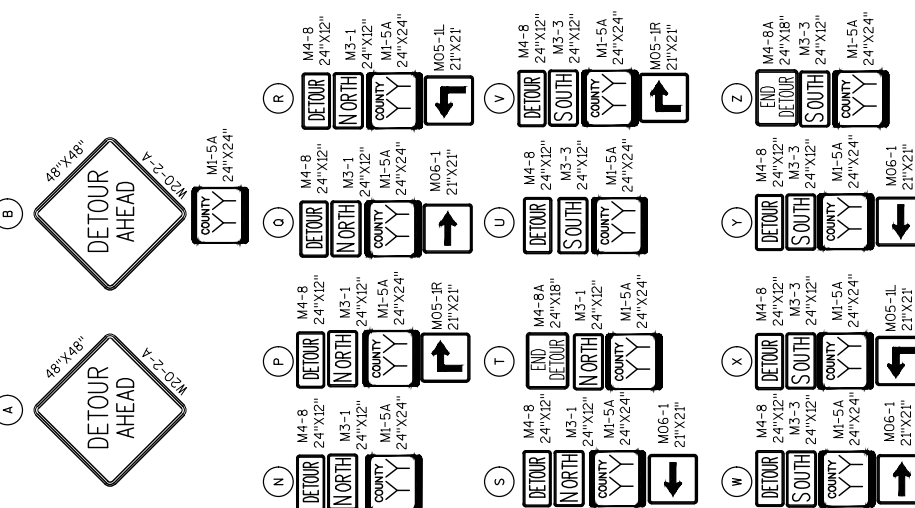
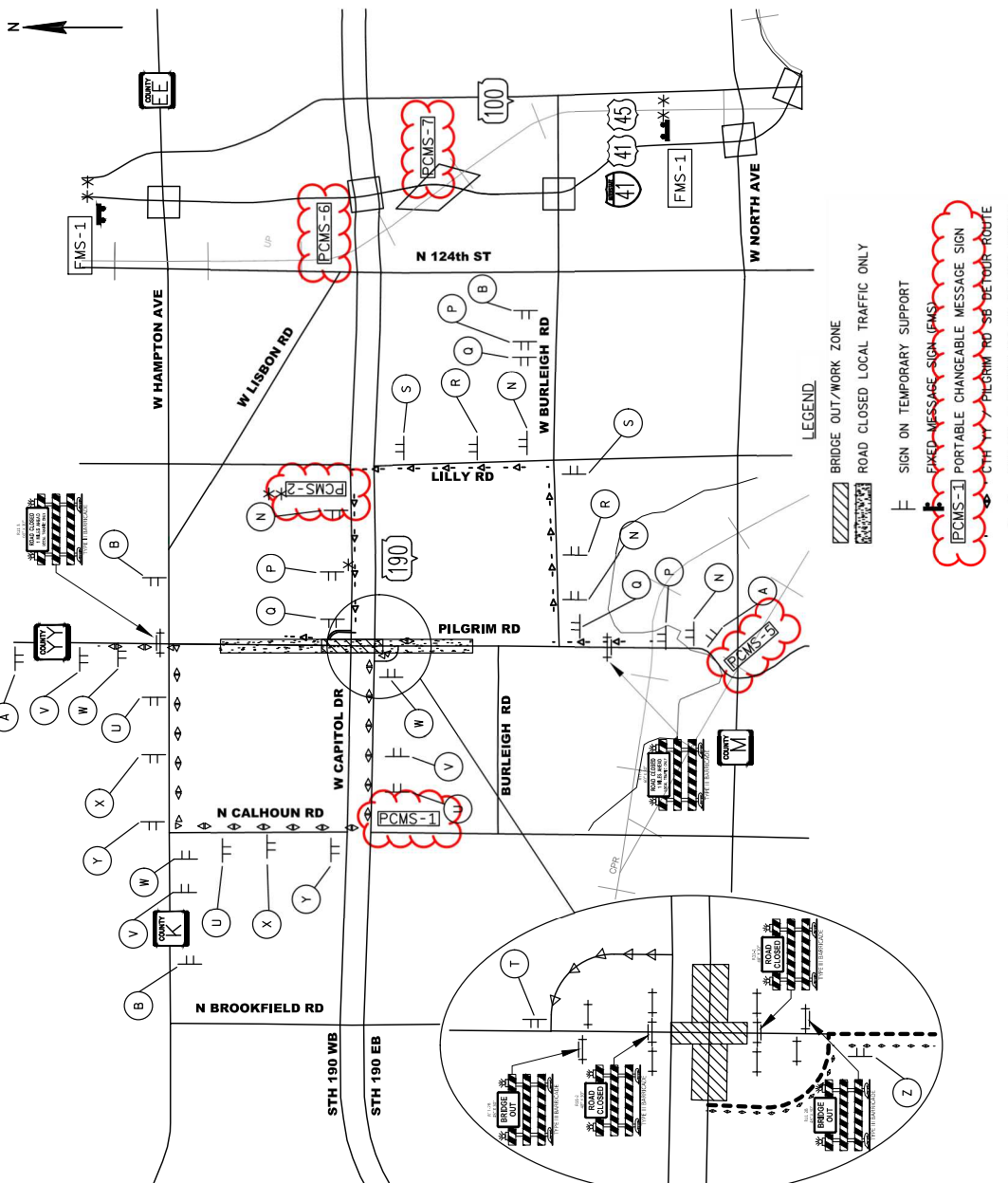


Addendum No. 01
 ID 2025-15-71
 Revised Sheet 15
 July 18, 2022



PLACE TWO TYPE III BARRICADES WITH "SIDEWALK CLOSED" SIGN ON THE SIDEWALK AT THE INTERSECTION OF 14TH STREET AND CAPITOL DRIVE.

- NOTES:
- SIGN LOCATIONS ARE APPROXIMATE. THE ACTUAL LOCATION AND SPACING MAY BE ADJUSTED AS DIRECTED BY THE ENGINEER TO MEET FIELD CONDITIONS.
 - AFTER SIGNS HAVE BEEN LOCATED IN THE FIELD, BUT BEFORE INSTALLATION, THE PROJECT ENGINEER SHALL VERIFY EACH SIGN LOCATION.
 - CONTRACTOR SHOULD LOCATE MESSAGE SIGNS A MINIMUM OF 200' FROM EXISTING TYPE "M" SIGN.
 - SEE TEMPORARY SIGNING SHEETS FOR MORE INFORMATION.
 - THE MONTH AND DAY SHALL BE AS DIRECTED BY THE PROJECT ENGINEER FOR EACH SIGN.
 - EXISTING SIGNS IN CONFLICT WITH THE TRAFFIC CONTROL "IN USE" SHALL BE COVERED. THE COVERING OF EXISTING WOOD POST MOUNTED SIGNS IS INCLUDED UNDER ITEM 643.0920 TRAFFIC CONTROL COVERING SIGNS TYPE II.
 - ANY "STOP" SIGNS THAT ARE REMOVED FOR A CONSTRUCTION OPERATION SHALL BE IMMEDIATELY RE-ESTABLISHED.
 - SEE TRAFFIC CONTROL PLAN FOR ADDITIONAL TRAFFIC CONTROL SIGNS.
 - DO NOT PLACE ANY SIGNS OR TRAFFIC CONTROL DEVICES WITHIN 50' OF RAILROAD RIGHT OF WAY.



Addendum No. 01
 ID 2025-15-71
 Revised Sheet 16
 July 18, 2022

2

PROJECT NO: 2025-15-71
 FILE NAME: I:\S\1\WORKSPACE\2025\1501\SHETS\PLAN\27001_01.DWG
 LAYOUT NAME: 027001_LP

HQ: CTH YY
 COUNTY: WAUKESHA
 DETOUR PLAN - PILGRIM RD.

DATE: 7/17/2022 2:02 PM
 PLOT BY: DARA BUDMANN
 PLOT NAME: 1 IN 1/2 FT
 WISDOT/CADSW SHEET 142

SHEET 16

MESSAGE PRIOR TO DECK DEMOLITION

FRAME 1

WIS 190
CLOSED
XXXXDAY

PCMS 1
(7 DAYS PRIOR)

FRAME 2

WIS 190
REOPENS
XXXXDAY

FRAME 1

WIS 190
CLOSED
AHEAD

PCMS 1

FRAME 2

FOLLOW
DETOUR

MESSAGE DURING DECK DEMOLITION

FRAME 1

BRIDGE
CLOSED
2 MILES

PCMS 5

FRAME 2

FOLLOW
DETOUR

FRAME 1

WIS 190
CLOSED
XXXXDAY

PCMS 2
(7 DAYS PRIOR)

FRAME 2

WIS 190
REOPENS
XXXXDAY

FRAME 1

WIS 190
CLOSED
AHEAD

PCMS 2

FRAME 2

FOLLOW
DETOUR

FRAME 1

WB 190
CLOSED
2 MILES

PCMS 6

FRAME 2

FOLLOW
DETOUR

FRAME 1

WB 190
CLOSED
2 MILES

PCMS 7

FRAME 2

FOLLOW
DETOUR

Addendum No. 01
ID 2025-15-71
Revised Sheet 18
July 18, 2022

PROJECT NO: 2025-15-71
FILE NAME: I:\317\WIS190\PCMS\SHIFTS\SPAN027001_01.DWG
LAYOUT NAME: 027002_PPCMS

HWY: CTH YY

COUNTY: WAUKESHA

PLOT DATE: 7/17/2022 2:03 PM

DETOUR SIGNS - PCMS

PLOT NAME: DARR BAUMANN

PLOT SCALE: 1 IN=20 FT

SHEET 18

E
WIS190/PCMS SHEET 18

TRAFFIC CONTROL ITEMS

ROADWAY	STAGE DURATION DAYS	TRAFFIC CONTROL DRUMS EACH* DAYS	TRAFFIC CONTROL BARRICADES TYPE II EACH* DAYS	TRAFFIC CONTROL FLEXIBLE TUBULAR MARKER POSTS EACH	TRAFFIC CONTROL FLEXIBLE TUBULAR MARKER TUBULAR MARKER BASES EACH	TRAFFIC CONTROL WARNING LIGHTS TYPE A EACH* DAYS	TRAFFIC CONTROL WARNING LIGHTS TYPE C EACH* DAYS	TRAFFIC CONTROL ARROW BOARDS EACH* DAYS	TRAFFIC CONTROL SIGNS EACH* DAYS	TRAFFIC CONTROL SIGNS COVERING TYPE II EACH*	TRAFFIC CONTROL SIGNS PCMS EACH* DAYS
643.0300	56	3,192	2	112	12	4	28	1,568	18	1,008	18
	9	1,539	69	621	--	138	--	74	666	--	--
	20	1,780	1	20	--	2	--	1	20	22	440
		--	--	3	3	--	--	--	--	--	--
		6,511	753	15	15	1,506	1,568	47	2,114	10	18
UNINDISTRIBUTED											
TRAFFIC CONTROL ITEMS SUBTOTAL											

^ FOR INFORMATION ONLY
 * ADDITIONAL QUANTITIES ELSEWHERE

Addendum No. 01
 ID 2025-15-71
 Revised Sheet 21
 July 18, 2022

DETOUR ITEMS

ROADWAY	STAGE DURATION DAYS	TRAFFIC CONTROL BARRICADES TYPE III EACH* DAYS	TRAFFIC CONTROL WARNING LIGHTS TYPE A EACH* DAYS	TRAFFIC CONTROL WARNING LIGHTS TYPE II EACH* DAYS	TRAFFIC CONTROL SIGNS TYPE II EACH* DAYS	TRAFFIC CONTROL SIGNS PCMS EACH* DAYS	TRAFFIC CONTROL SIGNS COVERING TYPE II EACH*	TRAFFIC CONTROL SIGNS SF	
643.0420*	65	12	780	24	1,560	117	7,605	2	130
	9	12	108	24	216	43	387	90	45
		--	--	--	--	--	--	--	--
		888	1,776	7,992	5	5	90	175	--
UNINDISTRIBUTED									
DETOUR ITEMS TOTAL									

^ FOR INFORMATION ONLY
 * ADDITIONAL QUANTITIES ELSEWHERE

ALL ITEMS CATEGORY 0010
 UNLESS OTHERWISE NOTED

PROJECT NO: 2025-15-71

HWY: CTH YY

COUNTY: WAUKESHA

MISCELLANEOUS QUANTITIES

SHEET: 21

E

11/21/2022 3:16:03 PM

PLOT BY: HNTB Corp.

PLOT NAME: 102294_M02

PLOT SCALE: 1:1

LEGEND

- SIGN ON PORTABLE OR PERMANENT SUPPORT
- TEMPORARY PORTABLE RUMBLE STRIP ARRAY
- DIRECTION OF TRAFFIC
- WORK AREA
- FLAGGER, EQUIPPED WITH STOP/SLOW PADDLE FASTENED ON SUPPORT STAFF

GENERAL NOTES

DETAILS OF TRAFFIC CONTROL DEVICES AND INSTALLATION NOT SHOWN ON THIS DRAWING SHALL CONFORM TO THE PERTINENT REQUIREMENTS OF THE STANDARD SPECIFICATIONS, THE SPECIAL PROVISIONS, AND THE MANUAL ON UNIFORM TRAFFIC CONTROL DEVICES.

ALL SIGNS ARE 48" X 48" UNLESS OTHERWISE NOTED.

"W" SIGNS ARE THE SAME AS "W" SIGNS EXCEPT THE BACKGROUND IS ORANGE.

THE EXACT NUMBER, LOCATION AND SPACING OF ALL SIGNS, DEVICES AND LOCATION OF ALL FLAGGERS SHALL BE ADJUSTED TO FIT FIELD CONDITIONS AS APPROVED BY THE ENGINEER.

THE FIRST ADVANCE WARNING SIGN SHOULD TYPICALLY BE LOCATED IN ADVANCE OF THE ANTICIPATED TRAFFIC BACKUP OR QUEUE.

WHEN A SIDE ROAD OR RAMP INTERSECTS THE FACILITY ON WHICH THE WORK IS BEING PERFORMED, ADDITIONAL SIGNS SHOULD BE PROVIDED AS SPECIFIED IN THE PLANS AND/OR THE SPECIAL PROVISIONS OR AS APPROVED BY THE ENGINEER.

FLAGGING

FLAGGERS SHALL BE IN SIGHT OF EACH OTHER OR IN DIRECT COMMUNICATION AT ALL TIMES. THEY SHALL BE EQUIPPED WITH STOP/SLOW PADDLES FASTENED ON SUPPORT STAFFS. WHEN THE FLAGGING OPERATION IS NOT IN EFFECT REMOVE TEMPORARY PORTABLE RUMBLE STRIPS PRIOR TO COVERING OR REMOVING ALL ADVANCE SIGNING.

FOR MOVING WORK OPERATIONS, POST ADDITIONAL W20-7A FLAGGER SIGNS AT APPROXIMATELY 3,500' INTERVALS IN THE MOVING WORK OPERATION OR AS APPROVED BY THE ENGINEER.

SIGN NOT REQUIRED IF FLAGGING OPERATION OCCURS WITHIN A SIGNED ROAD WORK ZONE AREA.

WHEN THE DISTANCE BETWEEN FLAGGERS EXCEEDS 2 MILES, A PILOT CAR IS REQUIRED. WHEN CURVES REDUCE SIGHT DISTANCE BELOW 400', A PILOT CAR IS REQUIRED.

TEMPORARY PORTABLE RUMBLE STRIPS

UTILIZE TEMPORARY PORTABLE RUMBLE STRIPS ON ALL FLAGGING OPERATIONS.

EACH TEMPORARY PORTABLE RUMBLE STRIP ARRAY CONSISTS OF THREE RUMBLE STRIPS PLACED TRANSVERSE ACROSS THE LANE AT THE LOCATIONS SHOWN. WITHIN EACH ARRAY, SPACING BETWEEN RUMBLE STRIPS SHALL BE 16 FEET ON CENTER. ONLY USE TEMPORARY PORTABLE RUMBLE STRIPS FROM THE APPROVED PRODUCTS LIST.

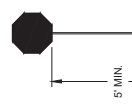
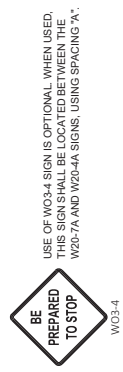
INSTALL TEMPORARY RUMBLE STRIPS PER MANUFACTURER'S RECOMMENDATIONS.

PLACE ADVANCE SIGNING PRIOR TO INSTALLING TEMPORARY RUMBLE STRIPS.

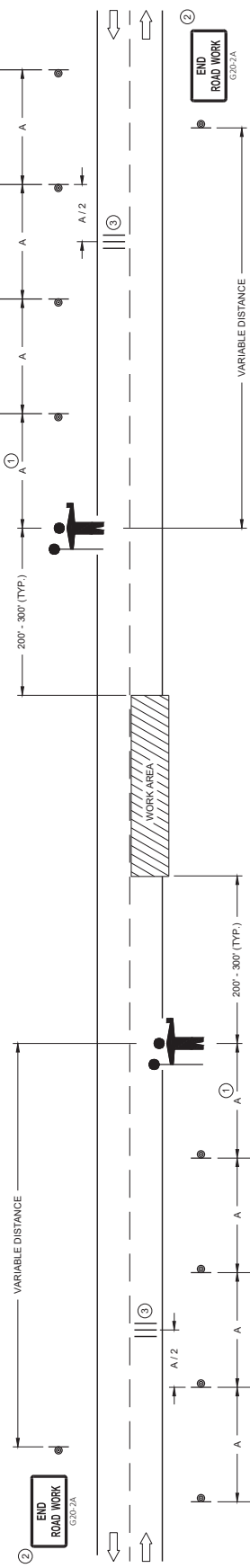
DO NOT INSTALL TEMPORARY PORTABLE RUMBLE STRIPS ON GRAVEL, MILLED SURFACES, OR ASPHALT THAT HAS BEEN PAVED LESS THAN 12 HOURS.

SIGN AND TEMPORARY RUMBLE STRIP ARRAY SPACING TABLE

SPEED LIMIT	SPACING "A"
25-30 MPH	200'
35-40 MPH	300'
45-55 MPH	500'



STOP/SLOW PADDLE ON SUPPORT STAFF



Addendum No. 01
ID 2025-15-71
Added Sheet 45A
July 18, 2022

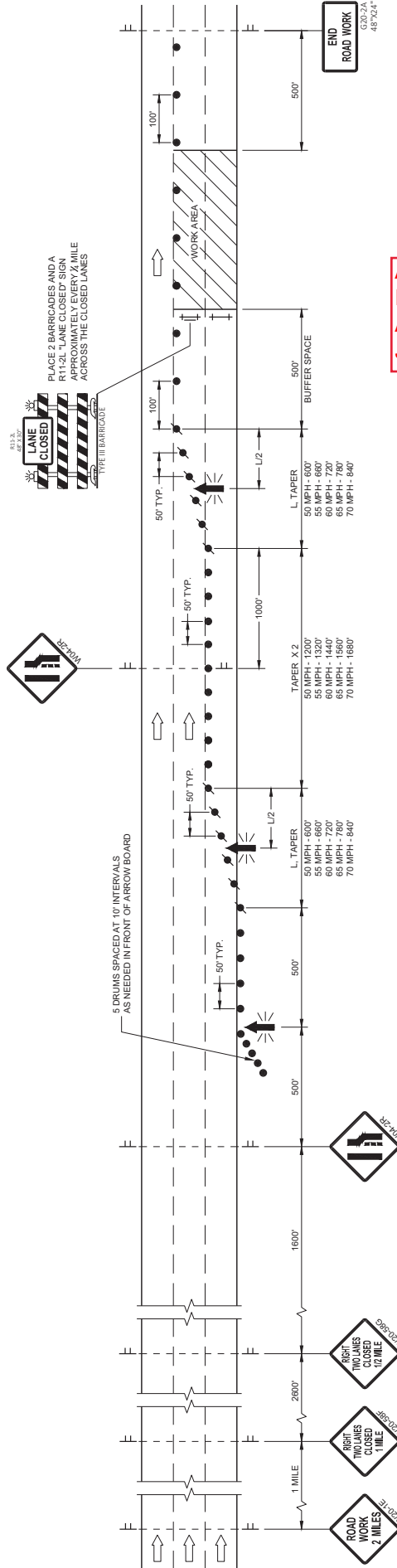
TRAFFIC CONTROL FOR LANE CLOSURE WITH FLAGGING OPERATION	
STATE OF WISCONSIN DEPARTMENT OF TRANSPORTATION	
APPROVED November 2021 DATE	/S/ Andrew Hedding WORK ZONE ENGINEER

GENERAL NOTES

- THIS DETAIL IS TYPICAL FOR CLOSING THE RIGHT TWO LANES. FOR CLOSING THE LEFT TWO LANES, REVERSE THE TRAFFIC CONTROL.
- ALL SIGNS ARE 48"x48" UNLESS OTHERWISE NOTED.
- "W" SIGN IS THE SAME AS "V" SIGN EXCEPT THE BACKGROUND IS ORANGE.
- ANY SIGNS TEMPORARY OR EXISTING, WHICH CONFLICT WITH THE TRAFFIC CONTROL "IN USE", SHALL BE REMOVED OR COVERED AS NEEDED AND AS APPROVED BY THE ENGINEER. NO WARNING LIGHTS SHALL BE WORKING ON COVERED OR "DOWNED" SIGNS.
- THE EXACT NUMBER, LOCATION, AND SPACING OF ALL SIGNS AND DEVICES SHALL BE ADJUSTED TO FIT FIELD CONDITIONS AS APPROVED BY THE ENGINEER.
- THE SPACING BETWEEN TRAFFIC CONTROL SIGNS SHOULD BE ADJUSTED TO NOT CONFLICT WITH AND TO PROVIDE A MINIMUM OF 200 FEET (600' DESIRABLE) DISTANCE TO EXISTING SIGNS THAT WILL REMAIN IN PLACE.
- W20-1E AND G20-2A SIGNS ARE NOT REQUIRED IF THE LANE CLOSURE IS WITHIN A LARGER WORK ZONE WHERE THESE SIGNS ARE ALREADY PRESENT.
- CONSIDER ROADWAY GEOMETRICS WHEN LOCATING SIGNS AND ARROW BOARDS SO THE APPROACHING DRIVER HAS A CLEAR VIEW OF THE ARROW BOARDS AND LANE CLOSURE DRUMS.
- WHEN A RAMP OR SIDE ROAD INTERSECTS THE FACILITY ON WHICH THE WORK IS BEING PERFORMED, ADDITIONAL TRAFFIC CONTROLS SHALL BE PROVIDED AS SPECIFIED IN THE PLANS AND/OR SPECIAL PROVISIONS OR AS APPROVED BY THE ENGINEER.
- BARRICADES IN A CLOSED LANE THAT MUST BE MOVED FOR A WORK OPERATION SHALL BE IMMEDIATELY REESTABLISHED UPON COMPLETION OF THE OPERATION, OR FOR CONTINUING OPERATIONS, AT THE END OF EACH WORKING DAY.
- CHANNELIZING DEVICES PLACED ADJACENT TO WORK AREA SHALL BE PULLED BACK FROM THE TRAVEL LANE WHEN WORK IS NOT IN PROGRESS.
- WARNING LIGHTS ARE NOT REQUIRED IF THE LANE CLOSURE IS A DAYTIME ONLY OPERATION.

LEGEND

- SIGN ON TEMPORARY SUPPORT
- TRAFFIC CONTROL DRUM
- ⦿ TRAFFIC CONTROL DRUM WITH TYPE 'C' STEADY BURN LIGHT
- ⊥ TYPE III BARRICADE
- ⊥ TYPE III BARRICADE WITH ATTACHED SIGN
- ⚡ TYPE 'A' WARNING LIGHT (FLASHING)
- ➡ FLASHING ARROW BOARD
- ➡ DIRECTION OF TRAFFIC
- ▨ WORK AREA



Addendum No. 01
 ID 2025-15-71
 Added Sheet 47A
 July 18, 2022

TRAFFIC CONTROL, TWO LANE CLOSURE ON FREEWAY OR EXPRESSWAY, SHORT TERM (LESS THAN 24 HOURS)

STATE OF WISCONSIN
 DEPARTMENT OF TRANSPORTATION
 APPROVED _____
 DATE: 10/15/2020
 FOR: Andrew Hedding
 SAFETY ENGINEER

GENERAL NOTES

ALL SIGNS ARE 48"X48" UNLESS OTHERWISE NOTED. IF NECESSARY DUE TO SPACE CONSTRAINTS IN URBAN AREAS, 36" X 36" MAY BE USED IF APPROVED BY THE DISTRICT TRAFFIC UNIT.

W SIGNS THE SAME AS "W" SIGN EXCEPT THE BACKGROUND IS ORANGE.

ANY SIGNS TEMPORARY OR EXISTING, WHICH CONFLICT WITH THE TRAFFIC CONTROL "IN USE", SHALL BE REMOVED OR COVERED AS NEEDED AND AS APPROVED BY THE ENGINEER. NO WARNING LIGHTS SHALL BE WORKING ON COVERED OR DOWNED SIGNS. THE EXACT NUMBER, LOCATION, AND SPACING OF ALL SIGNS AND DEVICES SHALL BE ADJUSTED TO FIT FIELD CONDITIONS AS APPROVED BY THE ENGINEER.

THE SPACING BETWEEN TRAFFIC CONTROL SIGNS SHOULD BE ADJUSTED TO NOT CONFLICT WITH AND TO PROVIDE A MINIMUM OF 200 FEET (50% DESIRABLE) DISTANCE TO EXISTING SIGNS THAT WILL REMAIN IN PLACE.

SIGN LAYOUTS SHALL BE IN ACCORDANCE WITH THE FHWA'S MANUAL OF STANDARD HIGHWAY SIGNS ON THE WISCONSIN STANDARD SIGN PLATES.

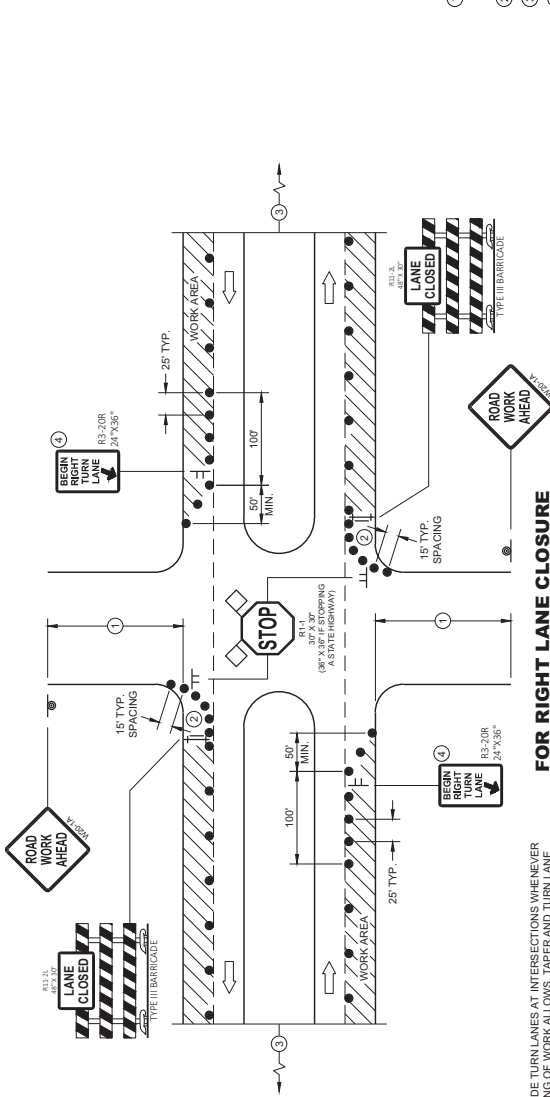
SIGNS THAT WILL REMAIN IN PLACE LESS THAN 7 CONTINUOUS DAYS AND NIGHTS OR THAT WILL BE PLACED IN A CLOSED LANE MAY BE MOUNTED ON PORTABLE SUPPORTS. BARRICADES IN A CLOSED LANE THAT MUST BE MOVED FOR A WORK OPERATION SHALL BE IMMEDIATELY REESTABLISHED UPON COMPLETION OF THE OPERATION, OR FOR CONTINUING OPERATIONS, AT THE END OF EACH WORKING DAY.

CHANNELIZING DEVICES PLACED ADJACENT TO WORK AREA SHALL BE PULLED BACK FROM THE TRAVEL LANE WHEN WORK IS NOT IN PROGRESS.

- ① 500' TYPICAL OR AT LAST INTERSECTION, WHICHEVER IS CLOSER, 350' IF 35-40 MPH, 200' IF 25-30 MPH.
- ② ALSO USE BARRICADE AND 15 FOOT TYPICAL DRUM SPACING AT COMMERCIAL DRIVEWAYS
- ③ SEE SEPARATE LANE CLOSURE DETAIL FOR ADDITIONAL TRAFFIC CONTROL.
- ④ MINIMUM MOUNTING HEIGHT OF 5 FEET FROM EDGE OF PAVEMENT (AT EDGE LINE LOCATION) TO BOTTOM OF SIGN.

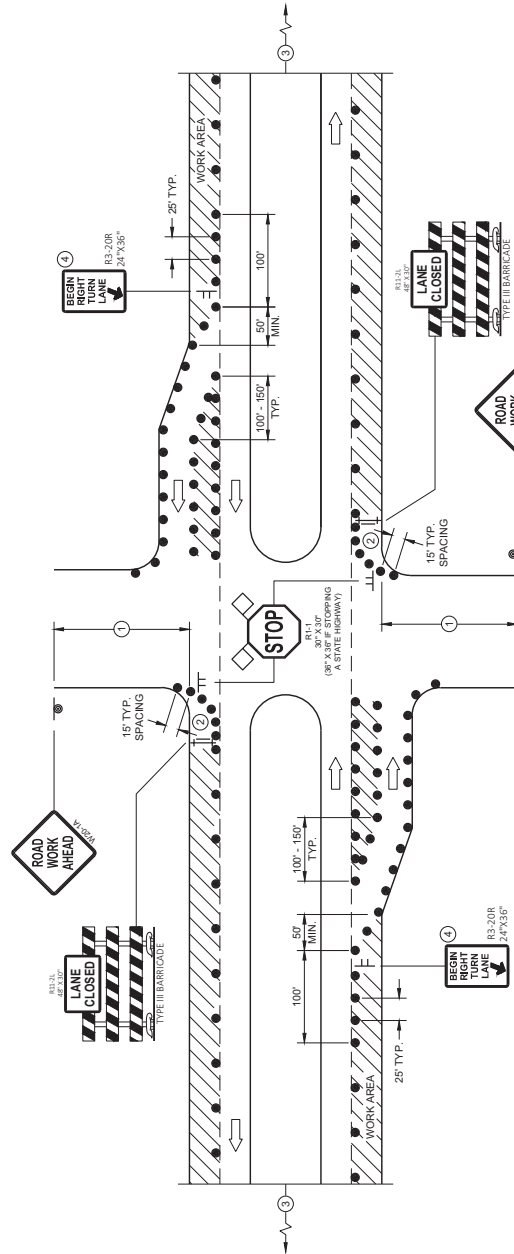
LEGEND

- ⊥ SIGN ON TEMPORARY SUPPORT
- ⊥ SIGN ON PERMANENT SUPPORT
- TRAFFIC CONTROL DRUM
- ⇄ TYPE III BARRICADE WITH ATTACHED SIGN
- ➡ DIRECTION OF TRAFFIC
- ◇ FLAGS, 16" X 16" MIN., ORANGE
- ▨ WORK AREA



FOR RIGHT LANE CLOSURE AT INTERSECTION

PROVIDE TURN LANES AT INTERSECTIONS WHENEVER STAGING OF WORK ALLOWS. TAPER AND TURN LANE DEVICES ON FIELD CONDITIONS AS APPROVED BY THE ENGINEER.



FOR RIGHT LANE CLOSURE AT INTERSECTION (WITH RIGHT TURN BAY OPEN)

Addendum No. 01
ID 2025-15-71
Added Sheet 47B
July 18, 2022

**TRAFFIC CONTROL,
INTERSECTION WITHIN SINGLE
RIGHT LANE CLOSURE**
STATE OF WISCONSIN
DEPARTMENT OF TRANSPORTATION

GENERAL NOTES

ALL SIGNS ARE 48"X48" UNLESS OTHERWISE NOTED. IF NECESSARY DUE TO SPACE CONSTRAINTS IN URBAN AREAS, 36" X 36" MAY BE USED IF APPROVED BY THE DISTRICT TRAFFIC UNIT.

"W" SIGN IS THE SAME AS "W" SIGN EXCEPT THE BACKGROUND IS ORANGE.

ANY SIGNS TEMPORARY OR EXISTING, WHICH CONFLICT WITH THE TRAFFIC CONTROL "IN USE" SHALL BE REMOVED OR COVERED AS NEEDED AND AS APPROVED BY THE ENGINEER. NO WARNING LIGHTS SHALL BE WORKING ON COVERED OR "DOWNED" SIGNS. THE EXACT NUMBER, LOCATION, AND SPACING OF ALL SIGNS AND DEVICES SHALL BE ADJUSTED TO FIT FIELD CONDITIONS AS APPROVED BY THE ENGINEER.

THE SPACING BETWEEN TRAFFIC CONTROL SIGNS SHOULD BE ADJUSTED TO NOT CONFLICT WITH THE MINIMUM 200 FEET (60' DESIRABLE) DISTANCE TO EXISTING SIGNS THAT WILL REMAIN IN PLACE.

SIGN LAYOUTS SHALL BE IN ACCORDANCE WITH THE FHWA'S MANUAL OF STANDARD HIGHWAY SIGNS OR THE WISCONSIN STANDARD SIGN PLATES.

SIGNS THAT WILL REMAIN IN PLACE LESS THAN 7 CONTINUOUS DAYS AND NIGHTS OR THAT WILL BE PLACED IN A CLOSED LANE MAY BE MOUNTED ON PORTABLE SUPPORTS.

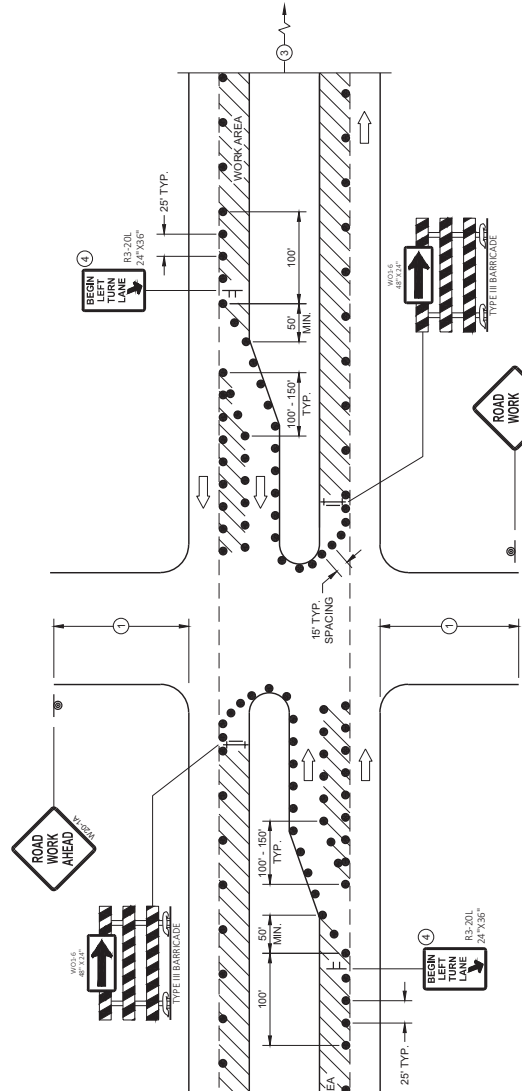
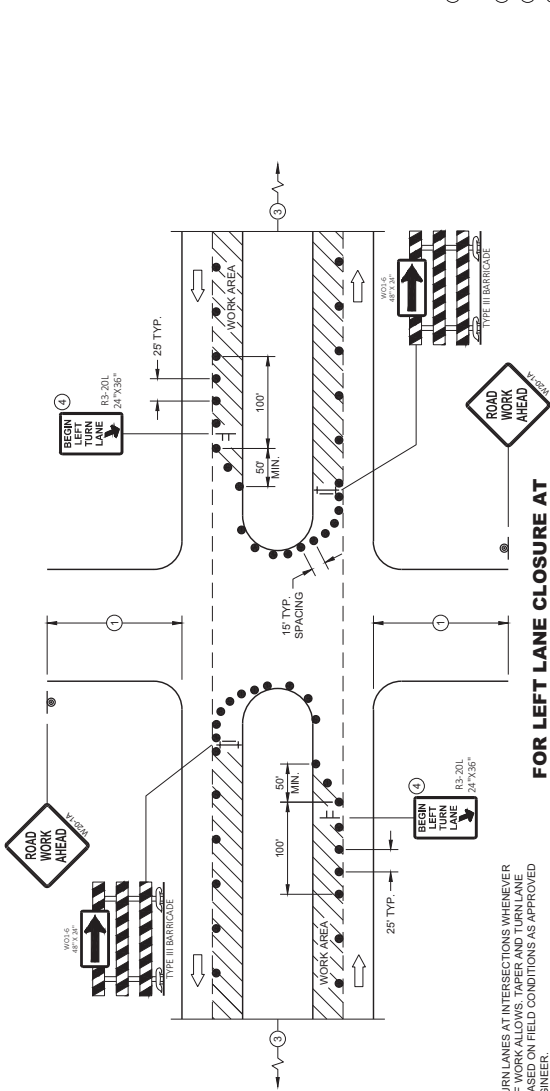
BARRICADES IN A CLOSED LANE THAT MUST BE MOVED FOR A WORK OPERATION SHALL BE IMMEDIATELY REESTABLISHED UPON COMPLETION OF THE OPERATION, OR FOR CONTINUING OPERATIONS, AT THE END OF EACH WORKING DAY.

CHANNELIZING DEVICES PLACED ADJACENT TO WORK AREA SHALL BE PULLED BACK FROM THE TRAVEL LANE WHEN WORK IS NOT IN PROGRESS.

- 1 500 TYPICAL OR AT LAST INTERSECTION, WHICHEVER IS CLOSER. 350' IF 35 - 40 MPH, 200' IF 25 - 30 MPH.
- 2 ALSO USE BARRICADE AND 15 FOOT TYPICAL DRUM SPACING AT COMMERCIAL DRIVEWAYS
- 3 SEE SEPARATE LANE CLOSURE DETAIL FOR ADDITIONAL TRAFFIC CONTROL.
- 4 MINIMUM MOUNTING HEIGHT OF 5 FEET FROM EDGE OF PAVEMENT (AT EDGE LINE LOCATION) TO BOTTOM OF SIGN.

FOR LEFT LANE CLOSURE AT INTERSECTION OR MEDIAN OPENING

PROVIDE TURN LANES AT INTERSECTIONS WHENEVER STAGING OF WORK ALLOWS. TAPER AND TURN LANE LENGTHS BASED ON FIELD CONDITIONS AS APPROVED BY THE ENGINEER.



FOR LEFT LANE CLOSURE AT INTERSECTION OR MEDIAN OPENING (WITH LEFT TURN BAY OPEN)

LEGEND

- SIGN ON TEMPORARY SUPPORT
- SIGN ON PERMANENT SUPPORT
- TRAFFIC CONTROL DRUM
- ⇄ TYPE III BARRICADE WITH ATTACHED SIGN
- ⇨ DIRECTION OF TRAFFIC
- ◇ FLAGS, 16" X 16" MIN., ORANGE
- ▨ WORK AREA

Addendum No. 01
ID 2025-15-71
Added Sheet 47C
July 18, 2022

**TRAFFIC CONTROL,
INTERSECTION WITHIN SINGLE
LEFT LANE CLOSURE**

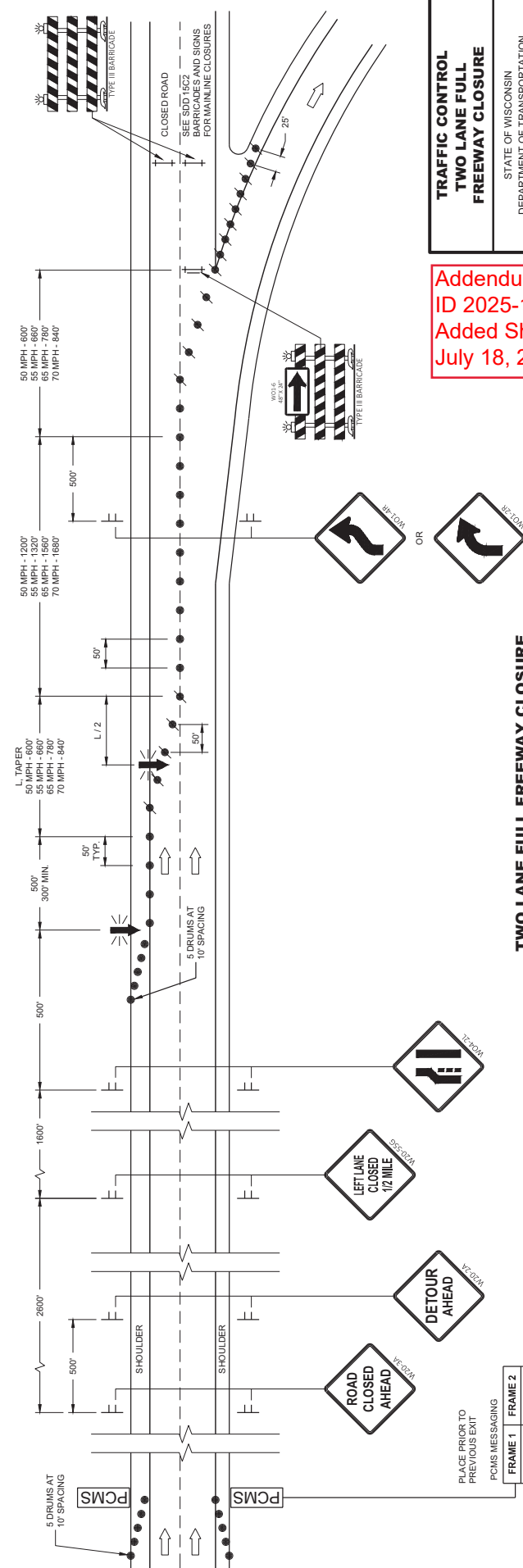
STATE OF WISCONSIN
DEPARTMENT OF TRANSPORTATION

APPROVED _____ /S/ Andrew Hedling
DATE _____
WORK ZONE ENGINEER

GENERAL NOTES

- RIGHT CLOSURE SHOWN (LEFT LANE CLOSURE SIMILAR)
- THE EXACT NUMBER, LOCATION, AND SPACING OF ALL SIGNS AND DEVICES SHALL BE ADJUSTED TO FIT FIELD CONDITIONS AS APPROVED BY THE ENGINEER.
- WARNING LIGHTS ARE NOT REQUIRED IF THE LANE CLOSURE IS PART OF A DAYTIME ONLY OPERATION.
- ALL SIGNS ARE 48" x 48" UNLESS OTHERWISE NOTED.
- "W" SIGN IS THE SAME AS "W" SIGN EXCEPT THE BACKGROUND IS ORANGE.
- WHEN A RAMP INTERSECTS THE FACILITY ON WHICH THE WORK IS BEING PERFORMED, ADDITIONAL TRAFFIC CONTROL SHALL BE PROVIDED AS SPECIFIED IN THE PLANS AND / OR THE SPECIAL PROVISIONS OR AS DIRECTED BY THE ENGINEER.
- PLACE A TYPE III BARRICADE APPROXIMATELY EVERY 1000' ACROSS EACH CLOSED LANE TO HELP REINFORCE THE DRUM LINE.
- CONSIDER ROADWAY GEOMETRICS WHEN LOCATING SIGNS AND ARROW BOARD SO THE DRIVER HAS A CLEAR VIEW OF THE ARROW BOARD AND LANE CLOSURE DRUMS.
- REFER TO DETOUR ROUTES FOR TRAFFIC GUIDANCE SIGNING.
- ANY SIGNS TEMPORARILY OR EXISTING, WHICH CONFLICT WITH TRAFFIC CONTROL "IN USE" SHALL BE REMOVED OR COVERED AS NEEDED OR AS APPROVED BY THE ENGINEER. NO WARNING LIGHTS SHALL BE WORKING ON "COVERED" OR "DOWNED" SIGNS.

- LEGEND**
- TYPE III BARRICADE
 - TYPE III BARRICADE WITH ATTACHED SIGN
 - SIGN ON TEMPORARY SUPPORT
 - SIGN ON PERMANENT SUPPORT
 - TRAFFIC CONTROL DRUM WITH TYPE "C" STEADY BURN LIGHT
 - TRAFFIC CONTROL DRUM
 - TYPE "A" WARNING LIGHT (FLASHING)
 - DIRECTION OF TRAFFIC
 - WORK AREA
 - FLASHING ARROW BOARD
 - PCMS
 - PORTABLE CHANGEABLE MESSAGE SIGN



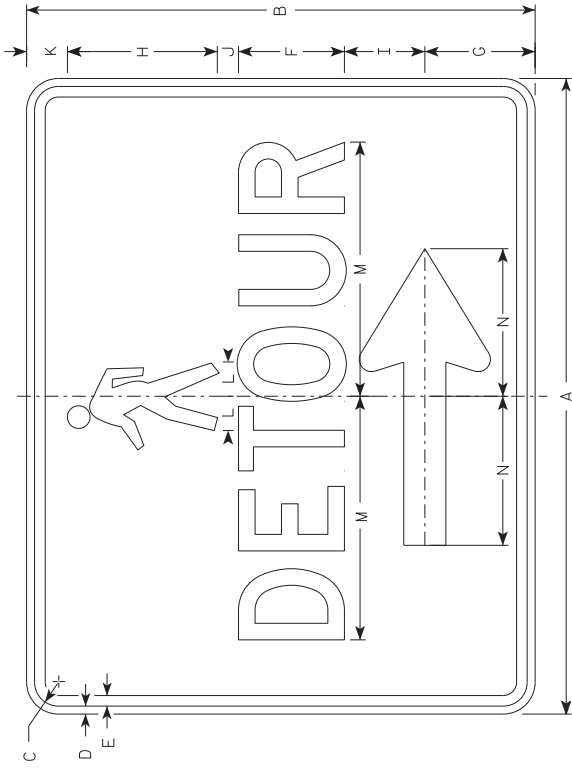
TRAFFIC CONTROL TWO LANE FULL FREEWAY CLOSURE	
STATE OF WISCONSIN DEPARTMENT OF TRANSPORTATION	
APPROVED AUGUST 2019 DATE	/S/ Andrew Hedling WORK ZONE ENGINEER

Addendum No. 01
ID 2025-15-71
Added Sheet 48A
July 18, 2022

TWO LANE FULL FREEWAY CLOSURE

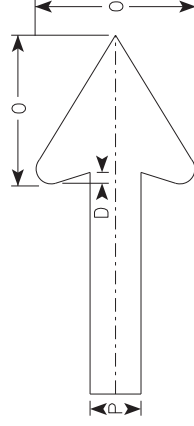
NOTES

1. Sign is Type II-Type F Reflective
2. Color:
Background - Orange
Message - Black
3. Message Series - D
4. Corners may be square or rounded when base material is plywood but borders shall be rounded as shown. When base material is metal, the corners and borders shall be rounded.
5. M4-9BL is the same as M4-9BR except the arrow is reversed.



M4-9BR

Addendum No. 01
ID 2025-15-71
Added Sheet 62A
July 18, 2022



Arrow Detail

SIZE	A	B	C	D	E	F	G	H	I	J	K	L	M	N	O	P	Q	R	S	T	U	V	W	X	Y	Z	Acq. qt.
1																											
2	30	24	1 1/8	3/8	1/2	5	5 1/4	7 1/8	3 3/4	1	1 1/8	1 5/8	11 3/4	7	6	2										5.00	
3																											
4																											
5																											

STANDARD SIGN
M4-9B L&R
WISCONSIN DEPT OF TRANSPORTATION
APPROVED *Matthew R. Raush*
For state Traffic Engineer
DATE 7/1/19 PLATE NO. M4-9B.2

NOTES

1. Sign is Type II - Type H Reflective

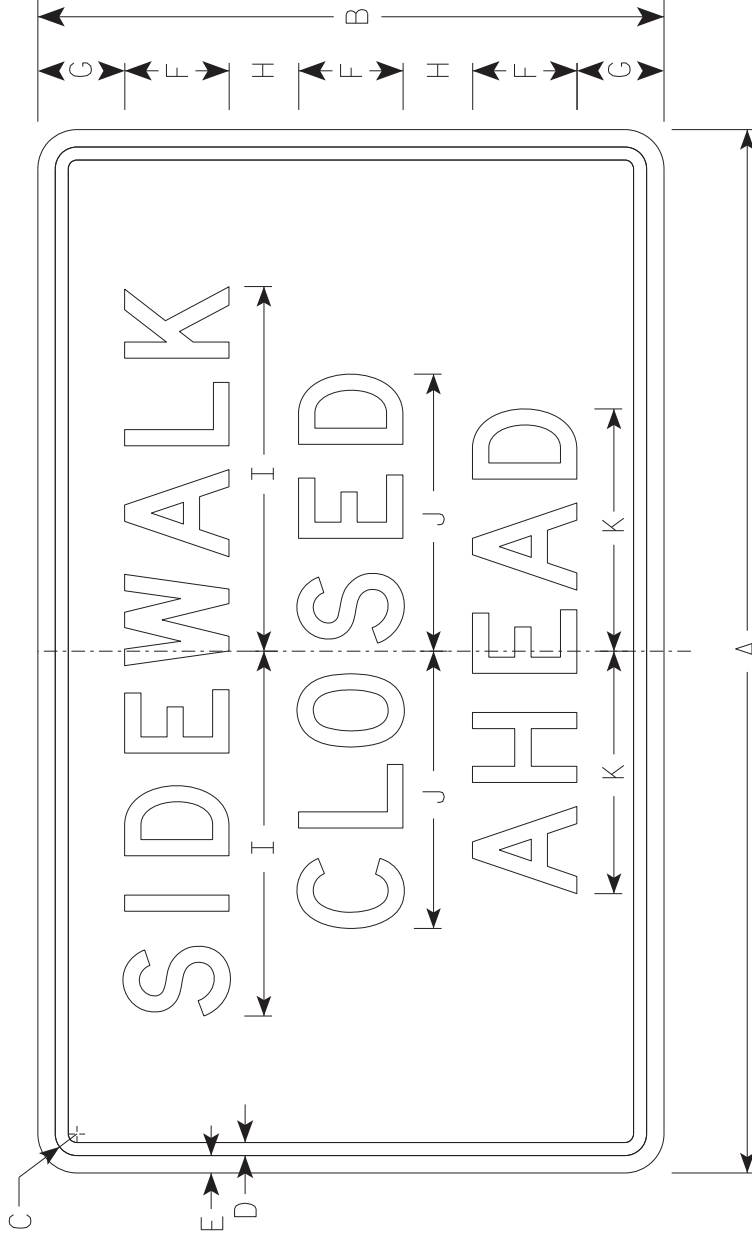
2. Color:

Background - White

Message - Black

3. Message Series - D

4. Corners may be square or rounded when base material is plywood but borders shall be rounded as shown. When base material is metal, the corners and borders shall be rounded.



Addendum No. 01
ID 2025-15-71
Added Sheet 69A
July 18, 2022

R9-9A

SIZE	A	B	C	D	E	F	G	H	I	J	K	L	M	N	O	P	Q	R	S	T	U	V	W	X	Y	Z	SPR. NO.
1																											
2S	30	18	1 1/8	3/8	1/2	3	2 1/2	2	10 1/2	8	7																3.75
2M	30	18	1 1/8	3/8	1/2	3	2 1/2	2	10 1/2	8	7																3.75
3																											
4																											
5																											

STANDARD SIGN
R9-9A
WISCONSIN DEPT OF TRANSPORTATION
APPROVED *Matthew R. Rauch*
For State Traffic Engineer
DATE 8/31/2020 PLATE NO. R9-9A.1

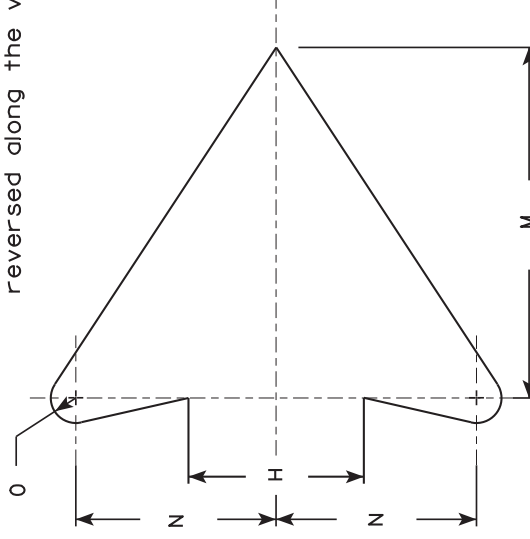
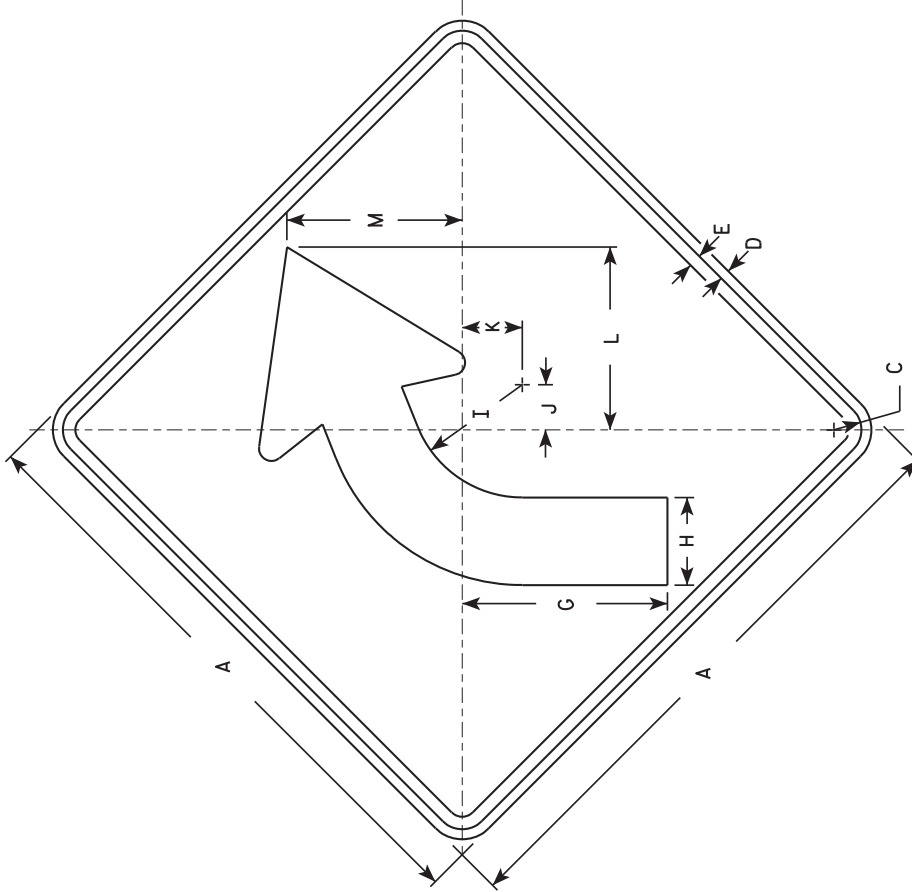
PROJECT NO: _____ COUNTY: _____ HWY: _____ SHEET NO: **69A** **E**

FILE NAME : C:\CAF\1tes\Projects\Yr...s\template\69A.DGN PLOT DATE : 31-AUG-2020 3:26 PLOT BY : dotc4c PLOT SCALE : ##.....plotscale.....## WISDOT/CADD/SHEET 42

NOTES

1. Sign is Type II - Type F Reflective - reference WIS DOT Standard Specification for HIGHWAY and STRUCTURE CONSTRUCTION latest edition.
2. Color:
Background - Yellow
Message - Black
3. Corners may be square or rounded when base material is plywood but borders shall be rounded as shown. When base material is metal, the corners and borders shall be rounded.
4. W1-2L is the same as W1-2R except the arrow is reversed along the vertical centerline.

Addendum No. 01
ID 2025-15-71
Added Sheet 72A
July 18, 2022



ARROW DETAIL

W1-2R

SIZE	A	B	C	D	E	F	G	H	I	J	K	L	M	N	O	P	R	S	T	U	V	W	X	Y	Z	W ₁₀₀ sq. ft.
1	24	1 1/8	3/8	1/2	1/2	8 1/4	3 1/2	4 1/2	1 3/4	2 3/8	7 1/4	7	4	1/2												4.0
2S	30	1 3/8	1/2	5/8	3/4	10 1/4	4 3/8	5 5/8	2 1/4	3	9 1/8	8 3/4	5	5/8												6.25
2M	36	1 5/8	5/8	3/4	3/4	12 3/8	5 1/4	6 3/4	2 5/8	3 1/2	10 7/8	10 1/2	6	3/4												9.0
3	36	1 5/8	5/8	3/4	3/4	12 3/8	5 1/4	6 3/4	2 5/8	3 1/2	10 7/8	10 1/2	6	3/4												9.0
4	36	1 5/8	5/8	3/4	3/4	12 3/8	5 1/4	6 3/4	2 5/8	3 1/2	10 7/8	10 1/2	6	3/4												9.0
5	48	2 1/4	3/4	1	1	16 1/2	7	9	3 1/2	4 5/8	14 1/2	14	8	1												16.0

STANDARD SIGN
W1-2
WISCONSIN DEPT. OF TRANSPORTATION
APPROVED
Matthew R. Rauch
State Traffic Engineer
DATE 5/15/12 PLATE NO. W1-2-10



Proposal Schedule of Items

Proposal ID: 20220809009 Project(s): 2025-15-71

Federal ID(s): N/A

SECTION: 0001

Contract Items

Alt Set ID:

Alt Mbr ID:

Proposal Line Number	Item ID Description	Approximate Quantity and Units	Unit Price	Bid Amount
0002	203.0220 Removing Structure (structure) 01.B-67-86	1.000 EACH	_____.	_____.
0004	213.0100 Finishing Roadway (project) 01. 2025-15-71	1.000 EACH	_____.	_____.
0006	502.0100 Concrete Masonry Bridges	23.000 CY	_____.	_____.
0008	502.3101 Expansion Device	6.000 LF	_____.	_____.
0010	502.3200 Protective Surface Treatment	42.000 SY	_____.	_____.
0012	502.3210 Pigmented Surface Sealer	33.000 SY	_____.	_____.
0014	502.4106 Adhesive Anchors 3/4-inch	1.000 EACH	_____.	_____.
0016	505.0600 Bar Steel Reinforcement HS Coated Structures	4,960.000 LB	_____.	_____.
0018	506.0105 Structural Steel Carbon	11,630.000 LB	_____.	_____.
0020	506.3025 Welded Stud Shear Connectors 7/8x8-Inch	264.000 EACH	_____.	_____.
0022	517.0600 Painting Epoxy System (structure) 01.B-67-86	LS	LUMP SUM	_____.
0024	517.0901.S Preparation and Coating of Top Flanges (structure) 01.B-67-86	1.000 EACH	_____.	_____.
0026	517.3001.S Structure Overcoating Cleaning and Priming (structure) 01.B-67-86	1.000 EACH	_____.	_____.
0028	517.4001.S Containment and Collection of Waste Materials (structure) 01.B-67-86	1.000 EACH	_____.	_____.



Proposal Schedule of Items

Proposal ID: 20220809009 Project(s): 2025-15-71

Federal ID(s): N/A

SECTION: 0001

Contract Items

Alt Set ID:

Alt Mbr ID:

Proposal Line Number	Item ID Description	Approximate Quantity and Units	Unit Price	Bid Amount
0030	603.8000 Concrete Barrier Temporary Precast Delivered	383.000 LF	_____.	_____.
0032	603.8125 Concrete Barrier Temporary Precast Installed	383.000 LF	_____.	_____.
0034	618.0100 Maintenance And Repair of Haul Roads (project) 01. 2025-15-71	1.000 EACH	_____.	_____.
0036	619.1000 Mobilization	1.000 EACH	_____.	_____.
0038	628.7020 Inlet Protection Type D	2.000 EACH	_____.	_____.
0040	634.0618 Posts Wood 4x6-Inch X 18-FT	4.000 EACH	_____.	_____.
0042	637.2210 Signs Type II Reflective H	20.000 SF	_____.	_____.
0044	637.2230 Signs Type II Reflective F	20.000 SF	_____.	_____.
0046	638.2102 Moving Signs Type II	4.000 EACH	_____.	_____.
0048	638.2602 Removing Signs Type II	1.000 EACH	_____.	_____.
0050	638.3000 Removing Small Sign Supports	4.000 EACH	_____.	_____.
0052	642.5201 Field Office Type C	1.000 EACH	_____.	_____.
0054	643.0300 Traffic Control Drums	6,511.000 DAY	_____.	_____.
0056	643.0420 Traffic Control Barricades Type III	1,641.000 DAY	_____.	_____.
0058	643.0500 Traffic Control Flexible Tubular Marker Posts	15.000 EACH	_____.	_____.



Proposal Schedule of Items

Proposal ID: 20220809009 Project(s): 2025-15-71

Federal ID(s): N/A

SECTION: 0001

Contract Items

Alt Set ID:

Alt Mbr ID:

Proposal Line Number	Item ID Description	Approximate Quantity and Units	Unit Price	Bid Amount
0060	643.0600 Traffic Control Flexible Tubular Marker Bases	15.000 EACH	_____.	_____.
0062	643.0705 Traffic Control Warning Lights Type A	3,282.000 DAY	_____.	_____.
0064	643.0715 Traffic Control Warning Lights Type C	1,568.000 DAY	_____.	_____.
0066	643.0800 Traffic Control Arrow Boards	47.000 DAY	_____.	_____.
0068	643.0900 Traffic Control Signs	10,106.000 DAY	_____.	_____.
0070	643.0920 Traffic Control Covering Signs Type II	15.000 EACH	_____.	_____.
0072	643.1000 Traffic Control Signs Fixed Message	90.000 SF	_____.	_____.
0074	643.1050 Traffic Control Signs PCMS	185.000 DAY	_____.	_____.
0076	643.5000 Traffic Control	1.000 EACH	_____.	_____.
0078	646.1020 Marking Line Epoxy 4-Inch	796.000 LF	_____.	_____.
0080	646.5020 Marking Arrow Epoxy	1.000 EACH	_____.	_____.
0082	646.5120 Marking Word Epoxy	1.000 EACH	_____.	_____.
0084	646.9300 Marking Removal Special Marking	2.000 EACH	_____.	_____.
0086	649.0150 Temporary Marking Line Removable Tape 4-Inch	3,064.000 LF	_____.	_____.
0088	649.0250 Temporary Marking Line Removable Tape 8-Inch	53.000 LF	_____.	_____.
0090	649.0960 Temporary Marking Removable Mask Out Tape 6-Inch	1,816.000 LF	_____.	_____.



Proposal Schedule of Items

Proposal ID: 20220809009 Project(s): 2025-15-71

Federal ID(s): N/A

SECTION: 0001

Contract Items

Alt Set ID:

Alt Mbr ID:

Proposal Line Number	Item ID Description	Approximate Quantity and Units	Unit Price	Bid Amount
0092	649.0970 Temporary Marking Removable Mask Out Tape 10-Inch	245.000 LF	_____.	_____.
0094	715.0502 Incentive Strength Concrete Structures	500.000 DOL	1.00000	500.00
0096	SPV.0060 Special 01. Heat Straightening of Damaged Girders	1.000 EACH	_____.	_____.
0098	SPV.0060 Special 02. Counterweight Structure	1.000 EACH	_____.	_____.
Section: 0001			Total:	_____.
			Total Bid:	_____.

