



Wisconsin Department of Transportation

September 1, 2022

Division of Transportation Systems Development

Bureau of Project Development
4822 Madison Yards Way, 4th Floor South
Madison, WI 53705

Telephone: (608) 266-1631
Facsimile (FAX): (608) 266-8459

NOTICE TO ALL CONTRACTORS:

Proposal #06: 5310-02-75, WISC 2022 380
Spring Green - Madison
Pleasant View Road Intersection
USH 14
Dane County

5992-11-01, WISC 2022 382
C Middleton, Pleasant View Road
Timber Wolf Trail to USH 14
Local Street
Dane County

5992-11-02
C of Middleton, Pleasant View Road
Timber Wolf Trail to USH 14
Local Street
Dane County

Letting of September 13, 2022

This is Addendum No. 01, which provides for the following:

Special Provisions:

Revised Special Provisions	
Article No.	Description
37	Removing Traffic Signals Pleasant View Road & USH 14, Item 204.9060.S.06
68	Temporary Traffic Signals for Intersections (Pleasant View Road and Blackhawk Road), Item 661.0200.01.
126	Transport and Install State Furnished Cameras (USH 14 & Pleasant View Road), Item SPV.0060.67.
127	Transport and Install SF Radar Detection System (USH 14 & Pleasant View Road), Item SPV.0060.68.
128	Transport and Install State Furnished Blank Out Sign (USH 14 & Pleasant View Rd) Item SPV.0060.69.

Added Special Provisions	
Article No.	Description
162	Excavation Rock
163	Railing Steel Pedestrian Type C3
164	Roadway Embankment, Item SPV.0035.08

Deleted Special Provisions	
Article No.	Description
40	Embankment

Schedule of Items:

Revised Bid Item Quantities					
Bid Item	Item Description	Unit	Old Quantity	Revised Quantity	Proposal Total
655.0610	Electrical Wire Lighting 12 AWG	LF	18,394	1,200	19,594

Added Bid Item Quantities					
Bid Item	Item Description	Unit	Old Quantity	Revised Quantity	Proposal Total
655.0230	Cable Traffic Signal 5-14 AWG	LF	0	1,000	1,000
658.5069	Signal Mounting Hardware (USH 14 & Pleasant View Road)	LS	0	1	1
SPV.0035.08	Roadway Embankment	CY	0	11,400	11,400

Plan Sheets:

Revised Plan Sheets	
Plan Sheet	Plan Sheet Title (brief description of changes to sheet)
271	Temporary Traffic Signal Plan - Stage 2 (Removed construction notes 4 and 5)
272	Temporary Traffic Signal Plan - Stage 3 (Removed construction notes 4 and 5)
273	Temporary Traffic Signal Plan - Stage 4 (Removed construction notes 4, 5 and 6)
480	Miscellaneous Quantities (Revised Cable Traffic Signal table, added two tables)
489	Miscellaneous Quantities (Added Roadway Embankment table)
490	Miscellaneous Quantities (Revised for Swallowtail Pond Excavation to all be wasted)
988	Cross Sections - Pleasant View Road (NB) - (Add hatching for Excavation Rock Parcel 20)
989	Cross Sections - Pleasant View Road (NB) - (Add hatching for Excavation Rock Parcel 20)
990	Cross Sections - Pleasant View Road (NB) - (Add hatching for Excavation Rock Parcel 20)
991	Cross Sections - Pleasant View Road (NB) - (Add hatching for Excavation Rock Parcel 20)
992	Cross Sections - Pleasant View Road (NB) - (Add hatching for Excavation Rock Parcel 20)
993	Cross Sections - Pleasant View Road (NB) - (Add hatching for Excavation Rock Parcel 20)
995	Cross Sections - Pleasant View Road (NB) - (Add hatching for Excavation Rock Parcel 20)

The responsibility for notifying potential subcontractors and suppliers of these changes remains with the prime contractor.

Sincerely,

Mike Coleman

Proposal Development Specialist
Proposal Management Section

ADDENDUM NO. 01
5310-02-75/5992-11-01/5992-11-02
September 1, 2022

Special Provisions

37. Removing Traffic Signals Pleasant View Road & USH 14, Item 204.9060.S.06.

Replace paragraph under section titled C Construction with the following:

Arrange for the de-energizing of the traffic signal assembly with the Region Electrical Field Unit by contacting the department's on-call electrician at (608) 246-5446 at least five working days prior to the removal of each traffic signal unit. Complete the removal work as soon as possible following shut down of this equipment.

40. DELETED

68. Temporary Traffic Signals for Intersections (Pleasant View Road and Blackhawk Road), Item 661.0200.01.

Remove paragraph (6).

126. Transport and Install State Furnished Cameras (USH 14 & Pleasant View Road), Item SPV.0060.67.

Replace paragraph one under section titled C Construction with the following:

Install cameras and mounting hardware at locations as shown on the plans. Adjust camera position/orientation as needed to provide detection at all zones shown on the plans. Multiple installations/adjustments may be required and shall be considered incidental to this bid item.

Remove the last paragraph under section titled C Construction.

Replace the last paragraph under section titled E Payment with the following:

Payment is full compensation for transporting and installing the state furnished cameras and mounting hardware; and to aim each unit to provide a fully operational video detection system.

127. Transport and Install SF Radar Detection System (USH 14 & Pleasant View Road), Item SPV.0060.68.

Replace paragraph two under section titled C Construction with the following:

Install the power and communication cable to run continuously (without splices) from the traffic signal cabinet to the pole handhole plus an extra 10-feet in the pole handhole. Install the detector unit cable whip from the detector unit to the pole handhole. Splice the detector unit cable whip to the power and communication cable in the pole handhole using the provided junction box.

Remove the last paragraph under section titled C Construction.

*Replace the last paragraph under section titled **E Payment** with the following:*

Payment is full compensation for transporting and installing the state furnished radar detection system, cable, and mounting hardware and radar units.

128. Transport and Install State Furnished Blank Out Sign (USH 14 & Pleasant View Rd), Item SPV.0060.69.

*Replace paragraph two under section titled **C Construction** with the following:*

Install the power cable to run continuously (without splices) from the traffic signal cabinet to the pole handhole plus an extra 10-feet in the pole handhole.

*Remove the last paragraph under section titled **C Construction**.*

162. Excavation Rock.

Supplement standard spec 205.3.1.(1). with the following:

Deliver material generated from excavation rock from within parcel 20 as generally shown on the plans to a location within parcel 22 as designated by the engineer. Excavated rock shall become the property of the parcel 22 property owner.

163. Railing Steel Pedestrian Type C3.

Supplement standard spec 513.2.1(4) with the following:

Anchor bolts conforming to ASTM A193 Type 316 may be substituted for anchor bolts conforming to the standard spec requirement of ASTM F593 Type 316.

164. Roadway Embankment, Item SPV.0035.08.

Conform to standard spec 207 modified by this special provision.

A Description

This special provision describes providing special compaction for embankment placed between Station 115+50 and Station 118+25.

Replace subsection 207.1(1) of the standard specifications with the following:

This section describes placing in embankments material obtained under the bid items in the roadway and drainage excavation or excavation for structure sections and modified under these special provisions.

B Materials

Conform to subsection 207.2 of the standard specifications.

C Construction

Conform to subsection 207.3 of the standard specifications.

Replace standard spec 207.3.6.3(2) with the following:

- (2) Compact the full depth of the embankment to at least 98 percent of maximum dry density.

Delete standard spec 207.3.6.3(3).

Add the following to standard spec 207.3.6.3:

- (7) Perform compaction testing on the embankment. Conform to CMM 8-15 for testing and gauge monitoring methods. Conduct testing at a minimum frequency of 1 test per 150 cubic yards of embankment, or major portion thereof in each lift. A minimum of one test for every lift is required. Deliver documentation of all compaction testing results to the engineer at the time of testing.

D Measurement

Replace subsection 207.1 of the standard specifications with the following:

The department will measure Roadway Embankment by the cubic yard acceptably completed in its final location using the method of average end areas, with no correction for curvature or settlement, except as follows:

- a) The engineer and contractor mutually agree to an alternative volume calculation method;
- b) The method of average end areas is not feasible.

If it is not possible to compute volumes of the various classes of roadway and drainage embankment by the method of average end areas due to erratic location of isolated deposits, the department may compute the volumes by alternative methods involving three-dimensional measurements.

The department will not measure embankment material beyond the limits of the required slopes as shown on the plans.

E Payment

Replace subsection 207.5 of the standard specifications with the following:

The department will pay for the measured quantity at the contract unit price under the following bid item:

ITEM NUMBER	DESCRIPTION	UNIT
SPV.0035.08	Roadway Embankment	CY

Payment is full compensation for forming, compacting, shaping, sloping, trimming, finishing, maintaining the embankments, and compaction testing.

Schedule of Items

Attached, dated September 1, 2022, are the revised Schedule of Items Pages 20 and 32.

Plan Sheets

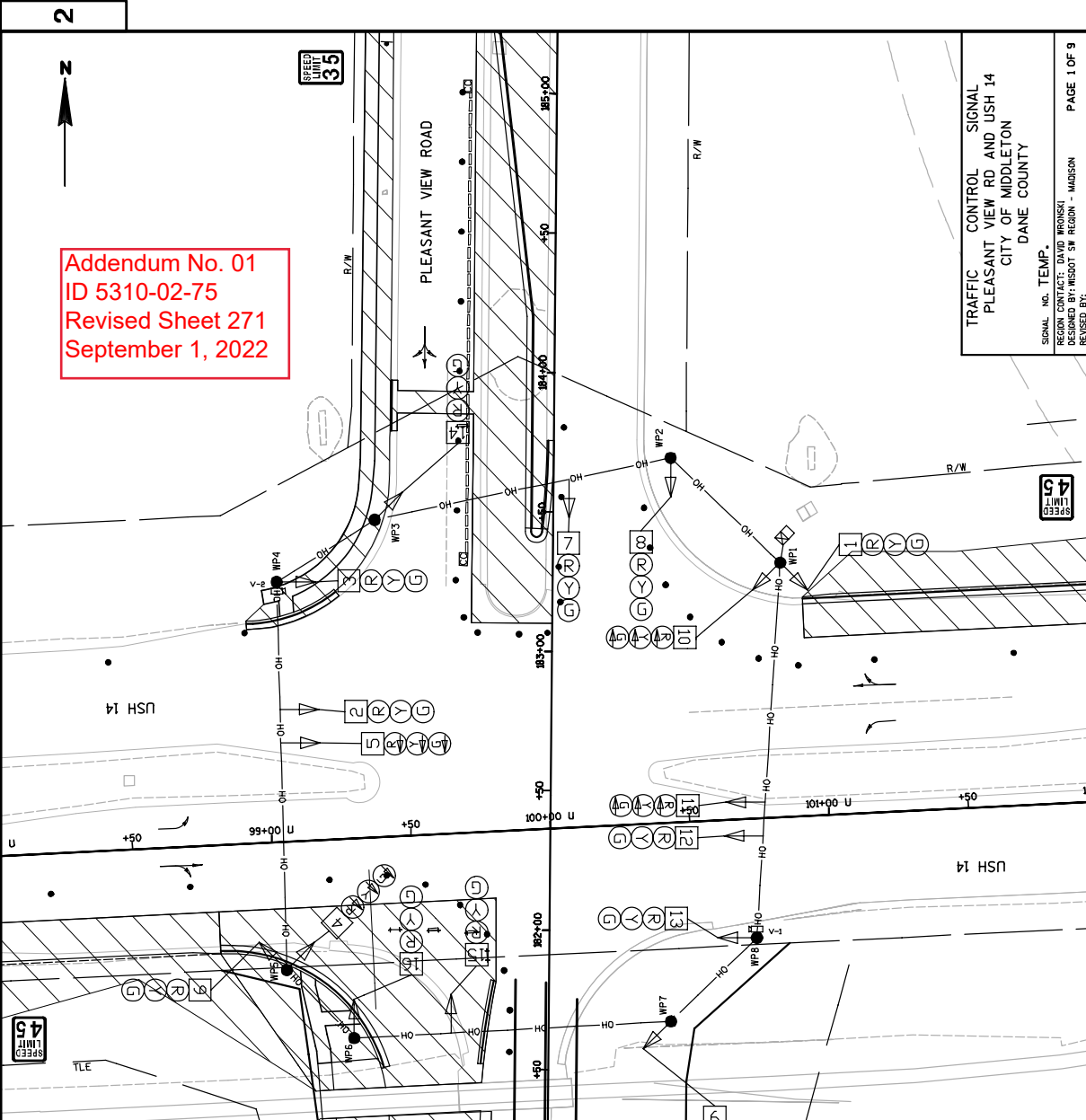
The following 8½ x 11-inch sheets are attached and made part of the plans for this proposal:
Revised: 271, 272, 273, 480, 489, 490, 988, 989, 990, 991, 992, 993, and 995.

END OF ADDENDUM

Addendum No. 01
 ID 5310-02-75
 Revised Sheet 271
 September 1, 2022

LEGEND

•	CLASS 4 WOOD POLE	OH	OVERHEAD SIGNAL CABLE
⊙	TEMPORARY SIGNAL BASE	↔	TIEBACK
⊕	SIGNAL HEAD	⊕	LANE DESIGNATION FOR INFORMATION ONLY
⊗	TRAFFIC SIGNAL HEAD	⊕	DETECTION ZONE
⊗	PEDESTRIAN COUNTDOWN TIMER 16-INCH	⊕	WORK ZONE
⊕	PUSH BUTTON		NOTE: ALL LENSES ARE 12-INCH
⊕	LUMINAIRE		



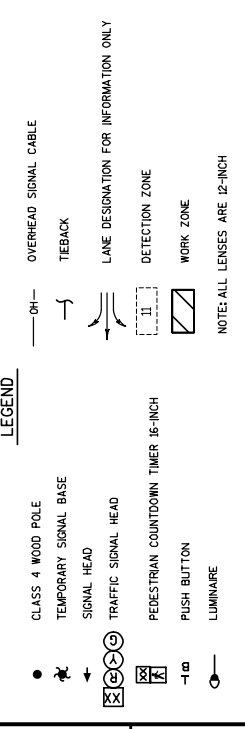
- CONSTRUCTION NOTES:**
1. DETECTION ZONES SHALL BE CENTERED IN THEIR RESPECTIVE LANES UNLESS OTHERWISE NOTED.
 2. THE ENGINEER SHALL ADJUST THE LOCATIONS OF ITEMS UNDER THIS CONTRACT TO AVOID CONFLICT WITH EXISTING AND PROPOSED UTILITY FACILITIES.
 3. EXISTING TRAFFIC SIGNAL EQUIPMENT WILL REMAIN IN OPERATION THROUGH STAGE 1. THE TEMPORARY TRAFFIC SIGNAL WILL BEGIN OPERATION IN STAGE 2. TEMPORARY TRAFFIC SIGNAL HEADS SHALL BE TURNED OR BAGGED DURING STAGE 1.

TRAFFIC CONTROL SIGNAL
 PLEASANT VIEW RD AND USH 14
 CITY OF MIDDLETON
 DANE COUNTY

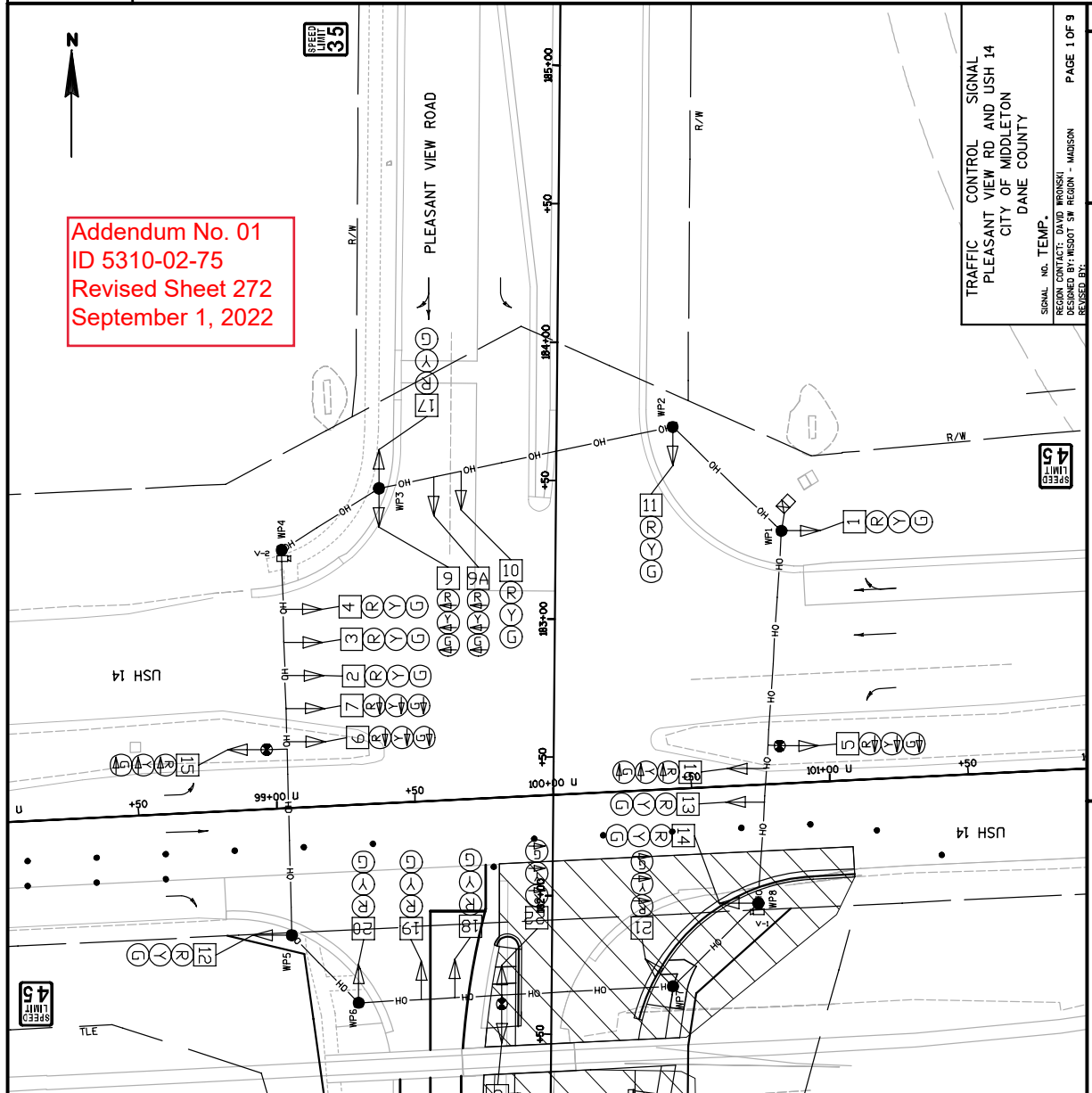
SIGNAL NO. TEMP.
 REGION CONTACT: DAVID WRONSKI
 DESIGNED BY: WISDOT SW REGION - MADISON
 REVISED BY:

PAGE 1 OF 9
 SHEET 271

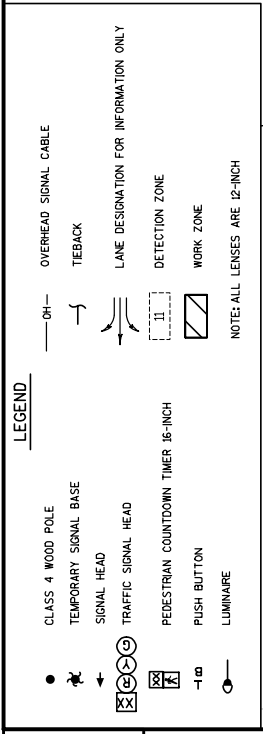
Addendum No. 01
 ID 5310-02-75
 Revised Sheet 272
 September 1, 2022



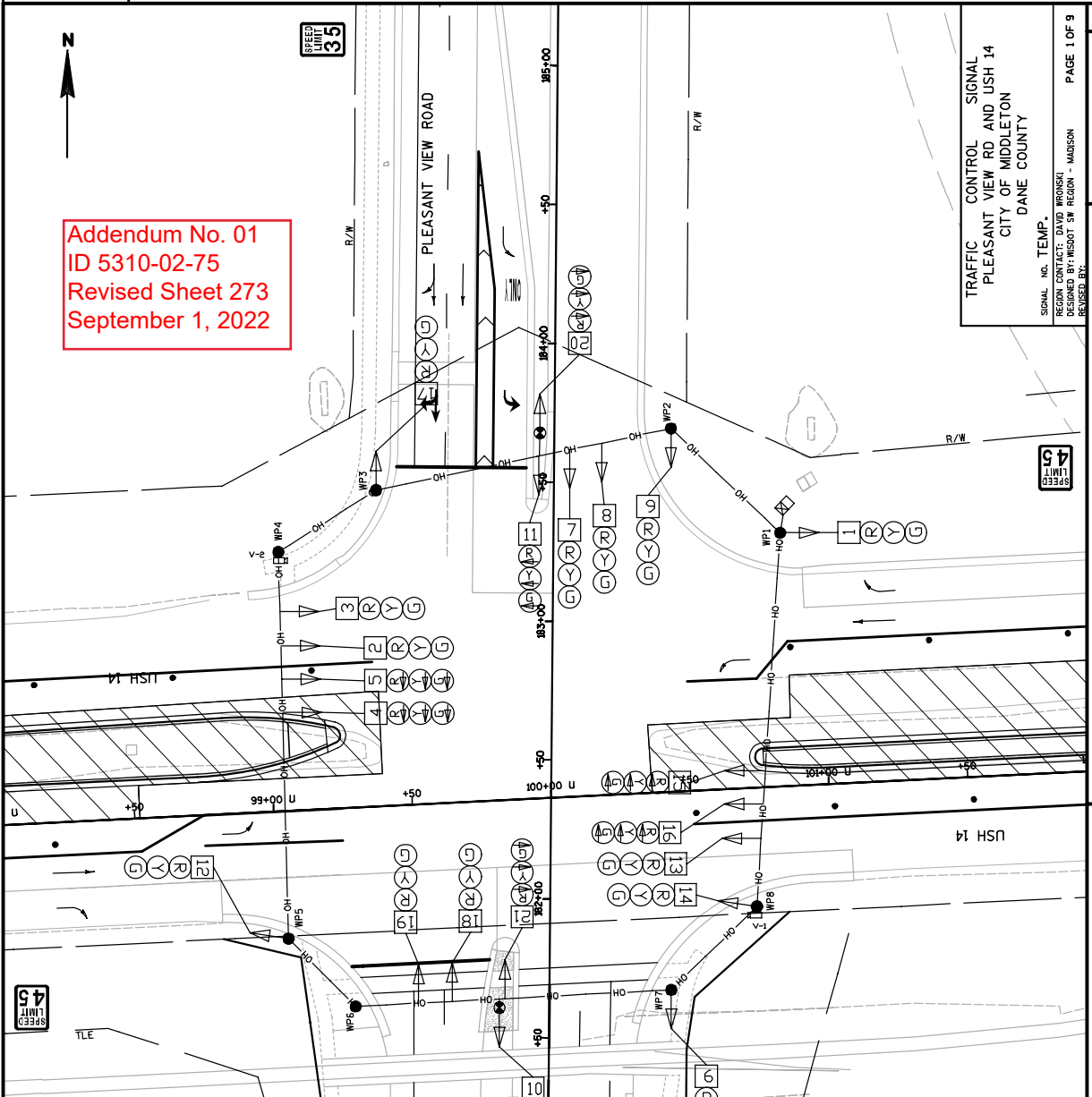
- CONSTRUCTION NOTES:**
- DETECTION ZONES SHALL BE CENTERED IN THEIR RESPECTIVE LANES UNLESS OTHERWISE NOTED.
 - THE ENGINEER SHALL ADJUST THE LOCATIONS OF ITEMS UNDER THIS CONTRACT TO AVOID CONFLICT WITH EXISTING AND PROPOSED UTILITY FACILITIES.
 - EXISTING TRAFFIC SIGNAL EQUIPMENT WILL REMAIN IN OPERATION THROUGH STAGE 1. THE TEMPORARY TRAFFIC SIGNAL WILL BEGON OPERATION IN STAGE 2. TEMPORARY TRAFFIC SIGNAL HEADS SHALL BE TURNED OR BAGGED DURING STAGE 1.



Addendum No. 01
 ID 5310-02-75
 Revised Sheet 273
 September 1, 2022



- CONSTRUCTION NOTES:**
- DETECTION ZONES SHALL BE CENTERED IN THEIR RESPECTIVE LANES UNLESS OTHERWISE NOTED.
 - THE ENGINEER SHALL ADJUST THE LOCATIONS OF ITEMS UNDER THIS CONTRACT TO AVOID CONFLICT WITH EXISTING AND PROPOSED UTILITY FACILITIES.
 - EXISTING TRAFFIC SIGNAL EQUIPMENT WILL REMAIN IN OPERATION THROUGH STAGE 1. THE TEMPORARY TRAFFIC SIGNALS WILL BEGIN OPERATION IN STAGE 2. TEMPORARY TRAFFIC SIGNAL HEADS SHALL BE TURNED OFF DURING STAGE 2.



CABLE TRAFFIC SIGNAL 14 AWG SUMMARY

655.0230	655.0250	655.0260	655.0270
CABLE TRAFFIC SIGNAL 5-14 AWG	CABLE TRAFFIC SIGNAL 9-14 AWG	CABLE TRAFFIC SIGNAL 12-14 AWG	CABLE TRAFFIC SIGNAL 15-14 AWG
LF	LF	LF	LF
FROM LOCATION	TO LOCATION	FROM LOCATION	TO LOCATION
CB1 SB1	CB1 SB1	CB1 SB1	CB1 SB1
CB1 SB2	CB1 SB2	CB1 SB2	CB1 SB2
CB1 SB3	CB1 SB3	CB1 SB3	CB1 SB3
CB1 SB4	CB1 SB4	CB1 SB4	CB1 SB4
CB1 SB5	CB1 SB5	CB1 SB5	CB1 SB5
CB1 SB6	CB1 SB6	CB1 SB6	CB1 SB6
CB1 SB7	CB1 SB7	CB1 SB7	CB1 SB7
CB1 SB8	CB1 SB8	CB1 SB8	CB1 SB8
CB1 SB9	CB1 SB9	CB1 SB9	CB1 SB9
CB1 SBX0	CB1 SBX0	CB1 SBX0	CB1 SBX0
CB1 SB11	CB1 SB11	CB1 SB11	CB1 SB11
WITHIN POLE	WITHIN POLE	WITHIN POLE	WITHIN POLE
TOTALS	TOTALS	TOTALS	TOTALS
8000	1240	1598	980

TEMPORARY TRAFFIC SIGNALS FOR INTERSECTIONS

661.0200.02	661.0200.02
USH 14 & PLEASANT VIEW ROAD	USH 14 & PLEASANT VIEW ROAD
LS	LS
LOCATION	LOCATION
USH 14 & PLEASANT VIEW ROAD	USH 14 & PLEASANT VIEW ROAD
LS	LS
1	1
TOTALS	TOTALS
8000	8000

ELECTRICAL WIRE TRAFFIC SIGNALS 10 AWG

655.0515	655.0515
ELECTRICAL WIRE TRAFFIC SIGNALS 10 AWG	ELECTRICAL WIRE TRAFFIC SIGNALS 10 AWG
LF	LF
FROM LOCATION	TO LOCATION
CB1 SB1	CB1 SB1
CB1 SB2	CB1 SB2
CB1 SB3	CB1 SB3
CB1 SB4	CB1 SB4
CB1 SB5	CB1 SB5
CB1 SB6	CB1 SB6
CB1 SB7	CB1 SB7
CB1 SB8	CB1 SB8
CB1 SB9	CB1 SB9
CB1 SBX0	CB1 SBX0
CB1 SB11	CB1 SB11
WITHIN POLE	WITHIN POLE
TOTALS	TOTALS
824	824

TEMPORARY TRAFFIC SIGNALS FOR INTERSECTIONS

655.0610	655.0610
ELECTRICAL WIRE TRAFFIC SIGNALS 10 AWG	ELECTRICAL WIRE TRAFFIC SIGNALS 10 AWG
LF	LF
FROM LOCATION	TO LOCATION
CB1 SB1	CB1 SB1
CB1 SB2	CB1 SB2
CB1 SB3	CB1 SB3
CB1 SB4	CB1 SB4
CB1 SB5	CB1 SB5
CB1 SB6	CB1 SB6
CB1 SB7	CB1 SB7
CB1 SB8	CB1 SB8
CB1 SB9	CB1 SB9
CB1 SBX0	CB1 SBX0
CB1 SB11	CB1 SB11
WITHIN POLE	WITHIN POLE
TOTALS	TOTALS
1200	1200

CABLE TYPE UF 2-12 AWG GROUND

655.0305	655.0305
CABLE TYPE UF 2-12 AWG GROUND	CABLE TYPE UF 2-12 AWG GROUND
LF	LF
FROM LOCATION	TO LOCATION
CB1 SB1	CB1 SB1
CB1 SB2	CB1 SB2
CB1 SB3	CB1 SB3
CB1 SB4	CB1 SB4
CB1 SB5	CB1 SB5
CB1 SB6	CB1 SB6
CB1 SB7	CB1 SB7
CB1 SB8	CB1 SB8
CB1 SB9	CB1 SB9
CB1 SBX0	CB1 SBX0
CB1 SB11	CB1 SB11
TOTALS	TOTALS
131	2678

TRAFFIC SIGNAL POLES & MAST ARMS SUMMARY

657.0420	657.0315	657.0352	657.0360	657.0541	657.0550
TRAFFIC SIGNAL STANDARDS	TRAFFIC SIGNAL STANDARDS	TRAFFIC SIGNAL STANDARDS	TRAFFIC SIGNAL STANDARDS	TRAFFIC SIGNAL STANDARDS	TRAFFIC SIGNAL STANDARDS
ALUMINUM 13-FT EACH	POLES TYPE 4 EACH	POLES TYPE 13 40-FT-SPECIAL EACH	POLES TYPE 13 40-FT-SPECIAL EACH	MONOTUBE ARMS 50-FT EACH	MONOTUBE ARMS 50-FT EACH
FROM LOCATION	TO LOCATION	FROM LOCATION	TO LOCATION	FROM LOCATION	TO LOCATION
SB1	SB1	SB1	SB1	SB1	SB1
SB2	SB2	SB2	SB2	SB2	SB2
SB3	SB3	SB3	SB3	SB3	SB3
SB4	SB4	SB4	SB4	SB4	SB4
SB5	SB5	SB5	SB5	SB5	SB5
SB6	SB6	SB6	SB6	SB6	SB6
SB7	SB7	SB7	SB7	SB7	SB7
SB8	SB8	SB8	SB8	SB8	SB8
SB9	SB9	SB9	SB9	SB9	SB9
SB10	SB10	SB10	SB10	SB10	SB10
SB11	SB11	SB11	SB11	SB11	SB11
TOTALS	TOTALS	TOTALS	TOTALS	TOTALS	TOTALS
3	4	2	2	2	2

* ADDITIONAL QUANTITIES LISTED ELSEWHERE

* ADDITIONAL QUANTITIES LISTED ELSEWHERE

TRAFFIC SIGNALS SUMMARY

658.0173	658.0174	658.0500	657.0820	657.0825	659.1025	SPV.0060.67	SPV.0060.68	SPV.0060.69
TRAFFIC SIGNAL FACE 3S 12-INCH EACH	TRAFFIC SIGNAL FACE 45 12-INCH 18-INCH EACH	PEDESTRIAN SIGNAL PUSH BUTTONS EACH	LUMINAIRE ARMS STEEL TYPE 10 POLE CLAMP 15-FT EACH	LUMINAIRE ARMS STEEL TYPE 13 POLE CLAMP 15-FT EACH	LUMINAIRE UTILITY LED C VIEW ROAD EACH	STATE FURNISHED DETECTION SYSTEM (USH 14 & PLEASANT VIEW ROAD) EACH	STATE FURNISHED DETECTION SYSTEM (USH 14 & PLEASANT VIEW ROAD) EACH	TRANSPORT STATE FURNISHED BLANK OUT SIGN (USH 14 & PLEASANT VIEW ROAD) EACH
FROM LOCATION	TO LOCATION	FROM LOCATION	TO LOCATION	FROM LOCATION	TO LOCATION	FROM LOCATION	TO LOCATION	FROM LOCATION
SB1	SB1	SB1	SB1	SB1	SB1	SB1	SB1	SB1
SB2	SB2	SB2	SB2	SB2	SB2	SB2	SB2	SB2
SB3	SB3	SB3	SB3	SB3	SB3	SB3	SB3	SB3
SB4	SB4	SB4	SB4	SB4	SB4	SB4	SB4	SB4
SB5	SB5	SB5	SB5	SB5	SB5	SB5	SB5	SB5
SB6	SB6	SB6	SB6	SB6	SB6	SB6	SB6	SB6
SB7	SB7	SB7	SB7	SB7	SB7	SB7	SB7	SB7
SB8	SB8	SB8	SB8	SB8	SB8	SB8	SB8	SB8
SB9	SB9	SB9	SB9	SB9	SB9	SB9	SB9	SB9
SB10	SB10	SB10	SB10	SB10	SB10	SB10	SB10	SB10
SB11	SB11	SB11	SB11	SB11	SB11	SB11	SB11	SB11
TOTALS	TOTALS	TOTALS	TOTALS	TOTALS	TOTALS	TOTALS	TOTALS	TOTALS
12	11	4	6	1	8	2	2	2

Addendum No. 01
ID 5310-02-75
Revised Sheet 480
September 1, 2022

ROADWAY EMBANKMENT

SPV.0035.08

ROADWAY EMBANKMENT

CATEGORY: STATION - STATION LOCATION CY

0010 105+50 - 118+25 EMBANKMENT 11,400

EARTHWORK SUMMARY

Table with columns: CATEGORY, DIVISION, LOCATION, STATION - STATION, LOCATION, EBS EXCAVATION (3), STRUCTURE, AVAILABLE MATERIAL (4), EXCAVATION (5), EXPANDED EBS BACKFILL (6), UNEXPANDED FILL, EXPANDED MASS FILL (6), EXPANDED MASS FILL (6), WASTE +/- (7), WASTE +/- (7), SELECT CRUSHED MATERIAL (9), 624.0000 WATER (FOR DUST CONTROL) MATERIAL (9) CONTROL.

EXCAVATION COMMON IS THE SUM OF THE CUT AND EBS EXCAVATION COLUMNS. ITEM NUMBER 205.0100. SALVAGED/UNUSABLE PAVEMENT MATERIAL IS INCLUDED IN CUT. EBS EXCAVATION TO BE BACKFILLED WITH SELECT CRUSHED MATERIAL. AVAILABLE MATERIAL = CUT + STRUCTURE EXCAVATION. EXPANDED EBS BACKFILL: THIS IS TO BE FILLED WITH SELECT CRUSHED MATERIAL. EBS BACKFILL EXPANSION FACTOR = 1.25. EXPANDED FILL = UNEXPANDED FILL * EXPANDED FILL FACTOR. EXPANDED FILL FACTOR = 1.25. PLUS MASS ORDNATE QUANTITY INDICATES AN EXCESS OF MATERIAL WITHIN THE DIVISION. MINUS MASS ORDNATE QUANTITY INDICATES A SHORTAGE OF MATERIAL WITHIN THE DIVISION. WASTE = MASS ORDNATE + EXPANDED EBS BACKFILL. SELECT CRUSHED MATERIAL IS USED FOR BACKFILL OF EBS. STRUCTURE EXCAVATION FOR INFORMATION ONLY: STRUCTURE EXCAVATION DOES NOT INCLUDE ROCK EXCAVATION WITHIN THE STRUCTURE EXCAVATION LIMITS. ROCK EXCAVATION NOT USED FOR FILL MATERIAL. WEATHERED TO INCREASINGLY MORE COMPETENT BEDROCK WAS ENCOUNTERED IN MANY BORINGS AND THE DEPTH AND CONSISTENCY OF THESE MATERIALS SHOULD BE EXPECTED TO VARY ACROSS THE SITE. ADDITIONAL QUANTITIES LISTED ELSEWHERE.

Addendum No. 01 ID 5310-11-01 Revised Sheet 489 September 1, 2022

EARTHWORK SUMMARY

CATEGORY	DIVISION	LOCATION	STATION	STATION	LOCATION	EXCAVATION COMMON ID		AVAILABLE		ROCK		EXPANDED EBS		EXPANDED UNEXPANDED		EXPANDED MASS ORDNATE		CY	TON	MATERIAL (9)	WATER
						CUT (2)	EBS EXCAVATION (3)	EXCAVATION (4)	EXCAVATION (5)	BACKFILL (5)	ROCK	EXPANDED	UNEXPANDED	EXPANDED	MASS	ORDNATE	WASTE				
		CY		CY		CY		CY		CY		CY		CY		CY		CY		CY	
0060	STAGE 1	TEMPORARY WIDENING POND D	128+50 NB	- 178+00 NB	LT/RT	6,386	419	9,395	0	0	0	524	0	866	1,082	8,313	8,837	917	18	564,000	
		POND E	2,255	0	2,255	0	0	2,255	0	0	0	0	0	38	48	2,208	2,208	0	5		
		POND F	6,495	0	6,495	0	0	6,495	0	0	0	0	0	133	133	6,361	6,361	0	13		
			5,920	0	5,920	0	0	5,920	0	0	0	0	0	98	122	5,798	5,798	0	12		
			23,056	419	23,056	0	524	24,065	0	0	0	524	0	1,108	1,385	22,680	23,205	917	48		
	STAGE 2	PLEASANT VIEW ROAD	169+50 SB	- 174+50 SB	LT	6,692	335	6,692	2,519	0	2,771	418	69	87	6,605	7,024	732	15			
		TEMPORARY SIDEWALK	10+00 B	- 14+50 B	LT	95	5	95	0	0	0	6	21	0	69	75	10	1			
		BLACKHAWK ROAD	10+71 B	- 15+11 B	LT	1,443	57	1,443	0	0	0	71	45	0	1,087	1,158	125	3			
		B6 ALLI	10+00 B6	- 11+50 B6	LT/RT	518	26	518	0	0	0	32	13	16	559	592	57	2			
		GREENWAY BLVD	50+00 C	- 53+38 C	LT	1,050	53	1,050	0	0	0	66	0	159	0	852	918	105	3		
		NORTHWESTERN STONE DRIVEWAY	10+25 NS	- 12+49 NS	LT/RT	4,412	221	4,412	0	0	0	276	46	57	4,355	4,631	483	10			
			13,910	695	13,967	2,519	869	2,771	0	0	0	869	352	440	13,527	14,397	1,521	34			
	STAGE 3	QUARRY ROAD	50+00 O	- 51+57 O	LT/RT	795	40	795	0	0	0	50	47	58	736	786	87	2			
		O3 ALLI	182	9	182	0	0	182	0	0	0	11	0	0	182	193	20	1			
		GOLF COURSE GRADINGS	1,776	0	1,776	0	0	1,776	0	0	0	0	10,030	12,537	-10,761	-10,761	0	4			
			2,793	49	2,793	0	61	0	0	0	0	61	0	10,077	12,596	-9,843	-9,843	107	7		
	STAGE 4	PLEASANT VIEW ROAD	131+00 NB	- 136+00 NB	LT	1,932	97	1,932	0	0	0	121	386	483	1,450	1,570	211	5			
		PLEASANT VIEW ROAD	129+24 SB	- 131+00 SB	LT	558	28	558	0	0	0	35	197	246	312	347	61	2			
		PLEASANT VIEW ROAD	136+00 SB	- 143+50 SB	LT	4,100	205	4,100	0	0	0	257	308	385	3,725	3,981	449	9			
		BP2 ALLI	268	15	308	0	17	308	0	0	0	17	734	588	-426	-409	29	1			
			6,868	343	6,908	0	429	0	0	0	429	1,478	1,848	5,060	5,489	751	17				
	STAGES 2-4	PLEASANT VIEW ROAD	141+36 NB	- 178+00 NB	LT/RT	68,625	3,481	76,513	36,253	4,352	39,888	13,398	16,747	59,766	64,117	7,615	147				
		QUARRY ROAD ROUNDABOUT	10+00 O1	- 12+38 O1	LT/RT	2,718	136	2,718	0	0	0	170	362	2,355	2,525	297	6				
		BP ALLI	396	20	396	0	25	396	0	0	0	273	341	460	55	79	43	1			
		GREENWAY BLVD ROUNDABOUT	10+00 G1	- 12+38 G1	LT/RT	1,918	96	1,918	0	0	0	120	368	460	1,458	1,578	210	5			
			74,657	3,733	6,888	81,545	4,666	39,888	17,910	17,910	17,910	17,910	17,910	17,910	17,910	17,910	17,910	17,910	17,910	17,910	17,910
			121,244	5,240	128,238	38,872	6,550	42,759	27,343	34,179	34,179	34,179	34,179	34,179	34,179	34,179	34,179	34,179	34,179	34,179	34,179
			126,484																		
	STAGES 2-4	SWALLOWTAIL POND(14)	29,450	0	29,450	0	0	29,450	0	0	0	0	4,810	6,013	29,450	29,450	0	59			
			183,453	7,994	184,897	38,872	8,188	42,759	57,120	71,399	71,399	71,399	71,399	71,399	71,399	71,399	71,399	71,399	71,399	71,399	71,399
			29,450	0	29,450	0	0	29,450	0	0	0	0	4,810	6,013	29,450	29,450	0	59			

1) EXCAVATION COMMON IS THE SUM OF THE CUT AND EBS EXCAVATION COLUMNS. ITEM NUMBER 205.0100.

2) SALVAGED/UNUSABLE PAVEMENT MATERIAL IS INCLUDED IN CUT

3) EBS EXCAVATION TO BE BACKFILLED WITH SELECT CRUSHED MATERIAL.

4) AVAILABLE MATERIAL = CUT - STRUCTURE EXCAVATION.

5) EXPANDED EBS BACKFILL: THIS IS TO BE FILLED WITH SELECT CRUSHED MATERIAL. EBS BACKFILL EXPANSION FACTOR = 1.25.

6) EXPANDED FILL = (UNEXPANDED FILL) * EXPANDED FILL FACTOR. EXPANDED FILL FACTOR = 1.25.

7) MASS ORDNATE: MASS ORDNATE = CUT - EXPANDED FILL + STRUCTURE EXCAVATION.

8) WASTE = MASS ORDNATE + EXPANDED EBS BACKFILL

9) SELECT CRUSHED MATERIAL IS USED FOR BACKFILL OF EBS.

10) STRUCTURE EXCAVATION FOR INFORMATION ONLY; STRUCTURE EXCAVATION DOES NOT INCLUDE ROCK EXCAVATION WITHIN THE STRUCTURE EXCAVATION LIMITS.

11) ROCK EXCAVATION NOT USED FOR FILL MATERIAL.

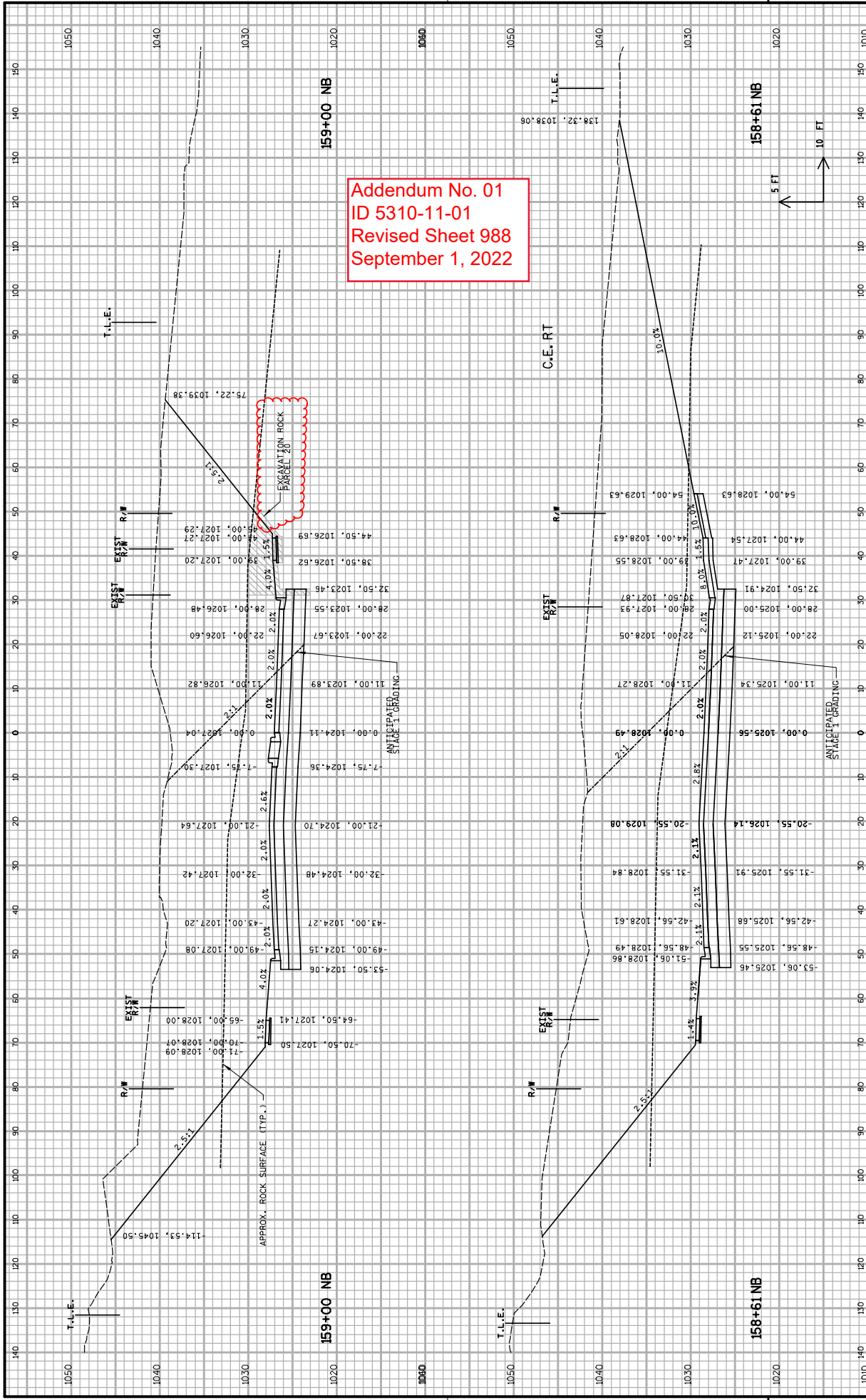
12) WEATHERED TO INCREASINGLY MORE COMPETENT BEDROCK WAS ENCOUNTERED IN MANY BORINGS AND THE DEPTH AND CONSISTENCY OF THESE MATERIALS SHOULD BE EXPECTED TO VARY ACROSS THE SITE.

13) HAUL APPROXIMATELY 2,200 CY OF WASTE TO THE PLEASANT VIEW GOLF COURSE AS SHOWN ON THE CONSTRUCTION DETAILS - GOLF COURSE GRADING CONTOURS DRAWING. SEE SPECIAL PROVISIONS PRIOR TO PLACING MATERIAL.

14) ALL EXCAVATION COMMON FROM SWALLOWTAIL POND IS ASSUMED TO BE WASTED. REQUIRED FILL TO BE HAULED FROM OTHER AREAS.

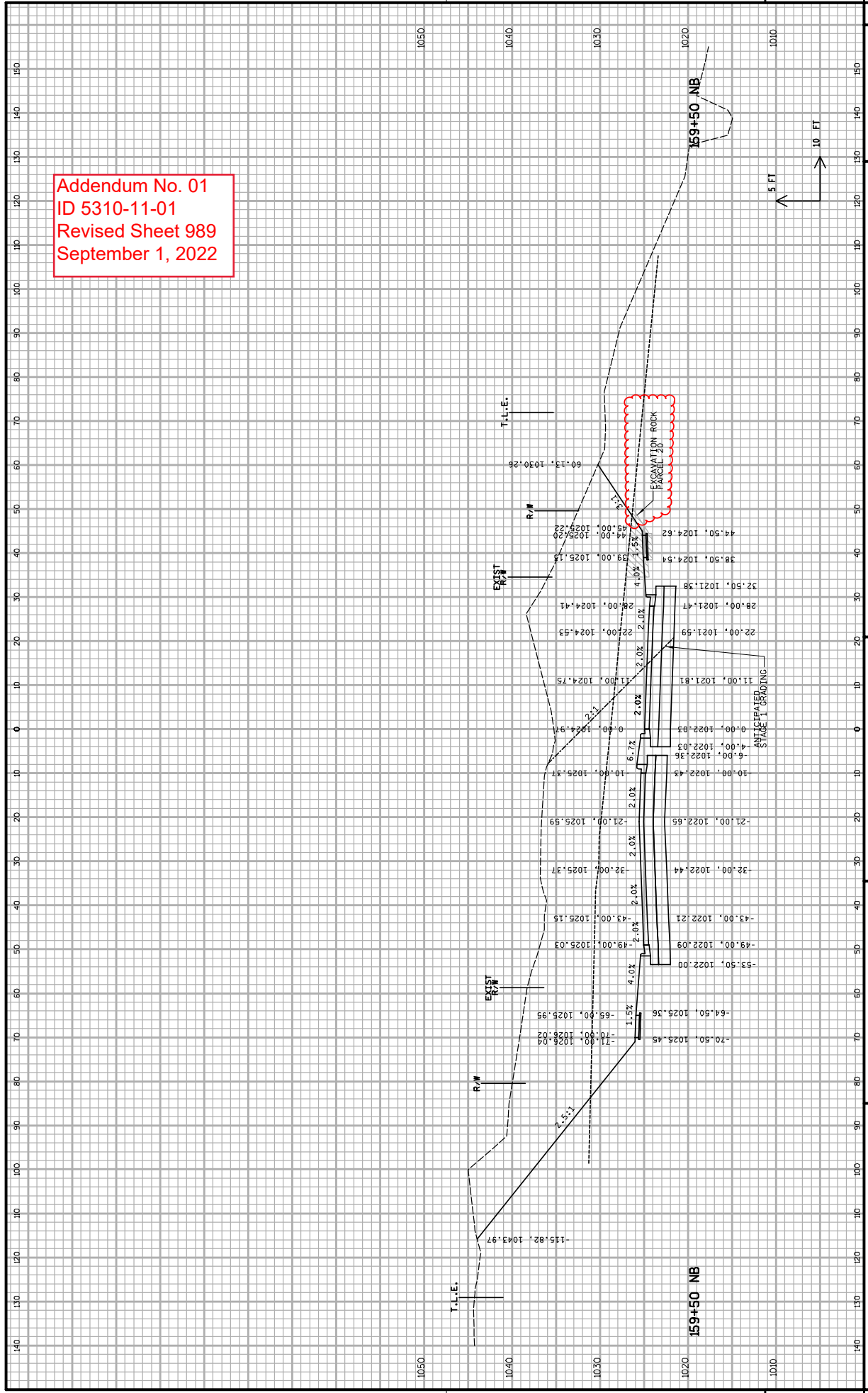
* ADDITIONAL QUANTITIES LISTED ELSEWHERE

Addendum No. 01
ID 5310-11-01
Revised Sheet 490
September 1, 2022



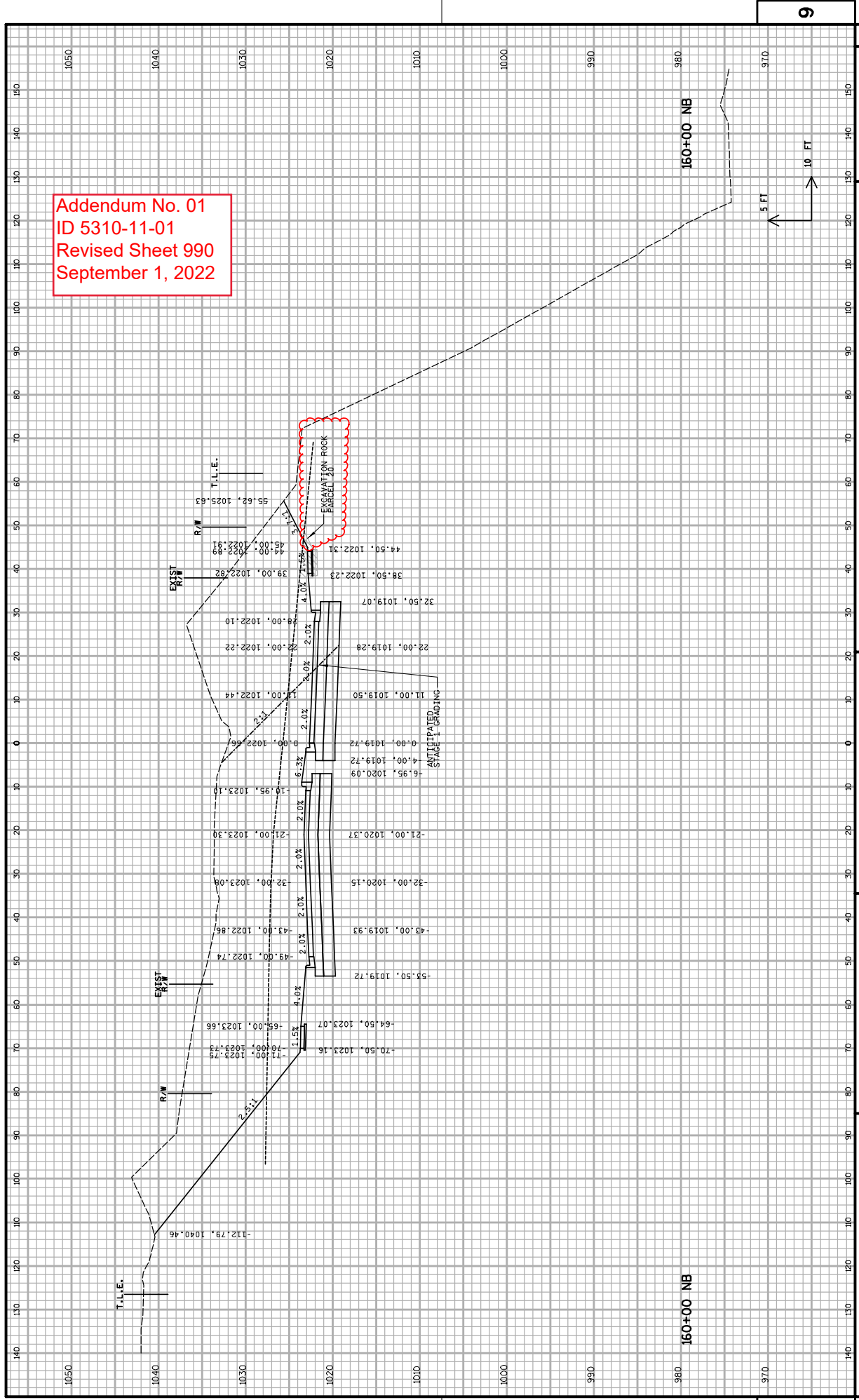
Addendum No. 01
 ID 5310-11-01
 Revised Sheet 988
 September 1, 2022

Addendum No. 01
 ID 5310-11-01
 Revised Sheet 989
 September 1, 2022

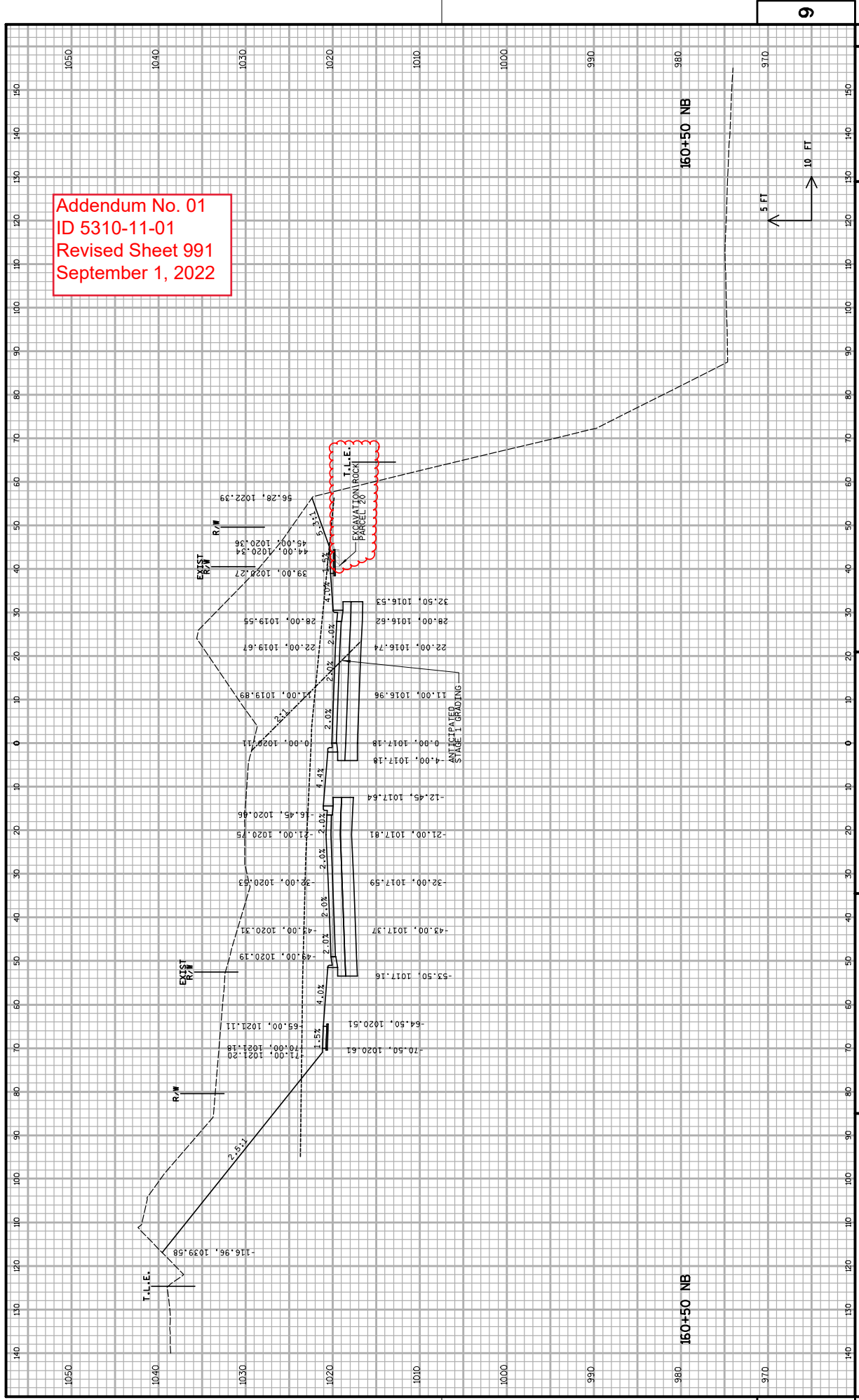


FILE NAME : S:\MWD\1000--1099\1020\101\MicroStation\Phase 1\090201_xss.dgn
 PLOT SCALE : \$\$.....plotescale.....\$\$ WISDOT/CADD SHEET 21

Addendum No. 01
ID 5310-11-01
Revised Sheet 990
September 1, 2022

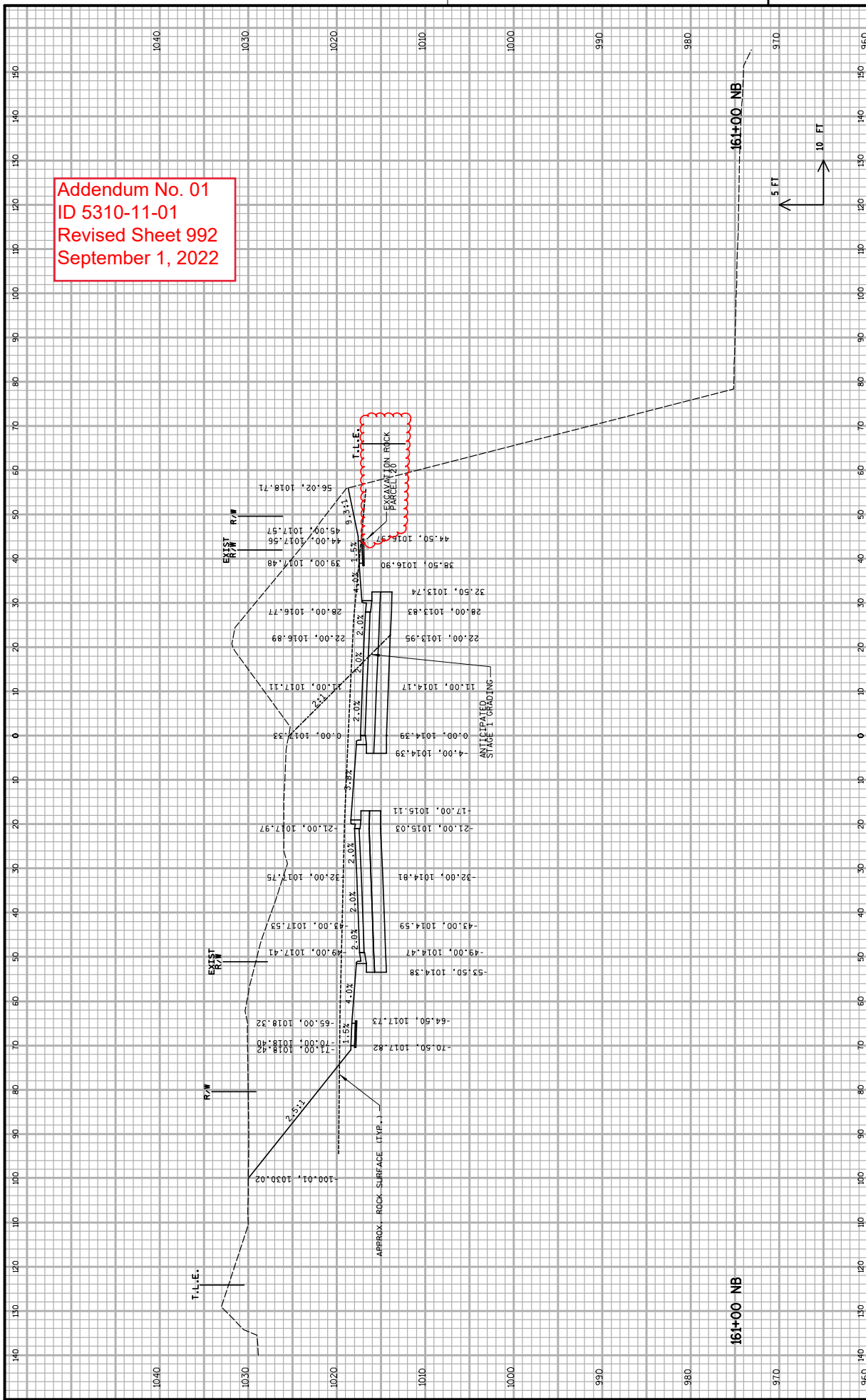


Addendum No. 01
 ID 5310-11-01
 Revised Sheet 991
 September 1, 2022

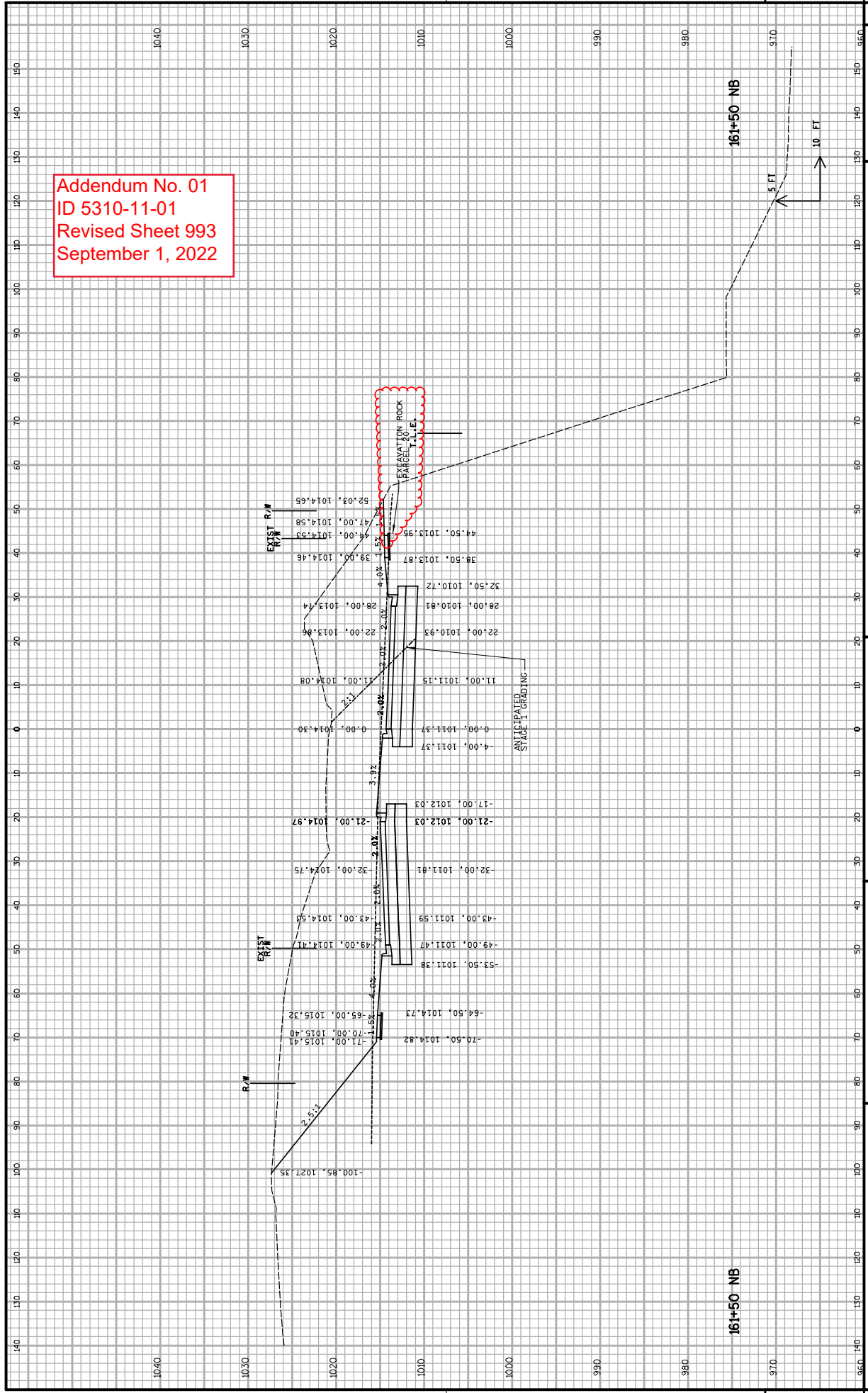


FILE NAME: S:\MWD\1000--1099\1020\101\Micros\Plan\Phase 1\090201_xss.dgn
 PLOT SCALE: 1"=40' (Horizontal), 1"=10' (Vertical)
 WISDOT/CADD SHEET 21

Addendum No. 01
 ID 5310-11-01
 Revised Sheet 992
 September 1, 2022

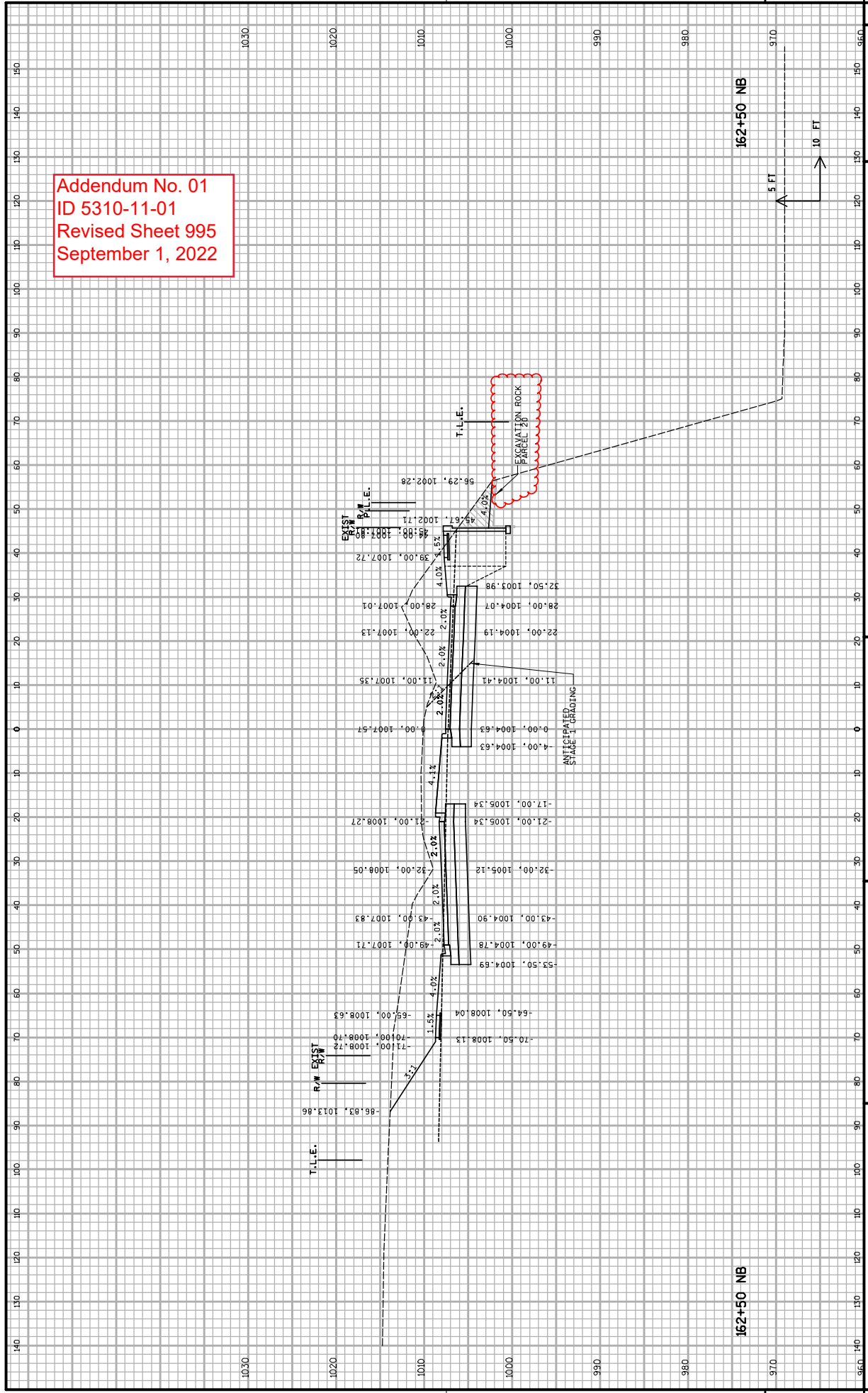


Addendum No. 01
ID 5310-11-01
Revised Sheet 993
September 1, 2022



PROJECT NO: 5992-11-01 **CROSS SECTIONS - PLEASANT VIEW ROAD (NB)** **SHEET 993**
HWY: PLEASANT VIEW ROAD **COUNTY: DANE** **PLOT DATE: 8/31/2022**
PLOT BY: j_username **PLOT SCALE: 1"=40'** **FILE NAME: S:\NMDV\1000--1099\1020\101\Micros\Plan\Phase 1\090201_1101.dgn**

Addendum No. 01
 ID 5310-11-01
 Revised Sheet 995
 September 1, 2022





Proposal Schedule of Items

Proposal ID: 20220913006 Project(s): 5310-02-75, 5992-11-01, 5992-11-02

Federal ID(s): WISC 2022382, WISC 2022380, N/A

SECTION: 0001 Contract Items

Alt Set ID: Alt Mbr ID:

Proposal Line Number	Item ID Description	Approximate Quantity and Units	Unit Price	Bid Amount
0576	654.0101 Concrete Bases Type 1	3.000 EACH	_____.	_____.
0578	654.0102 Concrete Bases Type 2	4.000 EACH	_____.	_____.
0580	654.0105 Concrete Bases Type 5	30.000 EACH	_____.	_____.
0582	654.0113 Concrete Bases Type 13	2.000 EACH	_____.	_____.
0584	654.0120 Concrete Bases Type 10-Special	2.000 EACH	_____.	_____.
0586	654.0215 Concrete Control Cabinet Bases Type 9	1.000 EACH	_____.	_____.
0588	654.0230 Concrete Control Cabinet Bases Type L30	2.000 EACH	_____.	_____.
0590	655.0250 Cable Traffic Signal 9-14 AWG	1,240.000 LF	_____.	_____.
0592	655.0260 Cable Traffic Signal 12-14 AWG	1,598.000 LF	_____.	_____.
0594	655.0270 Cable Traffic Signal 15-14 AWG	980.000 LF	_____.	_____.
0596	655.0305 Cable Type UF 2-12 AWG Grounded	2,678.000 LF	_____.	_____.
0598	655.0515 Electrical Wire Traffic Signals 10 AWG	824.000 LF	_____.	_____.
0600	655.0610 Electrical Wire Lighting 12 AWG	19,594.000 LF	_____.	_____.
0602	655.0615 Electrical Wire Lighting 10 AWG	11,656.000 LF	_____.	_____.
0604	655.0625 Electrical Wire Lighting 6 AWG	29,052.000 LF	_____.	_____.
0606	656.0200 Electrical Service Meter Breaker Pedestal (location) 01. Pleasant View Road & Blackhawk Road	LS	LUMP SUM	_____.



Proposal Schedule of Items

Proposal ID: 20220913006 Project(s): 5310-02-75, 5992-11-01, 5992-11-02
Federal ID(s): WISC 2022382, WISC 2022380, N/A

SECTION: 0001 Contract Items

Alt Set ID: Alt Mbr ID:

Table with 5 columns: Proposal Line Number, Item ID Description, Approximate Quantity and Units, Unit Price, Bid Amount. Rows include items 0920 through 0940, ending with Section: 0001 Total and Total Bid.