



Wisconsin Department of Transportation

September 8, 2022

Division of Transportation Systems Development
Bureau of Project Development
4822 Madison Yards Way, 4th Floor South
Madison, WI 53705

Telephone: (608) 266-1631
Facsimile (FAX): (608) 266-8459

NOTICE TO ALL CONTRACTORS:

Proposal #06: 5310-02-75, WISC 2022380
Spring Green - Madison
Pleasant View Road Intersection
USH 14
Dane County

5992-11-01, WISC 2022382
C Middleton, Pleasant View Road
Timber Wolf Trail to USH 14
Local Street
Dane County

5992-11-02
C of Middleton, Pleasant View Road
Timber Wolf Trail to USH 14
Local Street
Dane County

Letting of September 13, 2022

This is Addendum No. 02, which provides for the following:

Special Provisions:

Revised Special Provisions	
Article No.	Description
11	Railroad Insurance and Coordination - Wisconsin and Southern Railroad Company
23	General Provisions for Storm Sewer
39	General Requirements for Blasting Rock
87	Luminaires Single Arm LED-City of Middleton, Item SPV.0060.19; Luminaires Dual Arm LED-City of Middleton, Item SPV.0060.20.

Added Special Provisions	
Article No.	Description
165	Shortgrass Prairie Seed Mix, SPV.0085.04
166	Topsoil Planting Mix, SPV.0180.05

Deleted Special Provisions	
Article No.	Description
10	Notice to Contractor - Railroad Work During Construction and Additional Notification Requirements
131	Arch Façade Plates, Item SPV.0060.74

Schedule of Items:

Revised Bid Item Quantities					
Bid Item	Item Description	Unit	Old Quantity	Revised Quantity	Proposal Total
625.0100	Topsoil	SY	111,621	-1,960	109,661
627.0200	Mulching	SY	55,605	2,135	57,740
630.0500	Seed Water	MGAL	2,338.6	35.5	2,374.1
631.0300	Sod Water	MGAL	759.4	-48.1	711.3
631.1000	Sod Lawn	SY	28,250	-2,160	26,090

Added Bid Item Quantities					
Bid Item	Item Description	Unit	Old Quantity	Revised Quantity	Proposal Total
SPV.0085.04	Shortgrass Prairie Seed Mix	LB	0	5.5	5.5
SPV.0180.05	Topsoil Planting Mix	SY	0	2,150	2,150

Deleted Bid Item Quantities					
Bid Item	Item Description	Unit	Old Quantity	Revised Quantity	Proposal Total
SPV.0060.74	Arch Façade Plates	Each	1	-1	0

Plan Sheets:

Revised Plan Sheets	
Plan Sheet	Plan Sheet Title (brief description of changes to sheet)
7	Typical Finished Sections (Added note for Topsoil Plant Mix and Shortgrass Prairie Seed Mix)
8	Typical Finished Sections (Added note for Topsoil Plant Mix and Shortgrass Prairie Seed Mix)
123	Erosion Control - Pleasant View Road (Revised median hatch to mulching)
124	Erosion Control - Pleasant View Road (Revised median hatch to mulching)
125	Erosion Control - Pleasant View Road (Revised median hatch to mulching)
126	Erosion Control - Pleasant View Road (Revised median hatch to mulching)
508	Miscellaneous Quantities (Revised Finishing table to add Topsoil Plant Mix and Shortgrass Prairie Seed Mix)
509	Miscellaneous Quantities (Revised Finishing table to add Topsoil Plant Mix and Shortgrass Prairie Seed Mix)
757	B-13-892 Cross Section, General Notes & Details (Removed Arch Façade Plate)
764	B-13-892 Arch and Protective Screening Details (Removed Arch Façade Plate)

The responsibility for notifying potential subcontractors and suppliers of these changes remains with the prime contractor.

Sincerely,

Mike Coleman

Proposal Development Specialist
Proposal Management Section

ADDENDUM NO. 02
5310-02-75/5992-11-01/5992-11-02
September 8, 2022

Special Provisions

10. DELETED

11. Railroad Insurance and Coordination - Wisconsin and Southern Railroad Company.

Replace entire article language with the following:

A. Description

Comply with standard spec 107.17 for all work affecting Wisconsin and Southern Railroad Company property and any existing tracks.

A.1 Railroad Insurance Requirements

In addition to standard spec 107.26, provide railroad protective liability insurance coverage as specified in standard spec 107.17.3. Insurance is filed in the name of Wisconsin and Southern Railroad Company.

Notify evidence of the required coverage, and duration to Amanda Haggerty, Office Administrator; 1890 E Johnson Street, Madison, WI 53704; Telephone (608) 620-2048; E-mail: ahaggerty@watcocompanies.com.

Also send a copy to the following: Teri Beckman, SW Madison Region Railroad Coordinator; 2101 Wright Street, Madison, WI 53704; Telephone (608) 733-1923; E-mail: teri.beckman@dot.wi.gov

Include the following information on the insurance document:

- Project ID: 5310-02-75 USH 14 & 5992-11-01 Pleasant View Road
- Project Location: City of Middleton, Wisconsin
- Route Name: USH 14 & Pleasant View Road, Dane County
- Work Performed: Replace surface and signals on HWY 14 & Pleasant View Road and replace switches on Pleasant View Road railroad crossing

#	Route Name	City/County	Crossing ID	RR Subdivision	RR Milepost
1	Pleasant View Rd	Middleton, Dane Co.	391753H	Prairie	146.66
2	USH 14	Middleton, Dane Co.	391751U	Prairie	146.60

A.2 Train Operation

Approximately 1 through freight trains operate daily at up to 5 mph to 25 mph. Approximately 10 switching trains per day.

A.3 Names and Addresses of Railroad Representatives for Consultation and Coordination
Construction Contact

Todd Mulrooney, Superintendent of Engineering, Wisconsin and Southern Railroad Co.; 1890 East Johnson Street, Madison, WI 53704; Telephone (608) 620-2045; E-mail tmulrooney@watco.com for consultation on railroad requirements during construction.

Amend standard spec 108.4 to include the railroad in the distribution of the initial bar chart, and monthly schedule updates. The bar chart shall specifically show work involving coordination with the railroad.

Flagging Contact

See Construction Contact. Reference the Crossing ID, Wisconsin Milepost and Subdivision found in A.1.

Cable Locate Contact

In addition to contacting Diggers Hotline, contact the Construction Contact at least five working days before the locate is needed. Reference the Crossing ID, Wisconsin Milepost and Subdivision found in A.1.

WSOR will only locate railroad owned facilities located in the railroad right-of-way. The railroad does not locate any other utilities.

A.4 Work by Railroad

The railroad will perform the work described in this section, except for work described in other special provisions, and will be accomplished without cost to the contractor. Signals, surface and switch will be replaced and upgraded on HWY 14 and Pleasant View Road.

A.5 Temporary Grade Crossing

If a temporary grade crossing is desired, submit a written request to the railroad representative named in A.3 at least 40 days prior to the time needed. Approval is subject to the discretion of the railroad. The department has made no arrangements for a temporary grade crossing.

23. General Provisions for Storm Sewer.

Replace entire article language with the following:

Construct all round and elliptical shape storm sewers according to the pertinent provisions of standard spec 608, 610, 611, and 612, as shown on the plans, and as follows.

Prior to ordering drainage pipes and structures, verify related drainage information in the plan with the engineer. This shall include all information obtained from the bid item "Utility Line Opening" (ULO). This also includes tie-in elevations and pipe sizes with the existing storm sewer conditions.

Seal the joints for reinforced concrete pipe with internal rubber gaskets as described in subsection 608.2.1 of the standard specifications. The use of mastic joint sealer or mortar as a pipe joint method is prohibited unless directed by engineer.

Lay all round and elliptical shape storm sewers on a 6-inch minimum thick bed of Base Aggregate Dense Graded 1 1/4-Inch according to standard spec 305.2.1 or when water is encountered, No. 1 coarse concrete aggregate according to standard spec 501.2.7.3. Bedding for round and elliptical pipe shall be incidental to the installation costs of the round or elliptical pipe.

Submit a dewatering plan with the ECIP for approval. Dewatering is incidental to all storm sewer pipe installation.

All field poured storm structures shall be constructed rectangular in shape, unless noted otherwise. However, if a precast structure is approved, the requirement for a rectangular structure is waived. Construct catch basins, manholes and inlets using only precast or cast in place concrete masonry options. All structures shall be reinforced concrete. Concrete brick and block options are prohibited unless directed by engineer.

Construct all structures (manholes and inlets) on a 12-inch minimum thick bed of Base Aggregate Dense Graded 1 1/4-Inch according to standard spec 305.2.1 or when water is encountered, No. 1 coarse concrete aggregate according to standard spec 501.2.7.3, and as shown on the plans. Bedding for structures shall be incidental to the installation costs of the structure.

Removal of apron endwalls when connected to Culvert Pipes Temporary bid item is included in the bid item cost of Culvert Pipes Temporary. Apron endwalls that are removed as a part of the existing conditions will be paid as a separate bid item.

Submit shop drawings for all precast structures to the engineer. The engineer will coordinate with the City of Madison or City of Middleton design engineer and shall have five days to approve or reject the shop drawings. This approval will not be given until it can be confirmed that the proposed design will fit existing conditions including possible utility conflicts and until such time as all ULO's that could affect the structure/structures in question have been completed. Under no circumstance shall a precast structure be

brought to or used on the construction site without a written approval of the shop drawing for that structure prior to its use on site.

Do not use station and offset for inlet structures, as given on the storm plans, for final layout of the structure. Determine the curb line in the area of the inlet prior to pouring the inlet structure to assure proper location of the inlet relative to the curb line.

The costs to connect storm sewer to existing structures or pipes, including tapping the hole, placing the pipe, and sealing the joint will be paid for separately by bid items Storm Sewer Tap and Concrete Collars for Pipe, where shown on the plans or directed by the engineer.

The engineer will coordinate with the City of Madison or City of Middleton design engineer to review the ULO information for potential conflicts or redesign. Upon completion of the ULO information, the engineer shall be provided the information for revision of the storm sewer design as necessary. Once the design has been reviewed or modified, any revisions to the precast submittal shall be provided for review and approval. The precast submittals shall include any revised designs as necessary for consideration. The engineer shall forward on any design revision and shop drawing submittals for city design engineer to review. The city design engineer shall have five days to approve or reject shop drawings designs as necessary for consideration. Submit shop drawings for all precast structures to the engineer, who will review and forward on for the City's approval.

Contact Information:
Chris Scharf
City Engineering - Construction
Phone: (608) 267-1973
E-mail: cscharf@cityofmadison.com

Janet Schmidt
City Engineering – Stormwater Section
Phone : (608) 261-9688
E-mail : jschmidt@cityofmadison.com

39. General Requirements for Blasting Rock.

Revise in the table for vibration limits the value for Maximum Peak Particle Velocity for Rock Cut Wall from 1.0 to 2.0.

87. Luminaires Single Arm LED-City of Middleton, Item SPV.0060.19; Luminaires Dual Arm LED-City of Middleton, Item SPV.0060.20.

*Replace the first and second paragraphs under section titled **B Materials** with the following:*

Provide Luminaires Single Arm LED-City of Middleton as manufactured McGraw-Edison, model number TLM-E05-LED-E1-SL3-8030-BK-DIM.

Provide Luminaires Dual Arm LED-City of Middleton as manufactured by McGraw-Edison, model number TLM-E05-LED-E1-SL3-8030-BK-DIM, arm mount 2 at 180 degrees.

131. DELETED

165. Shortgrass Prairie Seed Mix, SPV.0085.04.

A Description

This work consists of furnishing and installing a Shortgrass Prairie Seed Mix at the locations shown on the plans according to standard spec 630 and as hereinafter provided.

B Materials

Seed shall be one of the following:

1. "Short Prairie for Medium Soils" as manufactured by Prairie Nursery, Westfield, WI. Seed shall be placed at a rate of 10 lbs/acre.
2. "Shortgrass Prairie Seed Mix for Medium-Dry Soils" as manufactured by Prairie Moon Nursery, Winona, MN. Seed shall be placed at a rate of 12.97 lbs/acre.
3. "Shortgrass Prairie for Medium Soils" as manufactured by Agrecol LLC., Evansville, WI. Seed shall be placed at a rate of 13.5 lbs/acre.
4. "Mesic Short Prairie Mix" as manufactured by Shooting Star Native Seed, Spring Grove, MN. Seed shall be placed at a rate of 10 lbs/acre.
5. Or equal.

Any substitution must have prior approval of the engineer. If an alternative is allowed, the rate of seed may be altered as a condition of approval, and seed shall be native ecotypes. No improved varieties are allowed.

Seed source shall be native ecotypes from Southeastern Minnesota, Eastern Iowa, Southern Wisconsin or Northern Illinois.

C Construction

Do not complete seeding later than September 15 without written approval from the engineer.

Apply a seeding rate for the Shortgrass Prairie Seed Mix as recommended by the seed mix provider and approved by the engineer. The plans estimate using a rate of 10 lbs/acre; notify the engineer if a different rate is recommended by seed supplier.

D Measurement

The department will measure Shortgrass Prairie Seed Mix by the pound, acceptably completed.

E Payment

The department will pay for the measured quantity at the contract unit price under the following bid item:

ITEM NUMBER	DESCRIPTION	UNIT
SPV.0085.04	Shortgrass Prairie Seed Mix	LB

Payment is full compensation for providing, handling, and storing all seed; for providing the required culture and inoculating seed as specified and as needed; and for preparing the seed bed, sowing, covering and firming the seed; for furnishing and installing all materials, including but not limited to seed.

166. Topsoil Planting Mix, SPV.0180.05.**A Description**

This work consists of furnishing, placing, spreading, and finishing humus-bearing soil, adapted to sustain plant life, commonly known as topsoil, from locations the contractor furnishes beyond the limits of the right-of-way according to section 625 of the standard specifications and as hereinafter provided.

B Materials

Topsoil Planting Mix shall be a mix of 2:1:1 pulverized and/or shredded general use topsoil, sand and compost respectively. Topsoil shall be a humus bearing soil composed of <70 percent silt, <70 percent sand, and <30 percent clay. The topsoil shall be free of noxious/invasive weeds, stones, debris, and vegetable material, and free of excess peat, sand, or clay. Thoroughly mix Topsoil Planting Mix off-site prior to spreading.

C Construction

Conform to subsection 625.3 of the standard specifications.

D Measurement

The department will measure Topsoil Planting Mix by the square yard, acceptably completed. The measured quantity will equal the actual number of square yards of topsoiled area to the depth specified within the limits of construction designated on the plans, or in the contract, or as the engineer directs.

E Payment

The department will pay for the measured quantity at the contract unit price under the following bid item:

ITEM NUMBER	DESCRIPTION	UNIT
SPV.0180.05	Topsoil Planting Mix	SY

Payment is full compensation for providing, excavating, loading, hauling, and placing this material; and for undercutting excavations, or underfilling embankments necessary to receive this material. The department will make no allowance, adjustment, or measurement for payment under the Excavation bid items for undercutting cut sections, or underfilling embankments.

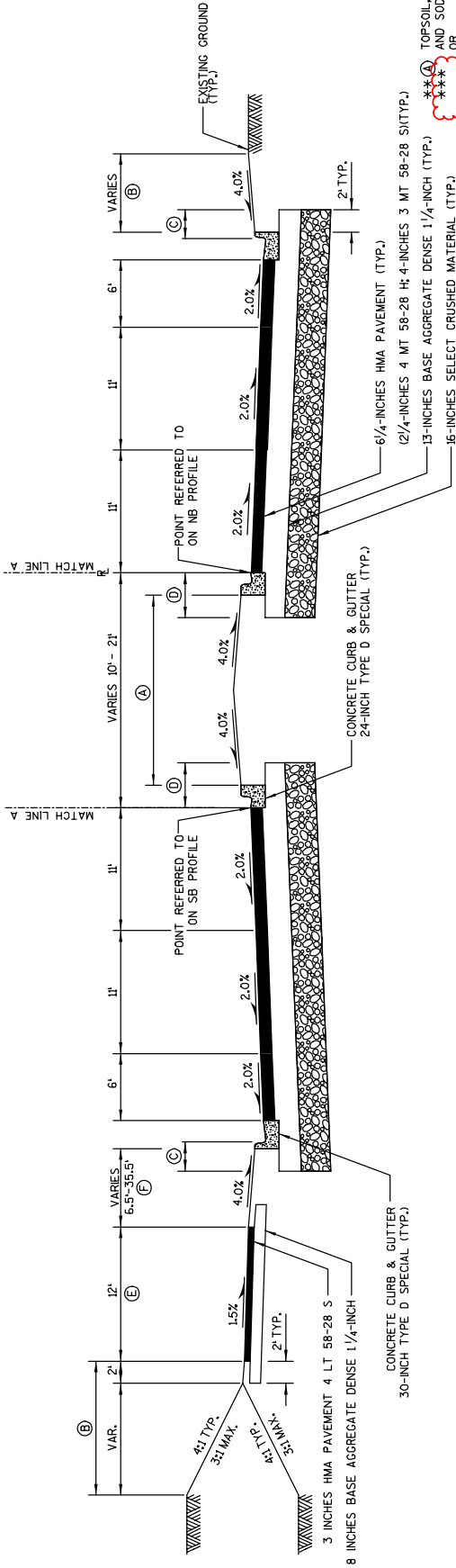
Schedule of Items

Attached, dated September 8, 2022, are the revised Schedule of Items Pages 12, 13, and 28 - 32.

Plan Sheets

The following 8½ x 11-inch sheets are attached and made part of the plans for this proposal:
Revised: 7, 8, 123, 124, 125, 126, 508, 509, 757 and 764.

END OF ADDENDUM



- *** (A) TOPSOIL, FERTILIZER TYPE B, AND SOD LAWN
- *** (B) CONCRETE SIDEWALK 5-INCH, COLORING CONCRETE CUSTOM OVER 4-INCHES BASE AGGREGATE DENSE 1/4-INCH
- *** (C) TOPSOIL, FERTILIZER TYPE B, SEEDING MIXTURE NO. 40, MULCHING OR EROSION MAT CLASS I TYPE A (SEE MISC. QUANTITY TABLES FOR LOCATIONS)
- (D) 2' LATERAL CLEARANCE
- (E) 4' LATERAL CLEARANCE
- (F) 10' STA. 129+16.31 TO STA. 140+13.00
- *** (G) TOPSOIL, FERTILIZER TYPE B, AND SOD LAWN

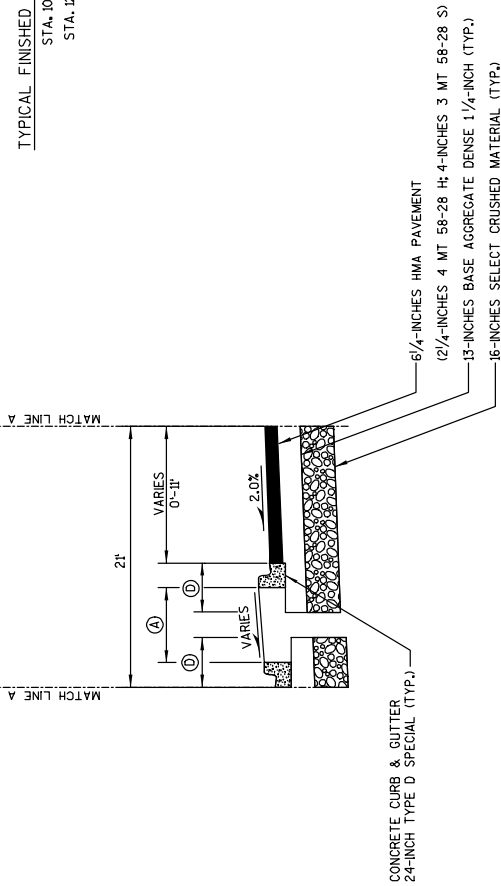
** 18-INCHES TOPSOIL IN MEDIANS
4-INCHES ELSEWHERE

*** TOPSOIL PLANT MIX, FERTILIZER TYPE B, SHORTGRASS PRAIRIE SEED MIX, AND MULCHING STA. 108+32.00 TO STA. 127+95.24

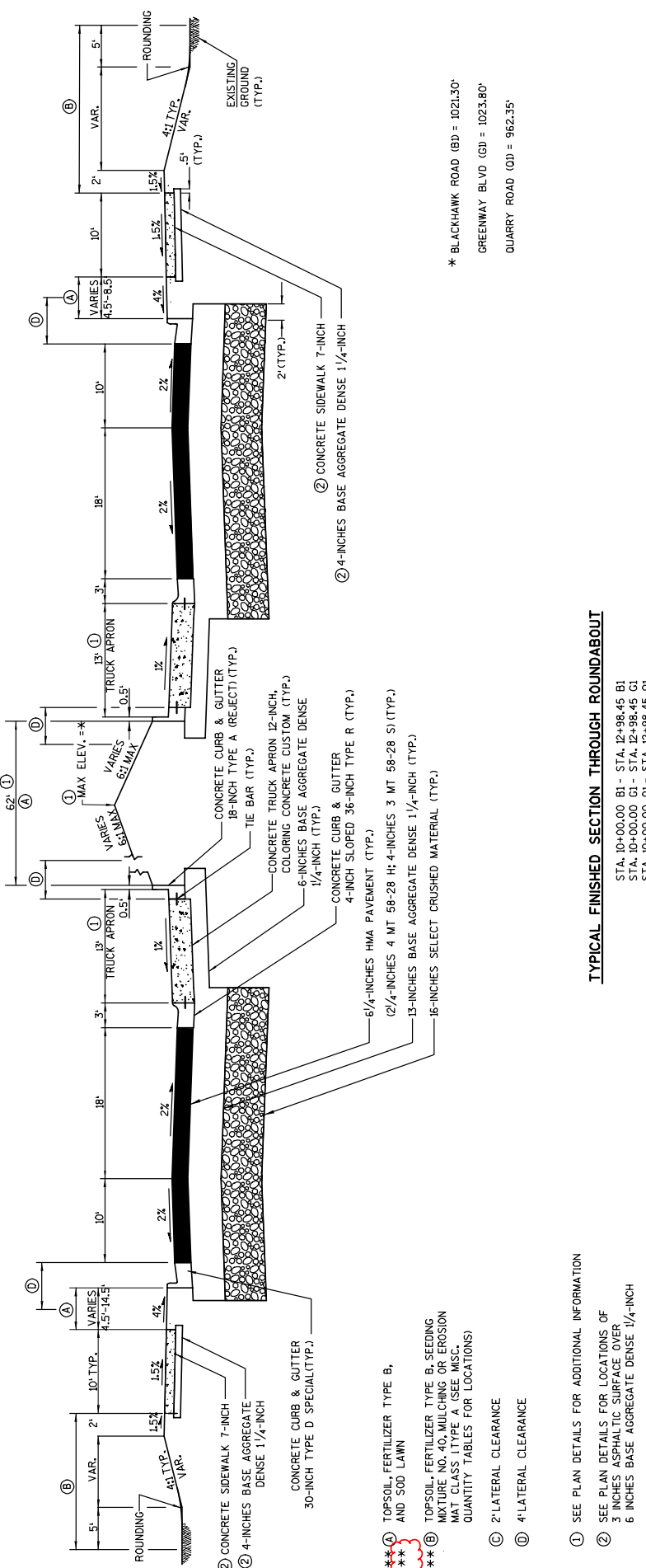
Addendum No. 02
ID 5992-11-01
Revised Sheet 7
September 8, 2022

TYPICAL FINISHED SECTION - PLEASANT VIEW ROAD

STA. 108+32.00 - STA. 127+95.24
STA. 129+16.31 - STA. 140+13.00



STA. 119+23.82 - STA. 121+18.43



- ① SEE PLAN DETAILS FOR ADDITIONAL INFORMATION
- ② SEE PLAN DETAILS FOR LOCATIONS OF 3 INCHES ASPHALTIC SURFACE OVER 6 INCHES BASE AGGREGATE DENSE 1/4-INCH
- ③ 2' LATERAL CLEARANCE
- ④ 4' LATERAL CLEARANCE

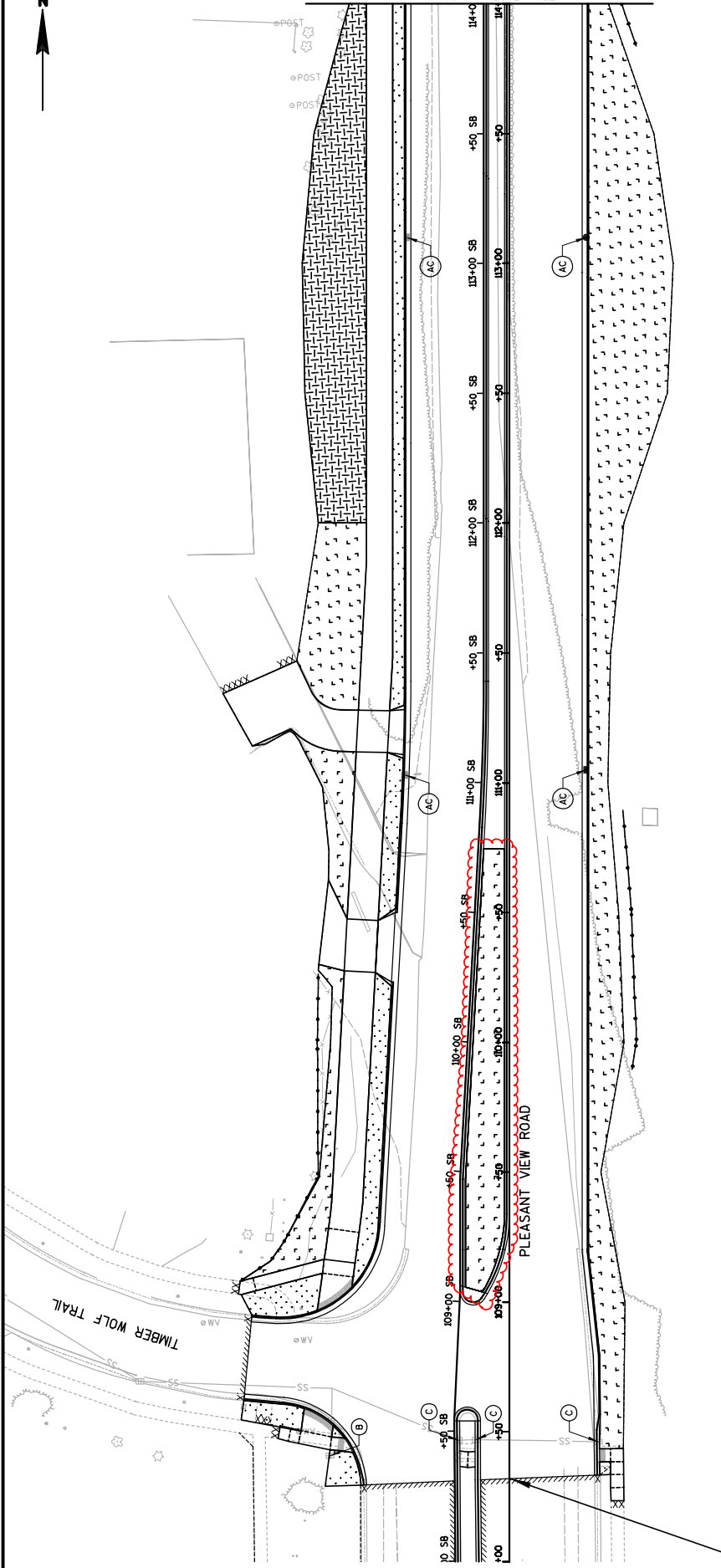
*** ④ TOPSOIL, FERTILIZER TYPE B, AND SOIL LAWN
 *** ⑤ TOPSOIL, FERTILIZER TYPE B, SEEDING MIXTURE NO. 40, MULCHING OR EROSION MAT CLASS I TYPE A (SEE MISC. QUANTITY TABLES FOR LOCATIONS)
 *** TOPSOIL PLANT MIX, FERTILIZER TYPE B, SHORTGRASS PRAIRIE SEED MIX, AND MULCHING
 STA. 10+00.00 BITO STA. 12+98.45 BI
 BLACKHAWK ROAD RAB CENTRAL ISLAND

TYPICAL FINISHED SECTION THROUGH ROUNDABOUT

- STA. 10+00.00 BI - STA. 12+98.45 BI
- STA. 10+00.00 GI - STA. 12+98.45 GI
- STA. 10+00.00 OI - STA. 12+98.45 OI

Addendum No. 02
 ID 5992-11-01
 Revised Sheet 8
 September 8, 2022

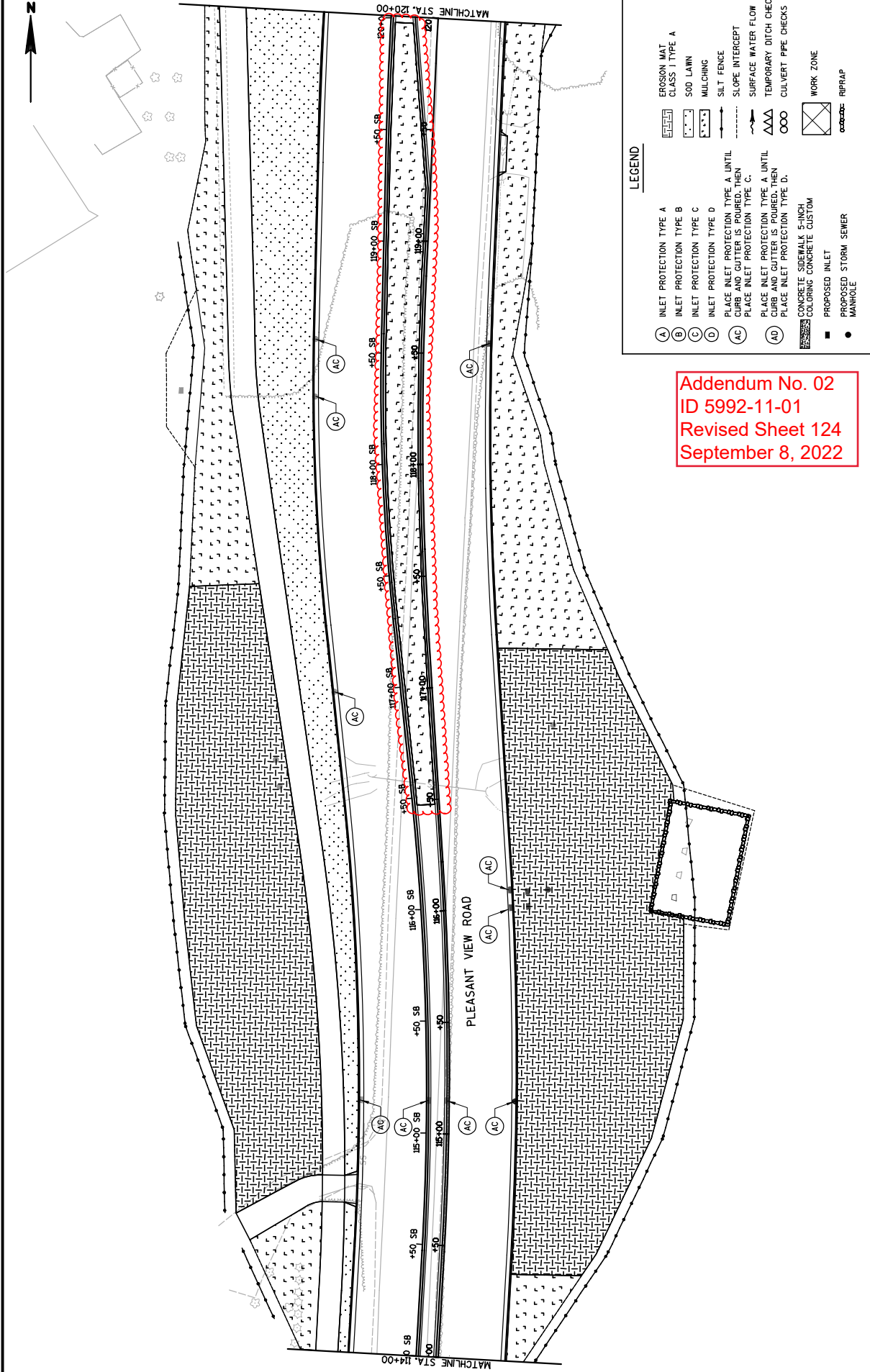
- * BLACKHAWK ROAD (BI) = 1021.30'
- GREENWAY BLVD (GI) = 1023.80'
- QUARRY ROAD (OI) = 962.35'



BEGIN PROJECT
STA. 108+32.00

- LEGEND**
- (A) INLET PROTECTION TYPE A
 - (B) INLET PROTECTION TYPE B
 - (C) INLET PROTECTION TYPE C
 - (D) INLET PROTECTION TYPE D
 - (AC) PLACE INLET PROTECTION TYPE A UNTIL CURB AND GUTTER IS POURED, THEN PLACE INLET PROTECTION TYPE C.
 - (AD) PLACE INLET PROTECTION TYPE A UNTIL CURB AND GUTTER IS POURED, THEN PLACE INLET PROTECTION TYPE D.
 - CONCRETE SIDEWALK 5-INCH COLORING CONCRETE CUSTOM
 - PROPOSED INLET
 - PROPOSED STORM SEWER MANHOLE
 - EROSION MAT CLASS 1 TYPE A
 - SOD LAWN
 - MULCHING
 - SILT FENCE
 - SLOPE INTERCEPT
 - SURFACE WATER FLOW
 - TEMPORARY DITCH CHECKS
 - CULVERT PIPE CHECKS
 - WORK ZONE
 - RIPRAP

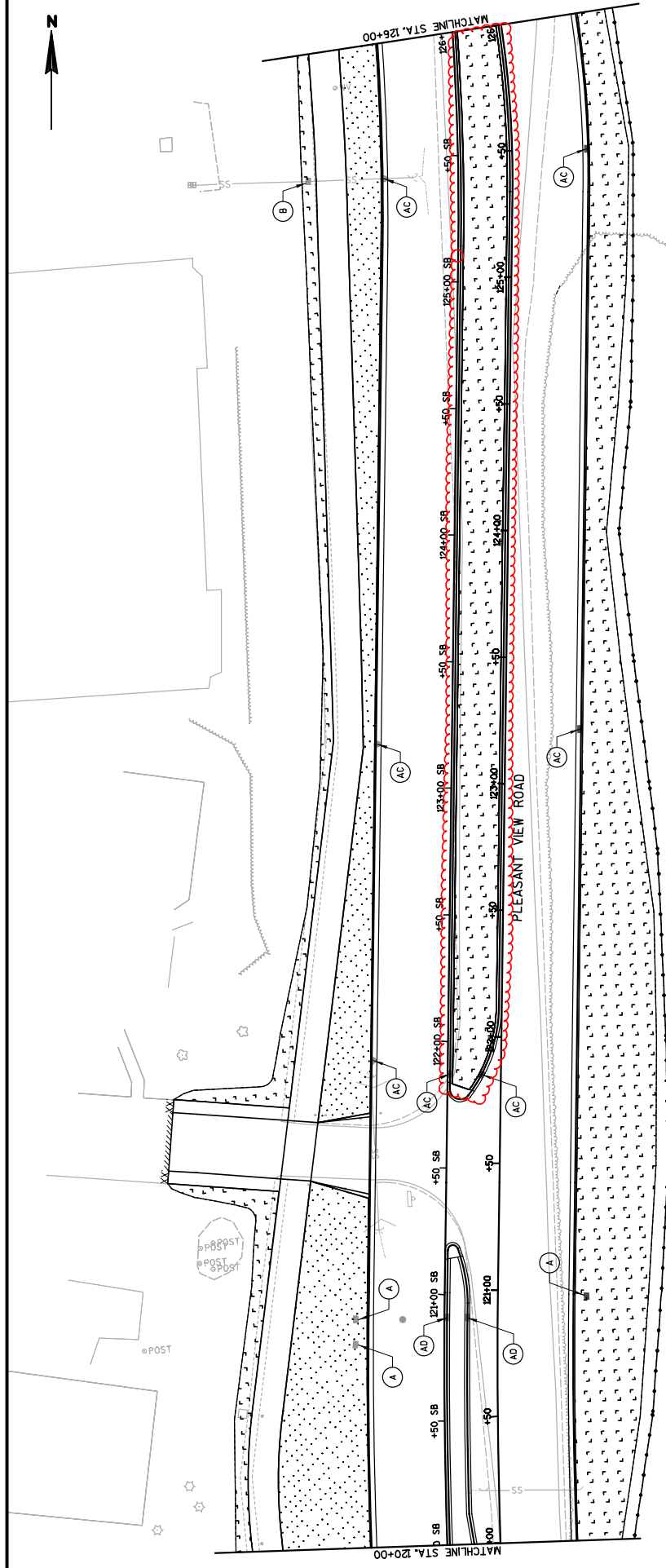
Addendum No. 02
ID 5992-11-01
Revised Sheet 123
September 8, 2022



LEGEND

(A)	INLET PROTECTION TYPE A	(E)	EROSION MAT CLASS 1 TYPE A
(B)	INLET PROTECTION TYPE B	(F)	SOD LAIN
(C)	INLET PROTECTION TYPE C	(G)	MULCHING
(D)	INLET PROTECTION TYPE D	(H)	SILT FENCE
(AC)	PLACE INLET PROTECTION TYPE A UNTIL CURB AND GUTTER IS POURED, THEN COLORING CONCRETE CUSTOM	(I)	SLOPE INTERCEPT
(AD)	PLACE INLET PROTECTION TYPE A UNTIL CURB AND GUTTER IS POURED, THEN COLORING CONCRETE CUSTOM	(J)	SURFACE WATER FLOW
(K)	CONCRETE SIDEWALK 5-INCH COLORING CONCRETE CUSTOM	(L)	TEMPORARY DITCH CHECKS
(M)	PROPOSED INLET	(O)	CULVERT PIPE CHECKS
(N)	PROPOSED STORM SEWER	(P)	WORK ZONE
(Q)	MANHOLE	(R)	RIPRAP

Addendum No. 02
ID 5992-11-01
Revised Sheet 124
September 8, 2022



Addendum No. 02
 ID 5992-11-01
 Revised Sheet 125
 September 8, 2022

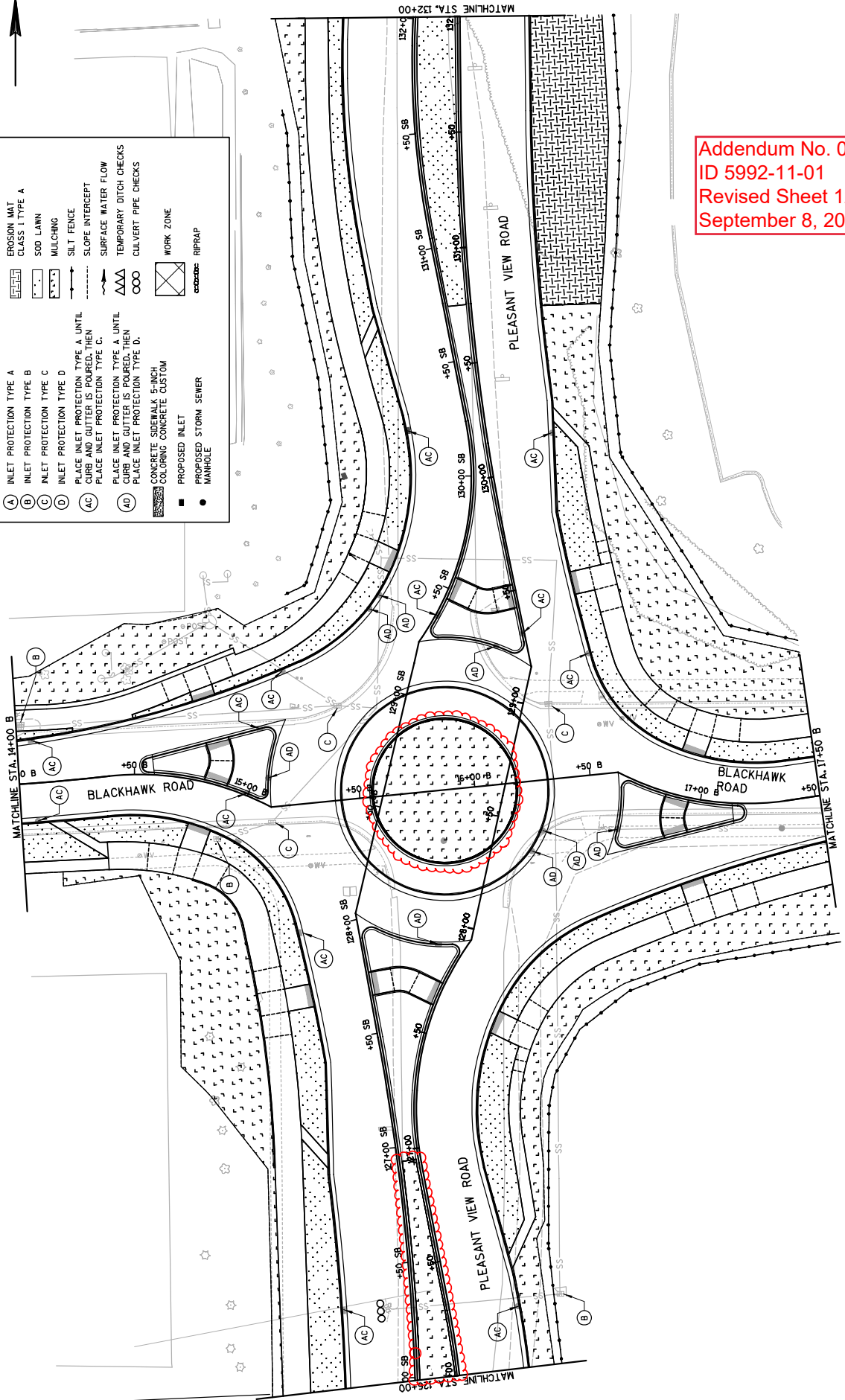
LEGEND

(A)	INLET PROTECTION TYPE A	(E)	EROSION MAT CLASS I TYPE A
(B)	INLET PROTECTION TYPE B	(F)	SOD LAWN
(C)	INLET PROTECTION TYPE C	(G)	MULCHING
(D)	INLET PROTECTION TYPE D	(H)	SILT FENCE
(AC)	PLACE INLET PROTECTION TYPE A UNTIL CURB AND GUTTER IS POURED, THEN POUR	(I)	SLOPE INTERCEPT
(AD)	PLACE INLET PROTECTION TYPE A UNTIL CURB AND GUTTER IS POURED, THEN CONCRETE SIDEWALK 5-INCH COLORING CONCRETE CUSTOM	(J)	SURFACE WATER FLOW
(SB)	PROPOSED STORM SEWER	(K)	TEMPORARY DITCH CHECKS
(M)	MANHOLE	(L)	CULVERT PIPE CHECKS
(N)		(O)	WORK ZONE
(P)		(R)	RIPRAP



LEGEND

- (A) INLET PROTECTION TYPE A
- (B) INLET PROTECTION TYPE B
- (C) INLET PROTECTION TYPE C
- (D) INLET PROTECTION TYPE D
- (AC) PLACE INLET PROTECTION TYPE A UNTIL CURB AND GUTTER IS POURED, THEN PLACE INLET PROTECTION TYPE C.
- (AD) PLACE INLET PROTECTION TYPE A UNTIL CURB AND GUTTER IS POURED, THEN PLACE INLET PROTECTION TYPE D.
- CONCRETE SIDEWALK 5-INCH COLORING CONCRETE CUSTOM
- PROPOSED INLET
- PROPOSED STORM SEWER MANHOLE
- EROSION MAT CLASS I TYPE A
- SOD LAWN
- MULCHING
- SILT FENCE
- SLOPE INTERCEPT
- SURFACE WATER FLOW
- TEMPORARY DITCH CHECKS
- CULVERT PIPE CHECKS
- WORK ZONE
- rip-rap



Addendum No. 02
 ID 5992-11-01
 Revised Sheet 126
 September 8, 2022

FINISHING ITEMS

CATEGORY	STAGE	STATION - STATION	LOCATION	* 625.0000 TOPSOIL PLANTING	627.0200 MULCHING	629.2020 EROSION MAT CLASS 1	629.0210 FERTILIZER TYPE B	* 630.0010 SEEDING MXTURE NO. 10	630.0400 SEEDING MXTURE NO. 40	SPV.0085.03 NO MOW LAWN SEED	SPV.0085.04 SHORTGRASS PRAIRIE SEED	* 630.0500 SEED WATER MGAL	631.0300 SOD WATER MGAL	631.0000 SOD LAWN SY
0000	STAGE 1	108+41.7 - 119+08.9	NB TEMP WIDENING	---	1,250	740	1.3	26.8	---	---	---	44.7	---	---
	STAGE 1	121+54. - 126+22.	NB TEMP WIDENING	---	---	130	0.1	1.8	---	---	---	3.0	---	---
		SUBTOTAL STAGE 1 CATEGORY 000		0	1,250	870	1.4	28.6	0	0	0.0	47.7	0	0
0060	STAGE 1	129+99. - 155+80.	SB TEMP WIDENING	---	620	5,500	0.1	82.3	---	---	---	156.9	---	---
	STAGE 1	151+50. - 153+00.	NB GRADING	---	---	12,500	0.1	188.4	---	---	---	280.1	---	---
	STAGE 1	156+00. - 170+87.	NB TEMP WIDENING	---	530	---	0.1	7.1	---	---	---	11.8	---	---
	STAGE 1	166+00. - 170+87.	NB TEMP WIDENING	---	530	---	0.1	7.1	---	---	---	11.8	---	---
	STAGE 1	172+45. - 178+00.	NB TEMP WIDENING	---	---	140	0.1	1.9	---	---	---	3.2	---	---
	STAGE 1	174+50. - 174+50.	STORM SEWER TRENCH	---	1,700	---	0.1	---	30.0	---	---	37.9	---	---
		SUBTOTAL STAGE 1 CATEGORY 0060		0	3,380	18,140	0.6	266.8	30	0	0.0	481.7	0	0
		TOTALS STAGE 1		1,300	4,630	19,010	2.0	295.4	30	0	0.0	529.4	0	0
0000	STAGE 2	108+32.0 - 127+50.	SB TERRACE	2,660	---	---	1.7	---	---	---	---	---	59.6	2,660
	STAGE 2	108+32.0 - 127+50.	SB OUTSIDE SIDEWALK	3,700	1,800	1,900	2.3	30.0	35.0	---	---	82.6	---	---
	STAGE 2	107+128 - 15+42.8	BLACKHAWK LT OUTSIDE SIDEWALK	750	740	---	0.5	15.0	---	---	---	16.9	---	---
	STAGE 2	130+72.0 - 138+50.0	SB OUTSIDE SIDEWALK	2,050	750	1,300	1.3	35.0	---	---	---	45.6	---	---
	STAGE 2	138+50.0 - 514+39.2C	SB OUTSIDE SIDEWALK	250	250	---	0.2	4.5	---	---	---	5.6	---	---
	STAGE 2	138+61.0 - 52+25.7C	SB TERRACE	380	---	---	0.1	---	---	---	---	---	8.6	380
		SUBTOTAL STAGE 2 CATEGORY 0000		9,780	3,540	3,200	6.1	0	84.5	35.0	0.0	150.7	68.2	3,030
0060	STAGE 2	51+90.3C - 53+38.6C	GREENWAY MEDIAN	230	---	---	0.1	---	---	---	---	---	5.3	230
	STAGE 2	132+00.0 - 134+50.0	GOLF COURSE STOCKPILE	---	3,100	---	---	---	---	---	---	---	---	---
	STAGE 2	142+50.0 - 53+38.6C	GREENWAY LT TERRACE	470	---	---	0.3	---	---	---	---	---	10.6	470
	STAGE 2	142+50.0 - 52+30.5C	GREENWAY LT OUTSIDE SIDEWALK	450	450	---	0.3	---	8.0	---	---	10.0	---	---
	STAGE 2	142+50.0 - 195+00.0	NB TERRACE	1,150	---	---	1.8	---	---	---	---	---	26.4	1,150
	STAGE 2	142+50.0 - 195+00.0	NB OUTSIDE SIDEWALK	2,850	1,700	1,150	1.8	---	30.0	20	---	63.5	---	---
	STAGE 2	156+00.0 - 166+00.0	NB OUTSIDE SIDEWALK	2,950	1,050	1,900	1.9	---	55.0	---	---	66.7	---	---
	STAGE 2	156+00.0 - 166+00.0	NB TERRACE	910	---	---	0.6	---	---	---	---	20.5	---	910
	STAGE 2	156+00.0 - 166+00.0	MEDIAN	830	---	---	0.5	---	---	---	---	18.7	---	830
	STAGE 2	156+00.0 - 166+00.0	SB TERRACE	1,500	---	---	1.0	---	---	---	---	---	34.0	1,500
	STAGE 2	156+00.0 - 166+00.0	SB OUTSIDE SIDEWALK	4,450	1,450	3,000	2.8	---	---	80	---	99.6	---	---
	STAGE 2	166+00.0 - 178+00.0	SB OUTSIDE SIDEWALK	6,750	2,500	4,200	4.2	---	45.0	75	---	151.4	---	---
	STAGE 2	166+00.0 - 178+00.0	SB TERRACE	1,550	---	---	1.0	---	---	---	---	35.2	---	1,550
		SUBTOTAL STAGE 2 CATEGORY 0060		24,090	10,250	10,250	15.2	0	138.0	175.0	0.0	391.2	150.7	6,640
		TOTALS STAGE 2		33,870	13,790	13,450	21.3	0	222.5	210.0	0.0	541.9	218.9	9,670
0060	STAGE 2A	107+128 - 15+39.3B	BLACKHAWK LT TERRACE	260	---	---	0.2	---	---	---	---	---	5.9	260
0000	STAGE 2B	9+71.1B - 15+20.8	BLACKHAWK RT TERRACE	920	---	---	0.6	---	---	---	---	---	20.7	920
0000	STAGE 3	108+32.0 - 126+41.5	NB OUTSIDE	5,150	3,400	2,000	3.2	---	55.0	35	---	157.6	---	---
	STAGE 3	116+48.0 - 119+97.0	MEDIAN	500	500	---	0.3	---	---	---	---	11.2	---	---
	STAGE 3	121+79.0 - 126+95.0	MEDIAN	890	890	---	0.6	---	---	---	---	19.9	---	---
	STAGE 3	126+41.5 - 20+52.8	BLACKHAWK RT OUTSIDE SIDEWALK	700	700	---	0.1	---	15.0	---	---	25.6	---	---
	STAGE 3	126+41.5 - 21+16.36B	BLACKHAWK RT TERRACE	530	---	---	0.3	---	---	---	---	12.0	---	530
	STAGE 3	130+72.0 - 21+16.36B	BLACKHAWK LT TERRACE	470	---	---	0.3	---	---	---	---	10.5	---	470
	STAGE 3	130+72.0 - 20+43.5B	BLACKHAWK LT OUTSIDE SIDEWALK	1,150	1,150	---	0.7	---	20.0	---	---	25.3	---	---
		SUBTOTAL STAGE 3 CATEGORY 0000		8,000	6,440	2,000	5.5	0	90.0	36.0	3.0	187.2	22.5	1,000
		*ADDITIONAL QUANTITIES LISTED ELSEWHERE												CONT NEXT PAGE

Addendum No. 02
 ID 5992-11-01
 Revised Sheet 508
 September 8, 2022

MISCELLANEOUS QUANTITIES

COUNTY: DANE

HWY: PLEASANT VIEW ROAD

PROJECT NO: 5992-11-01

SHEET 508

FILE NAME : S:\MMD\1000--1099\1020\101\Micros\Plan\Phase 1\030225_mq.dgn

PLOT DATE : 9/7/2022

PLOT BY : _username_

PLOT NAME :

PLOT 3

WISDOT/CADD SHEET 43

Addendum No. 02
 ID 5992-11-01
 Revised Sheet 509
 September 8, 2022

FINISHING ITEMS																						
CATEGORY	STAGE	STATION - STATION	LOCATION	* 6251.0000 TOPSOIL		* 627.0200 TOPSOIL PLANTING		628.2002 EROSION MAT		629.0210 FERTILIZER		630.0100 SEEDING MIXTURE		630.0140 SEEDING MIXTURE		* 630.0500 SEED WATER		* 631.0300 SOD WATER		* 631.0000 SOD LAWN		
				SY	MIX	SY	MIX	CLASS 1	TYPE A	TYPE B	NO. 10	NO. 40	MGAL	MGAL	MGAL	MGAL	MGAL	MGAL	SY	SY		
0060	STAGE 3	156+00.0 - 156+00.0	NB OUTSIDE SIDEWALK	400	---	400	---	---	0.3	---	---	---	---	---	---	---	9.0	---	---	---	---	
	STAGE 3	156+00.0 - 156+00.0	NB TERRACE	95	---	---	---	---	0.1	---	---	---	---	---	---	---	---	2.1	---	---	95	
	STAGE 3	156+00.0 - 156+00.0	SB TERRACE	140	---	---	---	---	0.1	---	---	---	---	---	---	---	---	3.1	---	---	140	
	STAGE 3	156+00.0 - 156+00.0	SB OUTSIDE SIDEWALK	480	---	480	---	---	0.3	---	---	---	---	---	---	---	---	10.7	---	---	---	
	STAGE 3	156+00.0 - 51+46.0	NB OUTSIDE SIDEWALK	790	---	720	---	75	0.5	---	---	---	---	---	---	---	---	17.8	---	---	---	
	STAGE 3	156+00.0 - 51+46.0	NB TERRACE	590	---	---	---	---	0.4	---	---	---	---	---	---	---	---	13.3	---	---	590	
	STAGE 3	166+50.0 - 170+44.0	MEDIAN	670	---	---	---	---	0.4	---	---	---	---	---	---	---	---	15.1	---	---	670	
	STAGE 3	51+09.0 - 178+00.0	NB TERRACE	380	---	---	---	---	0.2	---	---	---	---	---	---	---	---	8.5	---	---	380	
	STAGE 3	173+43.0 - 175+22.0	NB OUTSIDE SIDEWALK	1,050	---	1,050	---	---	0.2	---	---	---	---	---	---	---	---	23.3	---	---	---	
	STAGE 3	177+36.0 - 178+00.0	MEDIAN	85	---	---	---	---	0.2	---	---	---	---	---	---	---	---	---	6.1	---	---	270
SUBTOTAL STAGE 3 CATEGORY 0060				5,050	---	---	---	---	0.0	---	---	---	---	---	---	---	---	1.4	---	---	85	
TOTALS STAGE 3				13,060	---	1,390	---	75	3.3	---	---	---	---	---	---	---	---	60.8	---	---	2,930	
0000	STAGE 4	109+06.4 - 110+74.5	MEDIAN	---	---	230	---	---	0.1	---	---	---	---	---	---	---	---	5.1	---	---	---	
0060	STAGE 4	15+42.8 - 155+00.0	SB OUTSIDE SIDEWALK	13,000	---	---	---	---	8.6	---	---	---	---	---	---	---	---	69.7	---	---	---	
	STAGE 4	15+39.38 - 155+00.0	SB TERRACE	2,900	---	---	---	---	0.8	---	---	---	---	---	---	---	---	65.2	---	---	---	
	STAGE 4	130+75.0 - 139+00.0	MEDIAN	1,250	---	---	---	---	0.5	---	---	---	---	---	---	---	---	28.3	---	---	1,250	
	STAGE 4	142+60.0 - 147+36.0	MEDIAN	820	---	---	---	---	0.2	---	---	---	---	---	---	---	---	18.3	---	---	820	
	STAGE 4	149+42.0 - 151+05.0	MEDIAN	240	---	---	---	---	0.2	---	---	---	---	---	---	---	---	5.4	---	---	240	
SUBTOTAL STAGE 4 CATEGORY 0060				18,520	---	0	---	---	12.1	---	---	---	---	---	---	---	---	69.7	---	---	310	
TOTALS STAGE 4				18,520	---	230	---	0	12.2	---	---	---	---	---	---	---	---	69.7	---	---	5,520	
0000	STAGE 5	128+24.2 - 128+87.2	BLACKHAWK RAB CENTRAL ISLAND	---	---	340	---	---	0.2	---	---	---	---	---	---	---	---	7.5	---	---	---	
0060	STAGE 5	140+43.2 - 141+06.2	GREENWAY RAB CENTRAL ISLAND	340	---	---	---	---	0.2	---	---	---	---	---	---	---	---	---	---	---	---	
	STAGE 5	---	---	340	---	---	---	---	0.4	---	---	---	---	---	---	---	---	7.5	---	---	340	
	STAGE 5	---	---	560	---	---	---	---	0.4	---	---	---	---	---	---	---	---	---	---	---	340	
SUBTOTAL STAGE 5				14,000	---	190	---	---	0.4	---	---	---	---	---	---	---	---	---	---	---	---	
WASTE SITE UNDISTRIBUTED				14,000	---	190	---	---	0.4	---	---	---	---	---	---	---	---	---	---	---	---	---
GRAND TOTAL (CATEGORY 0000)				25,980	---	2,150	---	9,570	18.7	---	---	---	---	---	---	---	---	596.3	---	---	7,025	
GRAND TOTAL (CATEGORY 0060)				56,840	---	0	---	31,965	36.4	---	---	---	---	---	---	---	---	1,214.1	---	---	17,165	
GRAND TOTALS				82,820	---	2,150	---	41,535	55.1	---	---	---	---	---	---	---	---	1,810.4	---	---	24,190	

*ADDITIONAL QUANTITIES LISTED ELSEWHERE

MOBILIZATIONS EROSION CONTROL			
CATEGORY	PROJECT	QUANTITY	UNIT
0000	5992-II-01	5	EACH
0060	5992-II-01	10	EACH

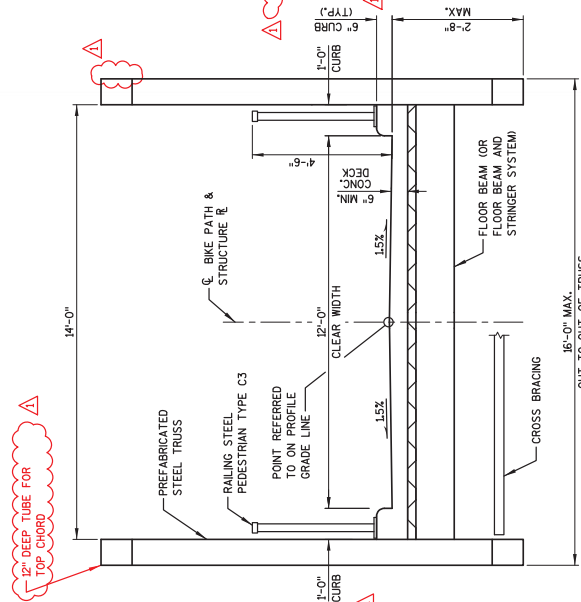
STATE PROJECT NUMBER
 5992-11-01

TOTAL ESTIMATED QUANTITIES

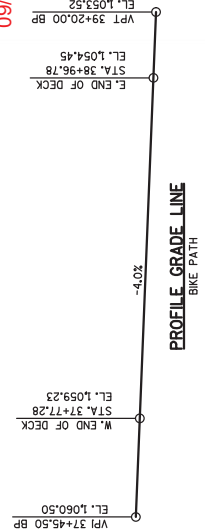
BID ITEM NUMBER	BID ITEMS	UNIT	E. ABUT.	I.W. ABUT.	SUPERSTRUCTURE	TOTALS
502.0100	CONCRETE MASONRY BRIDGES	CY	34.3	34.3	---	69
502.3101	EXPANSION DEVICE	LF	12	12	---	24
502.3200	PROTECTIVE SURFACE TREATMENT	SY	4	4	199	207
505.0400	BAR STEEL REINFORCEMENT HS STRUCTURES	L.B.	1,010	1,010	---	2,020
505.0600	BAR STEEL REINFORCEMENT HS COATED STRUCTURES	L.B.	1,410	1,410	---	2,820
506.8006.5	PREFABRICATED STEEL TRUSS PEDESTRIAN BRIDGE B-13-892 LRFD	EA	---	---	1	1
513.8016	RAILING STEEL PEDESTRIAN TYPE C3	LF	32	32	239	303
516.0500	RUBBERIZED MEMBRANE WATERPROOFING	SY	8	8	---	16
517.1000	PAINTING EPOXY SYSTEM STEEL TRUSS B-13-892	LS	---	---	1	1
550.0020	PRE-BORING ROCK OR CONSOLIDATED MATERIALS	LF	9	9	---	18
550.0020	PIILING STEEL HP 10-INCH X 42 LB	LF	57	57	6	114
604.0400	SLOPE PAVING CONCRETE	SY	6	6	---	12
SPV0090	ABUTMENT ANCHORAGE	LF	21	21	---	42
	NON-BID ITEMS	SIZE				3/4"
	FILLER	SIZE				1"
	CURED POLYSTYRENE					
	NAME PLATE					

PILE SPICE NOTES

STEEL HP PILE MATERIAL SHALL BE A.S.T.M. A709 GR.50.
 GRINDING MAY BE USED IN LIEU OF BACKGROUING.



CROSS SECTION THRU TRUSS STRUCTURE (LOOKING EAST)

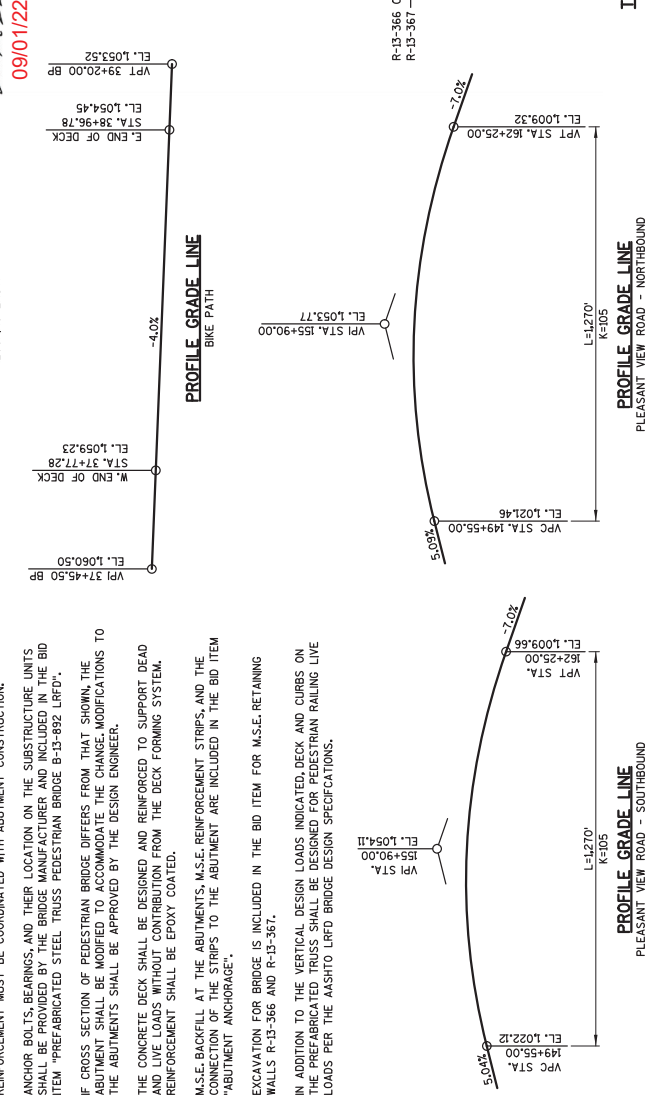


PROFILE GRADE LINE

GENERAL NOTES

- DRAWINGS SHALL NOT BE SCALED.
- BAR STEEL REINFORCEMENT SHALL BE EMBEDDED 2" CLEAR UNLESS SHOWN OR NOTED OTHERWISE.
- THE FIRST OR FIRST TWO DIGITS OF THE BAR MARK SIGNIFIES THE BAR SIZE. BEVEL EXPOSED EDGES OF CONCRETE 3/4" UNLESS NOTED OTHERWISE.
- THE TRUSS SHALL BE ANCHORED TO THE ABUTMENTS IN A MANNER TO:
 - ALLOW THERMAL MOVEMENTS ALONG THE BIKE PATH.
 - PREVENT HORIZONTAL TRANSLATION OF THE SUPERSTRUCTURE PERPENDICULAR TO THE BIKE PATH.
- THE TRUSS SHALL BE CAMBERED AN AMOUNT EQUAL TO THE PROFILE GRADE LINE PLUS AN AMOUNT TO OFFSET THE CALCULATED DEAD LOAD DEFLECTION.
- PROTECTIVE SCREENING, CONCRETE DECK AND REINFORCEMENT, CURBS, BEARINGS, AND ANCHOR BOLTS ARE INCLUDED IN THE BID ITEM "PREFABRICATED STEEL TRUSS PEDESTRIAN BRIDGE B-13-892 LRFD".
- THE PAINT COLOR FOR THE STEEL TRUSS SHALL BE MS #7039 (BLACK). THE ACCENT COLOR FOR THE OUTSIDE FACE OF THE TOP CHORD SHALL BE PANTONE MATCHING SYSTEM COLOR PMS 888 (DARK RED); REFER TO SHEET 9.
- TRUSS AND CONCRETE DECK SHALL BE DESIGNED TO ACCOMMODATE A 1 1/4-INCH STRIP SEAL JOINT. THE TRUSS FABRICATOR SHALL COORDINATE WITH THE JOINT FABRICATOR TO OBTAIN NECESSARY JOINT AND ANCHORAGE DETAILS. SEE SHEET 8 FOR EXPANSION JOINT INFORMATION.
- TRUSS SHALL BE DESIGNED AS SIMPLE SPAN BETWEEN ABUTMENTS. TOP CHORD BRIDGE B-13-892 LONG FRICTION SEQUENCE FOR THE MSE WALL AND SOIL REINFORCEMENT MUST BE COORDINATED WITH ABUTMENT CONSTRUCTION.
- ANCHOR BOLTS, BEARINGS, AND THEIR LOCATION ON THE SUBSTRUCTURE UNITS SHALL BE PROVIDED BY THE BRIDGE MANUFACTURER AND INCLUDED IN THE BID ITEM "PREFABRICATED STEEL TRUSS PEDESTRIAN BRIDGE B-13-892 LRFD".
- IF CROSS SECTION OF PEDESTRIAN BRIDGE DIFFERS FROM THAT SHOWN, THE ABUTMENT SHALL BE MODIFIED TO ACCOMMODATE THE CHANGE. MODIFICATIONS TO THE ABUTMENTS SHALL BE APPROVED BY THE DESIGN ENGINEER.
- THE CONCRETE DECK SHALL BE DESIGNED AND REINFORCED TO SUPPORT DEAD AND LIVE LOADS WITHOUT CONTRIBUTION FROM THE DECK FORMING SYSTEM. REINFORCEMENT SHALL BE EPOXY COATED.
- M.S.E. BACKFILL AT THE ABUTMENTS, M.S.E. REINFORCEMENT STRIPS, AND THE CONNECTION OF THE STRIPS TO THE ABUTMENT ARE INCLUDED IN THE BID ITEM "ABUTMENT ANCHORAGE".
- EXCAVATION FOR BRIDGE IS INCLUDED IN THE BID ITEM FOR M.S.E. RETAINING WALLS R-13-566 AND R-13-367.
- IN ADDITION TO THE VERTICAL DESIGN LOADS INDICATED, DECK AND CURBS ON THE PREFABRICATED TRUSS SHALL BE DESIGNED FOR PEDESTRIAN RAILING LIVE LOADS PER THE AASHTO LRFD BRIDGE DESIGN SPECIFICATIONS.

CROSS SECTION THRU ABUTMENT AT MSE WALL



PROFILE GRADE LINE

PROFILE GRADE LINE

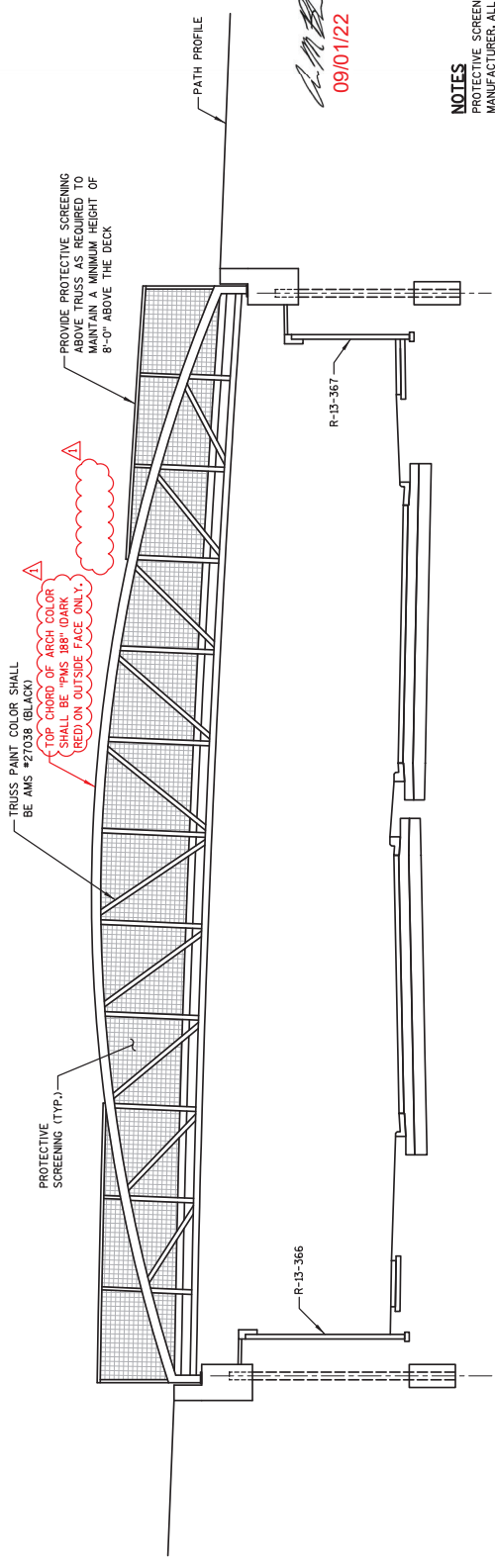
PLEASANT VIEW ROAD - SOUTHBOUND

PLEASANT VIEW ROAD - NORTHBOUND

NO. DATE REVISION BY
 1 9/1/22 ELIMINATE ARCH FACADE PLATES. BMO
 STATE OF WISCONSIN
 DEPARTMENT OF TRANSPORTATION
 STRUCTURE B-13-892
 DRAWN BY DTH
 CHECKED BY EJC
 SHEET 2
 GENERAL NOTES & DETAILS
 757

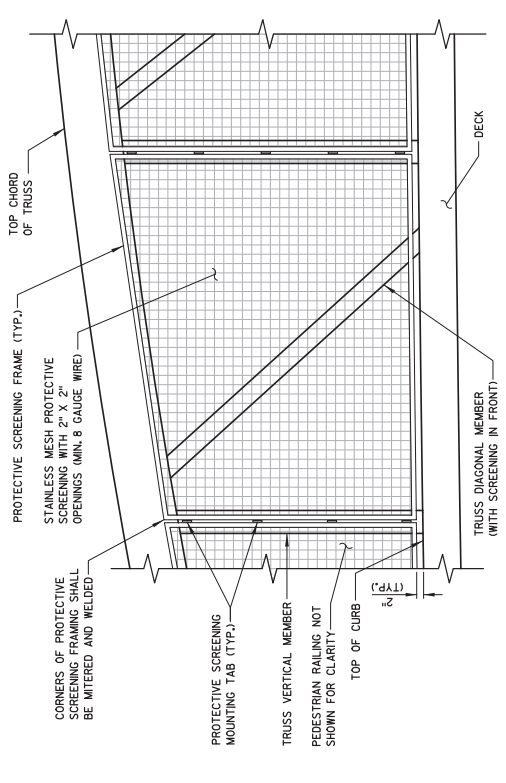


[Signature]
09/01/22

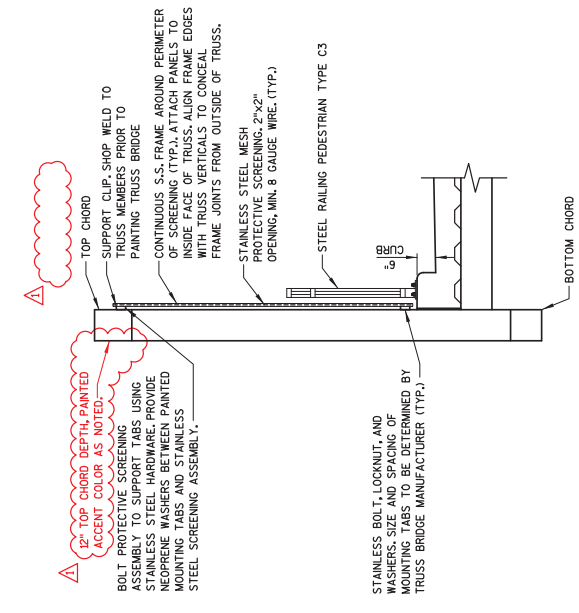


ELEVATION
(TYPICAL EACH SIDE)

NOTES
 PROTECTIVE SCREENING SHALL BE PROVIDED BY THE PREFABRICATED BRIDGE MANUFACTURER. ALL WORK ASSOCIATED WITH PROTECTIVE SCREENING SHALL BE PERFORMED BY THE PREFABRICATED STEEL TRUSS PEDESTRIAN BRIDGE LRPD B-13-892 LRPD.
 STAINLESS STEEL MESH SHALL BE ORIENTED VERTICALLY/HORIZONTALLY ACROSS THE FULL LENGTH OF THE BRIDGE.
 ALL MATERIALS FOR THE PROTECTIVE SCREENING, INCLUDING HARDWARE, SHALL BE STAINLESS STEEL.
 ALTERNATE DETAILS FOR THE PROTECTIVE SCREENING MAY BE PROPOSED BY THE PREFABRICATED BRIDGE MANUFACTURER BUT MUST BE APPROVED BY THE ENGINEER. THE DESIGN INTENT IS TO ALIGN THE PROTECTIVE SCREENING FRAME WITH THE TRUSS MEMBERS TO MINIMIZE VISIBILITY OF THE FRAMES FROM THE OUTSIDE OF THE TRUSS.
 PROTECTIVE SCREENING SHALL BE PROVIDED ON BOTH SIDES OF THE STEEL TRUSS PEDESTRIAN BRIDGE FROM THE TOP OF THE CURB TO THE TOP CHORD OF THE TRUSS OR 8 FEET ABOVE THE BRIDGE DECK, WHICHEVER IS GREATER. PROVIDE PROTECTIVE SCREENING THE ENTIRE LENGTH OF THE BRIDGE.
 PROVIDE ADDITIONAL FRAMING ABOVE THE TRUSS AS REQUIRED TO SUPPORT THE PROTECTIVE SCREENING WHERE PROTECTIVE SCREENING EXTENDS ABOVE THE TOP CHORD AT EACH END OF THE BRIDGE.



PROTECTIVE SCREENING ELEVATION
(LOOKING AT INSIDE FACE OF TRUSS)



PROTECTIVE SCREENING DETAIL

Addendum No. 02
 ID 5992-11-01
 Revised Sheet 764
 September 8, 2022

1	9/1/22	ELIMINATE ARCH FACADE PLATES.	BMO
NO.	DATE	REVISION	BY
STATE OF WISCONSIN DEPARTMENT OF TRANSPORTATION			
STRUCTURE B-13-892			
DESIGNED BY	DRAWN BY	CHECKED BY	E.J.C.
ARCH AND PROTECTIVE SCREENING DETAILS			764
SHEET 9			



Proposal Schedule of Items

Proposal ID: 20220913006 Project(s): 5310-02-75, 5992-11-01, 5992-11-02
Federal ID(s): WISC 2022382, WISC 2022380, N/A

SECTION: 0001 Contract Items

Alt Set ID: Alt Mbr ID:

Table with 5 columns: Proposal Line Number, Item ID Description, Approximate Quantity and Units, Unit Price, Bid Amount. Rows include items like Concrete Median Sloped Nose, Dust Control Surface Treatment, Water, Topsoil, Mulching, Silt Fence, Mobilizations Erosion Control, Erosion Mat Class I Type A, etc.



Proposal Schedule of Items

Proposal ID: 20220913006 Project(s): 5310-02-75, 5992-11-01, 5992-11-02
 Federal ID(s): WISC 2022382, WISC 2022380, N/A

SECTION: 0001 Contract Items

Alt Set ID: Alt Mbr ID:

Proposal Line Number	Item ID Description	Approximate Quantity and Units	Unit Price	Bid Amount
0370	628.7515.S Stone Ditch Checks	21.000 CY	_____.	_____.
0372	628.7555 Culvert Pipe Checks	57.000 EACH	_____.	_____.
0374	628.7560 Tracking Pads	21.000 EACH	_____.	_____.
0376	629.0210 Fertilizer Type B	60.800 CWT	_____.	_____.
0378	630.0110 Seeding Mixture No. 10	394.500 LB	_____.	_____.
0380	630.0140 Seeding Mixture No. 40	648.800 LB	_____.	_____.
0382	630.0500 Seed Water	2,374.100 MGAL	_____.	_____.
0384	631.0300 Sod Water	711.300 MGAL	_____.	_____.
0386	631.1000 Sod Lawn	26,090.000 SY	_____.	_____.
0388	631.1100 Sod Erosion Control	4.000 SY	_____.	_____.
0390	632.0101 Trees (species) (size) (root) 01. Chokeberry, common, Prunus virginiana, B&B, 1.5" CAL.	13.000 EACH	_____.	_____.
0392	632.0101 Trees (species) (size) (root) 02. Hawthorn, Cockspur, Crataegus crusgalli, B&B, 1.5" CAL.	12.000 EACH	_____.	_____.
0394	632.0101 Trees (species) (size) (root) 03. Maple, Amur, Acer Ginnala, B&B, 1.5" CAL.	10.000 EACH	_____.	_____.
0396	632.0101 Trees (species) (size) (root) 04. Redbud, Eastern, Cercis canadensis, B&B, 1.5" CAL.	11.000 EACH	_____.	_____.



Proposal Schedule of Items

Proposal ID: 20220913006 Project(s): 5310-02-75, 5992-11-01, 5992-11-02
Federal ID(s): WISC 2022382, WISC 2022380, N/A

SECTION: 0001 Contract Items

Alt Set ID: Alt Mbr ID:

Table with 5 columns: Proposal Line Number, Item ID Description, Approximate Quantity and Units, Unit Price, Bid Amount. Rows include items like Special 70. Electrical Pullbox Type V-City of Madison, Special 71. Electrical Pullbox Type VII-City of Madison, etc.



Proposal Schedule of Items

Proposal ID: 20220913006 Project(s): 5310-02-75, 5992-11-01, 5992-11-02
Federal ID(s): WISC 2022382, WISC 2022380, N/A

SECTION: 0001 Contract Items

Alt Set ID: Alt Mbr ID:

Table with 5 columns: Proposal Line Number, Item ID Description, Approximate Quantity and Units, Unit Price, Bid Amount. Rows include items 0844 through 0868 with descriptions like 'Special 08. Fence Chain Link Polymer-Coated 4-FT R-13-362' and quantities ranging from 30.000 to 1,716.000.



Proposal Schedule of Items

Proposal ID: 20220913006 Project(s): 5310-02-75, 5992-11-01, 5992-11-02
Federal ID(s): WISC 2022382, WISC 2022380, N/A

SECTION: 0001 Contract Items

Alt Set ID: Alt Mbr ID:

Table with 5 columns: Proposal Line Number, Item ID Description, Approximate Quantity and Units, Unit Price, Bid Amount. Rows include items 0870 through 0892 with descriptions like 'Special 21. 10-Inch Diameter Sanitary Sewer Inside Casing' and 'Special 32. Concrete Curb & Gutter 30-Inch Type D Special'.



Proposal Schedule of Items

Proposal ID: 20220913006 Project(s): 5310-02-75, 5992-11-01, 5992-11-02
Federal ID(s): WISC 2022382, WISC 2022380, N/A

SECTION: 0001 Contract Items

Alt Set ID: Alt Mbr ID:

Table with 5 columns: Proposal Line Number, Item ID Description, Approximate Quantity and Units, Unit Price, Bid Amount. Rows include items like Fiber Optic Cable, Marking Line Epoxy, Milling and Removing Longitudinal Joint, Water for Detention Pond, Wall Concrete Panel Mechanically Stabilized Earth (various R-13-363 to R-13-369), Wall Modular Block Gravity Landscape Station (various).



Proposal Schedule of Items

Proposal ID: 20220913006 Project(s): 5310-02-75, 5992-11-01, 5992-11-02
Federal ID(s): WISC 2022382, WISC 2022380, N/A

SECTION: 0001 Contract Items

Alt Set ID: Alt Mbr ID:

Table with 5 columns: Proposal Line Number, Item ID Description, Approximate Quantity and Units, Unit Price, Bid Amount. Rows include items 0922 through 0944, ending with Section: 0001 Total and Total Bid.