



Wisconsin Department of Transportation

Division of Transportation Systems Development

Bureau of Project Development
4822 Madison Yards Way, 4th Floor South
Madison, WI 53705

October 4, 2022

Telephone: (608) 266-1631
Facsimile (FAX): (608) 266-8459

NOTICE TO ALL CONTRACTORS:

Proposal #04: 4085-62-71, WISC 2023005
City of De Pere, Greenleaf Road
STH 32 Northbound over CTH PP
STH 32
Brown County

Letting of October 11, 2022

This is Addendum No. 01, which provides for the following:

Schedule of Items:

Revised Bid Item Quantities					
Bid Item	Item Description	Unit	Old Quantity	Revised Quantity	Proposal Total
455.0605	Tack Coat	GAL	218	-193	25
460.6223	HMA Pavement 3 MT 58-28 S	TON	641	-569	72
460.6224	HMA Pavement 4 MT 58-28 S	TON	214	-190	24
502.0100	Concrete Masonry Bridges	CY	568	6	574
505.0600	Bar Steel Reinforcement HS Coated Structures	LB	96,080	120	96,200

Plan Sheets:

Revised Plan Sheets	
Plan Sheet	Plan Sheet Title (brief description of changes to sheet)
16	Miscellaneous Quantities – Updated quantities in Pavement Items table
55	General Plan – Pier elevations revised
56	Cross Section and Quantities – Updated Total Estimated Quantities table
57	Subsurface Exploration – Pier footing elevations revised
64	Pier 1 – Pier footing elevations and dimensions revised
65	Pier 1 Details – Bar bend and bar lengths updated
66	Pier 2 – Pier footing elevations and dimensions revised
67	Pier 2 Details – Bar bend and bar lengths updated

Schedule of Items

Attached, dated October 4, 2022, are the revised Schedule of Items Page 2.

Plan Sheets

The following 8½ x 11-inch sheets are attached and made part of the plans for this proposal:

Revised: 16, 55, 56, 57, 64, 65, 66, and 67.

The responsibility for notifying potential subcontractors and suppliers of these changes remains with the prime contractor.

Sincerely,

Mike Coleman

Proposal Development Specialist
Proposal Management Section

END OF ADDENDUM

Addendum No. 01
ID 4085-62-71
Revised Sheet 16
October 4, 2022

BASE AGGREGATE

STATION	TO	STATION	LOCATION	STATION	TO	STATION	LOCATION	STATION	TO	STATION	LOCATION	REMARKS
648+77	-	648+99	STH 32	305.0110	-	305.0130	624.0100	305.0120	-	305.0130	624.0100	CONCRETE APPROACH SLAB
651+29	-	651+56	STH 32	BASE AGGREGATE DENSE 1 1/4-INCH	-	BASE AGGREGATE DENSE 3-INCH	-	BASE AGGREGATE DENSE 1 1/4-INCH	13	-	0.2	CONCRETE APPROACH SLAB
648+27	-	648+77	STH 32	AGGREGATE DENSE 3/4-INCH	42	AGGREGATE DENSE 3-INCH	217	AGGREGATE DENSE 1 1/4-INCH	16	-	0.2	CONCRETE APPROACH SLAB
651+56	-	652+05	STH 32	TON	27	TON	186	TON	98	217	5.4	
					82		186		82		4.4	
					209		404		209		11	
				PROJECT TOTAL	70		404		209		11	

PAVEMENT ITEMS

STATION	TO	STATION	LOCATION	STATION	TO	STATION	LOCATION	STATION	TO	STATION	LOCATION	REMARKS
648+77	-	648+99	STH 32	213.0100.01	-	415.0410	460.6223	455.0605	-	460.6224	460.6224	
651+29	-	651+56	STH 32	FINISHING ROADWAY (PROJECT) 001	-	CONCRETE PAVEMENT	-	HMA PAVEMENT	-	HMA PAVEMENT	-	
648+27	-	648+77	STH 32	4085-62-71)	33	APPROACH SLAB	36	3 MTS 58-28 S	12	4 MTS 58-28 S	12	
651+56	-	652+05	STH 32	EACH	-	SY	35	TACK COAT	12	-	-	
					1		-	GAL	-	-	-	
				PROJECT TOTAL	1		70		25		24	

CURB & GUTTER

STATION	TO	STATION	LOCATION	STATION	TO	STATION	LOCATION	STATION	TO	STATION	LOCATION	REMARKS
639+07	-	639+21	STH 32 RT	601.0588	-	CONCRETE CURB & GUTTER 4-INCH SLOPED 36-INCH TYPE 1BT	38	648+99	-	648+99	STH 32	CONCRETE APPROACH SLAB
648+72	-	648+86	STH 32 LT	CONCRETE CURB & GUTTER 4-INCH SLOPED 36-INCH TYPE 1BT	35		35	651+29	-	651+29	STH 32	BRIDGE
651+62	-	651+76	STH 32 LT		28		28	651+56	-	651+56	STH 32	CONCRETE APPROACH SLAB
				PROJECT TOTAL	101		101			PROJECT TOTAL	559	

PAVEMENT MARKINGS

MARKING LINE	LE	LOCATION	LE
646.1020	37	STH 32	37
EPOXY 4-INCH	480	STH 32	480
	42	STH 32	42
		PROJECT TOTAL	559

PROJECT NO: 4085-62-71

HWY: STH 32

COUNTY: BROWN

MISCELLANEOUS QUANTITIES

SHEET: 16

E

FILE NAME : N:\PDS\...030200_mq.ppk

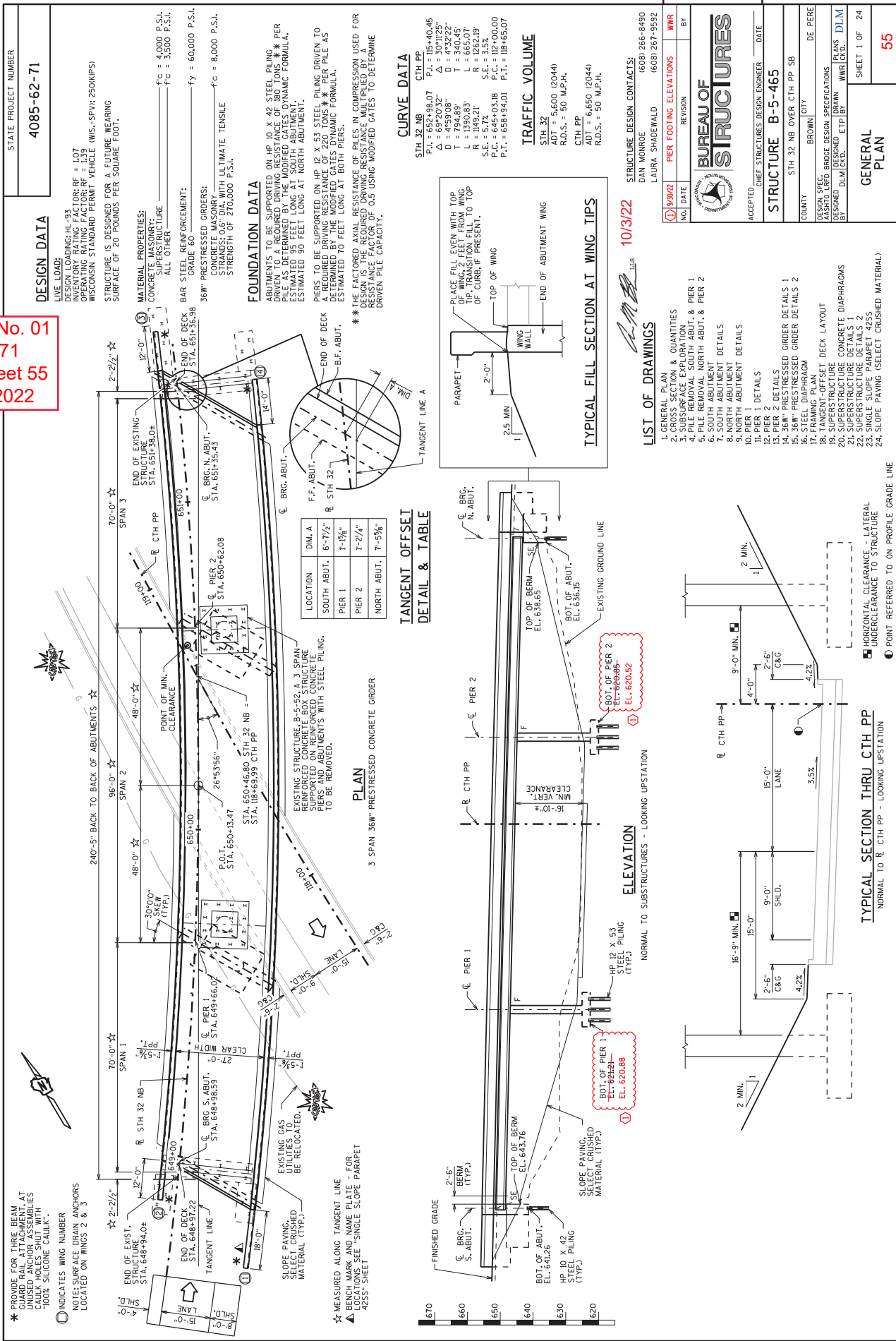
PLOT DATE : September 29, 2022

PLOT BY : MM.J.

PLOT NAME :

PLOT SCALE : 1:1

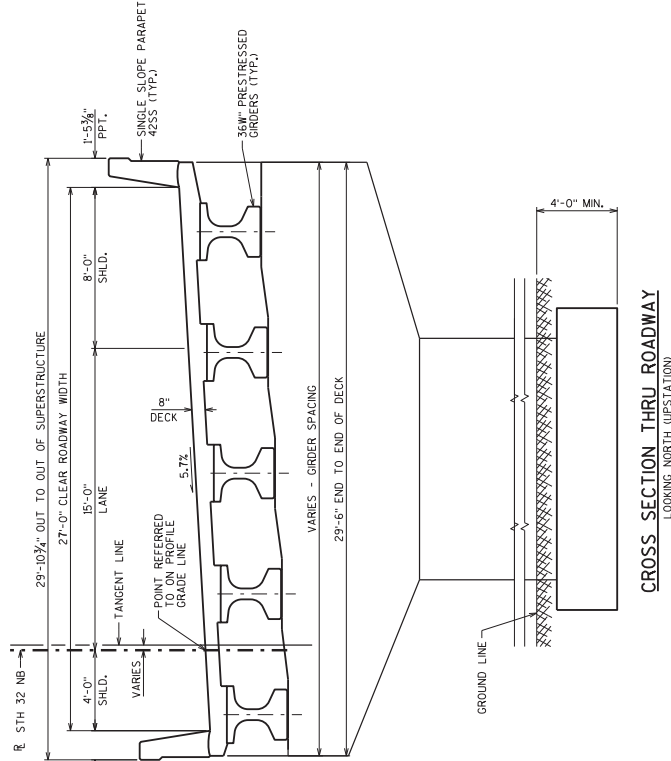
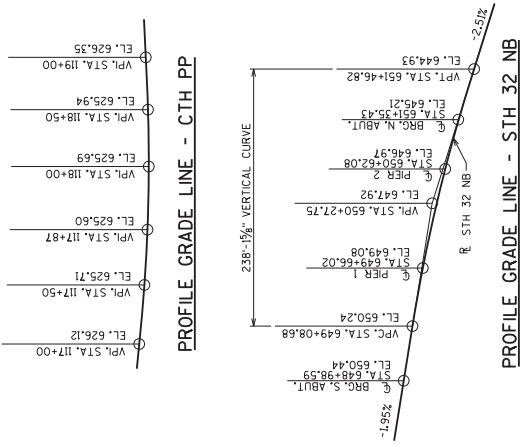
Addendum No. 01
 ID 4085-62-71
 Revised Sheet 55
 October 4, 2022



STATE PROJECT NUMBER
4085-62-71

GENERAL NOTES

- DRAWINGS SHALL NOT BE SCALED.
- BAR STEEL REINFORCEMENT SHALL BE EMBEDDED 2" CLEAR UNLESS OTHERWISE SHOWN OR NOTED.
- THE FIRST OR FIRST TWO DIGITS OF THE BAR MARK SIGNIFIES THE BAR SIZE.
- BEVEL EXPOSED EDGES OF CONCRETE 3/4" UNLESS OTHERWISE NOTED.
- THE UPPER LIMITS OF "EXCAVATION FOR STRUCTURES BRIDGES B-5-465" SHALL BE "THE EXISTING GROUNDLINE."
- AT THE BACK FACE OF ABUTMENT ALL VOLUME WHICH CANNOT BE PLACED BEFORE ABUTMENT CONSTRUCTION AND IS NOT OCCUPIED BY THE NEW STRUCTURE SHALL BE BACKFILLED WITH STRUCTURE BACKFILL TYPE A.
- EXCAVATION BELOW THE ABUTMENT AND ABUTMENT BEDDING SHALL BE EXTENDED TO THE BOTTOM OF EXCAVATION AND EXTEND 2'-0" ABOVE BOTTOM OF ABUTMENT.
- THE QUANTITY FOR BACKFILL STRUCTURE IS CALCULATED BASED ON THE DETAIL SHOWN IN THE PLANS.
- ELASTOMERIC BEARING PADS NEED NOT BE INDIVIDUALLY MOLDED PROVIDED THE CUT EDGES ARE SMOOTH AND TRUE.
- PROTECTIVE SURFACE TREATMENT TO BE APPLIED TO THE ENTIRE HORIZONTAL SURFACES OF THE PAVING NOTCHES AT ABUTMENT DIAPHRAGMS.
- PIGMENTED SURFACE SEALER TO BE APPLIED TO THE FRONT FACE AND THE TOP OF THE PARAPETS, INCLUDING PARAPETS ON WINGS.
- THE SLOPE OF THE FILL IN FRONT OF THE ABUTMENTS SHALL BE COVERED WITH SLOPE PAVING MATERIAL TO THE EXTENT SHOWN ON SHEET 1 AND THE ABUTMENT DETAILS.
- THE HAUNCH CONCRETE QUANTITY IS BASED ON THE AVERAGE HAUNCH SHOWN ON THE "36" PRESTRESSED GIRDER DETAILS 2" AT ABUTMENTS; HP 12X53 STEEL PILING MAY BE USED IN LIEU OF HP 10X42 STEEL PILING. PAYMENT SHALL BE BASED ON BID PRICE FOR HP 10X42 STEEL PILING.



CROSS SECTION THRU ROADWAY
LOOKING NORTH (UPSTATION)

Addendum No. 01
ID 4085-62-71
Revised Sheet 56
October 4, 2022

8

10/3/22

NO.	DATE	REVISION	BY
1	9/30/22	PER 1 & 2 CORRECT BAR STEEL QUANTITIES	NWR

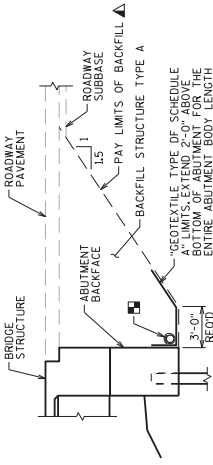
STATE OF WISCONSIN
DEPARTMENT OF TRANSPORTATION
STRUCTURES DESIGN SECTION
STRUCTURE B-5-465

DESIGNED BY: DLW/WR/CKD
CHECKED BY: DLW/WR/CKD
SHEET 2

CROSS SECTION & QUANTITIES
56

ABUTMENT BACKFILL DIAGRAM FOR WINGS PARALLEL TO ROADWAY

- L = OUT TO OUT OF ABUTMENT, INCLUDING WINGS (FT)
- H = AVERAGE ABUTMENT FILL HEIGHT (FT)
- EP = AVERAGE ABUTMENT PILING ELEVATION (FT)
- AND L/100 FOR TON ITEMS
- V_{cr} = (L/13.0)(H) + (L/10.0)(S/15)(H/10)
- V_{cr} = V_{cr} (EP/72)
- V_{cr} = V_{cr} (L/20)



TYPICAL SECTION THRU ABUTMENT

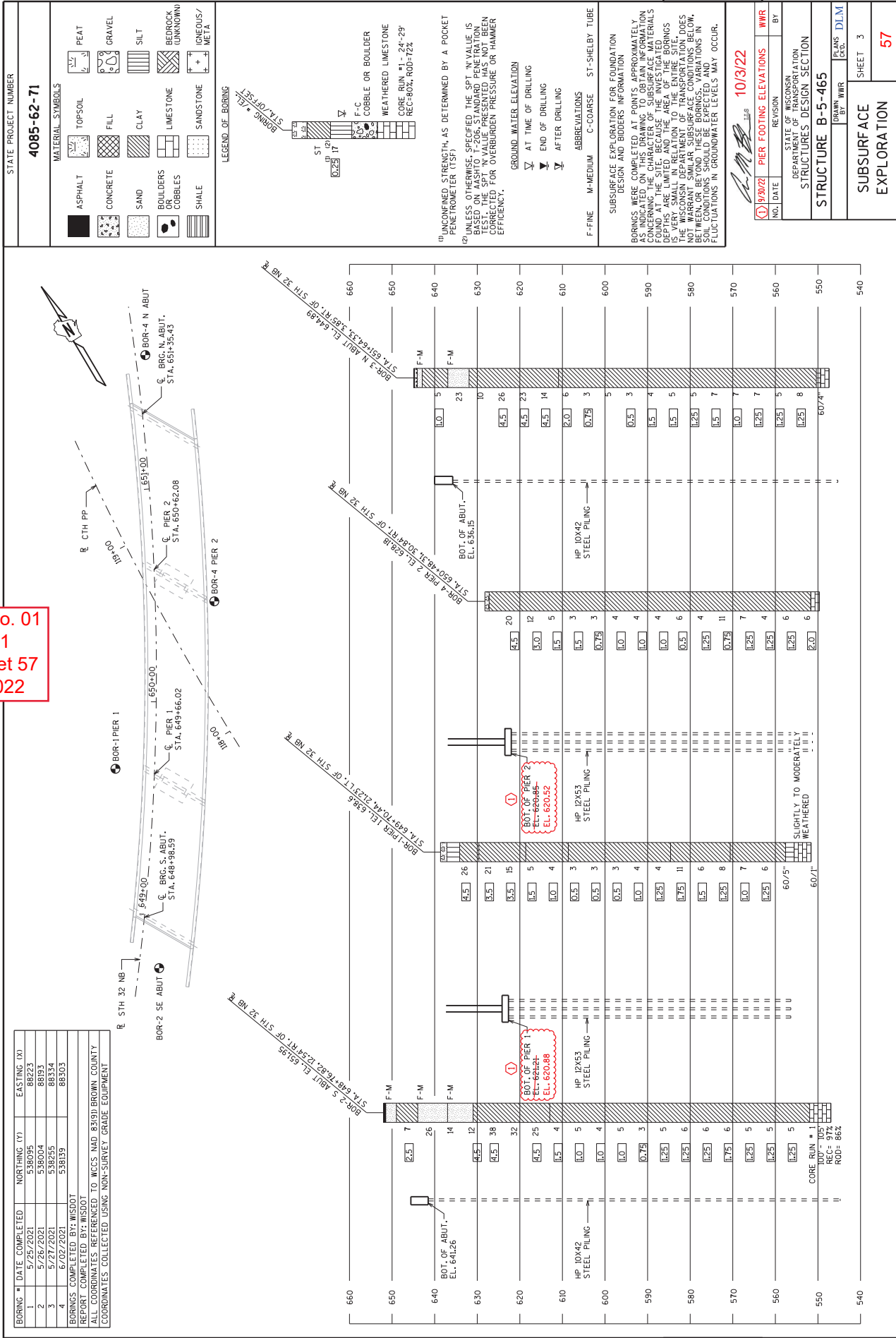
- ▲ BACKFILL PAY LIMITS BEYOND BACKFILL PAY LIMITS SHALL BE INCIDENTAL TO EXCAVATION FOR STRUCTURES. LIMITS OF EXCAVATION SHALL BE DETERMINED BY THE CONTRACTOR.
- PIPE UNDERDRAIN WRAPPED 16 INCH, SLOPE 0.5% MIN. TO SUITABLE DRAINAGE. ATTACH ROBERT SHIELD AT ENDS OF PIPE UNDERDRAIN.

TOTAL ESTIMATED QUANTITIES

BID ITEM NUMBER	BID ITEMS	UNIT	SUPER.	SOUTH ABUT.	PIER 1	PIER 2	NORTH ABUT.	TOTALS
203.0220	REMOVING STRUCTURE (B-5-52)	EACH						1
206.0020	EXCAVATION FOR STRUCTURES BRIDGES B-5-465	LS						1
210.1600	BACKFILL STRUCTURE TYPE A	TON		205			225	430
502.0100	CONCRETE MASONRY BRIDGES	CY	324.2	48.7	75.0	75.8	46.9	569.7
502.3200	PROTECTIVE SURFACE TREATMENT	SY	732					732
502.3210	PIGMENTED SURFACE SEALER	SY	241	15			13	269
503.0137	PRESTRESSED GIRDER TYPE I 36-INCH	LF	1180					1180
505.0400	BAR STEEL REINFORCEMENT HS STRUCTURES	LB	2620	2620	3420	3420	2620	12,080
505.0600	BAR STEEL REINFORCEMENT HS COATED STRUCTURES	LB	66,750	3040	22,950	11,760	2,480	95,080
506.2405	BEARING PADS ELASTOMERIC NON-LAMINATED	EACH		5	10	10	5	30
506.4000	STEEL DIAPHRAGMS B-5-465	EACH	16					16
516.0500	RUBBERIZED MEMBRANE WATERPROOFING	SY		10				20
550.1100	PILING STEEL HP 10-INCH X 42 LB	LF		760			720	1480
550.1120	PILING STEEL HP 12-INCH X 53 LB	LF			1120			2240
604.0600	SLOPE PAVING SELECT CRUSHED MATERIAL	SY		320			350	670
612.0406	PIPE UNDERDRAIN WRAPPED 6-INCH	LF		70			70	140
614.0150	ANCHOR ASSEMBLIES FOR STEEL PLATE BEAM GUARD	EACH	4					4
645.0111	GEOTEXTILE TYPE DF SCHEDULE A	SY		24			27	51
SPV.0090	REMOVING EXISTING STEEL PILING	LF		180	150	225	180	735
	NON-BID ITEMS							
	FILLER	SIZE						1/2"

8

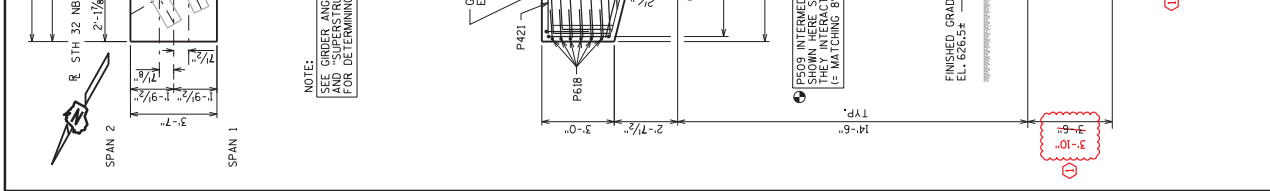
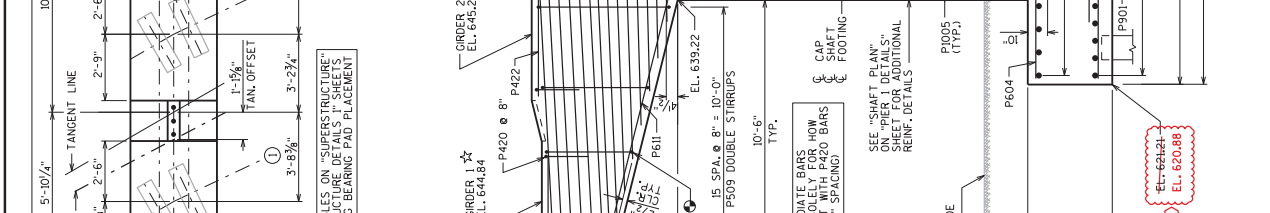
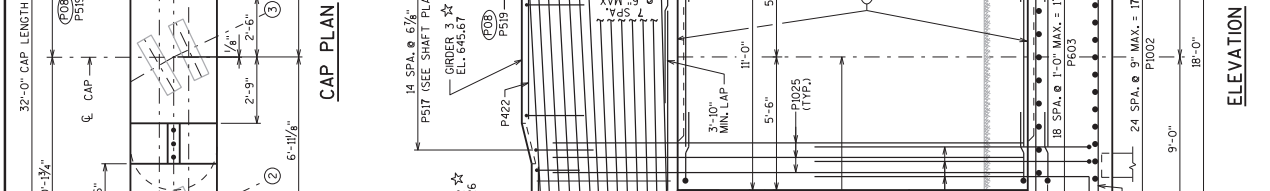
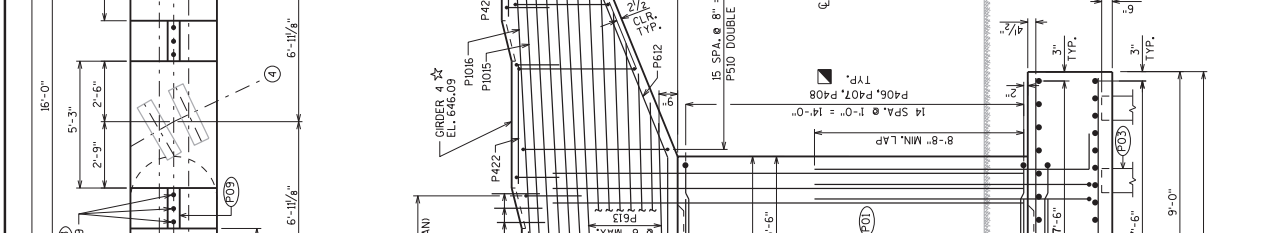
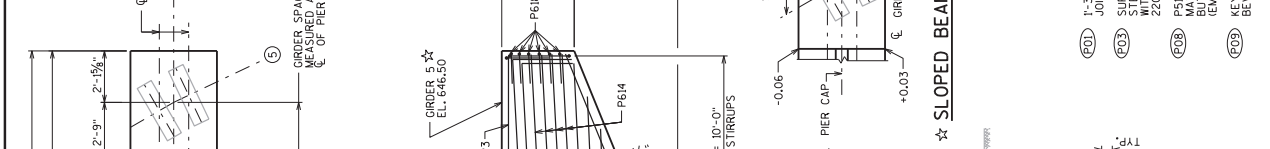
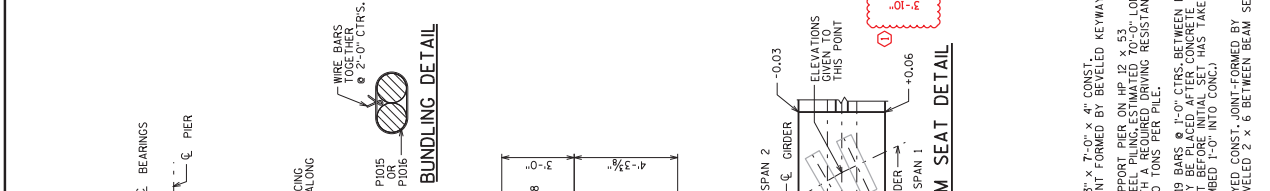
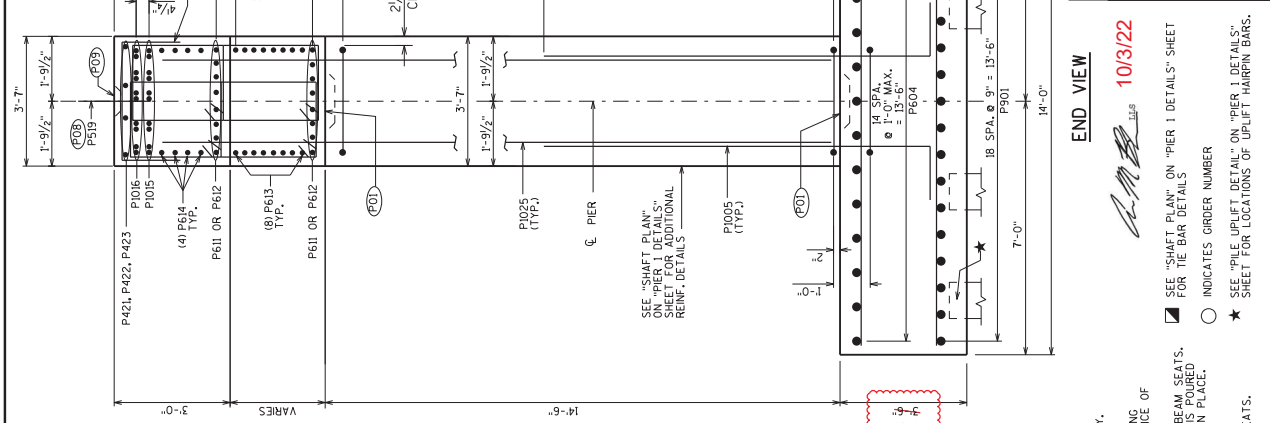
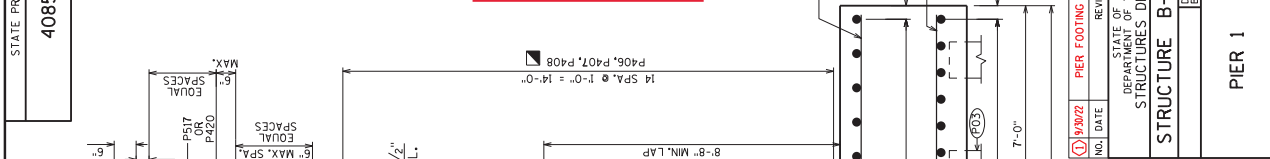
Addendum No. 01
ID 4085-62-71
Revised Sheet 57
October 4, 2022



BORING #	DATE COMPLETED	NORTHING (Y)	EASTING (X)
1	5/25/2021	5380095	88223
2	5/26/2021	5380004	88193
3	5/27/2021	538255	88334
4	6/02/2021	538119	88303

BORINGS COMPLETED BY: WISDOT
REPORT COMPLETED BY: WISDOT
ALL COORDINATES REFERENCED TO WCCS NAD 83(91) BROWN COUNTY
COORDINATES COLLECTED USING NON-SURVEY GRADE EQUIPMENT

Addendum No. 01
ID 4085-62-71
Revised Sheet 64
October 4, 2022



END VIEW
10/3/22

STATE OF WISCONSIN
DEPARTMENT OF TRANSPORTATION
STRUCTURES DESIGN SECTION
STRUCTURE B-5-465

NO. DATE REVISION
19/002 PIER FOOTING ELEV./DIM.'S
BY

SEE "SHAFT PLAN ON PIER 1 DETAILS" SHEET FOR THE BAR DETAILS
INDICATES GIRDER NUMBER
SEE "PIER UPLIFT DETAIL" ON "PIER 1 DETAIL" SHEET FOR LOCATIONS OF UPLIFT HARPEN BARS.

1 1/2" x 7'-0" x 4" CONST. JOINT FORMED BY BEVELED KEYWAY.
SUPPORT PIER ON HP 12 x 53 STEEL PILING ESTIMATED 70'-0" LONG WITH A REQUIRED DRIVING RESISTANCE OF 220 TONS PER PILE.
P519 BARS @ 1'-0" CTRS. BETWEEN BEAM SEATS. MAY BE PLACED AFTER CONCRETE IS POURED (EMBED 1'-0" INTO CONC.)
KEYED CONST. JOINT FORMED BY BEVELED 2 x 8 BETWEEN BEAM SEATS.

REIN. INTERMEDIATE BARS SHOWN HERE SOLELY FOR HOW THEY INTERACT WITH P420 BARS (= MATCHING 'B' SPACING)
SEE "SHAFT PLAN" ON "PIER 1 DETAILS" SHEET FOR ADDITIONAL REINF. DETAILS
CAP & SHAFT FOOTING

FINISHED GRADE EL. 626.5#

EL. 620.88

EL. 620.88

PIER 1
SHEET 10
64

STATE PROJECT NUMBER
4085-62-71

NOTE: THE FIRST OR FIRST TWO DIGITS OF THE BAR MARK SIGNIFIES THE BAR SIZE

BILL OF BARS

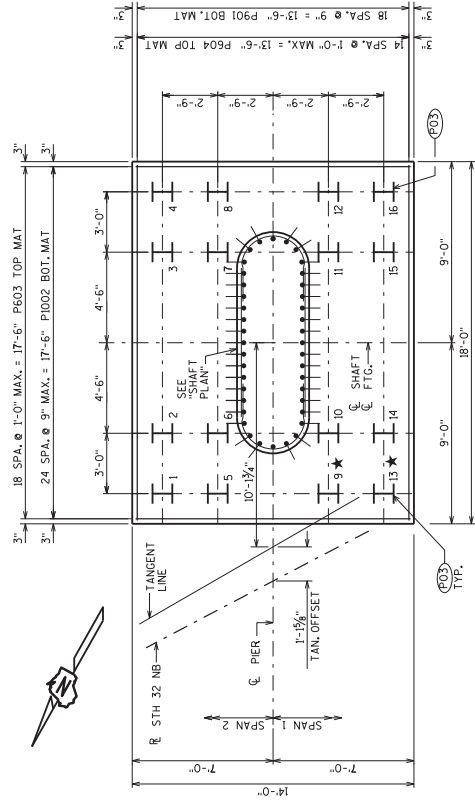
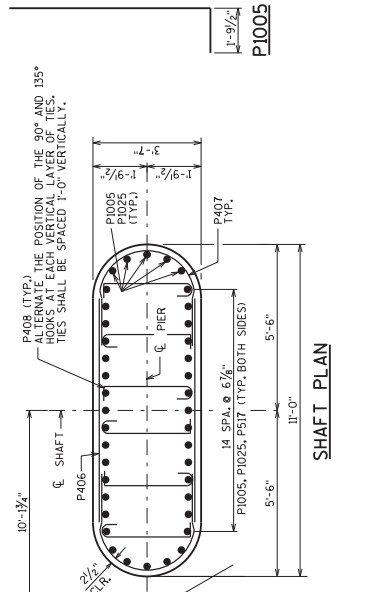
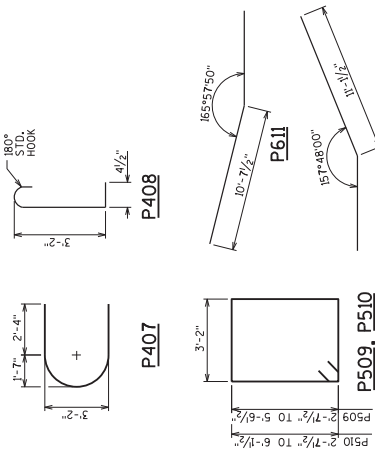
BAR MARK	NO. RECD.	LENGTH	BENT	BAR SERIES	LOCATION
P501	19	17'-8"			FOOTING-HORIZ. BOT.
P1002	25	13'-8"			FOOTING-HORIZ. BOT.
P603	19	13'-8"			FOOTING-HORIZ. TOP
P604	15	17'-8"			FOOTING-HORIZ. TOP
P1005	X 40	13'-2"	X	13'-6"	FOOTING/SHAFT-VERT.
P406	X 32	7'-5"	X	13'-6"	FOOTING/SHAFT-HORIZ.
P407	X 32	9'-8"	X		FOOTING/SHAFT-HORIZ.
P509	X 10	4'-1"	X		SHAFT-HORIZ. TIE BARS
P510	X 32	15'-2"	X		CAP-VERT. STIRRUPS
P511	X 8	18'-1"	X		CAP-VERT. STIRRUPS
P612	X 8	18'-8"	X		CAP-HORIZ. BOT.
P613	X 16	22'-4"	X		CAP-HORIZ. SIDES (LOWER)
P614	X 8	31'-7"	X		CAP-HORIZ. SIDES (UPPER)
P1015	X 10	34'-9"	X		CAP-HORIZ. TOP
P517	X 15	7'-3"	X		CAP-VERT. U-BAR
P518	X 12	7'-1"	X		CAP-VERT. DOWEL
P519	X 12	2'-0"	X		CAP-VERT. U-BAR
P420	X 30	6'-0"	X		CAP-VERT. U-BAR AT BEAM SEATS
P421	X 4	4'-4"	X		CAP-HORIZ.-BEAM SEAT 1
P422	X 12	4'-11"	X		CAP-HORIZ.-BEAM SEAT 2,3,4
P423	X 4	4'-6"	X		CAP-HORIZ.-BEAM SEAT 5
P624	X 2	6'-6"	X		FOOTING-UP-LIFT BARS
P1025	X 40	19'-6"	X		SHAFT/CAP-VERT.

▲ LENGTH SHOWN FOR BAR IS AN AVERAGE LENGTH AND SHOULD ONLY BE USED FOR BAR WEIGHT CALCULATIONS. SEE BAR SERIES TABLE FOR ACTUAL LENGTHS.

BAR SERIES TABLE

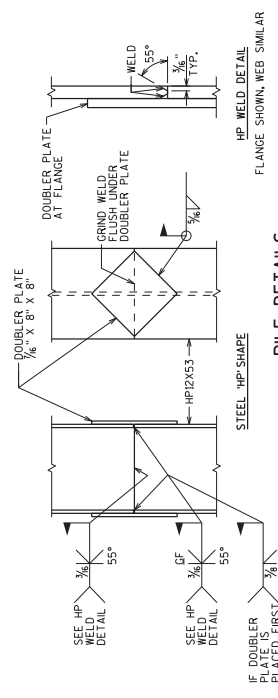
BAR MARK	NO. RECD.	LENGTH
P509	2 SERIES OF 16	12'-3" TO 18'-1"
P510	2 SERIES OF 16	12'-3" TO 19'-3"
P613	2 SERIES OF 8	17'-4" TO 31'-4"

BUNDLE AND TAG EACH SERIES SEPARATELY.



FOOTING & PILE PLAN

★ PILE UPLIFT DETAIL REQUIRED AT THIS PILE. SEE DETAIL THIS SHEET.



PILE DETAILS

Addendum No. 01
ID 4085-62-71
Revised Sheet 65
October 4, 2022

PIER 1
DETAILS

SHEET 11

65

10/3/22

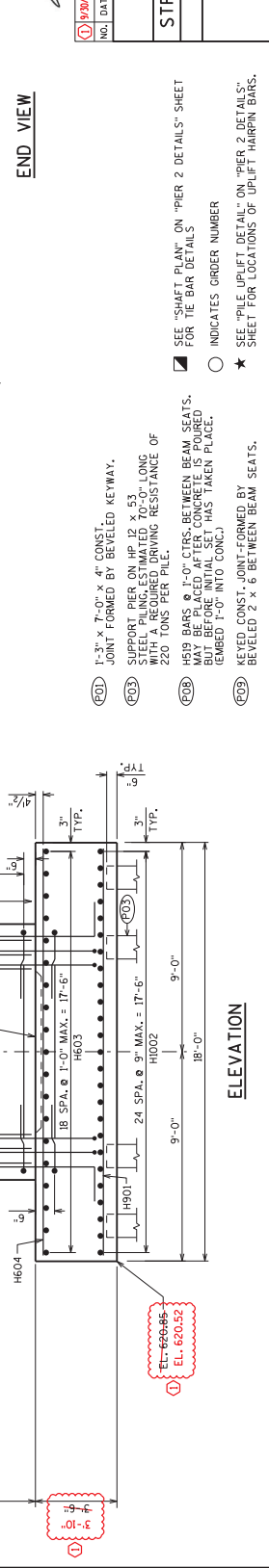
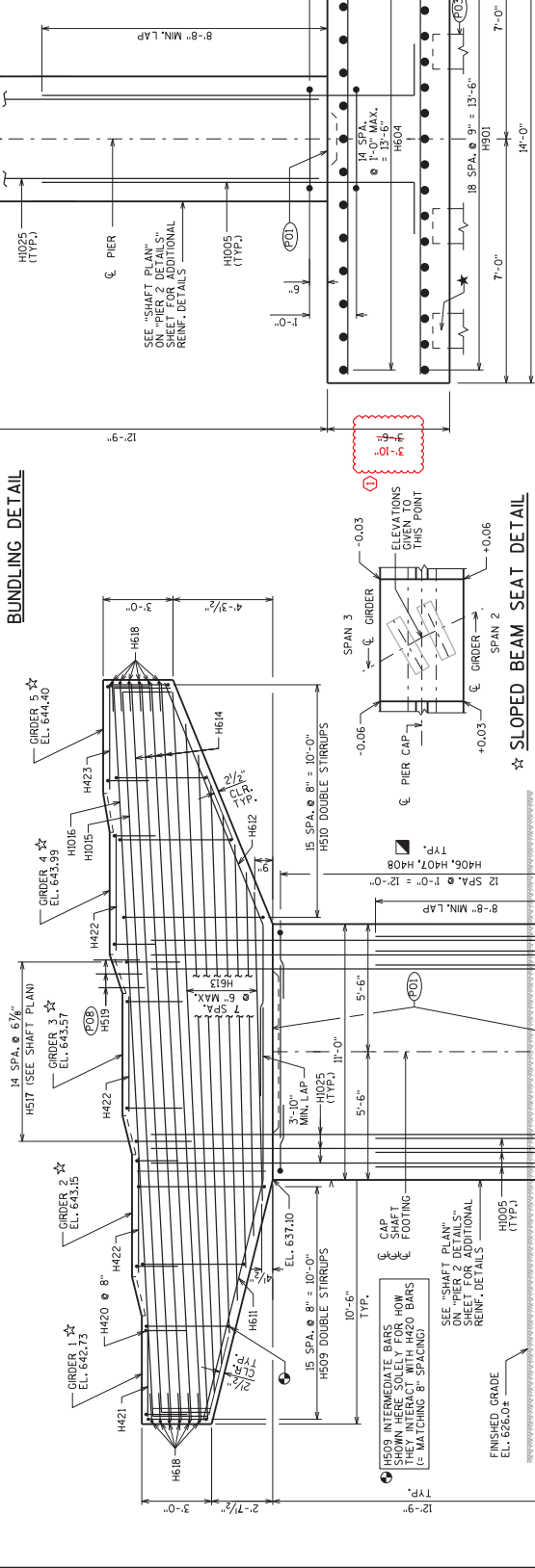
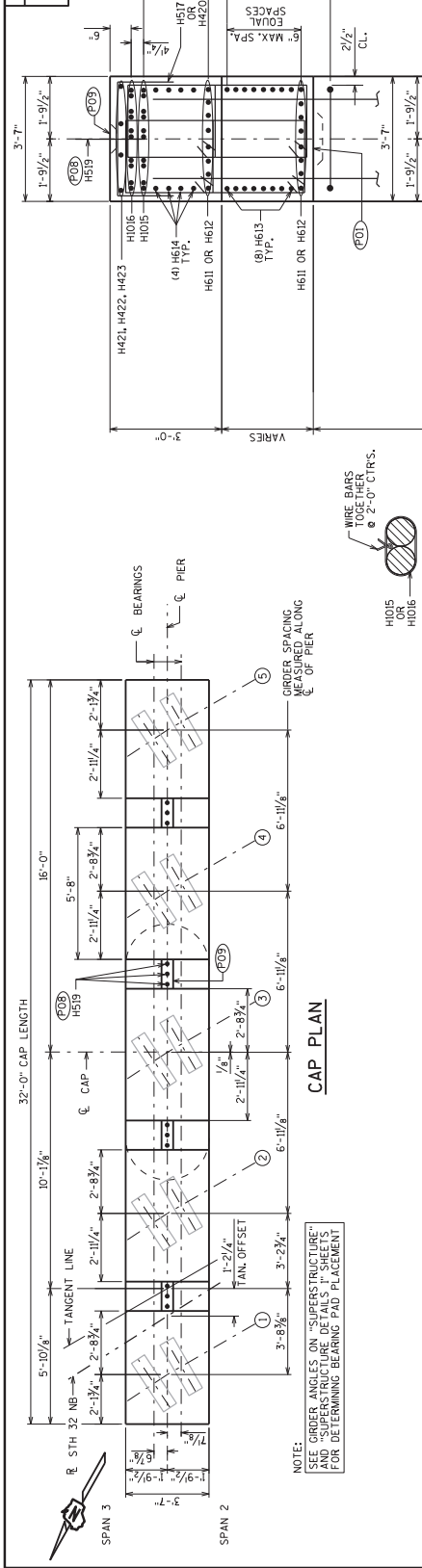
SUPPORT PIER ON HP 12 X 53 STEEL PILING, ESTIMATED TO 0' LONG WITH A REQUIRED DRIVING RESISTANCE OF 220 TONS PER PILE.

STATE OF WISCONSIN
DEPARTMENT OF TRANSPORTATION
STRUCTURES DESIGN SECTION
STRUCTURE B-5-465

DATE: 10/3/22
BY: [Signature]
CHECKED BY: [Signature]
DESIGNED BY: [Signature]

STATE PROJECT NUMBER
4085-62-71

**Addendum No. 01
ID 4085-62-71
Revised Sheet 66
October 4, 2022**



8

8

NO.	DATE	REVISION	BY
19/2022		PIER FOOTING ELEV./DIM.'S	WWR

10/3/22

STATE OF WISCONSIN
DEPARTMENT OF TRANSPORTATION
STRUCTURES DESIGN SECTION
STRUCTURE B-5-465

BY	WWR
CHECKED	DLM
DESIGNED	

SHEET 12
66

1'-3" x 7'-0" x 4" CONST. JOINT FORMED BY BEVELED KEYWAY.
SUPPORT PIER ON HP 12 x 53 CHANNELS WITH A REQUIRED DRIVING RESISTANCE OF 220 TONS PER PILE.
H519 BARS @ 1'-0" CTRS. BETWEEN BEAM SEATS. MAY BE PLACED AFTER CONCRETE IS POURED BUT BEFORE INITIAL SET HAS TAKEN PLACE. (EMBED 1'-0" INTO CONCL.)
KEYED CONST. JOINT-FORMED BY BEVELED 2 x 6 BETWEEN BEAM SEATS.

(FO1) (FO2) (FO3) (FO4)

(FO5) (FO6) (FO7) (FO8)

(FO9) (FO10) (FO11) (FO12)

(FO13) (FO14) (FO15) (FO16)

STATE PROJECT NUMBER
4085-62-71

NOTE: THE FIRST OR FIRST TWO DIGITS OF THE BAR MARK SIGNIFIES THE BAR SIZE

BILL OF BARS

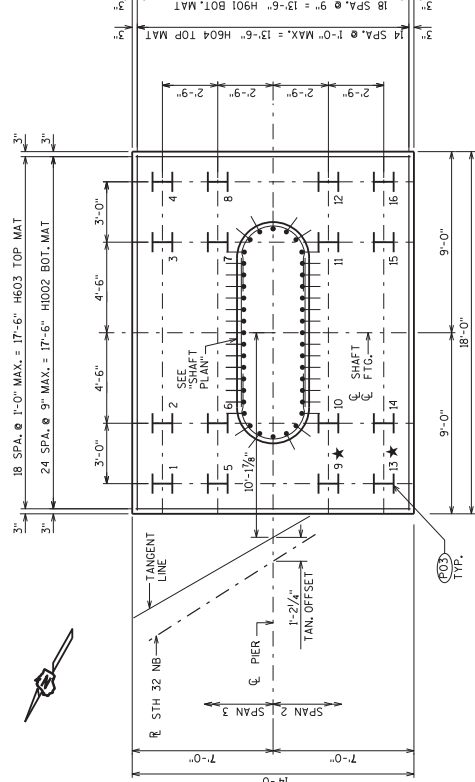
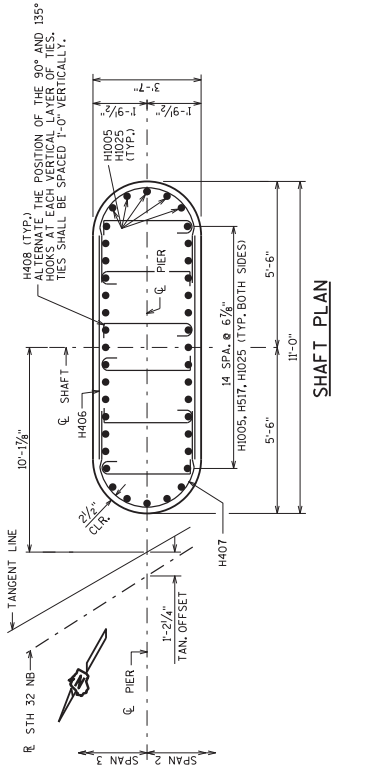
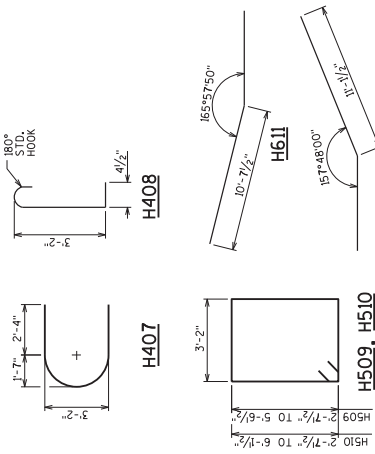
BAR MARK	NO. RECD.	LENGTH	BENT	BAR SERIES	LOCATION
H901	19	17'-8"			FOOTING-HORIZ. BOT.
H002	25	13'-8"			FOOTING-HORIZ. BOT.
H603	19	13'-8"			FOOTING-HORIZ. TOP
H604	15	17'-8"			FOOTING-HORIZ. TOP
H005	X 40	13'-2"			FOOTING/SHAFT-VERT.
H406	X 28	7'-3"			FOOTING/SHAFT-HORIZ.
H407	X 28	9'-8"			SHAFT-HORIZ. TIE BARS
H408	X 78	4'-1"			SHAFT-VERT. STIRRUPS
H509	X 32	15'-2"			CAP-VERT. STIRRUPS
H510	X 32	15'-9"			CAP-VERT. STIRRUPS
H611	X 8	18'-1"			CAP-HORIZ. BOT.
H612	X 8	18'-8"			CAP-HORIZ. BOT.
H613	X 16	22'-4"			CAP-HORIZ. SIDES (LOWER)
H614	X 8	31'-7"			CAP-HORIZ. SIDES (UPPER)
H015	X 10	34'-9"			CAP-HORIZ. TOP
H517	X 15	7'-3"			CAP-VERT. U-BAR
H518	X 12	7'-1"			CAP-VERT. END U-BAR
H519	X 12	2'-0"			CAP-VERT. DOREL
H420	X 30	6'-0"			CAP-VERT. U-BAR AT BEAM SEATS
H421	X 4	4'-6"			CAP-HORIZ.-BEAM SEAT 1
H422	X 12	5'-4"			CAP-HORIZ.-BEAM SEAT 2,3,4
H423	X 4	4'-9"			CAP-HORIZ.-BEAM SEAT 5
H624	2	6'-6"			FOOTING-UP/LIFT BARS
H025	X 40	17'-9"			SHAFT/CAP-VERT.

▲ LENGTH SHOWN FOR BAR IS AN AVERAGE LENGTH AND SHOULD ONLY BE USED FOR BAR WEIGHT CALCULATIONS. SEE BAR SERIES TABLE FOR ACTUAL LENGTHS.

BAR SERIES TABLE

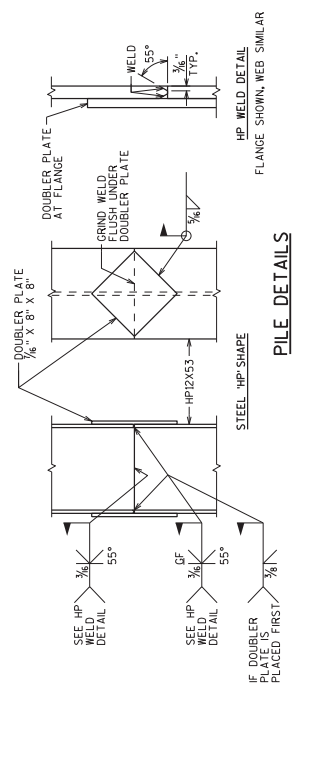
BAR MARK	NO. RECD.	LENGTH
H509	2	SERIES OF 18 12'-3" TO 18'-1"
H510	2	SERIES OF 18 12'-3" TO 19'-3"
H613	2	SERIES OF 8 13'-4" TO 31'-4"

BUNDLE AND TAG EACH SERIES SEPARATELY.



FOOTING & PILE PLAN

★ PILE UPLIFT DETAIL REQUIRED AT THIS PILE. SEE DETAIL THIS SHEET.



PILE DETAILS

HP WELD DETAIL FLANGE SHOWN, WEB SIMILAR
IF DOUBLER PLATE IS PLACED FIRST

10/3/22

SUPPORT PIER ON HP 12 X 53 STEEL PILING, ESTIMATED 70'-0" LONG WITH A REQUIRED DRIVING RESISTANCE OF 220 TONS PER PILE.

NO. DATE	REVISION	BY
19/07/22	BAR BEND & BAR LENGTHS	RWR

STATE OF WISCONSIN
DEPARTMENT OF TRANSPORTATION
STRUCTURES DESIGN SECTION
STRUCTURE B-5-465

DESIGNED BY: RWR
CHECKED BY: DLM

PIER 2 DETAILS
SHEET 13
67

Addendum No. 01
ID 4085-62-71
Revised Sheet 67
October 4, 2022



Proposal Schedule of Items

Proposal ID: 20221011004 Project(s): 4085-62-71

Federal ID(s): WISC 2023005

SECTION: 0001

Contract Items

Alt Set ID:

Alt Mbr ID:

Proposal Line Number	Item ID Description	Approximate Quantity and Units	Unit Price	Bid Amount
0034	416.1010 Concrete Surface Drains	13.000 CY	_____	_____
0036	455.0605 Tack Coat	25.000 GAL	_____	_____
0038	460.2000 Incentive Density HMA Pavement	550.000 DOL	1.00000	550.00
0040	460.6223 HMA Pavement 3 MT 58-28 S	72.000 TON	_____	_____
0042	460.6224 HMA Pavement 4 MT 58-28 S	24.000 TON	_____	_____
0044	502.0100 Concrete Masonry Bridges	574.000 CY	_____	_____
0046	502.3200 Protective Surface Treatment	732.000 SY	_____	_____
0048	502.3210 Pigmented Surface Sealer	269.000 SY	_____	_____
0050	503.0137 Prestressed Girder Type I 36W-Inch	1,180.000 LF	_____	_____
0052	505.0400 Bar Steel Reinforcement HS Structures	12,080.000 LB	_____	_____
0054	505.0600 Bar Steel Reinforcement HS Coated Structures	96,200.000 LB	_____	_____
0056	506.2605 Bearing Pads Elastomeric Non-Laminated	30.000 EACH	_____	_____
0058	506.4000 Steel Diaphragms (structure) 01. B-05-465	16.000 EACH	_____	_____
0060	516.0500 Rubberized Membrane Waterproofing	20.000 SY	_____	_____
0062	550.1100 Piling Steel HP 10-Inch X 42 Lb	1,480.000 LF	_____	_____
0064	550.1120 Piling Steel HP 12-Inch X 53 Lb	2,240.000 LF	_____	_____

