



# Wisconsin Department of Transportation

October 19, 2022

## Division of Transportation Systems Development

Bureau of Project Development  
4822 Madison Yards Way, 4<sup>th</sup> Floor South  
Madison, WI 53705

Telephone: (608) 266-1631  
Facsimile (FAX): (608) 266-8459

### NOTICE TO ALL CONTRACTORS:

**Proposal #38: 4519-20-70, WISC 2023039**  
**V Wrightstown, Alison Ct**  
**Highland St – Clay St**  
**Local Street**  
**Brown County**

### Letting of November 8, 2022

This is Addendum No. 01, which provides for the following:

#### Schedule of Items:

Added Bid Item Quantities					
Bid Item	Item Description	Unit	Old Quantity	Revised Quantity	Proposal Total
204.0120	Removing Asphaltic Surface Milling	SY	0	5620	5620
204.0115	Removing Asphaltic Surface Butt Joints	SY	0	30	30

Deleted Bid Item Quantities					
Bid Item	Item Description	Unit	Old Quantity	Revised Quantity	Proposal Total
204.0110	Removing Asphaltic Surface	SY	5650	-5650	0
642.5001	Field Office Type B	EA	1	-1	0
690.0150	Sawing Asphalt	LF	64	-64	0

#### Plan Sheets:

Revised Plan Sheets	
Plan Sheet	Plan Sheet Title (brief description of changes to sheet)
4	Construction Detail Update
6	Misc Quantity Update
7	Misc Quantity Update
8	Misc Quantity Update
9	Plan Note Change
10	Plan Note Change

**Schedule of Items**

Attached, dated October 19, 2022, are the revised Schedule of Items Pages 1 and 2.

**Plan Sheets**

The following 8½ x 11-inch sheets are attached and made part of the plans for this proposal:

Revised: 4 and 6 – 10.

The responsibility for notifying potential subcontractors and suppliers of these changes remains with the prime contractor.

Sincerely,

*Mike Coleman*

Proposal Development Specialist  
Proposal Management Section

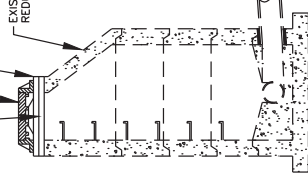
END OF ADDENDUM

TWO CONTINUOUS STRIPS OF 1/2" JOINT SEAL OR EQUAL BETWEEN ADJUSTING RINGS. JOINT SEAL TO BE APPLIED OUTSIDE OF ADJUSTING RINGS ONLY WITH SEWER JOINT COMPOUND AND WRAP WITH MIN. 6 MIL POLYETHYLENE.

EXISTING MANHOLE CASTING & LID OR AS SPECIFIED.

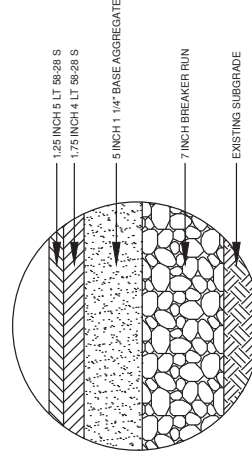
CONCRETE ADJUSTING RINGS AS REQUIRED. (4" MIN. AND 12" MAX. UNLESS OTHERWISE NOTED. ALL ADJUSTING RINGS LESS THAN 4" SHALL BE RUBBER.)

EXISTING ECCENTRIC REDUCING CONE



ADJUSTING SANITARY MANHOLE COVERS

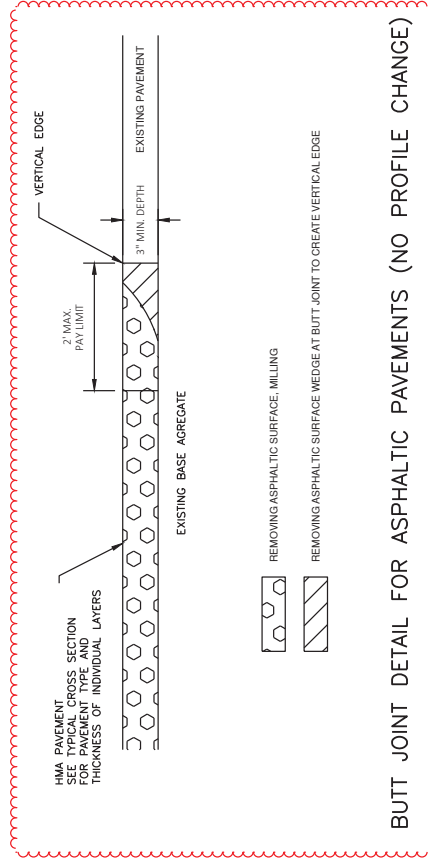
Addendum No. 01  
ID 4519-20-70  
Revised Sheet 4  
October 19, 2022



BASE REPLACEMENT DETAIL

STA. 25+25 TO STA. 25+90  
STA. 26+35 TO STA. 26+78

\* STATIONING IS APPROXIMATE. ENGINEER TO FIELD VERIFY BASE REPLACEMENT LIMITS.



BUTT JOINT DETAIL FOR ASPHALTIC PAVEMENTS (NO PROFILE CHANGE)

Addendum No. 01  
ID 4519-20-70  
Revised Sheet 6  
October 19, 2022

**PAVEMENT REMOVAL**

CATEGORY	STA	TO	STA	LOCATION	SY	5Y	EA
0010	20+36	-	50+39	4519-20-70	--	--	1
0010	20+36	-	26+78	ALISON CT	15	2772	--
0010	50+39	-	58+25	SHARLA ST	15	2780	--
0010	UNDISTRIBUTED				--	68	--
<b>TOTAL</b>					<b>30</b>	<b>5,620</b>	<b>1</b>

**EXCAVATION COMMON**

CATEGORY	STA	TO	STA	LOCATION	CY
0010	25+25	-	25+90	ALISON CT	78
0010	26+35	-	26+78	CUL DE SAC	169
0010	UNDISTRIBUTED				53
<b>TOTAL</b>					<b>300</b>

**FINISHING ROADWAY**

CATEGORY	PROJECT	EACH
0010	4519-20-70	1
<b>TOTAL</b>		<b>1</b>

**BASE AGGREGATE**

CATEGORY	STA	TO	STA	LOCATION	TON	MGAL
0010	25+25	-	25+90	ALISON CT	65	81
0010	26+35	-	26+78	CUL DESAC	141	177
0010	UNDISTRIBUTED				84	82
<b>TOTALS</b>					<b>290</b>	<b>340</b>

**HMA PAVEMENT**

CATEGORY	STA	TO	STA	LOCATION	GAL	TON
0010	20+36	-	26+78	ALISON CT	196	281
0010	50+39	-	58+25	SHARLA ST	196	282
0010	UNDISTRIBUTED				8	47
<b>TOTALS</b>					<b>400</b>	<b>610</b>

**TOTAL** 1

**MOBILIZATION**

CATEGORY	PROJECT	EACH
0010	4519-20-70	1
<b>TOTAL</b>		<b>1</b>

PROJECT NO: 4519-20-70

HWY: ALISON CT

COUNTY: BROWN

MISCELLANEOUS QUANTITIES

SHEET 6

E

FILE NAME: R:\1200126\126\983\DWG\030201\_MQ.DWG

PLOT DATE: 10/14/2022 10:42 AM

PLOT NAME: ROCHELLE L BURSA

PLOT SCALE: 1"=1'

WSS007\CADDS SHEET 42

FIELD OFFICE TYPE B		
CATEGORY	PROJECT	EACH
0010	4519-20-70	1
<b>TOTAL</b>		<b>1</b>

**EROSION CONTROL DEVICES**

628-7015	INLET PROTECTION	TYPE C	EA	LOCATION	STA	TO	LOCATION	EA
			2	ALISON CT	20+36	-	26+78	2
			2	SHARLA ST	50+39	-	58+25	2
<b>TOTAL</b>								<b>4</b>

**EROSION CONTROL MOBILIZATIONS**

628-1905	MOBILIZATIONS	EROSION CONTROL	EA	EA
			2	1
<b>TOTALS</b>			<b>2</b>	<b>1</b>

Addendum No. 01  
ID 4519-20-70  
Revised Sheet 7  
October 19, 2022

**TRAFFIC CONTROL**

CATEGORY	PROJECT	EACH
0010	4519-20-70	1
<b>TOTAL</b>		<b>1</b>

**TRAFFIC CONTROL ITEMS**

643.0300		643.0420		643.0705		643.0900	
PROJECT	TRAFFIC CONTROL	TRAFFIC CONTROL	TRAFFIC CONTROL	TRAFFIC CONTROL	TRAFFIC CONTROL	TRAFFIC CONTROL	TRAFFIC CONTROL
DURATION	DRUMS*	BARRICADES TYPE III	WARNING LIGHTS TYPE A	TRAFFIC CONTROL SIGNS	TRAFFIC CONTROL SIGNS	TRAFFIC CONTROL SIGNS	TRAFFIC CONTROL SIGNS
DAYS	EACH	DAYS	DAYS	EACH	EACH	DAYS	DAYS
10	29	4	8	6	6	60	60
30	30	5	10	10	10	10	10
<b>TOTALS</b>		<b>320</b>	<b>45</b>	<b>90</b>	<b>70</b>	<b>70</b>	<b>70</b>

\*NOTE: TRAFFIC CONTROL DRUMS AVAILABLE FOR PROTECTING MANHOLES; WATER VAVLE BOXES; BASE REPLACEMENT AREAS; OR OTHER MISCELLANEOUS NEEDS FOR CONSTRUCTION OPERATIONS

CONSTRUCTION STAKING			
650.5000	650.8000	650.9911	
CONSTRUCTION STAKING	CONSTRUCTION STAKING	CONSTRUCTION STAKING	
STAKING BASE	RESURFACING REFERENCE	SUPPLEMENTAL CONTROL (PROJECT)	
CATEGORY	STA TO STA	LOCATION	LF
0010	20+36 - 26+78	ALISON CT	145
0010	50+39 - 58+25	SHARLA ST	786
<b>TOTALS</b>			<b>145</b>
			<b>1,428</b>
			<b>1</b>

SAWING ASPHALT			
650.0150			
SAWING ASPHALT			
CATEGORY	STATION	LOCATION	LF
0010	20+36	HIGHLAND ST	32
0010	50+39	CLAY ST	32
<b>TOTAL</b>			<b>64</b>

Addendum No. 01  
ID 4519-20-70  
Revised Sheet 8  
October 19, 2022

ADJUSTING UTILITIES			
SPV.0060.01	SPV.0060.02		
ADJUSTING SANITARY MANHOLE COVERS	ADJUSTING WATER VALVE BOXES		
CATEGORY	STA TO STA	LOCATION	EA
0020	20+36 - 26+78	ALISON CT	2
0020	50+39 - 58+25	SHARLA ST	2
<b>TOTALS</b>			<b>4</b>
			<b>1</b>



REMOVE ASPHALTIC SURFACE -  
 3 INCHES  
 INSTALL 3 INCHES HMA PAVEMENT  
 UPPER - 1.25 INCHES 5 LT 58-28S  
 LOWER - 1.75 INCHES 4 LT 28-28S

Benchmark Table				
BM #	Station	Offset	Elevation	Description
BM 53	22+51.77	27.84L	653.28	FLAG BOLT ON HYDRANT
BM 50	27+23.64	3.20R	650.96	TAG BOLT ON HYDRANT

Addendum No. 01  
 ID 4519-20-70  
 Revised Sheet 9  
 October 19, 2022







## Proposal Schedule of Items

Proposal ID: 20221108038 Project(s): 4519-20-70

Federal ID(s): WISC 2023039

SECTION: 0001

Contract Items

Alt Set ID:

Alt Mbr ID:

Proposal Line Number	Item ID Description	Approximate Quantity and Units	Unit Price	Bid Amount
0004	205.0100 Excavation Common	300.000 CY	_____.	_____.
0006	211.0101 Prepare Foundation for Asphaltic Paving (project) 01. 4519-20-70	1.000 EACH	_____.	_____.
0008	213.0100 Finishing Roadway (project) 01. 4519-20-70	1.000 EACH	_____.	_____.
0010	305.0120 Base Aggregate Dense 1 1/4-Inch	290.000 TON	_____.	_____.
0012	311.0110 Breaker Run	340.000 TON	_____.	_____.
0014	455.0605 Tack Coat	400.000 GAL	_____.	_____.
0016	460.2000 Incentive Density HMA Pavement	678.400 DOL	1.00000	678.40
0018	460.5224 HMA Pavement 4 LT 58-28 S	610.000 TON	_____.	_____.
0020	460.5225 HMA Pavement 5 LT 58-28 S	450.000 TON	_____.	_____.
0022	618.0100 Maintenance And Repair of Haul Roads (project) 01. 4519-20-70	1.000 EACH	_____.	_____.
0024	619.1000 Mobilization	1.000 EACH	_____.	_____.
0026	624.0100 Water	4.000 MGAL	_____.	_____.
0028	628.1905 Mobilizations Erosion Control	2.000 EACH	_____.	_____.
0030	628.1910 Mobilizations Emergency Erosion Control	1.000 EACH	_____.	_____.
0032	628.7015 Inlet Protection Type C	4.000 EACH	_____.	_____.
0036	643.0300 Traffic Control Drums	320.000 DAY	_____.	_____.



Proposal Schedule of Items

Proposal ID: 20221108038 Project(s): 4519-20-70

Federal ID(s): WISC 2023039

SECTION: 0001

Contract Items

Alt Set ID:

Alt Mbr ID:

Proposal Line Number	Item ID Description	Approximate Quantity and Units	Unit Price	Bid Amount
0038	643.0420 Traffic Control Barricades Type III	45.000 DAY	_____.	_____.
0040	643.0705 Traffic Control Warning Lights Type A	90.000 DAY	_____.	_____.
0042	643.0900 Traffic Control Signs	70.000 DAY	_____.	_____.
0044	643.5000 Traffic Control	1.000 EACH	_____.	_____.
0046	650.5000 Construction Staking Base	145.000 LF	_____.	_____.
0048	650.8000 Construction Staking Resurfacing Reference	1,428.000 LF	_____.	_____.
0050	650.9911 Construction Staking Supplemental Control (project) 01. 4519-20-70	1.000 EACH	_____.	_____.
0054	ASP.1T0A On-the-Job Training Apprentice at \$5.00/HR	600.000 HRS	5.00000	3,000.00
0056	ASP.1T0G On-the-Job Training Graduate at \$5.00/HR	300.000 HRS	5.00000	1,500.00
0058	SPV.0060 Special 01. Adjusting Sanitary Manhole Covers	4.000 EACH	_____.	_____.
0060	SPV.0060 Special 02. Adjusting Water Valve Boxes	1.000 EACH	_____.	_____.
0062	204.0120 Removing Asphaltic Surface Milling	5,620.000 SY	_____.	_____.
0064	204.0115 Removing Asphaltic Surface Butt Joints	30.000 SY	_____.	_____.
Section: 0001			Total:	_____.
			Total Bid:	_____.