



Wisconsin Department of Transportation

Division of Transportation Systems Development

Bureau of Project Development
4822 Madison Yards Way, 4th Floor South
Madison, WI 53705

December 7, 2022

Telephone: (608) 266-1631
Facsimile (FAX): (608) 266-8459

NOTICE TO ALL CONTRACTORS:

Proposal #16: 1000-57-70, FR-CRS-0068-2
Milwaukee Airport 2nd Platform
RR Crossing 393023R To 1200ft South
STH 119
Milwaukee County

Letting of December 13, 2022

This is Addendum No. 03, which provides for the following:

Special Provisions:

Revised Special Provisions	
Article No.	Description
7	Utilities.
53	Structural Steel, Item SPV.0085.01.

Schedule of Items:

Revised Bid Item Quantities					
Bid Item	Item Description	Unit	Proposal Total Prior to Addendum	Proposal Quantity Change (-)	Proposal Total After Addendum
SPV.0085.01	Structural Steel	LB	371,847	1,527	373,374

Plan Sheets:

Revised Plan Sheets	
Plan Sheet	Plan Sheet Title (brief description of changes to sheet)
7	Underdrain Detail Sheet
54	S-001 General Plan and Elevation (revised Seismic Design Category)
56	S-003 Typical Section and Quantities (Structural Steel Quantity)
60	S-102 Intermediate Level (Steel Framing Updates)
61	S-103 Pedestrian Bridge Level (Steel Framing Updates)

62	S-104 Top of Pedestrian Bridge Level (Steel Framing Updates)
63	S-105 Tower Roof Level (Steel Framing Updates)
68	S-301 Longitudinal Section – Grid D & F (Steel Framing Updates)
71	S-304 Transverse Section – Grid 2, 4 & 6 (Steel Framing Updates)
78	S-505 Roof Slab Plan & Details (Roof Deck Callout)
84	S-511 Platform Details
95	S-522 Grade Beam Reinforcement Plan (Slab thickness and clear cover)
96	S-523 Concrete Slab Details (1 of 2) (Construction joint callout)
224	E-401 Electrical Site Lighting Plan
226	E-600 Electrical Schedules
284	VT-100 Elevator Schedule

The responsibility for notifying potential subcontractors and suppliers of these changes remains with the prime contractor.

Sincerely,

Mike Coleman

Proposal Development Specialist
Proposal Management Section

ADDENDUM NO. 03

1000-57-70

December 7, 2022

Special Provisions

7. Utilities.

Replace entire section titled Roger Telecom - Communications with the following:

Rogers Telecom – Communications has existing communication facilities within the project limits. The existing underground communication facilities parallel and east of Track 1, Sta 98+00 – Sta 108+00, 22'-25' RT will be relocated. The new facility will be installed under the existing east platform from Track 1, Sta 98+00 - Sta 108+00, 9'-19' RT. The work is anticipated to start on December 26, 2022, and require an estimated 20 working days to complete.

53. Structural Steel, Item SPV.0085.01.

Replace entire section titled C.2 Fabrication with the following:

C.2 Fabrication

The structural steel for the bridge truss shall be fabricated by an approved fabricator selected from the Approved Products List (APL) for steel bridge primary members or prefabricated steel truss pedestrian bridges. The fabricator for the building structural steel and non-bridge truss structural steel components shall carry AISC certification for buildings. Submit name(s) and location(s) of fabricator(s) to be used to the engineer within 14 days of project award.

Schedule of Items

Attached, dated December 7, 2022, are the revised Schedule of Items Page 9.

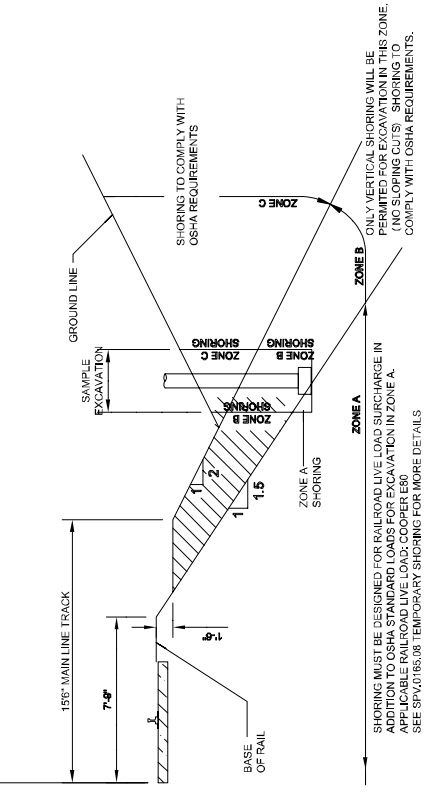
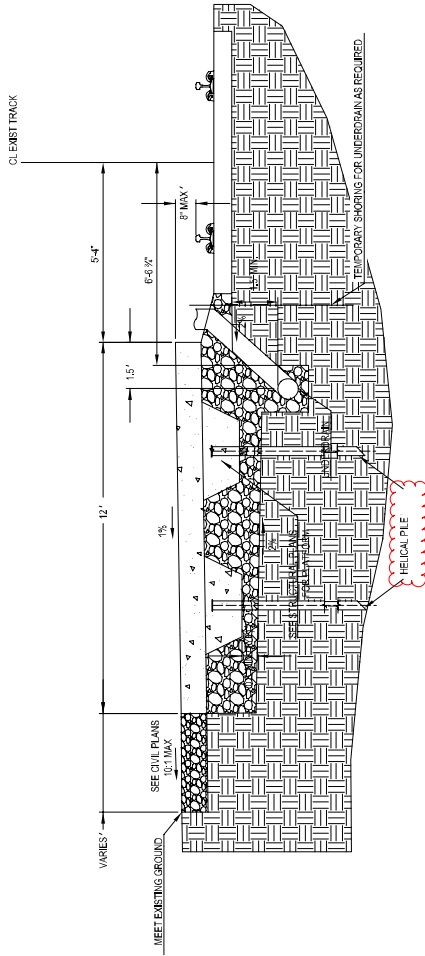
Plan Sheets

The following 8½ x 11-inch sheets are attached and made part of the plans for this proposal:

Revised: 7, 54, 56, 60, 61, 62, 63, 68, 71, 78, 84, 95, 96, 224, 226, and 284

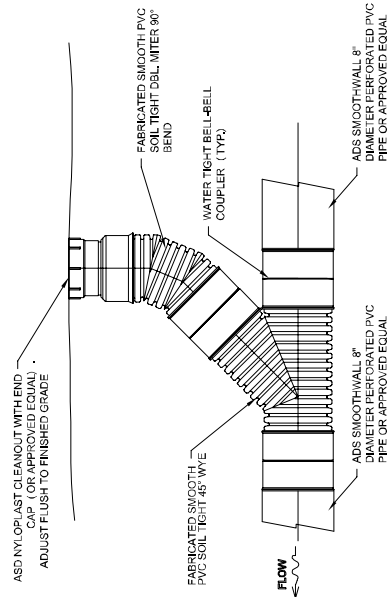
END OF ADDENDUM

TRACK

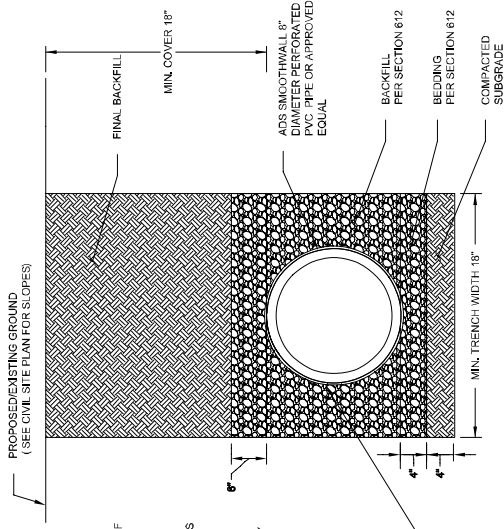


1 PLATFORM SECTION
N.T.S.

2 TEMPORARY SHORING
N.T.S.



3 CLEAN OUT DETAIL
N.T.S.



4 UNDERDRAIN TRENCH SECTION
N.T.S.

- NOTES:
1. ALL PIPE SYSTEMS SHALL BE INSTALLED IN ACCORDANCE WITH THE MANUFACTURER'S INSTRUCTIONS FOR UNDERGROUND INSTALLATION OF THERMOPLASTIC PIPE OR SEWERS AND OTHER GRAVITY FLOW APPLICATIONS.
 2. MEASURE SHOULD BE TAKEN TO PREVENT MIGRATION OF NATIVE FINES INTO BACKFILL MATERIALS WHEN REQUIRED.
 3. WHERE THE TRENCH BOTTOM IS UNDEVELOPED, THE TRENCH SHALL UNDERGO TO A DEPTH REQUIRED BY THE ENGINEER AND REPLACE WITH SUITABLE FILL AND A GEOTEXTILE AS SPECIFIED BY THE ENGINEER.
 6. SUBGRADE AND BACKFILL SHALL BE COMPACTED TO 95% OF MAXIMUM DRY DENSITY PER SECTION 612. THE OPTIMUM MOISTURE CONTENT BASED ON STANDARD PROCTOR TEST.

Addendum No. 03
ID 1000-57-70
Revised Sheet 7
December 7, 2022

FOUNDATION NOTES

PROVIDE SHEETING BRACING, AND UNDERPINNING TO PRESERVE ADJACENT STRUCTURE, AS REQUIRED.

FOUNDATIONS SHALL NOT BE PLACED IN WATER OR IN FROZEN GROUND. PROVIDE A WELL COMPACTED SELECT GRAVEL BASE COURSE CONFORMING TO THE SPECIFICATIONS UNDER ALL SLABS ON GRADE.

ALL REQUIRED INSERTS SLEEVES, CONDUITS, EMBEDMENT AND PENETRATIONS MUST BE VERIFIED WITH RESPECTIVE TRADES BEFORE CASTING CONCRETE.

DOWELS FROM FOOTINGS INTO PIERS, COLUMNS, BUTTRESSES OR WALLS SHALL BE THE SAME SIZE AND NUMBER AS REINFORCEMENT IN PIERS, COLUMNS, BUTTRESSES OR WALLS ABOVE, EXCEPT AS OTHERWISE SHOWN.

CONTRACTOR SHALL PROVIDE CONTINUOUS DRAINAGE TO CONTROL SURFACE WATER, AS REQUIRED DURING CONSTRUCTION.

ALL FOOTINGS SHALL BE CENTERED UNDER SUPPORTED MEMBERS, UNLESS NOTED OTHERWISE ON PLANS.

DO NOT PLACE BACKFILL AGAINST WALLS UNTIL ALL SLABS AND WALL BRACING ARE IN PLACE AND AFTER CONCRETE HAS ATTAINED DESIGN STRENGTH, SHORE AND/OR BRACE WALLS AS REQUIRED IF BACKFILLING OPERATIONS ARE TO BE CARRIED OUT PRIOR TO PLACEMENT OF FLOOR SLABS.

PLACE BACKFILL AGAINST RETAINING WALLS - DESIGNED AS CANTILEVERED ARE IN PLACE.

WHERE BACKFILL IS TO BE PLACED ON BOTH SIDES OF FOUNDATIONS TO PROVIDE ALL ROUND BACKFILLING, CONTRACTOR SHALL PROVIDE TO ELIMINATE LATERAL LOADS EFFECTS, OR PROVIDE NECESSARY TEMPORARY LATERAL SUPPORT TO THE TOP OF THE WALL UNTIL PERMANENT SUPPORT IS INSTALLED.

BACKFILL MATERIAL SHALL BE COMPACTED TO 95% OF MAXIMUM DENSITY, AS DETERMINED BY THE MODIFIED PROCTOR METHOD (ASTM D1557), IN LIFTS NOT EXCEEDING 6 INCHES.

BACKFILL MATERIAL AGAINST RETAINING WALLS - DESIGNED AS CANTILEVERS SHALL BE GRANULAR FILL.

HELICAL PILE DESIGN CRITERIA

UNFACTORED AXIAL LOADS:
DL = 10 KIPS
LL = 10 KIPS

MAXIMUM PILE SETTLEMENT = 1/4"

TOTAL ESTIMATED QUANTITIES

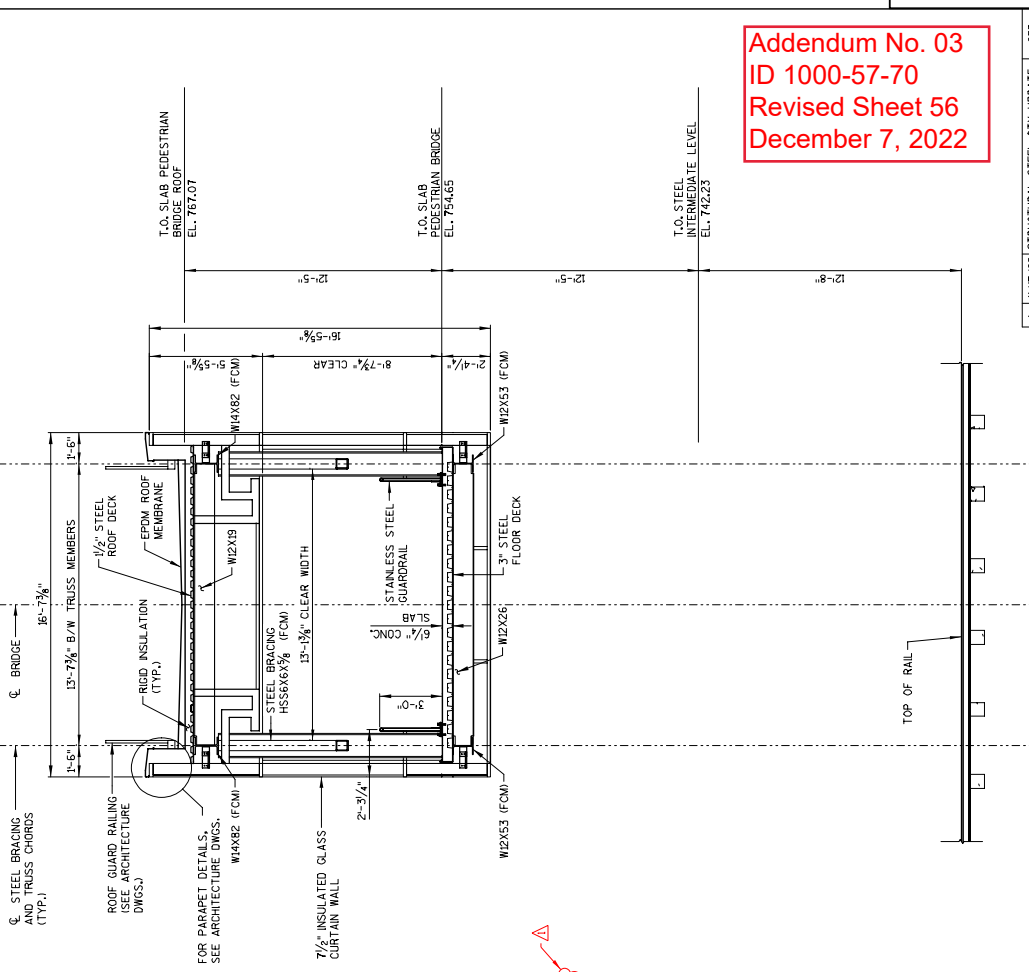
BID ITEM NUMBER	BID ITEM	UNIT	TOTALS
206-1001	EXCAVATION FOR STRUCTURES BRIDGES PEDESTRIAN BRIDGE	EACH	3
206-1100	BACKFILL GRANULAR GRADE 1	CY	303
210-1100	BACKFILL STRUCTURE TYPE A	CY	1082
502-0100	CONCRETE MASONRY BRIDGES	CY	718
502-3104	ADHESIVE ANCHORS 3/2-INCH	EACH	336
505-0400	BAR STEEL REINFORCEMENT IN STRUCTURES	LB	7100
505-0600	BAR STEEL REINFORCEMENT IN CONCRETE STRUCTURES	LB	50120
506-3009	WELDED STUD SHEAR CONNECTORS 3/8X5/8X1/2	EA	292
516-0500	AUTHERIZED MEMBRANE WATERPROOFING	SF	4800
520-3001	PAINTING FLOOR SYSTEMS	EA	4800
520-3002	PAINTING EXTERIOR SURFACES	EA	4800
SPV-0060.01	DESIGN ENGINEERING CONSULTATION	EACH	1
SPV-0060.02	CANOPY COLUMN ANCHOR ROD ASSEMBLIES	EACH	76
SPV-0060.03	TOWER COLUMN ANCHOR ROD ASSEMBLIES	EACH	46
SPV-0060.04	TRANSFORMER SWITCHES	EACH	1
SPV-0060.05	TRACTION ELEVATORS	EACH	4
SPV-0060.06	DOORS AND DOOR HARDWARE	EACH	22
SPV-0060.16	FALL RESTRAINT SYSTEM	EACH	1
SPV-0060.17	HVAL WORK	EACH	1
SPV-0060.18	LIGHTING	EACH	1
SPV-0060.19	GENERAL ELECTRICAL WORK	EACH	1
SPV-0060.20	FIRE ALARM SYSTEM	EACH	1
SPV-0060.21	LIGHTNING PROTECTION FOR STRUCTURES	EACH	1
SPV-0060.22	PLUMBING WORK	EACH	1
SPV-0060.23	STAIRS	EACH	1
SPV-0060.24	ROUGH CARPENTRY	EACH	1
SPV-0060.25	METAL FABRICATIONS	EACH	1
SPV-0060.26	GYPSUM BOARD PARTITIONS AND ASSEMBLIES	EACH	1
SPV-0060.27	CEILING	EACH	1
SPV-0060.28	INTERIOR AND EXTERIOR SIGNAGE	EACH	1
SPV-0060.29	OTHER ARCHITECTURAL WORK	EACH	1
SPV-0060.30	FIRE SUPPRESSION	EACH	1
SPV-0060.31	PIDS, COMMUNICATIONS, AND SECURITY WORK	EACH	1
SPV-0060.32	WHEELCHAIR ACCESSIBILITY - NEW AND RELOCATIONS	EACH	1
SPV-0060.01	PAINTING PIPE	LB	373374
SPV-0090.02	DRILLED SHAFT FOUNDATIONS 24-INCH	LF	555
SPV-0090.03	HELICAL PILE	LF	2190**
SPV-0165.01	MASONRY AND CAST STONE WORK	SF	9916
SPV-0165.02	STEEL DECKING	SF	8115
SPV-0165.03	ALUMINUM AND GLASS CURTAIN WALLS	SF	7278
SPV-0165.04	ROOFING AND ACCESSORIES	SF	11995
SPV-0165.05	EXTERIOR METAL PANELS	SF	3274
SPV-0165.06	LOUVERS	SF	3274
SPV-0165.07	FINISHES	SF	20973
SPV-0165.08	TEMPORARY SHORING RAILROAD	SF	2400

SEE CIVIL PLANS FOR OTHER BID ITEMS INCLUDED IN THIS CONTRACT.

ALL CONCRETE FOR TOWER FLOOR SLABS, ELEVATED AND ON GRADE FOOTINGS, BRACING AND FORMWORK SHALL BE ENCLOSED IN CONCRETE. ALL CONCRETE FOR TOWER FLOOR SLABS, ELEVATED AND ON GRADE FOOTINGS, BRACING AND FORMWORK SHALL BE ENCLOSED IN CONCRETE. ALL CONCRETE FOR TOWER FLOOR SLABS, ELEVATED AND ON GRADE FOOTINGS, BRACING AND FORMWORK SHALL BE ENCLOSED IN CONCRETE.

** HELICAL PILE QUANTITY IS BASED ON AN ASSUMED LENGTH OF 15'-ACTUAL LENGTH WILL BE BASED ON THE DESIGN BY THE SUPPLIER.

STATE PROJECT NUMBER
1000-57-70



1 TYPICAL BRIDGE SECTION

Addendum No. 03
ID 1000-57-70
Revised Sheet 56
December 7, 2022

NO.	DATE	REVISION	BY
1	12/17/22	STRUCTURAL STEEL QTY. UPDATE	CEB

STATE OF WISCONSIN
DEPARTMENT OF TRANSPORTATION

STRUCTURAL

DESIGNED BY: CEB
CHECKED BY: MJA

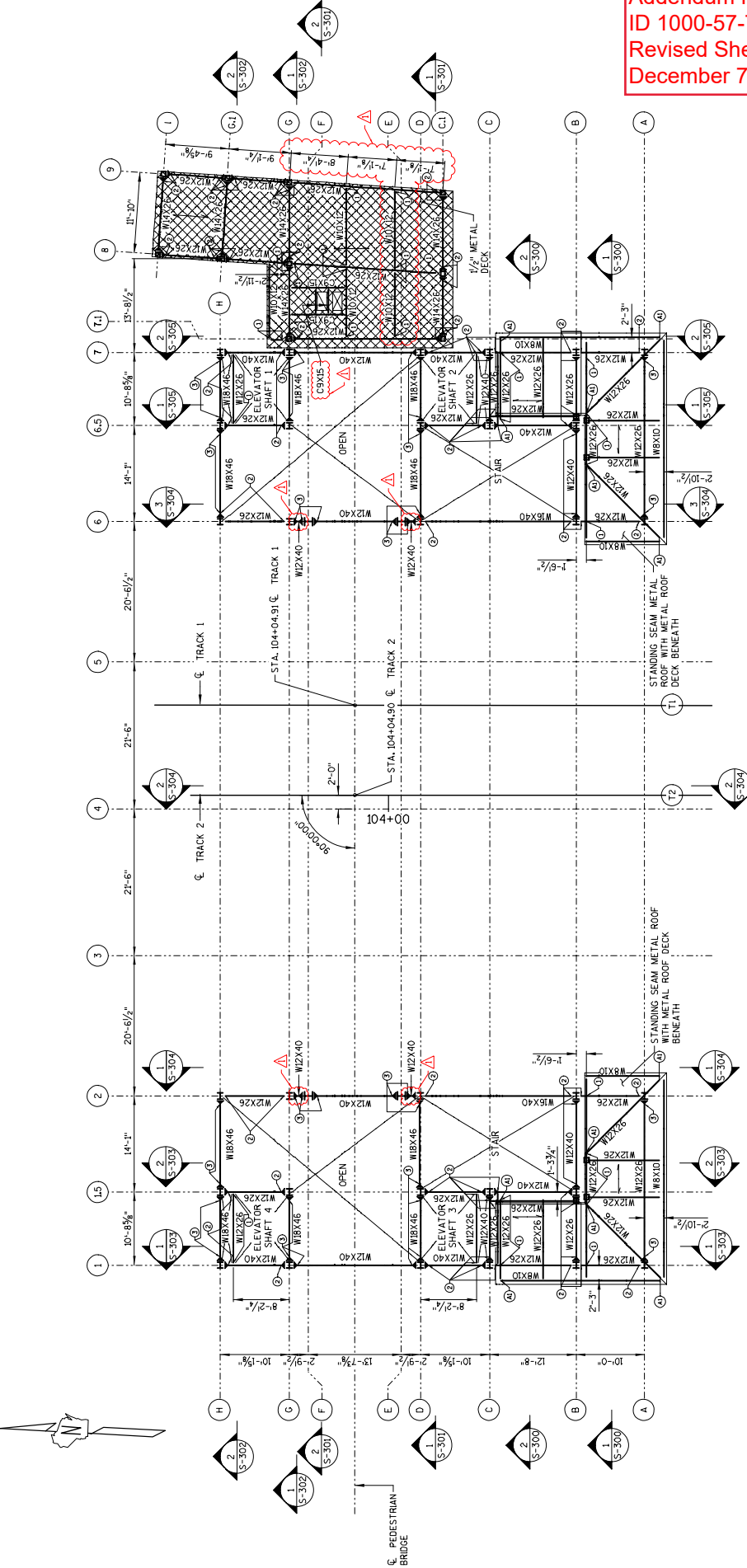
TYPICAL SECTION AND QUANTITIES

SHEET 5-003

56

STATE PROJECT NUMBER
1000-57-70

Addendum No. 03
ID 1000-57-70
Revised Sheet 60
December 7, 2022



1 INTERMEDIATE LEVEL
S-102 NTS

- LEGEND:**
- 1 SHEAR LOAD = 5 KIPS
 - 2 SHEAR LOAD = 10 KIPS
 - 3 SHEAR LOAD = 15 KIPS
 - 4 SHEAR LOAD = 20 KIPS
 - 5 SHEAR LOAD = 25 KIPS
 - (A) WELDED CONNECTION
- NOTE: FORCES SHOWN ARE ENVELOPE FORCES
OR ALL ASPECT TO LOAD COMBINATIONS.

LEGEND

- DIRECTION OF COMPOSITE STEEL DECKING
- DIRECTION OF TYPE B 15" x 20 GA. METAL ROOF DECKING
- ▨ FLAT ROOF
- ▨ SLOPED ROOF

NO.	DATE	REVISION	BY
1	12/7/22	NEW BEAM LINE, LEGEND UPDATE	CEB
STATE OF WISCONSIN DEPARTMENT OF TRANSPORTATION			
STRUCTURAL		DESIGNED BY	CEB
INTERMEDIATE LEVEL		CHECKED BY	M.J.A.
			SHEET S-102
			60

STATE PROJECT NUMBER





1000-57-70

Addendum No. 03
ID 1000-57-70
Revised Sheet 61
December 7, 2022

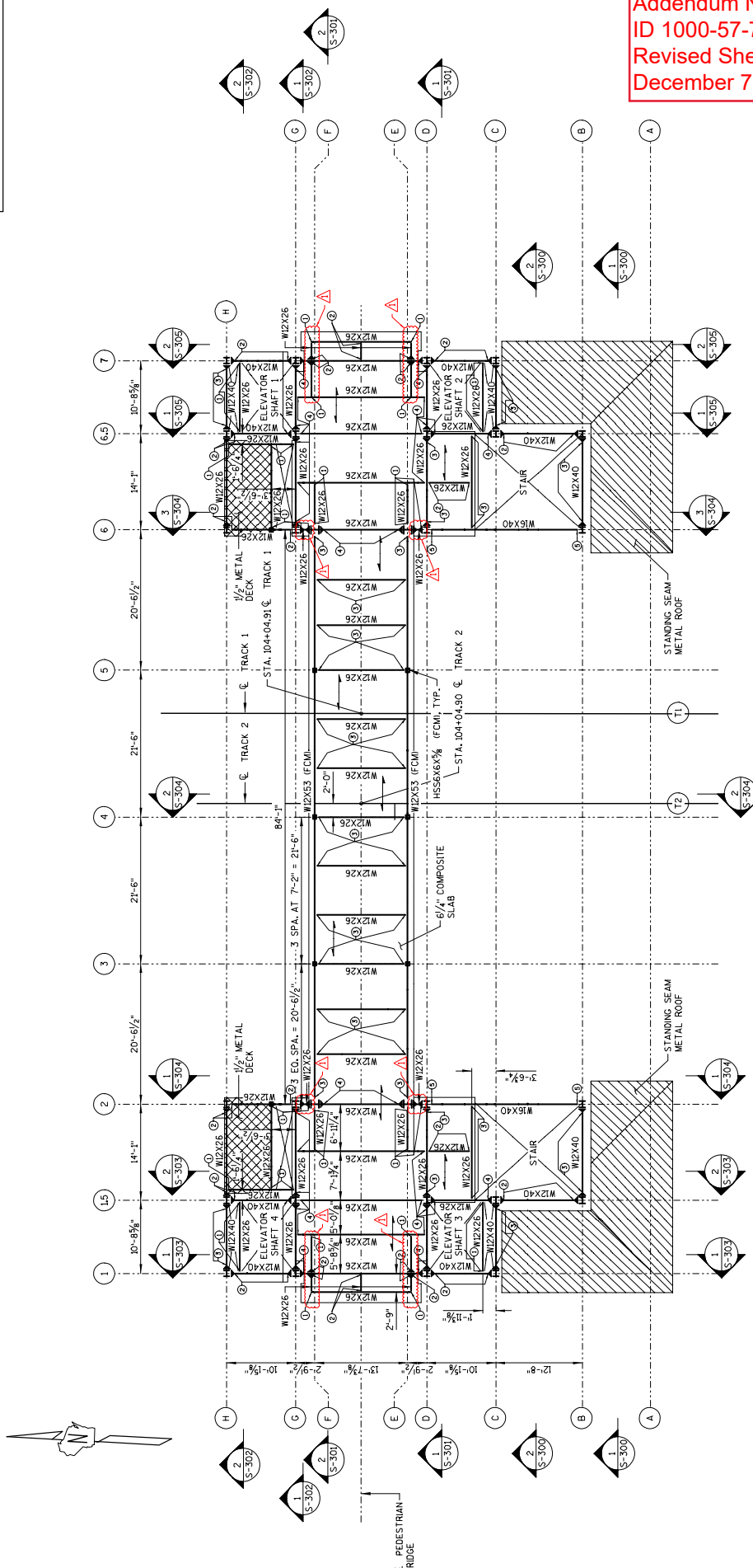
2

NO.	DATE	MOMENT	CONN.	LEGEND	UPDATE	CEB
1	12/17/22					
REVISION						
STATE OF WISCONSIN						
DEPARTMENT OF TRANSPORTATION						
STRUCTURAL						
DESIGNED BY			CHECKED BY		M.J.A.	
PEDESTRIAN BRIDGE			SHEET S-103		61	

LEGEND

-  DIRECTION OF COMPOSITE STEEL DECKING
-  DIRECTION OF TYPE B 1.5" x 20 GA. METAL ROOF DECKING
-  FLAT ROOF
-  SLOPED ROOF

1 PEDESTRIAN BRIDGE LEVEL
NTS

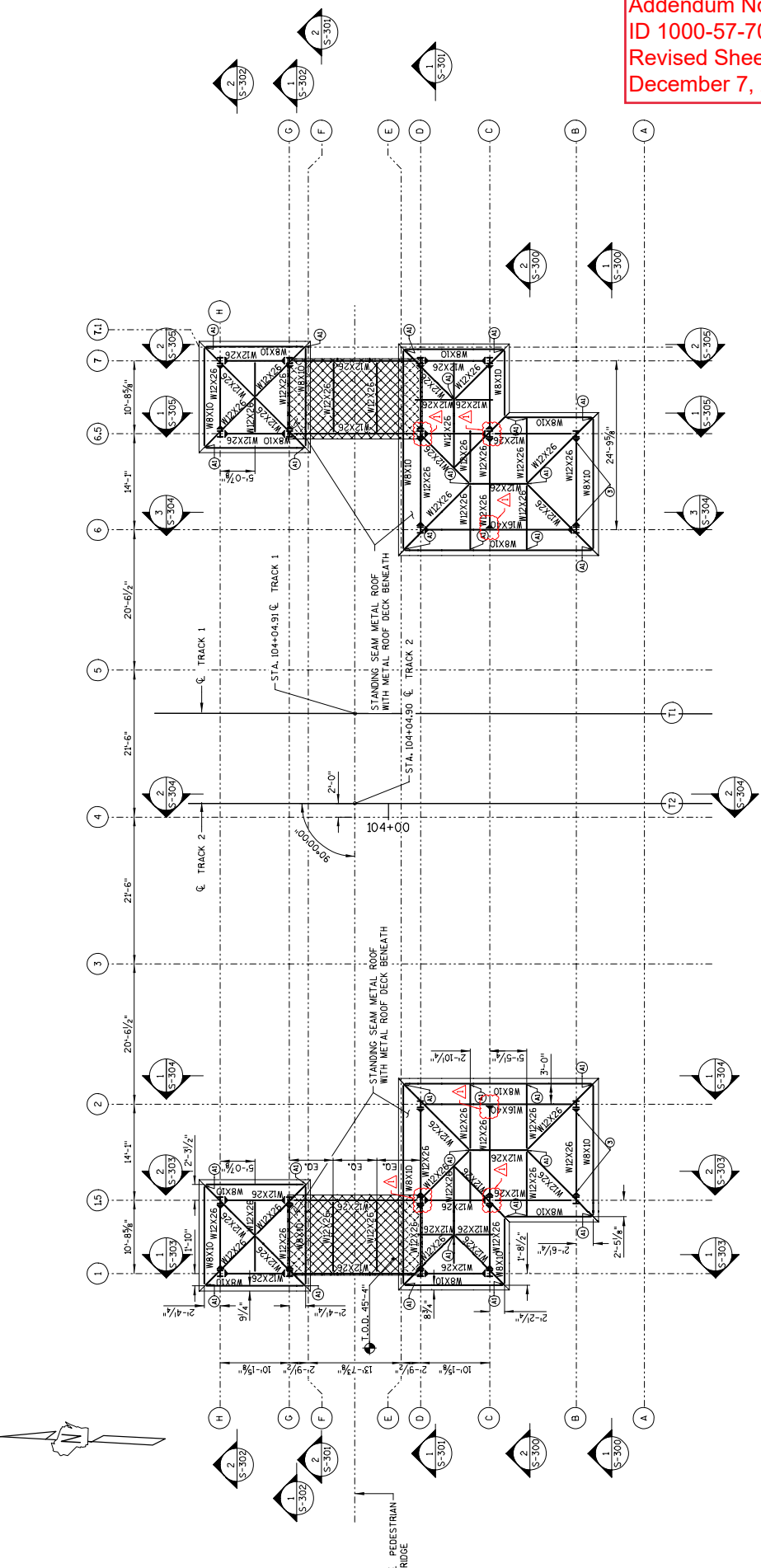


- LEGEND:**
- 1 SHEAR LOAD = 5 KIPS
 - 2 SHEAR LOAD = 10 KIPS
 - 3 SHEAR LOAD = 15 KIPS
 - 4 SHEAR LOAD = 20 KIPS
 - 5 SHEAR LOAD = 25 KIPS
- NOTE: FORCES SHOWN ARE ENVELOPE FORCES OF ALL ASSET-10 LOAD COMBINATIONS.

2

STATE PROJECT NUMBER
1000-57-70

Addendum No. 03
ID 1000-57-70
Revised Sheet 63
December 7, 2022



1. TOWER ROOF LEVEL
NTS

LEGEND:
 ① SHEAR LOAD = 5 KIPS
 ② SHEAR LOAD = 10 KIPS
 ③ SHEAR LOAD = 15 KIPS
 ④ SHEAR LOAD = 20 KIPS
 ⑤ SHEAR LOAD = 25 KIPS
 (A) WELDED CONNECTION
 NOTE: FORCES SHOWN ARE ENVELOPE FORCES OF ALL ACCEPTED LOAD COMBINATIONS.

NOTES:
 CONNECTION SHEAR LOAD = 5 KIPS UNLESS SHOWN OTHERWISE

LEGEND

- DIRECTION OF COMPOSITE STEEL DECKING
- DIRECTION OF TYPE B 15" x 20 GA. METAL ROOF DECKING
- ▨ FLAT ROOF
- ▨ SLOPED ROOF

NO.	DATE	REVISION	BY
1	12/1/22	MOMENT CONN., LEGEND UPDATE	CEB

STATE OF WISCONSIN
DEPARTMENT OF TRANSPORTATION

STRUCTURAL

DESIGNED BY: CEB
CHECKED BY: MJA

TOWER ROOF LEVEL

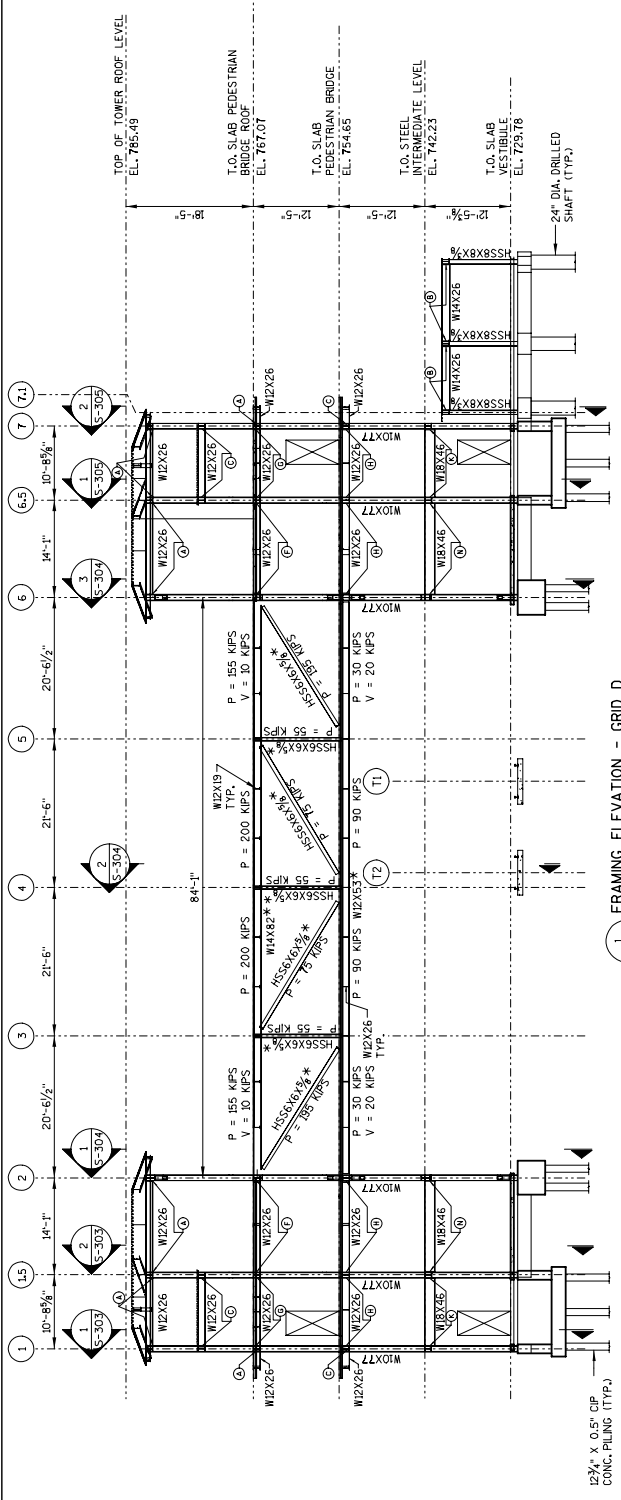
SHEET S-105

63

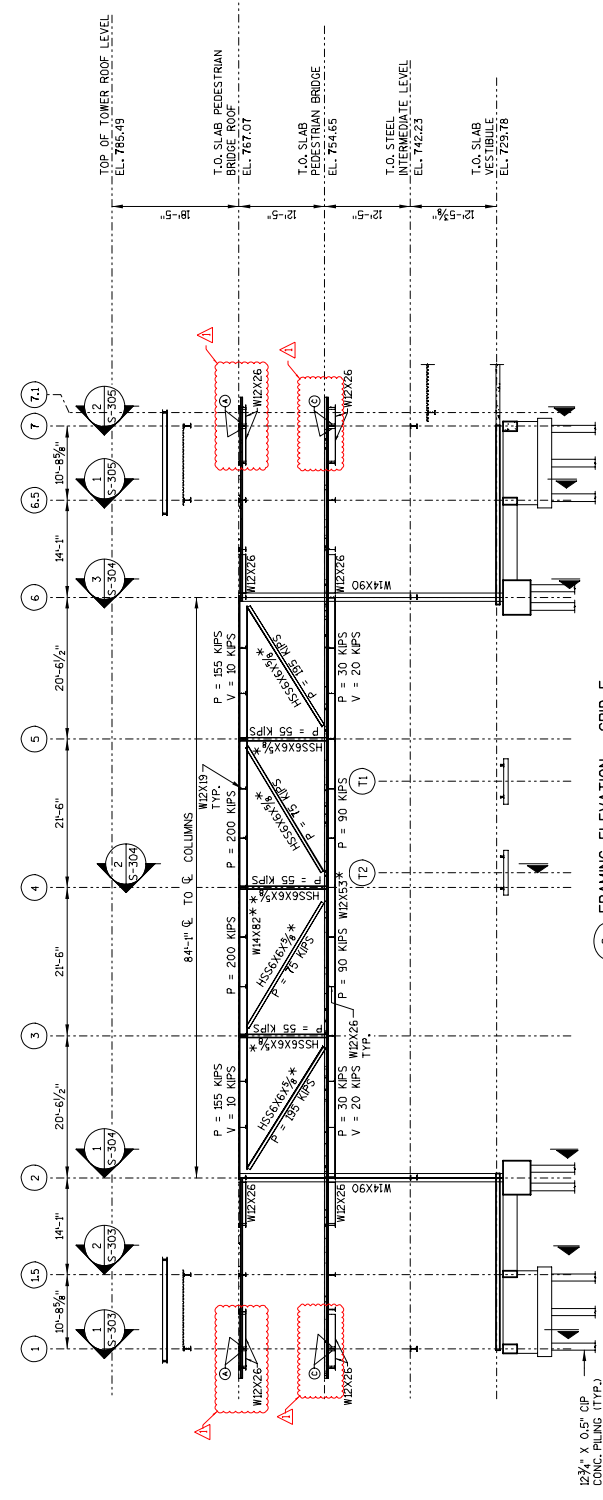
LEGEND:

- (A) MOMENT = 10 KIP-FT
- (B) MOMENT = 15 KIP-FT
- (C) MOMENT = 20 KIP-FT
- (D) MOMENT = 25 KIP-FT
- (E) MOMENT = 30 KIP-FT
- (F) MOMENT = 35 KIP-FT
- (G) MOMENT = 40 KIP-FT
- (H) MOMENT = 45 KIP-FT
- (I) MOMENT = 50 KIP-FT
- (J) MOMENT = 55 KIP-FT
- (K) MOMENT = 60 KIP-FT
- (L) MOMENT = 65 KIP-FT
- (M) MOMENT = 70 KIP-FT
- (N) MOMENT = 75 KIP-FT

* FRACTURE CRITICAL MEMBER (FCM)
NOTE: FORCES SHOWN ARE ENVELOPE FORCES
UP ALL ACCEPT-ID LOAD COMBINATIONS.



1. FRAMING ELEVATION - GRID D
S-1007 NTS



2. FRAMING ELEVATION - GRID F
S-1007 NTS

Addendum No. 03
ID 1000-57-70
Revised Sheet 68
December 7, 2022

NO.	DATE	REVISION	BY
1	12/7/22	BACKSPAN AND MOMENT CONN.	CEB

STATE OF WISCONSIN
DEPARTMENT OF TRANSPORTATION

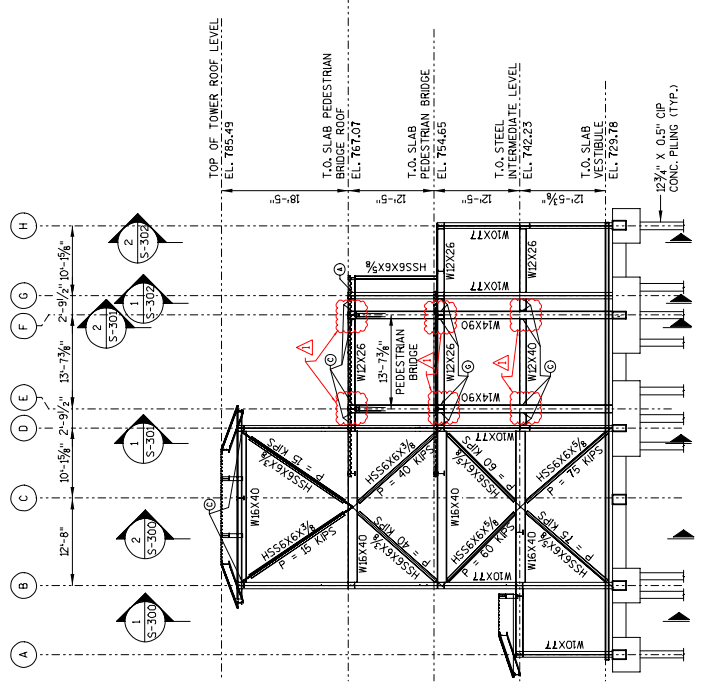
STRUCTURAL

DRAWN BY: CEB
CHECKED BY: MJA

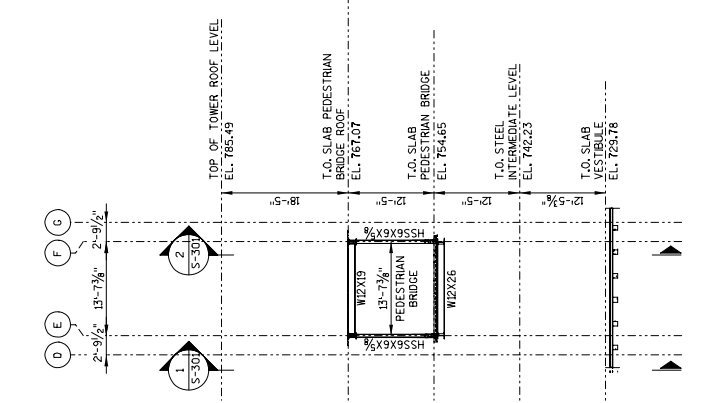
LONGITUDINAL SECTION -
GRID D & F

SHEET 5-301
68

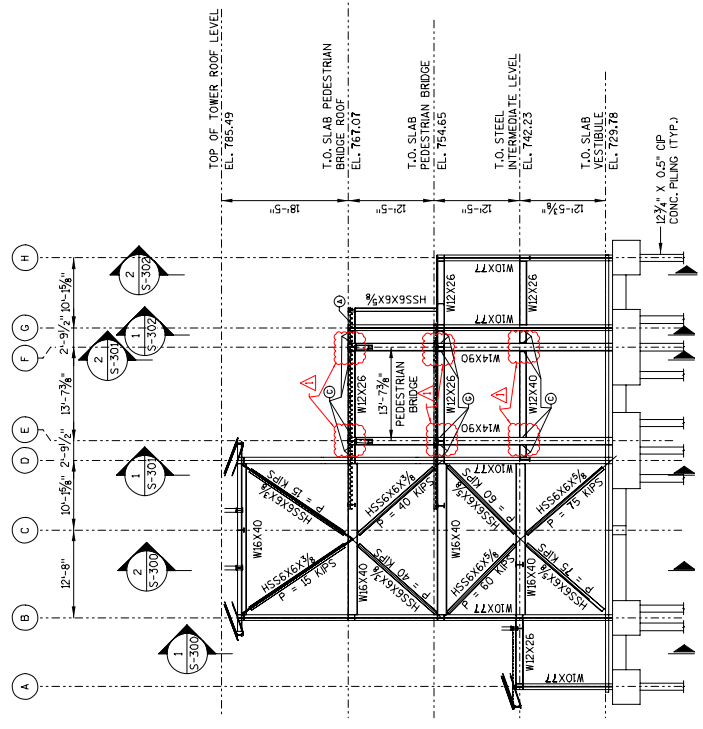
STATE PROJECT NUMBER
1000-57-70



FRAMING ELEVATION - GRID 6
S-300 NTS



FRAMING ELEVATION - GRID 4
S-300 NTS



FRAMING ELEVATION - GRID 2
S-100 NTS

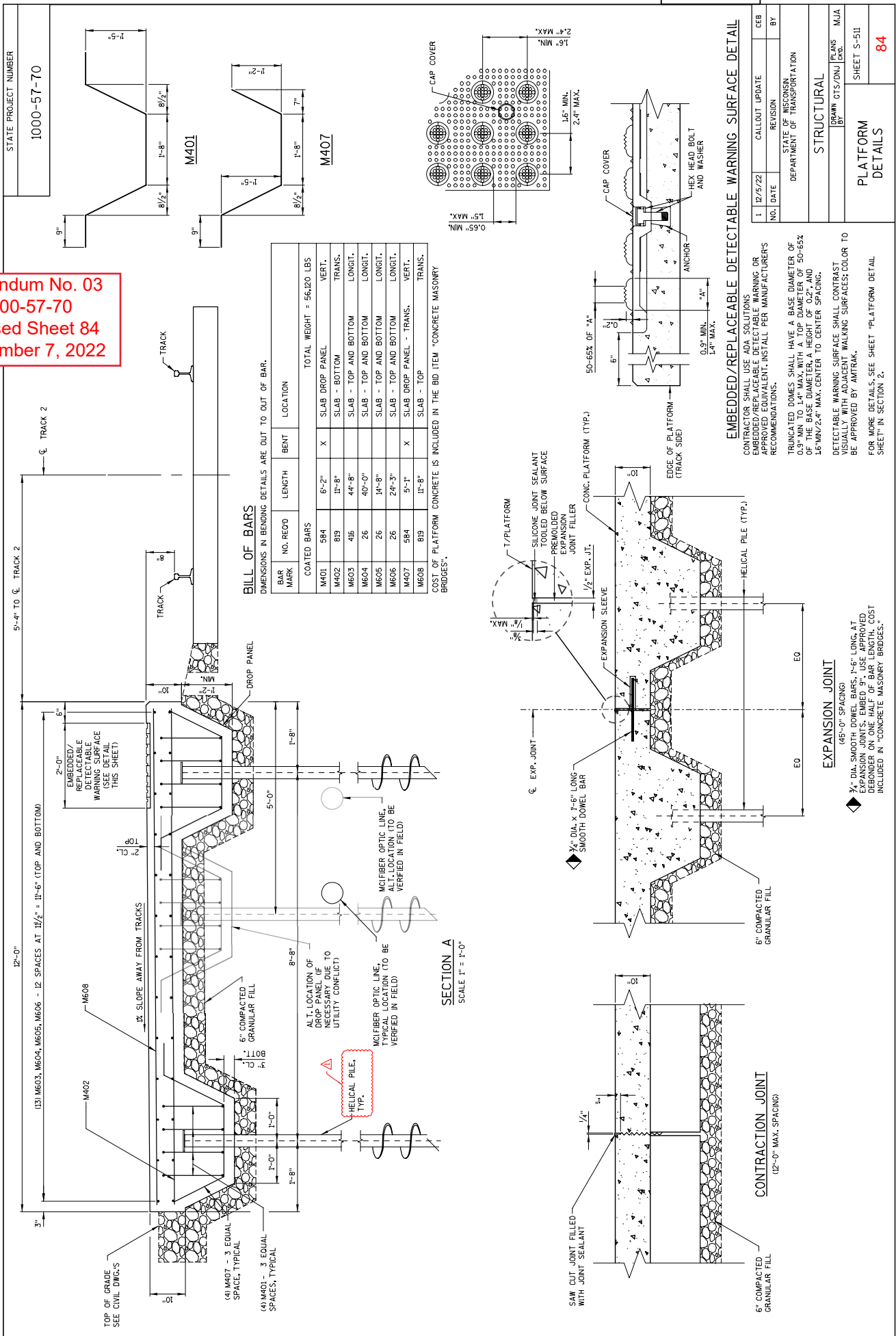
- LEGEND:**
- (A) MOMENT = 10 KIP-FT
 - (B) MOMENT = 15 KIP-FT
 - (C) MOMENT = 20 KIP-FT
 - (D) MOMENT = 25 KIP-FT
 - (E) MOMENT = 30 KIP-FT
 - (F) MOMENT = 35 KIP-FT
 - (G) MOMENT = 40 KIP-FT
 - (H) MOMENT = 45 KIP-FT
 - (I) MOMENT = 50 KIP-FT
 - (J) MOMENT = 55 KIP-FT
 - (K) MOMENT = 60 KIP-FT
 - (L) MOMENT = 65 KIP-FT
 - (M) MOMENT = 70 KIP-FT
 - (N) MOMENT = 75 KIP-FT
- NOTE: FORCES SHOWN ARE ENVELOPE FORCES
OF ALL ASPECT-TO LOAD COMBINATIONS.

Addendum No. 03
 ID 1000-57-70
 Revised Sheet 71
 December 7, 2022

NO.	DATE	REVISION	BY
1	12/17/22	MOMENT CONNECTION	CEB

STATE OF WISCONSIN DEPARTMENT OF TRANSPORTATION		
STRUCTURAL		
DRAWN BY CEB	CHECKED BY MJA	
TRANVERSE SECTION - GRID 2, 4 & 6		
SHEET S-304		
71		

Addendum No. 03
 ID 1000-57-70
 Revised Sheet 84
 December 7, 2022



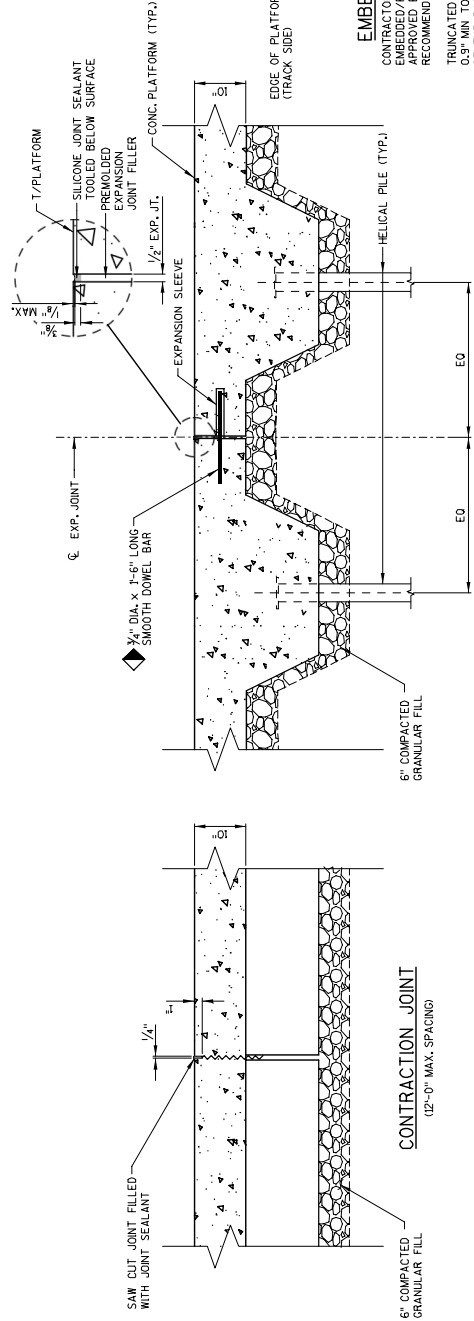
BILL OF BARS

DIMENSIONS IN BENDING DETAILS ARE OUT TO OUT OF BAR.

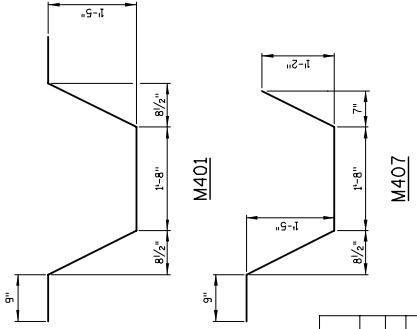
BAR MARK	NO. REQ'D	LENGTH	BENT	LOCATION	TOTAL WEIGHT = 56,120 LBS
M401	584	6'-2"	X	SLAB DROP PANEL	VERT.
M402	819	11'-8"		SLAB - BOTTOM	TRANS.
M603	416	44'-8"		SLAB - TOP AND BOTTOM	LONGIT.
M604	26	40'-0"		SLAB - TOP AND BOTTOM	LONGIT.
M605	26	14'-8"		SLAB - TOP AND BOTTOM	LONGIT.
M606	26	24'-3"		SLAB - TOP AND BOTTOM	LONGIT.
M407	584	5'-4"	X	SLAB DROP PANEL - TRANS.	VERT.
M608	819	11'-8"		SLAB - TOP	TRANS.

COST OF PLATFORM CONCRETE IS INCLUDED IN THE BID ITEM "CONCRETE MASONRY BRIDGES".

SECTION A
 SCALE 1" = 1'-0"

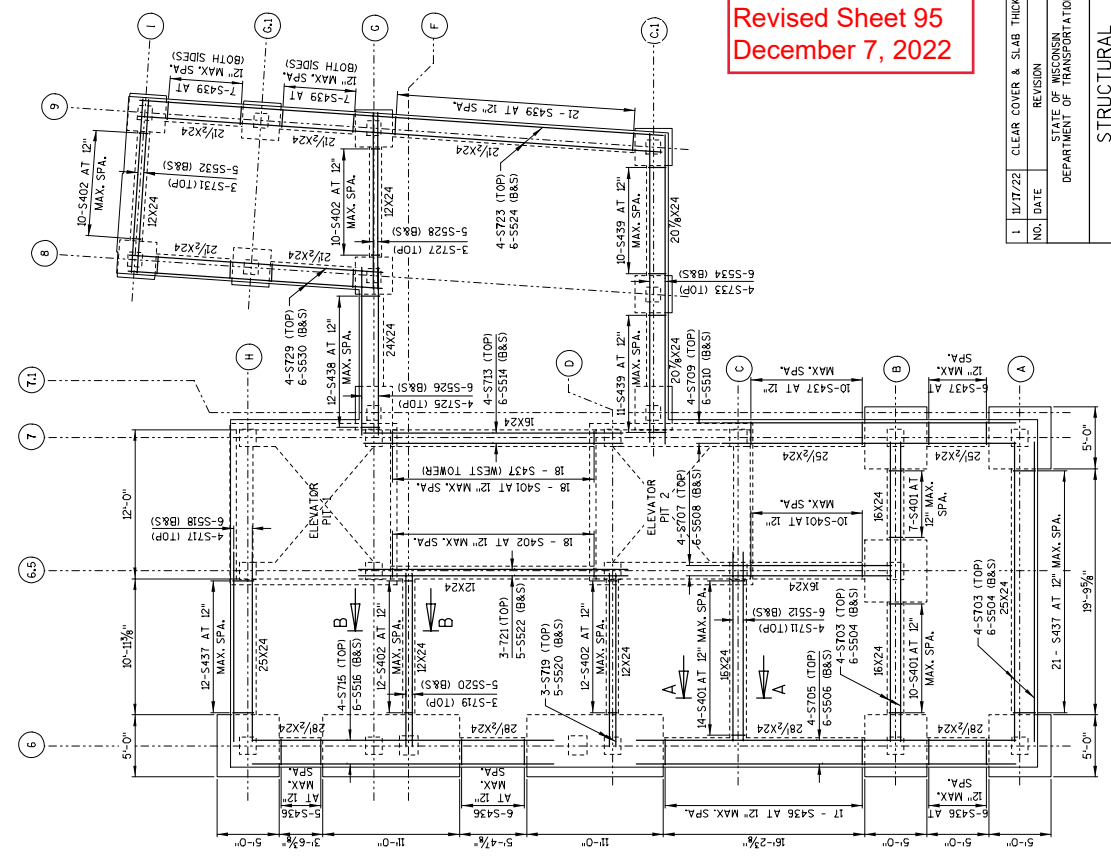


STATE PROJECT NUMBER
 1000-57-70

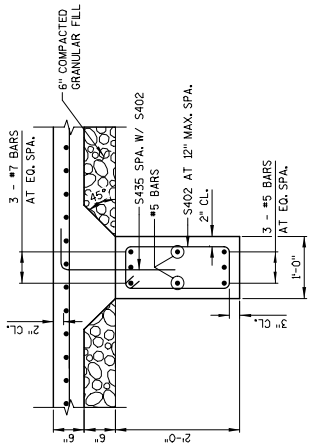


NO.	DATE	CALLOUT UPDATE	CEB
1	12/5/22	REVISION	BY
STATE OF WISCONSIN DEPARTMENT OF TRANSPORTATION			
STRUCTURAL			
DESIGNED BY: [Name]		CHECKED BY: [Name]	
DRAWN BY: [Name]		SCALE: [Scale]	
SHEET 5-511			
84			

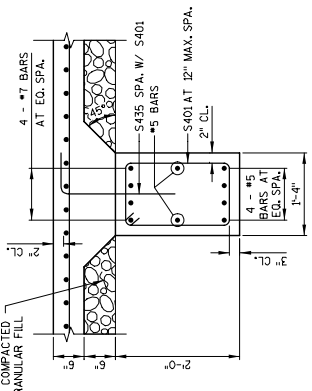
Addendum No. 03
 ID 1000-57-70
 Revised Sheet 95
 December 7, 2022



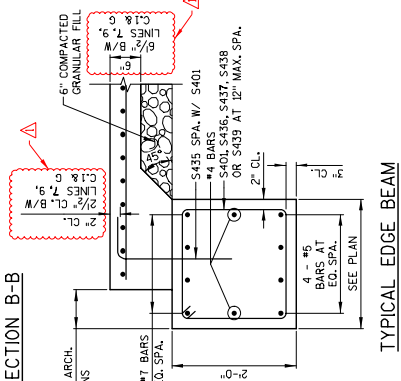
PLAN
(EAST TOWER SHOWN, WEST TOWER SIMILAR)



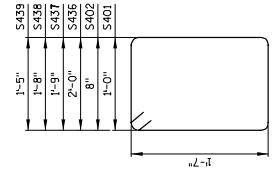
SECTION B-B



SECTION A-A



TYPICAL EDGE BEAM



S401, S402, S436, S437, S438, S439

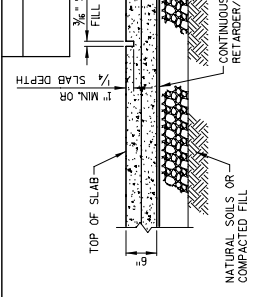
S435	1'-10"
S733	2'-9"
S725	13'-4"
S719	13'-6"
S711	15'-4"

S711, S719, S725, S733, S435

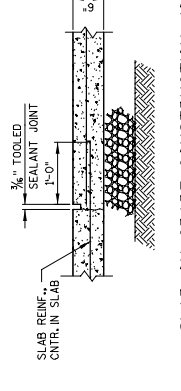
BILL OF BARS

MARK	NO. REQD.	LENGTH	BENT SERIES	BAR	LOCATION	TOTAL WEIGHT = 11,010 LBS
NONCOATED BARS						
S401	100	5 - 8	X	VERT.	GRADE BEAM STIRRUP	
S402	104	5 - 0	X	VERT.	GRADE BEAM STIRRUP	
S703	16	24 - 2		HORIZ.	TOWER GRADE BEAM (TOP)	
S704	24	22 - 4		HORIZ.	TOWER GRADE BEAM (BOTTOM & SIDES)	
S705	8	36 - 7		HORIZ.	TOWER GRADE BEAM (TOP)	
S706	12	28 - 9		HORIZ.	TOWER GRADE BEAM (BOTTOM & SIDES)	
S707	8	13 - 10		HORIZ.	TOWER GRADE BEAM (TOP)	
S708	12	12 - 0		HORIZ.	TOWER GRADE BEAM (BOTTOM & SIDES)	
S709	8	23 - 10		HORIZ.	TOWER GRADE BEAM (TOP)	
S710	12	22 - 0		HORIZ.	TOWER GRADE BEAM (BOTTOM & SIDES)	
S711	8	17 - 9	X	HORIZ.	TOWER GRADE BEAM (TOP)	
S712	12	14 - 1		HORIZ.	TOWER GRADE BEAM (BOTTOM & SIDES)	
S713	8	20 - 11		HORIZ.	TOWER GRADE BEAM (TOP)	
S714	12	19 - 1		HORIZ.	TOWER GRADE BEAM (BOTTOM & SIDES)	
S715	8	24 - 4		HORIZ.	TOWER GRADE BEAM (TOP)	
S716	12	21 - 6		HORIZ.	TOWER GRADE BEAM (BOTTOM & SIDES)	
S717	8	15 - 4		HORIZ.	TOWER GRADE BEAM (TOP)	
S718	12	13 - 6		HORIZ.	TOWER GRADE BEAM (BOTTOM & SIDES)	
S719	12	16 - 9	X	HORIZ.	TOWER GRADE BEAM (TOP)	
S720	20	12 - 3		HORIZ.	TOWER GRADE BEAM (BOTTOM & SIDES)	
S721	6	20 - 11		HORIZ.	TOWER GRADE BEAM (TOP)	
S722	10	19 - 1		HORIZ.	TOWER GRADE BEAM (BOTTOM & SIDES)	
S723	4	42 - 2		HORIZ.	VESTIBULE GRADE BEAM (TOP)	
S724	6	40 - 4		HORIZ.	VESTIBULE GRADE BEAM (BOTTOM & SIDES)	
S725	4	16 - 7	X	HORIZ.	VESTIBULE GRADE BEAM (TOP)	
S726	6	12 - 2		HORIZ.	VESTIBULE GRADE BEAM (BOTTOM & SIDES)	
S727	3	13 - 3		HORIZ.	VESTIBULE GRADE BEAM (TOP)	
S728	5	11 - 5		HORIZ.	VESTIBULE GRADE BEAM (BOTTOM & SIDES)	
S729	4	20 - 6		HORIZ.	VESTIBULE GRADE BEAM (TOP)	
S730	6	18 - 8		HORIZ.	VESTIBULE GRADE BEAM (BOTTOM & SIDES)	
S731	3	13 - 2		HORIZ.	VESTIBULE GRADE BEAM (TOP)	
S732	5	11 - 4		HORIZ.	VESTIBULE GRADE BEAM (BOTTOM & SIDES)	
S733	4	27 - 4		HORIZ.	VESTIBULE GRADE BEAM (TOP)	
S734	6	22 - 11		HORIZ.	VESTIBULE GRADE BEAM (BOTTOM & SIDES)	
S435	470	2 - 5	X	VERT.	GRADE BEAM DOVEL	
S436	68	7 - 8	X	VERT.	GRADE BEAM STIRRUP	
S437	116	7 - 2	X	VERT.	GRADE BEAM STIRRUP	
S438	12	7 - 0	X	VERT.	GRADE BEAM STIRRUP	
S439	70	6 - 6	X	VERT.	GRADE BEAM STIRRUP	

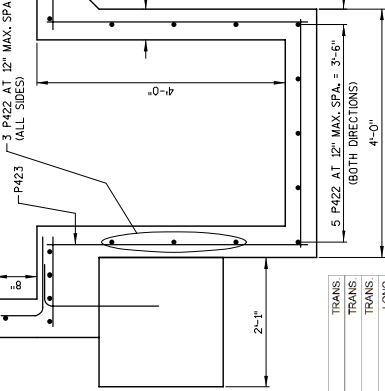
1	12/17/22	CLEAR COVER & SLAB THICK.	CEB
NO.	DATE	REVISION	BY
STATE OF WISCONSIN			
DEPARTMENT OF TRANSPORTATION			
STRUCTURAL			
DRAWN BY: [] CHECKED BY: []			
PROJECT: 1000-57-70			
SHEET 95 OF 95			
SHEET S-522			
PLAN			



SLAB ON GRADE CONSTRUCTION



SLAB ON GRADE CONSTRUCTION JOINT



SECTION A-A

NOTES:
FOR CURB DIMENSIONS, SEE SHEET S-101
AND ARCHITECTURE PLANS.

NO.	DATE	REVISION	BY
1	10/17/22	CONSTRUCTION JOINT CALLOUT	CEB

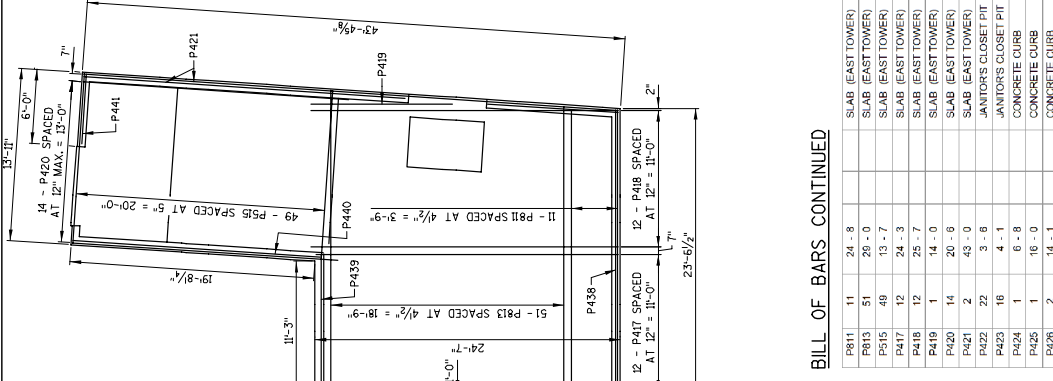
STATE OF WISCONSIN
DEPARTMENT OF TRANSPORTATION

STRUCTURAL

DESIGNED BY: CEB
CHECKED BY: MJA

SHEET S-523
CONCRETE SLAB
DETAILS (1 OF 2)

96



WEST TOWER

EAST TOWER

BILL OF BARS

MARK NO.	RECORD	LENGTH	BAR BENT SERIES	LOCATION	TOTAL WEIGHT = 21,140 LBS
P601	251	26'-0"		SLAB (EAST & WEST TOWER)	TRANS
P603	38	15'-4"		SLAB (EAST & WEST TOWER)	TRANS
P900	72	25'-2"		SLAB (EAST & WEST TOWER)	LONG
P407	44	11'-7"		SLAB (EAST & WEST TOWER)	LONG
P408	54	18'-10"		SLAB (EAST & WEST TOWER)	LONG
P409	34	12'-3"		SLAB (EAST & WEST TOWER)	LONG
P410	18	2'-6"		SLAB (EAST & WEST TOWER)	LONG

BILL OF BARS CONTINUED

P811	11	24'-8"		SLAB (EAST TOWER)	TRANS
P813	51	29'-0"		SLAB (EAST TOWER)	TRANS
P515	49	13'-7"		SLAB (EAST TOWER)	LONG
P417	12	24'-3"		SLAB (EAST TOWER)	LONG
P418	12	25'-7"		SLAB (EAST TOWER)	LONG
P419	1	14'-0"		SLAB (EAST TOWER)	LONG
P420	14	20'-6"		SLAB (EAST TOWER)	LONG
P421	2	43'-0"		SLAB (EAST TOWER)	LONG
P422	22	3'-8"		JANITORS CLOSET PIT	HORIZ
P423	16	4'-1"		JANITORS CLOSET PIT	VERT
P424	1	6'-8"		CONCRETE CURB	TRANS
P425	1	16'-0"		CONCRETE CURB	TRANS
P426	2	14'-1"		CONCRETE CURB	TRANS
P427	2	12'-8"		CONCRETE CURB	TRANS
P428	4	2'-1"		CONCRETE CURB	TRANS
P429	4	5'-8"		CONCRETE CURB	TRANS
P430	2	26'-2"		CONCRETE CURB	TRANS
P431	1	16'-8"		CONCRETE CURB	TRANS
P432	1	3'-0"		CONCRETE CURB	TRANS
P433	2	32'-8"		CONCRETE CURB	LONG
P434	2	31'-3"		CONCRETE CURB	LONG
P435	2	24'-3"		CONCRETE CURB	LONG
P436	2	16'-9"		CONCRETE CURB	LONG
P437	2	11'-10"		CONCRETE CURB	LONG
P438	1	24'-8"		CONCRETE CURB	LONG
P441	1	5'-8"		CONCRETE CURB	LONG
P542	407	2'-3"	X	CONCRETE CURB	HORIZ

Addendum No. 03
ID 1000-57-70
Revised Sheet 96
December 7, 2022

STATE PROJECT NUMBER
1000-57-70

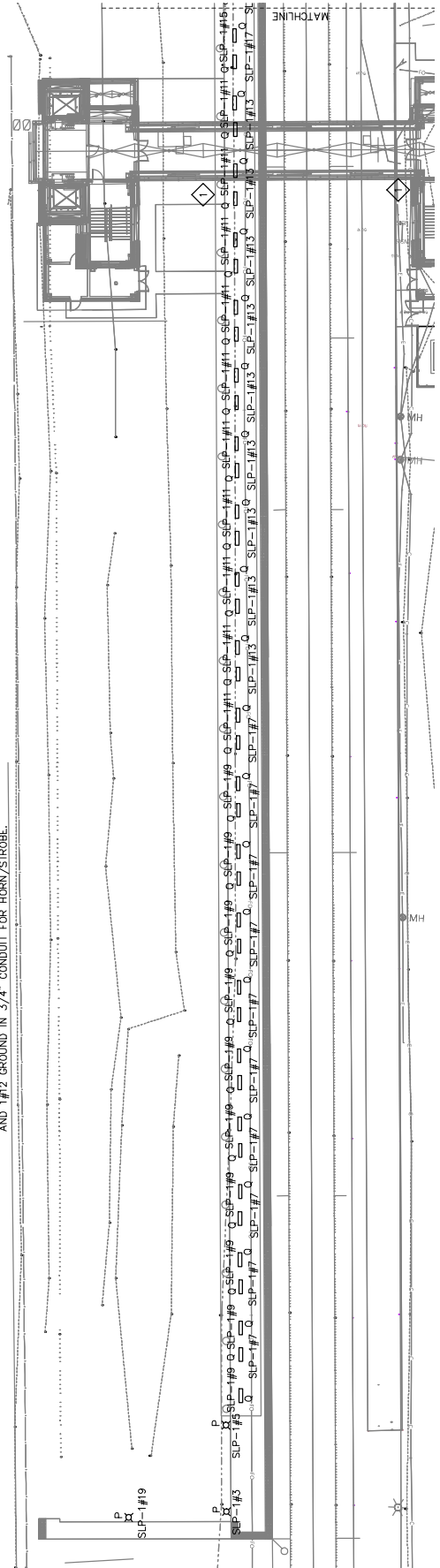
KEYED NOTES - POWER PLAN

- 1 PROVIDE WEATHERPROOF ELECTRONIC HORN AND STROBE WITH JENKINS 3000-00 SOUTH PLATFORMS HORN/STROBE CALL TO WORK AND SOUTH PLATFORMS HORN/STROBE SHALL ALARM WHEN ELEVATOR FAILS. INTERCONNECT WITH ELEVATOR CONTROLLER. FURNISH AND INSTALL MINIMUM 2#12 AND 1#12 GROUND IN 3/4" CONDUIT FOR HORN/STROBE.

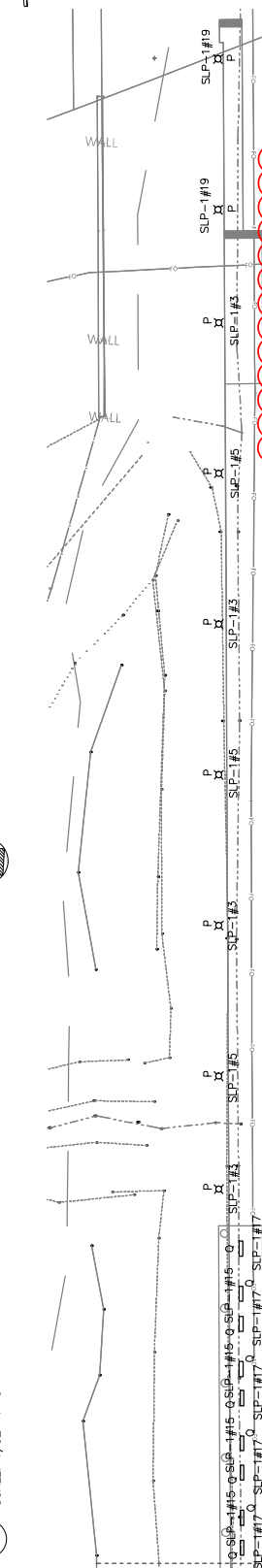
GENERAL NOTES - SITE PLAN

- 1 REFER TO DRAWING E-001 FOR ELECTRICAL SYMBOLS, ABBREVIATIONS, AND GENERAL NOTES.
- 2 REFER TO PANEL SCHEDULES DRAWINGS FOR CIRCUIT WIRING INFORMATION.

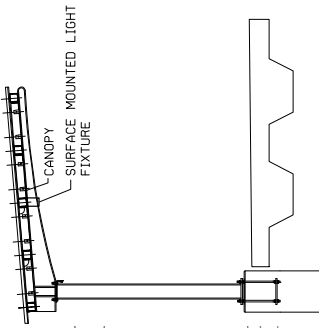
Addendum No. 03
ID 1000-57-70
Revised Sheet 224
December 7, 2022



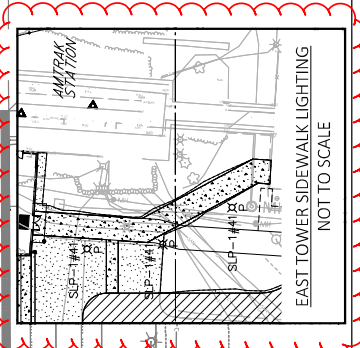
1 ELECTRICAL SITE LIGHTING PLAN
SCALE: 1/32"=1'-0"



2 ELECTRICAL SITE LIGHTING PLAN
SCALE: 1/32"=1'-0"



1 CANOPY FIXTURE MOUNTING DETAIL
SCALE: NONE



EAST TOWER SIDEWALK LIGHTING
NOT TO SCALE

NO.	DATE	REVISION	BY
STATE OF WISCONSIN DEPARTMENT OF TRANSPORTATION			
ELECTRICAL			
BY: JMM		CHECKED: PH	
DATE: 12/07/22		SCALE: AS NOTED	
SHEET E-401		224	
ELECTRICAL SITE LIGHTING PLAN			

SCALE = AS NOTED

STATE PROJECT NUMBER
1000-57-70

KEYED NOTES -
PANEL SCHEDULES

NO. DESCRIPTION
1 SHORT CIRCUIT RATING BASED ON PRELIMINARY CALCULATIONS AND ASSUMPTIONS. ACTUAL SHORT CIRCUIT RATING SHALL BE BASED ON CONTRACTOR SUBMITTED SHORT CIRCUIT STUDY PER SPECIFICATIONS.
2 INDICATED PANEL SHALL BE A SMART PANEL (CONTROLLABLE CIRCUIT BREAKERS) WITH INTEGRAL OVERCURRENT PROTECTION, EATON POW-R-COMMAND OR APPROVED EQUAL.
3 CIRCUIT BREAKER SHALL BE LOCKABLE TYPE.
4 GFCI TYPE CIRCUIT BREAKER FOR PUMP.
5 COORDINATE EXACT IT EQUIPMENTS REQUIREMENTS WITH LOW VOLTAGE CONTRACTOR.
6 PROVIDE 2#8 & 1#10 GND. IN 3/4" & 1#12 GND. IN 3/4" CONDUIT BETWEEN INDOOR AND OUTDOOR UNITS.
7 PROVIDE 3#10 & 1#10 GND. IN 3/4" CONDUIT FOR CIRCUIT.
8 CIRCUITS FOR RELOCATION OF EXISTING CANOPY LIGHT CIRCUITS UPON COMPLETION OF BUILDING POWER. REFER TO SITE PLAN ON DRAWING E-400 FOR FURTHER INFORMATION.

1 SCR: 10K AIC		SLP-1		120/208 V, 3 PH., 4 W., 100 A BUS, 150 A MCB			
A	B	C	WATTS	DESCRIPTION	A	B	C
350				BRIDGE CANOPY LTG	20A-1	1	20A-1
	375			PLATFORM LIGHTING	20A-1	3	20A-1
	390			PLATFORM LIGHTING	20A-1	5	20A-1
	200			PLAT CANOPY LTG	20A-1	8	20A-1
	200			PLAT CANOPY LTG	20A-1	9	20A-1
	225			PLAT CANOPY LTG	20A-1	10	20A-1
	125			PLAT CANOPY LTG	20A-1	11	20A-1
	150			PLAT CANOPY LTG	20A-1	12	20A-1
	450			EX CANOPY LTG	20A-1	13	20A-1
	450			EX CANOPY LTG	20A-1	14	20A-1
	450			EX CANOPY LTG	20A-1	15	20A-1
	450			EX CANOPY LTG	20A-1	16	20A-1
	450			EX CANOPY LTG	20A-1	17	20A-1
	450			EX CANOPY LTG	20A-1	18	20A-1
	450			EX CANOPY LTG	20A-1	19	20A-1
	450			EX CANOPY LTG	20A-1	20	20A-1
	450			EX CANOPY LTG	20A-1	21	20A-1
	450			EX CANOPY LTG	20A-1	22	20A-1
	450			EX CANOPY LTG	20A-1	23	20A-1
	450			EX CANOPY LTG	20A-1	24	20A-1
	450			EX CANOPY LTG	20A-1	25	20A-1
	450			EX CANOPY LTG	20A-1	26	20A-1
	450			EX CANOPY LTG	20A-1	27	20A-1
	450			EX CANOPY LTG	20A-1	28	20A-1
	450			EX CANOPY LTG	20A-1	29	20A-1
	450			EX CANOPY LTG	20A-1	30	20A-1
	450			EX CANOPY LTG	20A-1	31	20A-1
	450			EX CANOPY LTG	20A-1	32	20A-1
	450			EX CANOPY LTG	20A-1	33	20A-1
	450			EX CANOPY LTG	20A-1	34	20A-1
	450			EX CANOPY LTG	20A-1	35	20A-1
	450			EX CANOPY LTG	20A-1	36	20A-1
	450			EX CANOPY LTG	20A-1	37	20A-1
	450			EX CANOPY LTG	20A-1	38	20A-1
	450			EX CANOPY LTG	20A-1	39	20A-1
	450			EX CANOPY LTG	20A-1	40	20A-1
	450			EX CANOPY LTG	20A-1	41	20A-1
	450			EX CANOPY LTG	20A-1	42	20A-1
	450			EX CANOPY LTG	20A-1	43	20A-1
	450			EX CANOPY LTG	20A-1	44	20A-1
	450			EX CANOPY LTG	20A-1	45	20A-1
	450			EX CANOPY LTG	20A-1	46	20A-1
	450			EX CANOPY LTG	20A-1	47	20A-1
	450			EX CANOPY LTG	20A-1	48	20A-1
	450			EX CANOPY LTG	20A-1	49	20A-1
	450			EX CANOPY LTG	20A-1	50	20A-1
	450			EX CANOPY LTG	20A-1	51	20A-1
	450			EX CANOPY LTG	20A-1	52	20A-1
	450			EX CANOPY LTG	20A-1	53	20A-1
	450			EX CANOPY LTG	20A-1	54	20A-1
	450			EX CANOPY LTG	20A-1	55	20A-1
	450			EX CANOPY LTG	20A-1	56	20A-1
	450			EX CANOPY LTG	20A-1	57	20A-1
	450			EX CANOPY LTG	20A-1	58	20A-1
	450			EX CANOPY LTG	20A-1	59	20A-1
	450			EX CANOPY LTG	20A-1	60	20A-1
	450			EX CANOPY LTG	20A-1	61	20A-1
	450			EX CANOPY LTG	20A-1	62	20A-1
	450			EX CANOPY LTG	20A-1	63	20A-1
	450			EX CANOPY LTG	20A-1	64	20A-1
	450			EX CANOPY LTG	20A-1	65	20A-1
	450			EX CANOPY LTG	20A-1	66	20A-1
	450			EX CANOPY LTG	20A-1	67	20A-1
	450			EX CANOPY LTG	20A-1	68	20A-1
	450			EX CANOPY LTG	20A-1	69	20A-1
	450			EX CANOPY LTG	20A-1	70	20A-1
	450			EX CANOPY LTG	20A-1	71	20A-1
	450			EX CANOPY LTG	20A-1	72	20A-1
	450			EX CANOPY LTG	20A-1	73	20A-1
	450			EX CANOPY LTG	20A-1	74	20A-1
	450			EX CANOPY LTG	20A-1	75	20A-1
	450			EX CANOPY LTG	20A-1	76	20A-1
	450			EX CANOPY LTG	20A-1	77	20A-1
	450			EX CANOPY LTG	20A-1	78	20A-1
	450			EX CANOPY LTG	20A-1	79	20A-1
	450			EX CANOPY LTG	20A-1	80	20A-1
	450			EX CANOPY LTG	20A-1	81	20A-1
	450			EX CANOPY LTG	20A-1	82	20A-1
	450			EX CANOPY LTG	20A-1	83	20A-1
	450			EX CANOPY LTG	20A-1	84	20A-1
	450			EX CANOPY LTG	20A-1	85	20A-1
	450			EX CANOPY LTG	20A-1	86	20A-1
	450			EX CANOPY LTG	20A-1	87	20A-1
	450			EX CANOPY LTG	20A-1	88	20A-1
	450			EX CANOPY LTG	20A-1	89	20A-1
	450			EX CANOPY LTG	20A-1	90	20A-1
	450			EX CANOPY LTG	20A-1	91	20A-1
	450			EX CANOPY LTG	20A-1	92	20A-1
	450			EX CANOPY LTG	20A-1	93	20A-1
	450			EX CANOPY LTG	20A-1	94	20A-1
	450			EX CANOPY LTG	20A-1	95	20A-1
	450			EX CANOPY LTG	20A-1	96	20A-1
	450			EX CANOPY LTG	20A-1	97	20A-1
	450			EX CANOPY LTG	20A-1	98	20A-1
	450			EX CANOPY LTG	20A-1	99	20A-1
	450			EX CANOPY LTG	20A-1	100	20A-1
	450			EX CANOPY LTG	20A-1	101	20A-1
	450			EX CANOPY LTG	20A-1	102	20A-1
	450			EX CANOPY LTG	20A-1	103	20A-1
	450			EX CANOPY LTG	20A-1	104	20A-1
	450			EX CANOPY LTG	20A-1	105	20A-1
	450			EX CANOPY LTG	20A-1	106	20A-1
	450			EX CANOPY LTG	20A-1	107	20A-1
	450			EX CANOPY LTG	20A-1	108	20A-1
	450			EX CANOPY LTG	20A-1	109	20A-1
	450			EX CANOPY LTG	20A-1	110	20A-1
	450			EX CANOPY LTG	20A-1	111	20A-1
	450			EX CANOPY LTG	20A-1	112	20A-1
	450			EX CANOPY LTG	20A-1	113	20A-1
	450			EX CANOPY LTG	20A-1	114	20A-1
	450			EX CANOPY LTG	20A-1	115	20A-1
	450			EX CANOPY LTG	20A-1	116	20A-1
	450			EX CANOPY LTG	20A-1	117	20A-1
	450			EX CANOPY LTG	20A-1	118	20A-1
	450			EX CANOPY LTG	20A-1	119	20A-1
	450			EX CANOPY LTG	20A-1	120	20A-1
	450			EX CANOPY LTG	20A-1	121	20A-1
	450			EX CANOPY LTG	20A-1	122	20A-1
	450			EX CANOPY LTG	20A-1	123	20A-1
	450			EX CANOPY LTG	20A-1	124	20A-1
	450			EX CANOPY LTG	20A-1	125	20A-1
	450			EX CANOPY LTG	20A-1	126	20A-1
	450			EX CANOPY LTG	20A-1	127	20A-1
	450			EX CANOPY LTG	20A-1	128	20A-1
	450			EX CANOPY LTG	20A-1	129	20A-1
	450			EX CANOPY LTG	20A-1	130	20A-1
	450			EX CANOPY LTG	20A-1	131	20A-1
	450			EX CANOPY LTG	20A-1	132	20A-1
	450			EX CANOPY LTG	20A-1	133	20A-1
	450			EX CANOPY LTG	20A-1	134	20A-1
	450			EX CANOPY LTG	20A-1	135	20A-1
	450			EX CANOPY LTG	20A-1	136	20A-1
	450			EX CANOPY LTG	20A-1	137	20A-1
	450			EX CANOPY LTG	20A-1	138	20A-1
	450			EX CANOPY LTG	20A-1	139	20A-1
	450			EX CANOPY LTG	20A-1	140	20A-1
	450			EX CANOPY LTG	20A-1	141	20A-1
	450			EX CANOPY LTG	20A-1	142	20A-1
	450			EX CANOPY LTG	20A-1	143	20A-1
	450			EX CANOPY LTG	20A-1	144	20A-1
	450			EX CANOPY LTG	20A-1	145	20A-1
	450			EX CANOPY LTG	20A-1	146	20A-1
	450			EX CANOPY LTG	20A-1	147	20A-1
	450			EX CANOPY LTG	20A-1	148	20A-1
	450			EX CANOPY LTG	20A-1	149	20A-1
	450			EX CANOPY LTG	20A-1	150	20A-1
	450			EX CANOPY LTG	20A-1	151	20A-1
	450			EX CANOPY LTG	20A-1	152	20A-1
	450			EX CANOPY LTG	20A-1	153	20A-1
	450			EX CANOPY LTG	20A-1	154	20A-1
	450			EX CANOPY LTG	20A-1	155	20A-1
	450			EX CANOPY LTG	20A-1	156	20A-1
	450			EX CANOPY LTG	20A-1	157	20A-1
	450			EX CANOPY LTG	20A-1	158	20A-1
	450			EX CANOPY LTG	20A-1	159	20A-1
	450			EX CANOPY LTG	20A-1	160	20A-1
	450			EX CANOPY LTG	20A-1	161	20A-1
	450			EX CANOPY LTG	20A-1	162	20A-1
	450			EX CANOPY LTG	20A-1	163	20A-1
	450			EX CANOPY LTG	20A-1	164	20A-1
	450			EX CANOPY LTG	20A-1	165	20A-1
	450			EX CANOPY LTG	20A-1	166	20A-1
	450			EX CANOPY LTG	20A-1		

STATE PROJECT NUMBER
1000-57-70

ELEVATOR SCHEDULE													
ELEVATOR NO	CATEGORY	TYPE	AL7.1 CAPACITY (LBS.)	APTA CAPACITY (LBS.)	RATED SPEED (FPM)	PIT DEPTH	CLEAR OVERHEAD	CLEAR HOISTWAY WIDTH	CLEAR HOISTWAY DEPTH	PLATFORM WIDTH	PLATFORM DEPTH	CAR INSIDE WIDTH	CAR INSIDE DEPTH
ELEV. 01, 02, 03, 04	PASSENGER CLASS A	OVERHEAD TRACTION	4,000	6,000	200	5'-8"	17'-30"	9'-4"	7'-11"	8'-0"	6'-2"	7'-9"	5'-4 1/2"
ELEVATOR SCHEDULE (CONTINUED)													
		DOOR											
ELEVATOR NO	DOOR WIDTH	DOOR HEIGHT	TYPE	CAR TYPE	TRAVEL	NUMBER OF STOPS	NUMBER OF OPENINGS	LEVELS SERVED	POWER (HP)	STARTING CURRENT 480V, 3PH, 60Hz (A)	RUNNING CURRENT 480V, 3PH, 60Hz (A)	NET RELEASE AT CONTROL ROOM (BTU/HR/UNIT)	
ELEV. 01, 02, 03, 04	4'-0"	7'-0"	SINGLE SPEED SIDE OPENING	FRONT OPENING	24'-10 3/8"	2	2 (2F / 0R)	PLATFORM & OVERPASS	30	80	40	21,000	

Addendum No. 03
ID 1000-57-70
Revised Sheet 284
December 7, 2022

NO.	DATE	ELEVATOR SPEED REVISION	LD
1	12/7/22		

REVISION	BY

STATE OF WISCONSIN
DEPARTMENT OF TRANSPORTATION

VERTICAL TRANSPORTATION

DRAWN	LD	CHECKED	SY

ELEV. 01-04,
SCHEDULE
284

SCALE = AS NOTED



Proposal Schedule of Items

Proposal ID: 20221213016 Project(s): 1000-57-70

Federal ID(s): FR-CRS-0068-2

SECTION: 0001 Contract Items

Alt Set ID: Alt Mbr ID:

Proposal Line Number	Item ID Description	Approximate Quantity and Units	Unit Price	Bid Amount
0246	SPV.0060 Special 18. Lighting	1.000 EACH	_____.	_____.
0248	SPV.0060 Special 19. General Electrical Work	1.000 EACH	_____.	_____.
0250	SPV.0060 Special 20. Fire Alarm System	1.000 EACH	_____.	_____.
0252	SPV.0060 Special 21. Lightning Protection For Structures	1.000 EACH	_____.	_____.
0254	SPV.0060 Special 22. Plumbing Work	1.000 EACH	_____.	_____.
0256	SPV.0060 Special 23. Stairs	1.000 EACH	_____.	_____.
0258	SPV.0060 Special 24. Rough Carpentry	1.000 EACH	_____.	_____.
0260	SPV.0060 Special 25. Metal Fabrications	1.000 EACH	_____.	_____.
0262	SPV.0060 Special 26. Gypsum Board Partitions And Assemblies	1.000 EACH	_____.	_____.
0264	SPV.0060 Special 27. Ceilings	1.000 EACH	_____.	_____.
0266	SPV.0060 Special 28. Interior And Exterior Signage	1.000 EACH	_____.	_____.
0268	SPV.0060 Special 29. Other Architectural Work	1.000 EACH	_____.	_____.
0270	SPV.0060 Special 30. Fire Suppression	1.000 EACH	_____.	_____.
0272	SPV.0060 Special 31. Pids, Communications, And Security Work	1.000 EACH	_____.	_____.
0274	SPV.0060 Special 32. Wheelchair Lift Enclosure, New and Relocations	1.000 EACH	_____.	_____.
0276	SPV.0085 Special 01. Structural Steel	373,374.000 LB	_____.	_____.